

# The Memphis Democrat

10 PAGES  
This Week

Hall County Herald, Established May 3, 1890, Absorbed by Purchase August, 1928

MEMPHIS, HALL COUNTY, TEXAS THURSDAY AFTERNOON, OCTOBER 7, 1965 \*\*\* TEN CENTS \*\*\* NUMBER 21

**WEATHER**  
High Temperature 78  
Low Temperature 53  
Rainfall .39  
Total Rainfall 17.91  
(courtesy J. J. McMickin)



**CONVENTION**—Pictured above are some of the key individuals attending the annual Police Communications Assn. convention here last Thursday. From left to right: President Claude Wilhite, Amarillo DPS, Robert Lester, commissioner of the Oklahoma Department of Public Safety of Oklahoma City, Lt. Col. Wilson E. Spear, assistant director of the Texas Department of Public Safety of Austin, Capt. J. M. Thaxton of the Oklahoma DPS, and Hall County Sheriff Elmer Neel, host for the convention.

## Teachers Club Honors Retired Teachers Annual Banquet Tuesday Night

Approximately 175 persons attended the annual Teachers Banquet Tuesday evening at the Community Center, when special recognition was given to 12 local teachers.

Carl Yancey acting as emcee, presided over the banquet which was held at 7:30 p. m. The affair, which is given annually by the Memphis Teachers Club, was attended by the members, teachers, administrators, board members and husbands.

Lindsey led the group in prayer, then the pledge to the flag was given in unison. Rev. Gene Mason gave the invocation.

At the meal, the welcome was given by Boss Lion Orville Gooden. The response was made by Shannon Doss, who then invited the principals to introduce the new teachers in the schools.

Following teachers were recognized by Yancey who recited their record of teaching: Miss McElrath, 23 years; Mrs. Gurley, 23 years; W. C. former superintendent, 43 years; Miss Maud Milam, 24; Mrs. Davis, 25; Mrs. Hubert

Dennis, 24; Miss Neville Wrenn, 46; Mrs. Roy Guthrie, 36; and Mrs. Guy Cox, 33 years. Each was presented a Certificate of Appreciation by Pres. Goodpasture.

Three retired teachers, who were unable to attend, were also recognized. They were: Mrs. C. S. Compton, 16 years; Miss Ira Hammond, 49 years, and Mrs. Verna DeBerry, 37 years.

The speaker for the banquet was Wales Madden, Amarillo attorney, whose subject was "Texas Higher Education in the Sanguine 1970's." He traced the history of higher education from the beginning of this country to the accelerated pace of today, listing its evolution.

Madden cited several signs which he described as phenomenal, and predicted that the coordination programs which are being planned will be beneficial in the higher education schools.

"The reorganization will be good in each institution, and the salaries will go up," the speaker said. "Entrance requirements will be increased, and there will be expansion in all the vocational schools."

(Continued from Page One)



**RAYMOND BALLEW**  
**Raymond Ballew, Pioneer Resident Buried Sunday**

Funeral services for Jefferson Raymond Ballew, 72, a resident of Memphis for the past 63 years, were held at 2:30 p. m. Sunday in the First Baptist Church. Officiating were the Rev. Gene Johnson.

(Continued on Page Ten)

# Oklahoma, Texas Singing Assn. Convention Slated Here Oct. 9-10

## Masons To Have Area Meeting Here Monday

W. R. Scott, Most Excellent Master of Memphis Chapter Number 220 of Royal Arch Masons, announces that the local Chapter will be host to the fortieth District, Monday, Oct. 1, comprised of Chapters located in Clarendon, Shamrock, Wellington, Childress and Memphis.

The occasion will be an official visit by the head of Royal Arch Masons of Texas, Charles C. Sherrod of Lubbock, Texas, Grand High Priest of Chapter Masons of Texas. Besides the present office, Mr. Sherrod has held many high honors among Texas Masons and is Past Potentate of Khiva Shrine Temple of Amarillo.

A good attendance is expected from all the area Masons. All Royal Arch Masons residing in this district are urged to attend and hear this interesting speaker.

## Outstanding Song Leaders, Quartets, Trios Will Attend Two-Day Convention

Some of the outstanding song directors, quartets and trios in Texas and Oklahoma will be in Memphis this weekend for the annual convention of the Oklahoma and Texas Singing Association, Elmo Hudgins of Pampa, president, has announced. The convention will be held at the Community Center.

Mrs. Neil Conn of Childress, secretary of the association, said the organization was formed in Memphis on Sept. 7 and 8, 1929, and has held annual meetings since that time.

The convention will open at 2 p. m. Saturday afternoon and continue through Sunday afternoon.

The session Saturday night will begin at 7 p. m.

Sunday morning the convention will resume with a business session at 9 a. m. Singing will begin at 10 a. m. Sunday.

The convention will be dismissed at 11:30 a. m. Sunday, and singing will be resumed at 1 p. m. The affair will be over at 4 p. m.

Among outstanding musical talent who will appear on the program during the two-day convention will be Uncle Huffstutler of Dallas, who is considered one of the best directors in the field today, Mrs. Conn stated.

Also from Dallas will be the famous Conn family. This group is highly known in the gospel singing world and especially in the Eastern States. They never miss a weekend singing in some state convention.

Singing with this group is Mrs. Merle Moss, the wife of the late Gene Moss of the Stamps-Baxter Quartet.

Also here will be Little David Sapp and the Musicalaires of Orange, the Adair Sisters of Song from Canyon, Little Wood Quartet of Holiday, the Battle Family of Iowa Park, the Linda Robertson Trio of Dallas, Don Butler of Dallas, Mr. and Mrs. Lonnie B. Combs of Dallas.

Also present will be the fabulous singing Wills Family of Arlington. In this group are three quartets.

Many other well-known singers are expected to attend in addition to those listed above.

More than 3,000 persons are expected in Memphis Saturday and Sunday to attend the annual convention of the Oklahoma and Texas Singing Association. Host for the two-day convention will be the Hall County Singing Association, Ernest Lee, president, announced.

The convention was brought to Memphis through invitation of the Memphis Chamber of Commerce. The convention committee, headed by Carl Yancey as chairman, is in charge of providing the necessary facilities needed such as housing, badges, etc.

**Housing Is Needed**  
Delegates will begin arriving in Memphis about noon Saturday, and it is estimated that 1200 persons will be here to spend the night, Mrs. J. F. McIntush, secretary, said.

Since there are not enough motels and hotels accommodate this number, the chamber of Commerce committee is calling on local residents to provide bedrooms for Saturday night.

Persons who can keep delegates are asked to call Clifford Farmer, manager of the Chamber of Commerce, and list their addresses and names. The number is 259-3144.

It was estimated that 600 bedrooms will be needed in addition to the facilities available by officials of the association. All local hotels and motels will be filled before persons are placed in area homes, Mrs. McIntush stated.

## County Farmers Set Up Insect Control Assn.

A large number of county farmers met in the district courtroom Monday night and formed an organization to be known as the Hall County Insect Control Association.

Much interest was shown in obtaining a share and share alike basis for a diapause boll weevil spraying program.

Officers and directors for the association were elected, and include: Paul Montgomery, president; M. A. Beasley, vice president; Robert L. Moss, secretary; and Bill Thornberry, C. V. Murf, Crump Ferrel, Jan Turner, Jack Montgomery, Robert A. Hodges, R. B. Phillips, Joyce Webster and Edwin Meyers as directors.

**Meeting Next Monday**  
Any farmer interested in controlling the boll weevil in this program is urged to be present at a county-wide and vicinity meeting in the district courtroom in Memphis at 7:30 p. m. Monday, Oct. 11.

There is a possibility that farmers can spray twice this year to control boll weevils in the diapause stage, the officers of the newly formed association stated.

## Rodney Sams Is Greenbelt FFA President

Rodney Sams, a FFA student at Lakeview High School, was elected president of the Greenbelt District at a meeting in Paducah, Wednesday, Sept. 29.

Ken Baxter of Samnorwood was elected vice-president and Dwayne Lamberson of Clarendon was named secretary for the district.

Richard Shaw of Hedley was elected treasurer and Carl Houston of Memphis was named reporter.

Freddy Mayhugh of Wellington is the sentinel while Jim Robertson of Turkey was elected parliamentarian. Historian is Melvin Long of Esteline and the song leader is Wendell Isbell of Paducah.

The adviser for the Greenbelt District will be Barney Bevers, Vocational Agricultural teacher at Lakeview High School.

At the September meeting, delegates voted to have a district judging contest and banquet. Also the motion was made and approved that leadership banners be presented at the district banquet.

## Funeral Services For J. W. Webster Held Here Today

Funeral services for Jesse Walter Webster, 60, were held at 2:30 p. m. today (Thursday) at the Travis Baptist Church with the Rev. Leroy Gaston, pastor, officiating.

Interment was in Fairview Cemetery with services under the direction of Spicer Funeral Home.

A retired employee of the City of Memphis, Mr. Webster served as caretaker at the City Park.

He was born Dec. 29, 1904, in Milton, Tex. He passed away Oct. 6 at Hall County Hospital.

Survivors include his wife of the home; one daughter, Lulu Belle Webster of Abilene; one step-son, Reb Weir of Memphis; four step-daughters, Alice McKinney, (Continued on Page Ten)

Two local organizations, the Memphis Fire Department and the Band Booster Club, are helping to provide food.

The members of the Fire Department will set up food booths on the Community Building area and will serve throughout the convention.

The food booths will be open by noon Saturday and will stay open until the convention closes Sunday afternoon.

Delegates will be able to purchase hamburgers, sandwiches, fried pies, coffee, cold drinks, etc.

**Sunday Meal**  
On Sunday the Band Booster Club will serve a plate lunch at the Travis Cafeteria. Tickets for the lunch will be sold at the Community Building Sunday.

Buses will pick up the delegates at the Community Building and transport them to the Cafeteria for the meal, it was announced.

# Cyclone Ranked No. 7 in Class A Area Teams

By BILL COMBS  
For the first time this season, Memphis Cyclone football has been recognized as one of the top 10 Class A high school teams in the Panhandle. The announcement was made Tuesday morning Amarillo News.

Making the announcement, Globe News Sports Dept. stated the surprising Memphis Cyclone, boasting a 4-1 season record, jumped to the No. 7 position in Class A.

In an interview with Cyclone coach Charley Chambliss Tuesday afternoon before workout, he said: "The coaches are going to talk with our team about playing at which time our boys are going to have to make a decision about several things."

"Our boys are at a cross roads," Chambliss said, "we have completed our non-district games and we open this weekend which will be a help or a hindrance depending on the attitude of our team."

An open district play a week from Friday by going over to Wellington where we will play the ranked team in the Panhandle in the opening game of district 2-A," he said.

When the coach talked to the team Tuesday about the rating, Chambliss said he did not think the team would face a defeat. He explained that they could be a "good" team or an "average" team or a "poor" team depending on their desire to make the sacrifice in workout sessions for the rest of the season.

"We give it that 110 per cent effort for the rest of the way and it will be just good enough to

shake up the Class A ratings and be a 'good' team," he said.

The coach explained that the sacrifice may be too great to expect and the boys are going to need all the encouragement they can get because when Memphis and Wellington go on the field on Oct. 15, the Cyclone will not be favored to win the game.

What the local lads do and the efforts they put forth during the workouts the next two weeks may well determine the record they make in District 2-A play.

The Cyclone squad has come a long way since its opening effort against Crowell. Coach Chambliss cited the defensive team of the Cyclone as contributing the most to the four victories so far this season.

Most fans remember how Shamrock was upset 12 to 7 by the Cyclone's tough defense. Also Hooker had a lot of offense but was only able to score once against the Cyclone defense. A long bomb pass was Sanford-Fritch's scoring play and Silverton only made three first downs all night against the Cyclone defense.

The Memphis offense has continued to show steady improvement in both the passing and running departments as is evident by the continued mounting of scores. Memphis scored one TD at Crowell, two at Shamrock, three against Hooker, five touchdowns against Sanford-Fritch and eight against Silverton.

Fans will remember that District 2-A coaches and sports writers at the first of the season had every district 2-A team picked over Memphis. Clarendon was selected in the number two spot in District 2-A, a position they have now lost to Wellington.

District 2-A standing now have

White Deer No. 1, Wellington No. 2, Clarendon No. 3, Memphis No. 4, McLean No. 5 and Canadian No. 6.

The Memphis-Wellington game next week could well decide who will challenge White Deer for the crown.



**HOMECOMING QUEEN**—Miss Jan Neel (seated, center) is shown with the bouquet of flowers and wearing the crown she was presented with during Homecoming Queen crowning ceremonies last Friday night. She was crowned by Gary Gentry. To the left is pictured attendant Diane Gailey and escort David Lemons and to the right is shown attendant Elmonette Branigan and escort Roger Hargrove.

## Annual Cotton Guessing Contest Enters Second Week; Interest Mounts

The majority of local residents who have come in to make predictions on the 1965 cotton harvest have estimated the county will win a few less bales than last year. However, all agree the yield depends on the date of the first killing frost.

As usual, there are a few optimistic persons and Mrs. Golden Welcher has listed her estimate well above that ginned last year with a guess of 65,000 bales, the highest thus far.

Hall County has 80,540 acres planted to cotton this year as compared with 84,732 for the 1964 crop, according to figures secured from the Hall County ASCS office.

The county ginned 48,236 bales last year.

All readers of The Democrat are invited to enter the contest. All a person has to do to enter is come by the office of this newspaper and make a prediction. Or, if more convenient, mail a card or letter to The Memphis Democrat, Box 192, Memphis, and list your name, address and your guess. No entries will be taken over the telephone.

The person guessing closest to the actual number of bales ginned will win a three-year subscription to The Democrat. Second place winner will receive a two-year subscription, and third place a one-year subscription.

Guesses listed to date include: Mrs. W. N. Phillips, 49,170; Joan Proffitt, 54,950; R. S. Patrick, 61,580; Toby Crooks, 46,003; R. E. Crooks, 43,894; Joyce Crooks, 45,361; Eva Ann Glosson, 45,777; Roger Crooks, 46,122; Carol Crooks, 42,677; Bob Crooks, 44,333; Pat Crooks, 43,227; J. J. McMickin, 48,480; Ruby Thornton, 56,224; Joan Edwards, 58,225; Mrs. R. E. Lowe, 47,893.

Also J. B. Waddill, 43,333; Mrs. J. B. Waddill, 39,993; Bruce Ariola, 45,550; Mrs. Bruce Ariola, 38,993; Mrs. Golden Welcher, 65,000; J. C. Richerson, 33,400; Ruth Richerson, 36,929; Otis Lambert, 39,200; Mrs. Theo Swift, 42,350; Mrs. Harry Aspreen, 47,777; Harry Aspreen, 44,440; Fritz Aspreen, 54,745; Lester H. Campbell, 49,225; Frank Murray, 58,485; Charlie Murff, 56,495; W. D. Young, 53,333; V. C. Durrett, 50,000; O. E. Bevers, 56,030; W. C. Davis, 58,600; Bill Lockhart, 54,711; Mary Lockhart, 51,203, and Robert L. Moss, 46,668.



Published on Thursday of each week at 617 Main Street, Memphis, Texas by J. CLAUDE WELLS HERSHEY COMBS Owners and Publishers (Hall County Herald absorbed by purchase August 7, 1928)

Subscription Rate: In Hall, Donley, Callingsworth and Childress Counties, per year—\$4.00

Subscription Rate: Outside Hall, Donley, Callingsworth, and Childress Counties per year—\$5.00

Member of TEXAS PRESS ASSOCIATION and PANHANDLE PRESS ASSOCIATION

Entered at the post office at Memphis, Tex., as second-class matter, under Act of March 3, 1879.

NOTICE—Any erroneous reflections upon the character, standing or reputation of any person, firm or corporation which may appear in the columns of The Memphis Democrat will be corrected gladly upon its being brought to the attention of the publishers.

EDITORIAL

Fire Prevention Is Our Job

This week, from coast to coast, a concerted effort on the part of everyone to prevent fires was urged by the American Insurance Association as Fire Prevention Week rolled around.

Last year estimated dollar losses caused by fires in the United States totaled \$1,367,128,000, a decline of 1.3 per cent under 1963.

There have been many, many programs given on fire prevention since Fire Prevention Week was started some many years ago and these programs will be given in public schools, at civic clubs, and many public meetings during the special week.

The American Insurance Association assembled quite a few facts about fires and their causes which are educational and informative.

About big buildings the AIA said that fire drills are important and should be taken seriously, especially where children are involved.

Lightening causes every eighth fire in the United States and on farms in the Middle West lightning is the leading cause.

Home fires claim 60 per cent of all lives lost in the United States and of those lost, about one-half are among children under 10 years of age.

The leading cause of fires in the United States is matches and smoking, leading insurance officials stated.

Heating and electric equipments are among other principal causes of fires and insurance men say that many home owners are not having their heating equipment inspected as regularly as they should.

Leading insurance officials estimate that our losses would be three times as great as they are if fire prevention campaigns had not been started.

If a fire does start, get your family and yourself out of the home and then call the fire department.



ACROSS the DESK

What Other Editors Say

Perfection . . .

The average reader may not realize it, but newspaper people sometimes do some serious self-examination and soul-searching.

For instance, we sometimes wonder: Is this story important enough to publish? Is this editorial sound enough in its reasoning to deserve reading?

Sometimes, it seems that the readers think every bit of the paper should be perfect before it is printed.

But how many others are perfect in everything they do? Does a farmer, for instance, get a perfect stand in every cornfield?

This could apply to all jobs and professions.

We in the profession of journalism know that our papers are never as good as we would like for them to be.

But please don't expect them to be perfect. Try to understand that newspapers, like every other product of human beings, are not and can not be perfect.

So we hope you will deal gently with us as you judge the result of our efforts.

—S. W. Dallas Co. Suburbanite

Big Job: The War On Crime Lyndon Johnson makes great demands on those who serve him, but few have been given a greater challenge than his new Commission on Law Enforcement and Administration of Justice.

The President's crime crusade is typically Johnsonian, rivaling in scope and difficulty his campaigns against poverty, discrimination, disease and ignorance.

Lyndon Johnson is not one to sit back philosophically and shake his head at bad news.

Crime is always bad news. It continues to increase each year, and just when it seems to be leveling off in the cities, as it has this year, it flares out of control in the suburbs and among American youth.

The Federal Bureau of Investigation recently reported that more than one-third of all serious crimes solved by police were committed by persons under 18.

LOYD ELLIOTT Wants, needs and appreciates your business! Your ENCO Dealer Corner Main & Boykin Drive

same surroundings and circumstances, does not?

In his charge of the commission, the President did not dwell on organized crime. The more critical problem seems to be the waves of "unorganized," random, individual crime—the assaults, often without purpose; the senseless and dangerous armed robberies; the inexplicable sex offenses; the burglaries and larcenies; the contagion of narcotics addiction.

The President appointed a strong chairman—Atty. Gen. Nicholas Katzenbach. The commission was given 18 months to make studies and conduct hearings.

Why is it that juvenile delinquency knows no economic or educational boundaries? Why is drug addiction spreading among youth?

Why does one-third of all parolees revert to crimes? Why does organized crime continue to expand? Why does one man commit a crime while his neighbor, in the

—The Denver Post

Memories

Turning Back Time

From The Democrat Files

40 YEARS AGO October 8, 1925

The New Gem Theatre will open Monday, Oct. 12, and will have for the opening picture Reginald Denny in "I'll Show You The Town," which will be shown Monday and Tuesday.

Judge A. C. Hoffman states that at least the Highway Commission has granted permission for work to begin on the State Highway through Memphis in precinct one from the Donley County line to Red River.

Holmes McNeely was given a \$200 scholarship in the Wentworth Academy, Lexington, Mo. His preparation in the Memphis Band gave the qualifications that led to this honor.

Coy Lee Odom went to Quitaque first of the week to open the new Odom Drug Store there.

The City Council was presented with a petition Wednesday night at the meeting asking for an election to vote on bonds for some thirty-five blocks more paving in Memphis.

30 YEARS AGO Oct. 4-10, 1935

Memphis' Public address system arrived in the city yesterday and it is being rigged by Si Wood, technician, for use in tonight's football game.

Mr. and Mrs. J. D. Browder returned yesterday from a trip of several months spent at Los Angeles and other points in California.

Mrs. Jim Vallance, Mrs. Hal Goodnight and Miss Sylvan Wrenn were visitors in Childress Saturday.

Mr. and Mrs. H. H. Lindsey and children, Mary Helen, Gene, Bobby and Betty Sue, spent yesterday with Mr. Lindsey's father, G. K. Lindsey at Eldorado, Okla.

Miss Clara Pyeat left Sunday for McGargle where she will teach in the Public School this school year.

An examination of the official project map for the street grading for this city disclosed that streets in all parts of the city will be improved, under the WPA project which the first of the week received approval.

20 YEARS AGO October 11, 1945

Seaman 1-c Gordon Gilliam is

home with an honorable discharge tucked in his pocket after 43 months in the Navy Pacific.

Funeral services were held day afternoon at 3 o'clock at the Church of Christ in Memphis for Mrs. J. H. Widener, time resident of Hall County who passed away on Wednesday, Oct. 3, following a long illness.

Mr. and Mrs. E. T. Pratt and Mrs. Winifred Davis attended the Wichita Falls-Childress game Friday night.

Miss Susie Huckaby and Jo Lamb of Amarillo, Okla., weekend here with relatives.

O. J. Gilreath with radio motor repair shop in the Motor Service building, announced that he is now repairing and service radio and electrical appliances.

Frank Finch and G. W. Smith have been attending meetings at Dalhart and Ward, Okla., and the Kansas Royal show at Kansas City.

10 YEARS AGO October 6, 1955

J. C. Durham, member of the Hall County Agricultural and Conservation Society, was one of the largest grain crops in its history.

W. C. Davis, superintendent of the Memphis schools, attended a workshop on the school situation program in Texas which was held in Amarillo.

J. W. Coppedge, manager of the Hall County Electric, was in San Antonio Wednesday to attend a state-wide meeting.

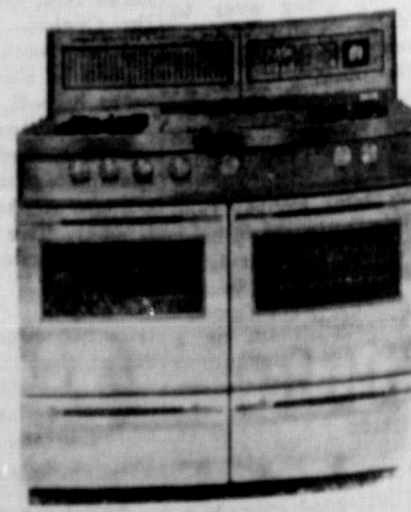
Douglas Vandiver, son of Mr. and Mrs. Joe Vandiver, in-law of Mr. and Mrs. Aduddell of Memphis, was awarded a plaque by the Texas Association of Insurance Agents for being the Co-Driver for August.

Mr. and Mrs. E. E. E. spent the weekend in Childress visiting their son, Evan, and family.



Uncommonly good cooks use modern gas and the Burner-with-a-Brain

The automatic Burner-with-a Brain holds temperatures exactly as you set them. Every pot and pan becomes an automatic appliance. Foods won't burn. Other unique advantages of a gas range: Cook 'n' Keep Oven — which cooks perfectly then holds foods serving-hot for hours without over-cooking; automatic roast thermometer; self-basting rotisserie; temperature-controlled griddle. And with touch-conscious gas you are in control always.



DR. JACK L. ROSE OPTOMETRIST Contact Lenses Closed Saturday Afternoons 505 Main Phone 259-2216

Fare to the Fair Reduced 1/3 Round Trip Chair Car Fare

MEMPHIS to DALLAS \$10.30 Effective Oct. 9-24

MOST ECONOMICAL WAY! The Train is Safe, Comfortable, Relaxing and Lots of Fun!



FORT WORTH AND DENVER RY.

E. Chavez, Agent 259-2325



# MHS Class Of 1915 Holds 50th Anniversary Reunion Here

Memphis High School Class of 1915 met for its 50th anniversary reunion here last evening, Sept. 18, at the restaurant and on Sunday at the Diamond Jubilee. This was the first reunion held at the school since 1915. The reunion proved to be a successful one with 17 of the original class of 28 present. Thirty-four of the eleven boys and 17 girls were present. The attendance was 51.

Only four class members are dead. Two were unable to attend. The occasion was a time of re-acquaintance after 50 years but it turned into a somewhat festive class members reunion.

Memphis High School in 1915 had five teachers, two are dead and the other three were in attendance at the banquet. Dr. Clus- Smith, superintendent of the school, is now retired. In 1915, a recent stroke and two attacks, he was flown to California by his son and daughter Friday afternoon. He took part in all of the activities and was the spark of the reunion.

Low, principal, came down from Clarendon and took the program itself was unique as all students and teachers participated. All had been asked to give a five minute outline of the highlights of their life over the past fifty years.

Smith made this remark, "If I had a key to heaven and found out the class members present were not going to heaven I would throw my key away and go to Hell with you." He further stated that in his 55 years in school work this class stands out as one of the best. The life accomplishments of the members prove it.

It developed that 85 percent of this class went to college with a large percent acquiring one or more degrees. All present were in comfortable financial condition and some were wealthy. Most all were in fine health. The youngest members of the class were 87 years and the oldest members were 70 years old.

The class members travelled 19,840 miles to be present at the reunion.

Attending the reunion were the following class members and their husbands or wives: Mr. and Mrs. Bland Burson (Francis Alexander) of Channing; Mr. and Mrs. M. R. Alexander of Strathmore, Calif.; Mr. and Mrs. E. A. Ericson (Vena Allen) of San Fernando, Calif.; Mamie Lou Baldwin Rouse of Memphis; Mr. and Mrs. C. A. Blanton of Fort Worth; Mrs. Cleo Brumley Taylor of Amarillo; Pinckney Cagle of Los Angeles, Calif.; Mrs. Forrest Power (Gladys Denny) of Memphis; Mr. and Mrs. Benton Fair of Hunt; Mr. and Mrs. John Ewen (Grace Fickas) of Stark City, Mo.; Mr. and Mrs. John Milam Bessie Lee Harper of Sudan; Mr. and Mrs. T. E. Graham (Kathleen Jones) of

Fort Worth; Mr. and Mrs. Leck Moreman (Ruby Long) of King- ville, Mr. and Mrs. Felix Cock- ran (Grace Milam) of Oklahoma City, Okla.; Mrs. Ethelyn Morgan Woodruff of Decatur; Miss Bess Norwood of Fort Worth, Mr. and Mrs. Byron Baldwin (Willie Mae Thompson) of Memphis.

Teachers present were Dr. Cluster Q. Smith, Sr., of Okla- homa City, Mr. and Mrs. Lam Lowe of Clarendon and Mr. and Mrs. Harwell (Eunice Peele) of Abilene.

Guests attending were Mr. and Mrs. John M. Deaver (Mr. Deaver was a member of the class at one time) of Memphis, Mr. and Mrs. John Bass of Clarendon and Mr. and Mrs. Cluster Q. Smith, Jr., of Dallas.

After a prayer, led by Mrs. Clarence Morris, Memphis, and a group of Delta Kappa songs, led by Mrs. J. N. Weaver, Clarendon, President Inez Blankenship, Good- night, conducted the business meeting, during which yearbooks were ordered, and reports of state and regional meetings were given.

Mrs. Kirby directed a quiz on the society's constitution; and Mrs. Reba Stroehle explained the scholarship activity. She stated that during the past year the Gamma Kappa Chapter was named one of the ten honor chapters of the

state for scholarship interest.

Mrs. Homer Tribble, Memphis, explained that the program, in the form of a debate: Resolved: That the Traditions of Japan Should Be Maintained, would be argued by Mrs. Gordon Bain, Turkey, and Mrs. Roy L. Guthrie, Memphis, for the affirmative; and Miss Ethel Hillhouse, Memphis, and Mrs. Tribble, Memphis, for the negative. Such traditions as the Imperial Regalia, the Chrysanthemum, the Neh, Banruka, and Kakura were emphasized.

During the social hour the hostesses served punch and cakes from a lace-covered table daintily arranged in fall flowers and colors. The entertainment rooms were brightly decorated with woods, flowers, a map of Japan, pictures and souvenirs from Japan. Mrs. Harry Aspren of Memphis received particular thanks for a display sent to her by her son, Lieut. Harold Aspren. The articles included a Bible printed in Japanese, a kimono, several books, a sake set, an abacus, and ceremonial dolls. During the social hour,

Mrs. Bain showed slides of temples, Diabasu, rice fields, geisha girls, pearl culture, ceremonies, and modern buildings.

Other members present included: Mrs. J. R. Brandon, Clarendon; Miss Alma Bruce, Memphis; Miss Maudie Coffee, Wellington; Mrs. Charley Hill, Wellington; Miss Sara Jones, Wellington; Mrs. Joe King, Memphis; Miss Esta McElrath, Memphis; Miss Margaret McElreath, Memphis; Miss Ed-

gar Mae Mongole, Clarendon; Mrs. Otis Naylor, Clarendon; and Miss Bonnie Willis, Wellington.

Mrs. Mildred Monzingo visited in Lubbock over the weekend with her sons, Tony Monzingo, who is a student at Texas Tech, and Don Monzingo and family.

There are more than 19,000 bridges on the Texas Highway system.

# Gamma Kappa Chapter Meets In Childress

The September meeting of the Gamma Kappa Chapter of the Delta Kappa Gamma Society was held in Childress with Mrs. Ewell Robinson, Mrs. Dora Diggs, Mrs. D. W. Kirby, Mrs. Gertrude Watson and Mrs. Sam White hostesses.

After a prayer, led by Mrs. Clarence Morris, Memphis, and a group of Delta Kappa songs, led by Mrs. J. N. Weaver, Clarendon, President Inez Blankenship, Good- night, conducted the business meeting, during which yearbooks were ordered, and reports of state and regional meetings were given.

Mrs. Kirby directed a quiz on the society's constitution; and Mrs. Reba Stroehle explained the scholarship activity. She stated that during the past year the Gamma Kappa Chapter was named one of the ten honor chapters of the

state for scholarship interest.

Mrs. Homer Tribble, Memphis, explained that the program, in the form of a debate: Resolved: That the Traditions of Japan Should Be Maintained, would be argued by Mrs. Gordon Bain, Turkey, and Mrs. Roy L. Guthrie, Memphis, for the affirmative; and Miss Ethel Hillhouse, Memphis, and Mrs. Tribble, Memphis, for the negative. Such traditions as the Imperial Regalia, the Chrysanthemum, the Neh, Banruka, and Kakura were emphasized.

During the social hour the hostesses served punch and cakes from a lace-covered table daintily arranged in fall flowers and colors. The entertainment rooms were brightly decorated with woods, flowers, a map of Japan, pictures and souvenirs from Japan. Mrs. Harry Aspren of Memphis received particular thanks for a display sent to her by her son, Lieut. Harold Aspren. The articles included a Bible printed in Japanese, a kimono, several books, a sake set, an abacus, and ceremonial dolls. During the social hour,

Mrs. Bain showed slides of temples, Diabasu, rice fields, geisha girls, pearl culture, ceremonies, and modern buildings.

Other members present included: Mrs. J. R. Brandon, Clarendon; Miss Alma Bruce, Memphis; Miss Maudie Coffee, Wellington; Mrs. Charley Hill, Wellington; Miss Sara Jones, Wellington; Mrs. Joe King, Memphis; Miss Esta McElrath, Memphis; Miss Margaret McElreath, Memphis; Miss Ed-

gar Mae Mongole, Clarendon; Mrs. Otis Naylor, Clarendon; and Miss Bonnie Willis, Wellington.

Mrs. Mildred Monzingo visited in Lubbock over the weekend with her sons, Tony Monzingo, who is a student at Texas Tech, and Don Monzingo and family.

There are more than 19,000 bridges on the Texas Highway system.

## COATS CHIROPRACTIC CLINIC

Complete Chiropractic Health Service  
DR. J. R. COATS, D. C.  
507 12th Street, Northwest  
Next to Coats Grocery

Childress

WE7-4431



**39** Jubilee

# SALE



GOOD VALUE  
**BACON**  
2 Lbs. .... **1.39**

FRESH LEAN  
**PORK CHOPS**  
Lb. **57¢**

FRESH WHOLE  
**Fryers**  
Lb. **27¢**

CHUCK  
**BEEF ROAST** **49¢**  
Lb.

LOIN  
**STEAK** **83¢**  
Lb.

BORDEN'S  
**Ice Cream**

1/2 Gal. Round Carton  
**69¢**

BORDEN'S CHARLOTTE FREEZE  
**Mellorine** 1/2 Gal. **29¢**

GOOD VALUE  
**Shortening** 3 lb. Can **69¢**

**OLEO** GOOD VALUE 3 lbs. **65¢**

No. 1 East Texas  
**YAMS**  
lb. **10¢**

TOKAY  
**Grapes**  
TOKAY REFRESHING... TO TOP OFF YOUR FRUIT BOWL  
Lb. **10¢**

RED ROME  
**APPLES**  
Lb. **15¢**

FLEMING  
**COFFEE** lb. Can **69¢**

GOOD VALUE  
**PINTO BEANS, CHILI HOT BEANS, BLACKEYE PEAS, SPAGHETTI**  
300 Size Can  
10 FOR **99¢**

We Reserve The Right To Limit Quantity—Double S&H Green Stamps Wed. With \$2.50 Purchase or More

# Vallance Food Stores

## Odessa To Be Scene For Oct. Industrial Meet

As part of the industrial development effort of the Chamber of Commerce, Chamber President Warren Driver is urging all inventors, manufacturers, and persons interested in industrial development in the community to attend the Texas Inventors Congress to be held in Odessa on October 15-17, 1965.

"Governor Connally has named the Texas Industrial Commission to sponsor the Inventors Congress," President Driver said, "in order to help in the creation of home grown industry and to encourage the expansion of existing manufacturers."


"There is a possibility that new firms created as a result of this Congress could be in Memphis," he said. "This project is definitely a part of our present program of industrial development."

The Inventors Congress is open to inventors and manufacturers with patents or patent pending. Manufacturers interested in new product lines for plant expansion are especially invited to attend. Technical sessions will be held during the Congress on all phases of setting up a business and marketing a product.

AT YOUR STORE OR AT YOUR DOOR

## Borden's

Guaranteed Fresh  
It's Borden's  
It's got to be good  
Phone 239-3162  
W. A. SMITHEE  
Local Distributor



Got A New One?

Or an old one either. You know, we sell life insurance. Too. Good, reliable Companies. With competitive rates. Don't wait to buy Life insurance. It's hard to buy when You're gone, or about To leave. Ya gonna leave an Estate . . . or debts? Life insurance will Make that estate Possible . . . for that New one . . . or the Old one. Today's the day To see us.

Campbell Insurance Agency  
"Honesty Is Our Best Policy"  
Les Campbell  
110 N. 5th Memphis, Texas

110 N. 5th Memphis, Texas



## Over 100 Persons Attend Field Day Tour Of Five County Farms, Ranches

Three bus loads of farmers and business men took a results demonstration tour of several Hall County farms and ranches last Monday. The tour ended with a banquet sponsored by the Memphis Chamber of Commerce and Hall County Farm Bureau.

Attending the banquet were 110 persons who had made the tour.

Harold Hodges, chairman of the Hall County Program Building Committee called on Mayor H. J. Howell to give the welcome address during which keys to the city were given. He also gave the invocation.

J. G. Simmons, District Agent, introduced the employees of the Extension Service present at the tour. They were: Dr. R. W. Berry, area plant pathologist, Dr. Dixon D. Hubbard, area livestock specialist, Norman Brints, area farm management specialist, Sam Helmers, county agent from Wellington, Ellis Helmers, county agent from Childress, Ronald Gooch, county agent from Clarendon, W. B. Hooser, Hall county agent, and Duane Scott, farm management assistant.

Mr. Hodges recognized: Neal Hindman, Vocational Agricultural teacher of Memphis High, James G. Mulkey, Chillicothe experiment station, Lynn L. McKown, manager of Hall County ASCS.

Also, Billy R. Jones, Polling Plains Production Credit Assn., E. Leon Thurman, Farm and Home Adm. manager, J. W. Coppedge, manager of Hall County Electric Coop., Mayor Howell, vice-president of First State Bank.

Also Jack I. Davis, president of First National Bank, Charlie Brown, assistant vice-president of First National Bank, Clifford Farmer, manager of Memphis Chamber of Commerce and Brown Smith, vice-chairman of the Hall County Building Program Committee.

Mr. Simmons complimented the Memphis Chamber of Commerce, Hall County Farm Bureau, Memphis High School, and Hall County Program Building committee for their cooperation in making the annual Northwest Texas Result Demonstration Tour one of the best in the history of the organization.

The first stop on the tour was at the J. J. McDaniel farm where

a demonstration on beef cattle production was explained by Dr. Dixon D. Hubbard, who supervised the demonstration. Recommended beef cattle practices such as water distribution, deferred grazing, disease control and noxious plants control as set up and explained.

The farms of Paul Smith, Brown Smith and Troy Phillips were visited in studying the control of Nematodes which has become a major problem to Hall County farmers. Dr. R. W. Berry explained these demonstration plots. The Wayne Hutcherson farm was visited to observe a demonstration on cotton varieties.

### Dr. J. A. Odom Is Recovering From Surgery

Dr. J. A. Odom, who underwent surgery in Northwest Texas Hospital in Amarillo, on Tuesday of last week is now recovering nicely, his son, Adrian Odoms, stated Wednesday.

Mrs. Odom is in Amarillo with her husband and his children have also been there with him part of the time.

### Stephen Lanes Attend Seminar

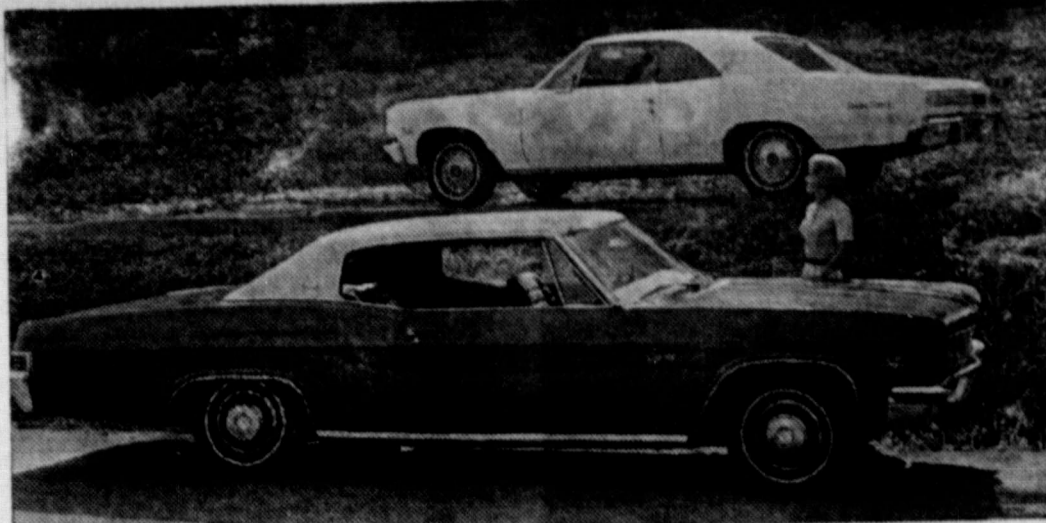
Mr. and Mrs. Stephen E. Lane have returned from Lamesa where they attended a three-day seminar of Jehovah's Witnesses.

Mr. Lane said regular meetings of Jehovah's Witnesses will resume this week in Memphis.

Approximately 461 persons attended the Lamesa session. A. A. Catanzaro, traveling representative of the Watchtower Society, spoke at the final session of the seminar on the subject "What Does the Resurrection of the Dead Mean for You and Yours?"

#### PUBLIC NOTICE

On July 2, 1965, the Caprock Translator System, Inc., filed form No. 348 for license renewal of K77AQ and K80AU, 100 watt units located 7 miles NW of Memphis, Texas, K77AQ rebroadcasts KVII, Channel 7 of Amarillo, on Channel 77. K80AU rebroadcasts KPFA, Channel 10 on Channel 80, both serving the Memphis, Lakeview, Estelline, Texas, area.



TWO OF CHEVROLET'S newest additions for 1966 are the luxurious Caprice Custom Coupe (below) and the stylish Chevelle Super Sport 396 Coupe. The Caprice Coupe is destined to be the style leader among regular size cars and the Chevelle Super Sport is distinguished by a new roof line with recessed rear window and a '396 SS' identification in grille and rear cover area. Caprice models feature distinctive wraparound rear lamps. Along with these two models, Chevrolet will offer 48 other models for 1966. Dealers will show the new cars for the first time Oct. 7.

### FHA Farm Tour Attracts 34 Area Citizens

Childress-Hall County Farmers Home Administration office held their annual farm tour in the Brice-Lakeview Communities last Thursday. Thirty-four farmers and business men attended this tour. FHA tours are used to show the types of loans that are made by the FHA offices in these two counties and the progress that is being made by farm families using his loan assistance. There were six stops made on the tour.

The John C. Johnson family was visited. On this stop observations were made on the cotton where various amount of fertilizer was used and check plots with no fertilizer. Herbicides were used to control weeds and the hoe bill on this cotton was very nominal. Soybeans were used on this farm for the first time which look very promising. This farm has two irrigation wells, one was made in 1965 with an FHA Soil & Water loan.

The second stop was made at the farm of Mr. and Mrs. Thomas H. Gattis. The double rowed cotton on 150 acres of irrigated land was observed on this farm. This farm was fertilized according to soil test and recommendations. Has a weed and grass problem on this farm. Herbicides were used to control the weeds, the grass, but he still has a grass problem.

The hoe bill was high because of the double row. The grass couldn't be plowed out.

The third stop was made at the farm of Mr. and Mrs. Mike Montgomery. This farm the cotton crop was observed. Herbicides had done a good job in controlling weeds and grass on this farm. Fertilizer was used according to soil test. The family has done a good job cleaning up the homestead on this farm. Old buildings were torn down and the material was used to build more desirable buildings. The record book kept by this family was an excellent record of the family living and farm operating expense of the family. This is the first year for this family to farm on their own and they have done an excellent job.

The fourth stop was made at the farm of Mr. and Mrs. Gurvis Kennard. This was the first year for the family to farm with FHA loan assistance. The bermuda and cow setup was observed along with the irrigated cotton. The calves have made excellent growth and are now being creep fed. The cotton had been fertilized according to soil test. This is the first year for the family to farm on their own and they have done an excellent job.

The fifth stop was made at the home of Mr. and Mrs. Wendell Mitchell. Mr. Mitchell used FHA loan to building his dwelling in

Lakeview. Mr. Mitchell farms in the Lakeview Community.

The sixth stop was made at the home of Mr. and Mrs. Johnnie Fowler. This is a well planned dwelling, well landscaped. Mr. Fowler farms in the Lesley Community.

#### Human Hand As A Ruler

How many times have you been in a situation where a ruler was needed, and none was handy?

Well, you'll never be in that fix again if you'll remember the distance between the tip of your little finger to the tip of your thumb. Span your hand on a ruler by placing the tip of the little finger on 0, and the thumb tip on whatever numeral in inches you can reach.

Mrs. Lynn Jones and Mrs. Helen Crisman of Lubbock visited here Tuesday with friends and relatives.

Mr. and Mrs. Jeff Welcher visited in Hollis, Okla., Monday.

Miss Susan Mothershed, who is a student at Baylor University, Waco, spent the weekend here with her parents, Mr. and Mrs. Joe Mothershed.

Jim Odom, who is attending Baylor University, visited here over the weekend with his parents, Mr. and Mrs. Adrian Odom.

### Turkey PTA Opens New Year; Adopts Projects

The Turkey PTA opened its year's work with a meeting Tuesday, Sept. 28, in the school cafeteria.

Mrs. Euman Lyles, president, conducted the business meeting. During the business session the unit accepted the project presented by the executive committee of purchasing two drinking water coolers for the two school buildings.

The finance chairman, Doran Denton, introduced two fund making projects to be undertaken by the PTA. The first, a Volley Ball tournament scheduled for Oct. 13, 14 and 15 with three groups. A trophy will be presented to the winner of each group. The groups are grade school, high school and open division. The open or adult division will consist of three women and three men to each team.

The second project, the annual Halloween Carnival is scheduled for Oct. 30 at 7 p. m. All projects and booth plans must be approved by Oct. 11. The point count for Kings and Queens will close at 4 p. m., Oct. 3. The three divisions are Tiny Mr. and Mrs. Turkey, Little Mr. and Miss Turkey and Mr. and Miss Turkey.

The \$3.00 room count prize was won by the 8th grade.

The membership chairman, Mrs. Billie Fuston, reported an enrollment of 61 PTA members.

Mrs. Winifred House, vice president and program chairman, introduced the new programs for the year. Mrs. Jan Turner gave the meditation followed by a prayer by Mrs. Jay Eudy.

During the get-acquainted hour Supt. Lorán Denton introduced the principals U. F. Coker, Jr., of high school and J. R. Adamson, Jr., of the Elementary grade and they in turn introduced the faculty.

The PTA Fall workshop was announced to be held Oct. 12 at Phillips for District 19. Registration and coffee hour will begin at 8:30 a. m. and the workshop will get underway at 9:30 a. m. with R. C. Marshall, district president, in charge.

The afternoon session will adjourn at 2:30 p. m.

**PENNANT WINNING FOOD VALUES**

<b>DEL MONTE PEARS</b> No. 2 1/2 Can <b>49c</b>	<b>CRISCO</b> 3 Lb. Can <b>79c</b>	
<b>BORDEN'S GLACIER CLUB ICE MILK</b> 1/2 Gal. <b>49c</b>	<b>DEL MONTE — DRINK</b> Pineapple-Grapefruit 3-46 oz. <b>1.00</b>	
<b>COFFEE</b> Lb. <b>79c</b>	<b>KRAFT MIRACLE WHIP, Quart</b> <b>55c</b>	
	<b>DEL MONTE TUNA, 3 Flat Cans</b> <b>79c</b>	
	<b>DEL MONTE TOMATOES, 2 - 303 Cans</b> <b>59c</b>	
	<b>BISCUITS</b> Shurfresh OLEO	
	<b>6 Cans</b> <b>49c</b> <b>2 Lbs.</b> <b>45c</b>	
<b>PRODUCE</b>	<b>MARKET</b>	
<b>SUNKIST LEMONS, Lb.</b> <b>17c</b>	<b>USDA GRADE "A" FRYERS, Pound</b> <b>29c</b>	
<b>COLORADO GOLDEN DELICIOUS or ROME APPLES, Lb.</b> <b>15c</b>	<b>HAMBURGER, Lb.</b> <b>49c</b>	
<b>TEXAS — GREEN CABBAGE, Lb.</b> <b>7c</b>	<b>END CUTS PORK CHOPS, Pound</b> <b>59c</b>	
<b>PASCHAL CELERY, Stalk</b> <b>21c</b>	<b>HOME MADE CHILL, Pound</b> <b>69c</b>	
<b>EAST TEXAS YAMS, Lb.</b> <b>13c</b>	<b>HOT BAR-B-Q, Pound</b> <b>69c</b>	

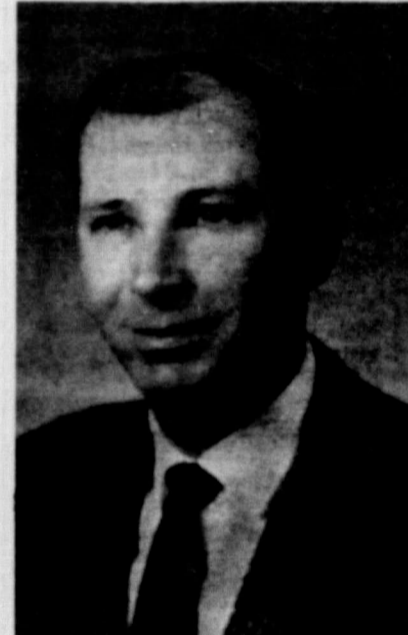
Double Buccaneer Stamps Tuesdays - \$2.50 Purchase or Over

MEMPHIS GROCERY

ORVILLE GOODPASTURE 120 NORTH 10TH      HERB CURRY      PHONE 259-3581

## FARMERS AND RANCHERS BANK ON THE FRIENDLY HELP AT FIRST NATIONAL BANK!

Charlie Brown Is Interested In Your Problems!



CHARLIE BROWN

We're mighty proud of the reputation you've given us during past years of being the "farmer's and rancher's friend."

Not only are we interested in the farmer and rancher, but most of us are dirt farmers ourselves. We believe this bank, as much as any other in this four-county area, understands the problems and needs of farming and ranching. In the future, we are enlarging our cooperation with our farmer and rancher friends, and invite you to talk over your individual problems with our farm specialist, Charlie Brown, or any of our friendly officers.

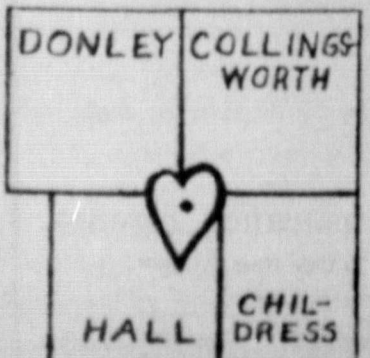
This is only one of the many services the FIRST NATIONAL BANK offers its customers.

## First National Bank

Member F.D.I.C. Memphis, Texas

**OFFICERS AND DIRECTORS**

T. H. DEAYER, SR. Chairman of the Board	JACK I. DAVIS President
O. L. HELM Vice President	BEN PARKS Vice President
CHARLES R. BROWN Asst. Vice President	T. H. DEAYER, JR. Cashier
ROSELYN WILLIAMS, Asst. Cashier	
O. V. Alexander, A. L. Gately, John M. Deaver E. N. Foxha, Joe Montgomery	



"Heart of Four Counties"

At Fowlers Drug 24 Hours a Day

Three Pharmacists Fill Prescriptions

Woman Club Mrs. Wa... Bert G... Frank... Long H... Basco sp... "free gra... period of... boy was... dom, a St... saddle his... the free g... end with... ed wire, ... the farmer... the last... earth to... was the... 1870's... Mr. G. T... ing of M... until aft... can raid... How the... in the op... ships, fou... man kil... and die fro... in spite... of which... rememb... Moss... The Socia... Traits" ... nette Iron... of the... and the... sh head... es more... all the po... ch was the... and Bai... The most p... ment we... re held... is was pl... ar player... could pl... Populu... are danc... Spanish... tische... Mrs. Iron... usewami...



### Woman's Culture Club Meets With Mrs. Ward Gurley

Meeting in the home of Mrs. Ward Gurley Wednesday, Sept. 29, was the Woman's Culture Club.

In the absence of the president, Mrs. Bert Glascock, vice president, presided.

Mrs. Frank Ellis, program chairman, introduced the program. In conjunction with the course of study, "Southwestern History," the program was based on a paper written by Don Q. Raso several years ago.

Mrs. L. G. Rasco discussed "The Long Horizon." The time period about dealt with "free grass" era; that romanized of the West when the cowboy was king, the range his domain, a Stetson his crown, and a saddle his throne.

The free grass period came to an end with the invention of barbed wire, and with the coming of the farmer, whose plow turned the lush grass, exposing the soil to the relentless wind.

As was the Panhandle of Texas in the 1870's.

Mrs. G. T. Moss discussed "The Making of Man." She told about Adobe Walls thrived until after a few months an arid wind wiped it completely away. How the men scooped dugouts in the open prairies, suffered hardships, fought Indians, saw his man killed by them or sickened by the elements, and in spite of these unpleasant conditions built a lasting civilization of which his descendants will remember, was discussed by Mrs. Moss.

The Social Structure and Cultural Traits" was given by Mrs. Betty Irons. She noted that the social life centered around the ranches themselves. Headquarters were many more conveniently located than the population in the area. As was the case of the JA, Shoe Bar and Bar 96 ranches.

The most popular form of entertainment were the dances that were held at various ranches. Music was provided by a fiddler, a star player, and sometimes one could play a jug or jews harp. Popular dances were the square dance, the Virginia Reel, the Spanish Two Step, and the waltz.

Mrs. Irons also told about "housewarming" and the "play

party." "The social structure and culture trait on the plains in the 1870's was simple, wholesome, rich and as big as the hearts of the people who lived it, and was of major importance to the raw frontier," Mrs. Irons concluded.

Mrs. Nat Bradley concluded the program with "The Passing of the Frontier." Mrs. Bradley noted how the invention of barbed wire seemed to put an end to all that was of the Old West. It put an end to cattle trails north. The railroads pushed into the Panhandle about 1890, bringing railroad workers, merchants, freighters, professional men, farmers, and drifters.

Martial law was established and county seats with their court houses sprang up. Churches and schools were constructed. Mrs. Bradley concluded, "The great era of free grass was over. The cattle business is still a major industry in the Texas Panhandle, but it is done on a much smaller scale, and the modern trend is predominant."

During the social period, refreshments were served to Mes. Jeanette Irons, G. T. Moss, Clifford Farmer, Bert Glascock, Nat Bradley, L. G. Rasco, Guy Cox, Frank Ellis, Robert Moss, L. A. Stilwell, Miss Alma Bruce, and the hostess, Mrs. Ward Gurley.



CYNTHIA BEDNARSKI

### Cynthia Bednarski, David Finfork To Marry Nov. 5

Mrs. Frances Bednarski of Route 1, Memphis, is announcing the engagement and approaching marriage of her daughter, Cynthia, to David Earl Finfork, son of Mr. and Mrs. Earl Finfork of Clovis, N. M.

The wedding is planned for November 5 at 7 o'clock in the Presbyterian Church in Portales, N. M.

The bride-to-be is the granddaughter of Mrs. Violette Gillenwater of Memphis.

### Ophelia Club Donates \$150 For School Curtain

At its first meeting of the new year, the Ophelia Club of Estelline voted to give a donation of \$150 to the Estelline PTA to help pay for curtains for the school auditorium.

The meeting was held in the home of the club president, Mrs. Rayford Jones.

A salad and dessert supper was enjoyed by eighteen members present: Mes. Rayford Jones, Billy Joe Rothwell, Jack Kinard, Royce Dunsan, Glennon Jameson, Roy Abram, Dude Helm, JoEd Cuppell, Rab Holland, Jack Boney, Bob Askey, Joe Bob Nivens, George Helm, Nell Abram, Joe Kent Eddins, Frank Hedrick, Gerald Fowler and Jimmy Gibson.

### Travis PTA To Meet Tues.

The Travis PTA will meet Tuesday evening, Oct. 12, at 7 p. m. in the school cafeteria, it was announced this week.

A feature of the meeting will be Visitation of Rooms. Shannon Doss, superintendent of school, will address the group, discussing current matters relating to the school.

All members are urged to attend and visitors will be cordially welcome.

**PUBLIC NOTICE**

On Sept. 30, 1965, the Caprock Translator System, Inc., filed form No. 347 for 100 watt UHF translator stations K77AQ, K80AU, and K82AZ for licenses to rebroadcast K7II, Channel 7; KPDA, Channel 10, and KGNC, Channel 4, respectively. Also, on this date, a form No. 348 was filed for license renewal of Station K7IAW, rebroadcasting KGNC, Channel 4, Amarillo, Texas on Channel 71, with 100 watts power. 20-2c

### WSCS Circles Meet For Study Monday At Church

The Alpha and Oliver Circles of The Woman's Society of Christian Service met Monday, Oct. 4, in the Methodist Church annex to continue the Bible study of the book of Acts.

Mrs. J. W. Oliver gave an introduction of the subject for the day, it being the "Church, Then and Now." She led in prayer for the church from the prayer calendar.

Mrs. Roy Guthrie gave a comprehensive discussion of the beginnings of the church as told in Acts. The early Christians shook off man interpreted laws, as the Mosaic laws, and developed a oneness of spirit with a sense of mission under the guidance of the Holy Spirit. Mrs. Guthrie called on different members for scripture readings.

Mrs. Oliver explained the attractive poster made for a worship setting by Mrs. J. J. McDaniel and Mrs. Bob Hutcherson. The Letters of "God So Loved the World" were on either side of the drawing of a large world globe which was used as the letter for each of the words. Below it was an acrostic for Acts, the A representing the actor or the Holy Spirit; the C representing the church, the T representing time or present day problems and the S stood for salvation.

Mrs. F. W. Foxhall told of the church today whose image should be a fellowship of committed servants witnessing for Christ.

Mrs. Bob Hutcherson told an interesting story "Congo Peace Makers" written by Mrs. Row, the wife of a lay missionary who was killed while serving in Africa. Mrs. Row will speak at the annual meeting of the Woman's Society in Abilene in the Spring. The story was about the far reaching Christian influence of Mama Omai upon her Congo tribesmen.

After a brief business session, the members adjourned to meet again Monday, Oct. 11.

Those present other than the above mentioned were Mes. W. C. Dickey, R. S. Greene, M. G. Tarver, Myrtis Phelan, R. T. Tiner, M. N. Orr, W. V. Coursey, Mary Lou Erwin, Ed Hutcherson, Bess Crump, W. J. McMaster, Ray Spruill, Lee Brown, Harold Smith, David Hamblin, T. J. Hampton, J. L. Barnes and L. G. DeBerry.

### Jody Rapp Is Guest Speaker At Ophelia Club

The Ophelia Club of Estelline met Monday, Sept. 27, in the home of Mrs. Bob Askey. Mrs. JoEd Cuppell served as co-hostess.

Jody Rapp showed picture slides and gave an interesting report on his trip to Washington, D. C.

A delicious supper was served to fifteen members and two guests: Mes. Bob Askey, JoEd Cuppell, Nell Abram, Bill Abram, Frank Hedrick, Royce Denton, Gerald Fowler, Jack Boney, Joe Bob Nivens, D'Allyss Wood, Jack Kinard, Rayford Jones, Glennon Jameson, Joe Kent Eddins, Jimmy Gibson and the guests, Mrs. Joe Allen Ballard and Jody Rapp.

### Lynn Foxhall Pledges Tech Gamma Phi

Lynn Foxhall, daughter of Mr. and Mrs. J. L. Foxhall, recently pledged Gamma Phi Chapter of Kappa Alpha Theta at Texas Technological College.

A graduate of Memphis High School, Lynn is a freshman at Tech.



### New Arrivals

Mr. and Mrs. M. L. Norrell announce the arrival of a daughter, Kimberly Jean. She was born Sept. 30 and weighed 6 pounds, 6 ounces.

Brian Alexander is the son of Mr. and Mrs. Bill Whitten. He was born Oct. 4 and weighed 7 pounds, 5 ounces.

Mr. and Mrs. Richard Vallance of Amarillo are the parents of a son, born Oct. 4. He has been named David Kyle and weighed 5 pounds.

Mr. and Mrs. Tommy Proffitt of Lakeview announce the birth of a son, Tommy Wayne. He weighed 8 pounds, 12 ounces and was born Oct. 5.

Visiting in the B. M. Durrett home over the weekend were Mr. and Mrs. Joe Corbin and son Kevin and Mr. and Mrs. Jack McGlocklin and daughters, Tracy and Kelly, all of Abilene.

### School Menu

**LAKEVIEW SCHOOLS**  
Oct. 11-15, 1965

Monday: Vegetable soup, grill cheese sandwich, cornbread, butter, half peach, milk.

Tuesday: Corn dog with mustard, buttered carrots, buttered peas, rolls, butter, fruited jello, milk.

Wednesday: Roast beef with gravy, mashed potatoes, vegetable salad, rolls, butter, peach cobbler, milk.

Thursday: White beans, spinach, onions, cornbread, butter, brownies, milk.

Friday: Hot dogs with chili, whole kernel corn, cookies, milk.

### Stanley Receives Fellowship At Texas Tech

George Edward Stanley, of Memphis and Lubbock, has been awarded a graduate fellowship stipend from the Department of English at Texas Technological College, Lubbock.

Stanley, who is also a teaching assistant in the Department of English and is instructing several courses in the English language, is working toward his Master of Arts Degree in comparative linguistics.

Stanley is the son of Mrs. Delton Brenee Koen and the grandson of Mrs. Rufus Edward Lowe of Memphis. He is the brother of Mrs. Jerry Paul Shields, the form Jo Ann Stanley, of Lelia Lake.

### First Aid Course To Begin Monday In Turkey

Charlie Johnson of the General Telephone Company will instruct a Red Cross course at the Turkey School cafeteria beginning Monday night, Oct. 11, at 7 until 9:30 p. m. Mrs. Bill Sherman, Neighborhood Girl Scout Chairman, announced this week.

The course will be a 10-hour course and is being arranged by the girl scout leaders of Turkey. Dates for the course will be Monday and Tuesday nights, Oct. 11 and 12 and Oct. 18 and 19, she continued.

Any adult of Turkey who is interested in taking the course is invited to attend, she concluded.

**CARD OF THANKS**

We wish to express our thanks and appreciation to our many friends and neighbors for their kindness and kindly ministrations to us during the illness and at the time of the death of our loved one, and to those who sent the beautiful floral offerings.

It is our wish that when this same sadness comes to your home you will have God's richest blessings and the same kindness at the hands of your friends and neighbors.

The family of Raymond Ballew

Mrs. Elmer Fisher of Pampa visited here Saturday with her mother and sister, Mrs. C. E. Gowan and Dorothy.

Tom Posey, minister of the First Christian Church, was in Amarillo Tuesday to visit with Dr. and Mrs. Odum. Dr. Odum, who is a patient in Northwest Texas Hospital, Room 440, was reported to be much improved Tuesday.

At the present rate of increase, world population will likely double to six billion by the year 2000 and reach 12 billion by 2050.

### Funeral Services For Mr. Patterson Held In Merkel

Funeral services for J. A. Patterson, father of Rev. Clesby Patterson of Fritch, formerly of Lakeview and Turkey, were held Monday, Oct. 4, in Merkel.

Survivors include four sons, Rev. Patterson, C. O. Patterson of Lawn, Lester Patterson of Abilene and Jim Patterson of Long Island, N. Y.; a daughter, Mrs. Louise Pomroy of Great Falls, Mont.; 11 grandchildren, three great-grandchildren; and two brothers, Brooks and Herbert Patterson, both of Merkel.

Mr. and Mrs. E. B. Baisden of Turkey joined their daughter and son-in-law, Mr. and Mrs. C. L. Patterson of Fredrick, Md., there to attend the services.

Pamela Lindsey, accompanied by her roommate, Miss Stephanie Holland, were here to spend the weekend with Pamela's parents, Mr. and Mrs. Gene Lindsey and Mitzie. The girls are students at Baylor University, Waco.

## Thompson's Potpourri

By MRS. BILLY THOMPSON

**WISHING WELL:** Our Wishing Well is getting to be quite full and looks as though we might have to get a larger one. I didn't know there could be so much interest in such a little thing as this. We will draw another name in a few days, so hurry and get your name in. Besides the Wishing Well prize, there are several other things that you might be surprised with. Can't ever tell just what we might think of next.

**THIS AND THAT:** I really see very little need for anyone being "puny" these days. In one night's viewing of television, I learned what to do for head colds, sore throats, sinus, asthma, backache, leg aches, tired blood, dandruff, hemorrhoids, headaches, arthritis, rheumatism, burritis, and athlete's foot. Sometimes they would be so good as to suggest that you see your Doctor if pain persists! If this keeps up, there might be a "do-it-yourself" appendectomy kit before long. Number 2 Son knows all of the commercials by heart and chants them throughout the day. We made the mistake of telling him that false claims in advertising were against the law. But how do you go about explaining a 10-foot tall washer? Or the Jolly Green Giant? Or a White Tornado? One night he found out his watch was one of the shockproof, waterproof, and self-winding kind. However, he found out that they didn't guarantee them against 10-year olds. What he considers shockproof and waterproof must not be the same thing as far as the makers of the watches are concerned.

**EARTHENWARE:** One of the newest members of our growing dinnerware family is the Spode Earthenware. Spode is an old and honored name in the ceramic world. "The Works" in England has been in continuous operation since it was founded in 1770 by Josiah Spode I. Spode I produced the fine earthenware body known as Spode Imperial. He also perfected the process of decorating underglaze from a hand engraved copper plate and this process is still in use. Earthenware differs mostly in type of design from that used in fina china. This type of decoration has been copied by both American factories and Japanese imports, but it still remains typical of the English. Although it is not nearly as durable as fine china, earthenware is often presumed to be superior to other similar ceramics. It is very popular in many areas for the informal and colorful patterns lend themselves well to everyday usage in the traditional, provincial, and early American fields. We have six beautiful patterns in Spode Earthenware and feel that you would have to see them to appreciate their real beauty. For instance, the Glendale pattern is hand-painted in natural colors in the style of a set of French Fruit Prints. This refreshing new dinnerware pattern combines the charm and color of Normandy in Spring with the detailed drawing of the 18th Century Botanical studies. Each of the dinner plates has a different fruit center with its distinctive flower or blossom. They are gooseberry, blackberry, red currant, cherry, tomato, peach, damson, and crab apple. The fruit motifs are appropriately framed with a basket weave embossment. Another pattern by the name of Buttercup was first made in the early 1800's and has continued to delight generation after generation of people who appreciate fine things. The natural colors of its freely drawn flowers

add a gray beauty to the table while light reflects pleasingly from the same basketweave embossing and fluting of the Chelsea Wicher shape. The timeless beauty of natural flowers makes Buttercup appropriate for any setting. The Blue Tower pattern is one selected by some of my customers at the time the salesman was in the store. It has been a favorite since 1780. It was taken from an Italian painting of the "Bride of Salario", although the legend persists that it was a scene on Spode's estate. It is done in Chinese style with the border from the English design and the Gadroon shape from the 18th century English silver. In rich Zaffre blue, this pattern is highly appropriate against the walnut of Provincial or the Traditional styles of the Regency period. It has its own place with the pine or maple of Early American. Our other patterns are just as interesting and I would like for each of you to come in and see for yourself how different they are.

**SNOOP AND SCOOP:** Now, for those of you who do not have good looks on your doors—come in, because we have a fresh stock of the BEST. Having a good look is one thing, but putting it to use is another. And it looks as though I have had a first rate lesson on the value of both. But, my next intruder really has a surprise in store, because I am now prepared in more ways than one!

**CHIT-CHAT:** There's a bold, new, ornate look to many bathrooms these days. This often unthought-of room has suddenly become one of the most talked about areas of the house. This is the result of the realization by decorators and fashion-conscious women that there is no need for this room to be any different from the beautiful rooms that surround it. Thus, there has arisen many ornate and beautiful accessories for the bath. We have some of the cute "little" things that go to making the bath a pretty room. Wastepaper baskets and tissue holders that match, little soap dishes with your personal soap balls, gold, lacry bottles and jars for my-ladies lotions and such, beautiful mirrored trays, as well as flowers and other planter materials all go to making this room something special. Plain statistics show that the bathroom is the second most decorated room in the home. So, with his in mind, we will have to throw away some of our past thinking. Now, ladies, don't be lost in the shuffle—let us help you to select these pretty accessories for your bath with the new look.

**HUBBY NEWS:** Now's the season when every homeowner's fancy very lightly turns to thoughts of raking leaves. And we have just the things—good leaf rakes that are guaranteed to fit your husband's hand, as well as the wonderful new wheelbarrows made by Radio—builders of America's finest wheelbarrows. They are just right for general duty size, such as hauling, landscaping and other projects around the house. They were built and designed with "Hubby" in mind. So, surprise him with these wonderful tools to keep your yard clear of leaves. Or you might take the advice of a good expert—ME. Billy doesn't like to rake leaves and neither do I. So I just leave them in order to have a good ground cover. And they make excellent fertilizer for your lawn. See how easy it is to get out of this "come fall" job? Oh, well, there is more than one way to skin a cat.

**NEW!**  
**Polaroid Camera**  
**\$1995**

Watch for it! Big 10-Day

ORIGINAL

**Sale**

Starts Thursday October 14th

**America's Greatest Drug Store Event**

Hundreds of items at 2 for the price of 1 PLUS A PENNY

**FOWLERS DRUG**

**Beckham Texaco Service Station And Garage**

415 Boykin Drive

We specialize in servicing all makes and models of cars and tractors

RED TIVIS, Service Manager  
MULL MOORE, Mechanic

Phone 259-2707 if you are in trouble

**TUCCO DRIVE-IN**  
**Under New Management**  
**WILL BE OPEN FOR BUSINESS THURS., OCT. 7**  
From 11 A. M. until 11 P. M.  
—SERVING THE BEST IN FOODS, DRINKS AND ICE CREAM—

**FOR 3 BIG DAYS "GET ACQUAINTED" SPECIALS**

- COMPLETE CHICKEN, cooked flavor-crisp, to go ..... 1.39
- ONE QUART SOFT VANILLA ICE CREAM ..... 39c
- BANANA SPLIT (Delicious) ..... 29c
- MILK SHAKES (Any flavor) ..... 19c

Call for fast and efficient service. Your order will be waiting for you (piping hot) when you get here.

—Years of Experience in the Food Business—  
**Your Host and Hostess: Leon and Velma Marshall**

**THOMPSON'S POTPOURRI**

By MRS. BILLY THOMPSON

**WISHING WELL:** Our Wishing Well is getting to be quite full and looks as though we might have to get a larger one. I didn't know there could be so much interest in such a little thing as this. We will draw another name in a few days, so hurry and get your name in. Besides the Wishing Well prize, there are several other things that you might be surprised with. Can't ever tell just what we might think of next.

**THIS AND THAT:** I really see very little need for anyone being "puny" these days. In one night's viewing of television, I learned what to do for head colds, sore throats, sinus, asthma, backache, leg aches, tired blood, dandruff, hemorrhoids, headaches, arthritis, rheumatism, burritis, and athlete's foot. Sometimes they would be so good as to suggest that you see your Doctor if pain persists! If this keeps up, there might be a "do-it-yourself" appendectomy kit before long. Number 2 Son knows all of the commercials by heart and chants them throughout the day. We made the mistake of telling him that false claims in advertising were against the law. But how do you go about explaining a 10-foot tall washer? Or the Jolly Green Giant? Or a White Tornado? One night he found out his watch was one of the shockproof, waterproof, and self-winding kind. However, he found out that they didn't guarantee them against 10-year olds. What he considers shockproof and waterproof must not be the same thing as far as the makers of the watches are concerned.

**EARTHENWARE:** One of the newest members of our growing dinnerware family is the Spode Earthenware. Spode is an old and honored name in the ceramic world. "The Works" in England has been in continuous operation since it was founded in 1770 by Josiah Spode I. Spode I produced the fine earthenware body known as Spode Imperial. He also perfected the process of decorating underglaze from a hand engraved copper plate and this process is still in use. Earthenware differs mostly in type of design from that used in fina china. This type of decoration has been copied by both American factories and Japanese imports, but it still remains typical of the English. Although it is not nearly as durable as fine china, earthenware is often presumed to be superior to other similar ceramics. It is very popular in many areas for the informal and colorful patterns lend themselves well to everyday usage in the traditional, provincial, and early American fields. We have six beautiful patterns in Spode Earthenware and feel that you would have to see them to appreciate their real beauty. For instance, the Glendale pattern is hand-painted in natural colors in the style of a set of French Fruit Prints. This refreshing new dinnerware pattern combines the charm and color of Normandy in Spring with the detailed drawing of the 18th Century Botanical studies. Each of the dinner plates has a different fruit center with its distinctive flower or blossom. They are gooseberry, blackberry, red currant, cherry, tomato, peach, damson, and crab apple. The fruit motifs are appropriately framed with a basket weave embossment. Another pattern by the name of Buttercup was first made in the early 1800's and has continued to delight generation after generation of people who appreciate fine things. The natural colors of its freely drawn flowers

add a gray beauty to the table while light reflects pleasingly from the same basketweave embossing and fluting of the Chelsea Wicher shape. The timeless beauty of natural flowers makes Buttercup appropriate for any setting. The Blue Tower pattern is one selected by some of my customers at the time the salesman was in the store. It has been a favorite since 1780. It was taken from an Italian painting of the "Bride of Salario", although the legend persists that it was a scene on Spode's estate. It is done in Chinese style with the border from the English design and the Gadroon shape from the 18th century English silver. In rich Zaffre blue, this pattern is highly appropriate against the walnut of Provincial or the Traditional styles of the Regency period. It has its own place with the pine or maple of Early American. Our other patterns are just as interesting and I would like for each of you to come in and see for yourself how different they are.

**SNOOP AND SCOOP:** Now, for those of you who do not have good looks on your doors—come in, because we have a fresh stock of the BEST. Having a good look is one thing, but putting it to use is another. And it looks as though I have had a first rate lesson on the value of both. But, my next intruder really has a surprise in store, because I am now prepared in more ways than one!

**CHIT-CHAT:** There's a bold, new, ornate look to many bathrooms these days. This often unthought-of room has suddenly become one of the most talked about areas of the house. This is the result of the realization by decorators and fashion-conscious women that there is no need for this room to be any different from the beautiful rooms that surround it. Thus, there has arisen many ornate and beautiful accessories for the bath. We have some of the cute "little" things that go to making the bath a pretty room. Wastepaper baskets and tissue holders that match, little soap dishes with your personal soap balls, gold, lacry bottles and jars for my-ladies lotions and such, beautiful mirrored trays, as well as flowers and other planter materials all go to making this room something special. Plain statistics show that the bathroom is the second most decorated room in the home. So, with his in mind, we will have to throw away some of our past thinking. Now, ladies, don't be lost in the shuffle—let us help you to select these pretty accessories for your bath with the new look.

**HUBBY NEWS:** Now's the season when every homeowner's fancy very lightly turns to thoughts of raking leaves. And we have just the things—good leaf rakes that are guaranteed to fit your husband's hand, as well as the wonderful new wheelbarrows made by Radio—builders of America's finest wheelbarrows. They are just right for general duty size, such as hauling, landscaping and other projects around the house. They were built and designed with "Hubby" in mind. So, surprise him with these wonderful tools to keep your yard clear of leaves. Or you might take the advice of a good expert—ME. Billy doesn't like to rake leaves and neither do I. So I just leave them in order to have a good ground cover. And they make excellent fertilizer for your lawn. See how easy it is to get out of this "come fall" job? Oh, well, there is more than one way to skin a cat.







# Cyclone Plucks Owls 5-0 Here Friday

Memphis Cyclone plucked the Owls off, then pulled away from the Silverton Friday night in a one-sided game before 1,200 homecoming fans at Cyclone Stadium. When the game ended the home team had 55 points on the scoreboard and the Owls were unable to score from 0 on their part of the field.

ed the Cyclone as No. 7 in the top 10 Panhandle area Class A football teams this week since the Cyclone now supports a four win-loss record as it completes its non-district activities for the season.

The Cyclone's 55-0 victory was brought about through a well-balanced offensive attack and an accredited defensive effort on the part of the whole squad.

The Cyclone fumbled the ball to Silverton the first play from scrimmage with the Owls recovering. But Silverton's best offensive effort failed to gain a first down and Memphis took over on the 26 yardline.

Gilbert Devorce, the 160-lb. halfback found running room up the middle and gained 11 yards to the 37. Then he picked up six yards to the 43.

On the next play, QB Tony Pounds hit End Clyde Wilson with a sideline pass and Wilson sidestepped the defender and outran the Silverton secondary for a 57-yard touchdown pass and run play. Kay Miller attempted a placekick for extra point but it went wide of its mark.

The remainder of the first quarter was played deep in the Cyclone end of the field where Silverton punts and penalties against the Cyclone kept Memphis' offense very conservative.

Late in the first quarter, Silverton made a first down on a beautifully completed pass play from John Montague to Tommy Edwards setting the Owls up on the Cyclone 22. They lost the ball on downs after this and Memphis took over on the 18-yard line.

This started the Cyclone's second TD march. During the drive, Mike Pounds carried three times making nine, 12 and seven yards while Tony Pounds carried for 16 yards on one carry. The longest run was by William McFall for 26 yards.

The scoring play was third down pass from QB Pounds to End Wilson covering 23 yards. The extra points attempt was no good and the score stood 12-0.

It took the Cyclone seven plays to score their next TD after a punt return by Jerry Moss gave Memphis the ball on the Silverton 25-yard line.

Carrying over for the score was



**POUNDS SCORES**—Shown above is No. 40, Mike Pounds (bottom of pile) as he scores the Cyclone's fourth TD Friday night. The 150-lb. senior fullback was the leading ball carrier with 116 yards in 17 plays. Also pictured are No. 71 Larry Gaston, No. 30 Gilbert Devorce and No. 63 Kay Miller. Silverton's No. 74 is Randy Hughes, No. 11, John Montague.

No. 30 Gilbert Devorce on a 16-yard carry around end. A place kick was good by Kay Miller and the score was 19-0.

The first half ended shortly thereafter.

After the half, Memphis took over the ball on the Silverton 36 after Moss returned a Silverton punt to the Owls 36 yardline.

Scoring another TD for Memphis from the two yard line was FB Mike Pounds. The extra points carry by Kenneth Cornish a halfback, was no good.

The Cyclone's next score came on a 47-yard pass play from QB Jerry Moss to End Clyde Wilson. Moss carried for a two-point conversion making the score 33 to 0.

In the last seconds of the third period of play, the Cyclone went for pay dirt again on a 11-yard carry by FB Mike Pounds. The 2-point conversion attempt by HB Cornish was not good and the score was 39-0 as the fourth quarter got underway.

At this point in the game, Coach Charley Chambless had been making major substitutions in the Cyclone lineup, both offensively and defensively.

The Cyclone's next score was set up by a 35-yard carry by Fred Durham to the Owls 14-yard line. On the next play, Willie Devorce carried over for the score. The 180-lb. guard, Willie

Devorce has worked out some as a fullback and got an opportunity to run with the ball, carrying 14 yards into the end zone without a hand being laid on him. Kenneth Cornish carried for a two-point conversion and the score was 47-0.

The Cyclone's next score came after a fumble gave them the ball on the Owls 19 yard line. William McFall carried for the score on a power play. Jerry Moss passed to End Junior Graves for a 2-point conversion making the final score 55-0.

Statistics		Memphis	Silverton
343	Yds. Rushing	10	10
130	Yds. Passing	50	50
20	First Down	3	3
115	Yds. Penalized	5	5
3	for 27 Punt Average	8	31
1	Fumbles Lost	1	1
6	Incomplete Passes	4	4

**Back's Averages**  
Leading ground gainer for the Cyclone was Fullback Mike Pounds who made 116 yards on 17 carries for an average of 6.8 yards per carry. Gilbert Devorce carried 9 times for 89 yards for a 9.3 yard per carry average. William McFall carried 6 times for 54 yards for a 9 yard average.

Fred Durham carried twice for 43 yards for a 21.5 average and Mike Nabers carried once for 8 yards. Tony Pounds carried four

times for 14 yards while Kenneth Cornish carried three times for six yards. Jerry Moss carried once for three yards and Willie Devorce carried twice for 18 yards.

**Coach's Remarks**  
"I believe our passing and running offense was well balanced which made Silverton's job of defense much harder," Coach Chambless said.

Silverton last their 200-lb. fullback in the first period of play to an ankle injury which weakened their team somewhat, the Memphis coach said.

"Our biggest advantage in the game was our superior speed. We had ends and backs on the field much faster than Silverton had," Chambless said.

"All our boys did a fine job of blocking and tackling and I was real pleased with the team's effort," he said.

Mr. and Mrs. George Ferris and children are visiting in Laramie, Wyoming, and Denver, Colo., this week. In Denver they visited with Mr. Ferris' sister and husband, Mr. and Mrs. Larry Burnham.

## Turkey News

Mrs. Linda Ferguson of Turkey is a new employee of the Peoples State Bank of Turkey.

Mrs. E. B. Baisden of Turkey and Mrs. Marsene Patterson of Fredrick, Md., visited in Lubbock Tuesday with Mr. and Mrs. Bob Baisden and girls.

Mr. and Mrs. Lee Pyeatt of Los Angeles, Calif., have been visiting with his brother and family, Mr. and Mrs. Doyle Pyeatt.

Mr. and Mrs. Bob Pyeatt and children of Plainview spent Sunday with his parents, Mr. and Mrs. Doyle Pyeatt.

Mrs. Collins of Ft. Worth is visiting her daughter and family, Mrs. Agatha Eudy.

### CARD OF THANKS

Our heartfelt thanks to all who extended comforting sympathy and help in our recent sorrow. For the beautiful service, floral offerings, food, and other kindnesses, we are deeply grateful.

The family of  
Creed Lamb, Sr.

## Hospital News

### Patients

Kay Vallance, Geneva Proffitt, Eloise Thomas, Cora M. Rasco, Marilyn Whitten, Sam J. Hamilton, Shirley Foster, Everetta Beck, Jackie Ransom, Dannie Bernardin, S. J. King, America Hillhouse, Grace Moreman, Nellie McCollum, Jeneda Gay, Winnie Evans, Ethel Lambert, Newbern A. Simmons, John M. Dickson, Myrtle Darby, Maudie Irene Frisbie, Myrtle Reeves, Sandra Goff, Jessie Allen, Nola Harris, W. Jessie Webster, William J. Cosper.

### Dismissals

Cora Bice, Zula Ann Huckaby, Mattie Mae Redman, Lettie Goodnight, Jno. F. Skaggs, Ollie Castner, Mae Rogers, J. Claude Wells, Jno. H. Cooper, Joe Mothershed, Sue Norelle, Alma Carrera, Ollie Mae Cornish, Sandra Ivy, Nelda Askey, Pearl Boswell, Julie Fowler, W. L. Nabers, Mrs. Carrie Dennis, Lola Mae Fox, Theola Leeper, C. G. Smith, Pearl Sparks, E. L. Wilson.

**GET YOUR CHRISTMAS ORDERS IN NOW!**

## SPECIALS:

**\$23.90 Value . . . . . For \$19.75**  
This includes: 2 8x10, 2 5x7, 12 wallet or post card size pictures

**\$18.65 Value . . . . . For \$15.00**  
This includes: 1 8x10, 2 5x7, 12 wallet or post card size pictures

**\$33.80 Value . . . . . For \$29.95**  
This includes: 1 11x14, 2 8x10, 3 5x7, 12 wallet or post card size pictures

## Williams Studio

820 Mendon

Phone 259-2352

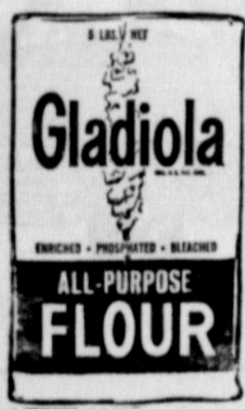
**SEA STAR FISH STICKS**  
Package 19¢

**Spurline COFFEE**  
69¢ Pound

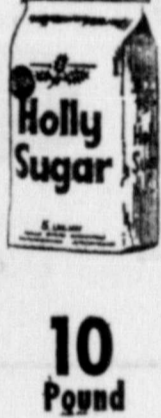
**AJAX LAUNDRY DETERGENT**  
59¢

**GENTLE LIQUID Detergent**  
New Pink Full Quart 39¢

SAVE COUPONS



5-Pound 49¢



10 Pound 99¢

SPECIAL WED, OCT. 13

- BANANAS, Lb. . . . . 10c
- SHURFRESH BISCUITS, Can . . . . . 7c
- LIBBY'S VIENNAS . . . . . 5 for 1.00
- SHURFINE 2's PEACHES . . . . . 4 for 1.00

SAVE COUPONS



FOR MANY FREE GIFTS

**FRUIT DRINK** WAGNER QUART 4 for 1.00

**CRACKERS** Pound One Shurfresh 23¢

**TALL KORN** 2 LBS. 1.45

**ALL MEAT BOLOGNA** Lb. 39¢  
**FRESH PORK LIVER** Lb. 19¢

**LETTUCE** Large Heads 10¢ ea

**Potatoes lb 10¢**

**Wright Brand** 12 Oz. 45¢

**FRESH Fryers** 27¢ Lb.

WE RESERVE THE RIGHT TO LIMIT QUANTITIES DOUBLE STAMPS EVERY WED.

**Davis & Scott SUPER MARKET**  
CORNER NOEL & 12th STREETS Lakeview Highway PHONE 259-2052



## Chevrolet Line For 1966 To Be Shown Today

Variety, safety and new peaks of luxury highlight the 1966 Chevrolets along with the largest assortment of models in the division's 55-year history.

Dennis Ward of Ward Motor Co., Inc., announced the new Chevrolets, totaling 50 models in six passenger car lines, will go on display in dealer showrooms on Thursday, Oct. 7.

"Model, option, color and interior combination in the new Chevrolets number in the billions, giving the buyer an unparalleled opportunity to individually customize his car," Ward said.

Principal features include: **New Models**—A Caprice top-of-the-line series with four prestige models is added to the top selling regular Chevrolets. A four-door hardtop joins the Chevrolet line, plus a distinctive Super Sport 396 series.

**Styling**—The Chevy II receives its first complete redesign since introduction in 1962 models. The Chevelle is restyled, there are design refinements in the Corvair and Corvette, and the regular Chevrolet has an even "bigger car" look.

**Safety Features**—Numerous safety features are made standard on all models ranging from a padded instrument panel and padded sun visors to rear seat belts and backup lamps.

**Mechanical Features**—New engines include a 350-cubic inch L6 and two 427-cubic inch V8's. A new three-speed fully synchronized transmission is standard on all Chevrolet models.

**Options**—Offered for the first time, in addition to the more than 400 options and accessories already available to Chevrolet buyers, are single-dial automatic heating and air conditioning system, a bench front seat with center armrest, adjustable front seat headrests and tilt-telescoping steering.

**Interiors**—Restyled, high fashion interiors are featured in all models. Bucket seats in Chevrolet, Chevelle and Chevy II models are a new slim "Strato" design. Each of the 14 station wagons has an all-vinyl interior.

Here are details on the six Chevrolet lines for 1966:

**Regular Chevrolet**—Headed by the luxury Caprice series, there are 19 models in five series. A color-keyed paint stripe distinguishes the Caprice Custom coupe—which has a special roof-line unique among all Chevrolet models—and the Caprice Custom

sedan. The two Caprice Custom station wagons have walnut grained exterior trim. All Caprice models have high prestige interiors. Structural improvement have been made in both chassis and body. New springs, shock absorbers and softer bushings and body mounts increase smoothness and quietness of ride. The 100-inch wheelbase is retained.

**Chevelle**—The popular 4-door hardtop body style joins Chevelle models for the first time. A total of 12 models in four series are offered.

Distinctive will be two Super Sport 396 models. Simulated scoops on the hood emphasize that a new 396-cubic inch engine is standard on the "SS 396" convertible and a companion "SS 396" sport coupe.

Length and width of Chevilles are increased approximately one-half inch while the wheelbase remains at 115 inches.

Seven engines—two sixes and five V8's—give the Chevelle buyer a wide range of power choices.

**Chevy II**—The most complete change in exterior and interior appearance since its introduction in 1963 models gives new beauty to the seven models in three series of Chevy II.

Retaining its 110-inch wheelbase, the 1966 Chevy II is slightly lower and longer and more than 1.5 inches wider than previous models.

Seven engines—a four cylinder, two sixes and four V8's—allow a broad power choice. The horsepower range is from 90 to 350. There are three transmissions.

**Corvair**—The smooth continental styling of Corvair is continued for 1966. Styling refinements include new rocker sill and wheel opening moldings, new front panel emblem, plus fresh design of the rear grille and taillights.

There are seven models in three series—all either convertibles or 2 and 4-door hardtops. Wheelbase continues to be a highly maneuverable 108 inches.

For 1966, Chevrolet offers 15 colors—6 of them new—with up to 8 two-tone combinations. Vinyl roof covers in black and beige are available for certain hardtop models.

Mrs. Agnes Toppin and Mr. and Mrs. Emory Dill of Converse, Ind., are visiting here this week in the home of Mr. and Mrs. G. D. Stephens. Mrs. Toppin and Mrs. Dill are sisters of Mr. Stephens.

Mrs. Younts had visited here several times with her sister and was known to numerous people.

## Santa Rosa Dist. Workshop To Be Held In Seymour

The 6th annual Board Meeting and Workshop of Santa Rosa District, TFWC, will be held October 19 at the First Methodist Church in Seymour.

"Characteristics of a Diamond Revealed" will be the theme for this year's workshop while will give recognition to the fact that this is the Diamond Jubilee year of General Federation of Women's Clubs.

Mrs. W. Baxter Johnson of Crowell, president, will preside over the workshop.

Activities will begin with a coffee and registration at 8:15 a. m. in the North of the First Methodist Church. After the morning business session, the group will

recess to Mitchell's Restaurant. Immediately following the luncheon, the pace will be stepped up by a "Trash or Treasure" Auction. Each club member is to bring some "Trash or Treasure" to be auctioned to raise money to complete the Federation Village House in Korea.

Highlight of the afternoon session will be a panel discussion on "What's Your Club Problem?" and "Leadership — Growth and Development."

Among featured speakers will be Mrs. Jessie Thomas of Paducah, Mrs. Roy Grundy of Matador, Mrs. Chauncey Weiler of Iowa Park, Mrs. Richard Ferguson of Seymour, Mrs. L. A. Andrews of Crowell, Mrs. Phillip A. Carpenter of Burkburnett, Mrs. Forrest Campbell of Matador, Mrs. Hugh Marshall of Quanah, Mrs. Ralph White of Burkburnett, Mrs. Clyde C. Hamm of Vernon and Virginia Browder of Memphis. Reservations with a check of

\$3.50 should be mailed to Miss Linnie McGlamery, Box 532, Seymour by Oct. 14.

## Mrs. Jack Boone's Sister Dies In Robstown Friday

Mrs. D. H. Younts, sister of Mrs. Jack Boone, passed away Friday, Oct. 1, at her home in Robstown. Mrs. Younts was severely burned about two months ago.

She is survived by her husband, two daughters and one son.

Mr. and Mrs. Monty Alewine and Linda spent the past weekend in Lubbock visiting with their son and his wife, Mr. and Mrs. Bob Alewine. While there they attended the Texas Tech-A&M football game.

Mrs. Jeff Welcher visited Mrs. Bill Stewart at Newlin Wednesday.

## Brice News

The Aubry Martins had their daughters home over the weekend. They are Shirley Martin, a teacher in Amarillo, and Connie Sue, student at Baylor University.

Mr. and Mrs. Randy Germiney of Wichita Falls visited Sunday with her parents, the Everett Paschalls.

Mr. and Mrs. Wayne Rexrode of Clarendon visited here Sunday with his brother, J. C. and Starr Johnson.

Mr. and Mrs. Roland Salmon had as guests Sunday Mrs. Alene Estlack and Bill Salmon of Clarendon.

Mrs. Zack Salmon, Mrs. Roland Salmon and Bill Salmon attended the funeral of a friend in Lubbock Monday.

Mrs. J. C. Johnson and Mrs. Ken Finch were Amarillo visitors Wednesday.

Mr. and Mrs. Doug Burgess family visited Sunday in rock with her mother, Miss Annie Parish, who spent the week here in the dress home returned home.

Dr. and Mrs. Jack Fowler children of Memphis visited Sunday with his father, Fowler.

Mrs. Doug Burgess and aunt, Annie Parish, were to business visitors Wednesday.

Mr. and Mrs. Wayne Rexrode spent the weekend at relatives. Wayne went to Sunday where he attended drag races.

Mr. and Mrs. Lee Hol Clarendon visited here with the Starr Johnsons.

Just the increase in the number of vehicles on road since World War II is approximately 2.5 times the number of vehicles on road that war ended.

# NOW! '66 CHEVROLETS



Caprice Custom Coupe

## NEW CAPRICE BY CHEVROLET

Custom Coupe, Sedan and two luxurious new Custom Wagons now. Liquid smoothride. Power you can order just as

smooth and pin-drop quiet. Turbo-Jet V8 engines that go all the way up to 425 hp. Shimmering new interiors. The look of hand-rubbed walnut trim. Elegance everywhere. Made by Chevrolet, so you know what a beautiful value it must be.



### NEW CHEVROLET JET-SMOOTHER

We've again specially tailored those coil springs at every wheel to each body style. We've put in new softer shock absorbers. No Chevrolet has ever had a ride like this. Power begins with a thrifty Six at 155 hp, and goes on from there. Turbo-Jet V8's available at 325 hp, 390 hp and 425 hp in all the new Impales, Bel Airs and Biscaynes. Model shown: Impala Super Sport Coupe.

## NEW CHEVELLE SUPER SPORT 396

New 300's. New 300 Deluxe models. New Malibus. And two new Super Sport 396's—coupe and convertible—with engines that tell you exactly what kind of Chevilles they are. Both are available with 396-cu.-in. Turbo-Jet V8's, either 325 hp or 360 hp. And both come with special hood, grille, suspension, emblems, red stripe tires, floor-mounted shift. Twelve beautiful new Chevilles in all—and all as new inside as they are outside, headlamps to taillights.



Chevelle Super Sport 396 Coupe



Nova Super Sport Coupe



Corvair Sport Coupe

## ALL NEW CHEVY II

It's so different, we should really call it the Chevy III. Roofs are swept way back on coupes. Fenders, grille, hood, taillights and bumpers are new on all seven models. Interiors are richer. Power available up to a 350-hp Turbo-Fire V8. You can even order headrests for the front seats and Mag-style wheel covers. What's the economical, dependable Chevy II coming to? A lot of smart '66 car buyers, we figure.

## '66 CORVAIR UNIQUE

Still America's only rear-engine car. And with the special steering and suspension you can add, there's no better way to rid yourself of prematurely gray driving. Lots new. Corvair, like all the '66 Chevrolets, has a padded dash, seat belts front and back, new fully synchronized 3-speed. Corsas, Monzas, 500's. Get one. Stay young.

SEE THE NEW 1966 CAPRICE • CHEVROLET • CHEVELLE • CHEVY II • CORVAIR • CORVETTE NOW AT YOUR CHEVROLET DEALER'S

## YOU ARE INVITED

Bring Your Family and Visit Our Showroom

**Thursday, Friday and Saturday Oct. 7, 8, and 9**

—And See the New—

# 1966 Chevrolets

## FREE COCA-COLA

And Favors Will Be Given Away Friday and Saturday

# Ward Motor Co.

Your Chevrolet and Oldsmobile Dealer

# WARD MOTOR CO., INC.

7th & MAIN STREETS

MEMPHIS, TEXAS 79245

PHONE 259-2641

42-5370



### Report From Washington

By WALTER ROGERS  
Representative, 18th  
Congressional District



#### Return of Carry Nation

Carry Nation will be remembered as a leader of the "Prohibitionists." Her trade mark was the back bars, the front of the whiskey bottles, and the times some of the customers were not anticipated that a prohibition move as such will be made in this country. How- ever, another movement of equal importance is fast shaping up. It is a movement of "anti-alcoholism." Many of the states have commissions on "Alcoholism" in an attempt to stop its spread by education and treat- ment. The Committee on Inter- national and Foreign Commerce of the House of Representatives, of which I am a member, is now hold- ing hearings on several bills which are to set up a Federal commis- sion for study and research into the problem of alcoholism in- cluding methods and facilities for the care, custody, treatment, employment and rehabilitation of alcoholics for other purposes.

The testimony before the Com- mittee has been most interest- ing. For instance, a number of large organizations maintain alcoholism in order to deal with the problem as it concerns their personnel. Many of these busi- ness organizations have made sub- stantial contributions in helping solve this nation-wide problem, through information and research regarding their own employees. It is generally believed that most alcoholics can be found on "Skid Row." Nothing could be further from the truth. The information supplied by some of these organi- zations has proven conclusively that this Nation now has more than 5 million alcoholics. Only 10 per cent of these, or 1,000,000 are to be found as derelicts on Skid Row. This leaves more than 4,850,000 suffering from this disease. People with this disease are probably in daily contact with over 2 million of these people who are job holders and can be found at all levels of every business. On an average, 1.5 to

### Colorful Account Of Indian Fight In Hall Co., Revealed By Local Man

(Editor's Note: An interest- ing account of life in Hall County before the Indians were out of this territory was sub- mitted recently by Thomas E. Wood, an attorney who opened his office here recently. Mr. Wood tells of an Indian battle between George and son, John Stakely and a group of Indians in 1865 near Prairie Dog Town Fork of Red River. This account follows:

The weekend of the 75th An- niversary Celebration, during which there could be seen many beards, some horses and buggies and wagons, and many old pic- tures and articles, was very en- joyable. It is good for a town like Memphis to have a birthday because so many good people come back for a few days. Hall County, being up in this part of Texas, is a young county compared to those back east of here. In 1890, when Hall County was organized, all this area had been cleared of Indians for sev- eral years, and the settlers here after that time were free of dan- gers that twenty years before had not only kept this part of Texas from being settled, but had also threatened to depopulate the coun- ties of Wise, Jack, Cooke, Parker and Montague, far to the east. But a few hardy and adventurous men did make trips out this way, though they did not stay.

Two of the old-timers who traveled to this part of Texas were George Stakely and his son, John Stakely. John was my great grandfather. They were of a pio- neering breed not seen now. George Stakely was born in 1813 or 1814 in Hawkins County, Tennessee near the Virginia line. He married Jane Warden, an orphan girl, there in 1840 and of the union, six boys and a girl were born, though the last child was born in Missouri. George moved his family to Law- rence County Missouri in 1857, which place was in an area set- tled by both pro-slave and pro- abolitionist sympathizers. These people could not settle their dif- ferences peaceably and a type of border warfare developed in the late 1850s as a prelude to the Civil War that ensued in 1861.

John Stakely was born in Ten- nessee on September 11, 1841, and he volunteered for the North on December 18, 1862 at Mount Vernon, Missouri. He served throughout the war as a scout for Co. A, 11th Mo. Cavalry (Fedral) and in his service became quite adept with the cumbersome cap-and-ball revolvers then in use. He was discharged in New Or- leans on July 27, 1865, some three months after the war ended.

In the fall of 1865—just 100 years ago—John and his father thought about opening a cattle ranch and visited several parts of Texas, including this area. It was above the Prairie Dog Town Fork of the Red River and south of

where Lakeview now is that they were watering their horses when, from behind a knoll about 100 yards away, an Indian fired on them. John fired back, but the Indian ducked behind the knoll. The Indian bobbed up again and John fired again, but the Indian took cover. This was repeated many times and the battle lasted an hour or more.

Finally, in desperation at hav- ing lost his ability to hit a man at that distance, John mouned his horse and charged at full gallop, firing as he rode. When he was where he could see behind the knoll, he pulled short, and to his amazement, found that he had not been missing after all: He had killed 21 Indians.

Being proper people, John and his father buried the corpses near the scene. People learned of the fight from captured Indians and from John himself—and years later searched for the bones, but the burial place has never been found.

John did not open a cattle ranch in this area, for there were too many Indians. He went back to Missouri and married. But he did move to Texas—Henderson and Ellis Counties—in 1885, and he died at Hi, Lamar County, of Bright's Disease on December 21, 1896. Neither John nor his father ever visited Hall County after the fight. The picture of John was made in De- cember of 1964, and the picture of George was made in 1874.

### LETTERS TO THE EDITOR

3490 Ward Dr.  
Abilene, Texas

Dear Editor:

It has been said that truth is stranger than fiction and I believe it: yet I find it difficult to believe all the happenings of the past week in Memphis. As you may know, I'm referring to the parade, the 1915 Senior Class Banquet and the picnic, all of which had been planned in ob- servance of the 75th anniversary of the founding of your city.

From all reports, as the coun- try newspapers used to say: "A good time was had by all." So, congratulations are now in order to all who had a part in planning and carrying out all these events. The parade was most colorful and interesting, the banquet fab- ulous and the picnic highly suc- cessful, regardless of the rain. (Yet I couldn't stay over for the latter.)

And so I consider it an honor and a privilege to be present, for I saw many of my former stu- dents whom I likely would never have seen again. And also includ- ed in this group were the 1915 Superintendent and principal of the high school.

In conclusion I shall say that I consider my three years in Mem- phis among the happiest of my entire life, for the graciousness and friendliness of your citizens

will never be forgotten. With sincere thanks to one and all, Eunice Peele Harwell (Mrs. E. L.) Teacher of Latin and German of Memphis High School.

Mrs. Don Beasley and daugh- ter, Melissa Jane, visited relatives in Memphis from Wednesday un- til Saturday last week while Don was attending a meeting in Austin. Don is employed at the First National Bank in Amarillo.

Mr. and Mrs. Brigham Young and Mrs. Claude Hickey visited in Quitaque Sunday with relatives.

Mr. and Mrs. Elmont Branigan and Elmonette and Mrs. Norma Lebow visited in Oklahoma City with Mike Branigan and Jerry Lebow, who are students in a trade school in that city.

### Last Rites For Former Resident Held In Abilene

Funeral services for Mrs. J. W. Thomason, 83, of Abilene were held Sept. 27 in the First Methodist Church of that city, with burial in Cedar Hill Ceme- tery there.

Born Lillie Mae George July 12, 1882, at Aubrey, Tex., she married Mr. Thomason at Denton in 1898. They moved to a farm near Memphis in 1904, where they resided until 1945, at which time they moved to Abilene.

Survivors include three daugh- ters, Mrs. H. B. Miller of Wich- ita Falls, Mrs. W. C. Rutledge of Lubbock, and Mrs. Ruth Peck of Phoenix, Ariz.; also two sons, Raymond Sr. and Glen of Abilene.

### MRS BAIRD'S



Stays Fresh Longer

**INSURANCE**  
IS OUR BUSINESS  
**CAMPBELL**  
Insurance Agency

LET US HELP YOU WITH

- FOOTBALL CORSAGES
- WEDDING DECOR
- FUNERAL PIECES
- CUT FLOWERS

**Ritchie Florist**  
Delivery Service  
320 Noel 259-2070 Nights & Holidays Memphis

**BUY Borden's BUTTERMILK**

Borden's Buttermilk is "cool comfort" that is waiting for you at your favorite store.

**"Better Than It Has To Be"**

**W. A. SMITHEE**  
INDEPENDENT DISTRIBUTOR  
Phone 259-3162 Memphis, Tex.

**Fall Sale**

Borden's or Swift's  
**ICE CREAM**  
1/2 Gallon  
**69¢**

**ELLIS JUMBO TAMALES** 69¢  
2 - No. 2 1/2 Cans

**WHITE SWAN VIENNA SAUSAGE** 1.00  
5 Regular Cans

**IMPERIAL PURE CANE SUGAR** 10 99¢  
Pound Bag

SEPTEMBER 8-9

**FOLGER'S COFFEE** All Grinds 79¢  
Pound Can  
2-Lb. Can. . \$1.47

**GENTLE LIQUID DETERGENT** 39¢  
Quart Size

**SUPER DAVE MARKETS**

**PATIO FROZEN MEXICAN DINNERS** Ea. 39¢

**HEINZ CATSUP 3** 20 Oz. Bottles 89¢

U.S.D.A. GRADE "A" FRYERS 29¢ lb.	CHOICE ROUND STEAK 85¢ lb.	TALL KORN BACON 2 Lb. Pkg. 1.39
-----------------------------------	----------------------------	---------------------------------

U.S. No. 1 WHITE RUSSETS  
**POTATOES** 10 Lb. Bag 49¢

SUNKIST LEMONS 2 Pounds 25¢	Washington Del. APPLES Pound 19¢
-----------------------------	----------------------------------

**Super Save Market**  
8th & Noel Sts. Phone 259-2C14  
DOUBLE BUCCANEER STAMPS WEDNESDAY WITH \$2.50 PURCHASE OR MORE





**WILSON SCORES**—One of the chief reasons the Cyclone heavily out-scored Silverton here last Friday night was because of team speed and pictured above is No. 81, End Clyde Wilson, running the Silverton secondary of the local lads second TD. End Wilson scored three times on pass plays bring his season total to four TD catches. The above pictured play covered 23 yards and the pass was thrown by Quarterback Tony Pounds.

### Turkey Turks To Travel To Jayton Friday

The Turkey Turks gave the favored Claude Mustangs a good ball game but lost the contest 12 to 6 last week. The Turks will travel to Jayton for their next non-district contest tomorrow night.

Game time at Jayton will be 8 p. m., the schedule shows.

The Turk's logged 11 first downs against Claude but were unable to tally on the scoreboard until the fourth quarter pf play when Barry Lane carried over from the one-yard line. The kick conversion failed.

Claude scored both their touchdowns in the first half.

When the Turks go to Jayton, they will have a yardstick to use in comparing the strength of the Matador Mustangs since last Friday Matador defeated Jayton 27 to 8.

The Turks should be favored to win the game as they are ranked No. 7 in Class B Panhandle teams. Matador is the 10th ranked team, and another District 6-B foe, and pice winner will receive a

### Memphis FFA Chapter Elects New Officers

The Memphis F. F. A. Chapter elected chapter officers for 1965-66 year last week in the Ag. Building.

They are as follows: President Jessie Murdock, Vice-President Larry Gaston, Secretary Danny Clark, Treasurer Carl Houston, Reporter Sammy Houston, Sentinel Paul Carroll.

Also, during the meeting they elected their district officer nominee who was Carl Houston. District delegates elected to represent the chapter are Mark Phillips and Danny Clark.

During the meeting the chapter voted to accept all Greenhands on completion of requirements.

The Greenhand officers elected included: President James Spruill, Vice-President Willie Devorce, Secretary Mike Lesley, Treasurer Marvin Edwards, Sentinel Smokey Bell and Reporter Willie Welch.

The Vocational Agriculture III officers elected include: President Mark Phillips, Vice-President Bob Neal, Secretary Larry Gaston, Treasurer Danny Peters, Reporter Tommy Moore and Sentinel Neal Hughs.

The Chapter's educational exhibit at the Tri-State Fair in Amarillo was given third place in judging competition.

The Chapter also attended the research demonstration tour Monday morning along with business men and farmers.

The average American spends more than four times as much for liquor and tobacco as he does for medicine and drugs.

**Boren Theatres**  
Phone 259-3121

**Tower Drive-In**  
Thurs.-Fri.-Sat., Oct. 7-8-9  
"FATHER GOOSE"  
starring Cary Grant and Leslie Caron in color

Sun.-Mon.-Tues., Oct. 10-11-12  
Jerry Lewis  
in  
"THE FAMILY JEWELS"  
in Technicolor

Wednesday, Oct. 13  
BUCK NITE!  
"ROUSTABOUT"  
starring Elvis Presley

### Gov. Trapper To Be In County

The Commissioners Court reported this week that they are expecting the arrival of a government trapper next week. He will work in Precincts No. 1, 3 and 4.

Commissioner Ed Hutcherson asked that any landowners wanting the trapper to work on their land should contact the county judge or one of the three commissioners so that a schedule could be worked out with the trapper.

The government trapper works only on land where the owner has given permission, it was explained.

### Estelline To Play Three Way At Tulia Sat.

The Estelline Bears, under Coach Jimmie Don Adams, will play a Saturday night game at Tulia at 7:30 p. m., when they meet Three Way, the schedule shows.

This is the Bears last non-district contest of the season, as they will be open next weekend.

The Bears won a one-sided contest at Childress last Thursday night in an 11-man contest over the Childress B team.

When Estelline enters District 3-B 8-man football play they will face teams from Guthrie, Patton Springs, Roaring Springs and Morse.

### Fire Dept. To Sponsor Halloween Carnival Oct. 30

Members of the Memphis Volunteer Fire Department will sponsor a Halloween Carnival in Memphis Saturday, Oct. 30, it was announced Wednesday.

All clubs and organizations in Memphis are invited to set up booths, Gene Hamill, chairman of the special committee, stated. He added that each should contact him if a booth is desired.

The carnival will be set up on the vacant lot south of Saied's. Tents will be furnished to booth sponsors, and rides for children will be available.

Additional details will be announced later, Hamill said.

Mrs. Jesse Jones of Belaire, one of the pioneers of Memphis and former long-time resident, has returned home after recently

### YOUR COUNTY AGENT SAYS

Livestock producers should start making grazing plans now for the coming winter, says County Agent W. B. Hooser. He explains that grazing systems should be planned and checked so there will be no difficulty at the starting date.

When planning winter grazing programs, use varieties of forage crops best adapted to local areas, and base stocking rates on available forage rather than expected rainfall and grass crops.

The number of livestock to graze a particular area should be adjusted to keep pastures in a good state of production. Grasses on moderately used ranges should appear patchy and uneven at the end of grazing season. Stubble heights should range from four to seven inches for bunch grasses and one to two inches for sod grass.

Hooser recommends a "low base herd" grazing program to keep pastures in a good state of production. Herd size should be maintained so that about three-fourths of the forage is utilized.

Even with good pastures, ranchers need to supply protein supplement during winter months. Range plants greatly decrease in nutritive value as they reach maturity. Dry winter grasses should be used as hay with a protein supplement to produce a balanced diet.

Pastures should be examined frequently to evaluate available forage. If livestock numbers need to be reduced, they should be sold before they lose weight and before prices decline.

**CARD OF THANKS**  
I want to take this means of expressing my sincere appreciation to Memphis friends who have gone to Amarillo to donate blood to the Blood Bank to replace that used by me in recent months. I want to thank persons in Amarillo who have also given blood in my name to the Blood Bank. This act of kindness was deeply appreciated by me and my family. May God bless each of you.  
F. E. Monzingo

visiting here with friends. Mrs. Jones was a house guest in the home of Mr. and Mrs. R. S. Greene while visiting here.

### Lions Club Honors

(Continued from Page 1)  
educational fields. Also, the manual arts programs will be of great benefit. As we move into the future, our living standards will be raised, and the qualifications of

our teachers will be elevated to meet the demands of the times."

### Funeral Services

(Continued from Page One)  
ney of Dallas, Mrs. LuElla Woods of Denver City, Mrs. Nana Lee Conrad of Towlerly, Mrs. Joyce Prodomone of Telican, La.; nine grandchildren; two brothers, Arthur Webster of Seattle, Wash.; five sisters, Mrs. Vera Pace and Mrs. Verdine Mae Mason, both of Dallas, Mrs. Daisy Lynn of Hugo, Okla., and Mrs. Mildred Hatcher and Mrs. Helen Terry, both of Paris.

### Raymond Ballew

(Continued from Page One)  
genson, pastor, and Tom Posey,

minister of the First Christian Church.

Interment was in Fairview Cemetery with services under the direction of Spicer Funeral Home.

A native Texan, Mr. Ballew was born Nov. 19, 1892 in Coppell. He died Saturday morning in Hall County Hospital after an illness of several months.

Mr. Ballew moved to Memphis with his parents in 1902 when he was 10 years of age and had lived here since that time. He had operated an appliance store and an automobile business in Memphis before his retirement.

He was a member of the First Baptist Church and Simmons-Noel American Legion Post 175.

Survivors include his wife, Edna of the home; five daughters, Mrs. Lucille Stephens of San Antonio, Mrs. Omega Hammond of Portales, N. M., Mrs. Gwendolyn

Fisher of Benton Harbor, Mich., and Betty Ramona and Bonita Kay of the home; three sons, Jeff-

erson Raymond, Jr., of South Bend, Ind., Bill of Memphis and Monte Ray of the home; two brothers, Tom of Los Angeles, and Jim of Abilene, 25 grandchildren

and two great-grandchildren.

Active pall bearers were Lindsey, Wendell Harrison, Neal Berry, Gene Hughes, Schel Pounds and Joe Durkin. Honorary pall bearers Mack Tarver, M. E. McNair and T. B. Rogers.

**MY HOME FOR SALE**  
Modern brick; has three bedrooms and den. See it at 1122 North 18th Street  
In FHA Loan. Can be bought for \$675 down, and remainder financed.  
**SAM PUTTS**  
Phone 259-3175 or 259-3195

# CLASSIFIED ADS

### CLASSIFIED INFORMATION RATES

Display rate, run of paper — 75c  
Classified Display rate — 80c  
Minimum charge — 75c  
Per word first insertion — 5c  
Following consecutive insertions — 8c

After want ad is taken and set in type, it must be paid for even if cancelled before paper is issued. The Democrat frequently gets results before paper is published by personal contact with customers, especially in FOR RENT and LOST and FOUND cases.

### For Sale

**FOR SALE:** Four room house and lots at 819 Cleveland. Mrs. R. D. Hall, Lakeview. 36-tfc  
**FOR SALE:** Fullblood Hampshire boar, age 18 months, \$50. Weiner pigs. Ruth Richerson, Estelline, Texas. 21-1p  
**FOR SALE:** 368 acres land, 77 acres cotton allotment, south of Memphis on Farm To Market road. Price \$100.00 per acre. Edwin A. Smith, Jr., Drawer "B", Rogers, Texas, phone MI 2-2313. 18-4c

**FOR SALE OR TRADE:** Three bedroom, two bathroom home. 711 Harrison. Call J. W. Coppedge. 48-tfc

**FOR SALE:** Used stoves, refrigerators, air conditioners, washers Smith Auto. 1-tfc

**MY HOME FOR SALE:** 3-bedroom, fully modern. Grady Haynes, 1410 North 17th. Phone 259-2852. 7-tfc

**BRICK buildings for rent or sale.** 31-plus acres for sale; residential lots. Make offers. James W. Webster Estate, J. D. Webster, Executor, 3214 Rusk St., Amarillo, Texas. 21-tfc

**ALL TYPES of Allied fences for Sale.** Free estimates. Call Ronny Leach, 259-2853. 14-tfc

**FOR SALE:** 1965 Chevrolet Pickup. Loaded including V-8 automatic transmission and factory air. 1800 miles. Phone 259-2806. 13-tfc

**FOR SALE:** Two newly rebuilt five room modern Spanish type stucco dwellings in North Hedley, less than one block from pavement. Also lots on pavement. Clifford Johnson, Hedley, Texas. 20-tfc

**FOR SALE:** 1955 Chevrolet, V-8, Powerglide, radio and heater, good tires. \$295. Ross Gentry, 259-3149. 19-3c

**FOR SALE:** New A-C Model 2S strippers, \$695. Also used strippers and trailers. Ross Gentry, 259-3149. 19-3c

**FOR SALE:** Wheat seed, home grown. Rayford or Wayne Hucherson. 20-4c

**HOUSE FOR SALE:** Six rooms and bath. Phone 259-3052. 20-3c

**FOR SALE:** 77 John Deere Cotton Stripper. Stalk rollers, boll catcher. Good shape. \$500. Billy Joe Rothwell, Tell, Texas. 20-3p

**FOR SALE:** Modern 3 bedroom house with 2 acres of land at Loco, Tex. On pavement, natural gas, mail route, milk route, school bus. Has telephone, one acre hog pasture, barn, garage, well windmill, new overhead tank cistern. Every kind of fruit, chicken house, yard. Shown by appointment. Write or call before Oct. 10. G. T. Austin, Arlie Rt., Box 99, Childress, Texas 79201. Phone 447-2351, Local, Tex. 21-1p

**TYPEWRITER AND ADDING MACHINE REPAIR**  
Phone 259-2441. Memphis. Have several used typewriters and adding machines for sale.  
**ROY M. HORN**  
Typewriter Repair Service  
Wellington, Texas 18-7

**KIRBY SALES & SERVICE**  
Dale Hunt, representative  
105 N. 9th St. Phone 259-3200  
Memphis, Texas 37-tfc

**CHOICE 100x140 residential lot** for sale. Campbell Ins. Agency, 259-2255. 21-tfc

**FOR SALE:** Portable typewriter, Olympia, \$65.00. Like new, Phone 259-2819. 21-2c

**FARM FOR SALE:** 200 acres located Western part of Hall County, 181 cropland, 76.1 acres cotton allotment, 100 acres in soil bank through 1967. Fine home and excellent improvements. \$300 per acre. Reason for selling is to settle estate. No trade. Call WE 7-2725 or write Box 392, Childress, Texas. 21-3p

**FOR SALE:** 35,000 BTU circulating heater with thermostat. Sybil Gurley, 410 S. 7th. 21-tfc

**FOR SALE:** Fat lambs, dressed by the halves or quarters. Contact Blackie Johnson. Phone 259-2222. 21-tfc

**WHEAT SEED for Sale:** KAW variety. \$1.85 bushel if you load it; \$2.00 per bushel if we load it. Telephone 259-3103 or 867-2926. 20-2c

**FOR SALE:** Broadcast binder, International. 10-ft. wheat drill, John Deere, on rubber. 14-ft. self-propelled combine, Baldwin. 888-3266, Estelline. 20-3p

**FOR SALE:** M. Johnson White Leghorn Hens; year old. G. C. Brinson, Hedley, Texas. 20-2p

**FOR SALE:** Used Victor adding machine and steel stand. See it at The Memphis Democrat. 19-3x

**FOR SALE:** Wheat seed, Early Triumph from irrigated land, tested 62, thrashed clean. Billy Salmon, Brice, Texas. 18-tfc

**FOR SALE:** 1959 Studebaker Lark. Maudel McCauley, Ph. 259-2150. 15-tfc

**FOR SALE:** 14-ft. Redskin boat, with 25 hp. Johnson motor, custom trailer. R. S. Patrick, 259-3167. 15-tfc

**FOR SALE:** Tomatoes, \$1.75 bushel in the field, Thursdays and Sundays, 2 miles West Hedley on Highway 287. Gathered and delivered on order of 4 bushels or more. Write Hedley, Box 31, A. J. Rowell. 20-4c

**For Rent**

**FOR RENT:** Unfurnished two bedroom apartment. Contact W. M. Davis. Phone 259-2353. 21-tfc

**FOR RENT:** 4-room house close to high school. See J. W. Noel at 1120 Noel Street. 21-tfc

**FOR RENT:** Lot for trailer house close to school. Has all utilities connections. Contact W. D. Young, 322 North 16th. Phone 259-2739. 21-2c

**FOR RENT:** New two-bedroom apartments in Lakeview, furnished or unfurnished. Water furnished. Contact H. J. DuVall or R. C. Clements. 42 tfc

**FOR SALE**  
Modern 3 bedroom house with 2 acres of land at Loco, Tex. On pavement, natural gas, mail route, milk route, school bus. Has telephone, one acre hog pasture, barn, garage, well windmill, new overhead tank cistern. Every kind of fruit, chicken house, yard. Shown by appointment. Write or call before Oct. 10. G. T. Austin, Arlie Rt., Box 99, Childress, Texas 79201. Phone 447-2351, Local, Tex. 21-1p

**FOR SALE**  
Modern 3 bedroom house with 2 acres of land at Loco, Tex. On pavement, natural gas, mail route, milk route, school bus. Has telephone, one acre hog pasture, barn, garage, well windmill, new overhead tank cistern. Every kind of fruit, chicken house, yard. Shown by appointment. Write or call before Oct. 10. G. T. Austin, Arlie Rt., Box 99, Childress, Texas 79201. Phone 447-2351, Local, Tex. 21-1p

**FOR SEPTIC TANK OR CESS POOL PUMP SERVICE**  
Call 259-2860  
**TRAVIS BOLDEN**  
28-tfc

**S. E. LANE**  
Contractor  
Building—Remodelling—Repairing  
Box 549 Memphis, Tex.  
Phone 259-2506 12-tfc

**WILLIAMS STUDIO AND GIFT SHOP**  
820 Menden St.  
Your portrait makes an excellent gift anytime.  
Call information for Gussie Williams

**FOR RENT — Kitchenettes and rooms, by day or week, Alhambra Courts.** 13-tfc

**FOR RENT:** Furnished apartment. 421 North 12th St. Call 259-2286 or 259-3094. 15-tfc

### SPECIAL NOTICES

**SANITONE — First in dry cleaning.** Lusk Cleaners, Memphis and Turkey. 25-tfc.

**NOTICE:** Carl's Pawn Shop is now open at Carl's Grocery on North Boykin Drive. 14tfc

**AUTHORIZED sales, service—** Singer machines, vacuum cleaners, typewriters, record players, televisions, Catalog Merchandise. Call 259-3040. 38-tfc

**A. H. MOORE & SON, Water Wall and Irrigation Contractors:** acidizing and cleaning wells. Phone 874 8596, Clarendon, P. O. Box 254. 38-tfc

**FOR wood paneling, furniture and cabinets use Trewax Liquid Paste for cleaning and polishing.** Thompson Bros. Co. 21-1c

**BLUE Lustre not only rids carpets of soil but leaves pile soft and fluffy. Rent electric shampooer \$1. Thompson Bros. Co. 21-1c**

**VENETIAN blinds repaired, new tapes and cord—furniture repairing—sewing machine repairing and parts. Reheis Furniture Repair Shop, 808 Cleveland St. 29-tfc**

**WELL DRILLING**  
Irrigation & Domestic  
Do all kinds of well and pump service.  
— Test Hole Drilling —  
Can furnish replacement parts for all makes of pumps.  
**A. & A. Drilling Co.**  
Lakeview Memphis  
Pho. 867-2231 Pho. 259-3245 29-tfc

**RADIATORS**  
Cleaned, Repaired and Recored  
One day service on majority of makes  
We maintain a representative stock of cores for cars, pickups and tractors  
**Rice's Radiator and Tire Service**  
SI RICE  
10th & Main 259-2165 tfc

**FOR SALE**  
Phillips "66" Ser Station. Located Highway 287 in Quah. Nice clean stock with clean stock. Reasonably Priced. Phone MO3-475

**Local Representative**  
Man or Woman  
Full or Parttime  
Protected Territory. Company Financing. Ex- tional Earnings. Incentive Full training Provided. National Advertising Program. Representative will handle complete line: The Book Knowledge — "America's favorite Since 1911." The Min-Max Teaching Machine "Program Learning at its Best" and other educational products. All replies kept confidential.  
C. V. Foster 4125 E. Denver, Colorado 80222

**AMERICAN NATIONAL INS.**  
Agent, C. J. Wynn, Jr.  
1204 West Main  
Memphis, Texas 45-tfc

**State Fair of Texas!**  
EXPOSITION OF THE AMERICAS

ROYAL CANADIAN MOUNTED POLICE "MUSICAL RIDE" Oct. 9-17  
DANZAS Y CANTOS DE MEXICO — Oct. 15-21  
DEEP RIVER FIFE & DRUM CORPS — Oct. 16-24  
BROADWAY MUSICAL HIT "FUNNY GIRL" — Oct. 8-24  
THE EXCITING WORLD OF ICE CAPEDES  
COLOSSAL FREE CIRCUS  
MARK WILSON AND HIS MAGIC LAND OF ALLAKAZAM  
FREE FASHION SHOW & WOMEN'S EVENTS  
FREE COTTON BOWL SPECTACULARS: Mon. Oct. 11 — TEXAS MUSIC FESTIVAL, fireworks, 8 p.m.; Thurs. Oct. 14 — MEXICO DAY PROGRAM, featuring Danzas y Cantos de Mexico, fireworks, 8 p.m.; Fri. Oct. 15 — DALLAS SYMPHONY SPECTACULAR, fireworks, 7 p.m.; Sat. Oct. 16 — MILITARY TATTOO, fireworks, 8 p.m.; Tues. Oct. 19 — EAST TEXAS ON PARADE, fireworks, 8 p.m.  
PAN-AMERICAN LIVESTOCK EXPOSITION • HORSE SHOWS  
AGRICULTURE SHOW  
TEXAS INTERNATIONAL TRADE FAIR  
**COMING OCT. 9-24**

**HAVE farmed Mrs. Effie** der's land for 17 years. Due death and sale of land, rent land for 1966. C. H. son, 303 N. 12th. Phone 259-

**WILL do sewing. Prefer** clothes from 2 years up. Gurley. Phone 259-3086.

**PLUMBING SERVICE:** C. son. Telephone 259-2370 (ad in directory). 1916 Memphis, Texas.

**WANTED:** Responsible take over payment on Singer sewing machine in area. Will zig-zag fancy etc. 5 payments at \$4.96 or cash. Write Credit Dept. 1114 18th Street, Lubbock, Texas.

**WANTED TO BUY:** Feeder and hogs. H. R. Yarbrough, 259-2904.

**WANTED:** Customers to light bulbs at Perry Bros. Hall's family can go to the town bowl.

**WANTED:** A couple to three room house rent free. references required. Phone 259-

**COSTUM COMBINING:** H and cutting. 2 1/2 cutting and hauling to Memphis, Clarendon, 15c. Combines at home today. Call Byron 259-2279.

**LOSE WEIGHT safely with A-Diet Tablets.** Only 98c at lers Drug.

**SPICER FUNERAL HOME**  
Ambulance Service  
**PHONE 259-353**

**MONUMENTS**  
AT FACTORY PRICE  
WILLIS-FELLOW BROS  
GRANITE QUARRY  
GRANITE, OKLA.  
Phone KE9-2184 Call