

The Memphis Democrat

12 PAGES This Week

Hall County Herald, Established May 3, 1890, Absorbed by Purchase August, 1928

NWN SERVICE

MEMPHIS, HALL COUNTY, TEXAS, THURSDAY AFTERNOON, APRIL 12, 1956

TEN CENTS

NUMBER 46

Home Paper

Bringing News People You Know

New Aldermen Sworn In, Committees Named Monday



Ver Moss of Ward No. 2, also took the oath of office. Following the swearing-in ceremonies, Mayor O. L. Helm announced standing committees...

Rites Held for Gene Bumpus, Former Estelline Resident

Funeral services for Gene (Doc) Bumpus of Plainview, who formerly of Estelline, were held Monday afternoon in the First Baptist Church of Plainview.

Rites Conducted For Mrs. Poteet

Funeral services for Mrs. T. F. Poteet, mother of Nolan Poteet of Memphis, were conducted at 4 o'clock last Thursday afternoon at the Church of Christ in the Dozier community...

Memphis Group Sees City Sights Saturday

Boys and girls from Memphis and Travis elementary here and four adults took trip to Dallas Saturday...

Among points of interest visited in the morning were the zoo, amusement park, Art Museum, Health Museum, Museum of Fine Arts, and the aquarium.

After lunch at the Fair Park, the groups visited the Texas Hall of State, before going to the Melba Theater, where "Cinerama Holiday" provided thrills and relaxation...

\$150; City Attorney Sam J. Hamilton, \$100; Chief of Police Guy Wright, \$280; City Tax Assessor-Collector Glen Carlos, \$250; Bill Vardeman and C. J. Neely, drivers for the fire department, \$185 and \$175, respectively...

Memphis Band Captures Honors At Altus Festival

The Memphis High School band and various members won a number of honors at the annual Altus, Okla., Band Festival Friday, according to Miss Kathy Phillips, director of music in the local schools.

Courthouse Insurance Hiked By Commissioners

Hall County commissioners approved an order to increase insurance on the courthouse and its contents, at a meeting here Monday. Commissioners authorized insurance coverage on the courthouse to be raised to \$203,000...

Plans Drafted For 287 Meeting

Plans were made at a meeting in Dumas Sunday for the annual convention of the National 287 Highway Association, to be held there, May 18-19. Julius Cox, chairman of the Oklahoma State Highway Commission, has accepted an invitation to speak during the convention...

Christian Church To Hold Revival

A spring revival will be held at the First Christian Church here, starting Sunday, it has been announced. The meeting will continue through April 22, with services commencing each evening at 7:30 o'clock.

315 Attend Memphis Ex-Students Banquet

A total of 315 former students and guests attended the annual banquet of the Memphis Ex-Students Association on Saturday evening, March 31. The Democrat was informed this week, rather than approximately 230 listed in last week's issue.

Monzingo, Allen Named Trustees in Election Here

M. C. Allen and F. E. Monzingo took the oath of office as members of the board of trustees of the Memphis Independent School District, during a meeting of the board Monday night at the high school.

Allen and Monzingo were declared elected to the positions, when a canvass of returns in Saturday's school election disclosed they had received the greatest number of votes in a four-man race.

Travis Baptist Revival Due Friday

Services will be held at 10 a. m. and 8 p. m. daily, during a revival which begins Friday at the Travis Baptist Church, Thirteenth and Grundy streets, according to Rev. Lanham F. Campbell, pastor. The meeting will close Sunday, April 22.

Trustees Re-Elect Estelline School Personnel Monday

All personnel of the Estelline public schools were re-elected for the 1956-57 school year, at a meeting of the board of education Monday evening, Supt. W. M. Roberts announced Tuesday. All faculty members have bachelor's degrees, and five have master's degrees, according to Mr. Roberts. The entire faculty are members of the Texas State Teachers Association.

Notable Milestone in Local Man's Life

Thompson Completes Fifty Years In Business At Same Location on Square Here Tuesday

Fifty years in business at the same location was reached Tuesday by a pioneer Memphis merchant, E. P. Thompson, of Thompson Bros. Co., hardware and furniture store. The company has been situated on the northeast corner of the square throughout the entire half century.

Board Re-Elects Teachers And Other School Employees



REV. RAY HARRELL

Severe Duststorm Blasts Section

A severe duststorm blasted this area Sunday night, causing considerable soil erosion and some minor property damage. Visibility dropped to around zero during the worst parts of the blow.

Park Beautification Program Scheduled

The City Park will soon be a more attractive recreation spot for everyone, according to an announcement Wednesday by City Councilman L. W. Stanford. Stanford said a meeting will be held at the park Sunday afternoon at 2 o'clock, to draft plans for a beautification and improvement program.

Estelline Girls Get Basketball Jackets

Jackets were awarded to members of the Estelline High School girls basketball team by Supt. W. M. Roberts, at a special assembly last Thursday. Receiving jackets were Mary Nell Couch, Julia Richburg, Clair Bryant, Jacklyn Fowler, Mary Mendez, Karen Eddins, Linda Altman, Linda Crisman, Carolyn Hoover, and Bettye Orcutt. Patsy Mabry and LaQuetta Wade were awarded manager's jackets.

Day in Big D

Boys and girls from Memphis and Travis elementary here and four adults took trip to Dallas Saturday...

Christian Church To Hold Revival

315 Attend Memphis Ex-Students Banquet

A total of 315 former students and guests attended the annual banquet of the Memphis Ex-Students Association on Saturday evening, March 31. The Democrat was informed this week, rather than approximately 230 listed in last week's issue.

Travis Baptist Revival Due Friday

Services will be held at 10 a. m. and 8 p. m. daily, during a revival which begins Friday at the Travis Baptist Church, Thirteenth and Grundy streets, according to Rev. Lanham F. Campbell, pastor. The meeting will close Sunday, April 22.

Trustees Re-Elect Estelline School Personnel Monday

All personnel of the Estelline public schools were re-elected for the 1956-57 school year, at a meeting of the board of education Monday evening, Supt. W. M. Roberts announced Tuesday. All faculty members have bachelor's degrees, and five have master's degrees, according to Mr. Roberts. The entire faculty are members of the Texas State Teachers Association.

Notable Milestone in Local Man's Life

Thompson Completes Fifty Years In Business At Same Location on Square Here Tuesday

Fifty years in business at the same location was reached Tuesday by a pioneer Memphis merchant, E. P. Thompson, of Thompson Bros. Co., hardware and furniture store. The company has been situated on the northeast corner of the square throughout the entire half century.

Severe Duststorm Blasts Section

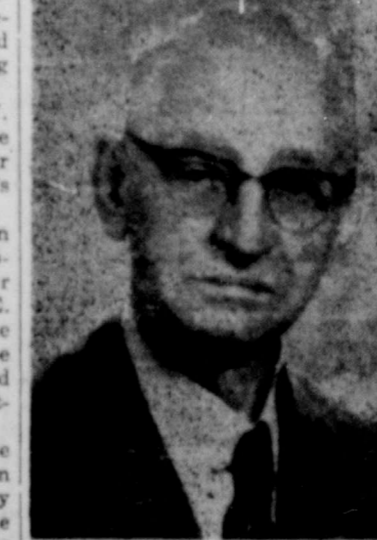
A severe duststorm blasted this area Sunday night, causing considerable soil erosion and some minor property damage. Visibility dropped to around zero during the worst parts of the blow.

Park Beautification Program Scheduled

The City Park will soon be a more attractive recreation spot for everyone, according to an announcement Wednesday by City Councilman L. W. Stanford. Stanford said a meeting will be held at the park Sunday afternoon at 2 o'clock, to draft plans for a beautification and improvement program.

Estelline Girls Get Basketball Jackets

Jackets were awarded to members of the Estelline High School girls basketball team by Supt. W. M. Roberts, at a special assembly last Thursday. Receiving jackets were Mary Nell Couch, Julia Richburg, Clair Bryant, Jacklyn Fowler, Mary Mendez, Karen Eddins, Linda Altman, Linda Crisman, Carolyn Hoover, and Bettye Orcutt. Patsy Mabry and LaQuetta Wade were awarded manager's jackets.



E. P. THOMPSON

When the three brothers bought the business in 1906, nothing but horsepower was used on farms, Mr. Thompson recalled. "But today, there probably are no more than one or two teams being used in farming in the county," he continued.

SPORTS  
AFIELD

By Ted Kesting

The three questions asked most frequently about spinning reels are: Is the open or closed type better? Which casts farther? Can a spinning reel be used on a casting rod?

I have seen both open and closed reels giving perfect satisfaction to their users, and I have used both types with equal satisfaction. Jason Lucas, our angling editor, reports that he can find no legitimate reason for recommending one above the other.

A regular open faced reel can't be used on a casting rod. Most of the closed type can, and some of them are designed so that they work best on casting rods.

Does closed or open cast farther. Bluntly, I don't know. In fact, Lucas thinks the greatest fault of all spinning reels is that they cast too far. This ease in attaining distances leads the angler to stay way out from the shore line or edge of the weed bed, where the fish are, and waste time on long retrieves.

As for spinning rods, a good majority of anglers seem to prefer them of seven feet, or at least 5 1/2 feet. It isn't just a matter of action, for the same rule applies here as for casting rods: the lighter the lure to be cast, the longer and more flexible the rod should be. Therefore, since nearly all spinning lures are very light, most users will find that long rods suit them best.

Glass or bamboo? In cheaper rods, glass by far is the best since good bamboo rods simply cannot be made by quantity production methods. In medium priced grades, glass is the better bet. All this

**THE BAFFLES** By Mahoney

applies to hollow glass, or the type with a wood core. Solid glass makes a very good casting rod up to six feet, but longer rods of any type made from it are so logy in action, and top-heavy, that few will find them satisfactory.

Choosing the right spinning line is so simple that one needs to know only the following brief rule: With fresh-water spinning tackle, four-pound line is about ideal. Six pound casts well enough and seems to be used more commonly. Eight pound can be used, but it's likely to cause trouble with short casts and tangles.

**Legal Notices**

CITATION BY PUBLICATION THE STATE OF TEXAS

TO: J. E. Dill, J. C. Montgomery, J. W. Brice and T. J. Woods, Jr., if living, and if dead, the legal representatives of each of said defendants named, and the unknown heirs of each of said defendants above named; the legal representatives of the unknown heirs of each of said named defendants, if the unknown heirs of said named defendants are dead; the unknown heirs of the named defendants if the unknown heirs of the unknown heirs of the named defendants are deceased.

Greeting:

You are commanded to appear and answer the plaintiff's petition at or before 10 o'clock A. M. of the first Monday after the expiration of 42 days from the date of issuance of this Citation, the same being Monday the 7th day of MAY, A. D. 1956, at or before 10 o'clock A. M. before the Honorable District Court of Hall County, at the Court House in Memphis, Texas.

Said plaintiff's petition was filed on the 19th day of March, 1956. The file number of said suit being No. 3705.

The names of the parties in said suit are Clara Duke joined by her husband E. H. Duke, Doris E. Graham joined by her husband Ted Graham, Nettie Herne a feme sole, Otto Parks, Vera King joined by her husband Vernon King, Bell Lampkin joined by her husband C. P. Lampkin, Aline Smith joined by her husband Al Smith, Cliff Parks, Charlotte Gillespie joined by her husband Bob Gillespie, Letha Hire joined by her husband B. H. Hire and Ruby Henderson joined by her husband Bob Henderson, Lila Wiggins and husband Bill Wiggins, and R. E. Dill, J. C. Montgomery, J. W. Brice, and T. J. Woods, Jr., if living and if dead, the legal representatives and the unknown heirs of each of them; if the unknown heirs of the said named defendants and legal representatives of the unknown heirs of the unknown heirs of the named defendants, as Defendants.

The nature of said suit being substantially as follows, to-wit: Suit in statutory form of Trespass to Try Title to Lots Nos. 9 and 10 in Block No. 71, Original Town of Memphis, Hall County, Texas and in which plaintiffs plead and rely on the 25 year Statute of Limitations, claiming that plaintiffs and those under whom they claim, hold and have held said real property under deeds duly recorded in the Deed Records of Hall County, Texas, said deeds purporting to convey said real property to them, and said deeds being so recorded for a period in excess of 25 years prior to the filing of this suit and that plaintiffs made entry on said land and have by themselves and those under whom they hold, had peaceable, adverse possession of said land under claim of right and in good faith under said deeds for more than 25 years prior to the commencement of this suit, and plaintiffs pray for general relief, as is more fully shown by Plaintiff's Petition on file in this suit.

Issued this the 19th day of March, 1956.

Given under my hand and seal of said Court, at office in Memphis, Texas, this the 19th day of

**Interscholastic Meet To Be Held At Tech, April 20-21**

LUBBOCK — More than 2,000 Texas high school students from the Oklahoma border to the Pecos River will match wits and muscle April 20-21 at Texas Tech in the Region I Interscholastic League Meet.

Participants in the meet at Tech will be champions of district contests held by more than 140 schools in the Panhandle and South Plains area. They will vie for the right to try for state championships later this spring at Austin.

Contests will be held in track and field, tennis, golf, journalism, ready writing, debate, declamation, poetry reading, one-act plays, extemporaneous speaking, number sense, slide rule use, typing and shorthand.

Students will compete in AA, A or B divisions, based on school enrollment.

Dr. P. Merville Larson, Tech speech department head, is director-general for the regional meet.

The Dionne Quintuplets were born May 28, 1934.

**Farm Value of Beef Down More Than Retail Price**

COLLEGE STATION — During the last quarter of 1955, the farm value of choice grade beef was down an average of nine cents a pound, while the retail price dropped only 3.5 cents a pound.

A beef study by the U. S. Department of Agriculture shows that the difference between what the farmer receives for U. S. choice grade beef on the hoof and what the consumer pays for the meat has fluctuated widely during the seven years 1949-55.

Retail prices remained relatively stable during the latter half of 1954 when farm cattle prices were rising, and during 1955 when farm prices generally declined. Marketing margins, therefore, narrowed substantially below the long-run average in the latter half of 1954. In 1955, however, they widened markedly, exceeding the high levels of 1953. The comparisons are based on the price of a pound of beef at retail and the price of its equivalent weight of 2.16 pounds in the live animal.

Marketing margin is the difference in price received by the livestock producer and that paid by the consumer.

During 1955, the spread between the farm marketing price and the retail marketing price was about five cents a retail pound more than at the start of the seven year period. In the last quarter of 1955, the margin was 27 per cent wider than in the same quarter of 1954.

A series of studies is now underway in the Department of Agriculture dealing with the cost of processing and distributing food. This particular report, Beef Marketing Margins and Costs, publication 710, analyzes the trend of prices and margins for U. S. choice grade beef at different stages in marketing process.

The report states that fluctuations in dollar margins come because cattle and beef prices do not maintain a fixed relationship to one another at any point in the marketing channel.

Nancy Hanks was the mother of Abe Lincoln.

March, A. D. 1956.

BILLIE F. O'DELL  
Clerk  
District Court, Hall County, Texas 45-4c

**SPECIAL OFFER FROM YOUR PURINA DEALER**

**Ladies' Garden Gloves**  
a 59¢ value

**FREE**  
With the first bag of Purina Super Chick Startena you buy!

**HURRY! Special offer good only while supply lasts**

These high-quality, style-minded gloves can be yours. They're durable, hard-woven cotton—with high-style cuffs. Simply come in and buy your first bag of Purina Super Chick Startena and a pair of these wonderful gloves is yours... absolutely free.

**Use 'Em For Gardening... Caring For Chick**

This year give your chicks a super start. Because Purina has made available to you this new Chick Startena, you should grow chicks that are nearly 6% bigger... and use over 7% less feed... than even chicks raised on last year's fine Startena! Give your chicks a super start... feed the New Purina Super Chick Startena... NOW!

**Omer Hill Elevator**  
MEMPHIS

**Do You Have An Insurance Policy Renewing — Automobile or Fire?**

See us before you buy!

As our customer, you may use our Low Cost **WILSON'S BUDGET PLAN**

Low cost monthly, quarterly or semi-annual payments

**Wilson's Insurance Agency**

Memphis Hotel Bldg. — Phone 555  
W. B. Wilson W. B. Wilson, Jr.

**Your Electric Service is even a bigger bargain than it looks**

For pennies a day, electricity lights your home, cooks your food, washes your dishes, and serves you in dozens of other ways. It's the biggest bargain in your family budget!

And it's even bigger than it looks.

Out of every \$4.00 you pay on your electric service bill, about \$1.00 goes for local, state and Federal taxes. Yet, in spite of this, you are getting about twice as much electricity for every dollar as you did 25 years ago.

Actually, the average cost of a kilowatt hour of electric service for homes served by WTU is 26% less than it was just 10 years ago. Part of the reason for this lower price is your greater use of electric service. But more important, is the work of the men and women of your electric service company who constantly are working to find more and more ways to reduce the cost of producing electric power and of delivering it to you.

**West Texas Utilities Company**

**Just 6¢ a day can help Build Rich, Red Blood... Save You from being TIRED... NERVOUS**

... EASY PREY TO MINOR ILLS.

Nutritional experts reveal vitamin losses in cooked foods plus faulty diet may be seriously undermining your energy, strength, and resistance, making you feel on edge—affecting your appetite—spoiling your sleep—because your body is vitamin and iron starved.

How You Can Stop Chronic Vitamin & Iron Starvation TODAY... Feel Like a New Person!

Supplement your diet every day with just one High-Potency Bexel Capsule. Just one of these wonderfully strengthening capsules give you the full vitamin and iron content nature provided in the following groups of foods before cooking:

1 quart of pasteurized milk	1/2 lb. of ham
4 oz. of fresh orange juice	1 lb. of beans
1/2 lb. of lean bacon	1/4 lb. of butter
1 lb. of lean pork	1/2 lb. of veal chops
1/2 lb. of green string beans	

**Penny for Penny... You Get More Value in High-Potency BEXEL**

SPECIAL FORMULA VITAMIN CAPSULES  
Feel Better... Look Better... Work Better  
BY YOUR MONEY BACK!

**Durham's**  
PRESCRIPTION PHARMACY  
383 N.W. DURHAM, PHARMACY 1234

**Remodel! YOU CAN MAKE YOUR HOME MORE ENJOYABLE!**

Improve, beautify, modernize your home. Add a room, gain more space, make needed repairs. Many improvements can be made with NOTHING DOWN and up to 3 years to pay. Our prices are always RIGHT!

**Heart o' the Hills**  
OUTDOOR FURNITURE

Now's the time to get a handsome durable redwood table and bench set for patio and lawn.

Oblong table (72 inches) \$29.95  
Round table (54 inches diameter) 3 circular benches \$50.95

**ADD A ROOM**  
For that extra bedroom, den, bath... get our suggestions, modern plans, reasonable prices.

**INSULATE!**  
Your home will be cooler this summer with attic insulation. It will also help keep it warm next winter. Easy monthly payments.

**ASBESTOS CEMENT SIDING**  
Improve your home with our No. 1 grade, straight edge or wave line siding. Grey, green, brown, coral, yellow or white. Have us do the complete job. Nothing down. Up to 3 years to pay.

**MINNESOTA PAINT**

**SPECIAL!—Minnesota Rubber**  
Base Paint for brick, stucco, concrete, asbestos shingles. Non-fading. 12 colors and white. \$5.05 GAL.

**SPECIAL!—Minnesota Farm**  
Paint for your barns, stalls, fences and other property. Lead-free non-toxic. White. \$3.69 GAL.

**WALLPAPER**  
Brighten Your Home with New WALLPAPER. Choose from hundreds of patterns. Let us paper one room or the entire house on a small monthly payments.

**SEE US NOW FOR**

- A NEW ROOF
- A GARAGE
- A FENCE
- A PAINT JOB
- IDEAL KITCHEN
- REMODELING

NO MONEY DOWN, UP TO 3 YEARS TO PAY

**SEE US FOR ALL HOME IMPROVEMENTS**

**WM. CAMERON & CO.**  
BUILDING MATERIALS AND SERVICES

**Income Key to Poultry Profit**

uses his time, says Wormell.

Warmer climates in southern states offer an advantage of lower building investment which is the largest part of total capital investment.

Texas figures are not available but an estimate that would serve as a basis for probable investment on a poultry farm are: land, 5 per cent of the total; real estate (houses), 45 per cent; poultry stock, 35 per cent; equipment, 10 per cent; and feed and supplies, 5 per cent.

If investment is larger than one and a half times the year's receipts, the poultryman should find out in what area he over invested. On the other hand, if the investment ratio is low, the poultryman may be overlooking some labor saving investments that could increase labor income.

Wormell adds, as in every business, the poultryman, too, must give the dollars involved in his business the skilful management needed to bring about satisfactory earnings.

After sundown it is colder on a desert than in a forest.



"I'd like to try this thing if you think it wouldn't strain the family resources this month."

**Drivers Warned Not To Argue With a Train**

"Don't try to argue with a train — it might prove fatal!"

That warning was given motorists by E. C. McFadden, president of the Texas Safety Association, Inc., in behalf of the Texas Safety Association, Inc., Department of Public Safety and the National Safety Council, in the interest of greater traffic safety.

Pointing out the appalling number of highway-rail accidents each year which are caused by motorists' failure to heed the warning signs and signals posted at railroad grade crossings, McFadden said, "The severity of these accidents is so much greater than other types of traffic casualties that the public must realize how fatal it is to try to beat a train to a crossing."

"In 1954, 1,377 people were killed and 3,352 injured in railroad grade crossing accidents. Four out of 10 of these accidents occurred at crossings at which there were gates, lights, bells, watchmen, or combinations of these

methods of protection."

Urging motorists and pedestrians to join in the nationwide drive to cut down on traffic accidents by carefully observing all traffic signs and signals, McFadden gave the following rules in crossing railroad tracks:

1. Be sure all tracks are clear. Even though a train may have passed, there may be another train coming.
2. Where there are no lights or audible signals at the crossing, listen for the train whistle and the noise of its approach, looking both ways before beginning to cross.
3. Where there are gates, signal bell, and warning lights at the crossing, do not begin to cross until they have stopped operating.

"These Signs of Life are designed for your protection," McFadden said. "Obey them and you'll live longer."

Mrs. Andy Gardenhire and children and Mrs. Phaeton Alexander were Amarillo visitors Monday.



**YOUR PRESCRIPTION**

**WE CARE FOR YOUR HEALTH**

Rest assured that your doctor's prescription will be carefully and accurately filled when you bring it to this pharmacy. We work hand-in-hand with the physicians of this community in helping to care for your health.

**Tarver-Stanford Pharmacy**

Phone 24  
Mac Tarver L. W. Stanford

**Complete Prescription Service**

**Read Your Bible**

By HARRY GRAHAM

**THEIR, MY CHURCH ! ! ! ! !**

all the misnomers in so called Christendom perhaps the most flagrant. The saying is true if the church is not God's. The terminology is often therefore used only for there are many churches that are not God's, at least as institutions of men, run by men with a fallacy at the head. (either one now living or one long dead) When we say, my church or your church, we mean that I have a church or you have a church. If this church I have is not God's. The church you have is God's, either. If we mean the church to which I belong the church to which you belong then we should say let it go at that.

Scriptures furnish us unto every good work (I Tim. 3:17). We can go to the pages of inspiration for all we need as followers of the Lord. Never did one of the prophets say "my church" or "your church" but they said, "the church of God which is at Corinth" (I Cor. 1:2) or "the church of Christ salute you" (Rom. 16:16). If anyone ever have the authority to call a group of worshippers "my church" surely the apostle Paul or Peter would have had this right, and would have exerted this prerogative. Peter declared upon the confession that Peter had just made, "thou art the son of God" he would build HIS church. (Matt. 16:18) Luke records for us that Christ purchased this church which came into being on the first Pentecost following the resurrection of Christ (Acts 2) with his own precious blood (Acts 20:28). The church seen in the New Testament is not mine nor is it yours, and we should not through our speech put ourselves in an embarrassing position by saying, "my church" or "your church."

The church is the bride of Christ (Eph. 5:22-33), and the head of the church (Col. 1:18). We should be careful to give the honor to whom the honor is due, and credit to whom the credit is due.

**Church of Christ**

**Tech To Offer 22 H-Ec Courses In Summer Session**

LUBBOCK — The Texas Tech Home Economics Division will offer a varied program of 22 courses during the 1956 summer session, Dr. Willa Vaughn Tinsley, Home Economics dean, has announced.

Courses for the first term, July 4 to 14, will be in the fields of applied arts, child development and family relations, food and nutrition, home economics education, and home management.

Second term courses, scheduled July 16 to August 24, will be in the areas of applied arts, clothing and textiles, elementary home economics teaching, and school lunches, Dean Tinsley added.

**Rural Area Vets Advised About GI Home Loans**

Veterans in rural areas seeking GI home loans who are turned down by local lenders should apply direct to Veterans Administration regional offices rather than to Voluntary Home Mortgage Credit Program (VHMCP) regional committees, VA has announced.

This suggestion is made, VA said, in order to speed up direct VA loan processing and to set up a priority system for veterans who are unable to secure VA-guaranteed loans from private lenders through VHMCP.

Southwestern VA Regional Offices are located at Houston, San Antonio, Waco, Dallas and Lubbock; Shreveport and New Orleans, La.; and Jackson, Miss.

Previously, veterans seeking GI loans were being referred direct to VHMCP regional committees so that these committees might be able to assist in securing private GI mortgage financing for World War II and Korean conflict period veterans living in remote areas and small communities.

Veterans, applying to VA, will be sent a VHMCP home loan application. VA will then put their names on a register so that a follow-up may be made and a priority established for the individual veteran.

Should the VHMCP committees be unable to provide regular GI financing for homes from private lenders, the veterans then can apply to VA for a direct government loan.

Loans secured from private lenders through the facilities of VHMCP regional committees will be guaranteed loans bearing the same interest rate as VA direct loans—4 1/2 per cent per annum.

Recently, VA took another important step in speeding up the process of getting mortgage financing for veterans living in rural areas by cutting the time for referring direct loan applications to VHMCP regional committees.

These committees now have 20 working days instead of 45 calendar days, as was the previous procedure, in which to secure loan commitments from private lenders.

**CARD OF THANKS**

I take this means to thank each and everyone who sent me those beautiful birthday cards. It was so nice of you to take time out to do this. I shall keep the cards and remember each of you. Thanks again.

Mrs. Joe Vandiver

Mr. and Mrs. L. I. Davis spent Friday night in Borger with Mr. and Mrs. Jack Youree. Mrs. Youree is the daughter of the Davises.

Mr. and Mrs. Buster Helm had as weekend guests Mrs. H. L. Selby and Mrs. Jane Parks and children, all of Okemah, Okla., and Mr. and Mrs. John Dutton and Sally of Hobbs, N. M.

Since 1946, the Ground Controlled Approach Unit at the Naval Air Station, Patuxent River, Md., has guided 64,113 planes to safe landings by means of radar. GCA is primarily used in bad weather.

A four-engined R5D, called the "Flying Laboratory," is attached to the Electronics Test Division of the Naval Air Test Center, Patuxent River, Md. Electronics Test installs aircraft instruments in the plane and tests them at altitudes.

**266 Acre Farm To Be Sold at Auction Sale**

**Monday, April 16th 2:00 p.m.**

Rain or Shine!

— LOCATED —

**1 1/2 Miles South of Parnell**  
THEN ONE-HALF MILE EAST TO HOUSE OR  
**10 MILES WEST OF ESTELLINE OR**  
**20 MILES EAST OF TURKEY**

CONSISTING OF

95 Acres of Cotton 29 Acres of Wheat  
Stock Well and Windmill  
R E A and School Bus Line  
1/2 Of Oil Minerals and Not Leased

**TERMS MUST BE CASH**

BRING YOUR BANKER OR YOUR LOAN CO. REPRESENTATIVE WITH YOU—  
FARM LAND OF 220 ACRES RENTED—3rd and 4th. CROP RENTED FOR THIS YEAR AND NEW OWNER TO RECEIVE LANDLORD'S RENT

OWNER — JOE MOTHERSHED  
PHONE 2491 — ESTELLINE, TEXAS

TO BE AUCTIONED BY:  
**Big State Auction Associates**  
AMARILLO, TEXAS PHONE DR. 4-3621

**We Replace AUTO GLASS while you wait!**

... or while you do your shopping.

Every job guaranteed  
**Foxhall Motor Co.**

**DEPENDABLE PRESCRIPTION SERVICE any hour of the day or night. Two Registered Pharmacists to serve you.**

**JOHN FOWLER Pharmacists DICK FOWLER**

**Take advantage of these savings at Fowlers**

- |   |   |
|---|---|
| 63c GLEEM<br>Tooth Paste . . . . . <b>49c</b> | 63c COLGATE<br>Tooth Paste . . . . . <b>49c</b> |
| Lilt Permanent . . . <b>1.39</b>              | 25c Bobbi Pens . . . . <b>19c</b>               |
| Lg. Alka Seltzer . . . <b>49c</b>             | \$2.00 LEMON<br>Shampoo . . . . . <b>98c</b>    |

**SAVE ONE DOLLAR!**  
**Helena Rubinstein's Color-Tone Shampoo**



Once-a-year offer only! 2<sup>50</sup> size, now **1<sup>50</sup>** plus tax

Wash your hair with dazzling color! Helena Rubinstein's fabulous Color-Tone Shampoo is not a dye, but extra creamy shampoo plus certified color. Its special new conditioners make your hair silky and soft. There is a "custom" Color-Tone Shampoo for every shade of hair: BLONDE-TONE adds golden lights. RED-HEAD gives a flaming aura. BROWN-GLOW lights up "plain" brown hair. BRUNETTE-TONE adds jet highlights and warm depths. SILVER-TONE halos grey, white or platinum hair, corrects yellowing. Silk-Sheen Cream Shampoo conditions dry, damaged hair to healthy lustre—no fed. tax.

**FOWLERS**  
**Your Rexall Store**

### Salisbury Club Meets Tuesday For Luncheon

The Salisbury Club met Tuesday, April 3, for a luncheon meeting in the home of Mrs. T. K. Wilton with Mrs. Cecil Lockhart as co-hostess.

Each member brought a covered dish and a tasty meal was served at the noon hour. The menu included pheasant and numerous other dishes.

A short business session was held during the afternoon and members voted to contribute to the March of Dimes and Red Cross.

Mrs. McQueen gave as the scripture reading the First Psalms and prayer was offered by Mrs. E. L. Kilgore. The remainder of the party hours were spent quilting for the club.

The next meeting is scheduled for April 17 and will be held in the home of Mrs. McQueen. The April meeting is a special meeting. The next regular meeting will be in May in the home of Mrs. L. I. Davis with Mrs. C. F. Stout as co-hostess.

Members present were Meses. L. I. Davis, W. B. McQueen, Ed Hutcherson, D. C. Messick, D. W. Lawrence, E. Lee, Kitty Gammage, Jess Mitchell, E. L. Kilgore, C. F. Stout, E. E. Cudd, E. E.

### Estelline Club Enjoys Musical Program Monday

The 1932 Culture Club of Estelline met in the home of Mrs. W. M. Whaley on Monday evening, April 2, for a musical program.

Mrs. Albert Bailey, president, conducted a short business meeting.

Mrs. Joe Eddins introduced the program with the quotation: "According to Coethe, the striving man, if initially good, was not bound to perdition, but could eventually be saved."

Mrs. Kennedy read the life of Verdi.

Mrs. Don Leary gave a synopsis of the story of the opera "Aida."

Two guests played piano selections. Larry Braidfoot played "Valse" by Chopin and "La Estrellita" by Ponce. Karen Eddins played "Turkish March from the Ruins of Athens" by Beethoven.

The hostess served chocolate sundaes and cookies. Mrs. Leonard Braidfoot, Larry Braidfoot, and Karen Eddins were guests. Members present were: Meses. Raleigh Adams, A. H. Bailey, J. A. Ballard, D. T. Eddins, Joe Eddins, R. V. Wood, B. T. Jackson, E. F. Kennedy, Don Leary, and J. B. Rapp.

Rice, Cecil Lockhart and T. K. Wilson.



**ENGAGEMENT REVEALED**—Mr. and Mrs. O. A. Sturdevant of 617 North Ninth Street announce the engagement and approaching marriage of their daughter, Yvonne, to Dr. Albert D. Bird of Childress. The wedding is planned for May 12.

### Around and About

By Helen Combs  
Sand, Sand, Sand! . . . how could we fail to mention the sand this week when we were reminded of it time and again as we made our way around the square Monday in search of news . . . all our friends greeted us, "Sure we know some news. We had a sandstorm last night." Of course we had been reminded of that earlier in the day when we rose to make the usual cup of coffee and piece of toast for the husband and myself. Only this morning we had to do a little dusting here and there before we could have the usual cup of coffee to wake up on!

Then we turned on the radio, only to be told that Sunday night's storm was the worst since 1936 . . . but we couldn't help wondering if maybe they didn't forget the one we had a couple of years ago when we came home to find

the white curtains in the living room had changed in one afternoon to a dusty tan . . . and Monday morning they were only lightly creamy!

But sand and all, there was one person who greeted us with a beaming smile Monday morning as she announced she had a new beauty operator who began work on Saturday . . . that person was Mrs. Wyley Whitley, who has been managing her beauty shop alone for the past few weeks because she was unable to find an operator . . . now Mrs. Opal Hawthorne of Clarendon is there to assist Mrs. Whitley . . . which reminds us why some of you girls don't take a hint and go to Beauty School . . . we hear all the time about the shortage of teachers, but very little about the shortage of help in numerous other fields . . . and one thing we're certain about—women are always going to strive to look beautiful!

Mr. and Mrs. T. J. Bridges will go to Rotan this weekend for the 50th wedding anniversary celebration of Mr. Bridge's parents, Mr. and Mrs. H. S. Bridges. All eight of the Bridges children plan to be present for the open house which will be held Sunday afternoon at the family home. Residents of Rotan since 1914, Mr. and Mrs. Bridges were married in Grayson County.

Another Memphian who had an unusual Easter surprise was Mrs. Guy Wright, whose son sent her cut flowers from Hawaii . . . the flowers were of two varieties, baby orchids and a flower of the lily variety. Mrs. Wright said she did not know the name of the lilies but they were in vivid colors of red, orange and pink. Guy Alden is serving with the Navy Air Corps, and is stationed at Earber's Point, Hawaii.

Did you notice Mollie Carlos and Gladys Power adding the final touch to the newly re-decorated window at Greene's Department Store one day last week? . . . the display window has a new background, and a new carpet has been added . . . this business firm is the last of several to have a new face—lifting this spring . . . in fact we doubt that some people would recognize the ole town . . . just to mention a few we have: The Fair, Said's, Perry's, on the west and on the south; Beeson's, Coleman's, Foster's, Hall Co. ASC, Bill & Al Cafe, and Cummings Cafe.

Had a nice chat this week with Mrs. W. D. Young, former Memphis resident who now lives in Abilene. It's always pleasant to talk with our friends who have moved away and return for a visit . . . and it's especially nice when they say nice things about our town . . . and we find that most former Memphians do have kind memories of their days spent in our midst. This time the praise from a former Memphian goes to the Victory Sunday School Class . . . Mrs. Young related how only recently she had held up as an example the Victory Class here to members of the Abilene Class, pointing out how much work was accomplished by the group here and how, through work, a wonderful fellowship was maintained.

A real treat was in store for members of the Atlatenean and Delphian Clubs, their husbands and several other guests Tuesday eve-

ning when Tim Paulsel of Fort Worth, former Memphian, returned to Memphis and took the group on an extensive picture tour of the United States. The colored movie, made on several tours the Paulsel family had taken through out the United States, highlighted many scenic and historic points. Mrs. Paulsel, who is the daughter of Mrs. L. M. Thornton, accompanied her husband to Memphis. The joint meeting was held at the Travis Cafetorium with Mrs. W. C. Dickey as hostess.

The Memphis Jaycees, that young, energetic group of men, are going to do something about beautifying the City Park . . . or at least they have undertaken the sponsorship of the project. L. W. Stanford, member of the City Council, said Tuesday . . . plans are being worked out by the organization and Mr. Stanford this week . . . the group has volunteered their services in the collection and planting of perennial plants and shrubs. Let's keep this in mind and make a survey of our yards to see if we have anything that we can contribute . . . if you find that you have surplus plants of any kind just call Mr. Stanford, Phone 24, and some member of the Jaycees will call for the plants. Or, if you would like to take up the plants yourself, just bring them to Tarver Drug. For further details please refer to story on front page.

B. M. S. N. Frankie Thompson writes us this week from Fitzsimmon Army Hospital, Denver, Colo., to send The Democrat as he likes to keep up with things going on around home. As you remember, Frankie was injured in a car accident in March as he was returning to California to join the crew of the U. S. S. Manchester, after spending a six-day leave with his parents, Mr. and Mrs. H. M. Thompson of Lakeview. Frankie goes on to say that he will be in the hospital for several months and requests that we thank all his friends for the nice gifts, cards and flowers that have

been sent to him. "They will never know how much this meant to me," Frankie concluded.

Mrs. Chas. Oren, who underwent major surgery recently in Lubbock, returned home Sunday; and we're happy to report is doing nicely . . . H. A. Leggett, who 'ell two weeks ago and received a broken leg and later had to undergo surgery, is also reported to be doing nicely . . . Mr. Leggett is still at the Veteran's Hospital in Amarillo.

Mrs. Elmer Prater has returned home following a visit in Taylor with her daughter, Mrs. E. R. Pate, Jr., and family.

### Estelline Family Enjoys Reunion

The A. W. Johnson family enjoyed a weekend reunion at their ranch home west of Estelline recently. Only a few were unable to attend. Those attending were: Johnson, Joann, Linda, of Abernathy; Mr. and Mrs. John, Sandra and Littlefield, Mr. and Mrs. Walker, Sherry, Delby, don of Colorado Springs; D. C. Walker of Lubbock; D. C. Hobbins, Bob, Dickie, of New Gulf, Texas; Johnson of New Gulf, and Jerry of Estelline.

**PRICELESS INGREDIENTS TO GUARD YOUR HEALTH**

Only the best is good enough for your baby! We offer you a complete supply of infants' needs. Turn to us where the health of your family is concerned. The filling of prescriptions is the most important part of our business.

**Durham's PRESCRIPTION PHARMACY**  
H. W. DURHAM, PHARMACIST  
MEMPHIS, TEXAS

PHONE 323

**Money IS YOUR BANK'S "Stock in Trade"**

Here at the First State Bank we deal in money, just as a farmer deals in his livestock and produce . . . the businessman in the stock of goods on his shelves. When you think about it, there are other parallels between your bank's business and yours.

Like any business man, we want more business. To get this business we offer dozens of services which the citizens of this area can use.

When you come to us to open an account or to arrange for a loan—we are not doing you a favor, you are doing us a favor . . . giving us more business. And, we hope that our attitude will always show it.

While money is our merchandise—our "stock in trade"—our patrons are our customers. They're people like you. And, like any good business man, we know that the way to please people and keep them coming back is to show real interest in their problems. This we try to do by making genuine effort to help them, and to give them personal attention.

Like most businesses, we want small and medium size accounts. These accounts are valuable to us . . . they add strength and stability to our business. Our attitude toward a small account is the same as toward a large one.

There's nothing cold and mysterious about banking. We're in a peculiar kind of business, and we know the good will of our customers is our greatest asset. Our policies are based upon this good will, which causes us to serve our people to the best of our ability.

Come in soon. You'll like to do business with the friendly folks at the . . .

**FIRST STATE BANK**  
Member F. D. I. C. Memphis, Texas

<b>OFFICERS</b>	<b>DIRECTORS</b>
SAM J. HAMILTON, President	CRUMP FERRER
L. C. MARTIN, Executive Vice President	F. A. PINCH
P. A. FINCH, Vice President	O. B. GOODALL
O. M. DUREN, Vice President	ALLAN M. WOOD
STARR JOHNSON, Assistant Cashier	CARL J. SMITH
	J. A. ODOM
	E. F. THOMPSON



**Hardwick and Magic Chef GAS RANGES**

**... for Every Smart Homemaker**

A Modern Gas Range Will Give You The Best Cooking Performance Money Can Buy

You'll be pleased to own and use one of our new HARDWICK or MAGIC CHEF Automatic Gas Ranges. It will mean new beauty for your kitchen . . . better food for your table . . . more leisure time for you. Visible flame adjustments give precision cook-book results for top-of-range cooking; balanced heat oven bakes perfectly; smoke-proof broiler means juicy meats.

See the models on display in our store today!

**Lemons Furniture Co.**  
618 Main St. Telephone 12

### Draft Call May Above April

The May draft call for 593 men, compared to 401 for April, Colonel S. Schwartz, state Selective Service director, has announced. The state's share of a national call for 12,000 men, all to be taken from the state Selective Service rolls, was announced. The draft call for 1,152 men to take physical and mental examinations for future calls. Schwartz said that the boards do not have a quota for these exam-

inations in May would be called upon to furnish men for examination in June.

The May quota will be filled with men who are 21 years of age, or older, on May 1st, with the exception of delinquents, or volunteers, who may be older.

Colonel Schwartz said he expected the May call to be filled with volunteers and men without children. He said delinquents were liable first, but the state doesn't have many delinquents.

He warned young fathers that they had better be alert in advising their draft boards about children or an expected child.

"They may get drafted if they don't," he said.

## Report From Washington

By Walter Rogers

Congressman, 18th District



### When a Recess Is Not a Recess

Congress is no stranger to criticism. And, rightfully so, in our democratic form of government. Our country has been built to its present greatness by the constructive criticism of those who are interested in correcting situations and conditions to the ultimate benefit of all. May it ever be so.

The so-called Easter Congressional recess has brought an extra helping of criticism from several sources, generally. Some of the Metropolitan dailies have made some rather caustic comments about Congress taking a recess. The manner in which they have treated the subject would lead one to believe that it is somewhat like a school recess where everyone goes out to the playground and has a romping good time. However, this is certainly not true. The term "recess" actually refers to the suspending of official sessions of the Congress for a period of about 10 days. It does not mean that all congressional work is suspended. In fact, my working day has increased from 10 or 11 hours to about 14. There are several reasons that have caused this. One is the farm bill, which is presently before a Conference Committee. Many of us from the farm areas worked very closely with the Senate during the passage of the farm bill and have continued to work closely with the Conference Committee in order to iron out many of the kinks in the bill. This, of course, caused us to lag behind in some of our correspondence and other duties. We can use the recess time in order to catch up in this respect. Another would be the fact that the Conference Committee has remained in session during this recess and has worked long, hard hours. Many of us have continued during the recess to work in close cooperation with the Conference Committee and this, of course, requires additional hours. Another reason is the fact that I want to get back home for at least a few days during the suspension of activities of the Congress. In order to do this, I must get ahead in much of my work here so that I will not be too far behind when I return.

I never read some of the columnists, commentators or editorial writers, treating the subject of recess, that I don't think of the little boy at Wildorado who wrote me several years ago and told me that he was writing his Congressman because he wanted something done about school. His complaint was that the study hours were too long and the recess was too short. I can well remember when I was his age that I felt the same way. I guess life is just that way. When you're young, there isn't time enough to get all of the playing done, and when you get older, there isn't enough time to get all of the work done.

**Politics**  
I noticed in a local paper that some politicians are going to use as a battle cry, "the do nothing 84th Congress." This does not surprise me much, because this group is bent on trying to get votes at any price and they are looking for

some easy catch phrase that will be acceptable to the New York public relations firms that are being paid to propagandize the country. One has but to stop and think to realize that a "do nothing Congress" could well be a contribution to the welfare of this country. It might furnish the members the time and opportunity to go over the laws that are on the books and correct some of the mistakes that have been made in past years. It certainly would be soothing to the American taxpayer, because he could be assured of at least one session of Congress that was not trying to raise his taxes. One of the oldest political sayings in Texas is that a legislative body that is not in session cannot pass any tax bills. Many people have told me that if Congress was graded on the number of bills it did not pass, at least some headway would be made toward stopping the confusion.

### Suggestion to the Telephone Co.

The telephone company could make one of the greatest contributions to mankind if they would work out some system to provide a separate telephone for each teen-ager in the house. A telephone man told me not long ago that this had already been worked out, and that you could have as many phones in your home as you could pay for. What he didn't understand is that if you can afford teen-agers, you can't afford extra telephones.

I get to talk to my home about once each day, unless Jean calls me. The only successful method that I have found of reaching my home is to ask the operator to interrupt the conversation between one of my teen-agers and another teen-ager. The operators are adamant to do this in this respect and advise me that, unless it is an emergency call there will be no breaking in. I cannot convince myself to call it an emergency and usually end up talking to the President of the local telephone company or one of his cabinet in order to get a directive sent down the line to please let Congressman Rogers of Texas talk to his home.

## Texas University Engineering Show Scheduled May 3-5

AUSTIN — A wonderland of engineering and science marvels will be shown at the University of Texas' annual Exposition and Power Show May 3-5.

The theme of this year's extravaganza will be "Automation Through Engineering." Visitors will see baffling stunts and educational displays of latest technological progress, including models of launching sites for space rockets.

Other displays will include clouds seeded to produce rain, an

artificial tornado which whirls across a miniature countryside, and an automatic cigarette lighter which actually lights and puffs a cigarette and offers it to the bystander.

Power Show visitors may match wits with an electric tic-tac-toe wizard, lift a heavy weight merely by moving their hands near a motor, and see hundreds of other entertaining and enlightening wonders of science.

The exhibits will be displayed Friday, May 4, from 6 to 10 p. m. at various University buildings. Guide service and maps will be available to visitors unfamiliar with the campus.

Honor guests at the show will be hundreds of high school students, their parents, teachers, and friends, who will be in Austin May 3-5 for the Annual Univer-

sity Interscholastic League State Meet.

The event also will provide opportunities for career counseling.

The eradication of one disease, brucellosis, would save the livestock industry of Texas an estimated \$10 million yearly. In addition to the direct loss from the disease, Dr. C. M. Patterson, extension veterinarian, reports other costs are piling up which are difficult to estimate.

**SKIN ITCH HOW TO RELIEVE IT. IN JUST 15 MINUTES.**  
If not pleased, your 46¢ back at any drug store. Instant-drying ITCH-ME-NICE leaders itch and burning kills germs ON CONTACT. Use day or night. No excruciating itches, foot itch, other sensitive itches. Now at FOWLENS DRUG. Ad.

# Y'ALL COME to the REVIVAL

## Travis Baptist Church

13th at Grundy

LANHAM F. CAMPBELL, pastor

Singer

Evangelist



Weldon Goar, Clarendon, Texas



Rev. N. Ray Harrell, Stephenville, Texas

### SERVICES

10:00 A. M. — 8:00 P. M.

Seek ye the Lord while He may be found, upon Him while He is Near" Isaiah 56:3

## APRIL 13-22

avenue of Rest—Tower of Hope—Gateway to Service"



"We shall attempt to prove that OK Used Cars are not only out of this world, but the next one as well."

We won't promise you a trip to the moon, but you can look forward to thousands of miles of carefree motoring in your OK Used Car. It's inspected and reconditioned to rate the famous Chevrolet dealer warranty in writing. Values are sky-high, too, because volume trading and selling keeps Chevrolet dealer used car prices low.

**USED OK CARS**

LOOK FOR THE OK TRADEMARK!

**CHEVROLET** Sold only by an Authorized Chevrolet Dealer

**POTTS CHEVROLET CO.**

TOMIE M. POTTS HOMER W. TUCKER



YOU'D GIVE A LOT FOR CLEAN, COOL COOKING WITH no hangover heat\*



**non-flame range:** Turn heating element under pan of fudge to high. When fudge boils, turn heat off. While fudge continues to boil and run over. Only way to stop it is remove pan from element.



**flame-fast gas:** Place fudge pan on burner and turn up full. Turn off when fudge boils, boiling stops instantly. Turn on again, fudge resumes boiling instantly. No running over — and no hangover heat.

... yet it's always **ECONOMICALLY YOURS** with **flame-fast gas**

**MERRY MODERN SAYS:** It's time to change over to a really modern automatic gas range

If fixing meals heats up the kitchen — and your temper — then it's high time you enjoyed the wonders of a new gas range. See the beautiful new models now on display at most dealers. Look over the many time-saving, work-saving automatic features. Then ask about the big trade-in allowances and easy, easy terms. You'll be very glad you did!

**DON'T BE FOOLED!** For what it costs to cook with non-flame, artificial methods for ONE YEAR, you can cook more than FOUR YEARS with modern flame-fast GAS.\*

**NOW... it's TIME for the TOPS!** The time of your life to own the tops in top-of-range cookery at really TOP SAVINGS!

**IT'S NEW!** **FOOD WON'T BURN**

**COOK-SAVER** top burner control holds exact pre-set temperature until cooking is done!

Here's the easy top-of-range cookery you've always wanted! Consult recipe, then dial desired temperature. **COOK-SAVER** temperature controlled top burner lights automatically. Quickly reaches and holds pre-set temperature for perfect results every time! Pots and pans become precise controlled-heat utensils!

\*Gas flame turns off instantly! No hangover heat to overcook or burn foods. No lingering heat in kitchen, keeping pots steaming and boiling walls.

See your gas range dealer or **LONE STAR GAS COMPANY**

More than 85 out of 100 Women Cook with Gas!

### New JC Officers To Be Installed

Annual installation banquet of the Memphis Junior Chamber of Commerce will be held Thursday night at 8 o'clock at the Cyclone Drive Inn, it was announced Tuesday. Members are invited to bring their wives, as well as guests.

To be installed are the following officers: Don Carmen, president; F. D. Saxon, vice-president; Melvin Blum, second vice-president; Raymond Martin, secretary; and W. P. Holman, secretary-treasurer.

Buzz Wheeler and Tommy Robinson will begin two-year terms as directors, and Joe Williams and H. R. Friable will start one-year terms. Cecil Edwards is state director from the local Jaycee organization.

Bob Polson, immediate past vice-president of the Texas Junior Chamber of Commerce, and until recently manager of the Childress Chamber of Commerce, will be master of ceremonies.

O. L. Helm will make a brief address.

### Local Women To Childress Meeting

The Methodist Woman's Society held a district meeting Wednesday of last week at the King Memorial Methodist Church in Childress.

Guest speaker was Miss Mary Seary, a missionary from Japan. Attending the meeting from the Methodist Church here were: Mesdames Frank Foxhall, Mac Tarver, Jim Sharp, Mary Lou Erwin, J. S. Ballard, O. M. Gunstream, Ed Hutcherson, and R. C. Lemons.

### Charles Hartman Visiting Parents

Charles A. Hartman arrived here Wednesday for a 13-day visit with his parents, Mr. and Mrs. A. C. Hartman. The younger Hartman arrived at New York, March 25, from Germany, where he had served with the 5th A. A. Battalion at Camp Pieri since February of last year.

He was flown to a San Antonio hospital, where he will be a patient for the next several weeks. He is scheduled to receive his discharge from the Armed forces in August.

### Robert Erwin Returns to States

Robert E. Erwin, son of Mrs. Mary Lou Erwin of Memphis, returned last week to Long Beach, Calif., aboard the Pacific Fleet heavy cruiser USS Toledo which had just completed a three-month cruise in the Far East. Among ports of call during that time were: Yokosuka and Kobe, Japan; Hong Kong, British Crown Colony; and Okinawa.

### Comments - (Continued from Page One)

to the park's attractiveness. Citizens who have not divided their plants for this year, are asked by the Jaycees to let them know when the divisions are made, and they will gladly call for what you want to give for the park. Perhaps some of the clubs and individuals who have units at the park will want to beautify their own units. It will rain one of these days.

T. M. Paulsel, of Fort Worth, one-time citizen of Memphis, showed moving pictures at the two-club party given by Mrs. W. C. Dickey Tuesday night. The pictures were taken in various parts of the United States, and not only showed the beauty and wonder of many places, but also showed the greatness of industries. All who saw the pictures, were convinced that one should see America first before going to other lands. Paulsel is a real photographer who chooses his subjects with care.

Councilman Landrum Stanford informs us that the city has put down a new well, deeper than the old well, and found a better supply of water in Fairview Cemetery. A pressure pump has been installed and any time a tap is opened, the water flows. This has been needed a long time, because the old well did not furnish sufficient water, and many times the windmill did not run. Stanford asks cooperation of the public in using the water judiciously, and to be sure to shut off the hydrant when through watering. Occasionally, someone leaves the water running all night, which not only decreases the supply of water, but such carelessness makes the cost of operating the pump greater. The present appearance of Fairview is so much better now than several years ago when people were almost embarrassed when out-of-county visitors appeared at the cemetery. Now, it looks so much better, and with the added water supply, a lot more improvement can be made.

Now for some highlights of the Florida trip: Found Ed Foxhall's footprints at Pensacola, where he served in the Air Force some years ago. Next, Chattahoochee, where Eastern Standard Time takes over; Tallahassee, the capital of Florida, and just south of there could be seen acres and acres of tobacco plants covered with netting cloth to protect them from insects and hot sun; then large groves of tung trees in bloom, looks very much like peach blossoms, and there is a tung refinery plant that crushes the pods and extracts oil. Under the tung trees grass is grown and cattle graze and wax fat.

Then we crossed the famous "Way Down Upon the Suwanee River" which rises in Georgia and empties in the Gulf of Mexico. Along the river brakes plenty of wild game habitat, such as black bear—some weighing 450 pounds, panther, deer foxes, turkey, etc.

To Tampa, on the west coast for three days' stay; across Tampa Bay to St. Petersburg on the gulf, where a sight-seeing tour revealed that both Tampa and St. Petersburg are splendid cities that do a world of business. Many tourists spend the winters, and many through the year in this temperate and enjoyable climate, but nothing to compare with the number of tourists who visit the east coast. A nice attraction in St. Pete is the Sunken Gardens, and another is the long causeway and bridge, connecting Tampa and St. Pete. Did not get to see the city of Clearwater, just north of St. Pete, where Rufus and Tommie Greene spend the winters.

Leaving Tampa we journeyed east to middle Florida. On the way were seen large orange groves and fields of strawberries around Plant City; a beautiful section, called "Land of Lakes," around Lakeland, home of Florida Southern College; Highland City is in the heart of the citrus belt, and does an immense business of shipping fruit and vegetables; Bartow, where Spanish moss is ruining trees—both giant oaks and tall pines. Laborers get \$1.00 per hundred pounds gathering the moss for market.

A few days were spent at Lake Wales, which we enjoyed more than any other place visited. Near this city is the largest phosphate mine in the world, and three sand mines—white building sand. The phosphate and sand are shipped everywhere. The Florida Citrus canneries are located in this section and it is interesting to watch the fruit being selected as to size and grade, boxed, and hundreds of box cars are loaded during the season and shipped to various ports and destinations of the world.

Near Lake Wales, on the highest point in Florida—about 160 feet above sea level—is the famous Bok Tower on the crest of Iron Mountain, erected by the late Edward William Bok who donated to the American public this tower of artistic, architectural perfection. The beauty of the tower and the Carrillon recitals have annually attracted thousands who have proclaimed it a new wonder of the world. Near the tower is an attraction called The Great Masterpiece. Here, amid an endless profusion of flowers, is a replica of mosaic tile in the inspiring "Last Supper" by Vinci. More than 300,000 pieces of integrally colored mosaic tile, having more than 10,000 gradations of color, were used in making this masterpiece of art. Here also, from Feb. 15 to April 15, the original Black Hills Passion Play is presented about four times a week at an amphi-

### T. M. Paulsel Brings Interesting Program to Local Clubs and Guests

T. M. Paulsel, widely-traveled Fort Worth lumber man and former Memphis resident, brought an interesting and entertaining program to members of the Atlantean and Delphian Clubs, their husbands, the faculty of Travis School and other guests on Tuesday evening when Mrs. W. C. Dickey was hostess to the group at the Travis Cafeteria.

Guests arriving at 7 o'clock were greeted by the club presidents, Mrs. C. W. Kinslow and Mrs. Sidney Baker, and presented to the speaker and his wife, Mr. and Mrs. Paulsel.

As the guests arrived tasty refreshments were served from an attractive tea table appointed in silver. The table was laid with a linen cloth and centered with an arrangement of wedgewood irises and yellow daisies. Alternating at the silver punch service were Mrs. Bill Hajek, Mrs. A. Anisman and Mrs. Robert Sexauer.

Mrs. Dickey welcomed the guests and then presented Mr. Paulsel. In making the introduction, she explained the speaker needed no introduction to most of the group as he was a former Memphian having been employed here with a local lumber company for several years. It was during that time Mr. Paulsel was married to the former Cora Ethel Thornton, member of a pioneer Hall County family. In 1936, Mr. and Mrs. Paulsel moved to Fort Worth where he now owns and operates the Paulsel Lumber Company.

In connection with his business, Mr. Paulsel has traveled extensively both in the United States and abroad. Through his travel, he has adopted a hobby of picture making in order to record scenic and historical points of interest

theatre which was completed in 1952 by the Passion Play company.

Seven miles from Lake Wales is the famous Cyprus Gardens, which compares in beauty to the Bellingrath Gardens near Mobile, Ala. No one can describe the beauty, the tropical setting, natural contours, trees, shrubs, flowers, contained in the confines of the garden. Visitors by the tens of thousands visit this place of exquisite beauty and gasp with amazement when they view the almost unbelievable perfect nature scenes. In connection with the Gardens, a water-ski show is held that thrills all alike. Here real artists on skis put on a show that is delightful to see.

More next week, perhaps.

**Ellis** A super supper treat!  
**CORN BEEF HASH**

Check this for good looks...  
BY **Carol RODGERS** JUNIORS  
  
It's easy to look your best in this dress of Dan River **Prinkl-see** woven gingham cotton check that keeps its freshness through countless washings. Enhanced with fine lace. This season's best colors. Sizes 7-15.  
**DAN RIVER'S Prinkl-see COTTONS**  
**LIFE**  
\$5.95  
**The Fair**

Why Not Buy Your  
**Air Conditioner**  
Now — With A  
**Small Down Payment?**  
You can get a new Air Conditioner here, and make your first monthly payment JUNE 1st—then one each month.  
We'll install any brand you select from the six we sell and service. All sizes carried in stock... and they will be installed in your home or business within a few days... in any location—floor, ceiling or window.  
Remember, we carry a full line of parts and supplies for servicing all makes of Air Conditioners. We do our own duct work.  
Ready To Serve You:  
When you are ready to buy any new (or used) merchandise at Household Supply, see  
**PETE SHANKLE and J. O. DIXON**  
For service or repair, see  
**L. B. ROBERTSON or C. T. CHAPPEL**  
For delivery or butane, see  
**J. C. ROW**  
For bookkeeping information, see  
**MRS. B. O. SHANKLE or MRS. PATSY CHEEK**  
**Household Supply Co.**  
PETE SHANKLE, Mgr.  
608 Noel St. Phone 95-M

as a guest. Mrs. Paulsel, who is the daughter of Mrs. L. M. Thornton, is a former member of the Atlantean Club.  
More than 100 guests were present for the occasion.  
Assisting Mrs. Dickey with hostess duties were members of the club's social committees including Mrs. C. C. Hodges, Mrs. A. Anisman, Mrs. Kenneth Dale, Mrs. Bill Hajek, Mrs. Weldon McCreary, Mrs. Clyde Smith and Mrs. B. J. Thomson, members of the Delphian Club and Mrs. L. C. Martin, Mrs. J. H. Morris, Mrs. Herbert Curry, Mrs. Robert Sexauer, Mrs. Cecil McCollum and Miss King, members of the Atlantean Club.  
Mr. and Mrs. Charlie and Mrs. O. L. Hammond, with Mrs. McBee's sister, J. Huddleston. They also in the home of Mr. and Mrs. Vincent Bennett, former resident of Memphis.  
Mr. and Mrs. Jack Par daughters, Melinda and M. Ralls visited here Sunday relatives.  
We Can Furnish You with  
**Webb's Special Dryland Cotton Seed**  
No. 3-41  
It has proven its superior quality over all other cotton grown in this country; has everything a cotton grower could ask for: greatest lint percentage, best staple, heavy producer, drought resistant, good storm-proof variety. Will bring a premium above most varieties of cotton.  
Come by and get additional information about Webb's Special Dryland Cotton  
**Omer Hill Elevator**  
Get relief sufferers of gall bladder stomach and colic distress indigestion gas with Alkalosine-A. The potassium in AKALOSINE-A helps the flow of bile and corrects your trouble nature way. AKALOSINE-A \$1.50 at your druggist. Mfg. Cuero Laboratories, Cuero Texas

**SPRING ROUNDUP of FOOD FAVORITES**  
**Bake-Rite** 3 LB. CAN — **79c**  
WHITE SWAN **COFFEE** 1 LB. — **88c**  
**GLADIOLA FLOUR** 10 LB. — **89c**  
**Bespakt FROZEN FOODS** AMERICA'S FINEST!  
FISH STICKS, 10 oz. pkg. .... 39c  
STRAWBERRIES, 16 oz. pkg. .... 39c  
ORANGE JUICE, 6 oz. can ..... 19c  
**SUGAR** 10 LB. BAG — **87c**  
**TIDE** LARGE — **29c**  
SUPREME **Crackers** 1 LB. — **23c**  
GUM, 3 pkgs. .... 10c  
CANDY, 6 bars ..... 25c  
KOOLAID, 6 pkgs. .... 25c

We Will Give DOUBLE "Memphis Pride Stamps" Every Wednesday with Each Purchase of \$2.50 or More!  
**ALL KINDS OF VEGETABLES**  
KY. BEANS Fancy Florida, lb. .... **18c**  
Yellow Squash Fancy New Crop, 2 lb. ... **19c**  
CARROTS Fancy Cello Bags ..... **9c**  
Green Onions Large Bunches ..... **5c**  
Strawberries Fancy Texas, pint ..... **33c**  
**MEAT and POULTRY**  
Pork Sausage Panhandle, 2 lbs. .... **39c**  
Cured Hams 1/2 or whole, lb. .... **59c**  
Beef Ribs Heavy Meat, lb. .... **29c**  
Slab Bacon No. 1 grade, lb. .... **39c**  
Bologna All Meat, lb. .... **33c**  
**COLEMAN'S Super Market**  
ROY L. COLEMAN, Owner  
A Good Place To Trade  
WE DELIVER PHONES 125-300



*Your Home Business Firms are*  
**THE HIGHEST BIDDERS**  
*for Your Shopping Dollar*

Actually . . . no matter where you live . . . nobody . . . and that means **NOBODY** . . . can give you more for your dollar than your own home business firms. Let's look at the reason for this advantageous . . . to you . . . situation:

**ANY MERCHANT** . . . anywhere . . . is ordinarily going to sell goods for some more than he pays for them.

**ON AN AVERAGE** . . . when you spend a dollar in any retail store . . . here or anywhere else . . . about 70 cents of it pays for **GOODS**, and about 30 cents goes for rent, taxes, donations, hired help, etc., and a few cents (the national average is about 5 cents) pays the proprietor for his work, and for his investment in goods and equipment, credit losses, etc.

**NOW** . . . when you spend your dollar at home, you get the same 70 cents worth of merchandise that you would get for it anywhere else.

**AND THE OTHER 30 CENTS** stays here too, to help you pay for schools, churches, roads and streets; to vitalize the community so your property . . . or your job . . . is worth more; to keep more people here to share civic work and expense, and to serve **YOU** when you sometimes direly need their knowledge and their skills.

**ONLY** when you buy in **YOUR OWN HOME** community do you get back most of this 30-cent retail handling charge . . . and often a great deal more, as your job or your business prospers and your social life broadens with the growth of the entire community.

More  
 are the facts  
 to prove

COPYRIGHT 1936 D. E. SCOTT

**It Pays to Buy  
 where you Live**

These Memphis firms are the only business establishments in the world who are sincerely interested in **YOUR** future and in the future of this community in which **YOU** live . . .

- Service Station
- Wright, Lessee
- Compress Co.
- Market
- Food Market
- Motor Company
- Massey Plumbing & Heating
- Penney Co.
- Furniture Co.
- Hardware
- Insurance Agency
- "Doc" Saye
- State Bank
- Chevrolet Co.

- First National Bank
- Greene Dry Goods Co.
- The Fair Store
- Jack Cain Feed, Seed & Gro.
- Memphis Lumber Co.
- Kinard-Gailey Agency
- Gilliam Bros. Insurance Agency
- Williams Oil Company  
Phillips "66" Products
- Popular Dry Goods
- Baldwin's
- Vallance Food Store
- Memphis Tire & Supply Co.
- Branigan's Jewelry

- Household Supply
- Reames Pontiac
- I. D. Mullin & Son Tractor Co.
- Brown Auto Supply
- Finch & DeWees Imp. Co.
- The Memphis Democrat
- Saied's
- Cicero Smith Lumber Co.
- Selby Shoe Service
- Coleman's Super Market
- Hickey Motor Co.
- Hughs Battery & Electric
- Wood Bros. Super Market

- C. T. Snowdon  
Blacksmithing - Welding
- Dr. Jack L. Rose
- Lindsey Cleaners
- Beeson Cleaners
- Bruce Bros. Texaco Station
- Omer Hill Elevator
- Palace - Ritz - Tower Theatres
- Memphis Frozen Food Locker
- Western Cottonoil Co.
- Martin's Gulf Service Station
- Alamo Service Station
- Cudd - Boone Oil Co.
- Hawthorne Service Station

# THE MEMPHIS DEMOCRAT

Hall County Herald Absorbed by Purchase August 7, 1928  
Published on Thursday of Each Week by  
**J. CLAUDE WELLS**      **HERSCHEL A. COMBS**  
Owners and Publishers  
Memphis, Hall County, Texas

Subscription Rate:  
Hall, Donley, Col-  
ingsworth and Chil-  
drew Counties, per  
year—  
**\$2.50**  
Outside Hall, Donley,  
Collingsworth, and  
Childress counties per  
year—  
**\$3.00**

Member of  
**TEXAS PRESS**  
**PANHANDLE PRESS**  
— and —  
**WEST TEXAS PRESS**  
**ASSOCIATIONS**

Entered at the post-  
office at Memphis,  
Texas, as second-class  
matter, under Act of  
March 3, 1879.

## Editorial

### Crime Increasing Among Youth

Crime among young people, ranging from property damage and destruction, to violence against individuals, is steadily becoming more serious throughout the United States, and there appears to be little or no reason for believing this trend will be reversed, as long as current lenient policies are followed. At present, youthful offenders frequently are released without receiving any punishment at all, unless their crimes are of the vilest. This situation cannot, in many instances, be blamed on law enforcement officers, but on antiquated juvenile systems, which may have worked fairly satisfactorily in the past, but which have proved extremely inadequate in coping with criminal activities of some of our youth today.

The steady rise in crimes, committed by members of the younger generation, is in itself, a sobering thing. But what may have received relatively little publicity, and consequently, have been given scant attention, is the fact that our weak juvenile laws have had, and are having, a detrimental effect on some young people, who normally would not think of committing criminal acts of any kind.

But seeing and hearing of others "getting away" with it, they decide to give it a try, too. Why these usually level-headed youngsters do this, we don't pretend to know. Maybe they do it because they have lost respect for laws which do not penalize violators, or maybe because they wish to flout adult authority. It is also probable that they break the law because some associate dares them to, and they do not want to be considered "chicken."

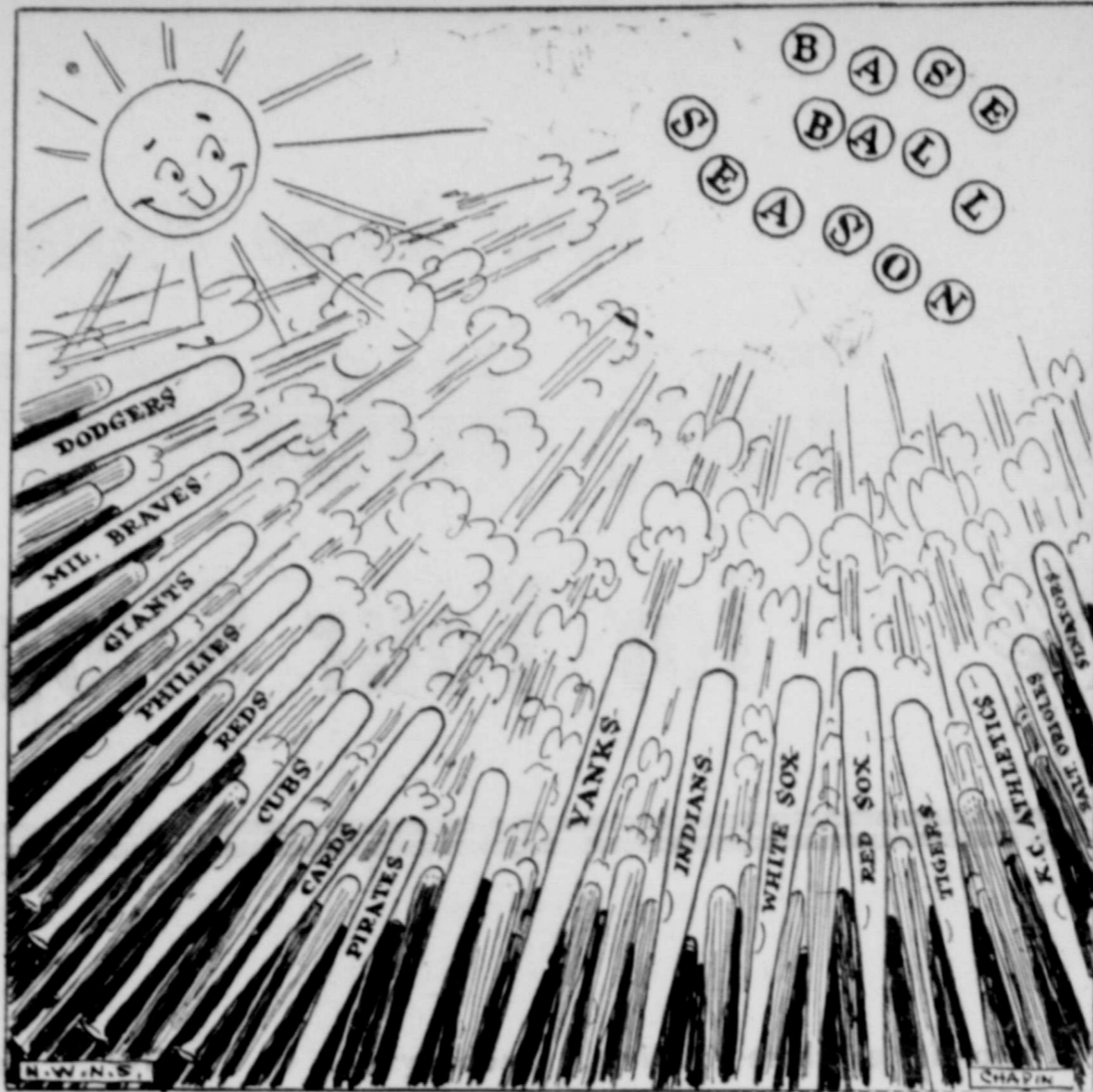
But whatever the reason, something must be done which will quell the "bad apples" among our young people, in order that their evil may not corrupt those who are inherently decent and good. To do otherwise can only mean a continuing deterioration in the moral values of young people—and since these are our future citizens—of our nation.

We do not claim to know the proper answers to the problem, but we believe strengthening juvenile laws to permit authorities to assess punishment commensurate to the seriousness of minors' crimes, might help. Now, would-be youthful law-breakers feel that the law cannot touch them. And they are frequently right.

Adults, too, must share some of the blame for this situation. In too many instances, they set bad examples, through breaches of the law, dishonest acts, discourteous behavior, or lack of respect for the rights of others, to name a few. If grown-ups break laws and accepted rules of conduct, or if they permit their children to, who is to blame, if the youngsters go wrong?

But it is likely that at the bottom of the whole problem of juvenile delinquency is the leisure which this generation seems to treasure so much. We would venture the opinion that most youngsters who get in trouble, do so because they have too much time on their hands. Ways of life may change but probably not old proverbs, one of which states, "An idle mind is the devil's workshop." Encouraging and helping our youth to use their minds and their energies in beneficial pursuits will, we believe, go a long way toward eliminating much juvenile delinquency.

## ANOTHER GUIDED MISSILES PROGRAM



### Press Paragraphs — QUOTING OUR NEIGHBORS

#### Cotton Situation

Old cotton belt counties have put up a successful fight to get back part of the cotton acreage lost to West Texas farmers in the past decade. They are celebrating the victory and have much renewed hope since a way has been found to fight the boll weevil with reasonable success. The old cotton belt had a cotton history, antebellum weevil and ante-cotton root rot, dating back a hundred years. Now the people of that area are making a hard fight to retain "their part" of the diminishing cotton allotments. One of the statements made in their push for members of the area is symbolic of the times: "An organization is essential in the political and economic life of our times."

To all appearances there is no probability of an agreement or understanding being reached by all farmers of the country to decide upon a farm program. Inability of the various groups to reach common ground on which to stand before the Congress is making the farm bill a hard one to come up with. Whatever the final shape the bill may take it will displease a large segment of the farming industry. The reason all cannot agree on a bill is that one bill cannot be tailored to fit all the varying conditions and needs. The Farm Bureau, trying to get a bill that all can stand behind, has reached a compromise through their community, district, state and national levels. As a consequence, this organization is being sniped at from various angles.

The State Department may make the "fight" between sections of the cotton raising areas for cotton acreage look foolish within the next few years. The fact is there are some observers, apparently well informed, who say that cotton as a cash crop for the south is on the way out. The cotton farmer, "for the good of the country," is being treated out of business, they say. The federal government has more authority than it used to have. The state department has the power and authority to re-do the country according to the ideas of the men who man the department. If cotton, sheep and wool can be treated away can corn and wheat be far behind?—Floyd County Hesperian, Floydada

#### Our Greatest Gift

It is a world of decisions. Everyone, regardless of who he is, must every day decide on a multitude of things. These include such mundane items as whether to wash the dishes before sweeping the floor and whether or not to make a U-turn instead of circling the block.

This is an automatic response to most of us — but this system of conditioned reflex motion sometimes carries over into other things which should be given more thought.

Imagine how many more day to day problems could be solved by the mere process of thinking. It may take five minutes of constructive reasoning to arrive at a conclusion, but there are all too few people willing to take that much time.

Ordinarily these people are labeled "hot-headed," "stubborn" and so on. Actually there is no distinction to being a stubborn person. It just shows unwillingness to listen to people who take the trouble to think. The same goes for the hothead variety. Our greatest endowment is sometimes al-

shortcomings, however, since some thinking people are produced by public schools. It still remains up to the individual to develop himself, for he is the one it affects most.

Non-thinking people are the ones who are the followers. They are the ones who vote for men who appeal to the emotions, who condemn without trial, who believe everything they hear, who accept without asking the words of men who do think.

Even people who use their minds to the fullest extent are sometimes wrong, the same as a jury can condemn an innocent man. To arrive at successful conclusions all the factors must be known and as this is sometimes impossible, then we have errors in thought. A mathematical equation will be in error if all the components are not present.

To think constructively is a hard habit to develop. But once a person realizes that it is a worthwhile objective and begins working at it, the personal problems that seem so overbearing might well take on a different aspect. — Castro County News, Dimmitt

## Memories Turning Back Time From The Democrat Files

**19 Years Ago**  
June 18, 1937  
**MAN IS HURT NEAR HERE IN FREAK WRECK** — W. F. Krouse of Graham was painfully injured and his light sedan was badly damaged in a freak accident about six miles northwest of Memphis on Highway 5 Friday morning.

The mishap occurred when Krouse's automobile collided with a front wheel that ran off a car driven by W. R. Thomas of Giles. The Krouse vehicle rolled over five times after striking the wheel and Krouse was thrown out a door and into a barbed wire fence. He suffered deep cuts, over 40 stitches being required to close a cut on one leg.

Prentiss Long of Dallas, who with Krouse was returning from a Colorado fishing trip, was unhurt, except for minor bruises and cuts.

Occupants of the Thomas car were uninjured, and the car was not wrecked.

**MAN ATTEMPTS TO DESTROY EVIDENCE IN LIQUOR CHARGE** — An Estelline man, arrested Saturday afternoon on a liquor violation charge, attempted to destroy the evidence in the case by snatching a pint of whiskey from Deputy W. C. Anderson's pocket and smashing the bottle.

The attempt was futile, however, as Anderson and a state liquor board man had found a quart in addition to the pint. He was charged with the possession of whiskey for the purpose of sale, and was released on \$500 bond.

**STRICTLY PERSONAL** — Mr. and Mrs. J. M. Lane and Royce Brooke were visitors in Childress last Thursday. Mrs. W. H. Moyer of Atlanta, Ga., is here for an extended visit with her brothers, J. R. and T. E. Harrell, and their families.

**10 Years Ago**  
April 11, 1946  
**ESTELLINE WINNER OF 2 FIRST PLACES AT LUBBOCK MEET** — Estelline captured two first places in area Conference B interscholastic league contests at Lubbock Saturday.

Paul Read, Estelline senior, won first in the 220-yard dash, and

**DR. JACK L. ROSE**  
Optometrist  
Closed Saturday Afternoons  
505 Main Phone 666

**Elec. Motor Re**  
Sales and Service  
Parts for all types of m  
**Gidden Electr**  
10th & Bradford Ph

**Inez's Rest Home**  
For Elderly People  
State approved  
Reasonable Rates  
Box 933 Clarendon, Tex.  
Phone 10-M

**Chas. Oren O. D.**  
OPTOMETRIST  
We Buy Old Gold  
512 W. Noel Phone 264-J

**B.P. CO.** Machine Early Maturing • Heavy Yielding  
• High Lint Percent 38% to 39%  
• Excellent for Machine Spinning  
• Easy Picking — Hand or Machine  
• 1 1/8 to 1 3/8 Inch Stems

**Breeder's Registered DELTAPINE 15**

**Breeder's Registered D&PL-FOX**

For Free Trial • Early Maturing  
• Excellent for Machine Spinning  
• Machine Lint Percent 34% to 35%  
• 1 1/8 to 1 3/8 Inch Stems

### Make more money growing better cotton

Deltapine 15 and D&PL-Fox produce the good spinning staple (1-1/16 to 1-1/8) that is in greatest demand — brings you top prices. These two outstanding cottons are heavy producers — give you high gin turnout and record breaking yields — more than four bales per acre in a recent demonstration test!

The heavy demand for better quality cotton offers you the opportunity for extra profit, if you plant your 1956 crop with Breeder's Registered Seed. Deltapine 15 or D&PL-Fox — the quality cotton for which there is a big demand at top prices. Look for the purple tag on the bag, it guarantees you Breeder's Registered Seed of highest quality.

We have a moderate amount of Breeder's Registered Seed of a new 1-1/8 inch strain of Deltapine, Deltapine Staple.

See your seed dealer today, or write, wire or phone

**DELTA & PINE LAND COMPANY**  
SCOTT, MISSISSIPPI • BROWNSVILLE, TEXAS  
"Breeder's of the Belt's Best Cottons"

Distributed by  
**HAROLD HODGES, MEMPHIS—PHONE 641 LAKEVIEW**

### Champs of every weight class!

### New '56 Chevrolet Task-Force Trucks!

**NEW LIGHTWEIGHT CHAMPS!**

6000 Series truck with van body • 5000 Series L.C.F. • 6000 Series school bus chassis • 4000 Series stake

**NEW MIDDLEWEIGHT CHAMPS!**

10000 Series truck with tandem • 9000 Series L.C.F. • 10000 Series truck with mixer • New 8000 Series model as shown

**NEW HEAVYWEIGHT CHAMPS!**

**CHEVROLET** This is just part of the new Task-Force fleet! Come on in and see why anything less is an old-fashioned truck!

**POTTS CHEVROLET CO.**  
TOMIE M. POTTS      HOMER W. TUCKER



**LOCALS**

Howell and James attended a board meeting of the Santa Rosa Roundup Association at Vernon Monday. The group are Hall County directors of the organization.

Svede Roark of Fort Worth visited here from Thursday to Monday with her mother, Mrs. Jones and sisters, Mrs. Foy and Mrs. Boyd Rogg. They were at the home of Mrs. Roark after visiting at the home of Mrs. Jones, Colo., with her son who is a student at Colorado School of Mines.

Mrs. A. J. Welch of Lubbock visited here over the weekend with her parents, Mr. and Mrs. Herschel Combs. They were at the home of Mrs. Paul Brewer and Mrs. Glenda of Wellington.

Mrs. Roy McClure visited here from Thursday to Sunday. Mrs. McClure and her family were at the home of Mrs. McClure.

Mrs. Hubert Dennis of Lubbock visited here over the weekend with her family. They were at the home of Mrs. Dennis.

Mrs. E. E. Cudd were visitors Sunday.



**BEAUTY AND BEAST**... Film actress Anne Francis has her car snatched by Leo VI, latest in long line of MGM trademarks.

Mr. and Mrs. Nelson Combest and Larry Ed spent the weekend in Albuquerque, N. M.

Dr. Jack L. Rose was in Amarillo Saturday to attend the reading Training Clinic.

Mrs. Lester Campbell and daughter Cris and son Jay Ed of Shamrock visited here over the weekend with her parents, Mr. and Mrs. E. P. Thompson and family.

Visiting here this week in the E. P. Thompson home is Mrs. H. M. Franks of Dalhart.

Mrs. Less Pruitt and daughter, Mary Lee, of Amarillo visited here Monday with Mrs. Claude Hickey and Mrs. F. E. Monzingo and other friends.

Weekend guests in the Claude Hickey home were Mr. and Mrs. J. L. Cooper and Mr. and Mrs. Bobby Mack Cooper, all of Pampa.

Mr. and Mrs. Nations of Wheeler visited here Sunday with the Misses Blacks.

Mr. and Mrs. B. O. Shankle visited in Breckenridge over the weekend with relatives.

Mr. and Mrs. W. D. Young of Abilene were in Memphis the first of the week transacting business and visiting with friends.

Mrs. Mabel Meacham visited in Amarillo over the weekend in the home of Mr. and Mrs. Doyle Catching.

Mrs. John Chaudoin, Mrs. Jack Kinard, and Mrs. Joe Kent Eddins all of Estelline, and Mrs. Perry Hale and Linda, took Mrs. Derrell Taylor to Amarillo last Thursday, where they were joined by Miss Rita Hale. Mrs. Taylor, the former Shirley Hale, left by train late that afternoon for Syracuse, N. Y., where her husband is attending Syracuse University.

Mrs. W. L. Nabers, who went to Amarillo Saturday for a medical check-up, has returned to Memphis and is receiving treatment in a local hospital.

**Producers Urged To Buy Certified Planting Seed**

COLLEGE STATION — Guaranteed purity, higher germination and top crop yields are all on the credit side of certified planting seed. While germination and final yields are dependent upon available moisture, Ben Spears, extension agronomist, says farmers can't afford to gamble with planting seed of questionable quality.

Certified seed usually are the best seed of a particular variety available. Seed with a "blue tag" comes from fields that were inspected during the growing season, properly handled at harvest time, cleaned and tested for purity and germination.

Certified seed may cost slightly more, but the added cost is good insurance, says Spears. He advises farmers to buy now the seed needed for planting this year's crops.

Seed supplies are generally adequate but last minute shoppers may find local stocks depleted. If the planting seed has not been chemically treated for seed-borne and seedling diseases, Spears recommends treatment. He points out that farmers have found this practice profitable and insurance against poor stands and plant losses during early growth.

Local county agents can supply additional information on seed and

also on adapted varieties, says Spears.

Visiting here Saturday with Mr. and Mrs. Claude Ferrel were Mr. and Mrs. Charles Lloyd Reynolds and children of Childress.

Mrs. Mary Jameson, Mrs. R. N. Beckum, Mrs. Ed Hutcherson and Lera Kay and Mr. and Mrs. Bobby Dick Hutcherson visited in Lubbock over the weekend in the home of Mr. and Mrs. Ernest D. Lindsey.

**Prices of the Day**

IGA MILK 2 Tall cans	25¢	JELL-O 3 Pkgs.	25¢
Duncan Hines—White or Chocolate CAKE MIX 19 oz. pkg.	31¢	LIPTON TEA ¼ lb. pkg.	39¢
STARLAC Powdered Milk, makes 3 gal.—pkg.	79¢	CIGARETTES Reg. Carten	2.09

**FREE! FREE! FREE!**

**Car and Garload of Groceries To Be Given Away Soon**

**FREE!**

**FREE!**

Nothing to buy! Come in and let us give you full details. Nothing to it... register your name each time you are in our store.

YOU ALWAYS GET MORE WHEN YOU SPEND YOUR FOOD DOLLARS AT VALLANCE'S!

Fresh ONIONS 3 Nice Bunches	10¢	SUGAR 10 lb.	87¢	Fleming's COFFEE 1 lb. can	85¢	Round STEAK Lb.	59¢
SQUASH 2 Lbs.	15¢	LEMONS Dozen	29¢	BEEF ROAST Pound	35¢	IGA Table Rite BACON 2 lb. pkg.	79¢
TOMATOES Fresh—Lb.	29¢	CELERY HEARTS Package	15¢	Wright All Meat WIENERS Lb. Pkg.	37¢	Fresh Ground HAMBURGER Pound	29¢
ROTEL Tomatoes 2 303 size cans	25¢	Sure Ripe Peaches 3 2½ size cans	87¢	Fresh CAT FISH Pound	59¢	Borden's BISCUITS 2 Cans	19¢
IGA English Peas 2 303 size cans	35¢	IGA Tomato Juice 46 oz. can	29¢	Good Value OLEO 2 Lbs.	45¢	IGA Sno Kream SHORTENING 3 lb. can	85¢
Yukon Best MEAL 5 lb.	35¢	IGA Orange Juice 46 oz. can	37¢	Diamond PICKLES Sour or Dill—Quart jar	29¢	St. Joseph's MINERAL OIL Pint jar	39¢
Yukon Best FLOUR 25 lb.	1.79	Yukon Best MEAL 5 lb.	35¢	St. Joseph's Saccharin Tablets 1,000—¼ grain bottle	99¢		

Double S & H Green Stamp Day Every WEDNESDAY With \$2.50 Purchase or over

**Vallance Food Stores**

Southeast Corner Square Memphis Phone 400

**Thinking Of Purchasing A New Car?**

Let Wilson's show you their **Low Cost Auto Financing Plan**

If you want your present auto re-financed, see us.

**Wilson's Insurance Agency**

Memphis Hotel Bldg. Telephone 555

**WANT ADS**

**CLASSIFIED INFORMATION RATES**

Minimum charge 60c

Word first insertion 4c

Following insertions 2c

Day rate in classified section—per inch 75c

Day rate, run of banner 55c

If you want ad is taken and set up it must be paid for even if cancelled before paper is issued.

Democrat frequently get in before paper is published.

Special contact with custom especially in FOR RENT and FOUND cases.

**For Sale**

FOR SALE — Portable radio in good condition. Call Duane Board, Phone 473-WX 46-tf

FOR SALE — Thousands of fishing worms. \$3.00 per thousand and up. 423 Montgomery Street. Bill Luttrell. 46-5p

FOR SALE — Maple bedroom suite, mattress and springs, at a bargain. Phone 272. 46-1p

FOR SALE — 1952 Dodge pickup. See K. D. Nabers, Lakeview. 46-tf

**For Rent**

FOR RENT — Two furnished apartments, one, two rooms and bath, one 3 rooms and bath. 621 S. 7th. 46-tf

FOR RENT — Four room unfurnished apartment with bath. Inquire at 917 West Main. 45-3b

FOR RENT — Four bedroom apartment furnished for my board and room. I will pay some money. See it at 1321 W. Main. Phone 28-M. Jim Foxhall. 42-tf

FOR RENT — Furnished or unfurnished apartment. All utilities paid. 821 Main St. 39-tf

**Special Notices**

Moore & Son water well diggers, acidizing, cleaning wells. Phone 14-14. P. O. Box 254

SEWING MACHINES For Rent week or month. Also sewing machines for sale. Reheis Fur & Repair Shop 808 Cleveland. Phone 549-M 19-tf

WANTED Radio repair work also iron repair (electric). Auto Store, Phone 134 North Fifth. 41-tf

**PIANOS**

Expertly Tuned, Voiced, Repaired, Rebuilt

Prompt service, town or rural. Reasonable rates. Work fully guaranteed.

25 years experience. Write **BILL McBRAYER** McBrayer Piano Co. Box 422 Childress, Tex. 35-tf

**Help Wanted**

LEIGH BUSINESS now open at Hall Co. or Memphis. Excellent opportunity. Full time. See Mrs. 1607 El Paso, Wellington, Tex. at once or write to Dept. TXD 250-189, Houston, Tenn. 45-3p

**FOR SALE**

Genuine Wilt-Resistant Empire Cotton Planting Seed Grown in Georgia

Fastest fruiting—early maturing—highest average yield—highest average oil content—strong and uniform fiber. EMPIRE picks good—gins good—spins good. Also registered D&PL 15 and state certified seed.

Distributed by C. A. Pruden **C. A. PRUDEN** P. O. Box 215, Irving, Texas 42-6c

**HOUSE OF BARGAINS**

**Rummage Sale**

Bargains Galore

118 N. 10th St.

Half Block off Main

Open Week Days

You have Salable Mds.

Bring it in.

If You Want to Buy Come in and Look

**W. E. Williams**

Res. Phone 180 22-tf

**FOR SALE**

2 good electric brooders, used one season. Thompson Bros., Phone 21. 44-3c

WE STILL have a good stock of lister shares; also a good stock of sweeps and godvil blades. Our prices are in line with the cheapest. Hoggatt & Son, Lakeview. 43-tf

FOR SALE—Good used pianos. Lemons Furniture Co., phone 17 3-tf

**Farms Business Property**

Ranches Dwelling

Property Leases

Would appreciate your listings of any kind

**Hall County Real Estate & Loan Co.**

Bryan Adams Gip McMurry  
611 W. Noel Tele. 745  
19-tf

**Bargains For April**

Clothes Line Poles, made of 3-in. pipe, 2 for \$12

4 ft Step Ladders, Each 3.19

Plastic Garden Hose, Priced from 1.98 to 5.95

Closing out our stock of Kemtone, at 2.95 per gal.

**Wm. Cameron & Co.** 45-4c

**ALUMINUM STORM WINDOWS**

Absolutely dust proof

COMBINATION DOORS

BLIND SHADE SCREENS

YARD FENCE

Chain Link

Free estimates on the above, call or write

**EUGENE F. MORROW**

Telephone 591-M-1

Box 44 Wellington 41-tf



HOW TO BE A BETTER COOK and save money too!

BY Mary Blake



This time of year, strawberries are at their flavorful best. For an easy-to-prepare family dessert, make your Strawberry Shortcake and the topping with Carnation Evaporated Milk. Remember, its double richness and heat-refining make it especially suitable for baking. And don't forget, Carnation is so rich it whips.

STRAWBERRY SHORTCAKE

Use your favorite brand of packaged biscuit mix calling for milk, but instead of regular milk, use a mixture of 2 parts Carnation Evaporated Milk diluted with 1 part water. Prepare and bake according to package directions. Split biscuits and fill with sliced, sweetened strawberries. Instead of expensive whipping cream, use Carnation Whipped Topping.

CARNATION WHIPPED TOPPING (Makes 3 cups)

1. Chill 1 cup undiluted Carnation in icecube tray until ice crystals form through the milk (25 to 30 minutes), or place the unopened can on chopped ice for 2 to 3 hours.

2. Pour into bowl and whip until it just begins to thicken (about 1 minute).

3. Add 2 tablespoons lemon juice and whip until very stiff (about 1 or 2 minutes more).

4. Fold in 2 tablespoons granulated sugar.

5. Serve immediately as a topping for shortcake, puddings, cakes, pies, many desserts.

Picked for Popularity ... SPRINGTIME FOODS



We have the Personality. Our foods have the Popularity. It's a good combination: Service with a smile, foods in the Spring-time "style" . . . And at prices that make you want to buy. Check this list.

PURASNOW FLOUR With Bowl 25 lb sack .. 1.79

Table listing prices for Sugar (87c), LEO (19c), Cleanex (23c), and AMALES (20c).

Table listing prices for Coffee (89c), TIDE (27c), Cake Mix (20c), and NORTHERN TISSUE (7c).

CHOICE MEATS

Table listing prices for Choice Meats: Sprite Sliced Bacon (1.00), Fresh Fryers (35c), Chuck Roast (29c), Hamburger Meat (1.00), Pork Sausage (1.00), Pork Steak (1.00), RANKS (79c), Round Steak (69c), Chicken Salad (49c).

VEGETABLES

Table listing prices for Vegetables: CABBAGE (5c), Fresh Green Onions (5c), Grapefruit (5c), CARROTS (8c), Yellow Squash (10c), Cucumbers (10c), Green Beans (10c), Fresh Tomatoes (29c), LEMONS (35c).

PRICES GOOD THURSDAY, FRIDAY AND SATURDAY

Candy 6 BARS - 25¢ GUM 3 PKGS. - 10¢

Wood Bros. Super Market

900 Noel St. Memphis, Texas Telephone 606

