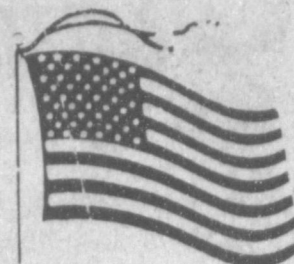


WEATHER

February 15	57	28	.00
February 16	61	23	.00
February 17	36	24	.54
February 18	42	24	.05

BAILEY COUNTY JOURNAL

'The Community Of Opportunity-Where Water Makes The Difference'



Vol. 27, No. 8

14 PAGES TODAY

Published Every Sunday At Muleshoe, Bailey County, Texas 79347

20^c SUNDAY, FEBRUARY, 19, 1989

Beneficial Rain Just A Drop In Bucket

Liles Represents TCTA At State Convention

Muleshoe High School teacher Alice Liles was one of 800 participants in the Annual State



Bailey County Commissioners will meet in special session in the Bailey County Courthouse on Monday, February 20, at 3 p.m.

Items on the agenda will be a meeting with members of the Muleshoe Industrial Foundation; and miscellaneous items.

Jean Allison said the public is especially invited to attend the Mock Trial presentation Tuesday night at 7:30 p.m.

You will have the opportunity to watch the youngsters go through the Mock Trial they will present in district competition.

The location for the Mock Trial presentation has been changed -- it will be held at the Old Depot.

Muleshoe Rebekah Lodge has announced it will serve a community luncheon on Thursday, February 23, 11 a.m. 'til' Tickets are \$3.50 and will be for all you can eat.

On the menu are stew, cornbread and cobbler, with drink.

If you're looking for an evening of excitement -- plan to be in the Three Way gym next Friday evening, February 24.

The Three Way Seniors will be presenting Bob Crosby's Donkey Ball -- featuring local talent!!

Advance tickets for adults are \$3 and will be \$4 at the door. Grade school student advance tickets are \$2 and will be \$3 at the door.

A fund has been set up at First Bank in Muleshoe to help offset the cost of double liver transplants for the twin sons of Mr. and Mrs. Delmer Bleeker.

They are the grandsons of Mr. and Mrs. Vernon Bleeker.

A year old the first of February, the twins have spent most of their life in a hospital and are currently waiting for life-saving liver transplants.

Your contributions can be made to the Bleeker Twins Fund at First Bank in Muleshoe; or the Bleeker Twins Fund at the Keller State Bank, Box 483, Keller, TX 76248.

On the contrary!! It has been brought to the attention of *The Journal* that it has not been "Many, many years" since the Muleshoe Mullettes defeated the Dimmitt Bobbies.

In fact, in his last year of coaching, before becoming assistant principal at MHS, Coach Jerry Johnson's Mullettes defeated the Bobbies some 58-52 on January 20, 1987.

Thanks for bringing that to our attention. With all the games played by MHS and WJHS, it is difficult to remember from year to year what took place in a particular game.

With the resignation of Dale Keeling as Athletic Director and Head Football Coach at MHS, applications are now being accepted until March 9, in the superintendent's office for that position.

Dr. Lawrence Ward, superintendent said those coaches interested in that position should

Cont. Page 6, Col. 4

Convention of the Texas Classroom Teachers Association held February 10-11 in Austin.

TCTA is a professional teachers' organization which represents more than 25,000 public school teachers across the state. Its annual convention provides delegates an opportunity to become better informed on current education issues and to make policy decisions for the Association.

Teachers attended a full day of mini-conference programs on a variety of professional topics, including the Texas Teacher Appraisal System, student performance accountability, mentoring and interning, cooperative learning, the Select Committee on Education and Tax Equity, and the 71st Legislature.

The keynote address on "The Future of Education in Texas" was delivered by the Honorable Henry Cisneros, Mayor of San Antonio, who praised the capability and dedication of teachers throughout the state.

Mrs. Rebecca Canning, former vice chairman of the State Board Cont. Page 6, Col. 1

Commemorative Buckles Will Be Given By CofC

Members and non-members are issued a cordial invitation to attend the annual Chamber of Commerce and Agriculture Banquet.

It is scheduled for 7 p.m. on Saturday, March 4, 1989 in the Bailey County Coliseum.

This year, members of the CofC have a special 'bonus' waiting if they purchase banquet tickets in advance.

With the purchase of two advance banquet tickets at \$10 each, a member will be entitled to receive a genuine pewter Muleshoe Commemorative Belt Buckle.

Smith explained that this buckle bonus is limited to advance sales only, and none will be given to persons who purchase tickets at the door. There will be only one buckle for each member.

Scheduled as speaker is Dr. Lawrence Ward, superintendent of the Muleshoe Independent School District.

New Contracts; Resignation Set For Board

Following routine opening at the regular meeting of the board of trustees of the Muleshoe Independent School District at 7:30 p.m. tomorrow, Monday, several items will be considered under business:

Consider approval of lease/purchase bids on school buses; consider MultiPro and Mule Bucks programs for 1989-90 school year; consider 1989-90 contracts for assistant superintendents, principals and directors; consider approval of Update 33 to local School Board policy; Discuss activities for Texas Education Week and take appropriate action; and Discuss possible school facility additions and take appropriate action.

Following an executive session for personnel matters, one will be to accept a resignation from Dale Keeling.

Under informational reports will be the bus maintenance report; superintendent's report; board president's report and assistant superintendent's reports.



HE'S A SWEETHEART--J. O. Parker, right, was chosen Muleshoe Fireman's Auxiliary Sweetheart "for assistance to the auxiliary during the past year." His name will be engraved on the plaque, and displayed at the fire department. Making the presentation was Parker's wife, Leavelle, who is president of the Fire Department Auxiliary. (Journal Photo)

City Showing Small Gains In Tax Rebate

State Comptroller Bob Bullock on Monday sent a late Christmas present to Texas cities, counties and MTAs by way of checks totaling nearly \$225 million in local sales tax allocations.

"The cities alone got a 12 percent increase over last year's checks, and eight percent -- more than half -- is due to higher sales during the holidays," Bullock said.

Bullock added that about \$670 million was deposited in the state's coffers because of the strong returns, and state lawmakers could put the unexpected extra \$150 million towards planning the 1990-91 state budget.

"The growth in collections from the broadened tax base has evened out now. That means these increases are a direct result of a stronger economy and greater consumer confidence," Bullock added.

Checks totaling \$145.1 million were sent Monday to 1048 cities that collect local sales tax at either one or one and one-half percent.

Muleshoe's share was \$28,311.13, down by 8.20 percent for the period, from the \$30,839.95 received a year ago. For the year, Muleshoe is reflecting a 3.69 increase over 1988. Total received to date this year is \$44,811.87, up by 3.69 percent over the figure of \$43,217.23 received to date a year ago.

In Cochran County, Morton shows a 2.15 percent increase for their current payment. They received \$7,629.05, compared to the \$7,468.33 received for the same period a year ago. However, for the year, Morton is reflecting a 3.23 decrease. Their current payments to date are \$11,324.10, compared to the \$11,701.76 of a year ago.

Littlefield is showing slight increases both in the current monthly payment and total payments to date for the year.

Littlefield has received \$52,913.83 total payments to date, an increase of 6.37 percent over the \$49,747.22 received by this time in 1988. Their current payment increased by 4.98 percent over a year ago. Last year, it was \$36,193.23, and was up to \$37,994.98 for the same time this year.

In Parmer County, Friona is showing large increases in current monthly payments and

for the year. Their current payment was \$14,502.54, an increase of 25.29 percent over the \$11,574.75 received for the same payment period in 1988. For the year, they show an increase of 28.26 percent. To date, they have received \$21,654.48, and had received \$16,883.57 by this time in 1988.

The state's six metropolitan transit authorities and one city transit department also received \$66.9 million in rebates, a 12.3 percent increase over last year's payments. Year-to-date payments to the MTAs are up by 15.3 percent.

According to Bullock, a total of \$12.7 million was allocated to 81 counties that collect the one-half percent county sales tax.

February's checks represent taxes collected by monthly filers in December and reported to the Comptroller's office by January 20. Also included in this month's allocation are sales tax collections reported by quarterly and yearly filers.

Jennyslippers Will Sponsor Student Night

It was announced Tuesday morning that the Jennyslippers will be sponsoring the second annual High School Students-/Parents Night to give information on ways to seek financial assistance for students to attend college.

The special seminar will be held at 7 p.m. on Monday, March 6, in the Muleshoe High School Cafeteria.

An informative meeting is being planned and more instructions on the actual application process will be given.

Speakers will be Lynda Tinsley, director of financial aid, WTSU, Canyon; Cathy Wright, Opportunity Plan; Dr. Ronny Barnes, financial aid department, Texas Tech University; Major Wood, Texas Tech ROTC; Mattie Hicks, nursing instructor, South Plains College; Mrs. Linda Marr, Muleshoe High School counselor; Wayland Ethridge, principal and Dr. Lawrence Ward, superintendent of the Muleshoe ISD.

Less Than Inch Leaves Area Wishing For More

Despite gray, drizzly skies on Saturday morning, and continued threats of more rain, the National Weather Service predicted that low clouds and rain that had been in the area for the past three days would be moving out by noon on Saturday, and the temperature was expected to rise into the high 50s for the weekend.

Local Road Rally Scheduled Here On March 18

One of the more popular annual events in Muleshoe is all set to take place on March 18, in the Bailey County Coliseum.

It will be the Seventh Annual Muleshoe Roadrider Motorcyclist Rally.

Actual events get underway on Friday night at 9 p.m. with the light show.

Registration gets underway at 7 a. m. on Saturday, with the poker run, a noon parade, field events and games; the bike show followed by a meal and awards presentations, as well as the 50/50 drawing.

Several cash awards will be presented, along with over 60 trophies during the day.

Special awards will be presented the largest club represented at the Rally; the long distance male; long distance female; long distance 2-up; oldest rider and hard luck award.

There will be free camping at the coliseum.

For additional information contact Don McDaniel at 806/272-4817 or Sid Turner at 806/272-4588.

Lazbuddie EMS Fire Department, Set Benefit Meal

The Lazbuddie Fire Department and EMS are having a BENEFIT DINNER Thursday, February 23, at 6:30 p.m. in the Lazbuddie School Cafeteria.

Barbecue brisket, sausage, beans, cole slaw, potato salad and all the trimmings will be served by the Cattle Call from Amarillo.

Tickets are \$7.50 for adults and

Cont. Page 6, Col. 3

Officially, the rain measurement for Thursday was .54 (just over half an inch) and an additional .05 was recorded for Friday. Although the moisture was more than welcome in the bone-dry area, an estimated six more inches of rain is needed, according to local farmers, in order to plant spring crops.

Unofficially, reports of up to an inch of rain were recorded in Bailey County, and the immediate surrounding area.

On Friday, school buses for Muleshoe and Lazbuddie "drove pavements only" as rural roads quickly became soft, muddy quagmires, hindering travel, not only for school buses but for other traffic.

Muleshoe was more fortunate that Clovis to the west and Lubbock to the east, as both cities were forced to close streets, not due to water, but to sinkholes that stopped traffic.

A small car was reported to have partially sunk into a street in Clovis, slightly injuring the driver of the car.

Some farmers had already started pre-planting irrigation, but planned to continue as the rain during the latter part of the week was insufficient to provide adequate moisture for planting.

Heavier amounts of rain fell to the south and east of Bailey County, according to official reports received by NWS. The largest amounts recorded were in the Meadow, Plains, Denver City, Seagraves and Seminole areas, with 1.50 to two inches recorded, according to Larry Gabric of the National Weather Service.

NWS says that the early Saturday morning cloudiness and fog will give way to mostly sunny skies by noon. Winds from the east and northeast were expected to shift to the south and southwest by noon, which would allow the skies to clear and drier air to flow into the area.

A couple of days of respite are expected before additional rain moves into the area by Monday night or Tuesday of this week.

With spring planting rapidly approaching, farmers who will be planting early crops such as corn onions and potatoes are beginning to be apprehensive about enough moisture to start their early planting. But, the outlook is promising for more rain during the next few days.



SPECIAL GIFTS FOR SPECIAL OLYMPICS--Nancy Kidd, left, and Cari Kidd are shown with several items obtained for Special Olympics through the point-system at Western Gifts. They got a first aid kit; a 100 foot metric tape; a croquet set and a baseball return throw. It took nearly 5,000 points to get the gifts. The Jennyslippers made a major donation to the project. (Journal Photo)



The 32nd annual membership meeting of Plains Cotton Growers, Inc., Lubbock, will be held Thursday morning, April 6, in the west banquet hall of Lubbock memorial Civic Center, according to Crosby County cotton producer Steve Verett of Ralls, PCG President.

The meeting will begin with registration at 9:00 a.m., coinciding with the opening of the Texas Cotton Ginners' Association annual meeting and trade show scheduled in the Civic Center April 6 through 8. The PCG meeting will adjourn about noon to avoid conflicts with TCGA activities, Verett says, and all cotton producers, ginners and other interested parties are invited to both functions.

In the meantime the PCG President is urging broad participation by cotton producers and cotton related businessmen in upcoming county meetings where PCG Directors for 1989-90 will be elected. Each of PCG's 25 counties has two directors, one a producer and one an agribusinessman, elected on alternate years for two-year terms. Excepting Hale and Swisher Counties, all counties in 1989 will elect producer directors. Hale and Swisher will be electing businessman directors.

Meetings are being scheduled for February and March. News releases will be distributed and meeting details posted in gin offices in advance of each meeting. PCG's family of counties, located roughly within a 100-mile radius of Lubbock, on average produce over one-half the Texas cotton crop and from 15 to over 30 percent of U.S. production.

Verett is stressing the necessity of a strong area organization to deal effectively with High Plains cotton industry problems, compete in the marketplace with other areas of production and take advantage of opportunities as they appear in years to come.

"An active board of directors which can and will adequately and accurately represent the views of the people in the individual counties," Verett believes, "is the key to PCG success in meeting membership needs."

And, he adds, an involved membership in each county that gives careful consideration to the selection of its PCG directors is the key to having such a board.

All producers and businessmen are invited to attend the county election meetings where current directors and PCG staff members will be on hand to provide information on the organization's work and answer questions.

However, under a by-laws amendment adopted in 1978, only current dues-paying PCG members are eligible to vote in elections or to be elected a director.

Directors elected in county meetings will be certified by the membership at the PCG annual meeting, after which the Board will convene and elect 1989-90 officers. Current officers include Board Chairman Myrl D. Mitchell of Lenora, Verett, Vice President Larry Nelson of Tulia, and Secretary-Treasurer Wayne Huffaker of Tahoka.

Washington Notes

Atwater and GOP

Lee Atwater began his two-year stint as the new Republican National Committee chairman, vowing to conduct a full-scale raid on key voting blocs that traditionally have been the stronghold of the Democratic Party.

Stockpiling Money

Nearly 200 House members have stockpiled \$39.2 million in campaign funds that they could use as retirement cushions because of a provision of the federal election law, according to a study, released by Public Citizen's Watch.

STATE CAPITAL



HIGHLIGHTS

By Lyndell Williams
TEXAS PRESS ASSOCIATION

AUSTIN—Texas House agriculture leader Dudley Harrison predicted the European community will lift its ban and buy Texas beef, a result of Agriculture Commissioner Jim Hightower's battle

Courthouse News

WARRANTY DEEDS

Scotty B. Farley to Teresa Ott (formerly Teresa R. Farley)—Lot Number (4), in Block Number (23), Country Club Addition to the City of Muleshoe, Bailey County, Texas.

Wes Tex Feed Yards, Inc., A Texas Corporation to Reggie Dwayne Johnson and wife Marcinda Sue Johnson—All of the Southwesterly 30 feet of Lot (4) and all of Lot (5), of Block (3), Richland Hills Addition Number 2, an Addition to the City of Muleshoe, Bailey County, Texas.

Ben F. Chapman and wife, Mary Nell Chapman to Parhandle Concrete Company, Inc.—All of Lots (16) through (23), McPherson Addition to the Town of Muleshoe, Bailey County, Texas.

Ernestine Little to Alvin Walton and Crystal Waiton, husband and wife—All of the (SE/4) of Section (43), Block Y, WD&FW Johnson Subdivision No. 2, Bailey County, Texas.

Sammy Nan Allison, a feme sole, Veta Jean Allison, joined pro forma her husband, Harold L. Allison and Mildred Adeline Osborn, joined pro forma by her husband, Kenneth Osborn to Mark Lee McClanahan and wife, Robin Marie McClanahan—All of Lot Number (9), Block (1), Lee Addition to the City of Muleshoe, Bailey County, Texas.

Richard E. Wall and wife, Tonya Wall to Merlyn L. Neel and wife, JoDean Neel—All of Lot (4), in Block (3), Muleshoe Park Addition to the Town of Muleshoe, Bailey County, Texas.

COUNTY COURT

Jose Luis De Lao, Reckless Conduct, 6 Months Probation

Diane Calderon, ET AL, Motion To Dismiss

Pablo Ramon, DWI, \$250 Fine, 1 Year Probation

Larry Ray Puckett, Possession of Marijuana (under 2 ounces), \$250 Fine

Hector J. Orozco, DWI, \$250 Fine, 1 Year Probation

Tommie Lee Hayes, DWI, Second Offense, \$500 Fine 60 Days Jail

Tracy Wayne Tunnell, Possession of Marijuana (under 2 ounces), \$250 Fine

DISTRICT COURT

Lelia Alarcon and Jose Luis Order Of Dismissal

Wayland Bellar VS Ken Vickers, D/B/A, Order Of Dismissal

The Travelers Ins. Co. VS Malcolm G. Stewart and Dale H. Johnson, Order Of Dismissal

American Valley, Inc. VS Terry Bacon, Order Of Dismissal

Adelina Kenny VS Robert D. Green, Inc., Order Of Dismissal

B.C.A.D., ET AL VS Christina Olivarez, Order Of Dismissal

B.C.A.D. VS Jose I. Moreno, Order Of Dismissal

Betty Jean Summar Phillip VS Strosburger Enterprises, Inc.,

Jacinto Tena Chavez VS Glenda Taya Grisham Chavez, Order Of Dismissal

Imomo Tip W. McNeill and June McNeill, Order Of Dismissal

Wolley International, Inc. VS Lionel Patterson, Ind. and DBA Patterson Harvesting, Order Of Dismissal

Wolley International, Inc. VS Curb Brantley, Order Of Dismissal

Stephen E. Cole and Carol A. Cole, DV

Sy Alton Ellibree VS National Union Fire Insurance Company, Judgment

with federal officials.

Meanwhile, one of Gov. Bill Clements' top appointees withdrew from contention because of what he termed "a racist move" by ethnic minorities in the Senate.

Harrison, a West Texas conservative, said Hightower negotiated a relatively inexpensive test for hormone-free beef that probably appeases both European customers and U.S.D.A. examiners.

He has also identified herds grown without hormones that can probably pass the tests and sell in Europe.

Comeback for Hightower

Hightower angered Texas cattlemen last month by seemingly interfering with the federal government's retaliation for the European embargo.

Cattle producers thought Hightower, a '60s style consumer advocate, would alarm consumers to avoid buying Texas-grown beef, and the feds didn't appreciate his interference either.

Resignation Demanded

The Texas Farm Bureau called for his resignation and is planning to introduce a bill changing his office to appointive.

But Hightower, whose political stock diminished following his endorsement of Jesse Jackson last summer, likes whacking the feds. He apparently is on a comeback doing what he does best, promoting Texas farm and ranch products.

The fact that he has someone of Harrison's stature nodding limited approval can mean a lot to Hightower, who evokes much emotion from followers and detractors.

The amiable Harrison, whom lawmakers call "the Wiley O' Fox," is probably neutral about Hightower, but he does love the farm and ranch sector. And he does oversee Hightower's budget, which makes conservatives breathe a little easier.

Withdrawal Clears Way

For weeks, the governor's appointment of three prominent white males as University of Texas regents was blocked by minority senators, despite Clements' good record of minority appointments.

Among the most vocal were Senators Craig Washington, D-Houston, and Carlos Truan, D-Corpus Christi, who wanted a Black and Hispanic on the board.

Also include Nominations Committee chairman Sen. Chet Edwards, D-Duncanville, who will need minority Democrat sup-

port to win his expected race for lieutenant governor against Comptroller Bob Bullock.

When former Texas Republican Party chairman Chet Upham voluntarily withdrew last week, his immediate replacement was Dr. Mario Ramirez of Rio Grande City.

Expecting this legislature to move three South Texas colleges under the UT funding umbrella, Ramirez' lone Hispanic vote will likely be an asset to the board.

Upham's withdrawal apparently brings the skirmish to a close, though the hard feelings may linger.

While some view the vendetta against Upham as partisan, simply mad dog Democrats against a former Republican general, Upham had other ideas, and stressed reverse racism.

"People are people. Politicians are politicians. And racists are racists...I was a victim of a racist move," he said, apparently implying that the minority senators are prejudiced against whites.

Who's Against Whom

At the Capitol, when ethnic issues come to the fore, racism does indeed seem to raise its ugly head higher than in the private sector. Maybe it's imagined; maybe it's the real thing.

No doubt, minority legislators feel advancement comes after a fight to climb every rung of the ladder, taken not given.

And behind that banner, frus-

trated liberal Democrats take a rare opportunity to force their will on a Republican governor.

The down side to hacking off any governor is that he can later veto your prize legislation, if he's vindictive and it gets that far.

But if you're a lightweight lawmaker, you might as well face the facts, money's tight and with well-seasoned players like Clements, Bill Hobby and Gib Lewis controlling every bill at every gate, you might as well take what's left: headlines.

Other Highlights

• A New York firm competing for a greyhound track in Galveston wants three prominent Texas Republicans as partners: Karl Rove, direct mail wizard for Clements; Harry Whittington, a Clements appointee; and Robert Gunn, former chairman of the Texas prison board.

• The Texas Chamber of Commerce endorsed the workers' compensation reform bill introduced in the House last week. "More jobs for Texas workers will be the immediate result of the passage of H.B. 1," said Larry S. Miller, president and CEO.

Tax Crack

A charming little recipe for a dessert called income-tax pudding: Take a good deal of dough, you'll knead it.

—The Opinion, Dublin.

Ben Franklin

Better Quality for less

2104 W. Amer. Blvd. 272-3855

Mon. - Sat. Sun.

8 a.m. - 8 p.m. 12 - 5 p.m.

Fabrics

1/3

Off

One full table
as low as 51¢ per yard.

Large selection



FFA: Helping the Community...

As members of the business community, we want to join our neighbors and friends in extending our appreciation for the work of the Future Farmers of America in our area.

In the FFA, vocational agriculture students prepare for a career by participation in classroom activities and with practical, hands-on farm experience. What our local FFA members do to improve our area now and in the years to come will ensure continued agricultural advancement and future, healthy agribusiness development.

We congratulate these FFA members whose hard work and dedication to agriculture and community will benefit everyone.

FUTURE FARMERS OF AMERICA WEEK
FEBRUARY 19-25, 1989



202 S. 1st

Member F.D.I.C.

272-4515

ADDITIONAL MARKDOWNS!

SALE PRICE

Take an extra

33% Off

Bentley's
Yellow Ticketed
Merchandise

Sorry...no layaways on clearance merchandise.
Applies only to winter merchandise in stock.
Chicago merchandise not included.

Merchandise from our Chicago store acquisition has recently been added!
Save 75% and more on this special collection of high quality clothing!
Hurry...limited time only.

Watch For The Yellow Sign Card
Toppers!

Bentley's

SMART FASHION

MULESHOE,
110 Main St.
148 Main St.
Closed Sunday
272-4119



SAVE-A-SWEET-HEART--Junior High School Student Council members Brian Osuna, Shane Schuster and Emely Harris, assisted other students as they signed pledges not to smoke for a year Wednesday afternoon. The American Heart Association provided pledge pins for those who signed pledges. (Journal Photo)

Rebekah Lodge News

Muleshoe Rebekah Lodge met Tuesday, Feb. 14 in the Lodge Hall with Audrey Langfitt, Noble Grand, in charge of the business meeting. Ina Wilemon and Ona Berry presented the flags and Ruby Green, chaplain, gave the opening prayer.

Final plans were made for the luncheon Thursday, Feb. 23. All members are asked to meet at the Lodge Hall at 4 p.m. Sunday, Feb. 19 for degree practice before going to Friena Monday night for initiation.

It was reported that eight Rebekahs and two Oddfellows attended the Plains Secretary and Scribes Association Sunday, Feb. 12.

Joyline Costen, Ruby Green and Audrey Langfitt served refreshments to the 14 members and one visitor present.

The Noble Grand's song "One Day At A Time" was sung.



ARTIST OF THE MONTH--Mrs. Jack (Blanche) Lenderson has been selected as Artist of the Month at the Muleshoe Public Library. She stated that she started painting as a hobby in 1956 or 1957 and has since studied under Dr. Emilio Caballero, Ramon Forman and Ben Konis. She holds workshops and paints in all medias, oil, acrylic, water color, pastels and charcoal. She is a member of the Muleshoe Art Association, West Texas Art Association and Lubbock Art Association. (Journal Photo)

Houston Red Measles' Outbreak Spreading

When an outbreak of rubeola (red measles) began in Houston last November officials at the Texas Department of Health (TDH) predicted that susceptible travelers might contract the disease and transport it to other cities. That prediction became fact, with several cases on college campuses traced to Christmas break in Houston.

Now, with the unusually large outbreak continuing in Houston, health officials have issued a new warning. TDH is concerned that many of the more than 50,000 people expected at Houston's livestock show and rodeo (Feb. 16-26) also could contract and transport the disease statewide.

While the new cases are occurring in all age groups, most patients are toddlers and infants less than 15 months old, and young adults, often high school and college students. Health clinics on several college campuses have reported a growing number of students with measles, most of whom were exposed to the virus during trips to Houston.

Robert D. Crider, director of TDH's Immunization Division, said that the Houston outbreak began late last year with about 50 infants and children. Until that outbreak began, only 17 cases of measles had been reported throughout the state for the first 10 months of 1988. But by the end of December, the year's total reached about 250. New cases continue to be reported at an alarming rate.

Crider said that the Houston area still is the source of most reports. "Between November, when the first of the Houston outbreak began, and early February, more than 900 cases of measles have been reported in Harris County alone," Crider said. "In all of 1987, there were

only about 452 measles cases in the whole state."

Crider attributed the sharp rise in the number of cases to several factors. He explained, "Many people seem to have forgotten how contagious the measles virus is. It can infect any susceptible person who is exposed to it. By susceptible, I mean anyone who has not had the disease, or whose

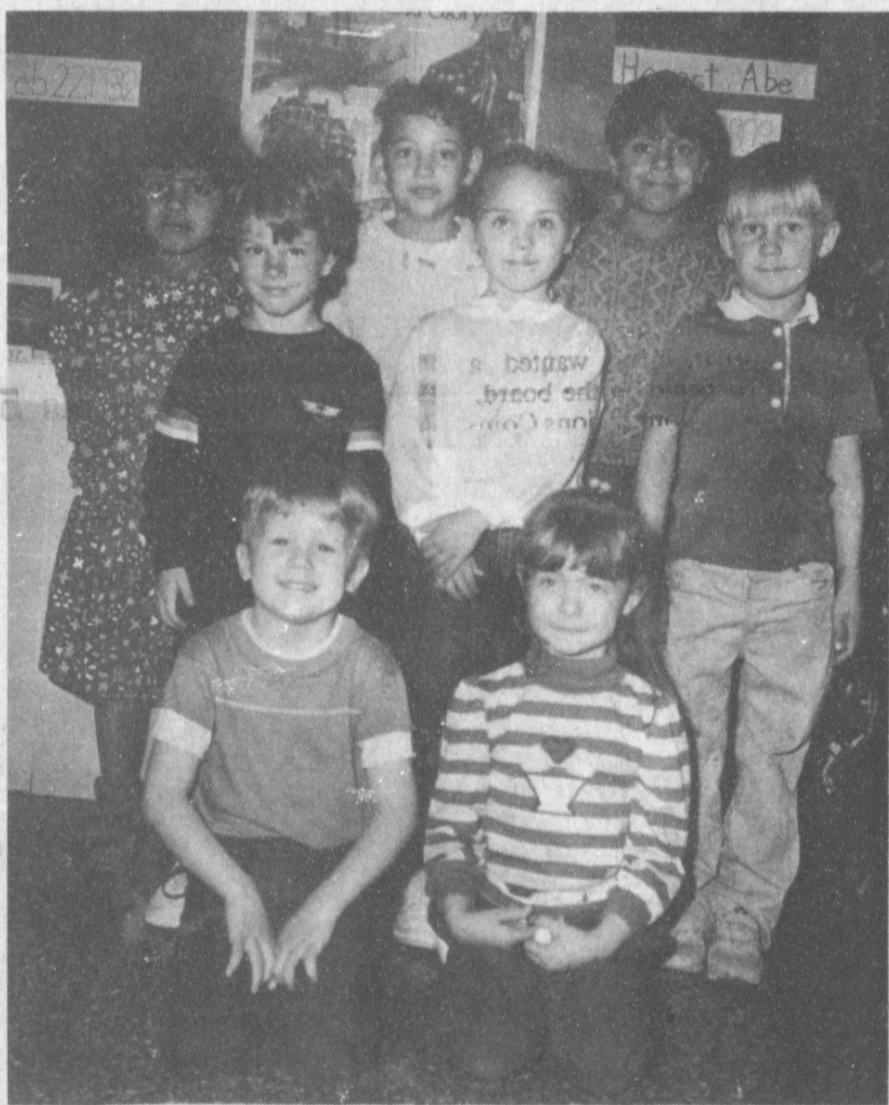
immunization was not successful -- about 3-5 percent of those vaccinated. Measles is so contagious that until the advent of vaccines, few people reached adulthood without being infected -- hence the misconception that measles is a 'childhood' disease.

He added that persons born before 1957 are likely to have been infected earlier with red

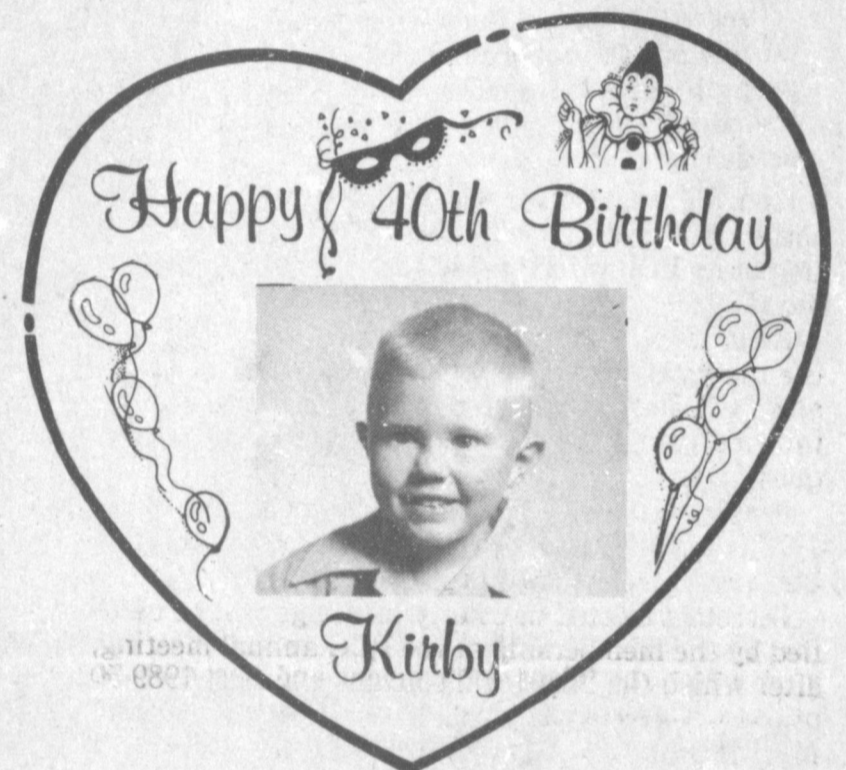
measles and are generally not considered susceptible to the disease.

Since 1981 state law has required that all children entering public or private school must show proof of immunization for measles, or furnish a physician-validated history of measles illness. On physicians' advice to parents, most children are routinely immunized at 15 months with measles-mumps-rubella vaccine. The result is that for some years, measles among young children dramatically declined. In 1983, for example, Texas reported only 37 cases.

The symptoms of red measles are fever, runny nose, cough, watery eyes, and a rash which first appears on the head and face, eventually spreading over the body. Crider stressed that red measles, rubeola, should not be confused with rubella, German measles, which can cause serious birth defects in the babies of infected mothers.

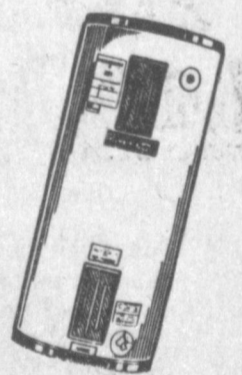
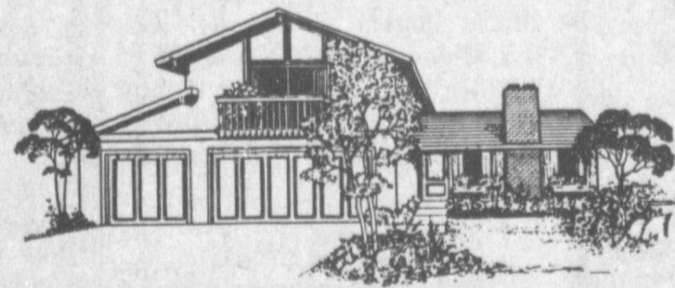
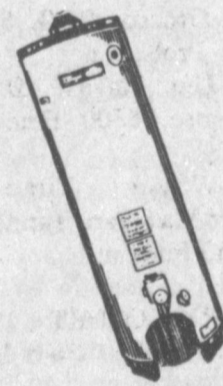


FEBRUARY SUPER KIDS--Chosen for February Super Kids at Dillman Elementary School were: Seated, (L-R) Michael Williams, Pre-kindergarten; Shani Rasco, E. C.; Center Row (L-R) Justin Johnson, Kindergarten; April Kelley, First Grade; Poncho Lowen, First Grade; Back Row (L-R) Evelyn Ortega, Kindergarten; Kristine Chavez, Second Grade; and Jesus Sanchez, Second Grade. (Journal Photo)



Check It Out!
Check It Out!

Could Be Lowest Everyday Price
In Town
On
CRAFTMASTER
Water Heaters
5 yr Warranty



30 gal.	Natural Gas	\$129. ⁹⁵
40 gal.	Natural Gas	\$139. ⁴⁰
50 gal.	Natural Gas	\$185. ⁴⁰
30 gal.	LPG	\$198. ¹⁰
40 gal.	LPG	199. ⁴⁰
50 gal.	LPG	245. ⁴⁰
32 gal.	Electric	\$132. ⁵⁰
42 gal.	Electric	\$135. ⁹⁵
52 gal.	Electric	\$142. ⁰⁰

6 - 10 - 12 gal Electric Available
Controls, Elements, Thermostats In Stock

TAXPAYERS' Rights, Remedies, Responsibilities

Want to learn more about the property tax system? That's possible by reading a pamphlet the State Property Tax Board has written and made available at the local appraisal district office.

It's called "Taxpayers' Rights, Remedies, Responsibilities" and it may help you save money. Learn about tax relief available through

- homestead exemptions
- disabled veteran exemptions
- special productivity value for farm, ranch, and timber land
- tax deferral for over-65 homeowners

You'll learn how your property is appraised. That way, you can decide if the appraisal district's value is reasonable.

If you think it isn't, the pamphlet tells you how to prepare an appeal to the appraisal review board. You'll learn the types of protests the appraisal review board can hear and useful evidence to bring to your hearing.

Important dates in the tax year are listed. You'll know what your responsibilities are and when you are obligated to satisfy them.

"Remedies" is free to taxpayers. Ask for yours today at

State Property Tax Board

Box 15900 Austin, TX 78761-5900

Bailey County Tax Appraisal District

104 E. Ave. C. Muleshoe 272-5501

Higginbotham-Bartlett Co.

"Quality & Service At The Right Price"

215 Main

272-3351

Candlelight Ceremony Unites Miss Judy Wiseman, Priest

In a garden look setting at the Sudan Church of Christ, Saturday, Feb. 4, Miss Judy Lynn Wiseman became the bride of Mark Austin Priest. Mike McDonald, minister, read the double ring vows, which were written by the bride and groom.

Parents of the couple are Mr. and Mrs. Calvin Wiseman of Sudan and Mr. and Mrs. Jim Priest of Levelland.

Vows were exchanged before two heart shaped candelabras, holding votive candles, amid greenery. The unity candle was placed on a white wicker stand under the ivy covered archway

formed by Hurricane globed candle trees, accented with white and salmon colored flowers. Various sized white wicker stands held pots of fresh ferns, airplane and diffenbachia plants. Bows of off-white, salmon and blue ribbons, flowers and baby's breath marked the pews.

The registration table was covered with a lace cloth and accented with the bride's toss-bouquet beside the guest book. Wendy Branson of Wolforth, cousin of the bride, registered the guests.

Barry Wiseman of Lubbock,

brother of the bride sang "Together As One" and "The Lord's Prayer". Marsha Wiseman, sister-in-law of the bride, also of Lubbock sang "Long and Lasting Love". A duet "Wind Beneath My Wings" was sang by Mike Priest of Levelland, brother of the groom, and Barry Wiseman. Wiseman and his wife, Marsha, also sang two duets, "Friends" and "Household of Faith". Joyous Sounds of Brownfield presented "Parent's Prayer".

Given in marriage by her father, the bride chose a formal length gown of champagne satin, featuring a V-neckline, outlined with scalloped lace. Venetian lace appliques enhanced the bodice and were emphasized with various shapes and sizes of pearls. The puffed sleeves were highlighted with Schiffler lace cut-outs and pearls. The skirt, edged with Schiffler lace, flowed into the train and the entire skirt was scattered with cut-out lace appliques.

Her fingertip veil of puffed tulle, edged with pearls, was attached to a wreath of silk

flowers, velvet leaves and pearls.

The bride wore a cameo droplet on a pearl necklace and pearl earrings. For something old, she wore her grandmother Wiseman's wedding band; something new was her wedding gown; something borrowed was a cross necklace attached to her bouquet, borrowed from her aunt, Lou Young. She wore a sixpence in her shoe.

She carried an arm bouquet of fresh cut flowers of off-white lilies, various flowers and berries of blue, salmon and greenery.

Jana Morgan of Hereford served as maid of honor. Bridesmaids were Ren Evans of Amarillo, Warnetta Noe of Canyon and Linda Wiseman of Abilene, cousin of the bride.

They wore gowns fashioned from Copenhagen blue Chintz, with small salmon designs. The V-neckline featured an off-white pointed collar, edged with heart lace, dropped waistline and below the elbow length puffed sleeves. They wore cameo necklaces, gifts from the bride, and carried arm bouquets of salmon lilies, off-white flowers and berries and blue orchids and

greenery.

Maria Barber, cousin of the bride, of Amarillo served as flower girl. She wore a long-waisted dress of salmon and featured a off-white pointed collar trimmed with heart lace. She wore a small porcelain rose necklace, a gift from the bride. The off-white wicker basket was lined with the blue chintz, like the attendants gowns, and accented with bows and flowers and was filled with love knots. This basket was carried by the bride when she was flower girl in the wedding of Mr. and Mrs. Rex Boyles.

Allan Branson of Wolforth, cousin of the bride, was ring bearer and was attired in a formal tuxedo identical to that of the groom. He carried a pillow made of the material of the bride's mother's wedding dress.

Bill Baynes of Dallas served as best man and groomsmen were Mike Priest of Levelland, Tony Priest of Wolforth and Kelly Priest of Amarillo, all cousins of

the groom. They were attired in a formal tuxedo of dark grey jacket, light grey vest, striped pants and wing-tipped shirt and ascot tie.

Ushers were Randy Wiseman of Lubbock, Roger Barber of Amarillo, Kevin Powers of Arlington, cousins of the bride, and Steve Austin of Houston, cousin of the groom.

A reception was held in the fellowship hall of the church, with the garden look being carried out with plants on wicker stands around the room.

The bride's table was placed in front of white lattice work that was draped in hearts and bows. The table was covered with a lace cloth and accented with a silver candelabra holding salmon tapers and flowers like the bride's attendants bouquets. Punch was served from a silver bowl and the three-tiered cake, featuring a heart shape and individual heart cakes surrounding the base, was topped with a Precious Moments bride and groom.

Presiding at the bride's table were Marie Corley, Sandra Johnson, and Rebecca Wiseman, all of Lubbock.

The groom's table was covered with a blue cloth and a copper urn was used for the coffee. Chocolate cake, nuts and mints were also served. Mary Basher of Ada, Okla., Nancy Priest of Abernathy, both aunts of the groom, and his cousin, Alisha Brasher of Ada, Okla. presided at this table.

The food table was presided over by Shirley Fisher. Hanging on the wall above the table was a quilt that friends and relatives of the couple had made, recalling a thought, occasion, poems or wish for the newlyweds.

The bride is a graduate of Sudan High School, Western Texas College and received a degree in computer information systems at West Texas State University.

Priest attended Hereford High School and received a degree in computer information systems at West Texas State University and is employed by Maxus Petroleum in Dallas. The couple will make their home in Cedar Hill, Texas.



MRS. MARK PRIEST
(nee Judy Lynn Wiseman)



CHECK PRESENTATION--Wednesday morning, Norma Bruce, left, and Sandi Robison, right, treasurer and president of the Jennyslippers, presented Anne Camp, librarian at the Muleshoe Public Library, a check in the amount of \$200.00 to be used to purchase needed items for the library. (Journal Photo)

Tops Club

Muleshoe-TOPS Club chapter No. 34 met at 6 p.m. Thursday, Feb. 16 at the Heritage Thrift Shop. Laverne James called the meeting to order with the TOPS prayer, fellowship song and a prayer.

Orvidie Burris called the roll with 15 members answering with the amount they had lost or gained. Minutes of the previous meeting were read by Aurora Mata, and they were approved as read.

A new contest was discussed and accepted. This contest will begin next week.

Aurora Mata drew a gift from the White Elephant box, after having been best loser for the week last week and losing again this week.

Both the National and Local TOPS rules were discussed.

Best loser for the week was Aurora Mata and runners-up were Alma Robertson, first; and Nan Gatlin, second.

The meeting was adjourned with the singing of the goodnight song.

Birthday Party Honors Mrs Gentry

Mrs. Nell Gentry was honored Sunday, January 22 on her 80th birthday. A party was held in the community room of the First National Bank, hosted by her children, Pudd and Kay Wiseman and Jack Gentry.

The serving table was covered with a white lace-edged cloth and

accented with a bouquet of mixed flowers.

Birthday cake and punch were served to those attending including: Charles and Lucille Young, Barbara Grimes, Randy and Rebecca Wiseman, Hareld and Vicki Horton, Katrina and Teresa Wolfe and Andy all of Lubbock; Marcella Young of Abilene; Linda Wiseman and Paul Adams, students at ACU; A.E. and Marjorie Folsom and Clara Young from Brownwood; Claudyne Brown of Washington, D.C.; Marie Rogers of Ulysses, Kansas; Wendy and Allan Branson of Wolforth; Earl and Dink Patterson of Levelland; Jewel DeWitt of Palo Pinto and Willie Burford of Sudan.

Channeled Effort

The difference between being in a rut or in a groove is how hard you dig. —The Champion, Whitmore, Ia.

Jennyslippers Plan Coming Activities

Muleshoe Jennyslippers met at noon Tuesday at the Old Depot for their regular meeting and luncheon.

Sandi Robison called the meeting to order and Nancy Kidd read the minutes of the previous meeting, followed by a treasurer's report by Norma Bruce.

Jeanie McDaniels, representing the Roadriders was a special guest.

The Jennyslippers voted to co-sponsor a "Merchant Of The Year" project with the MAC Committee. This merchant will be presented a plaque at the Chamber of Commerce banquet.

Among the committee reports given was the Easter Egg hunt scheduled for March 18. This year, providing it is not raining, the hunt will be held at the Marty Long T-Ball Field. In case of rain, the hunt will be held at the City Park.

A report was also given on Parent/Student Night scheduled for Saturday, March 4 at 7 p.m. at the high school.

The bakeless Bake Sale was also discussed. Mrs. Kidd reported that funds raised this year will go toward a new ice machine for the nursing home, stating that "the old one makes water not ice."

The ABCS (Action Based Community Served by volunteers will be the theme of this year's

Chamber of Commerce banquet, and Dr. Ward will be the speaker. He will speak on community and school-school and community working together. The Jennyslippers will decorate for the banquet.

The group also voted to give a \$200 check to the Muleshoe Public Library, to purchase items the library needs.

Mrs. Kidd passed out packets, provided by 5-Area Telephone.

Wonder

Wonder if anything else is as useless and yet as essential as a man's necktie?

—Buffalo Evening News.



May Kay
COSMETICS

Please call for a free facial or manicure

Janie Hughes
Beauty Consultant
(806) 272-4685
609 W. Ave. J Muleshoe, TX

RED TAG SALE

\$69.95

EUREKA UPRIGHT

Model 1428 with tools \$89.95

"Quality & Service At The Right Price"

Higginbotham-Bartlett

215 Main 272-3351

Model 1428
4.0 Amp Motor
4 Position Dial-A-Map
Power Driven Beater Bar Brush Roll
Dual Edge Kleener
Brilliant Dirt Seeking Headlight
Top Loading Large Capacity Disposable Dust Bag
Adapts Easily to 6-Piece Bonus Tool Kit
20' Power Cord
On/Off Toe Switch

Powerful, Compact, Lightweight, Portable
Model 3110
1.0 Peak H.P. Motor
MIGHTY MITE

Bailey County Journal USPS 040-200

Established March 31, 1963. Published by Muleshoe Publishing Co. Inc. Every Sunday at 304 W. Second, Box 449, Muleshoe, Texas 79347. Second Class Postage paid at Muleshoe, Texas 79347.

TEXAS PRESS ASSOCIATION

Member NATIONAL NEWSPAPER ASSOCIATION WEST TEXAS PRESS ASSOCIATION PANHANDLE PRESS ASSOCIATION

L.B. Hall-President & Publisher, Sammie Hall-Vice President & Controller, Clara Williams-News, Evelyn Harris-Society

SUBSCRIPTIONS
Muleshoe Journal and Bailey County Journal
Bailey and Surrounding Areas
Muleshoe Journal and Bailey County Journal
Elsewhere in Texas \$14.75
Muleshoe Journal and Bailey County Journal
Outside of Texas \$18.50
Yearly by Carrier \$12.50
Advertising rate card on application

Rip's IN TEXICO

314 Wheeler
482-3363

LADIES WEAR FOR LADIES WHO CARE THE RIGHT LOOK AT THE RIGHT PRICE

CHECK OUR **75% OFF SALE**

LAYAWAYS WELCOME We Accept:

OPEN: 8:00 a.m. - 6:30 p.m., C.S.T.



SORORITY SWEETHEARTS--Saturday night, members of the local sororities held their Annual Valentine Dance at the Muleshoe Country Club. Valentine Sweethearts crowned included: Cindy Purdy, seated, Preceptor, Zeta Rho; Starla Ellis, left, Alpha Zeta Pi; and Dawn Williams, right, Xi Omicron Xi. (Journal Photo)

Daisy Scouts

Daisy Girl Scouts held their regular weekly meeting Wednesday, Feb. 15 at the Pizza Hut. The girls were shown how the pizzas are made and the steps taken to make a pizza. It was reported that the hardest part was in waiting for the pizzas to eat, which the Daisies really enjoyed.

Those present were Adrienne Ashford, Shari Alonis, Elizabeth Torres, Kayla Claybrooks, Chyla Torres, Misty Garcia, Stephanie Kirk, Diana Gable, Jamie Prather, Karen Jo Wimberley, Kinsee Estep, Casey Tosh, Melissa Flores, and Lisa Marie Ramirez, and a new member, Averi Wilkerson. Troop leaders, Cherry Estep, Linda Tosh, Linda Flores and Mary Ann Ramirez and two guest, Adam Ramirez and Tiffany Flores also joined them.



DAISIES VISIT PIZZA HUT--Wednesday afternoon Cherry Estep, Linda Tosh, Linda Flores and Mary Ann Ramirez took their Daisy Scout Troop to the Pizza Hut, where they helped to make their own pizza. Those present included: (Not in order) Adrienne Ashford, Shari Alonis, Elizabeth Torres, Kayla Claybrook, Chyla Torres, Misty Garcia, Stephanie Kirk, Diana Gable, Jaime Prather, Karen Jo Wimberley, Kinsee Estep, Casey Tosh, Melissa Flores, Lisa Marie Ramirez, Averi Wilkerson and guests, Adam Ramirez and Tiffany Flores. (Journal Photo)

Xi Omicron Xi

Sorority Meets

In Franks Home

Members of Xi Omicron Xi Sorority met in the home of Kathy Franks Tuesday, Feb. 7. It was reported that everyone enjoyed an assortment of cheese and relishes.

Pledge training was held before the business meeting, which was conducted by the president, Annette Bonds.

The evening concluded with the viewing of a tape of Geraldo Rivera, brought by Barbara Mutschler.

Those present were Annette Bonds, Dawn Williams, Gayla Gear, Barbara Mutschler, Vicki Gear, Ginger Caldwell, Kathy Franks, Alice Liles, Gayla Toombs, Ricki Warren, Jacque Boutell, Nancy Barrier and Silvia Vourazeris.

Members of Xi Omicron Xi joined other Beta Sigma Phi sisters for the annual Valentine's Dance, February 11. The dance was enjoyed by all and was highlighted with the crowning of Dawn Williams as the chapter Sweetheart.

Golden Gleams

It is much better to be envied than pitied.
—Herodotus.

A man shall never be enriched by envy.
—Thomas Draxe.

The envious will die, but envy never.
—J. B. Moliere.

Guild Circle Meets In Lewis Home

The Guild Circle of the Sudan United Methodist Women met Monday, Feb. 6 in the home of Thelma Lewis. The invocation was given by Grace Lopes.

Mary Tollett, group chairperson, introduced the program leader, Frances Potter. The lesson entitled "Are We Mortgaging Our Children's Future" written by Caroline Njuki was presented by Frances Potter,

assisted by Anita Wallace. A group discussion followed.

Mary Tollett presided over the brief business meeting. Minutes of the previous meeting was read and plans were made for attending a program at Methodist Hospital.

A financial report was given concerning the rummage and bake sale which was held Saturday, Feb. 4.

Following the guild benediction, refreshments of cherry cheesecake was served to the following: Frances Potter, Nellie Williams, Eleose Curry, Mary Tollett, Grace Lopes, Mae White, Dorothy Drake, Anita Wallace and a guest, Kathleen Goodwin.

Dr. Murray Inducted Into Hall Of Fame

Dr. Lane Murray, formerly Joyce Stone, was inducted into the 1988 Texas Womens Hall of Fame on Feb. 8 at the Four Seasons Hotel in Austin.

Dr. Murray is a former Sudan resident having grown up there and graduating from SHS in 1937. She attended Texas Tech and A&M. She is presently superintendent of Windham Schools in Huntsville.

She was inducted into the Hall of Fame as an Educator having taught at several colleges including A&M and Huntsville.

Hobby Club

Muleshoe Hobby Club met at 2 p.m. Thursday, Feb. 16 in the Senior Citizens Complex with 12 members and two guest, Opal Talley and Trent Black, present.

Members present were: Jane Williams, Blanche Aubrey, Laura Stansell, Glenda Morris, Ruby Lambert, Mabel Caldwell, Edith Fox, Sammie Ethridge, Hazel Reeder, Frances Bruns, Ladema Wright and Mattie Benton.

The roll was called and the members answered with a favorite recipe. The recipes were put in a bowl and each one drew for a recipe.

Minutes of the previous meeting were read and approved.

Glenda Morris drew the hostess gift which was two bath towels and matching soaps.

This week's hostess, Frances Bruns, served sandwiches, chips and dips, pickles, cookies, coffee and soft drinks.

Hostess for the March 2 meeting will be Laura Stansell.

Sudan News

by Evelyn Ritchie

Bessie Lee Burke was taken by ambulance on Monday to the St. Mary's Hospital in Lubbock.

Mr. W.V. McAlpin was in Austin last week to attend Superintendents Mid-Winter Workshop for all area school superintendents.

Opal Pennington has returned from visiting in Morton with her daughter, Mr. and Mrs. Billy Gerik.

Ann Duplantis was named to the Presidents Honor List at SPC with a 4.0 gpa. Jimbo Green made the Dean's List. They are both children of Gloria and Jim Green.

David Harper, son of Mr. and Mrs. Raymond Harper was named to the President's Honor List at Texas Tech with a gpa of 4.0.

Mildred Harper of El Paso has

been visiting this week with Doris Harper and Dr. Evelyn Milam and Mrs. Bessie Milam. They were all in Austin for the Induction Ceremonies when their sister-in-law, Margaret Harper was inducted into the 1988 Texas Womens Hall of Fame on Feb. 8.

The Hornets will be playing Sunday Friday, Feb. 24 at 6 p.m. at Whiteface.

The fall 1988 Dean's Honor Roll at Wayland Baptist University includes Sharla Harrison George of Sudan.

Mrs. George, a senior, posted a 3.76 grade point average for a recently-completed term. She is the daughter of Mr. and Mrs. Al Harrison of Canyon, formerly of Sudan.

We Do
During the campaign we call for men of vision; afterward we call them visionaries.
—Evening News, Buffalo.

HOMESTEAD EXEMPTIONS



CAN LOWER THE PROPERTY TAXES ON YOUR HOME

A homestead Exemption

lowers the property taxes on your home by lowering its taxable value. For example, if your home is valued at \$50,000 and you receive a \$5,000 homestead exemption, your home will be taxed as if it were worth only \$45,000.

You qualify

for a homestead exemption if you owned your home on January 1 and used it as your primary residence on January 1. It doesn't matter whether your home is a house, a condominium or a mobile home.

Exemptions are available

to all homeowners on their school taxes. Additional exemptions are available to homeowners who are disabled or age 65 or over. Other exemptions may be offered to homeowners by school districts, counties, cities, and special districts. All taxing units offer exemptions to disabled veterans.

Apply to

your local appraisal district office at the address shown

Bailey County Appraisal District

104 E. Ave C

272-5501

below for all exemptions you may qualify for. Application forms are available at this

If you received a homestead exemption on your present home in 1988, you won't need to apply again for 1989 unless the chief appraiser requires you to reapply.

However, if you passed your 65th birthday or became disabled before January 1, file a new application to receive the additional exemptions.

If you haven't received an exemption on your present home, or if you've moved to a new home, make a new application for 1989.

The deadline

for applications is April 30, 1989. Contact your appraisal district before then if you need more time.

For more information, get a free copy of the pamphlet, *Taxpayers' Rights, Remedies, Responsibilities*, at your appraisal district office or from the State Property Tax Board in Austin.

An IRA...



... something for that little nest egg.



MULESHOE STATE BANK

MEMBER FDIC

101 West American Blvd.

Phone 806/272-4561

MULESHOE, TEXAS 79347



INDUSTRIAL FOUNDATION BOARD MEMBERS--It was a very positive report given by the Muleshoe Area Industrial Foundation during their annual meeting last Tuesday night at the Bailey County Civic Center and Coliseum. Pictured from left, standing are board members Cliff Black, Troy Stegemoeller and Bob Stovall; seated from left are Howard Watson, board member; Cheryl Pink, SPS guest speaker and Duane Castleberry, MAIF chairman. (Journal Photo)

State Convention

Cont. From Page 1

of Education and chairman of the Long-Range Planning Committee was the featured speaker at the TCTA Awards Breakfast. Mrs. Canning shared her experiences and perspectives as a State Board member and urged teachers to increase their involvement in the education profession. The Association presented its annual Friend of Education Awards to Senator Cyndi Taylor Krier of San Antonio and in the State Official category and to Ms. Estella Cuellar of McAllen in the Private Citizen category. Senator Krier was honored for her outstanding service in the State Legislature on behalf of teachers and education, while Ms. Cuellar was recognized for a lifetime of contributions to education.

Honored as the 1989 Administrators of the Year were Judy Harwell Ledbetter of Mineral Wells, Maria Fantina Wright of Temple, and Toby Louise Ward of Midland. And in a new award program honoring education volunteers, Mildred Walker, formerly of Lamar Consolidated ISD, was presented the Retired Teacher of the Year Award, while Kathy Reed of Angleton received the Parent Volunteer of the Year Award.

Convention participants were treated to the Texas premiere performance of "Let Me Teach," a play written and performed by former Texas drama teacher David Marshall Marquis. Fresh from a national tour and rave reviews off Broadway, "Let Me

Teach" echoed the joys, frustrations, and reasons for being a professional classroom teacher. State President Susan Crocker of Grand Prairie presided over the convention.

Lazbuddie...

Cont. From Page 1
\$2.50 for children 10 and under. They may be purchased from any fireman or EMS, or at the door. Additional donations will be appreciated.

Entertainment will be provided by *The Playboys*, a country swing band from South Plains College. The meal is being donated by Rhone-Poulent Ag Chemical Co., makers of Temik, Prep, Torch, and other ag chemicals used in this area.

Clovis Man Speaker For Kiwanis

By: R. A. Bradley

Eleven members, four guests and Sweetheart Justine Hanes got out in the beautiful wet weather to meet at the Old Corral Friday morning.

President Keith Turner called the meeting to order. Reggie Johnson led the club in the pledge to the flag; R. A. Bradley gave the invocation.

Sweetheart Justine Hanes said she tried, but the people at the mall in Lubbock did not want to cash the Muleshoe Kiwanis Club's Friendship Coin. These people don't know what they are missing.

Justine, as you have found out, the best friends are in Muleshoe anyway. Sweetheart Justine gave the friendship coin to Lyndon Huckaby because he braved the

fog and brightened her day. Justine, just how much did Huck pay you to say those nice things about him?

Our guests were our wonderful young people. We are very proud of them. Lacy Morris, daughter of Glen Morris; Jon Keith Turner, son of Keith Turner and Chad Johnson, son of Reggie Johnson.

Our other guest was our speaker, Chuck Wood from Clovis, N.M. The Kiwanis Club

The Kiwanis Club will be flying the flags Monday, President's Day. The Kiwanis Club thanks all of the merchants on our flag routes. Please call us and let us display a flag in front of your place of business.

Lonnie Merriott was in charge of the program and presented Chuck Wood from the Zia Model Shop in Clovis. Chuck is a member of the Clovis Model Airplane Club and also the AMA (American Model Association). The AMA has over 138,000 members.

Chuck explained some of the

AMA regulations. If you started a club in Muleshoe, and "we have quite a few who fly model planes and helicopters" here in Muleshoe.

Chuck stated that records for model, radio-controlled planes was 26,992 feet in altitude; 292 miles with our refueling; 242 miles per hour; 22 hours of continuous flying.

When asked how far would the radio control work, Chuck stated, "As far as you can see" -- this was very impressive.

Chuck also stated that to start in this hobby, the basics would start at about \$300 and from there up to about as far as your pocketbook and desire will let you.

All clubs in the AMA can and do hold all kinds of meets with their planes. This is lots of fun to all who participate and very entertaining to watch. If you ever hear of a show or contest coming off, be sure and make plans to go. You will surely enjoy it!

Chuck, thanks for getting up so early -- New Mexico time -- and coming to Muleshoe and giving us this program. We appreciate it so much.

Muleshoe...

Cont. From Page 1

contact him at 514 West Avenue G, Muleshoe, TX 79347. Or call 806-272-3389.

*** Educator of the Week for Watson Junior High School is Ronnie Jones.

Students of the Week are Heather Villalobos, sixth grade; Gage Angeley, seventh grade and Dustin Wilhite, eighth grade.

*** Rev. Charles Fisk of the Progress Baptist Church, said the church will be presenting a Billy Graham film, "Cry From the Mountain," at 6 p.m. at the church on Sunday, February 26.

"Cry From the Mountain," is one of a series of Billy Graham films, which also include "The Hiding Place" and "Joni and the Prodigal," all released by World-Wide Pictures.

Rev. Fisk said the entire area is issued an invitation to attend the showing of the film at no charge on February 26.

*** Michael Dunham, Muleshoe High School student, and son of Jack and Bobbie Dunham, won the Grand Champion in the Swine Show at the San Antonio Livestock Show with a heavy weight Cross.

Melinda Turney

Entered By School In 'Doers' Program

Melinda Turney, daughter of Mr. and Mrs. Dennis Turney of Enochs, has been selected to participate in the "Walt Disney World Dreamers and Doers Program" for Three Way High School.

It is said that "anything is possible when hard work is combined with belief in yourself and belief in your dreams." Walt Disney proved it. And many young students around the country are proving it, too.

By setting goals and achieving them, Succeeding despite the odds against them, and giving of themselves for the betterment of the world around them.

Lewis Mowery, Three Way High School principal said, "These are the students that Walt Disney World, in conjunction with the National Federation of State High School Associations, wishes to recognize in the Walt Disney World Dreamers and Doers Program."

City Police Report

During the past 10 days, a number of incidents have been investigated by the Muleshoe City Police Department.

This has included two minor accidents, with no injuries; two reports of criminal mischief; a report of disorderly conduct; a burglary at Farmer's Cooperative Elevator offices; two thefts, one involving \$135 cash, and the other involving \$2,383.18 in cash, checks and money orders; an aggravated assault; a hit and run accident and an obscene phone call.

Warrants were issued for seven individuals for the issuance of bad checks; and several checks were cleared by arrest and payment of fine and restitution.

One driving while intoxicated arrest was made.

Announcing a New Operator

Noemi Acosta
Attended
South Plains College
Cosmetology School
in Levelland



Ana's House of Beauty
109 Ave B 272-4152

***** After Inventory *****

Clearance Sale


<p style="text-align: center;">NEW Sharp Munchkin Microwave</p> <p style="text-align: center;">Reg. \$129⁹⁹ \$79⁹⁹</p>	<p style="text-align: center;">USED G.E. 14' Refrigerator</p> <p style="text-align: center;">\$150⁰⁰ \$150⁰⁰</p>
<p style="text-align: center;">USED Maytag Washing Machine</p> <p style="text-align: center;">\$100⁰⁰</p>	<p style="text-align: center;">REPOSSESSED Whirlpool Lg. Capacity 1 yr. old Washing Machine</p> <p style="text-align: center;">New \$489⁹⁵ Now \$299⁹⁵</p>
<p style="text-align: center;">REPOSSESSED Solid Wood 5 pc. Dinette</p> <p style="text-align: center;">\$250⁰⁰</p>	<p style="text-align: center;">REPOSSESSED AM/FM, Cassette, 8-Track, w/Turntable Soundesign Stereo</p> <p style="text-align: center;">\$100⁰⁰</p>

P O Y N O R ' S

103 Main Muleshoe 272-4552

Rip's

IN TEXICO
314 Wheeler
482-3363



Justin Ropers.

For more than just rodeo.

Justin introduced the first Roper boot to offer classic styling with superior comfort and fit. Since then, rodeo riders, workers, outdoorsmen and people of all walks of life have turned to the Justin Roper for its unduplicated craftsmanship. Justin. For more than just rodeo.



as low as
\$79⁹⁸

NOW
ESPECIALLY FOR CHILDREN

JUSTIN JUNIORS

as low as
\$46⁹⁸

ALL FELT HATS 20% off

SUITS one group 50% off

SHIRTS one group \$14⁹⁸

LAYAWAYS WELCOME WE ACCEPT
OPEN 8:00 a.m.-6:30 p.m. c.s.t.

thriftway



Offers You

THERE'S A NAME FOR FOOD THIS GOOD.

LUNCHEON MEAT SPAM

Regular
Less Salt
Smoked

\$1.59

12 oz.



HORMEL CHILI WITH BEANS

Regular or HOT

69¢

15 oz.

HORMEL BEEF TAMALES

REGULAR OR HOT

15 oz.

59¢

HORMEL POTTED MEAT

3 oz. CANS

\$1.00

HORMEL CHILI NO BEANS

Regular or Hot

15 oz.

89¢

DINTY MOORE BEEF STEW

15 oz.

99¢



Top Shelf
2 Minute Entrees

A Microwaveable

- GLAZED BREAST OF CHICKEN \$1.99 (10 oz.)
- BONELESS BEEF RIBS
- TENDER ROAST BEEF
- LEMON FILLET OF COD
- SWEET & SOUR CHICKEN
- BREAST OF CHICKEN ACAPULCO
- CHILI CON CARNE SUPREMA \$1.49
- SPAGHETTI W/ MT. SAUCE
- ITALIAN STYLE LASAGNA \$1.69
- LINGUINI W/ CLAM SAUCE

HORMEL VIENNA SAUSAGE

5 oz.

39¢



HORMEL DEVILED SPAM

2 3 oz. CANS

79¢

thriftway

THE BEST WAY TO SAVE!

MULESHOE, TX



WE ACCEPT FOOD STAMPS
WE RESERVE THE RIGHT TO
LIMIT QUANTITIES

Nursing Home News

By: Joy Stancell

We hope you had a happy Valentine Day. Thank you for making ours so special.

Friday afternoon we had a special Valentine party which consisted of entertainment by John and Becky Braten. John made a presentation on 1 Corinthians Chapter 13. And what could be more appropriate than the "Love" chapter from the Bible. Mr. and Mrs. Lynn Bratcher were presented with flowers having been chosen our nursing home Sweethearts. Refreshments of cherry bars and red Valentine punch were served from a beautifully decorated table. The table color theme was the traditional colors of red and white with the refreshments served from crystal trays. We had an exchange of Valentines and each resident received favors. Our thanks to all the ladies that baked food and Nancy Kidd, Joyce Turnbow, and Lona Embry for decorating the table and serving.

Monday morning we had a real thrill watching Tim Peterson and Randy Egan do their presentation on Cowboys. Our thanks to Tim and Randy for coming and to Lorinda Badiford for arranging for the visit. Thank you Ollie Sebring, and Clara Lou Jones for helping us serve biscuits and homemade jelly to the residents, also hot chocolate.

Lorinda Badiford hosted a Valentine Coffee for the residents Tuesday morning, Feb. 14. She presented a fun time of singing. Refreshments of jello hearts, cookies and punch were served. Thank you Holly Milsap for helping us serve.

Our special thanks to the Prayer Sisters from the Muleshoe Church of Christ for all the lovely Valentines they gave us, to Mrs. Tanksley and the H.E.C.E. students for making us door posters and Valentines, to Lona Embry for the beautiful bouquet of flowers, to Barbara Lust and her Home Ec. students at Lazbuddie for the Valentine place cards. We appreciate you Very Much.

Tuesday afternoon Irene Steinbock, Laverne James, Claudine Embry, Lula Maye Shanks and Jackie Johnson came to shampoo and set the ladies hair.

Guy Kendall returned to the nursing home last week after being hospitalized. Welcome back Guy.

We wish to express our sympathy to Effie Smith on the death of her brother, Elmer Shackley, of Denver, Colo.

Clifton Finley came Wednesday morning and visited and went shopping for us.

Curtis Shelburne and Mike Doyle visited Effie Smith Tuesday.

Mamie Askew was visited by Curtis Shelburne Tuesday, also her daughter, Irene Splawn.

Inez Allgood was visited by her friend, Polly Tunnell, who made and brought her a very pretty pink shirt. Ollie Sebring and Lorinda and Erin Badiford also visited her. Mrs. Allgood celebrated her birthday last Saturday, Feb. 11.

Our thanks to Herald Taylor for the large box of fresh citrus fruit.

Californians To Manage Helicopters

William D. Poteet, III, president and chief executive officer of Methodist Hospital and Jim Courtney, president of Lubbock General Hospital have announced that William Bryant has been named program director of CareLink, the joint aeromedical service of Methodist and Lubbock General Hospitals.

As program director, Bryant will be responsible for overall operations and fiscal management of the CareLink service.

Bryant comes to Methodist from Santa Rosa Memorial Hospital in Santa Rosa, California where he was helicopter program director. There he was responsible for controlling the program budget and development of a marketing and flight training program. Bryant was also responsible for development of a computer program for statistical and financial analysis of the helicopter service.

Prior to his post at Santa Rosa, Bryant was director of legislation for the California Rescue and Paramedic Association where he worked on statewide legislative issues affecting emergency medical services. Bryant also served as senior flight paramedic for Medi-Flight of Northern California.

He received his Master of Public Administration degree from the University of San Francisco in 1988. He received a bachelor of Science degree in biology/chemistry from California State University in Stanislaus, California and completed paramedic training at Modesto Junior College in Modesto, California.

Bryant is a certified paramedic and is a certified instructor for Advanced Cardiac Life Support. He is also a dive rescue specialist.

William Hamlin Services Held

At Earth

Funeral services for William Hamlin, 85, of Earth were held at 2:30 p.m. Saturday, Feb. 18 in the Earth Church of Christ with Denny Sneed, minister, officiating.

Interment was in Earth Cemetery under the direction of Ellis Funeral Home of Earth. Hamlin died at 11:50 a.m. Thursday in Lubbock General Hospital.

Born Sept. 21, 1903, in Wister, Okla., he moved to Earth from California. He was a carpenter and a World War I veteran, serving in the U.S. Army. He married Lottie Kasinger on July 1, 1977, in Muleshoe.

Survivors include his wife, Lottie; three sons, Dewey Hamlin and Zadoc Hamlin, both of Crescent City, Calif., and Franklin Hamlin of Grants, N.M.; three daughters, Rachael McBride of

Crescent City, Calif., Luvina Craig of Talihina, Okla., and Evelyn Francis of Grants, N.M.; a brother, Isaac Folsom of Talihina, Okla.; 20 grandchildren; and 26 great grandchildren.

Patients In West Plains Medical Center

FEB. 14-16
TUESDAY, FEB. 14
Guadalupe O'Campos
WEDNESDAY, FEB. 15
Moises Garcia, Kelly Dale and Guadalupe O'Campos
THURSDAY, FEB. 16
Moises Garcia, Kelly Dale and Guadalupe O'Campos

The life of the average politician consists of passing the buck and placing the blame.

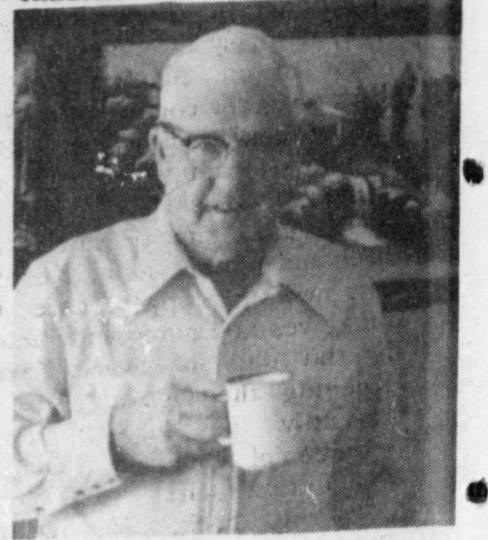
Delbert Baker Funeral Services Held Thursday

Funeral services for Delbert C. Baker, 74, were held at 11 a.m. Thursday, Feb. 16 in the Ellis Funeral Home Chapel of the Chimes with the Rev. Barry Bradley, pastor of the First Baptist Church, officiating, assisted by the Rev. Lyman Wood, pastor of the First United Methodist Church of Anton.

Graveside services were conducted at 10 a.m. Friday in Cottonwood Cemetery at Bryson, TX. Burial was under the direction of Ellis Funeral Home of Muleshoe. Baker died at 2:02 p.m. Tuesday in the Methodist Hospital at Lubbock.

Born July 22, 1914, in Lewisville, he moved to Muleshoe in 1980, from Springtown. He was an auto and heavy machinery mechanic and a Baptist. He married Loma Gustin on May 15, 1974, in Lazbuddie. Survivors include his wife,

Loma; two sons, Ronnie Gustin of Anton and Leland Gustin of Friona; a sister, Mrs. Lois Long of Boise, Idaho; a brother, Joe R. Baker of Chandler; six grandchildren; and five great grandchildren.



DELBERT C. BAKER

As the cold winds howl, warm your family from the inside out with Cincinnati-Style Chili. Serve chili with beans over cooked spaghetti noodles. Top with shredded Cheddar cheese and chopped onions.

Future Farmers of America...

LEARNING TO DO
DOING TO LEARN
EARNING TO LIVE
LIVING TO SERVE

Vocational agricultural education and the FFA together make a great team in giving high school students experience in cooperative agri-projects with very special emphasis on community service, character development and scholarship. These learning tools will be put into practical use later on and provide benefits felt by all of us.

With pride in community and strength in achievement, the FFA is a national educational, non-profit, non-political organization of, by and for vocational agricultural students.

We salute our local chapter of the Future Farmers of America during National FFA Week, February 18-25.

It's Time to Spring for Our Savings

The John Deere Spring SA ADVERTISER is ONE!
Stop in today and Spring for Special Values like these...

<p>Save on the purchase of this durable John Deere</p> <p>Mower Section</p> <p>Just \$49</p> <p>Offer expires March 11, 1989</p>	<p>Save Over 20%</p> <p>John Deere New Dimension</p> <p>Automotive Battery</p> <p>Fits most autos and pickups. Top and side terminals, 525 cca's, 60-month warranty.</p> <p>Just \$49.95</p> <p>Offer expires March 11, 1989</p>
<p>Save 10% on the purchase of this</p> <p>John Deere Oil Filter</p> <p>for most utility tractors.</p> <p>Just \$2.99</p> <p>Offer expires March 11, 1989</p>	<p>Save on dependable, double-acting</p> <p>Hydraulic Cylinder</p> <p>Just \$44.95</p> <p>Offer expires March 11, 1989</p>
<p>Save Over 30%</p> <p>Hose Tip Guard</p> <p>Prevents contamination by protecting tips from dirt and moisture when not in use.</p> <p>Regularly \$12.67</p> <p>Just \$7.99</p> <p>Offer expires March 11, 1989</p>	<p>Save Big</p> <p>Finger Pickup Kit</p> <p>for John Deere 7000 and 7100 Max-Emerge™ Tractors.</p> <p>Just \$20.99</p> <p>Offer expires March 11, 1989</p>

DENT & CO.
MULESHOE, TEXAS 79347
HWY. 84 WEST (806)-272-4296

<p>Joe's Boot Shop</p> <p>106 E. American Blvd 272-5074</p>		<p>Lamberts Cleaners</p> <p>123 Main 272-4726</p>
<p>Alex Tire Service</p> <p>302 American Blvd 272-5012</p>		<p>Riverside Terra Corp.</p> <p>Box 527 Muleshoe 272-4203</p>
<p>Terry Field Insurance</p> <p>223 E. Ave B 272-5551</p>	<p>High Plains Auto Center</p> <p>320 E. American Blvd. 272-5724</p>	
<p>Irrigation Pumps and Power</p> <p>W. Hwy 84 Muleshoe 272-4483</p>	<p>Bernice's Beauty Shop</p> <p>1304 W. Ave B 272-5707</p>	
<p>Atkins Insurance Agency</p> <p>1631 W. American Blvd 272-3292</p>	<p>Muleshoe Trade Center</p> <p>130 Main 272-4906</p>	
<p>Leo's Blacksmith & Machine</p> <p>310 W. American Blvd 272-4418</p>	<p>Farmers Spraying Service</p> <p>Lazbuddie 965-2624</p>	

From The State Senate

By: Tell Bivins

After spending the day working under the hot High Plains sun, it's easy to understand the value of the Ogallala Aquifer. But, given the comfort of modern day air conditioning, that underground water supply may slip our minds on occasion.

This is a reminder: water is the lifeblood of this state. Keeping our water supply safe for ourselves and our grandchildren is the duty of every Texan. Keeping the Ogallala safe is certainly the duty of every member of Senate District 31 -- including myself.

In his book, *The Golden Spread*, B. Bobby Price illustrates the value of the Ogallala to the early settlers of this region. "In 1885 hundreds of windmills dotted the plains landscape drawing precious sustenance from the vast and seemingly inexhaustible aquifer that lay beneath," he writes.

The Ogallala's worth became most apparent during the severe drought of the early 1950's. In 1950, there were 14,000 irriga-

tion wells in the high plains. By 1954 that number had doubled to 27,500 as the Ogallala provided irrigation to 3.5 million acres.

Now it can easily be argued that the Ogallala accounts for 50 percent of the business in Senate District 31. The region I represent in Austin -- produces 35 percent of the agricultural products of the entire state. Water is the key element to that production.

Without the Ogallala, many, if not all, of the towns that are scattered throughout this region could not exist. It's feasible that pipelines could carry water from some other area to the major towns in this region, but certainly not all of them could be serviced at a reasonable expense. Clearly, the Ogallala Aquifer is vital to the future of this region.

However, the future of the Ogallala and the other aquifers of Texas does not look bright. It is being threatened by leaking underground gasoline storage tanks and the exorbitant cost of cleaning them up. Between Sept. 1, 1986 and the end of 1988, the

Texas Water Commission was notified of 1,332 leaks or releases from underground storage tanks. Of those, 441, or about one-third, were confirmed to have affected groundwater.

Based on the growing age of the nation's underground storage tank population, Congressional studies indicate leaks will continue to escalate at a staggering rate. The Environmental Protection Agency estimates that 30 percent of the nation's underground storage tanks are leaking or will leak in the near future. Closer to home, several communities throughout the district are struggling with contaminated wells and identifying the source of the contamination.

The federal government responded to the problem by passing the 1984 Resource Conservation and Recovery Amendments to the Solid Waste Disposal Act, which establishes standards for the operation, inspection, testing and closure of underground storage tanks. Under those guidelines, the 70th Texas Legislature was forced to enact similar standards under the direction of the Texas Water Commission. One of the primary considerations of the federal legislation is a requirement that individual tank owners maintain

a minimum of \$1 million in pollution insurance for on-site and third party damages that may result from accidental releases.

The cost of cleaning up a leaking underground storage tank can run more than \$1 million, but estimates put the average cleanup cost at \$80,000. The average businessman, the Mom and Pop corner gas stations and the business that has a tank for convenience sake cannot shoulder that type of expense. They need insurance to meet both the regulatory requirements and the financial obligations.

However, pollution insurance is very limited and very expensive. The State Board of Insurance tells me that Texas has only three carriers of pollution insurance. And it the insurance is available, the premiums are cost prohibitive. One example of a policy premium costing \$47,930 for six months of coverage at \$500,000 is offered by the Texas Oil Marketers Association. And that amount of pollution insurance is only half of what is required by the federal government.

During 1988, liability coverage, which is normally carried in addition to the pollution cover-

age, cost \$16,480 for one year of coverage at \$1 million. Additionally, a business must pay the cost of a site assessment before the insurance company will approve the insurance -- that can cost more than \$10,000. Again, the small businessman cannot afford those expenses.

It's a catastrophic dilemma we face: set the standards of compliance so high that hundreds of businesses must close their doors, or ignore the potential for contamination and see our most precious natural resource polluted. The question of financial responsibility for cleaning up the messes of underground storage tanks does not lend itself to an easy solution. But, as my friend Mel Phillips is fond of saying, "All the easy problems have been solved. Only the tough ones remain."

I urge the people of Senate District 31 to give me their thoughts on this pressing issue by writing to me at P. O. Box 9155, Amarillo, 79105.

The surest way to enjoy life is to provide your own security by saving something every month.



ONE MINUTE SPORTS QUIZ

By Christian Thorlund
1. Who was voted MVP of the recent Super Bowl contest?

2. Who was runner-up?

3. In what sport are the names Frank Gotch, Jim Landos and Ed Lewis well known?

4. Where was the first regulation baseball diamond?

5. When was the first World Series?

The Answers:

1. Jerry Rice of San Francisco 49ers.

2. Joe Montana, of San Francisco.

3. Professional wrestling (authentic wrestling).

4. Hoboken, N.J. in 1846.

5. 1903.



RIBBON CUTTING CEREMONY HELD--Despite bitter cold, several people showed up at Evins Bell Station (formerly Shafer Bell Station) for ribbon cutting ceremonies hosted by the Muleshoe Chamber of Commerce and Agriculture. Muleshoe Mayor Darrell Turner performed the ribbon cutting, after welcoming Kenneth and Diane Evins to the Muleshoe business economy. (Journal Photo)

By popular demand
and to better serve our customers,

Leal's has added:


- Beef or Chicken Fajitas
- Chicken Enchiladas with red or green sauce
- Sopaipillas
- Your choice, topped sopaipilla topped with stew meat, taco meat or chicken

The Finest in Mexican Food... Since 1957



1542 W. Amer. Blvd. 272-3294

MR. FARMER



Foster Fertilizer features a blend of custom mixed and applied Liquid Fertilizers

ALSO

Anhydrous Ammonia and dry fertilizer is available.

A custom service at competitive prices.

We have been serving this area for 28 years.

Let us mix and apply your fertilizer according to your Specific Soil Requirements.

'Your Business is Appreciated'

Foster Fertilizer

Lazbuddie, Tx. 965-2421

IT'S HERE! A NEW CHRYSLER-PLYMOUTH COMBINATION - THE PRESIDENTS' SALE!

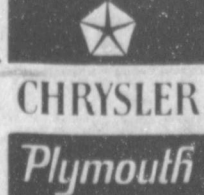


A WINNING COMBINATION OF GREAT DEALS AND UP TO \$750 CASH BACK!*

<p>1989 CHRYSLER NEW YORKER</p> <p>\$500 CASH BACK* + \$850 EQUIPMENT PACKAGE SAVINGS \$1350 TOTAL SAVINGS</p> 	<p>1989 CHRYSLER NEW YORKER LANDAU</p> <p>\$750 FACTORY CASH BACK*</p> 
<p>1989 CHRYSLER LE BARON COUPE</p> <p>\$11,945* - \$600 CASH BACK* \$11,345</p> 	<p>1989 PLYMOUTH SUNDANCE</p> <p>\$8820* - \$600 CASH BACK* \$8220</p> 
<p>1989 PLYMOUTH HORIZON AMERICA</p> <p>\$6843* - \$400 CASH BACK* \$6443</p>  <p>OR GET 4.9 A.P.R.** ON HORIZON!</p>	<p>OR GET 4.9 A.P.R.** ON SUNDANCE!</p> <p>1989 COLT HATCHBACK, IMPORTED FOR PLYMOUTH</p> <p>\$500 FACTORY CASH BACK*</p> 

*Choose your new car from stock at your local Chrysler-Plymouth dealer, and get these big cash back savings. **The savings on the equipment packages are based on the sticker prices of the options, if they were purchased separately. ***Annual Percentage Rate financing for qualified buyers through Chrysler Credit Corp. on Horizon and Sundance from new dealer stock. Other rates offered as length of contract varies. The prices shown above are base sticker prices, excluding title, taxes, and optional equipment packages.

Hurry to our President's Sale before it goes away!



Muleshoe Motor Co.

1225 W. Amer. Blvd. 272-4251

Lazbuddie Menu

FEB. 20-24 MONDAY BREAKFAST
Cereal, Juice and Milk
LUNCH
Enchilada Casserole, Pinto Beans, Green Salad, Pudding and Milk

TUESDAY BREAKFAST
Cinnamon Toast, Applesauce and Milk
LUNCH
Steakfingers, Potatoes & Gravy.

Green Beans, Hot Rolls, Fruit and Milk

WEDNESDAY BREAKFAST
Toast, Bacon, Juice and Milk
LUNCH
Tacos, Corn, Green Salad, Cake and Milk

THURSDAY BREAKFAST
French Toast, Fruit and Milk
LUNCH
Bar-B-Q Beef on Bun, French Fries, Pickles, Cookies and Milk

FRIDAY BREAKFAST
Donuts, Juice and Milk
LUNCH
Bologna & Ham Sandwiches, Potatoe Chips, Pickles/Salad, Fruit and Milk

SALAD BAR SERVED MONDAY THRU WEDNESDAY

Muleshoe Menu

FEB. 20-23 MONDAY BREAKFAST
Milk, Oatmeal, Cinnamon Toast and Fruit
LUNCH
Milk, Pizza, Mixed Vegetables, Pickles and Fruit

COMBO
Milk, Soft Burritos, Corn, Cheese Stick and Fruit

TUESDAY BREAKFAST
Milk, Pancakes, Syrup, Sausage and Fruit

LUNCH
Milk, Hamburgers, Lettuce & Tomato, Pickles & Onions, Tater Tots and Cookies

COMBO
Milk, Hamburgers, Lettuce & Tomato, Pickles & Onions, Tater Tots and Cookies

WEDNESDAY BREAKFAST
Milk, Honey Buns and Juice
LUNCH
Milk, Frito Pie, Beans, Salad, Cheese, Crackers and Cake

COMBO
Milk, Taco's, Cheese, Salad, Beans, Crackers and Cake

THURSDAY BREAKFAST
Milk, Pop Tarts and Juice
LUNCH
Milk, Corn Dogs, Veg. Beef Soup, Crackers, Cinnamon Rolls and Fruit

Three Way Menu

FEB. 20-24 MONDAY BREAKFAST
Apple Stixs, Orange Slices, Juice and Milk
LUNCH
Cowboy Macaroni, salad, peas, rolls, applesauce cake and milk

TUESDAY BREAKFAST
Pop Tarts, Juice and Milk
LUNCH
Chalupas/Cheese, Corn, Lettuce, Tomatoes, Jello and Milk

WEDNESDAY

BREAKFAST
Biscuit, Sausage, Jelly, Juice and Milk

LUNCH
Red Beans/Macaroni w/Tomatoes, Spinach, Corn Bread, Cherry Cobbler and Milk

THURSDAY BREAKFAST
Cereal, Juice and Milk
LUNCH
Baked Chicken, Green Beans, Cream Potatoes, Gravy, Roll, Honey/Butter and Milk

FRIDAY BREAKFAST
Pancakes, Syrup, Juice and Milk
LUNCH
Bar-B-Que German Sausage, Potatoe Salad, Green Salad, Rolls, Ice Cream and Milk



CLASS MEMBERS FROM 1938 MEET IN MULESHOE--Memories and reminiscing were the main items on the 'menu' when members of the 1938 graduating class from Muleshoe High School got together Tuesday at the Old Corral. Those meeting included from left, standing: Ben Crawford and Veta Huggins Crawford, Littlefield; Floyd Embry and Betty Embry, Farwell; Orville Justus, Clovis; Irene Askew Splawn, Muleshoe; Dr. and Mrs. Dr. Johnnie Starkey, Trent; Mozell Ellis Lynskey, Palestine; Edith Sims Bridges, Littlefield and L. P. Lynskey, Palestine. Seated from left are S. L. Robbins, San Diego; Allen (Red) Glasscock, Muleshoe; Robert Starkey, Clovis; C. R. Stevens, Littlefield; Florence Stone Ball, Lubbock and Mary Hester Glaze Branham, Amarillo. (Journal Photo)

COMBO
Milk, Corn Dogs, Veg. Beef Soup, Crackers, Cinnamon Rolls and Fruit

FRIDAY NO SCHOOL

In Fashion

Sporty activewear separates are featuring comfort and style for indoor or outdoor activity. French Terry or Twill offers easy-to-wear elastic pants and matching tops. Other separates are available in solid pants with matching crew neck tops in stripes.

Gold is going daytime in new spring fashions. Flashy gold-hued accessories, gold leather belts and fake gold bracelets will be popular this spring. Sportswear, in daytime styles, is available in gold-toned fabrics. Gold-toned buttons and buckles are used on button-front dresses.

Say Something
"I've been asked for references for our last maid. What on earth can I say in her favor."
"Well, she has a good appetite and sleeps well."

DOES YOUR CAR PULL TO THE LEFT OR THE RIGHT?

Could be it needs the front end aligned. Let us check it out and straighten it if required.

FRONT-END ALIGNMENT ONLY \$28⁰⁰

Includes:

- Camber Adjustment
- Toe Adjustment
- Shock Absorber Check
- Caster Adjustment
- Tire Check
- Steering Linkage Check

Don't Wait! Special Price Ends **2-28-89**

Robert D. Green, Inc.

2400 W. Amer. Blvd. 272-4588

GM Parts Mr. Goodwrench

A&M Farm & Ranch Supply

Sale Prices Good Through Feb. 25, '89

FEBRUARY MARKDOWN MADNESS

"NOTICE"

The Orders placed during the January Oil Booking Period for Cato Oil and Grease will be ready for pick-up on Wednesday, Feb. 22, 1989. You may at anytime after this date pick up your order.

Thank You!

MTD 5 HP Front Tine Tiller

Now: **\$299⁹⁹** Reg. \$309.99

Now's The Time.

BLACK & DECKER 7144 3/8" VARIABLE SPEED REVERSIBLE DRILL

This one can handle almost any job.

Just: **\$37⁹⁹** Reg. \$41.99

Arvin Wall Hugger

WH-10 Goes anywhere there's a plug

1000 Watts Heater Just: **\$17⁹⁹**

SKIL 3/8" Cordless Drill & Screwdriver #2503

Only: **\$44⁹⁹** Reg. \$51.49

CORDOVAN Batteries

5000 Series 3 yr - Pro Rated Warranty

Now Just: **\$34⁹⁹** Reg. \$39.99 (Exchange required)

Makita 14" Heavy Duty Cut Off Saw

For: **\$199⁹⁹** Reg. \$249.99

Centron Polyester/Steel Whitewall

STOCK NO.	SIZE	TRO. DEP.	Regular	SALE
SOC26	P155 80R13	11:32	41.39	35.19
SOC11	P165 80R13	11:32	42.89	36.46
SOC15	P175 80R13	11:32	45.59	38.76
SOC15	P185 80R13	11:32	46.59	39.61
SOC38	P185 75R14	11:32	49.79	42.33
SOC38	P185 75R14	11:32	49.39	41.99
SOC39	P195 75R14	11:32	50.09	42.50
SOC47	P205 75R14	11:32	54.89	46.49
SOC60	P215 75R14	11:32	57.89	49.04
SOC34	P205 75R15	11:32	56.09	47.66
SOC45	P215 75R15	11:32	59.09	50.23
SOC49	P225 75R15	11:32	61.49	52.27
SOC64	P235 75R15	11:32	64.89	55.10

The Live One

5 yr - Pro Rated Warranty 24 or 24F

At: **\$42⁹⁹** Reg. \$47.99 (Exchange required)

WELLS LAMONT Grain Cowhide Gloves w/"FREE" Jersey Gloves

A Special Of: **\$7⁹⁹** Reg. \$8.99

Skil Cordless Screwdriver Super Twist

Now: **\$27⁹⁹** Reg. \$34.49

21% Protein Chunk Style Dog Food

For: **\$8⁹⁹** 50# Bag

A&M

FARM & RANCH SUPPLY

All Stores Open Monday-Saturday 7:30 A.M. - 6:00 P.M. Sundays 12:30 - 5:00 P.M.

2600 Mabry Dr. Clovis, N.M. 1-505-762-7717
1601 S. Ave. D. Portales, N.M. 1-505-356-8543
1302 W. American Blvd., Muleshoe, Texas 1-806-272-5571

Friendliness 'First' With Texas Visitors

Two or three people zipping down a smooth highway, enjoying the scenery, and recalling the friendly people and good food at their lunch stop--that's the typical party of visitors to Texas, according to a year-long survey of more than 13,000 tourists.

Respondents to the highway department's *Auto Visitor Survey* during 1988 rated Texas friendliness first, followed by scenery, good roads, and food as what they enjoyed most during their visit.

"The first full year's count on our newly expanded survey doesn't show any big surprises. Adjacent states, the large population centers of California and Florida, and the Midwest sent Texas the most visitors," noted Don Clark, director of the department's Travel and Information Division.

Oklahoma, California, and Louisiana sent the most visitors, while Minnesota, Michigan, and Illinois residents topped the list of people staying 30 days or more.

San Antonio was the most popular destination, and a remarkable one-third of respondents visited the Alamo. "San Antonio, with big draws like the Alamo, the River Walk, and Sea World, is a real asset to the state because auto visitors have to travel a long distance across Texas to get there," Clark said.

Dallas and Houston were also popular tourist destinations. Other highly rated attractions included the Lyndon B. Johnson Ranch, the Confederate Air Force Flying Museum, and South Padre Island.

What did tourists do during their stay? What they did most was shop. Other popular activities were touring historic places and Museums, camping, bird-watching, and taking photographs to record their visit.

Most U.S. visitors stayed an average of a week in the state and spent more than \$560 per party on food, lodging, vehicle expenses, shopping, and entertainment. Foreign visitors spent a similar amount per day but stayed a few days longer.

"With the reasonable prices prevalent in the state, and the many diverse attractions here, Texas is an outstanding travel value that the entire world is noticing," Clark said.

The tourist report was prepared from a 17-question survey completed by out-of-state travelers who stopped at Texas tourist bureaus for routing information and travel literature. The bureaus serve as Texas' front door, and travel counselors extend hospitality to visitors arriving from all directions. Many travelers surveyed said information they received from the bureaus prompted them to

visit more places, enjoy more recreation, and stay longer in Texas.

Free copies of the report are available by writing *Auto Visitor Survey*, Travel and Information Division, 11th and Brazos, Austin, Texas 78701.

Good Reason

The defendant acknowledged that he hasn't spoken to his wife in five years and the judge put in a question. "What reason have you?" he asked severely.

Replied the husband, "I don't want to interrupt her."

Who Knows?

1. Who was the first American to orbit the earth?
2. Which state was the first to abolish capital punishment?
3. What is Kentucky's motto?
4. What is an erg?

Answers to Who Knows

1. John Glenn, February 20, 1962.
2. Michigan, in 1847.
3. United we stand, divided we fall.
4. A unit of electrical energy.

BIBLE VERSE



"Know ye that the Lord he is God: it is he that hath made us, and not we ourselves."

1. Who is the author of this verse?
2. What does this verse warn us against?
3. What is the rest of the verse?

Answers to Bible Verse:

1. The Psalmist—probably King David.
2. Against the sin of worry.
3. "We are his people; and the sheep of his pasture."

Cash Rewards
Up To \$1,000
For Information!

Call
Bailey County
Crime Line

272-HELP



Offering our youngsters the opportunity to work and learn all about agriculture, the Future Farmers of America continue to do a remarkable job in this endeavor. A national educational, non-profit, non-political organization, the FFA deserves our acclaim and deep appreciation in providing this great service to our communities and our nation. Happy 61st Anniversary to all its members!

FFA Members

Jerd Vinson	Monty Black
Mike Dunham	Daryl McCamish
Hugo Rodriguez	Jeffrey Noble
Troy Watson	Shane Burris
Carlos Galan	Shawn Rejino
Jerry Jaquess	Dusty Rhodes
Clayton Vansandt	Jody Gibbins
Shawn Branscum	Allan Vinson
Paul Rosas	Jeff Williams
David Ramos	Shannon Williams



FFA Members

Juan Pacheco	Robert Whisenhunt
Gregory Combs	Juan Carlos Lujan
James Foster	Brandon Collins
Johnny Cisneros	Susan Rejino
Billy Williams	Johnny Noble
Jason Redwine	Ross Parish
Steven Debusk	Ramon Mendoza
Blain Ferris	Jimmy Carpenter
Prospero Macias	Jason Obenhaus
Gary Freeman	Coby Baldwin

Justin Obenhaus
Ricky Railsback
Colin Tanksley
Bernie Valdez
Wade Wheeler

Wes-Tex Feed Yards

Farmer's Co-op Elevators

Muleshoe

Clays Corner

Enochs

GTE Changes Some Names In Operations

GTE's seven domestic telephone companies, recently reorganized operationally into a single, nationwide telephone unit, will be called GTE Telephone Operations, according to an announcement today by Kent B. Foster, president, GTE telephone operations group. This change is effective immediately.

The seven companies to be identified as GTE Telephone Operations are:

GTE California Incorporated, GTE Northwest Incorporated, and GTE Hawaiian Tel (to be identified as GTE Telephone Operations-West Area);

GTE Florida Incorporated, and GTE South Incorporated (to be identified as GTE Telephone Operations-South Area);

GTE North Incorporated (to be identified as GTE Telephone Operations-North Area); and

GTE Southwest Incorporated (to be identified as GTE Telephone Operations-Southwest Area).

Foster noted that the changes reflect the company's recent reorganization, its new nationwide sales and service coverage, changes in the business environment, advances in technology and the broad range of new products and services offered by the company.

In addition to the newly-consolidated General Office headquarters and the four Operating Areas, the overall GTE Telephone Operations Group is comprised of British Columbia Telephone, Quebec Telephone, CodeTel (in the Dominican Republic), and GTE Data Services. These companies will retain their existing names.

Texas Farm Bureau Confused By Inaction

With the U. S. Department of Agriculture waffling on rejection or acceptance of Texas Agriculture Commissioner Jim Hightower's plan to sell "hormone-free" beef to the European community, Texas farmers and ranchers still lose in the end, according to the president of the Texas Farm Bureau.

"The situation has become extremely confused," said S. M. True, a cotton, grain and cattle producer from Plainview, and president of the state's largest farm organization. "It appears the folks in Washington, D. C., both at the U. S. Department of Agriculture and the U. S. Trade Representative's office, can't seem to get their act together."

Regardless of how federal officials resolve the issue, True believes producers will fail to profit from the situation, for several reasons.

First, he said, if the EEC can make demands on the specifics of the types of commodities it will accept, then that raises the opportunity for any country to do the same.

"To start erecting certain types of trade barriers that either we will or will not be able to comply with, that means the whole format on our trading posture has changed," True said. "And, that's a very significant problem as we seek to increase our export markets for farm commodities."

Second, even if an agreement is worked out with the EEC, it's unlikely farmers and ranchers will have a true market, he said.

"If we lose the opportunity to use these natural growth promoters, then we'll lose from \$20 to \$80 a head in lost efficiency," he said. "Again, another tool is being challenged here in agriculture."

True said producers are worried that consumer activists in this country will follow the EEC's lead and make the same type of demands for American beef even though research does not support

their claims. The result could spill the issue over into the general population, when based on scientific evidence, there is really no issue at all.

"Thanks to deliberate misinformation and confusion consumers are obviously concerned, and they should not be," True said. "They should not be afraid because our food and food supply is safe."

"Commissioner Hightower has sworn to serve as an advocate for Texas farmers and ranchers. If what he's doing is serving as an advocate for farmers and ranchers, I'd certainly hate to see what he would do if he were opposing us."

More than 800 public school administrators, board members, teachers, employees, educational organization representatives and spouses are expected for the First Annual Education-Legislative Workshop in Lubbock, February 19 and 20 at the Civic Center.

The workshop, the first of its kind, is being hosted by the newly-appointed chairman of the State Board of Education, Montie Hasie, of Lubbock. Hasie explained the meeting would be "a good opportunity for school people and their legislators to get together, open communication channels, study current public education and its problems and seek new and better ways to improve our schools in the Panhandle and South Plains districts."

More than 116 school districts will be represented, from all 50 counties in SBOE District 15, in the conference to be attended by the following legislators:

Troy Fraser, Big Spring; Jim Rudd, Brownfield; David Counts, Knox City; Nolan 'Buzz' Robnett and Delwin Jones, Lubbock; Warren Chisum, Pampa; Dick Waterfield, Canadian; Senator Teel Bivins, Amarillo; and Senator John Montford, Lubbock and with 'possible' acceptances from the other legislators of this district.

On the program will be Senator John Montford, Railroad Commissioner Kent Hance, Secretary of State Jack Rains and Commissioner Bill Kirby.

All District 15 Are Attending Area Workshop

More than 800 public school administrators, board members, teachers, employees, educational organization representatives and spouses are expected for the First Annual Education-Legislative Workshop in Lubbock, February 19 and 20 at the Civic Center.

The workshop, the first of its kind, is being hosted by the newly-appointed chairman of the State Board of Education, Montie Hasie, of Lubbock. Hasie explained the meeting would be "a good opportunity for school people and their legislators to get together, open communication channels, study current public education and its problems and seek new and better ways to improve our schools in the Panhandle and South Plains districts."

More than 116 school districts will be represented, from all 50 counties in SBOE District 15, in the conference to be attended by the following legislators:

Troy Fraser, Big Spring; Jim Rudd, Brownfield; David Counts, Knox City; Nolan 'Buzz' Robnett and Delwin Jones, Lubbock; Warren Chisum, Pampa; Dick Waterfield, Canadian; Senator Teel Bivins, Amarillo; and Senator John Montford, Lubbock and with 'possible' acceptances from the other legislators of this district.

On the program will be Senator John Montford, Railroad Commissioner Kent Hance, Secretary of State Jack Rains and Commissioner Bill Kirby.

Sudan News

By: Evelyn Ritchie

Clay Carr, a 14 year old FFA member from Sudan will compete in the 1989 Houston Rodeo calf scramble on Feb. 25 in the Astrodome.

Clay, the son of Kenneth and Joyce Carr, will compete for one of 252 calves to be awarded at the 1989 show. The calf is raised by the winner for special showing competition in the Astrodome at the following year's Show. The yearlong project is closely supervised by the appropriate county extension agent or agriculture science teacher.

PREPARATION IS KEY TO MEMORABLE VACATIONS

Expert Offers Tips
For Travelers

One of the biggest challenges many families face in planning an automobile vacation is appealing to the entire family's interests while following a logical route. One of the most useful tools for trip planning is the 1989 Rand McNally Road Atlas.



Dr. Michael Dobson, vice president of cartographic services for Rand McNally, offers these tips for motorists: Use a Current Road Atlas. The new 1989 Road Atlas contains 18,116 changes from last year's edition, including important revisions to the nation's roadways, points of interest, travelers' services and other information of interest to motorists.

Do Your Homework. When you find points of interest in your Road Atlas, call or write to state agencies and tourism centers for literature providing additional information.

Start planning early to allow enough time for your requests to be fulfilled.

Plan Your Route. Instead of navigating as you drive, take the time to mark your travel route with a pencil on your Road Atlas. This is safer and more reliable than figuring out your route as you go.

Let Kids Participate. As you plan your route, show children how you're doing it and let them participate in the process. Let them help in choosing the points of interest you'll visit on the trip.



**WHY WAIT
FOR YOUR
TAX REFUND
WHEN YOU CAN
GET YOUR MONEY FAST!**

Use H&R Block's Rapid Refund Program

It's a loan against your expected federal income tax refund. Available whether H&R Block prepares your tax return or not.

IT'S FAST!

H&R BLOCK

For more details or to see if you qualify call H&R Block now.

Immaculate Conception Catholic Church

Father Patrick Maher
Northeast of City

First Baptist Church
220 West Ave. E.
Barry Bradley, Pastor

Emmanuel Baptist
Church

Iglesia Bautista Emmanuel
107 East Third
Isaias Cardenas, Pastor

Trinity Baptist Church
314 E. Ave. B.
Rev. Dale Berry

Circle Back Baptist
Church

INTERSECTION FM 3397 &
FM 298 Pastor Glen Price
946-3676

Calvary Baptist Church
1733 W. Ave. C.
Rev. Rick Michael

Muleshoe Baptist Church
8th and Ave. G.
Bob Dodd, Pastor

Progress Baptist Church
Charles Fisk, Pastor
Progress, Texas

Richland Hills Baptist
Church

17th and West Ave. D
Allen Petersen, Pastor

St. Matthews Baptist
Church

Corner of West Boston
& West Birch
M.S. Brown, Pastor

Progress Second Baptist
Church

1st and 3rd Sunday
Rev. Arthur Hayes

The Community Church
Morton Hwy.
Jim Cope, Pastor
272-5992

1st Baptist Church
Lazbuddie, Tx. 965-2126
Gary Wilcox, Pastor



John Doe ?

During the last war Kilroy was the name of the man who had been there. John Doe, the encyclopedia tells us, is the name used in legal documents to describe a person whose real name is unknown.

You do not know the name of this darling baby, and his name may be unknown to us, but in his eyes dwell love and trust. His eyes are like doe-eyes. Yet the male deer is a young buck, rather than a doe, and he is known for his swift running and his ability to jump to high places.

Our prayer for this young man is this:

May the Lord strengthen and establish you. Then as Isaiah says in the 6th verse of the 33rd Chapter, wisdom and knowledge shall be the stability of thy times, and strength of salvation: the fear of the Lord is his treasure."

The Church is God's appointed agency in this world for spreading the knowledge of His love for man and of His demand for man to respond to that love by loving his neighbor. Without this grounding in the love of God, no government or society or way of life will long persevere and the freedoms which we hold so dear will inevitably perish. Therefore, even from a selfish point of view, one should support the Church for the sake of the welfare of himself and his family. Beyond that, however, every person should uphold and participate in the Church because it tells the truth about man's life, death and destiny; the truth which alone will set him free to live as a child of God.



©Coleman Adv

St. John Lutheran

Sunday School and Bible
Classes 9:30 a.m.
Church Services 10:30 a.m.
Rev. Mac Bearss, Pastor

Lazbuddie Methodist Church

965-2121
Larry Reid Farris, Pastor
Truth Tabernacle

(Pentecostal Church)

200 E. Ithaca
& Fir
Pastor: Les James
272-3391

Templo Calvario

507 South Main
Sunday 10:00 a.m.
Sunday Evening 7:00 p.m.
Evangelistic Services
J.L. Soto, Pastor

Jehovah Witness

Friona Hwy.
Boyd Lowery, Pastor

New Covenant Church

Plainview Hwy.
Sunday 10:00 a.m.
Wednesday 7:00 p.m.
Jimmy Lowe, Pastor

Church Of The Nazarene

9th and Ave. C.
Dennis Hayes, Pastor

965-2932

United Pentacostal

Lighthouse Church

207 East Ave. G.
Rev. J.A. Torres

Western Drug

114 Main 272-3106

Little Gulf

202 W. Amer. Blvd. 272-4918

Bob Stovall Printing

221 E. Ave. B. 272-3373

Main Street Beauty Salon

115 Main 272-3448

Irrigation Pumps & Power

West Hwy. 84 272-4483

Serv-All Thriftway

401 W. Amer. Blvd. 272-4739

KC Mufflers Inc.

201 North First 272-3620

Lenau Lumber

202 E. Ash 272-4222

Wes-Tex Feed Yards

272-7555

American Valley, Inc.

W. Hwy. 84 272-4266

Farmers Co-Op Elevators

Muleshoe 272-3988

Bratcher Motor Supply

107 E. Ave. D. 272-4288

Bailey County Journal

304 W. 2nd. 272-4536

Dairy Queen

1204 W. Amer. Blvd. 272-3412

Auction Insight by Tom Flowers

Clovis Hwy. 272-453

Bobo Insurance

108 E. Ave. C. 272-4264

Five Area Telephone Cooperative, Inc.

302 Uvalde 272-5533

Richland Hills Texaco

1914 W. Amer. Blvd. 272-4875

GRAIN PRICES	
FEED CORN. 4.86 cwt	WCY. 5.70 cwt
RCY. 5.00 cwt	WHITE FOOD CORN. 6.85 cwt
MILO. 4.11 cwt	SOYBEANS. 6.89 cwt
NEW WHEAT. 3.59 cwt	99%
Prices February 17, 1989	
MARKETS COURTESY OF FARMERS CO-OP ELEVATORS	
272-4335	Muleshoe, Texas

Unpredictable Forecast? Shop The Classifieds

272-4536



CLASSIFIED RATES
Minimum Charge \$2.30

Consecutive Insertions Minimum Charge \$2.00

CLASSIFIED DISPLAY RATES
\$1.75 Per Column Inch

DEADLINES
12 noon Tuesday For Thursday Paper
12 noon Friday For Sunday Paper
We reserve the right to classify, revise, or reject any ad. Not responsible for any error after ad has run once.

1. Personals

A.J.T.P.A. Staff person will be available at Muleshoe Community Action on Tuesdays 9:30-3:30 to discuss applications and available services.
s1-1t-16tc

FOR REGISTERED
Child care, full time or drop-in's. 272-3036.
d1-2t-4tc

FRANK'S
Refrigeration & Appliance Service Parts & Repairs.
817 Gum Muleshoe, Texas 79347

PHONE
Home 272-3822
1-6s-tfc

Call your local used cow dealer for 7 day a week dead stock removal. 965-2903 or 1-800-692-4043.
e1-37t-tfc

CONCERNED
About Someone's Drinking?
HELP IS AVAILABLE
through Al-Anon
Call 272-2350 or 965-2870 or come to visit Tuesday nights, 8:00 p.m. or Saturday mornings at 10:30 a.m. and through AA call 965-2870 or come visit Tuesday nights, 8:00 at 620 W. Second, Muleshoe.

Mary Kay Cosmetics
Josie Flowers
272-3865
Call 8-12a.m. and after 6p.m.

3. Help Wanted

ATTENTION HIRING
Government jobs-your area. Many immediate openings without waiting list or test. \$17,840 \$69,485. Call 1-602-838-8885. Ext. R-10191.
p3-6s-6tp

WE ARE NOW taking applications for Part-Time Sales Clerk.
Ince Oil Co.
102 W. Amer. Blvd. Muleshoe, TX 79347
272-5278
13-8s-2tc

LVN, MA, or EMT, parttime. Need extra money? Complete Mobil Insurance Physical. Call 806-747-3223.
t3-8s-3tc
19, 23, 26

5. Apts. For Rent

NICE Large one bedroom range and refrigerator furnished. Good Location. Water Paid. Deposit Required. 272-7575.
h5-5t-tfc

8. Real Estate

NICE 3 bedroom, 2 bath house, 2 miles west of Muleshoe. With large barn. Nice location. Call 946-3340.
d8-25s-tfc

3BEDROOM BRICK on 3 acres of land, 2/car detached garage, fireplace, built-ins, Central heat with a house well. Barn and corrals.

Country Club Addition. Call 272 3390 or 272-4010.
a18-3s-8tc

TWO BEDROOM, 1 bath, garage, carpeted, fenced back yard. Kitchen appliances, washer, dryer and chest freezer included. One block from the high school. Call 272-5405.
p8-5s-9tp

3-2-1 STUCCO. Close to town on Hwy. 2 bedrooms downstairs, 1 bedroom and bath upstairs. Fire place. A must see on 100x400 lot. Call Whitt Reid Real Estate 272-3611 or Thursie Reid, 272-5318.
w18-3s-tfc

FOR SALE: 2 bedroom 1 bath mobile home on 60 x 100 lot with 2 car carport in Country Club Addition. Call: 925-6480 after dark.
08-45s-tfc

ATTENTION GOVERNMENT HOMES
from \$1 (U-repair). Delinquent tax property. Repossessions. Call 1-602-838-8885 Ext. GH 10191.
p8-6s-6tp

REPOS: 2 and 3 bedrm Mobile Homes No Credit needed. Low down payment. Low monthly payments. Call 806-894-8187.
b8-7s-8tc

ATTENTION: First time home buyers, 2 and 3 bedroom Mobile Homes. No credit needed. We deliver. Call 806-894-7212.
b8-7s-8tc

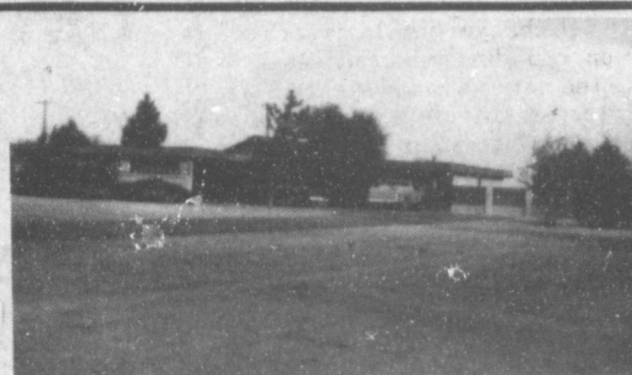
9. Automobiles For Sale

Is It True You Can Buy Jeeps for \$44 through the U.S. government? Get the facts today! Call 1-312-742-1142 Ext. 6976-A.
p9-3t-4tp

ATTENTION GOVERNMENT SEIZED VEHICLES from \$100. Fords, Mercedes, Corvettes, Chevys. Surplus Buyers Guide. 1-602-838-838-8885 Ext. A-10191.
p9-6s-6tp

Most people can give good excuses for failing to do what they don't want to do.

8. Real Estate 8. Real Estate



Whitt Reid Real Estate
201 Main Street Muleshoe, Tx.
272-3611

is featuring this week a beautiful Spanish Style Country home located 3/4 miles North East of Muleshoe on Plainview highway approximately 3435 square feet of living space, 3 large bedrooms, 2 and 3/4 baths, large carport, Central heat and air, large family room. Cathedral Ceiling, rock fire place w/gas starter, intercom system, shake roof, fenced yard, landscaped, incenerator, storage house, elegantly decorated-A dream home, priced for quick sale. Call after hours-Thursie Reid-272-5318
Sandra Chancey-925-6727
Geo. Poteet-272-4047
Roy Whitt-272-3058

11. For Sale For Rent

FOR SALE 16ft. Deck Boat, 85 Johnson Motor or real clean, has been covered. 927-5423.
r11-7t-tfc

KITCHENETTES
272-4533

1983 14x80 MANATEE MOBILE HOME 3 bedroom, 2 bath. Large bedrooms, storm windows, assumable loan. 263.68/month. Call 965-2364 after 5:00 p.m.

15. Misc.
MAN EXPERIENCED in irrigation well repair. Call 806-238-1596 day or 238-1328 nights.
b3-49s-tfc
CHRISTIAN WOMAN will sit with elderly day or night. 272-3339.
1p-7t-3tp

8. Real Estate 8. Real Estate

Jo Ann Chester Realty

306-227-2363

REDUCED

Bailey County Farms
504 Acres irrigated with Pivots
177 acres Dry Land

700 acres Dry Land-CIRCLEBACK

240 acres 2-8 in Wells on highway
70 EAST OF EARTH

SMALLWOOD REAL ESTATE

232 Main Muleshoe 272-4838

3 Bedroom, 2 Bath Stucko House. Close to Mary Deshazo School. \$500.00 closing cost. \$180.00 per month includes Tax, Insurance, and Escro.

3 Bedroom, 1 Bath, 1 Car Garage Brick Homes, Starting at \$23,500.00 Around \$650.00 to move in.

dealership log homes

Your complete Log Home Company has all of America's finest lines, starting at \$12,475. Great earning potential, will not interfere with present employment. Investment 100% secured by model home. Call Don Hickman Toll Free 1-800-633-0670 or Collect 615-399-1721.

COUNTRY LIVING LOG HOMES
P.O. Box 171080
Nashville, TN 37217

Exactly
The dying man gasped pitifully, "Grant me one last request, Julia."
"Of course," she said softly.
"Six months after I die, I want you to marry Sam," he said.
"Sam," she said in a shocked tone. "But I thought you hated that man."
"Exactly," he said with his final breath.

Bingham & Nieman Realty

116 E. Ave. C. 272-5285 or 5286

PRICES REDUCED UP TO \$7,000 on 2 & 3-1-1 Brick Homes, Cent. heat, Energy Efficient. PRICED FROM \$23,500 !!! Approx. \$600.00 total move-in, payments based on income for Qualified Buyers.

RICHLAND HILLS
IMMACULATE 3-2-2 Brick, corner lot, Cent. A&H, built-ins, FP, loads of storage & closet space, much more!

PRICE REDUCED 3-1-1 Brick, Cent. Heat, Evap. air, built-ins, fenced yard....

VERY NICE 3-2-3 Home, Cent. A&H, built-ins, FP, fans, sprklr. sys., fenced. **PRICED TO SELL!!!!**

VERY NICE 3-2-2 Brick Home, Cent. A&H, built-ins (inc. kitchen ctr., compactor, & microwave) Jacuzzi, loads of storage, basement, aut. sprklr. sys. & Much More!!!!

JUST LISTED 3-2-1 carport Brick, Cent. A&H, built-ins, FP, den or 4th bdrm., storage bldg., Fenced yd.

HIGHLAND AREA
JUST LISTED Nice Large 2-2-2 Brick, Cent. A&H, utility, cov. patio, fenced yard & more!!!!

VERY NICE 3-2-2 Brick, Cent. A&H newly remodeled kitchen with built-ins, storm windows, fenced yard, storage bldg. and much more!!!!

NICE 3-2-2 Brick home (2 story), on corner lot, Cent. A&H, built-ins, and much more. **LET'S LOOK TODAY!!!!!!**

NICE 3-2-1 carport home 2 living areas, priced under \$20 per sq. ft., fenced yard, workshop-storage, & more!!!!

NICE 3-1/4-1 Brick Home Cent. A&H, built-ins, large den w/Fireplace, fenced yard, storage bldg. \$50's!!!!

HIGH SCHOOL
NICE 2-1/2-2 Home, corner lot, built-ins, nice carpet, heat pump, fenced yard, storage bldg. & more!!!!

PRICE REDUCED FOR QUICK SALE! Nice 2-1-1 Home, Cent. Heat, carpets, work-storage area, and much more. \$19,950.00!!!

DIANNE NIEMAN, BROKER

IMMACULATE 3-2-1 carport, Brick Home, Cent. A&H, built-ins, nice finished basement with fireplace, sprklr. sys., & much more!!!!

COUNTRY CLUB-VERY NICE 3-2-2 brick, Cent. A&H, built-ins, FP, Earhtone carpet, large fenced yd., storage-workshop, corner lot. \$50's!!!!

LENAU ADDITION
COZY 3-1/2-1 home, Cent. heat, nice earhtone carpets, fenced yard, storage bldg., & more!!!!

3-1-1 home, Cent. A&H, utility, storage bldg., cellar, gas grill & more. \$20's!!!!

COUNTRY HOMES
NICE 3-2-2 Brick on 1 acre on pavement, close to town, DW, WB stove, utility, storm windows & doors. \$50's!!!!

VERY NICE 3-2-1 Home on 1 acre, close to town, Cent. Heat, Evap. air, nice carpets, nicely remodeled. \$30's!!!!

HOME TO BE MOVED, Nice 4-3-2 Home. Cent. A&H, built-ins, fireplace, loads of storage & closet area, 2150 sq. ft. of living area, much more, \$40's!!!!

2-1 home, 20 acres, sub. pump, sprinkler, barns & corrals. \$40's!!!!

Nice, well maintained Self-Service Laundry. 34 washers, 16 dryers in nice, modern building, excellent location. Books available to qualified Buyer.

SALE OR LEASE nicely remodeled office bldg. with over 3,000 sq. ft. of area, excellent location across from Courthouse. **PRICED TO SELL!!!!**

APPROX. 3,000 sq. ft. bldg. Railroad frontage. **CASH PRICE \$15,000.00.**

69+ acres, improved pasture, 8" well, undgrd. line, fenced, plus nice 3-2-2 home, Cent. A&H, built-ins, utility, storm cellar, nice shop. & much more, close to town!!!!

GEORGE NIEMAN, BROKER

18. Legals

REQUEST FOR BIDS ON TEXAS HIGHWAY CONSTRUCTION

Sealed proposals for constructing 3.867 miles of fabric under-seal, seal coat and asphaltic concrete pavement overlay on Spur 270 from US 60 to Main St. in Friona, on SH 214 from US 84 in Muleshoe to Avenue I, and from 0.583 mile S. of covered by CPM 168-17-5, CPM 461-1-168-17-5, CPM 461-616 & CPM 563-3-7 in Parmer, Bailey & Lamb Counties

will be recieved at the Department of Highways and Public Transportation, Austin, until 1:00 p.m. March 7, 1989 and then publicly opened and read. Plans and specifications including minimum wage rates as provided by Law are available for inspection at the office of Rhea Bradley Resident Engineer, Littlefield, Texas, and at the State Department of Highways and Public Transportation, Austin, Texas. Bidding Proposals are to be requested from the Construction Division, D.C. Greer State Highway Building, 11th and Brazos Streets, Austin, Texas, at the expense of the bidder. Usual rights reserved

Sudan News

By: Evelyn Ritchie

For the first time since 1967, the Sudan Hornets have won outright the District Basketball Championship. The Hornets also won District.

Playoffs will be announced later. The Hornets will be playing in Levelland and the Hornets will be playing Sundown at Whiteface.

In their win Friday over Plains, 63-56, Kyle Maxfield led in scoring when he hit 9 two point and 2 three point field goals and 2 of 3 fta for 26 and had 14 rb, 2 st and 7 a. Other scorers were Justin Holley, Elliot King, Ronnie Freeman, Joe Gonzales and Gorge Slains.

The Hornets took a 20-12 lead at the end of the first quarter and both teams added 14 for a 34-26 halftime score in favor of Sudan.

"Teamwork" said Coach Ed Henley, when asked what helped the Hornets in their 85-84 win over Kelton, who had not lost a game all season. The Hornets defeated them Tuesday night in a practice game.

In the easy 92-22 win over Plains Friday night, Kristi Hargrove took top honors by scoring 14 fg and 4 of 4 free ones for 32. Other scorers were Maxfield, S. Williams, K. Fisher, T. Newman, T. Williams and Melanie Peck. This game won district for the Hornets.

In their 62-52 win over Kelton Tuesday, a practice game, Stacy Williams led the Netties in scoring, 28; N. Maxfield hit 13; T. Fisher and T. Williams each 6; S. Tennyson 4; Hargrove 3; and K. Fisher 2.

The game was tied at 8 at the end of the first quarter and Sudan led 29-26 at halftime. They came out on top with 62-52 for the win.

The JV Hornets were edged out 44-53 by Plains with Edwards sinking 5 fg and 4 of 6 fta for 14 for top scoring honors.

For Your Classified Call Muleshoe Journal

272-4536