

WEATHER

January 21	25	13	.Tr
January 22	32	01	.00
January 23	37	00	.00
January 24	42	02	.00

BAILEY COUNTY JOURNAL

'The Community Of Opportunity-Where Water Makes the Difference'



Vol. 25, No. 4

12 Pages Today

Published Every Sunday at Muleshoe, Bailey County, Texas 79347

20¢

Sunday, January 25, 1987

Civil, Criminal Juries Summoned For Monday

Estate Planning Now Can Save Many Dollars

"A properly drawn estate plan may save many farm and ranch families up to \$200,000 in estate taxes." This statement made by Wayne A. Hayenga, Texas Extension Economist and Attorney, assumes a lot of information: a married couple who "like each other" and want to care for each other, who have a farm or ranch worth \$1 million or more, and want to pass it on to their children.

This is an eye-opening fact

AROUND MULESHOE

Businesses are asked to be sure to decorate for Valentines Day! Toni Eagle, manager of the Muleshoe Chamber of Commerce and Agriculture, said they are sponsoring a decorating contest, this time for businesses only.

Votes will be taken until 5 p.m. on Wednesday, February 11 and presentations will be made on Thursday, February 12. The business winner will receive a plaque to display in their particular business.

Janet Shain, a 1982 graduate of Muleshoe High School, is listed on the Dean's List at East Texas State University, Commerce, for the fall semester.

A radio and television communication major, she is the daughter of Mr. and Mrs. Charles Shain.

Eugenia Dupler of Maple is among 332 students named to the Dean's Honor List for the fall 1986 semester at South Plains College.

Also, Scarlett Claunch of Bula was among 125 students named to the President's Honor List for the fall 1986 semester at South Plains College, Levelland.

Jimmy L. Gleason, son of Dr. and Mrs. Jerry Gleason, Muleshoe, received a bachelor's degree in veterinary science during Texas A&M University's 1986 fall commencement exercises.

A total of 2,827 degrees were awarded, including 2,300 bachelor's, 387 master's and 140 doctorates.

Six hundred eighty-eight West Texas University students

Cont Page 8, Col. 6

Flight For Life Air Ambulance Scheduled Here

Did you ever want to ride in a helicopter? Of course, you would probably not really want to have to take a ride in a very special helicopter that will be on display in Muleshoe Tuesday afternoon. It is the Spirit of St. Mary, the 'Flight For Life' helicopter from St. Mary's Hospital, Lubbock.

At 1 p.m. on Tuesday, under auspices of the Muleshoe Rotary Club and the Bailey County Ambulance Service, the air ambulance will be on public display at the Bailey County Civic Center.

You can visit at that time and check out the French-made Alouette III, a very strong helicopter, equipped as a mobile emergency room. It is considered to be one of the most powerful helicopters in its class, and was originally designed to fly in the Swiss Alps.

Flight For Life is the only helicopter ambulance service in operation from Dallas to Albuquerque, and is available within a 100 miles radius for emergency transportation.

Be sure you make plans to visit the Bailey County Civic Center Tuesday at 1 p.m. and see the medical profession's latest addition to help save trauma victims.

for many farmers and ranchers. In fact, many people only worry about estate planning if they hear of a 'friend's problem' in settling an estate or paying estate taxes.

"But," Hayenga continued, "for many families the estate tax savings are not as large-if they have smaller operations. In fact, for many farm/ranch families, the income tax savings of a properly prepared estate plan can be greater than the estate tax savings."

A seminar talking about these complicated tax topics will be held at 9 a.m. on January 29, at the Bailey County Coliseum, explained Bailey County Agent Spencer Tanksley.

He said the program is structured to help farmers and ranchers learn how to lower their tax burden and ease administrative burdens that affect passing their estates to their loved ones. In addition to discussing estate planning systems, tax savings possibilities will be discussed from corporations, partnerships and trusts when family members are involved in the business.

Making gifts to avoid estate taxes will be discussed also. "There are two problems with making excessive gifts-the first is dying poor; the second is the adverse income tax consequences the gift can cause the recipient. A properly planned estate can save many dollars in income taxes for the heirs."

Two problems that affect family operations--planning for inflation and growth of the business will be discussed. Another topic, how to be fair among all children when one child is interested in the family business and others are not, will be addressed.

Snow-Packed Icy Roads Slow Traffic

The snow stopped, and the mess began. After light snow fell all day Tuesday, only on icy, snowpacked roads, sidewalks and yards were left by Wednesday, lingering into the end of the week.

At 8 a.m. on Thursday, the officially recorded temperature was 0; but warmed into the high 30's by the end of the day. Some thawing took place despite the rather low daytime temperature as a bright sun was shining all day on Thursday, giving way to cloudy skies again on Friday.

Only one potentially major accident had been reported at presstime, and was only indirectly related to the weather. A State Highway Department pickup, driven by Herb Whalin was smashed from behind by a semi-truck approximately three miles east of Muleshoe on Highway 84.

Whalin, who received no major injury, was driving behind a maintainer that had been clearing snow and ice from Highway 84. The impact smashed the bed of the pickup into the cab.

According to the driver of the truck, he had fallen asleep while driving, causing the smash-up.

Although lots of drivers slid into snowbanks on the ice-glazed streets, only a couple of non-injury fender-benders occurred in the city limits.

City workmen and members of the State Highway Department worked long, hard hours to keep major highways and streets as clear as possible during the snow, plowing down deep drifts in some instances.

School was held each day in every school in the area, although school started an hour late most of the week, and throughout the week, buses ran on 'pavement only.'

A few people went 'skating' trying to keep on their feet on the ice-glaze and icy snowpacked sidewalks, and a few took rather hard bumps when they fell, but no major injuries were reported from falls.



SHE'S SPECIAL TO HER STUDENTS-- Terri Fortenberry, special education teacher at DeShazo Elementary School, is very special to her students and to the other teachers, aides and administrative personnel at the school. She is considered a 'natural' for her profession.

Special Education Teacher Praised

What makes 'someone special' in teaching and guiding students in the Special Education classes? How do you determine if someone has that special 'knack' necessary to reach children with learning disabilities?

All you have to do is visit the classroom of Terri Fortenberry, Special Education teacher at DeShazo Elementary School. You will quickly find out she is, indeed, one of the special ones.

In her third year as Special Education teacher at DeShazo, Mrs. Fortenberry grins as she relates that she didn't start out to be a Special Education teacher. "When I was looking for a job, I was working on my teaching certificate, and they (DeShazo) needed a Special Ed teacher, so I took it," she commented. "I found I liked it so started working on my Special Ed Certification."

Mrs. Fortenberry said she finds all kinds of challenges as a Special Ed teacher, while guiding the 35 youngsters with learning disabilities in her classes.

The teacher relates that it is hard to plan for her class, as she has several different learning styles among her students. "I have to teach varied styles because of the great differences," she noted.

In Special Education classes, with very short attention spans, Mrs. Fortenberry said the classes take frequent breaks, and have smaller classes.

However, this special teacher of special children says, "Every year it gets better. I like working with children and working with children with learning disabilities. I also like counseling children, teachers and parents."

Every student is different, and must be handled individually, she said. Also, each school day, she makes 30 minutes available to the other teachers in the school, for counseling about some of the students who may be in their classes for at least a class a day.

Mrs. Fortenberry said she took her students on a field trip to Lubbock recently, and was amazed at some of the things entrancing the youngsters. Some had never heard a dial tone on a telephone; some had never eaten in a restaurant; some had never ridden on a bus

and some had never been on an escalator, such as they found in the mall.

The Special Ed teacher took

Con't Page 8, Col. 3

SBA Disaster

Loans Available For This Area

U.S. Small Business Administration (SBA) officials have announced that small business concerns in numerous West Texas counties may now be eligible to apply for financial assistance under the Agency's Economic Injury Disaster Loan (EIDL) program.

Small business concerns sustaining losses due to weather-related incidents beginning as early as January 1, 1986 and ending as late as November 30, 1986 in 23 West Texas counties may be eligible for the loans, according to Walter Fronstin, district director of SBA's Lubbock office.

"The deadline for filing applications with SBA under the EIDL designations is September 9, 1987, subject to requirement changes of the Federal budget," Fronstin said.

The West Texas counties designated and the related incidents and dates areas follows:

Wheeler County, adverse weather conditions occurring February 1 through June 26, 1986; and Bailey, Borden, Childress, Crosby, Foard, Gaines, Garza, Glasscock, Haskell, Hockley, Hudspeth, Kent, King, Knox, Lubbock, Mitchell, Motley, Nolan, Pecos, Terry, Upton and Yoakum Counties, damages and losses to crop due to adverse weather conditions occurring between January 1 and November 30, 1986.

"Only business loan applicants who are unable to obtain credit elsewhere and whose business meets SBA's size standards are eligible to apply for assistance," Fronstin noted. "Agricultural enterprises are not eligible for loans under SBA's EIDL program," he said.

EIDL loans are made by the SBA to small business concerns and small agricultural cooperatives having maintained sub-

Cont Page 8, Col. 4

Four Civil Cases, Three Criminal Cases On Docket

A special jury list of 110 prospective jurors has been notified to report to 287th District Court on Monday, January 26 at 9:30 a.m. for possible jury service to hear three criminal cases and four civil cases.

Joint criminal and civil settings have been called and docket call was on Friday, January 23.

Criminal cases called for Monday, January 26 involve one person. Case No. 1351 is the State of Texas vs. Randy Mack

Forty-Nine Are Chosen All-Region

Thursday night, the Muleshoe High School Mighty 'M' Band went to Littlefield to participate in the All-Region Band tryouts. Muleshoe, in competition with six other bands, placed the largest number of band members in the All-Region Band, with 49.

Littlefield was next, with 37 band members chosen.

Along with the 29 girls, and 20 boys selected for the All-Region Band, 11 alternates were also chosen.

Mighty 'M' Band members chosen and their instrument include:

FLUTES: Michelle Finney, first chair; Melissa Ward, Sharla Evins, Lisa Hamilton, Lucy Hurtado, Holly Huckaby and Rachel Pineda.

CLARINETS: Robin Evins, Ronnie Gail Bennett, Susie Leal, Shonda Strahan, Kimberly Harris, Elizabeth Posadas, Jenny Bennett, Brenda Mudford, and Susan Rejino.

HORNS: Glenda Willoughby, first chair; Kelly Conklin, Melissa Leal and Carmen Espinoza.

TROMBONES: Scott Williams, first chair; Jackie Luna, Francisco Ybarra, Abel Leal, Matt Madrid and Jason Clarkson.

BARITONES: Greg Garcia, first chair; and Ramon Garcia.

TUBAS: Mark Mata, Jimmy Seals, Rocky Flores and Lloyd McCray.

PERCUSSION: Christy Mata, snare, first chair; Nathan Lloyd, snare; Selina Gonzales, mallet (piano); and Brandon Carpenter, tympani.

BASS CLARINET: Roxanne Richards and Christy Pena.

ALTO SAX: Jimmy Cisneros, Lisa Triana, Sue Haire and Roland Ambriz.

TENOR SAX: Brenna Matthews.

BARI SAX: Brandon Wilson.

TRUMPETS: Richard Mui-shondit, first chair; Toby Carpenter, Freddy Paez, Lonnie Wilhite and Laurie Lindt.

Lackey, possession of controlled substance; No. 1352 is State of Texas vs. Randy Mack Lackey, drug manufacture and case No. 1361 is State of Texas vs. Randy Mack Lackey, escape - a felony.

The four civil cases are: In Re: Estate of Josephine Wenner, Deceased, Ralph Wenner, Reaford Wenner, Pro Se and Dorris Wenner Ashford; Pro Se; Randy Johnson vs. Elvin Crow, Individually and d/b/a Crow Cattle Company; Muleshoe State Bank, Muleshoe, Texas vs. Charles E. Flowers, Sydna Elms Flowers, Sydna Ann Flowers Family Trust, Harry H. Jung, as Co-Trustee of the Sydna Ann Flowers Family Trust & Hazel Elms as Co-Trustee of the Sydna Ann Flowers Family Trust and Mary Kathryn Flowers; and Avis Williams, vs. Roger Lowe, d/b/a Pay-N-Save Grocery Store and Pay and Save, Inc.

Prospective jurors to report on Monday are Irene Magby Morris, Larry Brent Kitchens, Nancy Robertson Benham, Benny Sena Pacheco, Billy Joe Gable, Rhonda Kitchens, James Kenneth Kindle, Bethany Goforth Watson, Kenneth Dale King, Trina M. Wilson, B. Aaron Scheller, Rudy Raymond Gonzales, Carolyn Tiller Swint, Jimmy Raymon Copley, Kay L. Mardis, Elias Noe Anzaldua, Gwendolyn June Ladd, J.T. Eubanks, Maria Villarreal Snitker, Elizabeth Ann DePalma, David Kendall Gallman, Donna Reed Redwine, Sheila Kelley Moraw and Terome Clemmons.

Also, Jerry Darrell Ruthardt, Margarito Longoria Garcia, Jessie Mae Holmes, Clifford Buckner, Joy Killough Glover, James Leroy Richardson, Wanda Kittrell, Richard K. Minckler, Sr.,

Con't Page 8, Col. 3

Explosion Closes Friona Beef Plant For Several Hours

Around midnight on Wednesday, a boiler blew up at the Excel Plant, formerly Missouri Beef, just west of Friona, forcing evacuation of workers, and a temporary shutdown in operations.

The explosion caused a minor fire, which was answered by the Friona Fire Department, as well as an ammonia leak.

A spokesman for the plant had said just a couple of days before the explosion, "We are busier killing beef then we have ever been."

After some repairs were made, and the ammonia leak secured, operations began again with the second shift of workers reporting for normal duty.

There was no serious injuries reported in the explosion.

Sweetheart Festival Saturday

It's almost time for the second annual Sweetheart Festival. The event will be held Saturday, February 7, at 7 p.m. in the Bailey County Coliseum.

This is a very important event sponsored by the Muleshoe Fine Arts Boosters, explained a member of the Fine Arts Boosters. She said the festival helps support the art, drama, and band departments of the Muleshoe Schools.

Each year, the Boosters provide financing for many projects in these departments for which the school budget is unable to fund. It is only through these efforts of this group's fund raising activities that these projects can be maintained, pointed out the booster member.

In past years, the Boosters have provided supplies, costumes for one-act plays, uniform bags for traveling, a copy machine and yearly maintenance agreement, and this list just goes on and on.

The Sweetheart Festival was established for the purpose of providing an evening of fun for local families, and at the same time, to support Muleshoe School children in the fine arts departments.

Booth space is available to any organization, club or interested person. The booths will provide entertainment, games, contests, or whatever your particular group feels is appropriate. Fee for booth space will be \$25 and will be a part of the fund raising effort. Money you or your group earns from your booth can be kept by your own organization. For information concerning booths, contact Charles Hamilton at 272-4974 or Carolyn Willoughby at 272-5446.

Climaxing the evening will be the crowning of the Sweetheart, who will represent one of the fine arts departments. Each department will be in competition for this title, and the group that raises the most money will watch their candidate crowned.

The spokeswoman concluded, "We invite you to join us in the worthwhile cause and support the youth in fine arts in the Muleshoe schools."

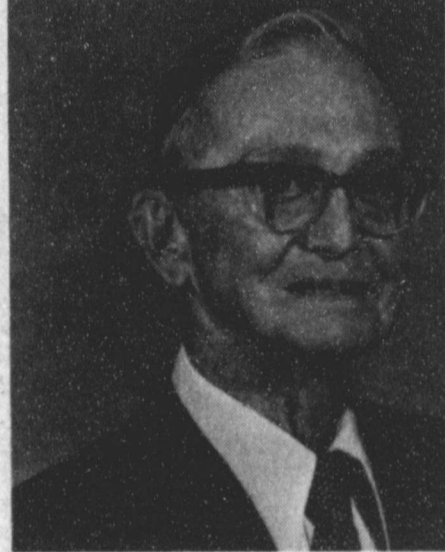
W.F. Harper Funeral Services Set Monday

Funeral services for W.F. "Felton" Harper, 87, will be held at 2 p.m. Monday, Jan. 26 in the First United Methodist Church with the Rev. Larry Reed-Farris, pastor of the First United Methodist Church of Lazbuddie, officiating.

Burial will be in Bailey County Memorial Park under the direction of Ellis Funeral Home. Harper died at 8:30 p.m. Thursday in Clovis, N.M.

A native of Glenallen, Alabama, Harper was born on June 1, 1899, and moved to Muleshoe in 1956, from Sudan where he lived from 1931 to 1956. He was a retired farmer and a member of the Muleshoe First United Methodist Church. He married Roberta Lucile Glover on Jan. 1, 1925, in Memphis, Tx.

Survivors include his wife, Lucile Harper; a son, Roy Lee Harper of Muleshoe; four sisters, Ella Gresham of Munday, Mozelle Spruill of Amarillo, Dorell Woodson of San Angelo, and Jennie Bell Fowler of Hereford; a brother, L.M. Harper of Sudan; five grandchildren; and two great grandchildren.



W.F. HARPER

Nona Davis Graveside Services Set Monday

Graveside services for Nona Ethel Davis, 88, will be conducted at 2 p.m. Monday, Jan. 26 in Muleshoe Cemetery with the Rev. Barry Bradley, pastor of the First Baptist Church, officiating.

Interment will be under the direction of Ellis Funeral Home of Muleshoe. Mrs. Davis died at 7:25 a.m. Thursday in Amherst Manor Nursing Home.

Born Dec. 22, 1898, in Nocona, Tx., she had been a resident of Muleshoe since 1949, moving here from Matador. She was a housewife and a member of the First Baptist Church of Muleshoe. Her husband, A.L. Davis, died in 1960.

Survivors include two sons, Jesse T. LeBow of Amarillo, and Richard D. LeBow of Carlin, Nevada; a daughter, Mrs. Dovie Luttrell of Alamogordo, N.M.; a half sister, Mrs. Dove (Marie) Gonyang of Freeport, Calif.; a half brother, Cecil Gibson of Oildale, Calif.; nine grandchildren; ten great grandchildren; and two great great grandchildren.

Thomas Rasco Local Man's Brother Dies

Services for Thomas Rasco, 59, of El Paso were held at 3 p.m. Friday in Martin Funeral Home with the Rev. Ken Johnson, pastor of Eastside Christian Church, officiating.

Burial was in Lubbock's Resthaven Memorial Park under the direction of Martin Funeral Home. Rasco died Tuesday in Provenance Hospital following an illness.

Born in Comanche, he had lived in Lubbock and Denver City before moving to El Paso. He owned and operated D.C. Wrecking in Lubbock and El Paso.

Survivors include his wife, Rita; his stepmother, Velma Rasco of Lubbock; two sons, Bobby and Michael, both of El Paso; two daughters, Karen Shirley of Lubbock and Brenda Hope of Los Angeles, Calif.; four brothers, James of Chaparral, N.M., Robert and Jimmy, both of Lubbock and Larry of Muleshoe; three sisters, Mildred Rich of Zapata; Shirley McNeil of Amarillo and Jerri Noseff of Lubbock; and 10 grandchildren.

The family suggests memorials to High Plains Children's Home, P.O. Box 7448, Amarillo, Tx 79113.

Dry, Itchy Skin?
Lindsey Soft Water Is The Solution
Free Installation
W. Hwy 84 Wilson Drilling 272-5521

Longhorn Roundup

By: Lazbuddie
Journalism Class

First half of district play is over for the Lazbuddie Longhorns, Lady Horns record, 13-9, 2-3 district, Horns 13-9, 1-4 district.

The Lady Horns played Bovina, Horns 39 Mustangs 47, scoring Elliott 16, Schacher 2, McGehee 3, J. Jennings 4, M. Jennings 14. JV girls Bovina 37 Lazbuddie 4.

The next team was Kress, Horns 44 Kress 43, scoring Elliott 10, Schacher 4, McGehee 6, Jesko 2 and M. Jennings 20.

Third game was Happy, Horns 29 Happy 49 scoring, Elliott 9, Schacher 8, McGehee 2, Jesko 4, J. Jennings 2, M. Jennings 2 and Daniel 2. JV girls Horns 28 Happy 37.

The fourth game was against Farwell, Horns 62 Steers 31, scoring Elliott 14, Schacher 5, McGehee 8, Jesko 5, J. Jennings 7, M. Jennings 11 and Daniel 5.

The fifth and final game was Nazareth, Horns 33 Nazareth 75 scoring Elliott 11, McGehee 10, Jesko 2, J. Jennings 4, M. Jennings 6. The Lady Horns have scored a total of 1119 points while allowing only 981 by opponents. Team wise the horns are shooting 25% from the field and 59% from the free shot line. Averaging 50.8 p.p.g., opponents averaging 44.5 p.p.g.

In the boys action the horns played Bovina, Horns 50 Mustangs 51, this game went into double over time. Scoring

Lust 18, McBroom 16, Mason 6, Glover 8 and Jarman 2.

The second game was with Kress, Horns 42 Kress 40 scoring Mason 17, McBroom 10, Glover 10, Lust 4 and Jarman 1.

The JV boys played, Horns 35 Kress 32, scoring McGehee 16, Zamora 11, Ivy 3, Waddell 3 and Holt 2, record 1-0.

Happy Cowboys was the third game, Horns 41 Happy 48, scoring Lust 10, Mason 12, McBroom 13 and Glover 4.

The fourth game was against the Farwell Steers, Horns 55 Farwell 72 scoring, Lust 6, McBroom 7, Mason 9, Glover 16, Jarman 3, Sanchez 12. JV boys, Horns 34 Farwell 57, scoring McGehee 2, Ivy 4, Zamora 7, Allen 16 and Waddell 3, record 1-1.

The last game of the first half was with Nazareth, Horns 40 Nazareth 67, scoring Lust 12, Mason 6, Glover 10, McBroom 2, Miller 6.

The Horns have scored a total of 1308 points while allowing 1162 by opponents. Averaging 59.4 p.p.g., opponents 52.8 p.p.g.

A useless life is an early death.
—J.W. Goethe

Happy
Birthday
Dad
Love,
Lauri & Janette

Weather Again. Stops Harvest One More Time

Good harvesting conditions prevailed for most of the week but rain, sleet, and snow moved onto the High Plains Thursday night. Sample receipts were moderate throughout the week. The crop is now 89% classed.

The Lubbock office classed, 79,760 samples during the week ended January 15, 1987. This brings the season's total to 773,922 and compares with 1,163,181 classed by the same date last year.

The week's predominant grades were grade 62 at 21 percent followed by grade 52 at 20 percent. Spotted grades made up 46 percent of the total. About 88 percent was reduced one grade because of bark.

Predominant staples were staple 33 at 30 percent, staple 32 at 22 percent, staple 34 at 21 percent and staple 31 at 11 percent.

Micronaire 35-49 amounted to 10 percent of classings, 33-34 was 9 percent, 30-32 was 23

percent, 27-29 was 34 percent and 26 or below was 25 percent. The average was 2.929.

High Volume Instrument breaking strength averaged 23.60 grams per tex at Lubbock during the week ended January 15.

Cotton prices were lower on the Texas High Plains. Grower sales were active throughout the week. 1986 crop equities traded at \$30 to \$75 mostly \$55 slightly lower than a week earlier.

Services Sunday For Oletha Best

Graveside services for Oletha Durrett Best, 74, of Jacksonvillle will be held at 4 p.m. today, Sunday in the Muleshoe Cemetery. Officiating will be Rev. V. L. Huggins, pastor of the Trinity Baptist Church under direction of Ellis Funeral Home of Muleshoe.

Mrs. Best died January 23 at 12:30 p.m. in University of Texas Health Center, Tyler, following an illness.

She was born December 6, 1912 in Eastland County, and was a former resident of Muleshoe.

She was a member of Mount Selman Baptist Church at Mount Selman.

Her survivors include two sons, Troy Weldon Durrett,

Holiday Hill, Frankston, TX, and Roy Wendell Durrett, Houston; a daughter, Mrs. Bobbie Janell Krug, Humble; two step sons, Larry Best, Roanoke and Donny Best, Seattle, WA; one step daughter, Mrs. Jackie Rooper, Dallas; four sisters, Mrs. Lula Elliott, Farmington, NM; Mrs. Nellie Dennis, Weatherford; Mrs. Maxine Graham, Amarillo and Mrs. Lillie Mae Calvert, Wells, TX; seven grandchildren; four great grandchildren; 12 step grandchildren and one step great granddaughter.

It will take a smart man to figure out what his taxes will be this year.

Thank You

We would like to say thank you to everyone who sent flowers, cards, gifts, phone calls & those who came to the hospital & stayed for Cliff's surgery.

Cliff & Rose Buckner

TAKE OUT

from the game

Chunk Style Dog Food

50 Lb. Bag

For Only: **\$7.00**

Reg. \$8.00

w/21% Protein

Men's Tops or Bottoms Thermal Knits

Healthknit

Your Choice For Just: **\$3.49**

Flannel Work Shirts

WB

Now: **\$7.99**

Reg. \$10.99

No. 5080002

Lots of Colors to Choose From

Split Leather Pile Lined Gloves

For: **\$6.99**

Reg. \$9.45

No. 7086

Leather Pac Boots

WB

Just: w/Wool Liner **\$19.99**

Reg. \$29.99

No. 9045L or 9045D

No. 950

Batteries

24 or 24F

5000 Series **\$29.99**

Reg. 36.49

No. GB1183
No. GB1193

3 YR. PRO-RATED WARRANTY

6000 Series **\$39.99**

Reg. \$47.99

5 yr. pro-rated warranty

No. GL 1183
No. GL 1197

Brown Duck Jacket

Now Just: **\$23.99**

Reg. \$37.50

Starting Fluid

8 Oz. Can **89¢**

Reg. \$1.19

No. 100008

Gas or Diesel

Sale Good Til Jan. 31st, '87

Walls
Quality you can feel and value you can depend on

New Hours
Mon.-Sat.
7:30 a.m. - 6:00 p.m.
Sun.
12:30 p.m. - 5:00 p.m.

Wells Lamont

STURBORN
BOOT QUALITY

QUILTED DUCK JACKET
Our Famous Work Jacket

100% cotton duck outer shell with 100% DuPont nylon taffeta lining. Insulated with 1/2" of 100% Dacron. Hobart's 808 polyester fibers.

Quick thru construction with straight quilt pattern. Convex collar. 2 patch pockets. 1 way heavy duty front zipper with strap over fly and set in sleeves with knit cuffs. Back length on medium regular is 28" 7750 Brown Duck

Jennyslippers Hold Annual Meeting, Install Officers

A large crowd attended the Jennyslippers, Womens Division of the Muleshoe Chamber of Commerce and agriculture, 1987 annual meeting and installation banquet Thursday night at the Bailey County Civic Center.

Following the invocation by Anne Camp, and the Pledge of Allegiance, led by George Nieman, members of the Muleshoe Rebekah Lodge served the meal. Dinner music and entertainment was provided by Ray Don Stanford and Kenneth Richards, of the Anchor Brothers Band.

Thursie Reid, outgoing Jennyslipper president, gave the welcome and paid a special tribute to Cari Kidd, daughter of Mr. and Mrs. Hubert Kidd. "Born July 19, 1962, bringing lots of joy and frustration, starting at a special school in Amarillo when she was two years old, she learned much more than she was supposed to."

"When she was eight, she moved to New Mexico with her family. This is when she became involved in Special Olympics. She participated in the soft ball throw, the standing long jump and the 50 meter dash. She would win a first, second or third place on the area level and in the State Events, when she was a sophomore, she went to cheerleading clinic and tried out for the cheerleader mascot and won the alternate. This was a good experience for her."

"In February of 1981, she moved to Muleshoe, and immediately took over Muleshoe High School. Believe me, they learned out fast they had never had any one quiet like this little lady. Because of her, other special education students in Muleshoe were involved in Special Olympics for the first time. She continued to win her events."

"In 1983, she was one of the Torch Carriers and she lit the main Special Olympic Torch for the Area 17 Olympics. In 1984, she led the Area 17 Olympics in the Special Olympic Creed. In 1985-86, she was nominated the Special Olympic of the year. The N.C.A. of Reese AFB presented her with a beautiful plaque and declared June 9 as Cari Ann Kidd Day at the base."

"She graduated from Muleshoe High School in 1984, being presented with the P.E. Hustler Award, which was the first and only time this award has been presented. In 1986, she was elected as an alternate to the International Special Olympics in Big Bend, Ind."

"Since graduating, she spends her time as a full time volunteer at the Muleshoe Nursing Home. She is also a full pledge Jennyslipper."

Ms. Reid also recognized guests and presented appreciation certificates to the following: Muleshoe Publishing Co., K.M.U.L. Radio Station, Channel 6, Jerry Hailey, Linda Foshee, James Lee, Mary Palma and Micky Tosh. Also recognized but not present was Jack Bates.

It was announced that Glenda Willoughby, daughter of Carolyn Willoughby and the late Bob Willoughby, was the winner of the Jennyslipper Scholarship. She was unable to attend the banquet due to school activities.

Vivian White, 1985 Jennyslipper president, recognized and presented certificates to the retiring officers, Thursie Reid, president; Billie Downing, president elect; Jeanie Mills, secretary; and Evelyn Peat, treasurer. Mrs. White also presented a plaque to Ms. Reid, in appreciation of her work as president.

Ms. Reid presented certificates to the 1986, committee

chairmen, Marjorie Merritt, Ellen Ladd, Nelda Merriott, Greta McCormick, Kay Graves, Bobbie Harrison, Joy Williams, Donna Noriega, Pat Mudford, Sandra Robinson and Donna Kirk.

Marjorie Merritt and Kathryn Taylor, both past presidents of Jennyslippers, installed the 1987, officers, Billie Downing, president; Donna Kirk, president elect; secretary, Sandra Robinson; and Evelyn Peat, treasurer.

Mrs. Downing was presented a presidents pin by Mrs. White. Following the presentation, Mrs. Downing gave her acceptance speech.

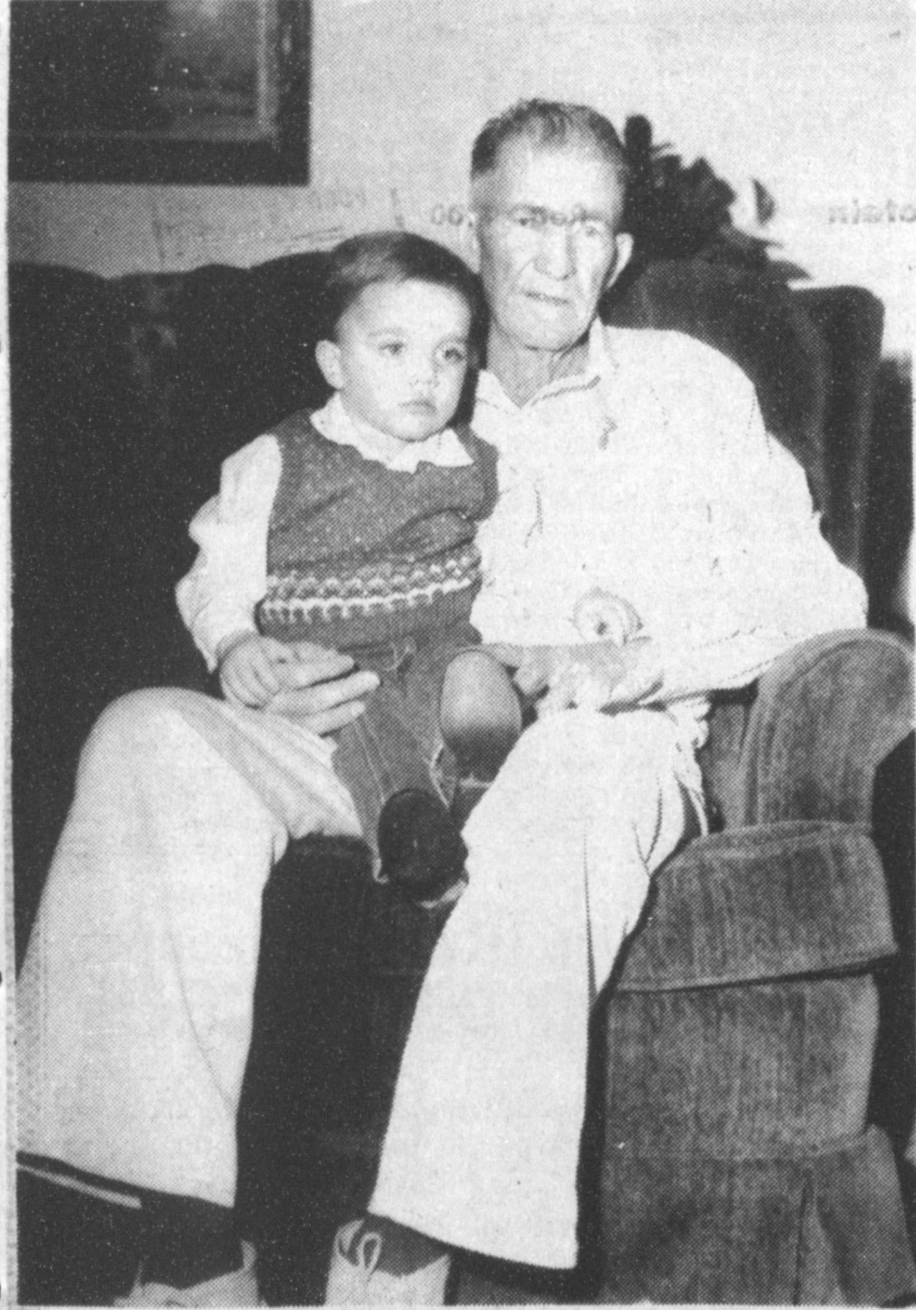
Committee chairmen for 1987, were also recognized, they include: Nelda Merriott, public relations; Pat Mudford, membership; Bobbie Harrison, budget and finance; Joyce Holmes, agriculture; Kathryn Taylor, business development; Pat Langfit, commercial growth; Nancy Kidd and Greta McCormick, co-chairman of service and cultural dev.; and special events has not had a committee chairman named.

Ms. Reid gave a brief summary of the Jennyslippers activities for 1986. Among these activities is the sponsorship of the writing of the Bailey County History Book. A town hall meeting is scheduled for 2:30 p.m. today, Sunday, in the Bailey County Civic Center lobby. History book committee chairmen were also recognized.

Benediction was given by T.R. White.



JENNYSLIPPER OFFICERS FOR 1987--During Jennyslippers annual meeting and installation banquet Thursday night the following officers were installed for 1987, by Marjorie Merritt and Kathryn Taylor: (L-R) Evelyn Peat, treasurer; Sandra Robinson, secretary; Donna Kirk, president elect; and Billie Downing, president.



HAPPY BIRTHDAY--Floss Baldwin celebrated his birthday Thursday afternoon with a birthday party in the day room of the Muleshoe Nursing Home. The party was hosted by the Needmore Community Club. Odessa Shanks played the piano as the club members led singing and Muleshoe Floral and Gift provided the flowers. Baldwin was born on Jan. 23, 1912. Pictured along with Baldwin is his great grandson, Cory Hunt, son of Mr. and Mrs. Curtis Hunt.



CARI KIDD

Tips On Trips

Making your next vacation a good one can be easier if you include reading a tour brochure in your travel plans. Each package should list a complete price for the land portion of your tour and a complete description of the day-to-day itinerary. Check to see if all transportation costs are included, how many meals are part of the package, which hotels you will stay in, and if luggage handling, taxes and gratuity are covered.

Mrs. Hanna Hosts Sunday School Social

Mrs. Billy Hanna hosted the January social Monday night for the Ruth Sunday School Class of the Sudan First Baptist Church. Frances Gardner gave the opening prayer and following the meal of sandwiches, salads, chips and dips, Jean Dodson brought the Devotional.

Mrs. Hanna presided over the short business meeting and Dottie Haney gave the closing prayer.

Those attending were: Libby Mudgett, Mary Hanna, Mottie Harper, Pail Bellar, Dottie Haney, Sue Chester, Frances Gardner, Evelyn Ritchie, Oleta Reese, Elsie Seymore, Helen Montmeyer, Billye Doty, Sara Woods and the hostess.

Bailey County Journal USPS 040-200
 Established March 31, 1963. Published by Muleshoe Publishing Co., Inc. Every Sunday at 304 W. Second, Box 449, Muleshoe, Texas, 79347. Second Class Postage paid at Muleshoe, Texas, 79347.

MEMBER 1987
TEXAS PRESS ASSOCIATION

L.B. Hull President & Publisher
 Sammie Hall-Vice President & Controller
 Clea Williams-News Editor
 Evelyn Harris-Society Editor
 Holly Milburn-Advertising
 Little Nine-Bookkeeping

SUBSCRIPTIONS:
 Muleshoe Journal and Bailey County Journal Bailey and surrounding counties \$14.00
 Muleshoe Journal and Bailey County Journal Elsewhere in Texas \$14.75
 Muleshoe Journal and Bailey County Journal Outside of Texas \$16.50
 Yearly by Carrier \$12.50
 Advertising rate card on application.

Still In Progress

1/2 Price Sale

ANTHONY'S
 Mon.-Sat. 8 a.m.-6 p.m. Sun 1 p.m.-5 p.m.
 321 Main 272-3478

HOMESTEAD EXEMPTIONS

CAN LOWER THE PROPERTY TAXES ON YOUR HOME

Apply to your local appraisal district office at the address shown below for all exemptions you may qualify for. Application forms are available at this office.

If you received a homestead exemption on your present home in 1986, you won't need to apply again for 1987 unless the chief appraiser requires you to reapply.

However, if you passed your 65th birthday or became disabled before January 1, file a new application to receive the additional exemptions.

If you haven't received an exemption on your present home, or if you've moved to a new home, make a new application for 1987.

The deadline for applications is April 30, 1987. Contact your appraisal district before then if you need more time.

For more information, get a free copy of the pamphlet, *Taxpayers' Rights, Remedies, Responsibilities*, at your appraisal district office or from the State Property Tax Board in Austin.

Bailey County Appraisal District
 104 E. Ave. C. 272-5501

Ben Franklin 272-3855
 Mon. - Sat. 8-8 Sun. 12-5 2104 W. Amer. Blvd.

Now Available Wooden Jewelry Supplies

Assorted Styles Queen Anne Burgundy, Cordial Creme De-Minthe, Pineapple Chocolates 99¢ 12 piece 8 oz. Box	Instruction Books Available Delsey 2 Ply 4 rolls Bathroom Tissue 99¢
Red Heart 4-Ply Yarn 97¢	Bed Dolls \$2.99 Reg. 3.99 Books..... 99¢
Aunt Lydia Rug Yarn 59¢ New Everyday Low Price	Conchos 29¢ To 98¢ Leather Strips 69¢ yd Crow Beads Available In Several Sizes & Colors
New Everyday Low Price Heavy Duty Thermo Grip Glue Gun \$19.99	Solid Milk Chocolate Foil Wrapped 5 oz. Bag Hearts 79¢
Paas Punch Out Hearts, Stencils, Glue Stickers Valentine Kit \$1.79	50 Valentines 99¢
White Plush Heartline Bear Because Your Special Reg. 16.97 \$6.99	Red & Silver Foil Hersey Kisses \$1.49 w/15¢ Coupon On Back

A Third of These Teenagers are Either Drunk, Drugged, Pregnant or Suicidal.

ON PUBLIC TV!

For many teens the sweet days of youth become a terrifying nightmare. Find out how concerned communities are helping their troubled teenagers. With hosts First Lady Nancy Reagan and Sam Waterston.

Generation at Risk

Wednesday, Jan. 28th, 7:00 pm & Sunday, Feb. 1st, 4:30 pm

kenw3
 PORTALES NM

TV Worth Watching

Andrea Thomasson, Hall United in Marriage

Ms. Andrea Lavonne Thomasson of Austin became the bride of Captain Larry Don Hall of Midland in a ceremony at the ClayDesta Atrium in Midland on Saturday, Jan. 17. The Honorable Gordon H. Green, Bailey County Judge, of Muleshoe, officiated.

Parents of the couple are Mrs. John Hagan Thomasson, Jr. of Sudan, and the late John Hagan Thomasson, and Mrs. R.V. Hall of Midland, and the late R.V. Hall. The bride is the niece of Mrs. Ronald von Herzog, also of Sudan.

Vows were exchanged on the steps of the massive natural stone fountain of the Atrium. Lining the fountain were greenery covered brass candelabras featuring rose tapers and bows of burgundy rose and teal. Each rose taper was adorned with burgundy hummingbirds.

Prelude music and the traditional Wedding March from

Wagner's Lohengren were played by Midland Symphony harpist, Andrea Rhoden. Mrs. William C. Shipton and Mark Roseen, both of Midland, presented vocal selections of "Three Times a Lady, Lady", "You Light Up My Life" and "Evergreen". The Midland College Brass Quartet presented the Aggie War Hymn and the Marine Hymn as the recessional.

Escorted by Gary G. Gatewood of Sudan, the bride was presented in marriage by her mother. The bride chose a formal gown of ivory silk, with an ivory silk overlay studded with diamonds and seed pearls. Her hat of ivory silk illusion featured a crown of Venice lace studded with seed pearls and a back row of silk illusion falling in three-quarter length tiers.

Intertwined among the flowers of her cascading bouquet, which featured rose lilies and

orchids interspersed with burgundy baby's breath and teal alstermeris, was her paternal grandfather's pocket watch, which had belonged to her father.

In keeping with tradition, the bride wore a 100 year old gold bar pin which belonged to her maternal great grandmother, the late Rebecca Shannon Walker of Knox City, and a diamond bracelet which belonged to her maternal grandmother, the late Belle Carver Walker of Sudan.

For something new the bride chose her wedding attire. From her aunt, Mrs. Ronald von Herzog, the bride borrowed a pearl and diamond necklace. She wore the traditional blue garter. A penny minted in 1950, and the year of the bride and groom's births, was placed in her shoe.

Matron of honor was Ms. Karen Kitto of Midland. She was attired in a full length teal dress featuring an empire waistline with teal silk overlay. She carried a bouquet of burgundy lilies accented with teal alstermeris and rose streamers.

Bride's matron was Mrs. Gary G. Gatewood of Sudan. Mrs. Gatewood was attired in a burgundy dress identical in fabric and style to that of the matron of honor. She carried a bouquet of rose lilies accented with burgundy alstermeris and teal streamers.

David Reese of Flower Mound, Texas served as best man. Darrell Hood of Plano was groomsmen. Ushers were Master Sargent Patrick Ealem of Fort Sheridan, Illinois and Kyle Kitto of Midland.

The bride and groom departed the Atrium through the traditional sword arch presented by the Officers of Training Squadron Twenty-Six, Naval Air Station, Chase Field.

Following the ceremony, a reception was held in the home of Mr. and Mrs. Monty J.

Gist. The reception table, laid with an ecru cut-work cloth, was centered by a five tier Grande Baroque silver candelabra with rose tapers surrounded by the bouquets of the bride and her attendants.

Following the cutting of the traditional three-tier wedding cake, by the bride and groom with the groom's Marine Corps sword, the cake was served by Miss Shelly Cox of Odessa and Mrs. David Reese of Flower Mound. Mrs. Patrick Ealem of Fort Sheridan, Illinois served champagne punch from the silver punch bowl. Miss Lois Ivey of Midland poured from the Grande Baroque silver coffee service. Guests were registered by Miss Katherine Yankovich of Midland.

Special guests included the mothers of the couple; the bride's aunt, Mrs. Ronald von Herzog of Sudan; the groom's grandmother, Mrs. B.C. Vincent; his great-aunt, Mrs. C.C. Vincent; and his aunt and family, Mr. and Mrs. Carroll Staton, all of Duncanville; the groom's great-aunt, Mrs. Laura Ellis of Midland; the groom's cousin, Mr. and Mrs. Kenneth Howell of Dallas; and the Officers of Training Squadron Twenty-Six, Naval Air Station, Chase Field, Beeville, Texas.

The bride, an economics and management major at Texas Tech University, is a Legal Assistant in the Corporate, Business and Banking Section of Fulbright and Jaworski in Austin. The groom holds a BBA in management from Texas A&M University, is a Captain in the United States Marine Corps and is currently an instructor pilot at Naval Air Station Chase Field, Beeville.

The groom's mother hosted a dinner honoring the bride and groom on Friday evening, Jan. 16 at Sam's At The Atrium in Midland, following the wedding rehearsal.

Round tables set in the lush tropical setting of the ClayDesta Atrium featured centerpiece of scarlet carnations and gold spider mums interspersed with Marine Corps memorabilia and streamers in the Marine Corps colors of scarlet and gold.

Individual place settings featured crossed miniature United States and Marine Corps flags and place card holders of the Marine insignia, the globe and anchor.

Special guests were the honorees and members of their wedding party. Also attending were the bride's mother, Mrs. John Hagan Thomasson, Jr. and her aunt, Mrs. Ronald von Herzog, both of Sudan, Mr. and Mrs. W.C. Shipton and Mr. and Mrs. Monty Gist, all of Midland; Mr. and Mrs. Kenneth Howell of Dallas, Judge and Mrs. Gordon H. Green of Muleshoe, and Dr. and Mrs. John J. Costanzi of Galveston.

Mrs. Ronald von Herzog hosted a bridal brunch honoring her niece on Saturday morning, Jan. 17 at the Plaza Club atop ClayDesta Plaza, Midland. Decorations featured silk floral arrangements of burgundy and rose lilies highlighted with miniature brides and streamers of teal.

Individual place favors were scrolls containing a wedding poem written by the bride.

The hostess presented the bride with a service of sterling flatware which has been a gift to Mrs. Herzog from her mother, the late Belle Carver Walker of Sudan, the bride's maternal grandmother. She also presented her niece with a diamond dinner ring which had

belonged to Mrs. Walker. Special guests included the bride and groom's mothers, the bride's attendants, the groom's aunt, Mrs. Carroll Staton of Duncanville; Mrs. Kenneth Howell of Dallas; Mrs. Patrick Ealem of Fort Sheridan, Illinois; Mrs. David Reese of Flower Mound; Miss Shelly Cox of Odessa; Miss Lois Ivey and Miss Katherine Yankovich, both of Midland; Mrs. Gordon H. Green of Muleshoe; Ms. Alice Bell and Ms. Kim Kunkel, both of Austin; and Mrs. John Costanzi of Galveston.



MRS. LARRY DON HALL
[nee Andrea Lavonne Thomasson]

Freeman, Branham Wedding Plans Revealed

The Rev. and Mrs. Eddie Freeman of Bangs announces the engagement and approaching marriage of their daughter, Kelly Annice to Joe Branham of Brownwood, son of J.B. and Marie Branham of Moran. The Freemans' are former Sudan residents, where Rev. Freeman served as the First Baptist Church pastor.

Vows will be exchanged Valentines Day, Feb. 14 at 8 p.m. in the First Baptist Church of Bangs.

Miss Freeman attended Wayland Baptist University in Plainview and is a Bangs High School graduate. She plans to complete her degree at Hardin Simmons University.

Branham is a graduate of Howard Payne University and is employed as a history teacher at Brownwood High School. He was also the Republican candidate last November for representative of the 65th District after having won the Republican primary in May 1986.



MRS. SANTA RECEIVES GIFTS--Lois Washington was elected by the listeners of Channel 6 as the sixth annual Mrs. Santa. Mrs. Washington, wife of George Washington, is secretary at Muleshoe High School. She is the mother of two children, Mark of Muleshoe, and Mrs. Mike (Lana) Lewis of Lubbock. She also has a three year old grandson, Dustin Lewis of Lubbock. Ten women were nominated by the Channel 6 listeners and over 400 votes were cast. Mrs. Santa received gifts from Joe Rhodes Boot Shop, Serv-All Thriftway, Williams Brothers Office Supply, Leal's, Ana's House of Beauty, Spudnut Shop, and B and J Kountry Kitchen.

Study Club

Muleshoe Study Club met Thursday, January 8 in the community room of Muleshoe State Bank with Betty Jo Carpenter as hostess.

Refreshments were served to nine members, Mrs. Charles Shain, Mrs. Rufus Gilbreath, Mrs. R.O. Gregory, Mrs. Wilson Witherspoon, Mrs. John Agee, Mrs. Joe Costen, Mrs. Doyle Turner, Mrs. T.R. White and Betty Jo Carpenter.

The collect was led by Mrs. Agee and the salute to the United States Flag was led by Mrs. Turner.

Correspondance was read from Girls Town and from the girl that the club sponsors, thanking the club for the gifts at

Christmas time. The program for the day was a work shop to write up reports and programs held in the last year. These will be sent to the district for judging.

A discussion was held on the book of the history of Bailey County that is to be written. It was pointed out that if you are interested in writing about your family and need help in doing so, you may contact someone in the Jennyslippers and they will put you in contact with someone who can help you.



For thickening gravy, sauce or stew, sprinkle instant mashed potatoes into the mix and stir. Lumps dissolve immediately.

Country Club Report Marlene Martin

The Womens Country Club Association met Wednesday, January 21st for the first meeting of the new year with 18 members present.

Rebekah Lodge

Muleshoe Rebekah Lodge met Tuesday night at the Lodge Hall for their regular weekly meeting. Terrie Snell, Noble Grand, opened the meeting and Ona Berry gave the opening prayer.

June Green read the minutes of the previous meeting and plans were finalized for serving the Jennyslippers banquet Thursday night.

Carrol Williams was installed as flag bearer by Fern Davis, District Deputy President and staff.

A short school of instruction was held by Sandi Robison. Audrey Langfitt served refreshments to the 13 members who were present.

New president, Neats presided over the luncheon meeting. The members decided to contribute two or three books of stamps each so the ways and means committee can purchase ice chests needed for projects this year.

Jo Rempe, Playday Chairman, gave out playday awards for the months of October and November to Jeanetta Precure, Mary Holt, Dorothy St. Clair, Helen Templeton and Argilee Millen.

Birthday ladies for January were Dorothy St. Clair and Laverne Winn.

Due to bad weather conditions no golf could be played so members enjoyed an afternoon of card games.

Members present were: Neats Foster, Shirley Beene, Ruby Kerr, Jeri Mayo, Mary Crane, Jo Rempe, Georgette Isaac, Dorothy St. Clair, Analita Haley, Ruby Hart, Evelyn Riley, Melzine Elliott, Jeanetta Precure, Claudine Elliott, Helen Templeton, Rayneil Bamert, Marlene Martin and Argilee Millen.

LAND PRODUCTIVITY VALUATION

MAY LOWER THE PROPERTY TAXES ON YOUR FARM OR RANCH

Texas law provides farmers and ranchers with a way to lower their property taxes, known as productivity valuation. If you qualify, your agricultural land will be taxed on its capacity to produce crops or livestock, instead of its value on the real estate market. Productivity valuation can lower the taxable value of your land, and lower your property taxes as a result. If your land has never received productivity valuation, you must apply to the appraisal district by April 30 to get tax benefits for 1987. You can choose from two types of productivity valuation. If your land already receives open-space (1-d-1) valuation, you don't need to reapply unless the chief appraiser requires you to reapply. For more information and application forms, contact the appraisal district office at the address shown below:

Bailey County Appraisal District

104 E. Ave. C. 272-5501

Make a 1986 IRA investment? BRILLIANT DEDUCTION!

With the upcoming tax-law changes regarding IRAs, it's more important than ever to make the smart decision now, in 1986.

Act fast, and not only will any growth of your investment occur tax-deferred, but you'll also get a full tax deduction for your 1986 contribution, regardless of your income or a company pension plan!

And to make your retirement dollars work best for you in 1986 and beyond, you need an IRA offering a variety of investments. Gone are the days when you could just tie your IRA investment to CD's and expect a good interest rate.

A Chubb Securities IRA allows you to invest in a money market fund, any of 300 mutual funds, or limited partnerships. It's flexible enough to fit anyone's investment style—and that flexibility means your IRA investment works harder. Works better.

Security. Flexibility. And an IRA that works better for you. Contact your Chubb Securities registered representative today.

CLIP AND MAIL TO:

ROY WHITT
(806) 272-3611
201 MAIN
MULESHOE, TEXAS 79347

YES! I want to enjoy the advantages of a Chubb Securities IRA, in 1986 and beyond. Please send me more information, including charges and expenses.

Name _____

Address _____

City _____ State _____ Zip _____

Chubb Securities Corporation is a registered broker dealer.
One Granite Place, Concord, NH 03301

Now In Stock All Styles Duncan YoYos

POYNOR'S
HOME & AUTO STORE

Double Ring Ceremony Unites

Miss Martin, Messamore

Patti D'Anne Martin and Dan Ryan Messamore were united in marriage Saturday, Jan. 10 at 7 p.m. in Saint Stephen United Methodist Church in Amarillo. The Rev. James Martin read the double-ring vows.

Parents of the couple are Mr. and Mrs. George T. Martin of Amarillo and Mrs. Linda Gail Messamore of Sudan.

The bride wore her mother's dress of candlelight satin and lace, made by her grandmother, Mrs. A.M. Holman of Colorado City, and Mrs. Willie Parkinson

of Amarillo. Her fingertip veil was attached to a wreath of candlelight roses and pearls. She carried a silk bouquet of navy and white roses and forget-me-nots.

For something old, the bride wore her mother's wedding dress. For something new, she wore a strand of pearls, a gift from the groom. Something borrowed was a handkerchief belonging to her aunt, Mrs. Kemp McMillan of Pilot Point, and a Bible belonging to her mother. For something blue, she wore a blue garter.

Attending the bride as maid of honor was Lisa Venhaus of Amarillo. Bridesmaids were Jenna Burnett of Amarillo and Kristi McMillan, cousin of the bride, of Lubbock. The bride's attendants wore formal length gowns of navy satin. Their headpieces were of candlelight sweetheart roses and seed pearls.

Haldon Messamore of Sudan served his brother as best man. Groomsmen were Rodney Copeland of Levelland and Al Martin, brother of the bride, of Amarillo.

Following the ceremony, a reception was held in the Sheraton Hotel in Amarillo. The bride's table was centered with the bride's bouquet and flanked by silver candelabra, the wedding cake and punch.

Members of the house party were Leslie Grisham, Michelle Gallier, Julie Garner, all of Amarillo; Kim Messamore of Sudan, Angela Clawson of Canyon, Kim Zeman of Oklahoma City, and Melinda Allen of Weatherford, Okla.

The bride is a 1984, graduate of Amarillo High School. She is a senior at West Texas State University and plans to graduate in May.

Messamore is a 1981, graduate of Sudan High School and a 1985, graduate of WTSU. The couple will make their home in Canyon, where the groom is employed as an officer of First National Bank.

A rehearsal luncheon honoring the couple was hosted by the groom's mother, Mrs. Linda Gail Messamore, at Supten's Barbeque at noon Saturday.



MRS. DAN RYAN MESSAMORE
(nee Patti D'Anne Martin)

West Texas Karate Attends Tournament

Recently, several members of WT Karate Academy of Muleshoe competed in the Lubbock Open Karate Championships at the Hilton Inn Grand Ballroom.

Bryce Byers, son of Mr. and Mrs. Danny Byers of Springlake, competed and fought in point fighting; green belt division, 7-9 year olds.

Michelle Winders, daughter of Mr. and Mrs. Mike Winders of Lazbuddie, competed and fought in the 10-12 year old green belt division in point fighting. Michelle won first place in this category. Tracy Puckett, placed second in the same category, purple belt division. He is the son of Mr. and Mrs. Dee Puckett. Steve Garcia, son of Alex Garcia and Mary Bonham placed second in forms competition in the purple belt division and second in fighting.

Charles Walker, green belt intermediate men's division, placed second on a controversial judgement in point fighting.

Wesley Cook competed and fought in yellow belt men's beginner division.

Danny Kelley, instructor, placed first in Senior Black Belt point fighting, first in Musical Forms Black Belt division, second in Hardstyle Black Belt Forms, third in Soft Style Black Belt Forms and Second in Weapons Forms.

Promotion tests were held in December. Those students being tested for yellow belt were Toni Eagle, Gilbert Vela, son of Mr. and Mrs. Gilbert Vela, Sr., Eric McElroy, son of Mr. and Mrs. Don McElroy, Clay Bulls, son of Mr. and Mrs. Glenn Bulls, Justin Winders, son of Mr. and Mrs. Mike Winders, Brian Field, son of Mr. and Mrs. Terry Field, and Clifton Knowles son of Mr. and Mrs. Lannie Knowles.

Young Baptist Women Meets In Martin Home

The Young Baptist Women met Monday, Jan. 5th at the home of Dana Martin for their January salad supper.

Rebecca Blair of Rupert, Idaho, a Pioneer Missionary, reported on the beginnings of new churches.

Those attending were Nancy Legg, Jean Dodson, Kelli Hargrove, Mary Blair, Ginger Harper, Rebecca Blair, guest, and the hostess.

Machelle Burns In Senior Spotlight

Cynthia Machelle Burns, daughter of Mr. and Mrs. Gaylor Burns, is featured in this week's senior spotlight at Sudan High School.

Machelle commented that the people that brighten life up and are most important thing to her are her family and close friends. "The people at SHS are easy to get close to."

Feeling this closeness, she said that it is a good school to go to and she has really enjoyed it. Her friends said that although she is blonde, she is definitely not a "dumb blonde", as her goal in life is to become successful and happy in whatever she chooses to do.

Passing the time by, Machelle enjoys listening to the Maines Brothers while her favorite song is "Words Get in the Way" by



Christopher Lee Davis

Mr. and Mrs. Ronnie Neil Davis of Muleshoe are the proud parents of a son born at 11:53 p.m. Dec. 14 in Lubbock General Hospital.

The young man weighed eight pounds and three ounces and was 21 inches long. He has been named Christopher Lee. He has a brother Ronnie Neil, Jr., who is 20 months old.

Grandparents are Mr. and Mrs. Albert Drusendahl of Roswell, N.M.

Three interesting topics will be presented on "Creative Living" on Tuesday, January 27 at 12 noon and repeated on Saturday, January 31 at 2:00 pm on KENW-TV. (All times are Mountain).

Over the past two decades, the size of families in the United States has decreased. This can be partly attributed to the fact that many singles are delaying marriage, and couples are waiting to have children later in married life. Some are opting not to have children at all. The American family is also dealing with more and more children leaving home after college, returning mom and dad to a two-person household. Because of these changes in the size of family, cooking habits have changed also. Cathy Voit, Home Economist with Revnolds Metals Co. from Dallas, Tx., will show some ways to cook for one to two persons, show how to adjust pans for cooking smaller quantities of food, and share some good recipes.

Another guest is the author of the book "Reuses," and she serves as a paper recycling consultant to the American Paper Institute. Carolyn Jabs, New York, will share some exciting rainy day projects for shape into a 6 x 4-inch log. Turn over to coat on all sides. Roll into a 12 x 9-inch rectangle. Brush with butter. Combine raisins with remaining 4 tablespoons (1/4 Cup) sugar and 1 teaspoon cinnamon. Sprinkle over dough. Roll up dough beginning at the long side. Cut into six 2-inch lengths. Place cut side up in prepared pan. Bake until browned, about 30 minutes. Drizzle with Confectioners Sugar Icing. Sprinkle with 1/4 cup chopped walnuts, if desired. Serve warm. Yield: 6 buns.

CONFECTIONERS SUGAR ICING
1/2 cup sifted confectioners sugar, 1 tablespoon milk

In a small bowl stir together confectioners sugar and milk until smooth. Yield: About 1/2 cup.

STACKED MEAT AND CHEESE ENCHILADAS
8 oz. ground beef, browned, drained, 2 cans (15 oz. each) tomato sauce, 2 tablespoons chili powder, 12 corn or flour tortillas, 12 oz. (3 Cups) shredded Cheddar or Monterey Jack cheese

Preheat oven to 350 degrees F. In a large skillet over high heat cook and stir beef until browned; drain off drippings. In a medium bowl combine tomato sauce and chili powder. Spread 1/4 cup sauce in the bottom of a 9-inch baking or pie pan; top with tortilla. Spread with 1/4 cup sauce, covering tortilla completely. Sprinkle with 1/4 cup of the cheese and about 2 tablespoons of the meat. Repeat layering remaining tortillas, sauce, cheese and ground beef, ending with sauce and cheese. Cover with foil. Bake for 20 minutes. Or, cover with plastic wrap and microwave on HIGH until hot, about 7 minutes, giving pan 1/4 turn after 3 minutes. Remove to a serving platter. Cut into wedges. Serve with sauce remaining in pan. Yield: 6 portions.

children. They're all fun and easy to make, and children will enjoy the creativity.

There's a revolution going on in the tastebuds these days. Cecile Lamalle of the American Spice Trade Assn. will demonstrate making stacked meat and cheese enchiladas -- or chili stacks.

Can an aspirin a day keep a stroke away? Some researchers say it does, and Stefan Bechtel, editor of Men's Health Newsletter, Emmaus, PA, will discuss this topic and other health topics that relate especially to men on "Creative Living" on Tuesday, January 27 at 9:30 p.m.

B.J. Doerfling, Supervisor of the Consumer Test Kitchen at Sunkist Growers, Inc. in Van Nuys, CA, will demonstrate year 'round gift giving ideas and decorations using fresh citrus fruits.

Cajun food is one of the most popular ethnic foods being prepared today. Joyce Meyer, Home Economist with the Indiana Pork Producers Assn. will demonstrate making Cajun Chops, featuring boneless pork rib chops. Ms. Meyer is from Indianapolis, IN.

On Thursday, January 29 at 12 noon, "Creative Living" will feature information on sources and resources of clothing information for handicapped individuals, recipes for making cinnamon buns and information on making money at home.

Accessibility of public buildings has enhanced handicapped individual's ability to participate fully in many realms of today's society. Dr. Joyce Davis, instructor in Home Economics at Eastern New Mexico University in Portales, N.M. will discuss some of the sources and resources available for clothing for handicapped individuals.

Cecile Lamalle of the American Spice Trade Assn. will be back on the show and will demonstrate making easy cinnamon buns. They're delicious and quick and easy to make!

Have you ever thought of staying home and starting your own business in your home? What are the advantages and disadvantages of having a "cottage industry"? Sandy Allison is a former Texas Extension Home Economist, and she will go over some important considerations if you're thinking about going into business at home and being able to make some money at it. Sandy is from Littlefield, TX.

EASY CINNAMON BUNS
2 1/4 C. buttermilk baking mix, 6 tablespoons sugar, divided, 2 tsp. ground cinnamon, divided, 3/4 Cup milk, 1/4 Cup raisins, 1/4 C. unsifted all-purpose flour, 2 tablespoons butter or margarine, melted, Confectioners Sugar Icing (recipe follows)

Preheat oven to 375 degrees F. Grease an 8-inch round pan; set aside. In a medium bowl, combine baking mix, 2 tablespoons sugar, 1 teaspoon cinnamon and milk; mix well. Dampen a piece of paper towel; place on a counter and cover with a 14-inch length of wax paper. Dust with flour. Place dough onto floured wax paper;



GOLDEN ANNIVERSARY CELEBRATION---Mr. and Mrs. Gene Lowe of Muleshoe will celebrate their 50th. wedding anniversary Sunday, February 1 with a reception from 1:30 to 3:30 p.m. in the Bailey County Civic Center. Hosting the event will be their children and grandchildren. Lowe and the former Georgia DeBond were married Jan. 11, 1937, in Texico, N.M.

New Classes In
**Beginner's Tole Or
Decorative Painting**
Tues. 9 a.m.-12 Jan 27-Feb. 24
or
Thurs. 9 a.m.-12 Jan. 29-Feb. 26
Afternoon or Night Classes
Can Be Arranged
To Enroll Call
Syble Hewitt
247-3632 Friona

Boots
\$40 to \$80
Ladies & Mens
LEE & ELLA DUNBAR
ee's WESTERN WEAR, INC.
1910 W. American Blvd. Phone 806/272-4663
MULESHOE, TEXAS 79347

Revco Drug
Proudly Announces
The Association Of
Clyde H. "Pudge" Rose
New Patient Profile System
Competitive Prices
Senior Citizen Discount
Stork Aid Plans
PCS Cards Accepted
New Mexico Medicaide
Paid PCS Navistar
Revco Drug
North Plains Mall Clovis, N.M.
505-762-3895

Spotted Dishess??
Lindsey Soft Water Is The Solution
Free Installation
W. Hwy 84 Wilson Drilling 272-5521

Researchers Say Texas Economy To Turn Around

Despite a stormy 1986 state economy, many Texas consumers as they headed into 1987 seemed to be weathering the downturn with enough confidence to consider major purchases during the next year.

That is the conclusion drawn from a survey by the Institute for Communications Research (ICR) at Texas Tech University. The mail and telephone survey of 387 Texas residents asked the likelihood that they would make a major purchase of a home, car, major home appliances or personal computer during the next year.

Almost 40 percent thought it likely they would buy a major appliance and more than a quarter felt the same about buying a car. Almost 19 percent considered it likely they would buy a personal computer and nearly 10 percent thought a house was a likely purchase during 1987.

On a new home -- the biggest investment most people make -- 9.4 percent of the survey respondents considered a purchase likely or very likely in the next year. Men and Women were almost identical in their belief a home purchase was likely as 9.6 percent of the males and 9.3 percent of the women thought so.

Surprisingly, the likelihood of a home purchase cuts across all income levels fairly closely. About 7 percent of those making under \$10,000, 7.9 percent of those making between \$10,000 and \$20,000, 9 percent of those making between \$20,000 and \$30,000, 11 percent of those making between \$30,000 and \$50,000 and 12 percent of those making over \$50,000 thought a home purchase possible.

Of the survey respondents, 27.5 percent considered it likely or very likely that they would buy a new car during the next year. That compares with 68.1 percent who thought it unlikely and 4.4 percent who were uncertain.

As incomes rose, the greater the likelihood respondents would buy a new car. Those making under \$50,000 totaled 61 percent of the respondents but only 12.6 percent thinking a car purchase was likely. By contrast, those making more than \$50,000 accounted for 39 percent of the respondents and 15.9 percent of those planning on buying a new car.

Some 39.2 percent of the respondents said they were likely to buy a major home appliance during the next year. Of the respondents, 49.2 percent said they were unlikely to buy an appliance and 11.5 percent expressed uncertainty. And, the percentages of males and females who said major home appliance purchases were likely were almost identical, with 39.6 percent of the men and 39.3 percent of the women so answering.

Likelihood of a new appliance purchase generally rose with income. Thus, 32 percent of those making under \$10,000, 34 percent of those making between \$10,000 and \$20,000, 46 percent of those making \$20,000 to \$30,000, 59 percent of those making \$30,000 to \$50,000 and 48 percent of those making over \$50,000.

thought they would make appliance purchases during 1987.

Among Texas consumers, 18.9 percent thought it likely they would buy a personal computer during the next year. Those making \$20,000 or more annually were more likely to be considering a personal computer than those making less.

Some 21.7 percent of the persons making over \$20,000 annually thought a computer purchase was likely, compared with 16 percent of those making less than \$20,000.

Generally, the more education a respondent had, the greater the likelihood of a personal computer purchase. Only 14 percent of the respondents with a high school diploma or less were considering a personal computer, compared with 21 percent who had attended college or earned one or more degrees.

Results of the survey conducted in October were released by ICR Director H.J. Hsia. The survey had a margin of error of plus or minus 5 percent.

'Small Town' Workshop Set For This Area

Small towns in West Texas are hurting, says Jerry Conner, Director of Economic Development for the West Texas Chamber of Commerce.

"They are losing and they are hurting," he says. "Their children are moving to towns where there is industry that pays the highest salaries."

So says the West Texas Chamber of Commerce and the Texas Agricultural Extension Service will sponsor a workshop to give community leaders the rudiments of economic development.

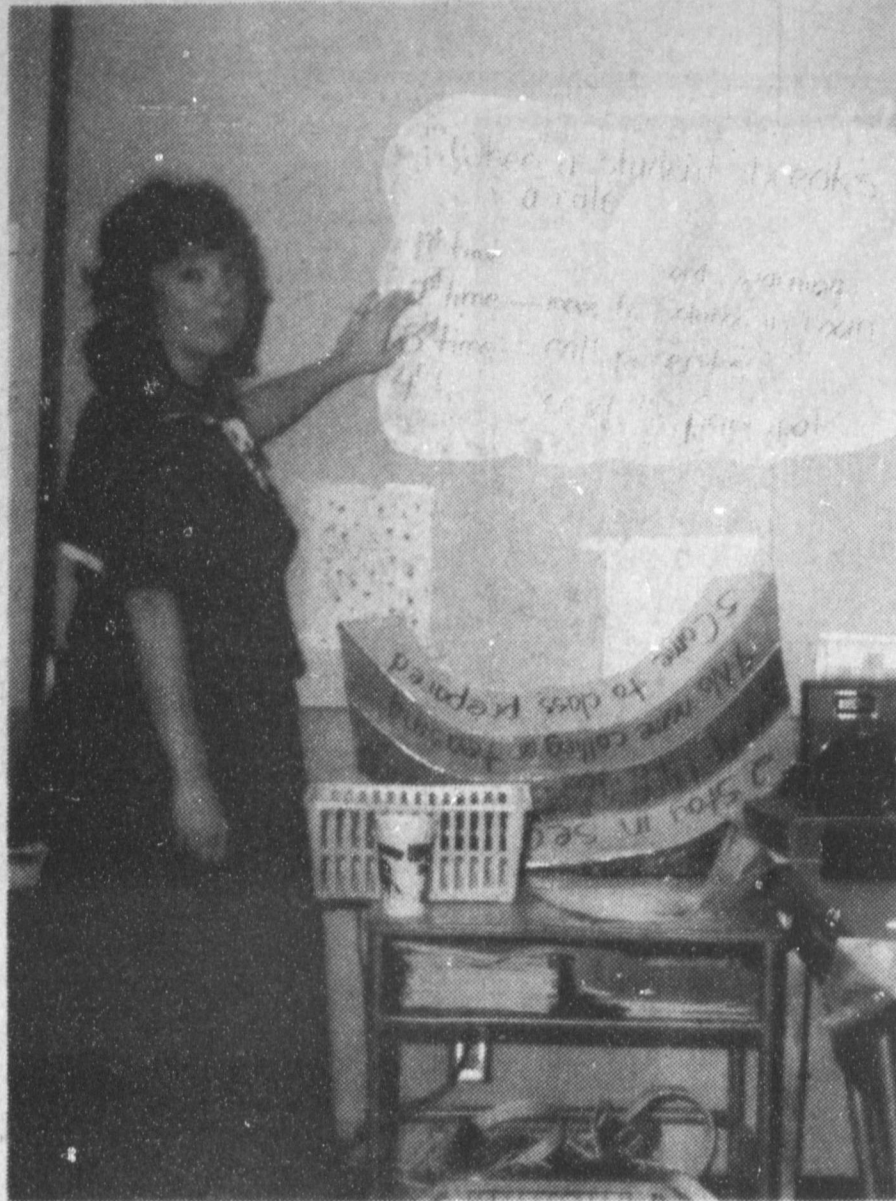
The workshop will be held in Littlefield, March 12, 1987, for business and economic leaders of rural areas and small cities within the Panhandle and Northwest Texas area. It will be hosted by the Littlefield Chamber of Commerce in the Lamb County Agriculture and Community Center, Highway 385. Registration will begin at 8:00 a.m. with the program scheduled from 9 a.m. to 4:30 p.m.

"The objectives of the workshop are to assist business and economic leaders in understanding Why and How economic development occurs," he says, "to help them develop a feasible and workable strategy for community economic growth, and to help them plan and initiate viable economic programs and activities for their communities."

"We will try to include just enough theory to explain Why and How economic development works but will also concentrate on the 'How To's'," he said.

For further information contact the West Texas Chamber of Commerce, P.O. Box 1561, Abilene, TX 79604. Early registration is \$35 and after March 2nd, \$40.00.

The best advice for modern people, young and old, facing all sorts of propaganda, is the single word: think.



THAT'S JUST THE WAY IT IS--Terri Fortenberry, special education teacher, points out the four 'major rules' for her students at DeShazo School. She is proud of her students and their own special accomplishments. Mrs. Fortenberry has been at DeShazo three years.

Special Teacher

Cont. from Page 1

her students to the Lubbock Avalanche-Journal. The trip was made to the major daily because her students have a project called "DeShazo Mini-Mule Tales." This special newsletter is written, edited, and distributed by her students.

Each copy is sold for 25 cents, and the money will be used for the purchase of equipment for the playground. She says the newsletter has created so many practical learning experiences for her students, particularly in the learning aspect. Her students are seeing how to make change and handle money in a meaningful real life situation.

According to Education Service Center's Projections & Reflections, "Terri is one of those 'natural' special education teachers. She takes the students where they are functioning and through the modification and creative teaching and behavioral strategies, she helps them progress."

"It is not unusual for some students to progress more than one grade level in one year's time. She is developing her own curriculum which is all correlated to the third, fourth and fifth grade essential elements."

Jury...

Cont. from Page 1

Shelley Kim Splawn, Alan Douglas Finney, Margie Lasley Hawkins, Helen Lambert Seymour, Jimmy Clarence Cannon, Ellen Johnson Ladd, Mary Ann Martin, Sharon Alexander Dale, Jimmy Mills, Ted Simmons Barnhill, Jerry Don Haley, Wanda Day Bosley, Ethel McDaniel Meason, Wilton Murlie L. Watson, Rickie Stockard Warren, Jana Szczerbyk Fried, Joe Mack Ruthardt, Beverly Boston Gibson, Barbara Tivis Pearson, Gary Len Cox, Marsha Owens Rasco and Wilma Lois Smith.

And, Peggy Fried Bates, Barbara Surratt Haley, Arnis Hansel Morris, Mattinda Cobb Johnson, Thurman Roscoe Whitte, Sheryl R. Dunham, Marie Bucy Lenau, Gladys Waggoner Black, Charles L. Lenau, Santiago Chopo Lucio, Horace G. Morgan, Arnelia Mosely Morris, June Chandler Bartley, Margaret Warren Stout, Herbert E. Sowder, Mary Janhson Kalbas, J.E. Layton, Amanda Lynn Rejino, William G. Harlan, Marjorie Cassidy Precure, Debra A. Green, Jack Duane Lloyd, Teddy Harrison, Marie Bingham Mass, Luis Pacheco, Gary Lynn McDaniel, William Carroll Killingsworth and Sharon Dalrymple Berry.

Also, Kay Stanton Graves, Maria Del Refugio Orozco, Kelly Ray Alexander, Elmer R. Davis, Jon Curtis Buhrman, John Manlon Medlin, Barry Wayne Bradley, Lee Orville Elder, Jack Edward Benham, Edgar Herbert Langfitt, Wayland E. Terridge, Ruth Bruns Briscoe, Terry Glenn Fields, Jolyn Margaret Hollier, Billy Robertson, Jay Lance Gleason, Arnold Ben Madrid, Pamela Dee Atwood, Larry Dale Parker, Esther Gonzales, Todd Wayne Ellis, Royce Lynn Turner, Elina Luera Hernandez, Clifton Wayne Tunnell, Janet Wagnon, Hope Melinda Free and Viola Hamar Mitchell.

New Corn Program Proposed By USDA

In the Thursday, January 22 edition of the Lubbock Avalanche-Journal, Duane Howell, Avalanche-Journal Farm Editor, had the following story:

PRODUCERS WHO ENTER CORN acreage into the 10-year conservation reserve program will receive a bonus for 1987 in the form of generic certificates. USDA announced this week.

The bonus payment will be equal to \$2 times the farm program payment yield for corn, times the number of acres of corn base designated for enrollment in the CRP.

Growers will be paid the bonus whenever a 1987 program contract is accepted. In following years however, the annual rental payment will be only the amount specified in the contract.

The next sign-up period for the program is Feb. 9-27.

The program, part of the 1985 farm act, calls for producers to cease production on highly erodible cropland for 10 years. In return, they receive annual rental payments.

Under the new enrollment incentive, the payment on 1987-crop corn will be increased through a one-time, one-year bonus.

THE BONUS OFFER IS LIMITED to new contracts effective beginning with the 1987 crop year. USDA said, and is not retroactive for corn base acreage under contracts already signed for the CRP.

However, officials said, producers who already have contracts under the 1987 production adjustment programs and have received advance payments in cash and generic certificates can cancel them without penalty and enter into the CRP.

Producers will be able to sign for enrollment in the program next month for either 1987 or 1988. Alfalfa and other multi-year grasses and legumes in rotation during 1981-85 will be considered "agricultural commodities."

Officials said USDA will establish maximum acceptable rental rates after the sign-up period ends and after the department has evaluated bid information.

Some market analysts thought announcement of the bonus payment might be bearish for nearby corn futures but perhaps slightly bullish for new-crop deliveries.

THE BEARISH PERCEPTION FOR nearby months stemmed from the fact that generic payment-in-kind certificates might tend to depress certificate market values and increase cash corn movement through PIK-and-roll.

Deferred months might be lifted somewhat because more acreage might be taken out of production this year, some analysts said.

However, others said, substantial farmer enrollment expected for the existing 1987 feed grains programs may preclude further producer interest in the new bonus plan.

The decade-long duration of the CRP may diffuse any widespread producer interest, some analysts said.

Danny Noble, County Executive Director of the Bailey County ASC office, said the little information they have received, and this was on Thursday, was verbal, with no confirmation in writing.

Muleshoe...

Cont. from Page 1

were included on the Dean's List for the fall 1986 semester, including several from this area.

They were: Claire Brown and Deborah S. Smith, Lazbuddie; Jeannie D. Parker, Maple; James D. Crawford and Nelda K. Wilhite, Muleshoe.

During the hunting trip reported by the Rotary Club Tuesday, Larry, Moe and Curley caught lots of trout -- it was the elk that got away.

BIBLE VERSE



"Men judge by outward appearance, but I look at a man's thought and intentions."

1. Who was the author of this statement?
2. To whom was it spoken?
3. What is the interpretation of it?

Answers to Bible Verse

1. The Lord
2. To the prophet Samuel
3. The human tendency is to judge by looks, but the divine estimate of a man is based upon his character.

Bursted Water Lines

Rent Our Extractor

For Water Removal

And Cleaning Of

Carpets And Floors.

Fry & Cox, Inc.

401 S. 1st

272-4511

KEEP THAT GREAT GM RIDE

AND SAVE! Offer Good Thru January

Now's a great time to replace those worn shock absorbers. With genuine GM shock absorbers. Save on our winter service special... available for a limited time only.

Four GM Shock Absorbers Installed Tax Included \$69⁹⁵

Struts Not Included

And they come with a Lifetime Limited Warranty, so you know they're going to work right. See us for details.

Robert D. Green

272-4588 2400 W. Amer. Blvd.

Mr. Goodwrench

No One Knows your GM Vehicle Better... No One!



GM QUALITY SERVICE PARTS

GENERAL MOTORS CORPORATION

January & February YOU CAN HAVE AN ON-FARM INSPECTION OF YOUR EQUIPMENT AND SAVE ON SERVICE WORK, TOO



SAVE 10% on parts when work is done in our Service Center

plus SAVE 10% on labor

When Paid Upon Completion

C&H Equipment

W. Hwy. 84 272-5514

Lazbuddie School Menu

LAZBUDDIE MENU
JANUARY 26-30
BREAKFAST
MONDAY
 Cereal, Juice, Milk
TUESDAY
 French Toast, Bacon, Juice

Three Way School Menu

JANUARY 26 - 30
BREAKFAST
MONDAY
 Cereal, Juice, Milk
TUESDAY
 Toast/Jelly, Juice, Milk
WEDNESDAY
 Sausage/Gravy, Toast/Jelly, Juice, Milk
THURSDAY
 Biscuit / Gravy / Bacon / Jelly, Juice, Milk
FRIDAY
 Pancakes/Syrup, Juice, Milk

LUNCH
MONDAY
 Corn dogs, Green Beans / Creamed Potatoes, Milk, No-Bake Cookies
TUESDAY
 Spaghetti/Meat/Sauce, Peas, Salad, Hot Rolls, Milk, Honey/Butter
WEDNESDAY
 Taco/Cheese, Corn/Salad, Milk, Cake
THURSDAY
 Macaroni/Cheese, Blackeyed Peas/Carrot & Celery Sticks, Hot Rolls, Milk, Fruit
FRIDAY
 Ham/Cheese Sandwiches, Frys/Lettuce / Tomatoes / Pickles, Buns, Milk, Cookies

Muleshoe School Menu

JANUARY 26 - 30
BREAKFAST
MONDAY
 Milk, Toast, Cereal, Fruit
TUESDAY
 Milk, Blueberry Muffins, Juice
WEDNESDAY
 Milk, Honey Buns, Juice
THURSDAY
 Milk, Pancakes, Syrup, Sausage, Fruit
FRIDAY
 Milk, Biscuits, Gravy, Sausage, Fruit

LUNCH
MONDAY
 Milk, Steak & Gravy, Creamed Potatoes, Green Beans, Hot Rolls, Fruit
TUESDAY
 Milk, Hamburgers, Lettuce & Tomato, Pickles & Onions, Tater Tots, Cobbler
WEDNESDAY
 Milk, Enchilada Casserole, Beans, Corn, Corn Bread, Fruit
THURSDAY
 Milk, Corn Dogs, Veg. Beef Soup, Crackers, Cinnamon Rolls, Fruit
FRIDAY
 Milk, Fish, Macaroni & Cheese, Eng. Peas, Hot Rolls, Fruit

COMBO
MONDAY
 Milk or Tea, Pizza, Mixed Vegetables, Pickles, Fruit
TUESDAY
 Milk or Tea, Hamburgers, Lettuce & Tomato, Pickles & Onions, Tater Tots, Cobbler
WEDNESDAY
 Milk or Tea, Burritos, Cheese Stick, Whole Tomato, Crackers, Fruit
THURSDAY
 Milk or Tea, Corn Dogs, Veg. Beef Soup, Crackers, Cinnamon Rolls, Fruit
FRIDAY
 Milk or Tea, Fish, Macaroni & Cheese, Eng. Peas, Hot Rolls, Fruit

THE PERRYCO ROTOCYCLE
 THE TOUGH ONE
 No matter the initial cost of your shredder, the Perryco RotoCycle can cost you less in the long haul! The rugged construction of the RotoCycle will permit years of trouble-free operation. While the average shredder may last five years, some RotoCycles are still going strong after more than 20 years. Models available in from 60" to 171" swath, 3-point or pull type.
FRY & COX, INC.
 Muleshoe, Texas
 Phone 272-4511

Milk
WEDNESDAY
 Sausage, Biscuits, Juice, Milk
THURSDAY
 Pancakes, Bacon, Juice, Milk
FRIDAY
 Cinnamon Rolls, Fruit, Milk
LUNCH
MONDAY
 Enchilada Casserole, Pinto Beans, Green Salad, Tortilla Chips, Fruit, Milk
TUESDAY
 Corn Dogs/Mustard, French Fries, Corn, Cookies, Milk
WEDNESDAY
 Chili and Beans, Cheese Sticks, Crackers, Cake, Milk
THURSDAY
 Hamburgers, French Fries, Lettuce, Pickles, Cobbler, Milk
FRIDAY
 Beef Stew, Crackers, Cheese Toast, Peach Halves, Milk
 The Salad Bar will be served daily.

Nursing Home News

by Joy Stancell

 Claudia Cannon was visited by her daughter-in-law, Lolly Cannon, Wed. afternoon.

 Clara Weaver was visited this week by Leonard McCormick, Cheryl Weaver, Jean Myers, Iva Carpenter.

 Ora Roberts was visited this week by Rosie Martin, her granddaughter, Tammie and family; Ruby Clark, Mrs. Cliff Randolph.

 Fluff Baldwin was visited by his wife Lois, Joe and Rhonda Rhodes his granddaughter; and great grandson this week.

 Congratulations to Edith St. Clair for being chosen Sweetheart of the week. Johnny St. Clair and Mrs. Sisemore are among those visiting her this week.

 Murphy Berry was visited by his wife, Winnie, and sister-in-law, Elizabeth Achonera, of Albuquerque, N.M.

 Thurs. morning Clara Jones and Zora Bellar came for a Devotional.

 Thurs. afternoon the residents play Skip-Bo and dominoes with Florene Upchurch, Winnie Berry.

 Fri. morning Lena Ruthardt brought the residents two pans of her special cornbread and showed two films from the Library.

 Fri. afternoon Lona Embry served the residents many different hors d'oeuvres from a beautifully decorated table. Nancy Kidd provided piano music while the residents and visitors sang gospel songs. Lona lead the discussion on counting our blessing.

STATE CAPITAL HIGHLIGHTS
 By Lyndell Williams
 TEXAS PRESS ASSOCIATION

AUSTIN—With the Legislature having just convened, a federal district judge is getting tough with lawmakers over the controversial and overcrowded Texas prison system.

He has their attention. Last week, Tyler federal judge William Wayne Justice threatened to fine the state for contempt of his longstanding court orders to upgrade prison conditions. The penalty could be as much as \$24 million a month, and state coffers contain no extra cash right now.

Justice's warning prompted Gov.-elect Bill Clements to schedule a private meeting in the judge's hometown with Attorney General Jim Mattox included. Clements and Mattox met earlier with Lt. Gov. Bill Hobby and Speaker G. B. Lewis to line up ways to defuse this cash bomb which could drain the already anemic state budget.

"Landmark" Contempt
 The landmark contempt ruling is regarded nationwide as the hardest constitutional collision between state and federal governments over prison reform.

In effect, Judge Justice has the entire Legislature's feet to the fire, forcing them to appropriate millions in the next three months for prison reforms. A gutsy undertaking.

Justice ruled the Texas Department of Corrections has done little or nothing to meet the reform order handed down during Clements' first administration, but state and prison officials claim much progress has been made.

According to Hobby and Lewis, prison appropriations have more than tripled since the court order, maintained even during the summer's controversial budget crisis special sessions.

Surprise Visit
 Departing Gov. Mark White is being made the scapegoat in Capitol halls for not making headway on the prison issue.

In defense, White took reporters on a surprise visit to two prisons last week to publicize that conditions weren't as bad as made out to be.

He criticized Justice as "myopic" and said Clements is making Texas a "laughing-stock" for the nation. At one

point he characterized Clements as an "old goose." Clements is alive and well. White's maneuver, probably his last as governor, underscores his genius for using the media to make his points. His point this time is that many improvements have been made in the prison system, that Justice's fine threat is not necessary, and the prison is in compliance with much of the reform order.

Other Highlights
 • Clements and new Oklahoma Gov. Henry Bellmon have scheduled a meeting with President Reagan and other federal officials to push for an oil import fee.
 • As reins change hands, Clements fired some 60 employees on White's staff by letter. Not all will be replaced. Clements, himself, resigned as board chairman at Southern Methodist University.

• Attorney General Mattox released figures claiming his office returned to the state treasury last year \$34 for every \$1 in state money spent.

• Treasurer Ann Richards was sworn in by a host of notaries public on her staff; new Railroad Commissioner John Sharp was sworn in by Mexican American Democrats chair Ruben Bonilla.

• The State Board of Insurance asked lawmakers to give it the power to force insurance companies to make restitution to wronged consumers, particularly for systematic overcharges for policies.

• State Sen. Buster Brown, R-Lake Jackson, has filed a bill to abolish the prison system's program of allowing for early release of good conduct inmates when prisoners grow overcrowded.

• Former Irving State Rep. Bob Davis will be Clements' budget director. Davis once chaired the Ways & Means Committee.

• On the economic front, Japanese investors are coming to the Rio Grande Valley. Furukawa Electric of Tokyo with a Michigan company will start an auto parts company headquartered in El Paso with a maquiladora plant in Ciudad Juarez, Mexico. The maquiladora program allows raw materials into Mexico duty-free for manufacturing, then the products are exported with limited duties into the U.S.

Opponents of the program argue that cheap Mexican laborers take jobs from Americans; proponents say those jobs were going to Korea or other nations anyway.

Accepts Resignation
 President Reagan accepted the resignation of his national security adviser and fired a key national security official because of their role in a secret operation that diverted up to \$30 million from arms sales to Iran to aid U.S.-backed Nicaraguan rebels.

Texas A&M survey shows school teachers think evaluations ineffective

COLLEGE STATION—Most public school teachers in Texas think their performance evaluations over the last two years were unfair, administered by people who are not credible, and didn't weed out poor performers, according to a survey conducted by Texas A&M education specialists.

Dr. Tom Savage of Texas A&M's College of Education and graduate assistant Marsha McCord conducted a random survey of teachers across Texas and found some positive results as well. For instance, 77 percent of 205 teachers surveyed thought their evaluations focused on teaching abilities rather than personalities.

Sixty percent of the teachers said they were informed of the criteria used to evaluate them and 74 percent felt the evaluations captured their typical teaching behavior, Savage said.

"But, here's where we get to the bad part," he said. "More than 70 percent of the teachers felt that the evaluation process did not discriminate between the good and poor teachers, 79 percent of the teachers thought the criteria was unfair and 55 percent did not think the evaluations were objective."

In addition, 54 percent of the teachers did not believe the evaluators were credible, Savage said, which presents a problem in terms of the teachers adhering to recommendations for improving their performance.

Reagan's Woes
 The national furor over President Reagan's secret decision to sell arms to Iran is far from ended with the White House shakeup, according to a wide spectrum of members of Congress, some state department officials and independent analysts.

The Chamber Is Working For A Better Tomorrow For Muleshoe!

Charles Moraw
 Muleshoe Co-Op Gins
 1986 Chamber President



Whether you are trying to get ahead of your competitors or are just getting started in a new business venture, you should be a member of the Muleshoe Chamber of Commerce and Agriculture. Right now there are over 150 business and agricultural people in the Chamber and you will have the opportunity to meet many of them through regularly scheduled meetings. As a member of the Muleshoe Chamber of Commerce and Agriculture, you are becoming affiliated with an organization dedicated to serving this community. Membership will help to promote goodwill for your firm, establish your credentials and build your prestige almost immediately.

Your firm will be listed and recognized as a new chamber member in the chamber newsletter. Many of the firms you may be doing business with are already members of the Chamber and strongly back its progress.

By investing now in the Muleshoe Chamber of Commerce and Agriculture you are helping to increase the market potential of your product or service.

You as a business or as an individual should be a member of the Muleshoe Chamber of Commerce and Agriculture. Call today and join.

The Chamber Needs You, To Help Muleshoe Grow
Muleshoe Chamber Of Commerce & Agriculture
 215 S. 1st Box. 356 272-4248

FLUID facts SOLUTIONS ASSOCIATION

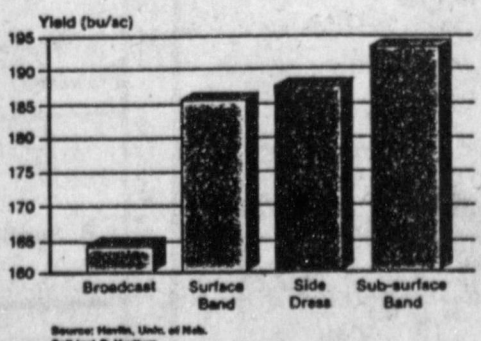
Fertilizer Placement
Overcoming Inefficiencies of Broadcast Applications

Option 1: Surface banding fluid fertilizers can help overcome the inefficiencies of broadcast applications and eliminate the equipment requirement for sub-surface placement.
 Surface banding is rapidly done with existing broadcast equipment without additional fuel. The bands may then be incorporated.

Option 2: Although research has demonstrated that knifing fertilizer into the soil can produce highest yields in many situations, growers have not adopted this practice because of equipment and time.
 Sub-surface banding may be more practical than you think! Knifing in fluid fertilizer has the potential to improve nutrient use by crops in no-till, ridge-till and bedded systems.

Bands Improve Ridge-Till Yields
 Bands concentrated in the root area tend to produce higher corn yields than broadcast fertilizer in Minnesota on a soil testing high in P. Placement in soils testing high in P and K may be more important for ridge-till than a chisel plow system. Other Minnesota data have shown definite benefits of banding on soils low to medium in soil nutrients.

Banded Placement Has Yield Edge
 Fertilizer placement results in 1985 by the University of Nebraska on no-till irrigated corn, show 21 to 29 bu/ac increase over broadcast, with the same amount of fertilizer surface or sub-surface banded.



Profit Note: Researchers and fertilizer dealers have tested and demonstrated the value of banding fertilizer. Strip or preplant bands can enhance yields in many situations. If costs are similar to traditional methods, these application techniques may prove advantageous to you!

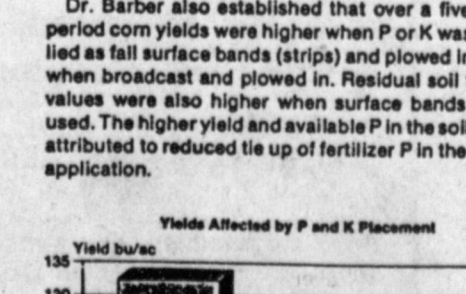
Placing your fertilizer where it has the best chance to be taken up by the plant rather than being tied up by the soil is the message of this Fluid Facts. The figure above illustrates the distribution from broadcast, surface band and deep banding in a chisel-disk system.

New Study Shows Optimum Soil Volume to Fertilize
 Dr. Stan Barber, Purdue, has established a procedure to determine the volume of soil to fertilize that gives the most efficient uptake of P by corn and soybeans. Evaluating 33 different soils he found they vary in their ability to tie up P and provide P availability to plant roots.

For example, maximum uptake of P in a Clarion soil (see chart) occurs when 10 percent of the plow layer is fertilized using a banded application. This is an 86 percent improvement in P use efficiency when compared to broadcast. You can fertilize too little or too much soil, depending on a soil's chemistry. Barber indicates that the potential for best P & K uptake is when 2 to 20 percent of the plowed soil volume is fertilized.

Location	Soil	Percent of Soil To Fertilize	Percent Improvement Over Broadcast
Michigan	Alma	5	83
Illinois	Ayrshire	10	48
Ohio	Canfield OK	5	48
Indiana	Chalmers	5	54
Iowa	Clifton	10	86
Colorado	Colby	10	38
Ohio	Crosby	2	113
Alabama	Decatur	2	82
Illinois	Flanagan	5	154
Minnesota	Hubbard	2	327
Tennessee	Memphis	2	120
Colorado	Plattner	10	212
Iowa	Taylor	5	258
Indiana	Tarboro	5	148

Early Purdue Studies Give Advantage to Banding P & K
 Dr. Barber also established that over a five-year period corn yields were higher when P or K was applied as fall surface bands (strips) and plowed in than when broadcast and plowed in. Residual soil test P values were also higher when surface bands were used. The higher yield and available P in the soil were attributed to reduced tie up of fertilizer P in the band application.



Profit Note: Both P and K surface bands each gave an 11 bu/ac yield increase over broadcast. At \$2.40/bu for corn, that equals \$26.40 more return by using surface bands.

FLUID facts 86-2
 National Fertilizer Solutions Association

Bailey County Journal

Classified

Call 272-4536

CLASSIFIED RATES
 First Insertion Per Word.....\$.15
 Minimum Charge \$2.30

Consecutive Insertions Per Word.....\$.13
 Minimum Charge \$2.00

CLASSIFIED DISPLAY RATES
 \$1.75 Per Column Inch

Blind Ad Rates 50% More

DEADLINES
 12 Noon Tues. For Thursday Paper
 12 noon Friday For Sunday Paper
 We reserve the right to classify, revise, or reject any ad. Not responsible for any error after ad has run once.

1. Personals

IF YOUR house needs a face lift - call the House Doctors - Betty or Curtis Carpenter, 272-4686 or 965-2485. We will give free estimates on acoustical ceilings, wall texturing, wall papering, taping and bedding, interior and exterior painting, and misc. handy man jobs! 1-3s-4tp

HOME REPAIRS
 R.M. Saldana Construction, licensed and bonded plumber. Specialized in cement, carpenter work, remodeling, painting, acoustical ceilings, 272-4995. s1-16s-tfc

ARE YOU looking for someone to do housework for you? Please call 925-6795. 1-3s-4tc

OPEN YOUR OWN beautiful shoe store. LADIES - CHILDRENS- MENS. All first quality merchandise. Over 200 top name brands-Over 1500 styles *Gloria Vanderbilt *9 West *Evan Picone *Andrew Geller *Liz Claiborne *Capeizo *Bandolino *Bass *Bear Traps *Calico *Reebok *Stride Rite *Buster Brown *Candies *L A Gear *Cherokee *Florsheim *Freemap *Bostonian and many more. \$12,900 to \$39,900 includes beginning inventory, training-fixtures and grand opening promotions. Call Today, Prestige Fashions 501, 329-2362. 1-3s-2tpts

PRETTY PUNCH embroidery now available. Free instructions - call Nelda 925-6634. 1-3s-4tp

CUSTOM picture frames 272-5823. 1-4s-2tp

MARY KAY COSMETICS Josie Flowers 272-3865. fl-49s-tfc

STORAGE Rooms Available For Storage \$25.00 - \$30.00 per month Ted Barnhill 272-4903 b1-42s-tfc

CONCERNED About Someone's Drinking? **HELP IS AVAILABLE** through Al-Anon Call 227-2350 or 965-2870 or come to visit Tuesday nights, 8:00 p.m. or Saturday mornings at 10:30 a.m. at 1116 W. American Blvd., Muleshoe

1. Personals

Flat rate Long distance \$125.00 monthly 1-800-US-Antel 9-5 Mon.-Fri. 1-5s-4tpts

START THE NEW YEAR WITH MORE MONEY. Sell AVON for good earnings, set your own hours. Call Nettie Long at 272-3208. ll-4s-6tc

Kenneth Evins' Handyman & Sharpening Serv.
 Knives 1.00
 Circular Saws 2.00-3.00
 Chain saw 3.00-5.00
 Scissors 1.50
 Call 965-2759 Muleshoe, Tx 79347

3. Help Wanted

LICENSED NURSES Roosevelt General Hospital has openings on all shifts for RN's, LPN's, in the PRN's nursing pool. Prefer hospital experience and must have current New Mexico License. If interested contact Susan Walliser, director of nursing, Roosevelt General Hospital, 1700 S. Ave. O., Portales, N.M., 88130. 505/356-4411. E.O.E. r3-3s-2tsc

IMMEDIATE opening for registered nurse, 7 days on, 7 days off schedule. Stable staff & good working conditions. Contact Miss Ahna Parker, Director of Nursing, Littlefield Medical Center, 385-6411. L3-4t-3tc

HAIR DRESSER'S needed, booth rental available. Call Adi at Shear Shack, 272-3991. s3-4s-3tc

4. Houses For Rent

SMALL unfurnished home for rent. Call 272-3107. m4-1s-tfc

FOR SALE or rent, large 3 bedroom house in country 946-3417. k4-3s-2tsc

RUIDOSO CHALET: 4 bedroom for rent by day, weekend, or weekly. Call 505-257-2622. Owner Dr. Albertson. a4-49t-tfc

HOUSE FOR RENT, 2 bedroom, double carport, fenced backyard, large metal storage building, in back. Near school. Call 817-663-5857. b4-4t-tfc

3 BDRM house for rent available Jan. 30 call 925-6799. r4-4s-4tc

5. Apts. For Rent

FOR RENT unfurnished 2 bedroom apartment call 965-2188 or 272-4754. s5-37t-tfc

8. Real Estate

HOUSE for sale 3 bdrm, 2 bath, storage shed, Geo-thermal heat & air conditioning, in ground swimming pool. 272-3117. L8-1t-tfc

8. Real Estate

FOR SALE: Two lots in the Country Club Addition. Call 272-5241 after 5:00 & weekends. 8-2s-3tsp

FOR SALE BY OWNER: small house on 1 acre of land reasonable 272-3600. c8-2s-3tsc

2,048 SQ. FT. Brick 3-2-2 1 acre tract 30x40, fab steel barn, paved drives, 6 ft. block fence. Nicely landscaped. Located Intersection highway 54 & Farm market 1731- 1 1/2 north of Maple. 793-7734 or 946-3452. l8-43s-tfc

CASTRO COUNTY TX strong water area. 1 1/2 sections, 1 - 8 inch well with circle. Balanced choice native grass. (Several circles could be established), minerals. Call about details of 1207 acres Andrews & Gains Co., TX 225/Acre. Call Ben G. Scott 806-647-4375 or Bill R. Gregory 806-647-5421. s8-4s-2tsc

FOR SALE 160 Ac. with 2-6" wells 4 mi. North of Muleshoe. 8-4s-4tp

HOUSE FOR SALE located in Lazbuddie 3 bdrm, 2 baths, utility, garage, brick, big lot, private well. If interested call 965-2126 or 965-2191. f8-32s-tfc

9. Automobiles For Sale

1977 FORD good times custom van. New paint. Immaculate condition. 1981 Chevrolet Citation 272-4367 after 4:00. c9-4s-7tc

8. Real Estate

PIERCE REAL ESTATE
 482-9188
 TEXICO, NM.

CHARLOTTE PIERCE BROKER
 400 Craig Street
 Texico, N.M.
 (505) 482-9188

Fully Licensed In New Mexico & Texas

OWNER MOVING and must sacrifice to sell a very nice 3-bedroom brick home at 914 Hickory. Price reduced to 34,000. Could qualify for any type loan, including FmHa, or existing loan could be assumed with individual lienholder's approval. If interested, lets negotiate!

WHITT - REID REAL ESTATE

201 Main Office 272-3611
 Lenau Addition - New On The Market - Central Heat - Ref. Air - 3 Bedrooms - 2 Full Baths - Fireplace Over 1650 S.F. - Double Garage - Storage - Workshop Under \$50,000 25H29

Lazbuddie Country Home - 2 Bedroom, 1 bath, on Pavement - Panel Ray Heat - Evap. Cooling - 12X16 Concrete Cellar, Private Well - 2 Acres Under \$30,000

We Have Sold Our Listings - We Need Nice Homes Also Need Farms
 If You Want It Sold See Us-

Roy Whitt Broker	272-3058
Thursie Reid	272-5318
Joy Whitt	272-3058
Lucille Harp	272-4693
Charles D. Jones (nights)	246-3200

(Sudan) (Littlefield)

8. Real Estate

116 E. Ave. C. **BINGHAM & NIEMAN REALTY** 272-5285 --- 272-5286
 We have homes for as little as \$600.00 total move-in cost, with payment scheduled according to income for qualified buyers!!!!

COUNTRY HOMES

3-1-1 Home on 1 acre, workshop-storage. \$30's... *****
 3-1-2 Home on pavement, 1 acre, Owner-financing.. *****
 3-2-2 Brick, 3.3 acres, built-ins, barn & pens!!! *****
 3-3-2 Brick, 3.86 acres, Geothermal A&H, built-ins, loads of extras, energy efficient!!! *****
 3-2-3 carport home, built-ins, Geo. A&H, storm cellar, barns, corrals, 11 acres... *****

RICHLAND HILLS

IMMACULATE 3-2-2 Brick, corner lot, Cent. A&H, built-ins, FP, energy efficient, loads of storage & closet space, sprinkler sys!!!! *****
 3-1-1 Brick, Cent. heat, Evap. air, built-ins, fenced yard. \$40's... *****
COUNTRY VIEW-3-2-2 Brick, corner lot, total elec., built-ins, Cent. A&H, & more!!!! *****
 3-1 1/2-2 Brick, corner lot, Cent. A&H, built-ins, fireplace, utility, nice home \$70's... *****

LENAU ADD

3-1 1/4-1 carport home, fenced yard \$30's *****
 2-1 1/2-2 Brick, Cent. A&H, built-ins, fireplace, sprinkler system. PRICED TO SELL!!!! *****
 4-2-2 carport home, built-ins, fireplace, many more extra's. CALL FOR DETAILS..\$50's... *****
 3-2-2 carport, corner lot storm windows & doors, concrete cellar. \$30's... *****
 3-2-2 carport home, Cent. A&H, DW fireplace, nice carpets, spacious. \$50's!!!! *****

2-1-1 carport, built-ins, Cent. heat fireplace, & more. \$20's!! *****

DIANNE NIEMAN, BROKER
 "WE APPRECIATE YOUR BUSINESS"

8. Real Estate

Know THE Weather

What is an occluded front?
 What causes them to form?
 An occluded front is almost always formed when a cold front (which travels up to 35 m.p.h. or sometimes even faster) overtakes the slower-moving warm front.
 The cold air mass pushes the warm, often moist, air upward and there's a mixing process which may confuse the observer on the ground and even the professional in his forecasting office.
 A characteristic of an occluded front is heavy rain and often strong winds. However, the cold front which overtakes the warm will speed up the eastward movement of weather and clearing will come sooner than had the warm front passed overhead in a normal manner.

WHITT - REID REAL ESTATE

201 Main Office 272-3611
 Lenau Addition - New On The Market - Central Heat - Ref. Air - 3 Bedrooms - 2 Full Baths - Fireplace Over 1650 S.F. - Double Garage - Storage - Workshop Under \$50,000 25H29

Lazbuddie Country Home - 2 Bedroom, 1 bath, on Pavement - Panel Ray Heat - Evap. Cooling - 12X16 Concrete Cellar, Private Well - 2 Acres Under \$30,000

We Have Sold Our Listings - We Need Nice Homes Also Need Farms
 If You Want It Sold See Us-

Roy Whitt Broker	272-3058
Thursie Reid	272-5318
Joy Whitt	272-3058
Lucille Harp	272-4693
Charles D. Jones (nights)	246-3200

(Sudan) (Littlefield)

8. Real Estate

116 E. Ave. C. **BINGHAM & NIEMAN REALTY** 272-5285 --- 272-5286
 We have homes for as little as \$600.00 total move-in cost, with payment scheduled according to income for qualified buyers!!!!

COUNTRY CLUB

3-2-2 Brick, Cent. A&H, Built-ins, fireplace, covered patio, fenced yard, & more!!!! *****
 3-2 Brick, Cent. A&H, built-ins, fenced yard. \$40's!!!! *****

HIGH SCHOOL AREA

3-1 1/2-2 Brick, Cent. A&H, built-ins, fenced yard, basement with fireplace. PRICED TO SELL!!!! *****
 3-1-1 carport, corner lot, wall furnace, evap. air, fenced yd., storage bldg. \$30's... *****
 3-1 1/4- Brick, Cent. A&H, built-ins, beamed ceiling, 2 fireplaces, spacious. \$70's... *****
 2-1-1 carport, corner lot, built-ins, plenty of cabinet space, fenced yd, \$20's... *****
 3-1-2 wall furnace heat, evap. air, MAKE AN OFFER...\$20's *****
 3-1-1 corner lot, Cent. heat, Evap. air. \$30's *****

2-1 home on 20 acres, 20 hp sub. pump, barns & corrals, many more extras... & \$42,500 *****

3-2 3/4-2 carport, nice extra large home, concrete cellar...Reduced \$30's. *****

WELL IMPROVED 40 acre cattle set-up PRICED TO SELL!!!! *****

3-1-1 Stucco, carpet & vinyl flooring. \$20's *****
 3-2 large home with Cent A&H, gas grill, storage bldg. & more..\$30's... *****

LARGE BLDG. on 2 lots, Paved parking... *****
PRICED TO SELL- Office Bldg. across from courthouse... *****
YL-Well-Improved 400 irrig. acres, 3-2-2 it home, shop, barns, UG tile. *****
 3-1 1/4 home, corner lot, Cent. A&H, large rooms..50's... *****

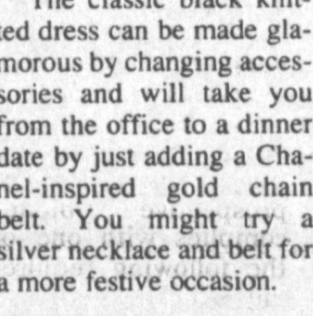
GEORGE NIEMAN, BROKER



What is an occluded front?
 What causes them to form?
 An occluded front is almost always formed when a cold front (which travels up to 35 m.p.h. or sometimes even faster) overtakes the slower-moving warm front.
 The cold air mass pushes the warm, often moist, air upward and there's a mixing process which may confuse the observer on the ground and even the professional in his forecasting office.
 A characteristic of an occluded front is heavy rain and often strong winds. However, the cold front which overtakes the warm will speed up the eastward movement of weather and clearing will come sooner than had the warm front passed overhead in a normal manner.

In Fashion

Dresses and suits are now playing a dual role. A smartly-tailored dress, in wrinkle-resistant fabric, needs only a quick change of accessories and you're ready for an elegant evening out.
 The classic black knitted dress can be made glamorous by changing accessories and will take you from the office to a dinner date by just adding a Chanel-inspired gold chain belt. You might try a silver necklace and belt for a more festive occasion.



Freeze syrup from canned fruit to make a sauce for gingerbread, coffee cake or nut bread.

8. Real Estate

116 E. Ave. C. **BINGHAM & NIEMAN REALTY** 272-5285 --- 272-5286
 We have homes for as little as \$600.00 total move-in cost, with payment scheduled according to income for qualified buyers!!!!

COUNTRY CLUB

3-2-2 Brick, Cent. A&H, Built-ins, fireplace, covered patio, fenced yard, & more!!!! *****
 3-2 Brick, Cent. A&H, built-ins, fenced yard. \$40's!!!! *****

HIGH SCHOOL AREA

3-1 1/2-2 Brick, Cent. A&H, built-ins, fenced yard, basement with fireplace. PRICED TO SELL!!!! *****
 3-1-1 carport, corner lot, wall furnace, evap. air, fenced yd., storage bldg. \$30's... *****
 3-1 1/4- Brick, Cent. A&H, built-ins, beamed ceiling, 2 fireplaces, spacious. \$70's... *****
 2-1-1 carport, corner lot, built-ins, plenty of cabinet space, fenced yd, \$20's... *****
 3-1-2 wall furnace heat, evap. air, MAKE AN OFFER...\$20's *****
 3-1-1 corner lot, Cent. heat, Evap. air. \$30's *****

2-1 home on 20 acres, 20 hp sub. pump, barns & corrals, many more extras... & \$42,500 *****

3-2 3/4-2 carport, nice extra large home, concrete cellar...Reduced \$30's. *****

WELL IMPROVED 40 acre cattle set-up PRICED TO SELL!!!! *****

3-1-1 Stucco, carpet & vinyl flooring. \$20's *****
 3-2 large home with Cent A&H, gas grill, storage bldg. & more..\$30's... *****

LARGE BLDG. on 2 lots, Paved parking... *****
PRICED TO SELL- Office Bldg. across from courthouse... *****
YL-Well-Improved 400 irrig. acres, 3-2-2 it home, shop, barns, UG tile. *****
 3-1 1/4 home, corner lot, Cent. A&H, large rooms..50's... *****

GEORGE NIEMAN, BROKER

8. Real Estate

JAMES F. HAYES & CO. AGRICULTURAL REAL ESTATE
 Vic Coker-Agent
 (806) 965-2468

120 Acres in Northeastern Bailey County. Established in hay \$225/Acre. *****

80 Irrigated Acres in Lamb County on Bailey County Line. Good prospect for part time cattleman or farmer. \$400/Acre. *****

639 Acres Northwest of Earth very good water, good soils, 2 electric sprinklers, Home, corrals, small feed lot. Barn & other out buildings. \$550/Acre. *****

1-15,000 Head feed yard complete with mill, homes, 1000 Acres of grass. MODERN FACILITY. *****

5 Sections-adjacent to above feedlot. Excellent soils, good water, 3 sprinklers. Combined with feedlot, this is a vertically integrated operation. Call Vic for details. *****

640 Acres Pleasant Valley on pavement. 3 electric sprinklers, 5 wells, excellent water & soils. \$700/Acre. *****

14,000 Head feedlot near Muleshoe. Good opportunity call Vic for details. *****

550 Acres with 3 electric sprinklers. Adjacent to above feedlot. Excellent water, & soils. \$625/Acre. *****

160 Acres very good soils, electric sprinkler, modern home. ALL for \$700/Acre. *****

335 Acres-Southwestern Castro County Good soils, excellent water, nice home on pavement, Look and make an offer! *****

HENRY REALTY
 111 W. Ave. B
 Muleshoe, Texas
 272-4581

BRICK Home North of Muleshoe on Hwy 214. 3 bedroom, 2 bath, fireplace, central air/heat. One acre. Large Hobby Shop and apartment on premises. Fruit Trees. *****

4 Br, 2 bath, 2 car garage, central heat/air, large utility, carpet, near down-town. Excellent condition. *****

ONE ACRE sites for home construction. 3 miles East of Muleshoe on HWY. 3 lots remain. *****

JUST COMPLETED 3 bedroom, 2 bath, large living room, kitchen and dining. Excellent condition, near high school. Priced to sell. *****

COMPLETELY remodeled 2 bedroom home. Ideal first home, must see to appreciate. Nice location with F.H.A. loan. *****

COMMERCIAL PROPERTY on Main Street, over 4,000 sq. ft., income producing property. *****

COMMERCIAL PROPERTY-Excellent rental income from 4 separate offices. Lease agreements in force. *****

3 Br, 2 bath, spacious home outside city limits, near city on highway. 29'x40' metal building. Lot 85'x62'. *****

3 Br, 1 bath, completely remodeled, edge of city on highway. *****

VACANT LOT for Mobile home immediate possession. *****

COMMERCIAL PROPERTY on West American Blvd. ideal location Building ready for occupancy. *****

J. B. Sudderth Realty, Inc.
 Realtors/Auctioneers / APPRAISERS
 Farwell, Texas
 481-3288

Drawer 887 109 5th St
 Licensed in Texas, New Mexico

J.B. Sudderth, Broker Daren Sudderth, Broker
 Jimmie Mace, Sales Associate

Country living at it's best. 10 acres with extra nice brick, 4 bedroom, 3 bath 2 car garage, T.V. Dish, large shop building, barn with fence, storm cellar, sprinklers pipe. Located near Muleshoe city limits. Priced to sell immediately. *****

On one acre nice 2 bdrm, 1 bath home with garage, large shop building and large storage building on hwy West Camp area priced for immediate sale. *****

18. Legal

PUBLIC NOTICE

Notice is hereby given that the Commissioners Court of Bailey County will enter into a contract with any banking corporation, association or individual banker in Bailey County for the depositing of the public funds of Bailey County in such bank, on February 9, 1987.

Any banking corporation, association or individual banker in Bailey County desiring to be designated as county depository shall make and deliver to the County Judge an application applying for such funds and said application shall:

8. Real Estate

ENERGY EFFICIENT BRICK HOME

Beautiful view on top of hill. Southside of Muleshoe Park. 3300 Sq. Ft. under Roof, 3-2-2. Den with fireplace kitchen/dining room, finished basement, study, attached shop, 2 porches. 1515 W. Ave. J. 272-5334. b8-25s-stfc

3. Help Wanted

stock and permanent surplus of said bank; and,

2. there shall be furnished with said application a statement showing the financial condition of said bank at the date of application; and

3. be delivered to the County Judge on or before February 9, 1987 at 10:00 A.M.; and,

4. be accompanied by a **CERTIFIED CHECK** for \$8,238.76, as required by Art. 2545, V.T.S.A.

Said application should set out all terms and conditions for the handling of such funds, including, but not limited to, the rate of interest, if any, to be paid on demand deposits, and the rate of interest, if any, to be paid on time deposits.

This notice shall be published once a week in some newspaper published in Bailey County and posted at the courthouse door of Bailey County.

Gordon H. Green
County Judge
b18-4s-3tsc

NOTICE TO CONTRACTORS

Sealed bids addressed to the City of Muleshoe, Texas will be received at the City Hall until 8:30 AM, February 17, 1987 and then publicly opened and read for furnishing all plant, labor material and equipment, and performing all work

3. Help Wanted

R.N. NEEDED

Part-time to make home visits on contract basis. Excellent pay and very flexible hours. Prefer someone familiar with Home Health and/or Primary Home Care programs. Must live in or near Muleshoe. Send resume to Community Action Home Health, P.O. Box 2612, Lubbock, Texas 79405, Attention: Director. EOE. 3-4s-4tc

8. Real Estate

8. Real Estate

SMALLWOOD REAL ESTATE BROKER

272-4838
3 Bedroom, 2 bath, stucco. Central heat, evaporative cooling, carpeted, 1360 sq. feet. \$24,500. This is a good price.

Investment Property
ON one lot-2 Bedroom, 1 Bath, New Carpet in living room, and 1 Bedroom Furnished. Both are now rented.

FOR RENT--2 Bedroom, 1 Bath

15. Misc.

15. Misc.

Custom Draperies - Mini Blinds - Fabric Custom Bedspreads Window Treatments of all Kinds

Morna's Interiors

Lisa Holt 946-3352 805 Utica
Morna Holt (806) 296-7951 Plainview, Texas 79072

ATTENTION

Feeder Cattle & Grain Option Seminar and New Concept of marketing your cattle thru video Livestock Auction

Clovis Thurs. Jan. 29, 1987 7:00 PM MST

Colonial Park Country Club

Frona Thurs. Feb. 5, 1987 7:00 PM CST

High School Cafeteria

Presented by:

T & D Commodities

Tom White Doug Harrison

400 Pile St. Suite 403

Clovis, N.M. 88101 505/762-4766

Superior Livestock Video Auction

Bob Bradley

505/762-5663

Public Invited

Don Foster

806/364-3900

No Charge

required for seal coating city streets.

Bids shall be submitted in sealed envelopes upon the blank form of the proposal attached hereto and marked in the upper left hand corner.

All proposals shall be accompanied by a cashier's check or certified check upon a national or state bank in the amount of five (5%) percent of the total maximum bid price payable without recourse to the City or a bid bond in the same amount from a reliable surety company, as a guarantee that bidder will enter into a contract and execute performance bond within ten days after notice of award of contract to him. The bid security must be enclosed in the same envelope with the bid. Bids without check or bid bond will not be considered.

The successful bidder must furnish performance and payment bonds upon the forms which are attached hereto in the amount of 100% of the contract price from an approved surety company holding a permit from the State of Texas to act as surety or other surety or sureties acceptable to the Owner.

The right is reserved to reject any and all bids and to waive any informality in bids received.

Plans, specifications and bidding documents may be obtained at the office of Bill R. McMorris & Associates, Inc., 6300 Canyon Dr., Amarillo, Texas 79109, upon deposit of fifty (\$50.00) Dollars per set which sum so deposited will be refunded, provided the prospective bidder complies with one of the following requirements: (1) If no proposal will be submitted: All documents will be returned to the office of the Engineer not later than 48 hours before the time and date of receiving proposals; or (2) If proposal is submitted: All documents are returned in good condition at the time and date of receiving proposals. Provided the prospective bidder complies with neither of the two above requirements, the sum of Fifty (\$50.00) Dollars shall become the property of the Engineer.

CITY OF MULESHOE, TEXAS
Darrell E. Turner, Mayor

18-4t-2tc

ABOUT YOUR HOME

by April Rhodes

Low-running ceiling fans will help mix the warm air near the ceiling with colder air below.

Add a teaspoon of salt to the water in which eggs are boiled and the shells are easier to remove.

A rainy-day house will keep a small child happy for hours. Simply drape an old blanket or bedspread over a table and a couple of chairs and leave the rest to the child's imagination.

Take advantage of the January White Sales to replace needed linen in your home. A wrinkle-resistant cotton sheet that needs no ironing is on the market.

If the odor that clings to plastic food storage containers can't be removed with baking soda, try running them through the dishwasher.

Another use for a shoe bag is to tie it to the outside of baby's playpen to hold small toys.

EATING OUT

by Rose Hughes

ONE favorite advertising line of restaurants is the phrase "with all the trimmings." That sounds good and has the ring of home cooking, but it can mean anything, maybe nothing. One usually pays something for the phrase.

SPEAKING of advertising, it's difficult to select a good restaurant in newspaper ads or the yellow pages. One should look for special awards or quotes from gourmet authorities.

THE biggest ads don't mean the best food. In resort towns the turnover rate for restaurants is quite high and one big date (and advertiser) one year might be closed and gone forever the next.

IN non-resort areas, the turnover is less. And one can learn by word of mouth where the smart people dine. But don't ask the filling station operator or the policeman if in a town of 50,000 or more.

THEY may not eat in the best restaurants. Ask at the newspaper, or ask someone who looks substantial and is well-dressed. Most often, they'll be delighted to tell you the best places to eat.

BEWARE of restaurants which advertise but don't give any indication of price, and which stress fine dining, gourmet dishes and exotic French food. They are often clip joints, to coin a phrase.

DAVIS COMMERCIAL PUMPING SERVICE

Cess pools, Grease pits, Mud pits, Septic tanks, 20 ft. elevator boots, Bacteria & Enzyme. Digestant stocked. We stress maintenance for your best results. Call us. 806-272-4673 806-272-3467 Muleshoe, Texas TX. Dept. of Health reg. #TDH-02009 1-8s-stfc

Sudan News

by Evelyn Ritchie

Mr. and Mrs. Randy Wiseman of Lubbock and Mr. and Mrs. Van Branscum and boys were holiday visitors with their parents, Mr. and Mrs. Pudd Wiseman and sister, Linda and other family members.

Bud Crouch has recently become a resident at Amherst Manor.

Roy Graves was taken back to the Amarillo hospital by ambulance late Sunday evening where he remains in critical condition.

Mr. and Mrs. Mike McDonald were in Camp Wood during some of the holidays to visit his parents, Mr. and Mrs. Ray McDonald and other family members.

Participants from Sudan who placed in the Lamb County Junior Livestock Show held recently in Littlefield held recently in the Lamb County Ag & Community Center and Ag Barns in Littlefield are as follows: In the Fine Wool Heavy Weight Lamb Division, Lee Ray from Sudan 4-H got Reserve Breed Champ. In the Fine wool Medium Weight, Gary Boyles placed 10. Lee Ray also placed 3rd in the Fine Wool Heavy Weight and 3rd in the Medium Wool Light-Heavy Weight. Gary Boyles placed 6th. Dean Johnson placed 5th with his Medium Wool, Medium Weight and he also placed 9th in the Medium Wool Heavy Weight.

Macie, daughter of Mr. and Mrs. Bo Lance was honored on her first birthday with a party held in the home of her grandparents, Mr. and Mrs. Carroll Gillit in Baird. A Baskin-Robbins icecream cake was served to the honoree, her grandparents, and great grandmother, Mrs. Lorene Gillit, and an Uncle Dana Gillit, her sister, Danya and her parents.

Danya, daughter of Mr. and Mrs. Bo Lance was honored Tuesday on her sixth birthday with a party held in the home of her parents. A "Care Bear" theme was carried out with a Care Bear cake and ice cream served.

Attending were her cousins, Monty, Kyle & Guthry Edwards, Mandy & Muffin Davis and aunts, Nancy Davis, Connie Edwards and grandparents, Pete & Pee Wee Lance, Mam-maw Baker, and Jackelyn Ford, Charls Ann Williams, JonAnn Ford, Nannie Lowe and the sister of the honoree, Macie Lance and also her parents.

Frances Gardner was honored on her birthday Sunday with a surprise party in her home. A specially decorated birthday cake and punch were served to her daughter, Mr. and Mrs. Steve Turner and family of Eunice, N.M., her granddaughter, Teresa Frank a student at Eastern N.M. University and her friend, Mr. and Mrs. Dwayne Powell, Mr. and Mrs. John Williams, Mr. and Mrs. Gaylon Bruns, Mr. and Mrs. Colby Norman, Rev. and Mrs. Jerry Dodson, Mary Hanna, Willie Mae Gregg, Rene Cole, Rosabel Coldiron, Kathy Powell and Bill Gardner.

Justin Harrison was honored on Saturday on his 8th birthday with a party held at the Pizza Inn in Littlefield.

Pizza, drinks and a "Transformers" birthday cake were served to his guests including Heath Harper, Kris Humphreys, Bradley Black, Michael Don Richards, and Amber Legg and Heather Harrison, and the honoree and his mother, Nancy Legg.

Mr. and Mrs. Dwayne Powell were in Midland during the

weekend to visit her brother.

Holiday visitors with Mr. and Mrs. Wiley Mudgett were their daughters, Penny Mills of Austin and Candy Quigg and her sons, Kelsey and Cannon of Denver Colo. Also visiting were Mrs. Mudgett's mother, Mrs. Stokes of Slaton and her brother, Mr. and Mrs. Gerald Stokes of Trinidad, Colorado.

Miss Ruby Mince joined the Ves Pattersons during the holidays and was here with them to enjoy the company of Pattersons daughter and her family.

Elsie Seymore was admitted to the St. Mary's Hospital this week where she is to undergo surgery on Friday.

Cletta Reese was an outpatient for eye surgery on Tuesday of this week.

Enochs News

by Mrs. J.D. Bayless

Guests in the home of Mr. and Mrs. Bobbie Adams Sunday were their daughters, Mr. and Mrs. Glenn Green of Muleshoe, Mrs. Debbie Logsdon and children of Lubbock, Mrs. Mamie Adams and Mrs. Bill Key they helped Kelly Logsdon celebrate her 4th birthday. It was Jan. 11, her grandmother, Mrs. Bobbie Adams baked her a birthday cake.

Mrs. Olive Cox of Muleshoe was a lunch guest in the home of Mrs. Ellen Bayless Saturday. Then she visited Mrs. Etta Layton in the afternoon.

Sudan Hornet Bzzz

The 7th grade tournament was held the 8, 9, 10. The girls won third place and the boys came in 4th.

The JV boys and girls played Anton here at 4:30 p.m. Jan. 12. The 7th grade boys and the Jr. High girls won. The 8th grade boys lost.

The JV boys and the Varsity boys and girls played Spade here at 5:00 p.m. January 13. The Hornets won all three games.

The Varsity boys and girls played Cotton Center on Friday, January 16.

The Sudan Stock Show will be at 2:00 p.m. today, January 17, in the bus barn.

The Junior High boys and girls will be in Spade to play basketball on Monday, January 19.

The JV boys and the Varsity boys and girls will be in Petersburg to play basketball on Tuesday, January 20.

The Sudan eighth grade basketball tournament will be January 22, 23, and 24.

The JV girls and Varsity boys and girls will be playing in Amherst January 23 at 5:00 p.m.

Friday, January 23, will be a holiday unless we have to miss for snow between now and then.

A&M FivePoint

\$9.00

50 Lb. Bag

HI PROTEIN DOG FOOD

A 26% crude protein dog food
Formulated for hard working dogs
For Peak conditioning and performance.



PROPERTY TAX RENDITIONS

HELP YOU PROTECT YOUR RIGHTS AS A TAXPAYER

A rendition is a report to the appraisal district that lists all the taxable property you own or control on January 1, 1987. You may also give your opinion of the property's value, if you wish.

You must file a rendition if you own tangible personal property used to produce income—such as the machinery and equipment used by a business.

The appraisal district may require any taxpayer to file a rendition by sending the taxpayer a written notice and a rendition form.

You may want to file a rendition, even if you aren't required to file, to preserve some of your rights as a taxpayer:

- You put your correct mailing address on record so your tax bills will go to the right address. Even if your bill goes to the wrong address, the law still holds you responsible for paying your taxes on time or else paying extra charges for late payments.
- You can put your own opinion of your property's value on record. If the appraisal district then places a higher value on your property, it must notify you in writing of the higher value and explain how you can protest that value to the appraisal review board.
- By filing a special type of rendition called a report of decreased value, you can notify the appraisal district of significant damage to your property that occurred in 1986. The district will send someone to verify the damage and take it into account when assigning a 1987 value to your property.

File renditions with your local appraisal district at the address shown below. Forms are available at this office.


The new deadline for 1987 renditions is March 31. You can get an extra 30 days if you ask for it in writing before the March 31 deadline.

For more information, get a free copy of the pamphlet, Taxpayers' Rights, Remedies, Responsibilities, at your appraisal district office or from the State Property Tax Board in Austin.

Bailey County Appraisal District

104 E. Ave. C. 272-5501

"The tax deadline is looming. H&R Block is never too busy to help you." — Henry Block



H&R Block's tax preparers are working through April 15th. We're pledged to find you the biggest refund you're entitled to. This year get back everything you've got coming.

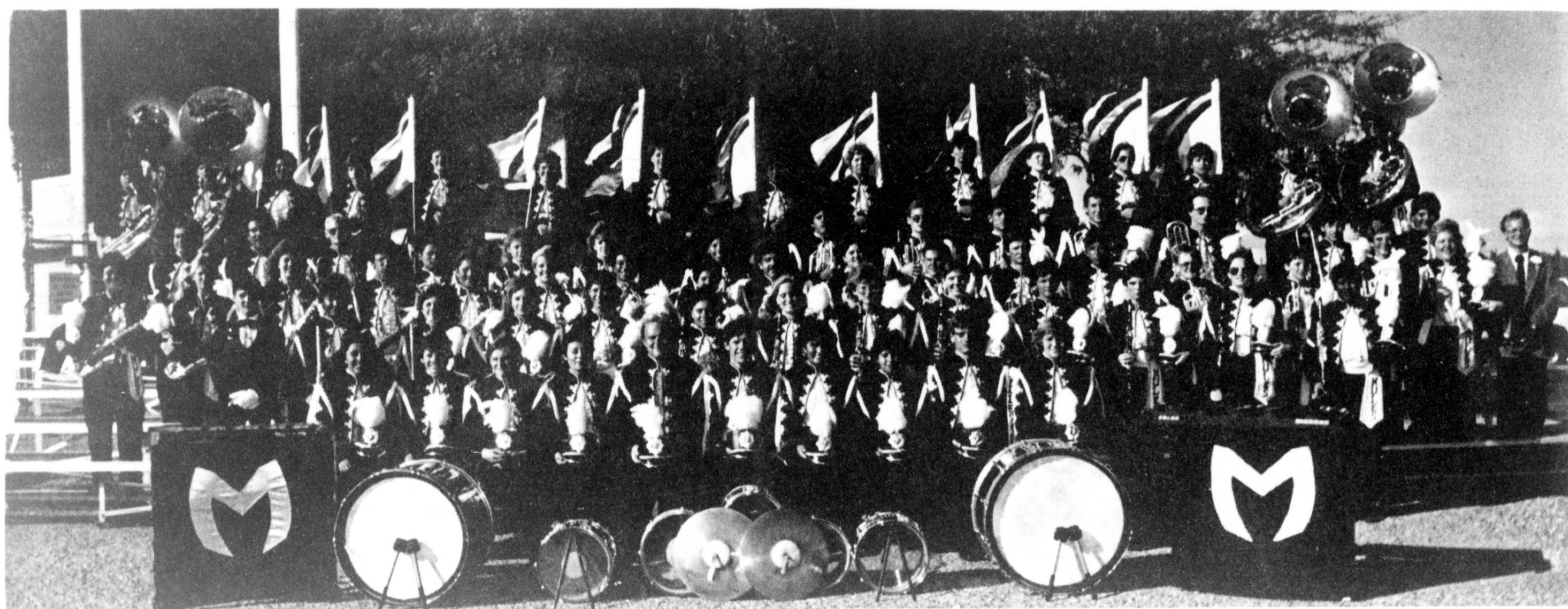
WHERE MORE AMERICANS FIND A BIGGER REFUND.

Weekdays 9 a.m.-6p.m. Saturdays 9 a.m.-5p.m.

272-3332 224 W. 2nd.

THINK CLASSIFIED

Congratulations



Muleshoe Mighty "M" Band Members

"For Doing So Well"

At

All-Region Band Try-Outs

Thursday, November 22, 1987



Presented By The Following Merchants:

Pay-N-Save

Spudnut Shop

Lookin' Good

Lambert Cleaners

Serv-All Thriftway

Lees Western Wear

Muleshoe Antenna

Main Street Beauty Salon

Anthony's Dept. Store

Decorators Nursery & Floral

Allison Bookkeeping & Tax Service

Glenna's Beauty Retreat

Black Insurance Agency

James Crane Tire Co.

Farmer's Co-Op Elevators

Spurgeons Motor Machine

Bob Stovall Printing

Charles Lenau Lumber Co.

Terry Field Insurance

Muleshoe Livestock Auction

Williams Brothers Office Supply

Wes-Tex Feed Yards

Muleshoe IGA Supermarket

Shipman & Son Body Shop

Something Special Gifts

Muleshoe Truck & Auto Center

Alton Burton Service Center

Muleshoe Auto Parts

Muleshoe Floral & Gifts

Leal's El Nuevo Restaurant

First Bank

James Lee, Bailey County Farm Bureau Ins.

Latrell's Fashion & Merle Norman Cosmetic Studio