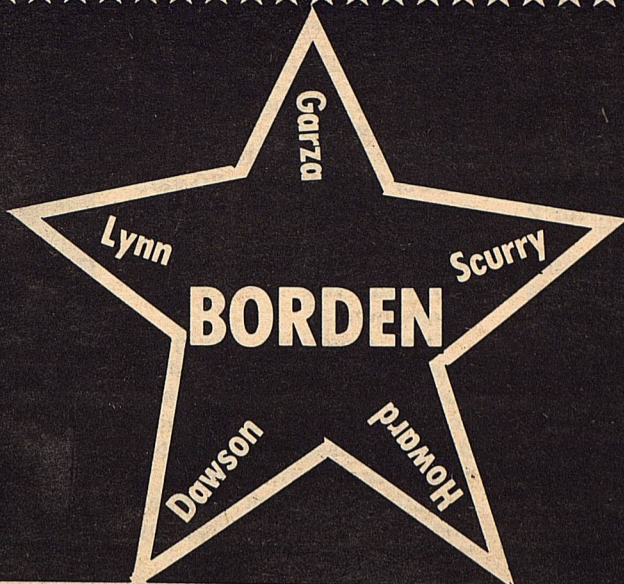


THE

Volume XLII



STAR

October 1, 1986

Serving the Counties of Borden, Dawson, Garza, Howard, Lynn & Scurry



WILLIAM P. CLEMENTS

CLEMENTS CALLS OUT TO BORDEN COUNTY SCHOOL DISTRICT TRAGEDY

Austin--Republican gubernatorial nominee Bill Clements said the funding reductions from the state to the local school district was straining an already overburdened taxed public and that it is a tragedy that the Mark White administration was not supporting the local school districts...

"In Borden County alone more than \$6,976 have been lost in state-aid to the school district since the school year 1985-86. This loss can only be made up by increasing property taxes or by cutting valued programs and



ROY REEDER

services," Governor Bill Clements said.

"Now Mr. White is planning to increase sales tax, that leaves the citizens of Borden County paying for his mistakes and for the loss of state-aid to the school districts."

Governor Clements has a clear record on supporting education and local school districts. His "back to basics" bill requires a strong curriculum in the basic subjects like English, Math, Science, Texas History to be offered from kindergarten through grade 12.

Governor Clements signed a bill that gave the teachers, counselors and principals the discipline and control to perform their jobs effectively.

In 1981, he approved the establishment of school-community guidance center pilot programs designed to locate and assist children with problems that interfere with their educations.

"Mark White has done very little to work with the teachers and school districts to solve the problems facing education on a local level. He is proposing even more reductions in education. He has alienated educators in our state. It is time to work with our educators not against them."

SERVICES HELD FOR REEDER

Services for Roy Reeder of Fluvanna, 82, were held at 2 p.m. Friday at Fluvanna Church of Christ with Don Campbell, minister of the church, officiating. Burial followed in the Fluvanna Cemetery under the direction of Bell-Cypert-Seale.

The lifetime county resident died at 6:50 p.m. Wednesday at Cogdell Memorial Hospital. He was born March 29, 1904 in Borden County.

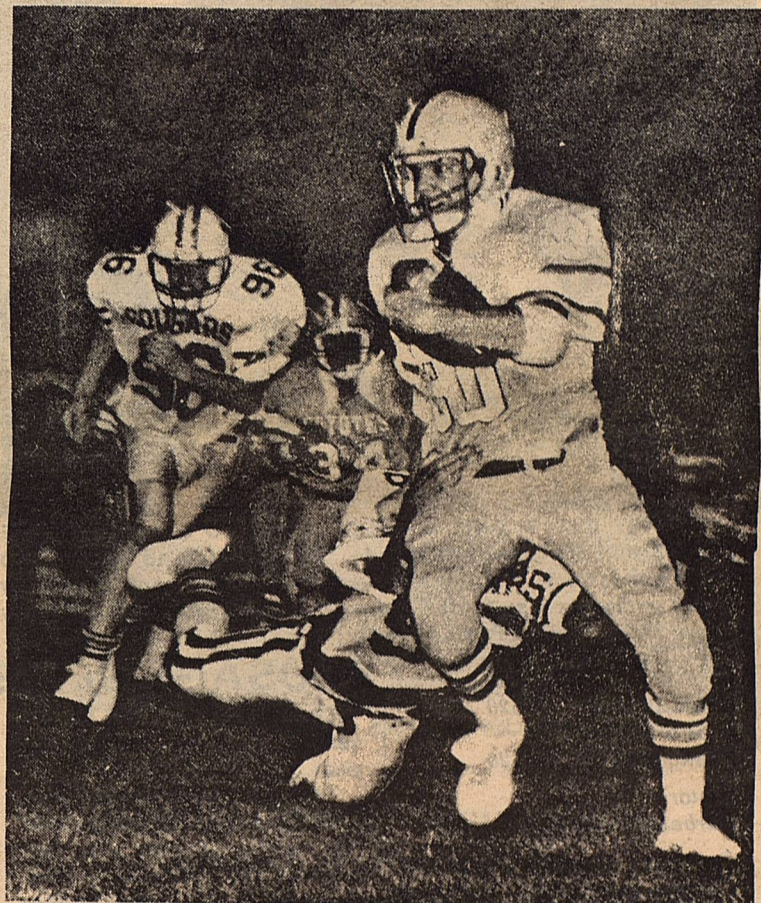
He was a farmer.

INVEST NOW FOR OUR ENERGY FUTURE

October has been officially designated National Energy Month by the United States Department of Energy. While consumers will see temporarily lower utility bills as air conditioners give way to autumn breezes and open windows, cold weather and heating bills are on the way for many Texans. Investments now in energy conservation will pay handsome dividends in lower utility bills and greater comfort this winter.

This month, the Public Utility Commission will be sponsoring the Texas Energy Challenge, a question and answer series on participating local radio stations. Listeners will be able to increase their awareness of state and national energy issues, as well as obtain useful information for conserving energy in their own homes and businesses.

Conservation can be viewed as the "hidden" resource in the state's energy picture. To find out how Texans can invest now in their energy future, call the toll-free ENERGY HOTLINE D1-800-643-SAVE.



GETS FREE-Brice Key breaks to the outside as Nicky Hill gives chase for the Klondike Cougars during six-man football action in Gail Friday night. Borden County scored at will in the first half and cruised to a 57-32 victory. (Photo by Gary Juarez-SND)

OPEN LETTER

This is in answer to the letter some of us received from Mr. Shaw, Rich's opponent for the 69th legislature.

We all know John Anderson has served his county as a school board member and now serves on the county equalization board and numerous boards in Howard County-also is a director of the Texas Cattle Raisers Association. These are facts.

Let's look at the record. Two of the most conservative groups in Texas rated Mr. Shaw this way - 1) Concerned Citizens for Tax Relief-Texas 13 rated Mr.

Shaw as having the 5th most liberal voting record in the Texas House in the 68th session - 2) The Conservative Report-Free Market PAC's rated Shaw as having the 11th most liberal record in the Texas House in the 69th session. Given these facts there is no doubt that Shaw is a liberal in sheep's clothing.

John R. has been a businessman for 35 years in this district and from a number of reports Shaw works in real estate in Austin, where he is a member of the Austin Ballet Association.

How can Shaw say he voted against House Bill 72

Con't on Pg. 7

BORDEN COUNTY WHIPS BY KLONDIKE 57-32

The Borden County Coyotes opened district play Friday night against Klondike. The Coyotes lost the opening coin toss, but everything else worked well in the first half. Rockie Harbor was the first to score on a 30 yard run with Michael Murphy passing to John Stephens for the point after touchdown. Then Brice Key ran into the endzone from 10 yards out and Randell Hollis kicked for two more points to bring the score to 15-0 in the first quarter.

In the second quarter our passing game began to work. Shannon Bond passed to Mickey Burkett for a 10 yard touchdown, and Randell

Hollis converted the extra point try. John Stephens caught the next pass for a 5 yard touchdown, and Randell was good on his kick for 2 more points.

After a 31-0 lead the Coyote bench began to see some action in a big way. Kerry Fryar, playing defense, intercepted a pass and raced 23 yards for the final Coyote score in the first half.

Just before the first half ended, Klondike was able to go in for a 1 yard touchdown run to make the score 37-8.

In the first half the Coyotes played almost flawlessly, only punting one time. In the second half all of the Coyotes

had some playing time, and they did well.

In the third quarter Rockie Harbor dashed for a 30 yard touchdown, but the kick failed. Once again the Bond to Burkett combination worked for a 5 yard touchdown.

The sleeping Cougars finally began to come alive during this quarter. They scored on a 68 yard run and a 51 yard pass. The Coyotes final scores came from a 5 yard run by Patrick Herridge and a successful kick by Randell.

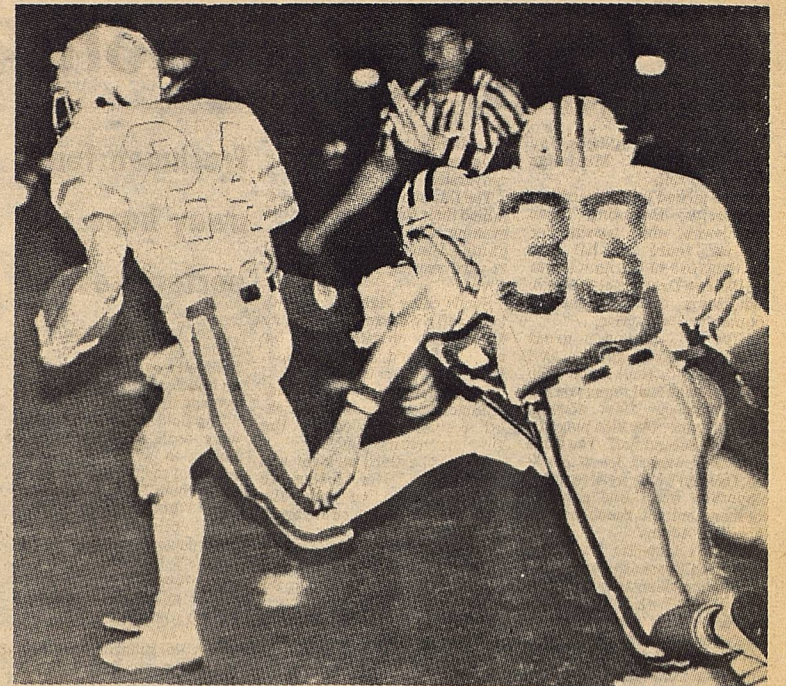
The Cougars scored twice in the fourth quarter, but it was too little too late.

Once again the defense was led by Mickey Burkett who had 13 tackles to his credit. He was followed closely by Brice Key with 10 tackles and Shannon Bond with 9. Mickey also had a pass interception, and Harold Barnes coming up with a fumble recovery.

Brice Key was the leading rusher with 106 yards on 10 carries. Rockie Harbor had 98 yards on 14 carries. Shannon Bond was 6 out of 10 on passing with 3 for TD's. Randell Hollis was 4 out of 8 on extra point tries. Michael Murphy had 117 yards on kickoff and punt returns.

Everyone played well and had a good time. Gerry Smith did a good job snapping the ball and blocking and caught 1 pass. Michael Murphy had another fine all around game. Ray Martinez and Harold Barnes helped the defense to hold the Cougars to only 8 first half points. Bobby Squires played well and made a good tackle of a kickoff. Our freshmen also played well. Brian Bond, James Smith, Lance Telchik and James Lewis saw action against the Cougars.

The Coyotes are really looking forward to our next game against Sands. The Coyotes still remember them passing for a touchdown with 4 seconds left in the game.



SLIPPING PAST THE COUGARS-Borden County senior tailback Rockie Harbor breaks a big gainer against Klondike. Pictured for the Cougars is sophomore defensive back Clint Kirkland. The Coyotes got off to a fast start and never looked back in six-man football action at Gail. (Photo by Russel Skiles-Lamesa Press Reporter)

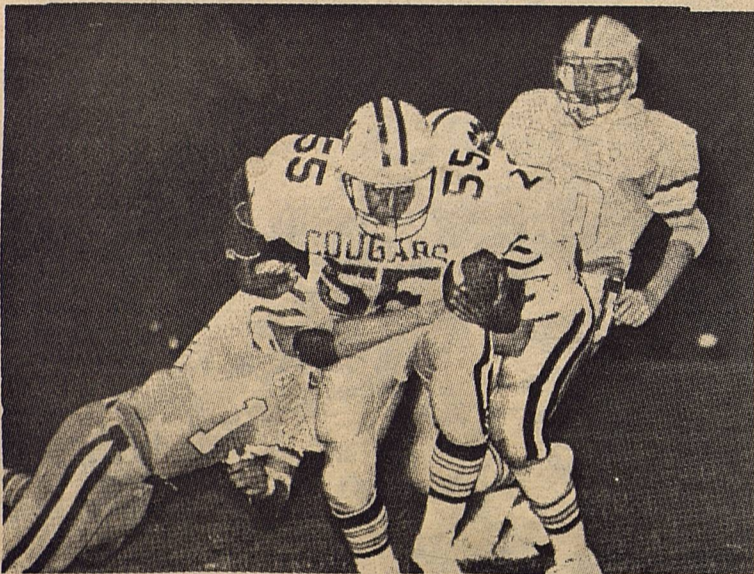
COYOTES SUFFER FIRST LOSS

The Junior High team traveled to Klondike last Thursday, and suffered their first loss of the year. The Cougar speed was just too much for the Coyotes in the first half. All of the scoring occurred in the first half. Jimmy Rios scored our lone touchdown.

In the second half the Coyote defense tightened up, but the offense was not able to score. Paul Sturdivant led the defensive charge, with Jimmy Rios, Shane Kemper, Cole Vestal,

Monty Garrett, and Eric Lusk giving support. Clint Bray and David Buchanan also chipped in on offense.

Between halves, everyone else enjoyed a fun time. Juvey Balague, Kirk Jones, and Rich Hozmann scored. Others joining in on the fun were Bruce Harris, Jesus Parra, Clint Kemper, Armondo Carrizales, Guy Zant, Clint Anderson, Shannon Smithie, Heith Gammons, Clay Miller, Mariano Granados, Steve Thurman.



BRICE KEY AND MICKEY BURKETT TRIES TO STOP KLONDIKE SENIOR fullback Cisco Arrendondo. Arrendondo rolled up over 200 yards rushing but it wasn't enough as the Coyotes held onto the victory in an exciting six-man football game at Coyote Stadium. (Photo by Russel Skiles-Lamesa Press Reporter)

THE BORDEN STAR
Publication No. 895520
(USPS 895-520)
Publication No. 895520

Editor
Barbara Anderson

Published weekly, except for Christmas and New Years, on Wednesday at Gail, Borden County, Texas 79738, Box 137, Kincaid Street, Second Class postage paid at Gail, Texas.

Any errors that we make reflecting on the reputation or standing of any Firm, Corporation, or individual that may appear in the columns of The Borden Star will be gladly corrected when called to the attention of the staff.

Subscription Rates:
\$8.00 per year

Ad. rate: \$2.00 a column inch
Classified ads: 15 cents a word
Legal Notices: 20 cents a word

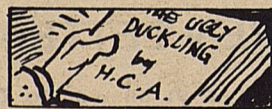
Borden Star Owners:
James McLeroy, Barbara Anderson, Doris Rudd, Pat Porter, Bob Dyess, Edna Miller, Ruth Weathers, Mrs. Nathan Zant, Sonny Tucker, Eddie Simer, Loreen Jones, Martin Parks, Dan Turner, Lela Porter, Marge Toombs.

SAUSAGE SELLS

The F.H.A. and F.F.A. are selling sausage again this year.

The price of the sausage is \$13.00 a box. If you would like to buy some, you can contact Mr. Wallace or Mrs. Cooper. The deadline to buy it is October 6th.

-s- F.H.A. Reporter,
Rene' Telchik.



Hans Christian Andersen wrote 168 fairy tales during his lifetime.

Claiborne's
THRIFTWAY

Visit Our Deli

Party Trays Pastries Custom Cakes

710 N. 4th

Lamesa

School Menu

October 6-10, 1986

Monday	Sausage on a Stick Ranch style Beans Fruit Hot Bread Milk	Salad Bar
Tuesday	Barbecued Beef on a Bun Tator Tots Vegetable Salad Jello Milk	Salad Bar
Wednesday	Chicken Nuggets Mashed Potatoes Lettuce Wedge Fruit Hot Bread Milk	Salad Bar
Thursday	Tacos with Cheese Pinto Beans Shredded Lettuce Fruit Milk	Salad Bar
Friday	Hamburgers French Fries Lettuce & Pickles Cookies Milk	Salad Bar

Briggs Welding
&
Muffler Service

267-1488
267-1380
Big Spring, TX 79720

501 N. Birdwell
Across From
Auction Barn

SCHOOL BUSES RETURN TO TEXAS ROADS

Like the swallows to Capistrano every March, flocks of yellow school buses returned to Texas roads this month. Their drivers work to safely transport students to neighborhood schools here and throughout the nation.

"National Safety Council statistics reflected 45 student deaths in school bus accidents nationwide in 1984, but only 10 of the children who died that year were killed while on a bus. Most accident victims, injuries and fatalities, are struck while boarding or leaving the bus," noted Edward M. Stratton, TSA Chairman of the Board.

"We ask that parents teach their children to safely walk to designated bus stops and follow accepted school bus rules. We all want our children to arrive safely at school to enjoy their educations," he added.

Children should:
...Line up away from the road when the bus approaches, waiting until its doors open before stepping of the sidewalk.

...Move directly to a seat on the bus.

...Stay in their seats and avoid yelling or screaming. For the maximum of safety, bus

drivers need the fewest distractions possible.

...When leaving the bus, walk about 12 feet in front of it so the driver can see them, and wait for a signal from the driver before they proceed to the middle of the road.

Another suggestion is aimed at drivers of other vehicles on Texas roadways during the school season. Texas law requires that drivers stop their vehicles when they overtake a school bus that is stopped to board or discharge school children. This law covers vehicles approaching from either direction on the same roadway as the school bus. Drivers may not proceed until the bus starts or the bus driver signals for other drivers to continue.

In addition, a law passed in 1985 requires that school bus drivers activate all flashing warning lights or other warning devices when stopped to take on or let off passengers. This helps to alert other drivers that they, too, must stop.

"We believe that the lives and safekeeping of our children are too important and worth much more than the few moments of delay involved in following the required precautions," Stratton emphasized.

Pointers For Parents

Discovering Scoliosis Early May Prevent Tragedy Later



Scoliosis—early detection and treatment are the key to controlling curvature of the spine.

Scoliosis, a condition in which the spine develops a side-to-side curve, affects an estimated 5 to 10 percent of all young people. But early detection and treatment can help control the condition and prevent additional problems, says the American Physical Therapy Association, a national, professional organization representing physical therapists throughout the United States.

Scoliosis usually develops during the years when the bones are growing fastest—from ages nine to fourteen—and is often first detected when the young person is around age eleven.

Since pain seldom accompanies scoliosis in the early stages, regular checkups for children are important. If the curve is allowed to progress, a child may eventually experience back pain, lose flexibility, and appear bent over. The child also may be more likely to develop arthritis, respiratory infections and heart problems as he or she grows older.

Parents can check for early warning signs of scoliosis just by monitoring their child's appearance. Pantlegs

or skirt hems may look uneven. One shoulder may appear higher than the other. One arm may rest farther from the side of the body than the other. Also, the upper portion of the back and shoulder blade may protrude somewhat on one side in a child with a curvature.

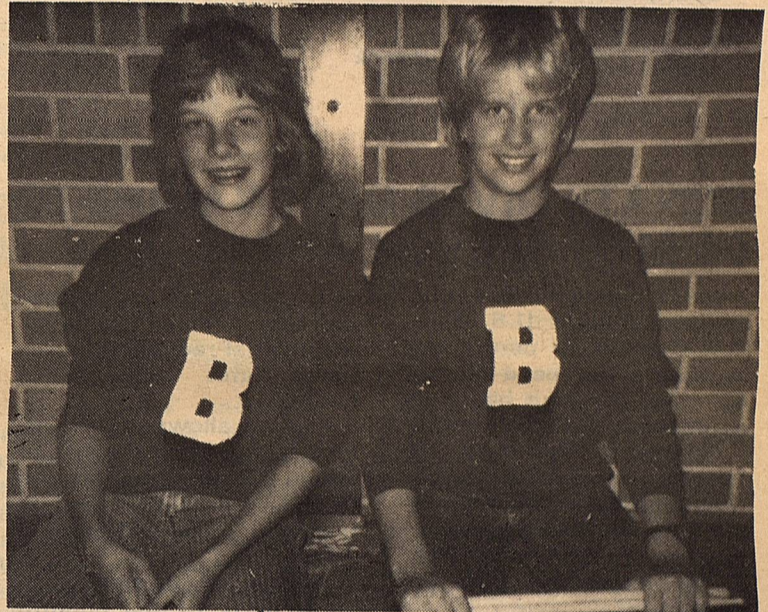
Home check-ups should be done every six months for children between the ages of nine and fourteen, recommends APTA. Additionally, parents should have children participate in scoliosis school screening programs where available.

If a child has one or more signs of a developing curvature, it does not necessarily mean scoliosis. But to be sure, a physician should be consulted. X-rays to measure the degree of curve will be taken only if necessary.

Scoliosis is a widely misunderstood condition that needn't generate the fear it once did. Treatments are available that ensure productive and normal lives for young people who develop scoliosis.

Treatment varies depending on the degree of the curve. Most curves are mild and many get better by themselves; mild curves need only be checked every few months. For moderate or severe curves requiring specific treatment, a brace or scoliosis jacket, electrical stimulation or surgery may be prescribed.

For a free brochure on scoliosis, send a self-addressed, stamped envelope to the American Physical Therapy Association, Dept. B, 1111 N. Fairfax Street, Alexandria, VA 22314.



JUNIOR HIGH DRUMMERS- KRISTIN KILMER AND KRISTEN MONGER.

-Support Our Advertisers-

-Pottery and imported Goods-

Greg Feather
Gail Rt., Box 136

(915) 263-0977 - Phone (915) 399-4572

Rosaleen S. Hector - Owners - Terry C. Smith

OCTOBER 1986

Sunday	Monday	Tuesday	Wednesday	Thursday	Friday	Saturday
<small>SEPTEMBER 1986</small> <small>S M T W T F S</small> 1 2 3 4 5 6 7 8 9 10 11 12 13 14 15 16 17 18 19 20 21 22 23 24 25 26 27 28 29 30	<small>NOVEMBER 1986</small> <small>S M T W T F S</small> 1 2 3 4 5 6 7 8 9 10 11 12 13 14 15 16 17 18 19 20 21 22 23 24 25 26 27 28 29 30		1	2	3	4
5	6	7	8	9	10	11
12	13	14	15	16	17	18
19	20	21	22	23	24	25
26	27	28	29	30	31	

BORDEN COUNTY HIGH SCHOOL 1986-87 Football Schedule

DATE	OPPONENT	PLACE	TIME
Oct. 3	*Sands	T	7:30
Oct. 10	*Loop	H	7:30
Oct. 17	*Grady	T	7:30
Oct. 24	*Dawson	H	7:30
Oct. 31	McCaulley	H	7:30
Nov. 7	*Wellman	T	7:30

* DISTRICT GAMES ** HOMECOMING

Head Coach: Joe Bond Assistant Coaches: Duke Frisbie & Mike Brown
 Superintendent: James McLeroy Principal: Mickey McMeans
 Band Director: Richard Boulton Sponsor: Sue Jane Mayes
 Cheerleaders: Kelli Williams, Ralynn Key, Kate Phinizy
 Rachel Romero, Elvira Balague, Felicia Romero
 Twirlers: Kristi Stone & Rene Telchik

MASCOT: COYOTE COLORS: RED, WHITE, AND COLUMBIA BLUE

BORDEN COUNTY JUNIOR HIGH 1986 Football Schedule

DATE	OPPONENT	PLACE	TIME
Oct. 2	Sands	H	6:00
Oct. 9	Loop	T	6:00
Oct. 16	Grady	H	6:00
Oct. 23	Dawson	T	6:00

Principal: Ben Jarrett Sponsor: Peggy Westbrook Coach: Joe Bond
 MASCOT: COYOTE COLORS: RED, WHITE, AND COLUMBIA BLUE

COMMUNITY CALENDER

- October 2
Parent's Club Meeting, 2:00 p.m. Exhibit Bldg.
- October 4
Team Roping (Re-scheduled Labor Day roping) Gail arena 9:00 a.m.
- October 6
4-H Achievement Banquet-Borden County School Cafeteria
- October 10
Teacher Appreciation Dinner, Sponsored by Parent's Club, School Cafeteria 6:00 p.m.
- October 6-11
National 4-H Week
- October 19
O'Donnell Homecoming
- October 21-25
State Fair of Texas-Dallas Livestock Exhibits for 4-H
- October 24
Borden County School Homecoming
4-H Aftergame Party-Exhibit Bldg.
- October 25
Parent's Club Fall Carnival-County Show Barn
- October 31
Halloween
4-H aftergame party-Exhibit Bldg.
- November 15
County 4-H Food Show-Exhibit Building
- December 6
District 4-H Food Show, Lubbock

SENATE GIVES GREEN LIGHT TO 65 MPH SPEED LIMIT

Washington--A bill co-sponsored by U.S. Sen. Phil Gramm to permit an increase in the speed limit to 65 miles per hour has won approval by the U.S. Senate.

Gramm, R-Texas, a longtime opponent of the 55 mph cap, pressed hard to allow state legislatures to increase the limit to 65 mph on interstate highways in rural areas.

"You can drive 55 miles per hour in Texas forever and still not get anywhere," he said. "And if you're driving 55 miles per hour in Texas, the likelihood is you are going to get run over."

The national 55 mph speed limit was imposed on states by the federal government during the energy crisis of the early 1970s.

During the Senate debate, however, Gramm pointed

out that the gasoline shortage which prompted the original reduction in the speed limit "no longer exists."

The bill allows states "to look at the circumstances, to gauge the safety factors and to make a decision based on their own individual needs," Gramm said.

"I urge those who live in other parts of the country who want to preserve the 55 mile-an-hour speed limit to do that," he said. "But those of us who live where there are huge driving distances should be allowed to set a limit that makes sense, that we can enforce, that will be respected."

The Senate passed the bill on a vote of 56 to 36. It must now be considered by the U.S. House of Representatives.

New Arrival

John and Lisa Wheeler are the proud parents of Timothy Kyle Wheeler. Timothy was born Saturday, September 27 in Lubbock. He weighed 8 lb and 5 oz and was 21 inches long. Timothy has a brother, Chad.

John Wheeler is the preacher for the Gail Church of Christ.

4-H Trap and Skeet Club Memorials

The Borden County 4-H Trap and Skeet Club has received memorials from the following people.

In Memory of David Holmes: Mr. and Mrs. Sid Long.

In Memory of V. W. (Corkey) Ogden: Joe, Nanette, Kandy and Marcus Belew.

We of the Borden County 4-H Trap and Skeet Club would like to express to you our appreciation for your generous contribution. Your donation will be used to help keep the cost of the shooting sports project as low as possible for those 4-H'ers in Borden County who participate.

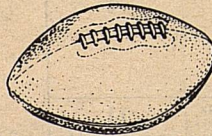
BALLOTS BY MAIL AVAILABLE

Applications for a ballot by mail to be voted in the General Election to be held November 4th, 1986 are now available at the County Clerk's Office.

You may come by the office and pick up an application or one can be mailed to you.

Write Dorothy Browne, County Clerk, Borden County, Box 124, Gail, Texas 79738 or call 915-856-4312 for an application.

GO COYOTES!
BORDEN JR. HIGH VS SANDS
HERE THURSDAY 6:00



BORDEN HIGH VS SANDS
THERE FRIDAY 7:30

SCURRY COUNTY MUSEUM CELEBRATES RANCH HISTORY

Snyder--The Scurry County Museum will "Celebrate Ranch History" with a major exhibit opening on Oct. 5. The public is invited to attend the day's activities from 1-4 p.m.

Paintings by Linda Miller of San Patricio, N.M., sculpture by Rosie Alford of Lubbock and an exhibit on Ranch Women from the Institute of Texas Cultures will be featured in the celebration.

A book signing party for Early Ranching in West Texas, published by the Snyder unit of the Ranching Heritage Association, will also be held during the afternoon. The book contains stories about ranches, ranchers and water sources in Borden, Garza, Howard, Kent, Mitchell and Scurry counties.

Miss Miller, born in Snyder, is a self-taught artist.

She has exhibited in the Dallas Museum of Fine Art in Dallas and the West Texas Museum in Lubbock as well as in numerous galleries. Her work has drawn praise from Henriette Wyeth and Peter Hurd, who wrote ".....We suggest that you look at these works which are immediately warm and appealing." John Meigs, artist, author and photographer, wrote that

"....Miss Miller ranks with the most gifted creative artists of our time."

Mrs. Alford's works have been exhibited in many national and regional shows including the Diamond M Museum in Snyder, the National Sculpture Society and the Salmagundi Club in New York City, and the North American Sculpture Exhibit in Golden, Colo. (Her work will remain in the museum only through Oct. 12 due to prior commitments.)

The Institute of Texan Cultures chose seven women to be featured in the Ranch Women exhibit; Molly Goodnight, Sallie Matthews, Laura Wallace, Mabel Day, Margaret Borland and Amanda Burks. Mrs. Wallace, who lived in Mitchell County, was the wife of the well-known "80 John" Wallace. The museum is inviting local ranch women to contribute information for a scrapbook to be displayed along with the Ranch History display.

The museum will continue the special exhibit through Nov. 11. The museum, located on the campus of Western Texas College, is open from 10 a.m. to 4 p.m. each weekday and from 1-4 p.m. on Sundays without admission charge.

ANNUAL AMERICAN CANCER SOCIETY MEETING

American Cancer Society volunteers from 5 counties attended the 1986 District Annual Meeting of the American Cancer Society (ACS) in Midland on September 11, 1986.

The annual meeting serves as a kickoff and training for ACS volunteers preparing to inform their local communities of ACS programs and services and to implement these programs.

"Over \$430,000 was raised by volunteers in District 2 last year to support the American Cancer Society's three-fold attack on cancer through research, education, and patient services," stated Ms. Lisa

Ludecke, President of the Borden Unit. "This past year, the Borden Unit served 1 cancer patient in Borden with hospital equipment, gift items and patient support programs. We also presented education programs to over 1,399 people in clubs, schools and where they work," added Ludecke.

The American Cancer Society is second only to the federal government's National Cancer Institute as a source of cancer research funds. And in Texas alone, more than \$6 is currently invested by the ACS in 12 major hospitals and research institutions throughout the state.

THE BORDEN STAR

1 year Subscription \$8.00

BOX 137 GAIL, TEX. 79738

Name

Street

City State Zip



Security State Bank

1411 Gregg

Big Spring, Texas

Member F.D.I.C.

ANSWERS TO YOUR QUESTIONS ABOUT THE NEW \$1 BEEF CHECKOFF

Austin--I want to introduce you to a cattleman who is not unique among cattlemen, but is one who does not believe in advertising. This cattleman wakes up in the morning after sleeping on an advertised mattress, washes with advertised soap, shaves with an advertised razor, puts on advertised clothes, eats breakfast at an advertised restaurant, glances at his advertised watch, rides to work in an advertised car, writes with an advertised pen, drinks an advertised soft drink, but yet this same cattleman hesitates to advertise, saying that advertising does not pay. Finally, when his unadvertised business goes under, he will advertise it for sale.

Thanks to the Beef Promotion and Research Act, a part of the 1985 Farm Bill, this cattleman will join his colleagues in participating in a checkoff program which will catapult the faltering beef industry into the 21st century of advertising and promotion. This united effort by cattlemen to regain the market share that beef has been steadily losing to its competitors--poultry and seafood--will be targeted toward consumers who avoid beef either for reasons of health or because they do not perceive beef as a convenience food.

Plans for implementing the mandatory \$1-head checkoff in Texas were recently shared with Keith Chapman, Executive Director of the Livestock Marketing Association of Texas. "It appears to me that the Texas Beef Industry Council is trying to do everything possible to make this program workable for the average cattleman. The simplified checkoff forms they have designed should help keep paper work to a I like the way things are progressing."

1. Who will be assessed this new mandatory \$1-head checkoff?

Each producer will pay at the time of sale. (A person acquiring ownership of cattle for 10 days or less to facilitate a transfer of ownership of such cattle from the seller to a third party is not considered a producer.)

2. Who collects the checkoff dollars from the producer?

The purchaser, (including those in the country) are legally responsible for collecting the funds from the seller. When sales take place at auction markets or feed yards, these places of business will collect the funds.

3. Where can the necessary forms be obtained?

Forms and informational booklets will be sent to all livestock markets, feedyards, county Farm Bureau offices and county Extension Service offices.

4. When does the \$1 checkoff begin?

October 1 is the beginning date for this new checkoff.

5. When does payment need to be made?

All money collected during a month must be submitted to the Texas Beef Industry Council by the 15th of the following month.

6. Where are the dollars sent?

All monies collected in Texas will be sent to the Texas Beef Industry Council.

7. What is the Texas Beef Industry Council?

This newly-formed non-profit corporation was established to enable Texas cattlemen to collect their own checkoff dollars, to conduct programs of promotion and research, and to keep cattlemen informed on ways their dollars are used.

8. Who organized the Texas Beef Industry Council?

Representatives from various beef organizations across our state met together to form this Council. These cattlemen and cattlemen represented Independent Cattlemen's Association, Livestock Marketing Association of Texas, Texas Purebred Alliance, Southwestern Meat Packers Association, Texas & Southwestern Cattle Raisers Association, Texas Cattle Feeders Association, Texas CowBelles, Texas Farm Bureau, and the dairy organizations.

9. How will checkoff dollars be spent?

Our best estimates project that the largest portion of the dollar will go towards advertising...54 cents. Other program areas such as research, communication, and education will use 13 cents. 6 cents will be set aside to keep Texas cattlemen informed about

this new program and the various expenditures of their dollars. Administrative costs will be kept at a minimum--2 cents for Texas and not more than 5 cents for the National Cattlemen's Promotion and Research Board. The remaining 20 cents will be set aside for possible refund requests.

10. Can refunds be obtained?

Yes, producers will be entitled to a refund for assessments collected prior to the referendum. Refund forms, which must be requested from the Texas Beef Industry Council, must be submitted by mail to the TBIC within 60 days of the sale. (6504 Bridgepoint Parkway, Suite 400, Austin, Texas 78730.) All requests will be held until after the referendum.

11. What assurances are there that everyone is paying?

Computer software has been designed to cross-check all information to insure that all collections are made. The Texas Beef Industry Council will also employ a field staff to work with cattlemen although the integrity of Texas cattlemen is worth bragging about. Most contracts on cattle are conducted with the shake of a hand as "a cattleman's honor is as good as his word."

12. Is imported beef covered by this \$1-head checkoff?

Yes, the \$1-head checkoff will be levied on imported cattle and on the equivalent number of pounds of imported beef products (509 lbs.). An estimated \$5 million will be collected from importers.

13. What is the penalty for non-compliance?

A restraining order may be issued, then a civil penalty of up to \$5000 for violation of the order may be assessed.

14. Can we obtain a copy of the Beef Promotion and Research Order?

Yes, you may obtain a copy by contacting the Texas Beef Industry Council at 6504 Bridgepoint Parkway, Suite 400, Austin, Texas 78730.

15. When will the referendum be held?

The referendum must be held no later than 22 months past July 18, 1986. Beef producers will finally have an opportunity to witness the results of advertising dollars. Why have people been flocking to poultry this past decade? Perhaps their ability to spend \$64 million compared to our \$6 million had something to do with it! Beef will finally have an opportunity to flex its muscles.

SESQUICENTENNIAL RALLYE AROUND TEXAS

The 1986 Sesquicentennial celebration kicked off in early January when the Wagon Train moved out of Sulphur Springs and began a six month, 3,000 mile trek around Texas.

So it seems only fitting that one of the last state-wide events of the year advances the prevailing mode of transportation 150 years forward with a 3,500 mile Sesquicentennial road rally--the Texas Heritage Excursion Rallye (T.H.E. Rallye).

An anticipated 200 T.H.E. Rallye contestants will officially start their engines Saturday, October 11, 1986 at the Plano Holiday Inn and begin a week long competition that ends in Dallas on October 18.

The Rallye course winds through the Piney Woods of East Texas, along the shores of the Gulf Coast, through the scenic Hill Country, the tropical Rio Grande Valley, the Big Bend Country, the Monahans Sand Dunes and

heads toward the finish line across the North Central Plains country. Stops include historic sites such as Nacogdoches, Washington-on-the-Brazos, Anahuac, San Jacinto, Goliad, the Alamo and Judge Roy Bean's "Courthouse" in Langtry.

The Rallye is open to all licensed drivers and vehicles. The registration fee of \$638 per person covers all meals, lodging, tolls, fees and miscellaneous expenses--everything but gasoline and automobile expenses.

According to Rallye organizer John M. Power, a full field of entries (200) will generate \$35,000 in prize monies and awards.

A rally differs from a race in that teams are required to maintain a set speed around a mapped course, staying as close to a time schedule as possible. Penalties -- for being early as well as late --are assessed at the rate of one point per second.

Emergency Medical Service News Memorials

The regular monthly meeting of the Borden County Emergency Medical Service will be held Tuesday, October 7, 1986, at 6:30 p.m. in the Ag Classroom. All EMT's should try to attend as we will be practicing on skills.

MEMORIALS

In Memory of Borden Gray: Mr. and Mrs. H. N. Zant.

In Memory of Corky Ogden: Mr. and Mrs. H. N. Zant.

In Memory of Roy Reeder: Gae and Lisa Ludecke; Sterling and Gladys Williams; Warren and Betty Beaver; Bill and Sadie Ludecke; O. D. and Lois Jackson; Ross, Sarah and Jason Sharp.

We of the Borden County Emergency Medical Service would like to express to you our appreciation of your generous contributions. Your donations will be used to better equip the ambulance so as to better serve you and all of Borden County if and whenever needed.

Donations may be sent to the following address: Borden County EMS, Box 153, Gail, Texas 79738.

The First National Bank - of O'Donnell

We want to meet the financial needs of this community -

Come in and visit with us

We now have safety deposit boxes.

MEMBER FDIC

Branon Funeral Home

Service in this area since 1922.

Phone: 872-8335

403 N. Austin - Lamesa

Our Advertisers Need Your Support

Extension Home Economics Report

Kandy K. McWhorter

"NATURAL" FOODS -- A MATTER OF DEFINITION

Consumer surveys show that people are attracted to--and buy-- food products that are supposed to be "natural".

But the term "natural" on a food label can mean almost anything, because its use is not regulated by the Food and Drug Administration.

Here is an example of a food labeling term that is regulated. "Pasteurized" is the term which refers to the heat treatment that kills bacteria in foods. It is not often used for raw milk.

Because the Food and Drug Administration regulates use of the term, consumers can be assured that all foods labeled "pasteurized" have gone through the same type of process.

By contrast, terms like "natural," along with "organiz" and "health," also appear on food labels. But these terms are being used to promote the food rather than to describe its scientific properties.

Because these terms are not regulated by the FDA,

consumers have no way of knowing whether they accurately describe the product or not.

But many consumers believe that "natural" foods have more vitamins and minerals and less sodium, cholesterol, fat, white sugar and chemical additives than ordinary products.

That may or may not be true. And in some cases, the differences between "natural" and regular products may not be significant.

With some products, such as unsalted potato chips, there is an obvious difference between the food labeled natural and the regular product. And while the reduction in sodium is a plus, the natural potato chips have just as much fat and calories as standard chips.

But the difference between a preservative-free "natural" cookie, made with honey and conventional cookies made with white sugar is probably insignificant. Both the honey and sugar provide calories without nutrients, and there is no scientifically established benefit to preservative-free foods.

Before you select a product because it is advertised as "natural," compare the list of ingredients on the label to the list on a similar "regular" product. They decide whether any differences are significant in terms of your overall diet.

"Be nice to people on your way up because you may meet them on your way down." Fred Moore

STENHOLM APPLICATIONS

Washington, D.C.-Congressman Charles W. Stenholm is currently accepting applications from young men and women in the 17th Congressional District, who are interested in attending one of the nation's service academies.

In the spring, Congressman Stenholm will have the opportunity to nominate area citizens to the four U.S. academies: the Air Force Academy in Colorado Springs, Co.; the Military Academy in West Point, N.Y.; the Naval Academy in Annapolis, Md.; or the Merchant Marine Academy in Kings Point, N.Y.

Persons interested in the

ACCEPTING FOR SERVICE ACADEMIES

possible nominations should contact the Congressman's Washington D.C., office as soon as possible. The deadline for completed application files is Dec. 1, 1986.

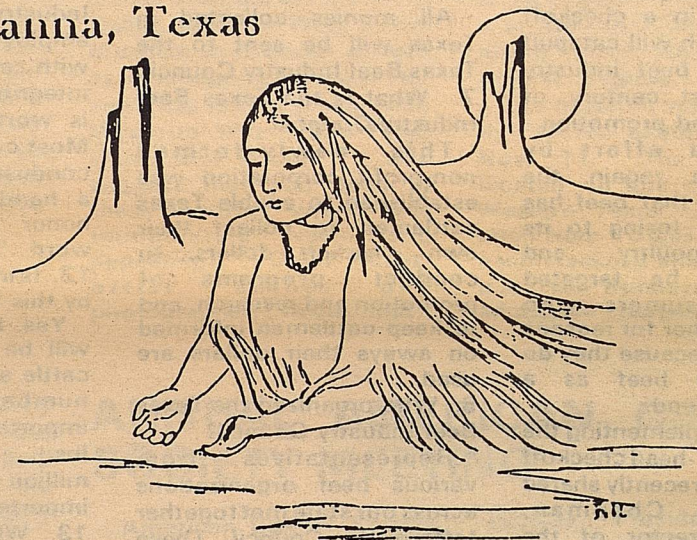
To be eligible for an appointment, the applicant must meet certain requirements. They include: American citizenship; good SAT or ACT scores; outstanding high school record; leadership potential; and good physical condition, including excellent eyesight. There is a very limited number of waivers for non-pilot candidates whose eyesight is less than 20-20.

Aside from academic achievement, strong

emphasis is placed on moral character, church and community involvement and extra-curricular activities and-or part-time employment. Applicants must be single with no dependents, at least 17 years of age, but not past their 21st birthday upon admission into the academy on July 1, 1987.

Application packages and additional information may be obtained from high school guidance counselors or by contacting Susan Goulart in Congressman Stenholm's office at (202) 225-6605 or by writing 1232 Longworth, Washington, D.C., 20515.

two friends...
Fluvanna, Texas



Indian Market

two friends...

unique wearable art

Rick Richardson — Two Grey Hills Gallery
contemporary Navajo jewelry, rugs,
pottery and collectables

Virginia Belew
"lost art" of sand candles

Doris Alexander
limited addition enameled belts and jewelry

Margrit Laman
fine handwovens from Tucson

Informal modeling Old Fluvanna Bank

October 4th and 5th

Saturday 10:00 a.m. - 8:00 p.m.

Sunday 1:00 p.m. - 5:00 p.m.

Meet the Artists and Special Envoys

Louise Parks
Donna Isaacs
South East of Lubbock off Hwy. 84

Becki Parks
Debi Parks

DANDIQ-O WORDPUZZLE

Edited by Yorgo Wordington, PHDc

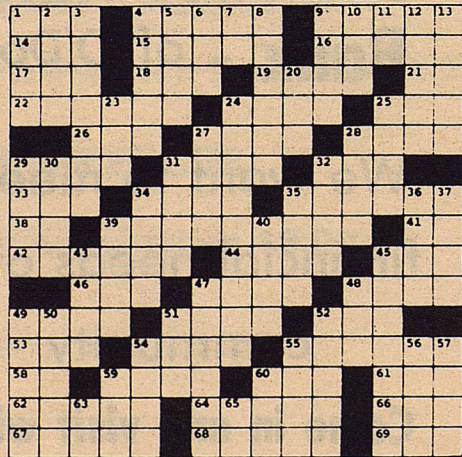
ACROSS

- 1 ___ inclusive
- 4 Or so
- 9 Novas
- 14 Political graft (slang)
- 15 Caravansary
- 16 Constellation
- 17 Vase
- 18 Label
- 19 Heavenly body
- 21 Ave.
- 22 Planet
- 24 Summer
- 25 Porcine abode
- 26 Union assn.
- 27 Penny
- 28 Urns
- 29 Dintment
- 31 Big ___ theory
- 32 Constellation
- 33 Pacino & Capone
- 34 Irish fuel
- 35 Heavenly body
- 38 Him
- 39 Worn family
- 41 At
- 42 Constellation
- 44 Indians
- 45 School gp.
- 46 Zodiac sign
- 47 Begat
- 48 Family war
- 49 Clobber
- 51 Constellation
- 52 ___ Star (Sirius)
- 53 Concubine-turk.
- 54 Evens up
- 55 Constellation
- 58 Thus
- 59 Moon goddess
- 60 Luger
- 61 A star
- 62 Constellation
- 64 Constellation
- 66 Facilitate
- 67 Constellation
- 68 Great
- 69 Blvds.

DOWN

- 1 Constellation
- 2 Constellation
- 3 Legumes
- 4 Heavenly pre-fix
- 5 Lima and navy
- 6 Globe
- 7 Tuscon Inst.
- 8 Clocking
- 9 The blackhaw
- 10 ___ can
- 11 Doubleday nickname
- 12 Choo choo depot
- 13 Woodland deity
- 20 Mel of baseball
- 23 German City
- 24 Constellation
- 25 Penn or Convery
- 27 Godfather actor
- 28 Cereal
- 29 Scrooge sounds
- 30 ___ Guinness
- 31 Sun
- 32 Oh me!!
- 34 Sloe
- 35 Mottled
- 36 ___ Bruté!
- 37 Amphibian
- 39 Egyptian deity
- 40 Sales terrs.
- 43 Bear
- 45 Constellation
- 47 Leavened food
- 48 Anti anti
- 49 Breast
- 50 Worship
- 51 ___ & tonic
- 52 Bestower
- 54 Salad fish
- 55 Fascist leader
- 56 Wipe off
- 57 Singles
- 59 Altos or Gatos
- 60 Hiatus
- 63 At home
- 65 Element symbol

#s 1-4-9 Across = Puzzle Theme



Solution elsewhere in paper

A creation of
MINUTIAE INSTITUTE OF TRIVIA, P.O. Box 35126, K.C., MO 64134

Did you enjoy doing our puzzle? We would appreciate hearing from you either at the above address or through this publication. Thank you.

COUNTY AG-AGENT REPORT

Dennis Poole

ARROWLEAF CLOVER A FAVORITE FOR WINTER PASTURE

Arrowleaf clover is becoming a favorite choice for winter pasture--and for some good reasons.

Arrowleaf clover is more cold hardy than other clovers. It offers high quality forage and grows later in the spring than other clovers. It can be grazed or harvested for hay. And arrowleaf clover reseeds well.

This particular clover is adapted to a rather wide range of soil types but should be planted only on well

drained sites. It grows less satisfactorily on wet soils and becomes chlorotic on soils with a pH above 7.5.

Plant arrowleaf clover in mid- to late-October. Seed can germinate at considerable lower temperatures than other legumes.

When planting arrowleaf clover in warm-season grass sods, grass should be short and near dormancy. Lightly disking the grass can improve establishment of the clover.

Grazing can begin as soon as growth reaches 6 inches or more. This may be February or early March in some areas, but the clover maintains satisfactory quality late into the season.

LETTER

Con't. from Pg. 1

when in reality he voted for it?

Rather than make accusations against his opponent Rich will run on his own leadership abilities and reputation.

How can Shaw represent himself as being an effective member of the legislature when we know that his is the least effective person in the house?

Shaw is grasping at straws when he criticizes Anderson for using his legal name in his campaign instead of the nickname of Rich. If we choose our legislators on their names instead of their abilities we are in bad shape.

We need a man with strong and truthful leadership for the 69th. Just compare the two men running--there is no comparison. We need John R. Anderson to represent us in the 69th.

-s- Dorothy Austin Dennis



Newspapers are the number one advertising medium in the United States.

CLASSIFIED

FOR SALE

Camper hull for wide bed pickup. Equipped with electricity and full camping gear. Write Sibyl Gilmore 811 W. 7th, Big Spring, Texas 79720.

SUSAN STEPHENS is looking for Ranch Day Work and outside horses.

Beal Ranch, South of Gail. Call 915-6399-4511

HORSESHOEING

For ALL your horseshoeing and trimming needs call TERRY VOSS 915-856-4361.

SCS Notes

By Ricky Linex
Range Conservationist



GRASS SEED TO BE IN DEMAND

If you have grasses or forbs that can be harvested for seed this fall, you might make a bundle of money.

That's because at least five million pounds of seed will be needed to plant 1.1 million acres of land accepted in the Conservation Reserve Program in Texas this year.

And with another sign-up expected this winter, the demand could be even greater.

Sam Buchanan, district conservationist for the USDA Soil Conservation Service at Snyder, said several kinds of seed are needed.

"There is going to be a strong demand for both native and introduced species," Buchanan said. "And the seed will probably bring premium prices."

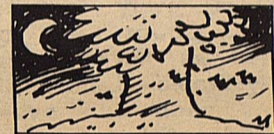
Some of the grass seed needed include native bluestem mixtures, little bluestem, indiagrass, switchgrass, sideoats grama, blue grama, King Ranch Bluestem, and green sprangletop.

Since land placed in the CRP can be leased for hunting, seed for wild plum and forbs including Maximilian sunflower,

Illinois bundleflower, and engelmanndaisy will probably be in short supply.

"If you have land that can produce any of these seeds and it can be harvested, now is the time to act," Buchanan said. "Removing all livestock from the land will give it a chance to produce a seed crop. We also recommend that you contact a commercial seed grower to learn if you can work out a contract for handling the seed."

Richard Heizer, state plant materials specialist for SCS at Temple, has offered to serve as a clearing house to put farmers and ranchers who can harvest seed this year in contact with members of the Texas Seed Trade Association. For information, write Richard Heizer, Soil Conservation Service, 101 South Main Street, Temple, Texas 76501-7682, telephone number (817) 774-1294.



The trunk of the African baobab tree is sometimes as wide as the tree is high. The tree is pollinated by bats, and its blossoms open only in moonlight.

4-H PROGRAM CONTINUES VITAL ROLE

College Station--No one can question the fact that young people are the future of America, and the 4-H program is continuing to play a vital role in preparing youth for the future by providing training in leadership, citizenship and coping skills.

Thus the theme of the upcoming National 4-H Week, Oct. 5-13, "4-H for Youth for America," points to this country's richest resource, its young people, says H. T. "Tom" Davison, state 4-H leader with the Texas Agricultural Extension Service, The Texas A&M University System. The Extension Service is the parent organization of the 4-H program, an informal, out-of-school educational program for youth between the ages of 9 and 19 that is based around local clubs.

"Through 4-H we try to provide youth with opportunities to learn and experience what life has to offer, Davison points out. "We also lay the groundwork to help 4-H members explore opportunities for personal growth and to gain skills that will be useful in later life."

Texas boasts 203,585 4-H members. Nationwide, 4-H is more than 4.3 million members strong. Looking at

the Texas 4-H enrollment, there are 105,541 girls and 98,044 boys. Some 37,000 members live on farms, with almost 100,000 residing in suburbs and cities with a population of more than 50,000.

Adult volunteer leaders are the backbone of the 4-H program as they provide the organizational leadership for local 4-H clubs as well as training and resources in a host of subject-matter areas. Some 600,000 volunteer leaders support the 4-H program nationwide, with more than 16,000 of those in Texas. Davison estimates that the time, travel and support contributed by these volunteer leaders across the U.S. is valued at more than \$1 billion a year.

Looking at the 4-H program in Texas, Davison notes that the most popular project area is foods and nutrition, which boasts 43,700 members. Other popular project areas include energy, 30,500 members; embryology, 20,300 members; health (eye care), 16,700 members; and safety, 15,300 members.

The number of 4-H clubs and special interest groups in the state total 3,335.

WESTERN SEED & DELINTING

Certified Cotton Seed

Paymaster 145, 303, 404, 792
Coker 3131, S110, 500
Terra 383, SR-10, SR-482
SP-21, SR-215, CAMD-E
CAB-CS

COTTON PLANTING SEED

ACID DELINTING


Wheat
Grain Sorghum
Hay Grazer

Wheat & Oats Cleaning

LAMESA, TEXAS
RON BUTLER

BUSINESS PHONE
(806) 872-8896
(806) 872-5388

RESIDENCE PHONE
(806) 872-5271



Bar H Bar

3205 College Ave. Snyder, TX.

THE FIRST NATIONAL BANK

The Symbol of Banking in Big Spring



FULL SERVICE BANKING Member F.D.I.C.

400 Main Street 267-5513 BIG SPRING, TEXAS

ASCS NEWS BY Jerry Stone

MEASUREMENT SERVICE

As of this date only a few slides have been taken in the county. This is due to the cloudy weather of the last few weeks. We realize this means your notice of measured acreages is a lot later than normal. You will be notified as soon as slides are received and work completed on your farm.

If you have requested measurement service and have grain sorghum about ready to harvest or crops that have failed, you need to come by this office before you take any action on these crops.

FAILED ACRES

Remember to report failed crop acreages before evidence of the crop is destroyed. Failure to do so will mean loss of history of having the crop planted and loss of any payments on those acres.

HIGHLY ERODIBLE LAND REQUIREMENTS

One of the most important parts of the 1985 farm bill is the requirements on highly erodible land. Under present Soil Conservation Service formulas, every farm in Borden County will be defined as having some Highly Erodible Land. This means each and every operator and owner is involved in this part of the law now. The law states that by 1990, to be eligible for any program benefits with ASCS, SCS, FmHA, or FCIC (payments or loans), a conservation plan of operation must be developed and practices begun. The objective of the plan is to reduce wind and water erosion. Items required to prevent erosion are: terraces, contoured farming, strips of high residue crops amounting to 25 percent to

75 percent of the land and seeding native grasses. Practices required will depend on the type of soil and slope of land. The plan would require full implementation by 1995. Class VI soils may not be allowed to be row cropped and be required to be planted only to native grass. Failure to follow the plan would mean loss of all government assistance on all farms in all states and counties for all individuals connected with the farm.

The most important thing you can do is make your comments known by writing: Director; cttn, Cotton, Grains and Rice Division; USDA-ASCS; P. O. Box 2415; Washington, D. C. 20013 or contact: Bruce Merkel (202) 447-6787. All comments should be received by October 27, 1986. The local SCS personnel will be happy to discuss the conservation for your farm.

1986 COTTON LOANS

There are several options for marketing cotton. One option will be CCC loan. This option is the same as in years past where warehouse receipts and grade cards are delivered to this office and loan made here. Gramm-Rudman will be withheld from the net loan amount. Cotton is redeemed from this loan at 80 percent of the loan rate with no interest for 1986 crop loan. If redeemed with a certificate the cotton will also be free of storage charges through the date of redemption.

Another option you have is to forgo loan and receive only the loan deficiency payments. Warehouse receipts and grade cards are brought to this office the same as for loan and loan deficiency payment issued, then warehouse receipts returned to you. The cards will be stamped ineligible for CCC loan. Looks like you would want a commitment from a buyer before taking this option. The rate is 20 percent of the loan rate. The payment will be 50 percent generic certificate and 50 percent cash. The 4.3 percent reduction will be made on the cash portion. This payment will be on the smaller of actual production or program yield x planted acres. This payment must be requested before title to the cotton changes.

Owners and operators can choose either option separately if the cotton is divided. Each person can take only one option on each farm. The loan deficiency payment is received under

either option. All requests for loan or loan deficiency payments must be made by May 31, 1987. There is no maximum per person limit on loan or loan deficiency payments. The only limit is as noted above. Questions should be directed to your local ASCS Office.

PAYMENTS IN CERTIFICATES

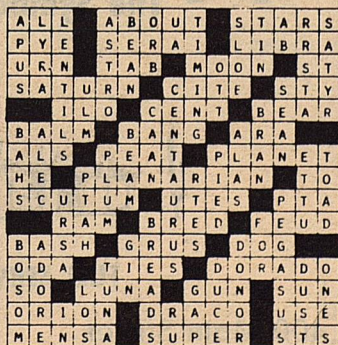
Several payments for 1986 have been and will be made in commodity certificates. Everyone should have a letter explaining what can be done with the certificate. You need to watch the FIRST TRANSFER DATE. This is the last date you have to sell the certificate or redeem your loan with the certificate. Certificates received as advance payments for wheat and grain sorghum mailed earlier in the summer have a first transfer date of 9-30-86. If you still have one of these don't miss this date.

The face value of the certificate will be reported to the IRS as payments from CCC. You may want to keep a record of this amount because it may differ from the amount you actually deposit in your account after selling the certificate. This record will help you account for all payments in January at income tax time.

If you declined receiving an advance payment during signup, you may now request it. You will have to come into this office to make this change.

1987 PROGRAM

Many producers are beginning to plant wheat. The following information might be helpful. Most important is the cross-compliance provisions. This means if you are participating in the 1987 farm program on any crops, the base of all other program crops cannot be exceeded. If the farm does not have a wheat base, no wheat can be harvested. (Many farms have zero bases.) Many other things can happen to wheat to prevent it from being wheat for harvest such as: grazed to prevent hard dough stage, clipped or shredded, baled before hard dough stage, or request to let reseed and not harvest. ACR (set aside) with wheat cover can be grazed until April 1, 1987, but cannot be baled at any time.



Why is Shaw running an underground smear campaign against Anderson?

The people of this district deserve to know the truth. Why has Mr. Shaw stooped to such insidious, low tactics?

If you personally have gotten a phone call or letter from Mr. Shaw's campaign full of deception, distortion, innuendos and half truths please let Anderson know right away or call any of the community leaders in Big Spring and ask them what the truth is.

Anderson is a hard-working, dedicated family man and community leader. It is sad that Mr. Shaw is trying to tear down Anderson's good reputation.

Anderson is running a campaign strictly on the issues and on his long and distinguished record of service to his community and this great state.

People are sick and tired of politicians like Mr. Shaw who try to run down their opponent in every way possible.

Anderson Challenges Shaw To A Debate In Every City And Town In The District

At these debates, Mr. Anderson would like to discuss Shaw's false accusations and the true issues, face-to-face, with Mr. Shaw in front of the voters.

Accountability is essential in this important campaign.

Anderson will debate Mr. Shaw at mutually agreed on times and places.

Anderson

Strong & Truthful Leadership

FOR A CHANGE

POLITICAL CALENDER

U.S. CONGRESS 17th District

Charles Stenholm (D)

STATE LEGISLATURE (69th District)

Rich Anderson (R)

COUNTY JUDGE

Van York (D)

COUNTY CLERK

Dorothy Browne (D)

COUNTY TREASURER

Lisa Ludecke (D)

COUNTY COMMISSIONER

Precinct 2

Larry Smith (D)

Precinct 4

Buck Lemons (D)

JUSTICE OF THE PEACE

Carolyn Stone (D)