



BAILEY COUNTY JOURNAL

'The Community Of Opportunity-Where Water Makes the Difference'

WEATHER

July 3	88	50
July 4	91	52
July 5	100	54 .01
July 6	101	57

Vol. 23 No. 29

10 Pages Today

Published Every Sunday at Muleshoe, Bailey County, Texas 79347

Sunday, July 7, 1985



FUTURE PIONEERS?--Thursday afternoon, at the annual Pioneer Reunion, held in conjunction with the July 4th celebration, this group of bright-eyed future pioneers led the pledge to the flag. They are from left, Heather Hooten and Amy Hooten, daughters of Mr. and Mrs. Gary Hooten; Twyla Gear, daughter of Mr. and Mrs. Joe Gear; Crystal Gilbert, daughter of Billy Gilbert and Donna Smith of Midland and Kyle Embry, son of Mr. and Mrs. Darrell Embry.

Paul Wilbanks Installed As New Rotary President

Tuesday night, it was officer installation time for the Muleshoe Rotary Club, and Rotarians, Rotary-Aids and special guests met at the Bailey County Civic Center for a dinner, followed by the presentation of special awards, and installation of officers for the organization.

This year, the rare 'Paul Harris Fellow' which is Rotary's top award, was presented to a

man who Max King, presenter, termed "A one man Chamber of Commerce for our community." He talked about the man's dream of the Mule Memorial, and how the honored man worked to obtain the Mule Memorial, which was 20 years old on July 4, 1985.

King talked about some of the man's background, then presented the Paul Harris Fellow medallion and certificate to longtime Muleshoe broadcaster, Gil Lamb.

Outgoing Rotary President J.D. Cage introduced this year's youth who will be attending Rotary's Camp Ryla, and for the first time, a girl was chosen to attend from Muleshoe. The youth attending the camp will be Zanna Huckaby, Mike Holt and Loy Triana. He also introduced the recipients of the Rotary scholarships this year, Jeff Kline and Preston Scoggin.

Holding the top 'Perfect Attendance' for the Rotary is C.K. Castleberry with Buck Campbell and J.D. Cage each having three years perfect attendance; with two years

Church of Christ 55th Anniversary Slated July 14

On Sunday, July 14, members of the Muleshoe Church of Christ will be celebrating their 55th anniversary, and the entire congregation extends an invitation to anyone interested to attend the anniversary activities.

Morning worship services will begin with classes at 9:30 a.m., and John Thompson will be the speaker for both the morning and evening services.

John Thompson lived in Muleshoe 1963-66 when his father, D.L. Thompson, was the minister of the Muleshoe Church of Christ. He graduated from Muleshoe High School, then attended Abilene Christian University, where he graduated in 1970 with a major in accounting and general business and a minor in Bible.

For five years, John Thompson working in the accounting profession in Chattanooga, Tenn. and Huntsville, Ala. He entered the Preston Road School of Preaching in Dallas in 1976 and graduated in December, 1977.

Since that time he has preached in Pritchett, Henderson and is presently in Longview at The Pine Tree, with a Sunday attendance of about 475.

He has been married for 16 years, and he and his wife Becky, are the preants of Scott, 12 and Marla, 10.

Following the morning services, a meal will be served in the Bailey County Civic center, followed by singing in the afternoon, closing out with the evening services.

perfect attendance each are Paul Poyner and Paul Wilbanks, while Buddy Embry and Terry Hutto each have one year perfect attendance.

With very little discussion, the Rotary Club opted not to take on the Lions Club in an upcoming Donkey Softball game, although individual Rotarians were encouraged to play if they wished.

Harvey Bass introduced the entertainment for the banquet. Providing musical entertainment were the Gospel Notes; a gospel

Cont. Page 6, Col. 4

School Sets Meetings For New Budget

Superintendent H. John Fuller, says a series of Budget Planning School Board Meetings are scheduled as the final preparation for the 1985-86 school year comes into focus.

Trustees will hold meetings on July 8, 15 and 22 and August 8, 12 and 30. The public is invited to attend all of these meetings, he said and the August 8 meeting will be designated as the Budget Hearing for the coming year's budget. Superintendent Fuller encourages everyone possible attend the Budget Hearing.

In preliminary information released to the trustees, the superintendent has indicated that the budgets in most Texas Schools will increase over the next few years significantly due to the requirements of recent legislation.

However, where it has been predicted by former Commissioner of Education, Raymon Bynum, that 90 percent of the school districts in the state will raise local taxes this year, "NOT SO, in Muleshoe," according to superintendent Fuller.

Fuller added, "Muleshoe ISD has the option of taking up to a three percent increase without formal notice to the public; however, I have already informed the trustees that I will not be making a recommendation for a tax increase this year."

According to Fuller, this is primarily due to the increased state funding received from the state under the provisions of House Bill 72. Muleshoe has also benefitted financially from and increased student attendance this past year. The school district received funding based on an average daily attendance of 1606 this year as compared to the 1469 the district was funded on last year.

Each of the meetings is scheduled for 8 p.m. except the final meeting of August 30 which will be at 6:30 a.m.

Big Crowds Enjoy July 4th Festivities

Donkey Softball Slated

Get set for a fun-filled evening next Saturday, July 13, at 7:30 p.m.

That is the date and time for the Muleshoe Chamber of Commerce and Agriculture vs. Lions Club donkey softball game to be played at the softball park just south of KMUL Radio.

Tickets have gone on sale for the game which should be filled with thrills, spills and chills as the totally inexperienced teams take to the field.

Advance tickets are \$2.50 for adults, and will be \$3 at the gate the night of the game; there will be one price for children's tickets and that is \$2.50, whether in advance, or at the gate. The tickets are available at the Chamber of Commerce office, or from any member of the board of directors.

It has been rumored that the cheerleaders for the Lions Club, who have become famous at the Lions-Rotary basketball games, may make an appearance at the game.

A concession stand will be available during the evening.

July 4, 1985 -- bright and sunshiny, and a very hot temperature -- accompanied by a late afternoon shower that briefly drenched several hundred people in the park, sending most of them scurrying for cover until the intermittent showers passed.

Starting off the day, early in the morning, were the 10-K and two mile runs.

In the 14 and under group for the mile run; first and second place winners were Refugio Samarron and David Gallegos; in the 15-19 group, David Medlin and Ronnie Logsdon and in the 20-29 division, Aldo

Almanza and Joseph Richard.

For the 30-39 group, Manuel Samarron and Phillip Martinez; the 40-49 group, Paul Moody and Ben Green and the 50 and over group, John Harper and Marvin C. Huguley.

For the mile run in the

women's division, Spirit Gregory was first and Lisa Noble second in the 14 and under group; Jennifer Green and Melissa Burnett in the 15-19 group; Gayla Brumfield in the 30-39 group and Vera Medlin for the 40-49 group.

For the 10-K run, winners in the 14 and under group included David Clements and Scott Tellier; 15-19, Tony Luna and Tony Brownell; 20-29, Mike Soto for the men and Cara Smith for the women; Richard Dulin and Santiago Samarron in the 30-39 group; and Bobby Cunningham and Paul Hoff for the 40-49 group.

Jerry Gleason was named the 1985 World Champion Mule Shoe pitcher following competition held Thursday, July 4. He and Calvin Embry teamed up to be the men's winners while Jama Brown and Mary Hicks won the women's division.

Doubles were won by Buddy and Jarrod Embry and Russell and Lee Magby.

At 2 p.m. the Pioneer Reunion was held at the Bailey County Civic Center, with a young group leading the pledge to the flag. Future pioneers leading the pledge were Heather and Amy Hooten, daughters of Mr. and Mrs. Gary Hooten; Twyla Gear, daughter of Mr. and Mrs. Joe Gear; Crystal Gilbert, daughter of Billy Gilbert and Donna Smith of Midland; and Kyle Embry, son of Mr. and Mrs. Darrell Embry.

Sudan's versatile and talented Cont. Page 6, Col. 6

Tuesday Hail

Destroys Crops

In Narrow Area

Tuesday night, a freak storm left a narrow band of crop destruction behind northeast of Muleshoe.

Dan Throckmorton said he had considerable crop damage, including cotton plants that had been eight to ten inches tall, stripped of all leaves, leaving only stems behind.

He also has shredded corn, that was just beginning to tassel out. Throckmorton said he was waiting for an insurance adjuster and did not know whether his crops would be termed a total loss.

The Throckmortons were not home at the time of the storm, but a daughter saved some of the large hail, which was said to range up to near baseball size. At the time of the hail, one inch of rain fell in the same area.

Throckmorton lives six miles northeast of Muleshoe. In the same area, some of the farmers receiving major crop damage in the hail, which was reported to be only a narrow band, two to two and a half miles wide, were Gene Caldwell, Ike Wilcox, the Buhrmans, and several others.

Most of the rain and hail was confined to the small area.

Several windshields were reported to have been lost in vehicles on the FM road north of the old Protein Processors, and several windows were reported lost from homes.

Through the rest of the area around Muleshoe, only light showers have been reported in the last several days.

School Board Has Long Agenda

On Monday, July 8, the board of trustees of the Muleshoe Independent School District will meet at 8 p.m. in the school administrative offices to consider a very full agenda.

Following recognition of visitors and school officials and the reading of minutes, informational reports will be given on the preliminary 1985-86 Budget information; Texas School Board Association Presidential Seminar Report and staffing projections for the next four years report.

Also full financial reports will be given, along with business items, including considering the approval of Annual Evaluation of the Five-Year Priorities Plan; accepting bids and/or alternatives to Restroom/weightroom facilities at high school; students insurance proposals for the 1985-86 school year; approval of recommendations for improvements in drug education program and granting administrative permission to dispose of school property, which includes land and two school buses; final approval of Update 24 of the school policy manual and energy audit program proposal for 1985-86 school year.

After the tax collection report, personnel considerations will be considering resignations; employment contracts and employee salaries.

Under the superintendent's report are correspondence and school and community events.

Commissioners Plan Monday Meeting

Bailey County commissioners will face a full agenda when they meet in regular session on Monday, July 8 at 10 a.m. in the Bailey County courthouse.

Included following the reading of minutes are payment of routine county bills; appointment of election judges of the review of departmental and treasurer's reports, as well as the review of the Fair Labor Standards Act as applicable to county work week and salaries.

Consideration of the resignation of Jerry Hicks and a budget amendment for FY1985 budget; review charges for conservation work; consider order authorizing County Judge to offer surplus property for sale and miscellaneous items.

Around Muleshoe

Because of a shortage of blood on the South Plains, a Muleshoe community blood drive will be conducted at the First United Methodist Church on Monday, July 8, 12 noon to 9 p.m.

If you wish to donate blood, please call 272-5517 to make an appointment for the blood to go to United Blood Services of Lubbock who provide this area with all blood services.

Starting off the July 4th holiday with a real 'bang' were Wayne Wauson and Larry Rasco, EMT operators of the ambulance for West Plains Medical Center.

Receiving a call to a home several miles east of Muleshoe, the EMT's arrived to find they were too late to transport an expectant mother to the hospital to have her baby in a traditional manner.

The woman had just given birth to a healthy son.

Wauson and Rasco brought in mother and son, who arrived at the hospital in very good condition.

"It was just like it says in the textbook," said Rasco to a Journal representative at West Plains Medical Center.

For the 17th year, the Muleshoe Chamber of Commerce and Agriculture will be sponsoring the family-operated Jest Amusement Carnival in Muleshoe.

The carnival will arrive in Muleshoe tonight, Sunday, and will open Monday night. Saturday night will be their final night for this appearance in Muleshoe. They will be located at the Boy Scout grounds on South Main Street.

Myrle Creamer continues to improve following heart attacks in Las Vegas, Nev. on June 13 and June 15. She will be staying in the home of a daughter, Phyllis Champlin, 7509 Skylark Drive, Las Vegas, Nev. 89128, for the next few weeks.

She will then return to Amarillo to the home of another daughter, Sue Kemp, to continue recuperation.



PAUL HARRIS FELLOW RECIPIENT--Max King, left, acting as spokesman for the Muleshoe Rotary Club during their annual officer installation banquet last Tuesday night, presented the coveted Paul Harris Fellow award to Rotarian Gil Lamb, longtime Muleshoe broadcaster.

Miss Parker, Clements Exchange Marriage Vows



MRS. DENNIS LYNN CLEMENTS
(nee Jamie D'Ann Parker)

Miss Jamie D'Ann Parker became the bride of Dennis Lynn Clements Saturday, June 8 at 10:30 a.m. in the First Baptist Church of Lubbock. Bro. Harold Drennan of Morton read the double ring vows.

Parents of the couple are Bonnie Edwards, D.C. Parker and Paula Clements, all of Lubbock, and the late Travis Clements.

The Church was decorated with spiral candelabras and an archway candelabra. Pink and burgundy ribbons marked the isles.

Sandra Farr of Lubbock, soloist, sang "Ice Castles" and "This Is The Day".

Given in marriage by her father, the bride chose a white floor length gown featuring an off the shoulder neckline with lace sleeves and lace at the neckline and hemline.

She carried a cascading bouquet of silk flowers and bows of pink and burgundy. Her veil extended to the waistline.

Alice Loyd of Lubbock served as maid of honor. Bridesmaids were Barbara Sorrells of Allen and Sandra McMillan of Lubbock. Timmi Loyd of Slaton was flower girl.

Troy Lewis of Lubbock served as bestman. Groomsmen were Deon Clements of Lubbock and Doug Clements of Morton. Ring bearer was Joel McAfee of Lubbock.

Melinda McMillan of Farwell lit the candles, and Darin and Damon Clements, both of Lubbock, were ushers.

Following the ceremony, a reception was held in Ford Memorial Chapel of the First Baptist Church.

The couple are making their home in Lubbock following a wedding trip to Ruidoso, N.M.

Out of town wedding guests included: Ruth and Dee Clements and Mae Provence, all of Muleshoe, grandparents of the groom; and Esther Edwards of Crosbyton, grandmother of the bride.

A rehearsal party was held at 7:30 p.m. June 7 in Brigham's BBQ.

The bride graduated from Lubbock Christian High School and Lubbock School of Vocational Nursing. She is employed at St. Mary's Hospital in Lubbock.

Clements graduated from Coronado High School at Lubbock and South Plains Association of Governments. He is employed at Texas Tech Police Department.

Tutt, Thrash To Entertain At Nursing Home

Kathy Tutt and Darrell Thrash will be entertaining in the day room of the Muleshoe Nursing Home today, Sunday, July 7.

Joy Stancell said "Miss Tutt will be providing the vocal entertainment and Thrash will be accompanying her. Everyone who enjoys music and singing is welcome to come and enjoy the entertainment."

Make A Special Ice Cream Treat

Remember when Father brought home a quart of ice cream Friday nights to celebrate payday? Some grandfathers reserved for themselves the privilege of buying each grandchild's first ice cream cone.

The song, "Won't You Have an Ice Cream Soda With Me," is a reminder of Saturday nights in a small town. If couples could agree on chocolate or root beer or strawberry, they had a good start on a lasting relationship.

A dish of ice cream at bedtime is "quality family time" in many homes today. There are so many ways to make a delectable treat out of ice cream using favorite toppings like chocolate, butter-scotch, and strawberry.

Try a chocolate covered cherry sundae. Just top cherry or cherry vanilla ice cream with crushed cherries, chocolate svrup and whipped cream.

A Confetti Parfait combines vanilla ice cream and drained fruit cocktail in a tall glass. Alternate the layers with toasted coconut.

When fresh peaches come to the market, make a Peach Blossum Parfait. Just top peach ice cream with diced peaches and fresh strawberries.

Berry-Berry Sundae has that all-American look. To serve it spoon strawberries and blueberries onto vanilla ice cream.

The kid in you will love Chocolate Peanut Butter Sundae. Top chocolate ice cream with softened crunchy peanut butter or prepared peanut butter topping and extra peanuts.

Your refrigerator has the ingredients for the old favorite, Turtle Sundae. Just top vanilla ice cream with caramel and hot fudge sauces and add a few pecans.

Ice cream scoops easily if you dip the scoop in warm water. Just be sure to tap and wipe it off to prevent ice crystals from forming, which would affect the taste and texture of the ice cream. Scoop the ice cream in layers about half an inch deep keeping the surface fairly level. For storage, cover the surface with plastic wrap to prevent drying, shrinkage, and the formation of ice crystals.

For the finest flavor and texture, buy ice cream in package sizes to fit your eating habits. Fresh ice cream tastes best. Top it with fruits or sauces you enjoy and eat happily.

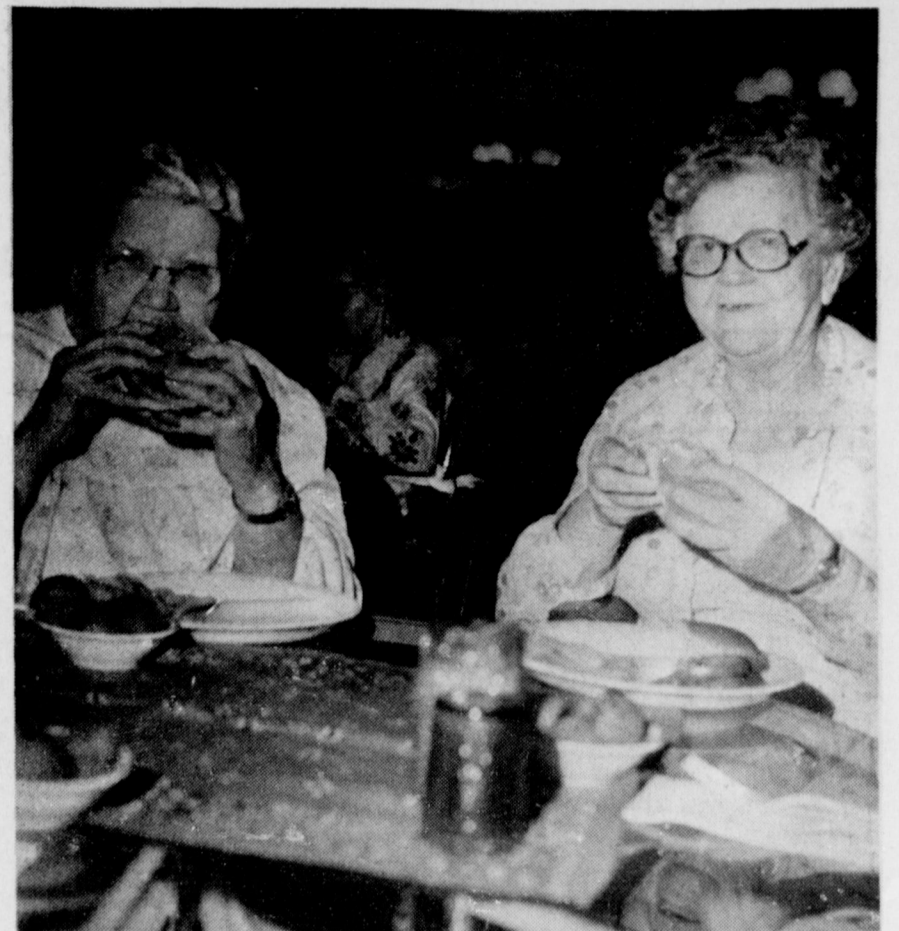


WHO KNOWS

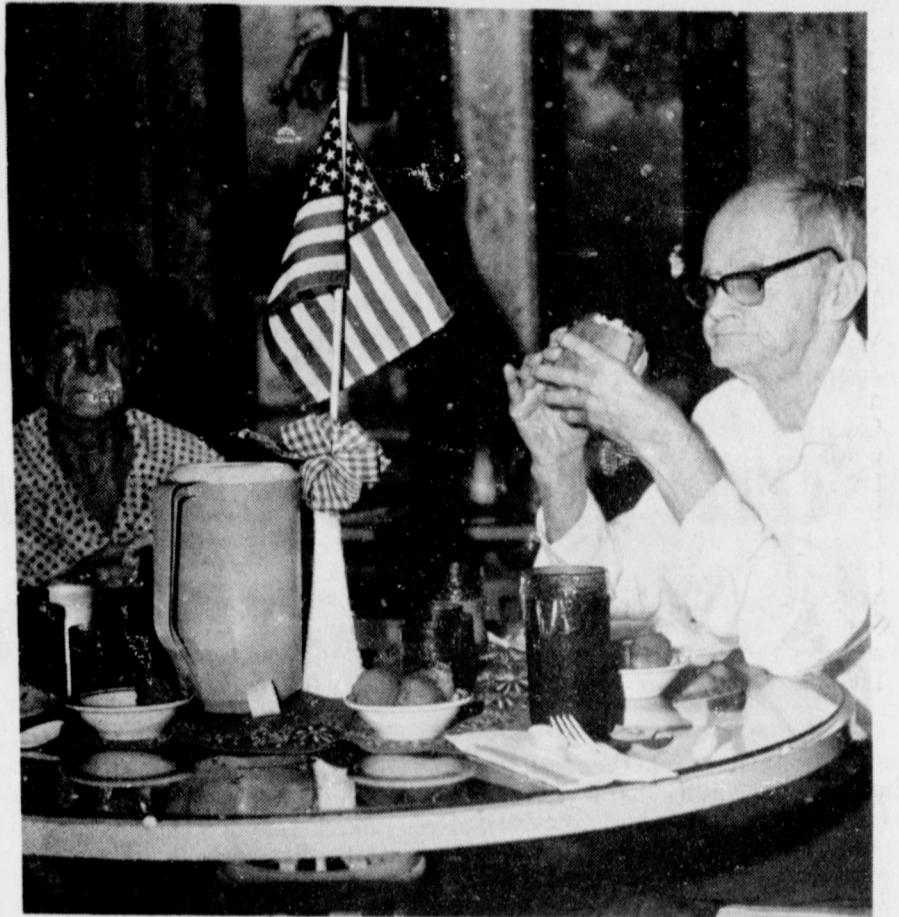
1. Name the Transportation Secretary.
2. Name the Pelican State.
3. What is the Roman numeral for 800?
4. Give another name for the Battle of Little Big Horn.
5. Which was the 39th state to ratify the 18-year-old voting right?

Answers to Who Knows

1. Elizabeth Dole.
2. Louisiana.
3. DCCC.
4. Custer's Last Stand.
5. Ohio, in 1971.



VISITING FROM FARWELL---Cordelia Cochran (left) and Effie Smith, both residents of the Farwell Convalescent Home, visited the Muleshoe Nursing Home Wednesday afternoon and enjoyed a cook-out. Hamburgers and all the trimmings were served to the Muleshoe Nursing Home residents and guests.



UUM.UUM GOOD---The Journal camera caught this resident of the Muleshoe Nursing Home enjoying a hamburger at the nursing home Wednesday evening during their cook-out. Hamburgers and all the trimmings were served the residents and their visitors.

WMU Weekly Meeting Held

WMU of the Trinity Baptist Church met at 2 p.m. Tuesday, July 2 at the church. Ms. Maxine Carter led the opening prayer.

The lesson of the day was "Church Planners In Mexico City" with each one present taking part.

Those present included: Wenona Spears, Clara Coffman,

Pearl Dunlap and Maxine Carter. Ms. Dunlap dismissed group with a prayer.

NOTES--- COMMENTS

Take a chance on human nature; usually it pays off.

Most people are befogged by figures, one kind or another.

The Creative Woman

By Sheryl Borden

An organization called Mothers Matter" will be discussed on "The Creative Woman" show on July 9 and 13. Another guest will demonstrate making candies.

Kay Willis is now serving as a consulting "mother expert" to Fisher-Toy Co., and she travels around the country talking to women about toy safety, the value of play and other concerns. Mrs. Willis lives in Rutherford, New Jersey and is the mother of ten children and she is going to tell about an educational and support group called "Mother Matter" which she founded in 1975.

LaNell Wilkins, a consumer cookware consultant for DuPont Co. is going to explain and demonstrate the advantages of using cookware with a silverstone finish. She will explain the differences between silverstone and teflon.

On July 11, three topics will be presented on the show. The first one will be on hearty salads and Marilyn Dompe is with the California Iceberg Lettuce Commission from Monterey, California. She believes hearty salads are an innovative way to use familiar and popular ingredients in new ways. She will prepare several different hearty salads and demonstrate the versatility of iceberg lettuce.

Another topic will be creative design in fashion and the guest is Kathleen Caito, a fashion

designer from Denver, Colorado. Kathy will talk about nine different elements of creative design and explain how these interrelate.

The final part of the show will be a demonstration and discussion on pork and guest, Jayne Hager will prepare stuffed pork burgers deluxe. Mrs. Hager represents the National Pork Producers, Inc. from Des Moines, Iowa.

"The Creative Woman" is produced and hosted by Sheryl Borden. The show airs on KENW-TV, Channel 3 on Tuesday and Thursday at 12 noon and on Saturday at 2:00 p.m. (All times are Mountain Standard).

Viewers can request copies of printed materials offered on the show by calling KENW-TV's toll-free telephone lines Monday through Friday between 8:00 a.m. and 5:00 p.m. In Portales and Roosevelt County the number is 562-2112. In New Mexico, the number is 1-800-432-2361, and out-of-state is 1-800-545-2359.



Fish can be susceptible to seasickness. Artificial "storm waves" made in a glass bowl, in a scientific study, resulted in seasick goldfish.

TOPS CLUB

Muleshoe TOPS Club chapter No. 34 met Thursday, June 27 in the meeting room of Bailey County Electric. Ernestine Steinbock, co-leader, called the meeting to order and the TOPS pledge was recited and the fellowship song sung.

Jewel Peeler, weight recorder, called the roll with six members answering with the amount lost or gained. Linda Wimberley read the minutes of the previous meeting and they were approved as read.

Linda Wimberley was named best loser for the week and Ernestine was first runner up.

Mrs. Wimberley received a gift from the white elephant box and the meeting was closed with the singing of the good-night song.

Hurst Department Store

110 MAIN
Muleshoe

Where The Customer Comes First, Always

Further Reductions Close-Out Sale

Group Ladies Blazers & Jackets \$12 ⁹⁹	Group Evening Dresses \$19 ⁹⁹
Group Tennis Shoes & Shoes Cut To Below Cost	Pierre Cardin Mens Belts Marked To 1/2 price
Mens Leather Jackets 1/2 price	Kid's School Clothes Prices Cut To Bone
Mens Botany 500 Suits Cut Below Cost	Group Mens Velour Robes 1/2 price
Price Cuts On Childrens Clothes	Make Nice Xmas Gifts
Gloria Vanderbilt Shoes Greatly Reduced	Groups Of Ladies Dresses
Group Redwing Boots 1/2 price	60 & 70% off

GREAT BUYS ALL OVER STORE
SELL OUT TO BARE WALLS

True Value
HARDWARE STORES

BARGAIN OF THE MONTH

EMPIRE

6.88 While Supplies Last

24-in. Outdoor Push Broom has tough palmyra bristles and a rugged, metal-tipped 60-in. handle. 25-2645

QUANTITIES LIMITED

True Value
HARDWARE STORES

TOOL VALUE OF THE MONTH

PLANO

3.99 While Supplies Last

Tote-More lets you take just the tools you need. Incl. latching drawer w/compartments for accessories, more. 311

QUANTITIES LIMITED

True Value
HARDWARE STORES

HARDWARE VALUE OF THE MONTH

WOODS NIFE

3.99 While Supplies Last

50-Ft. Portable Telephone Cord Reel has 2 modular jacks, manual rewind. High-impact plastic case. 955

QUANTITIES LIMITED

401 S. 1st

Mon. - Sat. 8-6
Fry & Cox, Inc.

272-4511

'Fashionable Youths Step Through The Looking Glass'

A wonderland of teenage fashion was created in Lubbock on June 28th as 144 youngsters stepped "Through the Looking Glass" at the South Plains District 4-H Fashion Show. Four contestants earned the right to represent the district's 20 counties in the state 4-H fashion show to be held in Lubbock July 9-10.

The four are Sandi Dillingham of Lubbock County, active sportswear; Donna Smith, Lamb County, tailored daytime wear; Connie Cain, Lamb County, non-tailored daytime apparel; and Zanna Huckaby, Bailey County, evening and specialty wear.

Other Bailey County winners were Shane Schuster who placed third in daytime tailored for the Junior 1 division; Brenda Mudford, third in evening and specialty wear, Junior 2 division. 4-H members from Bailey County who received recognition ribbons included: Courtney Tanksley, daytime non-tailored, Junior 1; April Watkins, active sportswear, Junior 1; Holly Huckaby, daytime non-tailored, Junior 2; Amy Turner, active sportswear, Junior 2; Britta O'Tay, daytime non-tailored, Senior; and Shelley Sain, active sportswear, Senior.

Twelve special awards for the best cotton outfits for the best by the Lubbock County Auxiliary. In the beginner division, winners were Darla Willia of Lynn County, Jayma Wilson of Hockley County, Jennifer Crow of Floyd County, and Amanda Havens of Cochran County. Intermediate division winners were d'Arceyanne (cq) Lemons of Borden County, Brenda Mudford of Bailey County, Dayla Church of Parmer County, and Michele Sparkman of Hockley County. Senior division cotton award winners were Melissa Welch of Yoakum County, Sandi Dilling-

ham, Zanna Huckaby of Bailey County and Keitha White.

Top winners in the younger division were: Junior 1 (beginner) - daytime tailored - Vicky Lange of Castor, Darla Willis of Lynn, and Shane Schuster of Bailey. Daytime non-tailored were Jennifer Crow of Floyd, Jennifer Thompson of Swisher, and Kelly Havens of Crosby. Active sportswear were Amanda Havens of Crosby, Melissa Sherrod of Hale and Cathy Hiatt of Swisher. Evening and Specialty were Jayma Wilson of Hockley, Kalina Marie Pohlmeier of Castro and Brandy Lester of Yoakum.

Junior 2 (intermediate) - daytime tailored - d'Arceyanne Lemons of Borden, Jennifer Cass of Parmer, and Angela Berry of Crosby. Daytime non-tailored were Kelli Kloiber of Lamb, Colbie Pinnell of Hale, and Brenda Mudford of Bailey. Active sportswear were Michele Sparkman of Hockley, Kris Belew of Lynn and Crystal Church of Scurry.

Taking third place in the senior division were Rosemary Shepard of Hale, daytime tailored; Becky Rowlett of Gaines, daytime non-tailored; Bobby Hockstein of Castro, active sportswear, and Tami Field of Lamb, evening and specialty.

The district fashion show in the University Center Theater at Texas Tech University featured an Alice in Wonderland setting. Master of ceremonies was 4-H'er Chris Caddell of Wolf-forth. Narrating the show were 4-H'ers Tammy Ritchey of Scurry County, Derick Dunn of Garza, and Jana Middleton of Garza County.

The fashion show is a 4-H educational activity which encourages participation in the clothing project and helps the youths develop self confidence and poise, sewing skills, posture, grooming and knowledge and skill in planning, purchasing and constructing clothing, explained Becky Saunders of Amarillo, clothing specialist with the Texas Agricultural Extension Service. Four-H is the youth development program of Extension.

Contestants were judged on sewing skills, clothing construction and overall appearance of the garment.

The program was supported by Plains Cooperative Oil Mill, Farmers Cooperative Compress, Energas, Lubbock Cotton Auxiliary, South Plains District Extension Homemakers Clubs, Jo-Ann Fabrics, Chance's Country Collections and Rachel's.



LATEST ARRIVALS

Cherry Danielle Mayfield

Mr. and Mrs. Bruce Mayfield of Texico, N.M. are the proud parents of a daughter born at 1:30 a.m. Tuesday, July 2 in West Plains Medical Center.

The young lady weighed seven pounds and three ounces and was named Cherry Danielle. The couple have two other children, Kyle, four and Shane, two years of age.



ZANNA HUCKABY

Weekday Specials

Mon. - Thurs. 11-4

Chicken Fry w/Salad \$5¹⁹

Charloin Steak w/Salad \$5²⁹

BBQ Beef Sandwich..... \$3⁹⁹

Mon. - Thurs. 4-10

Prime Rib w/Salad..... \$5⁸⁶

Chicken Teriyaki w/Salad \$5⁴⁹

New Hours: Friday All You Can Eat 11-10 p.m.

Mon. - Sun. Cat Fish w/Salad \$4²⁹ Bar

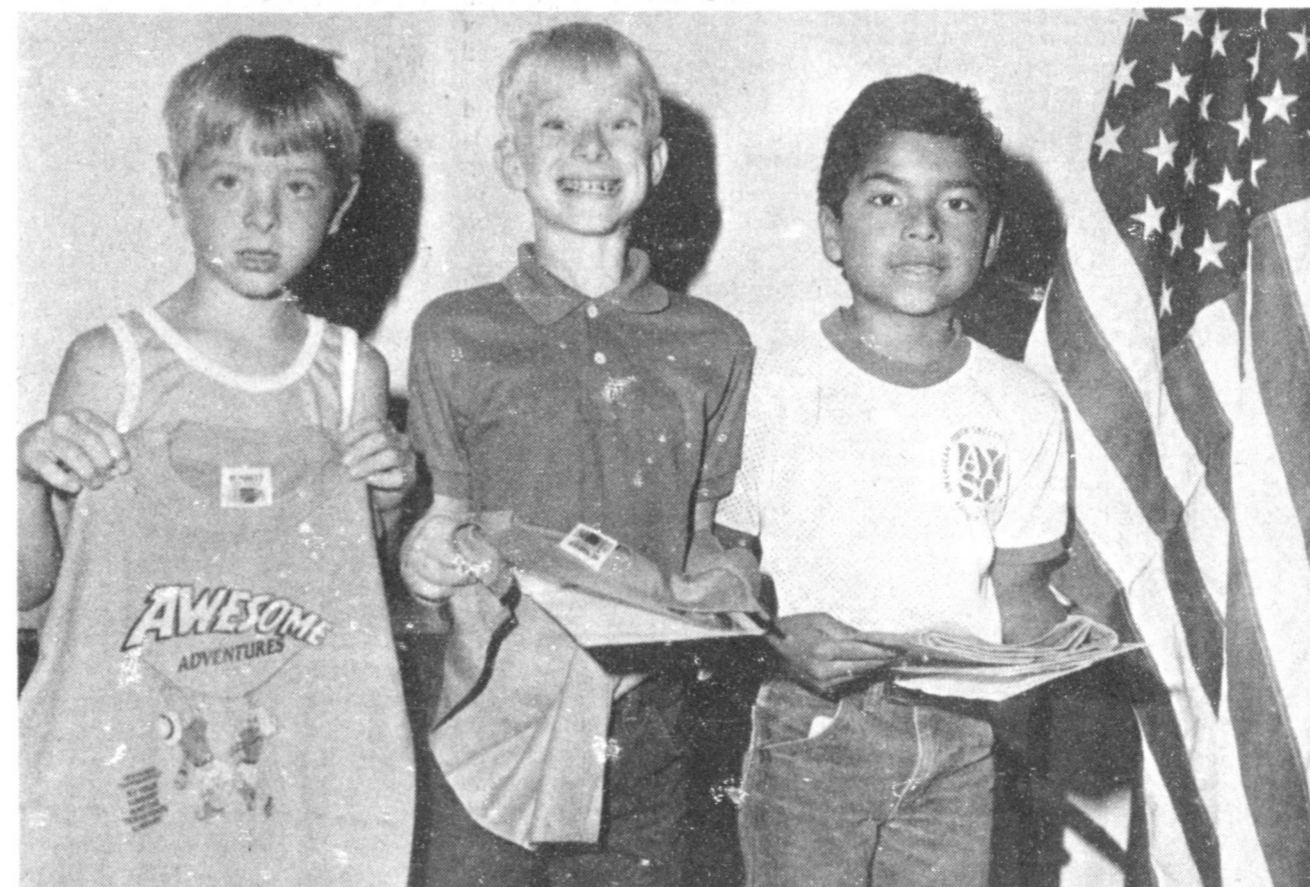
K-BOB'S

1008 W. Amer. Blvd.

272-7517



FOURTH AND FIFTH GRADE TOP WINNERS---Bertha Torres, Tommy Gutierrez, Steven Noble, Brian Wilhite and Monica Gallegos were the top readers in the Fourth and Fifth Grade division in the Summer Reading Club at the Muleshoe Public Library. They each received an Awesome T-shirt for their efforts. Tommy Gutierrez also received the flag shown.



AWESOME T-SHIRT WINNERS---Americo Aguirre (not pictured) was the top reader in the Kindergarten to Third Grade division of the Summer Reading Club at the Muleshoe Public Library, and received an Awesome T-Shirt. Also receiving a T-shirt were: Russell McGuire, Brooke Sinclair, Ruben Saldana and Sean Flanary.

Public Library Awards Summer Readers

Muleshoe Public Library completed their 21st year of the "Summer Reading Club" this week and presented awards Wednesday morning, July 3. Along with the other awards presented they presented Tommy Gutierrez a flag.

Those receiving the Awesome Adventure T-shirts" in the kindergarten to third grade division included: Americo Aguirre, with 75 books; Russell McGuire, 73; Brooke Sinclair 73, Ruben Saldana 70 and Sean Flanary 66.

Grandparents are Mr. and Mrs. Billy Mayfield of Farwell and Mr. and Mrs. Chuck Sluder of Clovis, N.M.

Great grandparents are Mr. and Mrs. Tony Holmberg of Clovis, N.M., Mr. and Mrs. Frank Mayfield of Plainview and Mr. and Mrs. John Cherry of Pennsylvania.

Lindsey Ann Nelson

Mr. and Mrs. George Nelson of Earth are the proud parents of a daughter born Tuesday, July 2 at 3:38 p.m. in West Plains Medical Center

The young lady weighed eight pounds and ten ounces and has been named Lindsey Ann. The couple have three other children, Tonya 14, Wayne, eight; and Jody, six years of age.

Grandparents are Mr. and Mrs. Fred Scott of Oklahoma and R.V. and Nadine Smith of Marble Fall, Tex.

Great grandmother is Essie Henderson of Oklahoma.

Much time is wasted preparing for what doesn't happen.

Bailey County Journal USPS 040-200
Established March 31, 1963. Published by Muleshoe Publishing Co., Inc. Every Sunday at 304 W. Second, Box 449, Muleshoe, Texas, 79347. Second Class Postage paid at Muleshoe, Texas 79347.

MEMBER 1985
TEXAS PRESS ASSOCIATION
L.B. Hall-President
James Woods-Vice President
Cris Williams-News
Evelene Harris-Society
Hills Milkup-Advertising
Little Nims-Circulation/Classified
Sammye Hall-Bookkeeper
SUBSCRIPTIONS:
Muleshoe Journal and Bailey County Journal
Bailey and surrounding counties \$11.95
Muleshoe Journal and Bailey County Journal
Elsewhere in Texas \$12.95
Muleshoe Journal and Bailey County Journal
Outside of Texas \$13.95
Yearly by Carrier \$11.50
Advertising rate card on application.

Chicken Barbecuing Time Is Here

Texans enjoy backyard barbecuing and eating as much as anybody in the U.S., and chicken barbecue is an all-time favorite. A few simple steps will enable you to enjoy mouth-watering chicken barbecue to your heart's content, says Dr. James Denton, poultry marketing specialist with the Texas Agricultural Extension Service, The Texas A&M University System.

Chicken barbecuing involves four basic steps. First, split the birds in half and sprinkle each half generously with salt and black pepper before placing on the pit, advises Denton. To shorten barbecuing time, cut halves into parts.

Second, make sure coals are white hot before putting the chicken on the grill. Any type of cooker can be used, but keep the coals 8 to 12 inches from the cooking rack for best results, says the specialist.

Another basic step for top-notch chicken barbecue is to use a basting sauce during the cooking process which contains no tomato product or sugar because such sauces burn easily. A basting sauce will keep meat moist and juicy and add a desired flavor. Apply basting sauce and turn chicken halves frequently.

Denton suggests these ingredients for a basting sauce: 1 tablespoon salt, 1 teaspoon black pepper, 1 stick butter or margarine, 2 tablespoons Worcestershire Sauce and a few drops of hot sauce or red pepper. Heat the mix over a low flame until the butter or oleo melts; then add the juice of one lemon (vinegar may be substituted). Next fill the pan with water and heat but do not boil. Spices such as garlic salt or lemon pepper can be added to suit personal preference.

To top off the barbecuing process, apply a finishing sauce to the chicken about the last 20 to 30 minutes before cooking is complete. This is the most critical time during the entire cooking process, emphasizes Denton. Check the meat carefully and turn it frequently to avoid burning the finishing sauce.

Several types of finishing sauce are available and vary from mild to hot. To prepare your own sauce (for 10 chicken halves), use the following: 1 cup cooking oil, 1 cup vinegar, 1 cup catsup, 1/4 cup sugar and 1/2 cup water. Add salt, Worcestershire Sauce, hot sauce, garlic and other seasonings to taste.

Chicken barbecue should be complete in about 1 1/2 to 2 hours. Cooking longer with less heat usually results in the most flavorful, juicy and tender barbecue. Placing the cooking rack closer than 8 inches to the coals will reduce barbecuing time, but the meat will be drier and less tender, Denton points out.

A test for doneness is to twist the drumstick which is connected to the thigh. If the joint between the thigh and drumstick is loose, the chicken is ready to eat. Another test is to cut into the meat at this joint. The moisture in the joint will run clear if the meat is done.

The fun part of chicken barbecuing is to develop your own secret recipe and cooking style, says Denton.

Semi-Annual Clearance Sale

Starts

Tues. - July 9th

9 a.m.

(We Will Be Closed Monday - July 8th - Preparing For The Sale)

SAVE!!!

25% to 50% Off

In Every Department

Selected Groups

All Sizes

Regular, Short, Longs, Extra Long

- Sport Coats
- Sport Shirts
- Dress Shirts
- Suits
- Dress Slacks
- Casual Wear

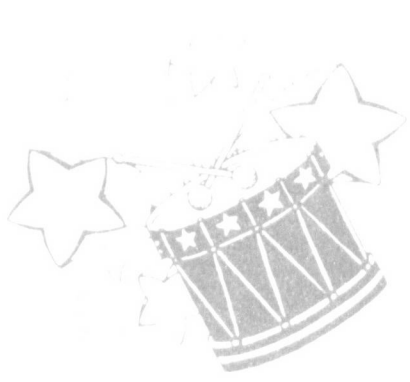
Sorry
No Layaways
Or Approvals

Small
Charge For
Alterations

Albertsons Shop For Men

228 Main

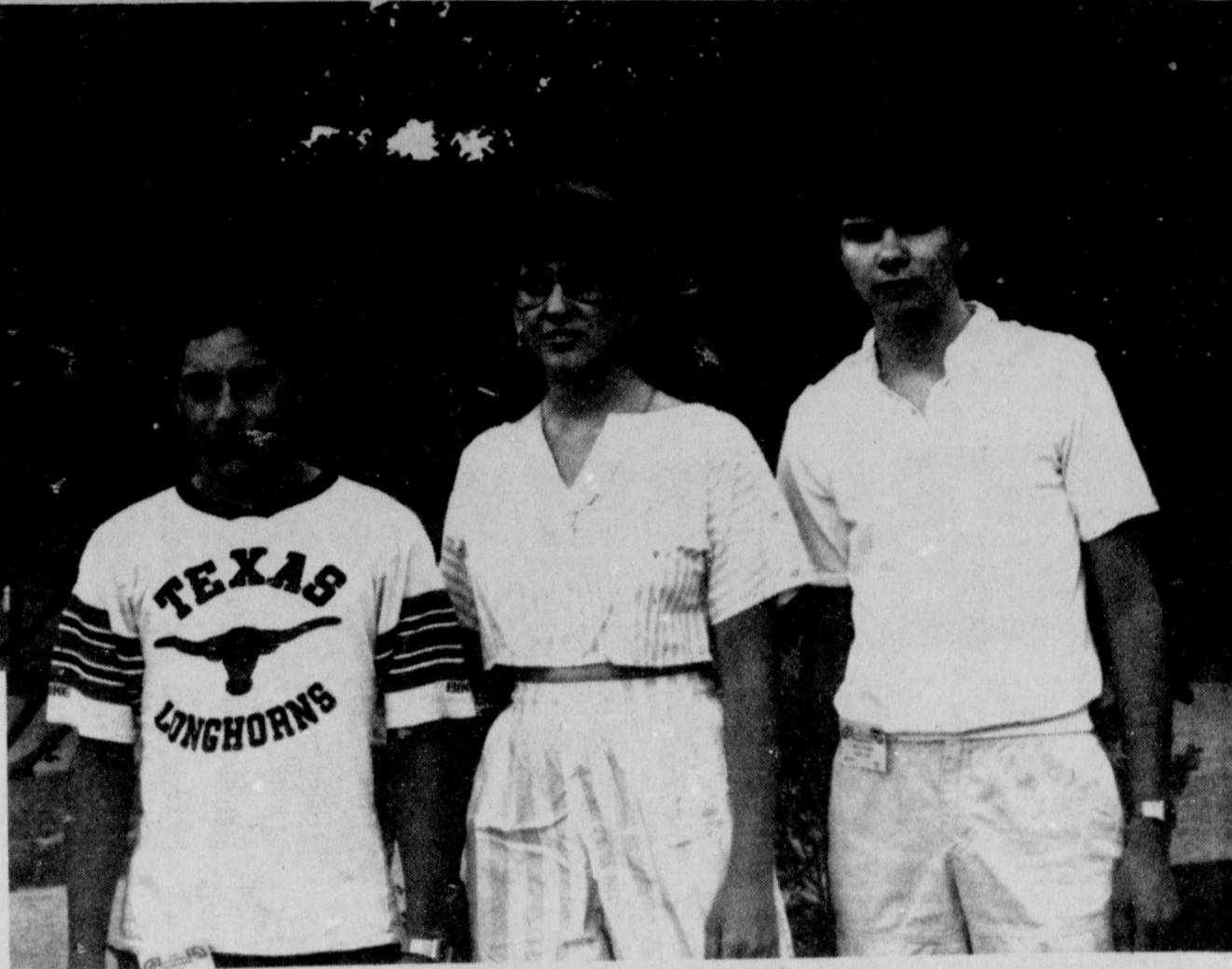
272-3000



Activities Galore Spotlight Area

Muleshoe, Thursday, July 5, 1985





YOUTH VISIT FARM BUREAU CITIZENSHIP SEMINAR--More than 400 high school juniors and seniors participated in the 23rd annual Texas Farm Bureau Citizenship Seminar, June 17-21, on the campus of Angelo State University at San Angelo. Attending the seminar from Bailey County were Loy Triana, Leslie Langfitt and Rodrigo Muyschondt. Purpose of the seminar was to give students a better understanding of the various forms of government and their responsibilities as citizens, according to James Gipe, coordinator of the seminar for Texas Farm Bureau. Students are sponsored through county Farm Bureau.

Manure Management Important For Environmental Quality

Runoff from animal feeding operations is often cited as contributing to water pollution. Consequently, livestock and poultry feeders need to work hard to keep their image clean regarding manure management and environmental quality. "All animal feeding operations regardless of size need to keep all manure and wastewater out of streams--even dry streams," emphasizes Dr. John

Sweeten, agricultural engineer in waste management with the Texas Agricultural Extension Service and the Texas Agricultural Experiment Station. Feeders should adopt the no-discharge policy with respect to manure handling and should get permits where state regulations require them. Sweeten points out. Nearly all large feedlots have been in compliance with state water pol-

lution control laws for many years, but this is not necessarily the case with smaller operations. Clean runoff from outside a feedlot should be diverted from the feeding facility to avoid contact with manure-covered surfaces. Runoff from open, unpaved feedlot surfaces should be collected and disposed of by land application. Solids accumulate in runoff holding ponds and debris basins, so these structures need to be cleaned out periodically to maintain their design capacity. Many dairy, swine and caged layer operations now have lagoon systems to store and biologically treat liquid manure and in some cases to furnish recycled wastewater for flushing, notes the engineer. All lagoon systems need a sprinkler irrigation unit to dispose of lagoon effluent when necessary to prevent overflow. "Wastewater from a lagoon, though improved in quality, may still have several times the pollutant strength of raw domestic sewage and should not be discharged," Sweeten cautions. However, lagoon effluent can be used for irrigation. Where a recycle flush system is used, irrigate with about 25 to 30 percent of the lagoon contents annually and replace with pond or well water, suggests the engineer. "Never drain or pump manure or lagoon contents into a drainage ditch or stream," cautions Sweeten. Although buildings with solid manure handling systems have little or no water pollution potential, it's another matter with stored or stockpiled manure removed from confinement buildings and open feedlots, says the engineer. Leached materials from manure stockpiles on porous soils can contaminate shallow groundwater, so select a site with impermeable subsoil and good surface drainage. Sweeten recommends using dikes or ponds to collect surface runoff from stockpiled manure for disposal by irrigation or evaporation. Using manure or wastewater on land requires matching application rates with soil and plant requirements for available nitrogen and other nutrients. Sweeten recommends soil testing and manure analysis for proper guidance. To conserve nutrients, solid manure should be disked into the soil promptly after application while liquid manure should be injected when feasible with respect to soil and crop conditions. "When applying manure to land near streams, lakes or drainage structures, leave a vegetated filter strip of 100 feet or more wide to prevent direct runoff into a water body," advises Sweeten. "Avoid permeable soils with a high water table, shallow creviced bedrock, waterways, floodplains, wet soils and excessive application rates." A 100-foot wide grass filter strip between the property boundary and all buildings, manure handling facilities and land disposal areas can greatly reduce transport of manure solids, sediment and nutrients off your property, says the engineer.



FORMER ROTARY DISTRICT GOVERNOR VISITS--In Muleshoe last Tuesday to deliver brief remarks and install incoming officers for the Muleshoe Rotary Club was Dr. John Selby, left, of Lubbock, former Rotary District Governor. He was greeted by Paul Wilbanks, incoming Rotary president, and J.D. Cage, outgoing president.

A&M FivePoint

Hi-Protein
Dog Food

50 lb. Bag **\$9.75**



NOTICE
Hearing

Parmer County Appraisal District

The Review Board Hearings Will Be On July 15, 1985, Starting At 8:30 a.m. to 5 p.m. or Until All Appointments Have Been Met.

The Hearings Will Be At The Appraisal District Board Room At 305 3rd. St., Bovina, Tex.

In Order To Be Entitled To A Hearing You Must File A Written Protest With ARB By July 11, 1985.

Parmer County Appraisal District
P.O. Box 56
Bovina, Texas, 79009
806-238-1405

Insect Workshop To Be Conducted At Plainview

Cotton, corn and sorghum producers in Bailey County are invited to the second part of the annual High Plains Scout Training Workshop to increase the effectiveness of their pest man-

Rotary...

Cont. From Page 1

singing group from the Muleshoe Church of Christ, including R.A. Bradley, Duane Lloyd, Jacque Baker and Jeanine Gable. The interspersed humorous gospel music with serious gospel to make a light and bright entertainment session.

Past Rotary District Governor John Selby of Lubbock was guest speaker and installed the incoming officers.

Dr. Selby told the Rotary members and guests, "Fellowship" is the basis of Rotary. Rotary is composed of community leaders, leaders who are in the forefront of activities in the community. It is important to have a program that is progressive, and a club this size sending three or four youths to Camp Ryla is just great," he added.

Only by understanding others, and being understood, can we have a peaceful world," according to the Doctor, who praised the local organization for the activities they are involved in.

He installed new officers, including, Paul Wilbanks, president; Bill Liles, vice president; George Nieman, secretary; Randy Field, treasurer; J.D. Cage, immediate past president; Ronnie Dent, sergeant-at-arms and directors, David Hamblen, Terry Hutto, C.K. Castleberry and Mike Hahn.

agement programs. The last of two workshop sessions will focus on mid- and late-season pests and will be held Tuesday, July 9, at the Hale County Agricultural Center in Plainview, Spencer Tanksley, county Extension agent, said. The center is on U.S. 87 Business Route south of the city.

In June, the first workshop covered mid- to late-season pests. Conducted by the Texas Agricultural Extension Service, the workshop was first held in 1973 to train scouts in the pest management programs conducted by Extension.

Beginning at 8:30 a.m. with Dr. James Leser, Extension Entomologist, he will be outlining the scope of the training and explaining general concepts. Leser will then open the cotton pest section with information on bollworms and budworms. Beet armyworms, loopers and aphids will be discussed by Greg Cronholm, Extension Agent-Entomology headquartered at Plainview.

Corn pests will be covered by Allen Jnutson, Extension Agent - Entomology based in Dimmitt. Dr. Pat Morrison, Extension entomologist, will discuss sorghum pests.

The daylong workshop will conclude with a field session in which participants will identify pests and beneficials and practice scouting techniques.

Festivities...

Cont. From Page 1

Anchor Brothers Band provided musical entertainment following the welcome of the 240 persons who registered for the occasion, as given by Muleshoe Mayor Darrell Turner.

Receiving awards were Viva Lewis of Medford, Ore. and Bob Bellar of California, for traveling the farthest; Ola Ragsdale at 91 and Alford Scott, 95, for the oldest attending the reunion.

Also recognized were Lily Sims and J.E. Embry, who have lived in the area for over 85 years.

Winners in the parade, held at 5 p.m. were Jennyslippers, float; Rebecca and Odd Fellow float, second and Girls Scouts float, third. B.C. Stonecipher won the antique car division with a 1959 Edsel.

Edward New's homemade car won him a trophy in the unique vehicle division; Five Area Telephone won the commercial division; Khiva Kart Patrol of Lubbock won the individual division and R.B. Cunningham won the mule division.

Capping of the evening was the annual fireworks display, with the sky brilliantly lit from fireworks as set off by the Muleshoe Fire Department.

Ellis Funeral Home

Pre-Need Funeral Plans

Supervised By Texas Department Of Banking
Price Frozen At Time Of Purchase

Ben Franklin

Better quality for less

2104 WEST AMERICAN BLVD. MULESHOE. PH. 272-3855 STORE HOURS 8 a.m. - 8 p.m.

Sizzling Summer Bargains Sun Visors 

<p>Tab-Diet Coke-Sprite Coke 6-Pk Cans \$1.49</p>	<p>99¢ Personalized \$1.99 The Original Doll Baby Heads Reg. 5.97 \$3.47</p>	
<p>20" Galazy Fan Breeze Box 3 Speed \$19.97</p>	<p>16" Oscillating Fan \$27.97</p>	<p>12" Tall Assorted Shapes Burman Lamps \$13.88</p>
<p>Wire Folding Fence 8 Ft. \$1.97</p>	<p>1/2 Inch 100% Vinyl Garden Hose 50 ft. \$3.87</p>	<p>Misses & Ladies Jellies \$1.96 Pair Assorted Sizes & Colors Flannelback Tablecloths \$2.97</p>
<p>60" Wading Pool \$9.27</p>	<p>Splash & Stash Swimming Pool Reg. 16.99 \$12.88</p>	<p>Wilson Baseball Gloves Reg. 19.98 \$9.99</p>
<p>28 Oz. Assorted Colors Plastic Tumblers 3/\$1.00</p>	<p>Hershey's Value Paks 10 Bars \$2.97 Hershey Bar Whatchamacallit Kit Kat Mr. Goodbar Hershey Almonds Bar</p>	<p>Post Grape Nuts \$1.71 Lipton Ice Tea Mix \$2.37 3.3 Oz. Jar</p>
<p>Palmolive Dishwashing Liquid 22 Oz. \$1.39</p>	<p>Helium Filled Balloons 25¢</p>	<p>Sather Cookies \$1.97 Coco Chips, Macaroons And Vanilla Creme Many More 2/\$1.00 Cricket Ecco Pack Lighters 87¢ 3 per pack</p>
		<p>Rubbermaid Sun & Fun Tote Bags \$1.97 1 Gal. Shrubs \$1.00</p>

Dorothy Bogard

Funeral Services

Held At Bula

Funeral services for Dorothy Bell Bogard, 73, of Bula were held at 10:30 a.m. Saturday, July 6 in the Bula Methodist Church.

Graveside services were conducted at 4 p.m. Saturday in the Citizens Cemetery in Clarendon under the direction of Hammons Funeral Home of Lufkinfield.

Mrs. Bogard died at 2 a.m. Thursday in Methodist Hospital following a short illness.

She was native of Dickens County and had been a Bula resident for 43 years. She married Tom Bogard on Dec. 22, 1930, in Hollis, Okla. She was a life member of the Bula Methodist Church.

Survivors include her husband, Tom; three daughters, Tommie Ann Gaston and Opal

Roberts, both of Junction and Barbara Kinnison of Olton; one son, Jake of Charlie; one brother, Andy Rhoades of Spearman; eight grandchildren; and four great grandchildren.

The family suggests memorials be made to the Citizens Cemetery Association in Clarendon or your favorite charity.

Best of Press



As a matter of fact, the man who lives within his income never gets as much credit as the man who doesn't.

-Times, Louisville.

Three Way News

by Mrs. H.W. Garvin

Mrs. Bula Toombs was a medical patient in Cochran Memorial hospital last week.

Mrs. J.T. Lemons from Roswell, NM spent the week end with her daughter the Bobby Kindle family.

Mr. and Mrs. S.G. Long spent Tuesday night in Canyon to attend the 25th wedding anniversary party honoring their daughter Mr. and Mrs. Carl

Miller.

Mr. and Mrs. Kenneth Fox from Clovis, NM spent the week end with her mother Mrs. H.W. Garvin.

A bridal shower honoring Pam Aldridge bride elect of Bill Hednett was held Sunday afternoon at the Three Way cafeteria.

The Three Way school reunion was held Saturday afternoon at the Activity building in Morton. Former teachers there were Mr. and Mrs. Howard Homely, Mrs. Fulton, Mr. and Mrs. Crowford, Mr. and Mrs. Self, Mr. and Mrs. Pruitt, Mrs. Carter and Mrs. Corkery, Mrs. Bob Sanders and Barbara Smith

from California. She traveled the farthest. Robert Weed from Corpus Christie traveled second farthest. There was about 200 attended. The reunion next year will be at the Three Way School.

Spending the week end in the George Tyson home was Mrs. Wendle Price and son from Ft. Worth, Mr. and Mrs. Tommy Durham from Lubbock and Mr. and Mrs. D.A. Willims from Enoch.

Ok Cha Davis will leave soon for a months visit in Kora with her parents. Rev. Davis is pastor of Maple Church of Christ.

Mr. and Mrs. Carl Miller

from Canyon spent the week end with the S.G. Longs.

Mr. and Mrs. Otie Kindle from Nedles California visited his brother the Robert Kindles the past week.

Mr. and Mrs. Luther Edwards and Marie Sowder from Sundown and Minnie Dupler from Maple were dinner guests in the Bill Dupler home Sunday.

No Place

There are thousands of hidden taxes these days, but, alas, no place where the tax payer can hide.

-Star-Times, St. Louis

West Plains Hospital Report

PATIENTS IN WEST PLAINS MEDICAL CENTER

July 2, Betta Lancaster, Hubert Owensby, Ruby Garner, Nicolasa Bara, Tommy Sexton, Jose Cortez, Eva Nell Stovall, John Copley, Bill Harmon, Manuel Almanza, Roxanne Mayfield-Baby Girl Mayfield.

July 3, Steve Griswold, Betta Lancaster, Ruby Garner, Nicolasa Bara Tomasa Diaz, Tommy Sexton, Gordon Duncan, Jose Cortez, Eva Nell Stovall, John Copley, Bill Harmon, Roxanne Mayfield-Baby Girl Mayfield, Terre Nelson -- Baby Girl Nelson.

July 4, Betta Lancaster, Ruby Garner, Tomasa Diaz, Freddie Hysinger, Jose Cortez, Eva Nell Stovall, John Copley, Julio Vega Jr.

July 5, Betta Lancaster, Ruby Garner, Tomasa Diaz, Freddie Hysinger, Jose Cortez, Eva Nell Stovall, John Copley, Julio Vega Jr., Ida Hardgrove.

FREE Hearing Test For Senior Citizens

Livingston Hearing Aid Center, Inc.

1913-19th St. Lubbock, Tx. 79401

806/762-2951

Offers a new concept in helping the hard of hearing.

Livingston Hearing Aid Center, Inc. will sponsor FREE an electronic hearing test on Wednesday July 10, 1985 from 9:30 a.m. to 10:30 a.m. The test will be given at Western Drug in Muleshoe by Richard R. Davila, A.C.A. His professional approach assures you of personal understanding and expert help.



Richard R. Davila, A.C.A.

Certified Hearing Aid Audiologist

Most hearing aid specialist sell you the brand of hearing aid they carry. And that brand may not have the model that's exactly right for you.

With Livingston Hearing Aid Center, Inc., 1913 19th St. Lubbock, 762-2951, it's different. We offer a new concept for the hard of hearing by carrying a wide variety of hearing aids from over 12 different manufacturers. We promise to fit you with an aid that answers your problem exactly. And our promise is backed by a 30 day satisfaction guarantee or your money back.

Every one, especially older citizens, should have their hearing tested electronically at least once a year. Many of you may suspect you have trouble hearing and understanding.

Repair service and cleaning will be available to you for your present hearing aid--no matter what brand or where you bought it. The hearing tests are FREE and will only take 20 minutes of your time. Please come in and take advantage of this special opportunity.

A&M DISCOUNT DAYS

Prices Effective July 7 - July 13, 1985

Double Faced Drilling Hammer
8" Handle Made From Genuine Brazilian Hardwood
4⁹⁹

*** Allen T Pack Utility Pouch**
Sturdy pickup utility pouch has 6 pockets, gun carrying case & double stitching.
11⁹⁹

10 Gal. Portable Air Tank
Sale!
29⁹⁹

- 10 Gallon Tank
- 6 foot air hose.
- Air line shut-off pressure relief valve.
- 125 Max. P.S.I., 200 P.S.I. air gauge.

CAR MATS
CENTURA
The car mat of the century! Rubber Queen adds a touch of class to your car with the protection of durable rubber. Fits standard and intermediate cars.
Twin Front #6456
9⁹⁹

Foot Pump
4⁹⁹

- High pressure, foot operated, air pump.
- Inflates up to 100 lbs. PSI pressure.
- Features 0-100 lbs. PSI dial pressure gauge.
- Rubber foot pad & slip resistant rubber floor protectors.
- No. LR103B.

Low Mount Mirror
Lightweight molded mirror frame, chrome anti-glare glass. Precision molded mounting feet mount to any door contour. Locking ball stud for positive positioning.
10⁹⁹

ARMOR ALL
Protects & Beautifies
8 oz. Protectant
2⁹⁹

WASH MITT
1⁴⁹

WD-40 Lubricant
9 oz. Stops squeaks and helps prevent rust.
1²⁹

STP Oil Treatment
Add to your oil for better performance. 15 oz. can.
1⁴⁹

CASITE DEPTH-TYPE OIL FILTERS
1⁹⁹

Eurada V601 Adjustable Convex Mirror
Eliminates deadly blind spots. Rotates to adjust angle of view. Works on any vehicle.
1⁹⁹

Delta Strong Box
Safe storage that goes with you, stays with you, base plate bolts to truck bed. Removable in seconds from it's mounted base, making it easily transferable.
45⁹⁹

BIG BUGGER
Big Bugger 48"
24⁹⁵

ELECTRIC HYDRAULIC BRAKE CONTROLLERS
For All 2 & 4 Wheel Trailers
No. 2016
29⁹⁹

Mini 12 Volt Portable Air Compressor
With Built In Pressure Gauge
Model No. EY-2104 (Similar To Illustration)
15⁹⁹

15. Misc.

BIRDWELL CATTLE
Co. Coyote Lake, We
are buying wheat &
barley 806-946-3321.
b15-23t-tfc

**17. Seed &
Feed**

**DISC ROLLING &
sharpening Spearman
Disc & Implement**
505-683-5362. Any
size, style or make.
We come to you.
s15-20s-7tsc

Round-up applica-
tions cotton, soy-
beans, maize, lay-
out, tipe-wick
mounted on highboy
30 in on 40 in rows.
Call Roy O'Brian
265-3247.
o17-26s-tfc

**For All Your
Local News Or Club
Activities Call
272-4536
Or Come By
The Journal Office**

15. Misc.

SHOP AROUND FOR THE BEST PRICE
THEN SEE OUR PRICES
60% OFF 14K GOLD&DIAMONDS
EVERY DAY
BI-WIZE HEALTH MART
902 Main 247-3010
b15-23s-tfc

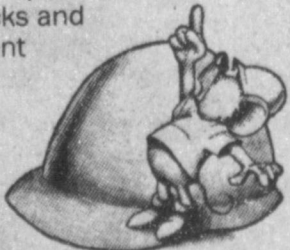


Career opportunities available now with
this rapidly growing convenience food store
operation. Applications are being accepted
now for Store Manager, Asst. Manager,
full time and part time clerk positions,
experience a plus but not required.
Benefits include above average starting
salaries, paid vacations, sick leave, group
insurance and performance based bonus
plan.
Apply at the Town & Country Food Store
at 1900 W. American, in Muleshoe.
t3-27s-tfc

**Out on the JOB
WATCH
UP
FOR
POWER
LINES**

Out on the job, power lines bring needed
electricity to the site. But they can be
dangerous . . . if you don't watch up! You
need to be especially careful when you are
handling re-bar, pipes, scaffolding, or tools
that are long enough to contact overhead
lines. Contact with power lines is also a
potential danger to operators of front-end
loaders, dump trucks and
any other equipment
of unusual height.

Keep an eye up for
power lines.
Watch up, for
safety's sake.



SOUTHWESTERN PUBLIC SERVICE COMPANY

**Sprinkler Efficiency Depends On
Care In Use**

By Jim Lutz
Blackwater Valley Soil
and Water Conservation
Did you know that 40% of all
water consumed around the
home is used to water lawns
and shrubs. Out of that 40%
water used, half could be lost to
evaporation and poor watering
habits. The two most common
causes of water loss are wind
speed and the time of day the
water is applied. These losses
can be cut substantially if
everyone understands these
problems and uses a few
common sense ideas on water-
ing.

The six most common lawn
sprinklers available to the public
are: impact, oscillating, rotat-
ing, buried head, ring and
traveling. All of these sprinklers
will water your lawn but not
necessarily in a uniform pattern
or apply a uniform amount of
water.

Dr. Charles Wendt, soil-plant-
water specialist at Texas Agri-
cultural Experiment Station in
Lubbock did some research on
lawn sprinklers in 1981. This
research was done to help
people on the South Plains
understand the problems with
lawn sprinklers and how to best
conserve water when watering
lawns. The six mentioned lawn
sprinklers were checked over a
24 hour period to determine
efficiencies and evaporation of
water. All models were ineffic-
ient during the time period
10:00 a.m. to 6:00 p.m. This
time period is the hottest and
usually the windiest. So only
water during this time period if

absolutely necessary.
The most inefficient sprink-
lers during this time period
were the impact and buried
head models. They lost from
50% - 70% of the water applied
to evaporation. The rest of the
models were in the 13% - 25%
range for the same time period.
The best of all models checked
was the ring with a 13%
evaporation loss. Wind also
affected the uniformity of the
water application. Here again
the impact, buried head and
oscillating were affected the
worst. There were dry spots in
the area watered due to a shift
in the water pattern. The best
in the wind was the ring
sprinkler with the rest in
between them.

**Enochs News
by
Mrs. J.D. Bayless**

Mr. and Mrs. Goldman visit-
ed his brother, Mr. and Mrs.
Alton Stroud at Hico, Texas also
friends, Mr. and Mrs. Johnnie
Cox while there, they also
visited their son, Mr. and Mrs.
Orvin Stroud at Brownwood,
Orvin and wife Beverly and Mr.
Stroud did some fishing at
Colorado, River, they caught 1
30 lb fish and a lot of others,
last weekend.

Mrs. Audra Hill and Mrs.
Clara Williamson of Lubbock
spent Wednesday night with
their sister, Mrs. Wilma Petree.

Mr. and Mrs. Dale Nichols
and their children had dinner
together Sunday, Mr. and Mrs.
Jerry Nichols and children of
Muleshoe, Mr. and Mrs. Bonnie
Nichols and son of Canyon, and
Mr. and Mrs. James Grant of
Odessa.

Mr. and Mrs. Buford Peter-
son visited their daughter, Rev.
and Mrs. Harold Abney, and
children Koby and Kristen at
White Deer, Tuesday till Thurs-
day, Koby and Kristen came
home with them for a visit.

Winnie Byars had her child-
ren home during the weekend,
Mrs. Nadene Parr of Lubbock
and Mrs. Jackie Petty of
Lubbock, Mr. and Mrs. Tom
Byars and children of Seminole
and Mrs. Henry Hardaway of
Brownfield some came for the
Three Way School Home com-
ing at the Activity Building in
Morton and the Barbeque
Supper.

Mrs. Mamie Adams had as
her guests a nephew, Dr. and
Mrs. John Jaynes from Colum-
bus, Ohio, her son, Mr.
and Mrs. Bobbie Adams of
Morton, and daughters, Mr.
Glen Green of Muleshoe and
Mrs. Linda Logsdon and child-
ren of Lubbock Monday the
Jaynes spent the night with her.

The visitors at the Baptist
Church Sunday were Glen
Hazel and children, Mr. and
Mrs. Wayland Hazel and
daughter Morgan, Barry and
Carolyn all of Lubbock. Mrs.
Faye Montgomery of Idalou,
Mr. and Mrs. Earl Peterson of
Muleshoe, Koby and Kristen of
White Deer, Texas, Mrs.
Mamie Adams of Morton, Mr.
and Mrs. Bonnie Nichols and
son of Canyon, and Mr. and
Mrs. James Grant of Odessa,
R.A. Irwin of Enochs.

Mrs. Opal Locker of Littlefield
and Mrs. E.N. McCall visited
their brother, Lee Kelly at the
hospital again at Plainview,
Friday afternoon.

Visiting Mr. and Mrs. Edd
Autry during the weekend were
a sister Mrs. Oney Bryant of
Colo. a son Mr. and Mrs.
George Autry of Pep New,
Mexico. Mrs. Gladys Short of
Ariz. and Mrs. Dollie Shaw and
Mr. and Mrs. Elwood Autry all
of Morton.

Mrs. Edward Crume and
Mrs. Etta Layton visited their
sister Mrs. Juanita Snow in
Muleshoe Thursday, other
guests were another, Mrs. Vida
Cash of Hereford and a grand-
daughter, Teri Cash, and her
daughter, Mrs. Sharon Brown-
ing and son from, Corpus
Christi.

Brittney Kirby of Three Way
spent the weekend with his
grandparents, Mr. and Mrs.
Goldman Stroud.

Mr. and Mrs. Dannie Petree
of Lubbock visited his mother,
Mrs. Wilma Petree Saturday.

Mr. and Mrs. Harie Pollard
have all their grandchildren
visiting them, Jacy Kridon,
Lewis of Littlefield, Brook and
Mason Sinclair of Muleshoe.

To get the best water
application from your own
sprinkler and wast less water
try some of the following ideas.
If you have an impact model or
buried head sprinkler system,
water only after 6:00 p.m. and
in low wind conditions. If you
have a rotating or oscillating
model, water only when wind
speed is under ten miles per
hour. The ring model is the best
for all conditions but because of
the small area it waters it has to
be moved real often. This, for
some people, is too inconven-
ient. The next best model is the
traveling sprinkler for all con-
ditions. The traveling sprinkler
has adjustable arms to fit the
area being watered without
changing pressure. Because of
the limited flow rate, it would
take two passes to water the
lawn right.

Aerate lawns in the fall or
spring to help water travel to
rot systems, fertilize less (ferti-
lizer increases water demand).
Remember, during the summer,
that lawn grasses use about .25
inches of water per day, so
adjust your watering schedule to
replace one and one-half inches
of water each week. Raise lawn
mower up at least one notch,
taller grass retains more moist-
ure.

For additional information
contact Soil Conservation Ser-
vice Office, 111 E. Ave. D,
Muleshoe.

**BIBLE
VERSE**



*If ye will obey my voice in-
deed, and keep my covenant,
then ye shall be a peculiar
treasure unto me above all peo-
ple; for all the earth is mine.*

1. To whom was the above
promise made?
2. Through whom was it given to
these people?
3. Where were the Children of
Israel at this time?
4. Where may this promise be
found?

Answers to Bible Verse

1. The Children of Israel.
2. Moses.
3. At the foot of Mt. Sinai.
4. Exodus 19:5.



Saguaros, which are huge cactuses found in Arizona, are
often called "apartment houses of the desert" because
they provide living quarters for so many bird species.

**8. Real Estate
For Sale**



**CROP-HAIL
15%
discount**

Hail takes the heart right out of a man, but
crop-hail insurance helps keep you in business
for the better days you know will come.

Roy Whitt
201 Main
806-272-3611 Office
272 line

Thank You

We wish to express our appreciation for the food and flowers,
the bountiful lunch and hospitality at Trinity Church
A "Thank You" to our neighbors for food and visits, to
Bro. Huggins and Bro. Stonecipher and Mr. Ellis
and his staff.

The family of Alma Henley

James Seagroves family Gayle Richerson's family

Stanley & Cleo Seagroves Robert Seagroves family

**Your wife been nagging you
about painting the house?**



You should:

- (1) run away to Tahiti.
- (2) sell the house and live in a tent.
- (3) find a painter through a Name
Newspaper Classified.

Choose one. Then call us for a new-looking
house and a non-nagging wife.

**Muleshoe And Bailey
County Journals 272-4536**

Bailey County Journal

Classified

Call 272-4536

CLASSIFIED RATES
 1st Insertion
 Per Word\$15
 Minimum Charge....\$2.30
 2nd Insertion
 Per Word\$13
 Minimum Charge....\$2.00

CLASSIFIED DISPLAY RATES
 \$1.70
 per column inch

BLIND AD RATES
 50% more

DEADLINES
 12 Noon Tues.
 for Thursday paper
 12 Noon Fri.
 for Sunday paper

WE RESERVE THE RIGHT TO CLASSIFY, REVISE, OR REJECT ANY AD. NOT RESPONSIBLE FOR ANY ERROR AFTER AD HAS RUN ONCE.

1. Personals

HELTON'S Roofing and Exterior Painting, Mobil Home Roofs our speciality. Also the best in Ag. products. Call Jerry Helton 272-3836, 915 Gum, Muleshoe, Tx. hf-8t-tfc

FURNITURE Upholstering & repairs. Burrows Upholstery Shop 209 W. 2nd Phone 272-4255 Home Phone 272-5722. b1-41-tfc

MARY KAY COSMETICS in stock. Free facials. 272-3865 Josie Flowers. fl-22-tfc

PAINTING CONTRACTOR Call Tommy Hall 272-4874 for Good Job. For bad job call somebody else. 1-24t-1mp

ATTENTION: POTATO FARMERS want to buy potatoes at your farm bulk loaded on our semi-trucks. Contact Colorado Potato Co., Trinidad Colorado 303-846-4404. 1-24t-8tp

HOME REPAIRS F.M. Saldana Construction Licensed and bonded plumber. Specialized in cement, carpenter work, remodeling, painting, acoustical ceilings. 272-4955. s1-16s-tfc

NEED YARDWORK? Call 272-3789 or 272-3380 Jerry Bob Graves & Sergio Gonzalez. a1-25s-tfc

I Lucille Scheller am no longer responsible for any debts made by anyone else other than Jay Burge. 1-27s-2tp

NURSES AIDES Part time schedules available to do private duty home care nursing. References required. Call 505-769-2243.

CLOVIS HOMECARE cl-27t-2tc

Avon Sales Representative Needed: Several open territories in Muleshoe. Call Nettie Long, 272-3208 11-25s-10ts

The Amazing Magic of Natural Herbs

All natural Weight Control Program will help you LOSE from 10 TO 29 pounds in a month WITHOUT diet pills, exercise or hunger pains.

- * Lose Inches & Pounds
- * Gives You Vitality And Energy
- * 100% Guaranteed Or Your Money Back
- * Natural, No Drugs

For More Information Call:
 Rex or Betty Steinbock
 806 965-2566

1. Personals

Hocheim Prairie Farm Mutual Branch 87
 201 W. Ave C. Contact
 Barbara Scarbrough Agent
 272-5141
 h1-22s-17tc

FOR SALE
 Bailey County Diet Center Includes: Some furnishings, starting inventory, training & schooling. Call: Greta McCormick 272-5487 or 272-4477. 1-11t-tfc

CONCERNED About Someone's Drinking? HELP IS AVAILABLE through Al-Anon Call 227-2350 or 965-2870 or Call 227-2350 or come to visit Tuesday nights, 8:30 p.m. or Saturday mornings at 10:30 a.m. at 1116 W. American Blv., Muleshoe.

2. Lost & Found

Lost small German Shephard by the name of Cookie Mardis if found call Louis Wayne Shafer 946-3622. m2-27s-2tc

8. Real Estate For Sale

HENRY REALTY
 111 W. Ave. B Muleshoe, Texas 272-4581

JUST COMPLETED
 3 bedroom, 2 bath, large living room, kitchen & dining. Excellent condition, near high school. Priced to sell. ***

320 ACRES with large beautiful 3 Bedroom, 3 bath, 3 car garage, spacious gameroom, central heating and air, underground sprinkler for yard 30' x 50' shop for building. 5 wells. ***

80 ACRES with 6" well and 8" well, under ground pipe owner financing available. 7 miles west of Muleshoe. ***

38 ACRES West of Muleshoe, 6 Inch Well, Sideroll, All Wheat. ***

ONE ACRE sites for Home Construction. 3 Miles East of Muleshoe on HWY. 3 lots remain. ***

COMPLETELY remodeled 2 Bedroom home. Ideal first home, must see to appreciate. Nice location with F.H.A. loan. ***

APARTMENT complex, mobile home park, vacant land for expansion. Terms available. 8-23t-tfc

3. Help Wanted

WANTED: Responsible individual for combination farming and cattle operation. Experience with livestock needed. Call 806-965-2470.

GOVERNMENT JOBS \$15,000 - \$50,000! yr. possible. All occupations. Call 805-657-6000 Ext. R-6226 to find out how.

Help Wanted Woods National Portrait Studio needs ten ladies to do pleasant telephone calling. Guarantee pay plus bonuses. Please apply in person at the Ranch House Motel Room #38 Hours 10-6 Friday and Saturday July 12, 13. w3-27s-2tc

RESPONSIBLE PERSON
 Wanted to own and operate candy vending route. Pleasant business with high profit items. Can start part time. Cash investment of \$3996 to \$12,996. Call 1-800-328-0723

EAGLE INDUSTRIES
 26 Years of Service m3-27s-1tpts

4. Houses For Rent

RUIDOSO CHALET: 4 bedroom for rent by day, weekend, or weekly. Call 505-257-2622 or 915-943-4261. Owner Dr. Albertson.

FOR SALE 300 acre farm, 2-8" wells in strong water area, underground pipe and excellent yield base! Beautiful, large country home 3/2/1 fireplace, beautiful den with built ins, covered patio, large yard with lots of trees and garden area, well house & cellar with extra storage. 1 3 room & bath hand house, 2 large barns & other out buildings. Close to hwy & convenient to Muleshoe or Clovis. Call 925-6446 before 8:00 AM or after 6:00 PM. b8-26t-4tc

WHITT-REID REAL ESTATE...INSURANCE BUILT ON INTERGRITY...SERVICE H.C. REID BROKER
 Phone 272-3611 201 Main ***

BEAUTIFUL LOT to build new home overlooking park in Richland Hills edition ***

LOVELY HOME - 3 Bedroom - 1 full bath, sunken tub - 1/4 bath - double garage - central heat - central evap. cooling - under \$40,000 - 25H-14 ***

JUST LISTED - 4 Bedroom - 2 baths - fireplace - trimmed in ash - dishwasher - range - oven - disposal - microwave. Extra nice. Under \$60,000 - 50H-10 ***

NICE 2 Bedroom and den. Under \$20,000 - OHS ***

Roy Whitt-home phone 272-3058
 Thursie Reid-home phone 272-5318
 Lucille Harp-home phone 272-4693

J.B. SUDDERTH REALTY INC.
 Drawer 887
 Farwell, TX 79325
 Ph. 806-481-3288

181 acres, one 6 in and one 8 in well, valley sprinkler, west of Progress on highway. Owner financing available. ***

472 acres, four wells with electric motors, two late model valley low-pressure sprinklers. Wheat crop included. Priced at \$650 per acre. Owner will finance. ***

477 acres, five wells, three circle sprinklers, beautiful wheat crop, east of Muleshoe. \$600 per acre. Excellent financing. ***

320 acres irrigated E of Farwell on hwy with circle sprinkler 2-8 in. wells approx. 200 ft of water lays nearly perfect. ***

155 acres irrigated with circle sprinkler, excellent water area, North East of Muleshoe ***

320 a, 3-8 in wells, circle sprinkler, 3 mi SE Clays Corner ***

158 a, 3 good wells, circle sprinkler, elevator and office building on highway. Progress area. ***

5. Apts. For Rent

FOR RENT: 2 bedroom apt. with large bath. Call 965-2188 or 272-4754 after 5 p.m. s5-27t-tfc

8. Real Estate For Sale

REPOSESSED 14 & 16 wide mobile homes from \$99 to \$500 down. Delivery included. 6 month free lot rent. Call 1-800-792-0032. m8-25t-tfct

NEW 1985 liberty 16x60 2 bedroom, 1 bath, front kitchen with bay window. 2 weeks special was \$18,950 now \$17,830 payments under \$250 a month with 10% down. We take trade ins for down payments. p8-26s-4tc

NEW PEACH tree 14x80 3 bedroom, 2 bath, fireplace, walk in pantry, dishwasher, deluxe carpet, storm windows, R-19 insulation & ceiling was \$23,000 now just \$21,000. An exceptional home for under \$275 a month with 10% down. We take trade ins for down payments. p8-26s-4tc

FOR SALE or Rent 3 Bedroom 903 W. 8th Muleshoe call 806-285-2757. Olton, Tx. b8-25t-tfc

8. Real Estate For Sale

DEALER REPO! 3 bedroom mobile home. 2 baths, wood siding, storm windows, garden tub, etc. Assume payments of \$248.08 with approved credit. Includes delivery and insurance. Several 16" wide available. **WE TAKE TRADES-ANYTHING OF VALUE!** 6325 Canyon Dr., Amarillo, TX, 806-358-3257. m8-24s-8tcs

FOR SALE BY OWNER: 3 bdrm, 3 bath brick home, large fenced yard-lots of storage and storm cellar. Call for appointment 272-3592 located 1810 W. Ave. C. d8-7t-tfc

Nice Clean Mobile-home 14x64 - 5 years old. Priced to sell. Call after 6-272-5402. e8-26t-tfc

BY OWNER 3-2-2 brick home in Richland Hills Cent. A&H. fireplace, new carpet & roof. Call for appointment. 272-5606 at 1901 W. Ave. F. m8-25t-tfc

MUST SALE 1981 Ne-Way 14x80 trailer. 3 bedroom, 2 bath. Call 925-6421. r8-26t-tfc

FOR SALE lot # 8 in Parkridge Addition \$3,500 806/ 745-5569. s8-25t-9tc

8. Real Estate For Sale

FOR SALE 3 bedroom, 1 bath garage 272-5414. 8-26t-4tp

Smallwood Real Estate
 232 Main
 272-4838

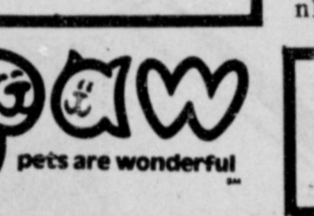
3 Bdr., 2 bath, storage, stucko, fully carpeted, 30's. ***

3 Bdr., 2 bath, fireplace, 2 car garage, Brick, lots of extras. ***

Nice 1 bedroom. Nice carpet, fenced yard. Ideal for retired couple or single. Terms available to qualified party. ***

JIMMIE CRAWFORD Real Estate & Ins.
 1725 W Ave E Muleshoe, Texas
 Phone 272-3666

KREBBS Real Estate and Appraisals
 272-3191



9. Automobiles For Sale

1980 Model Ford F250 heavy duty-C6 automatic transmission, 400 CI engine, heavy duty rear axle, new radial tires, and a service body. Runs on propane or gasoline. Call after 8:00 p.m. 925-6485. p9-24t-tfc

1980 HONDA XL80 Red Motorcycle, street/dirt bike equipped with blinkers and rearview mirrors. Only 2,000 miles \$500.00 Helmet included 806-272-3168. a9-21t-tfc

1978 Mercury Cougar XR7 Loaded. Excellent condition. See at 919 Ivy or call 272-4131 after 5:00 p.m. p9-23t-tfc

77 MERCURY COUGAR 2 door, good condition. Can see at 1730 W. Ave B or Call 272-5747. h9-27t-2tc

11. For Sale Or Trade

IRRIGATION ENGINES 292, 440, 413. New's Auto and Truck 214 E. Wilson, Morton, TX. Call 525-4412 after 6. n11-25s-8tc

CARPORTS
 Call 806-293-1720 or 293-9934
 p11-25s-tfct

11. For Sale Or Trade

FOR SALE- 3 lots with 134' frontage on highway 84 located at 1800 W. American Blvd. Call Lela Gatlin, Portales, N.M. Rt. 2 Box 167 Phone 505-356-6168. 11-26s-8tp

FOR SALE Two cemetery lots in Bailey Co. Memorial Park Call 915-388-4635 or write to C.M. King Box 244 Kingsland, Tx 78639. k11-23t-tfc

15. Misc.

WANTED: Pasture now for 60 days for summer cattle. Call 965-2339. c15-27t-4tc

Trailer space for rent at a fair price. 272-3718 b15-27s-tfc

DAVIS COMMERCIAL PUMPING SERVICE
 Cess pools, Grease pits, Dipping vats, Mud pits, Septic Tanks.
 "If it's part liquid and not over 20 foot deep we'll try to drain it."
 806-272-4673
 806-272-3467
 Muleshoe, Texas
 15-25s-stfc

BINGHAM & NIEMAN REALTY
 116 E. Ave. C
 272-5285***272-5286

COUNTRY LIVING HOMES
 4-2 1/2-2 Brick home on approx. 10 acres, built-ins, fireplace, approx. 30' x 50' insulated shop bldg., 10' satellite dish, orchard, sprinkler system, small barn. \$90,500... ***

3-2-2 Brick on 2 acres, built-ins, fenced yard, fireplace, on pavement close to town. \$50's!!!! ***

3-1-1 home on 1 acre, close to town, nice workshop-storage bldg. & attached shed. \$30's.... ***

RICHLAND HILLS
 JUST LISTED-3-2-2 Brick, Cent. A&H, built-ins, fireplace, fenced yard. ***

4-2 1/2-2 Brick, Cent. A&H, built-ins, fireplace, study, basement, fenced yard, & more. \$60!!!! ***

REDUCED PRICE-3-1 1/2-2 carport, Brick, Cent. A&H, built-ins, gas log fireplace, fenced yard. \$48,000!!!! ***

3-1 1/2-1 Brick, Cent. A&H, built-ins, fenced yard, storage bldg. A Good Buy..... ***

3-3-1 carport Brick, Cent. A&H, built-ins, fireplace, nice large den with built-in bar & gun cabinets, loads of storage, large utility, covered patio, gas grill, & storage bldgs.!!!! ***

2-1-1 Brick, Cent. heat, storm windows & doors, new roof, built-ins, fenced yard & more. \$40's!!!! ***

COUNTRY CLUB
PRICED REDUCED 3-1 1/2-2 Brick, Cent. A&H, built-ins, nice. ***

LENAU ADD.
 2-1-1 HOME, Cent. heat, DW, utility, storm windows, well insulated, fenced yard. \$20's!!!!!!! ***

2-1-1 Brick, Cent. A&H, built-ins, fireplace, Comb. den-office, fenced yard with 2 nice pecan trees, corner lot!!!!!! ***

3-1-1 home, corner lot, Cent. heat, Evap. air, fenced yard. \$30's..... ***

3-1 1/2-1 carport home, nice carpet, fenced yard, neat. \$30's!!!! ***

JUST LISTED-Nice 2-1-1 home, wall furnace, evap. air, storm windows & doors, utility, fenced yard & storage bldg. \$30's!!!!!!! ***

JUST LISTED-Very nice 3-2-2 carport home, Cent. A&H, fireplace, nice carpets, large rooms, loads of storage, fenced yard, & lots more!!!!!! ***

"WE APPRECIATE YOUR BUSINESS"
GEORGE NIEMAN, BROKER
DIANNE NIEMAN, BROKER

HIGH SCHOOL AREA
 3-1-1 home, corner lot, Cent. heat, Evap. air, fenced yard. \$30's.... ***

Very nice 3-1 3/4-1 home. Central A..H, built-ins, large utility, fenced yard, storage bldg. \$30's.... ***

3-1-1 Brick, Cent. heat, built-ins, utility, well insulated, storm windows & doors, fenced yard, water softener, storage bldg. \$30's!!!!!! ***

3-1 1/4-1 Brick, Cent. A&H, built-ins, fenced yard. \$40's.... ***

3-1 1/4-1 detached garage home, built-ins, fenced yard. \$30's!!!!!! ***

3-1 home, nice carpets, large rooms, built-ins, fenced yard, insulated workshop-Storage Bldg. \$20's..... ***

3-1 1/4-1 home, corner lot, Cent. A&H, 1800+ sq. ft. of lv. area, sprinkler sys., & also has a nice 2 room & bath rental unit. \$40's!!!!!! ***

2-1 1/2 Mobile Home +2 carports, covered porch, built-ins, cable TV, storage room, large barn & corrals on approx. 2 acres, on pavement close to town. \$30's..Possible Owner Financing. ***

NICE OFFICE BLDG., excellent location across from courthouse. Assumable loan!! ***

JUST LISTED-SMALL EQUITY & ASSUME-14' x 80' Mobile Home-3 bdrm., 2 bath, built-ins very nice..... ***

BUILDING ON 2 LOTS, approx. 2350 sq. ft., paved parking.... ***

2-1 home on 20 acres, 20 hp. sub. pump, domestic well, large barn & corrals, 1/4 mile sprinkler pipe, & more. \$42,500... ***

Sale or Lease nice brick office bldg. Approx 4,000 sq. ft. Very nice offices and reception area, central A..H, paved parking. ***

2-1 home, nice carpets, floor furnace, remodeled inside & out, storage bldg... ***

3-2-2 Brick, Cent. A&H built-ins, fenced yard, gas grill, nice carpets. A nice home. \$60's..... ***

3-2-1 Brick, Cent. heat, approx. 5 years old, evap. air, water conditioner, very nice home. \$40's!!!!!! ***

3-2 Mobile Home and lot, built-ins, fenced yard, storage bldgs. & More. \$13,000!!!! ***

NEEDMORE- Good Labor of land, 2 elec. wells with hi-pressure line for sprinkler system, some minerals. Priced to Sell....

We have numerous farms, commercial property, & lots listed. Contact us for details on these and other listings.

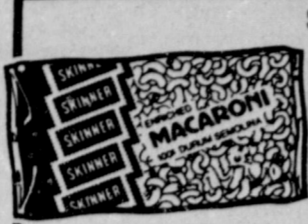
MORE FOR YOUR FOOD DOLLAR

FROM PAY-N-SAVE

NEW! HUNT'S
**SQUEEZE
KETCHUP**

89¢

32 OZ.
BTL.



SKINNER LG. SHELL/LG./SH. CUT ELBO

MACARONI

12 OZ.
PKG.

49¢



32 OZ. PLUS DEPOSIT

DR. PEPPER

6 BTL.
CTN.

\$1.99

HORMEL SUPER SELECT LEAN TRIM

**PORK
CHOPS**

\$1.39

LB.

SUPER SELECT LEAN TRIM FRESH

PORK STEAK LB. **\$1.49**

SUPER SELECT LEAN TRIM CENTER CUT

PORK CHOPS LB. **\$1.89**

SUPER SELECT LEAN TRIM THIN BREAKFAST

PORK CHOPS LB. **\$1.99**

LOUIS RICH SLICED

TURKEY HAM 8 OZ. PKG. **\$1.69**

LOUIS RICH SLICED

SMOKED TURKEY 8 OZ. PKG. **\$1.79**

LOUIS RICH

TURKEY FRANKS 12 OZ. PKG. **89¢**

WISCONSIN RED RIND MARKET CUT

LONGHORN CHEESE LB. **\$1.99**

GARY'S

SUPER DOGS 5 CT. PKG. **\$1.39**

ALL PURPOSE FLOUR
**GOLD
MEDAL**

89¢

5 LB.
BAG

SUPER SELECT LEAN TRIM
COUNTRY STYLE-LOTS OF MEAT
SPARE RIBS
LB. **\$1.59**

QTR. PORK LOIN
OR FAMILY PAK
(9-11 ASSTD.)

BETTY CROCKER INSTANT
POTATO BUDS

99¢

13.75 OZ.
BOX



UNCLE BEN'S
CONVERTED
RICE

2 LB.
BOX

\$1.49



UNCLE BEN'S
FLORENTINE
RICE

6 OZ.
BOX

99¢



UNCLE BEN'S
LONG GRAIN WILD
RICE

6.4 OZ.
BOX

\$1.09

BETTY CROCKER
BROWNIE MIX

\$1.29

22 OZ.
BOX

FOLGER'S REG. INSTANT
COFFEE

\$3.69

8 OZ.
JAR



FOLGER'S INSTANT DECAFF.
COFFEE
8 OZ. JAR **\$4.89**



30% OFF LABEL

**MAZOLA
CORN OIL**

\$2.39

48 OZ.
BTL.

BORDEN'S ASSORTED FLAVORS

ICE CREAM 1/2 GAL. PD. CTN. **\$1.59**

BORDEN'S ASSORTED FLAVORS

FRUIT DRINKS GAL. JUG **99¢**

BORDEN'S

COTTAGE CHEESE 24 OZ. CTN. **\$1.35**

BANQUET BONELESS CHICKEN

PLATTER 6.5 OZ. BTL. **\$1.19**

KRAFT SLICED

VELVEETA 12 OZ. PKG. **\$1.59**

KRAFT SQUEEZE MARGARINE

PARKAY

99¢

16 OZ.
BTL.

AIM
TOOTHPASTE 6.4 OZ. TUBE **99¢**



CLAIROL CONDITIONER II OR

15 OZ. BTL. **\$1.29**

SHAMPOO

CLAIROL CONDITIONING
STYLING

MOUSSE 6 OZ. BTL. **\$1.29**



GIANT SIZE

BOLD 3

\$1.99



FREE LIQUID DAWN
WITH PURCHASE OF

DISPOSABLE DIAPERS
SMALL/MED/LARGE

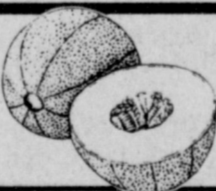
LUV'S BOX **\$3.39**

CAT'S PRIDE
CAT LITTER 25 LB. BAG **\$2.99**

TEXAS VINE RIPENED
WATERMELONS

15¢

LB.



CANTALOUPE

ARIZONA
VINE RIPENED

LB. **29¢**

GREEN BEANS

KENTUCKY WONDER

LB. **49¢**

RED POTATOES

NEW

2 LB.
BAG **79¢**

SUPER MOIST
BETTY CROCKER ASSTD.

**CAKE
MIXES**

79¢



18 OZ.
BOX

BETTY CROCKER
RTS ASSORTED
FROSTING
1 LB. CAN **\$1.39**

ALL GRINDS
**FOLGER'S
COFFEE**

\$2.49

1 LB.
CAN

FOLGER'S
DECAFFEINATED
COFFEE
13 OZ. CAN **\$3.19**

CLAIROL FINAL NET
HAIR

SPRAY 8 OZ. BTL. **\$1.98**

8 OZ.
BTL.

KEEBLER TOWN HOUSE
CRACKERS

\$1.39

16 OZ.
BOX



KEEBLER SOFT BATCH
COOKIES
12 OZ. PKG. **\$1.29**

BETTY CROCKER ASSTD. HAMBURGER

HELPER

99¢

BOX



Pay-n-Save

QUALITY AND SERVICE

PRICES EFFECTIVE
JULY 8 THRU JULY 13, 1985
WE RESERVE THE
RIGHT TO LIMIT