

**CHILDERS BROTHERS INC.**  
**HOUSE LEVELING**  
 Uneven Floors  
 Floor Bracing  
 Cracks In Bricks  
 Sticking Doors & Windows  
 Interior Wall Cracking  
 FREE ESTIMATES  
**1-800-299-9563**  
 WWW.CHILDERSLEVELING.COM

**It's Fall Road Trip Time!**  
 corner of Hwy 60 & 70  
 806-669-6062  
 Buy Here, Pay Here,  
 No Credit Check  
 www.DougBoydMotors.com  
**DOUG BOYD MOTOR CO.**  
 Steve Mike

**1/2 off all instock  
 hard surfacing**  
 install only, no carry out  
**Premier Floor Warehouse**  
 301 S. Cuyler, Pampa TX • 669-7001

# The PAMPA NEWS



Tuesday, September 30, 2014      www.thepampanews.com      Volume 110 • No. 125

**75¢** Viewpoints: Dennis Palmitier | p4      Lady Harvesters get big road win in Dalhart  
 \$1.50 weekend      Panhandle Regional Pageant | p9      Football, Volleyball and Tennis pics | p10,11, 13-15  
 38¢ subscription

## City Commission approves 2014-15 budget

By LINDSEY TOMASCHIK  
 LKTomaschik@thepampanews.com

As with all City Commission meetings, this special meeting began with a public comment portion. The first Pampa citizen asked about specific budget items and clarification on the funds allocated to these items. Director of financial services Robin Bailey answered each of these questions. Areas of concern included an expenditure summary of \$479,000 for other charges. Bailey explained that these funds are transfers for other funds including the golf course (Hidden Hills) and Lovett Memorial Library. This community member also asked about \$222,000 in the budget for contractual

services. Bailey said that these funds are for communication, postage, advertising, etc. After the public comment portion of the meeting came to a close, the Commissioners got down to the agenda items. First up was the second reading of the city's operating budget for the 2014-2015 fiscal year. This budget will raise less revenue from property taxes than last year's budget by an amount of \$21,524. This budget was approved unanimously on second and final reading. Next, the Commissioners looked to approve the proposed tax rate on first reading. This tax rate will effectively be raised from last year's by 1.83 percent and

will raise taxes on the average home to approximately \$315.54. The tax rate is what makes the budget balanced. When it came time to vote on this tax rate, Commissioner John Studebaker was the only one to oppose the motion. The last item on the agenda was in regards to renewing the water conservation plan. City Manager Richard Morris said that this is something that is required every five years. This agenda item was approved on second and final reading unanimously. Monday's City Commission meeting was held after the press deadline, and a summary of that meeting can be found in Wednesday's edition of The Pampa News.

## St. Matthew's to hold animal blessing Saturday



By JOHN LEE  
 jlee@thepampanews.com

Pet owners in Pampa will have an opportunity to do a special blessing for their furry companions as St. Matthews will be hold their animal blessing for the community at 10 a.m. on Saturday, Oct. 4. The blessing of pets and animals stems back to the 13th century and is conducted in remembrance of St. Francis of Assisi's love for all creatures. "It is meant to remind us of the beauty of all creation," Reverend Mark Lang, vocational priest for St. Matthew's said. "But it is also meant for us to remember the companionship from pets and service from the farm animals."

**BLESSING** cont. on page 2

## Woody Guthrie Folk Music Center presents 'Woody Sed'



Photo by Lindsey Tomaschik

The Woody Guthrie Folk Music Center is located at 320 S. Cuyler. For more information on these and other upcoming events, call 806-665-0883.

als in attendance will be responsible for paying for their own meals. This is a nice chance to visit and close out the weekend.

For more information on these and other events, call the Woody Guthrie Folk Music Center at 806-665-0883 or visit www.woodyguthriepampatx.com.

### About 'Woody Sed'

"Woody Sed" is a new play about the life and times of Woody Guthrie and the songs he sang about them. This play was born out of the sheer astonishment. "Woody Sed" is loaded with songs both well known and obscure, and each song is framed in a theatrical context.

"Woody Sed" is a 90-minute show with a minimalist set as it is, in essence, a memory play. It is illuminated with a full lighting design. "Woody Sed" has also been presented in shorter versions and thrives in venues both formal and casual.

Featuring 19 songs, "Woody Sed" offers a cascade of 25 colorful characters, all bundled up in a true to life tale. Woody was a prolific and provocative writer, the father of the 1960's folk revival and, according to Billy Bragg, the first 'alternative' musician. All you can write is what you see.

Well, Woody Guthrie saw it and wrote about it – from the dust bowl of Oklahoma to the towers of New York City and from Hobo Jungles to the Merchant Marine.

**WOODY** cont. on page 2

## County Commission to meet Wednesday

### STAFF REPORT

- The Gray County Commissioners will meet Wednesday morning to discuss and consider taking action on the following agenda items:
- Pay bills and salaries as approved by the County Auditor.
  - Consider line item transfers.
  - Consider the fiscal year 2015 retirement rate.
  - Consider funding request from Hoover Fire Department.
  - Consider request from County Clerk to spend records manage and archive funds.
  - Consider tax bids per letter from the tax assessor-collector dated Sept. 15, 2014.
  - Consider continuing contract with Conmed Healthcare Management for medical services for inmates at the Gray County Jail.
  - Consider declaring some county property surplus.
  - Consider motor grader purchase for Precinct 2 through Buy Board.
  - Consider motor grader purchase for Precinct 4 through Buy Board.

**COUNTY** cont. on page 2



### STAFF REPORT

The Woody Guthrie Folk Music Center has a number of events coming up this weekend.

Friday, Oct. 3 there will be a jam session starting at about 5 p.m., going until about 10 p.m. at the music center. On Saturday, Oct. 4, there will be an open house and open mic from noon until 5 p.m.

All are welcome and encouraged to come visit and check out the Woody Guthrie Folk Music Center at 320 S. Cuyler.

Saturday evening at 7 p.m., the center will host the show "Woody Sed" at M.K. Brown Auditorium in the Heritage Room. Tickets will be \$10 at the door. There will also be items for sale at the show, including hats, shirts and tote bags.

Sunday morning at 9 a.m., for those who wish to attend, there will be a breakfast at Dixie Cafe. Individu-

**Malcolm Hinkle**  
 Refrigeration Co.  
 Texas Lic # TACLA40021C  
 • Heating & Air  
 • Rooftop Units  
 • Indoor Air Quality  
 • Refrigeration  
 • Ice Makers  
 Commercial & Residential  
 Sales & Service Since 1952  
**806/665-1842**

**Total Care Health**  
 Caring & Effective Health care  
 for Your Entire Family  
**(806) 688-2273**  
 • Family Care • Urgent Care  
 (Insurance, Cash, and Medicare)  
 Teri Pay, FNP-BC  
 701 N. Price Rd.  
 Pampa, TX 79065

**PANHANDLE PLAINS REALTY**  
 Your dream home is waiting!  
 Linda Laycock, Broker - 806.662.1512  
 Tisha Calhoun, REALTOR® - 806.440.4153  
 Larry Hadley, REALTOR® - 806.662.2779  
 Pampa MLS & Amarillo MLS

**IN THIS ISSUE:**  
 Weather ..... 2A      Comics ..... 12A  
 Obituaries ..... 3A      Sports ... 10,11, 13-15A  
 Local Record ..... 3A      Classifieds ..... 1B-4B  
 Puzzles, Dear Abby.. 3B





# Blessing

Continued From Page 1

Lang said there will be individual blessings for all animals and a hope for them to live in God's will. "In the blessings there will be a hope for good

health among the animals," Lang said. There will also be animal blessings Wednesday and Thursday at St. Matthew's Day School at about 8:40 a.m. "We can learn a lot from the love a cat and dog can give to people," Lang said.



# County

Continued From Page 1

- Consider the fiscal year 2014 Chapter 59 Asset Forfeiture Report by Sheriff's Office.
- Consider the Sheriff's Forfeiture Fund Proposed Budget for fiscal year 2015.
- Consider continuing membership in National Association of Counties.
- Consider advertising

for RFPs for the following insurance:

- Comprehensive general liability
- Property
- Public officials and employees liability
- Airports – general liability, lessor's interest
- Heavy equipment floater
- Business auto insurance – county law enforcement professional liability coverage
- Workers compensation
- Recognize County Treasurer's continuing education and continuing investment education.

After discussing these agenda items, the Commissioners will enter into executive session to discuss a potential economic project.

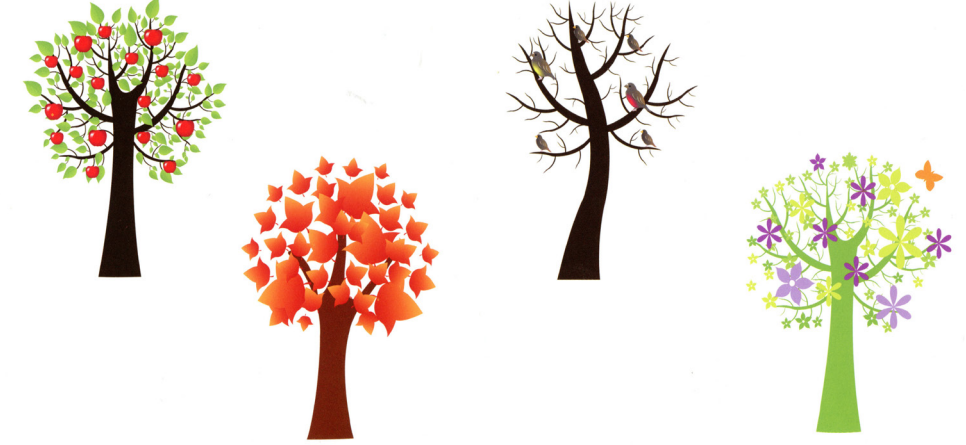


**HARVESTER CLEANERS**  
 200 West 28th, Pampa, Texas | 806.665.2222  
 Hours: Mon.-Fri. 7-6 Sat. 9-2  
 Delivery to Miami, Canadian, Briscoe, Wheeler & Shamrock

**f**  
 find us on **Facebook**  
 To find **Breaking News, Event Photos, & Video Clips.**  
[facebook.com/thepampanews](http://facebook.com/thepampanews)

## Are any of these symptoms preventing you from enjoying life?

Waterly Eyes  
 Runny Nose  
 Difficulty Smelling  
 Constant Colds  
 Sleepiness  
 Headaches  
 Pet Irritation  
 Depression  
 Sneezing  
 Itchy Nose  
 Mouth Irritation  
 Dry Skin  
 Scratchy Throat



If you said YES to any of the symptoms above, then you may suffer from Seasonal Allergies.

Call (806) 688-CARE for an Appointment Today! (2273)

**Total Care Health, PA**  
 Located at New Life Wellness Center  
**701. N. Price Road**  
**Pampa, TX 79065**

## CITY BRIEFS

**BRANDON'S FLOWERS** now hiring for immediate position!! Full-Time Delivery Driver. Must be reliable, over 21 yrs., clean driving record, no criminal history. Must work week-ends & be able to lift 50 lbs. on regular basis. Apply in person 123 N. Cuyler, downtown Pampa.

**GOSPEL MEETING!** Somerville Church of Christ, Oct. 1 thru Oct. 5th. Sun. 10:30am & 2:30pm. Wed.-Sat. 7pm. Guest Speaker Evangelist Pat Mannon, from Huntsville, Ark. Join us at 500 N. Somerville.

**JAM IS Here!!** \$5 per jar. Stop by Rheams Diamond Shop, 111 N. Cuyler, downtown Pampa and pick some up today!! (proceeds got to St. Paul Methodist Church).

The Pampa News is not responsible for the content of paid advertisement

**ORDERS ARE** being taken for the Annual 4-H Pecan Fundraiser. Call 669-8033 to order. Deadline for Thanksgivng order is Oct. 13th.

**SCHWAN'S HOME** Service now hiring for Route Sales Reps. We are looking for High Energy Individuals with good work ethics. \$40-50K potential 1st year salary. Full benefits pkg. No CDL req'd. Please apply online at [www.schwansjobs.com](http://www.schwansjobs.com) Keyword: Pampa. EOE 806.290.8122

**TILE- BACKSPLASHES,** Counter-Tops, Tub Surrounds, Showers & Floors. Ceramic or Tumbled Stone. Call Keith Taylor, hm. 874-1779 leave message.

available in an adaptation for young audiences.

# Woody

Continued From Page 1

"Woody Sed" takes you there charting Guthrie's rise to fame and his struggle to escape a harsh and predestined fate. It is both the biography of a seminal American musician and an epic drama of Greek proportions. Woody wrote it and sang it as he saw it and "Woody Sed" reflects that by telling the story in his own words.

"Woody Sed" was featured earlier this year at Vancouver's International PUSH Festival and is currently booking dates for the fall of 2014.

"Woody Sed" is adaptable to Music Festivals and Events. Each song in the show has a short scene or speech attached, gleaned from Woody's own writing and from first-hand accounts of events in his life. It is focused on songs and stories. Any version of the show can be done informally in a lo-fi fashion, without technical support. "Woody Sed" is built with an intermission but it has been performed in one act at both 75 minutes and 60 minutes long. "Woody Sed" has the flexibility to be abridged and excerpts have been presented at various events. It is also

"Woody Sed" encourages sing-alongs and gives context to Woody's classic and timely songs. It's an opportunity to rekindle the flame in older fans by profiling Woody, a folk music pioneer, while simultaneously introducing a new generation to a great creative force in songwriting history. Like Woody's music, "Woody Sed" brings people together and breaks down barriers. You don't have to look very far to see that songs like "Do Re Mi" and "Ain't Got No Home" are as resonant with audiences today as the day they were written.

The issues that Woody addressed read like a laundry list of the problems that our societies face today: corporate abuses, the rights of workers, environmental disaster, corrupt politics, inequality, racism, fascism, abusive bankers and migrant workers. Woody saw it all and told these stories through his music. That was his great gift, and that's why his songs live on.

"Woody Sed" offers the modern audience an opportunity to hear Woody speak about his experiences in his own words, creating a deep layer of appreciation for Woody's music.

Songs of "Woody Sed" Here is a list of the songs in the current version of the show:

- Woody's Songs**
1. Reuben James
  2. Ramblin' Round
  3. I ain't got no home
  4. Union Maid
  5. Howdiddo
  6. Do Re Mi
  7. Bound for Glory
  8. So Long, It's been good to know you
  9. Why oh why?
  10. Ain't gonna be treated this way
  11. This land is your Land
  12. Woody and Lefty Lou
- Other Songs/ Influences: Woody's Unpublished Songs**
1. Goodnight Irene (Leadbelly)
  2. California Stars (Mermaid Avenue)
  3. California Blues (Jimmy Rogers)
  4. I ain't dead
  5. Rye Whiskey
  6. Greenback Dollar
  7. A picture from life's other side

## PAMPA FORECAST

Today	Wednesday	Thursday
High 84 Low 57	High 84 Low 55	High 73 Low 49

**Today:** Partly cloudy with a high of 84. Chance of rain: 20 percent. Winds south-southwest at 17 mph. Sunrise at 7:38 a.m.

**Tonight:** Clear with a low of 57. Chance of rain: 10 percent. Winds south-southwest at 12 mph. Sunset at 7:29 p.m.

**Wednesday:** Sunny with a high of 84. Winds west at 13 mph. Sunrise at 7:39 a.m.

**Wednesday night:** Clear with a low of 55. Chance of rain: 20 percent. Winds west at 15 mph. Sunset at 7:28 p.m.

**Thursday:** Partly cloudy and windy with a high of 73. Chance of rain: 20 percent. Winds north-northwest at 24 mph. Sunrise at 7:40 a.m.

**Thursday night:** Clear with a low of 49. Winds south-southwest at 14 mph. Sunset at 7:26 p.m.

This information brought to you by...

**WHALEY ROOFING and Construction**  
**806-420-7033**  
 10 year workmanship guarantee  
 free estimates & roof inspections • all types of roofs  
 roofing the in the Panhandle 25 years

HERBS • VITAMINS • WEIGHT LOSS ENERGY • WOMEN'S & MEN'S NEEDS

# Herbs Etc.

**\* NEW \***  
**Slim Success Weight Loss Program**  
 5 simple steps to Lose Weight & Boost Metabolism  
 \*Tailored to the individual  
 \*REAL FOOD plus convenient options  
 You'll never feel deprived!  
 Class attendance optional  
 Feel better and PREVENT health problems!  
 M-F 10-5:30

109 W Kingsmill, Pampa (806) 665.4883  
[www.panhandlesunshine.com](http://www.panhandlesunshine.com)

**EnVISION A Winning Season!**

**Broome Optical**  
 Life is worth seeing!  
 3408 Olsen Boulevard • Amarillo, TX 79109  
**806-355-5633**  
**broomeoptical.com**



# DPS trooper seizes \$276,000 in methamphetamine

**SUBMITTED BY TEXAS DPS**  
**AMARILLO** — The Texas Department of Public Safety (DPS) conducted a traffic stop Sunday on Interstate 40, yielding almost eight pounds of methamphetamine valued at more than \$276,000.  
 At approximately 4:04 p.m., a DPS trooper conducted a traffic stop on a 2007 Saturn Ion traveling eastbound on I-40, for a traffic violation, near Groom in Carson County. The driver of the Ion

was identified as David Vega Morales, 31, of De Queen, Ark. During the traffic stop, the trooper discovered seven bundles of methamphetamine in the vehicle.  
 Vega-Morales was placed under arrest for possession of a controlled substance more than 400 grams, a first-degree felony, and booked into the Carson County Jail. The illegal drugs were allegedly being transported from Bakersfield, Calif., to De Queen, Ark.

# Airlines look for an edge in weather-radar systems

**DALLAS (AP)** — As their plane climbed away from Belize City, American Airlines pilot Brian Will and his co-pilot were ready to detour several hundred miles to avoid a wall of bad weather in front of them.  
 Then, looking at the display on a new weather-radar system, the pilots saw a way to navigate between the storms on the Dallas-bound flight this spring.  
 “We found the gap that the weather radar said was safe to go through,” Will, who is also American’s director of advanced technologies, recounted recently. “We didn’t have a single ripple, and we flew straight through to Dallas.”

of daily operations for Southwest Airlines, says the new system improves the safety margin, helps pilots provide a smoother ride for passengers, and saves on fuel. Flying into a hailstorm can leave a plane’s aluminum skin badly dimpled, so better radar could also reduce maintenance spending.  
 Older systems do a good job of capturing the basic characteristics of a storm — its height, shape and intensity — but the newer ones make it easier to pinpoint the location of the worst weather, says Erik Eliel, a pilot for a major airline who also trains other pilots on radar. But he worries that airlines might think all that technological muscle reduces the need for pilots to understand dangerous weather and the limits of radar.

Shooting the gap saved the airline a costly refueling stop in Houston or New Orleans. The makers of the advanced radar systems promise to do the same for other airlines — along with sparing passengers from gut-churning turbulence and reducing lengthy delays.  
 The system on Will’s plane was made by Rockwell Collins Inc. and just hit the market in February. Rival Honeywell International Inc. also has a new on-board radar system designed to give pilots a better idea of the weather ahead.  
 Rockwell Collins says its MultiScan ThreatTrack radar system is the first to detect not just severe turbulence but also more moderate bumpiness that is safe to fly through, although not comfortable for passengers. Other features warn pilots of storm cells that could rise from below and blow outward and make a flight choppy or dangerous.  
 American was the first customer for ThreatTrack. The system is now on about 40 planes at American and several foreign carriers.  
 Honeywell’s version is called IntuVue. A waffle-like receiver is in the plane’s nose cone. Pilots see a cockpit display that uses icons to warn of potential hail and lightning up to 370 miles away. They can call up panoramic 3-D images of storms between the ground and 60,000 feet, eliminating the need for pilots to manually aim the radar at smaller sections of the storm.  
 The system has been installed on 66 of Southwest’s newest Boeing 737 jets and will be on future deliveries. Southwest has no immediate plans to retrofit its roughly 600 older planes — it would cost upward of \$200,000 per job.  
 Bill Lusk, a Boeing 737 captain and the manager

“In terms of situational awareness, some of the stuff that the modern-day radars do is incredible,” Eliel says. “They are not a panacea. You still require training on some things.”  
 Rockwell and Honeywell are working on refinements that will better predict ice at high altitudes, which can damage engines and cause a loss in power. Radar can’t “see” so-called clear-air turbulence, so pilots rely on reports from other planes to avoid it, but the companies are working on algorithms to predict it.  
 Last year, 11 passengers and 13 crew members on U.S. airlines were injured during turbulence, according to government figures. This May, four passengers and two flight attendants were injured when an Orlando-bound US Airways jet hit severe turbulence for just a few seconds shortly after take-off from Philadelphia.  
 The stakes are big for Honeywell and Rockwell. The world’s passenger and cargo airlines are expected to need about 65,000 new planes over the next two decades, according to Boeing and Airbus, and each will need some type of weather-radar system. The companies and airlines declined to disclose the cost of each system.  
 Honeywell took four years and hundreds of flights on a 1952-built Convair 580 to develop its system. Rockwell took about six years, and a team of six engineers and a meteorologist flew into storms all over the world on a plane leased from a real estate investor.  
 “The only way to find out what the weather is like over the Amazon,” said Roy Robertson, Rockwell’s resident radar expert, “is to go to the Amazon.”

# Obituaries

## Lavena Mae “Jean” Tyrrell

Lavena Mae “Jean” Tyrrell, 83, of Pampa, went to be with her Lord and Savior on Sunday, Sept. 28, 2014, in Pampa.



Lavena Mae Tyrrell

Services will be at 10 a.m. Tuesday, Sept. 30, 2014, in Carmichael-Whatley Colonial Chapel with Rev. Norman Rushing, pastor of Central Baptist Church, officiating. Graveside services will be at 3 p.m. Tuesday at Fargo Cemetery in Fargo, Okla. with Rev. Shannon Davis, pastor of the First United Methodist Church of Woodward, Okla., officiating. Arrangements are by Carmichael-Whatley Funeral Directors.  
 Jean was born at home in Ellis County near Woodward, Okla. on Sept. 8, 1931 to Columbus and Hazel Treat. She grew up on a farm in Oklahoma and attended Ivanhoe Country School and then graduated from Laverne High School in Laverne, Okla. Jean’s parents were active in their local Methodist church, and she and her siblings were musicians at various churches in the area. Jean played the accordion.  
 Jean met Leo Tyrrell in 1950, and they married in December of that year. They moved around often as Leo worked in bridge construction and for Boeing Aircraft. They moved to Pampa in 1957, and Leo started with the

Pampa Fire Department.

Jean was very busy with five children but made time for activities in the First Church of the Nazarene and Bible Church of Pampa. She did bring her accordion out of retirement and played for child evangelism groups and at nursing homes. Jean will be remembered as a positive person who was dealt many physical hardships, but she never complained, and she always thought of others before herself.  
 The family would like to express their thanks to Deborah Ferrell of Interim Hospice and to their neighbors, Dan and Brenda Morrison, for their loving care and assistance.  
 Survivors include her husband, Leo Tyrrell, of the home; a son, Gary Tyrrell and wife Sherry of Pampa; four daughters, Mona Milam and husband Bob of Midland, Kathy Harvey and husband Craig of Woodward, Okla., Jo Karbo and husband Kent and Terri Cree and husband Kevin, all of Pampa; eight grandchildren, Mandy Archibald, Tyler Milam, Kacey Hulin, Kieran Beck, Travis Harvey, Logan Karbo, Landon Karbo and Chase Cree and two great-grandchildren, Rylee and Reagan Archibald. Jean was preceded in death by her parents, a sister, Thelma Overton, a brother, Bud Treat and a grandson, Justin Harvey.  
 Memorials may be made to Child Evangelism, CEF of West Texas, Inc., 818 W. 9th Ave., Amarillo TX 79101-3206.  
 Sign the online register book at [www.carmichael-whatley.com](http://www.carmichael-whatley.com).

# For the record

## Borger man arrested for assault

### STAFF REPORT

• Cozy Crain, 37, Borger, was arrested Sunday by the Department of Public Safety for assault to cause bodily injury to a family member.  
 • Sheila Grays Evans, 50, Pampa, was arrested Friday by the Pampa Police Department for theft of prop-

erty, possession of drug paraphernalia.  
 • Maurilio Lopez, 25, Pampa, was arrested Friday by the Gray County Sheriff’s Office for bond surrender — forgery.  
 • Laura Katherine Pulse, 26, Pampa, was arrested Saturday by PPD for possession of a controlled substance — less than one

gram.  
 • Lyndell Quaid Chennault, 20, Pampa, was arrested Saturday by PPD for two charges of assault to cause bodily injury to a family member, evading arrest or detention.  
 • Bobby Dillon Pierce, 23, Pampa, was arrested Saturday by GCSO for capias pro fine — expired

registration, expired motor vehicle inspection, failure to maintain car insurance, failure to appear.  
 • Jo Ann Garcia, 37, Borger, was arrested Saturday by GCSO for possession of drug paraphernalia.  
 • Justin Hughey, 20, El Paso, was arrested Sunday by GCSO for a pedestrian in the roadway.

# Death toll from GM ignition switches now at 23

**DETROIT (AP)** — At least 23 people have died and 16 people have been seriously injured in crashes involving General Motors cars with defective ignition switches.  
 Attorney Kenneth Feinberg, who was hired by GM to compensate victims, updated the totals in an Internet posting Monday.  
 Feinberg says he has received 153 death claims since August. Of those, 23 have been deemed eligible for compensation payments, up from 21 last week.  
 Sixteen of the 714 injury claimants have also received compensation offers.  
 GM has acknowledged that it knew about faulty ignition switches in Chevrolet Cobalts and other small cars for more than a decade. Yet it didn’t recall them until February of this year. The switches can slip out of the “on” position, which causes the cars to stall, knocks out power steering and turns off the air bags.  
 Feinberg, who previously handled payments to victims of the 9/11 terrorist attacks and the BP oil spill, began accepting claims Aug. 1 and has set a deadline of Dec.

31. He has said that GM hasn’t placed any limit on the amount of money that can be spent on settlements. GM has set aside \$400 million for compensation, but says that could grow to \$600 million.  
 Also Monday, the family of a 7-year-old New Bethlehem, Pennsylvania, boy who was injured in a crash caused by a faulty switch, accepted a settlement offer from Feinberg. Attorney Robert Hilliard said in a statement that the family of Trenton Buzard, who is now 7 years old, agreed to the undisclosed offer.  
 The settlement stems from an April 2, 2009 crash in which Trenton suffered spinal injuries that left him paralyzed from the chest down. According to his family’s lawsuit against GM, Trenton, who was almost 2 years old at

the time, was strapped into a car seat in a 2005 Cobalt driven by his great-grandmother, Esther Mathews.  
 As Mathews drove near Knox, Pa., northeast of Pittsburgh, she tried to avoid another car that she perceived was approaching in her lane. But when she tried to maneuver out of trouble, the Cobalt’s faulty ignition switch caused the car to stall and lose power-assisted steering, according to the lawsuit. “This defective condition directly resulted in a loss of power exactly at the time and place where Esther Mathews most needed these essential functions to avoid this collision and/or lessen the impact,” the lawsuit stated.  
 The right front of the Cobalt struck the other vehicle, killing Mathews and severely injuring Trenton.

For show times call **688-9192** or **688-9229**  
 Located in the Corondo Shopping Center behind Hastings 1201 N. Hobart Pampa, Texas

**There’s a New Funeral Home in Town... And We’re Making it Personal.**  
 We believe in funerals customized to every family. Your loved one lived an extraordinary life—so we’re here to make their funeral anything but ordinary. Discover our state-of-the-art facility and experience a personal brand of funeral care.  
**Eldringhoff Funeral Home** 303 N Frost St • Pampa, TX 79065  
 Established 2014 **(806) 662-6662**

**Friends of the Pampa Library**  
**Annual Book Sale**  
 October 2 to October 5  
**TIME**  
 Thur., Fri., & Sat.: 9:00A.M. TO 6:00P.M.  
 Sunday: 2:00P.M. TO 5:00 P.M.  
**Lovett Memorial Library**  
 111 N. Houston St.  
 Pampa, TX  
 NEW BOOKS ADDED DAILY

**The Sturgeon Law Firm**  
**Ben L. Sturgeon**  
 Board Certified in Civil Trial Law  
 • Personal Injury • Estate Planning  
 • Wrongful Death • Family Law  
 • Probate • Oil & Gas  
**105 E. Foster Suite 200** | 806-688-9292  
 Fax: 806-688-1150



**IT'S COMING**  
**THE WAIT IS ALMOST OVER!**  
CULLERSON STOWERS

# Prairie Plains Perspective

## For Pampa, will it be a fall of discontent?

What pray tell is going on in our fair burg these following weeks? How can I find out information I need to know? Like, when does our city commission meet? Gotta know about things like taxes, whether they're going up (alas, they never go down...) or remaining the same as last year's? If I've youngsters at home, how can I make sure whether or not they're up on their immunizations? What's the school district doing these days, after all, it's my taxes there as well? Same for our county government, better keep up with them too. Well of course, where's my Pampa News? The paper's Community Calendar will tell me such.

In what seems like 'The never-ending story,' for the past several days I've set on my boney tush in

quite a few City Commission meetings, and from what I just read on the front page weekend edition of the Pampa News, I'll be doing the same yet again. Another City Commission meeting was set for yesterday. Our City Commission considered adopting on second and final reading the new tax rate for the 2014-2015 fiscal year. If you're reading my perspective today, this latest tax rate and budget business should be old news to you. I hope you were there, for after all, the main topic was how the city, starting Oct. 1 for the following year, will spend your hard-earned money.

All over town there's quite the talk concerning our City Commission and managerial government. Tough times, taxes and elected officials make for

good grassroots dialogue. Such should be the case, but in order for any grassroots movement to get off to a good start, apathy's ugly head must first disappear. You might be saying "Geez, is he still riding that old horse?" Indeed I am, for if anything I've noticed since returning to Pampa way back in 2003, it has been the amount of citizens who opt out of the democratic process, then when caught unaware, feign self righteous indignation.

Another factor driving Pampa's air of discontent is the time of day which the City Commission meets. Due to the fact most folks are still working at 4 p.m., many have asked if Commission meetings could be held later in the evening so they would not have to take off early from work.

Commissioner Robert Dixon brought up a good point by explaining City Commission's in the past, attempting to accommodate citizens' time constraints have held evening sessions at various localities across the city, only to be attended by very few citizens. My old horse is in loping mode.

The core mission of The Pampa News is to keep citizens abreast of local news and events. You want to know what's going on locally, read the paper, which for the matter brings me to an important point (with none whatsoever A.D.D. inspired digression) why attendance at City Commission meetings is a responsibility of every Pampa citizen taxpayer.

Tuesday, Nov. 4 is election day. Using all my digits as I type this essay,

that's 37 days from today. For Texas and the nation November the fourth will be one of our most important of election days. I pray that includes long lines waiting to use voting booths here in Pampa. During the month of October, Pampa's City Commission will meet two times. Those two sessions will be an excellent opportunity for any and all concerned citizens to inquire of our mayor and Commissioners their questions regarding the 51 amendments to the City of Pampa Charter that are adorning the ballot that important Election Day, in particular amendment number 12.

Go visit our county election administrator on the fourth floor of the Gray County Courthouse. Ask her for a copy of the

Nov. 4 ballot. Study your democratic process. There is no excuse not knowing what your local elected officials are doing, especially so when it involves your hard earned money.

*Pampa resident Dennis Palm-tier is a regular contributor to the opinion page on issues that affect Pampa and Gray County. He can be reached at den-palm1949@yahoo.com. Anyone wishing to respond to Palm-tier's viewpoints in the form of a letter to the editor can email Editor John Lee at jlee@the-pampanews.com.*

# ATM fees keep climbing, survey says

LOS ANGELES (AP) — The penalty for using an ATM that is not affiliated with your bank rose 5 percent over the past year.

The average fee for using an out-of-network ATM climbed to a new high of \$4.35 per transaction, according to a survey released Monday by Bankrate.com. That figure includes \$2.77

that banks charge non-customers and \$1.58 that banks levy against their own customers for using an outside ATM.

Overdraft fees also surged, rising on average over the past 12 months to \$32.74. That's the 16th consecutive record high, the firm said.

Checking account fees

have been increasing as lenders adjust to federal banking laws and regulations enacted after the 2008 financial crisis. Among the changes: limits on when banks can charge overdraft fees on ATM and debit card transactions and a reduction in the fees that banks charge merchants for each customer who uses credit or debit cards for their purchases.

Lenders have responded by hiking overdraft and ATM fees, as well as increasing how much money customers must maintain in the bank to avoid checking account fees.

"I expect fees to continue increasing in years to come, but at a modest pace consistent with what we saw this year, just as was the case prior to the onset of these regulations," said Greg McBride, chief finan-

cial analyst at Bankrate.com.

Using another bank's ATM will usually lead to two fees. One is charged by your lender; the other is charged by the owner of the ATM. That's the fee that's risen most consistently and at a faster rate, McBride said.

All told, the average fee for using an out-of-network ATM has vaulted 23 percent over the past five years. It has notched a new high for eight years in a row, according to Bankrate. The firm surveyed the 10 largest banks and thrifts in 25 large U.S. markets.

The average ATM fees vary across the markets in Bankrate's survey. Phoenix had the highest average fee for users of ATMs outside their bank's network at \$4.96 per transaction. Cincinnati had the lowest aver-

age at \$3.75. Philadelphia had the highest average overdraft fee at \$35.80. San Francisco had the lowest at \$26.74.

The largest U.S. banks all offered free checking with no strings attached until 2009, when the share of all noninterest checking accounts that were free peaked at 76 percent, according to Bankrate. It's now at 38 percent; that's unchanged from last year and only slightly lower than 39 percent in 2012.

Even so, consumers looking for checking accounts without monthly fees have plenty of options. Many credit unions, smaller community banks and online banks offer no-strings checking accounts.

Many banks that do charge a monthly fee will often waive it if the ac-

countholder has their paycheck deposited directly into the account.

Not all bank fees rose this year. The average monthly service fee for a noninterest checking account fell 5 percent to \$5.26 over the past 12 months, Bankrate said.

Despite the increased fees, there are ways savvy bank customers can avoid them altogether.

Use your bank's website to find fee-free ATMs or, if available, get cash back at the register when using a debit card to shop. Avoiding overdrafts is a matter of keeping tabs on your available checking account balance, something that's easier than ever with mobile banking apps.

You can also sign up for email or text alerts if your balance gets below a certain level.

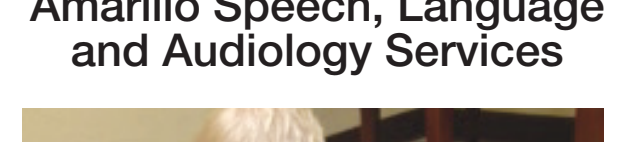
**The PAMPA NEWS**  
SERVING THE TOP O' TEXAS SINCE 1906

403 W. Atchison • Pampa, TX 79065  
806-669-2525 • Fax: 806-669-2520  
www.thepampanews.com

This newspaper (UPS 781-540) is published daily, except Sundays, Mondays and all national holidays by The Pampa News, 403 W. Atchison. Periodicals postage paid at Pampa, Texas. Postmaster: send address changes to The Pampa News, P.O. Drawer 2198, Pampa, Texas 79066-2198.

<b>Publisher</b> ReDonn Woods	<b>Subscription Rates - Mail Delivery</b>
<b>Managing Editor</b> John Lee	1 year ..... \$114.00
<b>Sports Reporter</b> Forrest Grimes	6 months ..... \$57.00
<b>Reporter</b> Lindsey Tomaschik	3 months ..... \$28.50
<b>Advertising Director</b> Callie Odell	1 month ..... \$9.50
<b>Business Manager</b> Carrie Hair	<b>Single Copies</b>
<b>Circulation</b> Jamie Humphrey	Daily 75¢/Sunday \$1.50
<b>Classifieds</b> Beverly Taylor	<b>Miss Your Paper?</b>
Member Associated Press and Texas Press Association	Circulation department hours of operation are 8 a.m. to 5 p.m. weekdays.
	<b>Copyright Notice</b>
	The entire contents of The Pampa News, including its logotype are fully protected by copyright and registry and cannot be reproduced in any form for any purpose without written permission from The Pampa News.

**Amarillo Speech, Language and Audiology Services**



Our team of compassionate therapists believes in treating the **individual** and the **family**, not just the *disorder*. We believe that improved communication supports improved quality of life. If you or a loved one has symptoms of any of the conditions listed below, talk to your physician about a full speech evaluation.

- Speech Delay
- Language Delay
- Learning Disabilities
- Auditory Processing Disorder
- Autism and Asperger's Syndrome
- Hearing Loss
- Aural Rehabilitation for Cochlear Implant
- Feeding Disorders
- Traumatic Brain Injury
- Stroke/Aphasia
- Swallowing Difficulty
- Impaired Memory
- Voice Disorder
- Head and Neck Cancer

Call today for your appointment. We gladly accept most major insurance, including Texas Medicaid

120 W. Kingsmill, Suite 102  
Pampa, Texas  
806-674-4583

## Number of US kids in foster care up after long dip

After dropping for seven straight years, the number of U.S. children in foster care rose slightly last year, according to new federal figures released Monday.

The annual report from the Department of Health and Human Services tallied 402,378 children in the foster care system as of September 30, 2013, up from about 397,000 a year earlier, but still down dramatically from a decade earlier. The peak was 524,000 children in foster care in 2002, and the number had dropped steadily since 2005.

The long-term drop resulted primarily from a

shift in the policies and practices of state and county child welfare agencies. Many shortened stays in foster care, expedited adoptions and expanded preventive support for troubled families so more children avoided being removed from home in the first place.

"While we have seen these national numbers hold steady over the past few years, it's important to note that there is great variation among states and many are still reducing their foster care populations," said JooYeun Chang, associate commissioner of HHS's Ad-

ministration for Children, Youth and Families.

The average length of stay in foster care has been reduced by more than 10 percent since 2002, according to the report. The mean stay is now 21.8 months.

Of the children in foster care a year ago, 52 percent were boys. Twenty-two percent were Hispanic, 24 percent black and 42 percent white; 101,840 of them were available for adoption.

During the 2013 fiscal year, 50,608 children were adopted from foster care, down from 52,042 in 2012.

Boosting the number of adoptions is one of the goals of a multifaceted bill that won final congressional approval on Sept. 18.

Titled the Preventing Sex Trafficking and Strengthening Families Act, it seeks to improve the system of offering incentives to states for facilitating adoptions out of foster care. Among its other provisions, the bill would require state child welfare agencies to promote "normalcy" for youth in foster care — allowing them to more easily participate in age-appropriate social and academics activities.

**COLD & FLU REMEDY HEADQUARTERS**

Relieve cold and flu symptoms with our complete line of generic or name brand over-the-counter remedies.

**Prescription Medication Services**

**VITAMINS & HERBAL SUPPLEMENTS**

**B&B Pharmacy**  
300 N. Ballard • Pampa  
665-5788 • 669-1071  
Night Emergency: 665-2892

**HIGH PLAINS FAMILY MEDICINE PA**  
**Borger Medical Clinic**

**ACCEPTING NEW PATIENTS**

**Newborn Care - Immunizations**  
**Pediatrics - Adolescents - Adult Care**

X-Rays	Industrial Health Exams
Allergy Testing	Company Physicians
Certified DOT Examiners	Industrial Hearing Exams
Women's Health	Lung Function Testing

**Dustin Hawley, MD**      **Michael Nash, MD**

**Esther A. Dorman**  
R.N., M.S.N. FNP-C  
Family Nurse Practitioner

**Wendy Kuehler**  
R.N., M.S.N. PNP-C  
Pediatric Nurse Practitioner

**HIGH PLAINS FAMILY MEDICINE PA**  
**104 N. Bryan . Borger, TX**  
**(806)274-DOCS (3627)**  
www.borgerdocs.com



# Getting legislative permission to do business

By **ROSS RAMSEY**  
The Texas Tribune

When upstart competitors challenge established businesses, they often call on state lawmakers for help, creating the fight card for the next legislative session.

This season's innovators and usurpers bring their claims of a helpful new order, starting new technologies, storming entrenched industries and disrupting business as usual. Theirs is often a circle-of-life narrative where old ways are set aside.

The practitioners of the old ways do not like these upstarts and their stories. They do not like to be called dinosaurs. Many of the "inefficiencies" the new kids propose to fix are, to the established companies, essential elements of their avocations.

Take auto companies for example. Tesla Motors, the newest carmaker on the block, wants to sell cars in Texas but does not have franchised dealerships here as is required by state law. Tesla has storefronts in Houston and Austin, but cannot talk about pricing, offer test drives or refer customers to Tesla stores in other states.

Here's another one: Companies like Uber and Lyft are trying to get a piece of the taxi business, allowing customers to hail a driver with a cellphone app and drivers to find customers the same way. Taxis are regulated, and the new jitneys are in many cases operating outside the regulations. When lawmakers gather in January, the companies will tell them that the state needs to be more

accommodating to newcomers by removing laws that protect existing companies from competition.

Not all disrupters are small fry. The retailing giant Wal-Mart is massing a lobby invasion force to attack some of the most powerful protection laws on the books: the post-Prohibition regulations on who can sell liquor, where and to whom. In Texas, that is the business of privately owned package stores; everybody from Wal-Mart to mom-and-pop groceries would like to get into the market dominated by companies like Twin Liquors and Spec's.

Others also want in; the Texas Package Stores Association is fighting to enforce a one-year residency requirement for companies that want to sell liquor under existing laws.

This is not a one-sided argument. Taxi companies have to serve entire cities and not just the parts where people are most likely to have smartphones and large amounts of disposable income. The liquor laws were written to help regulate what amounts to a legal drug business that was once dominated by criminals.

The start-ups and interlopers use the word "cartels" a lot in the challenges as a way of saying the state should not be protecting existing businesses and to try to align themselves with customers who, they say, would benefit from the competition.

Companies love to invoke customers' rights, especially if they think there is money to be made. And they often have to get the laws changed to break into markets. Not long ago, cable TV providers in Texas had to battle for

exclusive city franchises, agreeing to serve all areas of a city and, in return, winning protection from competition for the term of their agreements. Cable service more open to competition now, and upstarts big and small continue to horn in on the information markets.

Tesla recently chose Nevada over Texas as the site for a new battery plant to build that essential piece of its electric cars. Texas' sales restrictions probably did not help, but the company might have had more short-term leverage with the Legislature if it had invested in the state.

Wal-Mart is already here, as are the package stores. Teslas can be found on Texas highways in spite of the barriers to sales. The cabs and the livery cars are already here, too, and those promise to be the kind of business-to-business fights that make lobbyists cheer even as they make lawmakers and regulators sweat.

Lawmakers get a lot of attention when they battle over state budgets, social issues, schools and ethics. But wrangling over economic issues — telecommunications, electric utilities, the state's civil justice laws, interstate and intrastate shipping and such — is often at center stage when the Legislature meets. The issues get high-priced lobbyists hired, justify campaign contributions in otherwise nonpolitical businesses, and link "reform" campaigns that seem to pop up simultaneously in many states at once — like, say, selling electric cars and giving people rides.

## Jury selection begins in penalty retrial of Arias

PHOENIX (AP) — About two dozen potential jurors who said they could not be impartial were dismissed Monday in the penalty retrial of convicted murderer Jodi Arias, as prosecutors again seek a death sentence in the Arizona case that became a tabloid TV sensation.

About 300 prospective jurors reported to the courthouse in Phoenix, with more to come if an impartial panel cannot be found among the first group. A previous jury deadlocked on punishment.

Jury selection began as a sister of victim Travis Alexander sat in the courtroom.

Arias, 34, glanced back at the media at one point and smiled just before jurors started arriving.

More than 20 people were excused within the

first 20 minutes of questioning after saying they had followed the case and would not be able to make a decision based only on information presented at trial.

Some said they had seen so much coverage of the trial that they couldn't put it out of their minds.

The retrial, expected to last until mid-December, will not be televised live this time after the judge ruled that no video footage can be broadcast until after the verdict.

Arias acknowledged killing Alexander in 2008 at his suburban Phoenix home and claimed it was self-defense. He suffered nearly 30 knife wounds, had his throat slit and was shot in the head.

Prosecutors argued it was premeditated murder carried out in a jealous rage when Alexander wanted to end their affair.

Arias, a former waitress, was found guilty last year. The murder conviction will stand as lawyers spar once again over whether she should die for the crime.

If the new jury fails to reach a unanimous decision, the death penalty will be removed as an option and a judge will sentence Arias to spend her life behind bars or to be eligible for release after 25 years.

Arias' five-month trial began in January 2013 and was broadcast live, providing endless cable TV and tabloid fodder, including a recorded phone sex call be-

tween Arias and the victim, nude photos, bloody crime-scene pictures and a defendant who described her life story in intimate detail over 18 days on the witness stand.

Alexander's family sat in the front row of the courtroom throughout the trial, often sobbing, looking away from horrific photographs, and wincing as Arias described the victim as an abusive boyfriend who wanted nothing but sex.

It was a far cry from the man Alexander presented himself to be publicly — a devout Mormon in search of his soul mate.

**Happy Ads Are Now Available!**  
Wish Someone Happy Birthday for **FREE**  
5 Line Classified Ad that runs for 1 week



Call Today! **669-2525**

**OIL CHANGE EXTRAVAGANZA**

**ROBERT'S AUTO SERVICE**

**PENNZOIL**

**FREE WASH & VACUUM AFTER 9 OIL CHANGES**

Bring this card in with every oil change visit to receive punch. Fill card with punches and after 9 oil changes receive a free wash & vacuum.

**300 N. Hobart 806-669-1117**

- All types of minor repair
- Brake pads
- Oil change/full service
- Strut
- Tune-up
- Heat/air
- Tire rotation
- Shocks
- Water pump
- State inspection
- Wash/vac
- Full detail

**GIFT CERTIFICATES AVAILABLE**

**ROBERT'S QUALITY REPAIRS AUTO SERVICE**

**300 N. Hobart 806-669-1117**

Hours: Mon-Fri 7-7 Sat 8-4

**AVAILABLE NOW!**

**Instant Issue Debit Card**

**CABOT & NOI EMPLOYEES CREDIT UNION**

Open to the community

**806-665-0847**

**1063 N. Sumner Pampa, Texas**

Lobby Hours: M-F 9am-5pm  
Drive-Up Hours: M-F 7:30am-6pm

**www.cabnoiecu.org**

19067

**Pak-A-Burger**

**Taco Tuesday!**

**NOW SERVING FRIED PICKLES!**

You've tried the rest, Now Taste The Best!

1608 N Hobart, Pampa  
669-2865 • Mon-Sat 11-9  
Drive-up Window

**YEAH!**

BIRTHDAY • ANNIVERSARY • GRADUATION • NEW BABY • STRAIGHT A's • VACATION  
SOCCER WIN • FATHER'S DAY • NEW JOB • SCHOOL'S OUT • GRAND OPENING

Whatever your **excuse** for a party, let Brandon's make it special with a **custom bouquet** featuring balloons, cookies, or candy!



**BRANDON'S Flowers & Fine Gifts**

123 N. Cuyler • 665-5546  
www.brandonsflowers.com



# TEXAS FURNITURE MATTRESS SALE

Save **BIG** on **CLOSE-OUTS** and discontinued **FLOOR SAMPLES**

Queen Memory Foam with Adjustable base starting at only **\$1099**



**MEMORY FOAM**



Queen Sets **\$599**

**ASHLEY SLEEP**



**ActivCharcoal™**  
Made from purified charcoal, these tiny particles absorb moisture, thereby minimizing odor-causing agents



**Evergreen™**  
Made from Green Tea extract, this ingredient neutralizes odors from day one



Real Mattress In a Box  
**Compression Technology**  
results in the most efficient transportation and a lower carbon footprint for this mattress

## SAVE ON SEALY

**Discontinued Styles and Close-outs**

TWIN SETS as low as **\$299**

Hurry... limited quantities

QUEEN SETS as low as **\$399**



## SEALY "STEINBACH" POSTUREPEDIC

TWIN SET	FULL SET	QUEEN SET	KING SET
<b>\$599</b>	<b>\$679</b>	<b>\$699</b>	<b>\$999</b>

**BUY IT TODAY... SLEEP ON IT TONIGHT!!**

luxury memory foam **\$1999**  
DISCONTINUED FLOOR SAMPLES  
LIMITED TO STOCK ON HAND

QUEEN SETS

**ASHLEY RECLINING SOFAS \$699 • \$799**



**ASHLEY LIVINGROOM GROUP \$999**

**BUY ONE... GET ONE FREE RECLINERS**



**\$599**

**\$699**

**\$799**

Proudly serving Pampa since 1952  
**Texas FURNITURE**

MON-SAT 9 AM TO 5:30 PM



6 MONTHS NO INTEREST FINANCING WITH APPROVED CREDIT

665-1623 • 1415 N. Hobart

## Let your elected leaders know what you think

**U.S. Rep. Mac Thornberry**  
905 South Fillmore Street, Suite 520  
Amarillo, Texas 79101  
Telephone: 806-371-8844  
Fax 806-371-7044  
Office Hours: 8:30 a.m. to 5:30 p.m.  
<http://thornberry.house.gov/>

**State Rep. Ken King**  
P.O. Box 507  
Canadian, TX 79014  
(806) 323-8870  
Capitol Office: E2.402  
Capitol Phone: (512) 463-0736  
Capitol Fax: (512) 463-0211  
[Ken.King@house.state.tx.us](mailto:Ken.King@house.state.tx.us)

**State Sen. Kel Seliger**  
Physical Address: 410 S. Taylor, Suite 1600  
Amarillo, TX 79101  
806-374-8994  
806-374-4607 fax  
Mailing Address: P.O. Box 9155  
Amarillo, TX 79105  
[www.seliger.senate.state.tx.us/dist31.htm](http://www.seliger.senate.state.tx.us/dist31.htm)

**U.S. Sen. Ted Cruz**  
Austin Office  
300 E. 8th., Suite No. 961  
Austin, TX 78701  
Phone: 512-916-5834  
[www.cruz.senate.gov/index.cfm](http://www.cruz.senate.gov/index.cfm)  
**U.S. Sen. John Cornyn**  
West Texas  
Wells Fargo Center  
1500 Broadway, Suite 1230  
Lubbock, TX 79401  
Main: 806-472-7533  
Fax: 806-472-7536  
[www.cornyn.senate.gov/public/](http://www.cornyn.senate.gov/public/)

**Gov. Rick Perry**  
Office of the Governor  
P.O. Box 12428  
Austin, Texas 78711-2428  
Information and Referral Hotline [for Texas callers] : 800-843-5789  
Information and Referral and Opinion Hotline: 512-463-1782  
Office of the Governor Main Switchboard: 512-463-2000  
[www.governor.state.tx.us/](http://www.governor.state.tx.us/)

## IGLESIA BAUTISTA EMANUEL

**Servicios de Domingo**

Escuela Dominical: 10:00am  
-Adoración: 11:00am  
-Servicio de noche: 6:00pm  
Servicio Miércoles: 6:00pm



**¡Jesus Vive!**

Venga ver  
1021 S. Barnes  
665-4330  
Pastor  
Willy Jaramillo

## 30th Annual Country Fair

October 25th, 2014  
M. K. Brown Civic Center  
Doors open at 5:00pm  
Dinner, Silent & Live Auction, and Dance!  
First table closes at 7:15pm!  
StateLine Performing  
Bingo, Wine Pull, and Coin Flip  
Tickets: \$30 per person  
(Includes dinner)

Tickets are sold at the Chamber of Commerce



(806) 669-3241  
200 N. Ballard  
[www.pampachamber.com](http://www.pampachamber.com)

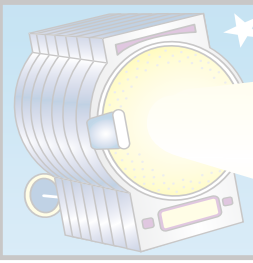
## Herbs Etc.

HERBS • VITAMINS • WEIGHT LOSS  
ENERGY • WOMEN'S & MEN'S NEEDS

**Slim Success Weight Loss Program**  
5 simple steps to Lose Weight & Boost Metabolism  
\*Tailored to the individual  
\*REAL FOOD plus convenient options

You'll never feel deprived! Class attendance optional  
Feel better and PREVENT health problems!  
109 W Kingsmill . Pampa (806) 665.4883  
[www.panhandlesunshine.com](http://www.panhandlesunshine.com)





# Pampa Entertainment

They did. They do.

## Clooney/Alamuddin wedding No. 2

VENICE, Italy (AP) — The romantic canaled city of Venice has been the venue for 323 weddings of foreign couples this year. Only one has drawn crowds and paparazzi.

George Clooney and Amal Alamuddin said "I do" for a second time Monday, celebrating a civil wedding ceremony in Venice's City Hall on the Grand Canal, greeted by hundreds of well-wishers who waited hours for a glimpse of the newlyweds.

The couple tied the knot two days earlier in a private ceremony attended by Hollywood celebrity friends and family in a luxury hotel. They followed up with a required civil procedure, which to be legally recognized must take place on a site designated by the city administration.

The newlyweds arrived at the pre-Renaissance Ca' Farsetti in Clooney's regular water taxi, called "Amore," trailed by doz-

ens of boats with photographers, as has been the case all weekend. Police boats tried to clear their way.

Clooney, 53, looked dapper in a gray suit and matching tie, while the bride, 36, wore a cream-colored, short-sleeved jacket with palazzo pants and a matching wide-brimmed hat accented by a navy ribbon.

As they exited the boat, Clooney drew his wife's attention to the crowds on the opposite shore, and they stopped briefly to take in the scene and wave. Clooney then ushered Alamuddin inside, looking up at city employees watching from the surrounding buildings and pointing inside with his thumb as if to say, "I gotta go."

They emerged about 20 minutes later with former Rome Mayor Walter Veltroni, who performed both ceremonies. Veltroni sent the couple off, hugging Clooney and kissing Al-

amuddin on the cheek.

They continued up the Grand Canal and under the arched Rialto Bridge, crowded with more well-wishers screaming "George, George," before disappearing up a one-way canal. Clooney's water taxi driver, who has ferried the actor around on his frequent trips to Venice, was later seen at the airport and indicated that the couple had left.

One of the world's most romantic cities, Venice draws couples from around the world for a fairy tale wedding in well-appointed official wedding halls overlooking the Grand Hotel.

According to official statistics for this year, 323 non-Italian couples were married in Venice's historic center through Monday.

A city employee, who identified herself only as Luisa, said she leaves her window overlooking the Cavalli Palazzo, where

most ceremonies take place, open in the summer just so she can hear the parade of newlyweds being congratulated by loved ones.

"There are so many beautiful brides. Every 10 or 15 minutes, they come out and people throw confetti or rose petals," Luisa said, standing with a group of co-workers who came outside to see Clooney and his bride arrive. "Once there was even a Scotsman in a kilt. Often we find champagne bottles and glasses here in the morning."

The last couple to exchange vows before the Hollywood star and his new bride arrived was Stefanie Eddinger and Gerald Frieder, from Vienna. The couple enjoyed the added energy from the crowd outside awaiting the celebrity newlyweds.

"They picked our day," Frieder said, before stepping outside into a shower of confetti.

## Dempsey's 'challenge' raises more than \$1.1M

LEWISTON, Maine (AP) — Nearly 3,900 people helped raise more than \$1.1 million for cancer care and support at the sixth annual Dempsey Challenge, organized by actor Patrick Dempsey in honor of his

mother. Aimee Arsenault, manager of special events and development at the Patrick Dempsey Center for Cancer Hope and Healing at Central Maine Medical Center in Lewiston, announced the

fundraising total at Sunday's closing ceremonies and added that it's still growing.

Dempsey, the "Grey's Anatomy" actor and Maine native, was one of the roughly 1,000 people who took part in Sunday's cycling events.

Others raised money by walking or running.

The actor founded the Dempsey Challenge following the experience of his 77-year-old mother's battles with ovarian cancer. She passed away in March.

**\$1000 SHOPPING SPREE**

come in to register & find out more!

**Frank's Best Hardware**  
401 N Ballard • 665-4995

**NEW ITEM!**

**Spicy Buffalo BONELESS CHICKEN WINGS**

Try as an appetizer or meal.

Appetizer **\$5.99**

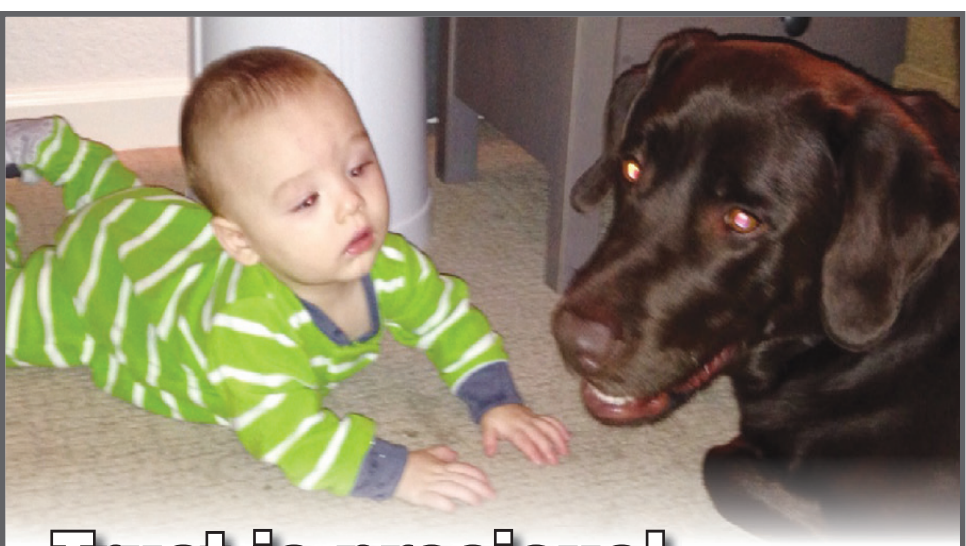
Meal **\$7.99**

**DYERS BBQ**  
HWY 60 W. • PAMPA, TEXAS • (806) 665-4401

## Movies at Pampa Cinema 4

- Dolphin Tale 2 - Rated PG**  
Friday - 7 p.m., 9:15 p.m.  
Saturday - 2 p.m., 4:30 p.m., 7 p.m., 9:15 p.m.  
Sunday - 2 p.m., 4:30 p.m., 7 p.m.,  
Monday/Thursday - 7 p.m.
- The Maze Runner - Rated PG-13**  
Friday - 7:15 p.m., 9:45 p.m.  
Saturday - 2 p.m., 4:30 p.m., 7:15 p.m., 9:45 p.m.  
Sunday - 2 p.m., 4:30 p.m., 7:15 p.m.,  
Monday/Thursday - 7:15 p.m.,
- The Boxtrolls 3D - Rated PG**  
Friday - 7 p.m., 9 p.m.  
Saturday - 4:30 p.m., 7 p.m., 9 p.m.  
Sunday - 2 p.m., 4:30 p.m., 7 p.m.,  
Monday/Thursday - 7 p.m.
- The Drop - Rated R**  
Friday - 7:30 p.m., 9:45 p.m.  
Saturday - 2 p.m., 4:30 p.m., 7:30 p.m., 9:45 p.m.  
Sunday - 2 p.m., 4:30 p.m., 7:30 p.m.  
Monday/Thursday - 7:30 p.m.

**GOT A HOT TIP?**  
CALL 669-2525



## Trust is precious!

When you choose Keyes as your pharmacy, we take that trust seriously and care for you like we would our own family. We will fill your prescriptions promptly and accurately because the health and wellbeing of those you care about matters as much to us as it does to you.

**Keyes Pharmacy**  
928 N. Hobart • 806-669-1202  
Monday - Friday 8:30 a.m. - 6:00 p.m. Saturday 8:30 a.m. - 12:00 p.m.

**BODY SHOP**

**Beautiful Bodies**

Your car is a bit banged up. Don't worry. We can fix it so it'll look as good as new!

**BODY WORK & DENT REPAIR**

- INSURANCE ESTIMATES
- COLOR MATCHING & PAINTING
- FRONT END WORK
- FRAME STRAIGHTENING

**CULBERSON-STOWERS BODY SHOP**  
805 North Hobart St.  
665-1665  
www.culbersonautos.com

**Got A Sports Story or Photo?**

**Send it to us!**  
jclee@thepampanews.com  
or bring it to the paper!

**If you don't see it after a week, call us!**  
669-2525 ext 209



# Community Calendar

When You NEED A Tow... BIG or SMALL



**CALL US FIRST  
WE'LL BE  
THERE!  
806-669-3481**

Bonded • Insured • Experienced

**Bob Douthit Autos**  
Parts & Auto Sales  
Wrecker Service  
1432 S. Barnes • Pampa

**PLUS  
Parts  
New/Used**

"We do Auto Lock-out"

12106



**RED RIVER  
STEAKHOUSE**

McLean, Texas

**LUNCH SPECIALS**

Check our facebook page to find out  
What We Got Cookin' Today!

Like us on Facebook



Exit 141-143 • 101 W. HWY 66  
Open 11am-9pm Tue. - Sat. • (806)779-8940  
"Best Steak You'll Ever Eat" 15975 A

**City Commission meetings**

The Pampa City Commission meets at 4 p.m. the second and fourth Tuesday of each month. The meetings are held on the third floor of City Hall.

**School board meetings**

The Pampa Independent School District board meets at 5:45 p.m. on the fourth Monday of each month at the new administration building on North Hobart Street.

**Immunization clinic 3 times a month**

The Texas Department of State Health Services (DSHS) hosts an immunization clinic in Pampa three times a month. The clinics are held from 9:30 to 11:30 a.m. and from 1 to 3 p.m. on the first three Wednesdays of each month. The first 10 people in line for the morning and first 10 in the afternoon will always receive shots. However, if there are more than 10, they still may be able to accommodate the patients, or ask them to come back at another time. For more information, call 665-4752 or 806-874-3211. The clinic is located at 736 S. Cuyler St.

**PAWS meets first Tuesdays**

Pampa Animal Welfare Society meets the first Tuesday of each month at the Pampa Animal Shelter, 811 S. Hobart St. The meetings are at 6:30 p.m. and are open to the public.

There is a desperate need for more members. PAWS members are needed to work at the shelter from 3 to 5:30 p.m. each day and to work adoption days or take animals to the vets when needed, but mostly people are needed to love and work with the animals where they will be more adoptable.

For more information, call the shelter after 3 p.m. at 669-5775 and ask for the PAWS volunteer.

**County Commission meetings**

The Gray County Commission meets at 9 a.m. on the first and 15th of each month. If the date falls on a Saturday, the meeting will be held on Friday. If the date falls on a Sunday, the meeting will be held on Monday. The meetings are held on the second floor of the Gray County Courthouse.

**TOT Republican Women's Club**

Top O' Texas Republican Women's Club meets at noon on the third Wednesday of every

month at the Pampa Senior Citizens Center, 500 W. Francis St. For more information call 806-669-1990.

**Jam sessions every Friday night**

The Woody Guthrie Folk Music Center has a jam session every Friday night starting at 6:30 p.m. Everyone is welcome to play or listen. The center is located at 320 S. Cuyler St. For more information, call 806-664-0824.

**Meredith House presents live music**

Meredith House, an assisted-living facility at 812 W. 25th Ave., has a band performing at 6:30 p.m. every Tuesday and Saturday night. Join them for Western music, gospel and the classics. For more information, call 806-665-5668.

**Monday night dance club**

The Monday night dance club meets from 7 to 9 p.m., each Monday, in the Pampa Chamber of Commerce building on the corner of Ballard and Kingsmill. Admission is \$3.50. Cold drinks and coffee are offered. The club plays country music. For more information, call Della at 806-663-1136.

**PPQG Meets fourth Thursdays**

Panhandle Piecemakers Quilt Guild meets the fourth Thursday of each month, January through October, at the Pampa Senior Citizens Center at 500 W. Francis St.

The meetings are held at 6:30 p.m. and membership is open to adult quilters of all ages. Dues are \$15 annually. Meetings consist of a short business discussion followed by a program featuring quilting techniques. For more information, call 806-662-2909.

**First United Methodist Church**

Every Friday through August, First United Methodist Church will be holding Gospel Pic'n and Grinnin'.

The weekly event will be at 5:30 p.m. at Gathering Space in the church.

For more information call 806-669-7411.

*Editor's note: Email submissions to [jclee@thepampanews.com](mailto:jclee@thepampanews.com). Submissions should be 100 words or less and written in the third person. Please include the title of the event, the date and time, physical address, the admission cost or whether it is a free event and a contact number and/or email address for the public.*



**CRL**  
Pump & Supply

**24 HOUR SERVICE**  
Complete Line of Oil Field Supplies  
New Location • Larger Selection of Inventory  
All Major Manufacturers  
Quality Down Hole Pump Repair  
Just opened Goodyear Hydraulic Hose & Fittings Shop

503 Industrial Blvd. | 1019 W. Alcock  
Borger, TX 79007 | Pampa, TX 79065  
806-274-2692 | 806-665-0947  
[www.crlpump.com](http://www.crlpump.com)

## Keep up with Your Favorite Football Teams with PTCI High-Speed Internet



**Call today!**

**Speeds up to  
6 Mbps for  
Rural Homes**

Services not available in all areas. Some restrictions apply.



222 S. Amherst  
Perryton, TX 79070

721 W. 7th  
Spearman, TX 79081

1-800-562-2556 [ptci.net](http://ptci.net)





# Panhandle Regional Pageant to be held in Pampa

**SUBMITTED**  
The upcoming 2015 Panhandle Regional Pageant will be held Nov. 8 in Pampa at the Hampton Inn, 2820 Perryton Parkway. The Regency International Panhandle Regional pageant is a traditional beauty pageant with ladies competing in one of four divisions. 'Teen' for girls who are between the ages of 13 and 19. 'Miss' for ladies who are single and between the ages of 20 and 30 years old. 'Ms.' for ladies who are 21 and up who are either divorced, widowed, or have children, the Ms. division also includes ladies who are single and over the age of 30. Finally, 'Mrs.' for women who are

currently married. We also have two junior divisions, 'Little Miss' for girls between the ages of eight and 10 and our 'Junior Miss' for girls 11 and 12. Each contestant will compete in five areas of competition including swimsuit (one piece or two with a wrap), evening gown, personal interview, fashion and photogenic, with the exception of the Little Miss and Junior Miss divisions, as they will not compete in swimsuit. The Regency International Pageant has no talent portion, requires no experience to participate and finally is a non-glitz pageant for our Little Miss and Junior Miss divisions.

All Contestants will eligible to compete in the 2015 International Pageant. The Winners of the Panhandle Regional will have their entry fee paid to the International Pageant in July 30 through Aug. 1, 2015 in The Woodlands (Houston). The winners will represent the Panhandle, and Runners up will be awarded area and city titles and discounts to compete at the International Pageant. Area and city titles will be awarded by placement, all contestants will be given a discount, but runners up will be awarded a larger discount. Other titles will apply directly through the international office, and

will be approved based on availability. The Regency International Pageant is a fantastic opportunity for you to get exposure and possibly even get discovered. At the International Pageant this July 30 through Aug. 1, 2015, a model management company will be awarding a modeling agreements to the winners in each division. This year's prize package we will be a \$500 cash prize for all division winners and a seven-night resort stay for up to six people in an exotic location for the Miss, Ms. and Mrs. winners. The prize package also includes a professional

photo shoot, competition wardrobe, plus many more wonderful prizes and this year's competition will be filmed and live streamed. The Regency International Pageant System, in lieu of charging an admission to our pageants, asks that guests attending the pageant make a donation to one of the animal charities that the pageant system supports through either pet food, toys, supplies or by making a cash donation to the organization. We also do not require contestants to purchase ads in the program, while ads are for sale, they are not required. If you interested and would like to participate

in the upcoming 2015 Preliminary Pageant, all that is needed is a deposit and completed entry form. The entry form can be found online at <http://www.regency-internationalpageant.com/panhandle-entry-form/>. After the deposit is made, contestants will receive their contestant handbook, which contains all of the information they will need to know to successfully compete. Deposits will not be refunded. If you have any questions please contact us at our international office. Deadline for entry is Nov. 8. Who will be the next Little Miss, Junior Miss, Teen, Miss, Ms. or Mrs. Regency International?

# Brush Busters program to be highlighted in Oct. 2 webinar

**SUBMITTED**  
COLLEGE STATION — Brush management is a challenging problem for livestock producers and landowners throughout the state, but guidance will be offered at an Oct. 2 webinar by the Texas A&M AgriLife Extension Service ecosystem science and management unit.

"Brush Busters" is next in the Texas Range Webinar Series, scheduled on the first Thursday of each month. Each webinar is scheduled from noon to 1 p.m., said Pete Flores, webinar coordinator in

Corpus Christi. "Brush Busters is a do-it-yourself, user-friendly, environmentally safe and ecologically sound approach to rangeland brush control developed by AgriLife Extension," according to Dr. Morgan Russell, AgriLife Extension range specialist in

San Angelo. Russell will present the Brush Busters webinar and cover how and why the program was developed, equipment options, individual plant treatment methods, where to find Brush Busters information, and examples of species found in the

Brush Busters publication series. Licensed agricultural private pesticide applicators participating in this webinar can earn one integrated pest management unit. Participants seeking Texas Department of Agriculture continuing education units must pay

a \$10 fee on the website. For all others, there is no fee, Flores said. This webinar and others in the series can be accessed at <http://naturalresourcewebinars.tamu.edu>. For more information on the webinars, contact Flores at [Pete.Flores@ag.tamu.edu](mailto:Pete.Flores@ag.tamu.edu).

# Gray County EA reminds voters that early voting begins Oct. 20 for Nov. 4 election

**SUBMITTED**  
Gray County elections administrator Karen Goodman reminds voters that early voting for the Nov. 4 general election begins Oct. 20 and continues through Oct. 31 at the Gray

County Courthouse on the main floor, room 105, non-jury courtroom. There are also two days with extended hours, Oct. 28 and 29, when early voting hours will be from 7 a.m. to 7

p.m. The last day for the office to receive an application for ballot by mail in the upcoming November election is Oct. 24. If a Gray County voter is unsure as to whether

they have already filled out the right application for getting a ballot by mail for the upcoming election may call the elections administrator's office at 806-669-8068.

**When it matters most, count on us.**



**HOME CARE, PALLIATIVE CARE AND HOSPICE**

Physician Recommended  
HealthCare 24 hours/day 7 days/week  
Skilled Nursing & Physical Therapy Services  
Interdisciplinary Team Approach  
Physicians, Nurses & Social Workers  
Spiritual & Bereavement Counselors  
Telemonitoring  
Specialized Therapy Programs & Services  
KCI Wound Vac/Wound Care

**Interim HEALTHCARE HOME CARE AND HOSPICE**

Phone: 806.665.1445  
Fax: 806.688.0186  
[www.interimhealthcare.com](http://www.interimhealthcare.com)

# Area Support Groups

The following is a list of support groups that meet regularly each week in Pampa. Information for each meeting is submitted to The Pampa News office and may not be completely updated or accurate. Please notify the newsroom if a change is necessary. The Pampa News welcomes all submitted materials for area support groups. Please include the meeting time, date and location and, if applicable, provide a contact number for each group.

- **Victims of domestic violence and sexual assault**, meet at 6 p.m., Thursdays, at the Tralee Crisis Center, 308 S. Cuyler St. For more info, call the Center at 806-669-1131.
- **Narcotics Anonymous — The Pampa Group** meets at 7:30 p.m., Tuesdays, and at 6 p.m., Saturdays, at 805 N. Gray St. **Narcotics Anonymous — Rufe Jordan Unit** also meets at 6 p.m., Mondays, and at 5:30 p.m., Wednesdays, at 1992 Hilton Road.
- **Cancer Support** meets from 12-1 p.m. on the fourth Tuesday of each month at Central Baptist Church. For more info, contact Beth Kean at 800-274-

4673

- **Alcoholics Anonymous** Open Door Club meets daily at noon and 8 p.m. at 910 W. Kentucky Ave. **Al-Anon** meets at noon on Mondays. For more information, call 665-9072.
- **Alcoholics Anonymous** Primary Purpose meets daily at noon and 8 p.m. at 112 W. Foster Ave.
- **Alcoholics Anonymous** Keep It Simple meets Thursdays at 6 p.m. at the Methodist church in White Deer.
- **Pampa Caregiver Support** meets at the Pampa Nursing Center on 1321 W. Kentucky Ave. at 6 p.m. on the second Tuesday of each month. For more information call 806-669-2551.
- **Accolade Home Care** sponsors a **Parkinson's Support Group** the second Thursday of each month at 6 p.m. The group meets at Accolade at 1313 N. Hobart St. For more information, call Lindsey Presson at 806-665-9700 or 806-324-3230.

**Patti Hudson**

What does HOME mean to you?  
A new home is about comfort, security. It's about being close to the ones you love. Whatever your dreams for your new home, I can help. Put my years of real estate experience on your side. Together we can make your home buying experience enjoyable.



WORKING TOGETHER **CARING** about your dreams

Re/Max Hometown  
(806)662-4896  
[www.pattisellsampa.com](http://www.pattisellsampa.com)

**HIGH PERFORMANCE**  
Exterior • Coatings • Glass

**NEW NAME.... SAME OWNER & GREAT SERVICE**

- GARAGE DOORS & OPERATORS
- COMMERCIAL
- RESIDENTIAL
- METAL BUILDINGS & CARPORTS
- REPLACEMENT WINDOWS
- ENTRY & PATIO DOORS
- COMMERCIAL
- RESIDENTIAL
- GLASS
- COMMERCIAL
- RESIDENTIAL
- AUTO
- SHOWER & BATH ENCLOSURES

1211 S. PRICE RD | PAMPA, TX 79065  
PH 806.665.8100 | [HIGHPERFORMANCEEXTERIORS.COM](http://HIGHPERFORMANCEEXTERIORS.COM)

**MICHELIN GAME CHANGER**  
The Right Tire Changes Everything.

We'll help you find the right Michelin® Tires for your vehicle.



**Services:**

- Alignment
- Brakes
- Oil Changes
- Tires
- Custom Wheels
- Shocks & Struts
- Much More!

WARRANTIES HONORED AT OVER 30,000 LOCATIONS NATIONWIDE

**HUDSON TIRE & SERVICE TIRE PROS**

1800 N. Hobart St. • Pampa  
**806-665-5302**  
[www.HudsonTirePros.com](http://www.HudsonTirePros.com)

**Advertise with The Pampa News**

Crystal Arreola Sales Rep - (806)663-9065  
Callie Odell Sales Rep - (806)662-8595  
Beverly Taylor Classifieds - (806)669-2525



[www.thepampanews.com](http://www.thepampanews.com)



# New Name.....Same Great Service!

## PanhandlePlainsRealty.com



**Linda Laycock**  
Broker  
BROKER®, GRI  
(806) 662-1312



**Tisha Calhoun**  
Associate  
(806) 440-4153



**Larry Hadley**  
Associate  
(806) 662-2779

# PampaSports

## Lady Harvesters stun Dalhart on the road to win first district game 3-2

By JOHN LEE

jcllee@thepampanews.com

DALHART — The Pampa Lady Harvesters volleyball team opened district play on Saturday on the road at Dalhart taking on the Lady Wolves. The Lady Harvesters took the Lady Wolves to five sets and overcame a slow start to win the match 3-2 (20-25, 25-16, 25-22, 25-18 and 15-13) and they advance to 15-13 on the season.

“It’s hard when you’re going into someone else’s gym on a Saturday,” head volleyball coach Brooke Sanford. “It’s kind of a hornets’ nest when you’re in district play. We just kept fighting and never gave up. That shows a lot of character from our kids.”

The Lady Wolves got out to a quick start against the Lady Harvesters in the first set taking the 3-0 lead until senior Madison Brown hit a kill to put the Lady Harvesters on the board. Junior Brittney Gonzalez hit consecutive points to tie the game at 3-3.

The teams traded points several times until the Lady Wolves edged the Lady Harvesters 6-4. Seniors Caragan Niccum and Taylor Eubank led the Lady Harvesters on a 6-2 run which gave them the 10-8 lead.

The Lady Wolves went on a strong 3-4 run which gave them the 21-14 lead, until senior Allison Noble got a kill to end the run at 21-15. The Lady Harvesters were able to pull within four during a 5-3 run, but the Lady Wolves won the set at 25-20.

The Lady Harvesters started strong in the second set on an 12-4 run behind kills from Eubank, senior Kirstin Hood, Niccum and Noble. The Lady Wolves fought to get back in the set and pulled within five until Noble and Eubank blocked a serve to stop the Lady Wolves and hold the lead at 13-7.

The Lady Harvesters and Lady Wolves battled back-and-forth with Niccum, Brown and Gonzalez all contributing for the Lady Harvesters as they kept their lead at 21-15.

From there, the Lady Harvesters went on a 4-1 run with senior McKinley Hancox serving the ball as Pampa took the second set 25-16.

The Lady Wolves went on a 6-0 run to start the second set until Gonzalez disrupted the run and put the Lady Harvesters on the board. The Lady Wolves tried running away with a commanding 11-4 lead.

The Lady Harvesters wouldn’t quit, however, as they went on an 7-4 run with points from Eubank, Hood and Gonzalez. The teams traded points several times and eventually the Lady Harvester pulled within three at 19-16.

The Lady Wolves advanced to a 23-17 lead but Eubank and Brown continued to get kills and pulled within three again. But the Lady Wolves were too much for the Lady Harvesters at 25-22.

The Lady Harvesters, hoping to tie the match at 2-2, scored the first point of the set after a kill from Eubank. The teams traded points until Brown started the Lady Harvesters on a



Photo courtesy of Butch Noble

The Pampa Lady Harvesters volleyball team is now 1-0 in District and 15-13 on the season. Catch them in action tonight at 7 p.m. against San Jacinto.

9-4 run which included points from Noble and Eubank and set the Lady Harvesters with a 13-7 lead. Brown, Gonzalez and Eubank continued to dominate for the Lady Harvesters as they went on another 9-6 run as Noble gave the Lady Harvesters the 22-13 lead. Gonzalez had two of the final three points for the Lady Harvesters as they forced a fifth set with the 25-18 win.

The final set started similar to the first and third with the Lady Wolves jumping out to an 2-0 lead but Brown put Pampa on the board and stopped the Lady Wolves from extending their lead.

The teams traded points but it was Noble who tied the game for the Lady Harvesters with three straight kills ty-

ing at 8-8. Gonzalez scored a point to keep it tied at 9-9 apiece and a kill from Brown gave the Lady Harvesters the lead.

The Lady Wolves kept tying the series and Eubank scored a kill to give the Lady Harvesters the 14-13 lead and a hit from the Lady Wolves going out of bounds gave the Lady Harvesters the 15-13 win for the set and 3-2 win for the match.

“We just got to keep winning,” Sanford said. “We have to fix some things that we messed up and we just got to keep winning.”

The Lady Harvesters return to action tonight at 7 p.m. in McNeely Field House to take on San Jacinto.

## Goodell meets with Texas coach Strong

THE ASSOCIATED PRESS

NFL Commissioner Roger Goodell met with Texas coach Charlie Strong on Sunday to talk about the core values Strong uses to run his program.

“We discussed setting standards, and taking a stand on who we are as football leaders,” NFL executive vice president Troy Vincent told The Associated Press on Sunday. “Charlie Strong is doing that. It is a difficult process changing culture, not for the light-hearted. But, as we know at the NFL, it is a process that must be endured with the goals of high standards, excellence and accountability.”

The NFL is re-evaluating its personal conduct policy after Goodell admitted mishandling the disciplinary process for former Ravens running back Ray Rice, who struck his then-fiancee in a casino elevator.

Strong has dismissed nine players during his first year

as Texas coach.

“Coach Strong is setting a precedent on leadership by not compromising on high standards and the value of football,” Vincent said. “He provided us valuable insight on how he establishes standards, gets buy-in from his student athletes and holds them accountable.”

“Coach Strong has taken a firm stance on violence against women and stressing core values as a prerequisite to playing on his team. He believes that winning starts with life principles and is building his program based on core values. We believe this is a model that should be emulated across the country in both amateur and professional football.”

Vincent, a former star NFL player and president of the players’ union, said the meeting “provided valuable insight on how the NFL and college programs can collaborate on these issues going forward.”

**Easy's Pop Shop 1&2**  
Buy Any Size Fountain Drink & Get One **FREE**  
WITH COUPON Expires 9/30/14  
719/729 N. Hobart

Make your financial future a priority.

**Duane Harp, AAMS®**  
Financial Advisor  
1921 N Hobart  
Pampa, TX 79065  
806-665-6753  
www.edwardjones.com  
**Edward Jones**  
MAKING SENSE OF INVESTING Member SIPC

Got A Sports Story or Photo?

Send it to us!  
jcllee@thepampanews.com  
or bring it to the paper!

Home of the OLD FASHION Greasy Burger and Cowboy Burger

Try Our Salad Bar!  
All salads are *Homemade*

**Granny's Home Cookin'**

Breakfast Served ALL Day, EVERYDAY  
Lunch Buffet Sun-Fri 11am - 2pm  
Evening Specials

We're here in Pampa to stay!

Open 7 Days a Week . 5:30am - 9:30pm  
328 Frederic Ave . Pampa, Texas  
806-669-6237  
Smoking Room Available

**IntegraCare Home Health**  
An Affiliate of Kindred at Home

Our patients quickly discover that skilled care, compassion and honor are at the very core of everything we do and everyone we touch.

Pampa

806.665.0301  
www.integracarehh.com

**Expect More**  
From Your Local Furniture Store

Fine Home Furnishings & Appliances for Any Room.

Living in Harmony

**Johnson Home Furnishings**  
801 W. FRANCIS PAMPA, TX (806)665-3361  
MONDAY-SATURDAY 9AM - 5 PM



# PampaSports

## EXTRA INNINGS

### College Football Recap: Week 5

It was a pretty ho-hum week for college football fans in Week 5 if you are one that likes the underdogs. In the Top 25 Poll only one ranked team lost. That team was then-No. 13 South Carolina. They fell to the Missouri Tigers 21-20. Missouri scored the go ahead touchdown with 1:36 left on the clock.

North Carolina State fired off a hot start against No. 1 Florida State and took a 24-7 lead early in the game. However, Florida State came back, with a little luck, and ended up winning the game 56-41.

Arkansas had hopes of upsetting No. 6 Texas A&M but blew a 14-point lead in the fourth quarter and eventually lost the game 35-28 in overtime.

Ole Miss was struggling for the first half with Memphis as it was just 7-3 until the Rebels reeled off 17 points in the fourth quarter to win the game 24-3.

Tennessee jumped out to a 10-0 lead on No. 12 Georgia but in the end came up short 35-32.

In a very odd statistical game then-No. 15 Arizona State lost to No. 11 UCLA 62-27. The Sun Devils lost the game despite winning every statistical category but one. You guessed it, they lost the turnover battle 4-0. Not many teams can win ball games if they are turning the ball over at a high rate and this is a prime example.

Those were all of the close upsets or lack of upsets. Now let's change gears and talk about the Big 12.

TCU had a slow start against SMU but won the game 56-0. Texas and Kansas was like a pillow fight but the Longhorns eventually took over due to the lack of Kansas offense and won the game 23-0. Kansas State had no issues with UTEP 58-28.

Baylor controlled Iowa State 49-28. And the Thursday game Oklahoma State took care of Texas Tech by the score of 45-35.

Now let's preview some of the matchups for next week. Texas Tech travels to No. 23 Kansas State. No. 21 Oklahoma State hosts Iowa State. No. 7 Baylor travels to Texas. No. 4 Oklahoma travels to No. 25 TCU. Kansas travels to West Virginia. The Jayhawks also fired head coach Charlie Weis over the weekend.

Those were all the Big 12 matchups and there are also a lot of top-25 showdowns. No. 14 Stanford will take their talents to South Bend for a game against No. 9 Notre Dame. No. 19 Nebraska heads to No. 10 Michigan State. No. 15 LSU travels to No. 5 Auburn.

No. 6 Texas A&M faces No. 12 Mississippi State in Starkville. No. 3 Alabama will face No. 11 Ole Miss in Oxford.

With all of those great matchups there are bound to be more upsets this week. It may be too early to call it Upset Saturday but from one college football fan to another, you won't want to miss the games this weekend.

*Zac Green is the Sports Editor of The Pampa News and Youth Minister at the Mary Ellen and Harvester Church of Christ. You can email him at [zgreen@thepampanews.com](mailto:zgreen@thepampanews.com).*



ZAC GREEN

## Cowboys rock Saints behind Romo, Murray

ARLINGTON — Jerry Jones watched what he called the best effort he's seen in 25 years as owner of the Dallas Cowboys in the first half, and that was before Tony Romo had the longest scramble of his career and DeMarco Murray finished off yet another 100-yard game.

All the fun came against New Orleans, the team that handed Jason Garrett his worst loss in four years as Dallas coach last season.

"I had that long ride home last year, and it's not fun," Jones said after the Cowboys beat the Saints 38-17 Sunday night for their first 3-1 start under Garrett. "I've got a lot of friends there and have been New Orleans friendly all my life, but that's a long ride when you have a night like I had in New Orleans a year ago."

The Cowboys kept Drew Brees and the Saints scoreless in the first half after giving up an NFL-record 40 first downs in a 49-17 blowout loss in New Orleans last year.

Romo threw three touchdown passes, including two to Terrance Williams, and Murray scored twice while joining Emmitt Smith as the only Dallas running backs to start a season with four

straight 100-yard games.

Murray broke a three-game streak of fumbling in the first quarter as the Cowboys won the turnover battle 3-0.

He had 24 carries for 149 yards, pushing his NFL-leading total to 534.

"DeMarco is inspirational," Jones said. "Glad to see him have a game that he didn't turn the ball over. About the time New Orleans was thinking about getting some life, he'd go out and make those yards."

Brees had touchdown passes to Josh Hill and Jimmy Graham early in the fourth quarter to get the Saints (1-3) to 31-17 before the Cowboys regained control.

The former Texas high school star threw for 340 yards, but had just 84 yards with an interception while Dallas was building a 24-0 halftime lead after he had 838 yards with seven touchdowns and no picks in his previous two games against the Cowboys, both wins.

"We had our chances in the second half," Brees said. "But at the end of the day when you look at this game, the entire game, we got beat. We got beat in every facet of it."

## Watch the Pros

### Baseball

Oakland Athletics at KC Royals.....TBS 7:07 p.m.

### Soccer

Roma at Manchester City.....FS1 1:30 p.m.

Barcelona at Paris Saint-Germain.....FSSW 1:30 p.m.

Chelsea at Sporting Club de Portugal....FS2 1:30 p.m.

### Golf

Big Break Invitational.....GOLF 2:00 p.m.

### Women's Volleyball

BYU at Pepperdine.....ESPNU 8 p.m.



Gary Winton: Realtor®/Office Manager  
806-440-1698  
1712 N. Hobart • (806) 665-4595

*We help you buy or sell your home!*

## Rename Khaki's Corner Contest

The winner will receive  
**a \$500.00 Shopping Spree**  
at the Children's Store

Khaki's Korner will continue dealing in **used**, consignment & vintage furniture.

**ENTER ONLY ONCE**  
Deadline: Oct 1<sup>st</sup>, 2014  
email:  
[Newnamekk@gmail.com](mailto:Newnamekk@gmail.com)  
or  
mail to: 113 West Kingsmill  
Pampa, TX 79066

If multiple entries of the same name are received, the 1<sup>st</sup> entry will be the winner.

# CARPET

- **Large Selection**  
TO FIT YOUR TASTE & BUDGET
- **Free Estimates**
- **Professional Installation**

**WITT FLOORING CENTER**

**806 N. Main • Borger, TX**  
**806.273.9488**

MON-FRI 8-5:30 SAT 9-3  
**WWW.BORGER.BUYABBEY.COM**

Got A Sports Story or Photo?

Send it to [jclee@thepampanews.com](mailto:jclee@thepampanews.com) or bring it to the paper!

## Is your nest egg growing?

An investment you make today can help provide you with security and financial freedom in the future. Start saving now with a weekly deposit of \$10, \$20, \$30 or more and we'll keep your money safe and make it grow.



*We can help. Call today!*

## National Bank of Commerce

An Office of First National Bank Waupaca, WI

Member FDIC

1224 N. Hobart • Pampa • 806.665.0022

305 N. Main • Shamrock • 806.256.2181

501 Commerce • Childress • 940.937.2514



19547b

## Coming Soon

**PANDORA**  
UNFORGETTABLE MOMENTS



## RHEAMS DIAMOND SHOP

111 N. CUYLER • 806-665-2831

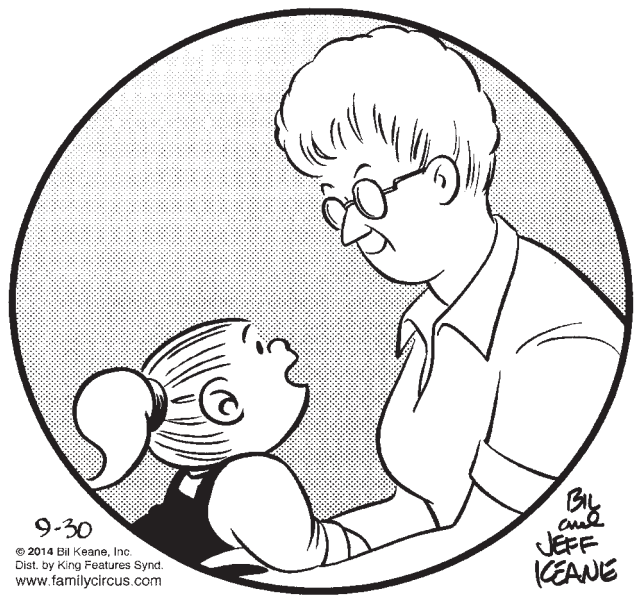
19628



# comics PAGE

## THE FAMILY CIRCUS

By Bil Keane



9-30  
© 2014 Bil Keane, Inc. Dist. by King Features Synd. www.familycircus.com  
"I'm really good at missing you when you're not around, Grandma."  
Bil and Jeff Keane

## Non Sequitur



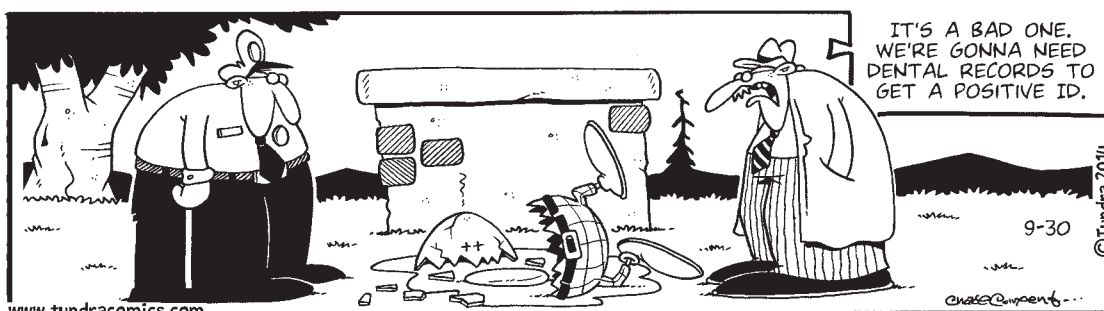
© 14 WILEY INK, INC. 9-30 DIST. BY UNIVERSAL UCLICK WILEYINK@EARTHLINK.NET 60COMICS.COM

## Nest Heads



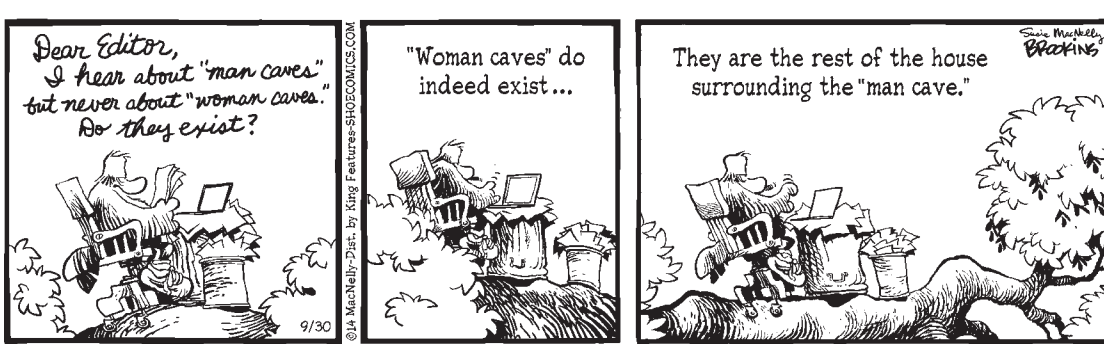
© 2014 WILEY INK, INC. 9-30 DIST. BY UNIVERSAL UCLICK WILEYINK@EARTHLINK.NET 60COMICS.COM

## Tundra



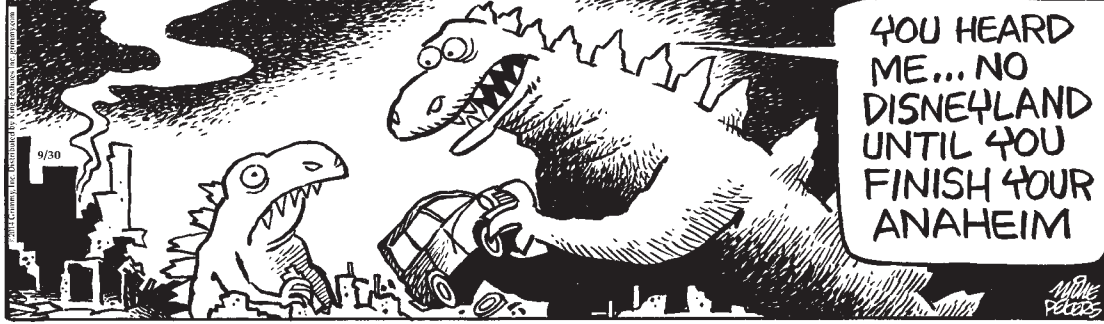
www.tundracomics.com  
IT'S A BAD ONE. WE'RE GONNA NEED DENTAL RECORDS TO GET A POSITIVE ID.  
9-30 © Tundra 2014

## Shoe



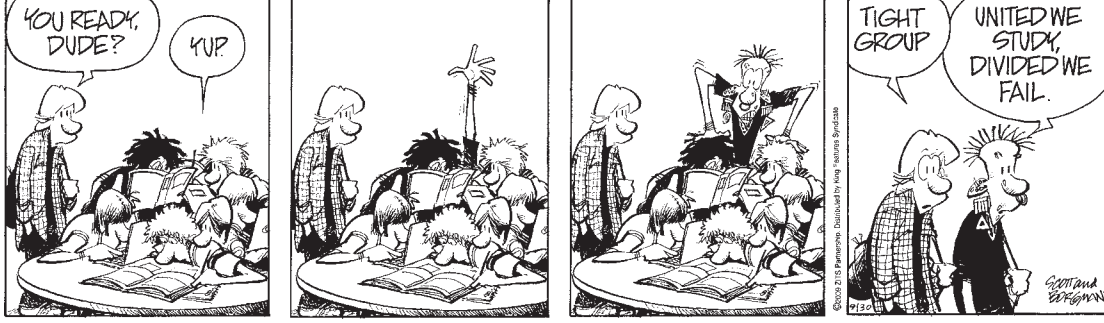
© 2014 King Features Syndicate, Inc. www.shoecomics.com

## Mother Goose and Grim



9/30 YOU HEARD ME... NO DISNEYLAND UNTIL YOU FINISH YOUR ANAHEIM

## Zits



© 2014 King Features Syndicate, Inc. www.zits.com

## Garfield



© 2014 King Features Syndicate, Inc. www.garfield.com

## Beetle Bailey



© 2014 King Features Syndicate, Inc. www.beetlebailey.com

## Marvin



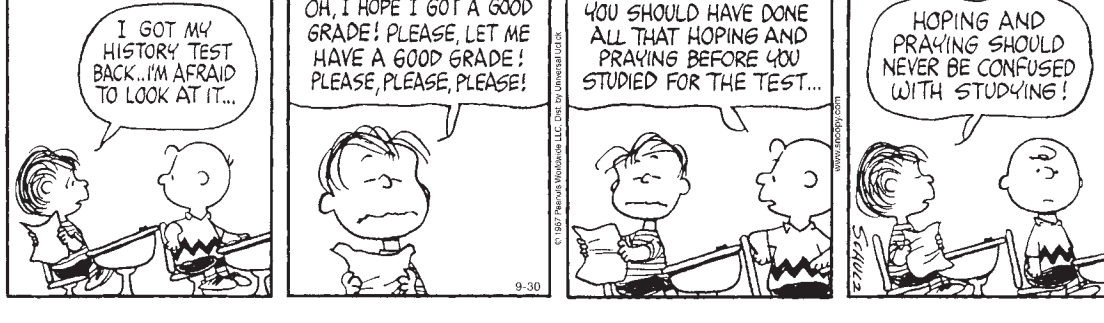
© 2014 King Features Syndicate, Inc. www.marvin.com

## Hagar The Horrible



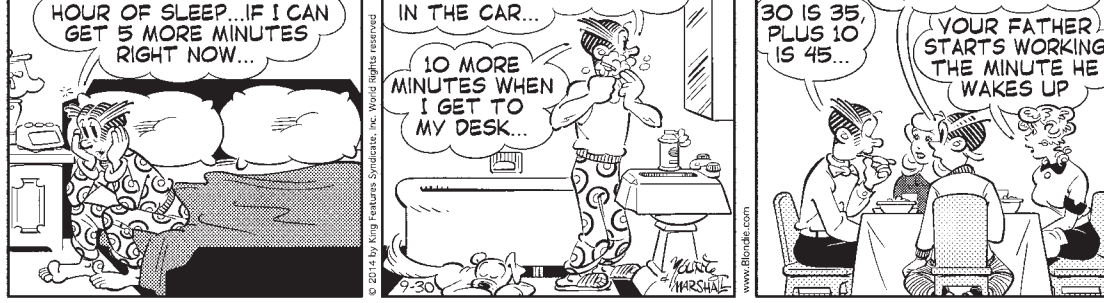
© 2014 King Features Syndicate, Inc. www.hagar.com

## Peanuts



© 2014 King Features Syndicate, Inc. www.peanuts.com

## Blondie



© 2014 King Features Syndicate, Inc. www.blondie.com

# daily horoscope

**HAPPY BIRTHDAY** for Wednesday, Oct. 1, 2014:  
This year you will be focused on your personal life. At times, you will experience significant discomfort, but ultimately it will be worth it. You have a tendency to be harsh with others. Work on incorporating more kindness. If you are single, you might be moving someone in before you know it. Be careful about committing too soon! If you are attached, you could be going through a situation involving a parent, which actually might involve moving him or her in with you. You and your sweetie both will need to be more nurturing as a result. CAPRICORN might be difficult to deal with.  
The Stars Show the Kind of Day You'll Have: 5-Dynamic; 4-Positive; 3-Average; 2-So-so; 1-Difficult  
ARIES (March 21-April 19)  
★★★★ Take one of the whimsical ideas you have been toying with and start manifesting it. You could experience the gamut of emotions, from being misunderstood to feeling a sense of true mental mutuality. Pressure is likely to build. Tonight: Out till the wee hours.  
TAURUS (April 20-May 20)  
★★★★ You might wake up with some strange new ideas. You'll want to test them out on a friend first. Be honest with yourself about whether this person is just a part of your fan club or is really being open with you. Tonight: You could be taken aback by a sudden insight.  
GEMINI (May 21-June 20)  
★★★★ Defer to someone else, and understand what needs to happen in order to make a situation work. This person could have very different needs from your own. Recognize the balance, and know that you will need to give far more than you might expect. Tonight: In deep conversation.  
CANCER (June 21-July 22)  
★★★★ You could be thinking about what needs to be done, but you might decide to let someone else do it. Actually, your decision would be using your energy well, as you would be helping this person out; he or she needs to be more dominant. Tonight: Let others make the first move.  
LEO (July 23-Aug. 22)  
★★★★ You could be livelier than you have been in a while. Confusion will mark a discussion. It would be helpful to recognize whether you are heading in the wrong direction. You might need to backtrack, but you also might not be

in the mood for any big changes. Tonight: Ever playful.  
VIRGO (Aug. 23-Sept. 22)  
★★★★ Your creativity will emerge. You can deal with any uproar better than your friends can. Recognize that your resourcefulness is needed. You might need to clarify your choices in order to avoid making a mistake. Others could have difficulty manifesting their ideas. Tonight: In the moment.  
LIBRA (Sept. 23-Oct. 22)  
★★★ Stay close to home to avoid making a mistake. How you feel could be very different from your norm. Make it a point not to worry so much. Your creativity and emotional resonance will emerge, which will draw others toward you. Tonight: Just make it easy.  
SCORPIO (Oct. 23-Nov. 21)  
★★★★ You'll smile and work through a problem by asking questions and having a talk. You are more centered than you have been, so you won't have a problem with a runaway imagination. You'll find ways of harnessing your ideas and making them work. Tonight: Visit with others.  
SAGITTARIUS (Nov. 22-Dec. 21)  
★★★★ Be aware of the costs of pursuing what appeals to you. You might want to hold off for now or do some price comparisons. You will learn a lot about those around you from their reactions. Tonight: Acknowledge what needs to happen in order to get past the present situation.  
CAPRICORN (Dec. 22-Jan. 19)  
★★★★ You'll wake up feeling on top of your game. You might decide to explore what would suit your long-term plans best. You could discover that your thoughts are quickly changing. Give yourself the space to play with different ideas. Tonight: The world is your oyster.  
AQUARIUS (Jan. 20-Feb. 18)  
★★★ You might feel as if you need to get some space in order to make the appropriate decision that will serve you best. Sometimes saying little and reflecting is a far more powerful process when it comes to making a positive decision. Tonight: Get some extra sleep -- you will need it.  
PISCES (Feb. 19-March 20)  
★★★★ Stay focused on what you need rather than on what someone else wants. You will discover that there is a midpoint where both of you could feel content with the situation in question. Be aware of a tendency to go overboard. Tonight: Let the good times begin.



# PampaSports

## LADY HARVESTERS STUN LADY WOLVES IN DALHART



Photos by John Lee

Above left, Allison Noble (6) strikes the ball across the net. Above middle, Brittney Gonzalez (5) prepares to make a dig in Pampa's first set of the match. Above right, Caragan Niccum (8) attempts a soft send across the net. Below left, Genevieve Zavala makes a serve in the first set Saturday. Kirstin Hood (4) makes a dig and sets the ball for the next player. Bottom, the Lady Harvesters regroup during a timeout in the first set of the match Saturday.



**Got A Sports Story or Photo?**

Send it to us!  
 jcllee@thepampanews.com  
 or bring it to the paper!

If you don't see it after a week, call us!  
 669-2525 ext 209

**WESTERN FINANCE**

WHERE SERVICE COUNTS  
**LOANS up to \$1300**  
 We Specialize in Helping People Who Have NO CREDIT OR BAD CREDIT

- LOANS ON CLEAR CAR TITLE
- COLLATERAL & SIGNATURE LOANS
- CREDIT STARTERS

2115 N Hobart • Pampa  
 806-665-0970  
 Apply by Phone Today!  
All loans are subject to our liberal credit policy and credit limitations, if any.  
[www.WesternShamrock.com](http://www.WesternShamrock.com)

**f**  
 find us on **Facebook**

To find Breaking News, Event Photos, & Video Clips.

facebook.com/  
 thepampanews

**Follow Us On**

**Twitter**

@thepampanews

**2 GREAT OFFERS EVERY WEEK AT KFC**

SPECIAL OFFER MONDAYS ONLY

**2-PIECE MEAL \$2.99**  
plus tax | no substitutions lunch or dinner | no limit  
 leg and thigh  
 individual mashed potatoes with brown gravy  
 1 freshly prepared biscuit

SPECIAL OFFER WEDNESDAYS ONLY

**CHICKEN FRIED STEAK MEAL \$1.99**  
plus tax | no substitutions lunch or dinner | no limit  
 chicken fried steak with white gravy  
 individual mashed potatoes with gravy  
 individual cole slaw | 1 freshly prepared biscuit

DINE IN - DRIVE THRU - CARRY OUT

PAMPA 2201 N. Hobart St. 665-2766

**YOU HAVE HEARD ABOUT IT BUT DID NOT BELIEVE IT WOULD HAPPEN**

**WATCH FOR IT!**

**CULBERSON-STOWERS** 805 North Hobart Street  
 806-665-1665



# PampaSports

## PAMPA HARVESTERS WIN AGAINST TULIA HORNETS



Photos courtesy of Charla Shults  
 Above left, Colton Thompson runs with the ball after one of his three interceptions in the game Friday. Francisco Salazar and Ryan Lee look for Tulia players to help lead the way for Thompson. Above center, Jayson Thomas makes a move to evade a Hornet defender. Raul Cortez is running towards to play in hopes to find a Tulia player to block. Above right, Brendon Woelfle tries to juke defenders after a catch in Friday night's game. Below left, Alec McClendon reaches up to snag the ball out of the air for a catch. Below right Zack Gates is in position and ready to make the catch. Far bottom, four Pampa Harvesters combine to get into the backfield and block a Tulia punt in the third quarter. Pampa won the game 31-7 and is 2-3 on the year.

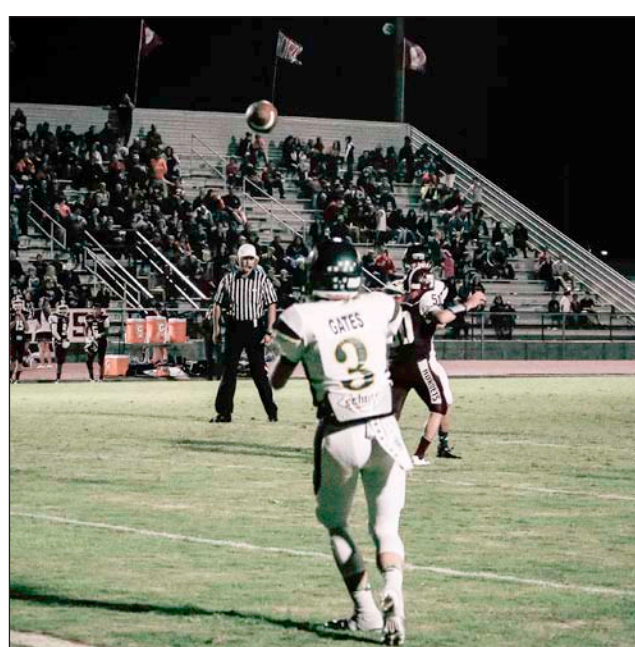
**Somerville Street  
 Church of Christ**

**Gospel Meeting**

October 1 through October 5  
 Sun: 10:30 a.m. & 2:30 p.m.  
 Wed - Sat: 7:00 p.m.

Guest Speaker  
 Evangelist Pat Mannon  
 Huntsville, Arkansas

Come join us at  
**500 N. Somerville**



**NOW SELLING**

**HUNTING  
 AND  
 FISHING  
 LICENSES!**

**PRESTIGE**  
 OUTDOORS DIVISION

101 S. HOBART 806-665-3500



Is your old carpet tired?

Spruce things up!  
 Large in-stock selection to choose from.

**One STOP Flooring**

1533 N. Hobart • (806) 665-0995  
 Mon-Fri 9am - 5pm • Sat 10am - 1pm

GOD BLESS!

Say Goodbye to Summer & WELCOME FALL!

**Summer Specials**

*Daileys Pouches* 2/\$2.99  
*Parrot Bay* \$13.99  
*Malibu* - Piña Colada \$14.99  
*Top Shelf* Piña Colada & Blue Hawaiian \$6.99  
*Salvadors* Margarita \$6.99

**FALL SPECIALS**

**OLE SMOKEY MOONSHINE** All flavors \$13.99  
**PADDY** Irish Whiskey \$19.99  
**JIM BEAM** 1.75 L \$24.99  
**SEAGRAMS 7** Crown \$21.99  
**PEARL VODKA** \$14.99  
**SMIRNOFF** \$19.99  
**FRIO BEER** 30 PK \$18.99 6 PK \$3.99

**Special Discounts**  
 • When you Buy Cases

**Mikey's Liquor Store**  
 1222 Price Rd. • 806-665-9662 M-S 10am - 9pm

The Ones to Trust  
**TRUSTAR**  
 REAL ESTATE

Gary Winton:  
 Realtor®/Office Manager  
 806-440-1698  
 1712 N. Hobart  
 (806) 665-4595

We help you buy or sell your home!

Ron Lilley, Broker



# PampaSports

## HARVESTERS TENNIS WINS VERSUS PERRYTON



Photos by John Lee

Above left, AJ Mitchell runs up to wait for the ball. Above middle, Christian Ulrey hits the ball. Jordi Gonzalez serves the ball in an exhibition match. Left, Kacee Sellers plays in a doubles match. Below left, Lane Terry serves the ball in a doubles a match with his partner Chase Cree. The Pampa Harvesters' tennis team took on Perryton last Thursday and won all of their matches. They take on Perryton on Saturday in Perryton starting at 9 a.m.



### Gotta Have it?

Get the financing you need, and get the car you want! Drop by today and find out how affordable your next vehicle can be!



Either new or existing members. We are here to serve you, in Pampa.

807 N. Sumner Pampa, TX  
806-665-4212  
www.pantexfcu.com

Federally Insured by NCUA

Now Available:  
PHS Circle Crest



**T-SHIRTS & MORE**  
111 W. KINGSMILL • 806-665-3036

# DO YOU HAVE A FLAG THAT IS TATTERED AND WORN?

The Pampa News is now a drop-off location for flags that need to be retired. Worn flags can be brought to the Pampa News office Monday–Friday 8am - 5pm (excluding holidays). Flags will be given to the local VFW for proper care.

The  
**PAMPANEWS**  
403 W. Atchison • 806-669-2525



# PAMPA REGIONAL MEDICAL CENTER

## Health & Wellness Fair

Saturday, October 4, 2014

8:00 am to 12:00 pm



# FREE to the Public!

- Free for all ages!
- Low-cost lab screenings
- Blood pressure checks
- Vendor booths with give-aways
- Tours of the hospital
- FREE food and beverages!
- Hands-on activities
- First Aid information
- Games
- ...and much more

Please fill out this form →



**HEALTHFAIR 2014**

806-665-3721

Saturday, October 4  
8:00 a.m. - 12:00 p.m.  
Pampa Regional Medical Center  
One Medical Plaza, Pampa, Texas 79065

HEALTH FAIR PRE-REGISTRATION FORM		
Legal Name _____	Date of Birth _____	Sex _____
Email Address: _____		
Address _____		
City _____	State _____	Zip _____
Phone (Home) _____		(Work) _____
Physician's Name _____		
<b>Do Not Eat or Drink for 12 hours Prior to Blood Test</b>		
* Complete Blood Profile includes: Cholesterol, Hemoglobin (anemia), White Blood Cell Count, Liver Function, Kidney Function, Blood Sugar, Electrolytes and Calcium and optional PSA for men.		
Cost without PSA = \$20.00 + PSA \$24.00 (total cost applies only to day of healthfair) Payment must accompany pre-registration form.		
<b>NO REFUNDS</b>		
Please make <b>check payable</b> to: Pampa Regional Medical Center		
Results will be mail directly to patient address listed above, results will not be mailed to provider.		
<a href="#">Read and sign consent below</a>		

You have requested to have your blood drawn by an employee of Pampa Regional Medical Center. The purpose of this blood draw is to obtain specimens for laboratory testing.

**1. PROCEDURES:** If you agree to this procedure, the following will happen. Blood will be taken from a vein in your right or left arm or the top of your right or left hand. The blood draw will take about 10 minutes of your time. After the draw the blood is centrifuged, labeled, packaged and sent for testing.

**2. RISKS/DISCOMFORTS:** The risks of having blood drawn include temporary pain from the needle stick, bruising, and rarely, infection. Some patients may experience dizziness, possibly lightheaded or rarely fainting. In this case, the needle will be removed and the phlebotomist will proceed to keep the patient comfortable.

**3. AUTHORIZATION:** I have read this consent form. All of the questions I have asked have been answered to my satisfaction. I agree to this procedure.

Patient's Signature: \_\_\_\_\_ Patient's Legal Name (print legibly): \_\_\_\_\_

Person Obtaining Consent (Signature): \_\_\_\_\_ Date: \_\_\_\_\_

Have you ever been a patient at Pampa Regional Medical Center before?  Yes  No



### Pampa Regional Medical Center Health & Wellness Fair

*On the campus of Pampa Regional Medical Center*

*One Medical Plaza - Pampa, TX*

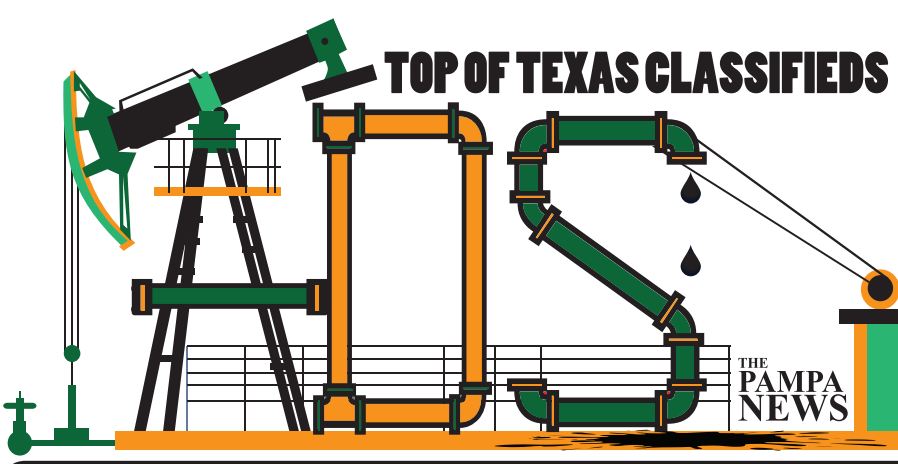
For more information contact us: (806) 665-3721 PRMC.TX.com



**YOU HAVE HEARD  
ABOUT IT  
BUT DID NOT  
BELIEVE IT  
WOULD HAPPEN**

**WATCH  
FOR IT!**





**ADS For Sale** Call Us today For Details!

**ADS Jobs** Call Us today For Details!

**ADS Services** as low as \$69 per month see display

**ADSHappy Ads** FREE \$3 with photo

Say Happy Birthday to friends for **FREE**

5 Lines for 7 days **\$37.50**

7 Lines for 7 days **\$47.50**

Reaching over 12,000 readers daily • Call Us at (806) 669-2525

**Lost & Found**  
 LOST Wed. fe. beige Pomeranian, kid's pet-600 bl. N. Frost. \$100 Reward. 886-1250, 8886-1258, 669-1117.

**Carpet Service**  
 NU-WAY CLEANING SERVICE Bob Marx Owner-Operator. Call 665-3541.

**Help Wanted**  
 BRANDON'S FLOWERS now hiring for immediate position!! Full-Time Delivery Driver. Must be reliable, over 21 yrs., clean driving record, no criminal history. Must work weekends & be able to lift 50 lbs. on regular basis. Apply in person 123 N. Cuyler, downtown Pampa.

**Help Wanted**  
 CDL Driver with Tanker Endorsement. Must pass DOT drug test. Sweetwater Frac, 580-534-2622.

**Help Wanted**  
**IMMEDIATE OPENING FOR PARTS / WAREHOUSE HELP**  
 Duties include: check orders, put up freight, deliver parts. The perfect candidate must be 21 or older, have clean driving record and able to pass drug test. This is a **Full-Time position. 8am-5pm Mon.-Fri. Apply in person at CULBERSON-STOWERS PARTS DEPT., ask for CHRIS POPE.**

**Help Wanted**  
 NOW Hiring Crude Oil Drivers in Pampa, Tx area. Local hauling-home daily. New equipment, paid weekly, earn up to \$80K/Yr. Quarterly safety & performance bonus. Paid orientation/training. 401K, Life, Medical, Dental, Vision. Must have valid Class A CDL with X Endorsement, minimum 12 mo. T/T or tanker exp. req. Military driving exp. accepted w/ DD214. Call Lori Hernandez 800/737-9981 for more info. or visit us online www.MIPE.com to apply.

**Help Wanted**  
 WAIT Staff and Line Cook needed. Drug free work environment. Apply in person Pampa Country Club, 1765 E. Harvester. NO phone calls, please!

**Unfurnished Apts.**  
 TEXAS SIZE APTS. 1 and 2 bdr. Apts. Largest in Pampa Plus Houses Too! Great Value! 665-1875 or 881-8518

**Homes for Sale**  
 2127 N. Nelson. 3 bdr., 1 ba. New carpet, paint & ceramic tile in kitchen. Travis Sch. Move-in Ready! 570-9924.

**Carpentry**  
 CUSTOM Building & Remodeling: Kitchens, Bathrooms & Additions. Shawn Deaver Construction, 662-2977

**Help Wanted**  
**Assistant Mgr. Full-Time**  
 150 unit apt. complex Must work Saturdays Apply in person 1601 W. Somerville or call 665-7149

**Help Wanted**  
**CARHOPS NEEDED AT SONIC!**  
 Apply online at [sonicdrive.com/jobs](http://sonicdrive.com/jobs)

**Help Wanted**  
**CULBERSON-STOWERS, INC. IS NOW HIRING MOTIVATED AND ENERGETIC SALES PEOPLE to join our Professional Sales Staff !! 5 day work week. 3 mo. guarantee / training provided. Click on the "Now Hiring Tab" on the top of our webpage at [culbersonautos.com](http://culbersonautos.com)**

**Help Wanted**  
**INSERTER**  
 This part-time night position is responsible for handling newspaper bundles and inserting advertising supplements into the daily newspaper. This position requires constant standing, repetitive bending, stooping and lifting of advertising inserts and newspaper bundles of up to 50 lbs. Candidates must be able to work Mon-Fri nights. Shift usually begins around 10:00 or 11:00 pm. To apply, come by 403 W. Atchison. EOE We are a drug-free workplace.

**Help Wanted**  
**NEEDED-Positive and encouraging individual to help teach exercises to patients. Willing to train. Fax resume to 806-665-0537.**

**Help Wanted**  
**Miscellaneous**  
 FOR SALE: Double Lawn Crypt in Memory Gardens. Call 806-898-2451

**Unfurnished Houses**  
 2 bdr., 1 ba, 1 car gar. Washer, dryer, stove refig. incl. Lrg fenced yard \$645 mo. 516 Nelson. 806-584-1266

**LOOKING for a home that is completely move-in ready? Stunning 4 bdr., 2 ba., located 1911 N. Russell. \$185,000. Call for appt. 595-0234**

**OVERHEAD DOOR REPAIR.** Kidwell Construction. Call 669-6347, 806-663-0192.

**Garage Sale**  
 FABULOUS Estate Sale, 2554 Beech, 9am-5pm. Fri. Oct. 3rd, Sat. Oct. 4th. Something for everyone! All items must go!!

**Garage Sale**  
 NEED Money NOW? We Buy & Sell Houses & pay TOP \$\$\$ Call today! 665-1875

**Garage Sale**  
 SIVALLS Inc. is looking for Welder Fabricators must pass weld tests and Industrial Maintenance Tech. Drug tests are required. Benefits: health ins., profit sharing, 401K, 8 paid holidays, 10 days vacation per year. 806-665-7111, Pampa

**Garage Sale**  
 CAPROCK APTS. 1, 2 and 3 bedrooms with rent starting as low as \$450/mo. Pool and on-site laundry, W/D hookups in all 2 and 3 bdrms. 665-7149.

**Garage Sale**  
 Schneider Apartments: Call for special rates. Short term lease. Business people welcome. 665-0415

**Garage Sale**  
 APTS. Houses Duplexes. K&B Properties. Ref. & dep. req. Lakeview Apts. 665-0995

**Garage Sale**  
 \$395/mo. and up!! 2 & 3 Bdrm Houses for rent. 665-1875 or 881-8518

**Trailer Parks**  
 Tumbleweed Acres: storm shelters, fenced, stor. bldg. avail. 665-0079, 886-2230

**CRYPTOQUOTE**  
 AXYDLBAAXR is LONGFELLOW  
 One letter stands for another. In this sample, A is used for the three L's, X for the two O's, etc. Single letters, apostrophes, the length and formation of the words are all hints. Each day the code letters are different.  
**9-30 CRYPTOQUOTE**  
 BMH'D DJRR OJMORJ VMF DM  
 BM DVTHXU, DJRR DVJP FVWD  
 DM BM WHB RJD DVJP  
 ULGOGTUJ EML FTDV DVJTG  
 GJULRDU. — XJMGXJ U. OWDDMH  
**Yesterday's Cryptoquote:** I CANNOT ENDURE TO WASTE ANYTHING SO PRECIOUS AS AUTUMNAL SUNSHINE BY STAYING IN THE HOUSE. — NATHANIEL HAWTHORNE

**CRUDE OIL TRANSPORT DRIVERS**  
 Plains All American GP, LLP is a publicly traded master limited partnership ("MLP") engaged in the transportation, storage terminal and marketing of crude oil, refined products and liquefied petroleum gas and other natural gas related petroleum products (together "LPG").  
 Our fleet of over 600 company trucks is equipped with electronic logging which reduces driver paperwork and the on-board computer system provides a host of information including 2-way communications and GPS tracking capabilities. We are expanding operations in Pampa, TX and looking for experienced commercial drivers.  
 Drivers transport Crude Oil products between customer leases, tanks, pipelines and more. All drivers will enter a period of training to demonstrate proficiency in driving, crude oil measurement and testing, operation of truck on-board computer system and ticketing process. We offer local driving and are currently looking for drivers to work the night shift in the area.  
 We offer competitive Commission opportunities, \$5,000 sign-on bonus, \$1,500 wage advance, \$3,300 quarterly performance bonus and exceptional benefits.  
 A CDL with Tanker and Hazmat endorsements required and a minimum of 2 years tanker transport experience is preferred. Candidates must be able to successfully pass criminal, drug and driving record screening.  
**To apply, call Alan Swartz at 580-225-1385 ex 2.**  
 An Equal Opportunity Employer.

**Christian Church of Pampa, TX** is accepting applications for Nursery Worker. This is a part-time position for Sun. mornings, Wed. evenings and special occasions. Qualified individual must be able to pass a background check and become First Aid / CPR qualified within 6 weeks of hire date. Please pick up application at the church office, 1633 N. Nelson.

**FLOOR HANDS** Wanted. 100% paid ins., uniforms provided. Holman Well Service, Gray Co. Rd. 2 at Hwy. 152, Pampa. NO phone calls.

**HEAVY Industrial Mechanic**, skilled with diesel, gasoline & hydraulics. Download application [connerindustriestx.com](http://connerindustriestx.com) and email it to [chris@connerindustriestx.com](mailto:chris@connerindustriestx.com)

**NOTICE**  
 Readers are urged to fully investigate advertisements which require payment in advance for information, services or goods.

**FREE ADS**  
 for Free Items! Call Us Today! 669-2525

**Maintenance Tech**  
 needed for a 150 unit Apt. Community Salary DOE. Apply 1601 W. Somerville, or call 665-7149

**Yard Manager**  
 Responsible for moving, loading & organizing tank inventory in yard. Forklift experience required. Competitive pay, paid health insurance, profit sharing, and bonus. **APPLY NOW:**  
 \* Online at [www.wwtank.com/employment](http://www.wwtank.com/employment)  
 \* In person at 100 N. Price Rd. Pampa, Texas

**PLAINS ALL AMERICAN**  
**CRUDE OIL TRANSPORT DRIVERS**  
 Plains All American GP, LLP is a publicly traded master limited partnership ("MLP") engaged in the transportation, storage terminal and marketing of crude oil, refined products and liquefied petroleum gas and other natural gas related petroleum products (together "LPG").  
 Our fleet of over 600 company trucks is equipped with electronic logging which reduces driver paperwork and the on-board computer system provides a host of information including 2-way communications and GPS tracking capabilities. We are expanding operations in Pampa, TX and looking for experienced commercial drivers.  
 Drivers transport Crude Oil products between customer leases, tanks, pipelines and more. All drivers will enter a period of training to demonstrate proficiency in driving, crude oil measurement and testing, operation of truck on-board computer system and ticketing process. We offer local driving and are currently looking for drivers to work the night shift in the area.  
 We offer competitive Commission opportunities, \$5,000 sign-on bonus, \$1,500 wage advance, \$3,300 quarterly performance bonus and exceptional benefits.  
 A CDL with Tanker and Hazmat endorsements required and a minimum of 2 years tanker transport experience is preferred. Candidates must be able to successfully pass criminal, drug and driving record screening.  
**To apply, call Alan Swartz at 580-225-1385 ex 2.**  
 An Equal Opportunity Employer.

**FLOOR HANDS** Wanted. 100% paid ins., uniforms provided. Holman Well Service, Gray Co. Rd. 2 at Hwy. 152, Pampa. NO phone calls.

**HEAVY Industrial Mechanic**, skilled with diesel, gasoline & hydraulics. Download application [connerindustriestx.com](http://connerindustriestx.com) and email it to [chris@connerindustriestx.com](mailto:chris@connerindustriestx.com)

**NOTICE**  
 Readers are urged to fully investigate advertisements which require payment in advance for information, services or goods.

**FREE ADS**  
 for Free Items! Call Us Today! 669-2525

**Maintenance Tech**  
 needed for a 150 unit Apt. Community Salary DOE. Apply 1601 W. Somerville, or call 665-7149

**Yard Manager**  
 Responsible for moving, loading & organizing tank inventory in yard. Forklift experience required. Competitive pay, paid health insurance, profit sharing, and bonus. **APPLY NOW:**  
 \* Online at [www.wwtank.com/employment](http://www.wwtank.com/employment)  
 \* In person at 100 N. Price Rd. Pampa, Texas

**Tank Delivery Driver**  
 Immediate opening for Class A CDL drivers to deliver and set fiberglass and steel tanks. Must pass drug test and DOT Physical. Competitive pay, paid health insurance, profit sharing and bonus. Home most nights. **APPLY NOW:**  
 \* Online at [www.wwtank.com/employment](http://www.wwtank.com/employment)  
 \* In person at 100 N. Price Rd. Pampa, Texas

**OFFICE space for rent.** Ask about 3 months free rent. 669-6841

**"Forever Friends" Looking For A Loving Home**



**"Walter Croncat"**  
 DSH Male  
 #14970



**"Felix Thunderpaws"**  
 DSH Male  
 #14964



**"Ms Ruffles Truffles"**  
 Boxer Mix Female Puppy  
 #15025



**"Honest Bob"**  
 Min Pin Mix Male Puppy  
 #15020



**"Princess Taffeta"**  
 Terrier Mix Female  
 #15011



**"Mr. Woofington"**  
 Terrier Male  
 #14992

**Donations needed:**  
**Blankets, Throws, Sheets, and Small Non-slip Rugs**  
 Monetary Donations may be made Online at [www.pampaanimalwelfaresociety.com](http://www.pampaanimalwelfaresociety.com)

Sponsored by:  
**BOURLAND & LEVERICH**  
 an Edgen Group Company



**"Maximus"**  
 Ridgeback Male  
 #14983



**"Prissy Porkchop"**  
 Shepherd Mix Female  
 #14936



**"Beanie Weenie"**  
 Pit Mix Female  
 #14982

For more info about these pets or for any other questions, call 806-669-5775.





# TOP OF TEXAS CLASSIFIEDS

Reaching over 12,000 readers daily • Call Us at (806) 669-2525

**Motorcycles**  
**2005 EXTOIX CYCLE VISION**  
 Replica of Easy Rider  
 6 spd 124cc S&S  
 Lots of Chrome  
**\$11,500 OBO**  
**806-662-1985**

**2007 HARLEY SPORTSTER 1200**  
 4900 Miles  
 White Gold Pearl  
 Excellent Shape!!  
 \$7500  
 Call 663-6317

---

**General Services**  
 CERAMIC tile work, stucco, cement, remodeling, floor, shower, kitchen. Texture, painting, dry wall. Free estimate. New # 440-0239, leave msg, Jesus Baraza.

---

**General Services**  
 COX Fence Company. Repair old fence or build new. Free estimates. Call 669-7769

**HANDYMEN** For Hire! Tree Trimming Specials, Tiling, Any Odd Jobs. Great prices! For estimates 663-2681.

**HOUSE** cracking? In bricks or walls? Childers Brothers, Inc. 800-299-9563, 806-352-9563.

**JH CONCRETE** all types of concrete incl stamp, fence, pools. Free est, financing available. 806-382-5408.

Ogle Fence Company  
 Free Estimates  
 Repair & New Const.  
 665-1712



## Dear Abby...

By Pauline & Jeanne Phillips

**DEAR ABBY:** explain your frank talk with try not to do it your hearing concerns for her and explain often) if I missed loss right off the bat. If a woman finds you attractive, she will find ways to accommodate the problem. And if she doesn't, then she wasn't the right candidate for a relationship in the first place.

How can I convince my aging, sick sister-in-law that her feeble husband's care is too much for her at this point? She can barely care for herself, yet she must help him eat, get out of chairs — everything short of chew his food for him. I have tried telling her she deserves respite care of some kind, to no avail.

Have you any ideas how I can convince her she is literally killing herself and deserves some assistance? Their three daughters are no help at all to them. They turn a blind eye from their parents' situation.

**RELATIVE WHO CARES IN OHIO**  
**DEAR RELATIVE:** I can think of a few things you might do to help. The first would be to talk to the daughters and

be as effective a caregiver as she obviously wants to be, she's going to have to take better care of herself because to point the track she's on right now it seems worth it to find a relationship or even her life, and that's no exaggeration.

**DEAR ABBY:** I'm a 29-year-old single man who is hard of hearing. I have a steady job and plans for a good future, but I'm having trouble in the dating world. I would love to have a special someone in my life, but I'm shy. I have a hard time talking with the girls who live in my area. I can hear people pretty well unless they mumble or talk quietly, or face away from me when they speak. I have asked people to repeat what they say (I

be as effective a caregiver as she obviously wants to be, she's going to have to take better care of herself because to point the track she's on right now it seems worth it to find a relationship or even her life, and that's no exaggeration.

**DEAR ABBY:** I'm a 29-year-old single man who is hard of hearing. I have a steady job and plans for a good future, but I'm having trouble in the dating world. I would love to have a special someone in my life, but I'm shy. I have a hard time talking with the girls who live in my area. I can hear people pretty well unless they mumble or talk quietly, or face away from me when they speak. I have asked people to repeat what they say (I

be as effective a caregiver as she obviously wants to be, she's going to have to take better care of herself because to point the track she's on right now it seems worth it to find a relationship or even her life, and that's no exaggeration.

**DEAR ABBY:** I'm a 29-year-old single man who is hard of hearing. I have a steady job and plans for a good future, but I'm having trouble in the dating world. I would love to have a special someone in my life, but I'm shy. I have a hard time talking with the girls who live in my area. I can hear people pretty well unless they mumble or talk quietly, or face away from me when they speak. I have asked people to repeat what they say (I

be as effective a caregiver as she obviously wants to be, she's going to have to take better care of herself because to point the track she's on right now it seems worth it to find a relationship or even her life, and that's no exaggeration.

**DEAR ABBY:** I'm a 29-year-old single man who is hard of hearing. I have a steady job and plans for a good future, but I'm having trouble in the dating world. I would love to have a special someone in my life, but I'm shy. I have a hard time talking with the girls who live in my area. I can hear people pretty well unless they mumble or talk quietly, or face away from me when they speak. I have asked people to repeat what they say (I

ing a better conversationalist and a more sociable person, order "How to Be Popular." Send your name and mailing address, plus check or money order for \$7 (U.S. funds) to: Dear Abby, Popularity Booklet, P.O. Box 69440, Mount Morris, IL 61054-0447. (Shipping and handling are included in the price.)

\*\*\*\*\*  
 For an excellent guide to becoming

**HERBS • VITAMINS • WEIGHT LOSS ENERGY • WOMEN'S & MEN'S NEEDS**

## Herbs Etc.

**\* NEW \***  
**Slim Success Weight Loss Program**  
 5 simple steps to Lose Weight & Boost Metabolism  
 \*Tailored to the individual  
**\*REAL FOOD** plus convenient options

You'll never feel deprived!  
 Class attendance optional  
 Feel better and PREVENT health problems!

**M-F 10-5:30**

**109 W Kingsmill . Pampa**  
**(806) 665.4883 M-F 10-5:30**  
**www.panhandlesunshine.com**

Answer to yesterday's puzzle:

6	3	5	8	1	9	2	4	7
2	7	1	3	5	4	6	9	8
4	8	9	2	7	6	1	5	3
3	6	4	1	2	8	9	7	5
5	1	8	9	3	7	4	6	2
7	9	2	6	4	5	8	3	1
9	4	3	5	8	2	7	1	6
8	5	7	4	6	1	3	2	9
1	2	6	7	9	3	5	8	4

**SUDOKU**

5			4				2	8
9		6						
	3			9		6	1	
8							6	9
1	5		8		4			3
			7	2	5	8		
	1	5						
			5			3	4	
2	6	4					5	

Level: Beginner

THIS AD HAS BEEN SEEN BY OVER 7,000 PEOPLE TODAY

**ADVERTISE HERE GET NOTICED**

THE PAMPA NEWS (806)-669-2525

## BANANAGRAMS!

Use the 15 tiles in this bunch to create words that fit into the grids below. To get you started, a few tiles from the bunch have been placed, and the BANANA BITES provide hints. Reuse the tiles for each grid.

**LEVEL**

**BANANA BITE:** One word means "to investigate."

**BANANA BITE:** One word means "to put together again."

Yesterday's Answer: TRIVIAL, BRAVELY, GRAPHED, CAPTAIN

## CROSSWORD

By THOMAS JOSEPH

**ACROSS**  
 1 Indian lutes  
 7 Pile  
 11 Maine national park  
 12 Eyeball  
 13 Lone Star State officer  
 15 Bike parts  
 16 Make progress  
 18 Uneven hairdo  
 21 Fair  
 22 Singer Robert  
 24 Many a time  
 25 "Oh, wow!"  
 26 "My word!"  
 27 Go  
 29 Make brownies  
 30 Tooth part  
 31 Neutral color  
 32 Sculptor Henry  
 34 Hero of an old kids' TV series  
 40 Sneaker problem  
 41 Salad base  
 42 Corrals  
 43 Put on, as a play

**DOWN**  
 1 Plopped down  
 2 Rink stuff  
 3 Receipt line  
 4 Slow passage  
 5 Up  
 6 Mystery writer  
 7 Tokyo's island  
 8 Nest item  
 9 Saloon supply  
 10 For each  
 14 Fiery crime  
 16 Succeed  
 17 The Jetsons' dog  
 19 Pond growth  
 20 Not at all cool  
 21 Cry loudly  
 22 Opening  
 23 Golf peg  
 25 Car part  
 28 Out-of-the-park hits  
 29 Starr of the comics  
 31 Endowment  
 33 Valuable rocks  
 34 Catchy music  
 35 Poem of praise  
 36 Took the title  
 37 Musician's job  
 38 Cain's mother  
 39 Scarlet

R	I	N	G	S		I	S	L	E	S
I	D	I	O	T		N	I	E	C	E
M	A	P	L	E		S	T	A	R	E
			D	A	S	H		P	U	P
C	A	T	S	M	E	O	W			
A	T	O	M		A	R	O	M	A	S
Y	O	G	I	S		T	R	I	B	E
S	P	A	T	E	S		D	R	E	W
			H	E	A	D	S	E	T	S
P	A	D		S	W	I	M			
O	S	A	K	A		M	I	A	M	I
S	H	R	E	W		E	T	H	E	R
T	E	E	N	S		S	H	A	G	S

THOMAS CROSSWORD BOOKS 1 AND 2! Send \$4.75 (check/m.o.) for each book to P.O. Box 536475, Orlando, FL 32853-6475

## Discover for yourself why Germania is The Insurance Texans Trust.®

**Taylor & Miller Insurance Agency**  
 120 East Browning  
 806-669-3062

**Germania INSURANCE**  
 HOME • AUTO • LIFE  
 www.GermaniaInsurance.com

1	2	3	4	5	6		7	8	9	10
11							12			
13							14			
			15							
	16	17				18		19	20	
21					22					23
24				25				26		
27			28				29			
	30						31			
			32		33					
34	35	36						37	38	39
40						41				
42						43				

9-30



# ARE YOU READY FOR IT?

TRADE UP TO ONE OF OUR QUALITY PREOWNED CARS OR TRUCKS & IN MOST CASES LOWER YOUR CURRENT PAYMENTS

2011 FORD EDGE	#4150A / LIMITED / NAVIGATION / LIKE NEW	\$25,988
2012 FORD EDGE	#T3050A / SHARP / LOW PAYMENTS	\$15,980
2011 FORD ESCAPE	#C2131C / CLEAN / LOW PAYMENTS	\$13,988
2009 GMC ACADIA	#G4052A / THIRD ROW / LOW PAYMENTS	\$21,988
2011 GMC SIERRA CREW 4X4	#G4055A / LIKE NEW / LOADED	\$32,988
2012 GMC SIERRA CREW 4X4	#4116A / SHARP	\$29,880
2012 HYUNDAI ELANTRA	#4147A / LIMITED / LIKE NEW / LOADED	\$15,988
2013 HYUNDAI ELANTRA	#4152A / SAVE THOUSANDS	\$15,988
2005 JEEP WRANGLER 4X4	#T3140B / AUTOMATIC / HARD TOP / RUBICON	\$14,988
2011 KIA SOUL	#4135A / SUPER BLACK / LOW PAYMENTS / FUN	\$12,988
2011 KIA SOUL	#4139A / LOADED / CARGO ROOM / GAS SAVER	\$12,988
2013 KIA FORTE SEDAN	#4134A / SAVE / LOW PAYMENTS	\$13,988
2006 MINI COOPER	#4130A / LOW MILES / GREAT SCHOOL CAR / LOADED / RARE	\$13,988
2011 NISSAN JUKE	#4133A / LOW MILES / LOADED / FUN	\$17,988
2011 NISSAN MURANO	#4138A / LOADED / CLEAN	\$21,988
2007 PONTIAC G6	#T4083B / CONVERTIBLE / LOW MILES / CLEAN / RARE	\$13,988
2009 TOYOTA COROLLA	#4136A / NICE / FUN / LOADED	\$13,988
2011 TOYOTA CAMRY	#4125A / LOADED / SHARP / LOW PAYMENTS	\$15,988
2011 TOYOTA 4-RUNNER	#T4054A / LIMITED / 4X4 / ONE OWNER	\$31,988
2011 TOYOTA RAV 4	#4114A / CLEANEST IN TOWN / LOW MILES	\$17,988
2011 TOYOTA RAV 4	#4115A / SHARP / LOW PAYMENTS	\$22,988
2012 TOYOTA CAMRY	#4118A / SAVE / SAFETY / CLEAN	\$17,988
2013 TOYOTA CAMRY XLE	#4149A / MOONROOF / LOADED / SAVE THOUSANDS	\$23,988

## ON THE SPOT APPRAISALS



**2014 CHEVY MALIBU**  
#4145A PROGRAM CAR SAVE \$\$

**\$20,988**



**2014 CHEVY IMPALA**  
#4143A PROGRAM CAR SAVE \$\$\$

**\$23,988**



**2014 CHEVY IMPALA**  
#4148A PROGRAM CAR LIKE NEW

**\$22,988**



**2014 CHEVY SILVERADO**  
#4144A PROGRAM TRUCK SAVE \$\$

**\$36,988**



**2011 CHRYSLER 300**  
#4142A LOW MILES LIKE NEW

**\$25,988**



**2012 CHRYSLER 200**  
#4141A LIMITED LOADED

**\$17,988**



**2014 CHRYSLER 300**  
#4151A HEMI LEATHER NAVIGATION

**\$26,988**



**2013 DODGE AVENGER**  
#4122A LOW MILES LIKE NEW

**\$15,988**



**2011 BUICK ENCLAVE**  
#4131A LOW MILES CLEAN

**\$24,998**



**2007 CHEVROLET TAHOE**  
#T4013C ONLY 25K MILES

**\$27,888**



**2011 CHEVY SILVERADO**  
#4140A LIKE NEW 4X4

**\$28,888**



**2011 CHEVY SILVERADO**  
#4137A SHARP

**\$28,888**



**2012 CHEVY CRUZE**  
#4132A LOW PAYMENTS

**\$13,988**



**2012 CHEVY SILVERADO**  
#4146A 4X4 CLEAN

**\$32,988**



**2012 CHEVY SILVERADO**  
#4123A LIKE NEW CREWCAB

**\$29,888**



**2013 CHEVY SILVERADO**  
#4121A 4X4 SHARP

**\$31,988**

# IT IS ALMOST HERE!

**CULBERSON-STOWERS**

805 North Hobart Street  
806-665-1665