

STOCK SHOWS
Three Way Stock Show
See Page 10

SPORTS
Varsity Basketball Action
See Below

WEATHER
Ice, Snow
A Winter Reminder

WEATHER

February 3	52	23	.00
February 4	71	23	.00
February 5	39	25	.21
February 6	39	14	.25

BAILEY COUNTY JOURNAL

'The Community Of Opportunity-Where Water Makes The Difference'



Vol. 26, No. 6

14 PAGES TODAY

Published Every Sunday At Muleshoe, Bailey County, Texas 79347

20¢

Sunday, February 7, 1988



EPSILON CHI PRESENTS CHECK TO HOSPITAL--They're disbanded, but former members of Epsilon Chi Sorority met Jim Burgess, right, president of the Board of Directors of West Plains Medical Center to present a check to the hospital. Former Epsilon Chi members from left, Christy Whitt, Beverly Parker and Ann Mount, presented the hospital a check in the amount of \$423.41. Burgess told the former sorority members, "On behalf of the hospital, we certainly appreciate your contribution. This will help with what we're trying to do."

Mullettes Lose District Chances In Overtime

District Record 4-2; Season 17-9; A Respectable Showing

Anchor Brothers Band To Sign National Contract

Late this week, the Anchor Brothers Band, a popular gospel group based in Sudan, verified that they are very close to signing a multi-year recording contract with the Eddie Crook Company in Goodlettsville, Tenn. a suburb of Nashville.

For the past several months, the Anchor Brothers have been conferring with Dave Wilcox, A&R for the Eddie Crook Company.

Wilcox stated that the band seems to have a new and different 'flavor' in Southern Gospel Music.

He commented, "They don't seem to fit in any certain box in the Southern Gospel Music Field, so we're going to start a whole new box for their style."

The Eddie Crook Company has been responsible for several recent number one hits, and presently holds many positions in the top forty.

The Anchor Brothers Band, who now have released nine albums, will release their first national single. It is tentatively set for late April or Early May of this year.

Their latest album, "Backseat Driver" was released late in 1987. It features about six songs composed by lead singer, Reydon Stanford.

Members of the Anchor Brothers Band include Kenneth Richards, Dean Richards, Reydon Stanford, Tracy Wood, Lannie Kenney and W. T. Watson.

Mayor's Proclamation Designates Heart Month

February is American Heart Month, and a very busy time for the Bailey County Branch of the American Heart Association.

Consuming much time this month is preparation for the Heart Association Radio Day, scheduled for Saturday, April 20. This is the big fund-raising project for the Bailey County Chapter.

This year, the Bailey County Chapter has an overall goal of \$5,000. Last year, they made \$2,700 during their radio day.

It will begin around 7 a.m. on KMUL Radio and be ongoing all day to 3-4 p.m. (Whenever the Spanish programming begins on KMUL AM).

During the day, community volunteers and board members of the American Heart Association will be auctioning off various home made items or services, along with donated items from local businesses.

During the day, much of the bidding is 'very spirited' as local and area residents vie against each other for some of the items.

Hugh Young, Development Chairman for the Bailey County Chapter, is in charge of Radio Day, and he said all businesses received a letter last week, and will be contacted personally within the next week.

He will also be available to

It could have been a 'storybook ending' -- and it almost was!

A district championship was on the line Friday night when Watson Junior High School gym was packed with the largest crowd to attend Muleshoe basketball in a long, long time.

The crowd was there especially to watch the Muleshoe Mullette-Dimmitt Bobbie basketball game, with the championship on the line.

By the time the game went into overtime, the score was 38-38 and it was the end of regulation play.

By the time the three minute overtime was completed, Dimmitt had emerged as a 42-38 winner.

At the end of the first, the Mullettes were leading 12-5. All through the first quarter, both teams rather edged around and felt each other out, shooting a little cold.

Action livened up some in the second, with a tough defense, marked by several fouls by both teams. But, the Mullettes went in at halftime, still leading the game, 21-16.

Going back out onto the court in the third, Dimmitt was finding some of the 'keys' and began to more effectively shut down the Mullettes shooting power, forcing them into some bad passes, and rebounding more.

At 5:16 of the third, the Bobbies took the lead for the first time, forging ahead 25-21, a lead they not relinquish but one more time before the game was over.

They were all tied up 29-29 at 1:15 of the third and it was 31-34 Dimmitt, at the end of the third quarter.

With Dimmitt hitting hard in the fourth, the Mules managed to pull ahead briefly at 5:02 of the fourth. However, the Bobbies came back at 4:52 and pulled ahead by one point.

The Mullettes tied up the game at 1:22 of the fourth, and at 0:19 turned a key ball over to Dimmitt, and at the end of regulation play, the score stood at 38-38.

Her name was McDonald, and she wasn't very big, but she made the difference in the final score of the game. The Dimmitt Bobbie hit straight and true for four points to pull the Bobbies ahead of the Mullettes and win the game for the Bobbies 42-38.

Gloria Gauna was high point. Cont. Page 6, Col. 3

MAC Tickets Drawn; See Journal Ads

The winning tickets have been drawn, and local news media has been provided the numbers.

Now--all you have to do to determine if you are a winner is to read the advertisements in this issue of *The Bailey County Journal*.

The four tickets are for \$25, \$50, \$75 and \$100, and if you hold one of the winning ticket stubs, you will have until 5 p.m. Tuesday to claim your prize.

If you find your number in an ad, take your ticket stub to the store carrying the ticket number to claim your prize. You have until 5 p.m. on Tuesday, February 9 to claim your prize.

In the event any prize is not claimed by 5 p.m. Tuesday, that particular amount will carry over to the next month's drawing.

More Than Forty County 4-H, FFA Youths Ready For Houston

A total of 23 4-H members from Bailey County, along with 18 FFA students from Muleshoe and Three Way, will be joining

4-H and FFA members from throughout the state for showing competition at the Houston Livestock Show, to be held February 17-March 6.

Competing in the Astrohall complex, these young exhibitors are vying for prizes in the junior show, where 1988 entries are expected to exceed 15,000. These junior show entries combine with open show and horse show entries to make the Houston Show the world's largest livestock show.

Junior exhibitors will be representing 809 Texas 4-H clubs and FFA chapters while open show exhibitors, primarily professional breeders and ranchers, arrive from all over the world.

Colin Tanksley, a 14-year old, 4-H member from Muleshoe, will compete in the 1988 Houston Livestock Show and Rodeo Calf Scramble on February 27 in the Astrodome.

The calf scramble is an exciting part of Houston rodeo action, featuring Restless Heart and Sweethearts of the Rodeo as part of that matinee performance activities.

Colin, the son of Spencer and Linda Tanksley, will compete for one of the 252 calf purchase certificates to be awarded at the 1988 rodeo. Additionally, as many as two youngsters from each of the 18 rodeo performances are awarded "hard luck" certificates for their hearty efforts in attempting to catch a calf, resulting in 36 more certificates actually given.

Known as an entertaining event with an educational purpose, the Houston Livestock Show and Rodeo funds agricultural scholarships and research projects all over Texas through its annual net proceeds.

The calf scramble, a yearlong activity, also is one of the Show's major programs benefiting Texas youth. Beginning with an athletic competition in the Astrodome, the program ends with top-notch competition in the Astrohall showing.

The event itself involves 28 energetic youngsters who are turned loose with half as many wild calves in the Astrodome arena. Those who manage to capture a calf, halter it and drag it across the finish line,

receive a \$600 calf purchase certificate.

The certificate, donated by Cont. Page 6, Col. 3

Kiwanis Club Celebrated 15th Birthday

By: R. A. Bradley

President Max Crittenden called the meeting to order for the Kiwanis Club as 15 members, and one guest, J'Don Kube and Sweetheart Sue Haire braved the weather to meet at the Old Corral.

J'Don Kube is a good prospect to become a new member of the Kiwanis Club. James Roy Jones led the club in the pledge to the flag and the invocation was given by Lyndon Huckaby. James Roy stated that since R. A. Bradley wrote the articles for the news media, that he surely needed a friend -- so James Roy gave the friendship coin to Brad.

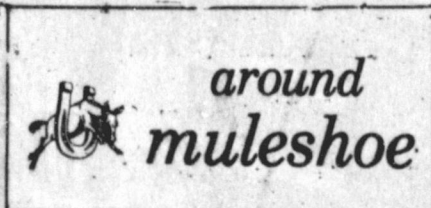
President Max read a 'thank you' letter from the Bailey County Livestock Show Board for the Kiwanis' part in this show -- we understand that the youth of our community did a good job in showing their animals -- Congratulations to each one.

Max also read a 'congratulation' letter from the Kiwanis International on the 15th anniversary of the Muleshoe Kiwanis Club. It seems that the Muleshoe Kiwanis Club is 15 years old today.

There were four charter members present. It is good to see the Kiwanis Club come from a struggling infant club with \$0.00 budget to a \$7,000 budget to give back to the community.

The Kiwanis Club wishes to thank all the wonderful people and merchants for making this all possible. Without the wonderful people and their loving spirit, there would probably not be a Kiwanis Club, or even a community.

Thanks to each and every person, past and present, who has made this community what it is today.



A meeting for all 1987-88 seniors from Muleshoe High School is scheduled for 8:30 p.m. Wednesday, February 10, at the Old Corral.

Decisions are to be made on Project Graduation.

All seniors are asked to be present, and parents are also welcome.

Coffee Memorial Blood Center of Amarillo, will conduct their annual community blood drive at Lazouddie Methodist Church on Tuesday, February 9, 11 a.m.-2 p.m.

All donors are asked to report for the annual drive.

Parents of kindergarten students are invited to attend a seminar, entitled *Project 2000*, Tuesday, February 9, 6:30-7:30 p.m. in the Dillman Elementary Cafeteria, said Barbara Finney, Dillman Elementary principal.

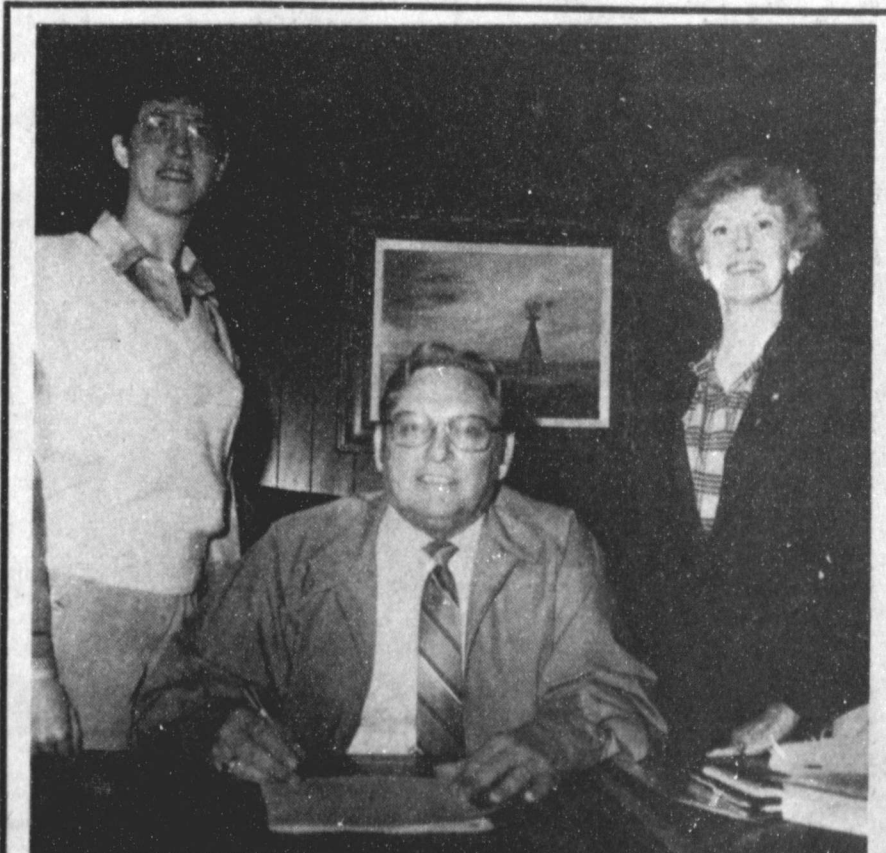
She said the seminar will be presented by the Muleshoe ISD Board of Trustees for the purpose of relating to parents of kindergarten children, who will be graduating seniors in the year 2000, a vision of the year 2000.

Important educational issues will be discussed and the opportunity for questions and feedback from parents will be given.

Forrest Creamer, son of Myrtle Creamer, reported from Las Vegas, NV Tuesday morning that he is continuing to recuperate from serious injuries received in an accident on December 11, 1987.

However, he has encountered a new problem at this time. He had lost his right eye at the vehicle accident site, and at this time, his left eye is still threatened.

Cont. Page 6, Col. 1



DESIGNATING FEBRUARY AS HEART MONTH--Janie Moynihan, left, president of the Bailey County Division of the American Heart Association, left, and Elaine Burgess, right, look on as Mayor Darrell Turner signed a proclamation designating the month of February, 1988 as American Heart Association Month in Muleshoe. He cited the research and ongoing work to help eradicate America's number one killer.

Cost-In-Water Income Tax Deduction Available To Irrigators

High Plains landowners who use ground water in their irrigation farming business may save money on their federal income tax return by claiming a deduction for the cost of water depleted from the Ogallala Aquifer.

Data to support this cost-in-water tax deduction is now available from the High Plains Underground Water Conservation District No. 1 for its service area. The Water District has been supplying this information for its landowners for more than 20 years.

Landowners who purchased, inherited or attained interest in land in the Water District's service area after 1948 whose ground water supply is depleted in the irrigation farming business are eligible to claim the tax deduction.

The Internal Revenue Service requires cost-in-water data, saturated thickness amounts and water level decline data to process cost-in-water depletion allowances.

Cost-In-Water

The tax regulation states that the taxpayer must have paid

more for a land tract with stored ground water than he would have paid for a similar tract without ground water.

Annually, the Water District contracts with a professional land appraiser to document land sales made within the District service area during the year. Each land tract sold is visited and any improvement value is deducted from the total purchase price. The remaining sales records are divided into "dryland" or "irrigated" categories with an average per sale price for each tract determined.

IRS engineers visit the Water District to review the data and develop yearly cost-in-water guidelines for each county in the service area.

For example, if \$500 was the average price paid during the year for land with stored ground water and \$200 was the average price paid for land with little or no water stored ground water, then the taxpayer may not claim more than \$300 as a cost-in-water allowance. ($\$500 - \$200 = \$300$)

Saturated Thickness Data

The IRS also required a documentation of the quantity of water in storage, or the saturated thickness, at the time the land was purchased.

This formation thickness is calculated by determining the depth to water below the land surface and deducting that figure from the depth of the base of the Ogallala Formation, as determined from well logs and measurements taken from existing wells on the property. Past valid water level measurements made at land purchase, as well as drillers' logs noting the depth to the Ogallala Formation, may also be used to support the taxpayer's depletion claim.

If these records are not readily available, the Water District can supply the information using IRS-approved maps.

The saturated thickness may be determined as follows. If the depth to the base of the Ogallala Formation was 500 feet below land surface, and the

depth-to-water below land surface was 200 feet, then there would be 300 feet of saturated thickness. If the price paid for the stored ground water was \$300 per acre, the landowner would have a \$1 cost per foot of saturated thickness. ($\$300 \div 300 = \1)

Decline Data

Landowners may file a water depletion allowance and provide their own data to support the claim. However, the Water District can also provide IRS-approved information for land within its service area.

Measurements documenting the aquifer water level for both the beginning and ending of the calendar year are also required. If a negative value occurs, this would be the amount of depletion occurring during the year. (If the January 1987 depth-to-water measurement was 202 feet and the January 1986 measurement was 200 feet, there would be a two-foot decline in the water level.)

If the landowner had purchased 320 acres of land, his water depletion allowance is two times the \$1.00 cost per foot of saturated thickness times the 320 acres in the land tract. This results in a cost-in-water income tax depletion allowance of \$640 for that year. ($2 \times \$1.00 \times 320 = \640)

Amended tax returns may be filed for three prior years to claim the cost-in-water depletion allowance. However, the landowner must have owned the land during those years, must have used ground water in the business of irrigation farming and must have documentation that water depletion actually occurred.

Requesting Data from the Water District

To request water depletion data from the High Plains Water Conservation District, the taxpayer's name, address, and social security number or federal ID number must be provided. Also, a complete legal description of the land on which the claim is to be filed, and the

date of land acquisition must be included. The land tract must lie within the High Plains Water District boundaries.

Individuals who have previously requested information need only to submit the permanent re-order number from the upper right corner of the Water District form.

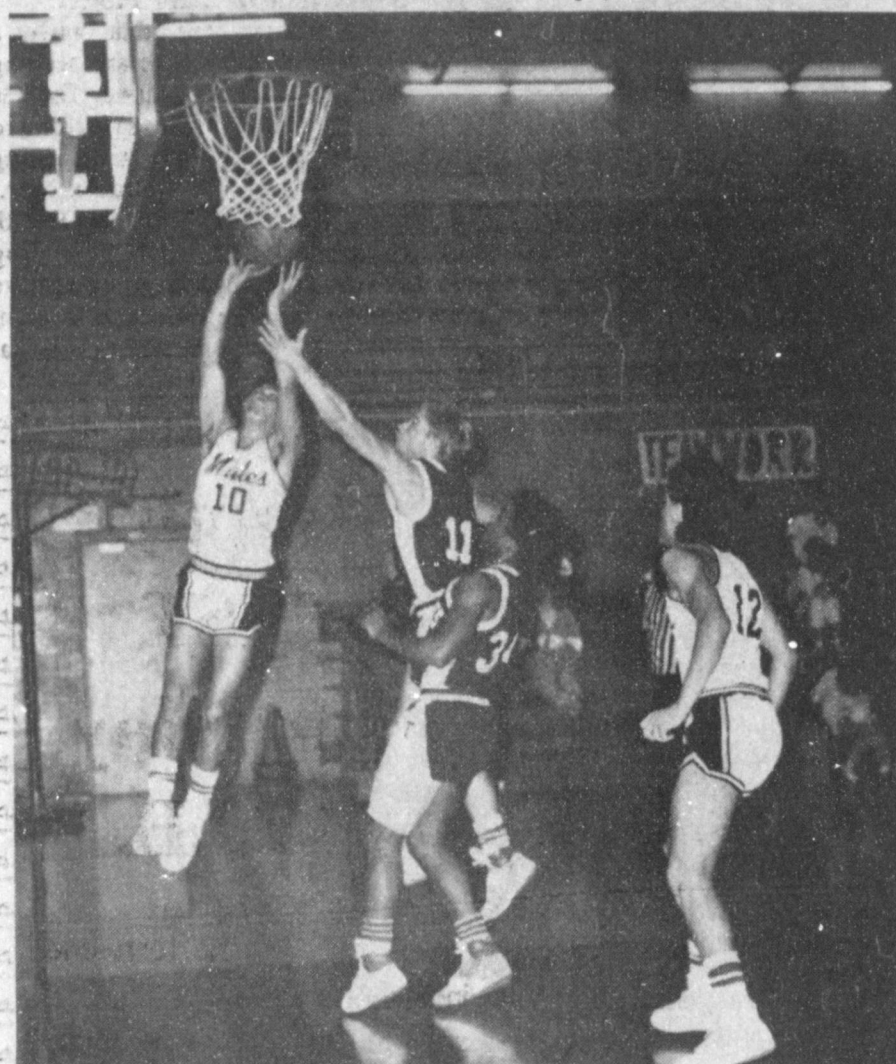
To help cover administrative costs, a \$5 charge is made for yearly decline data requests. There is no charge if no decline occurred. First-time requests cost \$25 and the claimant receives the saturated thickness at the time of land acquisition, cost-in-water guidelines and up to three years of decline data.

Taxpayers and/or their accountants should request data as soon as possible to ensure the fastest service. Requests are handled on a first-come, first-served basis.

For more information, contact Bobbie Bramblett, High Plains Water District water depletion coordinator, 2930 Avenue Q, Lubbock, Texas 79405 or call (806) 762-0181.

WORKING STUDENTS:


When you fill out your Form W-4 or W-4A, "Employee's Withholding Allowance Certificate," remember: If you can be claimed on your parent's or another person's tax return, you generally cannot be exempt from income tax withholding. To get it right, read the instructions that came with your Form W-4 or W-4A.




LOOK OUT, HERE I COME--Steven Sandoval, No. 10, shows good form as he tries for two in the Mule-Hornet basketball game in Muleshoe last Tuesday night. Looking on at the action is Ronnie Perez, No. 12.

"Moving Sale" Lollipop Tree

(Located on the Plainview Highway next to Muleshoe Truck & Auto)

All Little Girl Dresses 
 1/2 price

Little Boy Outfits 
 75% off

T-shirts: Buy one get the next one at 1/2 price.

All remaining nylon jackets \$5.00
 Watch the Journals for future address and phone number.

Plainview Highway Muleshoe 272-5422

AN INCREDIBLE SPECIAL PURCHASE OFFER! BUY ONE GET ONE FREE!

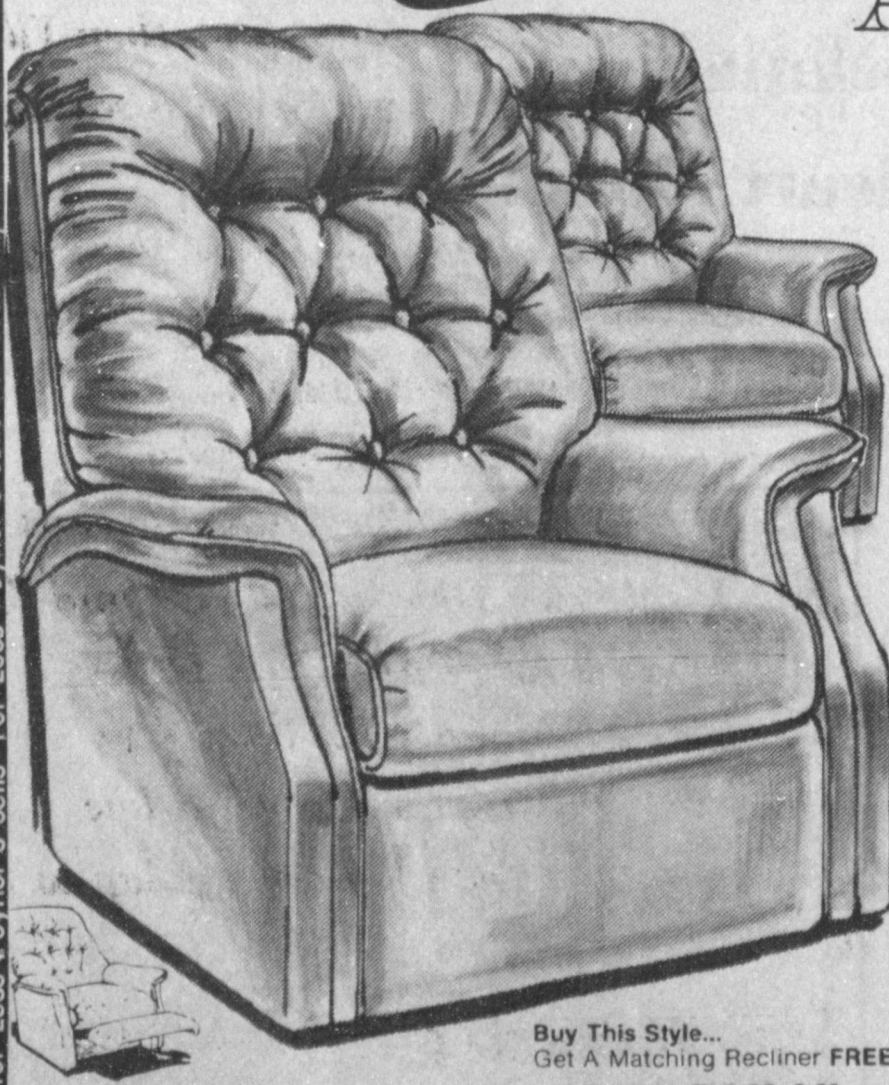
Action RECLINERS BY Lane

GENUINE ACTION RECLINERS BY LANE AUTHORIZED SALE!

If you don't need 2 of these famous Action Recliners...bring a friend and share the cost!

It's a great idea! Buy one famous Action Wall-Saver®, Rocker Recliner or recliner at the regular price...get the second of equal value FREE! Choose from any of these styles in a variety of colors. We have them all! Buy one, get one FREE!

Buy This Style... Get A Matching Wall-Saver® FREE!



Buy This Style... Get A Matching Recliner FREE!

NOW ONLY!

\$399⁰⁰



Buy This Style... Get A Matching Wall-Saver® FREE!

NOW ONLY! \$499⁰⁰

The Topper Sit back and relax in a Wall-Saver® with tufted back and soft roll arms in a velvet cord look.

Choice Of Colors.



The Sabre Super cushioned luxury in a full size Wall-Saver®. Button tufted and deep padded vertical puff head cushion. Choice Of Colors.

NOW ONLY! \$599⁰⁰

P O Y N O R S

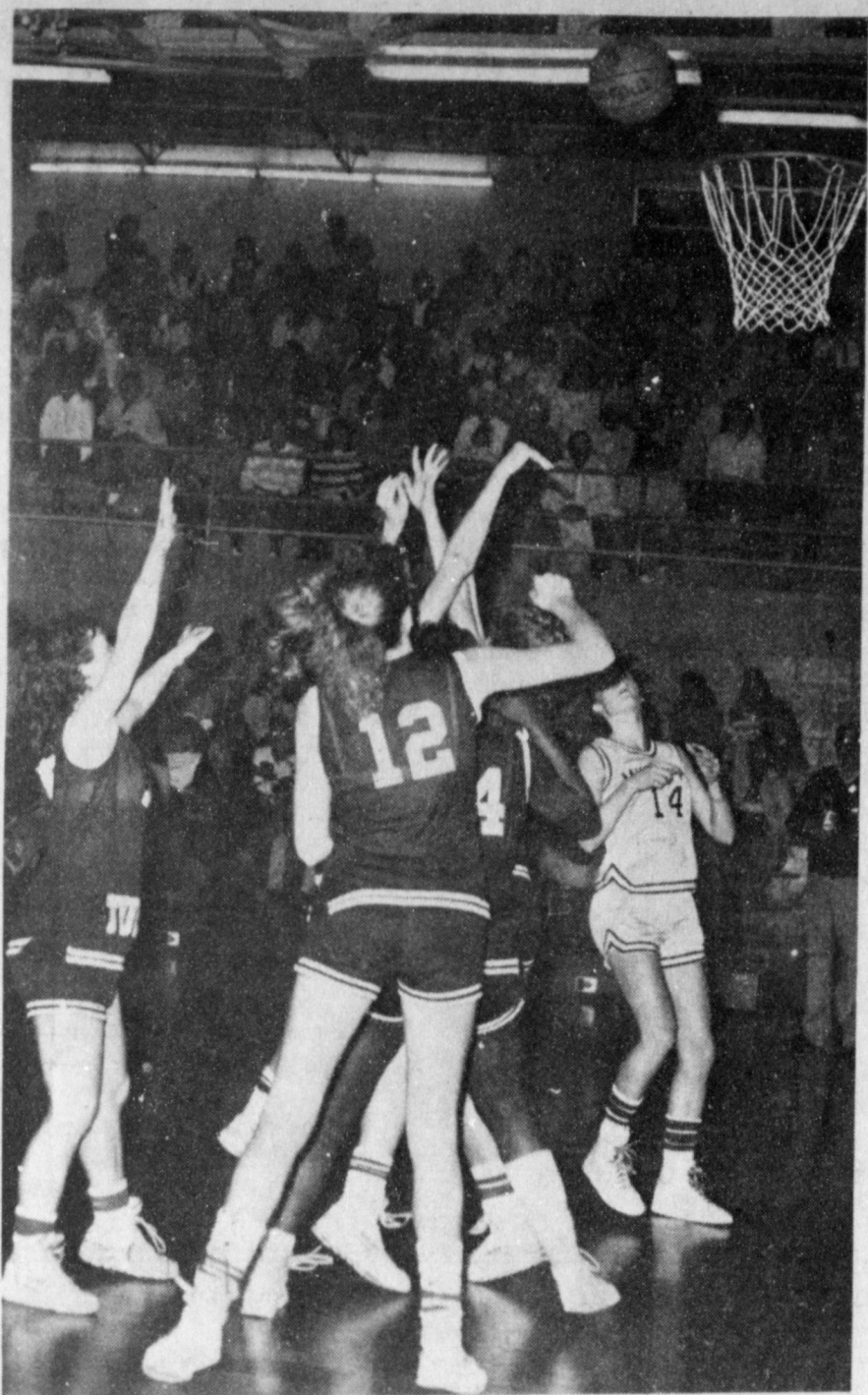
103 Main

Muleshoe

272-4552

FEATURED EXAMPLE: Rustler Bold styling with button tufted back and flared arms make this handsome restler recliner an ideal choice. All the Action luxury features, and deep seated comfort equal lasting enjoyment!

Choice Of Colors.



A BIG TANGLE OF ARMS--Someone has just released the ball and Amy Harrison, No. 14, is watching for a possible rebound. This was just some of the action in the Mulette-Hornette basketball game in Muleshoe last Tuesday night.

February, 1988

*The Trees Stand Wistful in the Square,
Wearing a Half-Expectant Air.*
-Anne Lawler.

The name February derives from the Latin "Februarius," meaning to purify, and from church custom and superstitions.

In the United States it's notable for the birthday anniversary of the father of this country, George Washington (on the 22nd).

Candlemas, a purification feast, is observed by Roman, Anglican and Greek churches, and in others, on the 2nd. Many in this country know it as Ground Hog Day.

The territory of Illinois was established on the 3rd, in 1809. Roger Williams, a famous defender of freedom of religion, arrived in Boston (from England) on the 5th in 1631.

Ronald Reagan, 40th president, was born in Tampico, Illinois, on February 6, 1911. Boy Scout Day, commemorating its American chartering, is the 8th, dating from 1910.

William Henry Harrison, 9th U.S. president was born in Charles County, Virginia, on the 9th in 1773. Thomas Edison was born at Milan, Ohio, on the 11th in 1847.

Abraham Lincoln was born in Hardin County, Kentucky, on the 12th in 1809, his ancestors having first settled in Hingham, Massachusetts (from Norwich, England). He lived later in Indiana and (at 21) moved to Illinois.

James Oglethorpe landed at Savannah on the 12th in 1733 and founded Georgia. St. Valentine's Day falls on the 14th, as well as Arizona Admission Day—dating from 1912 when Arizona became a state.

STATE CAPITAL



HIGHLIGHTS

By Lyndell Williams
TEXAS PRESS ASSOCIATION

AUSTIN—Texas and the federal justice system -- it never seems to end these days.

The governor last week headed off a prison system crisis and the wrath of one federal judge, only to find the state faced with possible fines from another judge for violations of court-ordered mental hospital reform.

Governor Bill Clements, with Lt. Gov. Bill Hobby and Speaker Gib Lewis, used the new emergency provision to clear the way for construction of an additional prison which will keep Texas on schedule with prison reforms ordered by Judge William Wayne Justice.

But Judge Barefoot Sanders said his court also expects compliance from the Department of Mental Health and Mental Retardation, which he said is understaffed. Pro-reform advocates urged Sanders to levy huge fines against the state if the violations continue, and he issued a last warning statement.

Dukakis Flexes Muscle

On the Texas campaign trail, Massachusetts Gov. Michael Dukakis flexed his political muscle by winning a plurality at the Mexican American Democrats state convention, and releasing a list of over 1,000 supporters, indicating he will carry the South Texas Democratic vote.

His stroke of strength raised the possibility of a rank-and-file ground swell against the party's chairman and money crowd which have endorsed Albert Gore.

Dukakis fell short of two-thirds needed for MAD endorsement, but led with 38 percent over second-place Jesse Jackson with 21 percent. Other candidates garnered less than 10 percent, except for Gary Hart, who was not nominated.

Dukakis' list included two Texas state senators, Carlos Truan of Corpus Christi and Hector Uribe,

of Brownsville, as well as Mary Alice Cisneros, wife of the San Antonio Mayor.

Robertson May Sue

On the GOP side, Pat Robertson said he will challenge, and sue if necessary, to change the state party's ruling making all six candidates eligible to win Texas delegates.

Robertson contends only he and Vice President George Bush submitted enough legal ballot petition signatures, and his challenge would effectively narrow the race here to those two.

The official polls are still out on Bush's progress after his televised confrontation with CBS anchor Dan Rather, also a native Texan, but word around the Capitol is it didn't help.

Contributions Unreported

The Travis County DA's office is investigating whether pro-betting and anti-betting forces violated state law by not reporting thousands of dollars used in the pari-mutuel gambling election.

Particularly at issue is whether the missteps were fraud to hide thousands of dollars from out-of-state.

Other Highlights

The Republican Eleventh Commandment of speaking no ill of one another is shattered

weekly, and the latest is an exchange between contenders for U.S. Senate.

After Amarillo Congressman Beau Boulter said he was the only qualified candidate, Houston's Milton Fox, a 14-year veteran of the Texas House, retorted that all Boulter has ever done is practice law and work in government, not business.

Texas has climbed to number four in the nation in the size of its electronics industry work force, behind California, New York and Massachusetts, in that order.

The Texas Capitol is a fire hazard and basic life-safety projects have been delayed in the present restoration, the State Preservation Board was told last week.

Recently-resigned Chief Justice John Hill joined the legal team representing the City of Austin against Houston Lighting & Power Co., the managing partner of the South Texas Nuclear Project.

Reports are that only a handful of applicants are seeking the job of commissioner for the Department of Mental Health and Mental Retardation, an opening that was expected to draw scores.

The Texas Board of Health ignored protests of major drug companies and voted to require bids from suppliers of infant formula for a state nutritional program.

Conservation Reserve Signup Ongoing Now

Texas farmers have another opportunity to enroll highly erodible land in the Conservation Reserve Program.

The next signup period is Feb. 1 to Feb. 19. Farmers may enroll land at Agricultural Stabilization and Conservation Service county offices where previously accepted bids do not exceed 25 percent of the cropland in the county.

"The February signup is the sixth since the program got underway two years ago," points out Dr. B.L. Harris, soils specialist with the Texas Agricultural Extension Service, The Texas A&M University System.

"Texans have already en-

rolled 2.8 million acres in CRP, and nationally about half of the 45 million acres targeted for the program are under contract and removed from crop production," notes Harris.

Farmers who participate in the 10-year commitment receive annual rental payments. In addition, the U.S. Department of Agriculture picks up half the cost of establishing a permanent conservation cover.

Only highly erodible cropland is eligible. The highly erodible designation is based on land capability class, soil loss tolerance and the erodibility index, explains the soils specialist.

The land also must have produced an agricultural commodity during any two years from 1981-1985.

"In Texas the maximum, or cutoff, bids have ranged from \$35-55 an acre, depending on geographic location in the state," says Harris. "Cut-off bids in Texas' seven bids 'pools' have not changed since earlier signups.

"Texas still has many acres of land being cropped that will be subject to conservation compliance provisions, which take effect in 1990. CRP is a good alternate for many of those problem soils," says Harris.

County Extension offices have information to aid farmers in their decision-making about CRP.

Weather Reporting

In recent years the media has turned to the "chill factor" to make weather reports sensational. A zero degree reading in far northern states in winter isn't big news, but when a reporter or commentator can say the chill factor is minus forty or fifty, that sounds like sensational weather news.

The chill factor is nothing new—it's just that it's now being reported. Residents of areas where winter always brings minus zero readings know about wind. It makes it harder to keep warm indoors and out.

Reporters are nevertheless sometimes tempted to sensationalize or exaggerate to have a more exciting report—as with a recent non-hurricane affecting Florida, which was incorrectly reported as a hurricane, alarming hundreds of thousands needlessly.

The chill factor is worth a mention, sometimes, but the temperature reading is what should be reported, normally. Weather systems don't "slam" into an area, they always move into areas over a period of hours. And while on the subject of weather reporting, has the reader noticed that he can often get different forecasts from different sources?

Finally, TV stations don't really need a full-time weather commentator. This commentator, not always an expert, is on the air only briefly a few times a day. On his or her big show, probably five minutes, evenings he must keep blabbering the same thing over and over to stretch out his report, so paid commercials can be fed in.

A minute is all one needs, usually, to give a weather forecast. Few people care what the weather was in Kalamazoo—except those who live in Kalamazoo.

• SOFT SUPPORTIVE LIGHTWEIGHT • MADE IN U.S.A.

8910

LIGHT AS A FEATHER-MADE OF SOFT LEATHER

N	M	W	WW
6 1/2-11	5-11, 12	5-10	6-10

Fair Store
120 Main 272-3500

RED WING SHOES

106 E. American Blvd
806-272-5074

Old St. Clair's Building
Muleshoe, Texas

JOE'S BOOT SHOP

&

Country Junction

Valentine Sale!

February 8th thru 13th

"Especially For Your Sweetheart"

"RED" Justin Ropers \$78.00

All Red Boots 10% OFF

Find "RED" in other

Merchandise And Get 10% OFF!

Happy 41ST Birthday L.D.B.

Wouldn't it be fun To be forty-one?

To see your hairline losing ground,
While your waistline just can't be found?
Don't be grouchy; don't be blue.
Just lean on your cane & endure the pain.
Actually, forty-one looks pretty good on you.
Hope you enjoy this year -- after all,
You're going on FORTY-TWO!

Love,
Pa, Ma, Donnie, Steve, Casey,
Lori & Janice

An old familiar story

Married:

Age 25 "I'm just getting started. I can't afford a savings plan yet. I'll start in a couple of years."

Age 35 "Got to get these kids raised first, then I'll start putting something away in a savings account."

Age 45 "Just as soon as we get the house paid off I'm going to put a lot into savings. It's still 20 years from retirement."

Age 55 "Social Security and my property are going to help, but maybe I'd better start soon. I still have 10 years to save and I'll put quite a bit away soon."

Age 65 "Boy, I wish I had put some money in savings 40 years ago, even just a few bucks a week. Now what am I going to do?"

See yourself?

Just a few dollars a week is all it takes to have an enjoyable retirement.

Stop in, Talk it over.

MAC TICKET NO. 0017501 \$25.00

1ST BANK MULESHOE

202 S. 1st Member FDIC 272-4515

Nutritionist Presents Program For Local AAUW Branch

Miss Janet Gable, nutritionist with Associated Milk Products was the guest speaker for the Muleshoe Branch of American Association of University Women (AAUW) Monday evening at the Bailey County Civic Center.

Miss Gable is from Amarillo. She gave some startling new facts about nutrition and how various foods affect your health. She told the members how good health could be maintained by managing the foods we eat. Miss Gable pointed out how to manage food intake to be compatible with such health concerns as heart disease, osteoporosis, and weight management. The presentation was summarized by showing the video—"Your Body, Your Diet, and Your Cholesterol."

Virginia Bowers, president, appointed Nan Johnson and Maurine Hooten to serve on the nominating committee.

The branch voted to send a member to the "Leadership in Muleshoe Seminar" sponsored by the Chamber of Commerce.

Debra Lackey, daughter of Mr. and Mrs. Walter Lackey, was chosen February Girl of the Month.

Hostesses for the meeting were Mary B. Obenhaus, Katherine Sanders and Eloise Wilson.

Members attending were Maurine Hooten, Lucy Faye Smith, Julie Cage, Esther Marie Dillman, Joyeline Costen, Margaret Gleason, Virginia Bowers, Nan Johnson, Pam Hancock and Elizabeth Watson.



Rebecca Barrientos

Mr. and Mrs. Santiago Barrientos of Bovina are the proud parents of a daughter who was born at 12:53 p.m. January 29 in West Plains Medical Center.

The young lady weighed seven pounds and ten ounces and has been named Rebecca Barrientos. She is the first child for the couple.

Grandparents are Mr. and Mrs. Rogue Barrientos and Mr. and Mrs. Felix Ibarra, all of Mexico.

Great grandparents are Mrs. Juana Salas and Mrs. Heulalia Serrano, both of Mexico.

Erika Brianne Autrey

Mr. and Mrs. Billy Ray Autrey of Texico, N.M. are the proud parents of a daughter, Erika Brianne, who was born at 2:57 p.m. Tuesday, Feb. 2 in West Plains Medical Center.

Erika Brianne weighed seven pounds and 14 ounces. She has a sister, Brittany, two years of age.

Grandparents are Mrs. J.C. Autrey of Texico, N.M., Sharlyn Tounton of Albuquerque, N. M. and Bob Westbrook of Albuquerque, N.M.

Great grandparents are Mr. and Mrs. Grady Tucker of Clovis, N.M., Mr. and Mrs. E. Kirschmiere of Almagordo, N.M. and A.E. Fine of Artesia, N.M.

Great great grandmother is Katherine Robbs of Clovis, N.M.

We would like to express our appreciation for the prayers, flowers, cards, visits, food, and concern for our family at the death of our loved one, Linda Frey.

A special thanks to Don Williams of Ellis Funeral Home.

The Key Family
Sidney, C. W., Vonna, Louie and Kevin



RACHEL PINEDA

Rachel Pineda Named Girl Of Month

Miss Rachel Pineda, daughter of Manuel and Teresa Pineda, was selected as the January AAUW Girl of the Month. This award is presented monthly to an outstanding junior or senior young lady at Muleshoe High School by the American Association of University Women.

These young ladies must demonstrate unusual leadership qualities in education, academics, and activities, as well as in church and community participation. "Rachel Pineda, a Muleshoe High School senior, fulfills these high qualities of leadership" said a spokesperson from the group.

"She has been very active as a band member as a freshman through senior years. She has

also been a participant in the Flag Corps throughout her high school days. Rachel has qualified the last two years as an all region band member," she continued.

As a junior student Rachel received the accounting award. As a member of the Student Community Action Club, she works in this club to improve relations between the school and the community. This club has been active in helping to preserve some of Muleshoe areas heritage through cooperation with the Muleshoe Heritage Foundation.

Miss Pineda is a member of the Immaculate Conception Catholic Church and has been a member of the Catholic Youth organization for the past four years.

"It is a joy to recognize a young lady of this high caliber as the January AAUW Girl of the Month" she continued.

Hobby Club

Muleshoe Hobby Club met Thursday, Feb. 4 at 2 p.m. in the Senior Citizens Complex meeting room with 12 members present. Those present included: Blanch Awbrey, Mabel Caldwell, Ethel Julian, Sammy Ethridge, Polly Clark, Linda Morris, Jane Williams, Frances Bruns, Hazel Reeder, Edith Fox, Mattie Benton and Ruby Lambert.

Minutes of the previous meeting were read and approved. Edith Fox drew the hostess gift.

Refreshments of cake, coffee and punch were served to everyone present, and the meeting was adjourned.

The next meeting will be on Feb. 18 at 2 p.m. in the Senior Citizens Complex with Ruby Lambert as hostess.

Shop Muleshoe First!

There's only one license for people who carry a lot of weight.

A new law for truck and bus drivers.

You may have only one driver's license issued by the state where you live, according to a new federal law. You should return any other licenses you hold to the states that issued them. Effective July 1, 1987, if you have more than one license, it will be illegal, and you may be fined up to \$2,500.

For additional information and exceptions, contact your local Texas Department of Public Safety office or your employer.

Valentine Ball Being Planned By Local Sororities

Xi Omicron Xi met in the home of Lindy Schuster Tuesday night. Ms. Schuster served a snack of chips and dip and cake for desert.

The membership held pledge training before the business

Rebekah Lodge

Muleshoe Rebekah Lodge No. 114 met Tuesday night, Feb. 2 at the Lodge Hall with 19 members present.

Novella Price, Noble Grand, called the meeting to order. Dimple Sims, acting chaplain, gave the opening prayer. Following a short business meeting Thersie Reid, Lodge Deputy, had a school of instruction.

Ona Berry, team captain, discussed plans for drill team from South Plains Association scheduled in April.

Each member is asked to take a white elephant gift to the next meeting for the grab box.

Refreshments were served by Ruby Green, Ona Berry and Dimple Sims.

meeting was conducted by the president, Marilyn Riley.

Roll was called with the following members in attendance: Marilyn Riley, Annette Bonds, Dawn Williams, Diana Harrison, Debbi Hutto, Alice Liles, Debbie Nickels, Lindy Schuster, Gayla Toombs, Rayniel Bamert, Kristie Phelps, Ginger Caldwell, Gayla Gear, Barbara Mutchler and Pat Young.

A report on the upcoming Valentine's Ball which will be held on Feb. 12 was given. A member of the sorority will be selected as the Valentine Queen.

Grammar is a subject about which the experts are sometimes in doubt.

Hard, steady work, not brilliance, usually brings in the green stuff.

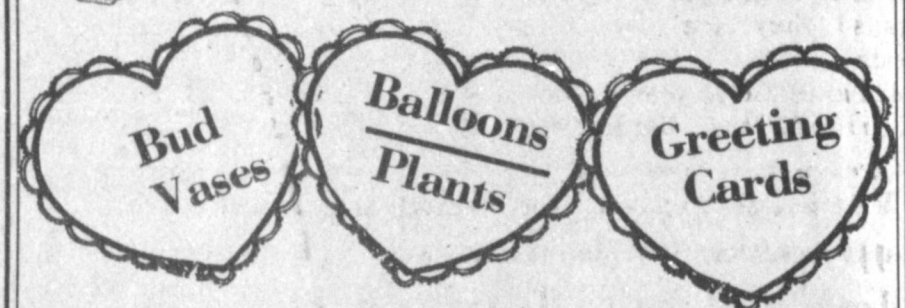
Most people think they are pretty smart so why not agree with them?

The hard work of other people often explains the success of many.

Say "I Love You,"
With Flowers

This Valentine's Day show that special person in your life how much you care.

We're here to help you say it right with:



Be sure to order early so Cupid can deliver your order.

Muleshoe Floral & Gifts

121 Main

272-4287

Welcome To Muleshoe



PASTOR AND FAMILY ARRIVE IN MULESHOE---Jim Cope is the new pastor of the Community Church. Jim and his wife, Kathy, are the parents of two daughters, Denise age 18 and La Homa age 12. Jim has been preaching the gospel since 1973. He attended Southwestern Assemblies of God college in Waxahachie, Texas, Eastern New Mexico University in Portales, New Mexico and McKendree College in Labanon, Illinois. Jim lists his hobbies as mountain climbing, swimming, antique collecting, water skiing, and being together with his family. Kathy enjoys traveling, sewing, cake decorating, cooking, singing and playing the piano. She is also an artist. Kathy paints in oils and water colors, and enjoys being active in civic and local activities. The Cope's oldest daughter, Denise, is a Senior at Muleshoe High School. She likes snow skiing and horseback riding. La Homa is 12 years old, and she is a 6th grader at Watson Jr. High. Her hobbies include horseback riding, water skiing and baseball.

James Crane Tire Co.

322 N. 1st

GOOD YEAR

272-4594

Henry Insurance Agency

111 W. Ave. B.

272-4581

Damron Rexall Drug

308 Main

272-4210

2nd ANNIVERSARY SALE!

ALL RED TAG FASHION
Previously marked down 25% - 75% **15% OFF**
IS NOW AN ADDITIONAL...

This Includes: • Dresses • Sleepwear • Slacks • Skirts
• Blouses • Sweaters • Coats • Jackets • Co-ordinate
Groups • Jewelry • Belts • Scarves and more!

One Rack Blouses
Buy One Get One
FREE

NEW SPRING

Jordache Group
St. Charles
2 Pc. Groups **20% OFF**

For Fashion & Fit....

There's
MORE TO LOVE
A WOMEN'S PLUS SIZES BOUTIQUE
Where Style Is Not A Size!!!

519 Main
In the Heart of
Downtown Clovis
Anniversary Hours:
9-6 Mon.-Sat.
Thurs. till 7 pm
762-9224



EMPLOYEE OF THE MONTH--Friday morning, Sylvia Buchenau, right, received a certificate and the traveling trophy as January's Employee of the Month. The 13-year employee of the U.S. Post Office is now in contention for Employee of the Year. Toni Eagle, left, manager of the Muleshoe Chamber of Commerce and Agriculture, made the presentation.

Creative Living by Sheryl Borden

Information on accessories, new taste combinations with wine and snacks for junior chefs will be presented on "Creative Living" on Tuesday, February 9 at 12 noon and repeated on Saturday, February 13 at 2 p.m. on KENW-TV. (All times are Mountain).

Merle-Dean Sanchez, co-owner of Image Avenue in Albuquerque is going to show how to create a look that is totally YOU, through the use of accessories.

Which wine do you serve with which food? Rose Hansen, a food and wine consultant who has her own business in Sausalito, CA will share some new taste combinations with wine. She says we can flex the rules and lay aside certain wine/food prejudices and fears.

Gayle Shockey, a registered dietician with Heart Keeper Cooking School in Fallbrook, CA will share some quick and easy snacks that can be prepared by either the parents of the

children themselves that make delicious after school snacks. The oven is used very little and easy recipes call for 10 ingredients or less and provide high energy, low fat and cholesterol, which makes them perfect choices for healthy hearts. Gayle will also share some tips on how to have the kids start dinner for mom before she gets home!

On Tuesday, February 9 at 9:30 p.m. and repeated on Thursday, February 11 at 12 noon, Lynn Gerhart will present a mini-course in furniture refinishing using a unique product called QRB, which stands for Quickly Restores Beauty. This unique product was created by Lynn's father, Ron Hack and is available only through mail orders. Lynn lives in Baynton, FL.

Lana Schulte, Socorro County Extension Home Economist, will present some unusual budget decorating ideas centered around lamps which you can make from virtually anything in the house. Lana is from Socorro, NM.

"Creative Living" is produced and hosted by Sheryl Borden. The show airs on more than 100 PBS stations in the United States, Canada, Guam and Puerto Rico and is distributed by Pacific Mountain Network, Denver, CO. Viewers can request copies of printed materials offered on the show by calling on KENW-TV's toll-free telephone lines between 8 a.m. and 5 p.m. In New Mexico, the number is 1-800-432-2361, out-of-state: 1-800-545-2359 and Portales and Roosevelt County: 562-2112.

SNACKS FOR JR. CHEFS

DREAM SHAKE

1/2 cup orange juice or cranberry juice cocktail or pineapple juice; 1 medium banana; 1/2 cup fruited nonfat or low fat yogurt

Combine all ingredients in the blender, cover and blend till mixed. Mash banana if shaking by hand. For a creamy shake,

BIBLE VERSE

"Know ye that the Lord he is God: it is he that hath made us, and not we ourselves."

1. Who is the author of this verse?
2. What does this verse warn us against?

Answers to Bible Verse

1. The Psalmist—probably King David.
2. Against the sin of worry.

freeze banana slices. Yield: 1 serving.

HERO WAFFLE SANDWICH

1 whole grain frozen waffle, cut in half; 1 oz. 99 percent fat free ham or turkey; 1 oz. lowfat cheese, American or Swiss

Toast waffle alone and then place meat and cheese between toasted waffle, or place meat and cheese between waffle halves and place in toaster oven to melt cheese. Yield: 1 serving.

QUICK SUGAR COOKIES

1/2 cup diet margarine; 1 cup granulated sugar; 2 eggs; 1 tsp.

vanilla; 4 Tbsp. nonfat milk; 4 cups unbleached flour; 2 1/2 tsp. baking powder

Sift together flour and baking powder. Soften margarine and mix with sugar, eggs and vanilla until creamy. Add flour mixture alternately with milk. Chill dough thoroughly. On a lightly floured surface, roll out half of the dough at a time, keeping the rest chilled. Roll 1/4 inch thick and cut with cookie cutters. Bake at 400 degrees F. 8-10 minutes or until lightly browned. Yield: 3 dozen.



AWARDED BUSINESS OF THE MONTH--Ron Montgomery, left, president of the Muleshoe Chamber of Commerce and Agriculture, presented a certificate for Business of the Month to Della Puckett and Louise Allen, right, bookkeepers at Muleshoe Co-op Gin, in the absence of Charles Moraw, manager. Muleshoe Co-op Gin was named Business of the Month for January, 1988.

Bartley Featured In SHS Senior Spotlight

Michael Bartley is featured in this week's Senior Spotlight at Sudan High School.

In reflecting on his high school years, he said the best times of his life are any time that he and Eddy Boyles, Chip Deloach, Jimmy Kyle Glasscock and Johnny Taylor are together.

He said "I always have a good time when I am with them because they are my best friends."

Michael is the 18 year old son of Gene and Jeanne Bartlev. He

was born on Nov. 3, 1969, in Lubbock. He has two brothers Lyn and Lee, and one sister Misty. He says, "My family are the people who have had the most impact on my life." His mother tries to keep him out of trouble by giving him her best advice—"don't talk to strangers!" Getting into trouble, though, is his worst habit.

He has had a successful high school career. He is involved in F.F.A., Industrial Arts Club, FCA, and NHS. He held the

office of F.F.A. Sentinel his junior year; and vice-president of F.F.A. his senior year. He also received the Lone Star Farmer Award this past summer in Fort Worth at the State Convention. He is active in athletics also. He has participated in football all four years which is his favorite sport; basketball his freshman and sophomore years; and he will again participate in track and golf this year.

"If Michael is not working hard at school, he is working hard at relaxing at home" said Misty Bartley. "His favorite hang out is his couch and while lying there, he loves to watch his favorite show "Growing Pains" or movie "Secret of my Success". At night he likes to watch his favorite video "Bad". When he isn't watching television, he is listening to music. When he has his choice, he picks his favorite album, "Girls, Girls Girls" by his favorite group Motley Crue!! Summer is at the top of his list of seasons because he loves to go to the lake and waterski."

His future plans include going to college at South Plains and majoring in Architectural Drafting. He comments on SHS as being fun, but he is ready to leave. He says to the underclassmen, "Work hard because school will be over before you know it!"

We wish to express our heartfelt gratitude & appreciation for the many acts of kindness shown to us during the recent loss of our precious loved one, KRISTY.

Thank you for your prayers, visits, telephone calls, flowers, cards, food & those who served, & the memorial donations to charities & the scholarship fund.

We thank God for each of you, for your love, your caring & your friendship.

Bob & Nina Landers
Billy Landers
Kathy Landers, Micah & Tasha
Arthur Landers
Artie F. "Jack" Lewis
Bob & Ann Lewis
Barbara & Ray Bain & Family



a Woman's IRA



I'm married and working. How much can my husband and I put into an IRA?

You and your spouse can each deposit up to the lesser of \$2,000 per year or 100% of compensation and shelter that amount from your current year's income tax.

I'm married, not working, and receive no alimony. What can I do about an IRA?

Rules governing spousal IRA's allow the working spouse to deposit up to the lesser of \$2,250 or 100% of compensation and shelter that amount from current year's income taxes.

How does it benefit my husband in my having an IRA?

Your having an IRA really benefits both of you. Not only are you providing for your own retirement, but a systematic IRA savings plan provides for both of your futures.

Should you die before you receive the proceeds out of your IRA, your beneficiaries will, of course, receive the funds.

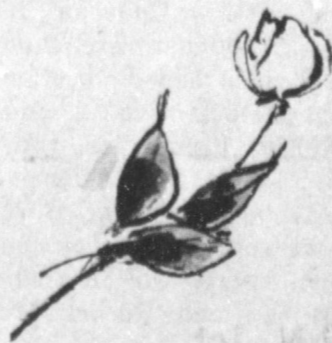
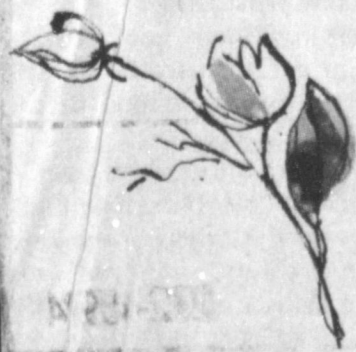
I'm single and working. How much can I put into my IRA?

You can deposit up to the lesser of \$2,000 per year or 100% of compensation and shelter that amount from your current year's income tax.

How do my children benefit?

Your children benefit in a variety of ways.

Should you die before receiving the funds out of your IRA, these funds could be used for their education, living purposes, or whatever other needs they would have at that time.



Muleshoe State Bank
Muleshoe, Texas
MEMBER FDIC

Western Wear

IN TEXICO

482-3363

OPEN 8:00 a.m. - 6:30 p.m. c.s.t.

Rip's

REMODELING SALE

50% - 75% off

SELECT GROUPS OF:

PENDLETON and PANHANDLE SLIM SHIRTS.
SUITS • SPORTCOATS • SWEATERS.
DOWN COATS • ALL WEATHER JACKETS.
JUSTIN LADIES ROPERS • FASHION BOOTS.
LADIES BLOUSES • BELTS • BUCKLES.

WRANGLERS:

13 MWZ 14.98 13 MWZ- COLORS 19.98

Accepting American Express-Visa-Discover-Mastercard



Muleshoe...

Cont. From Page 1

He is currently staying in the home of a sister and her husband, Mr. and Mrs. Jerry (Phyllis) Champlin in Las Vegas, as he is wearing a patch over his left eye at this time.

Bailey County Commissioners will meet in regular session in the Bailey County courthouse at 10 a.m. on Monday, February 8.

Items on the agenda include payment of routine county bills; review proposed contract for repairs to the courthouse roof; consider order to authorize County Judge to advertise for bids for new vehicle for the sheriff's office; review county treasurer report; review departmental reports and miscellaneous items.

Army Pvt. 1st Class Rudolph Sanchez Jr., son of Rudolph Sanchez Sr. of Texico, N.M. and Benitz Castillo of Farwell, has arrived for duty with the 18th Infantry, Fort Benning, Ga.

Sanchez, a fighting vehicle system mechanic, is a 1977 graduate of Farwell High School.

Members of the Board of Trustees of the Muleshoe Independent School District will meet in regular session at 7 p.m. Monday, in the school administration offices.

Items on the agenda include under informational reports and requests: Academic report from Joe Cearley relating to Mary DeShazo Elementary School; Playground Committee report and canine drug education program update.

Following an executive session, board members will report on the Superintendent's contract; review of personnel matters and new personnel recommendations.

Financial reports will be given on bank balances; fund balances and payment of current bills.

Special reports will be given by the Board President and the Superintendent of Schools.

The superintendent will give a policy update review and a review of questions on school operations.

**School Offers
Special Classes
For Youngsters**

Muleshoe Independent School District provides comprehensive education services for all handicapped children living in the district, and these services include an Early Childhood program, according to Betty Jennings.

This program for early childhood is known as Early Childhood Education for the Handicapped (ECEH). It provides for early detection and education of handicapped children from birth to five years of age. Mrs. Jennings said research has shown that early detection of problems among children can help deter the severity of learning problems as they get older.

Early Childhood Special Education program is a source of early intervention for aiding young children with handicapping conditions, explained the director. This program will provide the opportunity to raise the level of functioning and potential of handicapped children, Mrs. Jennings continued.

The Early Childhood unit is located at Dillman Elementary School, and services may be provided through special classes in one or more of the following areas: language development, (speech), social-emotional development, self-help skills, mental development, and fine and gross motor development.

She also said the Early Childhood classes are available free of charge to all eligible children in the district.

Anyone may refer a child who may have problems in the following areas: speech or language disability, mental retardation, orthopedic handicap, hearing and/or visual impairment, deaf/blind, learning disability, emotional disability, autistic, and other health impairments.

For additional information and/or referrals, contact the Special Education office in the Muleshoe High School Building.



RIBBON CUTTING AT PATIO BEAUTY SHOP--Tuesday afternoon, the new owners/operators of Patio Beauty Shop on West Sixth Street, were honored with a ribbon cutting at their new beauty shop. Performing the ribbon cutting ceremony was Muleshoe Mayor Darrel Turner, with scissors, assisted with the ribbon by members of the Muleshoe Chamber of Commerce and Agriculture.

Houston Show

Cont. From Page 1
members planning to exhibit animals at Houston include:

Russell Brown, Andy Crawford, Angela Crawford, Mike Dunham, Jason Harmon, Amy Harrison, Brandi Harrison, Lori Hodges, Suzy Hodges, Holly Huckaby, Brittany Kirby, Kourtnee Magby, Angel Pearson, Betsy Seales, Jimmy Seales, Brooke Sinclair, Colin Tanksley, Courtney Tanksley, Jamie Wheeler, Wade Wheeler, Chris Wheeler.

**Eighth Grade
Girls Winners;
Seventh Loses**

The following basketball results were released to *The Journal* Wednesday.

In eighth grade A girls action Monday, February 1, Coach Roxie Johnson said they defeated Littlefield by a score of 36-31.

It was 8-6 at the end of the first quarter and 16-13 at the halfway mark. By the end of the third, the Mulettes eighth grade had widened the score to 26-17.

Tory Matthews led all scoring with 12 points; Audrey Williams had eight; Tiffany Angeley, six; Jill Foster, five; Erin Kelley and Jody Field each had two points and Chanda Kemp had one point.

High pointer for Littlefield was Heard with 14. Audrey Williams had six offensive, and six defensive rebounds. Tory Matthews had two of each; Jill Foster and Jody Field each had four defensive rebounds; Lashelle Scoggins had two offensive and one defensive rebound; Erin Kelley had two offensive rebounds; Jill Noble and Chanda Kemp each had one defensive and one offensive rebound and Tiffany Angeley had two offensive rebounds.

Final game for the year for the eighth grade girls will be tomorrow, Monday, when they play Friona in Muleshoe.

Also on Monday night, the seventh grade A girls fell to Littlefield 21-35.

They trailed 0-6 at the end of the first, but it was 7-14 at halftime. By the end of the third, it was 11-18, and despite a strong come back in the fourth, with 10 points, they still fell victim to the Littlefield seventh grade girls.

Becky Donaldson was high pointer with seven; Angie King had six; Mandy Shipman, Stephanie Francis, Cristal Sargent and Rachel Toscano each had two points.

High pointer for Littlefield was Rodgers with 18.

Angie King had one offensive rebound; Cristin Chitwood recorded one offensive rebound; Cristal Sargent had three offensive and one defensive rebounds and Keisha Kemp had three offensive and two defensive rebounds. Other defensive rebounders were Rachel Toscano, one; April Hugg, two; Stephanie Francis one and Rachel McAdams, three.

The team hit 8-27 field goals for 29 percent and 5-8 free throws for 62 percent.

Mandy Shipman was chosen as Player of the Week.

Next and final game for this year for the seventh grade is tomorrow at Friona.

generous sponsoring firms or individuals, is used to purchase a purebred registered beef or dairy heifer.

The calf is raised by the winner for special showing competition in the Astrohall at the following year's show. Each project is closely supervised by a vocational agricultural teacher or county extension agent.

Additionally, the winners are required to submit to the calf scramble office accurate financial records, essays, photographs and a scrapbook detailing the progress of the venture.

Proper livestock evaluation techniques, efficient cattle feeding and production methods, principles of economics and money management are realistic learning experiences for the youngster who's managed to get a firm hold on a calf.

To date, the Houston Livestock Show and Rodeo calf scramble program has put 10,796 animals valued at more than \$2 million into the hands of Texas youth.

The 23 Bailey County 4-H

Basketball...

Cont. From Page 1
er for the Dimmitt Bobbies at 18 points.

For Muleshoe, Brenna Matthews had nine points; Amy Bean had seven; Debbie Brown, six; Michelle Cox and Wendy Green each had six; Amy Harrison, four; and Joey Heathington, two points.

JV GIRLS
Immediately before the varsity Mulettes played, the JV girls went down in defeat to the Dimmitt JV girls 29-27. The girls had pulled within one point, 28-27 with just 13 seconds left to play, but a foul gave the Dimmitt JV one more point.

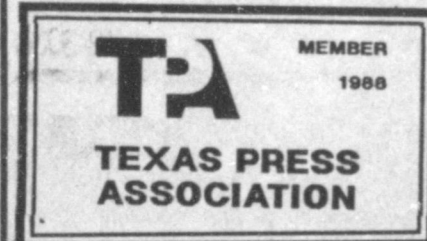
The Dimmitt Bobcats overwhelmed the Muleshoe Mules in varsity action in Muleshoe Friday night.

Dimmitt took the one-sided game by a score of 94-34.

High pointer for Muleshoe was Sergio Gonzales with 14 points. Ronnie Perez had 11 points in the game.

Bailey County Journal USPS 040-200

Established March 31, 1963. Published by Muleshoe Publishing Co., Inc. Every Sunday at 304 W. Second, Box 449, Muleshoe, Texas, 79347. SECOND CLASS POSTAGE paid in Muleshoe, Texas, 79347. U.S. Post Office approved.



Member
NATIONAL NEWSPAPER
ASSOCIATION
WEST TEXAS PRESS
ASSOCIATION

L.B. Hall-President & Publisher
Sammye Hall-Vice President & Controller

Cleta Williams-News
Danett Bunch-Advertising
Evelene Harris-Society
Lillie Nino-Bookkeeping

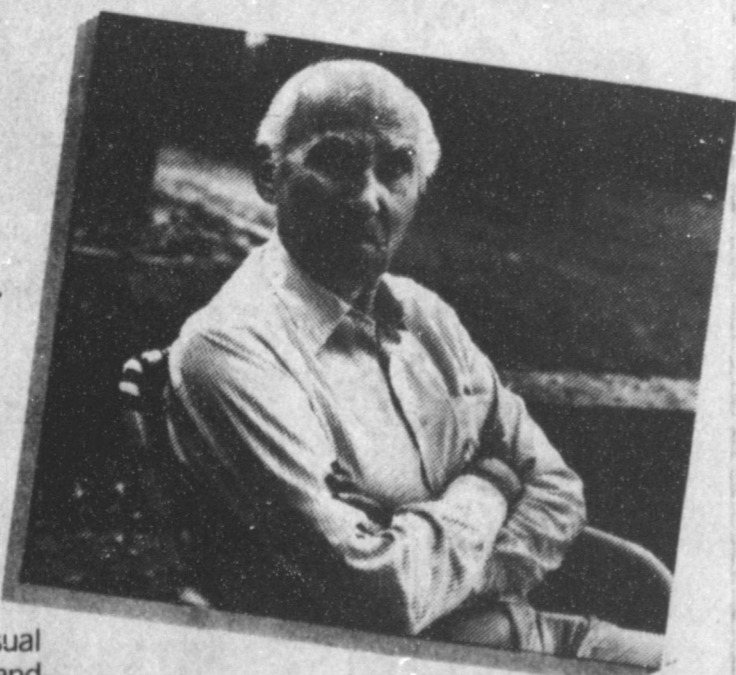
SUBSCRIPTIONS

Muleshoe Journal and Bailey County Journal
Muleshoe By Carrier \$12.50
Muleshoe Journal and Bailey County Journal
Bailey County & Surrounding Counties By Mail \$14.75

Muleshoe Journal and Bailey County Journal
Elsewhere in Texas \$16.50

Advertising rate card on application

**You said it
was cold...
He thought
you called
him old.**



Friday, Feb. 12, 1988

10 A.M.-12 P.M.

Beltone®

Call Now For An Appointment To Avoid Waiting

Bailey County Coliseum

272-4114

To someone with a hearing loss, a casual remark can often lead to misunderstandings and hurt feelings. Feelings you may never be able to set right. Because even though a friend or relative may hear what you say, he or she may have trouble understanding certain words. And one misunderstood word is all it takes.

Why take the chance? Be a good friend. Show someone how much you care. Call Beltone and make an appointment for a loved one now. Many hearing problems can be helped.

**BIBLE
VERSE**

"He that hath two coats, let him impart to him that hath none: and he that hath meat, let him do likewise."

1. Who made the above statement?
2. To whom was he speaking?
3. What happened just after this?
4. Where may this statement be found?

Answers to Bible Verse

1. John the Baptist.
2. The people who were listening to his sermon.
3. He introduced Jesus as the long promised Messiah of Jews.
4. Luke 3:11.

Speeches are made for two purposes—to tell the truth or to hide the truth.

MEET THE CANDIDATES
The Journal has been authorized to announce the following candidates for public office:
Parmer County Tax Assessor
Doris Herington
SHERIFF
Larry Cox

MAC TICKET NO.
0053719
\$50.00
Bob Stovall Printing
221 E. Ave. B 272-3373

PROPERTY TAX RENDITIONS
HELP YOU PROTECT YOUR RIGHTS AS A TAXPAYER
A rendition is a report to the appraisal district that lists all the taxable property you own or control on January 1, 1988. You may also give your opinion of the property's value, if you wish.
You must file a rendition if you own tangible personal property used to produce income—such as the machinery and equipment used by a business.
The appraisal district may require any taxpayer to file a rendition by sending the taxpayer a written notice and a rendition form.
You may want to file a rendition, even if you aren't required to file, to preserve some of your rights as a taxpayer:
• You put your correct mailing address on record so your tax bills will go to the right address. Even if your bill goes to the wrong address, the law still holds you responsible for paying your taxes on time or else paying extra charges for late payments.
• You can put your own opinion of your property's value on record. If the appraisal district then places a higher value on your property, it must notify you in writing of the higher value and explain how you can protest that value to the appraisal review board.
• By filing a special type of rendition called a *repprt of decreased value*, you can notify the appraisal district of significant damage to your property that occurred in 1987. The district will send someone to verify the damage and take it into account when assigning a 1988 value to your property.
File renditions with your local appraisal district at the address shown below. Forms are available at this office.
The new deadline for 1988 renditions is March 31. You can get an extra 30 days, if you ask for it in writing before the March 31 deadline.
For more information, get a free copy of the pamphlet, *Taxpayers' Rights, Remedies, Responsibilities*, at your appraisal district office or from the State Property Tax Board in Austin.
Bailey County Appraisal District
104 E Ave C 272-5500

Nursing Home News

Happy February birthday to Margaret Beard, 2-2-1910, Inez Allgood, 2-11-18??, Thelma Stearns 2-6-1907, Ruby McCamish 2-17-1905. Mrs. Allgood states you never ask a lady her age. We wish you love, peace and joy.

Friday afternoon the J.O.Y. choir of the First Baptist Church came for Gospel Singing and visitation. Refreshments of assorted finger sandwiches and punch were served to residents attending as well as those in their rooms and employees.

Sunday afternoon the Gospel Notes quartet from the Muleshoe Church of Christ came to sing to the residents.

Among those visiting the nursing home this week were Lula Bray Crim, Jo Dean Neel.

Veta White was visited by

Mr. and Mrs. Loyd Brown Sunday afternoon.

Congratulations to Allie Barbour for being chosen Sweetheart of the Week on Channel 6.

Lena Hawkins visited the nursing home Tuesday afternoon. She read to the residents and she and Jackie Johnson played Skip-Bo with Cordelia Cochran, Effie Smith, Emma Schuster, Ella Faubus, Mamie Askew and Julia Hawkins watched from the side line.

Among those visiting Mildred Nieman over the week-end were Curtis and Arline Clevenger and Plup Peice.

Julia Hawkins was visited by Alma Crim and Rita Hawkins.

Ella Faubus was visited by Mr. and Mrs. M.C. Faubus, Mrs. David Williams and son Saturday.

Sammie Moore's recent visitors were Vern Warren, Starla Ellis, and Mr. and Mrs. Wilcie

Moore. Arnold Morris was visited by Inez Bobo Sunday. Also visiting him were Bubby and Barbara Blackman, Clara Lou Jones and Lois Ethridge.

Beryl Hollis was visited by Laverne James Thursday. Ruth McCarty visited Tuesday.

Ruth Williams went out Sunday afternoon with her husband, Reil Williams.

Monday the Lazbuddie Young Homemakers and children visited and decorated the nursing home with an array of hearts and cupids for Valentines Day.

Mrs. Tanksley brought her H.E.C.E. group from High School who added decorations for Valentine's Day to the dining room Tuesday morning.

Our love and sympathy to the family of Martha Byers.

Lona Embry, Lena Hawkins and Velma Gwyn, Jackie Johnson and children were among those visiting in the nursing home Tuesday.

Our congratulations to Eric Smith for the nice plaque honoring him as Outstanding Service as Director of Enloe State Bank.

Johnny Chappell was visited by his daughter, JoAnn Faircloth and her friend, Jaquitta Crook Friday. His son and daughter-in-law, Mr. and Mrs. John David Chappell from Florida, visited him Tuesday night.

Effie Smith, Ora Roberts, Emma Schuster, Julia Hawkins, Veta White attended the A.A.R.P. meeting at the Civic Center Friday. Our thanks to the members of the A.A.R.P. for their warm hospitality and to Ed Harp for taking us on the Sr. Citizens van. Lois Ethridge attended the meeting with Clara Lou Jones. She also spent the afternoon visiting in Clara Lou's home.

Mr. and Mrs. J. C. Shanks came Friday afternoon to sing and play Gospel Music for the residents.

Sunday morning Earl Peterson came for Bible Study. Members of the Muleshoe Church of Christ brought communion.

Sunday afternoon The Progress Baptist Church came for a Devotional and Gospel singing.

Garvin Long Funeral Held At Morton

Funeral services for Garvin Long, 69, of Morton, will be held at 3 p.m. today, Sunday, in the First Baptist Church at Morton with the Rev. Steve Thomas, pastor, officiating, assisted by Rev. Al Jennings, pastor of the First United Methodist Church, Morton. Interment will be in Morton Memorial Cemetery under direction of Ellis Funeral Home of Morton.

He died Thursday in Cochran Memorial Hospital in Morton following an illness. He was born February 18, 1918 in Silverton and moved to Morton from Silverton in 1949. He was a retired farmer.

Garvin Long was married to Ada Bledsoe on Oct. 28, 1966 in Amarillo. He was a member of the First United Methodist Church, Morton and was a member of the Masonic Lodge at Morton.

Survivors include his wife, Ada; one daughter, Lorena Miller of Canyon; two sons, James Perry Long, Downingtown, PA; Larry Dean Trevathan, of Canyon; three step sons, Dale Trevathan and Aubrey Trevathan, both of Tulsa, OK and Rodney of Amarillo; three step-daughters, Elizabeth Hancock, Menden, LA; Wanda Jardin, Bakersfield, CA and Sudi Terrill, Amarillo; two sisters, Amanda Robertson, Cross Plains and Eileen Hobby, Riverton, WYO; 28 grandchildren and 10 great-grandchildren.

Rural Revitalization Conference

March 15-16

A statewide Rural Revitalization Conference for city officials, mayors of smaller towns, economic development groups, community leaders, businessmen, clergy, service agencies, farmers, and rural and suburban dwellers is scheduled for March 15 and 16 in Houston.

Conference headquarters will be the Ramada Hotel, 12801 Northwest Freeway (Highway 290 and Pinemont) in Houston. A conference highlight is expected to be a trip to Prairie View A&M University for a luncheon and program the opening day.

Objective of the conference is to discuss prevailing problems of rural and suburban areas of Texas and provide ideas for solutions and alternatives to aid in stabilizing and enhancing economic and social growth, explains Hoover Carden, administrator of 1890 Extension program at Prairie View A&M University.

The conference is being planned by the Cooperative Extension Program of Prairie View A&M and the Food and

Agriculture Council, in cooperation with the Texas Agricultural Extension Service.

Conference participants will have an opportunity to take part in workshops in economic development, social services, agricultural development and diversification, and housing and infrastructure.

Among featured speakers at the workshop will be Deputy Secretary of Agriculture Peter Meyers with the U.S. Department of Agriculture in Washington, D.C., and Mayor Judy McDonald of Nacogdoches.

Other agencies assisting with

the conference are the Houston-Galveston Area Council, Farmers Home Administration, Center for Economic and Social Research-Housing and Urban Development, Texas Department of Agriculture, Texas General Land Office, and the Texas Department of Commerce.

For additional conference information, contact the Cooperative Extension Program at Prairie View A&M University, Drawer B, Prairie View, Texas 77446, (409) 857-2023 or (409) 857-2227, or your local county Extension office.



CofC MEMBER OF THE MONTH-Thursday morning, Toni Eagle, manager of the Muleshoe Chamber of Commerce and Agriculture, presented Ronald Ashford Electric, a certificate as Muleshoe CofC Member of the Month for January.

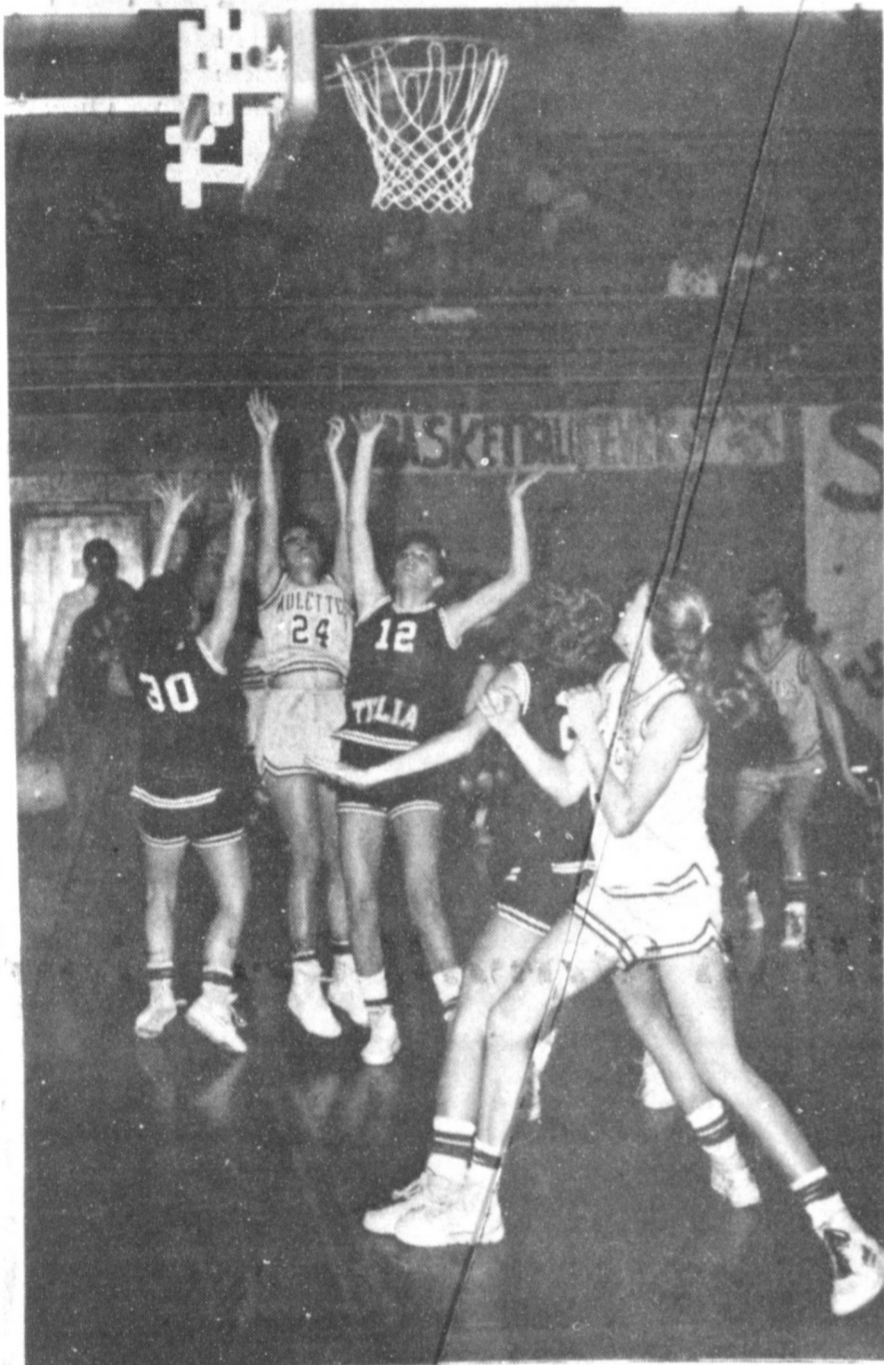
MICROWAVE COOKING

By Linda Attaway
Some microwave facts and figures: By the end of 1987, the percentage of households in the U.S. to have a microwave oven is expected to reach 70%.

In 1986, 21% of microwave ovens were bought by persons 29 years old or younger. Nearly 18% of microwave ovens bought in 1986 were purchased by singles.

Retail sales of frozen dinners and entrees reached \$4.5 billion in 1985 and are expected to reach \$18.5 billion by the mid-1990s. A food industry magazine listed a total of 47 new microwavable products this year.

There is now a microwave oven on the market that can read bar codes (similar to the UPC symbols that lasers read in supermarkets). This is accompanied by a cookbook with bar codes which the oven can read and carry out cooking instructions automatically.



GOOD FOR TWO--Amy Bean, No. 24, lets go of a sure basket despite the stretched arms of a Tulia Hornette in Muleshoe last Tuesday night. The Mulettes took a slim victory in the game.

AMALIE
Better than it has to be.®

Wiedebush and Company is having another Truckload Oil Sale. You can buy quality Amalie Products at 10% off regular prices.

Buy 10 Cases, drums or 5 gallon cans and get ONE UNIT FREE.

The way our oil prices are going up, this program could very easily save you as much as 25% in the coming months.

This offer good January 1, 1988 through March 1, 1988.

Wiedebush & Co.
1620 W. American Blvd. 272-4281

...new corn hybrids
...new pricing programs.

When it comes to seed corn, no one has better hybrids or better pricing options than your neighborhood Pioneer representative.

For the High Plains
NEW 3168 • 3124

Get Together with...

Gene & Francis Franks Muleshoe 925-6454	Terry Hutton Muleshoe 272-3711	Gene Paul Jarman Muleshoe 965-2340	Don Bryant Muleshoe 965-2464
--	---	---	---

Clyde Dammron, Jr., Pioneer Sales Representative (l), with his dad, Clyde Dammron, Sr., and customer Jim Collins (r), near Dimmitt, Texas.

Senator Bill Sarpalius



Reports



JUDICIAL REFORM ON THE WAY?

AUSTIN — Judicial reform at times seems like one of those ideas unique to regular sessions of the Legislature. Lawmakers come to town talking about the need to reform the judiciary, the media appropriately treats it as a "hot" topic, bills are filed, hearings conducted and then, ever

so quietly, the issue dies only to be resurrected two years down the line.

Why no resolution to date? Well, for one thing, the issue has failed until recently to spark widespread interest outside the Capitol and legal community. People simply have considered other issues more

pressing. That's left the fighting largely up to the pro and anti-reform groups. The battle between these groups is plenty spirited, and that makes the issue controversial, at least within the walls of the Capitol. Without a public mandate directing the Legislature, though, the issue has gotten no farther than the hearing stage.

Really, the debate over the issue has left only one thing clear, and that is that the majority of people in this state do not want to give up their right to elect judges in some form or fashion.

So, to this point, the battle has been among three groups. There are those, of course, who see no reason for any change in the judicial selection process. For them, electing judges at all levels by the traditional two-party process works just fine.

A second group would like to do away with the partisan aspect of the elections. Those supporting the non-partisan concept point to the 1980 and 1984 general elections when qualified Democratic judges were swept from office in the Reagan landslides and to the 1982 election when qualified Republican judges lost office in the Democratic landslide in Texas.

The third, and perhaps most vocal, group would like to see what they call merit selection of judges. Under this system, a bipartisan committee of attorneys, legislators and public members would submit five names to the governor each time a judicial post comes open. The governor then would nominate one of the five to fill the vacant post, and the Senate would confirm or reject the nominee.

Appointed judges, according to the merit selection plan, would serve a predetermined length of time before seeking another term in a "retention" election. Such an election would have voters cast ballots only on whether the

judge should have another term. Any time a judge is rejected by the voters, the merit selection process would begin again. At this point, proponents of merit selection call for the plan to apply only to appellate-level judges.

Each of the camps has its reasons for supporting its respective plan, but the public never seemed that interested in the various arguments. Beyond taking the traditional stance in favor of being allowed some type of ballot in judicial selections, the issue really hasn't appeared to be all that important to Texans.

Until now. Suddenly, the Texas judiciary is under fire around the nation, and people are beginning to question our judicial system a little more closely. At the heart of the controversy is the \$11 billion award granted Penzoil by a Texas court in a lawsuit against Texaco. The award has been upheld by both the Court of Appeals and the Texas Supreme Court.

Texaco charges that Penzoil — legally — bought the award. Texaco attorneys note that Penzoil's counsel made generous campaign contributions to the trial judge, the appeals judges and many members of the Supreme Court. To be fair, it should be noted that during the trial Texaco declined to offer any evidence to rebut Penzoil's claim that \$11 billion was a fair award.

Still, the heavy campaign contributions to most of the judges involved with the case taints Penzoil's award, even if it was fair. The judiciary's image further has been tainted by official reprimands against two Supreme Court justices and charges that special interests virtually control the Supreme Court.

The ethical questions that surround the state judiciary have been duly noted by the national media. In particular, "60 Minutes," the CBS newsmagazine, did a story

that was highly critical of our judiciary.

What all this means, is that the stakes have increased in the judicial reform battle and that the general public is likely to be more concerned about the issue when the Legislature reconvenes next January. At least one of the candidates seeking a seat on the Supreme Court this year already has said he will limit his contributions to \$5,000 per contributor.

It doesn't look like judicial reform will stay on the back burner much longer.

If you have any questions about judicial reform, or other issues, please write us at P.O. Box 12068, Austin, Texas, 78711.

NOTICE
 "Advertisers should check their ad the first day of insertion. The Journals will not be liable for failure to publish an ad or for a typographical error or errors in publication except to the extent of the cost of the ad for the first day insertion. Adjustment for errors will be limited to the cost of that portion of the ad where the error occurred."

Hearing Loss Is Not A Sign Of Old Age.

Chicago, Ill.—A free offer of special interest to those who hear but do not understand words has been announced by Beltone. A non-operating model of the smallest hearing aid Beltone has ever developed will be given absolutely free to anyone requesting it.

It's yours for the asking, so send for it now. It is not a real hearing aid, but it will show you how tiny hearing help can be. The actual aid weighs less than an eighth of an ounce, and it fits completely into the ear canal.

These models are free, so we suggest you write for yours now. Again, there is no cost, and certainly no obligation. Although a hearing aid may not help everyone, more and more people with hearing losses are being helped. For your free sample write today to: Department 82331 Beltone Electronics Corporation, 4201 West Victoria Street, Chicago, IL 60646.

There's only one license for people who carry a lot of weight.

A new law for truck and bus drivers.

You may have only one driver's license issued by the state where you live, according to a new federal law. You should return any other licenses you hold to the states that issued them. Effective July 1, 1987, if you have more than one license, it will be illegal, and you may be fined up to \$2,500.

For additional information and exceptions, contact your local Texas Department of Public Safety office or your employer.

Don't face the new tax laws alone.



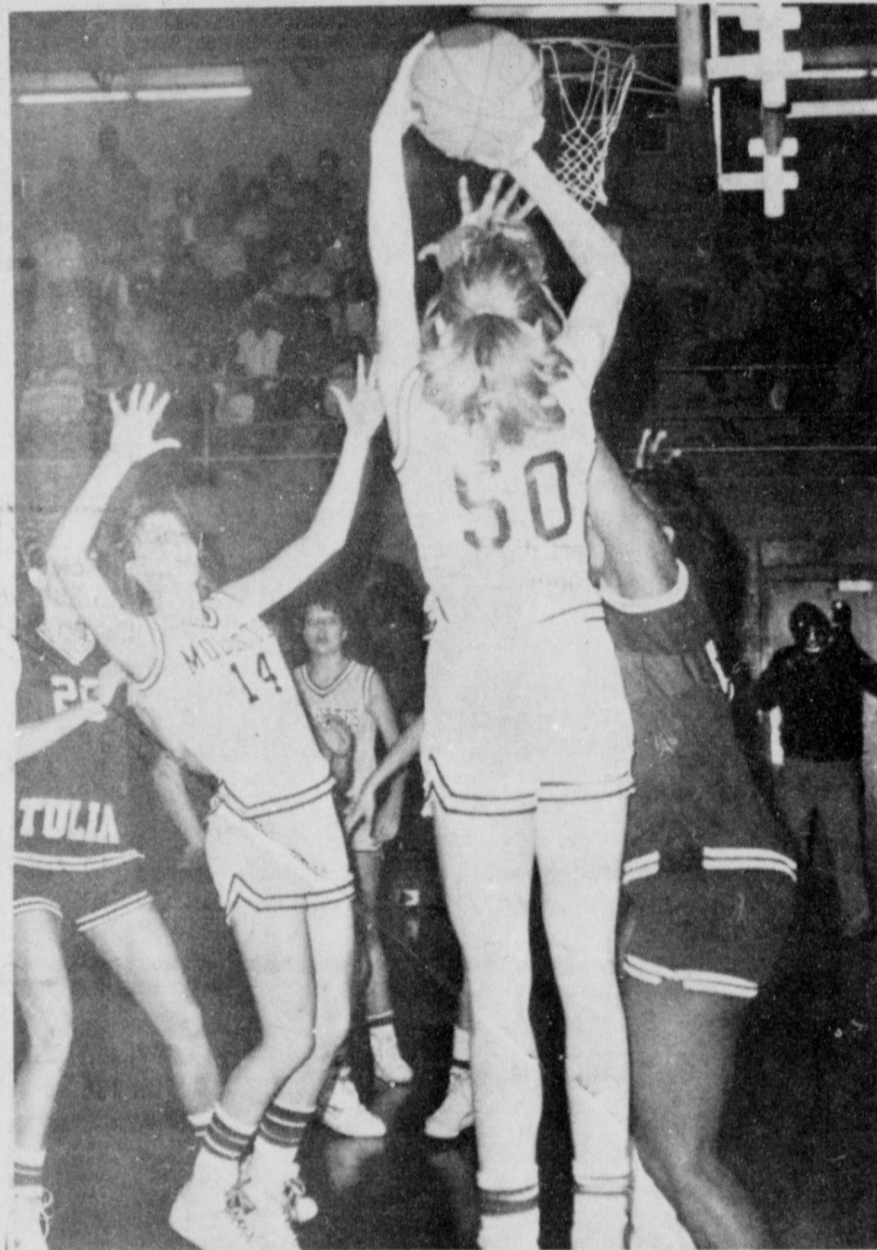
The tax laws have changed dramatically. And the forms have changed, too. Our experienced preparers know the new laws and how to use the new forms. We'll find you the biggest refund you have coming.

H&R BLOCK IF THERE'S EVER A TIME FOR H&R BLOCK, IT'S NOW.

224 West 2nd.

272-3332

Weekdays 9 - 6 Sat. 9 - 5



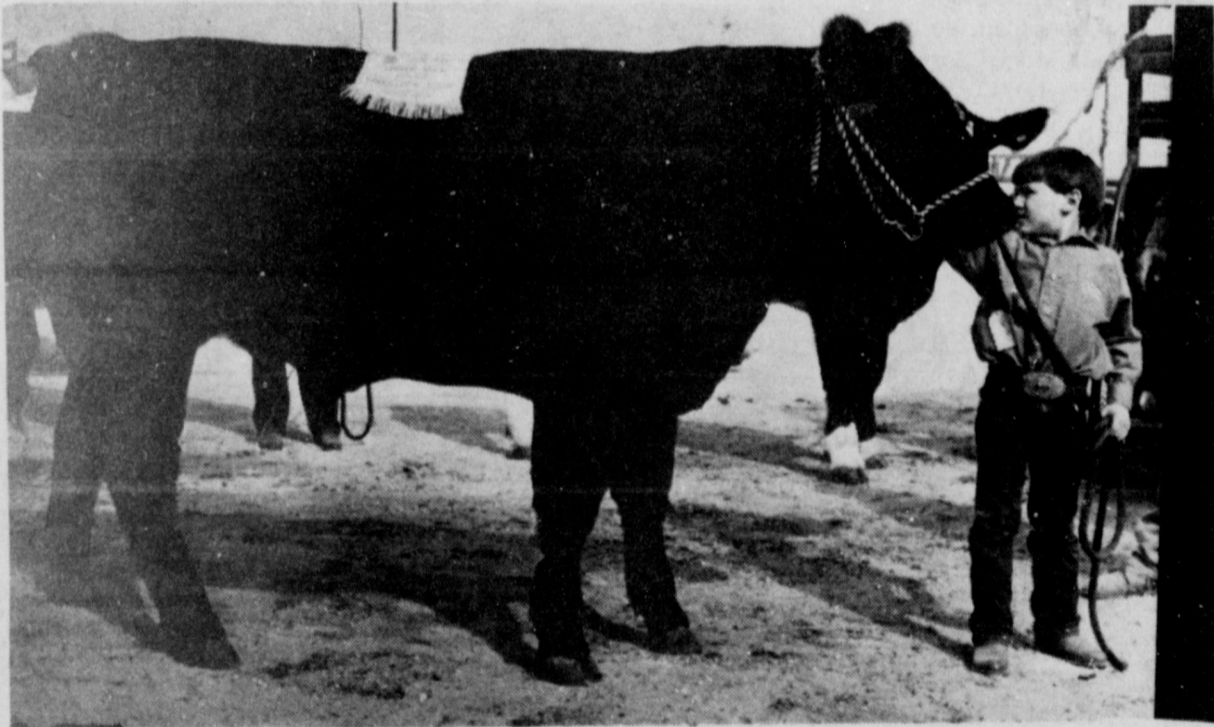
FENDING OFF THE INVADERS--Amy Harrison, No. 14, fends off Tulia defenders as Wendy Green, No. 50, goes up with the basketball in Watson Junior High School last Tuesday night. The Muletons won the game, keeping alive their hopes for the district championship.

they won't mix.

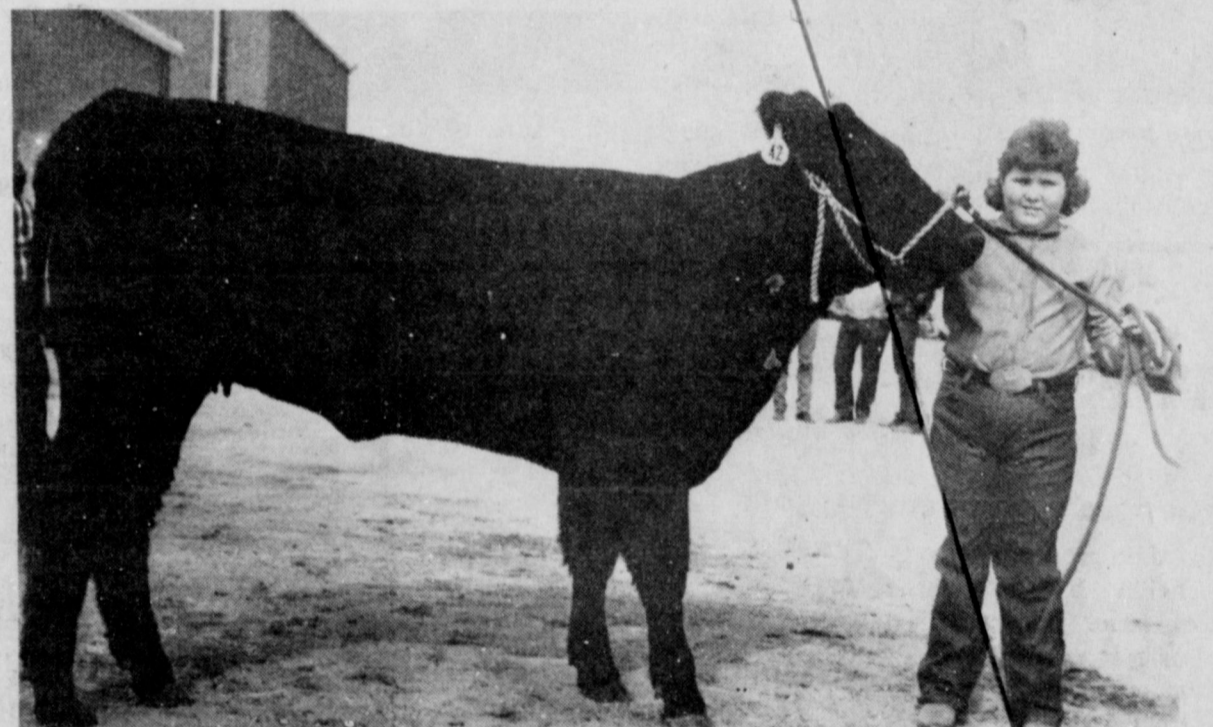


A message from this newspaper and the Texas Department of Public Safety

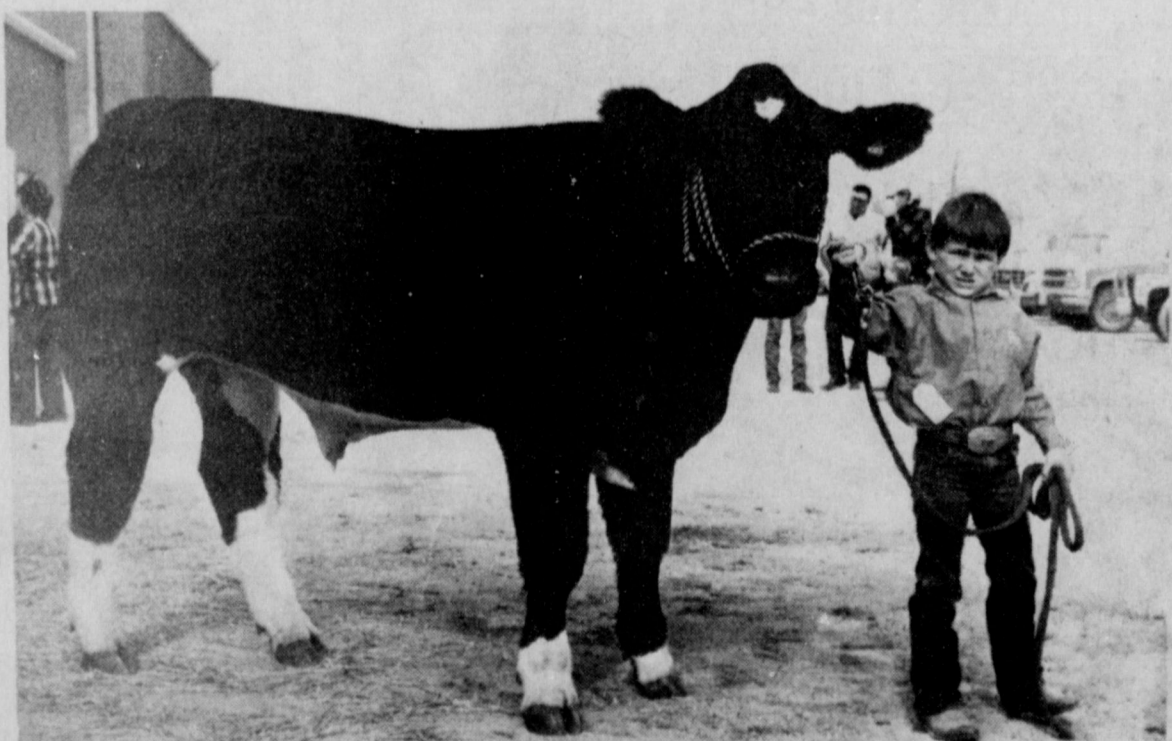
Congratulations To The Winners Of The Three-Way Junior Livestock Show



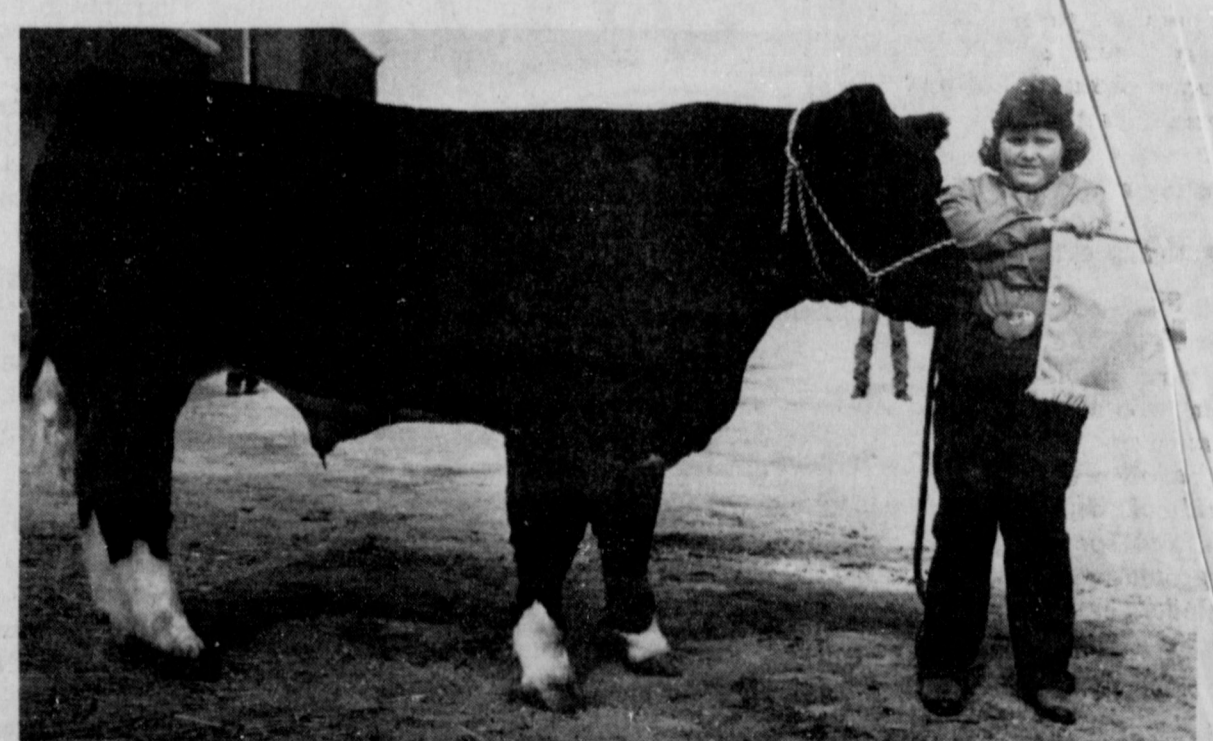
RESERVE CHAMPION STEER
 MONTY KIRBY



GRAND CHAMPION HEIFER
 BRITTANY KIRBY



1ST PLACE LIGHT WEIGHT STEER
 MONTY KIRBY



GRAND CHAMPION STEER
 BRITTANY KIRBY

Wes-Tex Feed Yards, Inc.

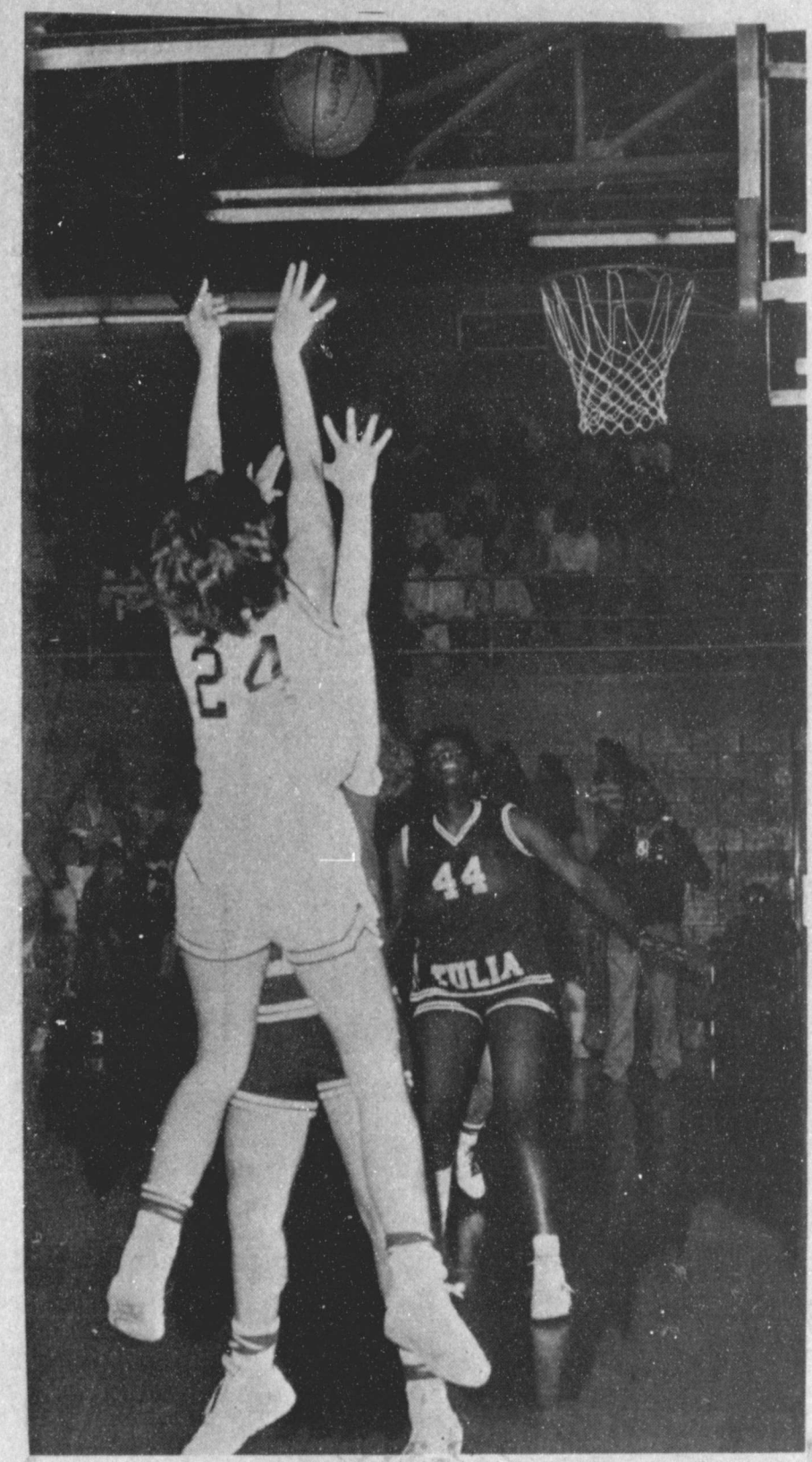
WJHS Honor Roll

THIRD SIX-WEEKS HONOR ROLL
SIXTH GRADE
Nicole Alanis, Brooke Barrett, Leah Bruns, Kelli Caldwell, Mason Conklin, Gail Copley, Jeanne Cox, Misty Davenport,

Shawna DeLaney, Casie Dodd, April Franklin, Chad Freeman, Kris Fuller, Lena Garcia, Mark Garcia, Johnny Gonzales, Emily Harris, Lori Hodges, Kristin Holman, Reginald Jaramillo, Evan Kelley.
Also, Chad McCormick, Stephanie McNutt, David Olivarez, Filemon Olivarez, Brian Osuna, Donna Puckett, Stephanie Quintana, Allie Riley, Ruben Saldana, Shane Schuster, Brooke Sinclair, Sonya Smith, Courtney

Tanksley, Jackie Thomas, Brenna Wheeler, Shawn Wheeler, Jamie Williams, Justin Williams.
SEVENTH GRADE
Hector Arzola, Amanda Ashford, Dora Barrera, Jeff Bradley, Michael Cearley, Kristi Chapman, Kristin Chitwood, Eric Cisneros, Sonya Cisneros, Monica Clemmons, Kristie Collins, Chris Dominguez, Becky Donaldson, Amelia Flores, Stephanie Francis, Carmen Franco, Rose Marie Gloria, Shane Glover, Rebecca Green.
Also, Vanessa Greenhouse, Veronica Gonzalez, Stacie Harris, Mark Hicks, Robin Hovland, April Hugg, Maria Hurtado, Jennifer Johnson, Kyle Kenmore, Angie King, Stacey Langfitt, Lozano Gonzalo, Susie Martel, Charlotte Martin, Aida Martinez, Eric McElroy, Scott Miramontes, Tracy Puckett, Gilrobert Rennels, Shannon Robertson, Blanca Sanchez.
And, Cristal Sargent, Mandy Shipman, Douglas Snell, Jody Thomas, Cari Turner, Jon Robin Watkins, Steven Wauson, Cory Welch, Summer Wiley and Courtney Williams.

Shawna DeLaney, Casie Dodd, April Franklin, Chad Freeman, Kris Fuller, Lena Garcia, Mark Garcia, Johnny Gonzales, Emily Harris, Lori Hodges, Kristin Holman, Reginald Jaramillo.
Also, Evan Kelley, Chad McCormick, Stephanie McNutt, David Olivarez, Brian Osuna, Donna Puckett, Stephanie Quintana, Allie Riley, Ruben Saldana, Shane Schuster, Brooke Sinclair, Sonya Smith, Courtney Tanksley, Jackie Thomas, Brenna Wheeler, Shawn Wheeler, Jamie Williams and Justin Williams.
SEVENTH GRADE
Hector Arzola, Amanda Ashford, Dora Barrera, Jeff Bradley, Michael Cearley, Kristi Chapman, Kristin Chitwood, Eric Cisneros, Sonya Cisneros, Monica Clemmons, Kristie Collins, Chris Dominguez, Becky Donaldson, Amelia Flores, Rose Marie Gloria, Shane Glover, Rebecca Green.
Also, Vanessa Greenhouse, Veronica Gonzalez, Stacie Harris, Mark Hicks, Robin Hovland, April Hugg, Jennifer Johnson, Kyle Kenmore, Angie King, Stacey Langfitt, Susie Martel, Aida Martinez, Eric McElroy, Scott Miramontes, Tracy Puckett, Gilrobert Rennels.



STRETCHING IT OUT--Amy Bean, No. 24, stretches out as she lifts the basketball above Tulia defenders Tuesday night during basketball action in Muleshoe.

SEVENTH GRADE
Hector Arzola, Amanda Ashford, Dora Barrera, Jeff Bradley, Michael Cearley, Kristi Chapman, Kristin Chitwood, Eric Cisneros, Sonya Cisneros, Monica Clemmons, Kristie Collins, Chris Dominguez, Becky Donaldson, Amelia Flores, Stephanie Francis, Carmen Franco, Rose Marie Gloria, Shane Glover, Rebecca Green.
Also, Vanessa Greenhouse, Veronica Gonzalez, Stacie Harris, Mark Hicks, Robin Hovland, April Hugg, Maria Hurtado, Jennifer Johnson, Kyle Kenmore, Angie King, Stacey Langfitt, Lozano Gonzalo, Susie Martel, Charlotte Martin, Aida Martinez, Eric McElroy, Scott Miramontes, Tracy Puckett, Gilrobert Rennels, Shannon Robertson, Blanca Sanchez.
And, Cristal Sargent, Mandy Shipman, Douglas Snell, Jody Thomas, Cari Turner, Jon Robin Watkins, Steven Wauson, Cory Welch, Summer Wiley and Courtney Williams.

SEVENTH GRADE
Hector Arzola, Amanda Ashford, Dora Barrera, Jeff Bradley, Michael Cearley, Kristi Chapman, Kristin Chitwood, Eric Cisneros, Sonya Cisneros, Monica Clemmons, Kristie Collins, Chris Dominguez, Becky Donaldson, Amelia Flores, Rose Marie Gloria, Shane Glover, Rebecca Green.
Also, Vanessa Greenhouse, Veronica Gonzalez, Stacie Harris, Mark Hicks, Robin Hovland, April Hugg, Jennifer Johnson, Kyle Kenmore, Angie King, Stacey Langfitt, Susie Martel, Aida Martinez, Eric McElroy, Scott Miramontes, Tracy Puckett, Gilrobert Rennels.

EIGHTH GRADE
Maria Almanza, Audree Anzaldua, Ana Arzola, Mita Bhakta, Cory Collins, Tina Copley, Andy Crawford, Patricia Del Toro, Dustin Elliott, Jody Field, Juan Flores, Ricky Flores, Jill Foster, Courtney Graves, Joe Gutierrez, Jason Harmon, Neal Haynes, Charla Holt, Corley Hutton, Erin Kelley, Shane Kirk.
Also, Galin Latham, Tory Matthews, Kip McCall, Jill Noble, Steven Noble, Jessica Orozco, Kevin Osuna, Ross Parish, Adrian Pineda, Lizeth Posada, Margarita Posadas, David Quintana, Michael Richardson, Misty Sawyer, Laschelle Scoggin, Ronda Scott, Virgil Snell, Melissa Toombs, Mickey Trussell, Celia Villalobos, April Watkins, Shea Wilbanks, Audrey Williams and Billy Williams.

FIRST SEMESTER HONOR ROLL SIXTH GRADE
Nicole Alanis, Brooke Barrett, Leah Bruns, Kelli Caldwell, Mason Conklin, Gail Copley, Jeanne Cox, Misty Davenport,

SEVENTH GRADE
Hector Arzola, Amanda Ashford, Dora Barrera, Jeff Bradley, Michael Cearley, Kristi Chapman, Kristin Chitwood, Eric Cisneros, Sonya Cisneros, Monica Clemmons, Kristie Collins, Chris Dominguez, Becky Donaldson, Amelia Flores, Rose Marie Gloria, Shane Glover, Rebecca Green.
Also, Vanessa Greenhouse, Veronica Gonzalez, Stacie Harris, Mark Hicks, Robin Hovland, April Hugg, Jennifer Johnson, Kyle Kenmore, Angie King, Stacey Langfitt, Susie Martel, Aida Martinez, Eric McElroy, Scott Miramontes, Tracy Puckett, Gilrobert Rennels.

EIGHTH GRADE
Maria Almanza, Audree Anzaldua, Ana Arzola, Mita Bhakta, Cory Collins, Tina Copley, Andy Crawford, Patricia Del Toro, Dustin Elliott, Jody Field, Ricky Flores, Jill Foster, Courtney Graves, Joe Gutierrez, Jason Harmon, Neal Haynes, Charla Holt, Corley Hutton, Erin Kelley.
Also Shane Kirk, Galin Latham, Tory Matthews, Kip McCall, Jill Noble, Steven Noble, Kevin Osuna, Ross Parish, Adrian Pineda, Margarita Posadas, David Quintana, Michael Richardson, Misty Sawyer, Laschelle Scoggin, Ronda Scott.

SEVENTH GRADE
Hector Arzola, Amanda Ashford, Dora Barrera, Jeff Bradley, Michael Cearley, Kristi Chapman, Kristin Chitwood, Eric Cisneros, Sonya Cisneros, Monica Clemmons, Kristie Collins, Chris Dominguez, Becky Donaldson, Amelia Flores, Rose Marie Gloria, Shane Glover, Rebecca Green.
Also, Vanessa Greenhouse, Veronica Gonzalez, Stacie Harris, Mark Hicks, Robin Hovland, April Hugg, Jennifer Johnson, Kyle Kenmore, Angie King, Stacey Langfitt, Susie Martel, Aida Martinez, Eric McElroy, Scott Miramontes, Tracy Puckett, Gilrobert Rennels.

SEVENTH GRADE
Hector Arzola, Amanda Ashford, Dora Barrera, Jeff Bradley, Michael Cearley, Kristi Chapman, Kristin Chitwood, Eric Cisneros, Sonya Cisneros, Monica Clemmons, Kristie Collins, Chris Dominguez, Becky Donaldson, Amelia Flores, Rose Marie Gloria, Shane Glover, Rebecca Green.
Also, Vanessa Greenhouse, Veronica Gonzalez, Stacie Harris, Mark Hicks, Robin Hovland, April Hugg, Jennifer Johnson, Kyle Kenmore, Angie King, Stacey Langfitt, Susie Martel, Aida Martinez, Eric McElroy, Scott Miramontes, Tracy Puckett, Gilrobert Rennels.

ABOUT YOUR HOME

By April Rhodes

If you plan to start seeds indoors or in a cold frame this month, use sterilized soil for healthier plants.

When using glass baking dishes, set the oven temperature 25 degrees lower than metal containers.

Remove faded camellia flowers and rake up flower blossoms around plants to avoid camellia petal blight.

Beds for planting spring annuals should be prepared early enough to allow the fertilizer and soil to become well blended.

Remove faded camellia flowers and rake up flower blossoms around plants to avoid camellia petal blight.

Beds for planting spring annuals should be prepared early enough to allow the fertilizer and soil to become well blended.

Remove faded camellia flowers and rake up flower blossoms around plants to avoid camellia petal blight.

Beds for planting spring annuals should be prepared early enough to allow the fertilizer and soil to become well blended.

Remove faded camellia flowers and rake up flower blossoms around plants to avoid camellia petal blight.

Beds for planting spring annuals should be prepared early enough to allow the fertilizer and soil to become well blended.

Remove faded camellia flowers and rake up flower blossoms around plants to avoid camellia petal blight.

Beds for planting spring annuals should be prepared early enough to allow the fertilizer and soil to become well blended.

Remove faded camellia flowers and rake up flower blossoms around plants to avoid camellia petal blight.

Beds for planting spring annuals should be prepared early enough to allow the fertilizer and soil to become well blended.

If a recipe calls for 1 teaspoon dry mustard, use 1 tablespoon prepared mustard.

To conserve energy and save money when using the oven, prepare a complete oven meal.

Outdoor sports enthusiasts will find two thin pair of socks are warmer than one heavy pair.

A bread or bakery shop often sells day-old items at a reduced price. Take advantage of this—they may be frozen for up to three months.



ONE MINUTE SPORTS QUIZ

1. How many NFL Super Bowls have been already played?
2. What is Don Mattingly's salary?
3. Who won the women's PGA Open last year?
4. How many years did Walter Payton play football for the Bears?
5. Who won the 1987 British Open golf championship?

- The Answers**
1. Twenty-one, before January 31.
 2. Reportedly, 6-plus million, in a 3-year Yankee contract.
 3. Laura Davies.
 4. Thirteen.
 5. Nick Faldo.

Shop Muleshoe First

Broke
"So you've just got back from your holiday. Feel any change?"
"Not a cent."

GRAIN PRICES

YELLOW CORN...	3.66 cwt
YELLOW FOOD CORN...	3.80 cwt
WHITE FOOD CORN...	4.70 cwt
MILO...	3.05 cwt
SOYBEANS...	5.34 cwt
NEW WHEAT...	2.75 cwt

COMMODITY CERTIFICATES
103 1/2

Prices-February 4, 1988
MARKETS COURTESY OF FARMERS CO-OP ELEVATORS
272-4335 Muleshoe, Texas

FREE HEARING TESTS FOR SENIOR CITIZENS

MEET AT WESTERN DRUG - MULESHOE
114 MAIN
Wednesday, Feb. 10, 1988
COME BY OR CALL 272-3106 9:30 a.m. - 10:30 a.m.
10 DAY FREE TRIAL 12 BRANDS TO CHOOSE FROM
SATISFACTION GUARANTEED

Sponsored by
LIVINGSTON HEARING AID CENTER
1903 19TH LUBBOCK, TX 79401 806-762-2951
606-B QUINCY PLAINVIEW, TX 79072 806-293-8874

RICHARD R. DAVILA
CERTIFIED HEARING AID AUDIOLOGIST

HOMESTEAD EXEMPTIONS



CAN LOWER THE PROPERTY TAXES ON YOUR HOME

A homestead exemption lowers the property taxes on your home by lowering its taxable value. For example, if your home is valued at \$50,000 and you receive a \$5,000 homestead exemption, your home will be taxed as if it were worth only \$45,000.

You qualify for a homestead exemption if you owned your home on January 1 and used it as your primary residence on January 1. It doesn't matter whether your home is a house, a condominium or a mobile home.

Exemptions are available to all homeowners on their school taxes. Additional exemptions are available to homeowners who are disabled or age 65 and over. Other exemptions may be offered to homeowners by school districts, counties, cities, and special districts. All taxing units offer exemptions to disabled veterans.

Apply to your local appraisal district office at the address shown below for all exemptions you may qualify for. Application forms are available at this office.

Bailey County Appraisal District
104 E Ave C 272-5501

Courthouse News

WARRANTY DEEDS
Ely Jimmie Shafer and wife, Joyce A. Shafer to Gene Atkins--All of Lots Numbers (13), (14), and the Easterly 6.56 feet of Lot Number (12), in Block Number (6), Highland Addition to the Town of Muleshoe, Bailey County, Texas

Dorothy Green to T.L. Timmons--143.73 acres of land out of Section Number (7), and Section Number (8), Block "Y", WD&FW Johnson's Subdivision No. 2, in Bailey County, Texas.

T.L. Timmons and wife, Loretta Timmons to Don McDaniel and wife, Jeanie McDaniel--All of Lots (1), (2), (3), (4), (5), (6), (7), (8), (9), (10), (11), and (12), Block (1), Original Town of Muleshoe, Bailey County, Texas.

W.E. Blair and wife, Vera F. Blair to E.H. Hall--All of Lots Nos. 16 and 17, McCain Addition to the City of Muleshoe, Bailey County, Texas.

Retha Fay Knowles to Jack Nelvis Knowles--All of Lots (27), (28), (29), (30), (31), and (32), in Block (5), Lenau Subdivision to the City of Muleshoe, Bailey County, Texas.

COUNTY COURT
Daniel Mirales Bara, Driving While License Suspended, \$350 Fine
Oscar Villarreal, DWI, \$500 Fine, 2 Years Probation
Dimas Acosta, DWI, \$250 Fine, 1 Year Probation

DISTRICT COURT
Brian Hamilton VS Fry and Cox, Inc., Order of Dismissal
Delia Mora and Maximo Mora, DV

Josemaria Orozco VS Houston General Insurance Company, Judgment

NEW VEHICLES
Martin Hernandez, 1987 Chry 4 dr from Muleshoe Mtr Co Inc
B.J. Estep, 1987 Merc 4 dr from Muleshoe Mtr Co Inc
R.C.G. Enterprises 1988 Chev Sub from Robert D. Green Inc

Congratulations To All The Winners In The Three-Way Junior Livestock Show

GRAND CHAMPION LAMB
CYNTHIA BENNETT



GRAND CHAMPION SWINE
DANIEL REEVES

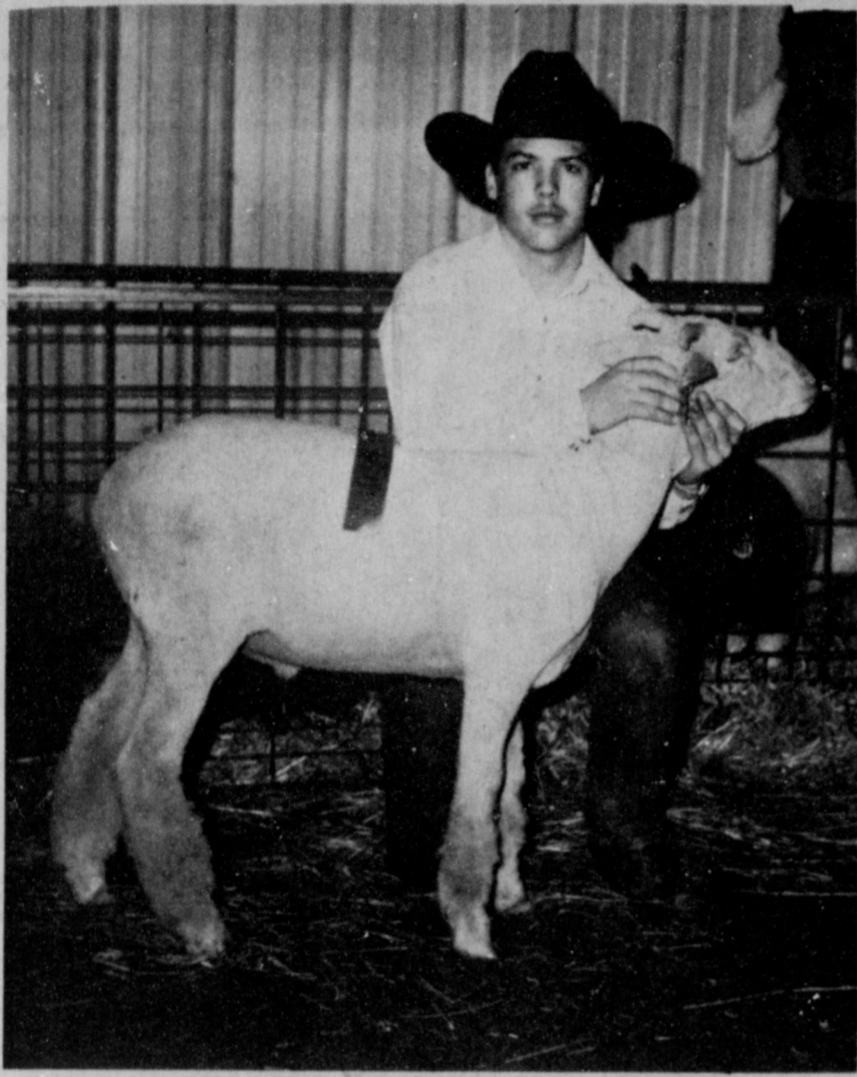
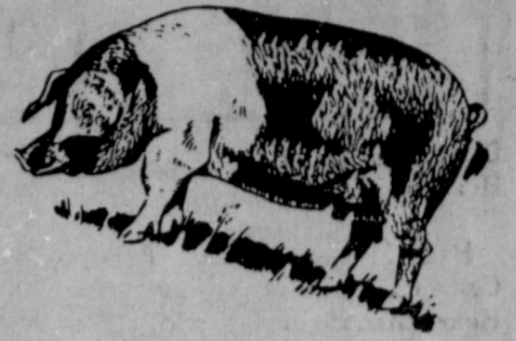
Farmer's Cooperative Elevators



CONGRATULATIONS

To The Winners And Participants Of

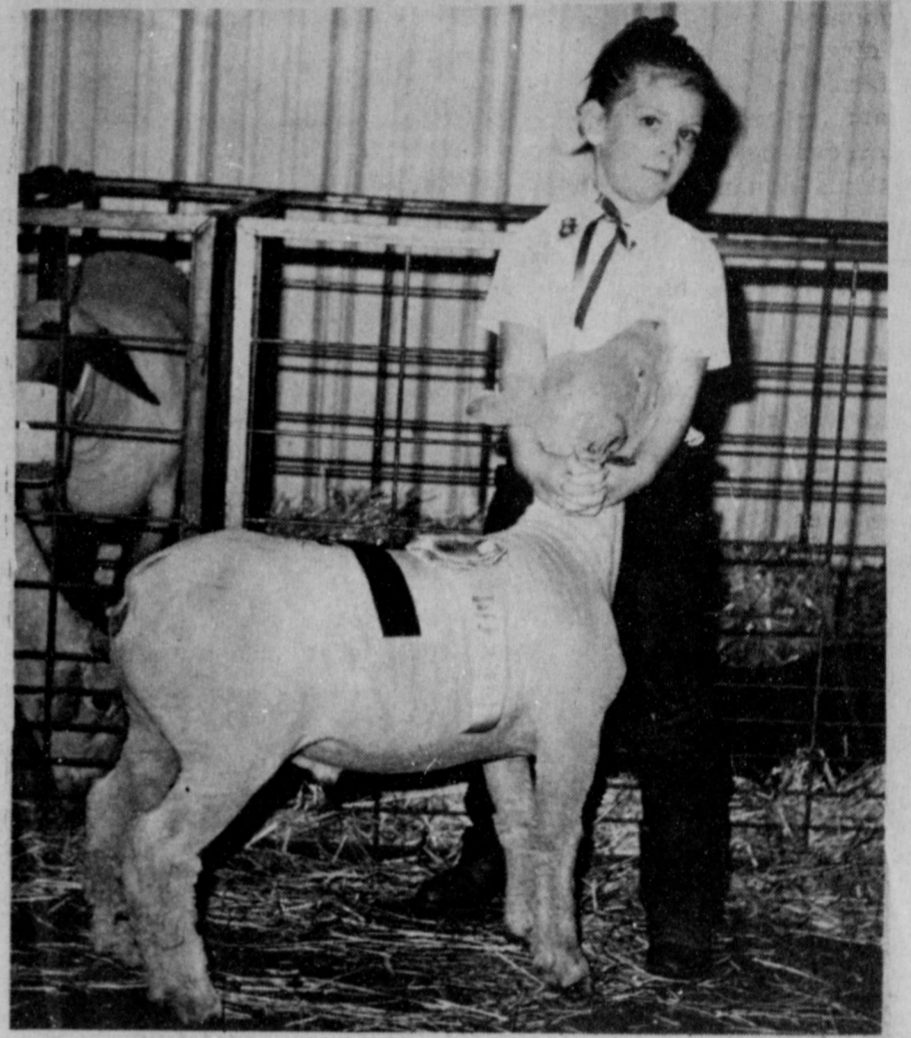
Three-Way Junior Livestock Show



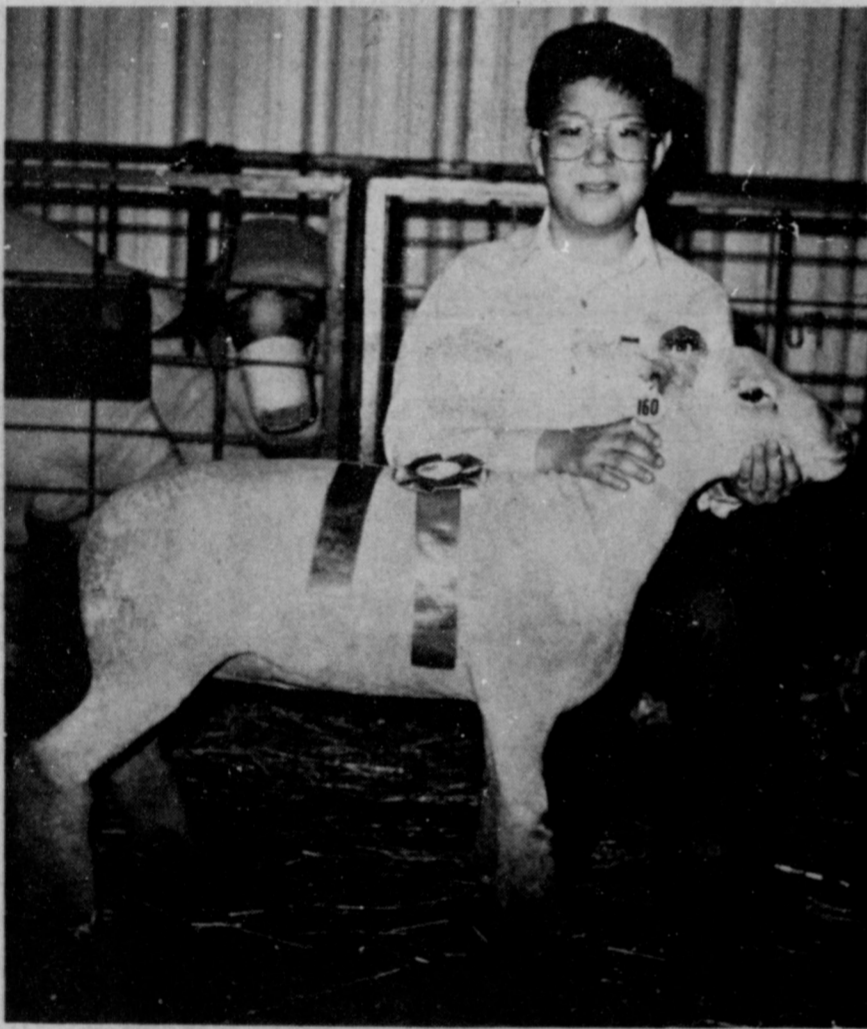
FINE WOOL CHAMPION
CHAD WELCH



CHAMPION HAMPSHIRE
JOSHUA TOOLEY



CHAMPION FINE WOOL
BECKY MOWERY



CHAMPION SOUTHDOWN
NICK DUARTE



RESERVE HAMPSHIRE
MELINDA TURNEY



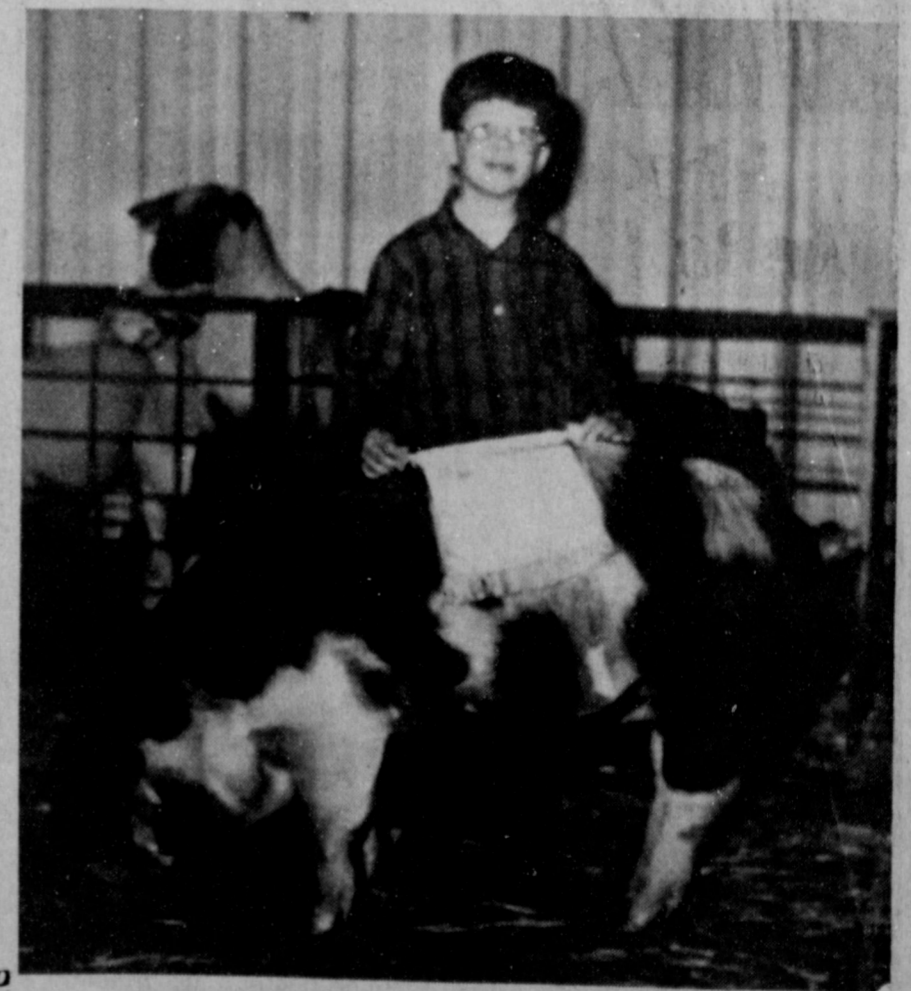
CHAMPION HAMPSHIRE
CARRIE KINDLE for JOSHUA TOOLEY



CHAMPION HAMPSHIRE
KELLY TUCKER

**Proudly Presented By
The Following Merchants:**

- Maple Co-Op Gin*
- Maple Butane Co.*
- Little Gulf- Muleshoe*
- First Bank of Muleshoe*
- Silvers Butane - Morton*
- First State Bank of Morton*
- Buffalo Farms - Goodland*
- Terry Field Insurance - Muleshoe*
- Higginbotham-Bartlett of Morton*
- Sanders Fertilizer & Chemical - Morton*
- Sunmark Grain - Goodland, Bledsoe & Porlales*



RESERVE CHAMPION SPOT
JOSHUA TOOLEY

Letters To The Editor

Dear Friends of the American Heart Association:

Each February, the Bailey County Division of the American Heart Association participates, along with cities and counties across the nation, in Heart Month activities. Our own unique event is our RADIO DAY and AUCTION. On this day, volunteers from our community have two goals: To inform our listeners of the risk factors of cardiovascular disease and to raise money for much-needed research into the nation's number one killer, heart and blood vessel disease.

Through the generosity of KMUL, our volunteers are able to bring you vital information regarding ways to prevent heart disease. We talk about life-saving measures and advances in research. At the same time, we have a lot of fun and auction off items to our listeners.

When our volunteers approach you for a donation to our RADIO DAY and AUCTION, please give from the Heart.

Your gift for us to auction off will be most appreciated. In the event your business does not provide merchandise, the money you donate will still be added to the project and used for research towards Cardiovascular Disease. Your gift, whether it be money, or material, is valuable.

As president of the Bailey Division of the American Heart Association, please accept my sincere thanks for your past support. I hope you continue to support us now and in the future.

Sincerely,
Janie Moynihan, President

Dear Editor:

I have lived in Bailey County all my life and have always thought it was the only place to live. I'm not sure now!

These Personal Property Taxes are a big rip off. When you buy a car you pay taxes on it. When you sell it the next person pays taxes on it. That's not even mentioning what you

pay on tags, stickers, gas, oil and any parts and labor you put on it. All these have taxes added.

There are only 3 counties in the state of Texas that have personal property tax, and Bailey Co. is one of them. So if someone out there feels that they are being ripped off too, maybe we can get together to stop this nonsense.

I love living in Muleshoe but I would not advise anyone to move here under this tax law. You will be paying for your car forever.

If you are a home owner and do not pay your personal taxes they put a judgment against your home. What do they do to these people who don't pay and do not own a home? What do they put a judgement on against them?

My mother and father live on 400.00 social security a month. They pay personal taxes on there car and really can't afford it. I think this is a real sad thing to do to the elderly people of the community.

Leavell Parker

Sandhill Philosopher

Editor's note: The Sandhills Philosopher on his Johnson grass farm on Sandy Acres comes up with an odd theory this week in trying to zero in on the national debt.

-0-

Dear editor:

You may not want to publish this, but I have a theory that the rise in the national debt is closely connected with the continued improvement in newspapers' printing methods. I'll show you.

In reporting a national debt, which one of the following is the scariest?

One trillion dollars,
or

\$1,000,000,000,000?

Clearly, it's the latter. A debt of one trillion spelled out is sort of meaningless, a sort of a so-what figure, but printed with that dollar mark and all those zeroes it can make your hair stand on end.

You may ask, what's a newspaper's printing plant got to do with the national debt?

You see, in early days, newspaper type was set by hand, one letter at a time. It would have taken a heap of zeroes, probably more than most newspapers had, to print a debt figure as big as the one we've got today. They'd have run out of zeroes along about \$10 million.

But as newspapers improved their printing methods to where they can supply you with an unlimited number of zeroes, the national debt kept pace and has continued to rise.

It isn't good or safe for Washington to know this, but newspapers are now in shape to print the national debt, even if it rises to \$1,000,000,000,000, 000,000,000,000,000, give or take a few handfuls of zeroes.

Yours faithfully,
J.A.

Who Knows?

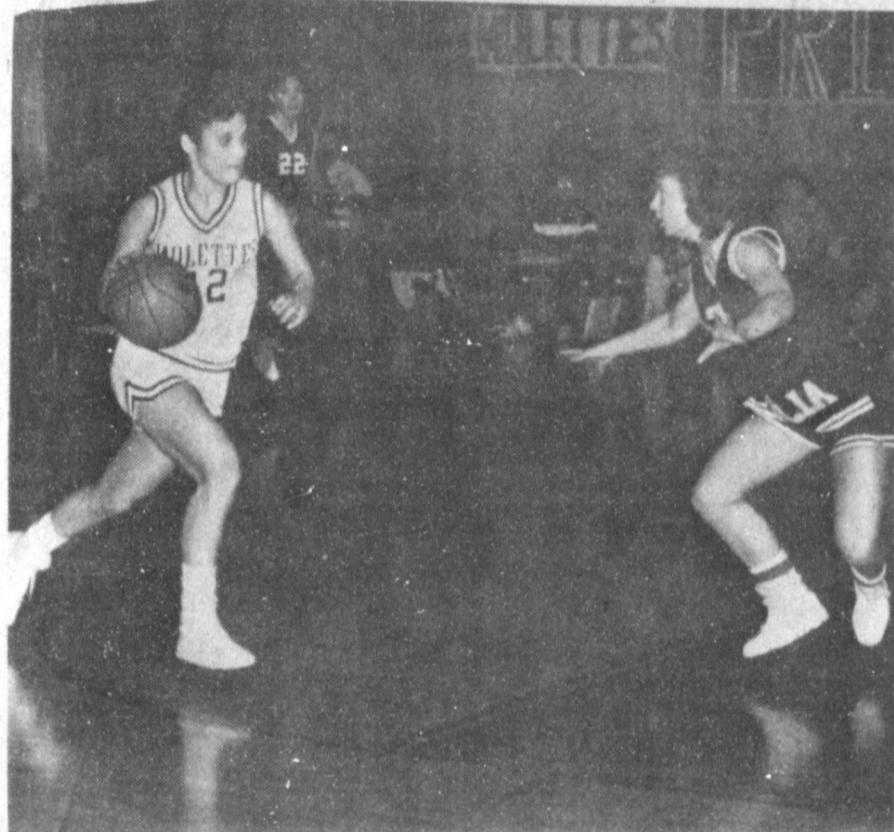
1. Who composed the poem "Evangeline"?
2. Which president served the shortest term?
3. What is the significance of February 23, 1945?
4. When was the first telephone directory published?
5. Define larder.

Answers to Who Knows

1. Jerome Kern.
2. William H. Harrison.
3. The Marines planted the U.S. flag on Mt. Surabachi, Iwo Jima.
4. February 21, 1878.
5. Storeroom or place where food is kept.

Mistake

She—John, dear, I wouldn't let anyone else kiss me like this.
He—My name isn't John.



JUST WATCH WHERE YOU'RE GOING!—A Tulia defender keeps a wary eye on Heather Hutton, No. 12, as she drives the basketball down the court during Mulette-Tulia basketball action in Muleshoe last Tuesday night.

Ken White Company
(KENCO ORDER BUYERS)

BUYERS OF ALL CLASSES OF STOCKER & FEEDER CATTLE REPRESENTATIVES

FRANK RUSK 505-456-5345
BROADVIEW, N.M. 456-5465
BRUCE SHAFER 806-247-2007
FRIONA, TEX. 247-2774
JOE WHITE, CLOVIS 505-762-1913
KEN WHITE COMMODITIES 505-762-3376
CLOVIS BUYING & 762-3131
HEDGING OF LIVESTOCK & GRAINS

John Deere Disk Parts... The Real Thing at Real Savings

Well-known John Deere quality... made in America. Cross-rolled disk blades resist breakage. Carefully controlled heat-treating assures uniform hardness where it counts.

<p>ANTI-FRICTION DISK BEARINGS</p> <p>2941 PART NO. AB 12603 4-lip seal keeps dirt out for dependability and long life.</p>	<p>DISK BLADES</p> <p>1677 PART NO. B31316 20 in. Made from cross-rolled high-carbon steel for long wear, resistance to breakage. Custom heat-treating for uniform hardness.</p>
--	---

John Deere disk parts... quality and price.

Dent & Co.

West Hwy. 84 Muleshoe 272-4296

A&M

Farm & Ranch Supply

Crossover Pickup Tool Box #1A Wide Bed

Sale Good Through Feb. 13, 1988

Now: **\$79⁹⁹**

Reg. \$86.10

ALL-STEEL TOOLBOXES THAT ARE AS TOUGH AS YOUR PICKUP.

- Blank interior storage - like having a trunk on your truck.
- Remors storage for emergency tools, equipment, sports gear - almost anything!
- Heated exterior finish and weather sealed lid.
- Ideal storage for work or play.

Boys Cowboy Classic

Regular or Slim

Now Only: **\$10⁹⁹**

Reg. \$12.99

No. 13MWZB

Sizes: 8-14

"Sweetlix"

"Staleys"

Bloat Guard Block

For: **\$8⁵⁹**

4 Cu. Ft. Wheelbarrow

Special At: **\$29⁹⁹**

WB Reg. \$39.99

Strongid Paste

Equine Paste

Wormer At: **\$5⁴⁹**

No. 1156

Classic cowgirl

Miss Regular Cowboy Cuts

Now Only: **\$18⁹⁹**

Reg. \$24.99

#13MWZMR

Stock Salt

50 Lb. Bag

Just: **\$1⁸⁵**

Hi-Protein Dog Meal

Specially Formulated for the Working Dog

Only: **\$9⁰⁰**

50 lbs. 27% Protein

100 ML Combiotic

#3849

Only: **\$5⁴⁹**

Excellent Syringe-ability.

You Buy **"Special"** And Get A Sprayer Applicator **"Free"**

1 Gallon Of **WD-40**

For Just: **\$8⁸⁸**

Reg. \$12.78 No. 40101

Full Fit Original Cut Jeans

No. 13MWZ

Reg. \$16.49

Now: **\$14⁴⁹**

38" Inseam: **\$15⁴⁹**

Reg. \$18.79

A legend in jeans Wrangler

A&M

Farm & Ranch Supply

We Have 3 Great Locations To Serve You.

2600 Mabry Dr. Clovis, N.M. 1-505-762-7717
1601 S. Ave. O, Portales, N.M. 1-505-356-8543
1302 W. American Blvd., Muleshoe, Texas 1-806-272-5571

All Stores Open Monday-Saturday 7:30 A.M. - 6:00 P.M. Sundays 12:30 - 5:00 P.M. All Are Welcomed

Muleshoe Menu

FEBRUARY 8-12
BREAKFAST
MONDAY
 Milk, Cooked Cereal, Toast, Fruit
TUESDAY
 Milk, Whole Wheat Muffins, Juice
WEDNESDAY
 Milk, Biscuits, Jelly, Sausage, Fruit
THURSDAY
 Milk, Honey Buns, Juice
FRIDAY
 Milk, Cooked Cereal, Toast, Fruit
MONDAY
 Milk, Burritos, Corn, Cheese Stick, Rolled Wheat Muffins, Fruit
TUESDAY
 Milk, Juicy Burgers, Lettuce & Tomato, Pickles & Onions, Tater Tots, Cookies
WEDNESDAY
 Milk, Enchallada Cass., Beans, Cole Slaw, Corn Bread, Pudding
THURSDAY
 Milk, Corn Dogs, Veg. Beef Soup, Crackers, Cinnamon Rolls, Fruit
FRIDAY
 Milk, Fish, Macaroni & Cheese, Eng. Peas, Hot Rolls, Fruit
COMBO LINE
MONDAY
 Milk, Pigs-In-Blanket, Corn, Cheese Stick, Roll Wheat Muffin, Fruit
TUESDAY
 Milk, Hamburgers, Lettuce & Tomato, Pickles & Onions, Tater Tots, Cobbler
WEDNESDAY
 Milk, Chili & Beans, Cole Slaw, Cheese Stick, Crackers, Fruit
THURSDAY
 Milk, Corn Dogs, Veg. Beef Soup, Crackers, Cinnamon Rolls, Fruit
FRIDAY
 Milk, Fried Chicken, Gravy, Eng. Peas, Creamed Potatoes, Hot Rolls, Fruit

Three-Way Menu

FEBRUARY 8-12-88
BREAKFAST
MONDAY
 Cereal, Juice, Milk
TUESDAY
 Toast & Jelly, Juice, Milk
WEDNESDAY
 Cinnamon Toast, Juice, Milk
THURSDAY
 Biscuit, Gravy, Bacon, Jelly, Juice, Milk
FRIDAY
 Pancake & Syrup, Juice, Milk
LUNCH
MONDAY
 Corn Dogs, Peas, Salad, Milk, Cake
TUESDAY
 Spaghetti Meat Sauce, Green Beans, Cabbage Salad, Hot Rolls, Milk, Jello
WEDNESDAY
 Pizza, Okra, Salad, Milk, Fruit
THURSDAY

Taco with Cheese, Corn, Salad, Milk, No-Bake Cookies
FRIDAY
 Ham & Cheese Sandwiches, Fries, Lettuce, Tomatoes, Buns, Milk, Cookies

Hubert Crouch Services Held At Lovington

Funeral services for Hubert H. "Bud" Crouch, 62, of Sudan, were held at 11 a.m. Saturday, Feb. 6, in Smith-Rogers Funeral Home Chapel in Lovington, N.M. with the Rev. Merriell Abbott, pastor of the First United Methodist Church of Lovington, officiating. Interment was in Lovington Cemetery under the direction of Smith-Rogers Funeral Home. Crouch died Thursday in Hobbs Health Care Center at Hobbs, N.M. Born Oct. 11, 1925, in Clarksville, TX, he had been a resident of Sudan most of his life. He was an oil field worker for 22 years, a member of the First United Methodist Church of Sudan and a veteran of WWII, serving in the U. S. Navy.

Survivors include two sons, Travis of Kingwood, TX and Buddy of Lovington, N.M.; a daughter, Carla Duncan of Lovington, N.M.; his mother, Muriel Crouch of Sudan; a sister, Edna Goodyear of Arlington; a brother, Bobby Crouch of Sudan; and seven grandchildren.

The Penalty
 Dad—Son, if you're a good boy and learn a lot you might some day become president.
 Son—And what if I ain't a good boy and don't learn nothin'?
 Dad—You might be elected to the state legislature.

Patients At West Plains Medical Center

PATIENTS IN WEST PLAINS MEDICAL CENTER FEB. 4, 1988
 Amelia Gonzales, Jose Luis Garcia, Elodia Barrientos, Antonio Monreal, Donna Noriega Darrell Whitaker, Traci Autrey and baby girl Autrey.

INCOME TAX DEADLINE APRIL 15th

Caring For Muleshoe Area Families Since 1959
Ellis Funeral Directors
 272-4524
 Pre-Need Funeral Plans
 Monuments
 Granite-Marble-Bronze

Immaculate Conception Catholic Church

Father Patrick Maher Northeast of City

First Baptist Church

220 West Ave. E. Barry Bradley, Pastor

Emmanuel Baptist Church

Iglesia Bautista Emmanuel 107 East Third Isaias Cardenas, Pastor

Trinity Baptist Church

314 E. Ave. B. Rev. V.L. "Buster" Huggins

Circle Back Baptist Church

Joel E. Stafford Intersection FM 3397 & FM 29 946-3676

Calvary Baptist Church

1733 W. Ave. C. Rev. Darrel Martin

Muleshoe Baptist Church

8th and Ave. G. Bob Dodd, Pastor

Progress Baptist Church

Paul Brigham, Pastor Progress, Texas

Richland Hills Baptist Church

17th and West Ave. D. David McAdams, Pastor

St. Matthew Baptist Church

Corner of West Boston & West Birch M.S. Brown, Pastor

Progress Second Baptist Church

1st and 3rd Sunday Clifford Slay, Pastor


The Community Church

Morton Hwy. Jim Cope, Pastor, 272-5992

MOTHER

It is so important that a child feel secure and loved the first weeks and months of its life. Our foremost authorities say that if a child's spiritual and emotional welfare is neglected in the early weeks of life, there is a great chance of permanent damage to its personality growth.

Therefore, on this day, we honor not only the beloved mothers of our adults and youth, but the very young mother who has both the tremendous responsibility and the precious opportunity to mold the life and character of the very young child. May she seek early God's help, who in the person of the Son, said, "Suffer the little children to come unto me."



The Church is God's appointed agency in this world for spreading the knowledge of His love for man and of His demand for man to respond to that love by loving his neighbor. Without this grounding in the love of God, no government or society or way of life will long persevere and the freedoms which we hold so dear will inevitably perish. Therefore, even from a selfish point of view, one should support the Church for the sake of the welfare of himself and his family. Beyond that, however, every person should uphold and participate in the Church because it tells the truth about man's life, death and destiny; the truth which alone will set him free to live as a child of God.

Coleman Adv. Ser.

Longview Baptist Church

965-3413 B.C. Stonechipper, Pastor

Primera Iglesia Bautista

223 E. Ave. E. Roy Martinez, Pastor

Lariat Church Of Christ

Sunday School 10:00 a.m. Worship 11:00 & 6:00 p.m. Wednesday Services 7:00 p.m. Sam. Billingslev, Minister

Muleshoe Church Of Christ

Clovis Hwy. Bret McCasland, Minister

16th & Ave. D. Church Of Christ

Sunday 10:30 a.m. Evening 6:00 p.m. Wednesday 8:00 p.m.

First Assembly Of God

Rev. David C. McCune 9:45 Sunday School 11:00 Morning Worship 6:30 Evening Services 7:30 Mid Week Services 272-3984

Primitive Baptist Church

621 South First Elder George Johnson, Pastor

Spanish Assembly Of God

East 6th and Ave. F. Luis Campos, Pastor

First United Methodist Church

507 W. 2nd Street Richard Edwards, Pastor

El Divino Salvador Methodist Church

5th and Ave. D. Jose M. Fernandez, Pastor

1st Baptist Church

Lazbuddie, Tx. 965-2126 Gary Wilcox, Pastor

Lazbuddie Church Of Christ

United Pentacostal Lighthouse Church

207 East Ave. G. Rev. J.A. Torres

St. John Lutheran

Sunday School and Bible Classes 9:30 a.m. Church services Church Services 10:30 a.m. Rev. Mac Bearss, Pastor

Templo Calvario

507 South Main Sunday 10:00 a.m. Sunday Evening 7:00 p.m. Evangelistic Services J.L. Soto, Pastor

New Covenant Church

Plainview Hwy. Sunday 10:00 a.m. Wednesday 7:00 p.m. Jimmy Lowe, Pastor

Lazbuddie Methodist Church

965-2121 Larry Raid Farris, Pastor

Jehovah Witness

Frioma Hwy. Boyd Lowery, Pastor

Church Of The Nazarene

9th and Ave. C. Dennis Hayes, Pastor

Lazbuddie Menu

FEBRUARY 8-12-88
BREAKFAST
MONDAY
 Toast, Oatmeal, Juice, Milk
TUESDAY
 Toast, Bacon, Juice, Milk
WEDNESDAY
 Cinnamon Rolls, Fruit, Milk
THURSDAY
 Donuts, Fruit, Milk
FRIDAY
 Cereal, Juice, Milk
LUNCH
MONDAY
 Fish Sandwiches/with Tater Sauce, French Fries, Pickles, Fruit, Milk
TUESDAY
 Chalupa's, Green Salad, Brownies, Milk
WEDNESDAY
 Beef Stew, Crackers, Corn Bread, Fruit, Milk
THURSDAY
 Hot Turkey Sandwiches, Green Beans, Salad, Cookies, Milk
FRIDAY
 Hamburgers, French Fries, Lettuce, Pickles, Pudding, Milk
SALAD BAR IS SERVED DAILY

MEET THE CANDIDATES


The Journal has been authorized to announce the following candidates for public office:

SHERIFF
 Jerry Hicks
 Ray Ruthardt

COMMISSIONER
 Precinct 1
 R. L. Scott
 H. E. Newsom
 James Meason

Precinct 3
 Joey Kindle

TAX ASSESSOR
 Kathleen Hayes

Western Drug 114 Main 272-3106			Dairy Queen 1204 W. Amer. Blvd. 272-3412
Little Gulf 272-4918	Baker Farm Supply 1532 W. Amer. Blvd.	American Valley Inc, Hwy. 84 W. 272-4266	Robert D. Green Inc. 2400 W. Amer. Blvd. 272-4588
Farmers Spraying Service Lazbuddie 965-2624	Bob Stovall Printing 221 E. Ave. B 272-3373	James Roy Meat Market 506 W. Amer. Blvd. 772-4361	Lookin Good 206 Main 272-5052
Main Street Beauty Salon 115 Main 272-3448	1st Bank 202 South First 272-4515	Bratcher Motor Supply 107 E. Ave. D 272-4288	Five Area Telephone Cooperative, Inc. 302 Uvalde 272-5533
Irrigation Pumps & Power West Hwy. 84 272-4483	Farmers Co-Op Elevators 272-4490	Foster Fertilizer Lazbuddie 965-2921	Frazier Feed Store 523 E. Amer. Blvd. 272-4373

Bailey County Journal

Classified

Call 272-4536

CLASSIFIED RATES
Per Word.....\$15
Minimum Charge \$2.30

Consecutive Insertions
Minimum Charge \$2.00

CLASSIFIED DISPLAY RATES
\$1.75
Per Column Inch

DEADLINES
12 noon Tues.
For Thursday Paper
12 noon Friday
For Sunday Paper
We reserve the right to classify, revise, or reject any ad. Not responsible for any error after ad has run once.

1. Personals

STORAGE ROOMS & office space for rent call 272-4754.
s1-53t-tfc

WANTED: Custom farm work. Call JIMNI, Inc. 933-4641 at night.
j1-5t-4tc

MARY KAY COSMETICS Josie Flowers 272-3865.
f1-49s-tfc

FRANK'S Refrigeration & Appliance Service Parts & Repairs
817 Gum
Muleshoe, Texas 79347

Phone Business 272-5090 Home 272-3822.
f1-6s-tfc

STORAGE Rooms Available For Storage \$25.00-\$30.00 per month
Ted Barnhill 272-4903
b1-42s-tfc

CONCERNED About Someone's Drinking? **HELP IS AVAILABLE** through Al-Anon Call 227-2350 or 965-2870 or come to visit Tuesday nights, 8:00 p.m. or Saturday mornings at 11:00 a.m. at 1116 W. American Blvd., Muleshoe.

3. Help Wanted

GET PAID for reading books! \$100.00 per title. WRITE: ACE-B883, 161 S. Lincolnway, N. Aurora, IL 60542.
3-3t-9tp

SALES person wanted good opportunity. Apply in person at Muleshoe Motor Co. m3-5t-3tc

5. Apts. For Rent

APTS. FOR RENT good location. Nice 2 bdrm., furnished, water paid. 272-7575. p5-4t-tfc

FOR RENT: Real nice one bedroom apartment. Fully carpeted, with refrigerator and cookstove. See at 101 West Ave. J. or call 272-4986. w5-6s-1tc

8. Real Estate

FOR SALE OR RENT. large 3 bdrm., house in the country. 946-3417.
k8-4t-stfc

8. Real Estate

FOR SALE beautiful 4 bedroom, 2 bath home at the edge of town, on 1/2 acre. Full grown trees, lots of flowers, water well. NO CITY TAXES, all the amenities of country life, with the convenience of town very close by. All this and more at an unbelievable price. Call now at 272-3813 or 272-5422.
w8-2s-stfc

FOR SALE BY OWNER, Richland Hills 3-2-2 Central A/H lots of storage, nice location. 272-5194.
f8-4t-16tc

FOR SALE 3 bdrm., stucco house, 1 living room, kitchen and 1 bath on 1 1/2 lot located at 310 West Austin, Muleshoe, Texas. Call 247-2409. c8-4s-8tc

HOUSE FOR SALE, 3 bdrm, 1 bath, dep, large kitchen & living room 1722 W Ave B, 272-3993 or 272-3994. s8-4s-tfc

FOR SALE 3 bdrm., house. Large corner lot. \$12,000. For information call 272-5410 after 4:30.
g8-6s-stfc

9. Automobiles For Sale

1981 Chev. Monte Carlo, clean, excellent care, PS, PB, cruise, R&H. Call 272-4524 EXT. 170 days 272-5156 evenings. See at 1821 W. Ave. D L.T. Johnson. j9-2t-tfc

FOR SALE: 1979 Buick Electra. One owner, good condition. would make good second car. 272-3089.
y9-53t-tfc

1979 Ford, 2 door, 46,700 mi., excellent. 1975 Ford, 4 door, 63,000 mi., looks & runs good. Call 272-4696, Peeler. p9-6s-stfc

11. For Sale Or Trade

FOR SALE: Remington Rand Kardex insulated filing cabinet with 250 drawers. Holds 6" x 7" insertable record cards. See at 305 E. Ave. B., Muleshoe, Texas or call 272-4504, Bailey County Electric Cooperative. b11-6s-3tsc

FOR SALE: Cannon 400F Copier, been under maintenance contract. See at 305 E. Ave. B., Muleshoe, Texas or call 272-4504, Bailey County Electric Cooperative. b11-6s-3tsc

16. Livestock

ROOM FOR CATTLE: Complete pre-conditioning and growing rations prepared by Gary Holcomb-nutritionist. Competitively priced. Call YL Cattle Feeders 965-2262, 965-2798 or night 965-2339. g16-4t-4tc

Statistics prove what the statistician sets out to prove. That explains the polls.

8. Real Estate 8. Real Estate 8. Real Estate

WHITT-REID REAL ESTATE
201 Main Office 272-3611

JUST LISTED-Nice 3 bedroom, 2 bath home in Progress. 25H33B, 27,500

NEW ON THE MARKET-Just move in your clothes 3 bedroom, bath, furniture complete \$35,000.

We Need Listings

- We need irrigated & dry
- Acreage on pavement
- Nice 3 bedroom homes

Roy Whitt Thursie Reid
272-3058 272-5318
Certified Appraiser

15. Misc. 15. Misc. 15. Misc.

INSURANCEState Farm
Good Service, Good Coverage, Good Price...
That's State Farm Insurance
See Me For Savings On...
Homeowners, Auto, Health, Life and Business

F.L. Newton, Agent
128 East 10th 385-3055
Littlefield, Texas

8. Real Estate 8. Real Estate 8. Real Estate

116 W. Ave. C BINGHAM & NIEMAN REALTY 272-5285 or 5286

We have homes for as little as \$600.00 total move in cost, with payment scheduled according to income for qualified buyers!!!!

RICHLAND HILLS

IMMACULATE 3-2-2 Brick, corner lot, Cent. A&H, built-ins, FP, loads of storage & closet space, sprinkler sys.!!!!

PRICE REDUCED 3-1-1 Brick, Cent. heat, Evap. air, built-ins, fenced yard....

MAKE OFFER 3-1 1/2-1 Home, Cent. heat, evap. air, built-ins, fenced yard, detached storage-garage. Nice locations. \$40's!!!!

HIGHLAND & STEWART
JUST LISTED-VERY NICE 3-2-2 Brick, Cent. A&H, newly remodeled kitchen with built-ins, storm windows, fenced yard, storage bldg. and much more!!!!

3-1 1/2-1 Home, wall furnace heat, evap. air, fenced yard. Nice home in a nice area. \$20's!!!!

SPACIOUS 3-2 1/2-2 Brick Home on corner lot, Cent. A&H, built-ins, fireplace, loads of storage, 2900 plus sq. ft. of LV. area lots of extras, undgrd. sprinkler sys., fenced yard. A GREAT BUY!!!

JUST LISTED-Nice 3-2-2 Brick Home (2 story), on corner lot, Cent. A&H, built-ins, and much more. LET'S LOOK TODAY!!!!

JUST LISTED-2-1-1 home, wall heat, carpet, & more. LET'S LOOK TODAY!!!!

JUST LISTED-Nice 3-2-2 home, Cent. A&H, utility, large fenced yard with lots of trees. \$40's!!!!

PARKRIDGE
IMMACULATE 3-2-2 Brick Home Cent. A&H, built-ins, fireplace, energy efficient, nicely decorated, plus beautifully landscaped yard. \$50's!!!!

HIGH SCHOOL
JUST LISTED-3-2-2 home, corner lot, nice carpet, fenced yard. \$30's!!!!

3-1-1 home, corner lot, Cent. A&H, built-ins. \$30's....

PRICE REDUCED Spacious 3-2 Brick, Cent. A&H, built-ins, 2400+ sq. ft. of lv. area, den w/FP, fenced yard, storage bldg., & much more. \$60's!!!!

3-1-1 home, nice carpets, floor furnace, evap. air, built-ins, storage & more. \$30's!!!!

IMMACULATE 3-2-1 1/2 carport, Brick Home, Cent. A&H, built-ins, nice finished basement with fireplace, sprklr. sys., & much more!!!!

DIANNE NIEMAN, BROKER

8. Real Estate 8. Real Estate

JAMES F. HAYES & CO. AGRICULTURAL REAL ESTATE
Vic Coker-Agent
(806) 965-2468

640 ACRES- 4 electric sprinklers, steel pens with concrete tanks, domestic well, all fenced. **SOLD** soil & water. Rare opportunity, good value. ***

320 ACRES of prime farmland Southwest of Hub in Parme County. Excellent water: 3 8" wells and 1 tailwater pit. This farm is clean. Top notch in every respect. ***

160 ACRES IN LAMB COUNTY- Excellent water, electric tank, fully allotted, fenced, prime opportunity for first time buyer. ***

160 ACRES North of Lazbuddie. 1 8" well, clean, lay good. Excellent terms Available! ***

160 ACRES - 2 Wells - Excellent Water, fully allotted, good check. Soil that will grow anything. ***
Call Vic if you need farm & ranch appraisal work done.

15. Misc.

dealership log homes

One of America's finest lines, starting at \$13,800. Great earning potential, will not interfere with present employment. Investment fully secured. If you can purchase or mortgage a model home, call Herb Derrick. Toll Free 1-800-346-LOGS.

OLD-TIMER LOG HOMES
442-D METROPLEX DR. NASHVILLE, TN 37211

JUST LISTED-3-1 home, nice carpets, new roof, storm windows & much more. \$20's!!!!

JUST LISTED-NICE 2-1-1 home, wall furnace heat, earthtone carpets!!!
LENAU ADDITION

VERY NICE-2-2-2 1/2 carport home, Cent. Heat, evap. air, nice carpets, wood stove, storm windows & doors. Large storage-workshop. \$20's!!!!

NICE 3-2-2 Brick, Cent. A&H, built-ins, fenced yard. \$40's!!!!

JUST LISTED-COZY 3-1 1/2-1 home, Cent. heat, nice earthtone carpets, fenced yard, storage bldg., & more!!!!

JUST LISTED-3-1-1 home, Cent. A&H, utility, storage bldg., cellar, gas grill, & more. \$20's!!!!

COUNTRY HOMES
JUST LISTED-2-2-1 brick home on 1 acre on pavement, close to town, Cent. A&H. \$40's!!!!

2-1-1 1/2 carport home on 1 acre on pavement close to town, built-ins, wall furnace heat, evap. air, satellite system, and fenced area for horses or calves. \$20's!!!!

3-1-2 home, 1/2 acre, Cent. A&H, new paint, nice carport, cellar. \$30's!!!!

2-1 home, 20 acres, sub. pump, sprinkler, barns & corrals. \$40's!!!!

3-1 home on .59 acres on highway at edge of town plus 1-1 mobile home for rental unit, storage, or workshop. A GOOD BUY!!!!

LARGE BUILDING on 2 lots, paved parking....

JUST LISTED-Nice, well-maintained Self-Service Laundry. 34 washers, 16 dryers in nice, modern building, excellent location. Books available to qualified Buyer.

SALE OR LEASE nicely remodeled office bldg. with over 3,000 sq. ft. of area, excellent location across from Courthouse. PRICED TO SELL!!!!

APPROX. 3,000 sq. ft. bldg. Railroad frontage. CASH PRICE \$15,000.00

GEORGE NIEMAN, BROKER

18. Legal 18. Legal

PUBLIC NOTICE OF DISSOLUTION-LIQUIDATION OF BUSINESS

Notice is hereby given that the partnership heretofore existing between Vince Simmacher and Larry Simmacher, under the firm name of Simmacher Brothers Company, doing business at Muleshoe, Bailey County, Texas, was dissolved by mutual consent as of September 15, 1987. All debts owing the partnership, and all claims against the partnership, will be received by Vince Simmacher at Route 5, Muleshoe, Texas.

Dated this 1st day of December, 1987.

Vince Simmacher
Larry Simmacher
18-5t-2tc

NOTICE is hereby given that Carl C. Bamert, heretofore doing business as a sole proprietor under the name of Carl Bamert Farms, has ceased to continue such business as a sole proprietorship and hereby gives notice that such business was transferred to a corporation on January 1, 1988, under the name of Grassland Farm, Inc.

b18-4s-4tsc

In Fashion

Maternity clothes have made great changes in the past few years. New styles are attractive and designers plan for comfort during the entire pregnancy.

Maternity departments and shops are showing a new variety of styles in their new spring and summer displays. Colorful long sweaters and long blouses topped dresses are very neat. Comfortable pants are also shown in addition to skirts.

KNOW THE WEATHER

Is it dangerous to fly through non-turbulent freezing rain, or sleet? Is snow a danger to aircraft?

If you are a frequent or infrequent passenger, or a pilot, who takes to the air for travel, it's well to know a little about icing conditions and how they affect aircraft. Most modern airliners have adequate de-icers so that worry here is unnecessary.

Private planes which don't have de-icers, and some larger ones not equipped for icing conditions, should stay clear of heavy icing. Even if the air is smooth, freezing rain which clings to the wing, and sometimes to prop, will cause a loss of power and lift.

A heavy frost on an aircraft's wing reduces its lift tremendously; therefore pilots will always wipe the wing clean before takeoff. An ice build-up reduces the airfoil's efficiency to such an extent that serious danger can result.

Snow is usually not dangerous, though wet snow can cling to the wing and cause trouble. A good rule is to stay out of private craft, especially single-engine planes, in such weather.

Great Relief
Caller (moralizing)—You know we take nothing with us into the next world. Mrs. Rounds—Thank heaven for that. It will be novelty to go somewhere without having to pack.

Sealed bids addressed to the City of Muleshoe, Texas will be received at the City Hall until 8:30 AM, February 16, 1988 and then publicly opened and read for furnishing all plant, labor, material and equipment and performing all work required for seal coating city streets.

Bids shall be submitted in sealed envelopes upon the blank form of the proposal attached hereto and marked in the upper left hand corner.

All proposals shall be accompanied by a cashier's check or certified check upon a national or state bank in the amount of five (5%) percent of the total maximum bid price payable without recourse to the City, or a bid bond in the same amount from a reliable surety company, as a guarantee that bidder will enter into a contract and execute any bonds that may be required within ten days after notice of award of contract to him. The bid security must be enclosed in the same envelope with the bid. Bids without check or bid bond will not be considered. Contract is expected to be awarded at the February 16 meeting in the City Council Chambers.

If contract is over \$25,000 the successful bidder must furnish performance and payment bonds upon the forms which are attached hereto in the amount of 100% of the contract price from an approved surety company holding a permit from the State of Texas to act as surety or other surety or sureties acceptable to the Owner.