

**CHILDERS BROTHERS INC.**  
**HOUSE LEVELING**  
 Uneven Floors  
 Floor Bracing  
 Cracks In Bricks  
 Sticking Doors & Windows  
 Interior Wall Cracking  
 FREE ESTIMATES  
**1-800-299-9563**  
 WWW.CHILDERSLEVELING.COM

**DOUG BOYD MOTOR CO.**  
 Dealer of Buick, Oldsmobile & Pontiac  
 Buy Here, Pay Here, No Credit Check, Visa & Mastercard Accepted.  
 Call us today at 361-5555 or visit our website at www.dougboymotors.com

All in-stock carpet  
**\$12<sup>99</sup> - \$25<sup>99</sup>**  
 per sq. yd. installed with pad  
 We will beat any legitimate bid by **10%** on any product that we carry!  
**Premier Floor Warehouse**  
 301 S. Cuyler, Pampa TX • 669-7001

# The PAMPA

\*\*\*\*\*AUTO\*\*MIXED ADC 750  
 0000471 12/31/2020  
 HERITAGE ARCHIVES  
 2195 BRITANNIA BLVD STE 102  
 SAN DIEGO, CA 92154-6290

**TODAY IN SPORTS**  


Wednesday, March 14, 2012 www.thepampanews.com Volume 107 • No. 282

**75¢** Viewpoints: Slim Randles Lady Harvesters keep rolling  
 \$1.50 weekend Catalogs the novels of optimistic lives | p4A PHS softball notches wins over San Jacinto, Sanford-Fritch | p1B

## garden party

Hannah, volunteers build new garden at Pampa Junior High

**ARNIE AURELLANO**  
 editor@thepampanews.com

Larry Hannah, garden consultant for the Pampa Independent School District, smiled as a sharp gust of wind nearly knocked off his hat.

"We're going to need some extra sturdy tomato cages," he laughed.

Hannah and a small group of volunteers from West Texas Landscape were at Pampa Junior High School on Tuesday, armed with rakes and shovels, installing what will soon be the campus' very own garden. Located south of the school building adjacent to the new wind turbine, the garden project grew from seeds that were planted in

Hannah's classroom.

"The kids always liked the little pinto beans that we grew in my class (for a project)," said Hannah, a retired educator who taught seventh grade science in Pampa for 26 years. "I just thought, since they had room out here, I always had gardens growing up and the kids were so excited about their little pinto beans back when I was teaching. I thought the kids now might like to actually plant things and tend to them in school."

The garden project has been in the works for about two years, Hannah said, thanks to \$15,000 worth of grants from the Pampa Education Foundation and Cabot.



staff photo by Arnie Aurellano

**Volunteer Chance Butler**, 13, rakes the soil in one of the newly installed vegetable beds at the Pampa Junior High's new garden.

Hannah himself started doing the grunt work on it last summer, collecting railroad ties and lumber recycled from 80-year-old

corrals on Kay Harvey's homestead ranch.

The corral lumber will be converted into sixteen flower beds, Hannah said. Those will be accompanied by eighteen 16-by-4-foot raised vegetable beds, that will house tomatoes, green beans, peppers, lettuce, spinach and an herb garden. Outside the beds, there will be cantaloupe, asparagus and raspberries. The railroad ties are set to go around the perimeter of

**GARDEN** cont. on page 8A



staff photo by Arnie Aurellano

← **Larry Hannah** (right) places a vegetable bed in what will soon be Pampa Junior High School's garden, helped by volunteers Nathan Ferguson, 14, and Harrison Stevens, 11.

## City gives first OK to rezoning lots

**MOLLIE BRYANT**  
 mbryant@thepampanews.com

During the Pampa City Commission meeting yesterday at 4 p.m. at City Hall, the city held two public hearings on rezoning two properties at 801 and 821 East Campbell from single family dwellings to commercial properties. The city approved rezoning both properties on a preliminary vote.

"One of them is the Apodaca Brothers, Inc. property, and the other is Reyna Castillo property," said Donny Hooper, Director of Public Works. "Both of those properties are zoned residential currently. They requested to zone those commercial, starting with the Apodaca Brothers property. In order to make that happen and not be spot zoning, the other property had to be included in that."

Hooper said that the city found no issues with the request and no potential negative effects to surrounding areas.

"All the proper notices were sent out as required by law, and yesterday the Planning and Zoning Commission met, and they did recommend approval for this resolution," he said.

The commission also voted to amend its adult business ordinance.

"It was passed originally in 2008," said Richard Morris, City Manager of Pampa. "We found that we'd left several pages of definitions out."

**CITY** cont. on page 8A

## One arrested for drug possession

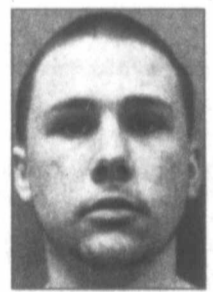
**MOLLIE BRYANT**  
 mbryant@thepampanews.com

A traffic stop late Monday night led to an arrest of an individual for possession of drugs.

At 11:45 p.m., officers with the Pampa Police Department stopped a vehicle for a traffic violation on the 1100 block of Campanella. After the two passengers showed signs of nervousness, the officers gained consent to search the vehicle.

Police found a substance believed to be cocaine after a field test was performed. Around midnight, they arrested the driver, Dustin Spear, 18, of Pampa, and charged him with possession of a controlled substance, in an amount greater than four grams but less than 200 grams.

Spear was released on a \$2,500 bond.



**Spear**

## Harmonicas Across America, folk center sponsor contest

**MOLLIE BRYANT**  
 mbryant@thepampanews.com

Harmonicas Across America and the Woody Guthrie Folk Music Center are sponsoring an art and writing contest for kids from preschool to fifth grade, with a deadline of Tuesday, April 3.

Kids can write a one-page story or draw a picture in response to one of eight songs in a contest that will be judged by the Pampa Fine Arts Association. The contest, according to Patrick Stewart of Harmonicas Across America, was inspired by the many talents of legendary folk musician Guthrie, a former Pampa resident.

"Woody Guthrie wrote, he drew and he did music,

so the contest really comes from (that)," said Stewart. "Kids will draw the picture of the songs or write a one-page story. It can be about anything."

Stewart said kids were welcome to submit work for different categories or different songs. The songs include "Twinkle, Twinkle, Little Star," "Red River Valley," "Amazing Grace," "I'm a Little Teapot," "Happy Birthday to You," "Jingle Bells," "Silent Night" and "This Land is Your Land." The contest is not restricted by the children's residency; any kids within the contest's age limits from within or outside Pampa can enter.

Winners of the contest will receive a gift certificate, and their work will go into an online harmonica song book on the Harmonicas Across America site, as well

as the screen savers on the Lovett Memorial Library computers.

"Kids are going to draw some really neat stuff, and you can look at something and say, This kid's got some talent," said Stewart. "And that's what it's about, to encourage the kids in the three things I think Woody Guthrie excelled in: Music, writing and drawing."

To participate, kids can give their submissions to their principals, music teachers and art teachers and Harmonicas Across America will pick them up. They can also send submissions to the folk center at 320 South Cuyler in Pampa. For more information, call Stewart at 806-663-2407.

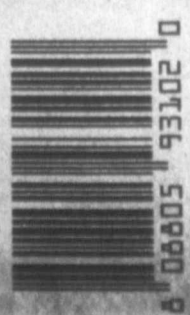
**M & H Leasing**  
**TOP OF TEXAS**  
**ELC**  
 SIGN THE PLEDGE  
 Receive free "Don't Text and Drive" finger bands.  
 1945 N. Hobart • 665-2061

**Total Care Health**  
 Caring & Effective Health care for Your Entire Family  
**(806) 688-2273**  
 • Family Care • Urgent Care (Insurance, Cash, and Medicare)  
 Matthew Gill, RN, FNP-C  
 701 N. Price Rd  
 Pampa, TX 79065

**HouseHunters Realtor**  
 Linda Laycock Broker (806) 662-1312  
 Larry Hadley Associate (806) 662-2779  
 Jordan O'Neal Associate (806) 670-6623  
 Tisha Holman Associate (806) 440-4153




**IN THIS ISSUE:**

Obituaries .....	2A	Church Page.....	5A
Local Record.....	2A	Comics .....	6A
Weather .....	2A	Sports .....	8A
Morning Rush.....	3A	Classifieds .....	2B,3B
Viewpoints .....	4A	Puzzles, Dear Abby..	3B





### PAMPA FORECAST

Today	Thursday	Friday
		
High 81 Low 49	High 78 Low 53	High 77 Low 55

**Today:** Mostly sunny, with a high near 81. South southwest wind between 10 and 20 mph, with gusts as high as 25 mph.

**Tonight:** Partly cloudy, with a low around 49. South wind between 10 and 20 mph, with gusts as high as 25 mph.

**Thursday:** Mostly sunny, with a high near 78. Southwest wind around 10 mph.

**Thursday Night:** Partly cloudy, with a low around 53. South southwest wind around 10 mph.

**Friday:** A 20 percent chance of showers and thunderstorms after 3 p.m. Mostly sunny, with a high near 77. South southwest wind between 10 and 20 mph, with gusts as high as 25 mph.

**Friday Night:** A 10 percent chance of showers and thunderstorms. Mostly cloudy, with a low around 55. South southwest wind between 15 and 20 mph, with gusts as high as 25 mph.

(\*) This information brought to you by...

PRESTIGE

AUTOBODY & ACCESSORIES

101 S. HOBART 806-665-3500

Spray on bedliner & bed covers!!

### LAST MINUTE ADS

The Pampa News is not responsible for the content of paid advertisement

<p><b>CERAMIC TILE</b>, also Tumbled Stone- Showers, Counter-tops, Floors, Tub Surrounds. Over 25 yrs. exp. Call Keith Taylor, cell-664-2018 or hm.-874-1779 lv. msg.</p>	<p><b>PAMPA OPTIMIST</b> Baseball &amp; Softball Sign-Ups, March 20, 21, 22 &amp; 23rd, 5:30-7:30pm. No late sign-ups!</p> <p><b>WE ACCEPT</b> Credit Cards! The Hamburger Station, 5am-2pm.</p>
---	--

**Specializing in**

- Roofing
- Windows
- Home Siding

**CRAWFORD EXTERIORS**  
ROOFING • SIDING • WINDOWS

in the Texas Panhandle and Western Oklahoma

FREE ESTIMATES

**806.688.1152**  
www.crawfordexteriors.com

The PAMPA NEWS

403 W. Atchison • Pampa, TX 79065  
806-669-2525 • Fax: 806-669-2520

**Randall Pribble**  
Publisher  
rpribble@thepampanews.com

<p><b>ReDonn Woods</b> Advertising Manager woods@thepampanews.com</p> <p><b>Bernie Frazier</b> Advertising Representative bfrazier@thepampanews.com</p> <p><b>Beverly Taylor</b> Classified Advertising classified@thepampanews.com</p> <p><b>Marijane Kent</b> Composing composing@thepampanews.com</p> <p><b>Carrie Hair</b> Accounting bookkeeper@thepampanews.com</p> <p><b>Sue Pribble</b> Subscription Manager spribble@thepampanews.com</p>	<p><b>Arnie Aurellano</b> Editor editor@thepampanews.com</p> <p><b>Mollie Bryant</b> Reporter mbryant@thepampanews.com</p> <p><b>Andrew Glover</b> Reporter aglover@thepampanews.com</p> <p><b>Holley Binson</b> Composing composing2@thepampanews.com</p> <p><b>Marcus Elkins</b> Press Supervisor press@thepampanews.com</p> <p><b>Chico Ramirez</b> Circulation Manager Circulation2@thepampanews.com</p>
--	--

The Pampa News (UPS 781-540) is published daily, except Sundays, New Year's Day, Martin Luther King Jr. Day, President's Day, Memorial Day, Independence Day, Labor Day, Columbus Day, Veterans Day, Thanksgiving Day, and Christmas Day. Periodicals postage paid at Pampa, Texas. Postmaster: Send address changes to The Pampa News, P.O. Drawer 2198, Pampa, TX 79066-2198.

© 2011 The Pampa News

TPA

MEMBER 2011

TEXAS PRESS ASSOCIATION

## Obituaries

### Natalie Reeve, 56

Natalie Reeve, 56, died Sunday, March 11, 2012, in Pampa.

Memorial services will be at 1:30 p.m. Friday, March 16, 2012, at St. Matthew's Episcopal Church, with the Rev. Ed Nettleton, rector of St. James Episcopal Church in Lake City, Colorado, and the Rev. Linda Kelly, rector of St. Matthew's Episcopal Church, officiating. Cremation and arrangements are under the direction of Carmichael-Whitley Funeral Directors.

Natalie was born June 7, 1955, in Tulsa, Okla. She died at home last Sunday at 1:20 p.m. after a 4-week illness diagnosed as gastroparesis. Natalie lived at home with her parents, Jack and Katherine Reeve of Pampa. She was a 1973 graduate of Pampa High School and completed two years of college at West Texas State University in Canyon.

Natalie was a talented artist by trade and her love for the mountains of southwestern Colorado was central to many of her paintings. In 1980, she was recognized as Artist of the Year by the Pampa Fine Arts Association. Natalie enjoyed a variety of art mediums, but was perhaps best known for her delicate water colors. Not only did she sell her original paintings and prints at local art shows and to friends, she enjoyed donating her art to charitable organizations whose causes she supported.

Natalie had a true heart for children. She had been involved with St. Matthew's Day School in numerous capacities. For 19 years, she worked as assistant to the administrator and served on the board of St. Matthew's Day School for several years. Until her recent illness, she continued reading to the school children every Thursday. Clearly, Natalie's priorities were in serving God and His church. She performed in numerous volunteer roles at St. Matthew's Episcopal Church in Pampa and at St. James Episcopal Church in Lake City, Colorado.

She was peaceful, patient, and had a great sense of humor. A small sampling of comments from her many friends and acquaintances capture Natalie's spirit:

"I treasure your friendship and you are such an inspiration. Every day, I walk by two of your pieces of art and it gives me a smile."

"You have always been such an inspiration to me. You have such a loving, giving sweet spirit."

"My earliest memories of knowing you are when you and I were students at St. Matt's. You have always been the most caring and selfless person, always smiling and happy! I am very thankful that each of my children are blessed by knowing you."

"You have touched so many people."

"I always valued your opinion and admired how much you gave to St. Matt's."

"You are like a gift that keeps on giving."

"May God hold you in the palm of His hands."

Natalie left us in peace. Those who knew her have described her as caring, creative, talented, funny, imaginative, thoughtful, patient, beautiful, persevering, witty, courageous, and loving. Natalie believed that love was the most important thing.

Survivors include her parents, Jack and Katherine Reeve of the home; two brothers, Rusty Reeve and wife Kim of Lucas and Randy Reeve and wife Mary of Gallup, N.M. Other family members include John and



Reeve

Theresa Reeve, Katie and Matt Chaney, Megan and Antonio Sibley, Stacy and Anthony Jimmerson, and several great-nieces and great-nephews.

In lieu of flowers, memorials may be made to St. Matthew's Episcopal Day School Scholarship Fund, 727 W. Browning, Pampa, TX 79065, or Lake City Arts, Lake City, CO 81235.

Sign the online register at [www.carmichael-whitley.com](http://www.carmichael-whitley.com).

### Herbert F. Trimble, 81

Herbert F. Trimble, 81, died March 13, 2012, in Amarillo.

Services are pending with Carmichael-Whitley Funeral Directors.

Mr. Trimble was born May 26, 1930, in Leedy, Okla. He was a veteran of the U.S. Army, serving during the Korean Conflict. He had been a resident of Pampa since 1947. Herbert married Helen Cornelison on November 19, 1955, in Clovis, N.M. She preceded him in death in 1996. He later married Barbara Jackson, and she preceded him in death in 2007. Herbert was employed by Cabot Corporation/Ingersoll-Rand for 21 years, retiring in 1984. He was a member of Trinity Fellowship. His true love was his family, especially his grandchildren.

Survivors include his daughter, Twila Devoll of Pampa; two grandsons, Coy Devoll and wife Stefani and Clint Devoll and wife Jeanee, all of Pampa. Herbert was preceded in death by a son, Terry Lynn Trimble on April 10, 1981, two sisters and one brother.

Sign the online register at [www.carmichael-whitley.com](http://www.carmichael-whitley.com).



Trimble

### Melva Luanne Lusk, 53

Melva Luanne Lusk was born November 8, 1958, in Pampa, to Shelton Ewell Lusk and Lu Jean "Honey" Pike. She passed away March 12, 2012 in Dallas.

Melva is survived by her loving partner of 23 years, Cecilia Gonzales; beloved pets, Pixee, Mickee, Tobee; sisters, Roxanne Newman and husband David, Jeanette Hooper and husband Danny, and Lynn Lusk and partner Mary; brother, Gerald Lusk and wife Monica; aunt, Norma Murdock and husband Duane; numerous nieces and nephews; parent in-laws, Cruz and Nelda Gonzales. She is preceded in death by her parents and grandparents.

She was a loyal supervisor dental technician for 24 years with the V.A. Hospital. Melva was blessed to be given the knowledge of how much people loved her and she them. Her walk with God every morning was her deepest love.

A memorial service will be held at 2 p.m. Thursday, March 15, 2012, at Laurel Oaks Funeral Home with Pastor Tony Armstrong officiating. In lieu of flowers, the family asks that donations be made to [www.longevity.org](http://www.longevity.org) in the name of "Miracle Melva".



Lusk

## For the record

### Police Department

The Pampa Police Department reported the following incidents during the 24-hour period ending Tuesday, March 13 at 7 a.m.

Pampa PD reported 30 traffic related incidents.

Animal Control agents and the Pampa PD reported 14 animal related incidents.

Pampa EMS, the Pampa Fire Department, the Lefors Volunteer EMS and the Lefors Volunteer Fire Department responded to nine medical calls.

**Monday, March 12**  
A suspicious vehicle was reported at the 300 block of West Foster.

A violation of city ordinance occurred at the 1000 block of Varnon.

A domestic disturbance occurred at the 1000 block of Huff.

A suspicious vehicle was reported at the 500 block of North Lowry.

Fraud was reported at the 200 block of North Houston.

Endangerment of a child

or elderly person occurred at the 1800 block of North Grape.

Stalking occurred at the 700 block of Lefors.

Accidents occurred at the 700 block of West Brown and the 200 block of North Cuyler.

Criminal mischief occurred at the 500 block of North Hobart.

Disorderly conduct occurred at the 100 block of West 30th.

Criminal mischief occurred at the 2600 block of North Rosewood.

An assault occurred at the 3000 block of North Perryton.

A burglary occurred at the 800 block of North Nelson.

A violation of city ordinance occurred at the 400 block of South Pitts.

A theft occurred at the 600 block of West Francis.

**Tuesday, March 13**  
An accident occurred at Tyng and Finley.

A domestic disturbance occurred at the 1000 block of South Christy.

A prowler was reported at the 800 block of East Scott.

A suspicious person was reported at Jackson and Finley.

A prowler was reported at the 200 block of East Tuke.

The Gray County Sheriff's Office reported the following arrests for the 24-hour period ending Tuesday, March 13 at 7 a.m.

**Monday, March 12**  
Mark Wayne Kelle, 52, was arrested by police on a warrant regarding failure to appear in court and domestic violence.

Angelia Marie Ferretti, 34, was arrested by police on a warrant regarding a grand jury indictment for theft of property, in an amount over \$20,000 but less than \$100,000.

Samuel Leroy Malone, 43, was arrested by police on a capias pro fine warrant.

Trent Logan Murray, 18, was arrested by deputies on a disorderly conduct warrant regarding obscene language.

Alfonso Gonzales Albear, 68, was arrested by police for assault causing bodily injury and on a warrant regarding an unsafe structure.

**Tuesday, March 13**  
Dustin Colby Spear, 18, was arrested by police for possession of a controlled substance, in an amount greater than four grams but less than 200 grams.

Antonio Corral Andrade, 39, was arrested by police for driving while intoxicated.

### Sheriff's Office

NEW Spring Styles Arriving Daily



Clarks Brisk Juniper



Clarks Ella Celtic

Brown's SHOE FIT CO.

665-5691  
1500 N. Hobart  
M-F: 9-7 Sat: 9-6 Sun: 12-4

Jewelry Repairs

Design • Engraving • Watch Repairs • In House

Doors & Doorbells

1504 N. Hobart 685-5090

20% OFF

ALL IN STOCK

Big Dog Zero-Turn Mowers



B&G Power Equipment

665-2366 103 S Hobart St

PC DREAMS

Computer Repair Done Right At Affordable Prices

2100 N. Perryton Pkwy. • 688-7817

Se habla español



# MORNINGRUSH

## Condemned man loses appeal

HOUSTON (AP) — A Dallas man condemned for a shooting spree that left five people dead during a robbery at a car wash has lost a federal court appeal. Robert Wayne Harris was convicted of two of the five slayings at the Mi-T-Fine Car Wash in Irving in March 2000. Harris had been fired from his job at the complex a few days earlier for exposing himself to a female customer. Attorneys for the 40-year-old Harris told the 5th U.S. Circuit Court of Appeals in New Orleans that he was mentally impaired, making him ineligible for execution under Supreme Court guidelines. The appeals court ruling, which was posted late Monday, says there's no evidence to support his claim.

## Remains identified as soldier

PETROLIA (AP) — The human remains found last month in a shallow grave in rural North Texas have been identified as those of a missing U.S. Army soldier. The Clay County Sheriff's Office says Spc. Jose Ramirez is the person found near a house south of Petrolia, near the Texas-Oklahoma border. Ramirez went missing from Fort Sill, Okla., in 2005.

Sheriff Kenny Lemons says Ramirez likely died sometime in summer 2007. According to a criminal complaint, 30-year-old Justin Green told relatives he shot Ramirez "because Ramirez did not believe in God" and had reached for a gun. Green was arrested last month and faces first-degree murder charges. He remains in jail, where officials did not have attorney information for him.

## Mink-freeing attempt ends in jail

SIOUX CITY, Iowa (AP) — A 22-year-old Texas woman has been given 60 days in jail for trying to release minks from a Sioux City farm. Kellie Marshall had pleaded guilty in Woodbury County District Court to releasing an animal from an animal facility and attempted third-degree burglary. The Sioux City Journal says Judge Steven Andrusen suspended a five-year prison sentence and 305 days of jail time for Marshall. Marshall was given five years of probation as well. Marshall and 24-year-old Victor Vanorden, also of Austin, were found in a soybean field in October before they could release the animals. Officers found fences nearby that had been cut. Vanorden was sentenced to five years in prison. Marshall and Vanorden must pay nearly \$8,800 in restitution for the fence damage.

## Beehive stolen from restaurant

HOUSTON (AP) — Some thieves might truly have sticky fingers after a 500-pound beehive was swiped from a garden outside a Houston restaurant. Houston police spokesman Victor Senties said Tuesday that nobody has been arrested. Surveillance security video shows a truck pulling up before dawn Saturday near the Haven Restaurant. Authorities believe at least two people loaded the box-style hive into the vehicle and drove away. Chef Randy Evans says the thieves apparently knew what they were doing by taking the hive during rainy, chilly weather. He says bees are usually inactive during such conditions. Evans says about 5,000 bees lived in the hive, worth an estimated \$1,000. Honey made by the bees is used in some restaurant dishes, plus the insects help pollinate the garden.

## 'Homeless Hotspot' draws ire

AUSTIN (AP) — A marketing stunt that paid homeless people to carry Wi-Fi signals during the South By Southwest Conference in Austin is drawing widespread criticism. BBH Labs, a unit of the global marketing agency BBH, gave 14 people from a homeless shelter mobile Wi-Fi devices and T-shirts that announced "I am a 4G Hotspot." BBH New York chairwoman Emma Cookson says the company paid them a minimum of \$50 a day. She called the experiment a modernized version of homeless selling street newspapers. But many have called the program exploitative. Wired.com wrote that it "sounds like something out of a darkly satirical science-fiction dystopia." ReadWriteWeb called it a "blunt display of unself-conscious gall." The experiment was meant to begin last Friday but rain delayed its implementation until Sunday. It stopped Monday.

## LCRA water plan submitted

AUSTIN (AP) — Texas regulators have up to a year to review a water management plan from the Lower Colorado River Authority to better deal with drought. The LCRA on Monday submitted the plan to the Texas Commission on Environmental Quality. The proposal offers methods to manage water downstream from lakes Travis and Buchanan during dry conditions. The lakes provide water for more than a million people in Central Texas, as well as serving industrial and farm needs. The measure would eliminate the so-called "open supply," which makes unlimited water available for downstream agriculture use when the lakes are above a defined trigger point. Restrictions would apply. The proposal was adopted by the LCRA board on Feb. 22.

# Officials to talk about herd rebuilding

LUBBOCK (AP) — Agriculture officials plan to travel Texas in the coming months to help ranchers who want to rebuild their herds after heavy sell-offs last year when drought parched grazing lands and sent hay prices skyrocketing. The Texas AgriLife Extension Service said Tuesday it will provide information on lending policies, animal health, balancing forage recovery with growing herds and issues involved in generational turnover.

One goal is to encourage young people to get into ranching after many cattle producers got out of the business because of the historic drought. Ron Gill, a livestock specialist with the extension service in College Station, said in a news release that some discussion will center around obstacles to younger Texans getting into ranching. Those include a lack of startup money and experience. "Developing partnerships

with family members or others in the community will allow a new generation of ranchers to emerge during this recovery process," Gill said. Texas is the nation's leader in beef production, and ranching and affiliated trade and service companies are the second largest economic driver in the state, worth billions of dollars, Gill said. A January U.S. Department of Agriculture report showed Texas had 11.9 million head of cat-

tle and calves, 11 percent fewer than a year before. The worst drought in Texas' history led to the largest one-year decline in the state's cow herd, with numbers dropping by 12 percent, or about 600,000. If they don't rebound soon, the state could start to lose infrastructure, such as feedlots and meat packing plants, Gill said. The educational programs begin in April. The first few will be held in Abilene, Alice, Athens, Graham, Midland and Yoakum.

# South Padre rocks as spring break party peaks

SOUTH PADRE ISLAND (AP) — When guests at the party next door number about 10,000 and the sound system is rock-concert quality, older visitors and residents say their options during spring break are to flee, adjust or enjoy the spectacle. At least a few chose each path as Texas week - the apex of South Padre Island's nearly month-long festivities - bounced back from a chilly opening weekend and packed the barrier island with students freed from their studies.

Residents and guests at the staid Isla del Sol condominium complex - a Frisbee toss away from the main stage of the beach party - marveled Monday at the size of the gyrating, tangled mass just beyond their property, taking in the scene with binoculars, cell phones and video cameras. R.G. Ketchum, a state park ranger from Oklahoma staying for two months at the Isla del Sol, found the high-spirited explosion of youth entertaining. "It's OK. They quit at 5 o'clock. They don't bother us here," Ketchum said. "They're real polite to you if you walk out there. They know you're a senior citizen."

He did his own partying on South Padre Island back when the Eagles and Steve Miller Band were the Lil' Flip and Skrillex of the day, and he recognizes what a boon it is for local businesses. But the traffic and mess left on the beach are enough to make Smith consider making other plans in March. "Every year, I think we should just pack up and leave for the month," he said last week.

Southern Methodist University, rinsed off a beach chair under an outdoor tap after returning from the party with several friends. A Brownsville native, Serafy said his parents have two units at Isla del Sol. Before moving on to the complex's pristine and uninhabited pool, he said the location offers the best of both worlds: access to the party and a refuge from it. "We know that there are a lot of older people staying here too, so we try to be respectful," Serafy said.

One day before Coca Cola Beach's official kickoff last week, the bass was already thudding as Gregory LaVelle, 72, prepared to escape back to Minnesota. The music from the 50,000-watt sound system next door made his condo walls vibrate. "It's horrible," he said with a laugh. The party behind the Isla Grand Beach Resort next door started in 1994. LaVelle, who's been coming down for seven years, said he usually leaves before the college hordes descend. In general, Isla del Sol does not allow its condos to be rented to spring breakers. But there's an exception for owners' children and grandchildren. Clayton Serafy, a 22-year-old student at

time-consuming duty during spring break becomes blocking spring breakers who try to follow guests through the complex's locked gate. One young partier who appeared to be going to a unit rented in violation of condo policies actually hopped the wall after being denied entry at the gate and slipped around a corner with a beer funnel hanging out of his backpack. But Cantu said most of the kids don't cause trouble. As proof, a passel of bikini-clad girls arrived at the gate, slapped high-fives with the security guard and warmly greeted Cantu by name.

Only one unit was giving Pito Cantu, the complex's on-site overseer, fits on a recent afternoon. His most

### March Specials

**\$59.95 Toilets: Regular Bowl**  
 Complete toilet including tank and bowl, toilet seat and bowl rim, floor screws etc. 12" rough in. Height is 14-5/8" total. Standard toilet includes trap operation. **969193300** **White**  
 \* Toilet in 2-Box, Brown, White

**\$94.99 Toilets: Elongated Bowl**  
 Complete toilet including tank and bowl, toilet seat and bowl rim, floor screws etc. 18" rough in. Height is 16-1/2" total. **969193300** **White**  
 \* Toilet in 2-Box, Blue, White

**CHIEF PLASTICS PIPE & SUPPLY INC.**  
 1227 S. BARRIS - PAMPA, TEXAS 906.686.6798 OR 906.686.6799 1240 S BARRIS - 906.686.2763  
**CHIEF PLASTICS**

### Cinema 4

Movies Showing  
 Friday, March 9 through Thursday, March 15.

**The Vow (PG-13)**  
 Fri 7:00 9:45  
 Sat 2:00 4:30 7:00 9:45  
 Sun 2:00 4:30 7:00  
 Mon/Thu 2:00 4:30 7:00

**Dr. Seuss' The Lorax (PG)**  
 Fri 7:00 9:00  
 Sat 2:00 4:30 7:00 9:00  
 Sun 2:00 4:30 7:00  
 Mon/Thu 2:00 4:30 7:00

**Project X (R)**  
 Fri 7:30 10:00  
 Sat 2:00 4:30 7:30 10:00  
 Sun 2:00 4:30 7:30  
 Mon/Thu 2:00 4:30 7:30

**Disney's John Carter (PG-13)**  
 Fri 7:30 10:00  
 Sat 2:00 4:30 7:30 10:00  
 Sun 2:00 4:30 7:30  
 Mon/Thu 2:00 4:30 7:30

www.cinema4pampa.com  
 Coronado Shopping Ctr.  
 688-9192 / 688-9229

**PENNZOIL**

- Oil Change
- State Inspection
- Tires
- General Maintenance
- Tune-Ups
- AC Service Repair
- Electrical
- CV Joints
- Shocks
- Belts & Hoses

Pick-up & Drop-off Service Provided

## Allison

Quality Quick Lube

806-688-0042  
 1203 N. Hobart • South End of Coronado Center

## Retirement Celebration!

THE OFFICERS AND EMPLOYEES OF  
 FIRSTBANK SOUTHWEST CORDIALLY  
 INVITE YOU TO A RETIREMENT  
 CELEBRATION IN HONOR OF

# PHIL GENTRY

THURSDAY, MARCH 15TH, 2012  
 12:00PM - 3:00PM

FIRSTBANK SOUTHWEST  
 300 W KINGSMILL AVE.  
 PAMPA, TX

Come In Or Call For A Quote

### AUTO • HOME • BUSINESS • LIFE

Gray County Insurance Doing Business As  
**JOHNSTON INSURANCE AGENCY**

1712 N. HOBART  
 PAMPA, TEXAS  
 806.665.4133  
 866.665.2788

Cl Johnston, Agent  
 Barry Johnston, Agent

Not The Largest...Not The Smallest...  
 But The Best Rates & Service!



# Viewpoints

## Today in History

Today is Wednesday, March 14, the 74th day of 2012. There are 292 days left in the year.

### Today's Highlight in History:

On March 14, 1962, Democrat Edward M. Kennedy officially launched in Boston his successful candidacy for the U.S. Senate seat from Massachusetts once held by his brother, President John F. Kennedy. (Edward Kennedy served in the Senate for nearly 47 years.)

### On this date:

In 1743, a memorial service was held at Faneuil Hall in Boston honoring Peter Faneuil, who had donated the building bearing his name.

In 1794, Eli Whitney received a patent for his cotton gin, an invention that revolutionized America's cotton industry.

In 1885, the Gilbert and Sullivan comic opera "The Mikado" premiered at the Savoy Theatre in London.

In 1900, Congress ratified the Gold Standard Act.

In 1923, President Warren G. Harding became the first chief executive to file an income tax report.

In 1932, photography pioneer George Eastman, founder of Eastman Kodak Co., died by his own hand at age 77 in Rochester, N.Y.

In 1939, the republic of Czechoslovakia was dissolved, opening the way for Nazi occupation of Czech areas and the separation of Slovakia.

In 1951, during the Korean War, United Nations forces recaptured Seoul.

In 1964, a jury in Dallas found Jack Ruby guilty of murdering Lee Harvey Oswald, the accused assassin of President John F. Kennedy, and sentenced him to death. (Both the conviction and death sentence were later overturned, but Ruby died before he could be retried.)

In 1967, the body of President John F. Kennedy was moved from a temporary grave to a permanent memorial site at Arlington National Cemetery.

In 1980, a LOT Polish Airlines jet crashed while attempting to land in Warsaw, killing all 87 people aboard, including 22 members of a U.S. amateur boxing team.

In 1991, a British court overturned the wrongful convictions of the "Birmingham Six," who had spent 16 years in prison for a 1974 Irish Republican Army bombing, and ordered them released.

**Ten years ago:** The government charged the Arthur Andersen accounting firm with obstruction of justice, securing its first indictment in the collapse of Enron. (Although Arthur Andersen was later found guilty, its conviction was overturned by the U.S. Supreme Court; however, the damage to the firm's reputation was enough to put it out of business.) Serbia and Montenegro signed a historic accord to radically restructure their federation, dropping the name "Yugoslavia" and granting greater autonomy to prevent the country's final breakup.

**Five years ago:** The Pentagon released the transcript of a military hearing in which Khalid Sheikh Mohammed said he "was responsible for the 9/11 operation from A to Z." President George W. Bush, speaking from Mexico, said he was troubled by the Justice Department's misleading explanations to Congress of why it had fired eight U.S. attorneys, but said the firings were "entirely appropriate."

**One year ago:** In the wake of Japan's earthquake and tsunami and mounting nuclear crisis, President Barack Obama said he had offered the Japanese government any assistance the United States could provide. Neil Diamond, Alice Cooper, Tom Waits, Darlene Love, Dr. John and Leon Russell were inducted into the Rock and Roll Hall of Fame. Olympic champion Evan Lysacek won the 2010 Sullivan Award, becoming the fourth figure skater to be honored as the top amateur athlete in the United States.

**Today's Birthdays:** Former astronaut Frank Borman is 84. Singer Phil Phillips is 81. Actor Michael Caine is 79. Composer-conductor Quincy Jones is 79. Former astronaut Eugene Cernan is 78. Actor Raymond J. Barry is 73. Movie director Wolfgang Petersen is 71. Country singer Michael Martin Murphy is 67. Rock musician Walt Parazaider (Chicago) is 67. Actor Steve Kanaly is 66. Comedian Billy Crystal is 64. Sen. Tom Coburn, R-Okla., is 64. Country singer Jann Browne is 58. Actor Adrian Zmed is 58. Prince Albert II, the ruler of Monaco, is 54. Actress Laila Robins is 53. Actress Tamara Tunie is 53. Actress Penny Johnson Jerald is 51. Producer-director-writer Kevin Williamson is 47. Actor Gary Anthony Williams is 46. Actress Megan Follows is 44. Rock musician Michael Bland is 43. Country singer Kristian Bush is 42. Rock musician Derrick (Jimmie's Chicken Shack) is 40. Actress Grace Park is 38. Actor Jake Fogelst is 33. Actor Chris Klein is 33. Actress Kate Maberly is 30. Singer-musician Taylor Hanson (Hanson) is 29. Actor Jamie Bell is 26.

**Thought for Today:** "Any fool can make things bigger, more complex, and more violent. It takes a touch of genius - and a lot of courage - to move in the opposite direction." - Albert Einstein, German-born American physicist (born this date in 1879, died 1955).



## Romney to recapture upscale whites?

In the cold, gray numbers of election returns and exit poll percentages, a reader with some imagination can find clues to people's deep feelings, their hopes and fears, their self-images and moral values.

This is especially true in presidential primaries. In most general elections, 80 percent of voters vote for candidates of the party they prefer. In primaries, voters choose between specific individuals with greater differences in experience, background and character than on issues.

So it has been in this year's contests, featuring candidates most voters didn't know much about and about whom their judgment has often shifted. The lead in national polls has changed 11 times since August.

One constant factor in the 14 contests with exit polls is that Mitt Romney has tended to run best among high-income and high-education voters. His leading opponents -- Newt Gingrich in South Carolina and Georgia, Ron Paul in Iowa, New Hampshire and Virginia, and Rick Santorum everywhere else -- have run best among low-income and low-education voters.

It is in the nature of political journalism that much attention is devoted to downscale voters. A question often asked is whether Republicans generally and Romney in particular can run well among blue-collar whites.

Actually, Republicans have done pretty well with this group. In the dreadful Republican year of 2008, exit polls showed John McCain carrying non-college whites by 58 to 40 percent over Barack Obama. George W. Bush did even better in 2004.

This year, Obama campaign strategists have signaled that they're not targeting the folks that Obama, speaking to rich liberals at a San Francisco Bay area fundraiser, characterized as

bitterly clinging to guns and God. They're targeting the college-educated, the young and Latinos instead.

There is little or no evidence that downscale whites have more positive feelings about Obama than they did then. They dislike Obamacare and the stimulus package. The president gives them little sense that he is in sympathy with their values.

The affluent are another matter. Republicans have been losing ground with them since the 1990s. Non-Southern suburban counties whose big majorities delivered electoral votes to George H.W. Bush in 1988 have been trending to Democrats, as affluent suburbanites, especially women, were repelled by Republicans' stands on cultural issues like abortion and by the increasing Southern and evangelical tone of the party.

The four suburban counties outside Philadelphia, for example, voted 61 percent for Bush in 1988, and he carried Pennsylvania. In 2008, they voted 57 percent for Barack Obama, and he carried the state.

Those latter figures are not, as some analysts seem to think, etched in stone. The financial crisis and recession have switched voters' focus from cultural issues to the economy. The gap between Obama's proposed top tax rate of over 40 percent and the Republicans' 28 percent is wider than any since the 1980s.

The cold gray numbers tell us that Romney has an affirmative appeal to this constituency. He has run 4 to 12 points ahead of his statewide average



MICHAEL BARONE

among over \$100,000 voters in every exit poll.

He carried affluent Oakland County northwest of Detroit, where he grew up, by 31,565 votes. He carried the rest of Michigan by 413. In Ohio, he carried the mostly affluent vote in the counties containing Cleveland and Cincinnati by 31,682 votes -- three times his statewide margin.

I sense that affluent voters find Romney a kindred spirit -- articulate but politically awkward, self-disciplined and successful, able to make a sharp argument but polite. He's conservative on cultural issues, but in a way that reminds me of the 18th century Englishwoman's gravestone noting approvingly that "she was religious without enthusiasm."

Barack Obama's appeal to high-education and young voters in the Virginia, North Carolina and Indiana primaries carried over into the general election. He carried all three in November, though none was a target state in 2000 or 2004.

Will Romney's appeal to high-education and high-income voters carry over to the general election, too? That's not clear.

But the Pew poll tells us that Republican party identification has risen 9 points from 2008 among Jewish voters -- a small but important part of this constituency. And exit polls show that Catholics, another important part, have gone for Romney in all but two Southern states.

The cold gray numbers don't tell us for sure. But they suggest that affluent voters may be up for grabs this year.

Michael Barone, senior political analyst for The Washington Examiner ([www.washingtonexaminer.com](http://www.washingtonexaminer.com)), is a resident fellow at the American Enterprise Institute, a Fox News Channel contributor and a co-author of The Almanac of American Politics.

## Catalogs are the novels of optimistic lives

The garden catalogs start coming when the snow is too deep to even find dirt. But we don't care.

This is a catalog time of year, a time for making plans and figuring out how to do something even better than we did last year.

There in the fishing catalog is that new fly-tying vise. I know I'll be able to tie flies faster and better with that, which will give me more time to cruise up and down Lewis Creek with the fly rod. Well ... at least that's the plan.

And the housewares catalog has all kinds of things in it to help us peel potatoes, boil things, slice things, and clean things. A few well-spent dollars on their 800 phone line and before you know it, our lives will be easier and our food tastier.

With the truck catalogs, we can get a little coffee maker that plugs right in to the cigarette lighter. Or we can



SLIM RANGLES

get a little oven that plugs right in to the cigarette lighter, or a fan that plugs right in to the cigarette lighter.

Let's hope the car makers continue to make cigarette lighters even after cigarettes themselves disappear. We'd miss out on a lot of fun without that plug-in.

The mule needs his catalog, too. I'll do the reading for him, and the order-

ing. But I think he'd appreciate one of those nice white fleece cinches. They seem so soft on an old mule's belly. And a matching saddle pad would be good, too. He's too old to rope on any more, but a guy can still appreciate comfort in semi-retirement.

The land catalogs are the most fun. In these, there are always lakes with wooded margins, begging for a little cabin. A small place where a guy can hole up and think literary thoughts and type quietly. Well, it's a thought, anyway. And that's what catalogs do, stimulate our thinking.

Spring catalogs are the novels of optimistic lives.

To buy Slim's books, go to [www.slimrandles.com](http://www.slimrandles.com).

Home Country is a weekly syndicated newspaper column written by outdoors journalist and humorist Slim Randles.

## We welcome your letters

- To ensure publication, please adhere to the following guidelines:
- Letters should be brief and to the point. All correspondence will be edited for length and clarity.
- All letters must be signed. Submit your name, address and telephone number with the letter for verification. Only your name and city will be published.
- Defamatory comments will not be published.
- E-mail submissions are welcome.
- The views and opinions expressed here do not necessarily reflect those of The Pampa News or its staff.

Read your hometown paper on your computer. Subscribe to our online edition. 669-2525



# Discipline

## Is anger a sin? Children discuss

"It's OK to get angry in certain situations," says Nicole, age 9. "For example, when your baby sister sits on your new cowboy shirt."

Being from Texas, I understand. A new cowboy shirt is a precious thing — new boots are even better.

"You have to get angry when somebody hits you so you can hit him back harder," says Daniel, 5.

Ouch! We smile at Daniel's honesty, but we all have this monster called revenge living inside. Most of us don't hit with fists. We're too sophisticated for that. Gossip and slander are often the weapons of choice.

If you have to punch something, Daniel, take a tip from Chaz, 10: "When I lose my temper, I beat up my pillow and then pray."

Punch and pray. This sounds like a winning combination — as long as you're punching a pillow and not someone's nose.

Anger can make you do crazy things such as "losing your temper when someone is trying to be boss of your football," says Cade, 5. Of course, some who get really angry about being boss of the football sign contracts worth millions and play for the NFL.

Anger can also make you "rip up a failing paper before you get home and tell your mom you didn't get that test," says Chelsea, 9.

As every teacher knows, dogs have ravenous appetites for school papers, especially on the day they are due.

Lying about a failing paper or making up a dog story because you didn't do your homework, could make your mom and your teacher justifiably angry.

Anger is fine, says Britanni, 5: "Because when two friends get together, it is hard to play good every minute." Colton, 5, disagrees, "Even though this makes Jesus sad, some people just love to fight."

Sometimes, it's small things that anger us, says another Colton, 5: "My mom and dad get angry when they can't decide what they want for dinner." Sounds like a recipe for indigestion.

Landon, 11, and others provide us with digestive aids by giving us tips on when it is and isn't



CARY KINSOLVING

## KIDS talk about GOD

wrong to be angry. "It is not wrong to get angry as long as it is righteous anger."

Righteous anger? "Jesus got angry when people used the temple as a trading post," says Courtney, 10. "He

knocked over tables, threw everything on the floor," says Bryant, 10. "I mean he got real mad."

The Apostle John writes that he made a "whip of chords" and drove the moneychangers out of the temple. You usually won't find this picture in children's storybook Bibles. Jesus was gentle, but he was also fierce.

Don't try to justify selfish anger by rationalizing it into righteous anger. When the disciples saw Jesus clearing the temple, they remembered Psalm 69:9: "Zeal for your house has eaten me up."

Jesus was consumed with the reputation of his Father. Instead of a house of prayer, merchants had turned the temple into a house of thieves. When we become angry, we're usually consumed with our rights and reputation, not God's.

Brent, 11, also approaches anger management in a biblical way when he quotes James 1:19-20: "Let every man be swift to hear, slow to speak, slow to anger; for the wrath of man does not produce the righteousness of God."

Think about this: Jesus could have been angry over the injustice he suffered, but he forgave.

Remember this truth: "Do not let the sun go down on your wrath" (Ephesians 4:26).

Ask this question: Have you ever been angry because someone blasphemed God's name or character?

Cary Kinsolving is an experienced public speaker, syndicated newspaper columnist, author, and producer.

## CHURCH SPOTLIGHT

# FUMC makes progress on church building upgrades

ANDREW GLOVER  
aglover@thepampnews.com

If you've driven by First United Methodist lately, you probably have noticed some activity with all the construction equipment. The church is undergoing upgrades.

Co-pastor Nick Matthews said the church is excited about it. Inside, the church recently added projection screens and cameras.

"(They are) neat," Matthews said. "It's a great aid to worship." Matthews said the purpose of

the building project is to make the church more accessible.

"We are adding elevators to help the handicapped or people that need a little help," Matthews said. "We're adding a gathering space for people to meet, and not just on Sundays. We are making our bathrooms and kitchen handicapped accessible so everyone can use it."

The church is also having work done on the outside to increase parking.

The estimated completion date is September 14.

## Pampa Church Directory

- |  |   |  |
|--|---|--|
| <b>Bible Baptist Church</b><br>500 E. Kingsmill Ave.<br>Pampa TX 79065<br>669-7830                         | <b>731 Sloan St.</b><br>Pampa TX 79065<br>665-2545  | <b>New Hope Baptist Church</b><br>404 Harlem<br>Pampa TX 79065<br>665-4044                   |
| <b>Briarwood Full Gospel Church</b><br>1800 W. Harvester Avenue<br>Pampa TX 79065<br>665-7201              | <b>First Pentecostal Holiness</b><br>1700 Alcock<br>Pampa TX 79065<br>665-8192                  | <b>New Hope Missionary Baptist Church</b><br>912 S. Gray St.<br>Pampa TX 79065<br>665-4044   |
| <b>Calvary Assembly of God Church</b><br>1030 Love Street<br>Pampa TX 79065<br>669-7207                    | <b>First Presbyterian</b><br>525 N. Gray<br>Pampa TX 79065<br>665-1031                          | <b>New Life Assembly of God</b><br>1435 N. Sumner<br>Pampa TX 79065<br>665-0804              |
| <b>Calvary Baptist</b><br>900 E. 23rd Street<br>Pampa TX 79065<br>665-0842                                 | <b>First United Methodist</b><br>Foster & Ballard<br>Pampa TX 79065<br>669-7411                 | <b>Open Door Church of God in Christ</b><br>402 Oklahoma<br>Pampa TX 79065<br>665-6132       |
| <b>Carpenter's Church</b><br>639 S. Barnes<br>Pampa TX 79065<br>669-2720                                   | <b>Gateway of Grace Ministries</b><br>720 W. Francis<br>Pampa TX 79065<br>806-336-4427          | <b>Pampa Chapel of the Apostolic Faith</b><br>711 E. Harvester<br>Pampa TX 79065<br>669-9635 |
| <b>Central Baptist Church</b><br>513 E. Francis<br>Pampa TX 79065<br>665-1631                              | <b>Grace Baptist Church</b><br>824 S. Barnes<br>Pampa TX 79065<br>669-7967                      | <b>Priest Park Church of God</b><br>731 N. Faulkner<br>Pampa TX 79065<br>688-0174            |
| <b>Church of Christ</b><br>1342 Mary Ellen<br>Pampa TX 79065<br>665-0031                                   | <b>Harvest Fellowship Baptist Church</b><br>2700 W. Kentucky Ave.<br>Pampa TX 79065<br>665-4922 | <b>Primeria Iglesia Bautista Mexicana</b><br>541 Hamilton<br>Pampa TX 79065<br>665-8347      |
| <b>Church of Christ Somerville</b><br>500 N. Somerville<br>Pampa TX 79065<br>665-0004                      | <b>Harvest Bible Church</b><br>300 W. Browning Avenue<br>Pampa TX 79065<br>669-2923             | <b>Redeemer Pampa</b><br>225 N. Cuyler<br>Pampa, TX 79065<br>665-8951                        |
| <b>Church of God</b><br>Gwendolen & Sumner<br>Pampa TX 79065<br>669-6372                                   | <b>Hobart Baptist Church</b><br>1100 W. Crawford<br>Pampa TX 79065<br>669-3212                  | <b>St. Mark CME Church</b><br>406 Elm Ave<br>Pampa TX 79065<br>665-6743                      |
| <b>Church of Jesus Christ of the Latter Day Saints</b><br>411 East 29th Ave.<br>Pampa TX 79065<br>669-2967 | <b>Hi-land Christian Church</b><br>1615 N. Banks<br>Pampa TX 79065<br>669-6700                  | <b>St. Matthews Episcopal Church</b><br>727 W. Browning<br>Pampa TX 79065<br>665-0703        |
| <b>Church of the Nazarene</b><br>500 N. West<br>Pampa TX 79065<br>669-3144                                 | <b>Highland Baptist Church</b><br>1301 N. Banks<br>Pampa TX 79065<br>665-3300                   | <b>St. Vincent de Paul Catholic Church</b><br>810 W. 23rd Ave.<br>Pampa TX 79065<br>665-8933 |
| <b>Community Christian School</b><br>1801 W. Harvester<br>Pampa, TX 79065<br>662-3393                      | <b>Iglesia Bautista Emanuel</b><br>1021 S. Barnes<br>Pampa TX 79065<br>665-4330                 | <b>Trinity Fellowship Church</b><br>2225 N. Hobart<br>Pampa TX 79065<br>665-3255             |
| <b>Cornerstone Baptist Church</b><br>2410 W. 23rd Ave.<br>Pampa TX 79065<br>669-6509                       | <b>Iglesia Casa Del Alfarero</b><br>500 N. Duncan<br>Pampa TX 79065<br>665-5898                 | <b>United Pentecostal Church</b><br>610 Naida<br>Pampa TX 79065<br>665-3676                  |
| <b>Crosspointe</b><br>711 E. Harvester<br>Pampa TX 79065<br>665-2480                                       | <b>Iglesia Cristiana Canaan</b><br>905 E. Beryl St.<br>Pampa TX 79065<br>669-3330               | <b>United Methodist Church</b><br>201 E. Foster<br>Pampa TX 79065<br>669-9371                |
| <b>Faith Bible Church</b><br>110 W. Kingsmill<br>Pampa TX 79065<br>688-9266                                | <b>Iglesia Nueva Vida</b><br>New Life Church<br>1200 S. Sumner<br>Pampa, TX 79065<br>665-8331   | <b>Zion Lutheran Church</b><br>1200 Duncan<br>Pampa TX 79065<br>669-2774                     |
| <b>Fellowship Baptist Church</b><br>1936 N. Wells<br>Pampa TX 79065<br>665-2747                            | <b>Jehovah's Witnesses</b><br>1701 Coffee<br>Pampa TX 79065<br>669-9355                         |  |
| <b>Fellowship Baptist Church</b><br>622 E. Francis<br>Pampa TX 79065<br>665-5976                           | <b>Kentucky Ave. Church of Christ</b><br>1612 W. Kentucky<br>Pampa TX 79065<br>665-2572         |  |
| <b>First Assembly of God</b><br>500 S. Cuyler<br>Pampa TX 79065<br>665-5941                                | <b>Lighthouse Baptist Church</b><br>725 W. Browning<br>Pampa TX 79065<br>665-0262               |  |
| <b>First Baptist Church</b><br>203 N. West<br>Pampa TX 79065<br>669-1155                                   | <b>Lighthouse Covenant Fellowship</b><br>1733 N. Banks St.<br>Pampa TX 79065<br>669-6915        |  |
| <b>First Christian Church</b><br>1633 N. Nelson<br>Pampa TX 79065<br>669-3225                              | <b>Macedonia Baptist Church</b><br>441 Elm<br>Pampa TX 79065<br>665-4926                        |  |
| <b>First Freewill Baptist Church</b>   |   |  |

## GOD'S GOOD NEWS

# We need grace around each other

Stephen Arterburn, in "Devotions for Men on the Go," tells of having a snapping turtle, a mean animal that hatches from an egg about the size of a ping-pong ball. From the moment of its birth, it's ready and willing to bite whatever gets near it.



DAVID BOULTER

In three years the snapping turtle is about the size of a small dessert plate, but is even more ready to bite at every opportunity. It is antisocial, has no friends,

and is disliked by almost everyone. When it reaches maturity, it will weigh about 150 pounds and will have jaws big and powerful enough to bite off a human finger. The snapping turtle lives a long life, but never leaves behind its reputation of being a mean, vicious creature.

Do you know any people like this? They have an angry disposition and are just waiting to snap at someone who draws their anger. They can be difficult to be around or work with. If you try and reach out to them, they bite.

Ask God today to give you that extra grace and allow God to touch that snapping turtle through you.

David Boulter is a pastor at Highland Park Baptist Church in Chattanooga, Tenn.

**RHEAMS DIAMOND SHOP**  
"My God Be With You During The Week"  
Ken & Stephanie Rheams CP1

**PARSLEY'S** 214 E. Tyng  
669-6461  
Pampa, Texas CP19

**ENGINE PARTS & SUPPLY**  
416 W. Foster 669-3305  
Local Company Serving Local Needs CP2

**JERRY CARLSON INC.** 669-7171  
Borger Hwy. - Pampa  
Jerry E. Carlson, Pres. CP11

**New Life Wellness Center**  
Dr. Mark W. Ford, Jr.  
701 N Price Rd • 806-665-7261 CP3

**Heard Jones** 114 N. Cuyler  
669-7478 CP12

**WAYNE'S WESTERN WEAR**  
1504 N. Hobart 665-2925 CP4

**CLIFTON SUPPLY CO.** Shop  
cliftonsupply.com  
Since 1969 CP13

**NATIONAL BANK OF COMMERCE**  
an office of First National Bank, Waupaca, WI  
Member FDIC  
1224 N. Hobart Pampa, TX 806-665-0022  
501 Commerce St. Childress, TX 940-637-2514  
305 N. Main Shamrock, TX 806-256-2181 CP5

**Culligan** 314 STARKWEATHER 665-5729 CP14

**KEYES PHARMACY**  
"Your Key To Better Health"  
928 N. Hobart - Pampa, Texas  
669-1202 - Emergency 669-3559  
Merlin Rose R. Ph. - Owner - Pharmacist CP6

**Century 21 PAMPA REALTY INC.**  
312 N. Gray • 669-0007 CP15

2201 Perryton Pkwy. Jay Gist Pampa, Texas 669-CHIC (2442) Royce Jordan CP7

**Titan** 11785 Hwy. 152 Pampa, Texas 665-3781 CP16

**Texas PRINTING COMPANY**  
PHONE (806) 669-7951  
318 N. BALLARD PAMPA, TEXAS CP8

**LARRY BAKER PLUMBING HEATING & AIR**  
11780 HWY 152 TACLA003191 665-4392 CP17

**STATE FARM INSURANCE**  
Sheila Webb  
State Farm Insurance  
N Side of Coronado Center  
669-3861  
"Like a good neighbor, State Farm is there." CP9

**One STOP Flooring**  
1533 N. HOBART • 806-665-0995 CP18

**PROFESSIONAL SERVICES** MONDAY, WEDNESDAY & FRIDAY

Up to 7 Lines  
-325  
Plus Classified Display AD  
Paid in advance

Up to 7 Lines  
-325  
Plus Classified Display AD  
Paid in advance

**\$69** per month for weekly AD

**\$89** per month for weekly AD

Up to 7 Lines  
-325  
Plus Classified Display AD  
Paid in advance

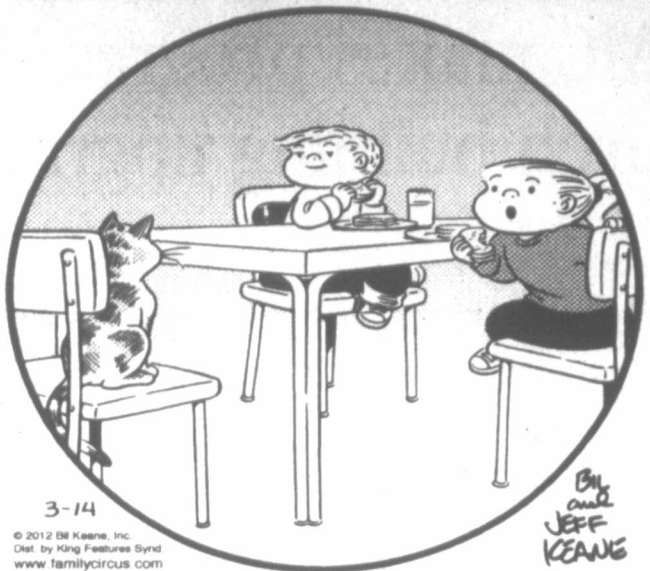
**\$119** per month for weekly AD

Call Beverly Today  
669-2525



# comics PAGE

THE FAMILY CIRCUS By Bil Keane



3-14

© 2012 Bill Keane, Inc. Dist. by King Features Synd. www.familycircus.com

"Who told Kittycat we were eating tuna sandwiches?"

Non Sequitur



Nest Heads



## daily horoscope

HAPPY BIRTHDAY for Thursday, March 15, 2012:

This year you open up to a different attitude at work and/or in your community. As a result, you feel more accepted and successful. Network to your heart's content, and socialize all you want. On both fronts -- professional and emotional -- you will expand your inner circle. Be precise with your communication. If you are single, you could meet someone who knocks your socks off. Take your time getting to know this person. If you are attached, choose to share more of your life with your sweetie. You will become a happier couple. CAPRICORN is a true friend.

**ARIES (March 21-April 19)**  
 ★★★★★ You know that appearance counts. Today, it counts even more than you think. You have a directness that lets others know you mean business. They step back accordingly. Consider cramming in more than one day's worth of plans, if possible. The Force is with you. Tonight: To the wee hours.

**TAURUS (April 20-May 20)**  
 ★★★★★ You can only share some of your present flights of fancy with certain people. Others might be irritated that you are not more present in the moment. Confusion surrounds plans and creates a new possibility. Just keep confirming messages and ideas. Tonight: Try the unusual.

**GEMINI (May 21-June 20)**  
 ★★★★★ Work with a key person directly. This person asks more from you than many others do. Remain confident. Your energy mixed with his or her diligence creates quite the combination, and the end results will show it. Work through a disagreement. Tonight: Togetherness works.

**CANCER (June 21-July 22)**  
 ★★★★★ Defer to others, knowing full well when enough is enough. Your sense of humor comes through when dealing with a difficult roommate or family member. Just don't let this person know you have the giggles. Focus on the long term. Tonight: Plan the weekend, and maybe start it early.

**LEO (July 23-Aug. 22)**  
 ★★★★★ Your relaxed pace might need to be tweaked if you want to clear your to-do list. You sense a profound difference in what is going on right now with others. The unexpected makes your day more interesting. Greet sudden change with a smile.

Tonight: Clear out as many errands as possible.

**VIRGO (Aug. 23-Sept. 22)**  
 ★★★★★ Your imagination encourages you down a new trail and/or adds a new dimension to a present project or emotional situation. A key person can be reactive. You might think you are used to this behavior by now, but you aren't. Resist verbalizing your opinions immediately. Tonight: Get into weekend mode a little early.

**LIBRA (Sept. 23-Oct. 22)**  
 ★★★★★ Your mind is on a parent or domestic matter. A significant other could be a tad bit reactive. Think in terms of gains. Perhaps you have been sitting on a feeling for too long. Choose a more appropriate time to express any pent-up emotions. Tonight: Homeward bound.

**SCORPIO (Oct. 23-Nov. 21)**  
 ★★★★★ Confusion could be an issue with someone at a distance or within an academic environment. Your attempt to gain clarity might simply alert this person to the issue. A meeting remains pivotal. Tonight: Return calls. Start thinking "weekend."

**SAGITTARIUS (Nov. 22-Dec. 21)**  
 ★★★★★ Be sensitive to your expenses and needs. Your creativity flows, and you can visualize a change. Staying grounded takes talent, but you can do it, especially if you keep an eye on your finances. You want to make good choices. Be willing to put in extra hours. Tonight: Your treat.

**CAPRICORN (Dec. 22-Jan. 19)**  
 ★★★★★ Despite momentary shocks and changes, you will head in the right direction, sure of yourself. You are able to integrate new information and situations immediately. Reach out for someone at a distance or an expert for more feedback. Tonight: Full steam ahead.

**AQUARIUS (Jan. 20-Feb. 18)**  
 ★★★★★ Listen to your inner voice. You might see that a course is carved out in front of you, yet your intuition tells you to go in another direction. Follow that voice. You will revise a judgment or two because of your observations. Count on your flexibility. Tonight: Head home.

**PISCES (Feb. 19-March 20)**  
 ★★★★★ Follow through with a meeting. In this situation, you become clearer about which direction to go. You have the support of others. Know what it is you need to do, though you might not feel that you are quite ready. Tonight: Where people are.

Tundra



Shoe



Mother Goose and Grim



Zits



Garfield



Beetle Bailey



Marvin



Hagar The Horrible



Peanuts



Blondie



dis tra the me son omi der gre the app Ma Sel Oh 23 in diti ren hor

A Ma Ma sen and 188 we and Set era Far S. 1 the gov Y pro

Elij Nel 194

AL

EL I cartel kidnap New Jose cartel on dru Torr Guatn inform The Marru tials S from f Two guilty gunpo his wi hands in neig Upo is beli massa where Torr conspi coinci weddi The Jaime Morak of a pi

Ron Lilley

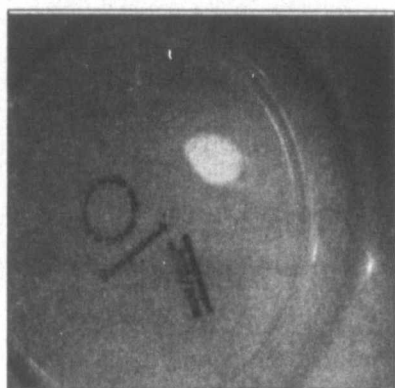


## Golden maize dish is amazing

Q: I have sent you a photo of a dish with a matching silver metal tray. I'm hoping you can explain the mark on the back and also tell me its value. I am in the midst of sorting out things that I have held onto for a long time. The dish is decorated with yellow, blue and red flowers against a yellow background, and it is sitting in a silver metal tray. The words marked on the back of the dish are blurry and appear to say, "Golden Maire — Made for Farberware — by the Sebring Pottery Co. — Sebring, Ohio — Reg. U.S. Pat. Off. No. 230447." It measures 11 inches in diameter and is in perfect condition. I am 72 and have always remembered it from my mother's home.

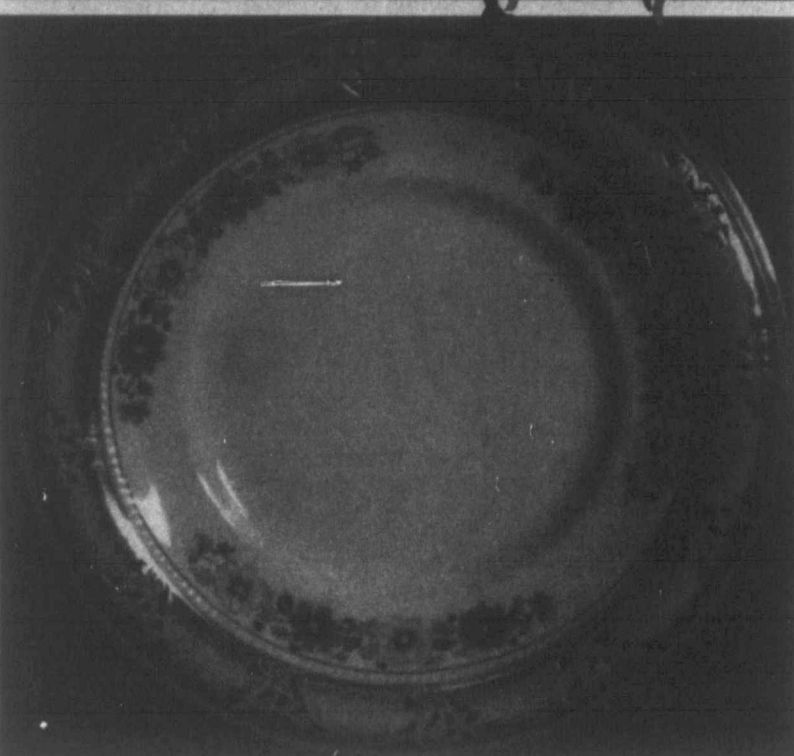
A: The mark should say "Golden Maize" rather than "Golden Maire." Sebring Pottery Co. made semi-vitreous pottery in Sebring and East Liverpool, Ohio, from 1887 to 1948. The Farber Brothers were located in New York City and known for their Farberware. Sebring made dishes in several floral designs and sizes for Farberware metal holders. The "U.S. Patent No. 230447" shows that the design was registered with the government around 1940.

Your dish with metal tray would probably be worth \$25 to \$50.



Elijah Cotton made Lord Nelson Ware from 1920 to 1940.

*Antique*  
**OR JUNQUE?**



Sebring Pottery Co. was located in Ohio from 1887 to 1948.

Q: This is the manufacturer's mark on the back of a plate that I have. I bought it at a flea market at least 30 years ago, just because I loved the pattern. I am now cleaning out our attic and cannot part with it until I learn some of its history and value. The plate is approximately 8 inches by 8 inches and has scalloped edges. On the right side is a woman in an 18th century style purple gown sitting near a table with a teapot on it and there is a tree with an English style cottage in the background. The plate is decorated with gold flowers against a white background.

Thank you for any information that you might provide.

A: You have an example of chintz ware pottery. "Lord Nelson Ware" was made by Elijah Cotton

in Staffordshire, England, from 1920 to 1940. "Pompadour" is the name of a chintz ware-style pattern and was inspired by Madame Pompadour, a favorite of the French King Louis XV. Chintz was a type of cotton that was imported to France from India in the late 18th century. Madame Pompadour used the fabrics for clothing and decorating.

Your circa 1920 dish would probably sell in the range of \$25 to \$50.

Address your questions to Anne McCollam, P. O. Box 247, Notre Dame, IN 46556. Items of a general interest will be answered in this column. Due to the volume of inquiries, she cannot answer individual letters.

## Inmate barred from Muslim services loses court appeal

HOUSTON (AP) — A federal appeals court on Tuesday rejected a Texas inmate's claim that he was unconstitutionally barred from Muslim religious services for six months as discipline for causing a prison ruckus.

The court also rejected his claims that Christian symbols hung in the chapel where Muslim services were held created a "hostile" environment and that prison officials improperly monitored services.

"Prison officials have broad discretion in balancing prisoner rights with prison security," the decision from the 5th U.S. Circuit Court of Appeals said. It added that "monitoring alone does not prevent the free exercise of religion."

Jesse James Copeland, 56, is serving life for aggravated robbery with a deadly weapon in Gregg County in 1987. His record includes another aggravated robbery conviction, along with burglary and aggravated assault on a corrections officer.

The ruckus started when he refused orders to leave the chapel at the Texas Department of Criminal Justice Eastham Unit about 80 miles north of Houston.

"A host of correctional officers and ranking officials abruptly burst into the chapel, and insolently disrupted the service ... having no respect for the Muslim offenders who were making their individual prayers," Copeland said in his lawsuit.

About 30 officers responded to the disturbance, and Copeland was subsequently barred from attending religious meetings for six months, confined to his cell for 45 days and lost good-behavior credits. Copeland said the punishment violated his free exercise of religion.

He appealed after a lower court rejected his lawsuit as frivolous.

The appeals court said even if Copeland's constitutional rights were violated, his lawsuit was moot because the six months had passed and the defendants he named, including nearly a dozen prison administrators, chaplains and officers, were entitled to immunity because they were doing their jobs.

**PRESTIGE**  
AUTOBODY & ACCESSORIES  
**806-665-3500**  
Ask for Casey or Eric

**Weather**  
Insurance

## Alleged cartel man indicted for conspiracy

EL PASO (AP) — An alleged lieutenant of the Sinaloa cartel has been indicted in the U.S. for conspiracy in the kidnappings and deaths of a West Texas man and three New Mexico men.

Jose Antonio Torres-Marrufo, who allegedly ran the cartel's operation in Juarez, Mexico, was also indicted on drug trafficking and money laundering counts.

Torres-Marrufo was arrested in February in Leon, Guatajuato, Mexico, and awaits extradition. Attorney information was not immediately available.

The indictment unsealed last week accuses Torres-Marrufo of conspiring to kill a man in 2009 with the initials S.S. That coincides with Sergio Saucedo, abducted from his home and killed in Mexico.

Two men were found guilty and one more pleaded guilty of the kidnapping of Saucedo. He was taken at gunpoint from his house in Horizon City, Texas, while his wife and child watched. He was found dead with his hands chopped off several days later in an unpaved street in neighboring Juarez, Mexico.

Upon his arrest, Mexican authorities said that Marrufo is believed to be the mastermind behind a Sept. 2009 massacre in Casa Aliviane drug rehab center in Juarez where 18 people were shot to death.

Torres-Marrufo is also accused in the indictment of conspiring in the 2010 deaths of three men whose initials coincide with three New Mexico men abducted from a wedding in Juarez and killed.

The bodies Rafael Morales Valencia, 29, his brother Jaime Morales Valencia, 25, and their uncle Guadalupe Morales Arriola, 47 were found in May 2010 in the back of a pickup truck after being snatched from the wedding

of one of these. The indictment says that Torres-Marrufo conspired in May 2010 to kidnap three men with the initials R.M.V., J.M.V. and G.M.A.

The indictment says Torres-Marrufo was a "regional lieutenant" for the Sinaloa Cartel and as such was responsible of overseeing drug-smuggling operations, money laundering and directing criminal groups such as Gente Nueva (New People), and the gang known as Artistas Asesinos (Murderous Artists) who act as enforcers in the war that cartel wages against local criminal organization, the Juarez cartel and its armed branch known as La Linea.

The Sinaloa Cartel is run by Joaquin Guzman, known as El Chapo.

**Cheapest Prices In Town!**  
Beer • Liquor • Wine • Cigarettes • Lotto  
**Let US help you celebrate St. Patrick's Day!**  
\$80.83  
Great Coors Lite 1/2 Keg  
By Reservation Only  
**New In Store**  
K.A.H. Tequila  
Hamon, Reposado, and Ancho  
750ml  
All Specialty Marked Green Items  
Green labels, Green liquid, Green Strickland  
See Store For Details  
Come and check out our new varieties of liquor.  
**Mikey's Liquor Store**  
1222 Price Rd. 806-665-9862  
M-F 10am - 9pm  
If we don't have it, we will try to get it.  
Drive-Up window  
Marlboro Special Blend 1440 pk  
with purchase of 3 pk.  
Copenhagen Long Cut Wintergreen  
1370 can  
32oz Fountain Drink \$21

**NOW WHAT?**  
Not having the right auto insurance coverage could prove a financial disaster. We offer coverage and affordable premiums to give you peace of mind.  
**AUTO - MOTORCYCLE - RV - ATV**  
**WE HAVE THE RIGHT INSURANCE FOR YOU**  
Contact us Today for a free quote and policy review.  
**Legacy Insurance Agency**  
**806-665-4800**  
legacy@legacy-ins.com  
www.legacy-ins.com  
2133 N Hobart Pampa, TX  
Pat Warren, Agent  
Katrina Neff, Agent

**The One to Trust**  
**TRUSTSTAR**  
We help you buy or sell your home!  
Gary Winton: Realtor® Office Manager  
806-440-1698  
1712 N. Hobart (806) 665-4595  
Ron Lilley, Broker

*Welcome Home!*  
**House Hunters Realtor**  
Linda Laycock  
Broker  
BROKER®, ABR, GREEN,  
SRES, e-Pro  
(806) 662-1312  
www.househunterspampa.com



# Feds unveil reform-minded immigration facility in Texas

KARNES CITY, (AP)

— With free Internet access, cheap overseas phone calls, private bathrooms and no lights-out policy, the new immigration detention center in this isolated corner of South Texas would hardly seem like a prison if not for the electronically locking doors and reinforced-glass windows.

Following civil-liberties lawsuits filed on behalf of families at a crowded central Texas facility where children were held behind razor barbed-wire, the Obama administration promised three years ago to rethink the nation's much-maligned system for jailing immigration offenders.

The 608-bed lockup in Karnes City, about 60 miles southeast of San Antonio, was intended to be more humane to detainees — though some activists argue they shouldn't be locked up at all.

"We needed to do better. We needed to improve

our detainee treatment,"

said Gary Mead, executive associate director for removal operations with U.S. Immigration and Customs Enforcement.

Some conservatives, however, fear the \$32 million civil detention center unveiled Tuesday is coddling criminals.

Guards don't carry handcuffs, and they're not even referred to as guards, but rather, "assistance staff." There's no wall around the facility, and the exterior is painted a crisp royal-blue and burgundy. The dorm-style rooms have four bunk beds, a private bath, television and phone, which inmates can use to make international calls at just 15 cents a minute — a rate mostly unheard of outside. Detainees can stay up all night if they want, or even wander into common areas while everyone else sleeps.

Most of the inmates held here will be those arrested after sneaking across the border in the Rio Grande Valley and

other parts of Texas.

Officials are retrofitting centers for low-risk detainees California, Virginia and New Jersey to make them more like this one. They're also building new, more-restrictive immigration detention facility in Florida and Illinois for medium- and high-risk detainees.

The facility will hold only adult males. They won't begin arriving for about three weeks, but ICE invited reporters and representatives from the American Civil Liberties Union and other groups to tour it Tuesday.

The Karnes facility's gym has weight-lifting equipment, a soccer field, indoor and outdoor basketball courts and sand and nets for beach volleyball. There are 117 pay phones, a law library, microwaves, board games and washers and dryers so inmates can do their own laundry.

Lisa Graybill, legal director of the ACLU of Texas, said, "this is their

new model civil detention facility, but it's still going to involve detaining people who don't need to be detained."

"It sounds good but our concern is it's not actually going to be good," said Graybill, who said her group is troubled that profit margins maybe more important than detainee welfare.

She said that the Obama administration should scrap U.S. policy adopted in 2005 of detaining nearly all immigration offenders, and instead only lock up only those considered most-dangerous, including any with past criminal records. Others could be given electronic ankle bracelets to ensure they appear for future court dates, she said.

Mead said ICE had increased its use of ankle bracelets and other alternatives to detention, and now has about 23,000 people in such programs compared to about 18,000 last year. He said it costs the fed-

eral government about \$122 per day per immigration detainee and that those outside detention are cheaper — but their cases are processed more slowly.

The ACLU sued in 2007 over incarcerating families at the T. Don Hutto detention center just northeast of Austin, alleging inhumane conditions. Authorities removed all families and sent them to a facility in Pennsylvania, and Hutto now only houses females.

The detention system has grown from 7,500 beds in 1995 to more than 33,000 today — as have reported abuses such as medical neglect of detainees and denial of due process. ICE removes nearly 400,000 illegal immigrants per year, and has reduced the

average length of stay to about 30 days.

Not all detainees are illegal immigrants. Some entered the country legally and committed a crime, making them deportable, but many people in detention have not been convicted. Others are seeking asylum.

The Obama administration recently released more than 400 pages of guidelines for illegal immigrants held in federal custody, and Rep. Lamar Smith, R-Texas, called them "more like a hospitality guideline for illegal immigrants."

Mead said Tuesday that inmates at Karnes, aren't "living in the lap of luxury."

"They are not free to leave," he said.

## Garden

cont. from page 1A

perimeter of the garden, embellished by marigolds. The whole thing will be nourished by a drip irrigation center designed by the Agriculture Extension Agency that will be installed next week.

There are already big plans for the garden within the school district and the junior high, according to Hannah.

"The schools are really interested in it now," he said. "Originally, this was going to be a seventh grade outside science lab area. That's what the grants were under.

"Now, it's also going to turn into, for the cafeteria, part of their nutrition program. For some reason, they can't get cantaloupe delivered, so they can grow their own. The cafeteria's really interested in the cantaloupe, the asparagus, the raspberries, some squash."

The community is getting into the project, too, with contributions coming from all over Pampa and Gray County. The West Texas Landscape volunteers on Tuesday worked with a tractor from B&G Electric to dig what will soon be the garden's pond. Many local residents and retailers have either given Hannah a discount or donated supplies outright.

Hannah said that it was a joy to see so how much Pampa wanted to help.

"It's real rewarding to see so many people excited about it," Hannah said. "I told Rusty (Stevens of West Texas Landscape) what we were doing out here, and his boy has Type 2 diabetes. He said, 'Man, if you can get some more vegetables in the cafeteria there, you can have anything you want. Just ask for it and it's yours.'"

"The County Extension Agency helped us out," he continued. "Bartlett's gave us a really good deal on some wood out here. Kay gave us some of her old wood. Everybody's helping some. It's great."

He added that he has hopes of making additions to the garden and working towards installing a greenhouse. "With further grants, that would be the next step," he said. "Right now, I'm just happy to get this going. I was really looking forward to getting the seventh graders out here to see if they were as enthusiastic about real plants as they were about bean seeds."

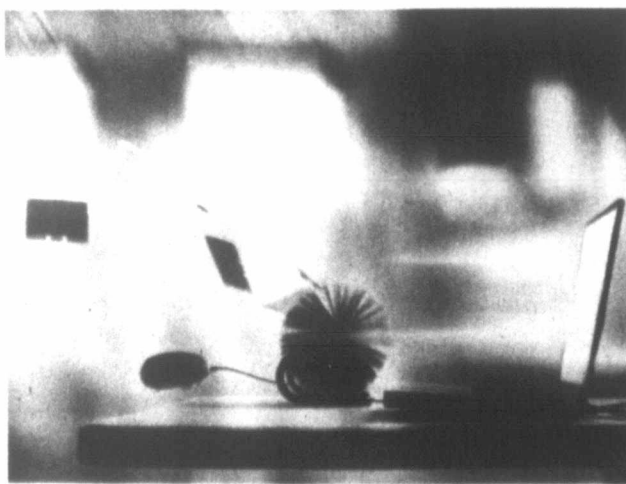


staff photo by Arnie Aurellano

Gunnar Stevens, 13, uses a front-shovel tractor to dig what will soon be the Pampa Junior High garden's pond.

[www.thepampanews.com](http://www.thepampanews.com)

What are you waiting for?  
It's time to switch over and go  
**wireless**



Formerly Centramedia.net

Packages starting at ONLY

**\$24.95**

\*Prices may vary according to rate plan and availability. \$49.00 Activation Fee. Additional equipment rental fee.

**NO CONTRACTS**

**NO INSTALLATION FEE**

Your Hometown Internet Provider

(866) 980-2714

[www.eRFwireless.net](http://www.eRFwireless.net)

## City

cont. from page 1A

The ordinance now contains full descriptions for an adult business license, sexual activities, relevant anatomical areas and viewing booths. Businesses that do not comply with city ordinances could have their licenses revoked.

In other business, the commission approved the minutes from its previous meeting.

Sudoku

Answer to yesterday's puzzle:

8	6	3	2	4	9	7	1	5
1	5	9	7	8	6	4	2	3
4	2	7	3	5	1	6	9	8
3	1	8	4	9	7	2	5	6
2	4	5	6	1	3	9	8	7
7	9	6	5	2	8	3	4	1
5	7	1	9	3	4	8	6	2
6	8	4	1	7	2	5	3	9
9	3	2	8	6	5	1	7	4

		7	5					6
9	5				3		1	
			1	7			9	
		4		9			6	
		3	2	1				
	6							
1		6	4					7
							8	
7			9				3	4

Level: Intermediate

# Get \$et to \$ave

Storewide & Warehouse Clearance SALE

Discounts if paid in cash

- Furniture
- Appliances
- Electronics
- Home Stereo
- DVD/Blue Ray
- Mattresses

Mon-Sat 9-5

- Se Habla Español
- Master/Visa Card Accepted
- In-house Financing Available

**Johnson**  
HOME FURNISHINGS

Pampa's Source of Excellence in Home Furnishings

801 W. Francis • Pampa  
665-3361



# Lady Harvesters win two as strong hitting continues



staff photo by Andrew Glover

Junior Bailey Beck hits a line drive against San Jacinto. Beck drove in three runs off of three hits in Pampa's second game against Sanford-Fritch.

ANDREW GLOVER  
aglover@thepampanews.com

After spending three days in Fort Worth sitting around and waiting to play games, the Pampa Lady Harvesters took advantage of two first inning leads and beat the Amarillo San Jacinto Lady Patriots 8-1 and the Sanford-Fritch Lady Eagles 15-2 Tuesday at Lady Harvester Field.

"I think they were excited to play," head coach Bobbi Gill said. "Offensively they hit really well and defensively did pretty good."

The Lady Harvesters (10-6) scored five runs in the first inning against San Jacinto. Junior Claire Hopkins led off with a single and advanced to third on a sacrifice bunt. Senior Nakayla Hardman brought

her home on a double. An RBI double by senior Kaylene Wyant increased Pampa's lead to 5-0.

Pampa was very aggressive running the bases as it recorded six infield singles and stole three bases. Seniors McKinlee Stokes and Heather Coffee and sophomore Bailey Wichert each had one.

"These girls are really smart," Gill said. "They take advantage of everything they can get. That's one of the reasons they score as much as they do: Their aggressiveness and putting themselves in scoring position."

Wyant made her varsity pitching debut, earning her first victory. She pitched two innings and allowed one run, walked two and struck out five. Wyant said she had a

PAMPA cont. on page 4B

## The Genesis Clinic Welcomes



Joyce Feerer, RN, MSN, FNP

Specialty  
Nurse Practitioner - Family Medicine  
and GYN

College  
University of Texas at Arlington

Accepting new patients ages 12 yrs. and up.  
In network with most medical insurance plans.  
Also accepting private pay.



107 W. 30th St. • 688-4205  
Dr. James K. Hall Jr., MD  
Brenda McCullough, RN, FNP-BC  
Stan Leffew, FNP-C

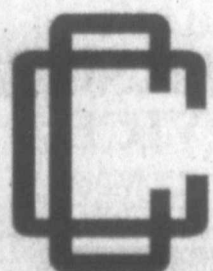
## Become a Health Care Professional



Applications are now being accepted for:  
Certified Nurse Aid (CNA)

Course starts March 24.

For more information call  
Christy Brooks at 806-665-8801  
to find out how to jump start a new career.

 **Clarendon**  
COLLEGE  
Pampa Center

1601 W. Kentucky, Pampa TX | 806-665-8801  
[www.clarendoncollege.edu](http://www.clarendoncollege.edu)

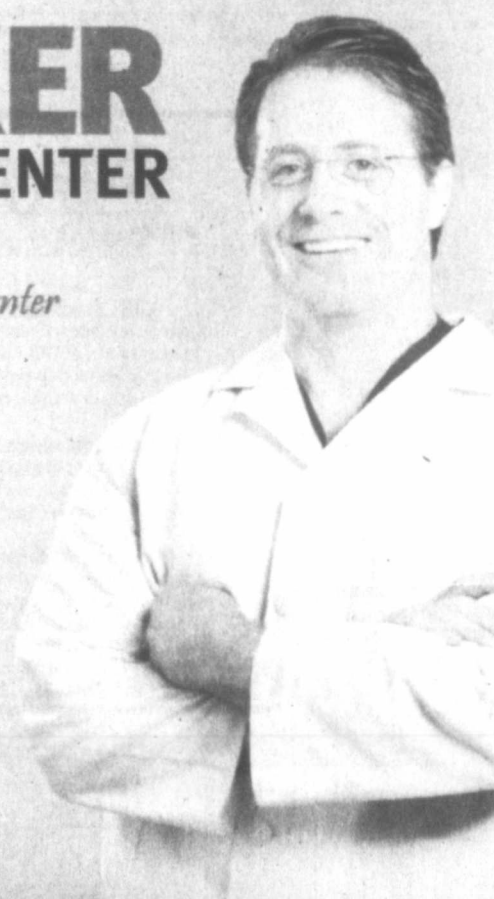
## 10 Years. 5000 Surgeries.

### BARKER BARIATRIC CENTER

 forest park medical center

#### FREE SEMINAR

March 24<sup>th</sup>, 2012  
9 a.m. - 11 a.m.  
Cardiology Center  
of Amarillo  
6200 I-40 West



See for yourself why Barker Bariatric Center is Texas' leading weight loss surgery center. Texas Tech graduate and weight loss surgeon, Dr. Barker will discuss the five types of weight loss surgery offered and what to expect along your journey.

- Hear patient testimonials
- Learn about our state-of-the-art facility
- Meet our team and ask questions
- Discover which surgery option is best for you
- Get assistance with insurance approval



If you're overweight, there are several reasons to talk with Barker Bariatric Center about your weight loss options. Improved health, better self-esteem, a better life for you and your loved ones. So register for our Free Seminar today and tell us, what's your one reason?

1-806-290-5144 • [BarkerBariatrics.com](http://BarkerBariatrics.com)  
Dallas • Southlake • Amarillo • Lubbock





Reaching over 12,000 readers daily • Call Beverly at (806) 669-2525

ADS for

ADS Jobs

ADS Services

ADS Home



**3 Personal**

LOOKING for Richard A. Weeks. Contact Jeremy at (806) 662-3511 regarding fishing boat.

**5 Special Notices**

**ADVERTISING Material to be placed in the Pampa News, MUST be placed through the Pampa News Office Only.**

**10 Lost/Found**

LOST fe bl & wh Shih-Tzu, last seen at 17th & Beech. Ans to "Lucy." Wearing collar, no tags. Lisa, 806-324-3469

**13 Bus. Opp.**

HAVE large Pool Hall for lease. Great downtown location. Call for details, 665-1875.

**14d Carpentry**

OVERHEAD DOOR REPAIR Kidwell Construction Call 669-6347, 806-663-0192.

**14e Carpet Serv.**

NU-WAY CLEANING SERVICE Bob Marx Owner-Operator. Call 665-3541.

**14h Gen. Serv.**

HOUSE Cracking? In bricks or walls? Childers Brothers, Inc. 800-299-9563, 806-352-9563

COX Fence Company. Repair old fence or build new. Free estimates. Call 669-7769.

CERAMIC tile work, stucco, cement. Remodeling, floor, shower, kitchen. Texture, painting, dry wall. Free est. 665-3453 leave message. Jesus Barraza

LET M&S help you w/ your concrete needs. Free Est. Doc or Mike 669-6990, 664-2009

JH Concrete, all types of concrete incl stamp, stain, fence, pools. Free est. 806-382-5408

**TILED Floors, Showers, Backsplashes, Cabinet Tops, etc. Stone & Ceramic, 25+ Yrs. Exp. Keith Taylor cell 664-2018 or hm. 874-1779 lv. msg.**

**14r Plowing/Yard**

JIMENEZ Multi-Service. Yard work, fertilize, leaf clean-up, cut trees, tree trim, gardening, haul trash. 669-2618, 886-2027.

**14s Plumbing**

JACK'S Plumbing 715 W. Foster 665-7115

**14w Air Cond/Heat**

BROWNING'S Heating & Air and Refrigeration Specialists since 1964!! 665-1212.

**21 Help Wanted**

**NOTICE**  
Readers are urged to fully investigate advertisements which require payment in advance for information, services or goods.

**NURSING** Department Under New Director. CNAs come check out our benefits! We have immediate openings for Full-Time positions. Apply today at St. Ann's Nursing Home in Panhandle, 537-3194. Dietary Aide Also Needed!

**GET PAID TO EXERCISE!!!**  
We are seeking an energetic, full-time team member with a passion for helping others to assist our Physical Therapist and Doctors with therapeutic exercises and physical rehab protocols. If you are punctual, have a great attitude and are willing to learn...fax your resume to (806)665-0537.

**Licensed Physical Therapy Assistant needed for a growing multi-disciplinary Physical Therapy practice in Pampa, Tx. Fax Resume to: (806)665-0537**

**NEEDED PT exp.** Accounts Payable Clerk. Quick Books preferred. Apply at St. Ann's Nursing Home, in Panhandle, 537-3194.

**NEEDED Full-Time Cook!** Apply at St. Ann's Nursing Home in Panhandle, 537-3194.

**SECRETARY Wanted.** QuickBooks experience required. Call 806-217-0399.

**21 Help Wanted**

**SAFETY Trainer:** Safety background w/ training exp and computer skills helpful. Bi-lingual a plus. Some travel. Send resume to P.O. Box 1172, Pampa, Tx.

**RIG Operator & Crew** needed. Need not apply without 10 yrs. exp. Applications at 1101 S. Price Rd., Pampa

**Job Openings at Hunting-Titan Pampa, TX**

**Customer Service Rep.** Inventory exp. required; good communication skills  
**Human Resources Adm. Asst.** 5-10 yrs Exp. Preferred, proficient in Excel, databases  
**Detector Assembler.** Entry level position / must possess good mechanical skills  
**High School diploma or GED.** Pre-employment physical exam / drug screen, background check, assessment tests required. Competitive wage and benefit pkg EOE. Contact:

Hunting Titan  
806-665-3781  
11785 Hwy 152  
Pampa, TX 79065  
hr@titanspecialties.com

**NOW hiring CSR for the Pampa Office.** Come join our dynamic team! National Consumer Finance Co. with over 1000 locations. Background and credit check are required. No finance exp. required.  
**Apply in person at 1538 N. Hobart, World Acceptance Corp. is an Equal Opportunity Employer.**

**21 Help Wanted**

**EXPRESS Lane** Lubec Center now hiring! Exp pref. but not necessary. Must have valid dr. license Apply in person 2801 Perryton Pkwy.

**WTL & WTL Sand & Gravel** now hiring landscapers, CDL Truck Drivers and experienced equipment operators. Must submit to drug test & have good driving record. Apply in person, 120 S. Hobart.

**MCDONALD'S** is hiring for All Positions! Apply in person, Fri. Mar. 16, Pampa Chamber of Commerce, 8am-5pm, 806-231-9101

**CORTERRA Operating, LLC** is now taking applications for experienced **Rig Operators, Lead Hands and Pumpers.** Employee insurance is provided. Must have Valid Texas Drivers License and a CDL is a Plus. References req. Apply in person 2601 W. Kentucky, Pampa 806-688-9291.

**EXP.** Roustabouts needed at OWPSI in Mobeetie. Must pass drug test, have valid driver's license. Call 806-845-1088, 806-662-9185, or come by 101 Santa Fe in Mobeetie.

**PART-TIME TELLER**  
Amarillo Community FCU  
Seeking candidate with cash handling or banking experience, bi-lingual preferred. M-F 12-6pm and alternating Saturdays.  
Apply in person, by Fax or Email  
ACFCU  
900 N Hobart Pampa, TX  
FAX (806)331-2088  
ccasto@acfcu.org

**21 Help Wanted**

**LOCAL OIL & GAS PRODUCTION COMPANY**  
Looking for experienced **Pumper / Lease Operator.** 5 yrs. pumping exp. & clean driving record. Benefits included but not limited to:  
\*Health Insurance  
\*401K w/ Co Match  
\*Company Vehicle  
Send Resume to **BOX 20**  
c/o Pampa News  
Po Box 2198  
Pampa, TX.  
79066-2198

**PAMPA NURSING CENTER**  
has an openings for all positions. Applicants must be able to handle a fast paced schedule and be able to work weekends and nights as needed. Please apply in person at 1321 W. Kentucky Pampa, TX

**Mac Supply Inc. Electrical Contractors**  
We are seeking an experienced individual in office management and accounting book-keeping. Offering competitive salary & great benefits.  
Please send resume to  
P.O. Box 1157  
Pampa, TX 79066  
or email to:  
[service@macsupplyinc.net](mailto:service@macsupplyinc.net)

**21 Help Wanted**

**LOCAL OIL & GAS PRODUCTION COMPANY**  
Looking for experienced **Administrative Assistant.** 7 yrs. of professional administrative exp. required. Benefits included but not limited to:  
\*Health Insurance  
\*401K w/ Co Match  
\*Paid Vacation  
Send Resume to **BOX 21**  
c/o Pampa News  
Po Box 2198  
Pampa, TX.  
79066-2198

**Mill-Feeding Hand:** McLean Feed Yard is looking for goal-oriented individuals. Salary is dependent upon previous experience & referrals. All interested people should apply at the feedyard, 4 mi. south of McLean on Co. Rd. 273. McLean Feedyard offers a competitive salary & insurance for all employees.

**21 Help Wanted**

**ASPLUNDH Tree Expert Co.** is seeking Trimmers to work in the Texas Panhandle. Qualified applicants must have a valid D.L. and be able to pass a back ground check. Starting pay \$13.33. (Full-Time/Year-Round Employment) In order to be considered an applicant, you must complete a pre employment application. Interested applicants should contact Truman Beck at (806) 544-6894 between 8 am & 5 pm Monday thru Friday. DRUG FREE WORKPLACE EOE:AA-M/F/V/D

**21 Help Wanted**

**MURPHY USA** is searching for qualified, motivated, and team oriented **ASSISTANT MANAGERS & CASHIERS**  
All interested & potential applicants must apply online at:  
[www.murphyusa.com/careers](http://www.murphyusa.com/careers)  
INTERVIEWS WILL BE HELD SOON.  
RESUMES can be faxed to 1-866-454-2688.  
Benefits include: Salary/Hourly Compensation, Tuition Reimbursement, Medical/Dental Insurance, and Paid Vacation.  
**APPLY TODAY!**

[www.thepampanews.com](http://www.thepampanews.com)



**Outside Sales Career Opportunity for Determined Individuals**  
Unhappy in your current sales job?  
Do you want to earn more money?

**Full Time Open Position Available**

**Outside Direct Door to Door Sales Representative**

Cable ONE has an immediate opening for a full-time Outside Sales professional. We need determined, committed individuals who want an exciting career in the telecommunications industry selling cable, TV, high speed internet, and phone services. Must be willing to sell our services door to door to non-subscribing residential homes. This includes working through the rain, snow, freezing weather and the hottest Texas days.

Our Outside Sales professionals earn a base salary plus commissions and have unlimited earning potential including bonus pay and incentives. We offer an excellent benefit package that includes major medical, dental, 401K, paid vacation, free cable, high speed internet and phone service if you reside in the Cable One service area.

A reliable insured vehicle, good driving record & a valid driver's license are required. Flexible hours will be required and good communication skills necessary. Sales experience is a must and being bilingual is a plus!

If you're ready for a challenging opportunity and want to be successful you should apply today!

Interested candidates apply in person, online or mail, fax resume to:

**Cable One, Inc.**  
Direct Sales  
1059 Coronado Circle  
Borger, Texas 79007  
Fax: 806-273-5258  
Donna Perry-Regional Sales Manager

On-line at [www.cableone.net](http://www.cableone.net)  
Equal Employer Opportunity



**CDL Truck Driver**  
Must have current Class A CDL. Pass drug test & DOT physical. Good driving & previous employment record. Clear drug & alcohol record.

**Shop and Production Labor**  
Immediate openings  
40-50 hours / week  
Wages based on experience

**All jobs include:**  
Competitive wages. Excellent benefits:  
Health Insurance, Retirement Package  
Paid Holidays & Vacation  
Apply in person  
100 N. Price Road, Pampa, TX  
Fax# 806-669-1129

AXYDLBAAXR  
is LONGFELLOW

One letter stands for another. In this sample, A is used for the three L's, X for the two O's, etc. Single letters, apostrophes, the length and formation of the words are all hints. Each day the code letters are different.

3-14 CRYPTOQUOTE

Z FXMWF WT Z AVITSM  
TVZIFDWMR NSI ZM DSMVTQ  
YZM LWQD Z TQSEVM

EZMQVIM. — VCRZI Z. TDSZNN  
Yesterday's Cryptquote: THE TIME WILL COME WHEN WINTER WILL ASK YOU WHAT YOU WERE DOING ALL SUMMER. — HENRY CLAY

# The Shopper's Square

Shop Right. Shop The Pampa News' Classifieds!



**Auto Body**

**PRESTIGE**  
Autobody & Accessories  
We feature name brand car and truck accessories and a state-of-the-art collision center. Whether it's repairing your vehicle back to it's factory look or adding automotive accessories, our professionally trained staff will take care of you.  
**(806) 665-3500**  
101 S. Hobart Pampa, TX

**Roofing**

"Serving Satisfied Customers Since 1978."  
Construction Services Available Insurance Claims Welcome  
**Paul Blake ROOFING**  
806-655-3094  
**FREE Estimates!**  
1561 4th Ave. Canyon, TX

**Advertising**

**Advertise Your Business Here!**  
Call The Pampa News at 806-669-2525 to place your ad in "The Shopper's Square" today!

**Pumping Serv.**

**REED'S PUMPING SERVICE**  
Let Reed's Meet Your Needs!  
Septic Cleaning & More!  
**806-669-3682**

To place an ad in The Pampa News' Shopper's Square, call us at 806-669-2525! Get Noticed! Get Results!

21 Hel  
SWIN  
Smith  
Genetic  
leader  
swine g  
ing to  
our fa  
Pampa,  
focus i  
quality  
for the  
We an  
art s  
compa  
qualifi  
the fol  
Produce  
(He  
The id  
will h  
work h  
ble and  
to wor  
sive, q  
modern  
product  
We of  
wage of  
an exc  
package  
paid va  
days, p  
pension  
medical  
sion, lif  
surance  
Qualific  
can app  
Smith  
C  
11 n  
Pamp  
betwe  
10ar  
Monda  
Equal  
Affirm  
Empl  
E  
Stu  
806-  
S  
DE  
and ha  
married  
but I an  
pant. Y  
"Jasmir  
her fam  
I was g  
time, ar  
ferred m  
cepted.  
The  
their o  
— ever  
daughter  
birthday  
ther car  
and toc  
I was s  
anything,  
months,  
my roc  
"talk" o  
ways cr  
too afra  
I fee  
I see Ja  
and I'n  
when I  
trayed  
myself  
to stay  
ness fo  
— DIS  
NORT  
DEA  
It appe  
it for a  
for you  
you nee  
ing arr  
out of t  
betraye  
are vali  
treated  
are bei  
with no  
passion.  
forgiver  
first yo  
yourself  
step.  
DEA  
friend,



**21 Help Wanted**

**SWINE GENETICS COMPANY**  
Smithfield Premium Genetics, (SPG), the leader in world class swine genetics is seeking to fill positions at our facility East of Pampa. SPG's primary focus is on producing quality breeding stock for the swine industry. We are a state-of-the-art swine genetics company seeking qualified people for the following position.

**Production Personnel (Herdsman)**

The ideal candidates will have a steady work history, be reliable and have the desire to work in a progressive, quality oriented, modern agricultural production operation.

We offer a starting wage of \$9 / hour with an excellent benefit package to include paid vacation and holidays, paid sick leave, pension plan, 401(k), medical / dental, vision, life and LTD insurance and more.

Qualified candidates can apply in person at:  
**Smithfield Premium Genetics**  
11 miles east of Pampa on Hwy 60 between the hours of 10am and 3pm. Monday thru Friday

Equal Opportunity / Affirmative Action Employer m/f/d/v EO 13201

**21 Help Wanted**

**NEED Security Guards** at National Oilwell, west of Pampa. FT/PT. Apply at site preferably 10am-noon Mon-Fri. Must pass background check and drug test.

**FIRST Baptist Child Development Center** is taking applications for an energetic, dependable & creative Teacher. Benefits. 203 N. West. 806-669-3529.

**60 Household**  
CHINA Cabinet, med. oak, 4 small doors on bottom, all glass on top incl. the shelves-side are oak. \$100. 669-1985

**WHITE ELECTRIC COOKSTOVE**, \$50. 669-1985

**STURDY (4) dining-room chairs**, light brown with cream color \$10 each. 669-1985

**DINING Tables** \$25 each. 1 new, 1 round. Call 669-1985

**SPACE RUG. 5x7 \$10.** Call 669-1985

**SPACE RUG. Round \$20.** Call 669-1985

**ANTIQUe** free standing 2 door closet, \$25. Call 669-1985.

**LIGHT green couch** with white specks, bought at Tx Furniture, \$50. 669-1985

**WOOD frame 6' couch** \$100, wood 4' coffee table \$50, lg. blue Lane recliner \$100, oak roll top desk \$200, straight chair \$50. 669-9424 after 5 or leave message.

**69 Misc.**

**WASHER, dryer, table, chairs, refrig, stove, rockers, china cabinets, freezer, etc.** 662-7557

**FIREWOOD For Sale.** \$160 a rick delivered. Call 664-1900 or 664-1901

**CLASSIFIED LINE AD SPECIALS**  
(does not incl. Last Minute Ads on pg. 2) Starting Mar. 1st  
**5 lines-7 days \$20.52**  
**7 lines-7 days \$22.52**

**Prices Good Every Day! Questions?? Call Beverly 669-2525**

**NEW Queen Mattress Set** \$246. Twin \$150. Red Barn, 1424 S. Barnes. 665-2767.

**GOOD USED LIFT CHAIR \$400**  
Call 669-2129

**76 Farm Animals**  
**YOUNG GOAT FOR SALE \$35**  
Call 662-8576

**80 Pets & Suppl.**  
**FOR ADOPTION**  
Siamese, Calico, Orange, Tabby, Gray. Spayed / Neutered & shots. Call 665-4901 lv. msg.

**FREE Blue Heeler Cross Puppies.** Call 806-207-0206.

**1 yr. old Full Blood white & black Havana dog.** Free to good home. Call Kelly (in Pampa) 432-288-4650

**89 Wanted To Buy**

**NEED Money Now?** We will give you top \$5 for your house. Call us today. 665-1875

**We Buy & Sell Houses** Call us today!! 665-1875

**95 Furn. Apts.**

**ALL real estate advertised herein is subject to the Federal Fair Housing Act, which makes it illegal to advertise "any preference, limitation, or discrimination because of race, color, religion, sex, handicap, familial status or national origin, or intention to make any such preference, limitation, or discrimination." State law also forbids discrimination based on these factors. We will not knowingly accept any advertising for real estate which is in violation of the law. All persons are hereby informed that all dwellings advertised are available on an equal opportunity basis.**

**FURNISHED rooms** in White Deer, utilities and cable included. Weekly or monthly rentals. Call for details 665-1875.

**ROOM For Rent, \$100 wk.** all bills paid incl. cable. Private entrance. 806-661-8508

**96 Unfurn. Apts.**

**APTS. Houses Duplexes. K&B Properties. Ref. & dep. req. Lakeview Apts. 669-4386**

**CAPROCK APARTMENTS**  
1, 2 and 3 bedrooms with rent starting as low as \$415 / mo. Pool and on-site laundry, W/D hookups in all 2 & 3 bdms. 665-7149

**MINUTES** from downtown-efficiencies. Short term leases avail. 806-665-4274.

**1 and 2 bdr. avail. now** at the Gwendolen Apts. Largest square footage in Pampa. 665-1875

**NO transportation, not a problem.** These large 1 bdr. apts. w/ appliances, are in walking distance to everything you need. 665-4274.

**SCHNEIDER Apartments.** Call for special rates. Short term lease. Business people welcome. 665-0415

**98 Unfurn. Houses**  
**PICK UP rental list**, in the **Black Box**, at 125 S. Houston, Pampa.

**3 bd., 1 bath, 2 living areas,** central heat/air, hardwood floors, fireplace, large laundry room, corner lot, \$750 mo., plus dep., Call Jan @ 972-896-6180.

**2 story, 2000 sq.ft.** 4/2/2 home. \$700 month \$500 deposit. 928 Fisher. 806-440-1785 lv. msg. or txt.

**3 bdr., 2 ba. house** \$400 mo. + dep. Must have references! 624 E. Foster. 662-9775

**102 Bus. Rental**

**DOWNTOWN office space** for rent. Utilities & cleaning service provided. Ample parking. 669-6823

**103 Homes For Sale**  
123 Walnut Dr. 4 bdr., 2 1/2 ba., 4 car gar. 2246 sq ft. Fireplace. Corner lot. Updated. 806-665-3524.

**1307 N. Russell, 2 bdr., 1 ba., 1/2 basement.** Hardwood floors. Very clean. \$45,000-owner will NOT finance. Call 662-5988.

**3 bedroom, 2 bath home,** attached garage. Low down payment. Owner will finance. 669-9532 lv msg

**FOR Sale Not Rent!** 2623 Seminole. Brick 3 bdr., 1 1/2 ba, large kitchen. New hardwood floor. New roof. \$74k. Call 662-0154 for appt.

**FSBO 2511 Charles.** All brick. Maintenance free! Flyers avail. By appt. 440-2645.

**FSBO- No Owner Financing,** 1609 N. Christy. 3/2/2. Move In Ready, f.p., recently updated \$117,500. 440-6290.

**TRUSTAR Real Estate** for all your complete real estate needs. Show, list, property mgmt. 665-4595.

**120 Autos**

**FOR Sale 2004 Nissan Pathfinder.** Copper Bronze color, 4 door, new windshield, good tires, automatic, 56K, 6 disk cd changer, Bose Sound, tow package. Good condition, we're asking \$8,000. Call 806-346-8124.

**IDEAL FOR COLLECTORS!**  
1979 Pontiac TransAm. White / blue, lrg bird on hood. One owner! 24,500 actual miles, 6.6 L, 403 Eng. Auto. transmission. All original. Good price. \$21,900. Call 806-665-4836

**1999 MAZDA MIATA CONVERTIBLE**  
New Tires 76K Miles Glass Perfect Silver with Black Top \$6500 Call 665-2210

**1998 GMC Yukon.** 4x4, 180,XXX miles, heated leather seats, new tires, fully loaded. Asking \$4000. Call (806) 662-7421 or (806) 662-4342.

**120 Autos**

**2001 Dodge Durango SLT,** 81,226 miles, 2 wheel drive, V-8 engine, auto transmission, exterior color maroon, interior color tan. \$4,500 obo. 663-3598

**2007 HARLEY SPORSTER 1200**  
4900 Miles White Gold Pearl Excellent Shape!! \$7500 Call 663-6317

**126 Boats & Access.**

**1984 Larson 16 ft. V-Hull Inboard-Outboard \$4000**  
Call 669-9245

**Public Notice**

**NOTICE TO CREDITORS**  
Notice is hereby given that original Letters Testamentary for the Estate of L. HAROLD SALMON, Deceased, were issued on March 12, 2012, in Docket No. 9908 pending in the County Court of Gray County, Texas to: LAURIE S. DAUGHERTY. Claims are required to be presented within the time and manner prescribed by law in care of Don R. Lane, attorney for the estate's representatives, P.O. Box 1781, Pampa, TX 79066-1781. DATED the 12th day of MARCH, 2012  
Laurie S. Daugherty  
B-81 Mar. 14, 2012

Subscribe!  
806-669-2525

**SELL your CAR**

We make the sale!

**PROFESSIONAL SERVICES** MONDAY WEDNESDAY & FRIDAY

Up to 7 Lines  
1-162  
Plus Classified Display AD  
Plus In-Home

**\$69** per month for weekly AD

Up to 7 Lines  
1-254  
Plus Classified Display AD  
Plus In-Home

**\$89** per month for weekly AD

Up to 7 Lines  
1-669-2525  
Plus Classified Display AD  
Plus In-Home

**\$119** per month for weekly AD

30 Month Minimum  
Buy 11 months  
star 12 month FREE

**Need To Sell Merchandise With An Ad That's Really Cheap????**

**FOR SALE YOUR STUFF!!!**

**Get Your Ad In The Top Of Texas Classified Listings In The Pampa News**

Items Priced under \$50 - 5 lines/7 days **FREE**  
Items Priced \$50-\$100 - 5 lines/7 days **\$5.00**  
Items Priced \$100 & up - 5 lines/7 days **\$9.00**

Classified Section Only. Last Minute Ads not included. Ads paid in advance. 5 line Ad - 1 item per Ad & Price has to be stated in Ad. Merchandise Only - Homes For Sale, Garage Sales Not Included!

**GARAGE SALE SPECIALS COMING SOON!**

Call Beverly  
For Questions & Deadlines  
**669-2525**

The Best Stuff Sale



**Dear Abby...**

By Pauline & Jeanne Phillips

**DEAR ABBY:** I am 19 and having an affair with a married man twice my age, but I am an unwilling participant. You see, I grew up with "Jasmine," and over the years her family has become mine. I was going through a rough time, and when her family offered me a place to stay, I accepted.

They treat me like one of their own, buy me presents — even introduce me as a daughter. However, after my birthday party, Jasmine's father came into my bedroom and took advantage of me. I was scared and didn't say anything. Over the past few months, he has sneaked into my room several times to "talk" or rub my back. He always crosses the line, and I'm too afraid to tell him to stop.

I feel sick and guilty when I see Jasmine or her mother, and I'm hurt and ashamed when I see him. I feel betrayed and confused. I tell myself I do it "for a place to stay." Is there forgiveness for me? Please help. — **DISTRAUGHT IN THE NORTHWEST**

**DEAR DISTRAUGHT:** It appears you ARE "doing it for a place to stay," and for your own well-being you need to make other living arrangements and get out of there. You have been betrayed, and your feelings are valid. You are not being treated like a daughter; you are being coerced by a man with no conscience or compassion. Of course there is forgiveness for you — but first you have to forgive yourself. Leaving is the first step.

**DEAR ABBY:** My boyfriend, "Ross," and I have

been together for five years and have a 2-year-old child. We talk a lot about marriage and we're engaged — kind of. Ross asked me and I said yes four years ago, but no one knows we're engaged. He bought me a ring and I have been wearing it. Nobody has questioned it.

I want to say something about our plans, but Ross says he's too nervous and is afraid my parents will be angry. I am 23 and unemployed. Ross is 24 and has had bad luck with a bunch of jobs. Our 2-year-old and I live with my parents. Ross is currently staying with his grandparents.

I don't want a big wedding and I'm afraid my parents will be mad if Ross and I start planning ours. How can

we break the news to them? — **TIMID IN STOCKTON, CALIF.**

**DEAR TIMID:** If Your boyfriend is too nervous to tell anyone about the engagement, face it — you're kind of NOT engaged. If I were you, I'd hold off making any announcements to your folks until you have the answers ready to some questions first, like where you and Ross plan to live after the wedding. With your parents? His grandparents? Who do you expect will be paying for the wedding you're planning?

"Everyone" may have ignored the significance of the ring you're wearing because neither of you is ready for marriage.

**BANANAGRAMS!**

Rearrange the tiles below to spell a six-letter word that fits in the first row. Then remove one letter and rearrange the remaining tiles to spell a five-letter word in the next row. Continue to remove one letter until you complete all five words. One tile has been placed in each row.

LEVEL

B V  
E V  
R A  
D R  
E

Yesterday's Answer: **INFLUENZA**

3/4

**CROSSWORD**

By THOMAS JOSEPH

- ACROSS**
- 1 Exercise choice
  - 5 Letter strokes
  - 11 Creative work
  - 12 Like apples and oranges
  - 13 Cubicle fixture
  - 14 Prayer aid
  - 15 Tiny worker
  - 16 Water bearer
  - 17 Pol's concern
  - 19 Seaman
  - 22 Make void
  - 24 Hot room
  - 26 Miseries
  - 27 Check mate?
  - 28 Baffled
  - 30 Rapper Elliott
  - 31 "You betcha!"
  - 32 Verne specialty
  - 34 High point
  - 35 Quick bite
  - 38 Obstructed
  - 41 Goose egg
  - 42 Individually
  - 43 Tag-sale label
  - 44 Wild ones
  - 45 "You there!"
- DOWN**
- 1 Luke's teacher
  - 2 Start the bidding
  - 3 Windy quality
  - 4 Demand
  - 5 Parsley serving
  - 6 Skips a ceremony
  - 7 Trick
  - 8 Lyricist Gershwin
  - 9 Remote
  - 10 Crafty
  - 16 Bud
  - 18 Inspiration
  - 19 Courageous quality
  - 20 Responsibility
  - 21 Pampered one
  - 22 Not at home
  - 23 Jot down
  - 25 "Like that'll happen!"
  - 29 Mien
  - 30 Dance tape
  - 33 Hands over
  - 34 Iowa State setting
  - 36 Eye part
  - 37 Fence part
  - 38 Boxing poke
  - 39 Big galoot
  - 40 Farrow of films
  - 41 Ray-gun sound

PEKE	LATCH
ILIAD	ENERO
NOTURN	NONRED
OPTYON	RAG
TEETER	NOTE
SNORT	ARES
ASHES	
SAGS	SMASH
TROT	TILTED
ALEMAN	ALI
YESWERE	OPEN
INTOW	MILNE
NEONS	LEAR

**Yesterday's answer**

**NEW CROSSWORD BOOK!** Send \$4.75 (check/m.o.) to Thomas Joseph Book 1, P.O. Box 536475, Orlando, FL 32853-6475

1	2	3	4	5	6	7	8	9	10	
11				12						
13				14						
15				16						
17	18						19	20	21	
22	23					24	25			
26							27			
28				29		30				
31				32	33					
				34				35	36	37
38	39	40						41		
42								43		
44								45		

3-14



# Sports

## Pampa

cont. from page 1B

range of emotions.

"It was nerve-wracking and awesome," Wyant said.

Wyant credited the defense for its strong play.

"When the other team hit the ball, we had a good defense behind me," Wyant said. "It was a really good game."

Stokes led the team in hitting with three hits, two runs and one RBI.

Sophomore Bailey Wichert pitched the last three innings and only gave up one hit. In the bottom of the second inning, Gill subbed out some of her starters.

"We got everyone in," Gill said. "Everyone got to bat and play the field. It's a really good day when you can do that."

The Lady Harvesters got off to a shaky start against Sanford-Fritch. Sophomore Alexa O'Brien started and struggled to find the strike zone, walking four. O'Brien also threw three wild pitches and two passed balls, resulting in Fritch's two runs.

Pampa quickly took control scoring five runs before Fritch could record an out. Senior Alanna Stephens hit a RBI-triple and RBI-double. Juniors Martecia Alexander and Baily Beck and Coffee hit RBI singles. Beck said it was a good day

for them.

"It's good when we can get on a roll like that and hit off a slow pitcher," Beck said.

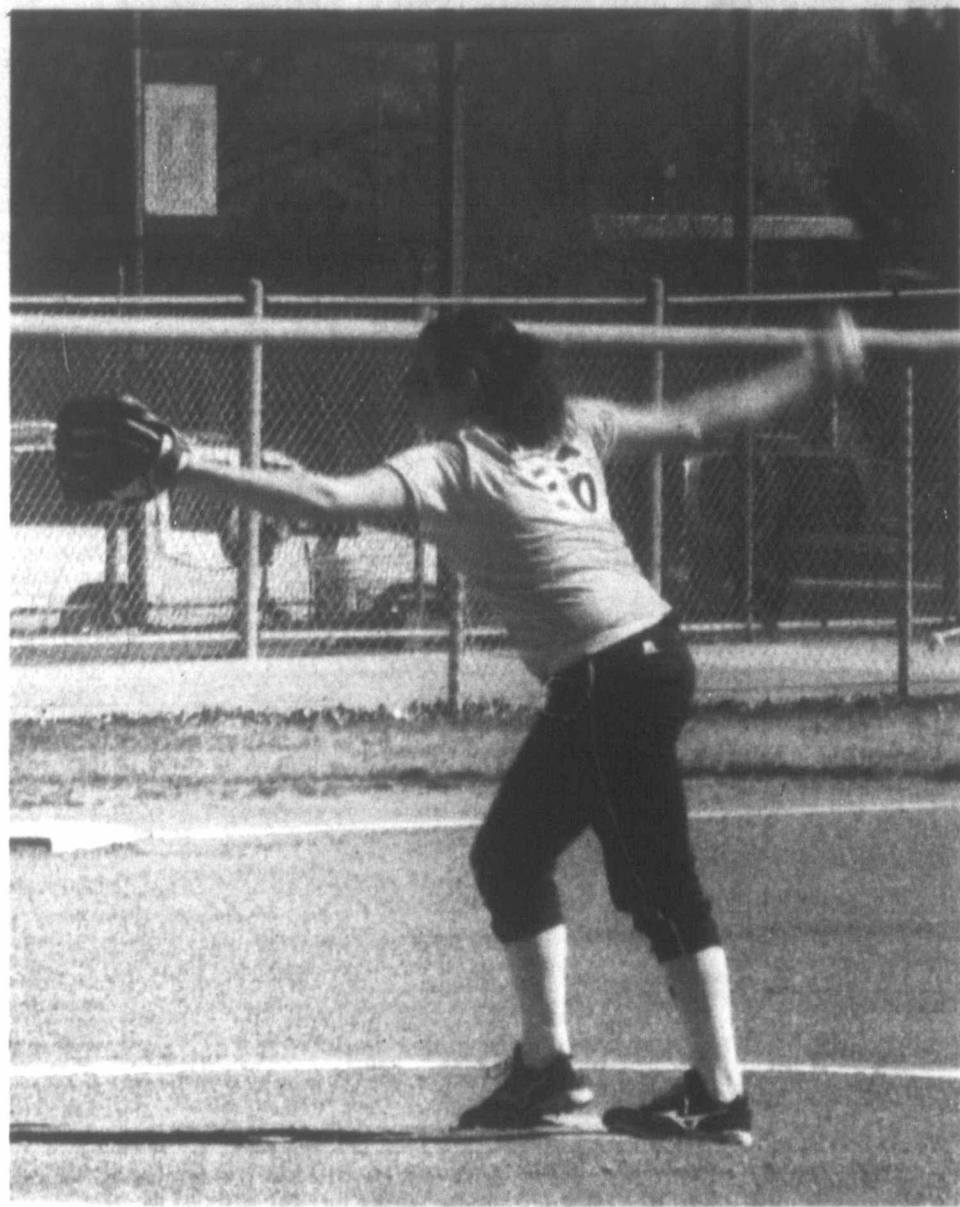
The Lady Harvesters scored most of its runs off of the Lady Eagles' mistakes. Hopkins scored on a throwing error by first baseman Jaylea Leatherman. Beck scored when catcher Hailey Wells overthrew third baseman Kasidy Fields. Stephens scored on a wild pitch. The Lady Harvesters led 12-2 after the first.

After a rough first, O'Brien settled down, only walking two and striking out four in her final two innings. It only took O'Brien 29 pitches to get out of the second and third, after using 33 to end the first.

Britton pitched the last two innings and gave up two hits, one walk and struck out one.

Pampa returns to Lady Harvester Field Friday to close out non-district against in a doubleheader with the Vernon Lady Lions. Gill said it will be a good test for her team.

"Vernon has traditionally been good," Gill said. "It's a great game for us to pick up and I'm excited that they are coming here."



staff photo by Andrew Glover

## Baylor women finishes first in final regular season poll

Princeton coach Courtney Banghart couldn't wait to tell her players.

The Tigers became the first Ivy League team to enter The Associated Press women's college basketball poll, coming in at No. 24 on Monday.

"It's so special to know what these kids have done," she said. "To earn this very prestigious opportunity is remarkable. It's a testament to their work ethic, goals. It's all the things that are right about college athletics."

In the season's final poll, Baylor was the unanimous No. 1 choice again. The Lady Bears received all the first-place votes Monday for the 15th straight week after easily winning the Big 12 tournament. There were ballots from 39 of 40 voters. One voter was absent.

Baylor (34-0) was the No. 1 team in the poll all season long and will enter the NCAA tournament as the top seed when the field is announced Monday night.

In all, only eight teams have run through the poll from start to finish at No. 1. UConn has done it four times.

"I'm flattered and honored to join those other teams that are all in the history books of women's basketball," Baylor coach Kim Mulkey said. "We feel humbled to join that special group."

It's the first time the Lady Bears have finished the season as the top team.

Stanford, Connecticut, Notre Dame and Maryland followed Baylor. Duke, Delaware, Miami, Tennessee and Wisconsin-Green Bay rounded out the first 10.

With Princeton's appearance, there are only six conferences that have never had a team in the Top 25: the Atlantic Sun, Big South, MEAC, NEC, Patriot and SWAC.

It's been a banner year for the Ivy League in basketball. The Harvard men's team earned its first ranking in early December and Crimson alum Jeremy Lin has been one of the top stories of the NBA this season.

"It's really a great time to be an Ivy athlete," Princeton star Niveen Rasheed said. "People are finally learning that there is more to the conference

than just academics."

Banghart has known of the Ivy League's basketball talent for years. She starred at Dartmouth as a player before taking over the Tigers five seasons ago.

"Until the Ivy League wins more games outside conference, the league won't get the respect you hope it would," Banghart said. "We've had some nice wins the last two years with Harvard beating St. John's and Yale beating Florida State. It shows the growth of Ivy basketball."

Princeton has a chance Monday night to earn the highest seed for an Ivy League school. No team has been seeded better than No. 11. The Tigers have an impressive NCAA resume. They won their Ivy League games by an average of 31 points and were the only men's or women's team to win all their conference matchups by at least 10 points. Princeton boasts a 17-game winning streak heading into the NCAAs.

The Tigers' four losses this season have come against NCAA tournament teams: Stanford, Delaware, DePaul and Navy.

"There probably aren't very many teams in the field that have lost to only

NCAA tournament teams," Banghart said. "I hope we use this to continue to get some good momentum headed to the tournament."

Princeton has won the Ivy League three straight years and gone 41-1 in the conference during that run. The Tigers fell in the first round the past two seasons, losing to St. John's and Georgetown.

Sunday School 9:15 a.m.  
 Sunday Worship 10:30 a.m. and 6 p.m.  
 Wednesday Activities (Children, Youth, Adult Bible Study) 7 p.m.  
 Nursery provided for all services

**Highland Baptist**  
 1301 North Banks Pampa, Texas 79065

[www.thepampanews.com](http://www.thepampanews.com)

Senior Kaylene Wyant throws the first pitch of her varsity career against Amarillo San Jacinto Tuesday. Wyant said her first start was awesome and nerve-wracking

**Auto loans that really perform.**

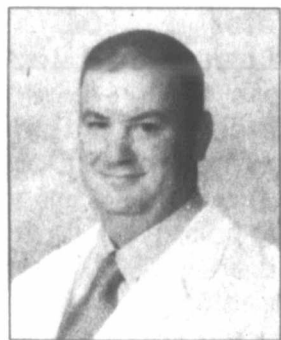
**Gayla Rigdon, Agent**  
 State Farm Agent  
 111 E 28th Ave.  
 Pampa, TX 79065  
 gaylarigdon.com

**Ask about Total Loss Debt Cancellation.\***

It's another great reason to get your loan from State Farm Bank. I'd be happy to tell you all about it. Bank with a Good Neighbor. CALL ME TODAY FOR MORE INFORMATION.

**State Farm Bank**

\* This is not an insurance policy. Subject to satisfaction of the terms of the Total Loss Debt Cancellation provision.  
 1001274 State Farm Bank, F.S.B., Bloomington, IL



To better serve our community **New Life Wellness Center** would like to introduce our team nurse practitioner :

**Matthew Gill, RN, FNP-C**

He will be offering a wide range of services including:

- Family Care
- Urgent Care
- Pain Management
- DOT and School Physicals

He will be accepting **NEW PATIENTS** (Insurance, Medicare and Cash) starting **January 2012** so call and set up an appointment today!

**(806)688-CARE**  
 (806) 688-2273

**Total Care Health Hours:**  
 Mon.-Thur. 8am-1pm, 2pm-6pm  
 Fri. 7:30am-11:30am

## Total Care Health

Caring & Effective Health care for Your Entire Family

701 N. Price Rd.  
 Pampa, TX 79065

info@NewLifeWellnessCenter.org  
[www.NewLifeWellnessCenter.org](http://www.NewLifeWellnessCenter.org)

