

Aspire & Associates
 ...for all your insurance needs!
 1224 North Hobart
 Pampa, TX
 806-665-7061
 www.aspireandassociates.com

Doing Business with people you know and trust!

Marc
 *****ORIGIN MIX:D ADC 798
 0000471 12/31/2008
 HERITAGE MICROFILM
 4049 PINE AVE SW
 C/OAK RIDGE, TN 37894-6389

Steve

25% - 40% Off Select Trees!
Wetters Landscape
 120 S. Hobart St. • 669-9150 • Mon-Fri • 9am - 5pm

The PAMPA NEWS

Wednesday, February 10, 2010 Volume 105 • No. 233 \$0.50 Daily • Weekend \$1.50

Welcoming 2010 With HUGE Savings!
 On New Products Arriving From Market
 Get any new in-stock laminate or tile for just **10¢** per sq. foot!
 Don't forget FREE estimates and installation purchase required.

The Floor Store
 2110 Perryton Parkway
 (806) 665-4455

CHILDERS BROTHERS INC. HOUSE LEVELING
 Uneven Floors
 Floor Bracing
 Cracks In Bricks
 Sticking Doors & Windows
 Interior Wall Cracking
FREE ESTIMATES
1-800-299-9563
 WWW.CHILDERSLEVELING.COM

One STOP Flooring
Specially Marked Carpets All \$19.97 per yd installed
 Save \$4.00 to \$12.00 per yd installed (reg. \$23.97 to \$31.97sy)
 Store Hours:
 Monday-Friday 9am-5pm
 Saturday 10am-1pm
 1533 N. Hobart ~ Pampa, TX
 (806)665-0995

M#10341 • LICENSED • INSURED
BOB'S PLUMBING
 PAMPA, TEXAS
806-669-1940
 CELL# 806-584-0809
 HOURS MON-FRI 8-6 • SAT 8-12
 EMERGENCY ANYTIME
 OWNERS: BOBBY FAIRES / DUECE FAIRES

Thomas Automotive Inc.
 Premier Auto Service and Repair
665-4851
217 E. ATCHISON
 Monday - Friday • 8am - 6pm

VISION SOURCE
 OAKLEY
 MAUI JIM
 RAYBAN
 CARE CREDIT ACCEPTED
 1324 N. BANKS
 806.665.0771

Vision
 COMPUTER SERVICES
 Ihavecomputerproblems.com
806-665-HELP(4357)
 Combs-Worley Building
 120 W Kingsmill Ave
 Suite 303

MASSAGE DISCOUNTS
 CALL PAMPA'S MASSAGE ADVANTAGE LOCATION TODAY!
 Call 806-665-7261

Read the Bible in a year
 Lev 1-16;
 Matt 24 - Matt 27: 1-26
M & H Leasing
TOP OF TEXAS

HOUSE HUNTERS- REALTOR
 Linda Laycock Broker 806.662.192
 Jordan Oneal Assoc. 806.670.663
 Larry Hadley Assoc. 806.662.279



staff photo by David Bowser

A never-ending battle— James Carson with the Pampa Street Department busily tries to fill pot holes in city streets as another winter storm approaches, threatening to tear them up again.

City wages war on potholes

BY DAVID BOWSER
 dbowser@thepampanews.com

Like a General plotting a military campaign, Donny Hooper, Pampa's director of public works, was in his office this morning tracking the damage done by the last winter storm and planning his defense as the next one approaches.

With much of the city still covered with snow and ice, another storm is expected Thursday.

"After a brutal week and a half of winter weather," said Donny Hooper, Pampa's director of public works, "you're going to have a lot of potholes."

Of course, they can't be seen under the snow and ice, but once the snow and ice disappears, the damage to the city streets is apparent.

"We're trying to get to them as quickly as we can to at least temporarily repair the ones that we can," Hooper said.

Once the weather dries up, he said city crews can put more of a permanent patch on them.

"What we're doing right now, Hooper said, "is we formed a small task force to go out and drive all of the streets in each Ward."

Each driver had a map and drove every street, marking every pothole in town.

"We're going to prioritize those," Hooper said.

The major thoroughfares have the highest priority because they are the most heavily traveled. In addition, Hooper said that the size of the pothole plays a part in its priority.

"If it's a huge one that's deep," he said, "it's going to get a high priority."

Smaller ones will put further down on the **POTHOLES** cont. on page 3

ATF blames church fires on serial arsonist

TYLER, Texas (AP) — Federal authorities believe a spate of church fires in eastern Texas is the work of a serial arsonist or group of arsonists who have evaded law enforcement for more than a month.

Clay Alexander of the U.S. Bureau of Alcohol, Tobacco, Firearms and Explosives expressed frustration Tuesday, a day after fires destroyed two more churches near Tyler. The agency believes eight fires reported since Jan. 1 were the work of at least one arsonist.

"We've been doing this for a long time," said Alexander, head of the agency's office in Tyler. "We're not getting a lot of sleep. We're tired. We're frustrated that this is continuing to happen. But we remain strong in our belief that we're going to find who did this."

The ATF deemed the investigation urgent on Jan. 11, when two churches were torched in nearby Athens, he

said. Seven churches in eastern Texas and one in central Texas have been set ablaze so far.

The two fires reported late Monday haven't been ruled arsons but were being investigated as such. Agents who were working last weekend's Super Bowl in Miami were brought in to help, Alexander said.

Alexander offered few details about the most recent blazes, which broke out at churches about three miles apart in a rural area northwest of Tyler, which is about 85 miles south-east of Dallas.

"We just don't want to discuss that at this point, what we know as far as the same type of things that are happening," he said. "We feel that quite a few of these are related."

Nearby fire departments have been on high alert, and firefighters from throughout the area responded **ARSONIST** cont. on page 3

RRC chair urges emission compliance

During the Railroad Commission conference held yesterday, Chairman Victor Carrillo directed Railroad Commission staff to inform all Texas oil, gas, and pipeline operators to be diligent in their efforts to control potential air emission releases, especially volatile organic compounds such as benzene. The Railroad Commission will send a notice to the thousands of Texas operators as part of its "stripout" notice in March.

Monthly, the agency calculates the next month's allowable production rate for every eligible Texas well — otherwise known as a stripout notice. On occasion, the Railroad Commission also uses the stripout to provide notice to operators of important information, such as this.

"We are essentially telling oil, gas, and pipeline operators that they need to step up their efforts to ensure they are conducting their business in a safe and environmentally friendly manner," stated

Chairman Carrillo. "I'm urging operators to get out there and make sure they double check their operations. If a valve is leaking, fix it; if a thief hatch is open, close it. Don't wait for us to come inspect the facility and require you to fix the problem. All of industry should be proactive about undertaking regular, ongoing inspection and maintenance of wells, valves, pipelines, tanks, hatches, and other equipment to assure full adherence to applicable rules." The Railroad Commissions Oil & Gas Division performed over 128,000 inspections last year.

"By and large, Texas oil, gas, and pipeline operators continue to do an excellent job in regular maintenance and upkeep but it is prudent, particularly in this environment of heightened awareness and often false accusations, to be ever-vigilant to ensure that our Texas energy sector continues to be the economic development and job creation powerhouse that it is today."

This notice comes on the heels of a concerted effort by Chairman Carrillo to approach this topic with common sense and attempt to be helpful to other agencies, local communities and concerned citizens.

Recently, Chairman Carrillo traveled to Dallas to discuss these issues with newly appointed EPA Region 6 **EMISSION** cont. on page 3

Girl Scout cookies on the Internet?

The Girl Scout Cookie Sale is an educational business endeavor where girls can "learn as they earn". It's the largest financial literacy program for girls in the country. One new aspect of the program is the opportunity to learn about online marketing.

Girl Scouts are no longer limited to a card table set up in front of the local market. Scouts are hitting the Internet, to run their cookie sales as a serious business.

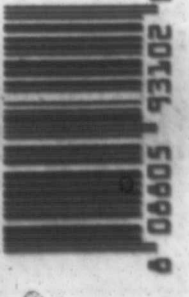
Girls are provided with internet safety tools, they sign an internet safety pledge, then, with adult supervision, they can begin marketing their sale online. While the girls are not allowed to sell cookies via e-mail or over the internet, they are allowed to use the internet to market their cookie

sales. All cookies are \$3.50 per box, with all proceeds benefiting the local Girl Scout troops. The Cookie Sale will be ongoing in the Amarillo Region until March 7.

For more information on Cookies or how to join, volunteer or donate to the Girl Scouts, call 800-687-4475 or visit www.gs-top.org

Counties in the Amarillo Region: Armstrong, Beaver, Briscoe, Carson, Castro, Cimarron, Collingsworth, Cottle, Dallam, Deaf Smith, Donley, Gray, Hall, Hansford, Hartley, Hemphill, Hutchinson, Lipscomb, Moore, Ochiltree, Oldham, Parmer, Potter, Randall, Roberts, Sherman, Texas, Wheeler

2010 Relay for Life of Gray County Kick-Off
 Food • Fun • Door Prizes
 Pampa Regional Medical Center
 Thursday, February 11, 2010, 5:30 p.m. - 7 p.m.
 For more information contact 663-2856



For the record

PAMPA FORECAST

| Thursday | Friday | Saturday |
|-------------------|-------------------|-------------------|
| | | |
| High 37 Low 31 | High 46 Low 30 | High 50 Low 29 |

Tonight: Mostly cloudy, with a low around 26. Wind chill values between 19 and 24. South wind between 5 and 10 mph.

Thursday: Mostly cloudy, with a high near 37. Wind chill values between 22 and 32. South wind between 5 and 10 mph.

Thursday Night: Partly cloudy, with a low around 31. Wind chill values between 24 and 29. South wind 5 to 10 mph becoming west northwest.

Friday: Sunny, with a high near 46. Northwest wind around 10 mph.

Friday Night: Clear, with a low around 30. West wind 5 to 10 mph becoming south south-east.

Saturday: Sunny, with a high near 50. North northwest wind between 5 and 15 mph.

Saturday Night: Mostly cloudy, with a low around 29. North northeast wind between 5 and 10 mph.

© This information brought to you by...

PRESTIGE

AUTOBODY & ACCESSORIES

101 S. HOBART 806-665-3500

AFTER THE SNOW IS GONE, WE CAN DETAIL YOUR CAR!

WE ALSO FIX ROCK CHIPS!

Obituaries

Sybil Catherine Elizabeth Qualls, 96

Sybil Catherine Elizabeth Qualls, 96, formerly of Pampa died on Monday, February 8, 2010. Services will be at 1 p.m. on Saturday, February 13, 2010 at the Boxwell Brothers Ivy Chapel, 2800 Paramount Blvd. with Dr. G.A. Roach and Sherman Eastland officiating. Burial will be at 3:30 p.m. on Saturday, February 13, 2010 at the Fairview Cemetery in Pampa. Arrangements are by Boxwell Brothers Funeral Directors.

Mrs. Qualls was born on May 20, 1913 in Lorena, Texas to Bert and Jane Conner. She married Clarence Qualls on December 24, 1933 in Desdemona, Texas. She and Clarence had been professional award winning photographers for over forty years in Pampa. She was a member of the Order of the Eastern Star and the Business Professional Women's Organization. She was also a member of the First Baptist Church in Pampa and Amarillo.

She was preceded in death by her husband, Clarence Qualls in 1986 and by four brothers, two sisters and one grandson. Survivors include a son, Richard Qualls and wife Grace, of Lafayette, LA; two daughters, Norma Seals and Ann K. Thompson both of Amarillo; seven grandchildren, Jane Mathis, Amy Komie, David Qualls and wife Tracy, Christina Russell and husband Hugh, Libby Adibi and husband Robert, Jim Triplephorn



Qualls and wife Cecily, Holly Thompson and nine great grandchildren. The family suggests memorials be made to a favorite charity.

Jerry P. Whitten, 82

Pampa— Jerry P. Whitten, 82, died February 7, 2010, in Memphis, Texas.

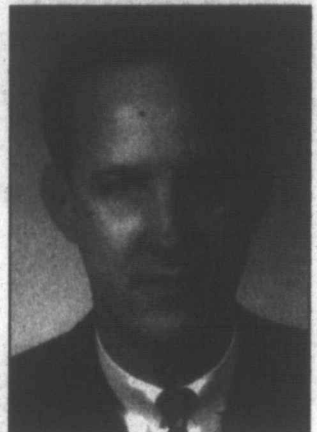
Memorial services will be at 2:00 PM Friday, February 12, 2010, at St. Matthew's Episcopal Church, with Rev. Linda Kelly, rector, officiating. Cremation and arrangements are under the direction of Carmichael-Whitley Funeral Directors.

Mr. Whitten was born May 27, 1927 in Muskogee, Oklahoma to Jack P. and Gladys Whitten. He graduated from Muskogee High School and attended Oklahoma Baptist University in Shawnee, Oklahoma. He received his B. A. degree from the University of Oklahoma

and his Master's Degree in sacred music from Union Theological Seminary in New York City. He was the organist for several churches in Oklahoma, including First Christian Church in Oklahoma City. Jerry was employed by Tarpley Music Co. in Pampa for 43 years. He was the organist and choir master at St. Matthew's Episcopal Church in Pampa for 15 years, and was also employed by Carmichael-Whitley Funeral Directors as their organist for 35 years. Jerry was fortunate to study under two of America's finest teachers, Mildred Andrews of the University of Oklahoma, and Dr. Vernon Detar of St. John the Divine Church

in New York City. Jerry married Nancy Kohler on November 21, 1969 in Pampa. He was a member of the American Guild of Organists.

Survivors include his wife, Nancy Whitten, of the home; four stepchildren, Richard Kohler and wife Darlene, Daniel Kohler and wife Glenda, Timothy Kohler and Cynthia Kohler; three step grandchildren, Phillip Kohler, Monica Kohler and Waylon Griffin; three brothers, Jack Whitten, Joe Whitten and Phil Whitten; and two sisters, Loretta Rosser and Helen Stith. In lieu of flowers, memorials may be made to St. Matthew's Episcopal Church Discretionary



Whitten Fund, 727 W. Browning, Pampa, Texas 79065 or Good Samaritan Christian Services, 309 N. Ward, Pampa, Texas 79065. Sign the on-line register at www.carmichael-whatley.com

EMERGENCY SERVICES

SHERIFF

The Gray County Sheriff's Department reported the following arrests during the 24-hour period ending at 8 a.m. today.

Monday, Feb. 8.
Terry Michael Gonzales, 18, was arrested by deputies on charges of burglary of a building.

Eddie Scott Graham, 21, was arrested by deputies on a grand jury indictment charging him with injury to a child, elderly or disabled person.

Larry Dale Terry, 41, was arrested by police on charges of nonpayment of fines.

PAMPA PD

The Pampa Police Department reported the following calls during the 24-hour period ending at 8 a.m. today.

Police reported six traffic-related stops and one accident.

Animal control officers reported eight animal-related calls.

Pampa EMS reported six ambulance calls. The Pampa Police Department reported one medical call. The Pampa Fire Department reported one medical call. The Lefors Volunteer Fire Department reported one medical call.

Monday, Feb. 8.
An alarm was reported

in the 2500 block of North Christine.

An alarm was reported in the 300 block of South Tignor.

Officers has escort duty in the 200 block of East Foster and in the 200 block of North West.

Disorderly conduct was reported in the 100 block of East Harvester.

A burglary was reported in the 1300 of North Coffee.

Criminal mischief was reported in the 1100 block of Darby.

A prowler was reported in the 1700 block of North Chestnut.

Fraud was reported to police.
An open door was report-

ed in the 1100 bloc of Coronado Drive.

City employees reported a sewer choke in the 1500 block of Williston.

A theft was reported in the 900 block of South Dwight.

A suspicious person was reported in the 1200 block of North Hobart.

A narcotics violation was reported in the 1300 block of North Coffee.

Disorderly conduct was reported in the 1400 block of North Hobart.

Tuesday, Feb. 9.
An open door was reported in the 1600 block of North Hobart.

A burglary was reported in the 1200 block of North Wells.

Reward increased for information on East Texas church arsons

The reward for information on the identity of the arsonist who has burned at least eight churches in the East Texas area, since January 1 has been increased to \$25,000.

Investigators from numerous local, state and federal law enforcement agencies in the area have been working together on a task force dedicated to finding the suspect. The task force has received numerous tips, but needs additional credible leads. Anyone with information on the identity of the person(s) committing these arsons is urged to call 903-939-6169 or 903-939-6172. These numbers are answered 24 hours a day, seven days a week.

DPS remains dedicated to providing numerous resources to the task force, including Texas Rangers, Criminal Investigation Division agents, aviation assets and Texas Highway Patrol troopers.

"We are working closely with our federal and local partners," said Steven C. McCraw, director of the DPS. "We are committed to sending whatever resources are required to bring this suspect to justice."

New aerial photos of Sept 11 attack released

NEW YORK (AP) — Newly released aerial photos of the Sept. 11, 2001, World Trade Center attack

show the towers coming down from a dramatic new angle.

The photos were obtained by ABC News, which filed a Freedom of Information Act request with the National Institute of Standards and Technology last year. The NIST collected the images as part of its investigation into the terrorist attack.

ABC said it was provided 2,779 pictures on nine CDs. Many of the photos, taken from police helicopters, have never been released before.

Twelve of the photos appear on ABC's Web site. One photo shows a close-up of the upper floors of the burning towers. Others show the towers' dramatic collapse in a thick plume of smoke and debris and sweeping views of billowing smoke clouds.

Convicted killer of Texas officer loses appeal

HOUSTON (AP) — A man condemned for gunning down a housing code enforcement officer in north Texas in a trash dispute has lost an appeal of his conviction and death sentence.

The Texas Court of Criminal Appeals on Wednesday upheld the case of 27-year-old Adam Kelly Ward. Ward was sent to death row for the 2005 fatal shooting of Michael "Pee Wee" Walker in Commerce, about 60 miles northeast of Dallas.

Evidence showed Ward opened fire after the 44-year-old officer took pictures of his home as part of a code violation investigation. Walker was following up on complaints of trash in the yard.

The inmate's appeal said the trial court judge improperly limited evidence of Ward's mental impairment and questioned the legality of the death penalty in Texas.

Condemned killer of student loses appeal

HOUSTON (AP) — A man condemned for killing a 19-year-old Montgomery County college student has lost an appeal for additional DNA testing of evidence.

The Texas Court of Criminal Appeals ruling Wednesday comes in the case of 38-year-old Larry

STATE BRIEFS

Swearingen, sent to death row for the abduction and murder Melissa Trotter.

The court says even if it granted Swearingen's request, overwhelming evidence pointing to his guilt likely would not change his trial's outcome.

A federal appeals court a year ago spared Swearingen a day before he was scheduled to die.

Trotter's body was found in January 1999 in the Sam Houston National Forest south of Huntsville nearly a month after she last seen leaving a college library near Conroe.

Group urges Texas to promote more solar power use

AUSTIN, Texas (AP) — Environmentalists and more than 80 business leaders are urging Texas officials to do more to promote more solar power in the state.

The Go Solar Texas coalition released a letter Wednesday to Gov. Rick Perry proposing ways to expand solar power capacity in the state. The group also released a report on how Texas businesses would benefit from a significant state solar program — noting that two solar businesses have already fled for states with better incentives.

The Public Utility Commission is considering a rule to require electric companies to obtain 500 megawatts of electricity from solar energy and other emerging renewable technologies by the year 2015. That's about the size of one coal-fired power plant.

Training period trimmed for Texas troopers

AUSTIN, Texas (AP) — The Texas Department of Public Safety is reducing the length of academy training for troopers by nine weeks in an effort to attract more recruits and save money.

DPS Director Steve McCraw says cutting the trooper training period to 18 weeks has been approved by the agency's governing board.

"We can provide superior training at less cost, in less time, and it's far easier for us to recruit," said McCraw, who says many recruits will not commit to a training course lasting more than seven months.

"We determined we can be much more competitive in recruiting, in college and the military in an 18-week school and one that's not done just once or twice a year," he said.

DPS has nearly 400 vacancies. Much of the training that was removed related to gaining an intermediate police officer rating, which also requires six years of experience, McCraw told the Houston Chronicle.

The Public Safety Commission also approved an eight-week school for certified peace officers who want to join the DPS, he said.

State Rep. Hubert Vo, D-Houston, said Tuesday he plans to make further inquiries.

"My main focus is we're not reducing the safety of the public by reducing the training time, and I don't think we are," Vo said.

LAST MINUTE ADS

The Pampa News is not responsible for the content of paid advertisement

CABOT & NOI Employee Credit Union Annual Meeting Thurs., Feb. 11th, 6:30pm. M.K. Brown. All members welcome! Door Prizes & Cash Prizes. Come support your credit union.

CERAMIC TILE. Keith Taylor, 874-1779 lv. msg.

MASSAGE THERAPY Valentine Special- Gift Certificates! Call Cathy Potter, Holly Albert or Brittany Shuman, 669-0013

MUST SEE!!! Beautiful 1 1/2 CT. Diamond Wedding Ring Set. White Gold. Circle Cut. Size 6. Only worn 2 years. Purchased at Zales. Asking \$1500 OBO. Please call 662-5716 after 4 pm.

Subscribe to The Pampa News 669-2525

Drivers, cars are ill-equipped when panic sets in

DEE-ANN DURBIN
AP Auto Writer
DETROIT (AP) — You're driving down the highway and suddenly your car starts accelerating on its own. Knuckles white, going from 60 to 90 miles an hour in seconds, you do what comes naturally — hit the brakes. But what if the car keeps going?

There are options: Put the car in neutral, or in park, or switch off the ignition. But experts say those choices would be almost impossible for most drivers to consider when they're in a panic, because frightened people often can't remember even simple steps to protect themselves. That — coupled with increasingly complicated gadgetry — makes cars a dangerous place to be when you're facing an unexpected situation.

"You're stamping on the brakes and your attention is going to be focused on where you're going and steering. There's no cognitive space left to think of alternatives," said Dr. Boadie Dunlop, a psychiatrist and director of the Mood and Anxiety Program at Emory University. "To do something that's not natural, such as turning off the engine, is just not going to come to mind."

Toyota Motor Corp. said Tuesday it is recalling about 437,000 Prius and other hybrid vehicles worldwide to fix a problem with brakes that are momentarily unresponsive in certain driving conditions.

That follows the automaker's recent recall of 5 million vehicles because of reports of unintended acceleration, and it's changing the gas pedals

to prevent floor mats from jamming them. But complaints about unwanted acceleration in Toyota vehicles go back at least to 2003, according to U.S. government filings.

The issue gained new urgency last August, when a high-speed crash near San Diego killed an off-duty California highway patrol officer and three family members. The officer's loaner Lexus ES350 reached speeds of more than 120 mph, struck an SUV, launched off an embankment, rolled several times and burst into flames. The family frantically called 911 from the car, telling the dispatcher the pedal was stuck and they couldn't stop.

It's not known what exact steps the officer took in that case, but Dunlop said in such a situation, the brain can't handle all the information it's getting.

"When people are in an intensely fearful situation, their ability to problem-solve is greatly diminished," he said.

Venkat Thannir had his own brush with panic a few months ago. The 48-year-old college instructor from South Carolina was pulling his 2010 Toyota Camry out of a Burger King parking lot when it sped up without warning. He panicked for several seconds before pushing hard on the brake pedal and stopping the car.

"The vehicle was out of control," he said. "If I was not in a parking lot, it could have been a whole different story."

Thannir never figured out exactly what happened, but believes the pedal was defective, since he considers himself a safe driver. He plans to

get the gas pedal repaired soon. In the meantime, he feels safe driving the vehicle for now.

Drivers have an array of safety features, including push-button stop in some cars. But the lack of standardization for those features further hinders peoples' ability to react to unexpected situations, since they vary from vehicle to vehicle, according to Paul Green, a research professor at the University of Michigan Transportation Research Institute.

Consumer Reports has criticized Toyota for the push-button ignition in Toyota and Lexus vehicles, which requires drivers to hold down the button for three seconds to turn off the vehicle in an emergency. Drivers of Cadillacs, Nissans and Infinitis can shut off the engines by pushing the button more than once.

"The design solution is to make them all work the same way," Green said.

Green said there's also been little research into the way safety features are laid out in the car. Is it easy to reach down and put the car in neutral? Should neutral be in a different order on the shifter so it's faster or easier to act? Green said vehicles are getting so complex that the extent to which drivers can understand their cars is diminishing. In one recent analysis, the institute projected that the owner's manual and navigation manual for a luxury vehicle will grow to 1,000 pages over the next decade.

"Can you conceive of a person reading all this stuff and remembering all of it?" he said.

Potholes

list. Right now, the city has one truck that's dedicated to patching the potholes.

"That crew will be out working tirelessly to try to get fixed as fast as possible," Hooper said.

With another storm on its way, Hooper said the crew has its work cut out for the next few days, as do the snow removal crews.

"These storms have been out of the norm," Hooper admitted, "and we've run our equipment ragged. We have a lot of repairs we making on the equipment now. We're just trying to keep equipment up and running for the next storm."

So far, there has been no

major damage to the equipment, but Hooper said that one broken bolt can have the potential of sidelining a major piece of equipment.

Potholes don't wait for a piece of equipment to get repaired. With each new snowstorm, he said, potholes get bigger and the wear and tear on the streets gets worse.

"We want to do everything we can to keep people from damaging their vehicles," Hooper said. "We try to do what we can."

When it warms up, Hooper said they'll go back and patch the streets more permanently.

"We're also going to do a cost estimate as to exactly

what kind of dollars we're talking about for the damage that the storms have created," Hooper said, "but we can't do that until we get some breathing room."

With more storms coming in, he said city crews are marking all the potholes and damaged streets so they can go back and keep a running total of the work that has been done so work won't be duplicated. That will also help in deciding where to start next summer with the city's seal coating project.

He said that citizens can report potholes by calling the city's Action Center at 669-5888.

cont. from page 1

Emission

Administrator Dr. Al Armendariz.

"Dr. Armendariz and I had a good visit. I extended an olive branch and offered to help work on well-reasoned, practical solutions regarding issues facing the agencies. I truly hope the Railroad Commission and the EPA can find common ground on our approach to the issues before us.

However, I refuse to irra-

tionally overreact to this situation. I still stand by my position that a drilling moratorium, like the one demanded of the Railroad Commission by Representative Lon Burnam (Dem - Ft. Worth) would be a drastic over-reaction based on the currently available science and facts."

"I refuse to send tens of thousands of Texans

to the unemployment line at a time when jobs are needed most. Make no mistake -- a drilling moratorium would do exactly that," explained Carrillo. "We need to monitor this situation and address air emissions in a practical and reasonable manner. The stripout notice is an excellent step in that direction."

cont. from page 1

Arsonist

quickly to the Monday blazes at the Dover Baptist Church and Clear Spring Missionary Baptist Church, said Smith County Assistant Fire Marshal Oren Hale.

There were no injuries reported in either fire, but the damage appeared to be extensive, said Hale, who worked at both fire scenes until about 3 a.m. Tuesday.

"They were big ones. They're not to the ground, but they'll be total losses," he said.

Assistant Fire Marshal Connie McCoy-Wasson, who was first on the scene at Clear Spring Missionary Baptist Church, said flames were coming out of the building's roof when she got there. The back door of the church had been broken, she said.

On Tuesday, the church's red brick walls were all that remained. It's pastor, Brandon Owens, said he planned to meet with his congregation of about 50 to figure out where they

would worship Sunday. The church also burned eight years ago when it was struck by lightning.

"I will be preaching," Owens said. "We will be OK. We'll still be going."

Several people gathered Tuesday near the still-smoldering Dover church. "It's heartbreaking," said 70-year-old Floyd Moseley, a retired Tyler firefighter who used to belong to the church and whose father helped build it.

cont. from page 1

A list of Toyota recalls and the affected vehicles

| | | |
|--|---|---|
| Toyota's recall of eight car and truck models over potentially sticky gas pedals, which affects 2.3 million U.S. vehicles: | 2005-2010 Avalon | 2005-10 Avalon |
| | 2004-2009 Prius | 2007-10 Camry |
| | 2005-2010 Tacoma | 2007-10 Tundra |
| | 2009-10 Corolla | Toyota's recall of hybrids with brakes that seem to fail momentarily, which affects 147,500 U.S. vehicles. |
| | 2009-10 Matrix | 2010 Prius |
| | 2005-10 Avalon | 2010 Lexus HS250h |
| | 2007-10 Camry | Toyota's recall to check a power-steering hose that may be in contact with a brake tube, potentially creating a hole in the tube, leading to loss of brake fluid and longer stopping distances. The recall affects 7,300 U.S. vehicles. |
| | 2010 Highlander | 2010 Camry |
| | 2007-10 Tundra | |
| | 2008-10 Sequoia | |
| | 2009-10 RAV4 | |
| Toyota's recall of models due to gas-pedal entrapment under floor mats, which affects 5.3 million U.S. vehicles: | 2009-2010 Pontiac Vibe (built by a joint venture between Toyota and General Motors Co.) | |
| | 2007-2010 Camry | |
| | The following models, encompassing 1.7 million vehicles, are affected by both recalls: | |

Pantex

Federal Credit Union

1300 W. Wilson
411 E. Broadway
807 N. Sumner

Borger 273-5692
Fritch 857-2400
Pampa 665-4212

Member NCUA

Pantex Federal Credit Union
Annual membership meeting.

Tuesday February 16, 2010
7:00 p.m. at the Borger
Community Activity Center.

LIMITED TIME OFFER

HALF OFF

STANDARD CABLE

SAVE \$25*

A MONTH!

WHEN YOU ALSO TAKE OUR STANDARD INTERNET
SAVE \$25 A MONTH FOR THE FIRST 6 MONTHS
WHEN YOU TAKE BOTH

CABLE ONE®

1-888-216-5524

Hurry! This limited time offer won't last long.

www.cableone.net

Viewpoints

Today in History

Today is Wednesday, Feb. 10, the 41st day of 2010. There are 324 days left in the year.

Today's Highlight in History:

On Feb. 10, 1967, the 25th Amendment to the Constitution, dealing with presidential disability and succession, was ratified as Minnesota and Nevada adopted it.

On this date:

In 1763, Britain, Spain and France signed the Treaty of Paris, ending the Seven Years' War.

In 1840, Britain's Queen Victoria married Prince Albert of Saxe-Coburg and Gotha.

In 1841, Upper Canada and Lower Canada were proclaimed united under an Act of Union passed by the British Parliament.

In 1942, the former French liner Normandie capsized in New York Harbor a day after it caught fire while being refitted for the U.S. Navy.

In 1949, Arthur Miller's play "Death of a Salesman" opened at Broadway's Morosco Theater with Lee J. Cobb as Willy Loman.

'Maybe all one can do is hope to end up with the right regrets.'

— Arthur Miller,
American playwright

the United States.

In 1959, a major tornado tore through the St. Louis, Mo., area, killing 21 people and causing heavy damage.

In 1962, the Soviet Union exchanged captured American U-2 pilot Francis Gary Powers for Rudolf Abel, a Soviet spy held by

In 1968, U.S. figure skater Peggy Fleming won America's only gold medal of the Winter Olympic Games in Grenoble, France.

In 1981, eight people were killed when a fire set by a busboy broke out at the Las Vegas Hilton hotel-casino.

In 1989, Ron Brown was elected chairman of the Democratic National Committee, becoming the first black to head a major U.S. political party.

Ten years ago: The hijackers of an Afghan plane surrendered, ending a four-day standoff at Stansted airport outside London. The Federal Aviation Administration ordered inspections of MD-80, MD-90, DC-9 and 717 series jetliners after two Alaska Airlines planes were found to have equipment damage similar to that on Alaska Airlines Flight 261, which crashed off the California coast Jan. 31, killing all 88 people on board. Actor Jim Varney, best known for his comic character Ernest P. Worrell, died in White House, Tenn. at age 50.

Five years ago: Playwright Arthur Miller died in Roxbury, Conn. at age 89 on the 56th anniversary of the Broadway opening of his "Death of a Salesman." Britain's Prince Charles announced he would marry his divorced lover, Camilla Parker Bowles, in April. North Korea boasted publicly for the first time that it possessed nuclear weapons. New York civil rights lawyer Lynn Stewart was convicted of smuggling messages of violence from one of her jailed clients, radical Egyptian sheik Omar Abdel-Rahman, to his terrorist disciples on the outside. (Stewart began serving a two-year, four-month sentence in Nov. 2009.)

One year ago: The Senate approved President Barack Obama's giant economic stimulus measure. U.S. and Russian communication satellites collided in the first-ever crash of its kind in orbit, shooting out a pair of massive debris clouds. Foreign Minister Tzipi Livni's (TSHI'-pee LIHV'-nee) centrist Kadima Party narrowly won the most seats in Israel's 120-member parliament. (However, it was Benjamin Netanyahu who ended up forming the new Israeli government.)

Today's Birthdays: Opera singer Leontyne Price is 83. Actor Robert Wagner is 80. Rock musician Don Wilson (The Ventures) is 77. Singer Roberta Flack is 73. Singer Jimmy Merchant (Frankie Lyman and the Teenagers) is 70. Rock musician Bob Spalding (The Ventures) is 63. Olympic gold-medal swimmer Mark Spitz is 60. Walt Disney Co. president and chief executive Robert Iger is 59. World Golf Hall of Famer Greg Norman is 55. Country singer Lionel Cartwright is 50. Movie director Alexander Payne ("Sideways") is 49. ABC News correspondent George Stephanopoulos is 49. Political commentator Glenn Beck is 46. Actress Laura Dern is 43. Country singer Dede Foyt is 38. Actress Elizabeth Banks is 36. Pop singer Rosanna Taveres (Eden's Crush) is 33. Country musician Jeremy Baxter (Carolina Rain) is 30. Rock singer Eric Dill is 28. Rock musician Ben Romans (The Click Five) is 28. Actress Emma Roberts is 19. Actress Makenzie Vega is 16. Actress Chloe Moretz is 13.

We welcome your letters

To insure publication, please adhere to the following guidelines:

- Letters should be brief and to the point. All correspondence will be edited for length and clarity.
- All letters must be signed. Submit your name, address and telephone number with the letter for verification. Only your name and city will be published.
- Defamatory comments will not be published.
- Political ads should be responded to in kind.
- E-mail submissions are welcome.



Letters to the editor

Dear Editor,

Politics is a standard topic of conversation along with the weather. Everyone likes to be an "armchair quarterback" in their assessment of what is wrong with politicians, laws and so forth. Yet on the local level, they don't do ANYTHING but talk! Our voice from Pampa, Texas is not likely to be heard on the national level. But it can be heard on the local level.

We work hard for our money — this past year that hard work netted less money than the year before. We have a responsibility to our families to make sure every dollar is spent wisely. Elected officials have say over how some of our money is spent. Do we care who those officials are? Are we asking the tough questions about character, ethics, work history, qualifications and whether or not they are law-abiding citizens?

Tax records are public knowledge and a good indication of how someone uses their money. If they do not take care of their own money, how can we hope they will take care of ours? If they do not have the character and personal integrity to be law-abiding citizens and faithful to their families, do we think they are suddenly going to become stellar figures in a public office?

If they do not have the accountability to be above reproach in their personal lives and work place, do we think they will suddenly become wise role models in the public office where pressures are much greater?

Character cannot be changed or bought by pretty signs or slick advertising. Neither can the best men and women be voted into office unless EVERY citizen takes their personal rights and responsibilities seriously. We must ask the tough questions. It isn't about being nice and polite. It is about seeking the best person for any given office. We will seek out the best bargains to make our money go farther.

We MUST seek out the best candidates for every public office!

Margo DeLong
Pampa

Reader objects to proposed transmission line route

There has been recent, well-earned consternation over the transmission line proposed across Palo Duro Canyon, described as "a true Panhandle jewel," however, there are other jewels, also, particularly in the eastern Texas Panhandle, that deserve protection from thought-

less development and spoliation. Public Utility Commission Chairman Barry T. Smitherman has addressed the routing of new transmission lines across the Panhandle, expressing an interest in "a robust set of alternative routes" and noting the PUC's concern with community, recreational, and aesthetic values, and environmental integrity.

Our family has ranches in Wheeler County for over one hundred years.

Cross Texas Transmission, a Delaware Corporation, has notified me that they want to construct an enormous 345 KV line and 200 foot tall transmission towers directly across some of the most pristine wetland and wooded acreage in the Texas Panhandle.

Cross Texas Transmission is a wholly-owned subsidiary of LS Power, which is governed by LS Power Associates, L.P., a limited partnership located in East Brunswick, New Jersey.

The property which is targeted by these developers contains wetlands and a lake which is one of the largest waterfowl wintering areas in the eastern Panhandle, frequented annually by thousands of geese and all of the species of ducks found in the Central Flyway, including mallards, pintails, gadwalls, widgeons, ring-necked ducks, blue-winged teal, green-winged teal, buffleheads, canvasbacks, redheads, greater scaups, wood ducks, mergansers and other species; Sandhill cranes, snowy egrets, Blue Herons, Belted-Kingfishers, and even cormorants.

Cross Texas Transmission proposes to route a line directly across the flyway to the lake, which will create an unavoidable barrier to waterfowl feeding and resting areas. The result will be to have all these species flying into what amounts to a blender. The death loss to waterfowl from this proposed construction will be enormous and totally unnecessary.

The power line will also transgress old growth cottonwoods, locust, black walnuts, and many other types of flora and fauna which have remained untouched for a hundred years, and constitute prime habitat for white-tailed deer, Rio Grande turkey, bobwhite quail, mourning dove, beaver, and many other species of birds and mammals, including the Lesser Prairie Chicken. It is documented that tower construction discourages Prairie Chicken breeding and nesting.

You would think that a cursory examination of this property would cause Cross Texas Transmission to look elsewhere, but such

is not the case.

There is an unseemly haste to the Cross Texas Transmission project. The PUC filings for this line will occur in March.

This is clearly a case where dollars have prevailed over sense, and the threat of the exercise of the power of eminent domain is very real.

If you agree with me that careless and wanton destruction of Texas Panhandle wetlands, waterfowl, and wildlife habitat should be resisted, I encourage you to contact Barry Smitherman, Chairman of the Public Utility Commission of Texas, P. O. Box 13326, Austin Texas 78711 barry.smitherman@puc.state.tx.us, Governor Rick Perry, P. O. Box 12428, Austin, Texas 78711 publicrecords@governor.state.tx.us, and B. Cameron Fredkin, Cross Texas Transmission, 400 Chesterfield Center, Ste. 105, St. Louis, Missouri 63017, CFredkin@LSPower.com.

The PUC docket num-

ber assigned to this case is 37141. Tell them you oppose the construction of "Line R" and "Line S" of Cross Texas Transmission across wetland and wildlife habitat in Wheeler County.

"Line R" & "Line S" will not only destroy habitat, but they will be thrown up directly across low-level training areas utilized by the U.S. Air Force. Daily, for brief moments, graceful C-17s from Altus Air Force Base wing their way across our land at altitudes well under 500 feet, training for low-level missions..

Transmission lines and utility towers do not do justice to wetlands and wildlife habitat, and once squandered these resources are irreplaceable.

Ken Fields
Pampa

THE PAMPA NEWS

403 W. Atchison • Pampa, TX 79065
806-669-2525 • 800-687-3348
Fax: 806-669-2520

Randall Pribble
Publisher
rpribble@thepampanews.com

| | |
|--|--|
| ReDonn Woods Advertising Manager woods@thepampanews.com | Betsy Phillips Editor bphillips@thepampanews.com |
| Sue Pribble Advertising Representative spribble@thepampanews.com | David Bowser Reporter dbowser@thepampanews.com |
| Beverly Taylor Classified Advertising classified@thepampanews.com | Andrew Glover Reporter aglover@thepampanews.com |
| Kera Kent Circulation circulation@thepampanews.com | Marcus Elkins Press Supervisor press@thepampanews.com |
| Carrie Hair Accounting bookkeeper@thepampanews.com | Chico Ramirez Circulation Supervisor |

This newspaper (UPS 781-540) is published daily, except Sundays, Thanksgiving and Christmas Day, by The Pampa News. Periodicals postage paid at Pampa, Texas. Postmaster: Send address changes to The Pampa News, P.O. Drawer 2198, Pampa, TX 79066-2198.

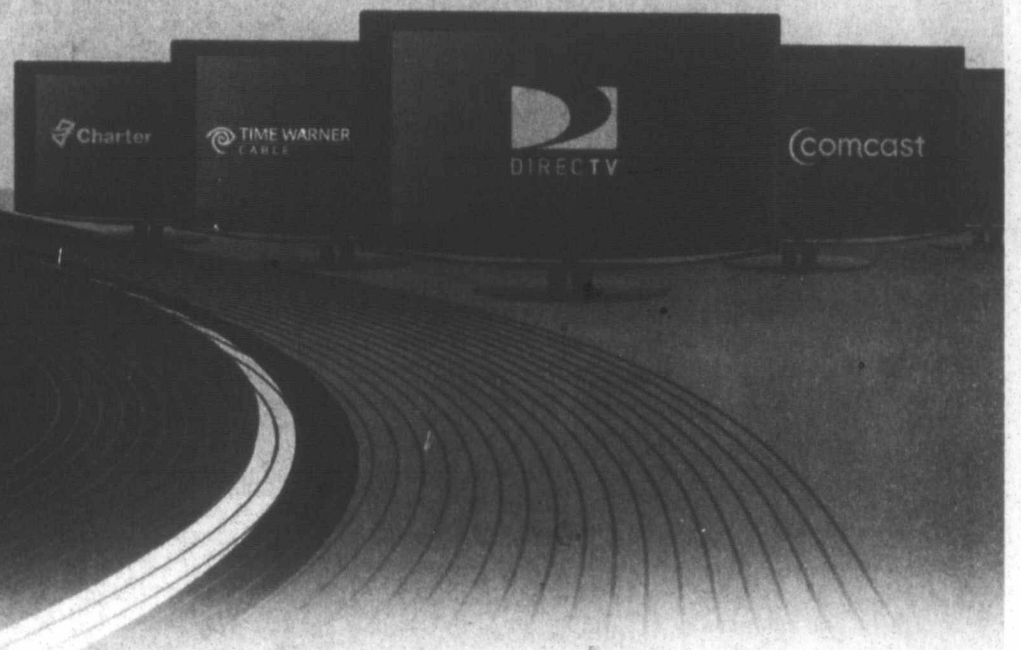
All carriers are independent contractors and The Pampa News is not responsible for advance payments of two or more months made to the carrier. Please pay directly to the Pampa News any payment that exceeds the current collection period. There are no mail subscriptions available within the city limits of Pampa. Mail subscriptions must be paid three months in advance.

© 2010 The Pampa News

**MEMBER
2010**

TEXAS PRESS ASSOCIATION

The TV You Love...For Less



They may look alike, but not all TV services are created equal.

Sure, the actual TV content isn't much different from one provider to another, and most of us enjoy the same shows and channels. DIRECTV's comedies aren't any funnier than those on DISH Network, their dramas aren't any more action-packed than ours. The difference between DISH Network and DIRECTV isn't visible on screen — but it jumps right out at you on your bill.

Technology that can't be beat

Price is a compelling reason to switch, but DISH Network is also attractive because our exclusive features are simply outstanding. We are the industry leader in technology and offer award-winning DVRs with no equipment to buy. The DISH Network sophisticated dual-tuner receivers double your DVR power with Multi-Room View technology: one box that connects two TVs so that you can record a show in one room and watch it in another. You can't get this from DIRECTV.

The most HD

DISH Network delivers over 150 HD channels — more than cable, more than DIRECTV — and our 1080p HD technology provides the best HD picture available anywhere. If you haven't made the leap to HD yet, no problem: our standard-definition selection is equally comprehensive and includes an impressive Latino lineup, the most international channels and thousands of video-on-demand options.



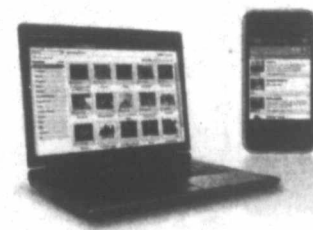
Lower prices

With DISH Network, you'll still get the entertainment you love but you'll pay less than with DIRECTV or cable. In fact, right now you can save \$180 in your first year with DISH Network. Our popular package with over 120 favorite channels is now just \$24.99/mo for twelve months (with Agreement). HBO and Showtime are free for 3 months, plus you'll get free Standard Professional Installation and free upgrades to DVR and HD DVR receivers. And because DISH Network has the lowest all-digital prices available every day nationwide, your savings will continue long after the promotional period is over. Whereas, with DIRECTV's offer, your price can double after the first year!

Exclusive features



Our enormous hard drives — the biggest in the business — let you create your own video library which you can manage anywhere, anytime with our advanced DISH Remote Access. It's the industry's most comprehensive remote DVR manager. This is such a popular feature that we've recently created a separate iPhone™ "app" just for remote DVR access.



Reliability

You'll enjoy peace of mind with our signal which is 99.9% reliable, and support you can get in our Welcome Center created especially for new DISH Network customers. The results are clear: in a recent survey by the American Customer Satisfaction Index,* DISH Network gets the lowest number of consumer complaints.



So take a good look at, DISH Network. We're confident you'll discover that DISH Network has the choice, the quality and the prices you want. It's just that simple.

Our award-winning VIP 722 DVR with Multi-Room View



Over 120 Top Channels
Including local channels

\$24.99
mo
for 12 months (with Agreement)

Plus:
FREE
HBO & SHOWTIME.
8 channels 10 channels
For 3 months (with Agreement)

FREE
DVR Upgrade
(\$6.00/mo DVR Service fee applies)

FREE
Standard Professional
Installation in up to 6 Rooms

Why would you ever pay more for TV?

CALL TODAY AND SAVE
1-888-864-2459
dish.com



Source CHOICE™ Package: dish.com. *According to the 2008 American Customer Satisfaction Index (ACSI) survey results for the Cable/Satellite TV industry. Local channels available to 97% of U.S. households. To find out if you are eligible, visit our website or an Authorized Retailer. Digital Home Advantage offer requires 24-month commitment and credit qualifications. If service is terminated before the end of commitment, a cancellation fee of \$17.50/month remaining will apply. Programming credits will apply during the first 12 months. All equipment is leased and must be returned to DISH Network upon cancellation or unreturned equipment fees apply. Local channels only available in certain areas. Offer is subject to the terms and conditions of the Standard Professional Installation and Residential Customer Agreements. Additional restrictions and fees may apply. For more information, visit dish.com. © 2010, DISH Network L.L.C. All rights reserved. HBO and Showtime are trademarks of Home Box Office, Inc. SHOWTIME and related marks are trademarks of Showtime Networks Inc., a CBS company. Charter is a trademark of Charter Communications. Time Warner Cable is a trademark of Time Warner Cable. DIRECTV and the satellite design are trademarks of DIRECTV, Inc. Comcast is a trademark of Comcast Corporation. iPhone is a registered trademark of Apple Inc. A082700

Wet conditions cause hardship for some

COLLEGE STATION -- When it comes to moisture, from one side of the state to the other, it ranged from extremely wet to extremely dry, according to a Texas AgriLife Extension Service expert.

But in Texas, weather extremes are the norm, said Dr. Andy Vestal, director of AgriLife Extension's Homeland Security and Emergency Management program.

"The weather is dynamic, as it usually is in Texas," Vestal said. "It goes from one side to the next."

Vestal noted that in the most southern parts of the state there were red-flag alerts for wildfire danger, while in Lubbock it was the seventh wettest January since official record keeping was started in 1911.

"If you start in South and Southeast Texas, we are very, very saturated," Vestal said. "And that saturation continues pretty significantly throughout East and Central Texas and on up through West Texas and the Panhandle."

"Two to 4 inches of rain were received throughout the week," said Rick Hirsch, AgriLife Extension agent for Henderson County, east of Tyler. "All farming and ranching activities were drastically hampered by soggy and muddy conditions. Hay supplies were fair for most producers, but producers with short hay supplies were having difficulty finding hay for sale."

What's too wet for some spells good news for others. For example, in Bexar County, which includes San Antonio, the continued rain is causing wheat and oats to thrive, said Jerry Warren, AgriLife Extension agent.

"We are in very good shape for moisture going into spring," Warren said. "Wheat and oats are doing well. Some warm days should provide some good growth on winter crops."

The following summaries were compiled by AgriLife Extension district reporters:

CENTRAL: Temperatures were in the 40s and 50s. Soils were saturated by recent rains,

keeping farmers out of the fields. Producers continued to provide supplemental feed to livestock.

EAST: As much as 4 inches of rain fell in parts of the region. Pastures and fields were soggy, making fieldwork difficult. Creeks and river bottoms were flooding, forcing feral hogs out of those areas and increasing their damage in pastures and other areas. Livestock were in fair to good condition with producers providing supplemental feed. Despite shortages, producers were still feeding hay to cattle, on which the cold, wet weather began to take a toll. Winter forage growth was limited due to the weather.

FAR WEST: Scattered rain fell across the district with accumulations from 0.5 inch - 1.5 inches. Farmers could not get into fields due to the wet conditions. Ranchers were thankful for the rain and looking forward to a good spring recovery of rangeland grasses. Some cool-season grasses were emerging. The last of the pecan harvest was on hold, with losses to embryo rot where nuts were on the ground. Alfalfa remained dormant. Fall-planted onions came out of dormancy and were at the three-leaf stage. Growers were irrigating spring-planted wheat, but there were no signs of germination yet.

NORTH: Weather was cold, wet and miserable for livestock and producers. The soggy, muddy conditions were getting worse, making it extremely difficult for cattle feeding and other activities. Livestock producers were having trouble getting hay out due to mud, and hay supplies were running low. The cattle were in fair to good condition, and producers were forced to feed more supplemental protein and forages due to the wet and cold conditions. Winter pastures were too wet to be grazed, which further increased the demands for supplemental feed. Unless there is drier weather, corn planting will be delayed. Small grains and winter annual pastures were not grow-

ing much at all with all of the rain. Winter wheat ranged from poor to good condition. Pecans were 100 percent harvested. Most pastures will need significant repair work this spring and summer to fix ruts in the feeding areas. The Van Zandt County area reported that this was the wettest it has been in 18 years, and producers there were still cleaning up from tornado damage in late January. Rangeland and pasture conditions ranged from very poor to good.

PANHANDLE: Rain and snow brought much-needed moisture. Soil conditions improved and should continue to do so as the snow melts. Spring planting preparations halted because of the wet conditions. The moisture will be good for spring planting and wheat when it comes out of dormancy. Because most fields were snow covered and not grazable, producers had to supplement cattle with hay. Cattle death losses from the winter storm were low.

ROLLING PLAINS: The district received much-needed moisture in the form of ice and snow. Several counties were without electricity following an ice storm. Thanks to the moisture, wheat and oat stands were looking great, but the region could use some warm, sunny weather to dry fields out and make applying fertilizer possible. Only a few scattered acres of cotton had not been harvested. Livestock were in fair condition with producers providing some supplemental feed. Stock water tanks were nearly full.

SOUTH: Nearly the entire region had adequate soil moisture levels. One county reported surplus soil moisture. Cool temperatures and from 3 inches to 5 inches of rain fell in the northern part of the region. The rain improved rangeland and pasture conditions but put a halt to field work in both the northern and eastern areas. Wheat and oats in the western part of the region benefited from rains, but harvesting of both market and processing spinach came to a stand-

still. Crops, particularly onions, were in fair condition in the southern part of the region. Rangeland and pastures had not yet fully recovered from multiple freezes during December and January, but showed some improvement thanks to rains. Body scores of cattle have declined some due to cold, muddy range and pasture conditions. That ranchers had difficulty supplemental feeding cattle because of wet conditions was also a factor.

SOUTH PLAINS: The region received more moisture in the form of rain and snow. Soil moisture was adequate. Fieldwork was still on hold due to wet conditions. Wheat was in fair to good condition and continuing to mature. Pastures and rangeland were in fair to good condition. Cattle were in fair to good condition, with beef producers continuing to supply supplemental feed.

SOUTHEAST: Light rain and cool, overcast conditions prevented any plant growth. Pastures were so wet that it was difficult for cattle producers to get into the fields to feed. The wet conditions also delayed hay deliveries. Supplemental feeding continued at a steady high rate where conditions allowed. Livestock were stressed by the weather but still in good condition.

WEST CENTRAL: Cold, cloudy and rainy conditions were the rule. Soil moisture levels were good, but all fieldwork came to a halt because of the wet conditions. Rangeland and pastures were in good condition, and cool-season grasses were growing. Stock water tanks were filling from rain runoff. Livestock were in fair to good condition as producers continued supplemental feeding.

Accolade to sponsor heart health screenings

In an effort to detect heart health, Accolade Home Care is offering confidential Heart Health screenings to Pampa and surrounding area residents on February 26 from 10 a.m.-2 p.m. at United Supermarket, 1420 N. Hobart Pampa, TX 79065.

Accolade screenings take roughly five to ten minutes and will include a five panel screening that will measure: blood pressure, O2 saturation, weight, cholesterol and BMI. Each screening is administered by a qualified healthcare professional and the results from the screening will be made available to participant. Accolade will also provide individuals with informational sheets explaining their numbers from the screenings.

Each year in the U.S. 6 million people are hospitalized due to cardiovascular disease. The number of excess deaths from Coronary Heart Disease is projected to rise from 59 in 2020 (an excess of 9%) to 3,600 in 2035.

Dr. Arunava Ray, a Texas cardiologist said, "Our patients are educated about their disease in our office or through home health. Home health care has reduced re-admissions into the hospital by a good fifty percent."

"The simplicity of the monitor made things easier and also provided more personal care. It gave me a feeling of comfort that someone would look at my husband daily," Weaver McKamie, wife of Accolade Home Care patient.

Telemonitoring has proven to be one of the best ways to manage cardiac patients in their home. Accolade was one of the first agencies in the country to use home telemonitoring to better care for their patients. The monitor is used easily by the patient to transmit vital signs to include blood pressure, heart rate, weight and oxygen saturation, daily to a team of specialized nurses. This daily transmitted information allows Accolade to provide more proactive care.

"Like most agencies we utilize the monitors on our cardiac patients. With the monitor, we are able to detect subtle changes in the patients' conditions earlier, thereby reducing unnecessary hospitalizations and ER visits. This type of care empowers the patient to better manage their condition," Maureen Kratzer, RN with Accolade Home Care.

Send photos of your group event to The Pampa News—share them with the community!

Altrusa Club News

ALTRUSA INTERNATIONAL, INC. OF PAMPA, TEXAS met February 9, 2010, at First United Methodist Church with President Kerrick Horton presiding. Sue Pribble and Judy Warner served as greeters. Teresa Benjamin and Amanda Copeland attended as guests.

Terry Gamblin gave the Accent on the procedure for election of new officers.

The club extended the leaves of absence for Ruby Roysse and Darlene Birkes.

The following committee reports were given:

Travis Reading Project - Kathryn Green announced the next reading date will be March 2.

ASTRA - Eileen Kludt reported on the

recent installation of officers.

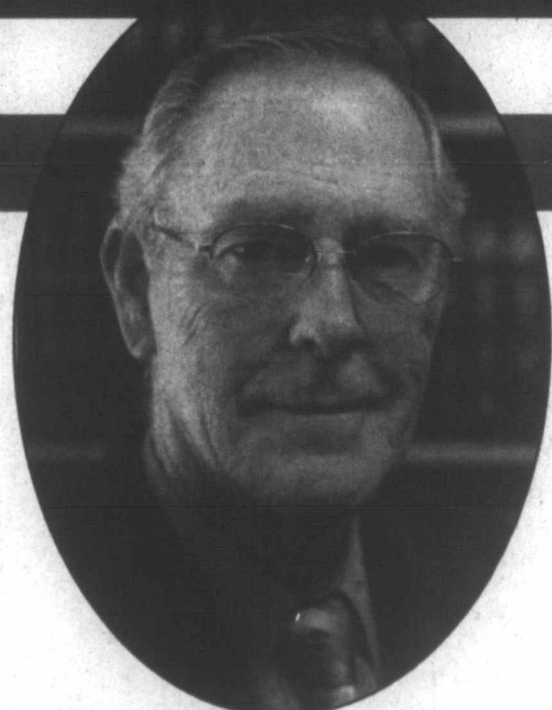
Salvation Army Snacks - Laura Martin expressed appreciation for snacks being furnished for the after school program.

Barb Hahn, Nominating Committee, chair announced the slate of new officers for 2010-2011. Election will be held at the March 9 meeting.

Carolyn Kessel and Mary McDaniel volunteered to co-chair the Relay for Life Dinner.

Birthday greetings were extended to Jennifer Monroe and Sheila Winton who celebrate birthdays this month.

The next meeting will be held February 23 at 6:30 p.m. at Pampa Senior Center.



Reasons to re-elect JUDGE RICHARD PEET

- ◆ Instead of hiring outside professionals, Judge Peet has exhibited abilities above and beyond his serving in the office of county judge
- ◆ In 1997 Judge Peet acquired contracts with over 20 panhandle counties to utilize our Golden Phoenix facility at the Pampa Regional Medical Center, thereby bringing in revenue to Pampa and Gray County
- ◆ In 1998 Judge Peet saved the county thousands of dollars by personally writing the grant application that received \$595,000 from the governor's justice fund to build a juvenile rehab facility
- ◆ In 2000 Judge Peet saved the county about \$16,000 by doing the redistricting required by law following the 2000 census and will do it again this year
- ◆ In 2001 Judge Peet worked with Architexas in writing the master plan for courthouse restoration which resulted in Gray County receiving a grant of 3.8 million dollars from the state
- ◆ In 2005 and again in 2008 Judge Peet saved the county altogether about \$24,000 by writing the criteria for the establishing of reinvestment zones, which provides business incentives in Gray County

Pl. Pol. Ad. By John Stewart, Treas., 717 E 14th Pampa, TX 79065

Would you like a copy of a photo you see in the paper?

Buy it Online!



Go To:
www.thepampanews.com
and click on

See a great photo in THE PAMPA NEWS? Order a copy for yourself today!

Sports

No. 2 Lady Eagles soar above Lady Harvesters

By BRAD RABURN
Canyon News staff

The Lady Eagles continued with their traditional style of play while the Lady Harvesters struggled to land their shots, falling 63-8, Tuesday.

"I thought that we played well, we just couldn't make a shot," said Lady Harvester head coach Gene Valentine. "I don't know why. Part of it may have been we were a little tight, or that we made the play-offs a couple of games ago; honestly I couldn't tell you."

The Lady Harvesters protected the ball well in the first minutes of the game, forcing a turnover but gave the ball right back and Lady Eagle Jordan Vessels took it inside for the score.

Canyon continued to hit unanswered jump-shots, while Pampa's efforts seemed bewitched through the first quarter and the Lady Eagles led 9-0.

The Lady Harvesters made defensive stands, but came up dry offensively for most of the second quarter as well.

The Lady Eagles added 15 points to the board, before Pampa's Shelbie Watson completed a free-throw for Pampa's first score; followed by Cori Cook scoring their second point in the same fashion.

A last second tip-in by Lady Eagle Taylor Sullivan moved the score to 26-2 at halftime.

The Lady Eagles completed 12 shots in the third quarter, boosting their score to 50. However, the Lady Harvesters' score remained unchanged at two points.

The beginning of the fourth quarter continued to be one-sided, and the Lady Harvesters could do nothing but press harder on defense as the score moved to 59-2.

As time ticked below the

four minute mark, Lady Harvester Kirsten Kuhn improved Pampa's score with a completed jump-shot.

Canyon was sent to the line, with Madison Russ completing both shots.

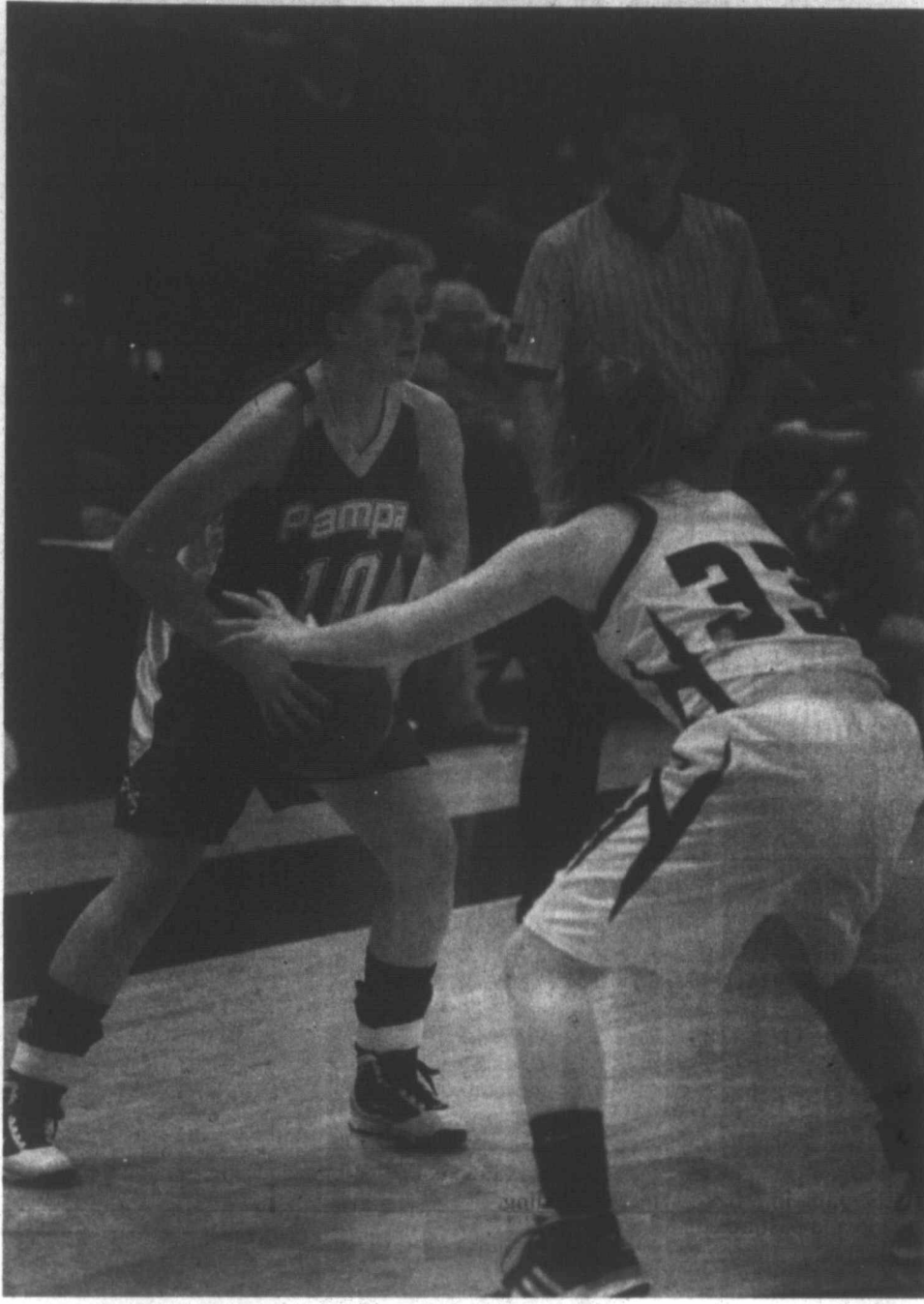
The previous Pampa completion led to Delaney Clendening hitting two more jump-shots and

Pampa's final score. Canyon's Macy Myrick found room to get off one more jump-shot and time expired.

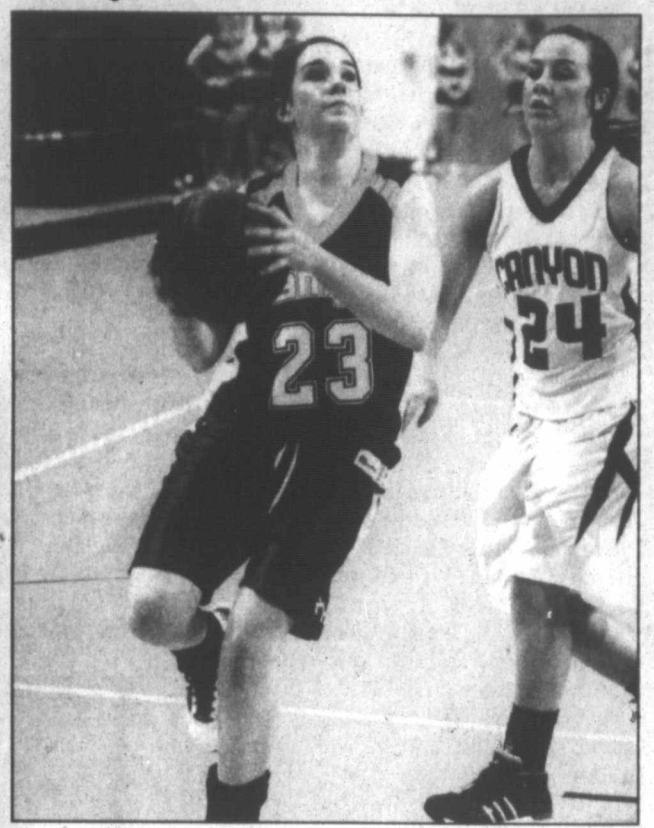
"We played real good defense," Coach Valentine said about the season overall. "We had to win three games last week and we did. Like I told Coach Lombard, I hope we got

this out of our system and get ready to play next Tuesday."

The Lady Harvesters end the regular season 11-17 overall and 6-6 in district. They will announce later this week whether their first play-off game will challenge Frenship or Plainview next Tuesday.



Lady Harvester Emilie Troxell looks for the pass over defender Macy Myrick. The Lady Harvesters lost 63-8 but will play either Plainview or Frenship in the bidistrict playoffs next Tuesday. Photo courtesy of James Barrington



Lady Harvester Taryn Eubank drives inside past Canyon's Taryn Borchardt. Photo courtesy of James Barrington



Call 669-2525 today to get THE PAMPA NEWS with all the local news you need delivered right to your doorstep



Dear Abby...

By Pauline & Jeanne Phillips

DEAR ABBY: I am 20 and live most of the year on my college campus. I'm on a full scholarship, so my parents are not paying my tuition. Most of my mail -- bank statements, etc. -- still goes to my parents' house since I don't have a permanent address.

For the last two years, my mother has opened my bank statement and read the entire thing. She then calls me and goes through all of my card charges and checks, and asks me to explain where I was and what I bought.

I have tried telling her that I am an adult and that what I buy is my business, but she continues to do this every month. When I explained that I am capable of managing my own finances, she told me she was just worried about me and that "a mother ALWAYS has the right to worry about her only child."

I understand she will always be concerned about my well-being, financial and otherwise, but this is taking it too far. How can I explain to her that it's not OK to invade my privacy? I know she means well, and I don't want to hurt her feelings, but it's really becoming a hassle. -- COLLEGE CO-ED IN WILLIAMSBURG, VA.

DEAR COLLEGE CO-ED: A mother may always have the right to worry, but she does not always have the right to snoop. Because you have already tried explaining to her that you feel what she's doing is an invasion of privacy and the message isn't getting through, it's time for you to open a post office box near the campus and have your mail sent there. It can be forwarded to you if you go home for the summers.

DEAR ABBY: After my mother died two years ago, my sisters and I divided up her household items, parceling out equally objects of material and sentimental value. One item, which went to my younger sister, "Beth," was a brightly colored hand-made Native American rug our parents bought in the 1950s in Arizona. It had

been displayed prominently for decades on a wall in the house where we three children grew up.

I visited Beth recently and was shocked to see that she had taken the rug out of storage and was using it as a floor rug in her family room. I shuddered to think of the damage that a daily trample by her three little kids, she and her husband and a sadly incontinent dog will do to this family treasure. I politely asked her to reconsider and find somewhere else to display it. If she couldn't, I offered to trade it for something of her choice from my parcel of the family possessions.

Beth took offense, reminding me that it is, after all, a rug, and that it now belongs to her. Emphasizing that her small house has limited wall space, she implied that I was trying to get the rug for myself. She feels my desire to see it displayed is no more valid than hers to see it used. Am I wrong in thinking she should not trash this heirloom? -- SENTIMENTAL IN HARTFORD, CONN.

DEAR SENTIMENTAL: The rug belongs to your sister, to do with as she pleases. HOWEVER, her Native American rug purchased in the 1950s could be extremely valuable. Has your sister had it appraised? If not, I am urging you to tell her to have it done, because it could pay for a year or two of one of her children's college education.

DEAR ABBY: "Katy" and I are in a loving relationship but have an ongoing argument in our home. Katy always sets the alarm clock for an hour before it's time to get up -- then hits the "snooze" button five times before actually dragging herself out of bed (which is usually even later).

Because I am a light sleeper, I'm forced to listen to the alarm clock and end up waking up earlier than I'd like. Can you please offer a solution? -- SLEEPLESS IN SOUTH CAROLINA

DEAR SLEEPLESS: Earplugs for you. A cold foot on the behind for Katy.

PAMPA M*A*S*H BLOOD DRIVE

Monday, February 15, 2010
11:00 am - 7:00 pm
Clarendon College-Pampa Campus-Lobby & Classroom 203
MUST BRING PHOTO ID OR DONOR ID CARD
All eligible donors who present to donate will receive a M*A*S*H T-Shirt.
To schedule an appointment to donate, call 1-877-574-8800.

Sanders resigns as CEO of United Supermarkets

LUBBOCK, Texas (Feb. 9, 2010) -- Dan J. Sanders, executive vice president and CEO of United Supermarkets, LLC, has submitted his resignation according to an announcement today by Co-Presidents Gantt and Matt Bumstead.

"The Board of Advisors has accepted it, gratefully acknowledging the fine work Dan has done in his nearly six years in this role," the Bumsteads said in a statement.

Effective immediately,

Robert Taylor, vice president of logistics, will serve as interim CEO. Taylor has been a member of the company's leadership team since July 2007, when United purchased R.C. Taylor Distributing. Taylor's family has operated R.C. Taylor Distributing in Lubbock since 1949, and Taylor was company president at the time of the purchase.

"We will make announcements about further plans at a later date as we examine the next steps for our

executive leadership team," Gantt Bumstead said.

Sanders assumed the role of CEO in 2004 after holding other executive roles at United in the advertising, marketing, sales/merchandising and human resources departments. Before joining the company, he was a principal in AdPlex and the founder of AdContent, both of which provided advertising production and content management technology to Fortune 500 companies.

PGCD calls director elections

At their regular meeting on January 26, 2010, the Board of Directors of Panhandle Groundwater Conservation District called director elections within and for the following precincts: Precinct 2, the southeastern portion of Carson County and the northeast corner of Armstrong County; Precinct 4, the southern portion of Gray County and the northern portion of Donley County and the southwestern portion of Wheeler County; Precinct 6, the remainder of Armstrong County; Precinct 8, the major eastern portion of Wheeler County. One director will be elected to a four-year term for each individual precinct.

Current directors of these precincts are: Precinct 2 - Billy Van Crawford; Precinct 4 - Charles Bowers; Precinct 6 - Jim Thompson; Precinct 8 - Danny Hardcastle.

The Board of Directors is responsible for legal, financial and business matters of the District. To qualify to serve as a director, an individual must be a registered voter in that precinct. Applications are available at the District office, 201 W Third Street, White Deer, Texas. All applications must be signed by the applicant, notarized and filed in accordance with the election code. The deadline to file an application with the District office is 5:00 p.m., March 8, 2010. For more information, contact the PGCD office at 806-883-2501.

Classifieds Work!
Call 669-2525

Sudoku

Answer to yesterday's puzzle:

| | | | | | | | | |
|---|---|---|---|---|---|---|---|---|
| 2 | 7 | 6 | 4 | 5 | 8 | 1 | 9 | 3 |
| 3 | 1 | 8 | 9 | 6 | 2 | 5 | 4 | 7 |
| 5 | 4 | 9 | 3 | 7 | 1 | 2 | 8 | 6 |
| 6 | 9 | 3 | 2 | 8 | 5 | 7 | 1 | 4 |
| 7 | 5 | 1 | 6 | 3 | 4 | 9 | 2 | 8 |
| 4 | 8 | 2 | 1 | 9 | 7 | 6 | 3 | 5 |
| 9 | 2 | 7 | 8 | 4 | 6 | 3 | 5 | 1 |
| 8 | 3 | 5 | 7 | 1 | 9 | 4 | 6 | 2 |
| 1 | 6 | 4 | 5 | 2 | 3 | 8 | 7 | 9 |

| | | | | | | | | |
|---|---|---|---|---|---|---|---|---|
| 8 | | 1 | | | | | | 6 |
| | 7 | | | 2 | 8 | | | |
| | | | 3 | 9 | | | | |
| | 3 | | 6 | | 4 | | | |
| 1 | | | 9 | | | | | |
| | 8 | | | | | | 1 | 9 |
| | 2 | 7 | | 3 | | 9 | | |
| | 5 | | | | | 4 | | |
| | | | | | | 2 | | 1 |

Level: Intermediate

Sports

Harvesters win delays playoff slot for Eagles

By BRAD RABURN
Canyon News staff
The Pampa Harvesters pulled ahead in the fourth quarter defeating the Canyon Eagles 64-60 Tuesday. "Since our Caprock district game, other than our PD (game), every game we have had a chance in the fourth quarter; we told them to keep hanging in there and hopefully one of these days it was going to go our way," said Pampa head coach Dustin Miller.

Canyon took an early lead, but was never more than three points ahead through the first quarter. Canyon's Derek O'Dell, as well as Pampa's Ryan Jimenez and Garrett Ericson, made three-pointers. Alex Clendening made the final shot at the buzzer, Pampa led 14-13, going into the second quarter.

O'Dell hit his second three after a Pampa turnover. However, Clendening answered back with his own. Both teams traded steals and Canyon's Braden Kimsey gave the lead back to Canyon 18-17 making two free throws.

Jimenez made one of two free throws to tie the score at 18. Both teams hit jump-shots. O'Dell made a third three followed by a jump-shot and a couple of free throws, provided a brief seven-point lead for Canyon.

Jimenez hit a successful jump-shot in transition, and after a Canyon miss, Trevor Davis grabbed a steal, taking it to the hoop.

Jimenez was not deterred and hit his second three-point shot, Jonathan Polasek

banked a shot off the glass and Travis Hagerman made his jump-shot to tie the score at 29 at halftime.

The second half began with traded points in the first few minutes, until missed Canyon shots allowed the Harvesters four points unanswered.

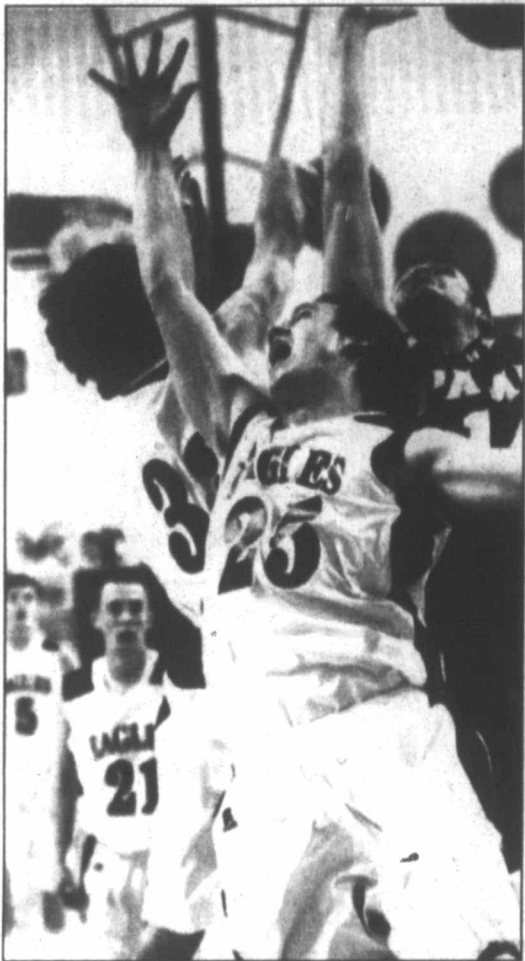
The lead was short-lived as O'Dell came away with a steal and a layup, followed by Kimsey with a three-pointer. Canyon retook the lead 36-35.

Ericson and Clendening gave the Harvesters the lead by one, 39-38.

Both teams exchanged threes. Kimsey gave Canyon a 43-42 lead, with a two at the end of the third.

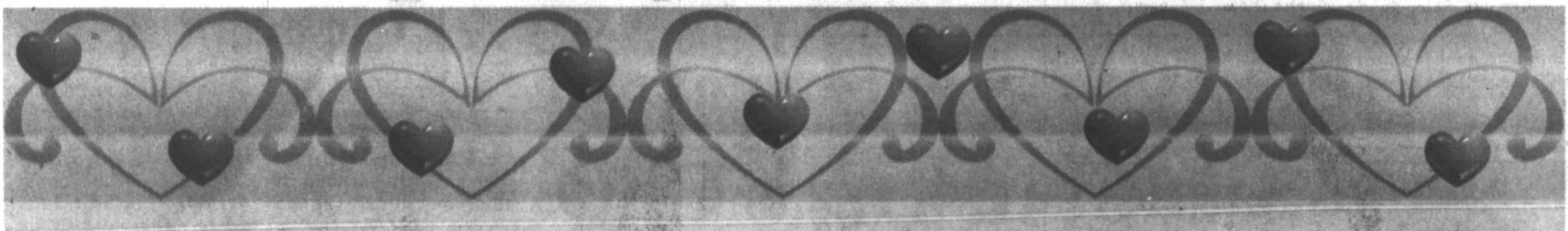
A Canyon turnover allowed Ericson to score and the Harvesters made four free throws line, giving them a six point lead.

O'Dell cut Pampa's lead in half, but the Eagles couldn't get closer.



Ryan Jimenez takes an off-balanced shot, shaking Canyon defenders Tuesday in Canyon. Pampa won 64-60. Photos courtesy of James Barrington The Canyon News.

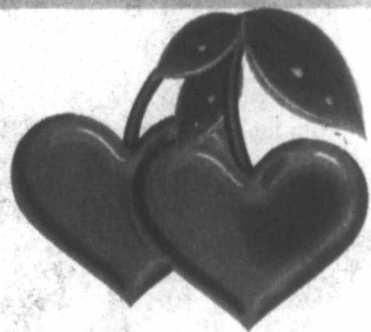
Alex Clendening powers over Canyon defenders Clay Halencak, right, and Jake Kantor.



Coronado

Shopping Center of Pampa, TX

For Leasing Information,
Contact Irvine Riphahn at
(806) 665-0717.



Dance Academy of Pampa
Home of the Pampa Civic Ballet
663-9103

Hastings.
Discover Your Entertainment
Clearance Rentals
Buy 1
Get 1
For \$1
(806) 665-1020

THE PLAZA RESTAURANT
DELICIOUS MEXICAN DISHES
Fajitas for Two
\$23.99
-plus-
Heart-Shaped Cheesecake & Drink
806.688.0031

LA Nails
Come by & check out our selection of purses, wallets, & sunglasses!
Sweetheart Gift Cards Available!
Accepting Cash, checks, or credit cards.
665.8424

AVENUES TOO!
"For all your Decorating Needs!"
For Appts: 665-0983
Call Beth at: 663-3511

Hoagies Deli
\$1 Off Any Entree! w/coupon*
806.665.0292

Watermill Express
WATER 24/7

Pampa Orthopedics & Rehab
806.665.4020

Sheila Webb Agent
806-669-3861
OR
800-299-3861
STATE FARM INSURANCE COMPANIES
HOME OFFICES: BLOOMINGTON, ILLINOIS
"Like A Good Neighbor, State Farm Is There"

DEALS
SALE CLEARANCE
SAVE 70%-85%
NOW 4.99
NOW 5.99
NOW 6.99

1982

