

**Ashtore Insurance Agency, LLC**  
 ...for all your insurance needs!  
 "Doing Business with people you know and trust"  
 1224 North Hobart  
 NBG Plaza 2 Suite 11  
 Pampa, TX  
 (806) 665-7081  
 www.ashtore.com

**DOUG BOYD MOTOR CO.**  
 WAIVE  
 CC  
 Visa  
 Marc

**25% - 40% Off Select Trees!**  
**West Texas Landscape**  
 Hobart St • 669-0158 • Mon-Sat • 9am - 5pm

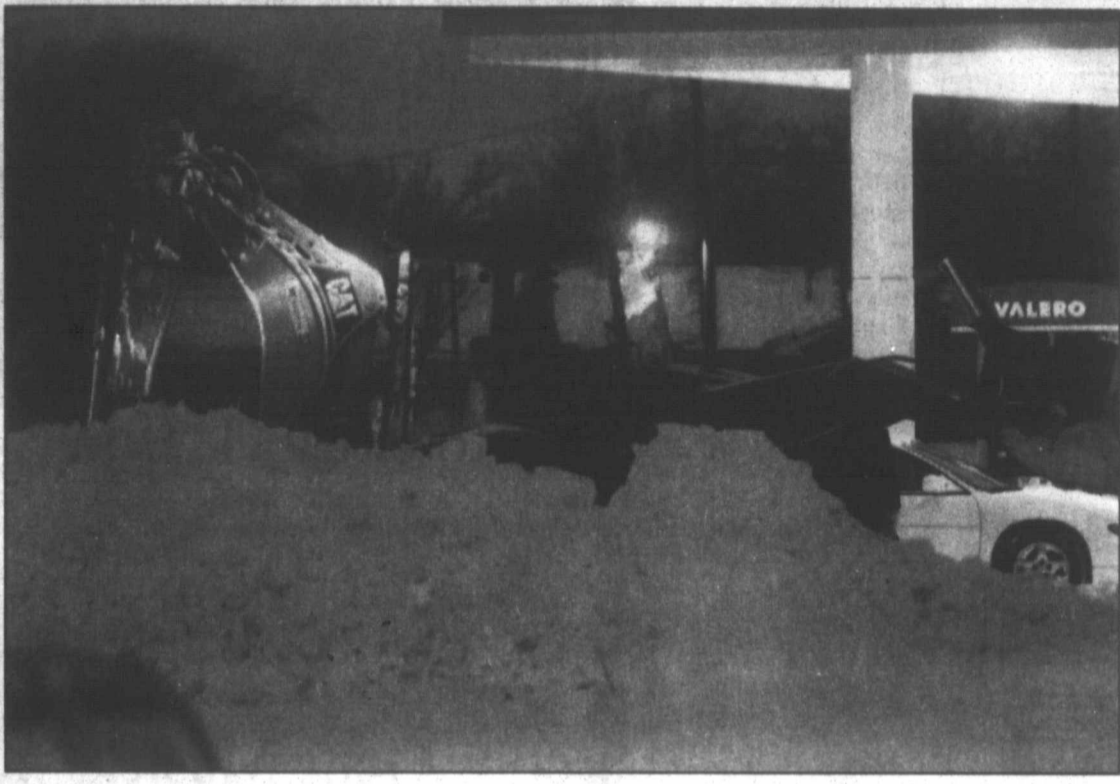
\*\*\*\*\*  
 0600471 12/31/1000  
 HERITAGE MICROFILM  
 4005 ZIEGLER AVE SW  
 CORD ROYALS, IA 52404 6383  
 \*\*\*\*\*

# The PAMPA NEWS

Friday, January 29, 2010 Volume 105 • No. 223 80¢ Daily • Weekend \$1.50

## Storm shuts down panhandle

BY DAVID BOWSER  
 dbowser@thepampanews.com



Workers in graders and front end loaders were out before dawn today clearing streets and parking lots after a winter storm dumped more than eight inches of snow on Pampa. *staff photo by David Bowser*

Although the National Weather Service reports that the winter storm that dropped more than eight inches of snow and over an inch of ice is moving off to the east, snow and ice remain a concern of city officials today.

With temperatures hovering around 14 degrees at mid-morning and not expected to get above 21 degrees this afternoon, city street officials are continuing to clear streets with crews working 12-hour shifts around the clock.

Fred Courtney, Pampa's Emergency Management Coordinator, said today that while several town around the panhandle suffered power outages, Pampa's power stayed on throughout the storm.

County officials reported no major problems due to the snow and ice. They said Texas Highway 273 to McLean was passable but travel was being discouraged.

Interstate 40, which was the scene of multiple pileups Thursday, was closed from the Oklahoma to New Mexico state lines this morning. Officials said it may **STORM** cont. on page 3

**Welcoming 2010 With HUGE Savings!**  
 On New Products Arriving From Market  
 Get any new in-stock laminate or tile for just **10¢** Per Sq. Foot!  
 Don't forget FREE installation purchase regular.

**The Floor Store**  
 2110 Perryton Parkway  
 (806) 665-4455

**CHILDERS BROTHERS INC**  
**HOUSE LEVELING**  
 Uneven Floors  
 Floor Bracing  
 Cracks In Bricks  
 Sticking Doors & Windows  
 Interior Wall Cracking  
**FREE ESTIMATES**  
**1-800-299-9563**  
 WWW.CHILDERSLEVELING.COM

**Handscraped real hardwood**  
 \$6.77/sf & \$6.97/sf installed.  
 Reg. \$9.97/sf. While quantities last.

**One STOP Flooring**  
 Store Hours:  
 Monday-Friday 9am-5pm  
 Saturday 10am-1pm  
 1533 N. Hobart - Pampa, TX  
 (806) 665-0995

**BOB'S PLUMBING**  
 PAMPA, TEXAS  
**806-669-1940**  
 CELL# 806-584-0809  
 HOURS MON-FRI 8-6 • SAT 8-12  
 EMERGENCY ANYTIME  
 OWNERS: BOBBY FAIRES / DUECE FAIRES

**Sentry Self Storage**  
 24 hr Controlled Access  
 24 hr Video Surveillance  
 Personal & Commercial  
**665-1000**

**VISION SOURCE**  
 OAKELY  
 MAUI JIM  
 RAYBAN  
 CARE CREDIT ACCEPTED  
 1324 N. BANKS  
 806.665.0771

**Vision**  
 COMPUTER SERVICES  
 Ihavecomputerproblems.com  
**806-665-HELP(4357)**  
 Combs-Worley Building  
 120 W Kingsmill Ave  
 Suite 303

**MASSAGE DISCOUNTS**  
 CALL PAMPA'S MASSAGE ADVANTAGE LOCATION TODAY  
 CALL 806-665-7261  
 2110 Perryton Parkway  
 Pampa, TX 79066  
 10 & 11 AM - 7 PM

**M & H Leasing**  
**TOP OF TEXAS**  
 Read the Bible in a year  
 Ex 12-26  
 Matt 16-Matt 20:17-34  
 1945 N. Hobart • 665-2061



As a winter storm dropped in excess of eight inches on the Pampa area, people still braved the elements to get to Pampa Regional Medical Center and to Walmart. *staff photo by David Bowser*

## Heavy snow, ice bury southern Plains, cut power

OKLAHOMA CITY (AP) — A storm that toppled power lines, closed major highways and buried parts of the southern Plains in heavy ice and snow began moving into the South on Friday, leaving tens of thousands of people in the dark — possibly for several more days. Winter storm warnings were in effect from New Mexico to North Carolina, and Arkansas Gov. Mike Beebe declared a state of emergency. The storm threatened to dump up to a foot of snow across the region after leaving 13 inches in the northern Texas Panhandle, where nearly all of Interstate 40 from the Texas-Oklahoma line to New Mexico was closed. The closure stranded dozens of people at the Travel Centers of America truck stop along I-40 in Sayre in far western Oklahoma. "There's probably 3 1/2 inches of packed ice on the road.

And it's no snow, it's all ice," said David Hill of Oklahoma City, who was hauling a load of food products. "I've probably got 2 inches that covers my whole tractor. It's pure ice." Heavy ice brought down electrical lines and trees limbs, leaving nearly 142,000 homes and businesses in Oklahoma without power Friday, according to the Oklahoma Department of Emergency Management. "In some places, as far as you can see there are hundreds of utility poles on the ground," said Andrea Chancellor, spokeswoman for Public Service Co. of Oklahoma. She said it could be five days before electricity is restored to all customers. Flights were canceled Friday morning at airports in Oklahoma City and Little Rock, Ark. Arkansas State Police warned people who were driving to work on Friday to be prepared to be stranded. Spokesman Bill

Sadler encouraged motorists to bring blankets, water and snacks with them and to line up a hotel room within walking distance or otherwise plan for an overnight stay. The snow, sleet and freezing rain were expected to crawl east through Friday. In Arkansas, as much as a foot of snow could fall near the Missouri state line, northern parts of central Tennessee could see up to 8 inches and western North Carolina could get hit with a foot of snow, according to the National Weather Service. More snow also was expected in Texas and Oklahoma, where dozens of shelters were opened for those who needed a warm place to stay, including First United Methodist Church in Hobart, about 120 miles southwest of Oklahoma City. Pastor Kyle Clark said downed trees and utility poles littered the **PLAINS** cont. on page 3

## Cancelled events and closures

- All events for PISD tonight have been cancelled.
- Wilson Elementary's 80th Anniversary Celebration slated has been postponed. A new date will be announced.
- Evening on Broadway rescheduled for Monday Feb. 1, at 7 p.m.
- The Hot Shot competition has been cancelled.
- Swimming
  - Varsity/JV District Swim Meet in Lubbock is cancelled. Make Up is still pending.
- Basketball
  - Dumas at Pampa (JV/V) Friday has been moved to Saturday 1 & 3 p.m. We are planning to play the JV's as normal.
  - We are switching the 9th grade games from Dumas to Pampa and will play them at regular time 10 & 11:15 in the MPAC-South gym.
  - JH Girls Tournament at Canyon has been cancelled.
- Soccer
  - Varsity Soccer Boys and Girls @ Burk Burnett Tournament has been Canceled.
  - JV Boys Soccer at Berger - Cancelled for Friday, Saturday is pending.
  - JV Girls Soccer at Caprock - Cancelled for Friday, Saturday is pending.
- Wrestling
  - At Bushland, Saturday still on.

**INSIDE THE WEEKEND EDITION**  
**GRIDIRON MANIA**

**Thomas**  
 Greater Auto Service and Supply  
**665-4851**  
**217 E. ATCHISON**  
 Monday - Friday 9am - 6pm



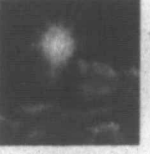
**HOUSE HUNTERS-REALTOR**  
 Linda Laycock Broker (806) 662-1312  
 Jordan Oneal Assoc. (806) 670-6623  
 Larry Hadley Assoc. (806) 662-2779

**Annual Chamber Banquet**  
 Citizen of the Year & Business of the Year Awards  
 Featuring Bruce Chadwick  
 February 25th at 7:00pm  
 \$25 per person • RSVP to (806) 669-3241



# For the record

## PAMPA FORECAST

Saturday	Sunday	Monday
		
High 37 Low 15	High 82 Low 62	High 86 Low 62
<b>Tonight:</b> Partly cloudy, with a low around 11. North wind around 5 mph becoming calm.		
<b>Saturday:</b> Mostly sunny, with a high near 37. Wind chill values between 3 and 13. Calm wind becoming south around 5 mph.		
<b>Saturday Night:</b> Partly cloudy, with a low around 15. Wind chill values between 6 and 11. South wind between 5 and 10 mph.		
<b>Sunday:</b> Mostly sunny, with a high near 46. South wind between 5 and 15 mph, with gusts as high as 20 mph.		
<b>Sunday Night:</b> Mostly cloudy, with a low around 27. South southwest wind between 5 and 15 mph, with gusts as high as 20 mph.		
<b>Monday:</b> Mostly sunny, with a high near 49. North northwest wind between 5 and 10 mph.		
<b>Monday Night:</b> Partly cloudy, with a low around 28. East southeast wind around 5 mph.		

Ⓜ This information brought to you by...

PRESTIGE

AUTOBODY & ACCESSORIES

101 S. HOBART      806-665-3500

IN STOCK: HELMETS, GLOVES, GOGGLES

## Obituaries

### John Allen Henderson, 67

Pampa— John Allen Henderson, 67, January 27, 2010, Pampa, Texas. Services will be held at 2 p.m. Saturday, January 30, 2009, at Carmichael-Whitley Colonial Chapel, with Lana Wilkinson and Sherry Barrow, officiating. Burial will be in memory Gardens Cemetery under the direction of Carmichael-Whitley Funeral Directors.

Mr. Henderson was born May 1, 1942 in Phillips. He had been a resident of Pampa most of his life. He was employed by Cameron Compression, retiring in 2009. John married JoeAndra Horn in March of 1970. She preceded him in death on July 30, 2006. He later married JonAnn Philpott on March 28, 2008 in Pampa. He was a member of Highland Baptist

Church. John adored and supported his grandchildren in all their ventures. He was an avid fisherman. Survivors include his wife, JonAnn Henderson of the home; a son, Mark Henderson and wife Wendy, and their two children, Makenna Henderson and Hunter Henderson, all of Midlothian; a daughter, Terri Barrow and husband Kelly, and their two chil-

dren, Luke Barrow and Lyndsey Barrow, all of Borger; one sister, Dana Turner of Simpsonville, South Carolina; three brothers, Kent Henderson of Albuquerque, New Mexico, Jimmy Henderson and wife Mary Lou of Borger, and Howard Henderson of Whitesboro. Sign the on-line register at [www.carmichael-whitley.com](http://www.carmichael-whitley.com)

### LeRoy Edward Rossiter, 69

Pampa— LeRoy Edward Rossiter, 69, died January 23, 2010, in Pampa, Texas. Memorial services will be at 3 p.m. Sunday, January 31, 2010, at Salvation Army Church, with Captain Mark Martin, officiating. Cremation and arrangements are under the

direction of Carmichael-Whitley Funeral Directors. Mr. Rossiter was born July 23, 1940 in Alma, Arkansas. He married Mary Bromlow on July 31, 1974. He had been a resident of Pampa since 1977 where he worked for the City of Pampa. LeRoy was

a member of the Salvation Army Church. Survivors include his wife, Mary Rossiter of the home; one daughter, Mandy Rossiter of Pampa; two sons, Brian Rossiter of Pampa and Steve Rossiter of Amarillo; a brother, Robert Rossiter

of Chickasha, Oklahoma and 14 grandchildren. He was preceded in death by a brother, Thomas Rossiter; a sister: Carrie Whitley and his parents. Sign the on-line register at [www.carmichael-whitley.com](http://www.carmichael-whitley.com)

### Robert Fick, 85

Pampa— Robert Fick, 85, died January 28, 2010, Amarillo, Texas. Services are pending with Carmichael-Whitley Funeral Directors.

### Bea Wortham, 71

Pampa— Bea Wortham, 71, died January 29, 2010, in Pampa, Texas. Services are pending with Carmichael-Whitley Funeral Directors

### Bobby Gene Musick, 71

Lefors— Bobby Gene Musick, 71, died January 28, 2010, in Lefors, Texas. Services are pending with Carmichael-Whitley Funeral Directors.

## Economy grows at 5.7 pct pace, fastest since 2003

WASHINGTON (AP) — The economy's faster-than-expected growth at the end of last year, powered by companies replenishing stockpiles, is likely to weaken as consumers

take a lid on spending. The 5.7 percent annual growth rate in the fourth quarter was the fastest pace since 2003. It marked two straight quarters of growth after four quarters of decline. Growth exceeded expectations mainly because business spending on equipment and software jumped much more than forecast.

Still, economists expect growth to slow this year as companies finish restocking inventories and as government stimulus efforts fade. Many estimate the nation's gross domestic product will grow 2.5 percent to 3 percent in the current quarter and about 2.5 percent or less for the full year.

That won't be fast enough to significantly reduce the unemployment rate, now 10 percent. Most analysts expect the rate to keep rising for several months and remain close to 10 percent through the end of the year. High unemployment and stagnant wage growth will likely keep consumers cautious about spending. Wages and benefits paid to U.S. workers posted a

scant gain in the fourth quarter. And for all of last year, workers' compensation rose by the smallest amount on records going back more than a quarter-century.

The economic recovery could falter if consumers, who account for 70 percent of economic activity, lack the income to ramp up spending.

"That's why there's so much hand-wringing right now," said Brian Bethune, chief U.S. financial economist for IHS Global Insight. "Can the economy really sustain this? That's the big question mark sitting out there."

With hiring still weak, President Barack Obama has stepped up his focus on job creation. On Friday, he will outline the specifics of a proposal to provide tax cuts to small businesses that hire new workers. He touted the plan in his State of the Union address earlier this week.

The goal is "to encourage businesses to respond to rising demand and output by taking the plunge and hiring new workers again," said Christina Romer, Obama's top economic advisor.

About 60 percent of the fourth quarter's growth resulted from a sharp slowdown in the reduction of inventories as firms began to rebuild stockpiles depleted by the recession. Changes to invento-

ries added 3.4 percentage points to the fourth-quarter growth, the Commerce Department said in its report Friday. Excluding inventories, the economy would have grown at a 2.2 percent clip, the government said. That's an improvement from 1.5 percent in the third quarter.

Consumer spending rose 2 percent, down from a 2.8 percent rise in the third quarter. It added 1.4 percentage points to GDP growth.

A steep increase in exports also helped boost growth last quarter. The shipment of goods overseas rose 18.1 percent, far outpacing a 10.5 percent rise in imports. Net exports added 0.5 percentage point to GDP.

Government spending was actually a slight drag on growth in the fourth quarter: A small increase in federal spending was outweighed by a drop in state and local spending.

A drop in defense spending accounted for the decline. Federal government spending is likely to pick up and add to growth in the first quarter, Bethune said.

Business spending will likely boost economic growth for several quarters, Bethune said, though not likely enough to make up for sluggish consumer spending. Many companies are upgrading computers, cell phones and machinery

as their equipment needs to be replaced just to maintain current levels of production.

In addition, many businesses have healthy balance sheets and don't need to pay off the large debts that households are struggling with, Bethune added.

For now, the growing economy is benefiting companies up and down the supply chain. Ford Motor Co. this week reported higher fourth-quarter sales and its first annual profit in four years, as it recovers from the devastating downturn the auto

industry. Ford's "recent success has benefited us," said Tom Schumann, general manager of EC Kitzel & Sons Inc., a small cutting tool fabricator based in Cleveland, Ohio.

### PAMPA INDEPENDENT SCHOOL DISTRICT STATEMENT OF REVENUES, EXPENDITURES, AND CHANGES IN FUND BALANCE GOVERNMENTAL FUNDS FOR THE YEAR ENDED JUNE 30, 2009

Data Control Codes	10 General Fund	60 Capital Projects	Other Funds	Total Governmental Funds
<b>REVENUES:</b>				
5700 Total Local and Intermediate Sources	\$ 12,380,539	\$ 537,197	\$ 4,569,830	\$ 17,487,566
5800 State Program Revenues	12,566,427	-	634,624	13,201,051
5900 Federal Program Revenues	161,888	-	3,322,080	3,483,968
5020 Total Revenues	25,108,854	537,197	8,526,534	34,172,585
<b>EXPENDITURES:</b>				
<b>Current:</b>				
0011 Instruction	13,316,351	-	1,634,216	14,950,567
0012 Instructional Resources and Media Services	333,126	-	16,638	349,764
0013 Curriculum and Instructional Staff Development	467,711	-	345,061	812,772
0021 Instructional Leadership	208,181	-	97,444	305,625
0023 School Leadership	1,431,156	-	22,983	1,454,139
0031 Guidance, Counseling and Evaluation Services	868,754	-	22,617	891,371
0032 Social Work Services	26,343	-	31,795	58,138
0033 Health Services	247,298	-	58,034	305,332
0034 Student (Pupil) Transportation	561,188	-	-	561,188
0035 Food Services	-	-	1,524,430	1,524,430
0036 Extracurricular Activities	1,156,845	-	42,274	1,199,119
0041 General Administration	1,098,809	-	3,967	1,102,776
0051 Facilities Maintenance and Operations	2,431,265	-	25,223	2,456,488
0052 Security and Monitoring Services	105,573	-	-	105,573
0053 Data Processing Services	339,654	-	81,965	421,619
0061 Community Services	94,730	-	146,953	241,683
<b>Debt Service:</b>				
0071 Debt Service - Principal on Long Term Debt	67,061	-	433,704	500,765
0072 Debt Service - Interest on Long Term Debt	4,972	-	2,595,163	2,600,135
0073 Debt Service - Bond Issuance Cost and Fees	-	-	800	800
<b>Capital Outlay:</b>				
0081 Facilities Acquisition and Construction	1,063,604	17,343,989	549,169	18,956,762
<b>Intergovernmental:</b>				
0093 Payments to Fiscal Agent/Member Districts of SSA	-	-	666,032	666,032
0099 Other Intergovernmental Charges	304,389	-	-	304,389
6030 Total Expenditures	24,147,010	17,343,989	8,298,468	49,789,467
1100 Excess (Deficiency) of Revenues Over (Under) Expenditures	961,844	(16,806,792)	228,066	(15,616,882)
<b>OTHER FINANCING SOURCES (USES):</b>				
7912 Sale of Real and Personal Property	25,960	-	-	25,960
7913 Capital Leases	164,638	-	-	164,638
7915 Transfers In	-	-	101,851	101,851
8911 Transfers Out (Use)	(2,812)	-	(99,039)	(101,851)
7080 Total Other Financing Sources (Uses)	187,786	-	2,812	190,598
1200 Net Change in Fund Balances	1,149,630	(16,806,792)	230,878	(15,426,284)
0100 Fund Balance - September 1 (Beginning)	8,586,536	41,635,879	2,714,786	52,937,201
3000 Fund Balance - August 31 (Ending)	\$ 9,736,166	\$ 24,829,087	\$ 2,945,664	\$ 37,510,917

The notes to the financial statements are an integral part of this statement.

E-26 Jan. 29, 2010

## LAST MINUTE ADS


The Pampa News is not responsible for the content of paid advertisement

**CERAMIC TILE.** Keith Taylor, 874-1779 lv. msg.

**MADISON'S CLOSET** has Whisper Bracelets, great Valentine gift! Located inside Beauty 2000, 329 N. Hobart.

**MUST SEE!!!** Beautiful 1 1/2 CT. Diamond Wedding Ring Set. White Gold. Size 6. Only worn 2 years. Purchased at Zales. Asking \$1500. Please call 662-5716 after 4 pm.

The Bible Church  
of Pampa  
Presents



Casey Moore

January 31st • 10:50 a.m.  
Public Invited!



2042



SALE ENDS FEB. 1ST!

**0%** ON SELECT MODELS  
**OR**

up to **\$2000** Customer cash  
 + **\$1000** GM Loyalty Bonus cash



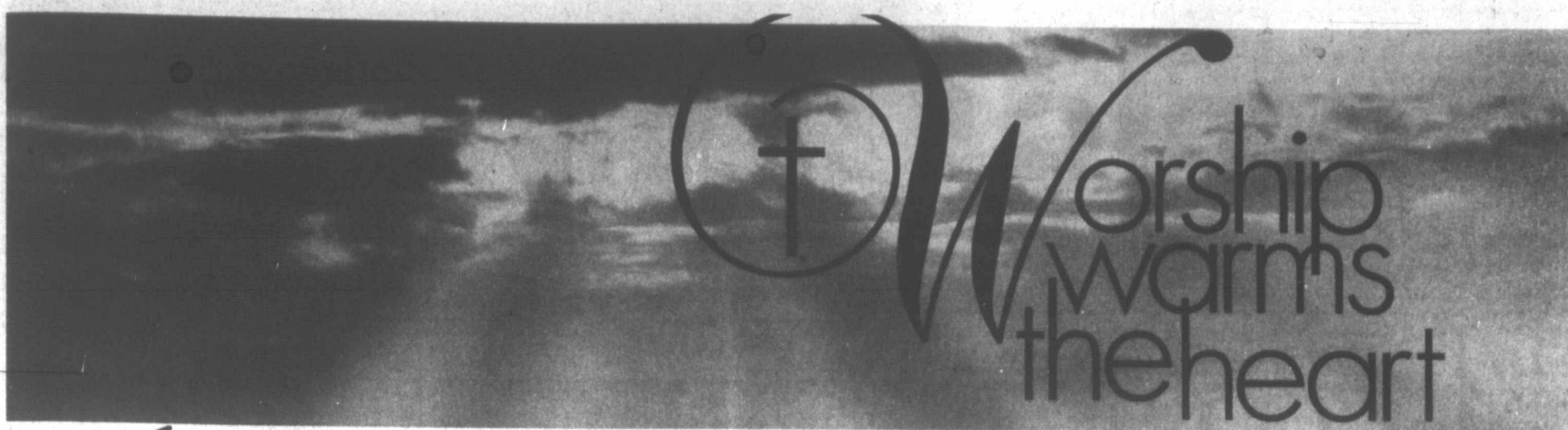
With approved credit.

\*GM Loyalty Bonus Cash - must own/lease GM vehicle 1999 or newer model year to qualify. Pictures for illustration only. Not responsible for typographical errors. See dealer for further details



**Culberson Stowers**

805 N. Hobart • 665-1665 • [www.culbersonautos.com](http://www.culbersonautos.com)



Visit the church of your choice this week

PAMPA CHURCHES

**RHEAMS**  
DIAMOND SHOP  
"May God Be With You During The Week"  
Kpn & Stephens Rheams

**PAMPA**  
NURSING CENTER  
Medicare  
Medicaid  
Special Alzheimers Care  
1321 W. Kentucky 669-2551

**ENGINE PARTS & SUPPLY**  
416 W. Foster 669-3305  
Local Company Serving Local Needs

**FORD FAMILY CHIROPRACTIC**  
Dr. Mark W. Ford, Jr.  
701 N Price Rd • 806-665-7261

**WAYNE'S**  
WESTERN WEAR  
1504 N. Hobart 665-2925

**NATIONAL BANK OF COMMERCE**  
an office of First National Bank, Waupaca, WI  
Member FDIC  
1224 N. Hobart Pampa, Tx 806-665-0022  
501 Commerce St Childress, Tx 940-937-2514  
305 N. Main Shamrock, Tx 806-256-2181

**KEYES PHARMACY**  
"Your Key To Better Health"  
928 N. Hobart - Pampa, Texas  
669-1202 - Emergency 669-3559  
Merlin Rose R. Ph. - Owner - Pharmacist

**United**  
Supermarkets

**Texas PRINTING**  
COPY  
PHONE (806) 669-7941  
319 N. BALLARD PAMPA, TEXAS

**STATE FARM**  
**Sheila Webb**  
State Farm Insurance  
N Side of Coronado Center  
669-3861  
"Like a good neighbor, State Farm is there."

**Pampa Concrete Co., Inc.**  
220 W. Tyng Ave. • 669-3111

2201 Perryton Pkwy. Jay Gist  
**Chitek**  
669-CHIC (2442)  
Pampa, Texas Royce Jordan

**CURT B. BECK, P.E.**  
CONSULTING ENGINEER - POLLUTION AND ENERGY  
"When You Need To Know The Facts"  
HUGHES BLDG. SUITE 173A PAMPA, TEXAS 806-665-0281

**One STOP Flooring**  
1533 N. HOBART • 806-665-0995

**Assemblies Of God**  
**Calvary Assembly of God Church**  
806-669-7207  
1030 Love Street

**First Assembly of God**  
806-665-5941  
500 South Cuyler

**Baptist**  
**Bible Baptist Church**  
806-669-7830  
500 East Kingsmill Avenue

**Calvary Baptist Church**  
806-665-0842  
900 East 23rd

**Central Baptist Church**  
806-665-1631  
513 East Francis Avenue

**Cornerstone Baptist Church**  
(806) 669-6509  
2410 W. 23rd Street

**Crosspointe**  
665-2480  
711 E. Harvester

**Fellowship Baptist Church**  
806-665-5976  
622 East Francis Avenue

**First Baptist Church**  
806-669-1155  
203 North West Street

**First Free Will Baptist Church**  
806-665-2545  
731 Sloan Street

**Grace Baptist Church**  
806-669-7967  
824 South Banks Street

**Harvester Fellowship Church**  
806-665-4922  
2700 W. Kentucky

**Highland Baptist Church**  
806-665-3300  
1301 North Banks Street

**Hobart Baptist Church**  
806-669-3212  
1100 Crawford Street

**Macedonia Baptist Church**  
806-665-4926  
441 Elm Avenue

**New Hope Baptist Church**  
806-665-4044  
404 Harlem Street

**Brethren**  
**Frost Street Missions**  
806-669-6671  
600 North Frost Street

**Catholic**  
**St. Vincent de Paul Catholic Church**  
806-665-8933  
810 West 23rd Ave

**Christian**  
**First Christian Church**  
806-669-3225  
1633 North Nelson Street

**Hi-Land Christian Church**  
806-669-6700  
1615 North Banks Street

**Church of Christ**  
**Church of Christ**  
806-665-0031  
1342 Mary Ellen Street

**Southside Church of Christ**  
806-669-3912  
11927 McCullough Street

**Kentucky Ave. Church of Christ**  
806-665-2572  
1612 W. Kentucky

**Church of God**  
**Church of God**  
806-669-6372  
1123 Gwendolyn Avenue

**Open Door Church of God in Christ**  
806-665-6132  
402 Oklahoma Street

**Episcopal**  
**Saint Matthews Episcopal Church**  
806-665-0701  
727 West Browning Avenue

**Fellowship Of Christian Assemblies / Non Denominational**  
**Lighthouse Covenant Fellowship**  
806-669-6915  
1733 N. Banks

**Fellowship of Christian Ministries**  
**Trinity Fellowship Church**  
806-665-3255  
2225 N. Hobart

**Full Gospel**  
**Briarwood Full Gospel Church**  
806-665-7201  
1800 West Harvester Avenue

**Independent**  
**Bible Church of Pampa**  
806-669-2923  
200 W. Browning Ave.

**The Carpenter's Church**  
806-663-0732 • 806-669-4711  
639 South Barnes St.

**International Pentecostal Holiness Church**  
**First Pentecostal Holiness Church**  
806-665-8192  
1700 Alcock

**Lutheran**  
**Zion Lutheran Church**  
806-669-2774  
1200 Duncan Street

**Methodist**  
**First United Methodist Church**  
806-669-7411  
201 East Foster Avenue

**St. Paul United Methodist Church**  
806-665-8951  
511 Hobart

**Nazarene**  
**Church of the Nazarene**  
806-669-3144  
510 North West Street

**Presbyterian**  
**First Presbyterian Church**  
806-665-1031  
525 North Gray Street

**Seventh Day Adventist**  
**Seventh Day Adventist Church**  
806-665-4492  
421 N. Ward Street

**PARSLEY'S**  
SHEET METAL & ROOFING  
214 E. Tyng  
669-6461  
Pampa, Texas

669-7171  
**Borger Hwy.- Pampa**  
Jerry E. Carlson, Pres.

**JOHN T. KING & SONS**  
918 S. Barnes 669-3711

**CLIFTON**  
SUPPLY COMPANY  
700 South Price Road • 665-0089  
"Visit our new location!"

**THE PAMPA NEWS**  
403 W. ATCHISON • 669-2525

**Culligan**  
314 STARKWEATHER 665-5729

**Century 21** **PAMPA REALTY INC.**  
312 N. Gray • 669-0007

**Titan**  
SPECIALTIES, LTD.  
11785 Hwy. 152  
Pampa, Texas  
665-3781

**LARRY BAKER**  
PLUMBING HEATING & AIR  
11780 HWY 152 TACLA003191 665-4392

**THE FLOOR STORE**  
2110 PERRYTON PARKWAY • 665-4455  
"God is our refuge and strength"

**Gulberson - Stowers, Inc.**  
www.gulbersonstowers.com  
  
BUICK GMC PONTIAC  
805 N. Hobart • Pampa, TX  
(806) 665-1665

# Comics

Marmaduke



"Obviously, the high-mileage subcompact is not for you."

## THE FAMILY CIRCUS

By Bil Keane



"Here's my report card. I'll be in my room practicin' being grounded."

Daily Crossword Puzzle

### CROSSWORD

By THOMAS JOSEPH

- ACROSS**
- 43 Give
  - 1 Wineglass addresses parts
  - 44 J.R.'s
  - 6 Up to now
  - 11 Fresh
  - 12 — Island
  - 13 Peace goddess
  - 14 Blush's kin
  - 15 Signer's need
  - 16 Visits
  - 18 Memo- rable time
  - 19 Utter
  - 20 "You there!"
  - 21 Historic seam- stress
  - 23 Really like
  - 25 Charlotte made one
  - 27 Old French coin
  - 28 Viola's cousin
  - 30 Avenue liners
  - 33 Holds
  - 34 Go astray
  - 36 Scottish river
  - 37 Deadlock
  - 39 Shoe hue
  - 40 Cold forecast
  - 41 Chili need
- DOWN**
- 1 Hidden shooter
  - 2 Bullfight star
  - 3 Right now
  - 4 Fellows
  - 5 Some
  - 6 Gullies
  - 7 Mall unit
  - 8 Words to a pot calling the kettle black
  - 9 More
  - 10 Min- uscule
  - 17 Cloth scrap
  - 22 Poivre's partner
  - 24 Rival
  - 26 Holy
  - 28 Shot taker
  - 29 Hosp. areas
  - 31 Nasty sort
  - 32 Detected
  - 33 Make passes at
  - 35 Yankee's foe
  - 38 Poker payment
  - 42 Quarter- back
  - Manning

T	A	B	S		S	H	O	E	S		
E	R	I	E		S	T	E	L	L	A	
M	I	N	E		L	A	I	D	I	N	
P	A	D	D	L	I	N	G				
		P	I	D	D	L	I	N	G		
G	O	H	O	M	E		B	O	A		
A	B	I	D	E		P	E	E	V	E	
S	O	N				M	E	N	T	A	L
P	E	D	D	L	I	N	G				
		P	U	D	D	L	I	N	G		
A	D	U	L	T	S		I	S	E	E	
M	I	N	U	E	T		S	L	A	T	
A	M	I	S	S			H	E	R	S	

Yesterday's answer

NEW CROSSWORD BOOK! Send \$4.75 (check/m.o.) to Thomas Joseph Book 1, P.O. Box 536475, Orlando, FL 32853-6475

1	2	3	4	5	6	7	8	9	10
11									12
13									14
15					16	17			
18					19				20
21			22	23		24			
		25		26		27			
		28		29		30		31	32
33				34		35		36	
37			38					39	
40						41	42		
43						44			
45						46			

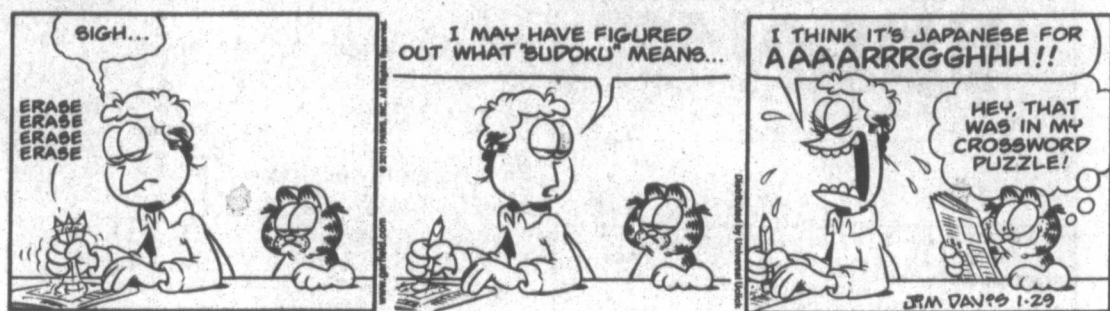
## For Better Or Worse



Zits



Garfield



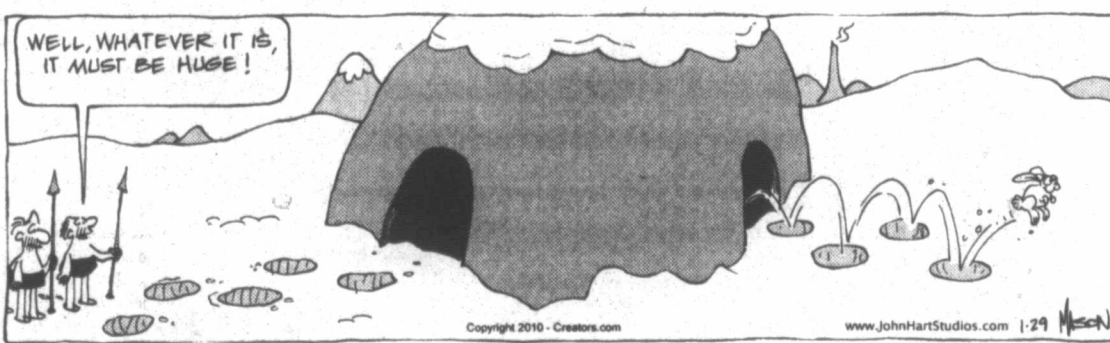
Beetle Bailey



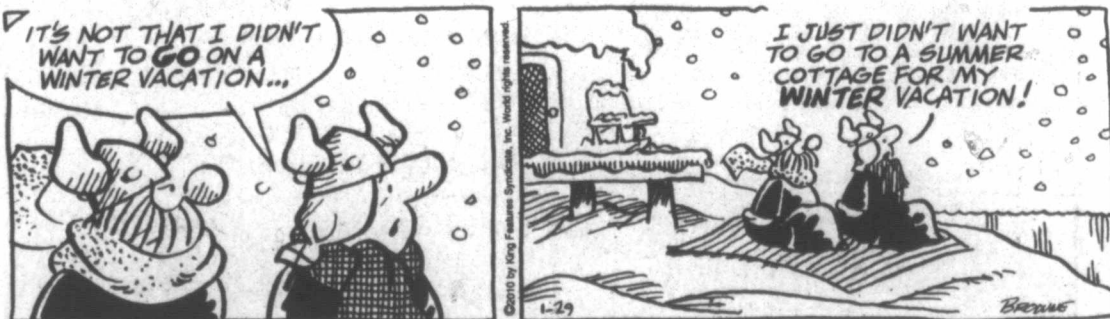
Marvin



B.C.



Haggar The Horrible



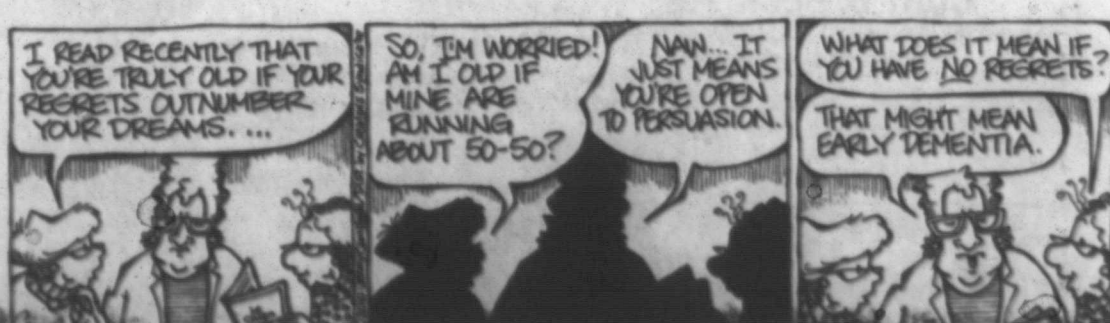
Peanuts



Blondie



Flo & Friends



1 Pa...  
The F...  
Schoo...  
cepti...  
als ur...  
ruary...  
(7) h...  
at the...  
Farm...  
ry St...  
must...  
Febru...  
est p...  
vail...  
form...  
tact...  
Purch...  
(806)...  
Alber...  
TX...  
Steph...  
290-3...  
E-29...  
5 Sp...  
ADV...  
terial...  
the...  
MUS...  
thron...  
News...  
10 L...  
LOST...  
light...  
lot. If...  
669-7...  
HA...  
30...  
This...  
prov...  
ers...  
are...  
Oft...  
wou...  
mo...  
Rea...  
wha...  
ply...  
hear...  
muc...  
gle...  
tain...  
best...  
need...  
und...  
inter...  
and...  
The...  
Hav...  
3-A...  
ARI...  
★★...  
Mod...  
war...  
buil...  
bein...  
plan...  
a ki...  
rock...  
TA...  
★★...  
uati...  
toda...  
men...  
ride...  
pers...  
— G...  
★★

The Pampa News'

# Classified Ads

Sell it fast!

Call Classified Advertising Specialist Beverly Taylor at 669-2525 for help in composing and placing a classified ad. Office hours are 8 a.m. to 4 p.m. Monday through Friday.



Beverly Taylor

<b>1 Public Notice</b> <b>Sale of Property</b> The Pampa Independent School District is accepting sealed proposals until 2:00 p.m., February 3, 2010 for seven (7) hog houses located at the Pampa ISD Ag Farm (south end of Perry Street). The houses must be removed by February 8, 2010. Highest bidder will prevail. For additional information please contact Betty Meadows, Purchasing Director at (806) 669-4700, 321 W. Albert Street, Pampa, TX 79065 or Randy Stephenson at (806) 290-3711. E-29 Jan. 29, 31, 2010	<b>13 Bus. Opp.</b> <b>GREAT Investment opportunity</b> Howardwick Convenience store. 665-1875, 806-383-1985. <b>14d Carpentry</b> <b>Carpentry, Roofing,</b> Replacement Windows, steel siding & trim. Continuous gutters. Jerry Nicholas 669-9991, 662-8169 <b>CUSTOM Building &amp; Remodeling.</b> New Homes & Additions. Shawn Deaver Const., 806-662-2977. <b>OVERHEAD DOOR REPAIR</b> Kidwell Construction. Call 669-6347. <b>WOOD &amp; METAL FENCING and REPAIRS</b> Call 665-2859 or 662-5582.	<b>14h Gen. Serv.</b> <b>HOUSE Cracking?</b> In bricks or walls? Childers Brothers, Inc. 800-299-9563, 806-352-9563 <b>COX Fence Company</b> Repair old fence or build new. Free estimates. Call 669-7769. <b>SOLIS FENCING.</b> New Fence / Fence Repairs. Free estimates. 806-486-1368, 662-2473 <b>PANHANDLE HOUSE LEVELING</b> Floor or roof sagging, walls cracking, doors dragging, bricks cracking? Call us 1st! 669-0958 <b>JH Concrete,</b> specializing in all types of concrete incl stamp, stain Free est. 806-382-5408	<b>21 Help Wanted</b> <b>NOTICE</b> Readers are urged to fully investigate advertisements which require payment in advance for information, services or goods. <b>F-T LVN's, F-T CNA's</b> and F-T Marketer needed. Call McLean Care Center, 779-2469, Candy Branscum, Adm. <b>Wellhead Service Technician</b> Established wellhead company seeking service tech to join our team. The position is responsible for installing and testing wellheads and frac trees on well locations. This is an hourly position with overtime required. Employee will be "on call" 24/7. We offer medical and dental ins., 401 (k) and paid vacation. Please forward your resume to thawkins@seaboardinc.com. Equal Opportunity Employer M/F/D/V. <b>PT File Clerk</b> needed at Broome Optical in Pampa-busy retail optical office. Prefer some office exp., but will train the right person. Fax resume to 806-355-1284 or 806-331-0866 or mail to: HR Dept., Panhandle Eye Group, P.O. Box 50720, Amarillo, TX 79159-0720.	<b>21 Help Wanted</b> <b>Licensed Massage Therapist</b> needed immediately for a busy Rehab / Wellness Center. Please fax resume to (806)665-0537 <b>Pampa Nursing Center</b> has openings for LVN's on all shifts. Apply in person, 1321 W. Kentucky. <b>PART-TIME Secretary</b> needed for small construction co. Reply to Box 88, c/o Pampa News, P.O. Box 2198. <b>LOCAL Delivery Drivers</b> for Pampa, TX. Class A CDL req. with Hazmat & Tanker endorsement. Salary based on exp. Health & Dental ins., 401K and uniforms provided. Call 806-595-0495 Mon-Fri., 7:30-4:30pm. <b>BACKHOE operator</b> needed. CDL required. Apply @ 100 N. Cuyler Ste. 200 (Bank of America Building).	<b>21 Help Wanted</b> <b>\$2000.00 SIGN-ON BONUS Licensed Vocational Nurses</b> Pampa Nursing Center has openings for LVN's on all shifts. Apply in person, 1321 W. Kentucky. <b>NEW queen sz. mattress set</b> \$246, twin sz. sets \$128. Red Barn, 1420 S. Barnes, Open Sat. or call 665-2767 <b>99 Wanted To Buy</b> I Buy Old Records 45's & LP's Rock Soul, Blues, etc. Jason, 512-785-8714 <b>95 Furn. Apts.</b> THE Schneider House, now leasing apts., 1 & 2 bdr., utilities incl. 120 S. Russell or 665-0415.	<b>69 Misc.</b> FOR Sale: 1 1/2 Ct. Diamond Engagement / Wedding Ring Set. Only worn for 2 yrs. Purchased @ Zales. Size 6. \$1500. Call 662-5716 after 4 pm. Serious callers only please. FOR Sale: Kenmore Elite gas dryer- Large capacity sweater rack \$350. 18.2 Cubic ft. Frigidaire Refrigerator \$350. 806-665-9445 or 806-664-0801 <b>96 Unfurn. Apts.</b> 1 Bedroom Apts. Reasonable Rate Coffee Street Apts. 665-4274 <b>ALL BILLS PAID 1 Bdrms. No Sec. Deposit Monthly Leases Avail.</b> (817) 909-4766 <b>APTS. Houses Duplexes.</b> K&B Properties. Ref. & dep. req. Lakeview Apts. 669-4386 <b>CLEAN 1 bdr., stove, refrig.</b> All bills paid. 886-1674. <b>FIRST month 1/2 rent,</b> nice updated 2 bdr., w/d conn., Austin sch. Fig Tree Apts., 663-9727. <b>ONE month free rent.</b> Largest apartments in Pampa. More for your money. They won't last long. Call us today 665-1875. <b>98 Unfurn. Houses</b> PICK UP rental list, in the Black Box, at 125 S. Houston, Pampa. 2/1/1. Great neighborhood. 1704 Hamilton. \$525 mo. \$525 deposit. 570-9824 or 665-5667. LRG. 3 or small 4 bdr. 700 Bradley. \$550 mo., \$200 dep. and Lrg. 3 bdr., 1040 Cinderella. \$650 mo., \$200 dep. 662-7557. 3 bdr., 2 bath, brick, Austin sch. 1 car gar. C h/a. Beautiful yard. \$950. 665-0095 2 bdr., 1 ba., 1 car garage, 1230 N. Russell. \$450 mo., \$450 dep. 665-5473 3 bedroom 2 bath 662-9775	<b>98 Unfurn. Houses</b> 3 bedrooms. Central Heat & Air. 313 N. Faulkner. References Required. 440-1969 2 bdr, 1 ba. New carpet & paint. Central h/a. Carpet. HUD ok. Great area. 665-4082. <b>99 Stor. Bldgs.</b> TUMBLEWEED Acres, self storage units. Various sizes. 665-0079, 665-2450. <b>102 Bus. Rental</b> DOWNTOWN office space for rent. Utilities & cleaning service provided. Ample parking. 669-6823 OFFICE Space for rent, ask about 3 months free rent. 669-6841. <b>103 Homes For Sale</b> FSBO. Drastic reduction on lovely 2nd home for rancher's wife. Kids say "sell!" Sign by Apr. 30 to use home-tax-credit avail. from fed. gov't. 1620 N. Dwight. 826-3373. <b>HIGHEST CASH PAID FOR HOUSES!</b> CALL 665-1875 <b>PRICE Reduced!</b> 4 bdr., 1 1/2 ba., 2500 sq. ft. Newly renovated. 669-1846, 663-0514. <b>Rod Donaldson Agent 663-2800</b> <b>Quentin Williams Realtors</b> <b>I need listings!!</b> <b>Contract Pending!</b> 720 & 722 E. Browning 2617 sq. ft. duplex MLS #08-8100 <b>Commercial Lot Price Reduced to \$90,000!</b> 2200 Coffee MLS #08-7980 Anyone can sell you a house, let me find you a home! TRUSTAR Real Estate, 1716 N. Hobart. List with us! Property mgmt., Home staging. 665-4595.
---	--	--	--	---	--	--	---

**ADVERTISING Material to be placed in the Pampa News, MUST be placed through the Pampa News Office Only.**

**10 Lost/Found**  
 LOST Silver Zippo lighter in Plaza parking lot. If found please call 669-7284

**CERAMIC tile work.** Remodeling floor, shower, kitchen. Texture, painting, dry wall. Free esti. Call 665-3453 leave message, Jesus Barraza.

### Daily Horoscope

Inevitably, you will feel like you need to squeeze them all in. Choose the most appealing; after all, this is your Saturday too. Others might be slightly flaky. Let go and rethink a decision. Tonight: Talking up a storm.

**CANCER (June 21-July 22)**  
 \*\*\* Curb your need to "have," as you become extraordinarily demanding. Trust that you don't always have to ask. A request actually could have the reverse impact. Know that what needs to happen absolutely will occur. Tonight: Give up your controlling ways.

**LEO (July 23-Aug. 22)**  
 \*\*\* You certainly feel empowered and capable of handling someone's seeming contrariness. Perhaps this person might not be getting the gist of what you are saying. Stay easy, and let this person see the genuineness of your feelings. Trust in yourself. Tonight: All smiles.

**VIRGO (Aug. 23-Sept. 22)**  
 \*\*\* If you simply feel as if you would like to do something different or more creative, then do. Make it OK not to join in with the crowd. Tonight: Rejuvenate by being your own person.

**LIBRA (Sept. 23-Oct. 22)**  
 \*\*\* How you handled a changing matter might have worked in the past, but not any longer. The time has come to recognize that the impossible can and will happen if you give others half a chance. A misunderstanding could be at the base of a relationship. Tonight: Where the gang is.

**SCORPIO (Oct. 23-Nov. 21)**  
 \*\*\* Others want what they need and desire. You have little to no problem with that. Open up to possibilities that someone you respect suggests. Investigate what is happening within a key interaction. Tonight: In the thick of the moment.

**SAGITTARIUS (Nov. 22-Dec. 21)**  
 \*\*\*\*\* Ask a friend or loved one to hop in the car and join you for a day exploring a new area of your state, town or nearby countryside. You could be amazed by the ease with which you refresh. Realize that everyone needs to recycle. Tonight: A change of pace is just what the doctor ordered!

**CAPRICORN (Dec. 22-Jan. 19)**  
 \*\*\*\*\* A partner challenges you, but how you accept and deal with this behavior determines the net results. Perhaps taking the attitude that some people just have passionate opinions and nothing more will work best. Avoid personalizing what this person says. Tonight: Enjoying the moment.

**AQUARIUS (Jan. 20-Feb. 18)**  
 \*\*\*\*\* Your ability to be clear and direct takes you down a different path from many. Don't make any snap judgments, especially as it appears you see a matter very differently from someone else. Allow time to be a reality check. Tonight: Just don't be alone.

**PISCES (Feb. 19-March 20)**  
 \*\*\*\*\* Hardship is defined in many different ways, depending on the person. Don't let this work become part of your thinking, or else you could make it so. Be aware that many people have varied needs. Allow for differences rather than judge. Tonight: Play it mellow.

**BORN TODAY**  
 Singer, musician Phil Collins (1951), former vice president Dick Cheney (1941), actress Vanessa Redgrave (1937)

Jacqueline Bigar is on the Internet at [www.jacquelinebigar.com](http://www.jacquelinebigar.com).  
 © 2010 by King Features Syndicate Inc.

**60 Household**  
 HOT Point white refrigerator 21 cu. ft. \$125. Kenmore 30 in. gas stove, black \$250. 31 in. white bathroom vanity & sink \$50. 32 in. Sanyo Tv \$125. Call 665-2944

3 piece sectional w/ qu. hideabed ottoman, rocker recliner, coffee / end tables. 440-6984

**69 Misc.**  
**ADVERTISING Material to be placed in the Pampa News MUST be placed through the Pampa News Office Only.**  
**FURNITURE CLINIC** Refinishing, Repairing Re-Glazing 662-9700

All real estate advertised herein is subject to the Federal Fair Housing Act, which makes it illegal to advertise "any preference, limitation, or discrimination because of race, color, religion, sex, handicap, familial status or national origin, or intention to make any such preference, limitation, or discrimination." State law also forbids discrimination based on these factors. We will not knowingly accept any advertising for real estate which is in violation of the law. All persons are hereby informed that all dwellings advertised are available on an equal opportunity basis.

**AXYDLBAAXR is LONGFELLOW**  
 One letter stands for another. In this sample, A is used for the three L's, X for the two O's, etc. Single letters, apostrophes, the length and formation of the words are all hints. Each day the code letters are different.

**1-29 CRYPTOQUOTE**

F ORRN MRDAKI TXFIK TXFIQ  
 EMKCK HMK TJDA LQ. F  
 OCKFH MRDAKI TXFIK TXFIQ  
 EMKCK HMK TJDA LQ ORLSO  
 HR GK. — EFISK OCKHYAI  
**Yesterday's Cryptoquote: LIFE IS A PROCESS. WE ARE A PROCESS. THE UNIVERSE IS A PROCESS. — ANNE WILSON SCHAEF**

**CLASSIFIED LINE AD SPECIALS!**

1 DAY \$1.50 3 DAYS \$2.50

DOES NOT INCLUDE LAST MINUTE ADS • CALL (806) 669-2525 FOR DEADLINES

**it's not [cat]s fault** by TheShelterPetProject.org

**SHELTER adopt**

**it's not [cat]s fault** by TheShelterPetProject.org

**SHELTER adopt**

# Sports

## Twisters club volleyball back in action for 2010

BY ANDREW GLOVER  
aglover@thepampanews.com

The Texas Twisters club volleyball has started play for the 2010 season. The Twisters opened the season with a tournament in Amarillo January 2. The team played in the Division III the Advanced Volleyball Qualifier and finished third in the gold bracket. On January 9 and

10 the Twisters finished ninth in the gold bracket out of 32 teams in a tournament in Oklahoma City. On January 16 the Twisters finished third in the gold bracket of the AEV January Jam Qualifier in Amarillo. Coach Kellie Metts said this group of girls are determined to be the best before the season is over. "I have seen improvement every practice, and

every tournament and just want to let the girls know they are doing an awesome job and to keep up the hard work," Metts said.

The Twisters would like to thank Easy's Pop Shop 1 and 2, Remax Hometown Owner Patti Hudson, Trailer's Etc, Shelia Webb State Farm Insurance and Classic Fertilizer for being sponsors.



The Texas Twisters Club Volleyball team. Back Row from Left to Right: Adrianna Soliz, Madison Joyce, Baylie Wackler, Alexa O'Brien, Taylor Holt and Kelly Silva. Front Row from Left to Right: Mattison Dix, Kylee Metts and Rilee Weatherford. Coach Kellie Metts and not pictured is Coach Sherri Munsell

## Hidden Hills results

Senior Scramble January 18

### First—60

Bill Hammer  
Jim Bridges  
James Lee  
Richard Abbott  
Harvey Malone

### Second—62

Harley Knutson  
Dick Dunham  
Earnest Barnett  
Bill Abernathy

Johnny Gilbert

### Third—63

Roy Don Stephens  
Gene Hall  
Gary Brewer  
John McGuire

### Fourth—64

Eldon Maxwell  
Charles Byrum  
Lucio Moreno  
Bill Harwood

### Fifth—65

Jim Stroud

Howard Wells

Gerrel Owens

Calvin Lacy

### Sixth—65

Ron Parnell  
Bob Henderson  
Nathan Lancaster  
James Richardson  
Closest to Pin #6 Gary Brewer  
Closest to Pin #12 Ron Parnell

### Fifth—66

A. Bolton

C. Byrum

B. Harwood

J. Osborne

Closest to Pin #15 J. Hervey

Closest to Pin #6 E. Maxwell

Hidden Hills Seniors

January 26

### First—63

H. Knutson  
G. Hall  
J. Lee

C. Johnson

### Second—64

R.D. Stephens  
T. Taylor  
M. Allison

J. Richardson

### Third—64

G. McCabe

J. Hervey

G. Brewer

C. Lacy

### Fourth—65

E. Maxwell

J. Mabry

N. Lancaster

R. Abbott

Many events for Saturday have been cancelled please see page 1 or check with your coach.

## READ IT Online

Access a complete issue of THE PAMPA NEWS every day, Monday through Saturday, on your computer!

Keep up with your hometown news anywhere you can access the Internet - at home, on vacation, away at college.

Call Kera at 669-2525 for subscription details.

## On Vacation with The Pampa News!

Take a copy of The Pampa News with you on your getaway. Take a photo of family and friends holding the newspaper. We'll print your picture in the newspaper. So, whether you are going to Paris, France or Paris, Texas (or Clarendon for that matter)... take us along for the ride!

**Remember to:**

1. Identify every person in the photograph from left to right, front row first.
2. Give us some information about the trip and the landmark in the photo.
3. Give us the name of a contact person and a telephone number or email address.

To see your photo in the paper faster, email the photo and information to: [rpribble@thepampanews.com](mailto:rpribble@thepampanews.com). Have a great summer and a safe trip.

# TEXAS FURNITURE

## INSTANT COUPON SALE

**INSTANT SAVING COUPONS ON SELECTED ITEMS STOREWIDE**

**ASHLEY LEATHER SOFA** LIST PRICE \$2399<sup>00</sup> Sale Price \$1499<sup>00</sup> -500<sup>00</sup> \$999<sup>00</sup>

**LA-Z-BOY RECLINING SOFA** LIST PRICE \$1799<sup>00</sup> Sale Price \$1099<sup>00</sup> -200<sup>00</sup> Instant Coupon \$899<sup>00</sup> Final Price

**SEALY POSTUREPEDIC QUEEN SET** LIST PRICE \$1299<sup>00</sup> Sale Price \$999<sup>00</sup> -200<sup>00</sup> Instant Coupon \$799<sup>00</sup> Final Price

**ASHLEY 5 PIECE DINETTE TABLE, 4 CHAIRS** LIST PRICE \$699<sup>00</sup> Sale Price \$499<sup>00</sup> -200<sup>00</sup> Instant Coupon \$299<sup>00</sup> Final Price

**SAVE NOW UP TO \$500**

**MANY ONE-ONLY ITEMS**

**HUGE SAVINGS!**

**DON'T WAIT! HURRY!**

**YOU WILL FIND INSTANT SAVING COUPONS ON DOZENS OF ITEMS THROUGHOUT OUR HUGE INVENTORY**

MON - SAT 9:00 AM TO 5:30 PM

## Texas FURNITURE

1415 N. HOBART • 665-1623  
PROUDLY SERVING PAMPA SINCE 1932

6 MONTHS NO INTEREST FINANCING WITH APPROVED CREDIT