

**Aspire & Associates**  
 Insurance Agency, LLC  
 ...for all your insurance needs!  
 Jim Blanton  
 "Doing Business with People you know and trust"  
 1224 North Hobart  
 NBC Plaza 2, Suite 11  
 Pampa, TX  
 806-665-7081  
 www.aspireandassociates.com

\*\*\*\*\*ORIGIN MEX:0 DOC 798  
 0000471 12/31/2009  
 HERITAGE MICROFILM  
 4049 21ST AVE SW  
 CLEAR RAPIDS, IA 52404-6309  
 Steve

25% - 40% Off Select Trees!  
**West Texas Landscape**  
 120 S Hobart St • 669-0159 • Mon-Sat • 9am-5pm

# The PAMPA NEWS

Wednesday, January 27, 2010 Volume 105 • No. 84 50¢ Daily • Weekend \$1.50

## Snow day?

### PISD gathering data to determine safest action

**BY BETSY PHILLIPS**  
 editor@thepampanews.com

To close or not close the schools for tomorrow's weather event may be a tough call, because of timing of the storm. The weather often doesn't do what forecasters predict in the Texas panhandle, but those who are charged with our

community's safety are meeting to determine a course of action.

PISD Coordinator of Transportation Services Sam Haynes said he will be out driving the roads early in the morning and could have a determination at 5:30 a.m.

If the snow doesn't arrive until

after 8 a.m. as predicted, it could still be somewhat of a crap shoot. "Sometimes they predict it and it doesn't come and sometimes they don't predict it and it does." We certainly don't want to be caught in a situation that is unsafe for our students."

Haynes said he will participate

in a conference call, as will emergency services personnel at this morning, Wednesday, Jan. 27 at 10 a.m. and again at 2 p.m. this afternoon. That may help district officials make an earlier determination on whether or not it may be necessary to close Pampa's

**STORM cont. on page 3**

**Welcoming 2010 With HUGE Savings!**  
 On New Products Arriving From Market  
 Get any new in-stock laminate or tile for just  
**Per sq. foot!**  
 Don't forget! Installation and material installation purchase required.  
**The Floor Store**  
 2110 Perryton Parkway  
 (806) 665-4455  
**CHILDERS BROTHERS INC**  
**HOUSE LEVELING**  
 Uneven Floors  
 Floor Bracing  
 Cracks In Bricks  
 Sticking Doors & Windows  
 Interior Wall Cracking  
 FREE ESTIMATES  
**1-800-299-9563**  
 WWW.CHILDERSLEVELING.COM

**One STOP Flooring**  
 Specially Marked  
**Carpets All \$19.97 per yd installed**  
 Save \$4.00 to \$12.00 per yd installed (reg. \$23.97 to \$31.97sy)  
 Store Hours:  
 Monday-Friday 9am-5pm  
 Saturday 10am-1pm  
 1833 N. Hobart ~ Pampa, TX  
 (806)665-0995

M#10341 • LICENSED • INSURED  
**BOB'S PLUMBING**  
 PAMPA, TEXAS  
**806-669-1940**  
 CELL# 806-584-0809  
 HOURS MON-FRI 8-6 • SAT 8-12  
 EMERGENCY ANYTIME  
 OWNERS: BOBBY FAIRES / DUECE FAIRES

**Sentry Self Storage**  
 24 hr Controlled Access  
 24 hr Video Surveillance  
 Personal & Commercial  
 665-1000

**VISION SOURCE**  
 OAKELY  
 MAUI JIM  
 RAYBAN  
 CARE CREDIT ACCEPTED  
 1324 N. BANKS  
 806.665.0771

**Vision**  
 COMPUTER SERVICES  
 ihavecomputerproblems.com  
 806-665-HELP(4357)  
 Combs-Worley Building  
 120 W Kingsmill Ave  
 Suite 303

**MASSAGE DISCOUNTS**  
 CALL PAMPA'S MASSAGE ADVANTAGE LOCATION TODAY  
 Call 806-665-7261  
 1945 N. Hobart • 665-2061

**M & H Leasing**  
**TOP OF TEXAS**  
 Read the Bible in a year  
 Ex 12-26  
 (Matt 16-Matt 20:17-34)  
 1945 N. Hobart • 665-2061

## Xcel mobilizes resources

As of this morning, Xcel Energy has mobilized all available resources in preparation for what could be a major winter storm in the Texas Panhandle and Eastern New Mexico.

If we see significant icing prior to the snow, and if the storm also brings high winds, we likely will see power outages. Typical problems are icy lines that begin to "gallop" in the wind and lines that are downed when wind and ice damage support structures. Tree limbs also can cause problems when they contact live lines.

Xcel Energy is prepared to meet these challenges in the following ways:

- Mobilizing all available power crews and contractors
- Calling on support from neighboring utilities, if necessary
- Planning logistics of moving crews and contractors to problem areas as they develop (this includes preparing for hot meals and hotel rooms)
- Lining up suppliers of poles and other equipment that could be needed to make quick repairs

## Red Cross urges the panhandle to prepare for winter storms

Pampa.— The Texas panhandle is prone to winter storms, and the Eastern Texas Panhandle Chapter of the American Red Cross urges residents to take steps now to stay safer when severe weather threatens.

"By preparing together for winter storms, we can make our families safer and our communities stronger," Cindy Nickell of the Eastern Texas Panhandle Chapter said. "We can help you and your family create a disaster preparedness plan before our community is threatened by dangerously low temperatures, snow, ice and strong winds."

As with any disaster, preparation can be the difference between life and death. The Red Cross recommends that individuals and families prepare for winter storms by:

- **Assembling an Emergency Preparedness Kit:** Pack a winter-specific supply kit that includes a warm coat, hat, mittens or gloves, and water-resistant boots, along with extra blankets and extra warm clothing. Sand or non-clumping kitty litter is good to have on hand to help make walkways or steps less slippery. Additionally, make sure you have a first aid kit and essential medications,



staff photo by **David Bowser**  
 Pampa and school officials gathered today in the Emergency Command Center at City Hall for one of the conference calls with officials from the National Weather Service in preparations for the winter storm expected to dump up to a foot of snow on the area Thursday and into Friday. Pampa Emergency Management Coordinator Fred Countney, left, listens to Sam Haynes with the Pampa Independent School District and Donny Hooper, Pampa's director of public works, discuss plans for Thursday and Friday as a winter storm threatens city services and school activities.



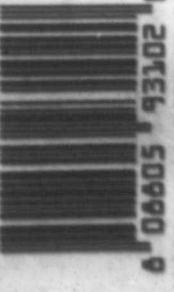
Trying to beat the winter storm expected to move through the area Thursday, Cheri Eck of McLean was at United Supermarket today picking up food, particularly canned goods. A winter storm is expected to move through dropping from 6 to 12 inches of snow and coating everything with a quarter inch of ice.

If road conditions become too dangerous for our carriers to travel, delivery of Thursday's Pampa News may be delayed. We ask for your patience.

**Thomas**  
 665-4851  
**217 E. ATCHISON**  
 Monday - Friday • 9am - 6pm

**HOUSE HUNTERS- REALTOR**  
 Linda Laycock Broker (806) 662-1312  
 Jordan Onsal Assoc. (806) 670-6623  
 Larry Hadley Assoc. (806) 662-2778




**Annual Chamber Banquet**  
 Citizen of the Year & Business of the Year Awards  
 Featuring Bruce Chadwick  
 February 25th at 7:00pm  
 \$25 per person • RSVP to (806) 669-3241





# For the record

## PAMPA FORECAST

Thursday	Friday	Saturday
		
High 27 Low 16	High 28 Low 10	High 36 Low 21

**Tonight:** Rain and sleet likely before 3 am, then freezing rain and sleet likely. Cloudy, with a low around 26. Wind chill values between 14 and 24. Northeast wind between 10 and 20 mph, with gusts as high as 30 mph. Chance of precipitation is 60%. New ice accumulation of less than a 0.1 of an inch possible. New sleet accumulation of less than a half inch possible.

**Thursday:** Freezing rain and sleet before 8 am, then snow. The snow could be heavy at times. Areas of blowing snow after noon. High near 27. Wind chill values between 11 and 16. Windy, with a northeast wind between 20 and 25 mph, with gusts as high as 35 mph. Chance of precipitation is 80%. New ice accumulation of less than a 0.1 of an inch possible. New snow and sleet accumulation of around 7 inches.

**Thursday Night:** Snow and areas of blowing snow before midnight, then a chance of snow after midnight. Low around 16. Wind chill values between 4 and 10. North northeast wind between 10 and 20 mph, with gusts as high as 25 mph. Chance of precipitation is 80%.

**Friday:** Mostly cloudy, with a high near 28. North northwest wind around 10 mph.

**Friday Night:** Mostly clear, with a low around 10. North northwest wind around 5 mph becoming southwest.

**Saturday:** Sunny, with a high near 36. South wind between 5 and 10 mph.

**Saturday Night:** Partly cloudy, with a low around 21. South wind between 10 and 15 mph, with gusts as high as 20 mph

## Winter Storm Warning

A WINTER STORM WARNING IS IN EFFECT THROUGH LATE THURSDAY NIGHT FOR ALL OF THE OKLAHOMA AND TEXAS PANHANDLES.

MOST OF THE SNOW FROM THIS SYSTEM IS EXPECTED TO FALL THURSDAY AND THURSDAY NIGHT. WIDESPREAD MODERATE TO HEAVY SNOW WILL RESULT IN STORM TOTAL SNOWFALL ACCUMULATIONS OF 6 TO 8 INCHES IN THE OKLAHOMA PANHANDLE TO 8 TO 12 INCHES IN THE TEXAS PANHANDLE WITH SOME LOCATIONS POSSIBLY SEEING ACCUMULATIONS OVER A FOOT.

IN ADDITION, NORTH TO NORTHEAST WINDS OF 20 TO 25 MPH WILL CAUSE AREAS OF BLOWING AND DRIFTING SNOW ALONG WITH SHARPLY REDUCED VISIBILITIES...POSSIBLY RESULTING IN TEMPORARY WHITEOUT CONDITIONS ACROSS THE AREA ON THURSDAY AND THURSDAY EVENING.

© This information brought to you by...

**PRESTIGE**  
AUTOBODY & ACCESSORIES  
101 S. HOBART 806-665-3500  
IN STOCK: HELMETS, GLOVES, GOGGLES

### LAST MINUTE ADS

The Pampa News is not responsible for the content of paid advertisement

**API MEETING,** Thurs. Jan. 28, Pampa Country Club. Speaker Jake Hammond w / Multi Chem. Social hr. 6:30pm, Chicken Fry Dinner (\$15 ea.) 7pm. Significant others welcome! Door prizes from Baker Oil Tools.

**CERAMIC TILE.** Keith Taylor, 874-1779 lv. msg.

**MUST SEE!!!** Beautiful 1 1/2 CT. Diamond Wedding Ring Set. White Gold. Size 6. Only worn 2 years. Purchased at Zales. Asking \$1500. Please call 662-5716 after 4 pm.

**SPOILED BY** Right 109 N. Cuyler. "50% Off Sale" Most of store. Items added daily.

### DON'T FORGET YOUR ANIMALS

Due to severe weather conditions, make sure pets are sheltered and have adequate food and water.

STAY CONNECTED  
Keep up with your hometown news on mobile via our away page.

## Obituaries

### John Allen Henderson, 67

Pampa — John Allen Henderson, 67, died January 27, 2010, in Pampa, Texas. Services are pending with Carmichael-Whately Funeral Directors.

## Enterprise fund companies struggling

AUSTIN, Texas (AP) — More than 20 companies receiving taxpayer-funded Texas Enterprise Fund grants failed to meet their job creation promises in 2008 or struggled to do so as the recession took hold, according to a report released Wednesday.

Texans for Public Justice found that some companies were not providing the number of jobs they had pledged. Other firms, such as Lockheed Martin Corp., re-negotiated their deals with Gov. Rick Perry's office to reduce their promised number of jobs or to obtain more time to reach their goals.

Shortly after Perry's office learned that the report was to be released, it announced late Tuesday that it had changed 11 Texas Enterprise Fund contracts and ended two other pacts.

"The global recession that hit Texas in 2008 is playing havoc with Governor Perry's signature business-incentive program: the Texas Enterprise Fund," the report states, adding that Perry's office "has quietly redefined success."

Perry's prepared statement said: "Contracts may be amended as necessary to adjust for changes in terms, including job targets and deadlines, and companies must be in compliance to amend their contract. TEF contracts are working as intended; rewarding job creation in Texas and protecting taxpayer dollars in the few cases where employers do not live up to contract job commit-

ments." Perry frequently talks up his record on job creation in his bid for re-election. He faces U.S. Sen. Kay Bailey Hutchison and Republican activist Debra Medina in the March 2 GOP primary.

Since it was formed by the Legislature in 2003 at Perry's urging, the Texas Enterprise Fund has invested more than \$385 million in deals that resulted in 54,600 new jobs and more than \$14.3 billion in capital investment, according to Perry's office.

Forty-five enterprise fund companies receiving \$363 million in public money were reviewed in the TPJ study, which was based in large part on state compliance reports the firms filed for 2008. Companies are only now beginning to file their reports for 2009.

Texans for Public Justice, a non-profit that says it tracks money in politics and advocates for corporate accountability, said it made numerous requests for government documents under the Texas Public Information Act in compiling the analysis.

Only 13 of the 45 projects examined were performing well, the report found.

Some of the companies the report categorized as "non-performing," or failing to meet job projections, were Fidelity Global Brokerage; Sanderson Farms; Santana Textiles; and Gulfstream Aerospace Services.

Perry's office revealed Tuesday that Gulfstream along with Bank of

America — the new owner of mortgage giant Countrywide — had ended their agreements with the state.

The Associated Press reported last year that Countrywide Financial Corp. and failed bank Washington Mutual fell short of their promised job creation targets for 2008. Each had been taken over by other financial firms. The companies were allowed under their state contracts to use job credits from positions they created in previous years to make up their shortfalls.

Now Countrywide's new owner has ended its \$20 million agreement with the state and will return \$8.45 million in taxpayer money, Perry's office said.

Gulfstream halted its \$375,000 agreement and will return that amount plus interest to Texas, the governor's office said.

The enterprise fund has repeatedly drawn criticism from some lawmakers who regard it as a corporate giveaway with little accountability.

Enterprise fund contracts contain "clawback" provisions that allow the state to financially penalize a company if it fails to meet a job target, and Perry's office has cited those rules as protections for taxpayer money.

As of October 2009, Perry's office had penalized 11 enterprise fund grant companies for not meeting job creation commitments, the Texans for Public Justice report found.

In addition to Lockheed Martin, the companies

whose contracts were amended are Rockwell Collins; Rackspace; Texas Energy; Allied Production Solutions; Fidelity; Martifer; Motiva; Vought; Authentix; and Heliovolt, Perry's office said.

Increasingly at issue is the political role of the enterprise fund as Perry mentions his job creation record in his re-election campaign, according to the report. TPJ research director Andrew Wheat, the study's author, said the state should consider having enterprise fund compliance audited by an agency outside of the governor's office.

He said future governors will probably like the program as much as Perry does and want to keep it.

**READ IT ONLINE**  
Access a complete issue of **The Pampa News** every day, Monday through Saturday, on your computer!



Call Kera at 669-2525 for subscription details.

**Dillard's**  
save an extra **30%** off  
ALL permanently reduced merchandise from:  
Ladies' • Juniors' • Men's • Children's  
Accessories • Lingerie • Shoes • Home

that's a savings of up to 79% off original prices

**LIMITED TIME ONLY!**

No adjustments on previously sold merchandise. Call 1-800-345-5273 to find a Dillard's near you.

Earn rewards on every purchase to get 10% off All Day Shopping Passes



## Storm

schools for the expected storm. "That 2 p.m. call could be a determining factor," Haynes said. Pampa Emergency Management Coordinator Fred Courtney said that the Pampa Red Cross office may be opened as a warming station. If the weather

gets really bad, he said, emergency shelters could be opened at First Baptist Church or at M.K. Brown Auditorium. For closures, road conditions and event cancellations, residents may turn to local radio stations KGRO, 1230 AM and

KMOX, 100.3 FM. News Director Mike Erhle said they will begin broadcasting updates sometime between 5:30 and 6 a.m. and continue throughout the storm. Road conditions may be reviewed online at [www.dot.state.tx.us](http://www.dot.state.tx.us).

cont. from page 1

## Prepare

For more information on winter storm preparedness, contact the Eastern TX Panhandle Chapter of the American Red Cross at 800 297-2270, visit [www.redcross.org](http://www.redcross.org) or [www.cruzrojaamericana.org](http://www.cruzrojaamericana.org) or call 1-800 RED CROSS. We urge you to share these Red Cross winter storm pre-

paredness tips with every member of your household, because the best protection is to be prepared ahead of time.

cont. from page 1

## Excel

- Reserving all available phone lines at our Amarillo Call Center, and bringing in additional agents to handle increased call volume
- Mobilizing contract tree-trimming crews from around the region
- Staffing up the Builders Call Line, which interfaces with city code inspectors (in the event of damage to customer-owned electric facilities)
- Assigning key personnel to regional emergency operations centers
- Mobilizing safety consultants to monitor how safely our employees are

- working
- Importing additional power from outside sources
- There are many other ways we must be prepared, and throughout the day we will continue meeting with one another to ensure our employees are primed and ready.
- Customers who experience outages should:**
  - Visually inspect their property, from a safe distance, to see if any live lines are down.
  - Stay away from downed lines.
  - Call 1-800-895-1999 to

report downed lines and service interruptions, and provide as much detail as possible if there is visible damage on premises or in the alley.

- Make a plan ahead of time to move small children, elderly or ailing friends and relatives to other locations if power service is down for an extended period of time.
- Be prepared to call an electrician if the storm causes damage to customer-owned electric facilities.
- Make the safety and comfort of your family and friends the top priority.

cont. from page 1


## State agency releasing gas-drilling air tests

FORT WORTH, Texas (AP) — Texas environmental regulators are set to release results of widespread air testing on the Barnett Shale. The Texas Commission on Environmental Quality plans to publish the results Thursday afternoon in Fort Worth. Fears of pollution over the 5,000-square-mile North Texas gas field have been

heightened after regulators found elevated amounts of the cancerous chemical benzene near the small town of Dish. Other towns on the shale — which lies beneath Dallas, Fort Worth and about 20 counties — also have expressed concerns about gas-related emissions. The head of the TCEQ's toxicology department and other top officials will announce the findings.

Would you like a copy of a photo you see in the paper?

Buy it Online!



Go To:  
[www.thepampanews.com](http://www.thepampanews.com)  
and click on

See a great photo in THE PAMPA NEWS?  
Order a copy for yourself today!

1879

# TEXAS FURNITURE

## INSTANT COUPON SALE

**INSTANT SAVING COUPONS ON SELECTED ITEMS STOREWIDE**

**SAVE NOW UP TO \$500**

**MANY ONE-ONLY ITEMS**

**HUGE SAVINGS!**

**DON'T WAIT! HURRY!**

**YOU WILL FIND INSTANT SAVING COUPONS ON DOZENS OF ITEMS THROUGHOUT OUR HUGE INVENTORY**

MON - SAT 9:00 AM TO 5:30 PM

# Texas FURNITURE

1415 N. HOBART • 665-1623  
PROUDLY SERVING PAMPA SINCE 1932

6 MONTHS NO INTEREST FINANCING WITH APPROVED CREDIT

<b>ASHLEY LEATHER SOFA</b>	LIST PRICE \$2399 <sup>00</sup>	Sale Price \$1499 <sup>00</sup>	-500 <sup>00</sup>	<b>\$999<sup>00</sup></b>
<b>LA-Z-BOY RECLINING SOFA</b>	LIST PRICE \$1799 <sup>00</sup>	Sale Price \$1099 <sup>00</sup>	-200 <sup>00</sup>	<b>\$899<sup>00</sup></b>
<b>SEALY POSTUREPEDIC QUEEN SET</b>	LIST PRICE \$1299 <sup>00</sup>	Sale Price \$999 <sup>00</sup>	-200 <sup>00</sup>	<b>\$799<sup>00</sup></b>
<b>ASHLEY 5 PIECE DINETTE TABLE, 4 CHAIRS</b>	LIST PRICE \$699 <sup>00</sup>	Sale Price \$499 <sup>00</sup>	-200 <sup>00</sup> Instant Coupon	<b>\$299<sup>00</sup> Final Price</b>

**IN THE CLASSIFIEDS!**

**SELL IT FIRST!**

## BETTER THAN CHOCOLATE...

For 1 Hour When Purchasing 6 or More Messages

**MASSAGE ADVANTAGE**

Package I (1) Half Hour Message Only \$39	Package II (6 or More) Half Hour Messages Only \$29 each
---	---

**PAMPA'S MASSAGE ADVANTAGE LOCATION**

@ FORD FAMILY CHIROPRACTIC REHABILITATION & WELLNESS CENTER  
701 N. PRICE RD. PAMPA, TX 79065

LOCATIONS ALSO IN COLORADO, MINNESOTA, & NORTH CAROLINA.  
VISIT [WWW.MASSAGEADVANTAGE.COM](http://WWW.MASSAGEADVANTAGE.COM)

Therapeutic Service



# Sports

## Borger bests Pampa soccer in physical rivalry game

BY ANDREW GLOVER  
aglover@thepampanews.com

The Pampa Harvesters soccer team scored their first goal of the season but still lost 3-1 to the Borger Bulldogs Tuesday at Harvester Field.

Borger took the lead early in the game and never let it go. The Bulldogs scored their first goal of the game four minutes into the first half. Four minutes later the same Bulldog scored another goal expanding Borger's lead to 2-0. Borger's player completed the hat trick with 10 minutes left in the first half to widen the Bulldogs lead to 3-0. Coach Byron May thought the team showed a lot of fight in the second half despite being down by three at the half.

"We talked to the kids at

halftime about stepping up to that challenge and going out and playing the best second half within us," May said. "A 3-0 score is hard to overcome, but it's not hard to show more fight than the other team in the second half."

The game was very physical and in the second half with one person from each team receiving a red card. May said the Pampa and Borger rivalry is alive and well, and the team did well in staying in control of their emotions.

"Soccer is one of the only sports remaining that we (Pampa and Borger) are still in the same district," May said. "So, it matters a lot to our kids and to their kids. All the kids know each other and have grown up playing together. I thought given

some adverse situations our kids maintained their composure and showed good sportsmanship which is an expectation of our program."

Enrique Mier scored the Harvesters only goal with a minute left in the game. Mier scored off a pass from Flavio Gonzalez. May said it was nice to finally get their first goal of the season.

"There were times it seemed there was a brick wall in front of the goal," May said. "We found creative ways to somehow miss the goal. Even though it happened in the final minute of the game it was a relief. They had most of their good players still in so we scored on their best. We're still confident we can score when it comes to district."



staff photo by Andrew Glover

Enrique Mier tries to keep control of the ball and find a teammate Tuesday. Mier scored the only goal for Pampa in a 3-1 loss and the first goal of the season.

## Boys soccer blanked in Wichita Falls Tourney

BY ANDREW GLOVER  
aglover@thepampanews.com

The Pampa Harvesters soccer team lost four games in the Wichita Falls Tournament Friday and Saturday.

The Harvesters opened the tournament against Hershey and lost 1-0 despite outshooting them.

"We outshot them 21-2 and they beat us," Head Coach John True said. "Which is not good. That was not a good thing we played really well against them."

Pampa played

Weatherford next and lost 6-0. True said they played utterly terrible in that game.

"We weren't mentally there," True said. "They deserved the win. Weatherford had all of the ball in that game."

The Harvesters lost the next game 2-0 to Abilene Wylie. True said it was a very physical game that his team could have won.

"They were giving two PK's (penalty kicks) and they scored one of them," True said. "Neither one of those PK's in my opinion

were a good call. The keeper blocked the ball off his face and it went off one of their players in the goal."

Pampa lost the final game of the tournament 7-0 to Rider's junior varsity. True said his backups played most of the game.

"I gave everyone playing time in that game because we were really beat up, tired and sore," True said. "So, I let the subs play almost the entire game. It was kind of a bonus game. It still counted as a loss but my subs knew what was going on."

## Pirates mauled by Tigers

BY ANDREW GLOVER  
aglover@thepampanews.com

The Lefors Pirates get in early foul trouble and lose their first home game of the season 70-49 to the Groom Tigers Tuesday.

Head Coach Joey Czubinski aka "Coach Ski" said everything his team wasn't able to do Groom was able to do.

"We got off to a slow start they got off to a fast start," Coach Ski said. "We didn't make shots, they did. We got into foul trouble, and they didn't. Keenan (Lott)

had four fouls in the first half. Trever (Czubinski) had three and Taylor (Ray) had three. They (Groom) were shooting free throws in the second quarter."

The Pirates trailed 46-13 at halftime. This was the second time the Tigers beat Lefors this season. Groom won 67-44 in Groom to open district-play January 8. Coach Ski said his team is upset they didn't play better but is moving on.

"We got to regroup and go into McLean Friday and pull out a victory," Coach

Ski said. "You don't get much done looking backwards. We had our shot against Groom and it didn't happen for us."

With the victory the Tigers (16-9, 5-0) move to 5-0 in district and are three games ahead of Lefors (8-6, 3-2) with three games left. The Pirates visit McLean Friday. Lefors beat McLean 33-29 January 12 in Lefors which was the first time the Pirates won against McLean since Coach Sk has been in Lefors.

## 7th grade girls swept 8th splits

The Pampa Junior High seventh grade girls basketball teams lost and the eighth grade girls team split against Dalhart Monday at Dalhart.

The seventh grade B team lost 25-20 in overtime. The team had 13 turnovers, shot 29 percent from the free throw line and 27 percent from the field. Risa Rodriguez led the team in scoring with 14 points and in rebounds with 9. Ty'Randa Johnson led the team in steals with seven.

The seventh grade A

team lost 36-24. The team turned the ball over 35 times, made four of six free throws and shot 27 percent from the field. Madilyn Brown led the team in scoring with 12. Caragan Niccum led the team in rebounds with eight. Taylor Eubank led the team in assists with three. Brittany Green led the team in steals with four.

The eighth grade B team lost 44-4. Jazmyn Hair and Emily Terry made the only baskets for Pampa. The team missed all six

free throws.

The eighth grade A team won 26-14. The team had 18 turnovers, shot 43 percent from the free throw line and 22 percent from the field. Kylee Metts led the team in scoring with 10. Bailey Dixon, Alexa O'Brien, Krysten Miller led the team in rebounds with two each. Dixon led the team in steals with two.

## Fr. boys basketball falls to Raiders and PD Dons

The Pampa Harvesters freshman boys basketball team losing streak reached four as they lost to the Randall Raiders and the Palo Duro Dons.

Pampa lost 57-15 at Randall January 18. Ty Hutto and Jonathan Cox each scored four points to led the team in scoring.

The Harvesters lost 46-30 to Palo Duro at the MPAC gymnasium at Pampa High School Saturday. Tyler Powell led the team in scoring with six points.

Trey Teel scored five and Riley Douglas scored four. Coach Del Smith said his team played hard and did a good job limiting the Dons to 46 points.

Due to winter weather conditions, some PISD events may be cancelled Thursday and Friday.

**Sudoku**

Answer to yesterday's puzzle:

2	3	9	6	1	4	5	8	7
8	6	1	5	2	7	4	9	3
4	5	7	3	9	8	2	1	6
7	2	5	4	3	1	8	6	9
1	4	8	7	6	9	3	5	2
3	9	6	8	5	2	1	7	4
9	7	2	1	8	3	6	4	5
6	1	3	9	4	5	7	2	8
5	8	4	2	7	6	9	3	1

Layout: Intermediate

		4		5	8			
		5				4		
	6						1	
7				8	1		2	
				2		8	4	
				7				6
			1					
9		2		4				
		7	9					5



## Dear Abby...

By Pauline & Jeanne Phillips

DEAR ABBY: I am a 16-year-old girl and I fight with my mother almost daily. It makes me sad and upset all the time, and I don't know what to do. The last fight we had was over something so dumb I don't even know why I dragged it out for so long. I said things I didn't mean - things that were hurtful and cruel.

No child should ever treat a parent like I treat my mom. I take her love and kindness for granted, and never tell her how much I really do appreciate her. What I said to her in anger made her cry.

How can I tell or show my mom how sorry I am and how much I love her and admire her, and how can I stop myself from exploding and saying things to her that I don't mean? - UPSET IN INDIANA

DEAR UPSET: The most direct way to make amends would be to hug your mom and apologize for flying off the handle and saying things you didn't mean. Tell her you love her and will try hard to do better because you are ashamed of your behavior and know it wasn't justified.

It's important to understand that the average person can experience frustration that leads to anger multiple times a day. Anger

is a normal emotion.

The challenge that everyone faces is how not to deny the feeling, but to express it in ways that are productive for ourselves and not hurtful to others. One way to accomplish this is recognizing what pushes our buttons. What provoked you? Were you under pressure? Or were you angry about something else so you "dumped" on an innocent party (in this case, your mom) because she was handy?

In my booklet, "The Anger in All of Us and How to Deal With It," I explain that one of the unhealthiest ways to deal with anger is to deny or repress it. However, because most of us have been trained from early childhood to suppress anger, many of us need to learn to express it appropriately.

Being able to calmly say, "When you do (blank), it makes me angry," before flying off the handle will earn you respect from others. If you resort to name-calling, the other person hears only the "static" and doesn't get your message. The first step in controlling anger is to recognize that the emotion is building, to understand that there are healthy and effective ways to express it, and to diffuse it before you lose control.

**THE PAMPA NEWS**  
403 W. Atchison • Pampa, TX 79065  
806-669-2525 • 800-687-3348  
Fax: 806-669-2520

Randall Pribble  
Publisher  
rpribble@thepampanews.com

ReDonn Woods  
Advertising Manager  
rwoods@thepampanews.com

Sue Pribble  
Advertising Representative  
spribble@thepampanews.com

Beverly Taylor  
Classified Advertising  
classified@thepampanews.com

Kera Kent  
Circulation  
circulation@thepampanews.com

Carrie Hair  
Accounting  
bookkeeper@thepampanews.com

Betsy Phillips  
Editor  
bphilips@thepampanews.com

David Bowser  
Reporter  
dbowser@thepampanews.com

Andrew Glover  
Reporter  
aglover@thepampanews.com

Marcus Elkins  
Press Supervisor  
press@thepampanews.com

Chico Ramirez  
Circulation Supervisor

This newspaper (UPS 781-540) is published daily, except Sundays, Thanksgiving and Christmas Day, by The Pampa News. Periodicals postage paid at Pampa, Texas. Postmaster: Send address changes to The Pampa News, P.O. Drawer 2198, Pampa, TX 79066-2198.

All carriers are independent contractors and The Pampa News is not responsible for advance payments of two or more months made to the carrier. Please pay directly to the Pampa News any payment that exceeds the current collection period. There are no mail subscriptions available within the city limits of Pampa. Mail subscriptions must be paid three months in advance.

© 2010 The Pampa News

**TPA** MEMBER 2010  
TEXAS PRESS ASSOCIATION

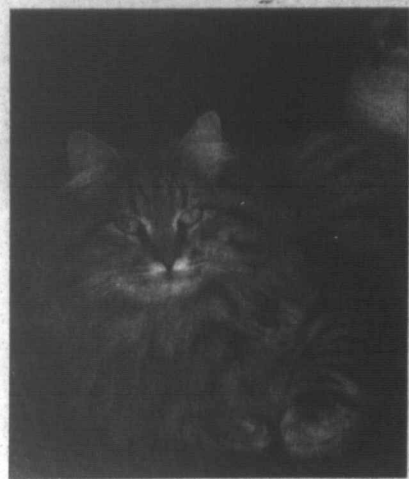




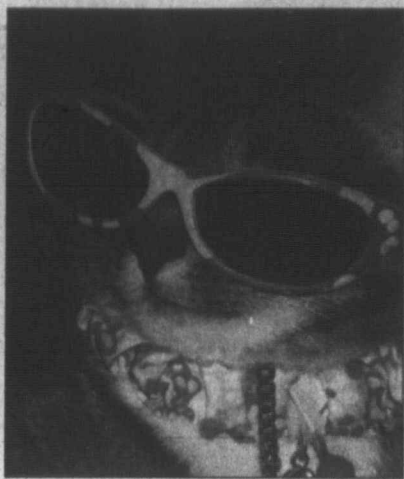


The Pampa News

# Cutest Pet Contest



#1 Mr. Tom Skittles



#2 Maggie



#3 Allie



#4 Popeye



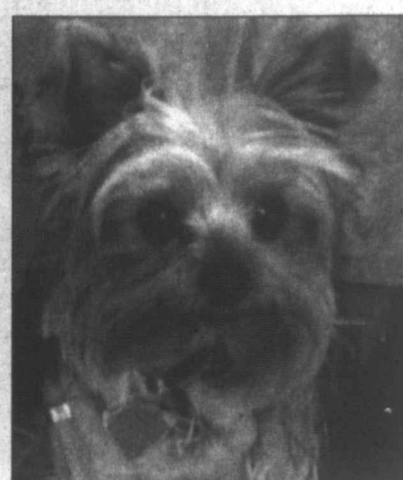
#5 Buddy



#6 Pika



#7 Gucci



#8 Bebe



#9 Casie



#10 Jake



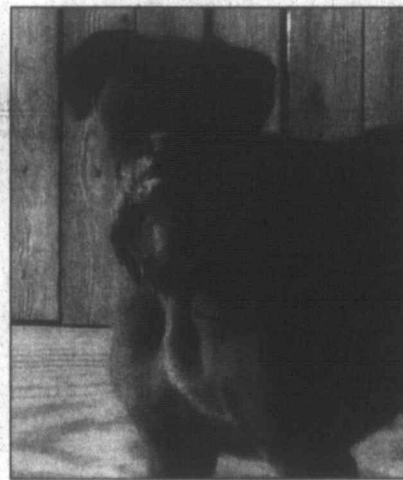
#11 Holley Sue



#12 Katy



#13 Chance



#14 Bowser



#15 Chloe



#16 Trixie



#17 Gilly



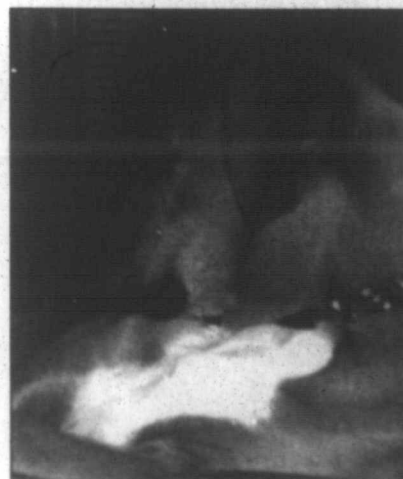
#18 Frog



#19 Bert



#20 Zoey



#21 April



#22 Ace



#23 Sweetie 2



#24 Zoe



#25 Lucky



#26 Peco



#27 Sassy



#28 Chencho





#29 Bailey



#30 Nebraska Jax



#31 Jelly Bean



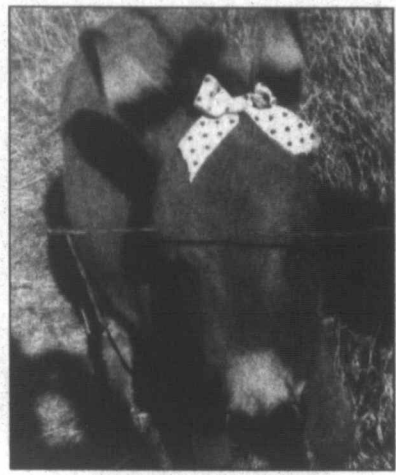
#32 Chavez AKA Poochie



#33 Rebel



#34 Spanky



#35 Naomi



#36 Isabell



#37 Little Miss Reba



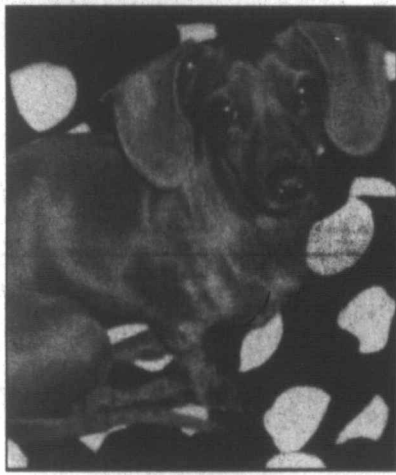
#38 Minnie



#39 Beggar



#40 Trixie



#41 Snoopy



#42 Max



#43 Missie



#44 Aika Mae



#45 Pennie



#46 Baby Kitty



#47 Red Duke



#48 Cabby

BALLOT

**VOTE**

**Now it's up to you!**

Here's how to cast your vote for The Cutest Pet:  
Write the number and name of the pet you wish to vote for in the space at the bottom of this form.  
Cut out this form and mail it to:  
The Pampa News at PO Box 2198, Pampa, TX 79066  
or bring it by 403 W. Atchison.

Vote for one pet per ballot. You may vote as many times as you wish, but each ballot must be an original from the newspaper. No copies will be accepted. Winners for first, second and third will be determined by the total number of votes received.  
All ballots must be received by Friday, February 5 at 4 p.m.  
The winners of the \$100, \$50, and \$25 prizes will be announced in The Pampa News on Tuesday, February 9.

**My vote for The Cutest Pet goes to:**

\_\_\_\_\_

BALLOT



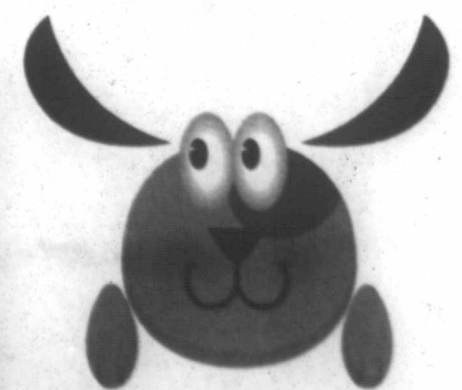
#49 Rosie & Lil



#50 Tuffy



#51 Hound-dog



Thanks to all of you who shared your pet photos for The Pampa News' Cutest Pet Contest!



# The Pampa News

# Classifieds

<p><b>4 Not Respon.</b> AS of Dec. 14, 2009 Ricky Annett will no longer be responsible for any bills other than my own.</p>	<p><b>10 Lost/Found</b> LOST Silver Zippo lighter in Plaza parking lot. If found please call 669-7284</p>	<p><b>14d Carpentry</b> WOOD &amp; METAL FENCING and REPAIRS Call 665-2859 or 662-5582.</p>	<p><b>14h Gen. Serv.</b> SOLIS FENCING. New Fence / Fence Repairs. Free estimates. 806-486-1368, 662-2473</p>	<p><b>21 Help Wanted</b> <b>NOTICE</b> Readers are urged to fully investigate advertisements which require payment in advance for information, services or goods.</p>	<p><b>21 Help Wanted</b> <b>\$1500.00 SIGN-ON BONUS</b> Certified Nurse Aide Pampa Nursing Center has openings for CNA's on all shifts. Apply in person, 1321 W. Kentucky</p>	<p><b>21 Help Wanted</b> <b>\$2000.00 SIGN-ON BONUS</b> Licensed Vocational Nurses Pampa Nursing Center has openings for LVN's on all shifts. Apply in person, 1321 W. Kentucky.</p>	<p><b>80 Pets &amp; Suppl.</b> FREE Female Brindle Pit bull. 6 months old. Has all shots. 440-4754 FREE small puppy, mix breed. 3 months old. Very cute, very playful. Has shots. 440-4433</p>	<p><b>96 Unfurn. Apts.</b> ONE month free rent. Largest apartments in Pampa. More for your money. They went last long. Call us today 665-1875.</p>
<p><b>5 Special Notices</b> ADVERTISING Material to be placed in the Pampa News, MUST be placed through the Pampa News Office Only.</p>	<p><b>13 Bus. Opp.</b> GREAT Investment opportunity Howardwick Convenience store. 665-1875, 806-383-1985.</p>	<p><b>14e Carpet Serv.</b> NU-WAY CLEANING SERVICE Bob Marx Owner-Operator. Call 665-3541.</p>	<p><b>14h Gen. Serv.</b> CERAMIC tile work. Remodeling floor, shower, kitchen. Texture, painting, dry wall. Free esti. Call 665-3453 leave message, Jesus Barraza.</p>	<p><b>14s Plumbing/Heat</b> BROWNING Heating &amp; Air Cond., 665-1212. Free esti. on new equip. We service all brands!</p>	<p><b>21 Help Wanted</b> F-T LVN's, F-T CNA's and F-T Marketer needed. Call McLean Care Center, 779-2469, Candy Branscum, Adm.</p>	<p><b>21 Help Wanted</b> NOW taking applications for host &amp; wait staff. No phone calls. Please apply in person between 2 pm &amp; 5 pm., at Dixie Cafe.</p>	<p><b>89 Wanted To Buy</b> I Buy Old Records 45's &amp; LP's Rock Soul, Blues, etc. Jason, 512-785-8714</p>	<p><b>98 Unfurn. Houses</b> PICK up rental list, in the Black Box, at 125 S. Houston, Pampa.</p>
<p><b>10 Lost/Found</b> FOUND fe. sm. dog or could be puppy, 800 bl. Locust. 669-6223, 662-3953 lv. msg</p>	<p><b>14d Carpentry</b> Carpentry, Roofing, Replacement Windows, steel siding &amp; trim. Continuous gutters. Jerry Nicholas 669-9991, 662-8169</p>	<p><b>14h Gen. Serv.</b> HOUSE Cracking? In bricks or walls? Children Brothers, Inc. 800-299-9563, 806-352-9563</p>	<p><b>14s Plumbing/Heat</b> JACK'S Plumbing, 715 W. Foster, 665-7115.</p>	<p><b>21 Help Wanted</b> <b>POSITION AVAILABLE: REGISTERED NURSE</b> Looking for reliable &amp; self motivated RN's with unbeatable work ethics. Flexible place to work with great benefits available. Call for an interview. EOE <b>ROADRUNNER HOMECARE</b> (866)210-8275 or (806)259-2597</p>	<p><b>21 Help Wanted</b> GANG Pusher. CDL a plus &amp; Roustabout needed. Apply at 100 N. Cuyler Ste. 200.</p>	<p><b>21 Help Wanted</b> LOCAL Delivery Drivers for Pampa, TX. Class A CDL req. with Hazmat &amp; Tanker endorsement. Salary based on exp. Health &amp; Dental ins., 401K and uniforms provided. Call 806-595-0495 Mon-Fri., 7:30-4:30pm.</p>	<p><b>95 Furn. Apts.</b> All real estate advertised herein is subject to the Federal Fair Housing Act, which makes it illegal to advertise "any preference, limitation, or discrimination because of race, color, religion, sex, handicap, familial status or national origin, or intention to make any such preference, limitation, or discrimination." State law also forbids discrimination based on these factors. We will not knowingly accept any advertising for real estate which is in violation of the law. All persons are hereby informed that all dwellings advertised are available on an equal opportunity basis.</p>	<p><b>98 Unfurn. Houses</b> 3 bdr., 1 ba., new flooring throughout, new tile in entry &amp; bath. Lrg. back yard. Great neighborhood. 2122 Hamilton. \$700 mo., \$700 dep. 806-570-9824, 665-5667</p>
<p><b>10 Lost/Found</b> FOUND fe. sm. dog or could be puppy, 800 bl. Locust. 669-6223, 662-3953 lv. msg</p>	<p><b>14d Carpentry</b> CUSTOM Building &amp; Remodeling. New Homes &amp; Additions. Shawn Deaver Const., 806-662-2977.</p>	<p><b>14h Gen. Serv.</b> COX Fence Company. Repair old fence or build new. Free estimates. Call 669-7769.</p>	<p><b>14s Plumbing/Heat</b> WENDELL'S ROOFING CO. Metal Roofs, Composition Roofs and Built-Up Roofs. Free Estimates. 806-665-7648</p>	<p><b>21 Help Wanted</b> <b>Licensed Physical Therapy Assistant</b> needed for a growing multi-disciplinary Physical Therapy practice in Pampa, Tx. Fax Resume to: (806)665-0537</p>	<p><b>21 Help Wanted</b> Wellhead Service Technician Established wellhead company seeking service tech to join our team. The position is responsible for installing and testing wellheads and frac trees on well locations. This is an hourly position with overtime required. Employee will be "on call" 24/7. We offer medical and dental ins., 401 (k) and paid vacation. Please forward your resume to thawkins@seaboardinc.com. Equal Opportunity Employer M/F/D/V.</p>	<p><b>21 Help Wanted</b> FIRST Baptist Church, in Skellytown is accepting Bids for weekly cleaning of the church. If you would like to see the property, please call 848-2935 or 662-6739. Mail sealed bids to P.O. Box 295, Skellytown, TX 79080. Bids will be opened on Jan. 31, 2010</p>	<p><b>95 Furn. Apts.</b> 1 Bedroom Apts. Reasonable Rate Coffee Street Apts. 665-4274</p>	<p><b>98 Unfurn. Apts.</b> 3 bedroom 2 bath 662-9775</p>
<p><b>10 Lost/Found</b> FOUND fe. sm. dog or could be puppy, 800 bl. Locust. 669-6223, 662-3953 lv. msg</p>	<p><b>14d Carpentry</b> OVERHEAD DOOR REPAIR Kidwell Construction. Call 669-6347.</p>	<p><b>14h Gen. Serv.</b> Hugoton, KS manufacturer is looking for motivated individual with good work ethic for employment in the Wheeler / Gray County, Texas area for the following position: <b>Mechanic for natural gas compressors:</b> This position requires mechanical experience in compressor and engine repair. Automotive and / or diesel experience is appreciated, training will be provided. The ability to work independently is mandatory. Applicant must have a clean driving record and must provide own tools. Pay proportionate to experience. Position is for full time employment with benefits. Great Plains Gas Compression, Inc. offers a competitive employment package, including insurance and 401(k) plan. A pre-employment physical and drug screen are required. Applications or resumes may be faxed to the Great Plains Gas Compression office (620)544-4141 or call 620-544-4191 for more information.</p>	<p><b>21 Help Wanted</b> NEED immediately-person exp. in alignments, front end work, tire repair. Drug test required. Apply in person. No phone calls. Gonzales Wheel Alignment, 125 N. Somerville.</p>	<p><b>21 Help Wanted</b> NEED person exp. in service calls for busy tire shop. Must be on call after hrs. Drug test req. Apply in person. No phone calls. Gonzales Wheel Alignment, 125 N. Somerville.</p>	<p><b>21 Help Wanted</b> PT File Clerk needed at Broome Optical in Pampa-busy retail optical office. Prefer some office exp., but will train the right person. Fax resume to 806-355-1284 or 806-331-0866 or mail to: HR Dept., Panhandle Eye Group, P.O. Box 50720, Amarillo, TX 79159-0720.</p>	<p><b>21 Help Wanted</b> FOR Sale: Kenmore Elite gas dryer- Large capacity sweater rack \$350. 18.2 Cubic ft. Frigidaire Refrigerator \$350. 806-665-9445 or 806-664-0801 NEW queen sz. mattress set \$246, twin sz. sets \$128. Red Barn, 1420 S. Barnes. Open Sat. or call 665-2767</p>	<p><b>95 Furn. Apts.</b> 2/1/1. Great neighborhood. 1704 Hamilton. \$575 mo. \$575 deposit. 570-9824 or 665-5667. LRG. 3 or small 4 bdr, 700 Bradley. \$550 mo., \$200 dep., and Lrg. 3 bdr., 1040 Cinderella. \$650 mo., \$200 dep. 662-7557. LEASE br. 3/2/2, built-ins, patio, Austin sch. 2537 Mary Ellen. \$900 mo. + dep. 669-6467 3 bdr., 2 ba. 1900 sf brick, Austin sch. 1 car gar. C h/a. Beautiful yard. \$950. 665-0095 2 bdr., 1 ba., 1 car garage, 1230 N. Russell. \$450 mo., \$450 dep. 665-5473 3 bedroom 2 bath 662-9775 3 bedrooms. Central Heat &amp; Air. 313 N. Faulkner. References Required. 440-1969 2 bdr, 1 ba. New carpet &amp; paint. Central h/a. Carport. HUD ok. Great area. 665-4082.</p>	<p><b>98 Unfurn. Apts.</b> 1 Bedroom Apts. Reasonable Rate Coffee Street Apts. 665-4274</p>

**DGcareers**  
SERVE • EXCEL • SUCCEED

**NOW HIRING Pampa, TX**

- Store Mgrs. in Training  
1 year retail mgmt. exp. preferred. Position begins at competitive hourly wage and with opportunity to become Store Manager.
- Assistant Managers  
6 months supervisory exp. preferred
- Lead Associates
- Associates

Apply in person:  
**DOLLAR GENERAL**  
2225 Perryton Pkwy., Suite 3  
Pampa, TX 79065

Supports a Drug Free Workplace • Equal Opportunity Employer  
[www.dollargeneral.com](http://www.dollargeneral.com)

**Hugoton, KS manufacturer is looking for motivated individual with good work ethic for employment in the Wheeler / Gray County, Texas area for the following position:**

**Mechanic for natural gas compressors:** This position requires mechanical experience in compressor and engine repair. Automotive and / or diesel experience is appreciated, training will be provided. The ability to work independently is mandatory. Applicant must have a clean driving record and must provide own tools. Pay proportionate to experience.

Position is for full time employment with benefits. Great Plains Gas Compression, Inc. offers a competitive employment package, including insurance and 401(k) plan. A pre-employment physical and drug screen are required. Applications or resumes may be faxed to the Great Plains Gas Compression office (620)544-4141 or call 620-544-4191 for more information.

**POSITION AVAILABLE: REGISTERED NURSE**

Looking for reliable & self motivated RN's with unbeatable work ethics. Flexible place to work with great benefits available. Call for an interview. EOE

**ROADRUNNER HOMECARE**  
(866)210-8275 or (806)259-2597

**Licensed Physical Therapy Assistant**  
needed for a growing multi-disciplinary Physical Therapy practice in Pampa, Tx. Fax Resume to: (806)665-0537

**Wellhead Service Technician**  
Established wellhead company seeking service tech to join our team. The position is responsible for installing and testing wellheads and frac trees on well locations. This is an hourly position with overtime required. Employee will be "on call" 24/7. We offer medical and dental ins., 401 (k) and paid vacation. Please forward your resume to thawkins@seaboardinc.com. Equal Opportunity Employer M/F/D/V.

**FURNITURE CLINIC**  
Refinishing, Repairing Re-Gluing  
662-9700

FOR Sale: 1 1/2 Ct. Diamond Engagement / Wedding Ring Set. Only worn for 2 yrs. Purchased @ Zales. Size 6. \$1500. Call 662-5716 after 4 pm. Serious callers only please.

**ALL BILLS PAID**  
1 Bdrms. No Sec. Deposit Monthly Leases Avail.  
(817) 909-4766

APTS. Houses Duplexes. K&B Properties. Ref. & dep. req. Lakeview Apts. 669-4386

CLEAN 1 bdr., stove, refrig. All bills paid. 886-1674.

FIRST month 1/2 rent, nice updated 2 bdr., w/d conn., Austin sch. Fig Tree Apts., 663-9727.

## Daily Horoscope

HAPPY BIRTHDAY for Thursday, Jan. 28, 2010:  
This year proves to be unique in its own right. Experiencing a period like this one might not occur again for a long time. You have many options, but they all demand hard work and focus. Claim your power, but avoid wild spending. Your finances will expand, though you might want to pull back some. If you are single, you have more to offer than you think. Remain sensitive to your needs. If you are attached, the two of you might want to take up a mutual hobby or pastime.

**CANCER** (June 21-July 22)  
\*\*\*\*\* You have the wherewithal to change the very nature of a situation. Your ability to grasp the dynamics involved is critical. A misunderstanding might be just that. Don't put all your power and energy into it. Tonight: All smiles.

**LEO** (July 23-Aug. 22)  
\*\*\* Partners know how to work the unexpected, like it or not. You might feel as if you have little recourse than to go along with a financial partner. You really do have options, but you might not be comfortable with them. Understand your limits and work within a key framework. Tonight: Take your own advice!

**VIRGO** (Aug. 23-Sept. 22)  
\*\*\*\* Zero in on a meeting where you have a greater opportunity to have your point heard and at the same time find supporters. You could be more than overwhelmed with a certain situation involving a way-too-unpredictable partner. Tonight: Where the action is.

**LIBRA** (Sept. 23-Oct. 22)  
\*\*\* Stay on top of work, despite the fact that you might want to take a walk or go for a drive. As strange as it sounds, your nervous energy could be preventing you from accomplishing more. Listen to what a child shares. Tonight: A must appearance.

**SCORPIO** (Oct. 23-Nov. 21)  
\*\*\*\*\* Dig into your imagination for answers. You could be taken aback by another person's seemingly great solution. See what works for you, and understand the many possibilities. If need be, do find an expert. You want different ideas, don't you? Tonight: Choose the

or talk! Tonight: Take a hard look at your budget.

**CANCER** (June 21-July 22)  
\*\*\*\*\* You have the wherewithal to change the very nature of a situation. Your ability to grasp the dynamics involved is critical. A misunderstanding might be just that. Don't put all your power and energy into it. Tonight: All smiles.

**LEO** (July 23-Aug. 22)  
\*\*\* Partners know how to work the unexpected, like it or not. You might feel as if you have little recourse than to go along with a financial partner. You really do have options, but you might not be comfortable with them. Understand your limits and work within a key framework. Tonight: Take your own advice!

**VIRGO** (Aug. 23-Sept. 22)  
\*\*\*\* Zero in on a meeting where you have a greater opportunity to have your point heard and at the same time find supporters. You could be more than overwhelmed with a certain situation involving a way-too-unpredictable partner. Tonight: Where the action is.

**LIBRA** (Sept. 23-Oct. 22)  
\*\*\* Stay on top of work, despite the fact that you might want to take a walk or go for a drive. As strange as it sounds, your nervous energy could be preventing you from accomplishing more. Listen to what a child shares. Tonight: A must appearance.

**SCORPIO** (Oct. 23-Nov. 21)  
\*\*\*\*\* Dig into your imagination for answers. You could be taken aback by another person's seemingly great solution. See what works for you, and understand the many possibilities. If need be, do find an expert. You want different ideas, don't you? Tonight: Choose the

**SAGITTARIUS** (Nov. 22-Dec. 21)  
\*\*\*\*\* Understanding evolves if and when you sit down and have a long-overdue conversation. Not everyone needs to understand where you are coming from. Examine your different choices and listen to what someone shares. Tonight: Make it cozy.

**CAPRICORN** (Dec. 22-Jan. 19)  
\*\*\*\*\* Your ability to see past the obvious emerges. You understand what many don't: the complexity of an issue. Open up to the potential of change and understanding. See what happens if you talk with a friend more openly. Tonight: Defer to others.

**AQUARIUS** (Jan. 20-Feb. 18)  
\*\*\*\* Your sense of direction comes through in many different ways. Realize what you can do to change the tides. Understand you are but one person. Think through an upcoming offer. Do you really want to take on any more work? Tonight: Easy works.

**PISCES** (Feb. 19-March 20)  
\*\*\*\*\* Don't expect others to see through the same lens as you. Your experiences are different and, in some way, far richer. Listen to news with an open mind, then consider if you want to do anything about it at all. Tonight: Fun times are here.

**BORN TODAY**  
Actor Elijah Wood (1981), actor Alan Alda (1936), Pastor Rick Warren (1954)

Jacqueline Bigar is on the Internet at [www.jacquelinebigar.com](http://www.jacquelinebigar.com)  
© 2010 by King Features Syndicate Inc.

**AXYDLBAAXR is LONGFELLOW**

One letter stands for another. In this sample, A is used for the three L's, X for the two O's, etc. Single letters, apostrophes, the length and formation of the words are all hints. Each day the code letters are different.

1-27 **CRYPTOQUOTE**

CQJ ZHZJUSBNWK UQV BDHZ  
PNLLZG, UQV BDHZ KDNWZG  
LQPZSBNWK ZXLZ, DWG CQJ  
ZHZJUSBNWK UQV KDNW, UQV  
XQLZ LQPZSBNWK ZXLZ.

— JDXOB'YDXGQ ZPZJLQW  
**Yesterday's Cryptoquote: NOBODY CAN GO BACK AND START A NEW BEGINNING, BUT ANYONE CAN START TODAY AND MAKE A NEW ENDING. — MARIA ROBINSON**

**102 Bus. Rental**  
DOWNTOWN office space for rent. Utilities & cleaning service provided. Ample parking. 669-6823  
OFFICE Space for rent, ask about 3 months free rent. 669-6841.

**103 Homes For Sale**  
HIGHEST CASH PAID FOR HOUSES! CALL 665-1875  
PRICE Reduced! 4 bdr., 1 3/4 ba. 2300 sq. ft. Newly renovated. 669-1846, 663-0514.  
TRUSTAR Real Estate, 1716 N. Hobart. List with us! Property mgmt., Home staging. 665-4595.

**115 Trailer Parks**  
TUMBLEWEED Acres, Storm Shelters, fenced, stor. bldg. avail. 665-0079, 665-2450.

**120 Autos**  
LEFORS FCU is accepting sealed bids on a 2005 Chev. Impala. Call 806-835-2773 for more info. Lefors FCU reserves the right to reject any and all bids.

**Classified Line Ad Specials!**

4 Lines 4 Days \$18.50  
8 Lines 4 Days \$21.50

Does not include first minute Ad.  
Call for Deadlines: (806) 669-2526

**Classified**