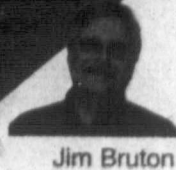


Ashmore & Associates
 1224 North Hobart
 NBC Plaza 2, Suite 11
 Pampa, TX • 806-688-7081
 www.ashmoreassociates.com
 INSURANCE AGENCY, LLC

We're the biggest
 Largest Selection
DOUG B...
 CORNER OF HWY 60 & HWY 70 • 80
 Visa & Mastercard Ac

*****ORIGIN MCO:0 NOC 790
 0000471 12/31/2009
 HERITAGE MICROFILM
 4049 21ST AVE SW
 CEDAR RAPIDS, IA 52404 5389

WHL
LAND & GRAVEL, LLC
 120 S. HOBART
 Pampa, Texas
 806-669-0158



Jim Bruton

The PAMPA NEWS

Tuesday, August 18, 2009 Volume 105 • No. 101 50¢ Daily • Weekend \$1.50

District busy preparing for new year

BY DAVID BOWSER
 dbowser@thepampanews.com

The Pampa Independent School District board of trustees will hold a public hearing on the proposed 2009-2010 tax rate Thursday.

Amid a flurry of special school board meetings this week, the school board will meet in regular session at 6 p.m., Thursday, at the Carver Center Administration Building, 321 W. Albert.

The public hearing will be followed by a Spotlight on Excellence presentation.

The board is expected to approve the district's 2009-2010 tax rate during their regular meeting.

They will also confer with their attorney concerning the high school stadium artificial turf project.

The board will get an update on the Pampa High School renovation project and the con-

SCHOOLS cont. on page 3

PISD board to hold special meeting today

The Pampa school board will meet tonight in a special meeting to tour the renovated high school.

The school board will tour the renovation beginning at 5:30 p.m. today.

The special meeting of the Pampa Independent School District board of trustees will be tonight at the Pampa High School in the rotunda area, 111 E. Harvester.

The school board will also hold a special meeting at 9 a.m., Saturday at the Carver Central Administration Office, 321 W. Albert.

Saturday morning, the school board will discuss goals and the superintendent's performance expectations. They will also clarify the superintendent's duties.

They will also consider employment of teachers.



staff photo by David Bowser

Brian Hinds makes some last minute adjustments to Pampa High School before it opens for business for the 2009-2010 school year.

Back to School Special
 You pay the flooring & installation costs and we pay the taxes through August!

The Floor Store
 2110 Perryton Parkway
 665-4455

CHILDERS BROTHERS INC
HOUSE LEVELING
 Uneven Floors
 Floor Bracing
 Cracks In Bricks
 Sticking Doors & Windows
 Interior Wall Cracking
 FREE ESTIMATES
1-800-299-9563
 WWW.CHILDERSLEVELING.COM

Watch for our huge Garage Sale!
 Discontinued & Small Quantities...
 Starting at 50¢ sq ft on Laminate & Tile
ONE STOP FLOORING
1533 N. HOBART
 MONDAY-FRIDAY 9-5
 SATURDAY 10-1

M#10341 • LICENSED • INSURED
BOB'S PLUMBING
 PAMPA, TEXAS
806-669-1940
 CELL# 806-584-0809
 HOURS MON-FRI 8-6 • SAT 8-12
 EMERGENCY ANYTIME
 OWNERS: BOBBY FAIRES / DUJCE FAIRES

Sentry Self Storage
 24 hr Controlled Access
 24 hr Video Surveillance
 Personal & Commercial
 665-1000

VISION SOURCE
 FAMILY EYE CARE
 OPTICAL
KIDS SEE FREE
 1324 N. BANKS
 806.665.0771

AMMONS CONSTRUCTION
 Roofing Siding
 Custom Homes
 Window Replacement
 Remodeling & Additions
 806.669.7777
 ammonsonstruction.com

Vision
 COMPUTER SERVICES
 I have computer problems.com
 806-665-HELP(4357)
 Combs Worley Building
 120 W Kingsmill Ave
 Suite 303

Jaspe
 Located in...
 Work...
 Main...
 Road...
 Mobile...
 806-669-7777

M & H Leasing
TOP OF TEXAS
CLUB
 Support
 Harvester Football!
 1945 N. Hobart • 665-2061

Lightning strikes retired fire captain's home

Lightning struck a home in the 2200 block of N. Zimmers early this morning. Luckily, the home owner knew just what to do.

Three units from the Pampa Fire Department and eight personnel responded at 3:27 this morning to the report of a structure fire caused by a lightning strike.

According to Captain Mike Day, the home owner, a retired captain from the Pampa Fire Department, had extinguished a small fire that caused damage to the home's heating unit, a gas line and some wiring. Damage was limited to that portion of the house.

Mother sentenced to 99 years for mutilating infant son

HOUSTON (AP) — A Houston-area mother convicted of mutilating her infant by cutting off his genitals two years ago was sentenced Monday to 99 years in prison.

But minutes after the jury's sentence was read, Katherine Nadal, 28, yelled out that she did not hurt her son, prompting the boy's father to storm out of the courtroom.

Jurors deliberated for two hours Monday night before returning the sentence, which also included a \$10,000 fine. The same jury had convicted her last week of first-degree felony injury to a child.

The jurors chose among possible sentences ranging from probation to life in prison. Nadal,

who shook her head as the jury foreman read the sentence, will have to serve at least 30 years before she is eligible for parole.

Prosecutors asked for life in prison. Nadal's attorneys did not request a specific sentence, instead asking the jury to not punish her out of hate or revenge.

Nadal had claimed the family dog, a 6- to 7-pound dachshund named "Shorty" was responsible for mutilating her then-5-week-old son, Holden Gothia, as he slept in his parent's bedroom in March 2007 at their suburban Houston apartment.

But prosecutors said she was high on drugs when she mutilated her son with an unknown sharp instrument. Authorities

say Nadal, who had prior drug arrests, tested positive for cocaine, methadone and Xanax after the attack.

Holden survived, but the severed body parts were never found.

After the sentence was announced, Holden's paternal aunt, Patches DeShazo, who has custody of the now 2-year-old boy, read a victim impact statement in the courtroom.

"I am thankful by time you are eligible for parole you will be beyond childbearing years. It makes me crazy to this very day to hear you say I did not hurt him," DeShazo said as she read her statement.

That prompted Nadal to yell

INFANT cont. on page 3

Flash flood watch in effect through tomorrow

The National Weather Service in Amarillo has issued a Flash Flood watch for Gray county and most of the Texas panhandle through Wednesday morning. Thunderstorms with very heavy rainfall are expected on top of Monday night's 1.7 inches of rainfall recorded in Pampa.

People in low-lying and flood prone areas are advised to take precautions to move property, including livestock, to higher ground.

Flash flooding is a very dangerous situation. Residents should monitor later forecasts and be prepared to take action should flash flood warnings be issued.

When there's water running across a road, drivers should always turn around and choose a different route.

•Six inches of water can cause tires to lose traction and begin to slide.

•Twelve inches of water can

float many cars.

•Two feet of rushing water will carry off pick-up trucks, SUVs and most other vehicles.

•Water across a road may hide a missing segment of roadbed or a missing bridge.

•In flash floods, waters rise so rapidly they may be far deeper by the time you are halfway across, trapping you in your vehicle.

•Flash floods are especially treacherous at night when it is very

difficult to see how deep waters may be or how fast water is rising.

•Floodwater weakens roadbeds. Drivers should proceed cautiously after waters have receded, since the road may collapse under the weight of the vehicle.

Lives can be saved every year if Texas drivers follow this one rule: when there's water on the road, turn around, don't drown.

MORLEY 274-5000
BORGER
 701 N. MAIN
 G. I. Joe: Rise of The Cobra
 Funny People
 The Ugly Truth
 G-Force (Digital 3D)
 My Sisters Keeper (Digital)
 www.morleyfranchise.com



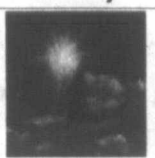
HOUSE HUNTERS-REALTOR
 Linda Laycock BROKER 662-1312
 Larry Hadley ASSOC 662-2779
 Jordan Oneal ASSOC 817-690-9622

Coffee Memorial Blood Drive
 COLLEGE
 I GAVE BLOOD TODAY!



For the record

PAMPA FORECAST

| Wednesday | Thursday | Friday |
|---|---|---|
|  |  |  |
| High 92 Low 64 | High 82 Low 63 | High 89 Low 62 |

Tonight: Scattered showers and thunderstorms. Some of the storms could produce heavy rain. Mostly cloudy, with a low around 68. East southeast wind 10 to 15 mph becoming north. Winds could gust as high as 20 mph. Chance of precipitation is 40%.

Wednesday: Partly cloudy, with a high near 92. South wind between 10 and 20 mph, with gusts as high as 25 mph.

Wednesday Night: A 20 percent chance of showers and thunderstorms before 1 a.m. Mostly cloudy, with a low around 64. South southwest wind between 10 and 15 mph becoming calm.

Thursday: Mostly sunny, with a high near 82. East northeast wind 5 to 10 mph increasing to between 15 and 20 mph. Winds could gust as high as 25 mph.

Thursday Night: Partly cloudy, with a low around 63. East southeast wind between 5 and 15 mph, with gusts as high as 20 mph.

Friday: Mostly sunny, with a high near 89. Southeast wind around 5 mph becoming calm.

Friday Night: Partly cloudy, with a low around 62. East southeast wind between 5 and 10 mph.

© This information brought to you by...

PRESTIGE
AUTOBODY & ACCESSORIES
101 S. HOBART 806-665-3500
TRUCK TENTS - PERFECT FOR CAMPING OR HUNTING IN CAMO

B & G Electric
REGION-WIDE, 24 HOURS
(806) 665-4418

IRS says beware of e-mail scams

DALLAS (AP) — The IRS is warning taxpayers to be on the lookout for various e-mail "phishing" scams.

An IRS statement Monday says fraudsters pose as an official trying to trick a victim into revealing personal and financial information.

People who respond to the scam could become victims of identity theft or financial loss.

One scam references the

Making Work Pay provision of the 2009 economic recovery law when a consumer receives an unsolicited e-mail that appears to come from the IRS and says the consumer is eligible for a tax refund.

Internal Revenue Service spokesman Clay Sanford says the agency does not contact or discuss tax account matters with taxpayers by e-mail.

Obituaries

Edna Lorene Belt, 90

Pampa— Edna Lorene Belt, 90, died August 17, 2009, in Gadsden, Alabama.

Services are pending with Carmichael-Whatley Funeral Directors.

Mrs. Belt was born February 26, 1919 in Childress. She married Harle S. Belt on January 27, 1935 in Childress. He preceded her in death on January 16, 1992. She had been a resident of Pampa

since 1975. Edna was a member and deacon of the Church of the Brethren.

Survivors include two daughters, Dolly Watts of Gadsden, Alabama, and Vickie Tippit and husband Billy of Plattsburg, Missouri; one son, Stanley Belt and wife Sandee of Pampa; one sister, Imogene McMinn of Pampa; 16 grandchildren, 26 great-grandchildren and two great-great-grandchildren.

She was preceded in death by two sons, Harlen and Randy, both in 2007.

MEMORIALS: Alzheimer's Association, 415 W. 8th Ave., Suite 300, Amarillo, Texas 79101, or American Cancer Society, c/o Gerry Caylor, 2130 Charles, Pampa, Texas 79065.

Sign the on-line register at www.carmichael-whatley.com



Belt

Ruth Nichols Lard, 84

Pampa— Ruth Nichols Lard, 84, died August 18, 2009, in Iowa Park, Texas. Services are pending with Carmichael-Whatley Funeral Directors.

EMERGENCY SERVICES

PAMPA PD

The Pampa Police Department reported the following incidents during the 24-hour period ending at 7 a.m. today.

There were five traffic stops.

There were 16 calls involving animals.

There were two 911 hang up calls.

Monday, Aug. 17.

A vehicle's door was reported kicked in in the 2100 block of North Christy.

A tool box with tools valued at \$500 was reported taken from a vehicle in the 1600 block of East U.S. Highway 60.

A fire alarm was reported in the 2500 block of Perryton Parkway.

An amplifier and speakers were reported taken from a vehicle in the 2200 block of North Dwight.

A medical emergency was reported in the 400 block of North Russell.

A windshield was reported broken in the 2100 block of North Christy.

Officers made a welfare check in the 1800 block of North Sumner.

Disorderly conduct was reported in the 700 block of East Scott.

Criminal mischief was reported in 500 block of Yeager.

Fraud was reported in the 300 block of East Brown.

A welfare check was made in the 900 block of Sierra Drive.

A medical emergency was reported in the 1400 block of North Russell.

An abandoned vehicle was reported 300 block of Miami.

Fraud was reported to the Police Department.

A medical emergency was reported in the 2400 block of North Mary Ellen.

A burglary was reported to the Police Department.

Child endangerment was reported to the Police Department.

A medical emergency was reported in the 8200 block of FM 2300.

Fraud was reported in the 1200 block of North Price.

A civil matter was reported in the 800 block of East Scott.

A suspicious person was reported in the 200 block of East Brown.

An assault was reported in the 600 block of South Reid.

A warrant was served in the 200 block of North Russell.

Disorderly conduct was reported in the 200 block of North Summer.

The driver's side window was broken out of a vehicle in the 500 block of South Barnes.

Disorderly conduct was reported in the 400 block of South Graham.

A forgery was reported in the 200 block of East Brown.

A medical emergency was reported in the 400 block of South Graham.

A person was reported missing from the 900 block of S. Barnes.

A suspicious person was reported at Somerville and Buckler.

Tuesday, Aug. 18.

An alarm was reported on Texas Highway 70 north of Pampa.

A structure fire was reported in the 2200 block of North Zimmers.

The burglary of a motor vehicle was reported in the 800 block of East Beryl.

The burglary of a motor vehicle was reported in the 300 block of South Anne.

SHERIFF

The Gray County Sheriff's office reported the following arrests for the 24-hour period ending

at 7 a.m. today.

Monday, Aug. 17

Jay Gene Kelly Jr., 22, was arrested on a warrant charging him with no wearing a seat belt and failure to maintain financial responsibility.

Zachery Wade Skinner, 24, was charged with fraudulent use of identification, not having a valid driver's license, not having a motorcycle endorsement, failure to appear, failure to maintain financial responsibility and operating a motorcycle without appropriate headgear.

David Chance Putman III, 22, Skellytown, was arrested on warrants charging him with not having a valid identification, theft under \$50 and failure to appear.

AMBULANCE

Guardian EMS responded to the following calls during the period between 7 a.m. Friday, August 14 to 7 a.m. Monday, August 17.

Friday

7:57 a.m.—An MICU unit responded to Somerville and Hobart, no patient.

11:17 a.m.— An MICU unit responded to the 1500 block of W. Kentucky Avenue, transported one patient to Pampa Regional Medical Center.

11:31 a.m.— An MICU unit responded to the 800 block of Gordon, transported one patient to PRMC.

1:05 p.m.— An MICU unit responded to the 800 block W. 25th, no patient.

10:04 p.m.— An MICU unit responded to the 1700 block of Evergreen, transported one patient to PRMC.

Saturday

4:17 a.m.— An MICU unit responded to 100 block of Foster, transported on patient to PRMC.

12:13 p.m.— An MICU

unit responded to the 1900 block of Dogwood, transported one patient to PRMC.

4:41 p.m.— An MICU unit responded to the 900 block of Finley, transported one patient to PRMC.

6:55 p.m.— An MICU unit responded to the 1500 block of W. Kentucky, transported one patient to PRMC.

8:06 p.m.— An MICU unit responded to the 900 block of Francis and Hobart, transported one patient to PRMC.

Sunday

6:00 a.m.— An MICU unit responded to the 2300 block of Mary Ellen, transported one patient to PRMC.

7:18 a.m.— An MICU unit responded to PRMC, transported one patient to Veterans Medical Center.

2:17 p.m.— An MICU unit responded to the 800 block of W. 25th, transported one patient to PRMC.

6:38 p.m.— An MICU unit responded to the 200 block of Henry, transported one patient to PRMC.

9:03 p.m.— An MICU unit responded to the 1500 block of W. Kentucky, transported one patient to PRMC.

FIRE

The Pampa Fire Department responded to the following calls from 7 a.m. Monday, August 17 to 7 a.m. Tuesday, August 18.

9:36 a.m.— 3 units and 7 personnel responded to a false alarm at the vacant J.C. Penny store in the mall.

10:20 a.m.— One unit and 3 personnel responded to the 100 block of S. Wells on a medical call.

3:27 a.m.— three units and 8 personnel responded to a structure fire caused by a lightning strike.

Austin clerk charged over beer theft suspect

AUSTIN, Texas (AP) — A 23-year-old clerk at an Austin convenience store was jailed Tuesday on a murder charge after the fatal shooting of a suspect in a beer theft.

Juan Hector Romero was in the Travis County Jail on \$250,000 bail. Electronic jail records had no indi-

cation of an attorney for Romero, who was arrested hours after Sunday's fatal shooting.

Investigators say Romero is charged with pursuing and shooting 22-year-old Jorge Luis Vielma, who allegedly dashed out of the store carrying a 12-pack of beer.

AXYDLBAAXR
is LONGFELLOW

One letter stands for another. In this sample, A is used for the three L's, X for the two O's, etc. Single letters, apostrophes, the length and formation of the words are all hints. Each day the code letters are different.

8-18 CRYPTOQUOTE

FWMXX XMDY UMV PALD MJV

XAYQMUMG, UMG KAMWDUBD

AUXABOVD LMYDYDYAMU.

— HJWAO POGX QMPD
Yesterday's Cryptoquote: THERE ARE TWO WAYS OF MEETING DIFFICULTIES: YOU ALTER THE DIFFICULTIES OR YOU ALTER YOURSELF TO MEET THEM. — PHYLLIS BOTTOME

Sudoku

Answer to yesterday's puzzle:

| | | | | | | | | |
|---|---|---|---|---|---|---|---|---|
| 1 | 4 | 3 | 6 | 7 | 8 | 9 | 2 | 5 |
| 5 | 6 | 9 | 3 | 2 | 1 | 7 | 4 | 8 |
| 7 | 8 | 2 | 4 | 5 | 9 | 3 | 1 | 6 |
| 4 | 7 | 1 | 5 | 6 | 3 | 8 | 9 | 2 |
| 6 | 2 | 8 | 1 | 9 | 7 | 4 | 5 | 3 |
| 9 | 3 | 5 | 2 | 8 | 4 | 1 | 6 | 7 |
| 8 | 1 | 6 | 9 | 3 | 5 | 2 | 7 | 4 |
| 3 | 5 | 4 | 7 | 1 | 2 | 6 | 8 | 9 |
| 2 | 9 | 7 | 8 | 4 | 6 | 5 | 3 | 1 |

| | | | | | | | | |
|---|---|---|---|---|---|---|---|---|
| | 9 | 3 | | | 6 | 5 | | |
| 1 | 2 | | 9 | 4 | 6 | 7 | | |
| 6 | | | | | | | | |
| | | | 7 | 6 | 9 | | | |
| 5 | 7 | 4 | | 1 | | | | 9 |
| | | | | | | | 2 | 8 |
| | | | | | 3 | 2 | 9 | |
| | | | | | 5 | 9 | 2 | 1 |
| 2 | | | 6 | | | | | 7 |

Level: Beginner

School starts Monday!
Remember, No cell phones in school zones!

LAST MINUTE CLASSIFIED LINE ADS

The Pampa News is not responsible for the content of paid advertisement

ASPIRE QUICKIE HELP WANTED- Outside Freestyle Wheelchair Battery Operated, choice of three colors for fenders. \$1,250.00. 665-9445. sales/customer service representative, see help wanted ads for more details.

AFTER SCHOOL program for K- 5th grade available at First Baptist Church Daycare. In-cludes pickup up from grade schools in Pampa, open Spring break and most scheduled holidays and snow days. Register today. 203 N. west 669-3529

CHAUTAUQUA 2009 - Info Meeting August 20. 200 N. Ballard S. Door 7:00 pm to 9:00 pm. New Non-Profits or individuals wanting to sign up.

JIM'S BARBER Shop, 1421 N. Hobart, 665-5111.

CERAMIC TILE. Keith Taylor, 874-1779 lv. msg.

VISION SOURCE Family Eye Care Optical. Kids See Free. 1324 N. banks 665-0771

CHECKING IT TWICE



Kristen Curtis and Belinda Waldrip, Friends of CASA committee members, work on plans for the 15th Anniversary Dinner for CASA of the High Plains. The dinner will be held on Thursday, August 20, at 6:30 p.m. This event is to mark 15 years of service to the abused and neglected children served by the local CASA program. Chadwick Sapenter, a former foster youth will be the featured speaker and will tell about the impact of a CASA volunteer on his life. Tickets are \$15 each and there are a few remaining. Anyone interested in attending the dinner can call the CASA office at 669-7638 for reservations.

Justice Brister announces retirement from court

AUSTIN— After 20 years as a judge and 6 years on the Supreme Court of Texas, Justice Scott Brister announced today that he would be leaving the Court effective September 7, 2009. He will return to private practice with the law firm of Andrews Kurth L.L.P., where he will lead the appellate section from the firm's Austin office.

Brister commented, "It was time for me to move on and give someone else the opportunity to serve. I am grateful to Governor Perry for appointing me to the last two courts on which I served, and to the voters of Texas for keeping me as a judge for the last twenty years. I will miss the challenges of judicial office, but even more the colleagues and friends I have served with over the last two decades."

Brister was the first of five judges who came to the Court during a period

of high turnover between late 2003 and mid-2005. With a stable membership over the four years since then, the Court has eliminated most of its backlog. "With the Court's docket in better shape than it has been for many years, it was a good time for me to make a switch," Brister said.

Justice Brister is a native of Waco, Texas and an honors graduate of both Duke University and Harvard Law School. He first worked at the Texas Supreme Court as a law clerk to legendary Chief Justice Joe Greenhill in 1980-81, followed by eight years as a trial attorney in the Houston offices of Andrews Kurth. Governor Bill Clements appointed Brister to the 234th District Court in Harris County in 1989, where he served for 11 years. He was elected to the First Court of Appeals in 2000, and appointed by Governor Perry as Chief

Justice of the Fourteenth Court of Appeals in Houston six months later. He was the first person to serve on both Houston courts of appeals, and as Chief Justice worked to try to combine the two courts. In November of 2003, Governor Perry appointed Brister to the Supreme Court of Texas, and he was elected to a six-year term in 2004.

Chief Justice Wallace Jefferson commented: "The Court will miss Justice Brister's brilliance and integrity. He has been a forceful advocate for the rule of law, and has contributed greatly to the Court's rising productivity. Texans can be proud of his outstanding service to the state."

Justice Brister, his wife Julie, and their four daughters, Elizabeth, Susannah, Sarah and Mattie reside in Georgetown, Texas.

Bambis or not, volunteer cares for 8 fawns

LUBBOCK, Texas (AP) — A small herd of bright-eyed fawns are adapting to the world at South Plains Wildlife Rehabilitation Center.

In the fall, they will roam free on private, West Texas ranchlands.

The eight fawns, some with unknown pasts, have a definite advantage — they are being cared for daily by center volunteer Barry Johnson. He brings them goat's milk, cantaloupe and grapes four times a day, and the little animals have come to regard him as a sort of foster parent, volunteers said.

And when the time comes for their independence, he plans to set out some of their favorite treats on weekends through the winter.

"It's whatever they liked the best while I had them at the center," he said.

Wildlife center founder Carol Lee suspects some of the fawns may have been brought to the center as a result of what she calls the "Bambi myth."

"People see a deer fawn along the road or out in the middle of a field, and erroneously believe they are

orphaned," she said.

"People," Lee continued, "find a fawn folded up beside a road, and it appears there is no mother. Once it's in our hands, we don't have a choice but to go ahead and treat it like the rest of them."

Occasionally, a real Bambi comes the center's way.

"Sometimes we will have a believable, cut-and-dried story: They saw the mother had been hit by a car," Johnson said. "It's sad. Sometimes for several days they will see the fawn stay with the mother's body, until somebody gets the fawn and brings it to us."

He discovered one of those Monday morning in the center's drop-off building, then talked by phone to the person from Midland who had left it.

"They said the mother had been killed by a car, and it was with the mother. It's probably about nine pounds, and I'm guessing it's inside of two weeks old," he said.

Sue Hill of Morton ships jugs of frozen goat's milk to the center for the fawns' sustenance, and they are

doing well on it, Johnson said.

He estimates the eight fawns range from 5 to 23 pounds. When they are released, they likely will weigh up to 40 pounds — and have the strength of the wild.

"The biggest I released last year was around 43 pounds, and they can tear your clothes off at that size," Johnson said.

A state law enforced by the Texas Parks and Wildlife Department prohibits Texans from keeping and raising deer, but the center has special state and federal licenses to rehabilitate animals.

Johnson said, "Sometimes we get a heads-up over the phone. Somebody wants to know how to take care of one, and we talk them into going ahead and giving it to us, and remind them that it is breaking the law to have it."

Sometimes, there are some unusual fawn deliveries to the center. One fawn at the center came from the Central Texas area.

"Believe it or not, a lady was passing through and

she had kept this fawn for eight weeks — it was traveling with her," Johnson said.

"We were scared it was going to be a pet. When she released it to us, she left us with some cooked brown rice, two or three kinds of real nice, high-protein dog food and some snow-goat chow. She had been mixing its formula."

"It had an embroidered collar with its name tag and phone numbers — and she had it on a dog harness, leading it with a leash," he said. "She knew everything except that she was breaking the law, I guess. Her husband was doing some contracting here in town. They came one evening to look the place, over like they were looking at a kennel or something, and said they thought this would be a pretty good place to bring a deer."

When Johnson is taking care of the fawns, he tries to limit the number of people the fawns see, because they tend to gravitate toward a person the way they would have done with their mother.

Lee explained, "Hunger is the strong motivat-

ing factor, and as they get weaned off the bottle, Barry is going to walk in there and just put food down. We discourage petting and talking to them, and keep them away from people. We don't want to make them pets."

When it is time for release, Johnson will take some to his private, 160-acre ranch, where he can soften the transition by setting out food and water on the weekends.

Johnson said he realizes he is not saving the world by the work he is doing. But he thinks it gives the fawn a better chance of surviving.

"I have to accept that

it may later be killed by a predator, by man or by automobiles," he said.

The volunteer has been caring for fawns at the center for three years, and sees them occasionally after they are released.

"We had a white-tail deer last year that me and my wife started calling Big Eyes. I identified him later on in the year on my place. And we have pictures of a fawn that is still there that comes around from last year. He has antlers, they're getting probably 11 inches high right now," he said.

"Everybody thinks I can't identify them. But I can."

Infant

cont. from page 1

back from the table where she sat with her defense attorneys: "I failed him. I did not hurt him."

The boy's father, Camden Gothia, then stood up and yelled to Nadal, "You abused him when he was in the womb," a reference to Nadal having taken drugs when she was pregnant with Holden. Gothia then left the courtroom.

DeShazo and her husband were given custody after his parents relinquished their rights. His father sees him regularly.

After the hearing, prosecutor Tammy Thomas told reporters that Nadal will never admit what she did.

"I don't know if this is justice to merit the damage," a teary-eyed Thomas said. "This is as close as we can get."

Allen Isbell, one of

Nadal's attorneys, said he was disappointed that the sentence was "so long."

During closing arguments in the punishment phase of the trial, Thomas told jurors that Nadal had sentenced her child to a life of pain and suffering. "She took his identity as a human being and either flushed it or threw it in a trash can," Thomas added.

Doctors testified that he faces years of surgeries and counseling.

Nadal's attorneys told jurors that nothing they did would help Holden.

"This jury must punish Katie Nadal. That's your job. But what is appropriate? I hope you don't do it out of hate or revenge," defense attorney Skip Cornelius said.

Driver hits cyclist, left lodged in car

GRAND PRAIRIE, Texas (AP) — A driver accused of slamming head-on into a bicyclist, who was left in the car's back seat after he toppled over the roof and crashed through the rear window, was jailed Monday on an intoxication manslaughter charge.

Vincent Paul Riojas, 27, is accused of hitting Ronnie Monroe Keller, 59, just before 9:30 p.m. on Saturday in Grand Prairie, a suburb of Dallas where both men lived. Investigators said Riojas was driving on Texas 180 when he drifted into oncoming

traffic.

The impact hurled Keller into the windshield of the car and flipped him over the roof before he crashed through the rear window and he became partially lodged in the car's back seat, investigators said.

Riojas drove from the scene to his home and apparently tried to hide the car in a side yard before fleeing, according to a police statement released Monday.

Riojas' relatives found Keller critically injured in the car and called

police. Keller was dead on arrival at Methodist Dallas Medical Center.

Police suspected Riojas had been drinking alcohol, though toxicology tests haven't been released.

Riojas was being held on \$150,000 bond in the Grand Prairie City Jail. He also was charged with resisting arrest and failure to stop and render aid, along with a felony warrant for criminal nonsupport.

A clerk at the city jail said he had no record of an attorney for Riojas.

Mysteriously, Dallas 'Sunshine' found in Miami

MIAMI (AP) — A 77-year-old Dallas woman has been reunited with her dog after it mysteriously turned up in Florida.

A Miami Beach club promoter found Sunshine, a Yorkie mix, on a street corner and took her to the vet. A microchip traced the pooch to Jodi Head, more than 1,000 miles away in Texas.

The two were reunited Monday at Miami International Airport.

Heat stroke blamed for death in Palo Duro Canyon

CANYON, Texas (AP) — Preliminary autopsy results indicate heat stroke killed a 24-year-old youth minister who died while hiking alone in Palo Duro Canyon.

Services will be held Thursday at Bacon Heights Baptist Church in Lubbock for Nathan Kyle Neel.

The Randall County Sheriff's Department said there were no signs of trauma on Neel, who went hiking Friday morning. His body was discovered a few hours later.

Schools

cont. from page 1

struction project at the new Pampa Junior High School. They will set a date for the dedication of the Pampa High School renovations.

The school board will also consider the purchase of a special education bus Thursday night.

The board will also consider buying and installing projectors in elementary classrooms.

They will also consider a pay scale for paraprofessionals with college degrees.

The board will appoint a representative to the Joint Election Administrator Committee and discuss vacancies on the Gray County Appraisal District Board.

They will also discuss

academic achievement.

The school board will discuss parental contracts for students who transfer from the Pampa Independent School District.

The board is also scheduled to discuss the District Belief Statement and review campus handbooks.

The school board will also hear reports on guidance services, transportation and Pampa High School exemption policy.

They will also consider professional employment contracts. The board will also consider monthly financial reports and a contract for Brown, Graham and Company concerning an annual audit.

To Subscribe to The Pampa News
Call 669-2525

Computer

Repair & Optimization

Repair • Clean • Optimize

Free Diagnostic

(a \$25⁰⁰ value)

We'll diagnose your computer and recommend a course of action to get you back online...fast!

Hurry! Offer expires in 30 days.

Let the professionals at erfCare help you keep your computer operating at its optimum.

- Computer Setup & Optimization
- Data Back Up & Recovery
- Virus Removal & Security Assistance
- Hardware & Software Upgrades
- Wireless Networking
- E-Mail & Software Help

Call us today to schedule your **Free Diagnostic** and learn how an erfCare Specialist can meet your technology needs

www.erfwireless.net
Internet the way it should be...fast and reliable!

888-534-9911

Viewpoints

Today in History

Today is Tuesday, August 18, the 230th day of 2009. There are 135 days left in the year.

Highlights in history on this date:

1527 - French forces take Pavia and Genoa in Italy.

1649 - Turkey's Sultan Ibrahim is deposed, assassinated and succeeded by Mohammed IV.

1812 - Russian forces are defeated at Smolensk, which is occupied by French.

1870 - Western Australia is granted representative government.

1894 - U.S. Congress establishes the Bureau of Immigration.

1896 - France annexes Madagascar.

1914 - U.S. President Woodrow Wilson proclaims American neutrality in World War I; Germany declares war on Russia.

1920 - The 19th Amendment to the U.S. Constitution is ratified, giving women the right to vote.

'New opinions are always suspected, and usually opposed, without any other reason than they are not already common.'

— John Locke, English philosopher

1964 - South Africa is banned from participating in the Olympic Games in Tokyo for refusing to condemn apartheid.

1968 - More than 100 women and children are killed when a landslide sweeps two sightseeing buses into rain-swollen river on Honshu Island in Japan.

1976 - Two U.S. Army officers are hacked to death by axe-wielding North Korean border guards at the truce village of Panmunjom.

1977 - U.S. President Jimmy Carter's administration denounces an illegal Israel's decision to establish three new Jewish settlements on the West Bank.

1986 - Sudanese rebel group claims responsibility for shooting down Sudan Airways passenger plane in which all 60 people aboard were killed.

1989 - In Colombia, leading presidential hopeful Luis Carlos Galan is assassinated outside Bogota, the Medellin drug cartel is suspected.

1990 - The death toll from Sri Lanka's civil war is at 3,350 persons. At least 2,000 are civilians. A 13-month cease-fire in the seven-year-old conflict between the army and ethnic Tamil separatist rebels was broken in June.

1994 - A powerful earthquake rips through north-west Algeria, collapsing thousands of dwellings and killing at least 150 people.

1996 - In Pakistan, gunmen fire on a group of Shiite worshippers in central Punjab province, killing 18 people and injuring 100.

1997 - Typhoon Winnie begins a sweep through Asia, killing 28 in Taiwan, then hits China, causing at least US\$2.6 billion in damage and killing as many as 56 people.

Today's Birthdays:

Antonio Salieri, Italian composer (1750-1825); Meriweather Lewis, American explorer (1774-1809); Lord John Russell, English statesman (1792-1878); Shelley Winters, U.S. actress (1920-2006); Roberto Clemente, Puerto Rican baseball player (1934-1972); Roman Polanski, Polish film director (1935--); Robert Redford, U.S. actor (1936--).



Texas editorial opinion

Fort Worth Star-Telegram on Tarrant County's infant mortality rate:

Infant mortality is often used to compare the health and well-being of nations, as well as population groups within nations. On this measure, defined as babies who die before their first birthday, our nation, state and county tragically perform poorly.

In 2004, the United States ranked 29th in the world, trailing developing nations such as Cuba and Hungary, at 6.3 deaths per 1,000 live births.

In 2005, the U.S. rate rose to 6.9 per 1,000, compared with 6.5 for Texas. Tarrant County's performance comparatively is atrocious at 8.2 per 1,000 live births. Fort Worth has the highest rate for Texas cities with 10,000 or more births at 8.1, and Arlington is highest in cities with 5,000 or more births at 9.4.

Infant mortality is the ultimate racial health disparity. In Tarrant County in 2005, the rate for blacks was 19.5 per 1,000 births, compared with 6.0 for whites and 6.9 for Hispanics. More than 200 people carrying red-and-white umbrellas participated in a "Stop the Reign of Infant Mortality" silent march Wednesday in downtown Fort Worth to raise awareness.

Medically, the primary causes of infant mortality are low-birth-weight babies, especially those born prematurely; genetic deformities; and sudden infant death syndrome. Less than 2 percent of U.S. births -- those babies born before 32 weeks of pregnancy -- account for half of the deaths.

But those causes are closely linked to unhealthy mothers who struggle with economic and environmental disadvantages and cope by practicing unhealthy behaviors. Women who drink, smoke, eat poorly during pregnancy or suffer physical and mental abuse are much more likely to have low-birth-weight babies.

Location can be an enormous factor. Women often lack transportation to seek prenatal care and poor neighborhoods typically suffer healthcare provider shortages. These areas are also considered "food deserts," meaning the lack of available supermarkets with ample supplies of nutritious food.

In 2007, Fort Worth Women's Health Initiative

assessed the health of women 18-44 years old in four ZIP codes -- 76104, 76105, 76112 and 76119 -- using in-person interviews. Those codes are among the nation's worst 25 in infant deaths. About 58 percent of the women were black and 33 percent were Hispanic.

What they found:

Nearly 36 percent had less than a high school education; about 71 percent were not married. More than 69 percent were overweight or obese, about 25 percent reported feeling depressed or hopeless nearly every day and more than 8 percent had been physically abused in the past year.

An astounding 82 percent were uninsured, compared with about 37 percent of women 18-44 in Texas and about 21 percent nationally.

Few took advantage of safety-net programs. Although most native-born women were eligible for the JPS Health Network, only about 9 percent were enrolled. About 22 percent said they had no pregnancy-health coverage despite the fact that county and state programs cover all pregnant women in Fort Worth.

Prenatal care is an important component of ensuring a healthy pregnancy. But as the study's authors point out, such care is often too late because it cannot undo years of damage to health. They emphasize the need for preconception health interventions and family planning, given that about 50 percent of pregnancies are unplanned.

Programs such as the Fort Worth/Dallas Birthing Project that match volunteers and pregnant girls to provide mentoring and emotional support are crucial. Such efforts can go a long way to help mitigate the disparities that foster heartbreaking loss of innocent lives.

Odessa American on paying for college education:

Texas Comptroller Susan Combs recently announced that the fund intended to help families pay for col-

lege education is about to go broke.

Unfortunately, since the state made deals with thousands of people who invested in the program during its seven-year life, state taxpayers will have to cover the shortfall for years to come.

Don't expect better results from the program that was created to replace it.

Enrollment begins Sept. 1 for the Texas Tuition Promise Fund, which asserts that families can lock in current university tuition rates for whenever a student actually begins college.

It's a promise the state can't possibly keep, without subsidies from state taxpayers.

The Texas Tomorrow Fund was offered from 1996 to 2003, with interruptions, changes in funding schemes and even a different name, the Texas Guaranteed Tuition Plan, when it became obvious that the income wasn't enough to make the plan successful.

The Texas Tuition Promise Fund, which began last year, sells "tuition units" that might or might not cover the full cost of tuition and fees when the student matriculates, unlike the previous plans -- i promise that all tuition and fees would be covered for participating families.

Defenders of the programs say university tuitions have risen faster than expected, and blame deregulation of educational costs for the problem. That isn't the problem at all.

The program, whatever its incarnation, is built on faulty premises about factors over which the state has no control. Another factor that the government can control is its own inflationary pressure on tuition, which it can only affect by continuing or ending the program altogether.

Behind the program is an idea that seems simple: Send monthly payments to the state, which will invest it and enable it to grow so that when a student is ready for college, the money is there to cover enrollment costs.

Of course, the big-

gest problem is that such investments are inexact to the point that guarantees are never possible. As we have seen since the Texas Tomorrow Fund was initiated, neither university tuition nor the yield on such investment funds can be predicted exactly.

Tuition has risen faster than expected, and the return on the money has been lower; the current national economic slump only makes it worse.

Government is the last place in which to invest money, even beyond the fact that it isn't even the government's job to act as a financial intermediary. Almost all government entities, by law, are restricted as to the kinds of investments they can make. Lawmakers usually try to ensure that taxpayers' money isn't lost on risky high-risk investments. While that is a good idea, it's bad for these kinds of investment funds, since higher-risk also means higher yields, which smart private fund managers are able to attain. Thus, a government-run plan isn't likely to grow as fast as a well-run private account.

As for the rapid rise in tuition costs, these kinds of government plans are a major factor in pushing them up. All plans that increase the number of students enrolling in school are inflationary. Those very increases create a need for more classes, which means more classrooms, more faculty and more staff, in addition to other university services those students will require.

The idea of saving for college when children are young is a good one; the money does compound in value, even in a simple bank account. However, the best way to store that money remains through reliable private funds.

It isn't the state's purview to act as an investment banker. Like the prepaid educational plans before it, the Texas Tuition Promise Fund is likely to fail. After more than a dozen years of trying the concept, state officials should have learned their lesson.

We welcome your letters

To insure publication, please adhere to the following guidelines:

• Letters should be brief and to the point. All correspondence will be edited for length and clarity.

• All letters must be signed. Submit your name, address and telephone number with the letter for verification. Only your name and city will be published.

• Defamatory comments will not be published.

THE PAMPA NEWS

403 W. Atchison • Pampa, TX 79065

806-669-2525 • 800-687-3348

Fax: 806-669-2520

Randall Pribble

Publisher

rpribble@thepampanews.com

ReDonn Woods

Advertising Manager

advertising@thepampanews.com

Sue Pribble

Advertising Representative

advertising1@thepampanews.com

Beverly Taylor

Classified Advertising

classified@thepampanews.com

Kera Kent

Circulation

circulation@thepampanews.com

Carrie Hair

Accounting

bookkeeper@thepampanews.com

Betsy Phillips

Editor

bphillips@thepampanews.com

Andrew Glover

Reporter

A.Glover2@thepampanews.com

David Bowser

Reporter

dbowser@thepampanews.com

Marcus Elkins

Press Supervisor

press@thepampanews.com

Chico Ramirez

Circulation Supervisor

This newspaper (UPS 781-540) is published daily, except Sundays, Thanksgiving and Christmas Day, by The Pampa News. Periodicals postage paid at Pampa, Texas. Postmaster: Send address changes to The Pampa News, P.O. Drawer 2198, Pampa, TX 79066-2198.

All carriers are independent contractors and The Pampa News is not responsible for advance payments of two or more months made to the carrier. Please pay directly to the Pampa News any payment that exceeds the current collection period. There are no mail subscriptions available within the city limits of Pampa. Mail subscriptions must be paid three months in advance.

© 2009 The Pampa News

BUSINESS REVIEW

Rasco

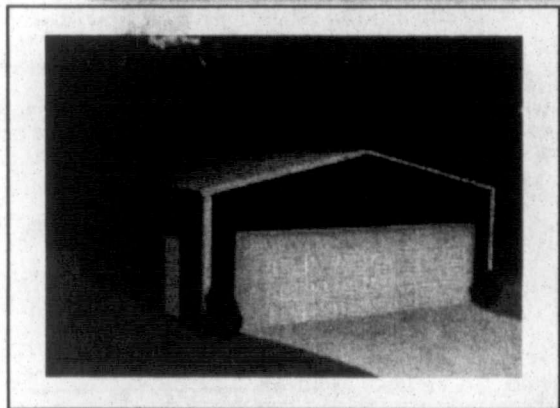
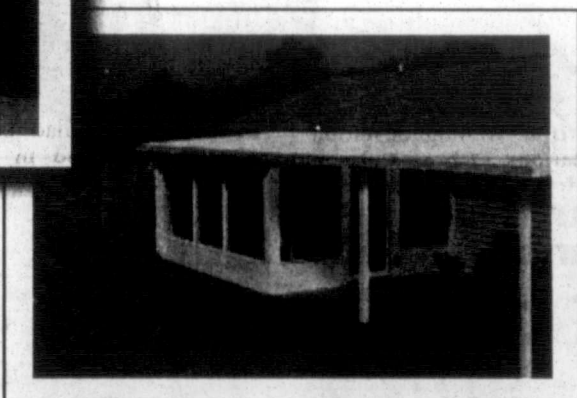
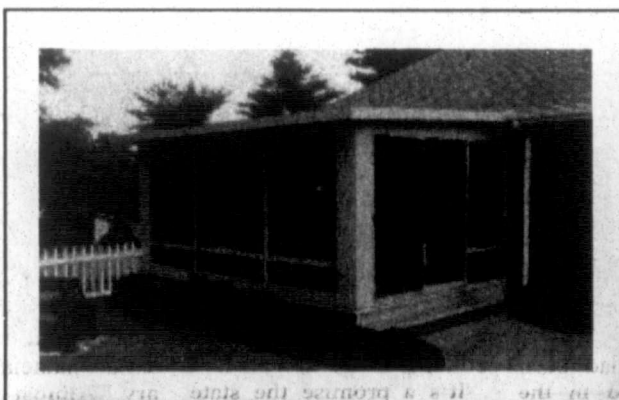
CONSTRUCTION

1211 S. PRICE ROAD • 806-665-0042

www.RascoConstruction.com

- Commercial & Residential Garage Door Installation & Service Work
- Commercial & Residential Operator Installation & Service Work
- Steel Buildings & Carports
- Attic & New Construction Insulation
- Vinyl Siding & Replacement Windows - qualify for energy tax rebate
- Premier Sunrooms & Patios
- Basement Refinishing Systems
- Room Additions & Handyman Services
- Ultramax Windows
- Prodigy Siding

Free Estimates - Service Pampa and Surrounding Areas
After hour emergency service 886-2055
rascodoor@live.com



Hours of Operation
8:00-5:00 Monday - Friday

Feature *Your* Business
On This Page
Call 669-2525

RASCO CONSTRUCTION

1211 S. PRICE RD • 806-665-0042

OVERHEAD DOORS
COMMERCIAL & RESIDENTIAL
STEEL FRAME CARPORTS
CUSTOM STORAGE BUILDINGS

Kevin Jefferts
806-666-2055

We Accept
Visa & Mastercard

Tim Sexton
806-440-1491



228 W Brown
665-5710
or 665-1360
www.uhaul.com

WINK'S U-HAUL

- Automatics • A/C • Power Steering • AM/FM Radio
- Low Cost Moving Protection Plan
- One-Way Rentals U.S. & Canada Mileage Included
- FREE 24-Hour Road Service • Auto Transports & Tow Dollies
- Complete Line of Moving Supplies & Towing Accessories
- Prices as Low as \$9.95 Per Day (* plus mileage)

Shepard's Crook Nursing Agency, Inc.

Home Health Care

"Established 1988"

- SKILLED NURSING CARE
- HOME HEALTH AIDES
- PHYSICAL THERAPY
- ELDER WELLNESS PROGRAM
- CASE MANAGEMENT
- INTERNAL & IV INFUSION
- DIABETIC MANAGEMENT
- CARDIAC REHABILITATION
- WOUND CARE SPECIALIST
- MEDICARE-MEDICAIDE CERTIFIED

LICENSED BY THE TEXAS DEPARTMENT OF HEALTH

806-665-0356

916 N. CREST RD. SUITE 101 • PAMPA

CENTRAL BAIL BONDS II

Kenneth Knowles, Founder

315 N. SOMERVILLE • PAMPA TX

Larry Ingram, Agent

24 HOUR SERVICE PAMPA 806-665-7716

CREDIT BONDS BORGER 806-273-5333

SE HABLA ESPANOL PANHANDLE 806-537-4795

WHEELER 806-826-0132

HINNEY BUILT HOMES

"The
Tradition
of
Quality
Continues"

665-4595 • Gary Winton

Dave's Custom Airbrush

We Paint Signs • Airbrush-T's
Temporary Tattoos • Truck Lettering

NEW!

841 S. Cuyler
(806) 662-4098
Mon - Sat 10 am - 7 pm

252

DJ Taco



\$4.99
2 BURRITOS
AND DRINK

Good for breakfast or lunch menu!

Tues-Fri 10:30 am - 6:30 pm
Sat 7 am - 3 pm & Sun 9 am - 2 pm
413 W Foster • (806) 665-2251

Pampa Realty Inc. 669-0007

Pampa MLS & Amarillo MLS



Real Estate For The Real World

Jim Davidson (BKR/OWNER) 662-9021
Rebecca Akins 662-2190
Robert Anderwald 665-3357
Kathina Bigham 898-8510
Donna Courlet 595-0779
Twila Fisher (BKR) 440-2314
John Goddard (BKR) 595-1234
Linda Lapacka 662-9611
Zeb Sailors 664-0312
Sandra Schuneman (BKR) 662-7291

Visit CENTURY 21 COMMUNITIES™ on AOL@keyword:CENTURY 21
Average Home & Mobile payments on average based upon all homes bought or sold through CENTURY 21 franchise during 1998.
©1998 Century 21 Real Estate Corporation. All rights reserved. Member of Century 21 Real Estate Corporation Equal Housing Opportunity. EACH OFFICE IS INDEPENDENTLY OWNED AND OPERATED.

MADISON AVENUE

Temporaries Inc.

Specializing in
Secretarial-Clerical
Temporary Placements

Services Offered:

- Interview Prospective Employees
- Check References
- Screen Applicants
- Handle Temporary Employee Payroll

For Price Quotes and more information regarding our services call:
806-274-7238
e-mail: madisonave@cablone.net

AFFORDABLE BAIL BONDS

Janie Orcutt, Owner • 800-687-0897



Vikki "Mungia"
Shackett, Agent
662-0663

24-Hour Service
Credit Bonds
Se Habla Español

Pampa • 806-669-6634
Panhandle • 806-537-1084
Borger • 806-273-3280
Clarendon • 806-874-9536
Vega • 806-267-0050

WHITNEY INSURANCE AGENCY

Auto • Home • Life

Health • Commercial • Annuities

Financial Services • Estate Planning

Long Term Care • Mobile Home

Motorcycle • Farm & Ranch

Authorized

John Deere

Crop Insurance Agent



721 W. KINGSMILL AVE.
PAMPA, TEXAS 79065

Office (806)665-2221
Fax (806)665-0129
Home (806)665-2927
Toll Free 866-665-2221



DONALD R. WHITNEY
LUTCF

Comics

Marmaduke



"I don't care if your GPS says this is the shortest route. Get me out of here!"

THE FAMILY CIRCUS

By Bil Keane



8-18

"Daddy always fixes it with a knife. He cuts the whole thing off and starts over."

For Better Or Worse



Zits



Garfield



Beetle Bailey



Marvin



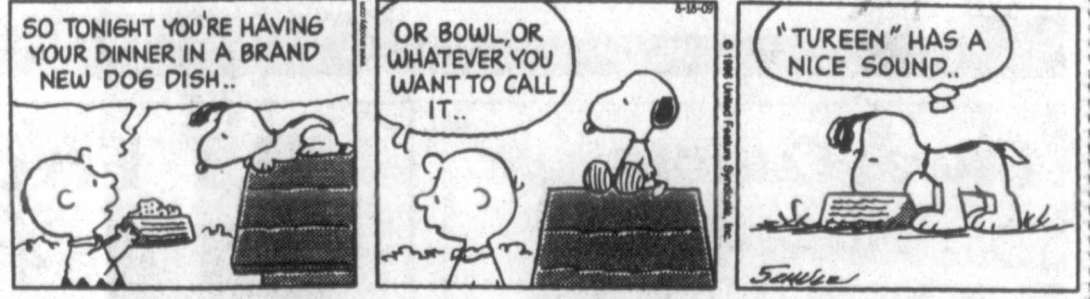
B.C.



Hagar The Horrible



Peanuts



Blondie



Flo & Friends



Daily Crossword Puzzle

CROSSWORD

By THOMAS JOSEPH

ACROSS

- 1 Elite unit
- 6 Mechanical man
- 11 Home of the Dolphins
- 12 Satirist's specialty
- 13 Advantageous position
- 15 Put into words
- 16 Dripping
- 17 Glimpse
- 18 Oregon's capital
- 20 Sordid
- 23 Track events
- 27 Lacking color
- 28 Coffee, in slang
- 29 Even a little
- 31 Planted
- 32 Permanent inmate
- 34 Lingerie item
- 37 Saloon
- 38 Ozone, for one
- 41 Temp workers, for example
- 44 Audibly
- 45 Marilyn's real name
- 46 Musical pace
- 47 Jingle creator

DOWN

- 1 Writer Martin
- 2 Fey of "30 Rock"
- 3 Effortless
- 4 French friend
- 5 Carnival section
- 6 John of "Three's Company"
- 7 Hockey's Bobby
- 8 Big snakes
- 9 Formerly
- 10 Young one
- 14 Twisty fish
- 18 Aroma
- 19 College study
- 20 Restful resort
- 21 Have lunch
- 22 In the style of
- 24 Crow cry
- 25 Second person
- 26 Down
- 30 Lusty drive
- 31 Venus Williams' sister
- 33 Craze
- 34 Dinghy or dory
- 35 Hold power
- 36 Physics bit
- 38 Start of an idea
- 39 — mater
- 40 Reach across
- 42 Have a late meal
- 43 Brick bearer

| | |
|--------|--------|
| COMB | DEEP |
| RACER | ATLAS |
| ARENA | MAPLE |
| SOLONG | ALE |
| PLOT | YESSIR |
| YET | IMGOOD |
| TONOW | |
| SCHWAS | MOM |
| EASYAS | COLA |
| ASH | TWOBIT |
| CHAFE | ALIVE |
| HERON | COLES |
| SPED | ONES |

Yesterday's answer

- 21 Have lunch
- 22 In the style of
- 24 Crow cry
- 25 Second person
- 26 Down
- 30 Lusty drive
- 31 Venus Williams' sister
- 33 Craze
- 34 Dinghy or dory
- 35 Hold power
- 36 Physics bit
- 38 Start of an idea
- 39 — mater
- 40 Reach across
- 42 Have a late meal
- 43 Brick bearer

NEW CROSSWORD BOOK! Send \$4.75 (check/m.o.) to Thomas Joseph Book 2, P.O. Box 536475, Orlando, FL 32853-6475

| | | | | | | | | | | |
|----|----|----|---|---|---|----|----|----|----|----|
| 1 | 2 | 3 | 4 | 5 | 6 | 7 | 8 | 9 | 10 | |
| 11 | | | | | | | | | 12 | |
| 13 | | | | | | | | | 14 | |
| 15 | | | | | | | | | 17 | |
| 18 | | | | | | | | | 19 | |
| 20 | 21 | 22 | | | | 23 | 24 | 25 | 26 | |
| 27 | | | | | | | | | 28 | |
| 29 | | | | | | | | | 31 | |
| 32 | | | | | | | | | 33 | |
| 34 | 35 | 36 | | | | | | 38 | 38 | 40 |
| 41 | | | | | | | | | | 43 |
| 44 | | | | | | | | | | 45 |
| 46 | | | | | | | | | | 47 |

8-18

PAMPA NEWS CLASSIFIEDS

5 Special Notices

ADVERTISING Material to be placed in the Pampa News, MUST be placed through the Pampa News Office Only.

10 Lost/Found

FOUND A SET OF KEYS AROUND UNITED!! COME TO THE PAMPA NEWS TO CLAIM!

FOUND north of Pampa, black female cat. Call 665-4506.

13 Bus. Opp.

GREAT Investment opportunity Howardwick Convenience store. 665-1875, 806-383-1985.

14a Air Cond.

BROWNING Heating & Air Cond., 665-1212. Free esti. on new equip. We service all brands!

14d Carpentry

Carpentry, Roofing, Replacement Windows, steel siding & trim. Continuous gutters. Jerry Nicholas 669-9991, 662-8169

CUSTOM Building and Remodeling. Additions, Kitchens & Bathrooms, Shawn Deaver Constr. 662-2977

OVERHEAD DOOR REPAIR Kidwell Construction. Call 669-6347.

14e Carpet Serv.

NU-WAY CLEANING SERVICE Bob Marx Owner-Operator. Call 665-3541.

14h Gen. Serv.

CERAMIC tile work. Remodeling floor, shower, kitchen. Texture, painting, dry wall. Free esti. Call 665-3453 or leave message, Jesus Barraza.

14h Gen. Serv.

HOUSE Cracking? In bricks or walls? Childers Brothers, Inc. 800-299-9563, 806-352-9563

COX Fence Company. Repair old fence or build new. Free estimates. Call 669-7769.

PANHANDLE HOUSE LEVELING Floor or roof sagging, walls cracking, doors dragging, bricks cracking. Call us! (806)669-0958

HUTCHINSON County Painting, sheet rock, texturing, roofing, fencing, remodeling. Call 806-274-0231.

SOLIS FENCING, New Fence / Fence Repairs. Free estimates. 806-486-1368, 662-2473

PROLINE Window & Door Installation. Pella, Andersen & top brands. Fin. Avail. Free est. 665-7590

BEST Price! Custom made fences, carpents, stor. bldgs., decks, painting. Free est. Finance avail. 665-7590.

HANDYMAN Specialist. Remodeling, fences, carpentry, painting, rental property renovations. 440-3774.

JACK'S Plumbing, 715 W. Foster, 665-7115.

WENDELL'S ROOFING CO. Metal Roofs, Composition Roofs and Built-Up Roofs. Free Estimates. 806-665-7648, or toll free 888-664-7648.

NEELEY ROOFING Mike Neely, Wellington, TX. All Types of Roofing. All Work Guaranteed. Fully Insured. Free est. 806-205-0608

PJ Care 24 hour elderly care in my home. Short / long term. I have references. Open for 10 yrs. Call 669-2271

CHILDCARE in my home, Mon. thru Fri. Meals provided. Affordable rates. Call 806-341-8717.

PRN CNA's for (am & pm) 1 FT LVN for (am) 1 FT LVN for (pm) PT Activities Asst. Apply McLean Care Center, 605 W. 7th, McLean 806-779-2469 fax 779-2515 email Candy.Brancum@cnac.com

PART-TIME SALES / CASHIER POSITION. Must be responsible. Mature only need apply. Bring resume & pick up application at HEARD-JONES

FIRST Baptist Child Development Center is growing & has openings for a lead teacher & asst. teacher. Great work environment & benefits. Experience pref. 203 N. West 669-3529 thbuce1@thepampa.org

NOTICE Readers are urged to fully investigate advertisements which require payment in advance for information, services or goods.

CERTIFIED Pharmacy Tech needed *Full time *No Sundays! No Phone Calls. Please! Mail Resume to Keyes Pharmacy 928 N. Hobart Pampa Tx 79065 or fax to 806-669-0957

CNA'S \$8.50 to \$10.61 hour with health insurance available. Community Care Center of Clarendon. Call for apt. 806-874-5221.

LVN'S 6PM to 6AM \$16.00 to \$19.00 hour, with health insurance available, at Community Care Center of Clarendon. Call for apt. 806-874-5221.

BOOKKEEPER Wanted. Experience Required. Excel computer program a must. White House Lumber Co. 220 E. Foster, 665-8475.

LEFORS ISD is accepting applications for an Early Childhood Teacher Assistant. For more info, contact Jeff Nicklas at (806)835-2533.

21 Help Wanted

RETIRED Couple or Single to manage apt. complex, some experience req. 665-1875.

NURSING LVNs / CNAs IMMEDIATE OPENINGS on most shifts. Must be TEXAS State Certified or possess State license. Competitive rates! Must be able to pass background check & drug screen. EOE. Call (806)665-5746 or apply in person at CORONADO HEALTHCARE CENTER, 1504 W. Kentucky Ave., Pampa.

FULL-TIME RN needed at Parkview Home Health in Wheeler. Please call 826.1370, ask for Susan Leffew RN Director, or come by 306 E. 9th, Wheeler, for an application.

AG and C.P. Sales person needed! Established farm and lawn and garden dealership looking for career minded individual to fill sales and customer support position. Great company, good pay, benefits. Clean driving record and background check required. Send resume to: 12098 East Frederic, Pampa, TX. 79065.

White House Lumber 101 S. Ballard 669-3291

MOVING Sale: Aug. 14-30. Used tires, oak table & chairs, dresser, stands, much more. Call 806-440-0079.

FOR Sale 26 in. Sony Tivv and kg sz Spring Air pillow-top mattress / box spr. 806-236-2031

ADVERTISING Material to be placed in the Pampa News MUST be placed through the Pampa News Office Only.

FURNITURE CLINIC 52 Yrs. Experience Furniture Repair 662-6357

DENTURES at Affordable Prices! Partials, Relines & Repairs. Call 1-800-688-3411.

NEW Mattresses. Tw. set \$149, qu \$266, I have 2 ea., chests, etc. Red Barn, 1420 S. Barnes. Open only on Sat. You can call and buy today, 665-2767.

DINING table w/ 2 leaves, 6 chairs, china cab, glass doors on hatch, Total Bodyworks-5000, PierOne Pappasan chair & stool, kg. sz. brass hb. 683-9160

SUNTEC Hospital Bed with mattress. Electronics control - \$350. Aspire Quickie Freestyle Wheelchair, Battery Operated, choice of three colors for fenders - \$1,250. Guardian hydraulic lift - 400 lb limit \$150. Call 665-9445.

CHURCH Day Care is accepting appli. for Assistant Director. Benefits, pd vac., great work environment. Exp pref. Rresume to Po Box 621, Pampa, TX 79066

CHURCH Day Care is accepting appli. for Assistant Director. Benefits, pd vac., great work environment. Exp pref. Rresume to Po Box 621, Pampa, TX 79066

CHURCH Day Care is accepting appli. for Assistant Director. Benefits, pd vac., great work environment. Exp pref. Rresume to Po Box 621, Pampa, TX 79066

CHURCH Day Care is accepting appli. for Assistant Director. Benefits, pd vac., great work environment. Exp pref. Rresume to Po Box 621, Pampa, TX 79066

CHURCH Day Care is accepting appli. for Assistant Director. Benefits, pd vac., great work environment. Exp pref. Rresume to Po Box 621, Pampa, TX 79066

CHURCH Day Care is accepting appli. for Assistant Director. Benefits, pd vac., great work environment. Exp pref. Rresume to Po Box 621, Pampa, TX 79066

CHURCH Day Care is accepting appli. for Assistant Director. Benefits, pd vac., great work environment. Exp pref. Rresume to Po Box 621, Pampa, TX 79066

CHURCH Day Care is accepting appli. for Assistant Director. Benefits, pd vac., great work environment. Exp pref. Rresume to Po Box 621, Pampa, TX 79066

CHURCH Day Care is accepting appli. for Assistant Director. Benefits, pd vac., great work environment. Exp pref. Rresume to Po Box 621, Pampa, TX 79066

CHURCH Day Care is accepting appli. for Assistant Director. Benefits, pd vac., great work environment. Exp pref. Rresume to Po Box 621, Pampa, TX 79066

CHURCH Day Care is accepting appli. for Assistant Director. Benefits, pd vac., great work environment. Exp pref. Rresume to Po Box 621, Pampa, TX 79066

CHURCH Day Care is accepting appli. for Assistant Director. Benefits, pd vac., great work environment. Exp pref. Rresume to Po Box 621, Pampa, TX 79066

CHURCH Day Care is accepting appli. for Assistant Director. Benefits, pd vac., great work environment. Exp pref. Rresume to Po Box 621, Pampa, TX 79066

CHURCH Day Care is accepting appli. for Assistant Director. Benefits, pd vac., great work environment. Exp pref. Rresume to Po Box 621, Pampa, TX 79066

CHURCH Day Care is accepting appli. for Assistant Director. Benefits, pd vac., great work environment. Exp pref. Rresume to Po Box 621, Pampa, TX 79066

CHURCH Day Care is accepting appli. for Assistant Director. Benefits, pd vac., great work environment. Exp pref. Rresume to Po Box 621, Pampa, TX 79066

CHURCH Day Care is accepting appli. for Assistant Director. Benefits, pd vac., great work environment. Exp pref. Rresume to Po Box 621, Pampa, TX 79066

CHURCH Day Care is accepting appli. for Assistant Director. Benefits, pd vac., great work environment. Exp pref. Rresume to Po Box 621, Pampa, TX 79066

21 Help Wanted

SE Solicita Vendedor bilingue Si usted es fluido en ingles escrito y verbal y espanol y tiene buenas habilidades con la gente, esto puede sr un trabajo recompensante para usted. La paga es comision basada con un sueldo bajo mientras se establezca la lista de cuentas. Envie el curriculum vitae a: Publisher, 403 W. Atchison Ave., Pampa, TX 79065 Ningunas llamadas de telefono, por favor.

White House Lumber 101 S. Ballard 669-3291

MOVING Sale: Aug. 14-30. Used tires, oak table & chairs, dresser, stands, much more. Call 806-440-0079.

FOR Sale 26 in. Sony Tivv and kg sz Spring Air pillow-top mattress / box spr. 806-236-2031

ADVERTISING Material to be placed in the Pampa News MUST be placed through the Pampa News Office Only.

FURNITURE CLINIC 52 Yrs. Experience Furniture Repair 662-6357

DENTURES at Affordable Prices! Partials, Relines & Repairs. Call 1-800-688-3411.

NEW Mattresses. Tw. set \$149, qu \$266, I have 2 ea., chests, etc. Red Barn, 1420 S. Barnes. Open only on Sat. You can call and buy today, 665-2767.

DINING table w/ 2 leaves, 6 chairs, china cab, glass doors on hatch, Total Bodyworks-5000, PierOne Pappasan chair & stool, kg. sz. brass hb. 683-9160

SUNTEC Hospital Bed with mattress. Electronics control - \$350. Aspire Quickie Freestyle Wheelchair, Battery Operated, choice of three colors for fenders - \$1,250. Guardian hydraulic lift - 400 lb limit \$150. Call 665-9445.

CHURCH Day Care is accepting appli. for Assistant Director. Benefits, pd vac., great work environment. Exp pref. Rresume to Po Box 621, Pampa, TX 79066

CHURCH Day Care is accepting appli. for Assistant Director. Benefits, pd vac., great work environment. Exp pref. Rresume to Po Box 621, Pampa, TX 79066

CHURCH Day Care is accepting appli. for Assistant Director. Benefits, pd vac., great work environment. Exp pref. Rresume to Po Box 621, Pampa, TX 79066

CHURCH Day Care is accepting appli. for Assistant Director. Benefits, pd vac., great work environment. Exp pref. Rresume to Po Box 621, Pampa, TX 79066

CHURCH Day Care is accepting appli. for Assistant Director. Benefits, pd vac., great work environment. Exp pref. Rresume to Po Box 621, Pampa, TX 79066

CHURCH Day Care is accepting appli. for Assistant Director. Benefits, pd vac., great work environment. Exp pref. Rresume to Po Box 621, Pampa, TX 79066

CHURCH Day Care is accepting appli. for Assistant Director. Benefits, pd vac., great work environment. Exp pref. Rresume to Po Box 621, Pampa, TX 79066

CHURCH Day Care is accepting appli. for Assistant Director. Benefits, pd vac., great work environment. Exp pref. Rresume to Po Box 621, Pampa, TX 79066

CHURCH Day Care is accepting appli. for Assistant Director. Benefits, pd vac., great work environment. Exp pref. Rresume to Po Box 621, Pampa, TX 79066

CHURCH Day Care is accepting appli. for Assistant Director. Benefits, pd vac., great work environment. Exp pref. Rresume to Po Box 621, Pampa, TX 79066

CHURCH Day Care is accepting appli. for Assistant Director. Benefits, pd vac., great work environment. Exp pref. Rresume to Po Box 621, Pampa, TX 79066

CHURCH Day Care is accepting appli. for Assistant Director. Benefits, pd vac., great work environment. Exp pref. Rresume to Po Box 621, Pampa, TX 79066

CHURCH Day Care is accepting appli. for Assistant Director. Benefits, pd vac., great work environment. Exp pref. Rresume to Po Box 621, Pampa, TX 79066

CHURCH Day Care is accepting appli. for Assistant Director. Benefits, pd vac., great work environment. Exp pref. Rresume to Po Box 621, Pampa, TX 79066

CHURCH Day Care is accepting appli. for Assistant Director. Benefits, pd vac., great work environment. Exp pref. Rresume to Po Box 621, Pampa, TX 79066

CHURCH Day Care is accepting appli. for Assistant Director. Benefits, pd vac., great work environment. Exp pref. Rresume to Po Box 621, Pampa, TX 79066

CHURCH Day Care is accepting appli. for Assistant Director. Benefits, pd vac., great work environment. Exp pref. Rresume to Po Box 621, Pampa, TX 79066

CHURCH Day Care is accepting appli. for Assistant Director. Benefits, pd vac., great work environment. Exp pref. Rresume to Po Box 621, Pampa, TX 79066

CHURCH Day Care is accepting appli. for Assistant Director. Benefits, pd vac., great work environment. Exp pref. Rresume to Po Box 621, Pampa, TX 79066

CHURCH Day Care is accepting appli. for Assistant Director. Benefits, pd vac., great work environment. Exp pref. Rresume to Po Box 621, Pampa, TX 79066

CHURCH Day Care is accepting appli. for Assistant Director. Benefits, pd vac., great work environment. Exp pref. Rresume to Po Box 621, Pampa, TX 79066

69a Garage Sales

ATTENTION!! DEADLINE CHANGE for Classified Line Ads for Fri. & Weekend Edition (Sat.-Sun.) this also includes Last Minute Ads (City Briefs)!! Fri. Deadline is Thurs. before noon. Weekend Edition (Sat.-Sun.) deadline is Thurs. before 4pm.

White House Lumber 101 S. Ballard 669-3291

MOVING Sale: Aug. 14-30. Used tires, oak table & chairs, dresser, stands, much more. Call 806-440-0079.

FOR Sale 26 in. Sony Tivv and kg sz Spring Air pillow-top mattress / box spr. 806-236-2031

ADVERTISING Material to be placed in the Pampa News MUST be placed through the Pampa News Office Only.

FURNITURE CLINIC 52 Yrs. Experience Furniture Repair 662-6357

DENTURES at Affordable Prices! Partials, Relines & Repairs. Call 1-800-688-3411.

NEW Mattresses. Tw. set \$149, qu \$266, I have 2 ea., chests, etc. Red Barn, 1420 S. Barnes. Open only on Sat. You can call and buy today, 665-2767.

DINING table w/ 2 leaves, 6 chairs, china cab, glass doors on hatch, Total Bodyworks-5000, PierOne Pappasan chair & stool, kg. sz. brass hb. 683-9160

SUNTEC Hospital Bed with mattress. Electronics control - \$350. Aspire Quickie Freestyle Wheelchair, Battery Operated, choice of three colors for fenders - \$1,250. Guardian hydraulic lift - 400 lb limit \$150. Call 665-9445.

CHURCH Day Care is accepting appli. for Assistant Director. Benefits, pd vac., great work environment. Exp pref. Rresume to Po Box 621, Pampa, TX 79066

CHURCH Day Care is accepting appli. for Assistant Director. Benefits, pd vac., great work environment. Exp pref. Rresume to Po Box 621, Pampa, TX 79066

CHURCH Day Care is accepting appli. for Assistant Director. Benefits, pd vac., great work environment. Exp pref. Rresume to Po Box 621, Pampa, TX 79066

CHURCH Day Care is accepting appli. for Assistant Director. Benefits, pd vac., great work environment. Exp pref. Rresume to Po Box 621, Pampa, TX 79066

CHURCH Day Care is accepting appli. for Assistant Director. Benefits, pd vac., great work environment. Exp pref. Rresume to Po Box 621, Pampa, TX 79066

CHURCH Day Care is accepting appli. for Assistant Director. Benefits, pd vac., great work environment. Exp pref. Rresume to Po Box 621, Pampa, TX 79066

CHURCH Day Care is accepting appli. for Assistant Director. Benefits, pd vac., great work environment. Exp pref. Rresume to Po Box 621, Pampa, TX 79066

CHURCH Day Care is accepting appli. for Assistant Director. Benefits, pd vac., great work environment. Exp pref. Rresume to Po Box 621, Pampa, TX 79066

CHURCH Day Care is accepting appli. for Assistant Director. Benefits, pd vac., great work environment. Exp pref. Rresume to Po Box 621, Pampa, TX 79066

CHURCH Day Care is accepting appli. for Assistant Director. Benefits, pd vac., great work environment. Exp pref. Rresume to Po Box 621, Pampa, TX 79066

CHURCH Day Care is accepting appli. for Assistant Director. Benefits, pd vac., great work environment. Exp pref. Rresume to Po Box 621, Pampa, TX 79066

CHURCH Day Care is accepting appli. for Assistant Director. Benefits, pd vac., great work environment. Exp pref. Rresume to Po Box 621, Pampa, TX 79066

CHURCH Day Care is accepting appli. for Assistant Director. Benefits, pd vac., great work environment. Exp pref. Rresume to Po Box 621, Pampa, TX 79066

CHURCH Day Care is accepting appli. for Assistant Director. Benefits, pd vac., great work environment. Exp pref. Rresume to Po Box 621, Pampa, TX 79066

CHURCH Day Care is accepting appli. for Assistant Director. Benefits, pd vac., great work environment. Exp pref. Rresume to Po Box 621, Pampa, TX 79066

CHURCH Day Care is accepting appli. for Assistant Director. Benefits, pd vac., great work environment. Exp pref. Rresume to Po Box 621, Pampa, TX 79066

CHURCH Day Care is accepting appli. for Assistant Director. Benefits, pd vac., great work environment. Exp pref. Rresume to Po Box 621, Pampa, TX 79066

CHURCH Day Care is accepting appli. for Assistant Director. Benefits, pd vac., great work environment. Exp pref. Rresume to Po Box 621, Pampa, TX 79066

CHURCH Day Care is accepting appli. for Assistant Director. Benefits, pd vac., great work environment. Exp pref. Rresume to Po Box 621, Pampa, TX 79066

CHURCH Day Care is accepting appli. for Assistant Director. Benefits, pd vac., great work environment. Exp pref. Rresume to Po Box 621, Pampa, TX 79066

CHURCH Day Care is accepting appli. for Assistant Director. Benefits, pd vac., great work environment. Exp pref. Rresume to Po Box 621, Pampa, TX 79066

96 Unfurn. Apts.

MOVE IN SPECIAL Large 1 bdrm apt. w/ lots of closet space. Stove & Refrigerator furn. Water Paid. 2 bdrm duplex. Washer Dryer hookups. Call 665-4274, 665-1875.

White House Lumber 101 S. Ballard 669-3291

MOVING Sale: Aug. 14-30. Used tires, oak table & chairs, dresser, stands, much more. Call 806-440-0079.

FOR Sale 26 in. Sony Tivv and kg sz Spring Air pillow-top mattress / box spr. 806-236-2031

ADVERTISING Material to be placed in the Pampa News MUST be placed through the Pampa News Office Only.

FURNITURE CLINIC 52 Yrs. Experience Furniture Repair 662-6357

DENTURES at Affordable Prices! Partials, Relines & Repairs. Call 1-800-688-3411.

NEW Mattresses. Tw. set \$149, qu \$266, I have 2 ea., chests, etc. Red Barn, 1420 S. Barnes. Open only on Sat. You can call and buy today, 665-2767.

DINING table w/ 2 leaves, 6 chairs, china cab, glass doors on hatch, Total Bodyworks-5000, PierOne Pappasan chair & stool, kg. sz. brass hb. 683-9160

SUNTEC Hospital Bed with mattress. Electronics control - \$350. Aspire Quickie Freestyle Wheelchair, Battery Operated, choice of three colors for fenders - \$1,250. Guardian hydraulic lift - 400 lb limit \$150. Call 665-9445.

CHURCH Day Care is accepting appli. for Assistant Director. Benefits, pd vac., great work environment. Exp pref. Rresume to Po Box 621, Pampa, TX 79066

CHURCH Day Care is accepting appli. for Assistant Director. Benefits, pd vac., great work environment. Exp pref. Rresume to Po Box 621, Pampa, TX 79066

CHURCH Day Care is accepting appli. for Assistant Director. Benefits, pd vac., great work environment. Exp pref. Rresume to Po Box 621, Pampa, TX 79066

CHURCH Day Care is accepting appli. for Assistant Director. Benefits, pd vac., great work environment. Exp pref. Rresume to Po Box 621, Pampa, TX 79066

CHURCH Day Care is accepting appli. for Assistant Director. Benefits, pd vac., great work environment. Exp pref. Rresume to Po Box 621, Pampa, TX 79066

CHURCH Day Care is accepting appli. for Assistant Director. Benefits, pd vac., great work environment. Exp pref. Rresume to Po Box 621, Pampa, TX 79066

CHURCH Day Care is accepting appli. for Assistant Director. Benefits, pd vac., great work environment. Exp pref. Rresume to Po Box 621, Pampa, TX 79066

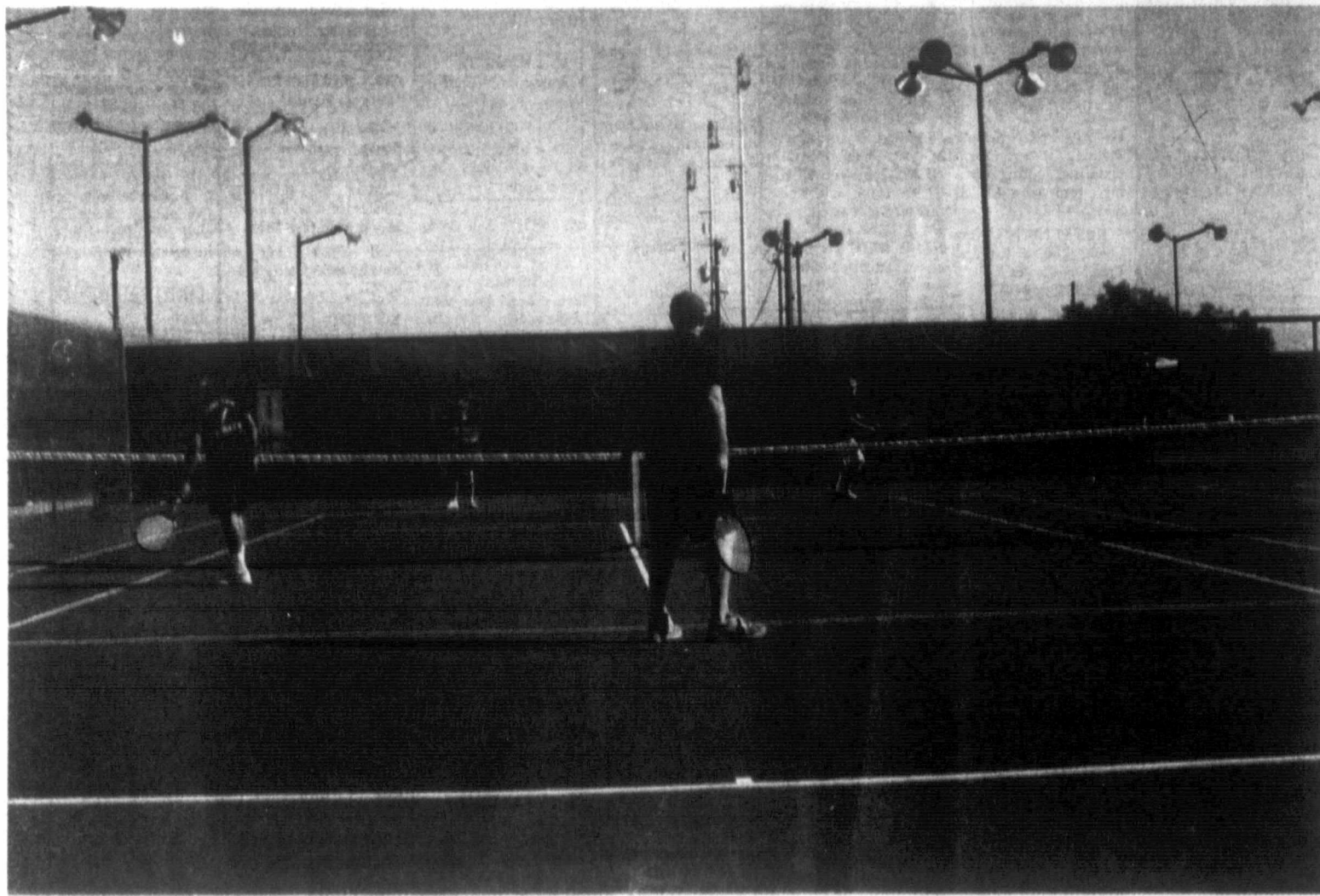
CHURCH Day Care is accepting appli. for Assistant Director. Benefits, pd vac., great work environment. Exp pref. Rresume to Po Box 621, Pampa, TX 79066

CHURCH Day Care is accepting appli. for Assistant Director. Benefits, pd vac., great work environment. Exp pref. Rresume to Po Box 621, Pampa, TX 79066

CHURCH Day Care is

Sports

Harvester tennis involves the community



staff photo by Randy Pribble

Community members joined with the Pampa Harvesters tennis team for some fun and bonding Saturday, Aug. 15, at the high school.

BY ANDREW GLOVER
aglover@thepampanews.com

Pampa Harvester tennis team members and adults from the community teamed up for a doubles tournament Saturday at the high school.

Each member of the team picked someone to play doubles with in as part of tennis' Green and Gold week. Head coach Sarah Corse said the event helped bring the community out.

"They get to be involved with the kids," Corse said. "The kids get to know someone. It was good for the kids to get to know each other."

Susan Chase, who partnered with Harvester senior Samantha Finney, said it was a lot of fun.

"It brings members of the community out and awareness of the program," Chase said. "It was really an honor. It allows people who don't play tennis to get involved. It was neat of Sammie to ask me."

Finney said it meant a lot to have Chase play with her.

"She's my best friend's mom," Finney said. "She knows how to (keep) score. I wanted to let her play."

This event closed out Green and Gold week for the team. Corse said she split the team in two, a green and gold team. After practice they competed in games against each other.

"We played kick ball, dodge ball and flag football," Corse said. "Each team gets points for winning and they want to win to have bragging rights."

Corse said the green team won all week but the gold team was gaining ground in the tournament. The Harvesters open their season in Amarillo for a tournament Friday through Saturday.

Rangers extend AL wild-card lead

ARLINGTON, Texas (AP) — The Texas Rangers seem unfazed by the pressures of chasing a playoff spot.

Marlon Byrd drove in three runs and the Rangers extended their lead in the AL wild-card by beating the slumping Minnesota Twins 8-5 on Monday night.

"It's a good feeling," said Josh Hamilton, who had two hits and scored twice for the Rangers. "We're loose, joking around and doing what we're capable of doing."

After taking two of three over the weekend from Boston, the Rangers stretched their advantage to one game over the idle Red Sox.

Rangers third baseman Michael Young said there was no worry about a letdown after a big series against their closest playoff competitor.

"We're only focusing on things we need to get better at."

HARVESTER'S SUCCESS Henderson achieving at SWOSU

BY ANDREW GLOVER
aglover@thepampanews.com

Former Lady Harvester volleyball player Krishna Henderson worked her way into the Southwestern Oklahoma State University in Weatherford, OK, starting lineup in her freshman season last year.

Henderson walked on last year and said her first season was pretty hard.

"I had to earn playing time," Henderson said. "I took a senior's spot (in the lineup). I didn't think I would get to play my first year. I found that if I work really hard it pays off."

Henderson joined the team as a hitter but saw the team already had a lot at that position. So Henderson said she switched positions.

"I looked at other positions," Henderson said. "I looked at defensive specialist. I worked with coach on it after practice and a spot opened."

The biggest honor Henderson received last season was being selected as the female Lone Star Conference representative for her school at the Student Athlete Advisory committee retreat. Henderson said representing her school at the retreat was fun.

"We learned to work together as a team," Henderson said. "We helped with Habitat for Humanity and met the Lone Star conference president."

Editor's note: We would like to know how our PHS graduates are doing. If you know a former Harvester athlete that is currently participating in college sports, send information to Andrew Glover, a glover@thepampanews.com.

WR Williams, CB Newman back at Cowboys practice

SAN ANTONIO (AP)

Dallas Cowboys receiver Roy Williams was back on the field Monday with his sprained left wrist protectively taped, opting to practice instead of working on the side with a trainer.

"My wrist still hurts. I don't want to be the guy that don't practice because of this or that," Williams said. "I've come too far not to go through camp. We're almost done. Get it over with, go through the pain, catch the football."

Cornerback Terence Newman, who had been sidelined by a groin strain, practiced for the first time in nine days. He didn't seem to have any lingering effects from the injury, but left the field without talking to reporters.

Cowboys coach Wade Phillips said Williams and Newman both "did fine" and expects both to play in the preseason home opener Friday night against Tennessee.

"If I practice, I'm going to play," Williams said. "I'm in, count me in."



Dallas Cowboys' Roy Williams stretches during the team's NFL football training camp in San Antonio, Monday, Aug. 17, 2009. Williams sprained his left wrist during practice Sunday. (AP Photo/Eric Gay)

After coming down hard on his wrist in the first workout Sunday, Williams missed the afternoon session while having X-rays that were negative. He was first in line to catch a pass from Tony Romo when the offense started its warmup session, and caught several passes in team drills.

"It's a good thing I did because my confidence level went sky high, especially after I caught my first ball," Williams said. "I thought the ball was going to take my hand and break my wrist or something, and it didn't. Thank God I've got strong hands."

Earlier Monday, the Cowboys released running back Alonzo Coleman and cornerback Michael Hawkins, who are recovering from knee injuries. The moves Monday put the Cowboys roster at 77 players.

Dear Abby...

By Pauline & Jeanne Phillips



DEAR ABBY: I am a casual reader of your column and saw the June 15 letter from "Lucky Wife of a Hero." What a refreshing piece it was to read. I know many people write to you with hardships in their lives, but that letter was one of the most uplifting I have read in a long time. It literally made my day.

While "Lucky Wife's" husband's help to her may seem surprisingly simple, it's great to hear about people doing the little things for those they love, and being appreciated in return. Thank you for publishing it. — U.S. MARINE IN JAPAN

DEAR U.S. MARINE: And thank you for writing. In my response to "Lucky Wife" I asked readers to share their stories of people they have encountered who — like the husband in that letter — are "everyday heroes." Read on for a sample:

DEAR ABBY: My life has been touched by several heroes. I became pregnant during my senior year in high school. Because marriage wasn't an option, I placed my son for adoption. In college, I met my husband, and we have raised three children together.

After 35 years my son, Paul, contacted me. The first hero who stepped up was my husband. Without hesitation, he welcomed Paul into our family.

My next hero was Paul's wife, who offered to share her husband during the holidays. Paul flew from Minnesota to California on Christmas Day to meet me and my family. It was an incredible experience.

It was then that I learned about the two heroes who had taken Paul into their home and their hearts all those years ago and raised him as their own. Paul's adoptive family encouraged him to find us, learn about his birth heritage, and have celebrated every moment of our reunion.

But the greatest hero in my story is Paul. Inspired by the sacrifices of the young men and women who serve our country, he felt compelled to join the Army National Guard and today is serving in Iraq.

Soon my family will travel to Minnesota to meet Paul's adoptive parents and siblings, his wife and his children. My heroes have joined together to enrich my life, and I can't begin to thank each and every one of them. — SHERI IN ESCONDIDO, CALIF.

Daily horoscope

HAPPY BIRTHDAY for Wednesday, Aug. 19, 2009:

This year, you approach life with renewed energy and a constantly transforming perspective. You might not always be comfortable with financial situations and what is happening, yet you are able to intuit your path. Still, keep a counsel of experts or those in the know. Opportunities definitely come through networking and key associates. If you are single, you'll want to be careful about your choice of sweetie. You could choose someone who is emotionally unavailable. If you are attached, you gain from weekends away, just the two of you. LEO is a soul mate.

The Stars Show the Kind of Day You'll Have: 5-Dynamic; 4-Positive; 3-Average; 2-So-so; 1-Difficult

ARIES (March 21-April 19)

**** Let your creativity emerge after a discussion with associates. You might feel as if you are in an all-or-nothing situation. Adapt your thinking, and you'll find solutions. Understanding evolves, but it won't happen like lightning. Tonight: Remember, it is only midweek! TAURUS (April 20-May 20)

**** One cannot say you are lazy, but you might want to vanish or play it low-key for several reasons. By extracting yourself from a situation, you might view issues and projects without as much feedback. Detachment will increase your creativity. Tonight: Happily at home. GEMINI (May 21-June 20)

**** Break past a restriction, and honor your objectives. Understanding could help illuminate a problem and display another perspective and solution. Trust your instincts. Tonight: Catch up on a friend's news. CANCER (June 21-July 22)

**** You discover what is going on with an investment. Your efforts do not go unnoticed. One-on-one relating elicits many strong feelings. These feelings could be more steady and insightful than usual. Your gentle manner draws many. Curb moodiness. Tonight: Your treat. LEO (July 23-Aug. 22)

**** At best, you can be a force who's hard not to deal with. Your imposing will and high charisma blend, making you a formidable figure. You could be worried about the end results. Your instincts point to stronger decisions. Use timing to maximize what is happening. Tonight: What you want. VIRGO (Aug. 23-Sept. 22)

**** Don't make a big decision without necessary information. If you slow down the process, the possibility for more information will emerge. You are on top of your game and can afford to hold on. Be aware of your limits. Tonight: Everything is happening quickly. LIBRA (Sept. 23-Oct. 22)

**** Emphasis does make a big difference, and others respond when you point to key directives. You are far more upbeat when with groups. You might not want to reflect over an emotional situation. Touch base with the many different options possible before committing to an approach. Tonight: Where there are many.

SCORPIO (Oct. 23-Nov. 21)

**** Take a stand, and others will respond. If you detach, look at what's happening behind the scenes. Revel in the moment, as you gain understanding. Find answers through inquiry and observation. You have a unique mix that makes a difference. Tonight: A must appearance. SAGITTARIUS (Nov. 22-Dec. 21)

**** Break past rigid thinking. Up till now, your ideas have been close to impossible to understand. Once you understand the manner in which you filter information, you can make an adjustment. Be open to all different types of feedback. Tonight: A must appearance. CAPRICORN (Dec. 22-Jan. 19)

**** Deal with someone on an individual level and grow in a new way. Your ability to move in a new direction opens up possibilities. Someone is clearly "soft" on you. Listen to feedback, which will touch you in a profound manner. Deal with your finances with the help of a savvy individual. Tonight: Dinner for two. AQUARIUS (Jan. 20-Feb. 18)

**** Your ability to move a project past another's critical insight is helpful. Still, it would serve you well to get past an immediate issue and gather more information. You could be overwhelmed by everything that you hear. Discussions with a partner could be staid. Tonight: Sort through information. PISCES (Feb. 19-March 20)

**** Toss yourself into work. You are more entrenched than you have been in the past. Feelings could be quite intense. Sort through your emotions perhaps at another time, as you could become quite distracted. Understanding builds because of a friend's or loved one's attitude. Tonight: Get some exercise.

BORN TODAY
Aviator Orville Wright (1871), 42nd U.S. President William J. Clinton (1946), poet Ogden Nash (1902)

Jacqueline Bigar is on the Internet at www.jacquelinebigar.com.
© 2009 by King Features Syndicate Inc.