


Ashmore & Associates
 1224 North Hobart
 NBC Plaza 2, Suite 11
 Pampa, TX • 806-688-7081
 www.ashmoreassociates.com
 INSURANCE AGENCY, LLC

La
 CORNER OF HW

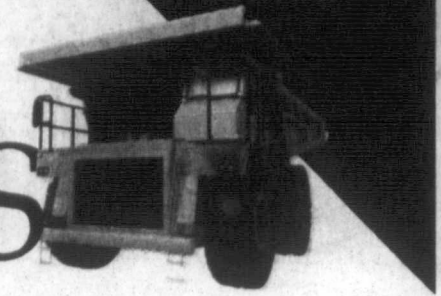
*****ORIGIN MIXED AOC 790
 0000471 12/31/2008
 HERITAGE MICROFILM
 4049 21ST AVE SW
 CEDAR RAPIDS, IA 52404-6309

WTL
 SAND & GRAVEL, LLC

120 S. HOBART
 Pampa, Texas
 806 669 0158

Home • TV • Boat
 Home • Collectible Art
 Home • Firearms
 Home • Health

 Jim Bruton

The PAMPA NEWS



Volume 105 • No. 100 One Daily • Weekend \$1.50

Back to School Special
 You pay the flooring & installation costs and we pay the taxes through August!

The Floor Store
 7110 Perryton Parkway
 665-4455

CHILDERS BROTHERS INC. HOUSE LEVELING
 Uneven Floors
 Floor Bracing
 Cracks In Bricks
 Sticking Doors & Windows
 Interior Wall Cracking
 FREE ESTIMATES
 1-800-299-9563
 WWW.CHILDERSLEVELING.COM

OO

Watch for our huge Garage Sale! Discontinued & Small Quantities... Starting at 50¢ sq ft on Laminate & Tile
ONE STOP FLOORING
 1533 N. HOBART
 MONDAY-FRIDAY 9-5
 SATURDAY 10-1

M#10341 • LICENSED • INSURED
BOB'S PLUMBING
 PAMPA, TEXAS
 806-669-1940
 CELL# 806-584-0809
 HOURS MON-FRI 8-6 • SAT 8-12
 EMERGENCY ANYTIME
 OWNERS: BOBBY FAIRES / DUECE FAIRES

Sentry Self Storage
 24 hr Controlled Access
 24 hr Video Surveillance
 Personal & Commercial
 665-1000

VISION SOURCE
 FAMILY EYE CARE
 OPTICAL
 KIDS SEE FREE
 1324 N. BANKS
 806.665.0771

AMMONS CONSTRUCTION
 Roofing Siding
 Custom Homes
 Window Replacement
 Remodeling & Additions
 806.669.7777
 ammonsonstruction.com

Vision
 COMPUTER SERVICES
 ihavecomputerproblems.com
 806-665-HELP(4357)
 Combs-Worley Building
 120 W Kingsmill Ave
 Suite 303

Jasper
 Located in McLean since 1958
 Black Owned • Minority Owned
 Equal Opportunity
 Equal Housing Lender
 Equal Housing Opportunity
 Equal Housing Lender
 Equal Housing Opportunity
 Equal Housing Lender
 Equal Housing Opportunity

M & H Leasing
 TOP OF TEXAS
 Support
 Harvester Football!
 1945 N. Hobart • 665-2061

RODEO PARADE



The annual Top 'O Texas Rodeo parade entertained spectators downtown Saturday morning. For results and more photos, see page 5.
 staff photo by Betsy Phillips

County attorney's office gets system upgrade

BY DAVID BOWSER
 dbowser@thepampanews.com

Gray County Attorney Josh Seabourn will get an expanded data network as the county upgrades his office's computer system. Seabourn appeared before the Gray County Commission Friday to explain the expanded and updated system. "Currently, we use two different software packages to track hot check cases and to track criminal cases," Seabourn told the commissioners Friday morning. "Both of those programs date back to sometime in 2002. They're about seven years old."

When Seabourn came into office, he said the county was paying about \$500 a month to maintain the software, but because the county wasn't getting very good service, it was cancelled.

"We started saving that money," Seabourn said. But after seven years, the company that had the online software was absorbed by another company.

COUNTY cont. on page 3

Sen. Hutchison announces run for Texas governor

LA MARQUE, Texas (AP) — U.S. Sen. Kay Bailey Hutchison announced her run for Texas governor Monday with a sharp blast at Gov. Rick Perry, saying he has overstayed his welcome with an administration marked by arrogance and "tragic" mistakes.

Hutchison, using her old high school as a backdrop, also proposed limiting governors to two, four-year terms. She called Perry a "dedicated public servant," but otherwise laid into him. Perry, in office since 2000, is the longest serving governor in Texas history.

"Now he's trying to stay too long — 14 years," Hutchison said. "After ten Perry years, where are we?"

Perry took over the remainder of former President George W. Bush's second term as governor and has been elected to two, four-year terms since.

Hutchison answered her own question by saying the state is awash in debt, leads the nation in uninsured children and suffers from the highest property taxes in the country. She singled out the Texas Department of Public Transportation, calling it the "most arrogant, unaccountable state agency in the history of Texas."

The state's senior U.S. senator also belittled Perry's decision to turn down \$550 million in federal stimulus money to help the state's



U.S. Sen. Kay Bailey Hutchinson, R-Texas comments during a news conference officially announcing her candidacy for Texas governor Monday, Aug. 17, 2009 in La Marque, Texas. Hutchison is planning to give up her Senate seat this fall so she can focus on the governor's race full-time.

empty unemployment insurance trust fund. She described the move as politically motivated and "irresponsible."

Her highly critical speech underscored the bitter clash that the Republican primary for Texas governor is becoming.

The rancor was evident from the moment Hutchison's vast entourage pulled into the parking lot of La Marque High School, the site of her first event. Perry's

aides had already parked a large truck carrying an oversized picture of the senator with a sign emblazoned across the front: "Kay Bailout Express," it read in reference to Hutchison's vote in favor of the 2008 financial rescue package.

Perry spokesman Mark Miner also showed up at the gymnasium where Hutchison was speaking

HUTCHISON cont. on page 3

Banks added 10,000 branches in boom

DALLAS (AP) — Banks expanded at a breathtaking pace over the past five years, adding more than 10,000 full-service branches, but barely 1 in 10 were in inner-city, minority neighborhoods, another sign the financial spending spree skipped over substantial parts of the country.

The discrepancy means millions of people who don't live near a bank have had to hand over \$2, \$5 or \$10 at a time — sometimes even more — in service fees to nonbank outlets to conduct basic transactions such as cashing checks or paying bills that most bank customers take for granted.

Nearly six branches were added every day, with bank offices rac-

BANKS cont. on page 3

Comptroller distributes \$544 mil in local sales tax

(AUSTIN) — Texas Comptroller Susan Combs today said the state collected \$1.65 billion in sales tax revenue in July, down 11.6 percent compared to one year ago.

"Sales tax collections in July were again down significantly as major sectors of the economy, such as retail trade; oil and natural gas; and construction,

remain weak," Combs said. "The sharp drop in revenue is a reflection of the current poor performance of these sectors as well as unusually strong sales tax collections in July 2008."

Combs sent \$544 million in August sales tax allocations to local governments, down 6.8 percent compared to August 2008. So far this calendar year, sales

tax allocations to local governments are down 2.2 percent compared to this time last year.

Combs sent sales tax payments of \$367.4 million to Texas cities, down 6.5 percent compared to last August. Calendar year-to-date, city sales tax revenues trail 2008 by 2.3 percent. Sales tax payments of \$33.8 million

went to Texas counties, 4.2 percent below last August. So far in calendar year 2009, county sales tax allocations are up 0.2 percent compared to last year.

In addition, \$21.2 million in sales tax revenue went to 151 special purpose taxing districts, down 0.8 percent compared to August 2008. Ten local transit systems received \$121.5 million,

down 9 percent compared to a year ago.

August sales tax allocations represent sales taxes collected in June by businesses that report sales taxes monthly, and sales taxes collected in April, May and June by quarterly filers.

MOBILITY
 274-5000
 BORGER
 701 N. MAIN
 G. I. Joe: Rise of The Cobra
 Funny People
 The Ugly Truth
 G-Force (Digital 3D)
 My Sister's Keeper (Digital)

HOUSE HUNTERS-REALTOR
 Linda Laycock
 BROKER
 662.1312
 Larry Hadley
 ASSOC.
 662.2779
 Jordan Onst
 ASSOC.
 817.690.9222

Office Memorial Blood Drive
 I GAVE BLOOD TODAY!



Judge who closed court on trial



Judge Sharon Keller waits for her trial to begin at the Bexar County Courthouse in San Antonio, Monday, Aug. 17, 2009. Keller, the presiding judge of the Texas Criminal Court of Appeals, faces judicial misconduct charges.

SAN ANTONIO (AP) — A Texas judge who closed her court to a death row inmate hours before his execution is herself being put on trial.

Judge Sharon Keller is up against five charges of judicial misconduct Monday when a special hearing begins in San Antonio. The charges could be career-ending for Keller, the presiding judge of the Texas Criminal Court of Appeals.

Keller refused to keep her court open late in September 2007 while lawyers for convicted killer Michael Wayne Richard (RUSHARD) scrambled to file a last-minute appeal. Richard was executed hours later.

Keller was roundly rebuked by lawyers nationwide and a state lawmaker tried to impeach her. Her attorney says the court was never closed and that Richard's attorneys had other avenues to file an appeal.

Youth minister dead in Palo Duro Canyon

NEW HOME, Texas (AP) — Services were pending for a youth minister whose body was found at Palo Duro Canyon during a solo hiking trip.

New Home Baptist Church Pastor Calvin Gray on Monday said Nathan Neel joined the staff in early August.

Gray told The Associated Press that the 24-year-old had gone to Palo Duro Canyon, near Amarillo, before with other people. Gray says he believes this

time Neel "wanted to go by himself to spend time with God."

Neel went hiking Friday morning. His body was found hours later.

Gray says he spoke with Neel's family and relatives believe the death was an accident.

An autopsy was ordered. Neel previously was a youth intern at Bacon Heights Baptist Church in Lubbock, where a service was planned.

Hutchison

and delivered a response before the senator even began her speech.

"Once again, the senator is coming up with no ideas," Miner said. "It's easy to criticize after being in Washington for 16 years, but the people of Texas want results not rhetoric."

Only two Texans — Sam Houston and Price Daniel — have made the rare leap from U.S. senator to governor, but Hutchison has been itching to come home for years. She flirted with a gubernatorial run in 2005

but ultimately decided to stay in Washington — avoiding a primary that GOP honchos feared would leave the party badly divided.

Joining Hutchison in La Marque was Karen Hughes, the former spokeswoman and trade representative from the last Bush administration.

Hutchison planned to continue her five-day announcement tour in Houston, San Antonio and Austin as well as 15 other cities.

Banks

ing to exclusive neighborhoods such as University Park in Dallas, Midtown West in Manhattan and Music Row in Nashville, Tenn., as well as the fast-growing exurban communities surrounding Sacramento, Calif., Phoenix and Cincinnati.

"It's crazy, and they're building another one!" said Mary Morgan, pulling into a parking spot at a JPMorgan Chase branch in University Park. Up the road, Comerica just cleared a lot to build a bank. A half-mile away, a financial institution is replacing a restaurant, she said.

"It's stupid," Morgan said. "How can the market be that big?"

Meanwhile, bank growth either declined or remained stagnant across wide swaths of the nation's inner cities, with branches closing in Cleveland, Pittsburgh and elsewhere.

Data from the Federal Deposit Insurance Corp. shows that the nation's 99,000 banks generally followed the money. About two-thirds of all neighborhoods have a median household income higher than the national average; about two-thirds of the new bank branches were in those neighborhoods.

An Associated Press analysis, however, found that branches weren't added at a proportionate rate in minority neighborhoods. About one-third of the neighborhoods analyzed are predominantly minority, according to the Census Bureau; only about 1 in 10 new bank branches showed up in those areas.

The AP study was reviewed by the American Bankers Association and is consistent with other federal studies.

"It's like the proverbial ambulance chasers," said Charles O'Neal, a vice president at the Dallas Black Chamber of Commerce. "They're all chasing the same dollar and they get little return. Meanwhile, on this side of town, folks are literally spending sleepless nights trying to figure out where do we go to find a financial institution that will be responsive to their needs."

Bank officials say they are following the growth of customers to continue providing services because most people choose banks

based on branch locations.

Bank watchdogs, however, say less-regulated financial institutions are filling the void and expanding at the expense of vulnerable, inner-city residents. As a result, they are relying on high-cost lending businesses for services, traditionally provided by bank branches.

"When you don't have banks going into poor communities, you're going to wind up with places where there are a lot of predatory products," said Kathleen Day, a spokeswoman for the Center for Responsible Lending, a Washington-based advocacy group. "It's not always the case — payday lending seems to target black and Hispanic neighborhoods regardless of income level or bank location — but it's a real problem."

Even in a digital age when banking is done online, the 99,000 bank branches are important barometers of economic health for thousands of communities. People in neighborhoods without banks are more likely to spend more of their money for basic financial transactions.

Under the Community Reinvestment Act, banks are encouraged to offer services in poor and minority neighborhoods. The vast majority of banks receive outstanding or satisfactory grades from regulators. The grades are important when banks apply to open new branches or acquire other banks.

James Ballantine, a senior vice president with the American Bankers Association, said banks that don't comply can be required to enter into agreements with regulators, fined or even lose their charter.

Even so, small and large banks alike focused most of their efforts on wealthy and fast-growing neighborhoods as the housing boom reached its zenith. Banks now receiving billions in federal bailout loans led the charge, according to the AP's analysis. The largest banks added nearly 6,800 branches between 2004 and 2008. Fewer than 900 of those branches wound up in minority neighborhoods.

Nearly 18 percent of those full-service bank

branches were in minority neighborhoods in 2004, according to the FDIC. By last year, that number had dipped to 16 percent as banks worked harder at pursuing customers in distant, mostly white suburbs.

Among the findings in the analysis:

— Fueled by explosive growth and its acquisition of Bank One Corp., JPMorgan Chase added 2,566 branches during the five-year period. Only 342 were in minority neighborhoods. In 2004, nearly 30 percent of Chase's branches were in minority areas. By 2008, that number had dropped nearly half, to 16 percent.

Christine Holevas, a bank spokeswoman, said most of the bank branches were added by acquisitions of other banks. Chase took over Bank One in 2004, adding 1,800 branches. The bank increased its number of branches again in 2004 when it acquired 300 Bank of New York locations. The acquisitions effectively reduced the bank's presence in minority neighborhoods.

Its most recent federal grade, issued in 2007, was

"outstanding."

— Citigroup added 272 new branches between 2004 and 2008, the overwhelming majority in white neighborhoods. Only two dozen were created in minority neighborhoods, according to federal figures. The bank still has 28 percent of its banks in minority areas.

Elizabeth Fogarty, a bank spokeswoman, said Citi makes a strong effort to serve poor and minority communities.

— Fifth Third Bancorp increased its presence in minority neighborhoods by more than half, expanding from 60 offices to 95 branches. Still, only 7 percent of its 1,356 branch offices are in minority areas.

Stephanie Honan, a bank spokeswoman, confirmed the figures. She said the company has a small percentage of its branches in minority neighborhoods because of acquisitions over the past two years. She said the company has decided to not close or consolidate branches in minority neighborhoods for the next three years.

Perhaps no place illus-



County

cont. from page 1

Last month, Seabourn said they had problem when the computer system automatically updates its program.

"When that happened," Seabourn said, "it messed up our prosecutor software for tracking criminal cases."

He said the problem was resolved but it meant rolling back the computers to earlier version of the operating system.

"We were concerned about that," Seabourn said. "We're also concerned because these software packages are so old."

Parts of them no longer have updates available because the company no longer exists. He said that it's his understanding that the one of the older companies has been bought by the Local Government Solutions Software Providers.

"We're currently paying \$195 a month to LGS," Seabourn said.

That allows his staff to look at the criminal cases in the clerk's office.

Seabourn proposed

spending an additional \$235 a month to upgrade the system and make it more efficient.

"That would include hot checks operator, prosecutor and criminal case management software, juvenile software that we don't even have right now and some limited civil case management software," Seabourn said.

It will all be integrated into one package, he said.

The monthly fee will include all support that is needed by the software company. It also includes training session on the software.

"It'll make sure that it's running smooth," Seabourn said.

The expanded and updated software, he said, would give his office more flexibility in tracking cases.

The software allows the various offices involved in the courthouse to see the different documents, he said.

Seabourn noted that he has money in his budget for the upgrade.

cont. from page 1

trates the expanding chasm as well as Dallas, a major financial center. The typical family living in the University Park section has an annual income of \$200,000. The neighborhood, just north of downtown, is 97 percent white. Two percent of its residents are poor. Since 2004, banks have added 16 new branches. The area now has 43 banks, or one for every 475 people.

The market apparently isn't as big five miles away, where the typical south Dallas family earns about \$17,000 annually. The neighborhood is 98 percent black. Half the people who live there are poor. In 2004, its residents could choose between a Bank of America branch and a Washington Mutual branch. By 2008, only the Bank of America branch remained, leaving the neighborhood with one bank for every 9,300 people.

It's a community of small, frame houses, some neat and tidy with security bars on the windows and doors; others are weathered, with peeling paint and tiny, weed-choked

yards. The bank stands in the shadow of the State Fair of Texas, the giant Ferris wheel looming above the parking lot. The lack of financial services often takes a back seat to worries about crime, fear of unemployment, or simply having a place to live and food to eat.

George Murphy, 68, owns M&W Barber & Beauty Shop, a small business in the heart of the neighborhood. The lack of banks isn't a problem for him because it only takes 30 minutes to walk to one, and a bus is also available.

"I don't deal with checks," he said. "My business is cash only."

Even so, the line is long at the Ace Cash Express, less than two miles away. The sign reads, "No Bank Account Necessary." Customers can have their paychecks automatically loaded on a prepaid Visa card for a fee. William Bates, 70, sits out front on his motorized scooter, waiting for his wife to get a money order.

"Twenty-five or 30 years ago," he said, "there weren't no banks or nothing over here."

PHS renovation nearing final stage

City, PEDC to team up against trash

Debate on name of PJHS mascot favors unity

Perry says he will call special session

Open meetings violation suit filed against PISD

Give heads collaboration in hiking accident

Access a complete issue of **The Pampa News** every day, Monday through Saturday, on your computer!

Keep up with your hometown news anywhere you can access the Internet - at home, on vacation, away at college.

Call Kera at 669-2525 for subscription details.

Fundraising underway for Panhandle Honor Flight

Fundraising is now underway for the 2nd annual Texas Panhandle Honor Flight scheduled for October 7-9, 2009. World War II and Korea Veterans will travel to Washington, DC, with all expenses paid, for three days and two nights to visit the War Memorials built to honor their service and sacrifice. Selected guardian volunteers traveling to Washington, DC will pay their own expenses for this incredible patriotic trip. American Airlines "Flagship Liberty" 737 aircraft will have the honor of flying our Greatest Generation and guardian volunteers from Amarillo, TX direct to Washington Reagan Airport, Washington, DC.

Highlights for the trip will include visits and wreath presentations at each of the War Memorials including: World War II Memorial, Korea Memorial, Vietnam Memorial, Iwo Jima Memorial and the Tomb of the Unknown Soldier at Arlington National Cemetery. A special wreath ceremony will be conducted by our veterans for the casualties from the Global War on Terrorism at Arlington Cemetery. Each veteran will be given an opportunity to participate in a wreath laying ceremony. The itinerary includes tours at the Pentagon, the nation's Capitol and Walter Reed Hospital. Elected officials from the state of Texas have been invited to attend special dinner functions as we salute these Veterans.

The Texas Panhandle is the home to 2,500-3,000 of these brave men and women. Due to the senior age of these heroes coupled with the prediction that we are losing 1000-1200 of them daily, we are committed to do all within our power to make this dream a reality. The Panhandle effort will focus on both our WWII veterans, Korea Veterans and those veterans from any war that have a terminal illness; therefore, time is of the essence. If you know a WWII or Korean Veteran, please call and request a Veteran application.

This presents a opportunity for the citizens of Pampa and the Texas Panhandle to demonstrate their pride in these heroes and their patriotism, and will make us proud to call this our home. We would like to raise enough funds so that every seat is filled on the aircraft. Please consider a generous donation as we salute our "Greatest Generation" on this special once in a lifetime trip for these true heroes. With the support of each citizen, business and corporation, we can achieve this goal. It's the right thing to do for these heroes who would not be able to afford such a trip on their own. America Supports You Texas is a 501(c)(3) nonprofit organization and all donations are tax deductible. For more information, please call 806-681-3596 or E-mail asytexas@amaonline.com.

A&M Memorial Student Center being updated

COLLEGE STATION, Texas (AP) — The more than half-century old Texas A&M Memorial Student Center is closing for renovation and expansion.

A ceremony was planned Monday to commemorate the closure of the center dedicated to Aggies who have given their lives in military service to their country.

A statement from the school in College Station says the project will bring

much-needed improvements and enhancements to the building, which was dedicated in April 1951.

The updated Memorial Student Center is expected to be finished in 2012.

The ceremony transfers the status of the center from being a memorial to a construction site.

Operations and events related to the center have been moved to other areas of the campus.

Oil falls below \$66 on worries of slow recovery

LONDON (AP) — Oil prices fell below \$66 a barrel Monday as investors worried that crude demand will recover only slowly in the U.S. and brushed off upbeat economic growth data from Japan.

Benchmark crude for September delivery was down \$1.63 to \$65.88 a barrel by late morning in European electronic trading on the New York Mercantile Exchange. On Friday, the contract tumbled \$3.01 to settle at \$67.51.

Friday's big selloff was triggered by a sharp drop in the Reuters/University of Michigan consumer sentiment index, a bad sign for crude demand, which has already been sluggish this summer.

Oil also followed stock markets, which fell heavily in both Asia and Europe.

Japan's Nikkei 225 stock average dropped 3.1 per-

cent, while Germany's DAX was down 1.8 percent.

"We've got overwhelmingly weak fundamentals in oil," said Victor Shum, an energy analyst with consultancy Purvin & Gertz in Singapore. "The market has really been due for a correction."

Investors brushed off evidence that the global slump may be nearing an end. Japan said Monday that its economy grew an annualized 3.7 percent in the second quarter, breaking out of a yearlong recession.

"The worst of the recession may be over, but for most economies, especially the U.S., the recovery may still be quite slow," Shum said.

In other Nymex trading, gasoline for September delivery fell 1.7 cents to \$1.92 a gallon and heating oil dropped 3.43 cents to \$1.81.

Chamber

The times will always be changin'



Weaver

BY JOE WEAVER
CHIEF EXECUTIVE OFFICER
"The Times They Are a-Changin'". In the mid 1960s, folk/rock singer-songwriter (and protégé of Pampa's Woody Guthrie) Bob Dylan wrote, recorded, and released that song. I can sort of sing you those five words, but so help me, I have no idea what the gist of the song is. Being the times, and the creator, I suspect it was some sort of protest

song. The fact is, however, that the times they are always a-changin'.

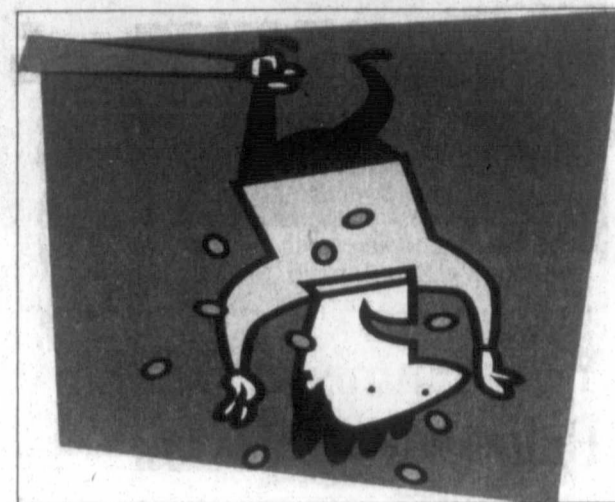
I have heard people bemoan the fact that "Pampa is not like it used to be." My answer to that is usually something along the line of "No, and it never was." Times change. Things change. People change. Communities change. Some changes are good, and some not—but they are unavoidable.

A few days ago I was discussing television with Holly (the smiling face you generally see at the Chamber's front desk or the friendly voice on the phone). She told me about when cable came to her small home town, and how eager they were to get it. I told her that we had three channels, all in black and white, and to change them, the viewer had to actually walk across the floor, and twist the knob (what's a knob?) on the set. The point is, from the time of my formative years to hers; television changed a lot—and compare that to the myriad choices today!

Change is inevitable. I don't watch much TV at all these days, but I love my iPod. I've gotten pretty used to having a cell phone too, and don't even think of taking away my Internet access. (And when I recall how I used to sit through the news to see the weather forecast!) Entertainment, information, communication, transportation... what do we still do the way we did ten years ago? To be viable in the 21st century, the chamber will change. Some changes will be easy, some will not, and some will happen in a way that we don't even notice. At any rate, it portends to be an

exciting time!

(BTW...I was visiting with Herb Smith a few days ago and recalled that the very first time I saw the NBC peacock "in living color" was in a house on Fir here in Pampa. In town to visit my grandmother, we had dropped by to see her sister Ruth Tarpley.)



SAVE YOUR MONEY AND SHOP PAMPA FOR ALL YOUR BACK TO SCHOOL NEEDS

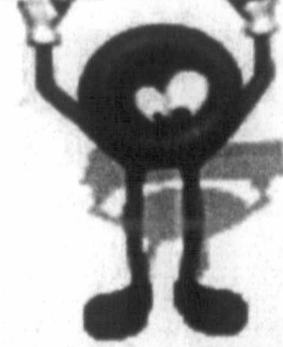
TAX FREE WEEKEND
AUGUST 21-23



Save the Date
25th Annual Country Fair
October 17, 2009
5pm - midnight
Silver Serenade

The Chamber Luncheon will be held on Tuesday, August 18th at 11:45 at the Chamber Building. This month's luncheon is sponsored by Harvester Lanes and our speaker is Julie Ramsey from Cross Texas Transmission. The Plaza will be serving beef and cheese enchiladas and the cost is \$8.50 per person.

BLOOD DRIVE



Coffee Memorial will be at Clarendon College Pampa Center on August 19th from 12-7pm. 1601 W. Kentucky 665-8801

UPCOMING EVENTS
Sept. 7 Chautauqua contact 665-0343
Sept. 12 Special Olympics Golf Tournament, to volunteer contact Helen at 669-9411

NATIONAL BANK OF COMMERCE

AN OFFICE OF FIRST NATIONAL BANK, WAUPACA, WI. Member FDIC

PAMPA TEXAS BRANCH

1224 N. Hobart
806-665-0022

SHAMROCK TEXAS BRANCH

305 N. Main
806-256-2181

CHILDRESS TEXAS BRANCH

501 Commerce Street
940-937-2514



Culberson - Stowers, Inc. SINCE 1927

805 N. HOBART • PAMPA, TX 79065 • PH: 806.665-1665 • 800.879.1665

Rodeo parade

Top 'O Texas Rodeo parade winners named

BEST CIVIC CLUB OR ORGANIZATION
 1ST PLACE — KHIVA SHRINERS
 2ND PLACE — PAMPA FFA

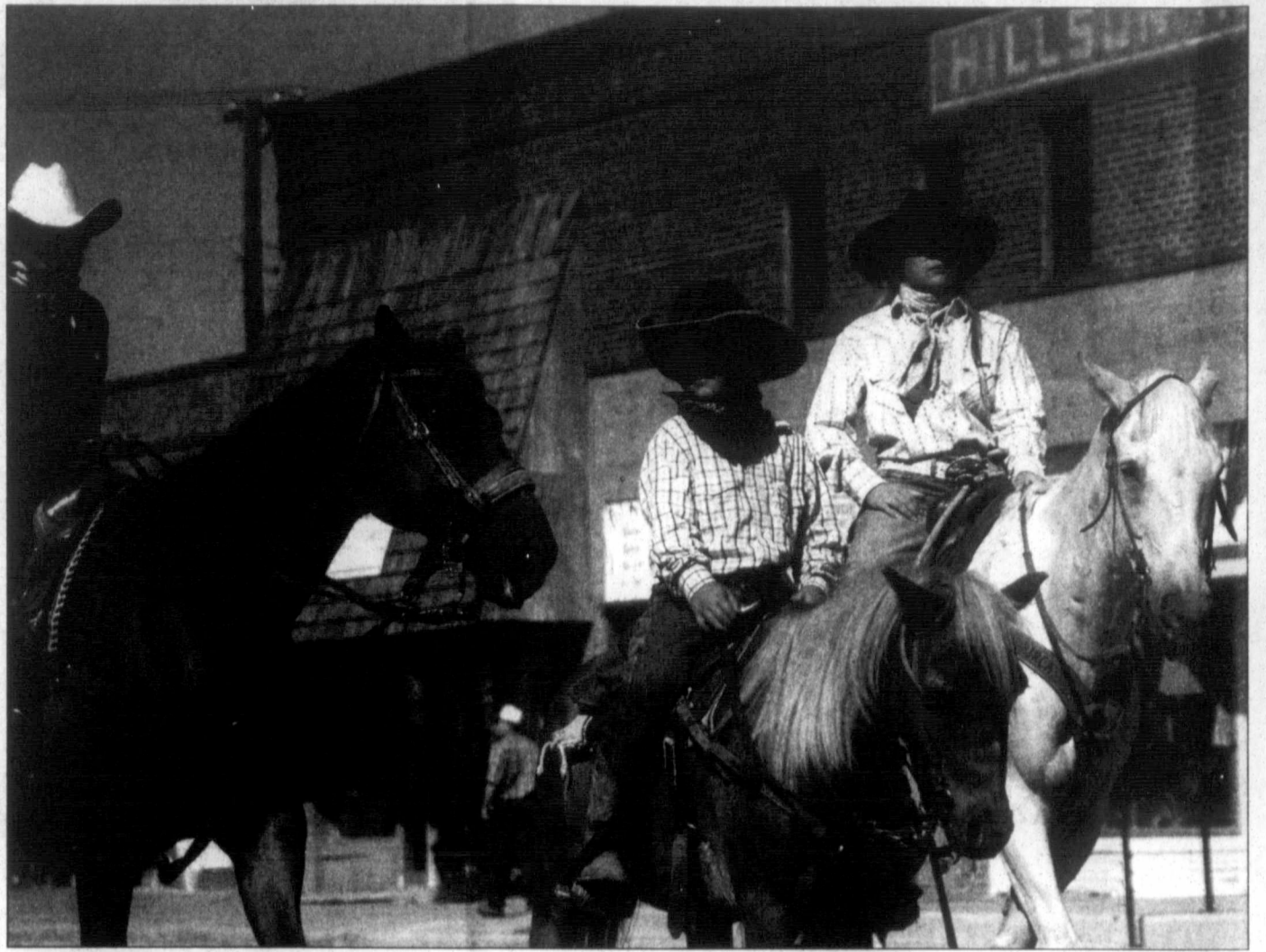
ANTIQUA TRACTOR
 1ST PLACE — DAVID HEXT
 2ND PLACE — BILL DAVIDSON

MOST ATTRACTIVE COMMERCIAL ENTRY
 1ST PLACE — TRE STOKES
 2ND PLACE — PAMPA REGIONAL MEDICAL CENTER

BEST RIDING CLUB
 1ST PLACE — SAND & SAGE RIDING CLUB

CLASSIC CARS
 1ST PLACE — LARRY RAY
 2ND PLACE — GRADY MELTON
 3RD PLACE — BOB FINSTERWALD

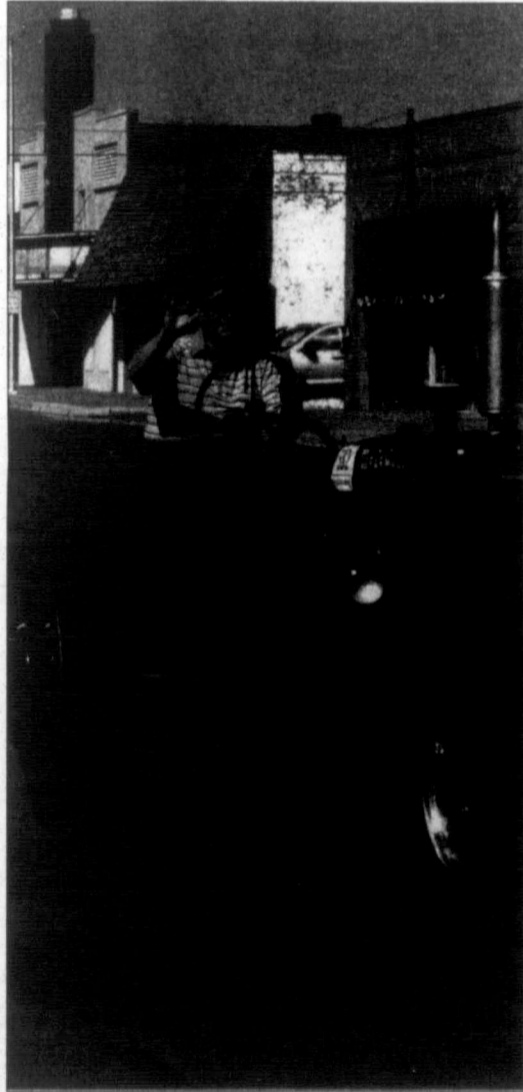
MOST TYPICAL RANCH ENTRY
 1ST PLACE — SINGLE TREE RANCH
 Winners may pick up their trophies at the rodeo office, 200 N. Ballard, beginning Tuesday, August 18.



staff photos by **Betsy Phillips**



Cowboys and cowgirls, fire trucks and vintage machines and posing puppies — Saturday's Top 'O Texas Rodeo parade in downtown Pampa had something for everyone to enjoy.



Dear Abby...

By Pauline & Jeanne Phillips

DEAR ABBY: I am a 46-year-old woman, and I feel as though my life is over. I lost my job more than a year ago and haven't been able to find another one. I have no friends, and it has been 13 years since I dated.

I live day to day, only for my mom and my dog — both of whom I love tremendously. I'm glad I can spend so much time with them each day, but I know I'm missing out on something more in my life.

I am well-educated, well-read and have traveled quite a bit, when my financial situation was better.

Abby, I feel like I'm 96, not 46! I am depressed and disheartened and don't know what to do. I can't afford counseling. I have thought about volunteering, but I don't want to work with kids and most volunteer jobs require that.

Please, can you suggest anything to help me out of this slump? I figure I have a good 20 to 30 years of living before me, and I just can't go on like this.

I have already accepted that I'll never find a

mate, and I'm struggling with the thought that someday, Mom will no longer be here. I see no future for myself. Please tell me what to do. — DOWN IN CONNECTICUT

DEAR DOWN: It is premature to conclude that you will "never" find a job, a friend or a mate. Things seem hopeless right now because you are depressed.

In your letter you hit on a wonderful, positive idea — your impulse to volunteer. Not all volunteer opportunities involve children. How about volunteering at a non-profit organization, an assisted-living facility for seniors, a VA center, an animal shelter, a program for people who are homeless, a food delivery program for shut-ins. Your local police department might also welcome some administrative help from a mature, organized adult.

I'm sure your time and talents would be deeply appreciated whatever you decide to do. Not only would volunteering be a rewarding way to fill your time, but it will help you to network.

P.S. Counseling is available on a sliding financial scale in most counties if you feel you need professional help.

HOW WILL YOU PAY FOR RETIREMENT? LET'S TALK.

Duane Harp
 Financial Advisor
 1921 N Hobart
 Pampa, TX 79065
 806-665-6753
www.edwardjones.com Member SIPC



Edward Jones
 MAKING SENSE OF INVESTING

Sudoku

Answer to yesterday's puzzle:

5	1	7	9	8	4	6	2	3
9	2	6	5	3	7	1	8	4
8	4	3	2	6	1	9	5	7
3	7	5	1	2	6	8	4	9
1	9	8	4	5	3	7	6	2
2	6	4	7	9	8	3	1	5
4	8	9	6	7	2	5	3	1
6	5	1	3	4	9	2	7	8
7	3	2	8	1	5	4	9	6

1	4	3	7					
5				1	7			8
					3			6
	7	1						
	2	8		9		4		
				8			6	7
				3		2		
	5					6	8	
	9	7	8	4				1

Level: Beginner

Your life may change... marriage ... children ... new house ... but we will still be here for you!

Call on your friends & family who will support all of life's little changes!

NATIONAL BANK OF COMMERCE
 An Office Of First National Bank Waupaca, Wisconsin

PAMPA • 1224 N. HOBART • 665-0022
 SHAMROCK • 305 N. MAIN • 256-2181
 CHILDRESS • 501 COMMERCE • 940-937-2514
www.fnbwaupaca.com Member FDIC

Comics

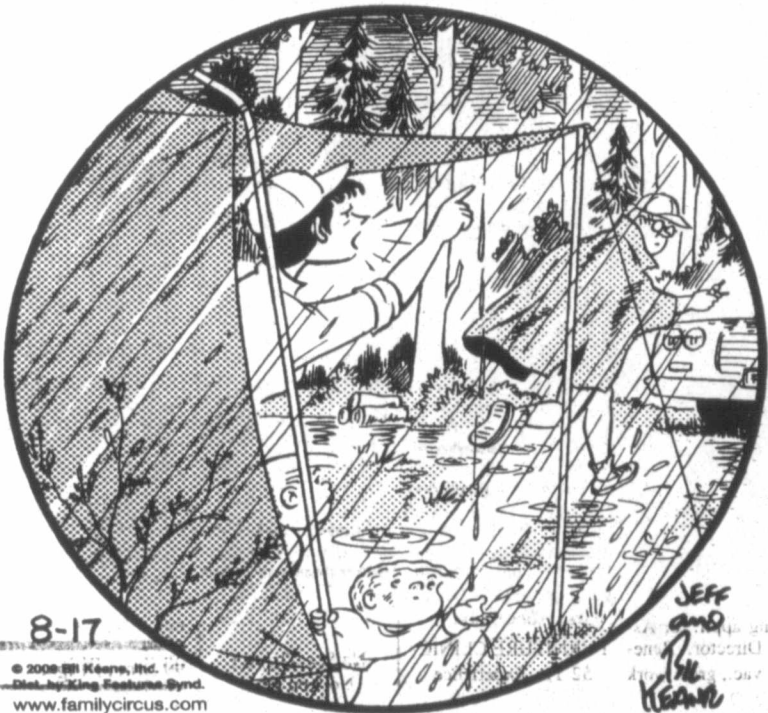
Marmaduke



"Good dog."

THE FAMILY CIRCUS

By Bil Keane



"...or coloring books or board games or puzzles or storybooks or..."

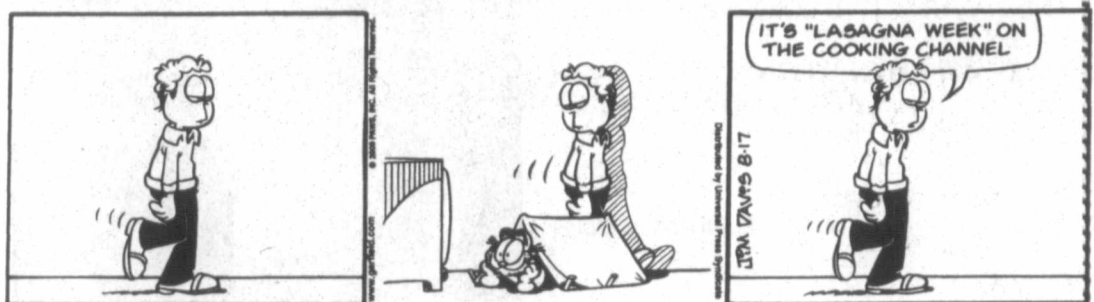
For Better Or Worse



Zits



Garfield



Beetle Bailey



Marvin



B.C.



Haggar The Horrible



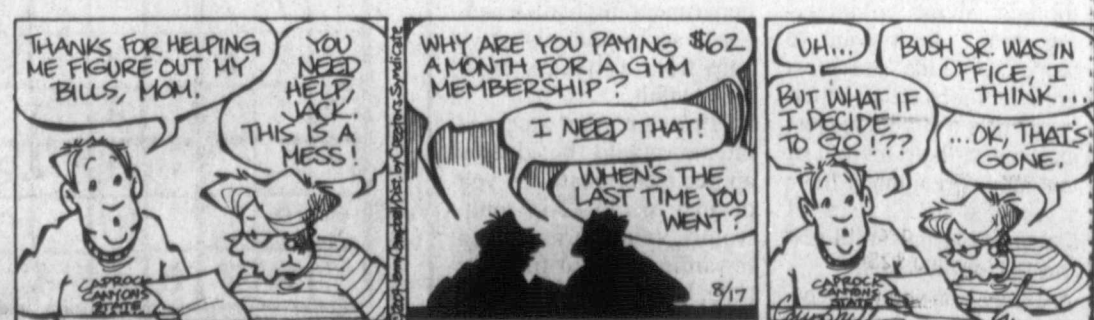
Peanuts



Blondie



Flo & Friends



Daily Crossword Puzzle

CROSSWORD

By THOMAS JOSEPH

- ACROSS**
- 40 Rushed
 - 1 Parting tool
 - 5 Like ocean trenches
 - 9 Indy auto
 - 10 Book of maps
 - 12 Amphitheater
 - 13 Sugar-yielding tree
 - 14 "Bye!"
 - 16 Pub drink
 - 17 Secret plan
 - 18 Army affirmative
 - 21 So far
 - 22 "Need anything?" reply
 - 23 So far
 - 24 Un-stressed vowel sounds
 - 26 Pop's wife
 - 29 "— pie"
 - 30 Soft drink choice
 - 31 Cigar bit
 - 32 Small-time
 - 34 Rub the wrong way
 - 37 Full of energy
 - 38 Ibis' cousin
 - 39 Dancer Charles "Honi" —
- DOWN**
- 1 King of song
 - 2 Spotted cat
 - 3 "Oh, bury —"
 - 4 Muffin makeup stopper
 - 5 River
 - 6 Greek vowel
 - 7 Texas city
 - 8 Wan
 - 9 Hoarse
 - 11 Crystal gazer
 - 15 Expert on the mat
 - 19 Swelled heads
 - 20 Boar's mate
 - 22 Corn Belt state
 - 23 Belonging to thee
 - 24 Robe parts
 - 25 Equivalent of D flat
 - 26 Dangling art
 - 27 Martini extras
 - 28 Partners
 - 29 A pop state
 - 30 Time separator
 - 33 Texas city
 - 35 Enemy
 - 36 Finish

S	A	M	E	C	A	F	E	S	
C	L	A	M	P	A	G	E	N	T
A	C	H	O	O	R	O	U	G	E
B	O	L	O	T	T	D	I	E	
S	T	E	L	L	A	V	E	N	D
T	R	A	C	K	S	I	D	E	
S	I	D	E	T	R	A	C	K	
F	A	N	S	E	A	S	I	E	R
A	H	A	I	N	N	C	E	E	
C	A	R	O	N	G	O	A	P	E
T	R	U	N	K	E	N	D	E	
S	A	T	E	S	O	A	R	S	

Saturday's answer

NEW CROSSWORD BOOK! Send \$4.75 (check/m.o.) to Thomas Joseph Book 1, P.O. Box 536475, Orlando, FL 32853-6475

1	2	3	4	5	6	7	8		
9					10				11
12					13				
14				15			16		
17				18	19	20			
21				22					
			23						
	24	25				26	27	28	
29						30			
31				32	33				
34			35	36		37			
38						39			
40						41			

Sports

Champion Pampa cowgirl tops barrel racers

Carley Richardson of Pampa, won first place in barrel racing at the Top 'O Texas Rodeo last weekend. Winning is becoming a habit for the local cowgirl.

Earlier this summer Richardson won the All-Around Cowgirl title at the International Finals Youth Rodeo (IFYR) and captured average wins in barrel racing and breakaway roping.

Richardson said she was kind of overwhelmed after finding out about her all-around win.

"I knew I was capable, but didn't know it would happen," Richardson said of her IFYR win.

Richardson's total IFYR earnings is over \$9,100. Jim and Marsha Richardson are her parents. Carley Richardson credits her dad for her success.

"He does everything for me, and he is a great trainer and a great coach," Richardson said.

Carley will be attending South Plains in the fall.

TOP 'O TEXAS RODEO RESULTS SATURDAY, AUGUST 15, 2009

BULL RIDING

DONNY GEE - LUBBOCK - 77 POINTS
DERRICK CRESWELL - WEATHERFORD - 77 POINTS
ZACH PERKINS - THOMAS - 75 POINTS

STEER WRESTLING

KURT GOULDING - DUNCAN, OK - 5.3 SECONDS
DAVID CLEMENTS - PANHANDLE - 6.1 SECONDS
STEVEN GAMBELL - CANYON - 6.1 SECONDS
RYAN SWAYZE - FREEDOM, OK - 6.1 SECONDS
BILLY BILLINGSLEY - MCLEAN - 13.5 SECONDS
DANIEL ADAMS - WEATHERFORD - 13.8 SECONDS
CODY MOORE - ARTESIA - 15.0 SECONDS

BAREBACK BRONC RIDING

WES CAMPBELL - MOBEETIE - 81 POINTS
CODY MYERS - SAMNORWOOD - 78 POINTS
STEVEN ROBERTSON - KILEEN - 73

POINTS

RANCH BRONC RIDING

CALEB RICE - STAMFORD - 74 POINTS
HAGAN LAMB - BORGER - 71 POINTS
BROOKS BLAND - LOVINGTON - 69 POINTS
TYLER TERRY - WHITE DEER - 66 POINTS

CALF ROPING

JUSTIN KNOWLES - OMEGA - 8.7 SECONDS
TRAVIS LEWIS - LUBBOCK - 9.7 SECONDS
TANNER COCHRAN - PAMPA - 10.3 SECONDS
HAGAN LAMB - BORGER - 10.5 SECONDS
DAVID WITCHER - CANYON - 10.9 SECONDS
JAKE MCCABE - LUBBOCK - 11.5 SECONDS
CLAY PAIGE - AMARILLO - 13.0 SECONDS
RUSTY SLAVIN - CANADIAN - 26.6 SECONDS

MUTTON BUSTIN'

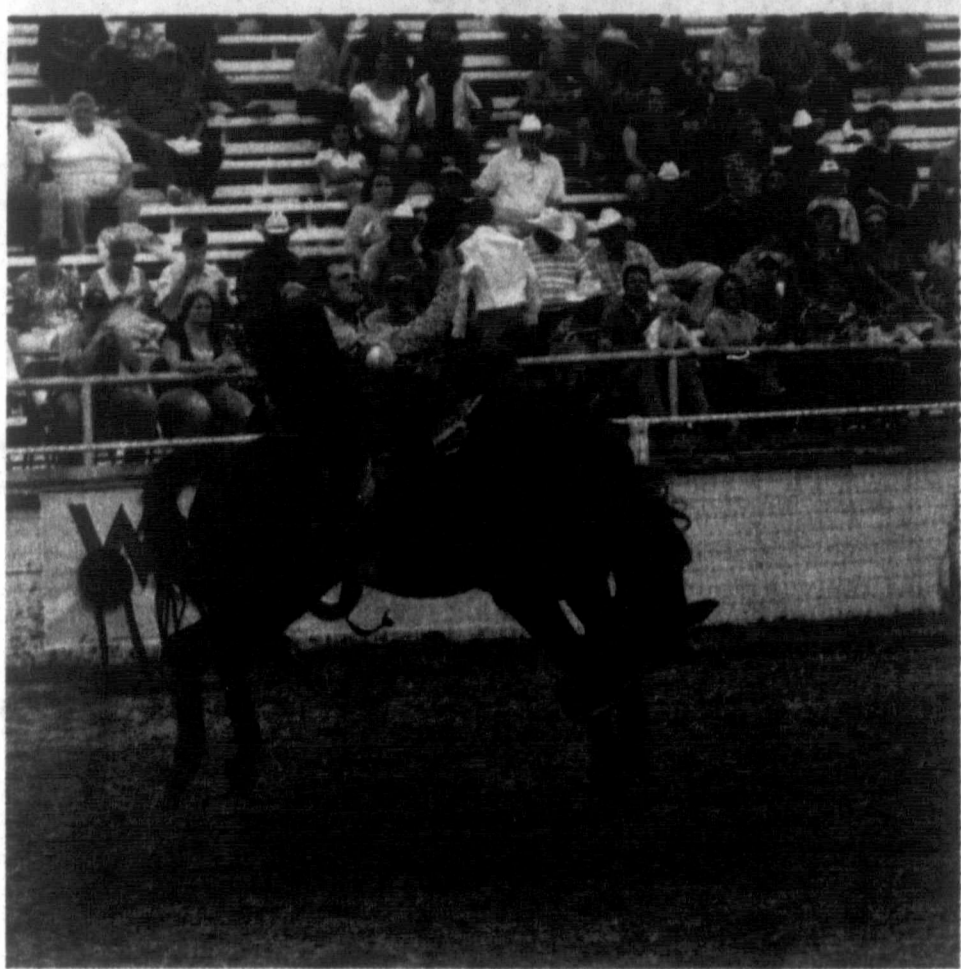
1ST - PARKER AILPORT - PAMPA - 63 POINTS
2ND - DALTON ABSHIRE - PAMPA
3RD - RHIANNA MEARS - PAMPA

BREAKAWAY ROPING

KATIE EAKINS - CRAWFORD, OK - 2.3 SECONDS
NICOLE BRANDANUCE - MAUDE, OK - 3.1 SECONDS
JENA HENSON - DODGE CITY, KS - 3.7 SECONDS
SADIE WATKINS - MIAMI - 4.6 SECONDS
KATIE RICE - SPEARMAN - 4.6 SECONDS
KATIE HALL - RAWLEY, KS - 6.2 SECONDS

DOUBLE MUGGING

JEREMY WINKLER, CODY PARSLEY, MONTY GUESS - 58.80 SECONDS
LEVI SAILOR, ARTIE SAILOR, JEREMY WINKLER - 65.01 SECONDS
CODY SCHIFFMAN, SHANNON MILLER, BENNY SCHIFFMAN - 65.01 SECONDS
SHAWN WHATLEY, AUSTIN WHATLEY, JEREMY TAYLOR - 68.03 SECONDS



staff photo by David Bowser

Top 'O Texas Rodeo ended Saturday night with Gray County contestants fairing well in the competition.

SADDLE BRONC RIDING NO QUALIFIED RIDES

TEAM ROPING

JASON THOMAS / VICK MORRISON - 5.7 SECONDS
JUSTIN MORRIS / JAY WALLER - 15.6 SECONDS

BARREL RACING

CARLEY RICHARDSON - PAMPA - 16.36 SECONDS
TAMMY PETERSON - CIMMARON, KS - 17.05 SECONDS

CANDACE FOSTER - CANTON - 17.16 SECONDS
CATHY SCHIFFMAN - WHITE DEER - 17.76 SECONDS
JENNIFER DOUGLAS - CANYON - 18.51 SECONDS
SHERRI DEAN - LIBERAL, KS - 22.18 SECONDS
SADIE WATKINS - MIAMI - 22.29 SECONDS
REGINA KIEHNE - CANYON - 27.51 SECONDS

Pampa coach pleased with first scrimmage

BY ANDREW GLOVER
aglover@thepampanews.com

The Pampa Harvester football team scrimmaged against Wichita Falls Saturday. Head coach Heath Parker said he was pleased with his team's effort.

"The most positive thing yesterday was the team tried hard to respond to the goals I asked them to accomplish," Parker said. "What was good for the community was the refs were very complimentary of the way Pampa held themselves, they played with class and talked positively among themselves."

Parker said going against

someone else is what his team needed.

"We were anxious to see someone else," Parker said. "We had two weeks of practice. You can only learn so much about yourself in practice. It was a great opportunity for us to go against an opponent full speed."

Parker said the scrimmage was in two parts. During the first part both teams ran a set number of plays and no penalties were called. Coach said Wichita Falls had the momentum during that portion of the scrimmage.

The second part of the scrimmage was two quarters where all the rules of

the game applied. Parker said his team had momentum during that segment.

"We ran the ball really well," Parker said. "I was pleased with the way we finished."

Parker said his team will work on several areas before their scrimmage against Dalhart on Friday.

"We'll focus on our position groups deficiencies and improve on them," Parker said. "This week's opponent has a different style of play."

The Harvesters freshman, junior varsity and varsity football teams will scrimmage here against Dalhart on Friday.

Livingston wins first national diving title

TALLAHASSEE, Fla. (AP) — Drew Livingston, the 2009 NCAA 1-meter diving champion, earned his first national title Sunday, winning the senior men's platform at the U.S. Summer Diving Championships at the Morcom Aquatic Center.

Livingston entered the final round of competition nine-tenths of a point behind nine-time national champion Thomas Finchum. Both attempted the same dive in the last round, a back 2½ somersault with 2½ twists, and Livingston outscored

Finchum by 15.2 points for the crown.

Livingston, a University of Texas diver, finished the finals with 509.55 points and said he knew early that his final dive was a good one.

"I felt it as I was taking off the platform," Livingston said.

"Usually, if I'm not feeling it, I can tell in my take-off. But I felt it coming off the tower," he said. "The biggest thing was that I didn't have anything else to lose. I hadn't won a national championship. I always like diving behind

the person in the lead."

Kelci Bryant, a 2008 Olympian, won the senior women's 3-meter springboard championship with a score of 347.25. It is her fifth national title and her second in that event.

In the women's synchronized 3-meter springboard, Cassidy Cook and Loren Figueroa won their first national title with a score of 308.40, while Andrew Brown and Cole Young won their first national title in the men's synchronized platform with a score of 354.15.

Rangers beat Sox to take wild-card lead

ARLINGTON, Texas (AP) — Two days after being roughed up by the Red Sox, Frank Francisco helped the Texas Rangers knock Boston out of the wild-card lead.

Francisco bounced back from the worst outing of his career to pick up the save, Ian Kinsler homered and drove in two runs, and the Rangers passed the Red

Sox in the AL wild-card race with a 4-3 win Sunday.

Kinsler, back in the lineup one day after he was hit by a pitch that ricocheted off his shoulder to his head, went deep for the second straight day and had an RBI single in the third that gave Texas a 3-1 lead.

Dustin Nippert (4-1) gave up two runs and six hits as the Rangers took

two of three in the weekend series. The right-hander pitched 5 2-3 innings to defeat Boston on July 22, his only other win as a starter this season.

Texas, which also got a solo shot from Taylor Teagarden, went 7-2 against the Red Sox this season.

Lady Harvester Softball Booster Club Meeting

When: Wednesday August 19
Time: 8:30 p.m.

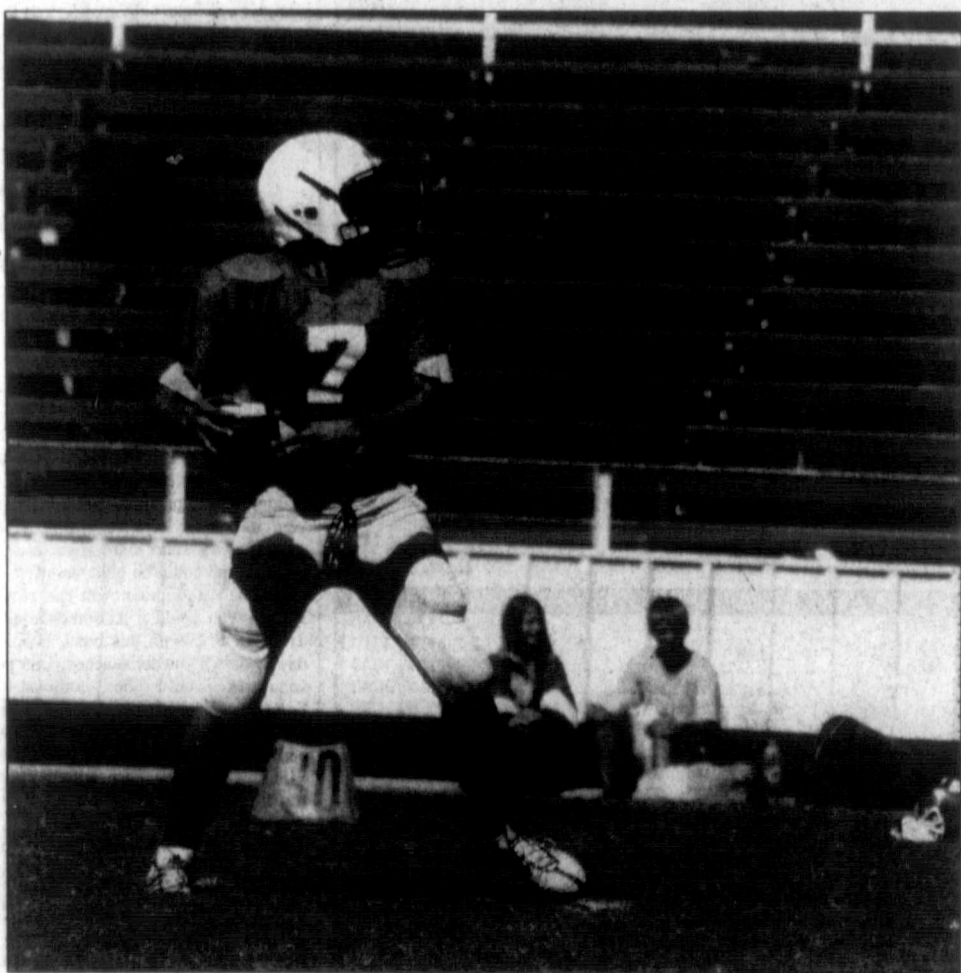
Where: High School Athletics Ready Room

A chance to meet new people and find out what the Lady Harvester

Softball Booster Club is all about.

We encourage all incoming freshmen parents to attend and also would like to invite everyone in the community, who wants to support the Lady

Harvesters Softball, to come and be a part of the 2010 season.



Keenan Lott of the Lefors Pirates looks down field for an open receiver during a scrimmage in Lefors Saturday. Lefors scrimmaged Follett, Hedley, and Fort Elliott. (photo submitted by Lendi Jackson)

Griffin wins BASS event

SYRACUSE, N.Y. (AP) — Chad Griffin won the BASS regular-season finale Sunday on Oneida Lake, beating Jeff Kriet by more than two pounds.

The 32-year-old Griffin, a Cresson,

Texas, resident who grew up in Alaska, had a total of 64 pounds, 10 ounces. He earned \$100,000.

Kriet, from Ardmore, Okla., finished at 63 pounds, 10 ounces. He earned \$25,000.