



"If you know that umpire is a bum and a robber, why don't you tell the management and have him dismissed?"

PREPARING

(Continued From Page One)
 cans and Democrats and keeping each other out of primaries in which they have no business.
 It would remove all excuses that a party is filled with other party members such as the Zwiefel boys did at Mineral Wells. "Nitter side could actually prove its claims, but the lads in the saddle had the say and the Taft forces were scattered."
 Under a preferential primary and a registration law such a condition could not exist and the political brass knows it.
 Registering does not bind a voter one way or the other. He can at any time change his registration, or he can register non-partisan. The latter, however, would naturally disenfranchise him in a primary since registering "non-partisan" would mean he does not belong to a party. He could vote in November.
 Then there is the problem of electing delegates to the national conventions and the provision affecting the delegates themselves. This can be done in several different ways. Here are a few ways the law could effect, read:
 1. Delegates shall be unattached, but vote as a unit.
 2. Delegates shall be unattached but placed under the name of a party unless they so choose to do so themselves.
 3. Delegates shall be unattached.
 4. Delegates shall be pledged for a certain candidate and stick with him until the close of the convention.
 5. Delegates pledged to a candidate until released by him.
 6. Delegates stick with a candidate for a certain or given number of ballots.
 There are, of course, many other formulae controlling delegates.
 Another problem is the makeup of the ballot and how to get on it.
 Here, too, are several avenues of approach. The ballot could center around just the names of delegates or the names of candidates. Candidates could select their own delegates, delegates could file the same as candidates for office, or candidates and delegates could appear on the ballot.
 Those are just a few of the problems that have to be ironed out before the people can have a direct voice in the choice of a party nominee.
 The Legislature has all kinds of opportunities to mold for Texas a workable presidential primary. There are so many states which have primaries that the law can be copied from and modified to suit Texas' needs.
 But whichever way the law finally reads, it will have a rough road to travel. Its enemies are going to throw every obstacle in its path before it becomes the law of the land.

Chamber Has 154 Members

Chamber of Commerce memberships for 1952 totalled \$12,192.75 for 154 members as the annual membership drive drew to a close yesterday at a noon luncheon for the board of directors and participants in the drive.
 A few more prospective members are to be contacted, according to Charles B. Cook, president, but the drive contest officially ended yesterday with prizes given to members of the committee bringing in the most members, the most money, and the greatest percentage of names given them to contact.
 It was also decided yesterday to set the price of tickets for the annual C of C banquet in October at \$2.50 per plate. A T. Fred Hicke, Parkridge, Ill., had previously been selected as speaker.
 The board voted to dispense with luncheon and meet informally for the next two months, regular meetings.
 Reports on a recent delegation to a Pioneer Air Lines CAB hearing in Dallas and the recent Highway 60 Convention were made by O. E. Wedgeworth and Howard Buckingham.
 President Cook awarded prizes to Floyd Imel, Ed Cleveland, Jeff Bearden, Howard Buckingham, Paul Crouch, and J. C. McWilliams as winners of the drive contest conducted last week. He thanked all participants for their part in the drive.

Vital Statistics

Warranty Deeds
 Katherine Nash to Homer A. and Helen Sprinkle, N. 40 feet of lot 9 and S. 15 feet of lot 39 in block 15 of the Cook - Adams Heights.
 Letitia Payne Hassell to G. E. Griggs, lot 15, block 25 of the Talley Addition.
 James O. and Lola Parkerton to D. C. Houk, lots 15 and 16 in block 2 of the Lavender Addition.
 Lee and Lillian J. Newsum to Jack L. and Mary Sue Nimmo, lot 16 in block 3 of Carr Terrace.
 James E. and Wilma B. Johnson to Clarence L. and Wilda Faye Anderson, lot 1 in Schulkey-Hill Subdivision of block 2 in the Schulkey-Hill Addition.
 D. C. and Ethel M. Houk to Arlin and Nadine Lee Smith, lot 20 and 55 feet of lot 19, block 1 of the Wynnelea Addition.
 A. A. and Laura M. Proctor to W. F. Slaten, J. E. Willis, and George F. Moore, Trustees of the Trinity Baptist Church, lots 12 and 13, block 39 of the Talley Addition.
 J. E. and Mildred Bullard to A. J. C. and Annie Maye Brown, lots 27, 28, and 29 in block 42 of the Wilcox Addition.
 W. H. and Golda B. Henke to W. C. Holder, lot 12, block 7 of the Finley-Banks Addition.

ACCEPT COLLECTION
 AUSTIN - (AP) - A valuable collection of first-edition books by

Mainly About People

CITY DRUG
 300 W. Foster
 Complete Fountain and Prescription Service
PHONE 5500

yes!

GOOD CROP-HAIL INSURANCE MEETS THESE REQUIREMENTS - -

- Prompt handling
- Competent handling
- Friendly handling

Get in touch with us today!
 We have what you'll agree is the best!

Will Elect Officers
 New officers will be elected at the First Methodist Church Circle Three meeting Wednesday at 2:30 p. m. at the home of Mrs. W. R. Campbell, Mrs. M. E. Cooper will direct pledge services following the election.

Jack London were accepted by the University of Texas Board of Regents Saturday.

Chamberlain & Cree
 ALL FORMS OF INSURANCE
 First National Bank Building
 LEWIS CHAMBERLAIN - JOE CREE
 113 E. Foster Phone 1798

Increase In Students Seen

An increase of 274 students to be enrolled in Pampa schools for the 1952-53 school year over the 1951-52 year is indicated by a complete tabulation of a school census taken recently for all the schools in the county.
 Small gains for Alameda, Hopkins, and Grandview schools were indicated but Lefors and McLean show a decrease of students.
 The census was taken under the auspices of R. R. Nuckolls, county school superintendent, and tabulation was completed yesterday.
 Total enrollment indicated for the county for next year is 5612 and for last year it was 5338. Alameda gained one over an enrollment of 97 last year; Hopkins went from 128 to 130; Grandview from 54 to 56; and Pampa from 4294 to 4568.
 McLean's enrollment dropped from 483 to 469 and Lefors from 398 to 389.

STEEL MILLS

(Continued From Page One)
 financially prepared for a long strike.
 The steel mills have been closed three times since the first of January - once while the industry prepared for a strike that President Truman averred last year is indicated by a complete tabulation of a school census taken recently for all the schools in the county.
 Small gains for Alameda, Hopkins, and Grandview schools were indicated but Lefors and McLean show a decrease of students.
 The census was taken under the auspices of R. R. Nuckolls, county school superintendent, and tabulation was completed yesterday.
 Total enrollment indicated for the county for next year is 5612 and for last year it was 5338. Alameda gained one over an enrollment of 97 last year; Hopkins went from 128 to 130; Grandview from 54 to 56; and Pampa from 4294 to 4568.
 McLean's enrollment dropped from 483 to 469 and Lefors from 398 to 389.

ELECTIONS

(Continued From Page One)
 are at stake. Officials look for 2,600,000 votes from the 3,300,000 registration.
 California Gov. Earl Warren is backed by the state's leading Republicans in his bid for the republican presidential nomination. He has accused his political foes of waging a hate campaign and, last night, said they spent a half-million dollars in an effort to defeat him.
 Rep. Thomas Werdell, up for re-election and a backer of Taft or Gen. Douglas MacArthur, retorted: "The hate and vilification in this campaign comes from the governor. Our money comes from thousands of Republicans." Taft himself has stayed clear of the California primary.
 The Wage Stabilization Board hower backers have endorsed Warren. MacArthur has said he is not a candidate but favors Taft.

Murray had postponed the strike for a later date. Negotiations broke off in late December. Informed of the Supreme Court ruling, he said:
 "The action of the court leaves the members of the united steel workers without the benefit of a collective bargaining agreement, in the absence of a wage agreement our members have no alternative other than to cease to work."
 Murray issued a statement calling on the steel companies to join in new negotiations on a contract based firmly upon the recommendations of the Wage Stabilization Board.
 John A. Stephens, vice president of the United States Steel Corp., who served as chairman of the coordinating committee for the companies in the steel-wage negotiations, declared the industry is willing to resume talks.
 He said:
 "We believe the steel dispute can be settled if both parties are willing to engage in free and genuine collective bargaining."
 However, it remains for the union and industry to get together and arrange a time and place for the meeting. There was no move to do that so the stalemate continues.
 An industrial spokesman said the union president has not contacted U. S. Steel Corp. in the world's largest producer, regarding new negotiations.
 The Wage Stabilization Board recommendations call for a 12-cent hourly pay increase on Jan. 1, another two and one-half cents next month

SCHOOL BOARD

(Continued From Page One)
 said an expected 1000 enrollment and 500 daily attendance gave rise to the need for the bus, particularly for the numerous baseball teams and the fishing instruction classes.
 The board delayed answering the request until further discussion and determining of the legality of releasing a school bus to the program. Possible leasing of the bus was suggested. Precedent and legality were problems to be resolved before decision is made.
 Kinard was voted to send letters of appreciation from the school board to those people who helped in the recent election.
 The financial report revealed there is an overdrawn account for the first time in seven years.
 Next meeting of the school board is scheduled for Thursday following an inspection tour of newly constructed Pampa schools and additions and the new school site at 5 p. m.

IMPORTANCE

(Continued From Page One)
 defense program, Eisenhower said "I have liked to think that America will go to war only in defense of free peoples."
 He went on to say, however, there was no question of the geographic and military importance of the two countries, even though there is a wide social and spiritual difference between Yugoslavia and Spain on the one hand and the free nations of the West on the other.
 "As a soldier," Eisenhower said, "I might have one answer that the political leaders might not accept."
 He said it would be a great victory for the free world if Yugoslavia and Spain were to show more concern for enlightened government.
 Eisenhower said he never has been able to see how universal military training and selective service could go hand in hand.

Three Are Fined

Jean Ewing Hayne, 18-year-old girl of Pampa, pleaded guilty to a charge of driving while intoxicated in county court yesterday and paid a fine of \$100 and court costs.
 Haskell Hyatt, Pampa, also paid a \$100 plus costs fine on a charge of driving while intoxicated.
 A third case, C. T. Ward of Big Spring, was fined \$10 for swindling with worthless checks, and a third two and one-half cent boost the first of next year.

MILT REPEATS A "SELL-OUT"

LUCKY PURCHASE SALE

YOUR OLD RADIO IS WORTH \$50

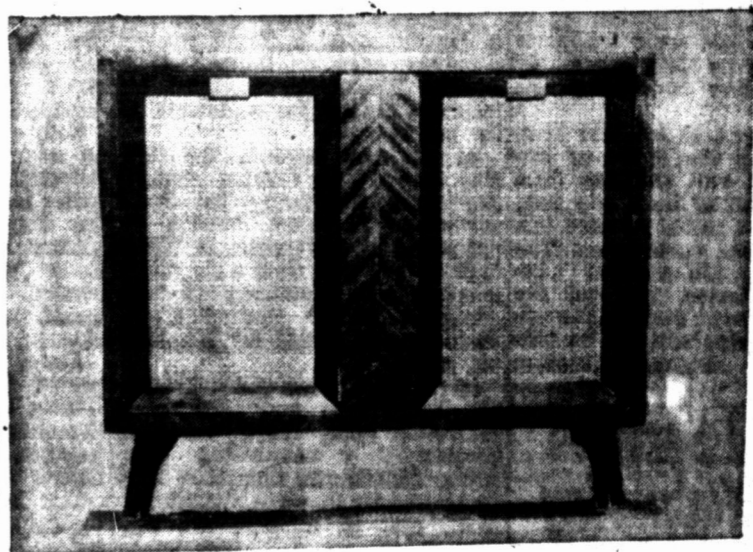
ON MILT'S SENSATIONAL LUCKY PURCHASE ON THE Latest 1952 Model RADIO and Automatic RECORD PLAYER

Powerful A. M. Radio With Finest 3 Speed Automatic Record Player Built-In Tone Control Beautiful Hand Rubbed Mahogany Cabinet

Yes, You Pay Only \$119.95

Total Regular Price 169.95
 Your Old Radio 50.00
 You Pay Only 119.95

EASY BUDGET TERMS



Colored OLEO 5 Lbs. \$1.00	NO. 2 CAN WAPCO CUT Green BEANS 6 For \$1.00	ARMOUR'S VEGETOLE SHORTENING 2 3-Lb. \$1.00 Cart.
FRESH COUNTRY EGGS 3 Doz. \$1.00	1/4 LB. 31c LIPTON TEA	NO. 2 1/2 CAN FRUIT COCKTAIL 3 For \$1.00
1/2 Gallon Ice Cream 65c	Lettuce CHOICE HEAD LB. 15c	Golden Bananas 2 Lbs. 29c
FRESH GROUND Hamburger ... Lb. 39c	U. S. GOOD T-BONE STEAKS Lb. 79c	
SPICED Lunch Meat ... Lb. 49c	BEEF SHORT RIBS . Lb. 39c	

ELMER'S "The Friendly Store" SUPER MARKET

FREE-FREE \$25.00
 Worth of Records of Your Choice Included With This Purchase!

Milt Morris
 ORCA - VICTOR

PAMPA HUGHES BLDG. PHONE 99
 RCA Corner
 BORGER 6th and MAIN PHONE 1000

Lefors Selects Its 'Best Citizen'

LEFORS — (Special) — Alta Mae Kimbley has been selected Lefors' "Best Citizen" for the 1951-52 high school class. Presentation of the award was made during graduation services at Lefors.

She was nominated along with several others from the Senior class. The faculty made the final selection and kept their decision a secret until the graduation.

G. N. Mounger, high school principal, made the award and also presented scholarships to the valedictorian, Dickie Maples, and salutatorian, Shirley Perkins.

Three Pampans Win A&M Degrees

COLLEGE STATION — (Special) — Three Pampa students received degrees from Texas A&M College in ceremonies held May 29.

From the school of agriculture, Eugene Hobart Fatheree and Kel-

Astronomer Reports Finding Glass-Walled Tunnel On Moon

NEW YORK — (AP) — There seems to be a tunnel on the moon. This tunnel has glassy walls, and is several miles long. It would make a fine shelter for rocket-explorers of the moon.

The discovery has been reported by H. H. Nininger, director of the American Meteorite Museum, Winslow, Ariz., in Sky and Telescope, a leading journal on astronomy.

The tunnel was made, not by moon-men, but by a meteor or shooting star, Nininger suggests. The meteor traveling 20 to 30 miles a second came sweeping low across the moon's face, and bored clear through a mountain-

ous ridge several thousand feet high.

It left craters on each side and presumably a wide, glassy-walled corridor through the ridge, connecting the two craters. The glass came from thick moon dust or rubble that was melted and cooled to form a glazed cylinder by the passage of the meteor.

The tunnel, if such it is, lies on the western part of the moon, in Mare (sea) Focundialis. Nininger proposes it is there after studying two peculiar craters named Messier and W. H. Pickering, which lie close together in this basin or sea. The crater are visible with strong telescopes.

Messier crater is on the west, and Pickering on the east of what seems to be a mountainous ridge, 15 to 20 miles wide at that point.

The shape and lips of the crater suggest the meteor rammed into the upper part of mountain ridge, coming from the west, Nininger writes.

The moon is apparently covered with a thick blanket of light, cindery material, moon dust or lunite, with solid material beneath the dust.

When the meteor struck, it formed Messier crater, and rammed on through the light stuff of the ridge, on a slightly downward course. Then it hit solid material, and bounced upward slightly, emerging to form Pickering crater on the opposite side.

The tunnel could give human explorers protection from meteors that may still be bombarding the moon. And shelter them from flying slivers of moonstuff blasted by any meteor hit.



"The club is trying to save balls this season by keeping fouls from going into the stands!"

JACOBY ON BRIDGE

Editor Didn't Look; He Used Real Logic

By OSWALT JACOBY
Written for NEA Service

"How'd you guess that double-queen hearts?" his teammates asked Steve White after the play of the hand shown today. "It's a cinch you didn't get a peek; those birds really hold 'em close to the vest!"

Steve didn't get a peek even though he is a magazine editor. But he demonstrated that if one peek is worth two finesesses, good logic is worth two peeks.

West opened the eight of diamonds, and East won with the ace. East then returned the three

of hearts, and Steve had his first chance to go wrong. He was sorely tempted to play a low heart in the hope of bringing in four heart tricks.

It was obvious, however, that East could have returned a diamond quite safely if he had wanted to do so. If East held the queen of hearts, would he make the dangerous heart return in Christ Jesus instead of a safe diamond return?

Additional evidence was available, so Mr. White cashed dummy's ten of clubs (getting a spade discard from East) and the king and queen of diamonds. The fall of the diamonds indicated that West had started with four diamonds as well as five clubs.

East's spade discard indicated that he had started with five or more spades; since East obviously had spade length and would surely keep protection in that suit as long as possible.

If East had the queen of hearts as well as the spade length, he could be squeezed; so that a finesse would not be needed. If

Read The News Classified Ads

MARTIN - TURNER INSURANCE
Fire, Auto, Comprehensive
Liability and Bonds
107 N. Frost Phone 772

BASEBALL on KPDN

PAMPA AT CLOVIS

9:00 P. M. Tuesday

WITH

Warren Hasse

Mutual KPDN 1340
Affiliated On Your Dial

Mobeetie Board To Let Contract For School Repair

MOBEETIE — The School Board of the Mobeetie Independent School District will meet at 8 p. m. June 9 in the High School building to go over plans for repair on the school buildings with any contractor who might be interested in making bids on the work.

The school district voted \$35,000 to repair the buildings and purchase some needed equipment. The board is anxious to let the contract and get the work started as soon as possible, so that everything will be in readiness for the opening of school of the first Monday in September. Interested parties may contact Supt. L. R. Reeves.

TIPRO Will Hold Membership Meet

AUSTIN — The Texas Independent Producers and Royalty Owners Association will hold its seventh annual membership meeting at San Antonio on March 20 and 31 next year, officials of the Association have announced.

Working committees will meet two weeks before the convention in Austin to prepare their reports. On Monday, March 30, they will review those reports for presentation Tuesday to the membership. A new feature of the convention will be a gold tournament followed by a buffet supper Monday evening.

Baylor English Head

WACO — (AP) — Dr. E. Hudson Long was named acting chairman of the Baylor University English Department yesterday to succeed Dr. A. J. Armstrong.

Dr. Armstrong resigned effective June 1 to devote full time to Baylor's Robert Browning Collection.

Read The News Classified Ads



Vaughn Shofner
Evangelist

The Church of Christ
Lefors, Texas

Extends a Cordial Invitation to Everyone To Attend the Gospel Meeting Now in Progress Through June 8 Services at 10 a. m. and 7:30 p. m.

Sermon This Evening: "Chain of Salvation"
Tomorrow Evening: "Holy Spirit in Conversion"

NORTH			
▲ AKQ5			
▼ J752			
♦ KQ3			
♣ K10			
WEST			
▲ 73			
▼ Q6			
♦ 8764			
♣ 97652			
EAST			
▲ J10642			
▼ 983			
♦ A1093			
♣ J			
SOUTH (D)			
▲ 95			
▼ AK104			
♦ J2			
♣ AQ843			
Both sides vul.			
South	West	North	East
1 ♠ Pass	1 ♠ Pass	1 ♠ Pass	1 ♠ Pass
1 NT Pass	4 NT Pass	6 NT Pass	Pass
5 NT Pass	Pass	Pass	Pass
Opening lead—♦ 8			

BUDDY'S SUPER MARKET

DOUBLE STAMPS WEDNESDAY
With Each Purchase of \$2.50 or More

Grapefruit Juice 15¢

Kimbell's Pure, 46 oz. Can

ICE CREAM 2 Pints 29¢
Gold Bar

ORANGE or GRAPEFRUIT

JUICE 5¢
Two Cans Brand, 9 1/2 oz. Can
Save Cash and Stamps

CHERRIES 17¢
Red Sour Pitted
We Give Stamps Reg. Can

VIENNA SAUSAGE 9¢
Regular Can

TOILET TISSUE 5¢
Roll
See Our Premium Display

COCA COLA 19¢
Reg. 6 Bottle Carton
Save Cash and Stamps

SLICED PINEAPPLE 29¢
Doles No. 1 Flat Can 2 for

FRYERS 45¢
Fresh Dressed
We Give Stamps lb.

HENS 35¢
Fresh Dressed
See Our Premium Display lb.

TAKE HOME CASH -- AND STAMPS TOO!

Bonus Values

... FOR YOUR BUDGET!

EVERY WEDNESDAY FURR'S GIVE DOUBLE GUNN BROS. STAMPS

With each 2.50 Purchase or More

LOOK!

Armour's Vegetable

SHORTNING

3 Lb. Carton 49¢

SAVE!

BABY FOOD

GERBER'S

3 Cans 14¢

ARMOUR'S SUDS - 2 Pkg. Deal 35¢

GRAPEFRUIT 4 Large marsh seedless For	25¢	SALAD DRESSING Bestyett, pint jar	19¢
Brown n' Serve ROLLS Furr's, 12 in a package	10¢	CHEESE Kraft's Velveeta 2 lb. box	79¢
FISH Fresh water channel lb.	49¢	PORK, BEANS Van Comps, 300 size can	2 for 23¢
FLOUR Purosnow 5 lb. bag	43¢	DOG FOOD Ideal, tall can	2 for 29¢
		TENDER LEAF TEA	98¢
		PINTO BEANS	19¢
		MODART SHAMPOO 75c Value Jar	49¢

Save at **FURR FOOD** Super Market

Low Everyday Prices

We Reserve the Right to Limit Quantities

OUR TOWN by Wanda Campbell

Lemonade stands are popping up all over our town now that school's out and the youngsters have time for the business of earning money...

Teenagers Should Learn Orderly Habits

By ALICIA HART NEA Beauty Editor Do you consider yourself a teenager who lives an orderly life...

Putting things where you can find them really isn't as difficult as you may imagine. Take your bureau drawers, for instance...

Actually, you'll save yourself a lot of time and effort if you spend an hour or two completely emptying the drawers...

By the way, the drawers will look nicer if you line the bottom with white shelf paper...

Wonderfully Simple 8834 10-20 Just about the prettiest summer dress you'll find—and it's so simple to sew...

Local Church Plans Vacation Bible School Vacation Bible School at the Lutheran Church, Pennsylvania and Duncan began at 9 a.m. Monday and will continue for two weeks...

Jaycee-Ettes Plan Supper Wednesday Jaycee-Ettes will entertain their husbands at a box supper Wednesday at 7 p. m. in the Parish Hall.

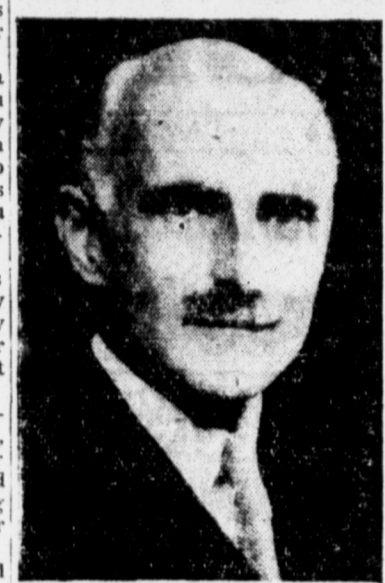
Read The News Classified Ads

The Pampa Daily News

Women's Activities

PAMPA NEWS, TUESDAY, JUNE 3, 1952 Page 5

Lt. Col. Robert Ellis Key Of London Named Christian Scientist Church Leader



LT. COL. ROBERT ELLIS KEY

Lt. Col. Robert Ellis Key of London, England, today was named president of The Mother Church, The First Church of Christ, Scientist, in Boston at its Annual Meeting attended by Christian Scientists from all over the world.

Colonel Key is Associate Editor of the Christian Science religious periodicals and formerly served as a lecturer. He is a Christian Science practitioner and has been an authorized teacher of the religion since 1937.

In World War I he was decorated by the British Army with the Order of the British Empire, and granted the permanent rank of lieutenant colonel.

Before and during World War II he served as District Manager of Committees on Publications for Great Britain and Ireland, and in various capacities in connection with Christian Science Wartime Activities in Europe.

He will continue as Associate Editor during his one-year term as President. His new appointment was announced by the Christian Science Board of Directors.

Ruth Millett News item: "In Butte, Mont., Dennis Lambert sued tavern owner W. B. Booth for \$16,500, charging that Booth flew into a violent rage and beat him up after Lambert ordered a hamburger and removed the onions."

BRAN CORN FRITTERS 1 cup sifted flour 2 teaspoons baking powder 1 1/4 teaspoons salt 1/2 cup ready-to-eat bran 1 egg, slightly beaten 1/2 cup milk 1 1/2 cups whole kernel corn, drained 2 tablespoons melted shortening

Living and drawing room of suite the Eisenhowers will occupy in Brown Palace Hotel, Denver, Colo.

SOCIAL CALENDAR

9:30 a.m. — Cherry Homes Circle of the First Christian church meets with Mrs. Herman Gantz, 346 Sunset Drive; the Nelson group will meet with Mrs. Howard Brown, Rt. 2.

12:30 — First Baptist Church WMU executive board meeting.

1:00 p.m. — Royal Service luncheon for First Baptist Church with the Maybelle Taylor circle in charge of the program.

2:00 p.m. — First Christian Church Fugua group meets with Mrs. A. M. Meadows, 705 E. Jordan; the Ellis group will meet with Mrs. Oscar Frasier, 1700 Christine.

2:00 p. m. Worthwhile Home Demonstration club will meet in the home of Mrs. A. A. McElrath, north west of city.

Entire Nons Club will meet with Mrs. Doyce Osborne.

After all I wasn't asking for anything extra — just for something less than I was paying for. And for the life of me I can't see why everybody in the world has to have "everything" on a sandwich just because a short-circuit is used to ping everything on.

But the pressure against getting a "plain" sandwich from Maine to California has been so great I'm not surprised that a customer was beaten up for removing the onions from a hamburger.

My guess is he asked for one "plain." And that for some strange reason sets up a chain reaction in the average restaurant.

It makes everybody mad from the waitress of car-hop to scorching milk by putting the pan in cold water and adding a pinch.

Read The News Classified Ads.



Dorothy Jones Receives BS Degree At Texas State College For Women

DENTON, Texas — Miss Dorothy Jones received the bachelor's degree during commencement exercises at Texas State College for Women June 2.

Miss Jones, the daughter of Mr. and Mrs. M. A. Jones, 1117 Clark, majored in health, physical education and recreation at TSCW.

President John A. Gunn of TSCW addressed the 238 graduates. Delivery of the commencement address by the college president is a 16-year tradition at TSCW.

Exercises followed a noon meal of social activities honoring the senior class.

Glimpses Of Yesteryear

FIVE YEARS AGO

Among the Pampan attending the Highway 60 Assn. meeting in Child, Okla., were Judge Sherman White, Jack Vaughn, Jack Mobley, Duke Baiterson, Bussy Shultz, Chick Hickman, and Mrs. I. O. Weggworth and daughter.

A. A. Schumeman, chairman of the local Soap Box Derby, announced details of the Pampa race, sponsored by The News, Chubberson-Chevrolet, and DeLuxe Dry Cleaners.

10 YEARS AGO The Navy announced that four Japanese bombers and about 15 fighters had attacked Dutch Harbor, Alaska. The attack lasted 15 minutes.

Bert Ishell returned to Pampa for the summer after completing a summer at Murray State College, Tiptonville, Okla., where he was president of the junior class.

15 YEARS AGO The Top of Texas Fiesta opened, and The News published a 75-page supplement.

The Duke and Duchess of Windsor married in two ceremonies and left for the "haunted castle of Wassenburg" to spend their honeymoon in Austria.

PERKINS DRUG STORE FINE Prescription Service Free Delivery Phone 940 110 W. Kingsmill

Tips For Tails

Remove the burnt taste from the waitress of car-hop to scorching milk by putting the pan in cold water and adding a pinch.

CHECK EVERY FEATURE AND YOU'LL CHOOSE Ultramatic Caloric



AMERICA'S EASIEST RANGES TO KEEP CLEAN

Always Dependable See Your Local GAS APPLIANCE Dealer

EMPIRE GAS SOUTHERN CO. Erwin C. Thompson Dist. Mgr. Melvin Watkins Sales Rep. 313 North Ballard Phone 2100



There's A Better Way to Pay Bills —USE CHECKS!

Folks with checking accounts send their personal checks by mail—avoid tiring trips... save time and shoeleather. For welcome relief from needless effort and expense, start a checking account with us. Come in today.

First National Bank RESOURCES EXCEED \$10,000,000.00 Bank Member FDIC

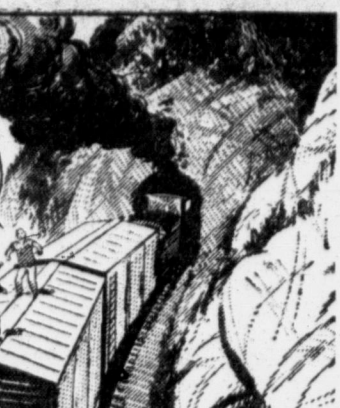
HEAR "BRIGHT STAR"

8:30 P. M.

TUESDAY

Affiliated Mutual KPDN 1340 On Your Dial

Buzz Sawyer



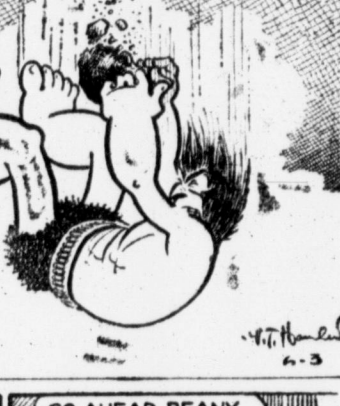
Jackson Twins



Blondie



Alley Oop



Bo



Ozark Ike



Chris Welkin



Mutt & Jeff



Bugs Bunny



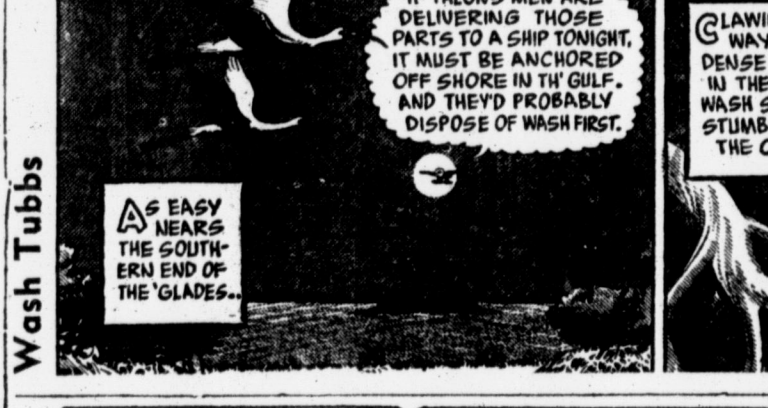
Fred's Pop



OUT OUR WAY

By J. R. WILLIAMS OUR BOARDING HOUSE

with MAJOR HOOPLE



Donald Duck

Samson

Vertical text on the far right edge of the page, including a list of names and possibly a phone number.



"Look up those old letters I wrote you before we were married. Pet! I think I made some attractive promises that might be converted to campaign use!"

He's Going Via Air Coach Henry Will Take A Drumstick In Shoebox On Ocean Flight

By HENRY McLEMORE
I bought a new pair of shoes the other day and when the salesman started to wrap them up in plain brown paper I asked him if I could have them in a box. I wanted a shoe box because I'll be going to Europe not too long from now by Air Coach, and I want the box to put my lunch and dinner in. When you travel Air Coach you don't get any free meals as you do on the de luxe or red carpet flights. You either carry your own food or buy it and be fancy.

I consider this the greatest blessing of the thrifty Air Coach way across the Atlantic. The money saved on Air Coach travel runs second to the fact that those who travel by Air Coach are allowed to carry their own food.

Pampa DRIVE-IN THEATRE
Tonight Only
200 Reasons Why You Should See...
ALEXANDER KNOX
"THE JUDGE STEPS OUT"
Also Comedy

TOP O' TEXAS DRIVE-IN THEATRE
Open 7:15 Show 8:15 - Adm. 9c 5c
Now Wed.
FIRST CITY SHOWING
15 BIG STARS!

LaNora Open 1:45
Adm. 9c 5c
Now Wed.
CONVICT with a Gun!
JAMES STEWART
CAROLINE WILLIAMS
JEAN HAGEN
Cartoon "Sock A Doodle Do"
Late World News

LaVista Open 1:45
Adm. 9c 5c
Now Wed.
THE BATTLE AT APACHE PASS
with JOHN LUND
JEFF CHANDLER
Cartoon - Featurette
Late World News

CROWN Open 1:45
Adm. 9c 5c
Ends Tonight
FRED STONE
ROCHELLE HUDSON
"KONGA, THE WILD STALLION"
Also "CHOO CHOO"
"TROOPT'S GOOD DEED"

Officers Learn A Lesson In Summing Up Mass Maneuvers

By WILBUR MARTIN
FORT HOOD — (AP) — Remember what the sergeant snarled when you started your basic training: "You gotta be tough in this man's army!"
After the biggest combined Air Force-Army maneuver in U. S. military history, these elementary principles of soldiering were pointedly evident: You've got to be tough; you've got to want to fight.
This was the lesson learned after Exercise Long Horn, a 14-day maneuver staged over 1,800 square miles of rugged Central Texas ranchland by 115,000 troops.
Lt. Gen. William M. Hogue, Fourth Army commanding general and director of Exercise Long Horn, phrased it in kinder language. He noted a general "lack of aggressiveness" and said there was a "general need" for better physical condition of the individual soldier.
The exceptions in his criticism were the 82nd Airborne Division and 1st Armored Division. There were reasons for these exceptions.
The lessons that were learned in Long Horn, where make-believe atomic warfare buried the ancient and beloved army close formation, were many. Some—as in the evacuation of mock victims of atomic attack—were monumental failures.
The country's top generals—Army Chief of Staff J. Lawton Collins, Air Force Chief of Staff Hoyt S. Vandenberg and Army Chief of Field Forces Mark Clark—agree that maneuver is the only way to "find out" whether your training and your planning will work.
Because Long Horn had so many "firsts" the long look back on what it proved is important.
It was the first large-scale maneuver with almost "man to man" opposition; opposing forces with different uniforms and—in many cases for intelligence purposes—speaking a foreign language.
It was the first large-scale maneuver where each side had its own tactical air force and where each used in make believe fashion atomic weapons.
Hogue and his deputy, Maj. Gen. Hobart Gay, summed up the exercise. The veterans of Korea command said:
"Too many troop commanders in the lower ranks did not understand the proper use of air support; how and where it can best be used."
"Too many troop commanders still attack at the middle, instead of the flank."
"Too many attacks were made by day, not enough at night. ('In war you are not on an eight hour day'—Hogue)."
"Too many troop commanders failed to take advantage of the terrain—nature and man."
"Too many division 'situation' maps were beautiful to look at with their rainbow covers—but didn't tell you what was happening."
There was an almost pathetic lack of intelligence—from front line questioning of captured troops right back through the chain of command.
There was a woeful lack of "security consciousness." (Everybody quits for chow—Gay).
These were the broad criticisms.
Specifically, total failure of the evacuation of the mock victims of the atomic attack could be singled as probably the maneuver's biggest boner.
There were other holdups, little things, but of basic justice from the viewpoint of the average soldier—present and past—the prime SNAFU (Situation Normal All Fouled Up) of the exercise came on the parachute drop of the 508th Regimental Combat team. That's when someone in the maneuver headquarters told Hogue the drop was off because of high winds and more than a score of generals—including four

liver sandwich; it's made from a recipe handed down by my great-grandmother.
Seat 22: Stewardess, do you object to having a few crumbs on the floor?
Stewardess: Not if you'll give me one bite of that potato salad I see in your box lunch.
Long before the plane reaches Shannon or Frankfurt or wherever its first touchdown in Europe is, everyone aboard will be good friends and swapping recipes. I'll be Fourth of July in the stratosphere.
If I owned a certain number of ants to that a certain number of ants were released during dinner hour just to make the picnic picture complete. After all, anyone who has ever been on a picnic should be on every bite you take. Nic knows that at least one ant just to add a certain piquancy.

leaving four stars—slept through the jump.
This same jump produced a sifter, undercover recovery was the jump made when the winds were too high?
Some of the men who jumped, some of those who suffered broken legs and arms, said it was Hogue and Col. Joe S. Lawrie, the 508th RCT commander said it wasn't.
Both agreed it was a "marginal condition" jump in winds they said ranged from 14 to 18 miles per hour with gusts up to 22 miles.
For practice purposes, paratrooper officers said jumps are not made if the wind exceeds 15 miles per hour on the ground and 25 miles an hour at 1,000 feet.
Shortly after the jump was made, an unidentified officer at the drop zone said the wind was 12 to 15 miles per hour on the ground when the "Fathmeters" dropped to set up the directional marker for the main body of troops.
Another officer, scarcely recognizable in the boiling dust whipping over the drop zone, said he "understood" the winds were 14 to 18 miles with gusts up to 25 when the last man jumped.
There were 232 injured. One was killed when his parachute became entangled with his equipment. Of the 232 injured—which included sprains and badly bruised—43 suffered fractured bones, including nine fractured backs.
Collins said it was a good jump, accomplished its purposes in the maneuver.
The evacuation of the mock atomic victims was written off as a "flop" by both Hogue and Gay.
More than 1,000 men of the 138th Infantry Regiment of the 47th Division were supposed to have been injured as the result of an atomic bomb blast.
In less than seven hours, 680 were evacuated—by helicopter and ambulance. But they poured into a clearing hospital so fast that one officer (who said he wouldn't like to be identified) declared: "After the first 150 we were so swamped we couldn't even begin to take care of them properly—even in make-believe war."
Gay said an officer he did not name decided that only the "casualties" for which there was an actual stretcher would be evacuated.
"I wonder why it is we can get a damn fool order obeyed so implicitly," he wondered, "and so often find it so hard to get anyone to pay any attention to a sound one?"
This failure in evacuating mock victims of an atomic bomb seemed to emphasize Gay's blunt statement:
"We may as well admit it—the day of the old close formation is over. Unless you get your men spread all over, you're going to make fine target for this (atomic) weapon."

Presbyterian School Is Begun

The vacation church school of the First Presbyterian Church opened at 9 a. m. Monday morning.
Designed for children from 4 to 12, the school will deal with the theme of "Learning from Jesus" by means of stories, games, singing and creative activity. It will be in session from 9 to 11:30 a. m. each day for the next two weeks.
Two features will mark the end of the program. On Thursday, June 12, there will be a worship service to which both parents and children are invited. The following day, Friday, City Park will be the scene of a picnic. All children from 4 to 12 are invited.

Death Of Two Soviet Leaders Announced

MOSCOW — (AP) — The Moscow press today reported the death of Yuri Kuchurov, well known Soviet composer, who received one of this year's Stalin prizes.
The Soviet government also announced the death of Dmitri Zhukov, veteran official in the

GARDEN HOSE GARDEN TOOLS V-BELTS & SHEAVES RAINCOATS AND OVERSHOES
RADCLIFF SUPPLY CO.
112 E. Brown Phone 1220

LISTEN TO "Battle of Two Cities" At PAMPA vs. BORGER 11:30 to 11:45 Monday Through Friday Mutual KPDN 1340 Affiliated On Your Dial

Police Rookie Gets Action On First Call

LUBBOCK — (AP) — Rookie Patrolman Charles Riker saw action his first day with the Lubbock police force.
Riker had been working only a few hours when his patrol car was dispatched last night to the east part of the city to quell a disturbance.
At the address given they were met by a man brandishing a .32-20 rifle. Two shots ran out over the officers' heads.
Riker fired his first shot as a police officer. The .38 revolver slug caught the rifleman in the thigh and stopped the rifle fire.
The wounded man was taken to the hospital and was to be charged today in the shooting.

Bolivia Orders Tin

LA PAZ, Bolivia — (AP) — Bolivia's government today gave a 10-man commission 120 days to work out a procedure for nationalizing the nation's three big tin mines, those of the Patino, Aramayo and Hochschild interests.
The nationalization has been expected since the April revolution installed Victor Paz Estenssoro as president but there has been some indication the government would go slow until it is recognized by the United States.
Menaces Culture
TOKYO — (AP) — A Japanese book dealer says "this Americanism is destroying Japanese culture."
Saburo Matsumura, says Tokyo had 1500 second-hand stores before the war and only 530 now.

Tom Sanders Food Supplements

ARTEX VITEX CANTEX ULITEX
Now Available at
The RICHARD DRUG STORE
In Pampa

ENDOW YOUR HOME

WITH A SOUTHWESTERN LIFE INSURANCE MORTGAGE CANCELLATION CONTRACT—TODAY
D. C. Ash - Ed F. Cleveland
REPRESENTING
Southwestern Life Insurance Company
HOME OFFICE • DALLAS

WHY DON'T STAMP GIVING STORES MEET IDEAL'S PRICES? IF STAMPS ARE ACTUALLY FREE, AS THEY CLAIM, THEN THEY SHOULD BE ABLE TO SELL MERCHANDISE AS LOW AS IDEAL!

FRESH DRESSED				
FRYERS BREAD	lb.			45¢
IDEAL	Lb. Loaf			10c
ENRICHED	1 1/2 Lb. Loaf			15c
FOLGERS	Lb.			69¢
PET or CARNATION	2 Tall Cans			19¢
SILVER FALLS	No. 2 Can			10¢
DEL MONTE	Sliced or Halves	No. 2 1/2 Can		25¢
SIX FLAVORS	3 Pks.			10¢
SPINACH	Del Monte	2 Cans		25¢
PORK & BEANS		4 Cans		25¢
CANDY BARS	OR GUM All 5c	3 for		10¢
SHINOLA	SHOE POLISH	Can		5¢

Prices Effective Tues. p.m. & Wed. June 3rd & 4th in Amarillo, Pampa, Borger and Dumas

Ideal Food Stores
SOUTHWEST SHOPPING CENTER
We Reserve the Right To Limit Quantities. None Sold to Dealers or Their Agents

WHY PAY FOR STAMPS
SAVE CASH AT IDEAL
BUY FOOD INSTEAD OF STAMPS