

SOME OF THOSE PEOPLE WHO FALL HEAD OVER HEELS IN LOVE OFTEN HAVE A PRETTY HARD TIME GETTING BACK ON THEIR FEET.

THE WEATHER

COLDER Tomorrow

Pampa News

D-R-I-V-E S-A-F-E-L-Y

ONLY through a SAFE Holiday can you Have a HAPPY Holiday.

VOL. 43, No. 182.

(12 Pages Today)

PAMPA, TEXAS, FRIDAY, DECEMBER 21, 1945.

AP Full Leased Wire

Price 5 Cents

Your 'Home for Christmas' Can Become Tragedy

AUSTIN, Dec. 21—“Home for Christmas” will have a tragic edge in many service homes where preparations for the greatest Christmas since Pearl Harbor will be stilled by traffic accidents the Texas Safety association said today.

(See “Will Death Have a Hand in Your Holiday?” on Editorial Page.)

A grim prediction that Texas traffic trends since V-J Day indicated 223 persons would meet death and 2,000 others suffer non-fatal injuries during the holiday, wintry twelfth month of December was made by George Clare, managing director of the association.



You must SEE danger to avoid it. Keep windshield defroster wiper and headlights in working order, windows clean. The prediction was based on an estimated 20 percent increase over last December's traffic fatalities.

“This is the Christmas Texans have lived for,” said Clarke. “It is tragedy in its crudest form that many a returning veteran will find his journey's end on our streets and highways, not in the safety of his fire-side.”

“The kamikaze attacks of worn-out automobiles and out-of-practice drivers will mock the four year dream of ‘Home for Christmas.’ In an effort to get GI Joe safe at home for Christmas, the association appealed to Texas mayors and editors to publicize the dangers of December traffic and to urge caution on the part of drivers and pedestrians.

UNO Delegates Given Approval

WASHINGTON, Dec. 21—(AP)—The complete American delegation to the first formal session of the United Nations organization bore senate approval today—after a two hour scrap.

Four of President Truman's selections underwent sharp criticism from various senators yesterday, but it was obvious from the start that the entire group was going to receive overwhelming approval. It came by voice vote, for: Edward R. Stettinius, Jr., former secretary of state, as representative on the security council and also to the first session of the general assembly to be held in London early in January.

Shinto Rites Held For Prince Konoye

TOKYO, Dec. 21—(AP)—Shinto funeral services were conducted today for Prince Fumimaro Konoye, pre-Pearl Harbor premier of Japan, with representatives of the imperial household and several cabinet ministers attending.

MacArthur Refutes Charges of Dissension

TOKYO, Dec. 21—(AP)—General MacArthur today denied a broadcast report that his headquarters had become embroiled in arguments with the Russians over assignment of Soviet occupation troops to Japan and that MacArthur had threatened to resign.

“I am here to serve and not to hinder or obstruct American government,” the supreme commander of the Allied powers said in a statement issued by his press relations office.

“It is my full purpose to see the thing through. The question of Russian participation in the occupation is a matter for other decision than my own.”

The statement said that the broadcast report, “purported to have been made by Larry Tighe of the American Broadcasting corporation, has absolutely no basis in fact.” “If Tighe made the statement he is alleged to have broadcast from Tokyo, someone must have been feeding him a funny type of ‘hooch’ being peddled around Tokyo on the black market.”

(Tighe said he received his information from the statement he is alleged to have broadcast from Tokyo, someone must have been feeding him a funny type of ‘hooch’ being peddled around Tokyo on the black market.”

Inherent Rights Are Being Lost, Amarilloan Says

Sim Kelly, past president of the Downtown Kiwanis club, Amarillo, said last night as guest speaker at the annual officers installation banquet of the Kiwanis club here that the people “have turned over to a willing Washington our responsibilities,” and consequently, the people are losing the freedoms that inhere in our forefathers.

“The people, he said, lost their vision when they sought security instead of opportunity. Citing Kipling's famous ‘let us forget in time,’ he asserted that America must return to the principles which made the country great—aspersion for opportunity, rather than for security; faith in ourselves—vision.

He advocated an understanding of the world, as represented in the phrase: ‘We can't be ignorant of our globe when American dead lie on every continent.’

Capitalism, he said, is not perfect, but it is the best ‘ism’ yet devised. Touching on the dislocated condition of the world today, he said of the days following hostilities: ‘We find our disappointment and surprise that the things we wanted are still to be achieved.’

Raeburn Thompson was presented with an award for maintaining a 13-year, 100 percent attendance record. Other Kiwanians who received attendance awards and the length of time were: R. W. Lane, W. B. Weathered and M. P. Downs, seven years; H. T. Hampton, Joe Gordon, Fred Shryock and Joe Wells, six years; B. B. Altman, Clyde Carruth and Fred Radcliff, five years; C. P. Pursley, Malcolm Denson and W. F. Dean, four years; J. H. Buckingham, Leib Langston, Ed Weiss, John Plant, J. B. Massa and W. A. Rankin, three years; L. N. Atchison, Cecil Myatt, H. W. Waters, A. C. Troop and Morris Goldfine, two years; And Bob Allford, G. F. Branson.

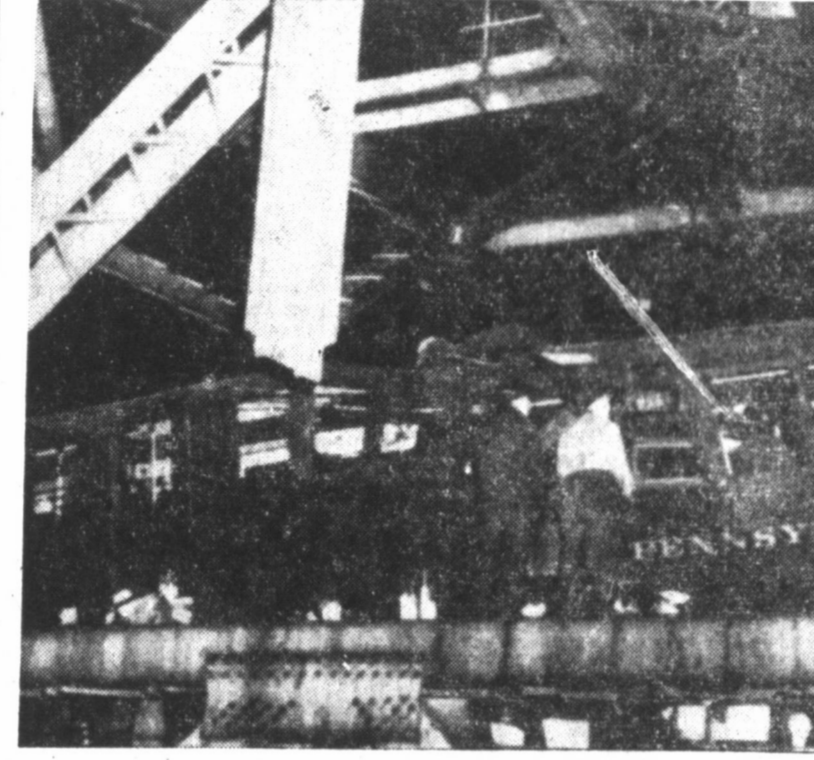
Cash for your car. See Sparky Rider. Rider Motor Co., 117 S. Ballard, Phone 760. (Adv.)

DEMANDS WILL NOT BE MET FOR SOME TIME

By MARVIN L. ARROWSMITH WASHINGTON, Dec. 21—(AP)—The rationing ends January 1 after four long years of thin treads, but it will be months before pent-up demand is met in full. The decision of OPA and civilian production administration to lift controls is based on their ‘considered opinion’ that there no longer is any danger of a transportation breakdown.

Both agencies emphasized, however, that despite a big increase in tire production, all motorists will not be able to walk in and buy new casings for some time. A plentiful supply of tires is not

POLICE, WORKMEN HELP TRAIN VICTIMS



Police and workmen (inside car) aid a victim in one of telescoped cars of suburban train which crashed into an open drawbridge over the Passaic river, west of Harrison, N. Y. Motorman was killed; fifty-seven passengers injured. —(NEA Telephoto.)

Houston Firm Is Awarded Contract For Outfall Line

Allred and Enix Construction company of Houston was awarded the contract for the construction of the main outfall line of the city's re-constructed sewer system.

The reconstruction of the main outfall line, which begins at the southeast corner of the city and ends at the disposal plant, is the first step in the rebuilding of Pampa's sewer system, which has been described as being in very poor condition.

Drives on Polio Aren't Together

The National Foundation of Infantile Paralysis is not in any way connected with the newly-formed Sister Kenny drive to curb polio, it was announced this week by Mrs. George H. Pittman, state representative for the Foundation.

Colder Weather Is in Prospect

Although the weatherman promised colder weather for Pampa and the Panhandle tomorrow, the general picture in the south was much better, according to Associated Press.

Senate Ends Butter Rationing—Too Late

WASHINGTON, Dec. 21—(AP)—There is some question about the future of a measure which somewhat was passed yesterday by the senate.

Danger! Who Has Torpedoes?

Chief of Police Louis Allen reported today that several Pampa boys are known to be in possession of signal torpedoes and signal lights taken from the caboose of a Santa Fe freight train.

Recovery Good Until Yesterday

HEIDELBERG, Germany, Dec. 21—(AP) Gen. George S. Patton, Jr., who led the victorious U. S. Third Army from the beaches of Normandy into Czechoslovakia, died at 5:50 p. m. (10:50 a. m. Central Standard Time) today a dozen days after his neck was broken in a traffic accident.

The General's stout old fighting heart weakened during the day from effects of pulmonary complications which had beset his apparent recovery from the broken neck and partial paralysis.

Exploratory Talks Branded As Successful

MOSCOW, Dec. 21—(AP)—The exploratory conversations of the foreign ministers of Britain, Russia and the United States appear to have brought the three countries closer together than they were before the meeting, informed foreign quarters said today.

36th Men Being Released Rapidly

TYLER, Tex., Dec. 21—(AP)—Men of the famed 36th division, who hurried ahead of most of the Allied armies to get a foothold in Hitler's fortress Europe, are hurrying again.

Mother, Five Children Perish in Blaze

WINNIPEG, Dec. 21—(AP)—A mother and her five children were burned to death and three other persons were injured when fire destroyed the interior of a two-story house in central Winnipeg early today.

Texas in Chungking Signs for One Year

CHUNGKING, Dec. 21—(AP)—An intensive re-enlistment campaign by the U. S. army in Chungking has produced the following results: Pfc. Jesus P. Rivers, of Harlingen, Texas, signed up for another two years.

Gray County Victory Loan Drive

E Bond Quota \$300,000.00 Sales-to-date 251,787.80

THE WEATHER

Table with weather forecast for various locations including Pampa, Amarillo, and other Texas cities. Includes columns for time of day and temperature.

WEST TEXAS: Fair this afternoon, tonight and Saturday; cooler in Panhandle and South Plains with lowest temperatures 18-23 tonight, colder in Panhandle, South Plains and upper portions Pecos valley eastward Saturday.

Harvesters Battle White Deer Cagers Here Tonight

Sun Bowl Game To Be Sellout

EL PASO, Tex., Dec. 21.—(AP)—It will be a sell-out, with 16,000 fans packed in the Sun Bowl Jan. 1 when New Mexico university plays Denver university's Pioneers.

Officials reported today that all reserved seats are gone and that only a few hundred general admission tickets are left.

Comparative scores indicate that the two teams will be as evenly-matched as any of the 10 sets of rivals to play in past Sun Bowl games.

In the regular season Denver won 19-7 from Utah and lost to the same team 33-21. Utah in turn edged the New Mexico Lobos 21-20. Both principals defeated Colorado university by the same margin—Denver winning 14-8 and New Mexico 12-6.

The Pioneers will be the first college team to fly to the Sun Bowl. They will arrive here Dec. 26. The Lobos will leave Albuquerque Dec. 31 and spend the night at Las Cruces, N. M., arriving here shortly before the game.

Denver's band and pep squad will entertain the fans in a between-halves show. The game will be a feature of the Sun carnival which will attract 34 Southwestern Sun princesses and the Sun queen, Miss Barbara Price.

Sugar Bowl To Be Game Of Contrasts

NEW ORLEANS, Dec. 21.—(AP)—Contrasting products of wartime football—combat veterans and teenage freshmen—will feature the respective supporting casts for all-American halfbacks Bob Fenimore and Harman Wedemeyer in the Sugar Bowl football game.

Four ex-soldiers who saw plenty of shooting will probably start with Fenimore for Oklahoma A. and M. and nine pink-cheeked freshmen are expected to take the field with Wedemeyer for St. Mary's Gaels.

Some of the Aggie veterans were playing college football when most of the current Gaels were hardly big enough for a high school junior team.

Jim Reynolds, for instance, was first-string tailback in 1941, before he took time out to fly 52 fighter missions over Europe.

Bert Cole, reserve tackle in 1941, became a bomber pilot, was forced down in Czechoslovakia, hooked up with some guerrillas and dropped to a quarterback's weight on a potato soup diet. He gained enough, however, to take a starting tackle berth this season.

J. D. Cheek, the other tackle, was a national guardsman and went across with the 45th division, Center O. Schellstedt dropped with the paratroopers on D-Day. Tackle Terry Monroe and center Bob Hargrove are war veterans serving as reserves.

Throughout the regular season, the Gaels' first team was composed of Wedemeyer, "Spike" Cordeiro and nine freshmen. Although outweighted in seven of its eight games, however, an all-Fresh line yielded only one of the five touchdowns scored on St. Mary's during the year. Passes brought the others.

Barnard, 6 Foot, 8 Inch Center Leads White Deer Team Attack

With three straight victories behind them, the Harvester cagers meet White Deer's potent Bucks in two games on the local hardwoods tonight, the first game starting at 7:30.

The "B" teams of the two schools will meet on the Junior high gymnasium floor at 7:30 in the local "B" squad's third contest.

White Deer is led this year by Charles Barnard, 6 foot 8 inch center, who was hard to stop last year and is reported to be much better this year.

Coach James Whittington, who is coaching the team in the absence of Coach Coffey, reported that the team was making good progress, as is shown by Pampa 32-16 victory over Panhandle in a game there Tuesday. It was the teams third victory—previous wins having been over Clarendon 66-8 and over Childress 29-26.

Randall Clay dumped 19 points through the hoop in the Panhandle game to bring his season total to 51 points in three games. The reserves trounced Panhandle 40-18.

This year's teams show perhaps the greatest promise of any cage team to take to the local hardwoods.

At forwards, Randall Clay and Leon Crump, do an effective job, both defensively and on scoring. Charlie Beard and Bernie Brown hold down guard positions with a tenacity that makes it very difficult for an opponent to get into scoring position.

At center, Bill Speer uses his height to every advantage although he will be topped by White Deer's Barnard.

Capable reserves enhance the Harvester's chances this year. Any of them can be used at any time and much experimenting with different combinations will be done before a definite starting line-up is decided on.

Among the outstanding reserves are Don Humphries, a squadman last year; Leon Gooch, a first year man but one that shows promise; Kelley Anderson, another first year man and one to watch; Darrell Davis, a real threat to the first stringers; A. Z. Griffin—nearly six and one-half feet of good basketball player; Charles Laffoon—his all over the court at once and a fine ball-handler.

Capable reserves enhance the Harvester's chances this year. Any of them can be used at any time and much experimenting with different combinations will be done before a definite starting line-up is decided on.

Among the outstanding reserves are Don Humphries, a squadman last year; Leon Gooch, a first year man but one that shows promise; Kelley Anderson, another first year man and one to watch; Darrell Davis, a real threat to the first stringers; A. Z. Griffin—nearly six and one-half feet of good basketball player; Charles Laffoon—his all over the court at once and a fine ball-handler.

Highland Park, Waco Are General Choices to Win Semi-final Games

Schoolboy football slashes a trail through the middle of Texas tomorrow with two teams within 100 miles of each other favored to survive the semi-finals and meet in the state championship final next week.

This means Highland Park of Dallas is the general choice to beat Wichita Falls at Fort Worth and Waco is picked to tumble Goose Creek's Ganders at Houston.

However, there are plenty who look at it the other way and forecast that the finals will be between a team from the far north and one from the south.

Nevertheless, the largest crowds of the season are predicted with 25,000 turning out at Fort Worth and the same at Houston—each the greatest throng ever to see a schoolboy game in either city.

There is little on which to base selections in tomorrow's games. Highland Park and Wichita Falls last similar records and when they met in mid-season in a non-conference game the result was a 7-7 tie.

Waco and Goose Creek did not play. Waco beat Marshall, which won over Lufkin, which downed Goose Creek. But there's a lot of difference in the Goose Creek team of today and that which took a 7-0 defeat from Lufkin. It has come on with a rush, is sound physically again and should be given at least an even chance of victory over Waco.

Indirectly, Waco and Goose Creek had similar records and when they met in mid-season in a non-conference game the result was a 7-7 tie.

Waco and Goose Creek did not play. Waco beat Marshall, which won over Lufkin, which downed Goose Creek. But there's a lot of difference in the Goose Creek team of today and that which took a 7-0 defeat from Lufkin. It has come on with a rush, is sound physically again and should be given at least an even chance of victory over Waco.

Indirectly, Waco and Goose Creek had similar records and when they met in mid-season in a non-conference game the result was a 7-7 tie.

Waco and Goose Creek did not play. Waco beat Marshall, which won over Lufkin, which downed Goose Creek. But there's a lot of difference in the Goose Creek team of today and that which took a 7-0 defeat from Lufkin. It has come on with a rush, is sound physically again and should be given at least an even chance of victory over Waco.

Indirectly, Waco and Goose Creek had similar records and when they met in mid-season in a non-conference game the result was a 7-7 tie.

Sports Round-up

By HAROLD V. RATLIFF AP Sports Editor

NEW YORK, Dec. 21.—(AP)—Today's hottest tip right from the old feed box is that Bing Crosby has not bought a single big league club within the past 48 hours—either New Orleans or Dallas, in about that order, is expected to be named within the next few days as the 10th city in the all-America football conference—to break the jump, someone suggested, between Los Angeles and Rio De Janeiro—Gus Lesnevich, the 175-pound champ, has begun yodeling for a shot at the winner of Louis-Conn. Says he taught 50,000 men how to box during the war and learned plenty himself.

"None," says Frank Hyde of the Jamestown N. Y. Post-Journal, falling for the bait, "that 49-year (high school) grid rivalry between Menominee and Marinette isn't the oldest as far as we apple knockers up here in western New York are concerned. The records show Jamestown and Warren, Pa. have been playing since 1889, which would be 56 years if my school housin' is proving itself."

Noting that Larry MacPhail's assault trial is due to come up at Bel Air, Md., on Jan. 3, Jerry Mitchell of the N. Y. Post comments: "Only one thing is certain now—the John Law who slapped the boss Yankee into the clinic will have still opposition in the coming election. MacPhail is backing the rival candidate for sheriff with everything at his command, including his celebrated vocal chords."

News from Detroit says there is an excellent chance that the champion Tigers' outfield next season will consist of the star trio which helped Beaumont win the Texas league flag before the war—Hoot Evers, Dick Wakefield and Anse Moore—Sunny Jim Fitzsimmons, the horse trainer, has had the cast removed from his broken leg and is getting around again. After having spent most of his life cranking horses' hooves, with never an injury, Fitz cracked the "laig" in a scuffle with his dog.

News from Detroit says there is an excellent chance that the champion Tigers' outfield next season will consist of the star trio which helped Beaumont win the Texas league flag before the war—Hoot Evers, Dick Wakefield and Anse Moore—Sunny Jim Fitzsimmons, the horse trainer, has had the cast removed from his broken leg and is getting around again. After having spent most of his life cranking horses' hooves, with never an injury, Fitz cracked the "laig" in a scuffle with his dog.

News from Detroit says there is an excellent chance that the champion Tigers' outfield next season will consist of the star trio which helped Beaumont win the Texas league flag before the war—Hoot Evers, Dick Wakefield and Anse Moore—Sunny Jim Fitzsimmons, the horse trainer, has had the cast removed from his broken leg and is getting around again. After having spent most of his life cranking horses' hooves, with never an injury, Fitz cracked the "laig" in a scuffle with his dog.

News from Detroit says there is an excellent chance that the champion Tigers' outfield next season will consist of the star trio which helped Beaumont win the Texas league flag before the war—Hoot Evers, Dick Wakefield and Anse Moore—Sunny Jim Fitzsimmons, the horse trainer, has had the cast removed from his broken leg and is getting around again. After having spent most of his life cranking horses' hooves, with never an injury, Fitz cracked the "laig" in a scuffle with his dog.

News from Detroit says there is an excellent chance that the champion Tigers' outfield next season will consist of the star trio which helped Beaumont win the Texas league flag before the war—Hoot Evers, Dick Wakefield and Anse Moore—Sunny Jim Fitzsimmons, the horse trainer, has had the cast removed from his broken leg and is getting around again. After having spent most of his life cranking horses' hooves, with never an injury, Fitz cracked the "laig" in a scuffle with his dog.

News from Detroit says there is an excellent chance that the champion Tigers' outfield next season will consist of the star trio which helped Beaumont win the Texas league flag before the war—Hoot Evers, Dick Wakefield and Anse Moore—Sunny Jim Fitzsimmons, the horse trainer, has had the cast removed from his broken leg and is getting around again. After having spent most of his life cranking horses' hooves, with never an injury, Fitz cracked the "laig" in a scuffle with his dog.

Maryland Racing Commission Faced With Big Problem

BALTIMORE, Dec. 21.—(AP)—The Maryland racing commission was confronted today with a statement by an American trainers association official that a "number" of ATA members believe the group should consider recommending the abandonment of training horses at Maryland tracks.

Janon Fisher, Jr., secretary-treasurer of the association and a former president of the Maryland horse breeding association, said the racing commission's interpretation of its rule (146-D) holding trainers solely responsible where evidence of stimulation has been discovered has created "an impossible situation" for trainers.

He added that the ATA still hopes that conditions can be remedied without such extreme methods—and the association accordingly has instituted legal proceedings.

Fisher referred to a suit filed yesterday in a Baltimore city circuit court asking invalidation of rule 146-D which provides a minimum suspension of one year for trainers whose horses have been stimulated.

Eight trainers have been under suspension in Maryland this fall in connection with stimulation charges.

act. Two previous were with Humble and Gulf. A case against Magnolia is still pending, he said.

Read Classified Ads in the News

DR. L. J. ZACHRY OPTOMETRIST First National Bank Bldg. For Appointment Phone 608

JEFF D. BEARDEN Representing THE FRANKLIN LIFE INSURANCE CO. Phone 47 Pampa, Texas

Rose Bowl Tickets Go on Public Sale; Only 7,500 of Them

PASADENA, Calif., Dec. 21.—(AP)—Today was the day for 7600 of football's faithful followers. There were that many tickets on public sale for the Alabama-Southern California New Year's game. And more than that many of the faithful.

They started lining up at 5 a. m. yesterday—28 hours before the windows opened, and spent all day and night, sometimes in a drowse, just waiting.

But it was an old story to customer No. 1, R. W. Tomlinson of Baltimore, Md., who said he once waited 72 hours in Philadelphia for world series tickets.

Some luxuriated in sleeping bags. Remainder of the 90,000 odd seats are distributed chiefly through the two competing schools.

Some birds run a temperature of 112 degrees; the sloth heats up only to 94 degrees; the elephant at 98 degrees approximates man's temperature.



We recap with Grade A Truck Rubber. Its toughness assures 3,000 to 5,000 miles of extra wear.

CENTRAL TIRE WORKS 323 W. Foster Phone 2410

CEMENT BUILDING BLOCKS Can be used for many types of construction. See us for your needs. We deliver. Houston Bros., Inc. Phone 1000 420 W. Foster St.

LLOYD'S SIGN SHOP All Types Sign Painting 837 W. Foster (Rear)

Dr. George Snell Dentist Office over 1st National Bank Phone 1482 for appointment

WILSON DRUG 300 S. Caylor Phone 600

'Obnoxious' Germans To Have To Go Back EERLIN, Dec. 21.—(AP)—The Allied control council, through its political directorate, has requested all members of the United Nations to assist in sending back to Germany all German agents and "obnoxious" Germans in their countries.

Protect Your Car. Wash and Lubricate Often. Phone 68 YOUR PHILLIPS 66 STATION 301 W. Kingsmill

Some Lobo Gridders Practice During Own Lunch Hour for Game ALBUQUERQUE, N. M., Dec. 21.—(AP)—Some of the New Mexico Lobo Gridders are even spending lunch periods to practice for the Sun Bowl game against Denver university.

Cuts in Pension Might Be Coming AUSTIN, Dec. 21.—(AP)—John Winters, executive director of the department of public welfare, today foresees no immediate cut in average Texas pension payments, but expressed doubt as to how long a cut can be stalled off.

Used Clothes Continued from Page One of Horace Mann school, was named educational director. Miss Thomas will have charge of requisiting the ward school students with the facts of the drive.

Central Power Stock Shares are Offered NEW YORK, Dec. 21.—(AP)—First Boston Corp. heads an underwriting group which today made public offering of 100,000 shares of Central Power and Light Co. (a Texas corporation) 4 percent preferred stock, par \$100 at \$102 3/4 a share and accrued dividends, subject to a prior exchange offer to preferred stockholders of Central Power and Light Co. of Massachusetts.

Tire Controls Continued from Page One about 4,000,000 casings a month. The outlook for production of truck tires and bus tires described as even brighter than for passenger tires.

Prime Minister Is Off for Holidays LONDON, Dec. 21.—(AP)—Prime Minister Attlee will leave tonight for the Christmas holidays at Chequers. He will return Thursday for talks with Dutch officials on Indonesia.

GO BY BUS All schedules were revised effective October 1st. Quicker service to all points. Call 871 for information. PAMPA BUS TERMINAL

Glamorous Gift Gowns LOW PRICED FOR YOUR XMAS BUDGET 4.49 For a gift that meets a look-of-luxury standard and a low budget quota, you can't beat one of these dainty rayon crepes! Choose solid blue or tearose, or floral prints on pastel grounds. Sizes 32-40. Montgomery Ward

PIMPLES Disappeared Overnight Blackheads, Too, Want Fast Van. It is true, there is a safe, effective, and pleasant way to get rid of pimples, blackheads, and other skin blemishes. It's called CRETNEY'S.

A wonderful bird is the pelican There is a well-known little verse about the pelican and his gift for gobbling up more than he can swallow. A parallel is the UAW-GIO demand for higher wages from General Motors. For General Motors' wages are already high. In fact, in the last peacetime year, the income of the average GM worker fell in the top third of all incomes in the United States. We believe in high wages! But we also believe that when wages are already high, the question arises whether further cost reductions that management can bring about may not well be used to lower prices or improve products. Lowering prices or improving products benefits everybody. Customers get more for their money. The company's business grows. And the growing business is able to employ more and more people. Wider employment serves the national welfare—and should be a primary objective of all of us. Unfortunately, many people are too apt to place their own interests above the national welfare. GENERAL MOTORS "More and Better Things for More People"

Beta Sigma Phi Christmas Party Held at Home of Mrs. Ray Robbins

T.E.L. Class Holds Christmas Social

The T. E. L. class of the Central Baptist church met yesterday at the home of Mrs. J. B. Hilburn for a business meeting and Christmas social.

Opening prayer was led by Mrs. G. W. Keeling. The devotional was given by Mrs. Zula Taylor.

The Christmas story from Luke's gospel was read by Mrs. O. H. Gilstrap, who also presided over the business session. Six class members were remembered with Christmas cards and offerings for cheer baskets were given.

Gifts around a Christmas tree were exchanged, and refreshments of chicken salad, fruit cake, with whipped cream, wafers and coffee were served.

Mesdames R. R. Jones, G. C. Stark, May Monroe, H. B. Knapp, H. C. Chandler, John R. Gray, Dr. Allen, F. M. Burnett, G. W. Keeling, R. J. James, Pearl Erwin, Noah Jones, Zula Taylor, John Brown, and O. H. Gilstrap and J. B. Hilburn.

Shower Given Mrs. T. Dykes

Mrs. Tommie Dykes was honored Monday evening with a pink and blue shower in the home of Mrs. Don Taylor with Mrs. Paul Higley and Mrs. C. L. Brownlee acting as co-hostesses.

The honoree was presented with a holly corsage and her gifts were then opened under the Christmas tree.

Tea and cookies were served with Mrs. Paul Hughey pouring for the following guests:

Mesdames V. H. Hillard, E. M. Hunt, Gene Blair, Joe Thomas, Dorothy Cox, Minnie Lee Barrett, C. P. Wallon, D. L. Brownlee and the honoree.

Gifts were sent by Mesdames Lorenna McNaughton, Leon Cook, Ila Dockman, Ruth Ellen Nelson, J. R. Wright, Jr., Cleo Whiteside, W. R. O'Neal, Robert Burns, Joe Vincent, John R. Phillips, Frank Hunt and Misses Myra Millard and Betty Hillard.

FLOWERS
Fresh Cut—Potted Plants
PARKER'S BLOSSOM SHOP
Phone 21

Wm. T. Fraser & Co.
The INSURANCE Men
Automobile, Compensation, Fire and Liability Insurance
112 W. Kingsmill Phone 1044

The annual Christmas party and program of Beta Sigma Phi was held with exchanging of gifts, revealing of "Mystery Pals" and singing of carols at the holiday-decorated home for Mrs. Ray Robbins Monday evening. Co-hostesses were Misses La Nelle Scheihagan and Virginia Vaughn.

The program included a Christmas story told by Mrs. Johnson Smythe and poem by Miss Leora Kinard.

Members present other than those mentioned above were Mesdames C. W. Henry, W. C. Lank, James Poole, B. R. Weston, John Rankin, Herbert Johnson, E. E. Shelhamer, C. E. Mimmear, Robert Carter, Harry Taylor, B. V. Biggers, John Plaster, I. R. Lister, Wylie Reynolds, Cleo Whiteside, Arthur Teed, Raymond Harrah and James Massa.

Others present were Misses Ruth Stapleton, Millicent Schaub, Dona Jursley, Evelyn Morehead, Kathrine Ward, Lee Sullivan, Marjorie Hill and June Hodge.

Married Women's Class Has Party

The Young Married Women's class of the First Methodist church met for a Christmas party Wednesday afternoon at the home of Mrs. Burl Brooks, 409 Magnolia.

The entertaining rooms were decorated in the Christmas motif. Games were played, carols sung and gifts exchanged.

A corsage was presented Mrs. Tommy Dykes. Refreshments of fruit cake, sandwiches and tea were served.

Members present were Mrs. Cecil Middleon and Mrs. Winnie Thomas, who assisted the hostess, and Mesdames J. O. Wright, Jr., Leon Cook, Glenn Hubbard, Frank Baker, Marshall Hubbard, Tommy Dykes and Clyde Brownlee.

Social Calendar

FRIDAY
Circle Five of the First Baptist W. M. U. will meet in the home of Mrs. Bob Triplehorn, 1201 Charles, for Christmas party, at 8 p. m.

Order of Eastern Star will meet at 8 p. m. in Masonic hall for Christmas tree. Fidelity class of Central Baptist church will meet for buffet supper in home of Mrs. H. K. Parker.

Entre Nous club will meet in home of Mrs. W. D. Benton for Christmas party.

Winsome class of the First Baptist church will meet at the home of Mrs. Anne Duell, 311 Northwest, for Christmas party, at 7:30 p. m. Husbands invited.

SUNDAY
VFW post and auxiliary Christmas party 3 p. m. at hall.

A warlock in northern England or Scotland is a wizard, sorcerer or magician. The word in Old English means a "liar against the truth."

DON'T GUESS—BE SURE
Do as millions do to make sure of high quality, fast action, real economy in aspirin. Ask for St. Joseph Aspirin, world's largest seller at 10c. 100 tablets for 35c.

SOCIETY

'Trip Through Toyland' Will Be Highlight of Party for Children

School-aged children under 12 years of age will hold sway at the canteen tomorrow as hundreds gather to celebrate the Christmas holiday season with an all-children party and program.

The party starts at 3 o'clock. Mrs. Julia Pagan, supervisor of the canteen, and party committee members will be in charge of arrangements.

An extensive program right from Santa's Toyland will be given by school children.

The Sam Houston school grades, under the direction of Mrs. John Bradley, will give a Dutch song, by Julia Nell McConnell and Noel Dalton; "French Doll" Sharon Cook; "Toy Soldiers," Jerry Dunn, Benny Eades, Kenneth Green, Calvin Mayo, Jim Osborne, Jerry Pumphrey, Wylie Reynolds, Dugan Smith and Richard Lee White.

A musical selection "Nurse Dolls," will be sung by a group of girls, all second graders from Sam Houston school, composed of Lara Esther Alexander, Norma Jean Canady, Barbara Cloud, Carol Ann Henry, Marilyn Holden, Shireen Hunt, Charlotte Ann Leder, Myrna Matlock, Dorothy Ann Payne, Deanne Shirley, Ruth Helen Steward, Joanna Wagner, Anita Wedgewood, Patty Welton, Carolyn Sue Wilson and Bonnie Jean Brown.

Students from Baker school will give several selections under the leadership of Mrs. Finside Gallman. Christmas songs will be sung by a sextette composed of Wilma Pitchford, Jean Lumsford, Shirley and Donald Cook, Bobbie Jones and Johnnie McGraw.

A trip through toyland is scheduled by Letta May Hamann, Anita Davesy, Betty Ann Wiley, Joan Lumsford, Donald Cook and Bobbie Jones.

Students of the McMurry school of dancing, Janice Isbell, Sally Cobb, Marcheta Hall and Georgine Brownlee, will be in a tap dance number.

A marimba duet will be given by two fifth graders from Sam Houston school, Mary Lou Outhier and June Gull, students of C. H. Meach.

The cowboy quartette of Bradley school third graders will sing "Home on the Range," "You Are My Sunshine," and "Don't Fence Me In."

Quartette members are D. J. Wilkinson, Richard Hawkins, Jerry Ray Boston and Frank Carter.

Games will be played by the children and refreshments served by committee members.

SEVEN ARE HANGED
MOSCOW, Dec. 21.—Seven German S. S. (Elite Guard) members were hanged yesterday at Smolensk following their conviction as war criminals.

Read Classified Ads in the News

Santa Is On Spending Spree Without Thought of Costs

By KATHARINE SHERWOOD
NEA Staff Correspondent
NEW YORK.—Santa Claus is on a spending spree this year, and no foolin'. For him, price is no object, even for the simplest gadgets. Things you can buy in the dime store are made up into super deluxe items for jewelry shops, which up the price a thousand times and more. Utility items that usually are made of wood and tin, now come in solid gold and are gaudied with jewels.

For instance, a friend with a dog might like to call him in from his yard with a solid gold whistle. Its low, well-modulated toot is worth \$90. Useful and expensive gifts for the family are a tape measure in a gold case for \$72, a collapsible ruler for \$114, and a tiny buttonhook for \$36.

Hatpins at \$1600 a job no more effectively than do 15-cent ones, but the hoity-toity ones are prettily decorated with rubies. If that price seems a little steep, Cartier also has a nice pearl one for \$250, a perfect gift for a distant female relative.

\$350 BUMBERSHOOTS!
An aging aunt will be less likely to forget her umbrella if you buy for it a gold and jade enamel swan's head handle studded with rubies and diamonds. You can weight the toe of her Christmas stocking with it for \$350.

Your temperature rises slightly when you see the price tag of a sapphire and gold thermometer. It sells for \$480, but it registers accurately the warmth of the rarified air the owner breathes.

Now that hostesses are passing cigarettes again, a cigarette box is a thoughtful gift. There is a charming gold and sapphire number for \$1725. Masculine smokers might prefer the simple gold case with a Bar-leveorn design on the outside, and room for 15 cigarettes inside. All that beautiful simplicity comes for \$2030. And with a flick of the wrist a fellow can light up with a \$162 gold lighter.

MA WOULD LIKE THIS
With the United States treasury at your command you could fit out a lady's handbag in a fancy manner. She may carry her vitamin tablets in a \$490 small gold pillbox with diamond, emerald and pearl clasp, peer at her shiny nose in the mirror of a \$1750 diamond-framed gold compact, and paint on a sweet smile with lipstick from a gold case studded with rubies and diamonds. Price \$450! An amber cigarette holder has an onyx mouthpiece rimmed with diamonds to keep annoying tobacco shreds from daily lips. This fits into a gold case and is yours for \$350.

Down in Texas where life is more robust, a Dallas jeweler has made it possible for women to hitch up their jeans with a diamond studded cowboy belt with a gold buckle. The price is a matter of just how highly you regard such items—they start at \$100. A Chicago jeweler has turned out a gold shaving mug for about \$1900. Soap, of course, is extra.

BANNER WATERPROOF WATCH with Hand-Tooled Leather Strap



\$34.75
\$1.85 Weekly

Serviceable waterproof watch that can "take it" in stainless steel case, luminous dial, sweep second hand, nonmagnetic, shockproof, accurate jeweled movement. MAIL ORDERS FILLED

Watch complete with smart western type leather band, hand-tooled, with sterling silver buckle, tip and keeper.

ZALE'S Jewelers
107 N. CUYLER

Federal Tax Included

Pampa News Want Ads Get Results

ZALE'S BRINGS YOU A World of Heavenly Things

It isn't hard to play Santa Claus when you've a whole store from which to choose. Whether its a glorious diamond for "her" or a small remembrance for a friend, you're sure to find the right gift at Zale's. And there are four easy ways to pay:

- LAY-AWAY
- OPEN CHARGE ACCOUNT
- CASH
- UP TO ONE YEAR TO PAY



Sentimental beauty in this heart shaped diamond solitaire for her. \$29.75

He'll be proud of this brilliant diamond in solid gold ring. \$97.50

Magnificent center diamond enhanced by two sparkling side diamonds. \$588.50

Three radiant diamonds smartly accented by tiny beading in this ring. \$62.50

Blue Lodge Masonic ring set with lustrous diamond in gold. \$47.50

Classic simplicity in these solid gold wedding rings for the bride and groom. \$25.00

Equilite filigree type dinner ring set with three sparkling diamonds. \$75.00

Lady's dainty Banner watch, jeweled movement, in lovely case. \$22.50

Man's 17-jewel Bulova watch in smartly styled yellow gold filled case. \$39.75

Baylor lockets and crosses, richly etched, on tiny chains. Each. \$4.95

Solid gold Banner waterproof watch, 17-jewel, gold expansion band. \$87.50

Beautiful lapel watch jeweled movement, an ideal gift for her. \$24.75

ZALE'S Sells More Diamonds Than any other Jeweler in the Southwest

Prices include Federal Tax

ZALE'S Jewelers
107 N. CUYLER
Open Saturday Till 9 p. m.

GIVE HER AN Exquisite Handbag

A GIFT SHE'LL REMEMBER




2.98 4.98
PLUS 20% EXCISE TAX

At 2.98 you'll choose from alligator, lizard, calf, morocco grains—every one with a zipper! At 4.98 you'll pick a rough-grained sheepskin in black or brown. Whichever it is, she'll appreciate its handsome styling, its sturdy workmanship. You'll appreciate the price!

Montgomery Ward

MORE THAN 32,000 READERS SEE YOUR ADVERTISING MESSAGE DAILY IN THE NEWS. CALL 666

WANT AD RATES
All want ads are accepted until 9:30
week days for publication on same day.

Phone 400 About
BURIAL
INSURANCE
Duenkel-Carmichael

ED FORAN
Cemetery Memorials
1237 Duncan Phone 1152-W

Special Notices
If you need Santa Claus for a party or community service call 1598.

Cornelius Motor Company
Mack McCullum, Serv. Mgr.
Pampa Radiator Shop
407 W. Foster Phone 662

Shock absorbers for Buick, Olds, Pontiac, Chevrolet and Chrysler Products. Pampa Safety Lane. Ph. 101.

CHESTER NICHOLSON, Slightly Station,
Four Corners on Burger highway for wash, lubrication, tire repair. Ph. 119.

The "Y" Service Station,
Amarillo highway. C. R. Curley-W. O. Bains. Complete overhaul and repair service. Skelly Products.

FIVE POINTS SERVICE, Magnolia Products,
841 S. Cuyler, Drive in service that is better, washing and greasing.

Engle Radiator Shop
Radiator are our specialty. All makes cleaned, repaired and recored.

Foster St. Radiator Shop
Radiators cleaned, repaired and recored
612 W. Foster Phone 1459

SEE BOZEMAN Garage for expert car repair and welding work. On Amarillo Highway, 1009 W. Ripley St.

LET WOODIE check your car and keep it going the cold months in good shape. We do repair, refinishing and upholstery. Gustaf Upholstery Shop. Phone 475.

Skelly Service Station
800 E. Fredrick Phone 2078
Complete line Skelly products. G. W. Vernon.

Lost and Found
LOST: Black field containing \$400. Belonging to seafarer, enormous reward. Return to Pampa News or Box 302, Lefors. C. L. Glick.

LOST: Between Frank Arrington home and Miami, occasional rocker, wicker type. Reward. Pampa Furniture Co.

LOST: Two keys on Tex Evans key staff, one car, one post office key. Please call 47 or leave at Pampa News for Jeff Bearden.

5-Transportation
MAN WANTS ride to Wichita Falls Christmas Eve. Call 964172 between 8 a.m. and 4:30 p.m. for flooper.

GOOD CAR leaving for Springfield, Mo. Can take five passengers. Saturday night or Sunday morning. Share expenses. Call Beach at 9538.

Moving and hauling anywhere. Ph. 588. Brown-Silvey BAGGAGE transfer and local hauling. 408 Hawling, Phone 544.

Local hauling and moving. Call D. A. Adams, 305 S. Cuyler. Phone 2090.

Johnny Garner's City Transfer delivery truck and pick-up service. Careful packing. Insured. Phone 999. 120 S. Cuyler.

BRUCE Transfer, 626 S. Cuyler for local or long distance hauling. Storage space. Phone 984.

House moving and winch trucks for service. Call 2162 for H. P. Harrison, 914 East Fredrick.

EMPLOYMENT
7-Male Help Wanted
Wanted: Service station attendant for front end work. Apply C. B. Service Station, 118 S. Frost.

Experienced mechanic wanted to work in new, well-equipped shop. Write P. O. Box 380, Pampa, giving your qualifications.

Experienced shoe man wanted. Must know how to handle merchandise and operate a shoe department. Splendid opportunity. Levine's Store.

Boys wanted: Place your application now for a Pampa News route. There may be a route open in your neighborhood soon.

Mechanic wanted—Well-experienced. Apply 5-1 Garage. Excellent opportunity for good pay.

15-Business Opportunity
Home and Auto Supply Stores—Franchise and merchandise available now for new Associate Stores. Write or wire. Kenyon Auto Stores, Dallas 1, Texas.

16-General Service
GARY STONE, water well repairing, rods and tubing "dilled. Mills installed. Telephone 2283.

Electric Motor Repair. Motors completely rebuilt. All sizes. Jackson Electrical Repairs, 119 N. Frost.

MAKE your home comfortable throughout the year. Let Des Moore keep your floor furnace and air conditioners in order.

Tucker and Griffin Building Contractors. No job too large or too small. Call 732J.

WATER WELL repairing, rods and tubing pulled, towers and mills erected. General Kotars. Phone 1830. 1107 Tule St.

PLAINS DEXTER Washing Machine Co. 208 N. Cuyler, Phone 1434. W. J. Ulrich, manager.

16-A-Electric Repairing
Neon Sales and Service Expert Repairing. Ph. 2307
Billie Martin 405 S. Ballard "We'll put your name to lights"

17-Beauty Shop Service
\$100 To that lady who has hair in good condition and Mr. Yates falls to give a soft, right ends permanent. Evening appointments also for listing. Yates Beauty Shop.

\$1.00 OFF on all permanents to January 1st at Ethel Beauty Shop. Call 703

JEWELRY BEAUTY SHOP, 802 E. Francis. Ph. 898 and make your appointment for beauty work in your neighborhood shop.

THE ORCHID BEAUTY SALON has a lovely array of costume jewelry and cosmetic sets for Christmas shoppers. Get your permanent before Christmas. Call 664.

18-Painting, Paper Hanging
RELIABLE painters and paper hangers ready to do your work. Call Foxworth-Galbraith Lumber Co.

19-Floor Sanding
MOORE'S Service, have those floors refinished by your local floor sanding company. Portable equipment. Phone 62.

21-Turkish Baths, Swedish Massage
LUCILLE'S Bath Clinic will remain closed for repairs until further notice. Watch for opening date.

25-Upholstery & Furn. Repair
J. E. BLAND, upholstery and repair shop, 328 S. Cuyler, Phone 1683. Lovely line of materials.

LET US put your furniture in good shape. We do repair, refinishing and upholstery. Gustaf Upholstery Shop. Phone 475.

27-A-Tailoring
FOR expert tailoring, alteration and repair work, also suits made for ladies from men's suits, see Paul Hawthorne, Tailor, 206 N. Cuyler, Phone 929.

28-Laundering
901 CAMPBELL St. Helmy-Sally Laundry. Rough dry and wet wash. Soft wool. Phone 2255W.

RABBIT and NUBBINS Laundry. Wash service and help your self. Open 7 to 7. 832 W. Foster, Phone 734

THE E. E. Laundry at 626 S. Cuyler. We do wet wash and rough dry. Phone 1888 Monday through Saturday noon.

29-Furrier
Mrs. Florence Husband. Ph. 1654. Furrier, 710 N. Sumner

30-Mattresses
AYERS Mattress Factory is now open for business. 817 W. Foster. Buy a Handy-Craft mattress now. Phone 638.

37-Household Goods
Glass mail boxes. Excellent quality. These make nice gifts for Christmas or any time. Radcliff Supply, 112 E. Brown, Phone 1220.

Maytag, Pampa, 520 S. Cuyler. Phone 644. Home of Maytag washers and Gibson Refrigerators. Modernize your home with a Premier Water Softener. They are here. It will save you soap and time plus conveniences. We are in the furniture business. Shop here and save money. W. L. Ayers, owner and manager.

Stephenson - McLaughlin Furn. Co. Phone 1688
Ice boxes, cane bottom chairs, new and used, completely overhauled, looks and runs like new. Priced to sell. Maytag Pampa Co. 520 S. Cuyler, Phone 1444.

Adam's Furniture Exchange
305 S. Cuyler Phone 2090
Many items suitable for Christmas giving for children, adults and the home. We buy good used furniture.

Pampa Home Appliances
119 N. Frost Phone 364
We have a new shipment of gas heaters priced as low as \$14.50. We have 100 new on display. Beautiful walnut four-piece bedroom suite with genuine plate glass mirrors comparable to previous construction as low as \$119.50. Platform tractors by the hundreds starting from \$17.50.

New 1946 Electrolux vacuum cleaners will be available about Jan. 15. Allotment limited. A. B. Ashmore, Write Box 20-A, Pampa, News.

37-Household Goods
Oven glass turkey roasters are in. Get them at Thompson Hardware.

Texas Furniture Co. Specials
Good used lounge chair \$19.55. Bassinet pad \$8.25. Occasional chair \$7.50. Dresser and bench \$35.00. Office desk \$15.

Economy Furniture Store, Formerly Spears, 615 W. Foster. Christmas Specials.
Specials:
Base rockers, living room suites, coffee tables, pictures, mirrors, doll furniture, including children's hamper, etc. Hurry!

Irwin's, 509 W. Foster. Last call for Christmas. Two new home desks, a few table lamps, floor lamps and bicycles and a cabinet size Philco radio. All prices are right.

38-Musical Instruments
FOR SALE: Cabinet model Zenith radio. Call 1529J.

Dixie Radio Shop
112 E. Francis Phone 966
If your radio needs repair don't forget, we give 24 hour service and guarantee all work and parts for 30 days.

FOR SALE: Violin, handmade by F. A. Bennett, Los Angeles. Price to sell at a fraction of its original cost. Maytag Pampa Co. 520 S. Cuyler, Phone 1644.

LEFTS SWAP radios. What's hot? Battery and electric sets. Big ones and little ones. 311 N. Dwight.

39-Bicycles
FOR SALE: Good prewar 26-inch bicycle. \$14 N. Somerville. Phone 2447W.

FOR SALE: Two girls bicycles, prewar. 410 N. Warren. Phone 2483 after 6 o'clock.

40-Office Equipment
1945 MODEL L. C. Smith standard typewriter. Priced \$110.00. Call Tull-Weiss Equipment Co.

41-Farm Equipment
ONE used Model U Allis Chalmers tractor and one used model three bottom moldboard plow, also new feed grinder. Osborn Machine Co., 810 W. Foster, Phone 494.

Scott Imp. Co. John Deere Sales & Service, Mack Truck

Hobbs Trailers
OH Field-Cattle-Vans-Flats Sales-Service
Tull-Weiss Equip. Co.
TULL-WEISS EQUIPMENT CO. International Sales-Service Trucks, Tractor, Power Units

42-Oil Field Equipment
For Sale: 1-2 ton gear type chain hoist, excellent condition, \$75. Call Tull-Weiss Equip. 1360.

45-Wearing Apparel
FOR SALE: Coat, size 12 and several dresses, size 14 and 18. Also shoes, size 7 1/2. Barrow.

Radcliff Supply, 112 E. Brown. Phone 1220. Be ready for those bad days coming. We have 4 buckle overshoes, raincoats and slickers in now. These are of extra good quality.

46-Miscellaneous
FOR SALE: Two boys prewar wool suits. Size 14-16. Phone 1809J.

FOR SALE: 22-40 gauge gun, also two boys bicycles. See at Daniels Auto, 219 W. Tule.

FOR SALE: One language trailer 8x53. Included One Universal electric oven, automatic control, like new. One General Electric Hot Point electric iron. One 4 inch electric fan. One 4-tube Crosley table model in good shape. A number of 14 dresses and coats, in good condition. Inquire at Weems Grocery, 1600 W. Aleck after 6 p.m. One 8-day mantle clock. \$2.50. Phone 2152.

FOR SALE: Victory factory made cafe booth. Delia Liquor Store, 408 S. Cuyler.

FOR SALE: Electric train and truck. Youth and complete. 601 Roberts.

Radcliff Supply Co. has flashlights and batteries in. These are really good ones and something everyone needs. Get yours at 112 E. Brown. Phone 1220.

RED HOT bargains Army used surplus merchandise 10,000 pairs soldiers' reconditioned shoes. \$2.45-\$2.95. 500 raincoats \$2.75-\$1.50. 5000 soft feather pillows \$1.00 each. Mesquite 40c. Canteens 40c. Field jackets \$4.45. Argonite WAC raincoats. New tent, wall tent, canvas, canteen, other items. All postage prepaid. Blank's Exchange, Wichita Falls, Texas.

Rechargeable wet storage battery flash light and charging kit. Coleman gas lanterns at B. F. Goodrich Stores.

For Sale—5,000-barrel bolted steel tank, suitable for wheat, water and oil storage. Wheat capacity 25,000 bushels. Radcliff Supply, 112 East Brown. Ph. 1220.

46-A-Wanted To Buy
HIGHEST PRICES paid for any make of washing machines. Phone 2072.

If you have good used furniture to sell, call Brummett at 2060.

Rags Wanted. Will pay 5c per lb. for clean cotton rags. No khaki, no buttons. Bring them in to Pampa News.

FUNNY BUSINESS



"Joe never misses a sale if we're short on sizes!"

BY HERSHBERGER



"Joe never misses a sale if we're short on sizes!"

51-Fruits, Vegetables
Neal's Market and Grocery
319 S. Cuyler Phone 1104
FOR SALE: White Rock frying chickens. 427 S. Faulkner.

52-Livestock
FOR SALE: Calves ready for butchering. Phone 583J.

FOR SALE: Paint horse, 12 years old, gentle enough for any woman or child to ride. \$60. 427 Sunset Drive.

FOR SALE: Saddle horse coming four years old, \$75. Inquire at Service Station, Lefors, Texas. F. H. Whitwood.

FOR SALE: Milk cow and young calf. Route 2, Pampa. S. R. Odell, 10 miles south of Tule.

53-Feeds
For Sale: 10,000 bundles well headed kaffir, 8c per bundle at field. Phone 297 or write La Von Heatly, Mangum, Okla.

58-Cats, Dogs, Birds
FOR SALE: Singer Canary bird. Phone 2424W.

FOR RENT-REAL ESTATE
60-Sleeping Rooms
BED ROOMS and apartments for rent, close in—American Hotel. Phone 838J.

NICE sleeping rooms for rent, close in on bus line, 807 East Kingsmill. Phone 1197.

63-Wanted To Rent
WANTED by ex-serviceman, 4, 5 or 6-room house, permanent Pampa. Phone 947W.

FOR SALE-REAL ESTATE
72-City Property
FOR SALE: Well constructed 8 room house, good location, near Sam Houston school. Shown by appointment. Call 2039.

Booth 1398 - Weston 1978
5-room house, \$2,500; close in. Just now being repaired. Four-room house, \$3,000. Six-room house, \$4,250. Three-room house, \$3,750. Close in. Nice four-room house with basement, \$3,750. Four-room house, good garage, \$2,750. Nice five-room home in good condition. Floor furnace, close in. Three-bedroom brick on N. Yeager. Five-bedroom home on N. Hobart. \$3,500. Brick business building, \$15,500.

Christmas buys by Mundy.
Four room modern, completely furnished, \$950 will handle. Immediate possession.

Two lovely 5-room homes on corner lot near Woodrow Wilson school, double garage. Nice 3-room home on E. Francis, three bedroom home, two baths, \$3,000. 50-foot lot. Price \$4,200. Three bedroom modern, N. Wynne, \$2,100. Four room modern, large corner lot, N. Russel cash offer. floor furnace, Telley Add., \$2,500. Terms. Large 3-room with garage, \$3,450. Phone 2372.

M. P. Downs, Agency
Real Estate, Loans, Insurance
201 Combs-Worley Bldg.
1264 Phones 336

J. E. Rice. Phone 1831
Four bedroom home on two acres, close in \$8,000. Five room modern close in, \$4,000. Eight room, two baths, E. Francis, \$5,200. Six room brick, full basement, two lots, three floor furnace, \$8,000. Lovely home, large corner lot, N. Russel cash offer. \$4,500. Four room modern, semi-modern, with small one room house, both on four lots, on paved highway, well located. 914 E. Fredrick, Phone 2152.

S. H. Barrett, Real Estate
203 N. Ward Phone 293
Two 5-room modern houses on 150-foot lot. Double garage, newly decorated. Possession of one house Jan. 1st. Will carry \$5,000 to \$5,500. Phone 2152.

WE CAN sell your house if it is reasonably priced. Stone-Thomason.

Gertie Arnold, Realtor
Rm. 3, Duncan Bldg. Ph. 758
Six room brick, large basement, immediate possession. Four room duplex with 2-room and 4-room house on same lot, all furnished, \$4,500. Four room duplex on S. Barnes, hardwood floors, \$3,000. Two room house, Tule St., \$1,000. Eight room duplex with two baths, \$5,750. W. Francis. Five room house E. Francis, \$3,500. Four room stucco with three room porch, large corner lot, N. Russel cash offer. Call me if in the market to buy, sell or exchange.

FOR SALE: Four room house, hardwood floors, double garage. Two work shops. Immediate possession. 816 N. Warren. Phone 1406.

Swanky home in north part of Pampa, two baths, four furnaces, dining room and front room, fully carpeted. Immediate possession. Call 1831. J. E. Rice.

GOING TO SELL AT ONCE—5-room modern home, 3 bedrooms, on pavement. \$2,750 cash. Phone 972J.

Haggard & Braly, Realtors
Duncan Bldg. Phone 909
Four room duplex, two baths, good location. Nice 6-room modern home on Claydon highway, 203 acres and 5-room house. Possession Jan. 1. List with us for quick turnover.

73-Lots
C. E. WARD has 600 sq. ft. lot on Hill St. Or better. Nice residence location. Call 2046.

76-Farms and Tracts
For sale by J. E. Rice. 320 acre farm, all in cultivation. Good well, four miles east of Pampa. Call 1831.

Lee R. Banks, Realtor, 1st National Bank Bldg. Phone 52-388
13-room house, with 3 baths, has four Apts. also sleeping rooms. 3 Apts. furnished, and 1 Apt. unfurnished. Income property, \$127.50 Priced \$28,000. 6-room duplex on Gray St. Both sides modern, hardwood floors, double garage, \$2,500.00 loan.

8-room house on Charles St. \$11,000. 7-room house on E. Francis, \$6,500. 5-room house, two car garage, \$4,200. 4-room house on front, and one four-room furnished house on back of lot. Gray St.

2 lots 50x125 ft on east Francis, \$750. 3-room modern house on N. Hobart, \$3,000. I would like to have a list on your 3, 4 and 5 room houses.

OR SALE: 150 acres sandy land farm four miles south of Wheeler on pavement. Good well of water and windmill, fair improvements. See or write C. C. Hullman, Wheeler, Texas.

Section of good improved Hemphill county land; 200 acres farm, balance fine grass. Will sell cattle and farming equipment with land. Stone - Thomason, 119 1/2 W. Kingsmill, Ph. 1766

C. H. Mundy, Phone 2372
For Farms and Ranches.

Four-section ranch, 550 acres in cultivation, light improvements, \$12,500 per acre. Well watered, near Borger, Okla., 3,240 acre ranch near Sweetwater, Okla., \$10 per acre, light improvements, 100-acre wheat farm close to Pampa. See me for other excellent buys.

77-Property To Be Moved
LOVELY eight room home, two baths, hardwood floors, new garage, trees, shrubs, to be moved Call 826.

79-Real Estate Wanted
WE CAN sell your house if it is reasonably priced. Stone and Thomason.

Gertie Arnold, Room 3, Duncan Building, Phone 758
List your property with me for quick sale.

80-Automobiles
FOR SALE: Model A roadster, rebuilt motor. Price \$115 (below OPA ceiling). White 1935 S. Barnes.

FOR SALE: '37 Deluxe Coupe, OPA ceiling price \$385. See at Yates Tourist Court.

WILL TRADE for cheaper car 1941 Ford coupe. See Cullum and Guyton, Cotto Plant, 2 1/2 miles east of Lefors.

81-Trucks
FOR SALE: 1941 Ford V-8 dump truck with 2-speed axle and 1942 Dodge dump truck. Also one Model K Allis-Chalmers tractor. 621 S. Russell, Ph. 2036-W.

84-Accessories
Batteries!
Just received new shipment
Brown - Silvey
105 N. Hobart Phone 588
Pampa Garage and Salvage
New rebuilt Ford, Mercury, Lincoln and Chevrolet motors. New and used parts for all makes. Guaranteed repairs work.

808 W. Kingsmill, Ph. 1661
Notice, For Sale
Ford Radiator Grills, '37 to '48—Wanted To Buy
Used water pumps, used Ford distributors, used carburetors, used generators and starters. Highest prices paid for junk iron, brass and copper.

C. C. Matheny, Tires, Salvage
318 W. Foster Phone 1051

Million Dollar Suit
Is Filed at Houston
HOUSTON, Dec. 21—(AP)—Suit for \$1,433,000 in alleged unpaid royalties, plus penalties and attorney's fees of \$75,000, was filed here yesterday against the Tod-Houston shipbuilding corporation by 326 former employees.

The district clerk's office said that it was the largest such suit ever filed locally under the fair labor practices act, which permits workers to sue for double the amount of overtime pay allegedly withheld.

The workers, all former fomen, said in their suit that although they were docked for time missed on an hourly basis, they did not receive additional pay for overtime work.

Company officials made no immediate statement.

Churchill Considers Visiting in Texas
LAREDO, Texas, Dec. 21—(AP)—Winston Churchill, who will visit the United States early in 1946, is considering an invitation to attend the Washington birthday celebration here, his secretary told James E. Kazen, president of the celebration, by telephone yesterday.

Read Classified Ads in the News

NEWS OF OUR MEN AND WOMEN IN UNIFORM

CONTROLS MALARIA IN INDIA
CALCUTTA, India. — Lieut. Francis W. Merriman, brother of Miss Florence Merriman of Pampa, is currently serving with the base surgeon's office of base section, India-Burma theater, as malaria control officer.

The base surgeon's office is responsible for the prevention and control of diseases and the maintenance and conservation of the health and physical fitness of the troops of base section. In addition, it is responsible for the supervision of the sick and evacuation of the sick and wounded from a large portion of India.

Previous to his entering the army in January, 1944, Lieutenant Merriman, a graduate of Texas Technological college, was a civil engineer employed by H. N. Roberts & Co., of Lubbock, Texas. His unit has been most successful in combating the many widely prevalent diseases in India, especially in the prevention of food and water borne diseases (dysentery and cholera) and all mosquito borne diseases (malaria, dengue fever and papapatoxi fever) and in the control of venereal disease.

RETURN FROM PACIFIC
Cpl. James H. Smith has arrived in the States after 20 months in the Southwest Pacific area with the 347th fighter squadron of the 13th air force. He has seen service on Guadalcanal, New Guinea and the Philippines.

His brother, 1st Petty Officer Robert A. Smith, served 21 months in the same area, returned to the States in June, and is now stationed at Norman, Okla. Both fellows were formerly employed by the Daily News.

Second Lieut. George B. Lilly of Laketon was honorably discharged from the army at the Amarillo air force separation base. He entered service Aug. 5, 1942 while employed as a railroad crew dispatcher with the Union Pacific railroad company. While in service he was a night "Black Widow" fighter pilot. His parents, Mr. and Mrs. J. W. Lilly, reside at Hollywood, Calif.

Pvt. Ralph C. Scheff, 117 S. Wynne, has been separated from military service at the Fort Bliss center.

T/S Leonard N. McNally was discharged from the service at the Fort Lewis, Wash., center on Dec. 10.

Rex R. Russell, former sergeant, son of Mr. and Mrs. C. Russell and husband of Tully Beth Russell, has been separated from the army air forces at the San Antonio AAF personnel distribution command.

Home W. Quarles, 20 SM/c, was processed for discharge at the Mare Island, Calif., submarine base. He saw action aboard the submarine USS S-30. His wife, Mrs. Bessie Ray Quarles, lives at Fillmore, Calif.

Lieut. Harold L. Halsam, has been discharged from the naval service at the Jacksonville, Fla., naval air station.

Veterans Will See Game in Owl Bowl
HOUSTON, Dec. 21—(AP)—Twenty-five veterans from McCloskey general hospital, Temple, with their wives and sweethearts will see the Owl Bowl game here Jan. 1 from a special box.

They will be the guests of the sports writers activities committee.

Man Goes Wild, Kills Woman
MARSHALL, Texas, Dec. 21—(AP)—A Negro man who ran amuck at the Texas and Pacific railway hospital yesterday, fatally stabbing a woman and knocking a hospital orderly, was killed by two policemen, C. M. Exell, chief of police, said.

Positive identification of the man was not announced immediately.

Calmar Connor, about 30, of Marshall, died of a stab wound in the chest and Frank Spencer, hospital orderly, received a stab wound above the heart while trying to rescue her, Dr. C. C. Davis, physician in charge of the hospital said.

Dr. Davis said the police shot the Negro as he advanced toward them brandishing a knife and ignoring their pleas to drop it.

Armed Guards Placed On English Trucks
LONDON, Dec. 21—(AP)—As a precaution against hijackers working for the black market, armed guards have been assigned to Scottish trucks bound for London with cases of whiskey—which now sells for \$15 to \$21 a quart in this capital.

SHORT ON STAMPS
EAST ROCHESTER, N. H., Dec. 21—(AP)—Here's a shortage you can't lick.

The post office reported itself out of postage stamps.

Officials said heavy Christmas mail exhausted both the regular and an emergency stamp supply.

SERVICE
Any Make Washer, Electric Iron or Motor—Any Hour!
Bradshaw Washing Machine Co.
438-N. Carr Phone

Better Break For Veterans Seen in Bill

By JAMES MARLOW
WASHINGTON, Dec. 21.—(AP)—War veterans get a better break. Congress has widened their government benefits. President Truman is expected to sign all this into law shortly.

The benefits include education, loans, amputees, disabled veterans, and any future bonus. The big changes are in the so-called "GI Bill of Rights." Here are the main ones:

1. Amputees—the veterans administration (VA) had no authority under the old law to pay a veteran's travel expenses when through difficulty with his artificial limb—he had to go to a veterans' center for a new limb or more training with the one he had. As soon as the bill becomes law VA can pay the travel expenses.
2. Education—to get schooling at government expense, a veteran had to start it within two years after his discharge from the service or two years after the war's official end, whichever was later. Now he can wait four years to start.
3. Education—to get schooling at government expense, any veteran who entered the service after he was 25 had to prove his education had been interrupted by military service. This is no longer necessary.
4. Intensive courses—VA pays up to \$500 a year for a veteran's education. It used to do it this way: It figured a year's school term at nine months. It broke down the payments to so much a month. Now VA will pay up to \$500 for a short intensive course even if—although this would be a rare case—it was for only one week.
5. There had been no provision for government pay for correspondence courses except extension courses at regular universities. Now the government will pay for correspondence courses, within certain limits.
6. Pay at school—subsistence pay (money for living expenses) for a veteran going to school was \$50 a month, if single; \$75 if married. Now it's \$65, if single; \$90, if married.
7. Disabled—Vocational and rehabilitation training for service-disabled veterans had to be completed within six years of war's end. Now it is nine. The limit on such a course of training was four years. Now it can run longer, depending on VA's decision.
8. Living allowance for disabled veterans was also increased.
9. Loans—the VA guarantees loans to veterans by banks, individuals or accredited lending agencies. He

Mrs. Beatrice Green Succumbs at Home

Funeral services will be held Saturday morning at 10 o'clock for Mrs. Beatrice Green, who died at her home, 10 miles northeast of Pampa, at 9:10 yesterday morning.

Mrs. Green was born March 22, 1901 in Finley, North Dakota. She was a member of the Zion Lutheran church, where the services will be held.

Besides her husband, V. C. Green, she is survived by a daughter, Iva June; two sons, Robert Lynn and Clayton Vernon; her mother, Mrs. Inger Hagkin, Luverne, North Dakota; three sisters, Mrs. Gertrude Woodland, Calif., and Mrs. S. M. Heburn, Sacramento, Calif.

Funeral services will be conducted by the Rev. Rufus Young, pastor of the Zion Lutheran church and burial will be in Fairview cemetery under the direction of Duennrich armchapel, funeral home. Pallbearers will be Wood Osborne, A. Johnson, B. C. Rogers, Robert Montgomery, W. P. Ernest and J. F. Shroedel.

Kimmel Didn't Follow Orders Says Admiral

WASHINGTON, Dec. 21.—(AP)—Adm. R. K. Turner asserted today that Adm. Husband E. Kimmel did not comply with "entirely clear" orders and expressed the opinion that if Kimmel had done so losses at Pearl Harbor would have been cut "materially."

Turner also told a senate-house committee investigating the Dec. 7, 1944, disaster that the Pacific fleet under Kimmel had been prepared for "just such an attack" and was "ready for war."

The navy department, Turner said, had given Kimmel "perfectly specific and entirely clear" orders to take the necessary measures against a Japanese attack.

"Did Kimmel comply, in your opinion?" asked Vice Chairman Cooper (D-Tenn).

"He did not, in my opinion, said Turner.

Turner, as chief of the navy war plans division had prepared a Nov. 27, 1941 "war warning" message for Pacific commanders.

If Kimmel had complied, pursued Cooper, "would the disastrous effects not have occurred or have been materially reduced?"

"I think they would have been materially reduced," Turner replied, "and there was a good chance we could have inflicted considerable damage on the Japanese fleet."

Turner said that the navy war plans division had prepared a Nov. 27, 1941 "war warning" message for Pacific commanders.

Beginning Jan. 15, home builders who qualify will be assigned a so-called "H.H." rating for these materials.

Ratings will be awarded either to individual veterans who wish to build for themselves, or to builders desiring to erect one or more buildings.

Housing already under way may be brought within the program, Small said, if it meets the \$10,000 price limit, is offered first to veterans, and meets other standards outlined in the regulation.

All applicants for priorities assistance in obtaining materials must agree to make the house available to veterans during the period of construction and for 30 days thereafter.

At the conclusion of that period it may be sold or rented to a non-veteran at the small scale price or rental applicable to veterans.

Building materials covered by the new regulation are:

- Common and face brick, clay sewer pipe, structural tile, gypsum board, gypsum lath, cast iron soil pipe and fittings, cast iron radiation equipment, both tubs, lumber and millwork.

Common and face brick, clay sewer pipe, structural tile, gypsum board, gypsum lath, cast iron soil pipe and fittings, cast iron radiation equipment, both tubs, lumber and millwork.

Common and face brick, clay sewer pipe, structural tile, gypsum board, gypsum lath, cast iron soil pipe and fittings, cast iron radiation equipment, both tubs, lumber and millwork.

A League Is Made



With aerial view of Yankee Stadium as backdrop, Maj. Dan Topping, center, quits National Football League, in which he owned Brooklyn franchise, and signs agreement to put New York club in new All-America Conference. Owner John L. Keeshin of Chicago club and Commissioner Jim Crowley look on with bland satisfaction.

Program Held Tonight At Nazarene Church

Tonight the Church of the Nazarene will hold a program and party with a Christmas tree and treats for every child present, at 7:30 p.m. Sunday Bible school will be held as usual at 9:45 a.m. A Christmas message will be brought by the pastor, A. L. James, at 11 p.m. on the subject, "The Uniqueness of Christ."

Federal Housing

(Continued from page 1)

that the federal housing administration will handle applications for these through its 52 field offices.

Beginning Jan. 15, home builders who qualify will be assigned a so-called "H.H." rating for these materials.

Ratings will be awarded either to individual veterans who wish to build for themselves, or to builders desiring to erect one or more buildings.

Housing already under way may be brought within the program, Small said, if it meets the \$10,000 price limit, is offered first to veterans, and meets other standards outlined in the regulation.

All applicants for priorities assistance in obtaining materials must agree to make the house available to veterans during the period of construction and for 30 days thereafter.

At the conclusion of that period it may be sold or rented to a non-veteran at the small scale price or rental applicable to veterans.

Building materials covered by the new regulation are:

- Common and face brick, clay sewer pipe, structural tile, gypsum board, gypsum lath, cast iron soil pipe and fittings, cast iron radiation equipment, both tubs, lumber and millwork.

Common and face brick, clay sewer pipe, structural tile, gypsum board, gypsum lath, cast iron soil pipe and fittings, cast iron radiation equipment, both tubs, lumber and millwork.

Common and face brick, clay sewer pipe, structural tile, gypsum board, gypsum lath, cast iron soil pipe and fittings, cast iron radiation equipment, both tubs, lumber and millwork.

Common and face brick, clay sewer pipe, structural tile, gypsum board, gypsum lath, cast iron soil pipe and fittings, cast iron radiation equipment, both tubs, lumber and millwork.

Mainly About Pampa and Her Neighbor Towns

Jerry C. Stroup, AMM2-c, and wife arrived this morning from the Panama Canal Zone where he is stationed on a 30-day leave, to spend the holidays with his mother, Mrs. Jessye Stroup, and family. Jerry was last in Pampa in February, 1942.

Those formal should be kept ready for the busy holiday season. We'll do them just right. Call 480.

Cpl. Glen H. Day called his parents, Mr. and Mrs. Alvin Day, 817 N. Russell, yesterday from Camp Kilber, N. J., on his arrival in the States. He hopes to be processed directly at Camp Fannin, Tyler, where he will be met by his parents en route to Dallas, Gladewater and Mexia to visit relatives and friends over the holidays.

Gala Christmas Dance, Christmas Eve at Southern club. Pinky Powell orchestra, \$1.20 per person. Including tax, 9 'til 9.

Mrs. Jewell Fore, daughter, Virginia and Grandson Trooper Foulter, are visiting from Pasadena, Calif., in the home of her parents, Mr. and Mrs. J. A. Poole for the holidays.

Gala Christmas Dance, Christmas Eve at Southern club. Pinky Powell orchestra, \$1.20 per person. Including tax, 9 'til 9.

LL (g) Robert W. Curry is home after 16 months overseas duty. He arrived Wednesday, expects to leave January 15 for a discharge from a New Orleans separation center. Lt. Curry was formerly employed by the Cabot Co.

You will have to buy more E Bonds if Gray county meets its quota.

Mrs. Clara Zabish of Amarillo, former teacher in Pampa high school, is visiting her sister, Mrs. Teds Slonecki. They will spend the holidays with their parents in Gerry, Okla.

For your dance or dinner party, contact Ken Bennett. Phone 1100.

The Pampa public library will close for the Christmas holidays from Saturday noon until Wednesday morning. Mrs. Evelyn Todd, librarian, announced today.

24 hour service. City Cab. Ph. 441.

William Gilstrap, CRM, son of Mr. and Mrs. O. H. Gilstrap, arrived yesterday from Camp Crowder, Mo., on a ten-day leave.

Sewer Project

(Continued from page 1) standing thoroughly and found them to be absolutely reliable in every respect, including, financially, in integrity and in past results," he said.

The firm will begin bringing its equipment here as soon as possible, Enix said today. Equipment will include a huge ditching machine which will penetrate a depth of up to 36 feet with extensions.

It was not revealed how much labor will be used on the project but Enix indicated that the company plans to use as much local labor as possible.

It was also estimated that the construction job will require about 120 working days, exclusive of days to weather or other conditions.

The new outfall line will be buried to a depth of about 27 feet in the deepest sections and will be 31,500 feet, or 5.96 miles in length.

11,000 feet of the length will be 18-inch vitrified tile sewer pipe; 12,900 feet will be of 15-inch pipe and other sections will range in sizes down to 6-inch pipe.

There will be 61 manholes in the line and 10 sewer manhole drops.

The line will run from the disposal plant, southwest to the swimming pool, across Lowry street west of the airport, southeast to the lift station near the Panhandle Packing plant and southwest to the southeast corner of the city, running along Malone street to Barnes.

The new line, generally, will be laid 20 to 30 feet from the old line so as to avoid cave-ins, City Engineer George Thompson said.

Instead of laying the new line up the alley south of Malone street, it will be laid down the street itself because there is no additional room in the alley.

New Use May Be Found for Old Military Posts

AUSTIN, Dec. 21.—(AP)—Chairman Weaver Baker of the board of control announced today that the attorney general has given the board authority to proceed on development of abandoned military establishments to care for pressing eleemosynary needs.

The essence of an opinion handed down today is that the board may legally spend unused balances of its appropriation for reconvertng, repairing and if necessary, adding buildings to several army installations it has been dickerng for.

More than \$1,000,000 is available for the program if that much is needed, Baker said. He said the board would redouble its efforts to obtain possession of several former military installations it needs.

These include Fort Ringgold near Rio Grande City, which the board hopes to use as a tubercular hospital. This project has met some opposition which Baker said he hoped could be eliminated in view of the pressing need for an institution of this type.

Another is, the former prisoner of war camp at Mexia, which the board wants to use as a school for handicapped children who are wards of the state. Another is the former prisoner of war camp at Brady, which would be used as a juvenile training school for Negro girls.

He said he had been informed that Fort McIntosh at Laredo has not yet been declared surplus, and that if it is, several federal government agencies might claim priority for its use. The board had hoped it might be reconverted into a tubercular hospital.

County Ginning
Prior to Dec. 1, 1,198 bales of cotton were ginned in Gray county as compared with 853 bales for the crop of 1944, as reported by the department of commerce, bureau of census.

Erosion is a costly robber.

Patton Death

(Continued from page 1) about the deterioration in his condition. As Patton's life ebbed away, his heart became affected.

Shortly before his death, Maj. Gen. A. W. Kenner, chief of army surgeons in Europe, left European headquarters in Frankfurt for Patton's bedside.

Only two minutes before the general died, the 130th station hospital issued this bulletin on his condition:

"General Patton's condition is considered serious. There has been a pulmonary complication which has resulted in an accumulation of secretions in the lungs thus embarrassing respiration. Paralysis of one side of the diaphragm in the intercostal resulting from the spinal cord injury has made it difficult to get rid of these secretions by cupping. As a result of the pulmonary congestion, the heart has become embarrassed; however, the pulse is strong and the temperature only slightly above normal. The chief medical consultant for the theater has been in attendance."

The pulmonary complications developed from bronchial secretions yesterday when the colorful general was well on the way toward recovery. He was injured near Mannheim when his automobile and an army truck collided.

There is a difference in cleaning. Try us and be convinced.

BoB Clements
114 W. Foster Phone 1342

LOANS
PLAINS FINANCE CO.
H. L. Phillips
Room 8, Duncan Bldg. Ph. 1205

● EGG NOG MIX ●
Non-Alcoholic
65c Quart
AT YOUR GROCER
PLAINS CREAMERY
315 E. Atchison Phone 2204

Christmas Jewelry Gifts

LAST MINUTE SUGGESTIONS

DIAMONDS

Solitaires and Wedding Sets

COMPACTS American, Elgin and Wadsworth

BILLFOLDS FOR MEN \$3.50 up

NEW TIE SETS \$2.00 up

MASONIC AND ODD FELLOW RINGS FOR MEN

Large Selections Men's Watch Chains \$3.50 and up

Men's Diamond Initial RINGS

COMPLETE STOCK CHILDREN'S JEWELRY

Leder's Jewelry

NEXT DOOR TO THE LANORA

Our Prices are FAIR to All

Because of the professional atmosphere that pervades our establishment, people sometimes conclude that we must be "high-priced." But actually, it costs no more—often less—to have prescriptions compounded here. That's because of our large volume and low overhead. So why not bring your next prescription here to Prescription Headquarters?

Richard Drug
107 Kingsmill
Phone 1240.

NURSES HOME
HOUSTON, Dec. 21.—(AP)—A million dollar building permit was issued yesterday for a new nurses home at Memorial hospital here.

Women should salute the flag by placing their right hand over their heart.

MAGNETO REPAIRING
Complete Stock of Parts and New Magnets
Also KOHLER LIGHT PLANTS BRIGGS & STRATTON ENGINES AND PARTS ALL WORK GUARANTEED
Radcliff Bros. Electric Co.
Phone 1220 Pampa 517 S. Cuyler

Big Three
(Continued from page 1)

public interest here was concerned, for Stalin in the eyes of millions of Soviet citizens is regarded as the greatest of all Russians.

It was evident at a reception given last night, as at earlier social functions, that the three foreign ministers were on extremely cordial terms. They drank a round of toasts to the friendship and collaboration of their three countries, and appeared to be in a jovial mood.

During the reception, Molotov approached Byrnes and said in Russian: "I suggest we go in and have something to eat and drink."

"What?" asked Byrnes, not quite catching the Russian translation.

"He says follow him," interrupted U. S. Ambassador W. Averell Harriman.

"Tell him I have been following him around up to now, why shouldn't I keep on," Byrnes said laughing.

MacArthur
(Continued from Page One)

formation "from a reliable and honest source and I still consider it both reliable and honest."

Tighe, in the broadcast which drew the headquarters dental statement, set forth these reports:

1. Russia wanted to send in an army of occupation to Japan; MacArthur insisted on only a division.
2. Russia wanted to occupy the northern island of Hokkaido, which is nearest Siberia; MacArthur suggested Kyushu, leaving American forces on Honshu and Hokkaido in between the Russians and Siberia.
3. MacArthur reportedly told the U. S. state department he would resign rather than allow Russia any further participation on occupation affairs.

There's added enjoyment in giving the Finest!

Give the finest Three Feathers bottled in 63 years

"First Among Fine Whiskies"

Blended Whiskey 86 proof. 65% American grain neutral spirits. Three Feathers Distributors, Inc., New York

Today's Schedule Of Redeployment

By The Associated Press
Twenty-four troop carriers, with 37,000 American servicemen, are scheduled to arrive today at three east coast ports, while at Pacific points more than 15,700 troops are due to embark from 24 vessels.

Ships and units arriving:
George Washington from Le Havre, elements of 566th signal air warning battalion, 3915th, 3934th and 3959th quartermaster gas supply companies; 602nd, 748th field artillery battalions; 956th, 4889th quartermaster service companies; 593rd, 540th quartermaster salvage replacement companies; 248th engineer combat battalion, 659th port company; 599th quartermaster laundry battalion; 68th anti-aircraft artillery group; 3rd cavalry group; 847th engineer battalion aviation; advance detachment 82nd artillery division; 29th field hospital; 593rd ordnance ammunition company; 178th general hospital detachment; 168th general hospital.

Zanesville Victory from Marseilles, personnel of 143rd anti-aircraft artillery gun battalion, type A; anti-tank company companies D and H, 355th infantry regiment; Laocia Victory from Le Havre, elements of the 390th engineer regiment and 54th field hospital.

Thomas Johnson from Le Havre, due yesterday, 3218th and 4480th quartermaster service companies; 3907th quartermaster truck company; 3918th quartermaster gas supply company.

Stephen Douglas from Marseilles,

27th photo reconnaissance squadron; headquarters and headquarters battery, 194th field artillery battalion.

King S. Woolsey from Marseilles, 50th field artillery battalion.

Caleb Strong from Marseilles, 2918th quartermaster truck company; companies A and K, 357th infantry regiment.

Miscellaneous troops on following:
Robert Stockton from Le Havre, John Dickinson from Marseilles, Santa Cecilia from Naples, S. M. Fabcock from Antwerp, due yesterday, Pittsburgh Seam from Antwerp, James Sullivan from Newport, England.

At Newport News—
Ponce De Leon from Le Havre, due yesterday, 152nd station hospital.

Francis Lee from Marseilles, company D, 141st infantry regiment; company B, 413th infantry regiment; 9th mechanized cavalry recon company recon troop.

Thomas Sim Lee from Lephorn, 328th ordnance depot company.

Wooster Victory from Marseilles, headquarters and headquarters company, 141st infantry regiment; and following units of 143rd infantry regiment—headquarters and headquarters company, Cannon company, anti-tank company, headquarters company of first battalion companies C, D, and E, and headquarters company of 3rd battalion.

Excelsior from Marseilles, company E, 143rd infantry regiment; and following units of 141st infantry regiment—anti-tank company, headquarters companies of 1st, 2nd and 3rd battalions and companies E, F, H, M. Also following 357th infantry regiment units—cannon company and headquarters companies, 1st and 3rd battalions.

Don Aair Seam.

At Boston—
Sea Scamp from Marseilles, due yesterday, 104th, 107th evacuating hospitals; 157th, 254th engineer combat battalions; 55th general hospital; 31st mobile railway squadron; 1954th quartermaster truck squad.

Henry Gibbins from Marseilles, due yesterday, including 13th field hospital; headquarters and headquarters battery, 207th anti-aircraft

artillery group; 953rd field artillery battalion; 94th engineer general service regiment.

Haverford Victory from Le Havre, 2298th engineer combat battalion and 424th engineer dump truck company.

Ward hunt from Le Havre.

At Portland, Ore.—
Rickaway from Samar.

At Los Angeles—
Cabinta from Hollandia.

At San Francisco—
Miscellaneous personnel on following: Motery from Manila, Hunter Liggett from Guam, ATU from Leyte, Zaurak from Shanghai, Copahue from Pearl Harbor, Circe from Japan, Wantuck from Pearl Harbor, Polana from Guam, Plunkert from Adak, LST 168 from Pearl Harbor, Lightning, LST 615, Beazon Smith, John Sedgwick, LST 762, Cinnamon, Torchwood, Silver Bell and Melucta.

At Seattle, Wash.—
Miscellaneous troops on following: Denali from Alaska, due yesterday; USS Broadwater from Saipan.

At Tacoma, Wash.—
USS Missoula from Okinawa.

Market Briefs

WALL STREET
NEW YORK, Dec. 20.—(AP)—The direction generally was downward in today's stock market although dealings were among the slowest of the past six months and real weakness a rarity.

Transfers approximated 800,000 shares. In the declining contingent the greater part of the proceedings were U. S. Steel, Bethlehem, Chrysler, General Motors, Santa Fe, Great Northern, St. Paul, Goodrich, Montgomery Ward, Douglas Aircraft, United Aircraft, Air Reduction, American Telephone, Consolidated Edison, Anconada, Du Pont, General American Investors, Allied Chemical, Schenley and Hiram Walker. Absent at intervals were American Water Works, Baltimore & Ohio, Cerro de Pasco, Consolidated Vultures and General Electric.

Bonds were narrow.

NEW YORK STOCKS
By The Associated Press

Am Airlines	2	84 1/2	73 1/2	73 1/2
Am Wagon	7	188 1/2	187 1/2	187 1/2
Amoco	17	39	29 1/2	29 1/2
Amoco T&E	17	44 1/2	43 1/2	43 1/2
AT&T	7	108 1/2	106 1/2	101
Aviation Corp	71	9 1/2	9 1/2	9 1/2
Beth Steel	71	9 1/2	9 1/2	9 1/2
Brant Air	10	9 1/2	9 1/2	9 1/2
Brantiff Air	4	33 1/2	33 1/2	33 1/2
Chrysler Corp	31	131 1/2	130	130 1/2
Cont Motors	20	48 1/2	47 1/2	47 1/2
Cont Oil Del	7	49 1/2	49	49
Curlew Wright	8	7 1/2	7 1/2	7 1/2
Freeport Sulph	2	49 1/2	49 1/2	49 1/2
Gen Elec	24	47 1/2	46 1/2	46 1/2
Gen Motors	40	71 1/2	70 1/2	70 1/2
Goodrich (BF)	5	69 1/2	69 1/2	69 1/2
Greyhound Corp	6	33 1/2	32 1/2	32 1/2
Hammer	4	61 1/2	61 1/2	61 1/2
Houston Oil	5	22 1/2	20 1/2	20 1/2
Int Harv	3	94 1/2	94 1/2	94 1/2
Int Harv	3	94 1/2	94 1/2	94 1/2
Lockheed	8	41 1/2	41	41
Mo Kan Tex	7	14 1/2	14 1/2	14 1/2
Mont Ward	7	72 1/2	72	72
Natl Gypsum	1	23 1/2	23 1/2	23 1/2
No Am Aviation	27	14	13 1/2	13 1/2
Ohio Oil	35	22 1/2	21 1/2	21 1/2
Packard Motor	173	10 1/2	10 1/2	10 1/2
Pan Am Air	56 1/2	25 1/2	24 1/2	24 1/2
Panhandle P&R	133	13 1/2	13 1/2	13 1/2
Penney (JC)	2	147 1/2	147 1/2	147 1/2
Phillips	9	58 1/2	57 1/2	57 1/2
Plym Oil	8	24 1/2	24 1/2	24 1/2
Pure Oil	27	23 1/2	22 1/2	22 1/2
Radio Corp Am	63 1/2	17 1/2	16 1/2	16 1/2
Son Pac	16	59 1/2	58 1/2	58 1/2
Standard Oil	12	48 1/2	48	48 1/2
Standard Oil NJ	18	41 1/2	41 1/2	41 1/2
Texas Co	9	59 1/2	59	59
Tex Gulf Sulph	1	50 1/2	50	50
Tex Pac C&O	11	28 1/2	27 1/2	27 1/2

CHICAGO PRODUCE
CHICAGO, Dec. 20.—(AP)—(USDA)—Potatoes: Arrivals 29, on track, 63, total U. S. shipments 642.

Supplies very light. Demand moderate, market firm to slightly stronger. Idaho Russett Burbanks, U. S. No. 1, \$3.40-\$3.50; North Dakota Cobblers, commercial, \$2.25; Pontiacs, U. S. No. 1, \$2.35.

KANSAS CITY LIVESTOCK
KANSAS CITY, Dec. 20.—(AP)—(USDA)—Cattle: 4,000; calves 300; good slaughter steers 15.25-16.25; good and choice medium weights 15.50; choice 915 lb. mixed yearlings 17.00; heifers mainly medium and good grades 13.25-14.75; medium and good strong weight cows 11.50-12.50; good beef bulls to 12.25; medium and choice slaughter calves and weaners 12.00-14.25; weaners at outside price with odd head weak; around three loads fleshy feeder steers 11.85; most medium and good stockers and feeders 11.50-12.75.

Hogs: 2,500; good and choice 170 lb. and up 14.50; lighter weights 14.35-59; sows mostly 13.80.

Sheep: 1,000; good to choice native lambs 13.75-14.00; good to choice wheat pasture lambs 14.00; some held above 14.25; good to choice yearlings 12.25; good to choice ewes 6.25-50.

FORT WORTH LIVESTOCK
FORT WORTH, Dec. 20.—(AP)—(USDA)—Cattle: 1,600; calves 1,000; slow, early sales steady, mostly on small killer account, some late deals weak; few common and medium slaughter steers and yearlings 9.50-13.50; four loads medium and good 14.00-25; fleshy beef cows scarce, scattered lots 10.50-12.50; most common and medium butcher cows 8.00-10.00; fat calves 12.50-15.00; choice heifers topped at 14.25; common and medium calves 9.00-12.00.

Hogs: 400; active and steady on all weights; good and choice 160 lbs. up 14.50; 100-120 lbs. 13.50; stockers and butcher pigs 10.00-12.00.

Sheep: 4,200; mostly steady on all classes; good and choice fat lambs 12.00-14.00 including 87-95 lb. lambs at 14.00 and

CHICAGO GRAIN
CHICAGO, Dec. 20.—(AP)—The December rice price dipped the full five cents a bushel allowed in a single day's trading when somewhat heavy liquidation orders came into the pit near the close of business today.

Wheat unchanged to 1/2 cent higher than the previous close, December \$1.80 1/2; corn was unchanged at \$1.18 1/2; soybeans were 1/4 to 1/2 cent lower, December 76 1/2-77.

COTTON FUTURES
NEW ORLEANS, Dec. 20.—(AP)—Cotton futures were irregular here today due to holiday covering. Closing prices were steady 25 cents a bale lower to 10 cents higher.

	Open	High	Low	Close
March	24.65	24.67	24.60	24.67
May	24.64	24.64	24.50	24.60
July	24.40	24.40	24.27	24.35
Sept	23.45	23.45	23.31	23.43
Dec	23.28	23.35	23.25	23.35

B-Bid.

NEW ORLEANS COTTON
NEW ORLEANS, Dec. 20.—(AP)—Spot cotton closed steady and unchanged. Sales 2,885. Low middling 19.85; middling 24.35; good middling 24.75. Receipts 5,922, stock 221,446.

CHICAGO GRAIN
By The Associated Press

	Open	High	Low	Close
Dec	1.80 1/2	1.80 1/2	1.80 1/2	1.80 1/2
Jan	1.87 1/2	1.77 1/2	1.77 1/2	1.77 1/2
Feb	1.74 1/2	1.74 1/2	1.70 1/2	1.74 1/2

Cleaner Employees To Have Christmas Party

W. M. Whisnant, operator of Edmondson Cleaners here, will hold a dinner and Christmas party beginning at 7 tonight, at the Country Club. It was announced today.

The Rev. Douglas Carver, pastor of the First Baptist church, will be the guest speaker. Special music and entertainment will be furnished by Mr. and Mrs. Virgil Mott, Miss Irma Francis, and Miss Amy Jo Durning.

About 40 persons are expected to be present.

Out-of-town guests will be Mrs. J. W. Langham who operates the branch Edmondson plant at White Deer; Mr. and Mrs. Buck Durning, who operate the branch plant at Skellytown; and Mr. and Mrs. Ernest H. Eads, Amarillo.

ENJOY "JERRY'S DANCE"
WEST MINOT, Me., Dec. 21.—When Jairus Hilborn, a chieftain memory worker and farmer, 20 years ago he parted, earned money for 26 annual parties, known here as "Jerry's Dance."

At the 26th party last night attended by 100 villagers the money stopped for a moment in Jai memory and for a reading of will clause establishing the dance fund. His widow was hostess.

Read the Classifieds in The News

ATTENTION PAINTERS
Just Arrived
Large Shipment of Neocel the Nylon Bristle PAINT BRUSH
All Sizes. Exclusive
Pittsburg Paint Dealer
Plate Glass, Mirrors, Auto Glass
NOW AVAILABLE
CIRKLAIR GAS HEATERS
THOMPSON GLASS & PAINT
119 W. Foster Phone 1
Watch for Formal Opening

KPDN 1340 on Your Dial

FRIDAY
6:00—The Publisher Speaks.
6:15—Tom Mix—MBS.
6:45—Dance Time—MBS.
6:55—Theater Page.
7:00—Captain Midnight—MBS.
7:00—News Report—MBS.
7:00—Fulton Lewis Jr.—MBS.
7:15—Rhyme and Reason—MBS.
7:15—Frank Sinatra—MBS.
7:45—Inside of Sports—MBS.
7:50—Hercule Poirot—MBS.
7:50—Freedom House Matinee—MBS.
8:00—Dance Music—MBS.
8:15—Real Stories from Real Life—MBS.
8:30—Spotlight Bands—MBS.
9:00—So You Think You Know Music—MBS.
9:30—Meet the Press—MBS.
10:00—All the News—MBS.
10:15—George Sterney's Orch.—MBS.
10:30—Emil Coleman's Orch.—MBS.
10:55—Mutual Reports The News—MBS.
11:00—Goodnight.

MAID MARION

Marion-Claire, soprano star of the popular "Chicago Theatre of the Air," heard Saturday-evening Mutual (6:30-9:00 p.m.), rehearsals under the direction of Henry Weber, conductor of the symphony orchestra and chorus.

SATURDAY
7:00—Yawn Patrol.
7:45—Extension Prog.
8:00—All Request Hour.
8:30—All Request Hour.
9:00—News Report—MBS.
9:15—Southern Harmonizers—MBS.
9:30—Rainbow House—MBS.
9:45—Rainbow House—MBS.
10:00—Billy Reppard News—MBS.
10:15—Dance Music.
10:30—Lance and the Lost—MBS.
11:00—House of Mystery—MBS.
11:30—J. L. Swindle—MBS.
11:45—Farmer's Market—MBS.
12:00—Opry House—MBS.
12:15—Opry House—MBS.
12:30—Opry House—MBS.
1:00—Hal Aloma's Orch.—MBS.
1:30—George Sterney's Orch.—MBS.
1:45—Wishful Falls vs. Highland Park.
4:30—The Publisher Speaks.
5:00—Gray Gordon's Orch.—MBS.
5:15—Special Program—MBS.
5:30—Hawaii Calls—MBS.
6:00—Sinfonietta—MBS.
6:15—Sinfonietta—MBS.
6:30—Arthur Hale—MBS.
6:45—Tom Harmon—MBS.
7:00—The Whisper Man—MBS.
7:15—The Whisper Man—MBS.
8:00—Leave It To The Girls—MBS.
8:30—Break the Bank—MBS.
9:00—Chicago Theatre of the Air—MBS.
10:00—Hal Aloma's Orch.—MBS.
10:15—Michael Zarin's Orch.—MBS.
10:30—Charlie Solovak's Orch.—MBS.
10:55—Mutual Reports The News—MBS.
11:00—Goodnight.

Tonight on Networks
NBC—7 Paul Lavalle Concert, New Children's Concert; 7:30 Duffy's Tavern; 8:30 Waltz Time; 9 Mystery Theater; 9:45 Rep. L. L. Ludlow on "Our Foreign Policy"; CBS—5:30 Ginny Simms and Ronald Colman; 7:30 Kate Smith in "The Small One"; It Pays To Be Ignorant; 8:30 The Weststers; 9 Moore and Donaghy; ABC—7 Blind Dates; 7:30 This Is FBI; 8 Famous Jury Trials; 9 Bout, Tony Janiro vs. Umberto Zavala; MBS—8 Hercule Poirot, Detectives; 7:30 Freedom of Opportunity, Victor Herbert; 8:30 Bob Crosby Band; 9:30 Meet the Press, Senator Wheeler on "America's Foreign Policy."

Saturday on Networks
NBC—9:30 a.m. Rockefeller Center Carols; 11:30 a.m. Atlantic Spotlight with Bing Crosby; 1 British Children and American Foster Parents; 1:45 Xmas on Troopship in Pacific; 2 Louisville Philharmonics; 3:30 Xmas Carols; T Life of Riley; 8 Barn Dance; CBS—8:15 a.m. Xmas Shopping in England; 2:30 p.m. Carole from Utica; 4 Philadelphia Orchestra Xmas Concert; 5:15 People's Platform "Moscow Conference and Peace"; 6 Hilda Hayes in "A Child Is Born"; 8:45 Saturday Serenade; ABC—10:30 a.m. Chester Bowles Talk; 1 p.m. Opera "Lohengrin"; 3:45 Labor USA; 6:30 Dick Tracy; 8 Gang Busters; 10:30 a.m. Land of Lost, New Time; 2 p.m. GI Xmas in Tokyo, recorded; 2:30 Xmas in Scripture and Song; 3 All-Angels Church Choir; 4:30 Only A Year Ago, Service Men; 6:45 Tommy Harmon Sports; 8:30 Break the Bank Quiz.

Association Resumes Session in 1946

FORT WORTH, Dec. 21.—(AP)—The Texas state medical association, which held its last general session in 1942, will resume its annual sessions "with all the trimmings" next May 6-9 at Galveston, Dr. H. F. Connally of Waco, president, announced here yesterday.

Since 1942 only sessions of the house of delegates and regional meetings of sections have been held.

Grass widows of the Sandwich Islands have the names of their ex-husbands tattooed on their foreheads.

TUNE UP FOR WINTER
Before cold winter gets here you'd better have your car double checked at the most critical points of wear.

Check your
• Spark Plugs
• Oil
• Water Pump
• Belts
• Brakes

Wally Service Station
400 W. Foster Phone 1919
Charlie Ford, Prop.

666
USE
Cold Preparations
Liquid, Tablets, Salve, Nose Drop
Caution—Use only as directed!

LADORA TODAY AND SATURDAY
THE AMAZING DRAMA BEHIND THE ATOMIC BOMB!
The House on 92nd Street
with WILLIAM WYLLIE LLOYD NOLAN
"Bus Pests" Puck Chasers NEWS
A 20th CENTURY-FOX PICTURE

REX TODAY AND SATURDAY
BRAZEN BANDITS BITE THE DUST
as Johnny goes into ACTION!
Johnny Mack BROWN
as the **Stranger from Santa Fe**
with Raymond HATCOI Beatrice GRAY
"MYSTERY ISLAND" No. 3
"CALIFORNIA OR BUST"

CROWN Last Times Today
Irene DUNNE Alexander KNOX Charles COBURN
in **OVER 21**
with Jeff DONNELL Loren TINDALL

CROWN SATURDAY ONLY
Comedy! Action!
CODE OF THE PRAIRIE
SMILEY BURNETTE SUNSET CARSON
Jungle Raiders No. 9

PAINTS TOOLS INSULATION WALLPAPER
For Reliable Painters and Paper Hangers
HOME BUILDERS SUPPLY
314 W. Foster Phone 1414

POPULAR BRAND WHISKEY
WINE Case 4-5's \$7.00
GIN Gilbey's, H. Walker \$2.25
Burton's Pints
Imported Champagne. Imported Cognac.
Clover Liquor
817 S. Cuyler Phone 1870

It's here! The most advanced low-priced car in America ... now on display for the first time in this city!

Flash
YOU'LL BE AHEAD WITH
DOYLES WASH CO.
114 S. Frost Phone 13



Tampa News

Published daily except Saturday by The Tampa News, 222 W. Foster Ave., Tampa, Fla. Phone 666—All departments MEMBER OF THE ASSOCIATED PRESS (Full membership). The Associated Press is exclusively entitled to the use for publication of all news dispatches credited to it or otherwise credited to this paper and also the right to make syndication contracts. Entered as second class matter at the post office at Tampa, Fla., under the act of March 3rd, 1879.

SUBSCRIPTION RATES
\$1 CARRIER in Tampa five per week, \$1.00 per month, \$10.00 per annum, \$2.00 per month, \$20.00 per annum, \$15.00 per year. Price per single copy 5 cents. To mail orders accepted in localities served by carrier delivery.

WILL DEATH HAVE A HAND IN YOUR HOLIDAY?

Texans have waited four long years for this Christmas. And, as Channing Pollock said recently, there really has not been Christmas in four years. Real thanksgiving was not in the hearts of the people.

G.I.'s are streaming out of separation centers, homeward bound. Others, already home, are shedding their khaki and blue for civilian clothes. Each passing day is making "home or Christmas" a blessed reality.

Except for one thing—traffic accidents. They are already in the upsurge—as reported from Austin yesterday. Take, for instance, Gray county. Last year and year before, there was not a single highway fatality in this county. There have been two in this county—one man failed to make a curve, and another lost his life here in the city.

The Texas Safety association predicts a traffic death toll of 223 persons and non-fatal injuries to some 2,000 others during the holiday, wintry twelfth month of December.

Yes, if things run true to form—and they usually do—Christmas will be ruined in hundreds of Texas homes by an accident that will take someone's life—and, therefore, enter someone's home.

We have no assurance it will not happen in this county—or this city.

These accidents are especially tragic and ironic at this Christmas season in any year. This year they are doubly so, this year, of all years, we want no price tag that can be avoided.

Journey's end for the returning veteran should be the safety of his fireside. Not futile death on the streets and highways of Texas.

Will death have a hand in your holiday? Isn't it worth a little extra trouble this Christmas—and every Christmas, and everyday—to prevent accidents that bring sorrow and suffering and tragedy?

Then do your level best as a driver to make it "Safe at home" for Christmas!

Common Ground

By R. C. HOILES

"The ultimate effects of shielding men from the results of their folly is to fill the world with fools."—Herbert Spencer.

Indirect Force

Exercise of Force

When we analyze why we have had so much unemployment, why we have such fluctuation in prices, why we are afraid of inflation, why we have been in two world wars, and why we have so much crime, we find that practically all of these troubles come from one source. They come from the misuse of force between men.

Indirect Force

Exercise of Force

Most people are so confused that they believe there is no definite dividing line, no definite circumference limiting the kind of force that can be used to advantage. The only kind of force that is justified in its use by either an individual, a collective group or a nation, is force used to prevent injury being done to the individual, group or nation.

Many people will agree to this statement but are confused when it comes to determining what constitutes injury. And if they do not know what injury is, they are likely to use force when it should be used.

Individuals, peoples or nations are not injured when they are prevented from having rights that others cannot have. They are injured by free and voluntary competition.

Most of our misuse of force is caused so much of our trouble is caused by the use of force from competition; in short, the use of force to get for certain people a position over and above other people. In recent years it is resolved more and more to apply using force to take from one person to help another.

When a people or a nation starts to take from one to give to another they have no impersonal basis of conduct. They have, in fact, an unlimited government of limited force. Force that is not controlled. It is not being used in the only manner it should be used between men.

Now let us consider a few examples of the ways force is misused. Ways which instead of being used to protect people from competition, in short, the use of force to get for certain people a position over and above other people. In recent years it is resolved more and more to apply using force to take from one person to help another.

When a people or a nation starts to take from one to give to another they have no impersonal basis of conduct. They have, in fact, an unlimited government of limited force. Force that is not controlled. It is not being used in the only manner it should be used between men.

Now let us consider a few examples of the ways force is misused. Ways which instead of being used to protect people from competition, in short, the use of force to get for certain people a position over and above other people. In recent years it is resolved more and more to apply using force to take from one person to help another.

When a people or a nation starts to take from one to give to another they have no impersonal basis of conduct. They have, in fact, an unlimited government of limited force. Force that is not controlled. It is not being used in the only manner it should be used between men.

Now let us consider a few examples of the ways force is misused. Ways which instead of being used to protect people from competition, in short, the use of force to get for certain people a position over and above other people. In recent years it is resolved more and more to apply using force to take from one person to help another.

When a people or a nation starts to take from one to give to another they have no impersonal basis of conduct. They have, in fact, an unlimited government of limited force. Force that is not controlled. It is not being used in the only manner it should be used between men.

Now let us consider a few examples of the ways force is misused. Ways which instead of being used to protect people from competition, in short, the use of force to get for certain people a position over and above other people. In recent years it is resolved more and more to apply using force to take from one person to help another.

When a people or a nation starts to take from one to give to another they have no impersonal basis of conduct. They have, in fact, an unlimited government of limited force. Force that is not controlled. It is not being used in the only manner it should be used between men.

Now let us consider a few examples of the ways force is misused. Ways which instead of being used to protect people from competition, in short, the use of force to get for certain people a position over and above other people. In recent years it is resolved more and more to apply using force to take from one person to help another.

When a people or a nation starts to take from one to give to another they have no impersonal basis of conduct. They have, in fact, an unlimited government of limited force. Force that is not controlled. It is not being used in the only manner it should be used between men.

Now let us consider a few examples of the ways force is misused. Ways which instead of being used to protect people from competition, in short, the use of force to get for certain people a position over and above other people. In recent years it is resolved more and more to apply using force to take from one person to help another.

When a people or a nation starts to take from one to give to another they have no impersonal basis of conduct. They have, in fact, an unlimited government of limited force. Force that is not controlled. It is not being used in the only manner it should be used between men.

Now let us consider a few examples of the ways force is misused. Ways which instead of being used to protect people from competition, in short, the use of force to get for certain people a position over and above other people. In recent years it is resolved more and more to apply using force to take from one person to help another.

When a people or a nation starts to take from one to give to another they have no impersonal basis of conduct. They have, in fact, an unlimited government of limited force. Force that is not controlled. It is not being used in the only manner it should be used between men.

Now let us consider a few examples of the ways force is misused. Ways which instead of being used to protect people from competition, in short, the use of force to get for certain people a position over and above other people. In recent years it is resolved more and more to apply using force to take from one person to help another.

When a people or a nation starts to take from one to give to another they have no impersonal basis of conduct. They have, in fact, an unlimited government of limited force. Force that is not controlled. It is not being used in the only manner it should be used between men.

Now let us consider a few examples of the ways force is misused. Ways which instead of being used to protect people from competition, in short, the use of force to get for certain people a position over and above other people. In recent years it is resolved more and more to apply using force to take from one person to help another.

When a people or a nation starts to take from one to give to another they have no impersonal basis of conduct. They have, in fact, an unlimited government of limited force. Force that is not controlled. It is not being used in the only manner it should be used between men.

Now let us consider a few examples of the ways force is misused. Ways which instead of being used to protect people from competition, in short, the use of force to get for certain people a position over and above other people. In recent years it is resolved more and more to apply using force to take from one person to help another.

When a people or a nation starts to take from one to give to another they have no impersonal basis of conduct. They have, in fact, an unlimited government of limited force. Force that is not controlled. It is not being used in the only manner it should be used between men.

Now let us consider a few examples of the ways force is misused. Ways which instead of being used to protect people from competition, in short, the use of force to get for certain people a position over and above other people. In recent years it is resolved more and more to apply using force to take from one person to help another.

When a people or a nation starts to take from one to give to another they have no impersonal basis of conduct. They have, in fact, an unlimited government of limited force. Force that is not controlled. It is not being used in the only manner it should be used between men.

Now let us consider a few examples of the ways force is misused. Ways which instead of being used to protect people from competition, in short, the use of force to get for certain people a position over and above other people. In recent years it is resolved more and more to apply using force to take from one person to help another.

When a people or a nation starts to take from one to give to another they have no impersonal basis of conduct. They have, in fact, an unlimited government of limited force. Force that is not controlled. It is not being used in the only manner it should be used between men.

Now let us consider a few examples of the ways force is misused. Ways which instead of being used to protect people from competition, in short, the use of force to get for certain people a position over and above other people. In recent years it is resolved more and more to apply using force to take from one person to help another.

When a people or a nation starts to take from one to give to another they have no impersonal basis of conduct. They have, in fact, an unlimited government of limited force. Force that is not controlled. It is not being used in the only manner it should be used between men.

Now let us consider a few examples of the ways force is misused. Ways which instead of being used to protect people from competition, in short, the use of force to get for certain people a position over and above other people. In recent years it is resolved more and more to apply using force to take from one person to help another.

When a people or a nation starts to take from one to give to another they have no impersonal basis of conduct. They have, in fact, an unlimited government of limited force. Force that is not controlled. It is not being used in the only manner it should be used between men.

Now let us consider a few examples of the ways force is misused. Ways which instead of being used to protect people from competition, in short, the use of force to get for certain people a position over and above other people. In recent years it is resolved more and more to apply using force to take from one person to help another.

When a people or a nation starts to take from one to give to another they have no impersonal basis of conduct. They have, in fact, an unlimited government of limited force. Force that is not controlled. It is not being used in the only manner it should be used between men.

Now let us consider a few examples of the ways force is misused. Ways which instead of being used to protect people from competition, in short, the use of force to get for certain people a position over and above other people. In recent years it is resolved more and more to apply using force to take from one person to help another.

When a people or a nation starts to take from one to give to another they have no impersonal basis of conduct. They have, in fact, an unlimited government of limited force. Force that is not controlled. It is not being used in the only manner it should be used between men.

Byrnes' Latest Mission



REG-MANNING

News Behind the News The National Whirligig

By RAY TUCKER
CANDIDATES—Governor John W. Bricker of Ohio and Senator Le-wett Stettin of Massachusetts would be the republicans' 1948 candidates for President and Vice President if the members of the national committee who recently met in Chicago to form an off-year platform had been authorized to name an anti-Truman ticket.

The politicians who assembled in the windy city were admittedly a rather conservative lot. But they do wield considerable influence in the organization, and they do collect the dough, with the help of Pennsylvania's two "Joes"—Pew and Grundy—so this report on the candidates' secret sentiments is taken quite seriously in Capital circles.

ERICKER—The handsome and personable Ohio governor, who may advance his chances by seeking and winning a senate seat, is the most popular and appealing figure to the majority of the republican national committee. Indeed, many thought as far back as 1944 that the presidential slate should have been Bricker and Dewey rather than vice versa.

Should 1948 be another 1920, as far as the political atmosphere is concerned, Mr. Bricker is touted as a "natural" to depose President Truman by certain extremely important G. O. P.-ers.

The opposition, three years hence, hopes to benefit from the postwar liabilities the democratic party may have incurred—racial labor, white collar, big business etc. Then the republicans will need a man who has made no class enemies, and Mr. Bricker seems to answer that description.

SALT-NSTALL—Senator Salt-nstall has not yet come out in advance of the election. He is a "more able and liberal Calvin Coolidge" with many of the same qualities which endeared him to the voters. But the party bosses like his looks, and he is the picture from the standpoint of geography.

LEWY—The surprise and sensation of the Chicago get-together was that Lewy assumed the proportions of an impromptu national convention, was the antagonism to Thomas E. Dewey of New York and the fear of I. C. Conrad, Harold E. Stassen (pulling a Wilkie) in 1944 if the voters tried to put over Governor Dewey.

Mr. Dewey seems to be on the outside looking in for several reasons, although he is obviously a candidate. In 1944 he accepted too many Rooseveltian reforms in his party. He signed his fathers when he sponsored Judge Jonah Goldstein, a former Tammany man, as republican candidate for mayor of New York a few weeks ago.

His recent courting of racial labor and agricultural groups strikes the boys as an artificial coup.

POLITICS HOLDING UP RELIEF
You can trace this philosophy by looking at the political situation in the districts of the congressmen who haven't been doing anything about next year's UNRRA appropriations. There are as many democrats opposing UNRRA as republicans. Congressmen who are suspicious of any co-operation with Russia put the fishy eye on UNRRA. Congressmen in whose districts are large foreign-born constituencies are pressured into believing that UNRRA supplies are building up new governments which the old hyphenated—nationality groups in this country do not support. If these congressmen vote for more UNRRA appropriations now, will the voters back home remember it and hold it against them next November? A strange situation this, in which the UNRRA issue is judged, not on its merits, but as a factor; in the U. S. elections of 1946.

Nearly a hundred congressmen were junketed all over the world last summer, and they came home with some first-hand impressions. Among this group are a number who have been most vocal in criticism of UNRRA. But since that time, UNRRA has cleaned house. It has recruited some top general staff officers from U. S., British, Canadian and Russian armies. Under its new deputy director general—Commander R. G. A. Jackson of the Royal Navy—a young whirlwind of 24 who spent five years on Malta—a new UNRRA organization has

MACKENZIE'S Column

AP World Traveler

LONDON, Dec. 21.—I have just had my first private conversation with the head of Britain's new labor (socialist) government (Minister Attlee—and I like him—and I like him).

Now of course this is a wholly unorthodox way of beginning our article, but it's deliberate. Naturally it doesn't matter a pot of small whether I like Mr. DEWITT MACKENZIE Attlee—except for one reason—an interviewer's first and most important task is to size up his personality. During the instant between cross the threshold and shaking of hands, the reporter must have determined the character of his man. It's partly training but mostly intuition.

I like Attlee because he looks honest. The prime minister received me in his office at number Ten Downing Street. The surrounding are blacked-out for your interest in the quiet, almost retiring man who is the leader of England's leftist swing. Bald, bespectacled, the paleness of his face accentuated by a black moustache, he looks like an intellectual—and is one.

Mr. Attlee responded thoughtfully but freely to blunt questions. Because he has made it a rule not to give interviews for publication, I can't quote him here.

The labor party has come out categorically against any form of totalitarian government. But what about regimentation of the workers under the nationalization of industry such as is being inaugurated?

Well, I believe Mr. Attlee has laid in effect on the floor of the house of commons that there will be no regimentation—that labor will be free to pick and choose its jobs without dictation by the government. In fact, should the government attempt to dictate, the trade unions would block it.

As the anti-totalitarian British socialist sees it, England's ideas of democracy are the same as those of America. Both set a value on the human being as a human being—not just as an instrument of the state. However, John Bull's economic ideas differ from those of Uncle Sam. Politically, the British socialist is with the United States, while economically he leans more towards Russia.

Britain feels there is a special need for Anglo-American unity in the fact that while their ideas of democracy are alike, an increasing number of countries are experimenting with various shades of totalitarian government. John Bull and Uncle Sam should stand together to maintain their democracy.

Director David Butler: "Now in this gunfight scene, I want you to take it on the edge of that balcony up there, whirl around twice, flash through the rail, then topple down here—dead."

Stuntman George Surrin: "It's a cinch. A hundred berries I've never made easier." Butler: "Maybe it's too easy. How about 'landing on a table instead of the floor.' Suzanne: "For 300 bucks." Butler: "United States to Los Angeles. We're already creeping up on Nevada!"

Gracie Renorts

By GRACIE ALLEN

Consolidated News Features
I certainly wish countries would stop changing their names. The other day I was reading something about Iran and it took me the longest time to remember that it used to be Persia. In fact, I didn't remember until the children came home from school and told me.

The most puzzling thing about these name changes is that they're not consistent. Persian melons haven't become Iranian melons and orchestra never play a tune called, "In An Iranian market." Also, Siam changes its name to Thailand, but Bismarck and Bailey don't advertise Thailandian twins and there don't seem to be any Thailandian kittens.

If this sort of thing isn't stopped I'm afraid I'll wake up some morning and find that Los Angeles has changed the name of the entire

In Hollywood

By ERSKINE JOHNSON

HOLLYWOOD, with M-G-M and Producer Hal Wallis of Paramount in heated argument over who will film the first factual movie based on the atomic bomb, it looks like it will take one to end the hostilities. Apparently the first to get the idea on film will be the winner. And writers for both studios are working overtime. M-G-M plans to make it an all-star affair with Clark Gable, Van Johnson and Walter Pidgeon already penciled in for top roles, but if Clark or Van or Walter or someone else is shown inventing the bomb, we can assure you that Don Ameche will be a very unhappy man. Universal has Don busy at the moment playing Hiram Maxim and inventing the silence in "Genius in the Family." But you never tell back from Hollywood. Maybe Don will come up with a silencer for the atomic bomb.

AMUSEMENT FOR \$\$\$
Strictly for the amusement of producer Jerry Wald's 3-year-old son, his brother, Mal Wald, wrote a story titled, "The Boy Who Owned An Elephant." Jerry read it to his kid, then sent it to Walt Disney, who is now thinking about filming it as a movie. There's a 25-cent mystery book in the bookstores titled, "Murder on the Hudson," by Jennifer Jones. But Hollywood's Jennifer is not the authoress.

Such is fame dept: Harry Warren, composer of "The Anichson, Topeka and San Fe" couldn't get enough of the Pacific Northwest. He's now in the Pacific train accommodations for New York. Warren finally got the boy a ticket on a plane. Orson Welles reports Marshall Keeler was browsing in a Beverly Hills book store when a clerk suggested Salvador Dali's autobiography. Orson angrily rejected the suggestion, indulging in some pointed, flowing rhetoric for a sulphuric five minutes. "But if you haven't read the book, why are you so vehement?" The clerk persisted. "Because," Orson replied, in tones that attracted everyone's attention, "if there is one thing I loathe, it is an exhibitionist."

SLAPSTICK RACE
Arthur Blake, the mimic, was introduced to a veteran Hollywood actress at a party. The actress was slightly inebriated and told Blake that she couldn't get any more film roles. "As a well," sympathized Blake, "you can always run for senate." The actress giggled. "I did once," she said. "The United States senate?" asked Blake. "No," hiccoughed the woman, "Mack Sennett."

Director David Butler: "Now in this gunfight scene, I want you to take it on the edge of that balcony up there, whirl around twice, flash through the rail, then topple down here—dead."

Stuntman George Surrin: "It's a cinch. A hundred berries I've never made easier." Butler: "Maybe it's too easy. How about 'landing on a table instead of the floor.' Suzanne: "For 300 bucks." Butler: "United States to Los Angeles. We're already creeping up on Nevada!"

PHILIPPINE CONQUESTS
GENERAL MacARTHUR had developed a strong portion of his assault force on his left or eastern flank to provide protection for the beachhead against the strong Japanese forces to the north and east.

In appreciation of the enemy's predicament the Sixth Army immediately launched its advance toward Manila across the bend of the Agno which presumably should have been strongly held Japanese defense line.

The troops met little resistance until they approached Clark Field. The I Corps, commanded by Maj. Gen. Imnis P. Swift, had heavy fighting on the east flank where the Japanese were strongly entrenched in hill positions. For the time being they were to be held there to keep the supply line for the advance on Manila secure.

On 20 January troops of General Hall's XI Corps under strategic direction of the Eighth Army landed on the west coast of Luzon near Subic Bay, meeting light opposition. They drove simultaneously, troops of the 34th Infantry Regiment hit the shore in assault boats at San Jose South Dock. They ran into a heavy mine field covering the entire length of the beach, but little fire from Japs on the island.

Fighting in the tunnels built by Americans in an attempt to make Corregidor impregnable prior to World War II, the Japs continued their suicidal resistance for nearly two weeks. Toward the end there was a series of terrific explosions on the islands as the Japs destroyed the tunnel system and themselves, with it. Americans sealed up remaining caves and an estimated 200 Japs. A total of 4,215 Japs were killed on the island, an unknown number blown up. Of the 3,038 Americans who took back Corregidor, 136 were killed, 8 were missing, and 581 wounded.

Manila was open in early March. In less than two months organized resistance ceased on 23 February when the American infantry penetrated the old walled city.

Preceded by heavy air and naval bombardment, elements of the 38th Division landed on 15

Hymen Prevails In Atmosphere Of Contrasts

By DAVE CHEAVENS

AUSTIN, Dec. 21.—A six-foot minister with a booming voice last night united in marriage Waylon H. Galloway, 20, the state's tiniest employee, and dainty little Rose Mary Copeland, 21, of Burbank, Calif.

The midget couple, with midget attendants was married on an altar improvised on the rostrum of the state senate chamber. The big voice of the minister, Dr. W. R. White of Austin, filled the room crowded with state officials, but when Waylon and Rose Mary piped their responses, their "I do's" were virtually lost in space.

Forty-five inch tall Waylon and forty-four inch tall Rose Mary were congratulated by six-foot plus Gov. Coke R. Sessomson who sat on the front row before the altar. Waylon's boss, Secretary of State Claude Isbell was on hand to see that everything ran smoothly and his wedding present to his office messenger and bride was their honeymoon trip.

The governor and his office staff gave Mr. and Mrs. Galloway a set of dishes, and they said they had received so many gifts from other state officials that they just hadn't time to open all the boxes. Today they were en route to East Texas

"Why the price boost?" Suzanne "Splinters" Suzanne "died" in the crash of shattering wood and got his \$300.

where they will spend their honeymoon at Waylon's old home town, Willis Point.

The romance started at Vinita, Okla., three years ago, and was carried on mostly by correspondence. Waylon proposed and Rose Mary accepted, by letter. But last week Waylon completed arrangements for the wedding by telephone.

The bride wore a white wedding gown and her attendants' gowns were dainty pastels. Galloway's wedding suit was a double-breasted blue serge. His ride carried in her tiny hand the huge orchid he had given her, and they exchanged size two wedding bands in the double ring ceremony.

After the ceremony Dr. White told Waylon that he had married many a 250-pound lad who was more nervous than he, but Waylon admitted maybe he just didn't show it.

Rose Mary, who dropped a budding movie career to come here for the wedding, inquired if she had appeared frightened.

"No," beamed Dr. White, "you were as composed and beautiful as any bride I have ever seen."

Father Home With Stricken Son Today

BROWNWOOD, Texas, Dec. 21.—(P)—Corp. Howard D. Bishop was home from Tokyo today to be with his three-year-old son, Douglas, stricken with leukemia.

Granted an emergency furlough, Bishop flew from Japan to the west coast in 30 hours.

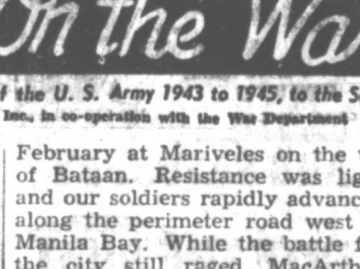
His child has been given a second blood transfusion.

Fertile soil is always a part of a strong nation.

Speedboat Racer

- | | | | | | | | | | | | | | | | | | | | | | | | | | | | | | | | | | |
|--|---------|---------|------------------|---------------|------------|-------------------|----------|---------------|---------|-----------|------------|-------------|---------------|-------------|-----------------|------------|----------------|----------|-----------|-----------|------------------------|-------------------|-------------------|---------------------------|-----------------|------------|------------|---------------|-------------|---------|---------------|---------------|-----------------|
| 1 Pictured champion speedboat racer, Sir Malcolm | 1 Quote | 2 Again | 3 Mountain (ab.) | 4 Persian elf | 5 Searched | 6 Spanish article | 7 Placed | 8 English bay | 9 Faded | 10 Change | 12 Carouse | 13 Watchful | 15 Open space | 18 Entreaty | 23 Ever (cont.) | 24 Rub out | 27 Distributed | 29 Exits | 30 Either | 31 Tribes | 34 Entrances in fences | 38 Point a weapon | 39 Wingleike part | 40 He was once automobile | 43 Time measure | 45 Palatal | 47 Boredom | 48 Mixed type | 49 Occasion | 50 Unus | 51 Press thin | 54 Accomplish | 55 Popular vote |
|--|---------|---------|------------------|---------------|------------|-------------------|----------|---------------|---------|-----------|------------|-------------|---------------|-------------|-----------------|------------|----------------|----------|-----------|-----------|------------------------|-------------------|-------------------|---------------------------|-----------------|------------|------------|---------------|-------------|---------|---------------|---------------|-----------------|

Answer to Previous Puzzle



Report On the War

By General George C. Marshall

Biennial Report of the Chief of Staff of the U. S. Army 1943 to 1945; 6th Secretary of War

This is the 35th of 42 installments of material selected from General Marshall's report on the winning of World War II.

February at Mariveles on the tip of Bataan. Resistance was light and our soldiers rapidly advanced along the perimeter road west of Manila Bay. While the battle for the city still raged, MacArthur moved to open Manila Bay and begin preparation of the Philippines as a major base for the next United States advances in the far Pacific.

Corregidor Retaken
Corregidor had gone under Allied bombardment on 23 January, and in less than a month Kenney's airmen dropped 3,128 tons of bombs on the two and three-fourths square-mile island that centered Manila Bay.

On the morning of 16 February, two long trains of Army C-47 transports approached the "Rock," close to the 500-foot sheer cliffs. A sudden 18-mile-an-hour wind swept the air clear of the smoke and dust of the naval and air bombardment that had ceased a few minutes earlier. Then the troop carriers began to sew the sky. "Chutes spilled out white and troops of the veteran 504d Parachute Regiments drifted downward toward the lighthouse and golf course on the little island, against scattered small-arms fire from the Japs on the ground. Simultaneously, troops of the 34th Infantry Regiment hit the shore in assault boats at San Jose South Dock. They ran into a heavy mine field covering the entire length of the beach, but little fire from Japs on the island.

Fighting in the tunnels built by Americans in an attempt to make Corregidor impregnable prior to World War II, the Japs continued their suicidal resistance for nearly two weeks. Toward the end there was a series of terrific explosions on the islands as the Japs destroyed the tunnel system and themselves, with it. Americans sealed up remaining caves and an estimated 200 Japs. A total of 4,215 Japs were killed on the island, an unknown number blown up. Of the 3,038 Americans who took back Corregidor, 136 were killed, 8 were missing, and 581 wounded.

Manila was open in early March. In less than two months organized resistance ceased on 23 February when the American infantry penetrated the old walled city.

Preceded by heavy air and naval bombardment, elements of the 38th Division landed on 15

February at Mariveles on the tip of Bataan. Resistance was light and our soldiers rapidly advanced along the perimeter road west of Manila Bay. While the battle for the city still raged, MacArthur moved to open Manila Bay and begin preparation of the Philippines as a major base for the next United States advances in the far Pacific.

Corregidor Retaken
Corregidor had gone under Allied bombardment on 23 January, and in less than a month Kenney's airmen dropped 3,128 tons of bombs on the two and three-fourths square-mile island that centered Manila Bay.

On the morning of 16 February, two long trains of Army C-47 transports approached the "Rock," close to the 500-foot sheer cliffs. A sudden 18-mile-an-hour wind swept the air clear of the smoke and dust of the naval and air bombardment that had ceased a few minutes earlier. Then the troop carriers began to sew the sky. "Chutes spilled out white and troops of the veteran 504d Parachute Regiments drifted downward toward the lighthouse and golf course on the little island, against scattered small-arms fire from the Japs on the ground. Simult

Legal Publication

ORDINANCE NO. 261

AN ORDINANCE PROVIDING FOR THE PROTECTION OF THE PUBLIC HEALTH, AND THE EXAMINATION, REGISTRATION, LICENSING AND BONDING OF PERSONS ENGAGED IN THE BUSINESS OF PLUMBING, OR LABORING AT THE TRADE OF PLUMBING; REQUIRING A PERMIT FOR THE INSTALLATION, ALTERATION OF PLUMBING AND DRAINAGE SYSTEMS; CREATING THE OFFICE OF PLUMBING INSPECTOR AND A BOARD OF PLUMBER EXAMINERS, AND PRESCRIBING THEIR DUTIES; DEFINING CERTAIN TERMS; ESTABLISHING MINIMUM REGULATIONS FOR THE INSTALLATION, ALTERATION OR REPAIR OF PLUMBING AND DRAINAGE SYSTEMS AND THE INSPECTION THEREOF; PROVIDING PENALTIES FOR ITS VIOLATION AND REPEALING CERTAIN TERMS; ESTABLISHING AN EMERGENCY; TO BE OBTAINED BY THE CITY COMMISSIONER OF THE CITY OF PAMPA, TEXAS.

ARTICLE I ADMINISTRATION

SECTION 1. EXAMINATION

It shall be unlawful for any person, firm or corporation to carry on or engage in the business of plumbing, or to labor at the trade of plumbing in the City of Pampa, unless such person has successfully passed an examination conducted by the Board of Plumber Examiners, and/or has had issued to him a Plumber's Certificate of Competency by said Board in accordance with the provisions of this Ordinance.

SECTION 2. REGISTRATION

Before any person, firm or corporation shall carry on, or engage in the business of plumbing, or labor at the trade of plumbing in the City of Pampa, Texas, including an apprentice or helper, he shall first register his name and address with the Plumbing Inspector of said City, together with such other information as said Department may require.

SECTION 3. LICENSE REQUIRED

Before any person, firm or corporation shall carry on, or engage in the business of plumbing in the City of Pampa, Texas, he or it shall first procure a Master Plumber's License from the City so to do, and pay the annual license fee imposed on such business. No such license shall be transferable.

SECTION 4. APPLICATION FOR A MASTER PLUMBER'S LICENSE

Every applicant for a Master Plumber's License shall first file with the Plumbing Inspector an affidavit sworn to before a Notary Public, which affidavit shall state the name and address of such applicant and if such applicant be a partnership or firm, the names of the members thereof, and if a corporation, the names of at least three of the principal officers thereof, together with such other information as the Plumbing Inspector may consider necessary to carry out the intent and purposes of this Ordinance.

SECTION 5. EXPIRATION OF LICENSE

All Master Plumber's Licenses shall expire on the 1st day of January of each year unless sooner renewed.

SECTION 6. REVOCATION OF LICENSE

No person holding a Master Plumber's License issued by the City of Pampa, Texas, shall lend such license to any other person or allow any other person to do any plumbing or drainage work under permit taken out in his name, except Certified Journeymen Plumbers, or in his own violation of this section shall be grounds for the revocation of such person's License by the City Commission of the City of Pampa, Texas.

SECTION 7. DISPLAY OF SIGN

Every person, firm or corporation, including or engaged in the business of plumbing in the City of Pampa, Texas, shall display a sign in his place of business, said sign to be printed thereon in large letters its name, the same as appears on its License, and the words "Licensed Plumber."

SECTION 8. UNLAWFUL FOR ANY PERSON, FIRM OR CORPORATION NOT IN LEGAL POSSESSION OF A VALID MASTER PLUMBER'S LICENSE

It shall be unlawful for any person, firm or corporation not in legal possession of a valid Master Plumber's License issued by the City of Pampa, Texas, to engage in, carry on, or represent himself, itself, or themselves as engaged in, or carry on, the business of Master Plumber in the City of Pampa, Texas.

SECTION 9. MASTER PLUMBER'S BOND

Before any Master Plumber's License shall be issued to any person, firm or corporation, the applicant herefor shall first obtain and file with the City Secretary of the City of Pampa, Texas, a Surety Bond in the amount of Five Thousand (\$5,000) Dollars. Said Surety Bond shall first be approved by the

City Attorney as to the form and legality thereof and approval by the City Commissioner as to solvency, and be conditioned that the person, firm or corporation named therein will comply with the provisions of all ordinances and regulations of the Plumbing Inspector of the City of Pampa, Texas, and the laws, rules and regulations of the Department of Health of the State of Texas applicable in the City of Pampa, Texas, pertaining to Plumbers, and Plumbing and Drainage Systems. Said Bond shall contain the further provisions, that it is to the benefit of any and all persons who may be damaged by reason of any failure on the part of the person or persons named therein to comply with such ordinances, rules, regulations, and laws, and that persons so damaged may maintain action thereon against the person or persons named in said Bond, and the Surety or sureties upon such Bond, and provided further, that said Bond may be sued and recovered upon in successive actions, until the whole penalty thereof is exhausted.

SECTION 9. PERMITS

It shall be unlawful for any person, firm or corporation, whether acting as principal, servant, agent or employee, to do, or cause or permit to be done any plumbing or drainage work for which a Permit is required within the City of Pampa, Texas, without first securing a Permit from the Plumbing Inspector of said City authorizing him so to do.

SECTION 10. TO WHOM PERMITS MAY BE ISSUED

No Permit shall be issued to any person to construct, install, alter or change any new or existing Plumbing or Drainage system in the City of Pampa, Texas, in whole or in part, unless such person is the legal possessor of a valid Master Plumber's License issued by said City; or, a person who is a Certified Journeyman Plumber in the employ of the Federal, State, County, City and County, or City governments including any political subdivisions thereof, provided, however, that the work proposed to be done is confined solely within the premises owned by them, respectively; or, a person who is a Certified Journeyman Plumber, steadily employed in a commercial or industrial establishment to repair and maintain the plumbing and drainage system of such establishment.

SECTION 11. WHEN PERMIT IS REQUIRED

A Permit shall be required when any Plumbing Fixture, Waste Discharging Device, Waste Pipe, Vent Pipe, Water Drain, House Sewer, Water Leader or System, or Water Distribution System is installed, altered, replaced, or removed.

SECTION 12. APPLICATION FOR PERMIT

Any person, legally entitled to apply for and receive a Permit shall make application at the office of the Plumbing Inspector on forms provided for that purpose. He shall give a description of the character of the work proposed to be done and the location, ownership, occupancy and use of the premises in connection therewith. The Plumbing Inspector may require plans, specifications, drawings, descriptions or information in compliance with and such other information as he may deem necessary and pertinent, prior to the granting of a permit.

SECTION 13. REPAIRS

Repairs to plumbing and drainage systems shall be made with such materials, and by such methods as is provided for by this Ordinance for new work, insofar as it is practical so to do. No Permit shall be required for the clearing of stoppages or the repairing of leaks in pipes, valves or fixtures, when such repairs do not involve or require the replacement or rearrangement of pipes or fixtures.

SECTION 14. PERMIT TO BE POSTED

No Plumbing or Drainage work for which a Permit is required shall be commenced in any building or premises, until an official Permit therefor is posted in a conspicuous place in such building or upon such premises. No person shall remove or deface such Permit, until the work authorized by it has been approved by the Plumbing Inspector or his authorized representatives.

SECTION 15. COST OF PERMIT

Every applicant for a Permit to install, add to, alter, relocate, or replace a Plumbing or Drainage System, or part thereof, shall state in writing on the application of work proposed to be done and the amount and kind in connection therewith, together with such other information pertinent thereto as the Plumbing Inspector may require.

SECTION 16. SCHEDULE OF FEES

For each Plumbing Fixture and waste discharging device.....\$50 For each House Drain..... 50 For each Sewer Drain..... 50 For each Cesspool..... 50 For each Septic Tank..... 50 Minimum fee for any Permit for work requiring inspection..... 300

SECTION 17. PLUMBING INSPECTOR'S AND PLUMBING INSPECTOR'S ASSISTANT'S QUALIFICATIONS

All Plumbing Inspectors and/or Assistant Plumbing Inspectors hereafter appointed shall be practical plumbers, having not less than five (5) years actual experience as journeymen or master plumbers. They shall be approved and held

office in accordance with the Ordinances or Charter provisions of the City of Pampa, Texas;

To provide for the administration and enforcement of this Ordinance, the Office of Plumbing Inspector is hereby created. The City Commissioner of the City of Pampa, Texas, may appoint assistants to the Plumbing Inspector to assist him in the discharge of the duties of his office.

SECTION 17. RIGHT OF ENTRY

The Plumbing Inspector shall have the right of entry in and upon all buildings and premises in the City of Pampa, Texas, for the purpose of making inspections, re-inspections, or otherwise performing such duties as may be necessary in the enforcement of the provisions of this Ordinance and amendments thereto.

SECTION 18. DUTIES OF PLUMBING INSPECTOR

The Plumbing Inspector shall maintain such public office hours as are necessary to efficiently conduct and carry out the duties imposed upon him by this Ordinance and amendments thereto. He shall require, examine and check plans and specifications, drawings, descriptions and/or information submitted to him by any person applying for a Permit, and upon approval thereof shall issue the Permit applied for. He shall inspect all Plumbing and Drainage work authorized by any Permit, for the purpose of determining whether or not such work complies with the provisions of this Ordinance or amendments thereto, approving or condemning the same in whole or in part, as the conditions require.

SECTION 19. CERTIFICATE OF APPROVAL

He shall issue a Certificate of Approval for any work approved by him, such Certificates being authorization for the coverings, concealing or use thereof, as the case may be.

He shall condemn and reject all work done, or being done, or materials used, or being used which do not in all respects conform to the provisions of this Ordinance and amendments thereto, and shall order such changes in workmanship and/or materials as will make the same conform thereto.

SECTION 20. RE-EXAMINATION

Any person who fails to pass the examination as prescribed by the Board of Plumber Examiners, may apply for re-examination after the expiration of thirty (30) days. Should such person fail to pass the second time, the Board may refuse to re-examine him after the expiration of six (6) months.

SECTION 21. DEFINITION OF TERMS

For the purpose of this Ordinance, the following words, terms and phrases, are hereby defined as follows, and shall be construed as in this Section defined:

(1) APPROVED; as to materials, workmanship and types of construction, means approval by the Plumbing Inspector, and the result of investigation, inspection, and/or tests conducted by them, or by reason of accepted principles or tests by the United States Bureau of Standards, the American Society for Testing Materials or other nationally recognized authorities.

(2) APPLICANT; a person who is registered as such under this Ordinance, and is undergoing an apprenticeship or course of training, (not exceeding five years) for the purpose of learning the trade of plumbing, and whose age when starting his apprenticeship is not less than eighteen (18) years and more than twenty-five (25) years.

(3) ASSISTANT; a person who is registered as such under this Ordinance, and is undergoing an apprenticeship or course of training, (not exceeding five years) for the purpose of learning the trade of plumbing, and whose age when starting his apprenticeship is not less than eighteen (18) years and more than twenty-five (25) years.

(4) BRANCH; a branch of any system of Drainage Piping is that part of the system which extends from the main at a slight grade, with or without vertical arms, for the purpose of receiving fixture outlets not directly connected to the main.

(5) CESSPOOL; an excavation in the ground which receives the discharge of a Drainage System or part thereof, so designed and constructed to retain the organic matter and solids discharging therein, but permitting the liquids to seep through the bottom and sides.

(6) CONTINUOUS WASTE AND VENT; a vertical Soil or Waste Pipe, terminating at its upper end in a Tee shaped fitting having a ninety (90) degree branch, to which a fixture trap may be connected, the top of which fitting continues vertically as a vent pipe to serve the trap.

(7) DEAD END; A Branch, not used for admitting water, or for carrying off Sewer or Vent Pipe, or a House Drain or House Sewer, which is terminated at a developed distance of two feet or more by means of a cap or plug.

(8) DRAINAGE SYSTEM; A Drainage System, or Drainage Piping shall mean and include all the piping within public or private premises, which conveys sewage, rain water or other liquid wastes, to a legal point of disposal, but shall not include the Mains or Laterals of a Public Sewer System.

(9) HORIZONTAL PIPE; Shall mean pipe or fitting, which is installed in a horizontal position, which makes an angle of more than sixty (60) degrees with the vertical.

(10) HOUSE DRAIN; The House Drain (or Main Drain) is that part of the lowest horizontal piping of a Drainage System which receives the discharge from Soil, Waste, or other drainage pipes of any building and/or premises and conveys the same to the House Sewer.

(11) HOUSE SEWER; The House Sewer is that part of the horizontal piping of a Drainage System, which receives the discharge of the House Drain and conveys the same to a Public Sewer, Private Sewer, Cesspool, or other receptacle, which includes that part of a Lateral Sewer which is under the jurisdiction of the City Engineer, or other

jurisdiction over Public Sewers and parts thereof.

(12) JOURNEYMAN PLUMBER; A Journeyman Plumber is a person who installs, alter and/or repairs Plumbing and Drainage Systems or part thereof, as an employee, but who does not furnish any materials or supplies, and who is Registered and the legal possessor of a Plumber's Certificate of Competency, as provided for in this Ordinance.

(13) LOCAL VENT; A local Vent is a ventilating pipe through which foul air is removed from a room or plumbing fixture, to the outer air.

(14) MAIN SEWER-PUBLIC SEWER; The Main or Public Sewer is a Public Sewer in street, alley or other premises under the jurisdiction of the City of Pampa, Texas.

(15) THE MAIN; The Main, of any system of horizontal, vertical, or continuous piping, is that part of the system which receives wastes, vents, or back-vents from fixture outlets or traps, direct or through branch pipes.

(16) MASTER PLUMBER; A Master Plumber, Merchant Plumber, or Licensed Plumber shall mean any person who is engaged in the business of Plumbing at an established place of business within the corporate limits of the City of Pampa, Texas, or who does, or who set himself out, as willing to do, in any manner personally or through his employees, any work or services in connection with the installation, alteration and/or repair of Plumbing and Drainage Systems or part thereof, and who is Registered, Licensed and Bonded as provided for in this Ordinance.

(17) PLUMBING; Plumbing is the business, trade, and/or work, having to do with the installation, alteration, and/or repair of Plumbing and Drainage Systems or parts thereof.

(18) PLUMBING SYSTEM; The Plumbing System is and includes, all water supply and distribution pipes; all plumbing fixtures and traps; all soil, waste, special waste and vent pipes; all house drains and rain water drainage piping; including all their respective joints and connections, devices, receptacles, and appurtenances within the property lines of premises.

(19) PLUMBING FIXTURES; Plumbing fixtures are approved receptacles, and/or devices, intended to receive water, liquid or other permissible wastes, and discharge same into a soil pipe, waste pipe, or special waste pipe with which they are connected.

(20) PLUMBING INSPECTOR; The Plumbing Inspector, means the Plumbing Inspector of the City of Pampa, Texas, charged with the enforcement of the provisions of this Ordinance.

(21) PERSON; Person means a natural person, his heirs, executors, administrators or assigns, and shall also include a firm, partnership or corporation, its or their successors or assigns. Singular includes plural; male includes female.

(22) SHALL; the word shall means mandatory.

(23) STACK; Stack is a general term for any vertical line of soil, waste, special waste or vent pipe.

(24) SAND TRAP; SETTLING TANK, SUMP; A water-tight receptacle, so designed and constructed as to intercept and prevent the passage of solids or other objectionable matter into the Drainage System to which it is directly or indirectly connected.

(25) SOIL PIPE; A soil pipe is any pipe which conveys the discharge of water closets, with or without the discharge from other fixtures, to the House Drain or House Sewer.

(26) SEPTIC TANK; A septic tank is a water-tight receptacle which receives the discharge of a Drainage System or part thereof, designed and constructed so as to retain solids, digest, organic matter through a period of detention, and allow the liquids to discharge into the soil outside of the tank, through a system of open joint piping.

(27) SIZE AND LENGTH; The given caliber or size of a pipe, means the nominal inside diameter, except that other than iron pipe size, brass pipe is measured by its outside diameter. The developed length of a pipe, is its length along the center line of pipe and fittings.

(28) TRAP SEAL; A trap seal is the maximum vertical depth of liquid that a trap will retain, measured from the crown weir and the dip of the trap.

(29) TRAP; A trap, as pertaining to plumbing is a fitting or device, so designed and constructed as to provide a liquid trap seal, which will prevent the passage of air or other gas from any one branch affecting the flow of sewage or liquid wastes.

(30) UNSANITARY; Conditions, to which the word "unsanitary" shall apply, include the following: (a) Any trap which does not maintain a proper trap seal, or (b) Any opening in a Drainage System, except where lawful, which is not provided with an approved water-sealed trap.

(31) PLUMBING FIXTURE, or other waste discharging receptacle or device, which is not supplied with water, sufficient to flush it and maintain it in a clean condition.

(32) ANY defective fixture, trap or pipe.

(33) ANY trap, except where in this Ordinance explicitly connected to a Drainage System, the seal of which is not protected against siphonage and back pressure, by a vent pipe.

(34) ANY connection, cross-connection, construction or condition, temporary or permanent, which would permit or make possible, by any means whatsoever, for any unapproved foreign matter to enter a waste distribution system used for domestic purposes.

(35) THE foregoing enumeration of conditions, to which the term "unsanitary" shall apply, shall not preclude the application of that term to conditions that are in fact unsanitary.

(36) VENT PIPE; A vent pipe is any pipe provided to prevent the loss of lowering of a trap seal by

allow a circulation of air through the soil or waste pipe to which it is connected.

(37) VERTICAL PIPE; A vertical pipe shall mean any pipe or fitting which is installed in a vertical position or which makes an angle of not more than sixty (60) degrees with the vertical.

(38) WATER DISTRIBUTION SYSTEM; The water distribution system pipes, are any pipes and/or fittings that convey water from the water service pipe or other source of supply to plumbing fixtures, or other apparatus, appurtenances or devices, in building and/or premises.

(39) WASTE PIPE; A waste pipe is any pipe and/or fitting which directly conveys the discharge of any plumbing fixture, receptacle, apparatus or device except water closets, to a soil pipe, house drain or house sewer.

(40) SPECIAL WASTE PIPE; A Special waste pipe, or indirect waste pipe is any pipe or fitting which indirectly conveys liquid wastes to a Drainage System, by discharging into an approved plumbing fixture or receptacle which is directly connected to a soil or waste pipe.

(41) WATER LEADER; A water leader is any pipe or fitting, which conveys rain water only, to a Drainage System or other legal point of disposal.

ARTICLE 3 GENERAL REGULATIONS

SECTION 28. DISPOSAL OF LIQUID WASTES

It shall be unlawful for any person to cause, suffer or permit the disposal of sewage, human excrement or other liquid wastes, in any place or manner except through any means of an approved Plumbing and Drainage System, installed and maintained in accordance with the provisions of this Ordinance, and amendments thereto.

SECTION 29. DAMAGE TO DRAINAGE SYSTEM OR PUBLIC SEWER

It shall be unlawful for any person to deposit, by any means whatsoever, into any plumbing fixture, floor drain, sand trap, sump, receptacle or device, which is connected to any drainage system, public sewer, private sewer, septic tank or cesspool any garbage, fruit or vegetable paring, ashes, cinders, solids, rags, inflammable, poisonous or explosive liquids, or gases, oils, grease or any other thing whatsoever, which would, or could be liable to damage to the drainage system or public sewer.

SECTION 30.—WORKMANSHIP

All workmanship shall be of such character as fully to secure the results sought to be obtained in all sections of this Ordinance.

SECTION 31. GRADE, SUPPORT AND PROTECTION OF PIPING

All horizontal drainage and vent piping shall be run in practical alignment, and at a uniform grade of not less than one-fourth (1/4) of an inch per foot. All such piping of cast iron shall be supported with suitable metal hangers or supports, at intervals not to exceed five (5) feet. All stacks shall be supported at their bases, and if over two (2) stories in height, at each floor, by approved metal floor clamps. All drainage piping shall run in the general direction of the point of disposal, without sharp angles or turns unless impractical due to structural conditions.

SECTION 32.—CHANGES IN DIRECTION OF DRAINAGE PIPING

All changes in direction of drainage piping shall be made by the appropriate use of approved fittings, and unless impractical due to structural conditions, shall be of the angles presented by a one-sixteenth (1/16th) bend, one-eighth (1/8th) bend or one-sixth (1/6th) bend, preference being given in the order named.

SECTION 33.—HORIZONTAL TO VERTICAL

Horizontal drainage lines, intersecting with a vertical stack shall enter through forty-five (45) degree "Y" branches, combination tee or sanitary tees, and be marked with the name unless impractical due to structural conditions. No fitting having more than one branch at the same level, shall be used unless such fitting is constructed so that the discharge from any one branch cannot enter any other branch.

SECTION 34.—HORIZONTAL TO HORIZONTAL

Horizontal drainage lines intersecting with other horizontal drainage lines shall enter through forty-five (45) degree "Y" branches, sixty (60) degree "Y" branches, or combination "Y" and one-eighth (1/8th) bend branches, preference being given in the order named, unless impractical due to structural conditions.

SECTION 35.—VERTICAL TO HORIZONTAL

Vertical drainage lines intersecting with horizontal drainage lines, shall enter through forty-five (45) degree "Y" branches, combination tee or sanitary tees, and be marked with the name unless impractical due to structural conditions.

SECTION 36.—QUARTER BENDS

Quarter bends shall be used when the direction of flow changes from horizontal to vertical.

SECTION 37.—LOCATION AND SIZE OF CLEANOUTS

All Cleanouts shall be installed so as to be easily accessible. Cleanouts may be omitted above the first floor on concealed work, provided that all changes in direction are made with long turn fittings. A cleanout fitting shall be installed at or near the end of each horizontal drainage line that changes direction to vertical.

SECTION 38.—CAST IRON FITTINGS

Cast iron fittings used for water distribution shall be galvanized.

SECTION 39.—CAST IRON FITTINGS

All malleable iron fittings shall be galvanized.

SECTION 40.—CAULKING RULES

Brass caulking iron shall be

ly inside of the property line, installed in a "Y" branch fitting.

All changes in direction of horizontal drainage lines shall be served by a Cleanout if such change of direction exceeds twenty-two and one-half (22 1/2) degrees from a straight line and is over ten (10) feet in length.

Cleanout fittings shall be of the same nominal size as the pipes they serve, up to and including four (4) inch pipe, and not less than four (4) inches for larger pipes.

SECTION 38.—PROHIBITED FITTINGS AND PRACTICES

No double hub fitting, single or double Tee branch, single or double Tee Tee branch, side inlet quarter bend, running thread, band or saddle shall be used as a drainage fitting.

SECTION 39.—DEAD ENDS

In the installation or removal of a Plumbing or Drainage system, dead ends shall be avoided, except where necessary to extend a cleanout so as to be accessible.

SECTION 40.—PROTECTION OF MATERIALS

All pipes passing under or through walls, shall be protected from breakage. All pipes passing through walls, under chders, concrete, or other corrosive materials, shall be protected from external corrosion in an approved manner.

ARTICLE 4 QUALITY AND WEIGHTS OF MATERIALS

SECTION 41.—MINIMUM STANDARDS

All materials used, or entering into the construction of plumbing and drainage system or part thereof, shall be free from defects.

The materials specified in this Ordinance are the minimum approved standards that shall be used in the construction, installation, alteration and/or repair of any part of a Plumbing and Drainage System hereafter constructed, except that the Plumbing Inspector may allow the extension of the length of relocation of existing soil, waste and/or vent pipes with materials of like grade or quality, if such existing soil, waste and/or vent pipes were installed in use before the passage of this Ordinance, but nothing in the above exception shall be construed as allowing intervening sections of different types, weights, or grades of materials.

SECTION 42.—MARKINGS

Each length of cast iron soil pipe and each cast iron fitting used in a Plumbing and Drainage System shall be stamped or indelibly marked with the weight or grade thereof and the maker's mark or name.

SECTION 43.—VITRIFIED CLAY PIPE

All vitrified clay pipe and fittings, shall conform to the A. S. T. M. Standard Specifications for Clay Sewer Pipe, Serial Designation C-13-33.

SECTION 44.—CAST IRON PIPE AND FITTINGS

All Extra Heavy Cast Iron Pipe and Fittings, shall conform to the A. S. T. M. Standard Specifications for Cast Iron Soil Pipe and Fittings, Serial Designation A-74-33.

SECTION 45.—WROUGHT IRON PIPE

All wrought iron pipe shall conform to the A. S. T. M. Standard Specifications for Wrought or Seamless Wrought Iron Pipe, Serial Designation A-77-33, and shall be galvanized.

SECTION 46.—MILD STEEL PIPE

All steel pipe shall conform to the A. S. T. M. Standard Specifications for Wrought or Seamless Steel Pipe, Serial Designation A-53-33 and shall be galvanized.

SECTION 47.—BRASS AND COPPER PIPE

Brass and Copper Pipe, shall conform respectively to the A. S. T. M. Standard Specifications for Brass Pipe, Standard Sizes, and for Copper Pipe, Standard Sizes, Serial Designations B-43-33 and B-42-33, respectively.

SECTION 48.—LEAD PIPE

All lead pipes, including bends and fittings, shall be of the best quality drawn pipe, of not less weight per linear foot than shown in the following table:

of the best quality red cast brass, with weights and dimensions in accordance with the following table:

Table with 4 columns: Pipe Inside Size (Inches), Weight per Foot (Lbs.), Weight per Foot (Oz.), and Length (Lbs. Oz.).

Seamless copper ferrules, may be used in lieu of cast brass, provided they correspond in size and weight.

SECTION 49.—SOLDER NIPPLES AND BUSHINGS

(a) Solder nipples, shall be of brass pipe, iron pipe size, or of best quality red cast brass, with weights and dimensions in accordance with the following table:

Table with 4 columns: Size of Pipe (Inches), Weight per Foot (Lbs.), Weight per Foot (Oz.), and Length (Lbs. Oz.).

SECTION 50.—CLOSET FLOOR PLUNGES

Floor flanges for water closets, shall be not less than one-fourth (1/4) of an inch thick, and shall be of cast brass or cast iron. Closet screws and bolts shall be of brass.

SECTION 51.—CLEANOUT FITTINGS

(a) Cleanout fittings, shall be of red cast brass. The ferrule or body part, shall be not less than one-eighth (1/8) of an inch in thickness, and the flange or cover part, shall be not less than one-fourth (1/4) of an inch in thickness. Cleanout covers shall have a solid cast head not less than one and one-half (1 1/2) inches square and three-fourths (3/4) of an inch in height on all sizes over three (3) inches, and not less than one and one-fourth (1 1/4) inches square and five-eighths (5/8) of an inch in height on all sizes under four (4) inches. The cover may be fitted with a countersunk opening in lieu of a head, if the same is to be used where a head would be impractical.

(b) Cleanout ferrules shall be of such length as to extend not less than one-fourth (1/4) of an inch beyond a soil or waste pipe hub.

(c) Cleanout ferrules and covers,

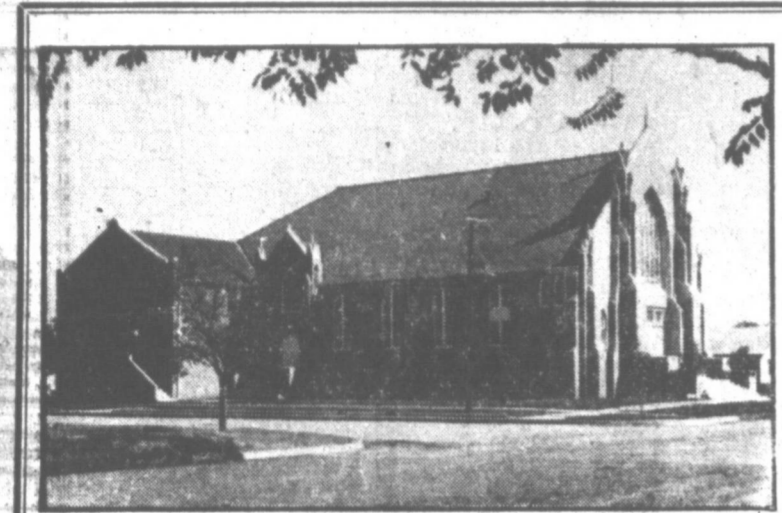
In the CHURCHES

Christmas Church Services

HOPKINS NO. 2 SCHOOL HOUSE
Ten miles south of Pampa at Phillips Pampa plant camp.
10 a.m. Sunday school, 11 a.m., preaching.

CHURCH OF GOD
601 Campbell
Sunday school 10 a.m. Preaching 11 a.m. Willing Workers band 7:30 p.m. Preaching 8 p.m. Tuesday prayer service 7:45 p.m. Thursday, young people's service with Mrs. Vivian Huff, president, in charge 7:45 p.m.

CENTRAL BAPTIST CHURCH
Rudolph Q. Harvey, pastor
"A neighborly church for a neighborly people and a place where a warm welcome awaits you." Located at the corner of Francis and Starkweather.
Sunday School 9:45 a.m.—Morning worship 10:45; Training Union 6:30 p.m. Evening preaching service 7:30.
Wednesday night services: Teacher's meeting 7:30; prayer service 8:15, and choir practice follows prayer service. R. A. Y. W. A. and G. A. meet during teachers' meeting.
W. M. U. meets in circles each Wednesday.



Announcement of Services
FIRST CHRISTIAN CHURCH
500 E. Kingsmill
SUNDAY, DECEMBER 23
Sunday School 9:45 a. m.
Morning Worship 10:45 a. m.
Morning Sermon Topic—"A Great Year for Christmas."
Servicemen Cordially Invited
Evening Services—Christmas Program by the Young People.
Young People's Meeting—5:45 p. m.
We Invite You to Worship With Us
JIM BROWN, Minister Ad Interim

Christmas, with peace on earth and good will toward men, this first season in four years that the nation has been at peace, will be celebrated in special Christmas services and programs in community churches Sunday. Christmas Eve services will be held in several of the churches.

Program Climaxed by Candle Lighting Rite
Sunday school will begin at 9:45; each department will have appropriate Christmas music.
In the morning service which begins at 10:50 a.m., the pastor Rev. E. Douglas Carver will bring the Christmas message to the visible and the invisible audience. The subject: "The Prince of Peace." The entire morning program may be heard over KPDN. The choir will sing "Hail His Name," by Axtell.
Evening activities will begin at 6:30 as the training unions gather in the grade departments for one hour. The evening hour of worship will begin promptly at 7:30. You are cordially invited to attend the elaborate Christmas music program which will be presented by the chorus choir and other special features. Dr. Malcolm Brown will render a trumpet solo, "The Holy City," Adams, accompanied by his wife. Lieut. Edwin Atkins will sing, "There's a Song in the Air," by Speaks; Myron Spencer, the solo part of "Gesu Bambino," by Petro Yon; Mike Alloway, an arrangement of "We Three Kings." Mrs. Virgil Mott and Miss Eloise Lane will accompany the choir and the special soloists.
For the offertory Roy Tinsley will play a violin solo "Souvenir," by Dida; "Simple Aveu," Thome, and "Nobody Knows," Kreisler.
The service will be climaxed with a beautiful candle lighting service. Each person present will be given a candle, and after all candles have been lighted a coronation service will close the performance and service of the evening.

FRANCIS AVENUE CHURCH OF CHRIST
Francis Avenue at Warren
Luther G. Roberts, minister
Sunday: Bible school 9:45 a.m.; preaching and worship 10:45 a.m.; preaching and evening worship 7:00 p.m.
Tuesday: Ladies' Bible class 2:30 p.m. Wednesday: Mid-week Bible study and prayer meeting 7:30 p.m. You are cordially invited to attend these services.

PENTECOSTAL HOLINESS CHURCH
Aloek and Zimmer
Rev. Irene Wilson, pastor
Sunday school—9:45 a.m.
Morning worship—11:00 a.m.
Evening worship, Sunday—7:30 p.m. Bible study, Tuesday—7:30 p.m. Prayer meeting, Friday—7:30 p.m. P. H. Y. S.—6:30 p.m.

ZION LUTHERAN CHURCH
1210 Duncan Street
R. L. Young, pastor
Sunday school at 11:00 a.m. You are cordially invited.

MACEDONIA BAPTIST CHURCH
Colored
9:45 a.m. Sunday school, 10:50 a.m. morning worship, 6 p.m. B.T.U., 8 p.m.—Evening worship service.

FIRST PRESBYTERIAN CHURCH
Dr. Douglas Nelson, pastor
9:45 a.m.—The church school.
10:45 a.m.—Common worship 7:30 p.m. The Tuxis Westminster Fellowship.
7:30 p.m.—The Junior High Westminster Fellowship.

500 South Cuyler
9:45 a.m.—Sunday school, morning worship 11 a.m., Sunday night evangelistic service, 8:15 p.m. Wednesday preaching, 8 p.m. Friday, C. A. Young People's service. Ladies meeting 2 p.m.
Also everyone is invited to listen to the full Gospel singers from 9 to 9:30 a.m. each Sunday over Station KPDN.

MCCULLOUGH METHODIST CHURCH
2109 Aloek Street
Rev. Will M. Culwell, minister
Church school, 10 a.m. Morning worship, 11 a.m. Evening evangelistic service, 7:30 p.m. Mid-week prayer service, Wednesday 7:30 p.m.

CHURCH OF THE BRETHREN
600 North Frost
Rev. Russell Greene West, minister
9:45 a.m.—Sunday school.
11:00 a.m.—Morning worship.
6:30 p.m.—Group meetings.

Methodist Church To Hold Vesper Service
Church school begins at the First Methodist church at 9:45. The special music for the morning worship in the sanctuary at 10:55, will be organ numbers by Miss Mildred Martin. "The Voice of the Chimes," by Luigi, "O Holy Night," by Conrad, and "Joy to the World," by Handel.

Christmas Eve Services At St. Matthew's Church
The Christmas Eucharistic service in St. Matthew's Episcopal church will start promptly at 11:15 Christmas Eve. This traditional service will be conducted wherever there are Episcopalians around the world. Word comes from Episcopal chaplains with the armed forces that plans are already made for the observance where our fighting men are stationed at the present time.
The minister and people of St. Matthew's church extend a cordial invitation to all persons, regardless of their own church affiliation, who wish to welcome the Christ Child on this anniversary of His birth, to join with them in this service.
The Rev. Edgar W. Henshaw will be the celebrant assisted by Mr. Alfred Smith. The music for the service is in charge of Mrs. May Foreman Carr, assisted by Mrs. Edna Henshaw and Mr. Robert M. Klingler. Candles will provide the lighting at this mid-night service.

Children To Give Church Program
At 11 o'clock on Sunday morning the children of the Church of the Brethren will give a Christmas program, followed by carol singing and a Christmas sermon by the pastor.

HARRAH METHODIST CHURCH
Rev. Grady M. Adcock, pastor
Sunday school begins at 9:45; morning worship, 10:55. Bible study and Youth Fellowship at 6:30, and evening worship at 7:15.
Services during the week include prayer services, Wednesday at 7:30, and the Women's Society of Christian Service, Tuesday at 3 p.m.

PENTECOSTAL ONENESS CHURCH
1046 West Brown
Rev. W. H. Massengale, pastor
ASSEMBLY OF GOD CHURCH
9:45 a.m.—Sunday school.
11:00 a.m.—Morning worship.
8:30 p.m.—Evening worship.
Thursday, 7:30 p.m.—Bible study.

SEVENTH DAY ADVENTIST CHURCH
Corner of Browning and Purviance St.
Rev. Elder LaCrosse of Amarillo
Sabbath school every Saturday morning at 10 a.m. Preaching at 11 a.m.

CHRISTIAN CHURCH
901 North Frost
1:30 a.m.—Sunday school, 11 a.m. Sunday service; 8 p.m. Wednesday service. The reading room in the church edifice is open daily, except Sunday, Wednesday, Saturday and legal holidays from 2 until 8 p.m.

FIRST CHRISTIAN CHURCH
Jim Brown, minister
9:45 a.m.—Church school.
10:50 a.m.—Morning worship, Communion.
5:45 p.m.—Youth Group meetings.
7:00 p.m.—Evening worship.
7:30 p.m.—Prayer meeting, Wednesday.

ST. MATTHEW'S EPISCOPAL CHURCH
707 W. Browning
Rev. Edgar W. Henshaw, minister
Early Communion at the first, second and fourth Sundays in each month. Services at 11 o'clock on each second and fourth Sunday. Sunday school every Sunday at 9:45. Special services on Saint's Days as announced at the time of such services.

CHURCH OF THE NAZARENE
North West and Buckler
A. L. James, pastor
Sunday Bible school, 9:45 a.m. Preaching services, 11 a.m. and 8 p.m. N.Y.P.S. program every Sunday evening at 7 o'clock.
H.N.Y. program every Sunday evening at 7 o'clock.
J.M.S. program every Sunday evening at 7 o'clock.
Mid-week prayer meeting Wednesday evening at 8 o'clock.

CENTRAL CHURCH OF CHRIST
Carlos D. Speck, minister
SUNDAY—Bible school, 9:45 a.m.; classes for all. Preaching 10:50 a.m.; Communion, 11 a.m. and 12:00 a.m. Evening service, preaching and communion at 7:30 p.m.
WEDNESDAY—Ladies Bible class at 3:00. Prayer services at 7:30 p.m.
FRIDAY—Men's training class, 7:30 p.m.

CALVARY BAPTIST CHURCH
Rev. E. M. Dunsworth, pastor
Sunday school, 9:45 a.m.; morning worship, 10:45 a.m.; preaching, 6:30 o'clock; evening service at 7:30.
C. H. Batt is Sunday school superintendent. Truman Fletcher, B. T. U. director; Mrs. Frank Turpin, pianist.

FIRST METHODIST CHURCH
Rev. E. B. Bowen, pastor
9:45 a.m. church school for all ages. 10:55 a.m. morning worship. This pastor will preach at both the senior and high school fellowship, 6:45 p.m. Evening worship at 7:30 p.m.

HOLY SOULS CHURCH
912 W. Browning
Father William J. Stack, pastor. Sunday masses at 8, 10 and 11:30 a.m. Daily masses are held at 7 and 8 o'clock. At the Post Chapel Sunday mass is at 8 a.m. and 9 p.m.
The public is cordially invited.

FIRST BAPTIST CHURCH
Corner West and Kingsmill Streets
E. Douglas Carver, pastor; Virgil Mott, director of education and music.
An old-fashioned, New Testament, missionary Baptist church, "where the visitor is never a stranger" invites one and all to the following:
Sunday school 9:45. E. Virgil Mott, superintendent; T. D. Alford, associate superintendent of records; A. C. Crook, associate superintendent of enlistments.
Morning worship, 10:55 o'clock.
Evening evangelistic service 7:00 o'clock.
If you enjoy great gospel music and powerful Bible preaching you will appreciate the services of the First Baptist church.

THE SALVATION ARMY
Captain Benish Carroll, commanding Service will be held at 111 E. Albert. Wednesday—Services at 8 p.m. Sunday—Sunday school at 9:45; Morning worship at 11 a.m.; Young People's service, 7 p.m.; Evening service, 8 p.m. Training Union 6:30 p.m.

For the little lady on your list

A PAIR OF ALL WOOL MITTENS
M m m m, they're warm, and oh-so-soft. Bright red, maize, blue, brown. Also stripes.
98c

A CUDDLY BUNNY MUFF
She'll love you for life, if you give her one of these! Of warm, cuddly bunny fur with a cute animal face attached. Snow-white, pink, pale blue, and buff.
1.98 plus 20% excise tax

AN ADORABLE HANDBAG
Give her one of these! She'll never stop talking about it! Darling little-girl styles in simulated leather. Green, tuffan, brown, red, navy. Each in a box!
1.69 plus 20% excise tax

Montgomery Ward

BIG SAVINGS AT WARDS

CLEARANCE SALE!

TOYS

DON'T DELAY! SHOP TODAY! FINE TOYS REDUCED!

SANDMAN PAJAMA DOLLS
each **1.49**
All the charm of sleepy children! Cherubic expression on painted features. Boy with short cropped yarn hair... girl with bangs and pigtails. Dressed in assorted cotton print pajamas.

LET'S PLAY RING TOSS!
AT WARDS... **59c**
Adaptation of horseshoe for indoors. 2 soft rubber rings and 2 peg stands included! It's fun!

DOUBLE DECK BUNK BED FOR DOLLS **4.49**
Can be used as twin doll beds too! Smoothly finished hardwood. Ladder included! Buy at Wards!

HASCO MYSTIC BOARD IS AMAZING! **1.49**
In fun... answers questions, solves your problems! With board, finder and instructions.

BLACK AND WHITE MAGIC SLATE SET **29c**
Reversible black and white slate... with pictures, chalk, everything for young artists!

GIVE A TOT A RATTLEPUSH!
1.25
Bright wood pieces tumble about merrily in a cage as the tot pushes! Encourages child to walk and gives support. Smoothly finished wood. Fun for little tots. Save at Wards!

PLASTIC TOY TELEPHONE
1.95
Finest little toy phone made! Will delight your youngster more than anything... looks exactly like the cradle phone you use... dial spins too! Black. Shop Wards for toys!

FOLDING SULKY FOR HER DOLLY
98c
How proudly she'll wheel her "baby" out for its airing in this stroller type sulky! Smooth wood frame in pink, with blue wheels. Will hold doll up to 24" tall! Buy at Wards and Save!

THOROBRED HORSE RACE GAME **57c**
Thrills of the steeple chase and horse race! Exciting for adults; as well as children!

TOURNAMENT CHECKERS COMPLETE... **57c**
Washable masonite board, red and black checkers and instructions! Buy for gifts!

FUN FOR TOTS! POLO PONY... **1.29**
All Wood. Smooth Painted finish! Ideal "exerciser" for tots to 3 years old! Buy for Christmas!

ABC JIG-SAW PUZZLES, Each **39c**
Regular 98c
Old King Cole, Little Boy Blue, Woman in the Shoe.

Sturdy Rockers Reg. 4.75 **2.77** **Bag o' Blocks** Reg. 1.25 **67c**

Montgomery Ward

This Christmas "Say it with Flowers"

Because flowers are the Christmas gift for everyone.

Make the holiday season one of festive grandeur with flowers of long lasting quality.

PARKER'S Blossom Shop
406 N. Cuyler Phone 21

(Legal Notice, Continued)

SECTION 69 - FLOOR CONNECTIONS.

Water closet, Pedestal Urinal, and Trip Standard Slop Sink floor connections. A brass floor flange shall be welded or soldered to lead pipe, a brass floor flange shall be caulked to brass pipe, and the connection made by bolting the fixture to the flange with brass bolts.

SECTION 70 - INCREASERS AND REDUCERS AND PROHIBITED JOINTS AND CONNECTIONS.

(a) Where different sizes of pipes, or pipes and fittings are to be connected, proper size increasers or reducers, pitched at an angle of forty-five (45) degrees between the two sizes, shall be used. (b) Any fitting or connection, which has an enlargement, or recess with a ledge, shoulder, or reduction of the pipe area in the direction of the flow on the outlet or drain side of any trap, is prohibited. No putty, or similar material, shall be used between a trap and a fixture, or in slip jointing connections.

SECTION 71 - EXPANSION BOLTS.

Connections of wall hangers, pipe supports, or fixture settings, with any masonry, stone, or concrete backing, shall be made with expansion or through bolts, without the use of wood plugs.

SECTION 72 - TUBING AND SOLDER BUSHING.

Connections between brass tubing traps shall be welded joints.

SECTION 73 - USE OF COUPLINGS.

A full size brass or cast iron drainage coupling, shall be used as an increaser, when one and one-half (1 1/2) inch diameter pipe is to be caulked into a two (2) inch hub, except that a plain coupling may be used when a vent pipe is to be so connected.

ARTICLE VI TRAPS

SECTION 74 - WHERE REQUIRED.

(a) Each plumbing fixture, except as provided for in this section, shall be separately trapped by a water seal trap, placed as close to the fixture outlet as possible. All bath tubs shall have drum traps. (b) Combination plumbing fixtures such as a sink and laundry tray, bath tub and lavatory, or any similar two-piece fixture may be installed, provided that each fixture in such combination is separately trapped and vented; provided, however, that two (2) sinks together, where the waste outlets are not more than twenty-four (24) inches apart or where the sink is not more than four (4) inches deeper than the other, may be classed as one fixture and installed on one trap. (c) Hand-traps, sumps, water meters, outlets to Special Waste Pipes, and other waste discharging receptacles or devices, shall be trapped as otherwise provided for in this Ordinance.

SECTION 75 - TRAPS PROHIBITED.

No form of trap which depends on its seal upon the action of movable parts, or concealed interior partitions, shall be used. No fixture shall be double trapped. No crown vented trap, shall be installed. SECTION 76 - TRAP SEALS. Every trap, except sand-traps and similar intercepting traps, shall have a water seal of not less than one and one-half (1 1/2) inches, and not more than four (4) inches. All traps shall be set true with respect to their water seals.

SECTION 77 - SAND TRAPS.

Sand-traps, and similar intercepting traps, shall be so designed and located, as to be readily accessible for cleaning, and shall have a trap seal of not less than six (6) inches. SECTION 78 - GREASE TRAPS. When a grease trap is installed, it shall be located as near as possible to the fixture from which it receives the discharge. SECTION 79 - FLOOR DRAIN TRAPS. Floor drains, shall connect into trap so constructed, that it can be readily cleaned, and of a size sufficiently efficient for the purpose for which it is intended. The drain trap shall be so located, that it is all times in full view. When subject to back flow, or back pressure, such drains shall be equipped with an approved back water valve.

SECTION 80 - TRAP SUPPLIES.

Water trap, which is directly connected to the Drainage System, shall be provided with a permanent trap seal, fed from an approved plumbing fixture, or by means of an approved automatic priming device, designed and installed for that purpose.

SECTION 81 - KIND AND MINIMUM SIZE.

Every trap, except sand traps and similar intercepting traps shall be self-cleaning. Traps for bathrooms, showers, wash basins, sinks, tubs, laundry tubs, hoppers, or drains, drinking fountains, and other similar fixtures, shall be of lead, brass or cast iron. The minimum size (nominal inside diameter) of the trap for a single given fixture, shall be not less than that shown in Table No. 1.

SECTION 82 - QUALITY OF WATER SUPPLY.

The quality of the water supply shall conform to the standards of purity, as established by the Boards of Health of the State of Texas and the City of Pampa.

TABLE NO. 1

Table with 2 columns: Kind of Fixture, Trap Size. Includes Drinking Fountains (1 1/2"), Dental Units (1 1/2"), Bar Sinks (1 1/2"), Wash Basins (1 1/2"), Kitchen Sinks (1 1/2"), Bath Tubs (4"x8"), Laundry Tubs (1 1/2"), Bidets (1 1/2"), Lip Urinals (1 1/2"), Cupidors (1 1/2"), Sump Gutter Drains (1 1/2"), Combination Fixtures (1 1/2"), Small Floor Sinks (1 1/2"), Small Floor Hoppers (1 1/2"), Shower Stalls (2"), Small Floor & Area Drains (2"), Through Urinals (2"), Stall Urinals (2"), Pedestal Urinals (3"), Slop Sinks (3"), Water Closets (3"), Sand Traps (3").

SECTION 83 - DISTRIBUTION.

The water supply, shall be distributed through a system of piping, entirely independent of any piping system conveying another water supply, or any piping or device conveying any other thing whatsoever. No connection shall be made, or conditions maintained that would permit the entrance of any unapproved foreign matter into the water distribution system, either by gravity, syphonage or back pressure.

SECTION 84 - SIZE.

The water service, and all water distribution piping of any building and premises, shall be of sufficient size to permit a continuous ample flow at all outlets at a given time.

SECTION 85 - SUPPLY TO FIXTURES AND DEVICES.

All plumbing fixtures shall be provided with a sufficient supply of water for flushing to keep them in a clean and sanitary condition. Every water closet and urinal shall be flushed by means of an approved tank or flush valve, of at least one (1) gallon flushing capacity for water closets, and at least two (2) gallons for urinals, and shall be adjusted to prevent the waste of water. The flush pipe for water closet flush tanks shall be not less than one and one-quarter (1 1/4) inches in diameter, and the water from the flush tank shall be used for no other purpose.

SECTION 86 - WATER SERVICE PIPE DISTANCE FROM SEWER PIPE.

All water service and distribution pipes shall be laid in a separate ditch and at least four (4) feet from any sewer or drainage pipe, and a drainage system. SECTION 87 - PUMPS, TANKS, WELLS, ETC. All water pumps, tanks, wells, hydrants, filters, softeners, appliances and devices, shall be protected from surface water and outside contamination, by approved covers, walls, or copings, and where subject to temperature variations shall be efficiently protected from freezing.

SECTION 88 - SHUT-OFF VALVES.

A shut-off valve, shall be installed on the main supply line, near the curb. Supply lines taken from any basement, such valve shall be valved at or near their source. All supply tanks, shall be provided with valved drain lines located at their lowest point. An accessible shut-off valve, shall be provided on the main supply line, at or near the foundation wall, and if there be a basement, such valve shall be accessible in the basement. Buildings having more than one occupancy, shall have shut-off valves provided at each fixture, so as to permit each fixture to be shut-off independent of any other fixture.

SECTION 89 - PRESSURE RELIEF VALVES.

Whenever a check valve, water meter, or any device functioning as a check valve, is installed on the cold water supply line between a street main, or other source of supply, and a hot water tank, there shall be installed on the hot water distribution system, an approved pressure relief valve.

SECTION 90 - MATERIALS OF WATER PIPE AND FITTINGS.

All water service and distribution pipes, shall be of lead, galvanized wrought iron, galvanized steel, brass, copper, or cast iron, with brass, copper, galvanized cast iron, or galvanized malleable iron fittings.

SECTION 91 - PLUMBING FIXTURES.

SECTION 92 - MATERIALS.

No water closet, or urinal, shall be installed or maintained, unless constructed of verified earthenware. All other plumbing fixtures, shall be constructed of glazed porcelain, vitreous china, porcelain enameled

SECTION 93 - INSTALLATION.

All plumbing fixtures, shall be installed free and open in a manner to afford access for repairs and cleaning. When practical, all pipes from fixtures shall be run to the wall at right angles thereto. All wall fixtures, shall be slightly supported by approved metal hangers or bolts, and all floor outlet fixtures, shall be rigidly secured to the floor, by approved screws or bolts. Water tight joints shall be made, where fixtures come in contact with walls and floors.

SECTION 94 - ACCESS TO SUPPLY AND WASTE CONNECTIONS.

Bull in bath tubs, or other fixtures having concealed slip-joint connections, shall be provided with suitable access panels or utility chambers, so placed as to make such connections easily accessible for inspection and repairs.

SECTION 95 - WATER CLOSET BOWLS.

Water closet bowls and traps, shall be made in one piece, and be provided with integral flushing rims, constructed so as to flush the entire interior surface of the bowl. The form of the bowl shall be such, that when filled to the trap overflow, the quantity of water retained will be sufficient to prevent fouling of surfaces.

SECTION 96 - PROHIBITED FIXTURES.

Fixed wooden wash trays or sinks for domestic use, shall not be installed or maintained, in any building designed or used for human habitation. No sheet metal lined wooden wash tub shall be installed or re-connected.

SECTION 97 - FLOOR DRAINS.

A floor drain or shower, shall be considered a fixture, and must be provided with a strainer. SECTION 98 - STRAINERS. All fixtures other than water closets and syphon action washdown urinals, shall be provided with fixed metallic strainers.

SECTION 99 - OVERFLOWS.

The overflow pipe from a fixture, shall be connected in the inlet side of the trap, and be so arranged that it may be readily and effectively cleaned.

ARTICLE IX VENTILATION OF ROOMS AND FIXTURES

SECTION 100 - LOCATION OF FIXTURES.

No plumbing fixture shall be installed in any room or compartment which does not contain a window, opening on a street, yard, court or vent shaft, or which is not otherwise provided with proper ventilation by means of a Local Vent Pipe.

SECTION 101 - LOCAL VENT PIPES.

Local Vent pipes from fixtures, or from rooms or compartments in which plumbing fixtures are located, shall be separate and distinct, or have no connection whatever with other ventilating ducts or pipes in the building.

SECTION 102 - TOILET ROOM VENTILATION.

(a) Toilet, and/or Urinal Rooms or compartments, in Apartment Houses and Dwellings, shall be provided with ventilation, in accordance with the requirements of the State Housing Act. (b) Toilet, and/or Urinal Rooms or compartments, in buildings other than Apartment Houses, Hotels or Dwellings, shall be ventilated by means of a window opening on a street, yard, court, or vent shaft, fan exhaust system of ventilation, or a Local Vent Pipe.

SECTION 103 - PROHIBITED CONNECTIONS.

No waste connection shall be made to a lead bend or branch of a water closet or urinal, or to a vent or waste vent, circuit or loop vent above the highest installed fixture on the branch or main, shall there after be used as a soil or waste pipe.

SECTION 104 - PROTECTION FROM FREEZING.

No soil or waste pipe, shall be installed or permitted outside of a building, unless adequate provision is made to protect it from freezing, if such pipe is subject to freezing temperature.

SECTION 105 - ROOF EXTENSIONS.

All vent pipes, shall be run separately or combined of the full required size, not less than one (1) foot above the roof. Flagging of vents is prohibited, except when the roof is used for purposes other than weather protection. In such cases, the vent shall extend not less than ten (10) feet above the roof and be securely stayed.

SECTION 106 - VENT TERMINALS.

The roof terminal of any vent pipe, if within ten (10) feet in any direction, including any angles and turns, of any door, window, air shaft, or any other source of ventilation or air supply of any building, shall extend at least three (3) feet above the same. No vent pipe shall terminate on a wall, or under an eave or overhang of any building, or otherwise set around any overhang, cornice, or similar construction, when it is practical to extend through the roof without such offset.

SECTION 107 - VENT TERMINALS ADJOINING BUILDINGS.

In the event, that a new building is built higher than an existing building, the vent of the new building shall not locate within

AND EQUIVALENTS.

The unit equivalent of Plumbing fixtures shown in Table No. 1, shall be based on the size of the trap required, and the unit equivalent of fixtures and devices not shown in Table No. 1, shall be based on the rated discharge capacity in gallons per minute in accordance with the following table:

TABLE NO. 2

Table with 2 columns: SIZE OF TRAP (in Table No. 1), DISCHARGE CAPACITY (in Gals. per Min.). Includes 1 1/2" Traps Equal 1 Unit, 2" Traps Equal 1 Unit, 2 1/2" Traps Equal 2 Units, Over 2 1/2" Traps Equal 6 Units.

SECTION 108 - SIZE OF DRAINAGES AND VENT PIPING.

The minimum sizes of vertical and/or horizontal drainage and/or vent piping, shall be determined from the distribution and total of all fixture units connected thereto, and additional, in the case of vertical soil, waste, and/or vent pipes in accordance with their length.

SECTION 109 - DISTANCE OF VENT PIPE FROM TRAP SEAL.

No trap shall be placed more than three (3) feet horizontal developed length, from its vent pipe. The distance from the trap to the waste vent pipe, shall be such as to provide, that each fixture waste separately into an approved double fitting having inlet openings at the same level.

SECTION 110 - MAIN VENTS TO CONNECT AT BASE.

All main vents and vent stacks, shall connect to their base to the main soil or waste pipe, at or below the lowest fixture branch. All vent pipes, shall extend undiminished in size above the roof, or shall be re-connected with the main vent stack at least four (4) feet above the roof level, on which is installed the highest fixture on the stack.

SECTION 111 - SOIL AND WASTE STACKS IN HEIGHT.

In every building ten or more stories in height, all soil and waste stacks which are served by parallel vertical stacks, shall be cross connected by means of an independent special vent pipe, the size of which shall not be less than the size of the vent stack at that story. The vent stack intersection shall be through a "WYE" branch fitting, placed below a fixture branch serving that floor.

SECTION 112 - BRANCH AND INDIVIDUAL VENTS.

No vent pipe shall be less than one and one-fourth (1 1/4) inches in diameter, no part of which shall be horizontal. Not more than one (1) "one" vent pipe trap shall be connected to a main vent stack (1 1/4) inch vent pipe. In no case shall the length of a branch vent pipe of a given diameter, exceed the maximum length permitted for the main vent serving the same size soil or waste vent pipe, or shall be less than three (3) feet above the finished floor level.

SECTION 113 - VENT PIPE GRADIENTS AND CONNECTIONS.

All vent and branch vent pipes, shall be free from drops or sags, and be so graded and connected as to drip back to the soil or waste pipe by gravity. Where vent pipes connect to a horizontal soil or waste pipe, the vent pipe shall be taken off above the center line of such pipe, ahead of the trap being served, and unless prohibited by structural conditions, shall rise vertically to a point not less than six (6) inches above the extreme overflow level of the fixture served, before offsetting horizontally.

SECTION 114 - CIRCUIT AND LOOP VENTS.

(a) A branch soil or waste pipe, to which three (3) urinals, trap sets or floor drains, or other fixtures are connected in series of battery formation, may be vented with a circuit or loop vent the size of which shall be not less than the size of the drainage branch to which it connects. Such vent pipe, shall be taken off above the center line of the battery, and shall rise vertically not less than six (6) inches above the extreme overflow level of the fixture connected to the battery drainage branch.

SECTION 115 - PROTECTION FROM FREEZING.

(c) Not more than eight (8) fixtures shall be connected to a battery formation branch soil or waste pipe, unless a two (2) inch relief vent is provided between each eight (8) fixtures.

SECTION 116 - BATTERY FORMATION SOIL OR WASTE BRANCHES.

(a) Fixtures connected to a battery formation drainage branch, shall not be more than five (5) feet apart center to center, measured horizontally in a straight line, unless such fixture trap is separately vented.

SECTION 117 - FIXTURES CONNECTED TO A BATTERY FORMATION DRAINAGE BRANCH.

(b) Fixtures connected to a battery formation drainage branch, shall not be more than two (2) feet from such branch, center to center, measured horizontally at right angles to the branch, unless such fixtures trap is separately vented.

SECTION 118 - DISCHARGE FROM EACH AND EVERY FIXTURE.

Each and every fixture, and each and every branch soil or waste pipe that connects to a battery formation drainage branch, shall enter the side of such branch in all cases.

SECTION 119 - DISTANCE FROM FINISHED FLOOR LEVEL TO TOP OF BATTERY FORMATION DRAINAGE BRANCH.

Such distance from the finished floor level, to the top of a battery formation drainage branch, shall not be less than six (6) inches, nor more than eighteen (18) inches, measured vertically, unless impractical due to structural conditions.

SECTION 120 - EVERY SOIL OR WASTE BATTERY FORMATION DRAINAGE BRANCH, WHICH IS

within ten (10) feet of any existing vent pipe on the lower building, unless the owner of such new building, shall defray the expenses, or shall himself make such alterations as may be necessary to conform with Section 105 of this Ordinance.

It shall be the duty of the owner of the lower, or existing building, to make such alterations therein, upon the receipt in advance of money or security, as shall be determined for the purpose from the owner of the new, or higher building, or to permit, at the election of the owner of the new, or higher building, the making of such alteration by the owner of said new or higher building.

SECTION 121 - TRAPS PROTECTED BY VENT PIPES.

Every plumbing fixture trap, except as provided for in Sections 119, 120, 121, 122, and 144 of this Ordinance, shall be protected against siphonage and back pressure, and air circulation measured throughout all parts of the drainage system, by means of a vent pipe, installed in accordance with the requirements of this Ordinance. In all cases, a continuous, soil or waste vent shall be below the vent when structural conditions will permit.

SECTION 122 - DISTANCE OF VENT PIPE FROM TRAP SEAL.

No trap shall be placed more than three (3) feet horizontal developed length, from its vent pipe. The distance from the trap to the waste vent pipe, shall be such as to provide, that each fixture waste separately into an approved double fitting having inlet openings at the same level.

ARTICLE XI HOUSE DRAINS AND HOUSE SEWERS.

SECTION 123 - INDEPENDENT SYSTEMS.

The Plumbing and Drainage System of each new building, and of new work installed in an existing building or premises, shall have an independent connection with a public sewer if such public sewer exists in the tract or alley, upon which the property abuts, except that one or more buildings located on an interior lot under the same ownership, may be connected to the House Drain or House Sewer. Should any building or premises so connected change ownership, an independent public sewer connection shall be provided for each premise.

SECTION 124 - OLD HOUSE SEWERS AND DRAINS.

Old house sewers and house drains, may be used in connection with new buildings or new plumbing and drainage work only when they are found on examination and test to conform in all respects to the requirements governing the use of sewers and house drains. If the old work is found defective, the proper administrative authority shall notify the owner to make the changes necessary to conform to this Ordinance. No building or part thereof, shall be erected, or placed over, any part of a Drainage System, which is constructed of Vitrified Clay Pipe.

SECTION 125 - CESSPOOLS AND SEPTIC TANKS.

When a public sewer is not available for use, drainage pipes shall be connected to an approved private sewage disposal works, a septic tank or cesspool.

SECTION 126 - EXCAVATIONS.

All excavations required to be made for the installation of a plumbing or drainage system, shall be made, shall be open trench work. All trench work, within or without a building shall be kept open, until the piping has been tested, inspected and approved.

SECTION 127 - HOUSE SEWERS IN MADE GROUND.

House sewer, or any other drainage piping serving in the capacity of a house sewer, when laid in made or filled ground, if constructed of vitrified clay pipe, shall be laid on a bed of approved grillage, the concrete or shall be of cast iron pipe or approved standards.

SECTION 128 - DEPTH OF DRAINAGE.

No house sewer, or other, drainage piping constructed of vitrified clay pipe, shall be installed within three (3) feet of any bearing wall, or less than twelve (12) inches from the surface of the ground. All underground drainage piping shall be laid at sufficient depth to provide protection from frost and vehicle traffic.

SECTION 129 - DRAINAGE BELOW MAIN SEWER LEVEL.

Drainage piping serving fixtures located below the crown level of the main sewer, shall discharge into an approved water tight sump or receiving tank, so located as to receive the sewage or other liquid wastes shall be lifted, and discharged into the House Drain or House Sewer, by ejectors, pumps or other equally efficient approved mechanical device.

SECTION 130 - SHEET METAL LEADERS AND DOWN SPOUTS.

No sheet metal water leader, shall be installed on the inside of a building, inner court or vent shaft. No sheet metal water leader, shall be directly connected to any drainage system, which connects with a Public Sewer, Septic Tank or Cesspool.

SECTION 131 - DEFECTIVE SHEET METAL WATER LEADERS.

When an existing sheet metal water leader pipe within the walls of any building becomes defective, such water leader, shall be replaced with one which conforms to this Ordinance.

SECTION 132 - RAIN WATER DRAINAGE PIPING MATERIALS.

All underground roof and area rain water drainage piping within the walls of a building, shall be cast iron pipe and fitting, and all such piping above ground shall be cast iron pipe and fitting, or galvanized wrought iron or steel pipe, with drainage fittings of approved standards.

SECTION 133 - RAIN WATER LEADERS TO BE INDEPENDENT.

Except the feeding of rain water leader traps as herein required, no water leader or other rain water piping shall be used as a soil, waste, or vent pipe, nor shall any soil,

outside with corrosion resisting paint. All such sumps and receiving tanks, shall be either automatically discharged, or be of sufficient capacity to retain all sewage and surplus discharge therefrom for a period of not less than twenty-four hours.

SECTION 121 - WHEN VENTS ARE NOT REQUIRED.

(a) No vent pipe will be required on a rain water leader trap, water trap, sub-soil catch basin trap, or sand trap, when such sand trap acts as a primary settling tank and discharges into a secondary sand trap which is properly trapped and vented.

(b) Traps serving outside areas drains need not be vented, if such traps discharge indirectly into the drainage system, in the manner provided for Special Waste Pipes.

(c) Traps serving sinks, which are part of the equipment of bars, soda fountains and counters, need not be vented in the manner specified in Section 110 of this Ordinance, when the location and/or construction of such bars, soda fountains and counters is such as to make it impossible so to do. When such conditions exist, said sinks shall discharge into a floor sink or hopper which is properly trapped and vented.

(d) No vent pipe will be required on a trap which connects to a Special Waste Pipe.

SECTION 122 - FIXTURES BACK TO BACK.

Two fixtures of the same kind, set back to back, or side by side within the distance allowed between a trap and its vent, shall be served with one continuous soil or waste vent pipe, as the case might be, provided that each fixture wastes separately into an approved double fitting having inlet openings at the same level.

ARTICLE XI HOUSE DRAINS AND HOUSE SEWERS.

SECTION 123 - INDEPENDENT SYSTEMS.

The Plumbing and Drainage System of each new building, and of new work installed in an existing building or premises, shall have an independent connection with a public sewer if such public sewer exists in the tract or alley, upon which the property abuts, except that one or more buildings located on an interior lot under the same ownership, may be connected to the House Drain or House Sewer. Should any building or premises so connected change ownership, an independent public sewer connection shall be provided for each premise.

SECTION 124 - OLD HOUSE SEWERS AND DRAINS.

Old house sewers and house drains, may be used in connection with new buildings or new plumbing and drainage work only when they are found on examination and test to conform in all respects to the requirements governing the use of sewers and house drains. If the old work is found defective, the proper administrative authority shall notify the owner to make the changes necessary to conform to this Ordinance. No building or part thereof, shall be erected, or placed over, any part of a Drainage System, which is constructed of Vitrified Clay Pipe.

SECTION 125 - CESSPOOLS AND SEPTIC TANKS.

When a public sewer is not available for use, drainage pipes shall be connected to an approved private sewage disposal works, a septic tank or cesspool.

SECTION 126 - EXCAVATIONS.

All excavations required to be made for the installation of a plumbing or drainage system, shall be made, shall be open trench work. All trench work, within or without a building shall be kept open, until the piping has been tested, inspected and approved.

SECTION 127 - HOUSE SEWERS IN MADE GROUND.

House sewer, or any other drainage piping serving in the capacity of a house sewer, when laid in made or filled ground, if constructed of vitrified clay pipe, shall be laid on a bed of approved grillage, the concrete or shall be of cast iron pipe or approved standards.

SECTION 128 - DEPTH OF DRAINAGE.

No house sewer, or other, drainage piping constructed of vitrified clay pipe, shall be installed within three (3) feet of any bearing wall, or less than twelve (12) inches from the surface of the ground. All underground drainage piping shall be laid at sufficient depth to provide protection from frost and vehicle traffic.

SECTION 129 - DRAINAGE BELOW MAIN SEWER LEVEL.

Drainage piping serving fixtures located below the crown level of the main sewer, shall discharge into an approved water tight sump or receiving tank, so located as to receive the sewage or other liquid wastes shall be lifted, and discharged into the House Drain or House Sewer, by ejectors, pumps or other equally efficient approved mechanical device.

SECTION 130 - SHEET METAL LEADERS AND DOWN SPOUTS.

No sheet metal water leader, shall be installed on the inside of a building, inner court or vent shaft. No sheet metal water leader, shall be directly connected to any drainage system, which connects with a Public Sewer, Septic Tank or Cesspool.

SECTION 131 - DEFECTIVE SHEET METAL WATER LEADERS.

When an existing sheet metal water leader pipe within the walls of any building becomes defective, such water leader, shall be replaced with one which conforms to this Ordinance.

SECTION 132 - RAIN WATER DRAINAGE PIPING MATERIALS.

All underground roof and area rain water drainage piping within the walls of a building, shall be cast iron pipe and fitting, and all such piping above ground shall be cast iron pipe and fitting, or galvanized wrought iron or steel pipe, with drainage fittings of approved standards.

SECTION 133 - RAIN WATER LEADERS TO BE INDEPENDENT.

Except the feeding of rain water leader traps as herein required, no water leader or other rain water piping shall be used as a soil, waste, or vent pipe, nor shall any soil,

outside with corrosion resisting paint. All such sumps and receiving tanks, shall be either automatically discharged, or be of sufficient capacity to retain all sewage and surplus discharge therefrom for a period of not less than twenty-four hours.

SECTION 140 - OVERFLOW PIPES.

No overflow pipe from a roof, cistern, tank, expansion tank, drip pan or other device, shall be directly connected to any soil, waste or vent pipe, House Drain or House Sewer.

SECTION 141 - LEADERS SHALL CONNECT AHEAD OF BRANCHES AND BACK-WATER VALVES.

(Legal Notice, Continued)

drainage outlets, shall be drained by Special Waste Pipes discharging into an approved open plumbing fixture, sump, or floor drain.

SECTION 149—STEAM AND HOT WATER DRAINAGE: CONDENSORS AND SUMPS.

No steam pipe, shall connect to any part of a drainage or plumbing system, nor shall any water above one hundred and forty (140) degrees Fahrenheit, be discharged into any part of a drainage system.

SECTION 150—WASH RACK AND SIMILAR DRAIN DRAINAGE.

All floor drainage from public laundries, canneries, packing houses, slaughter houses, soap factories, bottling works, dairies, milk or cream establishments, wash-racks, floors and/or areas where automobiles, trucks, vehicles, cars, or locomotives are washed, shall run to an intercepting settling tank or sump, so designed and constructed that mud and other objectionable materials will be retained therein.

SECTION 151—CONSTRUCTION OF SETTLING TANKS — SUMPS AND SAND TRAPS.

Settling tanks, sumps and/or sand traps, shall be constructed of concrete, with bottom and sides not less than four (4) inches in thickness.

No setting tank or sump, shall be less than two (2) feet deep, eighteen (18) inches wide, and thirty-six (36) inches long, inside measurements, and shall be provided with heavy cast iron grates that may be removed for cleaning purposes.

No sand trap, shall be less than two (2) feet deep, eighteen (18) inches wide and eighteen (18) inches long, inside measurements, and shall be provided with a tight fitting cover that may be removed for cleaning purposes.

SECTION 152—DRAINAGE FROM ACID AND CHEMICAL FIXTURES.

Drainage from fixtures, receptacles, apparatus, or devices, in which acids or chemicals are used, shall be diluted or neutralized before being discharged into a drainage system, or shall be conveyed to the house sewer, through a drainage system that is separate and distinct from any other drainage system.

SECTION 153 — MATERIALS OF ACID FIXTURES AND DRAINAGE PIPING.

Sinks, tanks, or other receptacles, apparatus, or devices in which acids or chemicals are used, are designed to discharge wastes, shall be constructed of approved

Such fixtures, tanks, receptacles, apparatus, or devices, may indirectly drain to a water supplied diluting tank or sump, constructed of acid resisting material, which shall be properly trapped, vented and connected to the drainage system.

Acid sinks, neutralizing tanks, or other similar fixtures or devices, may directly connect to the drainage system, when all such wastes discharge into a separate system of waste pipe, constructed of approved acid resisting pipe made for that purpose.

SECTION 154—SWIMMING POOLS.

All swimming pools, shall have the bottom and inner sides constructed of smooth non-absorbent materials, and be so constructed as to be properly drained through one or more metal grate openings.

No pool, designed to be supplied with water direct from the domestic water supply, shall have any water inlet thereto, below the extreme overflow level of the pool.

There shall be no direct connection, between any domestic water supply line and any circulating pump, filter, water softener, or other apparatus, or device, that comes in contact with the water in or from the pool.

SECTION 155—CESSPOOLS AND SEPTIC TANKS.

When a public sewer is not available for use, all drainage piping shall connect to a cesspool or septic tank, until such time as a public sewer is available.

No septic tank shall be installed, until plans and specifications therefor have been filed with the Plumbing Inspector.

ARTICLE XIII. INSPECTION AND TESTS

SECTION 156—ALL WORK TO BE INSPECTED.

All pipes and fittings, traps, fixtures, appurtenances and devices of a Plumbing and Drainage System shall be inspected by the Plumbing Inspector, to insure compliance with all the requirements of this Ordinance.

SECTION 157—NOTIFICATION.

It shall be the duty of the person doing the work authorized by this Permit, to make sure that the work will stand the test prescribed before giving the above notifications.

SECTION 158—MATERIALS AND LABOR FOR TESTS.

The equipment, material, power, and/or labor necessary for the inspection and test, shall be furnished by the person doing the work au-

thorized by the Permit. SECTION 159—METHOD OF TESTING.

All the piping of a plumbing and/or drainage system shall be tested with water or air in the following manner:

(1) WATER TEST: The water test shall be applied to the plumbing and/or drainage system in its entirety or in sections. If applied to the entire system, all openings in the piping shall be tightly closed, except the highest opening above the roof, or other highest point, and the system filled with water to the point of overflow.

(2) AIR TEST: The air test shall be made by attaching the air compressor or test apparatus to any suitable opening, and closing all other inlets and outlets to the system, then forcing air into the system, until there is a uniform pressure sufficient to balance a column of mercury ten (10) inches in height.

SECTION 160 — COVERING OF WORK.

No drainage or plumbing system or part thereof shall be covered or concealed until it has been inspected, tested and approved as herein prescribed.

SECTION 161 — UNCOVERING WORK.

If any drainage or plumbing system or part thereof is covered or concealed before being regularly inspected, tested and approved, as herein prescribed, it shall be exposed upon the direction of the Plumbing Inspector.

SECTION 162 — DEFECTIVE WORK.

If inspection or tests show defects, such defective work or material shall be replaced within three (3) days and inspection and test repeated.

SECTION 163 — RAINWATER DRAINAGE SYSTEM TESTS.

Water leader pipes and their roof connections within the walls of buildings, and storm water drainage systems that connect to a combined sewer system, a storm water drain system, or a system that drains to a public gutter shall be tested and inspected, as provided for in Section 160.

SECTION 164 — WATER DISTRIBUTING SYSTEM TESTS.

Upon the completion of the entire water distribution system, including connections to appurtenances, devices, tanks, apparatus, or fixtures, it shall be tested and inspected, and shall prove tight under a water pressure not less than the maximum pressure under which it is to be used.

SECTION 165 — FINAL FIXTURE TEST.

Upon the completion of the setting or installing of plumbing fixtures, or other devices, apparatus, appurtenances or appliances, having waste and/or water connections, and prior to the general use thereof, it shall be the duty of the person doing such work, to notify the Plumbing Inspector that such work is ready for inspection and test.

SECTION 166—AIR TEST OF DEFECTIVE PLUMBING SYSTEMS.

The air test shall be used in testing the sanitary condition of the drainage or plumbing system of any building or premises where there is reason to believe that it has become defective.

SECTION 167—WHEN INSPECTION AND TEST IS NOT REQUIRED.

No tests or inspections shall be required, where a plumbing system, or part thereof, is set up for exhibition purposes and has no connection with a water or drainage system; nor after repairing of fixtures, faucets or valves used for the same purpose, nor after forcing out stoppages and repairing leaks.

SECTION 168—MAINTENANCE.

All plumbing or drainage systems, found defective or in an unsanitary condition, shall be repaired, renovated, replaced or removed, upon written notice from the proper administrative authorities.

ARTICLE XIV. LEGISLATIVE

SECTION 169 — VALIDITY OF ORDINANCE.

If any section, sub-section, sentence, clause or phrase of this Ordinance is, for any reason, held to be unconstitutional, such decision shall not affect the validity of the remaining portions of this Ordinance.

SECTION 170—GENERAL PENALTY.

Any person violating any of the provisions of this Ordinance, shall be deemed guilty of a misdemeanor, and each such person shall be

deemed guilty of a separate offense, for each and every day or portion thereof, during which, any violation of any of the provisions of this Ordinance is committed, continued or permitted, and upon conviction of any such violation, such person shall be punishable by a fine of not less than five dollars (\$5.00), or more than One Hundred Dollars (\$100.00).

SECTION 171—MASTER PLUMBERS AND JOURNEMEN PLUMBERS HOLDING VALID LICENSE UNDER FORMER ORDINANCE.

All persons holding a valid Master Plumbers License issued by the City of Pampa, Texas, under the former Plumbing Ordinance shall be entitled to receive a Master Plumbers License without taking the examination prescribed herein, but shall make application and pay the renewal fee as herein prescribed.

SECTION 172—UNLAWFUL APPROVAL.

The issuance or granting of a permit, or the approval of plans and/or specifications shall not be deemed or construed to be a permit for, or approval of, any violation of the provisions of this Ordinance.

SECTION 173—LIABILITY OF CITY OFFICIAL OR EMPLOYEE.

This Ordinance shall not be construed as imposing upon the City of Pampa, Texas, any liability or responsibility for damage resulting from defective plumbing or drainage systems, or the installation thereof; nor shall the City of Pampa, Texas, or any official or employee thereof be held as assuming any such liability or responsibility by reason of the inspection authorized hereunder.

SECTION 174—REPEAL OF CONFLICTING ORDINANCES.

All Ordinances and parts of Ordinances of the City of Pampa, Texas, in conflict herewith, are hereby repealed.

SECTION 175—EMERGENCY.

The fact that there is no proper and sufficient Plumbing Ordinance in effect in the City of Pampa, Texas, to properly protect the health, sanitation and the welfare of its inhabitants creates an emergency and the rule requiring this Ordinance to be read on three separate days, is hereby suspended and this Ordinance shall take effect upon the expiration of ten (10) days after its last publication.

Passed and adopted by the City Commission of the City of Pampa, Texas, this 20th day of November, 1945, by the following votes to-wit: AYES: Three (3). NOES: None. ABSENT: None.

ss/FARRIS C. ODEN, Mayor

ATTEST: ss/J. ERNEST HOOD, City Secretary

NOTICE OF WAREHOUSEMAN'S SALE, JANUARY 15, 1946.

Whereas, the parties listed below did deliver to the undersigned as warehouseman for storage, and shall prove tight, without leaks or defects, upon approval of the plumbing Inspector shall issue a Final Certificate of Approval to that effect.

Whereas, the parties have failed to comply with such notice, in compliance with Article 5644 of the 1925 Revised Civil Statutes of the State of Texas, we will sell the said property on the 15th day of January, 1946, beginning at 9 a. m. at our warehouse at 916 West Brown street, Pampa, Texas, at a public auction following the manner of sale under execution to satisfy our warehouseman's lien for storage together with all charges accruing from this date and the cost of sale. And we will apply the proceeds of said sale to the payment of all said charges, balance (if there be any) to be delivered over to person rightfully entitled thereto.

Mr. Fred Brownlee—six (6) cartons, contents unknown.

Mrs. Thersia Garrison—one (1) sewing machine and one (1) radio.

Mrs. H. W. Woods—two (2) cartons and one (1) wood barrel, contents unknown.

Mrs. Estella Purvis — one (1) trunk, contents unknown.

Mr. R. H. Hasgett — household goods and personal effects.

Mrs. H. P. Graham — one (1) large wood box, one (1) barrel and one (1) cedar chest, contents unknown.

Witness the signature of Pampa Transfer and Storage Co. by its owner on this 24th day of December, 1945.

C. A. REILLY, Owner, Pampa Transfer and Storage Co. Permit, to notify the Plumbing Inspector, Dec. 21, 28 and Jan. 4.

The albatross has the longest wingspread of all birds, often 14 feet from tip to tip.

Fifty-eight per cent of the total war contracts were concentrated in eight states: Michigan, New York, California, Ohio, Pennsylvania, Illinois, New Jersey, and Indiana.

Robert Fludd (1574-1637), English physician and philosopher, also occupied himself with constructing odd mechanisms such as a self-playing lyre.

Leaves From a Correspondent's War Notebook

By HAL BOYLE SHANGHAI, Dec. 18—(P)—If you ask navy men who is the most determined man they know, many will answer "Uncle Dan Barbery," commander of the U. S. Seventh fleet.

Vice Adm. Daniel Edward Barbery has directed more amphibious landings than any man in history—62—and has been on continuous sea duty in combat zones longer than any other flag officer in the navy.

No one has ever been able to make him quit, and neither could the Annapolis medical board which rejected him on physical grounds after he had won appointment to the academy from Portland, Ore. in 1908.

"You have heart murmurs and palpitations," academy doctors told him kindly, "but many people have lived to a ripe old age with that condition."

It frightened the 18-year-old boy, but made him angry, too. He decided he didn't believe them. He boarded a train for Washington, D. C., and called at the office of the navy's surgeon general.

The surgeon general saw him, but shook his head. There was nothing he could do.

Barbery, who the night before had written a note to his hotel manager telling what to do with the body if he died in his sleep, asked "Who is the greatest heart specialist in America?"

"There is a Doctor Musser in Philadelphia — if he says you're all right, you're as good as in."

But no sooner had he finished his examination than Barbery fainted. Revived, young Barbery acknowledged sadly, "I guess they were right."

"No," said the doctor, "I just think you're excited. Come back tomorrow."

He did. He passed. Exultantly he returned to the surgeon general, who read the Philadelphia specialist's verdict and told him, with a grin:

"You go down and tell that academy board to give you another examination, and if they reject you I'll appoint another board and serve on it myself."

There was another obstacle, but

that time; his Oregon senator had learned of his first rejection and appointed another boy.

The senator was out of town, but young Barbery found his secretary. At his insistence, the secretary—who was in her room drying her laundry—sent a telegram to Oregon instructing the second appointee to remain there.

Then Barbery found the senator, who said he'd withdraw the second appointment if the lad hadn't already left for Annapolis.

He hadn't; Barbery's telegram had

occasions of the apartment— "We're awfully sorry," Tiernan said, "but we're tired of living with in-laws."

Read Classified Ads in the News TO-NIGHT TOMORROW AFTERNOON Dependable ALL-VEGETABLE LAXATIVE

forestalled that. So determined Dan got into Annapolis, two months later.



Long distance will be loaded

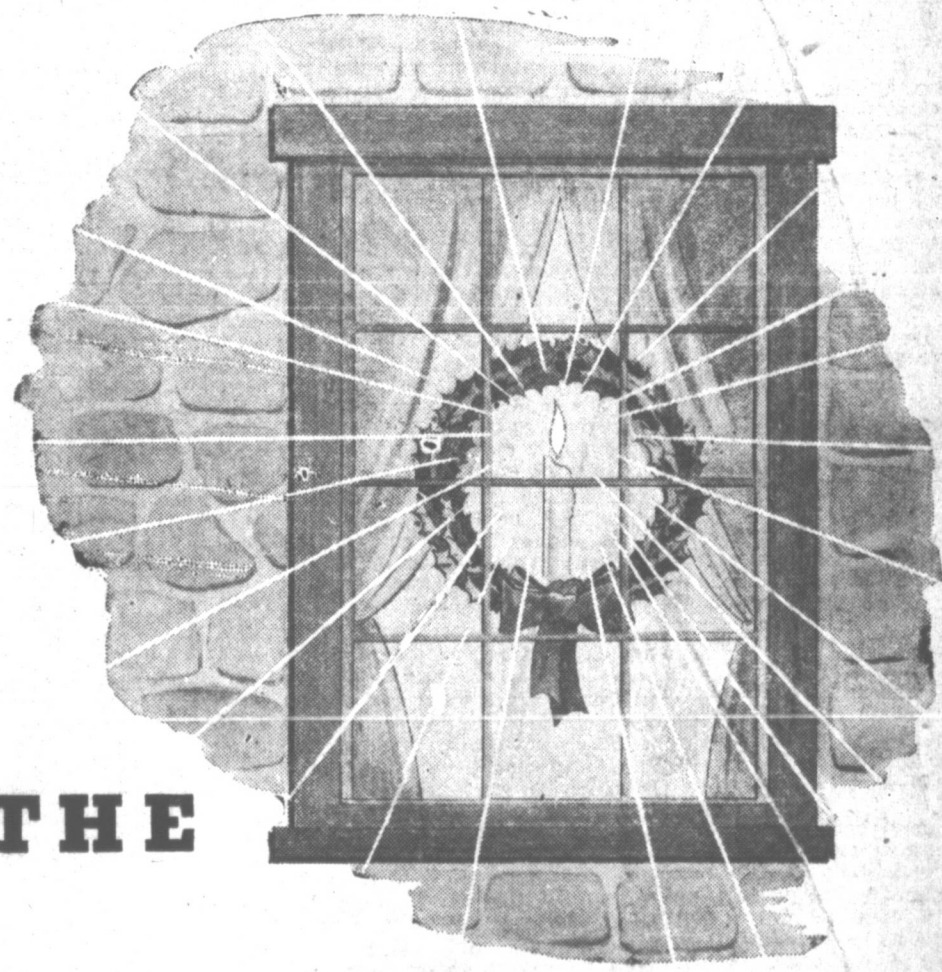
During the Christmas holidays, we'll have every long distance circuit working at capacity and every switchboard position fully manned.

But there'll be so many calls we

know some are sure to be unavoidably delayed. And a few may not get through at all.

If you can call a few days before or after the holidays, you'll get better service.

SOUTHWESTERN BELL TELEPHONE COMPANY



MAY THE

LIGHT OF PEACE

SHINE ON FOREVER!

SOUTHWESTERN PUBLIC SERVICE COMPANY