

THE

LYNN

BORDEN

SCURRY

STAR

Volume X No. 9

July 29, 1981

GARZA

DAWSON

HOWARD

Serving the Counties of Borden, Dawson, Garza, Howard, Lynn & Scurry

Man Loses Leg In Accident

Kenneth McBride, 27, of Midland, suffered a traumatic amputation of his left leg Sunday, July 19 in an accident 13 miles east of Gail on Hwy 180.

McBride, a passenger in a late model Ford pickup, was believed to have had his leg dangling out the window when the driver veered to the right and hit a "Climbing Lane Ahead" sign and severed McBride's leg below the knee. McBride underwent surgery Sunday

night at Cogdell Memorial Hospital in Snyder.

His uncle, driver of the pickup, was in the Scurry County Jail being charged with driving while intoxicated, then was taken back to Gail by the Borden County Sheriff as the accident occurred in Borden County. The uncle was initially brought to Snyder because Texas Highway Patrolmen out of Snyder were investigating the wreck.

Parents Club Meeting August 7

There will be a Borden County Parent's Club meeting, Friday, August 7 in the Borden County Barn.

Purpose of the meeting is to plan the Halloween Carnival, sponsored by the Parents Club, which is to be held October 31.

The meeting is at 2:00 o'clock and we need every

parent available to attend. Remember the Parent's Club benefits YOUR child as well as the other Borden County students.

If you are unable to attend August 7 and want to be a part of this worthwhile project contact Nanette Belew at 573-7718 or Connie Voss at 856-4361.



COAHOMA'S PEEWEE CHAMPIONS - The Vincent Rangers pictured here emerged as 1981 champions of the Coahoma Peewee League, which recently wound up its season. Kneeling from the left are Clint Anderson, Jeremy Mize, Cory Fulfer, Klint Kemper, Guy zant, and Jason Mize. Back row, Rowdy Fulfer, Shane Kemper, Daran Ray, Cody Cooley, Erad Neal, Eric Lusk, Dutch Barr and Chad Williams. The coach is Shorty Barr. Ten of the thirteen boys attend Borden Elementary School.

Members Sought For Draft Board

Do you want to serve on a draft board?

If so, contact Jim Burkett, Borden County Judge.

Col. Paul Dean Aikin, the state director of Selective Service, has advised that he plans to send about 1,000 letters to individuals and organizations in Texas asking for help in recruiting local Selective Service boards.

Borden County has received one of the letters, anyone interested in serving on the board may

obtain information on making application at the County Courthouse.

Col. Aikin, a National Guard officer, has been ordered to active duty for approximately 90 days for the purpose of recruiting a minimum of 690 local board members in Texas. Each of the 254 counties in the state must be represented on the 138 boards that will be established.

a board member must be a citizen of the United States between the ages of 18 and

60; must not be a member of the armed forces (including reserve and retired status); must not have served more than 15 years on a previous Selective Service Board; must be willing to attend a few hours of training and later to devote an adequate amount of time serving on the board without pay (probably one to two hours per month, or less).

The boards will not be activated immediately, but selected members will be placed on standby status for possible future need.



LAMESA RODEO WEEK- John Montgomery, left, gets a signature from Mayor Nelson Hogg proclaiming this week as Rodeo Week in Lamesa. The annual Lamesa Rodeo, along with a host of accompanying activities which include a parade and sidewalk sales, will begin Thursday and run nightly through Saturday.

Bagley Attends Workshop

Vocational Agriculture Teachers, some 1600 strong, will gather in San Antonio, August 4, 1981 for the Annual In-Service Education Workshop and Meeting sponsored by the Vocational Agriculture Education Department of the Texas Education Agency, Austin, Texas, under the direction of G. G.

Evans Named Best Camper

Angela Evans, seven year old daughter of Mr. and Mrs. Ricky Evans of Fluvanna, was named "Best Camper" at the Western Texas College Gymnastics Camp held July 20 - 24.

Angela participated in tumbling, trampoline, balance beam and other activities at the camp. She received a rose bud and a certificate for her honors.

Everybody's
THRIFTWAY

A FRIENDLY Supermarket serving West Texans with Quality Foods at Competitive Prices.

We give S&H Green Stamps - Double on Tuesday after 1 p.m. - All Day Wednesday.

35th & College Avenue
Snyder, Texas 79549

The Borden Star
Publication No. 895520
(USPS 995-520)
Publication No. 895520

Editor:
Barbara Anderson
Business Manager:
Connie Voss

Published weekly on Wednesday at Gail, Borden County Texas 79738; Box-137, Kincaid Street, Second Class postage paid at Gail, Texas.

Any errors that we make reflecting on the Reputation or Standing of any Firm Corporation or individual that may appear in the columns of the Borden Star will be gladly corrected when called to the attention of the staff.

Subscription Rates:
\$6.00 per year

Borden Star Owners: James McLeroy, Barbara Anderson, Doris Rudd, Pat Porter, Bob Dyess, Edna Miller, Ruth Weathers, Mrs. Nathan Zant, Sonny Tucker, Eddie Simer, Loren Jones, Martin Parks, Dan Turner, Leo Porter, and Glenn Toombs.

Borden Star Publishers Inc.

Scroggins, State Director, Vocational Agriculture Education.

Attending the In-Service Education Workshop from Gail Texas, will be Bob Bagley, Vocational Agriculture teacher at Borden High School.

Vacation Bible School

Gail Baptist Church will hold its annual Vacation Bible School August 10-14 from 8:30 - 11:30 a.m. Vacation Bible School is for children age 1 thru 8th grade. There will be songs, crafts, bible stories and much more.

Transportation will be provided if needed, call 856-4852. Plan now to attend, everyone is welcome.

You Are Invited

The family of Mark Simpson will be having a 80th Birthday Party to celebrate Mr. Simpson's birthday. The party will be held August 2 in the O'Donnell Community Center from 2:00 p.m. till 4:00 p.m. All friends and neighbors are invited to celebrate the occasion.

EMT News

The regular monthly meeting of the Borden County Emergency Medical Service will be Monday, August 3, 1981, at 8:00 p.m. in the High School Conference.

DONATIONS
Gail Homemakers Club

A shoebag hung on the back of a closet door can also hold stockings, scarves, gloves or rolled-up belts.

Summer Round-up RODEO Sale

Special sale for our once-a-year event Lamesa Rodeo July 30, 31, Aug. 1

Wranglers Cowboy Cut short sleeve 1/3 off	Men's western shirts large group long sleeve 50% off	Wrangler Jeans for Kids and Students Wrangler Jeans for Kids and Students... These 100% cotton jeans give you just what you need for those back to school days. They're made with a great stretch and are available in other colors. Regular \$12.99. Sale \$8.99. Kids \$6.99. Kids \$4.99. Kids \$3.99. Kids \$2.99. Kids \$1.99. Kids \$1.49. Kids \$1.00. Kids \$0.99. Kids \$0.89. Kids \$0.79. Kids \$0.69. Kids \$0.59. Kids \$0.49. Kids \$0.39. Kids \$0.29. Kids \$0.19. Kids \$0.14. Kids \$0.10. Kids \$0.09. Kids \$0.08. Kids \$0.07. Kids \$0.06. Kids \$0.05. Kids \$0.04. Kids \$0.03. Kids \$0.02. Kids \$0.01.
"Wrapid Transits" jeans by Wrangler 1/2 Price	All other western long sleeve \$5.00 off	Wrangler Reg. \$11.95-\$18.95 Sale \$9.95-\$15.99
HATS HATS HATS	Men's Tailored Western Suits Men's knit shirts All Ladies Summer Wear 50% off	Boys and Girls shirts up to 50% off
Resistol Straw Hats complete selection 1/4 off (includes Panamas)	Large group ladies jeans \$10.00	1 Group of Tack 1/2 price
	Boot Flare Wranglers Reg. \$19.50 Sale \$15.99	All Boots Men's, Ladies, Kids 10% off (includes new styles just received)

118 Austin
Cowboy Supply
WESTERN OUTFITTERS 872-3684

GAGE FINA TRUCK STOP

Owner-Operator John Hamilton

OPEN 24 HRS. DAILY
1520W Sweetwater, Tex.

Lubbock Hiway Phone 806 872-5474
Rt. B-Box 42
Lamesa, Texas **BRAY**
IMPLEMENT CO. Inc

JOHN DEERE

HAROLD LUCAS MOTORS
111 South Broadway
Post, Texas

Giant July Sale

CHEVROLET

806-495-2825

Barrington Pump & Machine

Myers, Taitco and Simmons Pumps
Complete Machine and Welding Shop

Phone 872-8307
Rt. B P.O. Box 28

Lubbock Hiway
Lamesa, Texas

YOUR PERSONAL DEALER
BOB BROWN
Olds-Cadillac-GMC

202 South 3rd
Lamesa, Texas
806-872-2144

OLDSMOBILE SERVICE
GMC TRUCKS
Cadillac

GM QUALITY SERVICE PARTS
GENERAL MOTORS PARTS DIVISION

Sweetwater Production Credit Association

★ Crop & Livestock Loans ★
Sweetwater - Central Office
Offices in Colorado City, Lamesa, Roby & Snyder

NAPA **Big Spring Automotive**

219 W. Third
Big Spring, Texas 79720
915-267-6308

THANK YOU FOR SHOPPING WITH US
WE APPRECIATE YOUR BUSINESS

FORD MERCURY LINCOLN BOB BROCK FORD
"Drive a Little, Save a Lot"

500 W. 4th
BIG SPRING
267-7424



Clothing budget "STRAINED AT THE SEAMS?" Maybe your wardrobe is too high quality.

That may sound "funny," but it's truth.

All clothing need not be of the same quality, high quality, to give good value.

Several factors can help you decide quality levels for various clothing items.

QUALITY VS. PRICE

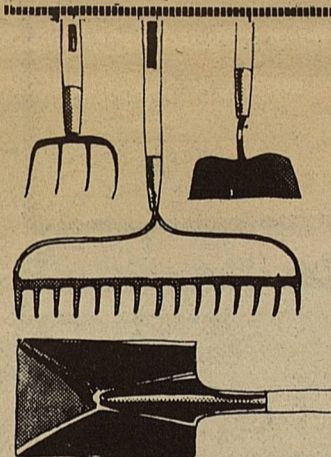
Before looking for high quality or lower quality, it's wise to understand a basic quality-price fact of life: quality and price are not always related.

For example, an expensive fabric or garment may be of poor quality but costly because of some unique characteristics.

You can't always rely on a manufacturer's brand name, either. Although the maker may have a reputation for a certain quality level, it still varies from garment to garment. And everyone can make a mistake now and then.

WEARABLE TIME SPAN

In deciding on quality needs, consider "wearable time span" as a major factor, how long the item will be worn.



Quality and selection at your fingertips . . .

John Deere Lawn and Garden Tools

We have a wide selection of top-quality tools. Hoes, rakes, and shovels. Trowels, pruners, loppers and many more. Stop in now.



Wayland Taylor Inc.
O'Donnell
428-3245

ASCS News

By JERRY STONE

CCC OFFERS CORN FOR SALE

Farmers and other interested persons will be eligible to purchase corn from the Commodity Credit Corporation starting July 27.

The Commodity Credit Corporation will offer corn for unrestricted use sale at market prices, but not less than the formula price which is 115 percent of the county loan rate for corn where stored plus 54 cents per bushel carrying charges.

The minimum quantity that will be considered for acceptance is 1,000 bushels.

Offers will be received and sales will be made on a first come, first served basis.

Interested persons should contact the county ASCS office as soon as possible for further details.

JULY 25-31, NATIONAL FARM SAFETY WEEK

The 1981 National Farm Safety Week, July 25-31, marks the 38th consecutive observance of this special activity co-sponsored by the National Safety Council and the U.S. Department of Agriculture. Farm Safety Week is designed to call attention to measures that should be taken to reduce accident losses to farm and ranch families. The theme of this year's event is "Enjoy Life-Safely."

This depends, also, on who will wear it and for what kind of activities.

Then you can determine how "good" the quality must be to meet your needs.

For example, a preschool child's play clothes receive hard wear. The child's activities strain every seam and button and grind soil into the fabric.

So, even though children outgrow play clothes quickly, the wear, tear and many washings make high quality in these items a good value. That means high quality construction and high quality fabric.

One the other hand, adult party clothes may not require such high quality. These items usually are not worn often, and they're worn in dimly lit rooms in many cases.

So the best buy in formal wear (usually) may be the least expensive, even if that means poor construction and not very durable fabric.

FASHION TRENDS
Fashion trends are another major factor in deciding quality level for various wardrobe items.

A garment that is faddish or highly fashionable today may not be so tomorrow.

Buy knowing that these will need replacing more quickly than the more basic styles in your wardrobe.

RULE OF THUMB

Finally, here's a rule of thumb:

Invest more time, money and effort in searching for good quality when it comes to clothes you'll wear the most.

Select lower quality items, usually less expensive, for spice and variety.

When you follow this rule of thumb, your clothing budget will "fit" better.



LAST CALL

For the following reasons, it is very important that producers file a certification of 1981 crop acreage by the August 3rd deadline:

1981 program benefits except for price support will not be available if a report of acreage is not timely filed. Also depending on legislative and policy decisions, program benefits in future years may depend on data filed in the current year report of acreage.

Benjamin Franklin was the first head of the U.S. postal system.

EAST SIDE OF THE SQUARE

The Finest
In Nationally
Known Brands
of
Western Wear
and
Sports Wear

FENTON'S
Snyder 573-6111



• HOME OWNED AND OPERATED BY THE CLAIBORNES

NO. 1 STORE
708 N. 1ST
OPEN WEEKDAYS 7 TIL 7
CLOSED SUNDAYS

NO. 2 STORE
710 N. 4TH
OPEN WEEKDAYS 8 TIL 8
SUNDAYS 9 TIL 7

LAMESA, TEXAS

BIG SPRING HEALTH FOOD CENTER
1305 SCURRY ST.
BIG SPRING, TEX.

LOTA'BURGER A Square Meal
Phone 573-2922 On a Round Bun
Snyder, Texas

Moorman's Energized Cubes-Mineral-Mintrate Blocks
C. Wilson Howell
Salesman
Box 1066
Snyder, Texas 79549
Moorman Mfg. Co. Phone 573-3826

THE FIRST NATIONAL BANK
DRIVE IN HOURS
Monday thru Thursday 9:00 a.m.-4:00 p.m.
Friday 9:00 a.m.-6:00 p.m.
NEW LOBBY HOURS
Monday thru Friday 10:00 a.m. - 3:00 p.m.
The First - In All Banking Service
Member F.D.I.C.

400 Main Big Spring, Texas 267-5513



Tessie is our new 24 hour teller serving our customers around the clock.

School District Taxes

The following legal notice is in compliance with state law. It does not necessarily mean that your school taxes will be more in 1981 than they were in 1980. School taxes on real estate will be less in 1981 than they were in 1980. School taxes on average ranch land were \$34.14 per section in 1980. School taxes on average ranch land in 1981 will be \$33.71 per section. School taxes on average farm land were \$110.52 per section in 1980. The proposed taxes in 1981 will be \$109.12 per section on average farm land.

NOTICE OF TAX INCREASE

The Borden County Independent School District proposes to increase your property taxes by 6.5 percent.

A public hearing on the increase will be held on August 3, 1981 at 8:00 p.m. at Borden County School Cafeteria, Gail, Texas.

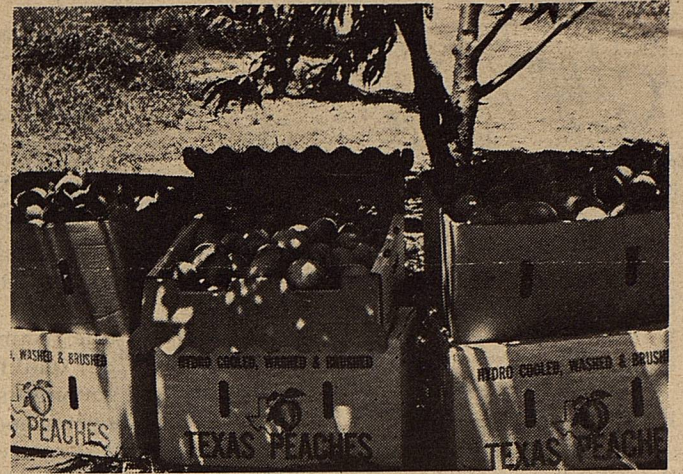
The Borden County Independent School District has considered the proposal and voted in a meeting of the Board of Trustees as follows:

FOR the proposal:

Ralph Miller, President
Jack McPhaul
Doyle Newton
Martin Parks
Bob Dyess
Bill Phinizy
Van York

AGAINST the proposal
None

ABSENT and not voting:
None



A BUMPER PEACH crop forecast at 625,000 bushels, 140 percent increase over 1980, is causing a glut in Texas markets, Agriculture Commissioner Reagan V. Brown has reported. Texas consumers should find the delicious fruit in very plentiful supply and at especially competitive prices, Brown said.

IS AVAILABLE
24 HOURS A DAY —
SEVEN
DAYS A WEEK

MR. CURREN C. MAKER

Security State Bank
1411 GREGG BIG SPRING, TEXAS
MEMBER F.D.I.C.

LAMESA TRACTOR & MOTOR COMPANY
800-808 North Dallas Avenue
Lamesa, Texas 79331
(806) 872-2161

NELSON D. HOGG

THE BORDEN STAR
P.O. Box 137 Rates \$8.00 for 50
Gail, Tex. 79738 issues
Name _____
Address _____
City _____ State _____ Zip _____

LOCAL NEWS ITEMS ARE WELCOMED BY PHONE. CALL THE BORDEN STAR 856-4402 or CONNIE VOSS 856-4361.

Come In Out Of The Heat And Browse.

FREE Delivery within 100 miles of Big Spring

CARTER'S FURNITURE
202 Scurry Street Big Spring, Texas

David G. Geeslin, D.V.M.
is now open

for
General Practice
Dawson County Veterinary Clinic
1204 South Dallas Ave.
Lamesa, Texas 79331

Office phone After hours phone
872-3183 872-3160

GAIL
Grocery & Station

Open 7:00 a.m. - 6:00 p.m.
Monday - Saturday
1:00 p.m. - 6:00 p.m.
Sunday

Phone 856-4121
Jesse & Sara Johnson