



## Third Annual 4-H Horseshow

The third annual Borden County 4-H Invitational Horseshow was held Saturday, June 6 in the Gail arena.

Seven counties were represented in the show with Scurry County winning the High Point County Trophy. High Point Pee Wee was Kandy

### Reddell Receives Award

Donald L. Reddell, Agricultural Engineering Department, Texas A & M University, College Station, has received an award for Distinguished Performance in Research from TAMU.

Donald is the son of Mr. and Mrs. K. T. Reddell of Gail.



DONALD L. REDDELL

### Ezell-Key Feed & Seed

- Feeds
- Seeds
- Insecticides
- Fertilizer

1615 26th Street  
Phone 573-6691  
Snyder, Texas



The Borden Star  
Publication No. 895520  
(USPS 895-520)  
Publication No. 895520

Editor:  
Barbara Anderson

Business Manager:  
Connie Voss

Published weekly on Wednesday at Gail, Borden County Texas 79738. Box 137, Kincaid Street, Second Class postage paid at Gail, Texas.

Any errors that we make reflecting on the Reputation or Standing of any Firm, Corporation or individual that may appear in the columns of the Borden Star will be gladly corrected when called to the attention of the staff.

Subscription Rates:  
\$8.00 per year

Borden Star Owners: James McLeroy, Barbara Anderson, Doris Rudd, Pat Porter, Bob Dyess, Edna Miller, Ruth Weathers, Mrs. Nathan Zant, Sonny Tucker, Eddie Simer, Loreen Jones, Martin Parks, Dan Turner, Lela Porter, and Glenn Toombs.

Borden Star Publishers Inc.



Belew from Borden, High Point Junior went to Stephanie Weaver of Scurry and High Point Senior was Mary Beth Tollison of Martin County.

Trophies were awarded in each class through 6th place, with results as follows:

#### REGISTERED MARES

Kelly Ogden, Borden; Kandy Belew, Borden; Kristy Hancock, Terry, Jon Herring, Borden; Stephanie Weaver, Scurry, and Rachel Everett, Scurry.

#### GRADE MARES

Blair Richardson, Howard; Dane Driver, Howard; Julie Newbury, Scurry; Stephanie Frierson, Fisher; Dan Krenek, Scurry; and Julie Ridenour, Borden.

GRAND Champion Mare, Blair Richardson, RESERVE Mare, Dane Driver.

#### REGISTERED GELDINGS

Heather Helbert, Andrews; Stacy Tollison, Martin; Jill Voss, Borden; Cody Stone; Kristi Hancock, Terry; and Kristi Stone, Borden.

#### GRADE GELDINGS

Summer Helbert, Andrews; Jim Ridenour, Borden; Tammy Voss, Borden; Julie Ridenour, Borden; John Bland, Fisher; and Stormy Gass, Borden.

CHAMPION Gelding Heather Helbert, RESERVE Geldings Stacy Tollison.

#### SHOWMANSHIP

##### PeeWees

Kandy Belew, Borden; Dane Driver, Howard; Stephanie Frierson, Fisher; Cody Stone, Borden; Summer Helbert, Andrews; and Kelly Ogden, Borden.

#### SHOWMANSHIP

##### Juniors

Kristi Stone, Borden; Heather Helbert, Andrews; Melody Schwartz, Scurry; Stephanie Weaver, Scurry; Michael Murphy, Borden; and Julie Ridenour, Borden.

#### SHOWMANSHIP

##### Seniors

Kristi Hancock, Terry; Mary Beth Tollison, Martin; Cathy Harlan, Terry; Blair Richardson, Howard.

#### WESTERN PLEASURE

PeeWees Cody Stone, Borden; Kandy Belew, Borden; Stephanie Frierson, Fisher; Jim Ridenour, Borden; Dane Driver, Howard; and Kelly Ogden, Borden.

#### WESTERN PLEASURE

##### Juniors

Rachel Everett, Scurry; Stephanie Weaver, Scurry; Julie Ridenour, Borden; Melody Schwartz, Scurry; Kristi Stone, Borden; and Jon Herring, Borden.

#### WESTERN PLEASURE

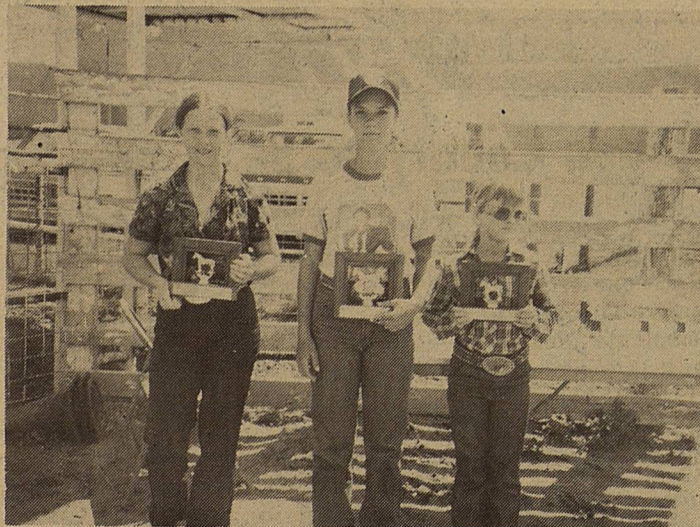
##### Seniors

Mary Beth Tollison, Martin; Kristi Hancock, Terry; Travis Rinehart, Borden; Cathy Harlan, Terry; Blair Richardson, Howard.

#### ENGLISH PLEASURE

Travis Rinehart, Borden; Michael Murphy, Borden.

Con't on P. 3



ALL-AROUND WINNERS - Stephanie Weaver of Scurry County, Mary Beth Tollison of Martin County and Kandy Belew of Borden were named all around winners of each age group of Saturdays horseshow.

## GAGE FINA TRUCK STOP

Owner-Operator John Hamilton

OPEN 24 HRS. DAILY  
IS 20W Sweetwater, Tex.

# ASCS

# New

by Jerry Stone

#### WHEAT LOANS

Wheat loans will be available through this office if you would like to hold on to your wheat for a few months before selling. These loans may be farm or warehouse stored. The interest rate is 14.5 percent.

#### LIVESTOCK FEED PROGRAM

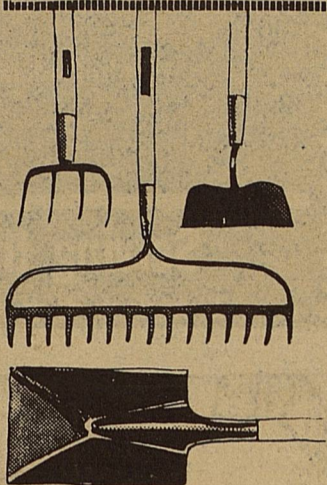
Remember, all receipts for feed purchased during the feeding period beginning 11-16-80 and ending 4-30-81 should be turned in by June 15th. No assistance will be paid on these receipts unless they are turned in by June 15th.

#### PLANTING DATES

June 15 is the established normal final planting date for cotton and June 20 is the final planting date for grain sorghum in Borden County. These dates do not restrict you from planting after June 15 and June 20, and will not in itself eliminate you from any eligibility for low yield disaster coverages if you do get the crops planted after the final

planting dates.

Eligibility for participation in all programs administered by ASCS is established under law without regard to race, color, creed, religion, sex, or National origin.



## Quality and selection at your fingertips . . .

John Deere Lawn and Garden Tools

We have a wide selection of top-quality tools. Hoes, rakes, and shovels. Trowels, pruners, loppers and many more. Stop in now.



Wayland Taylor Inc.

O'Donnell  
428-3245

### Roping Sunday

There will be a Jackpot Club Steer roping in Gail Sunday, June 15, at 1:00 p.m.

Lubbock Hiway Rt. B-Box 42 Lamesa, Texas

Phone 806 872-5474

BRAY IMPLEMENT CO Inc



Roping Headquarters of the Southwest!  
Professional Ropes by Leach

- ★ RIDING APPAREL
- ★ HORSE GROOMING AIDS
- ★ RIDING EQUIPMENT

# Cowboy Supply

- West Side of Square, downtown Lamesa -  
118 Austin Ave.

CINDY ETHEREDGE

DON ETHEREDGE

## Your County Agent Says by Alan Day

### REPLANTING HAIL DAMAGED COTTON

The large storm accompanied by heavy washing rains and hail recently hit portions of Borden County causing heavy damage to cotton. Damage occurred in the Plain, Vealmoor and Fluvanna areas.

Many farmers in these hard hit areas are now faced with the unpleasant task of replanting their crop, realizing that planting in June usually means less than average yields even with normal growing conditions for the remainder of the growing season. Your most important decision now is which cotton varieties to use and what cultural practices might be applied that will hasten the maturity of the crop.

Producers should consider varieties that fall into the early or possibly

early-medium ranges.

Any practices that encourages earliness is the key to profitability in late planted cotton. Earliness can be achieved by replanting cotton on "double rows" or some narrow row pattern other than the standard 40 inch row width. Of course, this will require arrangement for harvesting with a broadcast stripper. But generally, planting in double or narrow row patterns tends to hasten maturity. A few days gained in earliness can be important in late planted cotton.

## Classified

Carpenter work: Painting, inside and out. Paneling and minor work. Call Randy Roemisch at 915-856-4882 after 6:00 p.m. or on weekends.



Pictured above is a group of western clay sculpture created by Troy King of Gail. These sculptures along with many more arts and crafts will be on display and for sale at the exhibit Saturday.

**LOTA'BURGER** A Square Meal  
On a Round Bun  
Phone 573-2922  
Snyder, Texas

Make plans now to attend  
the Borden County Junior  
Rodeo and Western Art &  
Craft Exhibit, June 12 & 13



FORD  
MERCURY  
LINCOLN  
**BOB BROCK FORD**  
"Drive a Little. Save a Lot"

500 W. 4th

BIG SPRING

267-7424

### Heatly

Con't from P. 1

Road and Bridge Fund and will bring at least \$3,457 additional money per year to Borden County; \$184,772 more to Dawson County; \$206,992 additional to Howard County and \$90,457 more to Lynn County.

Mr. Heatly is also known as a staunch opponent of the Peveto Bill which revised the property tax codes, and throughout his career in the House, has opposed efforts to raise school taxes.

### Horseshow

Con't from Pg. 2

#### REINING

##### PeeWees

Cody Stone, Borden, Jim Ridenour, Borden; Kandy Belew, Borden; J J Kincheloe, Scurry; Stephanie Frierson, Fisher.

#### REINING

##### Juniors

Kristi Stone, Borden, Rachel Everett, Scurry; Melody Swartz, Scurry; and Stephanie Weaver, Scurry.

#### REINING Seniors

Travis Rinehart, Borden, Kristi Hancock, Terry; Mary Beth Tollison, Martin; Cathy Harlan, Terry.

#### POLE BENDING

##### PeeWees

J. J. Kincheloe, Scurry; Leddy Lewis, Scurry; Cody Stone, Borden, Kandy Belew, Borden; Sarah Bland, Fisher; Stephanie Frierson, Fisher.

#### POLE BENDING

##### Juniors

Stephanie Weaver, Scurry; Kristi Stone, Borden; Rachel Everett, Scurry; Julie Ridenour, Borden; Melody Schwarz, Scurry; and Michael Murphy, Borden.

#### POLE BENDING

##### Seniors

Mary Beth Tollison, Martin; Kristi Hancock, Terry; Cathy Harlan, Terry.

#### BARRELS

##### PeeWees

J.J. Kincheloe, Scurry; John Bland, Fisher; Leddy Lewis, Scurry; Kelly Jo Ogden, Borden; Jim Ridenour, Borden, and Stephanie Frierson, Fisher.

#### BARRELS

##### Juniors

Stephanie Weaver, Scurry; Julie Ridenour, Borden; Rachel Everett, Scurry; Kristi Stone, Borden; and Melody Swartz, Scurry.

#### BARRELS

##### Seniors

Mary Beth Tollison, Martin; Travis Rinehart, Borden; Cathy Harlan, Terry; Kristi Hancock, Terry; Melody Choate, Howard.



RETIREMENT TEA - A retirement tea honoring Gussie Gray, right, of Borden County, a teacher at Snyder West Elementary, was held at the home of Carolyn Hamby on May 23. Pictured with Mrs. Gray are her daughter, Marie Anderson and granddaughter, Dana Gray. Hostesses for the tea were Shirley McDaniels, Mippy Brownlee and Carolyn Hamby.

IS AVAILABLE  
24 HOURS A DAY -  
SEVEN  
DAYS A WEEK

MR. CURREN C. MAKER

**Security State Bank**  
1411 GREEN BIG SPRING, TEXAS  
MEMBER F.D.I.C.

CHRYSLER  
Plymouth

Jodge  
Jodge Trucks

**ROY MOTOR CO.**  
SALES AND SERVICE  
LAMESA, TEXAS

NEALE ROY PHONE 806 - P72-5484  
RES. 806 - 872-3556 1611 N. DALLAS

Rodeo Dance  
Friday & Saturday

**FARMERS CO-OP**

ASSN

O'DONNELL, TEXAS

428-3215



Cotton Gin



Fertilizer

Diesel

Burr Pellets

Butane



### TAKE CARE OF YOUR HEALTH

Take care of your health and your health costs.

Americans spent \$943 each in 1979 for health care, a total of \$200 billion, or one-tenth of the Gross National Product.

Consumers can help control these staggering costs in several ways with one basic idea in mind: it pays to stay healthy.

Six major steps can go a long way toward economical health care.

1. Stay fit.
2. Recognize early warning signs of disease.
3. Learn about low cost or free health care.
4. Provide your own home care.
5. Consider buying "generic name" drugs.
6. Follow your doctor's orders.

#### STAY FIT

Staying fit is your best "No cost" health insurance.

This involves eliminating cigarette smoking, getting

### EMT News

The regular monthly meeting of the Borden County Emergency Medical Service was held Monday, June 1, 1981, at 8:00 p.m., in the Ag Building. EMT's present were Buster Taylor, Gerald Boyd, Steve Hillhouse, Frances Burkett, Jim Burkett, Nelva Jones.

### W.T.B.R.A. Point Race

There will be a W.T.B.R.A. point race in the Gail arena on June 14 at 2:30.

moderate exercise, eating sensibly, reducing alcohol consumption, obeying speed laws and using seat belts in vehicles.

#### KNOW WARNING SIGNS

Learn to recognize early warning signs of disease.

At an early stage, before expensive hospitalization is necessary, many potential health problems can be detected and treated. Early stages of disease are when chances of recovery are best.

#### LOW COST HEALTH CARE

Learn about low cost or free health care.

Many health care services are available through a variety of public programs at all levels of government, such as well baby clinics. Planned Parenthood and Family Planning, immunizations from public health clinics, and screenings for high blood pressure and glaucoma.

To Be Continued Next Week.

Carol Lewis, and Lisa Ludecke.

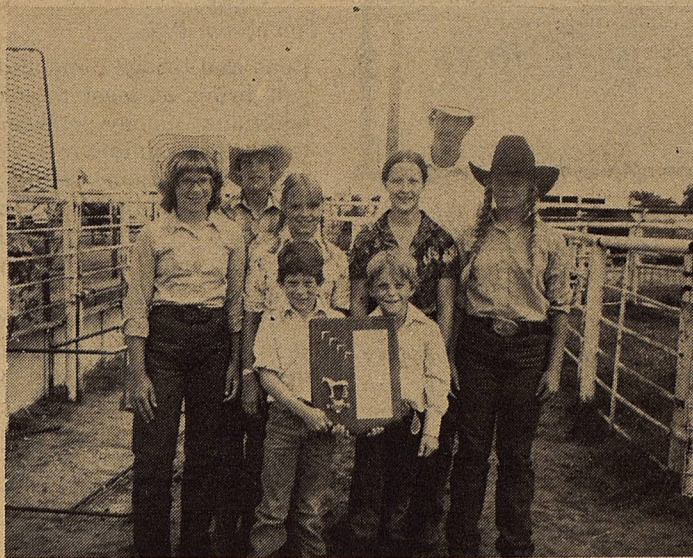
The program for this meeting was a practice session using the CPR Thumper.

The next meeting of the EMS will be Monday, July 6, 1981, at 8:00 p.m.

#### MEMORIALS

In memory of Clarence Porter: Pat and Jo Hensley, Mr. and Mrs. B. K. Eubank

In memory of Opal Stephens: Martin and Ruth Taylor, Doris Rudd, Rusty and Eunice Yadon, Pat and Jo Hensley, Lela Porter, Mr. and Mrs. C. C. Nunnally.



HIGHPOINT COUNTY - Scurry County 4-Hers received the highpoint county plaque during the Borden Invitational horseshow Saturday. Pictured left to right are, Julie Newbury, Van Krenek, Melody Schwart, Stephanie Weaver, Kent Mills, Rachel Everett and front row, Leddy Lewis and J J Kincheloe.

### Rodeo Concession

The concession stand for the 1981 Jr. Rodeo will be open from 7:00 p.m. until the rodeo is over on Friday and from 12:00 (noon) until the rodeo is over Saturday.

Menu for the concession stand is as follows:

Mexican Hamburgers, Hot dogs, Chili dogs, Sandwiches, Homemade Ice Cream, Brownies & Krispies, Candy & Gum, Cokes, Tea and Coffee.

Everyone is invited to come out early to see the Arts & Crafts exhibit, visit friends and neighbors and enjoy some good food.

### EAST SIDE OF THE SQUARE

The Finest  
In Nationally  
Known Brands

of  
Western Wear  
and  
Sports Wear

FENTON'S  
Snyder 573-6111

**Chevrolet**

**POLLARD Chevrolet Co.**

WHERE  
VOLUMN  
SELLING  
SAVES YOU  
MONEY

1504 East 4th  
Street  
Phone 267-7421  
Big Spring

**Barrington Pump & Machine**

Myers, Taitco and Simmons Pumps  
Complete Machine and Welding Shop

Phone 872-8307  
Rt. B P.O. Box 28

Lubbock Hiway  
Lamesa, Texas

YOUR PERSONAL DEALER  
**BOB BROWN**  
Olds-Cadillac-GMC

202 South 3rd  
Lamesa, Texas  
806-872-2144

OLDSMOBILE SERVICE  
GMC TRUCKS  
Cadillac

GM QUALITY SERVICE PARTS  
GENERAL MOTORS PARTS DIVISION

**LAMESA TRACTOR & MOTOR COMPANY**

800-808 North Dallas Avenue  
Lamesa, Texas 79331  
(806) 872-2161

NELSON D. HOGG

**Big Spring Automotive**

219 W. Third  
Big Spring, Texas 79720  
915-267-6308

**Claiborne's SUPERMARKETS**

• HOME OWNED AND OPERATED BY THE CLAIBORNES

**NO. 1 STORE**  
708 N. 1ST  
OPEN WEEKDAYS 7 TIL 7  
CLOSED SUNDAYS

**NO. 2 STORE**  
710 N. 4TH  
OPEN WEEKDAYS 8 TIL 8  
SUNDAYS 9 TIL 7

LAMESA, TEXAS

**GAIL TEXACO**

Phone No. 856-4101

**GAIL WELDING SERVICE**  
Full Line of Service  
Oil Field-Ranch & Farm

Lonnie King  
Ph 915:856-4101  
Nite 915: 856-4162