

THE

STAR

Volume IX No. 26

March 18, 1981

Serving the Counties of Borden, Dawson, Garza, Howard, Lynn & Scurry

Tragedy Strikes County



Walter Dewey Everett

Death claimed 82 year old Dewey Everett in a tragic accident Friday March 13, 1981.

The accident causing the death occurred in Gail when a butane truck overturned into the Flint Construction office where Mr. Everett was sitting.

Mr. Everett, or "Dewey" as everyone called him, touched many lives in Borden County with his benevolence and support in the county.

Listing himself as a "dirt contractor", Dewey pioneered soil conservation in the county. In the late '20's he built the first stock tank so necessary to the agricultural industry in semi-arid West Texas. He was a strong supporter of the Great Plains Conservation Program, practiced it and encouraged his neighbors to do so. He was named "Outstanding Conservation Rancher" in 1967 and was responsible

for piping water to Gail in 1965.

Walter Dewey Everett was born April 24, 1898 to J. Y. and Lucy Manning Everett in Coryell County, Texas.

The J. Y. Everett family moved to Borden County in 1906 when Mr. Everett traded for three sections of land South west of Gail. Shortly after this, "J. Y." was elected Sherriff of Borden County, a position he held for many years.

Dewey, a self made, self educated man, rode horseback to Gail to attend school spasmodically. "We didn't make him go", his mother once said. "Seems like 'working' was peoples main idea then", she added.

While working for his brother Ray on what was called the De Shazo place, World War One began and Dewey enlisted in the U. S. Navy.

After serving in the navy, Everett returned to Borden

County and his first love, the land. He started farming with "two Quarter Horse mares, a filly colt, and a rented farm".

Dewey Everett married Faye Reeder, another Borden County resident April 14, 1923. "Best trade I ever made," he said.

The young Everetts set up house keeping on 416 acres of land east of Gail. Here they built a house-filling station, thus supplementing their farm income.

As their family grew, so did their land holdings. By the time of his death Mr. Everett had increased his 416 acres by purchasing land surrounding him and had built his contracting business into one of the largest in several counties.

Although the Everetts moved to Snyder in 1937 so the four children could attend school, Dewey drove to Borden County every day to attend the ranch or was operating one of his large dirt moving machines. He was never idle. Although he had retired from active dirt construction only a few years ago, he still oversaw the operation of the ranch. In fact, it was on the day of his death that he had driven to Borden County in the pickup that his family had given him on his eightieth birthday.

Mr. Everett's love for the land and wild life was only exceeded by his deep devotion of his family. A quote from the family album appropriately says "It is in a man's family where in his riches lie."

SERVICES

Funeral services for Mr. Everett were held at 2 p.m. Sunday at the First United Methodist Church in

Con't on P. 7

Accident Takes Three Lives

Mr. and Mrs. John Arthur Warren of Abilene were killed immediately in the propane explosion in Gail last Friday that also took the life of Borden County rancher Dewey Everett.

Arthur, driver of the truck owned by Fraley Butane of Abilene, was thrown from the cab while Mrs. Warren was trapped inside. Both were probably killed on impact, witnesses said.

The couple's families were unidentified at press time as well as funeral arrangements. The bodies of those killed were taken to Bell-Seale Funeral Home in Snyder.

The accident that stunned the county occurred around 3:40 p.m. on U.S. 180 across from the Court House in Gail. Warren, traveling east attempted to pass another truck, investigators determined. Loosing control, the truck slid into a parked transport truck belonging to Flint Construction Co. on the north side of the highway. The butane truck then overturned and burst into flames just inches from the Construction building.

Mrs. Fannie Flint, O. L. Lane, a Flint employee and Dewey Everett were trapped in the small building.

Con't on P. 5

OFFICIAL MEMORANDUM

GREETINGS:

Agriculture has always been one of the economic mainstays of this great state of ours. Before any mechanical, trade, or technological industries arrived here, agricultural roots were well entrenched in this region as throughout the state.

Since its infancy as a basic means of survival for the early Texas pioneers, agriculture now represents a multi-billion dollar industry, providing jobs for thousands throughout the state and food and fiber for millions here and around the world.

Although the vast majority of Texans live in urban areas, the significant contributions made by those in the agricultural sector have ensured a plentiful and wholesome food supply for all of us. Our farmers and ranchers produce enough to feed themselves, forty other persons in the country and twenty-eight others abroad. We are also blessed in this country with the distinction of spending the lowest percentage of our disposable income on food than anywhere else in the world.

American agriculture is the most efficient among producing nations and Texas agriculture has been and will continue to be an integral part of this spirited achievement. The state's farmers and ranchers continue to strive for increased crop and livestock yields, making Texas a leader, now the second most productive state in the U.S.A.

The U.S. Congress and Texas Governor William P. Clements have proclaimed March 19, 1981, as Agricultural Day to promote a better understanding of the effect of agriculture on our lives and an awareness of our own personal stake in an abundant food and fiber supply.

Therefore, I do hereby designate March 19, 1981, in BORDEN COUNTY as

AGRICULTURE DAY,



in honor of the farmers and ranchers in this region, and urge all citizens to participate in special observances of this Day in appreciation of the agricultural industry which strives to feed and clothe our world.

In official recognition whereof, I hereby affix my signature this 16th day of MARCH, 1981.

Jim M. Burtett
County Judge, Borden County

Chairman
Reagan V. Brown, Commissioner
Texas Department of Agriculture

Borden County School News

Highland and Meadow Win Borden County Relays

Highland and Meadow won the Borden Relays held on Friday, March 13 at Borden County's Coyote stadium. Highland topped the boys teams, while Jayton was second, Wilson 3rd, New Home 4th, Smyer 5th, and Meadow 6th. Meadow won the girls meet, while Klondike was 2nd, New Home third, Smyer 5th, Whitharral 5th and Dawson.

The starter for the relays this year was again Wilbur Cleveland of Cleveland Athletics of Plainview and Fred McDonald was referee. Mr. McDonald is Superintendent of Loop I.S.D. Coaches Roemisch, May, and Maxwell appreciated everyone who stepped in and helped make this year's relays one of the best.

Awards were presented after the meet. In the girls division, Klondike won both the 880 Relay and 440 relay awards with times of 1:53.26 and 53.23, respectively. Meadow took the Mile Relay award with 4:30.92.

In the boys division, Highland won the 440 relay award with 45.83 and Wilson won the Mile Relay award with 3:38.98.

The complete results of the Relays are as follows:
GIRLS 110 Low Hurdles
 G. Roberts-Dawson, 16.93-1st; R. Airhart-Klondike, 17.30-2nd; S. Kay-Whitharral, 17.47-3rd; T. Terry-Meadow, 18.43-4th; T. Neal-Smyer-18.79-5th; P. Harris-Klondike, 18.92-6th

BOYSLOWHigh Hurdles
 R. Curiel-Meadow, 16.98-1st; Bruce Fowler-Smyer, 17.14-2nd;

The Borden Star
 Publication No. 895520
 (USPS 895-520)
 Publication No. 895520

Editor:
 Barbara Anderson
Business Manager:
 Connie Voss

Published weekly on Wednesday at Gail, Borden County Texas 79738. Box 137, Kincaid Street, Second Class postage paid at Gail, Texas.

Any errors that we make reflecting on the reputation or standing of any firm, corporation or individual that may appear in the columns of the Borden Star will be gladly corrected when called to the attention of the staff.

Subscription Rates
 \$8.00 per year

Borden Star Owners: James McLeroy, Barbara Anderson, Doris Hudd, Pat Porter, Bob Dyess, Edna Miller, Ruth Weathers, Mrs. Nathan Zant, Sonny Tucker, Eddie Simer, Loreen Jones, Martin Parks, Dan Turner, Lela Porter, and Glenn Toombs.

Borden Star Publishers Inc.

D. Freitag-Wilson, 17.34-3rd; Rider-Jayton, 17.77-4th; B. Hollard-Blackwell, 17.86-5th; J. Rinehart-Borden, 18.17-6th

GIRLS 440 Yard Relay
 New Home-53.14-1st; Klondike-53.50-2nd; Smyer-54.34-3rd; Meadow-55.49-4th; Highland-57.62-5th; Blackwell-57.84-6th; Whitharral-59.13-7th

BOYS 440 Relay
 Highland-45.82-1st; Smyer-47.08-2nd; Jayton-47.73-3rd; Hermleigh-48.31-4th; Borden-48.92-5th; Southland-49.26-6th; Dawson-49.46-7th

GIRLS 100 YARD DASH
 E. Griffin-New Home 13.34-1st; R. Thompson-McCauley, 13.60-2nd; P. Mosley-Smyer-13.64-3rd; A. Echols-Klondike-14.15-4th; D. Lucas-Whitharral-14.30-5th; Dulin-Highland-14.48-6th; D. Cathey-Dawson, 14.60-7th;

BOYS100 YARD DASH
 H. Light-Highland, 11.85-1st; Ed Wilson-Highland, 11.85-2nd; K. Wilke-Wilson, 11.89-3rd; R. Hall-Wilson, 11.90-4th; L. L. Milo-Southland, 11.92, 5th; R. Beaver-Trent, 11.94, 6th; T. Chandler-Union, 11.95-7th

BOYS 100 METER DASH
 Ed Wilson-Highland, 11.76-1st; R. Hall-Wilson, 11.89-2nd; K. Wilke-Wilson, 11.92-3rd; L. Milo-Southland, 12.04-4th; H. Light-Highland, 12.05-5th; R. Beaver-Trent, 12.06-6th

GIRLS 880 RELAY
 Klondike, 1.53.26-1st; Smyer, 1.55.38-2nd; Whitharral, 2.00.71-3rd; Meadow, 2.02.02-4th; Southland-2.05.33-5th; Highland-2.06.97-6th

BOYS 440 YARD DASH
 T. Chandler-Union, 52.53-1st; R. Griffin-New Home, 54.23-2nd; R. Beaver-Trent, 54.61-3rd; G. Beasley-Trent, 54.65-4th; D. Morgan-McCauley, 56.39-5th; S. Murff-Highland, 56.60-6th

GIRLS 440 YARD DASH
 D. Dunn-Meadow, 1.05.81-1st; West-Klondike, 1.08.33-2nd; Paul-New Home, 1.09.56-3rd;

Shaw-Smyer, 1.09.77-4th; Tillman-New Home, 1.12.68-5th; Danniell-Wilson, 1.12.85-6th

BOYS 330 INT HURDLES
 Freitag-Wilson, 42.54-1st; Stevenson-Highland, 43.18-2nd; Brinson-Meadow, 43.24-3rd; Fowler-Smyer, 43.35-4th; Guriel-Meadow, 44.13-5th; Petty-Highland, 44.49-6th

GIRLS 220 YARD DASH
 Davis-Smyer, 28.44-1st; Wilson-Dawson, 28.75-2nd; Thompson-McCauley, 28.88-3rd; Tillman-New Home, 29.68-4th; Edwards-Borden, 30.32-5th; T. Terry-Meadow, 30.33-6th

BOYS 220 YARD DASH
 Ed Wilson-Highland, 23.85-1st; E. Griffin-New Home, 24.10-2nd; Ev. Wilson-Highland, 24.67-3rd; L. Milo-Southland, 24.68-4th; Light-Highland, 24.76-5th

GIRLS MILE RUN
 Ta. Houchin-Wilson, 6.20.89-1st; J. Pendergrass-Meadow, 6.38.89-2nd; Beatty-Smyer, 6.49.45-3rd; S. Polk-Whitharral, 6.50.94-4th; J. Rivera-Sands, 7.18.84-5th; Angerer-Wilson, 7.20.10-6th

BOYS MILE RUN
 P. Kristiner-Whitharral, 5.08.36-1st; D. Rios-New Home, 5.16.92-2nd; Patterson-Trent, 5.22.65-3rd; J. Olvera-Union, 5.25.90-4th; Hilton-Jayton, 5.26.51-5th; Burtch-Wilson, 5.27.31-6th

GIRLS MILE RELAY
 Meadow, 4.30.92-1st; New Home, 4.41.64-2nd; Whitharral, 4.51.82-3rd; Wilson, 5.04.01-4th; Southland, 5.07.66-5th; Hermleigh, 5.45.42-6th

BOYS MILE RELAY
 Wilson, 3.38.98-1st; New Home, 3.45.88-2nd; Highland, 3.49.22-3rd; Dawson, 3.49.99-4th; Trent, 3.50.91-5th; Jayton, 3.54.45-6th

GIRLS 220 YARD DASH
 Davis-Smyer, 28.15-1st; D. Wilson-Dawson, 28.95-2nd; L. Tillman-New Home, 29.09-3rd; R. Thompson-McCauley, 29.16-4th; S. Kountz-Klondike, 30.11-5th; T. Terry-Meadow, 30.16-6th; J. Edwards-Borden, 30.36-7th

BOYS220 YARD DASH
 E. Griffin-New Home,

23.91-1st; Ed Wilson-Highland, 23.97-2nd; T. Chandler-Union, 24.29-3rd; G. Valdez-Southland, 24.33-4th; H. Light-Highland, 24.69-5th; Ev. Wilson-Highland, 24.95-6th; L. Milo-Southland, 25.07-7th

GIRLS TRIPLE JUMP
 D. Wilson-Dawson, 31'9 1/2"-1st; D. West-Klondike, 31'1 1/2"-2nd; D. Ware-Blackwell, 30'3"-3rd; M. Messick-Blackwell, 29'9 3/4"-4th; S. Kay-Whitharral, 29'8"-5th; Ca. Wheeler-Southland, 29'3 1/2"-6th

BOYS HIGH JUMP
 D. Morgan-McCauley, 5'8"-1st; B. Holland-Blackwell, 5'6"-2nd; Bryant-Jayton and M. Richburg-Highland tied for 3rd with 5'6"; B. Parker-Jayton, 5'6"-5th; M. Mills-Borden, 5'6"-6th

BOYS SHOT PUT
 K. Riley-Hermleigh, 46'11 3/4"-1st; MCMears-Jayton, 44'9 3/4"-2nd; R. Estrada-New Home, 43'10 1/4"-3rd; L. Reynero-Meadow, 43'4 1/2"-4th; R. Bell-New Home, 43'13 1/4"-5th; P. Wiggington-Sands, 42'7"-6th

GIRLS SHOT PUT
 C. Freeman-Trent, 33' 1/4"-1st; Cy. Wheeler-Southland, 31'1 1/2"-2nd; T. Terry-Meadow, 30'8 3/4"-3rd; J. Edwards-Borden, 30'5 1/2"-4th; K. Cartensen-Klondike, 29'9 1/4"-6th

GIRLS DISCUS
 C. Freeman-Trent, 92'4"-1st; P. Webster-New Home, 87'5"-2nd; Dulin-Highland, 85 1/2"-3rd; J. Serenil-Smyer-81'1"-5th; D. Dunn-Meadow, 81'4"-4th; T. Klaus-Wilson, 80'4"-6th

BOYS POLE VAULT
 M. Richburg-Highland, 11'6"-1st; L. Brown, Smyer, 11'-2nd; M. Sires-Dawson-10'6"-3rd; W. Robinson-Smyer, 10'-4th; M. Moore-Dawson, 10'-5th; Sartain-Jayton, 9'6"-6th

GIRLS 440 RELAY
 Klondike, 53.23-1st; New Home-53.91-2nd; Smyer-54.15-3rd; Meadow-54.73-4th; Highland-58.50-5th; Blackwell-58.53-6th

BOYS 440 RELAY
 Highland-45.83-1st; Jayton-47.16-2nd; Smyer-48.01-3rd; Dawson-48.29-4th; Hermleigh-48.55-5th; Southland-49.03-6th

GIRLS TWO MILE RUN
 N. Caballero-Sands, 13.43.62-1st; T. Castro-Meadow, 14.36.72-2nd

BOYS TWO MILE RUN
 Allford-Smyer, 11.26.23-1st; T. Cruz-Meadow, 11.26.63-2nd; J. Cavazos-Sands, 11.30.09-3rd; Hilson-Jayton, 11.45.51-4th; R. Hiracheta-New Home, 11.52.70-5th; R. Salazar-New Home, 11.52.72-6th

GIRLS 110 LOW HURDLES
 G. Roberts-Dawson, 16.80-1st; R. Airhart-Klondike, 17.16-2nd; S. Kay-Whitharral, 17.25-3rd; T. Terry-Meadow, 18.57-4th; T. Neal-Smyer, 18.74-5th; P. Harris-Klondike, 19.41-6th

BOYS 120 HIGH HURDLES
 Bruce Fowler-Smyer, 16.90-1st; R. Curiel-Meadow, 16.92-2nd; B. Holland-Blackwell, 16.93-3rd; D. Freitag-Wilson, 17.22-4th; Rider-Jayton, 17.44-5th; J. Rinehart-Borden, 19.85-6th

PLASTIC WRAP
 Clear plastic wrap is less likely to stick to itself if you keep it in the refrigerator. *Con't to Pg. 3*

Kimball Pianos & Organs
 Authorized Sony Dealer
 Large Selection of Records, Tapes, Sheet Music
 Band Accessories and Component Stereos
LAMESA MUSIC COMPANY
 Phone: 806-872-2401 509 S. 1st St.

Borden County School News

One Act Play To Be Viewed

The Borden County U.I.L. One Act Play will be performed for the community on Tuesday, March 24th at 1:30 P.M. in the school auditorium. Randy Roemisch is once again the director and this years play is Clara's On The Curtain.

The play will be in contest with 6 other plays on Thursday, March 26. The performances will be gan at 1:00 on Thursday, but the Borden County play will be

on stage about 4:00 p.m. Other plays competing are Wellman, Klondike, Dawson, Sands, Union and Loop.

There will be no admission for any of these performances. The critique judge this year will be Jane Ann Crum of Odessa College.

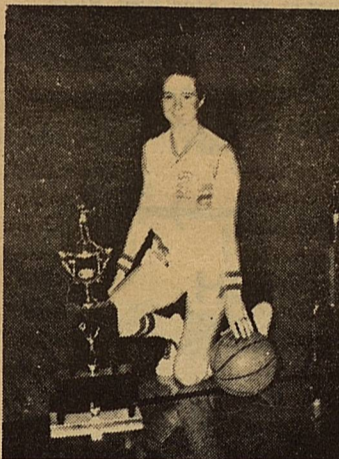
Awards will be given after the contest on Thursday for best actress, best actor, all'star cast and honorable mention all'star cast.



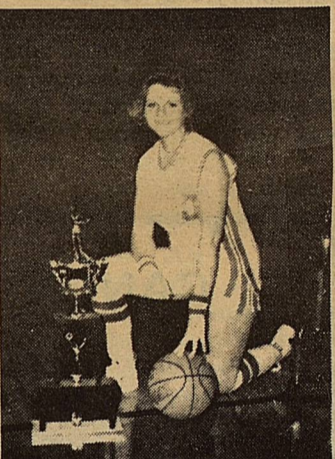
TALLEY GRIFFIN



JANA EDWARDS



GAYLA NEWTON



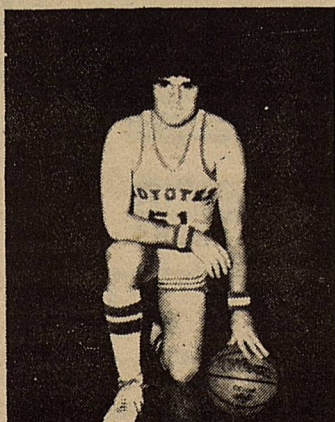
GENA FAUGHT

Five Local Ball Players Win All-District

Ten boys and ten girls from District 9-B have been placed according to scores for the basketball season of 1981 on the All-District list. The coaches in each school in the district scored each player and the following are the results.

Dennis Martin, Sands, Senior; Bil Tankersley, Wellman, Junior; John White, Union, Senior; Shayne Wiggington, Sands, Senior; Douglas Young, Wellman, Junior; Joel Bennett, Dawson, Junior; Clay Holcomb, Klondike, Senior; Todd Airhart, Klondike, Senior; Randy Holcomb, Klondike, Senior; and Bart McMeans of Borden, Senior. For the girls, Talley Griffin of Borden, Senior; Jana Edwards, Borden, Senior; Dani Cave, Klondike,

Senior; Roxanne Airhart, Klondike, Junior; Gayla Newton, Borden, Senior; Elva Arismendez, Sands, Senior; Jana Long, Sands, Senior; Lyndy Doyle, Klondike, Sophomore; Gena Wilks, Union, Senior; Gena Faught, Borden, Senior. were chosen for the All-District Honor.



BART MCMEANS

Relays

Con't from Pg. 2

GIRLS 880 YD. DASH
S. Thornton-Meadow, 2.31.47-1st; D. Wilson-Dawson, 2.33.75-2nd; D. Vicks-New Home, 2.41.71-3rd; N. Caballero-Sands, 2.47.39-4th; L. Stein Houser-Wilson, 2.49.74-5th; McLeroy-Borden, 2.52.41-6th

BOYS 880 YD. DASH
T. Bednarz-Wilson, 2.03.76-1st; P. Escamilla-Meadow, 2.11.17-2nd; Domingo Rios-New Home, 2.14.43-3rd; A. Webb-Dawson, 2.17.51-4th; E. Patterson-Trent, 2.21.07-5th; J. Jeffreys-Smyer, 2.21.42-6th

GIRLS LONG JUMP
S. Kountz-Klondike, 15'6"-1st; R. Airhart-Klondike, 14'10 1/4", 2nd; C. Wheeler-Southland, 14'5 1/4", 3rd; S. Alvis-Southland, 14' 5"-4th; D.Masonheimer-Trent, 14' 2 1/2"-5th; J. Edwards-Borden, 14' 1 3/4"-6th

BOYS DISCUS
McMeans-Jayton, 127', 1st; Whitley-Jayton, 116'8", 2nd; J. Benavidez-Borden, 114'11", 3rd; L. Key-Grady, 114.6", 4th; L. Courtney-Southland, and Vaughn-Jayton tied for 4th; Vaughn-Jayton, 112'6"-5th

GIRLS 440 YARD DASH
D. Dunn-Meadow, 1:06.67, 1st; W. West-Klondike, 1:07.97, 2nd; S. Shaw-Smyer, 1:09.82, 3rd; A. Paul-New Home, 1:10.06, 4th; B. Tillman-New Home, 1:10.14, 5th; A. Mosley-Smyer, 1:11.10, 6th; Daniels-Wilson, 1:13.24, 7th

BOYS 440 YARD DASH
T. Chandler-Union, 53.28-1st; R. Griffin-New Home, 54.05-2nd; G. Beasley-Trent, 54.26, 3rd; R. Beaver-Trent, 54.38, 4th; D. Morgan-McCauley, 54.46, 5th; S. Murff-Highland, 56.96-6th; J. Henley-Smyer, 57.40, 7th;

BOYS LONG JUMP
D. Morgan-McCauley, 19'8", 1st; Vaughn-Jayton, 18'8", 2nd; K. Wilke-Wilson, 18'5", 3rd; H. Light-Highland, G. Beasley-Trent, R. Beaver of Trent all tied for 4th with 18'4 1/2"

BOYS 330 INT. HURDLES
B. Fowler-Smyer, 43.18, 1st; Freitag-Wilson, 43.41, 2nd; R. Petty-Highland, 43.50, 3rd; T.

Stevenson-Highland, 44.34-4th; DL. Brinson-Meadow, 44.53, 5th; F. Curiel-Meadow, 44.97-6th; Rider-Jayton, 45.23-7th
GIRLS HIGH JUMP
Caryn Medcalf-Meadow, 4'8", 1st; S. Bednarz-Wilson, 4'6", 2nd; S. Kay-Whitharral, 4'6", 3rd; Murray-Highland, 4'6", 4th
GIRLS 100 YARD DASH
E. Griffin-New Home, 13.36, 1st; R. Thompson-McCauley, 13.60, 2nd; A. Echols-Klondike, 13.67, 3rd; P. Mosley-Smyer, 13.69, 4th; D. Lucas, Whitharral, 14.22, 5th; D. Cathey-Dawson, 14.61, 6th

Girls & Boys Track Schedule

March 28	Grady Relays-9:00 A M
April 4	Meadow Relays-9:00
April 10	Girls District-Klondike
April 11	Loop Relays: Relays-9:00 a.m. (boys only)
April 18	Open
April 23	Boys District Track Meet-Wellman-9:00 A.M
May 1-2	Regional Track Meet
MAY	State Track Meet

Menu

March 23-27, 1981

LUNCH	MONDAY	BREAKFAST
Corn Dogs Tossed Salad Pinto Beans Fruit Milk Salad Bar		Cereal Fruit Juice Milk
	TUESDAY	
Lasagna Salad Green Beans Hot Rolls Cobbler Milk Salad Bar		Cinnamon Toast Fruit Juice Milk
Spaghetti And Meat Vegetable Salad Hot Rolls Cake Milk Salad Bar		Hot Biscuits & Jelly Sausage Fruit Juice Milk
	THURSDAY	
Goulash Carrot Sticks Peas Cornmeal Twists Fruit Milk Salad Bar		Buttered Rice Toast Fruit Juice Milk
	FRIDAY	
Hamburgers Lettuce-Tomatoes-Pickles Potato Salad Banana Pudding Milk Salad Bar		Cereal Fruit Juice Milk

LOTA'BURGER A Square Meal
Phone 573-2922 On a Round Bun
Snyder, Texas



Something stirred in the bosom of the electorate last November despite the fact that our behavior had been so modified by two generations of conditioning to expect the federal government to provide for all of US. We elected a president who promised to free US who had become hostages of big government. Our votes reflected a desire to return US to the original intent of the Constitution—that of states rights—that what was not specifically spelled out to be under federal jurisdiction was therefore left to each state to handle in a manner that fit that state's needs.

We shouldn't be surprised tho, when a motion is made is implement this return to states' rights, certain segments of the electorate react in a most predictable manner. "It's a step backward", State Senator Carlos Truan. "This is but one more example that the Reagan administration is trying to disembowel the Hispanic community". Ruben Bonilla of Lulac. Carls Rowan wonders if Terrel Bell, Secretary of

Education is not "shafting the Hispanics, the Chinese, the others whose native tongues are not English".

The reason for the outrage and the return of a modified behavior attitude is the decision of federal regulations that have required the nation's public schools systems to teach foreign students in their native tongue. Mercy, or however you say it in Cambodian, Laotian, Iranian, Polish, Thai, Swahili, Spanish or Vietnamese, what an outcry. And all because a move is being made to return education to the States and at the same time save US a billion bucks over the next five years.

The United States has always been a melting pot. And we have traditionally taught the immigrant students in English, our "native" tongue. It was never considered discriminatory nor unreasonable to expect the immigrant to quickly learn the language of their adopted country thereby assimilating themselves into our culture and economy. Our language IS English and the sooner the foreign born learn it the better. Further more, the sooner the native born realize that English is our accepted language and a mastery of it is expected in order to advance in this economy, the better. I become a little vexed with some churches and other do-gooder organizations who are so caught up in "adopting" various ethnic groups who have flooded this country. They have fed, clothed and housed these people, showered them with attention and costly gifts. And then they have fostered them upon the public school systems, expecting the system to gear down to their level. In my opinion, these little non-English speaking

folks must be taught their new language by the sponsoring organization, not at taxpayer expense. And then is it too much to expect our public schools to concentrate on teaching reading, writing, and arithmetic in acceptable English?

I applaud the Reagan administration through his Education Secretary, M. Be.. for this first effort to remove government from the school house. It is commendable that this superfluous department now recognizes that under the Constitution the federal government has no right to dictate to the States the lesson plan or in which language it is to be presented.

Stamps Go Up On March 22

On March 22, the cost of mailing a first-class letter will climb to 18 cents, three times what it cost a decade ago.

And the Postal Service says the rates will have to go even higher.

The letter rate was 6 cents in May, 1971, when it rose to 8 cents. The price went to 10 cents in 1974 and to 13 cents in 1975. The last increase came May 29, 1978, when it went to the current 15 cents.

The Postal Service had requested a 20 cent first class rate, but the Postal Rate Commission decided Feb. 18 in favor of the 18

cent postage.

The Postal Service, calling the 18 cent stamp a "recommendation for fiscal irresponsibility" that will lead to constant rate changing, on Tuesday asked the commission to reconsider that decision.

"To achieve a lower stamp today, the commission has chosen to ignore more than \$1 billion in revenue needs that will have to be collected in the near future. This is not cost-cutting. It is make-believe," the nine governors of the Postal Service said in a statement approved unanimously.



The "Tennis Match of the Century" between Billie Jean King and Bobby Riggs also drew the greatest crowd in tennis history... 30,472. The fans who watched the match saw King beat Riggs in straight sets.

A person breathes 7 quarts of air every minute.

Home Visitors

Sunday afternoon after attending the funeral for Dewey Everett the following persons gathered at the home of Warren and Betty Beaver for a family

visit and to see the Beaver's new home.

Sterling & Gladys Williams, Bert Jennings, Roger, Comelle, Keil, Kelly, & Mindy Williams, Oleita Mitchell, Earl & Blanche Wilson, Pinck & Mary Mitchell, Blake & Barry Mitchell, James & Sylvia Mitchell, Joe Martha & Dawn Hutcheson, Doug, Lana & Kasy Hutcheson, Tim Conley, Floyd & Maude Hull, Margie Engle, Bernard & Sadie Longbotham, Francis Stockton and Ila Ruth Newton.



Jim McLeroy

McLeroy Honored

The Collegiate FFA of Texas Tech University are pleased to have had Bob McLeroy, the son of Mr. and Mrs. James McLeroy, as their vice-president for the fall semester of 1980. Bob is a senior Agriculture Education major at Texas Tech. Bob has been on the Dean's List for seven semesters.

EAST SIDE OF THE SQUARE

The Finest

In Nationally

Known Brands

of

Western Wear

and

Sports Wear

FENTON'S

Snyder 573-6111

Ezell-Key Feed & Seed

- Feeds
- Seeds
- Insecticides
- Fertilizer

1615 26th Street
Phone 573-6691
Snyder, Texas

THE BORDEN STAR

P.O. Box 137
Gail, Tex. 79738

Rates \$8.00 for 50 issues

Name _____
Address _____
City _____ State _____ Zip _____

CANON RANCH

BULLS

18 months of age
Guaranteed

- 9 Registered Angus
- 2 Un-registered Angus
- 3 quarter Limo. & Angus

Joe Canon
806-497-6326

Chuck Canon
806-497-6639

After 6:00 p.m.

YOUR PERSONAL DEALER

BOB BROWN

Olds-Cadillac-GMC

202 South 3rd
Lamesa, Texas
806-872-2144



SMALL GRAINS

May 15, 1981, is the final date to certify Wheat, Oats, Barley or Rye acreage and its intended use (Grazing, Grain, Cover etc.)

Wheat and Barley acreage grazed after March 20th, will be subject to a yield reduction if intended for harvest and then qualifies for low yield coverage.

For any wheat that is disaster affected, you must make a request and then have it inspected before any other use is made of it.

FOREIGN INVESTORS

Foreigners who own, buy, sell or hold interest in U.S. farmland are reminded that they MUST report this information to this office. A penalty could be imposed for failure to report such information.

EMERGENCY FEED PROGRAM

All applicants approved under this program need to report any changes in livestock number, feed available, and feed purchases.

COMMENTS REQUESTED ON 1981 COTTON LOAN DIFFERENTIALS

Comments concerning the micronaire, grade, and staple length premiums and discounts of the cotton loan program should be sent to: Director Price Support and Lona Division, USDA-ASCS P.O. Box 2415, Washington, D.C. 20013

APRIL 6, 1981 IS THE DEADLINE SO COMMENT TODAY.

MEASUREMENT SERVICE

Producers are reminded that measurement service is available to insure correct crop acreage.

NCA FOR 1981

Reminder-Compliance with the NCA (Normal Crop Acreage) is not a requirement for the 1981 programs. A correct and timely certification of crop acreages is. So watch for deadlines and be sure of crop acreages.

FEDERAL CROP INSURANCE

A list of agents and offices where producers may obtain all-risk crop insurance is available in the county office.

The closing date for sales on upland cotton is March 31st.

Eligibility for participation in all programs administered by ASCS is established under law without regard to race, color, religion, sex, or National origin.

Poison Prevention Week Keyed To Children

"Children Act Fast...So Do Poisons!" That's the theme for National Poison Prevention Week slated March 15-21.

"An overwhelming percentage of accidental poisonings happen to children under the age of five," points out Dr. Gary Nelson, safety engineer with the Texas Agricultural Extension Service, Texas A & M University System. "Much of this is due to the natural curiosity of youngsters and their tendency to put things into their mouths."

In the prevention of child poisonings, safety packaging or childproof containers have compiled an excellent record of success, contends Nelson. Introduced in 1972, safety packaging has helped reduce the number of certain product poisonings by 56 percent.

"Care should be taken, however, not to rely on safety packaging completely," cautions the engineer. "Since childproof containers must be reasonably easy for adults to open, some children will be able to open them as well. Thus it's important to keep medications and other poisons, even if they are in safety type containers, out of reach of children."

Nelson suggests these practices in addition to safety packaging to prevent poisoning accidents:

1. Keep all household products and medicines out of reach of children. Lock these items up when not in use.
2. Never let toxic products out of your sight when children are near, even if you must carry them with you to answer the phone or the doorbell.
3. Store medicines separately from other household products.
4. Keep toxic substances in their original containers.
5. Leave original labels on all products, and read labels before use.
6. Always have a light on when giving or taking medicines.
7. Avoid taking medicines in front of children since youngsters tend to imitate grownups. And never refer to medicine as "candy."
8. Clean out the medicine cabinet periodically and dispose of unneeded medicines when the illness for which they were prescribed is over.
9. Finally, use safety packaging properly by closing the container securely after every use.

Accident

Con't from P. 1

Mrs. Flint said she and Everett were seated at a table close to the front window visiting when the accident occurred. She was momentarily stunned and does not remember Lane getting her out of the back window. Mrs. Flint and Lane were treated for minor injuries and shock by Gail Emergency Medical Services.

The driver of the parked transport truck Lino Delion was more seriously injured. He was taken to a Big Spring hospital by the Gail Ambulance. He was treated second and third degree burns.

The Lamesa, O'Donnell and Gail Fire Departments battled the blaze several hours before bringing it under control.

The Snyder and Lamesa EMS were also on hand.

Help Wanted

Good Pay working from home, processing mail for us. No experience required. Part of full time. Start immediately. For information and application, send stamped, self-addressed envelope to: Colfax Publications, Box 1135, Newberry, Florida 32669.

To Whom It May Concern

The following is a photo of a post card that fell into the hands of The Borden Star. It was mailed from Los Angeles, Cal. addressed to "To Some Realtor in Town Gail, Texas" In one corner it read "Do not return if no realtor."

PLEASE IS IT POSSIBLE TO FIND IN YOURS SURROUNDING AREAS SOME OLD BUT NOT BROKEN MORE OR LESS HABITABLE HUT? ONE BIGGER ROOM JUST 4 WALLS AND A ROOF, WITH A LOT ABOUT ON ACRE OF ANY LAND IN A QUIET SOLITARY PLACE OUT OF TOWN FAR FROM ALL SOURCES OF NOISE. ELECTRICITY NOT NEEDED, SOME DROPS OF WATER VITAL. PLEASE DO NOT OFFER HOUSES!!! JUST SOME HUT. DO NOT EXPECT A BIG DEAL. I AM RETIRED OF EUROPEAN ORIGIN. PAY CASH. AFTER MANY YEARS IN THE BRUTAL ENVIRONMENT OF L.A. I NEED A HUMANIZED AND PRIMITIVE CORNER OF PEACE. SINCERELY

KAREL POBUDA (Mr.)
1926 N. WHITLEY AVE. # 7
LOS ANGELES
CALIF. 90068



BIG SPRING HEALTH FOOD CENTER
1305 SCURRY ST.
BIG SPRING, TEX.

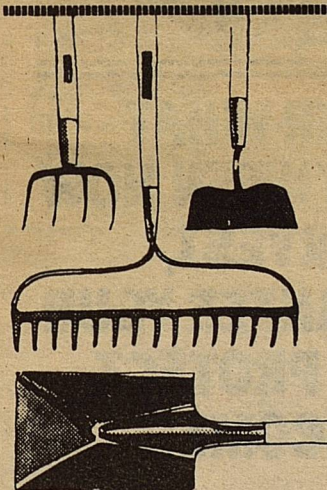
THE FIRST NATIONAL BANK
400 Main Big Spring, Texas 267-5513

DRIVE IN HOURS
Monday thru Thursday 8:00 a.m. - 3:00 p.m.
Friday 8:00 a.m. - 6:00 p.m.

NEW LOBBY HOURS
Monday thru Thursday 10:00 a.m. - 3:00 p.m.
Friday 10:00 a.m. - 6:00 p.m.

The First - In All Banking Service
Member F.D.I.C.

Tessie is our new 24 hour teller serving our customers around the clock.



Quality and selection at your fingertips . . .

John Deere Lawn and Garden Tools

We have a wide selection of top-quality tools. Hoes, rakes, and shovels. Trowels, pruners, loppers and many more. Stop in now.



Wayland Taylor Inc.
O'Donnell
428-3245



WINDOW SHADES HELPFUL HINTS FOR MOUNTING

Final of a series.

Roller shades you've made yourself can be mounted in one of the two ways, reverse roll or conventional roll.

In either case, you'll use the same kind of roller. It's just which side you position the spear on and the way the shade is mounted on the roller that makes the difference.

REVERSE ROLL

With the reverse roll, the spear (the flat end) should be on your right when the fabric side of the shade faces you.

Also, the shade cloth is in front of the roller, which causes the shade to sit out from the window a bit, of course.

This method lets the shade avoid handles or any other window projections, and it keeps the roller from showing, but it does make streaks of light more likely to show between the shade and the window edge in some window types.

CONVENTIONAL ROLL

With the conventional roll, the spear is on your left.

The shade fabric comes off the back of the roller, and this allows the shade to fit closer to the window itself.

This prevents streaks of light from showing between the shade and the window edge, and it saves more energy than the reverse roll.

Of course, the roller will show at the top unless you use a cornice or valance to hide it.

BRACKETS

Use "inside" brackets (those that are installed inside the window frame) for your shades if there is enough depth inside the window frame to accommodate the roller.

Also, remember, if you are mounting your shades by the reverse-roll method, you can still use standard brackets, but you'll have to reverse them, that is, place the spear bracket on the right side of the window frame and the round pin bracket on the left. Or you can buy a special reverse bracket for the reverse-roll method.

March 22 Important Day

Jim Cornish of the Post Dispatch reports that the sun will rise at 6:43 a.m. March 22. This is an important piece of news for people in and around Post, because that is when the farmers of the area will learn what to expect from their crops this year.

A ceremony called Taba'na Yuan'e is held at

sunrise on the first day of spring each year at Post. The even begins with Frank (Chief) Runkles lighting a fire by rubbing two sticks together. The smoke from the fire then is used to determine the wind direction at sunrise, which is the basis for the crop yield predictions.



LAMESA TRACTOR & MOTOR COMPANY
800-808 North Dallas Avenue
Lamesa, Texas 79331
(806) 872-2161

NELSON D. HOGG

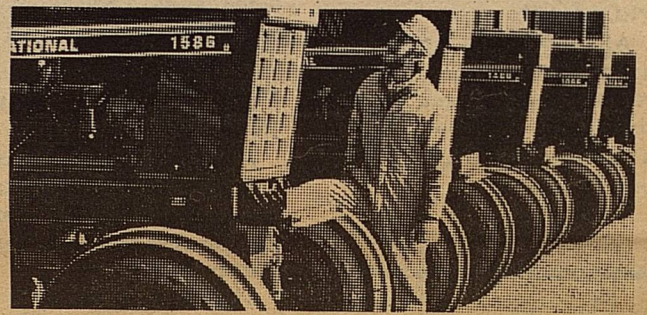
Notice To Seniors

High school seniors who will be graduating in the top 10 percent of their class may apply for a Cunningham Academic Scholarship at Western Texas College, James Parker, WTC Financial Aid Director, has announced.

The scholarships provide \$200 per year. Students who wish to apply are invited to contact Parker's office for details.

Students who are interested in financial aid to attend WTC during the coming summer session or in the 1981 fall semester should contact Parker's office for information soon. The office is in the WTC Administration Building is open each weekday. It may be reached by telephone at 573-8511, extension 309.

WHEN IT'S TIME TO TALK TO YOUR BANKER AGAIN, REMEMBER THIS...



NO MATTER WHAT HAPPENS BETWEEN NOW AND HARVEST, WE'LL GUARANTEE YOUR YIELD AND PROTECT YOUR INCOME.

That's the promise behind All-Risk Federal Crop Insurance.

What does it mean for you and your banker? Plenty. Because by locking in a guaranteed yield and income, you cover the risk of losses from natural disasters such as drought, flood, insects and disease.

Protection like that gives you repayment power—the kind that makes your banker sit up and take notice. The kind that makes your financial risks a lot easier to live with.

For more information, call the FCIC representative in your area. All-Risk Federal Crop Insurance. In good years and bad, it pays off.

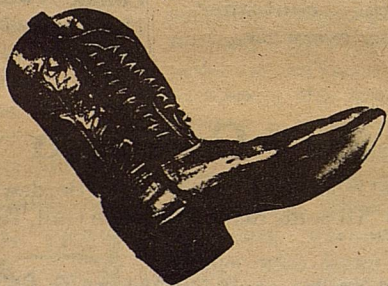
All-Risk Federal Crop Insurance



Agent:
J.R. Smith
Brad Smith
Dot Smith
806-439-6656

R. T. BELL'S Shoe & Boot Repair

Phone 573-0488
1712 - 25th Street Snyder, Texas



Leave your boots in Gail and they will be returned. Pickup Tuesday and they will be returned by Thursday.

CREATIVE STITCHERY WORKSHOP

Thursday, March 26, 1981 9:00 a.m. - 4:00 p.m.

REGISTRATION FORM (limit - 15 per class)

I would like to participate in the Creative Stitchery Workshop (check the one(s) you wish to attend.

- MACHINE EMBROIDERY, taught by Kathy Blagrove, 9:00 - 4:00; registration fees is \$25.00. This includes instruction manual, thread, hoop, You will need to bring your own sewing machine, extension cord, and personal sewing items (scissors, pins, etc.)
- COUNTED X-STITCH, taught by Dorothy Dennis, 9:00-12:00; registration fee \$6.00. This includes canvas, needle, and thread for making a sample.
- NEEDLEPOINT, taught by Modesta Stokes, 1:00-4:00; registration fee \$6.00. This includes canvas, needle, and thread for making sample.

Bring a covered dish for the luncheon from 12:00-1:00. Drinks, plates, flatware & napkins will be provided. Child care will be provided at a minimal charge. Return to Borden County Extension Office, Box 155, Gail, Texas 79351 or call 915-856-4207. Registration will be made on a first come-first served basis.

Name _____

Your County Agent Says by Alan Day

RIDENOUR AND WILLS PLACE AT SAN ANGELO

Nine Borden County 4-Her's exhibited 15 lambs and 7 barrows recently during the San Angelo Livestock Show. The show ran from March 10-15.

Kim Wills, daughter of Mr. and Mrs. Don Wills, placed third with her middle weight finewool cross lamb. This was high enough to make the auction sale as the top 10 lambs in each class made the sale. Jim Ridenour placed third with his lightweight Duroc barrow and also made the sale. He is the son of Mr. and Mrs. Fred Ridenour. Jerry Green, son of Mr. and Mrs. Charles Green, placed 10th in the light weight Duroc

class but didn't make the sale.

Other Borden County 4-Her's showing at San Angelo but that did not place were:

Market Lambs: Kristi and Cody Stone, Kim and Ty Wills, Michael Murphy and Cathy York.

Market Barrows: Julie and Jim Ridenour and Kristi and Cody Stone.

There were 910 market lambs divided among 6 classes. Finewool classes averaged 180 per class and crossbred classes had an average of 130 lambs per class. In the barrow show, classes averaged from 40-60 per class in all 3 divisions (Duroc, Hampshire and Crossbred).

A Tribute

Borden County lost one of their corner stones last Friday afternoon with the death of Dewey Everett. Although a resident of Scurry County since 1937 there were very few days of his life he failed to spend some time in Borden County.

Dewey's life symbolizes what Texans and Americans are all about. He was, to use the Cliche, "A Self Made Man" and to quote another cliche that "Behind every good man there stands a good woman" was so true and Dewey was always quick to acknowledge it.

He loved this earth and from the earth he made his fortune. He used it to graze his cattle and run his sheep and moved acres and acres to improve it. It would be hard to drive very many roads in Borden County and not see some of Dewey's work.

The greatest mark Dewey made in Borden County was his love of its people, his love for children and his willingness to always donate to any cause and support any project that would benefit Borden County and its Citizens.

His death will leave a void in the entire Community. When a man once made the statement about Dewey that he had sure been good to Borden County, Dewey's answer was that Borden County had also been good to him.

If I had to describe Dewey in one word I guess I would use Loyal. He was loyal to his Country, his family and his friends. He knew himself, he knew his faults, and his strenghts. He was always willing to take a chance, back a friend in need, take each day as it came and had a sense of humor that kept a twinkle in his eyes anytime he was among friends.

-s- Bonnie Sneed

Services

Con't from P. 1

Snyder with burial in the Gail Cemetery. The Reverend David Robertson officiated.

Pallbearers were Brent Murphy, Don Wills, Jerry Springer, Norman Sneed, W. C. Hart, J. L. Adams, Bill Zimmerman and Billy Ray Browning.

Mr. Everett is survived by his wife Faye, of the home; a daughter Dewey Faye Miller of Borden County; three sons, W. D. "Dub" Everett Jr., Jess Everett and Donnie Everett, all of Snyder; a foster son Roland Hamilton of Lamesa; one sister Mrs. Flossie Johnson of Crosbyton; two brothers Roy Everett of O'Donnell, and Glynn Everett of Ocean Side, Cal. Three brothers had preceeded him in death; Harvey, Travis, and Naman.

He is also survived by grandchildren; Becky and

Tammy Miller, Borden County; Mrs. Jim (Bennie) Smith of Lubbock; Vanette Everett and Jimmy Don Everett of Snyder; Mrs. Tim (Cindy) Harlan of Midland. Foster grandchildren; Elwood Hamilton, Lamesa and Mrs. Linda Lamphire of Hamlin.

Great grandchildren include Rachel and Wes Everett; Scott and Jess Lamphere, Dinah and Mark Hamilton.

Watch Your Step

Four hunters from Big Spring made a good start for the Rattlesnake Roundup in Howard County last Sunday when they bagged over forty of the critters on and around Muchakooga Peak. The men estimated the snakes averaged a pound and a half. At \$4.00 a lb., that's a pretty good days work!



• HOME OWNED AND OPERATED BY THE CLAIBORNES

NO. 1 STORE

708 N. 1ST
OPEN WEEKDAYS 7 TIL 7
CLOSED SUNDAYS

NO. 2 STORE

710 N. 4TH
OPEN WEEKDAYS 8 TIL 8
SUNDAYS 9 TIL 7

LAMESA, TEXAS

You're Invited

You are invited to a Housewarming for Warren and Betty Beaver, Monday March 23, at 7:00 p.m.

Barrington Pump & Machine

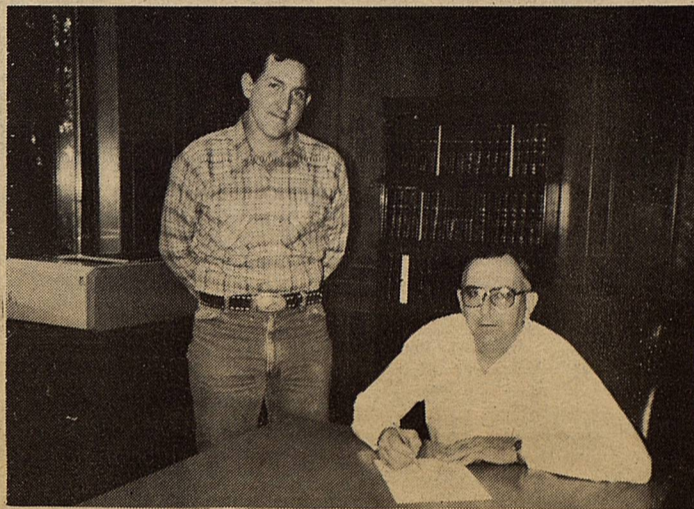
Myers, Taitco and Simmons Pumps
Complete Machine and Welding Shop

Phone 872-8307
Rt. B P.O. Box 28

Lubbock Hiway
Lamesa, Texas

For Sale

GOLD FOR SALE
Several private pieces of good investment jewelry - shown by appointment call 497-6739 after 6:30 p.m.



County Agricultural Agent, Allan Day looks on as County Judge, Jim Burkett signs the Official Memorandum designating March 19, 1981 in Borden County as Agriculture Day.

Ozarka

WATER COMPANY

CALL TOLL FREE
1-800-582-4323

605 S. Marienfeld - Midland, Texas

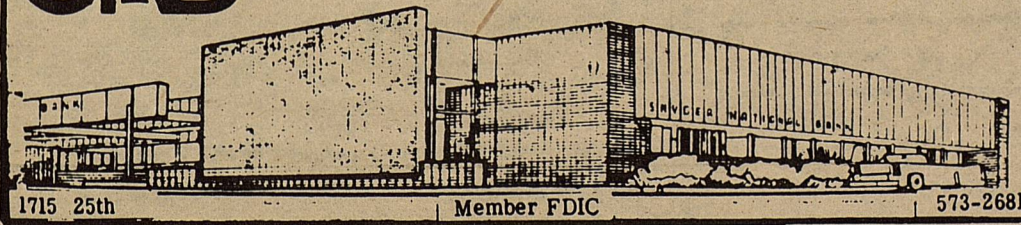
Oasis Water Coolers
Sales and Rentals

Crystal Pure Drinking Water
Delivery In Borden County

SNB

SNYDER NATIONAL BANK

SNYDER, TEXAS 79549



1715 25th

Member FDIC

573-2681

Lubbock Hiway
Rt. B-Box 42
Lamesa, Texas

Phone 806 872-5474

BRAY
IMPLEMENT CO. Inc



Sweetwater Production Credit Association

★ Crop & Livestock Loans ★
Sweetwater - Central Office

Offices in Colorado City, Lamesa, Roby & Snyder

***** Legal Notice *****

STATE OF TEXAS
COUNTY OF BORDEN

On this the 16th day of February 1981 the Board of Trustees of the Borden County Independent School District met in regular session. There being all board members present constituting a quorum and among other proceedings had by said Board of Trustees was the following: Whereas, the term of office of this School District will expire on the first Saturday in April, 1981, said first Saturday being April 4, 1981, and on said date a trustee election will be held in said School District.

Therefore be it ordered by the Board of Trustees of Borden County Independent School District:

1. That an election be held on April 4, 1981 for the purpose of electing to the Board of Trustees of said School District two (2) trustees.
2. That all requests by candidates to have their names placed upon the ballot for the above

mentioned election shall be in writing and signed by the candidate and filed with the secretary of the Board of Trustees at the superintendent's office not later than 30 days prior to the date of said election. (Deadline for filing March 4, 1981).

All candidates shall file with said application the loyalty affidavit required by Art. 6.02 of the Election Code.

3. Joan Briggs is hereby appointed Clerk for absentee voting, and Verna Ogden and Barbara York are hereby appointed Deputy Clerks for absentee voting. The absentee voting for the above designated election shall be held at the Borden County School (Superintendent's Office) within the boundaries of the above named School District and said place of absentee voting shall remain open for at least eight hours on each day for absentee voting which is not a Saturday, a Sunday, or an official State holiday, beginning on the 20th day

and continuing through the 4th day preceding the date of said election. Absentee voting will be from March 16 through March 31, 1981 and said place of voting shall remain open between the hours of 8:00 a.m. and 5:00 p.m. on each day for said election voting. The above described place for absentee voting is also the absentee Clerk's mailing address to which ballot applications and ballots voted by mail shall be sent. Absentee voting, both by personal appearance and by mail, shall be by paper ballots and shall be canvassed by a special canvassing board, and Wanda Smith, as Presiding Judge, Joan Briggs and Fran Bennett, as Clerks are hereby appointed the Special Canvassing Board for said election. Mailing address of absentee clerk-P.O. Box 95, Gail, Texas 79738.

4. That said election be held at the following places, and the following named persons are hereby appointed officers for said election:

School District Election Precincts	Polling Places	Election Officers
Box 1 (Same as Borden County Election Precinct No. 1)	Plains Community Center Community of Plains	Juanda Hancock Presiding Judge Lisa Ludecke Alt. Presiding Judge
Box 2 (Same as Borden County Election Precinct No. 2 and that part of the District in Howard County)	Vealmoor Teacherage Vealmoor, Texas	Zona Zant Presiding Judge Patricia Zant Alt. Presiding Judge
Box 3 (Same as Borden County Election Precinct No. 3)	Borden County Courthouse Gail, Texas	Wanda Smith Presiding Judge Fran Bennett Alt. Presiding Judge
Box 4 (Same as Borden County Election Precinct No. 4)	Willow Valley School Bldg. Community of Willow Valley	Mary Ruth Gray Presiding Judge Edna O. Buchanan Alt. Presiding Judge
Box 5 (Same as Borden County Election Precinct No. 5)	Election Precinct No. 5 Voting House	Melton Davis Presiding Judge Martha Davis Alt. Presiding Judge
Box 6 (Same as Borden County Election Precinct No. 6)	Sheriff's Posse Bldg. Gail, Texas	Sibyl Gilmore Presiding Judge Christine Cunningham Alt. Presiding Judge
Box 7 (Same as Borden County Election Precinct No. 7)	Roy Reeder Residence Community of Fluvanna	Roy Reeder Presiding Judge Azlee Reeder Alt. Presiding Judge

IS AVAILABLE
24 HOURS A DAY -
SEVEN
DAYS A WEEK

MR. CURREN C. MAKER

Security State Bank
1411 GREGG BIG SPRING, TEXAS
MEMBER F.D.I.C.

Services

RACE HORSE TRAINING
and HORSESHOEING

Travis Rinehart
915-856-4761

For Sale

FRESH Roping Steers
Call 573-6322, 573-5061, or
573-0936.

HAROLD LUCAS MOTORS
111 1/2 South Broadway
Post, Texas

**USED CAR
AND
TRUCK SALE**

CHEVROLET

806-495-2825

**GAGE FINA
TRUCK STOP**

Owner-Operator John Hamilton

OPEN 24 HRS. DAILY
IS 20W Sweetwater, Tex.

GAIL TEXACO

Phone No. 856-4101

GAIL WELDING SERVICE
Full Line of Service
Oil Field-Ranch & Farm

Lonnie King Ph 915:856-4101
Nite 915: 856-4162

Big Spring Automotive

219 W. Third
Big Spring, Texas 79720
915-267-6308

Roping Headquarters of the Southwest!
Professional Ropes by Leach

Wrangler
doesn't just
mean cowboy anymore

**Cowboy
Supply**

- West Side of Square, downtown Lamesa -
118 Austin Ave.

CINDY ETHEREDGE DON ETHEREDGE