

WEATHER

West Texas clear to partly cloudy and continued warm this afternoon, tonight and Saturday.

The Pampa Daily News

"Necessity is the plan of every living organism of human freedom, it is the argument of tyrants and the creed of slaves."—William Pitt

VOL. 50—NO. 84

AP Leased Wire

PAMPA, TEXAS, FRIDAY, JULY 20, 1951

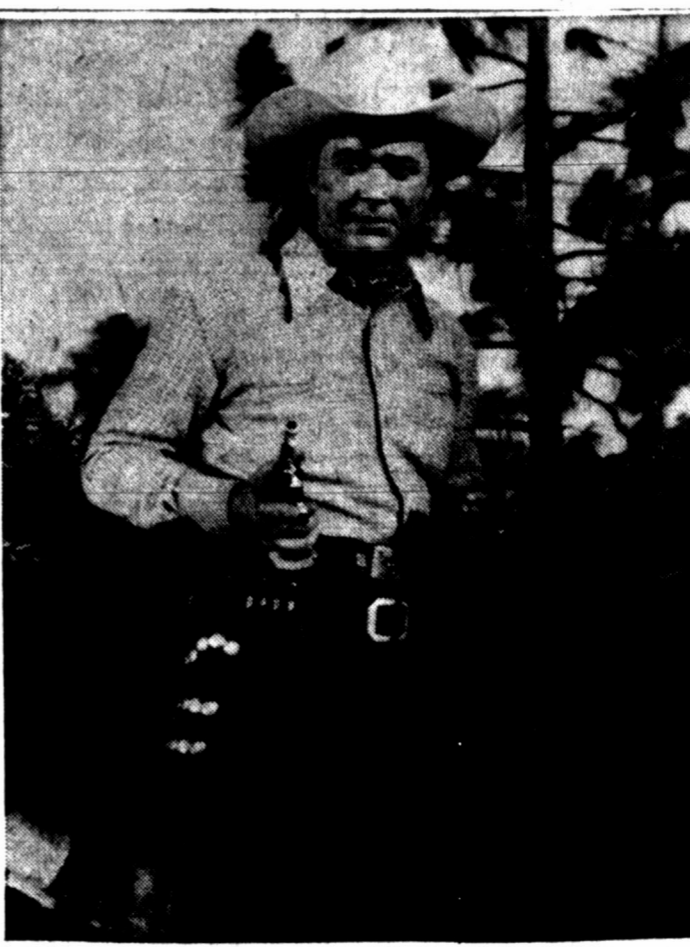
(20 PAGES TODAY)

Sunday 10 Cents Weekdays 5 Cents

King Of Jordan Assassinated; New Problem For British In East

Killing Adds To England's Iran Troubles

CAIRO —(P)— King Abdullah of Jordan was assassinated today as he was entering a mosque in Jerusalem. The killing promised new difficulties in the Middle East for Britain, already harried by the Iranian oil crisis. The British put Abdullah on the Jordan throne after World War II and supplied funds to his government and its strong Arab legion. Abdullah, 60, was shot and killed at the entrance of the Aqsa Mosque in the old city of Jerusalem, the British Foreign Office said. The government radio at Amman, in announcing the death of the bearded leader, said Abdullah's second son, 35-year-old Prince Naif, has been named temporarily as prince regent. The crown prince, Tallal, 40, has been under treatment for a nervous disorder. Mulla (Moselem priest) chanted verses of the Mohamadan Koran over the Amman radio in mourning as soon as the news was announced. Friday is the Moslem sabbath. The King claimed direct descent from the family of the Prophet Mohammed. The British Foreign Office said the assassin was identified as Mustafa Shakir. He was said to have been shot dead. Abdullah's violent death ended a reign marked by strife. The King wore a silver dagger always at his belt but presided over his country with Oriental serenity. A turbaned, little man swathed in flowing robes, Abdullah was constantly a thorn in the side of other Arab rulers because of his independence. A staunch friend of Britain who brought him to power and subsidized his strategically situated country, he often elected to play a lone hand in the complex politics of the Middle East. Abdullah was killed by the other Arab states when they made war upon the budding state of Israel in May, 1948, a war which lasted a year and never officially has ended in a peace settlement. He emerged from the war with a large slice of what had been Palestine, including the old shrine area in the walled city of Jerusalem and the city of Jericho, storied in the Bible. Last Monday in Amman Riad El Solh, foreign minister of Lebanon was killed by Syrian nationalists. The act touched off riots in Lebanon, where Solh was a leading political figure. He had long been an opponent of Abdullah's greater Syria ambition. Abdullah lived unpretentiously (See BRITISH, Page 2)



MONTE HALE RIDES AGAIN — He'll ride in Pampa Aug. 7-11 for the big seventh annual Top of Texas Rodeo. The good-looking cowboy Sepulchre star is one of the most popular western stars in Hollywood, and is making his second appearance here. His cowboy ballads, sung to his own accompaniment, and his likeable personality have made him a cowboy hero to the nation's kids. While in Pampa, he will give the public what they want and expect of a movie star — he'll dress to the hilt in high-style western garb.

Hollywood Star, Monte Hale, To Appear For Pampa Rodeo

Monte Hale, Republic western star, will appear here Aug. 7-11 for the second time in the history of the Top of Texas Rodeo. The handsome, young Texan who, besides making six western films a year, writes cowboy ballads, appeared in the 1948 rodeo and made such a hit with Pampans that rodeo officials asked him to return this year. He will ride in the rodeo parade Aug. 8 and will appear at each rodeo performance, entertaining crowds with special numbers. Some of the pictures he has appeared in here include "California Firebrand," "Timber Trail," "Prince of the Plains," "Son of God's Country," "The Old Frontier," "Pioneer Marshal," "Ranger of Cherokee Strip," "Vanishing Westerner," "Law of the Golden West," "Outcast of the Trail," and "South of Rio." While here in 1948, Hale was made an honorary deputy of Gray County.

Contestants In Soapbox Derby To Make Trial Runs Saturday

Aspirants for the Soap Box Derby crown will try out their boy-built racers tomorrow at 1:30 p.m. at Derby Downs, north of Pampa, according to Paul Brown, local derby advisor. The trial runs will give boys an opportunity to test the racers which they will use Sunday when the official Soap Box Derby will be held beginning at 2 p.m. Pampa Junior Chamber of Commerce members have inspected the little cars to make certain they are built in conformance with rules set forth by the All-American Soap Box Derby. The local derby is held under sponsorship of Culberson Chevrolet, Pampa Junior Chamber of Commerce and Chevrolet Division of General Motors, Inc. Winner of the event will be sent to the national derby at Akron, Ohio, through courtesy of The News. The big race in Akron will be held Aug. 12 and winner of the local race will arrive there Aug. 9 for four days of fun. First prize in the national derby is a \$5,000 scholarship to any college the winner will choose. Hundreds of other prizes will be awarded in Akron. Each boy racing in the Pampa Soap Box Derby will be given one or more prizes and trophies, donated by business firms in both Pampa and Derby. Whites Auto Store, Woolworth, Rinehart-Dozier, Malone and Keel pharmacy, Monarch Hardware and Metal, Bourland Supply, Pampa Oilers, Electric Supply Co., Sportsman Store, Lewis Hardware, McWilliams Motor, McWilliams and Moore Service station, Jack Vaughn Furniture, Bradley Industrial Supply, Lynn Boyd Lumber, Western Supply, Adington Western store, Electric Stone, Pampa Hardware, McCarty's Jewelry, Bovald Supply Co., Pursey Motor Co., Frank Fats, Melody Motor, Creney Drug, Tom Rose Motor Co., Texas Furniture, Continental Supply.



Graveside Rites For Pampa Infant

Graveside services were to be held at 3 p.m. today for Alice Faye Armstrong, infant daughter of Mr. and Mrs. Johnnie H. Armstrong, 932 S. Dwight. Survivors besides the parents are one sister, Linda Louise; two brothers, Tommie and Johnnie H., Jr. Father of the newborn baby is a mechanic for the city.

Unemployment Claims Show Tight Labor Market In Area

A tight labor market apparently exists in Pampa, if active employment compensation claims reported earnings. Still another report made late yesterday by L. P. Fort, Pampa manager of the Texas Employment Commission, showed only 38 claims being made through the local office, since they are here only temporarily. However, there are some unemployed persons in the city and county who either are eligible for unemployment compensation or are not putting in for unemployment compensation. Fort observed, too, the current labor situation has compelled Pampa's 87 business firms, representing many industries, to bring in employees from other cities and states. He said he believed the influx of new residents now is light when compared to the future outlook. In many instances, however, new construction jobs will have a employment for every able bodied man in the county, but the aged or infirm will find only part time or light work, he added.

Absentee Votes Increase To Six

Absentee voting in the July 23 bond and tax election jumped to six by 10 a.m. today, County Clerk Charlie Tate reported. Voters have until midnight Tuesday for absentee balloting on the airport, road and bridge bond issues, and the 16 cent tax as Furniture, Continental Supply.



ROLLING COMMUNIST — Gen. Nam Il, chief North Korean negotiator, left, smiles as he waits for his aides to enter the waiting room of the conference house in Kaesong. UN and Red negotiators broke up their July 18 meeting in disagreement over one point. (NEA Telephoto)

Cease-Fire Talks Halted By Weather

MUNSAN, Korea —(P)—The Korean armistice talks, focus of world hopes for peace, took a back seat today to the weather. A flash flood turned a creek 10 miles south of the Kaesong conference site into a raging torrent and barred jeeps carrying United Nations delegates to the truce city. Twenty newsmen and service personnel crossed the stream earlier and reached Kaesong. They returned by late afternoon. Bad weather also grounded the helicopters in which UN delegates usually travel the 14 air-line miles to Kaesong. The eighth session between UN and Communist teams—generally regarded as crucial in this first phase of the peace talks—was postponed until 10 a.m. tomorrow (7 p.m., EST, Friday). A single major issue bars agreement on an agenda which would permit the armistice talks to move into the second phase. While there has been official silence at the UN advance camp here, both Communist and high United States sources have made clear that the knot was tied by Red demands for withdrawal of all foreign troops from Korea. Communist radios in Pyongyang, the Red Korean capital, Peiping and Moscow have dinned this theme. And in Washington, U.S. Secretary of State Acheson said a UN force "must remain in Korea until a genuine peace has been firmly established."

Acheson in a statement confirmed that "the Communist delegation at Kaesong has raised the question of the withdrawal of all foreign forces from Korea in connection with an armistice." He added: "The United Nations command delegation has stated that it cannot go into this question, which is political, and can only be settled by the United Nations and the governments concerned." Gen. Matthew B. Ridgway, supreme allied commander, returned to Korea yesterday from Tokyo after the Kaesong meeting broke up so abruptly. He flew to Tokyo last night. A UN spokesman told newsmen after the close of Thursday's brief seventh "no progress" session: "I think we will come to an agreement (at the next meeting) or there will be an air of finality about the disagreement." The fact that only one issue bars an acceptable agenda indicated that the two delegations had found agreement on such questions as the significance of Parallel 38 separating North and South Korea; exchange of prisoners; creation of a buffer zone; effective time of a cease-fire order; and possibly the supervision of enemy territory by neutral groups during the cease-fire.

Citizens Bank Has Opening Saturday In New Quarters

Favors of roses, pencils and cigars will be given open house guests of the Citizens Bank and Trust Co. from 5 to 9 p.m. Saturday. The new building is located at Kingsmill and Russell. Guests will be greeted by directors of the bank, officers and employees. At the same time of the bank's formal open house, the Court-house Cafe, which has also been rebuilt next door to the bank, will be open for inspection. The cafe is owned by John O. Pitts and has been leased to H. L. Fisher, who will act as chef and manager. Fisher has been in the cafe business for over 25 years. The Pampa Daily News is running a special section today on the Citizens Bank and Trust Co. with stories concerning employees, officials, directors and background of the 11-year-old organization.

Columbian Workers Continue To Report

Workers at Columbian Carbon Co. are continuing to report for duty despite disruptions in contract negotiations between union and company officials, Don Glax, superintendent of Columbian, said today. Talks stopped July 11 when a suggestion to reinstate the old contract for six months was refused.

WE HEARD . . .

That three box seats at the rodeo arena are available in the local chamber of commerce office. The boxes seat six persons and are good for five night rodeo performances in the Top of Texas rodeo Aug. 7-11. Cost of the box does not include admission prices.

TURKEY ENDS WAR

ANKARA, Turkey —(P)—The Turkish National Assembly today approved a draft bill formally ending the state of war with Germany.

Mystery Malady Sweeps Ranch In Sherman—38 Cattle Dead

A mystery malady caused the death of 38 animals — 2-year-old heifers and calves — Tuesday on the Wolford ranch in Sherman. Cash loss has been estimated between \$10,000 and \$15,000, by the rancher, who is awaiting chemical analysis reports from a down-state laboratory. The cattle died in convulsions and the cause of death is still a mystery to Wolford and veterinarians. Until the reports return the cause is known as "a highly toxic poison obtained from an unknown source."

Mystery Man Introduced By Con Suspect

WASHINGTON (P)— Sam Mason, described by senators as a confidence man who fleeced his victims of thousands of dollars, said today he never had made any effort to fulfill his rosy promises. And, he told a special Senate investigating committee, he has filed no income tax returns since the money he took into a mystic about 1929. Mason testified he gave all serious figure he identified as "Mr. Eungart." Committee employes told reporters they hunted earlier for — but could not find — Eungart. Mason, a man with a red face and an artificial leg, said Eungart might be called "Ven" or "Vince" although he was not sure. Anyway, he said, Eungart was his agent or go-between with government officials. Asked where Eungart is now, Mason said he understands Eungart has gone to Australia, but he will be back, perhaps in August. "Eungart lived in Washington and he lived pretty high," Mason said. "He knew the right people and that's the way things are done here." "Did Eungart ever deliver leases for which you gave him money?" He asked. "No, but he gave me a pretty good excuse," Mason replied. "He told me he couldn't get them right now because of the scan-dal now going on in Washington." Before Mason testified, Meyer J. Sawyer, a Washington attorney, denied he had any knowledge Mason was collecting big sums of money from people introduced to him by Sawyer. Right at the start, the Senate committee, which is studying people who say they can influence government officials, started wondering about Mason's income.

Daniel Doubts Crime Report

AUSTIN (P)— Attorney General Price Daniel took issue today with reports that Galveston gambling is wide open again. "Organized gambling in Galveston is still more than fifty percent closed down," Daniel said. He said his statement was based on a report made by two of his investigators who were in Galveston this week. They were preparing for today's hearing on whether venue in the injunction suit against the Maceo syndicate's wire service should be shifted to Galveston. "Reports that Galveston gambling has returned to its former wide-open status are very misleading," Daniel declared. "Actually, all five of the elaborate horse race gambling parlors and over 1,000 slot machines are still out of business," he asserted. "These are the principal operations of organized gambling in the nation, and they constituted far more than half of the gambling operations in Galveston County before the recent shutdown."

Injunction Delayed In Hearings Over Hobart Route Trees

The temporary injunction in 31st District Court, brought by the city of Pampa against A. D. Robinson was delayed this morning over legal technicalities involving jurisdiction of the court. Attorneys for both sides argued in judge's chambers over legality of holding the temporary injunction before Robinson's \$5,000 damage suit against the city is tried in county court. By deadline this morning attorneys were still arguing over points of law in the hearing.

Izzy Competing With Old Faithful; 'Coon And Herman Get Chummy

By KENNETH WILLIAMS CHEYENNE, Wyo. — We made it to this wild and woolly country, but we are a week too early. The famous Frontier Days Rodeo that Cheyenne puts on every year will be held on the 24, 25, 26, 27, and 28, so, dang it, we're too early. They sure have got this town decorated; there are flags all over the place. There is a great big American flag stretched over the front of the capital building. It's big enough to wrap Isabel in.

We spent last night in the wilderness south of Denver. We were afraid when we went to bed that we would get cold because the night was over, but the weather was perfect; not too warm and not too cold. At about 5 o'clock yesterday afternoon we parked Izzy alongside one of those mountain roads and cooked supper. While we were there a car bearing Missouri license plates came along side us and stopped. The driver stuck his head out of the window and said, "Where in the heck are we?" Herman promptly replied, "Now that's a good question, where are we?" It seems the man from Missouri had been in Colorado Springs and had asked how to get to the Garden of the Gods. Somebody pointed out a road and the Missourian had taken it. Some way he got on the wrong road and had traveled a distance of about 80 or 70 miles and had never found the Garden. Was he mad when he found out that the Garden was only about three or four miles from Colorado Springs? Herman and I haven't had an undisturbed night of sleep since we left home. The first night there were railroad trains; the second night, noisy tourists; and last night, visitors. At 3 o'clock this morning peace and quiet reigned over our camp. Then a blood curdling scream that could have been heard for miles rose from where Herman was sleeping. I jumps out of bed, as far as my sleeping bag will allow, and turn a light on Herman. There is a coon gazing at Herman like he was a long lost brother. That poor coon, bet he sure was insulted when that could have been heard for



MAKING CAMP — Kenneth Williams, one of Pampa's goodwill ambassadors, is shown setting up camp somewhere en route to Canada. Williams and Herman Watkins left Pampa a week ago on a jaunt to Canada in Williams' 21-year-old car, "Isabel." Most of the trip they plan to sleep out and eat their meals in camp. Isabel is equipped with a "chuck box" which also makes into a table. Stories of their experiences on the trip will appear in The Pampa Daily News. (Photo by Herman)

Mainly About People

If you fail to receive your Pampa News by 6:00 p. m., call No. 9 before 7:00 p. m.

Lost - Brown leather billfold; contained papers of Mrs. H. B. Ladyman. Reward for return. Ph. 2058J-1.

Nice 3-room modern home; te. ma. John I. Bradley, 777.

Luggage sale, Lutheran Ladies Aid, July 21, (Sat.), 318 S. Cuyler.

All metal Shaw-Walker desk, also wooden office desk; both in excellent condition. May be seen at KPND, Hughes Bldg.

Unfurnished chest for sale cheap. See at the Tiny Tot Shop.

4-foot and 6-foot show case for sale cheap. See at the Tiny Tot Shop.

30 gal. cap. Frigidaire water fountain, like new, for sale. Call 1100, Coy Palmer.

Mrs. A. C. Cox returned this week from a month's visit in San Diego, Calif. Her daughter, Anna Merle, accompanied her to Pampa for a visit here before returning to San Francisco where she will be employed at Radio Station KYA.

Joe Fischer's Father Dies

Word was received here early today of the death of Mike Fischer, 74, father of Joe Fischer, 1429 Charles. He was found this morning, and apparently suffered a heart attack during the night.

Mr. Fischer was a resident of Beloit, Kan. where he had lived all his life.

He is survived by his wife, Elizabeth, seven sons, Joe, Pampa; Istore, Osborne, Kan.; Raymond and Gerald, Los Angeles, Calif.; Robert, Stinley and Jerome, Beloit; four daughters, Mrs. Isabel Zimmerman, Pueblo, Colo.; Mrs. Juanita Thibault, Washington, D. C.; Mrs. Monica Randall, Salina, Kan.; and Mrs. Cecilia Mick, Tipton, Kan.

One brother, Nick Fischer, Beloit, survives and three sisters, Miss Teresa Fischer, Wichita, Kan., Mrs. Carrie Hoffman and Mrs. Annie Schwaback, both of Beloit.

Funeral arrangements are pending.



to AUSTIN
4 Hrs. 20 Min.
4 fast lines

its BRANIFF
Phone Amarillo 2-4343

MARKETS

FORT WORTH LIVESTOCK
CATTLE: 200; calves 150; steady, good and choice steers and yearlings 30.00-34.00; common to medium slaughter yearlings and steers 22.00-28.00; head cows 21.50-26.00; good and choice slaughter calves 29.00-32.00; stockers scarce.

HOGS: 100; butchers mostly 25c lower with some sales 50c under Thursday's levels; sows 20c down; feeder pigs were unchanged, choices 150-250 lb. butchers 22-30; choice 150-175 lb. hogs 20.25-22.25; sows 16.00-18.50; feeder pigs 20.00 down.

LOW COST LOANS

Optional Credit Insurance, Life, Health & Accident

PIONEER INVESTMENT CO.

JOE MITCHELL, Mgr.

208 N. Russell Free Parking

Vital Statistics

Temperatures
6:00 a.m. 72 11:00 a.m. 94
7:00 a.m. 74 12:00 Noon 95
8:00 a.m. 81 West. Max. 95
9:00 a.m. 84 West. Min. 72
10:00

HOSPITAL NOTES

HIGHLAND GENERAL ADMISSIONS
Mrs. Berdell Davis
Mrs. Imogene Stevens
Mrs. Eveline Nichols
Mildred Armstrong
Mrs. Nancie Warren
Mrs. Dorothy Calvert
Zetta Windson
Orville Smith
Mrs. J. L. Noel
Vernelle Nelson

DISMISSALS
Vernelle Nelson
Mrs. Charlene Yeager
Jerry Warner, Lefors
Tommy Capps
Glendon Dearing
A. N. Ridgeway, Mobeetie
Mrs. Stella Berryman, Lefors
Mrs. Winifred Walker
Dennis Brewster, White Deer
Earl Collins
Mrs. Thelma Moot, and baby boy
Mrs. Catherine Altendorf and baby boy
Mrs. Ruth Stockstill and baby girl
Mrs. Laura Donaldson and baby boy
Mrs. Avis Wilson

SUITS FILED

R. G. Hughes vs Urchel L. Brooks et al, suit on open account.
Crawford Atkinson vs S and H Construction Co., foreclosure.
Della Bowden vs Ray L. Bowden, divorce.
Wanda Ruth Sparks vs Eugene W. Sparks, divorce.
Hilda Faye Brooks vs Harold Ray Brooks, divorce.
John Thomas Lambright vs Wanda Jean Lambright, divorce.

DIVORCES GRANTED
Nora Kitchens vs. Kelley Kitchens.
Doris Mathis vs James E. Mathis.

REALTY TRANSFERS
E. D. Scott and wife, Ora D. to Jessie O. Middleton and wife, Berna Dean; Lots 25 and 26, Block 11, Finley Banks.
Alta Mae Haddock to Jeta Duncan and J. Wade Duncan; W 75' lot 1, Block 8, Finley Banks.

POWERFUL T-1 ESCAPE
"Through the giant 10' inch telescope of the Mount Wilson observatory, near Pasadena, Calif., one could see a candle at a distance of 5000 miles.

Lions Urged To Cast Votes

Lions Club members were urged at a weekly luncheon yesterday to vote July 28 on bond issues for development of Gray County airports; improvement of roads and bridges and on a 16-cent assumption issue.

Frank Culbertson, chairman of the Lions membership committee, stressed the need of a good airport here because of growing industry "We can't afford to lag behind surrounding cities which have first-class airports," he said.

To pay for airport facilities and road and bridge repair, an assumption tax must be levied. If all issues pass, he said, the people not only can enjoy improvements, but can still have a reduction of 14 cents in the combined tax rate over last year.

Fred Neslage, head of the Pampa repressuring commission, spoke on the mechanics of oil production and the repressuring of oil.

BRITISH

(Continued from Page One) in the dusty little Arab city of Amman, was on the site of ancient Philadelphia.

Plots against Abdullah's life were reported on several occasions. In 1941 there was a report, later denied by the King, that he had been shot and wounded by his eldest son, Emir Tallal, in a quarrel over Iraq.

In 1949 three Palestine Arabs and a Jordanian were sentenced to death for conspiring against Abdullah.

Prince Tallal was a thorn in the aging king's side. Recently he had been in Beirut, Lebanon, for treatment for what is described as a nervous breakdown. But Tallal long ago was being pushed aside in the talk of succession to the Jordan crown. There were reports in the Israeli press in Jerusalem last May that Tallal had shot and wounded Arab legion chief Glubb Pasha. Amman denied it, but Tallal left the country and his duties were taken over by Emir Naif.

Prince Naif already has taken the oath before Parliament, Amman radio said.

The Amman radio gave this version of the assassination: "King Abdullah was on the point of entering the Aqu's Mosque in Jerusalem. The killer was hidden behind a door of the mosque.

OLD FAITHFUL

(Continued from Page One) he found out Herman wasn't his brother.

We hit some mighty pretty country around Deckers, Colo. The South Platte River ran along the road and the trees were everywhere. And mountains were very abundant and Izz, well you've heard of Old Faithful; it ain't got nothing on our old hot rod (cold stick or something). Going over those mountain roads Izz erupted every five minutes. Boy, she got hot! We'd take the radiator cap off and water would gush out like a geyser.

We went into Denver but didn't stay there very long. Just long enough for Herman to buy a fly rod and reel. He hopes to do a little fishing when we get to Glacier National Park. I saved my money because I know I couldn't catch cold with a fishing pole.

And Herman bought something else. He calls it a cap, but that's a debatable question. It's one of those hats like golfers wear. It has a small brim sticking out in front and the top of the thing lays on top of the brim. But what is bad about is the color. When I say color I use it very loosely. It's a combination of blue, brown and yellow with all shades of each.

On the way out of Denver, Isabel starting squeaking like a bushel of mice so we pulled into a service station and got a grease job. The station was Chet Kline's Skally Service Station located at 3700 Federal in Denver.

Parked next to the station was a red and white car with the fenders off and a big '91' painted on the side. We asked Kline about it and he said it was a stock car that he sponsored in the stock car races held there in Denver every Tuesday and Friday. But so far luck hadn't been with '91."

Kline showed us a picture of what happened the last time the car was run. Ninety - one was on top of the flagman's mound with the front end torn out. Kline has had three motors in the car and not one of them has stayed. After all that seems that his should change after a while. Hope so, anyway.

Isabel is still doing pretty good on the oil. We have used only two and a half gallons to get here but she seems to be getting just a little worse the farther out of Izz it was just like I was hypnotized. I went straight to the cherries in a daze. In between hiding from the cars passing on the highway a great

From Bloomers To Bikinis



The first World War changed a lot of things, including bathing suits. These are some California damsels in the advanced styles of 1920. Stripes were the thing, and you can see a definite trend away from the form-hiding fashions of earlier years. But there are still some left-overs of the pantaloons-and-long-sleeve era. They all wear some stockings, either long or rolled down below the knee. And the bathing suits are all skirted (although briefly) with trunks underneath. The low sandal had just about replaced the high, laced bathing shoe, but the girl at the right hadn't heard that story yet. Not all of the 1920 beauties went in for the form-fitting suits, however. Here is Margaret Gorman, Miss America of 1921. Her outfit is as form-fitting as a tent. But her dainty dimpled knee is peeking.

Invitations Sent For Treaty Meet

WASHINGTON - (P) - Invitations are going out today to the nations which declared war on Japan to meet at San Francisco Sept. 4 to sign a Japanese peace treaty.

Officials said the United States and Britain were sponsoring the invitations. They were addressed to 49 other countries, including Russia. Since Russia has sharply criticized the treaty making procedure, most authorities here believe Moscow will turn down the bid.

A big bunch of cherries appeared in my hat. I don't know how they got there. Magic, I guess. When the hat was full, I headed for the car a running. Wham, I tripped and fell flat on my face. I don't see why farmers leave little signs with "N - O - T - R - E - S - S - A - S - S - I - N - G" on them sticking around where people can trip over them. Crime, that's all it is. Man, those cherries were good. Tomorrow we plan to do quite a bit of traveling because we are afraid we are going to run short of time if we don't hurry.

President Appeals For Flood Money

WASHINGTON - (P) - President Truman has appealed to Americans to donate at least \$5,000,000 through their local Red Cross chapters for flood relief in Kansas, Missouri, Oklahoma and Illinois.

The appeal was made yesterday in a letter to Red Cross President E. Roland Harriman. At the same time, Mr. Truman allocated \$275,000 of existing federal funds for emergency relief, in answer to a request from Missouri Gov. Forrest Smith.

A like amount was allowed last Saturday for Kansas flood sufferers.

CRASH KILLS ONE
DALLAS - (P) - Robert S. Turner, 26, of Fort Worth, died in Veterans Hospital at Lisbon yesterday from injuries received Wednesday in a plane crash at Arlington. The pilot of the plane, W. A. Stephens of Fort Worth, is hospitalized with a broken arm and broken leg.

Zale's July CLEARANCE Sale

121 Beautiful PIECES DINNERWARE and SILVERWARE

\$33.33 Regular \$49.95

Here's the exquisite "Garden of Flowers" combination... the dream of every homemaker for its rich beauty, its practical value. Fashioned in this exclusive Zale design, we know of no finer set for the price. The gay center floral pattern of the dinnerware, with intricate gold border, includes: 8 Dinner Plates, 8 Cups, 8 Saucers, 8 Dessert Plates, 8 Soup Bowls, 8 Cereal Bowls, Platter, Serving Bowl, Creamer, Sugar Bowl and lid. Finely detailed and heavily silverplated, the lovely "Diplomat" silverware set by International Silver Company consists of: 8 Knives, 8 Forks, 8 Teaspoons, 8 Soup Spoons, Butter Knife, Sugar Shell. And, the 25-piece glassware combination, with dainty etched leaf design and gold colored rims, includes: 8 Fruit Juice Glasses, 8 Water Tumblers, 8 Ice Teas and Pitcher. Plus all this, a sparkling clear set of 8 glass stirring rods add greater ease to entertaining. An outstanding value you can't afford to miss... priced at only \$33.33!

53-PIECE DINNERWARE

25-PIECE GLASSWARE

8 GLASS STIRRERS

34-PIECE SILVERWARE

SILVERWARE CHEST

NO MONEY DOWN—ONLY 75c WEEKLY!
No Interest • No Carrying Charge

Exclusive "GARDEN of FLOWERS" Design

ZALE'S Jewelers
107 N. CUYLER

Order Now By Mail
ZALE JEWELRY CO., Pampa
Please send me this 121-piece set.
Name _____
Address _____
City _____
State _____
C.O.D. _____
Cash Charge State

Legal Publications

ORDINANCE NO. 33... RESOLUTION ADOPTING AND APPROVING ENGINEER'S ESTIMATE ROLLS AND OR STATEMENTS FOR IMPROVEMENTS ON PORTIONS OF STREETS, AVENUES AND - OR ALLEYS, FIXING TIME AND PLACE OF HEARING, AND DIRECTING THE CITY SECRETARY TO GIVE NOTICE, AND DECLARING AN EMERGENCY...

WHEREAS, arrangements for the making and construction of said improvements have been made and entered into by the City of Pampa as Contractor, and the City Engineer has made and prepared and filed with the City his estimates, rolls, or statements showing the amounts to be assessed against parcels of abutting property...

THE CITY OF PAMPA, TEXAS, BEING THEREFORE, BE IT ORDAINED BY THE CITY COMMISSION OF THE CITY OF PAMPA, TEXAS, THAT: I. Said estimates, rolls or statements be made and approved...

NOTICE TO THE OWNERS OF PROPERTY ABUTTING UPON THE HEREINBELOW MENTIONED PORTIONS OF STREETS, AVENUES AND - OR ALLEYS...

Business Men's Assurance Company... Mrs. J. Ray Martin... 167 N. Frost Phone 175

ALLEYS, AND TO ALL OTHERS AFFECTED:

The Governing Body of the City of Pampa, has heretofore ordered that the following portions of streets, avenues and - or alleys in said City of Pampa, be improved by raising, grading and filling and paving and by installing concrete curbs and gutters and storm sewers and drains where necessary on the streets, avenues and alleys designated below:

UNIT No. 600 - The Western one-half of Starkweather Street, from its intersection with the South property line of Foster Avenue, to its intersection with the North property line of Atchison Avenue.

UNIT No. 601 - The Eastern one-half of Starkweather Street, from its intersection with the South property line of Foster Avenue, to its intersection with the North property line of Atchison Avenue.

UNIT No. 602 - The Western one-half of Hamilton Street, from its intersection with the North property line of Pennsylvania Avenue, to its intersection with the North lot line of Lot 8, Block 2, Buckler Addition to the City of Pampa, Texas.

UNIT No. 603 - The Eastern one-half of Hamilton Street, from its intersection with the North lot line of Lot 8, Block 2, Buckler Addition to the City of Pampa, Texas, to its intersection with the South property line of Kentucky Avenue.

UNIT No. 604 - The Western one-half of Hamilton Street, from its intersection with the North lot line of Lot 8, Block 2, Buckler Addition to the City of Pampa, Texas, to its intersection with the South property line of Kentucky Avenue.

UNIT No. 605 - The Eastern one-half of Hamilton Street, from its intersection with the North lot line of Lot 8, Block 2, Buckler Addition to the City of Pampa, Texas, to its intersection with the South property line of Kentucky Avenue.

UNIT No. 606 - The Western one-half of Russell Street, from its intersection with the North property line of Texas Avenue, to its intersection with the Center line of Finch Avenue.

UNIT No. 607 - The Western one-half of Russell Street, from its intersection with the North property line of Texas Avenue, to its intersection with the Center line of Finch Avenue.

UNIT No. 608 - The Eastern one-half of Dwight Street, from its intersection with the North property line of Alcock Street, to its intersection with the Center line of Browning Avenue.

UNIT No. 609 - The Western one-half of Dwight Street, from its intersection with the North property line of Alcock Street, to its intersection with the Center line of Browning Avenue.

UNIT No. 610 - The Eastern one-half of Dwight Street, from its intersection with the North property line of Alcock Street, to its intersection with the Center line of Browning Avenue.

UNIT No. 611 - The Western one-half of Dwight Street, from its intersection with the North property line of Alcock Street, to its intersection with the Center line of Browning Avenue.

Legal Publications

NOTICE OF INTENTION TO ISSUE REFUNDING BONDS FOR THE PURPOSE OF REFUNDING \$134,000 "GRAY COUNTY, TEXAS, ROAD AND IMPROVEMENT WARRANTS," AND \$7,500 "GRAY COUNTY, TEXAS, ROAD AND BRIDGE WARRANTS," ALL DATED AUGUST 15, 1950...

UNIT No. 621 - The Western one-half of Nelson Street, from its intersection with the Center line of Lincoln Street, to its intersection with the North lot line of Lot 18, Block 1, Wynnelea Addition to the City of Pampa, Texas.

UNIT No. 622 - The Eastern one-half of Nelson Street, from its intersection with the North lot line of Lot 18, Block 1, Wynnelea Addition to the City of Pampa, Texas, to its intersection with the South property line of Greenwood Street.

UNIT No. 623 - The Western one-half of Nelson Street, from its intersection with the North lot line of Lot 18, Block 1, Wynnelea Addition to the City of Pampa, Texas, to its intersection with the South property line of Greenwood Street.

UNIT No. 624 - The Eastern one-half of Summer Street, from its intersection with the Center line of Lincoln Street, to its intersection with the North lot line of Lot 8, Block 1, Wynnelea Addition to the City of Pampa, Texas.

UNIT No. 625 - The Western one-half of Summer Street, from its intersection with the Center line of Lincoln Street, to its intersection with the North lot line of Lot 8, Block 1, Wynnelea Addition to the City of Pampa, Texas.

UNIT No. 626 - The Eastern one-half of Summer Street, from its intersection with the Center line of Lincoln Street, to its intersection with the North lot line of Lot 8, Block 1, Wynnelea Addition to the City of Pampa, Texas.

UNIT No. 627 - The Western one-half of Summer Street, from its intersection with the Center line of Lincoln Street, to its intersection with the North lot line of Lot 8, Block 1, Wynnelea Addition to the City of Pampa, Texas.

UNIT No. 628 - The Eastern one-half of Summer Street, from its intersection with the Center line of Lincoln Street, to its intersection with the North lot line of Lot 8, Block 1, Wynnelea Addition to the City of Pampa, Texas.

UNIT No. 629 - The Western one-half of Summer Street, from its intersection with the Center line of Lincoln Street, to its intersection with the North lot line of Lot 8, Block 1, Wynnelea Addition to the City of Pampa, Texas.

UNIT No. 630 - The Eastern one-half of Summer Street, from its intersection with the Center line of Lincoln Street, to its intersection with the North lot line of Lot 8, Block 1, Wynnelea Addition to the City of Pampa, Texas.

UNIT No. 631 - The Western one-half of Summer Street, from its intersection with the Center line of Lincoln Street, to its intersection with the North lot line of Lot 8, Block 1, Wynnelea Addition to the City of Pampa, Texas.

UNIT No. 632 - The Eastern one-half of Summer Street, from its intersection with the Center line of Lincoln Street, to its intersection with the North lot line of Lot 8, Block 1, Wynnelea Addition to the City of Pampa, Texas.

Legal Publications

NOTICE OF INTENTION TO ISSUE REFUNDING BONDS FOR THE PURPOSE OF REFUNDING \$134,000 "GRAY COUNTY, TEXAS, ROAD AND IMPROVEMENT WARRANTS," AND \$7,500 "GRAY COUNTY, TEXAS, ROAD AND BRIDGE WARRANTS," ALL DATED AUGUST 15, 1950...

UNIT No. 633 - The Western one-half of Summer Street, from its intersection with the Center line of Lincoln Street, to its intersection with the North lot line of Lot 8, Block 1, Wynnelea Addition to the City of Pampa, Texas.

UNIT No. 634 - The Eastern one-half of Summer Street, from its intersection with the Center line of Lincoln Street, to its intersection with the North lot line of Lot 8, Block 1, Wynnelea Addition to the City of Pampa, Texas.

UNIT No. 635 - The Western one-half of Summer Street, from its intersection with the Center line of Lincoln Street, to its intersection with the North lot line of Lot 8, Block 1, Wynnelea Addition to the City of Pampa, Texas.

UNIT No. 636 - The Eastern one-half of Summer Street, from its intersection with the Center line of Lincoln Street, to its intersection with the North lot line of Lot 8, Block 1, Wynnelea Addition to the City of Pampa, Texas.

UNIT No. 637 - The Western one-half of Summer Street, from its intersection with the Center line of Lincoln Street, to its intersection with the North lot line of Lot 8, Block 1, Wynnelea Addition to the City of Pampa, Texas.

UNIT No. 638 - The Eastern one-half of Summer Street, from its intersection with the Center line of Lincoln Street, to its intersection with the North lot line of Lot 8, Block 1, Wynnelea Addition to the City of Pampa, Texas.

UNIT No. 639 - The Western one-half of Summer Street, from its intersection with the Center line of Lincoln Street, to its intersection with the North lot line of Lot 8, Block 1, Wynnelea Addition to the City of Pampa, Texas.

UNIT No. 640 - The Eastern one-half of Summer Street, from its intersection with the Center line of Lincoln Street, to its intersection with the North lot line of Lot 8, Block 1, Wynnelea Addition to the City of Pampa, Texas.

UNIT No. 641 - The Western one-half of Summer Street, from its intersection with the Center line of Lincoln Street, to its intersection with the North lot line of Lot 8, Block 1, Wynnelea Addition to the City of Pampa, Texas.

UNIT No. 642 - The Eastern one-half of Summer Street, from its intersection with the Center line of Lincoln Street, to its intersection with the North lot line of Lot 8, Block 1, Wynnelea Addition to the City of Pampa, Texas.

UNIT No. 643 - The Western one-half of Summer Street, from its intersection with the Center line of Lincoln Street, to its intersection with the North lot line of Lot 8, Block 1, Wynnelea Addition to the City of Pampa, Texas.

UNIT No. 644 - The Eastern one-half of Summer Street, from its intersection with the Center line of Lincoln Street, to its intersection with the North lot line of Lot 8, Block 1, Wynnelea Addition to the City of Pampa, Texas.

Betty Lou Payne Is Proof Operator

Betty Lou Payne is proof machine operator and transit clerk for the Citizens Bank & Trust. She is the daughter of Mr. and Mrs. F. M. Scott of Pampa and was married to Philip Payne this spring. Her husband is employed in the engineering dept. of Brown & Root, Inc.

FORCED FEEDING The Romans started the custom of forcibly feeding geese to enlarge the livers. A goose that is fed by force every few hours soon develops a liver of several pounds' weight.

John I. Bradley Gunnison Homes 218 1/2 North Russell Phone 777



Maxine Muck Is In Bookkeeping

Maxine Muck is employed in the bookkeeping department of the Citizens Bank & Trust Co. Prior to her connection with the bank, she was employed at Levine's. Her husband, S. E. Muck, is employed by the C. M. Jetties Trucking Co. Her parents, Mr. and Mrs. B. A. Ricketts.



Betty Lou Payne Is Proof Operator

Betty Lou Payne is proof machine operator and transit clerk for the Citizens Bank & Trust. She is the daughter of Mr. and Mrs. F. M. Scott of Pampa and was married to Philip Payne this spring. Her husband is employed in the engineering dept. of Brown & Root, Inc.



Wanda Spelce Is Relief Teller

Wanda Spelce, recent bride of Bill Spelce employed by the Phillips Petroleum Co. is the relief teller for the bank. She also serves as posting machine operator, proof machine operator, file clerk and note teller. She is the daughter of Mr. and Mrs. A. L. Taylor and was graduated from Pampa High School last year.

Congratulations and BEST WISHES to the Court House Cafe UPON THE OPENING OF THEIR NEW AND BEAUTIFUL CAFE "TO OPEN NEXT WEEK" We Are Proud To Have Had The Opportunity To Do The Floor Work In This Lovely New Cafe! FRANK F. FATA Equitable Life Insurance for PLANNED Security Phone Res. 500C 113 WEST KINGSMILL PHONE 200

Legal Publications

APPLICATION FOR CHANGE OF ADDRESS OF PACKAGE STORE PERMIT The undersigned is an applicant to change his address for a Retail Liquor Permit with the Texas Liquor Control Board from 2218 W. Alcock St., Pampa, Texas, to 2214 W. Alcock St., Pampa, Texas, as and hereby gives notice by publication of such application in accordance with Provisions of Sec. 10, H. B. 77, Acts of Second Called Session of 44th Legislature designated as Texas Liquor Control Act. The Retail Liquor Permit applied for will be used in conduct of business located at 2214 W. Alcock St. and to be known as Alcock Package Store. MRS. FRANCES FINKBEINER

adopted by reference in respect of the description of said warrants and shall be considered as much a part of this notice as if incorporated herein. WITNESS MY OFFICIAL SIGNATURE, this 11th day of July, 1951, pursuant to order of the Commissioners' Court of Gray County, Texas. BRUCE L. PARKER, County Judge, Gray County, Texas. July 13-20-27.

My ranch 'workhorse' runs for only 2 1/2¢ a mile! Ranch owner George Stephens proved for himself, in the big Economy Run, just how little it costs to run his Ford Truck! The Lazy J's Ford Express did itself proud in the Run," says Stephens. "Daily records kept during the entire six months show that our Ford Truck ran up a total of 5,109 miles. My out-of-pocket expense for gas, oil, maintenance and repairs was exactly \$123.51... about a \$20 bill each month... only 2 1/2 cents a mile! The Ford Truck POWER PILOT is one reason why Ford Trucks cost so little to run, in ranch work or any work. The POWER PILOT gives you the most power from the least gas. In the low-price field, only Ford has it! Favorite hustler for loads near 1 1/2 tons is this new 1951 Ford F-3 Express, V-8 or 6-cylinder power. Rugged full floating rear axle. Choice of two smart new cabs, for greater driving ease! Low 27-in. loading height. Power Pilot Economy. See your Ford Dealer... choose from our 180 Ford Truck models to fit your job! TOM ROSE Our 30th Year 121 N. BALLARD PHONE 141

Electric Cooking Is ... as MODERN women KNOW! Modern women know, too, that economy, efficiency, dependability—all the completely automatic cooking features—will be found in an electric range. Electric cooking is cool because all the heat goes into the pan and into the food. None of it goes up the sides of the pan, none of it is wasted heating the room. Electric cooking is convenient. Convenient because it's automatic. Convenient because it's dependable heat is constant. You can cook complete meals without being in your kitchen either when they start to cook or when they stop cooking—thanks to automatic timers. You can leave your kitchen, too, even when you plan to stay at home, and not worry about the heat remaining constant. When you set the predetermined heat on your electric range, it stays at that setting—there's no flickering, no variation of heat. Electric cooking is clean because electricity is cleanest of all heat producing methods. When you cook electrically everything stays bright and shiny—your pots and pans, your walls, your curtains, your disposition. Electric cooking hits the High C's—clean, cool, convenient. It's economical, efficient, dependable, fast and automatic, too... as modern women know! See your electric appliance dealer now. See YOUR Electric APPLIANCE DEALER SOUTHWESTERN PUBLIC SERVICE COMPANY 26 YEARS OF GOOD CITIZENSHIP AND PUBLIC SERVICE

The Pampa Daily News
One of Texas' Two Most Consistent Newspapers
Published daily except Saturday by The Pampa News, Atchison at Somerville, Pampa, Texas. Phone 666.

Subscription Rates
By CARRIER in Pampa 25c per week. Paid in advance (at office) \$3.00 per 3 months, \$6.00 per six months, \$12.00 per year in advance.

Future Of Every Individual
To point to the obvious, this country, in company with most of the allegedly civilized world, is living on a war economy.

Even though military orders are fitting fairly smoothly into the economy, the putting of a strain on manpower and material supplies.

However, few think that severe civilian shortages will develop, save in a few special cases unless a big war comes along.

LOOKING SIDWAYS
By WHITNEY BOLTON
A man named Thornton Wilder, whom I know as a playwright and novelist, and everybody else seems to know as a college professor, got off the old one about the people of this planet, the other day and I could think of was the day I was asked to leave an astronomy class in college because I ventured to suggest that the teacher was uttering pure nonsense.

And now here is Professor Wilder slipping off the same greased shield and coming up thump on the floor. If I were a member of one of his classes, I would be as impudently offensive as I probably was back there in 1922, and suggest that he didn't know what he was talking about. The Professor, after a valiant, needful and completely reasonable summation of today's young people, gave his fervent thanks that we all dwell "on the only inhabited star."

Better
By R. C. HOILES
Using Figures of Speech
To Fool People
A friend of mine used to say that you cannot reason by using figures of speech.

They are constantly hammering on the idea that prices can be raised on the basis of the amount of this world's goods each citizen consumes. He should pay in proportion as he consumes goods. He should not pay in proportion as he produces wealth.

Yes, the politicians are using figures of speech to confuse and fool the people. Prices cannot be rolled back without further devaluation of the dollar in property.

Don't let the politicians fool you that they can do what they propose to do. It seems that when they get to be politicians and hold a government office that they seem to believe in economic miracles.

This interchange ended in what may be called a draw: I left the room and he remained to teach. A few days later he returned and said that our speech of spinning earth has been vouchsafed the only life in our solar system.

Over the years, still slightly gravely by the cavalier fashion in which I have treated in astronomy class, I have bored many a starry-eyed student into a state of somnolence.

Bid For A Smile
Teacher—What's the definition of a student?
Students—From the time the light turns green until the guy behind you blows his horn.

Baxter's Views
By DAVID BAXTER
NASTY MESS
I see where they've stopped publication of the University of New Mexico's publication, "The Tundra-Bird," because it printed a quotation, "Man will never be free until the last king is buried with the entrails of the last priest."

I don't think such instances are a reflection upon the cause of Christ at all but simply show that some men abuse their privilege.

We fought a revolution against England on the issue of "taxation without representation" but now that we have taxation WITH representation I don't see that the situation has improved any.

These fundamentals cannot be dimmed by age or distorted by demagogues.

The most important part of the speech was that which damned the Civil Rights program. This scheme is politically identical with the original Ku Klux Klan.

He led off with a warning that the whole nation could be destroyed by national insolvency and a charge that Truman was pushing the country toward that doom by presenting the highest civilian budget in history.

Drivers in some of the autos in movie smashups are dummies—too!
Most people go after what's worth having after a while—in stead of now.



FAIR ENOUGH-- PEGLER

By WESTBROOK PEGLER
NEW YORK — Senator Harry F. Byrd's big speech at the Jefferson-Jackson dinner in Atlanta actually was a call for a Southern political rebellion against a new plague of Northern carpetbaggers and Southern scalawags.

It was proposed to enact an anti-lynching law to be enforced by federal agents in federal courts," Byrd said. "Such a law has long been considered unconstitutional since it involved no inter-state aspects. It is clearly an invasion of state's rights."

"During my service as governor of Virginia," where 26 years ago he was lynched, "I have noted that the law, as proposed, would pointedly exempt riotous deliberations fomented by union bosses from the scope of the act.

Although mongolism or mongoloidity has been discussed in this column several times a number of correspondents have asked for additional information.

because that he was afraid to do it but he just finished a setto with the wages and hours administration. He was afraid the reporter might report him to this bureau and stir up the animals again.

The Doctor Says
By EDWARD P. JORDAN, M. D.
Although mongolism or mongoloidity has been discussed in this column several times a number of correspondents have asked for additional information.

There appeared recently in a New England newspaper an editorial which pointed out that American railroads are in government step with other segments of American business.

On the other hand, the railroads are currently paying about two and one-half times as much per hour in wages and approximately two and one-fourth times as much per unit of materials purchases as they paid before World War II.

have passed since the last lynching. "The President's commission proposed, and he endorsed, not only the specific abolition of the poll tax in federal elections but also an authorization for the Department of Justice to use all civil and criminal powers to supervise primaries and elections of representatives of the several states. It is even recommended that the federal government be given power to supervise the discussion of matters relating to national political issues. All this is in direct defiance of the first article of the Constitution which gives the states the right to establish the qualifications of voters and conduct all elections.

"The President threatens to deny all federal grants in aid, to states which refuse to repeal all local segregation laws." Never before has any President requested legislation whereby states are directed to change their local laws or suffer denial of federal money to which the citizens of these states, by their taxes, have contributed.

"This was deliberately aimed at the South. What, let me ask, has the South done to justify this treatment from the National Democratic party? Why should we be singled out by our party leaders? In the terrible days of reconstruction we had no 'southern recovery plan.' We had only our own character and our determination to go forward to our greater destiny. Never in all the history of the world is there an example of advancement equal to that of the Negro in the South.

"We must not short-cut the Constitution of the United States. Southern Senators and Congressmen ought to be treated with all their power. They were fighting not only for the South but to preserve our constitutional government, as every single one of these proposals is unconstitutional."

National Whirligig

By RAY TUCKER
WASHINGTON — Signing of a peace treaty with Japan at San Francisco next month will burden the United States with an international responsibility of a kind it has never had in its history.

Although our erstwhile enemy in the Far Pacific will become free and independent legally, she will remain a semi-ward for an indefinite period to the mutual advantage of Washington and Tokyo, and to the disadvantage of Moscow. That at least is the Truman-Acheson hope and purpose.

CLIMAX — It is an unprecedented climax to one of the world's most cruel and fierce conflicts, and a curious fall of the curtain on the drama which began on that "day of infamy" almost 10 years ago. The United States, as a result of our preceding quarrel with Russia, Japan's ancient foe and our World War II ally, is placed in the position of wooing the vanquished.

Similarly, we shall have to flirt with Germany with that nation because world conditions demand that we conquer and stoop at the same time. Although necessary to our military program for the encirclement of the Soviet satellite empire, it is a somewhat ludicrous position for Uncle Sam.

FEUDALISM — The terms and operations of the Japanese treaty will not realize the great expectations of American liberals and idealists that the Oriental country become a "democratic" government after our pattern. Although we retain the right to maintain air-naval bases and military units there, the Japanese will be permitted to manage internal affairs as they please.

So long as we agree with us in the "cold war" with the return to a state of economic, industrial and political feudalism in Asia as Washington is concerned, the Emperor, look upon him as heaven-born or as an ordinary human.

(which approximated 1941 in volume) been handled with no greater operating economy and efficiency than the 1941 traffic was handled, operating expenses in 1949 would have been more than \$900 million greater than they actually were.

So progress in operating economy and efficiency was made largely by investments for new and better facilities, which have averaged more than \$600 million yearly since World War II. Largely through these investments, the railroads were able to hold down increases in freight rates to such a moderate extent that the average revenue received for hauling a ton of freight one mile now amounts to only about 40 per cent more than in 1939, a year when the cost of fuel and other materials was at a low level.

But the gap between revenues and costs became too great to be entirely bridged through increased efficiency and greater traffic volume. The railroads have been forced to petition for a 15 per cent freight-rate increase. Even if this is granted in full, freight charges will still be lower in relation to total cost of transportation than they were in 1946, 1939 or any earlier year for which figures are available.

Railroad executives also would much prefer expansion to retrenchment of train service. Whenever service is reduced, it is because traffic has already dwindled to where the service no longer is self-supporting. For this unhealthy situation, subsidized competition is largely responsible.

We have in this country today two widely divergent public policies toward the general support of government-owned railroads. On the one hand, there are competing forms of transportation which enjoy subsidies at the taxpayer's expense. For instance, trucks operating over publicly provided highways do not pay the proportionate share of the construction and maintenance costs of the highways.

On the other hand, the railroads are currently paying about two and one-half times as much per hour in wages and approximately two and one-fourth times as much per unit of materials purchases as they paid before World War II.

The railroads have benefited much of these huge increases through greater efficiency and economy of operation. Between 1941 and 1949, savings in operating expenses through gains in efficiency amounted to more than \$500 million on a yearly basis. Stated another way, had the 1949 traffic

being, bow down when his passes or scout at him just as we give the once-over to Harry Truman.

As a matter of fact, almost every pre-treaty trend indicates that the Japanese will re-assert a highly nationalistic and conservative program. If we provide the money and materials, she may even become militaristic under strict American supervision.

TREND — The year-old Korean war has tended to obscure the rebirth of this sentiment in Japan, besides hastening it. Obviously, General Douglas A. MacArthur was too occupied with more pressing problems to check the trend, even if he had wanted to interfere with the Yoshida ministry.

It is not generally known here, but the Japanese government has "depured" almost all the 210,000 war and pre-war individuals who had been blacklisted. By the end of this month, it is expected that about 170,000 will have been given the right to participate in public and political affairs. Many of them were active members of pre-World War II regimes.

CONTROL — The government also plans to repeal the drastic anti-monopoly laws and regulations imposed in the early days of the occupation under allied pressure. Like our own anti-trust laws, these were designed to break up the interlocking control which a few families and interests enjoyed over Japanese finance, industry, shipping, etc.

It was these groups which reformed Japan, and reaped a handsome profit from it. They were the Krupp of Tokyo. But if we want a strong Japan as an anti-Communist buffer in this area, we would be biting off our own nose by preventing their return to economic power.

Moreover, after the treaty is signed, their position in Japan's future development will be none of our business.

REACTIONARY — The increase in the number of rightist, nationalistic organizations has become so great that more than 600 are registered with the attorney general's office.

These include the Democratic League for National Defense, which demands rearmament and a standing army; the Yashukuni Kamikaze pilots; organizations clamoring for "Asia for the Asians"; and former army officers who want to enlist under Chiang Kai-shek on Formosa.

Thus, as World War II and the current "cold war" effectively blocked enactment of Roosevelt-Truman, "liberal" reforms at home, so the Anglo-American dual with Russia may establish ultra-conservative and nationalistic regimes in Japan and Germany. It is ironic that the proclaimed "leaders of the proletariat" in the Kremlin should be responsible for a reactionary revival everywhere.

INFILTRATION — Although Russia is protesting against the treaty, the Communists plan to launch an infiltration offensive as soon as the United States relinquishes control. They will direct their attack against the provision giving us the right to maintain air-naval bases, and to keep United Nations (American) forces on the islands indefinitely.

In Japan today are Yoshida Liberal group, the Socialists and the Peasant Democratic League. The Communists obtained less than one percent of the total vote in recent local elections in which more than 90 percent of the population participated.

The Liberal and Democratic parties favor American protection until Japan becomes strong enough to set up its own military force. Without our help, this will not be possible for many years.

The Socialists, who will be reinforced by the Communists, want to get out, and to make Japan the Switzerland of the Far Pacific. It is possible that a platform of Japan-for-the-Japanese may become as popular as throwing political stones through the windows of Buckingham Palace in certain sections of the United States.

Oak Seed
HORIZONTAL 3 It is the fruit of the...
1 Depicted nut
5 Indians
13 Harmony
15 Tolerant
18 Writing fluid
19 Hurt
18 Armed conflict
19 Diminutive suffix
20 Regan
22 Exist
25 Unacquainted
27 Ironquodan
28 Indian
28 Animal fat
29 Calcium (symbol)
30 Near
31 Type square
32 Two (prefix)
33 Sea eagle
35 Guide
38 Ogle
39 Domestic slave
40 Psyche part
41 Read by letter
47 King of Bashan
48 It grows in a scaly
50 Elude
51 Ventilate
52 Ice pendants
54 Goddess of peace
56 Cloth
57 Satchels
58 Same
VERTICAL
1 Each
2 One

Overworked Red Sox Outrun Again In Extra Frames, 5-4



PAMPA NEWS, FRIDAY, JULY 20, 1951 PAGE 5

Jersey Joe Prepares Return To Camden As Champion

PITTSBURGH — (AP) — Jersey Joe Walcott got set today for "one of the happiest days of his life" — a day when he goes home to Camden, N. J. with the richest ring bauble of them all.

Four Tied For Blue Ribbon Lead

MILWAUKEE — (AP) — A field of 171 golfers headed for the half-way point of the \$20,000 Blue Ribbon Open Tournament today with only 14 boasting sub-par figures.

Sam Sneed, the West Virginian who topped all pros in earnings this past two years, shared top billing with three other "play for pay" performers as the second day of the 72-hole medal play met opened.

Sneed and his three cohorts—Ed (Porky) Oliver, Wilmington, Del.; Glenn Teal, Memphis, Tenn.; and Fred Hawkins, El Paso, Tex. — had four under par 67s on the 35-36-71 links.

And if its any encouragement to suffers, even the veterans blow when the going gets rough. Ransom, a pro for 18 years, had what amounted to a free ticket to the top of the list yesterday — and missed.

Grid Cards Get New President

CHICAGO — (AP) — The Chicago Cardinals of the National Football League today had a new president, 23-year-old Charles W. Bidwill, Jr., son of the club's former owner, who died in 1947.

Oilers Face Dukes Tonight

The Pampa Oilers open up a road trip tonight through New Mexico against the Albuquerque Dukes at Tingley Field.

Most of the club took a day off yesterday for the all-star game. Only Calo, Richardson and Dial saw action in that affair.

It wasn't until this year that Avila discovered he had "cousins" as far north as Boston. In fact, the stocky little Mexican from Vera Cruz has a flock of 'em. They all pitch for the Red Sox.

Avila is a single hitter (only 15 of his 87 hits have gone for extra bases), slapped four yesterday to lead the Indians to their triumph. His fourth single scored pinch hitter Bob Lemon with the tying run after the Sox had tallied once in the top of the 11th.

After the game, Avila said "I looked out of the corner of my eye. I think Williams is going to throw to second, I dig for the plate." Third base coach Jake Flawers had given him the signal to stop, but Bobby whizzed right through the red light.

Until the 25-year-old Avila put the finishing touches on his batting spree, it looked like big Clyde Volmer of Boston would once again emerge as the batting star. The husky outfielder smashed two homers. The first, a two-run belt, put the Red Sox in front 2-0 in the second.

First baseman Lou Limmer's wild throw slowed the Tigers to exactly a tie-breaking run in the eighth inning and win the second game after Martin had held them to five hits and no runs in the opener.

At that, the lone Yankee run in the fifth, was unearned. It resulted from Gerry Coleman's single, Nellie Fox' error and a

South Crushes North, 18-11

Rebels' Bats Pound Two Big Innings

BORGER — (AP) — The South's six field last night as the Southwesterners downed the Northern nine 18-11, in the West Texas - New Mexico annual all-star contest.

The North, led by booming bats which northern pitchers couldn't silence, jumped out to a 9-3 lead at the end of the second inning. They never relinquished the lead, adding one more in the fourth and icing the game with an eight-run frame in the fifth.

Howard, with his four big hits was both the hero and the dub of the game. The lone North error charged to him allowed three runs to score when he missed Morris Card's easy fly out in the fifth with the bases loaded.

Paust pitched effective ball for the three innings he worked for the South, he was frequently in hot water, but bore down in the clutches to work him self out. The North moundmen were totally unable to cope with the situation. They could not find the plate when they needed to and issued a total of 13

Murray Named As Player Of The Week

DALLAS — (AP) — Second baseman Frank Murray of the Amarillo Gold Sox was chosen star of the week in the West Texas - New Mexico League.

Official scorers credited Murray with a home run against the Pampa Oilers July 12. Closing the week at Lamesa, Murray scored three for three, including a brace of triples. He made seven assists in defensive play.

Green Sox To Battle Wheeler

SHAMROCK — (Special) — Shamrock's Green Sox will entertain the Wheeler crew here Sunday at 2:30 — and the chance to get revenge for the 5-4 win the Wheelers eked out at Wheeler several weeks ago on Tuesday's ninth inning homer.

Shamrock's Green Sox will entertain the Wheeler crew here Sunday at 2:30 — and the chance to get revenge for the 5-4 win the Wheelers eked out at Wheeler several weeks ago on Tuesday's ninth inning homer.

Citation Crushes North, 18-11

Citation Retired

INGLEWOOD, Calif. — (AP) — "The big horse is through." With those five words, fins was written to the racing career of Citation, the first million dollar winner in turf history and a thoroughbred many call the greatest of all time.

Retirement of Citation at the nice old age of six was the wish of Mrs. Warren-Wright, she is the widow of the master of the Calumet Farm in the bluegrass country, and it was her husband who set the final goal for Citation.

The goal was \$1,000,000. Citation hit and passed the mark last Saturday when he won the \$100,000 Hollywood Gold Cup Handicap. The \$100,000 won his all-time earnings up to \$1,085,760.

The mark will stand for a long time. There is no one on the scene now, from all appearances, able to threaten it.

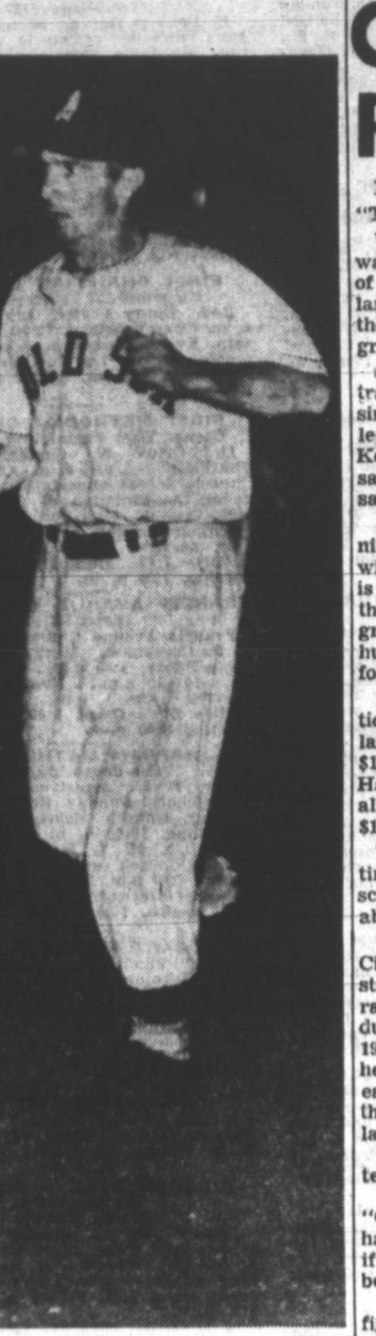
The cold record shows that Citation raced 45 times. Of those starts, he captured 37 wins. He ran second 10 times — seven during a troublesome year of 1950. He raced third twice, when he was just getting going again early this spring. He ran out of the money but once — fifth, last May.

Youthful Jimmy commented: "Greatest horse I ever saw. I had a lot of fun with him, even if I did get bricks in my belly every time he ran."

"But Mrs. Wright, all of us, figured he'd reached his goal, the goal Mr. Wright wanted. You know the saying, about taking a hammer to the well too many times."

"Citation is sound now. Best shape he's been in a long time. He's bowing out at a great time. And if we raced him some more — well, any horse can get broken up in a race. Might never happen, but again, it might."

"Yes," concluded Jimmy, "I guess this is the time, when he's at the peak."



Golden Socker — Frank Murray, hard-hitting, good-fielding second baseman of the Amarillo Gold Sox, slapped out the all-star game's first home run last night in the ninth inning during a losing cause. Murray's blow was followed by teammate Crawford Howard. Murray was today named player of the week in the West Texas - New Mexico League. (News Photo)

Murray Named As West Winner Of Longhorn Review

The western half of the Longhorn League continued its domination of the circuit's annual all-star game with its fifth consecutive victory last night. The Westerners exploded for seven runs in the fifth inning to beat the East all-stars, 8-4.

An estimated 3,500 fans saw the annual game, played this year in Roswell.

San Angelo holds a comfortable 7-2 game lead in the pennant race but three clubs are jockeying for position in the other first division berths. Big Spring is currently in second place with Odessa two games back and Roswell two and a half behind.

Indio Beltran, ace of the San Angelo mound staff, was the victim of the big seven run fifth inning that brought the West victory. He lasted only two thirds of an inning.

A home run by Bobby Souza and a double by Bill Cearley, both of Roswell, were the big blows of the inning.

The East had its big inning in the eighth when Bobby Souza and a double by Bill Cearley, both of Roswell, were the big blows of the inning.

NATIONAL LEAGUE

TEAM	W	L	PCT	GB
Brooklyn	53	32	.624	—
Cincinnati	44	39	.529	8
New York	46	41	.529	8
Philadelphia	42	44	.488	11 1/2
Boston	37	44	.454	14
Pittsburgh	35	42	.454	14 1/2
St. Louis	34	49	.410	18

AMERICAN LEAGUE

TEAM	W	L	PCT	GB
Boston	53	25	.680	—
Chicago	53	25	.680	—
New York	49	24	.677	1 1/2
Detroit	38	44	.462	12
Washington	35	49	.414	15 1/2
Philadelphia	35	52	.400	17
St. Louis	25	58	.318	24 1/2

TEXAS LEAGUE

TEAM	W	L	PCT	GB
Houston	46	41	.524	—
Dallas	45	48	.483	7
San Antonio	36	49	.423	9
Fort Worth	33	52	.388	12
Wichita Falls	27	58	.318	18
Shreveport	27	58	.318	18

BIG STATE LEAGUE

TEAM	W	L	PCT	GB
Gainesville	59	28	.680	—
Temple	59	41	.590	1 1/2
Shreveport	45	41	.521	5
Austin	42	48	.466	8 1/2
Waco	47	51	.480	9
Wichita Falls	45	52	.461	9 1/2
Texarkana	42	57	.424	12
San Antonio	36	66	.353	25

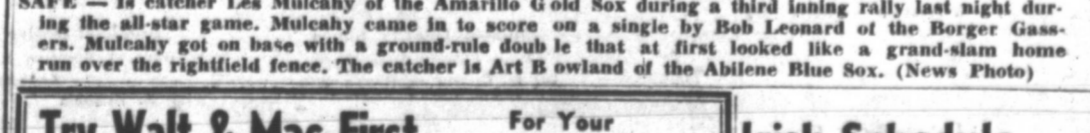
force play. Minnie Mino's spectacular catch of Yogi Berra's bid for an extra base ended the rally.

The Sox got their runs out lower Ed Lopat in the third. Chico Carrasquel singled, Joe Erault walked, both runners advanced on a sacrifice and scored on a fly by Bob Dillinger and a double by Fox.

First baseman Lou Limmer's wild throw slowed the Tigers to exactly a tie-breaking run in the eighth inning and win the second game after Martin had held them to five hits and no runs in the opener.

At that, the lone Yankee run in the fifth, was unearned. It resulted from Gerry Coleman's single, Nellie Fox' error and a

Richard leads his club on a three-week road jaunt, touching all rival cities except St. Louis.



SAFE — In catcher Les Mulcahy of the Amarillo Gold Sox during a third inning rally last night during the all-star game. Mulcahy came in to score on a single by Bob Leonard of the Borger Gassers. Mulcahy got on base with a ground-rule double that at first looked like a grand-slam home run over the rightfield fence. The catcher is Art B. Oswald of the Abilene Blue Sox. (News Photo)

Try Walt & Mac First

For Your Beverage Supply

COMPLETE LINE OF WHISKIES — WINE — ALES — GINS MIXES — COLD BEER

"Where Customers Send Their Friends"

WALT & MAC'S PACKAGE STORE

800 W. FOSTER PHONE 979

Irish Schedule Opens Fast

SHAMROCK (Special) — Shamrock's Fighting Irish will have three rough grid games away from home to start the 1951 grid season, and Scott McCall, head coach, knows he's got to groom them fast to make the grade.

DO YOU HAVE A DAILY ROUTE WITH YOUR STEERING WHEEL?

WHEEL ALIGNMENT AND STEERING ADJUSTMENT

for smooth, safe steering

Noblitt-Coffey Pontiac, Inc. 120 N. Gray Ph. 9320

YES

We Write Auto Liability Insurance

BE SURE — INSURE

Ott's AGENCY INSURANCE

O. F. "OH" SHEWMAKER

KPDN

Mutual Broadcasting System 1340 On Your Dial

HEAR ALL-STAR BASEBALL

Tonight on KPDN

West Texas-New Mexico Baseball

WITH WARREN HASSE

Clearance of Tropical All Wool Summer Suits

Special grouping not all sizes 35 to 49.50 values

1/2 Price

Wanner's Men's Wear

Combs-Worley Bldg.

PINKY POWELL and Orchestra MOOSE LODGE Saturday Night DANCE

Church Calendar

ASSEMBLY OF GOD
500 South Cuyler
Rev. J. S. McMillan, pastor. Sunday services: radio program over KPDN, 9 a. m.; Sunday School, 9:45 a. m.; Oscar Johnson, superintendent. Morning worship, 11 a. m. Christ Ambassador's service, 6:30 p. m. Dawson Goff, president. Evangelistic Service, 7:30 p. m. Tuesday at 2 p. m. W. M. C. meeting, Wednesday at 7:30 p. m. prayer service, Friday evening, 7:30 young people's service.

BETHEL ASSEMBLY OF GOD CHURCH
Located Corner Hamilton and Worrell Streets
Chas. J. Easter, pastor. Sunday School 9:45 a. m. Sunday, G. M. Walker, Superintendent. Morning Worship, 11:00 o'clock. Sunday Evening Evangelistic service at 7:30 p. m. Mid-week Prayer Service Wednesday night at 7:30. Young People's Service Friday night at 7:30 p. m. Elmo Hudgins, President.

FIRST BAPTIST CHURCH
Corner of Kingsmill and West Sts. Telephone 3737
E. Douglas Carver, pastor. R. Virgil Mott, director of music and education. Sunday's Services: 4:00 Worship; Sunday School, 9:45. Everyman's Bible Class meets at the City Hall at 10 a. m. Morning Worship services broadcast over KPDN at 11 a. m. Training Union, 7 p. m. Evening Worship, 8 p. m. Mid-week officers and teachers meeting, each Wednesday evening at 7 p. m. Mid-week Prayer service, each Wednesday evening at 7:45 p. m. All Church Choir practice, each Wednesday evening at 8:30 a. m. The church "Where The Visitor Is Never A Stranger."

FIRST CHRISTIAN CHURCH
Kingsmill at Starweather
Rev. Henry Tyler, minister. 9:45 a. m. Church School, 10:30 a. m. Worship, Evening worship, 8 p. m. Communion service 7 p. m. Chirho Fellowship hour, 6 p. m. Senior Fellowship, 7 p. m.

FIRST METHODIST CHURCH
Corner East Foster and Ballard
Dr. Orion W. Carter, minister. Church School, 9:45 a. m. Arthur Reed, Church School superintendent. Music under the direction of Harley Bulla. Mrs. May E. Carr, organist. Sunday morning service, 10:30. Sunday evening service, 7:30. Broadcast over KPDN, 7:45. Methodist Youth Fellowship, 7:00 p. m.

FRANCIS AVENUE CHURCH OF CHRIST
Francis Avenue Church at Warren, J. P. Greenaway, Minister. Sunday's Bible Study, 9:45 a. m. Church Service, 10:45 a. m. Evening Church Service, 8:00 p. m. Wednesday: Ladies Bible Class, 9:30 a. m.; Prayer Meeting 8:00 p. m.

HARRAH METHODIST
639 South Barnes
Rev. E. C. Armstrong, pastor. J. M. Nichols, Sunday School superintendent. Church School, 9:45 a. m. Preaching, 10:30 a. m. Evening worship, 7:30. M. Y. F. 6:45 p. m. Sunday Mid-week prayer service, Wednesday 7:30 p. m. WSCB 2:30 Tuesday, Board of Stewards, first Thursday of each month, 7:30 p. m.

HOBBART STREET MISSION
W. F. Lauderdale, pastor. Sunday p. m. Morning Worship service, 11 a. m. School, 9:45 a. m. Morning worship service 11 a. m. Training Union, 7:00 p. m. Evening worship, 8 p. m. Mage K. Kiser, Sunday School superintendent. Happy Dean Training Union director.

HOPKINS PHILLIPS CAMP
Sunday School 10 a. m.; Preaching Service 11 a. m. Everybody welcome. B. S. Wooten, Minister.

KINGDOM HALL — JEHOVAH WITNESSES
945 S. Dwight
Russell Irwin, Sunday morning evangelistic work. Meet at 9:30 a. m. at the hall. Watchtower, Sunday evening study classes, 7:30. Wednesday study class, 7:30. Friday study class, 7:30 p. m.

LIGHT HOUSE MISSION
1124 Wilcox
Mrs. Gladys MacDonald and Miss Ruby Burrow, Pastors.
Sunday School at 9:45 a. m. Morning worship to follow Children's Church at 4:30 p. m. each Sunday evening. Evening Service each Sunday at 7:30 p. m. Tues. and Thurs. night services at 7:30 p. m. Women's Missionary Council at 2:30 each Wed. afternoon.

MACEDONIA BAPTIST CHURCH
(Colored) 430 Elm. Rev. F. Felton Nelson, pastor. Sunday School 9:45 p. m. Morning worship, 10:30. E. T. U. 6:45 p. m. Evening worship 8 p. m.

MCULLOUGH METHODIST CHURCH
1810 Alcock — Phone 1238
Rev. E. H. Martin, pastor.
Sunday School, 9:45 a. m.; morning worship, 11 a. m.; evening worship, 7:30 p. m. M. Y. F. 6:30 p. m.; WSCB, Wednesday, 2:30 p. m. Carl Lam, S. K. superintendent; Mrs. E. H. Martin, music director.

PAMPA MISSIONARY BAPTIST CHURCH
708 West Foster Temporary Location
Elder Harry G. Lee, Groves pastor. Mr. E. M. Swindler, Sunday School Superintendent. Mr. J. F. Baumgardner, Baptist Training Service Director. Sunday School 9:45 a. m.; Preaching, 11 a. m. and 7:30 p. m.; Baptist Training Service, 6:30 p. m. Mid-week prayer service, Wednesday 7:30 p. m.

PENTECOSTAL HOLINESS
1700 Alcock
Pastor: Rev. S. W. Blake, Parsonage Phone 2271W. Sunday School 9:45 a. m. Morning Worship 11:00 a. m. P. M. Y. F. 6:30 p. m. Evening Service 7:30 p. m. Wednesday night Service 7:00 p. m. Ladies Auxiliary 10:00 a. m. each Thursday.

FIRST PRESBYTERIAN CHURCH
515 North Gray
Douglas E. Nelson, Ph. D., Minister. Church School 9:45 a. m. Common Worship 11 a. m. (Nursery for pre-school children). Junior III and Senior III Westminister Fellowship Groups 6:30 p. m.

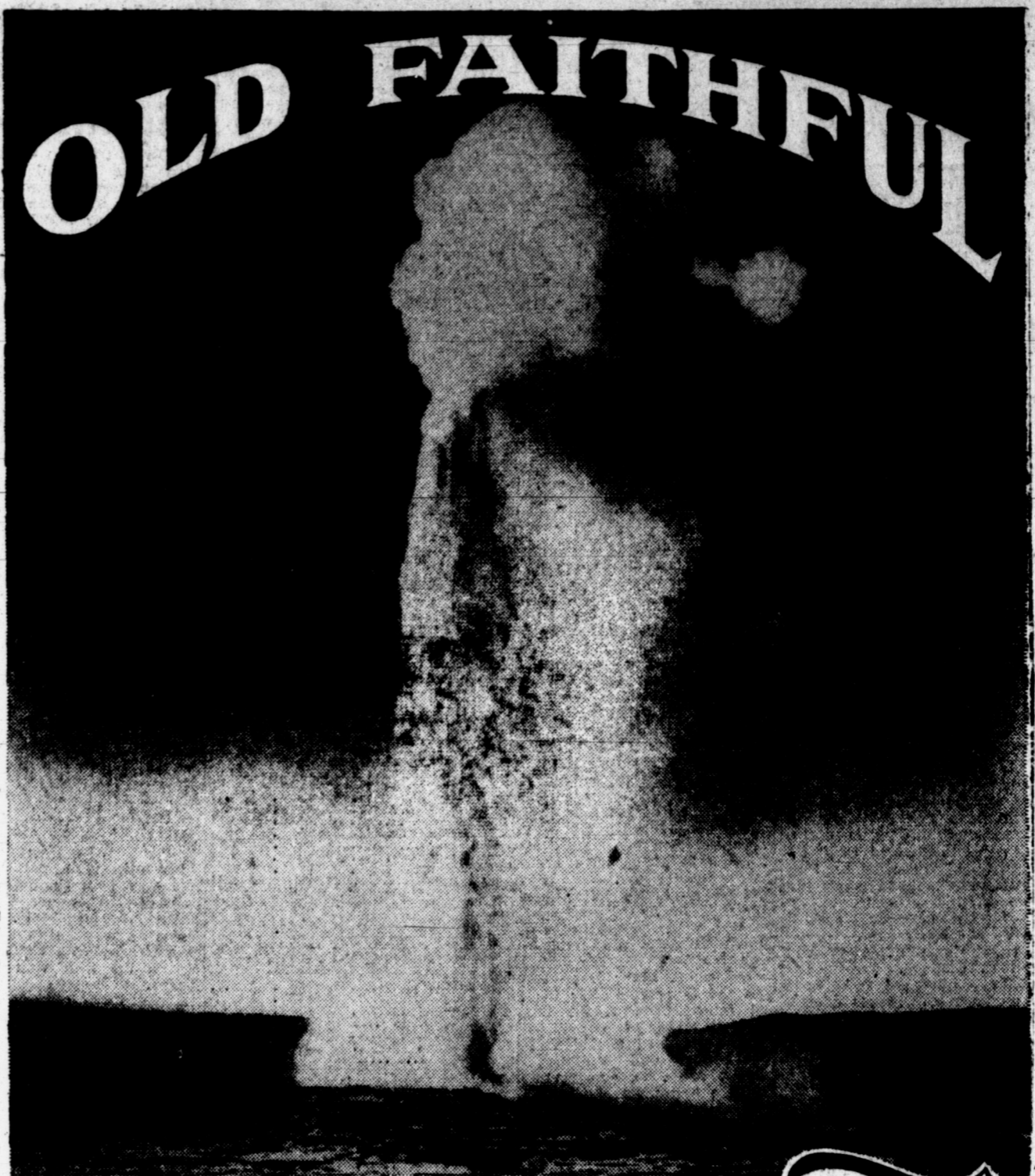
PROGRESSIVE BAPTIST
(Colored) — 836 S. Gray
Rev. L. B. Davis, Sunday School, 10:30 a. m. Franchising, 11 a. m. Morning worship, 7:30 p. m. Training Union, 6 p. m. Sunday.

SEVENTH DAY ADVENTIST CHURCH
Corner Puvion and Browling
Edward K. Koenig, pastor. 7:15 Sabbath School, 9:30 a. m. Morning worship, 11 a. m.

THE SALVATION ARMY
613 S. Albert St.
First Lieutenant Fred A. McClure, Commanding Officer.
Sunday: Company Meeting 9:45 a. m. Holiness Meeting 11:00 a. m. Y. P. L. 1:20 p. m. Open Air Meeting at the corner of Foster and Cuyler 7:15 p. m. Salvation Meeting 8:00 p. m.
Tuesday: Junior Legion 4:00 p. m. Girl Guards 7:30 p. m.
Wednesday: Ladies Home League 1:45 p. m. Preparation Class 1:30 p. m. Salvation Meeting 8:00 p. m.
Thursday: Bible Class 1:30 p. m. Corp. Captains 1:30 p. m. Soldiers Meeting 8:00 p. m. Holiness Meeting 8:30 p. m.
Saturday: Open Air Meeting at the corner of Foster and Cuyler 7:30 p. m.
St. Matthew's Episcopal Church
707 West Browning
Rev. Edgar W. Henshaw, First and third Sundays in each month. Holy Communion at 8 a. m. Second and fourth Sundays service at 11 o'clock. Sunday School and Bible Class every Sunday at 9:45 a. m. Guild meeting every Wednesday morning. Women's Auxiliary meets on alternate Wednesdays at 8 p. m. Special Service on Saint's Day as announced at the time.

ST. MARK'S METHODIST CHURCH
(Colored) 424 Elm. Rev. C. Brown pastor. Sunday School 9:45. Morning worship 10:30. Epworth League, 6:30. Evening worship, 7:30. Wednesday night Prayer meeting 7:30.
United Pentecostal Church
1846 West Brown
Rev. Nelson Frenchman, pastor. 9:45 a. m. Sunday School, 11:00 a. m. Morning Worship, 7:45 p. m. Evangelistic Service. Prayer meeting Tuesday, 7:45 p. m. Young People's Service Thursday, 7:45 p. m. Evangelistic Service Saturday, 7:45 p. m.

ZION LUTHERAN CHURCH
1218 Duncan Street
Sunday School 10 a. m. Divine services 11 a. m. Rev. Arthur A. Bruna, 1204 Duncan. Evening service 7:30.



MILLIONS of people have visited Yellowstone National Park to marvel at the Wonders of Nature, to stand in awe before the mysterious work of God. Forests and lakes and waterfalls and steaming pools of varied color and geysers almost without number! Who can walk or ride through this magic land without worshipping the Maker of it all?

For most of us, Old Faithful takes the place of central interest. As regularly as sunrise and sunset, this magnificent geyser throws its shaft of spray into the sky. Ask the attendant when next the geyser will perform; then go about your sightseeing for the next hour; you will not miss its appearance if you are on hand at the fixed moment. That regularity has not changed through the centuries. In the midst of change and circumstance there is something that is regular and dependable. What has Old Faithful said to you?

God is as dependable as that; He is from everlasting to everlasting. Women and men may fail us, but we can be sure of the continuing love and goodness of our God. Paul reminds us in the first chapters of Romans that even man's unfaithfulness does not change God's abiding faithfulness. Jesus makes it very clear that the Father sends His sunshine and His showers even if we are ungrateful and evil. Aren't you glad that God, like Old Faithful in Yellowstone, keeps doing His job in fidelity and goodwill, however unworthy we may be?

TRUE LOVE is like Old Faithful; "many water cannot quench love"; it grows the more strong with testing. Never doubt the woman or the man who truly loves you. Mother-love and father-love, every true and unselfish love, means a continual and beautiful faithfulness in which you may rest. Thank God for love. Thank God for Old Faithful.

**YOU IN THE CHURCH
THE CHURCH IN YOU**

Character is a by-product of the church. It is here that young and old alike are showered with benedictions that fortify and influence for a better citizenship and a stronger democracy. In the church the ministerial are molding religious character. Statesmen today declare that the church alone can furnish leadership to handle the affairs of state in these perilous times. Then we as Sunday, "You in the Church and the Church in you" form a combination for good. Be a regular CHURCH-GOER and a daily BIBLE READER.

Williams Newspaper Features
P. O. Box 111, Pampa, Tex.

Attend Church Every Sunday

This Series of Ads is Being Published Each Week in the Pampa Daily News and is Sponsored by the Following Patriotic Individuals and Business Establishments:

Addington's Western Store Sportsman supplies — Seasonal hunting license Luggage, men's clothing	Citizens Bank & Trust Company A Friendly Bank with Friendly Service Member F. D. I. C.	Ideal Food Stores No. 1 & 2 225 N. Cuyler — Phone 830 308 S. Cuyler — Phone 1311	Lewis Hardware Beautiful Crystal, China, Pottery Visit our store for gifts of beauty	Pampa Tent & Awning Tents, Awnings, Venetian Blinds 217 E. Brown — Melvin Clark — Phone 1312	Radcliff Supply Co. Industrial Supplies 118 E. Brown — Phone 1220
Brannon's I. G. A. Super Market Sanitary Grocery & Market 612 S. Cuyler — Phone 1328	Clyde's Pharmacy Complete Drug Service Cosmetics, Fountain, Prescriptions	M. R. Jones Gulf Service 422 W. Foster — Phone 91	Jeff Automotive & Industrial Motors 409 S. Russell — Phone 1699	Smith's Quality Shoes Your Family Shoe Store 207 N. Cuyler — Phone 1449	Rinehart-Decker Co.—Stores No. 1 & 2 General Electric Refrigerators — Maytag Automatic Washers 112 E. Francis 1105 Alcock
Jones-Everett Machine Co. Oil Field Supplies — General Machine Work Over 30 Years' Dependable Service	Coston's Home-Owned Bakery Fresh pastries and breads daily We specialize in beautifully decorated cakes	Service Cleaners Oliver Jones, owner Expert service — prompt attention 812 S. Cuyler — Phone 1299	Lewis Motor Co. Studebaker Sales & Service 211 N. Ballard — Phone 1718	Woodie & Jack—Nash 114 S. Frost — Phone 1350	Texas Furniture Company "Quality Home Furnishers" Use Your Credit
The Gate Valve Shop & Supply Co. SALES & SERVICE 120 W. Tuks — Phone 321	Culbertson Chevrolet, Inc. "Our 29th Year" 212 N. Ballard — Phone 141	H. Guy Kerbow Co. Pampa's Oldest Exclusive Air Conditioning Firm. Phone 3366 — 839 S. Faulkner	Electrolux—New & Factory Rebuilt Air Purifier - Service - Supplies G. C. Cox — Phone 3414 — 814 Christine	Plains Creamery Butter - Cheese - Milk - Cream 215 E. Atchison — Phone 2294	H. W. Waters Insurance Agency GENERAL INSURANCE 117 E. Kingsmill — Phone 2896 & 1479
Caldwell's Drive Inn Student's Meeting Place 228 N. Hobart — Phone 1699	M. P. Downs Agency Insurance, Loans, Real Estate Combs-Worley Bldg. Rm. 201—Phns 338 or 1284	Texas Gas & Power Corp. Home Owned Utilities 217 N. Ballard — Phone 2169	Des Moore Tin Shop Heating, Air-Conditioning, Payco Gas Heating Equipment, Payne Cooler Air Units 126 W. Kingsmill — Ph. 102 — P. O. Box 1872	Pursley Motor Co. Dodge and Plymouth For Fast Wrecker Service Call 112— Night No. 1764-J	Your Laundry & Dry Cleaners Send Dry Cleaning with Laundry; It's More Convenient 201 E. Francis — Phone 678

A Hymn Is Born

O God, Our Help in Ages Past

A rebellious youth revolutionizes church singing

The clerk read a Psalm. Everybody sang. That is, everybody except young Isaac Watts. After church that Sunday in 1693 when his Puritan father called him to the carpet Isaac said flatly that there was no music in the Psalms. Whereupon the outraged deacon suggested that the young upstart write something better. The result of that challenge was a revolution in church singing.

Staid, old Enoch Watts must not have been thinking when he buried that remark at his teenage son. For at his boarding school in Southampton the deacon himself had taught Isaac five languages before the boy was 14. That is, the deacon taught when he wanted to fall for ads against the Established Church. And for 12 years Mrs. Watts had tutored her oldest son in the writing of verse. At 7 he had won a medal for writing rhymes. He waxed so poetical that when Enoch threatened to thrash him for rhyming even in his everyday conversation he cried out, "O father, do some play take, and I will no more verses make!"

Accepting his father's challenge, 15-year-old Isaac set about "Christianizing and modernizing" the Psalms. It had been tried before but not by a mind like that of Watts.

The following Sunday the clerk read a new kind of hymn. It began: "Behold the glories of the Lamb . . . Amidst His Father's throne; Frequent new honors for His name, and songs before unknown." The congregation went wild. They made young Watts bring in one of his "modernized" Psalms every Sunday for two years!

Isaac Watts had successfully broken a tradition. Before he was 20 he wrote "Joy to the World," "When I Can Read My 'Tis Clear," "Am I a Soldier of the Cross" and 650 other notable hymns and paved the way for Wesley, Newton, Cowper and many others.

Isaac Watts lived in troubled times but he could have written no more appropriately for the present era than when he paraphrased the 19th Psalm more than two centuries ago and wrote:

O God, our help in ages past,
Our hope for years to come,
Our shelter from the stormy blast,
And our eternal home!

Before the hills in order stood,
Or earth received her frame,
From everlasting Thou art God,
To endless years the same.

Under the shadow of Thy throne,
Still may we dwell secure;
Sufficient in Thine arms alone,
And our defense is sure.

O God, our help in ages past,
Our hope for years to come,
Our shield and our eternal home,
To endless years the same.

Distributed by Illustrated Printing, Birmingham, Ala.



Woe unto you, for ye have taken away the key of knowledge: ye entered not in yourselves, and them that were entering in ye hindered. — Luke 11:52

Pampa's Largest PRESCRIPTION STORE PERKINS Drug Store
110 W. Kingsmill
Phone 546

Gilbert's JULY CLEARANCE SALE

BLOUSES

VALUES TO \$3.95 \$2
VALUES TO \$5.95 \$3
VALUES TO \$10.95 \$4

Sizes 30 to 38

SKIRTS

VALUES TO \$3.95 \$2
VALUES TO \$5.95 \$3
VALUES TO \$10.95 \$4

Sizes 10 to 18

HALTERS T-SHIRTS Value to \$1.95

BAGS \$5.00 VALUE \$2 PLUS TAX

FLOWERS Values to \$1.95 50c

Open House For Children Proves Worth While Effort

By DAVID TAYLOR MARKEE
AP Newsfeatures Editor

Not many parents can afford large-scale, entertaining for their children's friends, but all fathers and mothers can offer simple, friendly, old-fashioned hospitality.

Fortunate indeed is the child whose parents always are ready with a treat for their friends, says the National Kindergarten Association's Helen Green. Says she: "One of my happy childhood memories, is of a chum's mother who was always ready with an after-school treat, together with a parent's permission to enjoy Marie's grown-up brothers could greet their sister's friends with the natural gallantry given to a pretty girl of their own age, but the young doctor and his handsome brother gave all the neighborhood children a feeling of being welcome."

Any family, she says, can occasionally have a children's party and serve ice cream and cake.

In addition to a child's personal life and home life he has a social life, where he takes a place in the group, and he should contribute something worthwhile to it. Acquiring social consciousness is part of the process of becoming an adult. It should begin early and continue to grow, through sympathetic interest in others.

A child should know all types of youngsters. As one parent put it: "If you don't know both the rough ones and the ones who are raised, how can you distinguish and evaluate different traits of character?"

It's the best kind of hospitality to make others happy, says Miss Green. The most satisfying return from hospitality is friendship.

A friendly, open home will always be preferred to public places. When it is possible for your boys and girls to have their fun at home, you have the opportunity to help them to build ideals that will one day make them worthy heads of homes.

It's a good idea to make your home headquarters for the crowd. Both Dad and Mother should realize that if there is a need for a choice it is more important to have a house that all the youngsters enjoy than one which is decorative but without warmth and feeling.

We become the kind of adults we are because of early influences. If Mother or Dad dream of some day being a welcome, loved guest in a son's or daughter's house, they should begin now to make their home a place where hospitality is the keynote.

Ask yourself: "Are my children's friends happy in our house?"

For I was an hungry, and ye gave me meat: I was thirsty, and ye gave me drink: I was a stranger, and ye took me in. — Christ Jesus

Pilgrim on earth, thy home is heaven: stranger thou art the guest of God. — Mary Baker Eddy

The guest remembers all the days the host who took him in. — Homer

Hospitality must be for service, and not for show, or it pulls down the host. — Emerson

Wilson Drug

Registered Pharmacists
READY TO SERVE YOU AT ALL TIMES

200 E. Currier Ph. 500

The Pampa Daily News

Women's Activities

PAMPA NEWS, FRIDAY, JULY 20, 1951 PAGE 7

Jesus Answers A Baffling Question

By WILLIAM E. GILROY, D. D.

It is the tragedy of Christendom that the plain, simple teachings of the Master concerning love and brotherhood, enforced by His example, have been neglected, underemphasized, and unfulfilled.

One need only look at our world to realize the vast gap between Christian profession and Christian practice. In all churches "orthodoxy" has consoled far more in an assumed rightness regarding matters often deeply speculative, than in exactness in obeying the commands and following the example of Jesus in the relationships of daily life.

And this, I think, is particularly true with regard to one of the clearest and plainest utterances of Jesus, the meaning and application of which, it would seem impossible to miss.

This is the passage in the tenth chapter of Luke's Gospel, that we call "The Parable of the Good Samaritan."

The teaching that Jesus gave to the world — and professed Christianity has no vital authority except as it gives effect to that teaching — is found not only in the great pronouncements of the Sermon on the Mount; it is found in relation to his fellowmen in that latter parable is the great, ultimate definition of the meaning of neighborliness, love, and brotherhood.

The lawyer in that parable, who asked the question, "Who is my neighbor?" is typical of the generations of quibbling, arguing, controversial Christians, who have tried to put their own limiting interpretations on every thing great and good, when they ought to have been exploring and practicing the limitless opportunities of being and doing good.

What is notable in the parable, beyond the glorified action of the Good Samaritan, and the ignominious failure of the priest and Levite, who would have despised him, is the very limitlessness that Jesus gave to His definition of "neighbor."

One must note how He turned the question upon the questioner. Jesus did not say that one's neighbor is this man, or that man, or even that the neighbor is the man who needs help. He said, rather, "The neighbor is yourself; the neighbor is the man who helps."

The man stricken on the road to Jericho may not have been a neighborly sort at all. We don't know anything about him except what the parable tells us about

him, as he lay there wounded and dying on the road.

The neighbor was the Samaritan. And the limitlessness of neighborliness for you and me is found in that word of Jesus: "Go, and do thou likewise!"

CHRISTIAN SCIENCE

Life is eternal without beginning or end is the theme of the Lesson-Sermon titled "Life" to be read in all Christian Science churches on Sunday, July 22. The Golden Text brings out the eternal life is the gift of God in these words: "The wages of sin is death; but the gift of God is eternal life through Jesus Christ our Lord" (Romans 6:23).

To reap the benefits of eternal life, humanity must make a choice between good and evil, as seen in this verse from Deuteronomy: "I call heaven and earth to record this day against you, that I have set before you life and death, blessing and cursing; therefore choose life, that both thou and thy many live; that thou mayest love the Lord thy God, and that thou mayest obey his voice, and that thou mayest cleave unto him: for he is thy life, and the length of thy days." The Christian Science textbook, "Science and Health with Key to the Scriptures" by Mary Baker Eddy states, "The understanding that Life is God, Spirit, lengthens our days by strengthening our trust in the deathless reality of Life, its almightiness and immortality" (pages 487).

Sandra Noblitt At Summer Camp

Miss Sandra Noblitt, daughter of Mr. and Mrs. W. I. Noblitt, is starting the second week of activities at Western Life Camp, located in Gallinas Canyon, 17 miles northwest of Las Vegas, N. M.

Activities included in the four-week camp are swimming, horse back riding, riflery, ceramics, sewing and dramatics. Camp Counselors in the camp are Mrs. Paul Simpson, Borger, nurse; Mrs. W. J. Johnston, Santa Fe, swimming; Mrs. C. I. Poe, Borger, ceramics; B. H. Willoughby, Amarillo, horseback riding, and Miss Vergie Haines, Canyon, crafts and dramatics.

The girls' private camp last until August 15.

HOURS FOR WORSHIP-STUDY

SUNDAY **WEDNESDAY**

9:45 a. m. Bible Study 9:30 a. m. Bible Class
10:45 a. m. Worship 8:00 p. m. Prayer Meeting

SUNDAY, 6 P.M. EVENING SERVICE

CHURCH OF CHRIST
E. Francis at Warren J. P. CRENSHAW, Minister

Get Set for An Air-Conditioned Technicolor Cruise on the "Show Boat!"

11 GREAT SONG HITS!

A Color by **TECHNICOLOR**

SHOW BOAT

M-G-M's Technicolor MUSICAL

Starring **Kathryn Grayson • Ava Gardner • Howard Keel**

— Joe E. Brown • Marge & Gower Champion
Robert Sterling • Agnes Moorehead • William Warfield

plus Bugs Bunny Cartoon

LANORA STARTING SUNDAY

A New Process In Canning Meats Is Aid To Salt-Free Diet

A person on a salt-free diet soon will be able to have his meat — and have it good for him — because new experimentation has developed a method of reducing successfully the sodium content of meat. Going into commercial production immediately are low-sodium beef stew, beef and gravy, chili con carne, beef hash, and meat sauce. These foods now can be used in commonly prescribed diets for high blood pressure, coronary conditions, skin and kidney diseases and pregnancy.

Although as much as 95% of the sodium content of the meat in these products is reduced, their nutritive value is unaffected. No salt, salt substitutes or chemicals are used in preparing the foods, and only standard spices and vegetable flavorings are added to offset the missing "salt taste."

They will be available in 5 1/2-ounce individual servings, pre-cooked and ready to be heated. The label on each can will state the sodium content so that physicians, dieticians and the patients themselves can calculate the total daily sodium intake.

A well-known meat company

Follow the Searchlights to **The Drive-Ins . . .**

PAMPA 9c-44c NOW • SAT. Two Features! **"So Dear To My Heart"** Walt Disney's "BEAVER VALLEY" Also Cartoon

TOP O' TEXAS 9c-44c Open 7:00 North of Gen. Hospital NOW • SAT. Story of the Korean War **"Steel Helmet"** With Robt. Hutton Also Two Cartoons

Relax in COMFORT

Box Offices Open 1:45 Today 12:45 Sat. & Sun.

LaNORA Adm. 9c-50c NOW • SAT. An absorbing and dramatic story that treats the subject of divorce in a forthright and intelligent manner; excellent and satisfying entertainment performed in the best abilities of **Bette Davis, Barry Sullivan** and an outstanding supporting cast. See It From The Start!

DAVIS • SULLIVAN

Payment on Demand!

with BETTY LYNN, FRANCIS DEE, KENT TAYLOR

PLUS Grantland Rice's "City of Ball Tossers" News • Cartoon

LaVista Adm. 9c-50c ENDS TONIGHT **Mickey Rooney "QUICKSAND"**

Starts Saturday . . . Another Premiere Showing . . .

ROD CAMERON

Cavalry Scout

with **AUDREY LONG**

Chap. 5: "Desperados of the West" and Cartoon

Allan Lane "ROCKY" **ROUGH RIDERS OF DURANGO**

Chap. 5: "Desperados of the West" and Cartoon **TWO FEATURES** Starting Sunday

Women's Fellowship Hostess To Group

Members of the First Christian Women's Fellowship of the First Christian Church were hostesses to the Christian Men's Fellowship and families at a picnic on the church lawn July 18.

W. R. Harden gave the invocation.

After the picnic Miss Charlotte Allston and Miss Ouida Williams entertained the group with novelty songs. Miss Barbara Blair then led in hymns and Mrs. C. H. Woods presented the devotional.

The women sang "Blessed Be

Hospitality consists in a little of a little food, and an immense quiet. — Emerson

Hospitality is to be shown even towards an enemy. The tree doth not withdraw its shade, even from the woodcutter. — Author Unknown

the Tie That Binds" and closed with the women's benediction.

FIRST CHOICE OF MILLIONS

ST. JOSEPH'S ASPIRIN

WORLD'S LARGEST SUPPLY AT 10c

Mother the Modern Way To give your child aspirin! Orange flavored tablets is adult dose! Buy it now!

ST. JOSEPH'S ASPIRIN - FIRE CRACKERS

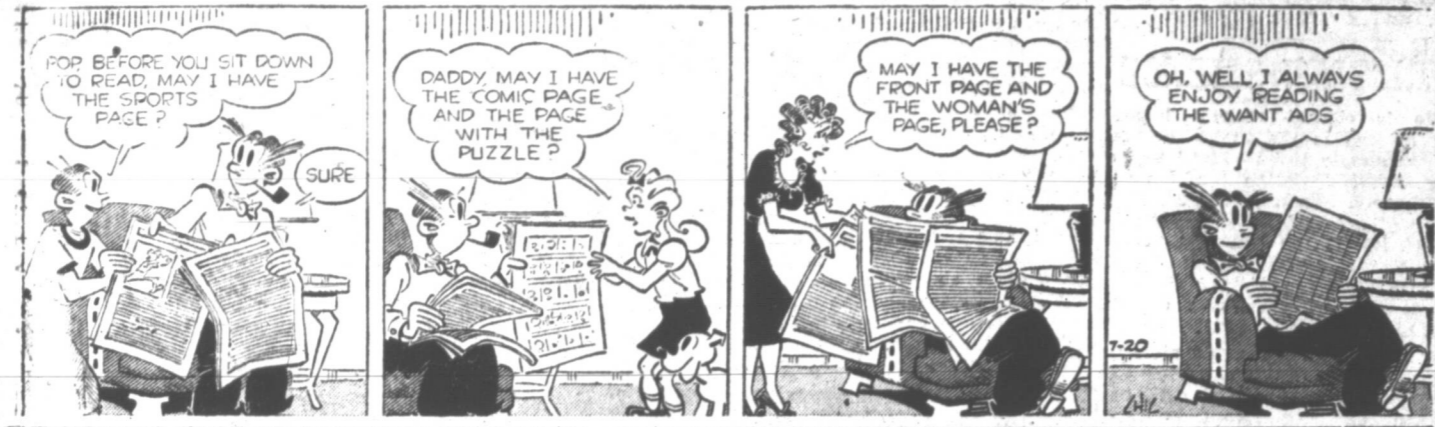
Bentley's Saturday Check List

- ✓ **sale - dresses**
group sleeveless and short sleeve new cottons—also styles from our regular stock to \$17.50. **\$6.00**
- ✓ **sale - dresses**
group cottons from our regular stock, also formal, values to \$24.95. **\$8.00**
- ✓ **sale - dresses**
remaining stock better dresses—sheers and cottons, formal included, values to \$14.95. **\$11.00**
- ✓ **sale - blouses**
group better cottons, batistes, crepes and linens, values to \$9.95. **4.00**
- ✓ **sale - "tee" shirts**
entire stock of regular \$2.25 to \$2.95 tee shirts—4 for \$2.00. **\$1.58**
- ✓ **summer sportswear**
includes shorts, pedal pushers, skirts, blouses, values to \$6.50. **\$3.00**
- ✓ **summer shorts**
special group cotton (twill) shorts in white and colors, regular \$2.95. **\$2.00**
- ✓ **summer skirts**
selected group summer skirts, values to \$6.50, jackets and blouses also included. **\$4.00**
- ✓ **sale - halters**
matching halters in denim and twills—values to \$2.50, also sport hats and beach bags. **\$1.00**
- ✓ **sale - nylon slips**
nylon tricot slips in pink and white all sizes, values to \$10.95. **\$6.88**
- ✓ **sale - swim suits**
balance stock "sea nymph" suits \$9.95 and \$10.95 values. **1-3 off**
- ✓ **nylon hose**
regular \$1.95 values in "kayser" and "flatter knit" hosiery, remaining stock of summer colors, 3 for \$4.00. **\$1.49**
- ✓ **cotton nightwear**
entire stock gowns, pajamas and shorty pajamas in seersucker and batiste, 3 for \$6.00. **\$2.88**
- ✓ **sale - summer shoes**
regular values to \$8.95, "american girl" in colors and white, combinations. **\$3.90**
- ✓ **sale - summer shoes**
entire stock better summer shoes, values to \$14.95, intricate whites, combinations, linens and colors. **\$5.90**

Jackson Twins



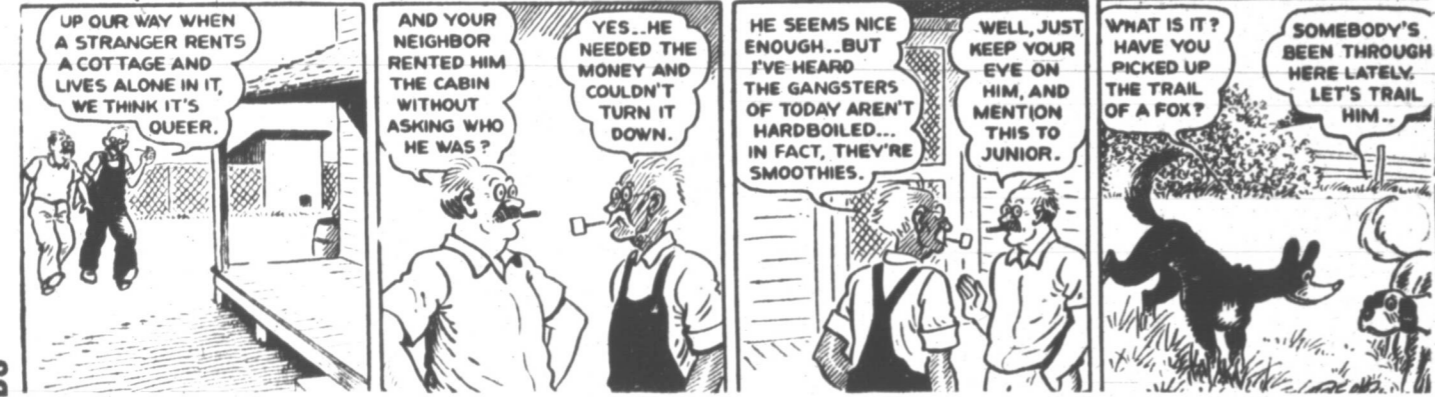
Blondie



Alley Oop



Bo



CARNIVAL

by DICK TURNER SIDE GLANCES

by CARL BATH



"Your father is very emotional—that eight-pound beef roast for his birthday has overwhelmed him!"

"Don't shout at me! It makes me nervous!"

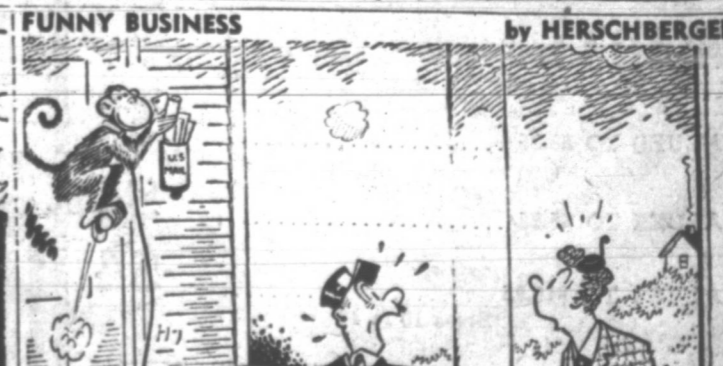
Mutt & Jeff



Bugs Bunny



Pop



"He saves a lot of my energy in hot weather!"

Levine's LIGHT THE 31st. CANDLE!

31st.

A Record-Breaking Sale in a Record-Breaking Year at Levine's!

ANNIVERSARY SALE!

Ladies
COTTON SLIPS

Every garment first quality. 4-gore half slips, 4-gore full slips. Eyelet trims with heading; wide eyelet trimmed bottoms.

\$1.33

MADE TO SELL FOR \$1.98 TO \$2.98




MEN'S GENUINE
PANAMA HATS

- Light Colors
- Dark Colors
- Perfect Quality

WORTH \$3.98

ANNIVERSARY PRICED
\$1.99



Children's
PLAY CLOTHES

FIRST QUALITY
Washable, Sizes 1-4, 3-6x.

SUN DRESSES
PLAY SUITS
PINAFORES
OVERALLS

Every Garment Made to Sell For \$1.98 ... And \$2.98 (Downstairs Store)

ANNIVERSARY PRICED
99¢




31ST ANNIVERSARY Piece Goods Values

NEW FALL **CORDUROY'S** **\$1** YD.

- 36" Wide
- Fine Wale — 16 Rib to the Inch
- First Quality
- 15 Different Colors

Summer Cottons

Sheers, Chambrays, Percales, Shirtings, Lawns, Voiles. Other Materials.

VALUES TO 98¢ **29¢** YD.

FINE **GINGHAMS!**

- SANFORIZED
- MERCERIZED
- WOVEN SCHOOL PLAIDS
- FIRST QUALITY
- 3 TO 10 YARD LENGTHS
- REGULAR TO 98¢ YD.

59¢ YD.

LEVINE'S 31st. ANNIVERSARY PAY OFF!

Men's Sanforized
WORK SHIRTS

•DURABLE CHAMBRAY!
FULL CUT!

ANNIVERSARY PRICED
99¢

2 BIG POCKETS

ANNIVERSARY PRICED
19¢

ONE LOT MEN'S SPORT SHIRTS

SHORT SLEEVES ONLY!

ANNIVERSARY PRICED
99¢




MEN'S WHITE COTTON
Anklets 5 for \$1

IDEAL FOR WORK

children's cotton
Panties 12¢

Stock up for school!

MEN'S **T-SHIRTS 89¢**

WHITE and Colored!

Men's White Cotton
Knit Briefs 3 for \$1

Sizes S-M-L

BOYS' STRIPE
T-SHIRTS 39¢

small medium large (Downstairs store)

LADIES SUMMER CASUALS \$1.99

worth \$2.98

Platform Wedgies All Leather Uppers White or Multicolors

Not odds and ends but full size runs, specially purchased for our Birthday Sale!

ANNIVERSARY PRICED
22¢

LADIE'S **PANTIES**

PINK • BLUE • MAIZE



54 gage
NYLONS 59¢

SLIGHT IRREGULARS

BEAUTIFUL RAYON
SLIPS 1/2 39¢

all Colors


ANNIVERSARY PRICED
39¢




SHOPPERS—WISE
ECONOMIZE AT

LEVINE'S

FOR GREATER QUALITY AT LOWER PRICES!



Citizens Bank To Hold Opening Sat.

Charter Granted Citizens In 1940

Application for the organization and incorporation of the Citizens Bank and Trust Co. was made to the Federal Deposit Insurance Corporation on March 28, 1940.

The FDIC charter was issued May 27, 1940. Making the application were Bob McCoy, E. O. Snead and John F. Sturgeon.

President Of Bank Carries Responsibility



F. E. IMEL

One of the biggest responsibilities of a president of a bank is to act as "go-between" for the board of directors and the customers.

F. E. Imel, president of the Citizens Bank & Trust Co., said that this job is not a difficult one to him, but takes a great deal of time. Other duties are to keep things in the bank running as smoothly as possible and approve or disapprove large loans and oversee the big business done by the bank.

Born in Kansas, Imel moved with his family to Forgan, Okla., and spent most of his life there. His first banking experience came when he took a job in the Forgan Bank as a bookkeeper.

Later, he moved to Liberal, Kans., where he worked in the First National Bank. There he met and married Laura Barnes and they have two sons, Gene and Jack.

Imel came to Pampa as vice-president of the Citizens Bank and Trust Co. in Dec., 1940, eight months after the opening of the business. He became president of the organization in 1947.

During the ten and a half years with the local bank, Imel has seen it grow in deposits from \$340,000 to \$5,000,000.

Imel said that "the bank enjoys this progress because of the confidence and friendship that the people of Pampa and surrounding communities have shown the bank."

His son, Gene, who has com-

A charter was granted to the bank by the State Department of Banking on April, 16, 1940. F. W. Brady was commissioner of the banking department at that time.

Included on the first board of directors of the Citizens Bank and Trust Co. were S. C. Evans, McCoy, A. J. Beagle, Ivey E. Duncan, Snead, W. B. Wild, M. A. Graham, J. J. Crutchfield and F. M. Culbertson. Three of the original directors have served throughout the 11 years that the bank has been in operation. They are Evans, Beagle and Duncan.

Officers at the time of organization were Evans, president, McCoy vice-president and Snead, vice-president and cashier. John F. Sturgeon was the bank attorney.

Employees numbered nine on opening day with McCoy and Snead as loan officers; Jack Dunn, teller; C. A. Weaver, teller and bookkeeper; Ralph Rittenhouse, head bookkeeper; Betty Jo Townsend and James Evans, bookkeepers and Lois Hinton, now Mrs. Erwin C. Thompson, secretary. Betty Jo Townsend, is the only one of the original nine who is employed by the bank.

McCoy is engaged in ranching and Snead has retired to a farm near Lake Dallas.

Dunn is now business manager for the Monarch Lumber and Plumbing Co.; W. B. Nichols is teller for the Panhandle State Bank in Borger; Weaver is associated in business with Sam Dunn in Amarillo; Rittenhouse is assistant cashier of the Panhandle State Bank in Borger; Evans is sales manager of the trucks and used cars at Tex Evans Buick Co.; and Lois Hinton is now Mrs. Harry L. Hughes of White Deer.

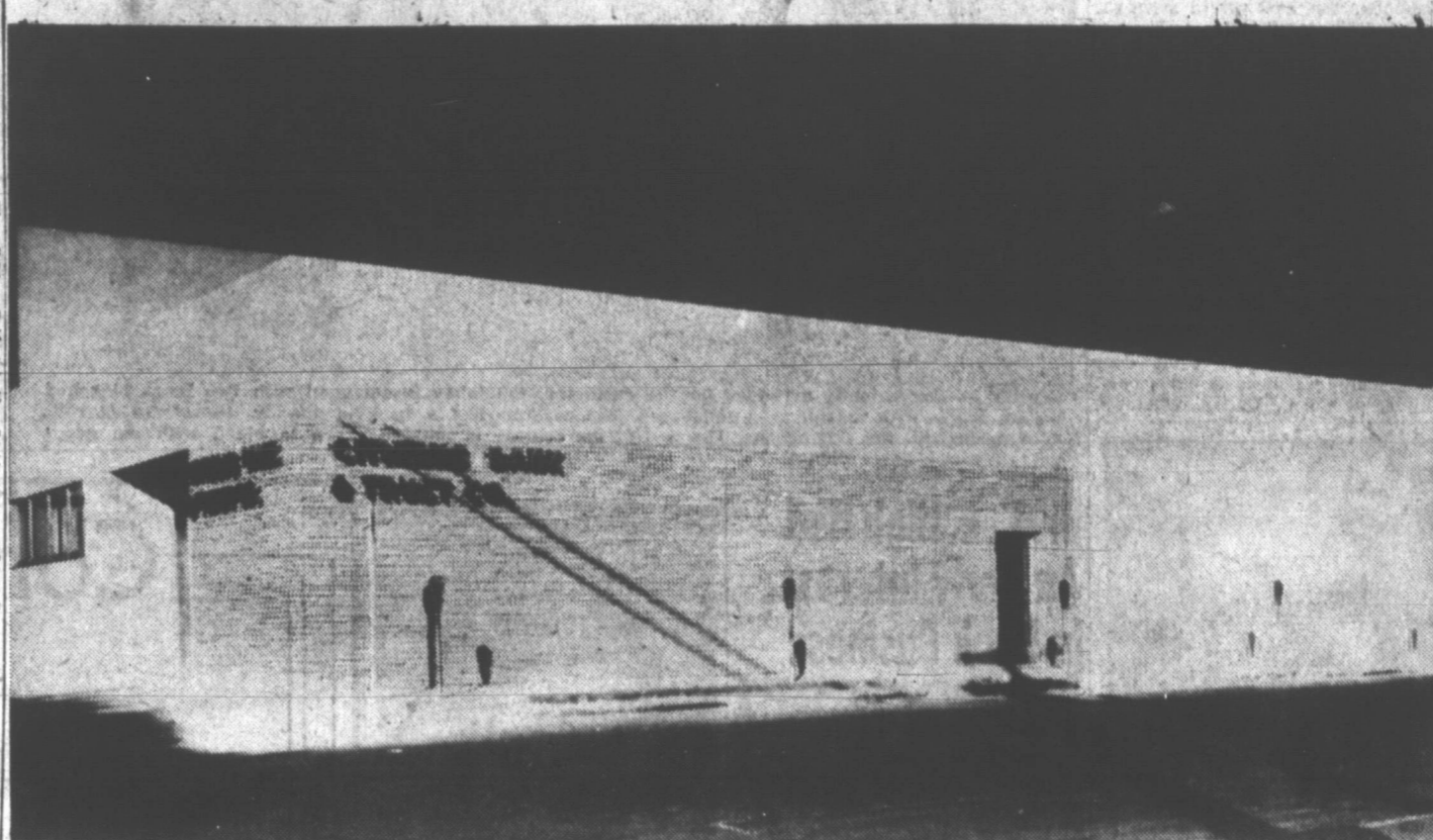
About the first of the year in 1940, F. E. Imel and his associates assumed operation of the bank and at the January meeting of the stockholders directors were elected. They include Beagle, Duncan, Evans, V. L. Boyles, T. J. Blakemore, E. L. Hoover, Imel, W. B. Wild and Sturgeon.

At the annual stockholders meeting in January, 1942 the number of directors was cut from nine to seven, which is the present number of the board. The number of directors has varied from five to nine during the bank's operation.

Employees at this time number 26 including Gene and Jack Imel, who work at the bank during summer vacation.

Completed his third year at Oklahoma University, is spending six weeks at ROTC training in Fort Sill, Okla. His younger son, Jack, who is to enter college this fall, is working in the bank this summer as a posting machine operator.

Imel is a member of the local American Legion Post, the Lions Club, Chamber of Commerce and is active in civic work.



THE FRIENDLY BANK — One of the officers of the Citizen's Bank and Trust Co. has stated that just because the bank employees have a new home to work in, they will still retain and live

the slogan, "the friendly bank with the friendly service." Their new home is decorated on the exterior with Colorado ledge stone and large slabs of pink architectural stone. (News Photo)

Citizens Bank Is Designed For Customers' Convenience

Designed for the comfort and convenience of the employes as well as the customer, the newly remodeled home of the Citizens Bank & Trust Co. is located at its old site of 123 W. Kingsmill.

Responsible for the floor plan are F. E. Imel, president of the bank, Elma Vandenberg, cashier and Floyd Watson, vice-president. Their chief aim in the floor plan design was to make the path of the customer as simple as possible and place the employes so their work will follow a convenient pattern.

Upon entering the bank by the front door, the customer will find the tellers' windows to his left. The cages are of St. Genevieve marble, which is a brown-rose in tone. Aluminum cage work and glass have been used over the counter tops. Inside the cages is the necessary drawer space made from bleached walnut. This wood is used throughout the woodwork of the building.

Behind the tellers' cages are the desks of the bookkeepers, spaced so that the bookkeepers' machines fit conveniently. At each desk-space are storage drawers for the workers' personal effects and files.

The wall behind the bookkeeping machines features a panel of acoustical tile, which is used throughout the ceiling. All the walls are of the same grey-green tone.

Just back of the tellers' cages is the directors' meeting room, which has small windows placed high on the wall. Drapes for these windows blend with the color of the walls.

In the lobby of the bank, customers' desks are of the same bleached mahogany. A circular pillar from the center of the marble floor to the ceiling has a base of St. Genevieve marble and its shaft is of a darker green than the walls.

The executive offices are to the right of the aluminum and glass front doors. They are sectioned off by a low counter, where the note customers will be served. Imel's desk is in the partly enclosed end of the office. Vault for the customers' safety deposit boxes is placed in the southwest corner of the bank. It is also equipped with a private booth for inspection of boxes.

The bank vault is immediately behind the customer's vault. Women employes of the bank have a lounge equipped with pale blue tile fixtures and royal blue trim. Storage space has been furnished for personal affects to be



S. C. EVANS

Former President: S. C. 'Tex' Evans Saw Need For Bank In Pampa And Area

Recognition of the banking needs of Pampa drew S. C. "Tex" Evans into the groups of men that were instrumental in organizing the Citizens Bank and Trust Co. in 1940.

He has been a member of the board of directors since the opening of the bank 11 years ago and served as president from the first until 1948 when he was elected chairman of the board.

Besides his banking interests, Evans is active in the operation of his own oil and gas interests since he came to Pampa in 1929. He has been in the automobile business since 1934 when he organized Tex Evans Buick Co., Inc. He is also associated with Jess Kirchman as a drilling contractor, and oil well servicing company.

Mr. and Mrs. Evans, 1800

Courthouse Cafe Holds Opening Also

In a new location and with a chef and manager of cafe prop- change from cafeteria to cafe. The Courthouse Cafe will be open for inspection during the time the Citizens Bank and Trust Co. is holding formal open house from 5 to 9 p.m. Saturday.

The cafe will begin serving about the middle of the week. A year ago in August the cafeteria which was located next to the old bank closed so that the bank could expand into the part occupied by the cafeteria.

Now, the modern and newly equipped cafe is located the first door east of the new bank, at Kingsmill and Russell. John O. Pitta is the owner of the cafe, which is leased to H. L. Fisher. The lease is an experienced

chef and manager of cafe prop- erties. For 25 years he managed hotel dining rooms, 15 years in Oklahoma City. Since that time he has owned and operated cafes, the last being in Littlefield, where he had an exclusive dining room seating 110 people.

Mrs. Fisher assists her husband as receptionist and cashier. Fisher said he expects to have four assistants in the kitchen, which he will operate and about five employes in the front of the cafe.

A. J. Beagle Assisted In Organization

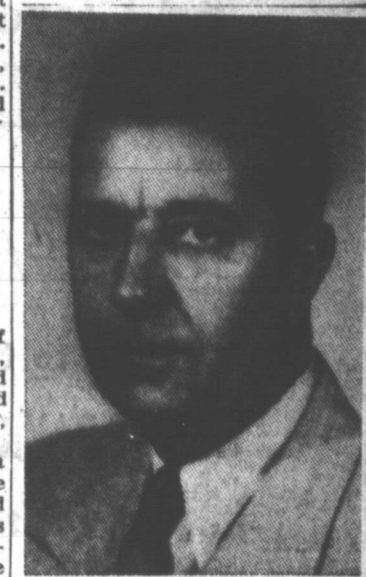
Assisting in the organization of the Citizens Bank and Trust Co., A. J. Beagle, vice-president and director, has served on the board since the organization date, May, 1940.

Beagle has been in Pampa since 1935 as an officer of the Rock Glycerin Co., an oil and gas well shooting service. His father, H. H. Beagle, also is interesting in banking and is the president and chairman of the board of the First State Bank of Odessa.

Mr. and Mrs. Beagle live at 917 N. Gray and have two daughters, Mrs. J. W. Agee, who lives in Odessa and Donna Ruth, who attended the University of Texas last year, and plans to enter a school in California this fall.

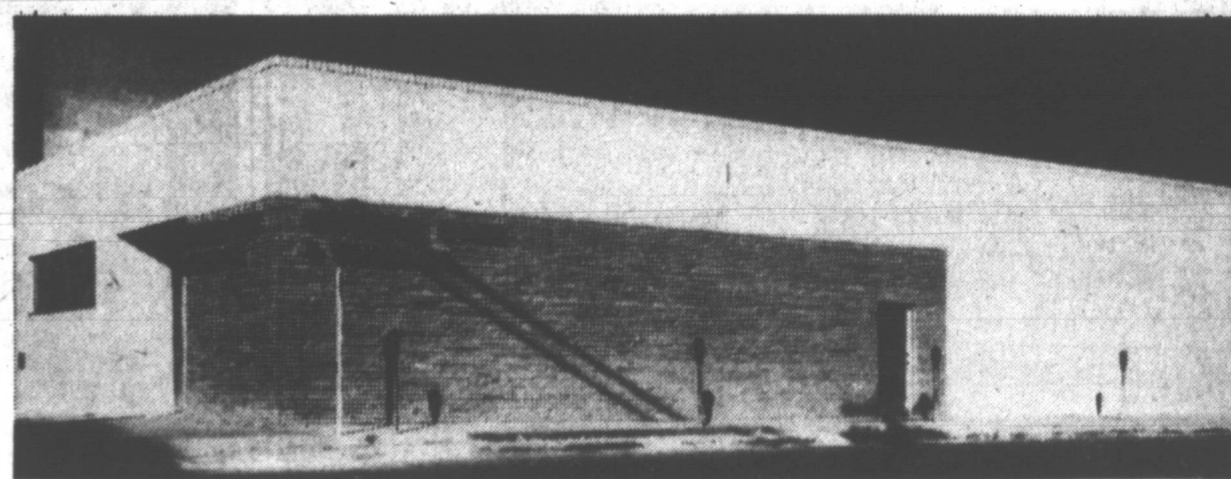
"With the opening of the new banking rooms, the Citizens Bank and Trust Co. offers the people of this community better service in more pleasant surroundings," Beagle said. "The patronage and good will of the people are responsible for the progress the bank has made."

"and we hope this patronage and good will continues for the mutual benefit of both."



A. J. BEAGLE

We Are Proud...



that we were chosen as general contractors by Citizens Bank and Trust Co. We wish to congratulate the Executives on the completion of this building. All of Pampa may point with pride to this symbol of progress cornerstone of the future. However, Men, not mortar, are the binding agents of service and dependability that make Citizens Bank and Trust Co. the solid institution it is.

Lysle K. Stout

GENERAL CONTRACTOR

719 N. Somerville

Pampa, Texas

Phone 1823-W

Congratulations

and

Best Wishes

to the

CITIZENS BANK & TRUST CO.

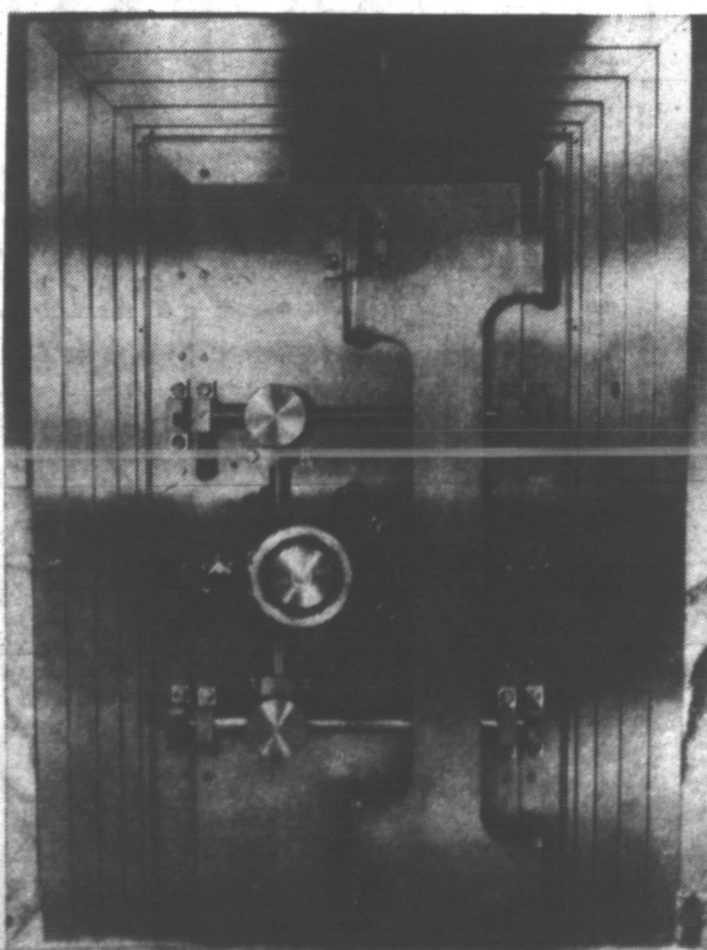
Your NEW BANK is a symbol of faith in the people and progress of Pampa. It is with Pride we say congratulations.

We are proud to say that we had the opportunity to furnish your New Bank with our office equipment.

Pampa Office Supply Co.

211 N. Cuyler

Phone 288



MASSIVE VAULT DOOR — This is part of the Citizens Bank's insurance for its customers in the remodeled building to be shown to Pampa and surrounding towns Saturday. On the inside are deposit boxes for bank customers. (News Photo)

35 Contractors Supplied Materials

Thirty-five contractors supplied materials for the Citizens Bank and Trust Co. rebuilding program. Only the shell of the old building was left and a part of the roof. Several feet were added on the back of the building and new exterior and interior walls were built.

Lyle K. Stout was the general contractor for the rebuilding. Workers on the building were all local men.

Pampa contractors include Acme Lumber Co., cement and miscellaneous hardware; Cabot Shops, Inc., reinforcing steel for building; Davis Electric, electrical appliances; Foxworth - Galbraith Lumber Co., lumber and miscellaneous; Green and Ellis painting contractors; Grundy Plumbing Co., plumbing; Home Decorating Shop, draperies; Bert A. Howell and Co., air conditioning and heating; Jaynes Tile and Brick Co., brick work and tile; C. M. Jeffries Trucking Co.,

gray; Johnson & Williams Plastering, plaster work; Lunaford Bit & Machine Shop, machine work; Monarch Lumber & Plumbing Co., floor covering; Pampa Office Supply Co., office furniture; Panhandle Lumber Co., lumber; R. K. Parsley, roofing; Prescott Sand & Gravel Co., gravel and dirt work; Transmix Concrete & Material Co., concrete and Ward's Cabinet Shop, special cabinet work.

B. R. Cantrell Architects and Co. were the designers for the building of the bank.

Contractors from out of Pampa were the Amarillo Plate Glass Co., who supplied the doors; A. C. Andrews Co., Dallas, the vault door; Architectural Stone Co., Lubbock, the cast white stone for the building's exterior; Forrest R. Barnes, Amarillo, steel doors and their frames; Builders Fireplace and Supply Co., Houston, magnesite floor; W. D. Collins Bank Fixture Co., Denison, marble bank fixtures and wood paneling; Federal Enterprises of Texas, Inc., Dallas, steel lettering for the sign; Herring-Hall-Martin Safe Co., Hamilton, Ohio, safety deposit boxes; Jenkins Erick & Supply Co., Amarillo, Colorado pink stone for exterior; Mangum Brick & Tile Co., Mangum, Okla., brick; Mosler Safe Co., Hamilton, Ohio, vault door for customers deposit boxes; Universal Corp., Dallas, windows.



LOBBY — Conveniently arranged for the customer, the lobby is equipped with two large bleached walnut tables with marble tops and bases. The column has a base of the St. Genevieve marble, used throughout the decorations. The rest of the column is painted green to blend with the gray-green walls. (News Photo)

Canadian Girl's Work Is Published

CANADIAN — (Special) — Word has been received here that an essay entitled "My Ambition" written by Louise Zybach, has been accepted for publication in "Essays of 1951." The book is a national anthology which will contain essays written by high school students from every state.

Miss Zybach wrote the essay, dealing with citizenship, last year

HIS HEORY — To explain the 14 great ocean currents, such as the Gulf Stream and others, one scientist advanced the theory that the sea water circulated through the center of the earth by means of innumerable fissures reaching down from the ocean floor.

while a junior in Canadian High School, studying under Mr. Marion Karr. It was published in "Young America Sepaks," 1950 Anthology of Eastern States' High School Essays, last winter.

CONGRATULATIONS
CITIZENS BANK & TRUST CO.
 Upon The Completion Of Your
NEW BUILDING

We Are Proud To Have Furnished The
 Draperies For This Beautiful Building
HOME DECORATING SHOP

MRS. L. A. BARBER
 108 OSAGE PHONE 824

Congratulations
 AND
BEST WISHES
 TO THE
CITIZENS BANK & TRUST CO.
 UPON COMPLETION OF YOUR NEW HOME
Ed Cleveland Ins.
 1701 WILLISTON PHONE 3939

Congratulations
 to the
CITIZENS BANK & TRUST CO.
 for their
 trust in the future of Pampa

Trust Your Doctor's Prescription
 When It's Filled By

MALONE & KEEL
 YEAR AROUND AIR CONDITIONED
PHARMACY
 WE FILL ANY DOCTOR'S PRESCRIPTION
 HUGHES BLDG PHONE 3365 PAMPA, TEXAS



Jane Branson To Citizens In January

Jane Branson, secretary to the president, F. E. Imel, was employed by the bank in January of this year.

She was employed as legal secretary for Braly and Braly Attorneys prior to this job. She is the daughter of Mr. and Mrs. G. F. Branson and her father is purchasing agent for Cabot Carbon Co. Miss Branson is well known in Pampa for her vocal attainments.

BIBLICAL TRANSLATOR
 The Germans regard Martin Luther as the creator of German prose. He was the first person to translate the Bible into colloquial German.

Dr. C. E. High Had An Early Interest In Bank Business



Interest in banking began with Dr. C. E. High in 1911 when he started his first bank account with the proceeds of two bales of cotton.

On June 1, 1938, Dr. High located in Pampa and, recognizing the need for additional banking facilities in this community, he subscribed for stock when the Citizens Bank & Trust was organized in May, 1940.

Dr. and Mrs. High and son, John, live at 821 N. Somerville. Dr. High's main interest is the practice of medicine and his main hobby is banking and finance. His son is studying toward a medical degree in Baylor University, where Dr. High received his degree.



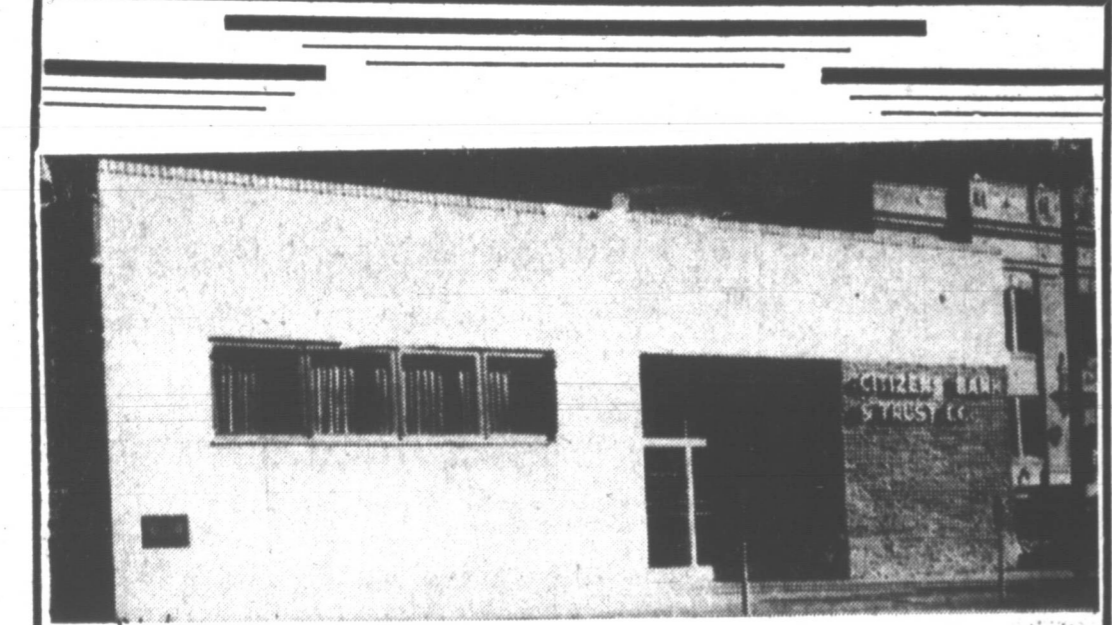
Lora Miller Is Receptionist, Clerk

Lora Miller is telephone receptionist and safe deposit vault clerk in charge of identification and approval of entry of customers into the vault for their safety boxes. Her husband is employed as engineer for Independent Natural Gas.

Congratulations

BEST WISHES TO THE FOLKS AT
 CITIZENS BANK AND TRUS CO.
 ON THE COMPLETION OF YOUR
 FINE NEW BUILDING!

FURR FOOD SUPER MARKET



We Congratulate
CITIZENS BANK & TRUST CO.
 on the completion of your splendid building. Pampa is also to be congratulated on the fact that this bank building has been added to her fine downtown business district.

Culberson Chevrolet, Inc.
 212 N. Ballard Phone 366



Billie Jeffers In Saving Department

Billie Jeffers, note teller, has been employed by the Citizens Bank and Trust Co. since 1946. Besides taking installment note payments she is in charge of the savings account department. Her husband, Gene Jeffers, works for Cabot Shops, Inc., and she is the daughter of Mr. and Mrs. J. W. Hopkins.

Clyde A. Bray Of Citizens Serving With Air Force

Capt. Clyde A. Bray, Jr., employee of the bank note department, who was called back into the Air Force on Feb. 2, was assigned to Military Air Transport Group at Brookley Field at Mobile, Ala.

His wife, Thelma and twin sons are with him in Mobile.

Recently Bray was assigned to the 1703rd Maintenance Squadron, 1703rd A. T. Group as Squadron Adjutant and personnel officer. The primary function of the Squadron is performing 3rd echelon or shop maintenance for the 1703rd air evacuation squadron.

This squadron handles air transfer of medical patients between hospitals in the southeast area of the United States.

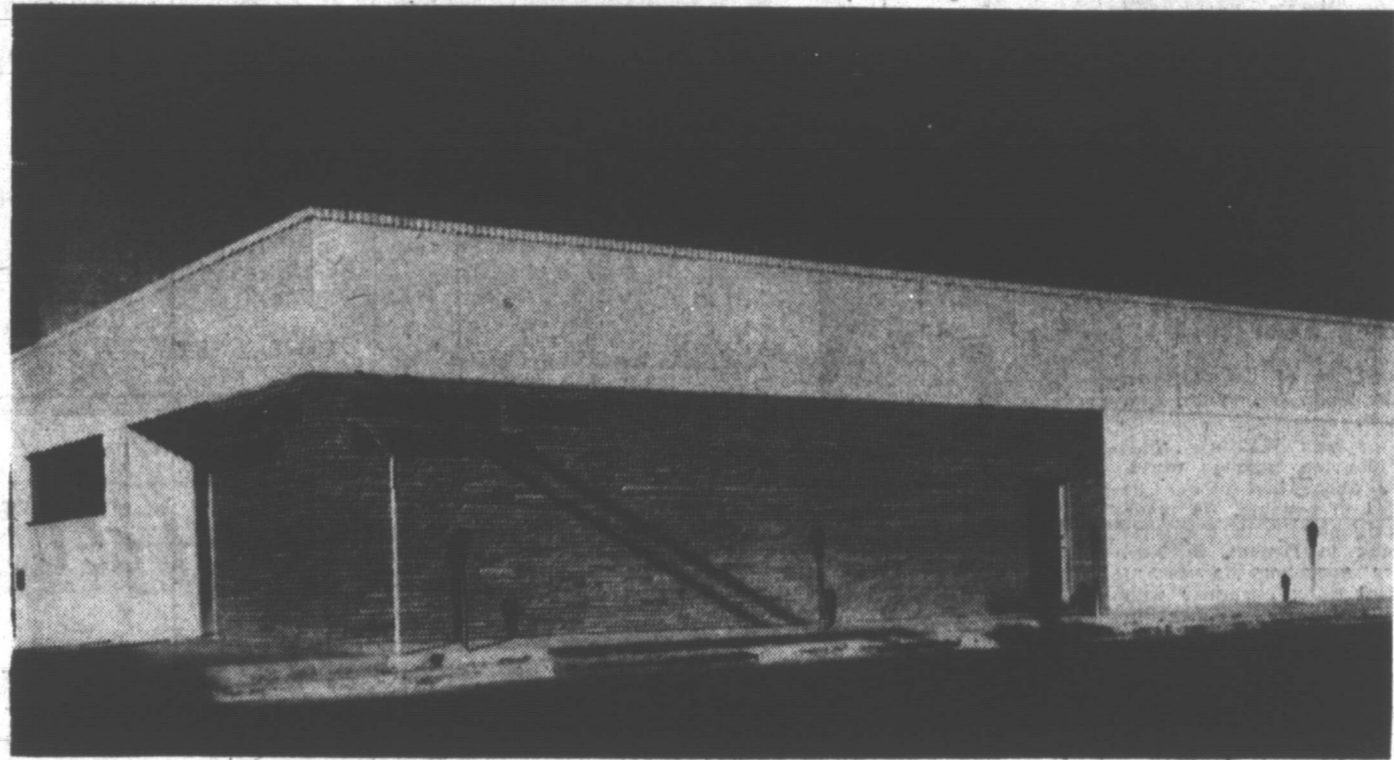
About a month ago, Capt. and Mrs. Bray and family returned to Pampa for a few days' visit. He will resume his duties at the bank upon his release from the Air Force.

Congratulations
 to the
personnel and management
 of the
CITIZENS BANK & TRUST CO.

Frigidaire
 Air Conditioning and Heating
 For This Beautiful Building
 furnished by
BERT A. HOWELL & CO.
 COMPLETE LINE OF AIR CONDITIONERS FOR
 HOME AND OFFICE
 119 N. WARD PHONE 152

You Are Invited...

TO OUR OPEN HOUSE



You are cordially invited to attend the
Formal Opening
of our new building at Kingsmill and Russell
from 5:00 to 9:00 p.m. Saturday, July 21, 1951
Directors, Officers and Employees

*Citizens Bank
& Trust Co.*



"A Friendly Bank with Friendly Service"

O'Daniel Assumes Command In Korea

TOKYO — (AP) — Maj. Gen. John W. O'Daniel, former military attaché in the U.S. embassy in Moscow, today assumed command of the U.S. First Corps in Korea.

He succeeds Lt. Gen. Frank W. Milburn who was corps commander ten months.

reassignment at Fort Monroe, Va.

Lt. Gen. James A. Van Fleet, commander of the U.S. Eighth Army, presented Milburn with an Oak Leaf Cluster to the Distinguished Service Cross and a second Oak Leaf Cluster to the Silver Star in a ceremony at Eighth Army headquarters today.

Great Britain has had only two Labor prime ministers: Ramsay MacDonald and Clement Attlee.



EXECUTIVE DESKS — Seated at their desks located to the right of the front doors, the executives will be able to greet their customers as they come in. The secretaries' desk and note department is in the front corner of the section. Mrs. Elma Vanderberg, cashier, has the front desk, Floyd Watson, vice-president, the middle desk and Floyd Imel, president, the back desk. (News Photo)

India Exempted From New Law

WASHINGTON — (AP) — India has been exempted from provisions of the new law which bars U.S. economic aid to any country selling war potential materials to Iron Curtain countries.

In announcing the exemption yesterday, the national security council said almost all of India's exports go to the free world and include large quantities of materials "essential to our defense effort."

The council has the power to make such exemptions if it believes they are "in the security interest of the United States."

One of every three freight cars on railroads of the United States is used to transport coal.

Oak furniture can be renovated with hot linseed oil applied with a flannel cloth. By telephone, the human voice can go around in the world in one-fourth of a second.

CONGRATULATIONS TO THE CITIZENS BANK & TRUST CO. DAVIS ELECTRIC CO.

Contracting—Wiring—Repairing

119 W. FOSTER Phone 152

Congratulations to the CITIZENS BANK & TRUST CO. on the opening of their beautiful new building



107 N. CUYLER

GOING PLACES!

Progress of a community is exemplified in its leading business structures.

The Citizens Bank & Trust Co. is a tremendous step forward for Pampa and its environs.

We are proud of our part in helping them to move to their new building and heartily congratulate the Executives for preparing for a greater future for Pampa.

Our Operating Territory—
Texas - Oklahoma - New Mexico
Kansas - Colorado

Oil Field Hauling and Bulldozing

C. M. JEFFRIES TRUCKING CO.

121 N. Hobart Pampa, Texas Phone 418
"Service is Our First Consideration"



FLOYD F. WATSON

Floyd Watson Vice-President

Vice-president of the Citizens Bank and Trust Co. is Floyd F. Watson.

Insurance was Watson's first venture into the business world, but after about two years, he transferred to banking. He made his banking start with the First State Bank in Denton, in Feb. 1942, later accepting the position of assistant bank examiner with the state banking department in September, 1944.

He came to Pampa in October, 1946. He is past president of the Pampa Junior Chamber of Commerce.

His family consists of his wife and young daughter, Linda.

Boss' Orders Get Pilot In Trouble

COMPTON, Calif. — (AP) — Pilot Gene Wikie's excuse failed to impress the judge who fined him \$150 yesterday for low flying.

Wikie gave this explanation for the July 7 misdeed:

His boss, who runs a car wash rack, sent Wikie aloft to check on how many wash racks there are in Compton and which was doing the most business.

Mrs. Vanderberg Wants To Keep Slogan A Reality

Elma Vanderberg, cashier of the Citizens Bank and Trust Co. has been with the bank since June, 1942.

Mr. and Mrs. Clyde M. Vanderberg came to Pampa from Borger, where he was employed by the Sinclair Oil and Gas Co. and she had spent about seven years with the Panhandle Publishing Co.

The Vanderbergs celebrated their 20th wedding anniversary



ELMA VANDENBERG

June 4 at the Panhandle Bankers Convention in Amarillo.

Mrs. Vanderberg is one of the approximate 50 women in Texas who serve in the capacity of bank cashier. Her highest ideal is to keep the slogan of the Citizens Bank and Trust, "a friendly bank with friendly service," more than just a slogan.



IRENE REEVES

Irene Reeves Is Teller At Citizens

Irene Reeves, paying and receiving teller for the Citizens Bank & Trust Co. is married to Kenneth Reeves, who is assistant purchasing agent for the Cabot Co. Mrs. Reeves, employed at the bank for more than a year, has worked as bookkeeper, file clerk and proof operator and receptionist advanced to the teller position. Her father, P. G. McElroy owns and operates the Yellow Cab Co. here.

Thousands of young saplings are purchased from farmers by steel companies for use in stirring molten steel.

Congratulations AND Best Wishes

to the management and personnel of the CITIZENS BANK & TRUST CO. upon the completion of their new bank

IT IS INDEED A PLEASURE FOR US TO DO OUR BANKING WITH YOU

FISHER PANHANDLE GRAIN

600 S. WEST

PHONE 3590

Congratulations TO THE CITIZENS BANK & TRUST CO. On The Opening Of Your New Building

NOW

is the time to

CHECK YOUR FURNACES AND HEATING UNITS FOR THE COMING WINTER



The flame that cools as well as heats — Economical NATURAL GAS

No, it's not too early — call your favorite heating and plumbing establishment today.

TEXAS GAS & POWER CO.

"Your Home - Owned Utility"

Congratulations

And Best Wishes

to OUR FRIENDS at
CITIZENS BANK & TRUST CO.

Upon completion of your new home. This marks another mile-stone in the progress of Pampa.

It is with PRIDE AND PLEASURE we say "Congratulations" a job well done.

YOUR NEW HOME IS A FINE TRIBUTE TO A BEAUTIFUL CITY



We're Adding Ours...



Congratulations!

The impressive new home of the CITIZENS BANK AND TRUST CO. is a constant reminder of what FAITHFUL BANKING SERVICE means to a progressive community.

With pride we offer our congratulations . . . with sincerity we extend our best wishes for the future.

The **FIRST NATIONAL**
BANK OF AMARILLO
"The Panhandle's Oldest Bank"



**Boston Double
Parker Found**

BOSTON — (AP) — Reuben Rettner was acquitted in municipal court yesterday of double-parking in 1931. Police said that for 20 years they had been unable to locate Rettner — until he applied for a hackney license a few days ago. "They couldn't have looked very hard," Rettner told the court. "I've lived right here in Boston all my life."

**Citizens' Special
Features Numerous**

Customers of the Citizens Bank and Trust Co. are offered numerous special features which make their banking problems simpler and more efficient. Anyone can open a checking account at the bank, regardless of the amount. A savings account may be opened and pass-

books will be issued. Savings accounts are recommended for planned savings and regular deposits of any amount. With this type of account, a depositor may withdraw any amount after 60 days if he desires.

Time certificates or deposits are lump sum deposits, which are put in the bank as a total sum and may not be withdrawn nor increased until a designated time.

All types of loans are made by the Citizens Bank and Trust Co., depending as all banks do, on the necessary obligations of the parties concerned. The bank also will act as an escrow agent.

Safety deposit boxes are furnished by the bank and protected by the customers' vault. The boxes themselves are protected against theft and fire, and are insured. They are rented to individuals to hold valuables. Customers are issued a key and the bank keeps a guard key.

The bank's night depository is located on the front of the new building. A key and money sachel is issued to the customers who use the depository.

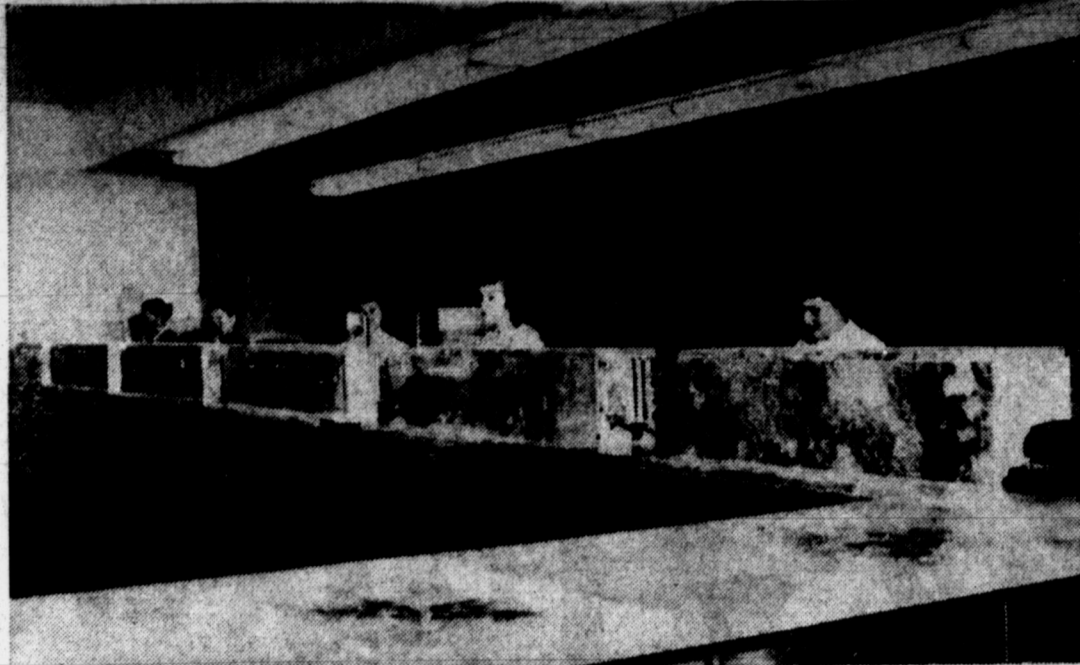
Cashiers checks and bank money orders are also special features of the bank. These are used particularly for sending money through the mail. Checks are certified by the bank for contractors and other business men when they are needed.

Bank drafts, which transfer money from one bank to another are offered by the bank as well as travellers' checks and money transfers.

The bank is authorized to sell savings bonds and government bonds. It is also qualified to cash these bonds.

Payroll checks may be cashed at the bank even if the customer has no checking account there.

All checks which pass through the bank are recorded on microfilm which is stored indefinitely in case of loss or any misunderstanding.



TELLERS — A row of pretty girls will be seen in the teller's cages to the left of the front door of Citizens Bank and Trust Co., in the new building. Left to right are Betty Jo Thompson, Irene Reeves, Rachel McCool, Wanda Speice and Billie Jeffers. (News Photo)

"AERIAL CHORUS"
Chinese kites sometimes are strung with catgut across apertures in the paper, so that the wind through them produces the effect of an aerial chorus, according to the Encyclopedia Britannica.

SUMMERLESS YEAR
The year 1816 is popularly known as the year without a summer because, in the northern states, there were frosts in every month of the year. Similar adverse weather conditions prevailed in many parts of Europe.

**CONGRATULATIONS
CITIZENS BANK &
TRUST CO.**

ON THE COMPLETION OF YOUR
NEW BUILDING

Modern Beauty Shop

110 N. RUSSELL PHONE 717

Best Wishes

to the

CITIZENS BANK & TRUST CO.

on the occasion of the opening of your fine new home. May yours and Pampa's progress continue hand-in-hand.

**The American
National Bank**

OF AMARILLO

**CONGRATULATIONS
AND
BEST WISHES
TO THE
CITIZENS BANK
& TRUST CO.**

All Pampa Is Proud Of
Your New Building

Montgomery Ward

**Ivey Duncan
Helped Form
The Citizens**



IVEY E. DUNCAN

Ivey E. Duncan helped to organize the Citizens Bank and Trust Co. and even assisted in selecting the name.

Duncan comes from a family of bankers. His father, J. N. Duncan, who was the first mayor of Pampa, helped to organize both banks in Pampa as well as the bank in White Deer.

A retired lawyer, Ivey Duncan practiced law for 30 years here and served as county judge. He is engaged in agriculture and stock farming as well as some oil activity and has done some drilling around this area.

His family consists of a wife and two sons. Mrs. Duncan is the daughter of D. B. Kirk, a pioneer Hutchinson County resident, who has served that county as commissioner for a number of years.

Kirk and Ray Duncan, his sons own and operate the Duncan Insurance Agency of Pampa. Duncan has seen Pampa grow from a small village to the city it is today.

He is a charter member of the Lions Club here and a past president of the organization.

RECORD NOMINEE
Franklin D. Roosevelt held the major party record for being nominated for resident the most times under the present U. S. electoral system. He was nominated four times, while Grover Cleveland and William Jennings Bryan were nominated three times each.



V. L. BOYLES

**V. L. Boyles
A Director
Since 1941**

V. L. Boyles became a director of the Citizens Bank and Trust Co. in January, 1941. He has been a stockholder of the bank since its organization having purchased some of the original shares.

His family consists of his wife and three sons. Ray is manager of an insurance company in El Paso, Charles is working on a ranch out of Ft. Davis and Bob has finished his third year at Sul Ross.

Formerly engaged in the oil field trucking business for 20 years, Boyles is now a partner in the Mobley Industrial Motors Co. He is a veteran of World War I, a member of the American Legion and served two terms on the Pampa school board.

He is a 32nd degree Mason and a Shriner.

**Tommie Stanford
Is A Bookkeeper**



TOMMIE STANFORD

Tommie Stanford, an employee in the bookkeeping department, came to this bank at the first of this year. She is the daughter of Mr. and Mrs. C. C. Woodward, who are long-time residents of Pampa. She has two small children, a boy, Kerry and a girl, Rhonda Jean.

Length of life for the American wage-earner and his family has been steadily increasing for the past half-century. Expectation of life at birth now is 67.7 years.

Congratulations

Citizens Bank and Trust Company

● ● ● on a job well done. Your new modern bank building is a distinct credit to Pampa and the Texas Panhandle.

**The Liberty National Bank
and Trust Company**

Oklahoma City Oklahoma

Congratulations

AND BEST WISHES
TO OUR FRIENDS

CITIZENS BANK AND TRUST CO.

Upon Completion of Their Home!

This beautiful new bank is another milestone in the progress of a beautiful city.

We are happy to extend best wishes to the officers and personnel of the Citizens Bank & Trust Co.

**J. A. GRUNDY
PLUMBING CO.**

1011 DUNCAN PHONE 3851

Congratulations

AND BEST WISHES
TO OUR FRIENDS

CITIZENS BANK & TRUST CO.

Upon completion of your new ultra modern home. We at Texas Furniture Co., are proud to say we are one of many who has the privilege of doing our banking with you.

*Texas
Furniture Company*

"QUALITY HOME FURNISHINGS"



Congratulations

and Best Wishes to Our Friends

CITIZENS BANK & TRUST CO.

We are proud to be in Pampa with you.

First National Bank



Verona Carruth On Bookkeeping Staff

Verona Carruth, a member of the bookkeeping staff of the Citizens Bank & Trust Co. makes her home in Pampa with her grandparents, Mr. and Mrs. H. B. Knapp.

She is the daughter of Mr. and Mrs. Otis Carruth of Tulsa. Before her employment with the bank at the first of the year, she was an operator with the Southwestern Bell Telephone Co. here.

Most ancient encyclopedia extant is Pliny's "Natural History," according to Encyclopedia Britannica.

VERONA CARRUTH



B. L. HOOVER

B. L. Hoover One Of First Directors

One of the original stockholders in the Citizens Bank and Trust Co. is B. L. (Buz) Hoover, who is now a director.

A Pampa resident since February 1926 and is engaged in the oil business and ranching.

Traveling with his family, which includes his wife and 12-year-old twin boy and girl, Barbara and Buzzie, is the favorite pastime of Hoover. The family is missing the bank opening this week end because of a pre-arranged trip to their cabin at Pearl Lake, Colo. There home is at 1401 N. Russell.

"The new bank," said Hoover, "is in keeping with the times and expansion and growth of Pampa. The staff and personnel have contributed to the increase of depositors and customers and the directors and officers of the bank are striving to extend the banking facilities to meet the needs of the people here."

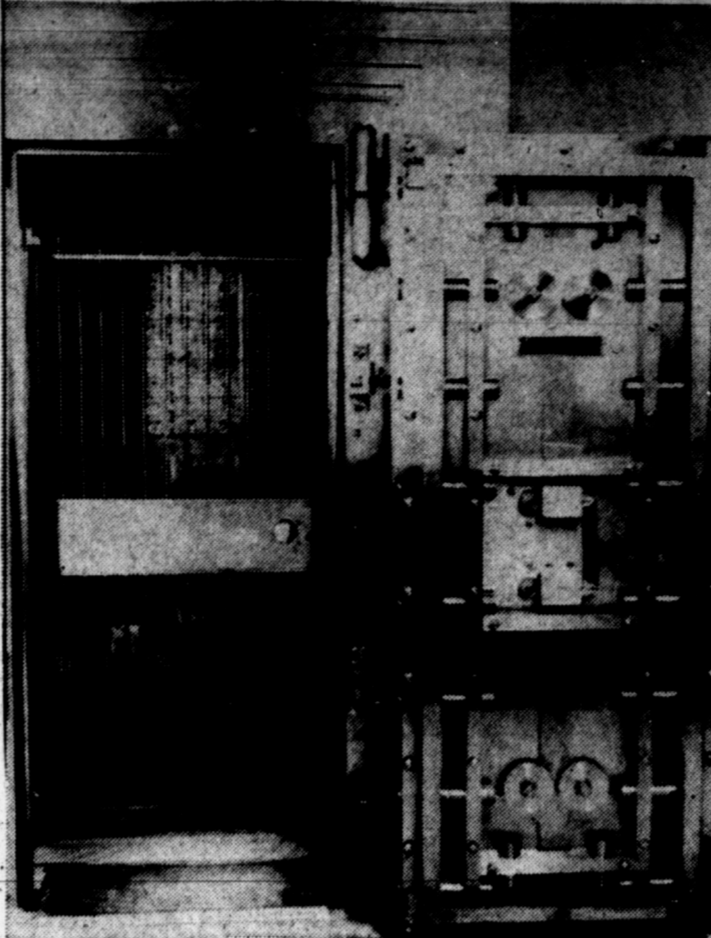
Jack Imel Employed In Bookkeeping



JACK IMEL

Jack Imel is employed at the bank in the bookkeeping department for the summer months and he will attend college in September. As Jack plans his career of banking, he is learning the bookkeeping procedure as the beginning phase. He is the son of the president.

COAL COUNTRIES
It has been estimated that approximately 75 percent of the world's known supply of coal is contained in the coal reserves of the United States and Canada.



CUSTOMERS' VAULT — Placed in the southwest corner of the new Citizens Bank and Trust Co., the customers' vault has a specially designed door for insurance against burglary or fire. Boxes for the customers are also provided with fireproof cases.

Clyde T. Durham Is Bank Janitor



CLYDE T. DURHAM

Clyde T. Durham, better known as "Slim," janitor for the Citizens Bank & Trust Co. for the past nine years, has looked forward all this time for the bank to remodel so that he would have a new building to care for. He has a wife, Hattie Lou, a daughter and two sons.



GENEVIEVE HENDERSON

Mrs. Henderson From Guymon Bank

Genevieve Henderson, NBM proof machine operator and transit clerk, for the Citizens Bank and Trust Co., previously worked for the City National Bank in Guymon, Okla., for more than three years.

Experienced in bookkeeping, filing and proof, she trains operators in the proof and transit departments. She is married to Willard Henderson who works for the General Atlas Carbon Co. They have two sons, Jay and Glen.

More than 25 percent of the total foods consumed annually by the average American consists of milk and milk products.



IRVIGENE BROWNING

Ervigene Browning Employed By Bank

Ervigene Browning, employed in the bookkeeping department of the Citizens Bank & Trust Co. came to the bank as an experienced posting machine operator. Her husband, Wm. R. Browning, is employed by Bert A. Howell & Co. They have two children, Barbara Kaye and Ronald Ray.



PEGGY PARSONS

Peggy Parsons In Bookkeeping

Peggy Parsons is a member of the bookkeeping staff of the Citizens Bank and Trust Co. She is the daughter of Mr. and Mrs. Luther W. Bogard, and she was married to Paul Parsons in March of this year. Her husband is employed by the Schneider Garage.

POTENTIAL POWER
Of 278 important waterfalls in Brazil, a minimum of 30,000,000 horsepower could be derived through hydro-electric plants.

Citizens Keeps Reserves In 13 Correspondent Banks

As a state bank, the Citizens Bank & Trust Co. keeps reserve deposits in 13 correspondent banks.

These deposits are used for more speedy service and keeping the business more localized. Banks holding deposits for the Citizens Bank & Trust Co. are First National Bank, Amarillo; National Bank, American National

Bank, all of Amarillo; Dallas National Bank, Texas Bank & Trust, Republic National Bank, and Mercantile National Bank, all of Dallas; Fort Worth National Bank, Fort Worth; Liberty National Bank, Oklahoma City; First National Bank & Trust Co., Tulsa, Okla.; Chase National Bank, New York City, N. Y.; Commerce Trust

DEATH BEFORE DUTY

William R. King, who was elected vice president on the Democratic ticket with Franklin Pierce in 1852, took the oath of office in Cuba. He died without very performing any of the functions of his new office.

KOCS "COACH"

The word "coach" applied to a roofed carriage derives from the town of Kocs, Hungary, where they originated, according to the Encyclopedia Britannica.

Co., Kansas City, Mo., and First National Bank, Wichita, Kans.

Congratulations

To The
Personnel and Management
of the

**Citizens Bank
and
Trust Co.**

Upon The Completion
Of Their
New Business Home!

We're All Helping
To Build
A Better Pampa.

**TEX EVANS
BUICK CO.**

123 N. GRAY PHONE 123

OUR HEARTIEST

Congratulations

AND

Best Wishes

To The Officers and Directors
of the

**CITIZENS
BANK & TRUST CO.**

ON THE FORMAL OPENING
OF THEIR NEW BANKING HOME

Texas **BANK & TRUST CO.**

MEMBER
FEDERAL
DEPOSIT
INSURANCE
CORPORATION

MAIN AT LAMAR OF DALLAS

DALLAS, TEXAS

Congratulations

**CITIZENS
BANK & TRUST
COMPANY**

On the Opening of Your New Building!

CABOT

Congratulations

And Best Wishes

TO THE

CITIZENS BANK & TRUST CO.

Upon The
Completion of Their New Business Home

*This new structure
is an example of their faith in the
future progress of Pampa*

**FOXWORTH — GALBRAITH
LUMBER CO.**

PHONE 209 PAMPA

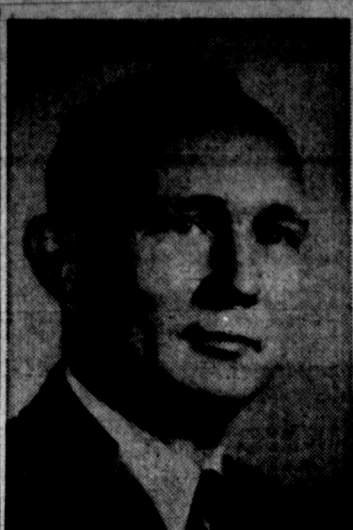


Rachel McCool At Citizens Two Years

Rachel McCool, paying and receiving teller of the Citizens Bank and Trust Co., was employed soon after graduating from Lefors High School more than two years ago. After having worked as a posting machine operator, file clerk and the proof department she was advanced to teller. She is the daughter of Mr. and Mrs. W. D. McCool of Lefors. Her fiancé, J. D. Compion, Jr. is serving with the paratroops in Korea.

TREASON TRIAL TERMINATED
After the Civil War, a Federal grand jury indicted Gen. Robert E. Lee for treason, but the indictment was dropped through the influence of General Grant.

RACHEL MCCOOL



MACK HIATT, JR.

Mack Hiatt, Jr. Is Training For Note Department

Mack Hiatt, Jr., a recent employe of the CB&T, is beginning his career in the bookkeeping department, but is being trained for the note department.

He previously worked for the Retail Credit Co. His wife, Mary and he are parents of two daughters, Jane and Jo. He is a member of the Lions Club and the SPEBSQSA. Hiatt is a veteran of World War II and a reserve line officer in the U. S. Navy.

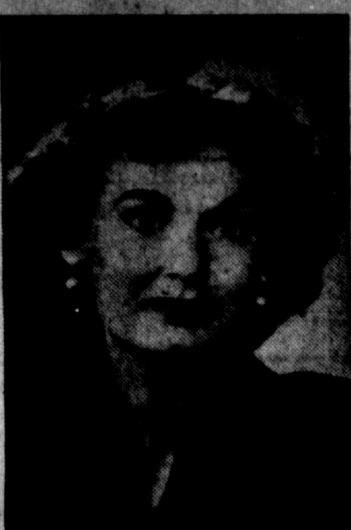
Freda LeMond Is Exchange Teller



FREDA LEMON

Freda LeMond, exchange teller for the Citizens Bank & Trust Co. began her banking career in December, 1941, after working as a dentist's receptionist. In addition to paying and receiving, she handles collections, travelers checks and drafts.

Her husband is Guy LeMond, central office repairman for the Southwestern Bell Telephone Co. Her son, Dickie attends junior high school.



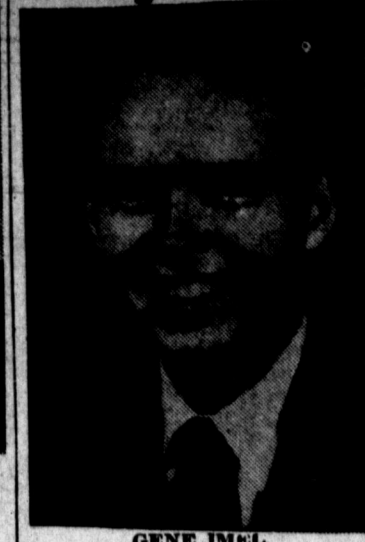
LORA GREEN

Lora Green Came Here From Dallas

Lora Green, a member of the bookkeeping department came to Pampa from Dallas, where she was employed as a model and attended modeling school.

She came to Pampa to make her home with her brother, Richard Green, formerly employed by the Hughes Co., but now in the Infantry at Ft. Organ, Calif.

Gene Imel Learning Banking Business



GENE IMEL

Gene Imel has worked summer vacations in the Citizens Bank and Trust Co. since he was in high school and is now at Fort Sill, Okla., taking a six week training course in ROTC. In learning the banking business, young Imel has progressed from the bookkeeping department to the note department.

He attends the University of Oklahoma at Norman and has completed his third year there. He is the older son of the bank's president, Mr. and Mrs. F. E. Imel and is majoring in business administration.

to the . . .

MANAGEMENT & PERSONNEL
of the
CITIZENS BANK & TRUST CO.
we say
Congratulations

It was indeed a pleasure for us to help you with the task of building your beautiful new home.

LUNSFORD
Bit and Machine Shop
844 S. Cuyler Phone 1049

Congratulations
AND BEST WISHES
To The Management and Personnel
Of The
CITIZENS BANK & TRUST CO.
UPON THE OPENING OF THEIR NEW
ULTRA-MODERN BANK
LEE SIGNS
24 Years in Pampa
317 ZIMMER PHONE 1023

**WHAT PAMPA MAKES
MAKES PAMPA**

The beautiful new Citizens Bank and Trust Co. is helping to "Make Pampa."

Sunshine Dairy is Pampa's own and only milk processing plant. We too are trying to help Pampa grow.



ONITA WAMPLER

Onita Wampler Is Newest Employe

Onita Wampler is the newest addition to the bookkeeping staff of the bank. Before coming to the bank, she was employed by Master Cleaners as checking clerk. Her husband, N. G. Wampler, is employed as roustabout for the Bigson Oil Corp. and they have a son, David, who attends Woodrow Wilson.

American women spend approximately 5 percent more for footwear than do British women.

John O. Pitts Designed And Decorated Courthouse Cafe

Betty Jo Thompson An Original Employe



BETTY JO THOMPSON

Betty Jo Thompson has the distinction of being the only present employe who was a member of the original Citizens Bank and Trust staff of May, 1940 although not steadily employed as she has resigned and returned to the bank at various times.

She is a paying and receiving teller, and is married to Erwin Thompson, who manages the Allied Paint Co. here. They have a daughter, Rogena, who will enter school this fall. Her parents are Mr. and Mrs. J. B. Townsend and her father is employed by the Magnolia Oil Co. here.

Floor plan and interior decoration for the Courthouse Cafe was the work of John O. Pitts, owner.

Seating capacity of the cafe is 64, including the counter, which is made from the same oak that makes up the wall panel behind it. Stainless steel also is used behind the fountains and service station as wall panels.

A feature of the arrangement of the cafe is the use of two service stations for waitresses. One is located behind the counter and the other at the south end of the booths. This arrangement is for the convenience of waitresses and for speedier service to the customer, Pitts said.

Colors used in the decoration of the cafe front are yellow walls, and gray and red booths. Complete new floor covering has been installed. It is of neutral color.

Equipment for the dining room includes all new furniture in leatherette and chrome and the oak paneling.

Most of the kitchen equipment is new and is arranged for convenient operation and methods for cleanliness.

Japan's most famous volcano, Fujiyama, last erupted in 1707.

Congratulations
to
the
CITIZENS BANK & TRUST CO.
upon the completion of their
new and beautiful building.

SPECIAL NOTE TO THE MANY BANK CUSTOMERS WHO HAVE BOUGHT THEIR AUTO INSURANCE FROM THE DUNCAN INSURANCE AGENCY:

The easiest and cheapest way to comply with the new Financial Responsibility Law is to buy liability insurance. If you haven't already done so, please call us so that we may write your policy.

DUNCAN INSURANCE AGENCY
KIRK and RAY DUNCAN
PHONE 444 100 W. KINGSMILL



JOYCE ADAMS

Joyce Adams With Citizens Since Fall

Joyce Adams, a member of the bookkeeping staff, has been employed by the Citizens Bank & Trust Co. since September after graduating in the spring from Pampa High School. She is the daughter of Mr. and Mrs. Virgil S. Adams, and her father is employed by Cabot Carbon Co.

Citizens Is Special Member Of The FDIC

Deposits in the Citizens Bank & Trust Co. are automatically insured up to \$10,000. The bank is a member of the Federal Deposit Insurance Co.

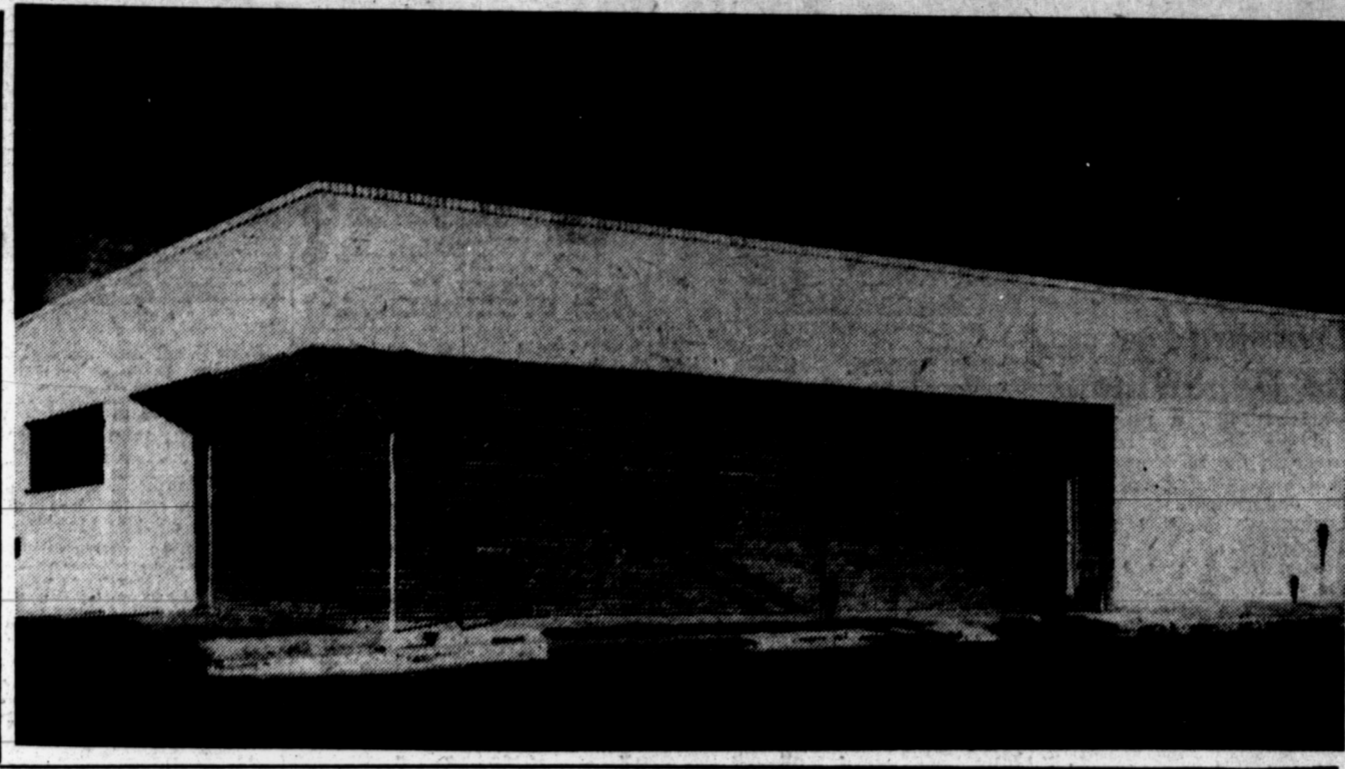
As a state bank, the company was not automatically a member of FDIC, as some other banks are, but was specially examined by a representative of the corporation.

An application had to be made by the banks before membership could be granted.

FORBIDDEN PROPHETS
Bands of prophets who stigmatised themselves into fractures by dancing and clanking, apparently were common in ancient Israel, according to the Encyclopaedia Britannica.

We are proud of this opportunity to extend our
Congratulations
and
Best Wishes
To the officers and directors of the . . .
CITIZENS BANK & TRUST CO.
Pampa, Texas

W. D. COLLINS
BANK FIXTURE CO., INC.
Our 54th Year
DENISON, TEXAS



Through The Years

CITIZENS BANK AND TRUST COMPANY has ever grown bigger and better, giving the tumost consideration to patronage, large or small.

From Pampa's newest Office Bldg. to Pampa's newest bank, we extend Congratulations to the Executives of the Citizens Bank and Trust Company for their beautiful building, another symbol of Pampa's progress. We are proud to be among the many who realize what advantages and facilities are housed in the luxurious splendor of their new Home. We extend to them our sincere good wishes for their continued success and leadership.



The Hughes Companies

FOURTH FLOOR

HUGHES BUILDING

PHONE 200