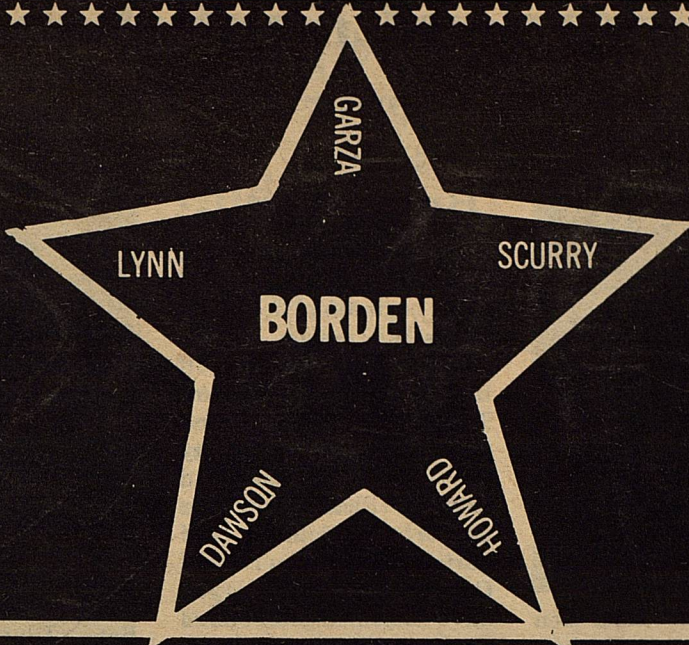


THE

STAR

November 12, 1980

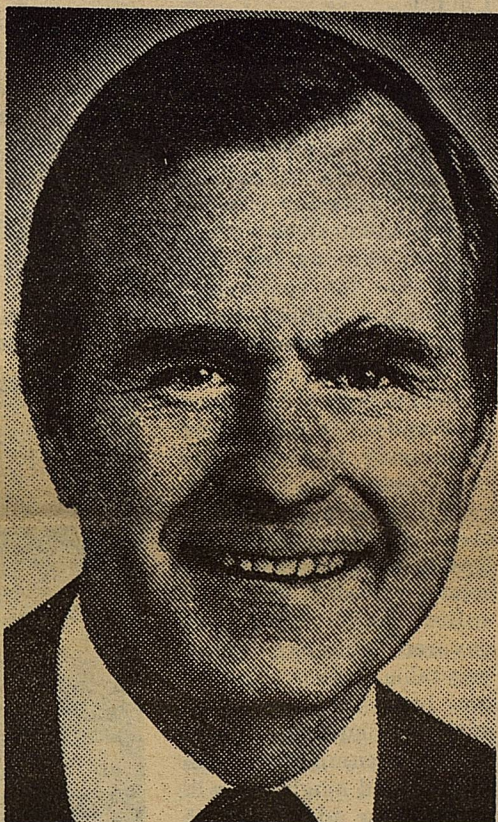
Volume IX No. 11



Serving the Counties of Borden, Dawson, Garza, Howard, Lynn & Scurry



RONALD REAGAN—President-elect



GEORGE BUSH—VP choice

Borden Joins in Reagan Landslide

Borden County voters Tuesday joined in a landslide victory for Ronald Reagan and George Bush as the nation called for a change in command at the White House.

A total of 424 Borden voters went to the polls Tuesday, one of the largest turnouts in recent years. That represented 77.2 percent of the 548 eligible voters. Borden Countians gave the Reagan-Bush ticket 279 votes, while the incumbent Democratic Party ticket of Jimmy Carter and Walter Mondale could muster only 131 according to complete unofficial returns. John Anderson picked up only 3 votes in this county.

Precinct No. 1 (Plains), Carter 33, Reagan 71;

Precinct No. 2 (Ackerly, Vealmoor), Carter 10, Reagan 35; Precinct No. 3 (South Gail), Carter 22, Reagan 25; Precinct No. 4 (Fairview), Carter 17, Reagan 40; Precinct No. 5 (Murphy), Carter 2, Reagan 20; Precinct No. 6 (North Gail), Carter 24, Reagan 41; and Precinct No. 7, (Snellings), Carter 10, Reagan 23.

In the few state races on the ballot, county turnout saw Buddy Temple get 214 votes for railroad commissioner to 135 for Henry C. Grover. James E. "Jim" Nugent was a 205 to 163 winner over H. J. "Doc" Blanchard for the railroad commissioner, un-expired term.

James P. Wallace got 222 votes to 133 for Jim Brady

for associate justice, supreme court, place 1. C. L. Ray got 200 votes to 156 for Will Garwood for associate justice supreme court place 4, un-expired term.

Running unopposed, Sears McGee, 240 votes for associate justice, supreme court, place 2; Robert M. Campbell, 234 votes for Associate Justice, Supreme Court, Place 3; Marvin O. Teague, 249 votes for Judge, Court of Criminal Appeals, Place 1; Mike McCormick, 248 votes for Judge, Court of Criminal Appeals, Place 2; Tom Davis, 243 votes for Judge Court of Criminal Appeals, Place 3; and Dickenson, 253 votes for Associate, Justice Court, Civil Appeals, 11th District. Congressman Charles W.

Con't On Pg. 7

Students Read for MS

The Multiple Sclerosis Read-A-Thon for Borden County ended last week, and dozens of students were rewarded for their efforts. Students from grades 2-6 read 796 books and took in \$936.34 for the foundation.

'Reading for the need of others' is the theme of the Read-A-Thon designed to raise money for MS research. At the same time, the program encourages children to read. A child participates in the drive by becoming a mystery sleuth and reading books. The read-a-thons for MS began in 1974 and students across the nation have read over 31 million books.

In addition to supporting research, money from the drive goes toward purchasing wheelchairs, crutches, leg braces, walkers, patient meetings and a free MS clinic at Methodist Hospital in Lubbock.

Borden County had to grand prize winners. Jim Ridenour, son of Mr. and Mrs. Fred Ridenour, read

120 books and won a T-Shirt. Jimmy Rios, son of collected \$135.00 and won a Mystery Slueth dog. Both Jim and Jimmy are in the third grade.

Other winners, the number of books they read and money collected are as follows: Eric Lusk, 24, \$28.50; Rowdy Fulfer, 18, \$33.40; Shane Kemper, 14, \$10.80; James Smith, 29, \$79.25; Lance Telchik, 32, \$41.60; Cody Stone, 20, \$45.00; Kimberly Doyle, 25, \$38.75; Christy Holmes, 16, \$12.00; Randi Woodward, 14, \$18.00; Amy Lewis, 30, \$16.50; Allison Redding, 41, \$12.30; Richard Zant, 16, \$89.60; Richie Anderson, 10, \$48.50; Kate Porter, 19, \$25.00; Kate Phinizy, 18, \$27.00; D'Lyn Lloyd, 21, \$31.50; Randell Hollis, 15, \$11.00; Elvira Balague, 44, \$17.05; Jennifer Zant, 10, \$48.50; Shelly Lewis, 34, \$20.40.

Other students participating and doing a great job for the program were Sandra Silva, Chad

Con't on P. 2



Jim Ridenour and Jimmy Rios were the Grand Prize Winners in the MS Read-A-Thon last week. Jim read 120 books and Jimmy took in \$135.00. Borden County Co-Ordinator, Sue Smith, Principal, Ben Jarrett and Regional Supervisor-Nancy Hammon are show with the winners.



Receiving Pens, Frisbees, and dog tags during the read-a-thon were James Smith, Jimmy Rios, Cody Stone, Lance Telchik, Jim Ridenour, Richard Zant, Richie Anderson and Jennifer Zant.



Receiving Frisbees and Pens in the read-a-thon were Eric Lusk, Rowdy Fulfer, Kimberly Doyle, Kate Porter, D'Lyn Lloyd, Kate Phinzy and Shelly Lewis



Receiving pens were Randell Hollis, Shane Kemper, Randi Woodward, Kristi Holmes, Amy Lewis, Allison Redding and Elvira Balague.

The Borden Star
Publication No. 895520
(USPS 895-520)
Publication No. 895520

Editor:
Barbara Anderson

Business Manager:
Connie Voss

Published weekly on Wednesday at Gail, Borden County Texas 79738. Box 137, Kincaid Street, Second Class postage paid at Gail, Texas.

Any errors that we make reflecting on the Reputation or Standing of any Firm, Corporation or individual that may appear in the columns of the Borden Star will be gladly corrected when called to the attention of the staff.

Subscription Rates:
\$8.00 per year

Borden Star Owners: James McLeroy, Barbara Anderson, Doris Rudd, Pat Porter, Bob Dyess, Edna Miller, Ruth Weathers, Mrs. Nathan Zant, Sonny Tucker, Eddie Simer, Loreen Jones, Martin Parks, Dan Turner, Lela Porter, and Glenn Toombs.

Borden Star Publishers Inc.

Con't from P. 1

Read-A-Thon

Conner, Jason Mize, Curtis Jackson, Vickie Yanez, Jon Herring, Issac Ragland, Mr. and Mrs. Rios, Will Phinzy, Hope Portales, Stacy Munoz, Mindy Williams, Ralynn Key, Ray Martinez, Maria Yanez, John Stephens, Brice Key, and Rockie Harbor.

Prizes for read-a-thon participants, included a MS pen for reading five books and collecting \$10.00; a Star Wars frisbee and MS pen for reading eight books and collecting \$20.00, and a Mystery Sleuth dog tags ID, frisbee and MS pen for reading 10 books and collecting \$40.00.

Supper Planed By Boosters

We have just completed a great football season and are beginning a great basketball season. Then comes track, tennis and golf and there's band all year. The athletes and band members of Borden County need your support and backing. Please show your support by joining and participating in the Borden County Booster Club. If you have not joined, please do so now.

The club is working to buy a colored Video-System for the school that will benefit each student in Borden County.

We plan to continue our Wednesday Luncheon Meeting in the School Conference Room. These meetings are for Mom and Dad both and are held in order to hear the coaches reports and to discuss ideas that will show our boys and girls that the community definitely is behind them.

We plan to several social and money raising functions before this school year ends; To do this we desperately need you and your ideas.

Let's begin with a covered dish supper, Thursday, November 20 at 7:00 in the school cafeteria. Bring the entire family and two covered dishes (meat, vegetable, desert). There'll be lots of fun and entertainment too. Charge for this evening of fun with friends and neighbors will be \$1.50 for adults and 75 cents for children twelve and under. This money from the supper will go in the fund for the Video-System.

Don't forget! We're counting on you.

Borden County Booster Club

James Telchik, Pres.
Van York, Sec. Treas.
P.S. Bring Grandmother and Granddaddy too!



Beta Club Officers- Seated-President-Talley Griffin, Vice-President-Gena McLeroy, Secretary-Tina Wimberly, Treasurer-Danny Holmes. Back-Sweetheart-Jana Edwards, Song Leader-Heather McPhaul, Sehtinel-Tammy Telchik. Chaplain, Jennifer Wilson was absent.

Beta Club Elects Officers

The Beta Club met last week to select officers for the 1980-81 school year. New officers are as follows:

President, Talley Griffin; Vice-President, Gena McLeroy; Secretary, Tina Wimberly; Treasurer, Danny Holmes; Beta Club

Sweetheart-Jana Edwards; Chaplain, Jennifer Wilson; Song Leader, Heather McPhaul and Sentinel, Tammy Telchik.

Plans were discussed concerning the Beta Convention to be held in Fort Worth January 23, and 24th, 1981.



STUDENT COUNCIL OFFICERS - President, Danny Holmes; Vice President, Gena McLeroy; Treasuer, Doug Love; Secretary, Lisa Smith; Reporter, Tammy Miller.

Student Council Officers

The 1980-81 Student Council members are Tammy Telchik, Bart McMeans, Lisa Smith, Ty Wills, Shellie Peterson, Doug Love, Tammy Miller,

Keith Martin, Kirby Williams, Shana Bradshaw, Cathy York, Jerry Green, Kristi Stone, and Michael Murphy.

The 1980-81 officers are President Danny Holmes, Vice-President-Gena McLeroy, Treasurer-Doug Love, Secretary-Lisa Smith, Reporter-Tammy Miller.



Others participating in the read-a-thon were Curtis Jackson, Isaac Ragland, Vickie Yanez, Mindy Williams, Maria Yanez, Sandra Silva, Hope Portales, Ray Martinez, Jon Herring, Rockie Harbor, Brice Key, John Stephens, Will Phinzy, Stacy Munoz, Jason Mize and Chad Connor and Ralynn Key.

**Booster Club
meeting
every
Wednesday
at 12:00**

Borden County School News



The third grade class presented a Thanksgiving program to Parents Club last Thursday. Pictured are Left to Right-Back-Vickie Yanez, Patrick Herridge, Kandy Belew, Jimmy Rios, Kimberly Doyle, Allison Redding, Cody Stone. Second Row-Cody Cooley, James Smith, Jon Herring, Kristi Holmes, Armondo Soto, Lance Telchik. Front- Arnold Portales, John Yanez, Randi Woodward, Jim Ridenour, Curtis Jackson, Rachael Wilson and Amy Lewis.

Coyotes Fall To Hornets

Borden County's Coyotes met Highland in Hornet territory last Friday night and fell 50-0. This was the 4th loss for the Coyotes whose season record is now 5-4 in their first year of 6-man football.

Four seniors will play their last football games this coming Friday night as the Coyotes play the winless McCaulley team. Maurice Herridge, Troy King, Van York and Bart

McMeans will finish their football careers at Borden High School.

In the game with Highland last week, John Paul Jones of the Hornets scored four touchdowns, while Monte Richburg, Ed Williams and Harrold Light made one each. Highland and Trent remain undefeated and play for the district championship Friday.

Parents Club Meeting

On November 6, 1980 the club met at 2:30 in the school auditorium for the 3rd grade program. Everyone present enjoyed the play which was based on Thanksgiving.

After the program, the meeting began with discussion for the Bake Sale. The date set for the sale is December 16, at the Klondike basketball game. Anyone who would like to donate baked goods for this

would be appreciated! To do so, you can contact any Parent's Club member.

The third grade class received candy after the meeting for being the best represented class.

Also- the Family Directories will be updated from last year and will contain new information, including birthdays for grades K thru 5. These will also be for sale at the Bake Sale.

Jr. High End Football Season

The Borden Junior High finished the 1980 football season last Thursday against Hermleigh. The Coyotes were 2-4 for the season beating Ira twice and having losses to Hermleigh and Grady. The Coyotes season was one that showed great improvement in a young Coyote team.

The Junior High Coyotes were 18 strong, 9 of those being sixth graders and three seventh graders. There were also six 8th graders. The young Coyotes improved every game. Grady beat the Coyotes 36-0 the first game, but the Coyotes lost the second contest to Grady by the score of 18-12. The Coyotes beat Ira 27-6 and 18-6.

Hermleigh beat the Coyotes 37-19 and 26-13. The Junior High Coyotes worked hard and wanted to improve and they did. I appreciated all of the young men's hard work and willingness to learn. I also want to thank the parents of these young men for their support and for their time given to the 1980 football season. Also, a thanks to all the fans, pep squad, and people who made this season an enjoyable one. The Coyotes will be back next year with determination to up that winning mark!

BOOSTER CLUB SUPPER

Nov. 20
Bring all the family and two covered dishes.
Proceeds to benefit the Booster Club.
7:00 p.m.

High School Pep Rally

Darrell Green presented the team talk during the high school pep rally last Friday. He said, "We have practiced harder this week than we have all year. We need this win." Darrell also presented the spirit stars. Coach Bill May received the star for the best offensive player because of the great scouting he did for the team

all year. Coach Maxwell was recipient of the best defensive star for the assistance on the football field.

Coach Maxwell gave the pep talk saying "There's lots of pride involved in the game with Highland." He urged all fans to come out and watch the game.

Jr. High Pep Rally

The Junior High football players were honored with their last pep rally of the year Thursday, November 6.

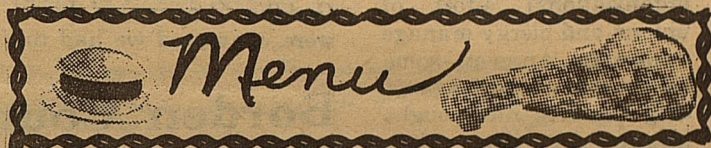
Julie Ridenour received the spirit bell. The grade that won the best poster contest was the 4th grade. They were awarded a box of candy. An appreciation gift was presented to Mrs. Westbrook by the cheerleaders for her dedication and long hours of work as sponsor.

Coach Roemisch gave the pep talk. He said he was proud of the 'little ones.' He said that they were small, but had lots of heart and

played hard during the past eleven weeks.

Michael Douglass presented the team talk saying, "We know what we have to do to beat the Cardinals and that is to stop number 24. So, get him!"

Twirler, Shelly Buchanan; cheerleaders, Nancy Martinez-7th grade, Cathy York and Ronda King-6th grade, Rene Telchik and Debbie King-5th grade; the pep squad; drummers-Becky Massingill and Simona Benavidez and all 17 Junior High Football players are to be commended for a job well done.



November 17-21, 1980

LUNCH MONDAY BREAKFAST

Hot Dogs
Salad
Green Beans
Fruit
Milk
Salad Bar

Cereal
Fruit Juice
Milk

TUESDAY

Chicken Fried Steak
Creamed Potatoes
English Peas
Hot Rolls
Cake
Milk
Salad Bar

Jelly Donuts
Fruit Juice
Milk

WEDNESDAY

Beef & Vegetable Soup
Cheese Sandwich
Fruit
Cookies
Milk
Salad Bar

Coffee Cake
Fruit Juice
Milk

THURSDAY

Pizza Squares
Celery Sticks
Corn
Jello
Milk
Salad Bar

Oatmeal
Toast
Fruit Juice
Milk

FRIDAY

Hamburgers
Lettuce-Tomatoes-Pickles
French Fries
Brownies
Milk
Salad Bar

Cereal
Fruit Juice
Milk

1980 NOVEMBER 1980

SUN	MON	TUE	WED	THU	FRI	SAT
	1980 NOVEMBER		OCTOBER 1980 S M T W T F S 1 2 3 4 5 6 7 8 9 10 11 12 13 14 15 16 17 18 19 20 21 22 23 24 25 26 27 28 29 30 31	DECEMBER 1980 S M T W T F S 1 2 3 4 5 6 7 8 9 10 11 12 13 14 15 16 17 18 19 20 21 22 23 24 25 26 27 28 29 30 31		1
9	10	11 6:30 p.m. H.S. Basketball A-B Girls Greenwood - H	12	13	14 7:00 p.m. H.S. Football McCaulley - H	15 6:30 p.m. H.S. Basketball A-B Girls Greenwood - T
16	17	18 6:30 p.m. H.S. Basketball A-B Girls Ropes - Here	19	20	21 4:00 p.m. H.S. Basketball Boys & Girls New Home - T	22
23 30	24 4:00 p.m. J.H. Basketball Boys & Girls Western Hills - There	25 5:00 p.m. H.S. Basketball Boys & Girls New Deal - T	26	27	28 Thanksgiving Holidays THANKSGIVING DAY	29



Whoop-te-do! Glory be! Eee-hah! How sweet it is! Yep, we done it! Pardon me if you are already bored with jubulation, but dead lines being what they are, this is the first chance I've had to express my absolutely amazed joy.

Not only was Republican president elected last week, but a conservative sweep across the country prevailed. If you'll allow me to remind you--an election of a conservative president without gaining control of the Senate and picking up a sizeable gain in the House would have been far less exciting. Do you realize that everyone of the senators who were on the hit list of the conservative PACs were defeated--plus more? Of course the defeated are already crying foul play. Funny how it becomes foul only when an organized effort defeats you. All is fair if the organizational effort of unions and clergy manage to elect you. Anyway--some believe that it was Reagan's long coat-tails that brought about all the other conservative victories. I agree that the landslide had an effect, but I am convinced that it was the nearly two year concentrated work of the political action groups that made the difference. In fact, by pinpointing the liberal records of those incumbents and by making the electorate aware of the need for a change, these committees probably contributed more to the election of Reagan than

Reagan did to the defeat of the liberals.

There has been a lot of hindsight and Wednesday morning quarterbacking about just what turned the tide. Was Reagan ever in trouble? Had the American people finally had enough? Was it the debate? Or was it a backlash from the obviously manipulated hostage negotiations? I could not trust my own reactions to the debate or the hostage deal (biased as I was), but I do think that the President did not give anyone much confidence in his leadership ability when he told US that he had consulted with Amy about "nuc-e-er proliferation". Oh dear! Roger Staubach was asked to apologize after he said he might better ask his Amy which play to use. He refused by asking shy should he apologize?--that Amy Staubach knows as much if not more about football than Amy Carter does about that other subject.

No matter who is responsible for a great victory, I am grateful to all of US who went to the polls and voted their convictions. It is a sad thing that only 52 percent of US who were eligible voted. But I thank God that 51 percent of those were convinced we had to

Borden County Added To Program

Borden County has been added to the "all-risk" federal crop insurance program, Congressman Charles W. Stenholm has announced.

"The expansion marks the beginning of a five-year expansion program to extend the government-assisted insurance coverage to all major agricultural counties in the U.S.," Stenholm.

The new program permits farmers to:

- Gurantee insurance coverage on up to 75 percent of their yields;
- Select the price level used to determine payments on lost production; and
- Purchase hail and fire coverage from private companies and receive a premium reduction from the "all-risk" federal policy.

have a change. The change won't come by January 21, 1981 but we will have a president who believes in less government and more personal responsibility and who will have a house and senate who are more inclined to restore sanity to government.

Guest Editorial

By Allen Monroe,
Traffic Safety Coordinator,
Amarillo College

A PARENT'S RESPONSIBILITY TO A CHILD

I cannot understand why a parent will not insist that a child wear some form of restraint-seat belt, harness or approved car safety seat. Maybe it is because they have a guilty conscience because they, the parents, do not wear them.

The following are some simple precautions to take:

Everyone must sit and remain seated while the vehicle is in motion.

Hands, heads and possessions must be inside the vehicle.

No one may distract the driver by fighting, fussing, or yelling.

No lollipops or popsicles, no sharp edged or heavy

toys loose in the vehicle.

No obstructions to the driver's vision, such as balloons or hanging clothing.

No maybe's or just-this-time about the rules.

No exceptions, or broken rules bring discipline.

Yes, it is difficult. Yes, it is a constant battle. Yes, we must set an example if we care.

Accidents kill approximately 16,000 children under the age of 15 each year. Over one-third of these are killed in automobile accidents.

Make it a rule to never leave a child in a vehicle alone and never leave your keys in the vehicle. If you live in a hilly area where your vehicle could roll out of the drive or down the street, set the brake, put it in park or reverse, turn your front wheels to the curb, and *lock the vehicle*. Children are killed and injured every year because of careless parents and friends.

As parents we have to set an example for the children; the school cannot do it. A Driver Education Program given to a student cannot erase 15 years of bad examples by a parent or parents.

EAST SIDE OF THE SQUARE

The Finest
In Nationally
Known Brands
of
Western Wear
and
Sports Wear

FENTON'S
Snyder 573-6111

ROY MOTOR CO.
SALES AND SERVICE
LAMESA, TEXAS

NEALE ROY PHONE 806 - P72-5484
RES. 806 - 872-3556 1611 N. DALLAS

IS AVAILABLE
24 HOURS A DAY —
SEVEN
DAYS A WEEK

MR. CURREN C. MAKER

Security State Bank
1411 GREGG BIG SPRING, TEXAS
MEMBER F.D.I.C.

POLLARD Chevrolet Co.

WHERE
VOLUMN
SELLING
SAVES YOU
MONEY

1504 East 4th
Street
Phone 267-7421
Big Spring

THE FIRST NATIONAL BANK

BIG SPRING, TEXAS

400 MAIN 267-5513

The First — In All Banking Service

MEMBER F.D.I.C.



JEANS - HOW TO BUY

First in series.

Jeans vary greatly in price -- whether for guys or gals.

With so many choices, how does the female consumer decide which jean to select?

The following guidelines may help.

Price of jeans is influenced by the fabric, fabric finish, cut, detailing, brand and type of store.

To save money, compare fashionability, fabric quality and garment construction to intended use; select simple desing details; choose brands you can trust and shop in the lowest priced store offering the quality and style desired.

FABRIC

Most jeans are made of denim, a twill woven fabric of cotton or a cotton blend. Look for firmly woven and durable fabric.

Generally, the heavier the weight, the more durable the fabric.

All-cotton jeans tend to be more absorbent, softer and

resist pilling better than blends.

However, blends tend to resist shrinkage and wrinkle less than untreated cotton denim.

To maintain a neat appearance and fit, select preshrunk and wrinkle-resistant cotton denim.

FABRIC FINISH

Check the label for fiber content and finish information. Jeans should not shrink more than two percent. Buy a larger size if the label does not guarantee shrinkage control.

The word "sanforized" guarantees fabric will not shrink more than one percent. A shrinkage control trademark commonly used on denim is "Sanforset."

Company trademarks associated with this finish include "Lee-set," "No Fault" and "Fitting Jeans."

For wrinkle-free finishes, look for permanent press or durable press information.

Trademarks for these finishes will generally include the term "prest" or "press."

CUT

Cut or styling will affect the price and fit of jeans, so select the right style for your figure.

Some jeans are cut for the slender figure, while others are fuller through the hips and thighs.

Also, some jeans are cut with flared legs to wear over western boots or have a fashion cut with slim or tapered legs, or have a full "baggy" appearance.

Fashion cuts tend to cost more.

Some jeans are sized like dresses (9, 11, 13) while others are sized by waist measurement and may provide a variety of leg lengths.

Because of the variety of sizing and styling, trying on jeans in the store is essential to obtain proper fit.

Since cotton denim tends to conform to the figure, select jeans that fit snugly when new for a close fit when wearing.

Also, denim tends to contract when washed buy expand with wearing. This may make freshly washed jeans uncomfortably tight when first put on.

DETAILING

Construction details can add to the quality of jeans and may affect price.

Flat felled seams, generally used on jeans, leave no raw seam edges to ravel. These seams are characterized by a double row of stitching which totally encases the seam allowance.

Seams not flat felled should be zig zagged or serged to prevent raveling. Check that seams are firmly stitched and neatly constructed.

Interfacing or double thickness at the waistband helps reduce stretching. Look for thread bar tacks or rivets at places of stress like pocket corners, belt loops and bottom of zipper placket.

Also, check for a quality, durable zipper which zips easily.

Special designs such as embroidery or geometric stitching on the pocket or other pand areas will add to the cost, especially when associated with a certain brand or designer.

BRAND

In most cases, a designer trademark will add at least \$10 to the price of the jeans.

STORE TYPE

Jeans bought in specialty stores or fashion boutiques will cost more, but these stores generally offer the latest in fashion styling.

Chains stores and discounts buy in greater quantities, so the consumer usually pays less at these stores.

(NEXT WEEK: Designer Jeans - Why Buy?)

Borden County Historical News

Have you visited the Borden County Museum lately?

The Museum is open each Saturday and Sunday afternoon for your visits. Jim Burkett, Buster Taylor, Van York, Sybil Gilmore, Bonnie Sneed, Roy Reeder, Francis Bennett, Vivian Clark, C. C. Nunnally, Edna Miller, Frances Burkett, Jean Taylor, Barbara York, Azlee Reeder, and Pauline Clark, have all given of their time to keep the Museum open.

Visitors from many different places have visited the Museum during the months the Museum has been open on weekends.

There have been visitors from Ruidoso and Fort Sumner, New Mexico; Bensalem, Pa.; Carlsbad, New Mexico; Jan Jose, Calif.; Alliane, Kansas; Wilcox, Arizona; Eagan Arizona; Syracuse, New York; Washington State and Louisiana; San Francisco, Calif; Furbon, Ohio; Sattelite Beach, Fla.; Redlands, Calif.; Hobbs, New Mexico; and many, many towns in Texas. Tow people who gave their home as Brazil have also visited

the Museum.

Quite a few people who live in Borden County have been by to see it lately. Have you? We are planning some more changes in the near future, so bring your friends and visitors and come see us.

The American Association of Sheriffs Poses and Ridng Clubs, District 4, visited the Museum as part of their fall outing. They met in Big Spring where they started their fall horseback ride to Gail. They left Big Spring about 2:00 p.m. on Saturday the 8th and rode to the corrals on the Phinzy Ranch. They spent the night there, camping out, and then rode into Gail on Sunday arriving at the Museum about 1:30 p.m.

They visited the Museum and were served lemonade, coffee and cookies, by Mr. and Mrs. Vivian Clark, Frances Burkett, Aubrey Rogers, Buster Taylor and Dorothy Browne.

They reported a nice ride, a nice campout and a nice visit to the Museum as they loaded their horses in their trailers and left for home.

Lubbock Hiway Rt. B-Box 42 Lamesa, Texas
 Phone 806-872-5474
 BRAY IMPLEMENT CO. Inc

TERRY'S HORSESHOEING
 GAIL, TEXAS
 915-856-4361
 THE HOOF - THE FOUNDATION

YOUR PERSONAL DEALER
BOB BROWN
Olds-Cadillac-GMC
 202 South 3rd
 Lamesa, Texas
 806-872-2144

OLDSMOBILE SERVICE
 GMC TRUCKS
 Cadillac
 GM QUALITY SERVICE PARTS
 GENERAL MOTORS PARTS DIVISION

Texas Farm Bureau Insurance
 Scott Russell, Agent
 Lamesa, Texas
 1602 N. Dallas Phone 872-8333

See the new
Tomty
 Downright Comfortable Since 1915
models...
Cowboy Supply
 118 Austin Ave. LAMESA 872-3684

School Buses Back On Roads

Nationwide there are many serious school bus accidents on the highway.

Here is what can happen when a commercial motor vehicle collides with a school bus: Early on a chilly afternoon, a heavy truck ran a stop light at a rural intersection and struck a moving school bus broadside. The body of the bus was ripped off, and the bus was flipped over. Five students were killed and 21 others were seriously injured.

This is only one of the many recent school bus accidents involving motor vehicles on our highways. In Texas, similar tragedies resulted in 10 deaths during 1978-79; most of these accidents could have been avoided had the driver exercised more awareness and caution.

Drivers, when you see a yellow school bus ahead, slow down and remember: a yellow school bus is like a moving traffic signal. If the amber lights on the bus are flashing, prepare to stop; if the red lights are flashing, stop at least two vehicle lengths away from the bus -- this permits better visibility of students leaving-entering the bus. Most pupil fatalities occur when the pupil is a pedestrian. Even when the bus leaves, watch for the

All Girl Rodeo In Sweetwater Nov. 22

SWEETWATER — The annual All-Girl Rodeo, sponsored by the West Texas Barrel Racing Association, has been for Saturday, Nov. 22, at the Nolan County Coliseum.

There are two scheduled performances, a matinee at 2 p. m. and an evening performance at 7 p. m.

The rodeo is open to any female. An All-Around saddle will be presented to the champion cowgirl earning the most points in the events.

The events include open barrel race, junior barrel race (open to girls 14 and younger), flag race, pole bending, goat tying, steer dabbing, breakaway roping, team roping and steer riding. Entry fees will be \$8, with \$5 being jackpotted. An open barrel race for ladies will also be held, with the entry fee being \$23, of which \$20 will be jackpotted.

Entries are due by Nov. 18, and entry blanks may be obtained by calling Patricia Boyd-Corbett at 915-846-4552.

Better Business Bureau Alert

South Plains residents should be alerted to a company by the name of Poole's Ltd. Gem Liquidators of New York.

This company is offering, through newspaper advertising, a "free" genuine diamond to creditcard holders that purchase a "single parcel of

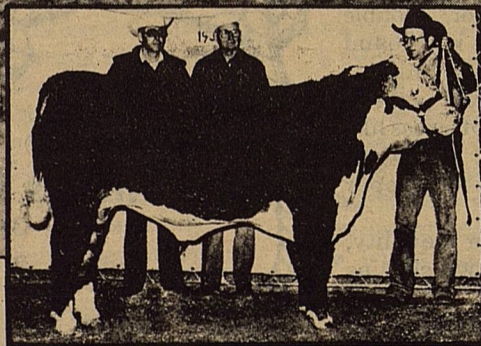
3 fully faceted, polished precious stones consisting of a genuine emerald, a genuine ruby and a genuine sapphire."

The Better Business Bureau of New York reports that on several occasions, background information has been denied by the company. The BBB of New York has questioned the firm's advertising also.

BBB-South Plains advises caution in doing business with this firm based on the following

reasons:

1. You have to buy something to get the "free" diamond, therefore, the diamond is not free.
 2. The urgency-type appeal of the advertising.
 3. Customer having to give credit-card number only.
 4. The New York BBB's report on company.
- Anyone having questions can call BBB at 763-0459 or for South Plains residents living outside Lubbock, call 1-800-692-4466.

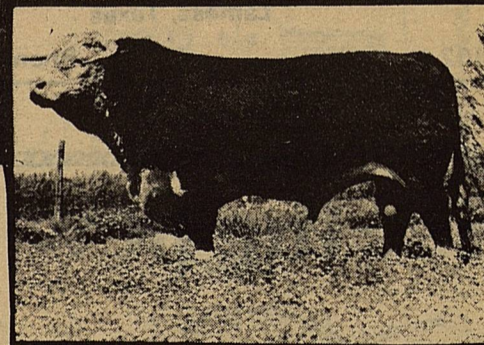


WE L1 DOMINO 624

Our son of HH Advance A482. We topped the 1980 Texas Select Bull Sale to buy this bull. He is out of an own daughter of CL1 Domino 820. The sale heifers all sell bred to "624"

TPR Records have been kept since the beginning of the program.

85 percent of the cowherd carries the influence of Mischief 119 and Sam Donald.



Super ROM MISCHIEF 119

Youngblood Ranch
LAMESA, TEXAS

STAR ROUTE 2, LAMESA, TEX. 79331

Phones: Alton 806-497-6411 Arlan 806-497-6412

Sale time 1:00 p.m.

Phone Sale Day 806-497-6414

15 miles E. Lamesa 16 miles W. Gail

by Jerry Stone

COUNTY COMMITTEE ELECTION

On November 21, ballots will be mailed to eligible voters for the upcoming county committee election. One member, first alternate, and second alternate will be elected. Keep this in mind and be ready to support the candidate of your choice by exercising your voting privilege.

FAILED ACREAGE AND LOW YIELD

Do not miss out on disaster payments you are rightfully entitled to receive. It is very important that producers remember to file an ASCS-574 within 15 days from the final date of harvest while evidence of the crop is still apparent. DO NOT mechanically disturb the land until the acreage is released. If you decide to abandon all or part of the acreage, then you must file an ASCS-574 before you destroy the crop or make other use of the acreage.

WHEAT FINAL PLANTING DATE

E.M.S. Meeting

The regular monthly meeting of the Borden County Emergency Medical Service was held Monday, November 3, 1980, at 7:00 p.m. in the High School Conference Room.

EMT's present were Buster Taylor, Frances Burkett, Dorothy Browne, Nelva Jones, Bob Bagley, Ross Sharp, Jim Burkett, Gerald Boyd, and Lisa Ludecke. Four visitors were present. They were Ouida Turner, Janette Turner, Kim Turner, and Glen Bacon.

The November program committee - Bob Bagley and Gerald Boyd - presented a program on CPR. After briefing and review test covering several aspects of CPR, each EMT and visitor was given an opportunity to do CPR on "Resuci-Annie" (the CPR dummy).

The next meeting will be held on December 1, 1980, enroute to the Veterans Hospital in Big Spring for a teleconference entitled "Triaging Mass Casualties" beginning at 7:30 p.m. All EMT's are reminded to meet in front of the school at 6:30 p.m. on December 1.

DONATIONS

Mr. and Mrs. Royce Patterson
Mr. and Mrs. Vivian Clark

November 30, is the established final planting date for wheat and barley in Borden County. These dates do not restrict you from planting at a later date and will not necessarily eliminate you from low yield disaster coverage if you do get the crop planted after the normal planting date.

Any producer who intended to plant wheat or barley but has been unable to do so due to adverse weather conditions may file for prevented planting credit. Applications must be filed within 5 days after the end of the normal planting period for the intended program crop.

FARM RECORDS

If there will be a change in your 1981 farming operations please let us know in order that we may keep our records up to date.

AGRICULTURAL CONSERVATION PROGRAM SIGN-UP

The 1981 Conservation Program has been announced. Applications will be accepted at the County Office from now through Monday, December 1, 1980. Approvals will be based on the priority of practices considering conservation needs and funds available. The maximum limitation is \$3,500.00 per person, per year.

CROP AND LIVESTOCK REPORTS NEEDED FROM FARMERS AND RANCHERS

From mid-November to early January, many Texas

farmers and ranchers will receive a crop or livestock questionnaire from the Texas Crop and Livestock Reporting Service or will be personally interviewed by the Service's field staff. All of the estimates published by the Texas Crop and Livestock Reporting Service are based on the data provided by Texas farmers and ranchers, County Extension Agents, ASCS offices, and many others in agriculture. This cooperation provides the necessary data which is, in turn, returned to farmers and ranchers and others in the form of accurate estimates, which are so essential in making the wisest production and marketing decisions. Each farmer or rancher receiving a questionnaire is urged to fill it out carefully and return it promptly to the Agricultural Statistician in Austin. Individual reports are confidential and used only for state and county estimates.

DATES TO REMEMBER

November 12 - Final date to Appeal Normal Crop Acreage

November 15 - All requests for Livestock Feed expire

November 30 - Final planting date for wheat and barley

December 1 - Final date to request cost-share assistance for ACP

December 1 - Final date to return voted ballots in COC Election

December 31 - End of marketing year for wool and unshorn lambs

Eligibility for participation in all programs administered by ASCS is established under law without regard to race, color, religion, sex, or National origin.

Landslide

Con't from P. 1

Stenholm, unopposed, rolled up 233 votes in the county. Larry Don Shaw, who defeated incumbent Mike Ezzell in the race for the 63rd District's representative won 264 votes here in Borden County.

Wayland G. Holt gained 288 votes for District Judge, 132 District and Lealand W. (Pete) Greene, gathered 264 votes for District Attorney, 132nd District.

All local county races ran uncontested with Norman (Slick) Sneed gathering 324 votes and Herman Ledbetter, Commissioner Precinct No. 1, 93 votes and Vernon Wolf, Commissioner Precinct No. 3, 76 votes.

Borden County voters approved only four of the nine amendments to the state constitution listed on Tuesdays ballot.

Those approved are:

No. 1, for unmanned teller machines 201 to 170;

No. 6, permitting governor to remove appointed officers 198 to 149;

No. 7, permitting private road work in counties under 5,000 population 302 to 79;

No. 9, permitting spouses to agree on income division arising from separate property 192 to 163.

Amendments rejected by Borden County voters are:

No. 2 for state appeal of pre-trial motion 214 to 118;

No. 3 for single board of equalization 242 to 117;

No. 4 to legalize bingo via local option 188 to 183;

No. 5 to give more fiscal control to the governor 256 to 90;

No. 8 on a variety of court changes 221 to 104.

Statwide, amendments No. 1, No. 3, No. 4, No. 7, No. 8 and No. 9 were adopted, while No. 2, No. 5, and No. 6 were rejected.

Ezell-Key Feed & Seed

- Feeds
- Seeds
- Insecticides
- Fertilizer

1615 26th Street
Phone 573-6691
Snyder, Texas

LOTA'BURGER A Square Meal
On a Round Bun

Phone 573-2922
Snyder, Texas



Kimball Pianos & Organs

Authorized Sony Dealer
Large Selection of Records, Tapes, Sheet Music
Band Accessories and Component Stereos

LAMESA MUSIC COMPANY

Phone: 806-872-2401 509 S. 1st St.

Barrington Pump & Machine

*Myers, Taitco and Simmons Pumps
Complete Machine and Welding Shop*

Phone 872-8307 Lubbock Hiway
Rt. B P.O. Box 28 Lamesa, Texas

Ozarka
WATER COMPANY

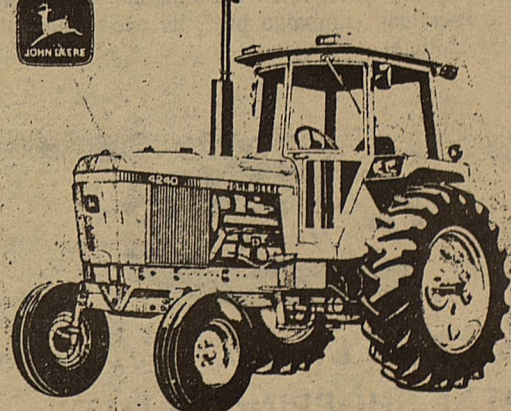


CALL TOLL FREE
1-800-582-4323

605 S. Marienfeld - Midland, Texas

Oasis Water Coolers Crystal Pure Drinking Water
Sales and Rentals Delivery In Borden County





WAYLAND TAYLOR INC.
O'DONNELL, TEXAS

806/423-3345

How Reagan Won

LOS ANGELES (AP) — It was Sept. 4 and as Ronald Reagan's chartered jet carried him toward Florida and Louisiana, his campaign was in trouble, beset by a series of stumbles in its early days.

His once-huge lead in the polls after July's Republican convention was shrinking and Reagan was on the defensive after a flap about his policy toward Taiwan, his declaration that the Vietnam War was a noble cause and his attempt to link President Carter to the Ku Klux Klan.

In retrospect, Reagan's strategists now view that trip as the turning point in the campaign, the day they began to shift the focus from Reagan's missteps to the Carter administration's record.

In the two-state southern swing, Reagan accused Carter of leaking military secrets about new bomber technology for political gain — to show that U.S. defenses were not in the bad shape that Reagan claimed.

The charges coincided with the start of a congressional investigation of the news leak, and the issue suddenly dominated the headlines and threw the president on the defensive.

The Sept. 4 trip also marked the first day that Stuart Spencer, a savvy Republican strategist and manager of former President Gerald R. Ford's 1976 race, began traveling on the candidate's plane. He steered Reagan away from trouble and picked up political intelligence from old allies.

From the beginning, Reagan's strategy was to attack Carter's record on the economy and inflation, particularly in big midwestern and northeastern states where layoffs in the auto and steel industries, as well as in coal mines, pushed state unemployment rates above the national average.

Reagan knew he had to convince blue-collar workers and other traditional Democrats to desert their party. He pledged to beat inflation and give them a 30 percent tax cut over three years.

He also vowed to bolster America's prestige throughout the world and to make America a militarily strong country that adversaries would be forced to respect.

Reagan also paid careful attention to the South. In particular he made repeated trips to Texas and Florida, hoping to crack the regional base that helped put Carter in the White House in 1976.

In the end, Reagan carried every southern state except Carter's native Georgia.

How Carter Lost

WASHINGTON (AP) — In the end, the campaign boiled down to two main issues: the economy and war and peace. Both worked against Jimmy Carter.

Carter couldn't overcome his own record and he failed to convince the voters that Ronald Reagan was too reckless and right-wing to occupy the Oval Office.

His last chance may have been the televised debate a week before the election — a one-on-one confrontation that Carter had insisted on.

The reassuring image of the Republican nominee projected before an audience of more than 100 million belied Carter's efforts to portray Reagan as trigger-happy.

As he was restoring luster to his own image, Reagan attacked the president on the economy where he was most vulnerable, asking voters whether they were better off or worse than they were four years ago.

Inflation stood at 12.7 percent and unemployment at 7.5 percent. Fifty-two Americans had been held hostage in Iran for a year.

Within 48 hours, Carter knew the situation was desperate. During a week-long campaign blitz, he tried frantically to refocus the spotlight on Reagan.

At first, it worked. Carter campaign polls had shown him trailing Reagan by 3-4 points after the debate. But by Saturday, the president held a slight 0.3 percent lead.

Overnight, it fizzled: Sunday's polls revealed that the president was down by 2-5 points. By Monday — the day after Carter had temporarily suspended campaigning to assess the conditions set by Iran for release of the hostages — the outcome was inevitable: he trailed by 7-10 points.

In the pre-dawn hours of Election Day, as Air Force One flew to Plains, Ga., for Carter to cast his own ballot, press secretary Jody Powell ordered a drink and braced himself to deliver the omen to his boss.

Before the president voted, he knew.

He may have suspected even before his weekend surge.

On Thursday, there was a small crowd for the president's appearance at a Polish club in Philadelphia and only polite applause from Jewish leaders when Carter made his strongest pledge ever in support of Israel.

On Friday, in Florida, Carter admitted the outcome was in doubt. And one of his most trusted advisers told reporters aboard Air Force One the campaign was suffering a "pause in momentum."

The post-mortem offered by Carter's aides blamed the defeat on the hostage statement and dual problems of inflation and recession.

Blaming inflation and unemployment on increases in oil prices, Carter played up his achievements on energy and the Middle East and stressed the necessity for calmness and stability in the Oval Office.

Carter admitted he had made mistakes, and declared himself wiser for his on-the-job training.

But in the end, the man who won his job in 1976 as an outsider lost it four years later because he had become the ultimate insider.

Xmas Bazaar Sponsored By 4-Her's

Put a big star on December 2, 1980! The day for the 2nd Annual X-mas Bazaar. It will be held in the school Conference Room from 3:30 - 7:00 p.m. This is a chance for you to do a little X-mas shopping early!

In order to make this a success, we need YOUR help. 4-Her's are asking people in the county to donate things they have made — such as Arts & Crafts, Decorations, Plants, Needlework, Baked goods & canned goods.

If you are willing to help in this effort, and have something you wish to donate please contact one of the 4-H leaders in your area before December 1.

Plains: Mary Lynn Williams 439-6614

South Part of County - Mary John Phinzy 399-4554; Teri Smith 497-6481; Pat Murphy 573-5002

Fluvanna - Jeri Daugherty 573-7740; Sue Lloyd 573-4420

Or LaRhea Pepper at the County Extension Office in Gail 915-856-4201

The Borden County 4-H appreciates your continued encouragement and support.

Classified

Clerical part or full time opportunity from home working with mail. No experience required. For information, send stamped, self-addressed envelope. DYN-NAR ENTERPRISE, P.O. Box 36, New Brunswick, N.J. 08903

Obituary

Rube McGuire

Services for James "Rube" McGuire, 85 were held November 3 in Ada, Oklahoma. Burial was in Jesse Cemetery.

Mr. McGuire died Friday in the Veterans Hospital in Sulphur, Oklahoma.

He was born December 29, 1894, near Waco, Texas to Sam and Nattie Eddlemon McGuire, and moved to the Ada area in 1903. He was a retired farmer, and Veteran of World War I.

He married Lillian Ginn, in 1918, in Pontotoc County, Oklahoma. She died in 1935.

Survivors include one daughter, Stella Tollison, Ada.; one brother, Jo, Lamesa, Texas; one sister, Lena Howell, Gail, Texas; two grandchildren and two great-grand children.

The male penguin incubates baby penguin eggs between his feet!

GAGE FINA TRUCK STOP

Owner-Operator John Hamilton

OPEN 24 HRS. DAILY
15-20W Sweetwater, Tex.



Big Spring Automotive

219 W. Third
Big Spring, Texas 79720
915-267-6308



Energized Cubes - Mineral - Mintrate Blocks

C. Wilson Howell

SALESMAN

BOX 1066

SNYDER TX 79549

Moorman Mfg. Co.

Phone: 573-3826

GAIL TEXACO

OPEN SUNDAYS

2 p.m. - 6 p.m.

Phone No. 856-4101

GAIL WELDING SERVICE

Full Line of Service

Oil Field-Ranch & Farm

Lonnie King

Ph 915-856-4101

Nite 915-856-4162

Claiborne's

More Than Discount! We give You
TOTAL SHOPPING VALUE!!!

HOME OWNED AND OPERATED
BY THE CLAIBORNE'S

1 708 N. 1st

NO. 2 710 N. 14th

LAMESA, TEXAS