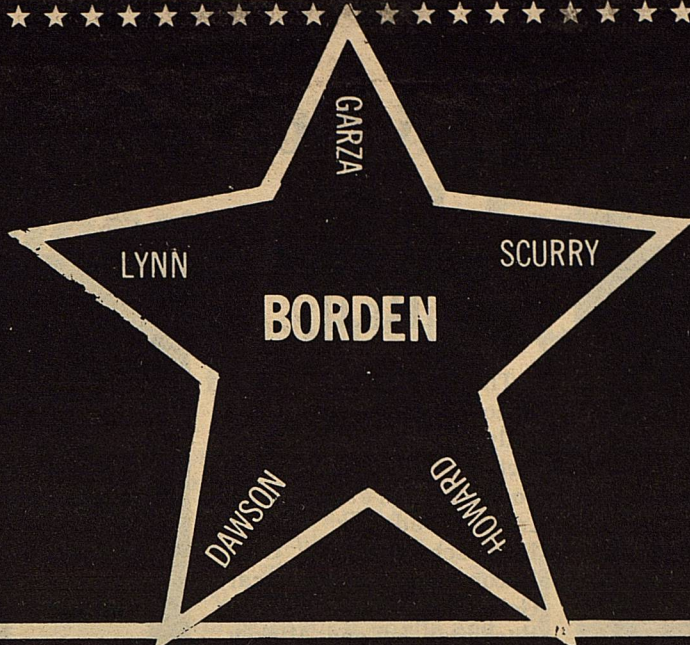


THE

STAR



Volume IX No. 6

October 8, 1980

Serving the Counties of Borden, Dawson, Garza, Howard, Lynn & Scurry

# NATIONAL 4H CLUB WEEK

## Phinzy To Head Local Republicans

AUSTIN-- Governor Bill Clements today announced the appointment of Mr. Bill Phinzy of Gail to be the chairman of the Reagan-Bush Campaign in Borden County.

In announcing the appointment, Governor Clements said, "Mr. Bill Phinzy is part of the top-notch statewide campaigning team we are putting together as we organize all 254 counties in order to carry the State of Texas for Governor Reagan and our fellow Texan George Bush. Each county is vital to our success, and we are waging an aggressive campaign from one end of our state to the other."

The Governor also said, "It's absolutely astounding the way momentum is building in Texas for Governor Reagan and Ambassador Bush. Every day, more and more Texans -- including many,

many Democrats and Independents -- are joining in active support of the Reagan-Bush ticket."

Among the many prominent Texans endorsing Governor Reagan and Ambassador Bush are former Texas Governors John Connally, Allan Shivers, and Preston Smith, as well as former Texas Governors John Connally, Allan Shivers, and Preston Smith, as well as former Lt. Gov. and former Speaker of the Texas House of Representatives Ben Barnes of Brownwood.

Other prominent Texas Democrats and Independents supporting the Reagan-Bush ticket include Democratic State Senators Bill Meier of Eules and Bill Moore of Bryan; former Speakers of the Texas House of Representatives Reuben Senterfitt of San Saba and Jim Lindsey of Texarkan;

Dr. Abner McCall of Waco, President of Baylor University; Colonel Wilson Speir of Austin, former director of the Texas Department of Public Safety; former U.S. Congressman O.C. Fisher of Junction; and former U.S. Ambassador and Presidential Advisor Ed Clark of Austin and San Augustine.

Governor Clements said, "Their support is welcomed and I think it is indicative of the thinking of most Americans who have had all they can stand of the Carter Administration's miserable record on all fronts."

The Governor stated, "Jimmy Carter's record -- which he is taking great  
*Con't on P. 7*



**SIGNING THE PROCLAMATION** - The Senior and Junior 4-H Officers were on hand to witness Judge Burkett signing a proclamation to proclaim October 5-11 as National 4-H Week in Borden County.

## Estate Planning To Be Held

An overview of Estate Planning will be held in the Borden County School Conference Room at 7:30 p.m. on October 20. Marvin Sartin, the South Plains Area Economist Management for the Texas Agricultural Extension Service, will be the speaker for this meeting.

The topics he will be covering are: the basics of estate transfers, what happens when you die

without a will, Estate Taxes, Gift Taxes, Tax free gifts, and Trusts. Mr. Sartin will also be discussing the advantages and disadvantages of farms and ranches pertaining as business organizations in relation to Estate Planning.

Questions and discussion will be welcomed. Refreshments will be served. Everyone should make an effort to attend this meeting.

Ex-students will be coming from as far away as California (maybe further) to attend Homecoming at Borden County School this Friday, October 10. Plans have been in the making for several weeks to make this (1980) Homecoming one of the best in the history of Borden County. Of the 30 students who started school together in the first grade, 13 graduated. Members of the class being honored are: Xavier Benavidez (England), Cheron Billeck Singleton (Mansfield, Louisiana), Charlotte Brown Hatfield, Judy Buchanan Smith, Terry

Canon Cheatham, Delwynn Davis, Debby Dennis (Dallas), Lisa Dennis Mahler (Temple), Betty Gray Echor (Odessa), Freddy Hagins (Midland), Sandra Hancock Cunningham (Ranger, Tex.), Dolores Lankford Anderson, Bobbie Ludecke George (Goldsboro, N. Carolina), Carla Shoemaker Hensley, Lin Smith, Sandra Sneed Evans, Robert Sorrells, Steve Summers, Darrell Taylor (Brighten, Colo.), Elidora Villanueva (Washington D.C.), Gary Wilkerson, Debbi Wills Hanks, Ted Yadon (Alpine).

## Great Anticipation Surrounds Homecoming

Activities are scheduled  
Pep Rally- 4:00 p.m.  
Bonfire- 4:00 p.m.  
Chili Supper- 4:30-7:00  
Homecoming Game with Ira - 7:00 p.m.  
Reception Honoring the Exes-following the game.

Everyone is invited to attend all the activities on Homecoming day. The chili supper is sponsored by the Booster Club and features R.T. Bell's famous chili, crackers, tea and homemade pies.

The Homecoming Queen will be crowned during halftime and the football Beau, Football Sweetheart and Band Sweetheart will be presented.



# Borden County School News

## Welcome All Exes

### Borden Co. School Rated In Top 30

Borden County School has been rated 5th in Average Labor Income Per Student for 1978-79 in a summary supervised experience of 82 schools in Area II. Borden County was also rated second in the Top Lone Star Farmer schools with 26 Lone Star Farmer Degrees being presented by the Gail Chapter during the last 5 years.

The following is the complete results of the summary:

SUMMARY SUPERVISED EXPERIENCE  
Area II 1978-79  
(82 Schools)

Upper 30% Schools Average Net Income Per Student 1977-79	Av. Labor Income Per Student 1978-79	Av. Labor Income Per Student 1977-78	Top Lone Star Farmer Schools 1976-80 (5 yrs) 30% area schools	Schools No.
Colorado City	3,850.07	2,523.23	BORDEN CO., GAIL	26
Grady	3,151.09	1,360.17	Brownfield	39
Ysleta Vocational	1,810.83	1,190.80	Colorado City	24
Sierra Blanca	1,734.46	361.52	Anson	24
BORDEN CO., GAIL	1,648.89	919.99	Plains	23
Plains	1,253.81	1,312.09	Ysleta	23
Dawson, Welch	1,233.68	653.88	New Home	18
Meadow	1,232.33	509.83	Wellman	17
Highland	1,231.59	1,305.30	Midland High	17
Wellman	1,091.07	928.39	Haskell	17
Anson	1,067.15	511.33	Stanford	16
Midland High	983.98	1,298.33	Midland Lee	16
Alpine	959.24	896.97	Wilson	15
Central, San Angelo	896.25	801.98	Hawley	15
Tahoka	876.64	508.61	Klondike	14
Aspermont	832.08	815.13	Central, S.A.	13
Sterling City	800.00	923.68	Hamlin	13
Roscoe	761.30	350.16	Snyder	13
Fort Stockton	742.90	572.84	Seagraves	13
Denver City	683.38	707.68	Sweetwater	12
Hamlin	663.72	404.02	Lamesa	12
McCaulley	526.00	221.83	Highland	10
Ft. Hancock	492.10	363.36	Tahoka	10
Wilson	485.21	480.60	Alpine	8
New Home	483.79	154.31	Sands	8
			Stanton	8
			Loop	8

Summary Supervised Experience  
Page 2

Labor Income of top 30% of Area Schools	Income 1978-79	Income 1977-78	Leading Lone Star Farmer Schools Since Chartered	Top 30% of Area Schools School	No.
Colorado City	147,850.07	103,545.28	Brownfield	Colorado City	222
Midland High	85,053.07	151,963.79	Colorado City	Colorado City	115
Tahoka	83,091.00	42,724.10	Meadow	Meadow	98
Central, S.A.	77,913.32	66,968.27	Stanford	Stanford	93
Anson	75,767.63	38,860.95	New Home	New Home	77
Grady	59,870.75	40,815.00	Wilson	Wilson	76
BORDEN COUNTY, GAIL	52,764.39	28,519.88	Lamesa	Lamesa	75
Midland Lee	48,053.07	43,980.28	Wellman	Wellman	71
Dawson, Welch	41,945.25	28,116.53	Anson	Anson	70
Denver City	41,003.00	46,707.00	Alpine	Alpine	64
Ft. Stockton	40,859.75	36,089.00	Snyder	Snyder	59
Sterling City	40,800.00	35,100.00	Midland High	Midland High	58
Alpine	40,288.00	29,600.00	Loraine	Loraine	55
Snyder	37,977.34	37,357.76	BORDEN CO., GAIL	BORDEN CO., GAIL	55
Wall	34,495.18	50,085.27	Tahoka	Tahoka	51
Meadow	32,040.60	14,784.70	Ysleta	Ysleta	46
Hamlin	30,531.09	11,312.51	Sweetwater	Sweetwater	45
Hawley	29,686.86	25,996.25	Loop	Loop	43
Wellman	28,367.90	24,138.10	Hamlin	Hamlin	43
Sweetwater	27,679.38	26,639.16	Central, S.A.	Central, S.A.	42
Eldorado	27,422.18	18,141.18	Plains	Plains	42
Plains	26,330.00	23,617.67	Hawley	Hawley	41
Highland	24,631.44	20,884.74	Haskell	Haskell	40
Klondike	22,986.00	24,110.00	Robert Lee	Robert Lee	36
Ysleta	22,932.78	38,303.45	Roby	Roby	35

RANK OF ENTERPRISES - AREA II  
1978-79

Enterprises	Labor Income	AVERAGES		
		Labor Income Per Student	No. Schools	% of Area Schools
Cotton	\$420,212.32		11	13.6
Coop	307,740.69		11	13.6
Beef Cattle	289,732.13	Over \$1,000	23	28.4
Swine	206,071.60	\$500.00 - \$1,000	12	14.8
Sheep & Goats	198,765.93	\$300.00 - \$500.00	11	13.6
Farm Placement	55,842.49	\$200.00 - \$300.00	8	9.9
Small Grain	36,663.92	\$100.00 - \$200.00	5	6.2
Grain Sorghum	16,609.03	\$50.00 - \$100.00		
Poultry	10,271.84	Less than \$50.00		
Veg, Truck Crop, Gar.	6,583.00			
Horses	3,570.85			
Miscellaneous	2,769.69			
Dairy Cattle	1,273.00			

### Booster Club Homecoming

Homecoming preparations were the top priority during the Booster Club meeting on October 1.

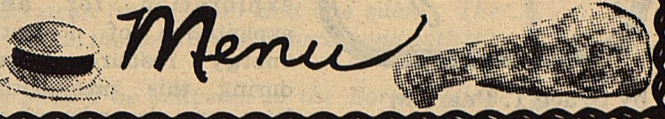
The chili supper will begin at 4:30 and end at 7:00. The cost for the supper will be \$2.00 for adults and \$1.00 for students. The meal will consist of chili, crackers, tea and homemade pie.

Sarah Sharp and Betty Beaver graciously volunteered to ring the victory bells during the Homecoming ballgame with Ira. Corner men and men to run the chain will be selected during the next meeting. The club expresses its appreciation to Terry Voss, Lonnie King and Van York who worked the chain for the last Junior High game.

Windbreakers have been ordered and should be in by Homecoming. The jacket will sell for \$14.00 and the unlined, \$12.00. These will be available during the chili supper in the cafeteria along with Booster caps for \$5.00.

Coach Roemisch gave the statistics on the game with Blackwell which the Coyotes won 36-6. The football team traveled to Dallas over the weekend and watched the Cowboys play.


**Booster Club**  
meeting  
every  
**Wednesday**  
at 12:00



## Menu

October 13-17, 1980

LUNCH	MONDAY	BREAKFAST
Fish Sticks Buttered Carrots Cornbread Fruit Milk Salad Bar		Toast & Jelly Fruit Juice Milk
	TUESDAY	
	Enchiladas Vegetable Salad Pinto Beans Sopapillas Milk Salad Bar	Hot Biscuits & Jelly Sausages Fruit Juice Milk
	WEDNESDAY	
	Lasagna Tossed Salad Green Beans Hot Rolls Pudding Milk Salad Bar	Oatmeal Toast Fruit Juice Milk
	Fried Turkey Steaks Lettuce & Tomato Salad Creamed Potatoes English Peas Jello Milk Salad Bar	Cinnamon Toast Fruit Milk
	FRIDAY	
	Hamburgers Lettuce-Tomatoes-Pickles French Fries Cookies Milk Salad Bar	Dry Cereal Fruit Juice Milk



## Farm Bureau Insurance

Scott Russell, Agent

Lamesa, Texas


1602 N. Dallas Phone 872-8333

## CHOICE CORN FED BEEF

One-Half Beef -- \$1.45 per lb cut & wrapped  
45 lb Boxes -- \$1.99 per lb 40 percent Steak  
20 percent Roast  
40 percent Hamburger

Parks & Walker Cattle Company

Cattle Company  
573-6322
Gary Parks  
573-0936



Shop Claiborne's For  
Back-To-School Specials  
During 33rd Anniversary

HOME OWNED AND OPERATED  
BY THE CLAIBORNE'S

No. 1 708 N. 1st
NO. 2 710 N. 14th

LAMESA, TEXAS



by Bruce T. Pearson

At election time there are advantages to being the man in office, to being the known quantity after four years of public exposure and opportunities to fulfill promises, reward favors and prove capability. The challenger, four years behind in experience and publicity, has to overcome the natural resistance to change and the reluctance to mess with success, if there is success. No one wants to take out the quarterback when the team is winning. The incumbent, on the other hand, must be ready to defend his record, to demonstrate that he has indeed performed well in office, and to prove that his term has been one of progress rather than failure. Both his assets and his shortcomings are open to assessment, whereas his opponent's abilities and qualifications are still subject to speculation.

In this election, then, the advantage is with President Carter, who, besides being with the majority party, has had three and on-half years to show that he is the type of inspirational leader, of high principle, forthright judgment and responsible action, that the electorate should eagerly, enthusiastically and gratefully return to office for another four years. How has he measured up?

Perhaps some sort of homemade quiz or self-poll might help us decide whether we should ask for more of what we've had for the last four years or take a chance that a new man might be an improvement. We might give ourselves an old-fashioned multiple-choice test, for example:

1. Since the President

created the Department of Education the quality of public education has (a) improved, (b) deteriorated.

2. The President's new Department of Energy has (a) helped, (b) hindered, the exploration for and exploitation of domestic energy resources and during this presidential term our dependence on imports has (a) increased, (b) decreased.

3. The economic health of the country, as measured by such factors as inflation, international stability of the dollar, interest rates, value of savings accounts and pension funds, costs of housing and other necessities, employment and productivity, is (a) better, (b) worse, than in 1976.

4. Our national defense arsenal and the performance capability of our armed services is (a) stronger, (b) weaker, now than in 1976.

5. The prestige of the United States, international respect for the President and regard for the wisdom of the American foreign policy are (a) higher, (b) lower, than four years ago.

6. In important international matters involving the Panama Canal, Taiwan, Cuba, Afghanistan, Latin America, Iran, Africa, Israel and the Arab countries, the President has performed (a) ably, (b) poorly, in representing the interests of the United States.

7. The President's strong religious convictions, (a) have, (b) have not, been reflected in the morals and the standards of conduct of his associates and staff.

8. The President's tolerance of his brother's acceptance of substantial amounts of money from a foreign government has been (a) admirable, (b) reprehensible.

9. If the President continues negotiations with Russia on the Salt II treaty the United States will surely come out on the (a) long, (b) short, end of the

deal.

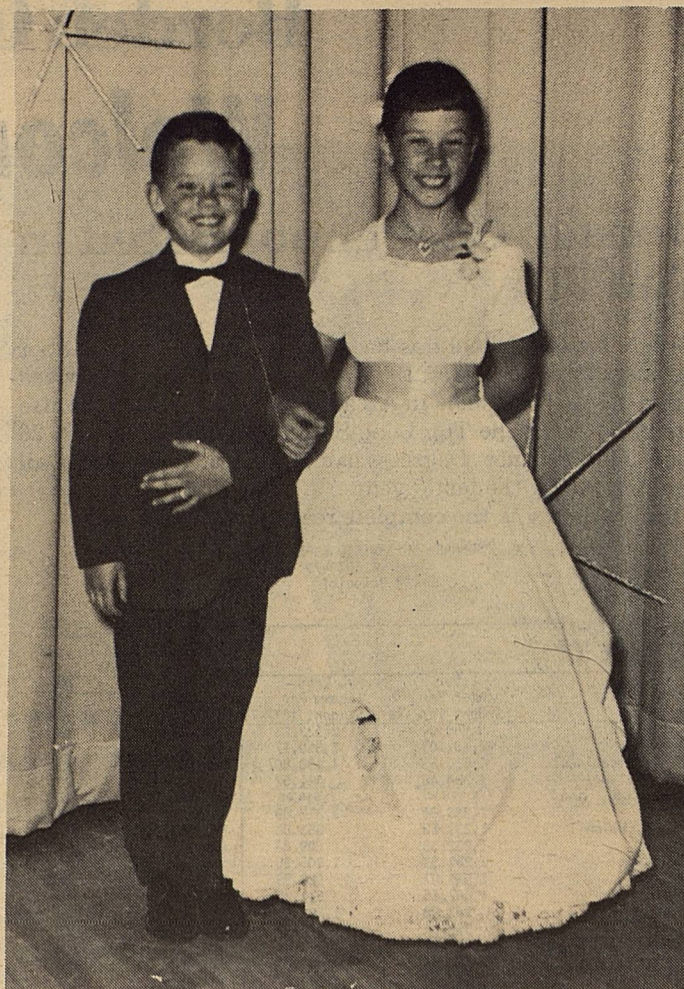
10. The President's personal advisors and his appointments to cabinet offices, the United Nations and the White House staff have been men and women of (a) high, (b) low, (c) mediocre, quality.

11. The President (a) has (b) has not, demonstrated that he possesses the depth of character, solid self-assurance and personal greatness that combine to inspire a confidence in his leadership, especially under the pressure of crisis.

12. The President's actions in the interest of Human Rights (the Olympic boycott, Andrew Young's mission to Africa, assistance to Cambodians, the Iranian hostage rescue, for example) have been (a) effective, (b) ineffective.

There are many more questions that can be asked, but perhaps they can all be summarized in a kind of Final Exam:

13. The fate of the United States and the free world may depend on the President I choose, and I am (a) willing, (b) not willing, to place my future and that of my children in the hands of Jimmy Carter.

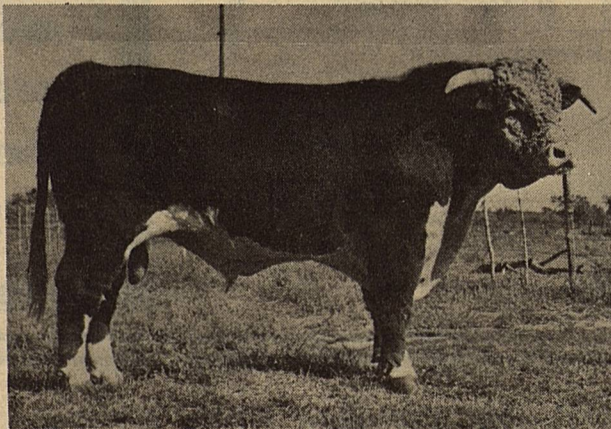


These two '70 grads will be attending homecoming activities at Borden High School.

## Wallace Hereford Ranch 7th annual

# PRODUCTION SALE

*Celebrating Our*  
**40th Anniversary**  
in the Hereford Business



Friday, October 17 • 12:30 PM  
at the ranch - 10 miles NORTHEAST of BIG SPRING, TEXAS  
State Highway 350 - Snyder Hwy.

**41 BULLS**      **39 HEREFORD BULLS**  
**14 Females**   **2 LONGHORN BULLS**  
*All bred to Superior 434*

*Gayle Ingram, Auctioneer*

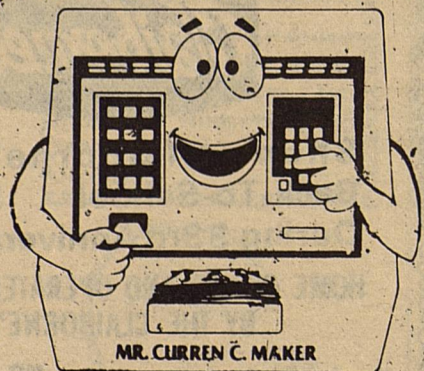
**FOR MORE INFORMATION CONTACT  
LELAND WALLACE - 915-399-4370**

IS AVAILABLE

24 HOURS A DAY -

SEVEN

DAYS A WEEK



**Security State Bank**

1411 GREGG      BIG SPRING, TEXAS  
MEMBER F.D.I.C.

# Absentee Voting

## WHO CAN VOTE ABSENTEE?

Any person registered to vote in the county of their permanent residence is eligible to vote absentee if they can give one of the reasons listed below.

## WHEN CAN I VOTE ABSENTEE?

An eligible voter may vote absentee in person during regular office hours of the county clerk at the clerk's office between October 15 and October 31.

## WHERE CAN I VOTE ABSENTEE?

Some counties will establish substations for absentee voting in person. Some counties may also extend their office hours during a portion of the absentee voting period, and this extension of office hours could include allowing absentee voting to be conducted on weekends. Check with the county clerk in your county to determine if there will be substations for absentee voting and what, if any, extended hours the clerk's office will be open for absentee voting.

## IN WHAT WAYS CAN I VOTE ABSENTEE?

1. Any person eligible to vote absentee may vote in person in the office of the county clerk or in an absentee voting substation between October 15 and October 31.

2. Some of the reasons allowing a person to vote absentee also allow that they may vote absentee by mail. In order to vote absentee by mail, an application for an absentee ballot must be delivered to the county clerk.

An application for an absentee ballot by mail may be obtained from the office of the county clerk or from the Secretary of State (1-800-252-9602). This

application must be received by the county clerk between September 5 and October 31 and the voted ballot must be in the office of the county clerk by 7:00 p.m. on November 4.

Check the reasons given below for voting absentee for information about who can vote absentee by mail and what specific procedures must be followed.

## WHAT REASONS WILL ALLOW ME TO VOTE ABSENTEE?

### 1. EXPECTED ABSENCE FROM THE COUNTY.

This reason for voting absentee applies to the largest number of persons. It is not required that a voter actually BE absent from the county, only that they EXPECT to be absent. There are two variations of this reason.

A. Absence from the county on election day and during the regular office hours of the county clerk during the period of absentee voting. This provision allows a person to vote absentee by mail.

Between September 5 and October 15 the voter may apply for an absentee ballot either in person or by mail. If the application is made by mail, it may be mailed to the clerk from either INSIDE the county or OUTSIDE the county. THE BALLOT MUST BE MAILED BY THE CLERK TO A POINT OUTSIDE THE COUNTY, AND MUST BE MAILED BY THE VOTER BACK TO THE CLERK FROM A POINT OUTSIDE THE COUNTY.

If the voter applies by mail for an absentee ballot using this reason after October 15, the application as well as the subsequent ballot must have been

mailed by the voter from a point outside the county. (A voter who works outside his county of residence and returns to his county after 5:00 p.m. Monday through Friday would qualify to vote absentee by this method).

B. Expected absence from the county on election day. A voter who expects to be absent from the county on election day, but who will be in the county during all or part of the period for absentee voting in person (October 15-31) may vote at any time during that period in person at the office of the county clerk.

These persons may vote absentee by mail, also, but the application must have been mailed to the clerk from outside the county, the ballot must be sent by the clerk to a point outside the county, and the voted ballot must be mailed by the voter back to the clerk from a point outside the county.

2. 65 YEARS OF AGE OR OLDER. Any voter who is 65 years of age or older may vote absentee either by mail or in person. An application to vote absentee by mail stating this reason may be made anytime between September 5 and October 31. The application may be mailed from within the county and the ballot may be mailed to and received from inside the county.

3. SICKNESS OR PHYSICAL DISABILITY. An application to vote absentee by mail for this reason must be accompanied by a medical statement signed by a licensed physician, chiropractor, or accredited Christian Science practitioner if there is no certificate of permanent disability on file with the county clerk. The medical statement is on the application to vote absentee by mail. A voter may vote absentee in person for this reason, also.

4. RELIGIOUS BELIEF. Any person whose religion restricts his activities on any election day may vote absentee either by mail or in person. The application for mail ballot may be made from within the county between September 5 and October 31; the ballot may be mailed to and received from within the county. It is not required that the voter state the name of the sect or otherwise verify this reason to vote absentee.

5. SERVICE AS AN ELECTION CLERK OR POLL WATCHER IN THE ELECTION. Voters expecting to serve as election clerks or poll watchers at a precinct other than the one of their residence may vote absentee in person. They

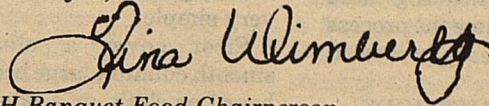
# An Invitation

Dear 4-H Parents:

Once again it is time for the annual Borden County 4-H Banquet. This year's theme is "North of the Border." As in the past, each 4-H family will be asked to bring one Mexican (main) dish and one salad. The Mexican accent on these dishes is to correspond with the theme.

This food should be delivered to the Borden High School lunchroom between 6:30 and 7:15 p.m. on Saturday, October 11, 1980.

Thank you,



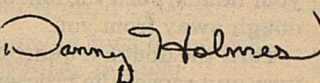
4-H Banquet Food Chairperson

Dear Parents,

Even more than your food, we would appreciate your presence at this banquet. Our past year in 4-H has been a great one, but we feel that with your help and guidance, we can make this one even better.

There's no better time to turn over a new leaf than at the beginning of a new 4-H year; and it is with that thought that we look forward to your presence at our "North of the Border" Banquet -- 7:30 p.m., Saturday, October 11, 1980.

Thank you,



4-H President

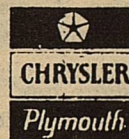
may not vote absentee by mail.

6. EMPLOYMENT IN THE ADMINISTRATION OF THE ELECTION. Persons who participate in the administration of the election by reason of their employment may vote absentee in person. They may not vote absentee by mail.

## Ezell-Key Feed & Seed

- Feeds
- Seeds
- Insecticides
- Fertilizer

1615 26th Street  
Phone 573-6691  
Snyder, Texas



ROY MOTOR CO.  
SALES AND SERVICE  
LAMESA, TEXAS

NEALE ROY PHONE 806 - P72-5484  
RES. 806 - 872-3556 1611 N. DALLAS

See the new



Downright Comfortable  
Since 1915

models....

Cowboy Supply

118 Austin Ave.

LAMESA

872-3684

# Friendly Flower Shop

Phone  
573-3851



or  
573-5260

WORLD WIDE FLORAL SERVICE

3001 College Ave.  
Snyder, Texas



**HOMEMADE YEAST BREADS -- MIXING, KNEADING, BAKING**

Second in a two-part series.

Mixing, kneading and baking complete the process of making yeast breads at home.

**MIXING METHODS**

There are three basic methods of mixing yeast doughs -- straight dough method, sponge method and batter method.

In the straight dough method, all ingredients are combined in the first mixing and the dough set aside to rise.

Liquid, yeast and enough flour to form a thick batter are combined in the sponge method. The batter is set in a warm place until bubbly and light.

The remaining ingredients are then added to form a dough.

Doughs prepared in this manner usually rise faster than doughs in the straight dough method.

In the batter method, all ingredients are combined and the gluten is developed by stirring and beating the batter rather than by kneading.

Yeast batters are usually allowed to rise in the pan they will be baked in.

**KNEADING**

Kneading, the part of breadmaking that most people are unsure about, changes the rough, uneven

textured dough into a smooth elastic ball.

It develops the gluten to produce a fine grain and texture.

The process is actually very simple.

First cover a clean, smooth counter, large bread board or cloth, or a plastic dough sheet with a small amount of flour.

Place the dough on the floured surface, and dust lightly with flour.

Grease hands lightly with shortening.

Fold the dough toward you with a rolling motion using the fingers of both hands.

Then, with the heels of your hands, push the ball of dough away from you.

Turn the dough a quarter turn and repeat the process until the dough looks full, rounded, smooth, satiny and tightly stretched.

The dough will feel springy and elastic.

You may need to work small amounts of flour into the dough while kneading, especially if the dough is very soft.

However, avoid adding too much flour or the dough will rise slowly and produce a coarse texture.

Grease the dough lightly and allow it to rise on a smooth surface. Cover with wax paper or a damp towel while rising.

The dough has risen sufficiently if doubled in

bulk or when a finger impression remains in the dough.

If dough is to rise twice, punch down and shape gently so you don't injure the gluten and produce a coarse texture.

**LOAF SHAPING**

There are many ways to shape a loaf, the simplest being to roll the dough into a rectangle slightly less than the length of the baking pan.

Then simply roll the dough, starting on the narrow side, is jelly roll fashion.

Seal the edges and place the sealed side down in the pan. The bread is then allowed to rise or "proof" until double in bulk.

**BAKING**

Baking is generally done at 375-400 degrees F. for 35-45 minutes for one pound loaf.

When done, bread will produce a hollow sound when tapped.

Cool on a wire rack to prevent softening of the loaf bottom.

For a soft crust, brush the top of the loaf with butter while still warm.



**Hospitalized**

Sheila Zant Womack is in Lubbock Methodist Hospital recuperating from major surgery. She enjoys hearing from her friends and we wish her a speedy recovery.

**Borden County Historical News**

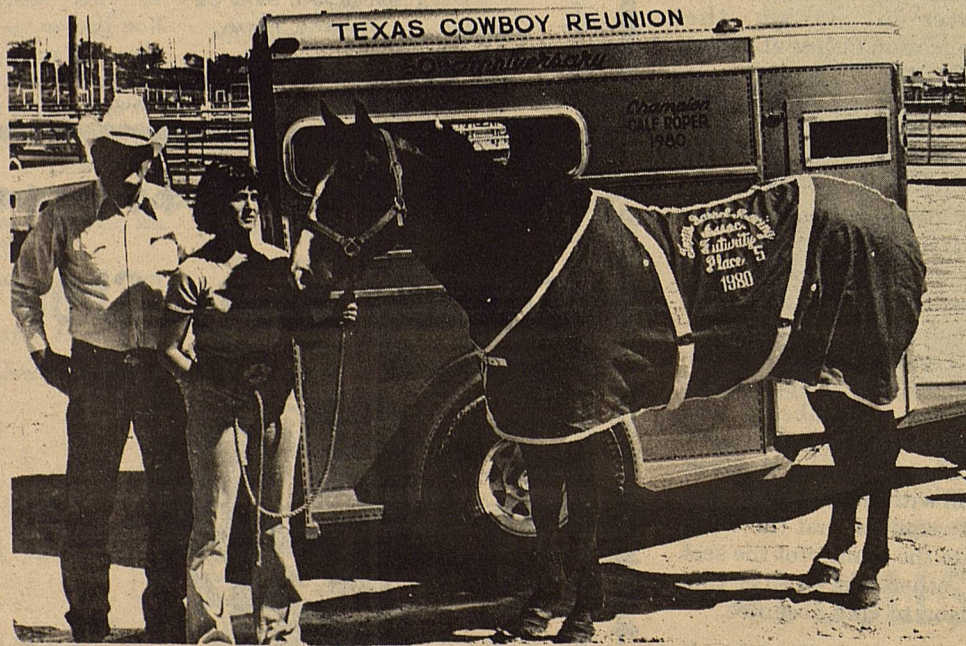
The monthly meeting of the Borden Co. Historical Commission will be Tuesday, October 14, 7:00 p.m. at the Courthouse. We urge all those interested in preserving our county history to attend. At this time our goal is to mark all Historic sites in the county, participate in the State's Historical traveling exhibits, and prepare our memorial plaque. One donation has been made this month by Mr. and Mrs. Borden Gray in memory of Mr. Gray's Father, Mr. R. L. Gray. The Senior Mr. Gray came to Borden Co. in 1904 with his family Mr. and Mrs. I. N. Gray. They settled 12 miles southeast of Gail where three generations of the Gray Family still live. The original Ranch House was built in the 1880's and was a stopping place for travelers

enroute to the plains from Colorado City. The house had a "Cupalo" which served as a lookout over a vast territory. It was a great historical loss when the house burned in 1940.

Our main purpose in holding these monthly meetings is to secure enough volunteer help to maintain our Museum and keep it open every Saturday and Sunday afternoons.



**BRADLEE EVANS HONORED** - Bradlee Norman Evans, six-week-old son of Rickey and Sandra Evans of Fluvanna, was honored at a baby shower in the home of Mr. and Mrs. Max Von Roeder in Snyder Sunday afternoon. Bradlee was born August 18. Pictured (left) is Opal Evans, the honoree, and his mother, Sandra.



**WINNING COMBINATION** - Four-year-old Arrived Easily, owned by Gerald Roberts of Lamesa and trained and ridden by Claudia Ogden of Gail, captured fifth place in the huge Texas Barrel Racing Association Futurity run in the mud last weekend at Grand Prairie. With 196 entries, the horse captured 2nd place during the first go-round with a time of 18.197 and 11th in the second go with an 18.606 second time. In the final short-go with only the top 40 horses, Arrived Easily again turned in the second fastest time of 17.980. The futurity is the largest of its kind in Texas.

**Margaret's**  
Hours 10 to 6 1818 26th Street Snyder

**LOTA'BURGER** A Square Meal  
Phone 573-2922 On a Round Bun  
Snyder, Texas

**GAGE FINA TRUCK STOP**  
Owner-Operator John Hamilton  
**OPEN 24 HRS. DAILY**  
1320W Sweetwater, Tex.

## DROUGHT DISASTER LOANS AVAILABLE

The small Business Administrations's (SBA) declaration No. 1900 for drought has brought much needed assistance to the agricultural industry in Texas.

The disaster victim is eligible for crop losses sustained during the 1980 growing season providing the crop was in the ground during the incident period of the declaration, regardless of the harvest date. Partial crop losses will be computed only after harvest and determination of actual yield.

The following formula will be used to compute eligible loss:

Acreage planted x Established Yield x Percentage of loss x Market price (Less insurance received, less ASCS low yield payment and other recoveries) equal Eligible loss.

Farmers and ranchers in Borden County have until February 12, 1981, to file application for physical loss suffered during the declaration period of May 30, 1980, through August 5, 1980. Agricultural-related businesses have until May 12, 1981, to file for Economic Injury Disaster Loans.

## DISASTER BENEFITS

Cotton and grain sorghum producers can qualify for disaster credit due to failed acreage or low yields. The disaster must be reported to the County Office within 15 days of the date of the disaster, the date harvest is complete, or the date the crop is abandoned and before crop residue is destroyed or put to other use. If crop is not harvested an appraisal must be made by the County Office.

To qualify for payment, production on grain sorghum must be less than 60 percent of the established yield for farm. For cotton, production must be less than 75 percent of the established yield.

## COMMITTEE ELECTION

The ASC County Committee election will be held December 1, 1980. The election will again be conducted by mail. The farmers and ranchers in Borden County will elect one county committeeman and two alternates. A list of all persons to receive ballots has been completed and is available in the County Office.

You may nominate eligible candidates by petition. Nomination petition letters were mailed to all known eligible voters on October 1st. Petitions must be returned to the ASCS Office by Monday, October 27, 1980.

The following is a schedule of the 1980 committee election:

October 27 - Last Date for Receiving Nominating Petitions

November 21 - Final Date For Mailing Ballots to Eligible Voters

December 1 - Final Date For Return of Voted Ballot  
December 4 - Ballots Will Be Tabulated in the County Office

Carryover committeemen are H. N. Zant and Kenny Hensley. Don Wills whose term expires this year will be eligible for reelection.

## WOOL AND UNSHORN LAMBS

The marketing year for wool and unshorn lambs ends December 31, 1980, 1980. Sales receipts should be submitted as you receive them.

## BEEKEEPERS

The Boll Weevil Control Spray began around September 22 and will continue until frost date. Every effort should be taken to protect your bees.

## EMERGENCY FEED PROGRAM

Borden County's current feeding period ended September 30, 1980. All producers who have previously filed an application for feed assistance MUST reapply if they are still feeding above normal and have suffered a 40 percent loss. The new feeding period will run from the date of application to November 15. At that time, conditions will be reassessed as to percent below normal, feed

normally purchased during winter months and additional grazing that has become available (such as small grain acreage).

## USDA SEEKS COMMENTS ON PROPOSALS FOR 1981 COTTON PROGRAM

Producers are being requested to submit any comments they might have regarding the 1981 Cotton Program. Prompt action is necessary since decisions regarding the program must be made at the earliest possible date.

Comments are sought on 1981 loan rate, whether a seed cotton loan should be offered and at what loan level, and specifications for bale packaging materials.

Persons interested in making their comments known should mail them to:

USDA - ASCS  
Director, Production Adjustment Division  
Room 3630 South Building  
P.O. Box 2415

Washington, d c 20013

Comments must be received by October 28, 1980.

## HOLIDAY

This office will be closed Monday, October 13, 1980, in observance of Columbus Day.

## NON-DISCRIMINATION

Eligibility for participation in all programs administered by ASCS is established under law without regard to race, color, religion, sex, r National origin.

## Republicans

Con't from P. 1

pains to hide -- remains clear for all Americans who must daily bear the brunt of it. Since he took office, inflation has tripled, the prime interest rate has tripled; federal spending is up 60 percent; and the average family of four will pay \$1,050 more in federal taxes."

"What's more," Governor Clements said, "our nation is facing the most serious threat to our national security since World War II because of Mr. Carter's defense cutbacks and his erratic foreign policy which is eroding our respect abroad."

He also said, "As Governor of California, Ronald Reagan showed us what he will do as President. He put the brakes on government spending, slowed the growth in government bureaucracy, and initiated a massive overhaul of the state's welfare system. In short, Governor Reagan brought a runaway government under control and restored fiscal stability, good management, and accountability to the taxpayers."

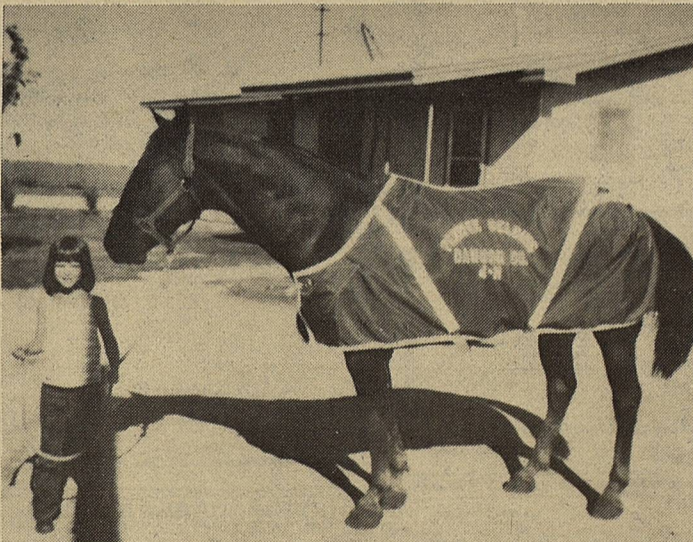
## For Sale

3 Bedroom, 2 Bath, Carpeted, Dishwasher, One year old house, located on six lots in Gail.  
Call 856-4772

EAST SIDE OF THE SQUARE

The Finest  
In Nationally  
Known Brands  
of  
Western Wear  
and  
Sports Wear

FENTON'S  
Snyder 573-6111



Kelly Jo Ogden, shown with her horse Bear, and the blanket she received at a recent end of year 4-H awards banquet in Lamesa. Kelly received the blanket for showing the champion Pee Wee Gelding and won a belt buckle for 1st place in pole bending in the pee wee division.

Kelly is the daughter of Randy and Claudia Ogden of Gail.

Kimball Pianos & Organs

Authorized Sony Dealer  
Large Selection of Records, Tapes, Sheet Music  
Band Accessories and Component Stereos

LAMESA MUSIC COMPANY

Phone: 806-872-2401 509 S. 1st St.

Barrington Pump & Machine

Myers, Taitco and Simmons Pumps  
Complete Machine and Welding Shop

Phone 872-8307 Lubbock Hiway  
Rt. B P.O. Box 28 Lamesa, Texas

WAYLAND TAYLOR INC.  
O'DONNELL, TEXAS


806/428-3345

## Statement Of Nondiscrimination

"POKA-LAMBRO RURAL TELEPHONE COOPERATIVE, INC. has filed with the Federal Government a Compliance Assurance in which it assures the Rural Electrification Administration that it will comply fully with all requirements of Title VI of the Civil Rights Act of 1964 and the Rules and Regulations of the Department of Agriculture issued thereunder, to the end that no person in the United States shall, on the ground of race, color, or national origin, be excluded from participation in, be denied the benefits of, or be otherwise subjected to discrimination in the conduct of its program and the operation of its facilities. Under this Assurance, this organization is committed not to discriminate against any person on the ground or race, color or national origin in its policies and practices relating to applications for service or any other policies and practices relating to extension of service, use of any of its facilities, attendance at and participation in any meetings of beneficiaries and participants or the exercise of any rights of such beneficiaries and participants in the conduct of the operations of this organization.

"Any person who believes himself, or any specific class of individuals, to be subjected by this organization to discrimination prohibited by Title VI of the Act and the Rules and Regulations issued thereunder may, by himself or a representative, file with the Secretary of Agriculture, Washington, D.C. 20250, or the Rural Electrification Administration, Washington, C.C. 20250, or this organization, or all, a written complaint. Such complaint must be filed not later than 90 days after the alleged discrimination, or by such later date to which the Secretary of Agriculture or the Rural Electrification Administration extends the time for filing. Identity of the complainants will be kept confidential except to the extent necessary to carry out the purposes of the Rules and Regulations."

**Bray Implement Co., Inc.**



Lubbock Hiway  
Rt. B Box 42  
Lamesa, Texas  
Phone 806-872-5474

### Political Candidates

The Borden Star is authorized to announce the following candidates for political office weekly, subject to action of the General Election.

RAILROAD COMM.  
Buddy Temple -D-

CONGRESS  
17th District  
Charles Stenholm -D-

STATE REPRESENTATIVE  
63rd District  
Larry Shaw -D-

COUNTY SHERIFF and TAX ASSESSOR  
Norman (Slick) Sneed -D-

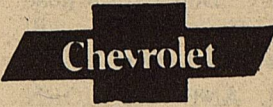
CO. COMMISSIONER  
Precinct 1  
Herman Ledbetter -D-

Precinct 3  
Vernon Wolf -D-

Above is paid political advertising. Paid by above listed individuals.

## Classified

Clerical part or full time opportunity from home working with mail. No experience required. For information, send stamped, self-addressed envelope. DYN-NAR ENTERPRISE, P.O. Box 36, New Brunswick, N.J. 08903



**POLLARD Chevrolet Co.**

WHERE VOLUMN SELLING SAVES YOU MONEY

1504 East 4th Street  
Phone 267-7421  
Big Spring

## Citation By Publication

THE STATE OF TEXAS,  
TO: THE ESTATE OF MAJOR BRADFORD STEEL MAGILL, CATHERINE C. HINKLEMAN, and their unknown heirs, if deceased, the unknown spouse, if any, the unknown heirs of any deceased spouse, Defendants in the hereinafter styled and numbered cause.

You and each of you are hereby commanded to appear before the District Court of Borden County, Texas, 132nd Judicial District, to be held at the Courthouse of said County in the City of Gail, Borden County, Texas, at or before 10:00 a.m. on the first Monday after expiration of forty-two (42) days from the date of issuance hereof; that is to say, on or before 10:00 a.m. on Monday, the 10th day of November, 1980, and answer the petition of V-F PETROLEUM, INC., Plaintiff in Cause No. 768, styled V-F PETROLEUM, INC. VS. THE ESTATE OF MAJOR BRADFORD STEEL MAGILL, CATHERINE C. HINKLEMAN, and their unknown heirs, if deceased, their unknown surviving spouse, if any, and the unknown heirs of any deceased spouse, in which V-F PETROLEUM, INC. is Plaintiff and ther parties herein named as Defendants are Defendants, which petition

was filed in said Court on the 26th day of September, 1980, and the nature of such suit is a follows:

Plaintiff seeks the appointment of a receiver of the interest owned or claimed by each of the respective Defendants in the oil, gas and minerals in the following tract of land situated in Borden County, Texas:

*The W 2 and the W 2 of the SE 4, Section 29, Block 30, T-6-N, John Gibson Survey, Borden County, Texas*

with authority to execute and deliver oil, gas and mineral leases covering said minerals owned by or claimed by said Defendants upon such terms and conditions as the Court may prescribe, all as authorized by and in accordance with the provisions of Article 2320(b), Tex. Civ. Stat. Ann., as amended.

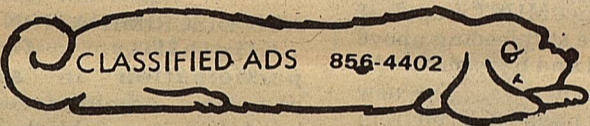

If this citation is not served within ninety (90) days after date of it issuance, it shall be returned unserved.

WITNESS Dorothy Browne, Clerk of the District Court of Borden County, Texas.

Given under my hand and seal of said Court at office in the City of Gail, this the 26th day of September, 1980.

Dorothy Browne, Clerk of the District Court of Borden County, Texas

CLASSIFIED ADS 856-4402

**LAMESA TRACTOR & MOTOR COMPANY**  
800-808 North Dallas Avenue  
Lamesa, Texas 79331  
(806) 872-2161

NELSON D. HOGG







**Big Spring Automotive**  
219 W. Third  
Big Spring, Texas 79720  
915-267-6308

YOUR PERSONAL DEALER

**BOB BROWN**  
Olds-Cadillac-GMC

202 South 3rd  
Lamesa, Texas  
806-872-2144


**WATER COMPANY**

CALL TOLL FREE  
1-800-582-4323

605 S. Marienfeld - Midland, Texas

Oasis Water Coolers Sales and Rentals  
Crystal Pure Drinking Water Delivery In Borden County

**GAIL TEXACO**  
OPEN SUNDAYS  
2 p.m.-7p.m.  
Phone No. 856-4101

**GAIL WELDING SERVICE**  
Full Line of Service  
Oil Field-Ranch & Farm

Lonnie King  
Ph 915:856-4101  
Nite 915: 856-4162