



BAILEY COUNTY JOURNAL

'The Community of Opportunity-Where Water Makes the Difference'



20¢

Volume 17, No. 35

10 Pages

Published Every Sunday at Muleshoe, Bailey County, Texas 79347

Sunday September 2, 1979

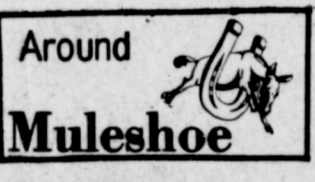
Lubbock To Drill 10 Wells In County

Mixed Drink Taxes Returned By State

State Comptroller Bob Bullock Monday said gross receipts taxes on mixed drinks earned the state \$14 million in revenue during the second quarter of the year. Bullock said mixed drink taxes for the April, May and June period were about \$51.2 million more than collected during the first quarter. His office has mailed checks totaling \$5.7 million to some 200 counties and 350 cities as their share of the 10 percent gross receipts tax. Muleshoe's share of the tax was \$416.34 on reported revenue of \$20,775.59. Cochran County received a rebate of \$130.64 on reported tax revenue of

\$872.26 while Lamb County received \$1,230.22 on taxes reported at \$8,201.47 and Littlefield's check was \$713.72 on reported tax revenue of \$4,758.16. Farmer County's check was \$17.76 on tax revenue's of \$118.40. Total taxes collected for the three-month period were \$19.8 million and after deducting the city-county rebates, the balance will go to the State's General Revenue Fund. Texas cities and counties receive a 15 percent rebate of the tax collected on mixed drinks sold within their boundaries under the law that legalized the sale of mixed drinks. Last year, the mixed drink tax generated more than \$65.3 million for

con't on page 6, col 6

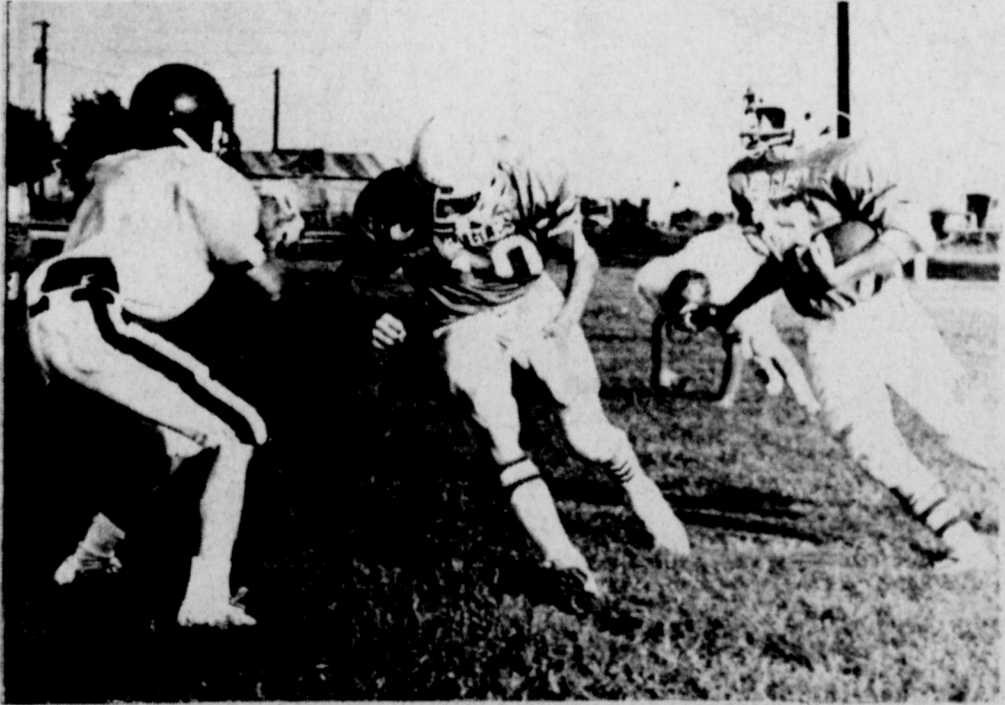


Wayne Holmes, vice president of the Muleshoe Area Youth Activities Committee Inc. said that due to the Labor Day holiday on Monday, YAC will not be meeting night. Next regular meeting of YAC will be on Monday, September 10, at 8 p.m. at the Bailey County Exhibition Center and Coliseum.

Visiting in the Journal Friday morning were Roger Gorrell and his daughter, of Bastrop. He is a former resident of Muleshoe and served as Bailey County Attorney.

Mr. and Mrs. Buck Creamer are visiting in Amarillo with their daughter and family, Mr. and Mrs. Ray Kemp, Kenny and Karen. Today, Sunday, they planned to be in Childress to attend a family reunion.

The Moonlight Extension Homemakers Club will hold their first meeting of the year on Thursday night, September 6 at 7:30 p.m. in the lobby of the Bailey County Coliseum. Linda Mullin, Bailey County Extension Agent, will give a program on food additives. Everyone is cordially invited to attend.



CLEARING THE PATH--Three Way Eagle Wayne Parkman #10 is running interference for James Simpson who is carrying the ball against Whitharral last Friday night at Three Way Field.



FENCE COMPLETED--From left, Wayne Holmes, Claude Holmes and Mrs. Wayne Holmes are completing the final section of the large cyclone fence that encloses the site of the miniature golf course to be constructed by the Muleshoe Area Youth Activities Committee Inc. Next on the construction list will be to construct the slab to house the concession/ticket/restroom building on the west side of the golf course.

Coliseum Cleaning, Leasing Rule Given

Following recent meetings and requests for written rules and regulations on leasing and cleaning Bailey County Exhibition Center and Coliseum, the following regulations will be presented any person renting the facility: Each organization will be responsible for cleanup as outlined in this guideline. Failure to comply with the cleanup policy might cause the organization to lose its deposit.

ARENA Pick up all trash in the area that your organization used. Sweep bleachers and arena floor where it is necessary. Empty all trash cans in dumpster at the east or the west end of the building. Trash cans are to be stacked by washroom door. All large spills need to be spot mopped. After all dances all corn meal or dance wax needs to be cleaned up. Stack all chairs and tables against south bleacher support wall.

Please notify manager of all broken tables or chairs. All posters and signs must be taken down. All equipment must be removed from arena unless prior arrangements have been made.

Cystic Fibrosis Annual Drive To Start Soon

The 1979 Kiss A Baby Week campaign of the Cystic Fibrosis Foundation begins September 19 in the Muleshoe area, and Chairman Mrs. Charles (Marie) Lenau is asking volunteers to donate their time to fund raising activities.

"I'm looking for people who can give a little of their time so that millions of lung-damaged children across the United States can live longer, more normal lives," said Mrs. Lenau of the Lone Star Chapter of the Cystic Fibrosis Foundation. "Just breathing is a struggle for these kids. They must have constant care and treatment. Some must take as many as 50 pills a day to fight infection and aid digestion, and breathe a medicated mist from a face mask each day."

The much needed funds raised from the campaign will go to support research, care and education programs aimed at lengthening lives and finding a cure for C/F. These programs include support for more than 100 Cystic Fibrosis Centers across the nation which provide diagnosis, treatment and referral to

Con't on page 6, Col 4

Youth Disco Slated

Even though school has started for 1979-80 and football season is getting underway, youths will still be able to enjoy weekend disco dancing, according to the Muleshoe Area Youth Activities Committee Inc. A Friday night disco is planned following the Muleshoe-Floydada football game at the Bailey County Exhibition Center and Coliseum. The dance is scheduled from 10 p.m. to 1 a.m. and all youths are welcome to attend the Friday night disco, and enjoy the disco sounds presented by a Lubbock disco duo. Admission will be \$2 for singles and \$3 for couples.

Farm Bureau Will Meet September 8

Alec Schuster, president of the Bailey County Farm Bureau, said the annual meeting of the organization will be at 8 p.m. on Saturday, September 8 in the Muleshoe High School cafeteria.

A fish and chicken dinner with all the trimmings will precede this meeting at 6:30 p.m. Dinner tickets, available at the door, will be \$2 each. Schuster said the main purpose of this meeting will be to adopt policies for next year and consider any needed by-law changes.

All members are invited to attend, said Schuster, but reminded that county by-laws provide that only agricultural producers may vote or hold office.

Adopted resolutions dealing with local matters will become county

Con't on page 6, Col. 4

5 Million Gallons Per Day Expected To Flow

Because the City of Lubbock became concerned about the possibility of low water supplies during peak summer months, the Lubbock city council approved a \$5.1 million water project Thursday, which included the extensive expansion of the Lubbock Water Works near Muleshoe.

According to the figures released by Sam Wahl, director of the Lubbock Public Utilities Division, the project would increase the Lubbock watersupply from new water wells drilled in Bailey County.

Nearly \$3 million was earmarked for a main collector and well supply lines and more than \$136,000 for the drilling of 10 new wells which Wahl explained to the Journal, would be extended to approximately two and a half to three miles west and two miles south of Muleshoe.

A \$175,000 project involves construction of new roads and well stands in the well field.

According to Wahl, the increased supply from the well field in Bailey County should raise the city's ability to meet peak demands from the present 80-81 million gallons a day to about 85 million gallons each day.

Wahl said he hopes the 10 wells produce "at least five million gallons a day and said two wells already drilled but not tied onto the city's distribution system will produce about one million gallons a day.

When contacted in Lubbock, Wahl said the system in Bailey County is only a back-up system for the City of Lubbock, as two thirds of their annual supply is received from the Canadian River Water Authority.

'We pump the wells in

Bailey County only when we can't meet the needs of the Lubbock people," commented Wahl, "and I doubt that we would ever pump in excess of 20 million gallons a day, if that much."

According to Wahl, the City of Lubbock has drilled around 100 wells in Bailey County to date, but some of the wells are presently out of service.

Bailey County was providing no water to Lubbock at the time of the conservation with Wahl shortly after noon on Friday. He said the wells were cut off to Bailey County slightly more than a week ago. He also emphasized that Lubbock has pumped very little water from Bailey County this entire year, citing "timely rainfall" as a decisive factor in lesser water use.

Also, Wahl said "This has been an ideal year as far as water use is concerned." He cited the intermittent rains as being the type to cut heavy water usage.

"However," he added, "we have to look to the future, and the growth of Lubbock, and be ready to provide water during peak times of use."

Wahl did not think the amount of water used to pump to the City of Lubbock was, at this time, a sufficient amount to prove to be of much concern to local irrigators, citing the large irrigation wells located near the city' of Muleshoe's water supply as being more of a factor than their wells.

He said they would be cutting an all-weather road across the sandhills on and along the path of the new wells which will be located some two miles south, east and west of the city.

Doris Wedel of the High Plains Underground Water

Con't on page 6, Col 5

Local Residents On Goodwill Tour Through Europe

A 50-member delegation of Texas Savings and Loan Institution leaders, including Mr. and Mrs. Don Harmon of Muleshoe, has just returned from a three-week People-to-People goodwill tour to England, West Germany, the Soviet Union, Switzerland and Spain. During the diplomatic travel program, delegates met with local financial institution leaders in London, Munich, Moscow and Madrid.

Counterpart meetings were also conducted in Leningrad, Lucerne and Zurich.

The purpose of the tour was to give delegation members an opportunity to carry messages of friendship to their counterparts in Western Europe and the Soviet Union. It also allowed them to visit savings and loan and other financial institutions to compare

con't on page 6, col 6



TOLK HAS RISEN-Who would believe that 12 months ago there was nothing between Sudan, Earth and Muleshoe except Sandhills, Sand, Cactus, Rattlesnakes and the Sun, plus an idea and desire to serve from Southwester Public Service Company. Now, today, almost 12 months to the day, out of this desolate area that desire and idea comes into reality. On August 16, the workers at Tolk Station #1 raised the first piece of steel to begin the boiler structure of Unit #1, and say with pride, "Tolk Has Risen!"

WE'VE GOT YOUR DOLLARS WORTH AT
Pay-n-Save

IT PAYS TO SAVE WITH US!



WILSON'S CERTIFIED FULLY COOKED-WATER ADDED

HALF HAMS

3-5 LBS. AVG. **\$1.79**
LB.



MEAT SPECIALS

WILSON'S CERTIFIED SLICED **BACON**
\$1.19
LB.



WILSON'S CERTIFIED **FRANKS**
99¢
LB.

Lipton's PURE INSTANT **TEA**
\$1.79
3 OZ. JAR
With Booklet Coupon \$1.29

Owens **Sausage** 2 Lb. **\$2.27**
1 Lb. **\$1.25**

BRISKETS	HEAVY GRAIN FED BEEF BONELESS WHOLE IN THE BAG 8-10 LBS. AVG.	LB.	\$1.29
BEEF	FRESH LEAN GUAR. 73% GROUND	LB.	\$1.29
BOLOGNA	SHURFFRESH SLICED	12 OZ. PKG.	99¢
HOT LINKS	GLOVER'S MEXICAN STYLE	LB.	99¢
CHORIZZO	SAN ANTONIO	LB.	99¢
SAUSAGE	GOOCH'S GERMAN BRAND SMOKED	12 OZ. PKG.	\$1.39

REG./SMOKED **SPAM MEAT** 12 OZ. CAN **\$1.19**

CHICKEN OF THE SEA **CHUNK TUNA** WATER/OIL PAK 6 1/2 OZ. CAN **79¢**

SWIFT'S VIENNA **SAUSAGE** 5 OZ. CAN **39¢**

Pay-n-Save THE FINEST QUALITY MEATS AVAILABLE AT SPECIAL SAVINGS TO YOU

DAIRY AND FROZEN FOODS

DONUTS	MORTON MINI	10 CT. BOX	59¢
PARKAY	SOFT MARGARINE	2-8 OZ. BOWLS	69¢
BROCCOLI	SHURFFRESH & CAULIFLOWER	20 OZ. BAG	99¢
CORN	SHURFFRESH CUT	10 OZ. BAG	79¢
BISCUITS	SHURFFRESH S.M./B.M./TEXAS STYLE	3 12 OZ. CANS	\$1.00

SPECIALS FROM THE GROCERY DEPARTMENT

PINEAPPLE	DEL MONTE CRU./CHUNK/SU./	20 OZ. CAN	59¢
PEARS	DEL MONTE HALVES	16 OZ. CAN	59¢
TOASTIES	POST CEREAL	18 OZ. BOX	89¢
CRYSTALS	FOLGER'S COFFEE	10 OZ. JAR	\$4.99
GRAHAMS	SUNSHINE CRACKERS PLAIN CINNAMON	16 OZ. BOX	79¢
DINNERS	SHURFFRESH MACARONI AND CHEESE	3 FOR	79¢
LINERS	SHURFFRESH TRASH CAN	20 CT. BOX	\$1.99
AMMONIA	SHURFFRESH LEMON	32 OZ. BTL.	29¢
TOWELS	MARDI GRAS DECORATOR	JUMBO ROLL	69¢
CHOW	PURINA DOG	25 LB. BAG	\$6.29
BEEF STEW	DINTY MOORE	24 OZ. CAN	\$1.19
BEANS	DEL MONTE WH. GREEN SLICED SEASONED	16 OZ. CAN	39¢

IN PAPER BAG SHURFFINE **FLOUR** 5 LB. BAG **49¢**
WITH EACH \$7.50 PURCHASE EXCLUDING CIGARETTES

HEALTH AND BEAUTY AIDS

INTENSIVE CARE **VASELINE LOTION** 10 OZ. BTL. **\$1.19**

CUTEX OIL **POLISH REMOVER** 4 OZ. BTL. **59¢**

Q-TIPS **COTTON SWABS** 170 CT. BOX **89¢**

Store Hours:
Open 8:00-10:00
Monday - Saturday
Sunday 9:00-8:00

We Welcome **USDA FOOD STAMP COUPONS**



Gunn-Ho "SPECIAL"

Filled Booklet Specials.....

CATSUP	DEL MONTE TOMATO	38 OZ. BTL.	99¢	With Booklet	49¢
COFFEE	FOLGER'S ALL GRINDS	1 LB. CAN	\$3.29	With Booklet	\$2.79
WHITE CLOUD	Asst. Bathroom	4 Roll Pkg.	89¢	With Booklet	39¢
SOFTENER	SHURFFRESH FABRIC CONCENTRATED	64 OZ. BTL.	59¢	With Booklet	9¢

Register for 5,000 free stamps
3 Weeks Left
Last weeks winner was
Edna Ellis

COME TO PAY 'N' SAVE FOR YOUR **WIC** CARD PURCHASES

CALIFORNIA VINE RIPENED **TOMATOES** **39¢** LB.

THOMPSON SEEDLESS **GRAPES** **69¢** LB.

PRODUCE SPECIALS

AVOCADOS	3	\$1.00
YAMS	2	29¢
ONIONS	2	25¢

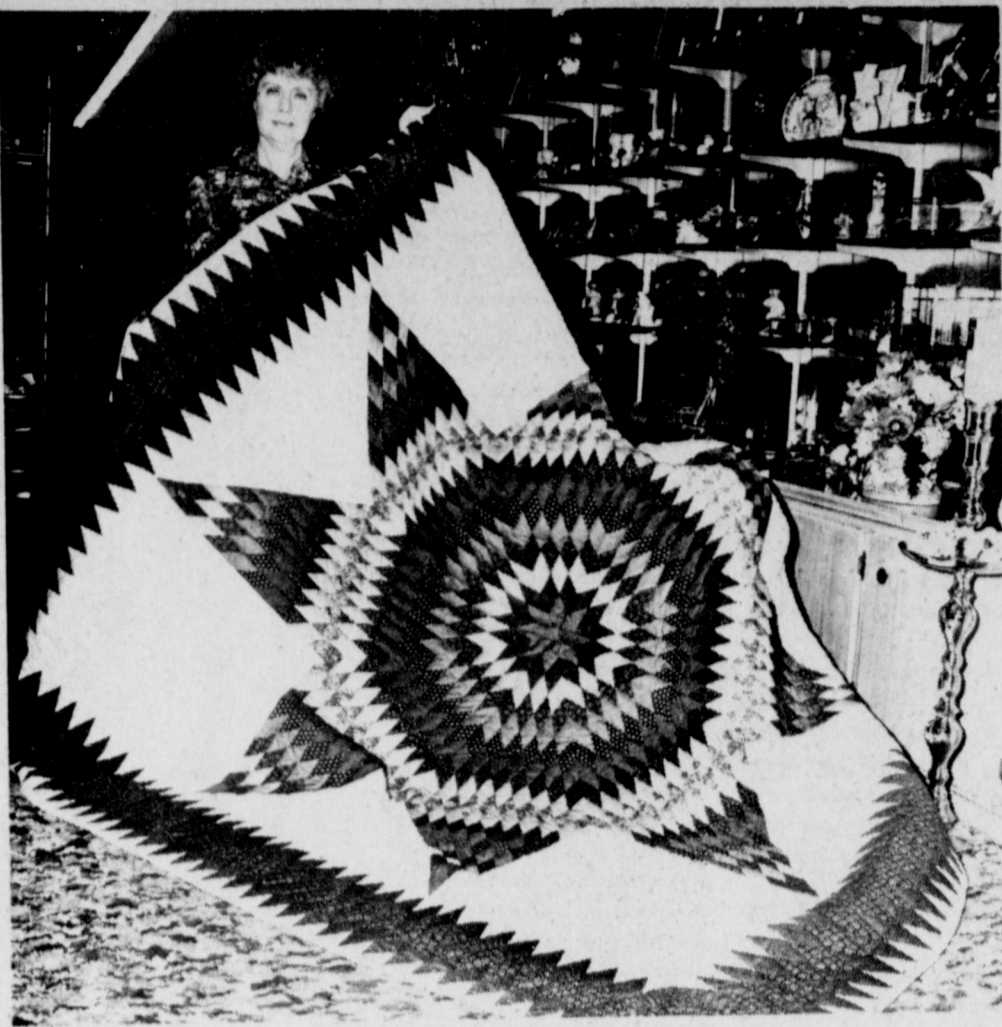
WE RESERVE THE RIGHT TO LIMIT

GO Gunn-Ho FOR 1000 EXTRA GUNN BROS. STAMPS.
Easy Way to Fill Books Fast!

WE'VE GOT YOUR DOLLARS WORTH AT

Pay-n-Save QUALITY AND SERVICE

FAVORITE FOOD STORES
PRICES EFFECTIVE SEPT. 2-9, 1979



CHANCES ON SALE: The local WIFE Club is presently selling chances for this "Lone Star" quilt on display at Something Special. A one dollar donation will purchase a chance at this quilt in earth tone colors. The quilt will be given away at the National WIFE Convention in Lubbock on November 17. You need not be present to win. To purchase chances, contact June Saylor, 825-3653; JoAnn McGuire, 925-2360; Jo McCray, 925-6738, or Carelean Hamilton, 965-2929.

Chicken Kabobs Converts Chicken Into A Party Dish

Chicken enjoys growing popularity, and for good reason. Its hearty good taste lends itself to many variations; it is an excellent buy as compared with beef; and not least, it provides excellent nutritional value, ranking high in protein, niacin and iron.

Chicken becomes a party dish with Chicken Kabobs prepared to serve four in a relaxed company atmosphere. Cubes of chicken, green peppers and mushrooms are marinated, then speared on skewers to be fried in the oven. The cut-up chicken pieces are coated with Oven Fry coating for chicken, crispy crumb recipe, assuring tender pieces with a crisp, crunch coating that fried chicken lovers will savor. While the kabobs are in the oven, packaged pre-cooked rice is made in minutes to complement this delicious

CHICKEN KABOBS
3 whole chicken breasts, split, skinned and boned

- (about 2 lb.)
 - 2 medium green peppers, cut into 1-inch pieces
 - 16 large mushrooms, halved
 - 1 cup prepared Italian salad dressing
 - 1 packet coating for chicken, crispy crumb recipe
 - 1/4 cup oil or melted shortening.
- Cut chicken into one inch pieces. Place chicken, green peppers and mushrooms in a bowl. Stir in dressing and let stand about one hour. Then drain well, discarding marinade.
- Preheat oven to 400 degrees. Empty packet of coating into a sheet of waxed paper or into a shallow bowl. Spread oil in a 15x10x1 inch jelly roll pan. "A flat-bottom pan with sides not more than one inch deep gives best results. Place chicken pieces in coating, a few pieces at a time. Pile coating on chicken, then press firmly on all sides until thickly and evenly covered. Divide among

four skewers, about 12 inches long, leaving 1/4 inch between the pieces. Place skewered chicken in pan. Fry in oven 30 minutes, then turn and fry 15 to 20 minutes longer, until chicken is tender. Meanwhile, divide peppers and mushrooms among four skewers, about 8 inches long. Add to pan after turning chicken. Remove from pan immediately. Makes 4 servings.

TOPS Has Weekly Meeting

Leavell Parker called the TOPS Club to order on Thursday, August 30 at 6 p.m. in the Community Room of Bailey County Electric.

Members sang the TOPS Song and recited the pledge.

Roll call was given by Evelene Harris with 24 members weighing in.

The new weekly queen is Evelene Harris with Ann Vinson as first runner up and Lanell Skaggs, second runner up.

Vickie Garner received material for three weeks consecutive weight loss and she received a hair set for six weeks of weight loss.

Nan Gatlin reached her KOPS (Keep Off Pounds Sensibly) status this week.

One new member, Betty Campbell, was welcomed to the club.

The monthly queen will be crowned at the next meeting and a new contest will begin. All members are urged to attend with a loss.

The meeting was dismissed with the Goodnight Song.

Ruth Bass Hostess To Hobbyists

Items on display by the Muleshoe Hobby Club at their regular meeting August 30 in the Community Room of Muleshoe State Bank included hand painted pictures, owls, mop dolls, frustrated macrame purse

Portales Association Completes Plaques For Children's Home

The Portales Children's Home Associates of Muleshoe met Monday, August 27 in the home of Ethel Julian to make owl plaques to sell for the benefit of the Children's Home. Five plaques were completed.

Those participating were Hazel Waddel, Ruth Williams, Jackie Johnson and daughter, Modene Elmpre, Oneida Cornelison, Florine Mills, Vickie Hendricks, Mabel Caldwell and the hostess, Ethel Julian.

Homemade ice cream was served.

The next meeting will be Monday, September 3 in the home of Oneida Cornelison. Anyone interested in helping is encouraged to attend.

Xi Omicron Xi Plans Cystic Fibrosis Drive

The Beginning Day meeting of Xi Omicron Xi, chapter of Beta Sigma Phi, was held August 27, in the home of Margie Merritt. The social committee co-hosted the event.

Barbara Finney, President, officiated over the business meeting.

Pam Miller, Way and Means Chairman, announced that the sorority will sponsor a youth disco dance September 29 at the Bailey County Coliseum from 8:30 p.m. to 12:30 p.m.

Rhonda Little, Service Chairman, discussed plans for a Cystic Fibrosis drive that is tentatively set for September 19.

A meal of fingersandwiches, chips, dips, cantalope, watermelon and soft drinks were served to the following members; Barbara Finney, Lindy Schuster, Judy Wilbanks, Karen (Tommy) Black, Sherrie Shipman, Sandi Chitwood, Debbie Foster, Karen (Clifford) Black, Margie Merritt, Rhonda Little, Debbie Magby, Gayla Toombs, Pam Miller, Lynn Box, Pat King, Janell Turner, Karen Kidd, Lucy faye Smith, Jo Jinks and Vicki Black.

and a crochet rose pillow. An all day workshop was led by Ruth Bass. She demonstrated how to make yarn flowers with a needle. A covered dish luncheon

was served at noon. Those present were Ola Epperly, Dora Phipps, Allie Barbour, Mabel Caldwell, Levina Pitts, Bernice Amerson, Verna

Dement, Myrtle Chambless, Myrtle Chambless, Vickie Hendricks, Gertie Kirk, Hallie Briscoe, Jo Wilson, Ruth Bass and Opal Robison. One new member, Maude Robison, and three visitors were

welcomed, Veta Self, Midge Clements and Ruth Williams. The next meeting will be September 20 with Levina Pitts serving as hostess. ***** Superstitions are opinions of others.

Channel 5 To Televisive Fiesta

A number of Eastern New Mexico and West Texas artists and craftsmen will combine their talents with some of the areas top performers to present the Eastern New Mexico "Fiesta of the Arts".

KENW TV 3's staff director, Don Criss, announced that the Fiesta will be televised. Both the performing and the visual arts will be featured.

Joe Casarez, vice chairman of the New Mexico GI Forum, stated that the Clovis chapter of the GI Forum is pleased to be sponsoring the art fiesta. He also indicated that the Responce by artists, craftsmen, collectors, church, civic and social groups has been tremendous. "We anticipate a large turn out by the public and a lot of participation by the area exhibitors."

The fiesta is scheduled for Saturday, September 22 on the Albertson's Supermarket parking lot, located on Prince Street at 21st. The show will open at

10 a.m. and close at 7 p.m. the public is welcome, no admission will be charged.

The fiesta will offer something for everyone: Area church, civic and social organizations will be manning booths offering food and drinks.

The talent show will begin at 1 p.m. Bands, singers and dancers will provide an afternoon of enjoyment. The program will be televised on Channel 3, Channel 5 at Muleshoe, at a later time.

Proceeds from the Fiesta will go towards The American GI Forum's Scholarship fund.

The Fiesta will become an annual event to coincide with the National Hispanic Week Celebration.

The American GI Forum invites and encourages everyone to attend, booth spaces are available for \$12.50. For booth spaces or more information call Phillip Mendoza, 1 (505) 769-0240 or write to Fiesta, 812 Prairieview, Clovis, N.M., 88101.

Jennings Family Unites For Birthdays

An unusual occasion brought the family of Mrs. Ruby Jennings to her home at Hereford Saturday evening, August 25. Of the 22 members of her family, 12 have birthdays in August and September. This includes, Mrs. Jennings and her sister, Mrs. Roxie Travis; her daughter, Pat Nickels and son Joe Bates Jennings of Muleshoe; grandson, Jeep

and daughter-in-law, Glenda; grandson Hoppe Jennings of Lazbuddie; granddaughter, Jenda Bruns; Jeffery, Gussell and Mark McGuire of Muleshoe, and grandsons, Bobby Henry of Lubbock and Gary Burns of Muleshoe. A birthday cake made by Mrs. Joe Bates Jennings and other refreshments were served.

... the 24 hour bank

Turning night into day

MULESHOE STATE BANK A FULL SERVICE BANK

101 AMERICAN BLVD. • 272-4561 • Member FDIC

The BACK FORTY by Les Graham

"Now, I can't dig post holes. I'm skilled labor."

1910 W. Amer. Blvd.

Layaway Now !

COATS!

LEATHER POLY FILLED
DOWN FILLED

Big Selection of Flannel Shirts On Hand.

Open Mon.-Fri.
9 a.m. - 6 p.m.

ee's WESTERN WEAR

Muleshoe

Kermit Coy Little, Phd.

Announces The Opening Of His Office For The Practice Of Psychology.

Christian Psychological Counseling

Office Hours 9-5

By Appointment

Farwell Clinic

Ph. 481-3337 Farwell, Texas

Anthony's HURRY, HURRY, HURRY!

SPECIAL BUYS!

ONE DAY ONLY!

GIANT LABOR DAY SALE OPEN 11 a.m. to 5 p.m.

SAVE! SAVE! SAVE!

SALE PRICES GOOD MONDAY ONLY 11a.m. to 5 p.m.

321 MAIN MULESHOE

WATTS THE GOOD WORD? SAVINGS!

There are many ways you can save on your electric bill. Adequate insulation, storm doors and windows or double pane glass in windows, properly sized heating equipment — all these can make a big difference in your electric bill. For information on how you can get the most for the watts you pay for — come by our office and pick up one of our informative booklets.

SPS SOUTHWESTERN PUBLIC SERVICE



TROY DON GOLDEN

Troy Don Golden Awarded At Dirt Bike Races

Troy Don Golden, nine year old son of Mr. and Mrs. Don Golden won first place in the nine year old division of the Dirt Bike Races at Lubbock UPs and Downs Saturday August 25. Troy Don competed against four other bikers and attends the races every Saturday afternoon. If he wins four times, he will be qualified as an expert nine year old in dirt bike racing. He will now have a chance to compete in the

next three heats and if he places, he will advance to the finals.



Kyle Camp Keith
Mr. and Mrs. Woody Keith of San Antonio are the proud parents of a new baby boy born August 29 at 10:30 p.m. Kyle Camp Keith weighed ten pounds and eight ounces. The couple have three other children, Kacia, age nine; Kambra, age 14 months and Trey, age 10. Grandparents are Mr. and Mrs. Bernis Camp of Muleshoe and Mr. and Mrs. Amos Keith of San Antonio.

Juan Salazar Jr.
Juan Salazar Jr. was born to Mr. and Mrs. Juan Salazar of Muleshoe on August 28 at 8:45 a.m. He is the couple's first child and weighed eight pounds and four ounces. Grandparents are Mr. and Mrs. Frank Saldona Sr. of Muleshoe and Mrs. Geneda Salazar of Mercedes.

Purposes Of PTA Outlined

Since many parents of primary and elementary school aged children are confused about the purpose and policies of the Muleshoe Parents-Teachers Association, Doris Palmer, PTA President explains the objects and policies of PTA.

The objects of the association, in common with the Objects of the national PTA are: to promote the welfare of children and youth in home, school, church, and community; to raise the standards of home life; to secure adequate laws for the care and protection of children and youth; to bring into closer relation the home and the school, that parents and teachers may cooperate intelligently in the education of children and youth; to develop between educators and the general public such united efforts as will secure for all children and youth the highest advantages in physical, mental, social and spiritual education.

The Objects of this association (to promote, in cooperation with the Texas PTA and the National PTA, through an educational program directed toward parents, teachers, and the general public) are developed through conferences, committees, projects and programs; and are governed and quillified by the basic policies set forth in Article IV.

The following are basic policies of this association: The association shall be noncommercial, nonsectarian, and nonpartisan. The names of any members in their official capacities shall not be used in any connection with a commercial concern or with any partisan interest or for any purpose not appropriately related to promotion of the Objects of this Association. The association shall not directly or indirectly participate or intervene (in any way, including the publishing or distribution of statements) in any political campaign on behalf of, or in opposition to, any candidate for public office; or devote more than and insubstantial part of its activities to attempting to influence legislation by propaganda or otherwise. The association shall work with the schools to provide quality education for all children and youth and shall seek to participate in the decision making process establishing school policy, recognizing that the legal responsibility to make decision has been delegated by the people to boards of education. The association may cooperate with other organizations and agencies concerned with child welfare, but persons representing the association in such matters shall make no commitments bind the association. In the event of the dissolution of the association, its assets shall be distributed for one or more of the exempt purposes specified in Section 501 (c) (3) of the Internal Revenue Code of 1954 as from time to time amended.

Church of Christ
16th and Avenue D
SERVING CHRIST AND OUR FELLOW MAN
Sunday 10:30 am
6:00 pm

... the 24 hour bank

Seven days a week

MULESHOE STATE BANK A FULL SERVICE BANK

101 AMERICAN BLVD. • 272-4561 • Member FDIC

Labor Day Weekend Sale
We Will Be Open Sept. 3rd
To Salute Labor
With A 1979 Model "Sell Down" Sale

Monte Carlo Landau Coupe

Come Out To Our Lot At 1415 West American Blvd.

You Can Buy A New Car or Pickup Cheaper Than You Ever Can Again!

Prices Will Go Up Sept. 5th

Scottsdale Fleetside Pick up

Go By & Talk To Roy or Pete Today!

"Your Full Service Dealer"

Roy Whitt Chevrolet, Inc.
Car Lot, 272-4449
201 Main St. Muleshoe Main Office 272-3100



OPEN LABOR DAY

11 a.m. to 5 p.m.

ONE DAY ONLY!

JUNIOR FASHION JEANS
Reg. to 22
\$9.88

SAVE! SAVE! SAVE!

GIANT GROUP FABRICS
Reg. to 2.99 **88¢** YD.
KNITS, WOVENS, AND MORE!

MENS LEVI BIG BELLS AND FLARES
\$13.97

MENS FASHION JEANS
\$9.88

LADIES TOPS
\$3.88
2 FOR \$7

- 60" QIANA KNIT...\$2.88 2 For \$5.
- BATH TOWELS...\$2.22 2 For \$4.
- MENS SHIRTS ...\$4.97 3 For \$12.
- BED PILLOWS.... 2 for \$5.00
- Entire Stock LUGGAGE.... 20% OFF
- BARGAIN RACKS Your Choice \$3.00, \$5.00 and \$10.00
- Entire Stock LADIES JEANS 20% OFF
- WRANGLER JEANS Mens.... \$11.97 Students....\$10.97 Boys.....\$8.97

321 MAIN ST MULESHOE

COME AND SAVE!



FEED MANUFACTURERS--Participating in the first Feed Manufacturing Short Course at Texas Tech University were, left to right: Terry Romo, assistant superintendent, Ezell-Key Feed Mill, Snyder; Larry Lawson, manager, Texas Pellet Producers, New Home; Dr. C. Richardson, animal science faculty, Texas Tech, course coordinator; and Steve Neptune, mill manager, King Feed Lot, Muleshoe. Texas Tech, Sponsor of the course, has a \$1.5 million research feed mill devoted exclusively to the study of livestock feeds. Short course cooperators were the Texas Grain and Feed, Texas Cattle Feeders and American Feed Manufacturers association.

Coliseum...

Con't. from page 1
return them to the kitchen. Clean off all counters. Any large spills should be spot mopped (CLEAR WATER).

KITCHEN

Pickup all trash and empty trash cans in dumpster at east or west end of arena. Sweep floor. Mop floor with (CLEAR WATER). Wash all dishes and pans used. All to be placed in their proper place. Each group using kitchen is responsible for broken dishes. Please report any breakage to manager. All appliances and counters need to be wiped off.

MEETING ROOM

All tables in excess of six round tables and two long tables should be taken down and stored under west storage room under bleachers. All chairs in excess of 40 chairs should also be stored. All trash and trash cans should be

emptied in the dumpster at the east or west end of the arena. All ash trays should be returned to the kitchen. Please empty all ash trays in the RED CAN in the kitchen. The piano can be used as long as it is not removed from the meeting room. If the floor has food crumbs etc the vacuum should be run. The vacuum is in the hall janitor closet. For any large spills on the carpet there is a can of foam carpet shampoo available in the janitor closet.

PARKING LOT

Litter thrown on the parking lot at any activity is the responsibility of the organization using the building to pick it up. A broom and dust pan is available under east side of bleachers with janitor supplies.

WALLS

No NAILS can be put in any of the walls in the Meeting Room, Lobby,

Snack Bar or Kitchen.

REST ROOMS
All litter should be picked up in the rest rooms used by your organization.

MOPPING MACHINE
It is NOT necessary for any person to run the mopping machine or buffer.

JANITOR CLOSETS

There are two janitor supply closets. One is in the hall coming out of the meeting room, and the other is under the east side of the bleachers. All janitor supplies needed are furnished in these closets. Dishwashing soap and dishwasher soaps are available in the kitchen and snack bar. Trash bags are in the janitor supply closet. Dish towels are available in kitchen. (Place dirty towels under sink)

TELEPHONES

The telephones are there for your convenience. Please no long distance.

F.B....

Con't from page 1
policies for next year. Other approved resolutions will be forwarded to the state convention as recommendations for state and national policies.

Schuster added that the county Policy Development Committee is still receiving

Drive...

Con't. from page 1
children suffering from asthma, chronic bronchitis, "childhood emphysema" and recurrent pneumonia, as well as cystic fibrosis.

"In addition to finding a cure for C/F," said Mrs. Lenau, "researchers are hoping to find a test to detect carriers of the C/F gene, and also a method of diagnosing the disease at birth. Early diagnosis and treatment helps extend and improve lives."

"In 1955, when the C/F Foundation was established, most children with C/F died before reaching three years of age. Now, more than 50 percent can be expected to live past age 19. But we want to make it possible for all children with cystic fibrosis to live normal, full lives."

Volunteers can help, she added, by giving of their time to support the giving of the most precious gift of all, The Breath of Life. To volunteer, call Mrs. Lenau at 272-3181 or 272-3485.

recommendations for resolutions to be voted on. All suggestions received, including ideas surfaced at the community discussion meetings held in August at the Farm Bureau office, will be considered in drafting the tentative resolutions.

Three high school students who attended the Texas Farm Bureau Citizenship Seminar this summer on Baylor University Campus in Waco will report on their experiences at the school.

They are Scott Baker, son of Mr. and Mrs. Jacque Baker; Joel Bratcher, son of Mr. and Mrs. Charles Bratcher, both of Muleshoe High School and Dale Simpson, son of Mr. and Mrs. Billy Simpson, of Three Way High School. President Alec Schuster will make his annual report and Joyce Shafer, CPA will give the financial report. Ray Davis, agency manager, will report on insurance services.

Lubbock...

Con't from page 1
District said they are aware of the planned new wells, but said the Lubbock Water District has not applied for any permits as yet.

She said the City of Lubbock is operating completely within the law, as they purchased the water rights from a large segment of land crossing the entire county in the sandhills.

Getting On

"Is your wife having any success in learning to drive the car?"

"Well, the road is beginning to turn when she does?"

Good Rangeland Use Adds To Productivity

Just because range forage has increased substantially due to spring and summer rains doesn't mean you can automatically adjust stocking rates upward, warns Spencer Tanksley, Bailey County agent with the Texas Agricultural Extension Service. Keeping stocking rates

low now will pay off later, believes Tanksley. "This will allow range conditions to improve since animals repeatedly graze plants needing to improve in vigor and ground cover after droughts. Also, improved range conditions will provide partial insurance against the next drought."

Taxes...

Con't from page 1
state, county and city governments, Bullock said.

The mixed drink tax is collected by the Alcoholic Beverage Commission and the city-county share is rebated on a quarterly basis by the Comptroller's office.

Tour...

Con't from page 1
methods and procedures. The mission was an official program of People-to-People International, a profit, private sector organization founded in 1956 by President Dwight D. Eisenhower to promote world peace through international understanding.

Highlights of the tour included a visit to St. Paul's Cathedral and the Tower of London in London; a tour of the Grand Palace in Leningrad; a walking tour within the walls of the Kremlin in Moscow; and a tour of the old Town Wall with its nine towers in Lucerne.

succession."

With this system, only one pasture of the two, three or four in the system is deferred from grazing but the deferment period is scheduled so a pasture is vacant at a different season each time it is deferred.

"In addition to improved forage, livestock numbers increase, wildlife habitat improves, soil erosion decreases and rainfall use is more efficient."

He said another approach is the one herd/multiple pasture system. Graze a pasture intensively for 7-14 days, then defer it for a long period depending on the number of pastures and length of grazing period.

More rapid range improvement is made and grazing animal numbers can be increased over the two, three or four pasture deferred-rotation grazing.

For any system to work, Tanksley emphasized, balance the proper kinds of animals and their numbers with forage production. Also graze pastures at the proper system.

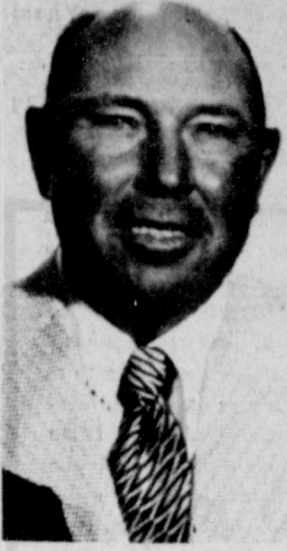
YOUTH ACTIVITY COMMITTEE

Schedule of events to date:
Discos:
Friday - Sept. 14th-- after ball game- time 10-11
music by Mark Love
Friday - Oct. 5th-- Homecoming Disco after ball game - time 10-11
Saturday - Oct 27th -- Halloween Masquerade Disco
Saturday - Nov. 10th -- Disco - time 8-12
Saturday - Nov. 24th -- Disco - time 8-12
Saturday - Dec. 29th -- Disco -- time 8-12 (music by John Steele)
Sunday Skating (YAC): Sept. -- none
Oct. 7th -- time 2-5
Oct. 21st. -- time 2-5

Advertisement for Bailey County Journal (ISSN 0095-9400) and Texas Press Association (1979). Includes contact information for L.B. Hall, President, and subscription rates.

Large advertisement for Gibson's Discount Center. Features various products and prices: Clorox 79¢, Gowns \$5.99, Jeans \$9.99, Tide \$4.69, File Cabinets \$15.00, Slacks & Knit Shirt Set \$3.69, and a 'Little Professor' electronic learning aid for \$11.49. Includes a 'Bellringing Sales' logo and 'Anchor Hocking Pitcher & Glass Set' for \$3.99.

Advertisement for Anthony's. Features a handwritten note on lined paper: "Dear Mom, Now that the kids are in school again. This is the perfect opportunity for you to do some early morning shopping. Anthony's wants to help you do exactly that. Bring this ad to Anthony's on Muleshoe any school day morning and receive 10% OFF your purchase of any regular priced item in the store. Remember this offer is only good any school day morning before noon and only applies to regular price merchandise. Thanks for shopping. At Anthony's". Includes address: 321 MAIN • MULESHOE "Muleshoe's Friendliest Store" and Anthony's logo. Offer expires 9-15-79.



JACK DARE JULIAN

Trade Restriction Removal Is Asked

The Grain Sorghum Producers Association has asked the U.S. Department of Agriculture to **Services Held For Former Friona Resident**

Services for Alwin H. Dudley, 86 of Stephenville, formerly of Friona were held at 4 p.m. Friday in the First Assembly of God Church in Hereford with the Rev. Homer T. Goodwin, Pastor, officiating.

Burial will be in Rest Lawn Memorial Park in Hereford under the direction of Gilliland-Watson Funeral Home.

Dudley died at 6:15 p.m. Monday in Parmer County Community Hospital in Friona following a short illness.

Dudley married Virtie Joiner in 1961 at Fort Worth. He was a veteran of World War I and a member of the First Assembly of God Church.

Survivors include his wife; a son, Homer of Plainview; seven daughters, Mrs. C.W. Pierson, Mrs. Haskel Harmon and Lorine Dudley, all of Hereford, Nita Holland and Mrs. Hubert Biggerstaff, both of Plainview and Mrs. C.V. Crabtree of Muleshoe; a sister, Alma Sanderson of Houston; a brother, Milton of Silverton; 20 grandchildren and 23 great-grandchildren.

Grandsons served as pallbearers.

McCormick Rites Held Saturday In Slaton

Funeral services for Mrs. Mack (Irene) McCormick, 76, of Slaton were conducted at 2 p.m. Saturday in the Church of Christ in Slaton with Clark Johnson of Lubbock and Jack McCormick, Littlefield, officiating. Burial was in Englewood Cemetery in Slaton under direction of Englund Funeral Home.

Mrs. McCormick died at 2:45 a.m. Thursday in Mercy Hospital at Slaton following a lengthy illness. She was the mother of Roland McCormick of Muleshoe.

A native of Dallas, she moved to Slaton in 1928 from Dickens. She was a member of the Home Demonstration Club, TOPS and the Church of Christ in Slaton.

Survivors include five sons; six daughters; five brothers; three sisters; 43 grandchildren and 34 great-grandchildren.

remove all restrictions of feed grain exports to Russia or increase the price support levels to 90% of parity. In a letter from GSPA Executive Director Elbert Harp to Secretary Bob Bergland (dated August 21), Harp stated, "The continued refusal of USDA to remove the restriction on exports to Russia is an unnecessary restriction of free trade."

The Association believes that the grain markets have reflected lower prices due to the restrictions placed on exports of grain to Russia by the U.S. government. If the present policy is continued, then it is, in effect, a "psychological embargo," even though there may have been no sales denied by the U.S. Department of

Agriculture. In the Agricultural Act of 1977, provisions were made for the protection of farmers, in the event an embargo is imposed.

The Agricultural Act of 1977 states that "whenever the President or any other member of the Executive Branch of the Federal Government causes to be suspended, based upon a determination of short supply, the commercial export sales of any commodity, to any country or area with which the United States otherwise continues commercial trade, the Secretary of Agriculture shall, on the day the suspension is initiated, set the loan level for such commodity under that Agricultural Act of 1949 as amended, if a loan program is in effect for the commodity, at 90 percent of the parity price for the commodity, as such parity price is determined on the day the suspension

is initiated." The law also states that the loan level established at 90 percent of parity, because of this provision, shall remain in effect as long as the suspension of commercial export sales are continued.

The Grain Sorghum Producers Association concludes that the refusal of USDA to lift the ban on future sales of feed grains to Russia, is, in fact, an embargo that is placed on such sales due to a fear of such short supply. GSPA feels that because of the Administration's refusal to lift the trade restrictions,

the grain farmers are due 90 percent price support protection immediately.

Dollar's value is inching up in Tokyo.

Services Held For Jack Julian

Services for Jack Dare Julian, 60 of Corsicana were held today, Sunday at 2:30 p.m. in the Chapel of the Chimes of Muleshoe. Julian was dead on arrival at the Navarro County Memorial Hospital of Corsicana following an apparent heart attack on August 31 at 1:30 a.m. Burial was held at the Bailey County Memorial Park with Singleton-Ellis Funeral Home officiating. Julian was born September 21, 1918 at Marlow, Okla. He moved to Lazbuddie in 1929 and has been a resident of Corsicana for three years. He is a member of the First United Methodist Church of Muleshoe and was married to Rosalene Day Julian. He was a farmer.

Survivors include his wife; five children, Ronald Julian, Gladewater; Bob Julian, Nacogdoches; Nancy Nolan, Round Rock; Connie Barnes, Lazbuddie; and Vickie Julian, Houston; his mother, Mrs. George Neeley of Muleshoe; two sisters, Edith Wilt, Muleshoe and Mrs. Robert Prather, Coleman; one brother, Charles Julian, Arlington; and seven grandchildren.

Active Pallbearers were Harold Brown, Merriman Vise, M.D. Gunstream, A.P. Sutton and R.O. Gregory.

Damage by rats mainly to property

COLLEGE STATION — Rats may be a threat to humans, but the major portion of rat damage in Texas is to property, say officials of the Texas Rodent and Predatory Animal Control Service at Texas A&M University.

More than \$123,000 in confirmed rat damage to feed, food and property was reported last year by the 13 field offices of TRPACS.

However, control service officials indicated the estimates of unreported and unconfirmed rat damage are at least 10 times higher.

Singleton-Ellis Funeral Home
24 Hour Ambulance Service
Ph. 272-4574 Muleshoe

Anthony's
HURRY, HURRY, HURRY!

SPECIAL BUYS!

ONE DAY ONLY!

SAVE! SAVE! SAVE!

SALE PRICES GOOD MONDAY ONLY 11 a.m. to 5 p.m.

GIANT LABOR DAY SALE OPEN 11 a.m. to 5 p.m.

321 MAIN MULESHOE

ATTEND THE CHURCH OF YOUR CHOICE

"LABOR IS LIFE"

Let's talk about labor — work, if you please, for that is what labor is. Labor has come a long, long way since ancient times when work was closely related to slavery. Aristotle described a slave as "a tool with life in it." In the Middle Ages, labor gained dignity and respect as slavery declined and Christianity spread. Then, later in the 1700's and 1800's the industrial revolution created conditions that led to the modern labor movements. Today labor has gained respect, wages and working conditions hitherto unknown before.

Labor is life. Work is satisfying. Through his work a man accomplishes, and creates, and provides for himself and his family. When deprived of the opportunity or ability to work, man often becomes depressed, even ill.

I Corinthians 3:9 tells us that "We are laborers together with God." We are His hands, feet, voice, and compassionate heart here on earth to spread the gospel, lift up the poor, eradicate ignorance and destroy disease.

Honor God and Labor this week by attending church.

EVERYONE IN THE CHURCH IS ON A CHAIN IN HEAVEN

The Church is God's appointed agency in this world for spreading the knowledge of His love for man and of His demand for man to respond to that love by loving his neighbor. Without this grounding in the love of God, no government or society or way of life will long persevere and the freedoms which we hold so dear will inevitably perish. Therefore, even from a selfish point of view, one should support the Church for the sake of the welfare of himself and his family. Beyond that, however, every person should uphold and participate in the Church because it tells the truth about man's life, death and destiny; the truth which alone will set him free to live as a child of God.

CHURCH OF THE NAZARENE
Ninth and Avenue C
Dana Shunko, Pastor

FIRST CHRISTIAN CHURCH
130 W. Avenue G
Rev. Walter Bartholf
Sunray School 10 a.m.
Worship 11 a.m.

LATIN AMERICAN METHODIST MISSION
Avenue D. and Fifth Street
R.O. Chavez, Pastor

THE COMMUNITY CHURCH
H.D. Hunter, Pastor
Morton Highway

CALVARY BAPTIST CHURCH
James Williams, Pastor
1733 W. Avenue C

FIRST UNITED METHODIST CHURCH
Rev. David Hamblin
507 West Second, Muleshoe

PRIMITIVE BAPTIST CHURCH
621 South First
Elder Bernard Gowens

MULESHOE ASSEMBLY OF GOD
517 South First
Rev. Joe Stone

EMMANUEL BAPTIST CHURCH
Iglesia Bautista Emmanuel
107 E. Third
Isaias Cardenas, Pastor

RICHLAND HILLS BAPTIST CHURCH
17th and West Ave. D
Roy L. Sikes, Pastor

SPANISH BAPTIST MISSION
Rev. Ynes Aleman
East Third and Avenue E

TRINITY BAPTIST CHURCH
314 Ave. B.
Rev. Gene Prevo

MULESHOE CHURCH OF CHRIST
David Cox, minister
Clovis Highway

FIRST BAPTIST CHURCH
220 West Ave E
Rev. J.E. Meeks

PROGRESS SECOND BAPTIST CHURCH
Clifford Slay, Pastor
1st and 3rd Sundays

ST MATTHEW BAPTIST CHURCH
West Third
E. McFrazier, Pastor

LONGVIEW BAPTIST CHURCH
Pastor B.C. Stonecipher
Phone 946-3413

SIXTEENTH AND AVENUE D CHURCH OF CHRIST
Sunday - 10:30
Evening - 6 p.m.
Wednesday - 8 p.m.
Terry Bouchelle, Minister

PROGRESS BAPTIST CHURCH
Progress, Texas
Rev. Gearld Albers, Pastor

NORTHSIDE CHURCH OF CHRIST
117 E. Birch Street

SPANISH ASSEMBLY OF GOD
East 6th and Ave. F.
Rev. Hipolito Pecina

ST. JOHN LUTHERAN CHURCH
Lariat, Texas
Herman J. Schelter-Pastor
Sunday School Classes
10:00 a.m.
Worship Services
11:00 a.m.

MULESHOE BAPTIST CHURCH
8th Street and Ave. G.
Bob Dodd, Pastor

JEHOVAH'S WITNESS
Friona Highway
Boyd Lowery, Minister

IMMACULATE CONCEPTION CATHOLIC CHURCH
Father Timothy Schwertner
Northeast of City in Morrison Edition

UNITED PENTECOSTAL GOSPEL LIGHTHOUSE CHURCH
207 E. Ave G
George Green, Pastor

You get more fun for your money with **CONCORD**

Roger Staebich
Quinnerybark,
Dallas Cowboys

CONCORD XKE MOPED

We have purchased the dealership for the Concord Moped.

Get up to 150 Mi. per gal.

Muleshoe Auto Parts

217 N. 1st 272-4596

Western Drug 114 Main 272-3106	Johnnie's Safety Center 320 E. Amer. Blvd. 272-3043	Lee's Wear 1910 W. Amer. Blvd. 272-4663	Roy Whitt Chevrolet 201 Main 272-3100
Bratcher Motor Supply 107 E. Ave. B 272-4288	Cobb's 218 Main 272-5511	Whites Cashway Grocery 'Where Friends Meet & Prices Talk' 402 Main & Prices Talk'	Bailey County Memorial Park 'Every Service A Sacred Trust' 272-4383
Dairy Queen Margie Hawkins, Manager 272-3412	Watson Alfalfa Alfalfa Hay 272-4038 272-3552	Dent-Rempe Implement Co. John Deere Dealer Muleshoe 272-4297	Dari-Delite Drive In 'Take Out Orders' 210 N. First 272-4482
St. Clair's 110 Main 272-4453	James Roy Meat Market Co. 506 W. Amer. Blvd. ph. 272-4361	Muleshoe Co-Op Gins	First National Bank 'Home Owned' 224 S. First
Baker Farm Supply, Inc. 1532 W. Amer. Blvd. 272-4613	Epy & Cox 401 S. First Muleshoe Ph. 272-4511	Western Sprinklers, Inc. ZIMMATIC CENTER PIVOT SYSTEMS	Lambert Cleaners Steam Carpet Cleaning Drapery Cleaning 123 Main 272-4726

Nursing Home News By Joy Stancell

Friday morning, LaNell Stancell came to make crafts with the residents. They made wall plaques from wooden spoons, boards and dried flowers. Those participating were Sarah Graham, Marie Engram, Maggie London, Onnie McDaniel and Archie Scarlett.

Lena Hawkins and members of the First Baptist Church came Friday afternoon to hold a devotional. Residents sang and recited their favorite Bible verses.

The family of Bertie Hendrix brought cake and homemade ice cream Friday evening after supper to celebrate Mrs. Hendrix' birthday.

Sunday morning, E.B. Wilson came to hold Bible Study with Rose Stine, Marie Engram, Edna Henderson, Maggie London, Dottie Wilterding, Marie Patton and Archie Scarlett.

David Cox and members of the Muleshoe Church of Christ came to hold a sing-a-long with the residents. Attending were Bertie Phelps, Maggie London, Clara Angeley, Masrie Patton, Rose Stine, Marie Engram, Lottie Hall, Edna Henderson, Bertie Hendrix, Annie Brown, Guy Nickels, Tome Watson, Archie Scarlett, John Crim, Willie Steinbock and Rose Sebring.

The Hospital and Nursing Home Auxiliary came to shampoo and set the wom-

en's hair and give manicures. Those having their hair fixed were Marie Patton, Docia Dykes, Effie Splawn, Birdie Phelps, Grace Kemp, Dora Slaughter, Bertie Hendrix, Mary Wadel, Carrie Boydston, Onnie McDaniel, Lottie Hall, Chellie Bradley and Mrs. Escobeda. Those having manicures were Edna Henderson, Marie Engram, Marie Patton, Maggie London and Grace Kemp.

Wednesday afternoon, the Spudnut Shop brought Spudnuts to the residents. The Nursing Home expresses their appreciation.

Ralph and Cliff Randolph visited with Mattie Glasscock last week.

Margaret Jones was hospitalized Saturday.

Edna Henderson went to the Senior Citizens meeting at the First United Methodist Church Monday. Mr. and Mrs. D.B. Head brought her back to the Nursing Home following the meeting. Mr. and Mrs. Bobby Henderson and Mr. and Mrs. Zeb Robinson visited with her this week.

Docia Dykes was visited by her daughter and son-in-law from Sudan Sunday.

Bertie Hendrix received visits from her great-grandsons Shawn and Jeff Bussey; Sherry and Leann Wisian, Mr. and Mrs. Joe Embry, Mr. and Mrs. Bobby Gabriel and Mr. and Mrs. Joe Smallwood.

Grace Kemp went to Clovis, N.M. to visit her daughter, Jenie Howell

last weekend. Her other children came to visit her at the Nursing Home. Mr. and Mrs. Don Kemp and Mr. and Mrs. James Mc-Dorman.

Burl Mardis and his family came to visit his grandmother, Ruth Myers.

Visiting with Onnie McDaniel was Beverly Hall of Hub, Charles and Shelia Moraw and Leigh, Janie Moraw, Judy, Shay and Melissa.

Annie Brown went out with Maude Kersey Monday.

Mr. and Mrs. R.L. White visited Rose Stine.

Visiting Marie Engram were Stacey Campbell, Sherrie Ellard and Wilma Waddle. Mrs. Waddle

View From The Plains by J.D. Peer I&E Field Office

LUBBOCK-- Texas sportsmen will have another early hunt when the annual teal duck season opens Sept. 15-23 across the state.

The daily bag limit will be four with eight in possession after the second day. This bag limit may include four green-winged, cinnamon, or blue-winged teal or a combination of the three species.

Shooting hours for teal will be from sunrise to sunset daily which is different than other migratory birds such as dove.

Legal firearms for the teal hunt are shotguns plugged to a three shell capacity. Both teal and dove hunters are governed by the migratory hunting rules set by the U.S. Department of the Interior.

The teal and dove hunters will be required a new 1979-80 Texas hunting license, but the teal hunter will also be required to carry on his person a federal migratory game bird and conservation stamp. This duck stamp can be purchased at most U.S. Post offices for \$7.50.

The early teal season is a means of harvesting the surplus species of teal that migrate through Texas in September prior to the regular duck season. Reports from the breeding grounds indicate a 20-percent increase in the blue-winged teal population over 1978.

More information about teal hunting is available by contacting the nearest Texas game warden or P&WD office.

gave Marie a shell necklace that she brought back from Hawaii.

Monday, Marie Engram, Maggie London, Archie Scarlett, Edna Henderson, Marie Patton, Willie Steinbock went out for a drive in the Senior Citizens bus. They stopped for refreshments at the Spudnut Shop.

Ed Parks and Mrs. Patterson's family gave the Nursing Home the bottom layer of a wedding cake that was left from a wedding Friday night.

Members of the Muleshoe Young Homemakers came to play bingo with the residents Monday afternoon. They also served refreshments. Residents participating were Willie Steinbock, Onnie McDaniel, Marie Engram, Maggie London, Bertie Hendrix, John Crim, Archie Scarlett, and Mrs. Hendrix's grandsons, Jeff and Shay Bussey.

The Nursing Home expresses thanks to the family of Guy Nickels for the long stemmed roses which were sent in celebration of Nickels' birthday.

Visiting with Clara Weaver Saturday were Cherif and children, Irene Geer of Seattle, Wa., Jimmie, Chad and Shannon Weaver, Iva Carpenter and Glenda Jennings.

A friend, Christine, visited Arthur and Chellie Bradley.

Glenda Jennings and Iva Carpenter came to have a sing-a-long with residents Wednesday afternoon.

Wednesday, Edna Henderson, Marie Patton, Maggie London and Grace Kemp visited the Muleshoe Public Library. Librarian Anne Camp showed them the library and the display case where they have some of their crafts on display.

The Nursing Home gave a "Sloppy Joe" picnic Thursday at noon. Sloppy Joes, chips, pork and beans, and cookies were served to the residents on the Nursing Home lawn.

For Your Classified Ad Call 272-4536

South Plains Fair Offering New Attractions

The lineup of free attractions due to highlight the 62nd annual edition of the Panhandle South Plains Fair in Lubbock Sept. 22-29 has been completed, according to general manager Steve L. Lewis.

Lewis has announced that Sam Hill of Salton and the Tennessee Sounds would be appearing on the outdoor stage at 5 p.m. and 7 p.m. Sept. 26-29. Earlier, Lewis said the Flatland Bluegrass Band would start the week at the same times Sept. 22-25.

In addition, Bob Ford's "world of magic" and Vandermeide, Europe's fastest hypnotist, will be sharing the stage throughout the eight-day run.

And Ruth Rubin, popular Lubbock mime, will be performing in the exhibit buildings and along the outside exhibit areas, Lewis noted. Lubbock and area square dancers will perform on the final day of the fair from 3 p.m. to 5 p.m. and 7:30 p.m. to 10 p.m.

Hill and the Tennessee Sounds comprise a five piece band that plays country and western music here and throughout the West Texas area. Earlier this year the group accepted an invitation to play at the Kerrville Folk Festival.

In addition to the free attractions, an all-star array has been carded for the Fair Park Coliseum. The slate includes the Charley Pride show, 5 p.m. and 8 p.m. Sept. 23; the Statler Brothers, with Barbara Mandrell, 5 p.m. and 8 p.m. Sept. 24; Eddie Rabbitt, with Janie Fricke, 8 p.m. only Sept. 25; Dave and Sugar, with John Conlee, 8 p.m. only Sept. 26; the Golden Years of Country Music, by South Plains College, 7 p.m. only Sept. 27; Tom T. Hall, with Charly McClain, 8 p.m.

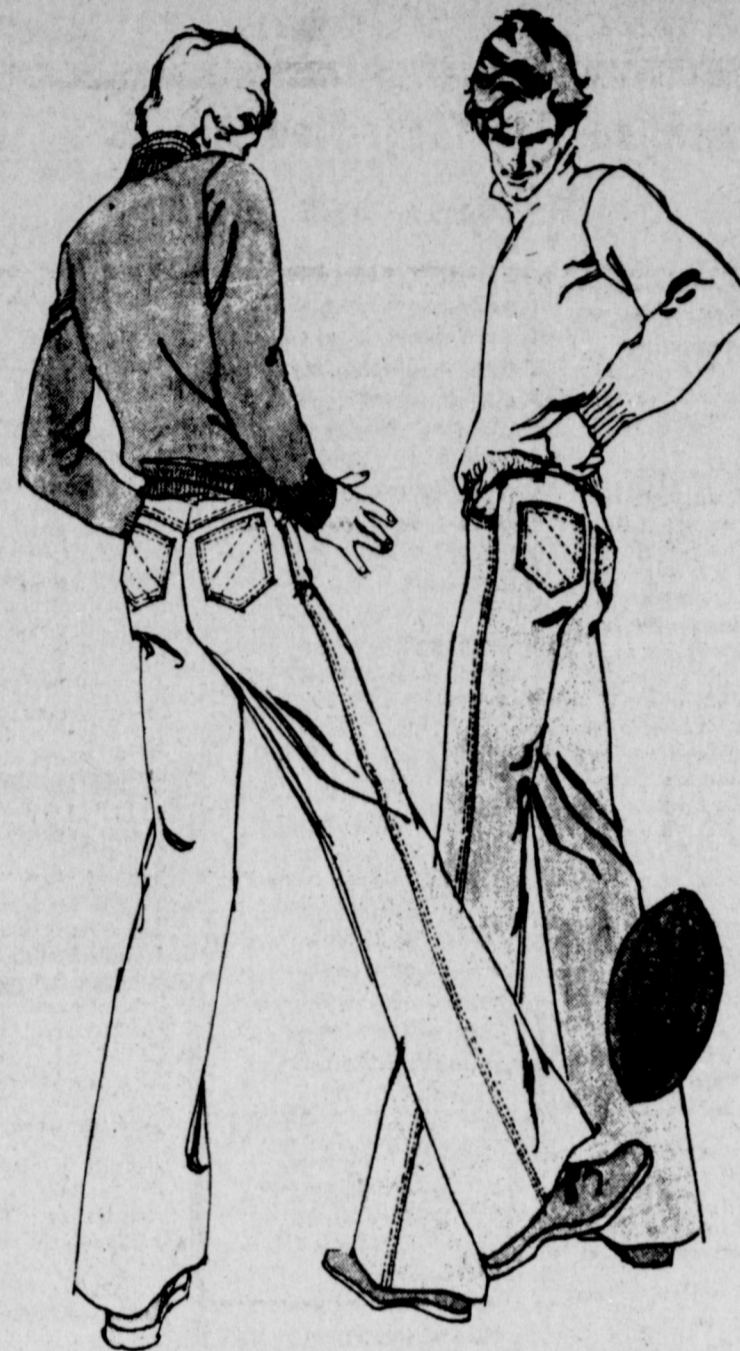
only Sept. 28; and Tammy Wynette, with Rex Allen Jr. and George "Goober" Lindsey, 5 p.m. and 8 p.m. Sept. 29.

All seats are reserved and tickets are \$4, \$5 and \$6

except for the SPC show which are \$2 and \$3. Tickets may be obtained at the fair offices, 105 E. Broadway, or at Luskey's Western Wear, Dunlap's, Sears and Hemphill-Wells

stores in South Plains Mall and at Ed's Wagon Wheel.

Teacher-What tense is: "I am beautiful?" Little Boy-Past.



Jeans, Jeans, Jeans!
Blue Denim, Velour Cords, Polys Polyester Knit
By Sedgfield & H.J.S. Large Selection
In Regular or Fancy Styles. Waist Sizes 28-38.
Shop Early For Back-to-School, & While You're Here

Look Over The Latest Styles In
Shirts, Sweaters & Jackets.
Albertson's
Shop For Men
228 Main 272-3000

Campbell IRRIGATION SYSTEMS, INC.
PIVOT TALK
by Arnie

There are two basic types of tower leg designs in use in undertruss center pivots. The double angle iron tied together in a V design and the single leg channel iron. The basic drawback to the double channel iron is its rigidity and the angle at which it bears its load. The load of the outboard span all bears down beyond the center of the tower base and even more significantly not directly down the leg as a beam but acting more like a lever. The single channel by contrast is inherently two and one-half (2-1/2) times as strong down to the tower base. Beyond that, in extreme radial stress the channel can flex where the angle iron either fatigues or bends the span pipe at a point directly outboard of the inner angle iron.

"LET US SERVE YOU"
Office In Muleshoe
604 N. 1st 272-5536

Lease a Valley this summer at rates you can't afford to pass.

7.37% LEASE RATE For Valley linears and corners, make a 10% down payment and we'll put the system on your farm. You don't make the next payment until January, 1981. Hurry, because it goes up to 7.50% on July 13th and up to 7.63% on August 17th.

8.24% LEASE RATE Here's a terrific long-term lease for long span and regular Valley systems. We don't think that lease rates will be this low for a long, long time. So make your move right now.

8.64% LEASE RATE Make a 10% down payment and you don't have to make another until January, 1981. The lease rate is 8.64%. There is also an interest-free finance plan available. Get all the facts.

Every month you wait, you're losing money.

VALLEY
For more information, please contact:
American Valley, Inc.
ph. 272-4266 Muleshoe, Texas W. Hwy. 84

ATTENTION:
Parents, Children, Crewleaders, Farmers & Other Employers

The compulsory school attendance law provides that all children who have attained the age of seven (7) before September 1 shall attend either Public or Parochial School on a regular basis until they have reached their seventeenth (17) birthday and have successfully completed the ninth grade. All parents have the responsibility to see that their children do attend school, and are subject to prosecution if they fail to do so. Children can be held accountable at law for failing to attend. Crew leaders, farmers, or other employers that employ such children during school hours are subject to prosecution for so doing. We respectfully request the support and cooperation of all concerned, including the children.

CLASSES BEGIN AUGUST 31
CLASSES BEGIN AUGUST 29

THREE-WAY MULESHOE

ATTENCIÓN:
Padres, Niños, Contratistas, Rancheros, & Otros Patrones

La ley obligatoria de asistencia escolar provee que toda Criatura que haiga Cumpilgo la edad de siete (7) años antes de el primerio (1) de Septiembre, tendra que asistir a alguna escuela, ya sea Publica O Prochial; tendra que asistir regularmente hasta que haiga cumplido la edad de 17 años y que haiga prosperamente terminado el grado 9. Todo padre tiene la responsabilidad de ver que sus niños atiendan la escuela y que estan sujetos a prosecucion si no manda a sus niños a la escuela. Los niños tambien tienen la responsabilidad bajo la ley si no atienden la escuela. Contratistas, rancheros, y otros Patrones que ocupan a niños durante horas escolares estan sujetos a prosecucion o hacer esto. Respetadamente pedimos el soporte y Cooperacion de todos a quienes le concierne, incluyendo los niños.

CLASSES DAN PRINCIPIO AGOSTO 31
CLASSES DAN PRINCIPIO AGOSTO 29

THREE-WAY MULESHOE

GLEN WILLIAMS
Juez de Condado y Ex-oficialo
Superintendente de Escuela del Condado de Bailey, Texas

Farmers Union Uncovers Foreign Investor Ploy

An official of the Texas Farmers Union has alleged that "countless alien investors are intentionally avoiding full disclosure of ownership of Texas farm land" and has cited "a case in our own backyard" as proof positive that a new federal reporting law "is toothless and inadequate."

Ron Butler, State Secretary of the Waco based farm organization, called reporters to the McLennan County courthouse to expose a foreign investor in the county who has failed to totally comply with the Agricultural Foreign Investment Disclosure Act of 1978.

The law, which passed Congress last year and went into effect February 1, required all foreign investors who hold American farm land to report information on their holding to county USDA offices by August 1 deadline. Thereafter, all new transactions involving aliens must be reported within ninety (90) days of purchase.

Butler revealed a report submitted before the deadline but containing insufficient information, particularly in identifying the owner of the property and the origin of nationality.

"I suspect," said Butler, "that the lack of information on the report is intentional. For what reason, I don't know. But the inadequacy of the report was pointed out, and the people who filed it still failed to reveal the owner."

County Agricultural Stabilization and Conservation Service (ASCS) Office Manager Wilburn Dreyer received the report, dated July 27, 1979, and returned it for further information. When it was returned again without the information, Dreyer had no choice but to submit it to the Washington collection point for all U.S. reports.

In the place of owner, those filing the report listed the Northern Trust Company of Chicago, a fiduciary holding the land in trust. The trustee, or owner, was listed simply "Trustee #2-45255" with a representative "Second Vice-President, Susan J. Ehrbar" of the Chicago trust company.

Butler stated, "We have

searched the deeds and other records of transaction and hit a dead-end everytime we saw the Northern Trust Company name. What this means is there is no way for the public to find out who owns the land, which was the main intent of the federal law.

"Furthermore," he continued, "if such games are being played with the submitted reports, I would guess there are hundreds, perhaps thousands, of other Texas land owners who have camouflaged their deeds and records to the point that they feel that they can safely fail to even file a report. That means data gathered under this federal law cannot be accurate. It's all still a guessing game like it was in the beginning."

"What's worse is that the agency put in charge of

gathering the information (USDA/ASCS) has no real enforcement power. There is a penalty for not reporting, but none for submitting insufficient reports or using such ploys as listing real estate trusts rather than individuals or countries.

"These huge investment firms, domestic and foreign, are 'big guys'". Congress has essentially asked understaffed ASCS offices to "hunt bear with BB-guns!"

Butler said that the major opposition to foreigners owning American farm land is that the use is often for speculating on investments rather than producing food and fiber. He further stated that local farmers have complained that the Northern Trust Company land in particular is being managed by an operator who is "hiring all the good labor away by paying tractor drivers \$1,000 a month, providing them with new pickups, housing, and paid utilities". He also said that aliens are paying premium prices for land, an average in Texas of \$250 per acre above current values, which accelerates the already spiraling cost of farm land.

"I'm very much in favor of labor receiving fair wages in any American business, especially if the labor is domestic," said Butler. "But throwing money around like this for investment is inflationary to both farmers and consumers. This practice also puts the ownership of farm operations by our farmers, especially the young, further out of grasp...or makes it outright impossible. Additionally, the dollars they spend do not necessarily go through the

local community. In this case, a lot of the capital is going to Chicago or possibly Iran...or gosh only knows where since they didn't list the nationality of the owner."

Texas Farmers Union was recently blocked in its attempt to pass a law prohibiting ownership of Texas farm land by non-re-

sident aliens when Austin lawmakers introduced a bill for consideration by the 66th Legislature. The principal opponent of that measure was Shell Oil Company, which is based in the Netherlands Antilles, a country with which the U.S. has a special treaty under which its citizens or corporations pay no capital gains, estate, gift, inheritance, dividend, or interest taxes.

"The Farmers Union wants to stop huge investment firms, foreign or domestic from speculating in finite land

resources," concluded Butler. "American farmers are interested in producing food and fiber, and it's downright impossible for them to compete with high-rolling investors who are interested only in land speculations."



... the 24 hour bank

Never takes a Holiday

the ready bank

MULESHOE STATE BANK

A FULL SERVICE BANK

101 AMERICAN BLVD. • 272-4561 • Member FDIC

Piggly Wiggly, Reg. or Ripple

Potato Chips

8-oz. pkg. **59¢**

Shasta Ass't Flavors

Can Soda

12-oz. cans **7¢**

Labor Day Savings

PIGGLY WIGGLY

Prices Good Sun. & Mon., Sept. 2 & 3

Little Sizzlers

Hormel Sausage

12-oz. pkg. **99¢**

Fresh Ground

Lean Ground Beef

lb. **\$1.39**

Piggly Wiggly, Ass't Flavors

Ice Cream

1/2 gal. ctn. **\$1.19**

Hunts Tomato

Ketchup

32-oz. btl. **79¢**

White Swan Granulated

Sugar

Limit 1 With Additional \$10 Purchase, thereafter \$1.23

5 lb. bag **79¢**

Smokey Bear, Easy Lite Quality

Charcoal

lb. bag **\$1.28**

Ideal For Holiday Cook-Outs! Well Filled Ears.

Sweet Corn

10 ears **\$1.00**

Buy 10 You Save \$1.50

How you see it... How you don't!

That's how fast a classified want ad works!

clear out unwanted articles and make money too!

Muleshoe & Bailey County

272-4536

Picture yourself at our bank...

Free

with a

8x10 Color Portrait

Picture yourself enchanted with our lovely 8x10 color portrait... our gift to you... made by a trained professional photographer.

And it's yours... absolutely free... simply by making an appointment with us for your portrait sitting. Appointments are arranged, at your convenience (day or evening), so you can have your entire family present.

Picture yourself delighted when you return to our bank (within 2 weeks of your portrait sitting) to preview your portraits and select the one for your FREE 8x10. At the same time, you may wish to purchase additional portraits. However, the choice is yours, you are under no obligation.

Picture yourself at our bank... smiling... when you take advantage of this fantastic offer. Call today!

MULESHOE STATE BANK

101 AMERICAN BLVD. 272-4561

True Value HARDWARE STORE

TOOL VALUE OF THE MONTH

While Supplies Last

now **5.77**

HEAVY-DUTY STAPLE GUN

Efficiently install insulation, upholster furniture, repair screened windows and more. Drives 5 staple sizes including Locktite. Built-in stapler remover.

P 800

Quantities Limited

Gray & Cox

Ph. 272-4511
401 So. First
Muleshoe Tex.