

### The Weather

West Texas: Not so cold to night as last night.

(VOL. 40, NO. 273)

# THE PAMPA NEWS

(10 PAGES TODAY) THURSDAY, FEBRUARY 11, 1943 PAMPA, TEXAS Wide World News—AP Leased Wire (PRICE FIVE CENTS)

### Good Evening

You can't climb high by stepping upon the toes of others.

## BOY SCOUT WEEK PROCLAIMED



Gov. Coke Stevenson (right) officially proclaimed Texas Boy Scout Week when he presented the highest award of scouting, the Eagle badge, to Charles Landry (center) of Beaumont. Presentation of the badge to young Landry was symbolic of the recognition of all scouts and scouters by the state of Texas. Rep. Will L. Smith (left) himself a former Eagle scout, presented young Landry to the governor. (AP Photo.)

## Americans Will Get Less Food This Year

By OVID A. MARTIN

WASHINGTON, Feb. 11 (AP)—How much food will you get this year? Not as much as last year, government officials say, but enough. But there'll be some changes in the way you act in the grocery store as the war goes on.

These changes will grow out of the fact that there will be less food for civilians than has been available to them the past three years. Consumers will have to go back to standards of the late 1930's, when

people bought less because incomes were smaller. Not all the civilians will be affected alike by the step-down in eating habits. Rationing, designed to divide the supply equitably, will give some families more than they had in the '30s, some less, others about the same amount.

The Jones family with the \$5,000 income may, for example, have bought an average of four pounds of meat a week for each member in the '30s. Under rationing, it will have to limit purchases to a little less.

See AMERICANS, Page 5

## Gray County Men Inspect Boys Ranch at Tascosa

Panhandle boys are making their own way in true Texas fashion at Gray County Ranch, located at old Tascosa, the counter-part of Nebraska's famous Boys Town.

Yesterday four Gray county residents were taken on a tour of the ranch and they were amazed at the efficiency with which the place was operated.

Actually, the boys run the ranch themselves. They have their foreman as their No. 1 man, a counterpart to Boys Town's mayor.

Occasion of the visit of the quartet from Gray county was a lecture and demonstration on trapping of muskrats and coyotes, given by Drew Word, 16, Alameda 4-H club boy and winner of a Santa Fe trip to the 4-H congress in Chicago last December.

Drew spoke to the boys at 1 p. m., later gave them a practical lesson by setting traps at points near the ranch school.

There are 42 boys at Gray County Ranch and 200 boys who are on the waiting list. The ranch has a 4-H club and ample facilities for practical work in farming which in turn supplies much of the food for the boys.

Boys Ranch has a herd of 30 registered Herefords, four calves being fed for the Amarillo Stock show to be held March 8, 9, 10, a 5-acre orchard, containing apple, pear, plum, and cherry trees, 12 acres of garden space. Last year Boys Ranch canned 3,000 half-gallon jars of food.

All the boys work. They do all the chores on the ranch except cooking. Some obtain employment on neighboring ranches. Clubs and societies regularly make donations to help keep the project growing.

Payment to the boys is in scrip and bonds. Victory stamps and bonds are purchased. They are paid \$30 a month in scrip, must pay \$20 of this for board and room. Savings and stamp purchases are deducted from the balance, leaving each boy about \$4. This money is his and he can save it or use it to buy candy, a fishing pole, or anything else.

Making the trip to Boys Ranch Wednesday were Drew Word, Glenn T. Hackney, Gray county farm agent, David F. Eaton, Jr., assistant agent, and County Judge Sherman White. The four left Pampa at 8 a. m., stopped at Channing to pick up J. W. Grist, Hartley county farm agent, who supervises the 4-H club at the ranch, and who accompanied the Gray county group on its trip yesterday. The quartet returned to Pampa at 7:45 p. m. yesterday.

## Finnish Election Monday Will Be Closely Watched by Washington

WASHINGTON, Feb. 11 (AP)—What may be a turning point in the Finnish situation lies just ahead. The signpost is the presidential election in Finland next Monday, when 300 electors assemble in Helsinki to choose a chief executive.

The incumbent is President Risto Rytli, who was elected in 1940 to serve out the unexpired term of President Kyysti Kallio, who died soon after the Russo-Finnish winter war of 1939-40. In Finnish circles here it is taken for granted that Rytli will be retained.

However other candidates have been mentioned: Field Marshal Gustav Mannerheim, former Foreign Minister Vaino Tanner, and former Prime Minister J. K. Paasikivi. Tanner was foreign minister during the winter war and Paasikivi headed the delegation which signed the 140 peace treaty in Moscow.

Inasmuch as the election is something like the balloting for a nominee in an American party convention, any number of names may appear in the first count. If the first and second ballots do not show a clear majority for any candidate, the two highest fight it out in the third and final balloting.

# CHURCHILL BARES PLAN FOR BATTLE OF EUROPE

## Allies Meet In China To Map Jap Drive

### Hap Arnold, MacArthur In Conferences

A concerted United Nations offensive against Japan was foreshadowed today with the official disclosure that high-ranking American, British and Chinese military leaders have met and agreed on "offensive plans" against Japan's far-flung invasion armies. The British government announced in London that Field Marshal Sir John Dill, representing Prime Minister Churchill, and Lieut.-Gen. Henry H. Arnold, representing President Roosevelt, had held a series of conferences with China's Generalissimo Chiang Kai-Shek in Chungking and with Field Marshal Sir Archibald P. Wavell in India.

### Bet This Jolted Tower Operator

LUKE FIELD, Ariz., Feb. 11. "If you wish to receive me, shake your wings," the signal lower radioed a pilot in a recent training flight.

### Military Rites For Bob Gribbon Set Saturday

Funeral services for Second Lieut. Robert Henry Gribbon, 25, killed in a bomber crash at Sioux City, Iowa, Monday night, will be conducted at 10 a. m. Saturday at Holy Souls Catholic church by the Rev. William J. Stack, pastor.

### 48-Hour Week Expected Here

DALLAS, Feb. 11 (AP)—Henry Le Blanc, deputy regional director of the War Manpower Commission, today said labor-management committees are being set up in Dallas industrial and business concerns in anticipation of this section being declared a critical labor shortage area in which the 48-hour week would apply.

### Telegraph Company Merger Favored

WASHINGTON, Feb. 11 (AP)—Approval by the house of legislation authorizing merger of the Western Union and Postal telegraph companies apparently cleared the way today for final passage of the measure.

### Wooden Plane Building Declared Here to Slay

DALLAS, Feb. 11 (AP)—The plywood airplane will have a place after the war even if metals are plentiful. Col. John H. H. Joutet, executive vice-president of Hignins Aircraft, Inc., of New Orleans, told the Texas section of the Society of Automotive Engineers last night.

### Temperatures In Pampa

6 p. m. yesterday	40
9 p. m. yesterday	24
Midnight	24
6 a. m. today	27
7 a. m.	28
8 a. m.	28
9 a. m.	28
10 a. m.	28
11 a. m.	28
12 Noon	28
1 p. m.	28
Yesterday's maximum	28
Yesterday's minimum	14

### Men With Children Are to Be Inducted

WASHINGTON, Feb. 11 (AP)—Major General Lewis B. Hershey today opposed legislation to require deferment of men with children until all single men and childless married men are drafted and said "the great majority of men" inducted in the next two or three months would be men with children. Without giving any figures, the director of selective service said he had previously testified that a lowering of the draft age to 18, which was done, would not meet the demands of the armed forces for manpower, and added:

### British Push 20 Miles Into Axis Tunisia

By The Associated Press  
British's Eighth army was officially reported to have stormed 20 miles into Axis-held southern Tunisia in a renewal of the two-way Allied offensive in North Africa.

### Offensive to Begin As Soon as United Nations Are Ready

LONDON, Feb. 11 (AP)—Prime Minister Churchill declared today that the Allies had landed nearly a half-million men in Africa and planned an offensive campaign during the next nine months with the goal of engaging the enemy "on the largest possible scale and at the earliest possible moment."

### Eisenhower Now Full General, Fourth for U. S.

WASHINGTON, Feb. 11 (AP)—President Roosevelt today nominated Lieutenant General Dwight D. Eisenhower to be a full general, coincident with Prime Minister Churchill's disclosure that Allied forces opposing the Axis in North Africa would be unified under Eisenhower's command.

### Yanks Replace French Troops

ALLIED HEADQUARTERS IN NORTH AFRICA, Feb. 11 (AP)—Some French troops have been withdrawn from action on the Tunisian front for re-equipment and training with American arms. It was officially announced today.

### Arnold Is Nominated For D. C. Judgeship

WASHINGTON, Feb. 11 (AP)—Thurman W. Arnold, assistant attorney general in charge of anti-trust prosecutions, was nominated by President Roosevelt today to be an associate justice of the United States Court of Appeals for the District of Columbia.

### New Syrup for Tobacco to Save Glycerine Needed in Explosives

PHILADELPHIA, Feb. 11 (AP)—Scientists in the U. S. Department of Agriculture's regional experiment station here started out a year ago to develop a substitute for common table syrup.

### I SAW

Geneva Schmidt, Billie Knapp, and the rest of the employees of the Gray County War Price and Rationing board, looking as though they were miles away from each other in the wide-open spaces of the county court room, where the office is now located. An odd touch to the remodeling job was the sight of a telephone on the desk formerly used by the county judge, and the jury box pushed over against the south wall.

Let us service your car while you shop Motor Inn.

### British Push 20 Miles Into Axis Tunisia

By The Associated Press  
British's Eighth army was officially reported to have stormed 20 miles into Axis-held southern Tunisia in a renewal of the two-way Allied offensive in North Africa. British headquarters said Gen. Sir Bernard L. Montgomery's vanguards clashed with Axis troops in the Ben Gardane sector, 25 miles inside Tunisia, while the German-controlled Vichy army asserted that two British attempts to break through Axis lines had failed.

### Yanks Replace French Troops

ALLIED HEADQUARTERS IN NORTH AFRICA, Feb. 11 (AP)—Some French troops have been withdrawn from action on the Tunisian front for re-equipment and training with American arms. It was officially announced today.

### Arnold Is Nominated For D. C. Judgeship

WASHINGTON, Feb. 11 (AP)—Thurman W. Arnold, assistant attorney general in charge of anti-trust prosecutions, was nominated by President Roosevelt today to be an associate justice of the United States Court of Appeals for the District of Columbia.

### New Syrup for Tobacco to Save Glycerine Needed in Explosives

PHILADELPHIA, Feb. 11 (AP)—Scientists in the U. S. Department of Agriculture's regional experiment station here started out a year ago to develop a substitute for common table syrup.

### I SAW

Geneva Schmidt, Billie Knapp, and the rest of the employees of the Gray County War Price and Rationing board, looking as though they were miles away from each other in the wide-open spaces of the county court room, where the office is now located. An odd touch to the remodeling job was the sight of a telephone on the desk formerly used by the county judge, and the jury box pushed over against the south wall.

Let us service your car while you shop Motor Inn.

### Vicars Serving At Kansas Post

Lieut. Edwin S. Vicars of 608 Buckler, Pampa, former vice-president of the First National bank, is now war bond and insurance officer at Strother Army Air field, Winfield, Kan.

Three-fifths of the officer personnel at Strother are native Texans but Lieutenant Vicars and another officer, Lieut. Donald E. Wineinger, post chaplain, are the only ones from the Panhandle.

Strother field is located on the Kansas plains, midway between Winfield and Kansas City. It was built in a hurry. Buildings were ordered to be adequate and no more than adequate. Emphasis was on speed in constructing this field for training combat pilots.

Symbolic of this all-out policy are the rugged and tough, geared for action Texans, who for the most part, make up the nerve center of this post.

### Ex-Pirate Captain Visits in LeFors

Special to the NEWS.  
LEFORS, Feb. 11.—Petty Officer Third Class Bob Delver of the United States navy spent the week-end with his parents, Mr. and Mrs. George Delver, located at Lakehurst, N. J., where he will take further training as a machine gunner on a patrol plane.

He was accompanied by a friend, Dick Lafferty, a native of Philadelphia, also of the United States navy, stationed at Purcell, Okla.

Bob was a student in LeFors High school at the time of his enlistment, and was captain of the 1941-42 football team. At San Diego he was one of a few seamen chosen to go to the navy pier in Chicago for training.

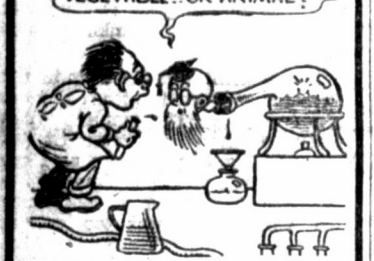
Having graduated from the navy pier, he was sent to Purcell, Okla., for a four-week training period where he recently graduated.

Read the Classified Ads

### Worry of FALSE TEETH

Slipping or irritating  
Don't be embarrassed by loose false teeth slipping, dropping or wobbling when you eat, talk or laugh. Just sprinkle a little FASTEETH on your plates. This pleasant powder gives a remarkable sense of added comfort and security by holding plates more firmly. No stumps, sores, nasty taste or smell. It's alkaline, non-acidic. Get FASTEETH at any drug store.

**PROF. WHIZZY QUIZ**  
PAROON THE INTRUSION... BUT IS ISINGLASS A MINERAL VEGETABLE OR ANIMAL?



Since ISINGLASS is made from parts of FISH — it is of the Animal Kingdom — and milk is also of the animal kingdom — consequently requiring pasteurization to make it safe for human consumption. You get all the health giving elements of milk in safe form when you get Northeast Dairy milk.



### 10 Men Lost When Oregon Tug Capsizes

PORTLAND, Ore., Feb. 11 (AP)—Coast guard patrol craft, aided by a fleet of private boats, searched the Columbia river today for eight shipyard workers and two crewmen of the tug May which capsized shortly after midnight.

Nine of the 19 persons aboard the 50-foot tug, including Pilot Clarence Harvey, were rescued shortly after the craft turned over about 400 feet from the Oregon shore en route to the Henry J. Kaiser shipyard at Vancouver, Wash.

Powerful searchlights played from the river bank and from the scores of searching craft that moved slowly through the pre-dawn blackness in search of the missing. But almost four hours after the tug overturned none of the 10 had been sighted.

Capt. Earl Stanley of the Multnomah county sheriff's office who took charge of the search for the missing, said the tug was used to transport workers because the number was so small that the regular converted barge ferry did not make the run.

### Internal Revenue Official to Visit

It's income tax paying time again and once more a representative of the internal revenue service of the treasury department will be in Pampa.

He is L. P. Herndon, deputy collector of internal revenue, who will be at the postoffice on March 1 through March 6 from 8:30 a. m. to 5 p. m. to give assistance to Pampans on income tax problems.

This will be his only visit here before the end of the current filing period on March 15, 1943.

W. A. Thomas, Dallas, collector of internal revenue, explains the salient point of this year's trip by Deputy Herndon:

"The revenue act of 1942 reduces the personal exemption allowed a single person to \$500 and a married couple to \$1,200 on individual income tax returns filed for 1942.

"In addition, increased surtaxes have been levied upon all net incomes exceeding personal exemptions in addition to the regular normal tax.

"This reduction in personal exemption will require many thousands in this district to file income tax returns who have never been required to file before. This office is anxious to aid all taxpayers who desire assistance in preparing their returns."

BUY VICTORY STAMPS

### Sheriff Issues Report on Jail

An average of better than one prisoner a day was the record for the Federal prison at the county jail according to the January report of Sheriff G. H. Kyle.

There were 28 county prisoners and eight Federal prisoners listed on the record for the month. Four of the Federal prisoners have been released into custody of W. P. (Bill) Lampe, Amarillo, deputy U. S. marshal.

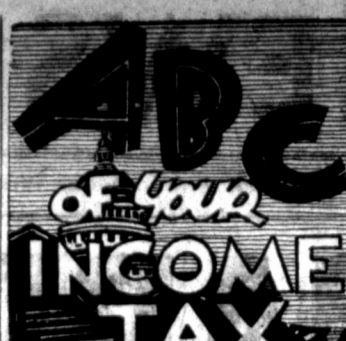
Charges on county prisoners ranged all the way from investigation to car theft. Few were held on the same charge as there were three forgery cases, two each for theft, drunken driving, liquor transportation, intoxication, disturbance of the peace, attempted passing of forged check.

Other charges included whisky running, vagrancy, and one insanity case.

In Federal jail the charges include violations of the Mann and Dyer act, and evasion of selective service law.

The old French word "marin," meaning "sea soldier," gives the marines their name.

BUY VICTORY STAMPS



### HERE'S HOW TO COMPUTE INCOME FROM BUSINESS

This is No. 2 of a series of 14 articles prepared by a tax expert to aid readers of this newspaper in preparing Federal income tax returns. Clip and save the articles for a complete reference when making out your tax form.

### By NEA Service

If you are sole proprietor of a business or profession, you will have to report income on line 9 of the U. S. Individual Income Tax Return Form 1040. (If you are not sole proprietor, but run your trade as a corporation, you must file separate returns—forms 1120 and 1121 for your company. This is in addition to your own individual tax return.)

To arrive at your income from business or profession, turn to schedule H on page 4 of the return. Note that your total receipts for the year, entered as item (1) on schedule H, must also be entered on line 9 of the first page of the return, though not in the income totals column.

Follow tax return's explicit directions to fill in schedule H, items 2 through 10, under "cost of goods." Then starting with item 11, list the deductions you are entitled to make in addition to the net cost of the goods you sold (which is item 9).

**BUSINESS DEDUCTIONS**  
You may deduct salaries (but not what you paid to yourself), contributions to employee pension funds, interest, taxes (including social security for employees) or your business or business property, losses, bad debts, depreciation, heat, light, rent, repairs, etc.

Remember the following important factors: The same deduction may never be made twice in the income tax return. Thus if you deduct interest and taxes in computing your business profit or loss, you may not deduct them again anywhere else on the return.

The cost of carrying on your business does not include your ordinary living expenses nor those of your family, and these may never be deducted on the tax return.

For business expenses to be deductible, they must be both ordinary and necessary expenses.

**NON DEDUCTIBLE ITEMS**  
Expenses for the purchase of capital are never deductible. Expenses for the purchase of capital is money you spend to buy new equipment or to make permanent improvements to your property. Commissions you pay to purchase of property are not deductible. In general, capital expenses are those made in acquiring something of permanent value.

In explaining deductions in the blank space provided at the end of schedule H, indicate by number which section of schedule H you are referring to on each deduction.

Thus, if you deduct rent, under section 17, your explanation will read "17 rent \$8,000."

When you have deducted cost of goods sold and other deductions from your total receipts on schedule H, enter this profit or loss on line 9 under income on page 1 of form 1040.

Line 10 under income asks for money received from "partnerships; fiduciary income; and other income." As to partnerships—since a tax return must be filed for the partnership itself on a separate form (1065), you will know from this report what profits must be filed on your individual return.

Fiduciary income is money received from your guardian, trustee, executor, etc. This income is not taxable if, similar to the case of dividends, it is actually a distribution of the principal of the trust, rather than earnings. Nor is it taxable if it is a bequest under a will. In most other cases it is.

**ALIMONY CONSIDERED**  
"Other income" includes, this year for the first time, alimony or separate maintenance payments received by a wife from her husband or former husband. The wife must report the total of her alimony and the husband may deduct it from his income on line 17 of form 1040, under "other deductions." This applies, however, only if husband and wife are divorced or their separation is approved under a court decree.

Other income also includes money won from gambling. You may charge gambling losses against gambling winnings when you come to deductions, but gambling losses in excess of winnings may not be deducted.

If you are the parent of a minor child who has an income, you must report the child's earnings as part of your income—unless you can show that you were not legally entitled to the child's earnings.

After you have reported your income on line 10 of form 1040, add up lines 1 through 10 to find your total income. What tax, if any, you will have to pay then depends on your deductions.

(Tomorrow: Deductions.)  
BUY VICTORY STAMPS

Gila Cliff Dwellings, a national monument in New Mexico, had 80 visitors during 1940.

BUY VICTORY BONDS  
Buffalo Bill's real name was William F. Cody.

## FOR TASTY MEALS Get these VALUES

<p><b>FLOUR</b> FURR'S FINEST BAKING TESTED GUARANTEED 24 POUND SACK <b>95¢</b></p> <p><b>SYRUP</b> CRYSTAL WHITE KARO, WAFFLE 5 LB. GLASS <b>39¢</b></p> <p><b>EXTRACT</b> BAKER'S VANILLA 8 OZ. BOTTLE <b>10¢</b></p> <p><b>Baking Pwd.</b> 25 OZ. CAN CLABBER GIRL <b>21¢</b></p> <p><b>FLOUR</b> ALAMO 24 POUND SACK <b>59¢</b></p>	<p><b>SHOP Early FOR BEST SELECTION</b></p> <p><b>STEAK</b> LOIN CLUB T-Bone <b>45¢ LB.</b></p> <p><b>CHOICE "AA" BEEF</b> <b>45¢ LB.</b></p> <p><b>LIVER</b> FRESH SLICED PORK <b>19¢</b></p> <p><b>CHEESE</b> AMERICAN or PIMENTO Sliced POUND <b>39¢</b></p> <p><b>PEANUT BUTTER</b> ARMOUR'S STAR <b>19¢ LB.</b></p>	<p><b>BIG A FLOUR</b> GUARANTEED 24 POUND SACK <b>75¢</b></p> <p><b>OATS</b> 20 OUNCE BOX OF NATIONAL <b>10¢</b></p> <p><b>CRACKERS</b> 2 POUND BOX OF PREMIUM <b>31¢</b></p> <p><b>TOWELS</b> NORTHERN PAPER ROLL <b>10¢</b></p> <p><b>CLEANSER</b> SAPOLIO REGULAR CAN <b>9¢</b></p>
<p><b>Quaker Flour</b> 48 lb. \$1.95 - 12 lb. 69¢ - 6 lb. 31¢</p> <p><b>24 POUND SACK 99¢</b></p>	<p><b>P &amp; G SOAP</b> 5 Giant Bars <b>19¢</b></p> <p><b>DUZ GIANT BOX</b> <b>63¢</b></p> <p><b>LAVA SOAP</b> 2 Large Bars <b>19¢</b></p> <p><b>SOAP 4 Bars</b> Woodbury's Toilet Soap <b>28¢</b></p> <p><b>BIRD SEED</b> 2 Boxes French's <b>25¢</b></p> <p><b>SALT</b> 2 Boxes Rock Crystal <b>9¢</b></p>	<p><b>Chicken Feed</b> Made by Quaker Oats Co. POUND SACK BIG EGG LAYING MASH <b>\$3</b></p>
<p><b>OATS</b> LARGE BOX QUAKER... <b>22¢</b></p>	<p><b>EGGS</b> FRESH COUNTRY DOZEN <b>33¢</b></p>	<p><b>MEAL</b> 5 POUND SACK SEA BREEZE <b>16¢</b></p>
<p><b>DOG FOOD</b> GRO - PUP BOX <b>23¢</b></p>	<p><b>TISSUE</b> FORTRESS ROLL..... <b>4¢</b></p>	<p><b>ALL BRAN</b> KELLOGG'S LARGE BOX <b>19¢</b></p>
<p><b>LARD</b> 4 LB. CARTON PINKNEY'S <b>63¢</b></p>	<p><b>OLEO</b> REAL-NU POUND... <b>17¢</b></p>	<p><b>DOUBLE MIX</b> Makes Butter &amp; Oleo Go Farther 2 Pkgs. <b>19¢</b></p>
<p><b>BABY FOOD</b> REGULAR CANS LIBBY'S 3 Cans <b>20¢</b></p>	<p><b>MACARONI</b> 2 Boxes Skinner's <b>15¢</b></p> <p><b>SPAGHETTI</b> 2 Boxes Skinner's <b>15¢</b></p> <p><b>RAISIN BRAN</b> 2 Boxes Skinner's <b>21¢</b></p> <p><b>NOODLE SOUP</b> 3 Pkgs. Dainty <b>25¢</b></p> <p><b>RAISIN BRAN</b> 2 Boxes Post's <b>19¢</b></p> <p><b>FLOUR</b> 2 20 oz. Pkgs. Pillsbury Pancake <b>19¢</b></p>	<p><b>BAKERY SPECIALS</b></p> <p><b>CAKES</b> 59¢ LARGE ANGEL FOOD EACH</p> <p><b>BREAD</b> FURR FOOD 2 16 Oz. Loaves <b>15¢</b></p> <p><b>Breakfast Rolls</b> Pecan, Date, Caramel 3 FOR <b>10¢</b></p> <p><b>CHERRY PIES</b> EACH <b>30¢</b></p>
<p><b>BAKERY SPECIALS</b></p> <p><b>CAKES</b> 59¢ LARGE ANGEL FOOD EACH</p>	<p><b>FRESH FRUITS-VEGETABLES</b></p> <p><b>GRAPEFRUIT</b> 6 TEXAS SEEDLESS <b>21¢</b></p> <p><b>ORANGES</b> CALIFORNIA 288 SIZE DOZEN <b>23¢</b></p> <p><b>APPLES</b> FANCY WINESAPS 3 LBS. <b>25¢</b></p> <p><b>POTATOES</b> 10 POUNDS COLO. REDS <b>23¢</b></p> <p><b>TURNIPS</b> FRESH BULK 3 LBS. <b>10¢</b></p> <p><b>LETTUCE</b> FRESH CRISP 2 HEADS <b>13¢</b></p>	<p><b>DOUBLE MIX</b> Makes Butter &amp; Oleo Go Farther 2 Pkgs. <b>19¢</b></p>

## Yours! WITH EVERY PACKAGE!

Fine, High Quality Tableware!

**THEY'RE LOVELY! AND SO THRIFTY, TOO! THEY'RE AT YOUR GROCER'S—NOW!**

Act today! Get smart, beautifully patterned tableware—perfect for making up a set you'll be proud to own—at an amazing bargain! Also—get the extra, beautiful advantages of Mother's Oats! Remember, whole-grain oatmeal leads all cereals in body-building Proteins! It's triple-rich\* in "anti-fatigue" Vitamin B1—for growth, energy!

\*In proportion to Calories

**MOTHER'S OATS** PREMIUM PACMAK

Truly America's SUPER Breakfast Food

Censorship Code Revised in Part

WASHINGTON, Feb. 11 (AP)—Byron Price, director of censorship, today announced a revision of the voluntary censorship codes for the press and for broadcasters which he said "simply represents progress in administration to keep pace with the progress of the war."

Navy Commissions Robert Taylor

LOS ANGELES, Feb. 11 (AP)—Film star Robert Taylor entered the naval air force here Wednesday as a lieutenant (JG).

Mainly About Pampa And Her Neighbor Towns

Mitchell Hill left Wednesday afternoon for Gilmer, Texas, to visit his father, Inham Hill. He will return next week.

STINNETT—Stinnett High school will be host to the bands of Borge, Phillips, Perryton, and Spearman when a band clinic is held here on February 15, scheduled to begin at 1 p. m.

BORGER—Jack St. Clair will become mayor of Borger, Texas, in 30 days for training as a ferry pilot or instructor, navy authorities said. He took the oath under his legal name, Spangler Arlington Brugh.

SHAMROCK—Miss Frances Neeley, daughter of Mr. and Mrs. M. O. Neeley of 408 South Houston street, was recently accepted by the Woman's Army Auxiliary corps.

CHILDRESS—New adjutant at the Childress bombardier school is Major Ray Elliott, veteran of 21 years in the army, Texas A. and M. alumnus, and native Texan.

WELLSVILLE—The Willsville Home Demonstration club will hold a Rummage and Food Sale Friday and Saturday at 208 N. Cuyler, across from Penney's.

AT FIRST SIGN OF A COLD USE 666 666 TABLETS, SALVE, NOSE DROPS HEAD-COLDS COUGH-BRONCHITIS SIPTOL

code: omits from censorship restriction war production contracts because other government agencies have suitable controls; omits from code restrictions the category "capable of adaptation for war production" from restrictions on secret war designs and formulas; omits, except in the case of secret designs, weapons and formulas, former restrictions on publishing exact types of war products; permits local and national round-up stories on war production as long as they do not reveal production rates of specific products.

Miss Ethelyn Drennan is a new teacher at Pampa Junior High school. She began work Monday, taking the place of Miss Jessie Bumpass as teacher of social science.

LEFORS—Seaman Second Class Melton Oldham of the navy, stationed at San Diego, Calif., left last Monday after spending a 10-day furlough with his father, John Oldham, here.

MELTON—Melton volunteered in December, 1942, is training to be a radio operator.

WATKINS—Miss Dorothy Gerlach, history teacher in the Oak Cliff High school, Dallas, came here Sunday because of the serious illness of her mother, who was taken Saturday to the Canadian hospital.

FRANK ALTON HALL, 38, lieutenant junior grade, of Georgetown, formerly of Pampa, was among 478 naval reserve officers graduated at the U. S. Naval Training school, Tucson, Ariz., today.

MATADOR—Winter vegetables are rare in this section but a carrot of the size grown by G. W. Ratcliff, northwest Matador, is unusual at any time.

10 REASONS Why it pays to shop for Food at your nearest Ideal Food Market BETTER FOODS FOR LESS NO. 1 220 N. CUYLER --- NO. 2 306 S. CUYLER 1. FOR SAVINGS: YOU CAN DEPEND ON SAVING AT YOUR IDEAL BECAUSE THEIR PRICES ARE ALWAYS AS LOW OR LOWER THAN ELSEWHERE IN TOWN EVERY DAY ON EVERY ITEM. (SPECIALS INCLUDED).

WATKINS—Miss Dorothy Gerlach, history teacher in the Oak Cliff High school, Dallas, came here Sunday because of the serious illness of her mother, who was taken Saturday to the Canadian hospital.

FRANK ALTON HALL, 38, lieutenant junior grade, of Georgetown, formerly of Pampa, was among 478 naval reserve officers graduated at the U. S. Naval Training school, Tucson, Ariz., today.

MATADOR—Winter vegetables are rare in this section but a carrot of the size grown by G. W. Ratcliff, northwest Matador, is unusual at any time.

WELLSVILLE—The Willsville Home Demonstration club will hold a Rummage and Food Sale Friday and Saturday at 208 N. Cuyler, across from Penney's.

CHILDRESS—New adjutant at the Childress bombardier school is Major Ray Elliott, veteran of 21 years in the army, Texas A. and M. alumnus, and native Texan.

SHAMROCK—Miss Frances Neeley, daughter of Mr. and Mrs. M. O. Neeley of 408 South Houston street, was recently accepted by the Woman's Army Auxiliary corps.

BORGER—Jack St. Clair will become mayor of Borger, Texas, in 30 days for training as a ferry pilot or instructor, navy authorities said.

STINNETT—Stinnett High school will be host to the bands of Borge, Phillips, Perryton, and Spearman when a band clinic is held here on February 15.

MELTON—Melton volunteered in December, 1942, is training to be a radio operator.

WATKINS—Miss Dorothy Gerlach, history teacher in the Oak Cliff High school, Dallas, came here Sunday because of the serious illness of her mother.

FRANK ALTON HALL, 38, lieutenant junior grade, of Georgetown, formerly of Pampa, was among 478 naval reserve officers graduated at the U. S. Naval Training school, Tucson, Ariz., today.

MATADOR—Winter vegetables are rare in this section but a carrot of the size grown by G. W. Ratcliff, northwest Matador, is unusual at any time.

WELLSVILLE—The Willsville Home Demonstration club will hold a Rummage and Food Sale Friday and Saturday at 208 N. Cuyler, across from Penney's.

CHILDRESS—New adjutant at the Childress bombardier school is Major Ray Elliott, veteran of 21 years in the army, Texas A. and M. alumnus, and native Texan.

SHAMROCK—Miss Frances Neeley, daughter of Mr. and Mrs. M. O. Neeley of 408 South Houston street, was recently accepted by the Woman's Army Auxiliary corps.

BORGER—Jack St. Clair will become mayor of Borger, Texas, in 30 days for training as a ferry pilot or instructor, navy authorities said.

STINNETT—Stinnett High school will be host to the bands of Borge, Phillips, Perryton, and Spearman when a band clinic is held here on February 15.

Nationally Advertised Brands at DEEP CUT PRICES FALCON MINIATURE CAMERAS \$2.39 Cretney's YOU SAVE EVERY DAY AT CRETNEY'S! VITAMIN HEADQUARTERS

VITAMIN HEADQUARTERS 500 Olafsen VITAMIN A-B-D-G Capsules \$4.99 100 AY-TOL ABDG with C \$3.98 100 Grayita for Gray Hair \$4.00 100 Abdol ABDG&C \$4.69 100 Thiamin Chloride B-1 Tablets, 5 mg. \$1.89 288-VIMMS, Family Size \$4.89 50 Vita Caps. ABCDG \$2.49 100 Squibb Vitamin B Complex \$3.39 100 Squibb Dicalcium Phosphate With Viosterol \$1.29

NATIONAL BRANDS 60c MENTHOLATUM 49c 75c BAYER ASPIRIN 59c \$1.20 SYRUP PEPSIN 98c 75c CARTER'S LIVER PILLS 69c \$1.20 CAROID & BILE SALTS \$1.09 \$1.20 ANACIN TABLETS \$1.09 \$1.00 OSTREX TONIC 89c \$1.25 PERUNA FOR COLDS \$1.09 \$1.50 LYDIA PINKHAMS \$1.29

MOLLINS Permanent Wave Kit Safe—Easy to Use—SUPPLY LIMITED 59c

WHISLEY'S Perfumed Bath Crystals and WATER SOFTENER 4 LB. BAG 69c

8-INCH WORLD GLOBES \$2.19 10-INCH ELECTRICALLY LIGHTED WORLD GLOBE \$7.79

for your VALENTINE AMERICAN MEMORIES BATH SET \$1.50 TULIP TIME COLOGNE \$1.50 TWEED COLOGNE BATH POWDER \$2.70 SHANGHAI BATH SOAP, BOX \$1.50 FUL-VUE HAND MIRROR \$2.19 LORAIN TOILET SET \$2.25 BUD VASE COLOGNE \$1.98 PLASTIC COMPACTS \$1.00 TANGEE COMMUTER KIT \$1.49

STOCK REMEDIES Kreso Dip, gal. \$1.89 Cube Pound 75c Wettable Sulphur, 2 lbs. 15c Franklin Horn Paint Qt. \$1.00 Franklin Blood Stopper \$1.00 Blackleg Bacterin, dose 10c Cox Barb Wire Liniment \$1.19 Hemorrhagic Septicema Dose 10c Hog Cholera Serum \$1.25 Pig Capsules, each 5c Franklin Bot. Caps. \$1.00 LeGear's Stock Powder 98c

COSMETICS \$1.00 Dorothy Perkins Hand Lotion 50c Pure Castile Soap, one Pound 25c \$1.38 Lady Esther 4 Purpose Cream \$1.19 Frances Denny Cleansing Cream \$1.00 \$1.50 Ponds Cold Cream \$1.19 Max Factor Pancake Makeup \$1.50 Tweed Perfume \$10.00 Houbigant Bath Powder \$1.00

RAY'S RAT KILLER 49c KILLS RATS & MICE

KOTEX 12's 22c

SAVE MONEY BUY—KLEENEX IN THE LARGE PACKAGE 440 Sheets 25c

Jeris Combination HAIR OIL & TONIC \$1.35 VALUE 76c

CRETNEY'S LIQUORS ROMA WINE 98c Calvert's Reserve \$2.19 LIQUEURS Apricot or Peach \$1.44 Old Plaid Scotch \$3.39

OUR 75c 0c 1c 0c 9c 3 6c N 7c X 0c S 0c

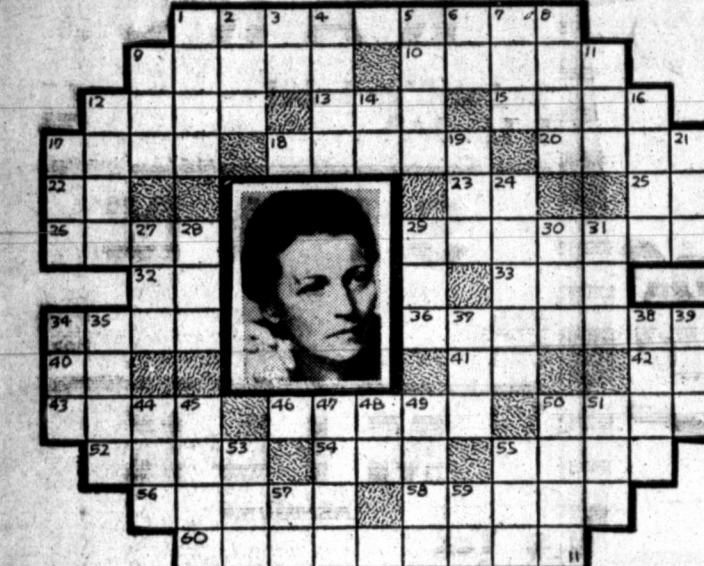
VICTORY WEATHERSTRIP FOR DOORS Easily Applied and Reasonable HOME BUILDERS SUPPLY 312 W. Foster Phone 1414

CITY DRUG STORE CRETNEY DRUG STORE FATHEREE DRUG CO. MODERN PHARMACY RICHARDS DRUG



NOVELIST

NOVELIST crossword puzzle grid with clues for words like 'Answer to Previous Puzzle', '1 Pictured novelist', '9 Trite', etc.



Owens Optical Office DR. L. J. ZACHRY Optometrist Appointment Phone 269 109 E. Foster

WALT DISNEY'S Bambi



WALT DISNEY'S Bambi A GREAT LOVE STORY From the novel by Felix Salten Distributed by RKO Radio Pictures, Inc.

LALORA Today thru Sat. BOX-OFFICE OPENS 1:45 35c - 40c - 9c

I LIVE ON DANGER a "mike!" CRISTER MORRIS-PARKER

REX LAST TIMES TODAY BOX-OFFICE OPENS 1:45 P. M.

LAST TIMES TODAY! SHIRLEY TEMPLE WILLIAM GARGAN in "MISS ANNIE ROONEY" CARTOON - COMEDY STATE OPEN 6:00 25c - 9c

CHURCHILL

Churchill - formerly peaceful countries - now are "warrior nations"...

Churchill declared: "We have to make an apenry burn and bleed..."

AMERICANS

more than two pounds each. The Smith family, with the \$1,000 income, may have consumed only about a pound and a half per member...

Manufacturers are required to set aside 30 per cent of their output for war needs...

There are sufficient stocks of grains to provide civilians with all the flour, breakfast and other cereal products...

The civilian supply will not be quite as large as last year's record level, when consumption averaged 316 per person...

They will be rationed, beginning March 1. The annual civilian supply will be equivalent to about 40 pounds per person...

Some old standards such as watermelons, cantaloupes, celery, head lettuce and artichokes will be hard to get...

Hill Speech to Be Heard over KPDN

"If unity can win wars it can also be used to win the peace that follows," declares Paul D. Hill...

EISENHOWER

Alexander, with a wealth of experience fighting the Germans and Italians, is seen as the logical choice to direct land operations...

PIONEER WALNUT WEALTH

In 1835 a pioneer family carried a tiny walnut tree from Missouri and replanted it in Oregon. The tree produced \$20,000 worth of veneer when sawed up 93 years later...

AMERICANS

more than two pounds each. The Smith family, with the \$1,000 income, may have consumed only about a pound and a half per member...

Manufacturers are required to set aside 30 per cent of their output for war needs...

There are sufficient stocks of grains to provide civilians with all the flour, breakfast and other cereal products...

The civilian supply will not be quite as large as last year's record level, when consumption averaged 316 per person...

ALLIES

On the Burma front, British headquarters reported that RAF planes carried out widespread attacks against the Japanese yesterday...

EISENHOWER

Alexander, with a wealth of experience fighting the Germans and Italians, is seen as the logical choice to direct land operations...

PIONEER WALNUT WEALTH

In 1835 a pioneer family carried a tiny walnut tree from Missouri and replanted it in Oregon. The tree produced \$20,000 worth of veneer when sawed up 93 years later...

AMERICANS

more than two pounds each. The Smith family, with the \$1,000 income, may have consumed only about a pound and a half per member...

Manufacturers are required to set aside 30 per cent of their output for war needs...

There are sufficient stocks of grains to provide civilians with all the flour, breakfast and other cereal products...

The civilian supply will not be quite as large as last year's record level, when consumption averaged 316 per person...

They will be rationed, beginning March 1. The annual civilian supply will be equivalent to about 40 pounds per person...

Winchell Flays Radio Ruling

NEW YORK, Feb. 11 (AP)—Mark Woods, president of the Blue network, says that several commentators have violated the network's policy by departing from prepared texts to discuss controversial subjects in an "inflammatory manner"...

EISENHOWER

Alexander, with a wealth of experience fighting the Germans and Italians, is seen as the logical choice to direct land operations...

PIONEER WALNUT WEALTH

In 1835 a pioneer family carried a tiny walnut tree from Missouri and replanted it in Oregon. The tree produced \$20,000 worth of veneer when sawed up 93 years later...

AMERICANS

more than two pounds each. The Smith family, with the \$1,000 income, may have consumed only about a pound and a half per member...

Manufacturers are required to set aside 30 per cent of their output for war needs...

There are sufficient stocks of grains to provide civilians with all the flour, breakfast and other cereal products...

The civilian supply will not be quite as large as last year's record level, when consumption averaged 316 per person...

They will be rationed, beginning March 1. The annual civilian supply will be equivalent to about 40 pounds per person...

BRITISH

A late bulletin from Red army headquarters said Russian spearheads were driving toward Kharkov from three directions...

EISENHOWER

Alexander, with a wealth of experience fighting the Germans and Italians, is seen as the logical choice to direct land operations...

PIONEER WALNUT WEALTH

In 1835 a pioneer family carried a tiny walnut tree from Missouri and replanted it in Oregon. The tree produced \$20,000 worth of veneer when sawed up 93 years later...

AMERICANS

more than two pounds each. The Smith family, with the \$1,000 income, may have consumed only about a pound and a half per member...

Manufacturers are required to set aside 30 per cent of their output for war needs...

There are sufficient stocks of grains to provide civilians with all the flour, breakfast and other cereal products...

The civilian supply will not be quite as large as last year's record level, when consumption averaged 316 per person...

They will be rationed, beginning March 1. The annual civilian supply will be equivalent to about 40 pounds per person...

Second 'Cadet Dope' Publication Issued

The second issue of Cadet Dope, Pampa's army air forces advanced flying school's guide to the background and interests of the aviation cadets of Class 43C, is now available...

Services Held For Littlefield Flyer

Funeral services were conducted at Littlefield today at the Methodist church for Lieut. Curtis Landrum, 21, combat pilot, who was killed in an airplane crash at San Francisco bay, December 31, 1942...

CHICKENS - TURKEYS

STAR SULPHUROUS COMPOUND Given in water or feed destroys intestinal germs and worms that cause most all disease and loss of egg production as they enter fowls...

Large advertisement for 'Easy-to-Slice' NEW 'WAR-MODEL' ENRICHED WHITE BREAD. Includes Uncle Sam character, product images, and promotional text: 'HERE'S EASY-TO-SLICE NEW "WAR-MODEL" ENRICHED WHITE BREAD. HERE'S UNCLE SAM'S WAR ORDER TO BAKERS! To conserve labor and materials in furtherance of the war effort, the Government has instructed all bakers to discontinue certain industry practices. Hence, in bread you buy for the duration, there will be NO SLICING... NO TWISTING... NO "WINNER WRAPS"...'









SERIAL STORY

THE TERRIBLE EYE

BY EDWIN RUTT

COPYRIGHT, 1943, NEA SERVICE, INC.

Jonah Logan is having trouble in getting to see Henry L. Channing, the multi-millionaire...

came a faint baying. "Dammit, get me out of here, somebody. I'm going to kill somebody."

I've hired? You must know the place. It's called Brookview and I rented it from a guy named Rand."

LOST IN A MAZE

CHAPTER VI

"GOSH," gasped Jonah, "you didn't tell me he was this allergic to photographers."

"Darned if I know," he said. "It looks like we're stymied. Mahoney and I had better go home."

"I don't want to seem to throw wrenches into the works," he said politely, "but isn't that a little far?"

"From behind came warlike sounds. "Sneak in here, will you? Hobnob with my daughter, will you? ... By Harry, I'll show you."

"Listen, Mahoney," he said, producing the keys to the Ford, "you take the car home. I'll get back across country."

"Well," said Jonah, "who am I to snoot the Taj Mahal? But if your father found out that ..."

Jonah took the lead, raced up the path, turned a corner and almost collided with H. L. Channing.

"Now," said Jonah, in the tone of one who has cleared the decks, "what's with you?"

"He won't," he never goes near the Taj. He says it's an abomination. If we're careful, we could use the place."

Jonah wheeled like a startled antelope. Mahoney had already had the forethought to wheel. The outstretched fingers of H. L. Channing missed Jonah's collar by an inch.

"That's the old fight," said Jonah. "There must be some way to approach your ancient relative without having him go off like a firecracker."

"Who is it?" he asked, in a low voice. "The local truant officer?"

It took Jonah and Mahoney no time at all to put distance between themselves and Mr. Channing.

"It's Meath," Hildy explained. "Father's new secretary. I wouldn't trust her as far as I could throw her."

"Why?"

"What was that, for the love of Pete?" Jonah said then, wiping his face.

"This, to Jonah's ears, was sweet music. "And how," he said, enthusiastically, "said Jonah Logan, going on record. "Just name it."

"Just a hunch," confessed Hildy. "She's only been here a few weeks, but she's a snooper of the first water. And I think that one of her duties is to watch me."

"Well," said Jonah, "it's sure my idea of a better mousetrap. But don't you think we ought to get a little farther away?"

"I'll say we can't," said Jonah, struck by this girl's intelligence. "What we need," said Hildy, "is a base of operations. A private one."

"I'll tell you all about it soon," Hildy promised darkly. "Right now, let's make the Taj. Meath is out of sight."

(To Be Continued)

Canadian Credit Association Names Officers for 1943

Special to The NEWS. CANADIAN, Feb. 11.—At a director's meeting of the Canadian Valley Production Credit association held in the office of this organization Monday afternoon, the following officers were elected for the ensuing year:

The stockholders' annual meeting of the CVPC association was held in the auditorium of the Canadian High school building Saturday, J. A. Bryant, Wheeler, presiding, C. W. Allen, secretary-treasurer and M. H. Smith, Gen. elect-ed vice president; C. W. Allen, re-elected secretary-treasurer; Ford Hamker, assistant secretary-treasurer; R. N. Matthews, assistant secretary-treasurer.

He advised to keep their business clean, get their farms clear, increase production in livestock and agriculture along the lines with which they were familiar and not undertake some previously untried project in an effort to produce more at this time.

During the business session, H. H. Kenney of Pampa and Lloyd Bursard of Lipscomb county were elected as directors of the CVPC, replacing J. C. Bradstreet of Wheeler and George Greenfield of Lipscomb county, retiring members of the board of directors.

We met a friend of ours the other day and we were going to visit a doctor. We—And what did the doctor advise?

During the second term of the administration of President Andrew Jackson, (1829) the national debt of the United States was fully paid. The accumulated surplus was distributed among the states.

Eggs of reptiles have soft shells resembling parchment.

RED RYDER



Right in Your Eye, Mister

By FRED HARMAN

ALLEY OOP



And That's That

By V. T. HAMLIN

FRECKLES AND HIS FRIENDS



Be Prepared

By MERRILL BLOSSER

WASH TUBBS



Sound the Alarm

By EDGAR MARTIN

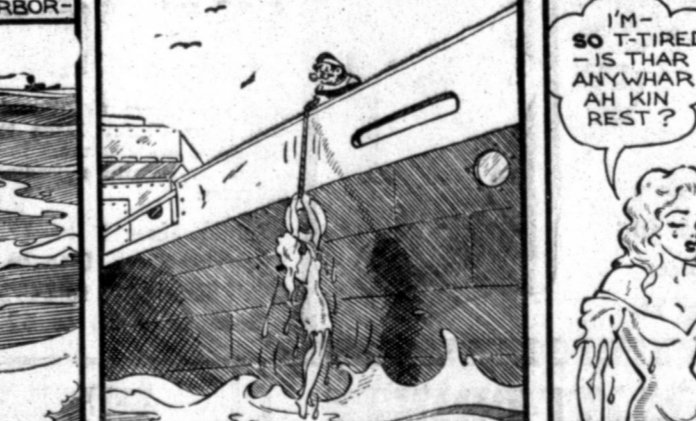
BOOTS AND HER BUDDIES



Imagine

By ROY CRANE

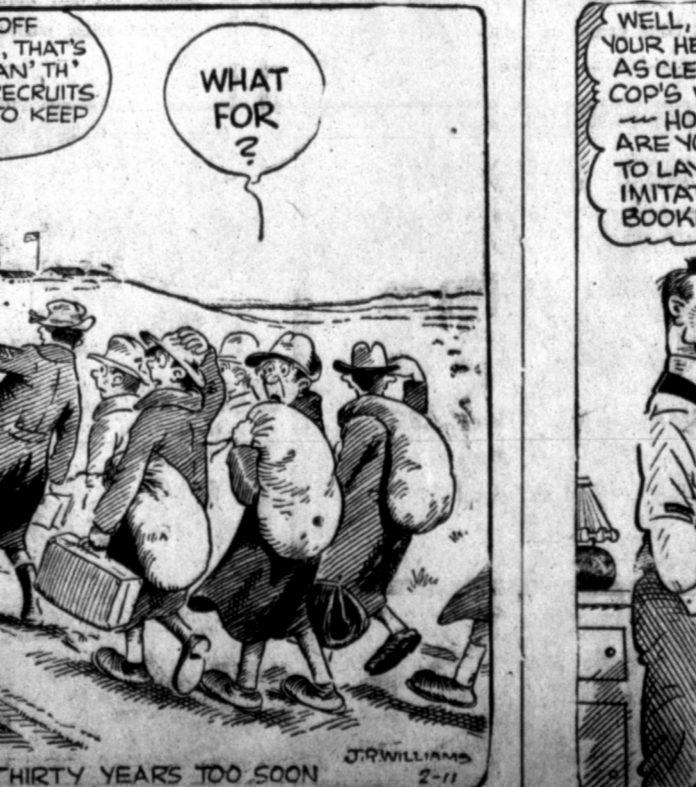
L'L ABNER



The Women—

By AL CAPI

OUT OUR WAY



By J. R. WILLIAMS

OUR BOARDING HOUSE



with MAJOR HOOPLE

Return of Pardoning Power to Governor Receives Approval

AUSTIN, Feb. 11 (AP)—Sen. Clem Fain of Livingston today predicted senate adoption of his resolution proposing a constitutional amendment to return pardoning power to the governor.

Horse Too Good A Friend to Eat It

MADISONVILLE, Feb. 11 (AP)—When it comes to eating horse meat, members of Madisonville sidewalk cattlemen's association just aren't hungry.

HOLD EVERYTHING



FUNNY BUSINESS



THE GREMLINS



Pampa News Want Ads Get Results

"I was president of a million-dollar business, but guess what the Army found my aptitude was!"

BORN THIRTY YEARS TOO SOON

