



# BAILEY COUNTY JOURNAL

'The Community of Opportunity Where Water Makes the Difference'

## Weather

DATE	HIGH	LOW
May 26	88	54
May 25	89	51
May 24	84	47
May 23	82	46

Rainfall to Date: 7.26"

VOL. 10 No. 21

8 PAGES

Published Every Sunday at Muleshoe, Bailey County, Texas 79347

10 CENTS

Sunday, May 27, 1973

# Gas Shortage Not Critical Here - Yet

## Diesel Shortage More Critical Than Gas

## Summer Reading Club Begins On Wednesday

Boys and girls of the Muleshoe area - be a READosaurus! Now, by joining the Summer Reading Club at the Muleshoe Area Public Library. The registration starts at 2 p.m. on Wednesday, May 30. Any boy or girl who can read and would like to earn a certificate by reading 12 books or more during the summer vacation are eligible to enter.

Besides the certificates which will be given at the end of the summer, boys and girls may work on the "Mighty Dragon" poster at the library. Make-believe and fantasy in the wonderful world of books will be emphasized in this year's program.

Filmstrips of fairy tales, story time favorites and children's classics will be shown each Wednesday and Friday from 3 p.m. until 4 p.m. in the children's section of the library. So you too may become a READosaurus, that strange and fantastic creature who gobbles up books by the dozens, get an early start on

around **muleshoe** with the journal staff

Graduation became a reality for 295 degree candidates at South Plains College Friday, May 18, when members of the Fifteenth graduating class of SPC, received their associate degrees or certificates of proficiency in special commencement services held in Texas Dome.

Those graduating from Maple were Leslie Geneo Abbe and Diana Kay Williams. Graduating from Muleshoe were Gary Kincannon, Clarence L. Thomas and Lenora Mallouf.

Mrs. Eddie Douglas, the former Marcia Blackman, of Dallas, was a guest in the home of her parents, Mr. and Mrs. Buddy Blackman, this week and attended the graduation of her brother, Brent. She left by plane on Wednesday.

Mr. and Mrs. Wally Watsell of Melbourne, Australia are visiting in the home of Mr. and Mrs. David Smith of Muleshoe. Mrs. Smith is a niece of Mrs. Watsell.

The Wastells are making a tour of the United States. Mrs. Smith is a former resident of Australia. She has been in the Muleshoe area for the past four years and this is the first time she has seen any of her relatives since moving here.

Mr. and Mrs. G.R. Fudge of Ampas, Texas are visiting in the home of their son and family, Mr. and Mrs. Bobby Fudge.

Wednesday, May 30. Pat Bobo has informed the library that he is going to bring to the Library current issues of The Wall Street Journal, Barron's Guide, The National Observer, and the finance magazine, Money. This will be valuable material available in the News and Periodical section.

The library was informed this week that a grant of \$600 will be available for books and material during 1973. This was cut from the \$2,000 the library was granted in 1972. However, the library will benefit from this grant. There has been no funds budgeted for 1974 by the federal government.

The library will be closed on Monday, May 28, in observance of Memorial Day.

## Historical Marker Will Be Dedicated

Dedication ceremonies for a historical marker dedicated to the first immigration well in Lamb County, will be held Friday, June 1, at 7 p.m.

The marker is located about four miles west of Earth on U.S. Highway 70, along the right of way.

The marker was erected by the Lamb County Historical Survey Committee.

The master of ceremonies for the ceremony will be Harold Miller of Earth.

The Honorable Bill Clayton, state representative, will be the guest speaker.

## Police Report

Arrests logged at the Bailey County Law Enforcement Center this past week include the Texas Highway Patrol arresting two for minor possession and two for not having a drivers license.

The Sheriff's office arrested one for illegal registration, one for drunk, one for felony theft and one for worthless checks.

The Police department arrested four for DWI, five for drunk, and one for drunk and using profane language.

## Result Demonstration Handbook Available

Results of 1972 agricultural demonstrations in Bailey County are now available, reports County Extension Agent Spencer Tanksley.

The annual report summarizes all agricultural and agriculturally related demonstrations planned with the Bailey



RED RAIDER DAY IN MULESHOE . . . Several of the outstanding personalities who were present in Muleshoe for the annual Muleshoe Red Raider Day are shown as they prepare to tee off at the annual Red Raider Golf Tourney held at the Muleshoe Country Club on Thursday. Pictured left to right are Dale Evans, football coach; Lee Jackson; Irvin St. Clair, president of the local

Red Raider Club; Gerald Myers, basketball coach; Danny Mason, golf coach; Bob Brown, football coach; and Donnie Anderson, former Texas Tech All-American. These members of the Texas Tech coaching staff were in Muleshoe to attend the annual Red Raider Festivities which included a free barbeque at the Muleshoe Country Club Thursday night.

# ASCS Program Deadline June 29

(The following newsletter is from the Bailey County Agricultural Stabilization and Conservation Committee.)

Producers wishing to receive program payments in July, must certify compliance by June 29. Be sure all acreage certifications are correct. To receive program payments, producers must certify compliance no later than August 1.

Producers interested in this service should apply no later than June 15. All acreage

measurements and quality determination of set-aside are guaranteed. Be sure to report acreages correctly; an incorrect report can cost through loss or reduction in program payments.

Current instructions provide that the productivity of other cropland on the farm. That if a producer designates below average land for set-aside, the entire program payment will be computed on the basis of the yield determined for the below average set-aside.

If both irrigated and dryland contributed to the farms established yield the set-aside acreage must include irrigatable cropland equal to the percentage of the allotment or base attributed to irrigation.

General Rule, an area offered for designation must in addition to meeting other eligibility requirements meet the following width and size requirements: SIZE: 5.0 acres and

WIDTH: 2.0 Chains (132 feet)

Exception to Rule: Areas which do not meet these minimums may be accepted when: first, an entire field is offered; second, the area offered is devoted to special conserving uses (filter strip wildlife plot, two rows skips in skip row pattern & etc; and third, the area offered is designated across the entire width or length of a field and represents the total set-aside requirements or the balance of the set-aside requirement after other designations have been made which meet the minimum standards set forth above.

June 5 is the last day for required planting of cotton; June 10 is the last day for required planting of peanuts; and June 20 is the last day for required planting of feed grain.

Producers may elect to hay or graze set-aside or CAP areas, at a reduced program payment, any time during the

year. An intention to hay or graze should be filed as soon as possible, but in any event prior to grazing or haying. The reduction in payment will equal 60% of the farm payment rate per acre. (Example; for set-aside, 100 bu. yield for grain, 30¢ payment per bu., 100 x 30¢ equals \$30.00 per acre x 60% equals \$18.00 reduction per acre to hay or graze.) The reduction in payment for CAP is equal to 30% of the average per acre payment.

During the last half of May, some 24,000 Texas farmers will receive a crop acreage questionnaire from Charles E. Caudill, Agricultural Statistician in-Charge of the Texas Crop and Livestock Report-

Cont. on Page 2, col. 1

He said that the diesel shortage was his main problem and that he was just barely getting enough to supply his customers.

On the gasoline shortage, he stated that the independent stations were feeling the pinch more than other stations.

Clyde Holt of Muleshoe reports that he is staying up with his regular diesel customers, but that the situation is getting more critical all the time.

He stated that in his opinion, Muleshoe will be feeling the shortage before the summer is over. He said that he thought the shortages would last only a few days at a time.

He reported hearing that if

some of the stations in Lubbock continue selling gasoline at the present rate, they will use up their month's quota before the month is over if gasoline distributors do not furnish them more gasoline.

Benjamin Shore of the Copley News Service stated in a recent story that there were many actions the federal government and the public could take to soften the impact of the growing gasoline shortage.

Frank N. Kard, president of the American Petroleum Institute, said consumer demand for gasoline exceeds the industry's production capacity.

He gave three main points for the shortage:

1. Consumer demand for gasoline increased 6.3 percent in 1973, the largest annual increase since 1955. More cars are on the road and they are getting fewer miles to the gallon because of pollution-control devices, air conditioning and automatic transmissions.

2. Domestic refineries, operating at capacity, are producing 13 million barrels of petroleum daily, but the need is for 17 million barrels this year. Refineries must turn crude oil into not only gasoline, but also heating oil, diesel fuel and other products.

3. Environmental protection has ruled out coal as fuel for electricity - generating plants, forcing utilities to use more distillate fuel oil. In 1967, utilities burned 8,000 barrels a day.

In 1972, mainly because of opposition to pollutants from much of the coal and heavy oils and because of shortages of natural gas, utilities consumed 186,000 barrels of distillate fuel oils daily. This means less production of gasoline.

Kard had the following suggestions for congress as it seeks answers to the growing energy crisis:

1. Relax the environmental standards in some areas to allow a return to freely available coal and heavy oils until suitable and sufficient energy sources are available.

The Environmental Protection Agency announced on May 7 that average sulfur oxides concentrations in 32 American cities had decreased by about 50 percent between 1964 and 1971. There have been further

Cont. on Page 2, col. 2



WO DIE IN WRECK . . . A Plainview couple, Mr. and Mrs. Alfred Smith, died Friday in a three vehicle crash four miles west of Muleshoe on U.S. Highway 84-70 about 4 p.m. Mrs. Trudy Smith, 2, was dead on arrival at West Plains Memorial Hospital and her husband, 87, died at West Plains hospital about 7 p.m. Friday. Investigating officers said that a truck and a car had stopped on the highway for a school bus to unload when the Smith vehicle slammed into the rear of a car driven by Mrs. Ila Serratt Koprian of Summerfield, knocking her car into the truck. Mrs. Koprian was taken to West Plains Hospital where she was treated and released. The truck driver was apparently not injured.

## SPAG To Organize Housing Committee

The South Plains Association of Governments Advisory Committee will hold its organizational meeting on Thursday, June 7, at 7:30 p.m. in the Southwestern Public Service Reddy Room, 1120 Main Street, Lubbock. The Housing Committee, to be chaired by James L. Robison of Plainview, is composed of a total of 15 members, which include housing professionals, laymen and elected officials from throughout the 15 county SPAG region. Welcoming remarks will be given by Mayor Giles McCrary, president of SPAG. Included on the agenda is the election of a vice chairman and the reviewing of the proposed committee bylaws. The public is welcome at the meeting.

The Housing Committee will carry on a continuous planning program to identify regional housing needs, analyze the availability of resources and establish priorities and goals. It will also act as a catalyst in the development of new plan-

ning projects. The committee will have the responsibility of conducting, on a continuing basis, review and comment of proposed housing projects which come under the A-95 review program.

Although there is a moratorium on the housing and urban development, housing subsidy development programs, SPAG will proceed with their housing planning during the pause.

The committee will look at other federal agencies for possible funding of housing projects until the moratorium is over. Farmers Home Administration currently has some housing programs which may be tapped. The association intends to use the pause to develop techniques and capabilities for establishing areawide housing priorities. By establishing a regional housing advisory committee, SPAG is not only involving the citizens of the region in the planning process but hopes to develop a

Cont. on Page 2, col. 2



BEEFMOBILE COMES TO MULESHOE . . . The Riata Cowbelles from Friona, Bovina and Farwell, sponsored the Beefmobile in Muleshoe Thursday. The Beefmobile was parked at several local grocery stores all morning and then traveled to the XIT Steak House just before noon. A drawing for a cut of beef was held at the Steak House. Everyone who had registered at the Beefmobile that morning were in the drawing. Pictured left to right are Jama Maritt, Miss Muleshoe; Karen Brittings of Friona, president of the Riata Cowbelles; Melba Phipps, a former Muleshoe resident now residing in Arlington, who won the cut of beef at the drawing; and Mrs. C.J. Feagley. The Cowbelles are associated with the Texas Cattlemen's Association and promote the Eat More Beef program.

### ASCS...

Cont. from Page 1  
ing Service, Austin, Texas. This information will be the basis for determining the planted acreage for the State of Texas and for each county. There are 254 counties in Texas, and reports are needed from many farmers so that each county will be well represented. Accurate estimates are of great importance to farmers in planning production and marketings and in providing an unbiased picture of Texas agriculture. The Texas Legislature has provided a program of estimates for each county. Texas covers such a wide area that State totals alone do not provide adequate information on Texas' most basic industry--agriculture. This is a cooperative effort of USDA's Statistical Reporting Service and the Texas Department of Agriculture. "SUMMARY OF BENEFITS FOR VETERANS WITH MILI-

TARY SERVICE BEFORE FEBRUARY 1, 1955, AND THEIR DEPENDENTS" published by the Veterans Administration is available at this office to all interested veterans.

### Gas...

Cont. from Page 1  
reductions since 1971. In view of this substantial progress, it may well be that some relaxation of the timetable for achieving much lower concentrations is justified if it can help ease the current energy situation. 2. Speed up the issuance of permits for nuclear electric power plants. Coupled with increased use of coal, this would substantially relieve the demand for oil. 3. Consumers must use less energy. For example, gasoline consumption would drop 11 percent if highway speed limits were lowered from 60 to 50 miles per hour.

## Agent Discusses Plant Nutrient

Many elements and compounds are essential for plant growth. Have you ever wondered exactly why certain elements are needed, why we must fertilize our lawns, gardens and flowers? To describe the functions of plant nutrients, let's start with a bag of 12-12-12 fertilizer, suggests County Extension Agent Spencer Tanksley. As you probably know, the designation on the bag means the material contains 12 percent nitrogen, 12 percent phosphate and 12 percent potash. What happens to the fertilizer when you apply it to the soil? It must first be dissolved before the nutrients become available to plants, points out

Tanksley. As far as organic and inorganic fertilizers are concerned, each contains the same elements. Therefore, either can supply the needed plant nutrients if similar quantities of nutrients are used. Since the most important plant nutrient is nitrogen, let's look at how it affects plants, suggests Tanksley. Nitrogen is primarily involved with chlorophyll and protein in the plant. Chlorophyll is the green coloring material in plant leaves which plays a vital role in photosynthesis, the process in which the sun's energy converts carbon dioxide from air and hydrogen from water into carbohydrates.

The production of carbohydrates by photosynthesis is probably the most important of all chemical reactions, points out the agent. This process provides the energy and substance for plant growth. And, since humans and animals secure their nourishment by eating plants, they likewise are dependent on photosynthesis for their livelihood. So, to keep plants green and growing vigorously, we must supply them with the necessary plant nutrients at least once a year, notes Tanksley. To find out how much fertilizer to apply, he recommends having the soil in your lawn, garden and flower bed tested. Information on soil testing is available at the county Extension office.

## Reception Honors Mr. & Mrs. Wilbanks

Mr. and Mrs. Fred Wilbanks of the Lazbuddie community were guests of honor at a reception Thursday night, May 24, in the Lazbuddie Cafeteria. This year concluded 21 years they have each taught in the Lazbuddie school system. A large host of friends, students, school staff and teachers gathered to congratulate them on their retirement and the many years given to the teaching profession. Homemade ice cream and cake was served at the reception. The people of the Lazbuddie community and schools presented the couple with a floor model grandfather clock. Mr. and Mrs. Wilbanks attended college at Arkansas State Teachers College in Conway, Ark. and Eastern New Mexico

University in Portales. They came to the Lazbuddie community in 1952 and have taught in that school system for the 21 years following. Fred Wilbanks has taught a total of 41 years; 20 years in Marshall, Ark. and 21 years in Lazbuddie. Mrs. Fred Wilbanks taught 15 years

in Marshall and 21 years in Lazbuddie, making a total of 77 years that the couple has been in the teaching profession. The couple taught in Marshall from 1931 to 1951. They have two children: Mrs. Richard Engelking and Paul Wilbanks, both of Muleshoe. Their grandchildren are Debbie Engelking, Valedictorian of the 1973 graduating class of Lazbuddie; Davey Engelking, a sophomore in Lazbuddie High School; and Melissa Wilbanks, a first grader in the Muleshoe school system.



MR. AND MRS. FRED WILBANKS

### Housing...

Cont. from Page 1  
strong housing planning capability. This will place the South Plains Association of Governments in a much better position to assist local governments when moratorium ends.

The joyfulness of a man prolong his days.  
-Ecclesiasticus 30:22.  
I have drunken deep of joy, And I will taste no other wine tonight.  
-P.S. Shelley.  
Joys too exquisite to last, And yet more exquisite when past.  
-John Montgomery.  
The man from whom the joys of life have departed is living no more, but should be counted with the dead.  
-Sophocles.

### Handbook...

Cont. from Page 1  
program. The purpose of the crop and livestock demonstration is to provide farmers, ranchers and landowners with information so that they can make better use of available resources. The latest technical research findings and recommendations are incorporated into the various demonstrations points out Tanksley. The demonstration program consisted of field tests in corn, grain sorghum, cotton fertility and irrigation. A copy of the handbook is available at the County Extension office in the courthouse.

WHERE YOU ALWAYS BUY THE BEST FOR LESS

# GIBSON'S DISCOUNT CENTER

## PRICES GOOD THRU WED.

30 Qt. Styrofoam ICE CHEST WITHOUT HANDLES #576 **83¢**

Thermos PICNIC JUG 1 Gal. #7708-M33 **2.99**

Men's Western Popular Style

## STRAW HATS

Our Reg. \$2.97 **1.99** Our Reg. \$3.97 **2.88**

Our Reg. \$4.97.....\$3.77 Our Reg. \$5.97.....\$4.44

Ladies Novelty

## CASUAL HATS 1.53

Ladies

## TERRY SCUFFS 53¢

Wagner Carpet

## SWEEPER

Cordless convenience—fast, easy carpet care with choice of colors. Low silhouette means easy cleaning under furniture. Large dustpan, super-traction wheels. Guaranteed bristles of DuPont Herculon.

YOUR CHOICE **4.88**

PRICES GOOD THRU WED.

Marvalon Adhesive

## SHELF COVERING 69¢

18" X 3 yd. Roll

Full-Vu

## DOOR MIRROR

IIVN-WA PBB or WLB Your Choice **3.77**

FABRIC SOFTENER DOWNY FAMILY SIZE ONLY

96 Fl. Oz. Bottle Only

SAVE NOW

**1.59**

Northern "Mane Tamer" HAND HAIR DRYER #1800-2-B **8.99**

Polaron 5 Gal. CAMPER COOLER #775 **7.77**

KOTEX 24's Reg. or Super **69¢**

Beacon MOP & GLO 32 oz. Size **99¢**

LIQUID PRELL Label 11 oz. Family Size **69¢**

SCOPE Mouthwash 12 oz. Size **69¢**

SECRET Dry Formula Anti-Perspirant 8 oz. Size **94¢**

Kleenex PAPER TOWELS Jumbo Rolls 3 Rolls For **87¢**

HANDI-WIPES 24" X 14" Pkg. of 10 **49¢**

OUR REG. .37¢

KEEBLER RED TAG COOKIE SALE 3 PKGS. FOR **87¢**

No-Pest Strip GIBSON SPECIAL **1.47**

Gibson's Disposable DIAPERS Daytime 60's **2.29** Overnight 40's **2.09**

VEL DISHWASHING LIQUID 22 oz. **39¢**

AJAX Cleanser 14 oz. **12¢**

LEAF & GRASS BAGS 6 Bags - 5 Bushel Capacity **59¢**

RAID Ant & Roach KILLER 16 oz. **83¢**

RAID House & Garden BUG KILLER 13 1/2 oz. **1.17**

SWAG LAMP SALE

Our Reg. 8.88	5.88	Our Reg. 11.97	7.88
Our Reg. 13.97	9.88	Our Reg. 17.97	13.88
Our Reg. 19.97	15.88	Our Reg. 23.17	17.88
Our Reg. 25.97	19.88	Our Reg. 29.97	21.88
Our Reg. 32.97	22.88	TABLE LAMPS	8.88

# It's National FRIGIDAIRE WEEK

## and Low, Low Prices

On Frigidaire Appliances Will Last Through June 2 Only

## REFRIGERATORS

Model FPI3-152TT (White, Green, Harvest Gold, Copper)	298.00 w/t
Model FPI3-170TT (White, Green, Harvest Gold, Copper)	338.00 w/t
Model FPC13-170TT (White, Green, Harvest Gold, Copper)	390.00 w/t
Model FPC13-200VT (Green and White) and 3-Door Models (All White)	498.00 w/t (Icemaker 58.00 Extra)

## RANGES

Model RSE3-36S (White, Green, Harvest Gold, Poppy)	328.00 w/t
Model RCDE3-71S (White Only)	448.00 w/t

## FREEZERS

Model CF3-103T	188.00 w/t
Model UF3-191T	338.00 w/t
Model UFP3-157T	338.00 w/t
Model UFP3-187T	358.00 w/t

## WASHERS

Model W3-224 (White)	198.00 w/t
Model WCDDT (White, Green, Harvest Gold, Copper, Poppy)	248.00 w/t
Model WAT (White)	208.00 w/t

## DRYERS

Model D3-24 (White)	138.00 w/t
Model DAT (White)	148.00 w/t
Model DCDT (White, Green, Harvest Gold, Copper, Poppy)	168.00 w/t

## MOBIL DISHWASHER

Model DW3-CDMT (White, Copper, Green, Harvest Gold, Poppy) **238.00 w/t**

## LAUNDRY CENTERS

Model LC3-2 or Model LC3-120 **338.00 w/t**

All Frigidaire

# Room Air Conditioners - 10% OFF

# HARVEY BASS Appliance

**Nursing Home News**  
by Myrtle Guinn

Mrs. Ura Lee Roland of Laguna Beach, Calif., and Mr. and Mrs. Lloyd Danforth of Agermon, N.M. were recent visitors of Mrs. Mae Danforth.

Mr. and Mrs. Leon Lewis, and several others visited Mrs. Lewis Sunday.

The Needmore singing group came Sunday afternoon and sang songs for us which we certainly enjoyed.

Mr. Harold McGee, son-in-law of Mrs. Brown, visited with her Sunday afternoon.

Mrs. Lavada Lassiter of Whiteface came to see her mother, Mrs. Newton, as she has every Monday morning.

Mrs. Davis, who hasn't been feeling well for the past several days, was taken to Methodist Hospital in Lubbock by her daughter, Mrs. O' Hair, Sunday. We are hoping she will soon be feeling better.

Mrs. Edna Mae Danforth celebrated her eighty-fourth birthday Sunday afternoon with all of her children coming to see her, as well as others. All brought gifts and her daughter, Mrs. Pete Roland of Portales, made a beautiful cake which was enjoyed by all. She was very happy to see each one and each wished her more happy birthdays to come.

Mrs. Lena Hite came Monday to see Mrs. Jane Beavers and several others.

Mr. and Mrs. W.M. Daniel of Bowie, Tex. visited Mrs. Wilterding, Mrs. Chaney and Mrs. Lewis Monday afternoon.

Mr. and Mrs. Bob Boone visited Tuesday with her mother, Mrs. Whitford, who has been ill since Sunday.

Mrs. Winners and the two Limbrough sisters visited Mrs. Lewis and Mrs. Chaney Tuesday afternoon.

Mrs. Paul Twaddell, Mrs. Brown's daughter of Amarillo, came for her on Wednesday to

spend a few days with her. We know she will enjoy it and are glad for her.

Mrs. Mae Wilterding, Mrs. Spence, and Mrs. Ethridge brought several of us bouquets of beautiful flowers last week. Our thanks to each one of you for sharing with us your pretty flowers to enjoy and see.

Mrs. Epperly visited Mrs. Lois Robinson Wednesday afternoon.

Mrs. Jackson, Mr. and Mrs. Leon Lewis, and Kirk called on Mrs. Lewis Wednesday.

Mr. and Mrs. Moore called on several of us here Wednesday afternoon. We are always glad to see them.

Mrs. Timms spent Wednesday afternoon with her mother, Mrs. Perry.

Several of the Auxiliary ladies were here Thursday bringing fruit juices and shampooing and fixing hair. Our thanks to them.

Mr. and Mrs. L.G. Sullivan of Vernon are visiting her sister, Mrs. Beavers, while Mr. and Mrs. Spencer Beavers are gone to Springfield, Mo. where their son, Spencer Clay Beavers, is graduating from Bible school.

I read these little verses recently and I think of them often. They are by Esther F. Thom. The title is "I Wonder": "What would happen if each drop of rain refused to fall; or every sunbeam ceased to shine because it was too small? What would happen if each day we chose to leave undone an act of kindness just because it was a little one?" Perhaps more than we know we can do something thoughtful for someone. Even a smile or taking time for a few words will mean happiness and a brighter day for someone.

**Market Report**

COLLEGE STATION -- Memorial Day officially opened outdoor - cooking - and - picnic season, Mrs. Gwendolyn Clyatt noted this week. The consumer marketing information specialist, Texas Ag-

ricultural Extension Service, Texas A&M University, said markets "have a lot to offer in picnic supplies--and many of the best food buys are excellent picnic fare."

"Fryer chicken prices dipped below those of the past three weeks, but heavy demand may drive them up again. Turkey supplies and prices are steady."

"Many markets feature beef chuck roasts, with other good values on ground beef, rib and round steaks, stew meat and liver."

"See-sawing pork prices lean toward the high side with scattered features on Boston butt roasts, shoulder steaks, quarter loin sliced, smoked picnics and ham portions, the specialist said."

"Strawberries and grapefruit are generally the best fresh fruit buys. It's near the season end for controlled atmosphere apples, with prices on the high side."

"Tomatoes are reasonably priced--the long range prediction forecasts relatively low prices throughout the spring and summer season."

"Watermelon prices show some trending downward with more plentiful supplies, as do cabbage prices. Lettuce quality, however, is irregular with variable prices."

"Onion supplies show improvement, but prices continue a bit high and likely will remain there until the summer crop is harvested."

"Potatoes, celery, carrots, corn, green onions and radishes are good choices price-wise. Eggplant, broccoli, asparagus, snap beans and cauliflower--mostly at moderate price levels--offer menu variety," Mrs. Clyatt added.

**Dumb**  
He (calling from house)-- Take a glance at the gas, will you, Mabel?

Mabel--The indicator says half, but I don't know if it means half full or half empty.

**Bailey County Journal**  
Established March 21, 1905  
Published by Muleshoe Publishing Co., Inc.  
304 W. Second Box 449  
Muleshoe, Texas 79247  
Second class postage paid at Muleshoe, Texas  
Postmaster: Please send address changes to  
L. B. Hall, President  
Jessica P. Hall, Sec.-Treas.  
L. B. Hall, Managing Editor  
Katie Neckett, News Reporter  
Cathy McCormick, Society  
Polly Owsen, Office  
Gayla Robertson, Advertising  
SUBSCRIPTIONS:  
Zone 1--Bailey-Parmer-Cochran-Lamb  
counties: \$4.00 per year; \$4.50 per year by  
carrier. With Thursday Muleshoe Journal,  
both papers \$8.50 per year; \$9.00 per year  
by carrier.  
Zone II--Out-of-Territory:  
With Thursday Muleshoe Journal, both  
papers, \$4.25 per year.  
Monthly, by carrier-\$5; single copies-10¢  
Advertising rates card on application

**Family--Fading Or Forceful**

COLLEGE STATION -- "A current fad is discussion of the decline in family life, the irrelevance of families and the purpose of a family unit."

Dr. Jennie Kitching, family life education specialist with the Texas Agricultural Extension Service, Texas A&M University, examined the subject this week.

"In view of this fad, a few minutes spent reflecting on what the word 'family' means--and what a family is for--seems relevant," she noted.

"A family has many purposes."

One primary purpose--recognized by almost everyone--is to serve as the carrier of heritage and culture. Everyone needs a sense of belonging and

a "sense of place," often difficult to achieve in a highly mobile society, she explained. "Another purpose involves physical security and protection usually given each member of a family unit."

"This applies to all family units--whether the central core of husband and wife, or a larger unit including children, in-laws, grandparents and cousins."

"A family is the place where adults and children can be given full opportunities for emotional support given freely by family members--not preceded by 'if or because.'"

"Related to this is the family responsibility of developing in its members the character traits it sees as socially desirable."

"Those traits may be different for each family unit. Families can help younger members identify and prepare for adult roles they will assume in the future."

"On the other hand, the family can help adults understand and adjust to new or changing roles that each individual faces constantly in contemporary society."

Dr. Kitching termed the family unit a possible "buffer" between the individual and society, helping members develop social relationships with the outside community.

"This family function is important because of increased feelings of alienation and helplessness among people."

**Lisa Lin Gilbreath**

Mr. and Mrs. Jerry Gilbreath of Amarillo are the parents of a baby girl born May 21 at 5:00 p.m. The baby weighed 7 lbs., 1/2 ounce and was named Lisa Lin.

Maternal grandparents are Mr. and Mrs. T.L. Gleason of Lazbuddie. Paternal grandparents are Mr. and Mrs. Francis Gilbreath of Muleshoe.

**Ruben Hernandez**

Mr. and Mrs. Celestino Hernandez, Jr. of Farwell are the parents of a baby boy born May 21 at 6:18 p.m. in the West Plains Memorial Hospital of Muleshoe. The baby weighed 5 lbs., and 3 1/2 ounces and was named Ruben.

**Shellie Lynn Morris**

Mr. and Mrs. Lonnie C. Morris of Texico, N.M. are the parents of a baby girl born May 18 at 6:07 a.m. in the West Plains Memorial Hospital of Muleshoe. The baby weighed 6 lbs., 15 ounces and was named Shellie Lynn.

**Calixto Guzman Nieto**

Mr. and Mrs. Elias Orozco Nieto of Texico, N.M. are the parents of a baby boy born May 19 at 6:36 a.m. in the West Plains Memorial Hospital of Muleshoe. The baby weighed 6 lbs., 9 ounces and was named Calixto Guzman.

**MAY DAYS are Savings days**

\*\*\*\*\*  
**BLADE CUT CHUCKSTEAK LB. 85¢**  
**CENTER CUT RANCH STEAK LB. 98¢**  
**ROUND BONE CUT SWISS STEAK LB. \$1.18**  
**FRESH GROUND BEEF 2 LB. PKG. \$1.59**  
**FRESH VINE RIPE TOMATOES LB. 29¢**  
**RED, PLUMP JUICY STRAWBERRIES BASKET 29¢**  
**ALL SWEET MARGARINE QUARTERS LB. 25¢**  
**FOOD KING SALAD DRESSING QT. 39¢**  
**FOOD KING TUNA 6 oz. can 3 FOR \$1**  
**BIG ROLL CORONET TOWELS 29¢**  
**HUNT'S TOMATO SAUCE 8 oz. can 10¢**  
**Zesta SALTINE CRACKERS LB. BOX 39¢**  
**CORONET BATHROOM TISSUE SOFT PRINT 2 ROLL PKG. 25¢**  
**NESTLE QUIK 2 lb. box 89¢**  
**ICE CREAM SHURFRESH 1/2 gal. 65¢**  
**FRESH FLORIDA SWEET CORN LARGE FULL EARS 4 FOR 39¢**  
**FRESH CRYSTAL WAX WHITE ONIONS NEW CROP LB. 29¢**

\*\*\*\*\*  
**ARTHRTIS STRENGTH BUFFERIN TABLETS 40's \$1.09**  
**NO-DOZ TABLETS 15's 69¢**  
**FEMINIQUE DEODERANT SPRAY 2.75 oz. \$1.55**

**Singleton-Ellis Funeral Home**  
24 Hour Ambulance Service  
Ph. 272-4574 Muleshoe

**Welcome to Muleshoe**



PAT DAVIS

Receiving a warm welcome to Muleshoe is Pat Davis. Pat is the new Food Service Manager for West Plains Hospital, she is from Abemathy and just graduated from Texas Tech in December with a B.S. degree in Food Nutrition. She is a member of the Church of Christ.

Pat says: "I would like everyone to know how much I have enjoyed Muleshoe, the people have been so nice. I really enjoy working at the hospital and believe it is a great asset to the town." Muleshoe is indeed happy to have Pat Davis.

THE FOLLOWING FIRMS WELCOME MISS DAVIS:

<b>James Crane Tire Co.</b> GOOD YEAR	<b>MULESHOE STATE BANK</b> MEMBER FDIC
<b>DAMRON DRUG CO.</b> REXALL 308 MAIN	<b>James Glaze Co.</b> INSURANCE REAL ESTATE LOANS

!!!!NOTICE!!!!  
Coupon redemption will end Sat., June 2, 1973

**WIN 500 - 1,000 3,000 or 5,000**

**GUNN BROS. STAMPS**

\$120 in purchases completes the WHEEL OF FORTUNE. Then we break the seal to see what you win! GOOD ONLY AT THIS STORE

SHOP JIM'S PAY & SAVE where you get valuable Gunn Bros. Stamps, Double on Wed. And redeemable right here in Muleshoe.

**QUALITY MERCHANDISE AT LOWEST PRICES**

**Jim's Pay N' Save**  
FRIENDLIEST STORE IN TOWN

8 AM till 10 PM 7 Days A Week  
PRICES GOOD MAY 27 - JUNE 2

201 S. 1st. Street

# Ceremony Unites Bass, Strayhorn



MRS. DAVID THOMAS STRAYHORN (nee VINA JEANETTE BASS)

Miss Vina Jeanette Bass became the bride of David Thomas Strayhorn May 26, at 6:00 p.m. in the Muleshoe Primitive Baptist Church. The double-ring ceremony was performed by Elder Afton E. Richards, uncle of the bride.

Miss Bass is the daughter of Mr. and Mrs. Harvey L. Bass of Muleshoe. The groom's parents are Mr. and Mrs. David Strayhorn of Snyder.

The couple stood before an altar trimmed with white tapers that formed spirals and arches above them.

Vocal selections were duets presented by Mrs. Jerry Winchester of Marietta, Okla. and Mrs. William White of Georgetown. They were "O Perfect Love," "Entire Consecration," "The Lord's Prayer" and "Brother James' Air."

Presented in marriage by her father, the bride wore a floor length gown of soft white peau de soie. The empire bodice with a high Victorian collar and princess skirt were adorned with beaded reembroidered Alencon lace. Lightly puffed sleeves were gathered onto wide cuffs buttoning to the wrist, accented with Alencon lace medallions and pearls. Cascading from the scalloped lace encircling the waistline, the chapel length train was arrayed with beaded lace motifs.

A bandeau of imported re-embroidered lace medallions, pearls and crystals held the elbow length veil of imported silk illusion. The bride carried a bouquet of white roses and stephanotis surrounding a cattleya orchid mounted on a white Bible.

For something old, the bride wore her grandmother's wedding band; something new was her wedding gown; something borrowed was the pair of earrings she wore belonging to her sister; something blue was a garter made by her aunt, Mrs. M.G. Bass. The bride wore pennies minted in the years of the bride's and groom's births in her shoes.

Matron of honor was Mrs. Ronald E. Johnson of Winter Park, Fla., sister of the bride. Brides matron was Mrs. Sandy Sandlin of Ft. Worth. Bridesmaids were Miss Debra Dutton of Junction and Miss Terry Rowell of Houston. The attendants wore identical floor length gowns of coral crepe. The short-sleeve bodice was accented with a line of peu de soie covered buttons. Encircling the empire waistline was a band of coral peau de soie gathered into a bow at the back. The flower headpieces were of looped coral peau de soie and illusion. The attendants carried nosegays of flamingo roses.

cornflowers and pompoms.

The flower girl was Miss Jimmie Sue Collins of Muleshoe. She wore a floor length dress of white dotted swiss featuring an empire bodice and short puffed sleeves. A sash of coral peau de soie accented the dress. She carried a lace covered basket with white rose petals.

Best man was Ronald Johnson of Winter Park, Fla., brother-in-law of the bride. Groomsman were Mark Henley of Lubbock, cousin of the groom; Randy Farr of Hereford and David Gowens of Friona, cousin of the bride. Ushers were Eddie Sharp of Brownfield and Donny Richards of Hereford, cousin of the bride.

Daniel Gowens of Friona, cousin of the bride, was ring bearer. Candelighters were Miss Lisa Waddell of Vernon, cousin of the groom, and Michael Gowens of Friona, cousin of the bride. A reception followed the ceremony at the home of the bride's parents. The serving table was centered with an arrangement of flamingo roses, cornflowers and pompoms in crystal. Crystal candelabras with white tapers also adorned the table. The three tiered wedding cake was decorated with cascades of coral roses topped with wedding bells and a bride and groom.

Registering guests was Mrs. Calvin Brints of El Paso, cousin of the bride. Serving were Mrs. Randy Farr of Hereford and Mrs. Mark Henley of Lubbock, cousin of the groom. Other members of the house party were Mrs. James Parker of Clovis, Val Bass of Muleshoe and Elaine Cargile of Muleshoe.

The bride's traveling outfit was a kelly green and white ensemble with white accessories. The polka-dotted bodice was accented by a sleeveless jacket and skirt. She wore a cattleya orchid corsage lifted from her bridal bouquet.

After a wedding trip to Houston, the couple will reside at 3607 Link Valley in Houston. They will be at home after June 3.

Mrs. Strayhorn is a 1969 graduate of Muleshoe High School. She attended Texas Tech University and is a candidate for August graduation from the University of Houston College of Pharmacy. She is a member of Kappa Epsilon, pharmacy women's fraternity and Phi Chi, national pharmacy honorary. She is also a member of Pharmaceutica Association and Student American Society of Hospital Pharmacists.

Strayhorn is a 1967 graduate of Snyder High School. He graduated from Texas Tech University in 1971 with a B.A. degree in science. He is employed by Brownfield Public Schools in the science department.

Many out-of-town guests included Mrs. Vina Fowler of Crosbyton, grandmother of the bride; Mr. and Mrs. J.P. Nelson and Mrs. George Kutala of Snyder; Mrs. Mary Howard of

Kennesaw, Georgia and Mr. and Mrs. W.W. Brints of Crosbyton. A rehearsal party dinner was hosted by the groom's parents May 25, in the dining room of the Muleshoe Primitive Baptist Church. A bridesmaids luncheon was hosted by Mrs. Ronnie Shafer and Mrs. James Collins in the home of Mrs. Shafer.

## Mule Belles Elect Officers

The Mule Belles met Wednesday, May 23, to elect officers for the coming year.

Those elected were: President, Robbie Sue Kelly; First vice presidents, Regina Poteet; Second vice president, Jim Ella Norman; Secretary, Kim Cowan; Treasurer, Jana Garrett; Reporter, Gayla Hooten; and Student Council Representative; Beverly McCamish.

It was reported that fifty-one members have been accepted to this new organization of Muleshoe High School. The Mule Belles was created to replace the pep squad. It is an organization for high school girls only. They will travel to all out-of-town games and will be working closely with the cheerleaders in learning new yells and making spirit posters.

It is the sincere hope of those in this new organization that the Mule Belles will help to promote school spirit. Remember—support the Mules!

A divided egg poacher is just the thing for heating baby's food. Place the food in the compartments over warm water.

## Muleshoe Study Club Honors Jane Beavers

The Muleshoe Study Club held a noon luncheon Thursday, May 24, in the home of Mrs. J.G. Ann. Assisting Mrs. Ann in the hospitalities were Mrs. Lewis Embry, Mrs. Rufus Gilbreath, Mrs. Sena Stevens and Mrs. LeVina Pitts.

Centering the serving tables were floral arrangements of yellow and red roses. The menu featured roast beef, whole kernel corn, english peas, marinated carrots, tossed vegetable salad, hot rolls, pineapple-orange sherbert and iced tea and coffee. Mrs. John Agee led the members in singing a well-known children's prayer before the meal.

Special guests for the luncheon were Dagmar Poteet, 1973 Study Club Scholarship recipient, and her mother, Mrs. George Poteet, the former Hortense Hudnall of the Lazbuddie community.

In a brief business meeting, the members answered role call by giving their special hopes and plans for the summer season. Mrs. O.N. Jennings then suggested that the 1973-74 study Club yearbook be dedicated to Mrs. S.C. (Jane) Beavers and her suggestion was approved by the entire membership. Mrs. Beavers was the club president when it was organized in 1938 and federated in 1939.

The Study Club recognizes and appreciates the hard work done by Mrs. Beavers and all former presidents and officers in their local club for the betterment of the community, state and nation. Former presidents of the club in the order of their term are the following: Mrs. S.C. Beavers, Mrs. Julian Lenoa, Mrs. A.E. Lewis, Mrs. Ray C. Moore, Mrs. James Goudy, Mrs. Katherine McNeese, Mrs. Pat Bobo, Mrs.

John Watson, Mrs. A.J. Gardner, Mrs. E.R. Hart, Mrs. Charles Lenoa, Mrs. O.N. Jennings, Mrs. Buck Wood, Mrs. M.F. Harris, Mrs. A.E. Alcorn, Mrs. M.F. Green, Mrs. Buck Ragsdale, Mrs. H.D. King, Mrs. Vance Wagon, Mrs. Lee Pool, Mrs. Thurman White, Mrs. W.O. Casey, Mrs. J.G. Ann, Mrs. Rufus Gilbreath, Mrs. Ramon Martin, Mrs. Cecil Cole, Mrs. Horace Blackburn and Mrs. Glen Splawn.

Also the charter members of the Study Club were Pauline Alexander, Jane Beavers, Inez Bobo, Eunice Florence, Elizabeth Gardner, Druella Goudy, Mary Hart, Jane Holland, Lois Lenoa, Mickie Lewis, Eunice McDermott, Melba Moore, Fay Smith, Opal Smith, Jackie Tate, Janette Wagon, Dee Walton and Ester Williams.

### Not Fair

Minister: And when I get through with my sermon I'll ask those of the congregation who want to contribute \$5 toward the mortgage on the church to stand up. In the meantime you play appropriate music.

Organist: What do you mean, appropriate music? Minister: You play the "Star-Spangled Banner."



ENGAGEMENT ANNOUNCED. . . Mr. and Mrs. Orbie Chandler of Muleshoe announce the engagement and approaching marriage of their daughter, Bonnie Evalene, to Sam Charles Thomas, son of Mr. and Mrs. Ed Kimberly of Humble. Miss Chandler is a 1971 graduate of Muleshoe High School and attended Texas A&M University and South Plains College. Thomas is a 1969 graduate of Humble High School, attended Stephen F. Austin College and is a 1973 graduate of Texas A&M University with a B.A. Degree in accounting. He is a member of Eta Gamma Sigma, Phi Kappa Phi, and Beta Alpha Phi fraternities. The couple will be married Sept. 1 at 7:30 p.m. in the Muleshoe Primitive Baptist Church.



MRS. ROGER KELLY PATRICK (nee CAROLYN SUE WEDEL)

## Wedel, Patrick Ceremony

Wedding vows were exchanged by Miss Carolyn Sue Wedel and Roger Kelly Patrick Saturday, May 19, at 2:00 p.m. in the First United Methodist Church of Muleshoe. Rev. Dale McCleskey performed the double-ring ceremony.

Miss Wedel is the daughter of Mr. and Mrs. James P. Wedel of Muleshoe. The groom is the son of Mr. and Mrs. J.W. 'Pat' Patrick of Farwell.

Spiral candelabras holding thin blue candles flanked the altar. A bouquet of gladiolus stood before the altar. Musical selections were "Sunrise, Sunset," "Velvet Shoes," "Theme from Love Story," and the "Hallelujah Chorus" from Handel's Messiah. Pianist Mrs. Randall Conner, sister of the groom, and Miss Shirley Peryman, flute soloist, presented these selections.

Given in marriage by her father, the bride wore a gown

of white bridal satin overlaid by white shadow knit and designed with an empire bodice. The gown featured long pointed sleeves and a slight train. The bride's veil was floor length. A small multi-colored colonial style bouquet was carried by Miss Wedel. The bride wore the traditional something old, a necklace given to her by her fiancé; something new, her wedding gown, something borrowed, her wedding veil borrowed from Mrs. Bryan Swain, and something blue, a blue garter.

Miss Charlotte Wedel of Muleshoe, sister of the bride, was maid of honor. Bridesmaids were Mrs. Scott Rombookus of Lubbock and Mrs. Bryan Swain of Clovis. The maid of honor was attired in a floor length jumper of royal blue knit. It was accented with a blue flowered blouse. The bridesmaids wore floor

length jumpers of light blue double knit over white flowered blouses. Each attendant carried a bouquet of white daisies.

Bart Abbott of Lockney served as best man. Groomsman were Roddy Pearce of Texico, N.M. and Randall Conner of Ft. Huachuca, Ariz., brother-in-law of the groom. Jimmy Wedel of Muleshoe, brother of

the bride, and Marty White of Texico acted as ushers.

A reception followed the ceremony at the Fellowship Hall of the church. The serving table was centered with a large arrangement of gladiolus. Mrs. Bryan Jennings, sister of the bride, and Miss Debby Mooney served the guests. Miss Beth Harvey presented wedding scrolls featuring ring motifs to each guest.

For traveling, the bride chose a princess style dress of white accented with blue and purple flowers. The dress featured caplet sleeves.

After a wedding trip to New Orleans, La., the couple will reside in Victoria, Tex. They will be at home after June 1.

Mrs. Patrick is a 1970 graduate of Muleshoe High School and a 1973 graduate of Texas Tech University. She was a member of the Women's Service Organization at Texas Tech. Patrick is a 1969 graduate of Farwell High School and was valedictorian of his graduating class. He is also a 1973 graduate of Texas Tech. While at Tech, he was a member of the American Institute of Chemical Engineering, Tau Beta Pi Engineering Honorary and president of the Texas Tech Chess Club.

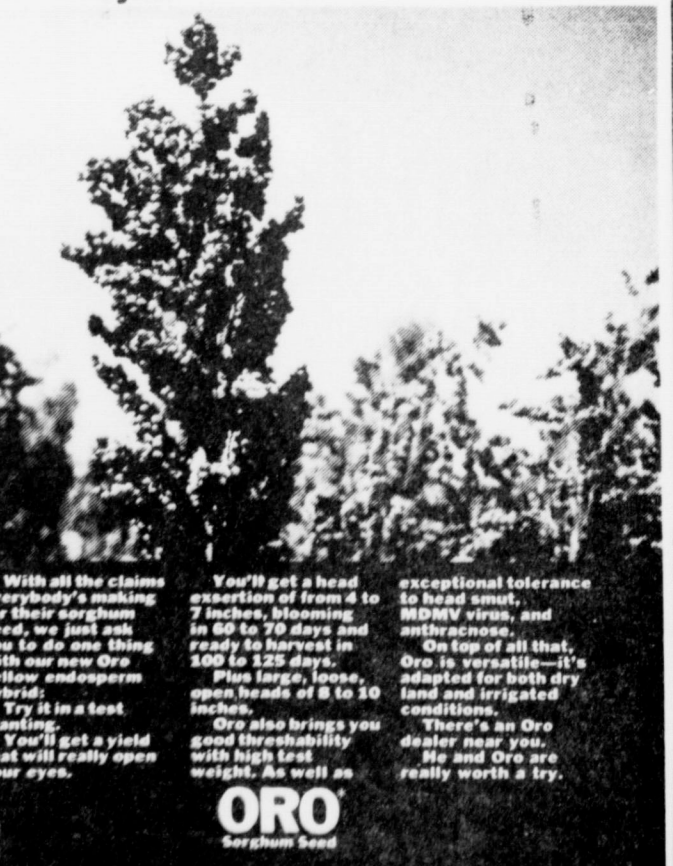
Out-of-town wedding guests included Mrs. Kitty Patrick of

Quitaque, grandmother of the groom; Mrs. A.F. Wedel of Littlefield, grandmother of the bride; Mrs. Melvin Free of Earth, aunt of the bride; Mr. and Mrs. Roy Patrick of Amarillo, Mr. and Mrs. Olin Patrick of Ft. Worth and Mr. and Mrs. Roy Golden of Lubbock, all aunts and uncles of the groom.

A rehearsal dinner was hosted by the groom's parents Friday evening, May 18, 8:00 p.m. at the XIT Steakhouse in Muleshoe.

\*Expert and Colorful Weddings  
\*Family Groups Anywhere, Anytime  
**PHOTOGRAPHY by Oecia**  
CALL 385-6083, Littlefield 409 W. 2nd

With everybody saying they've got the best sorghum seed, Niagara has just one thing to say about Oro: Try it.



With all the claims everybody's making for their sorghum seed, we just ask you to do one thing with our new Oro Hybrid Sorghum. Try it in a test planting. You'll get a yield that will really open your eyes.

You'll get a head assortment of from 6 to 7 inches, blooming in 60 to 70 days and ready to harvest in 100 to 125 days. Plus large, loose, open heads of 8 to 10 inches.

Oro also brings you good threshability with high test.

There's an Oro dealer near you. He and Oro are really worth a try.

**RIVERSIDE CHEMICAL CO.**  
3 MILES WEST ON CLOVIS HWY.  
FORMERLY CUSTOM FARM SERVICES  
PHONE 272-4203

**NOTICE**  
In order to give our employees a little extra time to be with their families. Our offices will be closed all day on Saturday during the Summer Months, beginning Saturday - June 2

Dr. B.R. Putman Optometrist Muleshoe 272-4705	Dr. B.W. Armistead Optometrist Littlefield 385-5147
--	--

## Mrs. Watson Presents Recital

Mrs. W.T. Watson will present her piano pupils in recital Monday evening, 8:30 p.m., in the Fellowship Hall of the Assembly of God Church of Muleshoe.

Those students appearing on the program include Chana Eubanks, Curtis Wheeler, Gayla Hooten, Jana and Janell Garrett, Darla, Denise and Debbie Hunter, and Clifford Watson.

Works from the Boroque to the Modern Era will be played. Certificates from the National Piano Guild auditions will be presented to each student.

A reception will follow the program.

IT'S A PUT-ON, BUT THE TAILGATERS DON'T KNOW IT. ACTUALLY I'M INSURED BY POOL

**POOL Insurance Agency**  
Joe Smallwood  
Bob Blackwood  
MULESHOE Ph 272-4531

Seven days a week dead stock removal please call as soon as possible

**ATTENTION MULESHOE AREA CATTLEMEN**

. . . In regard to dead stock removal. . .  
If you have had a problem with service. . . whether in the feedyard or on the farm. . . please give us a chance!

**Your local used cow dealer is muleshoe bi-products** Thank you  
Phone-965-2903  
Mobil Phone 965-2429



MRS. WILLIAM DWIGHT GOODWIN

## Miss Ayers Weds Goodwin

Miss Silva K. Ayers and William Dwight Goodwin exchanged wedding vows Sunday, May 20, at 2:30 p.m. in the First Baptist Church of Memphis, Texas. Rev. C.H. Murphy, Jr. officiated in the double-ring ceremony.

The bride is the daughter of Mrs. Aulis Ayers of Memphis and the late Robert L. Ayers. Parents of the groom are Mr. and Mrs. Ross Goodwin of Muleshoe.

The ceremony was performed before an altar decorated with two overlapped archways covered with white and orchid carnations. There were three arched candelabras amid leather leaf, the center one holding a Christ candle which was lit by the couple at the end of the ceremony. Two baskets of orchid and white mums flanked the altar.

Vocal selections were presented by Geary Brogden, soloist. They were "One Hand, One Heart," "The Lord's Prayer," and "The Wedding Prayer." Mrs. George Ferris accompanied him on the organ.

Miss Ayers was given in marriage by her great-uncle, Odies L. Hughes of Houston. She wore a formal floor length gown of angelmist peau de soie and chantilly lace over bridal taffeta. It was designed with a high V-shaped neckline, empire waist, long tapered sleeves, and semi A-line silhouette. Inserts of chantilly lace enhanced the neckline, bodice, sleeves, and skirt of the gown. The detachable chapel length train of peau de soie and lace complemented her dress. The bride wore a veil of imported illusion that fell from a coil of satin and seed pearls. She carried a formal cascade of miniature carnations centered with two white cattleya orchids.

Miss Elaine Phillips of Memphis was maid of honor. Matron of honor was Mrs. Gerald Floyd of Elkhart, Kans., sister of the groom. Bridesmaids were Miss Carolyn Sparks of Garland and Miss Claudia Corley of Memphis. The attendants were attired in floor length dresses of orchid crepe featuring empire waistlines and sheer puffed sleeves. They wore white broad brimmed hats accented with bands and waist-length streamers of orchid tulle. Each carried a bouquet of white miniature carnations centered with orchid carnations.

Miss Stephanie Goodwin of Richardson, niece of the groom, was flower girl. She wore an orchid dress of crepe identical to the other attendants. She carried a white lace basket containing rose petals and scattered them in front of the bride.

Don Heathington of Muleshoe was best man. Groomsman were Gerald Hale of Madill, Okla., Jim Spoon of Miami, Okla., and Jim Putman of Muleshoe. They served as ushers also. Jason Floyd of Elkhart, Kans., nephew of the groom, was ring bearer.

The bride's mother wore a street length dress of soft blue with matching accessories. The groom's mother wore a two piece pink dress with matching accessories. Each wore shoulder corsages of pink orchids.

A reception followed the ceremony at the Fellowship Hall of the First Baptist Church of Memphis. The table was covered with white satin and net with orchid accents. Orchids and white carnations centered the table and appointments of crystal were used. The four tiered wedding cake was topped with miniature bride and groom and trimmed with orchid flowers. Miss Jane Dunbar of Memphis registered guests. Serving at the reception were Mrs. Richard Goodwin of Richardson, sister-in-law of the groom, Mrs. Kelly Shaffer of Elmer, Okla., Miss Kattie Mo-

berly of Altus, Okla., and Miss Diana Boyer of Weatherford, Okla.

For traveling, the bride chose a dress with a purple knit skirt and sash and bodice of orchid and white. Her corsage of two cattleya orchids was lifted from the bridal bouquet.

After a wedding trip to Ruidoso, N.M. the couple will be at home in Weatherford, Okla., where they will both continue their education.

Mrs. Goodwin is a sophomore at the Southwestern State College School of Pharmacy. She is a member of Tau Beta Sigma, honorary music sorority. The groom is a 1970 graduate of Muleshoe High School and a junior student at the Southwestern State College School of Pharmacy. He is a member of Phi Delta Chi, professional pharmacy fraternity.

Special out-of-town guests were Mrs. Felix Jones of McLean, Mr. and Mrs. H.S. Mahaffey of Clarendon, Mr. and Mrs. Floyd Shannon of Clarendon, Mr. and Mrs. O.L. Hughes of Houston, Mrs. Mona Blanton of Pampa, Mrs. Iva Robinson of Pampa, Mrs. Doris Maltbie of Independence, Kans., Mrs. R.V. Ivy of Dimmitt, Mrs. O.M. Self Muleshoe, Mr. and Mrs. Aubry Heathington of Muleshoe, Mr. and Mrs. Richard Goodwin and Dwight of Richardson, Mrs. and Mrs. Gerald Floyd of Elkhart, Kans., Mr. and Mrs. Chester Mitchell of Lockney, Mr. and Mrs. Gerald Hale of Weatherford, Mr. and Mrs. Jim Spoon of Weatherford, Mrs. Fannie Parr, Mr. and Mrs. James Parr and Nancy, Mr. and Mrs. Temp

Kind, sincere words will take the average man or woman a long way along the journey of life.

Kind, sincere words will take the average man or woman a long way along the journey of life.

Kind, sincere words will take the average man or woman a long way along the journey of life.

Kind, sincere words will take the average man or woman a long way along the journey of life.

Kind, sincere words will take the average man or woman a long way along the journey of life.

Kind, sincere words will take the average man or woman a long way along the journey of life.

Kind, sincere words will take the average man or woman a long way along the journey of life.

Kind, sincere words will take the average man or woman a long way along the journey of life.

Kind, sincere words will take the average man or woman a long way along the journey of life.

Kind, sincere words will take the average man or woman a long way along the journey of life.

Kind, sincere words will take the average man or woman a long way along the journey of life.

Kind, sincere words will take the average man or woman a long way along the journey of life.

Kind, sincere words will take the average man or woman a long way along the journey of life.

Kind, sincere words will take the average man or woman a long way along the journey of life.

## Killingsworth, Barron Vows

Mary Leslie Killingsworth and Philip Luther Barron were united in marriage May 25, at 8:00 p.m. in the First Baptist Church of Canyon. Rev. Bill Foil officiated in the double-ring ceremony.

The bride is the daughter of Mr. and Mrs. R.D. Killingsworth of Canyon. Barron is the son of Mr. and Mrs. Jack L. Wood of Muleshoe.

The couple stood before an altar surrounded by baskets of yellow and white daisies and yellow roses with spiral candelabras on either side. A candelabra decorated with yellow tapers formed an arch above the couple. The altar railings were draped in white.

Musical selections were "Wedding Prayer," "One Hand, One Heart," and "Wither Thou Goest." They were presented by soloist, Mrs. Terry Landrum who was accompanied by Lily Koesjan, organist.

Given in marriage by her father the bride wore a floor length gown of silk-faced faille, designed with a fitted bodice and stand-up collar. The lantern sleeves were attached to wide fitted cuffs, forming points over the hands. The gown was accented by a panel of re-embroidered illustrated satin cascading down the front. The controlled skirt featured a sweeping sanctuary train. Her tiered veil was of silk illusion attached to a pearl encrusted Juliet-styled cap. The bride's bouquet featured daisies, yellow rosebuds, and baby's breath.

Mrs. Kirby Sunderman of Canyon served her sister as matron of honor. Maid of honor was Miss Kim Killingsworth of Canyon, also a sister of the bride. Mrs. Eddie Meadows of Briscoe was bride's matron. The attendants wore floor length dresses of pale yellow crepe designed with semi-fitted empire bodices and flowing A-line skirts. The dresses featured large cape collars. Each attendant carried a cascade of yellow and white daisies and baby's breath. Flowers from their bouquets were worn in their hair.

Curtis Ball of Muleshoe was best man. Groomsman were Steve Oliver and Joe Pat Riley, both of Austin. Greg Wood of Muleshoe, Jim Killingsworth of Bentonville, Ark., and Kirby Sunderman of Canyon were ushers.

A reception followed the ceremony at the Fellowship Hall of the First Baptist Church. Robbie Ramsey registered the guests. Pam Lawrence and Mrs. Perry Graham presided at the serving table.

For a wedding trip to points of interest in New Mexico and Colorado, the bride chose a white knit pants suit with a yellow blouse. Accessories to her ensemble were white. She carried a single long stemmed yellow rose.

Mrs. Barron is a graduate of Canyon High School and presently a sophomore at West Texas State University. The groom is a Muleshoe High School graduate and formerly attended West Texas State. He is currently employed with the Texas State Highway Department.

A rehearsal dinner was hosted by the groom's parents Thursday night, May 24, at Sutphens in Amarillo.

A rehearsal dinner was hosted by the groom's parents Thursday night, May 24, at Sutphens in Amarillo.

A rehearsal dinner was hosted by the groom's parents Thursday night, May 24, at Sutphens in Amarillo.

A rehearsal dinner was hosted by the groom's parents Thursday night, May 24, at Sutphens in Amarillo.

A rehearsal dinner was hosted by the groom's parents Thursday night, May 24, at Sutphens in Amarillo.

A rehearsal dinner was hosted by the groom's parents Thursday night, May 24, at Sutphens in Amarillo.

A rehearsal dinner was hosted by the groom's parents Thursday night, May 24, at Sutphens in Amarillo.

A rehearsal dinner was hosted by the groom's parents Thursday night, May 24, at Sutphens in Amarillo.

A rehearsal dinner was hosted by the groom's parents Thursday night, May 24, at Sutphens in Amarillo.

A rehearsal dinner was hosted by the groom's parents Thursday night, May 24, at Sutphens in Amarillo.

A rehearsal dinner was hosted by the groom's parents Thursday night, May 24, at Sutphens in Amarillo.

A rehearsal dinner was hosted by the groom's parents Thursday night, May 24, at Sutphens in Amarillo.

A rehearsal dinner was hosted by the groom's parents Thursday night, May 24, at Sutphens in Amarillo.

A rehearsal dinner was hosted by the groom's parents Thursday night, May 24, at Sutphens in Amarillo.

A rehearsal dinner was hosted by the groom's parents Thursday night, May 24, at Sutphens in Amarillo.

A rehearsal dinner was hosted by the groom's parents Thursday night, May 24, at Sutphens in Amarillo.

A rehearsal dinner was hosted by the groom's parents Thursday night, May 24, at Sutphens in Amarillo.

A rehearsal dinner was hosted by the groom's parents Thursday night, May 24, at Sutphens in Amarillo.

A rehearsal dinner was hosted by the groom's parents Thursday night, May 24, at Sutphens in Amarillo.

A rehearsal dinner was hosted by the groom's parents Thursday night, May 24, at Sutphens in Amarillo.

A rehearsal dinner was hosted by the groom's parents Thursday night, May 24, at Sutphens in Amarillo.

A rehearsal dinner was hosted by the groom's parents Thursday night, May 24, at Sutphens in Amarillo.

A rehearsal dinner was hosted by the groom's parents Thursday night, May 24, at Sutphens in Amarillo.

A rehearsal dinner was hosted by the groom's parents Thursday night, May 24, at Sutphens in Amarillo.

A rehearsal dinner was hosted by the groom's parents Thursday night, May 24, at Sutphens in Amarillo.

A rehearsal dinner was hosted by the groom's parents Thursday night, May 24, at Sutphens in Amarillo.

A rehearsal dinner was hosted by the groom's parents Thursday night, May 24, at Sutphens in Amarillo.

A rehearsal dinner was hosted by the groom's parents Thursday night, May 24, at Sutphens in Amarillo.

A rehearsal dinner was hosted by the groom's parents Thursday night, May 24, at Sutphens in Amarillo.

A rehearsal dinner was hosted by the groom's parents Thursday night, May 24, at Sutphens in Amarillo.

A rehearsal dinner was hosted by the groom's parents Thursday night, May 24, at Sutphens in Amarillo.

A rehearsal dinner was hosted by the groom's parents Thursday night, May 24, at Sutphens in Amarillo.

A rehearsal dinner was hosted by the groom's parents Thursday night, May 24, at Sutphens in Amarillo.

A rehearsal dinner was hosted by the groom's parents Thursday night, May 24, at Sutphens in Amarillo.

A rehearsal dinner was hosted by the groom's parents Thursday night, May 24, at Sutphens in Amarillo.

A rehearsal dinner was hosted by the groom's parents Thursday night, May 24, at Sutphens in Amarillo.

A rehearsal dinner was hosted by the groom's parents Thursday night, May 24, at Sutphens in Amarillo.

A rehearsal dinner was hosted by the groom's parents Thursday night, May 24, at Sutphens in Amarillo.

A rehearsal dinner was hosted by the groom's parents Thursday night, May 24, at Sutphens in Amarillo.

A rehearsal dinner was hosted by the groom's parents Thursday night, May 24, at Sutphens in Amarillo.

A rehearsal dinner was hosted by the groom's parents Thursday night, May 24, at Sutphens in Amarillo.

A rehearsal dinner was hosted by the groom's parents Thursday night, May 24, at Sutphens in Amarillo.

A rehearsal dinner was hosted by the groom's parents Thursday night, May 24, at Sutphens in Amarillo.

A rehearsal dinner was hosted by the groom's parents Thursday night, May 24, at Sutphens in Amarillo.

A rehearsal dinner was hosted by the groom's parents Thursday night, May 24, at Sutphens in Amarillo.

A rehearsal dinner was hosted by the groom's parents Thursday night, May 24, at Sutphens in Amarillo.

A rehearsal dinner was hosted by the groom's parents Thursday night, May 24, at Sutphens in Amarillo.

A rehearsal dinner was hosted by the groom's parents Thursday night, May 24, at Sutphens in Amarillo.

A rehearsal dinner was hosted by the groom's parents Thursday night, May 24, at Sutphens in Amarillo.

A rehearsal dinner was hosted by the groom's parents Thursday night, May 24, at Sutphens in Amarillo.

A rehearsal dinner was hosted by the groom's parents Thursday night, May 24, at Sutphens in Amarillo.

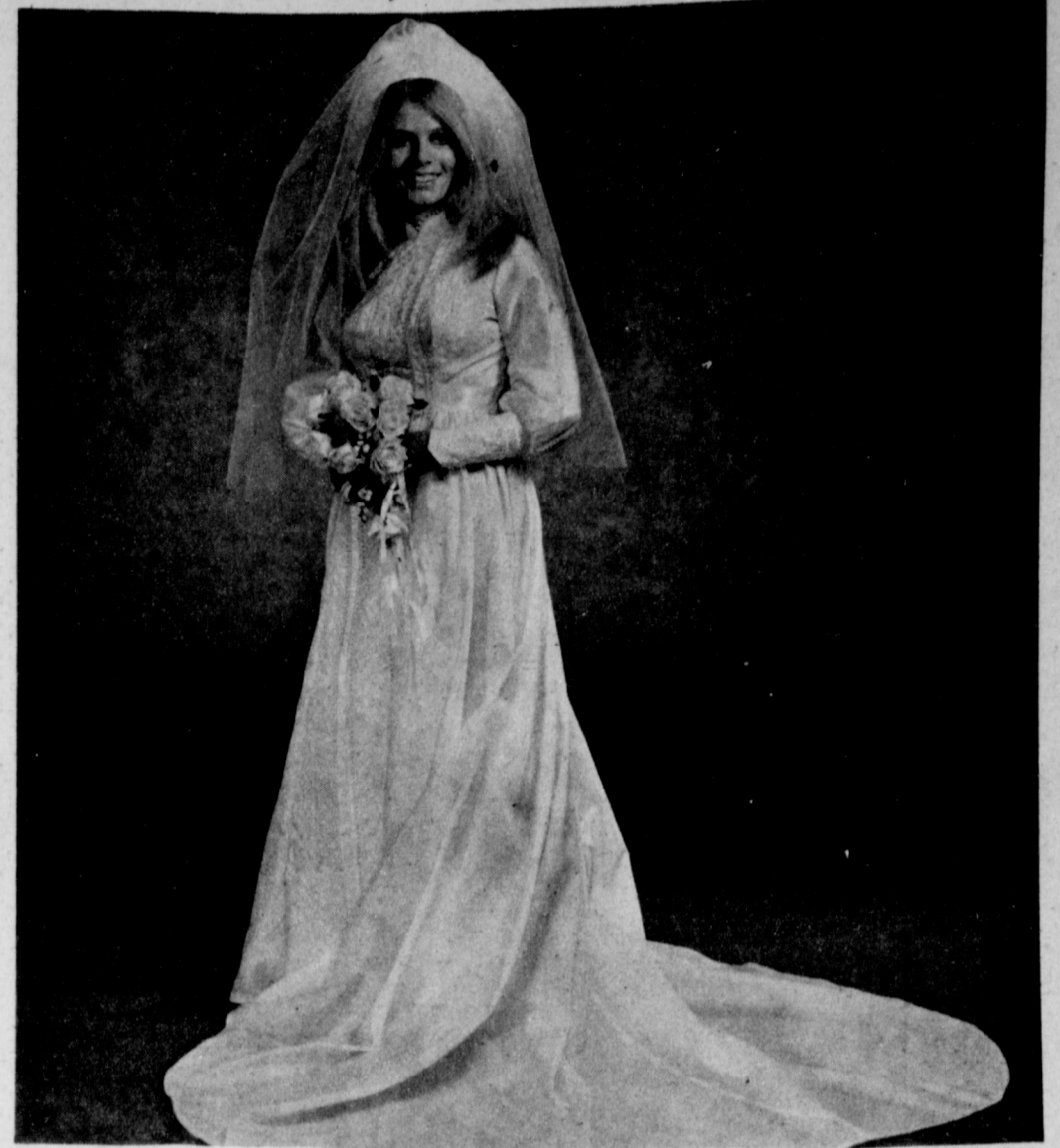
A rehearsal dinner was hosted by the groom's parents Thursday night, May 24, at Sutphens in Amarillo.

A rehearsal dinner was hosted by the groom's parents Thursday night, May 24, at Sutphens in Amarillo.

A rehearsal dinner was hosted by the groom's parents Thursday night, May 24, at Sutphens in Amarillo.

A rehearsal dinner was hosted by the groom's parents Thursday night, May 24, at Sutphens in Amarillo.

A rehearsal dinner was hosted by the groom's parents Thursday night, May 24, at Sutphens in Amarillo.



MRS. PHILIP LUTHER BARRON

## Miss Carol Haire Granted Certificate

It has been announced that Miss Carol Diane Haire has been selected to be granted the Certificate of Clinical Competence in Speech Pathology. The announcement was made by Dr. Donald T. Counihan, Chairman of the Clinical Certification Board of the American Boards of Examiners in Speech Pathology and Audiology of the American Speech and Hearing Association.

To qualify for the Certificate of Clinical Competence, an individual must meet requirements which emphasize competence that results from specialized training and experience. To be considered for the Certificate, the candidate must hold a Master's degree, complete nine months of full-time professional employment in speech pathology under the supervision of one who holds the Certificate of Clinical Competence, pass a written examination that evaluates the candidate's knowledge in all areas related to speech pathology, and be approved by the Executive Board of the American Speech and Hearing Association.

Miss Haire received a Bachelor of Arts degree from Texas Tech University in 1970, and a Master of Arts degree from North Texas State University in Denton in 1971. While in the Graduate School at North Texas State, she was the recipient of a University fellowship. As part of her graduate work, she received training at St. Paul's Hospital and Children's Medical Center in Dallas under Dr. M.C. Culbertson, an otolaryngologist associated with the University of Texas Medical School.

Her nine months of professional employment was done in 1972 under the supervision of Dr. Willard S. Jacquot, Director of the Division of Speech Pathology and Audiology of North Texas State University.

Her nine months of professional employment was done in 1972 under the supervision of Dr. Willard S. Jacquot, Director of the Division of Speech Pathology and Audiology of North Texas State University.

Her nine months of professional employment was done in 1972 under the supervision of Dr. Willard S. Jacquot, Director of the Division of Speech Pathology and Audiology of North Texas State University.

Her nine months of professional employment was done in 1972 under the supervision of Dr. Willard S. Jacquot, Director of the Division of Speech Pathology and Audiology of North Texas State University.

Her nine months of professional employment was done in 1972 under the supervision of Dr. Willard S. Jacquot, Director of the Division of Speech Pathology and Audiology of North Texas State University.

Her nine months of professional employment was done in 1972 under the supervision of Dr. Willard S. Jacquot, Director of the Division of Speech Pathology and Audiology of North Texas State University.

Her nine months of professional employment was done in 1972 under the supervision of Dr. Willard S. Jacquot, Director of the Division of Speech Pathology and Audiology of North Texas State University.

Her nine months of professional employment was done in 1972 under the supervision of Dr. Willard S. Jacquot, Director of the Division of Speech Pathology and Audiology of North Texas State University.

Her nine months of professional employment was done in 1972 under the supervision of Dr. Willard S. Jacquot, Director of the Division of Speech Pathology and Audiology of North Texas State University.

Her nine months of professional employment was done in 1972 under the supervision of Dr. Willard S. Jacquot, Director of the Division of Speech Pathology and Audiology of North Texas State University.

Her nine months of professional employment was done in 1972 under the supervision of Dr. Willard S. Jacquot, Director of the Division of Speech Pathology and Audiology of North Texas State University.

Her nine months of professional employment was done in 1972 under the supervision of Dr. Willard S. Jacquot, Director of the Division of Speech Pathology and Audiology of North Texas State University.

Her nine months of professional employment was done in 1972 under the supervision of Dr. Willard S. Jacquot, Director of the Division of Speech Pathology and Audiology of North Texas State University.

Her nine months of professional employment was done in 1972 under the supervision of Dr. Willard S. Jacquot, Director of the Division of Speech Pathology and Audiology of North Texas State University.

Her nine months of professional employment was done in 1972 under the supervision of Dr. Willard S. Jacquot, Director of the Division of Speech Pathology and Audiology of North Texas State University.

Her nine months of professional employment was done in 1972 under the supervision of Dr. Willard S. Jacquot, Director of the Division of Speech Pathology and Audiology of North Texas State University.

Her nine months of professional employment was done in 1972 under the supervision of Dr. Willard S. Jacquot, Director of the Division of Speech Pathology and Audiology of North Texas State University.

Her nine months of professional employment was done in 1972 under the supervision of Dr. Willard S. Jacquot, Director of the Division of Speech Pathology and Audiology of North Texas State University.

Her nine months of professional employment was done in 1972 under the supervision of Dr. Willard S. Jacquot, Director of the Division of Speech Pathology and Audiology of North Texas State University.

Her nine months of professional employment was done in 1972 under the supervision of Dr. Willard S. Jacquot, Director of the Division of Speech Pathology and Audiology of North Texas State University.

Her nine months of professional employment was done in 1972 under the supervision of Dr. Willard S. Jacquot, Director of the Division of Speech Pathology and Audiology of North Texas State University.

Her nine months of professional employment was done in 1972 under the supervision of Dr. Willard S. Jacquot, Director of the Division of Speech Pathology and Audiology of North Texas State University.

Her nine months of professional employment was done in 1972 under the supervision of Dr. Willard S. Jacquot, Director of the Division of Speech Pathology and Audiology of North Texas State University.

Her nine months of professional employment was done in 1972 under the supervision of Dr. Willard S. Jacquot, Director of the Division of Speech Pathology and Audiology of North Texas State University.

Her duties involved setting up new speech and hearing programs in five school districts in the Gainesville, Texas, area. As a holder of the Certificate of Clinical Competence, Miss Haire has demonstrated ability to conduct clinical services and train others in the arts and skills of the profession.

A 1967 graduate of Muleshoe High School, she is presently employed as the speech pathologist for the Muleshoe Independent School District.

A 1967 graduate of Muleshoe High School, she is presently employed as the speech pathologist for the Muleshoe Independent School District.

A 1967 graduate of Muleshoe High School, she is presently employed as the speech pathologist for the Muleshoe Independent School District.

A 1967 graduate of Muleshoe High School, she is presently employed as the speech pathologist for the Muleshoe Independent School District.

A 1967 graduate of Muleshoe High School, she is presently employed as the speech pathologist for the Muleshoe Independent School District.

A 1967 graduate of Muleshoe High School, she is presently employed as the speech pathologist for the Muleshoe Independent School District.

A 1967 graduate of Muleshoe High School, she is presently employed as the speech pathologist for the Muleshoe Independent School District.

A 1967 graduate of Muleshoe High School, she is presently employed as the speech pathologist for the Muleshoe Independent School District.

A 1967 graduate of Muleshoe High School, she is presently employed as the speech pathologist for the Muleshoe Independent School District.

A 1967 graduate of Muleshoe High School, she is presently employed as the speech pathologist for the Muleshoe Independent School District.

A 1967 graduate of Muleshoe High School, she is presently employed as the speech pathologist for the Muleshoe Independent School District.

A 1967 graduate of Muleshoe High School, she is presently employed as the speech pathologist for the Muleshoe Independent School District.

A 1967 graduate of Muleshoe High School, she is presently employed as the speech pathologist for the Muleshoe Independent School District.

A 1967 graduate of Muleshoe High School, she is presently employed as the speech pathologist for the Muleshoe Independent School District.

A 1967 graduate of Muleshoe High School, she is presently employed as the speech pathologist for the Muleshoe Independent School District.

A 1967 graduate of Muleshoe High School, she is presently employed as the speech pathologist for the Muleshoe Independent School District.

A 1967 graduate of Muleshoe High School, she is presently employed as the speech pathologist for the Muleshoe Independent School District.

A 1967 graduate of Muleshoe High School, she is presently employed as the speech pathologist for the Muleshoe Independent School District.

A 1967 graduate of Muleshoe High School, she is presently employed as the speech pathologist for the Muleshoe Independent School District.

A 1967 graduate of Muleshoe High School, she is presently employed as the speech pathologist for the Muleshoe Independent School District.

A 1967 graduate of Muleshoe High School, she is presently employed as the speech pathologist for the Muleshoe Independent School District.

A 1967 graduate of Muleshoe High School, she is presently employed as the speech pathologist for the Muleshoe Independent School District.

A 1967 graduate of Muleshoe High School, she is presently employed as the speech pathologist for the Muleshoe Independent School District.

A 1967 graduate of Muleshoe High School, she is presently employed as the speech pathologist for the Muleshoe Independent School District.

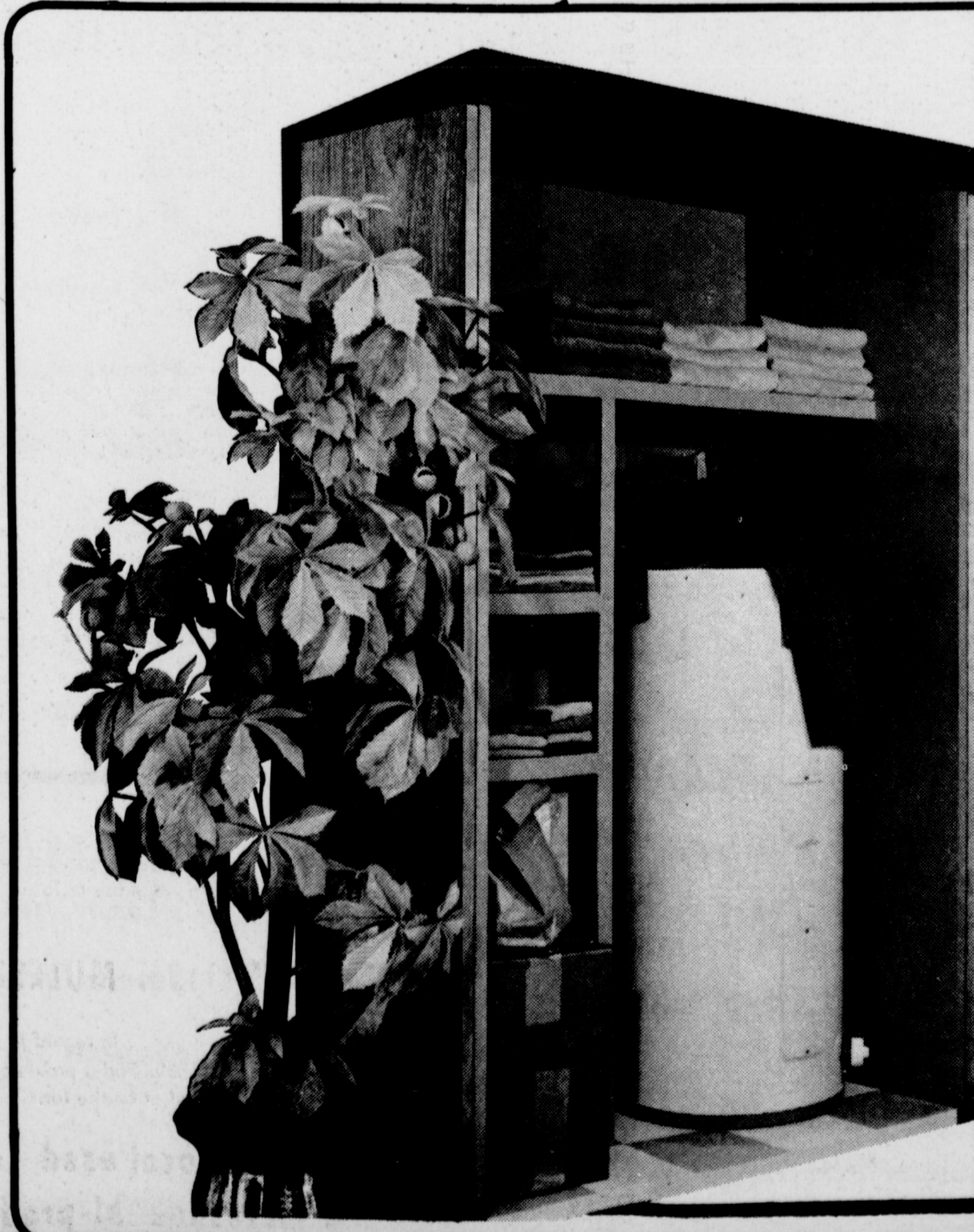
**SCHEDULE OF EVENTS**  
**MONDAY, MAY 28**  
 Progress HD  
 Music Teachers  
 Memorial Day  
**TUESDAY, MAY 29**  
 7:30 p.m. - OES  
 8:30 p.m. - Alcoholics Anonymous  
 8:00 p.m. - Rebekahs Oddfellows Lodge  
**WEDNESDAY, MAY 30**  
 9:00 - DeMolay  
**THURSDAY, MAY 31**  
 5:30 p.m. - Weight Watchers - 1st Presbyterian Church  
 7:00 p.m. - TOPS  
 REA Meeting Room  
 VFW Auxiliary  
 Study Club

Any up coming community event for Schedule of Events please report to the Journal office.

Compliments of:  
**MULESHOE STATE BANK**  
 MEMBER FDIC

We will be closed Monday May 28, in order to spend Memorial Day with our families.

Cobb's



We've Got The Only WATER HEATER In Town That's Insulated On All Sides

It's always cool to the touch . . . you can store anything you want right next to or on top of an electric water heater . . . and there's space available, too, because electric water heaters require no flue or vent . . . all they need are water pipes and an electrical outlet . . . so you can install an electric water heater almost anywhere. Get all the facts on an electric water heater!



WE SELL 'EM - Call Us!

21-2

# MEMORIAL DAY

## LEST WE FORGET...

### OBSERVE MEMORIAL DAY!

Memorial Day should be more than just a day off from work or a special date on the calendar — it should be a time to reflect on the sacrifices that have been made to preserve this nation. Let's remember our dead servicemen and women by keeping this nation a citadel of freedom.

### SPONSORED BY THESE LOCAL FIRMS:



Let us all be privileged to salute those who died in the strife to keep men free of bondage. Let us not forget the guarded belief in freedom for which so many gave their lives.

*Ray Griffiths & Sons*

*Higginbotham Bartlett*

*John's Custom Mill*

*Beaver's Flowerland*

*Dari Delite*

*Mulshoe Co-op Gin*

*Black Insurance Agency*

*Sam Fox Texaco Consignee*

*West 6th Texaco*

*Western Auto Store*

*Henry Insurance Agency*

*McCormick Upholstery & Drapery*

*Bob's Safety Center*

*James Glaze Co.*

*Green Butane Co.*

*Millsap Garage*

*Mulshoe Livestock Auction*

*Lowe Pump Service & Supply*

*West Plains Pharmacy*

*Spurgeon's Motor Machine*

*Ranch House Motel*

*Mulshoe Publishing Co.*

*Gibson's Discount Center*

*Richland Hills Texaco*

*Town & Country Olds-Buick*

*Swap Shop*

*Williams Brothers Office Supply*

*Tri-County Savings & Loan Association*

*Plains Auto Parts*

*First National Bank*

*Cobbs*

*Art Craft Printing*

*City Cleaners*

*Mulshoe Implement & Supply*

*Mulshoe Motor Co.*

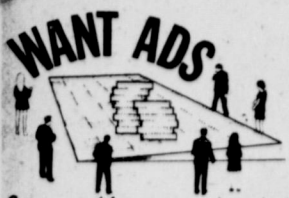
*White's Cashway Grocery*

*Dinner Bell Cafe*

*James Crane Tire Co.*

*Claudes Shamrock Station*

*Bailey County Electric Cooperative Association*



**WANT ADS**  
PH. 272-4536

**CLASSIFIED RATES**

**OPEN RATES**  
1st insertion, per word-9¢  
2nd and add., per word-6¢  
**NATIONAL RATES**  
1st insertion, per word-11¢  
2nd and add., per word-7¢  
Minimum Charge-50¢  
CARD OF THANKS - \$2.00  
Classified Display-\$1.12 per column inch  
Double rate for Elinda Ads-\$1.15 per col inch for Rev.  
**DEADLINE FOR INSERTION**  
Noon Tuesday for Thursday  
Noon Friday for Sunday

**WE RESERVE**  
Right to classify, revise or reject any ad.  
**NOT RESPONSIBLE**  
For any error after ad has run once.

**1. PERSONALS**  
MADAME LINDA, PALM READER... I can help you on all matters of life, including love marriage, business and health. Super-natural gifted. 405 North Broadway, Dimmitt, Texas, Phone 647-5981. Look for the Palm Sign in front of my home, 1-18t-9p

**2. LOST & FOUND**  
LOST- One 400 pound Charolais heifer near Clay's corner. Call Keith Menefee, 965-2445. 2-9s-tfc

LOST 4 HEAD OF CATTLE: weighing about 500 pounds, had upside down JR on left hip. Strayed during last blizzard. R. J. Renner. Phone 806-265-3810. 20s-3tc

**FOUND:** The biggest trouble maker in CALVARY BAPTIST CHURCH has been found. He will be exposed in the 11 a.m. hour this Sunday. Come and see the fireworks. CALVARY BAPTIST CHURCH is located at the corner of 18th and Ave. C. Charles Kenneth Harvey is the pastor. 2-21t-2tc

**3. HELP WANTED**

**WANTED:** Beautician at Dee Dee Coiffure Fantasies, Phone 272-4375. 3-16s-tfc

**FEED YARD NEEDS MEN** who can assume responsibility. General yard work. Contact Pa-go Feed Yard 806-265-3433. 20s-tfc

**4. HOUSES FOR RENT**  
HOUSE FOR RENT: Two bedroom, \$50 monthly. 902 S. Main. Phone 965-2738. 4-16t-tfc

**5. REAL ESTATE**  
FRIONA APTS, now have available 1, 2, & 3 bedrooms. Call 247-3666 or come by 1300 Walnut Street. 5-29s-tfc

**FOR RENT:** 2 bedroom unfurnished apartment. Phone 272-4898 Smallwood Real Estate, 5-47s-tfc  
FOR RENT: 2 bedroom unfurnished apartment. 305 W. 20th. Call 272-4284 after 5 p.m. 272-4491. 5-21t-tfc

**6. REAL ESTATE**  
FOR SALE: 3 bedroom, 2 1/2 bath, carpet, drapes, disposal, dishwasher, garage and carport. Call 272-3182 or 272-4459. 8-20s-4tc

**KREBBS REAL ESTATE**  
210 S. 1st PH. 272-3191

**JAMES GLAZE COMPANY**  
REAL ESTATE AND FARM & RANCH LOANS  
Phone 272-4549 219 S. 1st. 42t-tfc

**FOR SALE:** Home with Large basement, central heat. Four furnished apartments, one business building known as Beavers Flowerland. Consider two or three bedroom home as down payment. Layne Apartments-Mrs. C.E. Layne. 11-12s-tfc

**DRESS SHOP FOR SALE:** On Main Street in Muleshoe. Phone 272-4766. 8-20s-3tc

**IF YOU WANT TO SELL OR BUY** see Lee Pool or Woody Goforth  
**Pool Real Estate**  
Ph. 272-4716  
214 East American Blvd. 8-44s-tfc

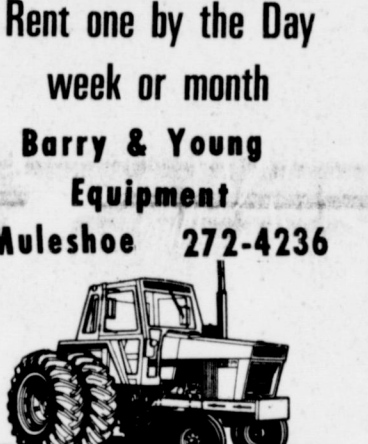
**HOUSES FOR SALE**  
2 & 3 bedroom-Nice  
**NEED LISTINGS FOR**  
1/4 section of Dry Land  
1/4 section of irrigated land  
80 acres of irrigated land  
CALL Phone 272-3293  
HOLLAND REAL ESTATE  
8-18t-tfc

**9. AUTOMOBILES FOR SALE**  
FOR SALE: 1967 Chevrolet 3/4 pickup and 10 1/2 foot self contained overcab camper-both units loaded with extras. Phone 966-2558. 9-21t-4tc

FOR SALE: 1972 Gran Torino, 2 door, automatic, power steering, air conditioning, 351. Light blue with dark blue vinyl top. Very good condition. Phone 965-2171 or 11 miles north of Muleshoe. 9-21t-tfc

**10. FARM EQUIP. FOR SALE**  
WE PAY CASH for tractors and equipment of all kinds. Tom Flowers Auction, Inc. Day 272-4145 Night 10-2s-tfc

**"We're Farming Out" our Case's!**  
Rent one by the Day week or month  
Barry & Young Equipment  
Muleshoe 272-4236



**FOR SALE:** Tri-Matic Sprinkler System-Length 1180 ft. Waters 180 feet per setting. Also for sale Side Roll Sprinklers. E.O. Baker. Telephone Number 272-4422. Muleshoe, Texas. 11-12s-tfc

**FOR SALE:** Used Tri-Matic, gated, mainline and sprinkler pipe. Chapman Supply Co. Ph. 272-3473. 10-5s-tfc

**12. HOUSEHOLD GOODS**  
CLASSIFIED:  
FOR SALE: 1969 Ford pick up. Phone 925-3121. Joe Sim-nacher. 9-21s-2tc

NO foreign substance remains in a rug cleaned with Blue Lustre. Stays clean longer. Rent our Blue Lustre electric shampoo machine. Perry's 128 Main

BLUE Lustre not only rids carpets of soil but leaves pile soft and lofty. Rent our Blue Lustre electric shampoo machine. Higginbotham-Bartlett 215 Main

**AT STUD:** Bright Sarg, AQHA-610437. Sired by Top Sarg out of Bright Chick. Bright Chick's sire is Bright Red by Leo, out of Maddon's Bright Eyes. Fine horse at reasonable fee. Call nights-Lebow 505-763-7796 or 763-9432 in Clovis N.M. Have some young horses for sale. 16-21t-4tc

**EXPORT YOUR OFFICE TO FRIONA:** Office suite for rent complete with coffee room, reception area, office furniture, refrigerator and fully carpeted. Call 247-2724, 247-3274 or 247-3641. 15-20s-3tc

**WANTED TO BUY ANIMALS:** Will pay \$1.00 on ground squirrels, baby badgers, \$25.00, king snakes, \$2.00, bull snakes, 75¢ a foot. As many as can be obtained. Call H.R. Newsom 713-337-2983. 15-19t-8tc

**FOR SALE:** CATTLE: 125 Black Angus pairs. Calves weigh 250 lbs. Choice stretchy Angus priced to sell. Will sell in small

bunches to suit you. Lawrence Kandall, Call 80-364-6121, Herford. 16-20t-4tc

**FOR SALE:** 1/2 price compact Farfisa organ like new. Also

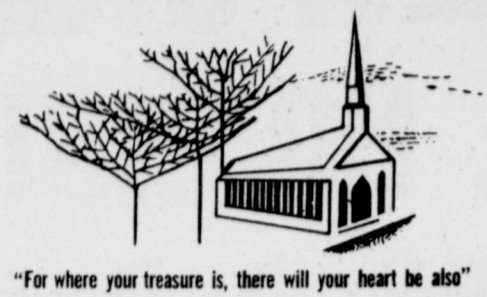
6 lots Bailey County Memorial Park. Call Friona 247-3419. 15-20t-tfc

Nixon seeks trade concessions for Soviet.

**COUNTRY TREASURES & JUNK:** Now open, specializing

in furniture stripping and re-finishing. Phone 925-3245. 15-20s-3tp

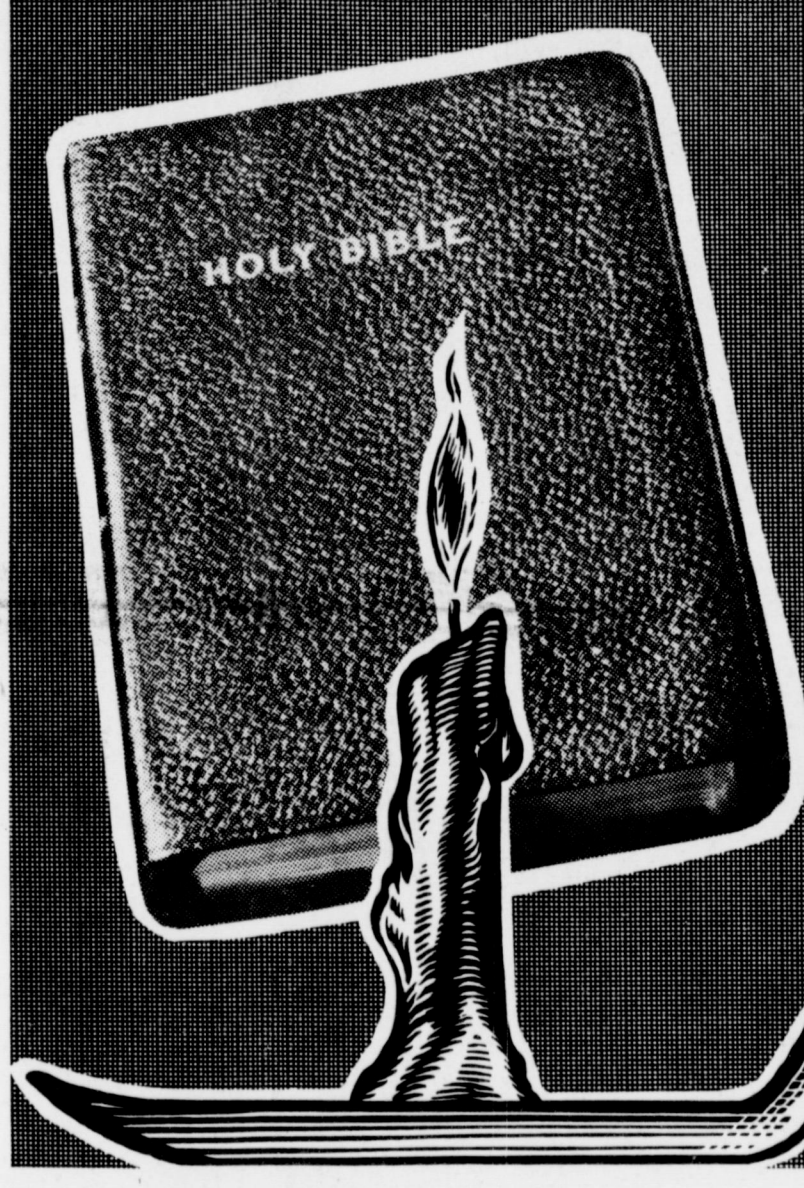
*An investment in Your Future*  
**...ATTEND CHURCH**



"For where your treasure is, there will your heart be also"

**THE LIGHT**

*"Thy word is a lamp unto my feet, and a light unto my path."*  
The bible, God's word, has often been compared to a light, for it penetrates the darkness and reveals God to man. It is the light that leads man down life's pathway. For those who study it, it reveals not only the past, but also the future.  
*"The entrance of thy words giveth light; it giveth understanding..."*  
Attend church and hear God's leaders expound on His word.



The Church is God's appointed agency in this world for spreading the knowledge of His love for man and of His demand for man to respond to that love by loving his neighbor. Without this grounding in the love of God, no government or society or way of life will long persevere and the freedoms which we hold so dear will inevitably perish. Therefore, even from a selfish point of view, one should support the Church for the sake of the welfare of himself and his family. Beyond that, however, every person should uphold and participate in the Church because it tells the truth about man's life, death and destiny; the truth which alone will set him free to live as a child of God.



**A&B Plumbing, Heating & Air Conditioning**  
We Sell the Best and Service the Rest  
272-3734

**Art Craft Printing Co.**  
105 E. Ave. "D"

**Bailey County Memorial Park**  
"Every Service A Sacred Trust"

**Chow-Tex Feed Lot**  
"Complete Feed Program"  
Route 1, Box 134  
Muleshoe 965-2900

**Bratcher Motor Supply**  
107 E. Ave. B  
272-4288

**White's Cashway Grocery**  
"Where Friends Meet and Prices Talk"  
402 Main

**City Cleaners**  
Quality & Fast Service  
119 Ave. C  
272-3248

**Clinical Masseuse**  
Exercise Program for a Feather-Like Figure  
109 S. First 272-3677

**Dairy Queen**  
1201 West American  
272-3412

**Gibson's Discount Center**  
1723 West American Blvd  
272-4306

**Kemp Pump Service**  
Sales & Service for Pumps  
272-4175

**Western Drug**  
114 Main

**Muleshoe State Bank**  
304 W. Second

**Whitt, Watts & Rempe Implement Co.**  
"John Deere Dealers"  
Muleshoe, Texas 272-4297

Dial 272-3737 for better turnouts, better samples with  
**Progress Gin**  
7 1/2 miles west of Muleshoe on Clovis Highway

**Homer Redwine Phillips 66**  
715 West American 272-4424

**St. Clairs**  
110 Main

**San Francisco Cafe**  
"Tortilla Factory"  
121 Main St. 272-3502

**Lambert Cleaners**  
Steam Carpet Cleaning  
Drapery Cleaning  
123 Main St. 272-4726

**Stonecipher's Standard Station**  
"Newly Remodeled Super Style Station"  
323 American Blvd.

**First National Bank**  
"Home Owned"  
724 South First

**Fry & Cox**  
401 S. First

**James Glaze Co.**  
Insurance, Real Estate & Farm Loans  
215 S. First  
272-4549

**Muleshoe Motor Co.**  
West American Blvd.

**Spudnut Shop**  
Special Order on Cakes  
328 Main 272-3542

**First Street Conoco**  
"Best Service in Town"  
106 American Blvd.  
2724792

**COMPLIMENTS OF: Bamert Seed Company**

# PIGGLY WIGGLY

The people pleasin' store

## NEW STORE

## HOURS!

Monday thru Saturday  
8:00 AM to 8:00 PM

CLOSED SUNDAY

# Piggly Wiggly is Open Memorial Day With VALU-PRICES

### EVERY DAY VALU-PRICE

- O-Cel-O Regular 33" **31<sup>c</sup>**  
Sponge Each
- Beacon's Floor Shine Cleaner **\$1<sup>73</sup>**  
Mop & Glo 48-oz. Btl.
- Renzit All Scents Room **47<sup>c</sup>**  
Fresheners 7-oz. Can
- Piggly Wiggly **49<sup>c</sup>**  
Liquid Bleach Gal. Jug
- Piggly Wiggly Blue, **59<sup>c</sup>**  
Detergent 49-oz. Box



Superb Valu Trim  
**Sirloin Steak**  
**\$1<sup>19</sup>**  
Lb.

Superb Valu Trim <b>Club Steak</b> Lb. <b>\$1<sup>49</sup></b>	Superb Valu Trim, Blade Cut <b>Chuck Roast</b> Lb. <b>88<sup>c</sup></b>
Superb Valu Trim <b>Rump Roast</b> Lb. <b>\$1<sup>19</sup></b>	Superb Valu Trim <b>Arm Roast</b> Lb. <b>\$1<sup>09</sup></b>
Superb Valu Trim <b>Rib Roast</b> Lb. <b>\$1<sup>19</sup></b>	Fresh, Family Pak <b>Ground Beef</b> 3 Lbs. or More Lb. <b>88<sup>c</sup></b>
Superb Valu Trim <b>Valu Trim Rib Steak</b> Lb. <b>\$1<sup>19</sup></b>	
Superb Valu Trim <b>T-Bone Steak</b> Lb. <b>\$1<sup>49</sup></b>	
Fresh Corn Fed, Family Pak <b>Pork Chops</b> Lb. <b>99<sup>c</sup></b>	Jimmy Dean <b>Pork Sausage</b> Lb. <b>\$1<sup>23</sup></b>
Farmer Jones <b>Sliced Bacon</b> Lb. <b>99<sup>c</sup></b>	Kraft's American, Stagger Stak <b>Sliced Cheese</b> 3-Lb. Pkg. <b>\$2<sup>99</sup></b>
Superb Valu Trim <b>Round Steak</b> <b>\$1<sup>19</sup></b> Lb.	

6 BOTTLE CARTON

## Coca Cola

Plus Deposit

# 45<sup>c</sup>

**X-TRA VALU**

Piggly Wiggly Buttermilk or

## Sweetmilk Biscuits



10-ct Can

# 6<sup>c</sup>

Limit 6, Please

**X-TRA VALU**

### EVERY DAY VALU-PRICE

### EVERY DAY VALU-PRICE

- Bunte Lumps **39<sup>c</sup>**  
Peppermint 9-oz. Pkg.
- Gerber's Strained Fruits & Vegetables **12<sup>c</sup>**  
Baby Food 4 1/2-oz. Jar
- Carnation Asst'd. Flavors Instant **\$1<sup>13</sup>**  
Breakfast 10 Pak Box
- Delicious **23<sup>c</sup>**  
Post Toasties 8-oz. Box
- Carol Ann Saltine **29<sup>c</sup>**  
Crackers 1-Lb. Box
- Carol Ann Nonfat **\$1<sup>10</sup>**  
Dry Milk 8-Oz. Box
- Liquid Asst'd. Flavors Sego **27<sup>c</sup>**  
Diet Food 10-oz. Can

- Hungry Jack **35<sup>c</sup>**  
Hot Rolls 16-ct. Can
- Pillsbury Cherry **59<sup>c</sup>**  
Turnovers 14-oz. Pkg.
- Chiffon **55<sup>c</sup>**  
Soft Oleo 2 Pak Sleeve
- Farmer Jones Sweet Cream **83<sup>c</sup>**  
Fresh Butter 1-Lb. Carton
- Bama **34<sup>c</sup>**  
Grape Jelly 10-oz. Jar
- Blackburn's **43<sup>c</sup>**  
Waffle Syrup 20-oz. Btl.
- Burleson's **59<sup>c</sup>**  
Creamed Honey 12-oz. Carton

Sweet Juicy Ears



## Corn-on-the-Cob

each **10<sup>c</sup>**

California Oranges **6 for 39<sup>c</sup>**

Romaine Lettuce **each 25<sup>c</sup>**

The Finest Fruits and Vegetables Money Can Buy

Piggly Wiggly

## Potato Chips

Regular or Dip Chips

9-oz. Pkg. **39<sup>c</sup>**

**X-TRA VALU**

Carol Ann Salad Dressing

Quart Jar **35<sup>c</sup>**

**X-TRA VALU**

Instant Tea

## Nestea

3-oz. Jar **99<sup>c</sup>**

**X-TRA VALU**

Libby's Frozen Lemonade

Regular or Pink

6-oz. Can **10<sup>c</sup>**

**X-TRA VALU**



Chapter 3 Home Repair Book

"Materials You Use Most Often"

Complete Family Cook Book

"Breads and Sandwiches"

Each **29<sup>c</sup>**

- Towie's **38<sup>c</sup>**  
Salad Olives 5-oz. Jar
- Heinz Kosher **63<sup>c</sup>**  
Dill Pickles 16-oz. Jar
- Kraft French **61<sup>c</sup>**  
Dressing 16-oz. Btl.
- French's **41<sup>c</sup>**  
Mustard 24-oz. Jar

- Hormel's Luncheon Meat **63<sup>c</sup>**  
Spam 12-oz. Can
- Campbell's **18<sup>c</sup>**  
Pork & Beans 16-oz. Can
- All Varieties Chun King **94<sup>c</sup>**  
Dinner 18 1/2-oz. Box
- Kraft's Chef-Boy-Ar-Deo **76<sup>c</sup>**  
Pizza Dinner 16 7/8-oz. Box

- Cal-Ida French Fry Frozen **3 \$1<sup>00</sup>**  
Potatoes 2-Lb. Bags
- Piggly Wiggly Frozen **13<sup>c</sup>**  
Waffles 8 1/2-oz. Pkg.
- Trophy Sliced **34<sup>c</sup>**  
Strawberries 16-oz. Pkg.
- Piggly Wiggly Whipped **49<sup>c</sup>**  
Topping 16-oz. Carton