







"If I had a couple of bucks I could date Marge tonight, Dad—her father. By the way, is an automobile dealer?"

Market Briefs

WALL STREET STOCKS
NEW YORK, Nov. 7.—Stocks dipped and rallied at frequent intervals in today's market with rails, selected steels, motors, utilities and industrials giving the best performance on the upside.
The post-election reaction of the previous session was extended at the opening, followed by a good general comeback and a subsequent retreat. There was another advance after midday. While gains of fractions to 3 points or so were well distributed near the close, some losers remained. Dealings slowed occasionally. Transfers ran to around 1,300,000 shares against 1,000,000 on Wednesday's relapse.
In front were southern Pacific, Great Northern, Santa Fe, Southern Railway, Northern Pacific, Chesapeake & Ohio, U. S. Steel Youngstown Sheet, Republic Steel, Chrysler, U. S. Rubber (for a pleasing extra), Goodyear, Deere, Public Service of N. J., Air Reduction, General Electric, Philip Morris and Distillers Corp.
Demand was attributed by brokers partly to the idea the list had been oversold by profit takers. Dividends and earnings were helpful. Widely shifting cotton and grain futures put brakes on sentiment. Wall Street, although enthused over the republican sweep, still leaned toward caution. It was said, because of skepticism over the labor-management picture and business prospects even with a new congress on the job. Talk of a boom in freight rates soon buoyed carriers. Cotton, approaching the finish, was off \$4.70 to \$4.75. At Chicago wheat ended off 1/2 to 1 cent a bushel, corn up 1/2 to 1 cent and oats 1/2 to 1 cent.

Table with columns for stock names and prices. Includes sections for NEW YORK STOCK LIST, CHICAGO WHEAT, CHICAGO GRAIN, KANSAS CITY LIVESTOCK, and CHICAGO PRODUCE.

John F. Studer Attorney At Law
First National Bank Bldg. Room 12 Phone 504

Dr. George Snell Dentist
Office over 1st National Bank Phone 1482 for appointments

McWilliams Service Station
424 S. Cuyler Phone 37

NEW PLASTIC CURTAINS
For your windows and Shower.
Also complete supply of ironing board covers and pads.

Home Builders Supply
312 W. Foster Phone 1414

AMBULANCE PH. 2454
CLEGG FUNERAL HOME

Jeanette MacDonald Back Working at MGM

By BOB THOMAS
HOLLYWOOD.—(AP)—Jeanette MacDonald was again acting at MGM today, looking just as fresh and pretty as in the old days when she used to battle it out with Nelson Eddy.

It will be five years ago next spring since Jeanette shook the Culver City dust from her heels after completing a climber called "Cairo." The Eddy-MacDonald films had lost their charm at the box office, and she had grown wear of playing curly-headed, sweet young things. So they called it quits, and she turned to opera, concerts and her job as Gene Raymond's wife.

Time passes, and the scene switches back to MGM. Jeanette has been cast as the singing mother of Jane Powell and two other girls in "The Birds and the Bees." Clad in a shabby good-luck coat she "stole" from the studio, when she left, she walked onto the set, the birds and bees flitting about in her stomach. An unusual applause from the extra players calmed her and she walked through her first movie scene.

Afterwards, the soprano told me it was as though she had finished that other picture a few weeks ago. "Everything is the same—the same crew and everything," she said. "The only difference is the men are fatter." She was doubly happy because of her new screen work and the GOP victory (she is a vocal republican.)

Why had she waited so long for her return? "Because every script I read would have merely thrown Nelson and me into duets with no story. I wanted a role in which singing would be only incidental, and this is the first one I found."

Nearly twice the number of Americans killed in World War II were fatally burned in U. S. fires since 1930.

ANTHONY'S Store-wide SUPER VALUE DAYS mean SAVINGS Scores Of Prices Drastically Slashed! You Haven't Seen Such Bargains In Years!

Cottons-Spuns-Crepe DRESSES \$4.88
Beautiful new styles offered at a big saving during this event. A variety of patterns and colors.
Values to \$7.90

Ladies' California SLACKS \$4.98
Smartly tailored slacks styled by master California sportswear designers. A selection of smart patterns and colors. A range of sizes.
Reg. \$6.50 Values

Ladies' Rayon HOSIERY \$1.01
First quality, 42-gauge hosiery in a grand selection of flattering colors. Buy and save—plenty for everybody. All sizes.
Anthony Value Days Special

Special Rack Boys' Leather JACKETS COATS OVERCOATS \$4.44
First quality garments, expertly tailored. Fine for winter school wear.

PLASTIC CLOTH 49c
Florals and patterns. Ideal for curtains, dresses, skirts and aprons. Values up to \$1.19 yd. YD.

BETTER DRESSES \$6.88
We must sell these fine quality dresses at huge reductions. Latest styles, finest fabrics, good colors. A bargain at

HOUSE DRESSES \$3.88
Street dresses included in this value lot. Beautiful styles, patterns and colors

LADIES' SKIRTS \$3.89
Finely styled group of skirts in a good assortment of styles and colors. Reg. \$3.98 to \$5.90 values

COLLAR & CUFF SETS 1/2 PRICE
Out entire stock of better collar and cuff sets are offered at this huge reduction. Buy and save

SHORTY PAJAMAS \$1.00
One lot tailored in seersucker offered. Assorted colors. Sizes 8-14. Regular \$1.70 values

LADIES' WASH DRESSES \$2.88
All new styles in a variety of patterns and colors. Values, \$2.98 to \$3.90

COAT AND LEGGING SETS
These are all new fall coats to be closed out at a saving to you.
VALUES \$9.00 \$11.75 \$12.95 \$14.75 \$16.75 \$18.75 \$22.50
VALUES \$9.00 \$10.00 \$13.00 \$16.00

Special \$1 Table
Includes children's sweaters, ladies' bed jackets, head scarfs, wool sholderettes, ladies' rayon crepe pajamas. choice of lot—
Vals. 1.98 to 4.98

Misses' PAJAMAS \$1
Knit styles with stripe top and plain color pants. Ex-partly tailored for good looks and comfort. Sizes 12 to 16.
Reg. 1.98 Values

ANKLETS \$1
A large selection of quality anklets in assorted colors. Sizes 8-10 1/2.
Vals. to 49c Pair 4 Pairs

SWEATERS \$1
Coat, slipover and slipover sleeveless styles in new knits. Sizes 6-10, 30 to 36.
Values to 1.98

BIG REDUCTION BOOTS \$9.85
U. S. Cavalry styles with 16-in. top leather sole, rubber heel, wide widths.
Reg. \$11.85 Values

Men's KHAKI PANTS \$1.79
Blue or khaki herringbone, or plain fabric. Most all sizes.
Reg. 1.98 to \$2.49 vals.

Ladies' SLIPS \$1.49
A special table of tailored and lace trimmed styles in sizes 32-40.
Values to \$2.98

Boys' KHAKIS \$1.59
Herringbone or plain weave fabric in blue or khaki colors. Sizes 8-16.
Special

DOUBLE BLANKETS \$4.88
Quality, 5% wool blankets in assorted colors of bold plaids. 72x84 inch size.

"NASHUA" BLANKETS \$5.88
Big block plaids in an assortment of colors. Rayon binding. Size 72x84 inch.

LADIES' SLIPS \$2.98
Tailored or lace trimmed styles in tereose only. Sizes 32 to 38.

LADIES' CHENILLE ROBES
Full skirted styles in gay color chenille. Ideal for Christmas gifts.
—Use Our Lay-Away Plan—
\$6.90 Values \$5.90 \$8.90 Values \$7.90
\$11.90 Values \$9.90

BOYS' SUITS \$10.90
Fine selection of styles in all wool fabrics. Good colors and patterns. Values to \$19.95

STUDENT SUITS \$18.95
A limited selection of better styles in blue or brown colors, good patterns, sizes 32 to 37. Reg. \$22.50 values.

BOYS' SPORT COATS \$9.90
Stylish two-tone coats in smartly tailored fabrics. Values to \$13.75.

MEN'S JACKETS \$7.44
All wool and leather combinations, full lining, zipper front, brown or maroon. Sizes 34-46.

BOYS' SUITS \$7.90
Assorted patterns and colors. Good styles in a big selection. Sizes 6-16.
Values to \$12.50

Boys' Combination JACKETS \$6.44
All wool with genuine capskin leather trim. Goo dining, zipper front, brown or maroon, sizes 6-18.
Reg. \$7.50 Values

Boys' KHAKI SHIRTS \$1.39
Odds and ends of our regular blue herringbone and plain khaki weave fabric.
Special

Men's Sport and Casual Coats \$12.90
Some two-tone, some tweeds and plain colors. Sizes 34-44.
\$17.50 to \$19.75 Vals.

Men's Sport Shirts \$2.95
Blue, tan or gold colors in a range of sizes. For men and young men.
Values to \$4.95

BIG REDUCTION ON FINE ALL-WOOL BLANKETS
ESMOND \$17.95 All Wool BLANKETS
American Woolen \$16.75 All Wool BLANKETS
Super Value Price Now \$11.88
Extra Super Value Price \$12.88

BIG REDUCTION! on WOMEN'S SUITS -- COATS
\$18.40 to \$23.75 \$18.40 to \$23.75
SUITS NOW ONLY \$18
COATS NOW ONLY \$18

BATH ROOM SETS \$149
Quality chenille in an assortment of colors and patterns. Reg. 1.98 value.
Anthony's PAMPA, TEXAS









Book Week
(Continued from Page 1)
Not So Wild a Dream... by Eric Sevareid...

Control
(Continued from Page 1)
tained on such basic commodities as coal, rubber, steel, and other metals.

U. N. Meeting
(Continued from Page 1)
calling for the Security Council to reconsider the rejected members...

Chinese
(Continued from Page 1)
government and nationalization of the armed forces...

Watch for the Opening of COLLIER AND CO. 5c \$1.00 and up 310 S. CUYLER 3 Doors South of Wilson Drug

Carson County Youth Receives 4-H Honors
PANHANDLE—(Special)—John has been placed on the Sears and Gripp...

Methodists
(Continued from Page 1)
preachers can be found on Page 2. Also announced at the session...

Death Rate From Child Diseases Takes Big Drop
NEW YORK, N. Y.—The death rate from the communicable diseases...

Kyle Gives Chase To Elusive Runner
Starling Grimes, a dishwasher in a local cafe, was arrested yesterday...

Lefors Death
(Continued from Page 1)
today. Others injured were: Mrs. Elia Terry, 82, a sister of Marvin Smith...

Insurance Payment In Accidental Death Is Approved by Judge
Judge W. R. Ewing yesterday afternoon in district court here approved a judgement payment...



Miraculous?
More than 30,000 pilgrims have traveled to the village of Villar Chao, Portugal...

Secretary Takes Holiday—Governor Swamped by 'Phone
By BO BYERS
AUSTIN—(AP)—Governor Coke Stevenson was his one-man office staff today as his employees enjoyed a legal state holiday...

Bicycle Rider Escapes Injury When Struck By Hit-Run Driver
Robert "Billy" Dixon, 14, 860 W Foster St., last night narrowly escaped serious injury...

Panhandle Transfer & Storage Co.
Byron Dees Pampa 916 W. Brown
Ray Cox Amarillo 415 N. Taylo

Equipment Head To Confer With Dealers
Charles G. Robinson, national representative of the National Supply Service...

LOANS \$5 to \$50 PLAINS FINANCE CO. Room 8, Duncan Bldg. Ph. 1205

Name of Church Will Honor McLean Flyer
McLEAN—(Special)—The name of the Dozier Methodist church has been changed to Glen Davis Memorial church in honor of Lt. Glen Davis...

MANN BAKERY AMARILLO, TEXAS. Depend on Quality When I'm Around. I'm Mann's New Trade Mark

MARINES Dance and Celebrate the Marine Corp's Birthday, Nov. 10th. AT THE TERRACE GRILL MUSIC BY CASEY'S FIVE FLATS

November Clearance 100% wool SUITS 70 of them now here is your chance... 70 all wool suits in stripes, checks, and solid colors...

Bentley's three piece SUITS approximately 25 three piece suits... 1/2 PRICE corner cuyler and foster

Let's go to the MOVIES TODAY Continuous Showings Lanora 44:45 Rex 30:00

LaNora 44:45 Today & Sat 1 p. m. Sat Refreshingly Delightful Centennial Summer

Rex 30:00 Today & Sat 1 p. m. Sat Crown 25:11 LAST DAY (Fri.) BADMAN'S TERRITORY

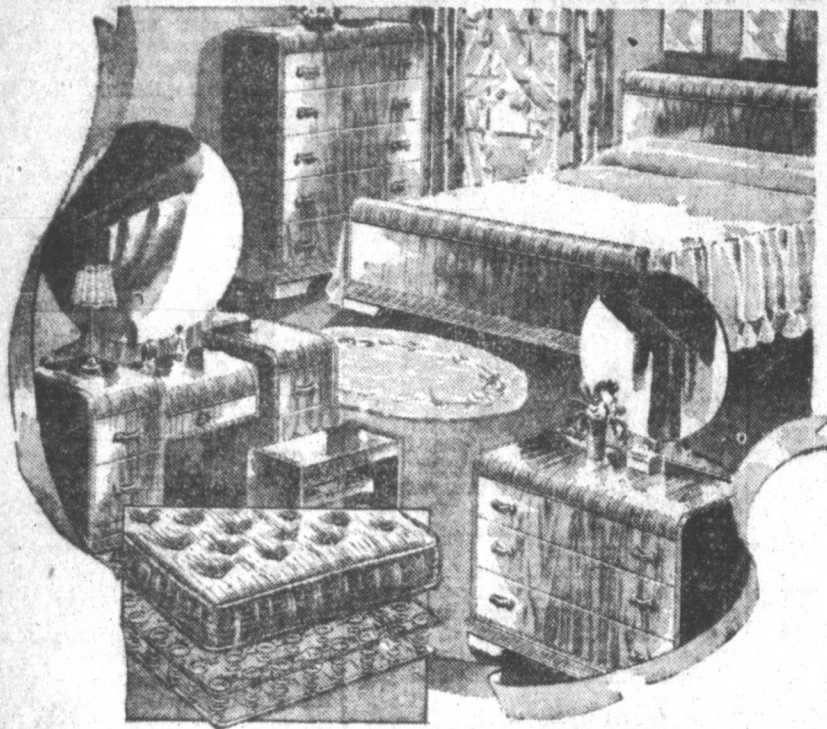
SUNDAY ENTERTAINMENT AT YOUR FRIENDLY GRIFFITH THEATRES IN PAMPA. SUNDAY MONDAY TUESDAY Lanora Features (Sun.) 1:00 3:14 5:28 7:42 9:57





# WHITE'S AUTO STORES FURNITURE ANNEX

## 12-PIECE BEDROOM GROUP



Not An Exact Illustration

Look at the size of this beautiful walnut finish Bedroom Set—Here's what you get:

Roomy panel bed, vanity with round mirror, chest of drawers, upholstered bench, prewar steel bedspring, staple cotton mattress, one picture, one bed lamp, two vanity lamps and two feather pillows—all for only

White's Low Price

**\$159<sup>50</sup>**



MODERN KNEEHOLE DESK

**\$29<sup>95</sup> to \$79.50**

A real "Buy!" Handsome, roomy kneehole desk with heavy carved rope edge; walnut finished.

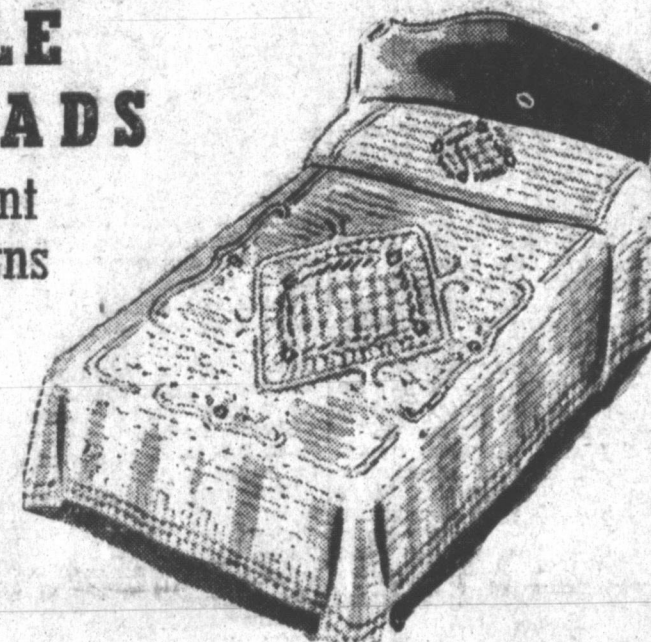


STUDENT DESK **\$19.95**

Attractively styled, perfect for the student, for household accounts, etc. Made of solid hardwood, finished in maple.

\$3.59 Down—\$1.25 Per Week

CHENILLE BED SPREADS  
Beautiful Assortment  
Of Colors and Designs



ONE GROUP **\$6<sup>95</sup>**

OTHERS AT **\$8<sup>95</sup>**



De Luxe High Chair **\$8.95**

Has panel back with gay decoration adjustable tray and foot rest, in natural or maple finish.

## Hollywood BEDS



As modern as tomorrow, here is the smart, economical way to a lovelier bedroom. 80-coil box spring and six legs. Choice of full or twin size.

WHITE'S LOW PRICE **\$32<sup>95</sup>**

Hollywood Headboard **\$14<sup>95</sup>**

STAPLE COTTON MATTRESS **\$19<sup>75</sup>**

PAYMENTS—\$1.25 PER WEEK



SOFA BEDS!  
WITH COIL SPRINGS **\$59<sup>50</sup>**

No one would guess that this spacious, smartly styled modern davenport doubles as a bed! Has full coil spring construction, and tailored in durable tapestry covers. Choice of colors.

\$11.00 Down—\$1.25 per Week



Much Nicer Than Illustration

4-PIECE POSTER BEDROOM SUITE

Reg. Price \$202.38  
WHITE'S SPECIAL PRICE

**\$179<sup>50</sup>**

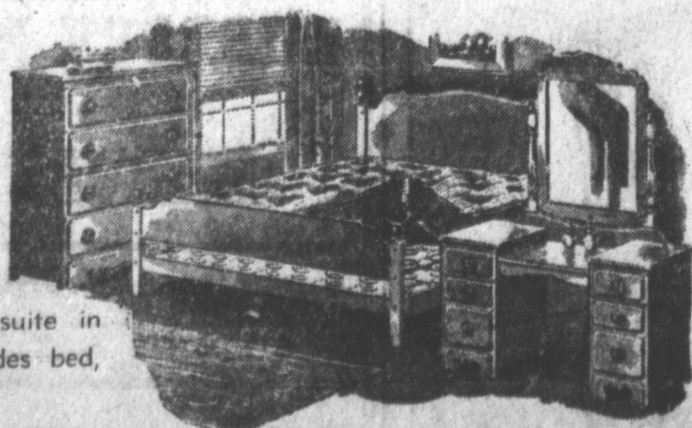
\$36.00 Down—\$3.50 per Week

4-PIECE COLONIAL BEDROOM SUITE

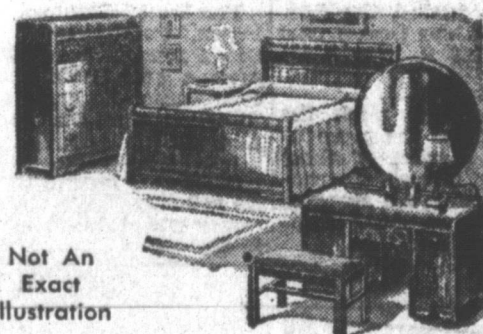
White's Month-End Price **\$87<sup>50</sup>**

Attractive American colonial suite in maple or walnut finish. Includes bed, chest, vanity and bench.

\$17.50 Down—\$1.55 Per Week



4-Piece Modern BEDROOM SUITE



Not An Exact Illustration

For a bedroom of glamour and comfort, you'll enjoy the rich beauty of this finer suite. Made of solid hardwood as well as its sturdiness and convenient design. Panel bed, chest of drawers, vanity with round mirror and upholstered bench.

White's Low Price **\$79<sup>95</sup>**

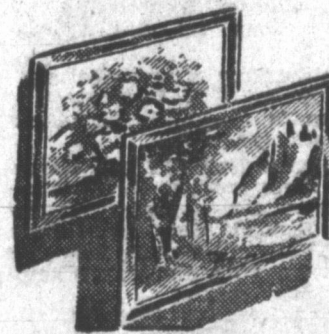
\$17.90 DOWN—\$1.55 PER WEEK

MIRRORS

Beautiful Assortment of Framed Plate Glass Mirrors

**\$12<sup>50</sup> to \$19<sup>95</sup>**

ASSORTED PICTURES



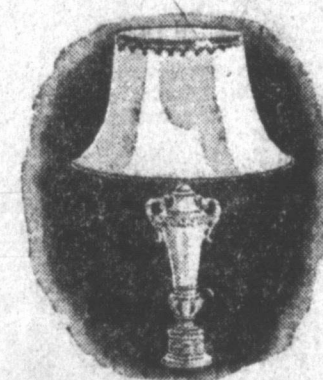
Nice size pictures in a choice of floral and scenic studies, handsomely framed.

WHITE'S LOW PRICE

**\$14<sup>9</sup>**

Others to \$12.95

Crystal Base Table Lamp



Wide selection of styles—graceful crystal bases and attractive shades.

WHITE'S LOW PRICE

**\$6<sup>95</sup>**

De Luxe Reflector Floor Lamps



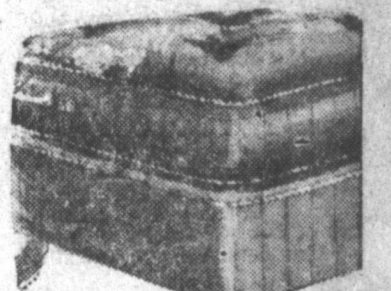
Smartly styled reflector floor lamps. Bring charm and color to the home, in assorted styles.

WHITE'S LOW PRICE

**\$19<sup>95</sup>**

\$6.65 Down—\$1.25 Per Week

Sleep in Comfort



Innerspring Mattresses

with BOX SPRINGS TO MATCH **\$77<sup>90</sup>**

Complete



HASSOCKS

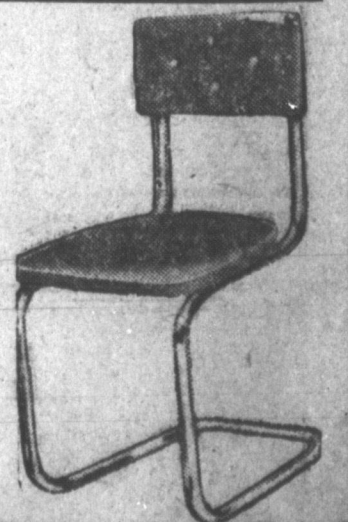
**\$8<sup>95</sup>**

All Shapes

All Colors

SPECIAL

Chrome Dinette Chairs **\$6<sup>95</sup>**



TRY OUR FRIENDLY CREDIT PLAN

WHITE'S FURNITURE

111 S. Cuyler

# GREAT OPENING SALE!



Convenient Payments

## "SPRING-FILLED" PLATFORM ROCKER

Regular Ceiling Price \$49.95

**\$29<sup>95</sup>**

A spacious, soundly constructed platform rocker of deep, loungey comfort and neat appearance. Nicely tailored in tapestry... Available in a choice of colors.

For blissful comfort and long service, you won't find anything better than this deep, inviting platform rocker.

Here's a real value in a fine platform rocker, has resilient innerspring construction. Tapestry cover.

**\$19<sup>95</sup>**

**\$34.95**

\$6.99 Down - \$1.25 Per Week

## COCKTAIL TABLE



Distinctive cocktail table, made of hardwood with glass top, walnut finish.

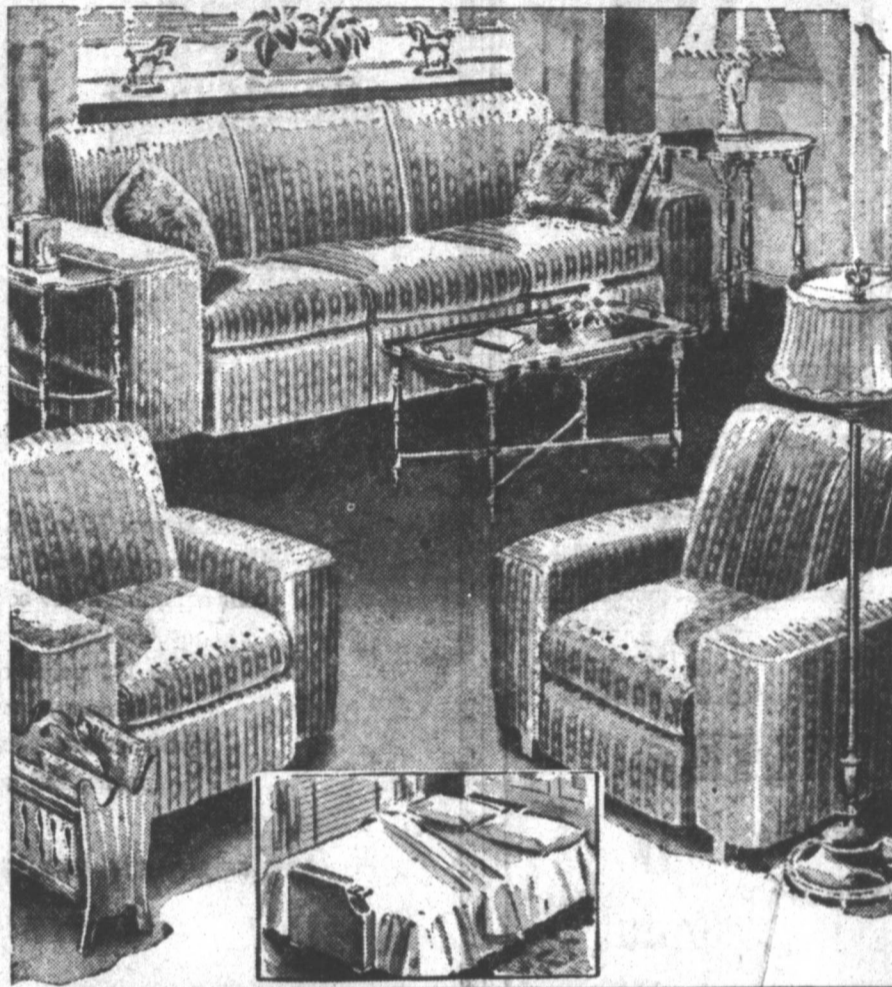
WHITE'S **\$7<sup>95</sup>**  
LOW PRICE...



## UNFINISHED SECTIONAL BOOK CASE

These can be bought in separate pieces.

3-pc. complete **\$19<sup>95</sup>**

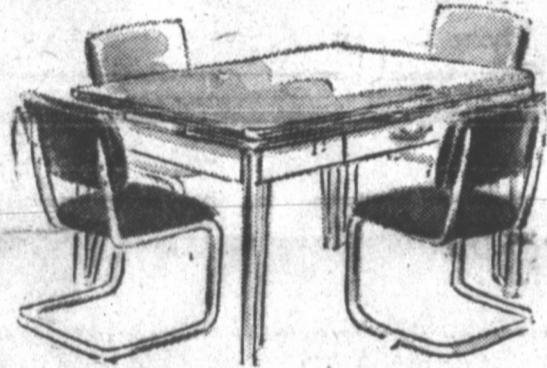


## 2 Piece STUDIO SUITE

A massive, beautifully styled studio suite. Long, luxurious innerspring sofa, with a spacious lounge chair to match. Upholstered in long wearing tapestry Assorted Colors.

**\$119<sup>50</sup>**

## CHROME DINETTES



See this beautiful 5-pc. suite; chrome chairs, plastic top.

Easy **\$74<sup>95</sup>**

Terms

## OCCASIONAL CHAIRS



Assorted Tapestry Covers

**\$17<sup>95</sup>**

## UNFINISHED CHESTS



3 DRAWER, 30 INCH **\$12.95**

CHEST 5 DRAWER, 30 INCH **\$14.95**

## MODERN 5-PIECE SUNTAN DINETTE

**\$34<sup>95</sup>**

Some extension table and four matching chairs with upholstery chair seats. Well constructed of hardwood in a warm suntan finish.

PAY ONLY \$1.25 WEEKLY

## SOLID OAK NATURAL FINISH

5-Pc. **\$39<sup>95</sup>**

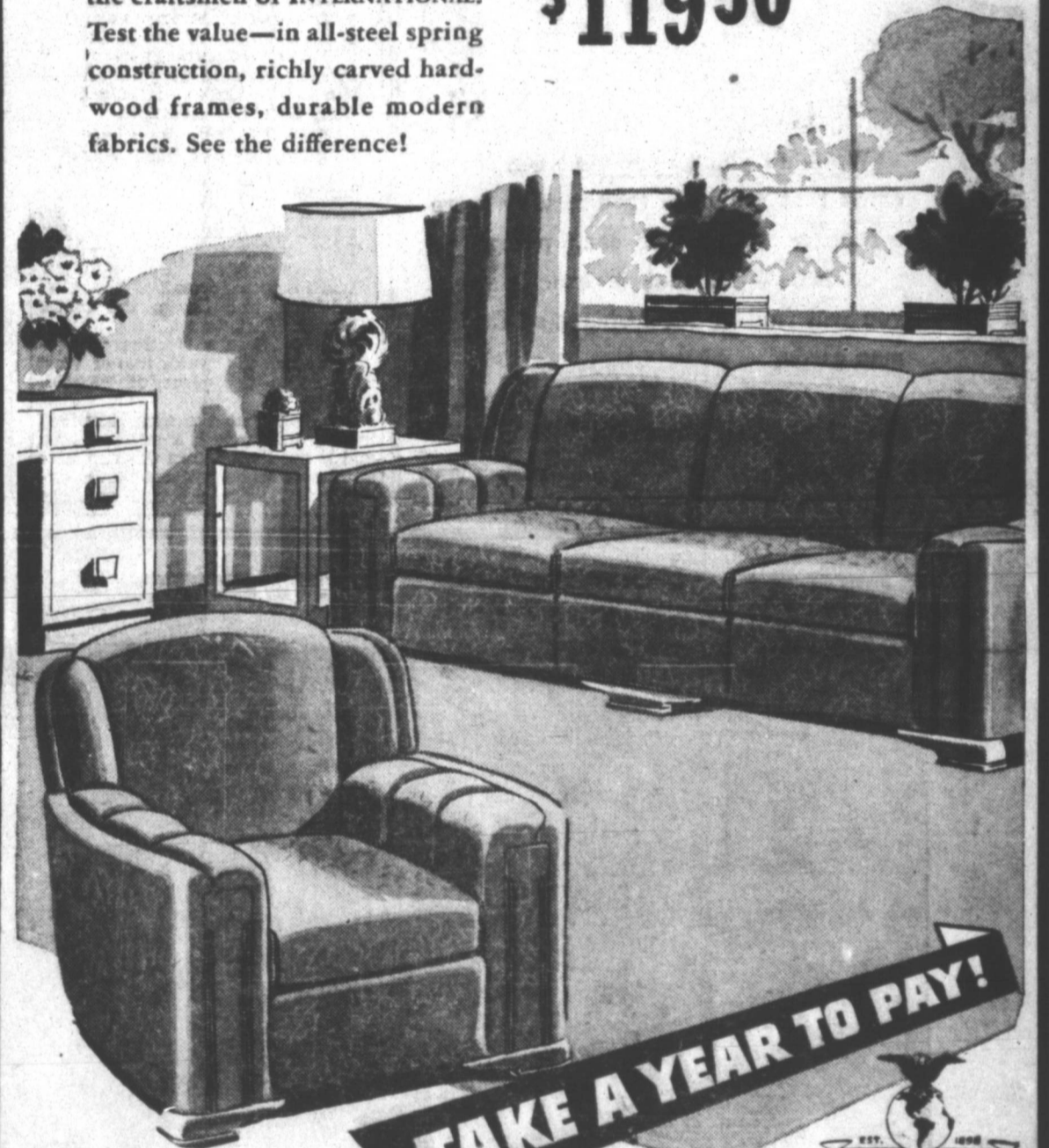
WALNUT AND MAPLE **44.95**

TRY OUR EASY CREDIT TERMS

Enjoy "A WORLD OF COMFORT" IN YOUR HOME with LIVING ROOM FURNITURE by INTERNATIONAL!

See this suite, built and styled by the craftsmen of INTERNATIONAL. Test the value—in all-steel spring construction, richly carved hardwood frames, durable modern fabrics. See the difference!

**\$11950**



**TAKE A YEAR TO PAY!**

Enjoy this finer Furniture NOW!

Take advantage of our amazingly low opening sale prices on these fine nationally advertised living room suites!

Regular \$16400 Suites	<b>\$149<sup>50</sup></b>
Regular \$18816 Suites	<b>\$174<sup>95</sup></b>
Regular \$20300 Suites	<b>\$189<sup>50</sup></b>
Regular \$22500 Suites	<b>\$199<sup>50</sup></b>

Tapestry - Velours - Mohairs

TRY OUR EASY CREDIT PLAN

**WALTON'S AUTO STORES**  
**FURNITURE ANNEX**  
Pampa, Texas

We Feature **FREE DELIVERY**

**Legal Publication**

ORDINANCE NO. 276  
AN ORDINANCE AMENDING OR-  
DINANCE NO. 36, AND EX-  
TENDING THE FIRE LIMITS

IN THE CITY OF PAMPA,  
TEXAS, AND DECLARING AN  
EMERGENCY:  
BE IT ORDAINED BY THE CITY  
COMMISSION OF THE CITY  
OF PAMPA, TEXAS:

That Ordinance No. 36, Section  
No. One, shall be amended so as to  
include the hereinafter described  
property such property being de-  
scribed as follows to-wit:

TRACT NO. ONE:

BEGINNING at Frances Ave-  
nue and Somerville street;

THENCE Westerly along the  
center line of Frances Avenue  
to the center line of West street;

THENCE in a Southerly direc-  
tion along the center line of West  
street to the center of Kingsmill  
Ave.;

THENCE East along the center  
line of Kingsmill street to the  
center line of Somerville street;

THENCE Northerly along the  
center line of Somerville street  
to the Place of BEGINNING.

TRACT NO. TWO:

BEGINNING at a point where  
the center line of West Street  
intersects with the center line of

PORTRAITS --- COMMERCIALS  
**SMITH'S STUDIO**

122 W. Foster Phone 1510  
Now Air Conditioned  
We close at 1 o'clock Saturdays

• FLOWERS •

For Every Occasion

**PARKER'S  
BLOSSOM SHOP**

406 N. Cuyler Phone 21

**Quoting Odds**



**PORCUPINES**  
ARE WELL SUPPLIED WITH  
**QUILLS!**  
HOWEVER, THE STIFF  
QUALITY DOES NOT  
DEVELOP UNTIL  
SHORTLY AFTER.



**OCEAN WAVES**  
DON'T ROLL! THEY UNDULATE,  
LIKE A FIELD OF TALL GRAIN  
IN THE WIND.

Kingsmill Avenue:  
THENCE Westerly along the  
center line of Kingsmill Avenue  
to the center line of Purviance  
Street;  
THENCE Southerly along the  
center line of Purviance Street  
to a point where the center line  
of the alley in Block No. Two of  
the Central Addition would in-  
tersect if produced;  
THENCE Westerly along said  
line and the center line of said  
alley to Hobart Street;  
THENCE South along the  
Easterly side of Hobart Street  
to the center line of Foster Avenue;  
THENCE Easterly along the  
center line of Foster Avenue to  
the center line of Osage Street;  
THENCE Southerly along the  
Easterly side of Osage Street  
to the South Corner of Block No.  
One, Cherokee Addition;  
THENCE Easterly along the  
Southerly side of Block No. One,  
of the said Cherokee Addition  
and continuing in the same Easterly  
direction across Block No. Six,  
Eller Addition, Purviance Street,  
Block No. Two, Eller Addition,  
Ward Street, Block No. One, Eller  
Addition, and on to the center  
line of West Street;  
THENCE in a Northerly direc-  
tion along the center line of West  
Street to the place of BEGIN-  
NING.

The fact that the area described  
in this ordinance is a business area  
and is not included in the fire zone  
and needs to be protected an emer-  
gency is hereby declared and the  
rule requiring three separate read-  
ings of this ordinance is hereby sus-  
pended and this ordinance shall be  
in full force and effect immediat-  
ly after its passage.  
Passed and approved this the  
20th day of August, A. D. 1946.  
s/ FARRIS C. ODEN,  
Mayor.  
(SEAL) ATTEST:  
J. ERNEST HOOD,  
City Secretary,  
Nov. 1-8.

NOTICE OF SALE  
Gray County will receive sealed bids  
on 17 Singer sewing machines. These  
machines may be inspected on No-  
vember 7th, 8th and 9th at the follow-  
ing places:  
Pampa Red Cross Office, City Hall,  
Community Hall, Coltexo Carbon  
Plant, Lufkin, Texas.  
McLean City Hall, McLean, Texas.  
Mail sealed bids by number shown  
on machines to Mr. R. C. Wilson,  
County Auditor, Pampa, Texas.  
Bids will be opened by Commission-  
ers Court on November 11th, 1946, at  
10:00 A. M.  
SHERMAN WHITE,  
County Judge.

Nov. 7-8  
Read Pampa News Classified Ads

**J. Ray Martin  
BMA**  
Business Men's Assurance Co.  
Life, Health, Accident Annu-  
ities, Hospitalization, Group, All  
Ways.  
107 N. Frost Phone 772



**HELLO FOLKS!**  
You'll See a Lot of me  
From Now On.  
I Stand for Quality!

**WALLPAPER SALE!**  
**FREE CEILING**  
FOR ANY ROOM  
With the purchase of the sidewall and bor-  
der for the same. This offer good one week  
only.  
**WHITE HOUSE LUMBER CO.**  
Across From Post Office Phone 50

**END  
TIRE WORRIES**

Install STOP-A-LEAK  
puncture proofing to-  
day. Eliminates 83% of  
tire troubles. Seals all  
normal punctures in-  
stantly and permanen-  
tly. Adds 30% more  
mileage to tires. It does  
not throw wheels out of  
balance.

**Preserves Rubber**

**CENTRAL  
TIRE WORKS**  
602 S. Cuyler Phone 2410

**GREETING CARDS**  
Wouldn't you like to find Christmas  
cards that sound as though they were  
especially written for each person on  
your list. Well, that is exactly what  
you will find in our displays of Christ-  
mas cards.  
**Pampa Office Supply Co.**  
211 N. Cuyler Phone 288

**For Gift  
Suggestions**

look in our *Christmas Book*

This year Wards Christmas Book has something extra  
special for everyone on your shopping list! If you haven't received  
your complimentary copy of this handsome book, ask for it at  
our Catalog Department today. Then shop through  
its 197 pages of helpful gift suggestions—all at Wards  
low, money-saving prices! After you have made a list  
of everything you want, phone our Catalog Depart-  
ment, and we will handle all ordering details for you!

ASK FOR YOUR CHRISTMAS BOOK AT  
**Montgomery Ward**  
Pampa, Texas

**ON TOP**  
*From Coast to Coast*

**PRIVATE  
STOCK  
WHISKEY**

THE AMERICAN DISTILLING COMPANY INC. NEW YORK • SAN FRANCISCO • LOS ANGELES • PEKIN, ILL. • SAUSALITO, CALIF. 80 PROOF

*It's New*  
**IT'S DIFFERENT**  
*IT'S All Whiskey*  
100 PROOF

**Town Club  
WHISKEY**

THE AMERICAN DISTILLING COMPANY INC.  
NEW YORK • SAN FRANCISCO • LOS ANGELES • PEKIN, ILL. • SAUSALITO, CALIF.