

# BEVIN BACKS AT CRITICISM BY U.S.

## Pampa News

VOL. 46, NO. 139. (8 Pages) PAMPA, TEXAS, FRIDAY, SEPTEMBER 12, 1947. Price 5 Cents AP Leased Wire

### Eighteen Dead In Explosion British Ship

**BELFAST, NORTHERN IRELAND**—Eighteen dead or dying men and more than 300 injured were brought ashore today from the British liner Reina Del Pacifico, which docked here badly damaged by an explosion at sea. While hundreds crowded the dock area, the 17,700-ton motorship was towed in and police began an inquiry, studying among other things what they described as the possibility of sabotage. The wartime troop transport, on a trial run after being refitted for resumption of peacetime service, was torn by an engineering blast yesterday about 12 miles north of Copeland Island, which lies just off the coast near the mouth of Belfast Bay. An SOS brought five tugs and a lifeboat carrying doctors and nurses. One of the doctors reported 34 of the injured "seriously burned" and said some probably would die. Fifteen men were killed outright and three died this morning in hospital.

### Solons See Extension Of Controls on Rent

**WASHINGTON**—Four senators who often differ on legislative matters agreed today that Congress is likely to vote an extension of rent controls beyond next February 29. Senators McCarthy (R-Wis.), Flanders (R-Vt.), Sparkman (D-Ala.) and Myers (D-Pa.) voted their predictions in separate interviews. Myers only yesterday said he believes Congress should be summoned into special session by early November to tackle the problems of rising living costs at home and aid to Europe. He declared it is "apparent that our economy is threatened by inflation today as it was by military aggression a few years ago." Sparkman commented that he had opposed proposals to extend and resume wartime controls except as a last resort but added: "It looks as though we are about at the last resort now." McCarthy, sponsor and vice-chairman of the current Congressional Housing Investment Act, believes that much of the past opposition to federal rent controls will fade "if actual control rests back in the local advisory boards set up under the present law." Under the compromise rent extension bill which squeaked through the last session, governors of the 48 states were allowed to nominate local advisory boards for each of the 14 rent control areas.

### Atlantic Hurricane Heading for Islands

**MIAMI, Fla.**—Storm warnings were hoisted in distant islands of the Lesser Antilles today as a full-fledged Atlantic hurricane with winds reported at 142 miles an hour sped west-northwestward at a forward speed of 20 miles an hour. The storm's center is expected to pass to the north of Bermuda and the Northern Virgin Islands tonight and tomorrow as it bores a path in the general direction of Puerto Rico, the goal of the Battleship Missouri which is bringing President Truman home from Rio de Janeiro. The Missouri is still many miles away, too far to feel any effects of the storm except perhaps the long rolling swells such disturbances make felt in distant sea areas. An Army plane which probed the storm located the center at 8:45 a.m. today at latitude 17.8 north, longitude 59.3 west, or some 300 miles east of Puerto Rico. This would put it about 1,500 miles from Florida. Barometric pressure at the center had dropped 28.25 inches. Very heavy rain and severe turbulence were reported. At Miami, some of the more cautious boat owners were moving their vessels to protected shelters in the upper reaches of the Miami River just in case the storm continued on its course and approached the Florida mainland. The Weather Bureau said winds in the upper islands of the lesser Antilles probably would not exceed 50 miles an hour as the storm brushed past, but all vessels in the path of the great hurricane were advised to exercise extreme caution. A Navy hurricane hunter appeared to fly into the disturbance later today to determine temperatures and vertical air blasts as a part of the research into a plan to "bust" hurricanes with dry ice and other chemicals. No actual "Project Cirrus" operations will be carried out on this particular storm, however, it was announced. Both the Army and Navy were pushing preparations to conduct the first test at breaking up a hurricane by seeding the disturbance with dry ice or other crystals. In an advisory issued at 4:30 a.m. (EST), the Weather Bureau at San Juan, P. R., said the tropical storm was then centered about 400 miles east of Antigua, British West Indies, and the winds were estimated at hurricane force over a small area near the center. Gales extended outward 80 to 100 miles near the center, the Weather Bureau said, and all vessels in the path of the storm were urged to use "extreme caution." Small craft from Dominica, British West Indies, northward and westward to the Virgin Islands were advised to remain in port from the next 24 to 36 hours.

### Change of Venue Is Ordered in Trial of Dr. Ross

**NEW BRAUNFELS**—The trial of Dr. Lloyd I. Ross was transferred to the jurisdiction of Fayette County today by District Judge J. R. Fuchs, who explained that a "fair and impartial" hearing of the mass slaying of the York family could not be held in Comal County. He set a tentative date of Oct. 13 for the next attempt to try the San Antonio physician. A change of venue was ordered here this morning in the trial of Dr. Lloyd I. Ross of San Antonio, charged with murder in the ambush slaying of four members of the York family, District Judge J. R. Fuchs ordered the case transferred to Fayette County. Judge Fuchs said that "after lengthy consideration" he had decided that an impartial trial could not be obtained in Comal County "because almost everyone had formed an opinion one way or the other." Before the judge had finished giving his explanation, the defense jumped up to enter a protest and demanded that the Comal County Sheriff, W. A. Scholl, be called to the stand. The sheriff testified as to trouble he had in calling veniremen for the jury. County seat of Fayette County is La Grange. Judge Fuchs did not designate a town of the county in his order of transfer. Three groups of talemens, totaling 207 New Braunfels and Comal County citizens, have yielded only ten jurors. Yesterday, only one new juror was accepted from 60 prospective jurors. See MURDER TRIAL, Page 8.



**KANSANS HAUL WATER IN DROUGHT**—As rains continued to evade Kansas, farmers, stockmen and rural dwellers are hauling water to supply needs. L. A. French, above, stockman living near Emporia, Kans., fills barrels from a hydrant at the Emporia Fire Station. The water will be used for his livestock. A farm truck, fitted with tank, background, waits its turn at the hydrant. Water even is being hauled to fill nearby small town cisterns.

## Long-Standing Lottery Rule on Press Reversed

### Contract Will Be Let for Paving Highway 66 Strip

**SHAMROCK** (Special)—Contract for paving the new strip of U. S. Highway 66 from the Gray County line to 500 feet east of the east city limits of Shamrock will be let this month, according to an announcement from the State Highway Department. Sealed proposals for the 16,373 miles of construction will be received by the Highway Department at Austin until 9:30 o'clock Wednesday morning, September 24. The bids will then be opened and read and the contract let to the lowest bidder. The dirt and drainage work on the road was recently completed by Bell & Braden Construction Company of Amarillo. The road runs parallel to the old highway and when completed will be a four-lane driveway with all extra foot traffic traveling the south road and the west bound traffic traveling the north strip of pavement. According to a legal notice appearing in this issue of The Texan, the contract will include work through Shamrock to 500 feet east of the east city limits. Through the city, there will be only one strip of paving, the road branching out to two lanes on both the east and west sides of town. Highway officials have stated that the strip of paving west of town will be completed before work begins east of Shamrock. Eventually the four-lane road will span the entire route from the Oklahoma state line west to the Gray County line. Plans and specifications on the paving project may be obtained at the office of the state engineer, Wellington, and the Texas Highway Department, Austin.

**WASHINGTON**—The Postoffice Department ruled last night that newspapers carrying stories in which there is "incidental" mention of a lottery will not be barred from the mails. The ruling, a reversal of long-standing policy, represents a new interpretation of the law which provides that newspapers publishing the names of lottery winners are not mailable. The decision followed a challenge by the St. Louis Star-Times of the St. Louis postmaster's right to bar from the mails its editions which told how a North Carolina Negro held the winning ticket in a lottery for a Cadillac automobile, only to be denied the prize on the ground that the drawing was for whites only. The decision followed a challenge by the St. Louis Star-Times of the St. Louis postmaster's right to bar from the mails its editions which told how a North Carolina Negro held the winning ticket in a lottery for a Cadillac automobile, only to be denied the prize on the ground that the drawing was for whites only.

### Girls Remanded To Parents by Order of Court

Two 16-year-old girls were remanded into the custody of their parents yesterday by County Judge Sherman White after he adjudged them delinquent children. The court heard the cases of the two runaways over the noon hour in the County Court Room. The father of the one girl told the court he had to be away quite a bit of the time working on construction jobs and his daughter would run away from home or misbehave in his absence. He added that she had hitchhiked her way to New Mexico on her first trip and a few months later ran off to Oklahoma. On another occasion the girl went to Borger. Both of the latter places, he told the court, she had secured employment in cafes and a laundry. Under Court questioning the girls complained of not being allowed to "do anything" and they were mistreated at home. Fined down by the court, the one girl admitted she didn't want to go to school and be educated, nor would she marry a boy with an education. The other girl complained that her father made her go to church. Judge White told both girls they were going to be sent back to the custody of their parents with the admonition that they "must behave and obey their mothers and fathers" and if either or both came before him again in violation of the state school for girls. They were ordered to report every two weeks to the office of the Gray County juvenile officer.

### Canadian Firemen Are Second in Race

**CANADIAN**—(Special)—The premier team of the Canadian Volunteer Fire Department won second prize in the pumper races at the fall convention of the Panhandle District Firemen's Association held at Memphis, Tuesday. The team is composed of Captain John Wilkinson, Buck Nix, Jack Nix, Lawrence Teague, Earl Rhea, J. C. L. Beatty, and Dean Cook. Others attending the convention from here were Chief Preston Hutton, Clyde Risley, O. J. Gross, and S. P. Rutherford. The next district convention is to be held in Pampa.

### Ground Breaking for New Dam Slated Today

**BEAUMONT**—(AP)—Advance reservations indicate that more than 600 persons will take part in a barbecue at Town Bluff today, part of the ground breaking ceremonies inaugurating work on Dam B, on the Neches River. The movement is headed by W. H. Reid, Dallas attorney, who "believes" Wainwright would have the political glamour to defeat "O'Daniel," the News said. (Wainwright, in Chicago, could not be immediately contacted by newsmen for a statement. Reid was quoted as describing Wainwright as a "candidate who would go down the middle of the road.")

### Move Under Way to 'Draft' Wainwright

**DALLAS**—(AP)—The Dallas Morning News said yesterday that a move has been started to draft Gen. Jonathan Wainwright as a Democratic candidate for the U. S. Senate opposing the renomination of Sen. W. Lee O'Daniel. Late last month Wainwright retired as commander of the Fourth Army and 45 years of Army service. He was an executive of a San Antonio food store chain. The movement is headed by W. H. Reid, Dallas attorney, who "believes" Wainwright would have the political glamour to defeat "O'Daniel," the News said. (Wainwright, in Chicago, could not be immediately contacted by newsmen for a statement. Reid was quoted as describing Wainwright as a "candidate who would go down the middle of the road.")

### Three Is a Crowd—Also an Organization in Washington

**WASHINGTON**—(AP)—If there's one thing this town has plenty of, it's national organizations. Man, have we got the national organizations! Get three Americans together and the national organization, that's why it takes more than four pages in the Washington phone book just to list them. I am pleased to report that we are now prepared to care for you, national organizationally speaking, from the cradle to the grave. The National Child Research Center is on the job with a demonstration nursery and kindergarten. The grave? Let's look no farther than the National Cemetery Association. It is every little thing, National Cemetery Association? "Good," said Martin F. Gaudian, its executive secretary. "As you know, we sell in advance prepared to care for you, good, our business is good." You probably never heard of some of our national organizations. Such as the American Box Shook Association.

### First Bale 1947 Cotton Is Ginned In Shamrock Area

**SHAMROCK**—(Special)—The first bale of 1947 cotton was ginned in Shamrock Monday afternoon, September 8, about one week later than the first bale is usually brought in and 17 days later than the first bale last year. Elmer Oldham, who farms one of A. Wischkaemper's places, one and one-half miles east of Dozier, was the producer. The bale, which weighed 580 pounds, was ginned free by the J. M. Thindal Gin of Shamrock and will be sold by auction in front of the Farmers and Merchants State Bank at 3 o'clock Saturday afternoon. At the same time he will be ginned 800 by the Chamber of Commerce for ginning the first bale of the season here. The unginned cotton weighed 2,120 pounds and was picked from a 144-acre field, it turned out 860 pounds of seed, which the ginner bought at the rate of \$80.00 per ton. Mr. Oldham, who has farmed in the Dozier community for several years, stated that his cotton is good. That area received more than one inch of moisture about three weeks ago. "This law," Delany said, "was not designed to suppress information of news value to the public, even though incidentally connected with a lottery." He added that his new interpretation "will be uniformly applied in the future in all cases wherever they arise."

### Very Distinguished General Succumbs

**NEW YORK**—(AP)—Lieut. Gen. Robert Lee Bullard, 86, who began a distinguished military career in the Indian fighting of the '30s and was decorated by four nations in World War I, died last night of a brain hemorrhage at Port Jay Hospital on Governor's Island. He was a member of the American Legion and the Grand Army of the Republic.

### Jury Lists Drawn For District Court

Grand and petit jurors for the September term of the 31st District Court in Gray County were drawn today by the Jury Commission. The September term will convene at 10 a.m. Monday, September 22. On that day the new grand jury will be assembled to deliberate on several cases now being prepared by the district attorney's office.

### County Tax Rates Set at 93 Cents

Gray County tax rates for 1947 were set at 93 cents per \$100 valuation this morning along with levies on the 12 county independent school districts, by the Commissioner's Court meeting in the Gray County Court Room. The county ad valorem tax on all property, both real and personal, has been divided as follows: General Fund, 26 cents; Jury Fund, 20 cents; Road and Bridge Fund, 21 cents; Road and Bridge Special Fund, 15 cents; Court House and Jail and Interest and Sinking Fund, seven cents; Hospital Interest and Sinking Fund, 12 cents; Permanent Improvement Available Fund, 10 cents. Following the recommendations by the county school superintendent, the following levies on the 12 school districts were approved: Davis No. 1, \$1; Laketon No. 4, \$1; Back No. 9, \$1; Shafter No. 10, \$1.50; Bell No. 11, \$1; Huntsman No. 12, \$1.25; Kephlinger No. 15, \$1; Farrington No. 16, \$1; Grandview No. 17, \$1.50; Hopkins No. 18, \$1; Webb No. 21, 75 cents; and County Line No. 4, \$1. All school tax rates are levied at per \$100 valuation.

### False Impression Says Local Minister

The Rev. Luther T. Reed, pastor of the Pentecostal Holiness Church, said today that "so-called representatives" of his church had been seeking to collect money from various churches in limit trial of rent cases to a special emergency Federal Court of Appeals, and allow receded. The sheriff testified as to trouble he had in calling veniremen for the jury. County seat of Fayette County is La Grange. Judge Fuchs did not designate a town of the county in his order of transfer. Three groups of talemens, totaling 207 New Braunfels and Comal County citizens, have yielded only ten jurors. Yesterday, only one new juror was accepted from 60 prospective jurors. See MURDER TRIAL, Page 8.

### County Tax Rates Set at 93 Cents

Gray County tax rates for 1947 were set at 93 cents per \$100 valuation this morning along with levies on the 12 county independent school districts, by the Commissioner's Court meeting in the Gray County Court Room. The county ad valorem tax on all property, both real and personal, has been divided as follows: General Fund, 26 cents; Jury Fund, 20 cents; Road and Bridge Fund, 21 cents; Road and Bridge Special Fund, 15 cents; Court House and Jail and Interest and Sinking Fund, seven cents; Hospital Interest and Sinking Fund, 12 cents; Permanent Improvement Available Fund, 10 cents. Following the recommendations by the county school superintendent, the following levies on the 12 school districts were approved: Davis No. 1, \$1; Laketon No. 4, \$1; Back No. 9, \$1; Shafter No. 10, \$1.50; Bell No. 11, \$1; Huntsman No. 12, \$1.25; Kephlinger No. 15, \$1; Farrington No. 16, \$1; Grandview No. 17, \$1.50; Hopkins No. 18, \$1; Webb No. 21, 75 cents; and County Line No. 4, \$1. All school tax rates are levied at per \$100 valuation.

### Abraham Lincoln Would Change Name

**SANTA CRUZ, Calif.**—(AP)—Abraham Lincoln Harris, 28, is asking Superior Court to change his name to Al Harris. Lincoln may have been a great president, he said, but he's a miserable failure as his namesake, who is gradually unburdened by such nicknames as rail splitter, emancipator and president. Half or whole beef, at 25¢ each, Pampa Frome Bros., 25-27th Sts.

### Ground Breaking for New Dam Slated Today

**BEAUMONT**—(AP)—Advance reservations indicate that more than 600 persons will take part in a barbecue at Town Bluff today, part of the ground breaking ceremonies inaugurating work on Dam B, on the Neches River. The movement is headed by W. H. Reid, Dallas attorney, who "believes" Wainwright would have the political glamour to defeat "O'Daniel," the News said. (Wainwright, in Chicago, could not be immediately contacted by newsmen for a statement. Reid was quoted as describing Wainwright as a "candidate who would go down the middle of the road.")

### Move Under Way to 'Draft' Wainwright

**DALLAS**—(AP)—The Dallas Morning News said yesterday that a move has been started to draft Gen. Jonathan Wainwright as a Democratic candidate for the U. S. Senate opposing the renomination of Sen. W. Lee O'Daniel. Late last month Wainwright retired as commander of the Fourth Army and 45 years of Army service. He was an executive of a San Antonio food store chain. The movement is headed by W. H. Reid, Dallas attorney, who "believes" Wainwright would have the political glamour to defeat "O'Daniel," the News said. (Wainwright, in Chicago, could not be immediately contacted by newsmen for a statement. Reid was quoted as describing Wainwright as a "candidate who would go down the middle of the road.")

### Change of Venue Is Ordered in Trial of Dr. Ross

**NEW BRAUNFELS**—The trial of Dr. Lloyd I. Ross was transferred to the jurisdiction of Fayette County today by District Judge J. R. Fuchs, who explained that a "fair and impartial" hearing of the mass slaying of the York family could not be held in Comal County. He set a tentative date of Oct. 13 for the next attempt to try the San Antonio physician. A change of venue was ordered here this morning in the trial of Dr. Lloyd I. Ross of San Antonio, charged with murder in the ambush slaying of four members of the York family, District Judge J. R. Fuchs ordered the case transferred to Fayette County. Judge Fuchs said that "after lengthy consideration" he had decided that an impartial trial could not be obtained in Comal County "because almost everyone had formed an opinion one way or the other." Before the judge had finished giving his explanation, the defense jumped up to enter a protest and demanded that the Comal County Sheriff, W. A. Scholl, be called to the stand. The sheriff testified as to trouble he had in calling veniremen for the jury. County seat of Fayette County is La Grange. Judge Fuchs did not designate a town of the county in his order of transfer. Three groups of talemens, totaling 207 New Braunfels and Comal County citizens, have yielded only ten jurors. Yesterday, only one new juror was accepted from 60 prospective jurors. See MURDER TRIAL, Page 8.

### County Tax Rates Set at 93 Cents

Gray County tax rates for 1947 were set at 93 cents per \$100 valuation this morning along with levies on the 12 county independent school districts, by the Commissioner's Court meeting in the Gray County Court Room. The county ad valorem tax on all property, both real and personal, has been divided as follows: General Fund, 26 cents; Jury Fund, 20 cents; Road and Bridge Fund, 21 cents; Road and Bridge Special Fund, 15 cents; Court House and Jail and Interest and Sinking Fund, seven cents; Hospital Interest and Sinking Fund, 12 cents; Permanent Improvement Available Fund, 10 cents. Following the recommendations by the county school superintendent, the following levies on the 12 school districts were approved: Davis No. 1, \$1; Laketon No. 4, \$1; Back No. 9, \$1; Shafter No. 10, \$1.50; Bell No. 11, \$1; Huntsman No. 12, \$1.25; Kephlinger No. 15, \$1; Farrington No. 16, \$1; Grandview No. 17, \$1.50; Hopkins No. 18, \$1; Webb No. 21, 75 cents; and County Line No. 4, \$1. All school tax rates are levied at per \$100 valuation.

### Abraham Lincoln Would Change Name

**SANTA CRUZ, Calif.**—(AP)—Abraham Lincoln Harris, 28, is asking Superior Court to change his name to Al Harris. Lincoln may have been a great president, he said, but he's a miserable failure as his namesake, who is gradually unburdened by such nicknames as rail splitter, emancipator and president. Half or whole beef, at 25¢ each, Pampa Frome Bros., 25-27th Sts.

### Ground Breaking for New Dam Slated Today

**BEAUMONT**—(AP)—Advance reservations indicate that more than 600 persons will take part in a barbecue at Town Bluff today, part of the ground breaking ceremonies inaugurating work on Dam B, on the Neches River. The movement is headed by W. H. Reid, Dallas attorney, who "believes" Wainwright would have the political glamour to defeat "O'Daniel," the News said. (Wainwright, in Chicago, could not be immediately contacted by newsmen for a statement. Reid was quoted as describing Wainwright as a "candidate who would go down the middle of the road.")

### Move Under Way to 'Draft' Wainwright

**DALLAS**—(AP)—The Dallas Morning News said yesterday that a move has been started to draft Gen. Jonathan Wainwright as a Democratic candidate for the U. S. Senate opposing the renomination of Sen. W. Lee O'Daniel. Late last month Wainwright retired as commander of the Fourth Army and 45 years of Army service. He was an executive of a San Antonio food store chain. The movement is headed by W. H. Reid, Dallas attorney, who "believes" Wainwright would have the political glamour to defeat "O'Daniel," the News said. (Wainwright, in Chicago, could not be immediately contacted by newsmen for a statement. Reid was quoted as describing Wainwright as a "candidate who would go down the middle of the road.")

### County Tax Rates Set at 93 Cents

Gray County tax rates for 1947 were set at 93 cents per \$100 valuation this morning along with levies on the 12 county independent school districts, by the Commissioner's Court meeting in the Gray County Court Room. The county ad valorem tax on all property, both real and personal, has been divided as follows: General Fund, 26 cents; Jury Fund, 20 cents; Road and Bridge Fund, 21 cents; Road and Bridge Special Fund, 15 cents; Court House and Jail and Interest and Sinking Fund, seven cents; Hospital Interest and Sinking Fund, 12 cents; Permanent Improvement Available Fund, 10 cents. Following the recommendations by the county school superintendent, the following levies on the 12 school districts were approved: Davis No. 1, \$1; Laketon No. 4, \$1; Back No. 9, \$1; Shafter No. 10, \$1.50; Bell No. 11, \$1; Huntsman No. 12, \$1.25; Kephlinger No. 15, \$1; Farrington No. 16, \$1; Grandview No. 17, \$1.50; Hopkins No. 18, \$1; Webb No. 21, 75 cents; and County Line No. 4, \$1. All school tax rates are levied at per \$100 valuation.

### Abraham Lincoln Would Change Name

**SANTA CRUZ, Calif.**—(AP)—Abraham Lincoln Harris, 28, is asking Superior Court to change his name to Al Harris. Lincoln may have been a great president, he said, but he's a miserable failure as his namesake, who is gradually unburdened by such nicknames as rail splitter, emancipator and president. Half or whole beef, at 25¢ each, Pampa Frome Bros., 25-27th Sts.

### Ground Breaking for New Dam Slated Today

**BEAUMONT**—(AP)—Advance reservations indicate that more than 600 persons will take part in a barbecue at Town Bluff today, part of the ground breaking ceremonies inaugurating work on Dam B, on the Neches River. The movement is headed by W. H. Reid, Dallas attorney, who "believes" Wainwright would have the political glamour to defeat "O'Daniel," the News said. (Wainwright, in Chicago, could not be immediately contacted by newsmen for a statement. Reid was quoted as describing Wainwright as a "candidate who would go down the middle of the road.")

### Move Under Way to 'Draft' Wainwright

**DALLAS**—(AP)—The Dallas Morning News said yesterday that a move has been started to draft Gen. Jonathan Wainwright as a Democratic candidate for the U. S. Senate opposing the renomination of Sen. W. Lee O'Daniel. Late last month Wainwright retired as commander of the Fourth Army and 45 years of Army service. He was an executive of a San Antonio food store chain. The movement is headed by W. H. Reid, Dallas attorney, who "believes" Wainwright would have the political glamour to defeat "O'Daniel," the News said. (Wainwright, in Chicago, could not be immediately contacted by newsmen for a statement. Reid was quoted as describing Wainwright as a "candidate who would go down the middle of the road.")

## Final Session Foreign Chiefs Is Postponed

**PARIS**—(AP)—The British Foreign Office announced today that Foreign Secretary Ernest Bevin had postponed the last scheduled session of Foreign Ministers of 16 nations on the Marshall plan, because of United States criticism of a "final" report on Europe's needs. A Foreign Office spokesman in London said Bevin, as chairman of the final session scheduled for next Monday, had advised the Foreign Ministers of the decision and that no alternative date had been suggested. Authoritative London sources said they expected the delay would be at least a week, and possibly two, so that the 16 nations' delegations could act upon American advice to prune their estimates. A secretariat source here said it was possible the Conference would remain in session for almost three additional weeks to rewrite their report, said now to call for nearly \$18,000,000,000 in U. S. aid in the next four years. This informant said William L. Clayton, U. S. Undersecretary of State for Economic Affairs, told the Conference Executive Committee Wednesday night he found the report "too indigestible" in its current form and objected to the method of presenting statistics. Bevin, who remains in London, was expected to confer today with Clayton. British officials were believed to be particularly concerned with the American statistics report, because they had been claiming all the initiative and most of the credit for framing the report.

## Export Controls Seen Necessary In Workable Plan

**WASHINGTON**—(AP)—French Ambassador Henri Bonnet said today that if the French dollar shortage grows more acute his government would have to reduce purchases of vitally-needed American wheat, fats and coal "before very long." "This could happen but I hope it does not," he said in an interview. Bonnet talked with reporters prior to seeing Secretary of State Marshall to report on his recent trip to France. The ambassador said he could not say the "precise date" when this cutback of United States purchases might occur. But, he added, the situation is "already very difficult in that respect." Bonnet's report emphasized what Secretary Marshall has already said—that European nations will have to have some emergency aid pending the start of long-range recovery efforts envisioned in the Marshall Plan. As for the plan itself, there are growing indications that extensive use of export controls and probably some other forms of government supervision over the American economy may be necessary to make it work effectively. This became apparent today from data being assembled in various divisions of the government. It was indicated particularly in formal reports from President Truman's top committee on foreign aid headed by Secretary of Commerce Harriman. The Harriman Committee, completing its second two-day cycle of conferences, made clear at a news conference that its recommendations thus far show that shipments of goods to Europe under the Marshall plan may put additional strains on some tight spots in the American economy. Various steel products, some types of farm machinery and food supplies were cited as examples of commodities that may require particularly careful handling in order to minimize the impact of the proposed aid program. "The American economy may be necessary to make it work effectively. This became apparent today from data being assembled in various divisions of the government. It was indicated particularly in formal reports from President Truman's top committee on foreign aid headed by Secretary of Commerce Harriman. The Harriman Committee, completing its second two-day cycle of conferences, made clear at a news conference that its recommendations thus far show that shipments of goods to Europe under the Marshall plan may put additional strains on some tight spots in the American economy. Various steel products, some types of farm machinery and food supplies were cited as examples of commodities that may require particularly careful handling in order to minimize the impact of the proposed aid program. "The American economy may be necessary to make it work effectively. This became apparent today from data being assembled in various divisions of the government. It was indicated particularly in formal reports from President Truman's top committee on foreign aid headed by Secretary of Commerce Harriman. The Harriman Committee, completing its second two-day cycle of conferences, made clear at a news conference that its recommendations thus far show that shipments of goods to Europe under the Marshall plan may put additional strains on some tight spots in the American economy. Various steel products, some types of farm machinery and food supplies were cited as examples of commodities that may require particularly careful handling in order to minimize the impact of the proposed aid program. "The American economy may be necessary to make it work effectively. This became apparent today from data being assembled in various divisions of the government. It was indicated particularly in formal reports from President Truman's top committee on foreign aid headed by Secretary of Commerce Harriman. The Harriman Committee, completing its second two-day cycle of conferences, made clear at a news conference that its recommendations thus far show that shipments of goods to Europe under the Marshall plan may put additional strains on some tight spots in the American economy. Various steel products, some types of farm machinery and food supplies were cited as examples of commodities that may require particularly careful handling in order to minimize the impact of the proposed aid program. "The American economy may be necessary to make it work effectively. This became apparent today from data being assembled in various divisions of the government. It was indicated particularly in formal reports from President Truman's top committee on foreign aid headed by Secretary of Commerce Harriman. The Harriman Committee, completing its second two-day cycle of conferences, made clear at a news conference that its recommendations thus far show that shipments of goods to Europe under the Marshall plan may put additional strains on some tight spots in the American economy. Various steel products, some types of farm machinery and food supplies were cited as examples of commodities that may require particularly careful handling in order to minimize the impact of the proposed aid program. "The American economy may be necessary to make it work effectively. This became apparent today from data being assembled in various divisions of the government. It was indicated particularly in formal reports from President Truman's top committee on foreign aid headed by Secretary of Commerce Harriman. The Harriman Committee, completing its second two-day cycle of conferences, made clear at a news conference that its recommendations thus far show that shipments of goods to Europe under the Marshall plan may put additional strains on some tight spots in the American economy. Various steel products, some types of farm machinery and food supplies were cited as examples of commodities that may require particularly careful handling in order to minimize the impact of the proposed aid program. "The American economy may be necessary to make it work effectively. This became apparent today from data being assembled in various divisions of the government. It was indicated particularly in formal reports from President Truman's top committee on foreign aid headed by Secretary of Commerce Harriman. The Harriman Committee, completing its second two-day cycle of conferences, made clear at a news conference that its recommendations thus far show that shipments of goods to Europe under the Marshall plan may put additional strains on some tight spots in the American economy. Various steel products, some types of farm machinery and food supplies were cited as examples of commodities that may require particularly careful handling in order to minimize the impact of the proposed aid program. "The American economy may be necessary to make it work effectively. This became apparent today from data being assembled in various divisions of the government. It was indicated particularly in formal reports from President Truman's top committee on foreign aid headed by Secretary of Commerce Harriman. The Harriman Committee, completing its second two-day cycle of conferences, made clear at a news conference that its recommendations thus far show that shipments of goods to Europe under the Marshall plan may put additional strains on some tight spots in the American economy. Various steel products, some types of farm machinery and food supplies were cited as examples of commodities that may require particularly careful handling in order to minimize the impact of the proposed aid program. "The American economy may be necessary to make it work effectively. This became apparent today from data being assembled in various divisions of the government. It was indicated particularly in formal reports from President Truman's top committee on foreign aid headed by Secretary of Commerce Harriman. The Harriman Committee, completing its second two-day cycle of conferences, made clear at a news conference that its recommendations thus far show that shipments of goods to Europe under the Marshall plan may put additional strains on some tight spots in the American economy. Various steel products, some types of farm machinery and food supplies were cited as examples of commodities that may require particularly careful handling in order to minimize the impact of the proposed aid program. "The American economy may be necessary to make it work effectively. This became apparent today from data being assembled in various divisions of the government. It was indicated particularly in formal reports from President Truman's top committee on foreign aid headed by Secretary of Commerce Harriman. The Harriman Committee, completing its second two-day cycle of conferences, made clear at a news conference that its recommendations thus far show that shipments of goods to Europe under the Marshall plan may put additional strains on some tight spots in the American economy. Various steel products, some types of farm machinery and food supplies were cited as examples of commodities that may require particularly careful handling in order to minimize the impact of the proposed aid program. "The American economy may be necessary to make it work effectively. This became apparent today from data being assembled in various divisions of the government. It was indicated particularly in formal reports from President Truman's top committee on foreign aid headed by Secretary of Commerce Harriman. The Harriman Committee, completing its second two-day cycle of conferences, made clear at a news conference that its recommendations thus far show that shipments of goods to Europe under the Marshall plan may put additional strains on some tight spots in the American economy. Various steel products, some types of farm machinery and food supplies were cited as examples of commodities that may require particularly careful handling in order to minimize the impact of the proposed aid program. "The American economy may be necessary to make it work effectively. This became apparent today from data being assembled in various divisions of the government. It was indicated particularly in formal reports from President Truman's top committee on foreign aid headed by Secretary of Commerce Harriman. The Harriman Committee, completing its second two-day cycle of conferences, made clear at a news conference that its recommendations thus far show that shipments of goods to Europe under the Marshall plan may put additional strains on some tight spots in the American economy. Various steel products, some types of farm machinery and food supplies were cited as examples of commodities that may require particularly careful handling in order to minimize the impact of the proposed aid program. "The American economy may be necessary to make it work effectively. This became apparent today from data being assembled in various divisions of the government. It was indicated particularly in formal reports from President Truman's top committee on foreign aid headed by Secretary of Commerce Harriman. The Harriman Committee, completing its second two-day cycle of conferences, made clear at a news conference that its recommendations thus far show that shipments of goods to Europe under the Marshall plan may put additional strains on some tight spots in the American economy. Various steel products, some types of farm machinery and food supplies were cited as examples of commodities that may require particularly careful handling in order to minimize the impact of the proposed aid program. "The American economy may be necessary to make it work effectively. This became apparent today from data being assembled in various divisions of the government. It was indicated particularly in formal reports from President Truman's top committee on foreign aid headed by Secretary of Commerce Harriman. The Harriman Committee, completing its second two-day cycle of conferences, made clear at a news conference that its recommendations thus far show that shipments of goods to Europe under the Marshall plan may put additional strains on some tight spots in the American economy. Various steel products, some types of farm machinery and food supplies were cited as examples of commodities that may require particularly careful handling in order to minimize the impact of the proposed aid program. "The American economy may be necessary to make it work effectively. This became apparent today from data being assembled in various divisions of the government. It was indicated particularly in formal reports from President Truman's top committee on foreign aid headed by Secretary of Commerce Harriman. The Harriman Committee, completing its second two-day cycle of conferences, made clear at a news conference that its recommendations thus far show that shipments of goods to Europe under the Marshall plan may put additional strains on some tight spots in the American economy. Various steel products, some types of farm machinery and food supplies were cited as examples of commodities that may require particularly careful handling in order to minimize the impact of the proposed aid program. "The American economy may be necessary to make it work effectively. This became apparent today from data being assembled in various divisions of the government. It was indicated particularly in formal reports from President Truman's top committee on foreign aid headed by Secretary of Commerce Harriman. The Harriman Committee, completing its second two-day cycle of conferences, made clear at a news conference that its recommendations thus far show that shipments of goods to Europe under the Marshall plan may put additional strains on some tight spots in the American economy. Various steel products, some types of farm machinery and food supplies were cited as examples of commodities that may require particularly careful handling in order to minimize the impact of the proposed aid program. "The American economy may be necessary to make it work effectively. This became apparent today from data being assembled in various divisions of the government. It was indicated particularly in formal reports from President Truman's top committee on foreign aid headed by Secretary of Commerce Harriman. The Harriman Committee, completing its second two-day cycle of conferences, made clear at a news conference that its recommendations thus far show that shipments of goods to Europe under the Marshall plan may put additional strains on some tight spots in the American economy. Various steel products, some types of farm machinery and food supplies were cited as examples of commodities that may require particularly careful handling in order to minimize the impact of the proposed aid program. "The American economy may be necessary to make it work effectively. This became apparent today from data being assembled in various divisions of the government. It was indicated particularly in formal reports from President Truman's top committee on foreign aid headed by Secretary of Commerce Harriman. The Harriman Committee, completing its second two-day cycle of conferences, made clear at a news conference that its recommendations thus far show that shipments of goods to Europe under the Marshall plan may put additional strains on some tight spots in the American economy. Various steel products, some types of farm machinery and food supplies were cited as examples of commodities that may require particularly careful handling in order to minimize the impact of the proposed aid program. "The American economy may be necessary to make it work effectively. This became apparent today from data being assembled in various divisions of the government. It was indicated particularly in formal reports from President Truman's top committee on foreign aid headed by Secretary of Commerce Harriman. The Harriman Committee, completing its second two-day cycle of conferences, made clear at a news conference that its recommendations thus far show that shipments of goods to Europe under the Marshall plan may put additional strains on some tight spots in the American economy. Various steel products, some types of farm machinery and food supplies were cited as examples of commodities that may require particularly careful handling in order to minimize the impact of the proposed aid program. "The American economy may be necessary to make it work effectively. This became apparent today from data being assembled in various divisions of the government. It was indicated particularly in formal reports from President Truman's top committee on foreign aid headed by Secretary of Commerce Harriman. The Harriman Committee, completing its second two-day cycle of conferences, made clear at a news conference that its recommendations thus far show that shipments of goods to Europe under the Marshall plan may put additional strains on some tight spots in the American economy. Various steel products, some types of farm machinery and food supplies were cited as examples of commodities that may require particularly careful handling in order to



Gray hair begins to show on white persons at the average age of 35. In Negroes, this occurs seven years later.

### Texas Today

By JACK RUTLEDGE  
Associated Press Staff  
Students at Texas A. and M. are divided in whether or not there will be trouble at Aggie land this year. New regulations, ending age-old traditions and upper class privileges, become effective. Freshmen are segregated in an annex, and no longer live in dormitories with up-

perclassmen, doing their mental labor. Hazing is forbidden. A Senior said no, there would be no trouble. Seniors—and of course the Sophomores—don't like the new regulations. But what can they do about it? Nothing. They found that out last year, when a student revolt broke out. And failed. An underclassman said yes. "Of course there'll be trouble. A Senior isn't exactly an old dog, but you can't teach him new tricks."

Wait and see." The student's conversation was spiced with strong language. Aggie land is a man's school. They apologize shyly for a word now and then, but explain such talk becomes a habit in bull sessions. "That trouble last year hurt A. and M.," he went on. "Freshman enrollment has dropped. It's several hundred under what was first predicted. Wait and see." He was against hazing. He was no longer a Freshman, but hazing was still fresh in his mind. Hazing is no good," he said emphatically. "A guy can't study, he can't sleep, he's always upset. He hurts most of the time. And what happens to his pride, being kicked around and made to clean up rooms and stuff?"

### Man Fined \$200 in Liquor Violation

J. V. Munn, Pampa, was fined \$200 and costs yesterday by County Judge Sherman White for illegal transportation of liquor. Munn was apprehended several weeks ago by State Liquor Control Board agents. He pleaded guilty to the charges shortly after noon yesterday. More arrests of 19-year-old youths are made than in any other age group, according to Department of Justice records.

**J. Ray Martin**  
BMA  
Business, Man's Assurance Co.  
Life, Health, Accident, Annuities  
Hospitalization, Group, All Ways  
107 N. Frost Phone 777

**MAGNETO REPAIRING**  
All Work Guaranteed  
Radcliff Bros. Electric Co.  
519 S. Cuyler Phone 1220

### GIVE NATURE A CHANCE...

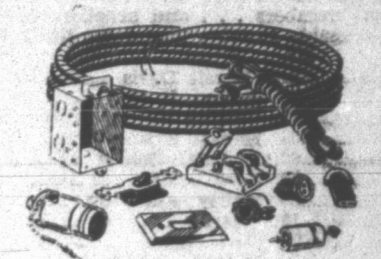
If you are run down, listless and tired because of poor digestion, give nature a chance. Don't use violent gurgles. Often all your digestive system needs is a little assistance. And that's just what the new, improved ADLERKA will provide. It's a scientific blend of effective ingredients that work quickly and pleasantly to relieve gas pressure and work waste matter gently through the alimentary canal. It's a kindly stimulant to sluggish intestinal muscles. Order a bottle of ADLERKA, the "Tone-Up" laxative, from your druggist today. Caution: use only as directed.

ADLERKA LAXATIVE

# Electrical SUPPLIES

Yes You Can Get Them Here

We now have the largest stock of electrical supplies in Pampa. For the best buy in electrical supplies see City Electric Co. and compare prices.



"Electrical Contracting at It's Best"  
Free Estimates . . . . . Regardless of the size of the job we will be happy to give you an estimate of the cost. GET OUR PRICES FIRST!

## CITY ELECTRIC CO.

920 Alcock Phone 27

## Bring Your Friends to the Friendly Store AND SAVE

<b>TEACHERS SCOTCH</b> 4-5 \$5.95	
<b>KENTUCKY TAVERN</b> Bottled in Bond, 4-5 \$5.49	
<b>LORETTO BOND</b> 4-5 \$4.95	<b>HILL &amp; HILL</b> 86 Proof—65% G.N.S. Pt. \$219 4-5 \$359
<b>PHILADELPHIA</b> 86 Proof—65% G.N.S. Pt. \$199 4-5 \$299	<b>Kinsey</b> 86.8 Pf. 65 G.N.S. Pt. \$199 4-5 \$299
<b>FOUR ROSES</b> 90.5 Proof—60% G.N.S. Pt. \$239 4-5 \$375	<b>Schenley Reserve</b> 86 Proof—65% G.N.S. Pt. \$219 4-5 \$359

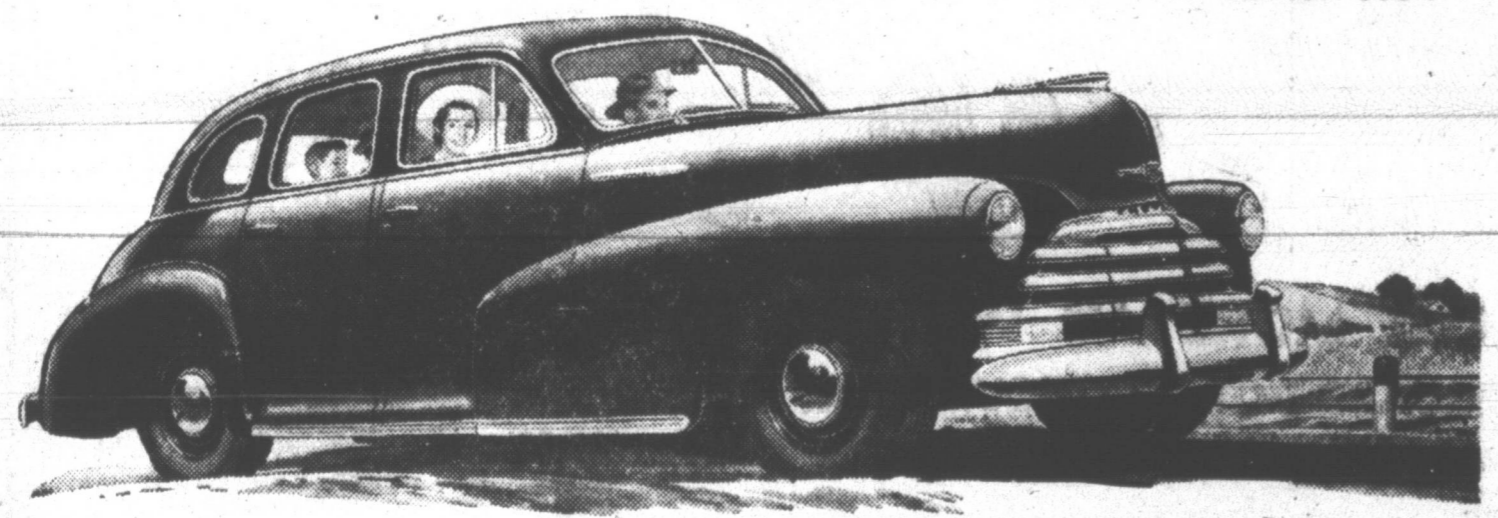
**Service Liquor Store**  
523 W. FOSTER  
TEXAS' FINEST PACKAGE STORE

### On the Radio

Tonight On Networks  
NBC—Paul Lavigne Melody; 7 Third Hornetman Finale; Speakers Sec. of Commerce and Douglas Fairbanks, Jr., Waltz Time; 8 Mystery Theater.  
CBS—6 Fanny Brice; 6:30 The Thin Man; 7 Arthur's Place Finale; 8 Pops to be Ignorant; 8:30 Eileen Farrell Concert.  
ABC—6:30 Lone Ranger; 7:30 This Is FBI; 8 Break the Bank; 9 Boxing, Archie Moore vs. Bert Lyell.  
Saturday On Networks  
NBC—7:30 a. m. Coffee With Congress; 11 a. m. Nature Sketches; 1 Saturday Showcase from WILAM; 6 Life of Riley; 8 Judy Canova.  
CBS—11:30 County Fair; 2:30 Seth Creiner Show; 3 Cross Section On "A New Day" Show; 5:30 Warner's Soundoff; 7 Bill Godwin Comedy; ABC—11:30 American Farmer; 1 Our Town Speaker; 4:30 and 6:30 Crosby Amateur Golf Finals; 7:30 Famous Jury Trials; 9:30 Hayloft Hoedown.

Read Pampa News Want Ads  
"Leto" Relieves "Gum" Discomfort  
You can not look, nor expect to feel your best, with irritated "GUMS." Druggists refund money if "LETO'S" fails to satisfy.  
CRETNEY DRUG STORE

Here's how big your enjoyment will be—  
and here's how small your cost!  
**BIG-CAR QUALITY**  
**AT LOWEST COST**



Yes, in addition to giving you all the Big-Car advantages described here, the new 1947 Chevrolet saves you money on all items of purchase price, operation and upkeep—gives you **BIG-CAR QUALITY AT LOWEST COST!**

You'll enjoy the Big-Car luxury of this smart, streamlined, style-leading Body by Fisher—with genuine No Draft ventilation, extra-comfortable seats, and every facility for your comfort and safety—for Fisher Bodies are the finest bodies, and they're found only on Chevrolet and higher-priced cars.



You'll delight in the Big-Car comfort and road-steadiness of the Utilized Knee-Action Gliding Ride—another advantage found only in Chevrolet and higher-priced cars.



You'll thrill to the Big-Car performance of a lively, powerful, dependable Chevrolet Valve-in-Head Thrift-Master Engine—the type of engine found only in Chevrolet and higher-priced cars.

Be sure your car is ready for winter! During September and October Chevrolet dealers are making a special point of fall service to demonstrate the excellence of our service facilities and quality workmanship. So bring your car in soon and let us get it ready for the bad weather days ahead.

# CHEVROLET



You'll feel perfectly safe, perfectly secure, thanks to Fisher Unisteel Body, Knee-Action Ride and Positive-Action Hydraulic Brakes—features found only in Chevrolet and higher-priced cars.

**CULBERSON CHEVROLET CO**  
Phone 366 Complete Sales and Service 212 N. Ballard

## Back to School in all your favorite Connie Sports

Right you are . . . in flats like these that are campus 'musts' Come have your pick . . . and note the new extension soles . . . saddles! moccasins! new wefer-wedgies! black suedes! smooth leathers! browns! polished reds! Everything you want, and to value-wise, at . . .

**\$495 to \$695**

NATIONALLY ADVERTISED in SEVENTEEN, CHARM, GLAMOUR and other leading magazines

**GILBERT'S** Progressing With Pampa

# Harvesters Favored in Opener

## Green and Gold to Tangle With Electra, Kickoff at 8 P. M.

Tonight, at 8 o'clock the 1947 edition of the Pampa Harvesters, coached by Tom Tipps and Aubra Nooncaester, will meet the Electra Tigers, of District 2AA, in the first game of the Harvesters' 10 game schedule. The Tigers are coached by W. E. Weathers and Cy Young. This will be the first public appearance of the 1947 Harvesters team and its two new coaches, Tipps and Nooncaester.

The Harvesters will go into tonight's battle favorites over the lighter Electra team. The Green and Gold will average 170 pounds per man; the Tigers 161. The convenience of the spectators the Harvesters will wear jerseys numbered to correspond with the position they play. The centers will wear jerseys numbered in the 50's; the guards, 60's; tackles, 70's; ends, 80's; quarterbacks, 12-19; left halfbacks, 20's; fullbacks, 30's; and right halfbacks, 40's.

The Harvesters were scheduled to appear tonight in new uniforms; however, the Green and Gold will be seen wearing new gold jerseys, with green numbers, and practice pants.

The probable starting lineup for the Harvesters will be as follows:

Pos.	No.	Name	Wt.
LE	86	Darrell Davis	155
LT	78	Roscoe Russell	218
LG	86	Charlie Thornborough	185
C	58	Hansel Kennedy	160
RG	63	Richard Scheig	165
RT	76	Zeke Griffin	185
RE	85	Kelley Anderson	185
QB	12	Charlie Laifoon	147
LB	22	Carl Maves	175
FB	36	Derrell Conklin	165
RH	42	Jack Williams	165

Substitutes: Backs, Lamar Livey, Jimmy Parker, Dennis Taylor, Vernon Holler, Rodney Barron, Paul Simpson, Harbord Cox, Wesley Keith, Jim Wilson, Francis Hunt, Centers, T. W. Perkins, Bobby Hayes, Guards, Jimmy Hill, Willie Eze Tucker, Phillip Payne, Gary Cooper, Wayne Henderson, Tackles, Ralph Hutsell, Bob Montgomery, Leroy Troop, Bobby Jack Phillips, Ends, Bill Bond, Bob Boyles.

The probable starting lineup for Electra will be:

Pos.	No.	Name	Wt.
LE	51	Kenneth Hixon	164
LT	77	Gene Waggoner	175
LG	33	Pod Price	160
C	51	Curtis Hine	167
RG	85	Fred Laik	150
RT	45	Wayne Ellis	155
RE	82	Donald Erv	160
QB	87	Ted Darland	150
RH	84	Joe Jacobi	175
FB	88	Bobby Myers	152
LH	57	Johnny Knight	128

Officials for tonight's game will be Cotton Neely, referee; Curtis Barrett, head linesman; Prentice Walker, field judge; and Chester Hufsteler, umpire.

### Lefors to Open With White Deer Tonight

The Lefors Pirates and the White Deer Bucks will open their club schedule when the two teams clash tonight at Lefors at 8 o'clock. Lefors, coached by Joe Champion and James Love, is in District 2A and White Deer, coached by Tyson Cox and James Lowery, is in District 1A.

### Red River Valley Loop Playoff Set

Mobeetie and Memphis will play the final game of the Red River Valley League play-off at Oiler Park Sunday at 3 o'clock.

Following the game at Memphis last Sunday, which Memphis annexed 15 to 8, Mobeetie manager F. A. Cocke suggested Pampa as the site for the finals. Ed Hutcherson, Memphis manager, waived a coin flip agreed on Pampa over either Mobeetie or Memphis as both clubs believed a larger regional attendance would be attracted to Pampa.

Mobeetie scored one of the heaviest upsets of the season on their home diamond two weeks ago as Hank Keller was blasted off the mound with 9 runs in the second inning, bringing in relief pitcher Garvis Davis, who was the victim of a hit and run session in the seventh, good for six runs, to bring the final tally to 28-6.

A reversal was staged in Memphis last Sunday as Mobeetie hurler Bus Dorman left the mound in the sixth in favor of Milton Deason as Memphis drove out 6 hits for 5 runs that frame.

The heavy rivalry between the two teams began with a game in Memphis early in the season, won by Mobeetie 11 to 2.

Memphis then met a Pampa team twice in June, which included several Mobeetie regulars, winning 8-7 and 20-11. The next Mobeetie game was a 10-inning classic at Mobeetie June 29 which Memphis finally won 1 to 0. On the Mobeetie return, Memphis won 6 to 5.

Ponderosa pine needles are sometimes 12 inches long.



PAGE 4 Pampa News, Friday, Sept. 12, 1947

### Brooklyn Gives St. Louis 4 to 3 Licking in Crucial Series Opener

(By The Associated Press) Brooklyn's dashing Dodgers never were in a better position to win the National League pennant than they were today following their victory in the biggest game of the year for them.

Yesterday was the game the Dodgers had to win and they did with a 4-3 licking in St. Louis which put the Dodgers five and a half games up on the Cardinals.

It was no secret that Eddie Dyer's Redbirds needed a sweep of the showdown three-game series to get back into serious contention. Or at the very worst, two victories of three.

The Cards now face a herculean task. An idea how tough the situation is for the Cards: Even should the Redbirds win 12 of their remaining 18 games, a splendid 667 pace, the Dodgers can sew it up by winning only six of 15, a lowly 400 gain.

The Dodger-Card tussle thrust into the shadows the slugging feat of Ralph Kiner, Pittsburgh power hitter, who slammed over four home runs three in the second game of the Pirates' double header with the Boston Braves, to tie Johnny Mize of the New York Giants at 47.

Kiner drove in seven runs to help the Bucks take both games from the Braves 4-3 in 13 innings and 10-8. The New York Yankees, who lead the American League by 12 1/2 games, split a double header with Detroit, winning the second 11-5 after Hal Newhouser tamed them with six hits in pitching the Tigers to a 7-2 victory in the opener.

The Indians took the first in a free-hitting affair 10-8, but the Red Sox, behind Dave Ferriss, came back to win the second game 8-3. Ken Raffensberger, Cincinnati left-hander, snapped a five-game winning streak of the New York Giants by pitching the Reds to a 3-2 victory.

Sam Zoladak and Bob Muncief collaborated in limiting Washington to six hits as the St. Louis Browns shut out the Senators in Washington, 2-0. York hit his 20th home run of the year with two on base in the first inning to lead the Chicago White Sox to a 7-3 triumph over the Athletics in Philadelphia.

The Phillies-Cub game in Chicago was postponed by rain.

### Texas Loop Playoffs To Be Resumed Tonight

The Texas League Shaughnessy playoff resumes tonight after rain washed out the Dallas-Fort Worth tilt last night.

Houston and Tulsa were not scheduled.

Big Willard Ramsdell (20-5) was due to take the mound for Fort Worth tonight at Dallas, opposing Rufus Gentry (12-8).

Charles Beers (25-8) was expected to start for Houston at Tulsa with Bill Lee (5-2) pitching for the Oilers.

Fort Worth's series at Dallas will be carried over through Sunday with extra games at Fort Worth Monday and Tuesday if needed.

Houston holds a 2-0 advantage over Tulsa in the playoff and Dallas and Fort Worth are even at one game each.

MAJOR LEAGUE STANDINGS			
AMERICAN LEAGUE			
TEAMS	W	L	Pct.
New York	55	25	.629
Boston	54	26	.640
Detroit	44	36	.556
Chicago	42	38	.526
Philadelphia	34	46	.425
Washington	29	51	.363
St. Louis	24	56	.322

NATIONAL LEAGUE			
TEAMS	W	L	Pct.
Brooklyn	58	20	.664
St. Louis	49	29	.574
Boston	47	31	.545
New York	47	31	.545
Cincinnati	42	36	.512
Chicago	39	39	.494
Pittsburgh	32	46	.410
Philadelphia	25	53	.323

**Amarillo Tri-State Fair**

*Presents*

**ALL GIRL RODEO**

1st Practical TELEVISION-DEMONSTRATION in the AREA

- QUARTER HORSE SHOW
- LIVESTOCK EXHIBITS
- AGRICULTURE EXHIBITS
- DOMESTIC SCIENCES
- ARTS EXHIBITS

MIDWAY Show **September 22nd-27th**

TRI-STATE FAIR Grounds, Amarillo, Texas

### Lubbock and Dukes Win Playoff Games

By the Associated Press Lubbock had a good chance to end its West Texas-New Mexico League playoff series with Lamesa tonight while Albuquerque and Amarillo were all square.

The Hubbers handed Lamesa an 18-7 licking last night for their third straight win. Albuquerque used three unearned runs in the sixth inning for a 3-0 win over Amarillo. The two teams are tied at one game each in the four out of seven game series.

Amarillo moves to Albuquerque tonight, while Lubbock continues at Lamesa.

GI Archuleta was scheduled to start for the Dukes and Steve Lagomarsino for Amarillo.

There are 31,022,875 head of sheep in New Zealand.

### World Series Opener To Be at Yankee Park

CINCINNATI—(AP)—The opening game of the 1947 World Series will be played in New York's Yankee Stadium but whether the curtain goes up on the big baseball show Sept. 30 or Oct. 1 waits a decision in the current National League pennant scrap between the Brooklyn Dodgers and the St. Louis Cardinals.

Should Brooklyn win, the series will open Sept. 30, but the inaugural contest will be the next day if the Cards triumph.

**Professional Pharmacy RICHARD DRUG**  
107 W. Kingmill Phone 1240

**MOON REFUSES TO TURN GREEN, MAN GIVES UP**

PHILADELPHIA—(AP)—Landlord Abraham Welser, who vowed last August 27 he'd stay in jail "until the moon turns green" rather than refund \$1,279 rent overcharges, has vacated his jail cell although the moon stubbornly refused to change color.

**HIGH STANDARD Dry Cleaning BoB Clements**  
111 W. Foster Phone 1342

**HOLLOW BUILDING TILE FACE AND COMMON BRICK**

In Stock for Your Requirements.

**Panhandle Lumber Co., Inc.**  
420 W. Foster Phone One Thousand

**BE SAFE!**

Acidproof glass cloth covered collector tube.

Glass cloth trap will not deteriorate when attacked by engine oil acids—an exclusive AC advantage.

**OIL FILTER SERVICE**

When you buy an oil filter or replacement element be sure it's AC "5-Star Quality." Only AC Elements have an acidproof glass cloth Collector Tube Trap that prevents pollution of the oil stream and assures a free flow of clean oil. That's just one of the new "5-Star Quality" features.

BUY WHERE YOU SEE THIS SIGN

# Attention Truckers!

Effective September 5, 1947

## The New Texas Uniform Traffic Law

Requires Special Truck Equipment!

**FOR SAFETY'S SAKE...**

**SAVE MORE AT WHITE'S!**

- S. O. S. FIREGUARD 1-QT. EXTINGUISHER Complete with Fluid and Bracket ..... \$9.95
- DIRECTIONAL SIGNALS Complete Set, Two Double-Face and Two Single-Face, Fingerprint Control, and Wire ..... \$12.95
- REFLECTORS Glass and Plexiglass Types, Amber and Red. As Low As ..... 39¢
- TRUCK LIGHT Three One-Way Lamps, Red ..... \$1.39
- FUSEES Fifteen-Minute, Red ..... 19¢
- 7, 8 and 9. CLEARANCE AND MARKER LAMPS As Low As ..... 34¢
- TRUCK MIRRORS 17" Arm, 5" Adjustable Head. Regular \$1.69 Value ..... 69¢
- REFLECTOR FLARES Fold Compactly, Set of Three in Bracket ..... \$9.95
- OIL BURNING FLARES Set of Three in Metal Case ..... \$3.98
- RED DANGER FLAGS Metal Staff, Extra Quality ..... 39¢

The items above, required under the new Texas law for various types of trucks, have been checked by the State Testing Laboratory and have met all of the requirements for sale.

**WHITE'S Auto Stores**  
THE HOME OF GREATER VALUES

102 S. Cuyler Phone 1140

**DANCE**

Every Night From 9 to 12

We have your favorite Wurlitzer selection.

Beer by the Case. Budweiser on Tap.

**Belvedere Club**  
DANCING EVERY NIGHT  
PHONE 9555  
ON BORGER HWY.

**HILL and HILL**

65 GNS 339 219  
86 Pf. 5th Pint

**ROSES**

60 GNS 365 235  
90.5 Pf. 5th Pint

**FULTON COUNTY**

A Fine Light Bodied Whiskey Made From Choice Grain 100 Proof 295 5th

**WE NOW HAVE BEER STUBBY**  
Bottles and Cans

Fine for Cooking 12 and 13%. Limited Quantity

**WINE** 5th 29c

**SIR DAVID** 51% Straight Whiskey 86 Pf. 219 Pint

**CLOVER LIQUOR STORE**  
Pampa's Leading Package Store  
Across From Six's Pig Stand  
T. Elmer Francis, Owner  
817 S. Cuyler Phone 1870

**Marine Pilot, Forced Down in China, Safe**

TSINGTAO, China—(AP)—Lieut. Richard A. Winters of Gordon, Neb., Marine pilot forced down in bad weather Aug. 27, returned here today—safe and unharmed—after a fortnight in "protective custody" of Chinese Communists.

He appeared weary due to lack of sleep but otherwise well.

**WHAT IS YOUR DANCE I. Q.?**  
See The Pampa News Sunday, Sept. 14

**BACK IN BUSINESS**  
American Junk Co.  
609 S. Cuyler  
Highest prices paid for scrap iron, junk batteries and metals.

**Professional Pharmacy**  
RICHARD DRUG  
107 W. Kingmill Phone 1240

**PRESENTING**  
Introducing Her Excellency

**BULOVA**  
21 Jewels \$49.50

\$49.50 to \$195.00

**ZELE'S**  
107 N. Cuyler

**OUR BOARDING HOUSE WITH MAJOR HOOPLE**



The Marine flier made a forced landing on a beach at Goose Point, 60 miles northeast of Tsingtao. He was one of three forced down by weather and fuel shortages. The other two were rescued.

Since his disappearance, the U. S. Navy conducted extensive searches in the Goose Point area and attempted to contact Chinese Communists by means of radio and letters to Communist headquarters at Chefoo.

Three days later, several Communist representatives approached a landing party and informed officers that Winters was unharmed

but held in "protective custody" at some distance inland.

A landing party was fired upon the previous day by "hostile, guerrilla groups" described by the Navy as presumably Communist. The Marines returned fire, destroyed Winters' plane and withdrew without casualty. The scene was some 100 miles northeast of government military operations against the Communists.

Ninety percent of the milk sold in American cities is pasteurized.

Douglas fir trees grow as large as 12 to 15 feet in diameter and 300 feet tall.

**Market Briefs**

**STOCK AVERAGES**  
(Compiled by The Associated Press)

30 Ind. 15 Rails, 15 Util. 60 Stock	Net Change	.. A	.. 1	.. D	.. 2	.. D	.. 1
Thurs. 100	.. 1	.. 2	.. 3	.. 4	.. 5	.. 6	.. 7
Previous Day	.. 8	.. 9	.. 10	.. 11	.. 12	.. 13	.. 14
Week Ago	.. 15	.. 16	.. 17	.. 18	.. 19	.. 20	.. 21
Month Ago	.. 22	.. 23	.. 24	.. 25	.. 26	.. 27	.. 28
Year Ago	.. 29	.. 30	.. 31	.. 32	.. 33	.. 34	.. 35
1947 High	.. 36	.. 37	.. 38	.. 39	.. 40	.. 41	.. 42
1947 Low	.. 43	.. 44	.. 45	.. 46	.. 47	.. 48	.. 49
1946 High	.. 50	.. 51	.. 52	.. 53	.. 54	.. 55	.. 56
1946 Low	.. 57	.. 58	.. 59	.. 60	.. 61	.. 62	.. 63

**WALL STREET STOCKS**  
NEW YORK, Sept. 11—(AP)—Special stocks such as textiles and distillers exhibited a fair amount of strength in today's market while many leaders ran out of buying power.

An early fast run-up was succeeded by a slowdown when prices tapered. There were subsequent hardening periods and active intervals. Top markets, in a number of cases, were reduced in the majority of cases at the close and a number of pivots reverted to the minus column. Transfers for the five hours were around \$50,000 shares.

Better performed included U. S. Smelting (on a raised dividend), Wyandotte, Westport, Fidelity, Schaefer, National Distillers, Lowenstein, Goodrich, U. S. Gypsum, American Telephone, Air Reduction, American Smelting, Union Carbide and Johnson, Steels, motors, rails and oils were narrow.

Occasional stumblers were Sears, Roebuck, Bethlehem, Douglas Aircraft, American Can (at a 1947 low), Santa Fe, Deere, Westinghouse and Owens-Illinois.

**NEW YORK STOCKS**  
By The Associated Press

Am Airlines	.. 61	.. 87 1/2	.. 9	.. 87 1/2
Am Tel & T	.. 102	.. 159 1/2	.. 109 1/2	.. 133 1/2
Am Woolen	.. 131	.. 45 1/2	.. 42 1/2	.. 44 1/2
Acadama Cop.	.. 45	.. 34 1/2	.. 34 1/2	.. 34 1/2
Atchafalpa	.. 5	.. 82 1/2	.. 82 1/2	.. 82 1/2
Aviation Corp.	.. 16	.. 5 1/2	.. 5	.. 5
Brantley Steel	.. 12	.. 87 1/2	.. 85 1/2	.. 85 1/2
Brantley Airway	.. 5	.. 87 1/2	.. 87 1/2	.. 87 1/2
Chrysler Corp.	.. 49	.. 59	.. 58 1/2	.. 58 1/2
Cont Motors	.. 15	.. 7 1/2	.. 7 1/2	.. 7 1/2
Cont Oil Del.	.. 5	.. 45 1/2	.. 45	.. 45
Curtiss Wright	.. 21	.. 57 1/2	.. 55 1/2	.. 55 1/2
Prescott Sulph.	.. 25	.. 37 1/2	.. 40	.. 40 1/2
Gen Motors	.. 31	.. 58 1/2	.. 57 1/2	.. 58
Gen Elec	.. 24	.. 39 1/2	.. 39 1/2	.. 39 1/2
Goodrich	.. 1	.. 64 1/2	.. 62 1/2	.. 62 1/2
Greyhound Corp.	.. 32	.. 10	.. 9 1/2	.. 9 1/2
Hall Oil	.. 17	.. 68 1/2	.. 66 1/2	.. 68 1/2
Houston Oil	.. 8	.. 54 1/2	.. 52 1/2	.. 52 1/2
Int Harv	.. 56XD	.. 81 1/2	.. 80 1/2	.. 81 1/2
Kan City South	.. 3	.. 22 1/2	.. 22	.. 22 1/2
Lockheed Air	.. 1	.. 12 1/2	.. 12 1/2	.. 12 1/2
Mo Kan Tex	.. 18	.. 5 1/2	.. 5 1/2	.. 5 1/2
Montg Ward	.. 22XD	.. 14 1/2	.. 14 1/2	.. 14 1/2
Natl Gypsum	.. 4	.. 19 1/2	.. 19 1/2	.. 19 1/2
No Am Aviat	.. 9	.. 88 1/2	.. 87 1/2	.. 88 1/2
Ohio Oil	.. 26	.. 16 1/2	.. 15 1/2	.. 15 1/2
Packard Motor	.. 32	.. 47 1/2	.. 45	.. 45 1/2
Pan Am Airway	.. 37	.. 10 1/2	.. 10	.. 10 1/2
Panhandle P	.. 8	.. 8 1/2	.. 8 1/2	.. 8 1/2
Pennoy (JC)	.. 6	.. 44 1/2	.. 44	.. 44
Phillips Pet	.. 8	.. 57 1/2	.. 57 1/2	.. 57 1/2
Plymouth Oil	.. 11	.. 49 1/2	.. 49 1/2	.. 49 1/2
Pure Oil	.. 15	.. 25 1/2	.. 25	.. 25 1/2
Radio	.. 61	.. 6 1/2	.. 6 1/2	.. 6 1/2
Republic Steel	.. 22	.. 26 1/2	.. 26 1/2	.. 26 1/2
Seas	.. 38	.. 37	.. 36 1/2	.. 36 1/2
Shinola	.. 45	.. 14 1/2	.. 15 1/2	.. 16
Socomec Vacuum	.. 48	.. 16 1/2	.. 16 1/2	.. 16 1/2
South Pac	.. 20	.. 42 1/2	.. 42 1/2	.. 42 1/2
S O Cal	.. 22	.. 14 1/2	.. 14 1/2	.. 14 1/2
S O Ind	.. 22	.. 39 1/2	.. 39 1/2	.. 39 1/2
S O NJ	.. 75	.. 7 1/2	.. 7 1/2	.. 7 1/2
Sun Oil	.. 1	.. 44 1/2	.. 44 1/2	.. 44 1/2
Tex Co	.. 22	.. 60	.. 59 1/2	.. 59 1/2
Tex Gulf Prod	.. 5	.. 15 1/2	.. 15 1/2	.. 15 1/2
Tex Gulf Sulph	.. 8	.. 54 1/2	.. 52 1/2	.. 52 1/2
Tex Pac C & O	.. 3	.. 34	.. 33 1/2	.. 33 1/2
Tide Wat A Oil	.. 9	.. 20 1/2	.. 20 1/2	.. 20 1/2
U S Rubber	.. 12	.. 20 1/2	.. 20 1/2	.. 20 1/2
U S Steel	.. 48	.. 70 1/2	.. 69 1/2	.. 69 1/2
U T Tel	.. 4	.. 44 1/2	.. 44 1/2	.. 44 1/2
Woolworth	.. 9	.. 46 1/2	.. 46 1/2	.. 46 1/2

**FORT WORTH LIVESTOCK**  
FORT WORTH, Sept. 11—(AP)—Cattle, 2,400; calves 1,300; fairly active mostly steady; 100-lb. calves, 20-25; strong; common to medium steers, yearlings and heifers 13.00-22.00; few good light yearlings to medium; medium to good fat cows 14.00-17.00; bulls 11.00-16.00; good and choice fat calves 18.00-22.00; common to medium calves 13.00-18.50; stocker calves, yearlings and steers; mostly, 16.00-21.00; one load feeder; steers 22.00; stockers 12.50 down.

Hogs 400; slow, butcher hogs mostly 40-50c higher; top 50c higher at 29.00, new record at this market; most good and choice 28-29 lb 28.75-29.00; other weights 28.50 down; sows 20.00-25.00; pigs 20.00-25.00.

**KANSAS CITY LIVESTOCK**  
KANSAS CITY, Sept. 11—(AP)—(USDA)—Cattle 4,500; calves, 800; steers fully steady to 25 higher, all other killing classes generally steady; some strength on good bulls; stockers and feeders in light supply, steady; around 4 loads medium and good grain fed steers 26.75-29.00; common and medium grass killing steers mainly 19.00-22.00; majority of grassers went to order; buyers, scattering of common and medium grass heifers 15.00-20.00; small number top medium and good cows 15.00-18.00; common and medium 13.75-16.00; medium and good killing calves 22.00-22.00; good and choice vealers and heavy calves 23.00; 4 loads good fleshy feeder steers 24.00; small lots medium and good stockers 17.00-21.00.

Hogs 2300; fairly active, uneven, 150-lb and up 25-25 1/2; 160-lb and up 25-25 1/2; good and choice 180-250 lb 30.25-35; 250-325 lb 29.25-30.25; sows steady to 25 higher, mostly 23.00-27.25; few 27.50.

**FORT WORTH GRAIN**  
FORT WORTH, Sept. 11—(AP)—Wheat No. 1 hard 2.82 1/2-90%.

Barley No. 1 1.84-80.  
Oats No. 2 red, 1.32-34.  
Corn No. 2 white, 3.03-08.  
Sorghum No. 2 yellow milled per 100 lbs 3.81-92.

**CHICAGO WHEAT**  
CHICAGO, Sept. 11—(AP)—Close

Sep	2.78 1/2	2.81	2.73 1/2	2.74-2.75
Dec	2.80-2.79	2.87	2.76	2.77-2.77 1/2
May	2.75-2.77	2.85	2.74 1/2	2.75
July	2.59 1/2	2.65 1/2	2.53	2.53 1/2-2.53

**CHICAGO PRODUCE**  
CHICAGO, Sept. 11—(AP)—(USDA)—Potatoes: Supplies moderate; demand rather slow; Idaho-Oregon, Russet Burbanks \$4.35; Nebraska Bliss Triumphs \$3.60; Washington long Whites \$3.75; Russet Burbanks \$3.40-4.25; Wisconsin Bliss Triumphs \$3.40-3.50; Chippewas \$2.50, long whites \$2.57 1/2.

**NEW ORLEANS FUTURES**  
NEW ORLEANS, Sept. 11—(AP)—Trade and speculative buying advanced coffee futures here today. Closing prices were steady, \$1.20 to \$1.95 a bale higher.

Open	High	Low	Close
October	31.57	31.96	31.57
December	31.39	31.76	31.39
March	31.36	31.80	31.36
May	31.16	31.57	31.16
July	30.40	30.90	30.40

**Plains Motor Says:**  
If an old man likes a young girl—  
That's his business.  
And if they want to get married—  
That's their business.

But if you're looking for better lubrication, gasoline, tires, tire repairs, and all-round service—  
**THAT'S OUR BUSINESS**  
See us for tune-ups, overhauls, Skelly products.  
**PLAINS MOTOR CO.**  
DE SOTO-PLYMOUTH  
113 N. Frost. Phone 280

**School Lunch Program Under U.S. Supervision**

AUSTIN—(AP)—The Texas school lunch program will go under federal supervision this year because the 50th Legislature's \$27,000 appropriation for supervision of the program was \$73,000 short of what federal officials consider necessary. Gov. Beauford H. Jester said yesterday.

The federal government is contributing \$2,980,000 to the Texas program this year, in addition to which Texas schools will receive \$500,000 worth commodities through the Department of Agriculture, Jester said.

The Governor said he was informed of the need for federal supervision of the program by John J. Slaughter, field supervisor of the food distribution branch of the Department of Agriculture.

Of the 2,148,000 passenger cars produced in the United States in 1946, only 144,000 were exported, or 6.7 percent.

**JEFF D. BEARDEN**  
Representing  
**THE FRANKLIN LIFE INSURANCE CO.**  
Phone 47 Pampa, Texas

**CHRYSLER AIRTEMP**  
HEATING — AIR CONDITIONING  
PERFECT YEAR 'ROUND TEMPERATURE  
**Texas Electric Appliance Co.**  
208 W. Browning Phone 747

**YES, IT'S ZALE'S FOR**

**DIAMONDS**

**Watches**

- \$100: Six lustrous diamonds in uniquely fashioned bridal rings of 14K yellow gold.
- \$275: Three diamonds set in each daintily beaded ring of gleaming platinum.
- \$50: Elaborately carved rings of 14K yellow gold. Engagement ring set with quality diamond.
- \$135: Mojaetic diamond nestled in cluster of smaller diamonds, mounting of 14K gold.
- \$35: Acorable 14K gold wedding ring set with five sparkling diamonds, surrounded by beading.
- \$310: Exquisite bridal pair of 14K gold, crown with ten diamonds in fish-tail design.
- \$75: Three gorgeous diamonds enhanced by dainty filigree in 14K gold dinner ring.
- \$100: 14K gold earrings, each with brilliant diamond in tiffany setting.
- \$150: For him, distinguished 14K yellow gold mounting with large quality diamond.

**4 EASY WAYS TO BUY:**  
CASH • OPEN CHARGE • LAY-AWAY • UP TO A YEAR TO PAY

All Prices Include Tax

Pampa News, Friday, Sept. 12, 1947 Page 1

Anywhere Yes, We Do Anytime

**COMMERCIAL PHOTOGRAPHY**

All Types of Work Solicited  
PHONE 307 FOR APPOINTMENT

**QUALLS PAMPA STUDIO**  
PORTRAITS  
Commercials Kodaks  
802 W. Foster

**BIRTHSTONE FOR**

**SEPTEMBER**

MON	TUE	WED	THU	FRI	SAT
1	2	3	4	5	6
7	8	9	10	11	12
13	14	15	16	17	18
19	20	21	22	23	24
25	26	27	28	29	30

**Sapphire**

Sapphire is the beautiful gem for September... its brilliant shades of blue symbolizing truth, wisdom and constancy. Zale's feature sapphires in distinctive rings for men, women and children, each mounted to enhance the natural sparkle.

FLOWER: ASTER

**\$3.95**  
Daintily designed child's ring set with sapphire stone.

**\$22.50**  
In a masculine gold setting, this glistening blue stone is an ideal birthday gift.

**\$9.75**  
Azure blue stone ring for her unusually mounted in yellow gold.

**EASY CREDIT TERMS**  
All Prices Include Tax

**DIAMOND IMPORTERS**  
**ZELE'S Jewelers**  
107 N. Cuyler

**BIRTHSTONES FOR EACH MONTH**

January	.. Garnet
February	.. Amethyst
March	.. Aquamarine
April	.. Diamond
May	.. Emerald
June	.. Pearl
July	.. Ruby
August	.. Sardonyx
September	.. Sapphire
October	.. Opal
November	.. Topaz
December	.. Zircon

**DIAMOND IMPORTERS**  
**ZELE'S Jewelers**  
107 N. Cuyler

**MAIL ORDER COUPON**

PLEASE SEND ME THE ITEMS INDICATED BELOW:

Name \_\_\_\_\_  
Address \_\_\_\_\_  
Town \_\_\_\_\_ State \_\_\_\_\_  
Case ( ) Charge ( ) C.O.D. ( )



Classified ads accepted until 9 p.m. for week day publication...

CLASSIFIED RATES
Minimum ad (three 6-point lines)
Day - 20c per line per day

3-Special Notices
BROWN BELL PEST CONTROL
Exterminating, fumigating, termite control...

EAGLE RADIATOR SHOP
516 W. Foster Phone 547

THE SKELLY STATION
1412 W. Wilks, A. B. Converse

4-Lost and Found
LOST-Feather tick near Jr. High or Humble camp on Amarillo Hwy...

5-Garages and Service
You'll be assured of factory trained mechanics when your work goes to Pursley.

SALES AND SERVICE
Complete brake service for trucks and trailers

Greggton Parts Shop
108 S. Hobart Phone 874

Schneider Motor Garage
Motor and body repair

COLE'S Automotive Service
You come in now and have your work done before cold weather...

P. K. ONE-STOP
Gasoline prices cut: Regular 20 1/2c; Ethyl 22c...

Clay Bullock Body Shop
518-20 W. Foster Phone 143

C. V. Newton and Son
Complete line Standard Products

Walter Nelson Service Station
across from Junior High School...

Hank Breining, Lefors, Texas
Wash Lubrication, Garage Service

115 N. Ward Phone 1310
Jack Vaughn "66" Service
Wash - Lubrication - Phone 5659

McWilliams Motor Co.
Pampa Safety Lane - Ph. 101

6-Transportation
PRIVATE car leaving for Stockton Calif., Mon., Sept. 15...

11-Male Help
Doorman wanted between ages 18 and 45...

12-Female Help
WANT-Woman or girl to care for two children in my home...

14-Sales People Wanted
SALESMAN OPPORTUNITY - Leading food company offers PERMANENT position...

17-Situation Wanted
EXPERIENCED stenographer desires permanent position...

18-Business Opportunity
Wanted - Solicitor for Gray and surrounding counties...

19-Home Wanted
Well stocked suburban grocery with 2 houses, all for \$10,000...

20-Home Wanted
FOR SALE-Drive-in filling station, one cabin and full block of land...

21-Home Wanted
FOR SALE-Campbell St. grocery, stock included...

22-Home Wanted
GOODYEAR SHOE REPAIR
Air-conditioned for your comfort.

23-General Service
Montgomery Ward Service on all electrical appliances.

24-Home Wanted
FOR SALE-10 ft. x 10 ft. building, 10 ft. x 10 ft. building...

25-Home Wanted
FOR SALE-10 ft. x 10 ft. building, 10 ft. x 10 ft. building...

25-General Service (Cont.)

I. G. Hudson - Gen. Dirt Work
309 N. Ballard, Phone 1951

Kotaro Water Well Service
You've called before. Call us once and you'll call some more.

26-Financial
MONEY TO LOAN
PAMPA PAWN SHOP

27-Beauty Shop
WHERE are you going pretty today? To Imperial Beauty Shop...

28-Wall Paper & Paint
The best protection to your home is paint and wall paper...

29-Paper Hanging
FOR YOUR painting and paper hanging work, call 1059-W for Norman...

30-Floor Sanding
FAMILY FLOOR SANDING CO.
Portable equipment, go anywhere.

31-Plumbing and Heating
Des Moore Tin Shop, Ph. 102

32-Upholstering and Furniture Repair
J. E. Bland Upholstery Shop

33-Curtain Cleaning
CURTAINS, panels, lace tablecloth, draperies...

34-Rug-Furniture Cleaning
Always Better The "57" Way

35-Tailoring
Tip Top Cleaners-Phone 889

36-Laundry
Wiggins Laundry-Ph. 1134

37-Photography
KODAK finishing service at Berry Pharmacy...

38-Electrical Service
Electric Supply Co.
Contractors, Appliances, Repairs

39-Home Wanted
FOR SALE-10 ft. x 10 ft. building, 10 ft. x 10 ft. building...

40-Home Wanted
FOR SALE-10 ft. x 10 ft. building, 10 ft. x 10 ft. building...

41-Home Wanted
FOR SALE-10 ft. x 10 ft. building, 10 ft. x 10 ft. building...

42-Home Wanted
FOR SALE-10 ft. x 10 ft. building, 10 ft. x 10 ft. building...

43-Home Wanted
FOR SALE-10 ft. x 10 ft. building, 10 ft. x 10 ft. building...

44-Home Wanted
FOR SALE-10 ft. x 10 ft. building, 10 ft. x 10 ft. building...

45-Home Wanted
FOR SALE-10 ft. x 10 ft. building, 10 ft. x 10 ft. building...

46-Home Wanted
FOR SALE-10 ft. x 10 ft. building, 10 ft. x 10 ft. building...

47-Home Wanted
FOR SALE-10 ft. x 10 ft. building, 10 ft. x 10 ft. building...

48-Home Wanted
FOR SALE-10 ft. x 10 ft. building, 10 ft. x 10 ft. building...

49-Home Wanted
FOR SALE-10 ft. x 10 ft. building, 10 ft. x 10 ft. building...

50-Home Wanted
FOR SALE-10 ft. x 10 ft. building, 10 ft. x 10 ft. building...

51-Home Wanted
FOR SALE-10 ft. x 10 ft. building, 10 ft. x 10 ft. building...

52-Home Wanted
FOR SALE-10 ft. x 10 ft. building, 10 ft. x 10 ft. building...

53-Home Wanted
FOR SALE-10 ft. x 10 ft. building, 10 ft. x 10 ft. building...

54-Home Wanted
FOR SALE-10 ft. x 10 ft. building, 10 ft. x 10 ft. building...

55-Home Wanted
FOR SALE-10 ft. x 10 ft. building, 10 ft. x 10 ft. building...

56-Home Wanted
FOR SALE-10 ft. x 10 ft. building, 10 ft. x 10 ft. building...

57-Home Wanted
FOR SALE-10 ft. x 10 ft. building, 10 ft. x 10 ft. building...

58-Home Wanted
FOR SALE-10 ft. x 10 ft. building, 10 ft. x 10 ft. building...

59-Home Wanted
FOR SALE-10 ft. x 10 ft. building, 10 ft. x 10 ft. building...

60-Home Wanted
FOR SALE-10 ft. x 10 ft. building, 10 ft. x 10 ft. building...

61-Home Wanted
FOR SALE-10 ft. x 10 ft. building, 10 ft. x 10 ft. building...

62-Home Wanted
FOR SALE-10 ft. x 10 ft. building, 10 ft. x 10 ft. building...

63-Home Wanted
FOR SALE-10 ft. x 10 ft. building, 10 ft. x 10 ft. building...

64-Home Wanted
FOR SALE-10 ft. x 10 ft. building, 10 ft. x 10 ft. building...

65-Home Wanted
FOR SALE-10 ft. x 10 ft. building, 10 ft. x 10 ft. building...

66-Home Wanted
FOR SALE-10 ft. x 10 ft. building, 10 ft. x 10 ft. building...

67-Home Wanted
FOR SALE-10 ft. x 10 ft. building, 10 ft. x 10 ft. building...

68-Home Wanted
FOR SALE-10 ft. x 10 ft. building, 10 ft. x 10 ft. building...

69-Home Wanted
FOR SALE-10 ft. x 10 ft. building, 10 ft. x 10 ft. building...

70-Home Wanted
FOR SALE-10 ft. x 10 ft. building, 10 ft. x 10 ft. building...

71-Home Wanted
FOR SALE-10 ft. x 10 ft. building, 10 ft. x 10 ft. building...

72-Home Wanted
FOR SALE-10 ft. x 10 ft. building, 10 ft. x 10 ft. building...

73-Home Wanted
FOR SALE-10 ft. x 10 ft. building, 10 ft. x 10 ft. building...

74-Home Wanted
FOR SALE-10 ft. x 10 ft. building, 10 ft. x 10 ft. building...

75-Home Wanted
FOR SALE-10 ft. x 10 ft. building, 10 ft. x 10 ft. building...

76-Home Wanted
FOR SALE-10 ft. x 10 ft. building, 10 ft. x 10 ft. building...

77-Home Wanted
FOR SALE-10 ft. x 10 ft. building, 10 ft. x 10 ft. building...

78-Home Wanted
FOR SALE-10 ft. x 10 ft. building, 10 ft. x 10 ft. building...

79-Home Wanted
FOR SALE-10 ft. x 10 ft. building, 10 ft. x 10 ft. building...

80-Home Wanted
FOR SALE-10 ft. x 10 ft. building, 10 ft. x 10 ft. building...

81-Home Wanted
FOR SALE-10 ft. x 10 ft. building, 10 ft. x 10 ft. building...

82-Home Wanted
FOR SALE-10 ft. x 10 ft. building, 10 ft. x 10 ft. building...

83-Home Wanted
FOR SALE-10 ft. x 10 ft. building, 10 ft. x 10 ft. building...

84-Home Wanted
FOR SALE-10 ft. x 10 ft. building, 10 ft. x 10 ft. building...

85-Home Wanted
FOR SALE-10 ft. x 10 ft. building, 10 ft. x 10 ft. building...

86-Home Wanted
FOR SALE-10 ft. x 10 ft. building, 10 ft. x 10 ft. building...

87-Home Wanted
FOR SALE-10 ft. x 10 ft. building, 10 ft. x 10 ft. building...

88-Home Wanted
FOR SALE-10 ft. x 10 ft. building, 10 ft. x 10 ft. building...

89-Home Wanted
FOR SALE-10 ft. x 10 ft. building, 10 ft. x 10 ft. building...

90-Home Wanted
FOR SALE-10 ft. x 10 ft. building, 10 ft. x 10 ft. building...

91-Home Wanted
FOR SALE-10 ft. x 10 ft. building, 10 ft. x 10 ft. building...

92-Home Wanted
FOR SALE-10 ft. x 10 ft. building, 10 ft. x 10 ft. building...

93-Home Wanted
FOR SALE-10 ft. x 10 ft. building, 10 ft. x 10 ft. building...

55-Turkish Baths-Massages

LUCILLE'S BATH CLINIC
Let us explain our method of riding the body of rheumatism...

61-Household
Let Us Furnish Your Home
Olin Beauty Gas Range...

62-Home Wanted
FOR SALE-10 ft. x 10 ft. building, 10 ft. x 10 ft. building...

63-Home Wanted
FOR SALE-10 ft. x 10 ft. building, 10 ft. x 10 ft. building...

64-Home Wanted
FOR SALE-10 ft. x 10 ft. building, 10 ft. x 10 ft. building...

65-Home Wanted
FOR SALE-10 ft. x 10 ft. building, 10 ft. x 10 ft. building...

66-Home Wanted
FOR SALE-10 ft. x 10 ft. building, 10 ft. x 10 ft. building...

67-Home Wanted
FOR SALE-10 ft. x 10 ft. building, 10 ft. x 10 ft. building...

68-Home Wanted
FOR SALE-10 ft. x 10 ft. building, 10 ft. x 10 ft. building...

69-Home Wanted
FOR SALE-10 ft. x 10 ft. building, 10 ft. x 10 ft. building...

70-Home Wanted
FOR SALE-10 ft. x 10 ft. building, 10 ft. x 10 ft. building...

71-Home Wanted
FOR SALE-10 ft. x 10 ft. building, 10 ft. x 10 ft. building...

72-Home Wanted
FOR SALE-10 ft. x 10 ft. building, 10 ft. x 10 ft. building...

73-Home Wanted
FOR SALE-10 ft. x 10 ft. building, 10 ft. x 10 ft. building...

74-Home Wanted
FOR SALE-10 ft. x 10 ft. building, 10 ft. x 10 ft. building...

75-Home Wanted
FOR SALE-10 ft. x 10 ft. building, 10 ft. x 10 ft. building...

76-Home Wanted
FOR SALE-10 ft. x 10 ft. building, 10 ft. x 10 ft. building...

77-Home Wanted
FOR SALE-10 ft. x 10 ft. building, 10 ft. x 10 ft. building...

78-Home Wanted
FOR SALE-10 ft. x 10 ft. building, 10 ft. x 10 ft. building...

79-Home Wanted
FOR SALE-10 ft. x 10 ft. building, 10 ft. x 10 ft. building...

80-Home Wanted
FOR SALE-10 ft. x 10 ft. building, 10 ft. x 10 ft. building...

81-Home Wanted
FOR SALE-10 ft. x 10 ft. building, 10 ft. x 10 ft. building...

82-Home Wanted
FOR SALE-10 ft. x 10 ft. building, 10 ft. x 10 ft. building...

83-Home Wanted
FOR SALE-10 ft. x 10 ft. building, 10 ft. x 10 ft. building...

84-Home Wanted
FOR SALE-10 ft. x 10 ft. building, 10 ft. x 10 ft. building...

85-Home Wanted
FOR SALE-10 ft. x 10 ft. building, 10 ft. x 10 ft. building...

86-Home Wanted
FOR SALE-10 ft. x 10 ft. building, 10 ft. x 10 ft. building...

87-Home Wanted
FOR SALE-10 ft. x 10 ft. building, 10 ft. x 10 ft. building...

88-Home Wanted
FOR SALE-10 ft. x 10 ft. building, 10 ft. x 10 ft. building...

89-Home Wanted
FOR SALE-10 ft. x 10 ft. building, 10 ft. x 10 ft. building...

90-Home Wanted
FOR SALE-10 ft. x 10 ft. building, 10 ft. x 10 ft. building...

91-Home Wanted
FOR SALE-10 ft. x 10 ft. building, 10 ft. x 10 ft. building...

92-Home Wanted
FOR SALE-10 ft. x 10 ft. building, 10 ft. x 10 ft. building...

93-Home Wanted
FOR SALE-10 ft. x 10 ft. building, 10 ft. x 10 ft. building...

94-Home Wanted
FOR SALE-10 ft. x 10 ft. building, 10 ft. x 10 ft. building...

95-Home Wanted
FOR SALE-10 ft. x 10 ft. building, 10 ft. x 10 ft. building...

96-Home Wanted
FOR SALE-10 ft. x 10 ft. building, 10 ft. x 10 ft. building...

97-Home Wanted
FOR SALE-10 ft. x 10 ft. building, 10 ft. x 10 ft. building...

98-Home Wanted
FOR SALE-10 ft. x 10 ft. building, 10 ft. x 10 ft. building...

99-Home Wanted
FOR SALE-10 ft. x 10 ft. building, 10 ft. x 10 ft. building...

100-Home Wanted
FOR SALE-10 ft. x 10 ft. building, 10 ft. x 10 ft. building...

101-Home Wanted
FOR SALE-10 ft. x 10 ft. building, 10 ft. x 10 ft. building...

102-Home Wanted
FOR SALE-10 ft. x 10 ft. building, 10 ft. x 10 ft. building...

103-Home Wanted
FOR SALE-10 ft. x 10 ft. building, 10 ft. x 10 ft. building...

104-Home Wanted
FOR SALE-10 ft. x 10 ft. building, 10 ft. x 10 ft. building...

105-Home Wanted
FOR SALE-10 ft. x 10 ft. building, 10 ft. x 10 ft. building...

106-Home Wanted
FOR SALE-10 ft. x 10 ft. building, 10 ft. x 10 ft. building...

107-Home Wanted
FOR SALE-10 ft. x 10 ft. building, 10 ft. x 10 ft. building...

108-Home Wanted
FOR SALE-10 ft. x 10 ft. building, 10 ft. x 10 ft. building...

109-Home Wanted
FOR SALE-10 ft. x 10 ft. building, 10 ft. x 10 ft. building...

110-Home Wanted
FOR SALE-10 ft. x 10 ft. building, 10 ft. x 10 ft. building...

111-Home Wanted
FOR SALE-10 ft. x 10 ft. building, 10 ft. x 10 ft. building...

112-Home Wanted
FOR SALE-10 ft. x 10 ft. building, 10 ft. x 10 ft. building...

113-Home Wanted
FOR SALE-10 ft. x 10 ft. building, 10 ft. x 10 ft. building...

114-Home Wanted
FOR SALE-10 ft. x 10 ft. building, 10 ft. x 10 ft. building...

115-Home Wanted
FOR SALE-10 ft. x 10 ft. building, 10 ft. x 10 ft. building...

116-Home Wanted
FOR SALE-10 ft. x 10 ft. building, 10 ft. x 10 ft. building...

117-Home Wanted
FOR SALE-10 ft. x 10 ft. building, 10 ft. x 10 ft. building...

118-Home Wanted
FOR SALE-10 ft. x 10 ft. building, 10 ft. x 10 ft. building...

119-Home Wanted
FOR SALE-10 ft. x 10 ft. building, 10 ft. x 10 ft. building...

120-Home Wanted
FOR SALE-10 ft. x 10 ft. building, 10 ft. x 10 ft. building...

121-Home Wanted
FOR SALE-10 ft. x 10 ft. building, 10 ft. x 10 ft. building...

122-Home Wanted
FOR SALE-10 ft. x 10 ft. building, 10 ft. x 10 ft. building...

123-Home Wanted
FOR SALE-10 ft. x 10 ft. building, 10 ft. x 10 ft. building...

124-Home Wanted
FOR SALE-10 ft. x 10 ft. building, 10 ft. x 10 ft. building...

125-Home Wanted
FOR SALE-10 ft. x 10 ft. building, 10 ft. x 10 ft. building...

126-Home Wanted
FOR SALE-10 ft. x 10 ft. building, 10 ft. x 10 ft. building...

127-Home Wanted
FOR SALE-10 ft. x 10 ft. building, 10 ft. x 10 ft. building...

128-Home Wanted
FOR SALE-10 ft. x 10 ft. building, 10 ft. x 10 ft. building...

129-Home Wanted
FOR SALE-10 ft. x 10 ft. building, 10 ft. x 10 ft. building...

J. WADE DUNCAN

Real Estate and Cattle
Duncan Bldg. Phone 312
41 Years in the Panhandle

NOW IS THE TIME TO BUY A HOME
Lovely home, newly insulated asbestos shingle siding...

61-Household
Let Us Furnish Your Home
Olin Beauty Gas Range...

62-Home Wanted
FOR SALE-10 ft. x 10 ft. building, 10 ft. x 10 ft. building...

63-Home Wanted
FOR SALE-10 ft. x 10 ft. building, 10 ft. x 10 ft. building...

64-Home Wanted
FOR SALE-10 ft. x 10 ft. building, 10 ft. x 10 ft. building...

65-Home Wanted
FOR SALE-10 ft. x 10 ft. building, 10 ft. x 10 ft. building...

66-Home Wanted
FOR SALE-10 ft. x 10 ft. building, 10 ft. x 10 ft. building...

67-Home Wanted
FOR SALE-10 ft. x 10 ft. building, 10 ft. x 10 ft. building...

68-Home Wanted
FOR SALE-10 ft. x 10 ft. building, 10 ft. x 10 ft. building...

69-Home Wanted
FOR SALE-10 ft. x 10 ft. building, 10 ft. x 10 ft. building...

70-Home Wanted
FOR SALE-10 ft. x 10 ft. building, 10 ft. x 10 ft. building...

71-Home Wanted
FOR SALE-10 ft. x 10 ft. building, 10 ft. x 10 ft. building...

72-Home Wanted
FOR SALE-10 ft. x 10 ft. building, 10 ft. x 10 ft. building...

73-Home Wanted
FOR SALE-10 ft. x 10 ft. building, 10 ft. x 10 ft. building...

74-Home Wanted
FOR SALE-10 ft. x 10 ft. building, 10 ft. x 10 ft. building...

75-Home Wanted
FOR SALE-10 ft. x 10 ft. building, 10 ft. x 10 ft. building...

76-Home Wanted
FOR SALE-10 ft. x 10 ft. building, 10 ft. x 10 ft. building...

77-Home Wanted
FOR SALE-10 ft. x 10 ft. building, 10 ft. x 10 ft. building...

78-Home Wanted
FOR SALE-10 ft. x 10 ft. building, 10 ft. x 10 ft. building...

79-Home Wanted
FOR SALE-10 ft. x 10 ft. building, 10 ft. x 10 ft. building...

80-Home Wanted
FOR SALE-

### Legal Records

**Marriage Licenses**  
A license to wed was granted yesterday to Clarence W. Carnahan and Frances McCarr in the offices of County Clerk Charlie Thut.

**Realty Transfers**  
Gladys Goodnight Horne and husband, Howard B. Horne, to Mrs. F. A. Spielman. All of Lot number 12 situated in Block 2 of the Benedict addition of the city of Pampa.

William T. Fraser and wife, A. Medina C. Fraser, to W. A. Rankin. The northerly 50 feet of Lot number 4 and all of Lot number 5 situated in Block 36 of the Fraser addition

of the city of Pampa.

John I. Bradley and wife, Deane Bradley, to Thomas B. Barron and wife, Pearl V. Barron. All of Lot number 11 situated in Block 8 of the Wynnelea addition of the city of Pampa.

Beulah Little to R. G. Burger and wife, Gladys M. Burger. All of Lot number 8 situated in Block 12 of the North addition of the city of Pampa.

**Divorce Suits Filed**  
The following divorce suits were filed yesterday in the offices of District Clerk Dee Patterson:  
Clarke O. Gilbert versus Frances Ellara Gilbert.  
Bonnie D. Kennedy versus W. B. Kennedy.  
Mima Wiley versus M. M. Wiley.

### Murder Trial

(Continued From Page 1)  
Jurors.  
Judge Fuchs said he was just as eager as the defense to hold trial here. He said he believed that every man should be tried in the community in which the crime occurred.

But he said that so many of the talesmen had pre-formed ideas he did not know if a jury could be obtained. He pointed out that of today's 60 men—57 of whom were questioned (three were excused by the court from serving), 39 had pre-formed opinion in the case.

Of the others who disqualified, nine were opposed to the death penalty, and one said he did not believe in insanity as a defense. Others were disqualified by either the state or defense lawyers, or other reasons.

As the trial went into a night session for the third consecutive night, tensions were noticeably frayed. Defense attorneys and the judge clashed twice over difficulties. They also clashed over the possible change of venue.

Attorneys' voices rasped with the effort of hour after hour questioning of jurors on their opinions, their beliefs and various phases of the law.

Dr. Ross was dressed in the same suit he has worn since the trial opened Tuesday. Mrs. Ross, who has been present daily, sitting in the audience, was dressed in a new black and white print. After the supper recess, she did not return to the courtroom, but remained in the hallway with friends.

A local newspaper, the New Braunfels Zeitung, printed in German, came out with its weekly edition today. The Ross story buried on Page 11 under a standing head "Lokales." It was brief.

The sole juror selected yesterday was Erhardt Kaniz, 45, a textile mill worker, father of three children.

The state has questioned each juror closely on the number of children he has and their ages.

The star witness for the state is expected to be 13-year-old Ann York, the only member of the York family to escape the ambush slaying May 25 which took the lives of her father, Willard H. York, 39; her mother, Mrs. Gertrude Q. York, 43; her brother, John, 9; and her grandmother, Mrs. Mary York, 67.

Dr. Ross, a former friend of York's, is charged with murder in the four deaths and with wounding Ann York who escaped with a hip injury. The trial now under way specifically concerns death of Mrs. Gertrude York.

The defense is pleading insanity. If Ross is acquitted, Judge Fuchs said, he will not be turned free, but will be committed to an institution from which he can not be released until after another Comal County Grand Jury passes on his sanity. In that event, he will then face the remaining murder charges, he said.

### Mainly About Pampa and Her Neighbor Towns

Mrs. B. A. Sumner is recovering from an emergency operation performed at Worley Hospital.

**WANT TO RENT**—2-bedroom home in north or east part of town; unfurnished or furnished. Family of three. Best of references. Permanent. Excellent care guaranteed. Phone 1536W.

Gary Bryan is reported to be recovering rapidly after undergoing surgery in the Worley Hospital.

**FOR SALE**—antique beads and dresset. Must be sold today. 1121 Terrace.

Wayne Coffin, son of Mr. and Mrs. T. H. Coffin of 630 N. Sumner, has returned from Duke University, Durham, N. C., and has gone to Amarillo where he will be assistant pastor of the Polk Street Methodist Church. He was graduated from Pampa High School in 1940 and attended college in Georgetown, Tex., and after graduation there he attended Duke University where he received his B. D. Degree.

Now available at the Foggy—fall gabardine skirts and dresses. 1153 Terrace.

Mrs. Joe Hooge returned to her home yesterday after undergoing surgery in the Worley Hospital. 3 adults want transportation to Los Angeles or San Diego, Calif., about Sept. 17. Share expense and driving. Call 362W.

Mrs. A. L. Prigmore is reported to be recovering from a recent illness.

**Female Help Wanted**—Apply at Your Laundry and Dry Cleaners. No phone calls.

Mrs. L. B. Scruggs, Mrs. Joe R. Foster, and Mrs. T. J. Worrell were business visitors in Amarillo Thursday and visited Mrs. R. E. Gatlin.

Your wedding cake our specialty. Pampa Baking Co., 348 W. Foster.

John David Gatlin of Amarillo, son of Mrs. Joe Foster, has enrolled in San Marzano Military Academy.

**Speech arts and personality course.** Children five and up. Term Sept. 15 to Dec. 15. Kathryn Vincent Steele, 117 N. Starkweather. Phone 1782J.

Miss Margie Carney, daughter of Mr. and Mrs. C. E. Carney of 333 Perry, was graduated from St. Anthony's School of Nursing in Amarillo on September 9.

Mr. and Mrs. J. M. Wright and son, Jim, left Monday for St. Louis, Mo., where they took Danny Williams to the Grawolf Laboratory and X-Ray Technique. They plan to be away two weeks and will visit relatives in Arkansas before returning home.

**Clegg Instant Ambulance, P. 245J.** See Ralph Puckett at 322 N. Cuyler for your Sinclair Gasoline and Oil.

Mr. and Mrs. Harry Hughes of White Deer are the parents of a six pound, eight ounce girl born Wednesday in Pampa Hospital. She has been named Patsy Jean.

Visit your City Barber Shop in Skellytown. Two barbers there to serve you.

Jerry Culberson, twin son of Mr. and Mrs. E. M. Culberson, was returned to his home after an eye operation in St. Anthony's Hospital, Amarillo.

Portable radios that play either on the battery or at home on the electric current. Modern Appliance Co.

Mrs. Vernon Hobbs is recovering nicely following minor surgery.

**WANTED**—Solicitors for Gray and adjoining counties by an old established firm located in Pampa. Salary and commission. Write Box G. F., care Pampa News.

Miss Kathryn Homer, 1327 Charles, will leave Sunday to re-enroll at Oklahoma University, Norman, where she will be a Senior in business administration.

Fuller Brushes, 514 Cook, P. 2152J. Bob Clemmons was taken to the Veteran's Hospital, Amarillo, Thursday afternoon for medical care.

Bobby Clemmons and Ann Spencer left this morning for Denison where they will attend Texas State College for Women.

Mr. and Mrs. Bill Chapman and family of Comanche, Okla., are spending the weekend in the home of Mr. and Mrs. Joe Essary, 516 N. Nelson. Mrs. Chapman is the sister of Mrs. Essary.

MRS. HOPKINS TO WED  
NEW YORK—P—With only a few friends and relatives attending, Mrs. Louise O'Neil Macy Hopkins, widow of Harry Hopkins, will wed Geoffrey McNair Gates, New York City architect, at 2 today at Ardmore, Pa.

### R. L. Meyers Is Named Director of Shamrock Band

SHAMROCK (Special)—R. L. Meyers, a native West Texan, has been hired as director of the Irish Band. Selected by members of the city council and board of trustees of the Shamrock Independent School District last weekend, Mr. Meyers began his work with the band Monday morning.

Mr. Meyers was born and reared in Lamessa. He has had six years of experience in band directing, one year in Levelland High School and five years in Jal, N. M.

After serving three years in the Army, he received his discharge in October, 1943. Since that time he has played and arranged for orchestras in Denver, Colo., Omaha, Neb., Los Angeles, Calif., and more recently in New Orleans, La.

Mr. Meyers is unmarried. He resides at the Johnson Hotel.

The Irish Band will make its first appearance of the current school term next Friday night at the Shamrock-Estelline football game. "We'll probably be a little 'ragged' for this first public appearance, but

we hope to be able to make a better impression at the second game," the new director said.

Mr. Meyers issued a plea for beginners. We will have a marching band of about 40 members this year, he said, and only one of that number is a Senior. We are in need of new students, however, so that we can help build the band for future years.

The new bandmaster succeeds Ed Chenette who resigned recently to take over direction of the high school band at Clovis, N. M.

The invisible larvae of the clothes moth, and not the moths themselves, do the damage to clothing.

**WHAT IS YOUR DANCE I Q?**  
See The Pampa News Sunday, Sept. 14

**NEW PLASTIC CURTAINS**  
For your windows and shower.

Also complete supply of ironing board covers and pads.

**HOME BUILDERS SUPPLY**  
312 W. Foster Phone 1414

**Boys and Girls**  
Don't Forget Heard's "Birthday Club"  
Saturday Morning, 10:00  
AT THE Rex Theatre

Open 1:45 Adm. 44c  
**TODAY AND SAT.**  
A DRAMATIC CHALLENGE TO YOUR HEART!

ROBERT and RAYMOND HAKIM  
**HENRY FONDA**  
**BARBARA BEL GEDDES**  
VINCENT PRICE  
ANN DVORAK  
**THE LONG NIGHT**  
AN ANATOLE LITVAK PRODUCTION  
RELEASED BY RKO RADIO PICTURES, INC.  
Produced by ROBERT and RAYMOND HAKIM  
and ANATOLE LITVAK  
Directed by ANATOLE LITVAK  
Screen Play by JOHN WEXLEY  
Based on a Story by JACQUES VIOI

PLUS  
"Diamond Gals"  
Paramount News

Open 1:45 Adm. 30c  
**REX**  
TODAY AND SAT.  
Swing High, Hot and Handsome!

**SWING THE WESTERN WAY**

COLUMBIA PICTURE  
"THE HOOSIER HOTSHOTS"  
(HEZZIE, KEN, GIL AND GARY)

PLUS  
Jack Armstrong No. 14 and Color Cartoon

Open 1:45 Adm. 25c  
**CROWN**  
TODAY AND SAT.

**Tex Ritter**  
in  
**"OKLAHOMA RAIDERS"**

PLUS  
"Daughter of DON Q." No. 4  
and "MESS PRODUCTION"  
A Color Cartoon

### BOWLING

In the opening of the Industrial League last night, George Thompson of the MNT Blueprint Co. rolled high single with a 212. Ted Evans of Hawthorne's Service rolled the high series with a 333.

**INDUSTRIAL LEAGUE**  
Hawthorne Auto Service  
R. Smith ..... 128 128 128 384  
Parsley ..... 108 108 108 324  
Hutchins ..... 104 108 109 321  
Evans ..... 204 102 102 408  
Hawthorne ..... 188 129 121 396  
Totals ..... 694 747 752 2171

J. C. Daniel Motor Co.  
W. Smith ..... 141 141 156 438  
Kozart ..... 140 162 134 436  
Swain ..... 151 156 109 416  
Purdy ..... 204 102 102 408  
May ..... 141 151 158 450  
Totals ..... 697 758 759 2114

M. N. T. Blueprint Co.  
Tomlin ..... 174 174 156 486  
Duminy ..... 150 150 130 390  
Sims ..... 81 95 415 591  
Tilgherson ..... 129 129 129 387  
Thompson ..... 212 138 156 506  
Totals ..... 736 786 785 2207

Lewis Hardware  
Turner ..... 120 124 128 372  
Moore ..... 186 157 163 506  
Potnam ..... 129 129 129 387  
Blenholder ..... 127 136 152 415  
Totals ..... 724 746 782 2252

Leaders  
Leder ..... 185 165 159 483  
Smith ..... 145 124 163 432  
Walker ..... 128 128 128 384  
Potnam ..... 129 129 129 387  
Duminy ..... 139 139 129 397  
Totals ..... 726 755 758 2239

Lawrence & Redman  
Cramer ..... 126 126 126 378  
Crump ..... 126 126 126 378  
Potnam ..... 129 129 129 387  
Arp ..... 124 126 126 376  
Redman ..... 145 169 160 474  
Totals ..... 750 691 643 2103

McWilliams Motor Co.  
Crimson ..... 140 142 166 448  
Carithers ..... 139 129 156 424  
Arp ..... 124 126 126 376  
Gray ..... 147 169 132 448  
Schubert ..... 108 125 138 371  
Donnell ..... 176 163 140 479  
Totals ..... 731 768 758 2257

Culberson Chevrolet  
Corbett ..... 121 124 102 347  
Hedgcock ..... 124 87 132 343  
Culberson ..... 123 126 86 335  
Schubert ..... 108 125 138 371  
Bodhorst ..... 163 122 111 396  
Totals ..... 649 624 531 1811

**NEED SEAT COVERS?**  
Two things you can't beat—Superior Quality at low cost—We guarantee both in our famous SPRADLING BABY LABEL SEAT COVERS—Come by and let us prove it.

**HALL & PINSON TIRE CO.**  
301 W. Foster Phone 255

You've Been Asking for It, So Here It is!  
**Suspenseful Modern Melodrama!**  
**DICK POWELL**  
**EVELYN KEYES**  
**JOHNNY O'Clock**

**REX THEATRE** SUN. MON. TUE.

**SUPER CHEVROLET SERVICE**  
Your Car Can't YELL BEFORE IT'S HURT

So it's up to you to keep your car in first-class shape. So there is no need to yell. Stop in for a check up today and eliminate those car troubles before they get out of control.

Bring it back to Culberson Chevrolet

ESTABLISHED 1927  
**CULBERSON CHEVROLET CO.**  
YOUR REPAIRS on the BUDGET PAY PLAN  
212 North Ballard 366-PHONE-367 Pampa, Texas

**Professional Pharmacy**  
**RICHARD DRUG**  
107 W. Kingmill Phone 1210

**Pampa News Want Ads Get Results**

**Professional Pharmacy**  
**RICHARD DRUG**  
107 W. Kingmill Phone 1210

**Professional Pharmacy**  
**RICHARD DRUG**  
107 W. Kingmill Phone 1210

**Professional Pharmacy**  
**RICHARD DRUG**  
107 W. Kingmill Phone 1210

**WE MOVE**  
Anything -- Anywhere -- Anytime  
Let Us Save You Real Money!  
We have been moving buildings from the railway way installations to Higgins disaster area.

**Excellent References**  
**Bingham and Sons**  
**HOUSEMOVERS**  
Box 243 Lefors Phone 30W

**TRAIN FOR SUCCESS WITH I.C.S.**  
CHEMISTRY and PLASTICS COURSES  
BUSINESS COURSES  
ELECTRICAL COURSES  
WELDING COURSES  
AVIATION and INTERNAL COMBUSTION ENGINES COURSES

CIVIL ENGINEERING  
ARCHITECTURAL and MINING COURSES  
DRAFTING COURSES  
COMMUNICATIONS COURSES  
MARINE and STEAM ENGINEERING COURSES  
MECHANICAL COURSES  
RADIO COURSES  
PLUMBING COURSES  
RAILROAD COURSES

Approved Under GI Bill of Rights for VETERANS of WORLD WAR II  
Local Representative  
**FLOYD LACEKY**  
831 Parker Street Amarillo, Texas

**REPAIR SERVICE**  
Refrigeration—Domestic or Commercial  
General Appliance Service  
Radio Repair  
**Texas Electric Appliance Co.**  
208 . Browning Phone 747

**APPLICATION FOR LIQUOR PERMIT**  
The undersigned is an applicant for a Retail Liquor permit from the Texas Liquor Control Board and hereby gives notice by publication of such application in accordance with provisions of Section 10, House Bill No. 77, Acts of the Second called session of the 44th Legislature, designated as the Texas Liquor Control Act.  
"The Retail Liquor permit applied for will be used in the conduct of a business at Corner Drug Store, 908 Alcock St., Pampa, Texas.  
By D. A. Hunt

**HAROLD WRIGHT**  
Insurance Agency  
"Right Service"  
109 W. Foster Phone 22

**As Advertised in LIFE**  
I Pre-Test Poll-Parrots!

Yes sir, the best base-runner on our team. Pre-Tests Poll-Parrot shoes for your child. You see when new materials, constructions and lasts are wear-tested before approved your youngster is assured of maximum foot protection. And, groups of active boys and girls have Pre-Tested Poll-Parrots for over 17 years. Another reason why they're your best buy.

**\$4.95 to \$6.95**

**Poll-Parrot SHOES**  
For Boys and Girls  
Age 4 to 12

**SMITH'S QUALITY SHOES**  
207 N. Cuyler Phone 1440

**ACME BEER**  
It's Here... The Finest ACME ever brewed...

Shortages are a thing of the past... quality ingredients are again available. And, now, with pride, we bring you the crowning achievement of nearly a century of skill and experience... the finest ACME ever brewed!

Pour it into your glass... see how it sparkles with the jewelled brilliance of rare yellow sapphires! Hold it to the light... watch a million gleaming bubbles dancing in the sun! Taste it... and revel in the tangy, zestful flavor of the original, light, dry beer!

Again, ACME sets the beer-pace for America... and the world!

Brewed in Los Angeles by ACME BREWING CO. Bohemian Distributing Company LOS ANGELES 11

**Professional Pharmacy**  
**RICHARD DRUG**  
107 W. Kingmill Phone 1210