



### Bombers Carrying Out Patrols In Latin America

By CHANDLER DIEHL  
 GUATEMALA CITY, March 19 (AP)—United States bombing planes, ready for any emergency, now are carrying out important patrols in defense of Central America and the Panama Canal from an air base "somewhere in Guatemala."

Bearing heavy loads of explosives, the planes maintain a ceaseless vigil far out over the tossing waters of the Pacific and the sunny Caribbean.

The base from which they are operating was established with the cooperation of the Guatemalan government which, like other Central American republics, declared war upon the Axis powers after the Japanese sneak-attack upon Pearl Harbor.

Lieut. Gen. Frank M. Andrews, heading the Caribbean defense command, has just completed an inspection of the base accompanied by high-ranking officers of the United States Air Force and American newspapermen—the first correspondents permitted to visit the airfield.

The group arrived in the field in the general's plane, with Andrews himself at the controls, to find the place a beehive of activity.

Guatemalan workmen—many of them Mayans—were busy engaged in improving facilities at the field and constructing quarters for ground troops who have been assigned to guard the base and equipment.

United States planes were coming and going constantly on their patrol missions. Morale obviously was high and the bomber crews—under command of Major Samuel Gurney, Jr., of Ridgewood, N. J.—were keyed for action.



**FIVE FORMER PAMPANS** now stationed at Camp Roberts in California are pictured above. They are, left to right: John Plummer, Bobby Karr, J. O. Russell, Leon Harris, and Mark Fahle. Plummer is now a corporal and the other four are acting corporals. All five are in the field artillery. Before enlisting, Plummer was employed

### SIDE GLANCES



"Oh, are you sure your husband lost \$26 in the poker game last night? George told me everybody came out even!"

### KPDN

**The Voice Of the Oil Empire**  
 THURSDAY AFTERNOON

4:30—Melody Parade.  
 5:00—Ernest Winkler.  
 5:30—Musical Interlude.  
 5:45—News with Harry Wahlberg—Studio.  
 6:00—Treasury Star Parade.  
 6:15—Western Serenade.  
 6:30—Monitor Views of the News.  
 6:45—Tune Tabloid.  
 7:00—Farming for Victory.  
 7:15—Our Town.  
 7:30—Mailman's All-Request Hour.  
 8:00—Bordertown Barbecue.  
 8:15—Sunday Serenade.  
 8:30—Jeff Guthrie—Studio.  
 8:45—Jale of Paradise.  
 9:00—Life and the Land.  
 9:15—Masters of Music.  
 9:30—Best Bands in the Land.  
 9:45—Lum and Abner.  
 10:00—Goodnight.

**FRIDAY**

7:30—Rise and Shine.  
 8:00—Behind the Scenes—Studio.  
 8:05—Musical Interlude.  
 8:15—Melody Mart.  
 8:30—Timely Events.  
 8:45—Vocal Varieties.  
 9:00—Sam's Glee of the Air.  
 9:15—What's Happening Around Pampa—Studio.  
 9:30—Dance Tempo.  
 9:45—News Bulletin—Harry Wahlberg—Studio.  
 10:00—The Woman's Page of the Air.  
 10:10—The Trading Post.  
 10:25—Interlude.  
 10:45—News with Tex DeWeese—Studio.  
 11:00—The Borger Hour.  
 11:15—The Little Show.  
 11:30—Light of the World—WKY.  
 11:45—White's School of the Air.  
 12:00—Jerry Seane Frolics.  
 12:15—Lum and Abner.  
 12:30—News with Tex DeWeese—Studio.  
 12:45—Latin Serenade.  
 1:00—Trouble Shooters—WKY.  
 1:15—Aunt Susie—WKY.  
 1:30—Low Preston—WKY.  
 1:45—Judy and Jane—WKY.  
 2:00—Sign Off.  
 4:30—Sign on!  
 4:30—Melody Parade.  
 5:00—Music From the Navy Lands.  
 5:30—The Trading Post.  
 5:45—Musical Interlude.  
 5:45—News with Harry Wahlberg—Studio.  
 6:00—10-2-4 Ranch.  
 6:15—Dance Orchestra.  
 6:30—Monitor Views of the News.  
 6:45—Tune Tabloid.  
 7:00—To Be Announced.  
 7:15—Our Town.  
 7:30—All-Request Hour.  
 8:00—Grace Allen and George Burns.  
 8:30—Jeff Guthrie—Studio.  
 8:45—Jale of Paradise.  
 9:00—Gaelic Harmonies.  
 9:15—Master of Music.  
 9:30—Best Bands in the Land.  
 9:45—Lum and Abner.  
 10:00—Goodnight!

**BUY DEFENSE STAMPS**  
 Read the Classified Ads

**CLOSE OUT OF OLD PAINT**  
 VARNISHES & ENAMEL 1/2 PRICE  
 Sold Only for Cash  
 HOME BUILDERS SUPPLY  
 312 W. Foster Phone 1414

### Seeing Eye Dogs Can't Be Obtained With Match Folders

MORRISTOWN, N. J.—Scores of blind people throughout the country are being encouraged by a false rumor to save empty match folders, in the vain hopes that they may thereby secure Seeing Eye dogs.

Hundreds of letters and inquiries have been received by the philanthropic school here, which educates dogs to guide blind men and women, from people who are saving these match folders in order to aid a blind person. They claim that they have heard authoritatively that from 5,000 to 150,000 of these folders are required.

"There is no truth in the current rumor that a quantity of empty paper match folders can be exchanged for a Seeing Eye dog by a blind person," Mrs. Harrison Eustis, founder and honorary president of The Seeing Eye, said today.

In an emphatic denial of the rumor, Mrs. Eustis pointed out that "this cruel hoax which started about two years ago on the eastern coast and has now spread all over the country, was for a time stopped, but apparently it has come to life again. Such a rumor might result in great disappointment to a blind person, who, after months of careful saving of the match folders, finds that they have no effect whatsoever in determining his elig-

ibility for a Seeing Eye dog." "And blind person between the ages of 18 and 50," concluded Mrs. Eustis, "may apply for consideration by The Seeing Eye, and complete information may be secured by writing the organization at Morristown, N. J."

—BUY VICTORY STAMPS—  
 U. S. passenger traffic by train in 1941 was greater than in any year since 1929.

## HUNDREDS OF BRANDS AT LOWER PRICES MAKES FURR FOOD

<b>STEAK</b> FANCY BABY BEEF TENDER SIRLOIN POUND ... <b>25c</b>	<b>A BIG GUN</b> IN HOME DEFENSE	<b>ROAST</b> SUNRAY BEEF CHOICE CHUCK POUND ... <b>25c</b>
---	-------------------------------------	---

<b>SHORT RIBS</b> BABY BEEF POUND ... <b>15c</b>	<b>SALE 4-H BABY BEEF</b> A 4-H Calf, raised by a Gray County boy, was purchased by your Furr Food Store at the Amarillo Fat Stock Show. You can buy this high quality beef at no additional charge. This is another Furr Food service that costs our customers not one cent additional.	<b>T-BONE STEAK</b> BABY BEEF POUND ... <b>29c</b>
--	---	--

<b>HAMS</b> SHANK HALF POUND ... <b>25c</b>	<b>SUNRAY QUALITY</b>
---	-----------------------

<b>STEAK</b> SUNRAY LOIN ... LB. <b>29c</b>	<b>STEAK</b> SUNRAY ROUND ... LB. <b>38c</b>
<b>BACON</b> FURR FOOD OR DECKER'S IOWANA Sliced Pound ... <b>27c</b>	

Corn Flakes Ralston, Large Box 2 For <b>15c</b>	BLEACH QT. LGE. BOX 10 <b>23c</b>	CLOROX PINT 11 <b>11c</b>	COFFEE Gateway, Guaranteed, LB. 20 <b>20c</b>
MY-T-FINE Dessert 3 Pkgs. <b>14c</b>	DREFT LGE. BOX 23 <b>23c</b>	MUSTARD QT. 10 <b>10c</b>	PEACHES Libby's Breakfast, No. 2 Can 19 <b>19c</b>
TOMATOES No 2 Cans 2 For <b>21c</b>	VEL LGE. BOX 23 <b>23c</b>	CRISCO 3 Lb. Can 71 <b>71c</b>	VIENNA SAUSAGE Armour's, 2 CANS 21 <b>21c</b>
BEANS Ranch Style 3 tall Cans <b>25c</b>	KLEX REG. SIZE 10 <b>10c</b>	KOTEX 12's REG. BOX 25 <b>25c</b>	FACIAL TISSUE 3 Boxes Lores 200 Count 29 <b>29c</b>
RICE Blue Rose 2 Lbs. <b>17c</b>	RINSO LGE. BOX 23 <b>23c</b>	BEANS 2 Pounds Pinto 12 <b>12c</b>	BLACK-EYE PEAS 3 Tall Cans White Swan 23 <b>23c</b>

<b>DRESSING</b> BLUE BONNET SALAD DRESSING QUART JAR ... <b>25c</b>	<b>BAKERY SPECIALS</b> CAKES Burnt Sugar LGE. SIZE <b>23c</b> ICE CREAM 2 Pints Assorted <b>25c</b> DONUTS 2 Dozen Fresh <b>25c</b>	<b>JAM</b> SILVER BAND ASSORTED FLAVORS 2-LB. JAR ... <b>29c</b>
---	--	--

<b>PORK &amp; BEANS</b> 2-24-oz. Cans White Swan <b>19c</b>	<b>P&amp;G or Crystal White SOAP</b> , 5 Regular Bars <b>19c</b>	<b>TOMATO JUICE</b> Swift's 46 Ounce Can <b>19c</b>	<b>KLEENEX</b> 200 Count 2 Boxes <b>25c</b>
<b>HOMINY</b> 2 No. 2 Cans White Swan <b>15c</b>	<b>MILK</b> Carnation 3 tall Cans <b>27c</b>	<b>KIRKS</b> Toilet Soap <b>3 Bars 14c</b>	<b>BABY FOOD</b> Clapp's Strained 2 Cans <b>17c</b>
<b>MORTON'S SALT</b> 2 Round, Plain or Iodized <b>15c</b>	<b>Shredded Wheat</b> Kellogg's Regular Box <b>11c</b>	<b>PALMOLIVE</b> Toilet Soap <b>3 Bars 23c</b>	<b>COFFEE</b> Chase & Sanborn, LB. <b>33c</b>
<b>SHORTENING</b> 3 Lb. Bakerite <b>69c</b>	<b>Chredded Ralston</b> 12 Ounce Box <b>11c</b>	<b>Scott's TISSUE</b> 1000 sheets 2 rolls <b>15c</b>	<b>Salad Dressing</b> Bestyett, Quart <b>33c</b>
<b>APPLE JELLY</b> 2 Pound Jar Bliss <b>21c</b>	<b>OATS</b> National 3 Minute 3 Lb. <b>21c</b>	<b>CLEANSER</b> Sunbrite 2 Cans <b>9c</b>	<b>COCOA</b> Hershey's Pound Can <b>17c</b>

<b>FRUITS &amp; VEGETABLES</b> GARDEN FRESH EACH DAY	<b>ORANGE JUICE</b> ADAMS BIG 46-OZ. CAN <b>25c</b>
<b>CABBAGE</b> NEW TEXAS GREEN LB. <b>1 1/2</b>	<b>MARSHMALLOWS</b> ANGELUS LARGE PKG. ... <b>11c</b>
<b>ORANGES</b> California Medium Size DOZEN ... <b>15c</b>	<b>RAISINS</b> 3 POUNDS SEEDLESS <b>25c</b>
<b>LEMONS</b> California DOZEN ... <b>15c</b>	<b>OXYDOL</b> LGE. BOX ... <b>21c</b>
<b>SPUDS</b> 10 LB. RED McCLURES <b>13c</b>	<b>BIG A FLOUR</b> GUARANTEED 24-LB. SACK ... <b>73c</b>

<b>APPLES</b> Large Size Delicious DOZEN ... <b>39c</b>	<b>SPINACH</b> Fresh Clean POUND <b>5c</b>
<b>YAMS</b> EAST TEXAS POUND <b>2 2/3c</b>	<b>COFFEE</b> FURR'S SUPREME TASTE-RITE, GUARANTEED, LB. <b>25c</b>
<b>VEGETABLES</b> 3 BUNCHES Carrots - Beets or Radishes ... <b>10c</b>	<b>CLEANSER</b> LIGHTHOUSE TALL CAN ... <b>3 1/2c</b>

<b>PEANUT BUTTER</b> Morris Supreme Qt. Jar ... <b>27c</b>	<b>FLOUR</b> FURR'S FINEST BAKING TESTED 24 Pound Sack ... <b>93c</b>
<b>BANNER OLEO</b> POUND ... <b>14c</b>	<b>ARMOUR'S MILK</b> 3 Tall Cans ... <b>25c</b>

WE RESERVE THE RIGHT TO LIMIT QUANTITIES AND REVISE PRICES DOWNWARD!

# FURR FOOD STORE

*Don't Forget*

## MAXWELL HOUSE

**PUTS MONEY IN YOUR POCKET**

... WHEN YOU GET THE 2-LB. TIN

To save money and save shopping trips—ask for the thrifty 2-lb. tin of Maxwell House. And remember, today that famous blue Maxwell House tin gives you more flavor for your money because ...

- There's more flavor in the Maxwell House blend—it's far richer in highland-grown, extra-flavor coffees.
- All the flavor is brought out by the special "Radiant Roast" process.
- No flavor can escape—it's sealed, roaster-fresh, in the famous super-vacuum tin.
- No waiting—Maxwell House is already precisely ground for every method—Drip, Regular, Glass-Maker.

**GOOD TO THE LAST DROP!**

A Product of General Foods







### Boys May Still Enroll In CCC

Despite the war, the Civilian Conservation Corps is still being continued and applications will still be taken here for enrollment in the corps.

Gray county boys desiring to enroll can make application at the office of Mrs. Willie Baines, county case worker, at the court house. Last enrollment here was in December, when two boys were sent to the camp at Memphis.

The CCC has a policy of continuous selection, and Texas is being called upon to fill a quota of 3,000. Boys who are 17 to 23½ years old, of good character and unemployed, are eligible for six months enlistment and may re-enroll for as long as 24 months. The local county welfare office accepts applications.

The CCC does not want boys who are needed in war industrial or agricultural programs at home; for their selection would defeat the purpose of the present program.

The selective service classification of a boy does not affect his eligibility, although boys expecting to be called momentarily will not be accepted.

"The CCC is now a 'Victory program,'" J. S. Murchison, director of CCC selection for Texas, stated. "All enrollees will be more intensely trained than ever before, and this service will aim to prepare these boys to cope effectively with the difficult work ahead."

Boys who enroll must agree to being sent to any camp in the continental United States. Texas enrollees are now serving in Arizona, California, Colorado, Nevada, New Mexico, Utah, and Wyoming, as well as in Texas.

### \$600 Paid For Polled Heifer

FORT WORTH, March 19 (AP)—R. J. Lowe of Huntsville, Ala., paid \$600 for a polled Hereford heifer, donated by Johnson brothers of Jacksboro for Red Cross relief. It was top price paid for a female at the annual polled Hereford auction conducted in connection with the Southwestern Exposition and Fat Stock show.

The first twenty bulls sold brought an average of \$328. Top for a bull was \$625, paid by H. E. Hill and Sons of Fairfield to Orvil Kuhlmann of North Platte, Neb., for Don Domino. Royal Duchess Ninth, bought by Mrs. Lowe from Paul Bize of Julian, Neb., brought the second highest price for a female, \$550.

Last night's horse show results included:

Fine harness class: First, Bourbon Rex, owned by Oak Hill farm, Ardmore, driven by Kern Johnson; second, Sewanee Stonevall, owned by Betty Sue Strake, Houston, driven by Eddie Nix.

Walking class: First, Watch Me, owned by Picke S. Burton, Dallas, ridden by Roe Ewing; second, Fit For A King, owned by Dr. and Mrs. Hugh Beaton, Fort Worth, ridden

### FAMOUS NOVELIST

Answer to Previous Puzzle

**HORIZONTAL**

1 Pictured writer, John  
7 He is a famous (pl.)  
14 Spanish dance  
15 Marionette.  
16 Note in Guido's scale.  
17 Yellow bugle plant.  
18 April (abbr.).  
19 City in Holland.  
20 Napoleonic marshal who led retreat from Russia.  
21 Symbol for selenium.  
23 Half an em.  
24 Sesta.  
25 At sea.  
27 Enticer.  
28 Asiatic moraceous herb.  
29 Color.  
31 Tree.  
32 Universal language.

**VERTICAL**

33 Pronoun.  
35 Noise.  
36 Rot by exposure.  
39 160 square rods.  
42 To tear.  
44 Born.  
46 Pint (abbr.).  
48 Poy.  
49 Girl's name.  
50 Roof final.  
52 Marble used as a shooter.  
53 Before.  
54 Belonging to

place.  
8 Rotate.  
10 Horse power (abbr.).  
11 Device for opening.  
12 Obstruct again.  
13 Russian plain.  
22 Doctor (abbr.).  
28 Employer.  
30 River in England.  
31 Dressed animal pelt.  
34 Lunatic.  
35 Gloomy.  
37 Japanese badge.  
38 Snakes.  
40 Tree.  
41 Algerian native cavalryman.  
43 Nostrils.  
45 Reedlike grass.  
47 In pairs.  
51 Greek letter.  
55 Opera (abbr.).  
57 Lower case (abbr.).

**ACROSS**

2 CHRYSLER  
3 THE  
4 PIONEER  
5 ARE  
6 THE  
7 SHOT  
8 AN  
9 THE  
10 THE  
11 THE  
12 THE  
13 THE  
14 THE  
15 THE  
16 THE  
17 THE  
18 THE  
19 THE  
20 THE  
21 THE  
22 THE  
23 THE  
24 THE  
25 THE  
26 THE  
27 THE  
28 THE  
29 THE  
30 THE  
31 THE  
32 THE  
33 THE  
34 THE  
35 THE  
36 THE  
37 THE  
38 THE  
39 THE  
40 THE  
41 THE  
42 THE  
43 THE  
44 THE  
45 THE  
46 THE  
47 THE  
48 THE  
49 THE  
50 THE  
51 THE  
52 THE  
53 THE  
54 THE  
55 THE  
56 THE  
57 THE  
58 THE  
59 THE

14 15 16 17 18 19 20 21 22 23 24 25 26 27 28 29 30 31 32 33 34 35 36 37 38 39 40 41 42 43 44 45 46 47 48 49 50 51 52 53 54 55 56 57 58 59



### More Movie Actors To Join Military

HOLLYWOOD, March 19 (AP)—Uncle Sam's finger beckoning "I want you" swung toward a new group of motion picture actors today.

If called to military duty they'll join such stars as Second Lieut. James Stewart, Lieut. Comdr. Robert Montgomery, Ensign Wayne Morris and Pvt. Jackie Coogan. The movie industry has sent approximately 1,500 men, ranging from producers to messengers, into the services.

Most of the actors whose numbers were pulled in Tuesday's selective service lottery are in the 36-44 age group. They include Gary Cooper, Clark Gable, George Brent, Humphrey Bogart, James Cagney, Nelson Eddy, Preston Foster, John Mack Brown, Spencer Tracy, Jack Oakie, Roger Pryor, Fredric March, Brian Donlevy, Lloyd Nolan and Fred Astaire.

Mickey Rooney and John Garfield were in the 20-year-old class.

Since its discovery, rubber has gone through this transition of names: koochook, caoutchouc, lead-cater, Indian rubber, india-rubber.

North American Indians contributed the word caucis to the American language.

### Russia Appeals For Allies To Open Offensive

MOSCOW, March 19. (AP)—A renewed appeal to Britain and the United States for opening of an offensive against Germany was sounded today.

The Moscow News, English-language organ published in Kubyshchev, advocated simultaneous attacks with all the forces and resources of the anti-Hitler coalition to capitalize on gains made by the Red Army through the icy winter.

"Not Hitler but the anti-Hitler front can and must determine the future progress of the war," the newspaper said. "This cannot be achieved by invocations and inconsequential speculation about the future organization of the world."

(Stepped-up bombings to involve both British and United States squadrons are the only official indication of a sustained diversion


program in western Europe, although military experts regard a summer invasion of German-occupied Norway and German-Allied Finland from the Arctic sea as a logical possibility.

(War supply aid for Russia is officially stressed. Lord Halifax, British ambassador to Washington, declared in a speech Feb. 26 that the 3,500,000 regular and home-guard troops stationed in Britain were needed for defense against invasion.

(Nevertheless, the German-Freedom radio—a secret continental station—reported German soldiers and laborers were moving to Holland to reinforce the channel coast and "these preparations show Hitler actually expects a landing by British and American troops."

(The broadcaster told residents of Nazi-occupied nations that "if you

There is a DIFFERENCE IN OATS!



NATIONAL OATS  
VITAMIN B1

We Invite Your Inspection

★

Phone 2205

**PAMPA CREAMERY, Inc.**

315 E. ATCHISON

## Tricky Budgets Are Very, Very EASY to BALANCE!

Harris Food has adopted an all-out policy of cooperation in helping every housewife keep those tricky food budgets in balance. We invite you to come to our store every day of the week—you'll have more change to buy Defense Stamps if you trade at Harris Food every day.

--If You Trade Every Day At HARRIS FOOD!

THESE LOW PRICES GOOD FRIDAY THRU MONDAY!



<b>RAISIN BRAN</b> PKG. 10¢	<b>PEACHES</b> Brimfull NO. 2 1/2 CAN 19¢	<b>MILNOT</b> So Rich It Whips 3 Cans For... 21¢
<b>COCOA</b> Our Mothers 2 Lb. Can 19¢	<b>WALNUTS</b> LB. 15¢	<b>COFFEE</b> Bright Early COFFEE POUND 25¢
<b>PINTOS</b> Re-Clean 4 Lbs. For 19¢	<b>Corned Beef</b> Armour's CAN 23¢	
<b>CRISCO</b> 3-LB. CAN 69¢	<b>SALT</b> American REG. 10c PKG. 7¢	
<b>Shortening</b> JEWEL OR VEGETOLE 4-LB. CARTON 65¢		

<b>Carnation MILK</b> 3 TALL CANS 25¢	<b>FLOUR</b> "CARNATION" 24-LB. BEST BY TEST SACK 89¢
<b>HONEY</b> Colorado Extracted 5-Lb. Can 49¢	<b>Green Beans</b> 3 No. 2 Cans 29¢
<b>BACON</b> Pinkney's Chunk LB. 20¢	<b>SPINACH</b> Faultless 2 NO. 2 CANS 25¢
<b>BALOGNA</b> LB. 12 1/2¢	<b>CORN</b> Sweetened Field NO. 2 CAN 10¢
<b>SAUSAGE</b> Armour's Star LB. 20¢	<b>PEAS</b> Fresh Blackeyes 3 Tall Cans 25¢
<b>PORK</b> Salt Jowls LB. 12 1/2¢	<b>FLOOR WAX</b> Stafford's PINT 35¢
<b>BACK BONES</b> LB. 7 1/2¢	<b>P &amp; G SOAP</b> 5 Bars 19¢
<b>BACON</b> Pinkney's Sliced LB. 24 1/2¢	<b>DREFT</b> GIANT SIZE 59¢
<b>KARO</b> Red or Blue Label Lb. Can 33¢	<b>BROOMS</b> 4-Tie EACH 25¢
	<b>COFFEE</b> Bliss 2 Lb. Can 49¢
	<b>BABY FOOD</b> Heinz or Clapp's, Can 7¢
	<b>GRAPE JUICE</b> Nelson or Marco PER PINT 10¢
	<b>FRUITS &amp; VEGETABLES</b>
	<b>CALIFORNIA ORANGES</b> 344 Size 2 Doz. 19¢
	<b>LEMONS</b> Choice 2 Doz. For 29¢
	<b>GREEN ONIONS, or TURNIPS</b> BUNCH 5¢
	<b>SPUDS</b> Reds or Russels U. S. No. 1 Beets, Radishes Carrots 10 LB. BAG 35¢ 3 Bchs. for 10¢
	<b>NEW SPUDS</b> LB. 4 1/2¢
	<b>LETTUCE</b> 2 Crisp Heads 9¢
	<b>CELERY</b> Green Pascal or Bleached—EA. 10¢

**MONTGOMERY WARD**

I'm buying my Easter suit at Wards for as little as \$6 a month!

IT'S STYLED BY BRENT. NO WONDER IT LOOKS GREAT, FITS FINE!

**28<sup>50</sup>**

Brents have everything you want in your new Easter suit! All virgin wool fabrics—for longer wear and that expensive appearance. Careful tailoring—to make them fit properly. Smart styling—to give you that "well-dressed" look. And they come in all the newest patterns: color stripes, diagonals, plaids, hairlines.

Also tailored to your individual measurement for a small extra charge.

**BUY ON TIME! \$6 A MONTH!** Usual down payment and carrying charge.

*Montgomery Ward*

Phone 801 217 - 19 N. Cuyler

**HARRIS FOOD**

REMEMBER: We Are Never Knowingly Undersold!

### Retail Gas Prices Frozen In 19 States

WASHINGTON, March 19 (AP)—Gasoline consumption by 10,000,000 motorists in the east and Pacific northwest was reduced by 20 per cent today, and operations of approximately 100,000 filling stations in the area were limited to a 12-hour day, six-day week.

Supplementing this wartime action, the Office of Price Administration froze the retail gasoline prices in the area at the levels prevailing last Friday and made violations punishable by a maximum \$5,000 fine or one year imprisonment.

The freezing order, which will be in force for at least 60 days, becomes legally effective on Monday, March 23. In issuing the order, Acting Price Administrator John E. Hamm disclosed last night that "serious consideration" was being given to the licensing of all filling stations in the curtailment area as a further measure to guarantee observance of the price regulations.

### Homer Brooks Charged With Draft Dodging

HOUSTON, March 19 (AP)—Assistant U. S. Attorney William R. Eckhardt has asked that Homer Brooks, alias Homer Lester Bartsch, be returned to Houston from New York to stand trial on a federal grand jury indictment of draft dodging.

Brooks, executive secretary of the Communist party in Texas and three times candidate for high public office in this state, was charged by a federal grand jury at Corpus Christi with failure to report for induction into the army on March 4, as ordered by his draft board, and failure to keep the board informed of his correct address.

According to the indictment, which was filed on the federal criminal docket here, Brooks registered with a local board on Dec. 16, 1940, at which time he was 29 years old.

Brooks was arrested in New York, Eckhardt asserted, after he had signed up as a crew member of a ship destined for a foreign voyage. In default of a \$2,500 bond, Brooks was placed in jail in New York.

In 1936 Brooks ran on the Communist ticket for governor. He was a gubernatorial candidate again in 1938, and in 1940 he ran for United States senator. He polled a total of 1,115 votes in the three races.

# THE PAMPA NEWS

(VOL. 39, NO. 294) THURSDAY, MARCH 19, 1942 PAGE 1

### \$3,422 Paid On Remodeling Of City Auditorium

Payment of \$3,422.10 on the remodeling cost of the city hall auditorium was approved by the city commission at its meeting this week.

This means that 75 per cent of the work on the remodeling has been completed. The work began a month ago.

The commission also approved payment of a library bill totaling \$156.40, and of \$41.76 for the recreation project.

The \$41.76 will be the last for that department as the project has been abandoned.

Approved was the substitution of the car of O. J. Payne, water department superintendent, in an insurance policy coverage that formerly applied to a car of John B. Wilkinson, former chief of police.

### Army Seeks Clues In Crash Of Four Pursuit Planes

LIMA, O., March 19 (AP)—The army air corps sought today an explanation of a remarkable coincidence in which four pursuit planes crashed within a half-mile radius at almost the same time.

Pilots of all four died in the flaming wreckage.

Crews to the cause may be found by officials of Patterson field, near Dayton, O., when they examine charred parts being collected by a salvage crew.

The planes, out of Detroit on a mission for the air corps ferry command, came down in a snowstorm late yesterday on farms six miles east of here.

The dead, all second lieutenants, were: Edward H. Saunders, 26, of Lake Village, Ark., flight leader.

Arnel J. Kennedy, 26, of Oklahoma City.

Eugene H. Anderson, of Kewanee, Ill.

Earl A. Houser, 23, of Pesotum, Ill.

Officials said there was evidence one pilot tried to use his parachute but his plane struck the ground before he could bail out.

### Evacuation Of Japs From L. A. Area To Start Next Week

SAN FRANCISCO, March 19 (AP)—Mass evacuation of all Japanese from military zone No. 1 starts early next week with a contingent of 1,000 volunteers from the Los Angeles area, and the army made it clear today that it wants the 2,000-mile-long strategic strip of coastline

cleared with the least possible delay. Lieut.-Gen. J. L. De Witt, head of the western defense command, urged other Japanese to follow the example of the Los Angeles volunteers, saying:

"I desire to make it unmistakably clear that evacuation will be continued with or without such cooperation. With such cooperation, those affected will find their situation much less difficult."

The Los Angeles volunteers are the first evacuation group announced by the army, although voluntary exodus has been reported

gaining momentum. They will help establish homes; agricultural work, schools, churches, a 150-bed hospital, recreational facilities and generally pioneer a reception center at Manzanar, 40 miles south of Bishop in the Owens valley of southeastern California, east of the rugged Sierra Nevada.

There the Japanese will live in prefabricated houses with community kitchens and community baths and probably engage chiefly in agricultural work. The camp eventually will accommodate 10,000 evacuees.

### Oil Well Being Drilled Directly Beneath Capitol

By JOHN B. OWEN OKLAHOMA CITY, March 19 (AP)—The driller's bit edged toward a treasure of black gold beneath the state's capitol today on a small unexplored island in Oklahoma City's petroleum sea.

From a spot directly in front of the domeless statehouse where a column of seven giant derricks lines the capitol plaza, the driller angled through the earth more than a mile to a spot directly beneath the building itself.

Soon, he hopes to tap a rich oil reservoir to add to the nation's war resources and pour more petroleum

profits into the state treasury. The state has profited \$3,000,000 from 23 wells on its holdings in the famous Oklahoma City field alone, but with derricks surrounding the statehouse this was the first time the soil beneath it had been disturbed.

Conservation officials expected no gusher because years of producing the pool have reduced the pressure, but W. J. Armstrong, corporation commissioner, said the well might be expected to make 400 to 500 barrels a day and should produce for years to come.

While oil-wise Sooners paid little heed, the tall steel was planted several weeks ago squarely in front of the only pitifully small flower bed left on the derrick-studded seven-block triangular plaza and poked its drill stem to a point reported today to be just above the prolific Wilcox oil sand.

## SAVING CENTER

FLOUR

91¢

24-Lb. Sack

CORDELL'S BEST

Guaranteed

25¢

DUKE'S MIXTURE TOBACCO 7-5c Bags...

Lipton's Continental SOUP MIX 3 pkgs. for 25¢

ADAMS Orange Juice 3 12-OZ. CANS 25¢

MACARONI, or SPAGHETTI Cello Bag Pound... 10¢

COOKIES Mixed Pound... 21¢

TURNIP OR MUSTARD GREENS 3 No. 2 Cans 25¢

CHEESE SPREAD Shefford's Devon Pineapple or Relish 5-OZ. GLASS 15¢

PECANS Large Pieces Lb. 45¢

Salmon Fancy Pink Concho 2 TALL CANS 35¢

COCOA Our Mothers 2 LB. CAN 21¢

POPPED WHEAT 15¢ Cello Bag LB.

Veg'tole 4-LB. 69¢ 8-Lb. Carton \$1.39

FRUITS & VEGETABLES

CARROTS 3 Bchs. for 10¢

APPLES WINESAPS Dozen... 19¢

TEXAS CABBAGE Per Lb. 2¢

NEW SPUDS LB. 4 1/2¢

Tomatoes Florida 2 LBS. FOR 25¢

ORANGES Naval 2 DOZ. FOR 25¢

RED SPUDS 10 LBS. FOR 21¢

SHEFFORD'S CHEESE DINNER PER BOX... 8 1/2¢

YOU SAVE MORE AT MITCHELL'S

Just read this add—here's plenty of proof that you can save more and more every day of the week by trading with MITCHELL—your home-town grocer! We realize that we've got to support our boys in service to the fullest extent by buying Victory Bonds and Stamps—that's why we are doing everything possible to keep food costs down, out here at our store. Come out today—you'll have lots of money left to buy some Victory Stamps!

THESE PRICES GOOD FRIDAY, SATURDAY, MONDAY

MEAT MONEY SAVERS

ROUND STEAK Lb. ...	29¢
CHUCK ROAST Lb. ...	22¢
BEEF Short Ribs Lb. ...	15¢
LOIN or T-BONE STEAK Lb. ...	25¢
FRESH—No Cereal—Hamb'rg'r Lb. ...	19¢
SURGAR-CURED P'rk Chops Lb. ...	29¢
BOLOGNA Lb. ...	9¢

## SPECIAL SALE

FRIDAY & SATURDAY

3,000

TWO-YEAR-OLD TYLER GROWN

# Rose Bushes

EVER BLOOMING

- FRESHLY DUG
- GOOD GROWERS
- POPULAR TYPES
- STRONG BUSHES

10 FOR 88¢

BUY VIGORO AT WARDS 10c Pkgs. To 100 Lb. Bags

- Red Radiance
- Pink Radiance
- Ami Quinard
- Talisman
- K. A. Victoria
- Etiole De Holland
- Luxemburg
- Dupont
- Dane E. Helen
- M. McGredy
- Climbing Radiance
- Climbing Pauls' Scarlet

SOLD IN BUNDLES OF 10 ONLY NONE SOLD TO DEALERS

BUY DEFENSE STAMPS... ON SALE AT MONTGOMERY WARD CATALOG ORDER SERVICE USE WARDS PAYMENT PLAN brings you over 100,000 items! on purchases of \$10 or more!

217-19 N. CUYLER PAMPA PHONE 801

MUSTARD Red Ball QUART 10¢

STARCH Faultless 3 10c Boxes 25¢

WASH-O 5 Lb. Box 59¢

POLISH Radiant Furniture QUART 19¢

MEAL Great West 5 Lb. Bag 17¢

VANILLA Imitation Extract 8-OZ. BOTTLE 8¢

BAK. POW'D. Clabber Girl 25-OZ. CAN 21¢

CAKE FLOUR Sno-Sheen LGE. BOX 23¢

MARGO CORN FLAKES 2 Large Boxes 15¢

BAB-O 2 Cans For 25¢

## MITCHELL'S

GROCERY AND MARKET





### Thomas Elected Canadian High School Principal

Special To The NEWS  
CANADIAN, March 19—Canadian public schools will be dismissed for

Friday and all faculty members expect to go to Amarillo for the educational meeting there.  
V. O. Thomas, principal of the junior high school, has been chosen to fill the place of A. B. Dameron, high school principal, who resigned to enlist in the United States army last

week, for the remainder of this school year. Mr. Thomas' enlistment was deferred until the close of school.  
Mrs. Uel D. Crosby, who has been a substitute teacher all year, will fill the position of principal of junior high school.

Lee Gilstrap is now driving the high school bus, replacing Mid Singleton.  
—BUY VICTORY BONDS—  
A volcanic eruption in 1883 on Krakatau, an island between Java and Sumatra, cut the island area in half.



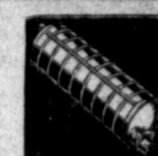
**Boys' Practice Baseball**  
**45¢**

Official size and weight! Compressed felt core and rubber center. Horsehide cover.



**Joe Medwick Glove**  
**1.98**

Full-sized, good quality horsehide... leather-lined. Welled seams. An economy leader!



**Lead-Coated Rust-Resisting Auto Muffler**  
**2.10**

Terne-plate... lasts longer than muffler on new cars! (Ford 1935-38, 85 H. P.)



**Gardex Automobile Wax-polish**  
**49¢**

A "quick-rub" wax-polish for your car. Just wipe it on... wipe it off! Big 20-ounce can!

## 100% PURE PENNSYLVANIA OIL

**4 Day Sale Price**  
**19¢** Qt.

in your container (Fed. tax already included)

**WARDS. FAMOUS RIVERSIDES**

If you are "eligible" to buy tires get Ward prices. Get the extra safety more miles that Riverside Tires provide!

Stock up NOW... while the price is low! 35c a quart won't buy better oil than Wards Supreme Quality! That seal above is your guarantee that every drop is refined from 100% Pure Pennsylvania crude. Get yours today and save!

5-quart sealed can reduced to **1.05**  
8-quart sealed can reduced to **1.59**  
(Fed. tax already included in all oil prices)

**Wards "Cleanfire" Cartridges**  
**.22 Cal. Shorts**  
**19¢**

Box of 50  
The power and accuracy of nationally-famous brands.  
Longs... 24c Long Rifle 30c

**Sport King Model 10B Casting Reel**  
**2.99**

Adjustable Drag  
Adjustable casting drag for any weight lure! Extended level winding carriage. A real buy!

**Built for Speed! Roller Skates**  
**1.75**

Nickel-plated  
Double row of ball-bearings in each wheel! Rubber-cushioned! Strong extension! Save!

**Built for comfort! Baseball Cap**  
**25¢**

Save at Ward's!  
Choice of several colors. Get yours now!

### Keep 'em Rolling!

**Tire Repair Materials**  
**32¢**

Tube Patch Kit  
Add extra miles and extra safety to old tubes! Includes 20 patches... patch rubber... 2 tubes of cement and buffer! Don't be helpless when tire trouble strikes! Get your kit today!

Casing patch—for inside tire breaks! **10¢**  
Vulcanizing Kit... everything you need **30¢**  
Tube Valve Cores 5 in handy box! **20¢**  
Rubber Cement... two-ounce tube! **5¢**

**None better at any price! Spark Plug**  
**45¢**

"Supreme Quality"  
Exclusive Knife-Edge electrode reduces resistance to spark jump! Motor starts easier!

**Price cut 4 days only!**

### Fiber Auto Seat Covers

**4.25**

Coupe 1-piece Back  
Lacquered fiber trimmed with snug-fitting cloth! Leather-like binding and panel. Made to FIT!  
Split-back coupe... 4.95  
Sedans... 8.35

**For 1935-36 Fords!**

### Rebuilt V-8 Motor

**82.95**

Regularly \$67.95!  
Not just an overhaul! 112 NEW parts... 52 renewed parts... 164 rebuilding operations. (Price includes your old motor if motor is suitable for rebuilding.)

**None better at any price! Spark Plug**  
**45¢**

"Supreme Quality"  
Exclusive Knife-Edge electrode reduces resistance to spark jump! Motor starts easier!

**For easier parking! Wheel Spinner**  
**29¢**

Sale Price!  
Sturdy... streamlined... shaped to fit your hand! A giveaway price for this spinner!

**Genuine G. E. Mazda! Auto Bulbs**  
**5¢**

Each  
For tail, dome, and stoplights! Carry an "extra" in your car.  
Headlight Bulbs... 15¢

**Price cut from \$2.25**

### Grille Guard

**2.10**

Sale Price!  
Fully chrome-plated! Two 20 1/4-inch steel cross bars will stand a heavy strain!

# Everyday Low Prices Plus McCartt's High Quality Means Satisfied Customers



PAMPA'S MOST COMPLETE FOOD STORE  
These Low Prices Good Fri., Sat., and Mon.

## Shortening

Mrs. Tucker's 3-LB. CTN. **59¢**

## Flour

Great West 24-Lb. Sack **79¢**

<b>MINCE MEAT</b> Old Time, 9-oz. Pkg. <b>2 For 17¢</b>	<b>SOAP</b> P&G or Crystal White <b>5 Reg. 19¢</b>	<b>TOMATO JUICE</b> 14-oz. Can <b>17¢</b> 3 Cans...
<b>CHOCOLATE</b> , Hershey Bitter Sweet—2 FOR <b>29¢</b>	<b>CLEANSER</b> Sunbright—CAN <b>5¢</b>	<b>BLACK-BERRIES</b> No. 2 Can <b>25¢</b> 2 Cans....
<b>RICE</b> Blue Rose <b>2 Lb. Pkg. 15¢</b>	<b>SOAP</b> Lifebuoy—BAR <b>6¢</b>	<b>RAISIN BRAN</b> Per Box <b>10¢</b>
<b>SALT</b> , Morton's Plain or Iodized <b>2 Boxes 17¢</b>	<b>COFFEE</b> Brook O' Morn—LB. <b>19¢</b>	
<b>DOG FOOD</b> Pard <b>3 Cans 25¢</b>	<b>COFFEE</b> Folgers—POUND <b>33¢</b>	
<b>PURE LARD</b> Silver Leaf <b>2 Lb. Ctn. 25¢</b>	<b>GRAPE JUICE</b> C & E, Pure Juice—PINT <b>15¢</b>	
<b>SPRUP</b> Pure Ribbon Cane, No. 5 Jar <b>39¢</b>	<b>PICKLES</b> Bread & Butter, 15-Oz. JAR <b>17¢</b>	
<b>HYPRO</b> QUART BOTTLE <b>12¢</b>	<b>CATSUP</b> Empson, 16-OZ. CAN <b>10¢</b>	
<b>SANI FLUSH</b> LARGE CAN <b>19¢</b>	<b>OATS</b> Highland—LARGE SIZE <b>15¢</b>	

### McCartt's Choice Cut MEAT

**BACON**  
Pinkney's Sliced Pound... **27¢**

**FISH** Ocean Perch POUND **27¢**

**CHEESE** Red Skin Wisconsin POUND **39¢**

**CHILI** Pinkney's Brick POUND **21¢**

**ROLLED ROAST** Pinkney's Sunray Beef LB... **25¢**

**PORK ROAST** Picnic Cuts POUND **23¢**

**BACON SQUARES** Sugar Cured POUND **14¢**

**BUTTER** Swift Cresta LB... **33¢**

<b>Post Toasties</b> 2 Boxes <b>13¢</b>	<b>MILK</b> Borden's 3 Tall Cans <b>25¢</b>
<b>Tomato Soup</b> Stokley's 3 Cans <b>17¢</b>	<b>OYSTERS</b> 5-OZ. CAN <b>19¢</b>
<b>PEACHES</b> Gingham Girl, No. 2 1/2 Can In Syrup <b>19¢</b>	<b>PEAS</b> Stokley's Honey Pod 2 Cans <b>29¢</b>
<b>CORN</b> Tender Sweet No. 2 Can 2 For <b>23¢</b>	<b>SPINACH</b> Heart's Delight Tall Can—2 FOR <b>23¢</b>
<b>BREAD</b> McCartt's 16-oz. Loaf 2 Loaves <b>15¢</b>	

### Fruits & Vegetables

Prices Good Fri. & Sat. Only

**Wash. Winesap APPLES** Large Calif. **1¢**

**LEMONS** Size 288 Calif. **1¢**

**ORANGES** EA. **1¢**

**POTATOES** 10 Lbs. **12¢**

**YAMS** LB. **2 1/2¢**

**POTATOES** LB. **4 1/2¢**

**CABBAGE** LB. **1 1/2¢**

**LETTUCE** 2 FOR **9¢**

**CELERY** STALK **10¢**

**TURNIPS** **3 Large 10¢**

**CARROTS** **3 Bunches 10¢**

**RADISHES**

**ONIONS**

**ANNOUNCING A NEW BEER**  
Blue Bonnet. A Texas product that is truly worthy of its name. Sold on a double your money back guarantee.  
**4 BOTTLES only 25¢**  
**24 BOTTLE CASE for \$1.39**  
PLUS BOTTLE DEPOSIT

#### CAFETERIA SPECIAL

LIST OF SPECIALS FOR FRIDAY AND SATURDAY

MEATS		VEGETABLES	
Prime Rib Roast	18c	Macaroni & Cheese	6c
Beef Stew	12c	Mashed Potatoes	5c
Sirloin Tips	18c	Lima Beans	5c
SALADS		DESSERTS	
Combination	6c	Strawberry Short Cake with Cream	10c
Shrimp Cocktail	10c	Fruit Jell-O	5c
Banana Nut	7c	Cream Pie	7c

NOTICE: SERVING HOURS  
11:30 A. M. to 2:30 P. M. — 5 P. M. to 8 P. M.

**WE REDEEM ORANGE AND BLUE FOOD STAMPS**

**WE RESERVE THE RIGHT TO LIMIT QUANTITIES**

#### PASTRY DEPARTMENT

<b>Burnt Sugar Cakes</b> Three layers iced with a caramel icing.	<b>59¢</b>
<b>Fresh Strawberry Cake</b> Three layers iced with a fresh strawberry icing.	<b>59¢</b>
<b>Milk Chocolate Icing</b> Tasty 3 layer cake with a milk chocolate icing.	<b>59¢</b>
<b>Honey Nut Rolls, 2 for</b>	<b>5c</b>
<b>Cherry Mince Pie</b>	<b>30c</b>
<b>Cluster Rolls, dozen</b>	<b>10c</b>

## BUY DEFENSE STAMPS... ON SALE AT

# MONTGOMERY WARD

CATALOG ORDER SERVICE USE WARDS PAYMENT PLAN  
brings you over 100,000 items! to get the things you need today!



**SERIAL STORY**  
**KINGS ROW**  
BY HENRY BELLAMANN

**UNKNOWN ENEMIES**  
**CHAPTER XXXII**

DR. NOLAN leaned back in the creaking swivel chair and knocked the ashes from his pipe. "I'm firing you for six months, Dr. Mitchell. Don't argue. You're too useful around here to take chances with."

"You mean I was?"

"Are. You take things too hard. You've let this Benny Singer thing flatten you out."

"I think I'll go to Europe, sir. Zurich."

"More work? Well, if that's what you want. Right away?"

"Yes."

"Free as that?" Dr. Nolan smiled, but he looked gravely after Parris as the door closed. He had been struck from the beginning by the peculiar solitariness of this hard-working young man.

Parris decided he'd look up Anna in Dusseldorf. Maybe Herr Berdorf in Bavaria. He could do exactly as he pleased because it didn't make any difference to anyone.

Tonight the asylum sounds, sudden screams and shouts that thrust through the murmurous buildings, flicked his nerves like a lash. He walked slowly down to see Drake and Randy.

Drake had a lapboard across the bed and the wide table beside it was covered with papers.

"Business this time of night?"

"We're starting a building and loan association, Parris. Randy was excited. 'We're putting you in as silent partner. You don't have to do anything, but we want it fixed up properly—legally.'

"Still talking about that Tower money?"

"Please, Parris—Randy's expression was intent. Her eyes were telling him that he must consent, that this was final compensation, to Drake, for the money Parris had given them.

"All right. Fix it any way you want to. I don't know the first thing about business of any kind."

He told them that Dr. Nolan had insisted on a vacation.

"Are you going to be away long?" Drake's voice came hesitatingly.

"Dr. Nolan says six months."

"Gee, I'm glad for you."

Farris looked curiously at Drake, and then at Randy. He wanted very much to know if it mattered to them whether he went or stayed.

Back at the hospital gate, he circled the grounds and came out on

Carrier street. In the second story room of a house at the end of the block there was a bright light. Vera Lichinsky sat at the window, her arms resting on the sash. Moonlight fell full on her face and whitened it to a stoney pallor. She was staring fixedly at the huge building facing her—the gloomy building that seemed even to Parris to crouch among the tall trees, and to wait.

PARRIS returned just in time to meet an early, disagreeable winter. The town was drab and shabby-looking. He shuddered with distaste as he viewed it.

His work at the hospital was waiting, the entire staff rejoicing over the state's appropriation for extensive new buildings. A huge tract of land had been bought for a farm and vegetable garden. Dr. Nolan was full of plans.

He was dressing one evening when his Negro houseboy came in and laid a copy of The Evening Chronicle on the table. Parris glanced at it and saw a heavy, black headline—*Asylum Doctor Makes Fortune Out of Asylum Deal*.

The second headline, scarcely smaller than the first, said, *It Pays to Be on the Inside*.

"Dr. Parris Mitchell, staff physician at the State Hospital for the Insane, and the silent partner of Drake McHugh, real estate dealer, realized a cool one hundred thousand dollars on the purchase of the old St. George tract recently acquired by the state for the improvement of hospital facilities. It appears that this plan for expansion of the hospital has been afoot for some time."

"Mr. Fulmer Green, elected this past November to the legislature, has promised that an investigation will be made."

Parris laid the paper before Dr. Nolan. "Have you seen this, sir?"

"Yes, I have."

"There's no truth in this, Dr. Nolan. I mean—if Drake McHugh put this through it was entirely without my knowledge."

Parris related in detail the story of his friendship with Drake, the gift of loan of the Tower money, the slow rehabilitation of Drake through being made to feel important and successful, and then the conversation with Drake and Randy just before Parris left for Europe.

"I signed some sort of papers, power of attorney among them. I had never heard of the proposed purchase of this land before I left, and I know that they—I suppose

I have to say 'we'—that we didn't own it when I left."

"Here's the story, Dr. Mitchell. The suggestion that we attempt this purchase and expansion was made by Senator Depass. You were already in Europe—had been there for a month or more. I inquired right away about this property. We had actually talked once or twice to the St. George brothers long ago about this purchase, but they wanted too much money. After the estate was being gettled I thought of it again, but I never mentioned it to anyone. Senator Depass acted on his own initiative. Your friend Drake McHugh bought the place up even before Senator Depass came to see me."

"What about the price?"

"It was appraised and the price found reasonable. There's something behind this, of course. Has anybody on that paper got a grudge against you for anything at all?"

"Not that I know of. I haven't many friends, that's a fact, but I thought I had no enemies at all."

"You know this—this, what's his name?—Fulmer Green?"

The undertone of irony and bitterness was strange and surprising coming from Dr. Nolan.

"Braggart, bully, coward, and liar. He made a circus out of the Singer trial and hanged the boy to enhance his position as prosecuting attorney."

"Queer, isn't it?"

"Dr. Nolan, you gave me my post here—pretty much on faith. You've made it an interesting one for me—I hate to make any kind of trouble for you."

"Stuff. Gave you your post because we had a first-rate report on you from Seiss in Vienna. You're a good man at your job. Trouble! Fiddlesticks."

"What shall we do?"

"Go on as before. I've got some influence in the board and in the legislature."

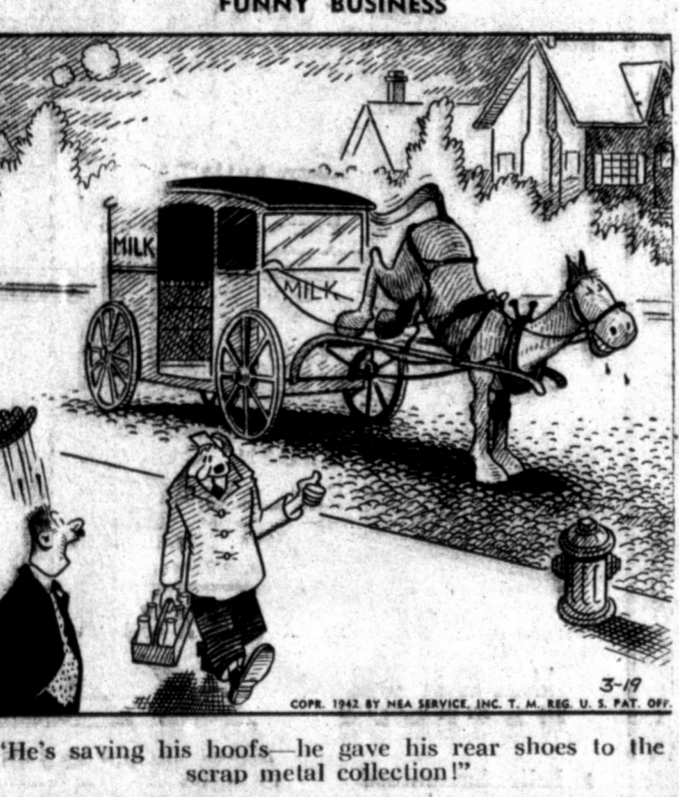
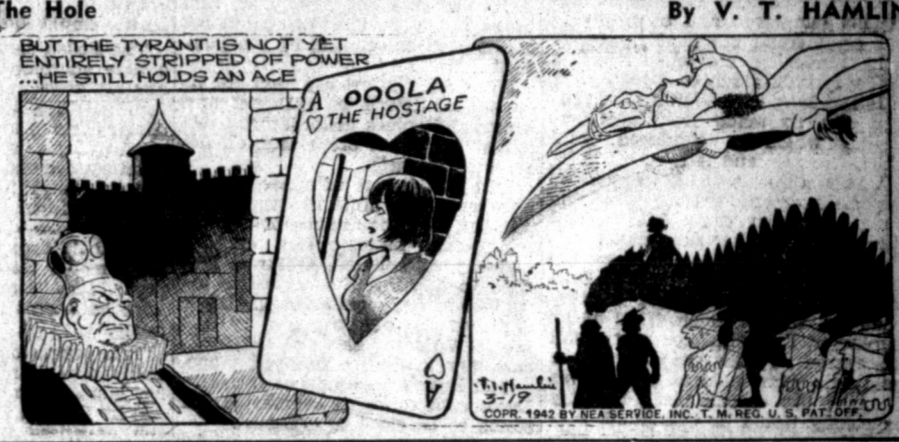
"I don't like publicity."

"Well, you're not the kind that'll go through this world without it. You might as well get used to the idea. You're sort of conspicuous, in a quiet way!"

Dr. Nolan laughed, and Parris smiled slightly.

"Well, well, if you don't mind, I'll just use you for bait for a while. I want to know what's behind this. There's something. I think Wardlaw, who runs this paper, is a skunk. You'll see that Miles Jackson will write a very different piece about it."

(To Be Continued)



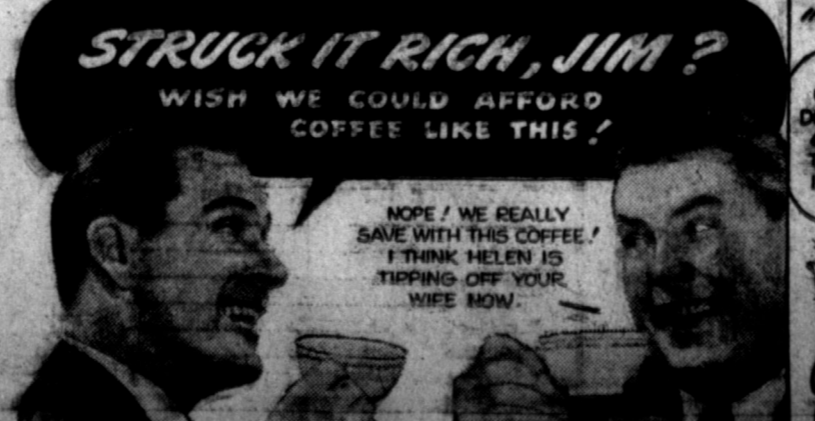
**Civil Service Needs Radio Inspectors, Addressographers**

Radio inspectors and addressograph operators are being sought through civil service examinations just announced by the U. S. Civil Service Commission.

As a result of the radio inspector examination, persons will be appointed to positions in the Federal Communications Commission paying \$2,700 and \$2,600 a year. Applicants must have completed a four-year college course either in electrical or communication engineering or with a major in physics. Provision is made for the substitution of certain radio engineering experience for the education. For the \$2,600 positions, applicants must have had in addition one year of appropriate experience or graduate study. The ability to drive a car, and ability to transmit and receive Morse code are required. There will be a written test of theoretical and practical questions on radio and electrical engineering. The closing date for receipt of applications is April 21, 1942. Under certain conditions applications will be accepted from senior and graduate college students.

The addressograph operator examination is for appointment in Washington, D. C., only and the positions pay \$1,260 and \$1,440 a year. For the \$1,440 jobs applicants must have had at least three full months of paid experience operating an automatic-feed motor-driven addressograph machine, while only one month of experience on a motor-driven machine equipped for either hand or automatic feeding is necessary for the lower grade positions. The machines must have used embossed metal address plates. No written test will be given and application will be accepted until further notice.

All applications must be sent to the Washington office of the Civil Service Commission. Full information as to the requirements for these examinations, and application forms, may be obtained from V. Darnell, secretary of the board of U. S. Civil Service Examiners, at the post office or courthouse in this city, or from the secretary of the board of U. S. Civil Service Examiners, at any first- or second-class post office.



Use The Pampa News Classifieds For Quick Results

Copyright © 1942 by NEA Service, Inc. U. S. Pat. Off.

