

THE

LYNN

BORDEN

SCURRY

STAR

GARZA

DAWSON

HOWARD

Vol. 6 No. 42

WEDNESDAY, JULY 5, 1978

Serving the Counties of Borden, Dawson, Garza, Howard, Lynn & Scurry

Early Rise In Screwworms

A rash of infestation along with favorable moisture conditions across Texas, New Mexico and Arizona has prompted predictions of one of the highest screwworm outbreaks since 1976. The results could cost Texas cattlemen millions of dollars in damage and destroyed livestock.

The Gulf Coast tick, and particularly the screwworm fly, have become a serious

threat to the Texas beef industry in the past few years. Adult ticks attack the ears of the cattle causing open wounds in which the screwworm fly lays its eggs. According to entomologists who have been monitoring the problem, screwworm larvae feed in these wounds and in extreme cases can kill the animal.

A Texas Agricultural Extension Service survey, conducted

by area extension entomologists, showed that a screwworm infestation can cost a cattleman as much as \$81.50 per head. This includes all categories of loss--death loss, loss of weight, medication expenses and the extra expenses associated with transportation and labor. In the same survey, screwworms produced an estimated \$283 to \$375 million loss to the Texas general economy during 1976.

"We've already had more cases of screwworm infestation this year than at the same time last season," says E.H. (Elmer) Ahrens, research entomologist with the USDA Screwworm Eradication Laboratory, Mission, Texas. "At the same time, we are seeing a sharp increase in the number of screwworm reports from Arizona and New Mexico. This all points to the possibility of real screwworm problems this summer.

Jesse Cocke, area entomologist for the Texas Agriculture Extension Service, is working closely with the screwworm eradication program and agrees with Ahrens who points to favorable high-moisture conditions as yet another indication of increased tick and screwworm problems this summer.

"According to weather predictions, many parts of Texas are still anticipating rainfall," Cocke says. "If the rains come this summer, conditions could become favorable for screwworm and tick infestation."

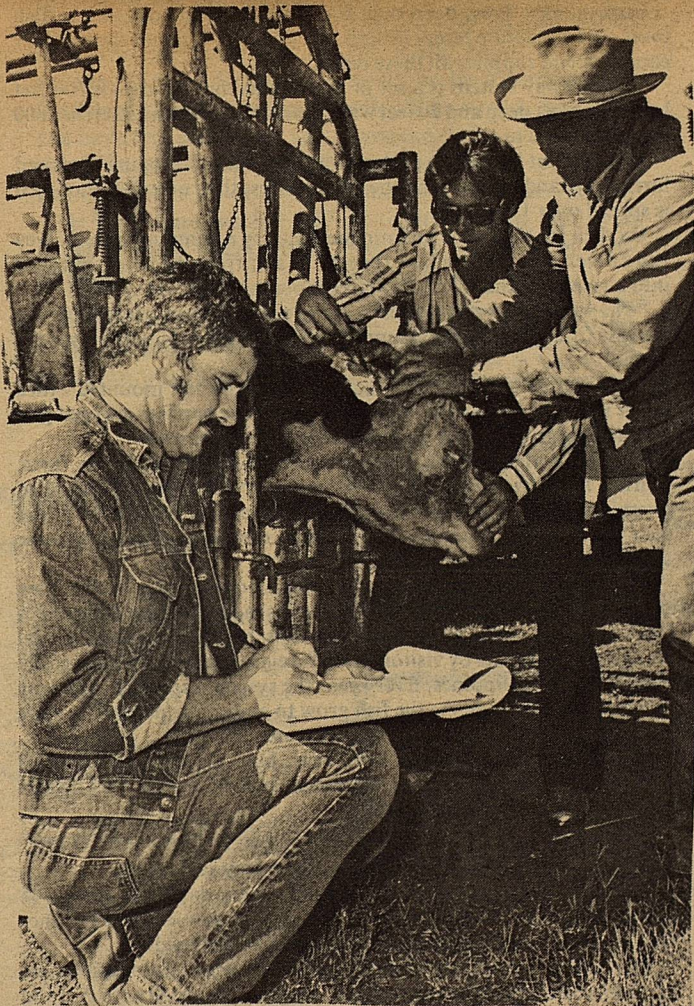
Ahrens, who has been working with area entomologists, says that cattle from Arizona and New Mexico are particularly to blame for the higher number of screwworm cases in Texas.

Cocke, who works with the "Screwworm Watch" monitoring program from his headquarters in Weslaco, says one of the few methods of protection cattlemen have in the

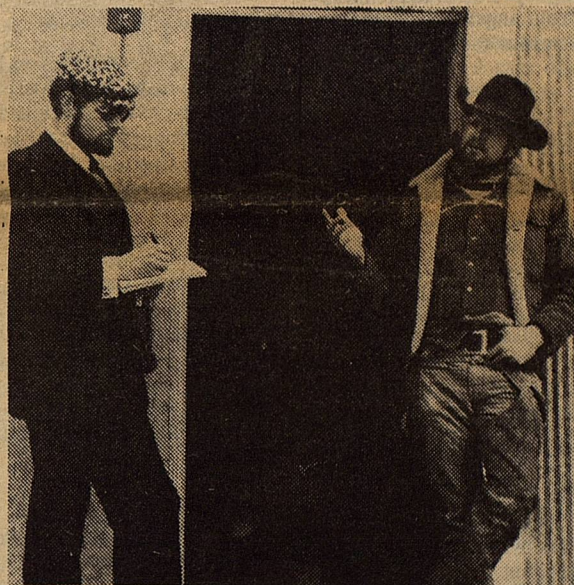
ATTENTION

Anyone who has Multiple Sclerosis or know of someone who does please get in touch with: Lorene Jones, Box 132, Gail, Texas 79738

She is trying to do some research and needs more facts about the disease.



Dr. Jesse Cocke (left), Texas Agriculture Extension Service Entomologist, checks the records on a steer that's wearing an insecticide-impregnated ear tag. The Rabon Cattle Ear Tag--a product of Shell Animal Health--is used to protect cattle against the Gulf Coast tick and attendant problems of the screwworm larvae. Government tests show the tag provides 95-100 percent effective control of the tick for a three-month period and equally effective against horn flies, a nagging problem for Texas cattle. This photo was taken at the Lon Cartwright ranch, Dinero, Texas. Cartwright is shown at right wearing a hat.



Book reviewer Eric Johnson interviews cowboy John Erickson, who has written a new book about western ranch life, *Through Time and the Valley*. The two men grew up together in the same small Panhandle town.

Author Entertains Readers

I have had a long and close association with John R. Erickson. We grew up in the same small town in the Texas Panhandle. We attended the same Sunday School and played on the same high school football team. And, oddly enough, after we left home, we both became writers.

When I learned recently that John's first book had been published by Shoal Creek Publishers of Austin, I drove to Beaver County, Oklahoma, where he now works on a 5,000-acre cattle ranch, and talked with him about the book.

It is called *THROUGH TIME AND THE VALLEY*, and it deals with the isolated ranch country along the Canadian River in the northeastern Texas Panhandle.

"As a boy," John explains, "I was always fascinated by the Canadian River valley. In 1970, after living for eight years in cities, I moved back to Perryton, my home town in the Panhandle. I wanted to learn more about the history of the river country but discovered that very little had been written about it."

So in 1971 he decided to write a book. He spent a year doing historical research and conducting interviews with old-timers in the area. Then he and photographer Bill Ellzey made a 140-mile, 15-day horseback trip down the river, through Hutchinson, Roberts, and Hemphill Counties. The result: a 200-page book illus-

cont. on page 4

cont. on page 4

The Francophone Family

BY Phyllis Schlafly

France's reaction to the recent invasion of Zaire provides an inspiring contrast to the usual vacillating American response to Communist aggression.

The decisiveness and deft footwork of President Valery Giscard d'Estaing contrasts sharply with President Carter's indecision.

While Andrew Young, President Carter's adviser on Africa, ignored the invasion and continued to call for the overthrow of Rhodesia by its neighbors Zambia and Mozambique, France acted speedily to defend Zaire. French paratroopers were flown to the copper-rich district of Kolwezi, where they stopped the orgy of killings, rapes and looting by Communist invaders from Angola and drove them back across the border.

Zaire is the solar plexus of Africa. With an area of more than 2.5 million square kilometers and a population of 24 million, Zaire is Africa's third largest state. Centrally located in the heart of Africa, it borders on ten countries.

If Zaire had fallen to the rebels, the largest obstacle to the Soviet plan to march from Angola to the Red Sea would have been eliminated. The chances of Zambia's remaining independent would have been next to nil. Rhodesia would have been fatally exposed and South Africa would have been threatened.

Unlike the United States and Britain, France was not intimidated by Soviet charges of colonialism. Giscard's government took the position that its intervention was in the best interest of the Africans as well as of French investors in Africa and that Cuban-Soviet aggression is bad for all.

As a writer in the influential Paris-Soir explained, France dared to send troops to Zaire "not because it necessarily believed that President Mobuto's regime was a good one, but because it believed a rebel army that shot men, women and children of all colors drunkenly and indiscriminately was even worse. The fact that coincidentally French investment had been protected was jam on the bread."

France has had a long history of influence in Africa. Unlike the British colonial administration, which was essentially pragmatic and decentralized, the France integrated the peoples of their colonies into the political and cultural systems of the mother country.

Instead of encouraging local culture and institutions, France developed a small African elite steeped in French culture and educated in France. They mixed freely with the whites and were often allowed to take prominent positions in France as well as in the colonies. Two current African heads of state are products of this policy: President Felix Houphouet-Boigny of the Ivory Coast and President Leopold Senghor of Senegal. Both are former members of the French government.

The sentimental ties to France resulting from this policy have effectively continued French influence even though the colonies are fully independent. The "Francophone family," as the French-dominated states are popularly known, includes Mauritania, Senegal, Guinea, Ivory Coast, Upper Volta, Mali, Togo, Benin, Niger, Chad, Cameroun, Central African Empire, Congo, Gabon, Ruanda, Burundi and now Zaire. Several of these countries have permanent French military bases.

Until the recent invasion of Zaire, that country had been considered an area of Belgian influence rather than French. Formerly known as the Congo, it had been a Belgian colony. But Giscard seized the initiative from Belgium in sending French paratroopers to Shaba.

Fortunately for the West, the French military presence is also strong in Djibouti, which borders the south end of the Red Sea and is a point of great strategic importance. The French have 5,000 troops there, reinforced by jet fighter planes and naval vessels.

The French are now in a position to block Communist control of the south end of the Red Sea, through which passes oil from the world's largest producer, Saudi Arabia. French activities in Africa are more beneficial to American interests, than the Carter-Yong-Vance policies of boycotting Rhodesia, aiding Rhodesian invaders and allowing Cuban-Communist aggressors to conquer country after country.

Feeding Preschoolers

COLLEGE STATION--When feeding the preschooler, follow the basic four food groups--milk, fruit and vegetable, bread, and meat, advises Marilyn Haggard, a foods and nutrition specialist.

There are simple guidelines to follow for each of the four food groups in determining the serving sizes for varying ages of children.

Miss Haggard is with the Texas Agricultural Extension Service, The Texas A&M University System.

MILK GROUP

Two to three cups of milk are recommended for the preschool child, the specialist says.

Put extra milk into the child's diet by serving foods containing milk such as hot or cold cereals, custards and puddings, ice cream and cottage cheese.

These are acceptable substitutes for milk; however, it takes varying amounts of these foods to equal an eight-ounce serving of milk, she continues.

For instance, a one-inch cube of cheddar cheese or one cup of ice cream equal only one-half cup of milk.

Small chunks or cubes of cheddar cheese stored in the refrigerator make excellent snacks for children.

FRUIT, VEGETABLE GROUP

Determine the serving size for fruits and vegetables by the age of the child, the specialist says.

Serve one tablespoon of fruits or vegetables for each year of age.

That way, it's easy to remember three tablespoons for a 3-year-old and four tablespoons for a 4-year-old. The four tablespoon, or one-fourth cup, serving for the 4-year-old is about half the average serving size for the adult.

Serve strips of raw carrots or bell pepper rings which are easily handled by small hands. However, children may not like strong flavored vegetables such as cabbage and cauliflower if they are raw, she points out.

For snack, serve fruits, fruit juices and crisp vegetables.

BREAD GROUP

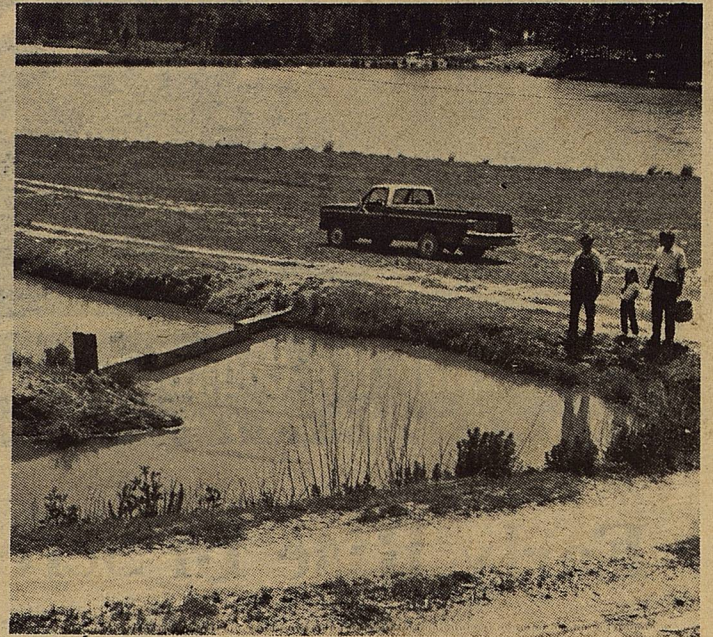
An average serving of the bread group for preschoolers is a half slice of bread, a half cup of ready-to-eat cereal, or one to two-thirds cup of cereal, grits, macaroni, noodles, rice or spaghetti.

Serve bread lightly toasted so the child can chew it easily, Miss Haggard suggests.

Serve finger sandwiches that are easy for the child to handle and fill them with peanut butter, meat spread or soft cheese that will not fall out of the sandwich while the child is trying to eat.

cont. on page 5

A Fish Story? You'd Better Believe It



The catfish raceway system is laid out in a snake pattern with 18 sections looping back and forth.

WINSTON-SALEM, N.C. — When Jim Ivey tells a fish story, believe him. He gets his stories from eight years of being part-time owner of a catfish farm in Fayette County, Ga., near Atlanta.

Ivey, a production supervisor for RJR Foods, Inc., a unit of R.J. Reynolds Industries, Inc., first got the idea of having a catfish farm from a federal agent for the Soil and Water Conservation Service.

The agent impressed Ivey with the advantages of such a farm. He said that the enterprise makes maximum use of a minimum amount of land, it is a cash crop that lasts all year, it is a good food source, and that the climate around Atlanta is perfect for raising catfish.

Catfish, says Ivey, need only four things: water, oxygen, catfish food, and moderate temperatures. Ivey's farm, built on the raceway canal system, supplies all these needs.

The raceway system is a set of 18 sections that are canals 100 feet long, four feet deep and 20 feet wide. The entire raceway stretches 800 feet.

It is laid out in a snake pattern with the sections looping back and forth. The land taken up by the system is less than one acre, though it is spread over 15 acres.

Oxygen for the fish is put into the water by a pumping system. Ivey has a seven acre lake on his property. Water from the lake is pumped into a reservoir and then that water is pumped into the system.

"The raceway system is really more efficient than using a lake to harvest fish. You can have more fish in a smaller amount of water," he said.

Each section of the raceway has a concrete barrier mounted with a set of metal racks. As the water flows over the barriers, oxygen gets circulated into the water by movement over the barrier.

Ivey built the backup reservoir after disaster struck his farm. During a storm, lightning hit his pump. Nearly 30,000 fish died overnight because of a lack of oxygen in the canals. Now, if the pump isn't functioning, water in the reservoir can be channeled into the system to provide water and air for the fish.

The system took six months for a local contractor to build. Two other farms in Fayette county were used as models. Those farms have since gone out of business, but Ivey's farm has been used as a model on agricultural tours by visitors from foreign countries including Viet Nam and the Philippines. Every year the system is stocked with baby fish called fingerlings. As the fish grow to about one pound, they are put into the stocked pond for the fishermen to catch.

The lake is also stocked with bass, blue gill, bream and shell crackers. The farm is open to fishermen six days a week. "It's a year-round operation for us," he said.

"I've got a lot of nervous energy and this gives me a good way to do something profitable with my spare time," Ivey said.

The farm does not take care of itself. Every day, Ivey spends 45 minutes or so feeding the fish. "They really know when it's dinner time. They get used to eating on time just like people do."

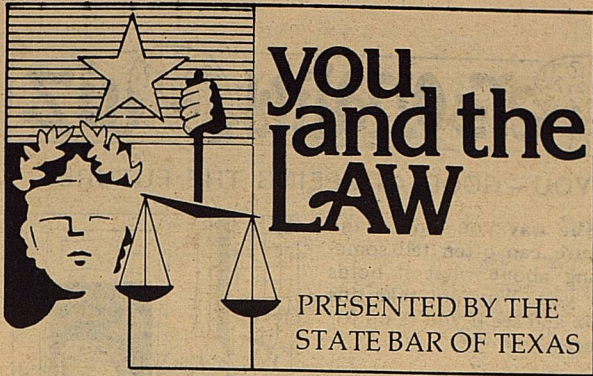
The canals have to be cleaned out every year. The sections are drained and cleaned out one-by-one. The fish are sorted as to size and some are put into the stocked pond while others are held back to grow bigger.

Catfish are not considered pretty fish. They have big feelers that resemble whiskers on a cat — hence the name.

Catfish farmers are trying to do away with stereotypes connected with the fish. Ivey said that there are different breeds, just like cattle or any other farm animal.

He raises channel catfish, which are a clean fish. They feed on only the highest grade of catfish feed and nothing else, so they grow plump and make excellent eating.

"I love to eat catfish," Ivey said, "but I sure hate to clean them."



FHA Secret Grandparents

Many of you requested copies of various recipes that had been prepared for the Tea. From the kitchens of: Mayme Mc-Laury, Karen Williams, Glynda Burkett, Janna Love, and Carla Jones, and the BETTY CROCKER COOKBOOK, here is one of them:

JUBILEE JUMBLES

A very versatile cookie - just count the variations. It's soft, cake-like, carmel-colored.

2 3/4 Cups all-purpose flour*
1 1/2 Cups brown sugar (packed)

1 Teaspoon salt
1/2 Teaspoon soda
1 Cup dairy sour cream

1/2 Cup shortening
2 Eggs

1 Teaspoon vanilla

1 Cup chopped nuts,
Browned Butter Glaze (below)

Mix thoroughly all ingredients, except glaze. If dough is soft, cover and chill.

Heat oven to 375°. Drop dough by level tablespoonfuls 2 inches apart onto ungreased baking sheet. Bake 10 minutes or until almost no imprint remains when touched with finger. Immediately remove from baking sheet; cool. Spread with Browned Butter Glaze.

4 1/2 to 5 dozen cookies.

*If using self-rising flour, omit salt and soda.

BROWNED BUTTER GLAZE

Heat 1/3 cup butter or margarine over low heat until golden brown. Remove from heat; blend in 2 cups confectioners' sugar and 1 1/2 teaspoons vanilla. Stir in 2 to 4 tablespoons hot water until of spreading consistency.

Good Records Essential

COLLEGE STATION--Farmers and ranchers cannot survive today's high level of agricultural production without good records. They need a financial management plan. Such a plan can also increase their profit-making potential, believes an economist with the Texas Agricultural Extension Service.

"Management of capital is vital to production efficiency and maximum profits," says Cecil Parker. Included in this management of finances are three key items-- the financial statement, profit-loss statement and cash flow summaries.

The financial statement shows the farm's financial picture at a given time. This includes the present solvency of the operation and also a projection of future solvency. List all assets and liabilities. Use current, intermediate, and fixed or long-term groupings in defining assets and providing a realistic look at repayment requirements.

The profit-loss statement sums up income and expenses and the resulting net profit or loss during a given period, such as a crop year, points out Parker. Handle non-farming items separately. To obtain the operation's gain or loss, subtract net cash expenses from net cash income and adjust for changes in inventory and capital items. Comparing profit-loss statements for a period of years will show any progress or decline of the farming or ranching operation.

Cash flow summaries list all cash income and expenses. They include family living money borrowed and debts paid. A monthly summary of these figures determines the flow of cash during the planning period. Cash flow summaries can help determine the time and amounts of credit needs and availability of repayment funds.

"Although some time is required to develop a sound financial management plan, the end result can be increased returns on capital," contends the economist.

"Agriculture 1978-style requires forward planning, keeping a close check on operations, and making adjustments as new situations and conditions arise. Increasing competition makes it more important than ever to produce on an efficient basis.

"Anyone in the farming and ranching business has got to have good records and accounts to make sound management decisions," Emphasizes Parker. "Complete and accurate accounting of income and expenses can mean dollar savings in income tax management, business management and social security benefits."

The economist identifies several proper accounting procedures:

1. Record cash received from all sources related to farming or ranching. By proper identification, some of these receipts may be excluded from taxable income.

2. Record all annual operating expenses. A poor operating expense record may result in increased tax liability.

3. Record capital expenditures. Many of these assets may be subject to depreciation. This will also serve as a record of cost at time of sale.

"Not only do records and accounts increase management efficiency but they provide the only basis for making a cost analysis of the business and may be used to determine credit needs. Future business adjustments should be made only after carefully analyzing financial and physical data from your records and accounts," contends Parker.

Farmers and ranchers can obtain more information on adequate farm and ranch records and accounts from any county Extension office.

Q: My ex-wife is planning to change my daughter's name to that of her new husband. Can she do that without my permission?

A: Yes, this requires a court proceeding with the reasons for the request being presented to the judge. However, your wife must give you notice of such a hearing and your attorney would be able to argue against the name change. Any decision by the court would be based upon good cause and what is in the best interest of the child.

Q: In 1971 I bought a pickup truck and paid for it. Since I did not have a drivers license at the time, the truck was registered in my father's name. What can I do to have the truck transferred to my name now that I have my drivers license?

A: You and your father should take the title to the truck and a tax affidavit and go before a notary public. The seller signs the bottom portion of the tax affidavit and a new application for title. The purchaser has 10 days to file these forms with the County Tax Collector. If you have any questions, you should contact your County Tax Collector's office.

Q: What happens if I fail to pay a traffic ticket within 10 days?

A: The Municipal Court or Justice of the Peace normally allows you 2 or 3 extra

days to answer the court summons stated on the ticket. If you do not pay the fine or appear to answer the court summons within that time, a warrant will be issued for your arrest. This does not necessarily mean police officers will come to your home; however, if you are later stopped by law enforcement officers for any other reason and it is discovered you have not responded to the traffic ticket, you can be taken to jail to await an appearance before the judge to resolve the matter.

Q: I am a widow. For the past seventeen months I've been living with a man who has been separated from his wife for two years. He has introduced me as his wife on several occasions, and I use his name. Should anything happen to him, what would my legal status be?

A: You have NO rights to his estate as a wife due to the fact he is still legally married. There must be a final divorce decree before you would have the opportunity to be a common law wife. You would, however, have the rights of a tenant in common to all property which you two have acquired together. If he died, you would be a tenant in common with his heirs.

Send your questions to "You and the Law," State Bar of Texas, P. O. Box 12487, Austin, 78711. Answers may appear in columns in hypothetical terms; personal answers not possible.

Passion vines vs. butterflies

AUSTIN, Texas (Spl.) — "War-game" tactics that are engaged in by plants and the insects that eat them are the subject of a University of Texas study that may provide basic data leading to the management or control of insect pests.

The battlefield which zoologist Lawrence Gilbert observes is in a tropical research laboratory at UT Austin, where the opposing forces are the passion vine genus *Passiflora* and leaf-eating caterpillars of the butterfly *Heliconius*.

One of the defenses the passion vine throws up to thwart the enemy is the development of a variety of leaf shapes to confuse the insects as they search for a familiar leaf.

BIG SPRING HEALTH FOOD CENTER

1305 SCURRY ST.

BIG SPRING, TEX. 79720



WESTERN WEAR

3205 College Ave.

Snyder, Texas

573-6763

Modesta's



602 Main
Big Spring

What's Hap-Nin Around Town

Sterling Williams was admitted to Cogdell Hospital in Snyder June 26 with ruptured appendix. He was to have surgery July 3rd. Our prayers go out to Sterling for a speedy recovery.

Word was received here last week that Randy Crittenden, a 1973 graduate of Borden High School, was to check into M.D. Anderson Hospital in Houston for test Friday June 30th. We all hope the very best of luck for Randy.

John Johnson is home from a three week stay in Crosbyton Hospital. Good to see John up and about again.

Margaret Sharp had an uninvited guest in her home last week. Seems as tho a rattlesnake got into her washroom and settled in behind her washing machine causing quite a "fuss."

Screwworms

cont. from page 1

war on screwworms are newly-developed insecticide-impregnated ear tags.

"Really, these tags are the surest safeguard for cattle," he says. "They are economical and labor efficient."

Two manufacturers--Shell Animal Health and Y-Tex Corporation--have developed such tags. Both tags are effective against the Gulf Coast ear tick. In comparative tests, government researchers found the Shell Rabon Ear Tag provided 95-100 percent control of the Gulf Coast ear tick for a three-month period. Additionally, the Rabon tag provided equally strong protection against horn flies, a nagging problem for Texas cattle.

"The situation is so volatile, due to the weather and other factors, that we just can't pin down how severe the Gulf Coast ear tick and the screwworm problem will be this summer," Ahrens cautions. "The important thing is for cattlemen to provide sufficient protection for their animals and participate in the "Screwworm Watch" program so worm Watch" program so we'll know where the screwworm problems are."

Mrs. Sam Skeen visited in Gail June 30th. Everyone remembers Mrs. Skeen, as our Postmaster here in Gail for 29 years. Mrs. Skeen has been in retirement at Knox Villiage in Lubbock for the past few years. She said she is enjoying her retirement and plays dominoes every day. Mrs. Skeen commented she just had to visit the Post Office for "old-time sake."

Tommy and Debbie Varner moved to Roscoe over the week-end. They will both be teaching in the Roscoe Public School System. We wish the best of luck to them in their new home.

Larry and Beth Steele, and their three children moved to Gail over the week-end. Larry is the new girls basketball coach. The Steeles come to Gail from McCamey. Larry and Beth have three children, Amy 4, Jodie 3, and James 10 months. We would like to say "Welcome to Gail."

ATTENTION:

ATTENTION FHA MEMBERS..

All Bicentennial Books that you have to sell must be turned in by July 10. Take or send your books to Lesa Hensley, Carla Burkett, Mrs. Kountz, or leave them in the office with Mrs. Briggs. Be sure your name is attached.

It is your responsibility. All books checked out must be accounted for.

Author

cont. from page 1

trated with a map and 35 photographs taken on the trip.

Erickson said his first objective in writing THROUGH TIME AND THE VALLEY was "to produce a book that entertains the reader--keeps him turning pages and wondering what will happen in the next chapter. And I wanted to inform people about a region I think is fascinating."

Erickson writes lucid prose that performs the basic function of language: the communication of moods, thoughts, and feelings. In some chapters he deals with historical incidents, and it is obvious to the careful reader that he has done his homework and respects sound scholarship. In other chapters he mines a seam of ore that some people would call "oral history" but which he prefers to call "yarns, tales, and wonderful lies." Throughout, his sense of humor gives the book a lively pace and cheerful tone.

And I would mention something else John has done in his book. He has brought to life some very colorful characters and stories that might otherwise have been lost; characters such as Shine Popejoy, the notorious outlaw of Borger's boom days; Choctaw Slim, the king of Canadian River moonshiners; and Charlie Tubb of Canadian, who made a public wager of \$1,000 that he would live to be a hundred.

The lost gold of Horse Creek is there, and the Canadian Depot Robbery, and even the case of Guthrie's One-Eyed Mare, in which the defense counsel addressed a Texas court entirely in rhyme.

I found THROUGH TIME AND THE VALLEY a rewarding reading experience--I laughed, I learned from it, I thoroughly enjoyed it. But I must admit that my opinion is slightly biased. If you will look closely at the photograph that accompanies this story, you will discover why.

Personality Quiz

YOU - GOOD AT SEEING THE FUTURE?

The way you look at the future can often tell something about what it holds for you. Why not take this quiz and see if you're up for success?



1. The training you receive after boot camp (a) doesn't give you much choice (b) trains you for a full 20- to 30-year career (c) is not very thorough?

2. The options open to you during the first five or six years of your life in the Marine Corps are (a) very few (b) none at all (c) extremely varied?

3. If you need help in deciding on what you should do after your initial

IN YOUR FUTURE may be a job that offers a wide range of specialties.

tour of duty, you should (a) call your mother (b) make your own decision (c) ask an authority?

ANSWERS ON PAGE 6

Sweetwater Production Credit Assoc.

Crop and Livestock Loans
Sweetwater—Central Office—

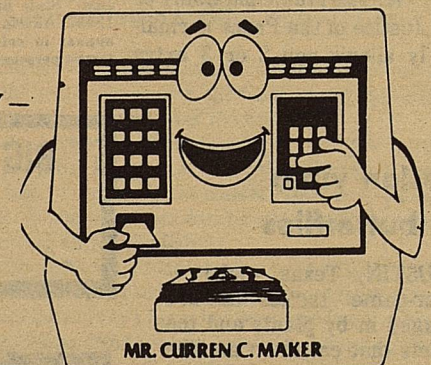
Offices in Colorado City, Lamesa, Roby & Snyder.

GAGE FINA TRUCK STOP

Owner-Operator John Hamilton

OPEN 24 HRS. DAILY
IS 20W Sweetwater, Tex.

IS AVAILABLE
24 HOURS A DAY —
SEVEN
DAYS A WEEK.



MR. CURREN C. MAKER

Security State Bank

1411 GREGG BIG SPRING, TEXAS 20
MEMBER F.D.I.C.



Big Spring Automotive, Inc.

219 W. THIRD STREET
BIG SPRING, TEXAS 79720
915-257-3305



Gulf Oil Products

FULL LINE PETROLEUM PRODUCTS FARM AND RANCH DELIVERY

FRED. M FLANIEN, DISTRIBUTOR

311 N. LYNN AVE.

LAMESA, TEX.

PRESCHOOLERS
cont. from page 2

Try serving fresh fruit, raisins or brown sugar on hot or cold cereals for an extra treat and nutrition for the child.

MEAT GROUP

Children need two servings of meat each day, the specialist reports.

A serving is one-fourth to one-half cup of meat, one-half to one cup dry beans or peas, or two to four tablespoons of peanut butter.

Preschoolers at the younger ages of two and three prefer tender juicy meats. Serve these in child-size portions with the skin and bones removed and the meat cut up or broken into small pieces.

Most children like well-cooked roast, ground beef dishes, chicken, meat loaf, fish and hot dogs.

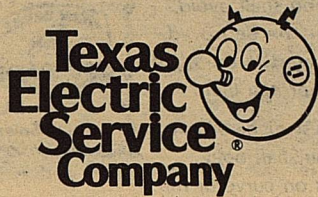
Children have a keener sense of taste and smell and may sometimes reject highly spiced meat dishes, she adds.

PUBLIC NOTICE

Texas Electric Service Company, in accordance with the rules of the Public Utility Commission of Texas, hereby gives notice of its intent to implement new rate schedules for electric service in areas served by the company, effective July 5, 1978, or as soon thereafter as permitted by law.

The new schedules will result in a 24.43 percent increase in the adjusted gross revenue of the company.

A complete copy of the new rate schedules is on file with the Public Utility Commission at Austin, Texas, and with each affected municipality. Copies are also available for inspection in each of the company's public business offices.



BURGESS-McWILLIAMS PHARMACY
3706 College Ave. Snyder, Texas Phone 573-7582
WE HOPE YOUR NEXT PRESCRIPTION CARRIES THIS LABEL
Jerry McWilliams Rayburn Burgess

THE LAMESA NATIONAL BANK
LAMESA, TEXAS 79331
THE LAMESA NATIONAL LNB BANK

COMEDY CORNER

MARSH MELLOWS

by Boro

ARTIFICIAL COLOR AND FLAVOR ADDED
BHA & BHT ADDED TO PRESERVE FRESHNESS
NITRITES AND NITRATES ADDED TO PREVENT SPOILAGE
YEA... THEY MUST KNOW WE'RE ON OUR NATURAL FOODS DIET!
YOU THINKIN' WHAT I'M THINKIN'...?

TWITCH

How Rands

OH, YOU CUTE LITTLE THINGS!
YOU SHOULD ALWAYS SAY SWEET THINGS TO YOUR FLOWERS, IT MAKES THEM GROW UP BIG AND BEAUTIFUL!
POOR TWITCH! ONLY THE WEEDS GO FOR HER SWEET TALK!

"CB" RIDER

by Dave Fulwiler

I'VE GOT 3 TENS! HOW 'BOUT YOU 'RACER, C'MON?
YOU LOSE! I'VE GOT 4 FIVES. PAY ME IN PECOS!
RATS! I'VE BEEN PLAYING 'CB POKER' WITH 'RACER' FOR THREE MONTHS... AND I AIN'T WON ONCE!
WHAT A ROTTEN THING 'T DO, 'CB!
YOU JUST RUINED THE LONGEST RUNNING POKER GAME I WAS EVER IN!
LISTEN! HOW DO YOU KNOW HE HAD 4 FIVES?

Grandpa's Boy
By Brad Anderson

GRAMPA!!
I GOT THE —
HICCUPS

Grandpaw Says

- HI -

-The reason the Post Office charges 15 cents for postage is because 13 cents is for transportation and 2 cents is for storage -

This is short 'cause I'm hot and tired so have a HAPPY 4th of JULY..... more next week.

ANSWERS TO PERSONALITY QUIZ from page 4

ANSWERS

1. (b) Whether or not you plan to stay in the Marines past your initial enlistment, the Corps started training you for a full career right from the start. But the first tour of duty is only the beginning of your training—the options open to you when it's time to reenlist are even more varied, and valuable for your future, both in the Corps and when you eventually go back to civilian life. 2. (c) The Corps has 39 occupational fields with over 165 entry-level specialty jobs—everything from Air Control to Electronics Maintenance. 3. (c) To make sure you get the best training the Corps has to offer, the Career Planner is there to help you. It's his job to balance the manning requirements of the Corps against your individual best interests. An experienced personnel manager, he'll help you get the most out of your Corps career.

THOU SHALT NOT KILL

"Thou shalt not kill" with gun or knife,
 'Tis sin to take another's life.
 'Tis also sin, you will agree,
 To murder with a Mercury.
 I think it would offend the Lord,
 To kill a fellow with a Ford.

The same applies, I think you'll say,
 To slaying with a Chevrolet.
 'Twould prove that love to man
 you lack,
 To hit him with your Pontiac.

So drive with common sense and care
 Your Tempest, Falcon or Corvair.
 This instruction includes all
 The foreign makes, however small.

It's a sin to murder with a car,
 Fiat, Rolls-Royce, or Jaguar.
 Thou shalt not hot rod, drag or peel
 While sitting at thy steering wheel.

Excessive speeds thou shalt avoid,
 Lest thou and others be destroyed.
 And when thou meetest in the night
 Another car, dim thou thy light.

Whether thou drivest night or day,
 The traffic laws thou shalt obey.
 Thou shalt not pass on curve or hill.
 This is the law: Thou shalt not kill."

—Anonymous

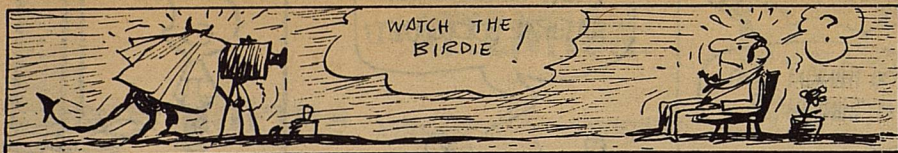


The smallest mammal is the pygmy shrew, which is only 1½ inches long without its tail, and weighs only one-eighteenth of an ounce.

EZELL-KEY FEED & SEED

"For Better Feed"

• Feeds • Seeds • Insecticides • Fertilizer
 1615 26th St. SNYDER TEXAS Phone 573-6691



Some people used to fear that having their picture taken would capture their souls in the camera.

THE BORDEN STAR

Editor
 Barbara Anderson
 Business Mgr
 Teresa Cox
 Adv. Mgr.
 Jan Hare

PUBLICATION NO. 895520

Published weekly on Wednesday at Gail, Borden Co., Texas 79738, Box 137 Second class postage paid at Gail, Texas.

Any errors that we make reflecting on the Reputation or Standing of any Firm Corporation or individual that may appear in the columns of the Borden Star will be gladly corrected when called to the attention of the staff.

Subscription Rates:
 Borden, Dawson, Lynn, Howard, Scurry and Garza Counties \$5 per year. Elsewhere per year \$6.

Borden Star Publishers: Mrs. Rich Anderson, Mrs. Pat Porter, Mrs. Robert Dyess, Mrs. Clarence Porter, Mrs. Nathan Zant, Mrs. Joe Gilmore, Mrs. Sonny Tucker, Doris Rudd, Glenn Toombs, Mrs. James McLeroy, T.L. Griffin, Eddie Simer, Lorene Jones, Ruth Weathers, Martin Parks, Mrs. Edna Miller, and Dan K Turner.
 Borden Star Publishers, Inc.

Bill Wilson Oil Co. Inc.

Bill Wilson Oil Company, Inc.

sells LP-gas, gasoline, diesel and all other Phillips 66 petroleum products, tires, batteries and accessories.



SERVING OUR AREA WITH PRIDE

1501 E. Third 267-5251

THOMASON COLLEGE PARK 66
 4th at Birdwell

TOM'S 66 SERVICE
 1811 Gregg

JIFFY CAR WASH
 807 W. 4th

DOWNTOWN 66
 215 E. 3rd

ST. LAWRENCE TRADING CO.
 St. Lawrence

FAIRVIEW 66
 Hwy. 87, 7 mi. no. of city

KNOTT 66 SELF-SERVICE
 Knott

LOTA' BURGER

"A SQUARE MEAL"

Phone 573-2922
 SNYDER, TEXAS

ON A
 ROUND-BUN

Chevrolet
POLLARD
 Chevrolet Co.

1801 E. 4th St. Phone 267-7421
 WHERE VOLUME SELLING SAVES YOU MONEY

Big Spring

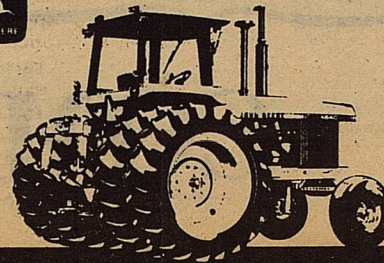


BRAY
 IMPLEMENT CO., INC.

Rt. B - Box 42
 Lubbock Hiway
 Lamesa, Texas

ROY BURDETT
 Salesman

Residence Phone 872-7230
 Business Phone 872-5474



WAYLAND TAYLOR INC.

O'DONNELL, TEXAS

806/428-3245

Back To Basics With Homemade Ice Cream

The dessert and refreshment category of the "back to basics" move encompasses homemade ice cream. The job of freezing ice cream becomes a group affair when the elements of the operation are divided among family members—one to mash the fruit, another to chop the peanuts, someone to crack the ice, and so on. Even if a child is too young to help he can be appointed the official taste tester!

It's fun and creative to make your own ice cream on a summer afternoon. Taking a turn at the crank is an entertaining activity that allows everyone to participate. Banana Nutcracker Sweet Ice Cream—a started-from-scratch recipe using simple, fresh ingredients and no preservatives—is better than any commercial product you've tasted. This creamy blend of bananas and Planters Dry Roasted Peanuts can be made in mechanical or electric ice cream freezers or refrigerator freezer trays.



BANANA NUTCRACKER SWEET ICE CREAM

- 1/2 teaspoon unflavored gelatin
- 1/3 cup sugar
- 1/3 cup milk
- 1 cup medium-ripe mashed bananas
- 1 teaspoon lemon juice
- 1/4 teaspoon salt
- 1 teaspoon vanilla extract

- 1-1/2 cups heavy cream
- 2 tablespoons finely chopped Planters Dry Roasted Peanuts

In small saucepan, combine gelatin and sugar. Stir in milk. Cook, stirring constantly, over medium heat until mixture comes to a boil. Cool to room temperature.

Combine cooked milk mixture with banana, lemon juice, salt and vanilla.

Whip heavy cream until stiff. Fold whipped cream into banana-milk mixture. Pour into freezer trays. Freeze until crystals form

around edges. Remove to a chilled bowl and beat until smooth. Stir in finely chopped Planters Dry Roasted Peanuts. Return to freezer trays; freeze until firm. Makes 1 quart.

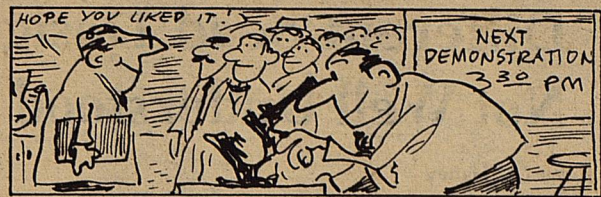
For Ice Cream Freezer: Double all ingredients and prepare as above except stir unwhipped heavy cream into banana-milk mixture omitting peanuts. Follow manufacturer's directions for freezing and ripening, folding in Planters Dry Roasted Peanuts before ice cream is ripened. Yield: about 1-3/4 quarts.

Political Candidates

The Borden Star is authorized to announce the following candidates for political office weekly, subject to action of the General Election.

- STATE SENATOR - 28th District
E. L. Short -D-
- CONGRESS - 17th District
Charles Stenholm -D-
- COUNTY TREASURER
Don Cox -D-
- COUNTY DISTRICT CLERK
Dorothy Browne -D-
- COUNTY COMMISSIONER
- PRECINCT #2
Larry Smith -D-
- PRECINCT #4
Ed Rinehart -D-
- COUNTY JUSTICE OF PEACE
Carolyn Stone -D-
- COUNTY JUDGE
Jim Burkett -D-

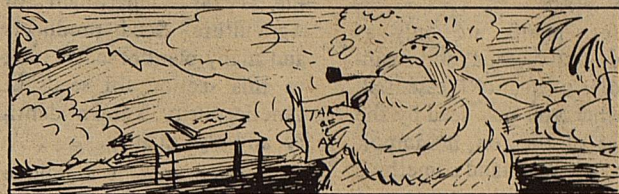
Above is paid political advertising. Paid by above listed individuals.



The first electron microscope was demonstrated by Max Knoll and Ernst Ruska in 1931.



The word "posse" comes from Latin meaning "to be able."



The "Tarzan of the Apes" books have been translated into 56 languages.

CLEVELAND ATHLETICS
Your Complete Athletic Team Dealer
and Snow Ski Equipment.
215 Main -- (915) 267-1649 -- BIG SPRING, TEXAS 79720

BARRINGTON PUMP & MACHINE
MYERS, TAITCO AND RED JACKET PUMPS
PHONE 872-8307 | SIMMONS LUBBOCK HIWAY
RT. B P.O. BOX 28 SUBMERSIBLES LAMESA, TEXAS

PEOPLE ARE FIRST WITH US

MEMBER F.D.I.C.

First of Lamesa
THE FIRST NATIONAL BANK OF LAMESA
LAMESA, TEXAS

Snyder 573-9333 DRUG INC.
3609 COLLEGE AVE. SNYDER TEXAS
THE STORE WITH MORE OF WHAT YOU'RE LOOKING FOR

Dairy Queen CUMMINS DAIRY QUEENS

Two Locations

108 E. Hwy. 4301 College
Snyder, Texas

573-5350 573-9041

PROFESSIONAL PHARMACY
10th & Main Big Spring, Texas 267-2546
REVLON, MAX FACTOR, COTY, BONNE BELL,
HELENA RUBENSTEIN, CHARLIE, JONTUE

Etheredge's Cowboy Supply

OPEN 9:00-6:00

- West Side of Square, downtown Lamesa -
118 Austin Ave.

CINDY ETHEREDGE 806-872-3684 DON ETHEREDGE

BOB BROWN OLDS-CADILLAC-GMC

OLDSMOBILE GMC TRUCKS Cadillac

202 SOUTH 3rd -- LAMESA, TEXAS
806/872-2144

The Scientists Tell Me ... Different Seed Designations Are Not Well Understood by the Public

By Robert L. Haney
TAES Science Writer

The general public, as well as many professionals in agriculture, is often confused by seed designations. If you're not sure of the meaning of pedigreed, certified, breeder, foundation, or registered seed, then you're probably in the majority.

Yet, plants are only as good as their seed, and maintenance of quality is essential. Whether you buy seed by the ounce or the ton, it's important to understand something of seed development and what constitutes quality.

In considering quality we encounter terms such as purity, viability, varietal deterioration, vigor, and genetic variability.

Genetic purity means the seed is all of the designated variety without contamination by crossing with other varieties.

Viability refers to what percentage of the seed will sprout, and *vigor* indicates how well the sprouted seed will grow.

Varietal deterioration means that a variety will decline in quality unless an effort is made to maintain or improve it. Some causes include mechanical mixtures, natural crosses, mutations, and gene changes.

Genetic variability can be caused by a mutation, which is a variation in genes controlling heredity, or it may even be that the original variety contained unlike genes.

Foundation seed requirements are the highest of any class of seed, according to Harvey Walker, agronomist in charge of the Foundation Seed Service of the Texas Agricultural Experiment Station.

This unit serves as the "bureau of standards" for a

large part of the Texas certified seed industry.

The basic seedstocks of new and old varieties and other strains developed by Experiment Station or USDA plant breeders are maintained by this unit and certified by the Texas Department of Agriculture. Seed producers and many plant breeders look to this section for seeds of genetic purity, known identity, and high quality.

Breeder seed is a unique variety developed by a plant breeder and maintained by the breeder. The breeder writes the description of his crop.

Registered seed is produced from foundation seed handled under procedures acceptable to the certifying met the most stringent requirements of all in the Certification Program.

In the production of Station or USDA foundation seed, the Foundation Seed Service controls or supervises all operations during selecting the land, planting the crop, and harvesting and processing the seed. Frequent roguing during the growing season and before harvesting is the most dependable method to prevent mixtures of off-type plants and other crops. Seed production during an average year runs about 900 thousand pounds.

In addition to such crops as improved varieties of peanuts, wheat, corn, and grain sorghum, Foundation Seed is responsible for improved grasses and barley, flax, oats, cowpeas, guar, sesame, castorbeans, sunflowers, and a great variety of vegetables. In recent years improved peaches, plums, figs, and berries have been multiplied and sold to commercial seed companies, other countries, other experi-

ment stations, and individuals.

The primary function of the Foundation Seed Service is to ensure that our hard-won gains, in better grasses; fruit, vegetables, and other crops, are maintained and multiplied for the present and future benefit of all.

Certified seed is produced from registered seed under approved procedures. This is the best seed for producers.

All seed except garden seed of less than two pounds must be labeled with a *Texas tested seed label*. Vital information on this label provides information necessary for producers.

It tells the kind of seed; the variety; the purity; inert material, if any; other crop seed; weeds; noxious weeds; germination; date tested; and net weight.


In addition to the Texas tested seed label, all seed in the certification program in commercial channels must be tagged as certified, registered, or foundation seed.

The blue-colored *certified tag* is the user's guarantee that this class of seed has met all requirements of the Texas Seed Certification Program.

Certified seed is best for producers to plant. It's available in adequate quantities and at reasonable prices.

The purple-colored *registered tag* indicates that seed has met even more stringent requirements of the Seed Certification Program.

The black-and-white *foundation tag* indicates that seed is of highest quality and has



FARM BUREAU INSURANCE

Scott Russell Agent


Lamesa, Texas

1602 N. Dallas Phone 872-8333

FORREST
Lumber Company

COMPLETE REMODELING AND CONTRACTING
CUSTOM CABINET WORK

509 South 2nd. Lamesa, Texas 806/872-2135



**You Pull The Strings...
And Save On Food At
Piggly Wiggly**

HOME OWNED AND OPERATED
BY THE CLAIBARNES

No. 1 708 N. 1st NO. 2 710 N. 14th
LAMESA, TEXAS

Fenton's
Clothing For The
Whole Family

2502 Ave. R

Snyder, Texas 573-6111

THE BORDEN STAR

1 YEAR BORDEN, DAWSON, LYNN, HOWARD,
GARZA AND SCURRY \$5⁰⁰

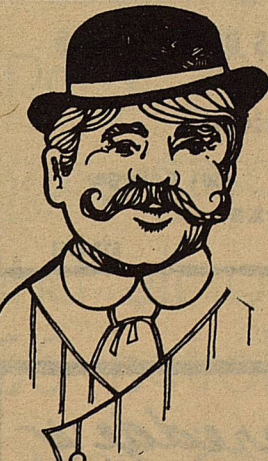
1 YEAR OUT OF 6 COUNTY AREA \$6⁰⁰

BOX 137 GAIL, TEX. 79738

Name.....

Street.....

City..... State..... Zip.....



**Bob Dyess
&
Pat Porter**

Homeowned and Operated

**Have A Happy
4th of JULY
from the Sunshine Boys....**

**THE SUNSHINE
MERCANTILE CO.
GAS & GROCERY
Gail, Texas**