







# QUICK ACTION OF PIPE LINE BILL PLANNED

## CENTENNIAL ACT VOTED MINUS REVENUE AMENDMENT

AUSTIN, April 5. (AP)—Consideration of a bill re-enacting the market demand provisions of the existing oil conservation law and generally tightening conservation statutes was the chief business facing the senate today.

The house already had passed the measure, which sponsors said was necessary to prevent serious consequences to proration. It would authorize the railroad commission to restrict production to market demand.

One of the most controversial matters, a \$3,000,000 appropriation for the Texas Centennial celebration, was shunted out of public hearing for the time being.

Finally passed by the house, the Centennial bill went to a conference committee for adjustment of differences with the senate minus an amendment which would pledge 18 per cent of the revenue of the Centennial to repay the state aid. The bill previously had been passed by the senate.

Much interest centered on the swift approval given by both senate and house committees to a bill creating a state agency to receive a grant and loan of \$60,000,000 from the federal government with which to build a giant pipeline from the Panhandle gas fields to St. Louis and Detroit.

Governor Allred in a special message told the legislature it was, in effect, the opportunity of a lifetime in which the state, individual Texans, resident of St. Louis and Detroit and people all about needing work would be benefited. Sponsors of the measure hoped to get it enacted before opposition possibly from gas companies already in the Panhandle field and fuel companies in the proposed markets, could organize.

Meanwhile, the house committee on constitutional amendments deferred action on the bill by Senator Ben G. Oneal of Wichita Falls providing for an election on a constitutional amendment authorizing classification of property other than real for taxation purposes.

After an extended hearing at which representatives of Texas bankers expressed their opposition, the resolution was sent to a committee for further study, and announcement of another hearing was made.

Speakers opposing the amendment included Sam Greer of Tyler, president of the state bankers association, N. Suttle Roberts of Corsicana, John T. Yantis of Brownwood, E. L. Boston of Angleton and J. E. Wood of Teague, all bankers. A house bill to make gas pipe lines common carriers will come before the senate on a minority report. It was voted out unfavorably by the state affairs committee, 10 to 3. The bill passed overwhelmingly in the house.

Opponents charged the bill was impossible of application because of physical obstacles that must be overcome before the gas pipe lines could enter the common carrier field.

Representative Charles H. Tennyson of Wichita Falls, author, asserted the bill would serve a dual purpose, furnish a market outlet for gas of distressed independent producers and provide a method of supply for municipal distribution systems.

A bill to authorize the state pharmacy board to cancel licenses of pharmacists engaged chiefly in selling liquor was reported favorably by the senate health committee. The committee also gave a favorable report to a bill prohibiting tax exempt hospitals from barring outpatients there called in by a patient.

Use News Classified Ads.

**DON'T FAIL to attend the Big JAMBOREE**

Sat. Nite, Apr. 6th  
Dance to Music  
Played by the  
California  
Play Boys

LOTS OF FUN

**Southern CLUB**  
No Advance in Prices

**POTATOES**  
IDAHO WHITE RUSSETS  
**10 LB. BAG 14c**

**POTATOES**  
U. S. NO. 1 SELECTED  
RED TRIUMPHS  
**10 LB. FOR 23c**

**BANANAS**  
LARGE - GOLDEN RIPE FRUIT  
SATURDAY ONLY  
**LB. 4c**

**CARROTS**  
LARGE ORIGINAL BUNCHES,  
YOUNG AND TENDER  
**BUNCH 5c**

**MONARCH PUMPKIN**  
THE BEST FOR PIES  
NO. 2 1/2 SIZE  
**2 CANS FOR 25c**

**TOMATOES**  
NO. 1 SIZE STANDARD  
PACK  
**CAN 5c**

**SUGAR** EXTRA FINE GRANULATED IN PAPER BAGS **10 LB. BAG 49c**

**APRICOTS**  
WHITE SWAN  
EXTRA FANCY DESSERT  
HEAVY SYRUP  
**No. 2 1/2 CAN 23c**

**PORK & BEANS**  
MONARCH  
NO. 2 1/2 TALL CAN  
**2 CANS FOR 29c**

**BREAD**  
OVEN FRESH FLUFFY  
SATURDAY ONLY  
**16 OZ. LOAF 8c**

**FREE**  
A BEAUTIFUL SCOTTIE  
CREAM FITCHER WITH  
2 PKGS. GRAPE NUT FLAKES  
**GRAPE NUT FLAKES 2 BOXES FOR 19c**

IT'S THE SAVING ON EVERY IT  
**STANDARD**  
**FOOD MARKET**  
"SELLS FOR"

The Items Listed in This Square Carried in Stock at Stores 2 & 3 Only

**BRAN 100 LB. SACK \$1.59** **SHORTS 100 LB. SACK 1.79** **FLOUR 24 LB. SACK 93c** **FLOUR 24 LB. SACK 83c**

**SPAGHETTI** ABOVEALL'S CAN  
**SOUP** ABOVEALL'S VEGETABLE CAN  
**BEANS** ABOVEALL'S KIDNEY CAN  
**HOMINY** ABOVEALL'S CAN  
**NOODLES** 3 OZ. BUDDY BAG  
**SARDINES** AMERICAN OIL, FLAT CAN  
**CLEANSER** LIGHT HOUSE CAN  
**SOAP** PEERLESS HARDWATER OR WHITE KING TOILET BAR  
**PORK & BEANS** NO. 1 TALL CAN  
**TOOTHPICKS** REGULAR BOX

**YOUR CHOICE EACH 5c**

**VEGETABLES**

**PUMPKIN** No. 2 Sweet Pack **2 CANS FOR 19c**  
**BEANS** No. 2 cut green **2 FOR 19c**  
**CORN** No. 2 Standard packed **2 FOR 21c**  
**KRAUT** No. 2 Fancy first grade **3 CANS FOR 21c**  
**PEAS** No. 2 Early June sifted, These are not dry soaked **2 CANS FOR 24c**  
**VEG-ALL** No. 2 Mixed Vegetables **2 CANS FOR 23c**  
**HOMINY** No. 2 1/2 large snow white **2 FOR 25c**  
**KRAUT** No. 2 1/2 fancy pack **2 FOR 25c**

**SWEET PICKLES**  
BIG VALUE  
**CUT FULL QT. 19c**

**COFFEE**  
FOLGER'S GOLDEN GATE  
PLAIN OR DRIP GRIND  
**LB. 30c**

**PRUNES** Northwestern Pack Fresh Italian **GAL. 31c**  
**PEACHES** Yellow Cling Pie Fruit **GAL. 39c**  
**PEARS** Fancy Bartlett Halves **GAL. 41c**  
**BLACKBERRIES** Fine for Pies **GAL. 41c**  
**STRAWBERRIES** Northwestern pack **GAL. 59c**  
**PINEAPPLE** Fancy Hawaiian **GAL. 68c**  
**DATES** Imported Persian Loose Packed **1 1/4 LB. 19c**

**GRAPE JAM**  
MA BROWN  
1ST GRADE  
DELICIOUS  
**4 LB. 49c**

**COCOA** Our Mothers Brand—Creamy Texture **2 CAN 19c**  
**RICE** Fancy Bulk Full Head **BAG 19c**  
**FIGS** Fancy Black Or White In the Bulk **BAG 19c**

**Butter** Cloverbloom Quarters, Lb. 31c.  
**CLOVERBLOOM SOLID MOLDS IN CARTONS LB. 30 1/2c**

**SALMON** Alaska Pink, No. 1 Tall **2 CANS FOR 23c**  
**SARDINES** Van Camp's No. 1 Tall **2 CANS FOR 17c**  
**SYRUP** Pennick's Original "Steamboat" Brand **GAL. 49c**  
**MARCO-JELL** Quick Setting in All Flavors **BOX 5c**  
**MACKEREL** California Quality No. 1 Tall **2 CANS FOR 17c**  
**MARSH-MALLOWS** Fancy fresh cellophane wrapped **LB. 19c**  
**MARSH MALLOW** Monarch Kept Fresh in Tins **1 LB. 23c**  
**CATSUP** Large 14 oz. packed from red ripe tomatoes **2 LARGE BOTTLES 24c**  
**COCONUT** Fancy long shredded in the bulk **1/2 LB. 13c**  
**SOAP** T. N. T. or Big Ben the Giant Yellow Soap that won't cheap **6 FOR 23c**

**CAKE FLOUR** PILLSBURY SNO-SHEEN WITH HANDY SIFTER ON EVERY BOX **BOX 24c**  
**TOILET TISSUE** Standard Food Brand 3 Large rolls **19c**

**COFFEE VALUES**

**BREAK O' MORN BLISS, A Maxwell House Product MAXWELL HOUSE**  
**LB. BAG 19c**  
**LB. CAN 22c**  
**LB. CAN 29c**

**CEREALS**

**POST TOASTIES** **BOX 10c**  
**POST BRAN** **BOX 10c**  
**REGULAR PKG.** **BOX 10c**  
**CRYSTAL WEDDING** **BOX 21c**  
**OATS, Large Box** **35c**  
**GRAPE-NUTS** **2 PKGS. FOR 17c**  
**MILLER'S CORN FLAKES** **2 BOXES FOR 17c**

**EVAPORATED MILK**  
CARNATION OR PET  
**3 TALL OR 6 SMALL CANS 21c**

**OLEO**  
BUTTER SUBSTITUTE  
SATURDAY AND MONDAY  
**2 LB. 33c**

**CRACKERS**  
TASTY FLAKES—SALTED JUST RIGHT FRESH AND CRISP  
**2 LB. 15 1/2c**

**BEETS**  
FANCY CUT—2 1/2 SIZE  
**2 CANS FOR 19c**

WE RESERVE THE RIGHT TO LIMIT QUANTITIES

# STANDARDS

**GRAIN FED STEAKS** GRAIN FED  
CUT FROM WILSON'S STAMPED VEAL

**FAMILY STYLE** **LB. 11 1/2c**  
**CHOICE CENTER CUT CHUCK** **LB. 18 1/2c**  
**CHOICE CUT ARM ROUND** **LB. 20 1/2c**  
**SMALL CHOICE SHORT CUTS** **LB. 27 1/2c**  
**CHOICE CUT LOIN** **LB. 27 1/2c**  
**FANCY ROUND OR SIRLOIN** **LB. 29 1/2c**

**HAMBURGER** 100% All Beef, Always Fresh

**SAUSAGE** 100% All Pork, From Grain-Fed Pigs

**PORK CHOPS** Center Cuts, Lb. 25c; End Cuts

# CHEESE

**DELICATESSEN FEATURES**  
AT NO. 2 STORE ONLY

**Barbecued Ribs, Roast Beef, Roast Pork** **LB. 35c**  
**Barbecued Hearts, Tongues, Short Ribs** **LB. 19c**  
**Potato Salad Ready to Serve** **LB. 17 1/2c**  
**PIE CHEESE SPREAD** **LB. 35c**  
**PIE MINCED HAM** **LB. 30c**  
**CHICKEN SALAD** **LB. 40c**

**POULTRY DEPARTMENT**  
ALWAYS STANDARD'S

**HENS** Fancy Heavy

**BROILERS** NEW CROP ALIVE

**FRYERS** WILSON'S CERTIFIED MILK FATTENED 1 1/2 TO 2 1/2 LB. AVERAGE

**FRESH HAMS**

**SHANK ENDS** **LB. 18 1/2c**  
**PORK ROAST END CUTS** **LB. 22 1/2c**  
**PORK ROAST CENTER CUTS** **LB. 27 1/2c**

**COTTAGE CHEESE** Full Cream

**SPARE RIBS** Small and Fresh Lots of Meat

**LUNCH LOAVES** Plenty To Eat From

**BACON SQUARES** Small Pieces

**LIVER** Young Cal Lb. 19c Small Pig

**FRANKS** Large and Juicy

**PORK SHOULDER**

**SHANK 1/2 ONLY** **LB. 14 1/2c**  
**END CUT ROAST** **LB. 19 1/2c**  
**CENTER CUT ROAST** **LB. 20 1/2c**

**CHEESE**  
KRAFT'S PHILADELPHIA CREAM

**3 PKGS. FOR 23c**

**Pure Lard** IN Y CO







MAY IN HAND TO SEE FORD SHOW IN CITY

WILL SHOW FEATURES TWICE DAILY FOR TWO DAYS

The Ford show was officially opened at 1:30 this afternoon at the Tom Rose Used car building...

Features which include the "human Ford," the Ford Motor company assembly crew, Ford moving pictures and the cut-away chassis...

As a part of their intensive advertising program for this year, the Ford Motor company is co-operating with the Panhandle Ford dealers...



(Continued from page 1)

fare of the prisoners is being looked after more efficiently each year, and the physical properties of the prison system have been materially improved...

THE PRISON has packing plants, canning plants, machine shops, shoe shop, candy factory, clothing shop, and the license plate shop...

GRAY COUNTY had nine inmates in the prison last year, a rather low figure for a county of this size...

NEW ORLEANS COTTON Prices held in a narrow range for the remainder of the morning and fluctuated from 2 to 3 points on both sides of the market...

CHICAGO GRAIN CHICAGO, April 5.—With the corn market showing almost 10 cents a bushel advance from the recent low point, profit taking sales became the rule today in grains...

COLTEX TO PLAY SHAMROCK SUNDAY Baseball fans of this section will get a peek at the strength of the Coltex baseball team of LeFors...

AGED WOMAN OF PAMPA IS DEAD Mrs. Anna Elizabeth Collins, 79, died at 8 o'clock last evening at the home of her son, H. C. Collins, 414 S. Gillespie...

FUNDS AGREED ON FOR 16 SCHOOLS AUSTIN, April 5.—(AP)—A conference today agreed on a bill to appropriate \$266,960 for operation of 1625 summer schools...

Senators Will Probe Charges Of Brutality AUSTIN, April 5.—Further investigation of charges that convicts in the Texas prison relieve farm near Angleton mutilated themselves because of brutality of guards was stated today...

MARKET BRIEFS

NEW YORK, April 5.—(AP)—The stock market got a foothold on recovery today in one of the most active sessions in about a month...

Table of stock market data including Am Can, Am % For Pow, Am Rad, etc.

NEW YORK CURB STOCKS Cities Svc, E. & S., Gulf Pa., Humble Oil.

GRAIN TABLE with columns for Wheat, May, July, Sept and High, Low, Close.

KANSAS CITY LIVESTOCK KANSAS CITY, April 5.—(U. S. Dept. Agr.)—Cattle: 1,000, calves: 250; fairly active...

NEW ORLEANS COTTON Prices held in a narrow range for the remainder of the morning and fluctuated from 2 to 3 points...

CHICAGO GRAIN CHICAGO, April 5.—With the corn market showing almost 10 cents a bushel advance...

COLTEX TO PLAY SHAMROCK SUNDAY Baseball fans of this section will get a peek at the strength of the Coltex baseball team of LeFors...

AGED WOMAN OF PAMPA IS DEAD Mrs. Anna Elizabeth Collins, 79, died at 8 o'clock last evening at the home of her son, H. C. Collins, 414 S. Gillespie...

DELEGATION TO ADVOCATE ROAD NORTH DEPARTS

Hearings To Be Held Monday Before Commission

A Pampa road delegation composed of George Briggs, manager of the B. C. D.; Mack Graham, president; and B. W. Rose, chairman of the highway committee...

AUSTIN, April 5.—(AP)—Twenty six delegations seeking state road aid were registered for hearing next Monday before the Texas highway commission.

Senators Will Probe Charges Of Brutality AUSTIN, April 5.—Further investigation of charges that convicts in the Texas prison relieve farm near Angleton mutilated themselves because of brutality of guards was stated today...

CENTENNIAL

reference committee to stand unyielding for a house amendment that would apply 15 per cent of gross receipts from the Centennial at Dallas to liquidation of a state appropriation for the observance.

TORNADO

tin barn on the Tebbe spinach farm, were caught beneath the roof of the shed when it collapsed. Three were seriously injured.

Funds Agreed on For 16 Schools

AUSTIN, April 5.—(AP)—A conference today agreed on a bill to appropriate \$266,960 for operation of 1625 summer schools at 16 state and the university.

Honor Roll Of 'Build Pampa' B. C. D. Fund

The Pampa Board of City Development is in a drive for a special fund to enable its committee to seek factories, more highway construction, and do other things for which the inadequate tax revenue may not be used.

Table with columns: Name, Amt. Pledged. Includes Dr. A. R. Sawyer, Montgomery Ward, Barrett Bros Packing Co., etc.

English Star



Binnie Barnes, titian-haired English movie star, smiles her joy en route to Hollywood. She is here as a new addition to the rapidly growing colony of British actors and actresses imported by the screen's talent exploiters.

5 RECORDS ARE SHATTERED IN TRACK TRIALS

Literary Events To Hold Attention Tomorrow

Entries in every event in the District 2 Intercollegiate league meet, which opened here this morning, far exceeded the number anticipated. Competition was keen in the preliminary events, especially in the track and field division and the tennis contests.

A few preliminaries in literary events were called for today but most of that section will be tomorrow. Preliminaries in declamation will be in local churches.

Medicated!

Ingredients of Vicks VapoRub in Convenient Candy Form VICKS COUGH DROP

Smart Fashions For The EASTER SEASON

Our buyers have just returned from the markets bringing the newest Smart Fashions for Easter wear. You will want to see them... Come in Today!

Advertisement for graduation and dance frocks, featuring a woman in a long dress and prices like \$498 up.

Advertisement for Cotton Favorites, featuring various styles of dresses and blouses.

Advertisement for White Ties & Pumps, featuring a woman in a dress and shoes, with prices like \$198 to \$395.

Advertisement for Spring Dress Hats, featuring various styles of hats.

Advertisement for Children's and Misses White Slippers, featuring a woman in a dress and slippers.

Bandits (Continued from page 1) Kerr, their wounded victim, was brought in for treatment. After the three other gunmen joined them they forced Goetzler to drive to a point near Wheaton...

Advertisement for BAKING POWDER, featuring a circular logo and text: "Manufactured by Baking Powder Specialists, who make nothing but Baking Powder... Controlled by Expert Chemists" for ECONOMY and SATISFACTION use.

Advertisement for TORNADO, featuring a man in a suit and text: "Man in the Tebbe spinach farm, were caught beneath the roof of the shed when it collapsed. Three were seriously injured."

Advertisement for Aged Woman of Pampa Is Dead, featuring a woman in a hat and text: "Mrs. Anna Elizabeth Collins, 79, died at 8 o'clock last evening at the home of her son, H. C. Collins, 414 S. Gillespie."

Advertisement for PAMPA BUS TERMINAL, featuring a bus and text: "New Service Between Pampa, Texas and Oklahoma City, Okla. Thru Busses Now Leave at 12:40 p. m. and 5:30 p. m."

Advertisement for Stein's Dep't Store, featuring various items like polo shirts, white duck caps, black oxfords, white oxfords, and mens work pants.









**PAM**  
FRUIT & VEGETABLE  
MARK  
"The Most of the Best for the Money"

FREE Delivery Phone Orders Given Prompt Courteous Attention

**FOODS**

**DEL MONTE FIND OUT**

- MACKEREL SELECTED FLAT SIZE CAN
- PORK & BEANS NO. 1 TALL CAN
- COCOA HERSEY'S SMALL SIZE CAN
- TOMATO SOUP ABOVALL BRAND CAN
- KIDNEY BEANS ABOVALL BRAND CAN
- VEGETABLE SOUP Abovall Brand CAN
- SPAGHETTI ABOVALL, Cookies in cheese & tomato CAN
- LIMA BEANS 9 1/2 OZ. SIZE CAN
- PEAS & CARROTS 9 1/2 OZ. SIZE CAN
- HOMINY PICNIC SIZE ABOVALL'S CAN
- CLEANSER SUNBRITE OR LIGHTHOUSE NO. 1 CAN
- TOMATOES STANDARD LINEN ROLL
- TOILET TISSUE SOFT ROLL

YOUR CHOICE **5c**

**CARROTS**  
LARGE YOUNG, FRESH AND CRISP  
BUNCH **3 1/2c**

**POTATOES**  
IDAHO WHITE RUSSETS  
10 LBS. FOR **15c**

**SPINACH**  
FRESH CALIFORNIA GARDEN NO GRIT  
LB. **6 1/2c**

**FARMERS** BRING US YOUR HENS, FRYERS, DUCKS, GEESE, GUINEAS, EGGS, BUTTER, ETC. WE PAY TOP PRICES ON ALL FARM PRODUCTS!

**PAMPA FRUIT & VEGETABLE MARKETS**

Fancy Del Monte Fresh California Sun Ripened  
**PRUNES**  
2 LB. BOX **25c**

**FRUIT SALAD**  
DEL MONTE FANCY  
BUFFET SIZE CAN **CAN 14c**  
NO. 1 TALL SIZE CAN **CAN 23c**  
NO. 2 1/2 SIZE CAN **CAN 37c**

**DEL MONTE SPINACH**  
Fancy No. 2 1/2 California No Grit  
**CAN 19c**

**GREEN BEANS**  
NO. 2 DEL MONTE FANCY  
**CAN 19c**

**SUGAR**  
FINE GRANULATED 10 LB. SACK **51c**  
PURE CANE IN CLOTH BAGS 10 LB. SACK **53c**

**CORN MEAL**  
BLUE BAND OR GREAT WEST  
5 LB. BAG **18c**

**SHORTENING**  
CUDAHY'S WHITE RIBBON IN CARTONS  
8 LBS. **\$1.04** | 4 LBS. **53c**

**CRACKERS**  
SALTINES ALWAYS FRESH 2 LB. BOX **29c**  
TRY SMACKS THEY'RE BUTTERED BOX **15c**  
TASTY FLAKES GRAHAM CRACKERS 2 LB. BOX **19c**

**CORN**  
DEL MONTE No. 2 Fancy Country Gentleman **CAN 18c**  
Med. Size, Vacuum Packed Whole Grain **CAN 19c**

**MACARONI**  
OR SPAGHETTI SUN RIPE BRAND 2 BOXES FOR **9c**

**TOMATO JUICE**  
DEL MONTE BRAND  
GAL. **49c**

**TOMATOES** Del Monte fancy red ripe GAL. **69c**  
**CHERRIES** No. 2 1/2 Del Monte Royal Anne in Syrup CAN **33c**

**APRICOTS**  
NO. 2 DEL MONTE FANCY HEAVY SYRUP  
CAN **21c**

**BKG. POWDER** CLABBER GIRL 2 LB. CAN **19c**  
**TOMATO SAUCE** Del Monte fancy for cooking 2 CANS FOR **15c**  
**PRUNES** No. 2 1/2 Del Monte fancy heavy syrup CAN **23c**

**FOLGERS** GOLDEN GATE COFFEE Plain or Drip Grind  
LB. **30c**  
2 LB. CAN **59c**

**JUNE PEAS** No. 2 Maple Early June 2 CANS FOR **23c**  
**CATSUP** 14 Oz. Packed from red ripe tomatoes 2 BOTTLES FOR **24c**  
**KRAUT** No. 2 1/2 fancy 1st grade 2 CANS FOR **19c**

**RASPBERRIES**  
No. 2 Fancy Del Monte Red Raspberry heavy syrup  
CAN **26c**

**HOMINY** No. 2 1/2 Fancy 1st Grade 2 CANS FOR **19c**  
**P'APPLE JUICE** No. 2 Del Monte Fancy CAN **19c**

**COFFEE**  
BREAK O' MORN IN LB. BAGS  
LB. **19c**

**DEL MONTE GAL. FRUITS**  
PEACHES Fancy Dessert Heavy Syrup GAL. **64c**  
PEARS Fancy Syrup Bartlett Halves GAL. **89c**  
PLUMS Fancy DeLuxe Heavy Syrup GAL. **64c**

**DEL MONTE PEARS**  
NO. 1 TALL FANCY BARTLETT CAN **19c**  
NO. 2 1/2 FANCY BARTLETT CAN **27c**

**DEL MONTE PLUMS**  
No. 2 1/2 Fancy Deluxe Heavy Syrup CAN **23c**  
No. 2 1/2 Green Gage Heavy Syrup CAN **26c**

**BLUE BARREL SOAPS**  
SOAP CHIPS 5 LB. BOX **33c**  
Giant Laundry 6 BARS FOR **25c**

**ROYAL GELATINE**  
QUICK SETTING IN ALL POPULAR FLAVORS  
BOX **6c**

**WHITE KING**  
GRANULATED SOAP GOES FURTHER  
BOX **28c**

**DEL MONTE PEACHES**  
NO. 1 TALL FANCY SLICED OR HALVES IN HEAVY SYRUP  
YOUR CHOICE 2 CANS FOR **29c**

U. S. Gov't. Inspected

**MILK FED VEAL MILK FED**  
Genuine Stamped Fancy BREAST TO STEW or BAKE LB. **17 1/2c**  
CHUCK ROAST LB. **19 1/2c**  
ARM ROAST LB. **21 1/2c**

**SLICED BACON**  
ARMOUR'S ROLLS LB. **29 1/2c**  
WILSON'S ENGLISH LB. **30 1/2c**  
PINKNEY'S SUN RAY LB. **31 1/2c**

**BUTTER**  
SOLID CREAMERY  
LB. **31 1/2c**

DAILY ARRIVALS FISH DAILY ARRIVALS

RED FISH	LB. 25c
HALIBUT	LB. 30c
SEA BASS	LB. 30c
SALMON	LB. 30c
SHRIMP	LB. 25c
JUMBO FROGS EACH	35c
SALT WHITE FISH	EACH 9c
SALT MACKEREL	EACH 12 1/2c

**DEL MONTE ASPARAGUS**  
NO. 1 PICNIC EARLY GARDEN GREEN  
NO. 2 GARDEN GREEN OR MAMMOTH WHITE  
MAMMOTH WHITE IN LARGE SQUARE

**FINEST**

**CORN FED STEAKS**  
ROUND OR T-BONE CHOICE SIRLOIN  
LB. **29 1/2c** | LB. **27 1/2c**

**CHOPS** Center Cut Pork, L. 29 1/2c, End Cut Pork  
**STEAK** Uniform Quarter, Del. From Baby Beef

**CORN FED ROASTS**  
CHOICE RUMP LB. **17 1/2c**  
ROLED PINE LB. **15 1/2c**

**SPARE RIBS** Fresh not frozen  
**BACON** Dry Salted for smoking

**CHILI** Mexican style block made in our own market

**PORK SHOULDER**  
FRESH KILLED, NOT I  
CENTER CUTS TO FRY OR ROAST  
LB. **23 1/2c**

**BACON SQUARES** Small Average Dold's Smoked Cured 1/2 or Whole  
Slices cured squares Bon

**OLEO** BUTTER SUBSTITUTE  
LB. **18 1/2c**

PRICES AS SATURDAY & MONDAY ONLY

# PAMPA & VEGETABLE MARKET

PHONE 11  
204 No. Cuyler

# STORE

# FOOD SALE

THESE PRICES ARE FOR ALL THIS WEEK APRIL 5<sup>TH</sup> TO THE 12<sup>TH</sup>

**LEMONS**  
LARGE, JUICY, NEW CROP CALIFORNIA SUNKIST  
**DOZ. 15<sup>1</sup>/<sub>2</sub><sup>c</sup>**

**NEW POTATOES**  
NO. 1 SELECTED FLORIDA RED TRIUMPHS  
**LB. 5<sup>1</sup>/<sub>2</sub><sup>c</sup>**

**GRAPE FRUIT**  
GOOD SIZE MARSH SEEDLESS  
**6 FOR 25<sup>c</sup>**

FRESH COUNTRY EVERY EGG FULLY GUARANTEED

**EGGS DOZ. 18<sup>1</sup>/<sub>2</sub><sup>c</sup>**

**SUPER SUDS** LONGER LASTING **BOX**  
**SPINACH** NO. 2 STANDARD PACKED **CAN**  
**CORN** NO. 2 SWEET & TENDER **CAN**  
**LIMA BEANS** 15 1/2 OZ. SIZE **CAN**  
**KRAUT** NO. 2 BRIM-FULL BRAND **CAN**  
**BRAN FLAKES** JERSEY BRAND **BOX**  
**CORN FLAKES** JERSEY BRAND **BOX**  
**HEINZ SOUP** VEGETABLE REG. SIZE **CAN**  
**MINCE MEAT** PEERLESS 9 OZ. SIZE **BOX**  
**MACKEREL** NO. 1 TALL SELECTED **CAN**  
**BEANS** Mexican Ranch Style IN CHILI SAUCE **CAN**  
**TOMATO JUICE** CAMPBELL NO. 1 TALL **CAN**

**DEL MONTE PINEAPPLE** **DEL MONTE**  
NO. 2 1/2 FANCY 1ST GRADE SLICED OR CRUSHED  
 **CAN 26<sup>c</sup>**

**DEL MONTE PEACHES** **DEL MONTE**  
NO. 2 1/2 FANCY IN EXTRA HEAVY SYRUP—SLICED OR HALVES  
 **CAN 23<sup>c</sup>**


**BLUE BELL OATS** **BLUE BELL**  
CUP AND SAUCER FREE IN EACH BOX PURCHASED  
**LARGE BOX 28<sup>c</sup>**

**TOMATOES**  
NO. 2 STANDARD PACKED RED RIPE  
**3 CANS FOR 27<sup>c</sup>**

YOUR CHOICE **9<sup>c</sup>**

**ASPARAGUS** **DEL MONTE**  
GREEN **CAN 19<sup>c</sup>**  
**GREEN** **CAN 29<sup>c</sup>**  
**WHITE** **CAN 33<sup>c</sup>**

**DEL MONTE PEACHES** **DEL MONTE**  
BUFFET SIZE FANCY SLICED OR HALVES IN HEAVY SYRUP  
**CHOICE CAN 10<sup>c</sup>**

TRY A CUP OF **GOOD COFFEE**  
ORTHO-CUT FOR PERCOLATOR OR DRIP  
 **LB. 29<sup>c</sup>**

**DEL MONTE SALMON** **DEL MONTE**  
FANCY RED SOCKEYE NO. 1 TALL SIZE **CAN 23<sup>c</sup>**  
 FLAT SIZE **CAN 19<sup>c</sup>**

**BREAD**  
OVEN FRESH FLUFFY  
Delivered Fresh Twice Daily!  
**LOAF 8<sup>c</sup>**

# MEATS

**STAKS** **BABY BEEF**  
CHOICE SIRLOIN **LB. 27<sup>1</sup>/<sub>2</sub><sup>c</sup>**  
 SHORT CUTS **LB. 24<sup>1</sup>/<sub>2</sub><sup>c</sup>**

**MILK FED VEAL** **MILK FED**  
Genuine Stamped Fancy  
CHOICE CHOPS **LB. 29<sup>1</sup>/<sub>2</sub><sup>c</sup>**  
 CHOICE T-BONES **LB. 29<sup>1</sup>/<sub>2</sub><sup>c</sup>**  
 ROUND OR LOIN **LB. 34<sup>1</sup>/<sub>2</sub><sup>c</sup>**

**Borden's** **MILK**  
UNWEETENED EVAPORATED MILK  
**3 TALL OR 6 SMALL CANS 21<sup>c</sup>**

**DEL MONTE GRAPEFRUIT JUICE** **DEL MONTE**  
FINEST No. 1 Size **CAN 10<sup>c</sup>**

**DEL MONTE CATSUP** **DEL MONTE**  
Choice Tomato **BOTTLE 21<sup>c</sup>**

**DEL MONTE GARDEN PEAS** **DEL MONTE**  
NO. 2 DEL MONTE EARLY GARDEN SMALL SIFTED **CAN 23<sup>c</sup>**

**POST TOASTIES**  
With Mickey Mouse Cut Outs on every box  
**BOX 10<sup>c</sup>**

**ROASTS** **BABY BEEF**  
ROLED PATE **LB. 15<sup>1</sup>/<sub>2</sub><sup>c</sup>**  
 SHORT RIBS **LB. 12<sup>1</sup>/<sub>2</sub><sup>c</sup>**

**NUCOA**  
DELICIOUS BUTTER SUBSTITUTE  
**LB. 21<sup>c</sup>**

**HAMS**  
WILSON'S SUGAR CURED SHANK ENDS AS CUT AND DISPLAYED  
**LB. 15<sup>1</sup>/<sub>2</sub><sup>c</sup>**

**SWANS-DOWN** **CAKE FLOUR**  
SWANS-DOWN, FOR BETTER CAKES  
**BOX 29<sup>c</sup>**

**DEL MONTE CHILI SAUCE** **DEL MONTE**  
fine for sea food cocktails **BOTTLE 27<sup>c</sup>**

**DEL MONTE MATCHES** **DEL MONTE**  
Good Quality full count **6 BOX 23<sup>c</sup>**

**DEL MONTE PINEAPPLE** **DEL MONTE**  
No. 2 Del Monte Sliced or Crushed **CAN 19<sup>c</sup>**

**FLOUR**  
GOLD MEDAL KITCHEN TESTED  
**24 LB. 98<sup>c</sup>**

**PORK SHOULDERS**  
FRESH KILLED, NOT FROZEN  
CUTS TO ROAST **23<sup>1</sup>/<sub>2</sub><sup>c</sup>**  
 SHANK ENDS AS DISPLAYED **LB. 17<sup>1</sup>/<sub>2</sub><sup>c</sup>**

**POULTRY**  
LIVE HEALTHY FOWLS DRESSED AND DRAWN FREE WHILE YOU WAIT

**FANCY COLORED TYPE ALL SIZES**  
**HENS LB. 17<sup>1</sup>/<sub>2</sub><sup>c</sup>**  
**FANCY COLORED NEW CROP**  
**FRYERS LB. 28<sup>1</sup>/<sub>2</sub><sup>c</sup>**

**BLISS COFFEE**  
A Maxwell House Product All Purpose Grind Vacuum Packed  
**LB. 22<sup>1</sup>/<sub>2</sub><sup>c</sup>**

**DEL MONTE TUNA FISH** **DEL MONTE**  
all white meat **CAN 23<sup>c</sup>**

**DEL MONTE ASPARAGUS** **DEL MONTE**  
mammoth white tail **CAN 33<sup>c</sup>**

**DEL MONTE SARDINES** **DEL MONTE**  
mustard or tomato sauce **2 FOR 25<sup>c</sup>**

**PINEAPPLE**  
NO. 2 1/2 SILVER BAR SLICED OR CRUSHED  
**CAN 19<sup>c</sup>**

**PURE LARD**  
HOME RENDERED  
**LB. 12<sup>1</sup>/<sub>2</sub><sup>c</sup>**

**HERSHEY'S COCOA**  
HERSHEY'S BREAKFAST IN 1 LB. TINS  
**LB. 13<sup>c</sup>**

**SOAP VALUES**  
P. & G. GIANT SIZE **6 BARS 26<sup>c</sup>**  
**OXYDOL** For General Use **BOX 23<sup>c</sup>**  
**CAMAY** The Soap of Beautiful Women **BAR 5<sup>c</sup>**

**FRUIT COCKTAIL**  
DEL MONTE FIRST GRADE NO. 1 TALL SIZE **CAN 19<sup>c</sup>**

**DEL MONTE PINEAPPLE** **DEL MONTE**  
sliced or crushed flat **CAN 9<sup>c</sup>**

**DEL MONTE MUSTARD** **DEL MONTE**  
Prepared in glass **QUART 17<sup>c</sup>**

**JELL-O**  
ALL FLAVORS  
**BOX 6<sup>c</sup>**

**MARCO JELL** in all flavors **BOX 5<sup>c</sup>**

**DEL MONTE PINEAPPLE JUICE**  
FANCY NO. 1 SIZE **CAN 10<sup>c</sup>**

**GRAPE JAM**  
OLD-MANSE BRAND 1ST GRADE JAR **4 LB. 49<sup>c</sup>**





**FURR FOOD STORES WILL HOLD WEEK OF CELEBRATION OF EIGHTH BIRTHDAY OF PAMPA CONCERNS**



**J. E. SIMMONS**  
Manager, Store No. 1



**ALVIN BELL**  
Manager, Store No. 2



**BILL DULL**  
Manager Market No. 1



**GEORGE DULL**  
Manager Market, No. 2



**JOHN PLATT**  
Checker, Store No. 1



**KEITH CALDWELL**  
Checker, Store No. 2

The Furr Food stores in Pampa are announcing today a week of celebration in honor of their eighth anniversary of business here. It was just eight years ago that the first store was opened at 312 West Foster in the same location it now occupies. The large building was only partly used as the business then hardly demanded the space now used. From time to time, since the opening, changes and improvements have been made until the present stores hardly resemble those of eight years ago. Modern merchandising methods have been applied to store display, counters, refrigeration and fruit and vegetable displays.

The Furr store organization is strictly a Panhandle institution with stores in many Panhandle towns with operation restricted to this territory. Coffee and sandwiches will be served all day Saturday to those visiting the store. Several employees are shown above. Others are as follows: Store No. 1 Joe Myers, Marshall Finney, Zeak Merchant, Robert Phillips, Billy Simmons, C. V. West, Sanky Trimble, J. W. Graham and Harry Faulkner in the market. Store No. 2, Wilson Harris, William Pickens, Elbert Gillham, Herbert Stockton, Joe Peacock, Wayne Hutchins and Desmond Deary and Darrel Dean in the market.

**NEW CITY DIRECTORY WILL BE ISSUED—WORK ALREADY BEGUN**

A representative of the Hudspeth Directory company of El Paso, has been here for several days, arranging for publication of the 1935 edition of the Pampa city directory. This company has published Pampa's city directories since 1928, but the 1934 edition was more than a city directory. On oil and gas section was featured in the 1934 book, and will be included in the forthcoming edition. The names of the industries and operators in the vicinity of Pampa are given, showing detailed information in regard to each. The names of executives and more important employees were listed in the regular Pampa directory, showing firm connections and residence address, the latter in the city or the field. The house-to-house canvass for information will commence about the first day of May, and the directory will be issued about 6 days later.

**Roosevelt Son Wants to Stage Texas Air Derby**

FORT WORTH, April 5. (AP)—Elliott Roosevelt wants to stage a western hemisphere air derby in connection with the Texas Centennial celebration next year, and he has hopes of his father, the president, coming to Texas for the derby and the state's big show. Young Roosevelt, consultant for the United States aeronautical chamber of commerce in charge of organizing and coordinating aviation companies to place them on a self-sustaining basis, suggested the

derby to Centennial celebration leaders. The derby would start and finish at Dallas, the route including south and Central America, Mexico and the United States, with stops in principal cities. Prizes totalling \$100,000 would be offered, the funds to be provided by the Centennial board. Immediate submission of detailed plans was asked by the Centennial directors. Young Roosevelt said at least 30 entries had been promised by American plane manufacturers and that other entries were expected from Australia, Poland, Italy, England, France, Germany, and Holland.

**SEE M. F. DOWNS**  
For 6% Money to Loan  
On Good Farms and Business  
Combs-Worley Bldg.—Phone 224  
Property

Read the classifieds today.

**BUTTONS**  
Let us make your buttons for your Easter Frocks.

**HEMSTITCHING**  
Also do your hemstitching—prices reasonable.

**Singer Sewing Machine Co.**  
214 No. Cuyler Phone 689

# ANNIVERSARY

**Prices Good All Week**

Celebrating our eighth anniversary in Pampa this week we are offering special money-saving prices in every department . . . Produce—Meat Market and

**FREE** A cup of Folger's Coffee and a sandwich ing our stores Saturday.

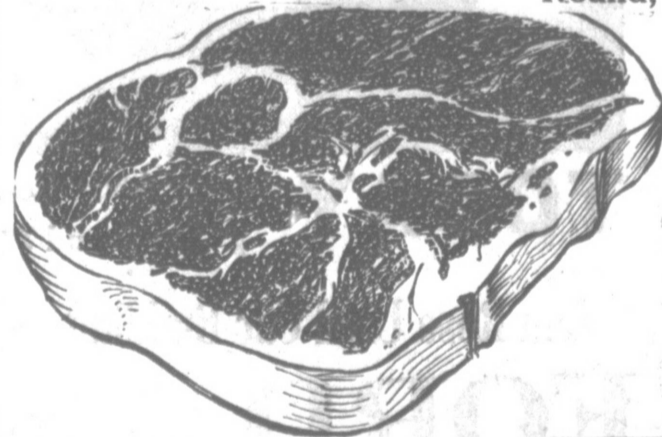


You can always depend on our market to provide you with highest quality meats at lowest prices, but this week especially, we offer you an unusual opportunity to save on quality meats.

<b>PORK ROASTS</b> Fresh Picnics, Per lb.	<b>13 1/2c</b>	<b>BACON</b> Fancy, home sliced, lb.	<b>26c</b>
<b>CHEESE</b> Full Cream Longhorn, lb.	<b>17 1/2c</b>	<b>PICNICS</b> Swift's Sugar cured shankless, Lb.	<b>20c</b>
<b>Hens</b> Dressed Weight Per Pound	<b>15c</b>	<b>BUTTER</b> Creamery solids, lb.	<b>31c</b>
<b>OLEO</b> Fresh shipment, lb.	<b>16c</b>	<b>SLAB BACON</b> Sugar cured, whole or half, lb.	<b>23c</b>
<b>SALT PORK</b> For boiling, Per lb.	<b>13 1/2c</b>		

**Veal Steak**

Round, Loin, T-Bone, Lb.



**17 1/2c**  
**VEAL ROASTS**  
Per lb.

**12 1/2c**

<b>BRAINS</b> Fresh Beef, cleaned, lb.	<b>9c</b>	<b>FRANKS</b> That are Really Good, lb.	<b>13c</b>
<b>HEARTS</b> OR TONGUES Fresh Calf, Per Lb.	<b>9c</b>	<b>SAUSAGE</b> All Pork Pig Links, lb.	<b>27c</b>
<b>Hams</b>	Cudahy's Puritan Skinned, Lb.		<b>22c</b>

Phillip's Delicious Foods

<b>PORK &amp; BEANS</b> Can	<b>5c</b>
<b>TOMATO SOUP</b> Can	<b>5c</b>
<b>VEGETABLE SOUP</b> 2 Cans	<b>15c</b>
<b>SPAGHETTI</b> 2 Cans	<b>15c</b>
<b>PEAS</b> Standard Early June, 2 No. 2 Cans	<b>25c</b>

**HOSTESS**  
**CAKES**  
LAYER  
EACH . . . **2**

## COFFEE

<b>HONEY</b> Extracted, No. 5 Can	<b>53c</b>
No. 10 Can	<b>93c</b>
<b>SYRUP</b> Brer Rabbit, No. 5 Can	<b>31c</b>
<b>MAZOLA OIL</b> 1 Quart Can For 1 Pint Can Free With Purchase	<b>41c</b>
<b>KREMEL DESSERT</b> 3 Pkgs. for 1 Pkg. Free With Purchase	<b>15c</b>
<b>RICE KRISPIES</b> Kellogg's Pkg.	<b>10c</b>

**FOLGER'S**  
OF  
**2 LB.**

<b>HYPRO</b> Qt. Bottle	<b>1</b>
<b>MLEO</b> 2 Boxes	<b>1</b>
<b>SANI-FLUSH</b> Lge. Can	<b>2</b>

## FLOUR

<b>OATS</b> Crystal Wedding, Large Pkg.	<b>19c</b>
<b>Whole Wheat Flakes</b> Kellogg's Pkg.	<b>9c</b>
<b>SUGAR</b> Powdered or Brown, 2 Boxes	<b>15c</b>
<b>PEAS</b> Black-Eyed, 2 Lb. Pkg.	<b>15c</b>
<b>PICKLES</b> Libby's Sour or Dill, 22 oz. Jar	<b>22c</b>

**White K**  
GRANULATED SC  
Large Pkg.  
**TOILET SOAP**  
3 Bars

## LIPTON'S TEA

<b>SHORTENING</b> Jewel, 8 Lb. Carton	<b>\$1.02</b>
<b>NORTHERN TISSUE</b> 3 Rolls	<b>17c</b>
<b>MATCHES</b> 6 Box Carton	<b>22c</b>
<b>SUGAR</b> 10 Lb. Paper Bag	<b>49c</b>
<b>RINSO</b> Large Pkg.	<b>23c</b>

**Blue Fib**  
**MALT**  
3 LB. CAN

## Jersey Cereals

<b>CORN FLAKES</b> LARGE SIZE PACKAGE . . .	<b>9c</b>
<b>BRAN FLAKES</b> REGULAR SIZE PKG .	<b>10c</b>





# MARKET BARGAIN SALE!

Week April 5th To 12th

General grocery department. We invite you to visit our stores this week and help us celebrate—and Save!

and a Sandwich to every person visit—**FREE**

**HOSTESS CAKES**  
22¢

**FOLGER'S REGULAR OR DRIP**  
2 LB. CAN 58c

17c

17c

**FLUSH** 21c

**GOLD MEDAL KITCHEN TESTED**  
10 LB. SACK 45c

**White King**  
ANULATED SOAP  
31c  
**TOILET SOAP**  
13c

**EA**  
ORANGE PEKOE AND GREEN  
Ice Tea Glass Free With Each  
59c

**FURR FOOD STORES**  
Lower prices

PEACHES Sliced or Halves, No. 10 Can	44c
APRICOTS Sliced or Halves, No. 10 Can	47c
PINEAPPLE Half Slices, No. 2 1/2 Can	17c
SALMON Alaska Pink, No. 1 Tall Can	10c
Macaroni or Spaghetti Beech-Nut, 16 oz. Pkg.	15c

**1 LB. CAN .. 30c**

OVALTINE Small Size	31c
OVALTINE Large Size	57c
COCONUT Baker's Southern Style, No. 10 Can	10c
ROYAL GELATINE All Flavors, 3 Pkgs.	19c
FIGS Choice White or Black, 2 Lb. Pkg.	15c
LININ STARCH 2 Pkgs. for 1 Pkg. Free With Purchase	20c

**24 LB. SACK ..... 97c**

OLIVES Libby's Queen, Quart Jar	37c
CATSUP Empson's, Large Bottle	15c
GRAPELADE Welch's, Large Bottle	17c
JELLY White House Pure Apple, 2 lb. jar	23c
PUFFED WHEAT Package	10c

**1 LB. 4 CAN . 21c**

LIFEBUOY 2 Bars	13c
WESSON OIL Pint Can	23c
SHREDDED WHEAT N. B. C., 2 Pkgs.	25c
TOMATO JUICE Campbell's, 2 Cans	15c
TOILET SOAP Woodbury's, 3 Bars	25c

**Libby's Specials**

APPLE BUTTER 26 oz. Jar	15c
CUT BEETS No. 2 Can	10c
MIXED VEGETABLES No. 2 Can	12c
KRAUT JUICE No. 2 Can	10c
VIENNA Sausage, 2 Cans	15c

Enjoy the FRESHNESS of QUALITY produce



**Oranges** CALIFORNIA NAVELS EXTRA LARGE SIZE, DOZEN **29c**  
Bought Specially For This Eighth Anniversary Celebration.

CARROTS California, 3 large bunches	10c	RADISHES Large, bunch	4c
BEANS Fancy green, full of snap, lb.	10c	POTATOES Fancy No. 1 New Red, lb.	5c

**Bananas** Dozen **10c**  
SATURDAY ONLY

SQUASH White Summer, lb.	10c	PEPPERS Bell, Lb.	15c
TOMATOES Fancy Fresh, lb.	15c	CABBAGE Firm, Green Heads, lb.	7c

**POTATOES** White Colorado 100 Lb. Sack 99c

**10c**

GRAPEFRUIT Texas Marsh Seedless Nice size, each	5c	APPLES Fancy Winesap Medium size, dozen	25c
APPLES Delicious, extra lge, 3 for	10c	ORANGES California, med size, doz.	19c
ONIONS Spanish Sweets, lb.	7c	TURNIPS Bulk, lb.	4c
YAMS Fancy No. 1, Lb.	5c	PARSNIPS California clean white, lb.	8c

**International Sunday School Lesson**  
By DR. J. E. NUNN

General Topic: The Heavenly Father.  
Scripture Lesson: John 14:8-24.  
8. Philip saith unto him, Lord, show us the Father, and it sufficeth us.  
9. Jesus saith unto him, Have I been so long time with you, and dost thou not know me, Philip? he that hath seen me hath seen the Father; how sayest thou, Show us the Father?  
10. Believest thou not that I am in the Father, and the Father in me? the words that I say unto you, I speak not from myself; but the Father abiding in me doeth his works.  
11. Believe me that I am in the Father, and the Father in me: or else believe me for the very works' sake.  
12. Verily, verily, I say unto you, He that believeth on me, the works that I do shall he do also; and greater works than these shall he do; because I go unto the Father.  
13. And whatsoever ye shall ask in my name, that will I do.  
14. If ye shall ask anything in my name, that will I do.  
15. If ye love me, ye will keep my commandments.  
16. And I will pray the Father, and he shall give you another Comforter, that he may be with you for ever.  
17. Even the Spirit of truth; whom the world cannot receive; for it becometh him not; neither knoweth him: ye know him; for he abideth with you, and shall be in you.  
18. I will not leave you desolate: I come unto you.  
19. Yet a little while, and the world beholdeth me no more; but ye behold me; because I live, ye shall live also.  
20. In that day ye shall know that I am in my Father, and ye in me, and I in you.  
21. He that hath my commandments, and keepeth them, he it is that loveth me; and he that loveth me shall be loved of my Father, and I will love him, and will manifest myself unto him.  
22. Judas (not Iscariot) saith unto him, Lord, what is come to pass that thou wilt manifest thyself unto us, and not unto the world?  
23. Jesus answered and said unto him, If a man love me, he will keep my word; and my Father will love him, and we will come unto him, and make our abode with him.  
24. He that loveth me, he will keep my word; and the word which ye hear is not mine, but the Father's who sent me.  
Golden Text: Like as a father pitieth his children, so the Lord pitieth them that fear him.—Psalm 103:13.

**God In Christ**  
The Old Testament teaching about God is a splendid preparation for an introduction to Jesus' revelation of him. "That other was defective, inadequate, because un-visualized by an actual divine personality. In short, it lacked the Christ of God. They could not know God as Father until they knew him as God the Son. All teaching about God—of the Bible, or theology, or religious education—must be supplemented and complemented by the figure of the man Jesus who was God incarnate." "I cannot see the face of God anywhere without seeing the face of Jesus." (R. J. Campbell).

**God In Jesus' Teaching**  
"In his application of the name Father to God we find Jesus' particular contribution to our knowledge of the Divine Being." And we interpret God's fatherhood in "terms of Jesus' Saviourhood." In his interchange of the pronouns "my" and "our" applied to God, He assures us of the child relationship; his Father, mine; as he is my Great Elder Brother. The Prayer of Prayers, that we are forever repeating, keeps us from forgetting that we have a Father of heavenly resources and graciousness, who is also Christ.

"Our Lord took those Old Testament conceptions of God, brought them out of their mere implications; and shot them through with his understanding of the love of God. That word Father on his lips is Jesus' clearest declaration and definition of God's love. It is interesting also to find that he uses it in his joyous youth as well as at his life's dark close (Luke 2:49; 25:46)."  
The Kind of Father God Is  
"By no other term could Jesus have linked us so close to God. It reminds us that we have our being from and in God (cf. Acts 17:28). There are mutual father-child obligations. Like an ideal father God provides for us, and "look after" us. Jesus states this beautifully in the Sermon on the Mount; The heavenly Father's care and provision are gracious and loving. He not only protects and sustains our lives, but adorns them with a glory surpassing Solomon's; and a beauty equaling the lily's. He loves his little birds, and all his insistent creation, but best of all our humans (Matt. 6:24-34)."

The reverence that the dutiful child pays the worthy parent, shall be typical of the worship that we render God (John 14:21, 23). How is it possible for God to have this intimate fatherly relation to our lives, and thus now to reveal himself to us as Jesus revealed him? When we are willing to be led by the Spirit, and when we are on such intimate, loving terms with God that in our praying we dare address him with that tender Aramaic word that Jesus used, Abba, "Father" (Rom. 8:14-17).

**The Necessary Chastening By God**  
Our Father, Heb. 12:5-11.  
"For whom the Lord loveth, he chasteneth." Heb. 12:6. The Greek word here translated "chasten" the important word of the passage in Hebrews, had two distinct meanings. It means fundamentally, to train a child and then, to chastise it, indicating that the Greeks believed that proper training was intimately related to discipline and chastisement. What relationship of life more perfectly offers the opportunity for such chastening than that of the child and parent, and then of our Father in heaven and his children on earth! The tenth verse explicitly states that chastisement is for the ultimate good and that we might be partakers of God's holiness. Thus may we perfectly rest in the Father's love, knowing that all his chastening is ever for our good. "As childhood to the rest of our earthly life, so is the whole of our earthly life to the future heavenly one."—Adolph Saphir.  
A Lesson From C. H. Spurgeon  
"I have found it a blessed thing, in my own experience, to plead before God I am his child. When, some months ago, I was racked with pain, to an extreme degree, so that I could no longer bear it without crying out, I asked all to go from the room and leave me alone; and then I had nothing I could say to God but this, 'Thou art my Father, and I am Thy child; and Thou, as a Father, art tender and full of mercy; I could not bear to see my child suffer as Thou makest me suffer; and if I saw him tormented as I am now, I would do what I could to help him to sustain him. If He be a Father, let Him show Himself a Father—so I pleaded, and I ventured to say, when they came back who watched me, 'I shall never have such agony again from this moment, for God has heard my prayer.' I bless God that ease came, and the racking pain never returned. Faith mastered by laying hold upon God in His own revealed character—that character in which, in our darkest hour, we are best able to appreciate Him. I think this is why that prayer, 'Our Father, which art in heaven,' is given us, because, when we are lowest, we can still say, 'Our Father,' and when it is very dark, and we are very weak, our childish appeal can go up, 'Father, help me, Father, save me.'"

**M. P. DOWNS**  
Automobile Loans  
Short and Long Terms  
REFINANCING  
Small and Large  
604 Combs-Worley Bldg  
Phone 338

**USED RADIOS**  
Priced right real Values  
\$10.00 to \$75.00  
**HAWKINS**  
RADIO LAB.  
Across the street from  
Rex Theatre  
PHONE 36

**When in Amarillo Park With Us**  
**Fire Proof Storage**  
We want to say, "Thank You" to the people of Pampa for your patronage. When in Amarillo, come in and see us for Gasoline Storage or Service.  
**Rule Bldg. Garage**  
Phone 21295 3rd Street at Folk

