



Lame duck session of Congress sought for social security woes

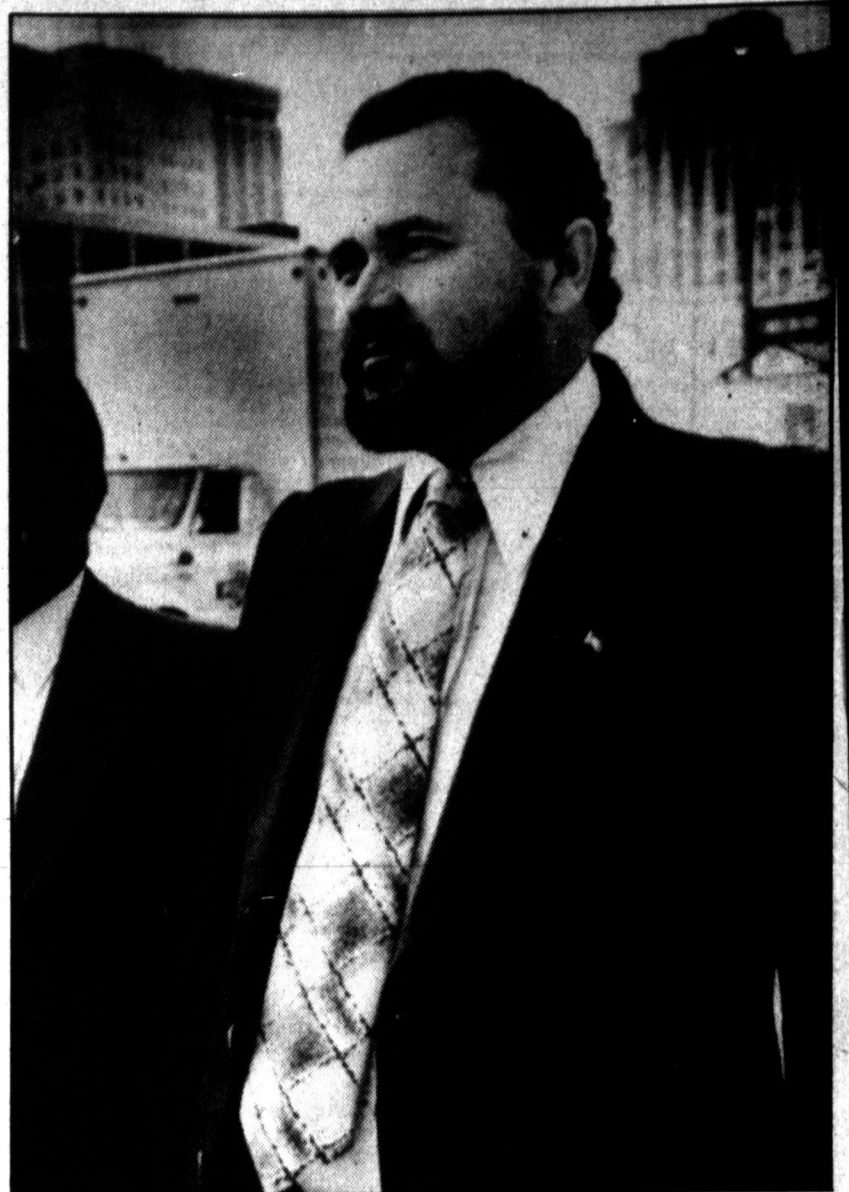
WASHINGTON (AP) — Senate Finance Committee Chairman Robert Dole wants a special post-election session of Congress to solve Social Security's financial problems, possibly with a combination of payroll tax increases and benefit reductions for future retirees.

The senator, speaking on Cable News Network's program "Newsmaker-Sunday," said President Reagan probably "would look with favor on getting it (Social Security) out of the political climate."

special session of Congress. He said the president will follow advice from Senate Majority Leader Howard Baker, Speaker Thomas P. O'Neill, and House Republican Leader Robert Michel on the matter.

for any new proposals. A post-election session would be unusual in that it would include retiring and defeated lawmakers whose terms end in January.

Sansaricq sentencing



Would-be Haitian invader Bernard Sansaricq enters federal court in Miami this morning where he was to be sentenced for violating the U.S. Neutrality Act in his attempted invasion of Haiti with a small force of would-be revolutionaries earlier this year. Sansaricq and his followers were picked up by the U.S. Coast Guard off the coast of Haiti when their boat broke down. (AP Laserphoto)

Local Chili Dilli to become annual affair

Pampa's First Annual Chili Dilli Saturday was so successful organizers are already planning another cookoff next year, according to sponsors.

the country's best chili cooks, the Ronald McDonald House will be given well over \$1,000 to help construct the facility, according to Ronnie Morrison, advertising manager of North Country Coors in Borger, the sponsor of the event.

Cancer Center in Amarillo, will provide inexpensive or free housing to families with a member under treatment at the clinic.

best cooks around, some from as far away as Wichita Falls.

Pampa burn victims in serious condition

A Pampa couple and their child were badly burned late Friday afternoon in a gas explosion and flash fire in their mobile home.

He suffered second and third degree burns on his hands while helping his family escape the blaze.

firefighters responded.

Winners of the showmanship contest were "Hole-in-One Chili" of Amarillo, first; and "Chain Gang Chili of Wichita Falls, second.

Anne Boleman, 28, of 624 Roberta St and her six-year-old daughter Anna E. Boleman were listed in critical, but stable, condition this morning at separate burn institutes in Galveston.

The gas leak originated from a disconnected line which once fed gas to a clothes dryer, according to firemen.

The blaze destroyed two back rooms of the home and damaged the rest of the structure before it could be extinguished.

Organizer Terrie Horst said today the group is already planning a second chili cookoff here next year.

Mrs. Boleman suffered second and third degree burns over 50 to 60 percent of her body. Her daughter had second and third degree burns over about 50 percent of her body, according to hospital spokesmen.

The noise and concussion from the resulting explosion alerted a next-door neighbor, firemen said.

A firemen said the two units were "back in service" at about 6:30 after the fire was out.

She said local Shriners have expressed interest in sponsoring next year's cookoff, with proceeds to Shriners' burn hospitals and crippled children's programs.

The husband and father, James W. Boleman, 28, was treated and released at John Sealy Hospital in Galveston, where his wife remains hospitalized today.

Larry Pyle, who firemen said was one of the Boleman's neighbors, reported the emergency at about 4:45 p.m., and two fire trucks with six

Firemen have listed the mobile home as a total loss. The three were transported to the Galveston hospitals from Pampa by airplane, and arrived shortly after midnight Friday.

Two-thirds of million dollars awarded burned child by jury

By DAVID CHRISTENSON
Staff Writer

A 223rd District Court civil jury awarded \$682,453.01 to an Oklahoma mother and child Friday as compensation for injuries the child sustained in a 1979 grease-burn incident east of Pampa.

medical bills, \$12,500 for future medical expenses, and \$630,000 compensation for physical pain and impairment and loss of future earning capacity.

said "the long and the short of this lawsuit is that this boy should not have been out there."

PLO leaders vows to continue fight

BEIRUT, Lebanon (AP) — PLO chairman Yasser Arafat, bound for an undisclosed home in exile, today left the city that had been his stronghold for 12

years aboard a converted Greek car ferry.

stood on deck wearing a black-and-white checkered kaffiyeh headress. He smiled and made a victory sign as the ship Atlantis cruised into the Mediterranean Sea.

City budget hearing Tuesday

Another public hearing on the proposed Pampa city budget and the city's plan to spend federal revenue sharing funds will be held at 9:30 a.m., Tuesday in city hall.

of the water-line replacement program.

The Atlantis was escorted out of Beirut's battered port by two American warships.

At the first public hearing on the budget last Tuesday, several citizens objected to several items in the planned total city budget of \$7,348,279 for fiscal 1983.

At that hearing, Walter Shed said he tours the city weekly in his real estate business, and "in three years I've never seen one block being done" in the water-line replacement program.

PLO spokesmen and Lebanon's state radio said Arafat was heading for an official visit to Greece at the invitation of Socialist Prime Minister Andreas Papandreu before going into exile in the Tunisian capital of Tunis.

The purpose of the public hearing Tuesday is to discuss the city's proposal to spend an expected \$235,000 in federal revenue sharing funds on water line replacements.

Wofford said at the hearing that Shed is invited to inspect the water-line replacement work.

Arafat's chief spokesman, Mahmoud Labadi, who left with the PLO chairman, said earlier the ship might stop at Larnaca, Cyprus, on its way to Greece.

For many years, the city has spent the Washington money on replacing 2-inch city water lines.

The proposed city budget represents a \$1,115,163 increase in two years over actual, audited spending during fiscal 1981.

Snake kisser recovers from bite

CONROE, Texas (AP) — A snake handler who was bitten when he tried to kiss a cobra was due to be released from a Houston hospital today, doctors say.

He was admitted in stable condition at Hermann Hospital in Houston after being air-lifted there by a Life Flight helicopter. Gardner was transferred from Montgomery County Hospital, said Life Flight spokeswoman Claudia Morris.

City Manager Mack Wofford said previously the city has already used past revenue sharing funds to replace about 70 percent of the existing 2-inch lines.

The public hearing Tuesday is open to any citizen of Pampa.

He said former co-owner Janousek "said it looks solid, it looks gray, it looks like concrete," and a seven-year-old could not tell the difference.

However, at the public hearing on the budget last Tuesday, a Pampa citizen complained he has not seen the results

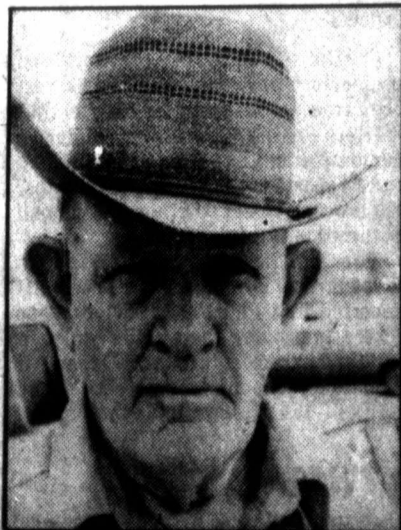
In a plea for damages, he said "In all the time I've practiced law, I've never seen a little boy, seven years old, injured as badly as this."

Index

| | |
|--------------|---|
| Classified | 9 |
| Comics | 8 |
| Daily Record | 2 |
| Editorials | 4 |
| Lifestyles | 6 |
| Sports | 7 |

Do you think The Pampa News has fair news coverage?

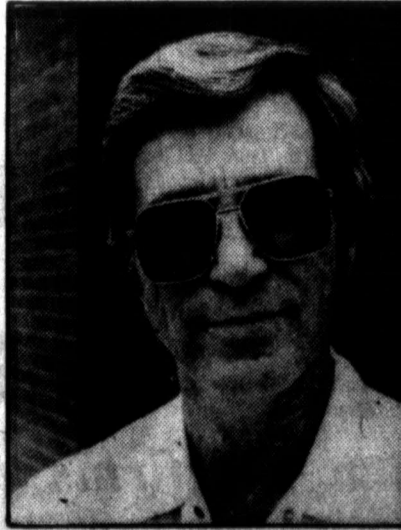
Q and



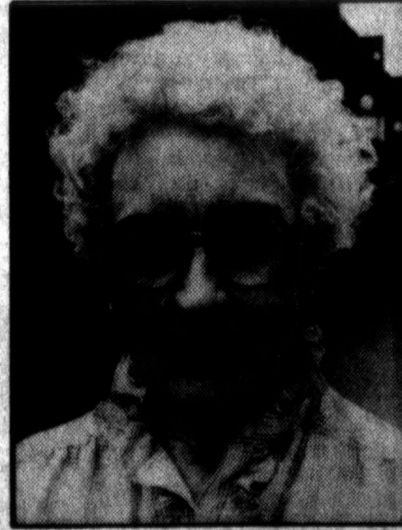
Travis Hunter, Pampa, retired: "Well, from the coverage it has of everything, I think it's fair. As far as being biased on (its news coverage), I don't think so. "I read about all there is in The Pampa News."



Betty Brown, Pampa, beautician for Phillips La Bonita salon: "Well, it has been a lot better, yes — since it changed editors, I think. Of course, I've heard pro and con on this. "The coverage on different things is better, and right now I can't think of anything that's worse... I definitely think it should (cover stories on) the lower class and middle class too."



Bobby Wynne, Pampa, service manager for White's Home and Auto: "I think it's as fair as any of them. But I don't think the news media is always knowledgeable about what they report. "I think any news medium has a habit of saying what people want to hear, not the truth. It's not the media's fault, it's the people's fault."



Vacy Groom, Pampa, housewife and retired teacher: "If you knew how we sit and wait for it, and wish for it on Saturdays, you'd know. "We enjoy the paper... I think it's pretty well balanced. It covers most everything."



Dwayne Avery, Pampa: "Yeah, I think it's fair, there's nothing wrong with it... Everything's just fine to me. I read everything, catch up with everything, everything's there. "It's balanced, and people are capable of reading and understanding it."

A

daily record

services tomorrow

There are no services scheduled for tomorrow

obituaries

No deaths were reported to The Pampa News today

senior citizen menu

TUESDAY
Chicken casserole or tacos, new potatoes, broccoli, white beans, tossed or jello salad, coconut pie or chocolate pudding

WEDNESDAY
Roast beef with brown gravy, mashed potatoes, green beans, carrots, pumpkin squares or banana pudding, slaw or jello salad

THURSDAY
Meat loaf or chicken a la king over corn bread, au gratin potatoes, cabbage, beans, tossed or jello salad, cheesecake or bread pudding

FRIDAY
Barbeque beef on a bun or fried cod fish, french fried potatoes, squash, lima beans, tossed or jello salad, cherry cobbler or tapioca

fire report

MONDAY, August 30
6:25 a.m. - Firemen responded to a smoke scare at the Pampa Senior Citizen's Center, 600 W. Francis. Firemen said a short in an air conditioner caused smoke to fill the building, but no other damage was reported.

police report

Officers of the Pampa Police Department responded to 45 calls during the 40-hour period ending at 7 a.m. today. Continental Trailways, 115 S. Russell, reported a burglary. Nothing was reported missing. David Marcum Bookout, 923 Scott, reported theft of a bicycle. Estimated value \$150. Linda Ashcraft, 713 Denver, reported an assault. Ray Anthony Romack, 1024 Neel Rd., reported a burglary. An HBO box, valued at \$150, was taken. Arthur Martinez, 602 E. Kingsmill, reported theft of a motorcycle. Estimated value \$1,000. Ruben Silva reported a theft. Kenneth Lee Roberts Jr. was stopped for alleged traffic violations and was later booked into city jail on a charge of driving while intoxicated. Larry Earl Kelly was stopped for alleged traffic violations and was later booked into city jail on a charge of driving while intoxicated. 7 - Eleven, Ballard and Browning, reported a theft. No estimate of loss.

city briefs

PASAS \$5 Bushel, you pick. Cucumbers \$8 Bushel. Jones - 6 miles East and 2 1/2 miles South, Wheeler. 826-5816. Adv. **REGISTRATION FOR** Clarendon College Pampa Center are now being conducted thru September 1. Registration for new Secretarial college is being conducted thru September 1. August 30 is the last day to register for EMT Classes. Adv.

minor accidents

SUNDAY, August 29
10:50 p.m. - A 1974 Chevrolet, driven by James Hicks, Elk City, Okla., struck a legally parked vehicle at 700 S. Gray. No citations were issued.

Layoffs threaten western wear industry

EL PASO, Texas (AP) - The demise of Texas chic in fashion circles has not affected makers of basic western wear, but the trend's death at the hands of preppies means some workers will lose their jobs in layoffs. The tight designer jeans, slick satin shirts, fringes, leathers, tassels and glitter that were the trademarks of the urban cowboy are waning from the fashion scene. And with them are going the \$5 billion in sales in 1980. Now some of Texas 265 western wear and accessories makers feel neglected. "What happened is that the urban cowboy went preppie," said Dick DeBryun, an El Paso publicist who handles six major western wear clients,

including the nation's largest maker of cowboy hats, Bailey Hat Co. of El Paso. "I do feel that a lot of western wear companies were really stupid going to capital expansion during the craze," he said. Indefinite layoffs of 275 Tony Lama Boot Co. employees last week mean a 20 percent reduction of the workforce, said chief executive officer Gene Hosey. Employees at the plant worked only four-day shifts to cut back production in the last two months, but the orders were not there. More than 100,000 pairs of boots sat in storage while executives wait for the big fall and Christmas orders that already should have come in.

Small-boat bill savors landlubber delights

FALMOUTH, England (AP) - American Bill Dunlop, already nicknamed Small-Boat Bill for his record Atlantic crossing in a 9-foot sailboat, ate chef-cooked meals, bathed in hot water and slept in a real bed for the first time in 78 days. Dunlop, 41, bulky and bearded, staggered when he stepped ashore on wobbly legs at Custom House Quay at Falmouth Harbor in Cornwall Sunday, and his wife, Pamela, said after helping him "p the steps, 'He is all in.'" The former truck driver from Mechanic Falls, Maine, set the world's record for making the eastward Atlantic Ocean crossing singlehanded in the smallest boat. He left Portland, Maine June 13. Dunlop said his fiberglass boat, Wind's Will, previously reported as 9-foot-one-inch overall, is actually one-eighth of an inch shorter than that. He was able to talk briefly after a hot bath, treatment for salt-water sores on his body and legs and a change into clothes his wife brought with her. "It was real tough, a lot tougher than I had expected," he said.

His worst moment was during a gale, when his boat turned over but righted itself. He was harnessed to the 12-foot mast. He said he had trouble with his food stock because many of the cans in the 200 pounds of canned food were rusted by sea-water and became contaminated. "It got a bit monotonous throwing cans overboard," he said. "But there was one consolation. The fruit cocktails were all right. The rust just made them ferment and that was a treat. It put some booze in it and

"As the saying goes, Christmas comes every year," said Holmes Till, a Tony Lama vice president and national sales manager. "Traditionally, the orders have come in about now. I think it's running a few weeks late." The boot inventory has doubled since January, a sure sign that the cowboy craze is over, Hosey said. "If we would have had this kind of inventory last year, we would have sold them. We just couldn't make them fast enough last year," said Till. Tony Lama recently built a second factory to handle orders for boots made of exotic hides, such as ostrich belly, for which there is still a one-year backlog of orders.

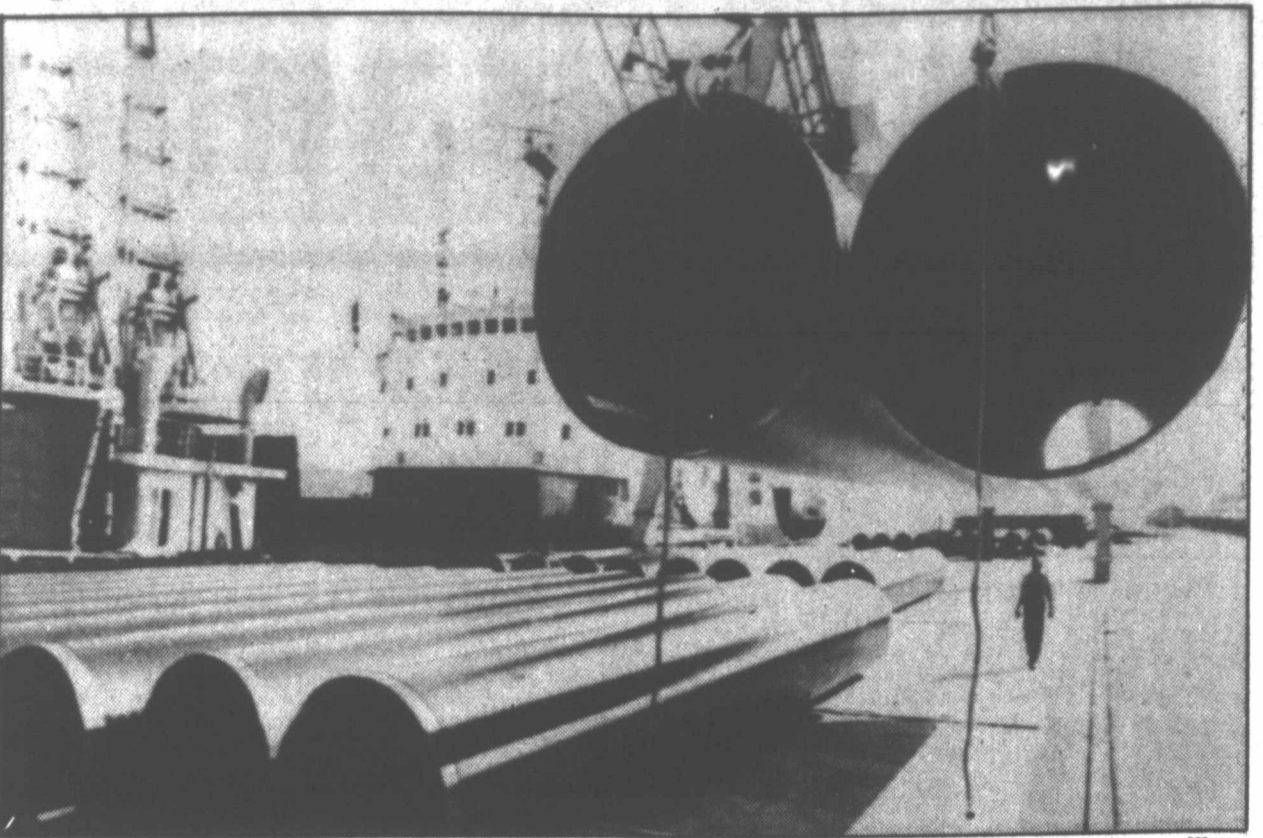
several times it gave me the bit of encouragement I needed." During her husband's voyage, Mrs. Dunlop, 37, sent a congratulatory telegram to Tom McClean, a Briton, who set a small-boat record for crossing the Atlantic in his 9-foot-9-inch Giltspur - until Dunlop broke it. McClean sailed from Newfoundland, 1,000 nautical miles nearer to Britain than Maine, and did the crossing in 51 days. Dunlop is no novice on the Atlantic. He crossed it in 1980 in his 35-foot sloop Enchantress.

Five men, two firms names in oil field fraud

LOCKHART, Texas (AP) - Five men and two corporations accused in a multimillion-dollar oil field fraud case have been named in indictments listing 130 separate charges. Caldwell County District Attorney Jeffrey L. Van Horn said the indictments handed down Sunday involved the sale of 150 oil and gas well leases in the county during the last two years.

Most of the investors were not from Texas, he said. "It was a big operation that ran well into the millions of dollars," he said. Indicted were Robert Dean Burr, Wilmer Jean Burr, Harry John Peters, Wingate Battle III, all of Dallas, and William Bryan Thaxton of Luling, the American-Statesman said. The firms indicted were Lincoln Drilling Inc. of

Pipes loaded for Russia



Pipes for the Russian pipeline which will carry Siberian natural gas from the Soviet Union are loaded aboard the Soviet freighter Pertominsk in Hamburg, West Germany, Monday. (AP Laserphoto)

Dresser France will build compressors

DALLAS (AP) - Dresser France, the international arm of Dallas-based multinational Dresser Industries, will be able to complete its contract for 21 compressors ordered by the Soviet Union for its Trans-Siberian gas pipeline, a company attorney said. Dresser attorney Scott Nickson said Sunday the remaining 18 compressors ordered for the pipeline can and will be built for the Soviets in France without help from the parent company. "Maybe they (sanctions imposed by the Reagan administration) have meaning in the political world, but they have no effect as far as stopping the pipeline project goes," Nickson said in Dallas.

The French government touched off an international political showdown last week when it ordered Dresser France to ship three compressors to the Soviets. President Reagan had imposed an embargo of U.S. technology for the pipeline in retaliation for martial rule in Poland. Reagan also sanctioned Dresser last week because the administration charged that Dresser violated Reagan's order by shipping the equipment.

"We are in the middle of a squabble between two sovereign governments. It's a position we are not enjoying. I might add," Nickson said. Dresser France will supply 21 of the 120 compressors scheduled for use in the pipeline, he said. The others will be supplied by Italian and French firms.

The Commerce Department on Thursday suspended export licenses for goods that Dresser France might pass on to the Soviets. Dresser France appealed the order Friday, saying it was "unconstitutional and illegal." That order from the Reagan administration will not affect the pipeline contract because no further help from the U.S. is needed by Dresser France. But the sanctions could delay others.

"They won't have any impact for that particular order. There's some others

that will be impacted. We have energy conservation and energy transportation projects in other countries that Dresser France can't complete," Nickson said.

Dresser is no stranger to controversy. The company might not always look "patriotic" when caught in a political squabble, but one analyst says that's because Dresser has "vision."

Dresser chairman John V. James, obviously angry, said the export ban will "transfer thousands of jobs out of the country," because Dresser's foreign subsidiaries can make the products now manufactured in the U.S. The company, he said, is an "innocent victim of a political power play."

Dresser itself is no slouch when it comes to playing with politics and power.

"What I think people don't know about Dresser is that it is very cosmopolitan," said Darwin Payne, a Southern Methodist University professor who wrote the authorized corporate history in 1978. "You tend to think of big business as being very insular and patriotic in the narrow sense. They have had a broader vision."

"We've got extensive military experience in our senior staff, which makes the president's cabinet look like a Boy Scout troop," James said. "But when we have these plants that are overseas, we've just got to be attentive to the needs of the host government."

For more than 30 years the Dresser has profitably dealt with regimes hostile to the U.S. - even doing business with the Soviet Union at the height of the Cold War.

But several times, the company's desire to make a deal clashed with U.S. foreign policy.

Dresser agreed in 1947 to build a \$6 million gas liquefaction plant near Moscow, but the next year the Commerce Department ended the project by suspending all export licenses. Most of the work on the plant

had already been completed.

Also in 1948, Dresser was denied licenses to export \$12 million in oil field equipment to Romania and build a \$5 million oil plant in Czechoslovakia.

In 1955, Dresser agreed to trade the Soviets oil drill bit technology in return for the right to produce a high-speed turbodrill with a rotary motor next to the drill.

The export license was denied because the Commerce Department said the deal would give the Soviet Union technology important to American security.

In 1976, Dresser reported to the Securities and Exchange Commission that it had made about \$30,000 in questionable payments to foreign government officials, including \$67,000 for inside bidding information. The SEC and the U.S. Justice Department investigated the company, which refused to turn over names of the people who made the payoffs.

The company bought newspaper ads and wrote stockholders in 1977 in a campaign for less regulation of American business overseas.

In 1978, Dresser proposed building a \$144 million oil well drill bit plant on the Volga River in Russia, but the Pentagon objected that the plan again gave the Soviets vital technology. President Carter approved the Dresser plan, but then revoked the export license in December 1980.

That move cost Dresser \$13 million, and the company charged it was revenge for James' support of Reagan in the 1980 election. In 1981, James was appointed to the president's Export Council.

James said last week that many Dresser executives were staunch Reagan supporters, but "I wouldn't want to ... guess how they feel now," adding that "some strong feelings" will be "reflected with our elected representatives."

Government warns against public protests

WARSAW, Poland (AP) - The government, preparing for protest demonstrations on Solidarity's anniversary, today ordered vodka rationing and newspapers followed up on Premier Gen. Wojciech Jaruzelski's plea for Poles not to demonstrate Tuesday.

Newspapers said the Trade Ministry was limiting vodka, Poland's favorite drink, to a half quart per Pole per month. There was no indication of how long the order will be in effect. Liquor rationing had recently been lifted and Poles who could afford it could buy any amount.

In another effort to keep crowds out of the streets Tuesday, the second anniversary of the signing of the Gdansk accords in 1980 that recognized workers' rights to independent unions, Polish Television said it will air highlights of the Polish team's play in the World Cup soccer games in Spain earlier this summer.

Newspapers said Poles should avoid street protests, which underground Solidarity leaders are calling for to demonstrate the suspended union's strength.

The Banner of Youth said young people, by staying home, could show support "for common reason, for work, for our economic and political sovereignty, which can be strengthened by common effort, not in street fighting." The Communist daily Trybuna Ludu said authorities could not "retreat" from enemies of socialism trying to "throw us off the chosen road of agreement into the blind

alley of confrontation. At stake in this game is the future of Poland and her truly socialist shape."

"Martial law can be liked or disliked, but it is a law which must be respected," Jaruzelski told cadets at a military school in Poznan, western Poland on Sunday. "Disturbing this law will not be tolerated."

Jaruzelski reiterated a promise to end martial law by the end of the year if the county is calm.

"This (calm) situation is made by people. May people deprived of reason not hold Poland back again. May Aug. 31 not be stained by excesses and irresponsible demonstrations," he said.

The Foreign Ministry summoned Western correspondents and warned them against distortion in their reports on events related to Solidarity's anniversary. Some reporters took the meeting, the first like it in at least two years, as a signal that their coverage could be limited or that they could be expelled.

At the same time, the military prosecutor's office said 27 people had been arrested Saturday for distributing leaflets calling for pro-Solidarity demonstrations. The arrests were the most reported in one day for months, but it was not clear whether they had all occurred in Warsaw.

The headline army newspaper Zolnierz Wolnosci (Soldier of Freedom) reported that Polish and Soviet troops "were improving their skills" in joint military exercises around Warsaw. It said motorized units, paratroopers and tanks from the Soviet army

participated in the exercises in the Warsaw military district, which stretches from Warsaw to the northeast Soviet border.

The maneuvers, and an increase in military police patrols in Warsaw over the weekend, underscored the warning against protests and hinted at a possible crackdown.

But underground union activists apparently were not intimidated.

The clandestine Radio Solidarity, in its first broadcast in two months, urged police to cooperate with the union by not arresting people and not placing them under surveillance.

The union grew out of shipyard strikes in the Baltic seaport of Gdansk and became the first trade movement independent of Communist Party control in the Soviet bloc. Before its suspension, the union inspired 16 months of labor unrest and social upheaval in Poland.

Solidarity supporters have been working up to a national demonstration Tuesday with a series of protests earlier this month. On Aug. 13 police crushed violent disturbances in Warsaw, Wroclaw, Krakow and Gdansk, and more clashes occurred between union sympathizers and police in the capital after that.

According to the state television Friday, union-related violence erupted in the central textile city of Lodz and the police showed massive displays of force in Gdansk and Szczecin, another Baltic port.

Lefors school board will meet tonight

The Lefors school board will hold a special meeting to amend the 1981-82 fiscal year budget at 7 tonight in the superintendent's office in the high school.

The board must file its amended budget with the Texas Education Agency by August 31st, according to school business manager Virginia Archer.

Consideration of the amended document of spending for the current fiscal year is the only item for consideration on the board's agenda. The meeting is open to the public.

Layoffs, shuttle delay possible

SPACE CENTER, Houston (AP) — Space agency officials say they still hope President Reagan's veto of a supplemental money bill won't delay the next shuttle mission.

About 3,400 workers, or half the work force at the Johnson Space Center, are employed under civil service law, and spokesman Steve Nesbitt said preparations for the shuttle's scheduled Nov. 11 launch could not continue without them.

Astronauts who are not in the branches of the military are covered by civil service law.

Kennedy Space Center, in Cape Canaveral, Fla., would shut down if forced to lay off its 2,100 federal civil service workers, said spokesman Hugh Harris.

Reagan vetoed a \$14.2 billion supplemental bill Saturday that would have provided money to cover cost-of-living raises and promotions not included in the original budget.

In addition to the space center, the veto could affect 27 government offices and the salaries of 3 million military personnel.

Reagan said the supplemental bill exceeded his domestic programs request by nearly \$1 billion.

The president's veto "doesn't push us into a furlough situation yet," Nesbitt said Sunday.

"There is still an opportunity for Congress to override the veto, which many believe will be done, or to pass another supplemental bill more to the president's liking," Nesbitt said.

He said that even if they are necessary, furloughs could not be handed out until Sept. 19, to comply with statutory notice requirements. The furloughs would last from three to 10 days.

"The contractor people cannot perform their jobs without supervision of the NASA people who would work with them," Nesbitt said.

He said the shuttle's fifth mission could be delayed one day for every day employees are not working.

Harris said officials at Kennedy Space Center have been "looking at plans to reduce the amount of time people would have to be laid off. It's a matter of determining — down to the last penny — how long we can continue to pay people and allow them to work."

Harris said any layoffs at the space center would be timed in a sequence having the least possible effect on the shuttle launch.

Any layoffs stemming from the funding shortfall the bill was to cover could last through Sept. 30. The fiscal year of the federal government starts Oct. 1, and funding as of that date has already been approved by Washington.

While Congress has recessed for the Labor Day holiday until Sept. 8, both the Johnson and Kennedy Space Centers have enough funds to cover the payroll until Sept. 30.

"We can put an acceptable bill together and have it ready for the president's signature by the middle of September," said U.S. Rep. Bill Nelson, D-Fla., who is a supporter of the space program.

"The only thing that could possibly get in the way would be if there were some significant showdown between Congress and the president on some other part of the bill," he said.

Police officer killed in accidental shooting

ARLINGTON, Texas (AP) — Police say they are investigating the death of a 24-year-old off-duty policeman who was killed when a patrolman's service revolver accidentally discharged on a hunting trip.

Three companions of William J. Slaughter on the trip, all off-duty city employees, were suspended with pay pending the outcome of a police internal investigation, a spokesman said.

Slaughter died at 3:50 a.m. Sunday of a gunshot wound to the head at John Peter Smith Hospital, officials said.

William J. Slaughter, 24, was shot in the head as he was riding in a Jeep along with three other off-duty policemen, according to a prepared statement.

Police said the accident occurred as Slaughter was returning with the other policemen from hunting rabbits south of Arlington in the vehicle driven by patrolman Christian Nussbaumer.

Sgt. Daniel Sustiare of the police internal affairs division said that off-duty patrolman Douglas Swantek's service revolver accidentally discharged when he lost his balance after Nussbaumer's vehicle lurched at an intersection.

Hospital fire



Dallas firemen pass patients on the ground floor of the 12-story Medical City Hospital early Monday morning in Dallas. Smoke that spread upward from a fire on the ground floor caused several of the hospital's upper floors to be evacuated. According to the Dallas Fire Department there were no reports of injury from the three-alarm fire. (AP Laserphoto)

Patients evacuated from smoke filled hospital

DALLAS (AP) — Dozens of hospital patients — many of them from cardiac care units — were evacuated from at least six floors of a Dallas hospital early today after dense, acrid smoke from a 3-alarm fire filled the 12-story building.

No injuries were reported, but authorities scurried to move patients and their accompanying medical equipment to safe areas after all but one elevator malfunctioned at Medical City Dallas Hospital, fire officials said.

The fire, reported at 12:00 a.m. today, sent smoke billowing up from the first-floor storage closet through a dirty linen chute to most floors, said Dallas Fire Department Arson Captain Don Howard. The cause of the blaze has not yet been determined, he said.

The smoke was first reported on the 12th floor — a cardiac care facility — and patients were moved to lower floors, Howard said.

Smoke continued to fill the 349-bed hospital and rescue personnel and nurses hurried to protect patients on the 5th floor up from the smoke, officials said.

"We actually didn't get very many of them moved out, but the nurses are helping them up

there," Howard said. "We'd have brought them all down here if the elevators were running."

At least 50 patients — most of them clad in bathrobes and several clinging to wheelchairs and intravenous fluid bottles — congregated in the first-floor hospital lobby after walking down from higher floors.

"I smelled the smoke and I thought maybe my cigarette wasn't out real good. Then I went to the hall and it was filled with smoke," said one 10th floor patient from Dallas who asked not to be identified.

"The smoke was so bad I had to run and get a wet towel to go back down the hall," he said. "I was walking down the 10 flights and I came upon this lady trying to get down holding an IV bottle in one hand and the railing in the other. So I helped her down."

Fire officials enlisted the aid of bystanders and hospital orderlies to handle the patients. Patients were moved from at least the 5th, 7th, 9th, 10th, 11th, and 12th floors, but no accurate count of the number of patients moved was available, officials said.

Thomas David Gaddy said he and a friend were

driving by the private hospital, located about five miles north of downtown Dallas, as fire apparatus was racing to the building.

"We saw the smoke and thought we should stop. I went and asked the first chief I saw what I could do and he said do whatever you can to get the people out," Gaddy said.

"I got up there and I couldn't breathe so I borrowed a hit off the nearest fireman's oxygen," said Gaddy, a student at Dallas' Brookhaven College. "Then I ran down the stairs warning people on every floor."

More than 60 Dallas firefighters with 15 major pieces of equipment responded to the alarms at the hospital. Firefighters initially responded to the 12th floor where the first alarm sounded, and extinguished the fire about 15 minutes after locating it in the closet, Howard said.

It took firefighters another two hours to clear the smoke from patient wings.

Hospital executive director Marleise Mooney said one emergency elevator operated so that patients confined to beds and wheelchairs could be moved. The public elevators are designed to shut down in the event of a fire, she said.

Overtured objects make authorities suspicious of death

BEACH CITY, Texas (AP) — Authorities at first believed Virginia E. Mayes died of a heart attack, but overturned objects on a bedside table made them think the 76-year-old millionairess might have been murdered.

Mrs. Mayes was found dead Aug. 1 in an upstairs bedroom of her secluded, Chambers County mansion. Coroners ruled she died of natural causes, but an autopsy three weeks later showed the elderly widow was suffocated.

Officers investigating what Justice of the Peace Larry Cryer called an "almost perfect crime" say they are baffled.

"It's a very different murder case," said Chambers County Sheriff's Investigator Fred Dodd. "Usually there is an obvious motive like robbery, a heated argument between somebody or something like that. It's really a mystery to us at this point."

erlooking Trinity Bay showed no signs of forced entry. None of Mrs. Mayes' valuables were taken from the 12-acre estate, located 30 miles east of Houston.

There were no obvious bruises or cuts on the victim's body to indicate a struggle.

"Everything looked normal," Cryer said.

However, Cryer later became suspicious and ordered an autopsy when he noticed several overturned items on a bedside table.

"The items were knocked over, which led you to believe this wasn't exactly right. They could have been knocked over by someone

who had a heart attack and fell, but it was a clue," Cryer said.

So far, no one has been arrested and authorities continue to look for clues that would put the puzzle together.

The Mayes fortune was built from a company handling large-diameter transmission pipeline.

Mayes worked as a supervisor for a Houston branch of a California-based oil pipe company. But when the Depression struck, Mayes' employers could not afford to pay him. They agreed to let him acquire all the equipment at the branch office.

Mayes started his own company with the equipment. He bequeathed the company to five employees after he died of cancer in 1968.

After her husband's death, Mrs. Mayes persuaded Melvin Eady and his wife, Sybil, to live on the estate with her. Mrs. Eady found the elderly woman lying on her bedroom floor when she was late for breakfast.

On Aug. 19, Mrs. Mayes was cremated and her ashes scattered in the bay. The Harris County medical examiner's office also ruled that her death was due to suffocation.

According to the will, Mrs. Mayes left her fortune of \$4 million to 14 people, including the Eadys, a childhood friend, a former maid, and a carpenter and his son. Mrs. Mayes had no children.

Jury selection may take four days

VAN BUREN, Ark. (AP) — Attorneys are to begin selection today of jurors to hear the capital murder trial of Mississippi death row inmate Marion Albert Pruett, who is accused of the Oct. 12 slaying of a convenience store clerk in Fort Smith.

It is expected to take at least four days to seat a jury in the Crawford County Circuit Court trial. Pruett, 32, is charged in neighboring Sebastian County, but the trial was moved across the Arkansas River to Van Buren at the defense's request. The prosecution did not object.

Pruett, originally of Gastonia, N.C., is accused of the shooting death of Bobbie Jean Robertson, 30, of Fort Smith and has pleaded innocent.

Mrs. Robertson disappeared while working the late shift. Police found her body in a wooded area of Fort Smith about 12 hours after she was reported missing. She had been shot three times, authorities said.

Pruett, who has been in the Sebastian County Jail since June 12, faces the death sentence in Mississippi for his conviction for the slaying of Peggy Lowe, a Jackson savings and loan clerk.

Prior to being transferred to Arkansas, Pruett entered a guilty plea in Colorado for the deaths of convenience store clerks Anthony Taitt, 21, and James Balderson, 23. They were shot and killed during armed robberies at 7-Eleven stores in Loveland, Colo., and Fort Collins, Colo.

As part of a plea bargain, Pruett was sentenced to two consecutive life sentences for first-degree murder for the deaths of Taitt and Balderson. In addition, the judge sentenced Pruett to two consecutive 16-year terms for aggravated robbery in Colorado.

In Mississippi, Pruett also was sentenced to 25 years for robbery and life in prison for kidnapping.

Texas authorities arrested Pruett near Stratford, Texas, on Oct. 17. He was returned to Mississippi and tried for the death of Mrs. Lowe.

Cinema IV

CALL OUR MOVIE HOTLINE 665-7726

CHUCK NORRIS
A Walking Weapon
That Never Misses!
FORCED VENGANCE R
8:00 Only MGM/UA

A BATTLE IS ABOUT TO BEGIN.
STAR TREK II
THE WRATH OF KHAN PG
A PARAMOUNT PICTURE
8:00 Only

RICHARD GERE
DEBRA WINGER
AN OFFICER AND A GENTLEMAN R
A PARAMOUNT PICTURE
8:00 Only

FRIDAY THE 13TH
PART 3 3D R
A PARAMOUNT PICTURE
8:00 Only

We Service Kirby & Hoover Vacuum Cleaners YOUR SINGER DEALER 665-2383

Top of Texas
Open 8:30 Showtime 9:00
FAST TIMES AT RIDGEMONT HIGH
At Ridgemont High Only the Rules get Busted! Study Approved! A UNIVERSAL PICTURE

With Burt & Dolly this much fun just couldn't be legit!
THE WIVES AND THE MURDERERS
A UNIVERSAL PICTURE

Give your clothes a good look. Everyone else does.
Choose dry cleaning you can trust
Choose Vogue Drive In Cleaners 1542 N. Hebart 669-7500

VOGUE
Drive-In Cleaners

RAY & BILLS'S
GROCERY & MARKET

915 W. Wilks 665-2125

PRICES EFFECTIVE THRU SEP. 4

OPEN MONDAY - SATURDAY 7:00 a.m. - 7:00 p.m.

| | | |
|--|--|---|
|  Bounty TOWELS Giant Roll 89c | SUPER SUDS Giant Size \$1.29 | Zesta CRACKERS 1 Lb. Box 89c |
|  COORS 12 Pack 12 Oz. Cans \$4.19 | MILLER LITE 12 Pack 12 Oz. Cans \$4.19 |  COFFEE 1 Lb. Can \$2.29 |
| Hunt's KETCHUP 32 Oz. Jar \$1.09 | Plains MILK Gal. \$2.19 | Mrs. Baird's STA-FRESH BREAD 1 Lb. Loaf .. 69c |
|  COKE 6 12 Oz. Cans \$1.29 | Chuck ROAST Lb. \$1.89 | Nestfresh Jumbo EGGS Dozen 69c |
| Arm ROAST Lb. \$1.98 | Market Made CHILI 1 Lb. Qtl. \$1.89 | Russet POTATOES 10 Lb. Bag \$1.29 |
| Market Made SAUSAGE Lb. \$1.89 | COUNTRY STYLE BACKBONE & RIBS Lb. \$1.89 | Shurfresh WIENERS 12 Oz. Pkg. \$1.09 |
| FRESH BEEF LIVER Lb. 98c | | |

ATTENTION ADVERTISERS

* The Pampa News office will be closed on Monday, September 6, 1982, and will, therefore, observe the following

EARLY DEADLINES

| | |
|---------------------------------------|----------------------------------|
| DISPLAY ADVERTISING | Deadline |
| Day of insertion | |
| Monday, September 6, 1982 | Thursday, September 2, 4:00 p.m. |
| Tuesday, September 7, 1982 | Friday, September 3, 11:00 a.m. |
| Wednesday, September 8, 1982 | Friday, September 3, 3:00 p.m. |
| CLASSIFIED DISPLAY ADVERTISING | Deadline |
| Day of insertion | |
| Sunday, September 5, 1982 | Thursday, September 2, 4:00 p.m. |
| Monday, September 6, 1982 | Friday, September 3, 10:00 a.m. |
| Tuesday, September 7, 1982 | Friday, September 3, 4:00 p.m. |
| CLASSIFIED LINE ADVERTISING | Deadline |
| Day of insertion | |
| Sunday, September 5, 1982 | Friday, September 3, 10:00 a.m. |
| Monday, September 6, 1982 | Friday, September 3, 1:00 p.m. |
| Tuesday, September 7, 1982 | Friday, September 3, 4:00 p.m. |

We appreciate your understanding and cooperation in this matter and wish you and your loved ones a

SAFE AND HAPPY HOLIDAY!

The Pampa News

EVER STRIVING FOR TOP O' TEXAS
TO BE AN EVEN BETTER PLACE TO LIVE

Let Peace Begin With Me

This newspaper is dedicated to furnishing information to our readers so that they can better promote and preserve their own freedom and encourage others to see its blessing. For only when man understands freedom and is free to control himself and all he possesses can he develop to his utmost capabilities.

We believe that all men are equally endowed by their Creator, and not by a government, with the right to take moral action to preserve their life and property and secure more freedom and keep it for themselves and others.

To discharge this responsibility, free men, to the best of their ability, must understand and apply to daily living the great moral guide expressed in the Coveting Commandment.

(Address all communications to The Pampa News, 403 W. Atchison, P.O. Drawer 2198, Pampa, Texas 79065. Letters to the editor should be signed and names will be withheld upon request.)

(Permission is hereby granted to reproduce in whole or in part any editorials originated by The News and appearing in these columns, providing proper credit is given.)

Louise Fletcher
Publisher

Anthony Randles
Managing Editor

Individual freedom best safety device

If the ruling of a federal appeals court holds the next car you buy, beginning in the fall of 1983, will come equipped with an automatic seat belt or an air bag that will pop out in case of accident.

Whether you want either of these or not.

That's what the court ruled recently.

You can moan and groan and say why don't they make you wear helmets or if they want to make the driver really safe require that he put on a suit of armor before driving off or outfit him in foam rubber — you can complain and cough and snort but if this court's decision holds, you can get ready for seat belts or air bags.

The court has decreed. But it probably won't be the end of the issue. It has been around for years and no doubt will be around for some time to come.

It was the Carter Administration that supported the theory that the driver didn't know what was best for himself and, therefore, had to have someone tell him what to do.

Automatic devices got a boost and

the auto industry tried to put the issue on the front burner.

Alog came the Reagan Administration, however, and contended that such devices were unduly costly and would not offer significantly more protection than the manual belts now installed in cars. The devices went to the back burner.

The issue wound up in court and the appeals court handed down its ruling.

Consumer groups heralded the ruling as a momentous decision. People concerned with individual rights saw it as another blow to freedom.

Auto manufacturers, acutely aware that the prices of their products are already dampening car sales, would rather forget the whole thing.

That's what the courts ought to do. Such devices are an idea whose time got bogged down in the right of the individual to choose for himself. Like so many other ideas that stagger out of Washington's think tanks, this one needs to be sent back for major overhaul.

Potential problems duly attended to

It's not as if it's one of the burning issues of the day, but these may be a lesson about the modern municipal mindset.

Woodbridge, N. J., has passed an ordinance to prohibit pedestrians, cyclists and drivers from wearing headphones while on the city's streets. (Sidewalks, okay.)

The present mania of portable music transmitted through headphones is a little puzzling, though to some of us it's an improvement over last season's craze: the portable music systems of alarming power generally used by those whose musical taste was the worst imaginable to assault innocent neighbors and passersby. Like all crazes, however, we figured the headphone would run its course, to be replaced by one of similar dubiousity.

It would be wise to acknowledge at the outset that the headphone mania contains the potential for disaster. It

must be difficult to hear sirens, let alone on coming traffic or other possible dangers, when being serene.

In the normal course of things, one would suppose that a couple of headphoned cyclists or pedestrians would suffer some injury, the injuries would be publicized, and those who hadn't previously considered the risks would give them due consideration. Unless the craze died out before the potential turned into the actual.

Apparently the good officials of Woodbridge weren't content to be patient. One can imagine them solemnly intoning phrases like, "It wouldn't be responsible for us to sit around waitings."

Perhaps we should be grateful to Woodbridge. Thirty years from now a compiler of one of those books of oddities will have another item for inclusion. Who are we to deny a few chuckles to future generations?

Every good thing is worth the wait

A recent modest effort to pull the federal government's nose out of an area where it had no business in the first place again illustrates how intrusiveness has been institutionalized. It also shows the difficulty of bringing a small degree of common sense to issues that have, in some dim and distant day gone by, attracted the attention of zealous writers of regulations.

Secretary of Education Terrel Bell has developed a reputation as something of a temporizer when it comes to dismantling the department over which he presides. But he has taken a firm stand against having the federal government write dress codes for local school districts.

Specifically, he has formally decided to scrap an old rule that permitted students to file federal discrimination complaints about school codes. One might have thought such a revision reasonably non-controversial 1980's, deserving of wonder only as to how the federal government had gotten into the business of reviewing dress codes in the first place.

According to the Associated Press, the amendment when Bell (first)

proposed it 15 months ago, saying it will foster sex discrimination because it will encourage stereotyped roles for male and female students (by allowing references to dresses and such). Indian groups have said it would abridge education and religious freedom of Indian people, to whom long hair is a cultural matter.

School dress codes may be silly or stereotyped. Insofar as local authorities want to impose them, they do so at the risk of being arbitrary in dealing with their captive charges. But, however inappropriate such codes are, there is little to be gained, either for education or for serious battles against discrimination, by making a federal case of them. As Bell put it, "I don't think Congress ever intended that the department would be enforcing matters that relate to length of beards, hair and skirts and whether you come to school braless or with a bra."

That this modest reform drew much opposition at all (the comments received by Bell's department ran 31-17 in favor) is another indication of the decepted

households. runs through so much of our society.



'IF SOCIAL SECURITY GOES ... WE'LL HAVE TO GIVE UP THESE LUXURIES.'

Arms and the myth

By DON GRAFF

The administration is making a considerable effort to expose a myth — that the United States is the world's leading arms dealer.

The State Department is out with a report putting the Soviet Union in that position. It does this by dismissing as misleading the conventional method of measuring arms deliveries — dollar value. Instead, it calculates in weapons systems — that is, a tank, a supersonic fighter a surface-to-air missile.

On this basis, the Soviets lead hands down, having supplied Third World nations that are the focus of the report with 74,000 major systems in the decade 1972-81, compared with an American total of 44,000.

As James L. Buckley, under secretary of state for the arms business, explains it, the dollar figures don't tell the whole story. American

military deals with other nations differ significantly in that they include arrangements or training, construction, maintenance, support services and other types of assistance that "have little directly to do with the transfer of arms."

Such transactions must be broken out to get the true balance of arms. To show how it works, one of the report's tables gives the value of Soviet arms agreements with the Third World during the decade in question as \$42.56 billion in constant 1972 dollars. The figures given for the United States are \$35.21 billion for weapons, \$12.23 billion for military construction and \$32.49 billion for other. The table does not provide the U.S. total, but it is \$70.93 billion.

Now let's look at how the systems system works. Still using the 1972-81 period, third World clients received

13,220 tanks and self-propelled guns from the Soviets compared with a total of 7,440 in equivalent American machinery. In supersonic aircraft it was 3,706 Soviet and 1,540 American. And in major surface warships, 46 Soviet and 103 American.

Neither do we. For one thing, a great deal of disbelief must be suspended in adding up a 155 mm howitzer, a guided-missile frigate and a helicopter to come up with a total that has any meaning outside the State Department.

For another, what makes that same State Department think that U.S.-financed airfield construction in Honduras is any less militarily significant than those Soviet tanks across the border in Nicaragua? Or U.S. training of Salvadoran troops in Georgia than the Cubans' Kalishnikovs? Or maintenance for

Saudi Arabia's \$8.5 billion worth of AWACS planes than Syria's Soviet missile batteries?

And for yet another, even taking the figures on arms trafficking — both systems and dollar breakdowns — used by the Reagan administration at face value, it has its predecessor to thank in considerable part for the apparent American restraint in comparison to the Soviets.

As the Center for Defense Information, one of the non-government arms evaluators generally dismissed in the State Department report as off the mark, observed in a study released earlier this year, the Carter administration made a deliberate effort to restrict arms transfers according to the seriousness of the military threat to a recipient nation, its ability to afford and absorb U.S. weapons and its human rights record.

The Carter people still ended up selling \$55 billion worth of lethal hardware — \$40 billion of it to the Third World — during their four years, but it might have been billions more.

All the signs are that the policy of restraint has been reversed. The Center for Defense Information notes that the dollar-value ceiling on total annual U.S. arms transfers has been removed, the prohibition on developing weapons systems solely for export dropped, the ban on foreign sales of new system before deployment with U.S. forces likewise and Carter's "leprosy letter" preventing official assistance to private U.S. arms dealers overseas rescinded.

By the center's estimate, using the Department of Defense's own figures, U.S. arms transfers and foreign military assistance may hit a record \$30 billion during fiscal 1982.

This is no myth. It's a deadly business.

(Newspaper Enterprise Assn.)

Today in History

By The Associated Press

Today is Monday, Aug. 30, the 242nd day of 1982. There are 123 days left in the year.

Today's highlight in history: On Aug. 30, 30 B.C., Queen Cleopatra of Egypt committed suicide, probably by taking poison — although legend says it was by having an asp bite her.

On this date: In 1645, American Indians and Dutch settlers worked out a peace treaty at New Amsterdam, which is now New York.

Thought For Today: The rotten apple spoils his companion. — Benjamin Franklin, U.S. statesman (1706-1790)

THE PAMPA NEWS

(USPS 78J-540)

Serving the Top 'O' Texas 74 Years
Pampa, Texas 79065
403 W. Atchison
PO Box 2198

Circulation Certified by ABC Audit

SUBSCRIPTION RATES
Subscription rates in Pampa and RTZ by carrier and motor route are \$3.75 per month, \$11.25 per three months, discount offer \$11.75 per six months and \$43.00 per year. THE PAMPA NEWS is not responsible for advance payment of two or more months made to the carrier. Please pay directly to the News Office any payment that exceeds the current collection period.

Subscription rates by mail are: RTZ \$11.25 per three months, discount offer \$11.75 per six months and \$43.00 per year. Mail subscriptions must be paid in advance. No mail subscriptions are available within the city limits of Pampa. Servicemen and students by mail \$2.50 per month. Single copies are 25 cents daily and 35 cents Sunday.

The Pampa News is published daily except Saturdays and holidays by the Pampa News, 403 W. Atchison Street, Pampa, Texas 79065. Second-class postage paid at Pampa, Texas. POSTMASTER: Send address changes to the Pampa News, P.O. Drawer 2198, Pampa, Texas 79065.

Missing Your Daily News?

By ROBERT WALTERS

WASHINGTON (NEA) — Since Texas and Louisiana account for more than two-thirds of the country's natural gas production, why shouldn't those two states also dominate the federal agency that regulates the price of natural gas?

That's the question President Reagan has, in effect, posed by nominating Oliver G. Richard III, a Louisiana, to join two Texans on the Federal Energy Regulatory Commission.

The problem posed by that arrangement, however, is that most of the nation's leading gas-consuming states, located principally in the Northeast and Midwest, lack any representation whatever on the five-member FERC.

The commission chairman is C. M. "Mike" Butler III, a Republican and a native of Midland, Texas, who has



methodically attempted to circumvent federal law by imposing "back door decontrol" on the price of natural gas, thus increasing consumers' fuel bills by billions of dollars annually.

Somewhat else aggressive on the issue is John David Hughes, a Democrat and a native of Lubbock, Texas. The commission's other two members are Anthony G. Sousa of Hawaii and Georgiana H. Shelton of Virginia, both Republicans from states that have little or no direct involvement in the consumption or production of natural gas.

Richard, a Democrat, is a native of Lake Charles, La., and currently a partner in a Lafayette, La., law firm. The first reports indicating that Reagan intended to name him to a seat on the FERC began circulating in Washington last spring.

By PAUL HARVEY

About sin and sex on TV

By PAUL HARVEY

In Delray Beach, Florida, neighbors objected to dirty movies at a drive-in. One indignant woman in a mobile home park says that she saw the "disgusting movie" from her window.

On three separate nights. What do we want, really? In Hollywood's heyday a flapper jiggerbugging in a fringe skirt was likely to be "banned in Boston."

It worked both ways. Productions, periodicals and books "banned in Boston" were likely to get more attention elsewhere.

It was the vigilance of the Roman Catholic Church in those days which kept sin out of sight in Boston.

Even today, of all major cities, Boston does not permit Cable-TV, and the state of Massachusetts is contemplating laws to censor what is shown there.

Gov. Edward King has designated an advisory committee to study the subject and what, if anything, he should do about it.

One member of the commission, Thomas Salem, has already expressed the opinion that nobody is forcing anybody to subscribe to and watch any

Cablecasters try where possible to discourage debate on the subject, referring critics to what the United States Supreme Court allows.

When Utah tried censorship, a federal court disallowed it as unconstitutional.

Mr. Salem's own wife finds nudity on TV objectionable; will have "non of that stuff in the house."

And I suppose individual, family-by-family censorship is likely to prevail.

Since TV cameras on the Ed Sullivan show were required not to show Elvis swiveling pelvis, we have come a long way, for better or worse.

Retail stores dealing in movies on TV cassettes report about one-fourth of their stock is X-rated — and it represents more than one-third of all their sales or rentals. Sex sells.

When Dallas citizens were surveyed, only 5 percent expressed any interest in so-called "adult programming." But once ON-TV was available in Dallas, 60 percent of subscribers signed up for the "adult" channel.

What nobody seems worried about is this: When we have let it all hang out, might the next generation be the last generation — if vicarious sex adventures in making the real thing a

At that time, the Northeast-Midwest Congressional Coalition appealed in vain to the president to "give every consideration to the appointment of a (FERC) commissioner from a natural gas consuming state."

Of the approximately 20 trillion cubic feet of natural gas consumed annually throughout the nation, about 5.5 trillion cubic feet goes to eight Northeastern and Midwestern states which are unrepresented on the FERC — Illinois, Ohio, Michigan, Pennsylvania, New York, Indiana, Wisconsin and Minnesota.

Annual production also is about 20 trillion cubic feet, with Texas and Louisiana each accounting for more than 7 trillion cubic feet.

Although the price of that fuel is controlled by the Natural Gas Policy Act, the petroleum industry and leading members of the Reagan administration (including the president) have pressed for accelerated decontrol.

The law, passed in 1978, authorized the gradual decontrol of natural gas prices and in the ensuing four years the cost of the fuel has doubled. Immediate decontrol would, according to most estimates, produce another doubling of the price.

Citing the experience of oil price decontrol, the industry claims that similar action affecting natural gas would lead to substantially expanded exploration and production efforts, thus increasing the country's energy supply.

The number of rotary drilling rigs in operation did increase from about 2,500 before the president decontrolled domestic oil prices in early 1981 to a peak of slightly more than 4,500 late last year — but that number now has fallen to approximately 3,000.

The industry also shrugs off the impact of a substantial natural gas price increase on the household budgets of the working poor and the unemployed. "It is no service to America," says Exxon, "to mix energy and social legislation together."

But a study of the impact of oil price decontrol, completed earlier this year by the joint Economic committee of Congress, found that "oil price increases have caused a major loss of purchasing power for low-income people."

The \$206.7 billion increase in consumer oil costs registered between mid-1979 and mid-1981 led to losses in household purchasing power ranging from 4.2 percent to 8.9 percent, the congressional study concluded.

"Whatever its merits as an energy policy," says Rep. Henry S. Reuss, D-Wis., chairman of the committee, "oil price decontrol is a disaster for the consumer, particularly the poor."

With the natural gas producing states now in control of the FERC, efforts to

disaster" is almost certain to follow.

Authorities say

Veteran cop turns renegade, kills roommate

CAMP VERDE, Ariz. (AP) — A police officer killed a fellow officer, held up a store, stole a sports car and holed up at a rugged campground where he was holding out today surrounded by dozens of deputies, authorities said.

Phoenix Police Officer Thomas Hernandez, Jr., 31, calmly continued to hold police and sheriff's deputies at bay under a full moon 85 miles north of Phoenix.

He smoked cigarettes and polished the stolen car with his T-shirt before starting negotiations to surrender himself, his semi-automatic weapons and possibly 3,000 rounds of ammunition, police said.

At one point, Hernandez traded 100 rounds of ammunition for a Coke, then refused to drink the soft drink, police said.

Authorities said Hernandez' roommate, Officer

Raymond C. Shaar, 40, was shot in the back and killed some time between 1 a.m. and 3:30 a.m. Sunday. The shooting occurred at a house in Phoenix the officers shared with a third policeman, Officer Jim Wilson, who was not home at the time of the killing, police said.

At 3:15 a.m., a man fitting Hernandez' description drove a late model van into a northwest Phoenix convenience store, demanding cigarettes and gasoline from clerk Dale Porter, police spokesman Sgt. Brad Thiss said.

The robber said "he didn't want to hurt me, but if I didn't do what he said, he'd blow the whole place away," said Porter.

Officer Brian Holmer gave chase in a police car after spotting the van. But the van's driver stopped and fired, hitting the patrol car many times. Thiss said.

The van then began chasing Holmer, continuing to fire, until Holmer's engine conked out, Thiss said.

Sgt. Conrad Schilling, arriving as a back-up, also was fired on, and police lost the trail, Thiss said.

But at 6 a.m., police found an abandoned van registered to Hernandez that fit the description of the suspect vehicle. At 7:54, they were told a man fitting Hernandez' description had entered the suburban Scottsdale home of John and Nola Sullivan, and demanded the keys to their 1981 Corvette.

Sullivan said a glassy-eyed gunman slipped into their kitchen, pointed what looked like a .30-caliber carbine to Sullivan's head and said, "This is serious business," before making off with the family car.

Reagan prepares for spending showdown

By TERENCE HUNT
Associated Press Writer
SANTA BARBARA, Calif. (AP) — He lacks the votes now, but President Reagan believes winning his newest spending showdown with Congress is "difficult but do-able," a White House official says.

"We start from a position that we have started from many times before, and that's behind," White House deputy press secretary Larry Speakes said after Reagan ignored advice of Republican congressional leaders Saturday and vetoed a \$14.2 billion supplemental appropriation bill.

The measure carried funds for military pay, emergency relief for Lebanon, the administrator's Caribbean Basin foreign aid program and a variety of domestic programs for the remainder of the current fiscal year.

The extra money is needed to pay for items which were added to the fiscal 1982 budget and for items that cost more than originally estimated. The fiscal year ends Sept. 30.

In a sternly worded veto message, Reagan accused Congress of trying to sneak through "unwarranted spending increases" he had previously vetoed.

The president said the bill "would bust the budget by nearly a billion dollars. It provides an unacceptable total of \$918 million in

unrequested and unwarranted increases" in programs for college students, the elderly and the disadvantaged.

In vetoing the bill, Reagan took the unprecedented step of diverting Social Security and income tax withholding money from military paychecks to help come up with the money needed to meet Tuesday's payroll for the nation's military.

Speakes said Reagan expects Congress will act quickly and pass a new supplemental appropriation before the next military payroll Sept. 15.

Without supplementary appropriations, some federal agencies will be unable to meet payrolls and some programs will have to end. In the past, such situations have lasted only a few days until

Congress approved more money.

Democratic leaders in Congress lashed out at Reagan's veto over the weekend and promised an attempt would be made to override.

Sen. Alan Cranston of California, the Democratic Whip, said it would be "difficult to get the two-thirds vote in both houses necessary to override the veto, but I do not deem that to be 'mission impossible.'"

Reagan called on Congress to rework the bill and make it more to his liking, but the administration girded for a bitter veto fight when Congress returns from vacation Sept. 8.

The key will be whether Republican members of Congress stand with the president or vote against him

for a bill they supported.

The legislation was approved in the House with a solid majority, 348-67, and passed in the Senate on a voice vote.

"Sixty-seven votes in the House provides a small base to start towards sufficient votes to prevent an override," said Speakes.

He said the Senate's voice vote "gives us no clue." Senate Republican leader Howard Baker had urged Reagan to sign the bill.

Reagan got the same advice from Sen. Mark Hatfield, R-Ore., chairman of the appropriations committee, and Sen. Pete Domenici, R-N.M., chairman of the budget committee and Ted Stevens, R-Alaska, another member of the GOP leadership.

Hatfield is on record as saying he would urge his GOP colleagues to override the president, and Stevens said a veto could be overridden. Speakes said the administration's legislative lobbying team will make preliminary nose counts during the congressional recess and then redouble efforts once Congress returns.

He said the president "will be as involved as necessary."

Less than two weeks ago, Reagan used his persuasive powers in dozens of personal meetings with members of Congress to urge approval of a \$98.3 billion tax increase. The measure passed with narrow margins in both houses.

Reagan, in the 10th day of a 17-day California vacation, has no plans now to call congressmen to lobby for support, Speakes said.

However, he said that if the head of the lobbying team, Kenneth Duberstein "calls him up and says here are six guys who have some questions, he'd do it."

On another subject, Speakes took a wait-and-see position about a proposal from Sen. Robert Dole, R-Kan., for a special session of Congress after the November election to deal with the deep problems in the Social Security system.

Bergman dead



Actress Ingrid Bergman died at her London home after a long battle against cancer the British news agency Press Association reported Monday. Photo of Miss Bergman was made in Los Angeles during October 1980. (AP Laserphoto)

Ingrid Bergman dies on birthday

LONDON (AP) — Academy Award-winning actress Ingrid Bergman, whose roles ranged from Humphrey Bogart's lover in "Casablanca" to the tough-minded prime minister of Israel in "Golda," has died after a long battle with cancer. She died on her 67th birthday.

Miss Bergman died Sunday in London, her daughter, Pia Lindstrom, said in New York today.

The Swedish actress rocketed to fame as Humphrey Bogart's co-star in the movie "Casablanca" in 1943.

She had been suffering from cancer since 1974.

Miss Bergman, who lived in London's Knightsbridge district, spent her last day

with former husband Lars Schmidt, last of her three husbands, and he was with her when she died, according to Press Association, the British domestic news agency.

Miss Bergman's last role was a portrayal of Israeli Prime Minister Golda Meir in a film premiered on American television this year.

In April, the actress answered rumors that she was fighting for her life by appearing in London and telling reporters: "I am not as young as I used to be. But my health is fine. I am not dying."

She had a mastectomy operation in 1974 after cancer was detected, and her other breast was removed in a second mastectomy in 1979 after a recurrence of the disease.

Arafat leaves West Beirut on ship

BEIRUT, Lebanon (AP) — Palestine Liberation Organization chairman Yasser Arafat, bound for an undisclosed home in exile, steamed out of Beirut harbor today aboard a converted Greek car ferry, witnesses said.

Arafat was seen standing on deck wearing a black-and-white checkered kuffiyeh on his head, smiling and making a "V" for victory sign as the Greek ship Atlantis cruised into the Mediterranean Sea.

A delegation of Lebanese leftist leaders and former Moslem prime ministers boarded the ship with him to say farewell but climbed back down the ramp 15 minutes later. The ship, which appeared to be a well-appointed

passenger craft, then set sail.

PLO spokesmen and Lebanon's state radio said Arafat was heading for an official visit to Greece at the invitation of Socialist Prime Minister Andreas Papandreu before going to permanent exile in the Tunisian capital of Tunis.

Arafat's chief spokesman, Mahmoud Labadi, who left with the PLO chairman, said earlier the ship might stop at Larnaca, Cyprus, on its way to Greece.

As the ship put to sea, 11 cannon salvos boomed in the background and were followed by four other rounds to salute the departing guerrilla chieftain as he left his Israeli-surrounded west Beirut stronghold.

DID YOU KNOW THAT...

Postal Receipts in Pampa were up \$152,464.00 last year?

Automobile insurance rates for a 1982 model automobile are approximately \$208.00 per year less than those in Houston?

Deposits in our Savings and Loan Companies were up \$3,574,400 last year?

— just ask us!

PAMPA

...shining bright in Texas!

PAMPA CHAMBER OF COMMERCE

HUGHES BLDG. 669-3241

The Pampa High School Choral Department

will again be renewing magazine subscriptions this year. Everyone needs to renew sooner or later. By renewing through the choir, 40% of the money will stay in our community. The "renewal" drive will begin Wed. Sept. 1 and will run through Wed., Sept. 15

Contact any high school choir member or call the high school choir room (669-2681) between 2:30 and 5:00 p.m.

Health Views

HOW TO CONQUER NERVOUS TENSION



Americans are a busy, ambitious people, moving at a rapid demanding pace. This high-pressure creates abnormal tensions in otherwise healthy people engulfed in an ever-increasing technological society.

How do you know you are suffering from tension? Watch for these signs.

1. Do you talk extra loud, extra fast, in a higher pitch than normal?
2. Do you have a "wash-board forehead"? Occasional frowning is a normal reaction for a person under control — but it can be a sign of mounting tension.
3. How is your posture? When you lie down, check your neck and shoulders for tightness. Does the small of your back relax into the comfort of

your bed, or does it stay tense and rigid? Do you have difficulty falling asleep or do you awake very early?

When your neck, back, shoulder, abdominal, pelvic or thigh muscles are taut, they may pull your spine out of normal alignment. Psychic stresses, as well as physical and chemical stresses, can cause misalignments of vertebrae compounding nerve tissue insults and consequent aches, pains, and functional disturbances. Serious disorders can be the result.

Nervous tension creates physical as well as mental problems, harnessing human potential. If you find yourself irritable or constantly "on edge" and not easily able to relax or to concentrate, it would be wise to consult a doctor of chiropractic. He is highly skilled in correcting spinal misalignments, reducing spinal tension, and aiding the restoration of normal nerve function to all vital organs of the body. In addition, the doctor of chiropractic can recommend a thorough program for releasing tension, developing your ability to relax, and more adequately coping with environmental stress.

Haydon Chiropractic Office
East 28th St. & Perryton Parkway
Pampa, Texas 79065
806-665-7261

MONDAY & TUESDAY SPECIALS

| | |
|---|---|
| Monday 5:00 p.m. - Closing | Tuesday 11:00 a.m. - Closing |
| 2 Chicken Fried Steaks | Club Steaks (6 oz. Sirloin) |
| \$4.99 | \$2.99 |
| <small>Served with your choice of potato, thick stockade toast, soup and salad bar.</small> | <small>Served with your choice of potato, thick stockade toast, soup and salad bar.</small> |

SIRLOIN STOCKADE

518 N. Hobart 666-8351

COMING SOON!

MOM BRING THE KIDS FOR THIS COLOR PORTRAIT SPECIAL

16 LIVING COLOR PORTRAITS AND PHOTO CHARMS

2 - 8x10's 10 Bill Fold Size
2 - 5x7's 2 Photo Charms



\$.95¢ MINIMUM DEPOSIT WHEN PHOTOGRAPHED
\$12.95 TOTAL PACKAGE PRICE! + TAX

- *SCENIC BACKGROUNDS
- *2 POSES - ALL AGES
- *NO LIMIT
- *SATISFACTION GUARANTEED
- *\$2.00 GROUP CHARGE
- *PACKAGE ORDERS ONLY!

PHOTOGRAPHER WILL BE HERE ON

MONDAY & TUESDAY
AUGUST 30 & 31

Bealls

Pampa Mall Pampa Mall

Miss Piggy's regime



If every other glamor star can issue an exercise album, pourquoi pas Miss Piggy? The Muppet love goddess calls hers: "Miss Piggy's Aerobiques Exercise Workout Album," and instructs fitness fans in her very own regimen. Sample Piggy aerobiques: snacking, snoozing and breathing ("as often as possible.") On sale nationally Sept. 1, the album will be demonstrated by the Superpig on her TV special, "The Fantastic Miss Piggy Show," airing Sept. 17 over ABC-TV. (AP Laserphoto)

Cancer study to be conducted

The seemingly ordinary lives we lead—the conditions we live, work play under, the products we use, the food we eat—all may increase our risk of developing cancer. To learn what exactly in lifestyle and environment poses a health threat, we rely on research studies like the American Cancer Society's current Cancer Prevention Study II.

At this time of great public concern over possible environmental causes of cancer, there is a definite need for a study the scope of Cancer Prevention Study II.

With rumors flying that just about everything causes cancer, the study will help identify which factors really do pose a serious threat to our health. Are x-rays safe? Can the birth control pill do more harm than good? How dangerous is that morning cup of coffee? These questions and many others hopefully will be answered by the study findings, and perhaps shed light on what can be done to reduce our risk of cancer and other diseases. More than one million men and women will take part in the study.

Infant seat-carriers recalled

WASHINGTON, D.C. — In cooperation with the U.S. Consumer Product Safety Commission, Pines of America, Ft. Wayne, Indiana, today announced a voluntary refund program affecting 15,000 combination infant seat-carriers.

The combination infant seat and carrier features a removable leg rest, removable feeding tray and a metal frame permitting use as either a rocker, stationary seat or carrier.

When used as a carrier, consumers may carry the product by holding it under its detachable leg rest. By carrying it in this manner, the leg rest may come off and allow the product to fall off the carrier.

Pines of America has received two reports of leg rests becoming detached while being used to carry the infant and carrier, allegedly allowing the infant being carried to fall out. The products were sold by numerous retail stores nationwide under the brand name of "Tendercare," model 412 and by Sears, Roebuck and Co. under the brand name of "Winnie-the-Pooh Rocker-Carrier," model 36511, between 1975 and 1980 for approximately \$20. No other infant seat-carriers are involved in this refund program.

Earlier efforts by the firm to reach owners of affected products have resulted in few returns of the detachable leg rests.

Consumers owning affected models should discontinue use of the detachable leg rests as a handle and should return the leg rest (with their name and address) in exchange for a \$5 refund to Pines of America, 5120 Investment Drive, P.O. Box 8601, Ft. Wayne, Indiana 46806. Postage costs will also be reimbursed.

Consumers requiring additional information on this refund program should call Pines of America toll-free at 1-800-348-0751, or the CPSC's toll-free Hotline at 1-800-638-6326.

Dear Abby

Recipe for fantasy: Add a little color

By Abigail Van Buren

DEAR ABBY: "Cooled Off in Coos Bay" wrote to say her husband was no longer physically attractive because he had gained so much weight. Your answer: "Pretend he's Robert Redford, Burt Reynolds and Paul Newman all rolled into one."

Thanks, Abby, but as an Afro-American lady, I am not physically attracted to these men. Would there have been any harm to have included one black male? Or did "Cooled Off" identify herself as a white female? More to the point, did you simply make the assumption?

Billy Dee Williams, Howard Rollins, Leon Kennedy, Reggie Jackson and Robert Hooks (to name a few) carry just as much appeal for a large segment of your readers as the three Caucasian idols you so readily mentioned.

I, for one, am tired of hearing the "classic" American beauty described as "blond and blue-eyed," and please do not point out that Reynolds is not blond, as this is hardly my point.

Discrimination, no matter how slight, cannot be called by any other name, and it is attitudes such as the one displayed in your column that it thrives on.

I am appalled by your lack of consideration, and think you owe an apology to a very large group of your readers. I hardly expect you to print this, but I hope you got the message... or did you?

BROWN & BURNING

DEAR B. & B.: I got the message, apologize, and plead guilty as charged for reasons of thoughtlessness and insensitivity, not discrimination.

May I add my own recommendations to yours? How about Sidney Poitier, Harry Belafonte, Lou Rawls, Richard Roundtree, Robert Guillaume, Fred Williams and Bobby Short for openers?

...

DEAR ABBY: My 17-year-old son just told me that his girlfriend is five months pregnant. She's 16, and they are both very immature for their ages. My son still plans on going to college next year.

We don't know what to do. The girl is just a child herself and doesn't know what she wants to do about the baby. We know very little about her parents. They're divorced, and she lives with her mother.

Who should make the decisions in a case like this? Something has to be done, but we don't know what. Can you help?

IN SHOCK IN ARLINGTON

DEAR IN SHOCK: This is a family matter. Your son, his girlfriend and both your families should meet with a professional counselor—a clergyman, or someone who has had experience in advising families who have found themselves in this predicament. The wishes of the youthful parents-to-be should be respected, but cool heads—rather than heated emotions—should prevail.

...

DEAR ABBY: Your advice to Sam's wife was all wrong. Sam was over 70 and in a nursing home, and his wife was worried that her friend, Emma, was getting too chummy with Sam. You said, "Don't worry, it's probably just an innocent flirtation—Emma is not about to steal your husband out of a nursing home."

Well, don't be so sure. After working for two years as a motel clerk near a nursing home, I can tell you that some of our best customers are senior citizens! One darling gentleman who was at least 80 used to check in alone every Friday afternoon. Half an hour later his "girlfriend" (in her 60s) would drive over in her own car and join him.

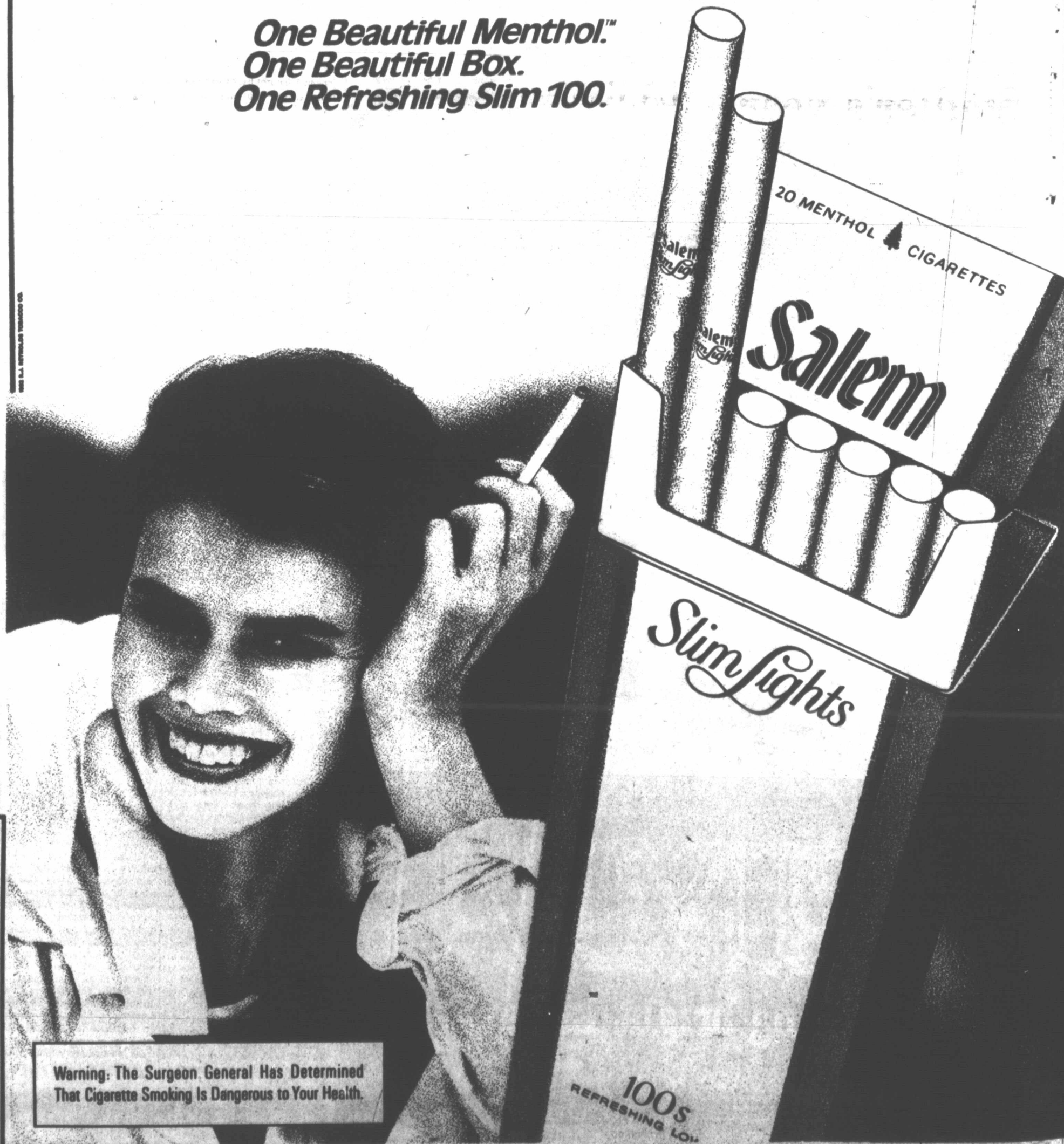
Another couple, both in their 80s, used to arrive in a cab, check into a room, and about an hour or so later, he'd order a cab to take them back to the nursing home where they were both residents.

Believe me, "old" doesn't mean "dead!"

NO NAME, NO LOCATION

Salem Slim Lights

One Beautiful Menthol.[™]
One Beautiful Box.
One Refreshing Slim 100.



8 mg. "tar", 0.6 mg. nicotine av. per cigarette by FTC method.

LABOR DAY SPECIAL

Perms \$25⁰⁰
Curl, Cut & Style



M.R. Chance
Sue Conway
Debbie Miller
Jeannie Bridges
Sonja Hardin

C Bonte
HAIR BY CHANCE

319 W. Foster

665-8881

Warning: The Surgeon General Has Determined That Cigarette Smoking Is Dangerous to Your Health.

100'S
REFRESHING LOW

Scrambling for it ...



Lauderdale Strikers and Montreal Manic players tangle for the ball during their game in Florida, which the Strikers took 1-0 in a sudden-death overtime. (AP Laserphoto)

Association seeks public golf site

The Pampa Golf Association has filed an application with the federal government to receive donations for which the donor can receive a tax break, according to Pat Albert, who serves on the Association's board of directors.

The Association was organized recently in an effort to obtain a public golf course for the Pampa area.

Albert said the Association is listed as a non-profit corporation with the state of Texas.

"We hope to have the process completed (application for tax break) in the near future, and in anticipation of this the Association has been investigating several sites for the proposed golf course," Albert added.

"No decision has been made at this time."

Albert aids the Association has been discussing possible design concepts which hopefully will be presented to the general public in the near future.

"We'd like to think all of those who have shown an interest in the public course project," Albert added. "We'll continue to update everyone on the progress and in the near future we hope to announce a time and place for a general meeting of all those interested in the community project."

Association officers are Buddy Epperson, president; Mickey White, vice-president and Tommy Lindsey, secretary. Beth Heiskell and Albert are both members of the board of directors.

Football sign-up

set this week

Sign-up for the Tiger Football League will be held at 5 p.m. Tuesday, Wednesday and Thursday at the Optimist Clubhouse. The league is for fifth and sixth graders. League play is scheduled to begin Sept. 23.

NFL strike being eyed

CHICAGO (AP) — Representatives of the National Football League Players Association could put the heat on league owners in their contract negotiations today by setting a strike date.

Player reps and the NFLPA gather here to discuss the lack of bargaining progress and to decide what they want to do about it.

"I think there is a pretty good chance a strike date will be set," Ed Garvey, executive director of the NFLPA, said Sunday in a telephone interview from his Chevy Chase, Md., home. He said the most likely time for any walkout would be between now and the fourth or fifth game of the regular season, which starts Sept. 12.

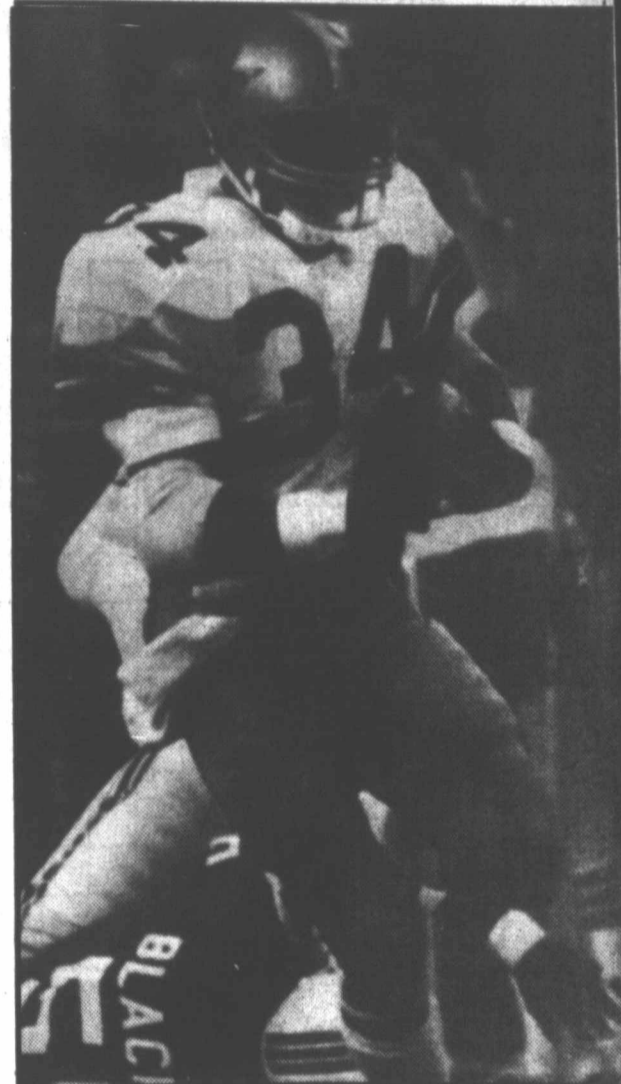
The Association has asked for 55 percent of the gross receipts brought in by the 28 teams, including television revenue anticipated from a lucrative contract recently signed.

"We know the owners are about to put an offer on the table," Garvey said. "They've been talking to some of the players individually about it."

But, he said, some of the player representatives have been dissatisfied with the owners' refusal to bargain.

"They want to see what steps we can take to force bargaining," Garvey said. Garvey discounted rumors that the Players Association may adopt some strategy aimed at forcing the owners into locking out the players.

Rookie takes it in ...



Cowboys rookie fullback George Peoples heads for home after catching a short pass from fellow rookie, quarterback Gary Hogeboom. Peoples broke free of patriots defense and went 79 yards for the fourth quarter touchdown. (AP Laserphoto)

Carner takes LPGA classic

HIGH POINT, N.C. (AP) — JoAnne Carner caught a cold playing an exhibition last week, but now she has both a cure and a way to pay her doctor bills.

Carner defeated Sandra Haynie in a 5-hole playoff Sunday to win the \$165,000 LPGA Henredon Classic on the 6,191-yard, par-72 Willow Creek Golf Club course.

"I don't think I have a cold any more," Carner said after her victory. "It's happened a lot where a player who is sick plays well, but this is a first for me."

While Carner can use her \$24,750 prize money to pay her medical bills, Haynie can use her \$16,170 runner-up winnings to pay for swimming lessons — something she unexpectedly needed on the decisive fifth playoff hole.

Haynie's tee shot on No. 17, the final playoff hole, landed in a hazard area on the bank of a lake. When she took her second shot, she lost her balance and fell into the water. It was, for all purposes, an \$8,580 fall — the difference between first and second place.

"I lost my concentration, composure, and a little bit of everything," said Haynie. "It's hard to concentrate when you're slopping up the fairway. I was wet up to my waist."

Carner, 43, from Palm Beach, Fla., who last week won the World Championship of Women's Golf in Cleveland, made a routine par on the hole. And when a soggy Haynie's third shot stopped on the fringe of the green and she two-putted for bogey, Carner had career victory no. 36.

"I didn't see her go in the water," Carner said. "I didn't realize she was that close."

Carner twice avoided defeat in the playoff, chipping in from 64 feet on the second playoff hole and hitting a 15-foot, par-saving putt on the fourth extra hole.

The playoff became necessary when they tied at 8 under par 280 after 72 holes. Haynie had begun the day with a two-stroke lead but shot a 74 while Carner finished an even par 72.

Kathy Whitworth, Hollis Stacy and Janet Coles tied for third place at 5-under-par 281. Whitworth and Coles shot final-round 68s while Stacy, a first-round co-leader, shot 71.

Patti Rizzo and Nancy Lopez tied for sixth at 4-under-par 82. Rizzo closing out in 4-under-par 68 and Lopez, a crowd favorite, shooting 71.

Heads up ...



Unseeded Leigh Anne Thompson of Newport News, Va. is all smiles as she displays her trophy which accompanied \$20,000 in prize money for winning the Volvo Women's Cup Tennis Championships Sunday. Leigh Anne, 18, upset Bettina Bungs 7-6, 7-4, 6-3 to take her first pro tournament win. (AP Laserphoto)

Stadler's year is 'fantastic'

AKRON, Ohio (AP) — Craig Stadler describes his year, laced with victories in the Masters and World Series of Golf and two other American titles, with one word: fantastic.

"This is very fitting to my year," Stadler said Sunday of his four-hole, sudden death triumph over Ray Floyd in the \$400,000 World Series of Golf.

"I figured if I won here, it would make a fantastic year. It has," he said.

The pudgy 29-year-old Californian now has more victories, four, and more money, \$428,101, than anyone else on the PGA Tour this year following his \$100,000 payday.

Floyd, the PGA champion who surrendered his money-leading position in this elite event, did not take his dramatic loss lightly.

"You're supposed to be happy with second place," said Floyd, who started the

cool day with a five-stroke lead. "I am very unhappy with second."

"I played my best golf in the playoff. I guess it was not meant to be."

Stadler conceded he was fortunate to win. He missed three of the four greens in the playoff while Floyd missed just one, the fatal 17th.

Tied at 71, they were in the same area, nestled in the high rough to the left of the green. Stadler knocked his chip shot to within four feet of the cup.

Floyd, with a tougher lie, chipped 12 feet past the hole. He missed the downhill, downhill putt to save par. Stadler then tapped his in for his first World Series triumph.

It marked the third straight playoff hole Stadler had missed the green, only to chip to within a few feet of the hole to stay with Floyd.

Stadler forced the playoff with a five-birdie regulation round of 65.

LA Raiders game not big draw

LOS ANGELES (AP) — The Los Angeles Raiders' first outing in their new home was successful on one count and not so successful on another.

The Raiders, with rookie Jack Squirek of Illinois and veteran Rod Martin spearheading a fine defensive performance, whipped the Green Bay Packers 24-3 Sunday night in their National Football League preseason game. But the Raiders' initial home contest in Los Angeles drew a crowd of just 40,906 to the L.A. Coliseum, which has a 70,000-plus capacity.

Chris Bahr kicked a 44-yard field goal as time ran out in the half and Frank Hawkins scored on a 2-yard run in the third quarter to put the Raiders ahead to stay. In the fourth period, Marc Wilson threw a 6-yard touchdown pass to Malcolm Barnwell, and Billy Taylor tallied on a 3-yard burst.

Exhibition scores

By The Associated Press
Los Angeles Rams 23, Seattle 13; the New York Giants 22, the New York Jets 10; Cleveland 20, New Orleans 17; Detroit 27, Cincinnati 23; Pittsburgh 37, Baltimore 15; Houston 21, Tampa Bay 6; Dallas 36, New England 21; Denver 27, Minnesota 17; San Diego 23, San Francisco 9; St. Louis 10, Chicago 3, and Kansas City 17, Miami 17 in overtime; Atlanta 24, Philadelphia 21, and Buffalo 20, Washington 14.

BAG-A-PUMA

Get this \$10 Puma team bag for just \$3 where you buy a pair of Puma athletic shoes. You can carry your uniform, books, anything in this versatile team bag from Puma. Hurry offer ends Sept. 30, 1982.

Puma in a class by itself, World Class.

HOLMES GIFT SHOPPE & SPORTS CENTER
304 S. Cuyler 665-8888

HOGAN
J. R. SCHUNEMAN
CONSTRUCTION CO.
512 E. Tyng 669-9391
Commercial Residential
Remodeling Repairing

Happy Jack
BEFORE
AFTER

After costly treatment failed, his skin disease was believed incurable. At this point, HAPPY JACK RANGE MEDICINE was used with dramatic success. Also, HAPPY JACK FLEX-TITE SPORT or POWDER, and other skin care products are available. Call for more information.

Happy Jack, Inc., Box 475, Snow Hill, MD 20688

Coors
Brewed with Pure Rocky Mountain Spring Water.
12 PACK

NOW SPECIALLY PRICED.
Made for the way you really like to drink beer.

Watch For Special Promotional Displays at Participating Merchants

New LL champs are Americans

WILLIAMSPORT, Pa. (AP) — For the first time since 1975, an American team left here as the new Little League world champion.

The surprising team from Kirkland, Wash., headed for home and was greeted by a rousing welcome Sunday after winning the title in a stunning upset over Pu-Tzu of Taiwan.

"It'll sink in," said Kirkland pitcher Cody Webster in the 6-0 triumph, in which he hit a home run and struck out 12 batters.

Taiwan had dominated the series since 1969, winning 10 overall and the last five in a row. The only American

victory in the period was in 1975, when foreign teams were temporarily barred.

"His (Webster's) curves and fast balls were very good, and he mixed them up very well," said Taiwan coach Chang Tein-chueng, adding: "We will come back, we will try our best to come back."

Washington coach Pat Downs said, "I don't think we ever played a better ballgame."

"Our bunting game surprised them. They didn't make the play on the bunt and that opened it up for a couple base hits for a couple runs," he said.

Dan Popejoy
Certified Public Accountant

announces the opening of his office located at

Suite 434-A
Hughes Building

Box 2019 665-0915

Harvester Lanes Cafe
Homemade Pie, Chili & Stew

Open Monday - Saturday during noon hour.
Open Sunday Afternoons

Harvester Lanes
1401 S. Hobart

Cowboy rookies looking good

IRVING (AP) — Gary Hogeboom created a furor in training camp this summer when he signed a contract for \$175,000 a year although he has never played quarterback in a regular season National Football League game.

After Saturday night's performance in Dallas' 36-21 preseason victory over the New England Patriots, Hogeboom may be worth every nickel of it.

Hogeboom, trying to become the No. 2 Cowboys' quarterback behind Danny White, hit 11 of 17 passes for 190 yards and two touchdowns in the victory, all in the second half.

He flicked a 1-yard scoring pass to tight end Doug Cosbie and flipped a perfectly executed screen pass to rookie George Peoples of Auburn who turned it into a 79-yard touchdown pass-and-run.

"I had a great time out there... I was very pleased with my performance," said Hogeboom. He added he's hoping to give White a run for No. 1.

"My goal for the summer was to challenge 'Danny,'" Hogeboom said. "I want to be in the position to push Danny. I want the coaches to have the confidence to put me in the game when it counts."

White played well in the first half, throwing a 3-yard scoring pass to tight end Billy Joe DuPree and completing 13 of 24 for 160 yards.

Hogeboom's touchdown to Peoples came late in the fourth period with New England trailing 27-21 and was what Peoples called "a simple out."

"I came open and Steve Wilson made a great block," he said. "I wasn't going to let anyone deny me getting into the end zone."

Coach Tom Landry took note of Hogeboom's performance saying "He looked like he has all summer, which is impressive."

"Peoples has impressed everybody and ran well tonight, too," said Landry, who doesn't praise rookies in public very often.

Hogeboom, who has a rocket arm, is getting his chance while Dallas' other backup quarterback Glenn Carano recovers from a leg injury.

"I still have a lot to learn but hopefully it will pickup the more playing time I get," Hogeboom said.

Dallas spoiled the homecoming of New England coach Ron Meyer, who used to be a scout for the Cowboys and was coach at Southern Methodist last year.

The Cowboys are 2-1 in the preseason while the Patriots are 0-3.

"It would have been nice to win here but not many people win in Texas Stadium who are dressed in anything but white and blue," said Meyer.

White said the Cowboys are "the farthest along we've ever been coming out of training camp. We've worked hard to accomplish a great deal."

White and Dallas All-Pro defensive tackle Randy White refused to join in the pregame handshake between the two teams to denote solidarity in the pending contract dispute by the players with NFL management.

USA tops USSR

KNOXVILLE, Tenn. (AP) — Frank Comfort, coach of the U.S. swim team, says he wasn't surprised by his team's victory over the Soviet nationals in a three-day dual meet at the University of Tennessee.

But he said he was surprised at the 224-156 score. "I think that after each day the possibility was there for a win," Comfort said after the meet ended Saturday. "I know that our people had no thought of slowing down."

The American men topped the Soviets 111-78, and the U.S. women outscored their opponents 113-77 during the outdoor meet in which no world records were set.

The Americans won nine of 10 events Saturday and eight of 12 events each day Thursday and Friday.

Today's Crossword Puzzle

ACROSS

44 Intermediate (prefix)
45 Housewife's ti- (abbr.)
46 One of 3
47 Time zone (abbr.)
48 Male adult (abbr.)
49 Speed measure (abbr.)
50 Honey (pharm.)
51 For rowing
52 Suffix
53 Non-group marriage
54 Draw tight
55 Weight
56 Pindar opus
57 With (Lat.)
58 Preposition
59 Genus of rodents
60 Electrical units
26 Of God (Lat.)
27 Last named
29 Cavalry horse
31 Rental contract
35 Rye fungus
36 Coat type
37 Actress Gabor
40 Cloth scrap
41 Questionable

DOWN

1 Madame (abbr.)
2 Animal genetic trait
3 Making apertures
4 Mournful sound
5 Mr. Spade
6 Actor's audition (2 wds.)
7 Rodents
8 Luau food

Answer to Previous Puzzle

10K UNFIT IBA
11K UNFIT IBA
12K UNFIT IBA
13K UNFIT IBA
14K UNFIT IBA
15K UNFIT IBA
16K UNFIT IBA
17K UNFIT IBA
18K UNFIT IBA
19K UNFIT IBA
20K UNFIT IBA
21K UNFIT IBA
22K UNFIT IBA
23K UNFIT IBA
24K UNFIT IBA
25K UNFIT IBA
26K UNFIT IBA
27K UNFIT IBA
28K UNFIT IBA
29K UNFIT IBA
30K UNFIT IBA
31K UNFIT IBA
32K UNFIT IBA
33K UNFIT IBA
34K UNFIT IBA
35K UNFIT IBA
36K UNFIT IBA
37K UNFIT IBA
38K UNFIT IBA
39K UNFIT IBA
40K UNFIT IBA
41K UNFIT IBA
42K UNFIT IBA
43K UNFIT IBA
44K UNFIT IBA
45K UNFIT IBA
46K UNFIT IBA
47K UNFIT IBA
48K UNFIT IBA
49K UNFIT IBA
50K UNFIT IBA
51K UNFIT IBA
52K UNFIT IBA
53K UNFIT IBA
54K UNFIT IBA

| | | | | | | | | |
|----|----|----|----|---|----|----|----|----|
| 1 | 2 | 3 | 4 | 5 | 6 | 7 | 8 | 9 |
| 10 | | | 11 | | | 12 | | 13 |
| 14 | | | 15 | | | 16 | | 17 |
| | | 18 | | | 19 | 20 | | 21 |
| 22 | 23 | | 24 | | | 25 | | |
| 26 | | | 27 | | | 28 | | |
| 29 | | 30 | | | | 31 | 32 | 33 |
| 34 | | | | | | 35 | | |
| | | 36 | | | | 37 | 38 | 39 |
| 40 | | | | | | 41 | | |
| 42 | 43 | | 44 | | | 45 | | |
| 46 | | | 47 | | | 48 | | |
| 49 | | 50 | | | | 51 | 52 | 53 |
| 54 | | | | | | 55 | | |
| | | 56 | | | | 57 | | |
| | | 58 | | | | 59 | | |
| | | | | | | 60 | | |

Astro-Graph

by bernice bede osol

Avenues could open this coming year which will enable you to make certain changes in your employment. If things have not been going too well for you financially, don't hesitate to make the switch.

VIRGO (Aug. 23-Sept. 22)
You'll get your work done a lot quicker today if you don't waste time shopping around for labor-saving devices. There is no substitute for elbow grease. Find out more of what lies ahead for you in the seasons following your birthday by sending for your copy of Astro-Graph. Mail \$1 for each to Astro-Graph, Box 489, Radio City Station, N.Y. 10019. Be sure to specify birth date.

LIBRA (Sept. 23-Oct. 23)
When an invitation to a fun event arrives today from a least-expected source, you'll realize you've been befriending the wrong people. Switch your loyalties.

SCORPIO (Oct. 24-Nov. 22)
You can bring an important goal into being today once you stop anticipating all the negatives. Have faith in the positives.

SAGITTARIUS (Nov. 23-Dec. 21)
If you see that you're getting no place with an interest of yours, quit barking up the wrong tree. Change directions and you'll succeed.

CAPRICORN (Dec. 22-Jan. 19)
Your plans will fizzle if you try to implement them prematurely. Timing is all important today, so be patient. Wait for your cue. It'll come.

AQUARIUS (Jan. 20-Feb. 19)
You may be an expert at getting the door opened today, but chances are you'll need assistance to close your deal. Bring along support when you knock.

PISCES (Feb. 20-March 20)
Extensive discussions about your problems will only confuse you more. What you need today is to get off by yourself. In quiet places, reason about.

ARIES (March 21-April 19)
If someone's actions have put you in a bad frame of mind today, don't sit around dwelling on it. Get out and mix. A pleasant time awaits you.

TAURUS (April 20-May 20)
Something could develop from out of left field today which would alter a losing situation into one where you'll come out on top. Remain hopeful.

GEMINI (May 21-June 20)
Even if you are gaining support today, don't be afraid to test your ideas on your own. Your creativeness will surprise others.

CANCER (June 21-July 22)
A unique situation may arise today which can offer you special benefits. However, unless you handle the person involved tactfully, he or she could delay your start.

LEO (July 23-Aug. 22)
After beating your head against a brick wall trying to persuade someone to your way of thinking, you'll finally discover, accidentally, the avenue to reach this person is through charm.

STEVE CANYON By Milton Caniff

HELLO, STEVE! WELCOME BACK!
GENERAL CAMPBELL, THIS WAS IN MY MAIL! MY PAY SUSPENDED BECAUSE I OVERSTAYED MY LEAVE!
AH, MY BOY, MURPHY'S LAW COMES TO WASHINGTON!
LOOBY MC-SUMPT'S BACK-HOME ENEMIES COULDN'T GET AT HER...
SO THEY KICKED THE DOG? THAT'S YOU!
YOUR RESCUE OF LOOBY WAS NOT AN A.F. INTELLIGENCE ASSIGNMENT—SO YOUR PIECE WORK WENT TO PIECES! CARE FOR A BITTER PILL TO SWALLOW?

KIT N' CARLYLE By Larry Wright

I'LL BET IT'S MONDAY.

THE WIZARD OF ID By Brant Parker and Johnny Hart

TWANG
HALT
HOW COME YOU SHOOT FIRST... THEN YELL HALT?
'CAUSE I MISSED

OUR BOARDING HOUSE By Frank Hill

DOWN, BOY! YOU GRABBED FOR THE MONEY LIKE IT WAS THE LAST PIECE OF MEAT ON THE PLATTER!
HAR-RUMPH! I WAS SIMPLY OFFERING TO TAKE THE MONEY AND INVEST IT SCIENTIFICALLY WHEN YOU...
STOP ARGUIN', YOU GUYS, AN GRAB THE MONEY BEFORE WE LOSE IT! IF YOU'D BEEN WITH CLUSTER, YOU'D HAVE ARGUED ABOUT WHO WAS SUPPOSED TO STAND WATCH!

EEK & MEEK By Howie Schneider

HI, THE NAME'S MEEK
HI... I'M PHYLLIS
WELL, SO FAR SO GOOD... EH, PHYLLIS?

By Johnny Hart

WHICH HOLE IS THIS?
I'M NOT SURE...
...IT'S GOTTA BE THE '4TH'

MARMADUKE By Brad Anderson

"How did you two wiggle in here? And no... I'm not going to read you 'the funnies!'"

PRISCILLA'S POP By Al Vermeer

STUART!
YOU WERE THINKING OF BOUNCING A BALL ON THE LIBRARY STEPS, WEREN'T YOU?
I WAS JUST STANDING HERE THINKING ABOUT A TELEVISION PROGRAM!
OH, REALLY? WHICH ONE?
THAT'S INCREDIBLE.

By Dick Cavalli

FROM NOW ON, I ONLY WANT TO DISCUSS CHEERFUL, LIPBEAT THINGS.
WHAT DID YOU HAVE FOR DINNER LAST NIGHT?
LIVER AND CALLIFLOWER.
I DON'T THINK IT'S GOING TO WORK OUT.

ALLEY OOP By Dave Graue

HOWDY, NEIGHBOR! T... THE APPARITION S... SPEAKS!
HEY, WAIT!
YI!
WHAM!
ALL I WANTED T'DO WAS ASK HIM IF I COULD BORROW HIS CLOTHES!

WINTHROP By Dick Cavalli

FROM NOW ON, I ONLY WANT TO DISCUSS CHEERFUL, LIPBEAT THINGS.
WHAT DID YOU HAVE FOR DINNER LAST NIGHT?
LIVER AND CALLIFLOWER.
I DON'T THINK IT'S GOING TO WORK OUT.

By T.K. Ryan

LOOK, EVERYBODY! MY FUTURE HUBBY'S COME BACK TO MY LOVIN' ARMS!
PUT ME DOWN, HILDEGARD HANNOCHER! I DIDN'T COME BACK TO YOU, AND I'M NOT YOUR FUTURE HUSBAND!
SO I AIN'T INFALLIBLE... BIG DEAL.

THE BORN LOSER By Art Sanson

OH, BOY, I'M GLAD YOU CALLED! DID YOU KNOW YOU TOOK THE KEY TO THE MAILBOX?
YEAH, HA-HA, BUT DON'T WORRY ABOUT IT...
I MAILED IT BACK TO YOU THIS MORNING.

FRANK AND ERNEST By Bob Thaves

JUST TO MAKE THE FLIGHT INTERESTING, LET'S ALL BREATHE IN ON THE COUNT OF THREE, AND SEE IF WE CAN MAKE THE OXYGEN MASKS APPEAR!

PEANUTS By Charles M. Schultz

Travel Tips
How to avoid carsickness, seasickness and airsickness...
Be careful what you eat.
And stay home.

Garfield By Jim Davis

LOOK OUT, WORLD! HERE COMES THE CAPED AVENGER!
OH, SURE, SUPER-HERO CRIME FIGHTERS MAKE FOR AN OLD, OVERUSED STORY LINE...
BUT HAVE YOU EVER HEARD OF A FAT, WEAK ONE?

TUMBLEWEEDS By T.K. Ryan

LOOK, EVERYBODY! MY FUTURE HUBBY'S COME BACK TO MY LOVIN' ARMS!
PUT ME DOWN, HILDEGARD HANNOCHER! I DIDN'T COME BACK TO YOU, AND I'M NOT YOUR FUTURE HUSBAND!
SO I AIN'T INFALLIBLE... BIG DEAL.

Garfield By Jim Davis

LOOK OUT, WORLD! HERE COMES THE CAPED AVENGER!
OH, SURE, SUPER-HERO CRIME FIGHTERS MAKE FOR AN OLD, OVERUSED STORY LINE...
BUT HAVE YOU EVER HEARD OF A FAT, WEAK ONE?

Sabbath
Orthodox
Airport
earlier
and ho
TEL
Jewish
peace a
apart th
the Jew
The S
for as
existed
governm
such a s
At im
orthodo
Israeli
and he
resistin
becomi
the sec
who ca
and wh
brands
Relig
flights
biblical
the Sab
Thei
Ministe
have p
decision
and he
decision
\$40 mil
charter
The c
AI we
Intern
for tw
their b
Relig
were s
P
One
every y
can de
on the
your ca
Know
le a r
respon
the bu
Barba
and a
The C
Rights
Ms.
says
chang
questi
she's
impor
If so
WA
given
slow
a an
Depa
Th
empl
ranch
work
per h
\$3.54
an av
6 per
Cor
\$3.54
incre
July
No
beca
ended
on fa
repor
Crop
1983,
able
year
The
deriv
how
paid
per h
years
said.
Wo
comp
three

Sabbath dispute grows



Orthodox Jews are prevented from entering Ben Gurion Airport in Tel Aviv by protesting El Al staff workers earlier this month, angry at a decision to ground Sabbath and holy day air flights in Israel. El Al workers are

resisting fiercely and the tug-of-war is becoming a test of who rules Israel — the secular majority or the 12 percent who call themselves strictly orthodox, and whom the daily newspaper Haaretz brands "the ayatollahs of Israel." (AP Laserphoto)

Controversy dividing Jewish state

TEL AVIV, Israel (AP) — The Jewish Sabbath, that sublime day of peace and reflection, threatens to tear apart the delicate seams that have held the Jewish state together for 34 years. The Sabbath has been a divisive issue for as long as modern Israel has existed. It has even brought down governments, but never has it been such a storm center as today. At immediate issue are the efforts by orthodox Jews to ground El Al, the Israeli national airline, on the Sabbath and holy days. El Al workers are resisting fiercely, and the tug-of-war is becoming a test of who rules Israel — the secular majority or the 12 percent who call themselves strictly orthodox, and whom the daily newspaper Haaretz brands "the ayatollahs of Israel." Religious Jews revile El Al's Sabbath flights as flagrant violations of God's biblical commandment to "remember the Sabbath day, to keep it holy." Their representatives in Prime Minister Menachem Begin's coalition have pushed through a government decision to ground El Al on Sabbaths and holy days starting Sept. 3. The decision is expected to cost the airline \$40 million a year, mostly in the loss of charter flights. The dispute grew this month when El Al workers blocked Ben-Gurion International Airport to orthodox Jews for two hours, singling them out by their beards and black robes. Religious and secular Israelis alike were shocked. But while the religious

called it "old-fashioned anti-Semitism," some non-religious observers saw it as symptomatic of a widening gulf between the two camps. The secular Israelis claim the trouble stems from the growing clout of the orthodox religious parties which can squeeze Begin for concessions like the El Al closure by threatening to quit his fragile coalition. Orthodox Jews reply that in recent years Israelis have lost respect for the Sabbath. They point to the growing number of bars, movie theaters and restaurants operating between Friday dusk and Saturday dusk, when the Sabbath is in force. Rabbis are campaigning to close Tel Aviv's Dolphinarium, a glittering entertainment and marine-life complex which draws thousands every Saturday. Hardly a Sabbath passes without religious zealots hurling rocks at cars traveling a major Jerusalem thoroughfare near a religious neighborhood. Clerical officials say that Sabbath work permits, originally issued to assure essential services, are being handed out to anyone looking for overtime work at triple-pay. "The Sabbath, which used to symbolize love and peace in Israel; has become, in the Jewish state of all places, a bonfire of controversy that is turning Jew against Jew," says Rabbi Menachem Hacohen, a member of parliament.

The resentment of secular Israelis is fueled by other concessions Begin has made to the orthodox such as tightening abortion laws, exempting more religious men and women from army service and funneling large sums of state money into religious institutions. Even a simple matter like daylight-saving time is a heated religious issue. Interior Minister Yosef Burg, who is religious, refuses to set clocks back an hour because it would interfere with prayer schedules. Secular Israelis fear that if El Al is grounded, orthodox Jews will be emboldened to demand the closure of other institutions like major factories. Next on the list could be Saturday soccer matches. Until now, religious and secular Jews have co-existed by compromising. Buses run in cities that have no large religious populations. Pork is sold in some restaurants, but is euphemistically advertised as white steak. Until now El Al has flown on the Sabbath but has not listed the flights on its schedule. S.Z. Abromowitz, a veteran commentator on religious issues, says the whole problem is rooted in the fact that Jewish orthodox developed in the ghettos of Europe, where gentiles could always be found to do the things a Jew couldn't on the Sabbath.

House speaker in unusual role

WASHINGTON (AP) — There stood Tip O'Neill, the head Democrat, lecturing freshman Republican House members on loyalty to the president whose coattails helped carry them to Congress. "Are you going to follow the leader that brought you here, or are you going to run?" the speaker of the House asked as he urged approval of the \$98.3 billion, three-year tax increase President Reagan wanted and got. O'Neill does not customarily coach Republicans, but he made an exception. It took an unlikely, one-time-only alliance, with Democrats supplying the votes that overrode conservative Republican opposition, to push the bill through Congress. The speaker was careful to

emphasize the Reagan imprint on the politically troublesome measure. "Only the president of the United States and the full support of his office can pass a tax bill," he said. That goes double for a tax increase bill 10 weeks before congressional elections. That usually is the season for tax cuts, not increases. But Reagan and majorities in Congress had to swallow this one as a deficit-curing measure. They did, and now head into the campaign with varying accounts of what was done and why. Reagan said it was more reform than increase, although the distinction doesn't mean much to the individuals and corporations that will be paying more taxes as a result.

That is proving a popular deflection among campaigning Republicans who backed the increase, and with whom the Democrats who voted for it. Democrats' defile reform in its instance as changes to undo excess that were built into the three-year cut Reagan pushed through Congress in 1981. They also said that Reagan had reversed course. The president insisted he had done no such thing — although he had said in the State of the Union message that he would seek to increase in 1982. O'Neill's counsel to the new House Republicans had a point all right in it. The Democrats lost 33 House seats in the 1980 elections. They hope to regain at least that many on Sept. 12.

Why business sector won't spend

By JOHN CUNIFF AP Business Analyst NEW YORK (AP) — While the business sector seems to share President Reagan's approach to economics, it hasn't been doing it with investment dollars. For most of 1982, which the administration once had hoped would be a recovery year, businesses have cut both expenditures and appropriations for future capital projects, such as new plant and equipment. The latest evidence of timid behavior comes in the form of a Conference Board survey that found the nation's 1,000 largest manufacturers reduced appropriations for plant and equipment by 22 percent in the second quarter. Such behavior is causing a lot of head scratching, and it has given rise to the criticism that business talks a better game than it plays. If business doesn't get on with its spending, it is said, things will be in a sorry mess. But it doesn't quite work that way. Business today doesn't spend until it is certain the market is there. Call it timidity. Accuse it of lacking entrepreneurial zeal. The fact is, business today doesn't spend until it must. And then, sometimes, it can't afford to. The reasons why are scattered all over the economic landscape. To begin, less than 70 percent of manufacturing capacity is currently being utilized. In many areas, factories stand empty, in others, shifts have been discontinued. Meanwhile, the idle plant and equipment must be maintained. Industrial production has declined in 10 of the past 11 months, reflecting a persistent and pervasive weakness in retailing. Orders are off. Profits, too. Between

the first quarters of 1980 and 1982 corporate profits fell 33 percent. Perhaps worst of all, capital has been almost prohibitively expensive. Companies that ordinarily might have offered stock to the public have had to postpone such plans because of disinterest on the part of the investing public. And some of the same companies have been blocked from borrowing by rates so high they left little opportunity for profits to be earned.

Many profitless businesses, in fact, report they have been borrowing simply to remain in existence, a practice that buys time but which won't unless the economy improves and rates fall, eventually lead to their doom. With the recent decline in interest costs, some of these companies might have been saved. Still, they and others have clearly stated their priorities — to retire short-term debt first and only then consider expansion.

Collision kills four men

MEADE, Kan. (AP) — Four men were killed over the weekend when their car collided head-on with a tractor-trailer in southwest Kansas, authorities said. The Kansas Highway Patrol said all the victims were riding in the car. They were identified as Steve Burgess, 33, of Elberton, Ga., the driver; Gary N. Stinnett, 18, of Paris, Ark.; Douglas C. Poll, 23, of Long Beach, Calif.; and William B. Adams, 33, of Burkburnett, Texas. The truck driver was treated at a hospital in Meade and released Sunday afternoon, a hospital spokeswoman said. He was identified as James F. Byrd, 33, of Kansas City, Mo. Patrol dispatcher Judy Litton said the eastbound car was apparently trying to pass a vehicle in front of it when it collided with the truck Saturday night on U.S. 54 near Plains, about 10 miles west of Meade.

Public Notices

CITY OF MIAMI NOTICE OF CALCULATION OF EFFECTIVE TAX RATE AND PUBLICATION OF ESTIMATED UNENCUMBERED FUND BALANCES. I, Debbie Striling, Chief Appraiser for the Dade Co. Appraisal Dist., in accordance with the provisions of Sec. 26.04 of the Property Tax Code, have calculated the tax rate which may not be exceeded by more than three percent by the governing body of the City of Miami without holding a public hearing as required by the code. That rate is as follows: \$235 per \$100 of value. The estimated unencumbered balances for Maintenance & Operation fund: \$60,000. The estimated unencumbered balances for Interest & Sinking fund: \$48,000. Charles D. Rand, Tax Assessor - Collector August 26, 1982. Calculations used to Determine Effective Tax Rate. I. ASSUMPTIONS 1. 1981 Total Tax Levy from the 1981 Tax Roll \$1,629,195 2. 1981 Tax Rate (\$6.4 M&O and \$0.10 I&S) 56 - \$100 3. 1981 Debt Service (I&S) Levy \$250,000 4. 1981 Maintenance and Operation (M&O) Levy \$1,379,195 5. 1981 Taxes Levied for Maintenance and Operation (M&O) on Property in Territory That Has Ceased to be a Part of the Unit in 1982 \$10,693 6. 1981 Taxes Levied for Maintenance and Operation (M&O) on Taxable Value of Property Becoming Exempt in 1982 \$25,790 7. 1981 Taxes Levied for Maintenance and Operation (M&O) on Taxable Value of Property Lost Because Property is Required to be Appraised in 1982 at Less Than Market Value \$722 8. 1982 Total Taxable Value of All Property \$2,929,915 9. 1982 Taxable Value of New Improvements Added Since January 1, 1981 \$2,745,000 10. 1982 Taxable Value of Property Added Since January 1, 1981 on Appraisal of 1981 \$1,241,990 11. 1982 Taxable Value of Property Lost Because Property is Required to be Appraised in 1982 at Less Than Market Value \$722 12. 1982 Taxable Value of Property Lost Because Property is Required to be Appraised in 1982 at Less Than Market Value \$722 13. 1982 Taxable Value of Property Lost Because Property is Required to be Appraised in 1982 at Less Than Market Value \$722 14. 1982 Taxable Value of Property Lost Because Property is Required to be Appraised in 1982 at Less Than Market Value \$722 15. 1982 Taxable Value of Property Lost Because Property is Required to be Appraised in 1982 at Less Than Market Value \$722 16. 1982 Taxable Value of Property Lost Because Property is Required to be Appraised in 1982 at Less Than Market Value \$722 17. 1982 Taxable Value of Property Lost Because Property is Required to be Appraised in 1982 at Less Than Market Value \$722 18. 1982 Taxable Value of Property Lost Because Property is Required to be Appraised in 1982 at Less Than Market Value \$722 19. 1982 Taxable Value of Property Lost Because Property is Required to be Appraised in 1982 at Less Than Market Value \$722 20. 1982 Taxable Value of Property Lost Because Property is Required to be Appraised in 1982 at Less Than Market Value \$722 21. 1982 Taxable Value of Property Lost Because Property is Required to be Appraised in 1982 at Less Than Market Value \$722 22. 1982 Taxable Value of Property Lost Because Property is Required to be Appraised in 1982 at Less Than Market Value \$722 23. 1982 Taxable Value of Property Lost Because Property is Required to be Appraised in 1982 at Less Than Market Value \$722 24. 1982 Taxable Value of Property Lost Because Property is Required to be Appraised in 1982 at Less Than Market Value \$722 25. 1982 Taxable Value of Property Lost Because Property is Required to be Appraised in 1982 at Less Than Market Value \$722 26. 1982 Taxable Value of Property Lost Because Property is Required to be Appraised in 1982 at Less Than Market Value \$722 27. 1982 Taxable Value of Property Lost Because Property is Required to be Appraised in 1982 at Less Than Market Value \$722 28. 1982 Taxable Value of Property Lost Because Property is Required to be Appraised in 1982 at Less Than Market Value \$722 29. 1982 Taxable Value of Property Lost Because Property is Required to be Appraised in 1982 at Less Than Market Value \$722 30. 1982 Taxable Value of Property Lost Because Property is Required to be Appraised in 1982 at Less Than Market Value \$722 31. 1982 Taxable Value of Property Lost Because Property is Required to be Appraised in 1982 at Less Than Market Value \$722 32. 1982 Taxable Value of Property Lost Because Property is Required to be Appraised in 1982 at Less Than Market Value \$722 33. 1982 Taxable Value of Property Lost Because Property is Required to be Appraised in 1982 at Less Than Market Value \$722 34. 1982 Taxable Value of Property Lost Because Property is Required to be Appraised in 1982 at Less Than Market Value \$722 35. 1982 Taxable Value of Property Lost Because Property is Required to be Appraised in 1982 at Less Than Market Value \$722 36. 1982 Taxable Value of Property Lost Because Property is Required to be Appraised in 1982 at Less Than Market Value \$722 37. 1982 Taxable Value of Property Lost Because Property is Required to be Appraised in 1982 at Less Than Market Value \$722 38. 1982 Taxable Value of Property Lost Because Property is Required to be Appraised in 1982 at Less Than Market Value \$722 39. 1982 Taxable Value of Property Lost Because Property is Required to be Appraised in 1982 at Less Than Market Value \$722 40. 1982 Taxable Value of Property Lost Because Property is Required to be Appraised in 1982 at Less Than Market Value \$722 41. 1982 Taxable Value of Property Lost Because Property is Required to be Appraised in 1982 at Less Than Market Value \$722 42. 1982 Taxable Value of Property Lost Because Property is Required to be Appraised in 1982 at Less Than Market Value \$722 43. 1982 Taxable Value of Property Lost Because Property is Required to be Appraised in 1982 at Less Than Market Value \$722 44. 1982 Taxable Value of Property Lost Because Property is Required to be Appraised in 1982 at Less Than Market Value \$722 45. 1982 Taxable Value of Property Lost Because Property is Required to be Appraised in 1982 at Less Than Market Value \$722 46. 1982 Taxable Value of Property Lost Because Property is Required to be Appraised in 1982 at Less Than Market Value \$722 47. 1982 Taxable Value of Property Lost Because Property is Required to be Appraised in 1982 at Less Than Market Value \$722 48. 1982 Taxable Value of Property Lost Because Property is Required to be Appraised in 1982 at Less Than Market Value \$722 49. 1982 Taxable Value of Property Lost Because Property is Required to be Appraised in 1982 at Less Than Market Value \$722 50. 1982 Taxable Value of Property Lost Because Property is Required to be Appraised in 1982 at Less Than Market Value \$722 51. 1982 Taxable Value of Property Lost Because Property is Required to be Appraised in 1982 at Less Than Market Value \$722 52. 1982 Taxable Value of Property Lost Because Property is Required to be Appraised in 1982 at Less Than Market Value \$722 53. 1982 Taxable Value of Property Lost Because Property is Required to be Appraised in 1982 at Less Than Market Value \$722 54. 1982 Taxable Value of Property Lost Because Property is Required to be Appraised in 1982 at Less Than Market Value \$722 55. 1982 Taxable Value of Property Lost Because Property is Required to be Appraised in 1982 at Less Than Market Value \$722 56. 1982 Taxable Value of Property Lost Because Property is Required to be Appraised in 1982 at Less Than Market Value \$722 57. 1982 Taxable Value of Property Lost Because Property is Required to be Appraised in 1982 at Less Than Market Value \$722 58. 1982 Taxable Value of Property Lost Because Property is Required to be Appraised in 1982 at Less Than Market Value \$722 59. 1982 Taxable Value of Property Lost Because Property is Required to be Appraised in 1982 at Less Than Market Value \$722 60. 1982 Taxable Value of Property Lost Because Property is Required to be Appraised in 1982 at Less Than Market Value \$722 61. 1982 Taxable Value of Property Lost Because Property is Required to be Appraised in 1982 at Less Than Market Value \$722 62. 1982 Taxable Value of Property Lost Because Property is Required to be Appraised in 1982 at Less Than Market Value \$722 63. 1982 Taxable Value of Property Lost Because Property is Required to be Appraised in 1982 at Less Than Market Value \$722 64. 1982 Taxable Value of Property Lost Because Property is Required to be Appraised in 1982 at Less Than Market Value \$722 65. 1982 Taxable Value of Property Lost Because Property is Required to be Appraised in 1982 at Less Than Market Value \$722 66. 1982 Taxable Value of Property Lost Because Property is Required to be Appraised in 1982 at Less Than Market Value \$722 67. 1982 Taxable Value of Property Lost Because Property is Required to be Appraised in 1982 at Less Than Market Value \$722 68. 1982 Taxable Value of Property Lost Because Property is Required to be Appraised in 1982 at Less Than Market Value \$722 69. 1982 Taxable Value of Property Lost Because Property is Required to be Appraised in 1982 at Less Than Market Value \$722 70. 1982 Taxable Value of Property Lost Because Property is Required to be Appraised in 1982 at Less Than Market Value \$722 71. 1982 Taxable Value of Property Lost Because Property is Required to be Appraised in 1982 at Less Than Market Value \$722 72. 1982 Taxable Value of Property Lost Because Property is Required to be Appraised in 1982 at Less Than Market Value \$722 73. 1982 Taxable Value of Property Lost Because Property is Required to be Appraised in 1982 at Less Than Market Value \$722 74. 1982 Taxable Value of Property Lost Because Property is Required to be Appraised in 1982 at Less Than Market Value \$722 75. 1982 Taxable Value of Property Lost Because Property is Required to be Appraised in 1982 at Less Than Market Value \$722 76. 1982 Taxable Value of Property Lost Because Property is Required to be Appraised in 1982 at Less Than Market Value \$722 77. 1982 Taxable Value of Property Lost Because Property is Required to be Appraised in 1982 at Less Than Market Value \$722 78. 1982 Taxable Value of Property Lost Because Property is Required to be Appraised in 1982 at Less Than Market Value \$722 79. 1982 Taxable Value of Property Lost Because Property is Required to be Appraised in 1982 at Less Than Market Value \$722 80. 1982 Taxable Value of Property Lost Because Property is Required to be Appraised in 1982 at Less Than Market Value \$722 81. 1982 Taxable Value of Property Lost Because Property is Required to be Appraised in 1982 at Less Than Market Value \$722 82. 1982 Taxable Value of Property Lost Because Property is Required to be Appraised in 1982 at Less Than Market Value \$722 83. 1982 Taxable Value of Property Lost Because Property is Required to be Appraised in 1982 at Less Than Market Value \$722 84. 1982 Taxable Value of Property Lost Because Property is Required to be Appraised in 1982 at Less Than Market Value \$722 85. 1982 Taxable Value of Property Lost Because Property is Required to be Appraised in 1982 at Less Than Market Value \$722 86. 1982 Taxable Value of Property Lost Because Property is Required to be Appraised in 1982 at Less Than Market Value \$722 87. 1982 Taxable Value of Property Lost Because Property is Required to be Appraised in 1982 at Less Than Market Value \$722 88. 1982 Taxable Value of Property Lost Because Property is Required to be Appraised in 1982 at Less Than Market Value \$722 89. 1982 Taxable Value of Property Lost Because Property is Required to be Appraised in 1982 at Less Than Market Value \$722 90. 1982 Taxable Value of Property Lost Because Property is Required to be Appraised in 1982 at Less Than Market Value \$722 91. 1982 Taxable Value of Property Lost Because Property is Required to be Appraised in 1982 at Less Than Market Value \$722 92. 1982 Taxable Value of Property Lost Because Property is Required to be Appraised in 1982 at Less Than Market Value \$722 93. 1982 Taxable Value of Property Lost Because Property is Required to be Appraised in 1982 at Less Than Market Value \$722 94. 1982 Taxable Value of Property Lost Because Property is Required to be Appraised in 1982 at Less Than Market Value \$722 95. 1982 Taxable Value of Property Lost Because Property is Required to be Appraised in 1982 at Less Than Market Value \$722 96. 1982 Taxable Value of Property Lost Because Property is Required to be Appraised in 1982 at Less Than Market Value \$722 97. 1982 Taxable Value of Property Lost Because Property is Required to be Appraised in 1982 at Less Than Market Value \$722 98. 1982 Taxable Value of Property Lost Because Property is Required to be Appraised in 1982 at Less Than Market Value \$722 99. 1982 Taxable Value of Property Lost Because Property is Required to be Appraised in 1982 at Less Than Market Value \$722 100. 1982 Taxable Value of Property Lost Because Property is Required to be Appraised in 1982 at Less Than Market Value \$722 101. 1982 Taxable Value of Property Lost Because Property is Required to be Appraised in 1982 at Less Than Market Value \$722 102. 1982 Taxable Value of Property Lost Because Property is Required to be Appraised in 1982 at Less Than Market Value \$722 103. 1982 Taxable Value of Property Lost Because Property is Required to be Appraised in 1982 at Less Than Market Value \$722 104. 1982 Taxable Value of Property Lost Because Property is Required to be Appraised in 1982 at Less Than Market Value \$722 105. 1982 Taxable Value of Property Lost Because Property is Required to be Appraised in 1982 at Less Than Market Value \$722 106. 1982 Taxable Value of Property Lost Because Property is Required to be Appraised in 1982 at Less Than Market Value \$722 107. 1982 Taxable Value of Property Lost Because Property is Required to be Appraised in 1982 at Less Than Market Value \$722 108. 1982 Taxable Value of Property Lost Because Property is Required to be Appraised in 1982 at Less Than Market Value \$722 109. 1982 Taxable Value of Property Lost Because Property is Required to be Appraised in 1982 at Less Than Market Value \$722 110. 1982 Taxable Value of Property Lost Because Property is Required to be Appraised in 1982 at Less Than Market Value \$722 111. 1982 Taxable Value of Property Lost Because Property is Required to be Appraised in 1982 at Less Than Market Value \$722 112. 1982 Taxable Value of Property Lost Because Property is Required to be Appraised in 1982 at Less Than Market Value \$722 113. 1982 Taxable Value of Property Lost Because Property is Required to be Appraised in 1982 at Less Than Market Value \$722 114. 1982 Taxable Value of Property Lost Because Property is Required to be Appraised in 1982 at Less Than Market Value \$722 115. 1982 Taxable Value of Property Lost Because Property is Required to be Appraised in 1982 at Less Than Market Value \$722 116. 1982 Taxable Value of Property Lost Because Property is Required to be Appraised in 1982 at Less Than Market Value \$722 117. 1982 Taxable Value of Property Lost Because Property is Required to be Appraised in 1982 at Less Than Market Value \$722 118. 1982 Taxable Value of Property Lost Because Property is Required to be Appraised in 1982 at Less Than Market Value \$722 119. 1982 Taxable Value of Property Lost Because Property is Required to be Appraised in 1982 at Less Than Market Value \$722 120. 1982 Taxable Value of Property Lost Because Property is Required to be Appraised in 1982 at Less Than Market Value \$722 121. 1982 Taxable Value of Property Lost Because Property is Required to be Appraised in 1982 at Less Than Market Value \$722 122. 1982 Taxable Value of Property Lost Because Property is Required to be Appraised in 1982 at Less Than Market Value \$722 123. 1982 Taxable Value of Property Lost Because Property is Required to be Appraised in 1982 at Less Than Market Value \$722 124. 1982 Taxable Value of Property Lost Because Property is Required to be Appraised in 1982 at Less Than Market Value \$722 125. 1982 Taxable Value of Property Lost Because Property is Required to be Appraised in 1982 at Less Than Market Value \$722 126. 1982 Taxable Value of Property Lost Because Property is Required to be Appraised in 1982 at Less Than Market Value \$722 127. 1982 Taxable Value of Property Lost Because Property is Required to be Appraised in 1982 at Less Than Market Value \$722 128. 1982 Taxable Value of Property Lost Because Property is Required to be Appraised in 1982 at Less Than Market Value \$722 129. 1982 Taxable Value of Property Lost Because Property is Required to be Appraised in 1982 at Less Than Market Value \$722 130. 1982 Taxable Value of Property Lost Because Property is Required to be Appraised in 1982 at Less Than Market Value \$722 131. 1982 Taxable Value of Property Lost Because Property is Required to be Appraised in 1982 at Less Than Market Value \$722 132. 1982 Taxable Value of Property Lost Because Property is Required to be Appraised in 1982 at Less Than Market Value \$722 133. 1982 Taxable Value of Property Lost Because Property is Required to be Appraised in 1982 at Less Than Market Value \$722 134. 1982 Taxable Value of Property Lost Because Property is Required to be Appraised in 1982 at Less Than Market Value \$722 135. 1982 Taxable Value of Property Lost Because Property is Required to be Appraised in 1982 at Less Than Market Value \$722 136. 1982 Taxable Value of Property Lost Because Property is Required to be Appraised in 1982 at Less Than Market Value \$722 137. 1982 Taxable Value of Property Lost Because Property is Required to be Appraised in 1982 at Less Than Market Value \$722 138. 1982 Taxable Value of Property Lost Because Property is Required to be Appraised in 1982 at Less Than Market Value \$722 139. 1982 Taxable Value of Property Lost Because Property is Required to be Appraised in 1982 at Less Than Market Value \$722 140. 1982 Taxable Value of Property Lost Because Property is Required to be Appraised in 1982 at Less Than Market Value \$722 141. 1982 Taxable Value of Property Lost Because Property is Required to be Appraised in 1982 at Less Than Market Value \$722 142. 1982 Taxable Value of Property Lost Because Property is Required to be Appraised in 1982 at Less Than Market Value \$722 143. 1982 Taxable Value of Property Lost Because Property is Required to be Appraised in 1982 at Less Than Market Value \$722 144. 1982 Taxable Value of Property Lost Because Property is Required to be Appraised in 1982 at Less Than Market Value \$722 145. 1982 Taxable Value of Property Lost Because Property is Required to be Appraised in 1982 at Less Than Market Value \$722 146. 1982 Taxable Value of Property Lost Because Property is Required to be Appraised in 1982 at Less Than Market Value \$722 147. 1982 Taxable Value of Property Lost Because Property is Required to be Appraised in 1982 at Less Than Market Value \$722 148. 1982 Taxable Value of Property Lost Because Property is Required to be Appraised in 1982 at Less Than Market Value \$722 149. 1982 Taxable Value of Property Lost Because Property is Required to be Appraised in 1982 at Less Than Market Value \$722 150. 1982 Taxable Value of Property Lost Because Property is Required to be Appraised in 1982 at Less Than Market Value \$722 151. 1982 Taxable Value of Property Lost Because Property is Required to be Appraised in 1982 at Less Than Market Value \$722 152. 1982 Taxable Value of Property Lost Because Property is Required to be Appraised in 1982 at Less Than Market Value \$722 153. 1982 Taxable Value of Property Lost Because Property is Required to be Appraised in 1982 at Less Than Market Value \$722 154. 1982 Taxable Value of Property Lost Because Property is Required to be Appraised in 1982 at Less Than Market Value \$722 155. 1982 Taxable Value of Property Lost Because Property is Required to be Appraised in 1982 at Less Than Market Value \$722 156. 1982 Taxable Value of Property Lost Because Property is Required to be Appraised in 1982 at Less Than Market Value \$722 157. 1982 Taxable Value of Property Lost Because Property is Required to be Appraised in 1982 at Less Than Market Value \$722 158. 1982 Taxable Value of Property Lost Because Property is Required to be Appraised in 1982 at Less Than Market Value \$722 159. 1982 Taxable Value of Property Lost Because Property is Required to be Appraised in 1982 at Less Than Market Value \$722 160. 1982 Taxable Value of Property Lost Because Property is Required to be Appraised in 1982 at Less Than Market Value \$722 161. 1982 Taxable Value of Property Lost Because Property is Required to be Appraised in 1982 at Less Than Market Value \$722 162. 1982 Taxable Value of Property Lost Because Property is Required to be Appraised in 1982 at Less Than Market Value \$722 163. 1982 Taxable Value of Property Lost Because Property is Required to be Appraised in 1982 at Less Than Market Value \$722 164. 1982 Taxable Value of Property Lost Because Property is Required to be Appraised in 1982 at Less Than Market Value \$722 165. 1982 Taxable Value of Property Lost Because Property is Required to be Appraised in 1982 at Less Than Market Value \$722 166. 1982 Taxable Value of Property Lost Because Property is Required to be Appraised in 1982 at Less Than Market Value \$722 167. 1982 Taxable Value of Property Lost Because Property is Required to be Appraised in 1982 at Less Than Market Value \$722 168. 1982 Taxable Value of Property Lost Because Property is Required to be Appraised in 1982 at Less Than Market Value \$722 169. 1982 Taxable Value of Property Lost Because Property is Required to be Appraised in 1982 at Less Than Market Value \$722 170. 1982 Taxable Value of Property Lost Because Property is Required to be Appraised in 1982 at Less Than Market Value \$722 171. 1982 Taxable Value of Property Lost Because Property is Required to be Appraised in 1982 at Less Than Market Value \$722 172. 1982 Taxable Value of Property Lost Because Property is Required to be Appraised in 1982 at Less Than Market Value \$722 173. 1982 Taxable Value of Property Lost Because Property is Required to be Appraised in 1982 at Less Than Market Value \$722 174. 1982 Taxable Value of Property Lost Because Property is Required to be Appraised in 1982 at Less Than Market Value \$722 175. 1982 Taxable Value of Property Lost Because Property is Required to be Appraised in 1982 at Less Than Market Value \$722 176. 1982 Taxable Value of Property Lost Because Property is Required to be Appraised in 1982 at Less Than Market Value \$722 177. 1982 Taxable Value of Property Lost Because Property is Required to be Appraised in 1982 at Less Than Market Value \$722 178. 1982 Taxable Value of Property Lost Because Property is Required to be Appraised in 1982 at Less Than Market Value \$722 179. 1982 Taxable Value of Property Lost Because Property is Required to be Appraised in 1982 at Less Than Market Value \$722 180. 1982 Taxable Value of Property Lost Because Property is Required to be Appraised in 1982 at Less Than Market Value \$722 181. 1982 Taxable Value of Property Lost Because Property is Required to be Appraised in 1982 at Less Than Market Value \$722 182. 1982 Taxable Value of Property Lost Because Property is Required to be Appraised in 1982 at Less Than Market Value \$722 183. 1982 Taxable Value of Property Lost Because Property is Required to be Appraised in 1982 at Less Than Market Value \$722 184. 1982 Taxable Value of Property Lost Because Property is Required to be Appraised in 1982 at Less Than Market Value \$722 185. 1982 Taxable Value of Property Lost Because Property is Required to be Appraised in 1982 at Less Than Market Value \$722 186. 1982 Taxable Value of Property Lost Because Property is Required to be Appraised in 1982 at Less Than Market Value \$722 187. 1982 Taxable Value of Property Lost Because Property is Required to be Appraised in 1982 at Less Than Market Value \$722 188. 1982 Taxable Value of Property Lost Because Property is Required to be Appraised in 1982 at Less Than Market Value \$722 189. 1982 Taxable Value of Property Lost Because Property is Required to be Appraised in 1982 at Less Than Market Value \$722 190. 1982 Taxable Value of Property Lost Because Property is Required to be Appraised in 1982 at Less Than Market Value \$722 191. 1982 Taxable Value of Property Lost Because Property is Required to be Appraised in 1982 at Less Than Market Value \$722 192. 1982 Taxable Value of Property Lost Because Property is Required to be Appraised in 1982 at Less Than Market Value \$722 193. 1982 Taxable Value of Property Lost Because Property is Required to be Appraised in 1982 at Less Than Market Value \$722 194. 1982 Taxable Value of Property Lost Because Property is Required to be Appraised in 1982 at Less Than Market Value \$722 195. 1982 Taxable Value of Property Lost Because Property is Required to be Appraised in 1982 at Less Than Market Value \$722 196. 1982 Taxable Value of Property Lost Because Property is Required to be Appraised in 1982 at Less Than Market Value \$722 197. 1982 Taxable Value of Property Lost Because Property is Required to be Appraised in 1982 at Less Than Market Value \$722 198. 1982 Taxable Value of Property Lost Because Property is Required to be Appraised in 1982 at Less Than Market Value \$722 199. 1982 Taxable Value of Property Lost Because Property is Required to be Appraised in 1982 at Less Than Market Value \$722 200. 1982 Taxable Value of Property Lost Because Property is Required to be Appraised in 1982 at Less Than Market Value \$722 201. 1982 Taxable Value of Property Lost Because Property is Required to be Appraised in 1982 at Less Than Market Value \$722 202. 1982 Taxable Value of Property Lost Because Property is Required to be Appraised in 1982 at Less Than Market Value \$722 203. 1982 Taxable Value of Property Lost Because Property is Required to be Appraised in 1982 at Less Than Market Value \$722 204. 1982 Taxable Value of Property Lost Because Property is Required to be Appraised in 1982 at Less Than Market Value \$722 205. 1982 Taxable Value of Property Lost Because Property is Required to be Appraised in 1982 at Less Than Market Value \$722 206. 1982 Taxable Value of Property Lost Because Property is Required to be Appraised in 1982 at Less Than Market Value \$722 207. 1982 Taxable Value of Property Lost Because Property is Required to be Appraised in 1982 at Less Than Market Value \$722 208. 1982 Taxable Value of Property Lost Because Property is Required to be Appraised in 1982 at Less Than Market Value \$722 209. 1982 Taxable Value of Property Lost Because Property is Required to be Appraised in 1982 at Less Than Market Value \$722 210. 1982 Taxable Value of Property Lost Because Property is Required to be Appraised in 1982 at Less Than Market Value \$722 211. 1982 Taxable Value of Property Lost Because Property is Required to be Appraised in 1982 at Less Than Market Value \$722 212. 1982 Taxable Value of Property Lost Because Property is Required to be Appraised in 1982 at Less Than Market Value \$722 213. 1982 Taxable Value of Property Lost Because Property is Required to be Appraised in 1982 at Less Than Market Value \$722 214. 1982 Taxable Value of Property Lost Because Property is Required to be Appraised in 1982 at Less Than Market Value \$722 215. 1982 Taxable Value of Property Lost Because Property is Required to be Appraised in 1982 at Less Than Market Value \$722 216. 1982 Taxable Value of Property Lost Because Property is Required to be Appraised in 1982 at Less Than Market Value \$722 217. 1982 Taxable Value of Property Lost Because Property is Required to be Appraised in 1982 at Less Than Market Value \$722 218. 1982 Taxable Value of Property Lost Because Property is Required to be Appraised in 1982 at Less Than Market Value \$722 219. 1982 Taxable Value of Property Lost Because Property is Required to be Appraised in 1982 at Less Than Market Value \$722 220. 1982 Taxable Value of Property Lost Because Property is Required to be Appraised in 1982 at Less Than Market Value \$722 221. 1982 Taxable Value of Property Lost Because Property is Required to be Appraised in 1982 at Less Than Market Value \$722 222. 1982 Taxable Value of Property Lost Because Property is Required to be Appraised in 1982 at Less Than Market Value \$722 223. 1982 Taxable Value of Property Lost Because Property is Required to be Appraised in 1982 at Less Than Market Value \$722 224. 1982 Taxable Value of Property Lost Because Property is Required to be Appraised in 1982 at Less Than Market Value \$722 225. 1982 Taxable Value of Property Lost Because Property is Required to be Appraised in 1982 at Less Than Market Value \$722 226. 1982 Taxable Value of Property Lost Because Property is Required to be Appraised in 1982 at Less Than Market Value \$722 227. 1982 Taxable Value of Property Lost Because Property is Required to be Appraised in 1982 at Less Than Market Value \$722 228. 1982 Taxable Value of Property Lost Because Property is Required to be Appraised in 1982 at Less Than Market Value \$722 229. 1982 Taxable Value of Property Lost Because Property is Required to be Appraised in 1982 at Less Than Market Value \$722 230. 1982 Taxable Value of Property Lost Because Property is Required to be Appraised in 1982 at Less Than Market Value \$722 231. 1982 Taxable Value of Property Lost Because Property is Required to be Appraised in 1982 at Less Than Market Value \$722 232. 1982 Taxable Value of Property Lost Because Property is Required to be Appraised in 1982 at Less Than Market Value \$722 233. 1982 Taxable Value of Property Lost Because Property is Required to be Appraised in 1982 at Less Than Market Value \$722 234. 1982 Taxable Value of Property Lost Because Property is Required to be Appraised in 1982 at Less Than Market Value \$722 235. 1982 Taxable Value of Property Lost Because Property is Required to be Appraised in 1982 at Less Than Market Value \$722 236. 1982 Taxable Value of Property Lost Because Property is Required to be Appraised in 1982 at Less Than Market Value \$722 237. 1982 Taxable Value of Property Lost Because Property is Required to be Appraised in 1982 at Less Than Market Value \$722 238. 1982 Taxable Value of Property Lost Because Property is Required to be Appraised in 1982 at Less Than Market Value \$722 239. 1982 Taxable Value of Property Lost Because Property is Required to be Appraised in 1982 at Less Than Market Value \$722 240. 1982 Taxable Value of Property Lost Because Property is Required to be Appraised in 1982 at Less Than Market Value \$722 241. 1982 Taxable Value of Property Lost Because Property is Required to be Appraised in 1982 at Less Than Market Value \$722 242. 1982 Taxable Value of Property Lost Because Property is Required to be Appraised in 1982 at Less Than Market Value \$722 243. 1982 Taxable Value of Property Lost Because Property is Required to be Appraised in 1982 at Less Than Market Value \$722 244. 1982 Taxable Value of Property Lost Because Property is Required to be Appraised in 1982 at Less Than Market Value \$7

THE Bill & Randy DERR'S HAVE A CAR FOR EVERYONE AT B&B AUTO CO. LARGEST SELECTION IN PAMPA

1980 CADILLAC Sedan DeVille, loaded. 17,000 miles. SEE THIS\$11,885

1980 OLDS 98 REGENCY 4 door. Has everything they offer. Low miles. We have (2) 1-white, 1-plum. Your choice only \$9885

1980 OLDS DELTA ROYALE 4 door, extra sharp. See this GREEN BEAUTY only \$6985

1979 OLDS DELTA 4 door ROYALE has a lot of equipment and it's cheap ...\$5385

1978 BUICK ELECTRA 4 door. Loaded, all equipment. New 721 Radials. You better look at this. One owner\$6385

1980 BUICK CENTURY SPORT 2 door. White and plum. Loaded. It's like new\$6385

BILL M. DERR HANDLES THE HIGHEST QUALITY AUTOS IN TEXAS

ONE TIME

1979 PLYMOUTH 2 door HORIZON TC3 4 cylinder, 4 speed, air, AM / FM, New radials. One local owner. Show room condition\$4385

1979 LEMANS V6 Wagon. Local owner.\$5885

1980 GRAN PRIX L.J. V6. It has everything they offer. It's only\$7385

1977 CHEVY NOVA 2 door SPORT. SEE\$4385

1977 MERCURY GRAN MARQUIS 4 door\$4385

1976 CHEVY CAPRICE CLASSIC 2 door. Loaded. Like new. Local owner\$3685

MANY MORE CARS—ALL KINDS LARGEST SELECTION OF TRUCKS IN TOWN

- 1981 FORD C&C 1 ton
- 1981 FORD 1 ton Dually Loaded
- 1981 FORD 3/4 ton 4 speed, Loaded
- 1978 SILVERADO 1 ton Dually
- 1981 SILVERADO 3/4 ton EVERYTHING
- 1980 EL CAMINO Like New
- 1978 DATSUN & TOPPER
- 1979 CHEVY LUV Loaded
- 1975 EL CAMINO & TOPPER
- 1977 RANGER LXT Loaded
- 1977 CHEVROLET VAN, Loaded
- 1976 CHEVROLET VAN, loaded

- 1974 MIDAS 23 ft. mini motor home dual air, power plant. 55,000 miles. Like new. See

"CLASSIC" Like new 1963 Pontiac Lemans 2 door, 4 cylinder, automatic, new tires. Complete motor overhaul. It's sharp\$2985

BUSINESS IS GREAT COME SEE WHY!

B&B AUTO CO.

600 W. Foster 665-5374

Public Notices

NOTICE OF CALCULATION OF EFFECTIVE TAX RATE AND PUBLICATION OF ESTIMATED UNENCUMBERED FUND BALANCES

I, Debbie Stribling, Chief Appraiser for the Roberts County Appraisal District, in accordance with the provisions of Section 26.04 of the Property Tax Code, has calculated the tax rate which may not be exceeded by more than three percent by the governing body of the Commissioner's Court of Roberts County without holding a public hearing as required by the code.

The rate is as follows:

- \$ 686 per \$100 for farm-to-market-flood control tax rate;
- plus \$1.44 per \$100 for the general fund, permanent improvement fund, jury fund, and road and bridge fund tax rate;
- plus \$8 per \$100 for public road maintenance tax rate; thus
- \$240 per \$100 total tax rate.

The estimated unencumbered fund balance for year ending Sept. 30, 1982 are as follows:

- Farm to Market - Flood Control Maintenance & Operation: \$1,727,000
- Interest & Sinking: NONE
- General Fund Maintenance & Operation: \$365,998.00
- Interest & Sinking: NONE
- Public Road Maintenance Interest & Sinking: NONE
- Roberts County Treasurer August 25, 1982.

CALCULATION OF THE EFFECTIVE TAX RATE

ROBERTS COUNTY

I. ASSUMPTIONS FOR A - Farm-to-Market Road Tax

- Total Tax Levy from the 1981 Tax Roll for This Tax: \$388,042.00
- 1981 Tax Rate (\$10 M&O) on Taxable Value (Assumption No. 7): \$28,693.00
- 1981 Debt Service (I&S) Levy for This Tax: \$10 - \$100
- 1981 Debt Service (I&S) Levy for This Tax: \$388,042.00
- 1981 Taxes Levied for Maintenance and Operation (M&O) on Property in Territory that Has Ceased to be a Part of the Unit in 1982: \$-0-
- 1981 Taxes Levied for Maintenance and Operation (M&O) on Taxable Value of Property Becoming Exempt in 1982 (Assumption No. 8): \$-0-
- 1981 Taxes Levied for Maintenance and Operation (M&O) on Taxable Value of Property Lost Because Property is Required to be Appraised in 1982 at Less than Market Value: \$17,795.00
- 1982 Total Taxable Value of All Property for This Tax: \$430,582,450
- 1982 Taxable Value of Property Added Since January 1, 1982, by Annexation of Territory: \$-0-
- 1982 Tax Levy Needed to Satisfy Bonded Indebtedness or Debt Service (I&S) for This Tax: \$-0-

II. CALCULATION MAINTENANCE AND OPERATION (M&O) TAX RATE FOR 1982

- (A) 1982 Total Taxable Value of All Property (Assumption No. 8): \$430,582,450
- Subtract 1982 Taxable Value of New Improvements Added (Assumption No. 9): \$34,527,960
- Subtract 1982 Taxable Value of Property Added by Annexation (Assumption No. 10): \$-0-
- Adjusted 1982 Taxable Value for Calculation: \$396,054,500
- (A) 1981 Total Tax Levy from the 1981 Tax Roll (Assumption No. 1): \$388,042.00
- Subtract 1981 Taxes Levied for Maintenance and Operation (M&O) on Taxable Value of Property Becoming Exempt in 1982 (Assumption No. 6): \$-0-
- Subtract 1981 Taxes Levied for Maintenance and Operation (M&O) on Property in Territory that Has Ceased to be a Part of the Unit in 1982 (Assumption No. 5): \$-0-
- Subtract 1981 Debt Service (I&S) Levy (Assumption No. 3): \$-0-
- Subtract 1981 Taxes Levied for Maintenance and Operation (M&O) on Taxable Value of Property Lost Because Property is Required to be Appraised in 1982 at Less than Market Value: \$17,795.00
- Adjusted 1981 Tax Levy for Calculation (2F above): \$370,247.00
- Divided by Adjusted 1982 Taxable Value for Calculation (1D Above): \$396,054,500
- Multiplied by \$100 Valuation: \$100
- Calculated Maintenance and Operation (M&O) Rate for 1982: \$0.9348 - \$1.00

INTEREST AND SINKING RATE FOR 1982

III. MAXIMUM RATE

- (A) Calculated 1982 Effective Tax Rate (3C Above): \$0.9348
- Multiplied by Three Percent (3 percent): x .03
- Equals Amount of Increase Allowed by Code: \$0.03
- 1982 Maximum Tax Rate (1A plus 1C): \$1.14

IV. ASSUMPTIONS FOR B - General Fund

- Total Tax Levy from the 1981 Tax Roll for This Tax: \$582,062.00
- 1981 Tax Rate (\$15 M&O) and \$-0-
- 1981 Debt Service (I&S) Levy for This Tax: \$34,527,960
- 1981 Maintenance and Operation (M&O) Levy for This Tax: \$582,062.00
- 1981 Taxes Levied for Maintenance and Operation (M&O) on Property in Territory that Has Ceased to be a Part of the Unit in 1982: \$-0-
- 1981 Taxes Levied for Maintenance and Operation (M&O) on Taxable Value of Property Lost Because Property is Required to be Appraised in 1982 at Less than Market Value: \$26,693.00
- 1982 Total Taxable Value All Property for This Tax: \$430,582,450
- 1982 Taxable Value of new improvements Added Since January 1, 1982: \$34,527,960
- 1982 Taxable Value of Property Added Since January 1, 1981, by Annexation of Territory: \$-0-
- 1982 Tax Levy Needed to Satisfy Bonded Indebtedness or Debt Service (I&S) for This Tax: \$-0-

II. CALCULATION MAINTENANCE AND OPERATION (M&O) TAX RATE FOR 1982

- (A) 1982 Total Taxable Value of All Property (Assumption No. 8): \$430,582,450
- Subtract 1982 Taxable Value of new Improvements Added (Assumption No. 9): \$34,527,960
- Subtract 1982 Taxable Value of Property Added by Annexation (Assumption No. 10): \$-0-
- Adjusted 1982 Taxable Value for

Public Notices

Calculation\$396,054,500

- (A) 1981 Total Tax Levy from the 1981 Tax Roll (Assumption No. 1): \$388,042.00
- Subtract 1981 Taxes Levied for Maintenance and Operation (M&O) on Property in Territory that Has Ceased to be a Part of the Unit in 1982 (Assumption No. 5): \$-0-
- Subtract 1981 Debt Service (I&S) Levy (Assumption No. 3): \$-0-
- Subtract 1981 Taxes Levied for Maintenance and Operation (M&O) on Taxable Value of Property Lost Because Property is Required to be Appraised in 1982 at Less than Market Value: \$17,795.00
- Adjusted 1981 Tax Levy for Calculation (2F above): \$370,247.00
- Divided by Adjusted 1982 Taxable Value for Calculation (1D above): \$396,054,500
- Multiplied by \$100 Valuation: x \$100
- Calculated Maintenance and Operation (M&O) Rate for 1982: \$1.1402 - \$1.00

INTEREST AND SINKING RATE FOR 1982: NONE

1982 EFFECTIVE TAX RATE is the tax rate published by the tax assessor, as required by Sec. 26.04 of the Property Tax Code, August 30, 1982

III. MAXIMUM TAX RATE

- (A) Calculated 1982 Effective Tax Rate (1A) (1.1402 - 1.00) = \$1.1402 (100 percent)
- Multiplied by Three Percent (3 percent): x .03
- Equals Amount of Increase Allowed by Code: \$0.04
- 1982 Maximum Tax Rate (1A plus 1C above): \$1.14

1982 Maximum Tax Rate is the tax rate which, if exceeded, triggers the public notice and public hearing requirements of Sec. 26.06 of Property Tax Code, C-36 August 30, 1982

PERSONAL

MARY KAY Cosmetics, free facials. Supplies and deliveries. Call Dorothy Vaughn, 665-5117.

MARY KAY Cosmetics, free facials, supplies and deliveries. Mildred Lamb, 616 Lefors, 665-1754.

MARY KAY Cosmetics - Skin Care classes and deliveries. Tammy Easterly, 665-6983.

MARY KAY Cosmetics, free facials. For supplies and deliveries call Theda Wallin 665-8336 or 665-0234.

SCULPTRESS BRAS and Nutri-Medics skin care also Vivian Woodard Cosmetics, Call Zella Mae Gray, 665-6624.

DRINKING PROBLEM in your home? AA and AL Anon Meetings Tuesday and Saturday, 8 p.m. 727 W. Browning, AA 665-1343 AL Anon 665-1388.

OPEN DOOR AA Wednesday, Friday, 8 p.m. 2nd Saturday, 7 p.m., Sunday 11 a.m. 208 W. Browning, 665-6871 or 665-7095.

NOT RESPONSIBLE

AS OF This date August 27, 1982 I, Don M. Daniels will be responsible for no debts other than those incurred by me. Don M. Daniels

SPECIAL NOTICES

AAA PAWN Shop, 512 S. Cuyler. Loans, buy, sell and trade.

PAMPA LODGE No. 966 A.F. & M. Thursday 7:30 p.m. E. Examination and F.C. Degree. Floyd Hatcher W.M. Paul Appleton secretary.

TOP O' Texas Lodge No. 1381 A.F. & M. Tuesday 7:30 p.m. Study and practice. Alton Chromster W.M. J.L. Reddell Secretary.

CAR POOL to West Texas State. Tuesday and Thursday evenings. Call 669-9372 after 5.

GENERAL SERVICE

SERVICE ON all Electric Razors, Typewriters and Adding Machines. Specialty Sales and Services, 1008 Alcock, 665-6002.

Free Trimming and Removal Any size, reasonable, spraying, clean up, you name it! Lots of references. 665-8006.

HANDY JIM: Minor repairs, painting, yard work, garden rototilling, tree trimming, hauling. 665-6787.

COX CONSTRUCTION AND FENCE COMPANY. Backhoe work, ditching, fencing, barbed wire, chain link, wood. 669-7769.

Auto Leasing Marcum West 665-7125 669-2571

TRACTOR AND TRUCK WORK. Top soil, drive way gravel hauled, spread. Vacant lots cleaned, leveled. Debris hauled. Tractor mowing. Pampa, surrounding towns. Kenneth Banks - 669-6119.

S&O SHARPENING Center - 1210 S. Hobart. All Saws, Knives, Scissors, Chain saws and mower blades sharpened. Most Keys Duplicated.

WILL DO all kinds of cement work, roofing, carpentry and yard work. Call 665-0477.

M&L CESSPOOL and septic tank pumping. Also, mud pits and grease traps. No travel charge and reasonable prices. 883-3741, White Deer, Texas.

Thompson Farm and Home Supply Full Service Dealer 668-3831, Miami

BUSINESS SERVICE

Gymnastics of Pampa. New location, Loop 171 North 669-2941 or 665-0122

Snelling & Snelling. The Placement People Suite 103 Hughes Bldg. 665-6528

BRICK WORK OF ALL TYPES. Bill Cox Masonry 665-3667 or 665-7336

SELF STORAGE units now available. 10x20, 10x10, and 10x5. Call 669-2900.

BOOKKEEPING & TAX SERVICE. Ronnie Johnson 119 E. Kingsmill 665-7701

WE SERVICE All makes and models vacuum cleaners. Free estimates American Vacuum Co., 420 Purviance, 669-9222.

CERAMIC TILE work, shower stalls and tub splash. Free estimate and guaranteed work. Call 665-6129.

24-HOUR TELEPHONE AND DISPATCHING SERVICE. K-C ANSWERING SERVICE. 665-7211.

BUSINESS OPP.

Wanted to own and operate candy or Confection vending route. Pampa and surrounding area. Pleasant business. High profit items. Can start part time. Age or experience not important. Requires car and \$3788 to \$12452 cash investment. For details call Eagle Industries - 1-800-328-0723.

BUSINESS SERVICE

Gymnastics of Pampa. New location, Loop 171 North 669-2941 or 665-0122

Snelling & Snelling. The Placement People Suite 103 Hughes Bldg. 665-6528

BRICK WORK OF ALL TYPES. Bill Cox Masonry 665-3667 or 665-7336

SELF STORAGE units now available. 10x20, 10x10, and 10x5. Call 669-2900.

BOOKKEEPING & TAX SERVICE. Ronnie Johnson 119 E. Kingsmill 665-7701

WE SERVICE All makes and models vacuum cleaners. Free estimates American Vacuum Co., 420 Purviance, 669-9222.

CERAMIC TILE work, shower stalls and tub splash. Free estimate and guaranteed work. Call 665-6129.

24-HOUR TELEPHONE AND DISPATCHING SERVICE. K-C ANSWERING SERVICE. 665-7211.

BUSINESS SERVICE

BOOKEEPING AND Typing Services. For more information call 665-8881 after 5:30 p.m.

APPL. REPAIR

WASHERS, DRYERS, dishwashers and range repair. Call Gary Stevens, 669-7956.

REFRIGERATION AND Electrical

service and repair. Post mix, fountain units, refrigerators, freezers, and heaters. Elmer Holder. 665-5677.

REFRIGERATION AND Electrical

service and repair. Post mix, fountain units, refrigerators, freezers, and heaters. Elmer Holder. 665-5677.

CARPENTRY

RALPH BAXTER CONTRACTOR AND BUILDER. Custom Homes or Remodeling 665-8248

Lance Builders

Building-Remodeling 669-3940 Ardell Lance

ADDITIONS, REMODELING, roofing,

custom cabinets, counter tops, acoustical ceiling spraying. Free estimates Gene Breese. 665-3777.

J & K CONTRACTORS

669-2648 669-9747 Additions, Remodeling, Concrete-Painting-Repairs

ELIJAH SLATE - Building, Additions

and Remodeling. Call 666-2461, Miami.

BILL FORMAN Custom Cabinet and

woodwork shop. We specialize in home remodeling and construction. 200 E. Brown, 665-5463 or 665-4665.

COMPLETE CABINETS - Custom

design and Remodeling. Plastic laminate, Patio decks, Etc. TLC Industries, 665-1976.

LONE STAR CONSTRUCTION

Custom Building, Remodeling, Custom Cabinets. Call 665-0230.

DARNALL CONSTRUCTION - Residential

Buildings, Roofing, Room additions. References furnished. 665-6776 or 665-2648.

NICHOLAS HOME IMPROVEMENT CO.

U.S. Steel and Vinyl siding, roofing, room additions and carpenter work, gutters and down spouts, storm windows. 669-9991.

PAINTING, ROOFING, Carpentry,

paneling. No Job too small. Free Estimates. Mike Albus, 665-4774.

MUNS CONSTRUCTION - Additions,

Patio, Remodeling, Fireplace, New Construction. Estimates. 665-3456.

SRS Remodeling - Add-ons Repairs -

Smiles 665-7676.

QUALITY CONSTRUCTION - Remodeling,

Additions, Ceramic tile, Interior and Exterior, Commercial and Residential. Free estimates. Guaranteed Work. 806-665-6434 or 806-669-2026.

CARPET SERVICE

T'S CARPETS Full line of carpeting, ceiling fans. 1429 N. Hobart 665-6772 Terry Allen-Owner

CARPET SALE

\$10.95 INSTALLED JOHNSON HOME FURNISHINGS 406 S. CUYLER 665-3361

COvalt's Home Supply

Quality Carpet, Our Prices Will Floor You! 1415 N. Banks 665-5861

GENERAL SERVICE

SERVICE ON all Electric Razors, Typewriters and Adding Machines. Specialty Sales and Services, 1008 Alcock, 665-6002.

Free Trimming and Removal

Any size, reasonable, spraying, clean up, you name it! Lots of references. 665-8006.

HANDY JIM: Minor repairs, painting,

yard work, garden rototilling, tree trimming, hauling. 665-6787.

COX CONSTRUCTION AND FENCE COMPANY.

Backhoe work, ditching, fencing, barbed wire, chain link, wood. 669-7769.

Auto Leasing

Marcum West 665-7125 669-2571

TRACTOR AND TRUCK WORK

Top soil, drive way gravel hauled, spread. Vacant lots cleaned, leveled. Debris hauled. Tractor mowing. Pampa, surrounding towns. Kenneth Banks - 669-6119.

S&O SHARPENING Center - 1210 S.

Hobart. All Saws, Knives, Scissors, Chain saws and mower blades sharpened. Most Keys Duplicated.

WILL DO all kinds of cement work,

roofing, carpentry and yard work. Call 665-0477.

M&L CESSPOOL and septic tank

pumping. Also, mud pits and grease traps. No travel charge and reasonable prices. 883-3741, White Deer, Texas.

Thompson Farm and Home Supply

Full Service Dealer 668-3831, Miami

INSULATION

Frontier Insulation Commercial Buildings, Trailer Houses and Homes 665-5224

TOP OF TEXAS INSULATORS INC.

Rock wool, Batts and Blown. Free Estimates, 665-5574 from 9 a.m. to 7 p.m.

665-6585

Shackelford

Sandra Schuneman ORI 5-8444 Guy Clement 445-8237 Norma Shackelford Broker, CRS, ORI 445-4345 Al Shackelford ORI 445-4345

! 4 YEAR ANNIVERSARY !

August 30 thru September 3

NORMA'S CORNER CAFE

400 Main-Skellytown, Texas

Open 6 a.m. - 4 p.m.

BREAKFAST BUFFET 6:30 a.m.-10:30 a.m.\$1.99

DAILY LUNCH BUFFET 11:00 a.m.-2:00 p.m.\$2.99

Sandwiches & Dinners To Go

Door Prizes-Games help us celebrate!

665-6585

Shackelford

Sandra Schuneman ORI 5-8444 Guy Clement 445-8237 Norma Shackelford Broker, CRS, ORI 445-4345 Al Shackelford ORI 445-4345

LAWN MOWER SER.

PAMPA LAWN Mower Repair. Free pick-up and delivery 513 S. Cuyler. 665-8843 - 665-3109.

LAWN MOWER TUNE ups and

repairs, sharpen and balance blades. 1044 S. Christy.

PAINTING

DAVID HUNTER PAINTING AND DECORATING ROOF SPRAYING. 665-2903

INTERIOR, EXTERIOR painting,

Spray Acoustical Ceiling. 665-8148. Paul Stewart.

PAINTING INSIDE or out. Mud,

tape, blow acoustical ceilings. Gene Calder. 665-4040 or 669-2215.

ESTIMATES - EXTERIOR Painting,

Bed and Laps, Spray Painting. Free Estimates. James T. Bolin, 665-2254.

PAINTING, INSIDE and outside.

References. Call 665-5463 or 665-2891.

INTERIOR AND exterior house

painting, spray acoustic ceiling and spray painting. Call Steve Porter 669-8547.

DITCHING

DITCHES: WATER and gas. Machine fits through 36 inch gate. 669-6562.

DITCHING, 4 inch to 10 inch wide.

WANT ADS DO IT ALL! BUY • SELL RENT • TRADE

PETS & SUPPLIES

PROFESSIONAL GROOMING - All small or medium size breeds. Julia Glenn. 665-4066.

AKC POODLE puppies, all colors. 665-4184.

GROOMING BY ANNA SPENCE 669-9585 or 669-9088

SAMVOYED PUP for sale. 1 year old female Samoyed to Give away. Moving - Must place this week. Call 665-2555 after 5 p.m.

ONE MALE puppy, part border collie. 837 Bradley Drive.

OFFICE STORE EQ.

NEW AND USED office furniture, cash registers, copiers, typewriters, and all other office machines. Also copy service available.

PAMPA OFFICE SUPPLY 215 N. Cuyler 669-3353

WANTED TO BUY

BUYING GOLD rings, or other gold. Rhems Diamond Shop. 665-2811.

NEED TO Buy - Good used evaporative air conditioner. Will be used in a classroom. Call 665-7048 after 4 p.m.

FURNISHED APTS.

GOOD ROOMS, \$3 up, \$10 week. Davis Hotel, 116 1/2 W. Foster, Clean, Quiet. 669-9115.

CLEAN 1 bedroom upstairs apartment, men only, no pets, bills paid. Inquire at 1116 Bond.

LARGE 2 Room furnished apartment - Bills paid. No pets. Inquire 616 N. Somerville.

GARAGE FURNISHED apartment available now! \$150.00 monthly. \$100.00 deposit. 412 W. Browning. 665-7818.

UNFURN. APT.

GWENDOLYN PLAZA APARTMENTS 800 N. Nelson 665-1875

ONE BEDROOM unfurnished apartment for rent. Suitable for single or a couple. Good location. Bills paid. Call 665-6284.

FURN. HOUSE

HOUSES AND Apartments for rent. Furnished and Unfurnished. 669-2900.

EXTRA-NICE, clean, 3 bedroom mobile home. No pets. \$325 plus deposit. 665-1193.

1 AND 2 bedroom houses, partially furnished. Call 669-2080.

FOR RENT - 2 bedroom mobile home, 14x56 foot. Partly furnished. Beautiful front porch. Carpeted and covered. Nice close in location. All paved lot. \$250 per month. Available September 1. No Children. Call 669-9660.

UNFURN. HOUSE

CONDO - Two bedroom with range, refrigerator, dishwasher, disposal, washer and dryer, fire place, 2 baths, garage, swimming pool, Club House. 1450 square foot living area. Nicest in town. Call 669-2900 or 665-1555.

HOUSE FOR Lease - 2209 Evergreen. \$750 month. O.E. Bradford, Realtor. Century 21. 665-7545.

1208 CHRISTINE, 3 bedroom, 2 1/2 baths, \$575 month. \$500 deposit. 3 month lease and references. Call Mark Wheeler. 405-329-3949.

FOR RENT - 3 bedroom, 2 bath, brick duplex with garage. Coronado Drive. \$400 with water and gas paid. Call 669-2721 or 665-8819.

FOR RENT - 3 bedroom house, \$450 month. \$200 deposit, no pets. 665-6215.

BUS. RENTAL PROP.

CORONADO CENTER Only Four spaces Remaining; 3600 Square feet, ideal for clothing store; 2400 Square feet, and 900 Square feet, excellent for Retail or office. Call Ralph G. Davis Inc., Realtor, 806-353-9851, 3714 Olsen Blvd., Amarillo, Texas, 79109.

BAR WITH Equipment for rent. Call 665-6948 or 383-3877.

HOMES FOR SALE

W.M. Lane Realty 717 W. Foster Phone 669-3641 or 669-9504

PRICE T. SMITH Builders

MALCOM DENSON REALTOR Member of "MLS" James Braxton-665-2150 Jack W. Nicholas-669-8112 Realtor, 806-353-9851, 3714 Olsen Blvd., Amarillo, Texas, 79109.

WILL BUY Houses, Apartments, Duplexes. Call 669-2900.

Neva Weeks Realty Suite 425 Hughes Building 669-9904

SAVE MONEY on your home owners insurance. Call Duncan Insurance Agency. 665-5757.

CUSTOM-BUILT 2100 square feet 3 bedroom, 2540 Christine, \$92,000. Country kitchen, hickory paneled den, beamed cathedral ceiling, fireplace, bookshelves, paneled doors, storm windows, oversized garage, electric opener and lovely yard. 665-2910 for appointment.

TWO BEDROOM, Attached garage. Fenced backyard, patio. 13 percent loan 669-9915.

OLDER HOUSE - 6 rooms plus utility. \$2000 down, owner will carry balance 505 N. Dwight. 665-4842.

3 BEDROOM, covered and enclosed patio. FHA inspected and approved. \$2000 down, \$2100. Payments \$390 month. 665-4842.

IN WHITE Deer, Brick, 3-1-2, storm cellar, on 2 lots, remodeled, large kitchen, new carpet, 12 percent assumption. Call 883-3281 or 883-2161.

FOR SALE by owner - Two bedroom. \$15,000. Come by 629 N. Christy.

LOOK, LOOK - 3 bedroom, 1 and 1/2 baths, worth the money \$39,000. check this one out. MLS #61.

3 bedroom, 2 bath, MH with its own lot, 317 Rider, \$23,000. MLS #248. Mobile home lot in Lefors, Texas asking \$450 - make an offer. MLS #250.

STOP PAYING RENT - nicest 1 bedroom house in Pampa, \$19,000. MLS #288.

DOUBLEWIDE MOBILE HOMES - 2 different ones and one will fit your needs and purposes. Reasonably priced. MLS #236, 297, and 198.

2228 Hamilton, 3 bedroom, excellent condition and early occupancy. MLS #282.

OWNER will carry on this 2 bedroom, big living room, \$22,900. MLS #278.

HOUSES to be moved. Milly Sanders, Realtor, 669-2671, Shed Realty, 665-3761.

THE GATUNBURG 1800 square foot log package. \$15,900. Call Lincoln Log Dealer for details. 665-5985, ask for Jerry.

3 BEDROOM house with triple car garage in block. \$8,000 down and owner will carry. 665-8129.

OPEN HOUSE 2529 Evergreen, new, modern, luxurious, three bedrooms, two large baths, fenced yard and more. Open daily 9 till 6. Call for information, financing available. 669-6587 or 669-3542.

LOTS Frasher Acres East Claudine Balch, Realtor 665-8075

FOR RENT - 3 bedroom, 2 bath, brick duplex with garage. Coronado Drive. \$400 with water and gas paid. Call 669-2721 or 665-8819.

FOR RENT - 3 bedroom house, \$450 month. \$200 deposit, no pets. 665-6215.

FOR RENT - 2 bedroom mobile home, 14x56 foot. Partly furnished. Beautiful front porch. Carpeted and covered. Nice close in location. All paved lot. \$250 per month. Available September 1. No Children. Call 669-9660.

FOR RENT - 2 bedroom mobile home, 14x56 foot. Partly furnished. Beautiful front porch. Carpeted and covered. Nice close in location. All paved lot. \$250 per month. Available September 1. No Children. Call 669-9660.

FOR RENT - 2 bedroom mobile home, 14x56 foot. Partly furnished. Beautiful front porch. Carpeted and covered. Nice close in location. All paved lot. \$250 per month. Available September 1. No Children. Call 669-9660.

FOR RENT - 2 bedroom mobile home, 14x56 foot. Partly furnished. Beautiful front porch. Carpeted and covered. Nice close in location. All paved lot. \$250 per month. Available September 1. No Children. Call 669-9660.

FOR RENT - 2 bedroom mobile home, 14x56 foot. Partly furnished. Beautiful front porch. Carpeted and covered. Nice close in location. All paved lot. \$250 per month. Available September 1. No Children. Call 669-9660.

FOR RENT - 2 bedroom mobile home, 14x56 foot. Partly furnished. Beautiful front porch. Carpeted and covered. Nice close in location. All paved lot. \$250 per month. Available September 1. No Children. Call 669-9660.

FOR RENT - 2 bedroom mobile home, 14x56 foot. Partly furnished. Beautiful front porch. Carpeted and covered. Nice close in location. All paved lot. \$250 per month. Available September 1. No Children. Call 669-9660.

FOR RENT - 2 bedroom mobile home, 14x56 foot. Partly furnished. Beautiful front porch. Carpeted and covered. Nice close in location. All paved lot. \$250 per month. Available September 1. No Children. Call 669-9660.

FOR RENT - 2 bedroom mobile home, 14x56 foot. Partly furnished. Beautiful front porch. Carpeted and covered. Nice close in location. All paved lot. \$250 per month. Available September 1. No Children. Call 669-9660.

FOR RENT - 2 bedroom mobile home, 14x56 foot. Partly furnished. Beautiful front porch. Carpeted and covered. Nice close in location. All paved lot. \$250 per month. Available September 1. No Children. Call 669-9660.

FOR RENT - 2 bedroom mobile home, 14x56 foot. Partly furnished. Beautiful front porch. Carpeted and covered. Nice close in location. All paved lot. \$250 per month. Available September 1. No Children. Call 669-9660.

FOR RENT - 2 bedroom mobile home, 14x56 foot. Partly furnished. Beautiful front porch. Carpeted and covered. Nice close in location. All paved lot. \$250 per month. Available September 1. No Children. Call 669-9660.

FOR RENT - 2 bedroom mobile home, 14x56 foot. Partly furnished. Beautiful front porch. Carpeted and covered. Nice close in location. All paved lot. \$250 per month. Available September 1. No Children. Call 669-9660.

FOR RENT - 2 bedroom mobile home, 14x56 foot. Partly furnished. Beautiful front porch. Carpeted and covered. Nice close in location. All paved lot. \$250 per month. Available September 1. No Children. Call 669-9660.

FOR RENT - 2 bedroom mobile home, 14x56 foot. Partly furnished. Beautiful front porch. Carpeted and covered. Nice close in location. All paved lot. \$250 per month. Available September 1. No Children. Call 669-9660.

FOR RENT - 2 bedroom mobile home, 14x56 foot. Partly furnished. Beautiful front porch. Carpeted and covered. Nice close in location. All paved lot. \$250 per month. Available September 1. No Children. Call 669-9660.

FOR RENT - 2 bedroom mobile home, 14x56 foot. Partly furnished. Beautiful front porch. Carpeted and covered. Nice close in location. All paved lot. \$250 per month. Available September 1. No Children. Call 669-9660.

FOR RENT - 2 bedroom mobile home, 14x56 foot. Partly furnished. Beautiful front porch. Carpeted and covered. Nice close in location. All paved lot. \$250 per month. Available September 1. No Children. Call 669-9660.

FOR RENT - 2 bedroom mobile home, 14x56 foot. Partly furnished. Beautiful front porch. Carpeted and covered. Nice close in location. All paved lot. \$250 per month. Available September 1. No Children. Call 669-9660.

FOR RENT - 2 bedroom mobile home, 14x56 foot. Partly furnished. Beautiful front porch. Carpeted and covered. Nice close in location. All paved lot. \$250 per month. Available September 1. No Children. Call 669-9660.

FOR RENT - 2 bedroom mobile home, 14x56 foot. Partly furnished. Beautiful front porch. Carpeted and covered. Nice close in location. All paved lot. \$250 per month. Available September 1. No Children. Call 669-9660.

FOR RENT - 2 bedroom mobile home, 14x56 foot. Partly furnished. Beautiful front porch. Carpeted and covered. Nice close in location. All paved lot. \$250 per month. Available September 1. No Children. Call 669-9660.

FOR RENT - 2 bedroom mobile home, 14x56 foot. Partly furnished. Beautiful front porch. Carpeted and covered. Nice close in location. All paved lot. \$250 per month. Available September 1. No Children. Call 669-9660.

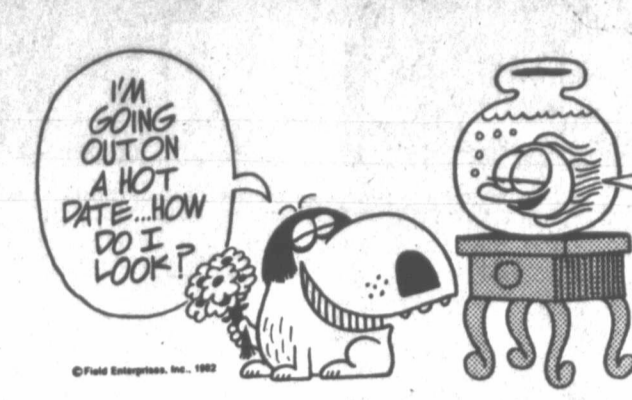
FOR RENT - 2 bedroom mobile home, 14x56 foot. Partly furnished. Beautiful front porch. Carpeted and covered. Nice close in location. All paved lot. \$250 per month. Available September 1. No Children. Call 669-9660.

FOR RENT - 2 bedroom mobile home, 14x56 foot. Partly furnished. Beautiful front porch. Carpeted and covered. Nice close in location. All paved lot. \$250 per month. Available September 1. No Children. Call 669-9660.

FOR RENT - 2 bedroom mobile home, 14x56 foot. Partly furnished. Beautiful front porch. Carpeted and covered. Nice close in location. All paved lot. \$250 per month. Available September 1. No Children. Call 669-9660.

FOR RENT - 2 bedroom mobile home, 14x56 foot. Partly furnished. Beautiful front porch. Carpeted and covered. Nice close in location. All paved lot. \$250 per month. Available September 1. No Children. Call 669-9660.

FOR RENT - 2 bedroom mobile home, 14x56 foot. Partly furnished. Beautiful front porch. Carpeted and covered. Nice close in location. All paved lot. \$250 per month. Available September 1. No Children. Call 669-9660.



© Fred Enterprises, Inc. 1982

8-30



© Fred Enterprises, Inc. 1982

8-30

LOTS

TWO RESIDENTIAL lots for sale in Howard Wick at Greenbelt Lake. (806) 865-3354.

KENTUCKY ACRE lot for sale, ideal house or mobile home site. 265'x380', \$6500. Call 665-4520 after 6 p.m.

FOR SALE - 3 lots in Fairview Cemetery. Discount price, \$300 each. Lots 5A, Block No. 1. R.C. Heaton, 201 N. Sprague, Wagoner, Oklahoma, 74467.

ONE LOT Clarendon - built at Sherwood Shores Howardwick Golf, swim, boat and fish. Write Thompson, P.O. Box 17294, Dallas, Texas, 75217. Send phone number, I will call. \$495.00.

TO BE MOVED

FOR SALE - 36x32 Building to be moved, M.D. Snider Trucking Company, Office, Price Road, 665-8208.

REC. VEHICLES

Bill's Custom Campers 665-4315 900 S. Hobart

LARGEST STOCK OF PARTS AND ACCESSORIES IN THIS AREA. SUPERIOR SALES Recreational Vehicle Center, 1019 Alcock. We Want to Serve You!!

FOR SALE - 1982 40 foot Kountry Air Fifth wheel Travel Trailer. Washer, dryer, garbage disposal. Call 669-3976 before 10:00 a.m. or after 6:00 p.m.

1982 27 FOOT Class "A" Southwest motor home, perfect condition, power plant, air conditioner, T.V. set, everything new. 2128 Lea, Pampa. 806-665-3042 or 665-4051.

26 FOOT Marque Motorhome, completely self-contained. 14,500 miles, sleeps 8. All the extras. Some hail damage. 700 E. Francis. Call for appointment, 669-7813.

1982 30 foot Spartan Travel Trailer fully self contained. Air \$8900.00 Clays Trailer Park Space 39.

TRAILER PARKS NEW TRAILER Parks Spaces for rent in Skellytown. Call 848-2466.

MOBILE HOMES SAVE MONEY on your mobile home insurance. Call Duncan Insurance Agency. 665-5757.

FOR SALE - New Mobile Homes with lots available. Call 669-9271 or 669-9436.

FINANCE COMPANY Must liquidate inventory of 14 wide repo mobile homes. Assume payments of as low as \$174.41. Call 373-9469.

1980 DUMP TRUCKS For Sale by Owner Six & Seven yard beds 3 Fords 2 Chevrolets C.G. BARKLEY 273-6122 Borger

\$5000 CASH BONUS Enlistment required. Call Army 376-2181 in Amarillo ARMY. BE ALL YOU CAN BE.

Joe Fischer Realty, Inc. FISCHER REALTY Downtown Office 115 N. West 669-9411 Branch Office Coronado Inn 669-6381

Melba Musgrave 669-6292 Rue Park 665-5919 Lilith Brainard 665-4579 Jan Crippen 665-5232 Norma Helder 669-3982 Evelyn Richardson 669-6240 Dorothy Jeffrey GRI 669-2484 Madeline Dunn, Broker 665-3940 Joe Fischer, Broker 669-9564

"SELLING PAMPA SINCE 1952" Quentin WILLIAMS REALTORS 669-3327 Keady-Edwards, Inc.

4 year old home on a corner lot. 3 bedrooms, 1 1/2 baths, family room with woodburning fireplace & kitchen with built-in appliances. Large utility room, central heat & air & double garage. \$76,500 MLS #274.

COMANCHE Spacious 4 bedroom brick home with 1 1/2 baths. Large family room with wood burning fireplace. Electric built ins in the kitchen. Utility room, sun room, and double garage. Central heat & air. \$74,000 MLS #223.

EAST 14th STREET 3 bedroom home with 1 1/2 baths. Living room, dining room, kitchen & single garage. Central heat; vinyl siding. \$40,000 MLS #258.

Exit Vantine 669-7870 Helen Warner 665-1427 Betty Cote 665-8126 Ed Houghlin 665-4553 Balisa Utzman 665-4140 Ruby Allen 665-6295 Marilyn Kenney GRI, CRS Judi Edwards GRI, CRS Broker 665-1449 Broker 665-3487

MOBILE HOMES

MUST SELL fast. 1969 Chateau 12x50. \$500.00 down, take over payments. 927 E. Gordon.

NEED HELP with mobile home financing? Call Rex Beall 806-376-5630.

14x60 DETROIT 1981 Model - \$2800. Equally and take up payments or \$14,500. Call 806-866-4551.

1981 CUSTOM built 14 by 80 Brookwood 3 bedroom, 2 bathroom, fireplace, microwave, washer, dryer. Fully furnished. Selling price, \$31,500.00. Asking only \$17,500.00 and take over payments. 665-4209.

WE TAKE TRADES ANYTHING OF VALUE Used cars, boats, mobile homes, real estate, etc. Large selection of two and three bedroom, Value Brand Mobile Homes E-Z terms. First Quality Mobile Homes 665-4715 Pampa, Texas

DEALING REPO! 2 Bedroom Mobile Home good condition, garden tub, bay window, wet bar, etc. Assume payments of \$244.04. First Quality Mobile Homes 665-4715 Pampa, Texas

1980 WAYSIDE Mobile home. \$3000 equity and owners will carry loan. Call 669-2628 or 669-7637.

TRAILERS

14x70 TRAILER, three bedroom, all appliances, central air and heat. Call 665-6340 or 316-675-8185.

FOR RENT - carhauling trailer. Call Gene Gates, home 669-3147, business 669-7711.

FOR SALE - 11 two horse trailer. Call 669-9326.

1979 28 foot Prowler, self contained, air condition. Call 665-6485.

FOR SALE - 1966 mustang - 289 engine. Asking \$800 or best offer. Call 665-8090.

1976 COUGER XR7, blue and silver. 2 door, power brakes, air, tilt, cruise, runs good, 400 engine, 2 barrel, body in good condition. Call 868-4802 or 868-3061 anytime after 4:00 p.m.

FOR RENT - Jartran Trucks and Trailers. 665-4218.

GIVING UP The Good Life! Selling welding "Rig", together 1980 Chevy 1-ton dual, 454, A-C and stereo. 1969 Lincoln welder (31 overhauled) headache rack, lead, cords, stingers, torch, gauges, two tool boxes - full, 200 pounds welding rod, wrenches, hoods. Everything needed, plus more. B-B-Q and cooler, too. Call 848-2911.

HYDRAULIC DUMP Beds for pick-ups, 1/2 ton and up, easy quick installation. Call 669-2848 or 669-9747.

1970 FORD Bronco. 669-7053.

DRIVE A LITTLE SAVE A LOT Solitaire Nashua Westfield Crownpointe Sandelewood D/W SHOP & COMPARE TOLL FREE 1-800-692-4163 Mustang Mobile Housing 5303 Ama. Blvd. E. Amarillo, Texas 806-383-2203

JONAS AUTO SALES BUY-SELL-TRADE 2118 Alcock 665-5801

CULBERSON-STOWERS Chevrolet Inc. 806 N. Hobart 665-1665

BILL ALLISON AUTO SALES Late Model Used Cars 1200 N. Hobart 665-3992

PANHANDLE MOTOR CO. 865 W. Foster 669-9961

TOM ROSE MOTORS 301 E. Foster 669-3233 CADILLAC - OLDSMOBILE

BILL M. DERR B&B AUTO CO. 600 W. Foster 665-5374

1980 DUMP TRUCKS For Sale by Owner Six & Seven yard beds 3 Fords 2 Chevrolets C.G. BARKLEY 273-6122 Borger

\$5000 CASH BONUS Enlistment required. Call Army 376-2181 in Amarillo ARMY. BE ALL YOU CAN BE.

Joe Fischer Realty, Inc. FISCHER REALTY Downtown Office 115 N. West 669-9411 Branch Office Coronado Inn 669-6381

Melba Musgrave 669-6292 Rue Park 665-5919 Lilith Brainard 665-4579 Jan Crippen 665-5232 Norma Helder 669-3982 Evelyn Richardson 669-6240 Dorothy Jeffrey GRI 669-2484 Madeline Dunn, Broker 665-3940 Joe Fischer, Broker 669-9564

"SELLING PAMPA SINCE 1952" Quentin WILLIAMS REALTORS 669-3327 Keady-Edwards, Inc.

4 year old home on a corner lot. 3 bedrooms, 1 1/2 baths, family room with woodburning fireplace & kitchen with built-in appliances. Large utility room, central heat & air & double garage. \$76,500 MLS #274.

COMANCHE Spacious 4 bedroom brick home with 1 1/2 baths. Large family room with wood burning fireplace. Electric built ins in the kitchen. Utility room, sun room, and double garage. Central heat & air. \$74,000 MLS #223.

EAST 14th STREET 3 bedroom home with 1 1/2 baths. Living room, dining room, kitchen & single garage. Central heat; vinyl siding. \$40,000 MLS #258.

Exit Vantine 669-7870 Helen Warner 665-1427 Betty Cote 665-8126 Ed Houghlin 665-4553 Balisa Utzman 665-4140 Ruby Allen 665-6295 Marilyn Kenney GRI, CRS Judi Edwards GRI, CRS Broker 665-1449 Broker 665-3487

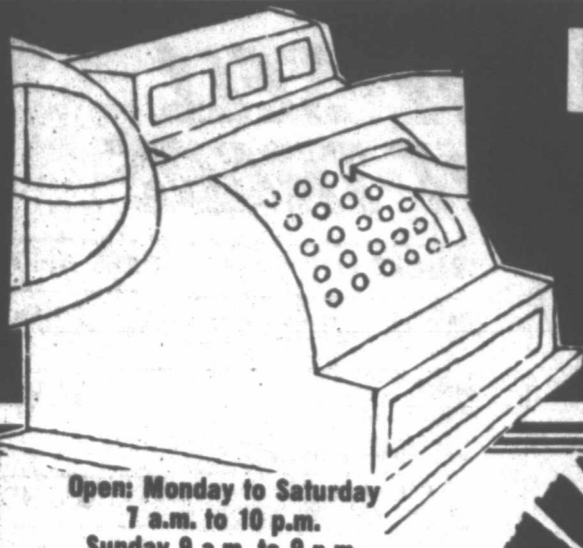
TRUCKS FOR SALE

1965 FORD - Econoline pickup, needs engine. \$275. 1963 Chevy 1/2 ton pickup, needs engine. \$450. 1975 Chevy 1/2 ton pickup. \$650. 731 Brunov. 669-8090.

CLEAN - 1978 Ford 1/2 ton. Power steering, power brakes, A.M.-F.M. stereo, \$2700. Call 665-2761.

1979 FORD Pick-up, 302 engine standard 4 speed with over drive, 131 bar, low mileage. 665-1009 or 848-2235 after 5:00 p.m.

1977 CHEVROLET 1/2 ton Pick-up 30



Long Tapes Have Lower Totals At Ideal...

DOUBLE



S&H GREEN STAMPS

TUES. & WED.

Open: Monday to Saturday
7 a.m. to 10 p.m.
Sunday 9 a.m. to 9 p.m.

PRICES EFFECTIVE THRU
1982. QUANTITY
RIGHTS RESERVED. NO
SALES TO DEALERS.

HUNT'S
Fruit Cocktail
56¢
15-OZ. CAN



ALL GRINDS
Folger's Coffee

\$2¹²
16 OZ. CAN

LIMIT 1
WITH \$15.00
OR MORE
PURCHASE

PURE VEGETABLE
Crisco Shortening
\$1⁹⁹
3 LB. CAN
LIMIT 1

TXSUN PINK
Grapefruit Juice
64¢
48 OZ. CAN
LIMIT 2

Duncan Hines
Layer Cake Mix
77¢
ALL FLAVORS
18½ OZ. BOX
LIMIT 3

MAISCO
Oreo Cookies
\$1⁴⁸
19-OZ. PKG.

Dairy Foods
CAMELOT GRADE 'AA'
Large Eggs
63¢
DOZ. LIMIT 2
STEFFENS REGULAR, CHIVE, JALAPENO
Sour Cream
2 \$1¹⁹
8-Oz. Ctns.

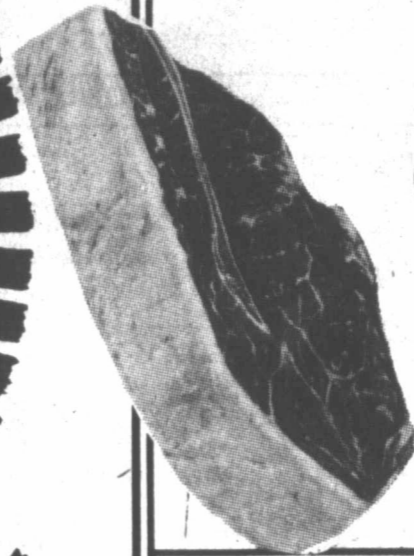
SOFT 'N' PRETTY
ASSORTED OR DECORATOR



Bath Tissue

4⁹⁶¢
ROLL PKG.
LIMIT 2

Frozen Foods
MEADOWDALE
Orange Juice
73¢
12-OZ. CAN
LIMIT 2
MEADOWDALE
Temptin Tators
68¢
24-OZ. PKG.



BUTCHER BLOCK BEEF
Beef Chuck Blade Cuts

Chuck Roast

97¢
LB.

HUDSON THRIFTY PACK
Fryers 3 TO 5 LB. AVG. LB. **55¢**
BUTCHER BLOCK, CAP OFF, LARGE END
Beef Rib Steaks LB. **\$2²⁹**
BUTCHER BLOCK BEEF—ARM CUTS
Swiss Steaks LB. **\$1⁷⁹**
BUTCHER BLOCK BEEF—EXTRA LEAN
Boneless Stew Beef LB. **\$1⁹⁸**

BUTCHER BLOCK BEEF
Beef Chuck Center Cuts
Chuck Steak
\$1²⁹
LB.

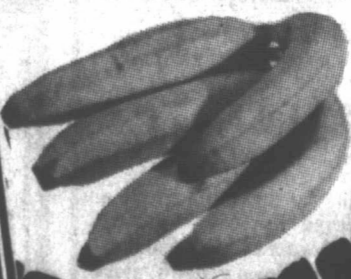
CONVENIENCE PACK
Luv Medium Elastic Diapers **\$8⁴⁴**
48 Count Box Limit 1

Fresh Produce FROM GREEN MARKET STREET



JUICY SWEET THOMPSON
Seedless Grapes
79¢
LB.

GOLDEN RIPE
Bananas
4 \$1⁰⁰
LBS.



Shop Ideal Cause Nothing Less Will Do!

Ideal FOOD STORES