

The Pampa News

Vol. 74 - No. 267

18 Pages

Thursday

March 18, 1982

Daily 25¢ Sunday 35¢



AT THE WELL. Pampans lined up outside the water well in the 600 block of North Ward Wednesday while water was shut off for water main repairs. Water through the lines was restored Wednesday night. (Staff Photo by John Wolfe)

Water restored to city

Repairs have been made to Pampa's main water line and service and pressure have been restored across the entire city.

City Manager Mack Wofford said today more inspections of the line from the water treatment plant are needed, but he said the inspections would not cause another water outage.

A coupling between the 18-inch line from the water treatment plant and the 30-inch main line to the city ruptured about 5 p.m. Tuesday, causing a citywide loss of water pressure.

To make repairs to the coupling, water to the city was cut off about 8 a.m. Wednesday. The repairs were completed and the water turned on

about 6 p.m. Wednesday, resulting in a 10-hour loss of water.

However, since city water pressure had been reduced to nothing, a few additional hours of pumping after the water was turned on were required to bring city lines back to full pressure.

The broken water line is made of concrete around steel. A steel collar was welded around the break to stop the leak. A special pipeline company, Gifford-Hill American, was called in to make the repairs.

When service was restored, water to some parts of the city was a little murky and discolored. City Engineer Dave Pullen said the loss and return to pressure stirred up some rust and sediment in some city lines, but he said

there is no danger of water contamination. Pullen said since the water in the lines already had been treated with chlorine, it would take several days of lost pressure before bacteria could grow. He said temperature has a great bearing on the possibility of contamination. Bacteria in water can cause a bout of "Montezuma's Revenge," diarrhea, or a more serious illness.

Wofford said the joint rupture created the need for more joint inspections on the 18-inch pipe between the rupture and water plant.

The plant and pipeline handle water from Lake Meredith and are located a half mile west of the intersection of Price and Kentucky.

Babysitter says two dogs involved in mauling of Pampa 2-year-old

The babysitter of a 2-year-old Pampa boy, mauled in a vicious dog attack Tuesday, said today that two dogs were definitely involved in the attack.

However, Lawausa Box, 1142 S. Dwight, said she only could positively identify one of the dogs which mauled Dusty Romines, son of Freddie and Dawn Romines, 1601 Duncan.

The dog Box identified is impounded for rabies observation at the veterinary clinic of Dr. M. W. Horne. It is a brown and white Pit Bulldog cross, owned by Philip Hutchinson Jr., 1137 Christy. Hutchinson denies his dog was involved

in the attack on the toddler, and his father said earlier, "There is no way the dog can get outside that fence."

The Romines child was listed in good condition today at Coronado Community Hospital. The toddler underwent three hours of surgery to close wounds to his face, arms and legs. More than 100 stitches were required to close his multiple lacerations.

Box said the attack occurred at her house on Dwight around 10:15 a.m. Tuesday, not at the boy's home at 1601 Duncan, as previously reported.

Box said the Romines child and a 6-year-old playmate were in her front

yard when she went inside the house to answer the phone. She said the 6-year-old alerted her to the attack, and Box discovered the dogs mauling the child.

She said the dogs had dragged the Romines youth into the street and were biting him about the face and body. Box said she had to kick the Pit Bull two or three times to halt the attack.

Box said, "We don't know where the dogs came from, it all happened so fast."

She said the damage to the child was done in less than one minute.

She said the unidentified dog involved in the attack is a "short, dark dog, about the same size as the Pit Bull."

Police Capt. Roy Denman said the city does not have authority to destroy a claimed dog, unless it is rabid.

"A dog is considered personal property. It is a felony to kill a dog," he said.

The captain said authority to destroy an owner's animal must come through the courts.

Box said today she believes the mauled child's parents "will ask to court to put the dog to sleep."

Weather

Partly cloudy through Friday, with a slight chance of thunderstorms tonight and Friday. Lake wind advisories are in effect today and Friday. The low tonight will be near 40, with Friday's high near 70.

Mink named assistant manager for chamber

Pampa Chamber of Commerce President Carl Kennedy and General Manager Floyd Sackett announced today that Brad Mink has been hired for the newly created No. 2 position at the chamber.

Mink will become Pampa Chamber of Commerce Assistant Manager, effective April 1. Mink's appointment was confirmed today by the chamber's board of directors.

The 29-year-old Pampa resident is presently assistant manager and account executive at KGRO radio in Pampa. Mink has worked in various media since 1971. He has worked in television and radio as a sports and news reporter and in sales.

He was formerly with the American Forces Network in Frankfurt, Germany. Mink was Sports Director

More residents flee homes as dike breaks

FORT WAYNE, Ind. (AP) — Floods broke through a dike in this soggy city during the night, sending hundreds of more residents scurrying to higher ground and leaving as many as 9,000 cut off from their homes.

"We began evacuating another 500 or so persons late last night," said Mark Rozeen, the city's public information director. "The number of persons evacuated is between 8,000 and 9,000."

Firefighters hurried people out of their homes and onto city buses as the floodwaters breached the dike on the city's northeast side, Rozeen said.

Hundreds of volunteers forming long chains passed sandbags in bucket-brigade style up to the muddy, 50-year-old dike. Rozeen said the breached was repaired by this morning.

Al Zirkle, director of operations for the city utilities, said, "Our engineers tell us the sheer weight of the sand is the only thing that can save (the dike)."

Water also was filling streets today along the Maumee River dike in the Lakeside neighborhood in the eastern part of the city. The river, bloated from thawing ice and days of rain, remained nearly stationary today just inches shy of its record level in 1913, when a series of floods killed 700 people in Indiana and Ohio.

But the National Weather Service predicted thundershowers for tonight and Friday.

Rivers were receding in Ohio and Michigan, where floods have done a total of \$19 million in damage, but the Illinois River was still rising and causing minor flooding in Peoria. Damage in Fort Wayne is estimated at \$16.8 million.

A tornado damaged an Atlanta building Wednesday as thunderstorms hit Georgia, and the San Francisco area was pelted with hail, snow and rain.

The death toll from a week of flooding in northern Indiana, Ohio and southern Michigan rose to six today when Ohio police reported a 9-year-old girl was killed when a car slid into a flood-swollen ditch and sank in 10 feet of water near Dolphos.

At least three people have been killed in Ohio, two in Michigan and one in Indiana.

"The entire dike area here is just like mush," Zirkle said. "The dikes are just saturated. It's not water lapping over the top."

"It could break loose at any time in the next 24 hours," Public Safety Coordinator Anthony Meyers said late Wednesday night.

Police used loudspeakers and firefighters went door-to-door along eight blocks to evacuate an undetermined number of people. Five city buses were sent to help take residents away, and evacuees with nowhere else to stay were brought to one of two churches. The firefighters also disconnected gas and electricity to prevent fires.

Later, buses were standing by in case the volunteers had to be evacuated, and a crane was brought in to help dump dirt on the earthen dike, if necessary.

"We have engineers all along the dike and they'll give the word if we need to get these people out," Zirkle said, adding there would be plenty of warning if something went wrong.

"We're gonna beat that river," Mayor Winfield Moses Jr. told volunteers Wednesday.

About 4,100 people left their homes Wednesday, and seven more emergency Red Cross shelters were opened, bringing the total to 11.

The three rain-swollen rivers that join in Fort Wayne — the Maumee, the St. Joseph and the St. Mary's — were expected to rise almost a foot overnight and threatened to divide the city of 170,000 into six isolated communities. All city schools were closed.

The water began trickling through about 11 p.m. EST.

"The leakage has accelerated. We've not had a full breach of the dike yet," said Frank Heyman, Fort Wayne city controller. He said earlier that if any of the dikes broke it could cause a flash flood.

The Lakeside area gets its name from a holding pond near the Maumee, which has spilled over into the pond. Water depth in the pond is about 12 feet, almost the height of the dike, which rises steeply near homes in the area.

"The latest report from the National Weather Service is that the Maumee is at 25.88 feet and still rising," said the mayor. "By tomorrow morning, it will crest at 26.5 feet."

The record crest for the Maumee at Fort Wayne is 26.1 feet, or 10.6 feet above flood stage, which was set during the 1913 flood.

Water spilled over sandbags in the city's Lakeside area along the St. Joseph and Maumee rivers where President Reagan helped volunteers Tuesday during an unscheduled visit to Indiana's second largest city.

Space shuttle landing shifted to White Sands as countdown begins

CAPE CANAVERAL, Fla. (AP) — Determined to prove "we can launch on the day we say," NASA began the countdown early today for a Monday liftoff of the space shuttle's third flight and shifted the landing site from a flooded Mojave desert floor in California to the white sands of New Mexico.

The clock started ticking at 4 a.m. EST with test conductor Andy Browne's announcement, "The launch countdown is now in progress." Immediately, technicians activated Columbia's computer systems and its electricity-producing fuel cells.

While launch preparations were routine, planning for a first-ever landing in New Mexico preoccupied space agency officials.

The U.S. Army's White Sands Missile Range is usually the backup landing site for the shuttle. Today, NASA decided to shift landing and "safing" equipment there because of heavy rainwater that fell on Edwards Air Force Base in California, the site of

Columbia's first two landings.

Launch is scheduled for 10 a.m. EST Monday and a "once-around" emergency landing — if necessary — would be made at White Sands. Landing is scheduled at White Sands one week and 115 orbits after liftoff.

NASA spokesman Dick Young said the decision to "use White Sands all the way" was made after top management officials assessed the latest reports from Edwards and determined that conditions there might be marginal to support a landing on March 29.

Earlier, officials had hoped to designate White Sands as an early-abort site while still planning to use Edwards for an end-of-mission landing.

On launch pad 39A, technicians were oblivious to all this. They were getting the ship ready for astronauts Jack R. Lousma and C. Gordon Fullerton, beginning four days of precise preparations toward a scheduled 10 a.m. EST liftoff. It would be the third of

Columbia's four test flights.

At midmorning, test director John Talone Jr. reported, "We don't expect any problems. It's been uneventful up to now."

Talone said that by delaying the launch a few days to gain an Edwards landing, NASA might be ahead of the game. But there is the risk, he said, of additional rain which could cause a longer delay.

The decision, to start the countdown and attempt a launch Monday reflects agency confidence in the maturity of the shuttle and its ability to perform its full mission, even though Flight 2 was cut short last November by a faulty fuel cell.

Gen. James A. Abrahamson, NASA associate administrator for space transportation, directed Launch Director George Page to start the countdown. Abrahamson and NASA administrator James Beggs believe that by sticking to the launch date, they can assure customers paying to have cargo carried later that the shuttle can meet its timetables.

OPEC price squabble predicted

VIENNA, Austria (AP) — OPEC's emergency meeting Friday to deal with the world oil glut is going to be a rough one, but the Saudis will defend the \$34 benchmark price, Venezuela's energy minister said today.

"It's going to be a difficult meeting. It's a difficult situation. I don't believe we can make a final decision of production levels," said Energy Minister Humberto Calderon, who was among the early arrivals for the meeting.

Calderon said Saudi Arabia, the world's biggest oil exporter, will defend

its price before the Organization of Petroleum Exporting Countries. "I think the effort is needed, that's our position," he told reporters.

Venezuela has had trouble selling some of its oil products since the glut developed, being forced to cut production and exports.

The glut is pushing prices lower. OPEC production is at a 13-year-low and its petrodollar surplus is fast dwindling. Internal bickering, while always present, seems to be growing.

Some analysts believe that unless OPEC drastically reduces its

production, its members will launch a free-for-all in price cutting to avoid losing customers. That could push oil prices to \$25 a barrel or lower. The current contract price averages about \$33 a barrel.

For nearly a decade OPEC flaunted its power to set prices, and in doing so reshaped the economic paths of the industrialized West. Now OPEC is seeing its strength sapped by such non-OPEC producers as Mexico and Great Britain.

By forcing prices higher in the 1970s, OPEC spurred the importing nations to conserve, to find oil outside the Middle East and to use alternative fuel sources.

As a result, Great Britain and Norway — which had virtually no oil production before 1967 — have rapidly developed rich oil fields in the North Sea. Production there now exceeds 2.4 million barrels a day and is growing.

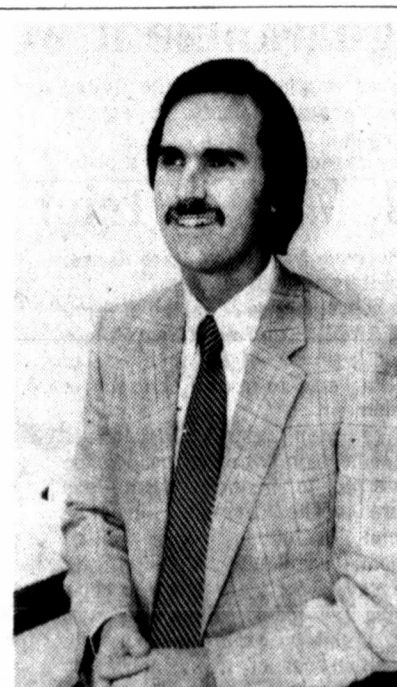
The increased output from non-OPEC countries has come at a critical time for the oil group. Its competitors have cut prices far below the Saudi Arabian price of \$34 a barrel, around which other OPEC members set their prices. As a result, oil customers are walking away from OPEC contracts.

And many energy analysts believe OPEC will be forced to reduce its benchmark price in order to avoid a further, possibly disastrous, erosion of its finances.

If OPEC lowers the \$34-a-barrel base, which is far above the cost of production, it would mark the first such collective price reduction in the group's 21-year history.



LAMB AT AUCTION. Amie Greene, owner of the Reserve Grand Champion Lamb, shed a few tears Wednesday as her lamb was auctioned for slaughter during the Top O' Texas Sale at the Bull Barn. (Staff Photo by John Wolfe)



BRAD MINK

daily record

services tomorrow

WEAVER, Howard Jr. — 2 p.m., Memory Gardens Cemetery.

HEGWER, Noble S. — 10:30 a.m., Carmichael - Whitley Colonial Chapel.

HEASLEY, Hershel Cleo "Pee Wee" — 2 p.m., McLean Church of Christ.

obituaries

HERSHEL CLEO HEASLEY
MCLEAN — Hershel Cleo "Pee Wee" Heasley, 67, who resided east of McLean, died Wednesday morning at Shamrock Hospital.

Services will be at 2 p.m. Friday in McLean Church of Christ, with Gene McCarty, minister, assisted by Lefors Church of Christ minister David Fultz, officiating. Burial will be in Hillcrest Cemetery under the direction of Lamb Funeral Home.

Mr. Heasley was born in McLean on April 10, 1914. He was a lifetime resident of the area and a member of McLean Church of Christ.

Survivors include his wife, Cliffie, of the home; one daughter, Clea Sue Howard of Groom; two brothers, Reo of McLean and Leo of Amarillo; two sisters, Virgie Everett of McLean and Vesta Williams of Andrews; three grandchildren and three great-grandchildren.

PEARL JANE ZIRKLE DOWELL
ROSWELL, N.M. — Mrs. Pearl Jane Zirkle Dowell, 87, of 2004 Fulkerson, died Monday at St. Mary's Hospital in Roswell.

Services were at 2 p.m. today in Ballard Chapel, with the Rev. Larry Johnson, pastor of First United Methodist Church of Roswell, officiating. Burial was in South Park Cemetery by Ballard Funeral Home of Roswell.

Mrs. Dowell was a 52-year resident of Pampa before moving to Roswell two months ago. She was born Oct. 7, 1894 in Enid, Okla.

Survivors include one daughter, Freda Hefner of Roswell; two granddaughters, three great-grandchildren and one great-great-granddaughter.

SAMUEL O. 'FUDDY' DUNHAM
SAMUEL O. 'FUDDY' DUNHAM, 68, of 1913 Lynn, died this morning at Coronado Community Hospital.

Services are pending with Carmichael - Whitley Funeral Directors.

Mr. Dunham was born June 5, 1918 in Wynona, Okla. He was employed by Skelly Oil Company for 38 years, and was a member of the First Baptist Church. He was married to Vi Rodden on April 24, 1937 at Wynona.

Survivors include his wife, of the home; two sons, Maj. Richard Dunham of Fort Sill, Okla., and Butch Dunham of Broken Arrow, Okla.; one sister, Mrs. Clifford Shewmaker of Pawhuska, Okla.; and four grandchildren.

stock market

The following grain quotations are provided by Wheeler - Evans of Pampa		DIA	30 1/2
Wheat	3 1/2	Durham	15 1/2
Maize	4 1/2	City	48 1/2
Barley	4 1/2	Halliburton	35 1/2
Com.	4 1/2	HCA	25 1/2
Soybeans	5 1/2	Superior-Rand	44 1/2
The following quotations show the range within which these securities could have been traded at the time of compilation		InlerNorth	24 1/2
Ky-Cent. Life	14 1/2 - 14 3/4	Karr-McGee	28
Sevrip	10 1/2 - 11	Mobil	22 1/2
Southeast Financial	18 - 19 1/2	Phillips	28 1/2
The following 9:30 a.m. N.Y. stock market quotations are furnished by		PNA	20 1/2
Standard Oil	37 1/2	SJ	42 1/2
Amarillo	18 1/2	Southwestern Pub	12 1/2
Beatrice Foods	16 1/2	Standard Oil	37 1/2
Cabot	16 1/2	Tenneco	25 1/2
Colony	23 1/2	Texas	20 1/2
Cash Service	28 1/2	Zales	21 1/2
		London Gold	322 40
		Silver	7 38

minor accidents

WEDNESDAY, March 17
 1:58 p.m. — A 1981 Plymouth, driven by Lora Staiger, 205 E. 14th, collided with a 1978 city street sweeper, driven by Joe Fox, 1033 S. Farley, in the 100 block of Brown. Staiger was cited for an improper turn.

city briefs

BEWARD: LOST female Chihuahua 665-7986. Adv.

TROPHY PLAYDAY White Deer Arena, Saturday March 20. Register 12:30. Adv.

KENNETH WYATT Comprehensive Art Collection, Saturday and Sunday, noon to 5. Adv.

STUFFED TOMATOES. \$1.89 lunch special. Health Aids, 305 W. Foster. Adv.

"OPEN HOUSE" Pre-Fabricated Home ready to move to any location. New custom built, 2 bedroom, over 700 square foot. See at 1205 S. Hobart. Adv.

fire report

WEDNESDAY, March 17
 9:25 a.m. — A grass and fence fire at 900 Terry Road was reported to the Pampa Fire Department. Owner and resident of the property is Porter Briggs. Moderate damage was listed, with no cause of the fire determined.

Say US must guarantee it won't attack

MANAGUA, Nicaragua (AP) — The leftist Sandinista government says it will not consider Secretary of State Alexander M. Haig Jr.'s terms for improved relations unless the United States promises not to attack Nicaragua.

"One cannot negotiate with a pistol on the chest," Interior Minister Tomas Borge said Wednesday. "One cannot negotiate when they are threatening us."

Trio arraigned, May 17 trial date is set

DALLAS (AP) — Three of seven men held without bond in a scheme to smuggle 15 armed Cobra helicopters from Texas to Iraq go on trial May 17 on federal conspiracy charges.

U.S. District Judge Robert Porter will hold a bond hearing next Tuesday for Carl Kulungian, 34, head of a Los Angeles executive employment agency; Alfonso Lopez Quesare, and Paulo Marcucci of Italy.

The trio was arrested in Amarillo March 6 on an indictment unsealed Tuesday which named four other people. California authorities arrested Thomas O'Connor, 51, and Max Field, both of Los Angeles, within the last week.

U.S. Attorney James Rolfe of Dallas

said Serverio Nuccio and Daro Ronca, both of Italy, remain at large. The helicopters were valued at more than \$15 million, and indictments allege that at least one of the men was to travel to Texas to inspect and receive the shipment. Other men would then make arrangements in Texas for money to be transferred to financial institutions offshore to the Cayman Islands or financial institutions in the United Kingdom, the indictment stated. The seven men are charged with violating the federal Neutrality Act, which prohibits exporting arms or ammunition out of the country for wartime purposes. Prosecutors say Field and O'Connor met with undercover customs agents in

hospital notes

CORONADO COMMUNITY Admissions
 William Robinson, Pampa
 James King, Pampa
 Amy Germany, White Deer
 Maria Ramirez, Pampa
 Lillian Pettit, Pampa
 Paul Chambers, Pampa
 Annie Avary, Pampa
 Jeremiah Johnson, Pampa
 Ruby King, Pampa
 Ruthie Fields, Pampa
 Merlie Courson, Pampa
 Heather Bollman, Groom
 Wilton Bratcher, Pampa
 Orvil Wood, Canadian
 Leonard Qualls, Dumas
 Addam Pack, Pampa
 Kelly Hendrick, Pampa
 Angie Degner, Pampa

Dismissals
 Julie Boyd, Pampa
 Glenda Cady, Lefors
 Gardner Carter, Pampa
 Earl Collins, Pampa
 Emily Coston, Pampa
 Vernon Cross, Miami

Births
 A girl to Mr. and Mrs. Keith German of White Deer.

Dismissals
 Julie Boyd, Pampa
 Glenda Cady, Lefors
 Gardner Carter, Pampa
 Earl Collins, Pampa
 Emily Coston, Pampa
 Vernon Cross, Miami

school menu

FRIDAY
 Hamburger, French fries and catsup, onion, lettuce, tomato, pickle, pineapple chunks, milk.

senior citizens menu

FRIDAY
 Chicken pot pie or fried cod fish, French fried cabbage, blackeyed peas, toss or jello salad, brownies or cream cherry tarts.

police report

Officers of the Pampa Police Department responded to 41 calls during the 24-hour period ending at 7 a.m. today.

Richel McDowell, 905 E. Scott, reported tools and silverware stolen from his house. Estimated loss \$160.

Madge C. Hankins, 718 N. Banks, reported a theft from her residence.

Derrick Lou Smith, 1122 Duncan, was arrested and charged with driving while intoxicated and traffic charges.

Lovett Memorial Library reported several people failed to return books and records. Total value \$104.

Kathy Phillips, 220 E. Tuke, reported theft of two puppies. Value \$20.

Emilia Zamora, 732 Campbell, reported theft of a bicycle. Loss estimated \$100.

Allsup, 201 E. Brown, reported a robbery. Loss unknown.

Coney Island Cafe, 114 W. Foster, reported a burglary.

An Animal Control officer reported a burglary at the city shelter. Three dogs were taken. Value \$62.

Jenkins Motor Co., 313 N. Hobart, reported someone pried open a door of the business. Nothing reported missing.

animal shelter report

These animals are currently being boarded at the Pampa Animal Shelter located in the Hobart Street Park. The shelter is open from 9 a.m. to 6 p.m. Monday through Friday. On Saturday, the shelter is open from 11 a.m. to noon and from 4 p.m. to 5 p.m. For more information, call 669-6149 or 669-7407.

Male adults: red doberman; white poodle; brown and white bulldog; black Scotty; black and tan doberman; gray elkhound mix; black and tan shepherd.

Male puppies: black cocker mix.

Female adults: gray and black Australian shepherd; black and silver shepherd; brown shepherd; black and brown shepherd; brown and white poodle mix; black and gray shepherd.

Female puppies: tan and white pitt mix; gray terrier.

calendar of events

FAA SAFETY SEMINAR
 An F.A.A. Safety Seminar for all pilots and interested persons will be held at 7 tonight in the Fellowship Hall of the First Christian Church.



DESERT MARCH. An Israeli soldier guards the road in the Occupied Sinai on which a battalion of the 82nd Airborne Division marches Wednesday. The American paratroopers are crossing the desert to take up peacekeeping duties between Israel and Egypt. (AP Laserphoto)

Americans begin peacekeeping duties

K SHARM EL-SHEIKH, Israeli-Occupied Sinai (AP) — An American paratroop battalion is taking up peacekeeping duties between Israel and Egypt in the deserts of the Sinai Peninsula.

The 670 troops of the 82nd Airborne Division, armed with automatic rifles, entered their uncompleted base overlooking the strategic Straits of Tiran after a march in 80 degree temperatures Wednesday.

The paratroopers, who left cool, rainy weather in Fort Bragg, N.C., marched non-stop for over three hours along a

highway to reach their new base. "Well done, I'm proud of you all," Lt. Col. William Garrison told the Americans who are part of the 11-nation peacekeeping force.

The force, which will number about 2,650 men, 1,200 of them Americans, will patrol eastern Sinai and monitor observance of demilitarization provisions of the Egypt-Israel peace treaty.

The last Israeli troops will withdraw by April 25 and Egyptian rule will be reasserted after 15 years of Israeli occupation.

The 82nd Airborne Division is also part of the U.S. Rapid Deployment Force aimed at countering Soviet advances in the Persian Gulf.

The troops' arrival, symbolic of the key role the United States played in mediating the Egyptian-Israeli peace treaty, was low-key, efficient and stripped of fanfare.

At a news conference in Tel Aviv, Defense Minister Ariel Sharon and visiting Egyptian Foreign Minister, Kamal Hassan Aly welcomed the arrival of the troops. Sharon said, "I'm sure they will contribute to peace between our two nations."

Democrats raise prospect of early vote on Reagan budget

WASHINGTON (AP) — Faced with President Reagan's continued intransigence on key elements of his 1983 budget, the Democratic chairman of the House Budget Committee is threatening to force a potentially embarrassing vote on the unpopular spending plan.

"I've explored every possibility of trying to break this logjam and this is the only one that I can see as of now that has a realistic chance of moving us forward," said Rep. James R. Jones of Oklahoma.

Jones, who presented the proposal to a closed meeting of House Democrats Wednesday, said later that "nobody spoke against it" during the session.

Top House leaders appeared to withhold their full support for the plan, but Jones indicated he expected the leadership would support the move after he had a chance to explain it in more detail.

"I'd hate to go that route, to tell you the truth," House Speaker Thomas P. O'Neill Jr., D-Mass., said. "What are

we going to do it for except to embarrass the president?"

But a Democratic leadership aide said that while O'Neill "has some doubts" about the plan, "I know his mind to be open" on the idea.

Even Reagan's congressional allies concede that his big-deficit budget as submitted last month could not win approval in either House of Congress. Thus, forcing a vote now would result in defeat and embarrassment for the president.

However, Jones — who lost a series of budget battles on the House floor last year — denied his move is aimed at embarrassing the president. Instead, he said, it is the only way to demonstrate that it is time for the partisan name-calling to end and to open the way for serious negotiations on a bipartisan alternative to Reagan's proposals.

"So maybe the only thing we can do is to report the president's budget out (of committee) and make it subject to a vote...I don't see any other way of

moving us off the dime...unless (simply) the threat of doing this results in some real action," Jones said.

House Democratic Leader Jim Wright of Texas, who also appeared cool to the idea, conceded Wednesday that such a tactic might prompt Reagan to be more willing to compromise on his budget, which according to the administration's latest projection would have a deficit of \$96.4 billion.

"What needs to happen is not for the president to be embarrassed...but for him to be brought to the reality of things and become a little less inflexible," Wright said.

Reagan has said repeatedly that he would consider alternatives to his budget recommendations as long as the plans do not include major tax increases or reductions in his requested military buildup.

"The main block to a comprehensive alternative is the president because he has ruled off base three-quarters of the alternatives...to get the deficits down," Jones said.

Reagan's Caribbean initiative gets off to a quick start in Congress

WASHINGTON (AP) — A key Republican senator says he is "absolutely convinced" Nicaragua and Cuba are controlling leftist guerrillas in El Salvador, but that the Reagan administration should reveal more evidence to garner public support for its Central American policy.

Sen. Robert Kasten of Wisconsin made his comments Wednesday as a Senate subcommittee began hearings on President Reagan's proposal to send \$350 million in emergency aid to the Caribbean Basin, including \$128 million to El Salvador.

The hearings got under way just hours after the president's aid package was sent to Congress. Besides emergency money, the proposal calls for a 12-year period of duty-free entry

into this country for virtually all Caribbean exports and tax incentives to encourage U.S. private investment in the region.

The trade subcommittee of the House Ways and Means Committee called a hearing for today on the economic aid package.

Kasten, chairman of the Senate Appropriations subcommittee on foreign operations, said he had no doubt about outside involvement in El Salvador's insurgency.

"I am absolutely convinced of Cuban and Nicaraguan support and control of terrorist guerrillas in El Salvador," Kasten told Thomas O. Enders, assistant secretary of state for inter-American affairs.

"But you have got to bring the

information out into public view and let the people of this country know what is going on," he said. The administration should move to counter "what is clearly a tide in American public opinion" against support of El Salvador's civilian-military junta, he said.

Enders replied, "The evidence we have, although it cannot all be made public, is, we believe, overwhelming." He said Cuban weapons have been sent to insurgents in El Salvador, Honduras and Guatemala and "now some are showing up" in Costa Rica and Colombia.

Reagan, in his message to Congress, charged that "extremist groups and violent minorities are exploiting" economic misery in Central America and the Caribbean.

Officials study Russian warning

WASHINGTON (AP) — President Reagan said today the administration had not completed its analysis of the Soviet Union's warning that it will take "retaliatory steps" if the United States carries out plans to install medium-range missiles in Europe.

"We're studying all the implications in that," the president told reporters in a brief question-and-answer period as he announced candidates to fill two posts on the Joint Chiefs of Staff.

In a speech Tuesday, Soviet President Leonid Brezhnev said his nation was suspending further

deployment of its SS-20 medium-range missiles in the European part of the Soviet Union.

Brezhnev coupled his statement with a warning that if the United States proceeds with planned NATO deployment of Pershing II and cruise missiles in Europe, "There would arise

a real additional threat to our country and its allies from the United States. This would compel us to take retaliatory steps that would put the other side, including the United States itself, in an analogous position."

Some reports interpreted Brezhnev's statement as a suggestion that Moscow might introduce nuclear weapons in Cuba.

Reagan said of Brezhnev: "If he really means he wants a lessening of the tension over nuclear weapons, well, all he has to do is join us in Geneva in elimination of nuclear intermediate range weapons in all of Europe."

At U.S.-Soviet negotiations in Geneva, the United States has promised to cancel plans to deploy the Pershing and cruise missiles if the Soviet Union agreed to dismantle its force of SS-20s.

Panel says FAA has management problems

WASHINGTON (AP) — Despite the upheaval caused by the air traffic controllers strike, the government has done little to correct the management problems that led to the walkout, according to a special task force.

A panel of management experts concluded Wednesday that morale among working controllers is low, strife

between management and controllers persists, and many of the factors that led to last summer's walkout are resurfacing.

"Most factors that had caused problems in the past are reasserting themselves, and the FAA seems headed toward more people-related problems in the future," said the 145-page report

on FAA management procedures.

FAA Administrator J. Lynn Helms, testifying at hearings into air safety,

acknowledged that morale among some controllers is low and promised to

implement a number of recommendations from the task force.



SANDBAG BRIGADE. Hundreds of volunteers form lines to pass sandbags to leaking dikes along the Maumee River in Fort Wayne, Ind., Wednesday. More than 4,000

residents on the east side of the city were evacuated as rising waters continued to threaten more areas of the flood torn city in northeastern Indiana. (AP Laserphoto)

Gag order issued in Martin case

FREDERICKSBURG, Texas (AP) — Indicted Rep. Mike Martin's latest trip into the courtroom had reporters scrambling for their lawyers and a publicity-wary judge slapping a gag order on everyone in sight.

The reporters won their battle to keep the pretrial hearing open Wednesday, but State District Judge Robert Barton ended the session by barring anyone who knows anything about the case from talking with reporters.

Martin, R-Longview, sat quietly through the three-day pretrial hearing.

The freshman lawmaker, charged with aggravated perjury, is accused of lying to Travis County grand jurors in August when he denied staging his own shooting. Prosecutors say Martin planned the July 31 Austin shooting — he was wounded in the elbow by shotgun blasts — as a publicity stunt.

Defense lawyer Frank Maloney won no major victories during three days of motions. Barton turned down a defense request to move the trial away from here because of extensive publicity. The case came to Gillespie County in Central Texas because of news coverage in Austin.

After Maloney invited reporters into the courtroom with subpoenas for the change of venue motion, he kicked them out by persuading Barton the testimony on other motions was too hot to be reported. The judge, agreeing that potential jurors could be prejudiced by news coverage of the testimony, closed the hearing despite reporters' objections.

On Wednesday, lawyer Jim George, representing the Austin American-Statesman, Dallas Morning News and Dallas television station WFAA, came into town with a solution approved by Barton.

"Ways exist to have our cake and eat it too," George said in proposing a solution to the dilemma of protecting Martin's constitutional right to a free trial and the reporters' constitutional right to cover it.

Under the George solution, Barton decided to reopen the hearing. Matters which did not include potentially prejudicial testimony were heard Wednesday in open court.

"How can that be the kind of emotional evidence that is going to pollute the pool of jurors in Gillespie County?" George said of those motions.

The second half of the solution involves the motions which will draw testimony that could be damaging to Martin. Barton said those motions will be heard after jurors are selected and sequestered, as suggested by George.

Wood grand jury reconvenes

SAN ANTONIO, Texas (AP) — A federal grand jury — which met for a day apparently without hearing any witnesses — planned to return today in its investigation of the slaying of U.S. District Judge H. Wood Jr.

The grand jurors filed out of the federal courthouse at 4:15 p.m. Wednesday and a source close to the investigation said they would return today for a short session.

Justice Department officials have declined to comment on recent reports that indictments could be returned soon in the nearly three-year-old investigation.

Wood was shot by a sniper on May 29, 1979, outside his San Antonio town home.

For the past year the grand jury has concentrated on imprisoned narcotics trafficker Jimmy Chagra and convicted hit man Charles V. Harrelson, both of whom have been jailed for more than a year on other charges.

Wood had been scheduled to preside at Chagra's trial at the time he was shot in the back and killed.

Inmate claims TDC officer ignored weapon

HOUSTON (AP) — A convict who supervised other inmates says a Texas Department of Corrections official once found a homemade knife under his mattress but pretended the weapon didn't exist.

Chester Smith Jr., 42, said a TDC officer found the weapon in his cell during a 1981 shakedown but did not confiscate the knife.

Smith, who is serving a 35-year sentence at the Ramsey 1 Unit near Rosharon for aggravated robbery, also said a TDC captain confiscated a claw hammer from a "building tender" but later returned the weapon.

Smith testified Wednesday at a hearing on two complaints before U.S. District Judge William Wayne Justice.

State Attorney General Mark White contends the special master appointed to oversee sweeping court-ordered prison reforms has overstepped his authority and should be fired.

Special Master Vincent Nathan argues the state of Texas has refused to end its use of inmate supervisors, such as building tenders, as Justice ordered a year ago.

During his testimony, Smith said another inmate wrote the special master, mentioning Smith witnessed the fight and saw the captain return the claw hammer.

Later, the captain approached Smith and told him "that I better forget it and go on back to the wing and do my job," the inmate said.

Earlier Wednesday, an inmate supervisor testified prison officials assured him that "building tenders" would continue to control his prison unit despite Justice's order that the job be eliminated.

"We were all concerned what would happen if we lost our jobs. What would happen to our status" after U.S. District Judge William Wayne Justice's prison reform order in 1980, inmate Bennie Earl Hudson said.

But, he said, a warden and a prison major "told us we were still in control of the farm — still running the penitentiary."

Braniff plans layoffs in route transfer plans

DALLAS (AP) — Financially strapped Braniff International will drop about 2,300 employees from its worldwide payroll in a transfer of South American routes to a competitor, and furlough another 700 domestic workers by summer.

About one-third of the total Braniff workforce will be laid off or transferred in the move, said Robert Culp, Braniff vice president of pricing and authority.

The 700 domestic workers from across the nation would be furloughed in an effort to "get down to fighting weight by summer," Braniff President Howard Putnam said in Washington Wednesday.

He and Pan American World Airways chairman C. Edward Acker announced that Braniff would allow Pan Am to service its South American routes, in exchange for an immediate \$20 million advance to ease Braniff's cash crunch.

Culp said about 1,500 workers would be laid off because of the agreement allowing Pan American to service the South American routes, and 800 Braniff employees in South America would be transferred to Pan Am.

The cash agreement comes just two weeks after Braniff was forced to delay paychecks because of a shortage of cash.

But Pan Am is in little better financial shape than Braniff, which lost \$160 million last year. Pan Am lost \$348 million last year as the industry's top money-loser and drafted Braniff's chairman John J. Casey to help restore it to profitability.

Braniff executives said they hope the Pan Am cash and the loss of routes that lost \$15 million last year and half that amount the year before will help the airline's in its major turnaround effort.

Pan Am has already provided \$7 million to Braniff under the agreement, and another \$13 million was to be delivered on approval of the plan.

Putnam said another \$10 million would be paid to Braniff in 1983. The two airlines would share revenue from the South American routes.



Coronado Center
665-7726
Doors Open
6:30 p.m.

FROM THE DIRECTOR OF FRIDAY THE 13TH.



A STRANGER IS WATCHING

MGM United Artists
Showtimes 7:30



SWAMP THING

THE COMIC BOOK LEGEND LIVES!
Showtimes 7:30



MODERN PROBLEMS CHEVY CHASE
Showtimes 7:00



It's the land of hospitality... unless you don't belong there.
SOUTHERN COMFORT
Showtime 8:35 only

CAPRI
Downtown Fonda 665-1941
NOW SHOWING
OPEN 7:00 SHOW 7:30

WALT DISNEY PRODUCTIONS
ROBIN HOOD
© 1977 Walt Disney Productions

The Palace Club
Chinese Restaurant & Bar
318 W. Foster Downtown
RESTAURANT HOURS
Sun.-Sun. 11 a.m. to 10 p.m.
BAR HOURS
Members Only
8 p.m. to 12 Sat. til 1 a.m.
Bar Closed Sunday

ELECT
DR. ROBERT PHILIPS
School Board Trustee
Pampa Independent School District



Vote For Dr. Philips
Saturday, April 3, Pampa High Music Bldg.

Pol. Ad. Pd. for by Dr. Robert Philips, Pampa, Tx.

- * Desire To Serve the Community
- * Panhandle Born And Educated
- * Dedicated to Quality Education
- * In Touch With People

There's no reason to pay more when you can pay less.



a. \$12 Reg. \$16.99
b. \$15 Reg. \$18.99
c. \$12 Reg. \$15.99

Find all the classic-look casuals you want for spring. a. Bow-tied Coasters® kilties top sport bottoms. b. Tassel trimmed Highlights® with stacked wood heels. c. Bow-tied Coasters® with laced collars. At Payless ShoeSource, prices are normally less. And during our Spring Sale, you'll pay even less than less. Sale ends Sunday.

Now pay even less than less.

1327 N. Hobart

Open 9 p.m. - 8 p.m. Monday-Saturday

Payless Shoe Source

©1982 Volume Shoe Corporation

Pizza Inn
Sicilian Topper

- Thicker Crust
- More Cheese
- Extra Flavor

The Sicilian Topper™ is made from special dough with lots of sauce and extra amounts of your choice of toppings, covered with cheese and more cheese to seal in the flavor.

Buy one pizza, get the next smaller size for 99¢. Buy any giant, large or medium size Original Thin Crust or Sicilian Topper pizza and get the next smaller same style pizza with equal number of toppings for 99¢. Present this coupon with guest check. Not valid with any other offer. Expiration Date: 4-1-82

Pizza Inn
2131 Perryton Parkway
665-8491



The Pampa News

EVER STRIVING FOR TOP O' TEXAS
TO BE AN EVEN BETTER PLACE TO LIVE

Let Peace Begin With Me

This newspaper is dedicated to furnishing information to our readers so that they can better promote and preserve their own freedom and encourage others to see its blessing. For only when man understands freedom and is free to control himself and all he possesses can he develop to his utmost capabilities.

We believe that all men are equally endowed by their Creator, and not by a government, with the right to take moral action to preserve their life and property and secure more freedom and keep it for themselves and others.

To discharge this responsibility, free men, to the best of their ability, must understand and apply to daily living the great moral guide expressed in the Coveting Commandment.

(Address all communications to The Pampa News, 403 W. Atchison, P.O. Drawer 2198, Pampa, Texas 79065. Letters to the editor should be signed and names will be withheld upon request.)

(Permission is hereby granted to reproduce in whole or in part any editorials originated by The News and appearing in these columns, providing proper credit is given.)

Louise Fletcher
Publisher

Lynn Hunter
Managing Editor

OPINION PAGE

Reagan must show cause for deficits

One of the main reasons that Ronald Reagan got more votes last election than did Jimmy Carter was that Reagan campaigned on a promise of balancing the budget.

That was one string on a several-string banjo that he played all over the country. He picked out a lively tune, the voters liked it, and they decided to give him a try.

Now, President Reagan says he has changed his mind: budget deficits are not as important as he had thought. Consequently, although he doesn't like it, he would like the Congress to pass a budget that would be in the red \$90 to \$100 billion; some say more.

Another string that Reagan has been strumming is defense. The nation's guard is down, he says, and he wants to raise it up. In 1983, he proposes to spend \$216 billion to protect the country.

Most of the people who supported Reagan in the election apparently share his philosophy on defense. They want their country protected, and they are willing to pay for it. But, they also believe that the eggs of defense must be placed into the same basket with fiscal responsibility. It was fiscal irresponsibility by previous administrations that is largely the cause of the nation's poor economic status now; to suggest that the economy can be improved by such enormous deficit spending is to ignore the light of reality.

Reagan asks the people to trust him. He says that only he knows

what threats hang over this country and how best to meet those threats.

If there is grave danger to the security of the country, then not only must Reagan say this but he also must present evidence. The evidence must be stark and demanding and bold. It will have to make the taxpayer sit up and breathe fast and shallow and turn to the person next to him and say: "Hey, look at that! The Russians just about have us where they want us." Or something like that.

As long as things are going well, Americans are a peace-loving people. There is nothing they would like better than to take the day off and go fishing, play golf, piddle in the yard. As a group, we tend to be lovers more than fighters — until somebody tries to take away a small portion of our liberty.

Then, we get fighting mad. That's the only way Reagan will ever sell a 100-billion-dollar deficit, with most of the deficit designed for defense.

He has to show cause. He has to lay it all out on the table. Then, if the threat is as serious as he says it is, he will get his billions for defense and anything else he wants, including reelection if he wants it, and he says he doesn't.

If he doesn't square with the people, however, and if he insists on a hundred-billion-dollar deficit, he might not have enough Republicans left in the House and Senate after the elections for a slow round of poker.

Middle class entitled to entitlements?

As the recession continues and the budget deficit grows, Americans are searching for explanations, and sometimes settling for scapegoats. A prime scapegoat for conservatives is the "welfare cheater," for liberals, the "wasteful Pentagon."

But an analysis of the federal budget reveals that by far the biggest share of government spending involves entitlement programs, such as Social Security, government pensions and Medicare, which benefit the deserving middle class. These entitlement programs have so far resisted most budget cuts. Social Security and government pension benefits, which are adjusted to the Consumer Price Index, have risen faster than wages in the private sector and higher than the price level during the 1970s.

Peter G. Peterson, secretary of Commerce under President Nixon, says that the growth of such entitlement programs is a primary cause of both the recession and the federal deficit. In a recent New York Times Magazine article entitled, "No More Free Lunch For the Middle Class," he contends that entitlement programs, housing subsidies and bad business management are siphoning our society's capital resources away from investment and squandering them on consumption.

Peterson wrote: "Over the last 15 years, the broad middle class that ultimately governs this nation has fragmented into a collection of special interests: the elderly, homeowners, public employees, veterans and the like." He added, "The special interests of the middle class do not fight each other. They have instead found common ground in using the federal government to expand today's consumption at the

expense of investment in tomorrow's prosperity. The future, unrepresented, is being sacrificed."

This is a provocative thesis. It would be disputed by people, on entitlement programs and homeowners paying mortgages who are barely hanging on in this recession economy. But the chilling prospect of a Social Security system going bankrupt, or a government paying more interest on its debt than on providing services, is making congressmen take a second look at the 60 percent of the budget spent on entitlement programs.

Peterson sees a way out of the vicious circle of consumption, deficit spending and stagnation if Americans are willing to take hard choices. He says that America must invest 14 or 15 percent of its gross national product into business development. We now invest about 10 percent. He said that America "would have to shift to industrial development all of the savings now being diverted into direct federal government borrowing . . . and simultaneously expand the total pool of national savings." To accomplish this, he suggests that the retirement age be raised to 68 or 70, a modest tax be levied on Social Security benefits, benefit indexing be halted, pension programs be reformed to encourage savings and investment, and housing tax subsidies be transferred to business investment.

It would be difficult to find a president or a Congress to enact such sweeping changes. But if the budget deficit and unemployment continue to rise and the recession and high interest rates are not alleviated, America may soon turn to the middle-aged middle class for a sacrifice to insure the nation's children and young people a decent future.

By ANTHONY HARRIGAN

The ballyhoo surrounding the Ford-United Auto Workers pact is profoundly misleading. The agreement, which is supposed to include substantial union concessions, won't significantly improve the automaker's situation. Ford Chairman Philip Caldwell engaged in extravagant talk when he said that the pact will "make Detroit the arsenal of economic democracy." What's that supposed to mean?

The pact is a job security agreement, which is why the UAW signed it. It freezes wages and benefits for a limited period, but denies the company the option of subcontracting work to non-union producers — a cost-saving measure. Ford also agreed to a two-year moratorium on the closing of plants, which may cost it dearly.

What Ford and the auto industry in general needs is not a job security

Auto crisis continues

agreement but an agreement for increased productivity. The UAW definitely has not promised to boost productivity per man hour. It has agreed to a temporary wage freeze, but the gap between the wages of American and Japanese auto workers remains as wide as ever. American auto workers will continue to receive approximately \$20 per hour, a wage that is twice what Japanese auto workers receive and much more than most U.S. industrial workers earn.

This means that American-made automobiles will continue to be higher in price than the Japanese competition. Indeed, it is likely that Japanese automakers could cut their already low prices.

The American automobile industry, as evidenced by the words of Ford's chairman, refuses to acknowledge, publicly if not privately, that the UAW

is destroying a vital American industry.

For a generation, the automakers have feared an all-out confrontation with the union. The UAW insists on wages and benefits that price American cars out of the domestic and world market. The result has been a not-so-gradual contraction in the size of the industry. No matter what Detroit says, auto dealers are stuck with an over-priced product that they have difficulty selling. The problems of the industry are likely to worsen as Japan's automakers get into production in this country, as Nissan will shortly do with its small-truck facility in Tennessee.

The politicians compound problems by refusing to tackle union monopoly power, as embodied in the United Auto Workers. The Reagan administration has a hands-off policy on monopoly unionism. Its political opposition is

dependent on the good will and financial support of the unions. One of the few national legislators to recognize the need for drastic change is U.S. Rep. Philip M. Crane (R-Ill.), who has introduced legislation (H.R. 5246) to place unions under the antitrust act.

By refusing to tackle union monopoly power, the administration and Congress are inviting the gradual dismantlement of the American auto industry. The United States is following the route of Great Britain, which also lost the bulk of its auto industry to excessive union wage demands. It's only a matter of time before the union in this country demand the direct or indirect nationalization of the remaining portion of the auto industry — perhaps through Chrysler-type bailouts.

In the meantime, the Ford Motor Co. isn't helping the public understand what's happening. Its statements on the new agreement encourage public euphoria about an industry that is in deep trouble and to which the jobs of millions of Americans are related.

Today in history

Today is Thursday, March 18, the 77th day of 1982. There are 288 days left in the year.

Today's highlight in history: In 1974, Middle East oil-producing states, except Libya and Syria, ended their oil embargo against United States.

On this date: In 1922, Mahatma Gandhi was sentenced to six years in prison in India for civil disobedience.

In 1937, more than 400 people — mostly children — were killed in a gas explosion at a school in New London, Texas.

In 1965, a Soviet Air Force officer became the first man to leave an orbiting spacecraft and float in space.

In 1969, the United States and Soviet Union proposed an international treaty to ban nuclear weapons from the ocean's floor.

Ten years ago: It was reported that South Vietnamese troops had beaten back an assault by North Vietnamese near Hue in South Vietnam.

Five years ago: Hanoi handed over 12 caskets containing the remains of American pilots killed in the Vietnam War.

One year ago: The Senate Budget Committee, in step with President Reagan's economic program, called for billions of dollars in cuts in welfare, unemployment and social security benefits.

Today's birthday: Country music singer Charley Pride is 44.

Thought for today: Customs may not be as wise as laws, but they are always more popular. — Benjamin Disraeli, English statesman (1804-1881).

THE PAMPA NEWS

(USPS 781-540)

Serving the Top 'O Texas 74 Years
Pampa, Texas 79065
403 W. Atchison
PO Box 2198

Circulation Certified by ABC Audit

SUBSCRIPTION RATES

Subscription rates in Pampa and RTZ by carrier and motor route are \$3.75 per month, \$11.25 per three months, discount offer \$21.75 per six months and \$43.00 per year. THE PAMPA NEWS is not responsible for advance payment of two or more months made to the carrier. Please pay directly to the News Office any payment that exceeds the current collection period.

Subscription rates by mail are: RTZ \$11.25 per three months, discount offer \$21.75 per six months and \$43.00 per year. Outside of RTZ, \$12.00 per three months, discount offer \$23.25 per six months and \$46.00 per year. Mail subscriptions must be paid in advance. No mail subscriptions are available within the city limits of Pampa. Servicemen and students by mail \$2.50 per month. Single copies are 25 cents daily and 35 cents Sunday.

The Pampa News is published daily except Saturdays and holidays by the Pampa News, 403 W. Atchison Street, Pampa, Texas 79065. Second-class postage paid at Pampa, Texas. POSTMASTER: Send address changes to the Pampa News, P.O. Drawer 2198, Pampa, Texas 79065.

Missing Your Daily News?
Dial 669-2525 After 7 p.m.
Weekdays, 10 a.m. Sundays



Space foolish?

By DON GRAFF
Here's a story with everthing — good news and bad news, and a dateline 20 million miles away.

It is the Soviets' successful soft landing of a spacecraft on Venus. If nothing else, it demonstrates that contrary to the message we have been hearing from some quarters, they have something on their minds other than wiping us out at the earliest opportunity.

It is, of course, much more. It is a first-class scientific achievement that will add greatly to man's knowledge of his living space that he is gradually extending into space.

Venus has had other visitors from earth. The Soviets have made two other landings. And an American probe, still orbiting, has made the first radar maps of the planet's surface.

But this one is different, a sophisticated automated laboratory equipped to take color photos, analyze

soil samples and carry out other tests on the cloud-shrouded, baking hot planetary surface.

For the American space program, the bad news is that the Soviet success comes as U.S. efforts are slowing down.

Project trimming under way for several years has been accelerated by the current budget bind. Projected cuts now include switching off the existing Venus orbiter, which was originally programmed to continue transmissions through 1992, and canceling a follow-up Venus mission.

Still on the schedule are the Galileo probe of Jupiter's system and atmosphere, the Voyager probe of the outer planets and the delay-plagued space shuttle flights.

Space enthusiasts are, naturally, not happy with the cost cutting. They can make a good case of the pound-foolish variety.

In the two decades since inception of the all-out effort to put an American on

the moon, the space program has not only enriched science itself but had an immense and beneficial effect upon the economy.

The billions poured into the Apollo program alone had a stimulative effect on the computer, semiconductor and aerospace industries that brought them to a current state of their arts that they could not otherwise have expected to achieve in so brief a time span. These are the very high-technology fields that are the hope of the American economic future.

There have been other spinoffs that have become so familiar or are so prosaic that Americans take them for granted — in everything from medicine to lightweight fabrics and digital clocks to tougher longer-lasting paints.

By this reckoning, the space effort in the long run has not cost Americans anything but paid for itself many times over. But it is difficult to sell that to accountants preoccupied with the short-run bottom line. Unless there are some totally unexpected changes in Washington attitudes and policies, Americans can expect to be observers of rather than participants in most of the coming space spectacular.

It can, of course, be argued that the Soviets are merely catching up. Their Venus craft is doing essentially nothing that the American Mars lander hasn't been doing since 1976. (Although it could be noted that since 1981 private funds have been raised to finance

contributed contact with and analysis of data from Viking I on the Martian surface.)

Mars for us and Venus for them, which might sound like a fair enough deal if it weren't for that disturbing question: Where are we both going from here?



By ART BUCHWALD

The Jupiter effect

By ART BUCHWALD
LOS ANGELES — As many people may have been aware the end of the world was to have taken place Wednesday, March 10.

The prediction was based on the so-called "Jupiter Effect," when all the planets lined up on one side of the sun and were supposed to cause earthquakes and volcano disruptions.

I happened to be in L.A. on March 10, which is the best place to be if the world is going to come to an end, because Southern Californians seem to take things like this more in stride than any people I know.

All the stuff about them being laid back does happen to be true.

On the morning of March 10, I started making my farewell telephone calls to dear friends. I called up Newcombe first:

"Well, Newcombe, I guess you know what day this is."

"Wednesday?" he said, taking a wild guess.

"It's the day the world is coming to an end."

"You mean the L.A. Dodgers haven't signed Fernando Valenzuela yet?"

"It's worse than that. We can expect a Jupiter Effect and we're all going to be swallowed into the ground."

"That happened to me a couple of months ago during amudslide at my house. I was sucked in right where my Jacuzzi was. But it always sounds much worse than it is. The trick is to take a deep breath and fight your way to the top of the muck."

"Goodbye, Rick. You made my stay on Earth worthwhile."

My next call was to Bernheim:

"Alain," I said, "I called to say au

revoir."

"What do you mean, au revoir?" he said. "We're giving a dinner for you Sunday night."

"There is no Sunday night. The world is going to end today."

"But what about the caterer? He's already ordered the avocado dip and potato chips."

"I'm sorry you went to all that trouble, but our fate is in the stars. The planets are against us."

"You want me to tell that to a Los Angeles caterer?"

"Don't tell him anything. When the earthquake comes, he'll disappear with his avocado dip and never be the wiser."

I then called my next friend, Angie Dickinson:

"Angie," I said, "today's the end of the world. Would you like to come over to the hotel for a final drink?"

"Oh, my God. I'm glad you called. I read about it yesterday and made a 3 o'clock appointment with my hairdresser."

Before I could make the next call, the phone rang.

"My name is Peterson and I'm with the B&H Real Estate Company. As you know the world is going to come to an end today so I'm happy to announce one of my clients in the San Fernando Valley is willing to sacrifice his \$6 million, two-bedroom ranchhouse for \$5 million."

"Suppose the world comes to an end before I get to look at the house?"

"Then the \$5 million asking price will be negotiable."

(c) 1982, Los Angeles Times Syndicate

Berry's World



WHITE H...
give farew...
Hanghey a...

HOLLYV...
celebrity's r...
holds a gur...
autograph...
obsessive lo...
violence.

The bad...
John Lenno...
on a New Yo...
This week...
time to a...
stabbed in...
wounded on...
assault w...
her" after l...
authorities s...
"We feel l...
sheriff's det...
As the lat...
other celeb...
intensifying...
hiring, bod...
handle guns...
The chic...

Wald...
BA...
TISS...
4 ro...
70...

Reg...
3.17...

Reg...
476.00...

White house panel approves nuclear waste site proposal

WASHINGTON (AP) — At least one permanent site for storing nuclear wastes would have to be selected by the president by March 30, 1987, under a bill approved by the House Interior Committee and now pending before the full House.

The legislation, approved by the panel on a voice vote Wednesday, is directed at the politically sensitive issue of where to put the nation's ever-increasing quantity of radioactive wastes, both from the nuclear weapons program and from nuclear power plants.

The committee approved an amendment to the bill that would ban permanent waste sites in areas where populations exceed 2,500 or where population density exceeds 1,000 people per square mile.

Another amendment the panel approved would require the votes of both the House and Senate to override a state's rejection of a nuclear waste site within its boundaries.

The government would not have to begin using the first site until 1998. Another provision would require the nuclear power industry to pay for much of the cost of constructing the waste dumps.

The measure, sponsored by the committee chairman, Rep. Morris K. Udall, D-Ariz., is similar to one being considered by Senate committees.

Meanwhile, there was more political maneuvering on the fiscal 1983 budget, with the chairman of the House Budget Committee suggesting a quick vote on President Reagan's deficit-plagued spending plan.

Rep. James Jones raised the idea at a private Democratic caucus. Bringing the matter to a vote, the Oklahoma Democrat said, might be the only way to break the current logjam over Reagan's budget, which officials who make public the names of American intelligence agents moved closer to approval. The Senate voted 55-39 for a tough version of the proposal, which is strongly supported by the Reagan administration as a way to prevent terrorist attacks on CIA agents.

—Sen. Charles McC. Mathias Jr., R-Md., introduced a resolution requesting President Reagan to open negotiation immediately.



WHITE HOUSE WAVES. President and Mrs. Reagan give farewell waves to Irish Prime Minister Charles Haughey at the end of a White House visit Wednesday. The president met with the Irish leader in the Oval Office and hosted a St. Patrick's day luncheon. (AP Laserphoto)

Celebrities fear violence from fans

HOLLYWOOD (AP) — It's a celebrity's nightmare — the "fan" who holds a gun or a knife instead of an autograph book, the admirer whose obsessive love has twisted into hate and violence.

The bad dream became reality for John Lennon, killed by a deranged fan on a New York street in 1980.

This week the dream recurred, this time to actress Theresa Saldana, stabbed in the chest and critically wounded on a Hollywood street by an assailant who "formed a fixation on her" after he saw her in the movies, authorities said.

"We feel he was in love with her," a sheriff's detective said.

As the latest attack made headlines, other celebrities were taking action — intensifying their security precautions, hiring bodyguards and learning to handle guns.

The chic Beverly Hills Gun Club,

opened last year in response to the growing crime wave, is doing a brisk business among celebrities who practice shooting at the club's target range.

Hollywood's top stars take precautions — they remember that the young man who took a shot at President Reagan last March did so after his other attempts to catch the eye of actress Jodie Foster failed.

Frank Sinatra, Bob Hope, Johnny Carson and Jane Fonda are among the celebrities who employ permanent bodyguards.

"Every time Frank gives a charity show, we provide the security," Clyde Duber, whose bodyguard service has branch offices throughout California, said shortly after Lennon was killed. "Before he steps on an airplane, there are bodyguards in there."

Why do celebrities get attacked?

"It has to do with one of the most

common of class dreams, what we call the dream of celebrity," Dr. Charles Wahl, professor of clinical psychiatry at the University of California at Los Angeles, says. You dream of intimacy with a celebrity. It is a self-aggrandizing dream — you want to be important."

"But there is a second aspect to this — envy and rivalry," he said. "It is strongest in people who have not worked out envy and rivalry in their own lives."

Wahl noted Mark David Chapman, convicted of killing Lennon, began his interest in the star with "intense idolatry" and tried to contact him.

"In the case of the devoted fan, you believe if you could just make contact with the celebrity, they would recognize your partisanship and embrace you as a friend," Wahl said. "Instead, when this person reaches the celebrity's house, he finds guard dogs and walls 12-feet high, a rejection."

Lewis Supply, Inc.

317 S. Cuyler 669-2558

OPEN ALL DAY SATURDAY Open Monday-Saturday 7:30-5:30

Adjustable Broom Rake
Green Thumb Deluxe No. AB22 22 tempered Spring Steel tines. Head width adjustable from 11 1/2" to 20" Handle 48"
Reg. \$11.19
\$8.29

Gott 2 Gallon Plastic Cooler
Reg. \$23.00
\$15.99
Screw-tight lid. Includes snap-in drinking cup.

Hedge Shears
No. GTH-1 Reg. \$9.87
\$7.39

Premium Reinforced Plastic Jamaica Hose
5/8" Diameter 50 Foot
Reg. \$21.25
\$14.99

RAIN BIRD Sprinkler
No. WB-25
Reg. \$32.99
\$21.99

Prices Good Through March 25, 1982

SAVE AT OUR MARCH BARGAIN BLAST!

SAVE THURSDAY FRIDAY SATURDAY

<p>Waldorf BATH TISSUE 4 rolls 79c</p>	<p>Waldorf PRINTS</p>	<p>AJAX CLEANSER 14 Ounce Can Reg. 69c 33c</p>	<p>All Canned SOFT DRINKS 6 12 Oz. Cans \$1.69</p>	<p>SWEET 'N LOW Low Calorie LEMONADE DRINK MIX Reg. 2.99 \$1.99</p>	<p>Doritos Tortilla Chips 1/2 Pound Bag Reg. 1.89 \$1.39</p>
<p>Kodak 110 Size COLOR PRINT FILM 24 exposure Reg. 3.17 \$2.19</p>	<p>Waldorf</p>	<p>NORTHERN ELECTRIC BLANKETS 1/2 off retail price</p>	<p>IVORY LIQUID 32 ounces Reg. 2.29 \$1.49</p>	<p>Kleenex HUGGIES 4 sizes To Choose From Reg. 2.99 \$2.99</p>	<p>HANDI-BAG 2PLY LARGE TRASH & YARD BAGS 7 ct. 33 Gallon Reg. 1.89 99c</p>
<p>Canon A9E-1 Programmed Automation Plus Shutter-Priority Sophistication System Integration Reg. \$240.00 \$169.99</p>	<p>Wrigleys CHEWING GUM Reg. 25c</p>	<p>CLOROX 2 all fabric bleach 40 Ounces Reg. 1.69 \$1.29</p>	<p>COMET CLEANSER 21 ounces Reg. 99c 99c</p>	<p>COMET</p>	<p>NESTLE CANDY BARS 4 Bars 89c</p>
<p>Canon SURE SHOT AF35M Reg. \$240.00 \$169.99</p>	<p>Reynolds Wrap HEAVY DUTY 37 1/2 ft. foil Reg. 1.39 99c</p>	<p>CLOROX 2 all fabric bleach</p>	<p>ANACONDA FOIL 200 ft. roll Reg. 4.39 \$2.79</p>	<p>COMET</p>	<p>NESTLE CANDY BARS 4 Bars 89c</p>
<p>Canon SURE SHOT AF35M Reg. \$240.00 \$169.99</p>	<p>Reynolds Wrap HEAVY DUTY 37 1/2 ft. foil Reg. 1.39 99c</p>	<p>CLOROX 2 all fabric bleach</p>	<p>ANACONDA FOIL 200 ft. roll Reg. 4.39 \$2.79</p>	<p>COMET</p>	<p>NESTLE CANDY BARS 4 Bars 89c</p>
<p>Canon SURE SHOT AF35M Reg. \$240.00 \$169.99</p>	<p>Reynolds Wrap HEAVY DUTY 37 1/2 ft. foil Reg. 1.39 99c</p>	<p>CLOROX 2 all fabric bleach</p>	<p>ANACONDA FOIL 200 ft. roll Reg. 4.39 \$2.79</p>	<p>COMET</p>	<p>NESTLE CANDY BARS 4 Bars 89c</p>
<p>Canon SURE SHOT AF35M Reg. \$240.00 \$169.99</p>	<p>Reynolds Wrap HEAVY DUTY 37 1/2 ft. foil Reg. 1.39 99c</p>	<p>CLOROX 2 all fabric bleach</p>	<p>ANACONDA FOIL 200 ft. roll Reg. 4.39 \$2.79</p>	<p>COMET</p>	<p>NESTLE CANDY BARS 4 Bars 89c</p>
<p>Canon SURE SHOT AF35M Reg. \$240.00 \$169.99</p>	<p>Reynolds Wrap HEAVY DUTY 37 1/2 ft. foil Reg. 1.39 99c</p>	<p>CLOROX 2 all fabric bleach</p>	<p>ANACONDA FOIL 200 ft. roll Reg. 4.39 \$2.79</p>	<p>COMET</p>	<p>NESTLE CANDY BARS 4 Bars 89c</p>
<p>Canon SURE SHOT AF35M Reg. \$240.00 \$169.99</p>	<p>Reynolds Wrap HEAVY DUTY 37 1/2 ft. foil Reg. 1.39 99c</p>	<p>CLOROX 2 all fabric bleach</p>	<p>ANACONDA FOIL 200 ft. roll Reg. 4.39 \$2.79</p>	<p>COMET</p>	<p>NESTLE CANDY BARS 4 Bars 89c</p>
<p>Canon SURE SHOT AF35M Reg. \$240.00 \$169.99</p>	<p>Reynolds Wrap HEAVY DUTY 37 1/2 ft. foil Reg. 1.39 99c</p>	<p>CLOROX 2 all fabric bleach</p>	<p>ANACONDA FOIL 200 ft. roll Reg. 4.39 \$2.79</p>	<p>COMET</p>	<p>NESTLE CANDY BARS 4 Bars 89c</p>
<p>Canon SURE SHOT AF35M Reg. \$240.00 \$169.99</p>	<p>Reynolds Wrap HEAVY DUTY 37 1/2 ft. foil Reg. 1.39 99c</p>	<p>CLOROX 2 all fabric bleach</p>	<p>ANACONDA FOIL 200 ft. roll Reg. 4.39 \$2.79</p>	<p>COMET</p>	<p>NESTLE CANDY BARS 4 Bars 89c</p>
<p>Canon SURE SHOT AF35M Reg. \$240.00 \$169.99</p>	<p>Reynolds Wrap HEAVY DUTY 37 1/2 ft. foil Reg. 1.39 99c</p>	<p>CLOROX 2 all fabric bleach</p>	<p>ANACONDA FOIL 200 ft. roll Reg. 4.39 \$2.79</p>	<p>COMET</p>	<p>NESTLE CANDY BARS 4 Bars 89c</p>
<p>Canon SURE SHOT AF35M Reg. \$240.00 \$169.99</p>	<p>Reynolds Wrap HEAVY DUTY 37 1/2 ft. foil Reg. 1.39 99c</p>	<p>CLOROX 2 all fabric bleach</p>	<p>ANACONDA FOIL 200 ft. roll Reg. 4.39 \$2.79</p>	<p>COMET</p>	<p>NESTLE CANDY BARS 4 Bars 89c</p>
<p>Canon SURE SHOT AF35M Reg. \$240.00 \$169.99</p>	<p>Reynolds Wrap HEAVY DUTY 37 1/2 ft. foil Reg. 1.39 99c</p>	<p>CLOROX 2 all fabric bleach</p>	<p>ANACONDA FOIL 200 ft. roll Reg. 4.39 \$2.79</p>	<p>COMET</p>	<p>NESTLE CANDY BARS 4 Bars 89c</p>
<p>Canon SURE SHOT AF35M Reg. \$240.00 \$169.99</p>	<p>Reynolds Wrap HEAVY DUTY 37 1/2 ft. foil Reg. 1.39 99c</p>	<p>CLOROX 2 all fabric bleach</p>	<p>ANACONDA FOIL 200 ft. roll Reg. 4.39 \$2.79</p>	<p>COMET</p>	<p>NESTLE CANDY BARS 4 Bars 89c</p>
<p>Canon SURE SHOT AF35M Reg. \$240.00 \$169.99</p>	<p>Reynolds Wrap HEAVY DUTY 37 1/2 ft. foil Reg. 1.39 99c</p>	<p>CLOROX 2 all fabric bleach</p>	<p>ANACONDA FOIL 200 ft. roll Reg. 4.39 \$2.79</p>	<p>COMET</p>	<p>NESTLE CANDY BARS 4 Bars 89c</p>
<p>Canon SURE SHOT AF35M Reg. \$240.00 \$169.99</p>	<p>Reynolds Wrap HEAVY DUTY 37 1/2 ft. foil Reg. 1.39 99c</p>	<p>CLOROX 2 all fabric bleach</p>	<p>ANACONDA FOIL 200 ft. roll Reg. 4.39 \$2.79</p>	<p>COMET</p>	<p>NESTLE CANDY BARS 4 Bars 89c</p>
<p>Canon SURE SHOT AF35M Reg. \$240.00 \$169.99</p>	<p>Reynolds Wrap HEAVY DUTY 37 1/2 ft. foil Reg. 1.39 99c</p>	<p>CLOROX 2 all fabric bleach</p>	<p>ANACONDA FOIL 200 ft. roll Reg. 4.39 \$2.79</p>	<p>COMET</p>	<p>NESTLE CANDY BARS 4 Bars 89c</p>
<p>Canon SURE SHOT AF35M Reg. \$240.00 \$169.99</p>	<p>Reynolds Wrap HEAVY DUTY 37 1/2 ft. foil Reg. 1.39 99c</p>	<p>CLOROX 2 all fabric bleach</p>	<p>ANACONDA FOIL 200 ft. roll Reg. 4.39 \$2.79</p>	<p>COMET</p>	<p>NESTLE CANDY BARS 4 Bars 89c</p>
<p>Canon SURE SHOT AF35M Reg. \$240.00 \$169.99</p>	<p>Reynolds Wrap HEAVY DUTY 37 1/2 ft. foil Reg. 1.39 99c</p>	<p>CLOROX 2 all fabric bleach</p>	<p>ANACONDA FOIL 200 ft. roll Reg. 4.39 \$2.79</p>	<p>COMET</p>	<p>NESTLE CANDY BARS 4 Bars 89c</p>
<p>Canon SURE SHOT AF35M Reg. \$240.00 \$169.99</p>	<p>Reynolds Wrap HEAVY DUTY 37 1/2 ft. foil Reg. 1.39 99c</p>	<p>CLOROX 2 all fabric bleach</p>	<p>ANACONDA FOIL 200 ft. roll Reg. 4.39 \$2.79</p>	<p>COMET</p>	<p>NESTLE CANDY BARS 4 Bars 89c</p>
<p>Canon SURE SHOT AF35M Reg. \$240.00 \$169.99</p>	<p>Reynolds Wrap HEAVY DUTY 37 1/2 ft. foil Reg. 1.39 99c</p>	<p>CLOROX 2 all fabric bleach</p>	<p>ANACONDA FOIL 200 ft. roll Reg. 4.39 \$2.79</p>	<p>COMET</p>	<p>NESTLE CANDY BARS 4 Bars 89c</p>
<p>Canon SURE SHOT AF35M Reg. \$240.00 \$169.99</p>	<p>Reynolds Wrap HEAVY DUTY 37 1/2 ft. foil Reg. 1.39 99c</p>	<p>CLOROX 2 all fabric bleach</p>	<p>ANACONDA FOIL 200 ft. roll Reg. 4.39 \$2.79</p>	<p>COMET</p>	<p>NESTLE CANDY BARS 4 Bars 89c</p>
<p>Canon SURE SHOT AF35M Reg. \$240.00 \$169.99</p>	<p>Reynolds Wrap HEAVY DUTY 37 1/2 ft. foil Reg. 1.39 99c</p>	<p>CLOROX 2 all fabric bleach</p>	<p>ANACONDA FOIL 200 ft. roll Reg. 4.39 \$2.79</p>	<p>COMET</p>	<p>NESTLE CANDY BARS 4 Bars 89c</p>
<p>Canon SURE SHOT AF35M Reg. \$240.00 \$169.99</p>	<p>Reynolds Wrap HEAVY DUTY 37 1/2 ft. foil Reg. 1.39 99c</p>	<p>CLOROX 2 all fabric bleach</p>	<p>ANACONDA FOIL 200 ft. roll Reg. 4.39 \$2.79</p>	<p>COMET</p>	<p>NESTLE CANDY BARS 4 Bars 89c</p>
<p>Canon SURE SHOT AF35M Reg. \$240.00 \$169.99</p>	<p>Reynolds Wrap HEAVY DUTY 37 1/2 ft. foil Reg. 1.39 99c</p>	<p>CLOROX 2 all fabric bleach</p>	<p>ANACONDA FOIL 200 ft. roll Reg. 4.39 \$2.79</p>	<p>COMET</p>	<p>NESTLE CANDY BARS 4 Bars 89c</p>
<p>Canon SURE SHOT AF35M Reg. \$240.00 \$169.99</p>	<p>Reynolds Wrap HEAVY DUTY 37 1/2 ft. foil Reg. 1.39 99c</p>	<p>CLOROX 2 all fabric bleach</p>	<p>ANACONDA FOIL 200 ft. roll Reg. 4.39 \$2.79</p>	<p>COMET</p>	<p>NESTLE CANDY BARS 4 Bars 89c</p>
<p>Canon SURE SHOT AF35M Reg. \$240.00 \$169.99</p>	<p>Reynolds Wrap HEAVY DUTY 37 1/2 ft. foil Reg. 1.39 99c</p>	<p>CLOROX 2 all fabric bleach</p>	<p>ANACONDA FOIL 200 ft. roll Reg. 4.39 \$2.79</p>	<p>COMET</p>	<p>NESTLE CANDY BARS 4 Bars 89c</p>
<p>Canon SURE SHOT AF35M Reg. \$240.00 \$169.99</p>	<p>Reynolds Wrap HEAVY DUTY 37 1/2 ft. foil Reg. 1.39 99c</p>	<p>CLOROX 2 all fabric bleach</p>	<p>ANACONDA FOIL 200 ft. roll Reg. 4.39 \$2.79</p>	<p>COMET</p>	<p>NESTLE CANDY BARS 4 Bars 89c</p>
<p>Canon SURE SHOT AF35M Reg. \$240.00 \$169.99</p>	<p>Reynolds Wrap HEAVY DUTY 37 1/2 ft. foil Reg. 1.39 99c</p>	<p>CLOROX 2 all fabric bleach</p>	<p>ANACONDA FOIL 200 ft. roll Reg. 4.39 \$2.79</p>	<p>COMET</p>	<p>NESTLE CANDY BARS 4 Bars 89c</p>
<p>Canon SURE SHOT AF35M Reg. \$240.00 \$169.99</p>	<p>Reynolds Wrap HEAVY DUTY 37 1/2 ft. foil Reg. 1.39 99c</p>	<p>CLOROX 2 all fabric bleach</p>	<p>ANACONDA FOIL 200 ft. roll Reg. 4.39 \$2.79</p>	<p>COMET</p>	<p>NESTLE CANDY BARS 4 Bars 89c</p>
<p>Canon SURE SHOT AF35M Reg. \$240.00 \$169.99</p>	<p>Reynolds Wrap HEAVY DUTY 37 1/2 ft. foil Reg. 1.39 99c</p>	<p>CLOROX 2 all fabric bleach</p>	<p>ANACONDA FOIL 200 ft. roll Reg. 4.39 \$2.79</p>	<p>COMET</p>	<p>NESTLE CANDY BARS 4 Bars 89c</p>
<p>Canon SURE SHOT AF35M Reg. \$240.00 \$169.99</p>	<p>Reynolds Wrap HEAVY DUTY 37 1/2 ft. foil Reg. 1.39 99c</p>	<p>CLOROX 2 all fabric bleach</p>	<p>ANACONDA FOIL 200 ft. roll Reg. 4.39 \$2.79</p>	<p>COMET</p>	<p>NESTLE CANDY BARS 4 Bars 89c</p>
<p>Canon SURE SHOT AF35M Reg. \$240.00 \$169.99</p>	<p>Reynolds Wrap HEAVY DUTY 37 1/2 ft. foil Reg. 1.39 99c</p>	<p>CLOROX 2 all fabric bleach</p>	<p>ANACONDA FOIL 200 ft. roll Reg. 4.39 \$2.79</p>	<p>COMET</p>	<p>NESTLE CANDY BARS 4 Bars 89c</p>
<p>Canon SURE SHOT AF35M Reg. \$240.00 \$169.99</p>	<p>Reynolds Wrap HEAVY DUTY 37 1/2 ft. foil Reg. 1.39 99c</p>	<p>CLOROX 2 all fabric bleach</p>	<p>ANACONDA FOIL 200 ft. roll Reg. 4.39 \$2.79</p>	<p>COMET</p>	<p>NESTLE CANDY BARS 4 Bars 89c</p>
<p>Canon SURE SHOT AF35M Reg. \$240.00 \$169.99</p>	<p>Reynolds Wrap HEAVY DUTY 37 1/2 ft. foil Reg. 1.39 99c</p>	<p>CLOROX 2 all fabric bleach</p>	<p>ANACONDA FOIL 200 ft. roll Reg. 4.39 \$2.79</p>	<p>COMET</p>	<p>NESTLE CANDY BARS 4 Bars 89c</p>
<p>Canon SURE SHOT AF35M Reg. \$240.00 \$169.99</p>	<p>Reynolds Wrap HEAVY DUTY 37 1/2 ft. foil Reg. 1.39 99c</p>	<p>CLOROX 2 all fabric bleach</p>	<p>ANACONDA FOIL 200 ft. roll Reg. 4.39 \$2.79</p>	<p>COMET</p>	<p>NESTLE CANDY BARS 4 Bars 89c</p>
<p>Canon SURE SHOT AF35M Reg. \$240.00 \$169.99</p>	<p>Reynolds Wrap HEAVY DUTY 37 1/2 ft. foil Reg. 1.39 99c</p>	<p>CLOROX 2 all fabric bleach</p>	<p>ANACONDA FOIL 200 ft. roll Reg. 4.39 \$2.79</p>	<p>COMET</p>	<p>NESTLE CANDY BARS 4 Bars 89c</p>
<p>Canon SURE SHOT AF35M Reg. \$240.00 \$169.99</p>	<p>Reynolds Wrap HEAVY DUTY 37 1/2 ft. foil Reg. 1.39 99c</p>	<p>CLOROX 2 all fabric bleach</p>	<p>ANACONDA FOIL 200 ft. roll Reg. 4.39 \$2.79</p>	<p>COMET</p>	<p>NESTLE CANDY BARS 4 Bars 89c</p>
<p>Canon SURE SHOT AF35M Reg. \$240.00 \$169.99</p>	<p>Reynolds Wrap HEAVY DUTY 37 1/2 ft. foil Reg. 1.39 99c</p>	<p>CLOROX 2 all fabric bleach</p>	<p>ANACONDA FOIL 200 ft. roll Reg. 4.39 \$2.79</p>	<p>COMET</p>	<p>NESTLE CANDY BARS 4 Bars 89c</p>
<p>Canon SURE SHOT AF35M Reg. \$240.00 \$169.99</p>	<p>Reynolds Wrap HEAVY DUTY 37 1/2 ft</p>				

Colorado farmers worried Dust Bowl will return

FLAGLER, Colo. (AP) — Leonard Smith and his father spent 10 years rebuilding their farm after the dust storms of the "Dirty '30s."

"Fifty years after the dust billowed up into the sky and blotted out the sun," Smith looks nervously over his fence at his neighbors' land and wonders if his 2-year-old granddaughter will grow up through another dust bowl.

"I was only a little boy, but I remember how we used to stuff wet sheets and rags around the windows and doors to keep the dust out," Smith said recently, sitting with his family in a sprawling stucco farmhouse on the high, arid plains of eastern Colorado. The Smith property lies near an 8,000-acre ranch that has been purchased by a corporation whose directors ordered the fragile grassland plowed up and planted in winter wheat.

Smith says he wishes he knew the owners so he could tell them how that kind of overzealous activity helped bring on a dust bowl 50 years ago.

Experts are not predicting a re-occurrence of the same proportions that hit Kansas, Oklahoma, Texas and Colorado in the 1930s. Most of America's farmland has been restored since the Dust Bowl era and conservation practices are well entrenched.

"But many farmers in eastern Colorado are afraid a new trend toward 'plowouts' will bring back hard times. They say they are facing an onslaught of investors who are interested only in profit and do not know anything about conditions in eastern Colorado."

"As in the days before the Dust Bowl, huge tracts of newly purchased land are being plowed up and planted corner-to-corner with wheat. The fields stand in stark contrast to the surrounding farmland, which is planted in narrow strips sandwiched between areas of fallow ground."

"The outfit that bought the land west of us came in here with big four-wheel drive tractors and 60-foot plows," Smith said. "They plowed straight up and down hills, through fences, in and out of gullies."

Federal conservation officials say they have seen similar scenes across eastern Colorado during the past three years as more than 400,000 acres of virgin prairie have been plowed out.

"That exceeds even the Dust Bowl days, when 300,000 acres went under the till in eastern Colorado."

The motive then and now was the same: Get as much profit as possible out of the land during the short term.

"What we're seeing here is the beginning of a movement," said David Miller, district conservationist for the U.S. Soil Conservation Service.

"The biggest buyers are Germans and Canadians, who want to make big bucks fast, and that usually means abusing the land. They think that all they have to do to get abundant crops is put a plow on the land."

"The problem with plowouts, Miller explained, is that the land is not rich enough to support intense farming. In most places, the grasslands are covered only with sparse tufts of blue-green prairie grass, used for grazing cattle."

"The thin topsoil lacks moisture and nutrients and lies over a hard bed of shale. Eastern Colorado averages only about 12 inches of rainfall annually and farmers must use all the available conservation methods to coax a wheat crop out of the ground."

"Those who are born and raised here use windstrip cropping, alternating between thin sections of fallow ground," said Miller.

"The method lets the ground rest every other year, conserves nutrients and leaves only small areas exposed to the wind."

Terraces are built to prevent water from racing down fields and forming deep gullies during infrequent rainstorms.

Despite the inhospitality of the land, foreign investors are attracted to the land. Cultivated farmland is much more valuable than pastures. Investors have been able to purchase the grassland for \$300 an acre, but the going price for plowed cropland is \$500 per acre.

But as the prices continue to decline for beef and wheat while the costs of production spiral, many farmers find the market pressure too great to keep their land and snap up offers from out-of-state buyers.

Real estate agent Joe Hendricks helped a local farmer sell a 16,000-acre ranch to a group of investors from Canada and West Germany. The ranch is 15 miles east of Smith's property.

"The price of land here is relatively cheap, but if they get it plowed, it doubles in value, which makes it a great investment," he said. "Also, they like putting their money

into the United States — it's stable here and they know their investments will be safe."

If the worst predictions come true and the land is destroyed by high winds, federal programs would pay 80 percent of the costs of returning it to grassland, Miller said. Reseeding is a costly process, however, requiring up to 30 years of careful nurturing.

Hendricks acknowledged there was local opposition to the sale but said it was because "the local guys are just jealous — they want to keep their land and they can't afford it." He denied that loose topsoil was blowing onto neighboring fields.

DRY AS DUST. David Miller, district soil conservationist for the U.S. Soil Conservation Service, watches the topsoil sift through his fingers during a recent visit to one ranch plowed out by foreign investors. The huge gully behind Miller was washed out by a sudden rainstorm and is evidence of the ravages that erosion can bring to the high, arid plains of eastern Colorado. (AP Laserphoto)



Ideal
FOOD STORES

PRICES EFFECTIVE THRU
MARCH 24, 1982. QUANTITY
RIGHTS RESERVED.
Open Daily: 7 a.m. - 10 p.m.
Sunday: 9 a.m. - 9 p.m.

Just When You Thought It Was
IMPOSSIBLE

BUTCHER BLOCK BEEF
Boneless
Round Steaks
LB. **\$1.98**

RANDOM WEIGHTS
Fresh Frozen
Turkey Drumsticks
LB. **39¢**

BUTCHER BLOCK BEEF
Full Center Slices
Round Steaks
LB. **\$1.69**

BAR-S BRAND
Skinless
Meat Franks
12-OZ. PKG. **98¢**

BUTCHER BLOCK BEEF
Boneless Rump Roast..... **\$1.98**
YOUNG, TENDER, SLICED
Fresh Beef Liver..... **89¢**
RANDOM WEIGHTS —
Longhorn Cheese..... **\$2.29**

RANDOM WEIGHTS — SLICED
American Cheese..... **\$2.29**
GORTON'S
Fish Portions..... **\$3.29**
GORTON'S
Fish & Chips..... **\$1.69**

DEL MONTE
WHOLE KERNEL
OR CREAM STYLE
Golden Corn
17 OZ. CAN **39¢**
LIMIT 3

SALAD DRESSING
Miracle Whip
QT. JAR **\$1.18**
LIMIT 1

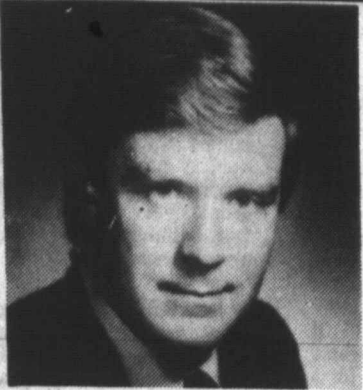
KRAFT
Macaroni
And Cheese
Dinner
7 1/2 OZ. PKG. **33¢**
LIMIT 4

FROZEN FOODS
Fried Chicken
MORTONS 2-LB. BOX **\$2.56** LIMIT 1
MEADOWDALE Orange Juice..... 12-OZ. CAN **83¢**
BIRDEYE Cool Whip..... 8-OZ. TUB **68¢**
STILWELL Breaded Okra..... 12-OZ. PKG. **65¢**

DAIRY FOODS
Kraft Singles
AMERICAN - OR - PIMENTO 12-OZ. PKG. **\$1.38**
KRAFT Cheez Whiz..... 16-OZ. JAR **\$1.99**
PARKAY — LIGHT SPREAD Margarine..... 2-LB. TUB **\$1.18**
MERICCO — WITH ICING Cinnamon Rolls..... 16-OZ. TUB **68¢**

FRESH PRODUCE...
Grapefruit RUBY RED
5 LB. BAG **99¢**
Oranges 3 LBS. **\$1**
Celery FRESH CRISP TENDER LB. **29¢**
Pineapple DELICIOUS RIPE LB. **89¢**

SHOP IDEAL...WHERE THERE'S MORE VALUE IN



LOSE WEIGHT! STOP SMOKING EASILY & PERMANENTLY

YOU'RE ONLY ONE TELEPHONE CALL AWAY FROM THE START OF A PROGRAM SO EASY AND EFFECTIVE IT HAS A MONEY BACK GUARANTEE.
If you want to lose weight quickly and permanently, or stop smoking without any anxiety or weight gain, then the Techniques for Living Clinical Hypnosis Program will make it easy for you. In just one short, comfortable session, you'll start to lose weight (or stop smoking) without any of those fad diets, pills, or weekly meetings you may have tried in the past. There's even a free take home tape program included.

WADE M. GENTHNER F.A.I.H.
Director of Techniques For Living, one of America's foremost authorities on hypnosis for weight loss and stopping smoking. He has appeared on the widely acclaimed CBS-TV network stations. In addition to lecturing on clinical hypnosis throughout the United States and in Canada, Mr. Genthner is a Fellow of the American Institute of Hypnosis and the author of "Hypnosis: Facts and Answers."

The Techniques For Living Seminar team is going to be in Pampa again Friday, March 19. This program works so well, we even give this money back guarantee. If during the first hour of the seminar, you don't feel it's for you, you can leave and receive a complete refund right there and then. Call now for free information on the program that's helped over 30,000 people. The next thin, proud person can be you.

CALL NOW FOR FREE INFORMATION 1-800-645-5454 (TOLL FREE)
Remember, you're just one phone call away from being the person you want to be!

SPECIAL
\$5.00 OFF PER CLIENT
LIMIT ONE CLIENT PER COUPON
CLIP AND SAVE

Environmentalist group seeks rule change in crop reduction

WASHINGTON (AP) — An environmentalist group has urged Agriculture Secretary John R. Block to seek changes in federal rules it says penalize some farmers who sign up in the government's crop-reduction program.
The Natural Resources Defense Council said Tuesday it asked Block in a letter to consider changing the rules to accommodate farmers whose cropland adjoins streams.
In an effort to curb production, the Agriculture Department has announced acreage-reduction programs for 1982 crops of wheat, feed grains, cotton and rice.
To be eligible for price

supports and related benefits, farmers must reduce 1982 acreages of those crops. Land taken from production must be devoted to approved conservation uses.
According to the letter — which was signed by council officials Tom Barlow and Kenton Hambrick — current regulations permit "shelterbelts, terraces, sod waterways and riparian filter strips" to be designated as being in conservation use.
The problem, says the council, involves the riparian strips — land adjacent to streams — which serve as filters to reduce erosion runoff and water pollution.
An example was provided

to illustrate the problem: Two farmers, A and B, have identical 100-acre corn fields bordering a stream.
In 1980 and 1981, when no acreage-reduction program was in effect, Farmer A chose to keep a 10-acre filter strip in grass to reduce siltation in the stream and help maintain the streambank. Farmer A, thusly, had 90 acres in corn.
Farmer B, during the same period, had no filter strip and chose to till the land to the stream edge. He had his full 100 acres of cropland in corn.
"In 1982, a 10 percent set-aside (reduction) is brought in for corn, requiring each farmer to set aside 10 of his cropped acres from

production," the letter said. "This set-aside must be devoted to conservation use, a requirement that we commend."
Under the regulations, however, Farmer A will not receive credit for his 10-acre filter strip he already had been maintaining on his 100-acre field, it said.
"But his non-conserving neighbor, Farmer B, may immediately establish a 10-acre filter strip and qualify" for acreage credit under the rules.
The council said that the problem is that "Farmer A must set aside an additional 10 acres to be in compliance" with the program, reducing his acreage to 80 acres to qualify.
"If Farmer A wishes to receive set-aside credit in the future for the 10 acres he had maintained as a filter strip, the only way he may do so under the new regulations is to plow the established filter strip and crop it in 1982, and at the same time set aside 10 acres from another portion of his field," the letter said.
Thus, in 1983, the farmer could re-establish the filter strip and juggle the other acres so he winds up with the proper credits and 90 acres of corn.

The environmentalists urged Block to consider changing the rules so a farmer can get credit for such uses of existing cropland in 1982 "regardless of whether he cropped them at any time in the past."
Or, they said, the rules could be changed so all farmers with land along streams would be required to maintain riparian filter strips as a condition of getting into the program.

WASHINGTON (AP) — Parrots shipped commercially from California must wear a leg band, according to a new regulation put into effect by the Agriculture Department.
The leg bands are being required to identify legitimate psittacines — parrots and their relatives — as part of a program to curb the spread of exotic Newcastle disease, a virus, which is deadly to birds, including poultry flocks.
John K. Atwell, deputy administrator of the department's Animal and Plant Health Inspection Service, said Tuesday that in addition to leg bands, the birds must be accompanied by a waybill, invoice or similar document signed by an agency inspector.

Parakeets, budgerigars, lovebirds and cockatiels are exempt from the new regulations "because they are bred domestically and have not been implicated" in any recent outbreak of the disease. Personally owned pet birds accompanied by their owners also are exempt.
Atwell said illegally imported birds have been implicated in nearly all recent outbreaks of exotic Newcastle disease.
"Identifying birds with leg bands will make it difficult to move smuggled birds in legitimate trade channels," he said.

The new regulations specify California shipments because "that state appears to be the principal channel for smuggled bird shipments to the United States," Atwell said.

Official tried for meetings law violation
GALVESTON, Texas (AP) — A county court jury took only 15 minutes Tuesday to find League City's mayor pro tem, accused of huddling with a city council member to draw up that town's budget, not guilty of violating the Texas Open Meetings Act.
Mayor Pro Tem A.C. Snow said he felt "damn good" about the verdict.
Jury foreman William G. Vickers said the panel made its ruling partially because members were not sure what papers Snow and council member Lloyd Wright were working on.
Larry Webb, city water and sewer superintendent, said he visited Snow and Wright, but could not tell whether they were working on the council's budget or the mayor's proposed budget.



IDEAL SHOWS YOU HOW

Butcher Block Beef
DO IT YOURSELF AND SAVE IN THE BAG MEATS

Boneless Top Sirloins.....1 LB.	WHOLE 8 to 10-LB. AVG.	\$2.29
Boneless Rib Eyes.....1 LB.	WHOLE 8 to 10-LB. AVG.	\$3.79
Boneless Sirloin Tips.....1 LB.	WHOLE 8 to 10-LB. AVG.	\$2.39
Bottom Rounds.....1 LB.	WHOLE 20 to 22-LB. AVG. BONELESS	\$1.89

SAVE ON YOUR TOTAL FOOD BILL

Brownie Mix 9-OZ. BOXES 398¢	Sweet Potatoes 10-OZ. CAN 69¢	Hunt's Manwich 15 1/2-OZ. CANS 89¢
Fabric Softener 96-OZ. SIZE \$3.78	Oreo Cookies 16-OZ. PKG. \$1.48	Hamburger Helper BOX 83¢

Crisco Oil
32 OZ. BTL.
\$1.53

Gold Medal Flour
5 LB. BAG
88¢
LIMIT 1

PORCELAIN
FINE CHINA
COMPLETERS
ON SALE THIS WEEK!

SOUP PLATE ONLY \$2.49 Reg. \$3.49	CREAMER ONLY \$4.99 Reg. \$5.99
---	--

Remember to purchase 99¢ Lay-Away certificates for your place setting service.

FROM GREEN MARKET STREET
Golden Ripe Bananas
LB. **29¢**
Yellow Squash 1/2 LB. **39¢**

CAMELOT
Chocolate Chips
12 OZ. PKG. **76¢**
ALL FLAVORS STEFFEN'S - THIN
Ice Milk \$1.09 GAL.
Steffen's Popsicles 12-PK. **\$1.08**

HEALTH and BEAUTY AIDS
Colgate Winter Gel Tooth Paste 6.4-OZ. TUBE **\$1.49**
FOR RELIEF OF HEADACHES
Tylenol Tablets 100-CT. **\$3.66**
MUSK, REG., OR LIME
Old Spice DEODORANT 2.5-OZ. TUBE **\$1.48**

STORE FOR YOU!... **Ideal** FOOD STORES

Tas-T-Bak Specials
OLD FASHION **Cinnamon Rolls** 1/2 DOZ. **\$2.29**
FRESH TEXAS **Toast** 1/2 DOZ. **99¢**
FRESH BANANA **Nut Loaf** 1/2 DOZ. **\$1.99**



MARC BOHAN of Christian Dior remembers Balenciaga, who shortened the silhouette, by updating the look in black and white glen plaid, crepe de chine blouse, muslin and lace scarf in yellow. Fedora hat by Dior.



LAST OF the classic couture era of the 1930s, Mme. Gres shows her mastery of cut in this slim evening gown topped with dramatic poncho, both in organza cloque of mauve and orange tones.

Updating the classics

Individualism among Paris designers

By Rosette Hargrove

PARIS (NEA) — With no trend bandwagon in sight, Paris couturiers have returned to the glory days between World Wars I and II, when the hallmark of a designer was individualism. As they say today, each one is doing his or her own thing, and that even includes hemlines, which at least did follow a trend in the past.

Yves St. Laurent, who debuted as a boy wonder in the last era of the couture giants, is celebrating his twentieth anniversary, perhaps that's the reason for his current emphasis on shape. Silhouette originality used to be the identifying mark of couture. St. Laurent is updating classics, such as the spencer jacket, with new details — the back is longer and fuller than the fitted front.

To soften his tailored shapes, he rounds collars, puffs up sleeves and loosens above-knee skirts. His hip-tied day dresses come in patchwork prints with big white oval collars. His evening shapes vary from a slim black satini gown to multi-tiered dotted chiffon revealing the knees.

Givency, who goes far enough back to have appren-

ticed to the last grand master of couture, Balenciaga, is celebrating his thirtieth anniversary, and his chemises recall Balenciaga's revolutionizing of fashion in the '50s with that shape. The new Givency chemises are gathered down the front on both sides of a placket closing, so they look draped but are still loose. At the knee-length hem the skirt

narrows, while the top, with its puffed elbow sleeves, widens out.

Givency also does tunic blouses, in leather jackets, in white painter's smocks with very full backs and in print tops with gathered shoulders. Skirts with the blouses swing with knife or box pleats. His puffed-shoulder dinner dresses and elegant organza ballgowns also recall Balenciaga.

Such members of the old-time couture as Mme. Gres, who leaped to fame in the '30s, when she was known as Alix, for making jersey a couture fabric, and Pierre Balmain, long known as dressmaker to royalty, uncrowned and crowned, keep to their individual ways. Mme. Gres offers her favorite capes, tunics and asymmetrically-cut dresses.

Harem pajamas and elegantly soft evening gowns end in a climax of those draped chiffons and silk jerseys that are her trademark.

Both Balmain and Gres prefer hems to cover the knee. Per Spook from Norway, and Hanae Mori, of Japan, are as individual as their origins. He likes geometric prints and mid-calf hems, while she creates spectacular Japanese floral prints and keeps her hems at the knee.

Still another individualist, Emanuel Ungaro, having hit the big time with unusual print combinations, is still at it. To his Oriental inspirations, he's now added fanciful 18th-century adaptations, all in those extraordinary print mixes only he knows how to do.

Dr. Lamb

Iron requirements differ in life phases

By Lawrence Lamb, M.D.

DEAR DR. LAMB — I read in your column that 10 mg of iron a day is a good amount. I am 68 years old and take one vitamin tablet a day that contains 18 mg in each tablet. The label says that is 100 percent of the U.S. RDA. Is it too much? Of course this amount is in addition to whatever I get from my food. I have stopped taking the pills and will wait until I hear from you.

DEAR READER — There is no fixed amount of iron for healthy people to take. The recommended daily dietary allowance (RDA) is a guideline for most normal healthy people.

There are four phases in life that can increase the iron requirements: infancy (milk — including mother's milk — contains little iron); during rapid growth as in adolescence; during pregnancy; and in women during

the reproductive years because of loss of blood with menstruation (which can be a highly variable amount).

The RDA for a menstruating woman is 18 mg and for other normal adult women and for men it is only 10 mg. Only about a 10th of iron you consume is absorbed. Absorption is highly variable. Some foods, including sources of bulk such as bran, may decrease iron absorption.

A normal adult can usually tolerate 25 to 75 mg of iron in the diet without deleterious effects. In a number of medical conditions, though, this would be hazardous. It could result in storage of iron in the liver such as occurs from too many blood transfusions.

Since there is iron in a number of foods we consume and from iron cookware, had I been asked I would have recommended to the vitamin companies that they limit the amount of iron

in vitamin tablets to no more than 10 mg. My alternative suggestion is that people who take iron this way should use a tablet that contains NO iron one day and the iron tablet the second day, averaging an intake of 9 mg a day, or find a preparation that only contains 10 mg of iron. Of course, if your doctor wants you to have more iron for a medical problem that is different.

I am sending you The Health Letter number 4-4, Iron and Anemia. Others who want this issue can send 75 cents with a long, stamped, self-addressed envelope for it to me, in care of this newspaper, P.O. Box 1551, Radio City Station, New York, NY 10019.

DEAR DR. LAMB — My husband has gotten into the habit of eating a bedtime snack right before retiring. The snacks range from a piece of fruit to a bowl of ice cream. He says it tides him

over until breakfast. I have heard that the calories consumed before bedtime will not be burned up and will contribute to weight gain. What is your opinion on this? Is anything eaten before sleeping beneficial?

DEAR READER — Calories are just like making a deposit in your checking account. It does not make any difference what time of day or week you deposit your calories. If the amount consumed is more than the amount used, the excess will be deposited as fat. The total calorie consumption is what counts. I am aware that this is a common misconception but it is just that, a misconception.

I am not enthusiastic about eating before bedtime because food in the stomach can leak back into the esophagus and cause indigestion in some people. However, if that doesn't happen and the snack helps a person sleep it is far better than a sleeping pill. But the total calorie intake for the entire day must be limited to avoid weight gain.

For spring, affordable gold jewelry

NEW YORK (NEA) — Gold prices have fallen way below the astronomical highs of the recent past, but gold is still a precious metal. So designers are working it in filigreed, cut-out, hollow and flattened styles to make it go further.

In chains, open links make a longer chain less expensive. Solid link chains are actually hollow, yet have a surprisingly weighty feel.

Texturing can also make less gold look like more, says the Jewelry Industry Council, such as basket-weave squared button earrings, or a pin carefully textured in leaf, stem and blossom to replicate a rose. Gold chains in herringbone

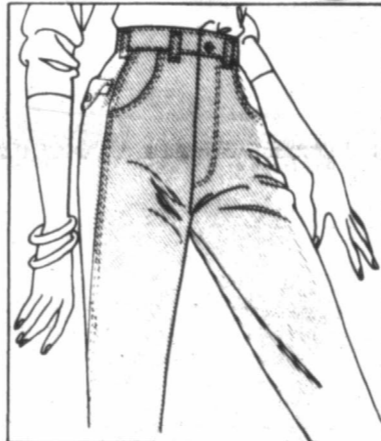
or feathered flat links look as interesting as heavier kinds.

Light gold designs look especially right for spring. A pin in schooner design features cutouts on hull and sails. Pins and earrings come in feather or wing motifs with cut-out making them look abstract. Cut-out work also lowers the price.

VOTE
MARY BRASWELL
Place 4 Pampa I.S.D.
Board of Trustees
Saturday, April 3
Absentee Voting March 15-30
Poll Ad Paid for by Mary Braswell 2701
Beach, Pampa, Tx 79065

Compare! Most of the items here are reduced 20% or more... just some of the over 175 cut prices and Special Values on sale this week at Wards!

wards sale



Save 50%
8.97 Reg. \$18
Misses' 100% cotton denim jeans. Trousers style and western look jeans in many styles. Decorative stitching on back pockets. Misses' 8 to 18.



10 pair 2.97 Special value
Sandalfoot knee highs have nylon and spandex tops so they won't sag. With run resistant toes. 100% nylon in beige, suntan. One size fits 8 1/2 to 11.



Save \$3
2 for \$8 Reg. 2 for \$11
Seamless bra won't show through your sleekest fitting clothes. Low cut front has lace trimming. Adjustable stretch straps. A cup (34 to 36). B. C. (34 to 38).



Save 3.58
2 for \$5 Reg. 2 for 8.58
Camisole top is trimmed with delicate beige lace. Polyester and cotton knit in white and pastel colors. Sizes S, M and L. Lingerie Department.



Save \$4 to \$5
7.97 Reg. \$12 to \$13
Girls' jeans in assorted styles with banded cuffs or straight legs. In bright colors, pastel colors and basic blue. Girls' regular and slim sizes 7 to 14.



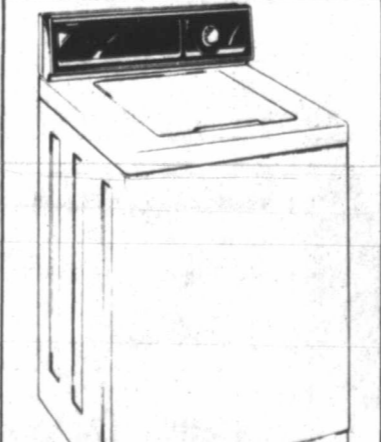
Save .32
.67 Pair, reg. .99
Men's crew socks in soft, 100% Orlon acrylic. The tops are ribbed to keep them from slipping or sagging. Dark or light colors to fit sizes 10 to 13.



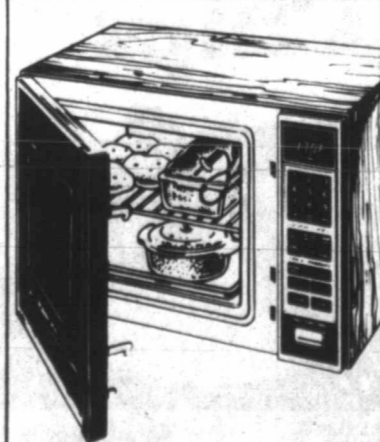
Save \$1
5.97 Reg. 6.99
Boys' denim jeans, at a great low price. Boot cut style in many light and dark colors. Polyester and cotton twill. Boys' regular and slim sizes 8 to 14.



Save \$40
229.97 Reg. 269.99
4 in 1 stereo system. AM, FM digital frequency reader. Cassette recorder, 8 track player, receiver, turntable, speakers and stand. Simulated wood. Model 6111.



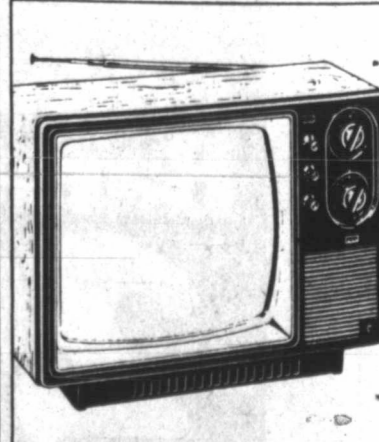
Save \$30
299.97 Reg. 329.99
4 cycle heavy duty washer with 2 speed motor and 3 temperature combinations for proper wash and rinse. For all washables including permanent press. Model 6202.



Save \$170
479.97 Reg. 649.99
1.5 cu. ft. Touch Control Microwave. 5 power levels and automatic 3 stage advance. With rack for cooking entire meal. 30 memories. Probe. Model 6272.



Save \$70
499.97 White Reg. 569.99
16 cu. ft. frostless refrigerator-freezer. Deep door shelf, adjustable refrigerator shelves. Meatkeeper, crispers. Model 1679. Colors available, reg. 579.99, sale 509.97.



Save \$20
99.97 Reg. 119.99
12" black and white TV operates AC or DC. Use at home or in vehicle using car cord (included). Comes with earphone. Recessed handle. 12" diagonal measure. Model 11780.



Ladies' Wrangler Spring Wear
Ladies', Juniors', Misses Sizes
Now Through March 20, 1982

10% OFF
WINTER MERCHANDISE
We still have a nice selection NOW at 1/2 PRICE

WAYNES WESTERN WEAR, INC.
Open Daily 9 a.m. to 6 p.m. Thursday to 8 p.m.
Wayne Strubling, Owner-Operator
1538 N. Hobart 665-2925

COME SEE WHY WE'RE NO. 1 IN GAS RANGES!

31AN-2W
Magic Chef
\$399.00 W.W.T.

...AND MOVING UP FAST IN ELECTRIC RANGES!

35BN-2CW
Magic Chef
\$399.00 W.W.T.

2008 N. Hobart "Service Since 1938"

Coronado Center 669-7401 Shop Daily 9-6, Thursday to 8



Advertised prices through Saturday March 20, 1982

Luxurious fabric Taming leather into high fashion

By Florence De Santis

NEW YORK (NEA) — Designer use of leather has been growing in recent years, and now that it's a luxury material, they've tamed its rugged personality into another high-fashion fabric.

John Anthony, perhaps king of the softly detailed look, thinks nothing of combining tan suede with linen and silk. You have to look closely at Ralph Lauren's pink flounced prairie skirt and old-fashioned shirt to see that they're suede. Of course, fashion suede is as thin and supple as any other material, not the kind that makes pile-lined winter jackets.

The new leathers simply melt into the separates trend. Their colors and draping could just as well be in cotton, silk, fine wool or linen. At Anne Klein, the slouchiest of drawstring-waist pullovers is in cognac suede over a linen skirt striped in cognac and gold. Carol Horn's orange suede chemise dress has double

capelet sleeves and ruffled detailing. Her sport ensemble in suede combines an orange ruffled jacket, fuchsia T-shirt and amber cropped pants.

Leather as fashion began some years ago, when it came mostly from firms specializing in it. Bonnie Cashin and Viola Sylbert were among the first design-

ers to become famous with their handling of leather. Samuel Robert was among the first to show leather evening gowns, and he is still one of the best fashion leather specialists.

His designer, Peter Hasi-Androu, uses white tissue suede for a side-closed blouson top and gathered knick-

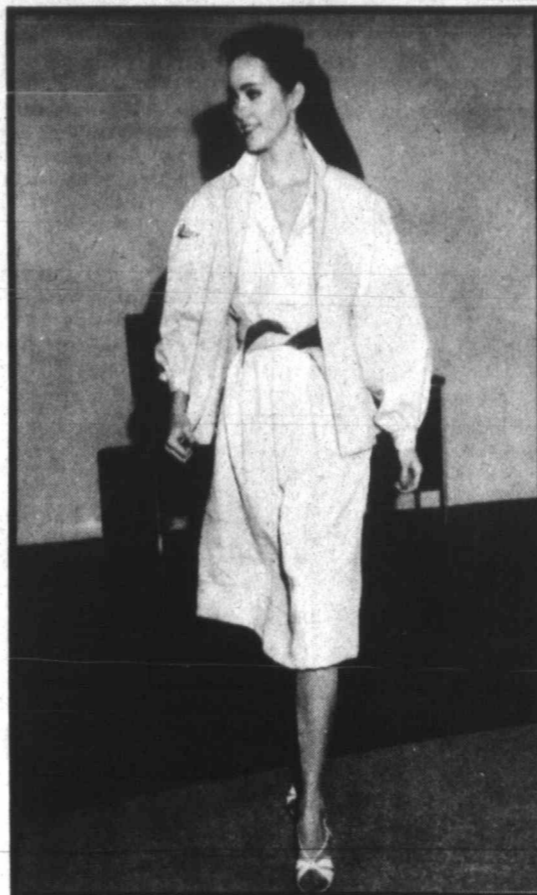
ers. He combines a white suede, side-draped pullover with a batik water-proof cotton raincoat and rain skirt.

The collection also includes more tailored styles than seen elsewhere, such as a squared jacket in python, hand-painted in subtle multi-color. It will go with anything in a wardrobe, because of the many tints, but Samuel Robert likes it with a tailored camisole and straight skirt in beige leather.

While many designers favor the new super-soft suede, Samuel Robert, as a leather specialist, likes the soft-polish of unsueded leather just as well. His spring collection includes separates in polished leather of red, white and Prussian blue. Detailing includes tuck stitching and appliques of snakeskin.

Ultrasuede, an expensive, washable fabric, has always been part of the fashion leather picture. A favorite

of Vera Maxwell, Halston and other high-fashion designers, it's also used at Samuel Robert. A puffed-shoulder jacket in lemon ice Ultrasuede tops a silk dirndl and blouse in lemon ice and blue graph lines on white. For a chocolate and blue plaid silk taffeta skirt and jacket blouse, an Ultrasuede cardigan comes in robins-egg blue.



SOFT FASHION trend is interpreted in Ultrasuede, the luxury leatherlike fabric. Designer Peter Hasi-Androu, for Samuel Robert, does a puffed-sleeve jacket in lemon ice Ultrasuede, for a white silk dirndl and blouse traced in graph lines of lemon and blue. (Photo by David Gould.)



'Reach to Recovery' a program designed by women, for women

"One of the most important services of the local unit of the American Cancer Society is the 'Reach to Recovery' program," said Shirley Woodridge, co-chairman of the program in Pampa.

Jane Gattis is co-chairman with Ms. Woodridge and both women are committed to extending the services of this committee to anyone in the area who might be in need of it.

The Reach to Recovery program is a rehabilitation program for women who have had breast surgery. Ms. Woodridge explained, "It is designed to help them meet their physical, psychological and cosmetic needs."

The program works through its volunteer visitors, a carefully selected and trained corps of volunteers who have successfully adjusted to their own surgery. Once the patient's physician has given permission, the volunteer makes a hospital visit a few days after surgery.

She brings a kit containing a manual of information about rehabilitative exercises, exercise equipment and a temporary breast form. When indicated by the physician, she will teach the exercises and provide reassuring literature for the patient's husband and teen-age children.

Ms. Woodridge stressed, "All information about the patient is kept in strict confidence. There is never any charge for Reach to Recovery services." Anyone wishing to learn more about the program are invited to contact either Ms. Woodridge at 5-8847 or Jane Gattis at 9-7583.

These volunteers will be conducting clinics at Coronado Community Hospital on Thursday of this week for all nurses.

Tailor your diet

The wrong diet If you're having trouble sticking to a diet, it may be because you've chosen a diet that's wrong for you. It may be that the diet emphasizes liquids and you crave solid foods; it has three meals a day and you're a nibbler; the vegetables are cooked when you prefer salads; or the seasonings in the recipes aren't to your taste. Shop around or ask your doctor to tailor a diet compatible with the way you like to eat — and you'll find it easier to follow the plan.



Whirlpool
HOME APPLIANCES

BONUS BUYS

LIMITED EDITION SPECIAL

NOW SAVE \$400

LIMITED EDITION SPECIAL

NOW SAVE \$300

Whirlpool Automatic Washer/Dryer
Models LA6900CK/LE6900ZK

Large capacity washer features 4 automatic cycles plus bleach and fabric softener dispensers. 3-cycle dryer features 3 drying temps, no-iron care for perm's press and knit setting.

Buy Now!

Save Now!

Buy Now!

Whirlpool
Making your world a little easier

BOWDEN'S TV'S AND APPLIANCES
Kenl Bowden, Owner
Whirlpool RCA BLITTON

2121 N. Hobart 666-3743

HOW TO WIN AT THE LOSING GAME

DIET CENTER

Here's a Sensible Weight-Loss Program That Really Works!


CALL 669-2351

Compare! Most of the items here are reduced **20% or more... just some** of the over 175 cut prices and Special Values on sale this week at Wards!

Wards sale

 <p>Save 60%</p> <p>10 for .97 Reg 10 for 2.50 Plastic hangers of smooth and sturdy polypropylene are good for hanging wet garments. White, yellow, chocolate, almond, red. Colors may vary by store.</p>	 <p>Save 33%</p> <p>1.97 Each, reg. 2.29 24x44" bath towel has 100% cotton loops for absorbency. In white, brown or blue. 15x25" hand towel, reg. 1.69... sale 1.49. 12x12" wash cloth, reg. 1.29... sale 1.09.</p>	 <p>Save 33%</p> <p>2.97 Reg. 4.49 Parson's table is sturdy plastic, can be used indoors or out. 14" high. It makes a good plant stand or end table. White, brown or yellow. Easy assembly.</p>	 <p>Save 33%</p> <p>7.97 Each, reg. 9.99 1200 watt pro or turbo dryers. Pro dryer has 2 heat settings. Turbo has folding handle for convenient storage. Reinforced cords and high impact plastic housing.</p>
 <p>1/2 price</p> <p>9.95 Each, reg. 19.95 Men's and women's LCD watches have constant hour, minutes display. Push button for seconds, month and day. Gold tone case, interlocked link band.</p>	 <p>Save 34%</p> <p>1.97 Reg. 2.99 4 pounds of detergent. Concentrated so you need only 1/2 cup per wash load. Use with hot, warm or cold water for all washables. Softens wash water, too.</p>	 <p>1/2 price!</p> <p>9.97 Reg. 19.99 Cushioned toilet seat with button tufted cover. Thick foam padding covered with easy to clean vinyl. In white, almond, blue or brown. Fits standard toilets.</p>	 <p>Save 30%</p> <p>.97 Reg. 1.39 22x34" woven scatter rug is practical for kitchen, bathroom or as a door mat. It's made from hundreds of multi color fabric strips and is machine washable.</p>
 <p>Save 29%</p> <p>1.97 Reg. 2.79 Uno card game is fast moving fun for 2 to 10 players. It's designed for players age 7 to adult, so the whole family can play. Deck of 108 cards.</p>	 <p>Save 44%</p> <p>\$1 14 ounces, reg. 1.79 Concentrated windshield washer fluid by DuPont mixes with water to make 14 quarts. It won't freeze so you can use it all year. Unbreakable plastic bottle.</p>	 <p>Save \$2 to \$3</p> <p>6.97 Each, reg. 8.99 and 9.99 12" planters with matching, removable saucers that hold excess water and help prevent over watering. Durable plastic comes in assorted colors. 10 1/2" high.</p>	 <p>1/2 price!</p> <p>5.97 Reg. 12.99 APF pocket calculator. Small enough to fit inside shirt pockets. 8 digit display is easy to read. 4 key memory. Shuts off automatically. Batteries, case included.</p>

stevenson's

FREE BASEBALL JERSEY

white body with pastel or bright color sleeves... a

\$6 Value FREE

... WITH EVERY PURCHASE OF ANY REGULAR PRICE JUNIOR PANTS

- 5-pocket western jeans
- fashion pocket jeans
- trousers and modified baggies
- cotton sheeting, twills, drills & workwear pants
- All priced \$18 to \$32

LIMITED TIME ONLY!

Pampa Mall Open 10-9 Monday-Saturday 666-0124

Coronado Center 669-7401
Open 9:30 a.m. to 6 p.m. Daily
Thursday to 8 p.m.



Advertised prices through Saturday March 20, 1982

Sensational savy with scarves

Spare, lean, architectural - the pure shape of fashion for spring. Echo's oblongs, squares and bias ties in silk and cotton work as neck and hair bows, obi sashing, neckerchiefs and ascots. The patterns are classically nautical - stripes and dots geometrically interpreted for the sophisticated sailor or spectator. The colors: white and bright, with major accents of navy, red and black. Echo scarves are the essential accessories for this directional trend.

The solid silk crepe bias tie from Echo, top, is worn casually with slimmer, body-conscious clothes. The scarf's ribbon border trim adds texture interest. The scarf is 6" x 48" made of pure silk crepe with a solid color bias tie with simulated ribbon trim border.

Echo's silk crepe oblong in black and white stripes, bottom left, wraps and bows at the neck for a boldly crisp fashion accent. This scarf is 12" x 48" and made of pure silk crepe with horizontal stripes.

Echo contrasts black and white, bottom right, in two oblong scarves of stripes and dots. The prints, in pure silk, complement the architectural look of fashion-forward clothes this spring. This fashion scarf is 12" x 48" and made of pure silk crepe in a print design with a vertical stripe and dot pattern.

All of the scarves shown are available at Colberts and Suzanne's, both of Amarillo.



Sew up a scarf

Shawls and oversized scarves are great fashion accessories - and they're easy to make, says Ann Vanderpoorten, a clothing specialist.

To give your wardrobe "fashion flair," select several different fabrics and make your own, she suggests.

Vanderpoorten, on the home economics staff of the Texas Agricultural Extension Service, The Texas A & M University System, says choose fabrics that look the same on both the right and wrong sides.

"This allows your shawl to fold or loop any way you want to wear it."



Dear Abby

Keep the faith to avoid heartbreak

By Abigail Van Buren

© 1982 by Universal Press Syndicate

DEAR ABBY: I am a very upset and frustrated 15-year-old girl. My parents have forbidden me to date boys of a different religion, but I have been doing it on the sneak and this bothers me.

I can understand their objections and have no intentions of marrying out of my faith, but I am not considering marriage now.

My parents and I have had some very heated arguments over this. Dating at 15 and marriage are two different things, but my parents can't see it that way.

I am proud of my heritage, and when it's time to look for a husband, I will restrict my dating to men of my own faith. In the meantime, I can't see the harm in dating others.

I hate sneaking around, but what am I to do?
15 IN SHAKER HEIGHTS

DEAR 15: If you have no intentions of marrying out of your faith, you will avoid a lot of possible heartaches by dating only boys you may one day marry. The heart doesn't care what the head is thinking.

DEAR ABBY: Three of us girls from the office decided to go to a club that features male strippers. I told my boyfriend I was going and he didn't want me to go, but he wouldn't give me a reason.

I went anyway just to see what it was like, and I enjoyed it. I didn't get "turned on" like some of the women in the audience appeared to be. I thought it was funny. The audience was more fun to watch than the male strippers.

One of the girls who went with us is married, and she said her husband would not approve of her going to see men strip, so she didn't tell him. The other girl is engaged, and she said her fiance thought it was disgusting.

Now we're asking you, Abby. Why would a man get upset

because his wife or girlfriend wanted to see a male stripper?
NORA

DEAR NORA: Probably for the same reason some women get upset because their husbands or boyfriends want to see female strippers. They feel that comparisons will be made and they won't measure up.

DEAR ABBY: The letter from the woman who lamented that her guests never used her pretty little guest towels, preferring instead to dry their hands on the rug or whatever was handy, brought back memories.

When my wife was living, we didn't entertain much. But when we did, my wife always had the bathroom spotlessly clean, and she laid out her fancy guest towels. Of course, my son and I were admonished not to use them - they were for the guests. However, none of the guests used them either.

Finally, after one party, my wife mentioned that nobody used her guest towels and she seemed hurt about it. The next time we entertained, I went into the bathroom and dried my hands on not one, but two guest towels, and just to make sure they looked "used," I wadded them up and left them in plain view. Sure enough, one or two guests followed my example!

The morning after the party, my wife and I were discussing what a good time we had, and she said, "And this time they used the guest towels!"

After that, I always did the same thing, and it worked like magic. I never did tell my wife my secret, bless her heart.
SNEAKY IN INDIANA

Do you have questions about sex, love, drugs and the pain of growing up? Get Abby's new booklet: "What Every Teen-Ager Ought to Know." Send \$2 and a long, stamped (37 cents), self-addressed envelope to: Abby, Teen Booklet, P.O. Box 38923, Hollywood, Calif. 90038.

Get ready for spring beauty tips

Tummy tighten

Here's an easy stomach-slimming exercise. Lie on your back on the floor, with knees bent, feet flat and hands resting on your thighs. Raising your head and shoulders slightly, slowly slide your hands along your thighs to your knees, pulling in your abdominal muscles. (Don't sit up.) Then slowly slide your hands down your thighs as you lie back down on the floor.

Powder them lightly before applying shadow. Or use a special eyelid foundation base. Apply shadow with a light hand, using a brush or sponge-tipped applicator for smoothest, sheerest results. Blend all color lines, then set with a fine dusting of face powder or pink powder blusher.

Mint mask

If your complexion is oily or prone to breakouts, try this astringent mask you can make at home. Add enough cold, strong mint tea to one fresh baker's yeast cake to make a creamy, spreadable mixture. Apply to your fresh-

ly washed face, avoiding the delicate eye area. Leave on 15 minutes, then remove with warm water. This mask is very drying, so you probably won't want to use it more than twice a week.

Dieting with friends

Do you feel you can't stick to your diet when dining at someone else's house because you're afraid of hurting the hostess's feelings? You should let her in on your dieting secret. Women always understand other women's weight-watching; if you tell her, she won't offer unwanted food to you. If you have a few friends who are weight conscious,

form a diet group. You can exchange low-cal recipes and have diet lunches, proving

sensible eating can be fun.

Touch of spring

To revise your winter wardrobe, add a few early touches of spring. A lacy sweater in a pastel shade of peach, yellow or pink will look lovely now and later. A bright cotton blouse can be worn under jackets or sweaters for now. Add one big, sporty accessory, such as a printed scarf, chunky wooden beads, wide bangle or large button earrings in pastel or vivid shades.

Only At Sherwin-Williams Stores

\$7 Off Gal.
On Classic 99[®] and A-100[®] Paint

All Stores Celebrating Our New Stores in **☆Lufkin ☆Baton Rouge ☆Dallas**



Classic 99[®] Flat Latex Wall Paint
• 707 Stylish Colors
Reg. \$16.99 gal. **9⁹⁹** gal.

A-100[®] Flat Latex House Paint
• 280 Durable Colors
Reg. \$17.99 gal. **10⁹⁹** gal.

A-100[®] Latex Stain and Finish
• Weather Resistant
Reg. \$14.99 gal. **9⁹⁹** gal.

All Paints Shown Offer One Coat Coverage, Applied As Directed. Satisfaction Guaranteed in the use of these coatings of your purchase price will be refunded.

Wallcovering Annual Sale **10-50%** Off Reg. Price A Roll NOW GOING ON
On All Books and In-Stock Patterns (In Stock not available at all stores) Wallpaper Sale ends March 28

28-31% Off
Interior Oil Stain Reg. \$6.99 **4⁹⁹** qt.
Exterior Varnish Reg. \$6.99 **5⁹⁹** qt.

SUPER BUY OF THE MONTH
Furniture Refinisher Save **\$4⁰⁰** Quart

Save **34% Off**
Formby's High Gloss or Low Gloss Tung Oil Finish YOUR CHOICE 8 oz. Reg. \$3.79 each **2⁴⁹** each

41% Off
Six Pack of Latex Caulk Reg. \$2.29 each Separate Price \$34 **7⁹⁹** 6 Pack

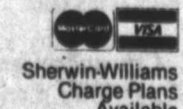
Formby's Refinisher Strip Finish Without Scraping or Sanding Reg. \$11.99 Quart **7⁹⁹** Quart

Save **33-42% Off Reg. Price**
Entire Line of White Bristle Stain & Varnish Brushes • Available in Sizes 1 in. to 4 in.

Sale ends March 27 unless otherwise noted



PAMPA
2109 N. Hobart
665-5727



c'mon home to Country Basket



Sizzling chicken-fried meat strips, golden fries, Texas toast and creamy country gravy. Come 'n get it at a special sale price!

Dairy Queen

This Monday March 15 thru Sunday March 21 only.

SALE \$1.69
Only at participating stores.

© 1982 The D.O. Council. All Rights Reserved. TM Trademarks of the D.O. Council. * An D.O. Corp.

Questions
With Great
Answers From Furr's

Special Features

Festival de Comida Mexicana ¿Porqué debemos hacer publicidad en español?*

Toda esta semana!

¡Sus amigos del supermercado Furr's están celebrando un festival extra especial de comida mexicana!

Obtenga sus comidas favoritas, originarias de nuestros vecinos al sur de la frontera, con sus amigos del supermercado Furr's de su vecindario.

¡Comestibles sabrosos y picantes... a precios refrescantes!

"Otro estreno de Furr's."



***FOR ALL YOU GRINGOS:**

Furr's Mexican Food Festival

Why shouldn't we advertise in Spanish?

All this week your friendly Furr's Supermarket is having an extra special Mexican food festival. Get your favorite foods from our neighbors south of the border at your neighborhood Furr's Supermarket.

Pretty hot stuff...

at prices to cool you off.

Another Furr's first.

Lentils

Food Club
1-Lb. Bag

38c

Taco Seasoning

Schilling
1 1/4-Oz. Size

39c

UPERSALE

Nachips **78c**

Old El Paso
7 1/2-Oz. Pkg

UPERSALE

Lard **\$1.48**

Morrell
4-Lb. Carton

UPERSALE

Pinto Beans **98c**

Food Club
4-Lb. Bag

UPERSALE

Flour **58c**

Light Crust
5-Lb. Bag

Refried Beans

Gebhardt's

16-Oz. Can

4 \$1 For

Green Chillies

Old El Paso
Chopped
7-Oz.

68c

Enchilada Sauce

Old El Paso

10-Oz. Size

58c

Taco Sauce

Old El Paso

7 1/2-Oz. Size

58c

Hominy

Bush's White
Or Golden

4 14 1/2-Oz. Cans For \$1

Sour Cream

Borden's

16-Oz. 88c

Picante Sauce

Pace's, Hot
Or Medium

8-Oz.

69c

Taco Shells

Old El Paso

4 1/2-Oz.
12-Count

79c



A Furr's First

...real neighborly.

Today's Crossword Puzzle

- ACROSS**
- 1 Talking bird
 - 5 Genetic material
 - 6 Hyssop
 - 12 Madame (cont.)
 - 13 Actress
 - 14 Organ stop
 - 15 Jane Austen title
 - 16 Ate prey
 - 17 Mona painting
 - 18 Stupely
 - 19 Ship part
 - 20 Poplar
 - 21 Zips
 - 22 Mucky
 - 23 Sooner state (abbr.)
 - 24 Person's manner
 - 25 Raw materials
 - 26 Inner (pref.)
 - 27 Container
 - 28 In motion
 - 29 Fissure
 - 30 Capture
 - 31 Unearthly
 - 32 Burden
 - 33 Labor group
- DOWN**
- 1 Madame (abbr.)
 - 2 Metric foot
 - 3 Identify
 - 4 Love (Lat.)
 - 5 Boats
 - 6 Compass point
 - 7 One of the Twelve
 - 8 Shaping form
 - 9 In the same place (abbr.)
 - 10 Snout
 - 11 Wrench
 - 12 Western-hemisphere organization (abbr.)
 - 21 Actress
 - 22 Merkel
 - 23 Afterthought (abbr.)
 - 24 Collection of animals
 - 25 Vegetable
 - 26 Cheers (Sp.)
 - 27 Chicken feed
 - 28 Mesdames (abbr.)
 - 30 Half a quart
 - 31 Abominable snowman
 - 34 And not
 - 38 300, Roman
 - 39 Base
 - 40 Compass point
 - 41 Broke bread
 - 43 Skins
 - 44 Cement
 - 45 Containers
 - 46 Cross
 - 47 Month (Fr.)
 - 48 Snakes
 - 49 City in Italy
 - 50 Opera prince
 - 51 Songstress Logan
 - 54 Fish
 - 55 Base
 - 56 Building wing

1	2	3	4	5	6	7	8	9	10	11
12				13					14	
15				16					17	
18				19			20	21		
				22						
24	25	26	27		28		29	30	31	
32							33			34
35							36			
				37			38	39	40	41
				42			43			
44	45	46	47		48		49	50	51	
52				53	54		55			56
57				58			59			
60				61			62			

Astro-Graph by bernice bede osol

This coming year you will be making many new friends from all walks of life. Interestingly, the little guy will prove as helpful to you as the big guys.

PISCES (Feb. 20-March 20) Even though you may be eager to involve an influential friend in your present plans, today is not the best day to make your presentation. Find out more of what lies ahead for you in each of the seasons following your birthday by sending for your copy of Astro-Graph. Mail \$1 for each to Astro-Graph, Box 489, Radio City Station, N.Y. 10019. Be sure to specify birth date.

ARIES (March 21-April 19) Joint ventures should prove more fortunate for you today than things you tackle single-handed. However, be sure to share the acclaim and rewards.

TAURUS (April 20-May 20) Your ideas and plans for doing things today will be good, but you may not execute them in accordance with your blueprints, and thus may fall short.

GEMINI (May 21-June 20) In matters that pertain to your career and finances, keep trippities out of the picture today. Fun and games could cause problems.

CANCER (June 21-July 22) People outside of the home will find you amicable and agreeable today. Try to maintain that same warm touch when dealing with family members.

LEO (July 23-Aug. 22) Things should go rather smoothly today because others will be there to help you over the rough spots, yet you may not give them proper recognition.

VIRGO (Aug. 23-Sept. 22) Lady Luck will back you up today in situations where you use good judgment. She may pretend she doesn't know you, however, if you take wild risks.

LIBRA (Sept. 23-Oct. 23) Materially this should be a beneficial day. You're endowed with the golden touch. Should you reap a lucky harvest, don't keep it all for yourself.

SCORPIO (Oct. 24-Nov. 22) Unless you can speak well of others today, it's best to say nothing at all, even though you might know something about another of whom you're not overly fond.

SAGITTARIUS (Nov. 23-Dec. 21) Your logic and hunches regarding ways to add to your means should be accurate today. You'd be wise to heed them instead of gambling on a friend's advice.

CAPRICORN (Dec. 22-Jan. 19) Things will work out more successfully today if you try to build good will with those with whom you're involved. Pushing and shoving to get your way won't work.

AQUARIUS (Jan. 20-Feb. 19) Keep a low profile today in matters relating to your career or finances. If you begin to make waves you could do yourself more harm than good.

BUGS BUNNY



by Warner Bros.



KIT N' CARLYLE

By Larry Wright



THE WIZARD OF ID

By Brant Parker and Johnny Hart



OUR BOARDING HOUSE

By Frank Hill



EEK & MEEK

By Howie Schneider



MARMADUKE

By Brad Anderson



B C

By Johnny Hart



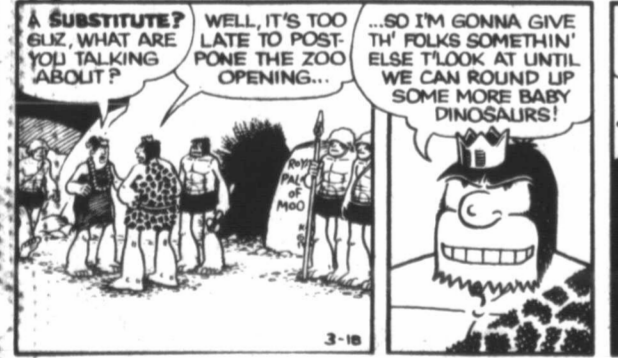
PRISCILLA POP

By Al Vermeer



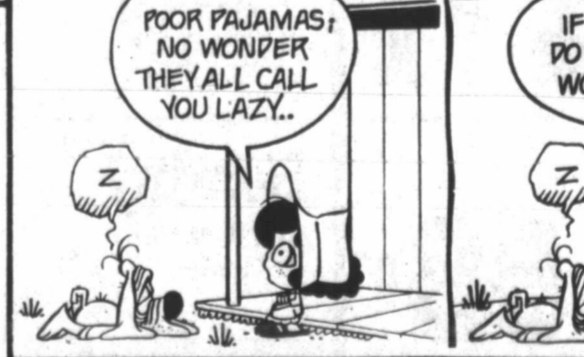
ALLEY OOP

By Dave Graue



TUMBLEWEEDS

By T.K. Ryan



THE BORN LOSER

By Art Sansom



FRANK AND ERNEST

By Bob Thaves



PEANUTS

By Charles M. Schultz



GARFIELD

By Jim Davis



Market price of homes decreasing

NEW YORK (AP) — Has the market price of your home plunged? In the opinion of some investment advisers it has. And if you haven't lost your shirt, in the opinion of a few authors it won't be long now.

Opinions, however, don't seem to count very much in the marketplace. Dollars do, and the median sale price of existing single-family homes rose last year to \$66,800 from \$64,500 a year earlier.

Discounting for roughly 8.5 percent inflation, the median house lost about \$3,400 last year, dropping the value to an inflation-adjusted \$61,100 — hardly a plunge that leaves your back bare.

If you compare that performance with some mutual funds or blue chip stocks it doesn't sound bad. Double-digit declines speckled the stock list. The Dow Jones industrial average lost more than 9 percent, or about 4 points more than the price decline in single-family homes.

Neither stockholder nor homeowner lost a real red cent if they didn't sell. And some of those who sold may have made lots of money.

To say that an object's price has plunged when it was bought at \$5, rose to \$10 and then fell back to \$8 or \$9 seems to be an exaggeration. But in much larger dollar signs, that describes the experience of many homeowners and stockholders forced to sell during the past year.

There's the future, say those who predict a collapse of home prices.

One theory is that continued high interest rates will keep monthly carrying charges beyond the

capability of the mass market. Demand will be so reduced that little support for prices will remain.

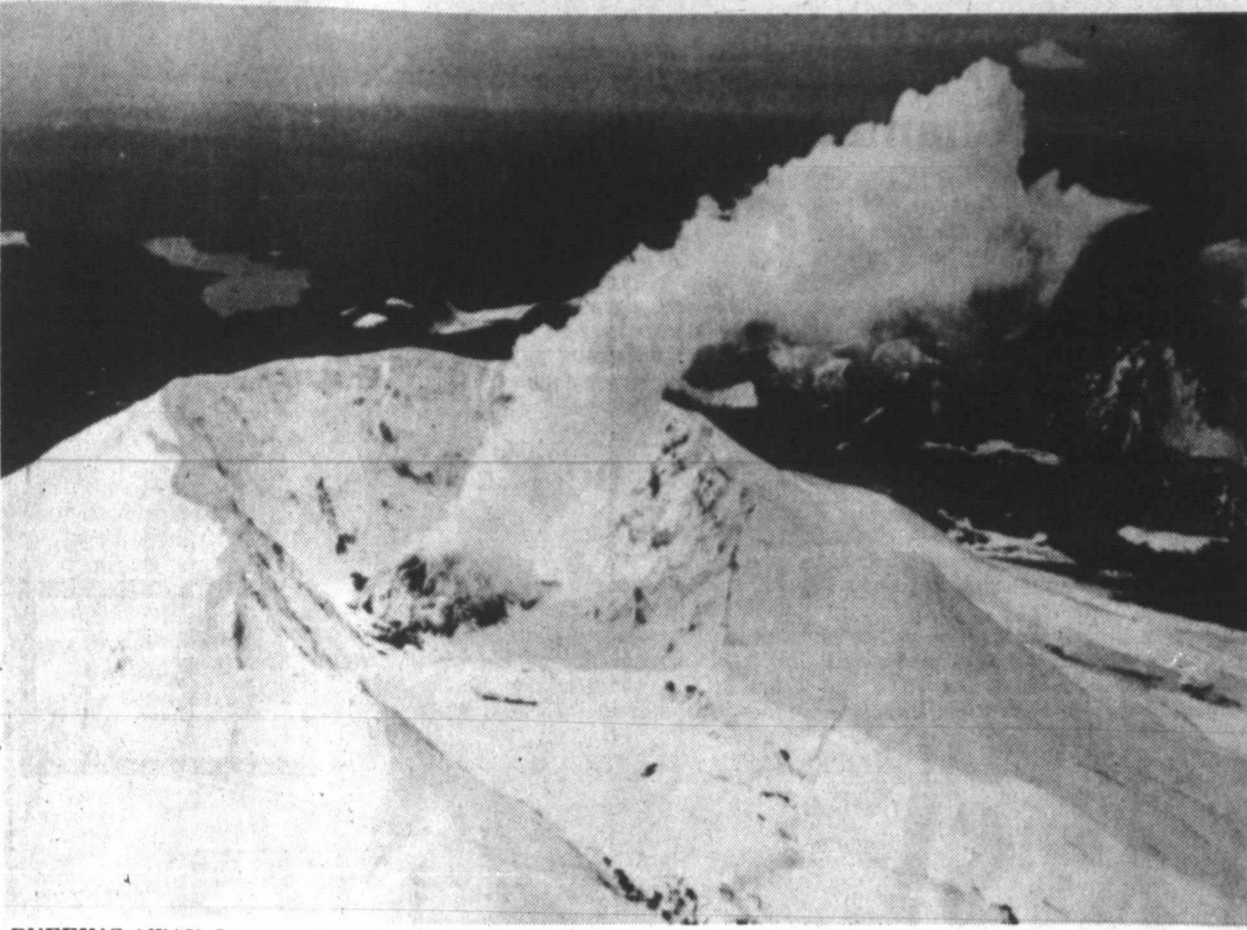
The theory can be made believable under conditions existing today when, by various estimates, about 85

percent of Americans have been forced from the market. But if such conditions continue, housing might not be alone in its plunge. The economy might plunge too.

The demographics also must be considered. In the

decade of the 1980s more Americans will reach

homebuying age, 25 to 34 years, than in any other decade. Meeting this demand would seem to call for a surge in construction.



PUFFING AWAY. Steam drifts up from the lava dome in the crater of Mount St. Helens on Tuesday. After visiting the crater floor on Monday, scientists reported an

increased rate of swelling of the floor and lava dome. Because of this, scientists say that a mild eruption of the volcano could begin at any time.

(AP Laserphoto)

Waiter travels with president

WASHINGTON (AP) — When President Reagan visited the Senate for lunch with Republicans, his Senate bean soup, fruit salad, and vanilla ice cream was served by Eddie Serrano, wearing a green and gold Senate waiter's jacket.

When Reagan attended a barbecue at a neighbor's ranch near Santa Barbara, Calif., two days earlier, there was steward Serrano, in a cowboy hat. A week earlier, he was attired in a waiter's jacket bearing the emblem of the Mayflower Hotel in Washington while Reagan dined at a banquet of conservative organizations there.

Serrano is the assistant White House food service coordinator.

"We don't cart our food all over the country" for the president, said assistant White House press secretary Mark Weinberg. But Serrano does travel with Reagan to help supervise the preparation of the president's food and then to serve it.

Serrano's presence, and White House supervision of the preparation of the food, is an element in the security program at the White House.

Serrano and others "are there to make sure the food is all right to be given to the president in all aspects," Weinberg said.

So, they travel wherever the president goes, donning the uniform of the day to blend in, and then dishing out his meals.

At the Senate, Sen. John Tower, R-Texas, cracked that the \$5 fee for the weekly GOP senators' luncheon would be waived in the president's case "since I'm informed the Secret Service prepared the president's lunch."

The drama of life, death and renewal continues at the White House.

Once again, mourning doves are building their nests on the White House grounds, as they have in years past.

As Reagan and Francois Mitterrand, the president of France, conferred in the Oval Office last week, a mourning dove was spied several yards away on a covered path outside of the Cabinet Room, tugging at a twig that was to be part of a nearby nest.

And in the front yard, workers were preparing to plant a seedling American Elm tree to replace a once-beautiful giant that they had felled a week before. For about 100 years it had occupied a corner plot near the northwest gate of the White House.

Discover **hollywood** it works a big way anywhere!

PAMPA MALL

Scoop of the WEEK!

Fri-Sat Only

Designer Leather **BLAZERS** (Daniel Phillippe)

\$129⁴² reg. \$200.00

Colors: Taupe, Gray, Beige, Onion. Sizes: 8-20.

SPRING SUITS

\$44³³ reg. \$75.00

Flax, Linen look, poplin. Sizes: 6-16. Colors: Navy, White, Beige and Flax.

the **HOLLYWOOD** Pampa Mall. HOURS: 10-9 Mon-Sat.

Charges: Visa, Master Card, American Express, Hollywood Charge

Handy HAMMER HOME IMPROVEMENT CENTER

822 East Foster

Call Us At 665-7159

Open Daily 9-6; Sunday 1-6

Prices Good Thru Wednesday March 24, 1982

<p style="text-align: center;">Alpine Gem</p> <p style="text-align: center;">White Rock</p> <p>50 Lb. Bag Reg. \$2.89 \$2²⁹</p>	<p style="text-align: center;">Neptune</p> <p style="text-align: center;">Garbage Disposer</p> <p>No. 300 1/3 h.p. motor Reg. \$46.99 .. \$36⁹⁹</p>	<p style="text-align: center;">Deluxe White</p> <p style="text-align: center;">Closet Set</p> <p>Less Seat Reg. \$98.99 \$69⁹⁹</p>
<p style="text-align: center;">Acrylic</p> <p style="text-align: center;">Deluxe Bathtub</p> <p>Right or Left Hand White, Blue, Creme and Gold Reg. \$211.99 \$149⁹⁹</p>	<p style="text-align: center;">Carfree. ALL STAR</p> <p style="text-align: center;">WASHER-TYPE LAVATORY FAUCET</p> <ul style="list-style-type: none"> ● 4" center to center ● Water-saving aerator ● 1/2" I.P.S. male shanks ● Renewable seals ● Acrylic handles ● No. R-32-41-8 ● Reg. \$15.99 <p style="text-align: right;">\$11⁹⁹</p>	<p style="text-align: center;">RANGE HOODS</p> <p>Miami-Carey Duct Free 30 and 36 inch Reg. \$38.99</p> <p style="text-align: right;">\$29⁹⁹</p>
<p style="text-align: center;">Miami-Carey—"A Fan for All Seasons"</p> <p style="text-align: center;">Ceiling Fans</p> <p>President 52" Ambassador 52" Statesman 48"</p> <p style="text-align: center;">35% OFF Reg. Price</p> <p style="text-align: center;">In Stock Only</p>	<p style="text-align: center;">Renew Walls with Handy, Low Cost</p> <p style="text-align: center;">Paneling</p> <p>by Somerville Cumberland Reg. \$8.99</p> <p style="text-align: center;">\$6⁹⁹</p> <p style="text-align: center;">Look Here!</p>	<p style="text-align: center;">Gering 3-Tube</p> <p style="text-align: center;">Sprinkler</p> <p>Sprinkles Like A soft rain 50 foot No. GSK50 Reg. \$5.59</p> <p style="text-align: right;">\$3⁴⁹</p>
<p style="text-align: center;">Stanley Wide Angle</p> <p style="text-align: center;">Door Viewer</p> <p>Look Out Guard No. OD 4638 Reg. \$2.89</p> <p style="text-align: center;">\$1⁷⁹</p>	<p style="text-align: center;">Stan Can 2 1/2 U.S. Gallon</p> <p style="text-align: center;">Gasoline Can</p> <p>Reg. \$8.30 \$4⁷⁹</p> <p>Steel, rust resistant with double-coated bottom. Reversible flex metal spout, flip vent handle with plastic grip, red, yellow and chrome. Filter screen.</p>	<p style="text-align: center;">100% Vinyl 2 Ply</p> <p style="text-align: center;">Garden Hose</p> <p>5/8 inch Diameter 50 Foot No. G 5850 Reg. \$5.99</p> <p style="text-align: center;">\$3⁹⁹</p> <p>Gering's guarantee of quality</p>

Pampa bowling roundup

CAPROCK
1. Rudy's Automotive; 2. Oden and Son; High Series-Forrest Cole 623; High Game-Jim Eakin 256.

FRIDAY MISFITS
1. Gray's Flying Service; 2. H. & A. Rental; High Series-Penny Pinley 486; Carolyn Hoskins 177.

HARVESTER COUPLES
1. Dr. Pepper; 2. Barnes Home Supply; High Series-Raleigh Rowland 552 and Beverly Mein 547; High Game-Richard Shay 205 and Marie Martin 213.

MIDNIGHT SPECIAL
1. Davis Electric; 2. Kim Petroleum; High Series-Ernie Byars 563 and Jernell Sanders 532; High Game-Leon Harris and Larry Mayo 213; Jernell Sanders 234.

BANTAM KIDS
1. The Champs; 2. (tie) Super Bowlers and Killer Bees; High Series-Troy Patterson 339 and Kristi Roe 384; High Game-Billie Wortham 148 and Kristi Roe 175.

CELANESE MIXED
1. Team One; High Series-Roy Ford 533 and Joyce Epperson 551; High Game-Jack Davis 207 and Joyce Epperson 202.

PETROLEUM MEN
1. Dorchester; 2. C & H Tank Truck and Keel Construction (tie); High Series-David Wortham 579; High Game-Rodney Story 233.

MONDAY NITE MEN'S QUARTET
1. Maxim IV; 2. Omni International; High Series-T.R. Dugger 544; High Game-Jack Barnes 203.

PETROLEUM INDUSTRIAL
1. Pupco Four; 2. J Bob's; High Series-Joy Maule 525; High Game-Terri Miller 191.

HARVESTER WOMEN
1. Don Knutson Masonry; 2. Keyes Medical Chest; High Series-Carolyn Hoskins 531; High Game-Jean Dietrich 213.

HITS AND MRS.

More coaches to be interviewed today

Two more candidates for the Pampa High head football coaches' position are scheduled to be interviewed today by the Pampa School Board.

Pampa High assistant coach George Harper and Liberal, Kans. High head coach John Kendall will meet with board members at 4:30 p.m. at Pampa Independent School District headquarters, 321 North Albert.

Clyde Noonkester, Freer High head coach, and Andy Robertson, assistant coach at Fort Hays State University in Kansas, were interviewed earlier this month.

"Hopefully, we'll have a head coach no later than Monday, but a decision could be reached today," said recently-appointed Pampa High Athletic Director Bill Balcom.

The new coach will succeed Larry Gilbert, whose coaching contract was not renewed by the school board. Gilbert had been the Harvesters' head coach the past two years.

Nichols, Richardson honored by Amarillo Chamber of Commerce

Harvester head coach Garland Nichols and former Pampa High cager Kellye Richardson were among the basketball honorees recognized during the Amarillo Chamber of Commerce awards luncheon Wednesday noon at the Villa Inn.

Nichols led the Harvesters to a 29-5 season record and their first appearance in the state

tournament in 23 years. Pampa fell to eventual Class 5A state champion San Antonio Churchill, 76-56, in the semifinals.

Miss Richardson, an AC sophomore, averaged 17.1 points, 5.5 rebounds and 5.9 assists per game as the Lady Badgers compiled a 17-14 record this season. She was named to the Western Junior College Athletic Conference first-team all-league team.



DANNY BUZZARD. Texas Tech offensive tackle from Pampa is expected to be looked at in a guard spot during the Red Raiders' spring training drills starting March 23. Buzzard, a 6-5, 260-pound sophomore, saw parttime starting duty for Tech last season.

Cowboys' Carano may be traded

DALLAS (AP)—Dallas Cowboys coach Tom Landry says he will entertain trade offers next week for backup quarterback Glenn Carano.

Carano, 27, a five-year veteran, will go on the trading block at the National Football owners meeting in Phoenix.

"I plan to make it known that I would be

receptive to a trade possibility," Landry said.

Carano, who played only one full game for the Cowboys, said he requested a trade during a recent meeting with Landry.

"I told him that it would be good for the club, and it was good for me, he should consider trading me," Carano said.

We Service Kirby & Hoover Vacuum Cleaners Your Singer Dealer 665-2383

SPORTS

Pampa baseball schedule

The Pampa High baseball schedule for the 1982 season is listed below.

The Harvesters open District 3-5A play April 10 with a doubleheader against Tascosa at the Rebels' park.

Amarillo High is defending district champions.

Pampa finished fourth in loop play last season with a 4-8 record. Overall, the Harvesters were 10-12.

March
18-Pampa Baseball Tournament; 23-Borger, 4 p.m. here; 27-Lubbock Monterey, 1 p.m. here (doubleheader); 30-Lubbock Monterey, 4 p.m. there.

April
2-Borger, 4 p.m. there; 3-Hereford, 1 p.m. here (doubleheader); 6-Dumas, 4 p.m. there; 10-Tascosa, 1 p.m. there (doubleheader); 13-Amarillo High, 4 p.m. there; 20-Caprock, 4 p.m. here; 24-Palo Duro, 1 p.m. here (doubleheader); 27-Tascosa, 4 p.m. here.

May
1-Amarillo High, 1 p.m. home (doubleheader); 8-Caprock, 1 p.m. there (doubleheader); 10-Palo Duro, 4 p.m. there (doubleheader).

Tulane: Darkhorse team of NIT tourney

By KEN RAPPOPORT AP Sports Writer

If it's Thursday, it must be Prep rodeo results

Lena Stewart of Pampa took first and second in goat riding during high school rodeos at Hereford and River Road the last two weekends.

Lee Lowrey, also of Pampa, placed fourth in team roping at Hereford and tied for second in bareback riding at River Road.

The Harvesters will compete in the Canyon Rodeo this weekend.

Peoria, Ill., for the Tulane basketball team.

"I don't know what they (NIT officials) are thinking," says Coach Ned Fowler. "We have had to play three games in a row in hostile environments."

Of the eight teams remaining in the NIT field, only Tulane hasn't played at home. And tonight, Fowler's players find themselves facing another unsympathetic audience in Bradley's Robertson Field House.

NCAA pairings

EAST REGIONAL
Semifinals and Finals
March 19 and 21
1. North Carolina (28-2) vs. Alabama (24-4)
2. Memphis State (24-4) vs. Villanova (22-7)

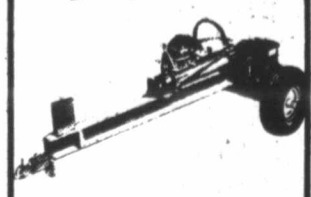
MIDWEST REGIONAL
Semifinals and Finals
March 18 and 20
1. Birmingham, Ala.
2. Louisville (21-9) vs. Minnesota (23-5)
3. Alabama-Birmingham (24-5) vs. Virginia (20-3)

MIDWEST REGIONAL
Semifinals and Finals
March 19 and 21
1. St. Louis
2. Houston (23-7) vs. Missouri (27-3)
3. Boston College (21-9) vs. Kansas St. (23-7)

WEST REGIONAL
Semifinals and Finals
March 18 and 20
1. Fresno, Calif.
2. Georgetown, D.C. (27-4) vs. Fresno St. (27-2)
3. Idaho (27-3) vs. Oregon St. (24-4)

NCAA Final Four
Semifinals and Finals
March 27 and 29
1. New Orleans

John Deere Log Splitters



Make firewood the quick and easy way with a John Deere Log Splitter. Two models — self-contained with 5-hp engine, high-speed wheels, and ball hitch. Category 1 or 2 3-point hitch model for tractors. Each has 7-inch cutting wedge, automatic ram return, and 10 tons of ram force. Split logs up to 26 inches long, any diameter.



We Service What We Sell
Crossman Implement
Hwy 60 East 665-1888
Across from Rodeo Grounds

Rubbermaid FLOOR MATS!

25% OFF

GREAT LOOKING MATS, GREAT PRICES!

OUR EVERYDAY LOW PRICES!
REG. PRICED FROM 8.99 TO 12.99

- A. VELOUR CARPETED FRONT MATS**
VELOUR CARPETED REAR MATS
Popular Colors Available. New Twin Front & Twin Rear. Available For Standard & Import Vehicles.
- B. TWIN FRONT VINYL MATS**
TWIN REAR VINYL MATS
Redesigned To Fit Today's Cars. See-Thru Material Accents Carpet. Nibbed Back Prevents Slipping.
- C. CORDOBAN BARATO VINYL MATS**
Fits Most Cars. Get The Look Of Hand Stitched Leather In This Solid-Color Four Piece Set.
- D. RUBBER TRUCK FLOOR MATS**
Rugged Rubber Mats That Fit Both "Mini" And Standard Size Pick-Ups. Assorted Colors Available.
- E. VINYL CLEAR FULL ACROSS MAT**
Fits Great In Today's Full Size Cars In Both Front & Rear. Clear Vinyl Accents Carpet. Non-Slip Back.



SUBJECT TO STOCK ON HAND!

<p>WD-40 LUBRICANT Lubricates, Frees Rusted Parts And Protects Against Corrosion Stops Squeaks. REG. 2.49 1.99 12 OZ.</p>	<p>WINDSHIELD WASHER FLUID Cuts Bugs, Dirt & Grime Easily From Windshield. REG. 1.49 1.49 GAL.</p>	<p>LOW MAINTENANCE 60 MONTH CHECKER BATTERY The Exclusive TRI-LOY™ Alloy Will Reduce Gassing Up To 80% Assuring Minimum Water Loss Under The Most Severe Driving Conditions. Impact Resistant Case. Lead Sealed Terminal Posts. REG. 49.99 44.99 EXCHANGE</p>	<p>\$5.00 OFF!</p> <p>CHECKER BATTERY 60 LOW MAINTENANCE</p> <p>HEADQUARTERS FOR AUTO BATTERIES AND BATTERY ACCESSORIES!</p>	<p>BEVERAGE & SNACK HOLDER Holds Hot & Cold Drinks, Cans & Cups Holds Tapes & Tissue. Fits Easily Over Center Floor Hump. REG. 1.99 1.49</p>	<p>"PINE TREE" AIR FRESHENER Freshens Air Inside Car Or Home. Pine Or Apple Scents. REG. 69¢ 29¢</p>
<p>12 VOLT HEAVY DUTY FLASHERS Reactivates Rounddown, Weak Turn Signals. REG. 1.99 1.49 EACH</p>	<p>VOLTAGE REGULATORS Pre-Set At Factory To Correct Charging Rate. 9.99</p>	<p>LEAD TERMINAL ENDS 79¢ TERMINAL CLEANER 1.99 UNIVERSAL HOLD-DOWN 2.99 BATTERY CABLES 1.49 to 5.99</p>	<p>CHROME PLATED SPLASH GUARDS Protects From Dirt & Rocks. REG. 1.49 99¢ SM. REG. 2.99 1.99 LG.</p>	<p>EASY TO INSTALL</p>	<p>INSULATED TRAVELERS CUP Push Button & Spill-Proof. For Hot Or Cold Drinks. REG. 2.99 1.49 GREAT FOR LONG TRIPS!</p>

CHECKER AUTO PARTS

We Help You Help Yourself!

PRICES EFFECTIVE THRU MONDAY, MARCH 22 DAILY 8:30-9:00 SUNDAY 9:00-6:00

1912 N. Hobart 665-4557

Firestone CHOICE OF RADIALS

Wide selection! Radial quality! Low prices!



**Fiberglass Belted
Deluxe Champion
Radial™**

\$36

• Radial handling, mileage and fuel efficiency of economical prices.
• Two fiberglass belts stabilize the tread for long wear.
• Polyester cord body provides a smooth ride.



**All-Season
TRAX 12'
Steel Belted Radial**

\$41

• Computer designed all season tread with thousands of biting edges.
• Deep Z bar cleats for snow traction.
• Open shoulder slots for wet pavement traction.
• Continuous center rib for smooth, quiet ride.
• Two 9 strand steel cord belts.
• Polyester cord body.
• Easy rolling fuel efficiency.



**721
Steel Belted Radial**

\$58

• Firestone's finest radial!
• Long wearing, cross siped tread for sure footed traction wet or dry.
• Two 10 strand steel cord belts 7 over 2 plus 1.
• 8 to 10% gas savings compared to our non radial of steady highway speeds.
• 24 million on the road!



**Firestone
Deluxe
Champion™
polyester cord**

\$23

6.00-12 Blackwall 5 rib tread Plus \$1.39 F.E.T. and old tire

Size	Black	F.E.T.	Size	Black	F.E.T.
*A78-13	\$26	\$1.58	G78-14	\$38	\$2.28
*P155/80D13	26	1.48	*5.60-15	35	1.61
B78-13	31	1.71	*6.00-15L	36	1.69
D78-14	35	1.93	G78-15	40	2.36
E78-14	36	2.04	H78-15	45	2.57
F78-14	37	2.14	L78-15	47	2.84

All prices plus tax and old tire. Whitewalls extra - 5 rib tread.

Super Sports™



TOUGH LOOKIN' raised white letters!

Super looks... super ride... super tread! If you're into customizing, get into Firestone Super Sports, 50 and 70 series sizes!

Size	Each	F.E.T.	Size	Each	F.E.T.
A70-13	\$49	\$1.83	G70-14	\$61	\$2.74
D70-14	\$57	2.21	G70-15	\$63	2.81
E70-14	\$58	2.35	H70-15	\$67	3.01
F70-14	\$58	2.57			

Prices plus tax. NO TRADE-IN NEEDED!
50 and 60 series sizes available, too!

All Terrain™



On-and-off-road traction for pickups, vans and RVs

Firestone ALL TERRAIN™

Raised white letters!

Patterned after the famous "Baja Runner" race tire, this rugged tire combines good off-road traction with a quiet ride on the highway.

Size	Load Range	Each	F.E.T.
26x8.50-14LT	B	\$73	\$2.81
10-15LT	B	\$87	4.34
10-15LT	C	\$96	4.67
31x11.50-15LT	B	\$104	4.38
31x11.50-15LT	C	\$104	4.72
33x12.50-15LT	C	\$112	5.43
31x10.50-16.5LT	D	\$132	5.40
33x12.50-16.5LT	D	\$143	5.53

All prices plus tax

NO CHARGE FOR MOUNTING

Firestone tire purchase.

90 DAYS CASH

on financing charge of financing charge of financing charge.

Minimum monthly payment required. All finance charges refunded, when paid as agreed.

We also honor:
• Visa
• MasterCard
• Diners Club
• Carte Blanche
• American Express

STORE HOURS
7 A.M. Mon-Fri.
8-5 Sat.

Lube, oil, oil filter and air filter

\$13.88

Multi-Grade Oil Extra

This inexpensive but valuable service is recommended every 4,000 to 7,000 miles for most vehicles. Included are up to five quarts of oil, a new Firestone oil filter, a professional chassis lubrication and a new air filter.

Most Cars and light trucks

Buy 1 Get The Second 1/2 Price



MONROE MONROE-MATIC SHOCK ABSORBERS

\$19.95

Installation available \$5 Each

Our skilled mechanics set caster, camber and toe-in to original specifications.

FRONT END ALIGNMENT

5-YEAR—50,000 MILE ALIGNMENT

YOUR CHOICE \$39.88

Service Agreement: We will align your car every 5,000 miles or whenever needed for five hours or \$60,000 miles, whichever comes first. See complete agreement for additional services included.

Most American cars except Chevies and compacts with front wheel drive &/or MacPherson suspension. Parts extra if needed no additional charge for factory air or torsion bar.

American wagon wheels



4 FOR \$119

White Wagon Wheels

No Charge for Stems, Mounting, or Balance

14 X 7
15 X 7
Lugs & Caps Extra

AMERICAN CANCER SOCIETY

AREA MUSEUMS

WHITE DEER LAND MUSEUM: Pampa. Tuesday through Sunday 1:30-4 p.m., special tours by appointment.

PANHANDLE PLAINS HISTORICAL MUSEUM: Canyon. Regular museum hours 9 a.m. to 5 p.m. weekdays and 2-6 p.m. Sundays at Lake Meredith Aquarium & WILDLIFE MUSEUM: Fritch. Hours 2-5 p.m. Tuesday and Sunday, 10 a.m. to 5 p.m. Wednesday through Saturday. Closed Monday.

SQUARE HOUSE MUSEUM: Panhandle. Regular museum hours 9 a.m. to 5:30 p.m. weekdays and 1-3:30 p.m. Sunday.

HUTCHINSON COUNTY MUSEUM: Borger. Regular hours 11 a.m. to 4:30 p.m. weekdays except Tuesday, 2-5 p.m. Sunday.

PIONEER WEST MUSEUM: Shamrock. Regular museum hours 9 a.m. to 5 p.m. weekdays, Saturday and Sunday.

ALAN REED-McLEAN AREA HISTORICAL MUSEUM: McLean. Regular museum hours 11 a.m. to 4 p.m. Monday through Saturday. Closed Sunday.

OLD MOBEETIE JAIL MUSEUM: Old Mobeetie. Hours 9 a.m. to 6 p.m. daily. Closed Tuesday.

ROBERTS COUNTY MUSEUM: Miami. Hours 1 to 5 p.m. Monday through Friday, 2 to 5 p.m. Saturday and Sunday. Closed Wednesday.

PERSONAL

MARY KAY Cosmetics, free facials, supplies and deliveries. Call Dorothy Vaughn, 665-5117.

MARY KAY Cosmetics, free facials, supplies and deliveries. Mildred Lamb, 616 Lefors, 665-1754.

MARY KAY Cosmetics, free facials, supplies and deliveries. Tammy Easterly, 665-6863.

MARY KAY Cosmetics, free facials. For supplies and deliveries call: Thea Wallin 665-8336 or 665-0234.

SCULPTRESS BRAS and Nutri-Medics skin care also Vivian Woodard Cosmetics. Call Zella Mae Gray, 606-659-6424.

NUTRI TRIM Weight Loss Program. It's safe, it's easy. Meets every Tuesday and Saturday, 8 p.m. to 7:30 p.m. Call Zella Mae Gray, 669-6424.

DRINKING WATER in your home! A and Al. Amon Meetings Tuesday and Saturday, 8 p.m. to 7:30 p.m. Browning, AA 665-1343 AL Anon 665-1388.

OPEN DOOR AA Wednesday, Friday, 8 p.m. 2nd Saturday, 7 p.m. Sunday 11 a.m. 208 W. Browning, 665-6771 or 665-7095.

PREGNANT AND alone? Let Christian Haven help. Call 355-6580.

LOST AND FOUND

LOST - WHITE female Samoyed dog. Last seen swimming pool area. Reward. Call 669-6088.

LOST - A set of keys on a Red, Green and Gold keychain, in vicinity of the Post Office, about 2 p.m. Tuesday. Call 669-2929. Reward.

REWARD: Will the party that picked up the Black Briet case last Saturday, please call 665-3891.

BUSINESS OPP.

VIDEO GAMES
The Silver Mine Arcade will open soon in Pampa. Cash-in on the booming Video Game Business by purchasing Video Games to be located in the Arcade. This is an all cash business. It is recession proof! No selling on your part is required. We provide continuous assistance with machine maintenance. Currently available machines are: Pac Man; Asteroid Defender; Tempest; Centipede; and many more! The minimum investment required is \$3,495. For further information call Mr. Michaels, 806-359-8625.

LIQUOR STORE for sale! Good Volume, stock, established clientele, building, land, turnkey operation. Milly Sanders, 665-2671, Realtor. Shred Realty, 665-3781. OE

BUSINESS SERVICE

Gymnastics of Pampa
New location, Loop 171 North
669-2941 or 665-0122

MINI STORAGE
You keep the key. 10x10 and 10x20 stalls. Call 669-2929 or 669-9561.

Snelling & Snelling
The Placement People
Suite 103 Hughes Bldg. 665-6528

BRICK WORK OF ALL TYPES
Bill Cox Masonry
665-3667 or 665-7336

Fugate Printing & Office Supply
Pampa's other office supply
210 N. Ward 665-1871

SELF STORAGE units now available. 10x20, 10x10, and 10x5. Call 669-2900.

BOOKKEEPING & TAX SERVICE
Ronnie Johnson
119 E. Kingsmill 665-7701

Computerized Bookkeeping Service. Place your time consuming record keeping functions on the computer and save. General Ledger; Financial Statements; Payroll; Depreciation; Accounts Receivable and more. Call us for a free estimate. 665-6436. 822 E. Foster.

STORAGE UNITS for rent. Call 669-2137 or 665-3146.

AUTHORIZED HOOPER, Eureka Kirby and Filter Queen Sells and service. American Vacuum Co., 420 Purviance, Pampa, 669-9222.

APPL. REPAIR

WASHERS, DRYERS, dishwashers and range repair. Call Gary Stevens, 669-7956.

APPLIANCE SERVICE Center. We work on all refrigerators and washers and dryers. Frigidaire parts and service. 665-7429. Call between 8-30 to 1. Will buy and sell used appliances.

CARPENTRY

RALPH BAXTER CONTRACTOR AND BUILDER
Custom Homes or Remodeling
665-8248

Lance Builders Building-Remodeling
669-3940 Ardell Lance

ADDITIONS, REMODELING, roofing custom cabinets, counter tops, acoustical ceiling spraying. Free estimates Gene Breese, 665-3377.

J & K Contractors
669-2648 669-9747
Additions, Remodeling, Concrete-Painting-Repairs

Nicholas Home Improvement Co.
US Steel Siding, Mastic vinyl siding, storm windows, roofing, carpentry work. 669-9991.

ELIJAH SLATE - Building, Additions and Remodeling. Call 868-2461, Miami.

BILL FOREMAN Custom cabinet and woodwork shop. We specialize in home remodeling and construction. 200 E. Brown, 665-5463 or 665-4665.

REMODELING, INSIDE OUT.

Home repair, paneling, ceiling tile. Scott Smiles, 665-7676.

ROOFING

SAVE MONEY. Patch, repair or re-roof. Conklin Rapid Roof. Free Estimates 669-9586.

NEW BREAK through in roofing technology. Light weight, flexible, yet tougher and more durable than conventional method. Perfect for commercial, residential or mobile homes. Free estimates. Call 865-3391.

MUNS CONSTRUCTION - Additions, Patios, Remodeling, Fireplace, New Construction. Estimates. 665-3456.

CARPET SERVICE

T'S CARPETS
Full line of carpeting, ceiling fans. 1429 N. Hobart 665-6772 Terry Allen-Owner

CARPET SALE - Completely Installed Free Estimates
JOHNSON HOME FURNISHINGS
406 S. Cuyler 665-3361

Covall's Home Supply Quality Carpet - Our Prices Will Floor You!
1415 N. Banks 665-5861

DITCHING

DITCHES WATER and gas. Machine fits through 38 inch gap. 665-6592.

DITCHING, 4 inch to 10 inch wide. Harold Baston, 665-5892 or 665-7793.

DIAZ TRENCING SERVICE. Please call for all your trenching needs. 669-6254.

GENERAL SERVICE

SERVICE ON all Electric Razors, Typewriters and Adding Machines. Specialty Sales and Services, 1008 Alcock, 665-6002.

Tree Trimming and Removal. Any size, reasonable, spraying, clean up, hauling, mowing, you name it! Lots of references. 665-8005.

HANDY JIM. Minor repairs, painting, yard work, garden rototilling. Fair prices. 665-6787.

FOR PROFESSIONAL chemical maintenance and caring. Give us call. Pampa Lawn Magic, 665-1004.

CONCRETE SLABS, porches, rock walls and fireplaces, drive ways, sidewalks, patios. 669-3150, 669-9453.

LIVING PROOF LANDSCAPING AND WATER SPRINKLING SYSTEM, TURF GRASS AND SEEDING. ALSO BIG TREES, 8 TO 12 FEET TALL. FREE ESTIMATES. CALL J.R. DAVIS, 665-5659.

COX CONSTRUCTION AND FENCE COMPANY
Backhoe work, ditching, fencing, barbed wire, chain link, wood. 669-7769.

CUSTOM GRASS Seeding. Pipe line Right-of-ways, locations, farms, ranches. Kenneth Banks, 669-6119.

INSULATION

Frontier Insulation Commercial Buildings, Trailer Houses and Homes
665-5224

PAINTING

DAVID HUNTER PAINTING AND DECORATING ROOF SPRAYING. 665-2903

INTERIOR, EXTERIOR painting. Spray Acoustical Ceiling, 665-8148. Paul Stewart.

PAINTING INSIDE or out. Mud, tape, blow acoustical ceilings. Gene Calder, 665-4940 or 669-2215.

HOUSEPAINTING - Exterior and Interior. Free Estimates. Call Paul Cain, 665-5868.

TOP OF TEXAS INSULATORS INC. Rock wool, Batts and Blown. Free Estimates, 665-5574 from 9 a.m. to 7 p.m.

DAVID HUNTER PAINTING AND DECORATING ROOF SPRAYING. 665-2903

INTERIOR, EXTERIOR painting. Spray Acoustical Ceiling, 665-8148. Paul Stewart.

PAINTING INSIDE or out. Mud, tape, blow acoustical ceilings. Gene Calder, 665-4940 or 669-2215.

HOUSEPAINTING - Exterior and Interior. Free Estimates. Call Paul Cain, 665-5868.

TOP OF TEXAS INSULATORS INC. Rock wool, Batts and Blown. Free Estimates, 665-5574 from 9 a.m. to 7 p.m.

FRONTIER INSULATION Commercial Buildings, Trailer Houses and Homes
665-5224

DAVID HUNTER PAINTING AND DECORATING ROOF SPRAYING. 665-2903

INTERIOR, EXTERIOR painting. Spray Acoustical Ceiling, 665-8148. Paul Stewart.

PAINTING INSIDE or out. Mud, tape, blow acoustical ceilings. Gene Calder, 665-4940 or 669-2215.

HOUSEPAINTING - Exterior and Interior. Free Estimates. Call Paul Cain, 665-5868.

TOP OF TEXAS INSULATORS INC. Rock wool, Batts and Blown. Free Estimates, 665-5574 from 9 a.m. to 7 p.m.

Plowing, Yard Work

CUSTOM ROTOTILLING - Gardens and flowerbeds. Call Gary Sutherland, 665-8813.

Millers Rototilling Service Yard and Garden
665-6736 or 669-7279.

ALL TYPES of yard work and hauling. Call 665-5659.

TO RENT: Why Pay More? Do it yourself. Save 12 or 15 Dollars an hour. 5 sizes of tillers. Some with Electric Starters - Lawn Combos. Eubanks Tool Rental, 665-3213.

TRACTOR ROTOTILLING, Lawn seeding, loader, Boxscaper, dump truck, leveling, Debris hauled. Kenneth Banks, 669-6119.

RADIO AND TEL.

DON'S T.V. Service
We service all brands.
304 W. Foster 669-6481

RENT A TV-color-Black and white or Stereo. By week or month. Purchase plan available. 665-1201.

CURTIS MATHES COLOR T.V.'s
4 Year Warranty
(We have TV Purchase-Rental Plan)
JOHNSON HOME FURNISHINGS
406 S. Cuyler 665-3361

Zenith and Magnavox
Sales and Service
LOWREY MUSIC CENTER
Coronado Center 669-3121

BEAUTY SHOPS

BEAUTY SHOP Equipment - 2 wet stations, two dry stations, 1 sink, 5 dryers, 4 hydraulic chairs, miscellaneous supplies, tables, Etc. Call 779-2139.

SITUATIONS

TYPING WANTED. 669-2027 or 665-6002.

WILL CARE For ailing or elderly men. Can furnish references. Call 665-4267 or 669-6143.

RELIABLE CARRIERS needed for neighborhood routes. Call the Pampa News, 669-2525.

ROUTE DRIVERS needed. Apply 840 E. Foster.

CAREER INSURANCE SALE OPPORTUNITIES
Are you tired of getting the same paycheck, if you do a good job or a bad job? Work established Farm Bureau accounts. Must be willing to work. Call for an appointment, 665-9451, Dale West.

CUSTODIAN NEEDED: Contact Bill Vestal, Miami School, 868-3971, 1000 S. Main, Shamrock, TX 79079 or call 806-256-2114 Extension 38. Monday - Friday, 8-4.

SERVICE MANAGER: If you can handle paper work, GM warranty claims, hire and train mechanics, get along with customers, fix almost anything on wheels, and consider yourself to be aggressive, hard working, and business minded, then we need to talk.
We offer all major company benefits including: DEEM Opportunity Unlimited Contact: Larry Kirsch, Larry's Chevrolet Pontiac, Inc. 806-647-3111

THE PALACE Club needs waitresses for restaurant. (Grand opening 11 a.m. Friday, March 5th.) Apply in person, 318 W. Foster.

Receptionist-Business Assistant For Orthodontic Office. Light typing, light bookkeeping. Must meet people well. Experience not as important as aptitude. For April, send resume to Dr. Ralph Depee, 10502 Hard Rock, Austin, Texas, 78750.

BURGER KING part time help apply in person between 2-5 p.m. 220 N. Hobart.

HAIRSTYLING SALON is now interviewing for experienced hairstylist with following: C' Bonte, 665-8881 or 665-5534.

LOOKING FOR MORE OUT OF LIFE?
Sell Avon for fun, friends. \$\$\$ Call 665-8507.

SECRETARY WANTED: Insurance agent needs a dependable person with good basic secretarial skills. Knowledge of the insurance business helpful, but not required. Send resume to Box 26, The Pampa News, Drawer 2198, Pampa, TX, 79065.

MAINTENANCE MAN needed for Miami, Texas. Contact Superintendent, Bill A. Vestal, P.O. Box 368, Miami, Texas, 79059 or call 806-868-3971.

WIRES LINE COMPANY needs aggressive salesman to sell wireline work in Canadian, Perrinton area. Top pay and benefits. Please call between 8 a.m. and 5 p.m., 806-655-5838.

READY TO hire dependable woman to work with elderly. Call 665-8106.

SALES FLOOR and Cashier needed, part time mornings and evenings. Apply in person, K-Mart Personnel Office, Wednesday, Thursday and Friday, 10-12, 1-3 p.m.

PLUMBING, HEATING and air conditioning. Steve Phelps Plumbing Company, Call 665-3219.

WEBB'S PLUMBING SERVICE - Drains, sewer cleaning, electric Rooter Service, Neal Webb, 665-2727.

SEWER LINES and Sink lines - Electric roto-roter. 825. Call 669-3919 or 665-6273.

PLUMBING, HEATING and air conditioning. Steve Phelps Plumbing Company, Call 665-3219.

WEBB'S PLUMBING SERVICE - Drains, sewer cleaning, electric Rooter Service, Neal Webb, 665-2727.

NEED MAN for part time work in the oil field to supplement a retiree who wishes to improve his income and one who has experience in the pumping of oil wells. Write in care of The Pampa News, Box 28, P.O. Drawer 2198, Pampa, Texas, 79065.

HELP WANTED

HELP WANTED: Receptionists. Good typing skills and light bookkeeping. Will Mart General Office, 213 E. Tying.

IMMEDIATE OPENING for experienced salesman. Qualified individual should have a minimum of 2 years experience in retail sales. Apply Clingan Tires, 123 N. Gray.

SEWING MACHINES

COMPLETE SERVICE Renter for all makes of sewing machines and vacuum cleaners. Singer Sales and Service, 214 N. Cuyler, 665-2383.

DAVIS TREE SERVICE: Pruning, trimming and removal. Feeding and spraying. Free estimates. J.R. Davis, 665-5659.

SET YOUR lawn for the upcoming growing season. Aerate now for best results this summer. Grass and tree roots grow in the winter. Care now will be seen when tops start growing in the spring. Pampa Lawn Magic, 665-1004.

WEED SPRAYING, tree spraying, pruning, trimming, prairie dog control. Larry Kaul, Miami, Texas 868-2271.

Trees, Shrubs, Plants

ALL TYPES tree work, topping, trimming, removing. Call Richard, 669-3469.

REVITALIZE YOUR lawn by aerating in the winter to promote deep root growth. Pampa Lawn Magic, 665-1004.

Tree Trimming and Removal
Any size, reasonable, spraying, clean up, hauling, mowing, you name it! Lots of references. 665-8005.

ALL TYPES spraying and deep root feeding. Call 669-9992, Taylor Spraying Service.

BLDG. SUPPLIES

Houston Lumber Co.
420 W. Foster 669-6881

White House Lumber Co.
101 E. Ballard 669-3291

Pampa Lumber Co.
1301 S. Hobart 665-5781

PLASTIC PIPE & FITTINGS BUILDER'S PLUMBING SUPPLY CO.
535 S. Cuyler 665-3711
Your Plastic Pipe Teadquarters

TINNEY LUMBER COMPANY
Complete Line of Building Materials. Price Road 669-3209

STUBBS, INC.
PVC pipe and fittings - 1/2 inch thru 10 inches 3 and 4 inch sewer, 1/2 inch and 3/4 inch CPVC pipe.
1239 S. Barnes 669-6301

Farm Machinery

FOR SALE: Like new, 9-Shank Big Ox Factory dual gauge wheels. Four new tires. Montgomery Ward II h.p. garden tractor with 38" mower. Always keep in barn. Call 665-2537 after 7 p.m.

REMINGTON MODEL 788 with scope bolt action, 243 caliber. Regular \$284.95 - \$247.50. Call D.B.'s Firearms, 669-7850 after 5 p.m.

HOUSEHOLD

Jess Graham Furniture
1415 N. Hobart 665-2232

CHARLIE'S Furniture & Carpet
The Company To Have In Your Home
1304 N. Banks 665-6506

RENTHI, YES, RENTH! Appliances, Microwave Ovens, Vacuum Cleaners.

JOHNSON HOME FURNISHINGS
406 S. Cuyler 665-3361

2ND TIME Around, 1240 S. Barnes. Furniture, appliances, tools, baby equipment, etc. Buy, sell, or trade, also bid on estate and moving sales. Call 665-5139. Owner Boyndine Bosay.

Dalton's Furniture Mart Used Furniture - Carpet - Appliances
413 W. Foster 665-1173

WE BUY good used furniture. Willis Furniture, 1215 W. Wilks, Amarillo, TX, 665-3551.

Pampa Used Furniture and Antiques Buy, Sell or Trade
513 S. Cuyler, 665-9843.

D & K Bargain Store, 1918 Alcock: Furniture, electrical appliances, odds and ends, buy and sell. Call 665-0396.

USED VACUUM Cleaners \$30 and up. American Vacuum Co., 420 Purviance, 669-9282.

FOR SALE: A good electric clothes dryer. \$125.00 Call 669-3944.

ANTIQUE

ANTIK-K-DEN - Furniture, glass, collectables. Open by appointment. 669-2326.

MISCELLANEOUS

MR. COFFEE Makers repaired. No warranty work done. Call Bob Crouch, 665-8555.

Chimney Cleaning Service
Queen's Sweep
John Haesle 669-3759

GAY'S CAKE and Candy Decor. Open 10 to 5 Monday thru Saturday 615 N. Hobart 669-7155.

TRAMPOLINES
New Joggling and large trampolines. Choice of mat colors, 1 year warranty. For best quality and price call 665-4767.

Plants by Jannie Commercial Plant Leasing, total maintenance and care. Jannie Lewis, 806-653-4356.

POOLS & HOT TUBS
PAMPA POOL and Spa We build in ground pools, set hot tubs, spas, saunas and chemicals. Also service on these items. Call 665-4218 for more information.

MISCELLANEOUS

HYDRAULIC DUMP beds for pickups. 1/4 ton and up, easy quick installation. Call 669-2648 or 669-9747.

PUT YOUR Ad on caps, decals, pens, rain gauges, matches, knives, etc. Dale Vespestad, 665-2245.

KIRBY COMPANY of Pampa, Sales and Service, 317 N. Stark, Weather, 665-6478. Check our prices first!

FIREWOOD - DRY oak and locust. \$15 cord. Call 665-3720 after 5 p.m.

WATERLESS COOKWARE - Home demonstration kind. Never opened. Normally \$600, selling \$275

Money Talks!

CHECK OUR QUALITY AND PRICE

1981 Lincoln Mark VI 4 door low **SOLD** all options. Lik **\$14,400**

1980 Buick Riviera Coupe V-6 engine. Has all the goodies. Real Sharp. **\$11,500**

1980 Cad Sedan DeVille loaded. This car is extra nice. Wire wheel covers. **\$11,900**

1980 Buick Park Avenue 4 door Sedan not a nicer one anywhere. Beautiful cloth interior **\$10,900**

1980 Chrysler Cordoba 2 door 6 cyl. engine, auto, P.S.P.B. air, cruise control, 10,000 miles **\$6995**

1979 Lincoln Town Cpe has all the options, including Moon Roof, a real beauty **\$9850**

1979 Olds Cutlass Supreme Cpe Diesel engine, auto, P.S.P.B. air, cruise, tape, wire covers. **\$5995**

1979 Olds '98' Regency Cpe loaded with everything a real nice one, clean **\$6995**

1979 Olds Delta '88' 4-door Sedan, has all extras that comes on a '98' real nice **\$5995**

1978 Olds Cutlass Supreme Cpe small V-8, auto, P.S.P.B. air, cruise control, Priced for Quick Sale **\$4695**

1978 Chry Cordoba Cpe V-8 auto, P.S.P.B. air, tilt wheel, cruise control, tape, nice. **\$3995**

1978 Olds '98' Regency 4 door **SOLD** with all the extra new tires, real sharp. **\$6495**

1978 Lincoln Town Cpe. This one has it all. Real sharp. A real buy **\$6995**

1978 Pontiac Phoenix 4 door Sedan V-6 engine. Auto, P.S.P.B. air, cruise, tilt, new tires, local owner **\$4295**

1978 Dodge Magnum Coupe this car is a local one owner has all the extras, Real nice **\$3995**

1977 Pontiac G.P. Coupe V-8 auto, P.S.P.B. air, cruise, tape, bucket seats, nice. **\$3995**

1977 Mercury Cougar XR 7 Cpe. Small V-8, auto. P.S.P.B. air. Not a nicer one anywhere **\$4195**

1977 Chry N.Y. Brougham 4 door has everything offered. Leather interiors, nice. **\$2995**

1976 Cad. Eldorado Convertible. Loaded, no more around Like this one, **\$7695**

1976 Dodge Aspen wagon 6 cylinder engine, auto trans P.S.P.B. air, wire wheel covers **\$2695**

DOUG BOYD MOTOR CO.

821 W. Wilks 665-5765

LIVESTOCK

CHESTNUT SORREL Stallion, 10 years old. \$375. Call W.C. Epperson, 665-8258.

PETS & SUPPLIES

PROFESSIONAL POODLE and Schnauzer grooming. Toy stud service available. Platinum silver, red apricot, and black. Susie Reed, 665-4184.

PETS & SUPPLIES

POODLE GROOMING - All breeds. Tangled dogs welcomed. Annie Aulfill, 669-6905.

FISH AND CRITTERS. 1404 N. Banks, 669-9543. Full line of pet supplies and fish. Grooming by appointment.

LET ME bathe and groom your pooch. Grooming for all breeds for dogs. For appointment, Call Anna Spence 669-9535 or 669-9808.

PETS & SUPPLIES

K-9 ACRES. 1000 Farley, professional grooming-boarding, all breeds of dogs. 669-7352.

PROFESSIONAL GROOMING - All small or medium size breeds. Julia Glenn, 665-4066.

4 1/2 MONTH old female half Irish setter, half Labrador retriever for sale. Has shots. Call 665-3228 after 5 p.m.

OFFICE STORE EQ.

NEW AND Used office furniture, cash registers, copiers, typewriters, and all other office machines. Also copy service available.

PAMPA OFFICE SUPPLY 215 N. Cuyler 669-3353

WANTED TO BUY

BUYING GOLD rings, or other gold. Rheams Diamond Shop. 665-2851.

WANTED TO BUY

WE PAY Cash for Guns, Jewelry, Coins etc. AAA Pawn Shop 512 S. Cuyler.

WOULD LIKE to buy houses for rent property. Will pay back-taxes. Call 665-2540 after 7 p.m.

WANTED - ANY of your odds and ends, pots, pans, dishes, glassware, old furniture, most anything for our rummage sale. We will use your throw-aways to help other people. Golden K Kiwani's Club, 219 W. Brown Street.

FURNISHED APTS.

GOOD ROOMS. \$3 up, \$10 week Davis Hotel, 116 1/2 W. Foster, Clean, Quiet. 669-9115.

FURN. HOUSES

APARTMENTS AND houses. Furnished and unfurnished. Call 669-2800.

UNFURN. HOUSES

THREE BEDROOM, Brick, 1 1/2 baths, fireplace, plus many extras, \$800 per month. Call 669-2900 or 665-1555.

FOR LEASE - 1101 Juniper, 3 bedroom, 2 baths, den, living room, built-ins, available March 31. (806) 353-5148.

BUS. RENTAL PROP.

CORONADO CENTER Retail office space available in the following sizes: 900 square feet, 2,000 square feet, 4000 square feet. Call Ralph G. Davis Inc., Realtor, 806-353-9851, 3714 Olsen Blvd. Amarillo, Texas 79109.

OFFICES For Lease or rent. 119 N. Frost. 665-7171 or 665-1237.

OFFICE SPACE for rent. 540 square feet new construction, all bills paid. Call J.B. Roberts, 806-293-4413.

HOMES FOR SALE

W.M. Long Realty Phone 669-3641 or 669-9504

PRICE T. SMITH Builders

MALCOLM DENSON REALTOR Member of M.L.S. Realtor, 806-353-2150 Jack W. Nichols-669-6112 Malcolm Denson-669-6443

Will buy Houses, apartments or duplexes that would make suitable rental units. Call 669-2900.

2540 CHRISTINE - Custom Built, 3 bedroom quality home. Only 10 years old. Call 665-2910 after 5 p.m.

1300 GARLAND, 3 bedroom, 1 1/2 baths, living room-dining, den, central heat, central air, plus 2 bedroom furnished apartment. Mike Ward, Norma Ward Realty, 669-3346. After 5, 669-6413.

FOUR BEDROOM, 2 full baths, new carpet, new paint, over size lot, \$5,000 down, owner will carry or take cheaper property on down payment. 665-4842.

FOR SALE - 3 bedroom, Corner lot, newly Remodeled. Call 669-7864.

BRICK, 3 bedrooms, 2 baths, central heat and air, double garage. 665-4918.

SHED REALTY, INC. 1002 N. Hobart, Office 665-3761

"SATISFIED CLIENTS" our only specialty. 24 Hour Service.

SHARPEST Two bedroom home you'll ever find! Paneled, carpeted, drapes, curtains, and a garage with electric opener, large closets, large fenced yard near Woodrow Wilson School. M.L.S. 937.

LOOKING FOR ADDED INCOME Here's a well established cleaning business, equipment and inventory and Gift Shop, with Gross effective income of \$19,300 or more, in White Deer. Large lot, excellent location. Call Audrey, M.L.S. 801.

PORTABLE AND PERFECT For a small family or couple. This 2 bedroom mobile home has furniture, refrigerator, cook stove, and two beds. 1981 Titan. 14x80 Mobile Home is great for you. Call Audrey, O.E.

ALOT FOR YOUR HOME Perfect for that new home you've been wanting. Now's your chance! 100' x 131' lot located in the new addition of White Deer. Only \$6,500. Call Audrey, M.L.S. 926L.

CALL US WE REALLY CARE!

Sadie Durning 848-2547
Doris Robbins 665-3298
Eva Howley 665-2207
Sandra McBride 669-6648
Dale Robbins 665-3298
Henry Dale Garrett 835-2777
Lorene Paris 868-3145
Audrey Alexander 883-6122
Gary D. Meador 665-2309
Milly Sanders 669-2671
Janie Shed GRI 665-2039
Walter Shed Broker 665-2039

NEVA WEEKS Realty
MLS 669-9904
Suite 425 Hughes Building
NEW LISTING
3 bedroom 1 1/2 baths, beautiful new carpet and fresh paint. Central heat and air conditioning, single garage, low move in MLS 146.
Jeanette Pahlaw 669-3519
Neva Weeks, Broker 669-9904

We Don't Have The Most WE DO HAVE THE BEST!
Most Of Our Cars Are One Owner And Low Mileage
30 DAY WARRANTY ON POWER TRAIN-79 MODEL OR NEWER
B&B AUTO CO.
Bill M. Derr
600 W. FOSTER Randy L. Derr 665-5374
1980 Cadillac Sedan DeVille D'Elegance Loaded plus only 21,000 miles, champagne color. See This \$11,885
1982 Cadillac Fleetwood Brougham 2 Dr. Cpe. Loaded Plus Leather Interior, Has it all Small V8 (Not a 4-6-8) List for \$22,896.00 Our Price \$18,885.

Where You Can Always Drive Home A Real Bargain!

1981 Lincoln Mark VI 4-door Signature Edition Continental. Has every option Lincoln offers, plus leather interior. See this \$15,885

1979 Olds 98 Regency 4-door, loaded \$6,985
1978 Buick Limited Landau Coupe, loaded \$6,385
1978 Cadillac Coupe DeVille White \$6,985
1978 Cadillac Sedan DeVille Green \$6,985
1978 Cadillac Coupe (SOLD) Yellow \$6,985
1979 Cadillac Sedan DeVille \$6,985
1977 Cadillac Coupe DeVille \$6,985
1980 Chevy Malibu 4-door V-6, automatic, power, air, new steel radials. It's a nice economy car. Beautiful gold \$6,985
1980 Buick Century Sport 2 door \$6,685
1979 Buick Limited Landau LaSabra Coupe \$6,385
1979 LaSabra Limited Landau Turbo Coupe \$6,385
1977 Mercury Grand Marquis 4-Dr. One owner 55,000 Mile car, has it all, \$4,985.00
1980 Buick LaSabra Limited 4-door, V-6, automatic, power, air, low miles and nice, power seats, windows, wheels, tilt, cruise, tape. Its got it all \$3,985
1978 Olds 98 Regency 2-door. Has it all and only 50,000 one owner miles \$5,985

1979 Cutlass Salon Brougham 4 door ... \$5,385
1979 Pontiac Bonneville coupe \$6,385
1980 Pontiac Gran LeMans 4 door \$6,385
1979 Pontiac Gran LeMans station wagon \$5,885
1977 Gran Safari Wagon \$4,885
1977 Nova 2 door sport \$4,885
1977 Olds Delta 4 door, power, air, tilt, cruise, 6 way power seat, Good steel radials, local car \$4,385
1981 Pontiac Bonneville 4-door, V6, automatic power, air, 25,000 miles. It's like new. Only \$6,685
1980 Datsun pickup, 4-cylinder, 4-speed, tool box. Local one owner, 16,400 miles. Like New \$6,385
1979 Chevy Luv Mikado, automatic, air, ... \$6,385
1978 Chevy Silverado Suburban loaded, dual air, power, tilt cruise, tape, dual tanks ... \$6,885.00
1967 Chevy 1/2 ton LWB, V-8 standard, good rubber, runs great, looks bad. Real cheap \$1,285.00

B&B AUTO CO.
"THANKS PAMPA FOR YOUR SUPPORT WE APPRECIATE YOUR BUSINESS!!"
QUALITY SERVICE "We've been friends a long time." Thanks Pampa For Your Support We Appreciate Your Business
CALL 665-5374 (18 Years of Selling to Sell Again)
"OUR REPUTATION SPEAKS FOR IT'S SELF"

BRAKE & FRONT-END MECHANICS NEEDED
IN THE AMARILLO-PAMPA AREA
Excellent opportunity for trained mechanics in the area of front-end and brake work. You will find a rewarding career with one of the fastest growing rubber companies in the industry.
We offer a top mechanic outstanding advancement opportunities with an excellent incentive program, coupled with an outstanding benefit package. Must own your own tools. We require at least 2-5 years prior experience. Top pay for outstanding mechanics.
For an interview call: **Mr. SCOTT HAHN**
665-8419
Pampa, Texas
Firestone
EQUAL OPPORTUNITY EMPLOYERS M-F-H

HOMES FOR SALE

TLC INDUSTRIES will pay cash for your home equity. Call Don Michaels, 665-1978.

FOR SALE - 3 bedroom home in Lefors. Call 835-2744 after 4:30 p.m.

EXTRA NICE three bedroom home. Interior decorated with a special personal touch. Must see to appreciate. 1538 N. Faulkner, 669-2157 or 665-8281.

PRICE REDUCED... 3 bedroom home on Bradley Dr. 1 bath, single garage, den with woodburner. Move-in cost less than \$7000.00 with new loan. Must see to appreciate. 669-7865 after 5:30 weekdays. All day Saturday and Sunday.

FOR SALE by owner - 3 bedroom brick with carport and storm cellar. Call 665-1177 after 5 weekdays, all day weekends.

3 BEDROOM, 1 bath, central air and heat, fireplace, new carpet, attached garage, nice location. Call after 5 p.m., 669-9427.

HOUSE FOR Sale! 2 Bedrooms, re-decorated bath, living room, dining room, large kitchen with pantry, utility porch. Textured walls, new ceilings and new wallpaper throughout. New roof, fenced-in backyard with 10x10 utility building. Call 665-8528.

TWO BEDROOM, corner lot, central heat and air, new carpet, owner anxious. Call 669-2623.

THREE BEDROOM, 1 bath, excellent location, low payments with assumable low interest loan. Call 669-3758.

NEARLY New Brick 3 bedroom, 2 baths, fireplace, nice location. Call 665-5678 for appointment.

LOTS FOR SALE
LAKE MERIDITH - Lot No. 35, Block 6, Section A. Sanford Estates, 1975 Price. Call 669-6108.

LOT AT Walnut Creek. Ideal for regular or split level house. Call 669-8396.

LOT FOR sale at 619 S. Barnes. Call after 6 p.m. 669-3056.

COMMERCIAL PROP.
SAVE MONEY on your Business Insurance. Call Duncan Insurance Agency for a FREE quote. 665-5757.

FOR SALE: 40x80 brick building at 324 Naida. Call 665-8381.

HAVE USED Car Lot for rent. Call 665-5765.

1 ACRE of industrial land for sale 1/2 mile west on Kentucky. Partially fenced. 665-2115, 669-2352.

FOR RENT - Commercial Building, 111 N. Hobart. Call Gene Fort, 806-373-9779, Amarillo.

FOR RENT: 1, 2, or 3 rooms for rent for Beauty Shop. Call Shed Realty for more information. 665-3761 or 665-2039.

Out of Town Prop.
FOR SALE - In Wheeler, 1 bedroom house on large lot on Stanley Street. Call 826-3266 in Wheeler, or call 669-3707 in Pampa.

MLS 665-6585 Shackelford REALTORS 315 N. SOMERVILLE

List With Us For Action! BUY FROM US FOR SATISFACTION
A TREASURE Under \$50,000 with 3 bedrooms, 1 1/2 baths, central heat & air, long kitchen & dining area, nice sized living room, single attached garage. M.L.S. 105.

SKELLYTOWN Brick 3 bedroom, 1 1/2 bath, single attached garage, large kitchen with dining, utility, extra nice sized living area, ready for a family. 772.

BEAUTIFUL Almost new 3 bedroom brick, 2 baths, formal living room, dining, den with woodburner, double garage. Call us for an inspection. M.L.S. 109.

Guy Clement 665-8237
Sandra R. Schuneman 665-8644
GRI 665-8644
Norma Shackelford Broker, CRS, GRI 665-4345
Al Shackelford GRI 665-4345

Houses to be Moved

HOUSE TO be moved - 3 Bedroom, 1 1/2 baths. Call 885-5071 or 840-2212.

REC. VEHICLES

Bill's Custom Campers 665-4315 930 S. Hobart

LARGEST STOCK OF PARTS AND ACCESSORIES IN THIS AREA - SUPERIOR SALES Recreational Vehicle Center, 1019 Alcock... We Want to Serve You!!

NEW 1982 Chevrolet Custom Van. Loaded. Save Watson Motors, 623 W. Foster. 665-6233.

SAVE MONEY on your Motor Homes Insurance. Call Duncan Insurance Agency for a FREE quote 665-5757.

FOR SALE: 1966 Chevrolet Step Van converted into Camper, 669-9747.

FOR SALE - Used topper for long wide pickup. Call 665-8333.

TRAILER PARKS

FOR RENT in Lefors. Trailer space with garage. Call 835-2759.

MOBILE HOMES

SAVE MONEY on your Mobile Home Insurance. Call Duncan Insurance Agency for a FREE quote. 665-5757.

1979 MAYFLOWER 8x40 Park model Trailer house with 1 tip out. Call 669-3990. See by appointment, Jerry W. Teels.

FOR SALE - 1980 ArtCraft 14x70 Mobile home, 2 bedroom, 2 bath. Excellent Condition. \$3000 equity. Call 358-4820 after 5:30 p.m.

1981 14x80 CUSTOM built Town and Country, 4 bedroom, 2 bath, fireplace. Excellent. 665-7077.

1978 14x80, 2 bedroom custom built Lancer. See space 30 at Coronado West on Frisco Road.

14x72 MOBILE Home, 2 bedroom, 2 bath, washer, dryer, stove, refrigerator, dishwasher, disposal. 665-8653.

1980 MOBILE Homes, 28x65, 3 bedroom, 2 baths, fireplace, equity and take over payments. Call 669-7012 after 5.

GRASSLANDS

625 ACRES Ranchland "A Hunters Paradise". Call First Landmark, Realtors, 665-0733.

TRAILERS

FOR RENT - car hauling trailer. Call Gene Gates, home 669-3147, business 669-7711.

AUTOS FOR SALE

JONAS AUTO SALES BUY-SELL-TRADE 201 Alcock 665-5901

CULBERSON-STOWERS Chevrolet Inc. 805 N. Hobart 665-1665

HERITAGE FORD LINCOLN-MERCURY, INC. 701 W. Brown 665-8404

BILL ALLISON AUTO SALES Late Model Used Cars 1200 N. Hobart 665-3992

PANHANDLE MOTOR CO. 865 W. Foster 669-9961

TOM ROSE MOTORS 301 E. Foster 669-3233 CADILLAC - OLDSMOBILE

BILL M. DERR B&B AUTO CO. 600 W. Foster 665-5374.

Norma Ward REALTY
669-3346
Carl Kennedy 669-3006
O.G. Trimble GRI 669-3222
Mike Ward 669-6413
Mary Clyburn 669-7959
Mona O'Neal 669-7068
Nina Spoonmore 665-2526
Judy Taylor 665-5977
Jim Ward 665-1593
Dena Whisler 669-7833
Bonnie Schaub GRI 665-1369
Mary Howard 665-5187
Pam Deeds 665-6940

SNAP-ON TOOLS CORPORATION
is looking for proven salesmen interested in owning their own business. Company has immediate opening in Pampa, Texas. Investment required.
CALL **BILL HENDERSON**
806-353-5132
Saturday and Sunday Only

"SELLING PAMPA SINCE 1952"
Quentin WILLIAMS REALTORS
669-2522 Keagy-Edwards, Inc.
SKELLYTOWN 2 bedroom home with metal siding. Living room, kitchen, and 1 bath. Would make a good starter home or rental. \$11,500. M.L.S. 986.
MAGNOLIA Recently remodeled 2 bedroom home with living room, dining room & a den that could be converted to a 3rd bedroom. Steel siding. Owner will consider carrying the loan. \$7,500 M.L.S. 139.
TREE-LINED STREET Spacious 3 bedroom home with living room, formal dining room, and separate den. Convenient kitchen has new linoleum. Tasteful decorated. 1 1/2 baths utility room, single garage. Central heat & air. Popular older neighborhood. \$62,500 M.L.S. 141.
OFFICE • 669-2522 HUGHES BLDG
Helen War ner 665-1427
Becky Cota 665-8126
Ruby Allen 665-6295
Judi Edwards GRI, CRS Broker 665-3687
Erica Vantine 669-7870
Ed Magloghlin 665-4553
Ralisa Utzman 665-4140
Marilyn Keagy GRI, CRS Broker 665-1449

DOUG BOYD MOTOR CO.
821 W. Wilks 665-5765

WANT ADS DO IT ALL! BUY • SELL RENT • TRADE

AUTOS FOR SALE

MARCUM
Pontiac, Buick, GMC & Toyota
633 W. Foster 669-2571

DOUG BOYD MOTOR CO.
On The Spot Financing
821 W. Wilks 665-5765

FARMER AUTO CO.
609 W. Foster 665-2131

MARCUM USED CARS
810 W. Foster 665-7125

JIM McBROOM MOTORS
Pampa's Low Profit Dealer
807 W. Foster 665-2538

SAVE MONEY on your auto insurance. Call Duncan Insurance Agency for a FREE quote. 665-5757.

FOR SALE - 1979 Mercury Marquis, private owner. Excellent condition. Reasonable. 665-4665.

GOVERNMENT SURPLUS Cars and trucks, many sold through local sales, under \$300. Call 1-714-569-0241 for your directory on how to purchase. Open 24 hours.

1977 TOYOTA SR-5 Liftback, FM-AM, 4 radials, extra nice. \$3495. 2225 N. Dwight, 665-3301.

FOR SALE - 1977 Chevrolet Impala, loaded. Call 669-3707. Extra Nice!

1977 PONTIAC Phoenix, excellent condition, low miles. Must sell. Call 883-4561.

FOR SALE - 1974 Hornet Hatchback, 6 cylinder, air conditioner, 33,000 actual miles. 669-7411 or after 5 pm 665-7012.

1977 CAMERO. Clean. 1127S. Finley. 665-4907.

1977 OLDSMOBILE Cutlass, fully loaded with T-top \$2,500. 669-2148 or 665-7762 after 5 p.m.

1973 PLYMOUTH Fury III, 4-door, 360 motor, air conditioner, power brakes, power steering, cruise, good condition. \$795. 665-7320.

1975 CHEVROLET Belair, 4-door, power brakes, power steering, air conditioner, runs good. \$950 or best offer. 669-3582.

AUTOS FOR SALE

FOR SALE - 1977 Ford Mustang II - Price, \$2100. Call 665-6932.

SHARP EXTRA clean metallic silver 1966 Dodge Coronet. Must see to appreciate. \$895. 665-3666.

1979 PONTIAC Firebird, Silver, Low mileage, extra clean, new tires. Call 669-7923.

ONLY 24,000 actual miles, like new, one owner, Mercury Grand Marquis, loaded. Call 669-7267 between 4 and 6 p.m.

1977 CHEVY Monza 305 V-8, 4-barrel, 58,000 miles. Very good condition, \$2,600. 1-883-3791 after 6 p.m.

FOR SALE - 1973 Oldsmobile Cutlass, 4 door. Almost new tires, \$850. See at 321 Roberts.

1978 FORMULA Firebird for sale. Red with white interior. \$4,900. Would consider 1/2 ton pickup for equity. Call 665-0630 after 6 p.m.

1969 CADILLAC Low mileage. Original owner. Good condition. Phone 665-5113.

FOR SALE - 1974 Dodge Challenger, Mags. \$500 or best offer. 320 Anne Street. 665-2222.

1978 PONTIAC Gran Prix, cruise, tilt, power steering and brakes, air. Downtown Motors and Marine or after 6 p.m., 665-7410. \$5495.

1935 FORD Coupe, new overhauled Chrysler 383 engine. Car needs some work, has original title, aged, inspected, runs extremely good. \$2500. Call 665-1040 after 6 p.m.

REAL GAS Miser - Cleanest 1976 VW Rabbit in town. An excellent car. Two door, air, 4 speed. 669-6440, 669-6859, \$3150.

1981 FORD Van (Custom) (The Texan Package), color T.V. couch, 4 captains chairs, stereo system with cassette player, 19,000 miles, take over payments, excellent condition. Exclusive paint job. Call 665-1940 after 6 p.m.

1976 FORD 4x4, 40,000 miles. Cream puff. Call 665-2233.

1981 FORD Van (Custom) (The Texan Package), color T.V. couch, 4 captains chairs, stereo system with cassette player, 19,000 miles, take over payments, excellent condition. Exclusive paint job. Call 665-1940 after 6 p.m.

1981 FORD XLT Ranger, ton dolly; Lincoln Gasoline Welder, extra nice. Downtown Motor, 301 S. Cuyler.



TRUCKS FOR SALE

1979 CHEVY 4 wheel drive, 11,000 miles, 6 cylinder, 4 speed with camper shell \$6,000. 665-4540.

1979 RANCHERO G.T. Loaded, extra clean, low mileage. Priced to sell, Compare! Call John 665-1991.

FOR SALE: 1979 Ford Courier pickup, long bed, headache rack and tool box. 16,000 miles. Call 669-3764 after 5 or 665-8980.

1977 SUBURBAN Silverado - 4 wheel drive, loaded and in good condition. Call 779-2539 after 4 p.m.

FOR SALE by owner, 1978 Ford Ranger XLT. Heavy duty 1/2 ton, super cap, loaded, super sharp. 669-6664.

SHARP 1978 ElCamino \$4,895. 1981 Ford Durango. Low mileage. Watson Motors. 623 West Foster.

MOTORCYCLES

MEERS CYCLES
1300 Alcock 665-1241

SAVE MONEY on your Motorcycle Insurance. Call Duncan Insurance Agency for a FREE quote.

MUST SALE: 1981 Suzuki GS 1100 Color-coded vetter fairing, lowers, bags, trunk, stereo, cruise, trailer. Call 665-7367.

1981 YAMAHA 650 Special - Low mileage. Call 669-7317.

1981 RM 125X, excellent condition, many extras, asking \$1050. Call 665-8833 after 4 p.m.

1980 SUZUKI 550 L, 3300 miles. Windshield, crash bar, excellent condition. Call 669-2270.

YAMAHA T.T. 500 - lot's of extra's. Runs good. Phone 669-7384 or 665-7614.

1981 SUZUKI 100 CC \$500 665-2170 after 5 p.m.

MOTORCYCLES

FOR SALE: 1979 Yamaha MT-500. Call 665-8336. After 6, 665-4897.

OGDEN & SON
Expert Electronic wheel balancing
501 W. Foster 665-8444

OGDEN & SON
Expert Electronic wheel balancing
501 W. Foster 665-8444

AUTO INSURANCE PROBLEMS
Underage, average, rejected drivers because of driving record. Also discount for preferred risks.

SERVICE INSURANCE AGENCY 1330 N. BANKS
David Hutto 665-7271

OGDEN & SON
Expert Electronic wheel balancing
501 W. Foster 665-8444

OGDEN & SON
Expert Electronic wheel balancing
501 W. Foster 665-8444

OGDEN & SON
Expert Electronic wheel balancing
501 W. Foster 665-8444

TIRES AND ACC.

FIRESTONE STORES
120 N. Gray 665-8419

NATIONAL AUTO Salvage, 1 1/2 miles west of Pampa, Highway 60. We now have rebuilt alternators and starters at low prices. We appreciate your business. Phone 665-3222 or 665-3962.

OGDEN & SON
Expert Electronic wheel balancing
501 W. Foster 665-8444

OGDEN & SON
Expert Electronic wheel balancing
501 W. Foster 665-8444

OGDEN & SON
Expert Electronic wheel balancing
501 W. Foster 665-8444

OGDEN & SON
Expert Electronic wheel balancing
501 W. Foster 665-8444

OGDEN & SON
Expert Electronic wheel balancing
501 W. Foster 665-8444

OGDEN & SON
Expert Electronic wheel balancing
501 W. Foster 665-8444

PARTS AND ACC.

PARTING OUT: 1977 Fiat X1-9. Call 1-883-3791 after 6 p.m.

BOATS AND ACC.

OGDEN & SON
501 W. Foster 665-8444

15 FOOT Glass Craft Boat, 35 Evinrude Motor, Trailer, \$395. Downtown Marine, 301 S. Cuyler.

1977 NEWMAN Charger 15 Foot Ski Boat; with 1979 85 Johnson motor. Call 669-7829.

SCRAP METAL

BEST PRICES FOR SCRAP
New and Used Hub Caps: C.C. Matheny
Tire Salvage
818 W. Foster 665-8251

PARTS AND ACC.

NATIONAL AUTO Salvage, 1 1/2 miles west of Pampa, Highway 60. We now have rebuilt alternators and starters at low prices. We appreciate your business. Phone 665-3222 or 665-3962.

PARTS AND ACC.

OGDEN & SON
Expert Electronic wheel balancing
501 W. Foster 665-8444

PARTS AND ACC.

OGDEN & SON
Expert Electronic wheel balancing
501 W. Foster 665-8444

PARTS AND ACC.

OGDEN & SON
Expert Electronic wheel balancing
501 W. Foster 665-8444

PARTS AND ACC.

OGDEN & SON
Expert Electronic wheel balancing
501 W. Foster 665-8444

PARTS AND ACC.

OGDEN & SON
Expert Electronic wheel balancing
501 W. Foster 665-8444

PARTS AND ACC.

OGDEN & SON
Expert Electronic wheel balancing
501 W. Foster 665-8444

PARTS AND ACC.

OGDEN & SON
Expert Electronic wheel balancing
501 W. Foster 665-8444

PARTS AND ACC.

OGDEN & SON
Expert Electronic wheel balancing
501 W. Foster 665-8444

PARTS AND ACC.

OGDEN & SON
Expert Electronic wheel balancing
501 W. Foster 665-8444

PARTS AND ACC.

OGDEN & SON
Expert Electronic wheel balancing
501 W. Foster 665-8444

PARTS AND ACC.

OGDEN & SON
Expert Electronic wheel balancing
501 W. Foster 665-8444

PARTS AND ACC.

OGDEN & SON
Expert Electronic wheel balancing
501 W. Foster 665-8444

PARTS AND ACC.

OGDEN & SON
Expert Electronic wheel balancing
501 W. Foster 665-8444

PARTS AND ACC.

OGDEN & SON
Expert Electronic wheel balancing
501 W. Foster 665-8444

PARTS AND ACC.

OGDEN & SON
Expert Electronic wheel balancing
501 W. Foster 665-8444

PARTS AND ACC.

OGDEN & SON
Expert Electronic wheel balancing
501 W. Foster 665-8444

PARTS AND ACC.

OGDEN & SON
Expert Electronic wheel balancing
501 W. Foster 665-8444

PARTS AND ACC.

OGDEN & SON
Expert Electronic wheel balancing
501 W. Foster 665-8444

PARTS AND ACC.

OGDEN & SON
Expert Electronic wheel balancing
501 W. Foster 665-8444

PARTS AND ACC.

OGDEN & SON
Expert Electronic wheel balancing
501 W. Foster 665-8444

PARTS AND ACC.

OGDEN & SON
Expert Electronic wheel balancing
501 W. Foster 665-8444

PARTS AND ACC.

OGDEN & SON
Expert Electronic wheel balancing
501 W. Foster 665-8444

PARTS AND ACC.

OGDEN & SON
Expert Electronic wheel balancing
501 W. Foster 665-8444

PARTS AND ACC.

OGDEN & SON
Expert Electronic wheel balancing
501 W. Foster 665-8444

PARTS AND ACC.

OGDEN & SON
Expert Electronic wheel balancing
501 W. Foster 665-8444

PARTS AND ACC.

PARTING OUT: 1977 Fiat X1-9. Call 1-883-3791 after 6 p.m.

BOATS AND ACC.

OGDEN & SON
501 W. Foster 665-8444

15 FOOT Glass Craft Boat, 35 Evinrude Motor, Trailer, \$395. Downtown Marine, 301 S. Cuyler.

1977 NEWMAN Charger 15 Foot Ski Boat; with 1979 85 Johnson motor. Call 669-7829.

SCRAP METAL

BEST PRICES FOR SCRAP
New and Used Hub Caps: C.C. Matheny
Tire Salvage
818 W. Foster 665-8251

PARTS AND ACC.

NATIONAL AUTO Salvage, 1 1/2 miles west of Pampa, Highway 60. We now have rebuilt alternators and starters at low prices. We appreciate your business. Phone 665-3222 or 665-3962.

PARTS AND ACC.

OGDEN & SON
Expert Electronic wheel balancing
501 W. Foster 665-8444

PARTS AND ACC.

OGDEN & SON
Expert Electronic wheel balancing
501 W. Foster 665-8444

PARTS AND ACC.

OGDEN & SON
Expert Electronic wheel balancing
501 W. Foster 665-8444

PARTS AND ACC.

OGDEN & SON
Expert Electronic wheel balancing
501 W. Foster 665-8444

PARTS AND ACC.

OGDEN & SON
Expert Electronic wheel balancing
501 W. Foster 665-8444

PARTS AND ACC.

OGDEN & SON
Expert Electronic wheel balancing
501 W. Foster 665-8444

PARTS AND ACC.

OGDEN & SON
Expert Electronic wheel balancing
501 W. Foster 665-8444

PARTS AND ACC.

OGDEN & SON
Expert Electronic wheel balancing
501 W. Foster 665-8444

PARTS AND ACC.

OGDEN & SON
Expert Electronic wheel balancing
501 W. Foster 665-8444

PARTS AND ACC.

OGDEN & SON
Expert Electronic wheel balancing
501 W. Foster 665-8444

PARTS AND ACC.

OGDEN & SON
Expert Electronic wheel balancing
501 W. Foster 665-8444

PARTS AND ACC.

OGDEN & SON
Expert Electronic wheel balancing
501 W. Foster 665-8444

PARTS AND ACC.

OGDEN & SON
Expert Electronic wheel balancing
501 W. Foster 665-8444

PARTS AND ACC.

OGDEN & SON
Expert Electronic wheel balancing
501 W. Foster 665-8444

PARTS AND ACC.

OGDEN & SON
Expert Electronic wheel balancing
501 W. Foster 665-8444

PARTS AND ACC.

OGDEN & SON
Expert Electronic wheel balancing
501 W. Foster 665-8444

PARTS AND ACC.

OGDEN & SON
Expert Electronic wheel balancing
501 W. Foster 665-8444

PARTS AND ACC.

OGDEN & SON
Expert Electronic wheel balancing
501 W. Foster 665-8444

PARTS AND ACC.

OGDEN & SON
Expert Electronic wheel balancing
501 W. Foster 665-8444

PARTS AND ACC.

OGDEN & SON
Expert Electronic wheel balancing
501 W. Foster 665-8444

PARTS AND ACC.

OGDEN & SON
Expert Electronic wheel balancing
501 W. Foster 665-8444

PARTS AND ACC.

OGDEN & SON
Expert Electronic wheel balancing
501 W. Foster 665-8444

PARTS AND ACC.

OGDEN & SON
Expert Electronic wheel balancing
501 W. Foster 665-8444

PARTS AND ACC.

OGDEN & SON
Expert Electronic wheel balancing
501 W. Foster 665-8444

PARTS AND ACC.

OGDEN & SON
Expert Electronic wheel balancing
501 W. Foster 665-8444

SAVE MONEY on your auto insurance. Call Duncan Insurance Agency for a FREE quote. 665-5757.

FOR SALE - 1979 Mercury Marquis, private owner. Excellent condition. Reasonable. 665-4665.

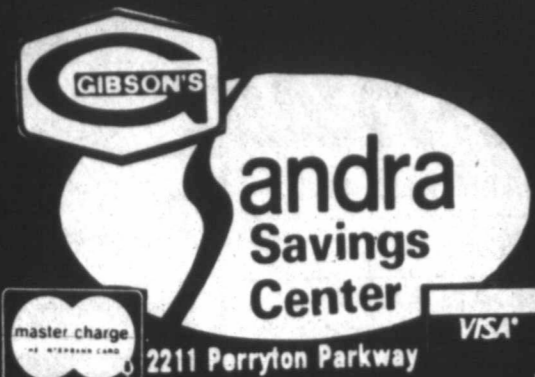
GOVERNMENT SURPLUS Cars and trucks, many sold through local sales, under \$300. Call 1-714-569-0241 for your directory on how to purchase. Open 24 hours.

1977 TOYOTA SR-5 Liftback, FM-AM, 4 radials, extra nice. \$3495. 2225 N. Dwight, 665-3301.

FOR SALE - 1977 Chevrolet Impala, loaded. Call 669-3707. Extra Nice!

1977 PONTIAC Phoenix, excellent condition, low miles. Must sell. Call 883-4561.

FOR SALE - 1974 Hornet Hatchback, 6 cylinder, air conditioner, 33,000 actual miles. 669-7411 or after 5 pm 665-7012



Sandra Savings Center
 2211 Perryton Parkway
 Pampa's ONLY HOME OWNED
 Full Line DISCOUNT CENTER
 ...Serving The Area Since 1963!
 • Shop Monday-Saturday 9:30-8
 • Midway Post office Open at Gibson's

We Reserve the Right to Limit Quantities
DORITOS



Lays' All Flavors
 Reg. \$1.89
 Size
\$1.39

IT'S A ROUND-UP OF SAVINGS
 Come In Thursday - Friday - and Saturday

WHITE POTATOES
 U.S. No. 1

\$1.29
 10 Lb. Bag



PEAR TREES

\$45

Bradford 5'6" Fast Growing

IDEAL FOR THIS AREA

HORMEL CHILI
 No Beans
 15 Oz. Can



89c

Parkay Stick
MARGARINE

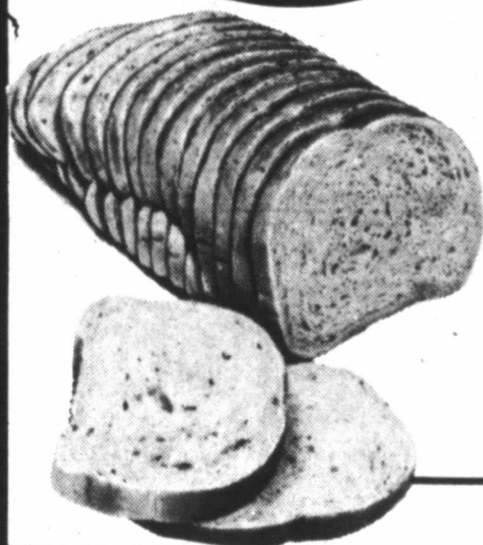
1 Lb. Pkgs.
2 for \$1.00



Kraft BARBECUE SAUCE



18 Oz. Btl.
59c



Mrs. Baird's
WHEAT BREAD

1 1/2 Lbs. Loaf
63c

New Shipment

DOWNY
 Fabric Softener
 64 Oz. Bottle

\$1.89



DEPENDABLE SERVICE—
 Since 1963—And Still Dependable!



Dean Copeland Owner-Pharmacist
 Jim Pepper Staff Pharmacist

- Computerized Family Records
- Approved Charge Accounts Welcome
- We Fill Medicaid Prescriptions
- P.C.S. and Paid Cardholder Welcome
- Nursing Home Patient Service
- Visa and Mastercharge Accounts

PEAT MOSS



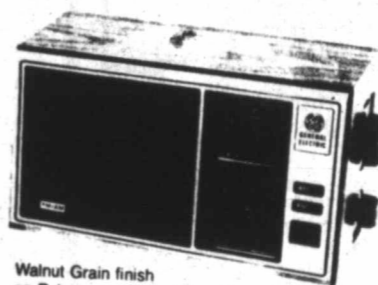
40 Lb. Bag
\$1.99

PAX CRABGRASS CONTROL

\$9.99



Prevents crabgrass and weed seed from germinating, plus fertilizer. Covers 2,000 sq. ft. Reg. 14.99.



General Electric AM/FM
CLOCK RADIO

No. 7-4550
 Reg. \$34.99
\$29.99

WRANGLER JEANS

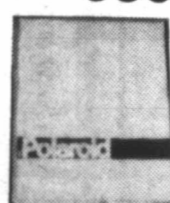
Boys' Sizes 6-14
 Straight Leg and Boot
 Reg. \$11.99
\$9.99

Student's
 Waist: 25-30
 Regular, Slim
 Reg. \$15.49
\$13.49



POLAROID 600 FILM

\$6.99



SOF N-SOIL
 Granulated Gypsum
 Ideal for Yards and Gardens

Gibson's Discount Prices
\$5.99
 Bag

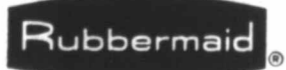


Vanity WASTE BASKET
 Assorted Colors

Reg. \$4.89
\$3.49

COOKIE SHEET
 Ekco Flint Stainless Sheet

12x16 1/2
 Reg. \$7.89
\$4.99



Drainer Tray

keeps counter dry and new-looking

- Built-in slope, side rims guide water into sink bowl
- Quiet cushiony protection for china, glassware
- Companion with dish drainer for ideal dish-drying team



20% OFF

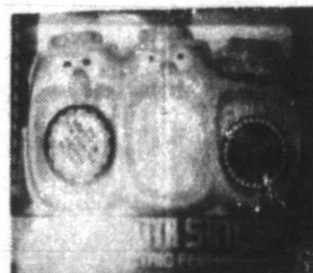
Baby Magic
BABY BATH

16 Oz. Reg. \$3.29
\$2.79



BIG MOUTH SWINGER

Electric Feeding Dish
 Reg. \$13.39
\$8.99



AMALIE 20 W Motor Oil

Qt. **89c**
 Limit: 6



AMALIE Automatic TRANSMISSION FLUID
 Type F

Qt. **89c**



ABSORBINE JR.
 12 Oz. Reg. \$3.39

\$2.59



PEPTO-BISMOL

Chewable Tablets
 24 Tablets
 Reg. \$1.49

99c



FLEX
 Shampoo or Conditioner

16 Oz. Reg. \$2.39
\$1.99

BAN
 Quick-Dry Roll-On Deodorant
 3.5 Oz. Reg. \$3.69

\$3.29



STP MOTOR OIL

10W30 Quart Limit: 6 **99c**

