

Low-Cost Charter Transport Inaugurated By Federal Board

WASHINGTON (AP) — The Civil Aeronautics Board is inaugurating a low-cost air charter experiment that may revolutionize air transportation. In a surprisingly abrupt decision, the CAB is opening the air charter field to all groups of 40 or more persons. The order was to be issued Thursday, but the board made its intentions public late Wednesday. A CAB official who worked on the new proposal called it one of the most important CAB actions in 20 years and added: "This could result in a massive shift of emphasis, particularly in transatlantic travel, from scheduled to charter services. It could cause the transatlantic market to take off." The CAB said the new rule will go into effect immediately for an experimental period of more than three years, through Dec. 31, 1975. Airline industry spokesmen withheld comment. Officials of many scheduled airlines, however, fear the new concept may seriously hurt the regular-fare services that provide most of their revenue. But the supplemental airlines have been asking for liberalized rules. The board said it will issue rules authorizing "travel group

charters" (TGCs) as a response to "the public need for more widely available low-cost air transportation." The CAB added that "in due course" it will propose suspension of the affinity charter authorization—the rule under which most charter flights currently operate—for the duration of the TGC experiment. Under affinity charter rules in effect for many years, persons taking part in low-cost charter flights must have belonged to the chartering organization for at least six months. The chartering organization must be a club, society, union or other group with genuine common interests. Under the new rule, any group of 40 or more persons, without any affinity relationships whatever, may charter part or all of an airplane with all group members sharing the costs equally. Such TGC charters must be for round trips lasting at least 10 days, with regard to most of the world, or seven days for North America.

Pike's Peak in Colorado was sighted by Zebulon M. Pike in 1806. The peak, 14,110 feet high, is located in the central part of the state.

Pentagon Denies Reds' Allegation On Gift Package

WASHINGTON (AP) — The Pentagon denies it has put espionage equipment in gift packages sent to American war prisoners in North Vietnam. The North Vietnamese have said they discovered espionage equipment inside such items as tubes of toothpaste and bars of soap that were intended for the prisoners. But the Pentagon said Wednesday it does not even see letters and packages sent by relatives of the prisoners. It said it provides a form mailing label, identifying the prisoner by name and service number, and this is affixed to the package by the sender who mails it himself. The mail travels through international postal channels to either Moscow or Hong Kong for forwarding to Hanoi, if the North Vietnamese will accept it.

Smallest City Mayor Leads 'Mass Exodus'

FINK, Tex. (AP) — It isn't Christmas or Thanksgiving or even National Pink Day, but Fink Mayor Pat Albright is closing down the Fink General Store and leading a mass exodus of Fink Citizens, all eight, to College Station Saturday. "I've been telling my customers for a month now what I was going to do," said her honor, "but they just laugh at me. But when I get out of the beauty parlor Saturday morning, we're locking up the store for the weekend and heading for College Station."

Moving Said Not Cause Of Women's Depression

NEW HAVEN, Conn. (AP) — Psychiatrists say moving is far more stressful than generally believed and is a contributing factor in depression among American women. "When you ask a bunch of depressed people about events that have occurred in their life recently, moving was about the third most frequent event," says Myrna M. Weissman, codirector of Yale University's Depression Research Unit. "In no way should we say that depression is caused by moving," she says. "It could be a contributing factor, we feel it is substantial." Dr. Weissman's studies, outlined in "Society" and the Yale Alumni Magazine, dealt with depressed women. Those women who had been through a move generally didn't connect their illness to the move. Dr. Weissman and coworker Eugene S. Paykel wrote. The women attributed it, instead, to financial problems, loneliness, marital friction, career frustrations, etc., but "almost always, however, these problems were the result of

Hijacker Gets Life Sentence

OKLAHOMA CITY, Okla. (AP) — Declaring that "this business of aircraft piracy has just got to stop," a federal court judge has sentenced a convicted hijacker to life in prison. U.S. District Court Judge Luther Eubanks said he completely agreed with the jury in rejecting the plea by Melvin M. Fisher of Norman, Okla., that he was temporarily insane when he piloted an American Airlines plane shortly after it left Will Rogers World Airport here last July 12. Fisher, 49, did not deny during the trial that he committed the hijacking.

Farmers Get Break On Trailer Brakes

AUSTIN (AP) — Farmers got a break on trailer brakes Thursday. A Senate committee also eased regulations on towing boats. Changes to a 1971 law on trailer brakes had been sought almost since the law went into effect. Gov. Preston Smith even considered calling a special legislative session on that topic this past summer. Farm groups particularly wanted changes. A bill sponsored by Sen. Wayne Connally of Floresville was approved for floor debate Thursday after numerous amendments, including a proposal by Port Arthur Sen. Roy Harrington to exempt boat trailers from having lights if they are used only in the daytime. The amendment specifies that if the directional signal on the "towing vehicle" can be seen, a signal light is not needed on the boat trailer.

All farm trailers would be exempt from the lighting requirements if they also are pulled only during daylight and are visible for 1,000 feet. This, in effect, would prevent movement of such trailers in rainy or foggy weather. The new proposal also removes the 30 miles an hour speed limit on farm trailers and exempts the trailers under 15,000 pounds gross weight from the 1971 law, which required a brake on each wheel. The proposal, however, requires that the driver would have to be able to stop the trailer within 50 feet if he is going 20 miles an hour. Rep. Mike Moncrief of Fort Worth headed a special House committee which worked on a new bill after complaints about the 1971 law. Supporters of the proposed changes included the Texas Farmers Union, the Texas Federation of Co-operatives and the 130,000-member Texas Farm Bureau.

Misunderstanding Blamed For False Cancer Report

NEW YORK (AP) — A misunderstanding over a cancer research report last weekend has been blamed for a widespread but false belief that researchers at Oak Ridge National Laboratory had achieved a major advance in cancer treatment. Scientists from the laboratory told a news conference Wednesday that there was no such breakthrough and agreed that answers to the cancer problem may lie years in the future. Spokesmen said the laboratory has received hundreds of telephone calls from around the country and around the world

inquiring about the original report, which was based on a news release from the National Cancer Institute. The release said a team of scientists from NCI and Oak Ridge "have proposed a mechanism to explain how stimulation of the immune, or disease-fighting, systems of animals with cancer can result in complete disappearance of their cancers." The scientists said Wednesday that the words "complete disappearance" apparently led to reports of a breakthrough in cancer treatment.

News In Brief

SAN FRANCISCO (AP) — The Committee, performing nonstop ad lib satire among the strip dens of gaudy North Beach for almost a decade, has announced it will fold because of financial troubles. Alan Myerson, who founded the company here in 1963, blamed the closing on the "economic situation" of the Nixon years. San Francisco Mayor Joseph Alioto and the "disaster" which converted neighborly, solid North Beach into a blaring carnival of strip joints, shills and overpriced drinks.

man in the U. S. Steel building almost got the supreme test for her hair spray's holding power. Firemen rushed to the building Wednesday when women claimed they smelled smoke in the women's room. Firemen found no smoke, but... "We think the girls were smelling hair spray," said Battalion Chief Joseph Mullen. "It was kind of a deodorant smell. One of the girls was still spraying when we got there."

FRANKLIN, Tenn. (AP) — A motel put up this sign: "Waitresses to strip." Manager R. L. Benson said Wednesday the sign was indeed true. But he emphasized the waitresses will strip tables, nothing else.

PITTSBURGH (AP) — A wo-

SPECIAL
Burgers 35¢ or 3 for \$1.00
S&J MART
600 E. FREDERIC 669-3661

SATURDAY AT DUNLAP'S

CORONADO CENTER SATURDAY 10:00 to 6:00



Girls Smock Tops

Sizes 7 to 14 **4⁰⁰**

Long sleeve smock tops in prints with contrasting yoke and pockets. Polyester and cotton blends for easy-care.



Washable Acrylic Cape

18⁰⁰

Beautiful capes of 100 percent windtuck Orlon Acrylics. Choose either the bow knot weave or the novelty stitch. One size fits all. White, beige, navy. Just right for the cool evenings.



3-Piece Polyester Pant Suit

31⁸⁸

Pant suit deal—jacquard double-knit sleeveless jacket and matching pants brightened with long sleeve, multi-color striped turtle neck. All 100% polyester, machine washable. Your favorite fall shades. Sizes 10-18.



Polyester Double Knits

Compare to 4.98 **1⁷⁷**

Your choice of over 750 yards first quality polyester double knits in a selection of textures, weaves and colors. All machine washable. Tumble dry.



Nylon Sleepwear

3⁹⁹

Pretty lace trims on this collection of long gowns, waltz gowns or baby doll pajamas. Fashion colors. P-S-M-L.



Blanket Special

Thermal weaves or napped weaves in 100% acrylics or 50% polyester and 50% acrylic blends. Wide nylon satin bindings.

72x90 inch size **4.99**
86x90 inch size **6.99**



Farah Double Knits

100% Polyester

14⁰⁰ to 18⁰⁰

Outstanding selection in men's or young men's belt loop, flares. Handsome textures and popular twills in a wide range of solid colors. Waist sizes 29 thru 42. Choose yours now, you'll want more than one pair.



Permanent Pressed Sport Shirts

Compare to 7.00 **4⁸⁸**

Long sleeve sport shirts in care free polyester and cotton blends permanently pressed. Plaids, patterns or solids in light or deep tones. Sizes S-M-L-XL.



Fall Selection!
Double Knit Sport Coats

Values to 60.00
44⁰⁰

Double knit sport coats with belted backs or plain backs. 100% polyester or the new 85% polyester and 15% wool blends. Solids or patterned weaves in tones of Blue, Grey or Brown. Regulars or longs.

Gospel Meeting

Oct. 1st. thru 8th.
at
Well St. Church of Christ

Evangelist Truman Teel

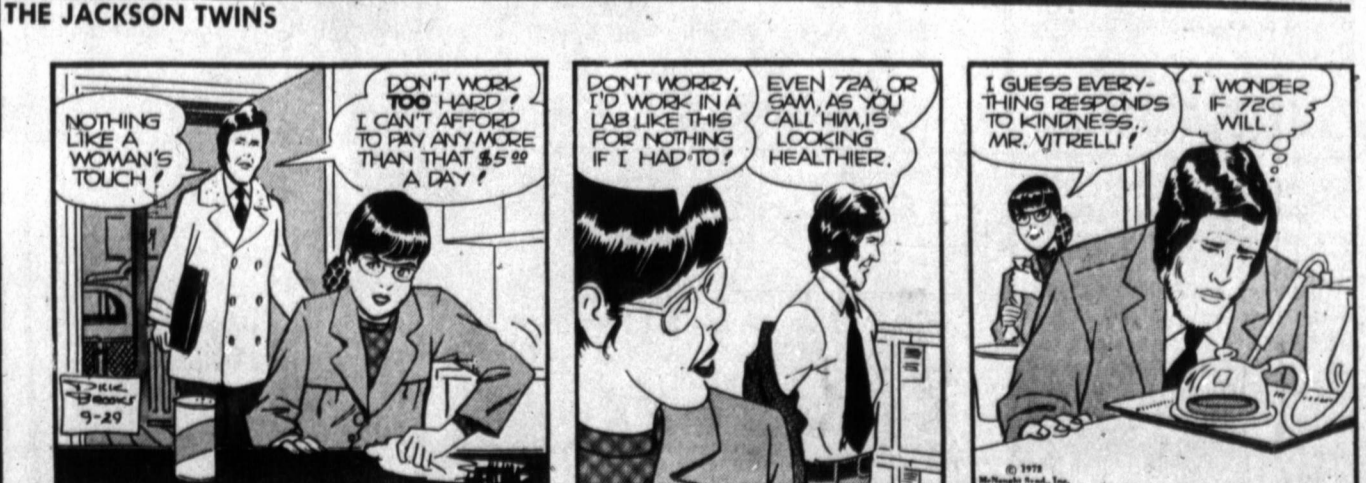
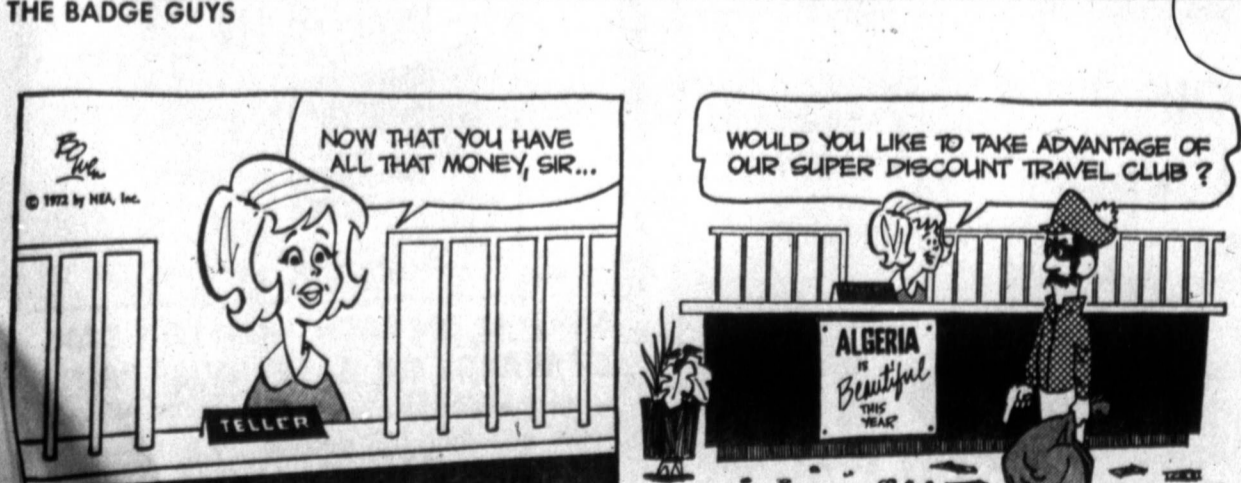
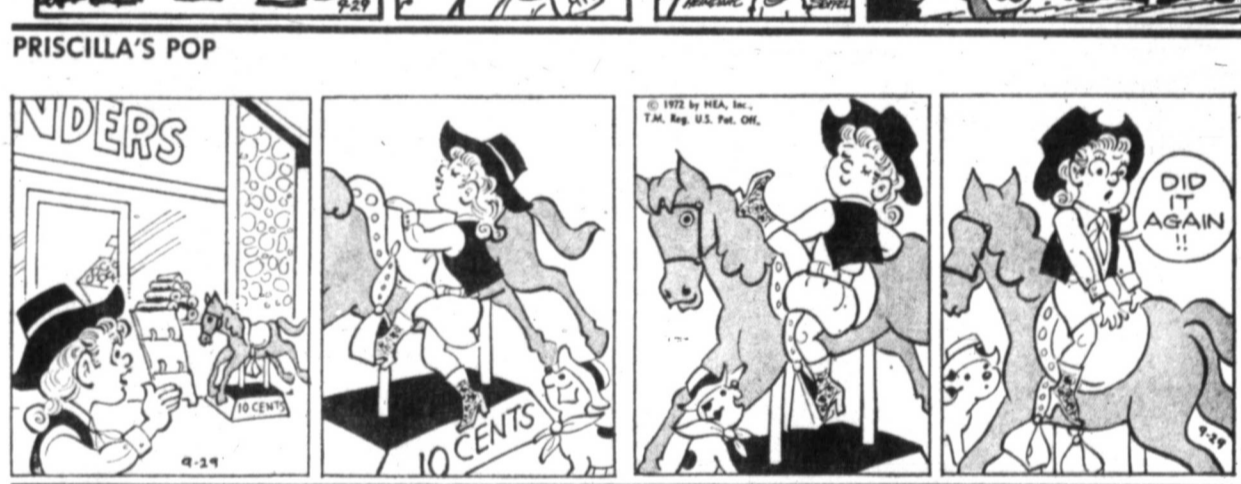
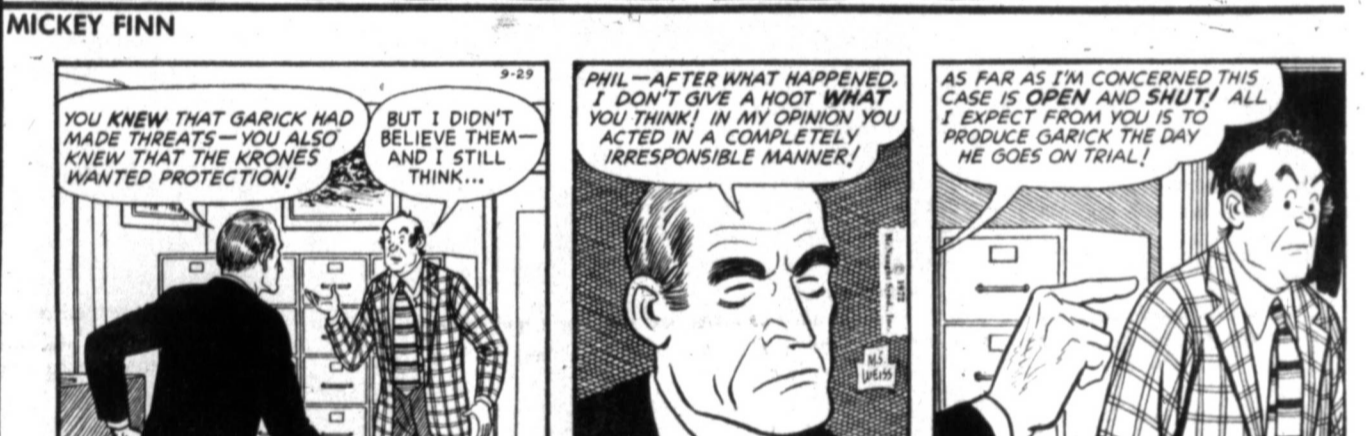
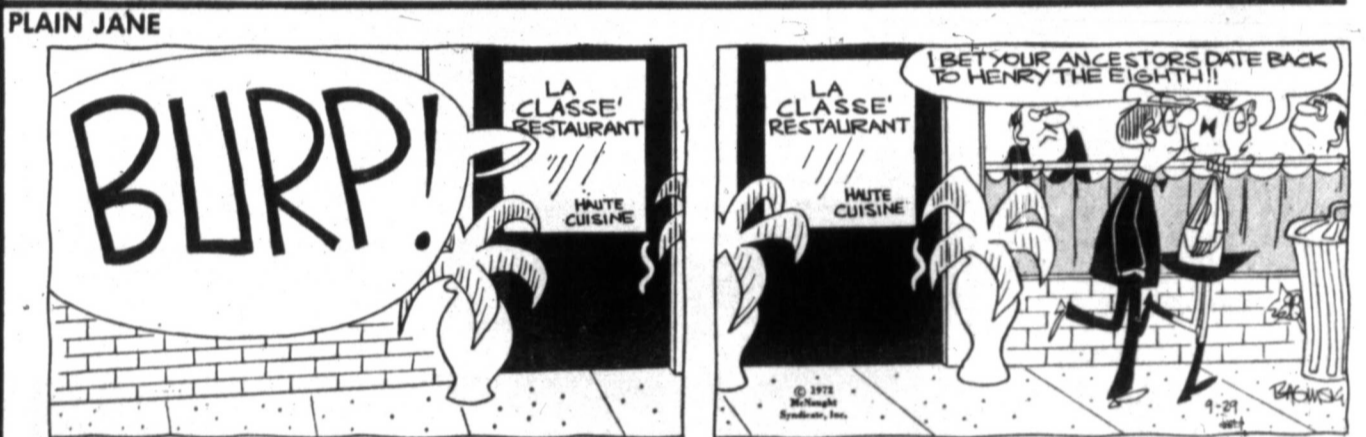
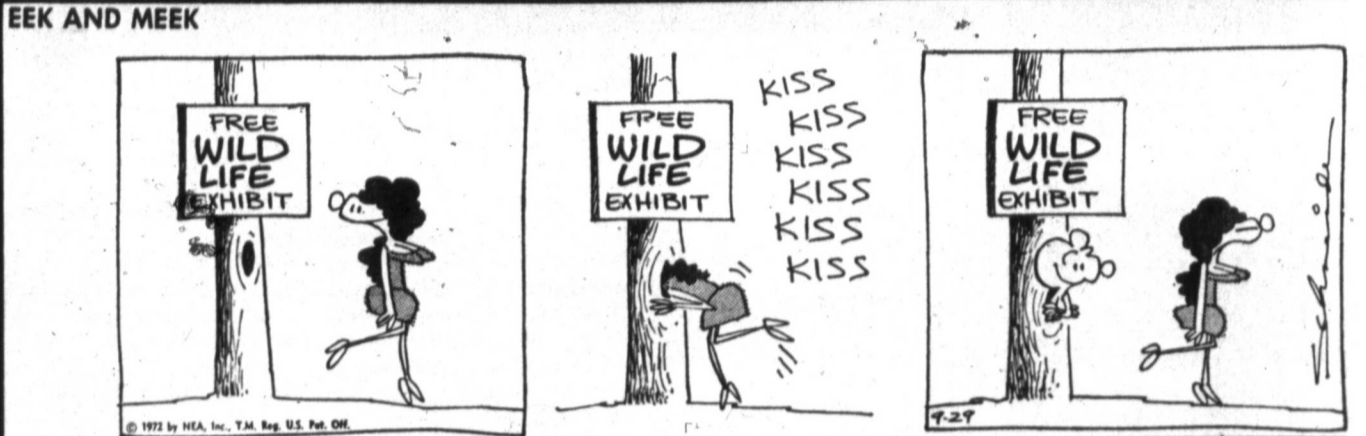
Sunday 10:30 a.m.
and 6 p.m.
Weekdays 7:30 p.m.

Singing Sunday
Oct. 8, 2:30 p.m.

Everyone Is Invited

NEW STYLES OF TONY LAMA BOOTS NOW IN STOCK

ADDINGTON'S WESTERN STORE
119 S. Cuyler



WIN AT BRIDGE

North-South vulnerable. West North East South. Opening lead—♦ K

By Oswald & James Jacoby

Here is another elimination play made possible because West's bidding has told South where all the cards are.

Not that we really fault West for his bidding. He can't know that East has a blank hand.

West cashes the ace and king of diamonds and shifts to a trump. South stops to figure out West's hand.

That doesn't have to be the exact distribution but South can find out more about it right away.

Now South leads a low heart toward dummy. West can't afford to rise with his ace.

South returns to this hand with a second trump. West shows out.

Now South leads a low heart toward dummy. West can't afford to rise with his ace.

West shows out.

CARD SENSE

The bidding has been: West North East South.

Pass 1 ♦ Pass 2 NT. Pass 3 ♣ Pass 3 ♠. Pass 4 ♠ Pass ?

You, South, hold: ♠AK65 ♥A102 ♦K53 ♠AJ6

What do you do now? A—Bid four hearts.

Today's Question: Your partner continues to four no-trump.

Answer tomorrow: Betty Canary

By BETTY CANARY

I don't feel sorry for the girl in the TV commercials.

Why is it that just when we're thinking our children are too slow in growing up...

When inspecting the fingernails, why does a man bend his fingers toward himself...

Why haven't we yet passed a law against parents saying to children...

Or a law against children saying to parents...

Is lack of curiosity the first real sign of old age?

Why do women usually tap cigarettes with the index finger while men more often flick off ashes from a cigarette with the back of the ring finger?

When caught up in one of those inane arguments about whether women dress for other women or for men...

Can the wise really grow wiser by listening to the ignorant?

Do those greener pastures always have higher fences around them?

Does anything make us pay off that old doctor bill faster than new twinge in our side?

Isn't it strange that those perfect husbands are all married to other women?

Why is that on every birthday we wake up remembering the quotation...

When a recipe calls for granulated sugar use nested measuring cups...



Wife's volunteer friends give husband the 'bores'

By Abigail Van Buren

DEAR ABBY: I do volunteer work with two wonderful women one day a week.

One of the women invited my husband and me to her home for dinner.

After we got home my husband told me to never subject him to another evening like that!

Abby, I know I should invite these nice people to my home, but I'm afraid my husband wouldn't hear of it.

DEAR IN: Reciprocate by inviting the women over some afternoon, sans husbands.

DEAR ABBY: I just attended a bridal shower where one woman brought her seven-year-old daughter.

The mother of the child has relatives all over town so there was no excuse for taking her along.

DEAR MOTHER: Pushy mothers have been with us since Eve gave Adam the rib.

DEAR ABBY: I have a very bright, quick-witted 32-year-old son who is an expert at putting people down.

I am sure he loves her, too, but I feel the cutting edge of his sharp tongue against this helpless child.

DEAR ANON: Since you are "grieved," and legitimately so, I suggest that you tell your "bright" son...

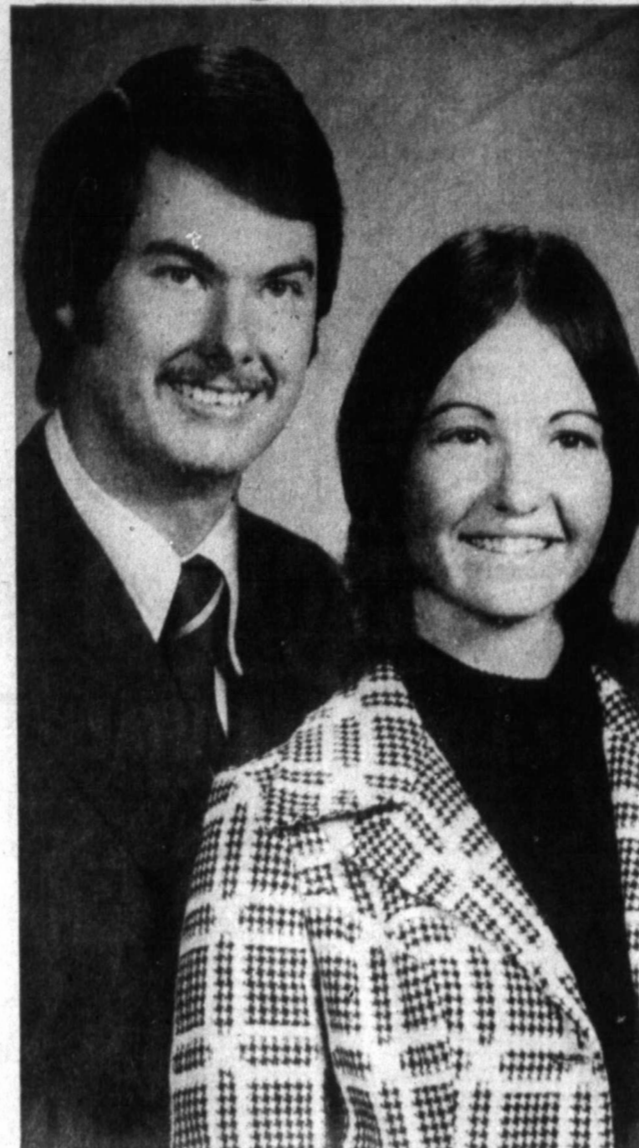
DEAR ABBY: Occasionally someone corrects my pronunciation of a word.

DEAR MIAMI: It depends upon the circumstances.

Hate to write letters? Send \$1 to Abby, Box 69700, Los Angeles, Cal. 90069.

Shoe Specials Waffle Stompers SCHOOL SHOES Hub's Booterie

Marriage Announced



Mrs. Stanley T. Beck of White Deer announces the marriage of her daughter, Deborah Sue...

Highway Signs Explained To Altrusa Club Members

In observance of National Highway Week, Leon Wood of Amarillo, traffic service engineer for the highway department...

The new sign system is for protection, regulation and information, he told the women...

Geneva Tidwell reported the annual Career Clinic at Pampa High School, sponsored jointly by the Altrusa Club...

Genevieve Henderson reminded members of the Arthritis Foundation meeting at noon Thursday at Furr's Cafeteria.

He explained the new yellow center-line marking, stating all highways must have the center-line markings completed by January 1973.

Program chairman was Mary Wilson of the community service committee.

During the business session, Libby Shotwell announced a training session for persons assisting with the Tuberculosis Association skin-test program.

Program chairman was Mary Wilson of the community service committee.

DEAR MOTHER: Pushy mothers have been with us since Eve gave Adam the rib.

DEAR ABBY: I have a very bright, quick-witted 32-year-old son who is an expert at putting people down.

DEAR ANON: Since you are "grieved," and legitimately so, I suggest that you tell your "bright" son...

DEAR ABBY: Occasionally someone corrects my pronunciation of a word.

DEAR MIAMI: It depends upon the circumstances.

Hate to write letters? Send \$1 to Abby, Box 69700, Los Angeles, Cal. 90069.

Your Horoscope

By Jeane Dixon

Saturday, SEPTEMBER 30 Your birthday today: Idealistic expansion fits your prevailing course this year.

Financial levels fluctuate all year. Today's natives enjoy talking; in business they usually deal in liquids or esthetic appeal items.

Aries [March 21-April 19]: Endless discussions resolve no issues, but make clear to all the character of those doing the talking.

Taurus [April 20-May 20]: You still are on a delay-depart pattern. Relax, as your unconscious is at work digesting recent experience.

Gemini [May 21-June 20]: Property entrusted to you should rest unused during your stewardship.

Cancer [June 21-July 22]: Open your mind and heart to the friendly people you know, expecting many sorts of differences to take into fair account.

Leo [July 23-Aug. 22]: People you've overlooked put in their two cents' worth. Check the facts, deal with them as nearly one-at-a-time as can be managed.

Virgo [Aug. 23-Sept. 22]: With little or no warning you are called upon to serve beyond normal expectations.

Libra [Sept. 23-Oct. 22]: Your pose while waiting for obstruction to be dismantled will distinguish you, and create an image that will help later.

Scorpio [Oct. 23-Nov. 21]: See yourself as stronger than momentary irritation, discipline your impulsive tendencies. Care in legal actions is critical.

Sagittarius [Nov. 22-Dec. 21]: This weekend is no time for a lasting decision.

Capricorn [Dec. 22-Jan. 19]: Union is not favored today. What is brought together now tends to split up in a fairly short time, with repercussions.

Aquarius [Jan. 20-Feb. 18]: Find the contradiction, search for the credible version before proceeding.

Pisces [Feb. 19-March 20]: Impetuous decisions concerning unfamiliar people are troublesome later.

During the business session, led by President Bill Kidwell, it was decided to hold the annual Top O' Texas CB Jamboree from 10 a.m. until 9 p.m. Sunday, Nov. 12.

Members present were Messrs. and Mrs. Bill Kidwell, M.D. Hood, Willis Watson, Junior Ellis, Eugene Stubbs, Perry Nichols, Dale Robbins, and Betty Miser.

During the business session, led by President Bill Kidwell, it was decided to hold the annual Top O' Texas CB Jamboree from 10 a.m. until 9 p.m. Sunday, Nov. 12.

Members present were Messrs. and Mrs. Bill Kidwell, M.D. Hood, Willis Watson, Junior Ellis, Eugene Stubbs, Perry Nichols, Dale Robbins, and Betty Miser.

FALL CARPET SALE SPECIAL PRICES ON ALL STOCK MERCHANDISE NEW SHIPMENT ARRIVING SOON.... EXPERT INSTALLATION TERMS AVAILABLE

Herbert Levy Trunk Showing

Advertisement for Herbert Levy trunk showing featuring a plaid dress coat and skirt set.



These Downtown Merchants Invite You To Shop This Page For GREAT SATURDAY SPECIALS

Saturday Features

Have You Seen Or Heard of "Mr. Meat Smoker"



Come by and examine how it provides the most succulent, juicy and tender smoked meats that you have ever eaten! Truly an exciting and different cooking experience!

GRILL
WATER PAN
CHARCOAL PAN

Single and Double Grill Smokers.

Item # 171
Single grill smoker

from **\$39.95**

See the New Detecto "Auto Zero" Bathroom Scales with Matching Ensemble Items

Hampers Baskets

Outstanding Quality
Superb Styling

PAMPA HARDWARE Co.
120 N. Cuyler Ph. 669-2451

ADDINGTON'S
WESTERN STORE

WHERE THE WESTERN AND HOSPITALITY MEETS

LADIES STA-PRESS BLOUSES

Reg \$7.95 to \$15.00
CLOSE-OUT GROUP **\$3.00**

COMPLETE LINE OF HUNTING SUPPLIES, INCLUDING RELOADING EQUIPMENT

SELECTIONS ARE COMPLETE IN ALL DEPARTMENTS LAY-AWAY NOW FOR CHRISTMAS

Anthony's
C. R. ANTHONY CO.

DOWNTOWN STORE ONLY SATURDAY SPECIALS

Ladies' 100% Polyester
DOUBLE KNIT SLACKS

Compare Values to '8.
Solids, Jacquards
Sizes 8-20 **\$5.50**

Laminated Nylon Men's Jackets • Lightweight Warmth • All Colors • Sizes 36-46 Compare to \$12.98 \$9.50	Martex TOWELS • Large Group • Solids, Prints • Slight Imperfects \$1.30 If Perfect Would Sell For \$2.98
---	--

A great Selection

M.E. MOSES
"Serves You Better" 5'-10"-35" & "100 STORES "Save For Many" 665-5621
105 N. Cuyler

Lined Plastic DRAPES

• Panels and Valance
• Beautiful Patterns

2 \$1
Pairs

CLOSE OUT BOYS' JEANS Saddle King Permanent Press Reg \$2.99 \$1.99	Ladies' HEAD SQUARES Nylon Sheer Favorite Colors 28"x28" 17c SATURDAY ONLY
--	---

Bobbie



Good-Bye, Baggy Boots. Here Comes Pocos.

Don't get your pre-teen a baggy grown-up boot when Pocos makes this sleek, stretch crinkle just for her slender, young legs. It's slim and shiny with just-right fit and special grow room. In all the colors she loves, too.

GATTIS SHOE STORE
207 N. Cuyler Pampa Ph. 665-5321

Jess Graham Furniture
110 N. Cuyler-Pampa Ph. 665-2232

SAT SPECIALS

Reg to \$30.00
TABLE OR SWAG LAMPS **\$13**

Reg to \$15.00
PICTURES **\$8**

Reg to \$59.00
ROCKERS **\$45**

Heard-Jones Sat. Specials

Softex 200 2 ply FACIAL

TISSUE 5 Boxes **97c**

Complete Stock **TOYS**

20% Off Retail Layaway Now

SCOPE Mouthwash 3 oz size **7c**

Wright FASHIONS

Saturday Special

100% Acrylic
Cardigan Sweaters

Reg \$12 **\$6**

Saturday Only

Luxurious Acrylic Cardigan Sweaters. Hand washable. Colors or white, red, purple, camel, navy, green and rust. Sizes S-M-L.



Bentley's

visit our "body shop"



\$15

100% polyester body shirt. Machine washable-never needs ironing, saddle stitched collar-long sleeve-black or white, size 30 to 36

SATURDAY SPECIALS AT SAND'S

SHIRLEY'S SERRAND CLOTH 45" WIDE, HANDWASH 13 colors. Reg. \$1.69 **79c** yd.

1 TABLE ASSORTED FABRICS Reg. \$1.49 45" wide **\$1.00** 2 yds.

Shop Our Yarn Loft For Your Crewel, Needlepoint & Knitting Needs.

SANDS FINE FABRICS AND NEEDLECRAFT
McCall Butterick, Simplicity, Vogue Patterns,
225 N. CUYLER
Daily 9:30 til 6 p.m. Open Thurs. til 8 p.m.

SAT SPECIALS Mens & Boys

CANVAS OXFORDS

ALL AMERICAN Red, White, & Blue Reg \$5.00 **\$2.66**

SPECIAL PURCHASE
LITTLE GIRLS SCHOOL SHOES

Tutone Combinations Reg \$4.00 **2 \$5**
SAT ONLY

SHOELAND

104 S. Cuyler 665-8861

FREE KICKING TEE with ALL FOOTBALLS!



Your Choice Red, White Blue or Tan FOOTBALLS

Priced from \$3.45 to \$10.99

Western Auto

Folding Stadium Seat! Vinyl Cover. Foam-Padded! **\$4.66**
G4115 Reg. \$5.55

217 N. Cuyler

Zales handy Dazey opens cans, sharpens knives!



• Opens all size cans; easy to clean.
• Puts a keen edge on any knife.

\$7.88

Five convenient ways to buy:
Zales Revolving Charge • Zales Custom Charge
BankAmericard • Master Charge • Layaway

ZALES

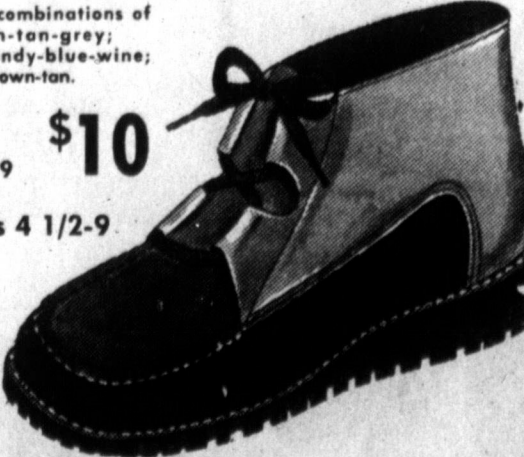
Miss Wonderful T.M.
YOUNG SHOE FASHIONS

Waffle Stompers

color combinations of brown-tan-grey; burgundy-blue-wine; rust-brown-tan.

Reg \$12.99 **\$10**

Sizes 4 1/2-9



Kyle's Fine Shoes
The Home of Flashing and Band Shoes
109 N. Cuyler 669-9442

1.99 yard Polyester double knit fabrics in top fashion colors and stitches. 60" wide. Just in time for a new Fall wardrobe.



JCPenney
The values are here every day.

600 FREE

STORE FRONT PARKING PLACES PLUS

Free Parking on the:
-Santa Fe Lot
-First Methodist Lot
-Lot on Cuyler at Browning

DOWNTOWN Merchants Association