

PLO leaders surrounded in downtown Beirut

By The Associated Press

With Israeli tanks at the gates of the presidential palace and besieging Palestinian guerrillas in Moslem West Beirut, Lebanese President Elias Sarkis today formed a six-man salvation committee to try to cope with the "grave situation."

The committee, which includes major Christian and Moslem militia and religious leaders representing Lebanon's traditional 50-50 split between Christians and Moslems, will convene later today, a palace statement said.

It was not immediately clear how the panel, to be chaired by the Christian president, would seek to ease the crisis.

Sarkis met through the night at the palace with members of his Cabinet while Israeli tanks took up positions outside after thrusting through Palestinian lines to the Beirut suburb where the palace is located. Christian residents welcomed the Israelis with cheers and fresh fruit.

The Israeli armored thrust Sunday into the Beirut suburb

of Baabda reportedly blocked the highway between Beirut and Damascus, cutting off the last escape route for Palestine Liberation Organization leaders trapped at their headquarters in mostly Moslem West Beirut, five miles west of Baabda.

Israeli Defense Minister Ariel Sharon, mastermind of the Jewish state's PLO-crippling invasion, led the lightning tank assault, Lebanese officials and the usually reliable Beirut newspaper An Nahar said today.

"We have not come to fight you," an official quoted Sharon as telling Lebanese military police protecting the presidential palace. "We have come to save the Lebanese people from the Syrians and the Palestinians."

After expanding its victorious invasion beyond the initial stated goal of driving Palestinian guerrillas 25 miles beyond the Israeli frontier, Israel has said it would like to see a new, strong central Lebanese government with which it could make peace. Israeli officials also called for a Lebanon purged of Palestinian militants and Syrian troops.

Early today war correspondents reported Israeli armored columns linked up with their Lebanese Christian militia allies north of Beirut, effectively cutting off the nerve center of the PLO from the outside world.

The rightist Christians, who oppose the PLO and Syrian forces in Lebanon, welcomed the Israelis and fed them fresh cherries, correspondents said.

"We are so happy they are here," said a young woman standing at the roadside with tears streaming down her cheeks. "Perhaps now we will have peace."

Asked why he welcomed the Israelis, a Christian militia officer said, "It is obvious, we are fighting the same enemies."

In Tel Aviv, Chief of Staff Lt. Gen. Raphael Eytan said Israeli forces had completely cut off the Lebanese capital but have not been ordered to capture it, "only to eliminate the terrorists."

Israeli Foreign Minister Yitzhak Shamir said PLO chief Yasser Arafat had sent an urgent message to Israel through

Egyptian intermediaries seeking a renewed cease-fire. A 12-hour-old truce crumbled Sunday morning.

"If they (the PLO) will stop, we will also stop," Shamir said. "They have requested a cease-fire but it is not credible because we stopped (shooting) and they started again."

Police said 700 people have been killed in the capital and 4,000 wounded since the invasion June 6, and hospitals are jammed with rotting corpses. PLO officials have said in unconfirmed reports that more than 10,000 people throughout the country have died since the invasion.

Lebanon's state radio said Israeli tanks smashed PLO positions near the beach resort of Khalde in southern Beirut Sunday.

Fierce fighting erupted at Khalde, near the end of the main runway of Beirut's international airport, eight miles from downtown Beirut. Columns of billowing smoke could be seen rising above Khalde, where Israeli fighter-bombers unleashed barrages of bombs on Palestinian positions.

The Tampa News



Vol. 75 - No. 60

10 Pages

Monday

June 14, 1982

Daily 25¢ Sunday 35¢

A pair to share ...



What do you do when you have a best friend, and there's only one pair of skates between the two of you? Nissa Boden, 9, on the left, and her friend Alethea Hester, 8½, solved the

problem by sharing and peddling. Nissa said they share the skates and use the sidewalks "every time she comes over." (Staff photo by Bruce Lee Smith)

Brits at the edge of Stanley in hot battle

By The Associated Press

Argentine artillery blasted British troops attempting their second advance on Stanley in as many days and forced them to retreat behind a smokescreen, Argentina said today. But British military sources said some British forces had reached the outskirts of the besieged Falkland Islands capital.

Meanwhile, Argentina and Britain announced they had accepted a Red Cross proposal for a neutral zone in Stanley for the protection of civilians and wounded as concern grew for the safety of some 600 islanders believed still in the capital.

The creation of the zone is another sign that the decisive battle between Britain's estimated 9,000 troops and 7,000 Argentines is approaching. It followed by one day reports that two Falklanders had been killed and four others injured by British guns shelling Stanley. One of the dead was Susan Whitley, a 32-year-old schoolteacher who was seven months pregnant.

The zone is a one-block area around Stanley's red-brick Anglican cathedral. Its spire is a landmark and the cathedral offers better protection against shellfire than the surrounding wooden houses, sources said.

On the battlefield, Argentina reported repelling another British drive on the capital Sunday, the second in as many days.

"During the afternoon between 3:30 and 4 p.m. English troops tried to advance over Mount Harriet. Our own artillery repelled them, obliging them to protect themselves with smoke

screens and withdraw." Argentina's Joint Chiefs of Staff said in a communique issued early today.

The Joint Chiefs also said Argentina's air force hit British troops, vehicles and helicopters.

The British Defense Ministry released no information on fighting around Stanley on Sunday, but British Defense Minister John Nott said Harrier jets from the carrier Invincible "attacked and disabled" an unspecified Argentine patrol craft.

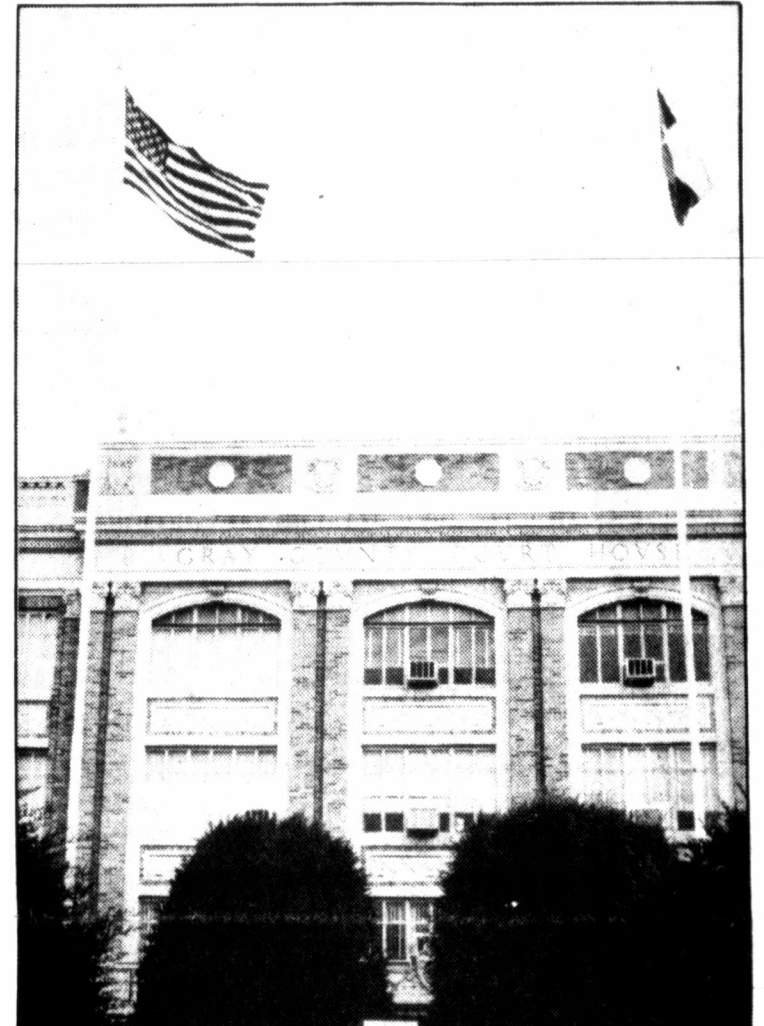
Nott did reveal that nine British sailors were killed when Argentine artillery fire damaged the light cruiser Glamorgan. He did not say when this occurred, but said the Glamorgan remained operational.

He also increased the official toll from last Tuesday's deadly Argentine air attack on a British frigate and two landing ships at Fitzroy to 50 sailors and soldiers killed and 55 wounded — Britain's worst single-day toll in the fighting so far.

British troops were reported bracing for Argentine counter-attacks and air strikes after seizing three strategic hills nine miles west of Stanley — Two Sisters, Mount Longdon and Mount Harriet — in a pre-dawn attack Saturday. The new positions were believed to give British gunners an almost unrestricted field of fire into the Argentine defenses at the capital.

Conflicting battlefield reports could not be independently confirmed because Argentina and Britain have not allowed foreign journalists into the war zone.

Happy birthday, Old Glory ...



It's 205 years old, and it's changed a bit since the original circle of 13 stars, but it is still the strong symbol

of our nation, and is honored today throughout the land as we celebrate Flag Day. (Staff photo by Bruce Lee Smith)

No change expected in Saudi oil policy

NEW YORK (AP) — Saudi Arabia's oil policy, which steers much of the world's economy, is not expected to change quickly in the wake of King Khaled's death, economic and political analysts say.

As holder of the largest oil reserves in the world, Saudi Arabia probably will continue to seek stable oil supplies and prices in order to prolong the oil era, analysts said after Khaled's death was announced Sunday.

But the dominant member of the Organization of Petroleum Exporting Countries may suspend its campaign to forge a long-term OPEC pricing plan until a realignment of the Saudi power structure is complete, said Nadav Safran, a professor of

government at Harvard University.

Eventually, that restructuring could produce some unexpected changes in Saudi oil policy, Safran and other Middle East specialists

said. Pressure on the Saudis to abandon their moderate stance on prices has mounted with the escalation of tensions in Iraq, Lebanon and other Arab countries.

But, says Safran, "The Saudis will do it slowly. They will not commit themselves to anything in long-term policy until that is completed."

Crown Prince Fahd became king Sunday after his half-brother Khaled, who was 69, died of a heart attack.

What is 205 and still alive?

By JEFF LANGLEY
Staff Writer

Today is Flag Day, a celebration of the anniversary of adoption of the Stars and Stripes as our country's symbol of justice and freedom.

The flag was adopted as our nation's official symbol June 14, 1777 by the Continental Congress.

According to Encyclopedia Britannica, Flag Day is not an official holiday, except in Pennsylvania.

Banks, businesses and government offices remain open on Flag Day, but the day is an official excuse to fly Old Glory.

Because of Francis Scott Key, a U.S. lawyer who lived from 1740 to 1843, our flag also is known as the Star-Spangled Banner.

Key wrote the words to our national anthem, naming the flag in 1814, during the War of 1812.

Betsy Ross, who lived from 1752 to 1836, is believed to have created the first flag, following a request from George Washington and his flag committee.

She was born in Philadelphia to Quaker parents, and it is believed she attended Friends School.

Her father, Samuel Griscom, was a carpenter, and she married an upholsterer, John Ross.

Ross died shortly after their marriage, and Betsy took over his shop. Her son, William Canby, wrote a paper in 1870 that tells the story of how Betsy Ross came to sew the first American flag, but his information was not documented.

Canby's story says George Washington and a committee, including the uncle of John Ross, came to Betsy in 1776 and asked her to make the country's first flag.

The story says George wanted a flag with six - pointed stars, but Betsy persuaded him to settle for five.

The incident was not verified, but it is known that Betsy Ross made flags for the Pennsylvania Navy.

The first Flag Day was celebrated June 14, 1877, 100 years after the banner's adoption as a national symbol.

The red, white and blue colors were

selected to symbolize qualities representing America's people.

The red stands for hardness and courage, the white for purity and innocence and the blue for vigilance, perseverance and justice.

The 13 stripes in the flag represent the 13 original colonies, while the 50 stars represent all of the states admitted to the union.

On the first U.S. flags, the smaller number of states were represented by (see Flag on page 2)

Weather

Partly cloudy tonight and Tuesday. 40 percent chance of showers or thunderstorms tonight and Tuesday, some possibly severe. Highs today in the upper 80s, lows tonight in the low 60s, highs Tuesday in the low 80s. Southerly winds 15-25 mph today and 15-20 mph tonight, northwest winds at 15-20 mph Tuesday.

Index

- Classified 7
- Comics 6
- Daily Record 2
- Editorial 4
- Lifestyles 5
- Sports 7

... THERE it is!

Where's the stop sign?



There is a stop sign in this photo somewhere, but it takes a sharp eye to locate it. It also takes a sharp eye

from motorists approaching this intersection at Harvester and Lowry in Pampa.

Tax bite is deeper in spite of Reagan's cuts

WASHINGTON (AP) — Most American families will pay more federal taxes than ever this year despite the largest income tax cut in history, the Reagan administration says.

A study by the Treasury Department concludes that for the average family, higher Social Security taxes and the effects of inflation will more than offset the 10 percent income tax cut scheduled for July 1.

As a result, most families will pay a higher percentage of their wages in federal income and Social Security taxes this year than they did before the three-year tax cut act of 1981 took effect.

The study blames most of the rise in tax bills to "bracket creep." The term refers to an inflationary bias in the tax laws under which a family's tax bill rises faster than its annual income. The result is that a larger portion of the family's income goes to the

Treasury even though the family's inflation-adjusted buying power remains unchanged.

According to the Treasury Department analysis, the 1982 installment of the tax cut barely offsets the bracket creep that has afflicted taxpayers since 1980.

When increased Social Security taxes are counted, the average family winds up with a higher net tax bill in 1982. Many families will pay more taxes every year through 1988 as well.

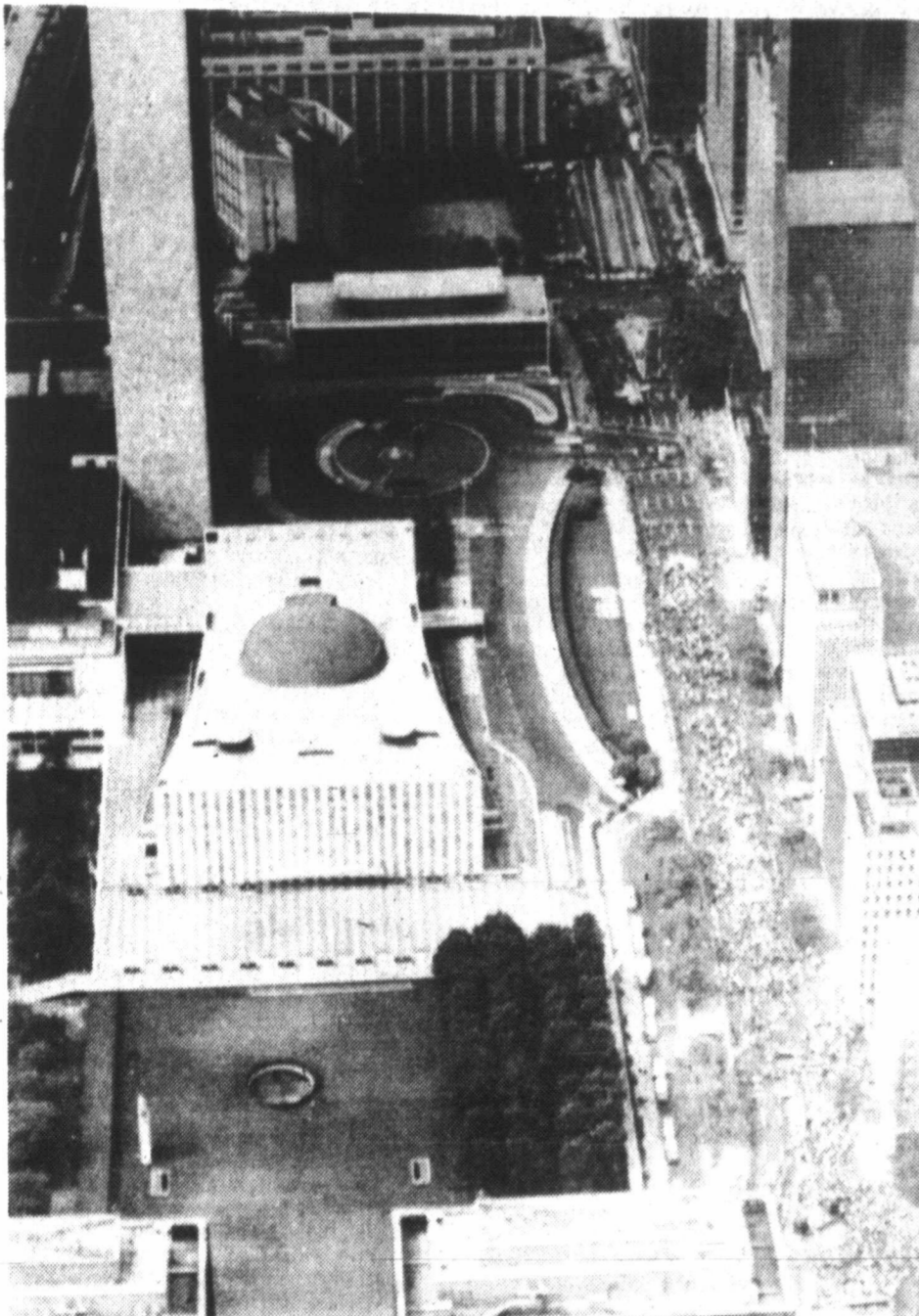
The study was limited to families of four with one wage-earner making a gross income between \$15,000 and \$40,000 in 1982. A majority of families fall within that income range.

Single people, two-earner families and the lowest-income families were not included in the study, but Treasury officials said these groups also would wind up with a net tax increase on average.



The sign, like a number of them around town, is hidden by trees, creating some problems for

approaching motorists who can't see them until the last minute. (Staff photo by Bruce Lee Smith)



MARCHING FOR DISARMAMENT. Demonstrators for disarmament crowd the avenue outside the United Nations complex during a Saturday march. The parade moved to New York's Central Park where a large disarmament rally was held on the Great Lawn. (AP Laserphoto)

No suspects in Kermit double slaying

KERMIT, Texas (AP) — Investigators here have a composite sketch of a killer and leads still to check, but no suspects in the slaying of woman and her daughter who were buried in a shallow grave, a sheriff's department official says.

Police put together the composite sketch with information provided by a second daughter, who fled naked five miles to escape.

"We still don't have a suspect. We have a lot of people we're looking at, but no one we can call a suspect," said Winkler County Sheriff's Department Sgt. Mike Eggleston, who is directing the investigation.

Eggleston said Sunday that sheriff's deputies are protecting 14-year-old Selena Kay Elms, who reached help at an oil drilling site about 8 a.m. Friday.

The bodies of her mother and sister were found in a 26-inch deep grave next to a cattle-watering tank 16 miles southeast of Kermit.

Officials spent Sunday checking calls from citizens who thought they recognized the man pictured in the composite.

"We've had numerous phone calls, but when we check the people out, they are not the ones on the composite," Eggleston said. "In my opinion, I think

he (the killer) is long gone." Authorities were waiting for the results of crime laboratory analysis of evidence collected at the burial site.

"It all boils down to strictly crime techniques. That's all we've got to go on," Eggleston said. "We're at a standstill."

Eggleston said authorities feared that if the killer was a local resident, he might try again to kill Selena Elms.

Brenda Kay Broadway, 31, and Christi Mechelle Elms, 8, died of stab wounds to the heart, authorities said.

Mother gives kidney to daughter she gave up

DALLAS (AP) — Pat Collins gave her new-born daughter up for adoption 21 years ago, thinking she would never see her again.

Last week, Mrs. Collins saw her now blind and diabetic daughter in a Dallas hospital and gave her the kidney she needs for a chance to survive.

"Even if she didn't want to see me in person, I would give her a kidney," she said. "I had hoped and prayed that I would get to meet her some day. My prayers have been answered."

Krysta Roberts' adoptive parents conducted an exhaustive eight-month search for the natural mother of the woman desperately in need of a kidney transplant.

After a search that included having a judge order the adoption records opened, Ed and Norma Roberts found the mother of the girl they adopted when she was two days old. As Krysta's condition worsened, the Roberts called Mrs. Collins.

"I knew immediately that she was mine. I knew before I hung up the phone that I would donate a kidney," Mrs. Collins said.

But the operation had to wait five months until Krysta was healthy enough for the transplant.

At 6 a.m. Tuesday, Mrs. Collins saw Krysta in the intensive care unit and kissed her cheek. At 7:15 a.m., the transplant team began removing Mrs. Collins' kidney. Krysta went into surgery 30 minutes later.

A Methodist Hospital spokesman said both were in fair condition Sunday.

Krysta said she "feels great" about meeting her natural mother.

"I wondered about her quite a few times. She is just like I envisioned her to be."

Mrs. Roberts said she has no ill feelings toward the woman who gave up Krysta in 1960.

Roberts said. "Krysta is lucky to have two families. We don't think of them as just Krysta's family, but as our family."

Krysta's medical problems began when she was 4 years old. Doctors diagnosed diabetes, but with insulin shots she remained healthy until junior high, when she briefly went into a diabetic coma.

Her vision began to dim in high school, and she went blind when she was a college freshman. The next year her kidneys failed.

Doctors told the Roberts that Krysta would have a better chance of surviving if she got a kidney transplant from a blood relative.

But the search for Mrs. Collins was arduous. The lawyer who had handled the adoption was dead. The records were legally sealed. After a judge ordered the records opened because a life was in danger, the Roberts began looking for the man listed as Krysta's father.

Report Blue Cross improving error rate

DALLAS (AP) — Officials at Blue Cross and Blue Shield of Texas say they are doing a better job of processing claims after a federal audit turned up \$26 million in erroneous payments during a three-month period last year.

The Dallas Morning News reported Sunday that a May 19 report by the General Accounting Office found that one way Blue Cross cleared a backlog of more than one million claims was by turning off a computer program designed to catch phony and erroneous claims.

That action meant \$26 million was paid erroneously to Texas Medicare recipients, the newspaper reported.

The GAO study, obtained by The News, found that

Texas Blue Cross had an error rate of 6 percent in processing claims — more than three times the national average of 1.9 percent.

Officials said Blue Cross' error rate was reduced to 4 percent during the first three months of this year, amounting to \$14 million paid out erroneously — still twice the national rate.

Texas Blue Cross President John Melton said the insurance carrier reduced its error rate to 3.1 percent last April. He said he is confident the rate will be reduced to the national average within two or three months.

Blue Cross is the state's largest insurance carrier. The company operates the Texas Medicare program under a contract with the federal Health

Care Financing Administration.

Melton, who was not at Blue Cross last summer when most of the processing errors occurred, did not dispute the report by the federal watchdog agency.

He said the company was "having one hellacious time last year."

"But since the first of the year, I think we've been doing a fairly credible job," he said.

Blue Cross and federal officials agreed that the insurance carrier has made substantial progress in reducing the claims backlog and speeding up processing since Blue Cross converted to a new computer system in May 1981.

Hero's home dedicated

HUNTSVILLE, Texas (AP) — The home of Texas hero Sam Houston, refurbished under a restoration plan that kicked up controversy, was dedicated by state officials as a crowd of 150 people watched.

"It is not just to celebrate the completion of the home, it is to celebrate the restoration and preservation of Texas history," Lt. Gov. Bill Hobby said during Sunday's dedication.

Woodland Home, on Sam Houston State University property across the street from

the main campus, was the longtime residence of Houston and his wife, Margaret Lea.

The Walker County Historical Commission complained the project, which began in 1979, was not thoroughly researched and that the restoration was not authentic.

Houston was the first president of the Republic of Texas, elected after he commanded Texas forces in the war of independence from Mexico.

SIX F Oil Service 440 W. Brown 665-0129
Corner of West St. & Amarillo Hwy.

NOW YOUR FULL SERVICE TEXACO STATION

*OIL CHANGE (5 qt. & filter) \$14⁹⁵
*CAR CLEAN-UP (Wash, wax & clean inside) \$34⁹⁵

We Service Kirby & Hoover Vacuum Cleaners
YOUR SINGER DEALER
665-2353

CAPRI *Italy*
Downtown Pampa 665-3941

NOW SHOWING
SHOWTIME 7:30-9:25

If you could see what I hear
Funny, tender, triumphant, the remarkable story of a born winner.

ADULTS 3.50-CHILD 1.50

Coronado Center
665-7726
Doors Open Thirty Minutes Prior To Showtime

Admission: Adults 3.50
Children 1.75
Matinee Adults 2.50

Cinema IV

"Bringing you the finest in first run movies"

SPECIAL WEDNESDAY MATINEE
2:00 p.m. ALL MOVIES

ROCKY III
ROCKY III
ROCKY III

The Greatest Challenge
SYLVESTER STALLONE
TALIA SHIRE

SHOWTIMES 7:15, 9:15

TOP O' TEXAS COUNSELING CENTER
Dave Brummett, Counselor

●Marriage & Family
●Child Behavior
●Fear or Phobias
●Nightmares ●Relaxation
●Self Image Building

Individual & group counseling available in all areas of emotional crisis. For an appointment Call 665-7239 or 665-7435.

M-F 9 to 6 Suite 530 Hughes Bldg.

RAY & BILL'S GROCERY & MARKET
916 W. Wilks 665-2125

MATURE BEEF FOR YOUR FREEZER
WE DO PROCESSING

PRICES GOOD THRU SAT. JUNE 19

OPEN MONDAY-SATURDAY 7:00 a.m. - 7 p.m.

GALA TOWELS Giant Roll 69c	COCA-COLA 2 LITER \$1.09	CIGARETTES ALL BRANDS \$6.29 CTN.
DELSEY BATHROOM TISSUE 4 ROLLS 99c	Coors BEER 12 Oz. Cans \$4.19	GRADE "A" MEDIUM EGGS 2 Doz. \$1.00
FOLGERS COFFEE CRYSTALS 10 OZ. JAR \$3.99	FOLGERS FLAKED COFFEE 13 OZ. CAN \$1.89	MRS. BAIRD'S STA-FRESH BREAD 69c
LET US PUT A HALF BEEF IN YOUR FREEZER	SHURFRESH WEINERS 12 OZ. PKG. 98c	FAMILY PAK PORK CHOPS 5 LB. ROLL \$1.69
	EDNER BRAND BACON \$1.59 Lb.	MARKET MADE SAUSAGE \$1.89 Lb.
	HAMBURGER PATTIES 5 LB. ROLL \$6.95	CENTER CUT PORK CHOPS \$1.98 Lb.

Top o' Texas *TWIN*
Lafayette Hwy. 665-8781

OPEN 8:30 SHOW 9:15
—SCREEN ONE—

PORKY'S
You'll be glad you came!
30th CENTURY FOX FILMS
—PLUS—
HISTORY OF THE WORLD PART I

—SCREEN TWO—
Have you seen Arthur lately?

arthur
DUBLEY MOORE - PG
—PLUS—
"NOBODY'S PERFECT"

PARAMOUNT PICTURES presents
STAR TREK II: THE WRATH OF KHAN
Based on STAR TREK. Created by GENE RODDENBERRY. Executive Producer HARVEY BENNETT. Screenplay by JACK B. SCHWARTZ. Story by HARVEY BENNETT and JACK B. SCHWARTZ. Produced by ROBERT SALLIN. Directed by NICOLAS MEYER. (Reading from the Motion Picture Book "STAR TREK II: THE WRATH OF KHAN" by GENE RODDENBERRY. Copyright © 1982 by Paramount Pictures. All Rights Reserved.)

SHOWTIMES 7:05, 9:20

The music and feeling go on forever. **2**

GREASE
Starring
MAXWELL CAULFIELD
MICHELLE PFEIFFER

A PARAMOUNT PICTURE PG

SHOWTIMES 7:20, 9:30

Our **50th Semi-annual Shoe Sale**
Starts **Tues, June 14th 9:30 a.m.**

"Pampa Your Feet At"

Hub's Booterie
Latest in Women's Shoe Fashions

119 W. Kingsmill 669-9291

NEW SUPPER CLUB

ZEPHYR now playing at The Palace Supper Club Friday and Saturday nights. The best local band plays everything from 50's, 60's and country western for your evenings entertainment.

**BEST DINNER!!
BEST COCKTAILS!!
COME SEE US!!**
(Membership inquiries invited)

THE PALACE SUPPER CLUB
318 W. Foster 669-2289

Dancin Willy Sale

10% - 15% - 20% SAVINGS
Complete Shallow Waterbeds, Matching Furniture, Accessories

Sale Ends Saturday, June 19th

SHALLOW WATERBEDS

Store Hours: 10 A.M. - 9 P.M. Daily

VISA MasterCard

Layaway Financing

Coronado Shopping Center (Next To Wards)

POLTERGEIST
It knows what scares you.

PG

SHOWTIMES 7:10, 9:25

Counselor's Corner

Your best friend can be your worst enemy

People have been jeopardizing their mentality for centuries. Most of us try to take care of our bodies - feed them, medicate them, and protect them. It seems as though the body is a sacred shrine housing a deity. Perhaps the bible has been influential in leading us to believe in this idea. Let us not argue this proposition; let us cogitate another important factor. Yes, the body is significantly important; and, the mind shares prosperously with it.

Most of us challenge the mind through academic pursuits, literary stimulation and staying abreast of current events. Such interest keep a person mentally healthy, unless the worst enemy arises. What is that enemy? There may be several.

One such enemy is mind altering drugs. Unless a medical doctor prescribes certain drugs for particular illnesses, there are drugs which cause mental deprivation. These drugs lead us to feel other than we really are, challenge us toward goals which are unattainable and cause us to fail in directions which would have been profitable. Drugs, used to change the minds normal level of function, can bring to the surface the worst enemy.

Another such enemy is over - work. Numerous individuals are unemployed today; yet, more persons are pushing themselves to the other extreme. These efforts lead to "burn out", stress, fatigue, irritability, depression, family disunity, poor job performance, physical deterioration and other striking features of self destruction. When these symptoms occur, the worst enemy is present.

Worry is another symptom of mental illness. It does nothing

more than keep a person from functioning normally. As the worry continues, fears are felt and self confidence diminishes. Eventually, an individual loses her self esteem and inner strength. Disbelief in herself is seen by others and she has conflict which doesn't go away. The worst enemy is back.

What is this worst enemy? Look in the mirror. Who do you see? You are your own worst enemy! It is you who might have chosen drugs to cope with a major problem, or chose to work long hours in order to build a certain bank account to a noticeable sum, probably to feel secure. You're neglected because no one saw them as important. You have become your own worst enemy. You have brought yourself to the breaking point and requested counseling. Your mind can not take any more pain and anguish. The most important person you know has become the worst enemy. This can change!

This writer knows people who have changed from being their worst enemy to becoming their best friend. They did it in these ways.

One person learned to relieve himself from stress by permitting others to help. There is not a role assignment for anyone. Each of us chooses the role we live. In roles, we sometimes over - load ourselves with mental duties, expectations, rules. Few of us would do this to our best friend. Then, do not do them to yourself. Be your best friend and let me help you with certain responsibilities.

Now, learn to relax in the meantime. Make yourself take a break, stop your task for a few minutes. Let the mental processes rest from the tortuous strain and close your eyes,

take a few deep breathes and dream. Yes, your best friend would appreciate a rest. Become your best friend.

After you have given the right to be helped and are more relaxed, keep yourself in the present time. The past is "over and done," the future is "not yet." Find meaning in what you do, even the dishes, the yard, the garden, the bills. Keep yourself thinking positive and possibilities for enjoying all parts of life will take form and be rewarding. Free the mind to follow its normal level of functioning.

The worst enemy and the best friend are not "out there." They are within you as you choose. Personally, friends are more important, especially ME!!

(Dave Brummett, MDiv, with the Top O' Texas Counseling Center will accept questions and answer them in this weekly column. Address letters to Top O' Texas Counseling Center, Dave Brummett, MDiv, Suite 530, Hughes Building, Pampa, Texas 79065.)



Dear Abby

Careless driving weaves tale of grief and pain

By Abigail Van Buren

DEAR ABBY: With all the kids out of school, I wish you would rerun the letter, "Please, God, I'm Only 17." I am 19 now, but when I was 16 I read it for the first time, and it made such a tremendous impression on me I have not exceeded the speed limit since, and I know I never will. HAROLD IN NORFOLK, VA.

DEAR HAROLD: With pleasure:

PLEASE, GOD, I'M ONLY 17
The day I died was an ordinary school day. How I wish I had taken the bus! But I was too cool for the bus. I remember how I wheeled the car out of Mom. "Special favor," I pleaded. "All the kids drive." When the 2:50 bell rang, I threw all my books in the locker. I was free until 8:40 tomorrow morning! I ran to the parking lot, excited at the thought of driving a car and being my own boss. Free!

It doesn't matter how the accident happened. I was goofing off - going too fast. Taking crazy chances. But I was enjoying my freedom and having fun. The last thing I remember was passing an old lady who seemed to be going awfully slow. I heard a deafening crash and felt a terrific jolt. Glass and steel flew everywhere. My whole body seemed to be turning inside out. I heard myself scream.

Suddenly I awakened; it was very quiet. A police officer was standing over me. Then I saw a doctor. My body was mangled. I was saturated with blood. Pieces of jagged glass were sticking out all over. Strange that I couldn't feel anything.

Hey, don't pull that sheet over my head. I can't be dead. I'm only 17. I've got a date tonight. I am

supposed to grow up and have a wonderful life. I haven't lived yet. I can't be dead.

Later I was placed in a drawer. My folks had to identify me. Why did they have to see me like this? Why did I have to look at Mom's eyes when she faced the most terrible ordeal of her life? Dad suddenly looked like an old man. He told the man in charge, "Yes, he is my son."

The funeral was a weird experience. I saw all my relatives and friends walk toward the casket. They passed by, one by one, and looked at me with the saddest eyes I've ever seen. Some of my buddies were crying. A few of the girls touched my hand and sobbed as they walked away.

Please... somebody... wake me up! Get me out of here! I can't bear to see my mom and dad so broken up. My grandparents are so racked with grief they can hardly walk. My brother and sisters are like zombies. They move like robots. In a daze, everybody! No one can believe this. And I can't believe it, either.

Please don't bury me! I'm not dead! I have a lot of living to do! I want to laugh and run again. I want to sing and dance. Please don't put me in the ground. I promise if you give me just one more chance, God, I'll be the most careful driver in the whole world. All I want is one more chance.

Please, God, I'm only 17!

DEAR ABBY: I am writing to complain officially about a very irritating practice you have pursued since the inception of your column.

Why must you say, "Mary - not her real name"? Or,

"John - not his real name"? Who in thunder cares whether you are using their real names or not? I find it boring, distracting and a ridiculous waste of space. Please cut it out.

HAROLD (MY REAL NAME)

DEAR HAROLD: That practice may strike you as irritating, boring and distracting, but it's good insurance against being sued by any number of malignant Marys and Johns.

Many readers sign their real names and ask me to substitute fictitious names in order to protect their privacy. A recent minor catastrophe occurred when I chose "Ray and Alice." (Alice suspected her husband, Ray, of fooling around, and wanted to know for sure.) After that letter appeared in my column, I heard from several married couples named Alice and Ray. Some thought it was hilarious. Others did not.

...

DEAR ABBY: Since almost everyone is interested in saving money, may I make a suggestion?

Folks who go to a lot of trouble and expense sending out mimeographed "Dear Friends" Christmas newsletters should consider this. Most people can tolerate the usual bragging: "Jack is now vice president of his firm, I was elected Women's Club secretary, our daughter has the lead in her class play, our son was accepted to law school, and we all went to the Orient last year." But if the senders can't add one handwritten personal line, such as, "And how is your family?" they should trim their mailing list. And I hope they start with me!

SICK OF BRAGGERS

SHOP PAMPA

WE HAVE SPRUNG!!
to
Coronado Center
Come See Us
THE Yarn Basket
Coronado Center 665-8331

LOOK WHAT WE'RE DOING NOW AT..... **HALL'S**
Monday Through Saturday, June 15 Thru 19
Open Monday-Friday 9-8, Saturday 9-6

SONY
Auto-Reverse XR-25
FM-AM CASSETTE

Reg. \$239.95 **\$189.95**

SAVINGS UP TO... 50%
VIDEO GAMES
Stereos Portables Radar Detectors
CB's Scanners Cordless Phones

We Invite Everyone to Visit Hall's:
Pampa's Most Complete Sound Specialists...In Both Sales and Precision Installation.
AUTO SOUND IS OUR BUSINESS!
FREE!
DOOR PRIZE DAILY
GRAND PRIZE

WALKMAN
Stereo Cassette Player
by Sony

50 Watt Model XS-201
SONY SPEAKERS

Reg. \$79.95 **\$44.95**

PIONEER
Mini In-Dash Auto Reverse
CASSETTE
With AM-FM Stereo-Music Search

Model UKP 4200
Reg. \$189.95 **\$149.95**

INTELLIVISION
● CONSOLES
● ACCESSORIES
ATARI 10% OFF!
GAMES **\$12.95** and up
● \$50.00 Rebate on Intellivision
● Free Atari Jacket with Purchase of Console
Ask About Our FREE ATARI GAME CLUB

Clarion
Max. power output 50 watts
No. 100EQB-4
Reg. \$99.95 **\$74.95**

FREE SATIN LISTENING JACKET WITH DECK and SPEAKERS
WALKMAN II
Stereo Cassette Player
by Sony
Reg. \$179.95 **\$149.95**

Entire Stock
6x9 SPEAKERS 30% OFF!
OTHER SPEAKERS up to 50% OFF!
FM BOOSTERS Automotive's Best
Reg. \$39.95 **\$29.95**
PORTABLES up to 30% OFF!

Panasonic CQ-5707 In Dash CASSETTE PLAYER
AM-FM-FM Stereo Radio Compact Auto-Reverse

Reg. \$219.95 **\$169.95**
Come and Experience The **COCKPIT**
So Advanced It's Over Your Head
See The Newest from
●SONY ●PIONEER ●PANASONIC

CHECK OUR PRICES—
Many More Units Sale Priced—Too Numerous To List
Our Installation Department Will Be Closed These 5 Days—
We Will Schedule Your Installation - First Sold - First Installed Basis
HALL'S
Top O Texas Complete Sound and Video Game Center
700 W. Foster Pampa 665-4241

Today's Crossword Puzzle

ACROSS

1 Swindle (sl)
4 Questionable
8 Former
12 Madame (abbr.)
13 Far (prefix)
14 Grateful
15 Behave
16 Biblical character
17 Scuff
18 Of the nose
20 Planet's orbit
22 Wrong (prefix)
24 Place
25 Items
29 Auspices
33 Suffix
34 Social club (abbr.)
36 Oklahoma town
37 Depression initials
38 La
39 Douce
40 Common metal
42 African land
44 Part of the psyche
46 Amount
47 Reddish brown
51 Cut of beef (comp. wd.)
55 Piece of luggage
56 Eastern bovine
58 Sailor (sl.)
59 Garden implement
60 Widemouthed
61 Throw slowly
62 Leered
63 "Auld Lang Syne"
64 Ensign (abbr.)

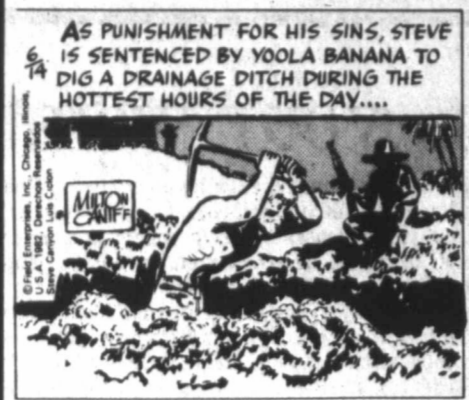
DOWN

1 Government agent (comp. wd.)
2 Charitable organization (abbr.)
3 Cats and dogs
4 Style of type
5 Month (abbr.)
7 Cries
8 Set fire to
9 Coat lapel
10 Sleeps
11 Thought (Fr.)
19 City in Iowa
21 Thin metal layer
23 Mix
25 Pippen sound
26 Perforation
27 John (Sp.)
28 Body
30 Apparel
31 Fetish
32 Showing good judgment
35 Lazy bums
38 Shakespearean villain
39 Metric foot
41 Hollered
43 Science-fiction topic
45 Seeps out
47 Evil giant
48 Aid in diagnosis (comp. wd.)
49 Child's vehicle
50 Covered with moisture
52 Amorous look
53 Meridian
54 Recedes
57 Franklin

Answer to Previous Puzzle

AGREE DYNAMO
READY ROAMED
ORANGE ORNATE
LARGO POET
ESSE ZIP EDGY
SAUL PSALM
CENTINLAY ROC
LOA DIANA EPA
AFIRE GOSH
WALE MEN IAMB
BRAD ADDER
METEOR AVIATE
EVOLVE RINGED
LAPSES EDGER

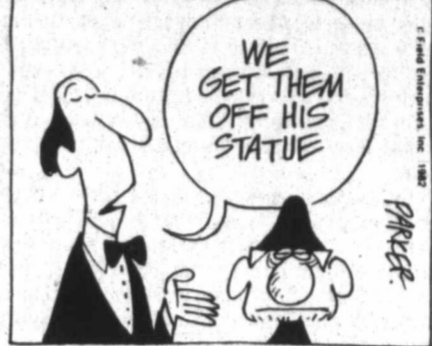
STEVE CANYON



KIT N' CARLYLE



THE WIZARD OF ID



OUR BOARDING HOUSE



EK & MEK



MARMADUKE



B.C.



PRISCILLA'S POP



WINTHROP



TUMBLEWEEDS



FRANK AND ERNEST



GARFIELD



Astro-Graph by bernice bede osol

Your leadership qualities and organizational skills will be more pronounced this coming year and they will enhance your possibilities for success. Advancement in your profession or field is likely.

GEMINI (May 21-June 20) Be able today to distinguish between being properly assertive or unreasonably aggressive. Pushing too hard will create problems which could be avoided. Predictions of what's in store for you for each season following your birth date and where your luck and opportunities lie are in your Astro-Graph. Mail \$1 for each to Astro-Graph, Box 489, Radio City Station, N.Y. 10019. Be sure to specify birth date.

CANCER (June 21-July 22) Even if those with whom you associate today engage in saying unkind things about someone who isn't present, be wise. Don't contribute to the put-downs.

LEO (July 23-Aug. 22) Steer clear of joint ventures today if your counterpart cannot make a contribution that's equal to yours, materially, imaginatively or productively.

VIRGO (Aug. 23-Sept. 22) Protect your self-interests today. Don't leave the decision-making up to others in situations which could affect your reputation or finances if they guess wrong.

LIBRA (Sept. 23-Oct. 23) It may be necessary to keep a closer watch than usual on persons who are performing work or a service for you today. Unsupervised, mistakes are likely.

SCORPIO (Oct. 24-Nov. 22) Business conditions could be a trifle tricky today, so don't take anything for granted. Stay atop things at all times.

SAGITTARIUS (Nov. 23-Dec. 21) An agreement or contract is only as good as the intent of those involved. If either party makes a halfhearted bargain today, it's not apt to hold together.

CAPRICORN (Dec. 22-Jan. 19) Unfortunately, coworkers may not be as industrious or ambitious as you are today. Their lackadaisical attitude could thwart your progress, unless you inspire them onward.

AQUARIUS (Jan. 20-Feb. 19) Be extra-careful today if you are managing a financial situation for your club or group. Should any mistakes be made, they may look to you to make up the difference.

PISCES (Feb. 20-March 20) Try not to scatter your forces too thin today. If your objectives are poorly defined you might have little to show for your time and efforts.

ARIES (March 21-April 19) Be careful not to take an unyielding position today in a situation where you may not have all the facts. If you're wrong, you'll be embarrassed.

TAURUS (April 20-May 20) Today your rewards will come in proportion to the efforts you expend. You'll be disappointed if you base your hopes upon unrealistic assumptions.

ALLEY OOP

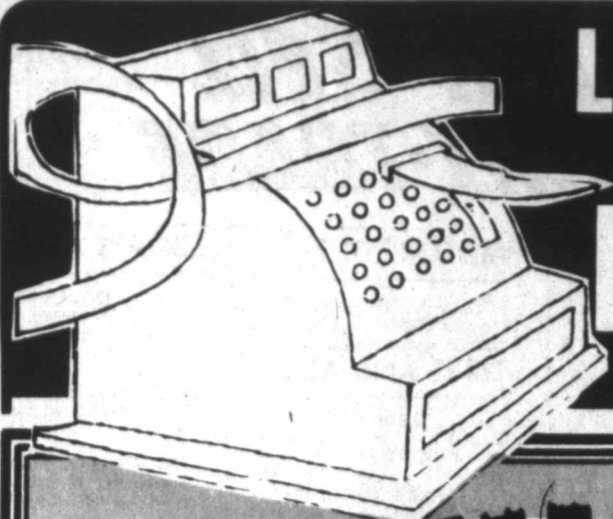


THE BORN LOSER



PEANUTS





Long Tapes Have Lower Totals At Ideal...

DOUBLE

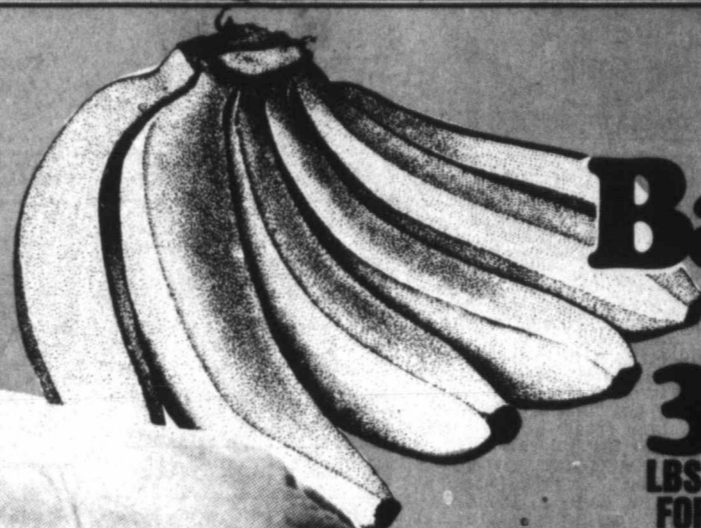


GUNN BROS. STAMPS ON TUESDAY AND WEDNESDAY

FRESH DRESSED GRADE "A"

Whole Fryers

LB. **53¢**



GOLDEN RIPE
Bananas

3 **89¢**
LBS. FOR



RED RIPE
Watermelons

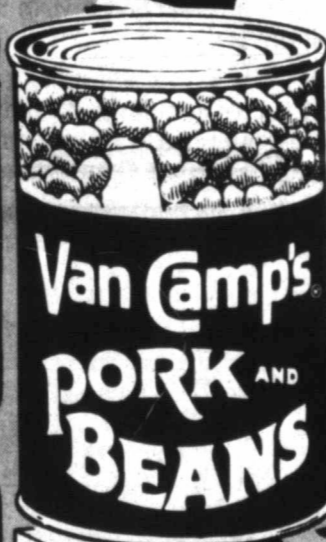
16¢
LB.

BONELESS

BUTCHER BLOCK BEEF
BOTTOM ROUNDS

Round Steak

LB. **\$2.09**



VAN CAMP'S
Pork & Beans

2 **73¢**
16-OZ. CANS
LIMIT 4

- FRESH GRADE "A" RIBS ATTACHED Fryer Breasts..... \$1.19
- FRESH DRUMSTICKS OR Fryer Thighs..... \$1.09
- BONELESS ROUND ROAST CENTER SQUARE CUT BUTCHER BLOCK BEEF..... \$1.98
- JIMMY DEAN Pork Sausage..... \$1.79

ALL FLAVORS
Generic Pop

12-OZ. CANS **6.97¢**



KRAFT — LIMIT 3
Macaroni & Cheese Dinner

3.94¢
7 1/2-OZ. BOXES

DAIRY FOODS

PARKAY
Margarine

1-LB. STICK **46¢** LIMIT 3

CAMELOT "AA"
Large Eggs..... 61¢
LIMIT 2 DOZ.

CREAMY OR CRUNCHY
Jiff Peanut Butter

28-OZ. JAR **\$2.44**



KRAFT
Miracle Whip

\$1.28
32-OZ. JAR
LIMIT 1

FROZEN FOODS

ALL FLAVORS MEXICAN
Patio Dinners

11-OZ. PKG. **86¢** LIMIT 3

Costal Lemonade..... **4.88¢**
6-OZ. CANS

PURINA
Dog Chow

5 **\$1.94**
LB. BAG

PRICES EFFECTIVE THRU JUNE 16, 1982. QUANTITY RIGHTS RESERVED.

Shop Ideal Cause Nothing Less Will Do!

Ideal
FOOD STORES