

The Weather

Partly cloudy tonight and Saturday, with showers in southeast; colder north portion; warmer southwest.

(VOL. 38 NO. 17)

(14 PAGES TODAY)

PAMPA, TEXAS, FRIDAY, APRIL 26, 1940

Full AP Leased Wire

(PRICE FIVE CENTS)

Good Evening

If we keep ourselves from opportunities, God will keep us from sin.—George Eliot.

Attorney General Rules On Gas Question ALLIES AGAIN FALL BACK BEFORE GERMANS

No Exceptions May Be Made, Mann Holds

Answer May Be Adverse To Users In Panhandle

A ruling issued by the attorney general's department today may affect the gas situation which has been under discussion here for some time. In the opinion handed down by the department, the Texas Railroad commission has no statutory authority to permit a gasoline plant under certain conditions to commingle sweet or sour gas with casinghead gas.

It is understood that many casinghead plants west of Pampa are operating under a special permit to commingle sour and sweet gas.

How the railroad commission will construe the opinion with regard to any decision it may make has not yet been determined.

Recently 30 Pampa business men made a trip to Austin and asked the commission to pass a permanent order allowing gas from low pressure sweet gas wells west of Pampa to be used for manufacture of casinghead gasoline. Last Monday petitions bearing 1,500 signatures were presented to the commission by John Sturgeon and M. A. Graham. The petitions urged the commission to take early action on the matter.

The plants in question are using the gas because it cannot be used for light and fuel. If the ruling of the attorney general's department is upheld the plants west of the city would be materially affected. In fact some of them might have to be moved, it has been pointed out in meetings here.

In all there are 94 low pressure sweet wells west of Pampa. Of that number 26 have been protested by a pipe line company which contended that they were producing in violation of the law which says that gas containing less than 1 1/2 grains of hydrogen sulphide must be declared sweet gas which cannot be used excepting for light and fuel. It is contended here that the gas cannot be used for light or fuel because it cannot be taken into trunk pipe lines because of low pressure at the well.

Commissioners Ernest O. Thompson and Jerry Sadler have both intimated that they feel the law is unfair. They stated that they knew shutting down of the plants would cause damage to Pampa business as well as taking much tax money away from the city, schools, county, and state.

AUSTIN, April 26 (AP)—The attorney general's department ruled in an opinion today the Railroad

See MANN, Page 6

Communism Danger

On Border Cited

SANTA BARBARA, Calif., April 26 (AP)—Danger of possible Communist-fostered trouble exists along the Texas-Mexico border and possibly along the California border, Sheriff Chris Cox of El Paso county, Texas, has warned.

Addressing the California State Sheriff's Association convention, Fox said a "serious condition" faces the Mexican border country from Brownsville, Tex., to San Ysidro, Calif.

"Fox declared the Mexico Congress group, which he described as a Communist front organization, has paid organizers who are banding together the Mexican nationals who have resided in the United States for many years.

"I recognize this as a Communist movement of the most vicious kind," said the Texan. "I am uninformed as to whether the movement has extended into California, but I advise you sheriffs to keep your eyes open.

"Alertness on your part may save a great deal of trouble, not only for Americans, but for the Mexicans who have settled in this country and wish to remain here."

Leon Huff Quits

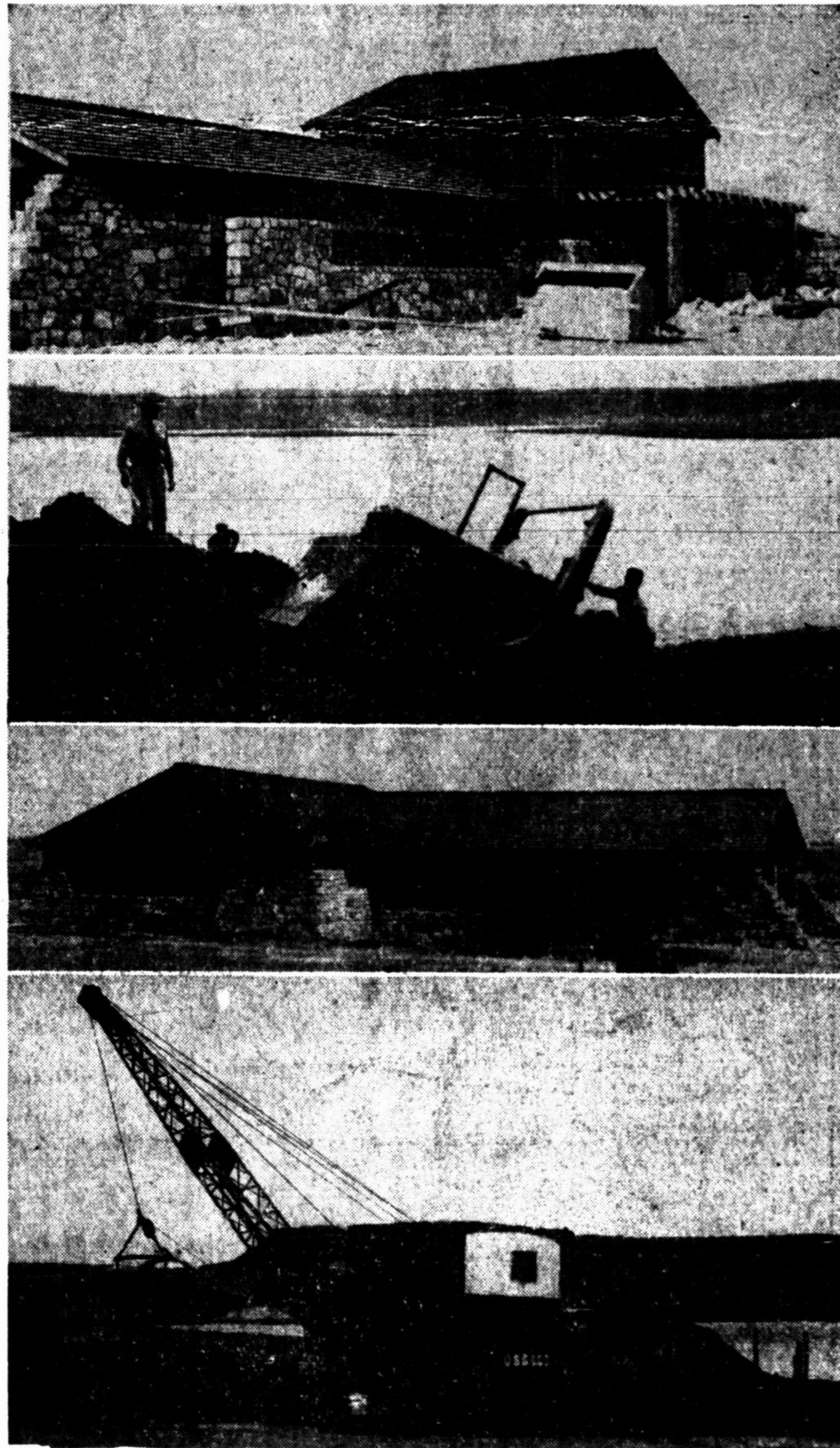
Governor's Band

AUSTIN, April 26 (AP)—Leon Huff, big blond singer with Governor W. Lee O'Daniel's band, today resigned as a member of the band. He also resigned as an employee of the W. Lee O'Daniel News, weekly publication recently started by the governor.

He was the second member of the governor's band to "walk out." Some months ago a girl singer known as "Texas Rose" quit.

"Leon" wouldn't say why he was resigning. The governor's secretary said "it is none of our business." O'Daniel was in San Antonio for the Battle of Flowers.

LAKE McCLELLAN PROJECT NEARS COMPLETION



By June 30 work is expected to be virtually completed on the Lake McClellan project of the Soil Conservation service. The project is under the sponsorship of the Panhandle Water Conservation authority. Here are four views of what is expected to be the recreational center

of Gray county and the Top O' Texas. Upper photo shows the clapboard-roofed bath house, trimmed with native stone cut by Works Projects administration workmen, under the supervision of an experienced stone mason. At work on one of the two earthen banks that protect

the boat dock is one of the big bulldozers, shown in the second picture, with the lake in the background. The club house appears in the third photograph, and the steam shovel at work on boat dock excavation and fill is shown in the bottom picture.

Phillips Petroleum company directors are expected to visit in Pampa and this section of the Panhandle oil field on Monday or Tuesday of next week. The eastern directors, accompanied by company officials from Bartlesville, will arrive at Panhandle Sunday noon and will go from there to Phillips to inspect the company holdings.

Although no word has been received regarding the itinerary, it is expected the officials will visit in Pampa early next week.

Editor To Speak At Kiwanis Dinner
Deskins Wells, editor of the Wellington Leader, will be the principal speaker tonight when members of the Wellington Kiwanis club present an inter-club program at the regular meeting of Pampa Kiwanis in Hotel Schneider.

For Safety let us reline and adjust your brakes. Hill's Garage, 101 W. Tule.—Adv.

Rich Costumes For Entrada Shown Here

Bitter Fight Ends In More 'Withdrawals'

LONDON, April 26 (AP)—Strong German forces supported by artillery and low-flying planes have forced allied troops to "limited withdrawals" in a bitter fight south of Dombas, key railway point in south-central Norway, the war ministry announced today.

Word of these fresh reversals came on the heels of officially admitted setbacks for the British at Steinkjer Wednesday and Lillehammer yesterday, which British military sources summarized with the statement that Germany had taken "the first trick" in Norway.

Dombas, 110 miles southwest of Trondheim, is a railway junction on the main line from Oslo to Trondheim through the Gudbrandsdal. This line is joined there by another coming south from Andalsnes, the sea port which is reported to have been one of the British troop landing points.

It is thus a vital point between Oslo, 150 miles to the south, and Trondheim, both held by the Germans. Both sides were said to be racing guns and men toward a decisive action around Trondheim.

The communique announcing the "limited withdrawals" supported the

Commission May Possibly Hire City Engineer

Whether the city will employ an engineer in addition to a city manager has not yet been decided by the city commission. There is a possibility, Mayor Fred Thompson said today, that a city engineer will be employed, but the decision is not likely to be made until the new city manager, Steve Matthews of Borger, meets with the commission.

Matthews is to take office on May 1, succeeding W. T. Williamson, resigned. The new city manager's salary will be \$312.50 a month, compared with \$325 paid Williamson who also received \$25 extra for car expense.

Both Williamson and his predecessor, C. L. Stine, acted in the dual offices of manager and engineer.

The retiring city manager could not be asked this morning for an interview concerning his plans for the future.

Under Williamson's direction, the city received a vast amount of public improvements through PWA and WPA projects. Among these were the construction of an improved waterworks system, completion of the grand stand at Recreation park, extension of Pampa's park system, setting out of trees, laying of sidewalks, a city-wide street paving program, including street markers. Williamson was project superintendent at Recreation park, and PWA engineer on the construction of Pampa's high school auditorium, preceding his appointment as city manager in 1938.

Mines Complain Of Highway Robberies

MEXICO CITY, April 26 (AP)—An engineer of a Sinaloa State mining company charged today bandits and highway robbers had so infested Mexico that they were threatening to make it impossible for many important mines to operate.

Jose A. Garcia of the F. D. R. L. Mining company urged President Cardenas to take steps to protect the industry.

Garcia asserted that not only were mines remotely situated being raided but that truck caravans carrying their products or payrolls were being plundered by roving bands.

Neighbors Assist
CYRUS, Minn., April 26 (AP)—When Ingwald Kjer was disabled by a runaway horse, neighbors turned out en masse to help with his spring farm work.

Local committees to assist in production of the \$100,000 Coronado Entrada here June 13, 14 and 15 will be announced soon.

Yesterday afternoon Walter Reger, promotional director of the Coronado Cuarto Centennial, conferred with members of the Junior and Senior Chambers of Commerce and outlined services Pampa will be expected to provide in connection with the staging of the Entrada.

The following committees will be appointed soon by local Entrada officials: livestock, grounds, policing, catering, electrically dressing quarters, tents, costumes, guards.

Mr. Reger announced that the Entrada as staged here will require a cast of 600 with 40 major roles. The six principal roles will be interpreted by professional actors who will appear in productions in Albuquerque the last of this month.

Rehearsals will begin here May 20 and last one and one-half hours each night. The Entrada will be rehearsed in sections.

D. L. Parker, casting chairman, announced a plan to sign up a cast for the show. "We anticipate no trouble whatsoever," he said. "People are beginning to realize that it will be an honor to be in the cast, and that it will be not only a lot of fun but an unforgettable experience."

The cast will be picked from various organizations in the city, and no public appeal will be made. Organizations will submit names of members for the cast, and these will be turned over to Mr. Parker.

Mr. Reger stated that the Entrada at Albuquerque is now in rehearsal, and that box seats are selling for \$15 each. Reservations are coming from all over the nation. Two TWA airplanes will bring celebrities from Hollywood to the first night performance.

Mr. Reger exhibited sample costumes which were made of velvet and lavishly decorated in the 16th century fashion. Each costume will be numbered; when the costumes are checked out to actors names of the wearers will be recorded. The actors will change clothes in tents, and the dressing rooms will be supplied with hammocks for the clothes belonging to the case. Costumes will be checked in after each performance. The costumes will be brought to Pampa in trucks; they will be transported on hangers and in cellophane bags.

Byrd Hurrying Back To Ask For Funds

WASHINGTON, April 26 (AP)—Rear Admiral Richard E. Byrd is hurrying back from the Antarctic to plead—if need be—for funds to support the government's expedition in the polar wastes for a second year.

Quitting the flagship Bear at Valparaiso, Chile, the explorer was booked to sail today on the liner Santa Elena for New York.

The house has rejected a \$250,000 request for further Byrd expedition expenses, and indications are that the senate may act before Byrd reaches the United States May 14.

Defeat of the appropriation, would not necessarily doom chances of getting the money. For it could be voted later in a special bill. Champions of the South Pole expedition are ready to make a renewed appeal to congress not to abandon the most extensive venture of its kind ever undertaken.

The expedition went to the Antarctic late last year to dig in for a stay of from three to six years. Its work program called for charting unknown areas, making scientific observations and laying the basis for an eventual American claim to a large segment of the icy continent at the bottom of the world.

Boy Dies Brutally

BOYSTOWN, Pa., April 26 (AP)—The victim of what Coroner P. E. Sasser described as the most brutal death in his existence was 13-year-old Kenneth Putt of near Huntingdon, Pa.

A sister made the identification yesterday nearly 24 hours after the boy's body was found between two vacant summer cabins on the Lincoln highway near here.

Dr. Sasser theorized the youth had been struck by an automobile and left to die by a frightened motorist.

PLAY HEROINE



Dorothy Campbell, upper photo, is the heroine of the Junior high school play which will be staged tonight at 7:30 o'clock at the high school auditorium. Director of the comedy is C. T. Hightower, lower photo, who has directed several plays for Junior High. Dorothy plays the role of Harriet Folks who must marry before she is 21 in order to inherit a fortune. Dorothy is the daughter of Mr. and Mrs. W. L. Campbell. Pictures of Jerry Smith and Mary Jane Davis other members of the cast, which appeared in the News yesterday were made by Fred's Studio and not Fletcher's.



Director of the comedy is C. T. Hightower, lower photo, who has directed several plays for Junior High. Dorothy plays the role of Harriet Folks who must marry before she is 21 in order to inherit a fortune. Dorothy is the daughter of Mr. and Mrs. W. L. Campbell. Pictures of Jerry Smith and Mary Jane Davis other members of the cast, which appeared in the News yesterday were made by Fred's Studio and not Fletcher's.

Against this picture the British air ministry presented an account of "vigorous offensive action" by British fliers against German bases in Norway and Denmark.

It said oil tanks south of Oslo were attacked and a large fire was seen, a transport was attacked in Oslo fjord and fires were started in attacks on four large ships and a seaplane base at Stavanger.

The War Today

By DEWITT MACKENZIE

The struggle for possession of the strategic port-railhead of Trondheim, one of the key positions of the battle of Norway, has developed rapidly with two Nazi forces making a rather spectacular dash northward yesterday to reinforce the German troops which hold the disputed port.

Such operations among the towering mountains of Norway are bound to have a sensational tinge, and it is perhaps wise to emphasize that what has happened thus far is in the nature of preliminary maneuvering for position.

The result of the battle of Norway likely will be to broaden the war. And there can be no one more keenly alive to this fact, or more concerned, than Signor Mussolini.

Some observers believe a Nazi victory over Scandinavia would draw Hitler to Hitler's side immediately, but I doubt that. A Nazi defeat is much more likely to force the fascist leader to a quick decision.

I figure this on the basis that it is in Italy's interest to stay "non-belligerent" just so long as possible. Mussolini's gravest danger of being forced into the war is the probability of an upheaval in the Balkans which he has set down as his sphere of influence.

It's almost certain that a German defeat in Norway would impel Herr Hitler to lash out at the Balkans in an effort to assure supplies to relieve the pressure of the allied blockade. That probably would draw Mussolini in, and perhaps against his axis partner, for the Italian chief has vowed to defend this important area.

It looks like a matter of plain horse-sense for Italy to stay out of the war at this juncture—and Mussolini is blessed with a lot of common sense. And there are several excellent reasons why he shouldn't tangle with the allies.

One lies in the relative strengths of the Italian navy and the combined allied naval force. Mussolini's chief concern, of course, must be protection of his long shore-line.

British Admit They've Lost 'First Trick'

Express Confidence In Outcome Of Decisive Battle

(By The Associated Press)
Allied forces for the third time in as many days fell back before the might of Germany's campaigners in Norway whose flying columns have driven swiftly into the heart of the northern kingdom, the British war office admitted today.

The new setback came after the British had conceded they already had lost "the first trick" in the struggle developing along the fjord-slashed coast and through the center of the mountainous northland.

The war office said "limited withdrawals" had been forced by strong German forces, mechanized and aided by low-flying warplanes, south of Dombas.

Dombas, railway junction point south of Trondheim, lies 50 miles north of Ringebu, reached yesterday by the westernmost of two columns driven up into the interior by the Germans in their effort to bulwark their hold on Trondheim.

Rival air fleets roared over wide areas in another phase of the conflict. The British said their aircraft now had established bases in Norway and begun "vigorous offensive action."

Oil Tanks Attacked
The German high command reported its warplanes yesterday had damaged small British warships and transports, destroyed harbor facilities, bombed troops and destroyed 11 Allied airplanes in Norway during the night with "no military damage" while on the west coast a British raid damaged several German planes on the ground.

Against this picture the British air ministry presented an account of "vigorous offensive action" by British fliers against German bases in Norway and Denmark.

It said oil tanks south of Oslo were attacked and a large fire was seen, a transport was attacked in Oslo fjord and fires were started in attacks on four large ships and a seaplane base at Stavanger.

British pilots and anti-aircraft gunners, the air ministry said, accounted in all for eight German planes shot down and nine others damaged at a cost of five British planes.

France Fears Invasion
France at the same time voiced fear Sweden was about to be drawn into the conflict.

While the German and British forces sought stronger Norwegian positions, a French war ministry spokesman asserted several Ger-

See ALLIES, Page 6

Methodists Deplore Peasantry In U. S.

ATLANTIC CITY, N. J., April 26 (AP)—The general conference of the Methodist church turned its attention to home missions today and heard a report that the mechanization of agriculture was resulting in peasantry in large sections of rural America.

The complaint was contained in a report of the church's committee on home missions and church extension which said:

"We must be more concerned about the plight of the peasant croppers, the homelessness of the migrants, the plight of those in distress in the dust bowl, the insecurity of the tenants, the millions of youth banded up in our towns and country communities without jobs and without the possibility of establishing homes and living normal lives."

Dwelling at length on social conditions among the "unchurches," the board said the United States had an "active criminal population" of 4,750,000, and added:

"Half of these are less than 21 years old. With many debauching influences at work and 15,000,000 children and young people not belonging to any organized religion, the seriousness of the situation should be appallingly apparent."

The report condemned "petty politicians who play with the farm problem as a way of feathering their own nests."

I Saw...

Johnny Wells, chairman of the Coronado whiskers committee, and he announced that all parties who are growing whiskers should be at Fletcher's studio tomorrow evening at 7 o'clock to have their picture made. The Entrada publicity committee will send the pictures to newspapers all over the Southwest and to several national newspapers.

Polonium Spark plugs. Guaranteed Satisfaction or your money back. E. Hoffman Service Station.

See BUTLER, Page 6

See MACKENZIE, Page 6

Mrs. Boston Replaces Mrs. Morton As President Of Local City Council P-TA

At a recent called meeting of the executive board of the City Council P. T. A. Mrs. T. F. Morton, re-elected president, resigned her office as she is moving from the city and Mrs. C. S. Boston was elected president. Following the resignation of Mrs. H. H. Boynton, historian, Mrs. L. J. McCarty was elected historian; and Mrs. Boynton, vice-president.

During the business period of the last regular meeting, Thursday afternoon, with Mrs. Morton president, presiding, it was reported that Horace Mann P. T. A. led in the number of books read with 88; Woodrow Wilson, 75; Junior High, 70; Sam Houston, 50; Woodrow Wilson led in the number of children keeping record of the health chart, having 300 pupils; Horace Mann, 224; Sam Houston, 206; and B. M. Baker, 100.

Archer Fallington represented the Junior Chamber of Commerce and the B. C. D. in extending to members of the Council an invitation to their joint luncheon to be held April 29 in the basement of the First Methodist church to hear Walter Rego, promotional director of the Charlo Coronada Centennial, speak. Mrs. R. J. Kiser extended an invitation to the group to attend the book review of Barry Benefield's new novel, "April Was When It Began," to be given by Mrs. H. Hahn Saturday at 2:30 o'clock in the parochial school.

The new officers were installed by Mrs. Claude Lard. They are as follows: President, Mrs. C. S. Boston; vice-president, Mrs. H. H. Boynton; secretary, Mrs. V. L. Hobbs; treasurer, Mrs. Harry Kelley; historian, Mrs. L. J. McCarty;

Benefit Book Review To Be Given Saturday

John Barry Benefield's new novel, "April Was When It Began," which is to be reviewed by Mrs. H. Hahn tomorrow afternoon at 2:30 o'clock in the parochial school hall, is cut to the same master pattern as his previous successes.

Like them, it should please readers "willing to enter upon a surprising and beautiful adventure," wherein dream girls are "spirited, but with moderation, in the classic way."

This is a novel to borrow a phrase from Alexander Woolcott, to warm the cockles of a sentimental heart. One would go far to find a more industrious group of romantics than that in which Martin Wivert, "the fourth deputy assistant editor," finds himself. Harmless and high-hearted adventures are studied as thick as raisins in a fruit cake throughout the story. Mr. Benefield handles his fantasy with a firm hand, and, even if you think you don't like whimsy, the chances are that you will like this story.

The author is a native Texan, a graduate of the University of Texas, and was at one time a reporter on a Texas newspaper.

The review is to benefit the Parent-Teachers association of the parochial school.

The Social CALENDAR

SATURDAY
A waffle supper and microphone will be given for members and guests of Country club at 11 o'clock in the club house.
P. T. A. of Holy Souls Catholic school will sponsor a book review at 2:30 o'clock in the parochial school hall.

MONDAY
McClough Memorial Woman's Missionary society will meet at 2 o'clock in the home of Mrs. D. Fiater.
Woman's Missionary society of First Methodist church will have a joint meeting at 2:30 o'clock in the church.
Woman's Missionary society of First Baptist church will meet at 2:30 o'clock. Visitation day will be observed by the eight circles of Woman's Missionary society.
A meeting of First Methodist church.
A meeting of McClough Memorial Methodist Woman's Missionary society will be held.
Calvary Baptist Woman's Missionary society will have a meeting.

TUESDAY
Miss Betty Jo Townsend will be hostess to B.G.K. club at 7:30 o'clock.
Bowers class of First Baptist church will have a luncheon in the home of Mrs. Emmett Forester, 126 East Francis avenue.
Veterans of Foreign Wars Auxiliary will have an installation of officers at 7 o'clock in the Legion hall. A dinner will be served at 7:30 o'clock by the V.F.W. in the parochial hall.
Nazarene Women's Missionary society will meet at 2 o'clock.
Ladies' Bible class of Francis Avenue Church of Christ will meet at 2:30 o'clock in the church.
A weekly meeting of B.G.K. club will be held at 7:30 o'clock.
Mothersingers of Woodrow Wilson school will meet at 9:30 o'clock.

WEDNESDAY
Clara Hill study group will meet at 2:30 o'clock.
Woman's Missionary society of Harrah Chapel will meet at 2 o'clock.
A meeting of the Parish Council of Catholic Women will be held.
Woman's Auxiliary of St. Matthew's Episcopal church will meet at 2:30 o'clock in the parish house.
A meeting of Women's Auxiliary of First Presbyterian church will be held at 2:30 o'clock in the church annex.
Women's Council of First Christian church will meet at 2:30 o'clock in groups.
Order of Eastern Star Study club will meet at 2 o'clock for study.
Home League of the Salvation Army will meet at 2 o'clock in the Salvation Army hall.
Ladies' Bible class of Central Church of Christ will meet at 2:30 o'clock in the church.
A regular meeting of Woman's Missionary society of Central Baptist church will be held at 2:30 o'clock.
K. K. Kat Klub will have a weekly meeting at 4:15 o'clock.
Ladies' Golf Association will have a luncheon at 12:30 o'clock with golf and bridge beginning at 10 o'clock.
Mrs. Theron Bowers will be hostess to Storch and Rip club.

THURSDAY
A weekly meeting of Coterie will be held at 7:30 o'clock.
Gray County Home Demonstration club will meet in the county home demonstration agent's office.
Pampa Council of Church Women will have a luncheon at 1 o'clock in the First Baptist church.
Girl Scouts of troop one will meet at 4:15 o'clock in the Boy Scout room of the First Methodist church.
A meeting of Susannah Wesley class of First Methodist church will be held.
A weekly meeting of Rebekah lodge will be held at 8 o'clock in the church.
Dorcas class of Central Baptist church will meet at 2 o'clock for visitation.
Club MacFaire will be entertained.
Fidelis class of Central Baptist church will meet at 2 o'clock for visitation and business.
A meeting of Contract Bridge club will be held.
Young Women's auxiliary of First Presbyterian church will meet at 8 o'clock.
Central Baptist choir will have a rehearsal at 7:30 o'clock.

FRIDAY
Pampa Garden club executive board will meet at 9:30 o'clock in the home of Mrs. Frank Perry.
A regular meeting of the Home Study club of the Complex class of First Methodist church will be held at 2:30 o'clock.
A meeting of the Order of Eastern Star will be held at 8 o'clock in the Masonic hall.
Mrs. Guy Farrington will be hostess at 1:30 o'clock luncheon for members of Entre Nous club.

New Rosebud Pals Drawn At Thimblette Sewing Club Meeting

Thimblette Sewing club met in the home of Mrs. Rufus Holmes this week.

Six members spent the afternoon in sewing and new rosebud names were drawn. The hostess was showered with a 75-piece set of china. Refreshments of angel food cake, fresh strawberries, and iced drinks were served to Mmes. J. H. Fish, L. C. Lafoon, A. E. Shaw, B. W. Bettis, and E. L. Martin.

Mrs. Bettis will be hostess to the club on May 6.

WHITE-PLAZA HOTEL
FORMERLY THE HILTON
Main at Harwood
"BEST LOCATION IN DALLAS"
Air Conditioned \$2-2.50-3 - single

LaRosa Sorority Plans To Observe First Anniversary

LaRosa sorority met in the home of Mrs. Noble Mounts, sponsor of the sorority, Thursday evening.

First anniversary of the sorority is to be celebrated Wednesday, May 1, in the home of Mrs. Mounts. A called meeting is to be held Monday afternoon at 3 o'clock.

Refreshments of iced drinks, pimento cheese sandwiches, cookies, and candy were served to Mmes. Doris Taylor, Willetta Stark, Inez Shaw, Kathieen Palmer, Fern Simmons, Betty Schwind, Doris Archer, Betty Mounts, and the hostess.

Pie Supper To Be Sponsored By Home League Tonight

Home League of the Salvation Army will sponsor a pie supper this evening at 7:30 o'clock in the Salvation Army hall.

A program is to be presented in connection with the sale.

The public is invited to attend.

Central Baptist Circles Have Bible Study At Meetings

Four circles of Woman's Missionary society of Calvary Baptist church met in the homes of members this week for Bible study.

A meeting of Lydia circle of Woman's Missionary society of Central Baptist church was held in the home of Mrs. Floyd Russell with Mrs. S. W. Brandt presiding over the business session and the program was opened with the singing of "Ready" after which Mrs. Joe Altman led in prayer. The Bible study by Mrs. W. T. Broxson was followed with a prayer by Mrs. Rex Watkins.

Refreshments were served to Mmes. S. W. Brandt, Roy Brown, W. T. Broxson, Clyde Ives, Joe Myers, Ruby Mullinax, E. P. Hayes, Joe Altman, Rex Watkins, Maness, Ernest Baldwin, R. T. Huffhines, Jack Hughey, A. H. Jones, Lee Hampton, Allen Williams and the hostess, one visitor, Mrs. Leal Pearl Baldwin.

Another meeting of the circle will be held on May 8 with Mrs. Watkins and Mrs. Hampton as hostesses in the home of Mrs. S. W. Brandt, 221 North Summer street.

At the meeting of the Mary Martha circle in the home of Mrs. H. C. Chandler, Mrs. G. C. Stark led in prayer and Mrs. A. Overall gave the devotional. A round table discussion of Acts: 6 was conducted with a business hour following.

Refreshments were served to Mmes. W. L. Morris, H. T. Beckham, Ray Riley, J. W. Cole, Dayne White, G. C. Stark and H. A. Overall.

Mrs. Ben Seibold in the Humble camp was hostess to members of the Lillie Hundley circle. Mrs. O. H. Gilstrap presided in the absence of Mrs. Scott Leverage at the business session in which Mrs. John Evans was elected personal service chairman. Mrs. Del Schalef led the Bible lesson from John: 8.

Refreshments were served to Mmes. H. G. Lawrence, E. R. Gower, Bern Hillman, C. E. McMinn, E. W. Anglin, O. H. Gilstrap, Del Schalef, John Evans, George Berlin, and one new member, Mrs. G. M. James.

Hopkins number two circle met in the home of Mrs. C. C. Jones. The opening prayer by Mrs. Richardson was followed with the study from Acts: 7 led by Mrs. Johnson and prayer by Mrs. Kennedy.

Present were Mmes. C. C. Jones, Umphries, Johnson, Richardson, and one visitor, Mrs. J. G. Kennedy.

Next Wednesday at 2:30 o'clock all circles will meet at the church for a Royal Service program.

Mrs. Bunch Elected Head Of Fidelis Class This Week

Fidelis class of First Presbyterian church met for a social in the home of Mrs. K. W. Bunch, with Mrs. R. E. Schilling as co-hostess Thursday afternoon.

In the short business session Mrs. Bunch was elected president; Mrs. H. Hoare, secretary; and Mrs. H. Bedenbender, treasurer. The class voted to meet the last Friday of each month.

Refreshments were served to Mmes. Floyd Ward, E. W. Voss, Bruce Walters, R. H. Nenzel, W. E. Wanner, George Alden, L. E. Willis, B. G. Blomkvist, H. Bedenbender, A. D. Hills, Robert Smellege, T. E. Allen, Starr, and Harry Hoare.

Play To Be Given Tonight By P-TA In City Auditorium

Tonight at 8:30 o'clock in the city hall auditorium a play will be presented by the Parent-Teachers association of the colored school.

The production is being directed by Ernestine Holloway.

Proceeds will be used to improve the school grounds.

Read The Classified Ads!

Mrs. Nichols Leads Harrah Chapel WMS Study This Week

Harrah Chapel Women's Missionary society met in the church this week for a business session which was followed with the study of the missionary topic, "Christian in Deed and in Truth."

Mrs. J. M. Nichols was leader and after the hymn, "Steal Away to Jesus," was spoken softly. Mrs. R. Timmons played on "The Life Story of Mrs. Luke Johnson;" Mrs. R. R. Jones, "Race Relations;" Mrs. Wheeler Carter, "Mrs. Johnson's Leadership;" Mrs. J. H. Thiesen, "Crusading for Laity Rights;" and Mrs. Henry English, "Champion of the Cause of the Negro." Mrs. Ed Stokes gave the meditation and Mrs. D. S. Buckner closed the program with prayer.

At the meeting next Wednesday at 2 o'clock Bible study will begin. Eleven members, Mmes. J. M. Nichols, B. R. Jones, H. M. Stone, D. S. Buckner, Wheeler Carter, R. L. Timmons, Henry English, C. E. Johnson, Ed Stokes, J. T. Thiesen, and J. M. Deering.

B-PW Members Entertained At Backward Party

Members of Business and Professional Women's club were entertained this week at a monthly social in the form of a backward party given in the city-club rooms.

After the guests, who wore their clothes backward, entered through the back door, refreshments were served and games were played.

Prizes for the most original costumes were awarded to Mildred Lafferty and Mable Gee.

In charge of arrangements were Maureen Jones, Gypsy Malloy, Cree Brock, Anna Grammas, Opal Wright, Frances Craver, Laura Belle Cornelius, Vada Lee Olson, and Kathryn Ward.

Guests and members attending were Mildred Overall, Gypsy Malloy, Ruth Walstad, Lillian Jordan, Ruth Caraway, Vada Lee Olson, Kathryn Ward, Anna Grammas, Frances Craver, Edna Neath, Natha Tinnin, Rebar Baird, Lillian McNutt, Mildred Lafferty, Audrey

B-PW Members Entertained At Backward Party

Members of Business and Professional Women's club were entertained this week at a monthly social in the form of a backward party given in the city-club rooms.

After the guests, who wore their clothes backward, entered through the back door, refreshments were served and games were played.

Prizes for the most original costumes were awarded to Mildred Lafferty and Mable Gee.

In charge of arrangements were Maureen Jones, Gypsy Malloy, Cree Brock, Anna Grammas, Opal Wright, Frances Craver, Laura Belle Cornelius, Vada Lee Olson, and Kathryn Ward.

Guests and members attending were Mildred Overall, Gypsy Malloy, Ruth Walstad, Lillian Jordan, Ruth Caraway, Vada Lee Olson, Kathryn Ward, Anna Grammas, Frances Craver, Edna Neath, Natha Tinnin, Rebar Baird, Lillian McNutt, Mildred Lafferty, Audrey

Phillips Employees MAY DAY DANCE SOUTHERN CLUB May 1st

See The Mav Pile Dance Select May Queen Fantastic Dance Contest

NERVES ON EDGE?
Try Lydia E. Pinkham's Vegetable Compound to help calm frayed nerves due to female functional "irregularities." Famous for over 60 years.

SAFE from Heat, Fire, Theft
New Modern
FUR STORAGE
PHONE 616
Today
DELUXE DRY CLEANERS

PAMPA DRUG
WEEK-END SPECIALS
GOOD FRIDAY THROUGH MONDAY ONLY

CALOX TOOTH POWDER, REG. 30c SIZE	HINDS Honey and Almond CREAM, REG. \$1.00 SIZE	9c	49c
COOPER BLADES Double Edge 25c		11c	
ALMOND LOTION Regular 50c Princess Pat		19c	
NON SPI Regular 30c Size		19c	
MAG-LAC TOOTH PASTE MAGNESIA TYPE, 50c SIZE	MAR-O-OIL SHAMPOO, REGULAR \$1.00 SIZE	19c	59c
THOXINE Regular \$1.00 Size		49c	
CLUB SODA Quart Size		19c	
50c Upper's FACE POWDER	50c PEPSODENT Antiseptic 2 for	29c	40c
50c Pearcol FACE POWDER	60c ALKA SELTZER	29c	49c
SHOWER Spray	50c Coro Butter CREAM	15c	29c
35c Ponds CREAMS	100 Boyer ASPIRIN	27c	59c

Banana Splits 9c

THIS COUPON AND BUYS A JUMBO Ice Cream Soda 5c
CHOCOLATE FLAVOR Must Have Coupon

PAMPA DRUG
E. L. DREW, Proprietor
107 N. CUYLER PHONE 2721

THE MOST SENSATIONAL OFFER IN OUR 14 YEARS OF LEADERSHIP

WASHING All Former Values!

61 INCHES HIGH

FLOOR LAMPS

THIS BEAUTIFUL MODERN FLOOR LAMP

FREE

WITH ANY \$29.75 PURCHASE

During Our Great 14th Anniversary SALE

There's No Red Tape To Sam's CREDIT TERMS

\$1 DOWN OPENS YOUR ACCOUNT AND YOU HAVE A FULL 12 MONTHS TO PAY

SAM SAYS . . .

Prices have never been so low on Quality merchandise. Take my word for it and do all of your buying during this Great Sale. . . Remember with Sam you don't need cash and easy liberal terms with no extra added. . . Take advantage of the Sensational FREE LAMP. . . "My 14th Anniversary Gift To You."

The DIAMOND SHOP
THE LEADING JEWELER IN PAMPA SINCE 1926

NEW PLEATED SILK EFFECT PARCHMENT SHADE
3 CANDELABRA LIGHTS
HEAVY REEDED TUBING ANTIQUED IVORY FINISH
NITE LITE IN BASE WITH INDIVIDUAL SWITCH
EXQUISITE NEW DESIGN FOOTED BASE
GLASS REFLECTOR DIFFUSING BOWL

Wheeler Adopts Commodity Plan

Special to The NEWS
SHAMROCK, April 25—Wheeler county became the second county in the Panhandle to be offered the new surplus commodity corporation plan for the distribution of materials for making mattresses...

Market Briefs

NEW YORK, April 26 (AP)—Stocks turned downward in today's market as traders lightened commitments to be on the safe side over the approaching week-end.

Positions regarding the trend of warfare in Norway helped inspire selling here and there, brokers said, and tended to offset the bullish effect of first quarter steel figures and highly favorable earnings statements from individual companies.

The last got off to a sketchy start. Prices rose in the final hour. Closing declines ran to around 2 points or so for leaders. Stocks and airfares were in front of the retreat.

Business, lively in the forenoon, slackened on the attempted recovery. Transfers for the full session were around 900,000 shares.

Table with 3 columns: Am Can, Am T & E, Am Wat Wks, etc. with corresponding values.

Only three per cent of the men looked forward to life-long bachelorhood. Another indication that rah-rah days are a thing of the past...

Four-fifths of these 1940 style collegians attended church with some regularity—one fifth without fail each week.

storage packed firsts 18 1/2. Other prices unchanged.
Poultry live 41 trucks, easier; hens over 5 lb. 15.5 and under 18, Plymouth Rock...

CHICAGO GRAIN
CHICAGO, April 26 (AP)—Wheat prices were pushed down 2 cents today to the lowest levels since April 13 as the markets absorbed selling inspired by good rains in the domestic outbush and heavy markets, particularly at spring wheat terminals.

Despite large receipts at Minneapolis, trade reports said demand for each grain there was the best in months, indicating commercial dealers were absorbing the supplies readily.

Wheat closed 1 1/2-2 cents lower than yesterday, May \$1.87 1/2-1/2, July \$1.66 1/2-1/2; Corn 3/4-1/2 down, May 63 1/2-3/4, July 64 1/2-3/4; Oats 1/2-1/4.

NEW YORK CURB
Ark Nat Gas 4 2 1/2
Ches Wts 4 1/2
El Bond & Sh 45 6 1/2

OKLAHOMA CITY LIVE STOCK
OKLAHOMA CITY, April 26 (AP) (U. S. Dept. Agr.)—Cattle saleable and total 1,000; calves 300; small lots and odd head light steers 6,000; 7-12 month beef cows 5,750-6,500; bulls to 6.75; vealer top 10.00; slaughter calves 5.50-9.00.

KANSAS CITY LIVE STOCK
KANSAS CITY, April 26 (AP) (U. S. Dept. Agr.)—Hogs saleable and total 1,000; 170-250 lbs. 6.00-6.25; sows 5.00-5.25. Cattle saleable 200; total 300; calves saleable 100; total 150; strictly good to choice fed steers head around 10.75; small lots short fed heifers downward from 9.00; common to medium cows 8.00-7.00; good to choice 10-12 month slaughter calves 6.50-8.00; stockers in light supply.

CHICAGO PRODUCE
CHICAGO, April 26 (AP)—Butter 93.1-92.2, steady; prices unchanged. Eggs 52 1/2, easier; current receipts 15 1/2.

Joe College No Longer Exists

EVANSTON, Ill., April 26. (AP)—The rah-rah days are over—for Joe College is a creature of the past.

This was the conclusion today of educators at Northwestern university based on results of a questionnaire answered by 250 seniors graduating this June.

In Joe's place they found a thoughtful young person who has learned the value of a dollar—by work.

Of the men questioned 80 per cent earned at least part of their school expenses. Thirty per cent of the women did likewise, and 15 per cent of the entire group received no financial assistance.

Only three per cent of the men looked forward to life-long bachelorhood. Another indication that rah-rah days are a thing of the past, the educators said, was given by replies to any inquiry on allowances from home. The men received a median of \$10 a month above room, board and tuition, while the women received a median of \$20. Nearly one-fifth received no money whatever for incidentals.

Four-fifths of these 1940 style collegians attended church with some regularity—one fifth without fail each week.

Miami Represented At FFA Area Meet
Special to The NEWS
MIAMI, April 26—The local F. F. A. chapter, with their advisor, Hood Willis, will attend the district leadership contest which meets in Canadian, today and tomorrow. Miami will be represented in at least three of the chapter conducting contest. Keith Klvecheh will enter extemporaneous speech for the chapter, and the F. F. A. string orchestra will compete in the radio division.

storage packed firsts 18 1/2. Other prices unchanged.
Poultry live 41 trucks, easier; hens over 5 lb. 15.5 and under 18, Plymouth Rock...

CHICAGO GRAIN
CHICAGO, April 26 (AP)—Wheat prices were pushed down 2 cents today to the lowest levels since April 13 as the markets absorbed selling inspired by good rains in the domestic outbush and heavy markets, particularly at spring wheat terminals.

Despite large receipts at Minneapolis, trade reports said demand for each grain there was the best in months, indicating commercial dealers were absorbing the supplies readily.

Wheat closed 1 1/2-2 cents lower than yesterday, May \$1.87 1/2-1/2, July \$1.66 1/2-1/2; Corn 3/4-1/2 down, May 63 1/2-3/4, July 64 1/2-3/4; Oats 1/2-1/4.

NEW YORK CURB
Ark Nat Gas 4 2 1/2
Ches Wts 4 1/2
El Bond & Sh 45 6 1/2

OKLAHOMA CITY LIVE STOCK
OKLAHOMA CITY, April 26 (AP) (U. S. Dept. Agr.)—Cattle saleable and total 1,000; calves 300; small lots and odd head light steers 6,000; 7-12 month beef cows 5,750-6,500; bulls to 6.75; vealer top 10.00; slaughter calves 5.50-9.00.

KANSAS CITY LIVE STOCK
KANSAS CITY, April 26 (AP) (U. S. Dept. Agr.)—Hogs saleable and total 1,000; 170-250 lbs. 6.00-6.25; sows 5.00-5.25. Cattle saleable 200; total 300; calves saleable 100; total 150; strictly good to choice fed steers head around 10.75; small lots short fed heifers downward from 9.00; common to medium cows 8.00-7.00; good to choice 10-12 month slaughter calves 6.50-8.00; stockers in light supply.

CHICAGO PRODUCE
CHICAGO, April 26 (AP)—Butter 93.1-92.2, steady; prices unchanged. Eggs 52 1/2, easier; current receipts 15 1/2.

Large advertisement for KLEX Giant Size Cookies, Tomatoes, Peaches, Tomato Juice, Salad Dressing, Coffee, Strawberries, Carrots, Green Onions, Turnips, Beets, Tuna Fish, Camay Toilet Soap, Kotex, Paper Towels, Sugar, Butter, Potted Meat, Lipton's Tea, Ovaltine, Oleo Best Spread, Furr Food, Hams, Fryers, Hens, Salad, Side Pork, Cheese, Peanut Butter, Sausage, Hamburg, Ham, Pork Chops, Steak, Fish, Bacon, Ham, Slab Bacon, Pork Lard, Hams, Roast Lean Pork, Roast Prime Beef.

Advertisement for 'THE PHOTOGRAPHER' featuring a man with a camera and a can of 'Admiration Coffee'. Text includes 'is expert in that he combines the ability of an artist and the knowledge of a chemist.' and 'Are you getting the "top of the crop" in the coffee you're drinking? If not, switch to ADMIRATION today...'

SAVE! COMPARE THESE VALUES... COUNT THE DOLLARS

Pimentos Fancy Quality 4 Oz. Can 5c
Matches Dandy Brand 6 Box Ctn. 15c
PRUNES Fancy Italian GAL. 25c
OLEO Magnolia Brand LB. 12c

SoapChips Balloon Brand 5 Lb. Box 29c
CORN Del Monte Whole Grain Vac Pack 12 Oz. Can 13c
MILK Armour's Evaporated 3 Tall Or 6 Small For 17c
TISSUE Standard Food Markets Brand 3 Rolls For 17c

COFFEE Break O' Morn Drip or Reg. Grind POUND 14¹/₂c
P&G Soap White Naptha 6 Giant Bars 21c
Pure Lard Armour's Star 4 Lb. Ctn. 31c
Cherries Red Sour Pitted 2 No. 2 Cans 25c

We Reserve The Right To Limit Quantity Purchases



FREE HIGH-TEST OXYDOL Large Box 19c
\$32,000 CASH PRIZES EVERY DAY-SEVEN \$100 BILLS-EVERY WEEK-\$1,000-\$5,000 GRAND PRIZE

NEW OLD DUTCH CLEANSER 50% FASTER! 3 CANS FOR 23c

PALMOLIVE SOAP 2 Reg. Bars 13c
The Only Soap Used by the Dionne Quins

FRESH FRUITS and VEGETABLES Quality Fruits and Veg. Fresh Daily at Standard Food

Spinach Extra Standard 2 No. 2 Cans 17c
JUICE Tomalo Large 46 Oz. Can 19c
NUCOA The Finest For Table Use, Cooking, Frying LB. 18¹/₂c
BABO 'A Wipe And It's Clean' 2 Reg. Cans 25c
JUICE Florida Orange 46 Oz. Can 23c

BREAD SUGAR
 FRESH BAKED SATURDAY ONLY LIMIT
 FINE GRANULATED LIMIT
2 16 Oz. Loaves **5** 10 Lb. Kraft Bag **47**

Strawberries Fancy Faced Louisianas Set. Only Pint 12¹/₂c
APPLES Fancy Delicious Dozen 23c
LETTUCE Large Calif. Head
Carrots Radishes 3 Bchs. For 10c
POTATOES McCLURES No. 1 Calif., Lb. 4c
BURBANKS No. 1 red, 10 lb bag 24c
CABBAGE FIRM, CRISP-POUND 2¹/₂c
ORANGES LARGE CALIF., DOZEN 23c
ONION SETS White, Red, or Yellow 2 Qts. For 15c

COFFEE Schilling's Drip or Reg. Grind Pound Can 25c

Look at these **MEAT VALUES**

WHEN YOU BUY AT STANDARD FOOD MARKET
Government Standard

NEWS For all Shoppers

FLOUR PILLSBURY'S BEST 48 LB. BAG \$1.76 24 Lb. Bag 92c
CRACKERS Fresh Salted 2 Lb. Box 16c
TOMATOES Extra Standard 3 No. 2 Cans 21c
MACARONI Or SPAGHETTI Reg. Fancy Bulk Bag 14c
PEACHES WHITE SWAN California's Finest 2¹/₂ Size Can 17¹/₂c
BEANS Dry LARGE OR SMALL LIMAS LARGE OR SMALL NAVIES PINTOS - PINKS - RED KIDNEY OR BLACKEYES Lb. Bag 17c
FLOUR CANADIAN'S BEST 48 LB. BAG \$1.66 24 Reg. Bag 84c

HAMBURG Standard's 100% Meat Pound 12¹/₂c
Pork Roast PICNIC CUTS Pound 12¹/₂c
CHEESE NO. 1 CREAM Pound 14¹/₂c
FRANKS LARGE JUICY Pound
Spare Ribs SMALL MEAT Pound
POT ROAST MEAT TEN Pound
BEEF RIBS BONELESS TENDER POUND 15¹/₂c
Fancy Fryers New Crop, Pound 25¹/₂c
BACON POUND SUNRAY SLICED 17¹/₂c
ROAST CENTER CUT PORK POUND 17¹/₂c
POULTRY and FISH
 HENS-Fancy Colored, Lb. 16¹/₂c
 FRYERS-Fancy New Crop, Lb. 25¹/₂c
 STEWERS-Young and Fat, Lb. 12¹/₂c
 GUINEAS-Young Fowl, Each 49c
 TURKEYS-Fancy Fowl, Lb. 18¹/₂c
 CATFISH-Fresh Water, Lb. 29c
LARD Bulk, Lb. 6¹/₂c
HAMS Fresh, Lb. 17¹/₂c
PIG FEET Pickled, Ea. 5c
Pork Chops End Cuts, Lb. 16¹/₂c
Pork Chop Center Cut, Lb.

STANDARD FOOD
 ★ ONE STOP DOES IT---GROCERIES
 No. 1—Somerville & Kingsmill. Phone 686, 687 and 688 No. 3—Fors. Ph.

DOLLARS AND CENTS SAVINGS YOU MAKE HERE! **SAVE!**

Prices Effective Press Time Today
Monday, April 29

Wax Paper Cut-Rite Brand 2 REG. 10c PKGS. **13c**

Bak. Powder Clobber Girl or K. C. 25 Oz. Can **21c**

CORN Sweetened Field 2 No. 2 Cans **15c**

KLEX BEADS OF SOAP Formerly Super Suds Reg. Size 9c Giant Size **17c**

PEAS Brimfull Brand No. 3 SIEVE No. 2 Can **13 1/2c**

Blackberries Fancy Cultivated GAL. **39c**

COCOA Waverly Brand 2 LB. CAN **17c**

PEACHES SLICED OR HALVES GALLON **39c**

APRICOTS Extra Standard Gal. **39c**

JUICE GRAPEFRUIT LARGE 46 Oz. Can **19c**

MOPS No. 16 Cotton or Linen **19c**

Cracker Jack NEW STOCK 3 For **10c**

TEA ORANGE PEKO AND PEKO

4 WITH 1 LB. **81c**
2 WITH 1/2 LB. **41c**
1 WITH 1/4 LB. **21c**

Fruits and Vegetables Standard Food Markets

FRESH FRUITS and VEGETABLES

BANANAS LARGE GOLDEN RIPE—Sat. Only Limit -- Doz. **10c**

CELERY Large Calif. Stalk **12c**

ORANGES New Crop Texas DOZ. **23c**

LEMONS LARGE SUNKIST—DOZ. **21c**

APPLES FANCY WINESAPS—DOZ. **19c**

TURNIPS & TOPS LARGE BUNCH **5c**

GRAPEFRUIT Fancy Texas Seedless 5 For **14c**

CRYSTAL WHITE SOAP The Billion Bubble Soap 6 Giant Bars **21c**

RINSO LARGE REGULAR **24c 10c**

CRISCO NOW CREAMIER, FASTER-MIXING 3 Pound Pail **49c**

SHORTENING ARMOUR'S VEGETOLE 8 LB. CTN. **73c**

FLOUR ENID'S BEST PILLSBURY'S PRODUCT—FULLY GUARANTEED 48 LB. BAG **\$1.56**

4 Lb. Ctn. 37c

24 Lb. Bag 81c

HOMINY Extra Standard 3 No. 2 Cans **21c**

B'berries Fine For Pies And Cobblers No. 2 Cans **19c**

Gr. Beans Extra Standard No. 2 Cans **17c**

KRAUT Or Hominy Extra Standard Large 2 1/2 Size Can **11c**

PICKLES SOUR OR DILLS 18-20 COUNT GALLON **47c**

FOOD MARKETS YOU ALWAYS BUY **Stamped Meats**

Look at these **MEAT VALUES**

SAUSAGE LARGE JUICY Pound **12 1/2c**

LIVER SMALL MEATY Pound **12 1/2c**

HAMS MEATY TENDER Pound **14 1/2c**

SAUSAGE COUNTRY STYLE Pound **12 1/2c**

LIVER SLICED PORK Pound **12 1/2c**

HAMS Shank or Butt End As Displayed Pound **14 1/2c**

BACON SLICED MORRELL'S PRIDE POUND **17 1/2c**

COLD CUTS Minc'd Ham or Bologna POUND **10 1/2c**

STEAK ECONOMY CUTS POUND **17 1/2c**

DELICATESSEN Beef Ribs, Lb. 19c
Potato Salad, Lb. 15c
Beef Roast, Lb. 29c
Sandwich sp'd, lb. 25c
Pork Roast, Lb. 29c

7 1/2c

5c

21 1/2c

PEAS Richelieu Brand SMALL SIFTED NO. 1 CAN **13c** NO. 2 CAN **17c** TINY SIFTED NO. 1 CAN **16c** NO. 2 CAN **19c**

NEWS For all Shoppers

SPINACH Extra Standard 2 Large 25c
Medina Brand 2 1/2 SIZE CANS

P'NUT BUTTER HELMET BRAND FRESH STOCK QT. JAR **27c** PINT JAR **15c**

PORK And BEANS WITH ARMOUR'S TASTY SAUCE Tall Can **5c**

SALAD DRESSING OR SPREAD FULL QUART **23c**

DOG FOOD ARMOUR'S Or IDEAL 3 Reg. Cans **25c**

CATSUP Extra Standard 14 Oz. Bottle **10c**

HEINZ VINEGAR APPLE CIDER OR WHITE DISTILLED Quart Jar **21c**

GOOD MARKETS GROCERIES, MEATS & PRODUCE
No. 3—Fors. Phone No. 1 No. 5—220-22 North Cuyler. Phone 127

Mrs. Doucette To Represent 20th Century Members

At a meeting of the Twentieth Century Club in the home of Mrs. Ivy Duncan, this week, members of the club voted to cooperate with local hardware men in observance of hardware week.

In the business session conducted by the president, Mrs. Roger McConnell, Mrs. A. H. Doucette was named delegate to the federated convention to be held in Shamrock on April 29 and 30 and May 1. Mrs. Ray Hagan was elected alternate.

Opening the program on music, favorite radio musical programs were named in answer to roll call. Mrs. Doucette, program leader, spoke on "Primitive Music and Its Sources" after which Mrs. Roy McConnell discussed "The Evolution of Instruments: Stringed, Wind, and Percussion."

Other topics on the program included "The Wandering Singers: Troubadours, Minstrelers, and Meistersingers" by Mrs. W. A. Bratton and "Part Singing and Counterpoint: The Round or Canon," by Mrs. Fern Rose who illustrated counterpoint and harmony on the piano.

Attending were Meses. Clifford Braly, W. A. Bratton, F. M. Culbertson, A. H. Doucette, Ivy E. Duncan, J. M. Fitzgerald, J. W. Gordon, Jr., R. J. Hagan, I. B. Hughey, Paul Kasiskhe, Roger McConnell, Roy McMillen, J. C. Richey, Tom Rose, J. L. Southern, and J. F. Stallings.

Calvary Baptist W. M. S. Meets For Prayer Service

Both circles of Calvary Baptist Woman's Missionary society met in the home of Mrs. W. L. Brewer this week for a prayer service in behalf of the revival now in progress at the church.

Mrs. C. C. Teague presented the devotional from "The Prayer Life of Jesus."

Twelve members of the society were present.

Next Monday afternoon at 2:30 o'clock both circles will meet in the home of Mrs. J. A. Moses for a fifth Monday social at which time secret pals will be revealed.

Read The Classified Ads!

WE'VE GOT THE USED CAR YOU WANT AT THE RIGHT PRICE

'39 MERCURY \$795 OVERDRIVE, NEW MOTOR, RADIO AND HEATER!

'39 FORD DELUXE TUDOR \$650 Only 7,500 Miles On New Motor

35 Chevrolet \$125 Coach

'34 Chevrolet \$75 Coach

'33 Ford Coach \$65

'38 PLYMOUTH DELUXE COUPE \$425 Very Clean Radio and Heater

TOM ROSE (FORD) PHO. 191

Solons Quartet To Mark Amarillo Show

A quartet composed of Texas representatives, senators, and former senators is one of the features of "Folies of Forty" to be staged Saturday night in the Amarillo municipal auditorium.

In the quartet are Rep. Emmett Morse, speaker of the house; Sen. Manley Head, Stephenville; Former Sen. Roy Sandeford of Belton; and Former Rep. Fred Harris of Dallas.

Mrs. Norwood West, chairman of the Nite Cap Cabaret which will be held immediately following the Folies in the Crystal ballroom of the Herring hotel, announced late yesterday afternoon that "it looks as if we will have a full house."

Two floor shows are promised, plus a full evening of other entertainment and dancing to fine music. The cabaret opens at 11 o'clock and lasts until—

Reservations may be made by telephoning Mrs. West at 9529, Amarillo.

Mrs. Cooper Feted At Bridal Shower Given This Week

A bridal shower honoring Mrs. Neal Cooper, who is the former Miss Elsie Mundy, was given Wednesday afternoon with Miss Margaret Brumby as hostess. Charles Madeira, and Mrs. Charles Thomas as hostesses.

A centerpiece of tulips decorated the table and a color scheme of pink and green was carried out in the appointments and refreshments.

After games were played, the gifts were opened by the honoree and refreshments of tea, cookies, and mints were served with Miss Brummett and Mrs. Madeira pouring tea.

Registering were Meses. J. L. Love, Emmett, Gee, B. A. Norris, Emory Noblitt, C. F. Bastion, J. G. Gantz, J. F. Meers, N. A. Purdy, Frank Baird, U. G. Waters, Z. H. Mundy, Herbert Dowell, W. C. Kinser, De Lee, Vicars, H. K. Spaulding, C. R. Followell, G. R. Harvey, T. E. Henderson, Miss Mildren Martin, the honoree, and hostesses.

Gifts were sent by Meses. Sylvia Goodwin, Louella Clark, W. Evelyn, R. M. Harvey, J. M. Martin, Fred Lamb, W. E. Riggan, and Sophie Elkins.

Mrs. Rusk Will Present Students In Recital Monday

Mrs. Fred Rusk will present her piano and voice students in a recital Monday night at 8 o'clock in Myers Music Mart.

Those participating will be Katherine Barrett, Joan Conrod, LaVerne and Virginia Covington, Frances Dean Crocker, Elena Ann Donald, John David Jatin, Carol Jeannine Perkins, Betty Jean Prigmore, Joella Shelton, Bobby Tucker, and Evelyn Wilson.

The public is invited to attend the recital.

Ideals Of Y. W. A. Read At Meeting Of Jo Skaggs Group

Jo Skaggs Y. W. A. of First Baptist church met recently for a regular business meeting.

The ideals of the Y. W. A. were read and personal service was discussed.

A library committee was appointed consisting of Mrs. Jean Ross, Elaine Crowl, Rita Holmes, and Adeline Hollar. An invitation to a tea at the Amara Mission was accepted and the meeting was closed with a prayer.

Those present were Adeline Hollar, Fernie Cagle, Norma Jean McKinney, Mary Jean Ross, Rita Holmes, Mrs. Bo Barrett, and a visitor, Aurenia White.

Magnolia Sewing Club Meets In Home Of Mrs. Hipps

Mrs. Ronald Hipps was hostess to members of the Magnolia Sewing club Thursday afternoon.

250 Attend Gulf Quarterly Safety Meeting

Employees of the Gulf Oil corporation in the Panhandle field gathered in the city hall here yesterday afternoon for their quarterly safety meeting. R. B. Saxe, Pampa superintendent, presided and welcomed the 250 men and invited guests.

Several company officials were present and made reports. Principal talk was made by G. M. Kintz of Dallas, assistant engineer of the bureau of mines, who also presented an interesting demonstration on fires and explosions.

W. E. Mosher, safety supervisor of the Gulf Oil corporation, North Texas district, made a report of the Gulf safety record so far in 1940. It indicated the best four months the Panhandle district has ever enjoyed, with the fewest disabling accidents. Mr. Mosher stressed the fact that accidents were not a matter of fate or just chance, but that there were always contributing causes that could be eliminated or avoided. A good safety record came as a result of good housekeeping on the job, constant safety training and constant alertness.

A. R. Rotman, of the Borger office, gave a short report on the Panhandle Safety Council, its plans, and purposes.

H. L. Rankin, who heads the Gulf Oil company, of Houston, which is the insurance department of the Gulf Oil corporation, spoke briefly on the cooperation of the field force and the insurance departments. He also read a report from Washington, D. C., showing that the Gulf Oil corporation last year won the Holmes National Safety award for the best record of its cars and trucks on the highways.

A paper on the subject, "The Gang Foreman and the Key Man to Safety," was read by H. Fish, a foreman in the Pampa district.

Short talks were made by T. G. Hollingsworth, chief clerk, Fort Worth division, and O. C. Needham, division superintendent of production, Fort Worth.

The main part of the program was a lecture and demonstration by G. M. Kintz, assistant engineer of the bureau of mines, Dallas, on "What Is Fire and What Causes Explosions." The lecture emphasized the danger of all inflammable liquids, when, improperly used, and improperly handled. Improper and hazardous electrical applications was also discussed. Proper methods and means of extinguishing fires were given. The lecture was especially appropriate to men in the oil field who are dilly in contact with dangerous inflammable liquids and gases. Favorable comments on the educational value of the lectures were unanimous.

After the lecture a sound picture was shown, covering the building of the Golden Gate bridge.

Members of the Pampa fire department attended Mr. Kintz's lecture.

BITTER FIGHT

comment of neutral military observers that it was extremely difficult for lightly armed troops to hold positions against striding planes cooperating with artillery and armored vehicles.

Although British military sources concede that Germany had "the best of it" in the air in the opening phase, the air ministry announced that Royal air force fighting planes and anti-aircraft guns had brought down eight enemy planes and damaged nine others in "vigorous offensive action" in Norway yesterday and last night.

For the first time the ministry announced action by R. A. F. planes in the north. The communique stated that "five of our aircraft are missing" and others had been damaged by bombing attacks.

The R. A. F. attacks on German air bases in Norway and Denmark were said by the air ministry to have blasted oil tanks on Oslo fjord, a sea-plane base and four large ships northwest of Stavanger.

Military sources, meanwhile, conceded Germany at least temporary aerial superiority because of her "five, possibly six air bases in Norway" and pointed out Britain might be having difficulty getting bases in the rugged Norwegian territory.

These sources pictured the war in Norway as settling down to a battle for Tromsheim on the coast, at which the whole future course of the Scandinavian conflict may depend.

Nazis Had Advantage "A treacherous invasion," one British source said, gave Germany all the initial advantage in Norway, with her airplane bases playing a vital role in fighting over the mountainous terrain.

"We knew we would have a difficult time and certain of our forces probably are having difficulties, but don't think for a moment this is going to have a determining effect on the allied effort in Norway."

School Principals To Meet In Amarillo

L. L. Sone, superintendent of the Pampa independent school district, W. B. Weathered, Gray county superintendent, and Doyle F. Osborne, Pampa high school principal, will attend the annual banquet of the Panhandle-Plains Superintendents association at 6:30 o'clock tomorrow night at the Amarillo high school cafeteria.

McGrew Uses New Method To Punish Local Offenders

A new method of assessing fines was introduced in city police court this morning when two habitual offenders appeared before Recorder C. E. (Dan) McGrew.

The judge locked his two visitors over and remarked, "you two have been in here quite often, haven't you?" The answer was "yes sir."

So the judge turned to Leo V. Wilson, desk sergeant, and asked him for the record card on the two men. After looking the cards over the judge said to one of the men, "You have been in here 31 times, not including this time, so I'm going to set your fine at \$1 for every time you've appeared in this court. Your fine is \$32."

To the other judge McGrew remarked, "you have been in here 16 times before today, your fine will be \$17."

Then appeared before the judge a man charged with intoxication and disturbing the peace. He was asked to be parked his car in front of a residence and honked the horn far into the night. He happened to park his car next door to the residence of a city officer which was too bad. He was fined \$15 for disturbing the peace and \$10 for intoxication.

The alleged holdup reported by Raymond Johnson Wednesday night has been cleared up. Johnson reported that he did not see a gun in the man's hand after their cars nearly sideswiped each other.

Pampa Veterans To Attend Perryton Legion Meeting

Pampa will be represented by 10 Legionnaires at the 18th district spring convention of the American Legion, which opens a two-day meeting in Perryton.

The Pampa vanguard of the 40 and 8 will join the Amarillo and Shamrock vanguards in a "wreck," in Perryton Saturday afternoon.

A. D. Montelth of Pampa, is grand chef de gare of the 40 and 8 for the state.

Legion and auxiliary officials of Texas, Oklahoma, and Kansas are expected to be among the notables present. Lou J. Roberts of Borger is state commander of the American Legion for Texas, and Charlie Maltel of Phillips, formerly of Pampa, is district commander.

Mrs. John Deater of Memphis is 18th district auxiliary president.

Attending the convention from the Kerley-Crossman post of Pampa will be William Heskew, L. R. Franks, Ed Kennedy, Dan Kennedy, Mark Long, E. M. Keller, Earl Perkins, Dan Williams, and Joe Roche.

MACKENZIE

smaller than the British, for that is the world's largest, but during the last three years Mussolini has steadily built up his fleet until the Italian and French navies are about on a par.

However, while the Italian fleet need take on back-wash from the French, the British are understood to have concentrated many of their finest ships in the Mediterranean along with the large fleet of their ally in those waters. This means that if Mussolini declared war against the Anglo-French brotherhood he would immediately feel the weight of this entire force, as well as having to deal with a land attack by the French.

The allies would blockade the Italian coast, cutting Italy off from vital sea-borne supplies. If the Italian fleet came out to do battle, it would have to leave the defense of the coastal positions to the air fleet. It Duce also has a powerful air force, but in all he would be mere comfortable fighting with the allies than against them.

There are other reasons why Mussolini would prefer to remain out of the war for the time being. One is that, as it is, Italy is not reaching the peak of its military preparedness before 1942.

Then Italy is far from self-sufficient in the way of resources and is still seriously handicapped by a shortage of raw materials, especially oil, iron and steel.

BUTLER

fect, as attested by a bronze plaque of the general, at headquarters, carrying this inscription: "Director of public safety, January 7, 1924, to December 23, 1925. He enforced the law impartially. He defended it courageously. He proved incorruptible."

McGrew Uses New Method To Punish Local Offenders

A new method of assessing fines was introduced in city police court this morning when two habitual offenders appeared before Recorder C. E. (Dan) McGrew.

The judge locked his two visitors over and remarked, "you two have been in here quite often, haven't you?" The answer was "yes sir."

So the judge turned to Leo V. Wilson, desk sergeant, and asked him for the record card on the two men. After looking the cards over the judge said to one of the men, "You have been in here 31 times, not including this time, so I'm going to set your fine at \$1 for every time you've appeared in this court. Your fine is \$32."

To the other judge McGrew remarked, "you have been in here 16 times before today, your fine will be \$17."

Then appeared before the judge a man charged with intoxication and disturbing the peace. He was asked to be parked his car in front of a residence and honked the horn far into the night. He happened to park his car next door to the residence of a city officer which was too bad. He was fined \$15 for disturbing the peace and \$10 for intoxication.

The alleged holdup reported by Raymond Johnson Wednesday night has been cleared up. Johnson reported that he did not see a gun in the man's hand after their cars nearly sideswiped each other.

ALLIES

man troops had left Baltic Sweden from Norway. Whether they are bound for Sweden is "tomorrow's secret," he said.

The struggle for central Norway grew more intense. British and German columns were heading toward a clash in the Osterdal valley southeast of Trondheim.

London military sources admitted that the British "lost the first trick" in the struggle for mastery of Norway, but said "don't think for a moment this is going to have a detrimental effect on the Allied effort."

An official spokesman said "we had to use untried troops and unimproved facilities. The first landing was carried out by men who had just what they could carry with them."

Swedish dispatches indicated a Nazi spearhead had retreated 15 miles from the Swedish frontier, applying its position as untenable. Further west in the Gudbrandsdalen valley another Nazi flying column appeared to have bogged down at Ringeby, 160 miles south of Trondheim.

British forces northeast of Trondheim were being held at bay by the aims of three German destroyers, but a Norwegian communique said the British had tightened their hold on Stora south of Trondheim.

The German high command's daily communique indicated that German-held Oslo had been bombed by British planes last night but said that any damage to the capital "cannot yet be determined." The British also bombed Narvik, northern ore port.

One British transport and a minesweeper were beached after being struck by bombs. The Germans said, adding that eleven allied planes were destroyed between Dombas and Andalsnes.

German forces successfully extended the occupation area and attacked allied troop and transport concentrations, the communique declared.

Britain was reported to have given Sweden a promise of help in event of a German invasion and at the same time assured Stockholm the allies have no intention of occupying the valuable Swedish iron-ore ports.

The allies advanced their lines on the economic front with these developments: 1. Signature at Berne of economic agreements guaranteeing Switzerland supplies from the allies in return for pledges they will not be transhipped to Germany.

2. Reports Britain and Japan were nearer agreement on disposition of Chinese government silver held in the British concession at Tientsin, a step which might improve British-Japanese relations.

3. Arrival of a Yugoslav trade delegation in Moscow to negotiate a trade treaty which informed sources said was aided by allied backing.

In addition Britain was making overtures to Russia for a trade agreement in hope of diverting Russian products from Germany and also of stopping the Vladivostok leak in the allied blockade which would permit needed raw materials to reach Germany by way of the Trans-Siberian railway.

KPDN Radio Program

FRIDAY AFTERNOON 5:00-Ken Bennett-Studio 5:15-Wilson Ames at the Console 5:30-Rhythmic & Romance-WBS 5:45-Hawaiian Screenings 6:00-Cornshuckers-Studio 6:15-To Be Announced 6:30-What's The Name Of That Song? 6:45-Reflections at Twilight-Studio 7:00-Goodnight.

SATURDAY 7:00-Rise and Shine-WBS 7:15-News-WKY 7:30-Conductors-Studio 8:00-Tonic-Tunes 8:30-Riddles & Rhythmic 9:00-Sam's Club of the Air 9:15-On Parade-WBS 9:30-Your Lexicon of the Air-Studio 9:45-Novelle 10:00-Piano Meditations-Studio 10:15-Women's Club of the Air 10:45-News-WKY 11:00-Let's Dance 11:15-News-WKY 11:30-It's Dancetime-WBS 11:45-Extension Service 12:00-Linger-a-While 12:15-Parade of Business-Studio 12:30-It's Dance Time-WBS 12:45-Sweet or Sour 1:15-Billy Gilbert-Studio 1:30-Hits & Scores-WBS 1:45-Pauline Stewart-Studio 2:00-Edna's Freshin' Orch. 2:15-Random Thoughts 2:30-George E. Sokolsky 2:45-Consert-Whisper 3:15-Monitor Views the News-Studio 3:30-Orch Air 3:45-Headlock Presents-WBS 4:00-Year American Music 4:15-News-WKY 4:30-News-WKY 4:45-Ken Bennett-Studio 5:15-Wilson Ames at the Console 5:30-Rhythmic & Romance-WBS 5:45-Pleasantville Folks 6:00-Cornshuckers-Studio 6:15-News-Studio 6:30-What's The Name Of That Song? 6:45-Hits & Scores-Studio 7:00-Goodnight!

Mainly About People

Mrs. Erving Williams, Jr., left Thursday for a visit with friends in Denver.

Mr. and Mrs. Floyd McClellan have returned to their home in Denver after visiting with Mr. McClellan's sister, Mrs. L. Harry Fountain. The couple was married last Sunday.

Mrs. John Weeks left last night for Amarillo to join Mann's Cake bowling team for a two-week trip to Syracuse, New York City, Washington, Canada, Chicago, and Niagara Falls. The team will bowl in the national meet at Syracuse.

Dr. K. W. Hulings left Thursday for Fort Worth to attend the annual congress and educational program of the Texas Chiropractic Research society on Saturday and Sunday. One of the principle speakers will be Dr. B. J. Palmer of Davenport, Iowa, son of the founder of chiropractic, who will discuss recent scientific developments which have been checked and verified at his clinic in Davenport. Other speakers will include Cash Asher of Davenport, author and newspaper man, Dr. J. E. Drain, president of the Texas Chiropractic college of San Antonio; and Dr. M. M. Nichol of Galveston.

The Rev. C. Gordon Bayless and children, Gordon and Emma Lou, and Mrs. Merl Coday left Friday morning for Mountain Grove, Missouri, where they were called because of the death of Rev. Bayless' mother, Mrs. C. W. Bayless, Sr., who passed away at 6 o'clock this morning. Mrs. C. Gordon Bayless has been in Mountain Grove for some time.

A judgment awarding \$750 to the plaintiff was filed Thursday in 31st district court here in the case styled C. F. Morgan vs. Associated Indemnity corporation, in a compromise settlement approved by District Judge W. R. Ewing. The judgment sets aside an Industrial Accident board ruling of March 26 of this year, styled C. P. Morgan vs. Portland Gasoline company.

Mr. and Mrs. C. K. Baker were called to Washington, D. C., yesterday by the death of his father.

Annual older boys conference of the Great Plains Young Men's Christian association will be held tomorrow in Amarillo. Attendance is expected to be 300. An outline of the 1940-41 Hi-Y conference and meetings will be given by Harold Nichols, newly appointed district secretary. The Pampa Hi-Y club will not be represented at the conference.

Supper-Dance To Be Given Saturday At Country Club

A nickelodeon dance and supper supper will be given Saturday night at 11 o'clock in the Country club house.

Members of the club and their guests will be entertained.

LaNORA TODAY - SAT. I TAKE THIS WOMAN

TONIGHT ON THE STAGE KEN BENNETT Presents REX AMATEUR CONTEST

CROWN TODAY and SATURDAY "RANDY RIDES ALONE" with JOHN WAYNE CARTOON and NEWS

EXTRA TODAY - SAT. "The Shadow" FREE

1940
previous
here on
iven last
room by
he Dallas
e service,
so of the
s were a
campaign
It is con-
siders will
ere when
klahoma
is held
rs. Geor-
Mrs. My-
and Mrs.
Ill. left
rtiesville,
visiting
er of the
Simpson,
at an ope-
hospital
dismissed
today.
he on to
ge room,
ster tank
blase.
man, ac-
morning
bl, were
K's
siness in
pen near
Chas. C.
096.
ay
d waffle
lay night
ity club
nd their
mpa
4G
NG
Invited
A
N

Methodist Bishops Oppose Diplomatic Dealings With Pope

ATLANTIC CITY, N. J., April 25 (AP)—The council of bishops of the new Methodist church expressed opposition today to "any establishment of diplomatic relations between the Vatican and the United States."

The statement was contained in the bishop's quadrennial message to the church's general conference

which began sessions here yesterday. It did not mention by name President Roosevelt's personal peace envoy to the Vatican, Myron C. Taylor.

"We," the bishops informed conference delegates, "express our sincere appreciation of the official interest of the President of the United States on behalf of world peace and especially his frequent emphasis upon the social and religious foundations of peace, and we are ready to join with the Catholic church and with all other religious or secular organizations to promote world peace."

"But we do deplore and must firmly resist any union or church and state, and are and will be unalterably opposed to any establishment of diplomatic relations between the Vatican and the United States."

These two paragraphs were in the middle of a dissertation by the Methodist bishops on the possibility of Christian churches throughout the world banding together in a union to promote world peace.

German Destroyers Scuttled At Narvik

NEW YORK, April 26 (AP)—A German radio broadcast intercepted in New York today said Nazi destroyers were scuttled in the second battle of Narvik when the "crushing superiority" of British warships made a continuation of the fight "impossible."

(The British admiralty claimed that seven German destroyers were sunk at Narvik April 13 by fire from the battleship Warspite and a strong force of destroyers.)

Rear Admiral Lutzw, commander of the World War German submarine fleet, described both the first battle for the Norwegian coast, in which the British were repulsed, and the subsequent battle, in a radio talk picked up by Columbia Broadcasting System short wave listeners here.

Describing the end of the second engagement, CBS quoted Lutzw as saying "After all the ammunition was gone and the continuation of the fight became impossible," the destroyers withdrew "into the inner arm of the fjord and there" scuttled themselves "after all the wounded had been taken care of."

Ice Company Here Sued For Damages

Damages of \$10,000 are asked in a suit filed in 31st district court Thursday afternoon, styled E. L. Reese vs. Broadway Ice company et al.

Basic of the action, according to papers filed in the case, is a request of an abatement of an alleged nuisance.

Plaintiff maintains that the ice company's plant, adjacent to plaintiff's residence, 413 South Houston street, has caused a nuisance by emitting from his dwelling, and causes chemically treated water to be blown on plaintiff's dwelling and lot, destroying shrubs, flowers, and trees.

It is further alleged that the plant's operation results in annoyance to plaintiff and his wife by the noise, and water from the tanks coming into the house, making the interior damp.

Plaintiff states that by virtue of a deal proposed between the Broadway Ice company and the Pampa Ice company, the alleged nuisance was to be continued and that also the plaintiff's power and light would be cut off.

Willis & Via represent the plaintiff.

Wm. T. Fraser & Co. The Insurance Men

112 W. Kingsmill Phone 1044
F. H. A. And Life Insurance Loans
Automobile, Compensation, Fire and Liability Insurance

Gilks To Conduct Meetings At Post

Colonel Roy Gilks of the Salvation Army will arrive in Pampa, Saturday morning to conduct a series of meetings at the local post. Colonel Gilks prior to his retirement from active appointment five years ago was stationed at the international headquarters of the Sal-



Col. Roy Gilks

Army Fund Boost Of 42 Millions Asked

WASHINGTON, April 26 (AP)—As congressional sessions on the president's budget dwindled to \$116,636,346, the war department asked the senate today to boost the army's 1941 funds about \$42,000,000 above the \$784,999,094 voted by the house.

Besides seeking money to purchase and equip 100 replacement airplanes, the department requested an additional \$14,250,000 for so-called "educational" orders for strategic war supplies, \$5,765,000 more for improvement of flying fields and \$3,000,000 more for clothing, equipment, and other minor items.

Yesterday the senate cleared the way for \$150,000,000 in future river and harbor spending by approving, 40 to 26, an authorization of that amount.

It then voted 43 to 14, to add \$25,000,000 to the \$255,000,000 CCC fund recommended by its appropriations committee.

The house had approved a \$280,000,000 CCC appropriation, and Senator O'Mahoney (D-Wyo) contended that unless that sum were provided 146 camps would be closed and 30,000 enrollees would be thrown out of work.

The farm bill awaited house reconsideration following the break-up of a conference committee appointed to adjust house-senate differences.

The committee yesterday returned to the house for a separate vote senate amendments adding \$212,000,000 for party payments, \$85,000,000 for surplus commodity disposal and \$50,000,000 for farm tenancy loans.

House Likely To Vote Amendments To Wage-Hour Act

WASHINGTON, April 26 (AP)—Test votes on parliamentary questions strengthened indications today that the house would approve amendments to the wage-hour law despite President Roosevelt's advice to wait a year.

Just how far these revisions would go was a riddle remaining to be answered when the roll is called next week.

While the house was arguing this issue, the Smith committee resumed its inquiry into another field of labor legislation—the Wagner act and the National Labor Board. Decision to renew public hearings was interpreted as an attempt to whip up sentiment for sweeping changes in the Wagner act, which may come before the house within two weeks.

The house voted yesterday to take up all wage-hour amendments before it learned of a letter from President Roosevelt to an unidentified friend saying that it is too early to say whether changes are needed in the law.

Proponents of revision defeated, first by 189 to 185 and later by votes of 176 to 92 and 233 to 141. Three attempts to prevent the house from considering any wage-hour amendments this year.

Wheeler Wouldn't Be Vice President Friends Declare

WASHINGTON, April 26 (AP)—A definite statement by friends of Senator Wheeler (D-Mont) that he would accept Democratic vice-presidential nomination put a check today on capital speculation over a possible Roosevelt-Wheeler ticket.

Wheeler himself has said repeatedly he was not available for second place, but recent callers at his office have led some Democrats to believe he was being sounded out for the vice presidency on a third term ballot.

Wheeler, who has an invitation to see President Roosevelt on the latter's return to Washington, is expected to seek the Democratic presidential nomination if Mr. Roosevelt does not run.

While Democratic speculation centered on Mr. Roosevelt's intentions, a new Republican presidential possibility—Gov. Arthur H. James of Pennsylvania—was ready to strike what some party men described as the keynote of his pre-convention campaign.

James, elected for a four-year term in 1938, will address the Indiana Republican editorial association at Indianapolis tonight. Pennsylvania Republicans here expressed the belief that it would include an indictment of the New Deal.

The Little Pig That Stayed At Home? Well, Here She Is!

SEA CLIFF, N. Y., April 26 (AP)—You've heard about the little pig that went to market?

Well, here's the story of the other one that stayed home.

Penelope is her name, and when she was given to Mr. and Mrs. Alvin G. Schneider two months ago she was just a pink little bundle. She made a cute pet for the Schneider children, George, 2, and John, 4.

The elder Schneiders, however, took a long range view and considered Penelope in terms of bacon and pork chops.

Penelope grew and grew, and now she tips the beam at 175 pounds, but still is kept plinkish by daily scrubbings. Gone are the thoughts of pork chops, and Penelope still is a pet.

But here, the law steps in. Sea Cliff's ordinances ban the keeping of pigs within 500 feet of any dwelling—even the pig-owner's dwelling.

Result? Mrs. Schneider's ad in this week's today read:

"For sale — Bungalow, Owner forced to sell because of pig."

They're going to buy a farm for Penelope.

Nazis Claim Many Wins, No Defeats

BERLIN, April 26 (AP)—Germany's mighty air force is blasting without pause to keep the Allies from carving solid footholds in Norway while Nazi air forces race to establish themselves in strategic positions.

The German high command, depicting widespread air action yesterday against the Allies on sea, land and in the air, claimed:

"A British minesweeper and a transport were beached after being hit by German air bombs off the west coast of Norway, a tanker was struck and began listing, smoke clouds billowed from a torpedo boat, and an explosion occurred on another vessel. Harbor facilities used by the Allies were destroyed."

Eleven Allied airplanes were destroyed on the ground.

Aiding the Nazi land drive, German warplanes bombarded Allied troop concentrations, marching columns and traffic centers.

As for the Allied air war against the Germans, the high command said several German planes were damaged by fighters during a British attack on an airport near Trondheim while Oslo was attacked during the night without military damage.

"The German troops in Norway were reported gaining ground, with fighting proceeding in several places." DNS, the official news agency, said the Germany army had rendered "illusory" and attempt by the Allied forces to gain influence in the southern part of Norway—from the west coast port of Trondheim on down.

Catholics Complain Of Persecution

MEXICO CITY, April 26 (AP)—Dispatches from Jalisco, capital of Vera Cruz state, reported today that a thousand Catholics had arrived there in a body, to appeal to the governor for protection against the mayor of the small town of Alto Lugo, who had been reported to have levied fines of 25 to 50 pesos on Catholics on the slightest pretext, imprisoned them at will and caused the entire Catholic community to live in an atmosphere of suspense and insecurity.

Miami Band Goes To Spearman Fete

MIAMI, April 26—The Miami high school band was in Spearman today, to take part in the celebration sponsored by the Chamber of Commerce of that city. They were entered in the parade and the marching contest.

YOU MEAN TO SAY MAXWELL HOUSE HAS ACTUALLY BEEN IMPROVED?

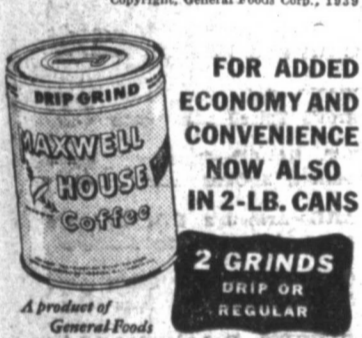


RIGHT! IMPROVED IN TWO VERY IMPORTANT WAYS!



2 DEFINITE REASONS why Maxwell House is now even richer, more delicious!

1. **New Enriched Blend.** Yes! The famous Maxwell House blend has actually been improved... made richer, smoother, even more delicious and full-flavored than ever!
2. **Improved Roasting Method!** And this magnificent new blend is now roasted by a new method called Radiant Roast. A method that roasts each bean evenly... brings out more fully the *extra-rich* flavor of these choice coffees. No weak coffee from under-roasting. No bitter coffee from parching. Always full-flavored, always delicious!



FOR ADDED ECONOMY AND CONVENIENCE NOW ALSO IN 2-LB. CANS

2 GRINDS DRIP OR REGULAR

A NEW HIGH

Phillips 66

Gasoline Value

WHETHER you judge a gasoline by the way your car sprints from a traffic light, cuts up straightaway, or sweeps up hills... you are sure to feel that difference with the NEW Phillips 66 Poly Gas.

Here is the motor fuel already famed for highest test, for weather-marching, for extra Poly power units... with its anti-knock rating now raised to a point that sets a new high in gasoline value. You get practically the same knockless performance for which you previously had to pay 2¢ extra per gallon.

No wonder so many motorists say, "There has never before been quality like this in a gasoline at regular price!"

Sales of the NEW Phillips 66 Poly Gas are climbing to record-breaking heights. This means that many thousands of new customers every day must be noting the added power, pep, and saving, delivered by this sensational motor fuel.

We invite you to join them, by stopping for a trial tankful of the NEW Phillips 66 Poly Gas at the Orange and Black 66 Shield.

Phillips 66

Phill-up with Phillips for Greater Mileage

PRICES EFFECTIVE FRIDAY THRU MONDAY

B&G FOOD STORE

412 SOUTH CUYLER

EVERYDAY LOW FOOD PRICES WHERE NEITHER BUDGETS NOR HEALTHY APPETITES SUFFER. QUALITY ISN'T SACRIFICED.

SOAP P & G 3 Giant Bars 10¢

OLEO BANNER Lb. 9¢

CATSUP 14 Oz. Bottle JACKSON'S 9¢

COFFEE BREAK O' MORN Pound ... 13¢

SUGAR Kraft Bag 10 Lbs. 45¢

OXYDOL The New Improved Lg. Box ... 19¢

BUTTER SWIFT'S CREAMERY POUND 27¢

SALT CAREY'S Large Round BOX 6¢

MILK ARMOUR'S 3 Gall or 6 Small Cans 19¢

10c VANILLA WAFERS Both

10c KRISPY CRACKERS For 15¢

CORN BRIMFULL Whole Kernel 12 OZ. CAN 10¢

BEANS Cut, String-less 3 No. 2 Cans 25¢

JELLO 6 DELICIOUS FLAVORS 3 PKGS. ... 14¢

FLOUR LIGHT CRUST 24 LB. ... 89¢

DRESSING OR SPREAD SUNSHINE QUART 21¢

SPINACH or TOMATOES 3 No. 2 Cans 21¢

Post Bran 2 Reg. Pkgs. 17¢

COMPOUND MRS. TUCKER'S 3 Lb. Cr. 35¢ VEGETOLE 8 Lb. Cr. 73¢ 4 Lb. Carl. 37¢

COFFEE Maxwell House Pound 25 1/2¢

SALMON Fancy Red Tall Can 19¢

"BUD" AMERY'S MARKET

SPARE RIBS FRESH MEATY Lb. 10¢

BACON Sugar Cured Slob Lb. 12 1/2¢

Shoulders Pork, Shank Half or Whole Lb. 11 1/2¢

CHEESE Full Cream Longhorn Lb. 17¢

HAMS PINKNEY'S TENDERIZED PICNICS Small Average LB. 13 1/2¢

P'nut Butter Fresh Bulk Lb. 11¢

ROAST BACON Boneless Roll, No Waste Lb. 18 1/2¢

Cottage Cheese Northeast Dairy Lb. 10¢

BACON Pinkney's Special Sliced Lb. 16 1/2¢



Old Fashioned BARGAIN DAYS



EXTRA SAVINGS AT HARRIS FOOD STORES!

You've heard about the "good old days" we wonder if you were afforded the many real values in quality groceries. Were the great savings affected as easily then as now! We don't have the old cracked bar-

rel in our stores but we do have the real savings in quality foods! Don't miss this opportunity for extra savings at this "Old Fashioned Bargain Days Event!" Prices good Friday, Saturday and Monday!

PICKLES
Sour or Dills
11c
Full Quart Jar

- Baby Food Heinz Assorted 3 Reg. Cans 21c
- Salmon Alaska Select 2 Tall Cans 29c
- Potted Meat Morrel's, Large Can 5c
- TREET Armour's Delicious Loaf, Reg. Can 25c
- Super Suds Concentrated, The Large Box 19c
- OYSTERS Fancy Cove, 5 Oz. Can 12 1/2c

PEACHES 16 1/2c
Del Monte in Heavy Syrup, Sliced or Halves
Large 2 1/2 Can

- Coffee Break O' Morn, Drip or Perk Lb. 13 1/2c
- JUICE Marco Grapefruit, Large 46 Oz. Can 17c
- Marco-Jell 9 Different Flavors 3 Pkg. 14c
- Palmolive Reg. Size Bars 2 for 11c
- Peanut Butter Armour's Star, Qt. 25c
- Macaroni Or Spag. 6 Oz. Pkg. 3 for 10c

SPREAD
Or Salad Dressing, Blue Bonnett
25c
FULL QUART JAR

TOMATOES 25c
FULL NO. 2 CANS 4 For

- CHECK LIST**
- ICE CREAM All Flavors, Qts. 19c; Pints 10c
 - PEAS Royal Early June, No. 2 Can 12 1/2c
 - SUGAR Powdered or Brown 2 Lbs. 15c
 - FLOUR Carnation, 48 Lbs. \$1.59; 24 Lbs. 81c
 - MUSTARD Full Quart Jar 10c
 - DOG FOOD Black Brand, Reg. Can 5c
 - HOMINY Brimfull, Large 27 oz. Can 10c
 - COCKTAIL Black Knight, Heavy Syrup, Tall Can 12 1/2c
 - JUICE Del Monte Pineapple Large 46 oz. Can 29c
 - JUICE Fancy Tomato, Large 46 oz. Can 23c
 - PRUNES Fresh Evaporated 3 Lbs. 19c
 - JUICE Curtis Grapefruit, No. 2 Can 7 1/2c
 - PEAS Brimfull Sifted, No. 2 Can, 2 for 27c
 - PINEAPPLE Del Monte Crushed, Tall 2 1/2 Can 12 1/2c
 - PECANS Shelled Meats, Lb. 49c

- SUGAR** FRI. AND SAT. ONLY FINE GRANULATED 10 Lb. Kraft Bag 45c
- BREAD** WHITE OR WHEAT Made With Milk FRI AND SAT. ONLY 2 Large 16 Oz. Loaves 5c
- BUTTER** Gold Star First Grade Fresh Creamery Lb. 27 1/2c

SHORTENING 37c
8 Lb. Cart. 73c
4 LB. CART.

FLOUR PRIDE OF PERRYTON
48 Lbs. \$1.19
24 Lbs. 69c

- MILK** Armour's Evaporated 17c
3 Tall or 6 Small Cans
- OKRA** White Swan, No. 2 Can 10c
- SNODRIFT** Pure Vegetable 6 Lb. Can 95c 3 LB. CAN 49c
- PEACHES** Royal, Large Halves, 2 1/2 Can 12 1/2c
- CHERRIES** Fancy Red Pitted GAL. 49c

- VEGETABLES**
- BANANAS NO. 1 OLD MEXICO FRI. AND SAT. DOZ. 10c
 - LETTUCE—Fresh Crisp Head 4 1/2c
 - TOMATOES—Calif. Beefsteak, Lb. 15c
 - RHUBARB—Cherry Red 3 Lbs. 14c
 - ONIONS—Yellow Valencas, Lb. 4 1/2c
 - LEMONS—Large Calif., Doz. 19c
 - ONION PLANTS—50 to Bunch 5c
 - POTATOES—Idaho Burbanks, Lb. 3 1/2c
 - TURNIPS—Large Green Tops, Bunch 7c
 - SPINACH—Fresh Crisp, Lb. 5c
 - CARROTS—Bulk, Lb. 3c
 - SQUASH—Small Tender, Lb. 10c

- CABBAGE New Green Hard Heads, Lb. 2 1/2c
- POTATOES New Calif Shalters, Lb. 4 1/2c
- CELERY Fancy Bleached Stalk 10c
- STRAWBERRIES Fancy No. 1 Louisiana FRI. AND SAT. ONLY Box 12 1/2c
- Pineapple Fresh Fruit Each 19c
- APPLES Extra Fancy Winesaps, Doz. 19c
- Potatoes Fancy Old Red McClures 10 LBS. 21c

- ORANGES FRESH CALIFORNIA LARGE SIZE DOZ. 23c
- GRAPEFRUIT TEXAS SEEDLESS LARGE FRUIT 6 FOR 19c
- Vegetables CARROTS, RADISHSE, GR. ONIONS OR BEETS 3 Original Bunches 10c
- FIGS—White or Black 2 Lbs. 25c
- SALT—Iodized or Free Running 2 1/2 Boxes 15c
- FLOUR—White Swan Pancake 3 Lb. 15c
- SYRUP—Worth's Maple Flav. 21 oz. Bottle 21c
- CATSUP—Empson's 16 oz. Can 10c
- COOKIES—Molasses Kake, Lb. 18c
- CORN—Del Monte country gent, No. 2 can 12 1/2c
- BEANS—Gebhardt's Spiced 3 cans 25c
- POT. SALAD—Blue Bonnett, 2 Cans 25c
- LARD—Armour's Star in Carton, 4 Lb. Carton 35c
- SOAP—Crystal White 5 Giant Bars 17c
- CHERRIES—Red pitted No. 2 Can 12 1/2c
- BLACKBERRIES—No. 2 Can 10c
- CHERRIES—Chocolate Covered, Lb. Box 19c

SCHILLING'S COFFEE
Drip or Perk Lb. Can 24 1/2c
2 LB. CAN PER LB. 23 1/2c

- MEATS**
- M-HAM—Or Bologna, Lb. 12 1/2c
 - P'NUT BUTTER—Fresh Bbl., Lb. 12 1/2c
 - HAMS—Decker's tender Picnics 1/2 or whole lb. 14 1/2c
 - CHEESE—Am. Brick or Chevillie, 2 Lb. Loaf 49c
 - LIVER—Fresh Pork, Lb. 10c
 - STEAK—Fancy Chuck, Lb. 19 1/2c
 - POT ROAST Boneless Rolled Stamped Beef Lb. 16 1/2c
 - SAUSAGE—Fresh Pork, Lb. 10c
 - SLICED BACON Dutch Kitchen, Lb. 14 1/2c
 - SPARE RIBS Small Meaty, LB. 12 1/2c
 - SALT PORK No. 1 Side 11 1/2c; JOWLS — LB. 8 1/2c

PINTO BEANS Re-Cleaned 3 Lb. Bag Per Lb. 5c

FREE Iced Tea Glasses While They Last! LIPTON'S TEA 4 FREE with 1 Lb. 79c, 2 FREE with 1 Lb. 41c, 1 FREE with 1 Lb. 21c

- PORK NECK BONES—Lb. 5c
- BAR-B-Q—Hot Boneless Beef, Lb. 25c
- SLAB BACON—Light Lean, Lb. 19 1/2c
- STEAK—Fresh Pork, Lb. 15 1/2c
- BACON—Heavy Slab, half or whole, Lb. 14 1/2c
- FISH and POULTRY Fat Hens, Lb. 15c; Fryers, Lb. 27 1/2c; Turkeys, Lb. 17 1/2c; Halibut, Lb. 29c; White Trout, Lb. 12 1/2c; Ocean Perch, Lb. 25c

HAMBURGER 12 1/2c
FRESH GROUND ALL MEAT LB.

- CHEESE Full Cream Longhorn, Lb. 15c
- Pure Lard Bring Your Pail 4 Lbs. 27c
- Coit. Cheese Fresh Creamery, Lb. Carton 11c
- Shoulder Fresh Pork, Shank Half or Whole, Lb. 12 1/2c
- Lunch Loaves Assorted Meats, Lb. 22 1/2c
- Bacon Sqs. Cello Wrapped, Lb. 12 1/2c

Harris Food Stores

Banquet Given For Seniors At LeFors School

Special To The NEWS
LEFORS, April 25—One of the highlights of the year was the junior-senior banquet, Saturday night in the LeFors High school gymnasium.

The huge gym had been turned into a magic pastel house, by crepe paper on wires hanging from the center to the sides and from the sides to the floor. The tables were beautifully decorated with center bouquets of gladioli and candles.

As the guests came in the junior class orchestra, directed by W. J. Finley, played a waltz.

Edward Vincent was toastmaster; Cleo Nipper gave the invocation. The toast to seniors was given by Mary Lou Hall with W. L. Ferguson giving the response. The junior class

quartet, consisting of Marvin Bowman, Mary Lou Hall, Dorothy Roach and Howard Sims, accompanied by Ruth Kratzer at the piano sang "Ole Faithful" and "Playmates." The toast to faculty was given by Felton Webb.

Special music was featured by the junior class orchestra, composed of Billy and Howard Sims, Johnny Turner, Ruth Kratzer, and Mr. Finley. Representative Eugene Worley gave the address of the evening. Mary Ellen Gething had charge of the presentation of flowers. Each senior was presented with a colonial corsage.

Those present were: Mr. and Mrs. C. M. Brown, Mr. and Mrs. Joe Clarke, Miss Ma Mae Hastings, Mr. and Mrs. J. D. Finburg, Mr. and Mrs. Toby Waggoner, Mr. and Mrs. F. L. Mize, R. E. Paige, Mrs. Virginia Crabtree, Ogden Stroud, Miss Iona Gill, Mr. and Mrs. E. R. Reeves, Mr. and Mrs. S. M. Cleland, Mr. and Mrs. Finley.

Elgene Worley, Earl Atkinson, Virginia Briscoe, George Nell Browning, Billy Jack Cobb, Roy

Ferguson, Truman Guthrie, Carl Hall, Martha Lou Hearn, Virginia Hill, Jack Howard, J. A. Jackson, Paul Jenks, Mickey Sue, Ruth Kratzer, Myron Johnston, Opal King, Wayne Koscheski, Elmer Lee, Leona Libby, John Louis Natho, Robertine Osborne, Ozzelle Riley, Sybil Lee Roberts, William Roach.

June Scott, Jaunita Smith, Donald Thomas, Aubrey Turner, Keith Miller, Pauline Word, Howard Archer, Maxine Ayres, Bobbie Barnes, Marvin Bowman, Kenneth Browning, Betty Jean Busby, Mandy Sue Cheek, Leo Ferguson, Mary Ellen Gething, Mildred Gomer.

Mary Lou Hall, Harwell Hall, Russell Jenks, Rex Lee Jones, Phillip Kennedy, Leisty Libby, Betty Lee Lockard, Cleo Nipper, Mary Sue Ogden, Melton Oldham, Dorothy Roach, Jack Shipman, Howard Sims, Jean Smith, Robin Tibbetts, Johnny Turner, Maurice Upham, Edward Vincent, and Felton Webb.

Britain Tries To Make Friends With Japan And Russia

LONDON, April 25 (AP)—Great Britain is counting on friendly relations with Russia and Japan as well as increased fleet activity in the Pacific to check the Vladivostok crack in the allied blockade of Germany.

Informed sources today said better relations with Japan were being sought and conciliatory gestures made toward the Soviet union in an about-face from the bitter hostility existing during the Russian-Finnish war.

The British are endeavoring to maneuver their Pacific blockade ships so as not to offend Japanese feelings.

In renewing British-Russian trade pact overtures, Britain sought assurance Russian imports would not be trans-shipped to Germany and that only a minimum of Russia's own products would be sold the Reich.

The Russians were said to have agreed to the first stipulation but to insist their nation's internal economy requires normal dealings with Germany in Russian products.

Importance to Britain of plugging the Vladivostok blockade gap was emphasized by figures given out by the ministry of economic warfare saying 1,000 tons of various goods are shipped daily from Vladivostok to Germany by way of the trans-Siberian railway.

States, the volcano blew its top off and sent columns of fine dust thousands of feet into the air. The dust then was scattered by winds to a depth of six inches over the 5,000 square mile area. Dr. Howell Williams of the university of California related.

The awesome spectacle must have been seen and heard for hundreds of miles, he said, because molten lava poured down the mountainside into

glaciers 1,000 feet deep and more than 10 miles long, generating terrific clouds of steam. The lava also ran through canyons for a distance of 35 miles and burned forests in its path.

Amarillo Injured In Ft. Sumner Wreck

CLOVIS, N. M., April 26 (AP)—Roy Bruner, 61-year-old Amarillo, Texas, cattleman and ranch owner at Ft. Sumner, N. M. was in a hospital here

today with injuries received when his car crashed into the rear of a small pickup truck west of here yesterday. Bruner suffered only minor injuries, it was said at the hospital, but he is being kept under observation.

IF YOU WANT GOOD FOOD
 THE FOLLOWING PLACES SPECIALIZE IN SERVING IT:

Lone Star Cafe	B & B Cafe
Love's Cafe	Blue Bonnet Inn
Mike's Cafe	Coney Island Sandwich Shop
O & I Cafe	Conley, Mickey, Mrs. Cafe
O'Neal, E. J.	Courthouse Cafe
Ozark Bar & Cafe	Durich's Place
Pampa Cafe & Bar	E & M Cafe
Patrick's Goody Goody	East More Cafe
Ray's Cafe	Eat A 'Bite Cafe
Rex Coffee Shop	Empire Cafe
Roy's Cafe	Frankie's Cafe
Royal Cafe	Green Lantern Coffee Shop
Schneider Hotel	Ideal Coffee Shop
Six's Pig Stand	Jack's Cafe
State Buffet	Johnson Cafe
Unique Cafe	K C Waffle House
Vantine's White Way Drive Inn	Kelley Drive Inn
	Killarsy Drive Inn
	Little Texas Cafe

BUT IF YOU WANT MEDICINE BY PRESCRIPTION
SPECIALISTS
 (4 REGISTERED PHARMACISTS)
SEE RICHARD'S DRUG
 Our Business Is Filling Prescriptions!
PAY LESS!
 SAVE MORE!
RICHARD'S DRUG CO.
 Pampa's Professional Drug Store
 Free Delivery—Phones 1240, 1241—Pay Checks Cash

Volcano Dust Storm 50,000 Years Ago Caused Migration

WASHINGTON, April 25 (AP)—A Titanic volcano dust storm 50,000 years ago which caused a more precipitate migration of Americans than any "Black Blizzard" yet to sweep the dust bowl was described today to the national academy of sciences.

The storm, which sent thousands of Indians fleeing from 5,000 square miles of what must have been one of their happiest hunting grounds, was caused by the eruption of Mount Mazama in the Cascade chain in southern Oregon.

In one of the last eruptions within the present boundaries of the United

Britain Tries To Make Friends With Japan And Russia

LONDON, April 25 (AP)—Great Britain is counting on friendly relations with Russia and Japan as well as increased fleet activity in the Pacific to check the Vladivostok crack in the allied blockade of Germany.

Informed sources today said better relations with Japan were being sought and conciliatory gestures made toward the Soviet union in an about-face from the bitter hostility existing during the Russian-Finnish war.

The British are endeavoring to maneuver their Pacific blockade ships so as not to offend Japanese feelings.

In renewing British-Russian trade pact overtures, Britain sought assurance Russian imports would not be trans-shipped to Germany and that only a minimum of Russia's own products would be sold the Reich.

The Russians were said to have agreed to the first stipulation but to insist their nation's internal economy requires normal dealings with Germany in Russian products.

Importance to Britain of plugging the Vladivostok blockade gap was emphasized by figures given out by the ministry of economic warfare saying 1,000 tons of various goods are shipped daily from Vladivostok to Germany by way of the trans-Siberian railway.

States, the volcano blew its top off and sent columns of fine dust thousands of feet into the air. The dust then was scattered by winds to a depth of six inches over the 5,000 square mile area. Dr. Howell Williams of the university of California related.

The awesome spectacle must have been seen and heard for hundreds of miles, he said, because molten lava poured down the mountainside into

glaciers 1,000 feet deep and more than 10 miles long, generating terrific clouds of steam. The lava also ran through canyons for a distance of 35 miles and burned forests in its path.

Amarillo Injured In Ft. Sumner Wreck

CLOVIS, N. M., April 26 (AP)—Roy Bruner, 61-year-old Amarillo, Texas, cattleman and ranch owner at Ft. Sumner, N. M. was in a hospital here

today with injuries received when his car crashed into the rear of a small pickup truck west of here yesterday. Bruner suffered only minor injuries, it was said at the hospital, but he is being kept under observation.

National Baby Week
APRIL 29 to MAY 5

IRRADIATED PET MILK

CHECK THESE VALUES . . . SAVE ON FOOD

Follow the hundreds of shoppers to Mitchell's and you'll soon discover that you have more money for the other things you want. Best of all, your family will appreciate the finer taste of foods — fresh fruits and vegetables—and the quality meats that only Mitchell can give you. Remember—check these values—and keep your budget in line.

BABY FOOD SPECIALS

PET MILK 3 LARGE OR 6 SMALL	19c	BABY FOOD HEINZ	3 10c Cans 25c
ARROW ROOT SUPREME — PACKAGE	9c	ORANGE JUICE SHAFER'S—3 NO. 2 CANS	25c
PRUNE JUICE MARCO BRAND	2 12 Oz. Cans 15c	BABY FOOD WHITE SWAN—CAN	5c
ORANGES LARGE SIZE — DOZEN	25c	CARROT JUICE QUEEN OF SHEBA—5 3/4 Oz. Can	5c
SUGAR DEXTRORSE—POUND BOX	10c	KARO BLUE OR RED LABEL	5 Lb. 35c
CORN FLAKES KELLOG'S GLASS BOWL	2 LARGE BOXES 23c	MEADOLAKE OLEO SACK OF 21 MARBLES	Lb. 17 1/2c

MEAT SPECIALS

Stew Meat TENDER — LB.	12 1/2c	BACON SLAB — LB.	14 1/2c
SAUSAGE Pure Pork, Lb.	12 1/2c	BEEF STEAK Choice Pound	21c
PORK STEAK EXTRA LEAN POUND	13c	BACON SLICED NO. 1 POUND	15c
Pork Shank Meaty, Pound	9c	Cheese, Lb.	16 1/2c
Bologna, Lb.	12 1/2c	Pig Liver, Lb.	10c
Pig Liver, Lb.	10c	Salt Side, Lb.	12c
Salt Side, Lb.	12c	Cheese, 2 Lbs.	50c
Cheese, 2 Lbs.	50c	HAM Cured Pound	18c

BIG SAVINGS

PICKLES Sour or Dill, Qt.	12 1/2c	TAPIOCA Minute, 2 Pkgs.	25c
M'MALLOW'S Cello Bag, Pound	12 1/2c	SOUP Heinz	3 Cans 25c
WAX PAPER 2 Reg. 10c Rolls	15c	Fruit Cocktail 2 No. 1 Cans	25c
NAPKINS Paper, 2-10c Pkgs.	15c	PIMENTOS 7 Ounce Can	10c
SHORTENING VEGETOLE—RICH CREAMY	4 LB. CTN. 37c	8 LB. CTN. 73c	
Salmon Fancy Pink	2 Cans 29c	RICE Cello Bag	4 Lb. 19c
ALL BRAN Nat'l 100% Pkg.	10c	MEAL Kraft Bag	5 Lb. 12 1/2c
SOAP Crystal Wh.	5 Bars 17c	CATSUP 14 Ounce Bottle	10c
COFFEE Break O' Morn, Lb.	14 1/2c	Salad Dressing Fresh Maid, Quart	19c

FLOUR
 LIGHTS BEST
 24 Lb. Sack 83c

Prince Albert
 CAN
 10c

ADMIRATION COFFEE
 Lb. 22 1/2c
 2 POUNDS 45c

BUTTER
 HIGH GRADE CREAMERY, POUND
 27c

OLEO
 BEST SPREAD, LB.
 9 1/2c

JUICES 46 OUNCE SIZE—

GRAPEFRUIT	15c
TOMATO	17 1/2c
ORANGE Shatter	21s
PINEAPPLE	27c
NO. 10 FRUITS	
PRUNES	23c
PEACHES	35c
BLACKBERRIES	35c
APRICOTS	37c

HY-PRO
 QUART
 12c

VEGETABLES

Tomatoes, Green Beans, Spinach	3 CANS 22c
HOMINY No. 2 1/2 Can	3 CANS 25c
BLACKEYE PEAS, No. 1	

SUGAR
 10 Pound Kraft Bag, Pure Cane 48c
 POWDERED OR BROWN 2 POUND CELLO BAG 15c

CRACKERS
 LIBERTY BELL
 2 LB. BOX 15c

NATURAL JUICE OF FRESH RIPE TOMATOES
 46 OUNCE CAN 17 1/2c
 3 20 Oz. CANS 25c

"All set for the pause that refreshes at home"



The quality and the purity of Coca-Cola have won it a place in America's refrigerators. Family and friends alike enjoy its clean taste and the happy after-sense of refreshment it brings. Your dealer has the handy home package, — the six-bottle carton of Coca-Cola.

BOTTLED UNDER AUTHORITY OF THE COCA-COLA CO. BY
PAMPA COCA-COLA BOTTLING COMPANY
 122 S. Houston St. Phone 279

Fresh FRUITS & VEGETABLES

BANANAS Sat. Only, Dozen	10c	TEXAS NEW SPUDS LB.	5c
TURNIPS & TOPS Bunch — Each	5c	COLO. RED 10 POUND GAUZE BAG	27c
RHUBARB Cherry Red, Lb.	5c	10 POUND KRAFT BAG	19c
CAULIFLOWER Snow White, Pound	8 1/2c	COFFEE SCHILLING'S DRIP OR PERC 2 POUNDS	22 1/2c 45c
APPLES Winesaps, Doz.	15c	SARDINES American Oil	6 CANS 25c
TOMATOES Red Ripe—Pound	15c	SARDINES Mustard & Tomato	2 ROUND CANS 19c
TEA Schilling's 1/4 Pound	19c	JELLO Or JELLO PUDDING	PKG. 4 1/2c
COFFEE SCHILLING'S DRIP OR PERC 2 POUNDS	22 1/2c 45c	SUPER SUDS LARGE BOX	22c
SARDINES Mustard & Tomato	2 ROUND CANS 19c	ICE CREAM SPECIAL PINT	10c

PHONE 1549 FREE DELIVERY **Mitchell's** 541 S. CUYLER FREE DELIVERY

HY-PRO
 QUART
 12c

VEGETABLES

Tomatoes, Green Beans, Spinach	3 CANS 22c
HOMINY No. 2 1/2 Can	3 CANS 25c
BLACKEYE PEAS, No. 1	

SUGAR
 10 Pound Kraft Bag, Pure Cane 48c
 POWDERED OR BROWN 2 POUND CELLO BAG 15c

CRACKERS
 LIBERTY BELL
 2 LB. BOX 15c

NATURAL JUICE OF FRESH RIPE TOMATOES
 46 OUNCE CAN 17 1/2c
 3 20 Oz. CANS 25c

THE PAMPA NEWS

Published every evening, except Saturday, and Sunday morning by the Pampa News, 212 West Foster Avenue, Pampa, Texas. Phone 566—All departments.

MEMBER OF THE ASSOCIATED PRESS (Full Leased Wire). The Associated Press is exclusively entitled to the use for publication of all news dispatches credited to it or otherwise credited to this paper and also the text of news published herein.

Entered as second class matter March 15, 1927, at the post office at Pampa, Texas, under the act of March 3, 1879, National Advertising Representatives: Texas Daily Press League, New York, St. Louis, Kansas City, Los Angeles, San Francisco and Chicago.

SUBSCRIPTION RATES BY CARRIER in Pampa, 25c per week, \$10 per month. Paid in advance. \$2.50 per three months, \$10.00 per six months, \$18.00 per year. BY MAIL, payable in advance, in Gray and adjoining counties, also Hansford, Ochiltree, and Lipscomb counties, \$4.50 per year. Outside above named counties, \$5.00 per year. Price per single copy 5 cents. No mail orders accepted in localities served by carrier delivery.

An Independent Democratic newspaper, publishing the news fairly and impartially at all times and supporting in its editorial columns the principles which it believes to be right and opposing those questions which it believes to be wrong, regardless of party politics.

The Goal Is Important!

"Build America!" is the battle-cry of the Chamber of Commerce of the United States as it approaches its annual meeting April 29-May 8 in Washington. It is a stirring cry, the imperative to build, in the midst of a world which is using most of its energies to tear down.

The Chamber, a federation of business and industrial organizations including 1700 local bodies and thousands of individual firms, has set a magnificent goal for its sessions.

"New fields lie ahead—new fields for expansion, new fields for science and invention, new fields for production—opening wider vistas for the distribution of necessities, the comforts and luxuries of life to our entire population. New horizons beckon in education, in cultural development, in all those directions that will make for a better country in which to live."

No one branch of education is sufficient. We need the united effort of private citizens; of business institutions, of private colleges, and good schools, of newspapers, magazines, statesmen and everyone who loves equality of freedom, in order to more rapidly educate each other as to how to promote the principle, the eternal truth that each and every human soul should have an equal right to try to create and enjoy the fruits of his creation.

This principle is an eternal principle that has been much neglected in our attempts to educate each other.

The goal must not be forgotten in the midst of bickering over method. The Chamber has well set before its members on the eve of the meeting this stirring words of Daniel Webster.

"Let us develop the resources of our land, call forth its powers, build up its institutions, promote all its great interests, and see whether we, also in our day and generation, may not perform something worthy to be remembered."

Unmasking The Klan

People who have seen fit to associate themselves with the Ku Klux Klan will no longer wear hoods and masks—at least not with the official approval of James A. Colescott, the Klan's Atlanta leader.

This is a grave decision because, at least on the past record, the sort of person who has been drawn to the Klan is the sort who prefers to operate behind a mask.

Brutal bulldozing has been going on around Atlanta by men who claim to have appointed themselves censors of their neighbors' morals, and who have enforced with the midnight lash their own concepts of how their neighbors ought to live. It is not the sort of thing a man remembers proudly the next morning. In the cold daylight he is glad he wore a mask.

Should Colescott be serious about this, and should he be able to make it stick, the Klan might lose some of its charms for those who use its cloak to cover sadistic, ignorant bigotry.

Behind The News

WASHINGTON, April 26—Holland's danger of getting drawn into the war may have the somewhat roundabout effect of giving the U. S. Navy its long-sought harbor improvements on the island of Guam.

It figures out like this: If Holland is invaded, her rich East Indies empire is left up in the air. A British, or U. S. protectorate has been suggested. Japan wouldn't like that and probably would move to set up a protectorate of her own. Neither the U. S. nor Britain would like that, in turn, and out of it all there might easily develop a lot of trouble.

And Guam is a lot closer to the Netherlands East Indies than any adequate naval base the U. S. now owns.

BASE COULD BE QUICKLY BUILT The navy has been asking for harbor improvements on Guam for over a year. Last winter Congress voted the idea down, fearing Japan would look on it as a threat. In a same item was put in the navy bill this year; the House again voted it down, but the Senate is putting it back and this time it may stick.

On the face of it, the measure is simple enough. All that's asked is enough money to dredge the knobs of coral out of the otherwise fine harbor so patrol planes could land there safely. But in the back of the navy's mind is the idea that the nation may soon be wanting a regular naval base there very badly. Starting from scratch, such a base could be built in less time than it takes to build a battleship. If there's going to be trouble in the East Indies, the navy figures it'd be a lot more useful.

U. S. MAIN FLEET MIGHT BE NEEDED Combined naval forces of Holland, Britain, France and the U. S., stationed in far eastern waters aren't very formidable, even though the French and Dutch are understood to have increased their strength there of late. Consensus is they could delay a Japanese descent on the East Indies and/or Malaya but couldn't hope to stop it. That'd take the main U. S. fleet.

Nearest U. S. base is Cavite, in the Philippines, but it's inadequate. It has an old drydock which could accommodate light cruisers and is equipped to do limited repairs, but for a full-dress scrap it just wouldn't do. That leaves Pearl Harbor, which is too far away.

EAST INDIES PROVIDE RAW MATERIALS Trade figures show why the U. S. government is concerned about any threat to the East Indies.

Three of the 17 commodities listed as "strategic raw materials"—tin, rubber and quinine—come mostly from the East Indies and Malaya. In 1937, last year for which figures are available, the U. S. bought from those two areas \$81,500,000 worth of tin, \$135,000,000 worth of

Sharing The Comforts Of Life

By R. C. Hoiles

WHAT PART OF EDUCATION COMES FROM SCHOOLS AND COLLEGES?

Education is our most important problem. There is much difference of opinion, however, as to what is meant by education and what methods can be used to help develop education that will permit all the talents of all the people to be used.

When most people hear the word "education" used, they invariably think of it as schooling, attending college or the training of some Sunday school or church.

But the education that comes from colleges and churches is probably small compared with the education that comes from other sources, such as business, personal conversation and contact, play, books, magazines, lectures, etc.

When education is looked at from a broad standpoint, it will be remembered that every business organization is an educational institution. It is attempting to train its associates in a manner as to how to produce something that will benefit its customers. In short, it is trying to use the talents to the best advantage of those under its direction so that they will be useful to the whole social structure.

Every human contact is educational, whether it be constructive or miseducational.

Probably the most important part of education and the one most neglected is the helping each other to understand that there are certain principles, eternal truths, by which social progress is made. These principles and truths are best ascertained by approaching from a scientific standpoint and seeking the truth and immediately correcting one's actions when they are out of harmony with these absolute principles.

No one branch of education is sufficient. We need the united effort of private citizens; of business institutions, of private colleges, and good schools, of newspapers, magazines, statesmen and everyone who loves equality of freedom, in order to more rapidly educate each other as to how to promote the principle, the eternal truth that each and every human soul should have an equal right to try to create and enjoy the fruits of his creation.

This principle is an eternal principle that has been much neglected in our attempts to educate each other.

THE FIRST FUNCTION OF MONEY

An easy money contributor makes this statement, "In other words, abolish in its entirety the three-damned credit system."

I presume, by this, he means permitting the banks to pyramid credit has caused us to have three serious depressions.

Undoubtedly the misuse of bank credit and the failure of the government to properly police the extending of bank credit used as a medium of exchange is a most serious offense against society.

This column has time without number pointed this very fact out, but the solution is not as easy as the contributor thinks. He advocates turning the credit system over to the government, which would mean turning it over to the politicians.

He seems to think that the government can create money or credit out of nothing. True, the government can use the credit of all producers for a while. In so doing, it just takes wealth from some individuals and turns it over to others.

Money Measure of Value What the contributor and most people, who want the government to issue what they call credit or money, do not understand is that the first and primary function of money is a measure of value; that if it is not a measure of value, sooner or later, it ceases to be a medium of exchange. Let me illustrate. Money is used in exchanging products. In order to exchange equal services for equal services and not do it directly, it is necessary to have something that is equal to the two services, something that measures them. Something to establish the amount of labor required to produce each service. This is money.

This means that it requires the same amount of human energy to secure the money, whether it be gold, silver, steel, ponies, beads or whatnot, as it does to produce either of the two services, or commodities, exchanged.

Measurement Only Comparison No one in the world can measure distance without having something of distance with which to compare. In the same way, no one can weigh anything without having some standard weight to compare the thing weighed by. Just so, no one can measure values, unless the thing used as a measure has value in itself. And by the word "value" is meant things that are produced by human energy and are desired and the amount of labor they save a man who wants them. Air has no value. It only has utility. It has no value because it requires no effort to get it.

So, when a government issues pieces of paper and attempts to use them as a measure of value, when these pieces of paper can be created without expending human energy, then this paper money sooner or later ceases to be a measure of value and consequently ceases to be a medium of exchange.

The contributor inquires, "Why the heck don't you tell folks some of these things?" The reason I have not told the people that the government should create money or credit is explained above. If it did indefinitely, sooner or later, it would have no value. It has been tried many times. Experience teaches us that politicians are just as anxious to stay in power as bankers are anxious to have power. My contention always has been that neither the officials of the government nor the bankers should have a right to flood the country with credit currency, but money should be loaned, as Thomas Jefferson said, by people who have it rather than permit either the government or the bankers to loan orders for money over and over again, almost time without number.

The fact that we have now more bank credit, government credit and more actual money in existence in the form of currency than we ever had in history and still have the equivalent of 15 million people out of work, is strong evidence that it is not lack of money or credit that cause unemployment.

rubber and—though the dollar figure isn't impressive—most of its quinine.

If Japan got those two areas she could either cut off U. S. supplies, or by continuing their sale make the U. S. help finance her war with China.

HOW ABOUT SOME PEACE GEOGRAPHY?



Around Hollywood

By PAUL HARRISON

HOLLYWOOD, April 26—Short takes: The walk-out parade has been growing in numbers and impetus lately, with the three Ritz Brothers scowling along at the head of it. After breaking with 20th-Fox, they quarreled over an engagement with Republic, and now have deserted "The Boys From Syracuse" at Universal, because their roles weren't big enough. This is what's known as a "Ritzkrieg."

Mild-mannered Don Ameche, recently suspended at his home studio for refusing a role, was loaned to Paramount for "The Night of January 16." He promptly bolted from that one and is being sued for \$170,000 damages said to have been sustained by the delay in production.

Bing Crosby also has been loaned with Paramount, and is believed about to wash up an eight-year association there. And there are new indications that Shirley Temple soon will be able to cut paper dolls from her contract with Darryl Zanuck.

Director William K. Howard stalked out of Warners the other day, leaving the Knute Rockne picture in the reluctant hands of the hastily-assigned Lloyd Bacon. Over a period of about 19 years, Howard has been a star boarder in the Hollywood doghouse, having quit at least three pictures before this one. Yet he's admired for his somewhat painful sense of integrity and respect for the fine films he has completed.

THERE'S THAT STRANGE WOMAN AGAIN A flicker executive returned to his Beverly mansion the other day with his third wife in five years. His little daughter, about 7, met her new mama and asked shyly, "Won't you write something in my guest book?"

For a Motion Picture Relief Fund benefit, a polo match between stars and producers was organized at the Midwick Country Club, at the end of the third 0-0 chucker. Announcer Boris Karloff boomed over the loudspeakers: "The reason for the failure of both teams to score is that the producers can't and the stars don't dare!"

Patriotism or privacy?—Binnie Barnes, who had her telephone number replaced it with a British flag. Wallace Beery's hunting trip into Mexico are made pleasant by his appointment as a U. S. Immigration inspector, entitled to a check of \$1000 without examination.

Bette Davis is putting the final revisions into her autobiography, which will hit print soon.

PHOOEY ON EUROPE—GOOD BUSINESS RIGHT AT HOME Phooey to the war!—Hollywood has set a three-year production record and may soon reach an all-time peak for number of pictures in work simultaneously. The picture growing that there's plenty of money to be made with good pictures on this hemisphere, no matter what happens to the other side of the world.

But the approaching presidential campaign will be of more interest to the movie industry than any previous political fracas. The Motion Picture Democratic committee and a Draft-Roosevelt group—the latter headed by Director W. S. Van Dyke—already are buying full-page advertisements in the trade papers. They're beating the drums of continued neutrality and additional preparedness.

Jimmy Stewart and Marlene Dietrich may be of more interest to the general public. Stewart will co-star in Warners' version of "No Time for Comedy." If you see the short that was filmed around the last Academy Award banquet, you'll hear David Selby paying tribute to Margaret Mitchell for writing "GWTW." But that's an added scene. At the actual dinner, Miss Mitchell's name wasn't even mentioned.

People You Know

By Archer Fullingim

An eight-month old boy, name of Terry McQuirk, or something like that, stole the show, as far as this corner is concerned, at the high school auditorium Wednesday night at the Early Birds program. This one was sitting on a front seat in the balcony when a woman with a baby sat down in the vacant seat next to mine.

"Oh ho, I thought, I'll move the first time that kid lets out a peep, and I had forgotten all about him by the time the movie was over and the stage lights had come on. I glanced down at him and there he was looking up at me, and believe me he seemed to me to be one of the most attractive babies I ever saw. He was friendly, too, and I missed two numbers on the program just watching that kid. Then his mother switched him on her lap so that he faced the other way, and he immediately struck up a friendship with four young fellows on the other side. (Their conversation indicated they recently attended the University of Oklahoma.) Well it wasn't long before the boy had all four looking at him, the while he played with the gold wrist watch of the fellow next to him.

With somebody would leave a kid like that on my doorstep.

Should the first function of the Church be social and economic? How many acts performed by the Holy Nazarene dealt with feeding the hungry, healing the sick? At any rate, thanks to local Sunday school classes, clubs and other groups, the Junior high cafeteria has been able to feed many hungry children this year, and without making a fuss about it. The cafeteria has spent more than \$500 on meals for underprivileged children, and Principal Frank Monroe is humbly grateful to the donors. He knows that if it had not been for their gifts of money the cafeteria would be more than \$25 in the red at this time.

As they are now as the result of a heavy expenditure last month, Frank will apply some more money to that fund if the play goes over big tonight, but it may not make much money so it would be best just to send him some money now. And go to the play besides.

Dental hygiene is the most neglected field of public health. We know that dental defects are the most prevalent of all the defects found in school children, but we have not yet discovered the means to prevent many of the defects. We do not know all the factors entering into the decay and deformities of teeth. We do know, however, that primitive peoples who have not taken refined foods with excess of sugar have better teeth than moderns.

NEXT: Accidents chief death cause among children from 5 to 15.

We are against people who push other people around, just for the fun of pushing.

RALPH INGERSOLL, organizer of new paper, PM, in New York.

In this time when experiments may save the lives of thousands of young men, it is no time to weep about a lot of goats.

LESTER BARLOW, bomb inventor, on the project to test them on goats.

The good neighbor policy is a beacon of light shining through the gloom of war.

Assistant Secretary of State HENRY M. GRADY.

I could not endure this world's madness.

NORMAN SELBY (KID MCCOY), in a suicide note.

ALL ABOUT BABIES

By RICHARD ARTHUR BOLT

M. D., Dr. F. H. Secretary, Maternal and Child Health, Section of American Public Health Association.

FACTS AND FANCIES ABOUT THE EYES, EARS AND TEETH

Eyes, ears and teeth are the gateways to knowledge and nutrition of the child. Their importance is often overlooked until some serious impairment to their function is discovered.

School physicians examining children at school entrance discover an alarming number of defects of eyes, ears and teeth. From 15 to 20 per cent of the children exhibit some defects of the eyes and ears which need attention. With the teeth it is even worse.

The eye is a very delicate organ which may be injured by infection, accidents or misuse. Children may inherit certain eye defects or be

Audiometers bring to light a child's bad hearing.

Remember that the eyes of a child are developing like any other organs. Children in school under an artificial environment need special attention given to the eyes. Near-sightedness, farsightedness, astigmatism, muscle weakness and other conditions can and should be thoroughly investigated by a competent, skilled eye specialist.

A considerable number of children entering school are partially deaf. This may not have been discovered by the parents. The modern method of examining every school child with the most approved type of audiometer is bringing to light many defects of hearing.

Dental hygiene is the most neglected field of public health. We know that dental defects are the most prevalent of all the defects found in school children, but we have not yet discovered the means to prevent many of the defects. We do not know all the factors entering into the decay and deformities of teeth. We do know, however, that primitive peoples who have not taken refined foods with excess of sugar have better teeth than moderns.

NEXT: Accidents chief death cause among children from 5 to 15.

We are against people who push other people around, just for the fun of pushing.

RALPH INGERSOLL, organizer of new paper, PM, in New York.

In this time when experiments may save the lives of thousands of young men, it is no time to weep about a lot of goats.

LESTER BARLOW, bomb inventor, on the project to test them on goats.

The good neighbor policy is a beacon of light shining through the gloom of war.

Assistant Secretary of State HENRY M. GRADY.

I could not endure this world's madness.

NORMAN SELBY (KID MCCOY), in a suicide note.

Tex's Topics

By Tex DeWeese

STEVE Mathews, Pampa's new city manager, should be able to buck the line in excellent shape. He's an ex-footballer who once tore up Texas high school and college gridirons and usually carried the opposition across the goal-line with him. Mr. Mathews comes to Pampa highly recommended by officials at Borger where he's been city manager for the past year.

Mr. Mathews says he looks at the job of being a city manager in the light that a good city manager is one who looks after the best business interests of the city and keeps his nose clean insofar as politics is concerned. And, he's right about that. A good city manager should be one who is so good that city commissions may come and city commissions may go, but all will want him to stay on the job.

THIS business of having to change city managers every time the city commission is changed is not good for the city, but, of course, when a city manager has been busy "politicking" for or against some particular set of candidates, he can expect to get his head chopped off in the event "this side" loses an election.

Being city manager of Pampa is a big job. In view of the issues at stake in Pampa's recent city election, any city manager coming in now would have to be highly invulnerable and impregnable against sniping attacks from any angle likely to be attempted. And we have learned from very good authority that the new city manager is not a politician and has no desire to be one. That, being true, he should make Pampa a good city manager.

THE Pampa Kiwanis club deviated from its regular custom of a weekly luncheon today and will hold its meeting at 6:30 o'clock this evening in the Hotel Schneider dining room. Kiwanians from Wellington will be here to present an inter-club program for the Pampa civic club members. Incidentally, Mayor Fred Thompson, who is a candidate for 1941 governor of the Texas-Oklahoma Kiwanis International district, now has an opponent. He is Kiwanian Raymond Robbins, of Athens, Texas. Mr. Robbins tossed his hat into the ring this week.

County Judge Sherman White and members of the Gray county commissioners court deserve the praise of the public for cooperating with the Chamber of Commerce in plans to acquire additional park grounds at McClellan Lake. In view of the fact that Gray county hasn't had to spend anything on the lake, the few hundred dollars necessary to complete the park grounds are the people hundred-fold through adequate recreational facilities in the years to come.

MUCH enthusiasm is being aroused in the growing Pampa Boat club which will hold forth at Lake McClellan in the years ahead. Boat Club officials at Lake McClellan are expected to sort of "ram-rod" things for the lake's improvement, and members of the Gray county group naturally are going to have to assume much of the burden in planning the program etc. for the official opening of Lake McClellan which may be held around July 15.

157 Lost On Destroyer LONDON, April 26 (AP)—The admiralty announced today a casualty list of 157, including eight officers, as "missing" from the destroyer Eager, sunk in the first battle of Narvik on April 10.

STORIES IN STAMPS

GREENLAND Is Newcomer To Collectors' Albums

GREENLAND, first settlement in the western hemisphere, has only recently issued its first postage stamps, a series of seven values in two designs. King Christian X of Denmark is pictured on five low values of the design above. Two high values, below, show a polar bear.

Greenland was discovered by Vikings and settlements established in 986. Decline of Norway's power as a commercial nation and spread of Black Death almost wiped out the colony in the 14th century. For 100 years Greenland was forgotten.

Sixteenth century explorers rediscovered Greenland, and the ancient settlements were re-established. Modern Greenland has about 15,000 inhabitants.

Danish stamps have been used for Greenland since 1870. One set of parcel post stamps were released for Greenland in 1905 and a second group of stamps, patterned after Danish issues, was used for local service.

Yesteryear In The News Ten Years Ago Today

After being shot with 90 quarts of nitro glycerin, the Panhandle Refining company's number 8 Saunders was producing 30 barrels of oil per hour, or about 1,000 barrels per day.

The Pampa Booster entertainers were on the air as usual from 6:30 to 7 o'clock over KGRS, Amarillo.

Five Years Ago Today

Lieut. Roy Wallbratenstein, band instructor in Pampa High School, and his family left for El Paso, where was to report for duty in the U. S. Army for four months.

FERA approval was given on two local projects, two tennis courts on a local campus and distribution of commodities to relief clients.

Cranium Crackers Who Are They?

From the following brief descriptions, you ought to be able to identify each of the persons referred to:

1. He smokes cigars, wears a derby and often fouls on the observation platform of New York's Empire State building.

2. Known for his geniality, never needs a haircut, hardly ever forgets a face, has his eyes pinned hopefully on a certain convention in Chicago.

3. Big, husky, steady-looking fellow, gave Senator Wheeler a pat on the back recently.

4. A movie actor, he-man type, 40 years old, first started going places when he played "The Last Mile" on Broadway.

5. He used to be secretary of war, and he's been mentioned recently as a G. O. P. possibility for president.

Answers on Classified Page

You and Your Nation's Affairs

THE TVA, A DEMONSTRATION IN SOCIALISM By GUS W. DYER Professor of Economics and Sociology, Vanderbilt University

The following interpretation of the TVA, it is believed, is supported by facts which, to the writer, are convincing.

As a rule as skillfully manipulated to the advantage of the institutional half billion dollar appropriation of another use is used to promote the fundamental principles of state socialism or even communism under the name of progressive names and deceptive purposes.

The substance of the state socialism theory is that all business should be taken out of private hands and owned, controlled, and operated by the government. The American constitutional theory is that business is not a proper function of government, and that complex business can never be operated successfully under public direction. The American theory is that the best general welfare and the greatest social and industrial progress come from the private ownership and operation of business under constitutional judicial regulation. Hence, the American theory is that the theory is antagonistic to each other. No sort of fusion between the two theories is possible.

Whoever believes in, subscribes to, and is the advocate of the theory that general government ownership should be substituted for the American constitutional system of industrial freedom is hostile to the American constitutional system.

The Constitution, interpreted by constitutional judges—not puppet judges—hostile to socialism and communism, the inevitable defense against all attempts from without or within to overthrow the American system of industrial freedom. The achievement of the New Deal in circumventing, subverting, and replacing constitutional authority in putting the federal government in the electric power business by the use of indirectness was a great victory over socialism. It destroyed the "invisible authority" of the Constitution, and opened the road for socialism or communism by simple legislative action.

With constitutional authority destroyed, the next step was to give a false demonstration of the alleged superiority of government ownership over American free enterprise and industrial freedom. The TVA was selected as the demonstration to convince the easily led unthinking masses that they can get cheaper and more satisfactory service under government ownership than they can hope to get under the American constitutional system.

There were 4,000 municipal government owned electric plants established between 1893 and 1930. These did not impress the public. Since they could not bid the cost and charge it up to the taxpayers, 2,000 of these plants went out of business in 1930. Under the TVA, the real cost could be hidden by charging over a hundred million dollars of the cost to the noble constitutional activity of stirring up said in the Tennessee River, and solving the problem of occasional overflows by putting the land permanently under water. With the price kept down by this ruse the people can be misled into thinking that the government can provide all services cheaper than they can be provided under the American system of enterprise.

The attitude of Congressmen, who under oath uphold the Constitution, has appropriated a half billion dollars for a demonstration, the purpose of which is to overthrow the American constitutional system, is difficult to explain.

SERIAL STORY BET ON LOVE BY CHARLES B. FARMER

YESTERDAY: Desperately in need of money, Sherry Bond decides to enter her colt, Pepper Boy, in a claiming race...

ing manner of a diplomat seeking an island or two. "Hope you've told me the truth. I bragged about you to Paul."

This \$20 she had given him really was an advance—yet she acted as if it were a loan to a poor relative.

Alfalfa Bill Will Run For Congress

BROKEN BOW, OKLA., April 26 (AP)—William H. "Alfalfa Bill" Murray, former governor, announced today he would run against Will Rogers for Oklahoma congressman-at-large.

Court May Decide Denison Dam Fight

DURANT, OKLA., April 26 (AP)—The question of the United States government's right to condemn land for the \$54,000,000 Denison dam on Red river may be argued out in Federal court here Monday.

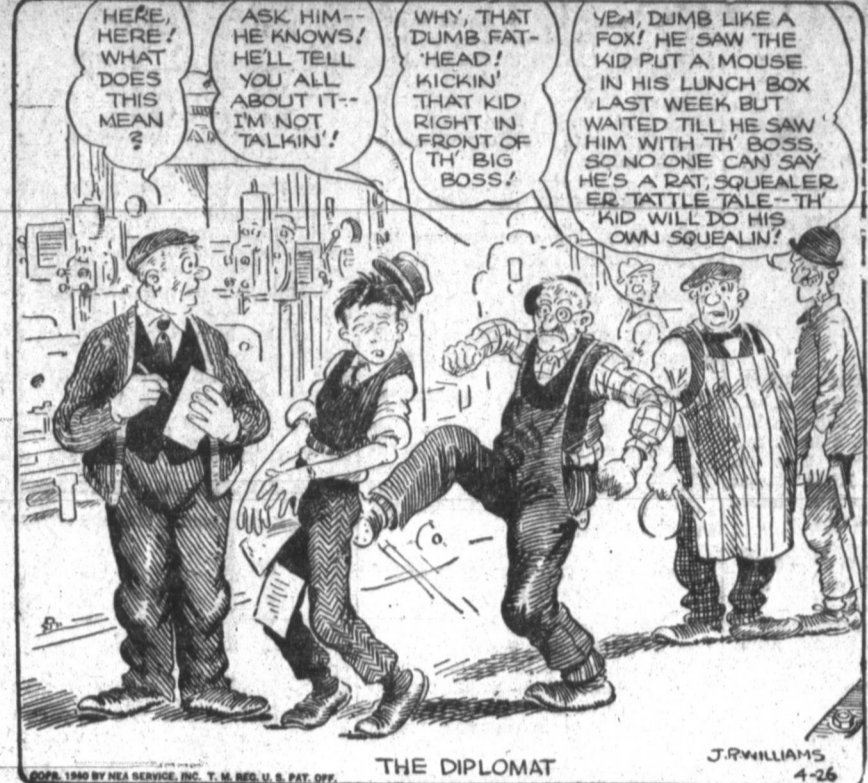
Score Of WD FFA Members To Attend District Meeting

Special To The News WHITE DEER, April 26—More than 20 members of the White Deer chapter of the F. F. A. accompanied by their instructor, H. M. Howell, plan to attend the Pampa district F. F. A. encampment at Canadian this week.

Look Who's Here

Gov. Lem C. Phillips has charged that the project would violate Oklahoma's sovereign rights by flooding and destroying millions of dollars worth of property, while benefitting only Texas, Arkansas and Louisiana.

OUT OUR WAY BY J. R. WILLIAMS



OUR BOARDING HOUSE with MAJOR HOOPLE



Vertical text on the far left edge of the page, partially cut off.

FLAPPER FANNY By Sylvia



"Now, quit worryin'. You're gonna be elected May Queen fair an' square, if I hafta lick the whole school."

HOLD EVERYTHING By GALBRAITH



"Would you gents like to try a chance on a punch board?"

RED RYDER The Plan Succeeds



ALLEY OOP Look Who's Here



FRECKLES AND HIS FRIENDS More Hysteries



L'L ABNER To Flee Or Not To Flee!



WASH TUBBS The Bird Has Flown



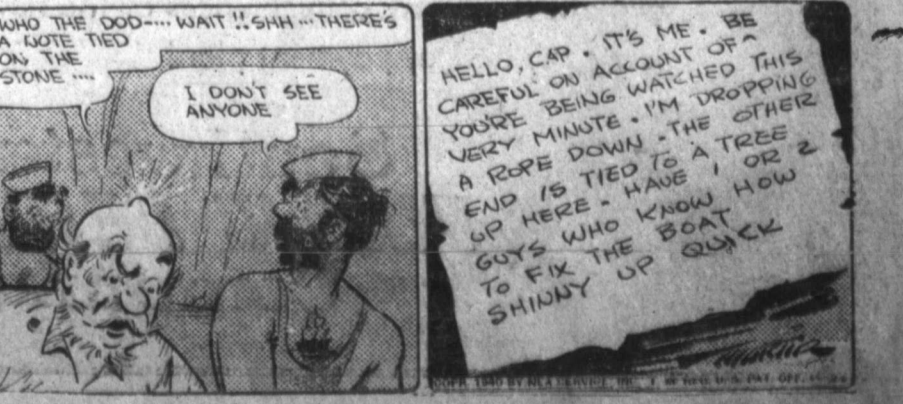
BOOTS AND HER BUDDIES Wasting No Time



RED RYDER (continued)



ALLEY OOP (continued)



One Oil Holiday In May Ordered

AUSTIN, April 26. (AP)—Railroad commission engineers worked on a May oil production order today under which operators can produce approximately 1,362,200 barrels daily. The commission agreed unanimously that one statewide holiday would be enforced in May. Operators have the choice of closing down May 1 or producing 30 days basic allowable in a 31-day period. The East Texas field will be shut in 14 days. Actually, the daily allowable in May will be about 1,420,500 barrels. Commissioner Jerry Sadler said average underproduction of 4 per cent, determined from a study of reports since January 1, would nullify the flow of wells to 1,362,200 barrels which is in excess of the bureau of mines estimate of May demand for Texas crude.

The commission had contemplated a 10 per cent horizontal reduction under current allowable but this resulted in a figure 111,000 barrels in excess of the bureau estimate. Application of one shutdown day, or its equivalent in the rate of production, will slice 34,700 barrels from the daily figure, Sadler said, and this, coupled with estimated underproduction will result in an average net flow of 1,362,200 barrels. Engineers had prepared a schedule on the basis of the proposed horizontal reduction but were required to alter the proration plan when the commission agreed on a one-day shut-in. The same plan was employed for this month.

In the CHURCHES

FIRST CHRISTIAN CHURCH
Rev. B. A. Norris, pastor, 9:45 a. m. Sunday school, 10:50 a. m. Observance of Lord's supper. Pastor will preach, Special music, 6:30 p. m., Young People's Christian Endeavors, 7:30 Evening worship.

CHURCH OF THE BRETHREN
Rev. Russell G. West, minister, 600 North Frost street, 10:00 a. m. Sunday school, Classes for all, 11:00 a. m., Morning worship, 6:30 p. m., Group meetings, 7:30 p. m., Evening worship.

CENTRAL CHURCH OF CHRIST
Bible classes meet at 9:45 a. m., preaching, 10:45 a. m.; communion, 11:45 a. m.; preaching, 8:30 p. m.; Ladies Bible class meets 3 p. m. Wednesday afternoon; Bible classes meet 8:30 p. m. Wednesday; classes for all ages in every service.

KINGSMILL BAPTIST CHURCH
Rev. T. M. Gillham, pastor, 9:45 a. m. Sunday School; 11 a. m. sermon, with pastor preaching; 7 p. m., B. T. U.; 6:30 p. m. Adult prayer service; 8 p. m., Evening service, 7:30 p. m., Wednesday, Mid-week prayer service.

SALVATION ARMY
Captain Herman Lambrecht, 831 South Cuyler street. The usual schedule of services will be followed by the Salvation Army over the week-end. Sunday services will be as follows: Sunday school 9:45 a. m. Holiness Meeting at 11 a. m. Young People's Legion service, 6 p. m. Salvation meeting at 7:30 p. m. Mid-week service will be conducted as usual at 7:30 p. m. Wednesday.

FIRST METHODIST CHURCH
Rev. W. M. Pearce, pastor, 9:45 a. m. Church school with a class for every age, 11 a. m. Dr. Frank Turner will preach, 7 p. m. Epworth league, 7:45 p. m. Dr. Frank Turner will speak. Special music at all preaching services. An invitation to join the church is extended at all times.

FIRST BAPTIST CHURCH
Rev. C. Gordon Bayless, pastor, 9:45, Sunday school, Fellowship class at church, R. E. Gatlin teaching, 10, Every Man's Bible class in the city auditorium; 10:50 a. m. morning worship, Service to be broadcast, 6:30 p. m., B. T. U., 7:30 p. m., evening worship.

THE CHURCH OF GOD
Arthur Ratchford, pastor, 9:45 a. m. Sunday school; 11 a. m. preaching service; 7:45 p. m. preaching service; 7:45 p. m. Wednesday, prayer service.

CALVARY BAPTIST CHURCH
Rev. M. Duceworth, pastor, 9:45 a. m. Sunday school; 10:50 a. m. Morning worship, by the pastor, 6:30 p. m., Training school; 7:30 p. m., Evening worship hour; 7 p. m., Wednesday, Prayer meeting.

PRESBYTERIAN CHURCH
Rev. Robert Boshen, minister, 9:45 a. m. The youth church, 10 a. m. The church school, 11 a. m. Common worship. The church conducts a nursery for babies and small children during the hour of morning worship.

ASSEMBLY OF GOD
Rev. H. E. Comstock, pastor, 9:45 a. m. Sunday School; 11 a. m. preaching; 7:30 p. m. Sunday night evangelistic service; 7:30 p. m., Tuesday, service; 2 p. m. Wednesday, Woman's Missionary Council; 7:30 a. m. Thursday, night services.

CHURCH OF THE NAZARENE
Rev. E. F. Robinson, pastor, 9:45 a. m. Sunday school; 11 a. m. morning worship; 6:30 p. m. young people's service; 7:30 p. m., Evening worship; 7:30 p. m., Wednesday, Prayer service.

FRANCIS AVENUE CHURCH OF CHRIST
D. W. Nichol, minister, will speak, 9:45 a. m. Sunday School, 10:45 a. m., preaching; 6:30 p. m., young people's classes; 7:30 p. m., preaching, 2:30 p. m. Tuesday, Ladies' Bible class, 7:30 p. m. Wednesday, prayer meeting.

CENTRAL BAPTIST CHURCH
9:30 a. m. adult prayer service; 9:45 a. m., Sunday school; 11 a. m., worship hour and sermon, 6:30 p. m., B. T. U.; 7:30 p. m., worship hour.

CHRISTIAN SCIENCE CHURCH
901 North Frost street, 9:30 a. m. Sunday school; 11 a. m., Sunday service; 8 p. m., Wednesday, service. The reading room in the church edifice is open Tuesday and Friday from 2 until 4 o'clock.

McCULLOUGH MEMORIAL METHODIST CHURCH
1910 Alook—Borger Highway
Rev. H. H. Bratcher, pastor. Morning worship beginning at 9:45 a. m. Sermon by the pastor, Sunday school at 10:45. Intermediate and young people's leagues at 6:30 p. m. Evening worship at 7:30 p. m.

HARRAH CHAPEL METHODIST CHURCH
713 S. Barnes
Rev. H. H. Bratcher, pastor. Sunday school at 9:45 a. m. Morning worship at 11:00 a. m. Sermon by the pastor, Epworth League, 6:30 p. m. Evening service to be combined with McCullough church there.

ST. MATTHEWS EPISCOPAL CHURCH
Rev. R. J. Shell, minister, 9:45 a. m. Church school, 8 p. m. Evening prayer, confirmation, and sermon with the Rev. E. C. Seaman of Amarillo in charge.

Pilot Output Boosted More Than Fourfold

By DEVON FRANCIS
Associated Press Aviation Editor
TULSA, April 26—With the help of civil aviation schools, the army air corps has been able to boost its pilot output more than fourfold under the \$300,000,000 air defense program, Brig. Gen. Jacob E. Fickel, assistant chief of the corps, said today.

Speaking before the third annual southwest aviation conference, General Fickel said that whereas the graduates of Randolph and Kelly fields, in Texas, used to number only 250 a year, the output under the recently instituted speedup program will add 2,300 pilots to the corps in two years.

Nine civilian schools are employed to give candidates for the corps primary training. From there they go to Randolph Field for basic training, and finally to Kelly Field for "an abbreviated advanced training course."

He emphasized the "standards of training have not been lowered." General Fickel remarked, "Those of our citizens who have believed that we will always be successful in war because we love our liberty and because we are Americans, have seen other peoples who love their liberty, who are brave, and who have the will to fight, defeated and even subjected."

"Others who felt that our geographical position has given us immunity from attack have seen our ocean barriers shrunk and have come to realize that we may no longer depend too much on these barriers to protect us."

A description of what he called the "vertical envelopment attack," a new tactic in warfare used by the Germans in occupying parts of Norway, was presented by Wayne W. Parrish of Washington, D. C., editor of the magazine American Aviation.

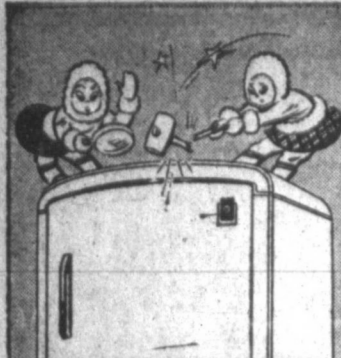
Probation Will Be Subject Of Sermon

"Probation After Death" is the subject of the lesson-sermon which will be read in all Churches of Christ, Scientist, on Sunday, April 28. The golden text is: "The Lord will perfect that which concerneth me: Thy mercy, O Lord, endureth for ever: forsake not the works of Thine own hands" (Psalms 138:8).

Among the citations which comprise the lesson-sermon is the following from the Bible: "Him that overcometh will I make a pillar in the temple of My God" (Revelation 3:12).

The lesson-sermon also includes the following passage from the Christian Science textbook, "Science and Health with Key to the Scriptures" by Mary Baker Eddy: "The sinless joy—the perfect harmony and immortality of Life, possessing unlimited divine beauty and the goodness without a single bodily pleasure or pain—constitutes the only veritable, indestructible man, whose being is spiritual. . . . Death can never hasten this state of existence, for death must be overcome, not submitted to, before immortality appears" (page 76).

Buckeye City Bans Circuses
MASSILLON, O., April 26 (AP)—Mayor Harry W. Lash today banned circuses and carnivals from Massillon because "we need to keep our money in the city."



THE NEW FRIGIDAIRE
has
1-Piece All-Steel Cabinet
BEAUTY-BUILT TO LAST A GENERATION
Another Reason Why
Frigidaire's the Better Buy!

BERT CURRY
Refrigeration Co.
112 S. Cuyler Phone 888

Strike Up The Band For These Jumbo Used Car Values

A JUMBO VALUE—
1937 Chevrolet Coupe—Motor and tires good. Upholstery clean. A real buy.

A JUMBO VALUE—
1936 Pontiac 40 Sedan—Motor in the best of condition. Original black finish, tires good. We aren't clowning, this is a buy.

A JUMBO VALUE—
1937 Pontiac 2-door Sedan, good-will reconditioned, good tires, excellent finish. Equipped with radio-heater. Keep used to \$495 for details of the Hidden Performer. \$2.90 Free Daily

Lewis Pontiac
Somerville and Francis

The Circus Is In Town!



ADVICE-To The New Bride

Budget will be a big word in your life, it will mean much at the beginning of a new life! Certainly you will want to save as much as possible and live on a well balanced scale. A key factor in continued success will be the food buying . . . start with electric refrigeration, and the problem can solve it's self. See Your Electric Refrigerator Dealer Today! . . . let him explain the many conveniences of the new models . . . and the low cost, budget payment plan!

Southwestern PUBLIC SERVICE Company

CITY DRUG STORE APPRECIATION SALE!

"THANKS" for your nice response to our 'GRAND OPENING' ad last week. We appreciate the opportunity to serve you. In appreciation for your patronage, we again offer unusual values this week end. Depend on our store for savings and quality merchandise.

APPLE BLOSSOM
A new odor by Vanetine, which denotes the season of Springtime. Body Powder, Bath Crystals, Bubble Bath, Colognes and Sachets.
And at a Most Unusual Price
ALL ITEMS 59c

BATH SOAP
WRISLEY'S SUPREME
8 Generous cakes attractively priced, while they last
69c

SACHETS
NOVELTY SACHETS BY ORLOFF
Sachet Bags, Sachet Balls, Cushions Assorted Odors
25c TO \$1.00

Chamberlains Lotion 50c Size **29c**

STATIONERY 75 SHEETS PAPER 75 ENVELOPES
Repeated by request. News shipment just arrived.
39c

SPECIAL OFFER
35c NYSEPTOL TOOTH BRUSH
25c NYSEPTOL TOOTH PASTE
REG. 60c VALUE FOR **29c**

Whitman's CHOCOLATES
for MOTHER'S DAY
Sunday, May 12

Gorgeously decorated boxes of her favorite chocolates, here fresh from the makers, at \$1.00 up. Order today!

Jeris Hair Tonic 75c Size **49c**

Jegens LOTION 50c Size **37c**

Tums 3 Reg. 10c Size **24c**

Lysol Disinfectant 60c Size **39c**

Vitalis For the Hair, \$1.00 Size **79c**

Bromo Seltzer 60c Size **49c**

CLEANSING TISSUES
SOFT AND ABSORBENT **200** Sheets For **9c**

MINERAL OIL
SQUIBB'S FULL PINT WITH 1/4 PINT FREE BOTH FOR **59c**

CARNATION MILK 3 TALL CANS—LIMIT 3 **19c**

DUTCH CLEANSER Limit 3 Cans Per Can **7c**

IDEAL DOG FOOD Limit 3 Cans 3 For **19c**

ACCURACY

The greatest possible care is exercised when prescriptions are compounded at City Drug Store. Only registered pharmacists fill your prescriptions!
PHONE 266

Sporting Goods By Spaulding
BOBBY JONES WOODS, Set of 3 **2350**
BOBBY JONES IRONS, Set of 6 **3300**

Syrup Pepsin \$1.20 Size **89c**

Crazy Crystals \$1.00 Size **89c**

S. S. S. Tonic \$2.00 Size **\$1.69**

Verazeptol 75c Size **59c**

Sunbeam Mixmaster New '40 Model, 10 Speeds **\$23.75**

WINE AND LIQUOR SPECIALS
CITY PACKAGE STORE

ROYAL OAK 2 Year Old, Pint **79c**

CREAM KENTUCKY Pint **99c**

WINDSOR 3 Year Old, Pint **89c**

WHITE HORSE SCOTCH 10th **\$1.79**

ITALIAN PRIDE WINE 1/2 Gal. **95c**

RAT TAIL COMB With 12 Bobby Pins. **9c**

P&G SOAP 3 Large Bars **9c**

CITY DRUG STORE 300 W. FOSTER PHONE 266