

Man is unjust, but God is just; and finally justice triumphs.—Longfellow.

(VOL. 38 NO. 81)

(14 PAGES TODAY)

PAMPA, TEXAS, FRIDAY, JULY 12, 1940

Full AP Leased Wire

(PRICE FIVE CENTS)

The Weather

Fair tonight and Saturday, except scattered thundershowers over southwest; slightly cooler north portion tonight and south portion Saturday.

Soap Box Derby Parade To Be Held Monday

BRITISH SHOOT DOWN EIGHT NAZI BOMBERS

Cars Will Be Tried Out At Hill Monday

Thousands Due To Attend Races On Thursday, Friday

The annual Soap Box Derby parade will be held in Pampa Monday afternoon. It was announced today by Sherman White, general chairman of The Pampa News-Lions Club Soap Box Derby which will be held Thursday and Friday nights of next week at Derby Downs, three miles north of Pampa on the old Miami highway.

All boys who plan to race in the derby are requested to have their derby cars at the high school gymnasium, Cuyler and Browning, Monday afternoon in time to start the parade from there at 3 o'clock.

At 4 o'clock all derby cars are to be returned to the gymnasium where they will be transported in trucks to the Derby Downs track for the trial spins. All racers are required to test their cars on the hill Monday afternoon.

The cars will go down the hill one at a time and there will be no competition in the trial spins. After the trials all cars will be taken back to the high school gym where each one will be given a thorough inspection by derby officials.

The cars will be kept at the gym until the day of the race. They will be under guard so that they cannot be tampered with. The public is invited to see the cars at the gym on Tuesday and Wednesday.

General Chairman White today suggested to parents and sponsors that boys not be permitted to take their cars to the hill for tests this week unless accompanied by two adults, one to watch traffic at the top of the hill and one at the bottom. This is a safety precaution.

A motorist had to run his car into a ditch at the hill one night this week when he came upon a boy riding down the hill. There should be no trials made after sundown. In fact, derby officials hope that parents will keep their children off the hill until the official test runs on Monday.

Following the Monday evening inspection of cars, racers will be notified on Tuesday if any changes are recommended for safety purposes. The Thursday and Friday night races, expected to attract thousands because of no conflicting events on those nights, are scheduled to begin at 7:30 p. m. and run approximately three hours on each night. At the finals on Friday night, the city champion will be crowned. This boy will receive an all-expense trip to Akron, Ohio, where he will compete with boys from over the United States, Panama, Canada and Mexico in the International Soap Box Derby finals. Top prize at the Akron event will be a four-year college education. Many local prizes will be given to heat winners in the Pampa derby races.

Derby helmets will be issued to the racers at the trial spin on Monday. The Pampa News-T-Sweaters, which all racers will wear on the nights of the races, will be presented to the boys on Friday evening before the first race. These become the permanent property of each boy.

General Chairman White stated today that between 75 and 100 boys are expected to compete for the coveted Akron trip to compete in the finals there on Aug. 11. All of these boys will be in the parade Monday afternoon.

Two Killed, 11 Hurt In Bus-Truck Crash

TOLEDO, O., July 12 (AP)—A collision between a Greyhound bus and a cattle truck brought death today to the bus driver and two passengers, and injury to 11 persons.

Among the injured was the truck driver, Gerald Nye, 19, of Napoleon, O., who was quoted by the sheriff's office as saying he must have dozed en route home with his empty truck.

The dead were driver John French of Fort Wayne, Ind., Mrs. Beulah Curd, Muncie, Ind., and Jesse Copeland, Detroit.

I Heard - - -

That Gene Green's lawn got a real soaking Wednesday night and yesterday. Gene, who is temporarily residing at the home of his mother-in-law, Mrs. Siler Faulkner, Sr., went to his home on North West street Wednesday afternoon and turned on his lawn sprinkler. And that was the last he thought about the water until yesterday afternoon when Siler Faulkner Jr., remarked that he wished it would rain. That was when Gene turned the pavement for home to shut off the water.

CHILDREN HUNGRY, MOTHER GASSES THEM



Ill and unhappy because her six children sometimes went hungry, Louise Micosia gassed them and herself in their New York home. The mother recovered but efforts of police to revive the children as shown failed.

Phillips Dance Will Be Held Here Tonight

Members of the Phillips 66 Employees society will hold a benefit dance at the Southern club tonight and they have invited all their friends to be present. Dancing will begin at 9 o'clock.

Music for the dance will be provided by Ken Bennett and his orchestra.

Proceeds will be placed in the floral fund which employees maintain for the sending of flowers to employees and members of their families who are ill.

Wage And Hour Standards Will Be Maintained

WASHINGTON, July 12 (AP)—President Roosevelt asserted at a press conference today that the administration would go ahead with its present policy of maintaining standards under the wage-hour act for work on the defense program.

Mr. Roosevelt read to reporters a letter which he said Colonel Philip B. Fleming, wage-hour administrator, had written him which covered the question of the necessity of raising the ceiling for hours, above which time and a half must be paid.

Fleming informed the president that any complaints from key defense industries that payment of time and a half for overtime was making their operation difficult would be brought promptly to Mr. Roosevelt's attention.

Cabot Company Will Make School Fence

The Cabot Shops was given a contract yesterday afternoon to furnish the Pampa school board with lifeguard chain link fence posts, and top railing, for a fence along the east and part of the south side of the high school campus. Bid of the Cabot Shops was \$10641 for the material alone.

School district employees will erect the fence.

Erection of the fence was approved at the meeting of the school board Monday but because of the different types of bids submitted, letting of a contract was delayed.

The fence, which will be 10 feet high, of 2-inch mesh, will run from the south side of the gymnasium to the corner of the school property at Cuyler and Francis and from the corner west to the east side of the junior high school building.

The fence will keep students within the campus area and keep balls from going into the streets during play periods.

A similar fence may be placed around Harvester field at a later date.

Dies Investigation May Move To Houston

AUSTIN, July 12 (AP)—The Dies committee might resume hearings at Houston or Beaumont, it was learned today.

Chairman Martin Dies said it had not been determined whether hearings on a new phase of the investigation, begun here Monday, would be moved elsewhere but pointed out that at least 25 future witnesses, members of the Kyrfaes-erbund, reside in Houston. Beaumont is in Dies' congressional district.

He added that developments would determine the future course.

Barnes Named Commander Of American Legion

Ray F. Barnes, first vice-commander, was elected 1940-41 commander of Kerley-Crossman American Legion post 334 at a meeting held last night at the Legion hut.

Election of new officers and selection of delegates to the department convention to be held at Laredo August 18-20, was the only business transacted at the meeting.

Installation of officers will probably be held sometime after the department convention, as is customary. The exact date for the installation was not set.

Other new officers of the post, in addition to Commander Barnes, are Dan E. Williams, first vice-commander; W. M. James, second vice-commander; W. C. deCordova, finance officer; A. D. Monteith, historian; Paul D. Hill, chaplain; Ed Tracey, service officer; Dan Kennedy, collectors; Bill Heskew, sergeant-at-arms.

Executive committee: Sherman White, Kennedy, Heskew, and M. F. Roche, retiring commander, who automatically becomes a member of the committee by virtue of his office.

Kerley-Crossman post and auxiliary will be hosts at the regular monthly 18th district meeting to be held at Lake McClellan, July 24.

Delegates to the department convention: I. J. Hival, Mark Long, Heskew, deCordova, James, Williams, Charlie Maisel, Barnes, Tracey, E. J. Kenney, Kennedy, Earl Perkins, Alternates: E. J. Dunigan, H. W. Waddell, White, Hill, Clinton Henry, J. G. Wingfield, Roy Bourland, Bill Hallmark, Frank Yates, Jess Richie, J. E. Dwyer, George B. Cree.

The War Today

Nazi invasion of Ireland a possibility, especially in view of Eric's rigid neutrality and insistence that England keep hands off—would immediately increase the threat against Britain's food supplies.

It needs only half an eye to see what his next move when we stop to think that normally she imports over eighty percent of her breadstuffs and fruits; fifty percent of her meat, eggs and dairy products; and a third of her fish and vegetables.

German occupation of continental countries has cut Britain off from some of her chief and nearest markets, notably Holland and Denmark. This has greatly increased the danger over which supplies must be transported by water, in face of the submarine and air menace.

Grim warning about the food situation was given the nation by the Minister of Agriculture, Hudson. He said the country was facing a crisis immeasurably more serious than at the beginning of the World War, and declared food production must be increased next year lest millions go hungry.

The little Welsh Napoleon, former Premier Lloyd George, added an exclamation point to this when in supporting plans for growing more foodstuffs he cried:

"If something is not done we may perish!"

"L. G." knows whereof he speaks. His snug little island is terribly vulnerable in the matter of food. I was in England when the Kaiser's submarines almost cleaned out John Bull's cupboard. Britain all but lost the war because of this.

German possession of the entire continental coast-line along the English channel and North sea already has enabled the Nazis to strike heavily at shipping to Britain's south and east coast ports—including mighty London upon which the country ordinarily depends for the bulk of its supplies.

Indeed Berlin yesterday claimed that British shipping is being sunk at a rate exceeding World War losses during the unrestricted submarine campaign which almost brought England to her knees. The British have acknowledged shipping losses close to 1,000,000 tons. Their total in the last year was about 8,000,000. The British could stand to lose a lot more ships than they have.

Band Concert Will Be Given Tonight

The 40-piece Pampa Summer Recreation band, directed by A. C. Cox will present its second concert of the summer at 8:30 o'clock tonight in the amphitheater in Central park.

The band, sponsored by the Summer Recreation program of which Jim Edwards is director, will play several marches, overtures and popular numbers.

Semi-monthly concerts will be presented by the band during the summer months.

A new part of the summer play program was introduced last night when hundreds of children and adults enjoyed free roller skating in the 500 block on North West street.

Police Searching For McLean Girl

Pampa police and radio station KPND were asked yesterday to assist in the search for Louise Hornsby, 12-year-old McLean girl who disappeared yesterday from her home. The girl, according to information received by police, left home on an errand and failed to return.

The girl is 5 feet, three inches tall, weighs 105 pounds and has brown hair and brown eyes. She was wearing a pink lace dress and brown hat. Her front teeth protrude slightly, the police report revealed.

Statement Made Issue Again In Meador Trial

As in the preceding case, the defense in the case of State of Texas vs. P. M. Meador, charged with failure to stop and render aid, today made an issue of a written statement said to have been given by the defendant shortly after his arrest.

In 31st district court here today the defense objected to the statement being read.

District Attorney Clifford Braly answered questions asked by E. A. Simpson, defense counsel, to the effect that the statutory warnings on statements had been made to the defendant prior to his making the statement.

Asked if he knew who brought Meador down from jail to make the statement, Braly said he did not recall, and that he did not know what had been said to Meador by other officers.

Simpson indicated that Sheriff Cal Rose would be put on the stand in the afternoon.

Meador on June 21 was assessed \$750 fine on a jury verdict of negligent homicide in the second degree. The charge against him in the preceding case and the charge in the current case were both based on the accident east of Pampa last September in which W. D. (Bill) Kelly, Pampa youth, was fatally injured.

St. Clair Testifies

Byron L. St. Clair, Texas Highway patrolman, and Carl Certain, preceded Braly on the witness stand this morning. St. Clair was asked numerous questions concerning marks on the pavement, description of a motorcycle on which Kelly and Clifford Hones were riding at the time of the collision, and relative size and positions of two pools of blood and a spot of oil.

Testimony in the case started in midafternoon Thursday, after District Judge W. R. Ewing had overruled the defense motion and appeal for a continuance.

Witnesses who testified Thursday were Dr. R. Malcolm Brown, who described injuries suffered by Kelly; Lorace Smith, who drove past the scene of the accident shortly after it happened; Clifford Jones, who was severely hurt in the crash.

Charlie Duenkel, whose ambulance brought the injured to a local hospital; Robert Hicks, technician who made analysis of blood found on clothing of the injured; Mrs. Ivan Block and Charlie Lamka, who stopped their cars at the scene of the accident a short time after it occurred.

War Flashes

BERLIN, July 12 (AP)—Thirteen British planes have been shot down at the cost of seven German planes in successful continuing German air raids on British harbors, warehouses and air ports, informed sources said today.

These informants said German bombers had sunk a 15,000-ton British tanker and four merchantmen with a total tonnage of 15,000 and heavily damaged nine other merchantmen totalling 35,000 tons.

LONDON, July 12 (AP)—An authoritative British source declared that the figure of 4,239,213 tons of British shipping German today claimed she had sunk since the beginning of the war actually was more than four times the total British losses up to July 1.

This source said Germany had lost about 877,000 tons of merchant shipping and Italy about 244,000 tons—captured, scuttled or sunk—more than the total British losses since the outbreak of war.

LONDON, July 12 (AP)—The admiralty announced today that the British patrol yacht Warrior Second was sunk by an enemy bombing attack in the English channel yesterday with the loss of one seaman. The rest of the crew were landed safely.

FDR Will Not Attend Chicago Convention

WASHINGTON, July 12 (AP)—President Roosevelt today said he definitely would not go to Chicago to attend the Democratic convention but again he avoided every question designed to bring about a disclosure of his third term stand.

Mr. Roosevelt's hearers interpreted his flat statement that he would not go to Chicago to mean that not only would he not be there during the convention but also that he would not go there, in event of a draft nomination, to make an acceptance speech.

The chief executive said his plans for the summer called for him to spend alternate weekends on cruises

King Narrowly Escapes Attack

Swift-rising British Spitfires slashed back at German bombers over the island kingdom today, shooting down eight of the raiders in flames after King George VI narrowly escaped a heavy Nazi attack.

In a Scottish town, one bomb killed 10 persons "as far as known." Many others were wounded. The German invader was shot down and its crew perished as the bullet-sieved plane crashed and burst afire.

The German high command, in a communique telling of heavy new damage inflicted on British airports, harbors and armament plants, asserted that 4,329,213 tons of "enemy merchant shipping or shipping usable by the enemy" have been sunk since the war began.

Heavy British Bombers Blast Deep Germany

LONDON, July 12—With RAF attackers matching their German foe's raid for raid and with defense forces leveling an unrelenting toll on planes attacking the British Isles, the air war of western Europe reached a new peak of intensity today.

The day's first casualty report came from northeast Scotland where it was said one bomb killed 10 persons "as far as known" and injured many others. The plane which dropped it was shot down and the crew perished in flames.

On the basis of official and unofficial reports, the tabulation of German planes shot down today in defense of the British Isles and British shipping stood in midafternoon as follows:

Scotland, one bomber. East coast, four bombers. South coast, one bomber. Southwest coast, two planes of unspecified type.

The "all out" attack of the Nazi air force was still to come, but so widespread have been the daily assaults against King George VI himself narrowly escaped death or injury yesterday somewhere in southern England.

Wave after wave of heavy British bombers blasted military objectives deep in Germany last night, it was reported by aviation circles in anticipation of an official outline of new British-wrought destruction.

Three British planes failed to return, but the Air Ministry balanced this loss by announcing that fighter commands of the British defense had confirmed the loss of another German plane in yesterday's action over England, thus bringing yesterday's

Wave after wave of heavy British bombers blasted military objectives deep in Germany last night, it was reported by aviation circles in anticipation of an official outline of new British-wrought destruction.

The aircraft carrier, struck by a five-calibre bomb, stopped suddenly with flames on board visible from above. Several ships speeded to its aid.

Sparks from the European conflagration spread a widening series of fires in the ancient land of Africa.

Board Points Out O'Daniel's Sons Used State Boats

AUSTIN, July 12 (AP)—A point-by-point denial of criticism voiced by Governor W. Lee O'Daniel against the letter continued today in the form of a 4,500-word letter.

The letter, signed by three of the six non-salaried commissioners, was made public yesterday after O'Daniel refused to meet with the body and explain his condemnation of it as a "millionaire sportsman club" and "giant oligarchy."

Signers were Chairman A. E. Wood of Austin, Don Davenport of Mission and Murrell Buckner of Dallas. Gene Howe of Amarillo was absent and O'Daniel's appointees, D. K. Martin of San Antonio and W. O. Yarbrough of Corpus Christi, were not asked to sign.

The letter stated the commission did not know O'Daniel objected to use of department boats for pleasure purposes since the governor's sons, Pat and Mike, had made liberal use of a boat at Buchanan Lake and that the craft had been reserved for the governor himself.

"We could have convinced you that this criticism was not justified," the letter continued, "that it was of the same type that has been reviewed before competent official forums on a number of occasions and nothing found in it meriting a rebuke of the commission."

The letter, accompanied by several pages of financial reports, pointed out department revenues derived from hunting and fishing licenses and a tax on sand, shell and gravel, that expenditures were checked by the comptroller and treasurer and that the legislature authorized methods of expenditure.

To O'Daniel's remark about "hordes of game wardens," the letter said 80 wardens patrolled 254 counties.

Late News

CHICAGO, July 12 (AP)—The Democratic national committee after a stiff fight between northern and southern states today adopted a compromise delegate "bonus" plan granting an additional delegate at large to future national conventions to each state casting a majority for the party's presidential nominee.

Temperatures In Pampa

Table with 2 columns: Time and Temperature. Rows include 6 p. m. Thursday (85), 9 p. m. Thursday (85), 12 Midnight (78), 6 a. m. Today (87), 7 a. m. (87), 8 a. m. (87), 9 a. m. (76), 10 a. m. (75), 11 a. m. (75), 12 Noon (80), 1 p. m. (81), 2 p. m. (83), Thursday's maximum (87).

I Saw...

Members of the Lions club and they claim they are through taking beatings in the civic club baseball league. "We're just getting going good—look how we beat the Kivanians the other day. We're going to take the old men of the Rotary club tonight," one of their prominent spokesmen said.

A lot of vacant lots grown up with weeds which the city is going to cut and charge to the owners. There are a lot of boys who need these jobs. If you need a boy to cut weeds or do yard work call this corner.



Four Circles Of Baptist Society Have Bible Study

Four circles of Woman's Missionary society of First Baptist church met this week for Bible study.

In the business sessions conducted at each meeting, the circles arranged to send a G. A. and Y. W. A. girl to the house party in Amarillo this month.

Members of circle one met in the home of Mrs. A. L. Prigmore for a program which included a prayer by Mrs. H. C. Wilkie, a song by the group, Bible study by Mrs. Baker Henry, and prayers by Mrs. Mary Binford and Mrs. B. E. Bard.

Refreshments were served to Misses Allen Vandover, W. M. Voyles, G. H. Covington, O. R. Wasson, Charles Kentling, H. C. Wilkie, A. L. Prigmore, Paul Stuffer, a visitor, Robert Carr, B. E. Bard, W. B. Henry, W. R. Bell, Mary Binford, a visitor, and L. H. Simpson.

The meeting of circle two in the home of Mrs. Fritz Waechter was opened with prayer by Mrs. Lewis Davis.

Attending were Misses Rittenhouse, B. A. Sumner, Lewis Davis, L. A. Baxter, F. C. Abbott, E. Stidham, P. O. Gaut, Fred Brownlee, Miss Dorothy Davis, and the hostess.

Mrs. F. E. Leech was hostess at the meeting of circle three when the song, "Help Somebody Today," by the group opened the session. Sentence prayers were led by Mrs. F. E. Leech and Mrs. W. E. James, and Mrs. T. B. Johnson had charge of the Bible study. The business was conducted by Mrs. C. L. McKinney.

Refreshments were served to Misses R. Kirbie, C. L. Stephens, Frank Hall, Floyd Yeager, W. E. James, T. B. Solomon, N. B. Ellis, Lyle Huffman, J. C. Vollmert, T. E. Maness, F. E. Leech, T. W. Jameson, visitors, C. L. McKinney.

Opening the meeting of circle four in the city park, Mrs. Arthur Nelson led in prayer and Mrs. H. B. Landrum presided over the lesson study after which Mrs. Bob Huff gave the closing prayer.

Present were Misses E. L. Tarrant, J. W. Mann, Ella Drake, Bob Huff, Rufe Jordan, L. Allen Clifford, Wilson, H. B. Landrum, and Arthur Nelson.

All four circles will meet again next week for mission study. Mrs. W. M. Voyles will be hostess to circle one at 2:30 o'clock Monday. Mrs. Lewis Davis, circle two, Tuesday at 9:30 o'clock; Mrs. C. L. McKinney, three, Monday at 2:30 o'clock; and circle four will meet in the city park at 4 o'clock Monday.

Mrs. Austin Named Honoree At Shower Given This Week

Honoring Mrs. Grover Austin, Sr., a shower was given Wednesday afternoon with Mrs. Charles Ward, Mrs. John Schofield, and Miss Valerie Austin as hostesses.

Attending were Misses J. B. Sanders, Lola Miller, Thomas Eckert, C. W. Berry, J. B. Morrison, Charles Ward, John Schofield, Miss Valerie Austin, and the hostesses.

Gifts were sent by Misses J. B. Austin, Jim Neely, N. A. Purdy, De Lea Vicars, Jess Goodwin, Charles Elshiemer, John Austin, and Lynn Boyd.

Party Entertains Primary Group In Park This Week

Members of primary department of First Presbyterian church were entertained with a party in the city park Wednesday afternoon.

Games were played by the youngsters after which cookies and lemonade were served.

Attending were Jimmy Howard, Betty Lou Howard, Bobby Hoover, Marilyn Mitchell, Peggy Hukill, Janette Jo Walters, Bill Gray, Donna Jo Nestfield, Phyllis Nestfield, Bobby Knapp, Lela Joan Ward, Billy Bob Ward, Dean Ward, Bill Loving, Mrs. L. L. McColm, Mrs. R. H. Nestfield, and Mrs. Floyd Ward. Mrs. Joe Stephens was a guest.

Six Boys From Gray Apply At CCC Camp

Inform was expected today by Mrs. Valde Bates, county case worker, on the examinations of six Gray county boys for enrollment in the Civilian Conservation corps.

Reporting at the CCC camp in Perryton yesterday from Gray were David McAnally, Luther Meyer, Ned McCann, all of Pampa, and Sidney Lee Washam of McLean, and alternates Ray McCann and Landon Sanders, both of Pampa.

Gray county's quota in the July enrollment is four, however, should other counties not send a full quota or should rejections occur, the Gray alternates will have a chance to enroll.

PUTTING CHIC DOWN IN BLACK AND WHITE



A BLACK and white rayon check dinner dress is smart enough for dinner and dancing at the country club, yet casual enough for dining at home. It's the sort of thing you can slip on after a long afternoon swim instead of slacks or a day dress. Unless you are more than size 16, the cut of this model makes a girle unnecessary.

KPDN Radio Program

- FRIDAY AFTERNOON
3:45-4:00 B. C. News
4:00-4:15 Danes Orchestra
4:15-4:30 News-WKY
4:30-4:45 News-WKY
4:45-5:00 Ken Bennett-Studio
5:00-5:15 Recreation Council
5:15-5:30 News-Studio
5:30-5:45 News with Tex DeWeese-Studio
5:45-6:00 Country-Studio
6:00-6:15 What's the Name of That?
6:15-6:30 Brain-Spells-IHC
6:30-6:45 The Blue Beetle
6:45-7:00 Dance Parade
7:00-7:15 Singing Strains-WBS
7:15-7:30 The Sport Light-Studio
7:30-7:45 The Mailman's All Request Hour
7:45-8:00 Clovis vs. Pampa Ball Game

The Social CALENDAR

- SATURDAY
1:00-1:15 Sunrise Salute
1:15-1:30 Baseball Scores-Studio
1:30-1:45 Farm Bulletin
1:45-2:00 Country-Studio
2:00-2:15 News and Show-WBS
2:15-2:30 News with Tex DeWeese-Studio
2:30-2:45 Sam's Club of the Air-Studio
2:45-3:00 On Parade
3:00-3:15 News of the Air-Studio
3:15-3:30 Photo Motivations-Studio
3:30-3:45 Brain-Spells-IHC
3:45-4:00 Danes Orchestra
4:00-4:15 Aunt Susan's Kitchen-WKY
4:15-4:30 Let's Dance
4:30-4:45 News-WKY
4:45-5:00 Dance-Studio
5:00-5:15 Extension Service-Studio
5:15-5:30 The Sport Light-Studio
5:30-5:45 Carleton Clinic
5:45-6:00 The Grain Reports-Studio
6:00-6:15 News with Tex DeWeese-Studio
6:15-6:30 Pat's in Music-Studio
6:30-6:45 Photo Motivations-Studio
6:45-7:00 Danes Orchestra
7:00-7:15 Acropolis
7:15-7:30 George's Sokolky
7:30-7:45 Interlude
7:45-8:00 Brian Sparks-IHC
8:00-8:15 Briant Platform
8:15-8:30 Birth of the News-Studio
8:30-8:45 Photo Motivations-Studio
8:45-9:00 Brian Sparks-IHC
9:00-9:15 Frank's Band-Orchestra
9:15-9:30 World Vocalists
9:30-9:45 What's the Name of That?
9:45-10:00 News with Tex DeWeese-Studio
10:00-10:15 Brian Sparks-IHC
10:15-10:30 What's the Name of That?
10:30-10:45 Danes Orchestra
10:45-11:00 Hawaiian Serenaders
11:00-11:15 Hit & Entores
11:15-11:30 Yesterday's Favorites
11:30-11:45 The Mailman's All Request Hour
11:45-12:00 MIDNIGHT

Mrs. Buckner Has Charge Of Program At Harrah Chapel

Women's Missionary society of Harrah chapel met in the church this week for a regular session.

Mrs. D. S. Buckner had charge of the program and those taking part were Misses C. E. Johnson, J. M. Nichols, and W. G. Carter.

Members present were Misses W. G. Carter, C. E. Johnson, J. M. Nichols, D. S. Buckner, and H. M. Stone.

Mrs. C. E. Johnson will have charge of the program next Wednesday afternoon at 2:30 o'clock in the church.

THIS WEEK IN PAMPA THEATERS

- LANORA
Today and Saturday: Don Amelie, Alan Curtis, George Ernest, Robert Lowery in "Four Sons."
REX
Today and Saturday: Cesar Romero and Mary Beth Hughes in "Lucky Cisco Kid."
STATE
Today and Saturday: Bob Steele in "Wild Horse Valley." State unit show with Lew Lehr comedy, cartoons, and serial.
CROWN
Today and Saturday: "Pals of the Silver Sage," with Tex Ritter, Cartoon, serial and news.
It is estimated the United States will reach its population peak in 1980, with 158,335,000 persons.
North Carolina was the leading gold-producing state in the Union prior to the 1849 gold rush.

Picnic Given For Clara Hill Class Members, Families

Clara Hill class members of the First Methodist church and their families were entertained at a picnic in the city park Wednesday evening.

A lunch of fried chicken, salad, potato chips, sandwiches, cake, and ice cream was served preceding the game of baseball played by the men and women.

Attending were Mr. and Mrs. J. B. White, Mr. and Mrs. Glen Radcliff and children, Mrs. Dan Leitch and daughter, Barbara, Mr. and Mrs. Jack Walton, Dr. and Mrs. W. M. Pearce, Mrs. Harry Hoyer and son, Harry, Jr. Mr. and Mrs. Fred Radcliff and son, Mr. and Mrs. I. T. Goodnight and daughter, Mr. and Mrs. Roy Pierce, Mr. and Mrs. W. L. Call and daughter, Mrs. H. P. Snyder, Mrs. Don Loshier and son, Mr. and Mrs. Arthur Hefflin and children, Mr. and Mrs. V. Ware and daughters, Mr. and Mrs. L. C. Gomillion, Mrs. Winston, Mr. and Mrs. Colvin, Mrs. Cleo Hoyer and daughter, Mrs. Jewel Purvis, Miss Helen Rogers, Mrs. Joe Nichols, Mrs. W. E. Bisset, Mrs. L. J. McCarty and daughters, Mrs. F. W. Shotwell, Mrs. E. L. Emerson and son, Mr. and Mrs. V. McArthur, Mrs. Bill Choate and daughter, Darlene, Mrs. McCall, Mrs. Emory Smith, and Mrs. E. P. Hollingshead.

Defense Group's Woman Member Is Ardent Feminist

GREENSBORO, N. C.—For the first time in history, women today are equally important with men, not only in a crisis, but in all the affairs of the nation," declared dynamic Harriet Elliott, only woman member of President Roosevelt's new National Defense Commission.

A feminist from the days of the suffrage fight, she believes women have the right to "freedom." She made the phrase of her relationships with the 2266 students at Woman's College, University of North Carolina, where she has been dean of women since 1935.

At a moment when the nation is devoted her greatest energies to giving young women a broad view of education as she interpreted it through her classes in political science, her work as a leader in the women's movement and her participation in national affairs. She staunchly holds the belief that "every human being is a citizen in a democracy."

Rated as one of North Carolina's outstanding women, Miss Elliott has held many honors in the state, this year as president of the Social Service Conference, a group significant for its wide interest in all social questions of the day. During the days of the Emergency Relief Administration, she was appointed by Governor J. C. B. Ehringhaus as a member of the State Advisory Commission of the E. R. A. She is now serving as a member of Governor Clyde R. Hoey's State Committee for the Conference of Southern Governors.

Her interest in the Woman's Movement was manifested when she taught women students the importance of woman's place as a citizen, when she gave her support wholeheartedly to such questions as the White House Conference this year on "Children in a Democracy" and on the question of the unemployment of young women in America.

Miss Elliott's classes have always been active discussion groups of national affairs, with students encouraged to provoke questions at all times. Her complex is perfect, instantly in-demand by groups, not only of women, but of men, for her searching opinion of the affairs of the day. In 1935 she toured the country as director of an educational program for women's division of the National Democratic Committee, speaking from coast to coast.

MAJOR INTEREST STILL EDUCATION
Coincident with the growth of Women's colleges from a small normal school to one of the three largest colleges of the country, Miss Elliott has built not only in the political science department, but in the whole field of education, stressing responsibility for the girls and thereby building up a social regime on the campus that has become nationally known. She emphasizes the fact that a broad educational policy means more than training girls in the skills, it means an appreciation of human relationships and of beauty.

While Miss Elliott insists that her major interest is in education, and that it is her desire to stay in her own office, she says, "This is a time when we must have unity in every phase of national life, and when the President says I am needed, I shall be glad to go."

Though a middle westerner by birth, Miss Elliott has lived in the south since 1913, and has affiliated herself closely with the life of Greensboro and the south. Her home, near the campus, is a center of hospitality for friends and for the students, and her advice, always trusted to be fair, is sought for years afterward by students with whom she has come in contact.

Picnic Given For Pair At LeFors

Special To The NEWS
LEFORS, July 12.—Honoring John and Hazel, young people of LeFors gave a picnic in Shaw park recently.

The group played games and roasted wiener and marshmallows. Those attending were Dorothy Jean Kratzer, Robert Matteson, Mary Sue Ogden, Jos Hazle, Mickey Sue Johnson, George Duncan, Ruth Kratzer, John Hazle, Virginia Hamrick, Maxine Hutchin, Harold Ellis, Raymond Bonner of Kellierville and Mr. and Mrs. J. P. Stoker.

Just Being Plain Mrs. Willkie Is Career Enough For Edith Wilk, Wife Of Republican Presidential Nominee

NEW YORK.—Mrs. Wendell Willkie, wife of the man who was nominated "by the people," is a "people's choice" type by herself.

Wendell Willkie's social life need have no fear that Edith Wilk Willkie will not be a definite asset to their candidate through the grueling campaign months ahead.

Most importantly, Mrs. Willkie will continue, as she has in the past, to make for her husband a home that is a haven of rest—a place that is quiet and peaceful, where he can think and read and think some more, completely undisturbed.

"In the ten years we have been in New York," attractive Mrs. Willkie smiled, "I don't like to shop. There's been limited to seeing a few plays and hearing a little good music each season and seeing a few close friends. We have never gone out a great deal, or had many people around."

"We like people of course. But if we had spent the past ten years in a round of social activity, Wendell Willkie would not have had time to make a thorough study of political science, economics and foreign affairs—as he has done."

"And I—I would not have had time to keep up with the things that have interested my husband most. As it is, he talks to me about his theories, his ideas, his plans. And so an evening is never dull."

SHE WILL APPEAL TO ALL CLASSES
In addition to maintaining a home where confusion and even minor friction are unknown, Mrs. Willkie will appeal to voters in all sections, of all classes.

She's definitely not the club woman type—in fact, never has belonged to any clubs. But she's interested in subjects dear to the average club woman's heart and well enough informed regarding them.

"I wear a dress I really like until it's practically in tatters," Mrs. Willkie smiled. "I don't like to shop. Three or four times a year I simply go out and get what I need to wear, then forget about clothes until I really need some more."

For the most part, Mrs. Willkie wears simple, smart, simply-cut dresses of the softened shirt-waister variety, and flattering not-too-extreme hats.

She has naturally curly, brown and gray hair which she washes at home, patting the waves into place herself. Her complexion is perfect, her figure just right for a mature person. She's extremely graceful—treads so lightly that you wonder whether her feet are actually touching the carpet. She loves to dance.

She does not play games or go in for any active sports—at all. She does not smoke.

Mrs. Willkie is a shy person, but not embarrassingly so. She has never made a speech in her life and has no intention of beginning a speech-making career now. What her charitable work she has done has been done so quietly that her name is not found on a single committee.

"I'm busy enough," Mrs. Willkie continued. "But the things I do outside of managing my home are so personal that they sound silly in print. I'm Wendell Willkie's wife and Philip Willkie's mother. That's about all there is to say about me," and the wife of the candidate went on modestly.

The eight-room, Fifth Avenue apartment in which the Willkies have lived ever since they have been in New York is a handsomely furnished, but distinctly homey place. The walls are lined with books. There are oriental rugs on the floor, a fine painting over the mantel in the living room, plenty of lamps and little tables and ashtrays. The general effect is restful and attractive, simple.

SHE NEVER HAS "SERVANT TROUBLE"
The mistress of the establishment never has "servant trouble." This one maid, Betty, has been in the household for many years. In talking to Mrs. Willkie, you get an impression that if and when minor domestic crises do arise, she handles them expertly and quietly without upsetting the smooth functioning of her household.

In fact, you leave believing wholeheartedly that Mrs. Willkie has been eminently successful in her chosen career—that of being Wendell Willkie's wife and the mother of his son.



Charming Mrs. Edith Wilk Willkie thinks her campaign job is to continue to make her home a real haven of rest for her presidential-nominee husband, Wendell Willkie.

Bridal Shower Given As Courtesy To Mrs. Bailey

A bridal shower was given Wednesday afternoon to honor Mrs. Clifford Bailey, the former Miss Billie Marie Bartz, at the home of Mrs. Red White, 122 West Tuke street. Co-hostesses were Mrs. W. O. James and Mrs. Addie Bartz.

Games were played and prizes were won by Mrs. R. C. Grider and Mrs. W. J. Bartz, who presented them to the honoree.

Refreshments were served to Mrs. Tracy Games of White Deer, Mrs. Coscan Thompson and Mrs. Addie Bartz of Skellytown, Miss Lois Covey of Berger, Mrs. C. W. Bailey, Mrs. W. W. Hill, Mrs. Roy Holt, Miss Francis White, Mrs. H. W. Hill, Mrs. W. I. White, Mrs. Robert Page, Mrs. W. M. James, Miss Annetive James, Mrs. W. O. James, Miss Opal Moon.

LeFors YWA Will Attend House Party

Special To The NEWS
LEFORS, July 12.—LeFors Y. W. A. met this week in the T. E. L. room of the First Baptist church with Mildred Skaggs and Dorothy Roach as hostesses.

Mildred Kratzer, president, had charge of the business meeting. The girls sponsored a cake sale in order to help finance their expenses to the Y. W. A. house party in Amarillo on July 18, 19, and 20.

The Y. W. A. plans to send 15 girls and two sponsors to the house party this year.

Refreshments of ice cream and cake were served to the following members and guests: Juanita Skaggs, Opal Herring, Virginia Hamrick, Mildred Kratzer, Mary Sue Ogden, Dorothy Jo Kratzer, Maxine Hutchin, Ruth Kratzer, Bernice Cole, Mrs. Roy Calvert, and the hostesses.

SOAP SALE

Lifebuoy, Lux, Woodbury's, Special 3 Bars 17c

SAVE MORE! RICHARD'S DRUG CO.

Pampa's Professional Drug Store
Free Delivery—Phones 1240, 1241—Phone Checks Cash

Fifth Birthday Of Ruth Ann Sill Observed Thursday

Mrs. Walter Sill entertained for her daughter, Ruth Ann, on her fifth birthday with a party for a group of friends Thursday afternoon.

Various games were played in the park and favors of balloons were given to each guest. Refreshments of birthday cake and ice cream were served to the group.

Present were Wilma Jean Favors, Bobby Mullin, Don and Larry Duennel, Patsy Millan, Charles McKay, Rheta Lou Jones, Eddie Jones, Meredith Ann Brooks, Dale Rhea Johnson, Don Schneider, Kay Stewart, Ina Jo Hawthorne, Ronald, Cleone, and Jean Patton, Norma Ann Pirtle, Janice Baker, Janice Erickson, and Wilma Frewitt.

A gift was sent by Helen Kay Wilson.

Junior Endeavor Members, Guests Meet For Party

Junior Endeavor members of First Christian church and their guests had a party Wednesday evening at the home of Mrs. Burl Graham where they made fudge and lemonade.

The group went to the city park where they ate before going to the recreation grounds to play.

Attending were Joyce Hutchins, Peggy Joyce Ecker, Carroll Ann Keys, Patsy Ruth Devern, Ois May Smith, Norma Pirtle, Wanda Marie Hillard, Elsie Ruth Graham, Virgie Mae Boles, Betty Jean Austin, Betty Jo Nolen, Alverna Mailer, Betty Marie Devern, Mary Nell Whisenand, Betty Ruth Anderson, and Mrs. Burl Graham.

JUST RECEIVED AND IN TIME FOR VACATION

Get your boy several of these suits to take-along. Save his clothes.

JACK TAR SLACK SUITS For Boys Sizes 4 to 7 \$1.98 and \$2.98

Boys' Seersucker SLACK SUITS \$1.00

LEE McCONNELL 32 Years in Gray County For CONGRESS 18th Congressional District Subject to Democratic Primary, July 27th

YOU PAY LESS AT PAMPA'S PROFESSIONAL DRUG STORE... THESE CASH DRUG SPECIALS ON SALE... FRIDAY THRU MONDAY...

Tussy Vacation Cleansing Cream \$2.00 Size \$1.00
MUM 60c Size 39c
ADLER-I-KA \$1.00 Size 69c
SYRUP OF BLACK DRAUGHT 25c Size 14c
Tussy Cologne, Hot W'th'r Special, \$1.00 Size 50c
FITCH'S Hair Oil, 25c Size 14c

Lucky Tiger Hair Ton. 50c Size 29c
Palmolive Shav. Cream 25c Tubes 33c
CARTER Liver Pills, 25c Size 17c
IPANA Tooth Paste 50c Size 29c
FITCH'S Shampoo, Big \$1.00 Size 59c
BABY Creams and Talc Powd., All 50c Sizes 37c

Speedy Accurate PRESCRIPTION SERVICE

We appreciate the prompt response given our new set up as an Exclusive PRESCRIPTION SHOP both by the doctors and the public. It justifies our faith in the future of PAMPA. 3 REGISTERED PHARMACISTS ON DUTY.



**Hot Tired?**  
**Kool-Aid**  
 Makes Ten Fall Thirst!  
 Thirst! QUENCHERS! FREE! CUT-OUTS IN EVERY PACKAGE

**Candidates For Railroad Commission Beating Bushes**

(By The Associated Press)  
 AUSTIN, July 12—Candidates for the Railroad Commission place of retiring Lon A. Smith flailed the electoral bushes with increasing fervor this week as the first Democrat-

to primary hovered only 15 days away.

Two young daughters took up cudgels in behalf of Senator Olan R. Van Zandt of Toga, delivering stumpy speeches at Burleson, Alvarado, Itasca, Hillsboro, Abbott and West, as well as points in Collin and Ellis counties.

The blind senator scheduled speeches at Collinsville Wednesday, Stephenville Friday and seven localities in the vicinity of Pittsburgh Saturday.

"We expect to receive not less than 200,000 votes," says Van Zandt. Olin Culberson of Edna and Hillsboro, ploughed through deep East Texas after a tour of the Rio Grande valley and speeches in Dallas Monday and Port Worth Tuesday. His itinerary routed him to Hemphill, Jasper, Newton, and Lufkin Friday; to Groveton, Trinity, Huntsville, Madisonville and Crockett Saturday and to Bryan Sunday. Culberson, catalogued "financial fifth columnists" who seek to throttle industrial regulation of oil and gas utilities and transportation systems.

Pierce Brooks of Dallas, campaigning in Dallas Tuesday, Houston Wednesday and Beaumont Thursday, declared straw votes indicated he would have a majority in the first primary. He goes to Waco Monday.

W. H. (Bill) McDonald of Eastland and Austin, former commissioner of the General Land Office, was followed by an itinerary that included Commerce, Greenville and Paris Friday and Saturday, and Texarkana and Marshall Monday. Clyde E. Smith of Woodville planned to be in Beaumont and Port Arthur the last two days of the week, speaking at Kountze Saturday night.

Early in the week Walton D. Hood campaigned in North Texas, visiting Fort Worth, Wichita Falls and Dallas, and headed toward the eastern part of the state Friday and Saturday. Errol Holt of Dallas has been working East Texas, pledging not to run for other offices if he is elected and also to do business "only through the front door."

John Pundt of Dallas, working Central Texas, urged betterment of transportation facilities for marketing crops, protection of natural resources and uniform and fair equalization of oil and gas production.

Eugene T. Smith of Austin, former chairman of the State Highway Commission, spent part of the week in the San Antonio area, and mapped visits to Houston Friday and Beaumont Saturday.

John D. Copeland, Jr., of Austin, talked in North and East Texas, including Gilmer and Longview. Other candidates are Rep. Ross Hardin of Prairie Hill, Bryan Patterson of Alice, Charlie Langford, Jr., of League City, John Paul Jones of New London, Baker Salisbury of Amarillo, Bailey Shepard of Longview, Larry Mills of Dallas and O. O. Terrell of Alvin.

**Two Skellytown Boys Enlisted In Marines**

Two Skellytown youths, Kenneth L. Melton, son of Mrs. Maude Melton, and Albert C. Curlee, son of Mrs. Essie Ruth, have been accepted for enlistment in the United States Marine corps and transferred to the recruit depot, Marine Corps base, San Diego, Calif., for training. Captain T. E. Kendrick, officer in charge, Marine Corps Recruiting station, Oklahoma City announced today. Both boys were accepted at Marine Corps Recruiting station, post office building, Amarillo, and transferred to Oklahoma City for final examination. Prior to enlisting in the marines both men attended White Deer High school, and while in the marines they will have an opportunity to continue their education through the Marine Corps institute, Washington, D. C. This educational institution of the Marine corps offers over 170 different courses on various subjects free to members of the marines.

Upon the completion of their recruit training at San Diego they will be eligible for further transfer to sea or foreign duty, the captain said.

**Convicted Forger To Face Charge Of 1938 Ax Slaying**

LINCOLN, Neb., July 12—Ernest Hoefgen, 27, was given a commutation today of his six-year forgery sentence in the Nebraska penitentiary so he might be returned to Wichita Falls, Tex., to face a charge of slaying George Richet, Independent, Kas., carpenter, with an ax in 1938.

The commutation was granted after Hoefgen told Gov. R. L. Cochran, head of the pardon board, that he would plead guilty to the charge if returned to Texas and would not contest introduction of evidence he gave the board Wednesday when he admitted the slaying.

Hoefgen, whose home is at Wichita, Kas., testified he struck Richet after he and Sylvia Phipps, Wichita, had ridden from Missouri to Texas with the carpenter. Hoefgen told Cochran "I was upset and anxious to get Sylvia, who was ill, back to San Antonio. But I don't understand why I struck Richet."

Miss Phipps is serving a one year forgery term in the Nebraska Women's reformatory.

Practically a Neighbor  
 The planet Venus, when between us and the sun at inferior conjunction, is 134,000,000 miles closer to the earth than when it is on the other side of the sun, at superior conjunction.

Carbon, which when alloyed with iron produces steel, mixes with the iron much like sugar dissolves in water.

**MIRACLE WHIP SALAD DRESSING QT. 29c**  
**SANDWICH SPREAD 25c**  
**TISSUE 5 Rolls Northern 25c**  
**OVALTINE PLAIN OR CHOCOLATE Large Can 59c**  
**SOAP 3 BARS LIFEBOUY 16c**  
**COFFEE 19c**  
 GOLDEN LIGHT LB. PKG.  
**LUX 19c**  
 FLAKES LG. PKG.  
**HONEY 39c**  
 SANDERS' 5 LB. PAIL

<b>PINEAPPLE HILLSDALE NO. 2 CAN 15c</b>	<b>SPAGHETTI 3 No. 2 Cans Libby's 25c</b>	<b>BIRD SEED AND BISCUIT 2 Pkgs. FRENCH'S 25c</b>
<b>PORK &amp; BEANS Texas Special 16 Oz. Can 5c</b>	<b>APPLE BUTTER KING'S HIGHWAY 32 OUNCE JAR 15c</b>	<b>PRUNE JUICE 12 OUNCE CAN 3 CANS 25c</b>
<b>GRAPE JUICE RED WING BRAND FULL QUART BOTTLE 27c</b>	<b>Graham Crackers LION BRAND POUND PACKAGE 15c</b>	<b>COOKIES CREAM FILLED 2 Lb. Pkg. TOWNE SQ. 25c</b>
<b>SAUSAGE 3 Cans Libby's Vienna 25c</b>	<b>TUNA 2 FAMILY STYLE CANS 25c</b>	<b>GRAPEFRUIT JUICE SUN-GLO 6 5 3/4 oz. CANS 25c</b>
<b>SOAP 5 LARGE BARS CRYSTAL WHITE 15c</b>	<b>COFFEE DRIP OR REGULAR BLISS—LB. PACKAGE 15c</b>	<b>GREEN BEANS MRS. FARMER'S 2 No. 2 CANS 25c</b>
<b>COCOA HERSEY'S POUND CAN 14c</b>	<b>SALSA 3 CANS ORTEGAS GREEN CHILI 25c</b>	<b>CORN MRS. FARMER'S CREAM STYLE 3 No. 2 CANS 25c</b>
<b>TOMATOES 4 No. 2 Cans Standard 25c</b>	<b>FRYERS EXTRA NICE EACH 49c</b>	<b>GRAPEFRUIT ROYAL RIO, FANCY 2 No. 2 CANS 25c</b>
<b>STEAK Veal No. 7 Cut, lb. 19c</b>	<b>CUDAHY'S Puritan Tender Ham MADE TENDER BY A NEW PROCESS 19c PER LB.</b>	<b>WAX BEANS MRS. FARMER'S 2 No. 2 CANS 25c</b>
<b>FISH Fresh Sli. Cat, lb. 30c</b>	<b>BUTTER DUTCH MAID POUND 25c</b>	<b>SUMMER DRINK FREEZE—6 FLAVORS—8 OZ. BOTTLE 8c</b>
<b>ROAST FANCY POT OR ROLL Pound . 15c</b>	<b>BACON OUR OWN SLICED — LB. 17 1/2c</b>	<b>POTTED MEAT MORREL, LARGE 5 OUNCE CAN 5c</b>
<b>BEEF HEART Or Tongue, lb. 12 1/2c</b>	<b>REX LEAN SLAB — LB. 15c</b>	<b>SILVER POLISH WRIGHT'S, JAR 23c</b>
<b>LARD 4 LB. BULK 25c</b>	<b>Pork Chops LEAN END CUTS POUND 15c</b>	<b>WORCESTERSHIRE SAUCE FRENCH'S, 5 OUNCE BOTTLE 15c</b>
<b>HAMBURG Fresh Ground, lb. 12c</b>	<b>Veal Steak FANCY CUTLETS ROUND OR LOIN LB. 32c</b>	<b>PIMENTOS 4 Ounce Can Seville 5c</b>
<b>Beef Roast Short Rib, lb. 12 1/2c</b>	<b>SALADS CHICKEN OR HAM — POUND 29c</b>	<b>CRACKER JAX 3 Pkgs. 10c</b>
	<b>POTATO ROUND POUND 15c</b>	<b>LIPTON TEA 1/4 Lb. Pkg. 21c</b>
	<b>CHEESE 2 LB. BOX 39c</b>	<b>SUGAR FINE GRANULATED LB. KRAFT BAG 45c</b>
	<b>SAUSAGE All Pork, Pound 12 1/2c</b>	<b>CORN 5 Fresh Roasting Ears 10c</b>
	<b>Ham Hocks Smoked, Pound 7 1/2c</b>	<b>LETTUCE SOLID HEADS, EACH 4c</b>
		<b>GRAPES THOMPSON SEEDLESS Lb. 12 1/2c</b>
		<b>PLUMS SANTA ROSA Doz. 10c</b>
		<b>ORANGES 288 Size California Lb. 17c</b>
		<b>CUKES LONG GREEN Lb. 5c</b>
		<b>LEMONS SUNKIST LARGE SIZE DOZ. 23c</b>

**Save at FURR FOOD**

**Wards Great JULY CLEARANCE!**

**SENSATIONAL SAVINGS! COME EARLY!**

Compare With \$3.50 Outfits!  
**Brandon Slack Suits**  
 Shirt and Socks **2.77**  
 Count on Brandon to keep you cool when the mercury touches a hundred! In-and-outer shirt—saddle-stitched. Full-cut slacks; zipper fly. Some rayon.

**Clearance WOMEN'S WEAR**

- Clearance! LADIES' 59c SHEER DRESSES, Sizes 12 to 52 **2 FOR \$1.00**
- Clearance! LADIES' 98c SLACKS AND FARMERETTES **EACH 66c**
- Clearance! CHILDREN'S 59c SHEER DRESSES **42c**
- Clearance! CHILDREN'S 98c PLAY SUITS **64c**
- Clearance! LADIES' 79c, 3-THREAD CREPE HOSE **64c**
- Clearance! LADIES' 39c TO 98c FABRIC GLOVES **PR. 7c**
- Clearance! LADIES' 5c SUMMER HANDKERCHIEFS **3c**

**Clearance MEN'S APPAREL**

- Clearance! MEN'S 39c TO 98c HAWLEY TROOPER WORK HATS **15c**
- Clearance! BOYS' 25c STRAW HATS **7c**
- Clearance! BOYS' \$2.98 SLACK SUITS **\$2.66**
- Clearance! BOYS' SWIM TRUNKS **77c**
- Clearance! MEN'S 98c SPORT SHIRTS **77c**
- Clearance! MEN'S 10c SPORT SOCKS **PR. 4c**
- Clearance! MEN'S \$14.95 SUMMER SUITS **\$11.88**
- Clearance! BOYS' \$1.58 SHANTUNG SUITS **\$1.24**

**Clearance ODDS AND ENDS**

- Clearance! 79c PRISCILLAS ASSORTED COLORS **54c**
- Clearance! 25c REFRIGERATOR BOTTLE **QT. SIZE 7c**
- Clearance! 39c REFRIGERATOR DISH **2 QT. SIZE 17c**
- Clearance! 59c 6 CUP PERCOLATOR **27c**
- Clearance! 89c REVOLVING 3-Pc. REFRIGERATOR SET **34c**
- Clearance! \$3.69 6-BALL CROQUET SET **\$3.15**
- Clearance! \$2.69 4-BALL CROQUET SET **\$2.09**

**MONTGOMERY WARD**  
 217-19 N. CUYLER PAMPA





**STANDARD FOOD MARKETS GIVE YOU FOOD**

**OXYDOL 59c**  
 2 BARS CAMAY SOAP 1c  
 When You Buy Giant Oxydol For

**STANDARD FOOD**  
 ★ ONE STOP DOES IT --- GROCERIES  
 No. 1—Somerville & Kingsmill. Phone 686, 687 and 688

**ASPARAGUS** FANCY CALIFORNIA GREEN OR NATURAL  
 Hearl's Delight No. 2 Size Can 25c

**SHORTENING** Armour's Vegetole 8 Lb. Ctn. 73c  
 4 Lb. Ctn. 37c

**PEACHES** WHITE CALIFORNIA FINES



**BANANAS** Sat. Only Limit DOZEN 12c  
 Large Golden Ripe

**LETTUCE** Fancy California LARGE HEAD 4 1/2c

**CARROTS RADISHES GR. ONIONS** 3 Bchs. For 10c

**GRAPEFRUIT** 5 FOR 19c  
 TEXAS SEEDLESS

**BREAD** FRESH BAKED Limit 2 16 OZ. LOAVES 5c  
 SATURDAY ONLY

**TOMATOES** Extra Standard  
**MATCHES** Dandy Brand  
**SOAP** White King Almond, Hardwater  
**VEGETABLES** Delicious  
**CRACKER JACK** Fresh Stock  
**SOAP** Sierra Pine

**SWEET PEAS** Tender White Swan No. 303 Can 14c

**MILK** ARMOUR'S EVAPORATED 3 Tall Or 6 Small For 19c

**MUSTARD** Little Pig 8 Oz. Jar 9c

**GREEN BEANS** FANCY WHOLE MARCO BRAND NO. 2 CAN 14c

**WAX PAPER** Cut-Rite Brand 2 REG. 10c PKGS. 13c

**PIMENTOS** Fancy Quality 4 Oz. Can 5c

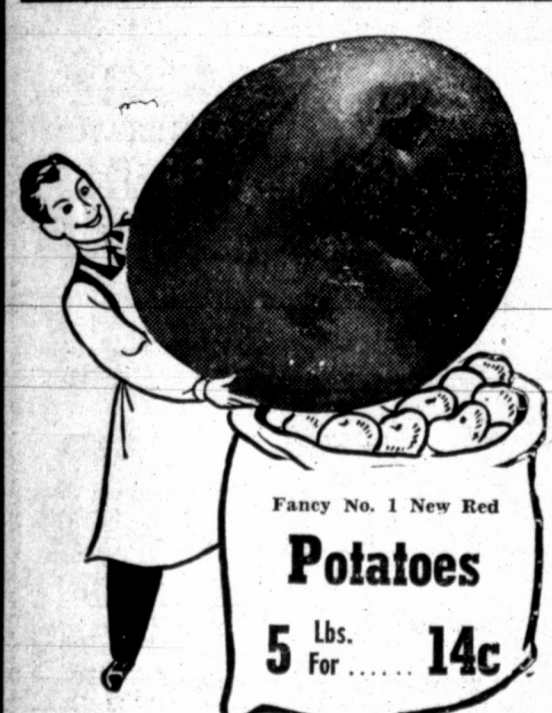
**FLOUR** PILLSBURY'S BEST 48 LB. BAG \$1.76  
 24 Lb. Bag 92c

**P & G SOAP** The W...  
**HOMINY** Extra Standard  
**CRACKERS** Fresh Salt  
**SOAP CHIPS** Ballou Brand  
**BAK. POWDER** C. or...  
**GREEN BEANS** Extra Standard

**GREEN BEANS** Fancy Florida POUND 5c  
**CABBAGE** Firm Crisp POUND 2 1/2c

**CANTALOUPE** FANCY JUMBO EACH 7 1/2c

**APPLES** Fancy Winesaps DOZ. 23c  
**LEMONS** Large Sunkist DOZ. 21c



**POTATOES** NEW CROP CALIFORNIA BURBANKS POUND 4c

**SQUASH** WHITE OR YELLOW POUND 3 1/2c



Sweet Juicy CALIFORNIA Oranges Doz. 21c

**TEA** LIPTON'S 1 Lb. 81c 1/2 Lb. 41c 1/4 Lb. 21c

**SALAD DRESSING** Or SPREAD Full Quart 23c  
**PEN-JEL** For J... and J...

**PRUNES** FANCY ITALIAN GALLON 25c

**PEAS** Brimfull No. 3 Sieve NO. 2 SIZE CAN 12 1/2c

**BLEACH** DEL HAVEN Quart Bottle 10c

**PLUMS** GREEN GAGE—EXTRA STANDARD—GALLON 39c

**NUCOA** Finest For Table Use POUND 18 1/2c

Prices effective Press-T... Today Thru Monday, July We Reserve The Right To Limit Quantity Purchas



DO YOU WANT AT PRICES YOU WANT TO PAY

# FOOD MARKETS

GROCERIES, MEATS & PRODUCE

No. 13 - Phone No. 1      No. 5 - 220-22 North Cuyler. Phone 127

## V-8 COCKTAIL

Recommended By Doctors

Juices of Eight Vegetables Blended Into a Healthful Refreshing Summer Drink

46 Oz. Can      5 3/4 oz. Can      2 For 15c  
 40c      12 1/2 oz. Can      2 For 25c

TRY IT

SERVED ICE COLD IN OUR STORES SATURDAY

For Cool-Economical

## MEAL SUGGESTIONS

- WHITE SWAN CALIFORNIA'S FINEST 2 1/2 Size Can 17c
- Extra Standard 3 No. 2 Cans 21c
- Dandy Brand 6 Box Ctn. 15c
- rdwater 3 Bars 14c
- ES Delicious 2 No. 2 Cans 17c
- JACK Fresh Stock 3 Reg. Pkgs. 10c
- 3 Bars 19c

## PRESERVES

# SUGAR

FINE GRANULATED

10 Lb. Kraft Bag 47c

BANNER BRAND 2 Lb. 23c      TISSUE Northern 5 Rolls For 23c

4 TOMATO JUICE Frazier's GALLON... 34c

9 BAB-O A Wipe and It Is Clean 2 Reg. Cans 25c

9 HEINZ SOUP CREAM OF TOMATO VEGETABLE OR VEGETABLE BEEF 3 Reg. Cans 25c

4 SHRED. WHEAT THE ORIGINAL NATIONAL BISCUIT 12 OZ. PKG. 10c

3 MACARONI Or Spaghetti PURITY BRAND 6 OZ. PACKAGE 3 For 10c

5 WHITE KING IT TAKES SO LITTLE LARGE FAMILY SIZE 27c

- AP The We Naphth 6 Giant Bars 21c
- Extra Standard 3 No. 2 Cans 19c
- S Fresh Soft 2 Lb. Box 16c
- PS Balloon Brand 5 Lb. Box 31c
- DER C. or Rubber Girl 25 oz. Can 21c
- ANS Extra Standard 2 No. 2 Cans 17c

# FLOUR

Enid's Best - Pillsbury Product

FULLY GUARANTEED 48 LB BAG \$1.56

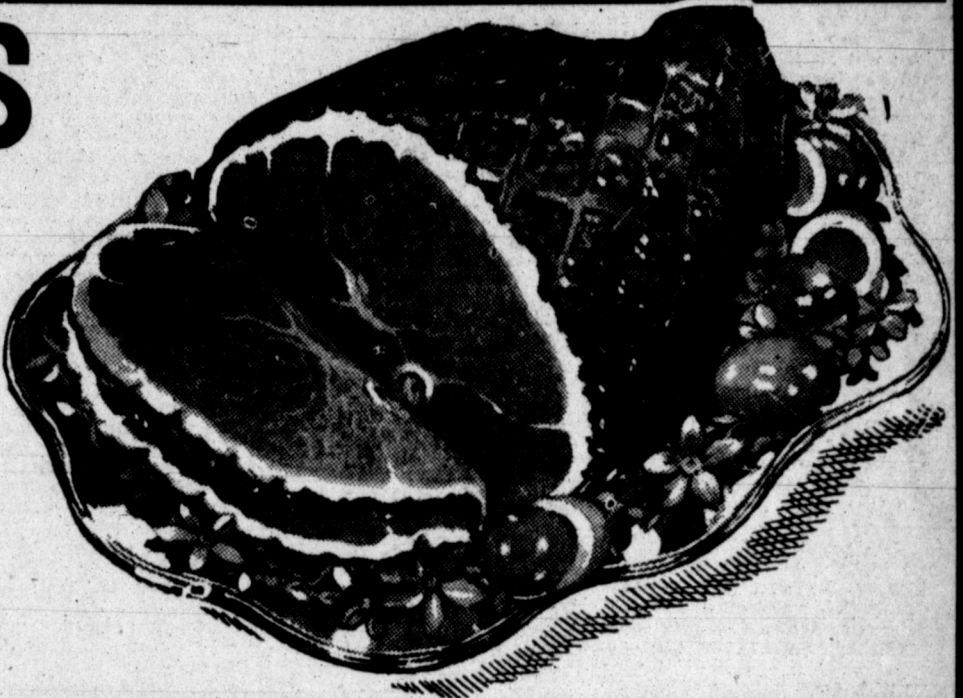
24 Lb. Bag 81c

## CURED HAM

BEAT THE HEAT WITH A DELICIOUS HAM FROM STANDARD AS DISPLAYED

17 1/2c

END SLICES, Lb. 19 1/2c



FRYERS FANCY COLORED Lb. 23 1/2c

HENS Fancy Heavy Type Lb. 15 1/2c

BACON BANQUET SLICED POUND 19 1/2c

HAMBURG STANDARD'S 100% MEAT POUND 12 1/2c

CHEESE NO. 1 CREAM Lb. 15 1/2c

HEARTS BEEF POUND 12 1/2c

FRANKS LARGE POUND 14 1/2c

BOLOGNA SLICED POUND 10c

ROAST FRESH PORK PICNIC CUTS POUND 12 1/2c

STEAK BABY BEEF CHOICE LOIN POUND 32 1/2c

BACON BANQUET SLAB POUND 15 1/2c

SAUSAGE PURE PORK COUNTRY STYLE POUND 10c

LIVER PORK POUND 12 1/2c

LIVER YOUNG BEEF Lb. 19 1/2c

TONGUES YOUNG BEEF Lb. 15c

CHEESE COTTAGE POUND 12 1/2c

PORK RIBS SMALL MEATY POUND 14 1/2c

ROAST BONELESS ROLL BABY BEEF POUND 17 1/2c

## POT ROAST

## BABY BEEF

CENTER CUT CHUCK POUND 19 1/2c

## STEAK

CENTER CUT CHUCK BEEF POUND 19 1/2c

## PORK CHOPS

CENTER CUT Lb. 22c

DELICATESSEN

- COTTAGE CHEESE, Lb. 12 1/2c
- POTATO SALAD, Lb. 15c
- BEEF ROAST, Lb. 29c
- BEEF RIBS, Lb. 19c
- SANDWICH SPREAD, Lb. 29c
- PORK ROAST, Lb. 35c

## PORK LOIN

End Cuts

## PORK CHOPS

MEATY LEAN POUND 15c

For Jams and Jellies 2 Reg. Pkgs. 19c

CREAMIER FASTER MIXING 3 Lb. Can 49c

PEAS Richelieu Brand Small Sifted No. 1 Can 13c No. 2 Can 17c Tiny Sifted No. 1 Can 16c No. 2 Can 19c

Prices Effective Press This Today Thru Monday, July 15

We Reserve The Right To Limit Quantity Purchases

## OLEO

MAGNOLIA BRAND

POUND 12c

## Peaches

EXTRA STANDARD

Sliced or Halves—Gal. 39c

## Vinegar

DISTILLED - SUGAR ADDED - QUART JAR 9c

## Apricots

EXTRA STANDARD

Gallon 39c

## COFFEE

Drip or Reg. Grind BREAK O' MORN—Lb. 14 1/2c



Main Provisions Of Compulsory Military Training Measure

WASHINGTON, July 12 (AP)—Here are the principal provisions of the Burke-Wadsworth compulsory military training bill endorsed in most details today by the army high command:

- 1. Registration of all male citizens and certain aliens between the ages of 18 and 65 years of age.
2. Liability for military and naval training and service imposed on all registrants between 21 and 45; liability for training and service in home defense units for those younger or older.
3. A training period of eight months for each man selected for service, or for a longer period if congress declared the national interest is imperiled.
4. A ten-year term in the enlisted reserve following the training period, with a requirement for annual training of up to one month per year for all reservists.
5. Choice of men for training made by lot, drawn to be made from age group 21 to 31 until registration and classification of men 31 to 45 has been completed.
6. Men to be chosen for training so far as possible on this basis: 38 to 47 per cent in age group 21 to 31; 10 to 15 per cent in age group 31 to 35; and 3 to 7 per cent in 38 to 45 group.
7. Authority vested in President to defer training for men whose employment in other work is found necessary. President may determine number to be called at any time.

NAZI PLANES

With British and Italian "flying columns" of mechanized troops raiding each others' outposts in the heat-baked desert regions of Italian Libya, Egypt and British-occupied Kenya colony. The Italian retook kingdom of Emperor Haile Selassie, the fugitive "Lion of Judah" who lost his throne to Italian conquest in 1936, also appeared likely to play a forthcoming major role in the struggle.

The British government officially recognized Selassie's government as "the lawful government of Ethiopia" and admitted it "to the full status of ally in the present war, with assurances that Ethiopia's independence will be assured when the war is won."

The Emperor's army, unofficially reported to number 200,000 native fighters, will be coordinated with British forces to assault Italy's army in north and east Africa and in Ethiopia, it was announced in the House of Commons.

From Nairobi, Kenya colony, came word that British troops have held out against a fierce three-day assault by large Italian forces at Moyale, fortified post on the Kenya-Ethiopia frontier.

In another action, British mechanized columns harried Italian troops cut off in two forts, Capuzzo and Maddalena, on the Italian-Libyan-Egyptian border. A pipe line supplying water to the forts from the coast was reported cut.

The Italian high command said Fascist bombers and troops wrought havoc on British forces along the Libyan-Egyptian border, destroying tanks and armored cars, firing barracks and trucks, and bombing airfields in British Somaliland and Kenya.

There was no letup, even overnight, in the bitter battle for mastery of the air over England, or along the narrow straits of Dover across which German invasion might be sprung.

The tide of lives was high but undisclosed. Twilight bombings concentrated on southern England alone killed 14 and injured 47. That was after a day of ceaseless, wave after wave assault from coast to coast. Homes were splintered and streets splattered with machine-gun bullets.

Market Briefs

Table with market data including Am Can, Anaconda, A T & S, etc. Columns include price, change, and volume.

KANSAS CITY LIVE STOCK

Table with Kansas City live stock prices for various types of cattle, sheep, and hogs.

FORT WORTH LIVE STOCK

Table with Fort Worth live stock prices for cattle, sheep, and hogs.

OKLAHOMA CITY LIVE STOCK

Table with Oklahoma City live stock prices for cattle, sheep, and hogs.

CHICAGO GRAIN

Table with Chicago grain prices for wheat, corn, and soybeans.

U. S. "Colossus Of North" University Professor Declares

EVANSTON, Ill., July 12 (AP)—A political scientist proposed today an American-inspired commonwealth of nations which would exclude the bulk of Latin American countries.

"Our economic destiny lies in the Pacific," said Prof. Kenneth W. Colegrove of Northwestern University in an interview. "We simply cannot afford to pay the bill to attach all the Latin American countries to us."

"To most of those countries we are the colossus of the north. Most of them have no genuine friendship for us. Economically, a Pan-American federation would be confronted with enormous problems."

Most of the South American products duplicate our own and Canada's. By far the larger part of South American export have been consigned to nations of the old world. How could we hope to take over so large a percentage of the surplus?

The axis of Democracy, Prof. Colegrove said, should point east and west, including, to the south, only Mexico and the Caribbean lands.

His proposed federation would embrace the United States, Canada, Mexico and the Caribbean areas, the Dutch East Indies, New Zealand, Australia, French Indo-China, the Malay States, Great Britain unless it should be defeated quickly, possibly Portugal, and in time, perhaps, India and China.

MOBILIZATION

During raids yesterday on German-occupied France and the Netherlands, it was announced, British bomber penetrated far into Germany's industrialized Ruhr valley and in broad daylight attacked oil depots.

The defenders of the British Isles started a new fabrication of German losses today with an air ministry announcement that four German bombers were blasted into this off the east coast this morning.

Explaining the guard would muster 230,000 men on first mobilization, Marshall said the pending legislation would bring its strength to a total "just short of 400,000."

In any case, he said, guard mobilization should be carried out at least four weeks before the proposed conscription program went into effect.

Assurances that officers and men of the national guard were "ready and willing to respond to a summons to active service were received, meanwhile by the war department.

The assurances were contained in a letter to Secretary Stimson from Brigadier General Walter A. DeLamar, president of the national guard association, and Brigadier General Charles H. Grah, president of the adjutants general association.

CONNALLY AND WHEELER NOT POSING HERE



Senator Tom Connally of Texas looks down his nose at the German-American Bund membership card of Bund leader Wilhelm Kunze. Senator is chairman of subcommittee considering bill to require detailed information from all "foreign-controlled" organizations.

AIR RAID

total of German planes destroyed to 23. During raids yesterday on German-occupied France and the Netherlands, it was announced, British bomber penetrated far into Germany's industrialized Ruhr valley and in broad daylight attacked oil depots.

The defenders of the British Isles started a new fabrication of German losses today with an air ministry announcement that four German bombers were blasted into this off the east coast this morning.

Explaining the guard would muster 230,000 men on first mobilization, Marshall said the pending legislation would bring its strength to a total "just short of 400,000."

In any case, he said, guard mobilization should be carried out at least four weeks before the proposed conscription program went into effect.

Assurances that officers and men of the national guard were "ready and willing to respond to a summons to active service were received, meanwhile by the war department.

The assurances were contained in a letter to Secretary Stimson from Brigadier General Walter A. DeLamar, president of the national guard association, and Brigadier General Charles H. Grah, president of the adjutants general association.

The chief of staff testified that a compulsory training bill introduced by Senator Wheeler (D-Neb) and Rep. Wadsworth (R-NY) would be in accord with war department views after a few minor changes.

The Burke-Wadsworth bill would require registration of all men between 18 and 65 years with training in the army and navy for those selected between 21 and 45 years.

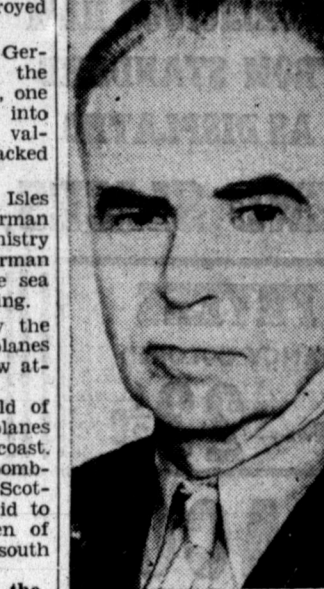
General Marshall said that it would take too long under the present system of voluntary enlistment to bring the regular army and national guard to the strength for which congress already has provided funds.

"In time of peace there is a very definite limit on how far you can go on the basis of voluntary enlistment, and there probably is also in time of war," the general declared.

Explaining that Congress had provided funds for a regular army of 370,000 men and that only 249,000 were now enlisted, General Marshall said the training bill could be used to "bring units up to full strength as quickly as possible."

The war department, he added, "feels that there is no more democratic basis" for building an army than the selective training proposal.

'IT'S A LIE!'



"It's a lie," was the terse comment of Colonel De Witt Peck, above, on charges by Japanese that Marines under his command mistreated 15 Japanese plain-clothesmen they arrested in the Shanghai International Settlement.

Bombers when attacked frequently try to lighten their load by emptying their bomb racks, target or no target.

Three houses of a southwestern coastal town were demolished and others were damaged. One bomb struck a children's playground.

The daily raids have taken a sharply increased toll in civilian casualties, but actual figures on the dead have been cloaked by such official phrases as "several dead" or "a few fatalities. No deaths had been reported by early afternoon, however.

Nazi raids were broadened today to include Scotland as well as southern England. A German bomber roared out of the clouds over a northeastern Scottish city shortly after noon and three Spitfire fighters met it with a swift-rising challenge.

The invader dropped two bombs as the fighters roared up. The bomber, which was bombed heavily by just a few minutes after he left.

The daring raids began July 3 and continued without a let-up. Britain has been attacked in day or night raids every day but one since June 18.

Whereas earlier attacks were carried out by lone planes or perhaps small groups of two or three, the raiders now are coming in groups of as large as 12 and 20.

As violent as the attacks have become, British officials expect they will be made "infinitely stronger" within the "very near future."

Since instances of damage done and casualties caused yesterday may give an idea of the extent of casualties throughout the attacked area.

MACKENZIE

They had some 18,000,000 tons of merchant shipping when the war broke out. They took over many of Norway's 4,800,000 tons when the Nazis invaded that country, some of Holland's 3,000,000 tons and some of the French. In addition England has bought vessels from neutrals.

Actually, Britain probably has more ships than when the war started. Her trouble is to get them safely home with the bacon.

It seems obvious that the British must have been forced to divert a great deal of merchant traffic to west coast ports opposite Ireland—principally Liverpool, Cardiff, Bristol and Glasgow.

Occupation of Ireland would bring the Germans bang up against this vital shipping, and raise a fresh problem for the British which would be extremely serious. Such an occupation, however, would be very difficult of achievement.

Transportation of troops by water to the rugged west coast of Ireland, through mine fields and against the opposition of the British navy and air-force, would represent a vast undertaking.

However, the Germans have pulled off some remarkable coups in this war.

ROOSEVELT

as founder of the club," he asked "what sort of communication to the dissolution meeting?"

The President grimed again, said he would have to look at the membership list first, and added that the progress that had been made, though the whole, had been pretty good. Quite a percentage of people who used to stand in the corner, he explained, are now back at their desks in the school room, but they said the corner still was not empty.

These sources explained that congress could easily amend the electoral law at its special session and by announcing the official results would save the people a "summer of suspense waiting to learn who had been elected and would probably forestall agitation by interested political elements."

Investigative who broke into Mrs. Kroll's barricaded room said it offered evidence that she led an impoverished existence.

CONGRESS MAY PASS ON MEXICO ELECTION

MEXICO CITY, July 12 (AP)—Political circles reported today that the extraordinary session of the Mexican congress summoned for July 25 might decide to pass upon the results of Sunday's national elections instead of waiting until August 25 as provided by law.

These sources explained that congress could easily amend the electoral law at its special session and by announcing the official results would save the people a "summer of suspense waiting to learn who had been elected and would probably forestall agitation by interested political elements."

WOMAN JUMPS FROM CHICAGO BUILDING HOURS AFTER THREAT

CHICAGO, July 12 (AP)—An elderly woman leaped from a three-story building on Washington boulevard early today, nearly six hours after she climbed to the rooftop and shouted her intention to jump.

Taken to a hospital in a critical condition, she was identified as Mrs. Anna Kroll, 55, a tenant of the building for three months.

Kroll's barricaded room said it offered evidence that she led an impoverished existence.

WILLKIE PREDICTS 'GREENER RANGES'

COLORADO SPRINGS, Colo., July 12 (AP)—Wendell L. Willkie, adopting a cowboy idiom to predict his election in November, told a "chuckwagon dinner" crowd that after next January "the chuck is going to be better and the range greener."

The Republican nominee was the guest of the Colorado Springs county cowhands' at an open-air, informal dinner on the eve of his departure for Denver and today's meeting with the Colorado Republican state committee.

Although its shell is badly scarred by bush fires, Tumilifa, a tortoise taken to the Friendly Islands in 1777, by Captain Cook, still lives in good condition.

The North America nebula, a cosmic cloud of dust and gas in the sky, when seen on photographic plates, has a striking resemblance to the continent of North America.

Mainly About People

The Gray County Singing convention will meet at 2 o'clock Sunday afternoon at the Pentecostal Holiness church in McLean. Among the singers attending will be Grady Bradford and Fred Cooper.

C. T. Harris, owner of the Harris Drug, returned Thursday night from a three-weeks vacation trip spent in fishing at Corpus Christi, Galveston, and other coastal points.

FOR SALE—Well built modern home. Splendid location, call 1781 J. Adv.

A marriage license was issued Thursday to William F. Kershaw and Grace M. Brenneshaw.

Members of the Do-Si-Do club will hold a picnic and dance tonight at Lake McClellan. Music will be by Jesse's orchestra.

Dances at Lake McClellan Sat. night. "Sons of the West" playing. Adm. 40c. Adv.

Two 15-year-old boys, taken into custody two days ago by county officers, were to be turned over to their parents this afternoon. They had run away from their homes in Oklahoma City, county officers said, and the parents were to come to Pampa today.

Three expert operators to serve you. Charles St. Beauty Shop, 160 W. 10th. Adv.

Billie Dean Vickers left this morning for his home in Ardmore, Oklahoma, after visiting with his aunt, Mrs. W. C. de Cordova, for the past month.

F. N. Shriver and son Brent, of Houston, are visiting in the home of Lee Ledrick, Brent's grandfather.

All the water was drained out of the swimming pool last night. The pool scraped thoroughly and fresh water run into the big pool. Large crowds have been flocking to the swimming pool daily this week to get relief from the heat. Manager Oscar Hinger reported.

Liner Champlain Reported Destroyed. HOBOKEN, N. J., July 12 (AP)—The destruction of the French liner Champlain was confirmed today by an American passenger on the Greek liner Nea Hellas which arrived from Lisbon, Portugal.

Michel Weil of San Francisco said he witnessed the sinking of the liner by an airplane-launched magnetic mine in the harbor of La Rochelle, France, June 27.

The Champlain, loaded with American airplanes, sank in 20 minutes, Weil said, while the captain was ashore for orders. All the crew was saved.

Mexican Political Situation Uncertain

MEXICO CITY, July 12 (AP)—Mexico's political situation remained uncertain today as the country faced the prospect of two rival groups claiming seats in congress and two powerful political leaders claiming the presidency when Lazaro Cardenas' term expires Dec. 1.

The party of Gen. Juan Andreu Almazan, independent anti-administration candidate, issued a statement saying the "only legitimate congress" would be "installed Sept. 1" and that before this congress "the president-elect of the united states of Mexico, Gen. Juan Andreu Almazan, will take the oath of office Dec. 1."

This countered an earlier claim by the Cardenas-created party of the Mexican revolution that its candidate, Gen. Manuel Avila Camacho, had won a 5 to 1 majority throughout the country.

The issue apparently boiled down to settlement of this question: Are the votes cast last Sunday in separate voting places established by Almazan's followers, and the tabulations made yesterday in separately-established Almazan tabulation centers, to be recognized?

The government previously had termed such establishments illegal. But Almazan's partisans, claiming big majorities for their man, asserted "imported gunmen" had prevented their attending the official tabulation centers, while on Sunday they were prevented from voting at many places.

Nazis Busy In Argentine. BUENOS AIRES, July 12 (AP)—The director-general of Argentine frontier police was disclosed today to have received reports from his agents in the Misiones sector that Nazis are active there.

In northeastern Argentina near the Brazilian and Paraguayan borders, successive raids on the homes of suspected persons have produced a quantity of arms, ammunition and propaganda pamphlets, it was said.

Fresh-water springs are found in various parts of the ocean.

Various news items including "CROWN TODAY and SATURDAY" and "SHORTS and NEWS".

Various news items including "Dardanelles Eyed By Rissia" and "CONGRESS MAY PASS ON MEXICO ELECTION".

Various news items including "WOMAN JUMPS FROM CHICAGO BUILDING" and "WILLKIE PREDICTS 'GREENER RANGES'".

Various news items including "MEXICO CITY, July 12 (AP)—Political circles reported today" and "CHICAGO, July 12 (AP)—An elderly woman leaped from a three-story building".

Various news items including "Wendell L. Willkie, adopting a cowboy idiom to predict his election in November" and "Although its shell is badly scarred by bush fires, Tumilifa, a tortoise taken to the Friendly Islands in 1777, by Captain Cook, still lives in good condition."

Various news items including "The North America nebula, a cosmic cloud of dust and gas in the sky, when seen on photographic plates, has a striking resemblance to the continent of North America."

Advertisement for Crown cigarettes, featuring the brand name and promotional text.

Advertisement for Four Sons, featuring a family portrait and promotional text.

Advertisement for REX Special, featuring promotional text and pricing.

Advertisement for LUCKY CISCO KID, featuring a cartoon character and promotional text.

Advertisement for JEFF SAYS, featuring a cartoon character and promotional text.

Advertisement for DANCE SATURDAY, JULY 13, featuring Pinky Powell's Rhythm Swingers and Southern Club.

Advertisement for Stork Gets Caught, featuring a cartoon character and promotional text.

Advertisement for For a Care Free Vacation GO BY BUS FOR INFORMATION CALL 871 PAMPA BUS TERMINAL.

Advertisement for CFSAR ROMERO, featuring a cartoon character and promotional text.

Advertisement for STATE, featuring a cartoon character and promotional text.



# U.S. Army And Navy Tend To Keep Down Officers With Initiative, Imagination

Is the United States ready to TRAIN an army of a million men? Who are the generals and admirals? Are they young, aggressive leaders? Or old-timers waiting for retirement?

How's our general staff? And our field officers? Are they up on blitzkrieg? Or do they know as little as some of the Allied command?

Then our air force. Have we enough pilot instructors? In other words: How's America's manpower?

By BRUCE CATTON  
NEA Service Staff Correspondent  
WASHINGTON, July 12—If the United States should go to war tomorrow, its armed services would be capped by conservatism, traditionalism, and a reluctance to face realities of a changing pattern of war—just as they have been so handicapped during the years of preparation.

This appraisal is reached after talking with a great many people in the capital who are in a position to know what conditions in the army and navy high commands really are.

In different ways, the two services follow systems which tend to keep down the officer with initiative and imagination. They are organized on patterns likely to nullify efforts of commanders who do possess those qualities. These facts go far to explain why, after years of armament, the services are ill-prepared in the air and why the army is so painfully short of tanks, armored cars, anti-aircraft batteries, and other implements of modern warfare.

**ARMY OFFICERS ARE AGING MEN**  
"The army is the place for young, inventive, active greaseballs, dressed in overalls and not in gaudy uniforms."

So says Congressman Ross Collins of Mississippi, who for some 17 years has been an exceptionally well-informed student of the nation's military machine. A few years ago Collins drew up average-age tables for the army. The figures he got then are roughly accurate for today's army as well. They show: Average age of major generals, 59 years; brigadier generals, 60; colonels, 58; lieutenant colonels, 51; majors, 44; captains, 42; first lieutenants, 34; and second lieutenants, 26.

These age averages are high, not because the army likes its officers old, but because it is enmeshed in a promotion system which makes high ages in the upper ranks inevitable.

The army promotes by seniority, up to and including the rank of

colonel. After three years, a second lieutenant becomes a first lieutenant; seven years later becomes a captain. There he may stagnate for a dozen years; finally he becomes a colonel and only then does his advancement depend on his own qualifications.

It is only fair to add that the army is seeking to shorten the periods each officer must spend in the ranks between captain and colonel. But the seniority system remains untouched.

**TRAINING SCHOOL SET-UP ELABORATE**  
The army boasts of an elaborate layout of special schools to fit officers for high command. First there are 22 special service schools; above these is the command and general staff school at Fort Leavenworth, Kan., attended by 225 officers annually; at the top is the Army War College near Washington, which gets 22 officers a year. As a matter of general practice, though not of law, an officer can not expect to rise to high command without training in these schools.

The rub in the selection system for these schools lies in the fact that a candidate must have "excellent" or "superior" on his record or fitness report, and this report is compiled by every officer who has ever been in command over him. The criticism is that the man with initiative and imagination, who speaks up against tradition or custom, is likely to be marked below the man who keeps his mouth shut and does as he is told.

**NAVY'S SYSTEM BARS ORIGINALITY**  
If this army system results in a steady promotion of officers without much regard for their qualifications, there are competent critics who say the navy—which has dropped seniority entirely—has obtained equally bad results by going to the other extreme.

Promotion in the navy is by selection boards. After a naval officer has spent a given period in a given rank, his fitness report goes before a selection board to determine his eligibility for promotion. Here the criticism is the same as that leveled against the army's special school system—the officer who tries new ways of doing things and criticizes freely is likely to get himself disliked by his superior—and, being disliked, gets a bum report. In the end, it is argued, the system weeds out brilliance and brings to the upper ranks men who lack imagination



Gen. George C. Marshall

Gen. George C. Marshall... falls a big share of the manpower training job for national defense.

and are fitted to the established groove.

The navy's school system is different. Although more than 95 percent of all officers take graduate courses, the courses are not necessary in order to rise to an admiral's rank. The theory is that Annapolis gives a man all the basic training he needs; thereafter his actual service is supposed to provide all the polish necessary.

**Stingless Bees**  
British scientists have produced a race of bees that don't, or won't, sting by mating queen bees with drones instead of letting them "choose" the swiftest and strongest bees.

## Oklahoma Damaged By Violent Storms

(By The Associated Press.)  
Winds accompanied by violent electrical displays lashed several north Texas points early Friday, but no great damage was reported.

Northward into Oklahoma, the wind damaged buildings and blew down trees at Oklahoma City, Tulsa and Blanchard. Dallas, Fort Worth and Wichita Falls had considerable wind and lightning, and heavy crop damage was reported from a two and a half inch rain in southern Ellis county.

Creeks were out of their banks in the vicinity of Italy, and hay crops were badly hurt by the downpour. Corsicana had 40 of an inch.

In northwest Texas, Burkburnett received a three and one-half inch rain, Wichita Falls 1.64 with a 33-mile wind and much lightning. The precipitation general over the entire area.

At Denison, an hour's storm brought 1.30 inches of rain, with an electrical display and some hail. Nearby Sherman had .95. Other north and northwest points reporting rain included Olney .75, Plainview .66.

In West Texas, there was some precipitation, none heavy.

The geographical center of the American steel industry has moved about 350 miles westward in 60 years, and now is estimated to be one mile north of Mansfield, Ohio.

It requires approximately eight minutes and 20 seconds for sunlight to reach the earth, it being 92,900,000 miles from our planet.

Melbourne, Australia, fines bicyclists who ride more than two abreast on the city streets.

## Pampa Worley Club's Band Will Play At Borger Rally Tonight

A schedule of trips to Borger, Miami, Canadian, Wheeler, Shamrock, Amarillo, and McLean was announced today by the "Mr. Worley Goes To Washington" club which tonight will take a band and speakers to Borger for a Hutchinson county rally for Rep. Eugene Worley of Shamrock, candidate for congress.

Speeches in Mr. Worley's behalf will be made tonight by Ross Buzard, June Marie Amick, and by Jack Johnson's Charlie McCarthy dummy, according to members of the club. Annabelle Lard said about 20 members of the band would make the trip. The group will march up Borger's main street at 8 o'clock from the vicinity of the

Black hotel. Those not playing instruments will carry placards, Miss Lard said.

Buzard said a larger group would attend the Panhandle political rally in Amarillo, July 23. Mr. Worley will speak tonight at 8:30. "We are not being financed by anybody and we are paying our own expenses," Buzard said. "We're for Gene Worley in this race just like we'd be for the Harvester football team."

A delegation of Pampa adults will also attend the rally at Borger tonight, according to Tom Wade and Bill Smith, local attorneys. All Worley supporters are invited to drive to Borger and be in the parade, they said.

## Townsendites To Hear Report On National Meeting

C. T. Hubert, local delegate to the national Townsend convention, will report on the assembly at a meeting of Pampa Townsend club 4, to be held here Monday night.

A special meeting of the club will be held at the court house at 8 p. m. Tuesday night, with J. F. Kirkland, state representative, as the principal speaker.

**Consult a Shoe Doctor**  
When in doubt about shoe—major repair on shoes—consult us.  
Goodyear Shoe Shop  
D. W. Sasser  
One Door West of Perkins Drug

Not a bad figger at that... and I owe it all to...  
**NORTHEAST DAIRY PASTEURIZED MILK**  
Phone 1472

**WE DELIVER FREE** 412 S. CUYLER

**YOU WILL FIND BARGAINS GALORE AT YOUR**

# B & G FOOD STORE

**BUD AMREY'S MKT.** PRICES EFFECTIVE FRIDAY THRU MONDAY

WE DELIVER FREE PHONE 276 RIGHTS RESERVED TO LIMIT QUANTITIES

<b>VIENNA SAUSAGE</b> 5c	<b>PIMENTOS</b> 4 Oz. 5c	
WHOLE PIECES LARGE CAN	Can	
<b>DUROX</b> 10c	<b>PICKLES</b> 12 1/2c	
LIQUID BLEACH Quart	Sour or Dills Quart	
<b>SUGAR</b> 10 Lb. 43c		
Friday and Saturday Only	LIMIT	
<b>Pen-Jel</b> Pkg. 10c	<b>Butter</b> Swift's in Cartons, Lb. 26c	<b>Jello</b> All Flavors 3 For 14c
<b>Cocktail</b> Fruit Tall Can 11c	<b>Crisco</b> 3 Lb. Can 49c	<b>Juice</b> Pineapple 46 oz. Can 25c
<b>Oleo</b> Banner Brand Pound 10c	<b>Catsup</b> 14 oz. Bottle 9c	<b>Hominy</b> No. 2 Can Pearl White 5c
<b>MILK</b> CARNATION — 3 FOR 21c	<b>3 Lg. Cans</b> 16c	
ARMOUR'S	LIMIT	
<b>COFFEE</b> B & G Special Grind POUND 15c	<b>Flour</b> 24 POUND SACK 75c	
<b>OXYDOL</b> Large Box 18c	<b>COMPOUND</b> 4-Lbs. 36c	
	VEGETOLE - CRUSTENE - JEWEL	
<b>TOMATOES</b> Hand Packed 3 No. 2 Cans 16c		
<b>BAK. POWDER</b> Club Girl Lge. Can 19c	<b>BROOMS</b> 4-Tie EACH 25c	<b>SOAP</b> P & G 6 For 21c
<b>CORN</b> Fancy Sweet, No. 2 Cans, 3 For 25c	<b>CHERRIES</b> Brimfull, No. 2 Cans, 2 For 25c	<b>CORN</b> Brimfull, Whole Kernel, 12 oz. Can 10c
<b>PEAS</b> Dew Drop 363 Can 10c	<b>KOOL-AID</b> Ass'l. Flavors 3 For 10c	<b>TISSUE</b> Northern 4 Rolls 23c
<b>Fruit &amp; Vegetables</b>	<b>First Quality Meats</b>	
<b>Lettuce</b> Large Firm Green Heads EA. 4 1/2c	<b>Fryers</b> Any Size Lb. 23 1/2c	
Quench Thirst With	<b>BACON</b> Pinkney's Special Sliced — Lb. 17 1/2c	
<b>LEMONS</b> 350 Size Doz. 23c	<b>HAMS</b> First Grade, Small Size Tenderized — Lb. 18c	
<b>Peppers</b> Fancy Green These Will Stuff LB. 8c	<b>ROAST</b> Boneless Roll No Waste — Lb. 18 1/2c	
<b>BANANAS</b> Carrots Beets Mustard Radishes Onions 3 Bchs. 10c	<b>HAMBURGER</b> Fr. Ground no cereal, lb. 14 1/2c	
<b>APPLES</b> Fancy Winesaps DOZEN 23c	<b>STEAK</b> Center Loin or Porter House, Lb. 28c	
<b>TOMATOES</b> Fancy Vine Rip POUND 5c	<b>BACON</b> Sugar Cured, 1/2 or Whole Slab — Lb. 14 1/2c	

**Eyes Examined Glasses Fitted**  
**DR. ADRIAN OWENS**  
OPTOMETRIST  
First National Bank Bldg.  
100 East Foster  
For Appointment Phone 209

Madam, Please Accept 2 Cakes of New, Improved CAMAY SOAP

for Only 1c

With Purchase of One GIANT ECONOMY Package of NEW HIGH-TEST OXYDOL

The Amazing New "No-scrub" Laundry Soap

This offer made solely to induce you to try the Giant Package of High-Test OXYDOL—the new "no-scrub" soap that gets clothes as much as 9 to 11 shades whiter, yet is REALLY SAFE.

**Try Amazing New Camay NOW IMPROVED**

With these 5 Beauty Cleansing Advantages Tests against 6 other best-selling toilet soaps proved Camay's 3 advantages.

- GREATER Mildness** for a complexion that invites close-up.
- MORE ABUNDANT Lather** that comes quicker to bring out hidden beauty.
- NEW WINNING Fragrance** that makes it heaven to hold you in its arms.

**TO GET THIS BIG SOAP BARGAIN**

To Have Faster, Whiter, Safe Washes

**Simply Do This:** Get a Giant Economy Package of New High-Test OXYDOL at your dealer's. And—for 1¢ more—receive two cakes of new, improved Camay Beauty Soap. Try High-Test Oxydol. If you don't agree it's the best laundry soap you've ever used, return unused portion to your dealer. Get Your Money Back!

**HERE'S the chance of a lifetime—to try these** H two amazing soap creations that are thrilling millions. And to see for yourself the convenience of the Giant package of OXYDOL.

So accept the two cakes of Camay Beauty Soap—and try High-Test Oxydol for your next washing. Use it in tub or machine. If you don't agree it washes with marvelous whiteness, yet with the SAFETY you've always wanted, simply return the unused portion to your dealer, get your money back!

**High-Test Oxydol** can offer astonishing results because it contains a new SAFE "miracle" ingredient—and does these remarkable things:

- Gets clothes as much as 9 to 11 shades whiter than many bar and package soaps. Actual tintometer shades, shown by our laboratory tests.
- Soaks out dirt in 10 minutes! No scrubbing, no boiling—just douse, rinse, and you're through! Even grimy spots come clean with a few quick rubs.
- Cup for cup, gives up to THREE TIMES THE SUDS.
- Yet is SAFE for washable colors and fabrics.

Money-saving, too. High-Test Oxydol goes so much farther than less economical soaps—it can cut laundry soap bills as much as one-fourth!

So try new High-Test OXYDOL—and see for yourself. Get a Giant-size package today—while you can get TWO cakes of new, improved Camay Beauty Soap for only 1¢ more. Procter & Gamble.

**AT YOUR DEALER'S—WHILE SUPPLY LASTS!**



THESE LOW PRICES ARE EFFECTIVE FRIDAY, SATUDAY AND ALL DAY MONDAY UNLESS OTHERWISE SPECIFIED . . . . . QUANTITY RIGHTS ARE RESERVED

# GOLD MEDAL

KITCHEN TESTED  
48 LBS. \$1.59  
24 Lbs. .

# 81c

# FRESH BREAD

WHITE OR WHEAT  
FRI. AND SAT. ONLY  
Sold Only On Gro. Orders  
LARGE  
16 OZ. LOAF

# 2 1/2c

# SWEET CORN

JACKSON'S  
BEST, FULL  
NO. 2 CANS  
3 For

# 23c

# BABY FOOD

HEINZ JUNIOR FOODS 12 1/2c

STRAINED FOODS  
ALL KINDS

# 3 For 19c



## COCOAMALT

Free Pinocchio Book with each can, Lg. Size 49c; Med Can 25c

- SORGHUM** Pure East Texas, GAL. . . . . 55c
- BAKE-RITE** Pure Veg. 3 lb. Can . . . . . 49c
- CORN** Brimfull, Golden Bantam 12 oz. U P Can . . . . . 10c
- SYRUP** Worth's Honey or Maple Flavor, 20 oz. Bot. . . . . 15c
- PICKLES** Sour or Dills QUART . . . . . 12 1/2c
- CHERRIES** Red Pitted No. 2 Can . . . . . 12 1/2c
- APRICOTS** Solid Pack GAL. CAN . . . . . 39c

- PRUNES** Fresh Oregon GAL. CAN . . . . . 23c
- PEACHES** Royal Yellow Cling, 2 1/2 Can . . . . . 12 1/2c
- C TAIL** Fruit in Heavy Syrup 2 TALL CANS . . . . . 25c
- MATCHES** True American 6 BOX CTN. . . . . 15c
- FLOUR** White Swan Pancake or Buckwheat, 3 LB. BAG . . . . . 15c
- CATSUP** Empsons Best 16 oz. Can . . . . . 10c
- TREET SOAP** Armour's Delicious Loaf, Reg. Can . . . . . 25c
- SOAP** Kirks Hardwater LARGE SIZE BAR . . . . . 5c

### Fruits & Vegetables

**VEGETABLES**  
Carrots, Radishes, Gr. Onions or Beets, Fresh Colorado  
3 LARGE BCHS. . . . . **10c**

**Bananas**  
Large Golden Fruit  
FRIDAY AND SATURDAY ONLY  
Doz . . . . . **10c**

**ORANGES** 288 Choice Calif., Doz. . . . . 17 1/2c

**CORN** Fresh Roasting Ears . . . . . 5 For 13c

**CELERY** New Crop Colorado Lg. Stalk . . . . . 9c

**MELONS** Black Diamonds On Ice — Lb. . . . . 1 1/2c

**GR. BEANS** Fancy Fresh Crisp — Lb. . . . . 4 1/2c

**TOMATOES**  
NO. 1 PINK SLICERS  
LB. . . . . **5c**

# CABBAGE

NEW GREEN COLORADO FIRM HEADS

# LB. . . . . 1 1/2c

**SPINACH**  
FRESH CRISP COLO.  
LB. . . . . **5 1/2c**

- LEMONS—Large 360 Calif, 2 Dozen . . . . . 25c
- APPLES—Fancy Red Winesaps, Dozen . . . . . 25c
- LIMES—Balls of Juice Dozen . . . . . 15c
- CAULI—Snow White Pound . . . . . 9c
- POTATOES—New Washed Reds, Lb. . . . . 3 1/2c

**POTATOES** New Crop Red Mc-Clures—10 LBS. . . . . 19c

**CUKES** Long Green Slicers — Lb. . . . . 3 1/2c

**SQUASH** Small Tender, Lb. . . . . 3 1/2c

**EXTRA VALUE!**  
Post Toasties  
POST TOASTIES  
RICH IN VITAMIN B<sub>1</sub>  
SPECIAL 2 FOR 21c

2 CAKES  
**CAMAY**  
with 1 quart plus  
OXYDOL  
ALL FOR **59c**

FRESH MADE  
**SPREAD**  
OR SALAD DRESSING  
QUART JAR . . . . . **19c**

# WHEATIES

The New Growing LG. Food For Children PKG. . . . . **10c**

# VANILLA

OR LEMON EXTRACT LARGE 8 OZ. BOTTLE . . . . . **10c**

**First Quality Meats**  
FANCY BEEF No. 7, Lb. . . . . 21c  
Rump, Lb. . . . . 24c  
Arm. Roast, Lb. . . . . 24c  
**Roast Shoulder Roast, lb. 19 1/2c**

## SHOULDER

FRESH PORK  
SHANK HALF OR WHOLE  
LB. . . . . **12 1/2c**

## CHEESE

FULL CREAM LONGHORN  
LB. . . . . **15 1/2c**

## OLEO SUGAR

OUR FAVORITE PURE VEG. Lb. . . . . **9 1/2c**  
FINE GRANULATED 10 LB. KRAFT BAG . . . . . **45c**

**CALUMET**  
LB. CAN . . . . . **19c**

- P-Nut Butter Armour's Star Quart Jar . . . . . 25c
- RAISINS Thompson's Seedless, 4 lb. Bag . . . . . 29c
- VINEGAR Worth's 12 oz. Bottle . . . . . 5c
- Magic Washer Large Box . . . . . 19c
- FLY SPRAY P. D. Pl. 25c Quart . . . . . 49c

REX PURE  
**LARD**  
4 LB. CART. . . . . **29c**

**BLACKBERRIES** Solid Pack No. 2 Can, 2 for . . . . . 19c

**JUICE** Tropical Sweet Grapefruit. LARGE 46 OZ. CAN . . . . . 19c

**PINEAPPLE** Del Monte Crushed . . . . . 2 Tall 25c

**CORN** Del Monte, Country Gent . . . . . 2 No. 2 25c

**PEAS** Royal Early June . . . . . 2 No. 2 25c

**CHERRIES** Chocolate Covered POUND BOX . . . . . 15c

**MACARONI** or Spagh., 6 oz. Pkgs. 3 For 10c

**SUGAR** Powdered or Brown . . . . . 2 Lbs. 15c

**TOMATOES** Hand Packed No. 2 Can . . . . . 4 For 27c

**SALMON** Alaska Select . . . . . 2 Tall 29c

**MACKEREL** Northern Pack TALL CAN . . . . . 10c

**CORN MEAL** Corn Dodger 10 lbs. 21c . . . . . 5 Lbs. 12c

**CHEESE** Borden's Cottage . . . . . 1 Lb. 11c

**BISCUITS** Ballard's . . . . . 3 Cans 25c

**CUTLETS** Fancy Veal . . . . . Lb. 39c

**HAMBURGER** Fresh Ground All Meat, POUND . . . . . 12 1/2c

**STEAK** Fresh Pork Shoulder Cuts, POUND . . . . . 16 1/2c

**PORK CHOPS** End Cuts, POUND . . . . . 16 1/2c

**STEAK—Fancy Chuck** Pound . . . . . 21c

**HAMS—Shank Half** or Whole, Lb. . . . . 19 1/2c

**HAM—Center Cut** 2 Cuts . . . . . 25c

**BOLOGNA—Sliced** or Piece, Lb. . . . . 9 1/2c

**LARD—Pure Pork** 4 Lbs. 25c

**SALT PORK—No. 1 Side, Lb.** . . . . . 11 1/2c

**Sliced Bacon**  
ALL KINDS  
YOUR CHOICE **LB. 20 1/2c**

- FISH and POULTRY**
- HENS—Fat Heavy, Lb. . . . . 16 1/2c
  - FRYERS—Nice Fat, Lb. . . . . 25c
  - CAT FISH—Fresh Water, Lb. . . . . 29c
  - FILLETS—Lb. . . . . 25c
  - WHITE TROUT, Lb. . . . . 10 1/2c

- DELICATESSEN**
- Pim. Cheese Spread, Lb. . . . . 28c
  - Potato Salad Pound . . . . . 15c
  - Ass't. Lunch Meat, Lb. . . . . 22 1/2c
  - Ham Pineapple Spread, Lb. . . . . 28c

- BACON—Heavy Sugar Cured Slab, Lb. . . . . 15c
- CHEESE—American or Brick 2 Lb. Loaf . . . . . 47c
- BACON—Light, Lean Slab, Lb. . . . . 17 1/2c
- PORK—Salt Jowls Pound . . . . . 8 1/2c
- PEANUT BUTTER—Pound . . . . . 12 1/2c
- BACON SQS.—Cured, Lb. . . . . 12 1/2c

**CARNATION FLOUR**  
Best by Test  
48 LBS. \$1.49  
**75c**

**1/2 Sale JERGENS FIVE HUNDRED SOAP**  
One Cake 15c WITH PURCHASE OF 3 CAKES FOR 15c

**ICE CREAM**  
All Flavors  
Quart 19c  
Pint . . . . . **10c**

## COMPOUND MILK

ARMOUR'S VEGETOLE 8 LB. CART. . . . . 73c  
4 Lb. Cart. . . . . **37c**  
ARMOUR'S 3 Tall or 6 Small Cans . . . . . **19c**

# Eat and Keep Cool

## Schillings COFFEE

Lb. Can . . . . . 24 1/2c

2 LB. CAN PER LB. . . . . **23 1/2c**

# Harris Food Stores



# In the CHURCHES

**FIRST CHRISTIAN CHURCH**  
Rev. B. A. Norris, pastor, 9:45 a. m. Sunday school, 10:50 a. m. Observance of Lord's supper. Pastor will preach. Special music, 6:30 p. m. Young People's Christian Endeavor, 7:30 Evening worship.

**CHURCH OF THE BRETHREN**  
Rev. Russell G. West, minister, 600 North Frost street, 10:00 a. m. Sunday school. Classes for all, 11:00 a. m. Morning worship, 6:30 p. m. Group meetings, 7:30 p. m. Evening worship.

**KINGSMILL BAPTIST CHURCH**  
Rev. T. M. Gillham, pastor, 9:45 a. m. Sunday School; 11 a. m. sermon, with pastor preaching; 7 p. m. B. T. U.; 8:30 p. m. Adult prayer service; 7:30 p. m. Wednesday, Mid-week prayer service.

**THE CHURCH OF GOD**  
Arthur Hatchford, pastor, 9:45 a. m. Sunday school; 11 a. m. preaching service; 7:45 p. m. preaching service; 7:45 p. m. Wednesday, prayer service.

**FIRST BAPTIST CHURCH**  
Rev. C. Gordon Bayless, pastor, 9:45 a. m. Sunday school. Fellowship class at church, R. E. Gattly, teaching, 10. Every Man's Bible class in the city auditorium; 10:50 a. m. morning worship. Service to be broadcast, 6:30 p. m. B. T. U. 8 p. m. evening worship.

**SALVATION ARMY**  
831 South Cuyler street. The usual schedule of services will be followed by the Salvation Army over the week-end. Sunday services will be as follows: Sunday school 9:45 a. m. Holiness Meeting at 11 a. m. Young People's Legion service, 6 p. m. Salvation meeting at 7:30 p. m. Mid-week service will be conducted as usual at 7:30 p. m. Wednesday.

**ASSEMBLY OF GOD**  
Rev. H. E. Comstock, pastor, 9:45 a. m. Sunday School; 11 a. m. preaching; 7:30 p. m. Fellowship night evangelistic service; 7:30 p. m. Tuesday, service; 2 p. m. Wednesday, Woman's Missionary Council; 7:30 p. m. Thursday, night services.

**CHURCH OF THE NAZARENE**  
Rev. E. F. Robinson, pastor, 9:45 a. m. Sunday school; 11 a. m. morning worship; 6:30 p. m. young people's service; 7:30 p. m. Evening worship; 7:30 p. m. Wednesday, Prayer service.

**CHRISTIAN SCIENCE CHURCH**  
901 North Frost street, 9:30 a. m. Sunday school; 11 a. m. Sunday service; 8 p. m. Wednesday, service. The reading room in the church edifice is open Tuesday and Friday from 2 until 4 o'clock.

**FRANCIS AVENUE CHURCH OF CHRIST**  
D. W. Nichol, minister, 9:45 a. m. Sunday school; 10:45 a. m. preaching, the pastor will preach; 7:15 p. m. young people's classes; 8:15 p. m. preaching, Rev. Nichol will speak; 2:30 p. m. Tuesday, Ladies' Bible class; 8:15 p. m. Tuesday, song drill; 7:30 p. m. Wednesday, prayer meeting.

**MACE DONIA BAPTIST CHURCH**  
Rev. J. A. Thomas, pastor, 9:45 a. m. Sunday School, 10:50 a. m. Morning worship; 6 p. m. B. T. U.; 7:45 p. m. Evening worship.

**HARRAH CHAPEL METHODIST CHURCH**  
713 S. Barnes  
Rev. H. H. Bratcher, pastor, Sunday school at 9:45 a. m. Morning worship at 11:30 a. m. Sermon by the pastor, Epworth League, 6:30 p. m. Evening worship 7:30 p. m. combined with McCullough church.

**MCCULLOUGH MEMORIAL METHODIST CHURCH**  
1910 Alcock-Borger Highway  
Rev. H. H. Bratcher, pastor, Morning worship beginning at 9:45 a. m. Sermon by the pastor, Sun-

day school at 10:45. Intermediate and young people's leagues at 6:30 p. m. Evening worship at 7:30 p. m.

**ST. MATTHEWS EPISCOPAL MISSION**  
Rev. E. J. Snell, minister, 8 a. m. Holy communion; 9:45 a. m. Church school; 11 a. m. Morning prayer and sermon.

**FIRST METHODIST CHURCH**  
Rev. W. M. Pearce, pastor, 9:45 a. m. Church school, Farris Oden, general superintendent; 10:55 a. m. Congressional worship. Sermon by pastor; 7:15 p. m. Epworth League and mission study; 8 p. m. Evening worship on church lawn. Pastor will preach. Candidates night will be observed.

**CALVARY BAPTIST CHURCH**  
Rev. E. M. Dunworth, pastor, 9:45 a. m. Sunday school, 10:30 a. m. Morning worship; 6:30 p. m. Men's prayer meeting; 7 p. m. training service; 8 p. m. Evening worship; 7:45 p. m. Wednesday, prayer meeting.

**CENTRAL BAPTIST CHURCH**  
Rev. T. D. Sumrall, pastor, Starkweather and Francis streets, O. H. Gilstrap, music director, 9:45 a. m. Sunday school, G. C. Stark, superintendent; 11 a. m. pastor will preach on "The Lord's Supper," with "In Remembrance of Me" as the theme, 7 p. m. Training union service; 8 p. m. Pastor will preach on "The Four Essentials of Spiritual Baptism."

**CENTRAL CHURCH OF CHRIST**  
Albert Smith, evangelist, Bible study, 9:45 a. m. Preaching, 10:45 a. m. Sermon subject, "The Missing Disciple." Preaching, 8:15 p. m. Subject, "The Great Salvation." Ladies' Bible class, 3:00 p. m. Midweek Bible study, Wednesday, 8:15 p. m.

**FIRST PRESBYTERIAN CHURCH**  
Rev. Robert Boshen, minister, All services of the church are being held in the high school auditorium during the construction of the new church building, 10 a. m. The church school, 11 a. m. Common worship. The nursery for small children held during the hour of morning worship is in the agricultural building on the corner of Browning and Frost.

## Navy Awards 23 More Contracts

WASHINGTON, July 12.—(AP)—The navy department awarded 23 contracts totaling \$136,743,900 as a part of the vast program to build up the nation's Pacific and Atlantic defenses.

To help bolster western defenses, contracts totaling \$30,870,000 were let for aviation facilities in the Pacific including Pearl Harbor, and the nation's other island possessions. In the east one contract alone provided \$24,204,000 for aviation shore

facilities at the Naval Quonset Point air station in Rhode Island. A formidable army striking force of some 6,000 tanks—several hundred of them huge land battle ships—was disclosed today as one major objective in President Roosevelt's new \$4,848,171,997 preparedness program.

Persons familiar with the plans behind the dollar marks said that the intention was to double the total of 3,100 tanks which now are either in service, on order, or covered by appropriation. Only Germany, they said, possesses a tank force of such potential striking power, according to available information. The projected American equipment, they explained, would include squadrons rivaling the 70-ton tanks which spearheaded victorious Nazi thrusts in Europe.

Most insects live in the adult stage just long enough to lay their eggs. Manila hemp is made from a species of banana.

# Aged Petain Dictator Of New France

(By The Associated Press)  
VICHY, France, July 12.—Under the shadow of the swastika, aged Marshal Henri Philippe Petain took into his hands today the reins of an authoritarian France.

A publication in the official journal of a "Constitutional Act" of his own signature gave the 84-year-old "Hero of Verdun" combined powers of president and premier and marked the death of the defeated Third French Republic.

President Albert Lebrun was a "forgotten man."

Today Petain held more power than any Frenchman since Napoleon III. with the right to govern as he pleases until a new national assembly is formed—provided the Germans approve.

Another "Constitutional Act" he signed gives him legislative power "during this period of serious international tension and internal crises."

The remnants of the old parliament will remain through this transition period, but may not meet except at Petain's summons.

The old senate and chamber of deputies legislated themselves out of existence Tuesday and Wednesday by granting him full power to set up a new constitution which then will be submitted to a referendum.

Presumably all Frenchmen even in German occupied areas will be asked to vote under the plan, but that apparently depended on Germany's decision.

It is not known yet whether Adolf Hitler will consider residents of Alsace-Lorraine—part of Germany before the World War—as "Frenchmen" with the right to vote in such a referendum.

Although more than half of France is occupied by troops of conquering Germany, Petain showed his intention to extend at least his civil power over that region by his desire to move the capital from his famed health resort to Versailles.

What Petain and his triumvirate of advisers—Pierre Laval, General Maxime Weygand and Adrien Marquet—can make of their new France appeared to depend on how much support Berlin was willing to give.

## BUY THE WHOLESOME BREAD AT YOUR GROCER

Are the citizens of Pampa going to sit by and watch the baking industry in Pampa ruined? We make this appeal because of the cheap loaf of bread that is being hauled into Pampa and believe that if the public, our customers, will stop and think, will realize that a good loaf of bread cannot be manufactured for the small amount charged. It has always been our object to produce a high grade bakery merchandise and we want to continue this policy. When you buy bread be sure to get the loaf that is baked by your local baker.

The Puritan Bakery  
515 S. Cuyler

**Folger's Coffee**  
POUND 25c  
2 POUND CANS — EA. 49c

**SAVE on FOODS**  
that tempt Warm Weather Appetites

**SUGAR**  
10 Pounds Fine Granulated 45c  
Powdered or Brown 2 POUND CELLO BAG 15c

**BROOMS** Our Leader Each 23c  
**TREET** Armour's Can Each 25c

**JUICE** TROPIC SUN PINEAPPLE 46 OUNCE CAN 27c  
3 12 OUNCE CANS 25c

**ICE CREAM** Full Pint 10c  
HERSHEY SYRUP 16 Ounce Can 10c

**PEP-AID** 3 5c Packages Home Drink 10c  
**SAUSAGE** 3 10c Picnic Cans Vienna 20c  
**POTTED MEAT** 4 5 oz. Cans Morrell's 25c  
**LIFEBUOY SOAP** 3 Reg. Bars 17c  
**WHEATIES** 2 BOXES 23c  
**PALMOLIVE SOAP** 3 Reg. Bars 17c  
**POTATO CHIPS** 3 10c PKGS. 25c  
**TOM'S TASTY** 2 Lb. BAG 29c  
**APRICOTS** 3 FOR 10c  
**FLY SWATTERS** 3 CANS 10c  
**CLEANSER** 3 CANS 10c  
**LIGHT HOUSE** 12c

**VEGETABLES STRICTLY FRESH VEGETABLES**

**BLACK EYE PEAS** FRESH — POUND 4 1/2c  
**LETTUCE** SOLID HEADS — EACH 4 1/2c  
**ORANGES** 288 size Dozen 15c  
**LEMONS** Dozen 19c

**BELL PEPPERS** FRESH STOCK—POUND 7 1/2c  
**TOMATOES** HOME GROWN — POUND 5c  
**CUKES** Long Green, Lb. 3 1/2c  
**LIMES** Dozen 15c

**WATERMELONS** ROUND BLACK DIAMOND FRESH, GREEN STEMS—POUND 1 1/2c

**SPUDS** 10 Lbs. Texas Reds 17c  
**OKRA** Home Grown, Lb. 10c  
**CABBAGE** New Green, Lb. 3c  
**SPUDS** 10 Lb. Gauze Bag Shaffers 33c

**JELLO** FREEZING MIX 2 CANS 19c  
**MATCHES** CRUSADER 6 BOX CTN. 15c  
**PRESERVES** BRIMFULL 2 LB. GLASS 35c

**MUSTARD** QUART MASON JAR 10c  
**PICKLES** SOUR OR DILL — QT. 12c  
**GLOCOAT** JOHNSON'S 1 1/3 PINTS 53c

**FLOUR** 24 LB. BAG LUCKY DAY 79c

**HY-PRO** QT. BOTTLE 12c

**Wax Paper or Paper Napkins** 2 10c PKGS. 15c

**PICNIC PLATES** DOZEN 9c  
**CORN** 3 No. 2 CANS 25c  
**QUICK MEAL** 3 CANS 25c

**VEGETOLE SHORTENING** 4 Lb. 37c 8 Lb. 73c

**WHITE SHOE POLISH** OIL-GLOW — BOTTLE 9c

**BUTTER** SOLIDS POUND 25c

**CANNED FRUITS**

**PINEAPPLE** Del Haven Cr. Or Sli, 2 1/2 Can 21c  
**COCKTAIL** 2 Tall Cans Fruit Cocktail 25c  
**APRICOTS** Large 2 1/2 Can Brimfull 15c  
**CHERRIES** 2 No. 2 Cans 25c  
**TOMATO JUICE** No. 10 Can 35c

**OLEO** Best Spread POUND 10c  
**STARCH** 3 10c Packages Faultless 25c  
**COFFEE** Break O' Morn POUND PKG. 14 1/2c  
**PEAS** Saylor Man NO. 2 CAN 10c  
**WON-UP** 3 No. 2 Cans 25c

**NO. 10 FRUIT**

**PRUNES** 23c  
**PEACHES** 35c  
**PINEAPPLE, Crushed** 57c

**Schilling's Tea** 19c  
10c Black Pepper Free 1/4 LB.

**GELATIN DESERT** WAUKESHE — 2 PACKAGES 5c  
**SHREDDED WHEAT** NATIONAL — PACKAGE 10c

**SALAD DRESSING** 19c  
SUNSHINE — QT JAR

**TOILET TISSUE** 5 ROLLS 19c  
**TEA** TETLEY'S 1/4 LB. PKG. 15c

## MEATS FIRST QUALITY MEATS

**SAUSAGE** ALL MEAT — POUND 12 1/2c  
**MINCED HAM** SLICED OR PIECE, Lb. 12 1/2c

**HAMS** WHOLE LB. 18 1/2c  
CENTER CUT SLICES — LB. 35c

**KRAFT CHEESE** 2 POUND BOX 48c  
**PIG LIVER** FRESH SLICED — POUND 10c  
**PORK STEAK** FRESH LEAN — POUND 17c

**STEAK** BEEF CHUCK — POUND 22 1/2c  
**BOLOGNA** SLICED OR PIECE — LB. 10c

**PORK CHOPS** LEAN END CUTS — LB. 17 1/2c  
**PIGS FEET** 14 OUNCE GLASS JAR, EA. 18c  
**BACON** SLICED LEAN — POUND 15c

**CHEESE** FULL CREAM NO. 1 LB. 16 1/2c

**BORDEN'S MALTED MILK** LG. CAN 29c

**ICE CREAM SALT** 4 Lb. Box 10c  
**VANILLA EXTRACT** Imitation 8 oz. Bot. 10c

**CAMAYE** 2 CAKES with 1 giant pkg. 57c  
**Prince Albert** CAN 10c

**ARMOUR'S MILK** 3 Tall Cans 18c

**BEANS** Fireside, Redi Cooked TALL CAN 10c  
**PORK & BEANS** Newport 16 OZ. CAN 5c

**BAK. POWDER** Dairy Maid, Bowl Free 25 OZ. CAN 21c  
**TALCUM** 3 CANS SWEET PEA 25c  
**FLY SPRAY** Rex QUART 33c PINT 17c

**MILCHELL'S** 541 S. CUYLER FREE DELIVERY

**DISTINCTIVE DOUBLES**

**FLYING HOME**

You'll feel like flying home too... if there's a sparkling glass of either ICED ADMIRATION COFFEE or TEA awaiting you. To refresh you... to really pep you up... nothing compares with ICED ADMIRATION!

Drink a glass between meals... for the pick-up that lasts!

ADMIRATION COFFEE has to be good... roasted from only the choicest highland grown coffees, it's always rich in invigorating goodness. Available in three distinct grinds to accommodate every type of coffee-maker.

FOR BEST RESULTS in making either iced coffee or tea... (1) Make brew double-strength. (2) Pour beverage over ice... do not add ice to beverage.

**Admiration COFFEE AND TEA**











SAY YOU SAW IT IN THE NEWS!

Classified Adv. Rates-Information. All want ads are strictly cash and are accepted on the phone with the positive understanding that the account is to be paid at earliest convenience.

Merchandise. 31-Radios-Service. HAVE that broken piece of furniture repaired. We can make any broken piece of furniture.

For Sale Real Estate. 58-Business Property. FOR SALE-Service Station on Highway 68, doing good business.

Automobiles. 62-Automobiles for Sale. FOR SALE-'36 Dodge pickup, '36 Ford Sedan '37s, '36 V-8 pickup '37s.

Hands Across the Political Fence



Senator Charles L. McNary, left, G. O. P. candidate for Vice President, is pictured in Washington, receiving Vice President Garner's congratulations on his recent nomination.

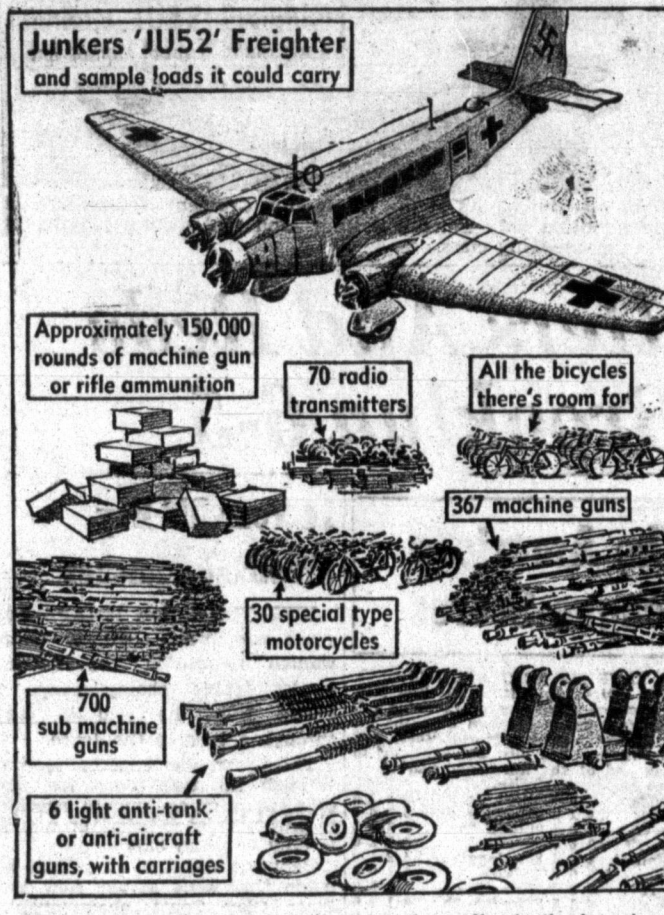
Landowners Favor Government Aid To Texas Tenants

COLLEGE STATION, July 12 (AP)—A heavy swing of sentiment toward long-term leases and government policies which aid tenants to become owners of small farms was reported here today by C. M. Evans, chairman of the farm tenancy committee of the Texas Agricultural Workers association.

Evans, regional director of the farm security administration, reported at the mid-summer meeting of the agricultural workers, taking his facts from a questionnaire which has recently been answered by more than forty county land use planning committees.

Whereas, the parties listed below did deliver to the undersigned as warehouseman for storage, and Whereas, at least ten days prior hereto the undersigned has given notice as required by law to these parties to come forward and pay storage charges on the said goods,

Sky Ferry for Invasion of Britain



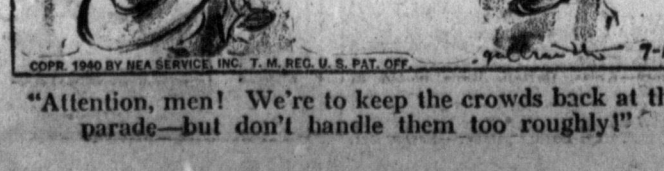
Nazi sky ferry for transport of men and supplies in the invasion of Britain is this Junkers freighter, capable of flying any of the above 7700-pound loads from German-held channel bases to England in less than a half hour.

Texas Delegation One Of Biggest At Chicago Convention

CHICAGO, July 12 (AP)—Delegates to the Democratic national convention began moving into town today, but as uncertainty of their ultimate destination as a ship's crew whose captain has seated orders in his pocket.

ON OUR LOT NOW!

1940 FORD COUPE About 5,000 miles. Carries new car guarantee. Liberal discount. \$495
1938 PLYMOUTH COACH Radio and heater. Very clean in every way. \$775
1939 MERCURY COACH Radio, heater and overdrive. \$585
1939 FORD DELUXE TUDOR Radio and heater, good tires and motor. \$525
1939 FORD COUPE Deluxe model. Nice black finish, spotlight and other extras.



Tom Rose-Ford. "Attention, men! We're to keep the crowds back at the parade—but don't handle them too roughly!"

GOVERNMENT LEADER

HORIZONTAL. Answer to Previous Puzzle. 1,7 Pictured president of the Philippines. 12 Burden. 13 Good-by. 16 To center. 17 Monster. 18 Place of worship. 19 To make a sweater. 20 Dower. 21 Freedom. 23 Abstract. 24 Note in scale. 25 Into. 26 Southeast. 27 South. 28 America. 29 El. 30 Data. 31 Type measure. 32 Spain (abbr.). 33 River. 34 Ship's record book. 36 Bluff. 39 To languish.

A 10x10 grid with numbers 1-60 in the cells. Some cells contain letters or symbols, possibly representing a crossword puzzle grid or a specific data table.

Announcements. 2-Special Notices. PROMPT, efficient service, expert workmanship. J. L. Clifford, Shelly Service Station, 4-Corner, Boyer Highway.

32-Musical Instruments. GUITAR, Accordion, hand instruments. Summer classes now being formed.

60-Investments. VACATION TIME! Need extra money—we can help by advancing you the money you need.

TEX EVANS BUICK CO., INC. Used Car Lot Opposite Post Office Phone 1817. '38 Buick 40s 4-d Sedan '36 Ford coupe '39 Buick 40s 4-d sedan '38 Olds coupe '37 Dodge 4-d sedan '38 Packard 4-d sedan

34-Good Things to Eat. FRYERS for Sale-R. Trucote, 304 S. Finley. THE Killarney is the place to go to enjoy good food, fountain service or beer.

36-Wanted to Buy. CASH paid for used furniture, men's clothing, guns and etc. We call at your home.

63-Trucks. FOR SALE OF Trade-New 1940 Dodge pickup, abundant, new and used cars.

64-Accesories. WE ARE distributors for Willard batteries the battery with longer life. Pampa Lubricating Co., 802 W. Brown.

39-Livestock-Feed. THE freshest and best feed in town at low prices. Comar and Co., 607 E. 2nd St.

41-Farm Equipment. FOR SALE-Three used John Deere tractors, ready to go. Osborn Machinery Co., 500 West Center.

65-Repairing-Service. WOODIES-Does your car use oil? The Woodies. Guaranteed rmg jobs, 203 W. Kingsmill, Phone 48.

66-Tires-Vulcanizing. NO Wonders everybody's doing it! It's the economical thing to do. Have those tires retreaded today. G. K. Rubber Co., 635 S. Cuyler.

42-Sleeping Rooms. DESIRABLE front bedroom, convenient bath. Rent \$15.00. 704 East Francis, Phone 1392.

43-Room and Board. VIRGINIA Hotel serving meals, packing lunches, have meals, 1500 N. Frost.

67-Clean Used Cars. 1937 FORD Tudor 1935 FORD Tudor 1937 PLYMOUTH 4-door

ANSWER TO CRANIUM CRACKER. Questions on Editorial Page. 1. (a) Leonardo da Vinci; (b) Raphael; (c) Hobbema; (d) Corot; (e) Millet.

44-Apartments. FOR RENT-3 room modern furnished house, bills paid, 545 East Locust St.

45-Room and Board. NEW 2 room furnished or unfurnished modern house, bills paid, 635 S. Somerville.

68-Good Clean Used Cars. 1937 PONTIAC Sedan 1937 ROYAL CHRYSLER Sedan 1934 FORD Coach

NOTICE TO BIDDERS. Bids on the electrical work for the new high school building will be received by the Board of Trustees of the Pampa Independent School District at 2 p. m. on July 22, 1940.

46-Houses for Rent. REASONABLE two-room furnished house, close in, 401 W. Foster.

47-Apartments. FOR RENT-3 room modern furnished, furnished, including electric ice box, close in, all bills paid, couple only, \$6 per week.

69-Used Cars. 1937 Chev. Twn. Sedan \$375 '37 Chevrolet Coupe \$350 '36 Ford Sedan \$300 '37 Chevrolet Coupe \$300 '38 Chev. Del. Spt. Sed. \$525 '38 Chevrolet Coupe \$425

LOOK OVER THESE USED CARS. Terms Can Be Arranged. Culberson-Small Chevrolet Co. Ph. 366

48-Houses for Rent. REASONABLE two-room furnished house, close in, 401 W. Foster.

49-Apartments. FOR RENT-3 room modern furnished, furnished, including electric ice box, close in, all bills paid, couple only, \$6 per week.

70-Clean Used Cars. 1937 FORD Tudor 1935 FORD Tudor 1937 PLYMOUTH 4-door

71-Used Cars. 1937 Chev. Twn. Sedan \$375 '37 Chevrolet Coupe \$350 '36 Ford Sedan \$300 '37 Chevrolet Coupe \$300 '38 Chev. Del. Spt. Sed. \$525 '38 Chevrolet Coupe \$425

50-Houses for Rent. REASONABLE two-room furnished house, close in, 401 W. Foster.

51-Apartments. FOR RENT-3 room modern furnished, furnished, including electric ice box, close in, all bills paid, couple only, \$6 per week.

72-Clean Used Cars. 1937 FORD Tudor 1935 FORD Tudor 1937 PLYMOUTH 4-door

73-Used Cars. 1937 Chev. Twn. Sedan \$375 '37 Chevrolet Coupe \$350 '36 Ford Sedan \$300 '37 Chevrolet Coupe \$300 '38 Chev. Del. Spt. Sed. \$525 '38 Chevrolet Coupe \$425

SIDE GLANCES By GALBRAITH

1. Freedom. 2. Abstract. 3. Note in scale. 4. Into. 5. Southeast. 6. South. 7. America. 8. El. 9. Data. 10. Type measure. 11. Spain (abbr.). 12. River. 13. Ship's record book. 14. Bluff. 15. To languish.

A 10x10 grid with numbers 1-60 in the cells. Some cells contain letters or symbols, possibly representing a crossword puzzle grid or a specific data table.



SERIAL STORY PEACE--SHE'S WONDERFUL BY ISABEL WAITT

YESTERDAY! Denny leaves the train, gets a plane, flies back to Peace... CHAPTER XI BUT that could come later. Just now the one idea was to catch the train. It waited 20 minutes at Winslow. Missing it, they would keep on to Flagstaff, the pilot said.

OUT OUR WAY BY J. R. WILLIAMS



OUR BOARDING HOUSE with MAJOR HOOPLE



Scouts Present Colors At Lions Club Installation

For the first time since it was officially opened on July 4, Lake McClellan was the scene of the installation of officers of a Pampa club, when Pampa Lions installed their officers at a banquet and ladies night program held Thursday night in the recreation building at the lake, 25 miles south of Pampa. Attendance was 100.

Worst Public Speaker

Ralph Waldo Emerson wrote of himself as "the worst known public speaker, and growing continually worse," yet he lectured 40 successive seasons before the lyceum of Salem, Mass. It is unusual for any locality to have perfectly normal weather.

Britain Recognizes Selassie Government

LONDON, July 12.—Great Britain has decided to recognize the government of Emperor Haile Selassie "as the lawful government of Ethiopia," R. A. Butler, under-secretary for foreign affairs, informed the house of commons today.

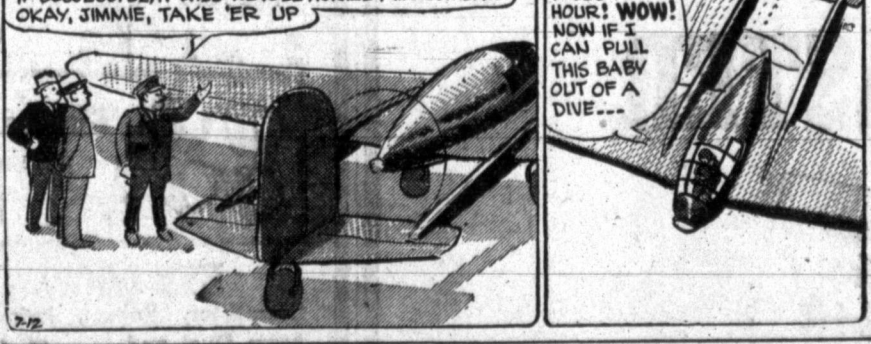
FUNNY BUSINESS



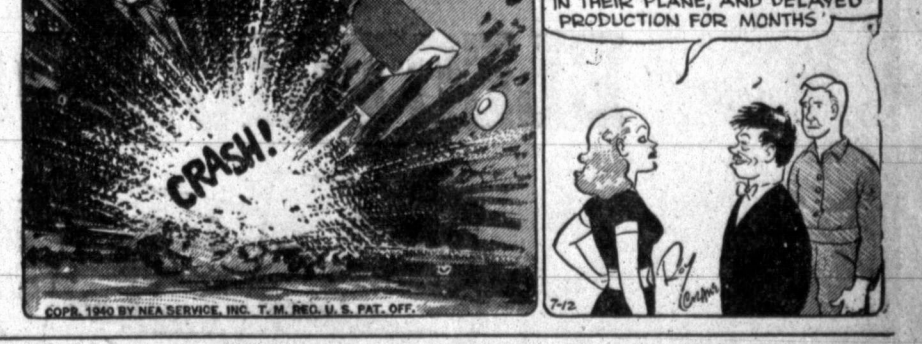
LI'L ABNER



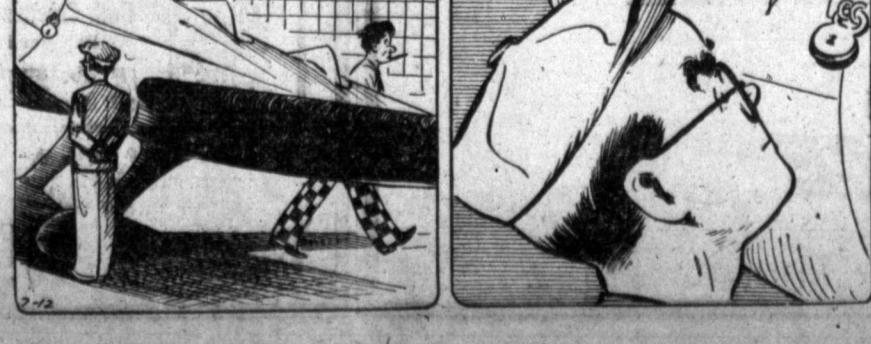
WASH TUBS



The Hand of Evil



BOOTS AND HER BUDDIES



Final Notice





### Dies Claims Un-American Activity In Texas Widespread And Unique

AUSTIN, July 12—(P)—Investigations of the Dies committee and state police dug into reams of letters and reports today in search of witnesses for a broadened investigation of un-American operations in Texas.

is more subversive activity in Texas than we thought.



### PRATT & LAMBERT HOUSE PAINT

North—South, East or West—it's all the same to P&L House Paint. It withstands the extremes of weather, more economical than cheap paint because it looks better and lasts longer. Come in and see panels. Ask for color card.

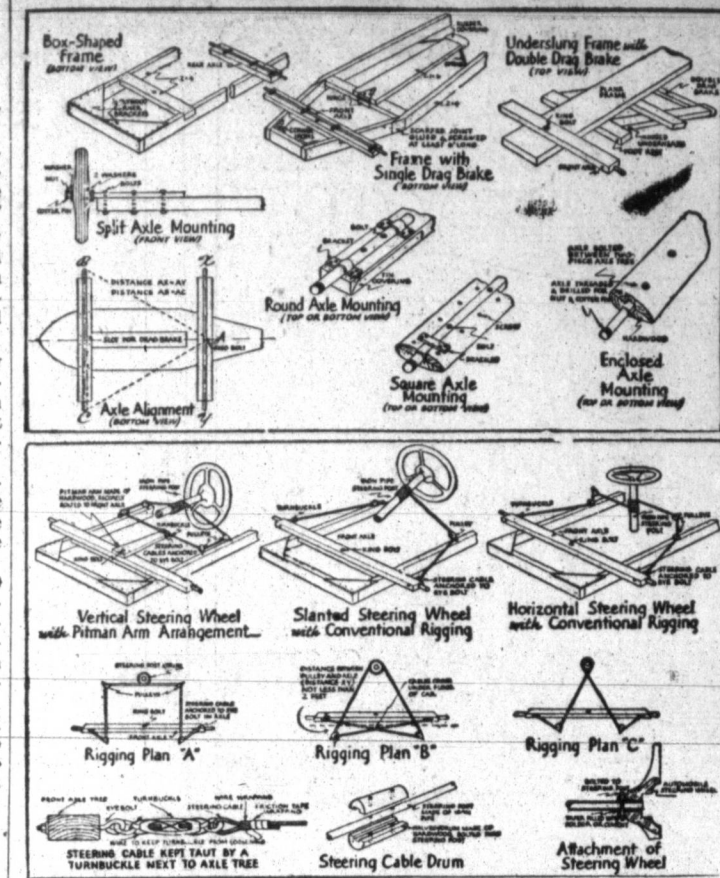
Now! 315 GALLON IN 5 GAL. CANS

### HOME BUILDERS SUPPLY COMPANY

312 W. Foster Ph. 1414 "Let Us Recommend A Reliable Painter"

TIME DEALS GENTLY WITH PRATT & LAMBERT PAINT

### FRAME AND STEERING



Suggestions on frame construction are offered here for Soap Box derby builders. In the upper picture, any plan is suitable, provided it affords sufficient strength and makes for a smoothly streamlined car. These

### Five Die As Fire Traps 30 Residents

CINCINNATI, July 12—(P)—Five persons died and at least two others were burned severely as fire early today trapped 30 residents and employees on the third floor of the Holy Family Home, a branch of St. Francis hospital.

### Favors Will Speak In Wheeler County

Ennis Favors will speak tomorrow in Mobeetie at 2 p. m. Wheeler 3:30 p. m. and McLean at 4:45 p. m. using a public address system and talking from the street in behalf of his candidacy for state representative, 122nd district, composed of Collingsworth, Donley, Gray and Wheeler counties.

### 4,329,213 Tons British Shipping Sunk, Say Nazis

BERLIN, July 12 (P)—The German high command reported today that 4,329,213 tons of "enemy merchant shipping space or shipping space useable by the enemy" have been sunk by German naval and air action since the start of the war.

The total given by the high command amounts to more than half the total tonnage lost by Great Britain in the entire World War—7,830,785 tons.

The daily communique, giving new point to Germany's declaration of a "starvation blockade" of the British Isles, divided the sunken shipping space as follows:

By torpedo hits and mines 1,920,439 tons. By surface craft and naval means 1,362,461 tons. By the air force 1,046,313 tons.

Renewed assault on airports, harbors and war industries in southern and central England and the sinking of four merchant ships and a tanker in the English channel were marked up to the credit of German fighting planes and dive bombers.

None other merchant ships were reported "severely damaged."

Thus, declared the high command, Germany's successes in the economic warfare have "reached a height perceptible to England."

The German figures presumably include all Allied and neutral shipping space which Germany has destroyed, not merely British, British

losses acknowledged thus far total nearly 4,000,000 tons. The German claim would represent a monthly average of about 400,000 tons of shipping space sunk in the present war, now 10 months old.

### France Source Of Worry To Americas

WASHINGTON, July 12 (P)—France's shift toward authoritarian government spurred consideration today of measures designed to prevent the aggressive use of any European possessions in the western hemisphere.

Germany's successes in the European war and the attitude she has shown toward the Monroe Doctrine already had made the future of these territories one of the most urgent problems for the Pan-American conference opening at Havana July 20.

It assumed an even more serious character with the French decision to abandon her republican form of government.

This led to increasing concern in official quarters here that France may fall still further under German domination and possibly enable the Nazis to gain a foothold in her western hemisphere possessions without actually acquiring them.

Still another disturbing factor was the diplomatic pressure which Secretary Hull said Germany was putting on Latin American countries to prevent any action at Havana aimed directly or indirectly at the Reich.

Dragons fly backward and sideways without altering the position of their bodies.

### New Methods Of 'Sewing' Planes Together Found

By DEVON FRANCIS Associated Press Aviation Editor

LOS ANGELES, July 12—A method of "sewing" together the metal parts of today's complicated warplanes, which promises to accelerate manufacture as the nation drives for a production rate of 50,000 machines a year, is well beyond the experiment stage in our aircraft factories.

The sewing is an effective spotwelding process for the aluminum alloys which go into almost all modern warplanes.

This does not mean that the aircraft plants will begin turning out machines by the wholesale next week or even next year.

It does mean that, very slowly, the plants are overcoming some of the manufacturing "bottlenecks" now becoming evident as the government seeks to gear them to national defense needs in what has been termed a period of limited emergency.

The old method, which is the riveting together of metal planes by small armies of skilled and semi-skilled workmen is a production bottleneck which has grown up over a long period of years. Faster methods of fabricating did not lend themselves readily to the manufacture of planes in small lots of 100 or 200.

Each aluminum alloy rivet—there

are 229,000 of them in a medium-weight bomber—was heated and then put in a dry ice refrigerator. It is a characteristic of the metal that heating and sudden cooling will make it soft and workable. Brought from the refrigerator and tapped into a plane's fuselage, wings or control surfaces, the rivet expands and hardens.

The spot welds take the place of rivets.

Now the spotwelding of aluminum alloys is cutting down both manufacturing costs and the total period required to complete a plane.

Rainbows appear in a multitude of forms. They vary in width, and in number and order of colors. A sheet of water, as well as a sun which is reflected by such a surface, may give us a primary and secondary reflected rainbow in the sky, intersecting the real rainbow.

Many of the world's great harbors would be useless without the moon, since there would be no tides of importance.

### Friday and Saturday SPECIAL At Our Store

Lemon and Lime Cake 31c

The tempting tang of fresh, whole lemons flavor this feathery light layer cake and a luscious fresh lime icing frosts it thick all over.

Dilley Bakeries 308 S. Cuyler

NOTICE Have you tried the Belmont Office Supply? Guaranteed Adding Machine and Typewriter Service 110 E. Foster Tel. 744

## CITY DRUG STORE

FREE WE MAKE FREE DELIVERY ON ORDERS OF 50c OR MORE

The CITY DRUG STORE'S summer sale is now on. We offer you a complete line of summer items at a remarkably low price. Be prepared for that Vacation or outing. Prices Good Friday through Monday.

Unguentine For Sunburn 50c Size 37c SQUIBB'S Sunburn Cream 35c Size 29c MOSQUITO LOTION Prevents Mosquito and other insect bites, 25c Size 19c

ASPIRIN BAYER'S 15c SIZE 9c HAIR OIL FITCH'S 25c SIZE 14c

MURINE FOR EYES 60c SIZE 39c

Chamberlain's Lotion 50c Size 29c COLOGNE FRIENDSHIP'S GARDEN A New Odor by Shulton The Maker of Old Spice 75c Size 39c POPULAR PRICED AT \$1.00 79c

BASEBALL Special League Guaranteed Rubber Center 39c

Bathing Caps 29c to 59c Assorted Colors—Styles

Outing Jug Well Insulated Gal. Size \$1.49 Special

Golf Balls Spaldings Top Flite or Kro Flite 3 for \$1.79 Tennis Balls Spaldings or Dunlop Sealed Cans 3 for \$1.29

Glasses For the Eyes 15c to \$2.00

EYE DROPS Eyemaster, Relieve Irritation From Dust and Sun, New Dropper Pkg. for Travel 49c

Wrisley's Bath Crystals Perfumed 5 Lb. 59c

Cool Off With A BATH SPRAY FITS ALL FAUCETS 39c

Vaccinate Now with ANCHOR Mixed Bacterin for Poultry Supplied by this store for your convenience.

PINKEYE SERUM, Per Dose 8c BLACKLEG SERUM, Per Dose 8c KRESO DIP, Quarl 59c

Liquor Specials At City Package Store OLD JUG BOURBON, Pr. 98c RYTHM GIN 89c KING ARTHUR \$1.00 GIN, Pint

OUR ORIGINAL Grape Cooler The Coolest Drink in Town 10c

Cold Plate Lunch Assorted Cold Meats Potato Salad, and Boston Baked Beans 25c

CLEANSING CREAM 40c Skin Freshener Free REG. \$1.40 VALUE \$1.00 39c

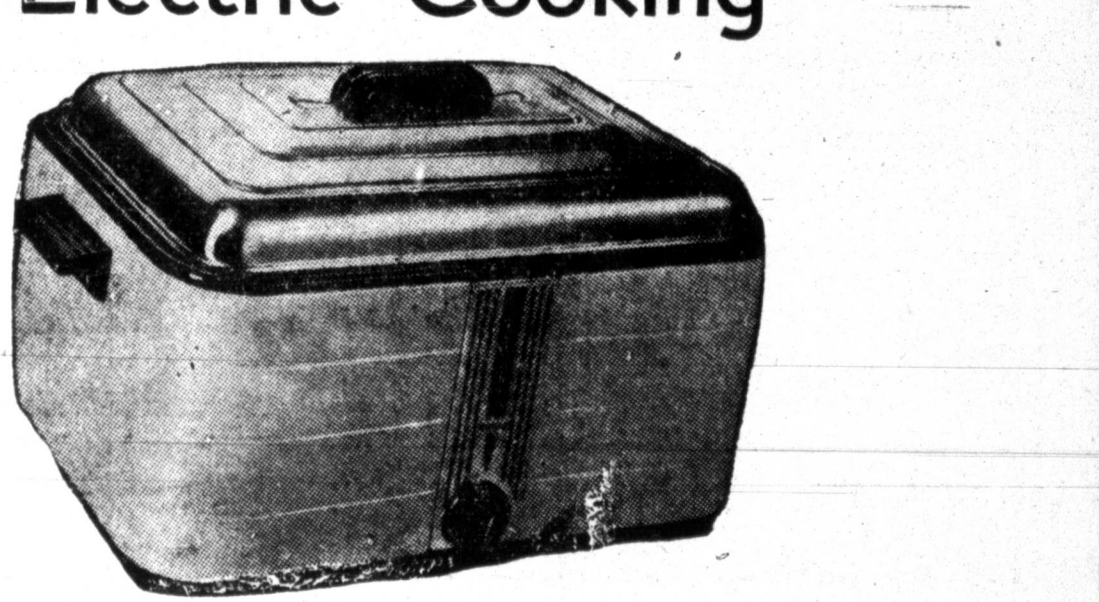
SYRUP PEPSIN 60c Size 39c

CLEANSING TISSUES Soft and Absorbent 500 Sheets 19c

Mentha Gil Powder \$1.00 Size 49c

FOR THE YOUNG REBEL... who refuses to wear full-length socks, even in winter... we suggest AIRMATE ANKIES in generous quantities. Aided and abetted by a comfortable garter top, they hug the leg just above the ankle. In gift wrap. 35c and 50c

## The Purse-Easy Way To Electric Cooking



Easier Cooking—Easier Living WITH AN

## ELECTRIC ROASTER

cook without watching in a cool kitchen clean without work

COOKS EVERY WAY--GOES EVERYWHERE SEE YOUR DEALER

Southwestern PUBLIC SERVICE Company