



JUDGES ATTEND SEMINAR- Ninety-six justices of the peace attend a 20-hour Texas Justice of the Peace Training Seminar recently in Amarillo. The training center is based at Southwest Texas State University in San Marcos. The seminars are held in compliance with article 5827, Section B of the Texas Revised Civil Statutes. Among the judges attending were left to right, Arnold C. Davis of Panhandle, Carson County, Precinct 1, Place 1, Max Wade of Groom, Carson County, Precinct 5, Place 1, Becky Hobson of Skellytown, Carson County, Precinct 6, Place 1.

Door-to-door investigation launched in child deaths

ATLANTA (AP) — Five hundred police and firefighters, looking for any shred of evidence that might prevent another killing, were launching a door-to-door canvass of Atlanta today in the investigation of the slaying of 10 black children.

Meanwhile, the City Council was meeting to consider imposing an 11 p.m. curfew for children under 15 and a \$20,000 appropriation to a reward fund that already totals more than \$50,000 in state and private contributions.

The body of the 10th victim — a 7-year-old girl — was found Saturday in a vacant lot by volunteers who signed up to kick through weeds and brambles in search of bodies and clues. Organizers of the search said the biracial effort by hundreds of blacks and whites had helped ease racial tensions produced by the slayings.

Four other children are missing. The volunteer searches are to continue each Saturday, while the daily door-to-door canvass is assigned to uniformed police officers. Homes missed by police will be visited by firefighters.

"We'll be using our regular beat officers, any officer on duty between 9 a.m. and 9 p.m.," Public Safety Commissioner Lee P. Brown said Sunday night. "When they are not responding to calls for service, they will be, in a systematic way, checking their areas."

About 250 officers and 250 firefighters are taking part. They will leave at each home materials designed "to provide every household with safety tips so we have no more of our

children becoming victims," he said.

The brochures include "an easy way to write down a description of any person who acts suspicious, including color of hair, color or clothing, like that," he said.

Officers will ask citizens to "think back in the past, when something may have happened, that may not have been considered significant," Brown said.

The police canvass will be similar to one used in New York's investigation of the "Son of Sam" killer.

"They put 1,000 men on the task force there, and the thing that turned up was a traffic ticket" that led to the killer, said Bill McKenney, an assistant to Atlanta Police Chief George Napper. "Just one little lead and it could all come together."

Brown said police hope the weekend discovery of the body of Latonya Wilson, who had been missing since June 22, might turn up a new clue to the killer. But it might not be possible even to fix the cause of her death, because the body was decomposed, officials said.

Fourteen children disappeared in the period since July 1979.

"We're not overlooking any possibility," Brown said, when asked whether police were finding any connection between the deaths. "Based on the evidence, we cannot conclusively say any one person is responsible, but we do not rule that out as a possibility."

Carter, Reagan each declare as 'peace candidate'

President Carter and Ronald Reagan laid out cold, hard cash on the campaign trail, and then both came down on the side of peace.

"Peace is my passion ... peace is my pledge," the president declared in a radio speech Sunday for which he purchased time on the Mutual Broadcasting System.

Reagan, for his part, said during the half-hour that he bought on CBS television that he shares with all Americans "the deep and abiding hope for peace."

Each man also tried to portray the other as more likely to get the nation into war. Reagan said Carter had allowed the nation's military strength to erode, and Carter declared that Reagan's policies could lead toward "the nuclear precipice."

Independent presidential candidate John Anderson, meanwhile, spoke before a Jewish group in the Chicago suburb of Evanston and warned of growing anti-Semitism.

"An attack on the Jewish people is by implication an attack on us all," Anderson said. "If we do not draw the line here and now, we can't draw it anywhere."

Carter and Reagan left the paid airwaves today to head out on the campaign trail, the president to Pennsylvania, Ohio and New York, and his Republican rival to Ohio, Kentucky and Illinois. Anderson speaks tonight in Schenectady, N.Y.

The president's trip today into the industrial Northeast follows a staff assessment that Reagan's forays into the traditional Democratic strongholds may be producing few results among the blue-collar voters he's fighting so hard to win.

White House press secretary Jody Powell said Sunday that "everything we see shows those people starting to come back home."

Without citing specific poll findings, Powell said recent surveys showing Carter pulling closer to Reagan found that "the biggest movement has come among blue-collar workers."

In the radio speech Sunday, for which he paid \$22,000, Carter maintained that Reagan was advocating measures that could move the nation closer to nuclear war.

"Over the last 20 years, we

have taken some tentative steps away from the nuclear precipice. Now, for the first time, we are being advised to take steps that may move us toward it," he said.

Behind the president's argument that Reagan's proposals could push the United States toward the "nuclear precipice" was the GOP candidate's comment in an interview last month that "the one card that's been missing" in strategic arms limitation talks "is the possibility of an arms race."

The president defended his advocacy of the SALT II treaty, which he likened to "a secret weapon" that would eliminate one-fourth of the Soviet long-range missiles and bombers projected for 1985; reduce the number of Soviet nuclear bombs and warheads, and enhance U.S. opportunities to monitor Soviet armament developments.

In an interview Friday with The Associated Press, the president said he would resubmit the treaty to the Senate for ratification after the election. He also said Reagan's call for nuclear superiority "is

not only dangerous, but it's ridiculous."

Carter also suggested that in the Oct. 28 presidential debate each presidential candidate should be allowed to directly question the other.

In the half-hour TV address for which the Reagan campaign did not release the cost, the Republican accused President Carter of a "litany of fear." Carter is trying to "scare people through innuendoes and misstatements of my position," Reagan said.

Octoberfest set by Shamrock Chamber

Artists and craftsmen from across the area are being invited to participate in the "OCTOBERFEST" on Oct. 25-26.

Sponsored by the Shamrock Chamber of Commerce, the show is being conducted to benefit youth projects.

A booth space of 8 feet by 12 feet will be available for \$10. This area will be furnished with a table and two chairs. A unfurnished booth space of 8 feet by 12 feet will be available for \$7.50.

Setup time will be Friday, Oct. 24, after 3 p.m. or on Saturday Oct. 25, before 9 a.m.

Awards will be given in various categories in both adult and children division.

Demonstrations will be held throughout the show.

For more information contact the Shamrock Chamber of Commerce, 121 North Main, or call 806-256-2501.

Freighter crash closes harbor

CORPUS CHRISTI, Texas (AP) — Coast Guard and port firemen today began pumping ballast water out of a Greek-registered freighter that had heeled over and slammed into a wharf, closing the Port of Corpus Christi to ship traffic.

"They are in the process of getting to the free water above the No. 3 ballast hoping when they pump it out it (the ship) will right itself some," duty officer Lt. James R. Watson said early today. "They will be pumping water on and off to help right it."

The 483-foot "Good Master" tipped over and crashed into the wharf about 6:30 a.m. Sunday as the crew shifted ballast and prepared to leave the port. Coast Guard officials said.

The harbor master immediately closed the port to ship traffic to avoid the possibility that the wake from a passing ship would drive the listing freighter further into the wharf and eventually roll it over.

The ship was tilted at about a 40-degree angle Sunday night before the pumping operation got underway, officials said.

Loaded with sorghum, the vessel was scheduled to depart at 2 a.m. Sunday when Coast Guard inspectors noticed an oil slick near the ship and delayed departure.

Authorities said inspectors

and the crew were on board when the ballast initially shifted and about 25 crew members jumped from the ship to the wharf. The Coast Guard said the ship's captain and one crew member sustained broken legs while jumping to safety.

Nazi rally ends in rout

EVANSTON, Ill. (AP) — It was supposed to be an hour-long demonstration of Nazi party strength and white supremacy. But it was over in five minutes for 11 brown shirts who were pelted by rocks and eggs by thousands of counter-demonstrators and decided to beat a hasty retreat under police protection.

Six arrests were reported on charges varying from disorderly conduct to aggravated battery.

Evanston Police Officer James Boone was struck on the leg by a brick and released after hospital treatment. He was the only person reported injured.

The Lovelace Park confrontation Sunday came after a two-mile march by 2,000 people who attended an anti-Nazi rally at Northwestern University.

The largely Jewish crowd there gave independent presidential candidate John B. Anderson, an Illinois congressman, a warm greeting as he called for an end to "the blot of anti-Semitism in America."

"We ignore, at the peril of all we hold dear, the resurgence of anti-Semitism in America," Anderson said. "An attack on the Jewish people is by implication an attack on us all. If we do not draw the line here and now, we can't draw it anywhere."

Several people at the rally wept as they sang Hebrew songs proclaiming "Israel lives" and

"Let My People Go." Many of the speakers, who stood above signs admonishing spectators to "Remember Auschwitz" and other Nazi-run concentration camps, paid homage to those who died in the Holocaust and warned of a recent upsurge in anti-Semitic activity around the world.

"(We are) Jews who will never forget what Nazism did to us," said Sol Goldstein, chairman of the Public Action Committee on Individual Liberty and Jewish Security. "Not in Jerusalem, not in Paris, and not in Evanston." The crowd cheered.

At Lovelace Park, the mood was ugly as counter-demonstrators gathered to shout at the members of the National Socialist Party of America and hang a brown-shirted effigy from a tree. "Hoodlums! Hoodlums!" one man shouted at the Nazis while other men threw rocks, eggs and tomatoes and shouted "Death to the Nazis."

The 11 Nazis were backed to a park restroom wall by the barrage and were forced to duck continuously behind swastika-marked shields. As the Nazis abandoned the area, they were pursued by spectators.

Police in full riot gear stood by the Nazis and surrounded the park. More than 200 police officers, state troopers and sheriff's officers closed in on the counter-demonstrators and forced them back behind police lines while the Nazis climbed into two cars and drove away.

CINEMA III
Coronado Center 665-7726
Doors Open at 6:30 p.m.

In Memory of Peter Sellers:
2 of His Finest Motion Pictures— \$3 Adults
DOUBLE FEATURE \$1.50 Child
Both Movies only

One Week Only

"THE PINK PANTHER STRIKES AGAIN"
PANAVISION COLOR by DeLuxe United Artists
AND
"REVENGE of PINK PANTHER"

Show Times: 7:00, Ends 10:20, Matinee 2 Sat., Sun.

HURRY! LAST 4 DAYS

BURT REYNOLDS JACKIE GLEASON
The all new adventure ...
SMOKEY AND THE BANDIT II

PG A UNIVERSAL PICTURE
Show Times: 7:15, 9:15; Matinee 2:10 Sat., Sun.

"How did you die, Joseph? Did you die in this house? Why do you remain?"

THE CHANGELING

R
Show Times: 7:30, 9:30; Matinee 2:20 Sat., Sun.

Conserve energy

Fite Food
1333 N. Hobart AFFILIATED 665-1092 or 665-8842

Prices Good October 20 Through October 25

Heavy Beef CHUCK ROAST Lb. \$1.59	BEEF CUTLET Lb. \$2.19	DECKER BOLOGNA Lb. \$1.49
Country Pride Split FRYER BREAST Lb. \$1.29	Country Style, Lots of Meat PORK RIBS Lb. \$1.39	Frozen Hamburger Patties 5 Lb. Roll \$6.95

BEEF AND PORK FOR YOUR HOME FREEZERS
WE DO CUSTOM PROCESSING

32 Oz. Bottles COCA-COLA 6 Bottles \$2.25 Plus Dep.	Shurfresh LARGE EGGS Grade A Doz. 75c	Shurfine COFFEE All Grinds 1 Lb. Can \$2.69
Assorted Flavors ICE CREAM 1/2 Gallon \$1.79	Shurfine Mandarin ORANGES 11 oz. can 59c	Shurfine WAFFLE SYRUP 32 Oz. Btl. 95c
Shurfresh OLEO 2 1/2 Lb. Pkg. 75c	Shurfine SPINACH 16 oz. can 39c	Shurfine SALAD DRESSING Qt. Jar 98c
Shurfine FLOUR 5 Lb. Bag 85c	U.S. No. 1 Russett POTATOES 5 Lb. Bag 69c	Ste-Fresh Hamburger or Hot Dog BUNS 8 Count Pkg. 59c
Ste-Fresh or Tender Crust BREAD 1 1/2 Lb. Loaf 59c	Shurfine Fresh Shelled BLACK EYE PEAS 16 Oz. Can 37c	Shurfine Steaks and Pieces Mushrooms 4 Oz. Can 69c
Washington Red Delicious APPLES Extra Fancy Lb. 39c	California Paschal CELERY Lb. 25c	California BELL PEPPERS Lb. 39c
Texas YAMS Extra Fancy Lb. 35c	Colorado Sweet YELLOW ONIONS Lb. 19c	Texas Green CABBAGE Firm Heads Lb. 15c

Call for HELP!

If you've tried everything else and can't lose weight, call the Professionals! Help is as near as your phone! New Program! No Injections!

CALL NOW:

Pampa
665-7161

Professional Reducing Centers
All major credit cards accepted. Student and military discounts available.



Consumers advised to watch insurance rates

By LOUISE COOK
Associated Press Writer

The Federal Trade Commission has been forced to stop its efforts to regulate the sale of life insurance. But consumers can regulate their own purchases to get the most for their premium dollars.

The FTC had proposed that state insurance commissions require companies to provide more information about the cost and rate of return on different types of policies. The proposal died when Congress passed legislation reaffirming its policy of leaving insurance regulation solely up to the states, and ordering the FTC to study insurance only if it is asked to do so by committee of the House or Senate.

The congressional action followed an FTC staff report which was sharply critical of the industry. Insurance companies challenged the report and accused the FTC of basing its study on false assumptions.

At the center of the controversy is the argument over term insurance versus whole-life policies. Each has advantages and disadvantages.

Term insurance provides a fixed amount of protection for a fixed period. After the term expires, you have no more protection unless you get another policy. Premiums are relatively low when you are young, but increase as you get older.

Whole-life policies provide protection for as long as

you live. They also build up cash values. You can borrow against them and, if you decide you no longer want the insurance, you can discontinue the policy and take the accumulated cash. Premiums for whole-life policies generally are higher than those for term insurance, but they are fixed and do not increase as you get older.

The FTC described whole-life policies as a combination of insurance and savings and it said the average rate of return on the savings portion of most policies was under 2 percent a year.

The American Council of Life Insurance said the FTC calculations were wrong. It said the average rate of return was closer to 6 percent. The council also said that whole-life policies are NOT savings or investments.

John H. Filer, chairman of the board of Aetna Life & Casualty of Hartford, Conn., summed up the council's position when he testified before the Senate Commerce Committee last October. "Whole-life insurance is not partially insurance and partially savings," he said. "It is wholly insurance. It is not designed to provide for the possibility of economic gain in return for a risked sum of money. That's an investment. Nor is it designed to accumulate deposits of money building toward an individual or family goal so long as the depositor remains alive to make the deposits. That's a savings account..."

The Better Business Bureau's "Guide to Wisely Buying" says that no matter which type of insurance you choose, it is important to shop around. "Compare the cost of similar policies offered by a number of firms. Premiums vary substantially," says the BBB. Ask how long it will take you to build up cash value in a whole-life policy. The FTC said that 45 percent of the people who buy whole-life policies drop them within 10 years and many of them lose money.

Four hospitalized in crash

MOUNTAIN HOME, Ark. (AP) — Four Texans remained hospitalized early today with injuries they received Sunday when a light plane clipped an electrical transmission cable and crashed at a north-central Arkansas resort, authorities said.

Taken to a Bull Shoals hospital were Joe Kemp, 61, the pilot; his wife Maxine, 58, both of Grapevine, Texas; and Bill and Teka Davis, both 60, of Roanoke, Texas. They were treated for cuts and bruises and were reported in stable condition.

State police trooper Bill Carver said Kemp took off from Gaston's Resort on the White River at about 10:45 a.m. Sunday in a 1955 model 170 Cessna. Gaston's is about three miles southeast of Bull Shoals Dam, near the Baxter-Marion county line.



EDGAR VISITS COMMUNITY DAY CARE CENTER. Edgar the Ghost has settled in as a seasonal visitor of the Community Day Care Center. Most of the children seem to accept his presence, however, Dee Riggins, hesitates to join his friends for a Halloween picture. From his vantage point behind the door facing, Dee watches as his playmates pose with the ghost. Back row, from left, are: Brenda Caples, Nicole Brown, and Lee Ann Calder. From row, from left, are Christina Blackwood and LaRanda Landers. (Staff Photo)

Trial in grisly murder opens in McKinney

McKINNEY, Texas (AP) — A petite, curly-haired housewife was in court here today — charged with hacking a family friend to death with a three-foot ax.

The murder trial of Candace Montgomery has shaped up to be one of the most notorious in this North Texas city. But State District Judge Tom Ryan says he intends to keep a tight rein on the proceeding.

The grisly murder ignited national interest shortly after the bloodied body of Betty Gore was found in her Wylie home June 13. Mrs. Montgomery, described as an active church

member, a devoted mother and a friend of the victim, surrendered to police two weeks later.

Ryan assumed jurisdiction in the case and almost immediately slapped a gag order on all participants, promising to enforce the order with a contempt of court citation for anyone who talked to reporters.

He also drew criticism from attorneys when he refused a motion for a change of venue and opted to keep the trial here in Collin County.

"It doesn't surprise me when someone calls me a petty dictator," Ryan said on the eve of the trial. "I could care less."

EXPERT CLEANING SERVICE
Denim Suits & Levis
VOGUE
Drive-In Cleaners
1542 N. Hobart
PHONE 669-7500

Names in the news

NEW YORK (AP) — Christian Barnard, the surgeon who prolonged some lives with pioneering heart transplants, says he believes suicide may be the best form of treatment for some terminally ill patients.

"Death is not the enemy. Often it is good medical treatment," Barnard says in his forthcoming book, "Good Life-Good Death."

Barnard is planning to arrive in New York next month to promote the book and campaign for acceptance of euthanasia, the Daily News said today.

"I feel that society is ready to take a giant step toward a better understanding of the dignity of death — and in the attainment of that dignity, if necessary, through the acceptance of euthanasia and suicide," Barnard said.

NEW YORK (AP) — Going on a diet is not easy for anyone, but it is especially tough if you're a food critic or chef.

"I don't trust thin food critics," says Mimi Sheraton, critic for The New York Times.

"Either they have an incredible metabolism or they don't have a real passion for food," she says in an interview in the current issue of People magazine.

Nonetheless, Miss Sheraton, 54, is on a diet. Last May, her 5-foot-5 frame carried 197 pounds and she took the summer off to shed 50 or 60 pounds. She's at about 160 now.

BREEZEWOOD, Pa. (AP) — Convicted Watergate conspirator G. Gordon Liddy says former White House counsel John Dean wasn't worth the cost of the bullet it would have taken to kill him.

"The price of a 9-mm round, due to inflation, has gone to 20 cents. He's not worth the price of blowing away," Liddy said Sunday at a news conference during a meeting of the Independent Truckers Association. Liddy spoke to the group.

Liddy gained notoriety during the Watergate scandal because he refused to divulge details of a scheme to break into the Democratic National Headquarters in Washington. The burglary and cover-up sent Liddy to jail and forced Richard Nixon to resign the presidency.

Dean, former White House counsel, made key disclosures that helped investigators unravel the cover-up.

Liddy was paroled from prison in 1977 after serving 52½ months of a 21-year term. He got off parole last week.

Firefighters held at bay

FORT WORTH (AP) — A shotgun-wielding Fort Worth woman was jailed late Sunday after she held police and firemen at bay outside her ex-husband's burning house, authorities said.

No one was injured in the outside fire.

STEVEN J. DAVIS D.O.P.A.
600 W. KENTUCKY, PAMPA, TEXAS

IS PROUD TO ANNOUNCE THE ASSOCIATION OF
KEITH BLACK, D.O.
SPECIALIZING IN GENERAL & FAMILY PRACTICE

BY APPOINTMENT ONLY
EFFECTIVE OCTOBER 15, 1980

MORE AT PIZZA INN

\$2.79 BUFFET SPECIALS

TUESDAY NIGHT BUFFET Every Tuesday Night 6:00 pm to 8:30 pm	NOON BUFFET Monday thru Friday 11:00 am to 2:00 pm
--	---

Children under 12... Age x 15¢

NEXT SMALLER PIZZA FREE

Buy one giant, large or medium size Sicilian Topper or Original Thin Crust pizza, get next smaller same style with equal number of ingredients, **FREE**

Present this coupon with guest check. Not valid with any other offer. Expiration date: October 27

Pizza Inn
You get More of the Things you Love.

2131 Perryton Pkwy. 665-8491

Woodrow Wilson. Ragtime. The Great Houdini. The year is 1913 and a new Bell telephone begins ringing throughout the land. Ah, those were the days...

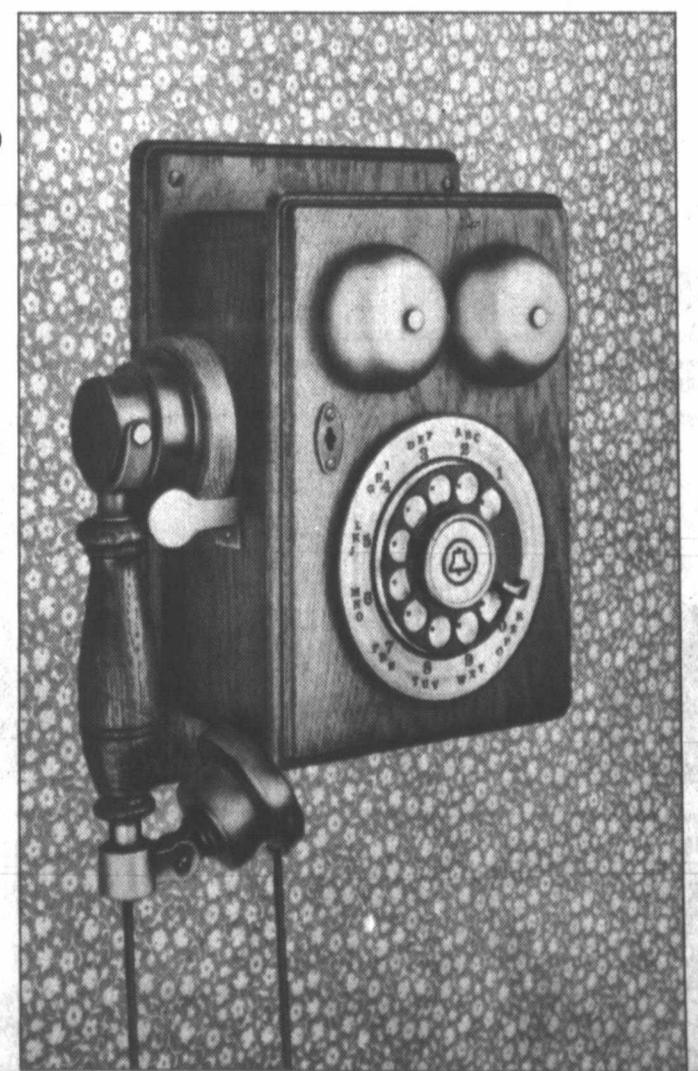
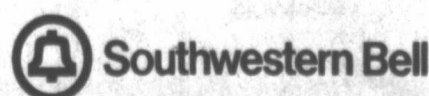
Now you can relive those days with Southwestern Bell's new Country Junction* telephone — a happy blend of yesterday's spirit with today's technology.

Lovingly handcrafted in natural oak and antiqued nickel trim, the Country Junction phone is a classic that blends with period settings and makes an attractive statement with the crisp, cool lines of contemporary taste.

No matter where the telephone is placed — kitchen, den, family room, living area — this is a phone that will be seen and admired. Because it has modular components, installing it is as easy as hanging a picture.

In a busy, bustling world, the Country Junction telephone is a pleasant reminder of those times when all phone conversations began with the voice that smiled.

Now on display at your neighborhood PhoneCenter Store.



*Trademark of AT&T Co. Working parts remain the property of the telephone company.

Today's Crossword Puzzle

- ACROSS**
- 1 Ills
 - 5 Awakened
 - 9 Jardiniere
 - 12 "Douce"
 - 13 Ixia
 - 14 Fruit pastry
 - 15 Lighting device
 - 16 Season of fasting
 - 17 Eggs
 - 18 Goes by (time)
 - 20 Interior
 - 22 Belonging to the thing
 - 23 Night before a holiday
 - 24 Wooden match
 - 27 Endure
 - 31 Opera prince
 - 32 Auxiliary verb
 - 33 Flying saucer (abbr.)
 - 34 Law degree (abbr.)
 - 35 Israeli coins
 - 36 Antiprohibitions
- DOWN**
- 1 Sly trick
 - 2 By mouth
 - 3 Jane Austen title
 - 4 More vital
 - 5 Seductive arts
 - 6 Raw materials
 - 7 Relatives
 - 8 Of summer
 - 9 Atop
 - 10 Cleave
 - 11 Gain on
 - 19 Female saint (abbr.)
 - 21 Hair-do holder
 - 23 Skinny fish
 - 24 Documentary
 - 25 Unshightly
 - 28 Shades
 - 29 News
 - 30 Popular flower
 - 32 Metal cord
 - 35 Refer
 - 36 Assistance
 - 38 Light meal
 - 39 Game (Fr.)
 - 41 Exalt
 - 42 Bring to ruin
 - 43 Well (Sp.)
 - 44 Kimono sash (pl.)
 - 45 Mrs. Truman
 - 46 Pedal
 - 47 Goddess of fate
 - 48 Bulb
 - 51 Two

Answer to Previous Puzzle

MEETS ERAS ERLE CAP
 DATE MOLLUSHS
 LIST MOST GHAT
 CULVER THERE
 AREA IRES WAR
 LESS ZONES

WRY ODER MERE
 RESE VOITVE
 TINI MEAN TIA
 TINNTEST URGE
 ENE DOTI TEEN
 RED AWED EAST

1	2	3	4	5	6	7	8	9	10	11
12				13				14		
15				16				17		
18				19				20	21	
22				23						
24	25	26		27				28	29	30
31				32				33		
34				35				36		
37				38				39		
40				41						
42	43	44		45				46	47	48
49				50	51			52		
53				54				55		
56				57				58		20

Astro-Graph

by bernice bede osol

October 21, 1980

Someone with whom you have had good luck heretofore will prove fortunate for you again this coming year in several situations. He or she is the type of person who knows how to make grandiose schemes work.

LIBRA (Sept. 23-Oct. 23) Someone with whom you've dealt previously who has a way of making you feel guilty might maneuver you into a position today where you're far more generous than is sensible. Romance, travel, luck, resources, possible pitfalls and career for the coming months are all discussed in your Astro-Graph which begins with your birthday Mail \$1 for each to Astro-Graph, Box 489, Radio City Station, N.Y. 10019. Be sure to specify birth date.

SCORPIO (Oct. 24-Nov. 22) Friends may not be as optimistic regarding a situation as you are today. Some of their doubts are valid. Take them into consideration.

SAGITTARIUS (Nov. 23-Dec. 21) Find joy in pursuing the goals you establish for yourself today. A glum attitude will make things more difficult than they really are and could even deprive you of victory.

CAPRICORN (Dec. 22-Jan. 19) Without being negative, don't count too heavily on luck to get you by today. Some potential obstacles you will have to work out the hard way.

AQUARIUS (Jan. 20-Feb. 19) Unless you're prepared to treat others as generously as you expect them to treat you today, nothing very profitable will occur. To get, you must first give.

PISCES (Feb. 20-March 20) When not operating under pressure your judgment is quite keen today. Once you begin to sense opposition, however, you may become very uncertain.

ARIES (March 21-April 19) You'll start out with good intentions today, and even a sound plan of attack. However, outside influences beyond your control could lead you astray.

TAURUS (April 20-May 20) Today's problems are such that it'll take two heads to solve them. Don't let pride stand in the way of teaming up with the best person.

GEMINI (May 21-June 20) Closely supervise any work or service being done for you today. The project could develop in a direction opposite from what you wanted done.

CANCER (June 21-July 22) Your way of thinking may not be too popular today, so don't be too rigid or opinionated if a good friend tries to tell you how others feel. Listen.

LEO (July 23-Aug. 22) Be extremely careful businesswise today. Involvements with the wrong types could prove costly and troublesome, even though the intent of both parties is sincere.

VIRGO (Aug. 23-Sept. 22) Your attitude toward associates is helpful today and that's as it should be. Unfortunately, your good nature may be taken advantage of.

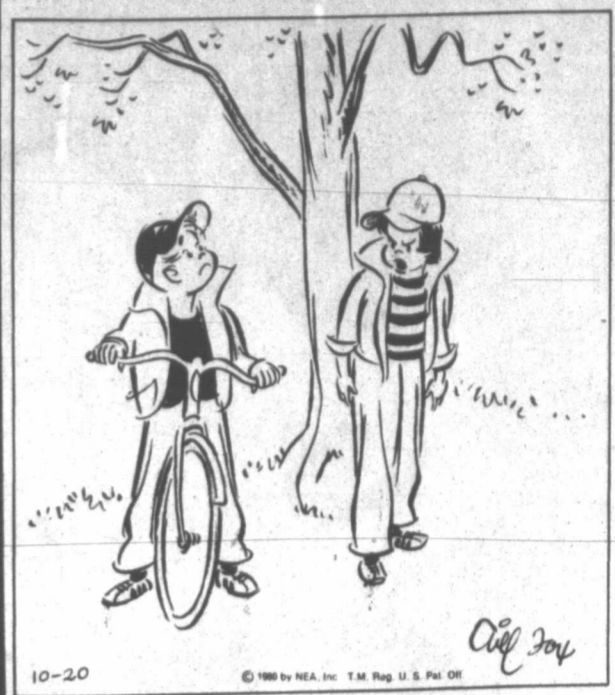
STEVE CANYON



By Milton Caniff

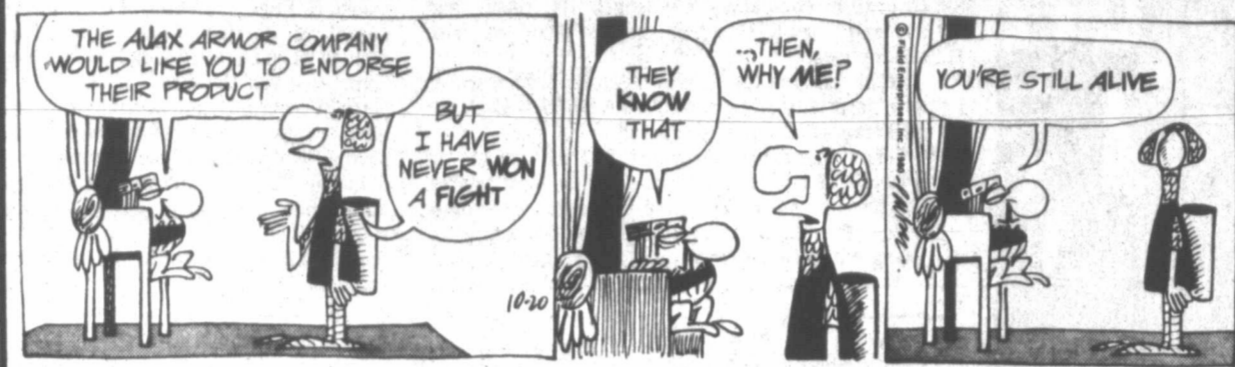
SIDE GLANCES

By Gill Fox



THE WIZARD OF ID

By Brant Parker and Johnny Hart



OUR BOARDING HOUSE

with Major Hoople



EK & MEK

By Howie Schneider



B.C.

By Johnny Hart



PRISCILLA'S POP

By Al Vermeer



WINTHROP

By Dick Cavalli



ALLEY OOP

By Dave Graue



TUMBLEWEEDS(R)

by T.K. Ryan



THE BORN LOSER

By Art Sansom



FRANK AND ERNEST

By Bob Thaves

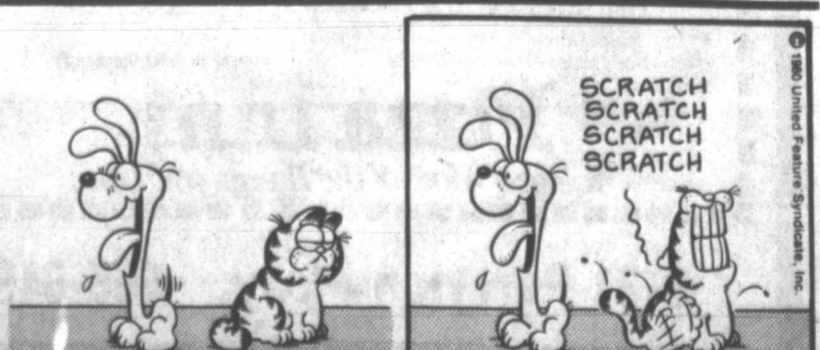


PEANUTS

By Charles M. Schulz



SCRATCH SCRATCH SCRATCH SCRATCH



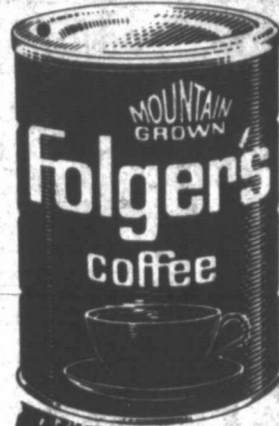
Double GUNN BROS. Stamps TUESDAY & WEDNESDAY



SUPER MOIST
BETTY CROCKER
Cake Mix
18½-OZ. BOX
72¢
LIMIT 3



CHARMIN
ASSORTED
Bath Tissue
4-ROLL PKG.
98¢
LIMIT 2



ALL GRINDS
Folger's Coffee
1-LB. CAN
\$2.73
LIMIT 1

KRAFT
Macaroni and Cheese Dinner
14½-OZ. BOX
73¢



CAMPBELL'S
Tomato Soup
10½-OZ. CAN
23¢
LIMIT 4

NABISCO DOUBLE-STUFF
Oreo Cookies
15-OZ. BAG
\$1.24

SHOULDER CUTS — FRESH
Pork Roast.....LB.
\$1.49

U.S.D.A. CHOICE
BUTCHER BLOCK BEEF
FULL CENTER SLICES — BEEF ROUND

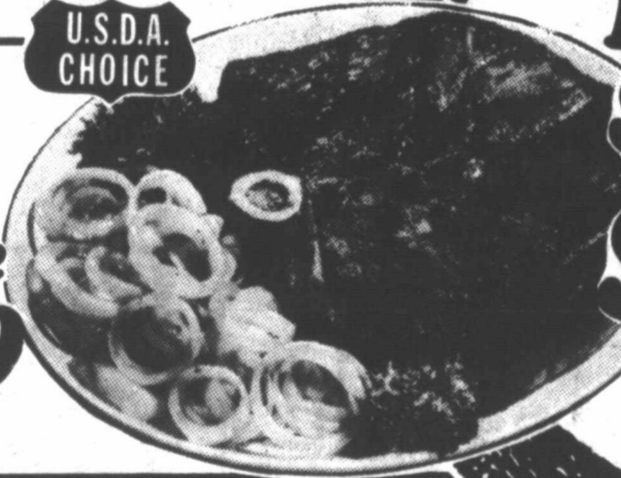
Round Steaks
LB.
\$1.98

PRE-COOKED — RANDOM WEIGHTS

Perch Fillets
LB.
\$1.69

U.S.D.A. CHOICE
BUTCHER BLOCK BEEF
BEEF LOIN
Sirloin Steaks
LB.
\$2.39

JIMMY DEAN
Pork Sausage
1-LB. PKG.
\$1.59



FULLY COOKED — CENTER CUTS
Smoked Ham Slices
LB.
\$1.98

FROZEN FOODS

FRESH DAIRY

PATIO ALL VARIETIES

Mexican Dinners
13-OZ. PKG.
76¢
LIMIT 3



MEADOWDALE
Orange Juice.....12-OZ. CAN
69¢

PARKAY

Maxi-Cup Margarine
1-LB. TUB
83¢



CAMELOT OR STEFFEN'S
Half & Half.....2 PINTS
2.79¢

NEW CROP
JONATHAN

Apples
LB.
29¢



LARGE CRISP
Head Lettuce
LB.
29¢

PRICES EFFECTIVE
THRU OCT. 22,
1980. QUANTITY
RIGHTS RESERVED.

Shop Ideal Cause Nothing Less Will Do!

Ideal
FOOD STORES