

"First Furnish Your Home
It Tells What You Are"

"YOUR CREDIT IS GOOD"

"First Furnish Your Home
It Tells What You Are"

Advance Showing of New Creations in Furniture for Spring!

Styles Refreshingly Smart
And Delightfully Modern

Correct In Every Detail!
Correct For Any Home!

Furniture Prices Are the Lowest in the History of the Industry!

• Today you can buy more furniture with a day's labor, a bushel of corn, a bushel of wheat or a barrel of oil than you could during normal pre-war days, yet there is more quality and style embodied in furniture now than ever before!

CAREFUL STUDY OF YOUR NEEDS WILL REVEAL THESE FACTS

We are exclusive distributors for the Associated Furniture Distributors of America

We are now showing the largest display of furniture that has ever been assembled in this territory. You are not limited to a few styles and designs, but you have the advantage of selecting from a stock as complete as is offered in any city.

SELECT CAREFULLY

In furniture, like any other industry, there are a few manufacturers and dealers who produce make shift items and camouflage them with style and price inducements. It is only through years' of experience and careful study that we are able to keep our stock free from these items.

INSPECT WHAT YOU BUY

BOUDOIR CHAIRS

Covered in Cretonne, Chintz and Damask. Moderately priced from

\$16.50



Occasional Chairs

Just the thing to fill that vacant niche or complete your group setting.

\$950 to \$2950



WHAT IS THE ASSOCIATED FURNITURE DISTRIBUTORS ASSOCIATION?

The Associated Furniture Distributors of America is an organization comprising seventeen leading jobbers of America who are using a cooperative plan of buying. Their combined buying power is more than \$25,000,000.00 annually. After a careful study of the various makes of furniture as to quality and style, they contract for the lines on a much larger scale than would be possible on an individual order. In this manner they offer furniture at a great savings to the consumer.

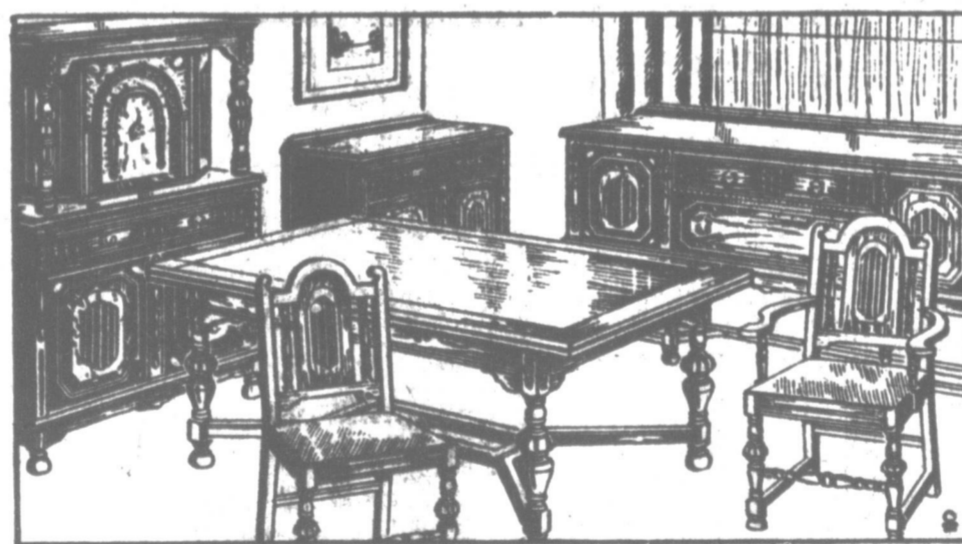
WE ARE EXCLUSIVE DISTRIBUTORS IN PAMPA

Bedroom Suites



We have 25 patterns of Bedroom Suites priced from \$43.75 up. All are four-piece suites in enamel finishes, or walnut in various shades with overlays of Maple, Rosewood, Satinwood, and Oriental Woods.

Charming New Designs!



Dining Room and Dinette Suites

REGARDLESS OF THE SIZE OF YOUR ROOM, YOU CAN SELECT A SUITE HERE THAT WILL GIVE IT DIGNITY AND CONVENIENCE.

Buy Now to Save on Your Furniture!

We buy only from the factories that are backed by years of experience with a reputation for quality and dependability.

Living room Suites



Beautiful upholstered Furniture gives your home a Friendly Air! Here you will find the newest creations in Kroehler Nationally Advertized Suites in either bed or stationary designs, and other makes priced from \$48.75 up to \$400.00. It is our aim to select the brands that are recognized as leaders in their line!

Springtime Is Rug Time!

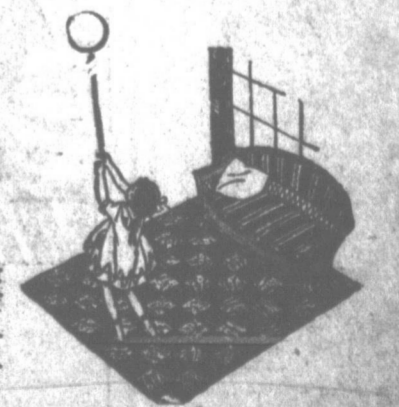


We have a complete assortment of sizes and patterns in Wool Fiber, Tapestries, Axminsters, Wiltons and Domestic Orientals.

Linoleum for Every Room!

Armstrong's Linoleum

The famous Armstrong brand in a great array of patterns in printed or in-laid designs. We specialize on commercial jobs.



Dealers for
General Electric
Refrigerators

G. C. MALONE FURNITURE CO.

Dealers for
General Electric
Refrigerators

THERE IS NO DOUBT OF ITS QUALITY IF IT COMES FROM MALONE'S

PHONE 181

PAMPA, TEXAS

210-12 N. CUYLER

"First Furnish Your Home
It Tells What You Are"

"First Furnish Your Home
It Tells What You Are"

MURDER BRIDGE

By ANNE AISIN
AUTHOR OF "THE BLACK PIGEON," "THE AVENGING BRIDE," "MURDER BACKSTAIRS," "KIDNAPING," "THE SILENCER"

(Continued From Page 4)

with excitement and a certain amount of horror. Then he rose, standing far to one side, picked up the fat volume which lay on the shelf. As he had expected, a bullet whizzed noiselessly across the room and buried itself in the plaster of the wall opposite—a bullet which would have plowed thru his own heart if he had obeyed his first impulse and gone directly to the shelf to obey the instructions in the note.

But more had happened than the whizzing flight of a bullet through one of the holes of the hot-air register. The "Who's Who" had been jerked almost out of Dundee's hand before he had lifted the heavy volume many inches from the shelf. Coincidental with the disappearance of a bit of white string which had been binned to a thin page of the book was a metallic clatter, followed swiftly by the faint sound of a bump far below.

Dropping "Who's Who" to the floor, Dundee flung open his living room door and raced down three flights of stairs. He brought up, panting, at the door of the basement. It was not locked, and in another minute he was standing before the big hot-air furnace. Above the fire box was a big metal compartment—the reservoir for the heated air. And set into the reservoir, to conduct the heat to the regions above, were three huge pipes.

With strength augmented by excitement, Dundee tugged and tore at one of the pipes until he had dislodged it. Then, thrusting his hand into the heat reservoir, he groped until he had found what he had known must be there—Judge Marshall's automatic, with the Maxim silencer screwed upon the end of its short nose.

At last he held in his hand; the weapon with which Nita Leigh Selim and Dexter Sprague had been slain.

The ingeniousness of his own attempted murder moved him to such

profound admiration that he could scarcely feel resentment. If, in the excitement of hunting for a promised clue, he had gone directly to the shelf, standing in front of the end of the silencer had been jammed, so that it showed scarcely at all, even to eyes looking for it, he would now have been dead. And the gun and silencer, after hurrying down the big hot-air pipe behind the register, could have lain hidden for months, even years, in the heat reservoir of the furnace.

With the weapon carefully wrapped in his handkerchief, Dundee went up the stairs almost as swiftly as he had gone down them, meeting no one on the way to his rooms on the top floor.

"My most heartfelt thanks to you, Cap'n!" he greeted his parrot. "If you had not squawked last night and so frightened the murderer that he made the vital error of covering your cage, I should never have annoyed you again with my Sherlock ruminations on cases which do not interest you in the slightest."

The parrot cackled hoarsely, but Dundee paid him scant attention. He picked up the now harmless "Who's Who" and turned to page 410, a corner of which had disappeared with the string which was still fastened to the hair-trigger hammer of the Colt's .32. Very clever and very simple! The murderer of two people and the would-be murderer of a third had had only to unscrew the metal covering of the register, wedge the end of the silencer into one of the many holes, replace the screws, and pass the end of the string to a page of the book he had selected as the one most likely to appeal to a detective as a clue source.

No, wait! He had had to do more! Dundee bent and examined the metal cover of the register. The circumference of the hole the murderer had chosen as the one which would be directly in front of Dundee's heart gleamed brightly. It had been necessary to enlarge it considerably. The murderer must have left a trace after all!

But the book was open in Dundee's hands and his eyes rapidly scanned page 410. And he found what the murderer had not expected him to live to read, but which he had counted on as an explanation of the note which the police would have puzzled over, if all had gone well with his scheme.

(To Be Continued)

During 1930 more than 1,320,000 persons visited the Field museum of natural history at Chicago.

Talks To Parents

OVERCOMING FEAR

By Alice Judson Feale
A three-year-old had developed an intense fear of dogs because of the large dog who lived next door and who barked and jumped at her whenever she passed. It was impossible to impress upon her that he was only being friendly.

The mother stroked the dog in her presence to show her how entirely gentle he was, but it did not help. The child refused to play out of doors if the dog was to be seen or heard.

But what her mother did not accomplish over a period of weeks, a visiting cousin of the child's own age was able to do in a few days. The little cousin was not in the least afraid of the dog but ran straight to it to pet and play with it.

The little girl watched from the shelter of the porch. Gradually her courage grew. Before the end of her cousin's visit, she had lost all fear

of the next door dog and of other dogs as well.
Children seem to be very well aware that a good many situations which cannot hurt the big adult who stands so firmly on his feet carry possibilities of danger for them. When the example of an adult is not sufficient to help the child overcome his fear, it frequently helps to expose him to the example of a child who is not afraid.
When he sees that the thing of which he is afraid does not hurt somebody of his own size, his fear frequently disappears.
Unfortunately, the device works both ways. A child who is not afraid may be made afraid by a child who is. In using this meth-

od, it is well to remember that the fearless child must possess the stronger personality.
HAS FUNDS LEFT
PLAINVIEW, Feb. 14. (AP)—Although more than two millions of dollars has been spent for highway construction in Hale county within the last two years, the county still has \$325,000 left from its million dollar bond issue.
The county spent \$675,000 on paving, including the paving of state highway No. 26 from Plainview to the west line of the county, which is under contract now. The rest of the two millions has been furnished by the state and federal governments.

ERECTING RADIO RANGE

AMARILLO, Feb. 14. (AP)—Construction of a radio broadcasting station and a radio range station is under way here, the work being done under supervision of the United States department of commerce, airways division. The cost will be \$52,000.
The two stations will comprise one unit of a nation-wide system being installed to direct fliers along transcontinental routes. With the aid of the government signals, fliers will be able to go through fog and darkness with a great degree of safety, M. L. Erickson, engineer in charge, said.
The stations will be completed in three months.

JUSTICE IS OUSTED

MERCEDES, Feb. 14. (AP)—The tangle which left the precinct of Hidalgo county of which Mercedes is a part with two justices of the peace has been unraveled by order of T. J. Fikes from the office.
Fikes, appointed late in December by the then county commissioners, refused to vacate when the new body of commissioners appointed W. D. Uecker to the office. Fikes was ejected by the sheriff's department upon authority of County Judge E. C. Couch.
The Great Lakes define 3,800 miles of the total boundary line of the United States, according to the Duluth, Minn., chamber of commerce.

Read News-Post Classified Ads.

WALLER
DENTAL CLINIC
225 N. Front
Across Street on West Side of Court House
DR. C. E. WALLER in Charge

Voss Cleaners
PAMPA'S OLDEST CLEANING PLANT
Phone 660

TREES

TREES

Highest Prices Paid For
Junk Metal, Scrap Iron and Steel
Pampa Junk Co.
Phone 413 636 S. Cuyler

DR. J. J. JACOBS
Optometrist
Eye examination. Glasses fitted. All kinds of eye glass repairing. Broken Lenses duplicated.



JACOBS OPTICAL CO.
Oldest Permanent Establishment
105 E. Foster 1st Nat'l Bank Bldg

HOO HOO CLUB TO RECEIVE TREE SHIPMENT NEXT WEEK —TO ENCOURAGE PLANTING

Lumber Dealers Will Help In Pampa Beautification and Will Sponsor Sale During Rest of Month.

That Pampa citizens may beautify their property by planting trees that are adaptable to the Panhandle, a shipment of Chinese and American elms will be received for distribution by the Pampa Hoo Hoo club Wednesday and sold to citizens by the affiliated companies at their yards.

Pampa streets should be lined with trees, the club believes. Contrary to popular belief, trees will grow on the Plains and the two varieties that have been selected are particularly adapted to this region. The two kinds of trees are from 6 to 8 feet tall. The Chinese elms sell for 75 cents per tree, and the American elms for 40 cents. Part of the carload that will be received Wednesday will be planted in the city park, city hall yard and at the Pampa Country club. The trees are guaranteed to be growing trees when delivered.

February is a proper time to plant trees. By planting them citizens will improve the appearance of their property and of the city, and the work will furnish employment for many men who need jobs, it was explained.

The trees can be bought and full information received on planting from any one of the following companies, all of whom are affiliated with the Hoo Hoo club: Tulsa Rig, Reel and Manufacturing Co. 736 South Cuyler, Merrick and Boyd, 805 South Cuyler; Panhandle Lumber company, 420 West Foster; Mintener Lumber company, 500 South Brown; White House Lumber company, 116 East Foster; Acme Lumber company, 120 West Thut; Fox Rig and Lumber company, 100 South Hobart; Foxworth-Galbraith Lumber company, 214 East Tyng—Pampa Daily News, Feb. 12.

TREES

TREES

PLANT SHADE TREES

Big Shipment Of Chinese and American ELM TREES

WILL ARRIVE WEDNESDAY

Chinese Elm ^{6 to 8}feet 40c
American Elm ^{6 to 8}feet 75c

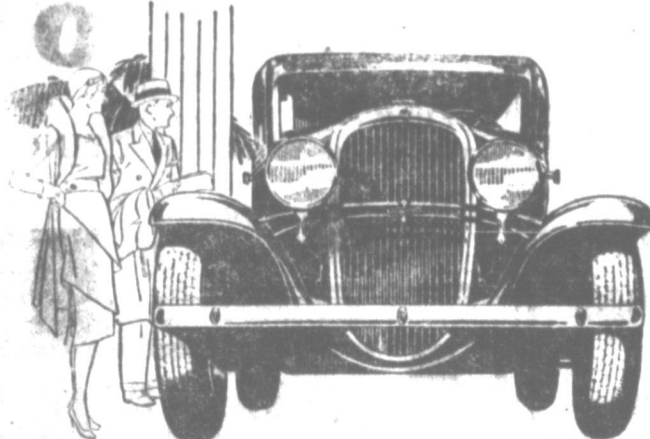
EVERY TREE GUARANTEED TO BE A LIVE ONE

Get Them At

- Tulsa Rig, Reel and Manufacturing Company, 736 South Cuyler St.
- Merrick & Boyd Lumber Company, 805 South Cuyler
- Panhandle Lumber Company, 420 West Foster
- Mintener Lumber Company, 500 South Brown
- White House Lumber Company, 116 East Foster
- Acme Lumber Company, 120 West Thut
- Fox Rig and Lumber Company, 100 South Hobart
- Foxworth-Galbraith Lumber Company, 214 East Tyng

Pampa Hoo-Hoo Club

THE NEW OLDSMOBILE IS FASTER · · SMOOTHER MORE BEAUTIFUL AND LOWER IN PRICE



There are several good reasons why the new Oldsmobile will appeal to you as soundly designed, sturdily built, and thoroughly capable car.

First, it is unusually fast—in both getaway and top speed. It goes swiftly out front in traffic; holds a lead on the road . . . and is always smooth and quiet.

Credit for this finer performance goes directly to several new Oldsmobile features. Chief among these is new down-draft carburetion . . . the source of greater power, increased smoothness, and higher efficiency. Important, too, is a new carburetor-silencer, which contributes to quieter operation at all driving speeds.

This finer performance is the more pleasing because of the remarkable ease of control that goes with it. Oldsmobile's new Synco-Mesh transmission—a

feature heretofore found only in higher priced cars—eliminates gear clashing. And a new Quiet Second Gear, added to Oldsmobile's Synco-Mesh transmission, assures smooth, swift acceleration which rivals high gear performance in quietness.

You will find as you drive the new Oldsmobile, that its finer performance and ease of control bring new pleasure to motoring. But you will find pleasure, too, in the new grace and beauty which have been added to its distinctive appearance. Refinements in design give special emphasis to Oldsmobile's long, low, fleet-looking lines. And smart new tailoring and appointments add to the attractiveness of its new Fisher body interiors.

Such, in brief, is the new Oldsmobile for 1931 . . . a fine car made still finer . . . faster, smoother, more beautiful . . . and lower in price!

WE WILL BE GLAD TO DETAIL THE REASONABLE DIFFERENCE BETWEEN LIST AND DELIVERED PRICES

845

C. O. Seeds Motor Company
312 West Kingsmill

OLDSMOBILE
PRODUCT OF GENERAL MOTORS

VALENTINE LUNCHEON GIVEN FOR A. A. U. W. SATURDAY

BRIDGE TO BE DIVERSION AT MONDAY EVENT

SEVENTY-FIVE TABLES ARE EXPECTED AT TOURNAMENT

About sixty-five members of the American Association of University Women and the College club attended a lovely Valentine luncheon Saturday at 12:30 o'clock at the Schneider hotel.

The room was colorfully decorated in red and white. Vases of red roses were on each table, and dainty Valentines centered the table. Smaller Valentines also were given as favors. Red cards tied with white tulle furnished the chosen motif in room decorations.

Mrs. W. A. Duerr addressed the group on the history of St. Valentine day, and Miss Helen Davis, rural school supervisor of Gray county, spoke on the problems of the rural schools. The president, Miss Fannie May, presided for a brief business session.

The A. A. U. W. and College club will sponsor a bridge tournament Monday evening at 8 o'clock in the Culture-Smalling building. The public is invited to attend the event, and it is expected that 75 tables will be in progress.

PARTIES ARE HELD AT SAM HOUSTON SCHOOL

Sam Houston school was the scene for numerous Valentine parties Friday afternoon.

Games held interest for the children and Valentines were given as a favor to each pupil. Lemonade and cookies were served by the room mothers.

Guests present were Mesdames A. C. Shaw, C. W. Hester, Richardson, Wilks, E. M. Conley, Frank Beaudin, Ernest Crain, L. E. Anderson, and Eunice L. Brady.

Spring to Bring Scarves of Silk

NEW YORK, Feb. 14. (AP)—The detachable fur scarves of winter will have their spring counterpart in silk.

Coats and dresses with detachable collars are prominent among advance spring styles.

The collars take various forms, but nearly all of them contrast, both in color and material, with the dress.

NANCY EARLE—

(Continued from Page 1)

But you'll have to tell your height—and age! These tables of height-age-weight ratios, incidentally, are prepared by the highest medical authorities. In such problems of charm as relate to the physical body your physician is your best friend.

Charm does not reside in just so many pounds of weight, nor in a certain girth. It lies to the extent of the bearing which these things may have upon charm rather in maintaining the weight which will afford you the greatest measure of abundant vigor, in your willingness to accept your individual type, and in adapting your gowns to your individual needs. Surely it is simple enough to attain these ends.

Of course many women need to reduce. Many "plumply plump" women are not so pleasing. Many would make a deplorable mistake to sit back comfortably in the thought that they were merely "the type." Weight reduction is one of the most important phases of my work, one to which I have given a great measure of time and research, and one which occupies an important place in the Charm school programs.

But if you are the type, your efforts should be in other fields than excessive reduction. Study—with me, if you please, at the Charm school—those many things which the normally large woman can do to make herself attractive.

One of the most charming women of my acquaintance is a large woman. Not fat, mind you, but large. She might very easily be clumsy and wholly lacking in attractiveness, but so thoroughly has she mastered the art of adapting her clothes, her coiffure, her jewelry, her very perfume, to her peculiar requirements, and so much has she learned of how to express her inner self, that she positively radiates grace and magnetism. And I assure you she trips joyously down the path of life.

What Nancy Earle has written to this woman may easily apply to feminine readers of the News-Post. She undoubtedly has many helpful hints for the women of this community, fat and lean, young and old, whatever their problems of charm. Remember the time, Feb. 24-27. Remember the place, city hall auditorium. The lectures will be at 2:30 o'clock except on Thursday, when an evening lecture will be given.

YOUNG OFFICIAL SHAMROCK, Feb. 14. (AP)—Clyde Fillmore, county attorney of Wheeler county, who is only 22 years old, is one of the youngest officials ever to serve this county. He has resided in the county little longer than the required six months when appointed to the office, then was elected to succeed himself.

Third And Fourth Grades Entertain

Under the direction of Mrs. L. C. Peddicord, third and fourth grade pupils had charge of the patriotic program at Herace Mann school Friday morning.

Special guests were Principal and Mrs. L. L. Sone and daughter, Principal A. L. Patrick, and Principal J. A. Mcek.

BRIDE-TO-BE GIVEN SHOWER HERE FRIDAY

Miss Ruby Lester, bride-elect of Bert Poland, was honored at a surprise shower Friday evening in the home of Mrs. C. A. Duenkel, with Mrs. Charlie Duenkel and Mrs. Clyde Oswalt as co-hostesses.

Each guest wrote advice to the bride, as well as favorite recipes and wishes. Much amusement was then furnished when each married woman was required to tell how she met her husband.

In a clever contest, which demanded that broken hearts be put together, Mrs. C. E. Phillips was awarded with an attractive favor which she presented to the guest of honor.

The shower of gifts then was presented in a basket gaily decorated with hearts and cupid.

Valentine favors were on dainty refreshment plates served at the close of the evening to the following guests: Mesdames Weldon Wilson, Fred Rusk, Cash E. Phillips, Jack Mundy, Marion Dearwater, Floyd McConnell, Essie Mace, Jack Boyd, Fred Burrus, Sid Merten, Fannie Hardin, Ray Wilson, Wallace, C. A. Duenkel, Delma, Hoskinson, and Frank Wallace; Misses Thelma Goddner, Imogene Willis, Elona Nelson and Florence Phillips.

Paisley Patterns For Handkerchiefs

NEW YORK, Feb. 14. (AP)—Photographic copies of old lace are employed for the lace print chiffon handkerchiefs which are coming into vogue.

Paisley patterns are also copied photographically for reproduction on handkerchiefs.

Eyelet Trimming Appears in Paris

PARIS, Feb. 14. (AP)—Embroidered eyelets are the newest trimmings on the mid-season things which point the way to the spring mode. A new white crepe evening gown is patterned all over in cotton embroidered eyelet lingerie designs. They are studded with the peek-a-boo effect, and one of the smartest black sport berets has white straw eyelets embroidered in dairy pattern on its crown.

SWASTIKA CLUB GIVEN PARTY HERE ON FRIDAY

Swastika Bridge club members were guests at a Valentine party Friday evening in the home of Mr. and Mrs. L. W. Minnis, 424 Yagor street. The chosen motif was featured in decorations and appointments.

In the games, Mrs. M. S. Fager was favored for high score among the women, George Hart for high score among the men, and Mrs. and Mrs. J. W. Minnis for consolation.

Mrs. Paul Edkin of Tulsa was a special guest for the occasion, and others attending were Messrs. and Mesdames J. W. Minnis, George Hart, Charles Elsten, M. S. Fager, Herman Morsman, and the host and hostess.

Montgomery Ward Group Is Favored

The personnel of Montgomery Ward and company was entertained at the home of Mr. and Mrs. E. M. Conley Thursday evening. The home was beautifully decorated in keeping with the Valentine motif.

At the close of a pleasant evening of games, refreshments were served to Mr. and Mrs. George E. Stickler, Mr. and Mrs. Frank Hood, Mr. and Mrs. W. G. Grayson, Mr. and Mrs. J. O. Irby, Mr. and Mrs. Harold Chaffin, Mr. and Mrs. E. C. Mase, Mrs. Ruth Hill, Mrs. Heath M. Hatcher of Oklahoma City, Mrs. Jewel Wiegman, Mrs. Mable Turner, Miss Violet Hallett, Miss Cleo Hendrick, E. S. Reed, and Mr. and Mrs. Conley.

Cousens Girls Prefer Horses to Automobiles

WASHINGTON, Feb. 14. (AP)—Through their father made millions in motor cars the two daughters of Senator James Cousens of Michigan prefer horses to automobiles.

The former Margo Cousens, now Mrs. William Jeffries Cheving, always has liked horses. She is an expert rider and since her marriage has continued to take part in horse shows in the capital and in Virginia.

New her younger sister, Betty, is appearing in children's riding events.

SENIOR B. Y. P. U. IS ENTERTAINED FRIDAY

The senior B. Y. P. U. of the Central Baptist church attended a party at the home of Miss Daphnia Lunford Friday evening. The Valentine motif was attractively featured in entertaining.

Dainty refreshments were served to Miss Juanita Stephenson, Louis Barton, Kate Holen, and Blanche Anderson, Edith Willis, Esther Stark, Messrs. Lee Brasham, Ed Parker, Harvey Anderson, Autry Holmes, Clyde Smith, Curtis Stark, G. C. Stank, Mr. and Mrs. Lloyd Satt-rewhite, the Rev. and Mrs. D. H. Tuhittz, and Mary Ann Truhittz.

Misses Anabel and Helen Stahl of Lubbock are week-end guests of Mr. and Mrs. L. O. Johnson and daughter, Barbara.

VALENTINE PARTY HELD FOR HARMONICA BAND

The Harmonica band of Sam Houston school was entertained by the director, Mrs. Sam Irwin, in her home on Gray street Saturday afternoon.

Valentines were given as favors, and refreshments were served. The group then went to the C. P. Eucker home and furnished entertainment for the Episcopical tea.

Flower Bonnets Chic for Theatre

PARIS, Feb. 14. (AP)—Bonnets of flowers are the Parisian debutante's favorite chapeau for theater and dancing hours.

One of the newest models is a toque made entirely of white violets. It is worn well back from the forehead, revealing the left side of the wavy coiffure, and dips low over the right ear, almost touching the shoulder.

Dull Tangerine New for Evening

PARIS, Feb. 14. (AP)—Mrs. Harry Symes Lehr is wearing an evening gown of a new shade of dull tangerine these evenings. The gown is made of salmon or tangerine-colored tulle over a satin foundation of the same color.

With it Mrs. Lehr wears a close-fitting diadem of diamonds.

Mrs. Ollie White is ill in the Pampa hospital.

SAN ANTONIO, Feb. 14. (AP)—Five thousand invitations to the National Association of Builders' Exchange convention here Feb. 16 to 19 have been mailed to members of the national body, according to Howell W. Jones, convention secretary of the chamber of commerce.

Mrs. Dan McIntosh underwent a serious operation at a local hospital Wednesday. She is doing nicely.

DRESSES



SMARTNESS DOES NOT DEPEND UPON THE PRICE YOU PAY

Canton crepe, wool crepe, satin and prints... pleats, flares, bows and chic sleeves... are only a few of the distinguishing touches of these stunning models. All the new shades including black.



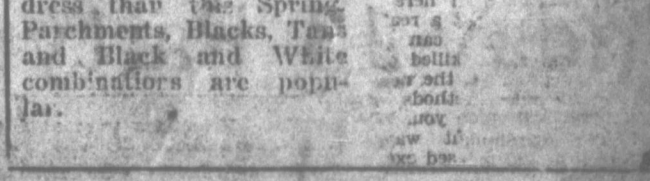
New Costume Jewellery

The New Costume Jewellery is well in keeping with the Spring styles. To be well dressed means that your costume must be completed with the proper costume jewellery. Moderately priced.



PURSES

The New Kid Leather Purses are presented in Parchment, Off White, Beige and Black. The Italian Purses are most popular in combinations of pastel colors.



GLOVES

Never were gloves more necessary for correct dress than the Spring. Parchments, Blacks, Tans and Black and White combinations are popular.

Just Unpacked!

100 New Fashion - Right Spring Dresses That Give You More For \$9.90 Than You Ever Had Before!

\$9.90

Navy, Green, Rose Black, Plains and Prints...

Misses Sizes 12 to 20; Half Sizes 14 to 24

Another example that illustrates our policy! To give you extraordinary selection, extraordinary style, and extraordinary price values. We can do this for numerous reasons: we buy cheaply, because we operate economically and, chiefly, because we turn our stock rapidly. The new dresses await you—and at a tempting low price.

Every Day is a "Bargain Day" all Through our Store!

HILL COMPANY
Better Department Stores

SPRING DRESSES

Flat Crepes Moderately Spring Colors
Chiffons—Prints Priced

Charming frocks copied and adapted from newly arrived imports and the new fashions that the best New York designers have to offer. Flat crepe, chiffon, georgette and gayly patterned prints in new spring colors. Size 14 to 48.

New Coats, New Millinery, New Accessories... beautiful clothes for Spring wear. We invite you to come and see what best dressed women are wearing. Moderate prices!

PAMPA STYLE SHOPPE
111 West Foster Ave.

MURFEE'S, INC.
"Outfitters to Young Men of all Ages"
PAMPA, TEXAS

News of the Churches

FIRST CHRISTIAN CHURCH
509 East Kingsmill Ave.
F. W. O'Malley, Minister
Bible school at 9:45. Young and old should study God's book.
Communion and sermon at 11 a. m. Special music.
Young people in three societies of the Christian Endeavor at 6:30. Gospel meeting with concert—singing, and service at 7:30. Baptismal services at 7:30.
A cordial invitation to all services.

ST. MATTHEW'S PROTESTANT EPISCOPAL CHURCH
Quinquagesima Sunday, Feb. 15, 1931.
Church school, 9:45 a. m. Special children's service of holy communion and dedication to the Lenten studies.
Morning prayer, 11 a. m. Sermon: "Lent—What Is It, Its Teaching, Its Purpose."
These services will be held in Lamar school.

Lenten Services
During the Lenten season, which begins with Ash Wednesday, Feb. 18, St. Matthew's Protestant Episcopal church will hold a series of weekly meetings at 8 o'clock each Friday evening in the Presbyterian church. The purpose of these Lenten services is to deepen the spiritual life of the members and to make some of the teachings of the church clearer. A cordial invitation to attend these services is extended to all. The dates and topics of the addresses are as follows:
Feb. 20, "Why We Belong to a Church."
Feb. 27, "Our Prayer Book."
March 6, "Our Creeds: Practicing the Presence of God."
March 13, "Our Church Year."
March 20, "The Holy Bible in Modern Dress."
March 27, "The Divinity of Christ."
April 3, Good Friday, "The Seven Words From the Cross."
Rev. Newton C. Smith, Minister.

FIRST BAPTIST CHURCH
Corner Kingsmill and West Streets
The first week of the revival has been the best in the history of the church. The attendance has continually increased, and in the face of very bad weather large crowds have come. A spirit of spiritual power pervades the services. Unusual preaching is being done from time to time. Rev. Whiskey brings messages that are gripping, earnest, and convincing.
The meeting will continue through next week with services twice daily, 10 a. m. and 7:30 p. m. There will be services Saturday morning and Saturday evening also.
The singing has also been on a high plane and has made a valuable contribution to all services. To these meetings the community is most cordially invited.
The services Sunday will be evangelistic, both the morning and evening hours. The church will meet by departments at 9:45 o'clock. The business men's Bible class, taught by the pastor, will meet on the main floor of the building in a larger, much more adequate room. The class is growing, and the resolve of the men is to continue this growth. Remember, the services throughout the week, and that you are invited.

CENTRAL BAPTIST CHURCH
Yes sir, we are out for 350 in Sunday school today, our attendance was just a little under the 300 mark last Sunday, but we had a very fine day with three additions to the church. The attendance in the B. Y. P. U.'s were much better last Sunday, our young people are putting on a program worth while.
Sunday school, G. C. Stark, supt., 9:45 a. m.
Sermon by the pastor, 11 a. m. South Side Mission, S. S. M. Beckham, supt., 2:30 p. m. Talley Addition Mission, Mr. Seale, supt., 2:30 p. m. Men's prayer meeting, 6 p. m. Training service, Harvey Anderson, director, 6:30 p. m.
Sermon by the pastor, 7:30 p. m. Every view of the Lord Jesus Christ is significant and precious to the believing heart. He is wonderful. Looking at Him from any angle, He stands out in perfect symmetry, full of strength and beauty.

For several days we have been presenting Christ as an example for Christian living.
Be sure your sins will find you out, now this morning we are going to lay all the cards right out on the table, without fear or favor. A lot of folks are fearing their shirts about some things here in Pampa, and some of these high-ups are going right along without any respect to the church, and the morals of our young people. I want this city to know that I am for the young people just as strong as any minister here, and we will take the lid off today and let the pot boil over. Why some are always jumping on the Central Baptist church and their pastor is more than we can tell, but here goes for a real good time and lots of fun—everybody likes fun. Come to the Central Baptist church, the church where the Christian fellowship abounds.
D. H. TRUHITTE, Pastor.

CHURCH OF CHRIST
Francis and Warren Streets
Services:
Bible study, 9:45 a. m.
Franching, 11 a. m. Subject, "The Identity of the Church."
Communion, 11:45 a. m.
Bible Study, 6:15 p. m.
Song Practice, 7 p. m.
Prayer, 7:30 p. m. Subject, "What is That to Thee."
Everyone is invited to attend these services.
Jesse F. Wiseman, minister.

PRESBYTERIAN CHURCH
"A merry heart doeth good like a medicine," said a writer of proverbs. We invite you to hear our message Sunday morning on, "A Merry Heart."
The evening message will deal with another of the seven churches of Asia, Ephesus.
Sunday school, 10 a. m. Sermon, "A Merry Heart." 11 a. m.
Junior C. E., 3 p. m.
Sermon, "The Church of One Fatal Error." 7:30 p. m.
A cordial invitation is extended to you.
A. A. Hyde, Minister.

CHRISTIAN SCIENCE SERVICES
Room 2, First Natl. Bank Bldg.
Sunday services, 11 a. m.
Sunday school, 9:30 a. m.
Wednesday services, 8 p. m. Subject, "Soul."
The reading room is open Mondays, Wednesdays, and Saturdays from 1 to 4 p. m. The public is cordially invited to attend the services and use the reading room.

PRESBYTERIAN CHURCH
The greatest need of the American people, and for the people of the world, is to bring to an end this time of spiritual depression. Before the service of worship for the multitude as it is enjoyed by the soul wise. A heart tonic is needed. The world needs to find out what the writer of 3,000 years ago wrote for them, "A merry heart doeth good like a medicine." But they

have mistaken the merry ha ha for the merry heart. They have chosen Falstaff in place of the rejoicing Christian. And the world pays in sorrow and disappointment for its foolish choice. Come and worship with us. Hear the sermon, "Heart Tonic," Sunday morning. All our services are open to you.
Sunday school at 10 a. m.
Sermon, "Heart Tonic." "A merry heart doeth good like a medicine," 11 a. m.
Junior Christian Endeavor at 3 p. m.
Sermon, "The Church With One Fatal Error." 7:30 p. m.
A. A. HYDE, Minister.

FIRST METHODIST CHURCH
Preludo, "Selected," M. F. L. Elliott.
Invocation, Choir.
Hymn, "Majestic Sweetness Sit Enthroned," Congregation.
Apostle's Creed, Congregation.
Prayer, Rev. Tom W. Brabham.
Hymn, "Guide Me, O Thou Great Jehovah," choir.
Old Testament lesson.
Gloria Patria.
New Testament lesson.
Coffertory, "Selected," Mrs. F. L. Elliott.
Vocal solo, Mrs. Russell Smith.
Sermon, Rev. J. W. Hunt, president of McMurry College, Abilene, Texas.
Hymn, "Glad Morning," choir.
Benediction.
E. evening Program
The evening program of worship will start promptly at 7:30 o'clock. A real good program has been arranged; one that you will enjoy. Dr. Hunt will bring the message of the hour. A "Sing-Song" under the direction of Prof. R. B. Fisher will be worth your time.
Our orchestra under the direction of Roy Tinsley will play several selections for us.
Our program are different. Let's continue to make our church a great church by every member doing his or her duty.
Tom W. Brabham, Pastor.

AGED SISTERS REUNITED
BRENNHAM, Feb. 14. (AP)—Through the chance acquaintance of their children, one an aviator and the other an aviation enthusiast, two aged sisters have been reunited after 30 years. Then they discovered they had been residing near each other for years, each thinking the other dead.
Mrs. W. G. Humphries, 72, of Brenham, and Mrs. Cynthia Danley, 82, of Little River, are the sisters. Mrs. Danley's son is an aviator, and during the time he was stationed at Brooks Field, San Antonio, came to know Mr. and Mrs. William Brown, aviation enthusiasts, who live on a farm near Brooks Field. Mrs. Brown and young Danley then discovered they were related. As a result, the two aged sisters, Mrs. Danley and Mrs. Humphries were reunited.

Use the News-Post Want-Ads.

MOVED AGAINST THIEVES
PLAINVIEW, Feb. 14. (AP)—Farmers around Plainview have organized to protect themselves against petty thieves. Any member of the organization is obligated to report anything he sees or hears that will aid in enforcing the law. Thefts of chickens, tractor parts, gasoline, oil, feed and other articles led to the organization, which is said to be working efficiently.

NEWS FROM LEFORS

Mrs. J. B. LaRue and daughter and Mrs. Glenn Wolfe were in Amarillo one day last week.
Mr. and Mrs. H. L. Sloyum of Borger were recent visitors of Mrs. Ada Matteson and children.
L. E. Brekke made a business trip to Amarillo during the past week.
Mrs. J. Lee Cole and Mrs. Van Pelt were shopping in Pampa Monday.
Messrs. Baechus, Glardy, and A. Carpenter were in Pampa on Business Monday.
Earl Durham and George Clardy has returned from a business trip to Clinton, Okla.
W. R. Combs was a recent visitor in Pampa.
Mr. and Mrs. L. F. Keough and Ellen visited Mrs. Keough's brother, Francis Hogan, and family of Cisco, last week. Mrs. A. Carpenter accompanied them.
Miss Alta Mayo and Miss Jack Emerson left Sunday for a visit in Dumas, with Miss Emerson's mother.
Mrs. Ira Vagnard is visiting her parents in Chickasha, Okla.
Mrs. J. H. Richey left last week for a short visit in Groom. From Groom she will go to Oklahoma City for a three weeks' visit with her brother.
Mrs. D. E. Vagner spent last week in Amarillo with her daughter.
Miss Reed of McLean visited her sister, Mrs. Loraine Reed, last week-end.
Mrs. Slipsars was ill during the past week.
Mr. and Mrs. C. Clardy and son, George, made a business trip to Amarillo Tuesday.
Mrs. George Johnson and children, and niece, Mrs. Smith of Pampa, visited Mrs. Freeland Friday.
Mrs. E. Baechus visited friends in Pampa during the week-end.
Mr. and Mrs. A. B. Kitchen were shopping in Pampa recently.
Miss Edna Evans of Erick, Okla., spent the week-end here visiting her sisters, Miss Anna Belle Evans and Mrs. W. E. Flatler.
Mr. and Mrs. Joe Henry and daughter have returned home after spending a week in Oklahoma.
Mrs. G. C. Ogden, Mrs. Jop Gourlay, and Miss Miriam Wilson were shopping in Pampa Monday.
Mrs. T. H. Bird is home from the hospital in Pampa where she underwent a major operation.
Mr. and Mrs. R. L. Freeland and Jennie W. Witten were transacting business in McLean Monday.

Those on the sick list this week are: Mrs. Fagn Glenn, Mrs. W. C. Breining, Mrs. Josephine Sparks, and Vernon Van Winkle.
Mrs. Raymond Burke Halter, Mrs. Carl Wall, and Mrs. Bill Mullins were shopping in Pampa Monday.

CHARM CHATS

by Nancy Earle
Noted Authority and Writer on Health, Charm and Beauty.

Have you met Pansy?
Pansy is the young lady who might have been beautiful, but isn't just yet because she still has a few more of her original hundred and seventy pounds than she needs.
But she will be a lovely lady one of these days because she has made up her mind that she is to be rid of the very last ounce that she does not want, and she is going about it in the right way.
For one thing, Pansy is patient. She remembers (with a sad wagging of her head no doubt) that she was a number of years accumulating all these pounds, or at least many months. And she is giving herself the sportsman's chance. She is going to be as patient in her off-sitting as she was in her on-putting. Fair enough, yes?
You see Pansy is a wise lady. She reasons that she wants to take those pounds off for two reasons, and for those two only. Namely, for her health's sake, and for her beauty's sake. And she knows she will defeat her own purposes if she hurries.
Her beauty will suffer. Her search of youth will be voided. These first and most obviously.
As those many pounds were being pyramided, the actual area, the actual number of square inches on the surface of the body, was materially increased. This means that the outer skin had to be stretched to accommodate the new volume. The skin was willing enough and very obligingly adapted itself to the gradual change.

Much of this sort of thing is obligated if the general body tone is preserved at high standard by supplementing the corrective diet with vigorous exercise. Out of door exercise if possible, and specific gymnastics for weight reduction regularly practiced. When the muscle tone of the system generally is vibrantly good, all the muscles of the body, including those of the face, show that smooth firm contour that means youth and beauty.
Local care should supplement these benefits, however. A good rich cream applied generously and regularly to the face will keep the tissues lubricated and pliable. This, in beauty terms, means youthful and smoothly beautiful. The face should be applied for a brief half minute to the skin, but not long enough to chill the tissues definitely. Too long an application is a shock to the tissues which will register upon them unfavorably.
The ice should be wrapped in a thickness of gauze likewise. It should not be applied in direct contact with the skin. Also the ice should not be held in one place, but should be kept continuously in motion. Used thus it exerts a stimulating effect upon the tissues, a bracing effect.
But the chief reason Pansy is so willing to be patient and reduce slowly is that she knows that her health will pay the penalty, even a heavier penalty than her beauty pays, if she tries the quick method.

Now if Pansy suddenly takes those paddings of flesh away from under the skin it will hang in wrinkles and folds that will add years to her appearance, and a haggard worn look to her that is anything but the loveliness she seeks.
If on the other hand she takes away the padding gradually (as it was put on) it will be equally oblique and once more adapt itself to the area it is to cover. It will, if given the chance, shrink gently in conformity with the alterations of body bulk, and never show a wrinkle or an aging line.
The care of the face, the skin, is of course a matter which should be carefully guarded during the process.

At Last I've Found My Eating Place.
You will like the informal atmosphere of our cafe . . . at breakfast, lunch or supper . . . and the smart attractive crowd that gather here. Even more you will like the food itself . . . perhaps wholesomely, simple daintily, delectably. All in all, our cafe is the place you will like . . . PERMANENTLY!
THE EMPIRE CAFE

ury for proposed improvements before the next season. An indefinite period had been allowed in which to pay for the field.

PIANO TUNING
Vern Springer, member National Association Piano Tuners. Work carefully done, and fully guaranteed.
Phone 538-J 318 E. Francis

CUT FLOWERS
POTTED JONQUILS AND BECACTINES
FUNERAL DESIGNS
EMILY'S
Pathos No. 4 Phone 222

"A BANK FOR EVERYBODY"
THE FIRST NATIONAL BANK
Gray County's Oldest National Bank
Capital, Surplus and Undivided Profits over \$100,000.00
OFFICERS:
B. E. FINLEY, President,
J. R. HENRY, Vice President
DeLEA VICARS, Vice President
EDWIN S. VICARS, Cashier
J. O. GILLHAM, Ass't. Cashier
B. D. ROBINSON, Ass't. Cashier

A Lasting Permanent Wave \$2.50
PERMANENT WAVES
If you haven't been here it will amaze you what a really fine permanent you can get at this low price. Skilled operators adept in all the newest modes and methods of hair dress will serve you. We did 1494 permanent waves during 1930 and pleased every customer.
Finger wave 25c
Facial 45c

NEW SPRING SILKS AND PRINTS
Silks and Prints . . . huge bolts of them . . . the sheerest and the loveliest we have ever seen . . . silk that heretofore has been prohibitive in price — now obtainable at special low prices! Gorgeous pattern Silks from 80c to \$1.95 per yard . . . Fruit of the Loom prints at only 22c per yard.
Beautiful assortment of new Cretones for your spring drapes.
Scout Prints and Percales, per yard 12 1/2c. All guaranteed fast colors.

The United Dry Goods STORES, INC. PAMPA, TEXAS
707 N. OUYLER

72% of all Chevrolets are still in use
During the past 20 years the American public has purchased 4,883,865 Chevrolet cars. Seventy-two per cent of these—3,511,651—are still in active service! Such a record is convincing testimony of the soundness of Chevrolet's policy of building the very best car possible for the price—a policy which finds even finer expression in the Chevrolet Six of today. With a remarkably complete array of fine-car features, and with prices lower than ever before, Chevrolet is offering, in this new model, **the Great American Value.**
New low prices
Roadster, \$475; Sport Roadster with rumble seat, \$495; Coach or Standard Five-Window Coupe, \$545; Phaeton, \$510; Standard Coupe, \$535; Sport Coupe (rumble seat), \$575; Convertible Cabriolet, \$615; Standard Sedan, \$635; Special Sedan, \$650. Prices f. o. b. Flint, Mich. Special equipment extra.
NEW CHEVROLET SIX
The Great American Value
See your dealer below
CULBERSON-SMALLING CHEVROLET COMPANY, INC.
Francis A. Ballard
ALSO DEALERS IN CHEVROLET SIX-CYLINDER TRUCKS. 1931 TO 1930. F. O. B. Flint, Mich.

FOR GINGER'S SAKE BY ETHEL HUSTON

GINGER'S SAKE... BEGIN HERE TODAY... To keep life from growing too dull in Red Thrush, Iowa, GINGER ELLA TOLLIVER organized a Junior Country Club. It was to be something exclusive—just for the "younger set"...

OF NEW BOOKS BY RICHARD MANSOOCK

NEW YORK.—February 15 found me bringing a new lot of words about the other of those February-born presidents, Washington and Lincoln...

BETWEEN WAVELNGTHS

Between Wavelengths... Cotton slithered from her velvet coat and into the chair Bard held for her, wriggling her fingers up at him in a way that meant she wanted a cigarette...

WORM GOES TO RUSSIA. AUSTIN, Feb. 14 (AP)—It is thought here by R. E. McDonald, federal entomologist, that the pink boll worm has worked its way to Soviet Russia... GIVEN VALUABLE DATA AUSTIN, Feb. 15 (AP)—Many records of San Antonio and Laredo churches thought to be more than a century old have been presented to the Texas Knights of Columbus historical commission at St. Edwards university here...

MOMN POP By Cowan



FRECKLES AND HIS FRIENDS By Blosser



OUT OUR WAY By Williams



TEXAS HISTORY MOVIES By Patton and Rosenfield



By Patton and Rosenfield



Daily Cross-word Puzzle

ADROSS

1. Passes
2. In warm
3. Fly soft
4. Solidified water
5. To
6. Single
7. Copper color
8. Vocal solo
9. Above and touching
10. Felice
11. Scared
12. Sun
13. Decorate
14. Vegetable
15. Proceeding
16. Lubricant
17. What a cow chews
18. Brittle metal
19. Italian river
20. Large cask
21. Equality
22. Myself
23. Honey
24. Ignited
25. Sailor
26. Furry
27. Head covering
28. Wiles
29. Poem
30. Children's game
31. African antelope

Solution of Yesterday's Puzzle

ACROSS

1. PALS
2. SEEKERS
3. EEL
4. ALICE
5. PANNE
6. TALK
7. SALAMANDER
8. ALA
9. TRACE
10. SEARS
11. RULE
12. KAT
13. OVR
14. S
15. CONSTRUCTS
16. VIEL
17. ADO
18. ERLE
19. SP
20. AREA
21. SITS
22. SNORT
23. KARN
24. TUTORS
25. PILE
26. TARN
27. SMILE
28. NEGLIGENT
29. NICE
30. FLY
31. WAG
32. LOWERED
33. BASE
34. ASHY
35. MENA
36. SERIES
37. REAR
38. ASTK
39. SEDAN
40. TAMS
41. STEER
42. TALE

DOWN

1. Twitching
2. War aviator of record
3. Writing device
4. Trickless hand at bridge
5. Gazed steadily
6. Asiatic peninsula
7. Depart

1	2	3	4	5	6	7	8	9	10	11
12										
15										
18										
21										
24										
27										
30										
33										
36										
39										
42										
45										
48										
51										
54										
57										

GLORIA



She'd Like A Little Light On This!

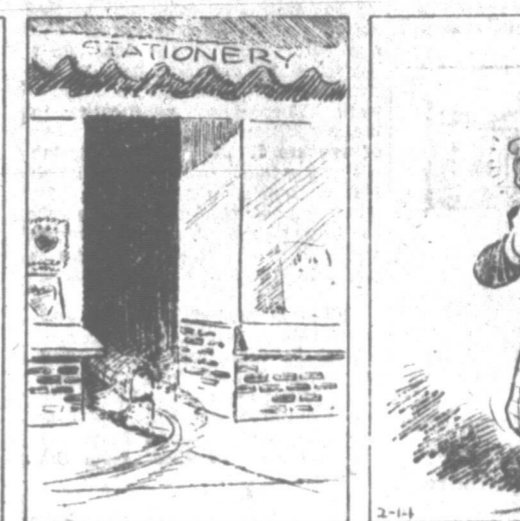


by Julian Ollendorff

ROLLO ROLLINGSTONE



Vice Versa



by Bruce Barr

BIG MOMENTS IN LITTLE LIVES

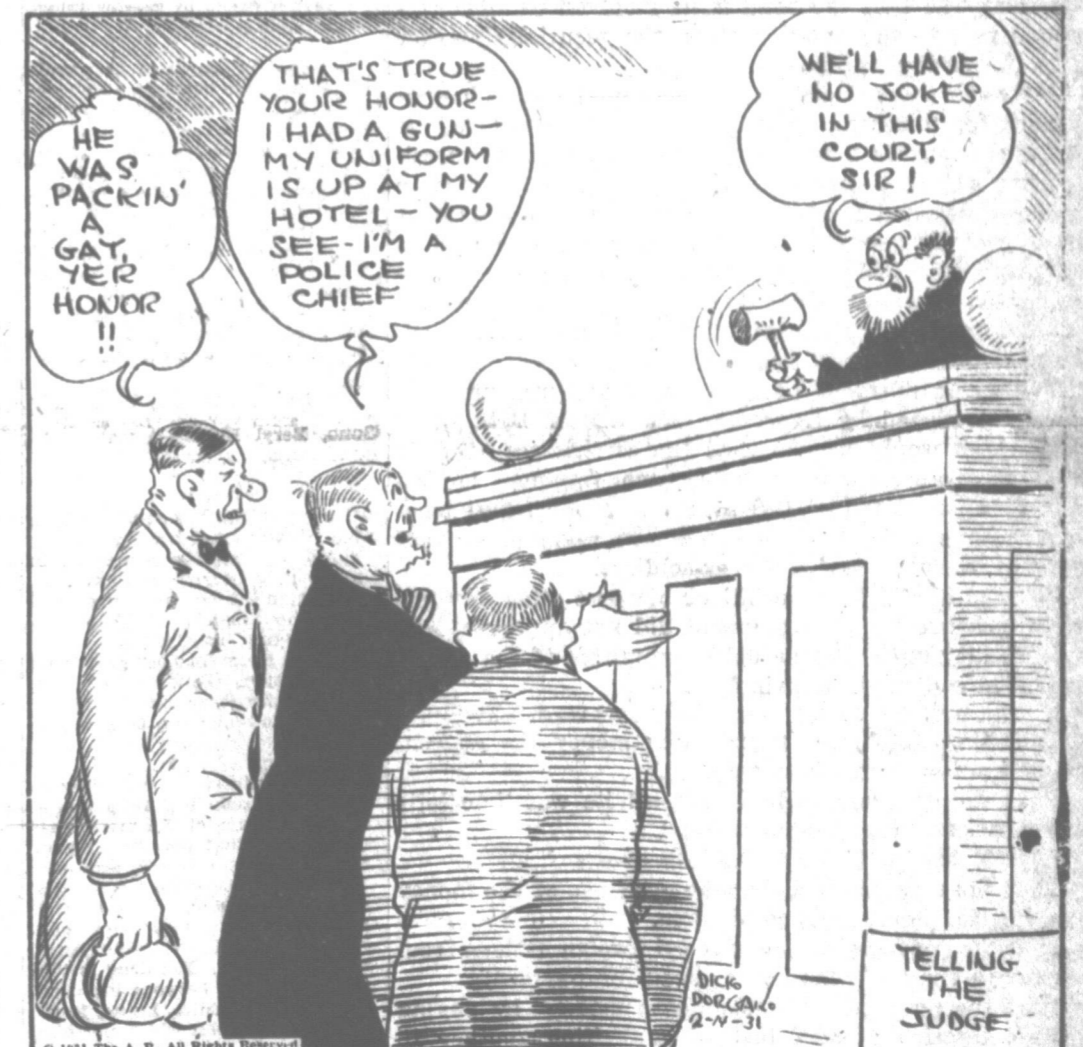
by Oscar Hitt



COLONEL GILFEATHER

Trademark Registered U. S. Patent Office

by Dick Dorgan



INTIMATE REVELATIONS



MODEST MAIDENS

Trademark Registered U. S. Patent Office

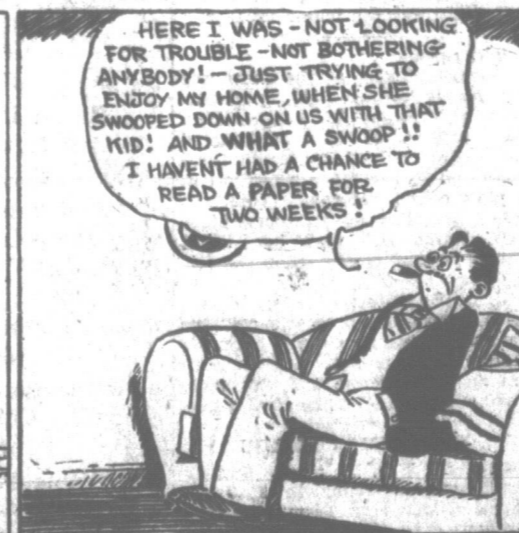
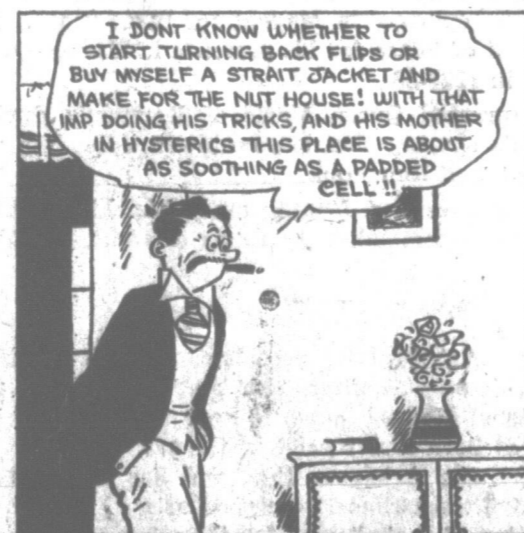


HOMER HOOPEE

Trademark Registered U. S. Patent Office

He Might Try The Attic

by Fred Locher



SCORCHY SMITH

Trademark Registered U. S. Patent Office

Hurried Orders

by John C. Terry

