

Pampa Daily News



HOME NEWSPAPER
Established April 6, 1907
Official Publication
City of Pampa.

VOL. 27 NO. 305

Full (AP) Leased Wire

PAMPA, GRAY COUNTY TEXAS, FRIDAY EVENING, MARCH 30, 1934.

(10 PAGES TODAY)

PRICE FIVE CENTS

2 DIE, SCORES INJURED, IN FIRE

Thompson, Allred Lash Critics, Denying 'Hot Oil' Is Produced In Texas

TURKEY TO ARREST AND DETAIN SAMUEL INSULL FOR EXTRADITION TRIAL



Twinkles
A good Pre-Centennial stunt would be to teach all these Oklahomans some Texas history.

Maybe it would be a good idea to start a class in Texas history in the Emergency Education school.

Your point of view is highly important. It is easy to find much wrong with your friends and equally easy to find much in them that is magnificent, admits Mrs. Gushaway.

'Know Your Neighbor' drives are being started in some cities. It would be equally valuable for some folks to get acquainted with their own homes, says the West Foster group.

A Carlsbad, N. M., paper is investigating a report that a sober man was seen near the polls in a recent election. I found his picture may be sent to Ripley.

Brevitorials

Musings of the moment: Col. Cappock calls the drive through the Palo Duro canyon the "most exciting 10 miles in Texas. Think that over, and see for yourself. The colonel, commanding army officer, is sincere. A "quiet" city election in Pampa is a good omen. The men personally are not issues. The issues are the matters of business management of Pampa's big municipal corporation.

WHO WAS FIRST? IN AMERICA
By Joseph Nathan Kane
Author of "Famous First Facts"

When and where was the Ku Klux Klan founded? When were the first Chinese employed as laborers in the U. S.? Where was the first American sea train put into use? Answers in next issue.

FIRST INDIAN RESERVATION ESTABLISHED AUG. 29, 1758 IN BURLEIGH COUNTY, N. C.
JENNIE DOUGLAS, FIRST WOMAN FEDERAL EMPLOYEE, WAS HIRED IN 1862 TO CUT AND TRIM U. S. CURRENCY.

Answers to Previous Questions
New Jersey appropriated a tract of 1600 acres for use of the Indians of the state. About 200 Indians located there. A young ice cream salesman in love brought about the first ice cream cone. His sweetheart fashioned it out of a layer of the ice cream sandwich he brought her. There was much opposition to a woman working for the government, but the U. S. treasurer appointed Miss Douglas, anyway.

Firsts in Pampa
Q-Who presided at the first district court session in Gray county?
A-The late Judge B. M. Baker was the first district judge. He presided over district court at LeFors in December of 1902 in the then new courthouse. Formerly court had been held in Miami. Judge Baker also helped create the Pampa Independent school district.

PROMISE MADE BY OFFICIALS TO AMERICAN

HOWEVER, PACT WITH TURKS IS NOT YET RATIFIED

ISTANBUL, March 30. (AP)—The Turkish government decided today to hand over the question of the arrest of Samuel Insull to a competent Turkish court, probably the penal court of Istanbul.

WASHINGTON, March 30. (AP)—The Turkish government informed the state department today that it would arrest and detain Samuel Insull for extradition proceedings.

Robert P. Skinner, American ambassador to Turkey, messaged the department that the Turkish government had definitely promised formally to arrest Insull upon receipt of a certified copy of the warrant of arrest and a complete text of the "judicial record."

The department immediately called a copy of the warrant to Ankara, capital of Turkey, and arranged for a copy of the indictment to be delivered as quickly as possible.

Later Ambassador Skinner reported that the Turkish government proposed to refer the papers to the proper Turkish court.

An extradition treaty with Turkey was signed in 1923, but was not ratified by the United States senate until February 21 this year, when it was first suspected that Insull, then in Greece, might attempt to seek refuge in Turkey.

The extradition treaty has not yet been ratified by the Turkish assembly. It must be ratified before Insull can be extradited.

Hoover Making Survey of West

KANSAS CITY, March 30. (AP)—A smiling, sun-tanned Herbert Hoover headed for his boyhood state of Iowa today, leaving political conjures wagging.

The former president spent the night here—the scene of his nomination for the presidency—the latest stop of an automobile trip through the west that seems to swell in extent and significance with every mile.

Although Mr. Hoover says the trip is without political significance, leaders pointed out it is giving him a "grass root" survey of how the western and midwestern farmers feel about the "new deal."

Grid Star Slays Girl He Loved

PETERSBURG, Ind., March 30. (AP)—Ward Davis, 20-year-old former high school athlete, was held for safe keeping in a nearby county today, while the state attorney general sought the reason for the slaying of the girl he started to escort to a junior class party last night.

The body of Annabelle France, 16, a bullet in her heart, was found in an automobile in front of Davis' home by his father last night, a few hours after she told a friend she feared "something desperate" might happen.

Happy chatter of fellow students awaiting the girl's arrival at the high school party was stifled suddenly by a telephone call announcing her death.

Davis, a few minutes earlier, had surrendered to authorities. Officers said he made no statement. When a crowd began to form about the house, state police spirited the youth away.

Mrs. Dan Gribbon of Kingsmill shopped in the city yesterday.

I HEARD—
Little Sharon Chapman, daughter of Mr. and Mrs. Frank Chapman, telling her parents that she wanted four "camels" on her birthday cake.

Mrs. Alex Schneider Sr. declaring that she never had a better crop of dandelions and yet she worked harder to exterminate them last year than in any previous year.

In 'Accident'



Fighting a prison term, Mile. Germaine Huot, pre-war toast of Paris, above, declares that she killed Pierre Causeret, government official, by accident. He was slain during a scuffle for a gun she held. Mile. Huot contends, Police, in her Paris trial, hold that she shot him when he told her their romance was ended.

SLIDES REVEAL CANYON BEAUTY TO LIONS CLUB

Drive in Palo Duro Is 'Most Exciting Texas Drive'

THAT the Palo Duro canyon state park drive "is the most exciting 10 miles in Texas" was claimed by Col. Edward R. Cappock, CCC commander, in an illustrated talk to Pampa Lions yesterday.

Col. Cappock showed colored slides, many of them of great beauty, in illustrating his talk.

The largest group of veterans in this area is under his command in the canyons, "where the tree army works without trees." However, there are evergreens in parts of the canyon, and formations of extraordinary interest.

In addition to building roads, the 800 men are studying. Their instructors include two holders of Ph. D. degrees. There are 54 college graduates among the men, and three ministers. There are 463 married men. Fourteen veterans could neither read nor write when they enrolled.

The men will be in the canyons one more year at least, and Col. Cappock says there is work enough to last four years. A stone ledge is soon to be started at the head of the canyon. The Hon. Pat M. Neff will lay the cornerstone next month.

Saying that the men were very lonesome and that visitors helped to maintain a good morale, the soldier asked Pampans to visit the camps on Saturdays or Sundays and to take entertainment. They also may have dinner with the men if they like.

The talk was on "Conservation of Men and Nature at Palo Duro." The speaker has been in the army 38 years, during which he has been in every state and in 14 foreign countries.

R. B. Fisher was program chairman yesterday. Visitors were Jimmie Eastman of Shamrock, C. T. Hunkapillar, and the Rev. Gaston Poole.

the Weather
WEST TEXAS: Cloudy, rain or snow in north and probably rain in southeast portion tonight and Saturday; colder, freezing in the Panhandle tonight; colder in south and rising temperature in the Panhandle Saturday.

'STATE IS IN BETTER SHAPE THAN OTHERS'

TOLD EAST TEXAS OIL MEN SITUATION NOT ALARMING

DALLAS, March 30. (AP)—Ernest O. Thompson, railroad commissioner general, lashed back at critics of oil conservation authorities at a meeting of 200 oil men from east Texas today.

Thompson said that contrary to popular report, Texas was in better shape in regard to oil production than any other state in the union and that Texas crude production the first four weeks of March was an average of 17,300 barrels under the 947,900 daily allowable.

He quoted from conversations with federal officials at Washington showing that they were more satisfied with the Texas showing than with any other state.

"We have had a special session on an average of every 60 days to save the oil industry from chaos, whatever that may mean," he said, in explaining that oil men had more attention from the state than any other group.

The commissioner reminded the oil men that under the law the commission was bound to watch out for the interest of consumers of petroleum products as much as it was to guard those of producers.

"It is not the commission's job," he said, "to make oil scarce in order that gasoline may be high, so that a few people in Texas and other states may get rich."

The assembly of oil men was called by the east Texas chamber of commerce, the Dallas chamber and the Texas petroleum council in an effort to dry up "hot oil" in east Texas without recourse to the federal government. Leaders in the industry have said that unless the flow were stopped within two weeks, they would ask the federal government to step in.

Phillips Agrees To Labor Parley

BORGER, March 30. (AP)—R. C. Jopling, general sales manager of the Phillips Petroleum company today announced his firm had agreed to permit labor representatives to meet with company officials in dealing fairly with labor problems.

Jopling, quoted in a Borger Herald interview, said the plan will permit employees to bring their differences to the attention of proper company officials.

"It provides a by-pass for employees to take their troubles beyond the immediate foreman of the department head that they may have a just hearing," Jopling said. "Our plan also has in mind the health and safety of our employees and their families. It is intended to create personal contact between the humbler, working man and the management of our company."

Canyon Pictures Will Be Shown in School Programs

Col. Edward R. Cappock, CCC commanding officer at the Palo Duro canyons, will be brought to Pampa for appearances at school chapels, probably April 11.

Col. Cappock gave an illustrated lecture for the Lions club yesterday that was much enjoyed. While here, he probably will speak to several other clubs.

Plans also are being discussed by school and B. C. D. officials to take the high school band to the canyons for a concert.

HIGH OFFICIAL OF OIL FIELD UNION TO SPEAK HERE TONIGHT
J. L. COULTER, international secretary of the Oil Field union, will speak tonight at 8 o'clock at the First Baptist church.

A previous announcement gave the meeting place as the union hall as first decided, but indications are that the hall could not accommodate the crowd that is expected tonight, union spokesmen said.

Weds 'Humbly'



Instead of Chicago's elite, a window washer was the only witness when Geraldine Swift, above, 22-year-old daughter of G. F. Swift, packing plant magnate, and Albert F. Taylor, Chicago broker and former Yale football player, were married by a Joliet, Ill., justice of the peace. It was not an eloquent, the Swift family announced.

COUNTY FERA WAGE SCALE IS RELEASED HERE

Relief Institute Is To Be Held April 4 In Amarillo

REPRESENTATIVES of the Texas Relief commission will hold an institute at the Herring Hotel in Amarillo April 4 at 10 a. m. relative to the new relief program and accounting procedure.

Mrs. W. H. Davis, Gray county relief administrator, and several members of her staff will attend.

County relief projects are now going forward as fast as regulations and machinery will permit, it was stated today. A shortage of trucks is slowing the work considerably, however, on the highway projects.

P. S. Bailey, assistant division state engineer, inspected Gray county projects yesterday and appeared to be well satisfied with the work being done. He saw projects using crushed caliche and those not using it. Those persons who favor crushing caliche claim that there is not a convenient supply of the softer type for use without crushing.

The proposed wage scale for Gray county in FERA projects has been released. It was adopted for recommendation to the state relief commission by A. H. Doucette, L. A. White, and J. T. Grosan, composing the wage and grievance board. The proposed scale follows:

Table with 2 columns: Classification and Rate. Includes Roofers, Painters, Plumbers, Carpenters, Brick layers, Common labor, Sheet metal workers, Steel & iron workers, Electricians, Truck drivers, Team drivers, etc.

NEW OIL SCHEDULE Will Be Released

A new oil schedule for the Panhandle field will be released by the railroad commission to become effective Sunday morning at 7 o'clock. The schedule will come from the oil and gas division office here.

The allowable will remain at 52,000 barrels, although an application for an increased allowable has been filed with the railroad commission in Austin. If the increase is granted, another schedule will have to be released.

The percentage factor of the April schedule has not been figured. The field has been producing its allowable during March.

FALSE ALARM
The fire department answered a false alarm at the air port last night about 9 o'clock. The report at the station said grass on the air port landing field was burning.

END OF FRANK CRUTCHFIELD TRIAL NEARS

INSANE ASYLUM HEAD TO TESTIFY THIS AFTERNOON

AMARILLO, March 30. (AP)—The end of the Frank Crutchfield murder trial, which opened two weeks ago, was in sight today, with only one more witness to be heard before testimony is concluded.

C. W. Castner, superintendent of the state hospital for the insane at Wichita Falls, where Crutchfield was confined in 1926, was to be called by the state this afternoon.

There was a possibility that the case would reach the jury by noon tomorrow, the last day of the present term of district court in Potter county.

Mrs. Maggie Stewart, who operates a boarding house at Sunray, in Moore county, testified that Crutchfield and a companion robbed her of \$105 on the night of January 3, just two days before Crutchfield killed Preston Burnham, Amarillo police officer. She said Crutchfield cursed her and threatened her life.

The remainder of the forenoon was taken up by the state in an effort to impeach the expert testimony of Dr. Guy F. Witt, of Dallas, who testified yesterday that Crutchfield was insane. Dr. Witt, on cross-examination, said Crutchfield's actions immediately following the slaying of Burnham indicated that he knew right from wrong. He also said it was paid \$410 and expenses to testify in a former insanity hearing for Crutchfield.

LATE NEWS

NEW YORK, March 30. (AP)—The United States Steel corporation announced today that its various manufacturing companies, after meeting with employees' representatives, had agreed upon an advance of approximately 10 per cent in wages.

WASHINGTON, March 30. (AP)—The civil work administration came to an end today with the man in charge—Harry L. Hopkins—announcing it a success.

WASHINGTON, March 30. (AP)—Farm administration officials said today contracts for government purchase of live hogs for relief needs will likely be let tomorrow or Monday.

WASHINGTON, March 30. (AP)—The commodity credit corporation said today loans of 45 cents per bushel on stored corn will be available to farmers until May 1, an extension of 30 days.

WASHINGTON, March 30. (AP)—Secretary Ickes, the oil administrator, today fixed the allowable production of gasoline for April at 31,910,000 barrels as compared with 31,791,000 for March. The allowable becomes effective April 1.

Absentee Votes In School Election To Be Accepted

Names of C. T. Hunkapillar and J. M. Daugherty, incumbents, and Frank M. Foster and Paul Hill appear on the ballots. The two high men will take office.

As a matter of form, nominations are usually presented over the signature of some citizen. Names of Foster and Hill were filed by Bonnie W. Rose and those of Hunkapillar and Daugherty by S. L. Anderson.

Ball tax receipts or affidavits must be filed with absentee votes, which will be accepted up to within three days of the election.

Out for Sheriff



J. I. Downs, above, veteran peace officer who previously had announced for constable of Precinct 2, today withdrew from the constable's race and entered the campaign for sheriff of Gray county.

Mrs. F. Safford, about 45, of Dallas, an employe of an insurance company, was killed instantly when he jumped from his third-story room. Awakened by the aging flames, he jumped head first out of a window and landed on his head. The charred body of another person, whose identity could not be established, was found in the ruins. Only a few of the 80-odd guests were up and about their rooms when the flames sprang up from a source undetermined, and quickly got beyond control of the fire department. Hope of saving the building was abandoned soon and efforts were directed at saving others nearby. A two-story home was destroyed but its occupants had been warned in sufficient time to gather up some of their personal belongings and flee to safety.

YOUTH IS NEAR DEATH AS CALF CAPTURES PRIZE

MUCH concern was felt in Gray county today over the condition of young Jim Farley, son of Mr. and Mrs. P. B. Farley of near Groom, who is in Amarillo hospital. Young Farley's condition was very grave today. He has had two recent operations.

His calf was grand champion at the 4-H boys' show in Lubbock, and was to be sold there today. Young Jim took much pride in feeding his calf, but was too sick to appreciate the championship he won. His father telephoned the news of the award from Lubbock to Mrs. Farley, who was with the boy at Amarillo.

The youth has been a consistent winner in 4-H club affairs.

Absentee Votes In School Election To Be Accepted

Names of C. T. Hunkapillar and J. M. Daugherty, incumbents, and Frank M. Foster and Paul Hill appear on the ballots. The two high men will take office.

As a matter of form, nominations are usually presented over the signature of some citizen. Names of Foster and Hill were filed by Bonnie W. Rose and those of Hunkapillar and Daugherty by S. L. Anderson.

Ball tax receipts or affidavits must be filed with absentee votes, which will be accepted up to within three days of the election.

I SAW--

A cherry tree in full bloom, just loaded with blossoms, at the home of Mr. and Mrs. H. B. Lovett at the corner of Houston and Kingsmill.

DAILY NEWS SCORES HIGH

NEWSPAPER APPEAL cannot be measured without an examination of the territory it serves and the interests involved.

National advertisers, the shrewdest space buyers in newspapers, are keen judges of reader interest. Among the question they ask are these: What percentage of readers are white? What is their level of education and alertness to news? Is every member of a reader-family interested in the paper? Are the readers outside of the paper's home community served with news they desire?

The Pampa Daily NEWS scores remarkably high when these questions are answered. Thousands of readers of THE NEWS take no other daily newspaper. Only THE NEWS satisfies their longing for territorial, state, national, and foreign news.

The NEWS aspires to be a great territorial organ as Pampa aspires to be a commercial center serving a great area. Pampa and Pampa's daily newspaper march hand in hand with a great section.

THE PAMPA DAILY NEWS

Published evenings except Saturday, and Sunday morning by Pampa Daily News, Inc., 322 West Foster, Pampa, Texas.

GILMORE N. NUNN, General Manager
PHILIP R. POSE, Business Manager
OLIN E. HINKLE, Managing Editor

MEMBER OF THE ASSOCIATED PRESS—Full Leased Wire. The Associated Press is exclusively entitled to the use for publication of all news dispatches credited to it or not otherwise credited in this newspaper and also the local news published herein. All rights for re-publication of special dispatches herein also are reserved.

Entered as second-class matter March 15, 1927, at the postoffice at Pampa, Texas, under the Act of March 3, 1879.

SUBSCRIPTION RATES OF THE PAMPA DAILY NEWS

By Carrier in Pampa	By Mail in Gray and Adjoining Counties
One Year \$6.00	One Year \$6.00
Six Months \$3.00	Six Months \$3.00
Three Months \$1.50	Three Months \$1.50
One Month \$0.50	One Month \$0.50

By Mail Outside Gray and Adjoining Counties

One Year \$7.00	One Year \$7.00
Six Months \$3.75	Six Months \$3.75
Three Months \$1.75	Three Months \$1.75
One Month \$0.50	One Month \$0.50

NOTICE: It is not the intention of this newspaper to cast reflection upon the character of anyone knowingly and if through error it should, the management will appreciate having attention called to same, and will gladly and fully correct any erroneous statement made.

Telephone 686 and 687

ARMAMENTS NOT WAR CAUSE

Wars and rumors of wars are closely related. Without war in the minds there could be no slaying with the hands. Fear-free nations are not afraid of the preparedness they think necessary. A battle ship in the Pacific may be less dangerous than a loose talker in Pampa. For rumors of wars spread and become a national obsession if encouraged.

A huge British fleet has been holding maneuvers in the Leeward Islands, in the West Indies. It is the mightiest fleet England ever has sent across the Atlantic. Not since the day of Rodney has so great a proportion of the empire's naval strength visited the edge of the Caribbean.

And yet this demonstration has aroused not a shadow of fear or suspicion in the United States. No one has risen to suggest that these maneuvers mean that England is looking ahead to a war with the United States.

Indeed, it is likely that not one American in even has known that the British fleet was on this side of the Atlantic. Of those who did know, hardly anyone has thought twice about it.

Compare that state of affairs with what happened a year or so ago, when the United States fleet held its maneuvers off Hawaii. The whole Japanese nation became alarmed.

The stunt was looked upon as a direct menace to Japan. It was asserted widely that preparation for war with Japan was the only possible motive for such action.

The two cases are almost perfectly parallel, on the surface. But one passed unnoticed; the other led to an amazing amount of war talk. Why?

Perhaps the answer is that armaments do not, in themselves, cause fear and suspicion, after all. If the national interests of two countries are in conflict, or seem to be, then military demonstration will provoke uneasiness and cause irritation; if fear and suspicion exist to begin with, in other words, fleet maneuvers will bring them out into the open.

But if they don't—if two nations know perfectly well that they are going to live peaceably, side by side, as the United States and England know it—then the admirals can parade their dreadnaughts when and where they please, and no one will think twice about it.

OUT OUR WAY

By WILLIAMS



ROME IS LIKE DEAD CITY FOR 3 HOURS TODAY

Death Sacrifice Of Christ Recalled In Services

BY A. E. STUNTZ.
Associated Press Foreign Staff.
ROME, March 30 (AP)—Black-vestimented priests, prostrated before the bare altars of Rome's many Catholic churches, prayed long and earnestly today in mournful commemoration of the death sacrifice made by Christ for mankind.

The basilicas and churches were stripped of ornament. Tapers and candles were removed. Drapes of deep purple and somber black covered the sacred images. No masses were said nor sacrifices offered. The ceremony, which took place in all Roman churches, was called the "presanctified," because officiating priests partook in one kind only of a Eucharist which was consecrated yesterday. At that time two sacraments were used and one taken in procession to a so-called sepulchre, or altar of repose, so that the central altars might remain bare today.

Adoration of the holy cross marked worship at the four great basilicas. There, the many thousand holy year pilgrims now crowding Rome heard sermons based on Christ's reproaches to his crucifiers and saw relics of his passion and death.

Other devout pilgrims went to the holy stairs which are housed next to the basilica of St. John Lateran. There they ascended the stairs on their knees reciting a prayer at each step. At the top they knelt before a small chapel containing a likeness of Christ supposed to have been painted by Saint Luke on wood.

The stairs are said to be the ones which Christ ascended in the house of Pontius Pilate after he had been crowned with thorns.

Rome lay like a dead city between noon and 3 o'clock. These were the hours that Christ hung on the cross. The people either stayed close at home or went to church. The hour of the "desolata" will be devoutly celebrated by Rome as the sun sets on this day of sorrow. It is an hour devoted in many churches to the best of Roman choir singing.

Political Announcements

The Pampa Daily News is authorized to announce the candidates of the following, subject to the Gray County Democratic primary of July 28, 1934:

- For Commissioner, Precinct No. 1—CLEM V. DAVIS, A. (ARLIE) CARPENTER, EDWARD J. GETHING.
- For Commissioner, Precinct No. 2—JOHN HAGGARD (second term).
- For Commissioner, Precinct 3—H. G. MCLESKEY, THOMAS O. KIRBY.
- For Justice of Peace, Prec. 2, Place 2—E. F. YOUNG.
- For County Clerk—CHARLIE THUT, J. V. NEW.
- For County Tax Assessor-Collector—W. E. LEECH, EDWIN G. NELSON, T. W. BARNES.
- For Constable, Precinct No. 2—JIM M. KELLER, FRANK JORDAN.
- For County Superintendent—W. B. WEATHERED, JOHN E. HESSBY.
- For County Treasurer—D. R. HENRY.
- For Sheriff—MRS. C. E. PIPES, J. I. DOWNS.
- For County Judge—C. E. GARY (second term).
- For County Attorney—SHERMAN WHITE.
- District Clerk—FRANK HILL, W. E. BAXTER.
- For District Judge—W. B. ERWING.
- For District Attorney—LEWIS M. GOODRICH.
- State Representative—JOHN PURYEAR, Wellington. EUGENE WORLEY, Shamrock. PHILIP WOLFE, Pampa.

Class Members Report Activity Of Busy Month

A busy month for members of Bethany class, First Baptist church, was revealed in reports at the monthly social and business meeting Tuesday afternoon.

Members told of 95 telephone calls, 88 visits to the sick, 224 visits in the interest of the class, and 16 trays sent. Games were enjoyed and refreshments were served. Those present were Misses J. P. Reynolds, John Kiser, T. B. Solo-

Blue Star Kills Foot Itch Gerns

Stiffborn foot itch germs die when Blue Star Ointment melts and soaks in. For itchy, scraggy, rash, letter, ringworm, pimples and other skin troubles, you can find nothing as fine as Blue Star Ointment. Does not burn (adv.)

See Us For Ready Cash To:
■ Refinance
■ Buy a new car
■ Reduce payments
■ Raise money to meet bills.
Prompt and courteous attention given all applications.
PANHANDLE INSURANCE AGENCY
Combs-Worley Bldg. Ph. 531.

1920 1934
THE OLD RELIABLE Pampa Shoe & Harness Shop
First in Pampa First in Quality
Across From Garfield Court, 405 W. Foster
J. N. DEAN
Proprietor

AUTO LOANS
See Us For Ready Cash To:
■ Refinance
■ Buy a new car
■ Reduce payments
■ Raise money to meet bills.
Prompt and courteous attention given all applications.
PANHANDLE INSURANCE AGENCY
Combs-Worley Bldg. Ph. 531.

FIRESTONE GUM-DIPPED TIRES
PRICE, QUALITY, AND SERVICE
Only Firestone Tires are double safety protected—on the inside with high stretched GUM DIPPED cords—on the outside with deep, rugged non-skid tread... Tires sold on easy payments... Make your own terms.
WE GUARANTEE THEM AGAINST ALL ROAD HAZARDS
FIRESTONE ONE-STOP SERVICE
Phone 100 Free Road Service 403 West Foster

THE NEW FANGLES (Mom'n Pop)
AN ESCAPED CONVICT! HE'S A KILLER, AND INSANE! WHERE'S MY GUN? FORMING UP! POSSE! QUICK!
YOU AREN'T GOING WITH ME!
THEN I'LL GO WITH YOU!
STAND BACK! THIS IS MINE! WORK MY DUTY IS BY THE SIDE OF MY FELLOW CITIZENS, GIVING MY LIFE IF NEEDED FOR LAW AND ORDER!GIVE ME ONE CHANCE AT THAT YEGG! JUST ONE CHANCE!AWK! DON'T SHOOT!!!

ALLEY OOP
WELL, I'LL BE A WART-HIDED ALLIGATOR'S GRANDPA! WHAT MOVED THAT WATERFALL OVER ONTO OUR CAMP? NOW, WHAT TH—HMM—THAT LOOKS LIKE FUNNY BUSINESS, TO ME! YEZZIR! SUMPIN'S PONEHY!SPLAUG!

And More to Come!
SPLUTAFOOY-PHT! NOW I KNOW THERE'S PONEHY BUSINESS! I'M GONNA DO SUMPIN' RIGHT NOW! I?
HAW, HAW, HAW! WE GOT 'IM WILD! LISSEN TO 'IM ROAR! NOW HE'S GONNA 'DO SUMPIN' TOUGH! HE'S DECLARING WAR!
HE AINT GONNA DO NOTHIN' 'IM TELLIN' YOU! HE WON'T HAVE A MAN LEFT AFTER WE PULL OFF OUR NEXT STUNT!

By COWAN
By HAMLIN

THIS CROSS TELLS YOU
It Means the REAL ARTICLE
GENUINE ASPIRIN Bayer Of Bayer Manufacture
When you go to buy aspirin, just remember this: Every tablet of real aspirin of Bayer manufacture is stamped with this cross. No tablet without this cross is GENUINE Bayer Aspirin.
Remember this for your own protection. Tell your friends about it for their protection. Demand and get Genuine Bayer Aspirin.
Safe relief for headache, colds, sore throat, pains of rheumatism and neuritis, etc.
Genuine Bayer Aspirin Does Not Harm the Heart MEMBER N. H. A.

Baby Chicks
FOR SALE
A good variety different breeds of baby chicks. We also do custom hatching at 2 1/2c per egg, 2 1/2c in 500 lots. Bring hatching eggs on Saturdays.
PURINA FEEDS
COLE HATCHERY
828 W. Foster Pampa
Phone 1161

PHONE
871
FOR TRAVEL INFORMATION
Lower Rates - Faster Time - Safe - Convenient
PAMPA BUS TERMINAL
112 No. Somerville St. Phone 671

OH, DIANA!
OH-H-H---M-M-Y B-B-BABY---MY D-D-DIANA, GONE!
NOW, NOW, MOTHER, DON'T TAKE ON SO.
EVERYTHING'S GONNA BE ALL RIGHT.
WHAT?! YOU CAN STAND THERE AND SAY THAT WHEN OUR DAUGHTER'S GONE TO MARRY THAT NO ACCOUNT ACTOR-GIBBER TORRID!

Homing Pigeon
OH, WHY DO YOU EVER LET HER GO?
LISTEN--I PHONED SERGEANT BLAKE! IF DIANA REALLY TRIED TO BOARD THAT TRAIN FOR NEW YORK HE'D STOP HER! WHY--SHE'LL BE HOME IN AN HOUR!

By FLOWERS
DIANA?
YEP--I QUIDN'T BEAR TO LEAVE YOU AND MOM--AND BESIDES, THE JUNIOR PROM IS NEXT WEEK!

By TERRY
THIS CALLS FOR QUICK ACTION, BOB! THE GANG THAT STOLE YOUR PLANS IS IN THIS! COME ON, WE GOTTA FIND HER!

SCORCHY SMITH
THE PLACE HAS BEEN RANSACKED, SCORCHY!

Bunny Disappears!
BUNNY ISN'T HERE EITHER!

Bob!
COME HERE QUICK! HERE'S BUNNY'S PURSE!

SOMETHING'S HAPPENED TO HER, SCORCHY!

EASTER SERVICES ARE ANNOUNCED FROM ALL PAMPA CHURCHES

DAY MARKS BEGINNING AND CLOSE OF REVIVALS; MUSIC IS IMPORTANT IN WORSHIP

CANTATA, ANCIENT CHANT, AND ANTHEMS HAVE BEEN PREPARED BY CHOIRS TO CELEBRATE CHRISTIAN HOLIDAY

EASTER sermons and special music will celebrate in Pampa churches Sunday the most important Christian holiday of the year. A week of revival services in the Methodist church will close, as a two-weeks' revival opens in First Baptist church with the Rev. J. D. Brannon as evangelist. First Christian church will start preparations for a spring revival beginning April 15.

Choirs in all churches are preparing special numbers. Important on the list is an ancient Gregorian chant, "Missa de Angelis," which the choir of Holy Souls Catholic church will present at a high mass beginning at 10 a. m. This will be the first time one of these famous chants has been attempted here.

SERVICES FOR EASTER DAWN ARE PLANNED

Methodist Classes To Have Outdoor Meeting

Young people of Methodist church will greet the Easter sunrise at an outdoor service Sunday morning, with the senior and intermediate departments participating.

Meeting at the church, they will leave at 5:30 for a suitable spot for the early breakfast and program. The Rev. Gaston Poole, minister, is to be the principal speaker. Plans are in charge of Mrs. C. T. Hunkapillar, intermediate superintendent, and A. L. Patrick, senior superintendent.

Another group which will observe an early morning Easter service is the Fidelity class of the adult department which will meet at 6 o'clock on the lawn of the W. Purviance home Sunday morning.

Their Majesties of Sam Houston



(Photo by Fred's) Crowned queen and king of the Sam Houston school carnival as a result of a student popularity contest this month, Gloria Conley and Howard Myers Jr., pictured above, had the leading parts in a colorful ceremony. Queen Gloria is the daughter of Mr. and Mrs. E. M. Conley, and his majesty is the son of Mr. and Mrs. H. G. Myers. The carnival over which they reigned was sponsored by the Sam Houston Parent-Teacher association.

BREAKFAST IN EASTER MOTIF IS GIVEN CLUB

OUT-OF-TOWN GUEST IS ENTERTAINED WITH QUEEN OF CLUBS

A BREAKFAST in Easter motif was given for the Queen of Clubs when Mrs. Carl Boston entertained at her home yesterday morning.

Cheerful shades of yellow predominated in the table appointments, in tallies for the bridge games, and in wrappings of the prize packages. Mrs. Neil McCullough scored high, and Mrs. E. S. Lawrence received the award for high cut. Mrs. Callie McConnell of Tulsa was a special guest, and club members playing at the three tables were Misses A. M. Martini, I. B. Hughey, Neil McCullough, H. D. Keys, Mack Graham, Raymond Harrah, Howard Buckingham, J. H. Kelley, H. C. Wilson, A. B. Goldston, and Lawrence.

Methodist Children Will Have Egg Hunt

Children of both the primary and beginners departments of Methodist Sunday school will be entertained with Easter egg hunts Saturday. Both groups are to meet at the church at 3 p. m. Boys and girls of the beginners department are asked to each bring a half dozen colored eggs.

Mrs. R. B. Haynes of Miami was a Pampa visitor Wednesday.

Miss Margaret Buckler and Miss Virginia Faulkner are vacationing in Hot Springs, Ark. Gene Fatheree made a business trip to Amarillo this morning. Use The NEWS classified ads.

TEACHER OF POPULAR MUSIC
Why not play all the late popular music? See Mrs. W. L. Brummett Phone 363 424 Yager

Mrs. Ligon's Easter Specials

Our \$7.50 Permanent Wave \$3.50 (2 for \$6.00)

Regular \$5.00 Permanent, 2 for \$5.00

Our Cheaper Wave for only \$1.50

Shampoo and Set, Dry, for 50c

Eyebrow and lash dye, arch and manicure \$1.00

Shampoo and Marcel, this week 75c

PHONE 1005
Call Early for Appointment Smith Building

MERTEN P-TA FILES REPORTS ON TERM WORK

BUSINESS HOUR HELD AFTER EGG HUNT FOR PUPILS

YEARLY reports were finished and mailed to state and district headquarters by Merten Parent-Teacher association in a brief business session conducted yesterday after an Easter egg hunt which members gave for the school.

Forty-two dozen colored eggs were hidden for the hunt, enjoyed by all pupils at Merten. Prizes for finding the most eggs went to Master Wilkerson of the primary room, Master Moody of the second and third grade room, and Jimmie Louise Enloe of the fourth and fifth grade room.

After the eggs were counted and prizes awarded, all the eggs were collected and divided equally.

The P-T. A. business hour followed. Reports were sent to the state congress, and the publicity record book for the year was sent to district headquarters at Amarillo.

Mrs. C. R. Nelson, delegate to the educational conference at Canyon last week-end, reported on that meeting.

HOLY SOULS CATHOLIC
Distribution of communion, 7 a. m.
Mass at 8 a. m.
High mass at 10 a. m., followed by the benediction of the blessed sacrament. The choir will sing a Gregorian chant, Missa de Angelis, and as an offertory, Regina Coeli, with Mrs. J. W. Garman as soloist.

FIRST BAPTIST CHURCH
Corner Kingsmill & West Streets
The pastor will occupy the pulpit at 11 a. m. and 8 p. m. Special attention is called to the changed hour of the evening services. Sunday begins two weeks of services in the church. Rev. J. D. Brannon will preach and Mr. Ira Powell will direct the music. Services will be at 7:30 on week nights and at 10 a. m. week days, excepting Mondays and Saturdays. The public is invited to take part in these services. We recommend the special help and are anxious for the meeting to be of help to the entire community.

The pastor will bring an Easter message Sunday evening for the reason many are forced to work Sunday mornings and it is probable that for years they have not been in a service in which an Easter message was magnified.

SIMPLE METHOD OF HOME CHEESE MAKING IS GIVEN BY H. D. AGENT

"I have made 125 pounds of American cheese since Miss Ruby Adams gave the demonstration to our club in March, 1933," says Mrs. G. G. Frasier, farm and ranch food supply cooperator of the Kingsmill club. This is valued at \$12.50 and has cost only \$1.00 to make. "I have not found it difficult to make, and my family enjoys cheese served in many ways," continued Mrs. Frasier.

The instruction Miss Ruby Adams, Gray county home demonstration agent, gives are as follows:

1. Put milk in a straight sided vessel such as a pressure cooker and bring to 86 degrees.
2. Five gallons of milk will make a very nice size cheese.
3. For five gallons of milk use 1/2 of a color tablet and 1/2 of a No. 2 rennet tablet. Dissolve these in a half cup of water each, and add to the milk after it has been brought to 86 degrees. Mix the rennet and color thoroughly with the milk.
4. After rennet and color have been added to the milk and mixed in, allow the milk to stand undisturbed until a fine curd has formed. This generally takes from 25 to 30 minutes.
5. After the curd is firm, cut both ways across the vessel with a long knife into 1/2-inch strips and break up into 1/2-inch cubes with a wire egg beater by stirring slowly with the beater.
6. Allow the curd to stand from 5 to 10 minutes until whey begins to separate quite freely.
7. Place on a low fire and heat slowly (2 degrees for each 3 minutes) until 100 degrees is reached. It should take from 30 to 40 minutes.
8. Stir slowly all the time during the heating period.
9. Hold the curd whey at 100 degrees until it becomes quite firm and rubbery; this will take from 45 minutes to one hour. Stir occasionally while holding.
10. When the curd has become sufficiently firm, drain off the whey and keep the curd stirred to prevent its matting together. This should continue until the curd is quite dry.
11. Salt the curd at the rate of one ounce of salt to each 3 pounds of curd and allow the salt time to dissolve. Then the curd is ready for the press.
12. A cheese mold can be made from a syrup bucket or lard can.
13. Line the mold with cheese cloth.
14. A lever over the mold will serve for pressure by using about 50 pounds weight on a 6 foot lever.
15. The curd should be kept in the press from 8 to 12 hours. Then removed and placed in a clean, cool place to dry on the outside. Turn same over two or three times daily while it is one drying shelf.
16. Also soon as the cheese is dry on the outside, 3 or 4 days after taking from the press, it should be paraffined. Heat the paraffin to 230 or 230 degrees and roll the sides of the cheese and dip the ends into the paraffin. The paraffin must be hot to prevent too thick a coat from forming on the cheese. A thin coat is to be preferred to a thick, scaly one.
17. After the cheese is paraffined it should be stored 5 or 6 weeks for curing, and a temperature around 60 degrees is the most desirable.

We do not recommend making cheese on the farm in the summer because curing temperatures are not often available.

Mrs. Frasier won second place in the district on American cheese making during the Amarillo fat stock show on March 5.

CAMP FIRE GIRL SALE
The Inhaba group of Camp Fire Girls will sponsor a cake and pie sale tomorrow at both the Furr Food stores, to secure funds for payment of dues and registration of their new organization.

BLACK-DRAUGHT For CONSTIPATION

"I am 71 years old and have used Theodor's Black-Draught about forty years," writes Mr. W. J. Vanover, of Rome, Ky. "We are never without it. I take it as a purgative when I am bilious, dizzy and have swimming in my head. Black-Draught relieves this, and helps me in many ways. . . . Keep a package of this old, reliable, purely vegetable laxative in your home, and take it for prompt relief at the first sign of constipation."

FREE JUMBO SACK OF CARNATION FLOUR

Have you seen the large Jumbo sack of Carnation Flour in the window at Pampa Hdw. & Imp. Co.?

This sack will be given away Saturday, April 7, to the Person guessing nearest its exact weight.

2nd Prize 48 Lb. Sack
3rd Prize 24 Lb. Sack
4th Prize 12 Lb. Sack
5th Prize 6 Lb. Sack

Get your blank ballots from your grocer. One ballot for any size sack of Carnation Flour purchased. No limit on number of guesses you can make. Deposit your ballot in ballot box at Pampa Hardware & Implement Company.

H. A. MARR GROCERY CO.
Distributor For Carnation Flour

Perfume By The Dram

COTY

L'Almant 50c
Chyree 50c
Paris 50c
Lorigan 50c
Emeraude 50c
Styx 75c

HOUBIGANT

Quelque-Fleur 50c
Mon-Boudoir 50c
Ideal 50c
Subtilite 50c

Orchid'ee Bleu \$1.00
Dram

Doux-Jasmin 98c

Le Chevalier De Lanuit By Giro 98c

Beldogla By Caron \$11.00 & \$20.00

Coty Powder and Perfume 1.10 Value 98c

Evening In Paris Powder, Perfume and Lipstick All For 98c

GIVE CANDY FOR EASTER

79c to \$2.50

DANGBURN'S Easter CANDIES

...Have famous MILK CHOCOLATES

EXPECT THE BEST AT YOUR Prescription Drug Store

50c Kleenex 35c
Kotex 18c
75c Fitch Shampoo 59c

DOCTORS ADMIRE THIS LAXATIVE

To banish headaches, dizziness and other constipation ills doctors regularly prescribe the laxative ingredient used in Feen-a-mint, the modern, pleasant-tasting, chewing gum laxative. Feen-a-mint acts more promptly, thoroughly, and satisfactorily, for it is gently released into the intestines by giving a "full," more natural action. Feen-a-mint is pleasant to take, but contains no richness to upset the stomach or diet. Feen-a-mint is the modern development from old-fashioned, unpleasant-tasting, habit-forming, bowel-slusing laxatives. Does not interfere with duties. "Delay" is dangerous—chew Feen-a-mint for constipation. 15c and 35c at druggists.

Reports of Easter Visits Are Wanted

Reporters of society items for Sunday's paper are reminded that their material must be sent or telephoned to the woman's page editor by noon Saturday to assure a place.

Reports of social and personal items are always welcomed, and news of Easter holiday visits and visitors will be of interest this week-end. Students home from college or out-of-town guests will appreciate the courtesy of having their presence reported, and their friends will be interested.

Mrs. Clyde Mathews of Kingsmill shopped in the city yesterday afternoon.

FISH

Fresh Shipment From White River In Arkansas.
Channel Cat, Drum and Buffalo.

GROCERIES

We will meet all advertised prices with merchandise of equal quality in accordance with the NRA Code. Bring Your Papers.

W. H. THOMAS GROCERY & MARKET
WE DELIVER
408 South Cuyler Phone 24

Rough and Easy EASTER SUITS \$25
(Extra Pants \$4.50)

There's No Letting Up, Once You Get a "Rep" for alert styling . . . young men insist upon new ideas . . . something original in the way of smart-nett each season.

VARSITY TOWNS AND UNDERGRADS NEVER DISAPPOINT!

For Spring . . . Up to Expectations and Possibly 'Way Above!

PLATINUM GREYS . . . NEW TANS . . . BLUES

Murfee's INC.
PAMPA'S LEADING DEPARTMENT STORE

RICHARD'S DRUG CO.
Prescription Laboratory
Phone 1240 Next To P. O.

FOOTBALL SCRIMMAGE TO BE HELD TOMORROW AFTERNOON

Exes and College Players To Play 1934 Prospects 4:30 At Harvester Park.

The football scrimmage of the year will be staged at Harvester park east of the grandstand, about 3:30 o'clock tomorrow afternoon when the Harvester prospects of 1934 meet the ex-Harvesters of Coach C. O. Busby. It will be the last scrimmage of the first spring training period for the Harvesters. They will turn their suits in following the battle.

A second group of prospects will

be given uniforms next week and will work out for several weeks. The second group will include boys ineligible for Harvester play this fall and youngsters anxious to learn the game. Coaches Odus Mitchell and Argus Fox will be in charge of the practice, assisted by Captain Monroe Owens.

Coach Mitchell has been making more changes in the Harvester lineup and will probably start his changed lineup against the Exes tomorrow. Bill Hiner, former guard, has been switched to an end position. J. R. Green takes the guard position when he is not in the backfield "tooting the mail." Charlie Welton has been playing the position. With Green in the line, Chubbey Stewart has been the backfield selection in scrimmage.

Charlie Johnson is fast becoming an outstanding guard and will be hard to beat out of a position if he continues to improve. Robert McAuley has been showing marked improvement at the center position the last week. Bob Drake is about the most improved man on the squad, and if any of the regular backfield boys start slipping it will be disastrous for them. Lloyd Hamilton is showing up as a ball carrier and Mayse Nash as a quarterback. Bill Dunaway's punting and passing have improved wonderfully. Jack Fowler has been filling in at tackle like a veteran, with Carl Smith at the other tackle job. Captain Owens has the other end position. Several substitutes are fighting hard and only waiting for a single slip to take up playing duties. Most of them will be used tomorrow.

Coach C. O. Busby has not definitely named his starting lineup but reports that either Poe or Pinnell will be at center with Pafford and Powell, guards; Green, tackle, and Kelley and Moore, ends. His back-

TRAINING WITH THE MAJOR LEAGUES

By The Associated Press
WINTER HAVEN, Fla., March 30.—Lois Chicago, who came here with the team publicity, has the best change among candidates for infield vacancies in the ranks of the Phillies. It was Chicago who drove in the winning run against the Boston Red Sox yesterday, repeating his performance of their previous encounter.

YANKEES
ST. PETERSBURG, Fla.—Danny McFadden, veteran right hander, finally has turned in a game that makes it appear as though he'll be of considerable use to the New York Yankees this season.

Danny pitched the first six innings against the Boston Braves yesterday, granted only four hits and one run. He walked none and fanned three.

TIGERS
LAKELAND, Fla.—Detroit's Tigers, beaten by the A's, again Thursday, 3-10-3, came back to meet the Columbus team today to meet the Columbus team of the American Association.

Although each team got 10 hits Thursday, the Macks hit when hits meant runs.

SENATORS
BILOXI, Miss.—After two consecutive linkings by the Cleveland Indians, Manager Joe Cronin has put his Washington Senators back into sort of a laboratory workout on baseball fundamentals.

For two hours yesterday the kid manager had his charges practicing the fine points of both defensive and offensive play, including a bit of base stealing.

RED SOX
SARASOTA, Fla.—No more traveling for the Red Sox until they break camp for the season next Monday.

The Braves come to town today and Gordon Rhodes will pitch six innings against the Tribesmen. Either Welch or Walberg will finish out the game.

BRAVES
ST. PETERSBURG—The last St. Petersburg game of the 1934 training camp season behind them, the Braves travel to Sarasota today for the second game of their five-game spring series with their Boston rivals, the Red Sox.

Ben Cantwell, who has been under the Doctor's care, may pitch a few frames to keep his arm in action.

WHITE SOX
PASADENA, Cal.—The Chicago White Sox took their last routine drills of the practice season today. Tomorrow and Sunday they will meet the Pasadena Merchants, a semi-professional team and on Monday will take to the road home.

The homeward journey will involve a string of 12 games in 10 cities, all against the Pittsburgh Pirates.

YESTERDAY'S EXHIBITION

By The Associated Press
New York (N) 5; Brooklyn (N) 4. Philadelphia (N) 6; Boston (A) 5. Columbus (AA) 7; St. Louis (N) 6. Philadelphia (A) 5; Detroit (A) 3. Boston (N) 7; New York (A) 2. Cleveland (A) 5; New Orleans (SA) 4.
Chicago (N) 5; Pittsburgh (N) 1.
Today's Schedule
At Sarasota: Boston (A) vs. Boston (N).
At Bartow, Fla.: Cincinnati (N) vs. Rochester (IL).
At Dothan, Ala.: New York (N) vs. Nashville (SA).
At Orlando: Philadelphia (N) vs. Montreal (IL).
At Los Angeles: Pittsburgh (N) vs. Chicago (N).
At Bradenton: St. Louis (N) vs. New York (A).
At Lakeland: Detroit (A) vs. Columbus (AA).

District Track Meet To Be Held Here April 13-14

Trackmeets to represent Pampa high school in an invitation track and field meet in Amarillo April 7 will be selected Wednesday afternoon at Harvester park, when an impromptu track and field meet will be held. Winning athletes will go to Amarillo to the meet being sponsored by the Amarillo college.

The district meet, with teams coming from eight counties, will be held here April 13 and 14. Programs are being printed and will be mailed soon. The teams coming to Pampa will be county champions.

All marks in the News-Globe tournament, succeeded by the Amarillo college meet, will be set up for athletes to "shoot at" in the Amarillo races.

Four of the records are held by Pampa athletes and one by a LeFors boy. Joe Kahl of the class of 1932 is one of the two athletes who hold two records. Kahl set the broad-jump mark of 20 feet, 10.5 inches and tied with Russell of Hereford in the 200-yard dash at 23.8 seconds.

Archie Lee Walstead holds the record in the 220-yard low hurdles made in 1929 at 25.6 seconds. John Willis set the pole vault record in 1929 with a leap of 12 feet.

Arthur Moore of LeFors set the shot put record in 1932 with a heave of 43 feet, 8 inches.

W. T. Jones of Amarillo transacted business here today.

Field will probably be Lard, Sausbury, Heiskell, and Marbaugh. A number of good relief players will be on hand and things look tough for the Harvesters.

Use Daily News Classified Ads.

CLINGMAN IN 'KILLER' ROLE AT AMARILLO

Rod Fenton Loses Bloody Match; To Grapple Dory Detton Here on Monday.

Sailor Otis Clingman turned "killer" last night to defeat Rod Fenton, Canada's baby-faced bad man, in a match on the Amarillo mat to gain his place at the head of the middleweight title race, but still is tied with Fenton. The Canadian will appear here Monday night against Dory Detton, Utah Mormon youngster, in his first match on a climb, to get another crack at Clingman.

The good-looking Detton has been working at top speed to perfect a defense against the Canuck's dropkick. He has had Dutch Mantell, Rob Roy, Otis Clingman, and a few more ear-twisters working with him. If the youngster has improved as much over his last appearance as he did between his last two shows, he should be a match for the best in the game.

Pampa wrestling fans are waiting anxiously to see the famous dropkick introduced into these parts by the Canadian champion. He has started other matlers to using the method of attack. Clingman used it on Fenton with disastrous results last night and Tuesday night in LeFors. Rob Roy gave a demonstration.

Two local wildmen will appear in the semi-final King Cole, whose wrestling name is Swede Larson, will meet Pat Garrison, Phillips mauler. Cole has been working long and hard every afternoon for the last two weeks and has dropped 10 pounds in weight. He will be down to a normal 178 pounds by Monday night. At that weight, Larson will outweigh Garrison by at least 10 pounds but the local bad boy apparently doesn't mind the handicap.

Andy Gump will meet Farmer Miller, one-hold specialist, in the opening event which will start at 8:15 o'clock.

Fights Last Night

By The Associated Press
Dallas, Tex.: Wilson Dunn, 173, Dallas, outpointed Ed Dunningway, 179, Houston, (10). Paul Lee, 127, Indianapolis, outpointed Kid Williams, 127, San Antonio, (10). Hollywood: Mickey Walker, 171,

Rumson, N. J., outpointed Tom Patrick, 186, Hollywood, (10). Tacoma: "Baby Tiger" Flowers, 134 1/2, Omaha, drew with Billy Gray, 137 1/2, Fort Lewis, Washington State, (8).

Mrs. Hank Brining of LeFors visited in Pampa yesterday.

Mr. and Mrs. Riley Richardson of White Deer visited in Pampa today.

Pampan in Haiti Sees Reception For First Lady

Raymond Wiedman, former Pampan who is now with the U. S. Marine corps stationed in Haiti, has written concerning the reception given Mrs. Franklin D. Roosevelt on her visit to the island this month.

His platoon, No. 28, was on duty as the first lady arrived, and he witnessed the celebration in her honor. Wiedman entered the marines after his graduation from high school here in 1931, when he was prominent in athletics and other school activities.

Mel B. Davis was an Amarillo visitor yesterday afternoon.

Mrs. Tucker's Recipe of the Week

"NU HAM"

Mrs. Herbert Sinclair, of McAlester, Okla., submits a new way to fry Cured Ham.

Trim fat away remove a bone from side of Ham one inch thick; rub both sides of Ham well with dry Mustard and Black Pepper. Mix generous tablespoon of Mrs. Tucker's Shortening with iron frying pan. Shortening in iron frying pan, fry Ham until well done, and place in hot serving dish.

Cut fine one small red Hot Pepper and one slice Garlic, put in pan with grease; let fry one minute; add 1/2 cup boiling water; boil one minute; pour over Ham and serve hot.

Mrs. HERBERT SINCLAIR, 110 E. Chickasaw, McAlester, Okla.

Mrs. Tucker's Shortening does not pop nor splutter when used for frying. Hear "Mrs. Tucker's Radio Program," WFAA, Tues., Thurs. and Sat., 7:45 A. M.



The Secret of Good Baking

The magic of always getting perfect baking results lies in the choice of the right flour. You too, can make pies, cakes and biscuit they'll beg for--if you'll use "GREAT WEST."



It's always fresh and good--always of uniform high quality--always dependable.

Bake with confidence... use GREAT WEST! Try this new, easy way to better baking today!

At Your Grocer's

More Safe Happy Miles

— WITH —

U. S. TIRES

ONLY U. S. BUILDS TIRES OF TEMPERED RUBBER

SEE OUR SEAT COVER SPECIALS

LEE WAGGONER

Batteries - Floor Mats - Seat Covers - Accessories

FREE KITES

Again this week by popular request.

EASTER SPECIALS

FREE KITES to each kid die when the groceries are bought at Piggly Wiggly.

<h3 style="text-align: center;">WHITE KING</h3> <p style="text-align: center;">(Small size 5c)</p> <h2 style="text-align: center;">26c</h2> <p style="text-align: center;">Granulated Soap, Large Size Box</p>	<h3 style="text-align: center;">SUGAR</h3> <p style="text-align: center;">Pure Cane, 10-pound</p> <h2 style="text-align: center;">51c</h2> <p style="text-align: center;">Cloth Bag for</p>
<h3 style="text-align: center;">HENS</h3> <p style="text-align: center;">Fat, colored, healthy hens, pound</p> <h2 style="text-align: center;">14 1/2c</h2>	<h3 style="text-align: center;">Butter</h3> <p style="text-align: center;">First grade creamery, per pound</p> <h2 style="text-align: center;">20 1/2c</h2>
<h3 style="text-align: center;">P & G SOAP</h3> <p style="text-align: center;">Giant bars,</p> <h2 style="text-align: center;">23c</h2> <p style="text-align: center;">7 Bars for only</p>	<h3 style="text-align: center;">FLOUR</h3> <p style="text-align: center;">Absolutely Guaranteed,</p> <h2 style="text-align: center;">\$1 64</h2> <p style="text-align: center;">48-lb. sack</p>

PEACHES
In heavy syrup pack, 2 No. 2 1/2 cans **29c**

APRICOTS
In heavy syrup, 2 No. 2 1/2 cans **29c**

PEACHES
Large halves, 2 No. 2 1/2 cans **25c**

MILK
Armours, 4 tall cans **23c**

PRUNES
Fresh pack, gallon can **32c**

COFFEE
Folgers, 5-lb. vacuum can **\$1.39**

SOAP CHIPS
Crystal White, 5-lb. box **32c**

Laundry SOAP
Made by White King, 10 Bars **19c**

TOMATOES
Argo, 3 medium cans **25c**

CATSUP
Brimfull, 2 large bottles **25c**

ASPARAGUS TIPS
2 regular picnic tins **25c**

TUNA FISH
Light meat, 2 regular cans **25c**

TOMATO JUICE
Campbell's, 4 tall cans **25c**

PEACHES
Solid pack, gallon can **42c**

Where Pampa Housewives Buy Their Meat With Confidence!

Whether its meats, groceries, fruits or vegetables, you can depend on the quality at Piggly Wiggly! Although our prices are always consistently low... the thrifty shoppers know that we never sacrifice quality for price. Try Piggly Wiggly for One Week and you'll see why your neighbors have stayed with them for many years!

STEAK Fancy T-Bone or Porterhouse, lb. **19c**

STEAK Swiss, cut the way you like it, lb. **22c**

ROASTS Prime cut of chuck, lb. **12 1/2c**

ROASTS Fancy forearm, pound **15c**

BLACKBERRIES
Solid pack, gallon can **42c**

CORN FLAKES
Marco, 2 large packages **19c**

PRESERVES
Pure plum, 2-lb. jar **33c**

CRACKERS
Saltine Flakes, 2-lb. box **27c**

SOAP
Palmolive, 3 regular bars **13c**

PORK & BEANS
Van Camps, 4 medium cans **25c**

APRICOTS
Brimfull, 2 tall cans **19c**

PEACHES
Del Monte, 2 tall cans for **25c**

SPINACH
Brimfull, 3 tall cans **25c**

CARROTS
3 large bunches **10c**

ONIONS
3 large bunches **10c**

APPLES
Fancy delicious, per dozen **23c**

ORANGES
Extra large navels, dozen **39c**

GRAPEFRUIT
Texas Marsh Seedless, 1gc. size **1c**

PIGGLY WIGGLY

HITLER DECLARES HE WOULD LIKE TO TALK WITH ROOSEVELT

Judith Lane

Classified Advertising Rates Information
All classified advertising is accepted on the basis of the positive understanding that the advertiser is to be paid when our collector calls.
PHONE YOUR WANT AD TO 666 or 667
Our courteous advertiser will receive your Want Ad, helping you word it.
All ads for "Situations Wanted," "Lost and Found" are cash with order and will not be accepted over telephone.
Out-of-town advertising cash with order.
The Pampa Daily News reserves the right to classify all Want Ads under appropriate headings and to revise or withhold from publication any copy deemed objectionable.
Notice of any error must be given in time for correction before second insertion.
In case of any error or omission in advertising of any nature The Pampa Daily News shall not be held liable for damages further than the amount received for such advertising.
LOCAL RATE CARD
EFFECTIVE NOV. 22, 1931
1 day 2c word, minimum 20c
10 days 15c word, minimum 20c
10c per word for each succeeding day after the first 7 issues.
The Pampa Daily NEWS
For Sale or Trade

FOR SALE—8 washing machines \$2.20 while they last. Look and run like new. General Sales company, 810 W. Foster. Opening evenings. 2p-307
FOR SALE—640 acres, relinquishment, northern New Mexico, under fence. M. Herlin. 3c-307
FOR SALE OR TRADE—Four pig sows, farrow in April. Elca Grain Co., Kingsmill, Tex. 2p-307
FOR SALE—Nine tube super heterodyne Philco radio, table model, \$20.00. 112 West Foster. 2p-306
FOR SALE—House and lot. Sale of trade consider standard Ford coupe, 317 So. Cuyler, Davis Trading Post. 2p-306
FOR SALE—One medium small piano. Two bedroom suits used. 112 West Foster. 2p-306
FOR SALE—Mitchell's high quality county land and sugar cured pork, also headed hogs, banded. One mile east on Moberg highway. 2p-306
FOR SALE—Two small homes to be moved. W. T. Hollis, 525 South Faulkner. 1p-304
FOR SALE—National cash register and several piano benches. 307 W. Foster. Phone 1025. 1c-304
FOR SALE—Six-foot show case and National cash register. 307 W. Foster. Phone 1025. 1c-304
FOR TRADE—Six-room modern home, Wichita Falls. M. Herlin, realty. 3c-305
FOR SALE—Two-room house and lot, on S. Barnes. \$275. M. Herlin, realty. 3c-305
FOR SALE—4000 bundles of good cane, 3c per bundle cash. G. L. Holmes, mile south of Kingsmill. 3p-305
FOR SALE—Bulk garden seeds of all kinds. Zeb's Feed Store, end of West Foster Ave. 300-11c
FOR SALE—Baby chicks—White Rocks, Anconas, Minarcas, New Hampshire Reds, Langshans and all popular breeds from Elk City Hatchery, Zeb's Feed Store, end of West Foster Ave. 300-11c
FOR SALE—Bulk blue grass, clover and Bermuda grass seeds. Zeb's Feed Store, end of West Foster Ave. 300-11c
FOR SALE—Good 1930 Buick coupe. New rubber. Just overhauled. Box 505, LeFors, Tex. 12p-311
FOR SALE—Good paying salvage business. Pipe, oil well supplies and automobile parts. Box 503, LeFors, Tex. 12p-311
FOR SALE—Five room, modern house, newly decorated, maple floors. Terms, 814 East Browning. Key first door east. 26p-325

For Rent
FOR RENT—Apartment at American Court, back of American Hotel, across street from Laundry. 6c-310
FOR RENT—Five-room and bathroom, modern brick home, 535 N. Faulkner. M. Herlin. 3c-307
FOR RENT—Four-room modern house, on pavement. Garage. Call at 403 N. Somerville. 1c-304
FOR RENT—Hotel Rex, opposite Denver depot. Reasonable terms, long lease. See owner, 718 North Banks. 5p-300

Wanted
WANTED TO BUY used furniture. Will pay cash. Davis Trading Post, 317 So. Cuyler. 2p-306
WANTED—House work or care of children by experienced lady. Vreel, Gentry, Texas Hotel. 3c-307
WANTED TO RENT—Four or five-room modern furnished house or apartment. Write box 587, Pampa. 2p-306
WANTED—House work or office work by experienced young lady. Call 1009. 3c-306
WANTED—Pasture for two Jersey heifers for summer. Write Box 611, Pampa. 4p-304

Miscellaneous
GUARANTEED \$5.00 permanent waves for \$1.50. Duart permanent \$1.50. Mrs. Zula Brown, 520 N. Russell. Phone 345. 26p-312
PERMANENT \$1.00 up. Wet set 15c. Experienced operators. Mrs. Hobbs, opposite Pampa Hospital. Phone 1097. 26p-312
EASTER SPECIAL permanent

SAYS HE WILL NEVER SUBMIT TO DICTATION

CLAIMS HE HAS GROUP OF MEN WHOSE JOB IS CRITICISM

By LOUIS F. LOCHNER (Copyright, 1934. By The Associated Press)

BEEELIN, March 30.—Chancellor Adolf Hitler told me today that he wished he might have man-to-man talks with the leaders of other nations—including President Roosevelt. By such personal conversations, he said, the pitfalls of diplomacy might be avoided. "And under no circumstances" here the chancellor's voice vibrated with emotion, his jaw became firmly set—"under no circumstances will I submit to dictation. As I entered the study, he emerged from behind a desk in the right-hand corner of the room. He came half-way across the room to greet me affably, and then motioned me to sit on a settee while he and the sole witness to our conversation seated themselves in straight-backed chairs. That witness was Ernst F. Hahn Staengel, former Harvard student and Hitler's personal and devoted friend. I asked him: "What is your attitude toward criticism, both individual and of the press?" Quickly, the Chancellor answered: "Do you realize that I have a whole staff of men around me, men versed in numerous phases of economic, social, and political life, whom I have associated with me for no other purpose than that I want them to criticize?"

I asked him: "What is your attitude toward criticism, both individual and of the press?" Quickly, the Chancellor answered: "Do you realize that I have a whole staff of men around me, men versed in numerous phases of economic, social, and political life, whom I have associated with me for no other purpose than that I want them to criticize?"

Mrs. Dale? Don't you reckon like better turn on the furnace?" Judith shook her head and smiled a radiant smile. She had wondered at Delphy's sudden insistence upon using Mrs. Dale, instead of her customary Miss Judith. It was as though she sought to hold her to the estate of Norman Dale's wife by a constant reminder. She followed Delphy downstairs to find Cila out-of-doors on her knees, picking violets. "Judith, you're not bright," she said looking up. "The idea of giving up a home like this just to tickle your temper." She raised her heavy brows, the purple-headed blossom, looked up for a brief moment, caught the expression on Judith's face and looked down quickly. "What are you going to do now?" "If I did what I wanted to do, I'd go to Galveston on my own wings and tell Norman what a ninny I've been."

"Why tell him, he knows it? But if you want to fly, I'll phone Slim. You realize of course he'd beat Admiral's Byrd's time to the south pole if you crooked your little finger." Judith laughed—"I'd prefer the Treasure Isle, if he would take me, and leave here in time to get down there for dinner." A telephone conversation with Slim Sanford, assured her she would see Norman that night, so Judith went about the business of the new company. She had asked the members to hold a morning session without her, so after lunching with Cila, in the friendly clatter of the Rice Grill, she went to the bank to take the papers from her safe deposit box and with Cila's assistance to carry them to Judge Morgan's office. Pausing at the door, Cila just behind her, she looked in to see thirteen men, instead of the seven who had followed her the preceding day. A gasp from Cila, and a pull on her jacket made her hesitate, then turn back. "See that chap with the cat-in-the-cream expression and the salt and pepper pants?" demanded the red-head. "He handled the undercover work for Martellian's election."

"That means he's representing Lamper's," Judith caught the implication quickly. "Cila, how soon can you give me something definite on him? These men are mostly engineers. They won't know him and I don't want him in on our plans." "I'll telephone our political editor, then call you into Morgan's private office as soon as I'm ready." Judith entered, was greeted with warm cordiality and led to the head of the long table by Justin Cunard. "There she sat and listened to a report of what had occurred that morning. Her mind, free of worry since Norman's letter, was completely engrossed in the problem before her. Cunard had just concluded when Judith was called to the telephone in the Judge's private office. Cila accompanied her to take the receiver and listen to the political editor's reply to her question. When Judith returned to the board room her manner was brisk, alert. "Mr. Cunard," she said, "before going further I would like to greet the new members of our board and meet the one whom I haven't met."

Judith spoke briefly to the men whom she had remembered seeing during previous meetings, when she had acted as Tom Bevins' secretary, then she turned to the stranger. "And Mr. Scathorne, J. C. Scathorne, acting proxy for Carl Mathis who is in the east," explained Cunard. "Mrs. Dale, Mr. Mathis asked me to extend his heartfelt sympathy and most sincere congratulations," began Scathorne. (Copyright, 1934, by Jeanne Bowman)

Lost and Found
LOST—Pair glasses in blue case. Believed lost on West Francis Monday morning. Reward return to Dr. Paul Owens, 109 E. Foster. 3c-304
LOST—German Police pup, age 4 months. Black streak down back. The truth about Scathorne comes out tomorrow. 2c-306

WARDS BID FOR a Smarter Thriftier Easter



Wards "Pro" Golf Balls
For the golfer who wants maximum distance and control and little roll. Liquid center. "Gloss-O" finish. 45c

Sheathed Steel Shafts
Irons with chrome plated heads. Each \$2.49
Woods with fine seasoned heads. Each \$2.98

Handy Rake
Round Bow Style
Bow head curved and curved teeth all forged from one piece. 95c

"B" Battery
Low Priced—Fresh
Small in cost, yet powerful as any standard "B" made. \$1.19

Enamel
Low Price, High Grade
Triple tested for quality. Use it anywhere inside. \$1.09 qt.

Marproof Floor Varnish
Dries to a brilliant gloss in 4 hours. 600 sq. ft. to gal. 89c qt.

Wardoleum
In 6 and 9-Foot Widths!
Wear tested. Super-Service quality. Stain-proof. Sq. yd. 59c

Top Dressing
Finest quality. Fills up cracks. Plait with brush. 55c

Spark Plugs
Wards famous Riverides. Made of best materials. 44c

Cape Gloves
Plain and fancy. In navy blue, gray, brown, black. \$1.29 pr.

Panties
For Children 2 to 14!
Run-resistant rayon. French panties, elastic waist. 25c

Wax & Cleaner
Wards is easier to use on cars or furniture. Per can. 29c

Auto Battery
Guaranteed 18 months. 13 plates. With old battery. \$5.95

Wards Style SHOES

have the star role in the Easter Parade

\$1.98

Pair

They're the last word in style; they're streamlined! The leathers are soft; colors smart; heels correct!

Ties for Easter Suits
White Oxfords for cottages
Punched pumps for tweeds
Easter Oxfords are perforated
Dress pumps for Easter coats

New Blouses
Silk crepes, high shades or pastels. A real Easter value. \$1.19

Silk Hose
Women's service or chiffon weights; full-fashioned. 59c pr.

Cape Gloves
Plain and fancy. In navy blue, gray, brown, black. \$1.29 pr.

Panties
For Children 2 to 14!
Run-resistant rayon. French panties, elastic waist. 25c

Wax & Cleaner
Wards is easier to use on cars or furniture. Per can. 29c

Easter Frock
Choose your own type of
EASTER FROCK
\$5.55

For street, sports, Sunday night—every type of frock you'll need is here! Short sleeves; Jackets! Trimmings of taffeta and mousseline. White, pastels, new shades. Misses' sizes. Priced low for Easter!

TOTS' WASH FROCKS
Get in on this special Saturday sale of print percales and sheers! For tots from 1 to 3. **29c**

Flat Crepe
Washable, Specially Priced!
Fine, soft rayon and cotton. **39c YD.**

Corselet
Snug Fitting Inner Belt
Soft, uplift bust! Back boned. Rayon and cotton. **\$1.98 each**

Easter Wardrobe Coat
Your Easter wardrobe needs
A WARD COAT
\$12.95

Sports coats in stunning tweeds—some imported! Dress coats in worsted crepes, trimmed with kid galyac, marmink, squirrel, lapin! Priced low for Easter!

Costume Slips
Slim fitting, bias cut slips of soft rayon Taffeta, lace trimmed. A value! **69c each**

Anklets
Bright and gay for children
Rib-tops; colored stripes. Rayon, plated. 7 1/2 to 10. **15c**

MONTGOMERY WARD

217-19 No. Cuyler Phone 80

WIRT NAMES WALLACE IN COMMUNISM PLOT AGAINST F. D. R.

COUNTY H. D. CLUB PARTY
The Recreational association of Gray County Home Demonstration clubs are having a county recreational meeting Monday, April 2, at 7:30 p. m. at the high school cafeteria with Mrs. E. A. Shackleton, county recreational chairman, in charge. All club families are expected and friends of club members are invited.

Bob Fuller transacted business in Panhandle last night.

"Sul"
is what a woman asks for when buying salt in Czecho-Slovakia.

Here in America, 2/3 of all women ask for Morton's because—



WHEN IT RAINS IT POURS
MORTON'S IODIZED SALT IT POURS
10c IODIZED OR PLAIN

RE-TEX
"Brings Back Life To Fabrics"
DeLuxe DRYCLEANERS

Charley's Specials
Onions, Mustard, Chili
HAM SANDWICH 15c
Tomatoes, Lettuce 20c
HAM SANDWICH 20c
Big Hot Juley HAMBURGERS 10c
Finger Flavored CHILI take home 20c
CHILI 25c
Extra Fancy CONEY ISLAND 5c
CONEY ISLAND SANDWICH SHOP
We use our own Recipes for cooking the Famous Ham Sandwich.
104 N. CUYLER

Opportunity
Right character, favorable reputation, good personality and average intelligence will make you successful in the life insurance profession, provided you will call on our Branch Manager, Mr. Guy W. Slack, and follow his instructions. A few days of intensive study under him will make you ready to start earning.

Mid-Century Life Insurance Company
Please address Guy W. Slack 302 Oliver-Eagle Bldg. Amarillo, Texas

The Pampa Transfer & Storage Co. announces the opening of a FURNITURE DEPARTMENT With New and Used Furniture of all Kinds We Buy and Exchange Furniture
PAMPA TRANSFER & STORAGE CO.
307 West Foster Phone 1025

EDUCATOR TO BE SUMMONED FOR QUIZZING

'NOT DECIDED WHICH WAY COUNTRY IS GOING'

WASHINGTON, March 30. (AP)—The name of Secretary Wallace, the Roosevelt chief of agriculture, was injected into the house investigation of Dr. William A. Wirt's communism charges today.

A telegram received from the Gary, Ind., schoolmaster, quoted Wallace and several others, whose names were not disclosed.

Rep. Foulkes (D., Mich.) who received the message, said Wirt listed Wallace as saying in effect that some presidential advisors had "not yet decided which way the country is going."

A summons was in preparation for Wirt to come to Washington and tell the whole story. Representative Bulwinkle (D., N. C.), whose resolution for an investigation was adopted by the house, said Wirt would get an invitation to appear before a special committee probably late next week.

Foulkes kept close possession of the Wirt telegram. It was in answer to Foulkes' demand that Wirt name "one of the five men foremost in the democratic party" credited by the educator with having said President Roosevelt is only the "Kerensky of this revolution."

Insisting that he must keep the detailed information for the special committee, which Speaker Rainey will name next week, Foulkes allowed reporters only a glimpse at the message from Wirt.

The first two words were "Secretary Wallace."

He quotes Secretary Wallace, Foulkes said, "as well as some others to the effect that brain trusters had not yet decided which way the country was going. He declined to debate with me, but he asked me to help him right what he thought was a wrong."

Foulkes declined to say more. Nor did he elaborate upon Wirt's declaration to debate the whole subject with him at an open forum here.

Efforts to reach Wallace for his reaction to the news were fruitless. Close aides of the agricultural secretary, however, were inclined to minimize Wirt's latest action.

YOUR GROCER WILL HELP YOU KEEP HEALTHY AND HAPPY

Delicious Cereal Promotes Regular Habits

The right kinds of foods form the very basis of health. You need nourishment for strength and energy. And you need "bulk" to prevent common constipation.

Otherwise, this ailment may cause headaches, loss of appetite and energy. You can correct it, usually, by eating a delicious cereal.

Kellogg's ALL-BRAN adds generous "bulk" to your daily menu. Tests show this "bulk" is similar to that found in leafy vegetables.

Inside the body, the fiber of ALL-BRAN absorbs moisture, and forms a soft mass. Gently, this clears out the intestinal wastes.

ALL-BRAN is also a good source of vitamin B and iron. Isn't it safer—and pleasanter—to enjoy this food in place of taking patent medicines?

Two tablespoonfuls of ALL-BRAN daily will overcome most types of common constipation. Chronic cases, with each meal, if seriously ill, see your doctor. ALL-BRAN makes no claim to be a "cure-all."

Serve ALL-BRAN as a cereal with milk or cream, or cook into fluffy muffins and breads.

PAMPA TOPICS OF OUR CITY

(Continued From Page 1)
ration. It is well.

Other words for name: Appellation, detonation, epithet, compellation, nomenclature, cryptonym, pseudonym, sobriquet, nomen, agnomen, ronymic, cognomen.

ASSUMING—and we certainly hope it is safe to assume—that the depression will be largely over by 1936, we can safely calculate that a Texas Centennial celebration if amply staged would bring hundreds of thousands of persons to this state.

This is synonymous with saying that tourists would spend millions for gasoline, food, lodging, and other items during the centennial. The Century of Progress exposition attracted more than nine millions of persons from outside points.

Texts through her Centennial can turn the tide of traffic toward this state and also draw attention to Mexico as the great future tourist attraction to which Texas is the gate-way.

If you were born in 1915 you had a 10 to 1 chance of surviving, which is another way of saying that at least 100 out of every 1,000 babies born alive died before their first anniversary. But if you could have been born in 1932, the last year for which figures are available, you would have been more lucky. In that year, only 58 deaths resulted for each one thousand live births. America is a good country in which to spend your first year on earth.

The first day is the hardest. One-fourth of all the infants who die succumb in their first month of life. And science has done little to decrease the death rate of that first dangerous month. Two-thirds of the babies who die on the first day of life die because of premature birth and another one-fourth succumb to injuries at birth. But that continued education may be expected to bring improvement is shown by the fact that in New Zealand the death rate has been reduced to 31 out of each 1,000 born alive.

FIRE

(Continued from page 1)
Motel, Chester Marcy, Mrs. Bob Cosby, Mrs. J. E. Peck of Shreveport, La.; W. E. Palmer, Jr., of Dallas, Tom Gwaltney of Longview and Ellis West, a cook.

Three Longview school teachers, Miss Edith Kern, Miss Mary McCullar and Miss Jennie Clyde Hollis, escaped from the top story by climbing out over a ledge and dropping to the ground.

As dawn broke, a detail of men in relays poured water on the smouldering debris and dug into the ruins to determine if other persons might have lost their lives.

COWBOYS WILL ENTERTAIN AT PLA-MOR AGAIN

According to E. B. Gish, owner-manager of radio station KGBS in Amarillo, the Rambling Cowboys are the most popular radio attraction in the Panhandle. While other radio acts receive from 10 to 15 letters a week from radio fans, the "Rambling Cowboys" receive an average of 150 letters a week.

During February, they received 630 letters from 17 towns in 16 states. Letters are received regularly from California, Utah, and North Dakota. Most of these letters request special songs to be played or are dedicated to certain listeners. There have been many requests for boys to play for dances. So now there are five musicians in the "Rambling Cowboys" dance orchestra.

Last Thursday night the Rambling Cowboys played at the Pla-Mor ballroom and have been booked for a return engagement tonight. The music is distinctly different and "good dance music," say Pampa dancers.

AUTO LOANS
Prompt Service Reasonable Terms For Ready Cash or Reduced Payments

CARSON LOFTUS
Room 202, Combs-Worley Bldg. Phone 710 Box 267

CHICKS FEED
That Live and Grow When You FEED
Merit all mash starter for low mortality, rapid development and early maturity.
RESULTS COUNT
ZEB'S FEED STORE
End of West Foster Ave. Phone 491 We Deliver

Professional Directory
L. B. GODWIN
Attorney-at-Law
Paramount Building
Amarillo, Texas

Automobile Loans
Short and Long Terms REFINANCING Small and Large
M. P. DOWNS
204 Combs-Worley Bldg. Phone 336

CHURCHES

FIRST CHRISTIAN CHURCH
John S. Mullen, minister
E. Kingsmill and N. Starkweather

Easter will be observed in this church with special music and special messages. Sunday morning the young people's choir under the direction of Mrs. W. A. Bratton will sing several numbers from the cantata: "The First Easter" by Wilson. "Our Lord Indeed Is Risen," "Silent, The Sleeping Town" and "All Hail" are the titles of the numbers to be sung by the whole choir. Miss Zola Grace Donnelly will sing a contralto solo: "In The Garden." Mr. Charles Frost Madera will sing a tenor solo: "The Break of Day." Mrs. Walter Nelson will play a violin solo for the offertory.

The morning Easter message by the minister will be on the subject: "The Resurrection." The Lord's Supper is observed in this church every Sunday morning. The worship will begin at 11 o'clock. Sunday night there will be music by the orchestra under the direction of Mr. Roy Wallraabenstein and a special vocal number. The sermon subject will be "Easter Hopes." The worship will begin at 7:30 o'clock. We are looking forward to an attendance of 600 at the Sunday school classes which convene at 9:45 a. m.

Christian Endeavor groups meet at 6:30 p. m.
Tuesday night, April 3, the monthly men's fellowship banquet will be held in the church.
Sunday, April 15th, our spring revival will start. The minister will preach, Mr. Billy Reeves, who lead the music in the Vawter meeting last summer, will direct the music.

FIRST PRESBYTERIAN
"His Glory in the Resurrection" will be the message Sunday morning. This is the last of a series of sermons on the question, "What Think Ye of Jesus?"
The music at 11 a. m. will include the prelude, "Largo," by Handel.
Anthem by the choir, "The Lord Is Risen Indeed," by Carrie B. Adams. Mrs. Newt Dilley singing the solo part.
Anthem by the choir, "O Lamb of God," by Noete, Mrs. Harry Lyman singing the solo part.
Offertory, "Spring Fingers," by Gade.
Special number by the junior choir, "Christ Arose."
Evening service Sunday at 8 p. m.
Message, "Simply Trusting, That Is All."
Sunday school at 10 a. m.
We cordially invite you to our services.
—A. A. Hyde, minister.

CHURCH OF CHRIST
E. Francis at N. Warren
E. C. McKenzie, Minister
Sunday
Bible school, a class for every age, 9:45 a. m.
Sermon, 11 a. m. Subject: "The Resurrected Christ."
Lord's supper, 11:45 a. m.
Young peoples' class, 7 p. m.
Sermon, 8 p. m. Subject: "Modernism."
Lord's supper (continued) 8:45 p. m.
Wednesday
Ladies Bible class, 2:30 p. m.
Mid-week prayer and praise service, 8 p. m.
You are cordially invited to come with us, and especially if you have no church home and are not a regular Sunday school attendant.

ST. MATTHEW'S EPISCOPAL
Corner N. Ward and W. Browning
Easter Sunday
9:45 Church school, Mr. Roy Wallraabenstein superintendent. This service is the time for the presentation of the children's mite boxes, the contents of which represent their Lenten self-denial gifts.
11 Holy communion and sermon. In connection with the regular Easter service, the Woman's Auxiliary will make their corporate communion and present their blue box offering for missions.
There will be special music for this service arranged by Mr. Roy Wallraabenstein.
A cordial invitation is given to all to worship with us, particularly those without a church home and strangers who may be in the city this day.

CENTRAL BAPTIST CHURCH
Sunday school begins at 9:45 a. m. under the direction of the superintendent, G. C. Stark. Preaching at 11 a. m. by the pastor, Rev. Vernie S. Pipes. Men's prayer meeting at 6 p. m. B. T. S. begins at 6:45 p. m. under the direction of J. B. Hilburn. Preaching again beginning at 7:45.
The spirit of Easter will be manifested throughout the hours of worship Sunday. Attend church Sunday. We cordially invited you to

MEMPHIS, Tenn. (AP)— Fred G. Weiss, 53, pharmacist, partook of holy communion at Trinity Lutheran church, returned to his pew and fell dead. His death disrupted holy Thursday services at the church.

DIJES IN PEW
MEMPHIS, Tenn. (AP)—Fred G. Weiss, 53, pharmacist, partook of holy communion at Trinity Lutheran church, returned to his pew and fell dead. His death disrupted holy Thursday services at the church.

CHURCH OF THE BRETHREN
637 N. Nelson
Daily services are progressing nicely, with good attendance. The subject tonight will be The Seven Words of Christ While on the Cross. We cordially invite all to hear the message.
The place of the picnic on Easter Sunday has not been definitely decided, but all will meet at the church at 9:45 to leave for this outdoor Easter meeting.
—J. R. Jackson, pastor.

"Blue" Spells
Reduce some women to the petulant shadow of their own smiling selves. Others take the Vegetable Compound when they feel the "blues" coming on. It steadies quivering nerves; helps to tone up the general health; gives them more pep; more charm.

LYDIA E. PINKHAM'S VEGETABLE COMPOUND
To See Comfortably—See—
Dr. Paul Owens
The Optometrist
We specialize in fitting comfortable Glasses as well as the newest styles.
OWENS OPTICAL CLINIC
DR. PAUL OWENS, Optometrist
1st. Nat'l. Bank Bldg. Ph. 269

Elmer J. Scott & Co.
Investment Counselors
Dealers in Listed Stocks
West Lobby
Combs-Worley Bldg.
Telephone 1152
F. C. Higgins, Resident Mgr.

BARRETT & CO.
Authorized Sub-Brokers
NEW YORK STOCK AND BOND EXCHANGE
Stock carried on conservative margin
203 Rose Bldg. Phone 127

Professional Directory
L. B. GODWIN
Attorney-at-Law
Paramount Building
Amarillo, Texas

Automobile Loans
Short and Long Terms REFINANCING Small and Large
M. P. DOWNS
204 Combs-Worley Bldg. Phone 336

Barrett & Co.
Authorized Sub-Brokers
NEW YORK STOCK AND BOND EXCHANGE
Stock carried on conservative margin
203 Rose Bldg. Phone 127

Professional Directory
L. B. GODWIN
Attorney-at-Law
Paramount Building
Amarillo, Texas

Automobile Loans
Short and Long Terms REFINANCING Small and Large
M. P. DOWNS
204 Combs-Worley Bldg. Phone 336

Barrett & Co.
Authorized Sub-Brokers
NEW YORK STOCK AND BOND EXCHANGE
Stock carried on conservative margin
203 Rose Bldg. Phone 127

come and be with us. Our goal is 300 in Sunday school.

FIRST METHODIST
Gaston Poole, minister
Sunday school, 9:45 a. m.
Morning service, 10:45 a. m. Sermon, Consider the Lily, by the pastor. Vocal solo, The Holy City. R. B. Fisher. Offertory, Salve Regina, Pergolis, by Mrs. May F. Carr, organist. Service for dedication of infants will precede the sermon.
Evening service, 7:45 p. m. Fifteen-minute organ prelude by Mrs. Carr. Offertory, Ave Maria, Gounod. Sacred Cantata, Seven Last Words of Christ, Dubois, by the choir.
The pastor and congregation join in inviting all to our services.

CALVARY BAPTIST CHURCH
Sunday school, 9:45 a. m.
Preaching, 11 a. m. Subject, The Arisen Lord.
B. Y. P. U., 7 p. m.
Preaching, 8 p. m.
W. M. S. 9 p. m. Thursday.
We invite all to worship with us who do not go to another church.

CHRISTIAN SCIENCE
901 N. Frost Street
"Reality is the subject of the lesson sermon which will be read in all Churches of Christ, Scientist, on Sunday, April 1.
The Golden Text is: "Thou, O Lord, remainest for ever; thy throne from generation to generation" (Lamentations 5:19).
Among the citations which comprise the lesson sermon is the following from the Bible: "The Lord hath brought forth our righteousness: come, and let us declare in Zion the work of the Lord our God" (Jeremiah 51:10).
The lesson sermon also includes the following passage from Christian Science text book, "Science and Health with Key to the Scriptures" by Mary Baker Eddy: "To grasp the reality and order of being in its science, you must begin by reckoning God as the divine principle of all that really is. . . . All substance, intelligence, wisdom, being, immortality, cause, and effect belong to God" (page 275).
Sunday 11 a. m.
Sunday School, 9:30 a. m.
Wednesday 8 p. m.
The reading room is open Monday, Wednesday and Saturday from one to four p. m. and Wednesday evening before and after the services.
The public is cordially invited to attend our services and use the reading room.

MEN'S FELLOWSHIP CLASS
First Baptist Church
We render our program, the Triumphant Christ, at the worship period preceding the church service this year last Sunday, and are enrolling new members each week. Visitors are welcome. Our class program to begin at 9:45 follows: Song, Christ Arose; Prayer, W. J. Brown; "Jesus Said—" by five men; The Way, Truth, and Life, A. A. Trammell; You Shall Live Again, Dr. Schulkey; Song, Old Rugged Cross; Our Captain, Frank Johnson; The Living Christ, J. Powell Wehrung; solo and chorals. He Lives! High; following the Risen Christ, E. C. Link.
—T. L. Anderson, sec.

CHURCH OF THE BRETHREN
637 N. Nelson
Daily services are progressing nicely, with good attendance. The subject tonight will be The Seven Words of Christ While on the Cross. We cordially invite all to hear the message.
The place of the picnic on Easter Sunday has not been definitely decided, but all will meet at the church at 9:45 to leave for this outdoor Easter meeting.
—J. R. Jackson, pastor.

MEMPHIS, Tenn. (AP)— Fred G. Weiss, 53, pharmacist, partook of holy communion at Trinity Lutheran church, returned to his pew and fell dead. His death disrupted holy Thursday services at the church.

DIJES IN PEW
MEMPHIS, Tenn. (AP)—Fred G. Weiss, 53, pharmacist, partook of holy communion at Trinity Lutheran church, returned to his pew and fell dead. His death disrupted holy Thursday services at the church.

CHURCH OF THE BRETHREN
637 N. Nelson
Daily services are progressing nicely, with good attendance. The subject tonight will be The Seven Words of Christ While on the Cross. We cordially invite all to hear the message.
The place of the picnic on Easter Sunday has not been definitely decided, but all will meet at the church at 9:45 to leave for this outdoor Easter meeting.
—J. R. Jackson, pastor.

"Blue" Spells
Reduce some women to the petulant shadow of their own smiling selves. Others take the Vegetable Compound when they feel the "blues" coming on. It steadies quivering nerves; helps to tone up the general health; gives them more pep; more charm.

LYDIA E. PINKHAM'S VEGETABLE COMPOUND
To See Comfortably—See—
Dr. Paul Owens
The Optometrist
We specialize in fitting comfortable Glasses as well as the newest styles.
OWENS OPTICAL CLINIC
DR. PAUL OWENS, Optometrist
1st. Nat'l. Bank Bldg. Ph. 269

Elmer J. Scott & Co.
Investment Counselors
Dealers in Listed Stocks
West Lobby
Combs-Worley Bldg.
Telephone 1152
F. C. Higgins, Resident Mgr.

BARRETT & CO.
Authorized Sub-Brokers
NEW YORK STOCK AND BOND EXCHANGE
Stock carried on conservative margin
203 Rose Bldg. Phone 127

Professional Directory
L. B. GODWIN
Attorney-at-Law
Paramount Building
Amarillo, Texas

Automobile Loans
Short and Long Terms REFINANCING Small and Large
M. P. DOWNS
204 Combs-Worley Bldg. Phone 336

Barrett & Co.
Authorized Sub-Brokers
NEW YORK STOCK AND BOND EXCHANGE
Stock carried on conservative margin
203 Rose Bldg. Phone 127

Professional Directory
L. B. GODWIN
Attorney-at-Law
Paramount Building
Amarillo, Texas

Automobile Loans
Short and Long Terms REFINANCING Small and Large
M. P. DOWNS
204 Combs-Worley Bldg. Phone 336

Barrett & Co.
Authorized Sub-Brokers
NEW YORK STOCK AND BOND EXCHANGE
Stock carried on conservative margin
203 Rose Bldg. Phone 127

Professional Directory
L. B. GODWIN
Attorney-at-Law
Paramount Building
Amarillo, Texas

Automobile Loans
Short and Long Terms REFINANCING Small and Large
M. P. DOWNS
204 Combs-Worley Bldg. Phone 336

Barrett & Co.
Authorized Sub-Brokers
NEW YORK STOCK AND BOND EXCHANGE
Stock carried on conservative margin
203 Rose Bldg. Phone 127

Saturday Guests Will Add to Art Exhibit Crowds

Residents of nearby towns and communities will have an opportunity to visit the Arto Art club's exhibit of famous paintings tomorrow the last day of the showing here. The place, a downtown building, will be convenient to Saturday visitors in the city.

Accurate reproductions of 150 paintings, of both old and modern masters, are in the exhibit. All the pictures are in their original colors. Members of the sponsoring club act as hostesses each morning and afternoon when the display is open. Mrs. John Andrews is general chairman for the exhibit.

Human Checker Game Will Be Next Thursday

The animated checker game at high school gymnasium next Thursday evening, to be sponsored by the High School Parent-Teacher association, will provide funds for assisting several student projects. Girls will be moved as checkers over the gym floor.

Its main purpose is to finance national honor society pins for ranking students and to provide awards for interscholastic league winners. Band awards will also be purchased, and excess profits will go to the senior class fund for a Carlsbad cavern trip on class day.

A general admission price of 10 cents has been set.

Fellowship Meet Enjoyed at First Christian Church

A group of First Christian church members enjoyed at the church last evening one of the series of fellowship meetings which bring various groups together for supper and programs.

Mrs. H. D. Keys and Mrs. Joe Minnick were in charge of supper preparations yesterday, and Mrs. Dick Rhoades directed the program. It opened with group singing. Kirk Duncan gave a reading, Jimmy King a solo, Mattie Velma Brown a piano number, Mrs. James Todd Jr. and Mrs. Carson Loftus an amusing skit, and Charles Frost a vocal solo. Fred Mason, Red Flanigan, and Lavern Carson sang also.

John S. Mullen, minister, spoke briefly on the purpose of these meetings, and directed the introduction of guests.

FERA
(Continued From Page 1)
In addition, 50¢ per hour is the rate for other skilled labor, such as tractor operator, roller operator, grader operator, form setter, concrete finisher, and other similar skilled labor commonly used in road construction.

MEMPHIS, Tenn. (AP)— Fred G. Weiss, 53, pharmacist, partook of holy communion at Trinity Lutheran church, returned to his pew and fell dead. His death disrupted holy Thursday services at the church.

DIJES IN PEW
MEMPHIS, Tenn. (AP)—Fred G. Weiss, 53, pharmacist, partook of holy communion at Trinity Lutheran church, returned to his pew and fell dead. His death disrupted holy Thursday services at the church.

CHURCH OF THE BRETHREN
637 N. Nelson
Daily services are progressing nicely, with good attendance. The subject tonight will be The Seven Words of Christ While on the Cross. We cordially invite all to hear the message.
The place of the picnic on Easter Sunday has not been definitely decided, but all will meet at the church at 9:45 to leave for this outdoor Easter meeting.
—J. R. Jackson, pastor.

"Blue" Spells
Reduce some women to the petulant shadow of their own smiling selves. Others take the Vegetable Compound when they feel the "blues" coming on. It steadies quivering nerves; helps to tone up the general health; gives them more pep; more charm.

LYDIA E. PINKHAM'S VEGETABLE COMPOUND
To See Comfortably—See—
Dr. Paul Owens
The Optometrist
We specialize in fitting comfortable Glasses as well as the newest styles.
OWENS OPTICAL CLINIC
DR. PAUL OWENS, Optometrist
1st. Nat'l. Bank Bldg. Ph. 269

Elmer J. Scott & Co.
Investment Counselors
Dealers in Listed Stocks
West Lobby
Combs-Worley Bldg.
Telephone 1152
F. C. Higgins, Resident Mgr.

BARRETT & CO.
Authorized Sub-Brokers
NEW YORK STOCK AND BOND EXCHANGE
Stock carried on conservative margin
203 Rose Bldg. Phone 127

Professional Directory
L. B. GODWIN
Attorney-at-Law
Paramount Building
Amarillo, Texas

Automobile Loans
Short and Long Terms REFINANCING Small and Large
M. P. DOWNS
204 Combs-Worley Bldg. Phone 336

Barrett & Co.
Authorized Sub-Brokers
NEW YORK STOCK AND BOND EXCHANGE
Stock carried on conservative margin
203 Rose Bldg. Phone 127

Insect Control Is Demonstrated To Hopkins Club

"Bed bugs are most annoying and disgusting tenants," said Mrs. C. P. Couts in a demonstration to Hopkins Home Demonstration club Tuesday afternoon, when Mrs. Leonard Darnell was hostess.

She presented a helpful demonstration, saying that buildings free from crevasses kept down bed bugs. She suggested use of hand atomizer or feather to apply either benzene, gasoline, or some standard insect spray for control of the insects.

Each member answered roll call by discussing the new deal as it applies to farm families.

Miss Opal Davis, club recreation chairman, discussed plans for the county recreational meeting, which will be for all club members and their families at Pampa high school cafeteria April 2 at 7:30 p. m.

Mrs. R. I. Davis, council delegate, reported that the council meeting scheduled last Monday was postponed because of bad roads.

Cocoa and cake were served to Mrs. C. P. Couts, R. E. Davis; Misses Opal and Fae Davis; the hostess and her little daughter, Maxine.

Norris Attacks Power Lobbying

WASHINGTON, March 30. (AP)—Senator Norris (R., Neb.) told reporters today that testimony regarding alleged power lobbying by Warren T. Thayer, state senator of New York, represented "a universal ray of hope."

He said he hoped "the New York legislature will profit" by the discovery of letters read into the federal trade commission records yesterday and purporting to show that Senator Thayer, one-time chairman of the New York senate committee on public service, had asked the Associated gas and electric company for election expenses.

Norris said the trade commission had the authority to summon Thayer to Washington and that he hoped it would do so.

Use Daily News Classified Ads.

Drink
ADAMIRATION
Coffee
because IT TASTES BETTER.

Kolb Grocery-M

HERE'S WHY PAMPA HOUSEWIVES PREFER FURR FOOD STORES



One Price THE RIGHT PRICE Always

SPECIAL FOR
FRIDAY EVENING
AND
SATURDAY

Every article you buy in a Furr Food Store is plainly marked, and it is well understood by all that one person pays the same price as another. You know your purchase is priced right—weighed right—and is standard merchandise, exactly as advertised.

Gold Medal

Flour 93c

48 Lb. Sack, \$1.83
24 Lb. Bag

Money Back
Guaranteed

Sugar 44c

10 Lb. Bag

MILK Borden's, 3 Tall or 6 Small cans... 16c	SALAD WAFERS Supreme, 2 Lb. Caddy... 29c	GUM All Popular 5c... 4c
PORK & BEANS Van Camp's, Can... 5c	COFFEE Admiration, 3 Lb. Can... 75c	CATSUP Empson's, Large Bottle... 14c
BLACKBERRIES No. 2 Can... 10c	OVALTINE 50c Size... 39c \$1.00 Size... 79c	TURNIP GREENS No. 2 Cans... 8c
CHIPSO Large Pkg... 14c	BEANS Pinto, Lb... 4c	SPINACH No. 2 Cans... 8c
TOILET TISSUE Charmin, 4 Roll Box... 23c	RICE Choice Blue Rose, Lb... 5c	BEANS Cut Green, No. 2 Can... 9c
HOMINY Van Camp's, 3 Med. Cans... 17c	TOMATO COCKTAIL Van Camp, Large Can... 10c	JERSEY CORN FLAKES Pkg... 10c
SOUP Campbell's, All Kinds, 2 Cans... 15c	CANDY BARS All Popular 5c Bars... 4c	JERSEY BRAN FLAKES Pkg... 10c

Coffee 26c

SCHILLING'S
1-LB. CAN
ONLY

Soap 23c

P & G
10 REGULAR
BARS

Sliced or Crushed PINEAPPLE Big Hit Brand, 2 No. 2 Cans... 25c	WESSON OIL Pt. Can... 19c	HY-PRO Qt. Bottle... 15c
SALAD DRESSING Kraft's Miracle Whip, Qt. Jar... 25c	MACARONI SPAGHETTI EGG NOODLES Skinners, 2 Pkgs... 13c	SYRUP Karo, Light or Dark, No. 10 Can... 53c
PICKLES Sweet or Sweet Mixed, Qt. Jar... 21c	O'CEDAR POLISH 12 Oz. Bottle... 39c	COCOA Mother's, 2 Lb. Can... 16c
RAISINS 4 Lb. Package... 25c	FLOOR WAX Johnson's, 1 Lb. Can... 59c	BAKING POWDER K. C., 25 Oz. Can... 16c
TOILET SOAP Palmolive, 3 Bars... 12c	SANI FLUSH Can... 19c	MUSTARD 2 Quart Jars... 25c
WHITE KING Granulated Soap, Largest Size... 26c	MELO Box... 8c	COFFEE Chase & Sanborn, 1 Lb. Pkg... 28c
LYE Hooker or Red Top, 3 Cans... 23c		COFFEE Blossom, 1 Lb... 19c

GELATINE 9c

Royal
All Flavors
2 PKGS.



SHORTENING 49c

Jewel
8-LB. CARTON

Bought in Gray County From Near By Farmers

Eggs 12 1/2c

Strictly
Fresh,
Dozen

THE ALL-AMERICAN BREAKFAST

Bacon 20c

Cudahy's Puritan
1-Lb. Packages
each

CHEESE Kraft's Full Cream, Pound... 16c	BUTTER Taylor Farm 2 LBS. FOR... 41c
HAMBURGER 2 LBS. FOR... 9c	BARBECUE Beef or Pork, Boneless, Pound... 20c
PORK CHOPS End Loin Cuts, Pound... 11c	CHEESE Philadelphia Cream 2 Pkgs. For... 15c
BOLOGNA MINCED HAM, WEINERS OR FRANKS, LB. . .	12 1/2c

EASTER HAMS LAMB

Swift's Premium
Either End
Per lb... 12 1/2c

Fancy Spring
Legs, per lb... 22c
Chops, lb... 25c
Shoulder Roast, lb... 17 1/2c

Enjoy This Nice Produce at Special Low Prices!

CRISP VEGETABLES

CARROTS
BEETS 3 Large Bunches 10c

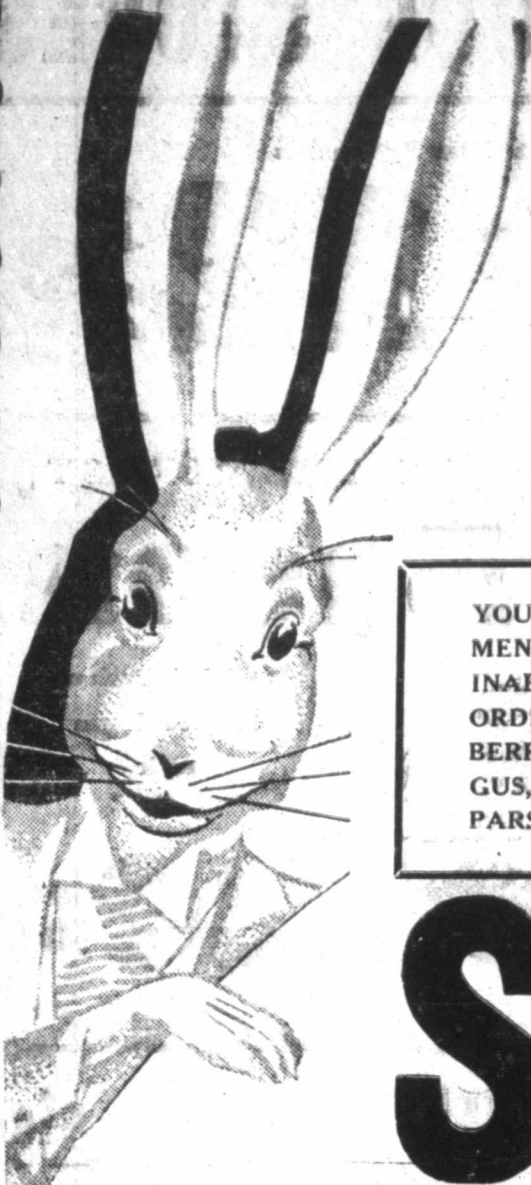
AVOCADOS EACH 9c

Just received another load of those large California tree ripened

Oranges 19c

6 Extra Large
5c Size for only

CAULIFLOWER Per pound... 7 1/2c	LETTUCE Firm heads, each... 4 1/2c
APPLES Winesaps, med. size, doz... 19c	ORANGES California Sunkist, med. size, doz... 19c
ONIONS Spanish Sweet, lb... 4c	SPUDS No. 1 Idaho, 15 lb. cloth bag... 43c
YAMS Yellow and Sweet Finest quality on the market, lb... 5c	CELERY Large Stalk... 11c



HERSHEY'S COCOA Small Size Can **CAN**
COOKED BRAINS 5 Oz. Can **CAN**
VERMICELLI 7 Oz. Pkg. **PKG.**
TOMATO SOUP Regular Size Can Van Camp's **CAN**
BORAX WASHING COMPOUND **BOX**
TOOTH PICKS Regular Size **BOX**
GOLD DUST CLEANSER SMALL BOXES **2 BOXES**

YOUR CHOICE

5c

SODA ARM & HAMMER Baking Soda **LB. BOX**
MACKEREL No. 1 Tall King Solomon Brand **CAN**
STARCH Faultless Brand For Hot or Cold Starching. Net Wt. 12 oz. **BOX**
HOOVER LYE Granulated Made by S. T. Hoover, Inc. **CAN**
BRILLO Aluminum Cleanser One Box Contains 5 Pads and Bar Soap **BOX**
PEAS No. 1 Size Can Early June Variety, Sifted **CAN**
SPAGHETTI No. 1 Tall King Cooked With Cheese and Tomato Sauce **CAN**

YOUR CHOICE

9c

GREENS No. 1 or 2 **2c**
BEANS No. 1 or 2 **2c**
DOG FOOD **2c**
OXYDOL 50% more suds **2c**
G'N BEANS **2c**
RICE **2c**
BEANS **3c**

YOU'LL ENJOY SHOPPING IN OUR VEGETABLE DEPARTMENTS THIS WEEK—YOU'LL FIND EVERYTHING IMAGINABLE IN FRUITS AND VEGETABLES OUT OF THE ORDINARY TO GRACE YOUR EASTER TABLE—STRAWBERRIES, ENDIVES, PARSLEY, CAULIFLOWER, ASPARAGUS, CALAVOS, SQUASH, EGG PLANT, RHUBARB, PARSNIPS—AND MANY OTHERS.



OUTSTANDING GROCERY VALUES FOR A
 THE PRESIDENT OF THE UNITED STATES HAS USED HIS EFFORTS IN BEHALF OF LABOR TO AVOID A NATIONAL STRIKE. HIS AIM TO PROVIDE HIGHER WAGES GIVES THE PUBLIC MORE BUYING POWER, THEREBY HASTENING THE THRU CO-OPERATIVE EFFORTS. THE ADMINISTRATION, THRU OUR CODE, HAS PLACED A MINIMUM LABOR STANDARD ON ALL THE STANDARD FOOD MARKETS HAVE ALWAYS GIVEN YOU THE LOWEST POSSIBLE PRICES ON QUALITY MERCHANDISE. THIS LABOR MARK-UP IN ORDER TO FURTHER ASSIST THE ADMINISTRATION IN THE AIMS.

PRICES ARE IN EFFECT WHEN THE PAPER

STANDARD'S EASTER

Planting Time
FOR GARDEN SEEDS!
 --SEE US!
 ALL KINDS OF GARDEN SEEDS FROM ASPARAGUS TO YELLOW SQUASH—AND FLOWER SEEDS GALORE. ALL STAMPED FRESH STOCK FOR 1934 PLANTING. IT'S POTATO PLANTING TIME AFTER GOOD FRIDAY. ALL OUR SEED POTATOES ARE CERTIFIED—YOU CAN DEPEND UPON THEIR QUALITY. WE ALSO HAVE THE BEST SELECTIONS OF ONION SETS WE'VE SEEN IN A LONG TIME.

Spring FRUITS and VEGETABLES

BANANAS Standard's Quality, Saturday Only **LB. 4c**
POTATOES Large Selected **10 Lbs. 17c**
CELERY Large Well Bleached **STALK 9c**
CABBAGE Fresh Crisp & GREEN **LB. 2 1/2c**

U. S. Inspected and Branded Choice Wilson's or Dold's Corned Heavy Veals

STEAKS

"They Melt in Your Mouth"

FAMILY STYLE Uniform Plain Cuts **LB. 5c**
CHUCK Center Cuts Choice Forequarter **LB. 11 1/2c**
ARM STEAK Forequarter Round **LB. 13 1/2c**
LOIN Choice, Cut From Our Best Beef **LB. 14 1/2c**
SHORT CUTS Or Rib for Individual Steavings **LB. 15 1/2c**
SIRLOIN Full Cut Fine to Fry or Broil **LB. 17 1/2c**
SWISS Cut Any Thickness For You **LB. 17 1/2c**
T-BONES Our Finest Cuts **LB. 19 1/2c**

Plan Your EASTER WITH STANDARD'S QUALITY

5500 LBS. TO S

CANE SUGAR
 There is no Substitute for Pure Cane Sugar

10 LB. CLOTH BAG 51c
POWDERED OR BROWN IN ONE LB. BOXES 2 LB. 15c

CHIPSO **14c**
LARGE BOX

PICKLES Whole Sour or Dill in Glass Jars **QUART 16c**
PEACHES OR APRICOTS No. 1 Tall In Syrup **2 Cans 19c**
RAISINS Seedless **4 LB. 32c 2 LB. 18c**

FRESH PORK SHOULDERS

SHANK, HALF ONLY **LB. 7 3/4c**
END OR BOSTON BUTT **LB. 10 1/2c**
CENTER CUT ROAST **LB. 12 1/2c**
CENTER CUT STEAK **LB. 14 1/2c**

FRANKS Large, Fresh and Juicy **LB. 11 1/2c**
BOLOGNA OR MINCE HAM, Real Fresh **LB. 12 1/2c**
BACON SWIFT'S PREMIUM FANCY BOX **LB. 23 1/2c**

GREAT WEST FLOUR GOLD-MEDAL

24 LB. BAG 97c
48 LB. BAG \$1.89

CORN MEAL GREAT WEST CREAM **20 LB. SACK 46c**

JELL-O **5c**
BOX

MATCHES Three Will Strike **6 Box Carton 23c**
SWEET CORN No. 2 Standard Pack **2 Cans 18c**
SPINACH No. 2 Texas-Grown and Packed **2 Cans 17c**

SPRING LAMB
 Genuine Stamped Spring

SHOULDER ROAST **LB. 13 1/2c**
LOG O' LAMB **LB. 16 1/2c**
SMALL CHOPS **LB. 23c**

SMALL PORK CHOPS
CENTER CUTS LB. 16 1/2c
END CUTS LB. 8 3/4c

SAUSAGE Country Style Sack **LB. 16 1/2c**
LUNCH MEAT As sorted **LB. 19 1/2c**
PIG LINKS Morrell's York-shire **LB. 19 3/4c**
CHILI Dold's Mexican Style In One-Pound Blocks **2 Lbs. 29c**
SAUSAGE Ground Fresh Daily **3 Lbs. 25c**

CRYSTAL WHITE Regular Size Crystal White or P & G Soap **10 BARS 26c**
Crystal White Giant Size Crystal White or P & G Soap **6 BARS 21c**
CRYSTAL WHITE SOAP CHIPS **5 LB. 29c**

PORK & BEANS **5c**
TALL CAN

JUNE PEAS No. 2 Bull Head Brand Early June **2 Cans 23c**
TOMATOES No. 2 Standard Packed **3 Cans 26c**
GOLDEN CORN No. 2 Yacht Club Monarch Product Golden Bantam **2 Cans 23c**

SLICED BACONS

DOLD'S STERLING **LB. 15c**
MORRELL'S AIRSHIP **LB. 18 3/4c**
STANDARD FOOD BY WILSON & CO. **LB. 19 1/2c**
WILSON'S CERTIFIED HOTEL PACK **LB. 25c**

HAMBURGER
GROUND FRESH DAILY IN OUR OWN MARKETS **LB. 4 3/4c**

PICNIC HAMS, Boned and rolled Sugar Cured **LB. 16 1/2c**
DRIED BEEF Fresh Ship-ment. **2 PKGS. 25c**
CORNED BEEF Pickled In Our Markets **LB. 15c**

FLOUR PRODUCT OF RED STAR MILLS. CARRIED IN STOCK AT STORES NO. 2, NO. 3 & NO. 4

48 LB. SACK \$1.64 24 LB. SACK 89c

Every sack of flour purchased at a Standard Food Market is sold under a "MONEY BACK GUARANTEE"—You are the judge—and Must Be Pleased.

KOKOHEART **25c**
2 LBS.

K. C. BAKING POWDER 50 Oz. 29c 25 Oz. 17c
SOAP T. N. T. or Big Ben. The Yellow Giant Laundry Soaps **6 Giant Bars 21c**

PURE LARD
 Carried in Stock at Stores Nos. 2, 3, and 4 Only **6 for 34c**

CURED HAM
 WILSON'S, SWISS OR MORRELL'S SHANK OR BUTT ENDS AS DESIRED **LB. 8 3/4c**

RABBIT
 Fresh Dressed, Fancy Tamboor. Serve Something Different. Stocked at No. 1 Store **LB.**

HENS
 Colored Type, All Sizes. Select Your Fowl Alive If You Can **LB. 14 1/2c**

TURKEY
 First Grade—Young Or Hens, Standard's Quality **LB. 14 1/2c**

YOUR CHOICE

19c

2 CANS
2 CANS
2 CANS
BOX
2 CANS
3 PKG.
3 CANS

GREENS
BEANS
G FOOD
KYDOL
N BEANS
CE
EANS

YOUR CHOICE

5c

TOILET TISSUE
SALT
GELATINE
TOILET SOAP
SOAP
SUNBRITE
MACARONI

ROLL
BOX
BOX
BAR
BAR
CAN
BOX

IT'S THE SAVING ON EVERY ITEM THAT COUNTS

STANDARD

FOOD MARKETS

Wholesale "SELLS FOR LESS" Retail

ES FOR ALL WEEK AT ALL STORES

MEAT & PRODUCE PRICES ARE FOR FRIDAY AFTERNOON, SATURDAY & MONDAY ONLY.

FREE DELIVERY FROM ALL STORES

NO. 1 110-12 SOUTH CUYLER PHONES 342-343

NO. 2 302-04-06 SOUTH CUYLER PHONE 727

NO. 3 LEFORS—ECONOMY GROC. LOCATION PHONE NO. 1

NO. 4 McLEAN—CORNER 1ST & MAIN PHONE 30

LABOR TO AVOID A NATIONAL CRISIS THAT MIGHT HAVE AFFECTED THOUSANDS OF WORKERS, HEREBY HASTENING THE RETURN OF PROSPERITY—WHICH EVERYONE KNOWS MUST COME AFTER A MINOR LABOR MARK-UP EFFECTIVE THIS DATE ON THE COMMODITIES WE SELL. THESE PRICES ON QUALITY MERCHANDISE AND WILL CONTINUE TO DO SO. WE ASK YOUR CO-OPERATION IN THE AIMS. WE ARE 100% BEHIND OUR PRESIDENT AND HIS LABOR POLICIES.

J. D. Brown

PAPER LEAVES THE PRESS FRIDAY AFTERNOON!

PARADE OF VALUES!

EASTER MENU

WARD'S QUALITY MEATS

A FULL FLAVORED HAM FOR YOUR SUNDAY DINNER

WILSON'S **LB. 14 1/2c**

SWIFT'S **LB. 15c**

MORRELL'S **LB. 15 3/4c**

SWIFT'S **LB. 16 1/2c**

ARMOUR'S **LB. 17c**

0 LBS. TO SELECT FROM!

U. S. Inspected and Branded Choice Wilson's or Dold's Corned Heavy Veals

ROASTS

"They Melt in Your Mouth"

SHORT RIB **LB. 4 3/4c**

ROLLED ROAST **LB. 6 1/2c**

FORE QUARTER **LB. 7 1/2c**

CHUCK **LB. 11 1/2c**

ARM **LB. 12 1/2c**

PRIME RIB **LB. 15 1/2c**

RUMP **LB. 15 1/2c**

ROLLED **LB. 21c**

Spring FRUITS and VEGETABLES

ORANGES **DOZ. 21c**

LETTUCE **HEAD 4c**

APPLES **DOZ. 21c**

CARROTS **BUNCH 3c**

SALTED CRACKERS 2LB. BOX 29c

COCOA **LB. 14c**

PINEAPPLE **2 For 29c**

CHERRIES **2 For 29c**

VERIBEST MILK

ARMOUR'S VERIBEST BRAND

3 TALL OR 6 SMALL CANS 17c

BUTTER

CLOVER-BLOOM **LB. 23c**

QUALITY A Gray County Creamery Product **LB. 21c**

SHORTENING

FRESH SWIFT'S JEWEL IN 8 LB. CARTONS

8 LBS. FOR 56c

EGGS

We handle only country eggs and pay 13c a dozen. The cartons cost 1 cent. You can boil these eggs.

DOZ. 15c

CURED HAMS

WILSON'S, SWIFT'S OR MORRELL'S BANK OR BUTT ENDS AS DISPLAYED

LB. 8 3/4c

LB. 22 1/2c

WEINERS **LB. 14 1/2c**

BOLOGNA **LB. 11 1/2c**

CHEESE **LB. 10 3/4c**

FRESH KILLED PIGS

PORK LOIN ROAST **LB. 12 1/2c**

FRESH HAMS, HALF OR WHOLE **LB. 14 1/2c**

CENTER CUT FRESH HAM ROAST OR STEAK **LB. 17 1/2c**

SPARE RIBS **LB. 10 3/4c**

WHITE KING

Granulated Soap for General Household Use

LARGE BOX 27c SMALL BOX 5c

COFFEE FEATURES

BREAK O' MORN **LB. 19c**

BLISS **LB. 23c**

SCHILLING'S **LB. 28c**

FOLGERS **LB. 32c**

RABBITS

ash Dressed, Fancy Tame Rabbits Serve Something Different! . . . Stocked at No. 1 Store Only

CHEESE **3 PKGS. 19c**

CHEESE **LB. 16 1/2c**

SQUARES **LB. 9 3/4c**

BACON **LB. 9 3/4c**

PICKLES **EACH 5c**

P'NUT BUTTER **LB. 10c**

LOAF CHEESE

BRICK, PRICED BY THE 5-LB. LOAF **LB. 21c**

AMERICAN OR PIMENTO SAUCED—AS YOU LIKE IT **LB. 24 1/2c**

PRUNES **GAL. 32c**

BLACKBERRIES **GAL. 39c**

PEACHES **GAL. 39c**

BLACK PEPPER **CAN 5c**

Yours Truly Brand 1 1/2 Oz. Size Can

CATSUP **2 Large Bottles 25c**

P'NUT BUTTER **23c**

OATS **BOX 17c**

CEREAL FEATURES

POST BRAN **BOX 9c**

RIPPLED WHEAT **BOX 10c**

SMALL OATS **2 Boxes 11c**

OATS **BOX 18c**

HENS

Colored Type, All Sizes. Get Your Fowl Alive If You Wish.

LB. 14 1/2c

FRESH LIVER **LB. 12 1/2c**

BACON **LB. 23 1/2c**

BACON **LB. 21c**

PIG LINKS **LB. 16 1/2c**

SLAB BACONS

WILSON'S LAUREL **LB. 14 1/2c**

WILSON'S KORN KING **LB. 17 3/4c**

WILSON'S CERTIFIED **LB. 18 1/2c**

SWIFT'S PREMIUM **LB. 19 1/2c**

TOILET TISSUE **3 Large Rolls 19c**

SWEET CORN **2 Cans 11c**

TOMATOES **2 Cans 11c**

TURKEYS

First Grade—Young Toms Or Hens, Standard's Quality

LB. 14 1/2c

BULKSNOWDRIFT

Carried in Stock at No. 1 Store Only **3 lbs. 29c**

International Sunday School Lesson

BY DR. J. E. NUNN

General Topic: The Risen Christ (Easter Lesson).

Scripture Lesson: John 20: 1-16. 1. Now on the first day of the week cometh Mary Magdalene early, while it was yet dark, unto the tomb, and seeth the stone taken away from the tomb.

2. She runneth therefore, and cometh to Simon Peter, and to the other disciple whom Jesus loved, and saith unto them, Behold, we have taken away the Lord out of the tomb, and we know not where they have laid him.

3. Peter therefore went forth, and the other disciple, and they went toward the tomb.

4. And they ran both together: and the other disciple outran Peter, and came first to the tomb.

5. And stooping and looking in, he seeth the linen cloths lying; yet entered he not in.

6. Simon Peter therefore also cometh, following him, and entered into the tomb, and he beheld the linen cloths lying.

7. And the napkin, that was upon his head, not lying with the linen cloths, but rolled up in a place by itself.

8. Then entered in therefore the other disciple also, who came first to the tomb, and he saw, and believed.

9. For as yet they knew not the scripture, that he must rise again from the dead.

10. So the disciples went away again unto their own home.

11. But Mary was standing without at the tomb, weeping: so, as she went, she stooped and looked into the tomb.

12. And she beareth two angels in white sitting, one at the head, and one at the feet, where the linen cloths lying.

13. And they say unto her, Woman, why weepest thou? She saith unto them, Because they have taken away my Lord, and I know not where they have laid him.

14. When she had thus said, she turned herself back, and beheld Jesus standing, and knew not that it was Jesus.

15. Jesus saith unto her, Woman, why weepest thou? whom seekest thou? She, supposing him to be the gardener, saith unto him, Sir, if thou has borne him hence, tell me where thou has laid him, and I will take him away.

16. Jesus saith unto her, Mary. She turned herself, and saith unto him in Hebrew, Rabbouni; which is to say, Teacher.

Golden Text: If ye then were raised together with Christ, seek the things that are above, where Christ is, seated on the right hand of God.—Col. 3:1.

Time: Sunday, April 9, A. D. 30. Place: Jerusalem. Parallel Passages: Matt. 28:1-15; Mark 16:1-11; Luke 24:1-12.

Introduction

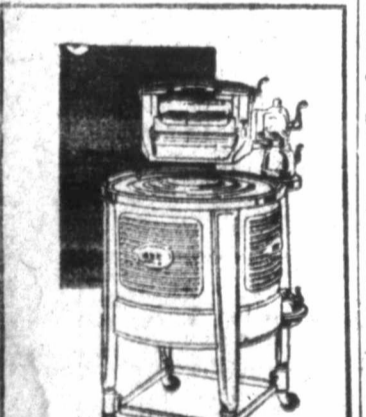
The burial of the body of Jesus in the new grave of Joseph of Arimathea, a member of the Sanhedrin, was hastily conducted on Friday evening before sunset, when the Jewish Sabbath would begin and render the act unlawful. Joseph with another senator, Nicodemus, who at the beginning of Christ's ministry came to Jesus by night and held the ever-memorable conversation recorded in John 3, came bringing about a hundred pounds of myrrh and aloes, with which they made a hasty embalment. On Sunday morning, while it was yet dark, a company of women friends of Jesus came to con-

BEWLEY'S ANCHOR FEEDS

Higher Production and Protein at lowest cost. Bewley's feeds are made in Texas. Feed Bewley's Anchor starter and Baby Chick Scratch.

BEWLEY'S BEST FLOUR

Handled at the following Grocery Stores: Baum's Food Store, Central Grocery & Market, Hunter's Grocery, Miller's Cash Grocery, MILLER FRED STORE, Phone 1028 925 West Foster



America's Safest and Most Modern Wringer Typewriter

ABC Washer... model 66 with patented Fingertip Control

Pampa Hdw. & Implement Co.

Phone 4-120 No. Cuyler

Brain Dies



Gangland vengeance, long thwarted, "caught up" with Fred (the Brain) Goetz, above, called Chicago's super-criminal, found bullet-riddled in a fiery auto.

plete the operation. These were Mary Magdalene, together with another Mary and Salome the mother of John and James, and other women not named. As they approached the tomb they wondered how they could manage to roll away the heavy stone closing the mouth of the grave, a good example of being in a hurry, for the angel had already rolled it away. Mary was the first to reach the tomb and rushed away to tell Peter and John, the leading apostles, suspecting that Christ's enemies had stolen the previous body. The other women kept on, entered the tomb, found the body of Jesus indeed gone, and as in dismay they rushed out to behold two angels sitting on the stone which had been rolled away. One of these angels calmed the distress of the women by telling them that the Lord had risen from the dead, that he would keep the appointment in Galilee which he had made with his disciples, and that they were to go quickly and tell the disciples the good news. This they did, and on the way they met the risen Lord himself, whom they worshipped, and who gave them the same message.

"The First Day of the Week." v. 1.

"Now on the first day of the week." Our Sunday, which has become a standing memorial and proof of this event, as the Christians, unwilling to celebrate the sad day on which their Saviour lay in the grave, gradually transferred their Sabbath from the Jewish last day of the week (Saturday), to the first day of the week. The New Testament contains no record of any command to do this, but contains several indications that it was done with sanction of the apostles and the approval of the church.

Peter and John. v. 2.

"The runneth therefore, and cometh to Simon Peter." v. 2. Probably the oldest of the apostles, one whom Christ had especially honored, and one who by his decisiveness of character was most fitted to take the lead at this juncture. "And to the other disciple whom Jesus loved." John never names himself, or his relations in his Gospel, being far too modest; but this description of the relation between himself and his Saviour is a biography in itself. Though doubtless the youngest of the apostles, for he far outlived the rest, dying at the age of nearly one hundred, he excelled them all in his deep insight into the Master's spirit and purpose, and his Gospel is the greatest book ever written. His letters and the Revelation are fit to stand beside it. He is often coupled with Peter, and the oldest and youngest of the disciples were boon companions, bound together by their fervent love for the Redeemer.

Mary at the Tomb. vs. 11-16.

The contrast between the two pictures presented here is striking: The Mary standing weeping at the tomb, weeping and the Mary who rushes joyfully to tell her good news to the brethren; the contrast between her despairing, "They have taken away my Lord! and her glad, "I have seen him!" Because of this contrast the story possesses for us, for humanity in general, great comforting value.

We all have our dark hours, our times of broken hopes and shattered faith. But the gospel of Christ is ever saying to us what the Psalmist said, "Though weeping carry with you for a while, joy cometh" (Ps. 30:5). It is the voice of the wheel of nature; bright sunshine and warmth after the early gloom and chill; or vernal beauty succeeding winter's death.

The Empty Grave.

"He is not here, He is risen." Matt. 28:6. Is not the child of God thus taught never to look for the precious thing in a grave? Not any thing for which we have hoped, to which we have aspired? Faith says, The grave is empty! Jesus' disciples evidently believed that now all was over. What made it worse, his tomb had been violated and the precious body carried off somewhere probably to be shamefully mishandled. To visit the spot where the earthly remains of the loved one have been deposited affords no comfort, indeed, but still comfort. Even of this meager consolation they are to be deprived.

"A Splendid Vacancy."

Doctor Crannell has called the tomb's emptiness, that first Easter

morning, "a splendid vacancy." That it was empty when Mary stooped down and looked into it is the most important, gladdest fact the world has ever faced. That he was not there, where she had expected to find him, means for you and me, likewise, "the resurrection and the life," and all the fulfilled blessings of the Risen One's redemptive work. "He died, and arose, and ascended, that his presence and power might be unlimited. He left his

disciples and went away into heaven that he might come nearer to man than it would ever have been possible as long as he remained in the flesh. He is nearer to us than he was to Mary, Peter and John." Jesus and the Resurrection Life. No fact in history is better attested than the resurrection of our Lord. It transformed the disciples, so full of fear and distrust, into veritable lions of courage and confidence. Thousands died for their

faith in the risen Christ. Paul, that most lawyerlike of all minds, was thoroughly convinced, and made the resurrection of Christ the cornerstone of his preaching and writing. The Christian church, from that first Easter, has gone steadily forward to the conquest of the world. The resurrection of Christ is our only proof of immortality. Socrates and Plato made but a feeble argument for it, with all their brilliant intellect. The

immortality of the soul does not depend on philosophy but on a fact. We are risen with Christ. He is our Resurrection and our Life.

WAGES INCREASED CHICAGO, March 29 (AP)—Wage increases of approximately 10 per cent were announced today by Acme Steel company, applying to all plant and office employes on hourly wage or salary basis effective April 1. The increases affect about 1,400 employes. North Carolina faces losses from damage done wheat, oat and barley crops by the cold last winter.

BAUM'S FOOD STORE & MARKET — WE DO OUR PART — WE DO OUR PART — WE DO OUR PART — WE DO OUR PART

Each employee in this store carries a union card

ORANGES Large, sweet and very juicy, dozen **14c**

FLOUR Top of Texas 48 lb. bag **\$1.64**

PORK SHOULDERS Fresh—Not frozen, half or whole, lb. **10 1/2c**

PEARS Fancy Bartlett, No. 2 1/2 can **16 1/2c**

STEAK family cuts, lb. Stamped beef **5c**

PURE LARD Open kettle rendered **37c**

Buy your cooked foods at Baum's

BAKED HENS With gravy, each **59c**

SHRIMP SALAD Our Specialty, Pint **25c**

BAKED HAM Our own, per lb. **43c**

POTATO SALAD With mayonnaise, lb. **15c**

MEAT LOAF Tomato Sauce, lb. **18c**

EASTER FOODS THAT MAKE PREPARING AND EATING MEALS A PLEASURE

SPECIALS FOR FRIDAY, SATURDAY AND MONDAY

STRAWBERRIES Large, red ripe, luscious berries, full box Saturday only **13c**

APPLES 163 size Winesaps 2 doz. Saturday only **15c**

GRAPEFRUIT Arizona Marsh Seedless each **4 1/2c**

LEMONS Bright yellow balls of juice, doz. **19c**

POTATOES Small Brown Beauties. Sat. Only 10 lbs. for **9c**

HOT CROSS BUNS For Your Easter Breakfast Doz. **15c**

SNOW WHITE LAYER CAKE Made with butter, each **20c**

PARKER HOUSE ROLLS Serve them hot with your Easter dinner, doz. **12c**

BANANAS Yellow ripe, green tips, Sat. only, doz. **10c**

A wide variety for your table

Received Fresh Kept Fresh Sold Fresh

CARROTS Large original tied bunch, each **3c**

GREEN ONIONS Per bunch **4c**

CELERY Extra fancy Chula Vista **9c**

MUSTARD Fresh, per bunch **4c**

LETTUCE Calif, fresh crisp, Sat. only, head **3 1/2c**

RHUBARD Cherry red, per lb. **8 1/2c**

ONIONS Spanish sweet, No. 1, lb. **3c**

RADISHES Round, red, per Bunch **4c**

POTATOES Large ones, 100 lb. red or white bag **\$1.89**

KRAUT No. 2 can **9c**

CATSUP Gallon can **49c**

SOAP Our Leader Laundry 10 bars for **18c**

HENS Those fat, fancy, heavy live, healthy fowls, the kind you like, lb. **13 1/2c**

PORK CHOPS Fresh, lean, end cuts, Sat. only, lb. **8 1/2c**

ROUND STEAK Stamped beef, lb. **12 1/2c**

PORK SHOULDER Whole shank, lb. **6 1/2c**

ROAST PORK Primo rib, rolled, lb. **19 1/2c**

PORK STEAK Center cuts, lb. **12 1/2c**

PIG LINKS Little Pound **16 1/2c**

BACK BONES Fresh **4 1/2c**

PIGS FEET **4 1/2c**

BEEF STEW **4 1/2c**

TROUT Speckled, fresh Saturday, lb. **19c**

BACON Dry Salt Sat. only, lb. **6 1/2c**

YES WE DELIVER FREE PHONE 67

FRIDAY SATURDAY MONDAY SPECIALS

BAUM'S FOOD STORE AND MARKET

This ad conforms to both local and national NRA codes

FRESH HAMS Cut from choice grain fed pigs, small, whole, Sat. only, lb. **12 3/4c**

BUTTER Fresh, delicious, Gray County Creamery, Sat. only, lb. **19 1/2c**

PEACHES Halves in heavy syrup, No. 2 1/2 can **16 1/2c**

COFFEE Seven Day or Aladdin, vacuum sealed, lb. **25c**

ROASTS Thick rib or juicy pot, Sat. only, lb. **4 1/2c**

LAMB Genuine Spring, Easter quality, Leggs, Chops, lb. 18 1/2c, lb. 22 1/2c, Shoulders, per lb. **13 1/2c**

Small change ITEMS

Beef HEARTS

Fresh PIG TAILS

Fresh Beef TONGUES

Fresh Made SAUSAGE

Choice, lb. **5c**