







Should I jump in?

Emily Duran contemplates rejoining her friends during the Polywoog swimming lessons at the Pampa Youth Center. George Smith, center director, estimates 3000 youngsters age 4-6 have completed the Polywoog program since it was inaugurated in 1963. The final two-week summer lessons ended today, but the youth center is filling a prospective list for the fall Polywoog program which will begin Sept. 7. The Polywoog program is free to youth center members, and costs \$10 for non-members. (Pampa News photo by Ron Ennis)

### Force still wants checkoff

COLLEGE STATION, Tex. (AP) — The Beef Development Task Force still feels a need for a checkoff and research program despite last month's defeat of a similar federal proposal, says a Texas A&M professor. Dr. Ernest Davis, who had assisted the group in telling producers across the state about the \$40 million beef re-

search and promotion program, said 65 members of the group met here Thursday to evaluate why the plan had failed to win approval in Texas. In the July vote, 231,046 cattle producers nationwide cast ballots.

### Knorpp faces removal suit

AMARILLO — Potter County Attorney Kerry Knorpp, faced with a lawsuit filed to oust him from public office, was ordered by District Judge George E. Dowlen to answer the petition by Aug. 29.

The suit accuses Knorpp of stealing public money. A petition seeking his removal was filed Thursday in Judge Dowlen's court by Hugh Russell, special counsel for a court of inquiry into Potter County's "lack of, or irregularities in financial controls and auditing procedures."

Russell called the filing of the ouster petition "just an interim step in his work on the court of inquiry." Knorpp's courthouse office reported he is on vacation. Russell said further work on the court of inquiry awaits the 1976 audit of county books, which is not yet complete. He added that he is also awaiting return on a subpoena of copies of Knorpp's bank records.



### Help pay off your mortgage

Help free your family of worry with an Allstate Mortgage Protection Plan.

Allstate Life Insurance Co.

MARK BUZZARD

1623 N. Hobart 665-4122



# Perez says alien imports needless

EL PASO, Tex. (AP) — Mexican labor was needlessly imported to help Presidio, Tex., farmers harvest crops this summer, according to the director of the Governor's Office on Migrant Affairs (GOMA). Rogelio Perez said Thursday a better coordination among migrant agencies could have supplied all the labor needed to work the Presidio area farms. He estimated there are 475,000 migrant farm workers in Texas, which he said is the "largest supplier of migrants for the country." President Carter recommended in June the importation of

about 800 farm workers from Mexico to help in the Presidio harvest. Perez blamed Presidio's Motivation Employment Training Association for not notifying other migrant-service agencies of the need for farmworkers. "They didn't tell us," Perez said. "If we had known, we would have gotten the workers. There are a lot of unemployed in the lower valley." Perez told a meeting of the GOMA coordinating council that four of 36 agencies that offer services to migrants in Texas are not members of

GOMA. He called for a coordination of services. Migrant workers can find out where farm labor is needed by consulting the Texas Employment Commission, he said. "But they don't go because there's too much red tape. Services now are fragmented. They have to go to so many different agencies to get everything they need. There is no umbrella to offer all services," he said. More and more farmers are switching to mechanized harvesting, decreasing the need for migrant labor, Perez said.

"There will always be migrants. But we need to give them an alternative. We need to provide educational services so they will have something else to turn to. Today there is an 80 per cent school dropout rate among migrants." Jerome Vacek of Corsicana's Community Services, Inc., said mechanization is driving many migrants from South Texas to other parts of the state for permanent jobs. Mexican nationals with work permits are also found across the state, he said. "Pass workers are every-

where. People don't know how much work they do and how necessary they are. "In the coastal rice producing communities they are working everywhere, but you never see them. You don't see them on main street. They work and disappear into their communities. "In some lower valley communities they live in shacks in colonies with no running water or electricity. Dysentery is a big problem. They get their water from the canals," Vacek said. Gov. Dolph Briscoe told the council that GOMA is a catalyst for statewide efforts to serve migrants. Migrants can be "participating citizens in the economy of their state," Briscoe said. Under one GOMA program, 300 migrant youths are housed in university dorms while their parents work. The young people are taught English, writing and other subjects when not performing community service work.

# Tris back on shelves

WASHINGTON (AP) — Products treated with Tris, the flame retardant linked to cancer in animal tests, are reappearing on store shelves, and the government is powerless to intervene. S. John Byington, chairman of the Consumer Product Safety Commission, said Thursday his

agency cannot stop the sales because a federal district court in June voided the commission's ban on production and sale of children's sleepwear treated with the chemical. "When we had a ban in effect, the amount of Tris-treated garments on the market place were being significantly reduced by the day," Byington said in a telephone interview. "We did not want a large number of these garments coming back on the market. We're damned concerned about it. But at this point in time we cannot take enforcement action because we were ordered by the court not to."

### Church sets outdoor concert for Saturday

An outdoor concert of gospel music is scheduled from 7:30 a.m. to 8:30 p.m. Saturday in Central Park. A local girl, Vondel Simmons, will also perform during the evening's entertainment. The concert will feature the Christian Sons, a trio from Western Colorado, Van, Dan and Wendel Christenson, aged 16 to 20 years, who have appeared nationally in concerts, youth camps, conventions and on television. There will be no admission charge to the informal concert. The Christian Sons are appearing at 6 p.m. Sunday at the Pampa Chapel of the Apostolic Faith Church, 711 E. Harvester, according to the Rev. Keith Barker, pastor. The minister added the youth of Pampa are "especially encouraged to attend the concert."

### Church sets outdoor concert for Saturday

Richmond. The defense fund, a nonprofit group with 44,000 members, filed affidavits with the court citing four studies showing that Tris products are still on sale. The chemical has been widely used in children's sleepwear. The private group said two of the studies, conducted by the product safety commission in July, showed that one-fifth of the retail outlets checked were still selling Tris-treated garments. The commission ban, announced in April, was voided June 24 by U.S. District Judge Robert Chapman in Columbia S.C. He said the agency had not met several procedural requirements in approving the ban, which was announced after Tris was found to cause cancer in laboratory animals. Consumers fearful of buying Tris garments should see if the label says they are made from polyester, acetate or triacetate. If so, they may contain Tris. The fund also announced settlement of a lawsuit it had brought against the commission over the safety of washed Tris-treated clothes.

### Brown raises wheat estimate

AUSTIN, Tex. (AP) — Agriculture Commissioner Reagan Brown raised his estimate of the 1977 Texas wheat crop Thursday by 2.5 million bushels. He now predicts a wheat crop of 117.5 million bushels from the 4.7 million acres under cultivation. In July he predicted a 115 million-bushel crop. Estimates are based on weather conditions and the status of other variables at the time a prediction is made.

Don Carter Salutes the customer of the day Mr. and Mrs. R.C. Rowdan

THE MOVIE WITH SO MANY LAUGHS... you have to see it twice, you have to see it twice.



NEIL SIMONS  
NEIL SIMONS

## Murder by Death

COLUMBIA PICTURES presents A RAY STARK Production of NEIL SIMONS' "MURDER BY DEATH"

Music by DAVE GRUSIN · Production Designer STEPHEN GRIMES · Written by NEIL SIMON · Ray STARK · Robert MOORE · RASTAR · Directed by From

PG PARENTAL GUIDANCE SUGGESTED (SOME MATERIAL MAY NOT BE SUITABLE FOR PRE-TEENAGERS)

CAPRI Theatre Downtown Pampa • 665-3941 ADULTS 2.00 KIDS 1.00

NOW SHOWING SHOW TIME FRI.-7:00-9:00 SAT. 2:00-7:00-9:00

## KILLER WHALES vs GIANT OCTOPUS

TITANS OF THE SEA IN THE MOST SAVAGELY FEROCIOUS BATTLE EVER FILMED!



## TENTACLES

SAMUEL Z. ARKOFF presents an OVIDIO ASSONITIS film Special Appearance by JOHN HUSTON · SHELLEY WINTERS · BO HOPKINS · HENRY FONDA "TENTACLES" · DELIA BOCCARDO · CESARE DANOVA · ALAN BOYD CLAUDE AKINS as "ROBARDS" · Direction and Coordination of Marine Underwater Sequences NESTORE UNGARO · Executive Producer OVIDIO ASSONITIS Music Composed and Conducted by STELVIO CIPRIANI · (CBS MUSIC PUBLISHERS) Written by JEROME MAX, TITO GARRI and STEVE CARABATOS · Color prints Produced by ENZO DORIA · Directed by OLIVER HELLMAN by MOVIELAB

Top o' Texas 2215 N. Hobart • 665-8781

NOW SHOWING ADULTS 2.00-KIDS 50¢ OPEN 8:30 SHOW 9:15

## PITTSBURGH PAINTS

# House Paint Sale

### Lowest Prices this Year!

#### LIMITED TIME OFFER

**Latex Flat House Paint**

- Covers previous colors well
- Durable
- Good weather resistance
- Soap and water clean-up
- Mildew resistant on paint film

Now Only **\$6.99** gal.

\*White and standard colors. Custom colors slightly higher.

**Special Note:** Unlike many "economy paints" that you might see advertised, these are **top-quality house paints**, formulated with the finest raw materials.

**Sun-Proof Latex Flat House Paint**

- Fade resistant colors
- Mildew resistant on paint film
- Soap and water clean-up

Now Only **\$10.50** gal.

\*White and standard colors. Custom colors slightly higher.

**Sun-Proof Oil Base House & Trim Paint**

- One finish for siding and trim
- Resistant to dirt collection
- Excellent color and gloss retention

Now Only **\$11.50** gal.

\*White and standard colors. Custom colors slightly higher.

IS YOUR HOUSE PAINT READY FOR ANOTHER TOUGH WINTER?

Changing weather and environmental conditions can play havoc with the house paint on your home. Prolonged sub-zero temperatures in the north... rain, sleet and even snow in the deep south have a more than normally destructive effect on exterior paint. Add to this the atmospheric pollutants... smoke, fumes, industrial gases... and you have ample reason to choose a house paint designed to resist these ravages. Pittsburgh house paints have been recently reformulated and specially reinforced to provide maximum protection against the elements and pervading pollution. Come in today and let us recommend the one best suited to your need.

## GRAY'S DECORATING CENTER

323 S. Starkweather 669-2971

AUG 12 7 7

# Bergland urges, "build graineries"

By PAUL STEVENS  
Associated Press Writer  
Storage bins are being erected at a rapid pace on farms in the nation's grain belt as farmers attempt to make room for a bumper fall harvest. The summer building boom has been spurred by the anticipation of near-record corn and wheat crops that some producers feel will find no room in already half-full commercial elevators.

responding in unprecedented numbers. One county in Illinois already has \$700,000 in outstanding loan applications for the steel bin structures, which range in capacity from 1,000 bushels to 50,000 bushels. An average 5,000-bushel bin will cost from \$2,000 to \$3,000 to install. In Missouri, "People are putting up bins faster than they can get them," said Agriculture Department Director Jack Ryan. "You can't buy one now."

to keep on hand supplies of feed for livestock and serving as a temporary holding point before taking their grain to the country or terminal elevators for sale. But the recent buildup of the two most abundant grains, corn and wheat, has resulted because of such factors as overplanting and diminishing export trade.

three-year period. The producer is paid 20 cents a bushel per year for wheat he stores under the program, regardless of whether it is kept on the farm or in a commercial facility. Dick McChesney, price support specialist with the Kansas office of the Agriculture Stabilization and Conservation Service, said that if farmers use commercial storage, they pay at least 24-25 cents a bushel to store their wheat. Thus, they must pay more than they receive from the government for storage.

"In most cases I think they can." The USDA took yet a further step last month when it reinstated a loan program for storage facilities to hold high-moisture grain, used primarily by dairymen and livestock feeders. Although the USDA estimated farm storage on Jan. 1 at 6.1 billion bushels, ASCS officials in Washington say they have no means of determining how much growth has occurred so far in 1977.

# Carter plots sales pitch

WASHINGTON (AP) — President Carter is going over the new Panama Canal pact word for word so he can okay every detail and start a sales blitz to convince Congress and the people it's safe, sure to improve Latin American relations and worth ratifying. For the first time as President, Carter cleared his schedule today of all appointments but his regular intelligence briefing so he could devote the day to studying the agreement. Approval was expected. Carter gave his preliminary opinion Thursday: "I'm very pleased with it."

fully" and help ratify. "This is a crucial element in the American people's acceptance of the treaty," Carter said. "Above all else the security of our nation stands as the greatest concern with me and Ambassador Bunker and Ambassador Linowitz. "With this treaty, which is the culmination of 13 years of hard work, I think we've arrived at a point where we can adequately defend and control the operation of the canal throughout this century," the President declared.

Under the second new pact, Panama guarantees the neutrality of the canal, pledging it would remain open to ships of all flags. The Panamanians say the United States would keep the right to intervene if the canal were attacked by a foreign power. Other terms provide a big increase in U.S. payments for use of the canal and provide Panama hundreds of millions of dollars in aid for the life of the agreement.

Panama within two weeks and that Brig. Gen. Omar Torrijos, the Panamanian head of government, was inviting other Latin American leaders to the ceremony. Powell said, however, that "there has been no decision on where the signing will take place."

# Unclaimed body alleged 'Butcher'

ASUNCION, Paraguay (AP) — A mystery man's body lay unclaimed in an Asuncion police morgue today while West German officials tried to determine if he was alleged Nazi war criminal Eduard Roschmann. If so, it would end a 30-year hunt for an elusive fugitive known as the "Butcher of Riga" who apparently stayed one step ahead of his trackers in South America in recent months.

who is believed to have fled to Argentina in 1948. Wolf said his parents and sister were executed at a Roschmann-run concentration camp. But Nazi hunter Simon Wiesenthal said in Vienna Thursday that he does not believe Roschmann is dead. He said the German was spotted in Bolivia only last month. "I wonder who died for him?" asked Wiesenthal, who heads the Jewish Documentation Center, an agency that keeps track of former Nazis.

# Utility execs against bill

By JOHN LENGEL  
Associated Press Writer  
WASHINGTON (AP) — Utility executives say that new taxes on oil and natural gas in President Carter's energy plan would run up household electricity bills and give the companies a fiscal headache. "Please, don't pass this damn thing," T.L. Austin, chairman of the board for Texas Utilities Co. told the Senate Finance Committee Thursday.

coal and nuclear plants without having to pay taxes. If anything, Thompson said, the taxes could force companies to abandon plants that use oil and natural gas before the equipment is worn out. All the executives said the tax payments would simply be passed on to their customers, adding that the higher prices and tax shortfalls would harm their chances of raising money for plant construction.

Hans Tanzler, the mayor of Jacksonville, Fla., and the head of the municipally owned power company, said the effect of the taxes will be to "turn out the lights at the end of the tunnel." Energy Secretary James R. Schlesinger said the administration's proposed tax on gas-guzzling autos does not endanger the family car. "We can have a very substantial car for the large family that is not fuel inefficient," Schlesinger said.

guzzling autos does not endanger the family car. "We can have a very substantial car for the large family that is not fuel inefficient," Schlesinger said. "There is no major threat to the family car. There is a major threat to the fast-accelerating car," he said. Schlesinger made the comments on the CBS "Morning News" today.

News" today. He also said the administration was "hopeful" of getting Congress to enact a standby tax on gasoline to discourage consumption. "I think we recognize it's an uphill fight," he said, referring to the energy bill now before the Senate. The House recently refused to enact a standby gasoline tax. "You can't propose laws without considering what Mexico has to say about the program," he said.

Several members of the audience complained about "inconsistencies" in the plan, citing the fact aliens with temporary resident status would have taxes and Social Security taken out of paychecks, but would not be eligible for benefits. The panel's moderator, Vicente Jimenes, chairman of Albuquerque's GI Forum No. 1, said the only way to formulate a solution to the problem of illegal or undocumented aliens "is to deal with the other country, with Mexico."

# San Jon saves Boy Scout trip

MEMPHIS (AP) — A group of Boy Scouts who worked all year for a trip to the Grand Canyon have returned talking more about the people of San Jon, N.M., than about the glorious gulf.

# Reagan opposes treaty

LOS ANGELES (AP) — Ronald Reagan, who made retention of the Panama Canal a major issue of his 1976 quest for the GOP nomination for president, has criticized but not advocated rejection of the proposed new Panama Canal treaty.

# Reagan opposes treaty

ment in Cuba to step up activities. He also expressed concern on the Panamanians' reactions if the U.S. Senate refused to ratify the treaty.

# Stock market

The following grain quotations are provided by Wheaton Grain of Pampa. Wheat \$1.50 to \$1.55 per bushel. Corn 38.00 to 39.00 per bushel.

# Stock market

The following 10-20 N.Y. stock market quotations are furnished by the Pampa office of Schneider, Bernick & Company, Inc. Bestrice Foods 34 1/2. Colman 62. Ciba Service 28 1/2. Dole 29 1/2. E.I. du Pont 114 1/2. GenCorp 24 1/2. Harsco 34 1/2. H.P. Hood 22 1/2. P.F. Inc. 28 1/2. P.F. Inc. 28 1/2. P.F. Inc. 28 1/2. P.F. Inc. 28 1/2.

Reagan, in a statement sides read to reporters on Thursday, said the proposed treaty would improve chances for a spread of Marxism in Central America. Reagan was not available for questions.

"I couldn't begin to tell you all the things that little town did for us," Scoutmaster Randy Wilder said about how the townspeople transformed bad luck into good. The 21 boys left Memphis aboard a bus July 9 and were taken into San Jon two days later after the bus engine failed. Their trip looked doomed until Sheriff Richard M. Flint and a group of residents took the entertainment of the stranded boys in hand.

Wilder said the 13-16-year-old boys were so taken with San Jon, he insisted on stopping there on the return trip. "They got very indignant when it looked like we were going to pass through there too late at night to stop and they just wouldn't stand for that. They had bought gifts for the sheriff and the others who had helped and they wanted to thank them again."

# On the record

## Highland General Hospital

Thursday Admissions  
Mrs. Mayme Graham, Miami. Richard Thompson, 734 Lefors. Mrs. Mary Sinches, 638 S. Somerville. Mrs. Jewell Kunz, Leisure Lodge. Mrs. Joyce O. Velasquez, 917 Campbell. Mrs. Roberta E. Appleton, Pampa. Terry J. Cash, 713 E. Campbell. Ray G. Burger, 601 E. 18th St. Mrs. Mable A. Johnson, 1433 Williston. Baby Girl Velasquez, 917 Campbell. Mrs. Teresa J. Neal, 923 E. Francis.

## Mainly about people

Kay and David Dirickson will be honored at a 35th wedding anniversary party from 2-4 p.m. Sunday at 328 Miami. Friends of the couple are invited to attend. Garage Sale: 1943 N. Banks, Friday and Saturday 8 a.m. to 6 p.m., Sunday 1 p.m. to 6 p.m. (Adv.) School Clothes, wicker furniture, T.V. antenna, linens, suits and dresses — a gold mine in a garage! Friday and Saturday, 1841 Fir. (Adv.) Meet Sell sofa, chair, and table. Excellent condition. 665-2145. (Adv.) Estate Sale: 432 Jupiter Thursday, Friday, Saturday, 8 to 5. (Adv.)

## Police report

A Pampa man, Jimmy Ray George, 24, was charged with possession of marijuana Thursday after Pampa police found a bottle of suspected marijuana in his possession while he was being booked on charges of public intoxication. He entered a guilty plea to the intoxication charge and was fined \$102.50 in Municipal Court. He was arraigned before Justice of the Peace Venora Cole on the possession of marijuana charge. Bond was set at \$2,500. Mark Lee Polk, 18, of Pampa, was arrested for public intoxication and disorderly conduct and was later found to be in possession of a controlled substance. He was charged with possession of a controlled substance.

## Obituaries

ROBERT V. (BOB) BURNS  
Funeral services for Robert V. (Bob) Burns, 68, of 345 Miami, will be 10 a.m. Saturday in the Carmichael - Whitley Colonial Chapel with the Rev. M.B. Smith, pastor of the Highland Baptist Church, officiating. He will be assisted by the Rev. Jack M. Greenwood of Barrett Baptist Church. Burial will be in Fairview Cemetery. Mr. Burns died Wednesday at Highland General Hospital.

## Obituaries

LESLIE SAVAGE  
Funeral services for Leslie Savage, 66, of Barger, are pending with Carmichael - Whitley Funeral Directors. Mr. Savage died Thursday at Veterans Hospital in Amarillo. He was born in Crowell, Tex., in 1910 and he moved to Pampa from California in 1960. He moved to Barger in 1975. Mr. Savage was a member of the Methodist Church and American Legion Post 516 of Los Angeles, Calif. He was a veteran of World War II. Surviving are one brother, J. Luke of Pampa; one sister, Mrs. Bertie L. Luper of Wichita, Kan., and several nieces and nephews.

Day, T... com... shar... New St... Ty... bach... musi... on... Prof... Le... D... big... Jerr... D... beat... tirst... off... Hi... take... the... can... A... to... D... wor... dec... turn... D... who... now... whic... her... with... TV... about... time... Si... bein... situ... It... rout... Frid... lette... hush... beca... I... prom... my... W... a... w... life... D... ye... vou... resu... st... m... mil... ch... not... jobs... pru... T... ye... cur... dep... july... ju... sho... lon... T... sou... mar... ar... ju... wo... co... yo... ty... co... ch... pr... di... re... th... to... H... IR... Co... g... O... til... ed... in... b... s... y... c... i... c... s... y... c... i... c... s... H... IR... Co... g... O... til... ed... in... b... s... y... c... i... c... s... H... IR... Co... g... O... til... ed... in... b... s... y... c... i... c... s...

**Advice**

**Dear Abby**  
By Abigail Van Buren

**DEAR ABBY:** We have a Mother's Day and a Father's Day, why not officially declare a day to honor bachelors? The great historian and philosopher, Will Durant, compiled a list of the ten men he rated as having the sharpest minds of all time. Among them were Plato, Isaac Newton, Voltaire, Immanuel Kant, Leonardo da Vinci and St. Thomas Aquinas, all of whom were bachelors! Two of the world's greatest musicians were bachelors—Beethoven and Brahms. Oddly enough, the musician who was said to have been the greatest ladies' man of them all was Richard Wagner—a married man! One finds outstanding bachelors in all trades and professions except politics. Let's hear it for bachelors!

ED IN RICHMOND

**DEAR ED:** Why not? But two bachelors DID make it big in politics: James Buchanan, our 16th president, and Jerry Brown, California's governor.

**DEAR ABBY:** I'm a non-smoking guy going with a beautiful redhead whose breath smells like smoldering tires. This gal really turns me on, but her breath turns me off.

How do other guys handle this situation? Don't tell me to take up smoking so I won't notice her breath. I was a three-pack-a-day man until my brother developed lung cancer, and that cured me. Answer soon. I want to marry this girl, but wonder how to handle this one major problem.

TIMID TIM

**DEAR TIM:** Try the direct approach. If that doesn't work, the ball is in your court again, and only you can decide if you want this beautiful redhead whose breath turns you off.

**DEAR ABBY:** I just read the letter from STUMPED whose fiancée suddenly developed the fear of driving, so now she complains because she must do all the driving, which will limit her social life. Ha! What a wonderful helpmate she is. My condolences to the man who's stuck with her. I wonder what she would have done in my place.

Twenty-five years ago, my husband also "lost his nerve" about driving, and rather than see him risk his life every time he went out, I took over the driving for both of us. Since he was a salesman and our living depended on his being "on the road" every day, need I tell you what that situation did to my life?

It not only wrecked my "social life," it changed my home routine. I sat in the car alone every day, Monday through Friday. I read hundreds of books, wrote hundreds of letters, and knitted scores of afghans. BUT today my husband is alive and well and his self-respect is undamaged because he was able to support his family.

I will always have the satisfaction of knowing that my promise, "Whither thou goest, I will go," was kept! THAT, my poor dear STUMPED, is what love is all about.

Why don't you get out of that man's life and let him find a woman who will share his troubles as well as his "social life."

HAPPY CHAUFFEUR

**Ask Dr. Lamb**  
By Lawrence E. Lamb, M.D.

**DEAR DR. LAMB** — Three years ago I had a small nervous breakdown, which resulted in tension and a constipation problem.

My doctors recommended mild tranquilizers and a psychiatrist. I took the pills but not the therapy. A change in jobs helped my tension and prune juice cured the rest.

Today I am a healthy, 25-year-old woman who has cured her nerves but still depends on 15 oz. of prune juice every other day. I'm truly afraid to stop yet I know I should. What can I do? How long will it take to return to normal? Please help!

**DEAR READER** — It sounds to me like you have made a lot of progress. There are worse things than prune juice. Your bowel function would probably improve if you could decrease the amount you need.

Prune juice contains an active ingredient that stimulates contractions of the colon. In this sense it is a bit like a chemical laxative. It does not provide bulk. There are different reasons for constipation. In most people it is related to insufficient bulk in the diet. Psychological factors are often important, too.

I am sending you The Health Letter number 2-1, Irritable or Spastic Colon and Constipation. It will provide a good program for you to use. Others who want this information can send 50 cents with a long, stamped, self-addressed envelope for mailing. By being patient and following the bowel training program outlined there you can improve.

I would suggest that you start increasing the bulk in your diet by using whole cereals that contain bran. Increase the bulky vegetables as in salads. If you happen to use coffee, tea or colas you might stop them. These increase anxiety and nervousness anyway and have the opposite

**Polly's pointers**  
By Polly Cramer

**DEAR POLLY** — I have found a great use for the clear plastic bags that clothes come home in from the dry cleaners. Enlarge the opening at the top, cut a 12-inch slit below each shoulder seam at the outer edge of the bag and then slip it on like a jumper. This is great for saving one's clothes when painting, bathing the dog, cleaning screens, storm windows or any messy job. You can keep it to use again or toss it away after wearing. —MRS. R.W.H.

**DEAR READERS** and Mrs. R.W.H. — The above is a very clever idea but I suggest that after wearing such a bag it be torn in pieces and discarded as they can be a real hazard when children are around as they might attempt to pull one on — with disastrous results. Such bags should be handled with great care. A friend of mine told me that when she is on a trip and it rains and she has no raincoat she makes a satisfactory raincape from such a bag that might cover some of her clothes. —POLLY.

**DEAR POLLY** — A cotton-tipped stick moistened with soap or cleanser is good to use to clean the inside of the stem to your percolator. It really does a thorough job.

The easiest way I know to distinguish a hard-boiled egg from a raw one is to twirl the egg on a flat surface. The cooked one will twirl fast and easily and the raw one will not. —JEAN

# Scanning the color spectrum

With thousands of Americans finding manufactured homes not only affordable but acceptable, it might be interesting to hear what one interior designer says about the colors they can expect for mobile and modular homes in 1977.

If the manufactured home industry follows the color trends forecast for home furnishings in 1977, new home buyers are in for a cornucopia of beautiful colors according to Mrs. Margaret Gordon Dana, supervisor of interior design training and communication for Armstrong Cork Company, one of the nation's largest suppliers of resilient flooring, carpets, ceilings and furniture to the manufactured housing industry.

In 1977, according to Mrs. Dana, off-whites—number one on the home furnishings scene for the last 14 years—will be topped by two yellows: Pineapple and Sun Yellow.

Yellows, including rich Chrome Yellow and pastels such as Pure Cream, Shell and Vanilla, have been growing in popularity for several years.

Greens come next on the most-sold, most-sought-after charts. Avocado still leads the field of greens as it has for thirty years. But Avocado seems to have reached its peak, and the current forecast calls for fresher, truer greens (Green Mint, Sweet Lime, Ming Green, Seafoam Green) to become favorites. A dark green called Lacquer Green is also rising in popularity. It provides a nice accent of touch of drama to a decor, Mrs. Dana said.

Following the greens comes a wide range of blues—Ultramarine Blue and True Blue, which are dark, almost navy blues sharing the spotlight with lighter blues such as Blue Sky, Blue Flower, and a tint

violet blue known as Heavenly Blue.

Then come the reds, which over the past two or three decades have remained in constant use, remarkably free of ups and downs. The recent shift has been to orange variations such as Real Red, Tangerine, and Bittersweet. (Red, of course, is excellent as an accent color and has done well in cookware.) Other good reds with strong future promise are the soft oriental tone of Pompein Red and the deep rich Garnet Red.

Speaking of orange, this color hit big volume during 1975 when it became a top seller. Deeper variations, such as Burnt Orange, have been leading sellers in carpeting; paler variations, such as Creamy Apricot, have been exceptionally popular textiles. Orange probably has reached its crest, though. Consumer

interest in it seems to have shifted more towards Terra-Cotta.

Terra-Cotta—alias rust, russet, brick, cinnamon, henna, paprika, cognac, etc.—is big news. It is emerging as the leader of the so-called "earth colors" or "naturals," which will continue to grow as the broad color base for the 1970s.

Naturals and neutrals of all types will probably continue to do well this year Mrs. Dana said. In fact, 10 of the 36 colors in the forecast are either naturals or neutrals. In flooring, neutrals such as beiges and greys provide an excellent, unobtrusive background for furniture and accessories. Naturals which simulate the colors of the earth, wood, and stone can add a bold dimension to a room.

Mrs. Dana said brown is a real "natural." It was popular back in 1950-55, then it lost out to pastels and to beige. It began its return in the late '60s and has risen steadily ever since. Browns now cover a broad gamut of products: upholstery and drapery fabrics, carpets, housewares, and cookware. In house exteriors, dark brown is a top-selling color in paints and

for roofing. It has been successfully promoted in plumbing fixtures and bath accessories. And it is a brisk seller in towels.

Browns are likewise ideal for the floor. They are easy to live with, and as a background they seem to make bright colors look even brighter and better. Brown imparts a quality look and leaves the impression of more

value for the money. (Remember, though, that a brown floor may not go with certain dark wood furniture, as there is not enough of a contrast.)

Examples of browns to keep an eye on are Sweet Chocolate (a warm red-brown), Velvet Brown (a sophisticated bronzed brown), and Hot Fudge (which looks just like it sounds).

## "THE CROSS And the Switchblade"

Starring Pat Boone

7:30 p.m.  
Sunday  
Aug. 14

Calvary Assembly  
of God Church  
1030 Love Street  
(at Crawford)

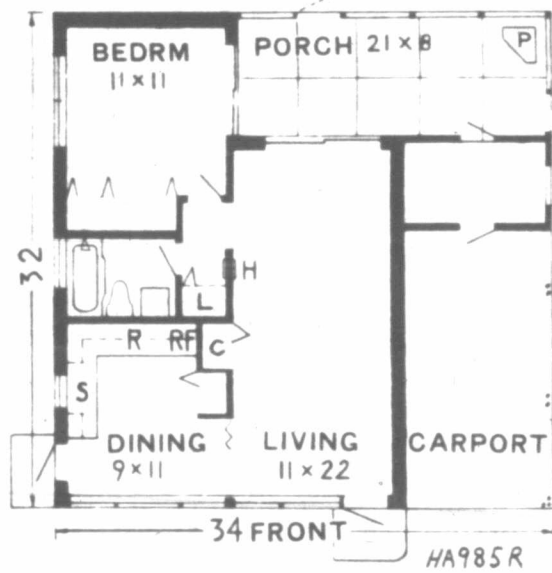
This is the true story of David Wilkerson's legendary ministry with gangs, addicts and hopeless youths on New York Streets, Recognized as the most outstanding film ever made.

Pastor David E. Brecheen invites everyone to attend.

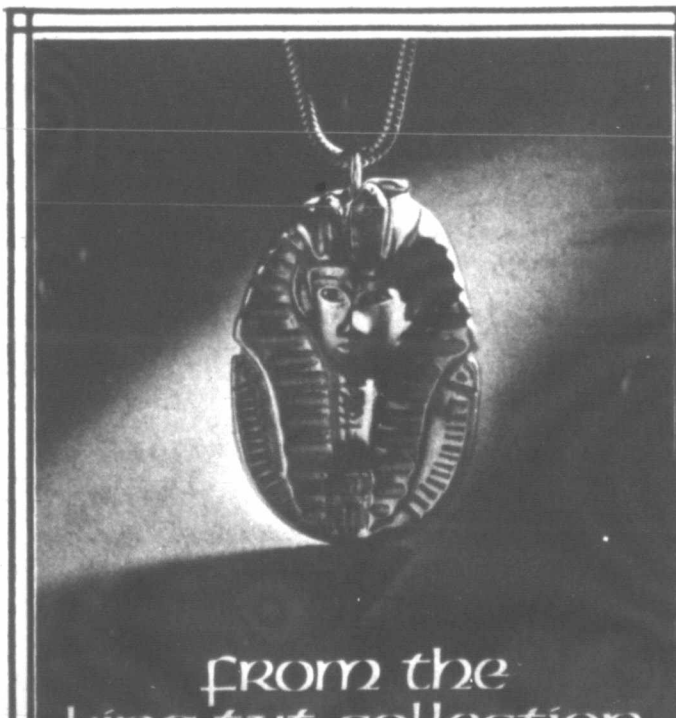


Colors add to new home concepts

The color spectrum for modular and mobile homes during 1977 is wider than ever with yellows leading the decorating field while a forest full of green shades rank second on the most-sold, most-sought-after charts. From the pastels to the navy shades, blue is continuing its popularity and Americans still like the reds. This room, designed by the Armstrong Cork Company's Bureau of Interior Design has room for all the 1977 color favorites including the natural shades.



THE COMPACT DESIGN of this home features a cross-ventilated, L-shaped living-dining area which faces both the street and the back garden. A sliding glass door gives handy access from the bedroom to a rear screened porch. Jan Reiner's Plan HA985R has a floor area of 672 square feet plus a screened porch and carport. More information may be obtained by writing to the architect—enclosing a stamped, self-addressed envelope—at 1000-52nd St. North, St. Petersburg, Fla. 33710.



from the king tut collection

### Treasures From King Tut

Reproductions of Master-Crafted Gold Jewelry for the Kings and Queens of Egypt  
Other styles available  
Found at

**Kennedy's Jewelry**

"Pampa's Complete Jewelry Store"

121 N. Cuyler

669-6971

free

See Our Brand new Selections

## OFFICIAL FLYING DISCS by ADIDAS

With Every Adida Shoe Purchased — While Supply Lasts



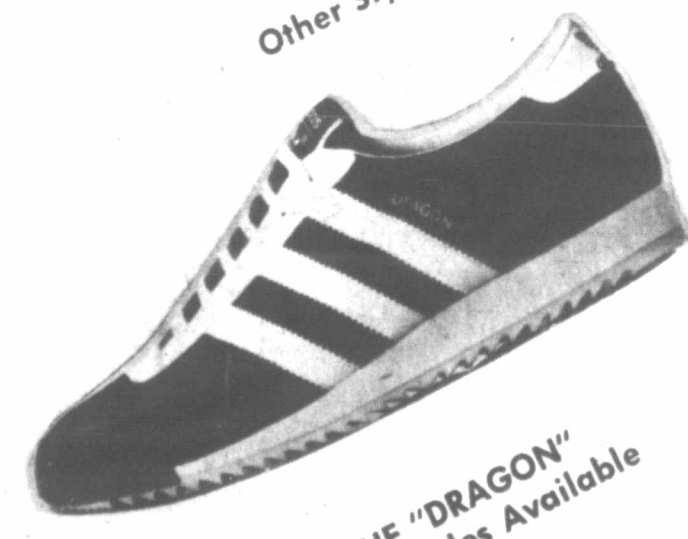
THE "ROM"  
Other Styles Available



THE "VIENNA"  
Other Styles Available



THE "MATCH"  
Other Styles Available



THE "DRAGON"  
Other Styles Available

We Give Fit and Care For Free to Every Person In Our Store!

**JOHN GATTIS Shoe Store**

Your Old Reliable Shoe Store  
207 N. Cuyler 665-5321

CARE QUALITY FIT—  
The Things To Depend On

AUGUST 12 77



**Group sets concerts**

The Christian Sons, a male gospel trio from Western Colorado, will present special music at the Christian Center Church, 801 E. Campbell, Sunday. The service begins at 11 a.m. and the public is invited according to the Rev. Bill Hobson, pastor. The Christian Sons are, from left, Van, 16; Dan, 20, and Wendel, 17. Their ministry has been shared from coast to coast in concerts, youth camps, conventions and on television, Rev. Hobson said. The trio will appear in an hour-long outdoor concert starting at 7:30 p.m. Saturday in Central Park and they will sing at the Pampa Chapel of the Apostolic Faith, 711 E. Harvester, at 6 p.m. Sunday.

**Oklahoma pastor will speak Sunday**

The Rev. Joseph Lee Turner, associate pastor of one of the Presbyterian Churches in Oklahoma City, Okla., will deliver the sermon at the First Presbyterian Church of Pampa Sunday. A reception is scheduled at 2 p.m. Sunday in the church parlor to provide an opportunity for church members to visit with Rev. and Mrs. Turner and their children, Martha and Matthew. The Prayer Group will meet in the West Room at 9:30 a.m. Wednesday.

Owen F. Gee, a ruling elder, will assist in the pulpit. Special music will be provided by the Chancel Choir, under the direction of Sally Green.

**Blind hymnist topic**

A district representative of the Christian Record Braille Foundation will be the main speaker at Sabbath services of the Pampa Seventh-day Adventist Church, 425 N. Ward, Saturday. Franklin E. Horne, pastor, said the speaker will be Carl Shaffler and his topic will be the life of blind hymn writer Fanny Crosby's love of Jesus. "Christian Record has offered free services to the blind and

handicapped persons since 1889," their pastor said. "Some of the services include books, magazines and Bibles in braille, national camps for blind children, home visitation programs and a lending library of books and magazines in braille, tapes, records, and cassettes." Pastor Horne said Bible school will start at 9:30 a.m. Saturday and the worship services will be 11 a.m.

**Church will show film**

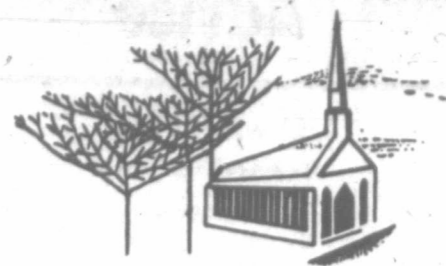
The Calvary Assembly of God Church, 1030 Love St., will screen "The Cross and the Switchblade" at 7:30 p.m. Sunday. The Rev. David Brecheen, pastor, said the film is based on David Wilderson's "now legendary ministry with gangs, addicts and hopeless youth in the streets of New York." The movie, seen by millions around the world, was actually filmed in the streets of New York and Rev. Brecheen said it is "widely recognized as the most outstanding evangelical film ever made." The showing is open to the public at no charge.

**Unique musical sounds to brighten services**

"The Musical Taylors," billed as America's most unique musical team, will perform at a special service at the First Pentecostal Holiness Church, according to the Rev. Albert Maggard, pastor. The service will start at 7:30 p.m. Monday at the church, 1700 Alcock. "Fred and Nova Taylor have one of the largest collections of musical novelties and instruments in the evangelistic field today," Rev. Maggard said. "They produce music on tin cans, inner tube, hand saw, washtub, glasses, cowbells, steel guitar, vibraharp and the theremin which is played without being touched." "The Musical Taylors have a unique program which interests youth as well as adults." Rev. Maggard said the special service is open to the public.

An investment in Your Future

**...ATTEND CHURCH**



"For where your treasure is, there will your heart be also"

**PARENTS' RESPONSIBILITY**

"Train up a child in the way he should go: and when he is old, he will not depart from it." Proverbs 22:6

Ask anyone what his most precious possession is, and he will almost invariably say, "My children." The desire for the welfare of our children enables us to "move mountains". We will do anything, give them anything, if we think it will help them.

The one most important thing we can do for them, however, is to instill in them a love of God, and a desire to obey him. The church can help you in this endeavor, inspire and strengthen you. We invite you to take your family to church this week. It may make a great difference in the life direction taken by your children.



**EVERYONE IN THE CHURCH**  
**THE CHURCH IN EVERYONE**

The Church is God's appointed agency in this world for spreading the knowledge of His love for man and of His demand for man to respond to that love by loving his neighbor. Without this grounding in the love of God, no government or society or way of life will long persevere and the freedoms which we hold so dear will inevitably perish. Therefore, even from a selfish point of view, one should support the Church for the sake of the welfare of himself and his family. Beyond that, however, every person should uphold and participate in the Church because it tells the truth about man's life, death and destiny; the truth which alone will set him free to live as a child of God.

Coleman Adv. Ser.

These Business Firms and Professional People Are Making This Weekly Message possible. Joining with the ministers of Pampa in hoping that each message will be an inspiration to Everyone.

- GIBSON'S DISCOUNT CENTER**  
"Where You Buy The Best For Less"  
2210 Perryton Pkwy. 669-6874
- WRIGHT FASHIONS**  
222 N. Cuyler 665-1633
- PAMPA OFFICE SUPPLY CO.**  
211 N. Cuyler 669-3353
- SHOOK TIRE CO.**  
1800 N. Hobart 665-5302
- LEWIS SUPPLY CO.**  
Tools and Industrial Supplies  
317 S. Cuyler 669-2558
- DIXIE PARTS & SUPPLY**  
417 S. Cuyler 665-5771
- CLAYTON FLORAL CO.**  
410 E. Foster 669-3334
- SOUTHWESTERN PUBLIC SERVICE**  
315 N. Ballard 669-7432
- FURR'S CAFETERIA**  
Coronado Center 665-3321
- COSTON'S HOME OWNED BAKERY**  
Coronado Center 669-7361
- H.R. THOMPSON PARTS & SUPPLY**  
312 W. Kingsmill 665-1643
- ADDINGTON'S WESTERN STORE**  
Western Wear For All The FAMILY  
119 S. Cuyler 669-3161
- TEXAS FURNITURE CO.**  
"Quality Home Furnishings - Use Your Credit"  
210 N. Cuyler 665-1623
- FORD'S BODY SHOP**  
111 N. Frost 665-1619
- MONTGOMERY WARD & CO.**  
Coronado Center 669-7401
- MARGO'S LAMODE**  
formerly Bentley's  
113 N. Cuyler 665-5715
- PAMPA PARTS & SUPPLIES INC.**  
"Automotive Parts & Supplies"  
525 W. Brown 669-6877
- FURR'S FAMILY CENTER**  
1420 N. Hobart 669-7441
- PANHANDLE SAVINGS & LOAN ASSOCIATION**  
520 Cook 669-6868

**Church Directory**

- Adventist**  
Seventh Day Adventist  
Franklin E. Horne, Minister ..... 425 N. Ward
- Apostolic**  
Pampa Chapel  
Rev. Keith Barker, Pastor ..... 711 E. Harvester
- Assembly of God**  
Assembly of God Church ..... Skellytown  
Rev. Rick Jones  
Bethel Assembly of God Church ..... 1541 Hamilton  
Rev. Paul DeWolfe  
Calvary Assembly of God ..... 1030 Love  
Rev. David Brecheen  
First Assembly of God ..... 500 S. Cuyler  
Rev. R.L. Courtney  
Lefors Assembly of God Church ..... Lefors  
Rev. John Galloway
- Baptist**  
Barrett Baptist Church ..... 903 Beryl  
Rev. Jack M. Greenwood  
Calvary Baptist Church ..... 824 S. Barnes  
Rev. Ronald A. Harpster  
Central Baptist Church ..... Starkweather & Browning  
Rev. Ted Savage  
Fellowship Baptist Church ..... 217 N. Warren  
Rev. Earl Maddux  
First Baptist Church ..... 203 N. West  
Rev. Claude Cone  
First Baptist Church (Lefors) ..... 315 E. 4th  
Rev. Rick Wadley  
First Baptist Church (Skellytown) ..... Skellytown  
Rev. Milton Thompson  
First Freewill Baptist ..... 326 N. Rider  
L.C. Lynch, Pastor  
Highland Baptist Church ..... 1301 N. Banks  
M.B. Smith, Pastor  
Hobart Baptist Church ..... 1100 W. Crawford  
Rev. John Mansard  
Pampa Baptist Temple ..... Starkweather & Kingsmill  
Rev. John Hulse, Jr.  
Bethel Missionary Baptist ..... 326 Noida  
Rev. Danny Courtney  
Primera Iglesia Bautista Mexicana ..... 1113 Huff Rd.  
Rev. Heliadora Silva  
Progressive Baptist Church ..... 836 S. Gray  
Rev. L.B. Davis  
New Hope Baptist Church ..... 321 Albert St.  
Rev. J.T. Wilson  
Grace Baptist Church ..... 1425 Alcock  
Pastor Maurice Koromo
- Bible Church of Pampa**  
Mike Harris, Interim ..... 2401 Alcock

- Catholic**  
St. Vincent de Paul Catholic Church  
Father Frederick Marsch ..... 2300 N. Hobart
- Christian**  
Hi-Land Christian Church  
Harold Starbuck, Minister ..... 1615 N. Banks
- Christian**  
First Christian Church (Disciples of Christ)  
Dr. Ralph T. Palmer ..... 1633 N. Nelson
- Christian Science**  
A.R. Rober, Reader ..... 901 N. Frost
- Church of the Brethren**  
Rev. Bryce Hubbard ..... 600 N. Frost
- Church of Christ**  
Central Church of Christ ..... 500 N. Somerville  
R.L. Morrison, Minister  
Church of Christ ..... Oklahoma Street  
Wayne Lamons, Minister  
Church of Christ (Lefors) ..... Lefors  
Denny Sneed, Minister  
Church of Christ ..... Mary Ellen & Harvester  
Glen Walton, Minister  
Pampa Church of Christ ..... 738 McCullough  
J.D. Barnard, Minister  
Skellytown Church of Christ ..... Skellytown  
Peter M. Cousins, Minister  
Westside Church of Christ ..... 1612 W. Kentucky  
Billy T. Jones, Minister  
Wells Street Church of Christ ..... 400 N. Wells
- Church of God**  
Rev. Joe Bertinetti ..... 1123 Gwendolen
- Church of God of Prophecy**  
Rev. Dan W. Chatham ..... Corner of West & Buckler
- Church of Jesus Christ of Latter Day Saints**  
Bishop Lavon B. Voyles ..... 731 Sloan
- Church of the Nazarene**  
Rev. Robert L. Williams ..... 510 N. West

- Episcopal**  
St. Matthew's Episcopal Church ..... 721 W. Browning
- First Christian Church**  
(DISCIPLES OF CHRIST)  
Dr. Ralph T. Palmer ..... 1633 N. Nelson
- Foursquare Gospel**  
Rev. Charles Moran ..... 712 Lefors
- Full Gospel Assembly**  
Lamar Full Gospel Assembly  
Rev. Gene Allen ..... 1200 S. Sumner
- Non-Denomination**  
Christian Center ..... 801 E. Campbell  
Rev. Bill W. Hobson  
The Community Church  
Rev. Don Michael ..... Skellytown  
Life Temple  
Geraldine Broadbent, Pastor ..... 944 S. Dwight  
Cosmic Training Center  
Rev. Earl N. Madler ..... 941 S. Farley
- Lutheran**  
Zion Lutheran Church  
Rev. Timothy Koenig ..... 1200 Duncan
- Methodist**  
Harrah Methodist Church  
Rev. J.W. Rosenburg ..... 639 S. Barnes  
First Methodist Church  
Dr. Lloyd V. Hamilton ..... 201 E. Foster  
St. Marks Christian Methodist Episcopal Church  
V.L. Brown, Jr., Minister ..... 406 Elm  
St. Paul Methodist Church  
Rev. Oland Butler ..... 511 N. Hgbart
- Pentecostal Holiness**  
First Pentecostal Holiness Church ..... 1700 Alcock  
Rev. Albert Maggard  
Hi-Land Pentecostal Holiness Church  
Rev. Cecil Ferguson ..... 1733 N. Banks
- Pentecostal United**  
United Pentecostal Church  
Rev. H.M. Veach ..... 608 Noida
- Presbyterian**  
First Presbyterian Church ..... 525 N. Gray
- Salvation Army**  
Bodell Heath ..... S. Cuyler at Thut

**PHILLIPS 66 CUSTOM P/C**



**78 SERIES**

**Four Full Plies of Polyester Cord**

PROVIDES:

- Strength to reduce bruises
- Smooth soft no-thump ride
- Wide footprint for good traction
- Tread that absorbs normal impacts
- Economical mileage

SEE THEM TODAY AT —

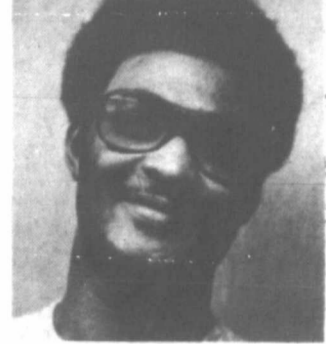
**MOJAVE PETROLEUM CO., INC.**  
821 W. Brown

**DAN CARTER 66**  
1405 N. Hobart

**HARDIN & ROTH TRUCK STOP**  
805 W. Brown

# Guillory named PJHS coach

By TOM KENNER  
Pampa News Sports Editor  
Former Tarleton State basketball standout Lawrence Guillory was named junior high assistant basketball and football coach at the school board meeting Thursday. Guillory, 22, will assume coaching duties immediately, and will teach social studies at the Junior High.



Guillory

## Pistol Pete signs \$3 million pact

NEW ORLEANS (AP) — All-star guard Pete Maravich has signed a five-year, \$3-million contract with the New Orleans Jazz, but said the money that big a factor in his deciding to sign.

A source close to the negotiations confirmed that Maravich's annual salary is to be \$600,000-plus, which would probably make him the second-highest paid player in the National Basketball Association. Kareem Abdul-Jabbar reportedly makes about \$650,000 a year, and the source said Maravich will not make quite that much.

Although Maravich still had a year to go on his \$370,000 con-

tract with the Jazz, he said he would retire if his contract were not renegotiated.

"It wasn't all monetary," he said after huddling with team management to sign the contract at one end of a riverfront restaurant. "I spent a great part of my life in Louisiana. It's only natural for me to want to live in this town. I cannot see any other place that compares with New Orleans. It's one heck of a town. That was the main part of it."

Another thing stressed by Maravich during last season was his desire to see the team trade for some front-line help

required to be dressed for a team meeting at 8:30 a.m. and workouts scheduled for 9 a.m. The afternoon meeting is scheduled for 2:30 and practice at 3.

## Football shoe checkout ends tonight 7-8

Head Coach John Welborn would like all candidates for Harvester football to check out at the athletic building tonight between 7-8 p.m. Two -a- day practices will begin Monday with players

required to be dressed for a team meeting at 8:30 a.m. and workouts scheduled for 9 a.m. The afternoon meeting is scheduled for 2:30 and practice at 3.

# Sports

PAMPA NEWS Friday, August 12, 1977 7

## Littler leads PGA; Watson one back

PEBBLE BEACH, Calif. (AP) — Tom Watson, caught in the middle of the Great Golf Club Controversy, literally has a mixed bag in the 59th PGA Championship.

The 27-year-old Watson could have been excused if the events of this week had boggled his mind and caused him to lose confidence. But he has no fear.

Watson, winner of five tournaments this year including the Masters and British Open, lost his clubs en route to Pebble Beach when he flew one way and his bag went another. When the clubs arrived, they were declared illegal because the grooves on the face of the irons did not meet U.S. Golf Association specifications.

He messaged home to Kansas City for an older set, one with which he won the 1975 British Open. He looked at them and figured he had better find a backup set in case they also were ruled illegal.

Watson sent an SOS to fellow pros for another set of irons. Roger Maltbie responded with an extra set he carried in the back of his car—a Silver Scot model that were at least 25 years old.

Fortunately, for him, the set was available; Watson's own

second set was disqualified. So, using Maltbie's irons, fellow pro Leonard Thompson's sand wedge and his own driver, No. 2 and No. 3 woods and putter—and with only eight practice swings, Watson fired a 68 Thursday over the famed Pebble Beach Golf Links. And he was, only one stroke off the lead held by veteran Gene Littler, at 67.

At least eight other players had clubs disqualified. Jerry McGee, winner in Philadelphia two weeks ago, played with Watson and also fired a 68, as did Mark Hayes, winner of the Tournament Players Championship at Jacksonville, Fla. in March.

## Clown Prince returns Sat.

Due to the rain-out of last night's game, Max Patkin, The Clown Prince of Baseball, will perform at Saturday's Gold Sox - Midland game at Memorial Stadium, beginning at 7:30 p.m. The two clubs will play a doubleheader tonight starting at 6:30. The first 500 kids through the gate will receive a free mini-bat at tonight's doubleheader.

## Rangers blast Royals

ARLINGTON, Tex. (AP) — The Texas Rangers snapped their long standing Jim Colborn jinx Thursday night with tape-measure home runs and a little suicide squeeze bunt that traveled 15 feet.

Texas whipped the Royals 8-3 to move within two games of first place Chicago and jumped a half-game ahead of Kansas City into third place.

"Just call this our mini stretch run," said Ranger Manager Billy Hunter, who has

guided his team to 26 victories in their last 33 games and 11 out of the last 14.

"This is just a rehearsal for the real thing in a couple of weeks," he said. "We are just jockeying for position. We just want to lay back and ambush."

Chicago comes into town tonight for the start of an important three-game series. "We would just be happy to take two out of three and pick up one more game on them. There's still a long way to go," Hunter said.

## Malcolm Hinkle, Inc.

1925 N. Hobart 669-7421  
Serving the Top of Texas More Than 25 Years

- Plumbing ● Heating
- Air Conditioning
- Service Available 24 Hours A Day, 7 Days A Week
- All Work Guaranteed



MECHANICAL CONTRACTORS  
We Appreciate Your Business

Saturday Hours: 10 am - 6 pm

# saturday at DUNLAPS



MEN'S KNIT SHIRTS  
Short Sleeve — Broken Sizes  
**6<sup>99</sup> To 18<sup>00</sup>**

Tall Man Sizes Too!



One Table  
MEN'S DRESS SHIRTS  
Only Sizes 14 1/2 - 15,  
**5<sup>99</sup>**

**30% off**

Clean Sweep On Entire Stock Broken Sizes and Patterns

Walk Shorts

Polyester Poly-cotton



ONE RACK  
Boys Short Sleeve  
KNIT SHIRTS  
**3<sup>99</sup>**

Reg. To 7.50

Broken Sizes

10 ONLY  
BOYS SWEATERS  
Only **4<sup>22</sup>**

28 Count  
BOYS SPORT SHIRTS  
**1/2 Price**

ONE GROUP  
Boys Short Sleeve Sport Shirts  
**3<sup>99</sup>**

ENTIRE STOCK  
BOYS SWIM WEAR  
**30% OFF**

ONE RACK  
BOYS WINTER JACKETS  
**30% To 50% OFF**



Martex "Signature" Velour Towels  
Slight Irregulars In Assorted Colors

If perfect	SALE
4.50 Bath	2 for 4.99
3.00 Hand	2 for 4.99
1.50 Wash	2 for 1.89



**acme**  
MEN'S DINGO BOOTS  
**22.90**

A fantastic Special Purchase group means extra savings for you because of slight surface blemish defects, mostly D widths.

ONE RACK  
Sportswear Separates  
**50% OFF**

ONE GROUP  
LADIES DRESSES  
**30% To 50% OFF**  
Broken Sizes

ONE RACK  
SHELLS & BLOUSES  
famous label—  
Broken Sizes

**30% to 50% OFF**

SAVE Up To 50%

During our Ladies and Junior  
**FINAL CLEARANCE**



## Baseball standings

By The Associated Press  
AMERICAN LEAGUE

Team	W	L	Pct.	GB
Boston	65	44	.596	—
Balt	64	47	.580	1 1/2
N York	62	49	.559	4
Detroit	51	60	.459	15
Milwaukee	50	65	.435	18
Clevo	49	62	.436	17 1/2
Toronto	39	71	.350	29 1/2

Chicago 65 46 .586  
Min 62 52 .545  
Texas 63 48 .568 3  
S.C. 62 48 .564 3 1/2  
Calif 55 55 .500 12  
Seattle 48 68 .414 19 1/2  
Oakland 42 76 .352 23 1/2

Thursday's Games  
California 7, Boston 3  
Minnesota 7, Toronto 3  
Baltimore 4, Seattle 3  
New York 2, Oakland 0  
Texas 8, Kansas City 2  
Cleveland 3, Chicago 1  
Only games scheduled

Friday's Games  
California (Brett 10-2 and Kabanis 5-0) at New York (Figliore 10-0 and Hunter 5-1), (1-1)  
Milwaukee (Sorensen 5-0 and Haas 0-7) at Cleveland (Eckersley 10-0 and Wood 1-0), (1-0)  
Kansas City (Pettit 4-2) at Toronto (Lamanczyk 5-0), (0)  
Oakland (Blum 15-0) at Baltimore (Palmer 12-0), (0)  
Seattle (Mitchell 6-2) at Boston (Wise 5-4), (0)  
Minnesota (Reifers 5-7) at Detroit (Arroyo 6-11), (0-1)  
Chicago (Barry 11-4) at Texas (Ellis 6-0), (0)  
Saturday's Games  
Milwaukee at Cleveland  
California at New York  
Seattle at Boston  
Kansas City at Toronto, (0)  
Oakland at Baltimore, (0)  
Minnesota at Detroit, (0)  
Chicago at Texas, (0)  
Sunday's Games  
Milwaukee at Cleveland, 2  
Kansas City at Toronto  
Minnesota at Detroit  
Oakland at Baltimore  
California at New York  
Seattle at Boston  
Chicago at Texas, (0)

NATIONAL LEAGUE

Team	W	L	Pct.	GB
Phila	67	44	.604	—
Chicago	64	47	.577	3
Pitts	65	49	.570	3 1/2
S. Louis	62	52	.543	5 1/2
Montreal	52	62	.456	16 1/2
N York	47	64	.423	20
Los Ang	49	45	.522	—

**NOW IS THE TIME—**  
Layaway Your  
**DOWN FILLED WINTER COAT or VEST!**

And We Will Give You An Additional **10% Discount**

**\$5<sup>00</sup>** Holds your Selection Till Oct. 15

**FIELDS MEN'S WEAR**  
111 W. Kingsmill 665-4231

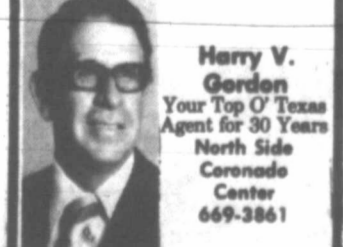
## STATE YOUR CHOICE!—

- City Taxes Increased— YOU HAD NO CHOICE
- School Tax Ratio of Assessment Increased 50% Last Year— YOU HAD NO CHOICE
- Utility Rates Increased— YOU HAD NO CHOICE

Pampa School Bond Issue of \$2.2 million for Maintenance and Classroom Construction  
**YOU HAVE A CHOICE**

**VOTE 'NO'**  
ON THE SCHOOL BOND ISSUE  
August 18, 1977, in Pampa High School Music Building  
Pol. Ad Paid For By Committee - Against Waste and Extravagance  
John Gilkes, chairman

"Operations and hospital rooms cost a lot more than you think"



Harry V. Gordon  
Your Top of Texas Agent for 30 Years  
North Side Commerce Center  
649-2861

See me for State Farm hospital/surgical insurance.

Like a good neighbor, State Farm is there.

STATE FARM INSURANCE  
P 7594  
State Farm Mutual Automobile Insurance Company  
Home Office: Bloomington, Illinois

AUG 12 77

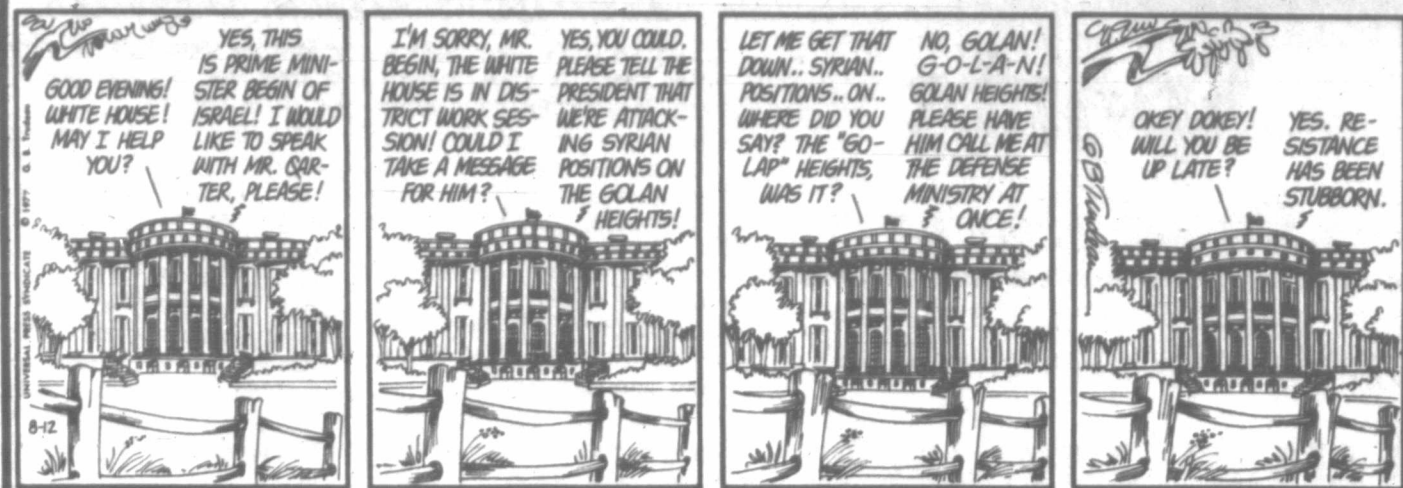
FUNNY BUSINESS

By Roger Bollen



DOONESBURY

by Garry Trudeau



STEVE CANYON

by Milton Caniff



SIDE GLANCES

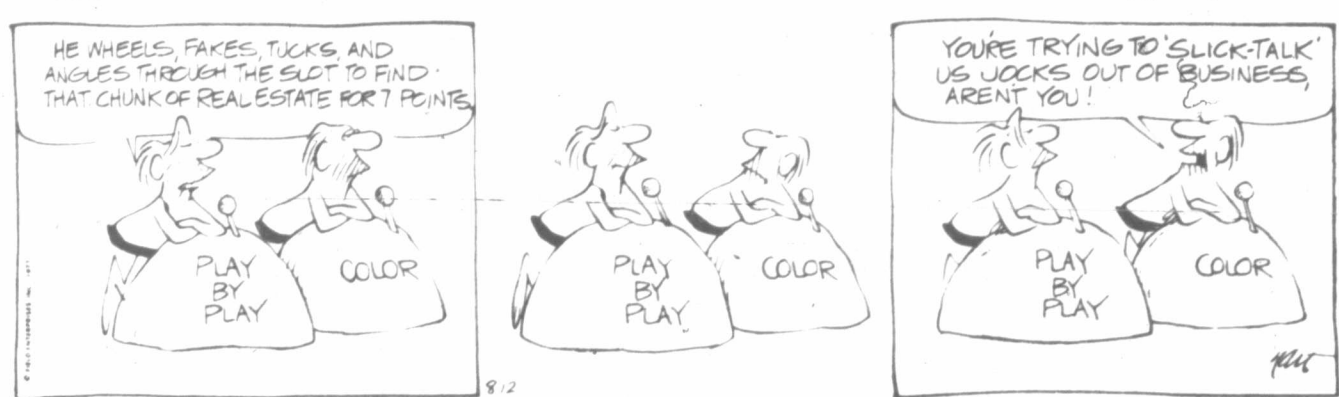
by Gill Fox



"Where are your Fonzie and Farrah Fawcett-Majors departments?"

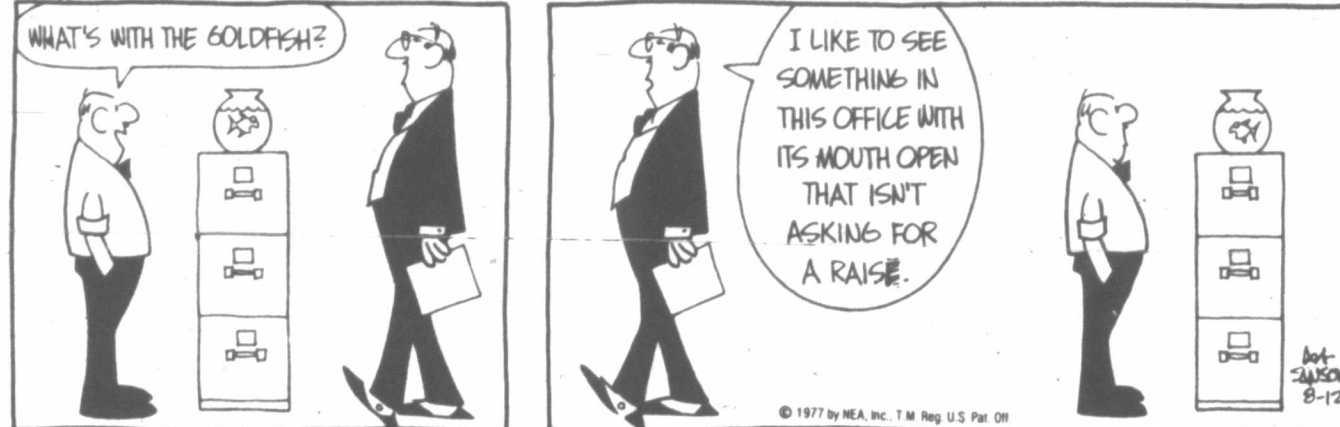
B.C.

by Johnny Hart



THE BORN LOSER

by Art Sansom



FRANK AND ERNEST

by Bob Thaves



PRISCILLA'S POP

by Al Vermeer



CAPTAIN EASY

by Crooks & Lawrence



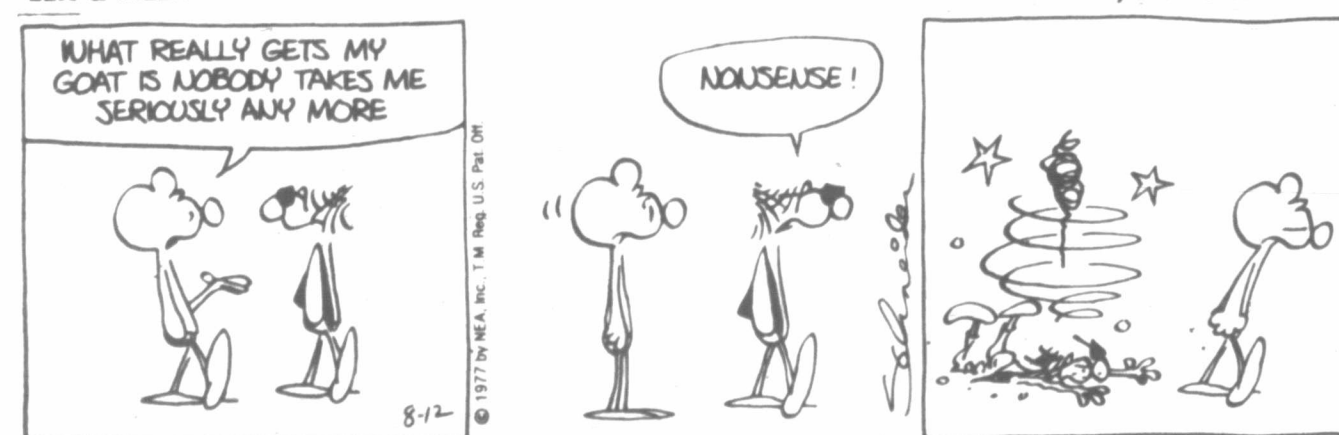
ALLEY OOP

by Dave Graue



EEK & MEEK

by Howie Schneider



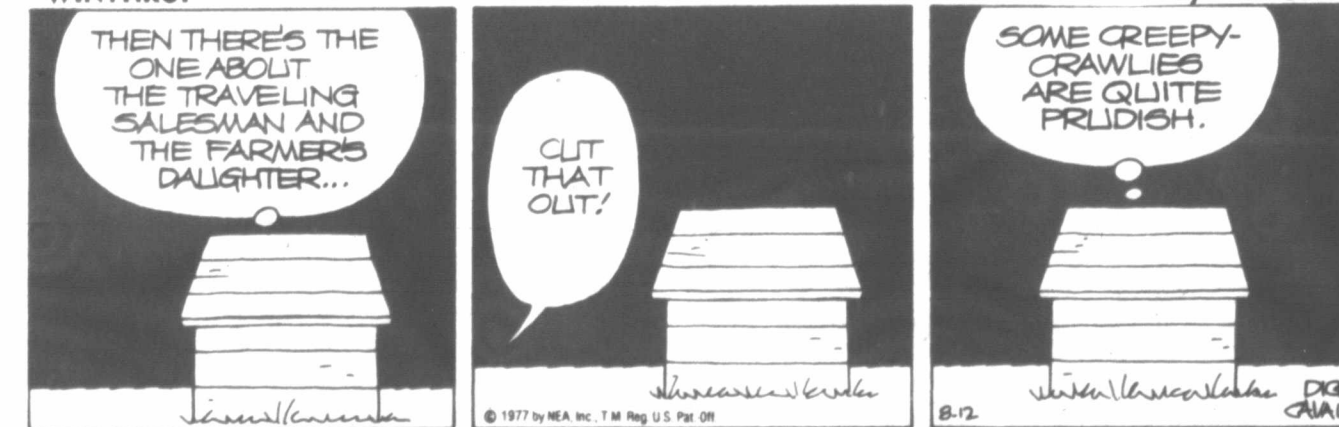
BUGS BUNNY

by Stoffel & Heimdahl



WINTHROP

by Dick Cavalli



THE WIZARD OF ID

by Brant Parker and Johnny Hart



OUR BOARDING HOUSE

with Major Hoople



MARMADUKE

by Brad Anderson





## Soviet costumes draw fire from Russian publications

FT. HOOD, Tex. (AP) — U.S. soldiers bearing Soviet weapons and wearing Soviet-style uniforms are playing war games around this huge Central Texas Army post, the Dallas Morning News reported in a copyright story Thursday.

The paper quoted the Army's Senate liaison as confirming that the training program has come under fire from Russian publications.

Known as OPFOR (Opposing Forces), the training program uses Soviet military tactics and weaponry supplied by Israel from booty taken in the 1973 Israeli-Arab war, the newspaper said.

Specific references to the OPFOR units as Russian have been modified recently to "Eastern Bloc" when describing tactics.

"There's no question about what we're doing," one officer was quoted as saying. "But

we'd rather leave it unsaid and let your readers put one and one together."

Tactics have been referred to recently as those of "foreign threat people" or "the people we are portraying."

But the 95 words used in the training are referred to as "Russian," or "Tex-Russian."

"It used to be you had the good guys and the bad guys and the only thing separating the good guys from the bad guys was a patch on their jacket and a wooden ridge running down the helmet," said Sgt. Mike Atkinson. "Both used American tactics and every move was predictable."

The OPFOR units numbers 118 officers and men, trained to act as Eastern-bloc troops. They utilize flag signals, which are frequently used during battle by Soviet troops. Their uniforms are patterned after those worn by Soviets.

"We're trying to look like enemy forces," said Sgt. Roger Griffith. "That way the training is more realistic." The company-sized OPFOR generally is pitted against a platoon of 40 men.

"We operate under the very real assumption that any attacking force will outnumber our men three to one," said Lt. Henry Hughes.

Several members of the OPFOR units discussed a project called "Red Thrust," aimed at setting up similar training projects at other posts.

An officer reprimanded the men for mentioning "Red Thrust," saying it is a classified project whose name could be "inflammatory."

The most widely spoken language is Chinese, with an estimated 750 million speakers. English is second, with 300 million and Russian and Spanish are tied at 200 million each.

PLAINS, Ga. (AP) — They all wonder, some out loud: Has he gotten a swelled head? Apart from his hat size, has he changed? How?

After all, he's the President now.

Jimmy Carter's home folks ask each other about these things. And they compare notes.

His hair is getting grayer. He looks a little older. He awes people. He has a lot less time to do personal things for his friends. He doesn't come around much anymore. And he looks very serious these days.

But a swelled head? "His head don't swell," muttered Rachel Clark the other day, during the President's third visit home. She gave the suggestion a disdainful shrug.

Her 87 years go back to Jimmy Carter's childhood, when he was 7 or 8 years old and she went to work for his daddy and

Miss Lillian. Rachel Clark was Jimmy Carter's black mammy. "He never had to be whipped," she remembered. "I

never had to get mad with Jimmy Carter. And I was one to get mad if need be. Jimmy's always been a good boy. Still is. He don't get no swelled

head."

But one thing about Jimmy Carter has changed. He can't go see her anymore without bringing a gang of Secret Service agents and reporters and other hangers-on and creating a general ruckus.

"He told me, 'I can't get around much,'" she said. "And then he told me, 'But I want to see you. So you come out here and see me.'"

She pointed to Main Street in front of the Plains pharmacy. There, in the street, is where he sees her now, every time he comes back to town. There, in the street, in front of the reporters and the Secret Service agents and the tourists, is where he always gives her a big hug.

Down near the other end of the block, Ida English, who runs the Back Porch Gift Shop, laughed and said: "My husband, Bill, saw Jimmy the other

day, and Bill said to me later on, 'If someone had ever told me I couldn't talk directly to Jimmy Carter I wouldn't have believed him.'

"But I found myself just awed. I was just like a tourist. Of all the things I wanted to ask him, I just couldn't say anything to him.' Now, can you beat that?"

Neighbor Jimmy Carter had helped her handicapped son — even given him a lot to park his house trailer on. Would President Jimmy Carter do the same?

"I think he would, but he don't have that much time anymore," said Ida English. And she'd be more reluctant to ask him now.

Frank Williams is Jimmy Carter's competitor. He, too, has a peanut warehouse in Plains. Naturally, he said, "We just don't see Jimmy as much any more."

# Home folks examine Carter

## 'Big Foot' hunters invade OK

STILWELL, Okla. (AP) — Members of a group searching for the legendary creature "Big Foot" will come here Saturday.

The Oklahoma State Bureau of Investigation has joined the group in investigating a reported creature described by a youth as being 8-feet tall, hairy, and having glowing red eyes.

The 15-year-old youth, Brian Jones, told authorities that the creature grabbed him and ripped off his shirt outside a friend's rural home near here Friday night.

The State Bureau of Investigation is studying the boy's shirt, which authorities said had long coarse brown hair attached to it.

Bob Stamps of Oklahoma City, director of a group calling itself Sasquatch Investigation of Mid-America, said he has talked with authorities in the eastern Oklahoma town and is convinced "that there is something there — just what, I don't know."

Stamps and other members of his group will search the area Saturday night, after interviewing persons in the area during the day.

"We believe these people (who have reported a strange creature) are telling the truth and we just want to find out what this thing is," said Adair County Civil Defense Director Tobe O'Neal.

# DOWNTOWN PAMPA SATURDAY SPECIALS

● 600 FREE STORE FRONT PARKING PLACES

● WIDE SELECTIONS IN ALL STORES

● 6 FREE PARKING LOTS

**FANFARES**

could you? should you? No question about it. A girl like you can see the woods for the trees. Stand on our timber. That's why Fanfares proposes this slinky, heel-insole carving, so you'll proudly promise "I wood" camel uppers with multi-colored cord insets.

**23<sup>99</sup>**

Phetteplace's  
**KYLE'S SHOES**  
109 N. Cuyler Downtown

**Anthony's**  
C. R. ANTHONY CO.

"Make new friends  
But keep the old..."

Your Old Friend  
**Anthony's**  
Downtown

is still open with the same friendly service and value-wise selection that has kept Anthony's growing with Pampa

Exciting New Styles  
In Genuine Sapphires and Brilliant Diamonds

Perfectly Matched! Perfectly Beautiful!

20 Diamonds  
14 Kt. White Gold \$550

4 Sapphires  
9 Diamonds  
14 Kt. White Gold \$425

**RHEAMS DIAMOND SHOP**  
Your Personal Jewelers  
112 W. Foster 665-2831

**Gar's Give-A-Wax**  
"THE ENTIRE STOCK"

**Jumping Jack Shoes**  
For children  
Up to Size 3, B-C-D-E  
All Styles ..... **\$3 Pr.**

<b>Women's Dress &amp; Casual Shoes</b> Selby, Red Cross, Cobbie, Poco, Florsheim ..... <b>\$6 Pr.</b>	<b>Men's Dress &amp; Casual Shoes</b> Freeman, Dexter, Rand, His, Dexter, Wm. Joyce ..... <b>\$9 Pr.</b>
---	---

**KEDS**  
For Men & Women  
Children  
Complete Stock of Tennis Shoes ..... **\$3 Pr.**

**GARY'S FACTORY OUTLET SHOES**  
Located Behind J.C. Penney's on Kingsmill  
First Quality — Name Brands — Unbelievable Prices

**GILBERT'S CONSOLIDATION SALE IS NOW**

A Big Selection of Summer Fashions

from  
The Dixie Shop of Plainview Behrman's of Pampa

Gilbert's of Pampa

**1/2 Price or Less GILBERT'S**

209 N. Cuyler 665-5745  
Please, all sales final. No refunds. No exchanges. No Lay-A-Ways.

**M.E. MOSES**  
Serves You Better 5¢-10¢-25¢ & \$1.00 STORES "Saves You More"  
105 N. Cuyler 665-5621

Assorted PLANTS

3" ..... 2 For \$1.00  
4" ..... 1 For 1.44  
6" ..... 1 For 3.66

Wood Cedar Planters  
10" Tall by 8 1/2" wide  
or 24" tall by 12" wide  
**ALL 20% OFF**

**POTTING SOIL**  
Reg. 1.39 ..... **99¢**

Specials good Saturday

**Which portable for back-to-school? 96%\* said Smith-Corona.**

\*Smith-Corona owners who responded to a consumer survey.

That's quite an endorsement. Find out why. Ask a friend who owns a Smith-Corona portable. Check these important features:

- Cartridge Ribbon • Dependability • Repeating Keys
- Typing looks good • Stylish looking • Good dollar value

Smith-Corona Cartridge Portable Typewriters from \$257.50

**Pampa Office Supply**  
215 N. Cuyler 669-3353

**JC Penney**  
CATALOG 665-3751

201 N. Cuyler  
**BACK-TO-SCHOOL 20% OFF SUPER DENIM\* JEANS**

BOYS 8 to 16 Reg. 8.00 SALE <b>640</b>	GIRLS 7 to 14 Reg. 9.00 SALE <b>720</b>
BOYS 8 to 16 Reg. 7.00 SALE <b>560</b>	BOYS 3 to 7 Reg. 6.00 SALE <b>480</b>
BOYS 4 to 7 Reg. 6.50 SALE <b>520</b>	GIRLS 4 to 6x Reg. 7.00 SALE <b>560</b>

\*J.C. PENNEYS Trademark for its heavyweight polyester cotton denim.

**One Rack Men's and One Rack Children's TENNIS SHOES**

at reduced prices for  
**Back-To-School**

**Brown's SHOE FIT COMPANY**

Open 8:30-6:00  
Monday thru Saturday  
216 N. Cuyler 665-5691  
Downtown Pampa

**CLOSE-OUT SPECIALS ALL BARBECUE GRILLS**

**25% OFF** And More!

**ICE CHESTS & COOLERS 25% OFF**

**LAWN FURNITURE & REDWOOD TABLES 25% OFF**

**All Ice Cream Freezers 25% OFF**

**WESTERN AUTO STORE**  
217 N. Cuyler 669-7488

**Heard-Jones DRUG**

114 N. Cuyler 669-7478  
**SATURDAY SPECIALS**

Kleenex Hi-Dri Towels  
2 Rolls **69¢**  
Limit 2, Please

**FOUNTAIN SPECIAL**  
Hamburger Potato Chips and Coke **89¢**

**Final Markdowns Have Been Made!**

All your favorite brands are included. Prices are now at their **LOWEST.**

Lots of Summer Odds 'n Ends  
Just **\$3 to \$5**

Hurry! Styles, Sizes, and colors are going fast.

**CAROUSEL Shoe Salon**  
"The Latest in Ladies High Fashion Shoes"  
101 S. Cuyler 669-3511  
Please, All Sales Final, No Refunds, No Exchanges





# USDA changes school meal program

WASHINGTON (AP) — The fare of school lunches and breakfasts subsidized by the federal government will be different by the time the new school year begins, but the changes may not be that dramatic, Agriculture Department officials say.

Almost 26 million children eat the lunches nationwide. About 2.6 million eat the breakfasts, mostly in urban areas.

Altogether, more than \$2.2 billion worth of food is consumed through the programs.

Or, at least that much is bought and served.

About 5 per cent is wasted, according to years of government surveys and a new one last month by the General Accounting Office.

Another school-lunch report by the congressional watchdog agency, however, figures more closely in the plans for changing the program's requirements on what will and won't be served.

But a top official said that the report still offers more opinion than solid guidance on solutions.

It said that the USDA required "Type A Lunch" at the 92,585 participating schools may be too much for the youngsters, perhaps leading to obesity and more certainly discouraging them from eating all they're served.

Five items are mandatory: milk, meat or a substitute with an equal amount of protein, two vegetables and bread.

Last year, USDA allowed high schools to permit students to choose three of the five and this coming year elementary schools may be allowed to serve smaller portions.

In about two weeks, major changes will be announced.

said Assistant Secretary Carol Tucker Foreman, who is in charge of food and consumer services at USDA.

She announced on Thursday a major change for 1978-79 in the school breakfast rules: no more "formulated grain-fruit products," which is government longhand for doughnuts, cream-filled cakes, coffee cake, oatmeal bars, "Astro food" and peanut-butter crackers.

The change is subject to revision after public comments are received through Sept. 26.

It was ordered because "we believe that use of these products in school-breakfast program is not consistent with promoting good food habits in children and does not further nutrition education through a well-balanced diet of conventional foods," she said.

In addition, she said, controversies over the sugar and fat content of the products and questions about their actual convenience for school use made USDA decide their inclusion wasn't justified.

They were authorized in 1974 as a nutritious, convenient alternative to a conventional breakfast, a spokesman said.

About 21,380 schools have the breakfast program.

Although the GAO report on the lunches seemed to suggest abandonment of a federally set pattern or standard meal, Ms. Foreman, who prefers that title, said that the changes she will recommend "probably will keep a pattern, but with more flexibility" for food-service officials at the schools.

Ms. Foreman and Secretary Bob Bergland have supported a so-far-unsuccessful move in Congress to bar snack vending machines from cafeteria areas at participating schools.

All lunches at those schools are at least partially subsidized, including those for which children are charged "full price." USDA reimburses states 25 cents per meal for those.

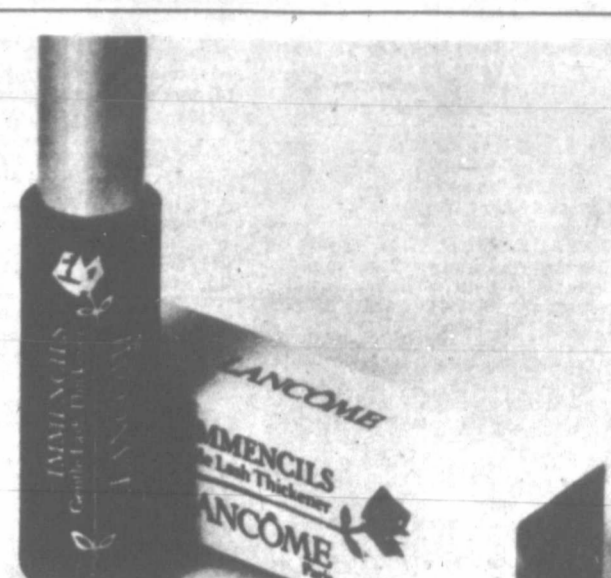
Also under standards set by Congress for USDA reimbursement, about 40 per cent of the lunches are served free to children from low-income families and an additional 5 per cent are served at reduced prices.

In the next year or two, Bergland says, he hopes to wholly revamp the 17 feeding programs he oversees and design a more effective nutrition education program for both pupils and adults than the limited one USDA now operates.

WASHINGTON (AP) — Federal authorities have launched a move to connect the rural poor with federal housing and development programs.

The Farmers Home Administration of the Agriculture Department and the Department of Housing and Urban Development announced their selections Thursday from applications by 30 states. Farmers Home is supplying \$40 million for the two-year project.

Home is supplying \$40 million for the two-year project.



From Lancôme Immencils Gentle Lash Thickener, in brown, black or blue. One-half oz. for \$6.50. Eight new shades of Le Crayon: Silver Bluefox, Smoked Lapis, Wild Mink, Deepest Jade, Rich Sable, Blue Onyx, and for lips only, Great Garnet, Gilded Ruby. Each, \$4.00. Maquiriche Maximum Wear Creme Powder Eye Colours in six Natural Neutrals, six Softer Primaries, and two Brilliant Basics. Each \$5.00.



Barber's  
1600 N. Hobart

## Coal in tanks by 1990?

FLORHAM PARK, N.J. (AP) — "Fill it up, anthracite please." By the 1990s, that remark may be as common at gas stations as "check the oil."

The Exxon Research and Engineering Co. and the U.S. Energy Research and Development Administration recently signed an agreement to jointly finance the development of a process to produce liquid fuels from coal.

But today that is not economical, W. R. Epperly, general manager of Exxon's coal liquefaction program, said Tuesday.

"If the pilot plant were built today, the cost of the liquids would be greater than the cost of imported crude oil," he said.

But Exxon and government energy officials are certain that if the process can be made commercially feasible, a good quality gasoline would be produced, he said.

The oil company began research independently in 1966, but due to the high cost of development, an agreement was reached with ERDA to split the costs of the \$240 million research and development program, Epperly said.

Exxon had spent about \$32 million on its own to formulate and develop the process, he said.

Most of the experimental work to convert coal to liquid fuel is taking place in Texas and Louisiana. The conceptual design work and studies on the commercial viability of the process is being done here, Epperly said.

"The engineering work is being done here for the design of a 250-ton per day pilot plant to be built at the Exxon refinery in Baytown, Tex.," he said.

The liquefaction of coal would not replace the direct use of coal for electrical power.

But it could provide an additional source where liquids are needed, such as gasoline and low sulfur fuel oil, he said.

The agreement with the government runs through 1982. "If we're successful, we'll have enough information to design a commercial plant," he said.

In the liquefaction process, the coal is crushed and mixed with "slurry," or oil that is able to transfer hydrogen to the coal, converting it to liquid, he said.

From that, most of the sulfur and ash can be removed to make a clean fuel.

A wide range of coals from all sections of the nation can be used for this process, Epperly added.

The agreement with ERDA gives Exxon Research the title to all patents, but any royalty fees would be shared by all participants in the financing, including ERDA, he said.

"If the development is successful, this would give the nation another option for meeting its energy needs," Epperly said.

## Top exec tells of threat to smear Ma Bell's rep

SAN ANTONIO, Tex. (AP) — The San Antonio chief of Southwestern Bell Telephone Co. says James Ashley threatened to "smear the organization" after he was suspended during an internal investigation nearly three years ago.

C. L. Todd, who as vice president and general manager for Southwestern Bell in San Antonio was Ashley's immediate boss, said Ashley made the threat at the funeral in Dallas of T. O. Gravitt.

Gravitt committed suicide Oct. 17, 1974, in Dallas. At the time he was the top Texas official of Southwestern Bell.

Todd's testimony came Thursday in the state court trial of a \$29 million damage suit against the telephone company by Ashley and the Gravitt family.

The suit alleges Gravitt was driven to suicide and Ashley wrongfully fired from his \$55,000-a-year job as a result of an improper internal investigation by Southwestern Bell. The company denied this.

Todd quoted Ashley as saying at the funeral of Gravitt, "Chet (Todd), I'm sick of this whole mess. Get me a year's leave of absence and I'll disappear."

Todd said he considered this a demand for payment and said he would discuss it with higher company officials. He said Gravitt had threatened to file suit against the company.

Todd said he warned Ashley that if he tried to smear Southwestern Bell that there were longtime employees who "might come after him."

The Gravitt family and Ashley contend the company probe was designed to remove the two executives because they were rebels trying to "reform" the company from within.

But Todd, who said he knew both Gravitt and Ashley well, said he never heard either man complain of any company practices.

"They were both 'company men,'" Todd said.

Todd said he relied heavily on Gravitt and Ashley to help him in rate-making cases after he came to San Antonio in 1973 because he lacked expertise in the field.

Gravitt had been in charge of Bell in San Antonio before being promoted to the Dallas job.

The damage suit contends Ashley and Gravitt rebelled against "deceptive" rate-making by the company, but Todd said Gravitt pushed him hard and guided him to obtain rate hikes.

Todd also described how he suspended Ashley from his job Oct. 9, 1974. Todd said he knew nothing of the company probe until he met with corporate officials from Southwestern Bell's headquarters in St. Louis on Oct. 9, 1974, at the San Antonio airport.

**Carmichael & Whitley**  
Pampa's Leading  
FUNERAL DIRECTORS  
665-2323

**Schlitz Beer**  
\$1.55 6 pack  
Special Good at Crosstown Liquor also

32 oz. Non Returnable  
**7-UP or COKE**  
3/99¢

**SUPER SUD**  
Laundry Detergent  
2 lb. 8 oz. box  
**77¢**  
Good thru Aug. 13-14

SNAPPY SHOPPER  
716 Prairie Drive 665-1831

**ALCO** SINCE 1901  
"discover the difference"

**COX YAPPER CB RADIO**  
9 volt battery not included. REG. 11.95  
SAVE 2.00 **9.95**

Enjoy the lingo fun of CB! Receives all 23 CB channels. Use for hours of fun. Biking hiking camping, in the home. Use anywhere.

**SATURDAY DOORBUSTER**

**TRAY TABLE SET**  
4-TRAY SET  
SAVE 14.07 **9.88**  
REG. 23.95

Spacious 21" X 5" serving area. 4th piece is a hostess Storage cart. BUY NOW!

**KEEBLER ELFWICH COOKIES**  
SAVE 30¢ **57¢**  
REG. 87¢ ... KEEBLER ELFWICH COOKIES  
Double chocolate uncommonly good cookies baked by elfs.

**BORDEN'S CAMPFIRE MARSHMELLOWS**  
SAVE 18¢ **39¢**  
REG. 57¢ ... BORDEN'S CAMPFIRE MARSHMELLOWS  
16 oz. marshmallows. If it's made by Borden, it's got to be good.

**RITZ CRACKERS**  
SAVE 40¢ **57¢**  
REG. 97¢ ... RITZ CRACKERS  
Delicious fresh and tasty crackers. Everything tastes good on a Ritz.

**SWITZER'S LICORICE**  
SAVE 8¢ **29¢**  
REG. 37¢ ... SWITZER'S LICORICE  
5 oz. package. Choose black licorice or Cherry red sticks.

**RIPON GOOD COOKIES**  
SAVE 1.28 **4 \$1**  
REG. 57¢ EA... RIPON GOOD COOKIES  
"Always a treat. Assorted. Choose your favorites."

**SHRUB TUB**  
SAVE 2.91 **3.97**  
REG. 6.88 ... SHRUB TUB  
Plant not included. Convenience plus smart styling.

**BOXED GREETING CARDS**  
SAVE 69¢ **88¢**  
REG. 1.57 ... BOXED GREETING CARDS  
Everyday cards to send for all occasions. One style.

**GAF COLOR FILM**  
SAVE 22¢ **77¢**  
REG. 99¢ ... GAF COLOR FILM  
126 Cartridge fits instant loading cameras. 12 prints.

**STA-PUF FABRIC SOFTENER**  
SAVE 95¢ **1.00**  
REG. 1.95 ... 64 oz. STA-PUF FABRIC SOFTENER  
Concentrated. Keeps your clothes soft with a fresh spring scent.

**PALMOLIVE DISHWASHING LIQUID**  
SAVE 68¢ **77¢**  
REG. 1.45 ... 32 oz. PALMOLIVE DISHWASHING LIQUID  
New mildness breakthrough! Softens your hands while you wash.

LOCATED CORONADO CENTER PAMPA TEXAS B.A. PRICES GOOD SATURDAY, AUGUST 12 ONLY MC STORE HOURS 9 TO 9 DAILY CLOSED SUNDAY