

Atlantic City prepares to become gambling haven

ATLANTIC CITY, N.J. (AP) — This fading resort city, permitted by state voters to stake its future on casino gambling, is celebrating as if it had already hit the jackpot. But oddsmaker Jimmy "The Greek" Snyder rates the chances of financial success as "no cinch."

On Tuesday, New Jersey voters approved a constitutional amendment making Atlantic City, home of the famous Boardwalk and the Miss America Pageant, the nation's only area outside Nevada to allow casino gaming.

Snyder sounded one of several notes of caution as city residents gave a chorus of hurrahs. He predicted that gambling would spread as other areas try to cash in, too — and he warned that running a gambling house is no sure thing unless you know what you're doing.

Meanwhile, New Jersey Gov. Brendan Byrne said he considers careful supervision of gambling more important than setting it up quickly. Promoters said it would be at least a year before gambling starts. And a prominent banker warned of a wave of speculation on property.

Caution was hardly the general mood, however, as hotels threw parties here and bars served up free drinks.

"I foresee Atlantic City once again becoming the greatest seashore resort in the world," said Mayor Joseph Lazarow.

"We're going to rebuild this town," vowed John Rich, president of a bricklayers union, many of whose members have been unemployed. "The skyline will change dramatically," predicted lawyer-banker James Cooper.

Jimmy "The Greek," interviewed in New York, saw it differently.

"Now that the rolling stone has been let go," Snyder said, "I'm just wondering how many other states are going to pick it up."

"Pandora's door is open... What's going to stop the places up in the Catskills (a resort area just north of New York City) from doing it?"

Atlantic City hopes to capitalize on the gambling market among tens of millions of people who live on the East Coast and are unwilling to go to Nevada.

Atlantic City does offer some advantages, Snyder said, such as "the community and the population... the transient trade." Unlike Las Vegas promoters, he said, operators here won't have to spend money luring people to an area out of their way.

Ford's future remains uncertain

WASHINGTON (AP) — For Jerry Ford, like Jimmy Carter, it is a time for readjustment.

But, while Carter and his aides begin a transitional period to set up the Democrat's White House tenure, the plans of the man who will move out of the Oval Office in January remain uncertain, according to his spokesman.

President Ford is planning to take a week-long vacation in Palm Springs, Calif., and will

probably leave Washington on Sunday, according to his press secretary, Ron Nessen.

Ford conceded defeat at 11:04 a.m. EST Wednesday in a telephone call to Carter in Plains and also sent a telegram to the Democrat, pledging cooperation in the transition period.

Ford's hoarse throat prevented him from carrying on much of a conversation, Nessen said, so White House chief of staff Richard Cheney, on an ex-

tension telephone, read the text of the telegram to the former Georgia governor, now president-elect.

The talk, the press secretary said, was "warm and friendly."

Then, just after noon, the President and his family appeared in the White House press room where Ford, his voice hoarse from campaigning,

turned over the microphone to his wife, whom he described as "the real spokesman

for the family."

Mrs. Ford, teary-eyed, read a statement saying Ford "wants to thank all those thousands of people who worked so hard on his behalf.... The President urges all Americans to join him in giving your united support to President-elect Carter as he prepares to assume his new responsibilities."

Then she read the "Dear Jimmy" telegram.

"It is apparent now that you

have won our long and intense struggle for the presidency. I congratulate you on your victory...."

"Although there will continue to be disagreements over the best means to use in pursuing our goals, I want to assure you that you will have my complete and whole-hearted support as you take the oath of office this January...."

The Ford's daughter, Susan, and three sons stood in the background alongside the President as Mrs. Ford read the statement. Susan appeared to be fighting back tears.

Ford, said Nessen, was "certainly disappointed" by the election results, but he quoted one aide who said the President seemed "to feel a lot better than we do."

He said the President "seemed to give strength to his family and members of the staff who were affected by this...."

Carter faces budget, appointees

WASHINGTON (AP) — Jimmy Carter has two priority tasks facing him in the months immediately before and after his inauguration. He must populate his administration, and he must put his imprint on the 1978 budget.

How Carter goes about doing both jobs will go a long way toward showing the nation and the world how he plans specifically to effect the ideas he talked of during his campaign.

A young Atlanta attorney, Jack Watson, has been working with a small staff since July on a transition plan for the new administration.

Among other things, Watson has prepared lists of potential appointees to the top jobs among the more than 2,000 Carter will have to fill. No names have been publicly discussed by the Carter staff, but some cri-

teria have been.

Carter has said he intends to reduce the size of the White House staff and give more freedom and policy responsibility to Cabinet members.

Some key roles in the White House are expected to be filled by the small group of Georgians who were on Carter's gubernatorial staff and stuck with him through the campaign.

Campaign manager Hamilton Jordan is a likely choice for chief of staff; press secretary Jody Powell is likely to fill that job again. But, Jordan said, the staff is now limited to generalists. Specialists in foreign and domestic policy will have to be added.

Both Carter and his staff have reiterated their determination to place a large number of women, blacks and younger people in key roles. What

amounts to a women's employment agency. "Talentbank 77," has been operating in Washington for several weeks, compiling names of potential women appointees.

"There will be a lot of new people," said Jordan. One of them, according to Carter, is going to be a replacement for Secretary of State Henry Kissinger.

Carter has been getting foreign policy advice from several experts, including Columbia University Professor Zbigniew Brzezinski, who is a likely candidate for a role in formulating the new administration's foreign policy.

Others who have been mentioned as possible candidates include former Pentagon officials Paul Nitze and Cyrus Vance and former under-secretary of state George Ball.

When he turns to domestic issues, Carter will be confronted with the realities of fulfilling his campaign pledges to lower unemployment, reform taxes,

get started on a national health insurance program and still move toward balancing the federal budget by 1981.

His first task will be to reshape the 1978 federal budget; he will have just weeks to work over the document the Ford administration has been preparing for 18 months.

About one-fourth of all the turtles in the world live in North America.

Lebanese to be speaker

A native of Lebanon, the Rev. Sam Nader, will lead revival services at the First United Methodist Church, 201 E. Foster, according to Dr. Lloyd Hamilton, pastor.

Rev. Nader, pastor of the First United Methodist Church in Lubbock, will be in Pampa for the four-day revival which starts Sunday.

The son of a Greek Orthodox priest, Rev. Nader has been serving the Methodist ministry since he was 15. Dr. Hamilton said.

He was active in sports and journalism at Southern Methodist University where he earned two degrees. He did graduate work at Columbia University in New York and received an honorary doctor of divinity degree from Centenary College in Shreveport, La.

Rev. Nader has served churches throughout Louisiana and has conducted preaching missions for the Army and Air Force. He preached in a Methodist Church behind the Iron Curtain and has interviewed Mrs. Indira Gandhi in India.

The Lubbock minister has been a delegate to five World Methodist Conferences and was a jurisdictional conference delegate of the United Methodist Church.

He is active in the Masons and Rotary Clubs and is a member

of the board of trustees of McMurry College and Lydia Patterson Institute.

The revival program will include a church breakfast at 7 a.m. each day. Services will be 7:30 p.m. Sunday through Wednesday, followed by seminars and fellowship.

Special music will be by youth choirs, the Rev. and Mrs. Bill Patterson of Guyton, Okla., John Glover of the First Baptist Church and Susie Wilson of Pampa.

Jubilee Quartet sets program

Special music will be presented at 7:30 p.m. Monday at the Church of the Nazarene, 500 N. West, by the Jubilee Quartet, of Topeka, Kan.

Whitley Gleason, manager pianist and emcee, organized the quartet in 1959. Since then members have performed in all 50 states and several countries.

Other members include Harlan Elkins, a native of Kentucky; Chuck Hardt of Wisconsin; and Danny Klinger of Gary, Ind., bass singer. The public is invited to attend the Monday performance.

Dan Chapin purchases Western Auto

Dan Chapin recently purchased the Western Auto franchise at 217 North Cuyler in Pampa.

He has worked for White's Stores for the past 13 years.

A native of this area, Chapin said he had received many opportunities for other employment.

"But I think so much of Pampa I didn't want to leave," he said. He was graduated from White Deer High School.

He said plans call for remodeling the Western Auto store. He and his wife have two children. The Chapins live at 2821 Comanche.

CAPRI Downtown Pampa 665-3241

Friday and Saturday Open 6:45 — Show 7:10 - 9:30 Sunday Show at 2:00-7:30

Now Showing "NOT SINCE 'CAT BALLOU' such a hilariously bawdy movie!"

A broken down frontier scout teams up with a drunken Indian with a social disease to pull off the Great Brothel Robbery of 1908!

and heap funny, too!

Lee MARVIN • Oliver REED • Robert CULP Elizabeth ASHLEY • Strother MARTIN • Sylvia MILES

"THE GREAT SCOUT AND CATHOUSE THURSDAY"

An AMERICAN INTERNATIONAL Picture

PG

—MATINEE SATURDAY & SUNDAY 2:00—

Top o' Texas 275 N. Hobbs 4181-4200

Open 7:00 Show 7:30 Adults 1.75 — Kids 50¢

—Now Showing Thru Tuesday—

MANSION OF THE DOOMED

WHAT HAPPENS IS SO HORRIFYING WE CAN'T EVEN HINT AT IT IN THIS ADVERTISEMENT

"Fast-paced, spine-tingling suspense overwhelming."

STARRING RICHARD BASEHART/GLORIA GRAHAME

R

Texas FURNITURE COMPANY

DINING ROOM DISCOUNTS

We're carvin' prices on the dining room you've been cravin' — just in time for Thanksgiving savin'

SAVINGS OF 20% to 40%

<p>Mediterranean Group</p> <ul style="list-style-type: none"> ● Large Oval Table ● 5 Side Chairs ● 1 Arm Chair ● Beautiful Breakfast ● 2-12" Leaves <p>Was \$750 \$548⁰⁰</p>	<p>Pedestal Painted Suite</p> <ul style="list-style-type: none"> ● 4 Side Chairs ● Cone Backs ● Orange Corduroy Seats ● Beautiful Slate Top <p>Now \$597⁰⁰ Reg. \$850.</p>	<p>Traditional Dining Suite</p> <ul style="list-style-type: none"> ● Lighted China ● Gold Velvet Chair Seats ● Octagon Table ● 5 Side Chairs ● 1 Arm Chair <p>Reg. \$628⁰⁰ Now \$498⁰⁰</p>	<p>Tell City Values</p> <ul style="list-style-type: none"> ● Round Thick Top Table ● 6 Side Chairs ● 2-12" Leaves ● Nutmeg Finish <p>Now \$498⁰⁰</p>
<p>8 Piece Oak Group</p> <ul style="list-style-type: none"> ● Octagon Table ● 2-18" Leaves ● Cone Back Chairs ● Lighted China <p>Was \$1350.00 \$1095⁰⁰</p>	<p>On Display - Thomasville at its best</p> <ul style="list-style-type: none"> ● Beautiful New Table ● Hand Parqueted Top — in Rich Pecan Wood ● Table Edge Trimmed in Cork Wood ● 4 Side Chairs and 2 Arm Chairs with Luxurious Velvet Seats 	<p>Many More Items To Choose From</p> <p>Texas FURNITURE COMPANY</p> <p>210 N. Cuyler 665-1623</p>	

Other tables and chinas priced separately. Many more to choose from.

Toot 'n Totum

SNACK BAR

500 N. DUNCAN

BBQ

POLISH SAUSAGE

Nov. 5, 6, and 7 ONLY

59^c Each

Regular 89^c

Check Our Other Barbeque Specials!

SNACK BAR — 500 N. DUNCAN 669-9071

Debate benefit polled

NEW YORK (AP) — The televised debates between Gerald Ford and Jimmy Carter benefited Carter more than the President, apparently by giving the voters a better idea where he stands on major issues.

But an Associated Press survey of voters on election day found the debates dispelled only part of the voters' confusion on Carter's position on abortion and did not wipe out concerns about his fuzziness on issues.

The debates exerted less influence on Ford voters, but they also apparently helped expand supporters' knowledge about his stands on issues.

The AP survey was conducted on Nov. 2 at 100 scientifically selected precincts across the country, ranging from several in New York City to those in remote rural areas.

In a unique cooperative effort, reporters from AP member newspapers and broadcast stations joined AP staffers and stringers to do the interviewing.

Asked how much influence the debate had on their decision who to vote for, 44 per cent of the Carter supporters said the portions of the debates they watched had a "great deal" or "some" influence on their decision.

By contrast, only 36 per cent of the Ford voters said the debates they watched had swayed their decision to that degree.

Over-all, agreement with the candidate on the issues was the reason cited most by all the voter's decision who to vote for. And the poll found that they knew far more about the candidates when they voted than they had in May.

Each of the 2,487 voters interviewed by the AP survey was asked where the candidate they voted for stood on four major issues — government-guaranteed jobs, an antiabortion amendment, more money for national defense and national health insurance.

On all four issues, more supporters of each man named his position correctly than named it incorrectly.

The margins were as large as the 70 per cent to 18 per cent edge by which Carter voters said he supports comprehensive national health insurance and the 70 per cent to 23 per cent bulge by which Ford backers said he opposes the federal government guaranteeing jobs for all those who want them.

When broken down into those who watched the debates and those who did not, Carter voters who watched the debates were from five to nine points more likely to name his position correctly than those who did not watch the debates.

Ford backers who watched the debates were even more well versed-naming the President's position correctly more often by a 9-to-13-point margin over those who did not.

These findings do not prove the debates were the source of the information on the candidates. For one thing, those who watched the debates tended to be the better educated voters, who are expected to have a better idea of candidates' positions. But education cannot account for all of the variation found by the survey, leaving the debates as a major factor.

But the survey also found that Carter is still viewed as fuzzy on the issues.

About one out of five of his own supporters agreed that "it's hard to know where he stands on the issues" and 35 per cent more said there was no difference between Carter and Ford on that trait.

Abortion was the only issue on which Carter voters were generally confused, with about half saying they didn't know where he stood or crediting him with an incorrect position.



FHA Executive Council

The Future Homemakers of America, Hero Maxi Chapter Executive Chapter officers include from left, back row, Lorena Zamora, Red Chapter president; Keven Ammerman, Hero president; Connie Maple, Maxi secretary - treasurer; and Julie Slaymaker, Maxi second

vice president; front row, Levi Bailey, Red Chapter president; Korinne Wight, Maxi third vice president; Kelly Tucker, Maxi first vice president, and Sue Cook, Maxi president.

(Pampa News photo)

FOUNDATION REPAIR
 New Sills Leveling Concrete Piers
 ● All Work Guaranteed
 ● Free Estimates
Guarantee Builders & Supply
 115 Osoe Pampa 669-2012

Broasted Chicken
 Phone 669-2601
 order will be ready
CALDWELL'S

MONTE JEWELRY WARD TOYLAND OPEN NOW

Saturday specials!

Save 5.01
 Men's doubleknit gift dress shirts.
3.99
 Regularly \$9
 Finely tailored of wrinkle-spurning polyester. 2-button adjustable cuffs. New medium tones. 14 1/2 - 16 1/2. Limit 4

SAVE 50%
 FOUR PARQUET-LOOK TV TRAYS
14.88
 REGULARLY 29.99
 Stain-resistant hard-board trays have folding legs, measure 15x 20 1/2". Brass trim. Un-assembled storage rack.

Adorable.
 Hush L'il Baby™ needs special care.
10.88
 Reg. 13.99
 Baby doll cries and squirms until bottle or pacifier is put in her mouth. 15" tall. Rooted hair. Btrs. ex.

Save \$50
Our 23-channel mobile CB transceiver.
 Deluxe features. Antenna warning system. Microphone.
119.88
 Regularly 169.99

Save \$1.55
 Deluxe dry curling iron, built-in stand.
 Great for quick curls. Signal light, ready dot, convenient swivel cord.
5.44
 Regularly 6.99

SAVE \$1.55
 OUR PERMANENT ANTI-FREEZE
3.49
 GALLON
 REGULARLY 4.99
 Year-round protection. Guards against freezing in winter, boil-over in summer. Rust inhibitors incl.

\$2 OFF
 WICKER-LOOK SEWING BASKET
 Has organizer tray; handle. Thermoplastic. 16 x 10 x 9".
5.99
 Reg. 7.99

Christmas Lay-Away
 \$1 HOLD PURCHASES UP TO \$50. THE MORE YOU BUY, THE MORE YOU SAVE! (SEE STORE FOR DETAILS.)
WARD

Toys? That's our game. **WARD**

'Football fever' strikes girls

DALLAS (AP) — "Football fever," a mysterious ailment that felled dozens of young girls earlier this year as they watched high school football games, was hyperventilation, according to Dr. Heinz Eichenwald of the University of Texas Southwestern Medical School.

The girls, who fainted or became stricken while watching their football teams struggle on the gridiron, suffered symptoms of dizziness, fainting and a choking feeling in their chests. Dozens were treated at hospitals around the state earlier in the football season.

Dr. Eichenwald, chairman of the department of pediatrics at the medical school here, said most people think the fainting is caused by lack of oxygen, but the problem is just the opposite. He said the body burns oxygen and turns it into carbon

dioxide which is exhaled from the lungs. Carbon dioxide in the blood stream is one of the stimuluses triggering your breathing, he added.

The first symptom of hyperventilation, he said, is breathing faster and faster until your breath comes in pants. This rids the body of carbon dioxide in large amounts, the doctor said.

He continued that as a person's carbon dioxide level in the bloodstream falls, one loses the stimulation to breathe and faints. Once a person faints, automatic reflexes take over and they begin to breathe normally.

"The cure is reassurance—the one thing you don't usually get," Dr. Eichenwald said. "Victims may not be conscious of it, but it's a voluntary phenomena."

He said that once one person faints, it becomes almost an epidemic. "Once people to the right of you and the left of you faint, you'll probably go down the drain, too," he said.

Pointing out that there is nothing dangerous about it, Dr. Eichenwald said "Just don't lose your head when it happens. Everybody watches too much television and reads too much science fiction and there is always some disaster they can think is striking—poison gas, germ warfare."

Hyperventilation strikes young people more than older persons and strikes girls more often than boys, he said. It is more prevalent at church meetings and football games where people congregate and become emotional.

An old fashioned cure of having the victim breathe into a brown paper bag is effective, Dr. Eichenwald said, because "It distracts them and gets carbon dioxide back into the bloodstream."

On April 25, 1959, the St. Lawrence Seaway was opened. It was dedicated June 26 by President Eisenhower and Queen Elizabeth II.

ZALES TIMELY GIFTS

Seiko® helps you enjoy the good times this Christmas

a. Quartz, black dial, \$165
 b. Day-date, brown dial, 17 jewels, \$125
 c. Bracelet watch, 17 jewels, \$125
 d. Quartz, day-date, blue dial, \$135
 e. Quartz, leather strap, blue dial, \$135
 f. Quartz, day-date, brown dial, \$195

Zales Revolving Charge • Zales Custom Charge • BankAmericard
 Master Charge • American Express • Diners Club • Carte Blanche • Layaway
 Ask about our New Custom Charge

107 N. Cuyler **ZALES** Coronado Center
 The Diamond Store

Call **Mark Buzzard and compare.**
 Maybe I can save you some money on top-quality protection, whatever your insurance needs.
Allstate®
 See or phone **Mark Buzzard**
 1623 N. Hobart 666-4122
 Allstate Insurance Companies, Allstate Life Insurance Company.

Nationalized railroads might be inevitable

By MICK ROOD
Pampa's Washington Bureau
WASHINGTON — Administration and congressional antagonists over federal railroad policy seem to agree on one thing — if the strategy of providing federal subsidies and loans amplified by the 94th Congress doesn't stabilize the industry by 1981, a much more expensive nationalized system will be inevitable.

Federal officials have argued for several years over how much must be paid now to preserve an essentially private railroad system — and to avoid paying a lot more later. But both sides are locked in together now, with President Ford's signing of the Rail Transportation Improvement Act on Oct. 19.

Two Pennsylvanians typify the railroad dilemma argument. Rep. Fred Fooney, D-Bethlehem, was a chief sponsor and supporter of high spending levels in the railroad act. Department of Transportation (DOT) Secretary William Coleman recommended lower grant and loan amounts, but finally went along with the act, which:

—puts a \$1.3 billion spending ceiling on Amtrak, including operating subsidies, capital construction and Northeast corridor work.

—authorizes up to \$350 million in federal loan authority so Conrail can pay off creditors inherited from the bankrupt Northeast railroads.

—encourages Coleman to make available \$1.6 billion in already authorized federal loans and financing to strictly private railroads for rehabilitation and new facilities.

—Every industry is subsidized, and the railroads get the least of any transportation industry. When you try to prevent the nationalization of railroads with federal aid, there's always an uproar," Rooney said in a recent interview.

Rooney, chairman of the House Commerce Transportation Subcommittee, noted that "we urged the secretary to move" on the railroad loans and so-called preferential share financing in the said.

In a separate interview, Coleman reiterated his position

that the Amtrak subsidies were too high, that the revolving loan authority for Conrail creditors should have been \$300 million "at the outside," and that there were not enough restrictions on the financing offered private railroads.

But Coleman conceded that, "I certainly think we now have the tools where the secretary of transportation can help implement the rehabilitation of America's railroads within five years. I think it's essential."

The railroad improvement act was a follow-up to assistance established by the Railroad Revitalization and Regulatory Reform Act, sponsored by Rooney and signed into law by the President in February.

Federal officials believe the railroad aid will have to be continued and probably increased over the next five years. By then, according to the quasi-private Amtrak's five year plan, increased ridership will minimize subsidies that now make up more than half of its revenues. By then, Conrail hopes to be prospering and is scheduled to have paid back the \$2.1 billion in federal funds being invested in its debentures and stock. And by then, private railroads which have lacked capital construction funds will have used enough federal financing for track repair and new construction to reverse sagging performance.

By that magic year of 1981, federal officials expect they can taper off federal railroad aid. It didn't work that way with Amtrak during its first five years of carrying most intercity rail passengers, but officials are somewhat more confident about Conrail loans for rail freight business carried by Conrail and the private railroads.

"The next five years are probably the critical ones," Federal Railroad Administrator Asaph Hall said in a recent trade journal interview. If the railroad aid doesn't work in the long run, Hall said, "the next step is probably more government involvement, eventually leading perhaps to nationalization, which none of us wants."

Prior to Ford's approval of the Railroad Improvement Act, Coleman told the Pampa's Washington Bureau he had many reservations about it. One

of them was that federal financing could be provided to more profitable railroads at interest as low as two per cent, "with no real restrictions, really," Rooney countered that Senate - House conferees changed the financing provision, tying the interest rate charge to an applicant railroad's profit performance. A profitable railroad could pay high rates under the new language, he said.

Coleman also had a personal objection to the Rooney bill. A Senate amendment, which Rooney supported, dictated that only department deputy secretaries or secretaries themselves could serve on the United States Railway Association (USRA) board. That provision cuts out Under Secretary of Treasury Jerry Thomas from serving on the board. Thomas has been critical of fellow USRA board members' accounting of their fringe benefits. USRA is the government financed private body which handles the Northeast railroad reorganization and Conrail loans.

"It's a tragedy when a public official is selected for abuse. It's not the way to run a government," Coleman said.

Rooney argued the provision was intended to get the highest qualified individuals to serve on the USRA board — not lesser officials delegated to serve by Cabinet members. Treasury Secretary William Simon had authorized Thomas to serve on the board.

Despite his objections, Coleman eventually recommended that Ford sign the bill, according to Capitol Hill sources. It marked a victory for Congress and Rooney, who said the bill was "a thoughtful compromise which should assure better rail transportation in this country for both passenger and freight service."

Whether the federal aid strategy will prevent a federal takeover of most railroads is another question. The answer is due in about five years.

On Jan. 14, 1969, an explosion and fire aboard the U.S. ship Enterprise near Hawaii killed 27 crewmen and inflicted heavy damage.



Long distance doctoring

Doctors hundreds of miles away can now obtain, within seconds, expert medical evaluations of their patients' respiratory ailments with the help of an IBM computer recently installed at Houston's Methodist Hospital. In the picture a physician prepares a patient for a breathing test at the Houston hospital. The results will be fed into the computer which will analyze the results and prepare a report on the patient's condition. The Methodist Hospital and 10 participating hospitals in Texas and Louisiana obtain analyses of respiratory and heart ailments from the Houston computer. Patient data from remote hospitals is sent to the Methodist Hospital by telephone lines and the computer's analysis is returned in the same manner.

Hospital board to study '77 budget

The board of managers for McLean and Highland General Hospitals will meet at 2 p.m. Monday for a 16-item agenda including a study session on the 1977 hospital budget and consideration of proposed room rate increases.

A proposed room rate hike was tabled earlier by the new board, headed by R.W. Sidwell, president.

A report from the chief of staff, approval of the constitution and by laws of the medical staff, and delineations of medical staff privileges will also be considered.

Approval of policies and procedures for three departments including

pharmacy, department, housekeeping and fire safety procedures is also on the agenda.

Other items include: —Appointment of a committee to represent the governing bodies during a survey by the Joint Commission on Accreditation of Hospitals. —Consideration of policy on employee's Christmas gifts. —Report on hospital interim audit.

—Approval of Metropolitan Ambulance Service Contract.

—Review of financial statement of the two hospitals.

—An executive session to discuss personnel matters, if any, and reconvene in open for action, if any.

Lefors students in play

Two Frank Phillips College students from Lefors are working on the annual Dinner Theatre production by the drama department of the college.

Peggy Maples, daughter of Mr. and Mrs. Earl Maples, Lefors, plays the part of Jeanette Fisher, a chronically depressed woman, in the Neil Simon play "The Last of the Red Hot Lovers," to be presented in

the college dining room on November 18 and 19.

Ronda Whittington, daughter of Mr. and Mrs. John Holland, Box 288, Lefors, is one of the two stage managers.

Tickets for the Dinner Theatre will go on sale November 8, at \$6.50 each. Reservations may be made by calling the Frank Phillips College Bookstore or the office of the drama department, between the hours of 8 a.m. and 4 p.m., and from 6:30-9:30 p.m.

Hauck to be speaker

Speaker for the 10:45 a.m. Sunday worship service at the First Presbyterian Church will

be the Rev. Donald S. Hauck. As a part of the observance of the church's 50th anniversary,

Rev. Hauck will speak on "How Firm a Foundation." He will base his sermon on scripture from Matt. 16:13-20, and Isaiah 6:1-8.

A church dinner will follow the worship service, after which a reception is scheduled in the church parlor.

Rev. Hauck is a native of Valley City, Ohio and was graduated from Wittenberg University in 1956, and from Princeton University in 1960.

He was married in 1959. He and his wife are parents of four children. Steven, Amy, Douglas and Sara.

Rev. Hauck has held pastorates in Bartlesville, Okla., Richardson, Tex. and is a former minister for the local Presbyterian congregation from 1962-67.

Since 1970, he has been regional representative for the Presbyterian Ministers' Fund based in Austin. He is a graduate of the Institute of Insurance Marketing at Louisiana State University, a member of the Million Dollar Round Table for three years and was designated a chartered life underwriter in 1975.



Rev. Donald S. Hauck

saturday at DUNLAPS

Jo Lester 3 Piece Polyester Weekender Usually 40.00

25⁹⁰

- Jacket
- Pant
- Skirt



This versatile 3 piece weekender in 100 percent polyester knit gives you a packable, travelable ensemble you'll wear so many ways with extra tops or blouses. Sizes 8 thru 20 in solid colors as well as new patterned weaves.



Girls 4 thru 14 Famous Name Separates

30% off

Reg. 7.50 to 15.00

Rust or Blue

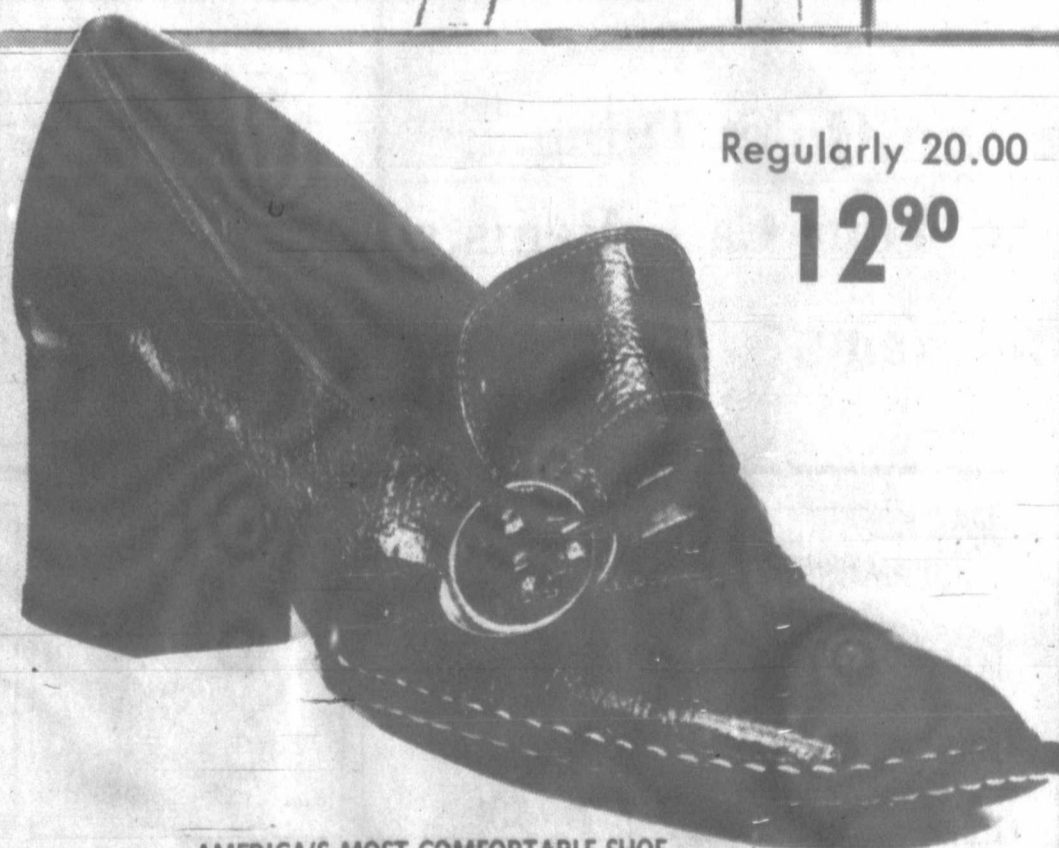
Broken sizes from 4 thru 14 variously in tops and bottoms from this nationally known maker. A great opportunity to add pieces to your earlier purchase and save 30%.

Saturday Hours 10 a.m. til 6 p.m.

Boys' Warm-up Suits 25⁰⁰



Sizes to fit boys 6 thru 20, 100 percent Creslan Acrylic knit with pull-on pant with side zip at ankle. Long sleeve jacket with zipper closing. Choice of colors with contrasting stripe.



Regularly 20.00 12⁹⁰

AMERICA'S MOST COMFORTABLE SHOE

THE WESTWOOD BY EASY STREET

A very timely purchase enables us to bring you this great shoe at the whopping saving of over 30 per cent. Complete sizes 5 1/2 thru 10 in narrow or medium widths.

- Black
- Camel
- Red
- Brown
- Rust
- Bone

"Starving Artist" ART SALE

ORIGINAL OIL PAINTINGS VALUES to \$210.00 - OVER 80 ARTISTS REPRESENTED

NOTHING OVER \$35.00

MOST UNDER \$20.00

SUNDAY, NOV. 7-10 a.m. to 4 p.m.

FREE ADMISSIONS

STARLITE ROOM CORONADO INN PAMPA

ART PRESENTED by HOME GALLERIES "COME EARLY FOR BEST SELECTION"

Select Group Men's Sweaters

Usually to 15.00

8⁹⁹

Rich Lambs wool pullovers and shirts as well as washable acrylic blends in V-necks or crew necks. Choice of colors and sizes. S-M-L-XL.



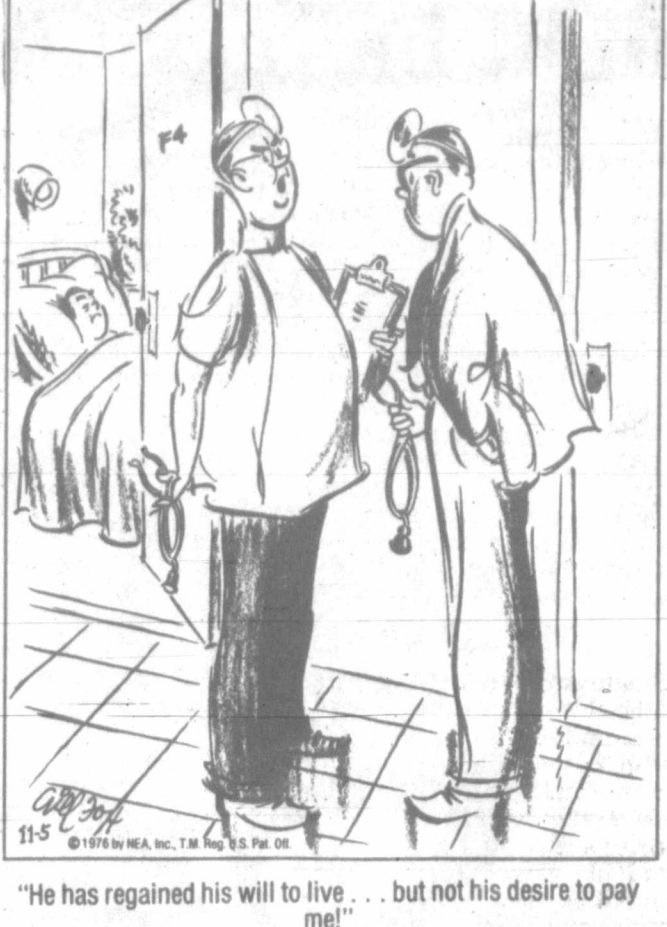
MR. FLUGG by Jon Peterson



B.C. by Johnny Hart



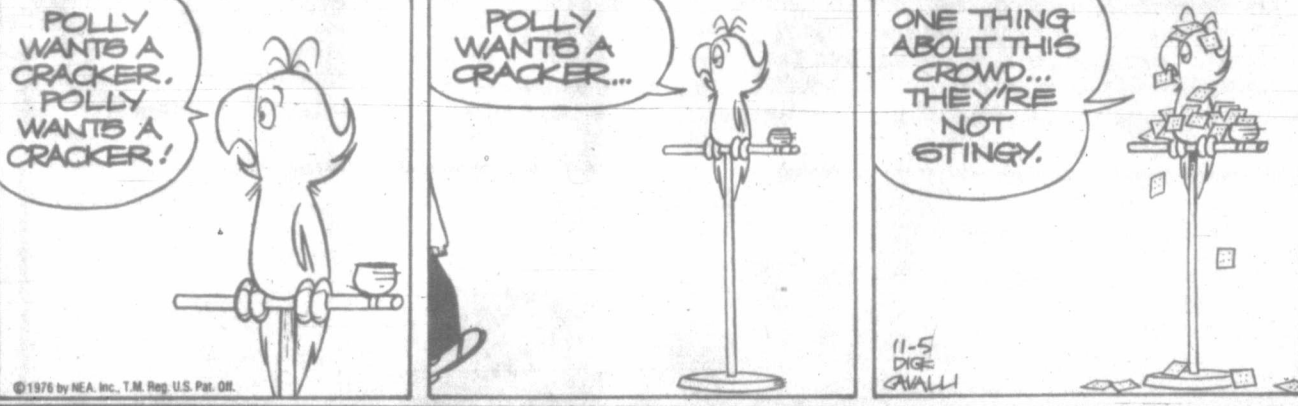
SIDE GLANCES by Gill Fox



STEVE CANYON by Milton Caniff



WINTHROP by Dick Cavalli



THE BORN LOSER by Art Sansom



FRANK AND ERNEST by Bob Thaves



PRISCILLA'S POP by Al Vermeer



CAPTAIN EASY by Crooks & Lawrence



ALLEY OOP by Dave Graue



EK & MEK by Howie Schneider



BUGS BUNNY by Stoffel & Heimdahl



THE WIZARD OF ID by Brant Parker and Johnny Hart



Newspaper Advertising Is A Quiet Thing... It Only Makes Noise Around Your Cash Register The Pampa News

OUR BOARDING HOUSE with Major Hoople



PEANUTS



SHORT RIBS by Frank Hill



MARMADUKE by Brad Anderson





Homecoming

Singing during homecoming services at the Lamar Full Gospel Assembly, 1200 S. Sumner, will be Larry and Sharon Rice of Lubbock. The Rev. Gene Allen, pastor, said the homecoming services will be at 10:45 a.m. and 7 p.m. Sunday. The Lubbock couple have sung at functions attended by President Gerald Ford and Gov. Dolph Briscoe. Bob Miller, pastor of the Faith Temple Church in Killeen, will speak at both services. He has pastored in Killeen over 20 years, Rev. Allen said.

Californian will preach in Pampa

Revival services at the Bethel Assembly of God, 1541 Hamilton, are scheduled Nov. 9-19 with Evangelist and Mrs. Ray Sorensen and their son, John, 10, as special guests.

Evangelist Sorensen, who makes his home in Sylmar, Calif., has preached extensively across the United States during the past six years. He authored

the book, "The Key to God's Miracle Power."

He has also made several radio and television appearances across the midwest.

The Rev. Paul DeWolfe, pastor, said the public is invited to attend any and all of the services.

LLL adopts new budget

ST. LOUIS, Mo. — The Board of Governors of the International Lutheran Laymen's League has adopted an \$8.3 million budget for the 1976-77 fiscal year. The board also authorized another \$768,000 in priority items dependent upon availability of funds.

Budget items include nearly \$4.9 million for the League's radio evangelism ministry, \$1.775 million for Lutheran Television, and \$1.2 million for membership programs, projects and a press ministry.

During the budget session the governors were informed that the League had failed to reach the 1975-76 budget of \$7.6 million by about \$960,000. It was noted that the acceptance of full responsibility for Lutheran

Television had greatly increased League expenses for the year. The LLL has been a co-sponsor of Lutheran TV with The Lutheran Church - Missouri Synod since 1967.

Local Baptists start revival

Revival services at the First Free Will Baptist Church, 326 N. Rider, will begin Sunday evening, according to the Rev. L.C. Lynch, pastor.

Leading the revival will be the Rev. Lonnie Burks of Fayetteville, Ark. The services will start at 7:30 p.m. each day and will feature gospel singing. The public is invited to attend.

Church names Rev. Cone

SAN ANTONIO — The Rev. Claude Cone, pastor of the First Baptist Church in Pampa, was elected to serve on a Texas Baptist board during the annual meeting of the 22 million-member Baptist General Convention of Texas.

Rev. Cone will sit on the 192-member Executive Board, comprised of laymen and ordained church leaders from across Texas, which conducts the business of the BGCT between sessions.

The State Convention, meeting in San Antonio, launched "Good News Texas," described by convention leaders as "the most comprehensive, unique evangelistic thrust in Texas history."

Plans include a state-wide \$1 million mass media campaign to climatize the state in support of Good News Texas through ministries of 4,400 Texas Baptist churches as well as the Convention's institutions, agencies and boards.

UNBELIEF

Entrenched in the hearts of men is the idea that if one does not believe a given Bible passage, then it just isn't true. But, my friends, the unbelief of man affects the veracity of God's word not one iota. Paul, discussing the giving of the oracles of God to the Jews said, "For what if some did not believe? shall their unbelief make the faith of God without effect? God forbid: yea, let God be true, but every man a liar; as it is written, That thou mightest be justified in thy sayings, and mightest overcome when thou art judged." (Romans 3:3-4)

Christ said, "Not everyone that saith unto me Lord, Lord, shall enter into the kingdom of heaven; but he that doeth the will of my father which is in heaven." But men say, "We do not believe it." Jesus said, "Be thou faithful unto death, and I will give thee a crown of life." However, the general attitude is, "He didn't mean what he said."

The word of God says, "He that believeth and is baptized shall be saved; —" But from the ditch digger to the learned man from the religious seminaries this is met with unbelief. Naaman, the leper, learned the value of water when it is applied according to a thus saith the Lord. Shall their unbelief make the faith of God without effect? Men may disbelieve until doomsday, and the word of God will still say what He means and mean what He says.

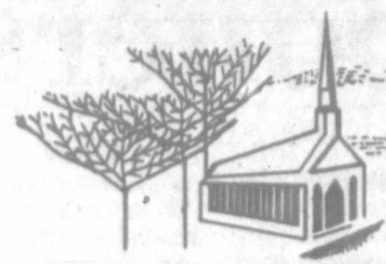
While the multitudes "waste their substance in riotous living," precious souls are going to the grave unprepared to meet their Maker. Instead of preaching Christ, those who should know better are tickling the ears of those who love to have it so. Cake and coffee, sports and other forms of entertainment mean more than a mansion in heaven to most. But when "the books are opened," the unbelief will quickly be dispelled.

Friends, we invite you to study and believe the Bible.

Central Church of Christ

500 N. Somerville Pampa

An investment in Your Future
...ATTEND CHURCH



"For where your treasure is, there will your heart be also"



God Bless...

God bless Mommie, Daddie, and all my friends at church...

"Hearken unto the voice of my cry, my King, and my God."

God's word has a great deal to say about prayer, for prayer is our means to communicate with God. Through prayer we can give thanks, petition for our friends, and seek God's wisdom for our daily living.

Make prayer a daily practice in your life.

The Church is God's appointed agency in this world for spreading the knowledge of His love for man and of His demand for man to respond to that love by loving his neighbor. Without this grounding in the love of God, no government or society or way of life will long persevere and the freedoms which we hold so dear will inevitably perish. Therefore, even from a selfish point of view, one should support the Church for the sake of the welfare of himself and his family. Beyond that, however, every person should uphold and participate in the Church because it tells the truth about man's life, death and destiny; the truth which alone will set him free to live as a child of God.



Coleman Adv. Serv.

Church Directory

- Adventist**
Seventh Day Adventist
Ken Carwright, Minister425 N. Word
- Apostolic**
Pampa Chapel
Rev. Keith Barker, Pastor711 E. Harvester
- Assembly of God**
Assembly of God Church
Rev. Rick JonesSkellytown
Bethel Assembly of God Church
Rev. Paul DeWolfe1541 Hamilton
Calvary Assembly of God
Rev. Jerald Middaugh1030 Love
First Assembly of God
Rev. R.L. Courtney500 S. Cuyler
Lefors Assembly of God Church
Rev. John GallowayLefors
- Baptist**
Barrett Baptist Church
Rev. Jackie N. Lee903 Beryl
Calvary Baptist Church
Rev. Ronald A. Harpster824 S. Barnes
Central Baptist Church
Rev. Ted SavageStarkweather & Browning
Fellowship Baptist Church
Rev. Earl Mardux217 N. Warren

- First Baptist Church
Rev. Claude Cone203 N. West
- First Baptist Church (Lefors)
Rev. Rick Wadley315 E. 4th
- First Baptist Church (Skellytown)
Rev. Milton ThompsonSkellytown
- First Freewill Baptist
L.C. Lynch, Pastor326 N. Rider
- Highland Baptist Church
M.B. Smith, Pastor1301 N. Banks
- Hobart Baptist Church
Rev. John Hansard1100 W. Crawford
- Pampa Baptist Temple
Rev. John Hayes, Jr.Starkweather & Kingsmill
- Bethel Missionary Baptist
Rev. Danny Courtney326 Naida
- Primera Iglesia Bautista Mexicana
Rev. Heliodora Silva1113 Huff Rd.
- Progressive Baptist Church
Rev. L.B. Davis836 S. Gray
- New Hope Baptist Church
Rev. J.T. Wilson321 Albert St.

Bible Church of Pampa

Mike Harris, Interim2401 Alcock

Catholic

St. Vincent de Paul Catholic Church
Father Frederick Marsch2300 N. Hobart

Christian

Hi-Land Christian Church
Harold Starbuck, Minister1615 N. Banks

These Business Firms and Professional People Are Making This Weekly Message possible. Joining with the ministers of Pampa in hoping that each message will be an inspiration to Everyone.

- GIBSON'S DISCOUNT CENTER**
"Where You Buy The Best For Less"
2210 Perryton Pkwy. 669-6874
- WRIGHT FASHIONS**
222 N. Cuyler 665-1633
- PAMPA OFFICE SUPPLY CO.**
211 N. Cuyler 669-3353
- SHOOK TIRE CO.**
1800 N. Hobart 665-5302
- LEWIS SUPPLY CO.**
Tools and Industrial Supplies
317 S. Cuyler 669-2558
- DIXIE PARTS & SUPPLY**
417 S. Cuyler 665-5771
- CLAYTON FLORAL CO.**
410 E. Foster 669-3334
- SOUTHWESTERN PUBLIC SERVICE**
315 N. Ballard 669-7432

- FURR'S CAFETERIA**
Coronado Center 665-3321
- COSTON'S HOME OWNED BAKERY**
Coronado Center 669-7361
- H.R. THOMPSON PARTS & SUPPLY**
312 W. Kingsmill 665-1643
- ADDINGTON'S WESTERN STORE**
Western Wear For All The Family
119 S. Cuyler 669-3161
- TEXAS FURNITURE CO.**
"Quality Home Furnishings - Use Your Credit"
210 N. Cuyler 665-1623

- FORD'S BODY SHOP**
111 N. Frost 665-1619
- MONTGOMERY WARD & CO.**
Coronado Center 669-7401
- MARGO'S LAMODE**
Formerly Bentley's
113 N. Cuyler 665-5715
- PAMPA PARTS & SUPPLIES INC.**
"Automotive Parts & Supplies"
525 W. Brown 669-6877
- FURR'S FAMILY CENTER**
1420 N. Hobart 669-7441
- PANHANDLE SAVINGS & LOAN ASSOCIATION**
320 Cook 669-6868

GRAHAM'S FURNITURE SALE

1415 N. HOBART ST.

665-2232

SHOP DAILY

9 AM - 6 PM



SEE GRAHAM'S FOR THE LOWEST POSSIBLE PRICES ON NEW

● FURNITURE
● BEDDING

WE ALSO HAVE LOW LOW PRICES ON REPOSITIONS, DISCONTINUED AND FREIGHT DAMAGED MERCHANDISE.

Super Savings

ON GOOD REPOSITIONS, DISCONTINUED ITEMS, FREIGHT DAMAGED ITEMS. BEFORE YOU BUY ANYWHERE CHECK OUR PRICES AND STOCK

3 Cushion
QUEEN SIZE SLEEPER
HERCULON COVER **\$309**

3 Cushion
CONTEMPORARY SOFA
GOLD VELVET COVER **\$320**

DARK PINE BEDROOM SUITE
TRIPLE DRESSER, MIRROR CHEST, BED, NIGHTSTAND **\$433**

DARK PINE BUFFET AND HUTCH
SLIGHT DAMAGE **\$250**

SOLID MAPLE BUNK BED
COMP. WITH LADDER AND RAIL **\$119**

WHITE SOLID OAK TABLE AND 4 CHAIRS
AND CHINA **\$559**

GOLD VELVET SOFA AND LOVE SEAT
MATCHING CHAIR \$129 **\$499**

6 PIECE KING SIZE RIVERSIDE BEDROOM SUITE
TRIPLE DRESSER, 2 MIRRORS DOOR CHEST, KING SIZE HEADBOARD, NIGHTSTAND ALL WOOD SPANISH STYLE **\$699**

ONE ONLY DINING ROOM TABLE
HARDROCK MAPLE **\$75**

2 CUSHION SLEEPER
by KROEHLER **\$340**

QUEEN SIZE BEDROOM SUITE
By RIVERSIDE ALL OAK **\$825**

8 PLACE GUN CASES
BY HARRISON **\$245**

NEW SHIPMENT-- BENT WOOD ROCKERS **\$105**

5 PIECE BEDROOM HARRISON RUSTIC OAK
DOUBLE DRESSER, MIRROR CHEST, REG. OR QUEEN BED, NIGHTSTAND **\$599**

3 ONLY CEDAR LINED TRUNKS
BRASS, WHITE, BROWN FROM **\$195**

PROWING GAME SET
TABLE 4 CHAIRS LIKE NEW **\$399**

NEW SHIPMENT ARTIFICIAL PLANTS
1/3 OFF ON ALL FROM **\$39**

ONE GROUP THROW PILLOWS **\$5**

BERKLINE RECLINERS
ALL ON SALE FOR CHRISTMAS GIFTS MANY STYLES AND COLORS, ALL FULLY GUARANTEED FROM **\$98**

15 ODD LOVE SEATS
VELVET, NYLON, HERCULON VINYL COVERS. ALL AT RIDICULOUS SALE PRICES
START AT **\$169**

SPANISH STYLE 3 CUSHION SOFA
BERKLINE BLACK VINYL **\$229**

DARK PINE CAPTAIN BED
With plenty storage space. 2 only. Close Out **\$188**

BROWN VINYL SOFA, CHAIR OTTOMAN CLOSE OUT **\$479**

KROEHLER SOFA AND LOVE SEAT
HEAVY VELVET COVER **\$699**

GREEN VELVET SWIVEL ROCKER
By KROEHLER SLIGHT DAMAGE **\$119**

ONE ONLY DRESSER AND MIRROR
By BROYHILL HONEY PINE **\$229**

1/2 PRICE ITEMS
2 CHESTS \$100
TABLE LAMPS \$15
OCCAS. TABLES \$40
LARGE PICTURES \$20
SWAG LAMPS \$25

EARLY AMERICAN SOFA AND CHAIR
By KROEHLER **\$476**

GOLD NYLON QUEEN SLEEPER
By MASTERCRAFT **\$399**

SPANISH STYLE DINING ROOM CHAIRS
ODDS AND ENDS FROM **\$25**

3 ONLY OCCAS. CHAIRS
1/2 PRICE **\$75**

MAPLE TABLE & CHAIRS
GOLD FINISH **\$315**

8 PIECE LIVING ROOM SUITE
ALL FOR ONLY **\$529**

TRUNDLE BEDS
COMPLETE WITH POP UP UNIT 2 MATTRESSES **\$188**

2 ONLY ROLL TOP DESKS
PECAN OR PINE **\$199**

BRASS OR VELVET HEADBOARDS
START AT **\$39**

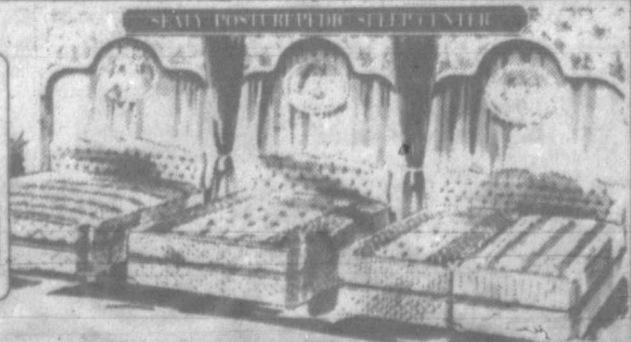
ALL WOOD SEWING ROCKERS
BEAUTIFUL FINISH **\$95**

WOODTRIM 3 CUSHION SOFA
NYLON COVER **\$299**

KING SIZE BEDSPREADS **\$25**

SALE ENDS TUESDAY

SHOP OUR SEALY SLEEP SHOP
TWIN SIZE MATT. AND BOX SPRING \$95.00
REG. SIZE MATT. AND BOX SPRING \$149.00
QUEEN SIZE MATT. AND BOX SPRING \$189.00
KING SIZE MATT. AND BOX SPRING \$239.00
SPECIALS PRICES ON POSTURMEDIC SETS



Farm roundup

Want to save on food? try eating at home

By BRIAN B. KING
Associated Press Writer
WASHINGTON (AP) — Eat at home if you want to save money on food, says a new Agriculture Department look at the nation's food market.

For all of 1976, the department's Outlook and Situation Board says, prices for meals and snacks in restaurants and fast-food outlets will average about 7 per cent higher than the 1975 average.

At the same time, prices of store-bought food for eating at home should come out about 2.5 per cent higher, it said.

Labor and utility cost increases are the principal culprits in both cases, officials said, noting that the farm value of foods produced on U.S. farms is expected to average 4 per cent below last year's average.

Constantly rising prices for coffee, an imported food, throw the scales off a bit, but the board said:

"Increases in retail food prices this year mainly reflect wider farm-to-retail spreads as well as the sharply higher prices for coffee and fishery products."

The USDA forecasters made no changes in this latest report in their main prediction: an over-all 1976 average increase in retail food prices of 3 per cent, including levels in these closing months only 1 or 2 per cent above late-1975 levels.

Next year, the outlook is still for prices 2 to 4 per cent above the January-June 1976 averages.

Large supplies of both crop-derived food supplies and meat are dampening retail price increases, the board said.

The portion of the price attributed to middlemen's costs and profits is expected to average 5 per cent higher this year than last, "well under the increases of the previous two years and a little below the rate of (general) inflation" which has been around 6 per cent.

The increases coming this winter will be due to the coffee situation, higher prices for fresh vegetables "and away from home eating," the analysis said.

The improved economy's spurring of consumer demand and the large food supplies are pushing American consumption rates to near the 1972 record, the board added. A 5 per cent rise in the amount of red meat eaten per person and a 9 per cent rise in poultry consumption are primarily responsible.

In the months of July through September, total spending for food at home and away from home rose at about the same pace, the report said.

However, compared to a year earlier, the at-home spending was up 5.5 per cent while the

eating-out expense was up 11 per cent.

The Agriculture Department says it will establish by Nov. 20 the new Federal Grain Inspection Service required by the compromise grain inspection overhaul legislation signed two weeks ago by President Ford.

A new independent agency was one of the provisions of the bill fought hardest by top USDA officials. It was an item of special concern to several Democratic senators who felt the misgrading and bribery scandals at Gulf Coast ports demanded major changes in the inspection system.

A new agency was a result of the compromises that went into producing a bill the Senate and Ford both would accept. USDA officials said this week that the agency initially will be staffed by the 778-person corps of supervisory inspectors now under the diverse Agriculture Marketing Service.

Plans are still in the making

to recruit more inspectors, weighers and supervisors, the department said. Employees of private inspection firms, which the new law bans in some places, will be offered jobs with the new agency, it added.

Inspection services at Texas and Louisiana ports, now largely run by the USDA-licensed private firms sometimes connected to grain traders, will be federalized.

State authorities on the West Coast and exports of grain from them account for about 75 per cent of the U.S. total. In Mississippi, Alabama, Wisconsin, Minnesota, Florida, South Carolina and Virginia can apply to handle the inspections themselves.

The amount of poultry slaughtered for the consumer market continued to climb in September, the Corp Reporting Board says.

The first domestic jet airline service was started between New York and Miami, Dec. 10, 1958.

'Happy Days' still top

LOS ANGELES (AP) — Three canceled new series — NBC's "Gemini Man" and ABC's "Mr. T. and Tina" and "Cos" — ended their television runs last week with ratings of the kind that caused their demise.

All wound up among the lowest-rated shows in the week

ending Oct. 31, according to A. C. Nielsen Co. audience estimates made public Wednesday.

For the sixth straight week, ABC came out No. 1 in the weekly ratings averages, its "Happy Days" again the nation's top-rated show. The program was seen in 21.2 million homes.

In contrast, the week's lowest-rated program — CBS' now-canceled "Spencer's Pilots" — was seen in about 5.5 million homes, according to Nielsen estimates.

The Nielsen figures said the 20 most-watched shows last week were "Happy Days," "Charlie's Angels," "Bionic Woman" and "Laverne and Shirley" (ABC); "Bob Hope Special" (NBC); "Baretta" and "Six Million Dollar Man" (ABC); "All in the Family" (CBS); "Amelia Earhart" (NBC); "M-A-S-H" and "The Waltons" (CBS); "Live and Let Die" (ABC); "Disney" (NBC); "Alice" and "Hawaii Five-O" (CBS); "Welcome Back, Kotter" (ABC); "One Day at a Time" and "Maude" (CBS); "NBC Saturday Movie"; and "NFL Monday-Night Football" (ABC).

Pampa men take course

Two Pampa men have completed courses in the Prevention of Oil and Gas Well Blowouts at the IADC Petroleum Industry Blowout Control Center in Norman, Okla.

Those who received diplomas were Keith Hunt and Richard Bright.

The courses were held in cooperation with the International Association of Drilling Contractors.

Toot 'n Totum

201 Brown No. 41 Hobart & Alcock No. 43
859 Frederic No. 42 500 N. Duncan No. 44

Tender Crust
BREAD
large loaf
45¢

Dairy Gold
MILK
one gallon
\$1.69

Store Nos. 42 & 43 Open 24 hrs. daily
FOUR CONVENIENT LOCATIONS

2 DAY SALE
Saturday Nov. 6 Monday Nov. 8

WAREHOUSE FASHION SALE

at our

WAREHOUSE BUILDING 1617 N. HOBART

Many Items
1/2 Price
OR LESS

SAVE
on Selected
FALL '76 FASHIONS!

Shop Our
\$1 to \$3
BARGAINS!

Hi-Land Fashions

Warehouse-1617 N. Hobart