

THE BORDEN STAR

Volume XXXI

August 28, 2002

Serving the Counties of Borden, Dawson, Garza, Howard, Lynn & Scurry

Panhandle South Plains Fair getting ready to Kick-off, Sept. 20 - 28.

Lovers of small, large and in-between animals should have plenty to view over the nine-day course of the Panhandle-South Plains Fair, set for Sept. 20-28, reports Herb Higgs, manager. According to Higgs approximately \$115,000 in premium money will be on the line in 18 different competitions featuring animals ranging from a junior steer show to rabbit contests.

Kicking off junior livestock show activities opening Saturday, Sept. 21, is a Junior Market Goat Show at 10 a.m. in the Swine Barn Arena. Junior swine exhibitors will have their livestock judged in a 10 a.m. Sunday, Sept. 22nd, contest in the Swine Barn. Junior shows at the fair are open to 4-H and FFA students only and Higgs reported that entries have closed for the junior livestock shows and the open sheep, goat, dairy and beef cattle show.

A Harness Driving Show, open to all horse, mule or pony drawn carts, is slated for Saturday, Sept. 21, at 9 a.m. and Sunday, Sept. 22, Barrel Races are set to begin with 10 a.m. exhibition races. Barrel races featuring

children 7 and under will begin Sunday afternoon activities at 1:30 p.m. Barrel Racing and Harness Driving competitions will take place in the Livestock Pavilion.

Poultry and pigeon competitions open to juniors and adults will round out opening weekend animal competitions with shows set to begin at 9 a.m. Saturday morning, Sept. 21st. and continue Sunday, Sept. 22nd, in the Pigeon, Poultry and Rabbit Barn. Poultry and pigeons will be on display until their shows conclude Monday, Sept. 23. Goats and swine will be on display in animal barns from Friday night, Sept. 20 until judging is completed Saturday and Sunday.

Monday, Tuesday and Wednesday, Sept. 23 - 25, dairy cattle, beef cattle, Southdown sheep, Rambouillet sheep shows plus

sheep dog trials and championship bull riding take center stage at the fair. These competitions are open to youth and adult exhibitors. Judging for beef cattle is set to begin Monday, Sept. 23, at 9 a.m. and conclude about 3 p.m. Dairy cattle will be judged in classes Tuesday, Sept. 24, starting at 9 a.m. Both shows are judged in the Livestock Pavilion. Cattle competing in the open and junior dairy shows will take part in milking demonstrations, open to the public, each evening at 5 p.m. in the milking parlor, located west of the cattle barns, during the dairy cattle shows. Cattle will leave the cattle barns follow-

Cont. from pg. 2



Photo Day!

Friday, Aug. 30th.

Senior Portraits,
K-11th. Class Pictures, Football (HS & JH)
Cheerleaders (HS & JH), Class Officers

Assessment notices to arrive soon

Boll Weevil eradication assessment notices were recently mailed to cotton producers in the Permian Basin eradication zone.

The assessments are based on information cotton

producers provide the Farm Service Agency when they certify their crops. If growers find an error in the information on their billing, they will need to correct the information at their local FSA office, which will forward the corrected information to the Foundation.

A 2 percent discount is available to growers who pay the full assessment by Sept. 10.

Growers who certified failed acres by the final certification date for their area are eligible to receive a credit for those acres as long

as the fields are kept free of cotton capable of supporting boll weevil feeding and reproduction. Failure to keep the fields clean will result in the full assessment being due.

For more information contact your local district office or call the Assessments Department in Abilene at 866/672-2800.

The Texas Boll Weevil Eradication Foundation is a nonprofit, grower-initiated and funded organization dedicated to eliminating the cotton boll weevil from the state in the most cost-effective and environmentally responsible manner possible.



Meet the Coyotes 2002



Friday, August 30th, - 6:00 p.m.
Scrimmage against Jayton
Practice Field

Immediately following the scrimmage, all the High School students will be introduced.

Everyone is asked to bring either Homemade Ice-cream, or brownies, cookies & goodies to enjoy. Don't forget to bring your lawn chairs and enjoy watching the Coyote scrimmage.

Let's Go Coyotes!

Opportunity to Help Former BHS Student and Family

Donations, in lieu of flowers or gifts, are being accepted to help Chris (Rocky) Tubb with medical expenses.

Rocky is the husband of Kristin (Monger) Tubb, formerly of the Vealmoor Community and a 1992 graduate of BHS.

He was injured in an accident in July and remains in critical condition in the ICU Trauma Unit of Breckenridge Hospital in Austin.

Rocky did not have short-term disability insurance, and his long-term disability will not activate for six months.

Rocky and Kristin live in Austin, where Kristin teaches school. The couple has a two-year-old son, Evan.

Donations in the form of a check or money order may be made to the following: *Tubb Family Benefit Account, c/o Linnea Bladerach, 1502 Miami Drive, Austin, Texas, 78733 or to Wells Fargo Tubb Family Benefit Account, c/o Kristin Tubb, account #526 736 4327.*

In the spirit of loved ones, we rally to show our support in times of need and crisis. Please keep Rocky, Kristin, and Evan in your prayers. God bless!

Parents Club News

The Parents Club held their first meeting for 2002-2003 on, Monday, Aug. 19th in the School Conference room. Election of officers were held and discussion of Parents Club projects were discussed.

Elected Officers for 2002-2003
 President – Tondra Herridge
 V. Pres. – Jana Underwood
 Treasurer – Lee Roberts
 Reporter – Peggy Pigford

Elected Room Parents

- K - Needed
- 1st - Peter & Kerri Benavidez
- 2nd - Needed
- 3rd - Sonja Fields and Metta Tyler
- 4th - Tammy Valentine and Donelle Hensley
- 5th - D'Linda Chapman, and Metta Tyler
- 6th - Holly Benavidez, and Rhonda Harding
- 7th - Kip Wallace and Carol Wilson
- 8th - D'Linda Chapman and Rhonda Harding
- 9th - Brandy Brooks and Peggy Pigford
- 10th - Kip Wallace and Carol Wilson
- 11th - Brandy Books and

Sherry Gass
 12th - Donelle Hensley and Ann Culp

The Kindergarten class and 2nd grade class are in need of room parents. If you can help with a class please call Tondra Herridge at 756-4487.

Future Projects

- Crispy Creme Doughnut Sale scheduled for September 14, 2002.
- Homecoming Dance scheduled for after the game on October 4, 2002.
- Fall Festival scheduled for October 19, 2002.

Coyotes Gain Momentum, Finish Strong in Opening Scrimmage

It's always a lot more fun to line up against someone else instead of your teammates.

Friday's season-opening

School Menu Week Of:

Sept. 2nd – 6th, MONDAY:

NO SCHOOL

TUESDAY: Corn dogs, salad, pork & beans, cake & milk. **Breakfast:** Breakfast burrito, fruit juice & milk.

WEDNESDAY: Chicken nuggets, green beans, potatoes, hot rolls, fruit & milk. **Breakfast:** Oatmeal, toast fruit juice & milk.

THURSDAY: Spaghetti, spinach, corn, garlic toast, fruit & milk. **Breakfast:** Pancakes, fruit, & milk.

FRIDAY: Hamburger, salad cup, tater tots, cookies & milk. **Breakfast:** Fruit-A-roo, fruit juice & milk

scrimmage against Aspermont provided that chance for the 2002 BHS football team.

After a sluggish first offensive series against the Hornets (who already had one scrimmage under their belts), the Coyotes regrouped, revived, and wore down the bigger Aspermont team.

The Coyotes scored three times, one a 54-yard pass play from T.J. Sharp to Derek Rodriguez.

Sharp had another strike that ended up in the endzone.

The third score came on a

run by to make it a 3-3 scrimmage tie.

Defensively, the Coyotes wore the Hornets down.

Aspermont was held to only one first down in their second and third series of downs, and the Coyotes created three fumbles.

This Friday the Coyotes host Jayton in their second and final scrimmage before opening the regular season September 6 at Meadow.

Scrimmage time is set for 6 p.m. on the practice field followed by "Meet the Coyotes."

Borden Coyote Football Schedule 2002-2003

| | | | |
|----------|-------------|-------|------|
| Aug. 30 | **Jayton | Here | 6:00 |
| Sept. 6 | Meadow | There | 7:30 |
| Sept. 13 | Ropes | Here | 7:30 |
| Sept. 20 | Ira | There | 7:30 |
| Oct. 4 | ***Highland | Here | 7:30 |
| Oct. 11 | *Klondike | Here | 7:30 |
| Oct. 18. | *Sands | Here | 7:30 |
| Oct. 25 | *Dawson | There | 7:30 |
| Nov. 1 | *Loop | Here | 7:30 |
| Nov. 8 | *Grady | There | 7:30 |

*District Games **Scrimmages ***Homecoming
 Varsity Head Coach: Bobby Avery
 Assistant Coaches: Trey Richey & Kevin James
 Band Director: Hector Aguero
 Cheerleaders: Amanda Boucher, Shayla Gass, LaSahe Johnson, Emily Mayes, Cassidy Rinehart & Brandy Shafer
 Mascot: Sunni Ship
 Cheerleader sponsor: Lori Stephens

Jr. High and JV Football Schedule

| | | | | |
|----------|---------------|-------|----|------|
| Sept. 5 | Meadow | Here | JV | 6:00 |
| Sept. 12 | Ropes | There | JH | 6:00 |
| | | | JV | 7:30 |
| Sept. 19 | Ira | Here | JH | 6:00 |
| | | | JV | 7:30 |
| Sept. 26 | Wellman-Union | Here | JH | 6:00 |
| | | | JV | 7:30 |
| Oct. 3 | Grady | Here | JH | 6:00 |
| | | | JV | 7:30 |
| Oct. 10 | Klondike | There | JH | 6:00 |
| | Sands | TBA | JV | TBA |
| Oct. 17 | Sands | There | JH | 6:00 |
| | | | JV | 7:30 |
| Oct. 24 | Dawson | Here | JH | 6:00 |
| | Highland | There | JV | 7:30 |
| Oct. 31 | Loop | There | JH | 6:00 |
| | Grady | TBA | JV | TBA |

Cheerleaders: Kalli Poole, Lindsey Stamper, Sydney Shipp & Rachel Wilson. Sponsor: Cindy Herridge

NO SCHOOL MONDAY, SEPT. 2ND. LABOR DAY HOLIDAY

THE POWER of Excellence

It's the driving force behind everything we do. We are a proud sponsor of all our area football teams: Lamesa, O'Donnell, Borden County, Sands, Dawson, Klondike

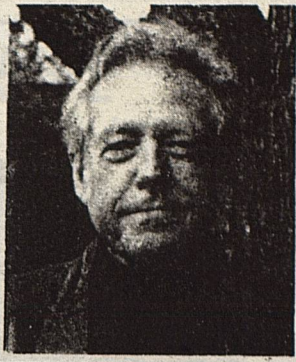
THE FIRST NATIONAL BANK OF O'DONNELL



Texas Stories

A showcase of the Texas Spirit

Tumbleweed Smith
Part owner of Texas



Tall Trees, the London Bridge and The Best Meal Ever

Vacation, Arizona, Lake Havasu City. Boiling Hot. Slap-you-in-the-face hot! Over 120 degrees, no breeze. Don't go there in the summer. Go there in the winter when the temperature is between 40 and 80.

We didn't stay long at Lake Havasu City. We went there to see the London Bridge which was dismantled at the Thames in London and transported to the Arizona Desert. London Bridge was falling down in 1962, so the British government decided to sell it. An American, Robert McCulloch bid \$2,460,000 and got it. Shipping and reconstruction cost an additional 5 million dollars.

When you drive over it, it seems like just a plain old bridge. And you say, "Is that all there is to it?" But if you get out and look underneath, you see the huge granite stones and the graceful arches planted deep into lake water. The majesty of the bridge is under the traffic lanes.

We drank some iced tea near the bridge and continued our journey.

The purpose of the trip was to deliver our son BZ's Star Wars collection, which we had been keeping since he was in high school. It filled our Explorer. Our son lives in San Francisco. We visited cities on Highway 1 on the way: Cambria, Big Sur, Carmel and Monterey. At Big Sur, we ran across the most expensive gasoline I've ever bought; \$2.62 per gallon (87 octane). We didn't buy much.

BZ and his wife Margaret took us to a Sushi bar. We pleased ourselves for just

about as long as I could take it. We hung around their place for a couple of days, rode bicycles around Lake Merced, did some tourist stuff, then headed to Mendocino where we had reservations at a spa resort.

We ended up staying at Little River, just a couple of miles from Mendocino. One evening we went to the Little River Inn and met some people who wanted to know what we were doing in that part of the world. We told them we wanted to see some redwoods. It just so happens one of those guys was a forester and he directed us to the two tallest trees on earth. They stand nearly 350 feet high and are in an obscure place called Montgomery Woods State Park. Awesome! Groves of giant trees welcome the few guests who walk the trail a mile or so into the forest to see them.

For our last night in California, we chose the restaurant at Stevenswood for dinner. I can hardly talk about the experience without getting mushy. It was just the best. Susan had pine nut crusted salmon, I had tuna seared on the outside, purple in the middle. The first bite sent shivers through my taste buds. So did the last bite. Impeccable service, the perfect wine, an apricot desert that looked like fireworks on a plate ... it all just sent me! Unforgettable.

On the way home we stopped in Winslow, Arizona and ate supper at the restored Harvey House. At a Winslow gas station, I asked a cashier where the nicest restaurant in town was located. She told

Panhandle South Plains Fair

Cont. from pg. 1

ing the judging Wednesday afternoon.

Sheep dog trials are scheduled for Monday and Tuesday evenings, Sept. 23 & 24, in the Livestock Pavilion and competition is set to begin at 6 p.m. Canines will be competing under rules established by the Texas Sheep Dog Association.

An open Boer Goat show, sanctioned by both the International Boer Goat Association and the American Boer goat Association, is slated for Tuesday, Sept. 24, at 9 a.m. Wednesday, Sept. 24, an open Southwest Regional Southdown Show is scheduled for 9 a.m. and an open Rambouillet Sheep Shows set to begin at 2 p.m. All shows will be judged in the Swine Barn.

Wednesday night, Sept. 25, at 8 p.m. in the Livestock Pavilion Championship Bull Riding rolls into town for an evening of thrills and spills featuring some of the best pro and semi-pro bull riders in the Southwest. Bull riders will be competing for prize money, a belt buckle and championship title.

Bunnies of all sizes and

colors will invade the fair grounds Wednesday, Saturday, Sept. 25-28, for a rabbit show set to be judged beginning at 9 a.m. Thursday, Sept. 26, in the Pigeon, Poultry and Rabbit Barn. The rabbit show is sanctioned by 16 major rabbit breed associations.

Higgs reported that junior shows for lambs, steers and beef heifers Sept. 28 will conclude animal competitions at the fair with shows at 9 a.m. Saturday morning for lambs in the Swine Barn and beef heifers in the Livestock Pavilion. A Junior Steer Show at 12 noon in the Livestock Pavilion will officially close out livestock shows for the 2002 fair.

For those little cowboys and cowgirls not quite big enough to compete with large animals, a children's petting zoo, located in the red barn building, will be open throughout the fair. The zoo features animals suitable for young children to pet and feed with food purchased at the zoo. Lubbock 4-H Clubs sponsor and help with the animals.

Higgs stressed that anyone requiring information on deadlines for entering rabbit, poultry or pigeon shows, or for participating in bull riding, sheep dog trials, harness driving or barrel racing should call the fair office at 806/763-2833 for assistance.

A New School Year: Starting Off Healthy

As parents know, the beginning of a new school year requires a great deal of advance work, but there is more to it than buying new supplies and clothing. Preparing for students' health needs is an important part of the process.

"Children need to feel their best in order to learn, and schools need to be able to provide for students' daily health issues as well as special needs, accidents and emergencies," says Louis Z. Cooper, MD, president of the American Academy of Pediatrics (AAP). "So it is well worth the time it takes to make sure each child's health and medical requirements are anticipated and covered for the upcoming school year."

Most schools provide one or more health forms that need to be updated each year, and these are a good starting point for parents. They should be completed promptly. Of course, this may require scheduling a well-child visit with the family's pediatrician that includes any immunizations required for school entry, as well as a sport physical if one is needed.

Parents and pediatricians in some parts of the country have encountered shortages of certain vaccines. Fortunately, public health officials anticipate that the vast majority of these will be resolved in time for the start of school this year.

In case of accidents or crisis situations, emergency information must be kept up-to-date. Most schools provide appropriate forms for basic contact information. But some children have conditions and special needs that require additional communication with school health personnel. A form designed for this purpose is available at <http://www.aap.org/advocacy/blankform.pdf>

In addition, children with chronic illnesses may require a written, individual health plan that the school should follow, based on directions



from the child's parent and pediatrician. This will ensure that proper steps are taken if the child develops symptoms while at school, and that his or her activities are not restricted unnecessarily.

"Sometimes a child's health changes from one school year to the next, and these changes might affect his or her school day," says pediatrician Howard Taras, MD, chair of the AAP Committee on School Health. "It is important for parents and school staff to discuss any new medications, allergies or other concerns to be sure they agree on how these will be handled." Dr. Taras also reminds parents to ensure arrangements have been made on or before the first day of classes for the school to have in stock any medication the student needs.

Once the school bell rings on that first day of classes, children will be spending many hours each week "on campus." Discussing health issues before the start of the year helps children, parents and school staff to ensure students' health and safety all year long.

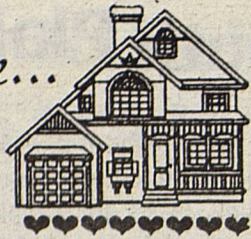
**If you suspect a
STROKE or
HEART ATTACK
Call the
BORDEN CO. EMS
806/759-5111
Immediately
DON'T
HESITATE!**

me about a Mexican Food place. Enroute, we noticed the Harvey House. It was so inviting we ate there. We would have spent the night there, but it was full. Maybe next time.

The news on arrival at home: BZ and Margaret are expecting!

Heart and home...

By Julie D. Mumme
Borden County Extension Agent -
Family and Consumer Sciences



Extension programs serve people of all ages regardless of socioeconomic level, race, color, sex, religion, disability, or national origin. The Texas A&M University System, U.S. Department of Agriculture, and the County Commissioners Courts of Texas Cooperating.

Packing a Safe Sack Lunch

The school lunch that children take to school or even the sack lunch you pack for yourself or spouse for work may be the reason they come home with stomach cramps, diarrhea, or even vomiting. Their illness might actually be caused by a "food bug" instead of a "flu bug."

Packing a lunch that will be stored at room temperature and eaten many hours later requires special precautions. Harmful bacteria that cause foodborne illness grow best at room temperature. Temperatures between 40 and 140 ° F, also known as the "danger zone," can cause these harmful bacteria to multiply and cause illness.

Bacteria that cause foodborne illness need moisture, the right temperature, a food source like protein, and time. Any moist protein food is especially susceptible. Foods that are handled a lot during preparation pose an extra risk because bacteria from hands can spread to them. These foods include protein salads such as ham, chicken, or egg.

To avoid spreading harmful bacteria to food, maintain a clean area when preparing sack lunches. Make sure utensils,

hands, work areas, and food containers are clean. Remember to wash the lunch box or thermos after each use. If using a paper bag, use a bag made for food. Do not use grocery bags because they may be contaminated from insects or food leakage.

Keep cold lunch foods cold. Store lunches in a refrigerator. If one is not available, insulated lunch boxes keep foods colder than paper bags. A freezing gel, ice, or frozen drink placed in an insulated lunch box will keep food chilled. Advise children to place their lunch in a cool place out of direct sunlight.

Keep hot lunch foods hot. Use a thermos for hot foods such as chili, soups, and stews. Use a clean thermos with a tight fitting lid. Rinse the thermos with boiling water and pour steaming hot food into the thermos. The food should still be hot at lunchtime.

If you choose to pack lunchmeat sandwiches, make sure to keep them cold. When purchasing lunchmeat, pay close attention to "use-by" dates. These products can harbor bacteria that can grow slowly, even at refrigerator temperatures.

Plan a menu of properly prepared and healthy foods. Foods that look or smell sour may be contaminated with bacteria that cause foodborne illness. Don't pack leftovers that have been in the refrigerator for an extended time and don't re-pack perishable lunch items that have not been eaten. Throw them away.

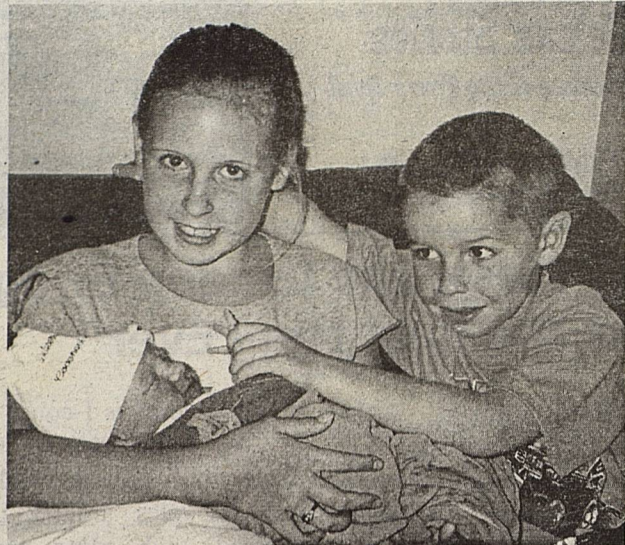
Foods that don't need to be kept hot or cold are a safe choice when there is no cold storage to keep foods chilled. These foods include peanut butter; dried products such as beef jerky; non-perishable cheese and cheese spreads; canned products that can be opened and eaten immediately such as meat, poultry, and seafood; fresh fruits and vegetables; and breads, cereals, and nuts. Ready-to-eat foods in individual servings such as puddings or canned fruits make a nice addition to sack lunches.

For more information about packing a safe sack lunch, contact the Texas Cooperative Extension Office - Borden County at (806)756-4336.

**Wanted to Buy
Treadmill
Call 756-4364**

*For all your School and
County information.
Subscribe to the
Borden Star today!
Only \$12.00 a year
Box 137 - Gail, TX*

It's A Boy!



Chelsea & Colton Stephens are proud to announce the arrival of their baby brother:

Dylan Jase

Born: July 22, 2002 - 8:24 a.m.

Weight: 8 lbs. - 21 inches long

Parents:

John & Lori Stephens

Grandparents:

Richard & Lenda Vogler

Steve & Carolyn Stephens

Great-Grandparents

Herschell & Frankie Currie

Dale & Bonnie Hein



LAMESA BUTANE CO.

ARLEN MORRIS, Mgr.

Long Distance
1-800-772-5201

Local
872-5200
872-5356

P.O. Box 382 — 501 South Lynn — Lamesa, Texas 79331

Good Neighbor Review of Post

Holly's Drive In

'Since 1971'

This restaurant is located at 614 S. Broadway in Post and is one of the finest and most popular in this section. They have gained a name that has spread over a large area as a place where both the local and traveling public can well satisfy their demands in good eating. The menu consists of many tempting dishes served with courtesy and a pleasant smile. It is indeed refreshing to find such an up-to-date restaurant as this. It is unsurpassed by any eating place in the way of fast service and good food. Here you will find inside dining in nice surroundings or if you wish they have curbside service where by you may eat in the convenience of your own car. Or if its take-out you want, you may phone 806/495-2704 and they will bring it out to you when you arrive. Everyone will find a pleasant place to visit while in Post, whether working or shopping for the day.

It's a Girl!

Kate and Ryan Davis
of Spearman wish to announce
the birth of their daughter



Mary Margaret

Maggie was born at 4:17 p.m. on
August 1, 2002 in Amarillo.
She weighted 7 pounds, 11 ounces
and was 20-1/2 inches long

Grandparents are:

Bill & Mary John Phinizy of Gail, TX

Liz Hohertz Metcalf & Tom Metcalf of Ft. Collins, Co.
and the late Mike Davis of Panhandle, TX.

Mu
We

Loch
James
of Bi
weddir
2002,
Church
McMe
She i
and L
Spring
daught
Musgro
Herman
Ledbet
He is
Margar
Spring
Betty H
and I
Llano.
The
marriag
Musgro
A-Line
hand be

of the b
Honor.
Robin I
Ringb
Whiteh
Sierra
Palmer.
John
Man &
Troy R
Cand
Brionna
Roberts
A re
College
Fellow

The E
PUBLIC
is pul
Christ
week
the B
137,
Second
Gail, T
POSTM
of Add
P.O. B

Musgrove and Darling Exchange Wedding Vows

Lochie Beth Musgrove and James Edward Darling, both of Big Spring exchanged wedding vows August 10th, 2002, at College Baptist Church with the Rev. Ken McMeans officiating.

She is the daughter of Tom and Liz Musgrove of Big Spring and the granddaughter of Jerry and Dell Musgrove of Big Spring and Herman and Christeen Ledbetter of O'Donnell.

He is the son of Jimmy and Margaret Darling of Big Spring and the grandson of Betty Findley of Big Spring and Dorothy Darling of Llano.

The bride was given in marriage by her father, Tom Musgrove and wore a satin A-Line gown that featured hand beading and cut out lace detailing, a scoop neck and short cap sleeves highlights.

She carried a bouquet of bluebonnets, sunflowers, daisies and other wildflowers. Vocalists/instrumentalists were Rhonda Harding, Joan Harmon, Meline Brewer, Shelly Choate and Clarence Palmer

Jacqueline Musgrove sister of the bride served as Main of Honor. Bridesmaid was Robin Dickens.

Ringbearer was Gage Whitehead. Flowergirls were Sierra Huitt and Kylie Palmer.

John Peters, served as Best Man and groomsman was Troy Roberts.

Candlelighters were Brionna Palmer and Casey Roberts.

A reception was held at College Baptist Church Fellowship Hall.



Mrs. James Edward Darling
...nee Lochie Beth Musgrove

The bride's cake was three tier and had two satellites and was decorated with daisies.

The satellites were topped with country bouquets.

The white ribbon icing was in the cornelli lace design.

The groom's cake was three tier chocolate cake covered with milk chocolate icing and decorated with fresh strawberries.

The bride is a 1999

graduate of Big Spring High School and a 2001 graduate of Howard College.

She is a senior at Tarleton State University.

The groom is a 1998 graduate of Big Spring High School.

He is presently employed by the Stephenville Water Utilities Department.

The couple will make their home in Stephenville.

Meeting Scheduled

A meeting is scheduled for **Monday, September 9th @ 7:00 p.m.** in the Borden Co. Courthouse, to begin preparations for the Lighting of the Star on Gail Mountain.

Everyone in Borden County that is interested in keeping this Borden County Christmas Tradition continuing, is invited to come and help with the planning of this special event.

Your HELP and INPUT is Needed!



50th Wedding Anniversary Celebration



Don and Nelva Jones will celebrate their 50th Wedding Anniversary on September 7th, 2002. They were married on September 6th, 1952, at the First Presbyterian Church of Snyder and have lived in the Fluvanna Community since their marriage. Their parents were Mert and Ruby Jones and Bill and Jimmie Herring.

Don & Nelva will be joined by their children, Max and Janes Jones of Fluvanna, Donnelle and Randy Hensley of the Plains Community in Borden County, and Carla and Grant Sandusky of Roscoe and their 9 grandchildren in a celebration at the Wagon Wheel Ranch in Snyder.





SNYDER LANES

FALL LEAGUES
NOW FORMING

CALL US 573-2811

MEN'S
THURS 7PM

WOMEN'S
WED. 7PM

WE NOW HAVE
**"AUTOMATIC
SCORE
KEEPERS"**

KID'S
SAT. 10AM

CO-ED
TUES. 7PM

SIGN UP NOW
573-2811

"Free Shoes" to Borden County Residents

**In Case of Emergency Call:
Borden County EMS
806/759-5111**

The Borden Star (USPS or PUBLICATION NO. 895-529) is published weekly except Christmas and New Year's week for \$12.00 per year by the Borden Star, P.O. Box 137, Gail, Texas. 79738. Second-class Postage paid at Gail, Texas.
POSTMASTER: Send Change of Address to the Borden Star, P.O. Box 137, Gail, TX 79738

Bake a Special Lunchbox Treat

Make a delicious treat in just minutes with the ease of **Bridgford Frozen Bread or Roll Dough**. Simply let this convenient yeast dough thaw and you are ready to go. To make *S'mores Treats*, **Bridgford Frozen Bread Dough** is divided into small portions, which are pressed or rolled into small rounds. These rounds are topped with marshmallows, chocolate chips, and peanuts. Kids love to work with yeast dough. Give your little bakers a ball of **Bridgford Dough** and watch the creative fun begin.

S'mores Treats

12 Bridgford White or Parkerhouse Rolls, thawed, or 1 loaf **Bridgford Frozen Bread Dough**, thawed
¼ cup melted butter or margarine
¼ cup miniature marshmallows
¼ cup semi sweet chocolate chips
¼ cup peanuts
melted butter or margarine for brushing dough

Lightly grease baking sheet(s). Preheat oven to 400-degrees. If using loaf of dough, divide thawed loaf into 12 equal slices. If using rolls, they are ready to use once thawed. On a lightly floured surface, pat or roll each piece of dough into a circle, 4-5 inches in diameter. Place dough rounds on greased baking sheet(s) 2-3 inches apart. Prick dough several times with fork. Brush each dough round with melted butter or margarine. Top each dough round with 2-teaspoons marshmallows, 1-teaspoon chocolate chips and 1-teaspoon nuts. Bake in a 400-degree oven for 12 minutes or until edges of bread are golden brown. Remove from oven and brush with melted butter. Let cool on wire rack.

Yield: 12 S'mores

Nutritional Information. Servings 12, Calories 170, Fat 7g, Cholesterol 10mg, Sodium 210mg, Total Carb 24g, Protein 4g.

NOTICE OF APPLICATION FOR FLUID INJECTION WELL PERMIT

Patterson Petroleum LP PO Box 1416 Snyder, TX 79550 is applying to the Railroad Commission of Texas for a permit to inject fluid into a formation which is productive of oil and gas. The applicant proposes to inject fluid in the **Sprayberry Formation, Parks "677"** Lease, Well Number **1**. The proposed injection well is located **17 miles NE of Gail in the Cain (Sprayberry) Field**, in Borden County. Fluid will be injected into strata in the subsurface depth interval from **4972** to **4982** feet.

LEGAL AUTHORITY: Chapter 27 of the Texas Water Code, as amended, Title 3 of the **Texas Natural Resources Code**, as amended, and the **Statewide Rules** of the Oil and Gas Division of the Railroad Commission of Texas.

Request for a public hearing from persons who can show they are adversely affected, or requests for further information concerning any aspect of the application should be submitted in writing, within fifteen days of publication, to the Environmental Services Section, Oil and Gas Division, Railroad Commission of Texas, PO Box 12967, Capitol Station, Austin, Texas 78711 (Telephone 512/463-6792)



S'mores Treats made with BRIDGFORD FROZEN BREAD DOUGH

Congressman Charlie Stenholm to Host FUNDay on Sept. 7th

Congressman Charlie and Cindy Stenholm will host FUNDay on Saturday, September 7th, 2002, at the Ericksdahl Picnic Grounds east of Stamford. Festivities will begin at 4:30 p.m. and continue into the evening.

The annual event draws people from throughout the vast 17th Congressional District.

The program includes barbecue, entertainment, and a drawing for flags flown over the U.S. Capitol. Special guests scheduled to attend include former Comptroller John Sharp, who is running

for Lieutenant Governor, and Texas House Speaker Pete Laney.

"Cindy and I want to invite everyone to come and spend the day in Ericksdahl," said Stenholm. "FUNDay is a great time to meet new people and visit with old friends."

Tickets for FUNDay, which remain at \$10 per person, will be available at the gate. Children's activities will also be provided. For more information, contact the Stenholm Campaign office at 1-800-391-0704.

Western Rolling Plains Cow/Calf Clinic

The 2002 Western Rolling Plains Cow/Calf Clinic will be held on September 10th, 2002. This year's program will address Foreign Animal Diseases with topic discussions on E.I.A. or Coggins, Mad Cow Disease, T.B. (Tuberculosis), West Nile Virus, and Chronic Wasting Disease.

We are very fortunate to have guest speakers Dr. Arnaldo Gutierrez, Federal Veterinary Officer and Dr. Jim Amin, Area I Director of Texas Annual Health Commission. You won't want to miss this opportunity to have all your questions answered concerning these diseases.

Registration and welcome begin at 5:45 p.m. at the Jayton Community Center. A meal will be provided, so you are encouraged to R.S.V.P. no later than September 3rd. Call the Kent County Extension office at 806/237-3751, Dickens office at 806/623-5552, King County office at 806/596-4451, or the Stonewall County office at 940/989-3510.

STENHOLM U.S. CONGRESS

Date: September 7, 2002
Place: Ericksdahl Picnic Grounds
Time: 4:30 to 8 p.m.

- ✓Casual Dress
- ✓Children's Activities
- ✓Drawing for Flags Flown over the U.S. Capitol
- ✓Special Guests

For more information, call 1-800-391-0704



Paid for by the Stenholm for Congress Committee.

FUNDay

School has Started!

Be careful and Watch Out for the Children!

Moore-Rains Insurance
Frances Rains Stephens

701 8th St. O'Donnell, TX
806/428-3335



Branon Funeral Home
Understanding and Guidance When You Need It Most!

"Serving in this area Since 1922"

806/872-8335 Lamesa, TX

TPA MEMBER
TEXAS PRESS ASSOCIATION

LEGAL NOTICE

The Commissioners' Court of Borden County will hold a public hearing on the proposed budget for Borden County for 2003, beginning at 10:00 a.m. on Monday, September 9, 2002 at the Courthouse in Gail, Texas.

A summary of the proposed Borden County budget is as follows:

Jury Fund - \$1400.00
General Fund - \$773,68.80
Road & Bridge Fund - \$641,831.00
Permanent Improvement Fund - \$12,000.00

This proposed budget does include a 3% cost of living salary or wage increase for County employees and elected officials.

Elected Officials Salaries for 2003 will be:

| | |
|-----------------------|------------------------|
| County Commissioners | \$18,169.00 |
| County Judge | \$24,176.00 + |
| | \$10,000 State Support |
| County/District Clerk | \$24,176.00 |
| Sheriff/Tax Assessor | \$26,351.00 |
| County Treasurer | \$24,176.00 |
| Justice of the Peace | \$ 7,144.00 |

Any interested persons is invited to attend and present oral or written comments. The proposed budget may be examined at the office of the County Clerk or the County Judge.

The proposed tax rate for 2002 is .47 per \$100.00.

BY ORDER OF THE BORDEN COUNTY COMMISSIONERS' COURT

Van L. York,
County Judge, Borden County



END OF GAME NOTICE

Don't Delay, Play Today!



Game #230 (\$2)

Money Machine
*Overall Odds are 1 in 4.45



Game #248 (\$2)

Weekly Grand
*Overall Odds are 1 in 4.56



Game #262 (\$2)

Yellow Rose of Texas
*Overall Odds are 1 in 4.77



Game #279 (\$1)

Dough In a Row
*Overall Odds are 1 in 4.67



Game #281 (\$1)

Loot Pursuit
*Overall Odds are 1 in 4.81

These games will close on **September 30, 2002.** You have until **March 29, 2003** to redeem any winning tickets for these games.

10th Anniversary Game

Game #280 (\$10)
10th Anniversary Game

*Overall Odds are 1 in 2.46



Game #290 (\$1)

Straight 8's
*Overall Odds are 1 in 4.77

You can claim prizes of up to \$599 at any Texas Lottery retailer. Prizes of \$600 or more are redeemable at one of the 22 Texas Lottery Claim Centers or by mail. Questions? Call the Texas Lottery Customer Service Line at 1-800-37-LOTTO (1-800-375-6886).

NOTICE: A Scratch Off game may continue to be sold even when all the top prizes have been claimed. *The odds listed here are the overall odds of winning any prize in these games, including break-even prizes. Must be 18 years or older to purchase a ticket. © 2002 Texas Lottery.

BCJLA General Membership Meeting

The general membership meeting for the Borden County Junior Livestock Association will be held on Tuesday, September 3, 2002 at 7:00 p.m. at the Borden County Community Center. All persons that have an interest in BCJLA functions are invited to attend. Officers for the upcoming year will be elected.

Hope to see you there!

PET TALK

Tiny ear mites can be mighty big problems to a pet.

Mites are just one of several irritating factors that can affect your pet's hearing and lead to discomfort if left untreated, says Dr. Christine Rees, a veterinarian in the Small Animal Clinic at Texas A&M University.

Mites – the correct term for them is *Otodectes* – feed on the skin's surface and the ear canal can fill with wax, blood and mite debris, producing a coffee ground appearance. Mites are not host-specific, so they can feed on another animal, Rees explains.

"Young animals – especially kittens – can get mites very easily," says Rees. "Unlike fleas, mites tend to stay in one area, usually the ear, and they can cause a lot of discomfort to the animal."

Excessive scratching and itching of the ears is usually a sign that a dog or cat has mites, Rees adds. Treatment often involves droplets into the ears, she says.

Another problem involving ears: allergies.

Allergies can affect your pet just as they can people, and allergies can result in a hearing nightmare. Allergies can be caused by pollens, plants, molds or even food, and they can affect your pet's hearing.

"It's not uncommon for a dog to go walking into a field that has all sorts of plants that it may be allergic to," notes Rees. "The grassy plants and seeds can get on the animal, including inside the ears, and the only way the animal can fight back is to scratch. Excessive scratching can lead to infections and serious ear problems."



Pete Laney

A Leader We Can Be Proud Of

Pete Laney is a fourth-generation farmer who has never forgotten his roots. It's where he learned the value of an honest day's work and the importance of caring for your family and your neighbors.

As Speaker of the House, Pete Laney has been praised by Republicans and Democrats alike for his fair leadership and even-handed approach to solving our state's problems.

Pete Laney has focused on economic development, improving our public schools and making quality health care more affordable. He makes sure the concerns of our area are heard.

As Speaker of the House and our State Representative, Pete Laney gives our area a strong, respected voice in Austin.

On November 5th, let's vote to keep Pete Laney as our State Representative.



For more information, go to www.laneycampaign.com

Paid Pol. Adv. James E. "Pete" Laney Campaign, Route 2, Box 115, Hale Center, TX 79041