



# Ford Moves To Improve Standing, Sign Legislation

WASHINGTON (UPI) — With the widely hailed selection of millionaire Nelson A. Rockefeller as his vice-presidential nominee, President Ford moves today to improve relations with the black caucus and sign stiff antibusing legislation.

Ford's nomination of Rockefeller, former New York governor and life-long Republican, appeared to be one more gesture in a series to win the support of the moderates in his party as he follows his stated plan to bind up the nation's wounds and apparently prepares to run for the presidency in 1976.

Rockefeller, who made three unsuccessful bids for president on the Republican ticket himself, told reporters that he gained the impression that Ford "has every intention" of running for a full four-year term after he fulfills the remainder of former President Nixon's tenure.

Rockefeller said that Ford "talked about himself" but not what he wants to do regarding a running mate in 1976.

White House news

**Perryton Sets Goal For UF**

PERRYTON — The 1975 budget for the Ochiltree County United Fund has been set at \$57,073.

Of this amount, local organizations will receive \$47,102 or about 83 per cent of the total.

The money will be distributed as follows:

- Local — Perryton YMCA, \$22,305; Boy Scouts, \$11,780; Red Cross, \$5,904; Girl Scouts, \$4,176; and Salvation Army, \$2,937.

Agencies not in Ochiltree County include Southwestern Diabetic Foundation, \$390; Texas United Community Service, \$234; and Texas Association for Mental Health, \$100.

Starting date for the mail campaign is Sept. 5, with general solicitation in the city to begin Oct. 17.

**Stock Market Quotations**

The following 11 a.m. Chicago Exchange live cattle futures are furnished by the Amarillo office of Merrill Lynch, Pierce, Fenner and Smith, Inc.

Month	Close	Open	High	Low	Last
Feb.	44 32	43 78	43 32	43 32	43 32
Apr.	45 32	44 00	44 00	44 32	44 00
June	46 70	46 20	45 70	45 70	45 70
Aug.	46 00	46 25	46 25	45 30	46 25
Oct.	46 32	45 50	45 50	45 32	45 32
Dec.	46 75	45 75	45 75	45 75	45 75

The following 11 a.m. grain quotations are furnished by Wheeler Grain of Pampa, Texas.

Grade	Price
White	85.00
Yellow	80.00
Soft	75.00
Hard	70.00

The following quotations show those within which these securities could have been traded at the time of compilation.

Security	Price
Franklin Life	14
Ky. Cent. Life	4%
Southeast Finance	20
So. West Life	21

The following 10:30 N.Y. stock market quotations are furnished by the Pampa office of Schneider Bernat Hichman, Inc.

Security	Price
Beatrice Foods	14 1/2
Cabot	17 1/2
Calumet	31 1/2
Citrus Service	41 1/2
DIA	22 1/2
Kerr-McGee	38
Pennsylvania	53 1/2
Phillips	43 1/2
PNA	17 1/2
Shelby	17 1/2
Southern Pub. Service	7 1/2
Standard Oil of Indiana	9 3/4
Texas	24 1/2

**On The Record**

**Highland General Hospital**  
**WEDNESDAY**  
**Admissions**

Mrs. Carol Peet, 2230 Duncan.

Baby Boy Peet, 2230 Duncan.

Baby Boy Gage, 953 Barnard.

Mrs. Geneva Atchley, Panhandle.

Floyd E. Cotham, Lefors.

Arnold Adkison, White Deer.

Mrs. Fayanna Winters, Pampa.

Mrs. Lodema Reid, Canadian.

William Butcher, 1245 Wilcox.

Mrs. Deborah Moore, Canadian.

Jerry Quarles, 1025 S. Christy.

Mrs. Sue Barnes, Pampa.

Miss Katherine Isaac, 1820 Holly Lane.

Mrs. Marcella Helbert, 116 Crane Road.

Mrs. Shannon Horton, 1101 Finley.

Mrs. Jeanette Aftergut, 2329 Aspen.

Mrs. Mirtie Ellard, 1608 N. Christine.

Baby Boy Atchley, Panhandle.

Baby Girl Middaugh, 1031 Love.

Dismissals

Mrs. Eura Davis, 1312 Terrace.

Mrs. Sarah Crow, 2200 1/2 Chestnut.

Mrs. Correne Nichols, Pampa.

**The Pampa Daily News**

**SUBSCRIPTION RATES**  
Subscription rates in Pampa and RTZ by carrier and motor route are \$2.25 per month, \$6.75 per three months, \$13.50 per six months and \$27.00 per year. THE PAMPA DAILY NEWS is not responsible for advance payment of two or more months made to the carrier. Please pay directly to the News Office any payment that exceeds the current collection period.

Subscription rates by mail are RTZ \$6.75 per three months, \$13.50 per six months and \$27.00 per year. Outside of RTZ, \$7.50 per three months, \$15 per six months and \$30 per year. Mail subscriptions must be paid in advance. No mail subscriptions are available within the city limits of Pampa. Servicemen and students by mail \$1.75 per month. Single copies are 15¢ daily and Sunday.

Published daily except Saturday by the Pampa Daily News, Atchison and Somerville Streets, Pampa, Texas 79065. Phone 669-2525 all departments. Entered as second-class matter under the act March 9, 1879.

Missing Your Daily News? Dial 669-2525 Before 7 p.m. Weekdays, 10 a.m. Sundays.

**Pampa Office Supply Co.**

"Everything FOR THE OFFICE"

211 N. Cuyler  
669-3353

**Ways to Reduce Fuel Consumption in Household Heating...**

through energy conservation

The above consumer report is available from us or Office of Consumer Affairs Washington, D.C. 20506 (Price 35 cents)

We Can Help YOU! SAVE FUEL Relieve the Energy Crisis

In Home or Businesses with Humphrey Insulating Windows, Doors, Awnings Thermal-Barrier Windows New or Replacement

**Pampa Glass and Paint**  
1431 N. Hobart

**JOHNSON'S HOME FURNISHINGS**

406 S. Cuyler 665-3361

# Consumers Facing Lean Beef Grades

WASHINGTON (UPI) — Consumers will find more beef on grocery shelves than they did last September, but most of it will be a leaner, tougher grade of beef than they are accustomed to, the Agriculture Department said today.

Supplies of tender, grain-fed beef next month will about equal to the low levels of a year earlier, officials said in a monthly "Food Marketing Alert". But there will be a step up in production of grass-fed cattle which yield tougher beef because they have less of the "marbling" fat developed when cattle are finished on grain.

Signs of declining production of grain-fed beef have been apparent for several months in government reports showing a decline in the number of cattle being fed with grain in feedlots. It began with an economic pinch on feedlot operators who found themselves losing up to \$200 a head at times this year because of a squeeze between high feed prices and low prices for slaughter cattle.

The drop was expected to be aggravated by a smaller-than-expected 1974 corn crop forecast. Next year, the predictions are for even shorter supplies.

The food alert for September said pork

# Communist Troops Take Control Of Key Outposts

SAIGON (UPI) — Communist forces overran a pair of key outposts 50 miles northwest of Saigon and captured a huge slice of land around the nearby provincial capital of Tay Ninh, the Saigon command said today.

Command spokesman Lt. Col. Le Trung Hien said Viet Cong and North Vietnamese forces late Tuesday captured the militia base at Phuoc Tan, 10 miles west of Tay Ninh near the Cambodian border.

The Communists also captured Cau Khol, a military base and rubber plantation town six miles east of the provincial capital, Hien said.

Communist troops were within 10 miles of Tay Ninh on all four sides, although the main highway between the city of 200,000 and Saigon remained open, field officers said.

Far to the north, North Vietnamese troops attacked Quang Tri with a mortar barrage, the first assault on South Vietnam's northernmost provincial capital since the Jan. 28, 1973 cease-fire.

In Cambodia, government troops killed 29 rebels in a sweep Tuesday along the east bank of the Tonle Sap river 16 miles north of Phnom Penh.

Military sources said rebel forces overran a government post at Dawn Wednesday near Krawl Krabei, six miles southwest of Phnom Penh on Highway 2. Casualty figures were not revealed.

# Mainly About People

Season Football tickets now on sale. School Business office, 119 N. Frost. \$10 per book. 669-2531. (Adv.)

Miscellaneous Sale at Marie Foundations, Pampa, Saturday August 24th, 7:30 to 3. (Adv.)

The Planned Parenthood clinic session, with a medical doctor in attendance, will be at 10 a.m. Thursday at the clinic, 615 E. Albert. Women attending this clinic session receive counseling in family planning, a medical examination, pap or cancer test, and TB test.

Girl Scout East and West neighborhoods will hold an organizational meeting Thursday, Aug. 22, at the Pampa Girl Scout Little House at 9:30 a.m.

The term "quising," which is a synonym for traitor, is derived from the name of Vidkun Quisling, a fascist who collaborated with Hitler during the German invasion of Norway in 1940.

# Sen. Goldwater Not Satisfied At Nomination

WASHINGTON (UPI) — Nelson Rockefeller's nomination as vice president doesn't sit well with Sen. Barry M. Goldwater, who says it won't go over with rank-and-file Republicans and may deepen rather than heal party wounds.

"I can support it," Goldwater said in an interview Tuesday, shortly after Rockefeller's nomination was announced by President Ford.

"He's very well qualified. But I don't know what it's going to do to the Republican party... he's not the one to put the party together."

The senator also suggested that if Ford runs for president in 1976 he should dump Rockefeller, now 66, in favor of "a younger man."

Goldwater, an Arizona conservative who beat the liberal Rockefeller for the 1964 GOP presidential nomination, seemed still to be bitter over Rockefeller's lukewarm support of the Republican tickets in 1964 and 1968.

# Mormons Get Less Cancer

LOS ANGELES (UPI) — Mormons are much less because of clean living and strong family bonds, a UCLA RESEARCHER SAID Tuesday.

The death rate from cancer in Utah is only 75 per cent of the national average, said Dr. James E. Overton, of the UCLA School of Public Health. Members of the Church of Jesus Christ of the Latter-Day Saints, or Mormons, make up 73 per cent of the state's population. In Utah County, which includes the city of Provo and is 90 per cent Mormon, the cancer death rate is only 65 per cent of the national average for men, and 72 per cent for women, Overton said.

He said that possible factors may be the Mormon ban on smoking and drinking, low consumption of coffee and tea and rare drug usage, along with the church's traditional encouragement of physical fitness programs, exercise and outdoor activities.

Also, he said, "They believe in a very strong family structure—particularly —contrasted with other U.S. social orders—for the elderly, keeping them involved in family and church activities."



G. R. TURBEVILLE ...settles in Pampa

# Wards Names New Manager

Succeeding Jim Stallings, G. R. Turbeville is new manager for Montgomery Wards in Pampa.

Turbeville came to Pampa in July from Amarillo, where he had been for the last three years.

Stallings was transferred to Texarkana where Turbeville had served for five years.

A 1964 graduate of North Texas State University in Denton, Turbeville has been associated with Wards for 10 years.

He was chosen Merchandise Manager of the Year of Region III in 1973.

He began his work in Tyler before transferring to Texarkana.

Turbeville and his wife, Linda, have one son, Todd, 8 and a daughter, Julie, 6.

# Perryton Conducts Wheatheart Events

PERRYTON — This city's 28th annual "Perryton Celebration" got off to a lively start Tuesday night with a championship goat roping contest which carried \$300 top money.

Tonight's feature includes a Demolition Derby and Motorcycle Rodeo at 8 p.m. at the Ochiltree County rodeo arena.

A special attraction will be a dare — devil motorcyclist from Guyton, Okla., who will attempt a jump over 10 automobiles.

Thursday and Friday will see some 260 contestants participating in the Tri - State High School Rodeo. (Texas, Oklahoma, and Kansas).

Culmination of the celebration will be Saturday when a parade is scheduled for 10 a.m. just after registration for the Old Timers Reunion.

The rodeo will resume at 2 p.m., to be followed by the Miss Wheatheart of the Nation contest in which 28 entries have registered.

Top winner will receive a \$1,750 scholarship, while first and second runners - up

will receive scholarships of \$500 and \$250 respectively.

Judges include "Amarillo Slim"; Susie Sirren, a model from Dallas; Billy Bob Harris, Dallas stock broker and Gen. James Cannon, Ft. Sill, Okla.

Master of Ceremonies is Keith Ingram, operations manager of radio station KCLV at Clovis, N.M.

A spokesman for the sponsoring organization, the Ochiltree County Chamber of Commerce, has explained that the word "Wheatheart" got its name during the 1940's when the county three times raised one percent of the total of red winter wheat in the entire nation.

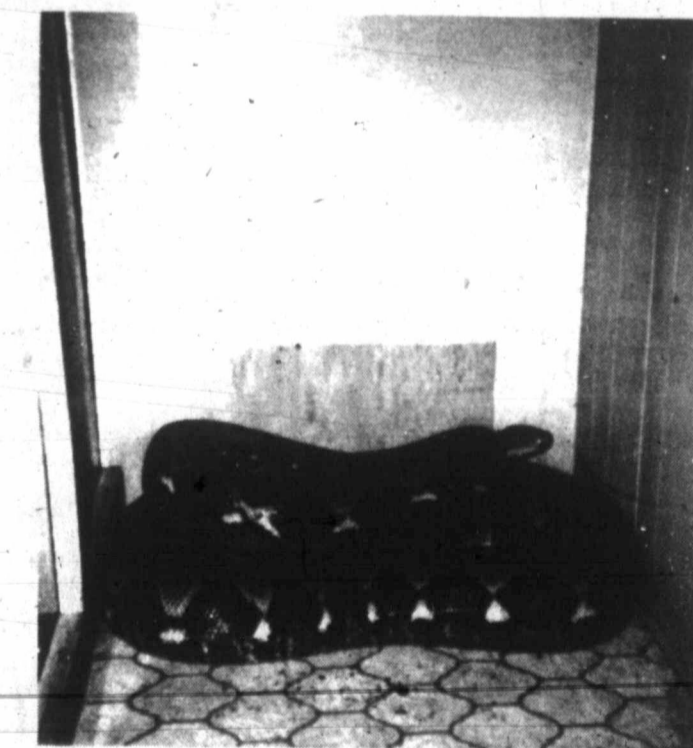
**Carmichael & Whitley**

Pampa's Leading FUNERAL DIRECTORS

665-2323

**SEE BIG MAC World's Largest Snake Burmese PYTHON**

**21 FEET LONG 270 LBS.**



**ALIVE INSIDE!!! A GIANT ANACONDA AT**

**GIBSON'S DISCOUNT CENTER**

Thru Saturday

**Stereo/Phono plus AM/FM/FM Stereo Radio**

DELUXE MORSE/BSR/MCDONALD RECORD CHANGER WITH DIAMOND STYLUS, 12 SPEAKER "DUOCONE" AUDIO SYSTEM, BUILT IN 8-TRACK TAPE PLAYER.

**morse**

**\$179.95**

**JOHNSON'S HOME FURNISHINGS**

406 S. Cuyler 665-3361

**Pampa Office Supply Co.**

"Everything FOR THE OFFICE"

211 N. Cuyler 669-3353

# Bush Commends VP Choice

United Press International Republican National Chairman George Bush of Houston, considered one of the top choices to become the country's new vice president, commended President Ford on his selection of Nelson A. Rockefeller to the job.

"In searching the country over, one couldn't find a man of more stature and who possesses more administrative ability," Bush said Tuesday.

"In addition, Gov. Rockefeller brings another important dimension to the vice presidency — his experience in foreign affairs. I commend President Ford for his decision and warmly congratulate Gov. Rockefeller."

Other Texas Republicans said they would support Rockefeller even though Bush was their first choice.

"The President has made a decision that I think will be warmly accepted by a majority of the American

people," Sen. John G. Tower, R-Tex., said. "Gov. Rockefeller has a long, distinguished history of public service. I intend to cooperate with him in every way possible."

Tower said the nomination of the former New York governor will mean there "probably will be some grumbling among conservatives, of course. But Gov. Rockefeller made himself more acceptable (to conservatives) in some areas in recent years, especially in foreign affairs and welfare cheating."

"I was really disappointed (Bush was not picked), but Rockefeller was President Ford's choice and I'll certainly support him," Rep. Jim Collins, R-Tex., said. "Now that he represents all America, I look for him to broaden his view."

"My first choice was George Bush, but I think Gov. Rockefeller likewise brings a great deal to the job and I'll support him," Rep. Alan Steelman, R-Tex., said.

Harris County Republican Chairman Nancy Palm of Houston said she thinks the

appointment may hurt Republicans' chances in 1976 because Rockefeller may try to challenge Ford for the GOP presidential nomination.

"This appointment may be unifying for the country, but it certainly will not be for the Republican party," she said. "I think it likely will mean a major contest for the nomination in 1976."

"I believe we will see the plays being set in from the bench by (Secretary of State Henry) Kissinger and Mr. Rockefeller to the President," she said. "He has surrounded himself with eastern liberal establishment Republicans and therefore the choice of Rockefeller was inevitable."

Pump irrigation has made rapid strides in Nebraska during the past 20 years. A 1953 study showed only 70 irrigation wells in Chase and Dundy counties. Last year the number had increased to more than 1,000.

Old Burial Hill in Marblehead, Mass., contains the graves of 600 Revolutionary War fighters.

## Museum To End Series

AMARILLO — The Panhandle Plains Historical Museum will wind up its successful, fun-filled Sunday afternoon series with a bang.

On Aug. 25, both young and old visitors will be able to relive the past, just a little when they will be served piping hot popcorn from the Museum's 59-year-old popcorn wagon. The popcorn is free.

The bright red and white wagon will be moved from display in the Museum Annex out onto the lawn on the West Texas State University campus in Canyon. The two Museum buildings are located on the southern edge of WTSU on Fourth Avenue. Popping time is scheduled to begin at approximately 2:30 p.m.

The Sunday afternoon series, emphasizing silent films, has been such a success that plans are being made to continue the treats on special occasions. Attendance has been rising steadily throughout the

summer, as the crowds come to see such immortals as Tom Mix, William S. Hart, Charlie Chaplin, Laurel and Hardy, and William Boyd (more popularly known as Hopalong Cassidy.) The idea was originated by the new Museum Director James Austin Hanson.

## Investment Chatter

NEW YORK (UPI) — Dines Letter says it doesn't know whether the stock market is at the bottom of its current slide, but it "certainly should be the prelude to a rather strong trading rally." The publication says it is "beginning to see signs that a 'very strong' rally could develop next month.

The economic disappointments that have taken their toll on the stock market since January, 1973, may now "be rather fully discounted," Bache Co. says in a special report. The

report says that with the expected return of public confidence, "the stock market could perform more positively over the long run."



DEBBI CHAFIN ... named to list

## Baylor Honors Pampa Student

Debbi Ann Chafin, daughter of Mr. and Mrs. William R. Chafin, 1710 Evergreen, a 1971 graduate of Pampa High School, and junior student at Baylor, is among 687 students recently recognized for academic achievement.

The students were named to the University Provost's Academic Honor List and the University Provost's Distinguished Academic Honor List.

Standard & Poor's "Outlook" says the occasional trading rallies on the stock market "should be treated primarily as opportunities for upgrading holdings." The company suggests that investors remain "cautious" until "indications of a change in the fundamentals afford a rational basis for more positive portfolio action."

His death came less than 24 hours after he signed to star in a sequel to the smash boxoffice hit about his battles against gambling, moonshining and prostitution in McNairy County, Tenn.

The Tennessee Highway Patrol said the 36-year-old Pusser died when his 1974 red sports car careened off Highway 64, crashed into an embankment and burst into flames.

Pusser was thrown clear and died instantly. The Highway Patrol said there was no sign of foul play in the wreckage.

There were seven attempts on Pusser's life while he served as sheriff and one of them killed his wife and almost killed him. "Walking Tall" ended with Pusser lying in a hospital bed, half his face shot away by 30-caliber pistol bullets.

Fourteen plastic surgery operations gave him a new appearance, and he was wearing his hair longer than his crewcut of law enforcement days.

"There was no apparent reason for the accident that I could find," said Trooper Paul Ervin. "I don't know if there was a tire blowout or not. I couldn't tell from the burned car."

Ervin said that Pusser apparently was headed home to Adamsville, Tenn. His daughter was alone in another car traveling behind him and witnessed the accident.

Bing Crosby Productions announced in Memphis Tuesday, with Pusser at the news conference, that it would soon begin filming "Buford" near the area of honky tonks where he became a legend.

Pampa, Texas 88th Year PAMPA DAILY NEWS Wednesday, Aug. 21, 1974 3

# Accident Claims 'Walking Tall' Sheriff

WESTSIDE CHURCH OF CHRIST  
1405 ALCOCK  
(on Berger Hwy)  
WELCOMES YOU

Evangelist  
AUG. 18-23  
MON-FRI. 7:30 P.M.



DEBBIE LAMER ... to be featured

## 1974 Grad Selected For Honor

Debbie Lamer, a 1974 graduate of Pampa High School, was recently notified that she is to be featured in the Eighth Annual Edition of Who's Who Among American High School Students, 1973-74, the largest student award publication in the nation.

Students from over 20,000 public, private and parochial high schools throughout the country are recognized for their leadership in academics, athletics, activities or community service in the books. Less than three percent of the junior and senior class students nationwide are awarded this recognition.

Miss Lamer is the daughter of Mrs. Bob Tinner, Pampa and James Lamer, Owasso, Okla. During her school years, she was active in Truteen Service League, Future Teachers of America, Red Cross and Future Homemakers of America.

She served as a volunteer worker at Pampa Nursing Center and was active in the choir musical.

In addition to having her biography published in the book, Miss Lamer will also compete for one of 10 scholarship awards of \$500 to \$1,000 funded by the publishers and will be invited to participate in the firm's annual "Survey of High Achievers."

Miss Lamer plans to attend West Texas State University.

### Jetglas

New Gas-Fired Water Heater  
Increased In Puts -  
Easy to Install  
and Built To Last Longer  
Jetglas Z Tank Lining  
10 Year Guarantee  
Builders Plumbing Supply Co.  
The water heater people.  
535 S. Cuyler 665-3711

## Woolworth

Satisfaction Guaranteed - Replacement or Money Refunded  
OPEN THURSDAY NIGHT TILL 8 P.M.

Capehart <b>AM-FM Radio Stereo Phono</b> 4-Way Speaker <b>\$39<sup>95</sup></b>	Capehart <b>8 Track Tape AM-FM Radio Stereo Phono</b> 3 Speed Turntable Console <b>\$189<sup>95</sup></b>	<b>10 Gallon Aquarium</b> With heater, filter, tubing, pump, floss, charcoal, thermometer, food, full hood, fish care booklet. <b>\$17<sup>97</sup></b>
<b>10 pc. Safety Double Barrel Target Set</b> For Children • Over & Under Shotgun • 2 Pistols • Target • 6 Safety Darts <b>\$3<sup>79</sup></b>	<b>Rub-A-Dub Doll \$13<sup>66</sup></b> <b>Baby Alive Doll \$14<sup>97</sup></b> <b>Baby Chubby Doll \$10<sup>96</sup></b> <b>Lorri Walker Doll \$7<sup>88</sup></b>	<b>All Ladies' Shorts</b> Including: • Jamaicas • Cuffed Short Shorts Reg. \$3.49 <b>2 Prs. \$4</b>
<b>Opaque Nylon Kneelets</b> Fall Colors Reg. \$9 <b>3 Prs. \$1</b>	<b>Ladies' Turtleneck Sweaters</b> Long Sleeves, Ribbed Fall Colors <b>\$5<sup>99</sup></b>	<b>Ladies' Brushed Sleep Shirts</b> with matching hip hugger panties <b>\$3<sup>99</sup></b>
<b>Short Ladies' Gowns</b> Nylon <b>\$1<sup>49</sup></b>	<b>Short Sleeved Ladies' Gowns</b> Long Brushed Tricot Sizes 34-40 <b>\$3<sup>29</sup></b>	<b>Long, Brushed Ladies' Gowns</b> Sizes S-M-L <b>\$4<sup>39</sup></b> Extra Sizes ..... <b>\$4<sup>59</sup></b>
<b>Seamless Girls' Tights</b> Sizes 1 through 14 <b>97<sup>c</sup> Pr.</b>	<b>Crush Stretch Panty Hose</b> <b>38<sup>c</sup> Pr.</b>	<b>Men's Crew Sox</b> with Reinforced Heel <b>73<sup>c</sup> Pr.</b>
<b>Terrific Selection Sandals - Shoes</b> <b>1/2 Price</b>	<b>Nerf Footballs</b> <b>\$2<sup>99</sup></b>	<b>Chambray Boys Shirts</b> Sizes 8 through 18 <b>\$3<sup>99</sup></b>

# JCPenney

back to school sales

Save 20% on great looking men's woven sport shirts.

**Sale**  
\$4 to \$6<sup>38</sup>

Reg. \$5 to \$7.98 What a selection of men's short sleeve woven shirts! Great styles, patterns and colors to choose from. All in easy-care fabrics including polyester/cotton. Sizes S-M-L-XL

LIKE IT - CHARGE IT!

**20% off all our men's shoes.**  
**Sale**  
\$7<sup>99</sup> to \$20

Reg. \$9.99 to \$25 foot it over to Penneys for the latest styles and the greatest savings. Our entire line is on sale. Choose slip-ons, oxfords, strap and buckle styles and more.

**20% off all our shirts.**  
**Sale**  
\$5<sup>60</sup> to \$8.80

Reg. \$7 to \$11 Choose from our entire line of women's shirts, tailored or casual, in an assortment of bright solids and patterns. Popular easy-care fiber blends in a wide range of sizes.

Open 9:30 a.m. to 6:00 p.m. Monday, Tuesday, Wednesday, Friday  
9:30 a.m. to 8:00 p.m. Thursday  
9:00 a.m. to 6:00 p.m. Saturday





Dear Abby

### Should she conveniently "forget" the Pill?

By Abigail Van Buren  
© 1974 by Chicago Tribune-N. Y. News Synd., Inc.

DEAR ABBY: John and I have been married for 14 months. He had a 3-year-old son by a previous marriage. We had no trouble getting custody of the boy because his mother didn't want him. (She hasn't come to see him once.)

I am 29 and John is 35, and I want to have a child of our own. John's son, whom I honestly couldn't love more if I had given birth to him, would dearly love a little brother or sister, and I desperately want one, but John says no. His excuses are lame. ("The world is in such a sorry state, we shouldn't increase the population now. We have one healthy, normal child now, why press our luck?")

I am on the pill, and could conveniently "forget" to take it a few mornings, but I hate to be dishonest. If I were to get pregnant, he couldn't force me to have an abortion, and I'm sure that after the child was born he would grow to love it like he loves his son.

Please help me sort out my feelings, Abby.  
TORN IN CHICAGO

DEAR TORN: About your scheme to "conveniently forget" the pill: Forget it. (THE scheme, not the pill.) Ideally, you and John should get some counseling together. Most clergymen are well equipped; also Chicago has many expert marriage counselors. If John refuses to go, you can't force him, but do go alone. You need some sound, objective counseling to help you resolve this knotty problem.

DEAR ABBY: A writer was unhappy about her flat chest and asked you whether breast implants were considered deceitful and therefore sinful in the eyes of the Lord. You suggested that she ask her clergyman for a ruling. I disagree. Every clergyman cannot keep abreast of new developments in plastic surgery; some clergymen are big busts as advisers on these points.

The writer should look behind her breast—where her heart is—for the answer. Whom is she trying to deceive or please? "Capping" one's teeth for cosmetic reasons has been an accepted practice for years. Are teeth more important to beauty than breasts?  
BEVERLY HILLS M.D.

DEAR M.D.: Only to those who have trouble keeping their mouths shut.

CONFIDENTIAL TO SHIRLEY: I agree. Something is wrong. Maybe he gave at the office.

Problems? You'll feel better if you get it off your chest. For a personal reply, write to ABBY: Box No. 69700, L.A., Calif. 90069. Enclose stamped, self-addressed envelope, please.

For Abby's booklet, "How to Have a Lovely Wedding," send \$1 to Abigail Van Buren, 132 LaSky Dr., Beverly Hills, Cal. 90212.



Senior Center Corner

By LINNIE LESTER  
Approximately 60 seniors were present Thursday for their weekly party at Lovett Memorial Library.

Sponsoring Altarsans present were Mrs. Lora Dunn, chairman, and Mmes. Louise Sewell, Olive Hills, Lillian Snow and Gertrude Barber.

Serving cheese cake and coffee were Mmes. Olive Hills, Fae Walker, Dorothy Jefferies, Anna Pierce, Suzy Kneade, and Elsie Cunningham, all members of the Friendship Class of the Presbyterian Church.

Mrs. Mary Hills, daughter-in-law of Mrs. Olive Hills and Sandra Clark were greeted as guests.

Door prizes were awarded Mrs. Jay Evans and O.L. Ray.

We were happy to see Mrs. W. Wasson back after a stay in Amarillo hospital.

Visiting in the home of Mrs. Edith Lawrence over the weekend were her nephew and wife, Mr. and Mrs. J. T. Ratcliff of Irving, Tex.

Visitors in the home of Mrs. Mattie Dixon are her grandson and family, Mr. and Mrs. Lloyd McCann of Joplin, Mo.

Sunday visitors in the home of Mr. and Mrs. J. C. Moseley were Mr. and Mrs. Cleo Vaughn of Amarillo, Miss Candi Lopez of New York, Mrs. Mavis Converse and Mrs. Bea Bowers.

Mrs. Verna Schroeder and Mrs. Vernon Kettlewell visited relatives in Spearman Sunday.

Mrs. D. M. Thomas of Twenty-Nine Springs, Calif., formerly of Pampa, spent two weeks with her sister, Mrs. A. McClendon.

Mrs. Lora Dunn left Thursday afternoon to visit her children in Indiana.

Mrs. Olive Hills left Friday to visit her children in Houston and Florida. Have fun girls! We'll miss you!

## The Women's Page

Pampa, Texas 68th Year Wednesday, Aug. 21, 1974

### Ways To Refinish Furniture By Cleaning

COLLEGE STATION — One easy way to restore the finish on some used furniture only involves cleaning — but cleaning with a reconditioner cleanser, according to one expert.

She's Patricia Bradshaw, housing and home furnishings specialist, Texas Agricultural

Extension Service. The Texas A&M University System.

"Before stripping and refinishing, try a cleanser conditioner to restore natural grain and color of wood, conceal scratches and retard crazing or checking.

"It will also remove cloudiness caused by smoke, grease and dust, and

will recondition wood dried from overheated rooms," she advised.

Turning to specific directions for making the cleanser conditioner, the specialist said to mix in a bottle one part gum turpentine with three parts of boiled linseed oil.

"Cover the mixture tightly and shake well — it will keep indefinitely."

To apply, pour enough cleanser conditioner into a dish of hot water to cover the surface. Do not stir.

Dip a cloth into the floating oil mixture — the hot water makes the oil easier to use. Apply to a small area at a time and avoid getting too much moisture in joints or glued areas.

Rub the surface with the oil mixture. If there is a build up of dirt, dip grade 3's steel wool into the mixture and rub lightly.

Wring out a clean cloth with clear warm water and wipe the furniture surface.

Discard the mixture when the water cools. Do not reheat because the mixture is flammable and becomes gummy.

"If you use the cleanser conditioner on shellac finishes, use it sparingly and wring the rinse cloth dry," the specialist said.



### The Kitchen Almanac

Get you didn't know dept. — popcorn contains more food energy than 96 percent of all edible foods... Barbecue Cue: Charcoal should be "ash white" hot before you begin cooking.

Ann Johnston of Chicago sends along her favorite recipe for Blueberry cake. It makes a mighty good dessert and we're happy to pass it along.

**Blueberry Cake**  
One package yellow cake mix  
1 teaspoon vanilla  
1 can (1 lb. 5 oz.)  
Blueberry Pie Filling  
2 eggs, beaten  
Using a large mixing bowl, combine all ingredients until well-blended. Pour into a 9 1/2" x 13 1/4" greased cake pan and bake at 350° for 35 minutes or until cake is done when tested. Frosting: Your favorite white!

Happy Silver Anniversary to KitchenAid! This fine company has been making automatic dishwashers now for 25 years. Numerous units introduced back in 1949 are still washing and drying dishes today. Based on two washes daily for a family of four — that's more than 18,000 cycles — and still on the job. And, who says things aren't built to last?

Raw fruits and vegetables are good tooth decay fighters. Their

crisp, crunchy and juicy interiors can help cleanse sticky food from teeth before bacteria can build-up.

Staggering Statistics: About three billion pounds of fish and shell fish are caught commercially for food in the U.S. annually.

Love Italian food and watching your weight? Use ricotta cheese in place of cottage cheese and mozzarella cheese in place of processed cheddar when making lasagna. You'll really cut down on calories... When "washing" fruit — it's a good idea not to let the fruit stand in water. Some lose food value and flavor that way and others get "water soaked."

Use a muffin tin to make individual salad and dessert gelatin molds. In half the time, mix grated vegetables with the gelatin and in the other half add fruit and/or nuts. Presto! — you have both salad and dessert ready. With this swell gel idea, you can even "personalize" each portion to individual taste. (Tip: If you coat each tin with mayonnaise beforehand, mold will slide out easier.)

Editorial note: You may want to clip this feature and keep these worthwhile tips in your own "kitchen file."

New York state is only 30 miles wider than its length — 330 miles to 310 miles.

## 10% to 50% off all carpets.

Just two of many, shown below.

OUTSTANDING VALUE



**A "MAISON GRANDE"**  
Durable multi-level loop construction in brilliant space-dyed tweeds accents the home: **6.99** REG. \$9.99 SQ. YD.

**B RUGGED "BRIGADIER"**  
Nylon pile in handsome tweeds, solids really takes the wear. Foam back — install it yourself. **3.99** REG. \$6.99 SQ. YD.

NO MONTHLY PAYMENT TILL FEB. 1975.  
FINANCE CHARGES ARE APPLICABLE DURING THE DEFERRED PERIOD.  
OPEN A CHARG-ALL ACCOUNT FOR FAST SHOPPING

We've got value by the yard. **MONTGOMERY WARD**

Coronado Center

Open Daily 9:30 a.m. to 6 p.m.  
Thursday 9:30 a.m. to 8 p.m.

CAPRI

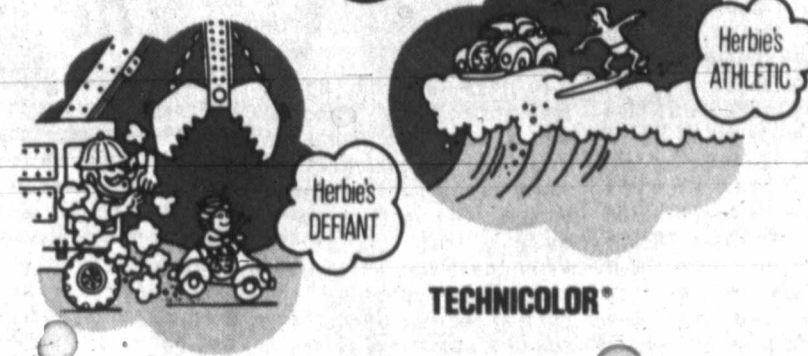
OPEN 7:00 ADULTS 1.50  
1 SHOW 7:30 ALL CHILDREN 75¢

### The Loveable Bug is back-doing his thing!



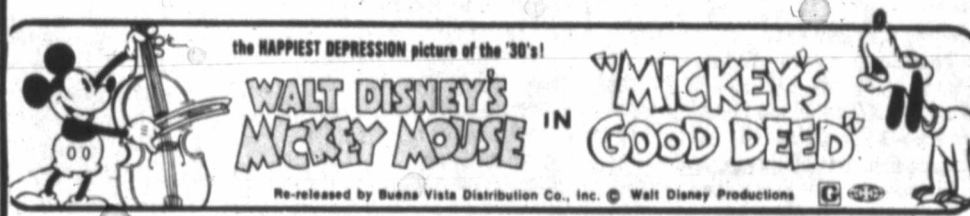
WALT DISNEY PRODUCTIONS

HERBIE RIDES AGAIN



HELEN KEN STEFANIE JOHN KEENAN  
**HAYES BERRY POWERS MCINTIRE WYNN**

Screenplay by BILL WALSH. Based on a story by GORDON RUFORD. Produced by BILL WALSH. Directed by ROBERT STEVENSON. G GENERAL AUDIENCES ALL AGES ADMITTED



WALT DISNEY'S MICKEY MOUSE IN "MICKEY'S GOOD DEED"

Top o' Texas DRIVE-IN

OPEN 8:15 ADULTS 1.50  
SHOW AT DUSK



Summer's here again.

In everyone's life there's a SUMMER OF '42

FROM HERMAN RAUCHER'S NATIONAL BEST SELLER

A Robert Mulligan/Richard A. Roth Production  
JENNIFER O'NEILL • GARY GRIMES • JERRY HOUSER • OLIVER CONANT  
Written by HERMAN RAUCHER Produced by RICHARD A. ROTH Directed by ROBERT MULLIGAN  
Music by MICHEL LEGRAND  
TECHNICOLOR® From Warner Bros. A Warner Communications Company PG PARENTAL GUIDANCE SUGGESTED





# Gambling Scandal Smokes NFL Again

NEW YORK (UPI)—The smoke of a pro football gambling scandal showed again on Tuesday, but this time there was a tip of flame as well.

A Manhattan Grand Jury indicted two known gamblers, both of whom were reportedly connected with crime syndicates, but added the shocker that the physician for the New York Giants was involved, although not indicted.

Dr. Anthony Pisani, who resigned as team doctor of the National Football League club after serving the Giants for 10 years, was cited in the first charge of the 40-count indictment of Thomas Musto and Michael Astarita.

The indictment alleges that Musto, 64, of New York, and Astarita, 47, of Hillsdale, N.J., handled more than a \$1 million in illegal pro football wagers, and that the two conspired with Pisani, who was to supply them

information on the physical condition of Giant personnel, with distinct mention in the indictment of fullback Ron Johnson, defensive back Carl Lockhart, lineman John Mendenhall, and other offensive and defensive players of said National Football League team.

A league spokesman would only say that the NFL had been aware of the N.Y. City police investigation for some time, but had been unable to help in the probe.

Greg Perrin, Pisani's attorney, declared his client innocent of any wrong doing, but that he had become "unfortunately involved through his acquaintance with Musto and Astarita, who were his patients for a period of years."

The league policy is to release reports on the injury situations of all clubs, with a final status of injured players released on the Thursday before each game.

# Lopes Carries Dodgers

UPI Sports Writer

Hitting home runs can have its drawbacks. Los Angeles' Dave Lopes doubled his home-run total for the season Tuesday when he blasted three shots, in addition to a double and a single, in the Dodgers' 18-8 rout of the Chicago Cubs and the 5-foot-9, 175 pound second baseman quickly paid the price.

After belting two of his homers and a double in his first three times at-bat, Lopes found his head being used as a target by reliever Dave LaRoche in the fourth inning. LaRoche was eventually pounded for 11 runs and 15 hits in 4 1/3 innings.

"Nobody is going to throw at my head and get away with it," vowed an angry Lopes after the game. "It was a deliberate attempt to hit me in the head. I've played against (Cub manager Jim) Marshall before and I know he uses those tactics. It's one thing to try and brush a player back but when you deliberately throw at his head, then that is uncalled for."

"Don Sutton, who pitched today, got fined \$100 earlier this season for brushing back Doug Rader of Houston," recalled Dodger Manager Walt Alton.

## Mark Trails OUTDOOR TIPS

SAVE THOSE EMPTY TENNIS BALL CANS...THEY CAN BE USED TO PACK FRAGILE ITEMS AND FOODS SUCH AS COOKIES AND CANDIES FOR YOUR CAMPING TRIP...



AN EMPTY OATMEAL CONTAINER ALSO MAKES A HANDY STORAGE BIN

"Today, no umpire said anything to LaRoche. I can't believe it."

Lopes, refusing to be intimidated, promptly singled in the fourth and connected for his third homer in the sixth before the Cubs were able to get him out on an infield grounder in the seventh.

Lopes' five hits contributed to the Dodgers' 24-hit attack that also included homers by Jimmy Wynn, Steve Garvey and Willie Crawford. The six homers and 24 hits were the most for the Dodgers in one game since the team moved to Los Angeles from Brooklyn in 1958.

In other NL games, Cincinnati beat Philadelphia 7-1. San Francisco shaded Pittsburgh 8-7 in 10 innings. Atlanta topped St. Louis 8-6. Houston defeated New York 6-2 and San Diego shutout Montreal 3-0.

In the American League, Baltimore nipped Texas 2-1. Boston beat Chicago 8-3. Kansas City blanked Cleveland 2-0. New York edged Minnesota 2-1. Oakland topped Milwaukee 7-1 and Detroit nipped California 1-0 in 11 innings.

**Reds 7, Phils 1**  
Johnny Bench belted a three-run homer and Joe Morgan, who had two homers the night before, added a solo shot to power Cincinnati over Philadelphia and keep the Reds 2 1/2 games behind first place Los Angeles in the West Division. Clay Kirby limited the Phils to five hits while racking up his eighth win against seven losses.

**Giants 8, Pirates 7**  
Reliever Juan Pizarro, purchased from the Mexican League Monday, walked Bruce Miller with the bases loaded in the 10th inning to force in the winning run for San Francisco against Pittsburgh. The Giants, trailing 6-2, erupted for five runs in the top of the ninth with Miller's run-scoring single capping the rally but the Pirates tied the game in the bottom of the frame. The victory went to Mike Caldwell, 12-3, in relief.

**Braves 8, Cardinals 6**  
Darrell Evans' two-run homer and triple and three hits apiece by Henry Aaron and Marty Perez led Atlanta

# SPORTS

The Pampa Daily News  
Pampa, Texas 68th Year Wednesday, Aug. 21, 1974

past St. Louis' Perez' homer capped a four-run second inning for the Braves. St. Louis' Lou Brock stole his 85th base, moving him to within 19 of Maury Wills' single season record of 104 set in 1962.

Astros 6, Mets 2  
Lee May slammed his 19th

homer to spark a 12-hit attack and James Rodney Richard, with relief help from Mike Cosgrove, recorded his first victory of the season in Houston's win over New York. Bob Watson singled home Roger Metzger in the fifth inning to snap a 2-2 tie.

## Baseball Standings

By United Press International		American League	
National League		East	
	w. l. pct. g.b.		w. l. pct. g.b.
St. Louis	65 59 .524 -	Boston	68 54 .557 -
Philadelphia	62 61 .504 2 1/2	Baltimore	62 59 .512 5 1/2
Pittsburgh	62 61 .504 2 1/2	Cleveland	60 58 .508 6
Montreal	57 63 .475 6	New York	61 61 .500 7
New York	52 67 .437 10 1/2	Milwaukee	59 64 .480 9 1/2
Chicago	50 70 .417 13	Detroit	58 65 .472 10 1/2
		West	
			w. l. pct. g.b.
Los Angeles	77 46 .626 -	Oakland	71 53 .573 -
Cincinnati	75 49 .605 2 1/2	Kansas City	64 56 .533 5
Atlanta	66 56 .541 10 1/2	Texas	62 62 .500 9
Houston	63 59 .516 13 1/2	Chicago	60 63 .488 10 1/2
San Francisco	56 68 .452 21 1/2	Minnesota	60 64 .484 11
San Diego	49 75 .395 28 1/2	California	49 75 .395 22

**Tuesday's Results**  
Los Angeles 18 Chicago 8  
San Francisco 8 Pittsburgh 7, 10 inn.  
Atlanta 8 St. Louis 6  
San Diego 3 Montreal 0  
Cincinnati 7 Philadelphia 1  
Houston 6 New York 2

**Today's Probable Pitchers**  
(All times EDT)  
Los Angeles (Messersmith 13-5) at Chicago (Bonham 10-15), 2:15 p.m.  
San Diego (Spillner 5-8) at Montreal (Renko 9-11), 8:05 p.m.  
San Francisco (Barr 10-6) at Pittsburgh (Ellis 9-8), 7:35 p.m.  
St. Louis (Gibson 7-10) at Atlanta (Capra 10-6), 8:05 p.m.  
New York (Koonman 11-8) at Houston (Griffin 12-5), 8:35 p.m.  
Philadelphia (Lomborg 13-11) at Cincinnati (T. Carroll 4-0), 8:05 p.m.

**Thursday's Games**  
(No games scheduled)

**Tuesday's Games**  
Baltimore 2 Texas 1  
Boston 8 Chicago 3  
Kansas City 2 Cleveland 0  
New York 2 Minnesota 1  
Detroit 1 California 0, 11 inn.  
Oakland 7 Milwaukee 1  
**Today's Probable Pitchers**  
(All Times EDT)  
Minnesota (Butler 4-5) at New York (Tidrow 9-10), 2:00 p.m.  
Chicago (Johnson 4-2) at Boston (Moret 6-5), 2:00 p.m.  
Kansas City (Dal Canton 7-6) at Cleveland (Bosman 5-2), 7:30 p.m.  
Texas (Bibby 17-14) at Baltimore (Grimsley 14-10), 7:30 p.m.  
Milwaukee (Colborn 8-10) at Oakland (Odom 1-3), 11:00 p.m.  
Detroit (LaGrow 7-13) at California (Hassler 2-8), 11:00 p.m.

**Thursday's Games**  
Kansas City at Cleveland, night  
Texas at Baltimore, night (only games scheduled)

# NFL Strikers May Leave Camp Soon

United Press International  
Ed Garvey is up in arms again and he says National Football League players may be out of camp soon.

Garvey, the executive director of the NFL Players Association, was incensed Tuesday when he learned that veteran defensive back Kermit Alexander of Philadelphia, vice president of the union, had been given permission to make a deal for himself with another club.

"If their answer to our cooling off period is to get Kermit Alexander out of the league and attack our leadership, this is going to be a long strike," Garvey said. "We've got enough strength to go back in and come on back out—the players know the strength of their union is at stake."

The union called a 14-day cooling off period and allowed players to report to camp beginning last Wednesday. It said,

however, that players would walk out of camp at the end of the two weeks if agreement is not reached with the owners.

Coach Mike McCormack said the Eagles "haven't waived him (Alexander) but he's looking on his own. I looked quite honestly at our defense and there was no way he could make the team or help it. Kermit's standing in the strike had absolutely nothing to do with my decision."

Alexander, who played little since joining the Eagles as a free agent two years ago, said he asked to make a deal for himself last season.

"Obviously they didn't do it then," Alexander said. "But Mike asked to see me. I came in and the talk opened with a statement about what we talked about before and that now I was free to try. If I can't make a deal? I presume I'm cut."

## Brown Grabs Another Golf In State Meet

NEW BRAUNFELS — Pampa swimmer Ted Brown, who captured first place in the 1500 freestyle last Friday here, continued his winning ways Saturday, taking a gold medal in the 400 free in the Texas Age Group Swimming Championships.

The meet involved the top high school swimmers in the state as Brown, besides the two first place medals, took seventh in the 200 free.

Swimming for the Amarillo Aquatic Club, the Pampa High School junior had his lifetime bests in the 200-yard intermediate, the 400-yard medley and the 100-yard butterfly, but did not qualify for the finals.

**COLDEST BEER IN TOWN**  
**Ballantine's BEER**  
6th 99c  
OPEN EVERY DAY  
**ELEVEN**  
**MINI MART**  
2100 Perryton Pkwy.  
1106 Alcock

**CORRECTION**  
**FRANK'S FOODS** 638 S. Cuyler 665-5451 Good Thru 8-24-74  
SAVE 26¢ WHEN YOU BUY A 1 LB. CAN of FOLGER'S COFFEE  
SPECIAL PRICE WITH THIS COUPON **99c** WITHOUT COUPON \$1.25  
COUPON CASH VALUE 1/20 OF 1¢  
GOOD THRU 8-24-74  
Whole **FRYERS** lb. **39c**  
Block Diamond, Medium Size **WATERMELONS** \$1.19

Comfort...that's what we're all about.  
**Wards Dual Flame gas furnace.**  
SAVE \$75  
**SOLID STATE THERMOSTAT**  
• Far more accurate than conventional thermostats. Ends thermostat jiggling forever.  
• Fully Automatic. Selects flame size and blower speed to meet your heating needs.  
• Controls both heating and cooling.  
**GAS FURNACE GUARANTEE**  
Montgomery Ward guarantees this furnace against defects in materials and workmanship as follows:  
• FOR 1 YEAR FROM DATE OF PURCHASE Montgomery Ward will repair or, at its option, replace defective parts free, including labor.  
• FOR AN ADDITIONAL 19 YEARS Montgomery Ward will furnish free replacements for defective heat exchangers, charging only for installation.  
For service under this guarantee, contact your nearest Montgomery Ward branch. Evidence of date of purchase required.  
Just set the thermostat. Furnace automatically selects the right flame to match the weather.  
A.G.A. CERTIFIED DESIGN  
**DUAL FLAME** furnaces have 2-flame settings to match your specific heating needs. Low for mild weather, high for coldest days. Multi-speed blower automatically adjusts to match burner flame. **20-YEAR GUAR.** heat exchanger works for maximum efficiency. **1-PIECE JACKET** is fiber glass insulated to conserve heat.  
**67/100,000-BTU FURNACE**  
**\$289**  
REGULARLY \$364.95  
\$289.95/84/125,000-BTU unit, 67/100,000-BTU counterflow unit reg. \$334.95 ..... \$259  
CALL TODAY. LOW-COST INSTALLATION AVAILABLE.  
SAVE \$30  
80,000-BTU '500' GAS FURNACE  
Heat exchanger guaranteed 20 years. Thermostat is extra. REG. \$159.00  
SAVE \$20  
ELECTRONIC AIR CLEANER  
Mount in your furnace system. Removes 95% of dirt from air. REG. \$239  
ENJOY WHAT YOU NEED NOW—JUST SAY "CHARGE-IT!"  
We care about your comfort. **MONTGOMERY WARD**  
Open Daily 9 a.m. to 6 p.m. Thursday 9 a.m. to 8 p.m.  
Coronado Center.

**LABOR DAY SALE**  
**POLYGLAS WHITEWALLS**  
**1974 New Car Tires**  
Custom Power Cushion Polyglas: America's Best-Selling Tire  
**BUY NOW—SAVE**  
**\$30** SAVE \$8.75  
Size A78-13 Whitewall plus \$1.80 F.E.T. and tire off your car.  
SALE ENDS SATURDAY NIGHT—OTHER SIZES SALE PRICED TOO!  
**5 WAYS TO CHARGE**  
• Our Own Customer Credit Plan • MasterCard  
• BankAmericard • American Express Money Card • Carte Blanche  
**GOOD YEAR**  
\$4.00 OFF WITH THIS COUPON  
**ENGINE TUNE-UP \$34.95**  
Includes VW's, Toyotas, Datsun • NEW Plugs, Points, Condenser. Any 6 cyl. U.S. auto—Add \$4 for 8 cyl. cars—Add \$2 for air-cond. autos.  
**BRAKE OVERHAUL \$50.95**  
Except disc brakes, foreign cars—Wheel Cylinders \$10.00 ea. IF NEEDED. Regular price \$54.95  
Brake linings 4 wheels • Front Grate Seals • Return Springs • Turn Drums • Arc Linings • Add fluid, clean front wheel bearings. Inspect, repack bearings.  
**LUBE AND OIL CHANGE \$5.50**  
• Transmission, differential oil check • Complete chassis lube • Price includes oil and labor • Please phone for appointment. limit 5 qts. of oil per customer.  
**FRONT-END ALIGNMENT \$10.95**  
• Front-end inspection • Camber, caster, and toe-in set. —Most U.S. some foreign cars—plus parts if needed.  
**GOODYEAR SERVICE STORE**  
125 N. SOMERVILLE 665-2349









# Daily School Meal Priced At Only Half Its Current Real Cost

WASHINGTON (UPI) — When children troop back to school this fall, they'll be returning to one of the few comparative bargains in today's economy — a daily meal priced at only about half its current real cost.

In the school year which ended last June, for example, youngsters at more than 87,000 schools participating in the National School Lunch program paid an average of about 42 cents for their meals.

The price was up about a nickel from the previous year. But officials of the Agriculture Department's child nutrition division — which handles federal aid to the lunch program — say the tab paid by youngsters was only about half the 84 cent total cost of the average school lunch.

Who paid the 42-cent difference?

About 24.5 cents of the gap, officials say, was paid by state and local governments in the form of cash or services such as warehousing, transportation and utilities. Another 10.5 cents came in the form of cash from the Agriculture Department which has been subsidizing school lunches since 1946.

Finally, a further 7 cents came in the form of Agriculture Department donations of commodities like hamburger, chicken and butter.

Food prices have risen since last year, which means that the total cost of the average school lunch this fall is expected to rise above the 84 cent level of the 1973-74 school year. But

Agriculture officials say they don't expect any widespread hikes in the average of about 40 cents paid by elementary school pupils and 46 cents charged in many high schools.

The increase-in-costs, one expert said, should be mostly or entirely offset by increased federal-aid being provided under several recent laws liberalizing government subsidies to the lunch program. The Agriculture Department's cash contribution, for example, went from 8 cents to 10.5 cents last November and will be up again to 11 cents in the new year. The agency's commodity contribution will rise from 7 to 10 cents per meal.

Besides, officials point out, all these figures on federal lunch aid apply only

to middle and upper income children who pay "regular" prices for what is actually a heavily-subsidized meal. For needy children, the subsidy is much greater.

According to Agriculture estimates, about 9.3 million of the 24.1 million youngsters eating lunches under the National School Lunch Program this coming year will qualify as needy and will get their meals free or for token prices of about 20 cents. Almost all of the needy will be in the completely free category, since only about 1 per cent of all lunches served go to youngsters qualified for the token-price plan.

For free and reduced-price lunches, the federal cash contribution this coming school year will average 47 cents compared

with 46 cents in the 1973-74 year.

In many ways, the meals children will get this fall will differ from the lunches their mothers and fathers ate under the lunch program a generation ago. New types of foods are being served, new methods of central preparation and cost-cutting service are being used — but one thing remain unchanged.

A it did back in 1946, the federally-subsidized "Type A Lunch" must consist of four basic elements — milk, a protein food, fruits and vegetables, and bread with butter or margarine.

Today's youngsters, however, are getting some foods their parents never saw. Federal regulations, for example, now allow school cafeterias to mix up to 30

per cent textured vegetable protein (TVP) into hamburger to reduce the cost of meat without cutting protein content. Other new "engineered" foods approved for school use include fortified macaroni, and officials currently are considering possible approval of a "cheese alternate" made without butterfat.

Another change affects milk. When the mothers of today's first-graders were in school, they got only whole milk. But regulations today permit schools to offer youngsters their choice of regular, low-fat or even skim milk — and more children are drinking milk under the new plan.

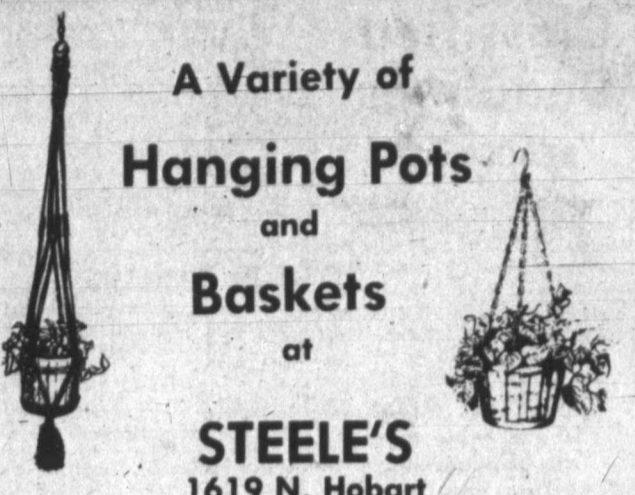
Total federal spending for the lunch program in the coming 1974-75 school year

is estimated at \$1.467 billion compared with \$0.78 billion in the 1971-72 year.

Not all of the children eligible will participate if

past patterns are followed. In past years, schools have reported that only about two-thirds of their pupils generally chose to eat the school meal.

A Variety of  
**Hanging Pots**  
and  
**Baskets**  
at  
**STEELE'S**  
1619 N. Hobart



## BACK TO SCHOOL SALE

# School system.

MODULAR STEREO 8-TRACK SYSTEM WITH FULL-DIMENSIONAL SPEAKERS FOR DORM OR HOMEROOM



**\$99<sup>88</sup>**  
REGULARLY \$119.95

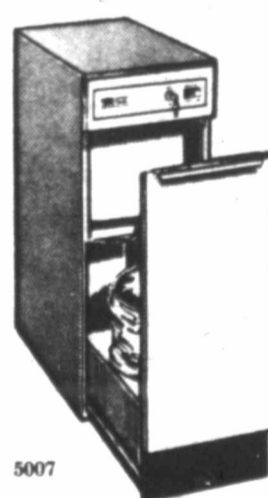
LISTEN TO FM SOUNDS, AM ROCK OR HOURS OF YOUR FAVORITE 8-TRACK TAPES. IT'S A GREAT SYSTEM.

**SAVE \$20**

8-TRACK PLAYER gives hours of uninterrupted music; operates automatically or manually.

AM/FM-STEREO receiver has quick, easy pushbutton functions and slide controls.

4-SPEAKER stereo sound system gives you full-dimensional listening.



**SAVE \$10**  
HANDY TRASH COMPACTOR

**\$149<sup>88</sup>**

REGULARLY \$159.98  
Just one neat bag a week for average family of 4 eliminates many messy garbage cans. All trash goes in one place. Quiet operation; child-safe lock.



**SAVE \$20**  
WARDS 30-IN. GAS RANGE

**\$229<sup>88</sup>**

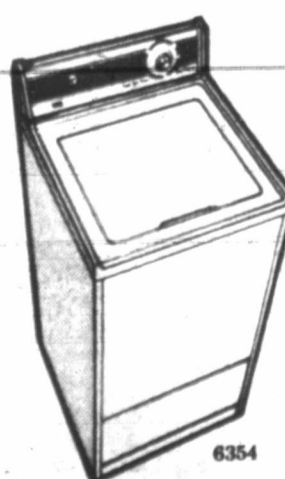
REGULARLY \$249.95  
Continuous-cleaning oven with removable black glass door. Lift-up cooktop and chromed burner bowls for easy cleaning. Clock, 4-hour timer.



**SAVE \$30**  
19" DIAGONAL COLOR PORTABLE TV

**\$299<sup>88</sup>**

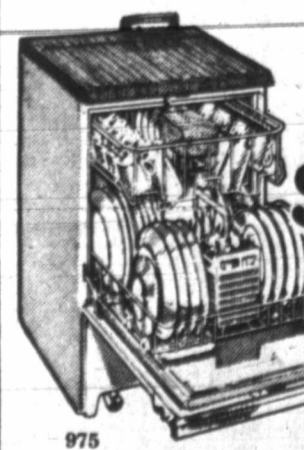
REGULARLY \$329.95  
Features Automatic Frequency Control, UHF and VHF antennas, up-front speaker, deluxe cabinet.



**SAVE \$40**  
SPACE-SAVING AUTO. WASHER

**\$239<sup>88</sup>**

REGULARLY \$279.95  
Takes big family loads yet only 21-in. wide — fits where others can't. 8 cycles, two speeds and infinite water-saver control. Driers as low as \$108



**SAVE \$20**  
WARDS 4-CYCLE DISHWASHER

**\$249.88**

REGULARLY \$269.95  
Power-saver switch lets you stop machine just before dry cycle starts. Chopping-block top of maple wood has gravy groove. In 3 colors.



**SAVE \$60**  
12-CYCLE, 20-LB. CAPACITY WASHER

**\$279<sup>88</sup>**

REGULARLY \$339.95  
Infinite water level control. Bleach, fabric conditioner, and detergent dispensers incl. 4 colors.



**\$50 OFF**  
15.4-CUBIC FOOT REFRIGERATOR

**\$229<sup>88</sup>**

REGULARLY \$279.95  
Frostless — you never defrost. Freezer section holds up to 152 lbs. of food. Dual cold controls, slide-out shelves, twin produce bins, more.



**SAVE \$50**  
DELUXE 20-LB. CAPACITY DRYER

**\$189<sup>88</sup>**

REGULARLY \$239.95  
4-way system for drying with or without tumble. 5 temperature selections. Available in 4 colors.

## NATIONAL HOME APPLIANCE SALE

OPEN 9:00 A.M. TO 6:00 P.M. DAILY, THURSDAY 9:00 A.M. TO 8:00 P.M.

**CHARGE IT!**

**MONTGOMERY WARD**