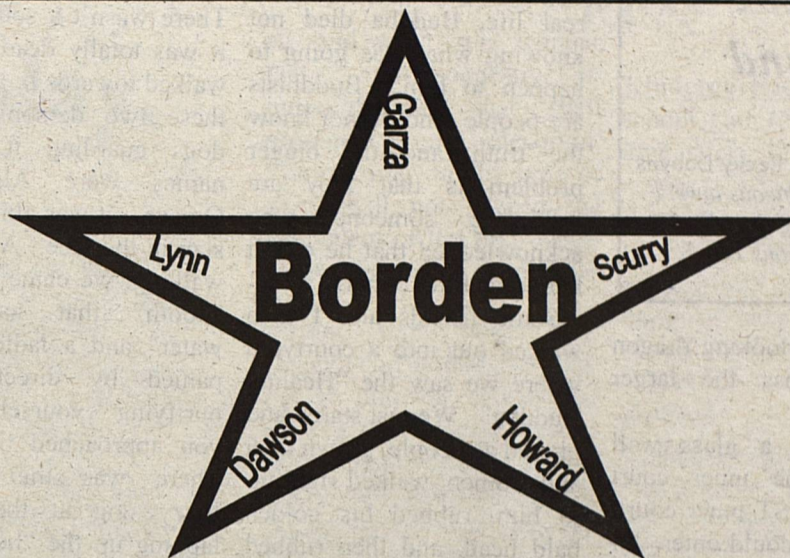


THE

Volume XXXII



STAR

July 26th, 2006

Serving the Counties of Borden, Dawson, Garza, Howard, Lynn & Scurry

History of the Gail Cemetery

Borden County was created in 1876 from Bexar County and organized in 1891. In April of 1892, J.I. Wilbourn and his wife, L.E. Wilbourn donated a block of land for the public square. The courthouse and jail would be built on this square. The Wilbourns also dedicated land to be used for three churches and a 2 acre block to be used as a burial ground.

On January 14th, 1901, J.I. Wilbourn deeded the cemetery land to five Borden County men, who would serve as trustees for the Gail Cemetery. The first trustees were: J.N. Prince, A. B. Spears, J. W. C. Mullins, E. K. Yellott and W.K. Clark. This was the block of land that he and his wife gave to Borden County in 1892 to be used as a burial ground. He also stated that any vacancy of a trustee position would be appointed by the county judge.

In 1906, Mr. Wilbourn deeded a two acre block of land just south of the cemetery to the Gail Masonic Lodge. In October 1988, the Masonic Lodge

donated the two acres to Borden County. In 1992, two more acres were added to the cemetery.

There are over 300 graves in the Gail Cemetery. The oldest known grave in the cemetery is that of Fetnah S. Alexander. There may be older graves for there are at least nine unmarked graves.

There are three of the original five trustees buried in the cemetery. They are J.N. Prince, W.K. Clark and A. B. Spears.

J.N. Prince was the Borden County district and county clerk from 1898 to 1902. Prince and his wife, Susan Emmie, are buried in the cemetery. A.B. (Aquilla Brown) Spears and his wife, Annie Mae Clark Spears are both buried in the cemetery. Annie May was the daughter of Mr. & Mrs. W.K. Clark. J.W.C. Mullins is not buried in Gail Cemetery but his wife, Mary E. and three of his children are.

Among others buried in the cemetery are an infant son of William S. and M.E. Moore. William S. (Billy) Moore was the first district and county clerk of Borden

County from 1891-1894. He was also the second sheriff of the county from 1897 to 1898.

Lee Anderson Pearce and his wife, Elizabeth Ruth, are buried in the cemetery. L.A. Pearce was the district and county clerk from 1915-1916, the county treasurer from 1927-1930 and the county judge from 1931-1936.

David Dorward and Minnie Russell Dorward are both buried in the cemetery. David Dorward was county treasurer from 1905-1908 and again from 1919 - 1927. David Dorward and J.D. Brown opened a drugstore on the west side of the square. Later Dorward opened a drugstore on the north side of the square. The building still stands.

Sid Reeder and his wife, Iva, are also buried in the cemetery. Sid was sheriff in Borden County from 1939-1963. After Sid's death, Iva was appointed to finish her husband's term as sheriff.

J.S. York was the first commissioner of precinct #4 appointed in 1891. He served from 1891-1894 and from

Cont. to pg. 4



New Brick Entries into Gail Cemetery: The brick entryway to the cemetery shown in this picture is one of two that was a project of Jess Everett of Snyder. He supplied the materials and directed the construction of the two entryways.



Learning and Living

By Becky Dobyns

When I learn your righteous laws, I will thank you by living as I should!
-Psalms 119:7

Japan Journal

Part 4: Buddhist Temple and Shinto Shrine

June 9

This morning, a very gloomy, rainy morning, we went to the Buddhist Temple and Shinto Shrine at Asakusa (an area of Tokyo). I have never experienced such spiritual warfare in my life as I did in those places. As we entered the outer court of the Buddhist temple, we could tell right away that it wasn't a place of worship, but a place of money. It was very loud, and shops were crammed into every available space.

As we walked through and prayed, we were reminded of the situation in the temple of Jesus' day, and how He overturned the tables. We found it strange that people weren't even reverent of their own faith, but of course the Church often has similar situations. We had expected that only tourists would treat the temple as a mere historical monument, but even the believers treated it that way.

As we entered the inner court, I noticed that it wasn't much quieter than the outer court. Cameras were flashing, and children were running around. We looked up at the ceiling and there was

this demonic-looking dragon running across the larger portion of it.

There was a glass wall separating the inner court from the MOST inner court. Only monks could enter. In front of that glass wall, there was a place where people dropped coins in, bowed, and prayed. On either side of it was a glass case filled with candles. Inside the two cases, about forty candles were lit in all. These candles were lit to represent aborted babies. Guilt-ridden mothers or other family members would come and light candles...I'm not sure if it was to show repentance or what, but either way they were offering up these unborn babies to Buddha, and not Jesus. I was standing for a moment, staring at all these humans right in front of me that never had a chance to live. This was the only time I teared up while we were in the temple.

Inside the inner court, there were people writing prayers on pieces of paper and tying them to rods, mostly kids. Lining the walls were machines that you could put coins into and horoscopes would come out. I went to a side exit and looked outside. It was raining pretty hard. As I looked out, I saw the main Buddha, the largest one there, in the middle of trees and bushes with a path leading to him. He was just a cold, wet, dark gray statue, and no one was bowing at his feet. He looked cold and empty, and with the rain falling on him, he seemed so helpless and unknowing. In

real life, Buddha died not knowing what was going to happen to him. Buddhists are people who do not know the truth...and the bigger problem is that they are following someone who acknowledged that he didn't know the truth either.

Some friends and I then walked out into a courtyard where we saw the "Healing Buddha". We just stared and prayed as people, grown men and women, walked right up to him, rubbed his golden bald head, and then rubbed whatever part of their body was hurting. We were so sad and angry, but at the same time compassionate.

We then left the courtyard, passed a Buddha with an incense bowl in front of him, passed the place where people purified themselves with incense fumes, and walked back into the inner court. Some members of our team were walking around praying Scripture, others were simply singing praises to God in a place where His name gets so little praise, and the rest were huddled in a corner in a group on the floor, praying together out loud. My friends and I joined them, and little by little more of us joined them, until before long the whole Japan team was praying together.

It was strange; as soon as the whole team was praying together, the monks started chanting over the loud speaker and playing the organ (I think it was an organ...that's what it sounded like). It sounded so eerie and evil. The louder we got, the louder they got. It was like there was a battle going on right there. We were getting exhausted just sitting on the floor...but we kept praying until they stopped chanting.

Then we walked over to the Shinto Shrine. It had a very different atmosphere.

There wasn't a soul around; it was totally dead. As we walked towards it, we passed these two demonic-looking dogs guarding it. Their names were Alpha and Omega...it was almost like a slap in the face. As we kept walking, we came to a little "booth" that had "holy water" and a ladle, accompanied by directions for purifying yourself before you approached the shrine. There was this adorable fuzzy dog at the bottom, lapping up the "holy water" that spilled down the sides. Then we approached the shrine, which was dark and still. It housed some statues, and on the outside was a place where people could hang blocks of wood with prayers on them. A few were written in English, and they said things like, "Bring money and success to my family so we can buy things we want." Again we prayed and sang to God. Now and then people came up to the shrine, and we prayed for them.

As disturbing as it was, seeing all the statues that people were bowing to, I wasn't actually sensing worship of the statues. Even in those temples, I was sensing materialism more than anything - the prayer on the block of wood, the expensive clothes people were wearing, and all the shops lining the temple. Japan is not a godless country. Like America, it has chosen its god.

We went back to Iidabashi, where our hostel is located, for lunch. I ate REAL ramen noodles with pork! Yeah, that's right, not the hard kind in a package. It was sooo good, and really cheap.

From there we headed to Shibuya, home of the largest, busiest intersection in the world. One guy on our team that used to live here met up with a friend from elementary school. We got to hand out LOTS more tracts. Three of my friends got to present the Gospel to three schoolgirls as I prayed for them, and one accepted and now trusts in Jesus! She had gone to a Catholic school, but had never really understood the message of Christ. But now she understands, and it's so awesome!!

On the train I talked to two schoolgirls and gave them "The Hope" tracts, which present the Gospel and give the reader an opportunity to get a free DVD and Bible. The schoolgirls were giggling SO HARD. The only words I could fully understand were "thank you!" Then they got off, another group of schoolgirls got on, and two other girls and I handed them tracts. This group was less giggly, so I was actually able to personally mention "Yesu Kirisuto" ("Jesus Christ") to them. They're the first ones I've actually gotten to say that to! I'm trying to be bolder in mentioning Jesus so that maybe I can eventually share the Gospel personally instead of relying solely on a tract to do it.

After Shibuya, we went back "home" to Iidabashi, where our team leaders, two other girls, and I went to this awesome restaurant nearby where I had rice in egg stuff with shrimp on top. We got to give a tract to the waitress too.

Cont. to pg. 7

The Borden Star (USPS or PUBLICATION No. 895-520) is published weekly except Christmas and New Year's week for \$12.00 per year by the Borden Star, PO Box 137, Gail, Texas, 79738. Second-class Postage paid at Gail, Texas. POSTMASTER: Send Change of Address to the Borden Star, PO Box 137, Gail, Texas 79738

School Year begins Monday, August 21st

The 2006-2007 school year will begin on Monday, August 21st, at Borden County I.S.D. The school day will begin at 8:05 a.m. and will dismiss at 3:33 p.m.

Registration for all students in grades 6-12 and all new students in grades K-12 will take place at Borden County High School from 8:30 a.m. to 4:30 p.m. Tuesday, August 8th through Thursday, August 10th.

Borden County ISD Dress Code

The Borden County School's dress code is established to teach grooming and hygiene, prevent disruption, and minimize safety hazards. Students and parents may determine a student's personal dress and grooming standards, provided that they comply with the following:

Borden County's students shall be dressed and groomed in a manner that is clean and neat and that will not be a health and safety hazard to themselves or others. Clothing and grooming that in the principal's judgment may reasonably be expected to cause disruption of or interference with normal school operation is prohibited.

The Borden County School prohibits pictures, emblems, or writing on clothing that

1. Is lewd, offensive, vulgar, or contains obscene language

2. Advertises or depicts tobacco products, alcoholic beverages, drugs, or any other substance prohibited by the school

3. Refers to satanic, cult, prison wear or gang activities

The following guidelines will be used to determine appropriate dress:

1. Dresses, skirts, split skirts and shorts should not be shorter than two inches above the knee. A student will lose the privilege of wearing shorts for the school year upon a third offense. Parents will be notified when the second offense occurs. Shorts must be tailored (hemmed with no frayed edges). No spandex biker shorts or wind shorts are allowed (loose-legged, athletic running shorts) and shorts shall not be too tight.

2. Wearing of oversized or baggy pants and/or jeans is prohibited at school or at any school-sponsored activity on or off campus. No "saggin, baggin, or draggin." Pants must be an appropriate length and not drag the floor. Boys' pants will be worn at the waist and properly fit the waistline. No excessively wide legged pants will be allowed. No trench coats, dusters, jail attire or paramilitary attire will be allowed. No chains will be allowed on school property or at school sponsored functions.

3. Shirts and blouses must be buttoned appropriately with midriff and back covered at all times. (Tops must be long enough that skin does not show when arms are lifted.) Clothing shall be designed, construc-

School Supply List

ed, and worn in a manner that is not suggestive or indecent, and that shall promote proper decorum. The opening on any type of shirt shall not exceed the equivalent of the first button below the collar of a dress shirt.

Tank tops and "see-through chiffon blouses" will not be allowed unless they are worn with a crew neck T-shirt underneath it or a shirt worn over them during all school hours and activities. Tailored shirt shirttails must be tucked in unless you have a crew T-shirt underneath the shirt. (All tailored shirts will be buttoned and tucked into the pants or skirt when representing Borden County in any extracurricular activity.)

Sleeveless blouses are permissible but must be in good taste. Appropriate undergarments must be worn and must not be exposed at any time.

4. Footwear shall be a part of regular attire. House shoes are not acceptable footwear. No metal cleats or plates on the soles of shoes shall be worn in the building.

5. Hair shall be clean and well groomed at all times while attending school, school functions, and school sponsored activities. It will be styled in a manner that will keep it out of the student's eyes and not obstruct one's vision. No unnatural or bizarre hair colors or haircuts will be permitted. Eyebrows must not be notched or shaved in an unnatural manner. Male students' hair may be worn no longer than the top of the collar. In addition: geometric or unusual patterns will not be allowed to be shaved or cut in the hair, and boys may not wear ponytails, rat-tails, or braids.

Cont. to pg. 8

Kindergarten: Elmer's school glue (NOT paste), 2 glue sticks, 2 boxes of 16 crayons, scissors (**Fiskars for kids**), supply box (**cigar box size**), 4 #2 pencils, gym shoes, towel for nap time, 2 boxes of baby wipes or wet wipes, big eraser, 1 box of Kleenex, 2 folders (**with pockets**)

First Grade: 2 boxes of 16 crayons, 5 #2 pencils, supply box, scissors (**Fiskars for kids**), 2 medium sized bottles of Elmer's school glue, 2 glue sticks, 1 1-subject spiral notebook (**wide ruled**), gym shoes, large box of baby wipes, 2 boxes of Kleenex

Second Grade: 12 #2 pencils, crayons, Elmer's school glue, notebook paper (**wide ruled**), scissors, eraser, gym shoes, ruler, large box of baby wipes or wet wipes, supply box, 2 glue sticks, box of Kleenex.

Third Grade: 1 spiral (**wide ruled**), (300) 3X5 index cards, 1 ruler (**metric and standard**), 4 red pens, 1 bottle of glue and 2 glue sticks, 2 pocket folders, 1 box Kleenex, 2 large boxes of baby wipes, notebook paper (**wide ruled**), 24-#2 pencils (**not mechanical**), large eraser, gym shoes, supply box, crayons, colored pencils, scissors **NO NOTEBOOKS, PLEASE!**

Fourth Grade: Crayons, box of #2 pencils, 3 red grading pens, 3 folders with inside pockets (**no brads**), **wide ruled** notebook paper, 1 standard and metric ruler, 1 large inexpensive box of baby wipes, 2 glue sticks, 1 eraser, scissors, 2 boxes of Kleenex, gym shoes, 1 bottle of glue, 1 pkg. lined index cards.

Fifth Grade: 1- 2 inch 3 ring notebook, 1-red 1 1/2 in. 3 ring notebook, 1 package of dividers with pockets, 1 red spiral notebook (**wide**

ruled), 1 red folder with pockets, 2 pkgs. notebook paper-**WIDE RULED ONLY**, 1 box of #2 pencils, 4 grading pens, 1 black sharpie (**twin tip**) 2 large glue sticks, 1- 8oz. Bottle Elmer's glue, 1 box of 36 colored pencils, 1 box of 10 crayola markers (**broad tip**), 1 package of 50 crayola washable markers (**super tip**), 1-ruler (**with both inches and centimeters**), scissors, 1 package of highlighters (**5 colors-green, blue, yellow, orange, pink**), 2 large boxes of Kleenex, 1 school box

Sixth Grade: One 2" 3 ring notebook (**regular notebook-no zippers or flaps**), 6 pocket dividers, 30 regular dividers, 1 package highlighters (**5 different colors: green, blue, orange, yellow, pink**), 1 package map colors (**at least 24**), 1-5 subject spiral notebook (**with holes**), 5 packages notebook paper (**wide ruled**), 2 packages lined 3x5 index cards (**4x6**), 2 boxes Kleenex, 1 package red pens (**10 at least**), 1 package black pens (**10 at least**), 1 package pencils (**10 at least**), 1 package blue pens (**at least 10**), 1 glue stick (**large**), 1 package wet wipes, 1 good pair of scissors, 1 Mead Composition black and white book, 2 black sharpie markers, 1 folder with pockets, ruler w/inches and centimeters, 1 large supply box.

****ONE LARGE SMILE AND A GOOD ATTITUDE****

(7th - 12th)

Mr. Ard - English (7th), English (8th), Speech

A comprehensive list will be given the first day of school. Loose-leaf notebook paper (**wide-or college-ruled**) and black/blue/& red ink pens.

Cont. to pg. 8

History of the Gail Cemetery

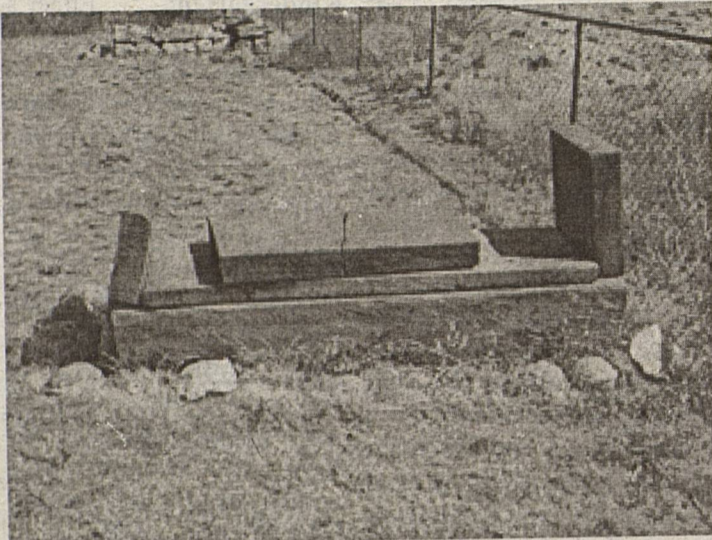
Cont. from pg. 1

1899-1904. He is not buried in the cemetery but his son James Norman (Jim) York is.

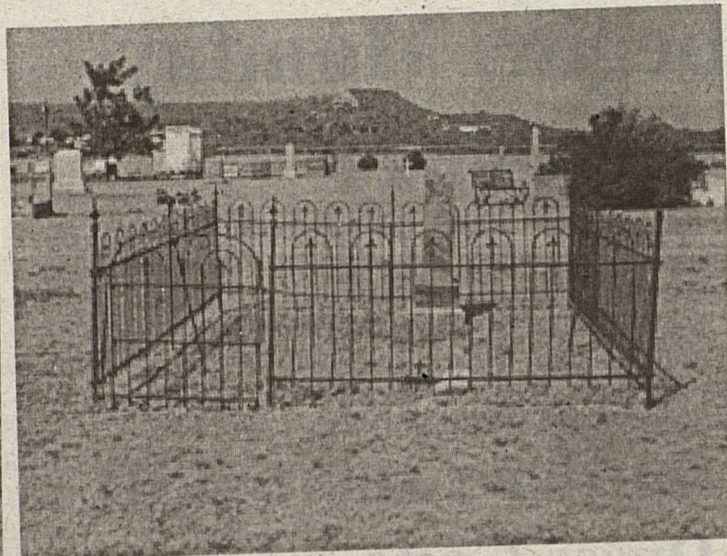
Tom C. Smith was the commissioner of precinct #1 from 1927-1932. Tom and his wife Ruth are both buried in the cemetery.

Leither J. Dow was the wife of James Lorenzo Dow. She died a few months after their marriage on September 21, 1901 and is buried in the cemetery. James Lorenzo Dow finished his elementary school years in Gail and his high school in Colorado City. He learned the printer's trade from an uncle in Colorado City. He returned to Gail about 1900 where he edited his first newspaper, The Borden Citizen. After working for the newspapers in the area James L. Dow moved to Lubbock in 1905. He was responsible for developing the Lubbock Avalanche. The town of Lorenzo was named for him.

There are numerous veterans buried in the Gail Cemetery. Confederate veterans buried in the Gail Cemetery are Caswell P. Johnson, J.D. Cathey, W.P. Coates and J.M. Kincaid.



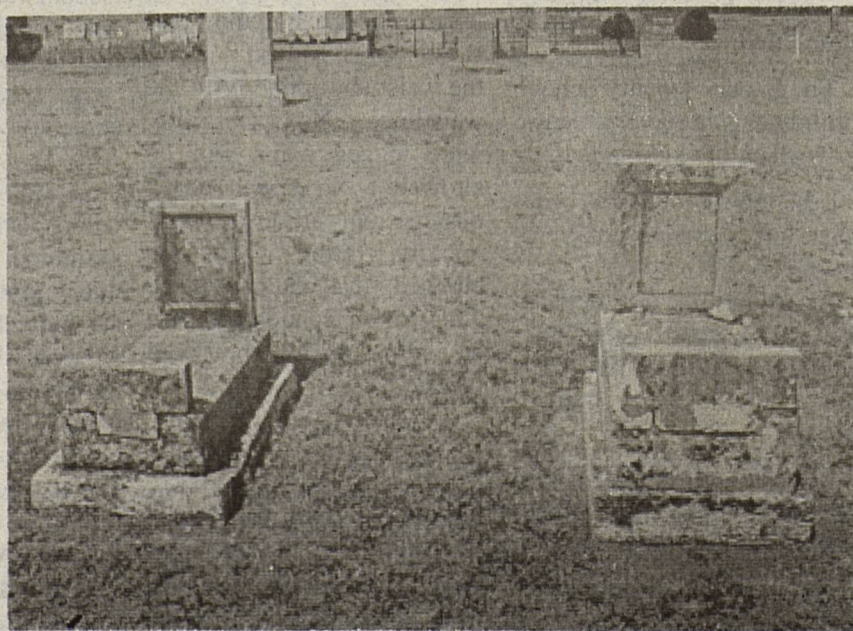
Gravesite of Fetnah S. Alexander

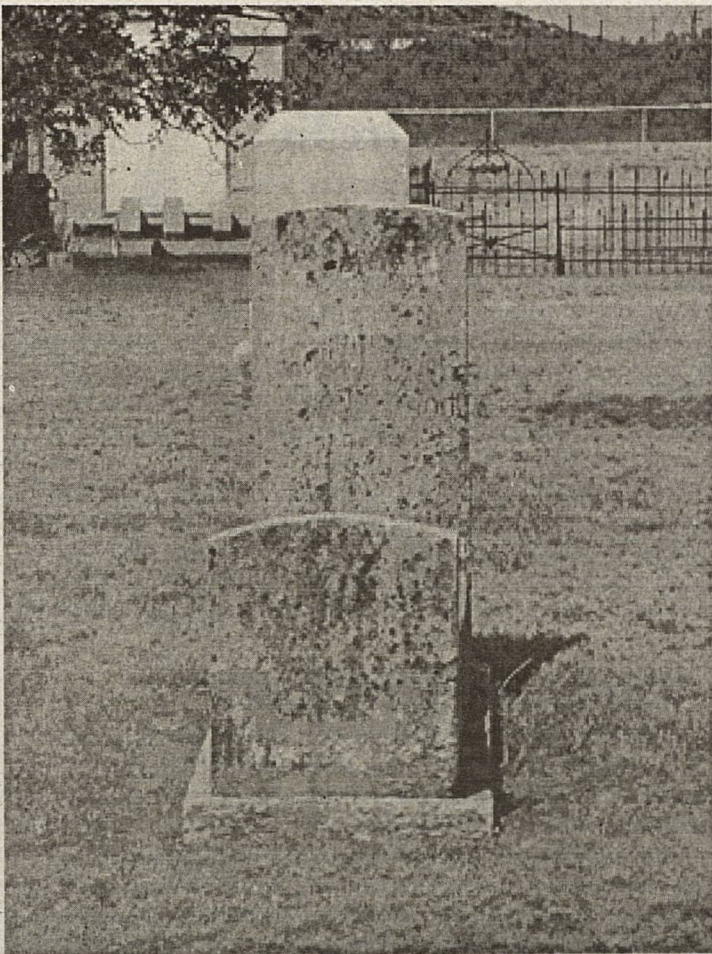


Some of the gravesites have fences surrounding their family plots.

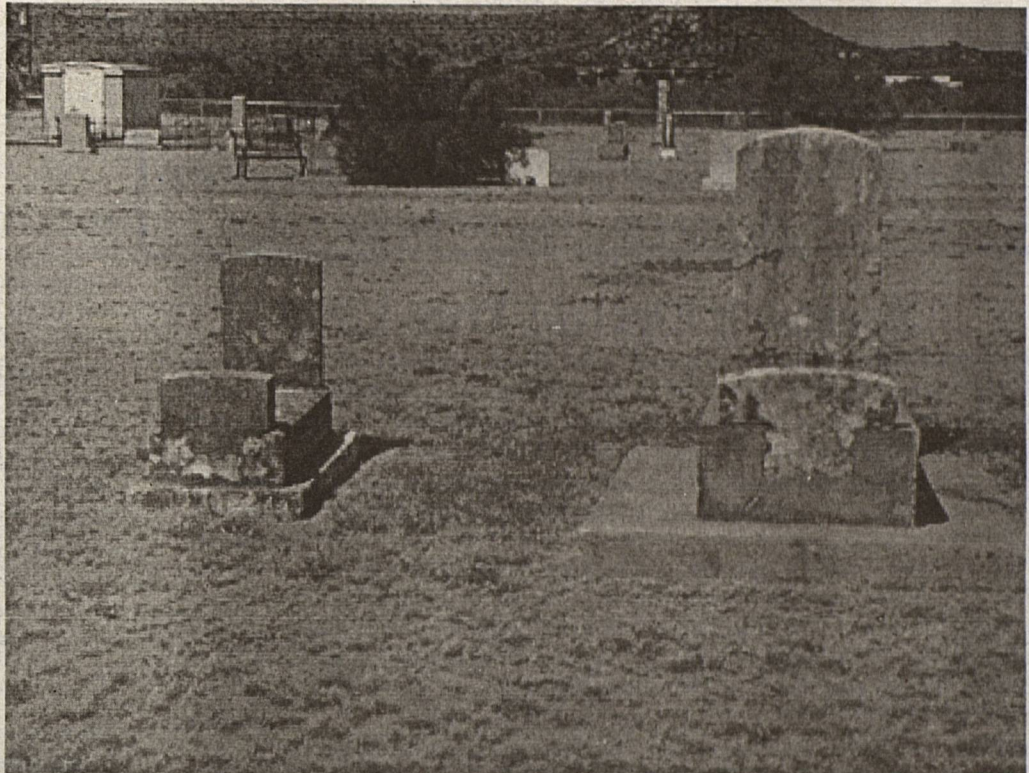


Photos of a few of the older gravestones



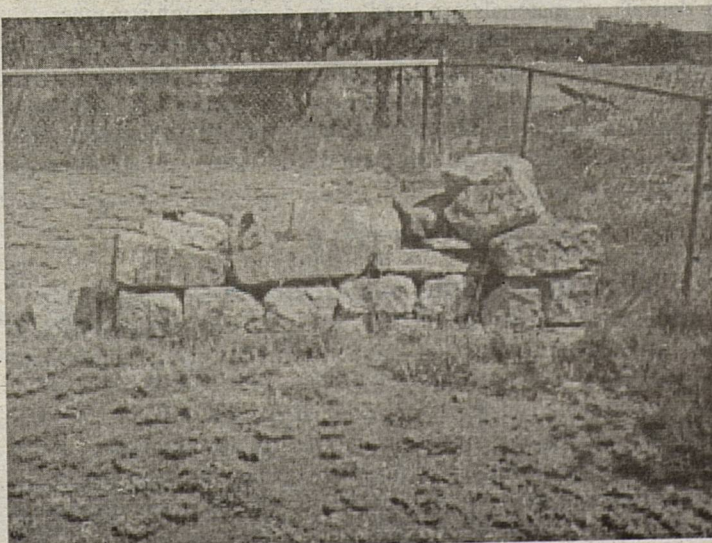


Early markers were made of concrete instead of marble or granite which are used in stones today.



Weather and time are wearing away the inscriptions and surfaces of many early stones as shown in this picture.

Gail Cemetery



This gravesite covered with large rocks has no markings.



This unusual stone marks the grave of a person that was a member of the Woodman of the World Lodge



There are several children's graves from the early 1900's that have angels or lambs sitting on top of the stone. Many of these children died from epidemics that occurred during this era.

***Business & Professional
Good Neighbor Review of Snyder***
Trade with the firms that support Borden County

Southern Electric True Value

Southern Electric True Value is conveniently located at 900 College Avenue, in Snyder, phone 573-4903. Here they feature building materials of every description of the highest quality at the lowest possible prices, including everything to go with it, hardware, tools, plumbing supplies, paint, kitchen cabinets, doors, windows, light fixtures, and a complete line of electrical supplies, as well as commercial cleaning supplies. The people of this section of West Texas including contractors, builders and farmers have come to know that they can depend upon **Southern Electric True Value** for everything in building materials. It may be said that this firm is a valued asset to this community. One of the essential features of any house, store or any other structure is that it will stand the wear of the years. The same is true of the reputation of any business firm and that is why **Southern Electric True Value** enjoys an ever-increasing volume of business and popularity. We in this Good Neighbor Review suggest you see them for all your building materials, hardware, cleaning and paper products and electrical supply needs.

Bell-Sypert-Seale Funeral Home

Time and service have honored the name of **Bell-Cypert-Seale Funeral Home** located at 3101 College Ave. in Snyder, phone 573-5454. For years this reputable funeral home has served the people of this section of West Texas. They relieve you of all worry and responsibility and by sympathetic cooperation bring comfort in the hour of distress. Their service supplies the consoling through that the final tribute to your loved one has been beautiful and fitting. They have in their employ only those who have a natural fitness for this profession. When a funeral director must be called, may we suggest that you place this firm in charge. They will relieve you of all the many details that must be taken care of and at the same time see that everything is done according to your desires. In this Good Neighbor Review we unhesitatingly refer our readers to this reliable firm and suggest that you call them when in need of a funeral director.

Snyder National Bank

This prominent bank is located at 1715 25th Street in Snyder and is a member of FDIC, phone 325-573-2681. **Snyder National Bank** is an institution of financial strength and safety and may well be termed "The Friendly Bank". It was founded by men of character and integrity who were very prominent in business and commercial activities and have progressed as this district itself has grown and progressed. Under the management of efficient and capable men they invite accounts of businessmen, women, farmers, labors or all people who desire profitable connection with a modern banking institution. At this bank you will find strength, seasoned judgment, dependability, accuracy in handling details and breadth of vision - - - all to be applied to the management of your personal or commercial affairs. In making this review we wish to make the statement that at the **Snyder National Bank** you may at all times save with safety.

McDonald Welding Supply, Inc.

McDonald Welding Supply is located at 1110 College Ave. in Snyder. They are distributors for all the well-known name brands of welding equipment along with a large line of hardware items and steel products for farm and ranch use. **McDonald Welding Supply** has a complete line of supplies for both light and heavy welders. Following is a partial list of supplies they offer you; complete line of industrial gases, gas welding torches, hoses, gauges, complete electric welding equipment, electrodes of any type, as well as all those other necessary supplies such as gloves, goggles, helmets, wire brushes, etc. If you are in the welding business, it is to your advantage to get acquainted with the reliable firm in Snyder. Here you will find a large line of hardware items for the farm, ranch and general public. Also they carry a complete assortment of steel for all purposes. Drop in at 1110 College Ave. and they will be happy to discuss your welding hardware and steel needs with you, or phone 573-5329. Also, remember that for all your hardware needs or for all farm and ranch steel products, **McDonald Welding Supply** is the place to go.

First Ag Credit

Farm Credit Service

First Ag Credit, Farm Credit Services (formerly Production Credit Assoc.), is located at 5111 College Ave. in Snyder. Phone 573-3222. They loan money to farmers and ranchers for agricultural purposes including operating, equipment and real estate loans at reasonable rates of interest. As it is our purpose in this Good Neighbor Review to give our readers throughout this district a list of prominent firms in our trade territory, we wish to bring to your attention this leading firm, **First Ag Credit, FCS**. The management, Robert Lehrer, has a reputation far and wide for honest business dealings and is anxious to please every customer alike. Their position among the people of this district is evidence of well placed confidence and in this review we take pleasure in recommending **First Ag Credit, FCS** to the farmers and ranchers of this and surrounding counties. During their years of operation they have done everything in their power for the improvement of the community and this district as a whole. You too, will find this firm to be a most valued asset to our section of West Texas and most desirable institution with which to do business.

American State Bank

American State Bank located at 3610 College Ave. in Snyder, is a member FDIC bank. A strong bank instills confidence in its community. Grow with your local bank. Our readers will find this bank a friendly bank, providing all of the facilities and services of a large city bank together with personal interest in every customer. So be prepared to take advantage of opportunity by depositing a reserve in this strong bank. When you are contemplating making an investment of any kind, it is a safe plan to consult the officers of this bank before you make that investment. A great deal of credit is due to the officers and directors of the **American State Bank**, who have done their best toward the developing of the farming, ranching and other interests of this area. The officers and directors of this bank are fine, public spirited men and women who believe in this area and feel that there are better days ahead for energetic persons who work with a plan backed by sound judgment and reasoning. We are pleased to recommend to our readers this outstanding bank. Phone 573-4041.

TRI-W Laundry & Dry Cleaners

Jay Wesson - Owner

TRI-W. Laundry & Dry Cleaners is located in Snyder at 1900 Snyder Shopping center. Phone 573-2821, for any information. Here the finest of dry cleaning and laundry service is available. They use the best and latest processes and as a consequence, when your garments are returned, they are not only clean but fresh smelling and well pressed, which extends the life of your garments considerably. Here they specialize in all kinds of dry cleaning and laundry, both for men and ladies. The most delicate of materials are handled in a very careful manner at TRI_W Laundry and Dry Cleaners. Many people have learned that through a good dry cleaning and laundry service that many dollars can be saved on the cost of new clothing. Customers have found that the most sensitive fabrics are carefully handled and successfully cleaned when using the services of TRI-W Laundry and Dry Cleaners. Jay Wesson invites you to visit them the next time you are in need of expert cleaning and finishing.

Ben Murphy

"Certified Public Accountant"

Today's Certified Public Accountant is more than just a tax Professional A CPA is a business advisor, keeping abreast of legislation which affects the businessman and woman, the individuals, and the professional. He is an invaluable "SILENT" partner in helping you improve your business and financial status. Laws affecting your business can change yearly and forms required by various agencies are overwhelming to many businesses. **Ben Murphy** is competent in matters that could be beneficial to your business. He is located at 1815 25th Street in Snyder, phone 573-8992 or toll free 1-800-658-6739. We believe the expertise of a CPA is a necessity in today's complex economic and business environment. In this Business & Professional Good Neighbor Review of the business firms of Snyder we do highly recommend this competent CPA firm as an experienced and professional advisor to businessmen and professionals throughout our area.

Big Country Autoland

The largest full line General Motors
Dealer in West Texas



Big Country Autoland is your authorized dealer for Chevrolet, Buick, Cadillac, Oldsmobile, Pontiac and GMC trucks. They are located at the Intersection of Hwys 208 & 180 in Snyder. Phone 573-5456 or toll free 1-800-573-5459. These General Motor products will give you the advantage of driving comfort, safety, efficiency of operation and easy handling. So treat yourself to a ride in one of these General Motor products and you will agree that they have beauty, roominess and plenty of power. At this time, **Big Country Autoland** invites you to come by and see the all-new CHEVROLET SILVERADO and GMC SIERRA pickups. This firm is also completely equipped to service any and all makes of automobiles. The mechanics at this firm are certified and will give your auto the best of care. In this Good Neighbor Review we are happy to recommend **Big Country Autoland** to all our many readers throughout Borden County. You can be assured of professional care and service when you buy or have your car or truck serviced at **Big Country Autoland**.

Tindol Insurance Agency

A Proud Past with a Solid Future

The reputation of **Tindol Insurance Agency**, representative for Germania, Progressive, Dairyland, and other insurance companies, has been built upon it's excellent service, the satisfaction and good will to their many satisfied policy holders. One of the leaders of it's kind in the area, this firm is under the management of a capable staff, who know that insurance business and the needs of their customers and furnish a quality insurance service at fair prices. If you will come by the office, Robbi Tindol will be glad to go over your coverage with you and advise you on any new or additional insurance you may require. Or you may phone 573-8649 and they will be glad to visit with you at your home or place of business about your insurance needs and furnish them to you at the most economical price. At the present time they are serving a great number of people throughout this area of West Texas in their insurance requirements, whether for auto, life or property. In this review of the business and professional concerns of Snyder, we highly recommend **Tindol Insurance Agency**, located at 1907 25th Street in Snyder. Phone 573-8649 for any information or for an appointment.

Snyder Lumber Company

Snyder Lumber Company is conveniently located in Snyder at 2109 25th Street, Phone 573-3579. Here they feature building materials of every description and the highest quality at the lowest possible prices. This popular lumber concern carries a complete line of grade "A" building materials and through their fair dealings of doing business and the high quality and fair prices constantly offered they have won an enviable reputation throughout this section. The people of this territory, including contractors, building and farmers have come to know that they can depend up on **Snyder Lumber Company** for everything in building materials. It may be said that this firm is a valued asset to this community. One of the essential features of any house, store or any other structure is that it will stand the wear of the years. The same is true of the reputation of any business firm and that is why **Snyder Lumber Company** enjoys an ever increasing volume of business and popularity.

Japan Journal

Cont. from pg. 2

Heavenly Father, I praise Your name right now for all You've done and yet to do with us. I love seeing You at work like this and being around so many amazing people. Bless all of Your

servants tomorrow. Show us how to pray and what to pray for. Guide our prayer warriors, and guide our feet where You want them to go. Bless all the tracts that were handed out today. Help

them ignite a fire of curiosity about Your Son in whoever's hands they landed.

[Becky will be giving a PowserPoint presentation about her mission trip to Japan at Gail Baptist Church on Sunday, July

30th during the 11:00 a.m. morning service. Everyone in the community is invited to come and join this special service. You'll learn a lot about what she did there, about how you can personally pray for Japan, and see many pictures that

she took while there. Make plans to come and see how God worked while these young people served.]



Eddins-Walcher Company

Edna Smith- Manager

Through the services of **Eddins-Walcher Co.** located on the old Lubbock Hwy. in Snyder, rural life in this section has been made more attractive. With their services there is no home that can not enjoy a modern system of cooking and heating. They offer the propane system, giving you a gas fuel, which has been passed by the National Board of Fire Underwriters and can be secured as complete systems with ranges, heaters and other gas appliances. Propane can be used for practically every purpose natural gas is employed. With propane you merely turn on the gas and light it and you immediately have a flame intensely hot with perfect combustion and is clean burning. Also you will find that they have a delivery service for Farm & Ranch fuels; delivering right to your location for the operation of all your farm and ranch equipment. It affords us a distinct pleasure in this our annual "Business and Professional Good Neighbor Review of Snyder" to recommend **Eddins-Walcher Co.** and refer their propane service to all our readers throughout Borden County. Phone 573-5722 for any information or home delivery.

Larry's Trucks & Stuff

This firm is one of the leaders of its kind in this district and they have built their reputation upon the service, satisfaction and good will extended to their many customers. They have a complete line of accessories for all types of cars, pickups, vans & Sport utility vehicles, such as, bed liners, bed mats, gooseneck hitches, trailer wiring, bug shields, bed rails, running boards, cab steps, headache racks, tool boxes, grill guards, along with auto detailing and car washing and they are your dealer for spray-on Rhino Lining. Having been in this line for a number of years, the management provides the demands of his customers with quality service and merchandise at reasonable prices. The people of this area prefer trading with **Larry's Truck & Stuff** because they know they will be treated fairly. It has often been said "That business goes where it is invited and stays where it is well treated". Through constant vigilance and execution of this policy they have attained success and popularity among the people of this district. In this review of the reliable concerns in our trade territory we recommend **Larry's Trucks & Stuff** now at their new location just north of Big Country Autoland at the intersection of Hwys. 208 & 180 in Snyder. Their satisfactory service to the public, quality merchandise and fair prices purvey the ultimate reason for their success. Phone 573-3188.

Big Country Electric Cooperative

Owned by the Members who use it's services

In this particular field of endeavor there is no organization more worthy of extended mention in this Review. Under the direction of men thoroughly conversant with every feature of electricity they furnish an abundant and dependable source of electric power to the people of this area. They have contributed much by furnishing low cost power and light to local and rural areas for such purposes as residential, mill and shop operation, irrigation, refrigeration, pipeline pumping, water well pumping, ginning and many other types of uses. They are continually striving to find new and cheaper methods of helping you in your everyday needs. Because of their progress, they have become a most important industrial asset to this community of West Texas. We in this Good Neighbor Review wish to congratulate this firm located at 2100 College Ave. in Snyder, with the main office in Roby on the Snyder Hwy., on their efforts to serve the electrical needs of this area at a low cost, making this a better and more prosperous place in which to live. Phone 573-3161 in Snyder or 776-2244 in Roby for information or service.

Our Bake Sale at the Coyote Country Store was a BIG Success. It helped us with the expense of attending debate camp at West Texas A&M University.

We especially want to give special recognition to Bertie, Brenda and Dannelle. And, to all who bought-baked goods to help us pay for our camp.

We Say
Thank You!



Rachel Wilson

Yvonne Wallace

Karl Lanning

Kristin Hobson

Sue Jane Mayes

Erin Espinoza



Randy Eddy

Carla Hernandez



Borden County ISD Dress Code

Cont. from pg. 3

Students are to be clean-shaven at all times. Mustaches and beards are not allowed. Sideburns shall not be worn lower than the bottom of the ear lobe and no wider than one inch at the base.

6. Boys will not wear piercing jewelry. Girls may not wear exposed piercing jewelry other than earrings. No tongue piercing will be allowed for boys or girls.

* * * *

dry erase markers (2 or 3), compass, protractor (NO PENS), 7th & 8th Grade-inexpensive calculator

Mrs. Soto - 7th Grade

Reading

Spiral notebook, 3-ring binder, 1 package of ruled index cards (3" X 5"), black or blue pen, highlighter (any color), notebook paper (wide or college ruled), red pencil or pen

Coach Turner - Social Studies (7th), Health (9th)

Spiral notebook and pens

Mr. Wallace - Ag. Science (8th - 12th)

8th grade: 3 ring binder notebook, 9 dividers w/labels, pens, pencils, and notebook paper
9th - 12th grade: 9 dividers w/labels, pens, pencils, and notebook paper

7. Sunglasses may not be worn in the building during school hours or events inside the building unless prescribed by a doctor.

8. Students may not wear hats, caps, bandanas, or hoods inside the building during the school day unless approved by the school administration. In addition, they may not wear such headwear when participating in basketball games, whether actively participating or sitting on the bench.

9. Any clothing or grooming not listed above that is determined by the school administration to pose a disruption, interference, or safety concern to the normal school operation or Borden County School Community will be prohibited and addressed as appropriate.

A student who violates the dress code shall be given an opportunity to correct the problem at school. If not corrected, the student shall be assigned to in school suspension either for the remainder of the day or until a parent or designee brings an acceptable change of clothing to the school. Repeat offenses may result in more serious disciplinary action. The principal, in cooperation with the sponsor, coach, or other person in charge of an extracurricular activity, may regulate the dress and

grooming of students who participate in the activity (for example: cheerleader uniforms may vary from normal requirements according to principal/sponsor approval). Students who violate these standards may be removed or excluded from the activity for a period determined by the school administration or sponsor and may be subject to other disciplinary action.

Violations of the Borden County Dress Code may be handled through the Student Code of Conduct.

FOR SALE

2 Captain Beds
w/mattresses
1 Twin Bed
w/mattresses and
box springs
Call: 756-4432

Have a
Great Summer!



Moore-Rains
Insurance
Frances Rains
Stephens

O'Donnell
806-428-3335

Branon Funeral
Home
Understanding and
Guidance When
You Need it Most!

"Serving this area
since 1922"

806-872-8335 Lamesa, TX

School Supply List

Cont. from pg. 3

Coach Avery - Social Studies (8th), U.S. History (9th), World History (10th), W. Geography (11th)

Notebook paper, pens

Coach Benavidez - Spanish I (10th), Spanish II (11th), Spanish III (12th)

1 1/2 inch notebook, RED PEN, dividers, notebook paper

Mrs. Key - Math (8th), Algebra I (9th), Algebra II (10th & 11th), Pre-Cal (11th & 12th), Facilitator for ITV College Algebra, Computer Applications (8th - 2nd semester)

Notebook paper, spirals, folder, notebook, plenty of pencils, red pens

Mr. Lewis - Science (7th), Science (8th), IPC (9th), Biology (10th), Chemistry (11th), Physics (12th)

Notebook or pocket folder, pens. Chemistry: Inexpensive calculator

Mrs. Mayes - English I (9th), English II (10th), English III (11th), English IV (12th), Government/Economics (12th),

1 1/2 inch notebook, RED PEN, dividers, composition book

Coach Richey - Math (7th), Algebra I (9th), Algebra II (10th), Geometry (10th)

Notebook paper, spiral notebook, dividers (5 or 6), pencils, red pen, highlighter,



LAMESA BUTANE CO.

Arlen Morris, Mgr.

Long Distance:
1-800-772-5201
P.O. Box 382
501 South Lynn Street

Local:
806-872-5200
806-872-5356
Lamesa, Tx 79331