



# BAILEY COUNTY JOURNAL

20¢

## WEATHER

April 19 85 43  
April 20 77 49  
April 21 67 35

*'The Community of Opportunity-Where Water Makes the Difference'*

Vol. 22, No. 17

12 Pages Today

Published Every Sunday at Muleshoe, Bailey County, Texas 79347

Sunday, April 22, 1984

## 'Blow-Out' Solutions Sought By Farmers

West Texas winds really set out to prove a point Thursday afternoon when a group of agriculturists and conservationists toured an



A board of directors meeting for the Muleshoe Youth Baseball League is scheduled Monday night at 7 p.m. in the Summit Savings meeting room, according to Bill Liles. Liles emphasized that it is important for all board members to be present.

On Tuesday, April 24, a meeting is scheduled at 7:30 p.m. in the Three Way School Cafeteria for all parents and residents of the entire community.

Don Parker of the school said it is urgent for the community to attend as the public will be informed of new curriculum changes as set forth by the State Legislature. He urges everyone to be sure to attend.

Marine Pvt. Lincoln W. Snell, son of Gene A. and stepson of Janice L. Snell of Route Four, Muleshoe, has completed recruit training at the Marine Corps Recruit Depot, San Diego.

During the 11-week training cycle, he learned the basics of battlefield survival. He was introduced to the typical daily routine that he will experience during his enlistment and studied the personal and professional standards traditionally exhibited by Marines.

Visiting in the home of Mr. and Mrs. W.W. Wilson Friday were three sisters of Mrs. Wilson.

They included Hazel Cunningham, Bloomfield, N.M.; Fern Lamar, Morton and Juanita Julian, Como, Tx.

Army 1st Sgt. Gordon R. Graves, Sr., son of John A. and Mayfair Graves of Sudan has been decorated with the second award of the Meritorious Service Medal at Fort Bragg, N.C.

The Meritorious Service Medal is awarded specifically for outstanding non-combat meritorious achievement or service to the United States.

Brownfield Chamber of Commerce is sponsoring a basketball game on Friday, April 27, at 7 p.m. in the Brownfield High School Gym at 701 North Fir.

What makes this game different is that it will be between members of the Houston Oilers football team and the Brownfield Local

Cont. Page 9, Col. 1

area farm. The wind whipped sand into a frenzy during the tour. A portion of the farm located east of Muleshoe near Talk Station has a deep blow-out caused by spring winds, and a lack of moisture.

As the group toured the Kirk Dean farm, they were trying to come up with a solution which isn't easy in this part of the country which has been under the influence of a drought for just about a year now.

An estimated 10 acre tract of the Dean's wheat land is immediately affected, but that is just scratching the surface of a problem which is beginning to crop up throughout the area, according to Obie Kelley of the Blackwater Valley Soil and Water Conservation District local office.

Kelley said the problem is beginning to affect farmers and ranchers not only in Bailey County and the surrounding counties, but all through this drought-stricken area.

A possible solution was posed by a proposal to fill in the blown out land, then seeding it with grass to help keep the land from blowing out more.

Dr. Bill Dahl, Texas Tech University Department of Range Management and Pasture Management, suggested mulching the land in the blown-out areas to help hold the seed and prevent it from blowing away, then perhaps watering the seed to help it get started.

During a morning meeting at the Muleshoe State Bank meeting room, the possibility of future vineyards in this area were discussed by several speakers. Although the speakers said it would be expensive to get the vineyards started, they need very little water, and do provide an excellent income once they are started.

Skipper Duncan, a San Angelo consultant in Ranch Management, said he had come to Muleshoe for the meeting to see what he could find out about seeding as the problems with blow-outs around San Angelo "are at least as bad, if not worse" than what he had seen around Muleshoe.

Harold Martin, a custom seed planter from Portales, N.M. was one of the speakers, who also displayed a sophisticated seed drill operation and explained how the grass seeding could help keep more land from blowing away.

Also on hand for the meeting were Jim Lutz, director of the local Soil Conservation service office, Kelley, Warren Givens and Dale McCary, all of the Blackwater Valley Soil and Water Conservation District.

Cont. Page 9, Col. 1

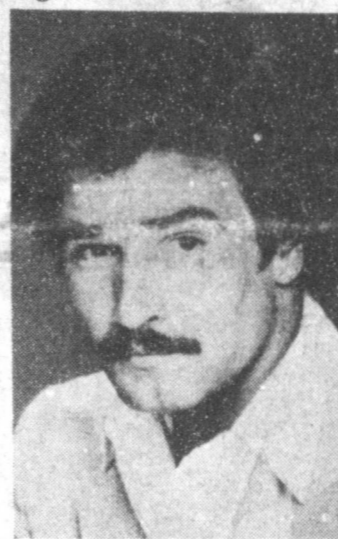


LOOKING OVER THE EROSION PICTURE...A group of soil conservationists, seed experts and concerned farmers gathered at the Kirk Dean farm east of Muleshoe Thursday afternoon to discuss the ever-increasing erosion and blow-out problems in fields. Pictured is a truck with a drill which may be used to plant grass seed in an effort to eliminate holes like this one in the edge of a wheat field. The photographer was standing on the edge, shooting into the hole of what had been growing wheat earlier in the year.

## Lee Horsley To Head Tennis Dinner; Show

Want to mix and mingle with the stars? Want to have an unforgettable weekend? The time is finally winding down for the Celebrity Tennis Tournament to be held in Lubbock, April 27-29. The tournament officially begins on Friday, April 27, at 3:10 p.m. when between 35 and 40 celebrities arrive at Lubbock International Airport. From the airport, the visitors will travel in a caravan of Chevrolet Celebrity automobiles driven by a number of the Saddle Tramps, Texas Tech's spirit organization, to the Texas Tech Recreation Center.

will be the last day to buy tickets in Muleshoe, so begin now to make your



LEE HORSLEY

### Drink Tax Rebate 'Up' From 1983

State Comptroller Bob Bullock sent out checks totaling \$11 million to 221 counties and 419 cities as their share of the state's 10 percent mixed drink tax collected during the first quarter of 1984.

Bullock said the state collected a total of \$39.2 million in taxes on the sale of mixed drinks during the quarter, up 8.3 percent over the same period in 1983.

Texas cities and counties each receive a 15 percent rebate on the tax collected on mixed drinks sold within their boundaries under the law that legalized the sale of mixed drinks in the state.

A total Bailey county tax revenue of \$5,306.40 was reported with \$795.96 being rebated to the county, while the city reported revenues of \$3,207.95 with \$481.19 being returned to the city of Muleshoe.

During the same period Cochran County reported revenues of \$828.57 and a rebate to the county of \$129.29.

In Lamb County, tax revenues of \$8,532.53 were reported with the county rebate totaling \$1,279.88. Littlefield reported tax revenues of \$4,904.55 and their rebate was \$735.68.

Parmer County had the smallest tax revenue and rebate with \$88.50 being reported, and a 15 percent rebate that totaled \$13.28.

The state's general revenue fund will be receiving the balance—\$28 million—of the tax money collected.

The mixed drink tax is collected by the Alcoholic Beverage Commission and city-county rebates are sent out quarterly by the Comptroller's office.

## MHS Varsity Track Team District Winner

\*\*\*

### Lookin' Good Now Under New Ownership

Rosemary Bell, a longtime local resident, purchased Lookin' Good from the Hamilton Estate earlier this month. Mrs. Bell has been associated with the store for the past three years.

She said her current plans are to 'carry on' much the same as the store has been operated in the past, but she probably will be adding new lines of clothing in the coming months.

Currently the store features fashions for juniors, misses and ladies; accessories and lingerie.

### May 15 Deadline

### Reminder Given

### For Certification

Danny Noble, county executive director of the Bailey County ASC office reminded Friday that the final date to certify or request aerial measurement service for wheat, rye, barley, and oats (regardless of use) is May 15, 1984.

He said this is also the final date to certify to zero acreage planted if the farm has a small grain base.

Noble added that an accurate certification is always important. If the spot-checked acreage differs by more than the larger of 1.0 acre or five percent, the commodity is ineligible for program benefits.

### Slow-Pitch

### Tourney Will

### Help Boxers

Muleshoe Boxing Teams will sponsor a Slow Pitch Softball Tournament May 4-6 to help defray traveling expenses for the team to attend the Junior Olympics in Colorado Springs, Colo.

Entry fee for the slow pitch tournament will be \$75, and it will be played under ASA rules. Each team must bring a ball, and only Blue Dots will be accepted.

Trophies will be presented to first, second and third place teams, as well as an MVP trophy. Only C & D divisions may play.

To obtain further information about the tournament, call Eliodoro Orozco at 272-4456 after 5 p.m.

Muleshoe High School's varsity track team is continuing their winning ways as they brought home another first place win. The varsity track team had 149 points from the District Track Competition at Abernathy last Tuesday. In second place was Friona with 92 points; Littlefield, 91 points; Abernathy, 89 points; followed by Tulia, then Dimmitt.

Hector Flores was sixth in the shot put with 44 feet, four inches.

In the discus, Cheyenne Bickel was first with 143 feet, three inches and Hector Garcia was fourth with 123 feet, nine inches.

Ray Vinson tied for third in the pole vault with 12 feet, and Ricky Rasco was fifth with 11 feet, six inches.

In the long jump, Mark Moton was third at 20 feet, six and one half inches and Darin Shaw was fourth at 20 feet, five and one half inches, with Eddie Perez, fifth with 20 feet, four inches.

Mark Moton was sixth in the high jump with five feet, six inches.

In the 3200 meter run, Tony Luna was first with 10:41 and David Medlin was in third at 10:42.

Muleshoe varsity was also first in the 400 relay with the time of 43.09. Team members include Trent Hy-singer, Jeff McCarty, Mark Moton and Darin Shaw.

Aldo Almanza set a new school record in the 800 with a first place and a time of 2:02.26. In the same event, Ronnie Logsdon was second at 2:02.28.

Jeff McCarty was third in the 110 high hurdles with a time of 15.66 and Hector Garcia was sixth at 16.7.

In the 100 Darin Shaw was second with a time of 11.19.

Aldo Almanza was fourth in the 400 with a time of 53.8, Michael Del Toro was fifth at 53.9 and Trent Hy-singer was sixth with 55.2.

In the 300 intermediate hurdles, Mark Moton was third at 39.6 and Eddie Perez was sixth with 43.0.

Jeff McCarty was second in the 200 dash at a time of 22.58.

In the 1600, Ronnie Logsdon was first at 4:41, David Medlin was fifth with 4:55 and Tony Luna was second with 4:43.

After a runner fell in the race, the team of Aldo Almanza, Darin Shaw, Michael Del Toro and Mark Moton was fifth in the 1600 with a time of 3:30.7.

Tulia took the 1984 boy's district race in junior varsity track action last Tuesday with 183. Muleshoe JV was second at 119 1/2 points.

In the 3200 meter run, Alan Beasley was first with a time of 11:19.3, Norman

Perez was second at 11:23.3 and Jose Sanchez was fifth with a time of 11:57.3.

Ralph Salazar was first in the 800 meter run with a time of 2:09.9 and Jose Sanchez was fifth at 2:18.2.

Chris Harris was fourth in the 100 meter dash at 11.8 and Brent Black was fifth with a time of 11.9.

Smiley Orozco was second in the 400 meter dash with a time of 54.2.

In the 1600 meter run, Ralph Salazar was first with 5:04.2, Alan Beasley was second with 5:06.3 and Norman Perez was fourth at 5:13.3.

A team of Chris Harris, Smiley Orozco, Scott Williams and Brent Black were third with 47.7.

Ralph Salazar, Steven Neptune, Loy Triana and Smiley Orozco were third in the 1600 meter relay with a time of 3:50.7.

Jerry Gleason was fifth with nine feet, six inches in the pole vault and Scott Bickel was sixth with nine feet, six inches.

Michael Precure was third in the high jump at five feet, six inches and Loy Triana was fifth with five feet, four inches.

In the shot put, Jaime Torres was third with 36 feet, seven and three fourth inches and Chris Hernandez was sixth in discus with a distance of 100 feet, seven inches.

## MHS Judging Team Shown In Top Five

Muleshoe High School's livestock judging team was in the top five teams overall during the South Plains College livestock judging invitational.

Muleshoe was second with 1148 points, followed by Spearman High School, third with 1140 points, Boys Ranch, fourth with 1137 points and Sterling City, fifth with 1136 points.

Members of the Muleshoe team include Craig Hunt, Michael Barrett, Darren Albertson and coach G.T. Dickerson.

Top five teams in the swine division were Dimmitt High School, first; Canadian High, second; Spearman, third; Muleshoe, fourth; Wellman, fifth.

Casey Stewart of Muleshoe was the fifth high individual with 400 points and Craig Hunt was first in individual honors in cattle with 198. Darren Albertson of Muleshoe was sixth with 398 points, in the top 10 overall individuals.

## MHS Graduate Will Perform In 'Deathtrap'

Jeff Combs, son of Mr. and Mrs. Larry Combs, and a 1983 graduate of Muleshoe High School, will play Clifford Anderson in the classic mystery thriller, "Deathtrap" at Western Texas College theatre department at Snyder.

The play will be staged April 26-28 and curtain time is 8 p.m. each performance.

Tickets for "Deathtrap" are \$5 for adults and \$3 for students and can be reserved by calling the box office at 915/573-8511, extension 234.

Combs is a freshman at WTC and appeared in "Major Barbara" in December and "Story Theatre" in February.

### Couple Charged

### In Possession Of Marijuana

Friday afternoon, Bailey County Sheriff Bob Henderson said a local man and wife had been charged with possession of marijuana, less than two ounces, following a raid last Friday night on their home.

The couple made bond and will be tried in county court at a later date.

Deputies Jerry Hicks and Hal Bynum, who conducted the raid on the residence, found a growing marijuana, marijuana seed and other paraphernalia.



THEY'RE WINNING AGAIN...Members of the Muleshoe boxing team fought in Olton last week, with Jose Olivas, standing left, winning to fights. Coach Beto Diaz is standing at the right. Also pictured are Hector Flores, seated, left, who won two fights; Beto Diaz, center, also two fights and Ricky Diaz, seated right, who won two fights. Not pictured are Anthony Orozco, who won two fights; Sergio Garcia, won one fight and David Orozco, who won two fights. Another coach, Eliodoro Orozco is also not pictured. They also won the best team trophy.



READY FOR MULE DAYS?...Thursday at noon, Mrs. Garvill (Mildred) Williams of WOTS (Women of Talk Station) presented Jeff Smith a \$250 check for Girlstown, USDA. This is the time to kick off plans for the annual Mule Day Festival in August to benefit Girlstown. Smith said the first planning session for this year will be 7:30 p.m. Tuesday, April 24 in the Summit Savings meeting room.

4' OFF LABEL  
**CLOROX**  
½ GAL. BTL. **69¢**

**SHOP AND SAVE...**

**... THE THRIFTY WAY**



DIET PEPSI, PEPSI FREE,  
MOUNTAIN DEW OR

**PEPSI** \$1.79  
6 PK CANS



HORMEL SUPER SELECT LEAN TRIM  
QUARTER PORK LOINS OR  
FAMILY PACK (9-11 ASSORTED CHOPS)

**PORK CHOPS** \$1.59  
LB.

HEAVY GRAIN FED BEEF  
WHOLE IN THE BAG-PACKER TRIM  
8-12 LBS. AVG.

**BRISKETS**  
\$1.29  
LB.

SUPER SELECT WAFER THIN  
**PORK CHOPS** \$2.09  
LB.

SUPER SELECT LEAN TRIM CENTER CUT LOIN  
**PORK CHOPS** \$1.99  
LB.

COUNTRY STYLE-LOTS OF MEAT  
**PORK RIBS** \$1.59  
LB.

GOOCH'S MEXICAN STYLE  
**HOT LINKS** \$1.49  
LB.



CALIFORNIA ICEBERG

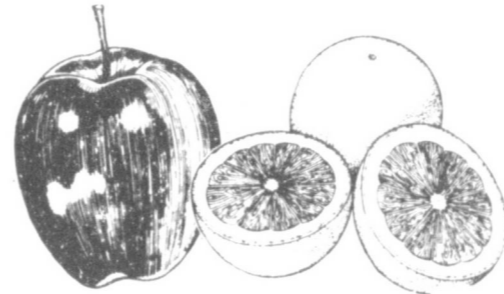
**LETTUCE** LB. **29¢**

CALIFORNIA LARGE SIZE  
**ARTICHOKES** EACH **49¢**

TEXAS GREEN TABLE  
**CABBAGE** LB. **29¢**

WASHINGTON D'ANJOU  
**PEARS** LB. **39¢**

CALIFORNIA HASS  
**AVOCADOS** 5/\$1.00



CALIFORNIA VALENCIA 4 LB. BAG  
OR  
WASHINGTON RED DELICIOUS 3 LB. BAG  
**APPLES** \$1.29  
YOUR CHOICE

Contadina **WHOLE PEELED**  
**CONTADINA**  
**TOMATOES**  
**3 \$1**  
14½ OZ. CANS

RANCH STYLE BEANS  
**HUSBAND PLEASIN' BEANS**  
**RANCH**  
**STYLE**  
**3 \$1**  
15 OZ. CANS

THE CHEESE MOTHER USED  
**KRAFT**  
**VELVEETA**  
**2.89**  
2 LB. PKG.

WHITE/DEC/DESIGNER  
**BOUNTY**  
**TOWELS**  
**69¢**  
JUMBO ROLL

ALL PURPOSE GLADIOLA  
**FLOUR**  
**89¢**  
5 LB. BAG

HILLS BROS. **ALL GRINDS COFFEE**  
**HILLS BROS.**  
**COFFEE** \$2.19  
1 LB. CAN  
HILLS BROS. DECAF. AUTO. **COFFEE** \$3.15  
13 OZ. CAN

WHITEHOUSE  
**APPLE JUICE**  
**72¢**  
32 OZ. BTL.

QUARTERED MARGARINE  
**PARKAY**  
**59¢**  
LB. PKG.

**FRESH DAIRY SPECIALS**  
SHURFRESH **COTTAGE CHEESE** \$1.29  
24 OZ. CTN.  
KRAFT PLAIN/PIM/JALA **CHEEZ-WHIZ** \$1.19  
8 OZ. JAR  
CITRUS HILL CHILLED **ORANGE JUICE** 99¢  
32 OZ. CTN.

**FROZEN FOOD SPECIALS**  
WESTERN/CHOP/SIRLN/FRIED CHIC.-DARK/TURKEY/BBQ CHICK  
**SWANSON DINNERS** \$1.19  
10½-12 OZ. PKGS.  
CITRUS HILL FROZEN **ORANGE JUICE** 75¢  
6 OZ. CAN  
**BORDEN 12 PK'S**  
Dreamsicles \$2.39  
Fudgesicle \$2.39  
Niftee \$2.39  
Popsicle \$2.39  
Pudding \$1.99  
Bars \$1.99

**TOTAL GROCERY SAVERS**  
KRAFT DINNER-SPIRAL **MAC & CHEESE** 3 \$1  
5½ OZ. BOXES  
SPAM DEVILED LUNCHEON **MEAT** 2 89¢  
3 OZ. CANS  
SWANSON CHUNK WHITE **CHICKEN** 89¢  
5 OZ. CAN  
SPAGHETTI SAUCE MEAT/MSHRM/REG **PREGO** 99¢  
15½ OZ. JAR  
SKINNER LONG **SPAGHETTI** 49¢  
12 OZ. PKG.  
BETTY CROCKER HAMBURGER **HELPERS** \$1.19  
BOX  
LIPTON - WITH NUTRA SWEET - ICED **TEA MIX** \$2.99  
3.3 OZ. PKG.  
SUNSHINE KRISPY **CRACKERS** 79¢  
16 OZ. BOX  
SCHILLING **BLACK PEPPER** 69¢  
4 OZ. CAN  
SPOT REMOVER **GLASS MAGIC** \$1.79  
14 OZ. BOX

**HEALTH & BEAUTY AID SAVINGS**  
ASST. PERFUMED BODY SPRAY **BODY FLOWERS** \$2.49  
2.5 OZ. CAN  
CONDITIONING CLEAN **TAME RINSE** \$1.49  
8 OZ. BTL.  
ADORN REG/EXTRA HOLD **HAIR SPRAY** \$1.69  
6½ OZ. CAN  
CHECK-UP REG/GEL ADULT **TOOTH-PASTE** \$1.99  
4.1 OZ.  
**it's Baby Week**  
GERBER FRUITS & VEGE. **JUNIOR FOODS** 38¢  
90 NEWBORN/60 DAYTIME/48 TODDLERS  
**PAMPERS** WITH CONV. \$9.58  
GATHERS PACK  
SHURFINE BABY **SHAMPOO** \$1.39  
16 OZ. BTL.

**TOTAL GROCERY SAVERS**  
ELECTRA-SOL **AUTOMATIC DISHWASHING** \$1.39  
35 OZ. BOX  
40' OFF LABEL **PALMOLIVE LIQUID** \$2.49  
48 OZ. BTL.  
\$1.00 OFF LABEL **FRESH START** \$6.49  
FAMILY SIZE  
\$1.00 OFF LABEL WITH FABRIC SOFTENER **FAMILY SIZE FAB** \$5.99  
FAMILY SIZE  
NABISCO CHOC. CHIP **CHIPS AHOY!** \$1.99  
19 OZ. PKG.  
DOG FOOD **KIBBLES'N BITS** \$6.99  
20 LB. BAG

ON SALE THIS WEEK:  
**SAUCER**  
**79¢**  
EACH WITH EACH \$5.00 PURCHASE

401 West American **SERV-ALL** 272-4739  
**THRIFTWAY**  
We're proud to give you more!

Thrifty McSaver  
**AFFILIATED FOODS INC.**  
MEMBER STORE  
PRICES EFFECTIVE APRIL 22-28, 1984  
WE RESERVE THE RIGHT TO LIMIT QUANTITIES  
WE ACCEPT FOOD STAMPS



**WOTS MEMBERS HONORED...** Mildred Williams, (right) and Millie Mitchell were honored at the WOTS luncheon Thursday. Their husbands are retiring and they will be leaving Muleshoe. Mrs. Williams will be going home to Odessa and Mrs. Mitchell will be spending the next year traveling.

## WOTS Celebrate Fourth Anniversary

On Thursday, April 19 WOTS (Women of Talk Station) celebrated their fourth anniversary at the community room of Summit Savings and Loan with a special luncheon and some special guests.

It was reported that in the past four years there have been 134 members; 15 new members joining in 1984. There are currently 56 members and 10 honorary members, and a total of 183 guests have joined the group for lunch during that time.

Originators of the club were Mildred Williams and Lois Martinec, who saw a need for such an organization since there was an influx of newcomers arriving in this area. Wives of Talk Plant employees were urged to join, regardless of craft or company.

Both the serving tables and dessert tables were decorated with red and white cloths with lace overlays. Red and white table appointments were centered around a red and white anniversary cake, baked and decorated by Lydia Wright.

Following lunch, Mildred Williams presented Jeff Smith a check in the amount of \$250.00. This check is to be sent to Girls Town U.S.A. at Whiteface.

The anniversary celebration doubled as a farewell party for Mildred Williams and Millie Mitchell, when these two ladies were presented corsages, gifts, and cards. Mrs. Williams will be returning to her home in Odessa, while Mrs. Mitchell plans to do traveling.

As WOTS has voted to disband permanently, the last covered dish luncheon will be held at Summit Savings on Thursday, April 26th, with Millie Mitchell

and Mildred Williams as the hostesses.

Members present included: Pauline Gunn, Nora Flannary, Mildred Williams, Ada Thompson, Lois Martinec, Kay Madry, Faye Wellborn, Pat Cummins, Marie Hendrix, Bertha Wilkener, LaJune Duren, June Dunham, Lydia Wright, Millie Mitchell and Billie Harvey.

Guests present were: Glen Williams, Bob and Maxine Donaldson, Garvin Williams, Keith Madry, Billy Donaldson, Jeff Smith, Evelene Harris, Clara Lou Ind Jones, Jack Mitchell, Magann Rennels, and Gilrobert, Darrel Turner, Loretta Loyd, Kristy Phelps, and Dana Rasco.

### Ruth Sunday School Class Meeting Held

The members of the Ruth Sunday school class of the Sudan First Baptist Church met Monday night in the home of Sue Chester with Mut Hanna as co-hostess.

Following the salad supper, Mrs. Esther Meeks brought the devotional on "Spring, Easter and Revival."

A short business meeting was held with Billye Doty, class president, presiding.

Attending were: Jean Harvey, Edna Seymore, Frances Gardner, Wanda Kittrell, Winona Dudgeon, Pill Bellar, Gwen West, Mary Harper, Libby Mudgett, Martha Markham, Pat Cummins, Rosemary Seymore, Billye Doty, Elsie Seymore, Pee Wee Lance, Evelyn Ritchie and the hostesses.

## TOPS Club

TOPS Club Chapter Tx. No. 34 met at 6:30 p.m. Thursday, April 12 in the meeting room of Bailey County Electric with Clara Lou Jones in charge.

The TOPS pledge was recited and the fellowship song sung. Laverne James,

weight recorder, called the roll with 12 members present. Minutes of the previous meeting were read by Aurora Mata, secretary.

Best loser for the week was Hazel Nowell, with Ruth Clements and Skeet Bradshaw tying for first runner up. Second runner up was Jewell Peeler.

The meeting was dismissed with the singing of the goodnight song.

### Atlas - Hotpoint - Magic Chef

## Rick's Repair Service

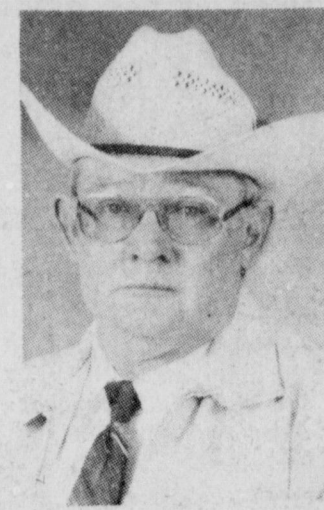
Open For Business: January 2, 1984  
To Repair All Small Appliances & Lawnmowers  
Rick T. Galt, Owner  
Maple (806) 927-5595



Dry ice does not melt. It evaporates.

## Re-Elect Bob Henderson Sheriff Bailey County

Your Vote & Support Greatly Appreciated



Pd. Pol. Adv.

You are cordially invited to attend a Surprise Party honoring the 25th Wedding Anniversary of DAN and ROSEMARY SMITH on Sunday, April 29, 1984 2:00 to 5:00 p.m. Bailey County Coliseum Muleshoe, Texas

Curtis Mathes

# BLITZ Continues

You Can Still Get Fantastic Savings On Curtis Mathes 25" Console TV's  
**PRICES HAVE BEEN SLASHED!**

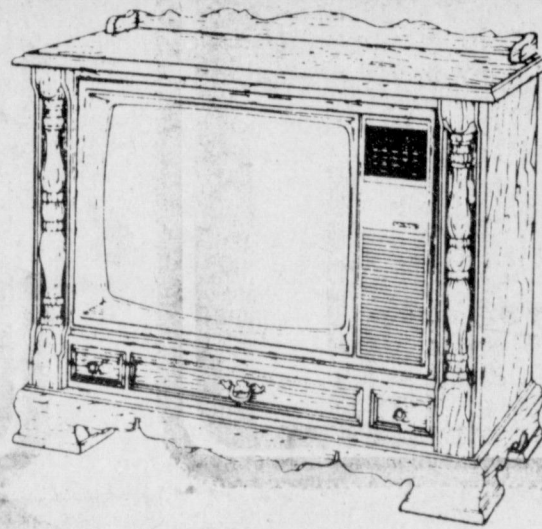
**\$779<sup>95</sup>**

Regular Price \$949.95

**\$35<sup>45</sup>**

Per Month 1st Payment In June

Regular Price 949.95, Sale Price 779.95, Sales Tax 38.02, Total 817.97, Down Payment 67.97, 28 Payments Of 35.45, Finance Charge 242.60, APR 21.38%.



25" DIAGONAL COLOR CONSOLE MODEL J2532MM

- Maple Wood-grained Finish
- Early American Styling
- 134 Channel Electronic Tuning System
- LED Channel Number Display
- Auto Color
- AFT
- Picture Control
- Casters

Remote Control

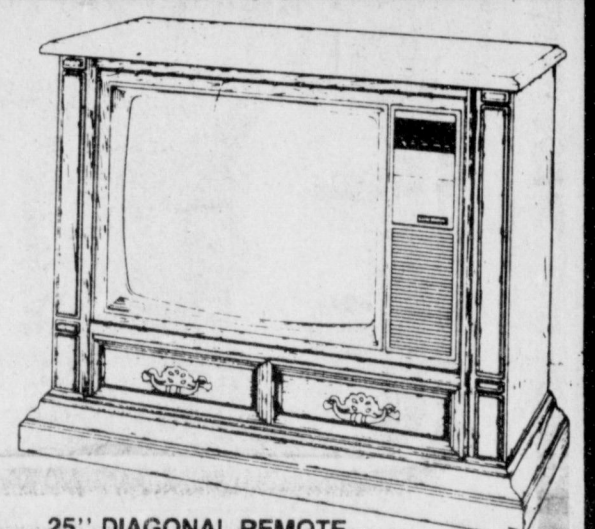
**\$899<sup>95</sup>**

Regular Price \$1099.95

**\$37<sup>81</sup>**

Per Month 1st Payment In June

Regular Price 1099.95, Sale Price 899.95, Sales Tax 43.87, Total Price 943.82, Down Payment 143.82, 28 Payments Of 37.81, Finance Charge 258.68, APR 21.37%.



25" DIAGONAL REMOTE CONTROL COLOR CONSOLE MODEL J2540RK

- Continental Fruitwood grained Finish
- Classic Styling
- 134 Channel Electronic Tuning System
- Deluxe Remote Control
- LED Channel Number Display
- Auto Color
- Picture Control
- Casters

# No Payments Til July\*

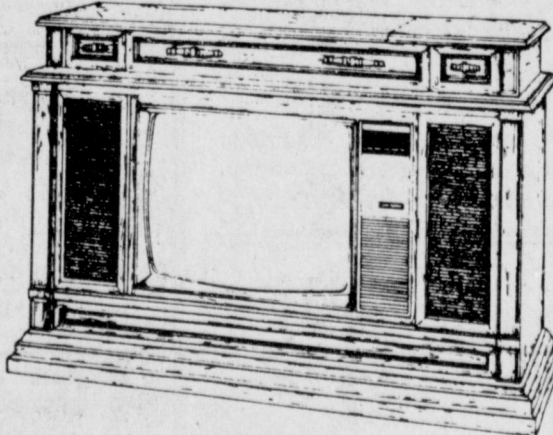
Total Entertainment **\$1399<sup>95</sup>**

Regularly \$1599.95

**\$52<sup>96</sup>**

Per Month 1st Payment In June

Regular Price 1599.95, Sale Price 1399.95, Sales Tax 68.24, Total Price 1468.19, Down Payment 168.19, 34 Payments Of 52.96, Finance Charge 500.64, APR 21.19%.



25" DIAGONAL REMOTE CONTROL HOME ENTERTAINMENT CENTER MODEL J2574RD

- Simulated Dark Oak Wood-grained Finish
- Classic Styling
- 134 Channel Electronic Tuning System
- AM/FM Receiver with 8-Track Player & Cassette Player/Recorder
- Belt Drive Record Changer
- Auto Color
- LED Channel Number Display
- Quality Speaker System
- Casters

Our Finest Console

4 Speakers Stereo Sound Remote Control

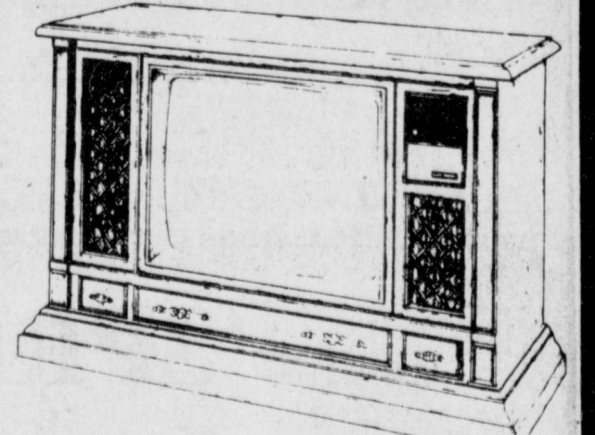
**\$1099<sup>95</sup>**

Regularly \$1379.95

**\$40<sup>73</sup>**

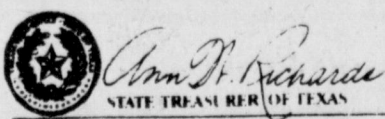
Per Month 1st Payment In June

Regular Price 1379.95, Sale Price 1099.95, Sales Tax 53.62, Total Price 1153.57, Down Payment 153.57, 34 Payments Of 40.73, Finance Charge 384.82, APR 21.18%.



25" DIAGONAL REMOTE CONTROL COLOR CONSOLE MODEL J2550RD

- Simulated Dark Oak Wood-grained Finish
- Classic Styling
- 134 Channel Electronic Tuning System
- Deluxe Infrared Remote Control
- Digital Channel Number/Time Display
- VCR
- ABC
- AFT
- Picture Control
- SoundWide™ Hi-Fi Audio Sound System
- Casters



### TEXAS TREASURY UNCLAIMED MONEY FUND

P.O. BOX 12408 - CAPITOL STATION - AUSTIN, TEXAS 78711 (512) 475-2086 or 1-800-321-4ASH

#### REPORT OF PROPERTY SUBJECT TO ESCHEAT

HOLDER First National Bank of Muleshoe (Name of Business or Financial Institution)

Box 565 (Address)

Muleshoe, Texas 79347 (City)

REPORT YEAR 19 84 (Report Year)

1-750914804 (Fund Identification No.)

PERIOD COVERED 4-11-83 TO 4-17-84

**Cabrera, Raymond Mrs**

Address: None

**Garrett, John Wallace**

Address: None

**Ragland, Earlene**

Address: None

**Tanner, Bob**

Address: None

**Tanner, Robert**

Address: None

**4**

\*Upon Approved Credit

Years Parts Warranty  
Years All Labor & Service  
Years Free Loan T.V.  
On All Curtis Mathes Products

**Curtis Mathes**  
HOME ENTERTAINMENT CENTER

1611 N. Prince, Clovis

762-3743

**Free Delivery Within 100 Miles**

**Free Delivery Within 100 Miles**



**ENGAGEMENT ANNOUNCED...** Mr. and Mrs. Frank Hardage of Lubbock and Mr. and Mrs. L.A. Green of Muleshoe announced the engagement and approaching marriage of their children, Felecia Dawn and Tommy Wayne. Vows will be exchanged Friday, June 1 at 7:30 p.m. at the Southside Baptist Church in Lubbock.



**TOP WINNERS...** Winners in Category one of the Easter Egg Coloring Contest at the Muleshoe Art Loft are: Twila Gear (not pictured) first, Amy Hooten, second; and T.J. Hutto, third.

## Miss White, Martin United In Marriage

Miss Kristi Kaye White became the bride of Mike Preston Martin in a formal candlelight ceremony at 7 p.m. Saturday, March 17 in the sanctuary of the First Baptist Church of Hugo, Okla. The Rev. Dale Kirkhoff heard their double ring vows. They also had Rev. Kirkhoff read a tribute written by the couple, to the parents during the lighting of the unity candle.

The bride is the daughter of Mr. and Mrs. Jimmy White of Ft. Towson, formerly of Muleshoe. Martin is the son of Preston Martin of Ft. Towson and Mrs. Malda Martin of Longview. The bride is the granddaughter of Mrs. Virgil Newell of Ft. Towson, formerly of Muleshoe and Mr. and Mrs. L.R. White of Friona.

Mrs. Marlene Kirkhoff, organist, played traditional wedding music for the ceremony. Mrs. Debbie Mefford accompanied herself at the piano as she sang "My Tribute". She also accompanied Brad Jewell as he sang "I Pledge My Love". Tresa Harber registered the guests.

The bride was escorted to the altar by her father and given in marriage by her parents. She wore a gown of ivory tafeta featuring a fitted bodice with a high victorian neckline. The gown featured a sheer yoke and bishop sleeves if ivory silk organza. Ivory pearl encrusted Venice appliques accented the yoke all the way to the waist in both the front and back.

The collar, pointed cuffs and the sheer sleeves also featured the pearl encrusted Venice appliques. The A-line skirt also featuring the appliques in front was gathered on the sides and back and flowed into a chapel length train. Bands of Chantilly lace encircled the skirt and the hem was finished with the same lace. The bride carried a bouquet of ivory silk roses, dusty rose camellia blossoms and baby's breath.

Her chapel length veil of ivory illusion was held to a pearl and ivory applique lace terra. The veil also featured ivory pearl incrested lace appliques and was finished on the edge with the same Chantilly lace as her gown.

For something old the bride wore two pennies minted in the year of their birth in her shoe. Her gown was something new and something borrowed she wore a locket belonging to

her maternal grandmother. Something blue was a blue bow on her garter. She also wore a tuppence in her shoe, a gift from England.

Kathi White served her sister as maid of honor. Danette Smith served as bridesmaid and Beth Martin, niece of the groom, served as junior bridesmaid.

Darrel Martin served as his brother's best man. Also his brother, David, served as groomsman and Kyle White, brother of the bride served as junior groomsman.

Clayton and Angie Martin, nephew and niece of the groom, served as ring bearer and flower girl. Ushers were Jimmy Menefee and Thomas Henry.

Following the ceremony, the bride's parents hosted a reception in the fellowship hall of the church. Lisa Hawkins and Sandy Honton served the wedding cake. Audra Wyatt and Tresa Harber served at the groom's table. In the houseparty were: Mrs. Danny Rue Menefee, Mrs. Tina Menefee, Mrs. Gail Landreth, Mrs. Fran Damron and Mrs. Susan Smith.

## Muleshoe OES Chapter Hosts Friendship Night

The annual Friendship Night for Muleshoe Chapter No. 792, Order of the Eastern Star, was held Saturday evening, April 14th, in the banquet room of Masonic Hall, with a salad supper and program.

Margaret Epting, Worthy Matron, extended a cordial Welcome to approximately 70 members and guests from Canyon; Dimmitt; Earth; Hereford; Farwell; Bovina; Lockney; Olton; Plainview and Muleshoe.

Mary Farley presided at the Guest register, and presented each one an identification badge in the shape of Easter Bunnies and Chicks. The Invocation was given by Alex Williams.

Mrs. Elma Hart, a member of Garland Chapter No. 156, Garland and now residing in Farwell, was presented her 50 Year membership certificate and pin, for her Chapter.

Grand Officers introduced were: Jo Ann Chiddix, Plainview, Jewells of Opportunity Committee; Beverly Brooke, Hereford, Good Shepherd Committee; Wannie Stevens, Dimmitt, Jewels of Opportunity Committee; Allene Leake, Canyon, Star Visitation Committee; Hazel Nowell, Muleshoe, Jewels of Opportunity Committee; Elbert Nowell, Muleshoe, Founders Day Committee, and Mary Farley, Muleshoe, Jewels of Opportunity Committee; all of the Grand Chapter of Texas, O.E.S.

Barbara Lust, Chairman of the Program committee, introduced Danny and

A rehearsal dinner was hosted by the groom's father.

The bride is presently majoring in Speech Pathology at Southeastern State University in Durant and the groom is engaged in ranching with his father in Ft. Towson.

## Sudan Graduating Class Honored

The 1984, senior class of Sudan High School, their sponsors, and administrators were honored Tuesday evening April 10, with a western banquet in the fellowship hall of the Sudan First United Methodist Church.

The annual event was sponsored by the United Methodist Women's Organization.

Transportation to and from the banquet was by an old fashioned hayride. Mrs. E.C. Minyard, UMW president gave the welcome. Oee Martin gave the response on behalf of the class.

A meal consisting of pan fried chicken, pinto beans, potato salad, relishes, hot rolls, fried cherry pies and iced tea was served. Tin pie pans were used for dinner plates, fruit jars for iced tea and bandana were used for napkins in carrying out the theme.

## Tonda Gunstream Named AAUW Girl Of Month

Tonda Gunstream, daughter of Mr. and Mrs. Tommy Gunstream, has been selected AAUW Girl of the Month for May. She is a member of FTA, FCA, and HERO. She has been a cheerleader throughout her high school years and was a homecoming queen candidate in the fall of 1983.

Ms. Gunstream plans to go to Southwest Texas State in San Marcus and major in business. She is a member of the Methodist Church.



TONDA GUNSTREAM

A spokesman for the group said "The American Association of University Women are pleased to have Tonda as their Girl of the Month."

**Want Ads Pay**  
**Call 272-4536**

**Sign Up Now And Save**  
**April 23 to May 25th**

### DIET CENTER

302 West 2nd 272-5487

4 Weeks Program Paid In Full  
Receive One Week FREE  
You Get 5 Weeks Reducing  
\*2 Weeks Stabilization  
\*Life Time Maintenance

**\$120<sup>00</sup> (Save \$30<sup>00</sup>)**

---

6 Weeks Program Paid In Full  
\* Receive 2 Weeks FREE  
You Get 8 Weeks Reducing  
\*3 Weeks Stabilization  
\*Life Time Maintenance

**\$180<sup>00</sup> (Save \$60<sup>00</sup>)**

Hrs: Monday-Wednesday-Friday 8-4:30  
Tuesday-Thursday 8-12  
Saturday 9-12

**When Commodore Talks It Pay\$ To Listen**

- Stock Quotes
- Education
- Record Keeping
- Loan Analysis
- News Wires
- Home Entertainment

Computer Supplies Available  
322 MAIN 272-3113

Complete Line Of Computer Furniture

**NEW FILM DEVELOPING SPECIAL INTRODUCING SUPERPRINTS**

**UP TO 37% LARGER THAN REGULAR PRINTS**

**SUPER PRINTS AVAILABLE ONLY AT PHOTO KWIK**

**INTRODUCTORY OFFER COLOR PRINT FILM DEVELOPED AND PRINTED**

12 Exp. \$1.67	15 Exp. \$2.07	24 Exp. \$2.97	36 Exp. \$4.67
----------------	----------------	----------------	----------------

501 1/2 W. Amer. Blvd. 272-4120  
9:30 - 6 M - F 11 - 2 - Sat

**Bailey County Journal**

Established March 31, 1983. Published by Muleshoe Publishing Co., Inc. Every Sunday at 304 W. Second, Box 449, Muleshoe, Texas 79347. Second Class Postage paid at Muleshoe, Texas 79347.

**MEMBER 1984 TEXAS PRESS ASSOCIATION**

L.R. Hall, President  
James W. White, Vice President  
Elva Williams, Secretary  
Helen Williams, Treasurer  
Lillian Williams, Advertising  
Lillian Williams, Classified  
Lillian Williams, News Editor

**SUBSCRIPTIONS:**  
Muleshoe Journal and Bailey County Journal: \$11.95  
Muleshoe Journal and Bailey County Journal: \$12.95  
Muleshoe Journal and Bailey County Journal: \$13.95  
Muleshoe Journal and Bailey County Journal: \$14.95  
Muleshoe Journal and Bailey County Journal: \$15.95  
Muleshoe Journal and Bailey County Journal: \$16.95  
Muleshoe Journal and Bailey County Journal: \$17.95  
Muleshoe Journal and Bailey County Journal: \$18.95  
Muleshoe Journal and Bailey County Journal: \$19.95  
Muleshoe Journal and Bailey County Journal: \$20.95

**Don't miss out on AFTER-EASTER Bargains**

321 MAIN St Muleshoe, Texas

# "SPRING SALE"

**Gigantic 13 1/2 ft. Round**

For Fun and Fitness

HERCULES TRAMPOLINES

Quality You Can See  
Performance You Can Feel

TRAMPOLINE COVERS AVAILABLE

5 YEAR WARRANTY

Suggested Retail \$599.95  
Only \$399<sup>00</sup>

Quantity Limited

POYNORS

103 Main Street WHITE'S STORES, INC. Muleshoe, Texas 79347

Ladies <b>PYKETTE CO-ORDINATES</b>	Men's <b>ATB STRETCH JEANS</b>
• Pants • Tops • Blouses • Blazers	Regular to 20. <b>14.97</b>
<b>25% OFF</b>	
Donnkenny <b>FASHION SLACKS</b>	Men's <b>RED WING WORK BOOTS</b>
Regular 14. <b>8.97</b>	all styles <b>20% OFF</b>
Ladies <b>SHORT SLEEVE BLOUSES</b>	Thick and Thirsty <b>BATH TOWELS</b>
Compare to 18. <b>12.88</b>	<b>2 FOR 6.</b>

*Your* Spring Fashion Stop  
**ANTHONY'S**

## Baby Shower Honors

### Mrs. Millen, Joshua

Mrs. Becky Millen and Joshua were honored with a baby shower Tuesday, April 17 from 7:30 until 9 p.m. in the community room of Summit Savings.

Guests were greeted by the honoree, Joshua and

Argilee Millen and registered by Ray An Doshier.

Alice Elliot and Vickie Wilcox served pineapple punch, cake and peanuts from crystal appointments.

The serving table was covered with a white lace

cloth over yellow and accented with an arrangement of yellow and blue roses in a blue baby carriage. The honoree's corsage was made of white daisies with blue trim accented with a blue stork.

Special guests included: Argilee Millen, mother in law of the honoree.

The hostesses gifts were

crib sheets, diaper pail, baby book and crib rail runner. Hostesses for the occasion included: Vickie Wilcox, Kay Knowlton, Sherrie Sisco, Alice Elliott, Doris Parker, Jennifer Givens, Edi Lou Woods, Jona Gatewood, Ray An Doshier, Kay Ramage, Peggy Buhram and Betty Hovland.



MRS. BECKY MILLEN AND JOSHUA

## Baby Shower Honors

### Mrs. Skaggs, Janna

Mrs. Gary Skaggs and Janna Lashelle were honored with a baby shower on Thursday, April 19 from 7:30 until 9 p.m. in the home of Mrs. Alton Burton. The guests were greeted by Alma Burton.

The serving table was covered with a white eyelet cloth and accented with a blooming mouse ear jew in a

white potty chair and accented with pink and white lace bows.

The hostesses served punch and thumbprint cookies from crystal appointments.

Special guests included: Mrs. J. D. Spurgeon of Lake Thomas, grandmother; Mrs. Paul Skaggs of Texico, N. M., grandmother; Mrs. Ve-

da Duncan of Big Springs, great aunt and Mrs. James Turnbow of Muleshoe, aunt. The hostesses presented the honoree with a swing, potty chair and a corsage of pink rosebuds and white baby socks.

Hostesses for the occasion

included: Linda Turner, Gayle Turner, Helen Hunter, Phyllis Wood of Brownfield, Nig Williams, Gayle Wilcox, Margaret Copley, Dawn Williams, DeAnn Halford, Sue Johnson, Terry Young, Debbi Hutto, Pat Cox and Alma Burton.

### Sunday School Class Meeting Held

The TEL Sunday school class of the Sudan First Baptist Church met Tuesday night in the fellowship hall of the church. Louise Parish, Alva Sturdivant, Rosie Snow and Marie Beckett were the hostesses.

Winona Dudgean gave the opening prayer and Jean Harvey brought the devotional on "The Good Black

Doctor."

A comical style show was presented with Louise Parrish as mistress of ceremonies. Those modeling were: Alva Sturdivant, Quida Parrish, Thelma Vinson and Winona Dudgean.

Others attending were Hazel Savage, Mareena Roark, Louzella Serratt and Frances Gardner.



MRS. SKAGGS AND JANNA

### Mrs. Debbie Hutto Hosts Alpha Zeta Sorority

The Alpha Zeta Pi Chapter of Beta Sigma Phi met in the home of Debbi Hutto April 17th at 7:30 p.m. Preceding the meeting Tuna sandwiches, cucumber sandwiches, chips, cheese dip, and tea were served. The meal was prepared by Gina Smith.

President Hutto called the meeting to order. Betty Bush called roll and read the minutes of the previous meeting. Alice Liles gave the treasurer's report.

Mrs. Hutto announced that the state convention is to be held in Houston this year on June 22 through 24th. The theme for the convention this year is Carosel of Merriment.

Service chairperson Tammy Black said that the goods brought by the members for the Cervantes

family will be taken Monday. City Council representative Jan King said that Founder's Day banquet will be held on Tuesday, April 24, at the Muleshoe Country Club. It will begin at 7:30 p.m. She also announced that Khristi Phelps had been elected president of city council for the upcoming year and Tammy Black had been elected as recording secretary. The city council fund was discussed. The three chapters of Beta Sigma Phi have decided to use the money as a scholarship for a young woman.

Following the committee reports the members were asked to sign up for committees they would like to be on for the next year. The members then voted on Woman of the Year and Pledge of the Year to be revealed at the Founder's Day banquet. Members also drew names for their secret sisters.

President Hutto dismissed the members.

Following the meeting the members opened gifts and revealed whose secret sister they were. The members then enjoyed a program given by Jan King and Paula McMeans on Hobbies. Each member was given material to do cross stitching.

Present at the meeting were Tammy Black, Annette Bonds, Betty Bush, Lyniece Goodnough, Debbi Hutto, Jan King, Alice Liles, Paula McMeans, Peggy Pohmeir, Khristi Phelps, Gina Smith, Rayniel Bamert, Debbi Cowley, Debbi Fred, Cyndi Goff, Gwyn Murray, Traci Matsler, Rhonda Myers, and Barbara Young.

JUNE DATE SET...Mr. and Mrs. Sergio Arce of Farwell announced the engagement and approaching marriage of their daughter, Lidia Arce to Mario Orozco of Muleshoe. Wedding vows will be exchanged on Saturday, June 2 at 4 p.m. at the Immaculate Conception Catholic Church in Muleshoe. No Local invitations are being mailed. The couple will make their home in Lazbuddie.

### Bridal Selections

For

Linda Bell

Bride-Elect of Mark Washington

Kay Lynn Prather

Bride-Elect of Cuby Brantley

Antiques & Junk

109 S. 1st

272-5275

# "LOSE WEIGHT 20% FASTER IN THE FIRST TWO WEEKS"



Joyce Nimetz Area Director

REPEATED BY POPULAR DEMAND!

SCALE

WEIGHT WATCHERS AMAZING NEW PROGRAM... QUICK START™

You asked for it! So many people missed our special offer for 2 meetings that we're repeating it for a limited time only!

Join the thousands who have discovered the wonders of QUICK START™! It's Weight Watchers sensational new program that helps you lose more weight in the first two weeks than ever before! And best of all, you'll do it the sensible Weight Watchers way while enjoying 3 well-balanced meals PLUS SNACKS. DON'T MISS OUT THIS TIME!

**SPECIAL OFFER!**  
2 MEETINGS/\$6.  
PLUS \$13 REGISTRATION FEE.

Offer good thru May 12, 1984. Offer valid for new and rejoining members only. Other valid in areas listed. (Areas 37, 96, 107). Not valid with any other promotion. © Weight Watchers International, Inc. 1984. Owner of the Weight Watchers and Quick Start trademarks.

MEETING SCHEDULE:

MULESHOE CHURCH OF CHRIST  
16th and Avenue D

Tue. 6:00 p.m.

**JOIN WEIGHT WATCHERS!**  
1-800-692-4329

**FREE!**  
**SHARP.**  
**MICRO**  
**DEMO!**

May 1st

6:30 - 8:00

Wait till you see all the things you can do with a Sharp Microwave saves money! You and your family can enjoy a great new lifestyle!

Call now for reservations

**Wilson**  
Appliance Inc.

117 MAIN  
272-5531

Elect  
**Marshall "Catfish" Williams**  
Bailey County Commissioner Precinct 1  
May 5



Pd. Pol. Adv.

**FULL TIME EXPERIENCED DEVOTED**  
Your Vote & Influence Will Be Appreciated

Hire the Right Man for the Job!  
**CONDRA FOR CONGRESS**  
**GARY D. CONDRA**  
Agricultural Economist  
Democrat  
Pd. Pol. Adv. by Condra for Congress Comm. P. O. Box 64309, Lubbock, Tx 79464 Tommy Swann

**Now Under New Ownership...**  
**Rosemary & Linda Bell**

Invite You To  
Come In & Look Over  
Their Spring & Summer  
Merchandise Arriving  
Daily.

**Lookin' Good**  
206 Main 272-5052

# Mid-Tule Village

Government Subsidized Housing

Age 62 & Older

Will Have

# Open House

On

**Sunday**

**April 29, 1984**

2 p.m. - 5 p.m.

**Low Rent Or No Rent**

- ★ Full Maintenance
- ★ Central Heat
- ★ Refrigerated Air
- ★ All New

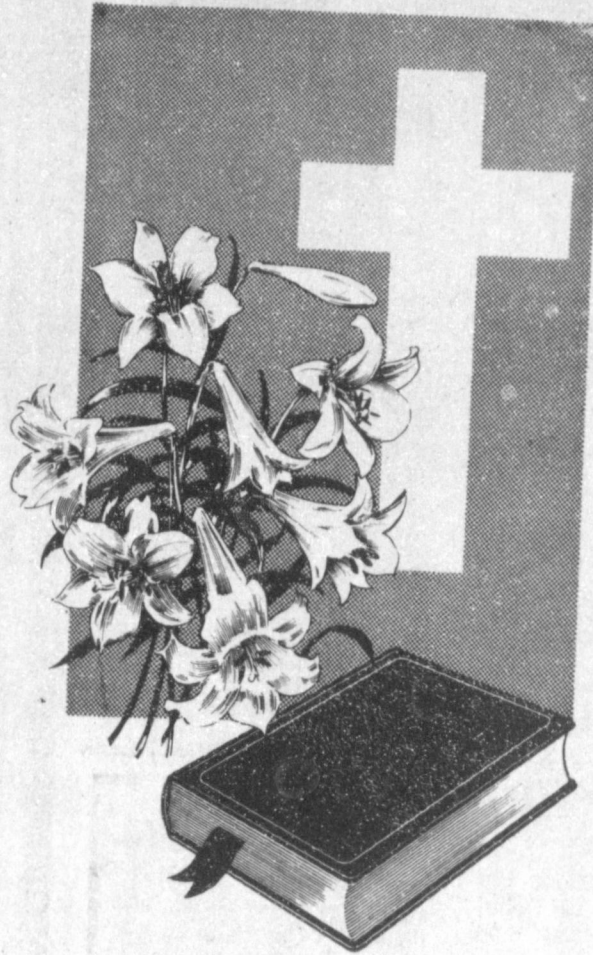
7th & Dallas

Tulia, Texas  
EOH

# Attending Easter Services



**JOYOUS EASTER...**Rev. and Mrs. Darrell Martin, Jeremy, Charlotte, Cindy and Cheryl are on their way to Easter services at the Calvary Baptist Church where Martin is the pastor. The Martin's came to Muleshoe seven months ago from Gainesville. Mrs. Martin is a housewife.



## Resurrection Of Christ

By Bro. Darrel Martin  
Pastor-Calvary Baptist Church

Easter is a time to celebrate the Resurrection of our Lord and Saviour Jesus Christ. The apostle Paul admonishes us to celebrate not with malice and wickedness, but with sincerity and truth.

It is a time of renewal of our spirits, a time of looking inward, a time of "putting off," and a time of "putting on." It is a time for things closed to open up.

In the book of Luke chapter 24 is the wonderful story told. It is a chapter of open things. May we learn how to celebrate Easter by using this chapter as an instructional aid and guide.

Firstly, we have the open grave! Our entire system of Faith is centered around the open grave. If Christ had not arose our faith would all be in vain. (I Cor. 15:17) We serve a living God and have an open grave to prove it.

Secondly, this Easter open your memories. In Lk. 24:6-8, teaches us to open our memories to the Words of the Lord. They had forgotten what the Lord had said concerning His resurrection. May you not forget the Lord this Easter.

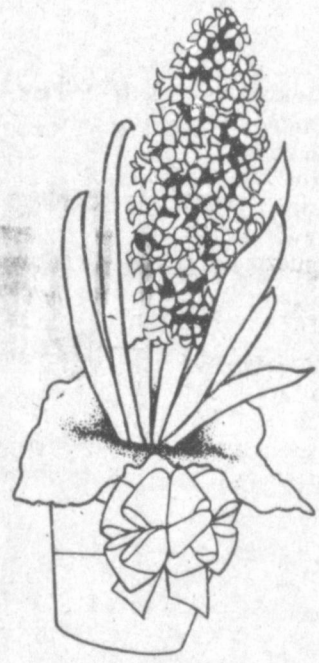
Remember to worship Him in the Word by attending Church.

Thirdly, this Easter open your eyes. In Lk. 24:15-16, the Lord drew nigh to them but their eyes were holden. They did not know who He was. May you meet Christ as your Saviour. If you have never came to Him before, it is our Prayer you will open your eyes to Him today. (Lk. 24:31)

Forth, this Easter come to the open hands of Jesus. In Lk. 24:50 we see the Lord with his hands out stretched waiting to bless you. We here at the Calvary Baptist Church urge you to open your heart to the Lord, as He has opened His hands to you. Saved or Lost there is no one who loves you as much as Jesus. You must come to the out stretched, nail scared, loving hands of Christ. Just remember Easter simply means, "HE LIVES!"



**SERVICES AT UNITED METHODIST CHURCH...**Mr. and Mrs. Dale McCray and eight month old daughter, Tiffany, are on their way to Easter services at the United Methodist Church. They moved to Muleshoe one and half years ago. McCray is employed by Soil Conservation Service and Mrs. McCray is employed at the Police Department.



**ATTENDING EASTER SERVICES...**Mr. and Mrs. Manuel Balderas are on the way to Easter services at the Immaculate Conception Catholic Church. The Balderas' moved to Muleshoe in 1959. They have four children, Bobby of Montevideo, Uruguay; Linda and Helen of Amarillo and Billy of Muleshoe; and six grandchildren. Mrs. Balderas is a Community Aide and Balderas is employed at 5-Area Telephone.



**EASTER MORNING SERVICES...**Mr. and Mrs. Charlie Watson are on their way to Easter morning services at the Primitive Baptist Church. Watson moved to Bailey County in 1928. He is a retired farmer. The Watson's celebrated their 50th wedding anniversary in September. They have six children, Charlene Cargile of Lariat, Billie Chandler of Lubbock, Howard of Muleshoe, Don of Balwin, Missouri, Benny of Dallas and Leon of Petersburg, 13 grandchildren and 10 great grandchildren.



**SCRIBES HONOR SOCIETY...** Mary Mata, daughter of Mr. and Mrs. Luis Mata, was recently initiated into the Scribes Honor Society at West Texas State University. Miss Mata was one of 12 WT seniors to be selected for membership. Miss Mata is also a member of Alpha Kappa Psi, Computer Science Association, and Epsilon Delta Pi (Computer Honor Society). Membership in the Scribes is based on the individual's leadership scholarship and service at the University.



**NEW ARRIVALS**

**Andy Dario Dominguez**

Mr. and Mrs. Julian Dominguez are the proud parents of a son born at 2:21 p.m. Saturday, April 14 in a Littlefield hospital.

The young man weighed five pounds five ounces and was 19 inches long. He has been named Andy Dario. He has four step brothers and sisters, Adarian Dominguez, Amy Dominguez and Robert and Melissa Martinez.

Grandparents are Josephine Gamboa and Julian and Lupe Dominguez.

**Lisa D'Nae Edwards**

Mr. and Mrs. Gary Edwards of Sudan are the proud parents of a daughter,

**Heath Harper**

**Celebrates Birthday**

Heath Harper was honored Friday on his fifth birthday with a party in the home of his parents.

The "He-Man" theme was carried out with decorations and a "He-Man" cake, ice cream and punch were served and games were played.

Guests included Chad and Josh Chester, Kris Humphreys, Justin Harrison, Jason and Justin Bellar, Kyla Morris, Alecia Seymore, Garrett Flowers, Johnathan Martin, Ryan and Stacy Masten, Breeanne Baker, Aaron Nix, Kristy Synatschk, Dustin Provence, and Shane, the honoree's brother and his parents, Mr. and Mrs. Craig Harper.



**GIVING AWAY AFGHAN...**The Muleshoe Rebekah Lodge will be giving away an afghan, made by Mrs. Ruby Green (right), with each donation to the Lodge you will be given a ticket for the drawing. Also pictured is Dimple Sims. For more information you may contact Mrs. Green.

**Rebekah Lodge**

**Meeting Held**

**Tuesday**

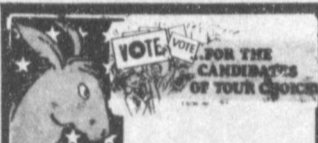
Muleshoe Rebekah Lodge No. 114 met Tuesday evening with Noble Grand, Dimple Sims, presiding. Twenty members and three visitors were present. The American flag was presented by Opal Talley, flagbearer, escorted by Dorothy Chance, warden and Ina Wilemon, conductor.

The minutes of the previous meeting and roll call were read by Fern Davis, secretary. The opening prayer was given by Mildred Kindred, chaplain.

Before Lodge everyone enjoyed supper and singing. Dimple Sims introduced the guest, her daughter, Sosetha Bishop; granddaughter, Vanda Thary and K'Ann Maize of Portales. They sang an Easter song for the Lodge.

**Classified Ads**

Call 272-4536



The Journal has been authorized to announce the following candidates for public office:

**SHERIFF**

Tom Watson  
Bob Henderson

**TAX ASSESSOR /COLLECTOR**

Kathleen Hayes

**STATE SENATOR**

Bill Sarpalius

**U.S. CONGRESS**

Don R. Richards

Tom M. Richards

Gary D. Condra

Dr. John Selby

Delwin Jones

**COMMISSIONER**

Precinct 1

R.L. Scott

G.L. 'Hoss' Gibson

R.O. Gregory

Marshall

'Catfish' Williams

**COMMISSIONER**

Precinct 3

James Warren

Joey Kindle

**COUNTY**

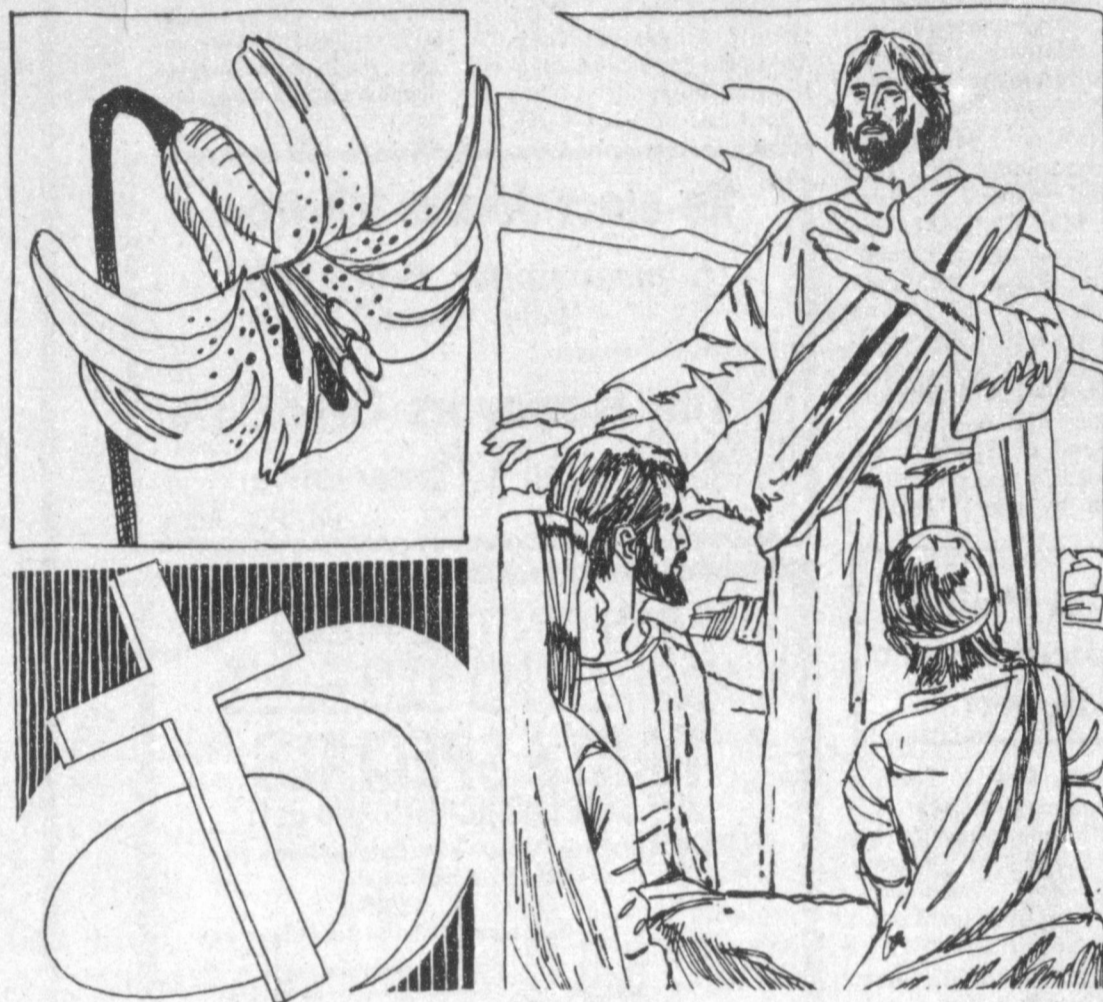
ATTORNEY

Linda Guelker

**RANDGEAR** We Can Save You Money...  
Come In Today And Check With Butch or R. O. Before You Buy  
20 Hp. to 750 Hp.  
**Randolph Gearhead**  
Now Available At  
**Leo's Blacksmith & Machine**  
310 W. American Blvd. 272-4418

**Re-Elect R.L. Scott**  
**Commissioner Precinct 1**  
May 5, 1984  
Your Vote & Support Greatly Appreciated  
Pd. Pol. Adv.

**EASTER BLESSINGS**  
...TO ALL  
16.09 MAR 84



May the message of this holy Easter fill your hearts and uplift your spirits with joy. Celebrate this renewal of faith and hope with your loved ones. You will find a rebirth of your faith in Him and in His messages of peace and love.

Sponsored by the following

Civic Minded Merchants:

The Honeycomb

John's Custom Mill

Dinner Bell Cafe

Bob Stovall Printing

Glennas Beauty Retreat

Black Insurance Agency

Main Street Beauty Salon

Albertson's Shop For Men

Williams Bros. Office Supply

Muleshoe Livestock Auction Inc.

Decorator's Nursery & Floral Inc.

Shipman & Sons Body Shop

Pivot Products Distributors, Inc.

Bailey County Electric Co-op Assn.

El Nuevo Leal's Restaurant

Hochheim Prairie Farm Mutual Insurance

**ELECT MARY BETH WILLEY**

**TAX ASSESSOR/ COLLECTOR**  
Lamb County

Your Tax Office Is My Concern

Pol. Ad. Pd. for by

Mary Beth Willey



### David Harris Graveside Services Held

Graveside services for David Glen Harris, 29, were held at 2 p.m. Saturday, April 21 at the Muleshoe Cemetery. Burial was under the direction of N.S. Griggs and Sons Funeral Home of Amarillo.

The bodies of Harris and a fishing companion, Kenneth Doyle Butler, were located at 12:15 p.m. Thursday at Lake Meredith about midway between Bates Canyon and South Turkey Creek Point, where their boat was found overturned March 12. Harris and Butler were last seen at about 2 p.m. March 11 and were reported missing by relatives after they failed to return from a fishing trip.

A native of Muleshoe, Harris was born Dec. 19, 1954 and married Shelley Arnold May 30, 1981, in Spring. He was a truck driver for Playa, Inc. and a Baptist.

Survivors include his wife, Shelley; his parents, Mr. and Mrs. Glen B. Harris of Muleshoe; and one sister, Mrs. Sondra Wilson of Muleshoe. He was preceded in death by one sister,

Cynthia on Nov. 8, 1978. Services for Butler are pending at Memorial Park Funeral Directors. Butler was born in Sedalia, Mo., and worked at Playa Feed Yard in Bushland.

Survivors include his wife, Beverly J.; two sons, David and Jason; and four brothers, Norbert, Joseph L. Harold and John, all of Amarillo.

### Deregulation of banks gives consumers more for their money

COLLEGE STATION — Consumers can expect to receive higher returns on deposits and at the same time lower charges for loans with the deregulation of financial institutions, predicts a Texas A&M University finance professor.

If these expectations are realized, there will be substantial pressure on depository institutions' profitability, which could lead to fewer of the institutions and consolidation among some of them, said Dr. Donald R. Fraser, Texas A&M's Dresser Industries Professor of Finance.

By eliminating deposit rate

ceilings, consumers can expect to receive market rates of interest on their deposits, Fraser said. Similarly, greater competition in the credit market should produce a greater availability of credit at lower cost than would be the case in the absence of deregulation.

### REWARD OFFERED

ROME -- A Rome security company recently offered a \$1.5 million reward for help in finding the robbers who got away with \$21.8 million from the company vaults in the biggest theft in modern Italian history.

**Re-elect James Warren**  
Commissioner Precinct III  
Bailey County

**The Taxpayers Candidate**  
Experienced & Conservative  
Pd. Pol. Ad.

### West Plains Medical Center Report

April 17: Flois Toten, Lillie Simkins, Rosie Martin, Alice O'Brien, Lupe Flores, Jackey Burris, Vergie Harding, Kyle Atwood, Ernest Kerr, William Kent, Tiny Walling, Buelah Gatewood, Alma Fivash, and Rosie Holland.

April 18: Flois Toten, Lillie Simkins, Juanita Lumbrera, Rosie Martin, Alice O'Brien, Lupe Flores, Vergie Harding, Kyle Atwood, Ernest Kerr, Lupe Vidaurri, William Kent, Anna Lopez, Lisa Norman, Buelah Gatewood, Alma Fivash, and Rosie Holland.

April 19: Flois Toten, Lillie Simkins, Juanita Lumbrera, Ceferino Sierra, Joe Pat Wagon, Lupe Flores, Lupe Vidaurri, William Kent, Anna Lopez-Baby Boy Lopez, Alma Fivash, and Rosie Holland.

### BEST IN THE FIELD SPRING BREAK PARTS SPECIALS

BUY CASE LUBRICANTS AND GET:  
• \$25.00 off Case Ag filters • \$10 Savings Certificate  
• FREE Systemgard Kit PLUS



Now Through 00/00/00!  
**Reynolds & Young**  
803 W. Amer. Blvd 272-4236



PRICES EFFECTIVE THRU APRIL 28th

**IF YOU DIDN'T MAKE YOUR LAST TIRE PURCHASE FROM US: YOU PAID TOO MUCH!**

**COMPARE OUR QUALITY - PRICES - SERVICE AND CUSTOMER SATISFACTION**

**IF WE DON'T HAVE YOUR SIZE - WE CAN GET IT.**

### CLASSIC BELTED 2 + 2 POLYGLASS .85" WHITEWALL



The combination of fiber-glass belts and body plies of polyester cord produce a tire with open groove fraction, improved treadwear and great stability.

Stock No. N5-06	P155/80B13	28.13
Stock No. N5-11	P165/80B13	29.40
Stock No. N5-13	P175/80B13	31.07
Stock No. N5-14	P185/80B13	31.82
Stock No. N5-38	P185/75B14	32.81
Stock No. N5-39	P195/75B14	34.18
Stock No. N5-47	P205/75B14	36.00
Stock No. N5-60	P215/75B14	36.97
Stock No. N5-66	P225/75B14	39.16
Stock No. N5-34	P205/75B15	37.18
Stock No. N5-45	P215/75B15	38.64
Stock No. N5-49	P225/75B15	40.26
Stock No. N5-64	P235/75B15	43.38

### BONNEVILLE STEEL BELTED RADIAL POLY/STEEL



"Our Best"

### WHITEWALL

Stock No. 22C06	P155/80R13	47.57
Stock No. 22C11	P165/80R13	49.62
Stock No. 22C15	P185/80R13	53.97
Stock No. 22C38	P185/75R14	52.19
Stock No. 22C39	P195/75R14	54.44
Stock No. 22C47	P205/75R14	56.24
Stock No. 22C60	P215/75R14	59.84
Stock No. 22C34	P205/75R15	58.49
Stock No. 22C45	P215/75R15	62.54
Stock No. 22C49	P225/75R15	63.89
Stock No. 22C64	P235/75R15	69.29

### CORDOVAN TIRES

Your new tire, bearing our Cordovan® trademark or other brand marketed by THE Tire and Battery Corporation, is warranted against defects in workmanship or material. The extent of this protection is based on the kind of vehicle or equipment you use and the records you keep. When you present a claim for an unserviceable tire, you must be able to identify yourself as the purchaser of that tire. In the case of an automobile tire you must also show that the tire has only been used on the vehicle on which it was originally installed. To prevent disappointment, keep all papers given to you by the Cordovan dealer when you purchase the tire.

### ELIGIBILITY:

You are eligible for the benefits of this warranty if you are the original owner of a tire bearing one of our trademarks and identified by the manufacturer's serial number, (and in the case of an automobile tire that it has been used only on the vehicle on which it was originally installed.) according to the vehicle manufacturer's recommendations.

### COVERAGE:

If any tire covered by this policy becomes unserviceable during its full original tread life, by reason of a defect in workmanship or material, the servicing dealer will either repair it or make an allowance on the purchase price of a comparable new tire. The servicing dealer will decide what is best under the circumstances. You will pay for mounting and balancing. The replacement allowance will be based on the percent of tread depth remaining on the tire. The amount of the allowance will depend upon the servicing dealer's actual retail selling price of a comparable new tire at the time of adjustment. You will pay any applicable taxes.

### Workmanship and Material

Treadwear is measured by the depth of the remaining tread. A tire has delivered its full original tread life when worn down to the treadwear safety indicators (where applicable) molded into the tire.

### LIMITATIONS:

This warranty is applicable only in the continental United States. Not covered are:

- Tires branded "NA" (not adjustable) in the vicinity of the serial number;
- Tires branded "BLEM" for appearance imperfections only;
- Automobile tires used in commercial application;
- Tire failure or loss due to improper mounting procedures (including broken beads), improper inflation, overloading, running flat, chain damage, mechanical condition of the vehicle, fire, theft, highway conditions, road hazard damage, wreck or collision, tire neglect or mistreatment, or other conditions beyond the manufacturer's or our control;
- LOSS OF TIME, INCONVENIENCE, LOSS OF USE OF THE VEHICLE, INCIDENTAL OR CONSEQUENTIAL DAMAGES.
- THE USE ON ANY VEHICLE OF TIRES OF SIZES OR TYPES NOT RECOMMENDED OR SPECIFIED BY VEHICLE MANUFACTURER IS AT USER'S SOLE RISK AND Voids THIS WARRANTY AND ANY IMPLIED WARRANTIES (INCLUDING MERCHANTABILITY AND FITNESS FOR A PARTICULAR PURPOSE).

### NATIONWIDE LIMITED WARRANTY

Some states do not allow the exclusion or limitation of incidental or consequential damages so such limitations or exclusions may not apply to you.

### OWNER'S OBLIGATIONS:

- If a tire which is subject to this warranty becomes unserviceable, you should take the tire back to the dealer where you bought it. Should this, for any reason, not be possible, you may take it to the nearest Cordovan dealer. Please consult telephone directory for locations. To assist you in locating the nearest Cordovan dealer you may telephone toll free during normal business hours (800) 238-6469. Calls originating in the state of Tennessee should call collect (901) 795-3399. It is your obligation to present the unserviceable tire to the dealer.
- Replacement under this adjustment policy does not include taxes, dealer handling charge or any services (including mounting and balancing) ordered by you at the time of adjustment.
- No claim will be recognized unless accompanied by proof of purchase, identification of you as the original purchaser, and identification of the vehicle, (excluding tires for commercial use), on which the tire was originally installed.

### LEGAL RIGHTS:

This warranty gives you specific legal rights, and you may also have other rights which vary from state to state.

### FEDERAL LAW:

Your new tires must be registered at the time of purchase. It is clearly to your advantage to make sure the dealer or store from whom you purchased the tire does, in fact, register them.

THE TIRE & BATTERY CORPORATION  
POST OFFICE BOX 18342 • MEMPHIS, TENNESSEE 38118

**CLOVIS HIGH PLAINS HOSPITAL**  
Where We MEET YOUR HEALTH CARE NEEDS

## OPEN HOUSE CT SCANNER AND ADDITION

Come see the latest in radiologic technology made available through your regional hospital (use entrance at west of hospital)

**Thursday April 26**

**10 AM - 6 PM**



Clovis High Plains Hospital



**Blow-Out...**

Cont. From Page 1

The SCS group is working with any farmer or rancher requesting their assistance in an effort to come up with solutions to the blow-out or erosion problems affecting such a wide area. Alternatives are being discussed on a farm by farm, or ranch by ranch basis, to determine what type of solution would work for that particular operation.

"The quicker we can get started working on a solu-

**Muleshoe...**

Cont. From Page 1

Yokels. Admission will be \$5 per person over 12 and \$3 for persons under the age of 12. An autograph session will be held during halftime.

**Horsley...**

Cont. From Page 1

Ana Alicia (Falcon Crest), Raina English (Lawrence Welk Show), Markie Post (Fall Guy), Patrick Wayne, Morgan Brittany (Dallas), Desi Arnaz Jr, Eric Braeden (Young and Restless), Grant Goodeve (Dynasty), Richard Dean Anderson (Emerald Point), Joseph Moscolo (Days of Our Lives), Robert Walden (Lou Grant), and many more.

Don't be left out -- make your plans to there now!

tion for a farmer, the less land he will be losing to blow-outs" said Kelley.

In the same area of the Dean farm, a four mile stretch of county road has become clogged with sand and is impossible, according to the conservationists.

Other speakers at the meeting during the morning hours preceding the visit to the Dean farm included Nick Bamert, Bamert Seed Company; Dr. Bill Lipe, Horticulturist with the Texas Experiment Station; David Webster, Soil Conservationist, Littlefield; Dennis Neffendorf, Conservation Agronomist Soil Conservation Service, Lubbock and Greg Sokora, Ag Engineer, Lubbock.

Persons wishing additional information on starting a program to stop field erosion or blow-outs are asked to contact the Blackwater Valley Soil and Water Conservation Service Office in Muleshoe, or call 272-5124.

**King Hussein, Jordan,** on Middle East peace:

"Israel was the force that rejected it, they did not wish peace, yet we are portrayed as if we are the party that is opposed to peace..."

**Edwin Meese,** on confirmation hearings: "I intend to continue my efforts to be confirmed as attorney general of the United States."



**EASTER EGG COLORING CONTEST WINNERS...**Justin Williams won first place in the Easter Egg Coloring Contest (in Division three) at the Muleshoe Art Loft Friday. Second place winner was Jeanne Cox and Kristin Chitwood won third place.

**Courthouse News**

**WARRANTY DEEDS**

Scotty Farley to Roy L. Farley and wife, Charlene Farley --- All of Lots Numbers (31), (32), (33), and (34), in Block Number (5), Lenau Subdivision to the City of Muleshoe, Bailey County, Texas.

Ralph O. Wenner to Mickey Merriott --- All of Lots (7), (8), and (9) in Block (3), Harvey Addition to the Town of Muleshoe, Bailey County, Texas.

Omer Fletcher and wife, Julia Fletcher to Vernal King --- All of Lot Number (7), in Block 1, Parkland Place Addition to the Town of Muleshoe, Bailey County, Texas.

Floyd Embry, Joe Embry, Chester Embry and Calvin Embry to Lula May Embry Shanks --- (N. 132 A) of Section (88), Block Y, WD & FW Johnson's Subdivision Number (2), in Bailey County, Texas.

Lula May Embry Shanks to Floyd Embry, Joe Embry, Chester Embry and Calvin Embry --- (E/2) of the (SW/4) of Section Number (69), Block Y, WD & FW Johnson's Subdivision Number (2), in Bailey County, Texas.

Muleshoe Swine Breeders, Inc., a Texas Corporation to Joe Mack Wagnon and wife, Beverly Wagnon --- All of the West 19.83

The laugh is the most powerful of voice weapons.

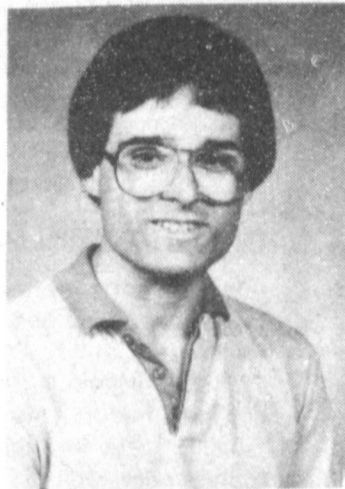
acres of the South one half of the Northwest Quarter of Section 75, Block Y, WD & FW Johnson's Subdivision, Bailey County, Texas.

**COUNTY COURT**  
Charlotte Goldsmith Donahau --- Driving While License Suspended, 3 months probation, \$150 fine.

Olberto Mendoza, Order of Dismissal.

Alberto Mendoza, DWI, 5 days jail, \$400 fine.

**DISTRICT COURT**  
Beverly Ann Sisemore and Tommy Ray Sisemore, DV.



JOEL BRATCHER

**Joel Bratcher**

**Will Graduate**

**From Wayland**

The graduating class of 1984 at Wayland Baptist University includes Joel Bratcher of Muleshoe.

Bratcher, one of 26 honor students in the class, will be awarded the bachelor of arts degree in history at Wayland's 74th Commencement next Saturday, April 21, beginning at 10 a.m. in Herral Memorial Auditorium.

A record total 255 students will be awarded degrees on the associate, baccalaureate and master's levels, in addition to four other students who will receive certificates of completion.

Of that number, 29 will be awarded master's degrees, 222 will receive bachelor's degrees, and four are scheduled to receive associate of technology. Twenty-six members of the class of 1984 are honor graduates.

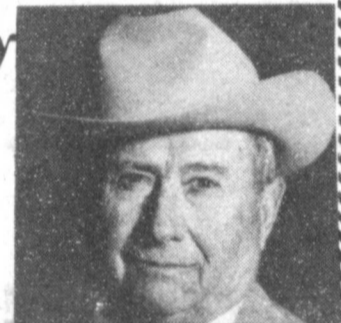
Degrees for December and April graduates will officially be conferred upon those persons during Saturday's ceremonies. Candidates for August graduation will receive their diplomas upon completion of their course of study, although they will also participate in Saturday's activities.

Jose Estrada and Esmeralda Estrada, DV.  
Betty Lou Hovland and Danial Walter Hovland, DV.  
Shook Tire Company VS Gene Snell, Default Judgment.

**ROBERT D. GREEN, INC.**  
2400 W. AMERICAN BLVD. -- MULESHOE, TEXAS 79347  
— HOME OF THE GREEN MACHINES —  
Terry Yell  
Sales Representative

ELECT AN EXPERIENCED BUSINESSMAN

**R.O. Gregory**  
Your 'Best' Choice  
Precinct I



May 5  
Responsible, Conservative & Would Appreciate Your Support  
Pd. Pol. Adv.

**Lazbuddie School Menu**

April 23-27, 1984

**MONDAY HOLIDAY**  
**TUESDAY BREAKFAST**  
Cereal, Juice and Milk

**LUNCH**  
Beef / Cheese Tacos / Hot Sauce, Pinto Beans, Green Salad, Fruit, and Milk.

**WEDNESDAY BREAKFAST**  
Do-Nuts, Applesauce and Milk

**LUNCH**  
Bar-B-Que on Bun, French Fries, Baked Beans, Cookies and Milk.

**THURSDAY BREAKFAST**  
Pancakes, Syrup, Juice / Milk.

**LUNCH**  
Hot Dogs, Buttered Corn, French Fries, Brownies, and Milk

**SALAD BAR**  
**MONDAY HOLIDAY**  
**TUESDAY**

Tuna Salad  
**WEDNESDAY**  
Fruit Salad

**THURSDAY**  
Chicken Salad

**FRIDAY**  
Chef Salad

**FRIDAY**  
Rice, Buttered Toast, Applesauce and Milk.  
**LUNCH**  
Longhorn Burger, French Fries, Lettuce / Pickles / Onion, Fruit, and Milk.

**FOR YOUR WANT ADS CALL 272-4536**

There's a time to play, as well as a time to pray, but some people never try either.

Time and people both change and there is no reason to worry about the process.

Optimism is that quality that permits us to hope that someone else will do something for us.

**Wilson's Radiator Service**  
311 W. Amer. Blvd. 272-4212  
Heating Problems? Need Repairs?  
Cleaning? Rodd Out? Heaters?  
New Radiators For Any Vehicles  
Check Our Prices On Radiators For All Farm & Industrial Equipment Before Buying.  
Serving W. Texas & Eastern New Mexico  
Since 1965.

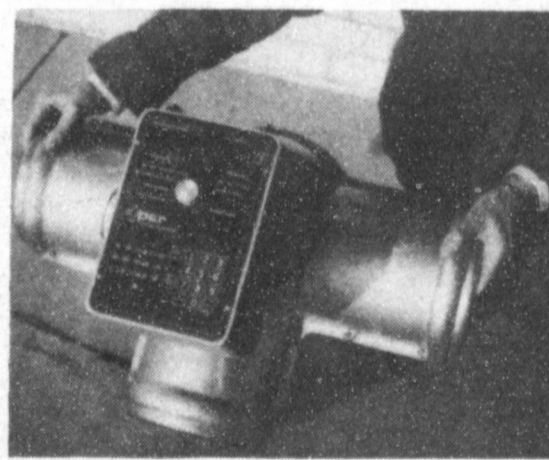
**ferti-lome Crabgrass Preventer PLUS LAWN FOOD**  
Stop Crabgrass and feed your Lawn  
Easy to apply!  
Prevent Sandburrs  
**ferti-lome**  
FOR A GREENER LAWN  
**ferti-lome**  
LAWN FOOD + IRON  
**BAKER FARM SUPPLY**  
1532 W. American 272-4613

**True Value HARDWARE STORES**  
**HARDWARE VALUE OF THE MONTH**  
9.77 Our Price  
-2.00 Mfr's Rebate  
7.77 Final Cost  
While Supplies Last  
Home & Auto Twin-Pack Fire Extinguishers  
Includes compact extinguisher for auto, workshop, etc. and larger size for home. 1021D  
Quantities Limited

**True Value HARDWARE STORES**  
**TOOL VALUE OF THE MONTH**  
Master MECHANIC  
289  
While Supplies Last  
Heavy-Duty Steel Hacksaw Frame  
Holds 10-in. blade (incl.) or 12-in. size in any of 4 different positions. Pistol grip. 100MM  
Quantities Limited

**Fry & Cox, Inc.**  
401 S. First 272-4511

**Pivot Products Distributors Introduces -- The P & R Surge System -- The Ultimate Surge Flow Unit**



**FEATURES**

durable - all cast aluminum with stainless hardware portable - 55 lbs., 24" wide weatherproof - electronics sealed in control box Serviceable - valve body opens. Control box is detachable for storage and opens to actuator and rechargeable battery user friendly - instructions for programming on face

This compact light weight unit is combined with the most complete programmable controller yet devised. This rugged efficient unit diverts water flow with a very minimum of turbulence and negligible back pressure. The unit can be programmed for just one set of surge cycles on a set watering time, with the option to also program a second surge setting of a different watering time on an indefinite number of surge cycles. Any standard 12 volt car battery will give the P&R Surge Systems long life in the field. The controller's memory battery pack is recharged off the main power supply and the unit can store the program for over 1 year.

Contact Pivot Products Dist. now to have one or more of these units in time for prewatering which incidentally is the most preferable time to have the Surge Flow unit. Orders received prior to February 1, 1984, will have the best chance of March delivery. Call today 272-5134, or come by Pivot Products Distributors West highway 84 in Muleshoe, Texas

**PIVOT PRODUCTS DISTRIBUTORS, INC.**

West Highway 84 Telephone 806/272-5134 or 806/272-5536 MULESHOE, TEXAS 79347

**TEXAS CERTIFIED NURSERYMAN**  
**TCN MEANS PROFESSIONAL!**  
**Daniel S. May**  
TCN #1281  
**Decorators Nursery & Floral**  
616 S. 1st. 272-4340

**INTEREST-FREE 'TIL 1985**  
OR CASH REBATE THROUGH APRIL 1984  
**JOHN DEERE 40- TO 300-HP TRACTORS**

Choose the John Deere tractor power size you need, finance with John Deere, and no interest will be charged until January 1, 1985. Or, through April, 1984, you can take the cash rebate in lieu of waiver as shown in the chart, lower right.

**Special discounts on John Deere tillage tools:** Buy a new John Deere tillage tool between now and April 30, 1984, and we'll give you a discount from the base price—10% off any field cultivator, disk, mulch finisher, mulch tiller, or chisel plow; 5% off any moldboard plow; and \$350 off a 250 SpraCart sprayer. That means, for example, you'd save more than \$1,500 on a 24-foot mulch finisher.

**Special deals on Max-Emerge planters:** Using special allowances from John Deere, we're cutting the price on all Max-Emerge planters...but only through April 1984. With the price of seed so much higher this year, you need the proven ability of a Max-Emerge planter to deliver maximum germination and uniform emergence more than ever.

**Titan combines interest-free 'til the '84 harvest:** Finance a new 4420, 6620, 6622 Hillside, 6601 PTO, 7720, 7721 PTO or 8820 Combine with John Deere and pay no interest charge until 1984 harvest season in your area. Or take a cash rebate in lieu of waiver through April 1984.

Model**	Cash rebate in lieu of Waiver on Tractors	Model**	Cash rebate in lieu of Waiver on Tractors
40-hp 1250	\$ 600	120-hp 4250	2,000
45-hp 2150	700	140-hp 4450	2,100
50-hp 2255	750	165-hp 4650	2,600
55-hp 2350	825	190-hp 4850	2,900
65-hp 2550	950	185-hp 8450 4WD	3,400
75-hp 2750	1,100	235-hp 8650 4WD	4,200
85-hp 2950	1,300	300-hp 8850 4WD	5,200
100-hp 4050	1,850		

\*Availability of John Deere financing subject to approval of credit.  
\*\*A similar financing rebate offer applies to any 40 Series Tractors remaining in inventory. See your dealer.

**WE'LL MAKE YOU A GREAT DEAL... AND ALL THROUGH APRIL, JOHN DEERE WILL MAKE IT EVEN GREATER**

**DENT-REMPE**  
1516 W. Amer. Blvd.  
272-4296  
Muleshoe Tx.  
Leon (Tuffy) Dent  
Ronnie Dent

### Mrs. Gatewood Services Held Saturday

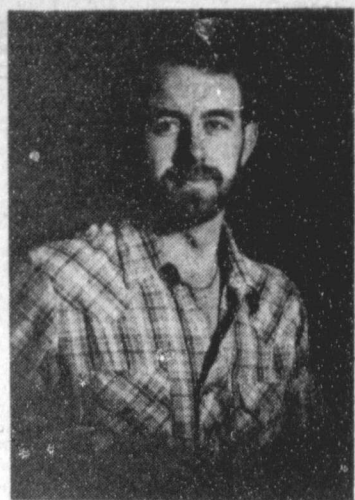
Services for Beulah Gatewood, 72, were held at 11 a.m. Saturday, April 21 in the Muleshoe Church of Christ with David Cox, Church of Christ minister of Anton, officiating.

Interment was in Bailey County Memorial Park under the direction of Ellis Funeral Home. Mrs. Gatewood died at 8 p.m. Wednesday in West Plains Medical Center.

Mrs. Gatewood was born Oct. 17, 1911, in Dallas and moved to Muleshoe in 1945. She was a housewife and a

member of the Church of Christ in Muleshoe since 1945. She married Larless Albert Gatewood Feb. 29, 1932. He died in March of 1969.

Survivors include four sons, Ingle Gatewood of Belton, J.C. Gatewood and Cappy Gatewood, both of Muleshoe, and Boyce Gatewood of Cleburne; three daughters, Mrs. Lorene Suratt of Cleburne, Mrs. Wanda Stanfield of Dallas, and Mrs. Linda Magnan of Belton; two sisters, Mrs. Pauline Binion and Mrs. Ruby Aaron of McKinney; one brother, Troy Talent of Sherman; 25 grandchildren; and 15 great grandchildren.



DON HANES

### Don Hanes Services Held Friday

Services for Don Hanes, 24, were held at 2 p.m. Friday, April 20 in Ellis Funeral Home Chapel of the Chimes with the Rev. V.L. Huggins, pastor of the Trinity Baptist Church, officiating.

Graveside services were conducted at 4 p.m. in Parklawn Memorial Gardens at Plainview. Burial was under the direction of Ellis Funeral Home. He was found dead late Wednesday in his vehicle four miles southwest of Muleshoe on a dirt road. Justice of the Peace Trey Ellis said he died at approximately 10:30 p.m. Tuesday, from an apparent suicide.

A native of LaJunta, Colo., Hanes was born Dec. 21, 1959, and moved to Muleshoe two years ago from Cheyenne, Wyoming. He was employed at Valley Grain Products and served in the U.S. Air Force.

Survivors include his parents, Mr. and Mrs. Frank Hanes of Muleshoe and Mrs. Sandra Watkins of Dallas; his grandparents, Mrs. Frank Hanes, Sr. of Abenathy and Mrs. O.S. Bristow of Petersburg; and one sister, Justine Hanes of Muleshoe.

### Mrs. Lenoard Services Will Be Held Tuesday

Services for Truly Mae Lenoard, 47, will be held at 2 p.m. Tuesday in St. Matthews Baptist Church with the Rev. Milton Brown, pastor, and the Rev. Author Hayes officiating.

Burial will be in Muleshoe Cemetery under the direction of Ellis Funeral Home. Mrs. Lenoard died at 4:50 p.m. Thursday in Lubbock General Hospital.

A native of Coolidge, Mrs. Lenoard was born Sept. 28, 1936, and moved to Muleshoe in 1981, from Ft. Worth. She was a housewife and a member of the St. Matthews Baptist Church of Muleshoe.

Survivors include two daughters, Mrs. Buhie Mae Palmer of Muleshoe and Mrs. Richie Mae of Dell City; three sisters, Mrs. Ethel Busby and Mrs. Vernastine Lewis of Muleshoe.

### S.H. Pierce Longtime Area Resident Dies

Services for S.H. Haskell Pierce, 76, were held at 3 p.m. Tuesday, April 17 in the 16th. and Ave. D Church of Christ with James Johnson, minister, officiating.

Interment was in Bailey County Memorial Park under the direction of Ellis Funeral Home. Justice of the Peace Trey Ellis pronounced Pierce dead at 8:35 a.m. Saturday at his home.

A native of Quitaque, Pierce was born August 28, 1907, and moved to Muleshoe in 1931, from Turkey. He married Gladys Cruse on May 31, 1931, in Clovis N.M. He was the former owner of Combination Motor and a member of the 16th. and Ave. D Church of Christ.

Survivors include his wife, Gladys; three daughters, Mrs. Patsy Hughes of Lubbock, Mrs. Betty Campbell and Mrs. Cherry Estep, both of Muleshoe; seven sons, Bill Pierce of Everett, Wash., Sam Pierce of Sattelite Beach, Fl., Tony Pierce of Medford, Oregon; Dick Pierce of White Door, Mick Pierce of Medford, Oregon, Neal Pierce of Goodman, Missouri, and Gerry Pierce of Muleshoe; four sisters, Mrs. Mamie Askew of Muleshoe, Mrs. Grace Mullin, Mrs. Chlorene Melton and Mrs. Ruby Aplin, all of turkey; three brothers, Burt Pierce and Tom Pierce, both of Turkey, and Doug Pierce of Lexington, Okla.; 31 grandchildren; and 16 great grandchildren.

Lewis of Muleshoe, Marvin Dean Lewis of Lubbock, Mentie Lewis of Clovis, and Mrs. Ocie B. Robertson of Coolidge; five brothers, Clarence Lewis and Emmitt Lewis of Muleshoe.

### Local Man's Father Dies At Jayton

Funeral services for Luther Vanis "Dude" Burkett, 77, of Jayton were held at 2 p.m. Friday, April 20 in the First Baptist Church of Jayton with Jim Babcock, minister of the Jayton Church of Christ, officiating, assisted by the Rev. Dennis Teeters, pastor of the Jayton First Baptist Church.

Interment was in Jayton Cemetery under the direction of Campbell Funeral Home of Spur. Burkett died at 4:56 p.m. Tuesday at Fisher County Hospital in Rotan.

He was born in Comanche County and married Loya Greer on Jan. 18, 1963, in Aspermont. He lived in Kent County 70 years and was a farmer and a ginner.

Survivors include his wife; three stepsons, Durwood Thompson of Friendswood, Doyle Capps of Muleshoe and Dwight Capps of San Antonio; one brother, W.A. "Buster" of Los Banos, Calif.; and four sisters, Mary Sutton of Gorman, Mattie Botts of Beaumont, and Rena Smith and Winnie Mae Self of Chowchilla, Calif.

### Former Area Woman Dies At Clovis

Services for Ida Mae Archie, 60, of Clovis, N.M. were held at 2:30 p.m. Saturday, April 21 at the First Church of God in Christ of Clovis with the Rev. W. Charles Green officiating.

Burial was in Mission Garden of Memories under the direction of Muffley Funeral Home of Clovis. Mrs. Archie died Tuesday at Clovis High Plains Hospital.

She was born in Groesbeck, Texas, Oct. 14, 1923, and Married Nemiah Archie in Muleshoe on Oct. 30, 1939. She moved to Clovis in 1943. She was a housewife, a presser for Blocks Laundry and worked at Kings Inn. She attended the First Church of God in Christ.

Survivors include her husband, Nemiah Archie; five sons, Nemiah Archie Jr. of Dallas, Clarence Lee Archie of Longbeach, Calif., Charles Ray Archie of Albuquerque, N.M., Ronnie Joe Archie and Paule Eugene Archie of Clovis, N.M.; four daughters, Helen Stevenson, Wilma Goodman and Ida Mae Bishop of Clovis, and Elnora Mitchell of Charleston, S.C.; one sister, Elnora Childress of Clovis; 27 grandchildren; and four great grandchildren.

N.M. and Robert Dean Lewis of Odessa; and nine grandchildren.

**VOTE**  
**Joey R. Kindle**  
**Commissioner Precinct 3**  
**Bailey County**  
"I'll Be Sensitive To Your Needs"  
Pd. Pol. Adv.

**A&M**  
**Five Point**  
**\$10.50**  
**HI PROTEIN**  
**DOG FOOD**  
• A 26% crude protein dog food  
• Formulated for hard working dogs  
• For peak conditioning and performance.

**Tom Watson**  
for  
**SHERIFF**  
  
Educated-Experienced-Willing  
For Professional  
Law Enforcement Pd. Pol. Adv.



BEULAH GATEWOOD

### BIBLE VERSE

He said unto them, Go ye into all the world, and preach the gospel to every creature.

1. Who is speaking in this command?
2. To whom was he speaking at the time?
3. Does this command apply today?

Answers to Bible Verse

1. Mark is recording the command of Jesus.
2. He was speaking to his disciples.
3. Certainly.

WE WANT TO HELP SHAPE UP MULESHOE

**THE FITNESS CENTER**  
FEATURING **Nautilus**  
And Raquetball  
(Now Under Construction)

**We Are Now Adding Raquetball!**

Hurry In! Charter Memberships Going Fast!

Stop By Our Temporary Office  
At 1420 N. Prince  
For More Information

Stop By And Register  
For Trip To Mazatlan  
Mexico!  
You Might Win!

Buy 1 Membership  
Get Second 1/2 Price  
During Preopening Sale!!  
(No Purchased Required)  
Call 762-3775

This Journal has been authorized to announce the following candidacies:  
**Lamb County Assessor/Collector**  
**Mary B. Willey**

**Ellis Funeral Home**  
Pre-Need Funeral Plans  
Guaranteed By Texas Department of Banking  
Price Frozen at Time of Purchase

**HAVE YOUR CARPET BEAUTIFULLY CLEANED IN YOUR OWN HOME**

In a matter of a few hours, we can revive its original beauty and freshness.

We use the famous Von Schrader dry-foam method. No moisture goes through to the underside to damage the pile or backing. There is no odor. Carpet can be used the same day.

**A & F Carpet Cleaning**  
PO Box 262 Muleshoe  
272-3009 or 4423

**True Value**  
HARDWARE STORES  
Shop now from our **Spring and Summer Catalog!**  
Sale Ends April 28th

**1984 SPRING AND SUMMER VALUES**

2.99  
3.99  
1.40  
169.99  
199.88

If you haven't received your copy, get one FREE at  
**Fry & Cox, Inc.**  
401 S. First 272-4511

Bruce & Matthews Inc. Refrigeration & Electrical Contractor's, Heating, Cooling, Appliance service. 424 N. First, 272-5114. 15-44t-tfc

**HONEY FOR SALE**  
Nick Landers  
334 W. Ave. J.  
272-3096  
15-5t-tfc

Does Your Trim Need Painting? If So Paint NO MORE  
By having steel siding and accessories installed to put an end to the painting.

50 year guarantee on material  
Free Estimates  
Free Stormdoor With Every Job.  
**LITTLEFIELD SPECIALTY CO.**  
**DARRELL SIEMS**  
385-3262  
385-3787  
115-12s-tfc

**OPEN YOUR OWN FASHION STORE!**  
We will help you make your dream of owning your own business come true. Our 10 year old company will supply you with training, fixtures, supplies, and a beginning inventory of famous lines such as Calvin Klein, Gloria Vanderbilt, Chic, Lord Isaac, Conder, Stuffed Shirt, Jordache, and Zena. Purchase price is \$16,500.  
For more information call Marti Hutchinson collect at (405) 238-5429.  
**THE SOURCE**  
15-16t-2tpts

**GSA 75—Number 1**  
In Bailey County Test

STANDARD COTTON VARIETY DEMONSTRATION

James Wedel Farm  
West Camp Community  
Bailey County Texas

PURPOSE: To Demonstrate Cotton Variety Characteristics  
PLANTING DATE: May 11, 1983  
HARVESTING DATE: November 18, 1983  
HERBICIDE: Treflan at 1 pt per acre  
IRRIGATION: Furrow system (prewater plus one summer)  
PLANTING RATE: 25 pounds per acre  
ROW WIDTH: 40 inches  
PREVIOUS CROP: Grain Sorghum  
INSECTICIDE: Temik at 3 pounds per acre

**TEST RESULTS**

	YIELD (LB/A)		PERCENT						STR (GM/TEX)	1983 LOAN VALUE
	LINT	SEED	LINT	SEED	GR	ST	MIC	UR		
<b>GSA 75</b>	<b>749</b>	<b>1480</b>	<b>21.8</b>	<b>43.1</b>	<b>31</b>	<b>32</b>	<b>3.9</b>	<b>81</b>	<b>27</b>	<b>51.05</b>
Pioneer PR 80	747	1327	24.5	43.5	31	31	3.4	80	26	47.65
Cascot Exp	718	1344	23.4	43.7	51	34	2.8	76	27	44.10
Tamcot CAMD E	584	1001	21.8	37.4	42	32	3.1	80	25	44.00
Paymaster 792 Temik	571	1254	17.0	37.4	41	33	3.0	82	26	49.05
Paymaster 792 Farm	553	1162	21.1	44.2	41	33	3.3	83	25	51.40
Paymaster 792, No Temik	540	1078	21.4	42.6	41	32	2.8	82	24	43.60
Pioneer PR 75	538	938	22.0	38.4	42	31	3.0	80	24	43.00
Paymaster 404	536	1045	20.9	40.8	41	32	3.1	83	27	46.00
Paymaster 792	529	1206	18.6	42.4	51	32	2.8	82	28	41.15
Cascot C13	520	975	22.5	42.2	41	33	2.9	77	26	46.65
Hurd 580	430	876	21.7	44.1	31	37	2.9	80	27	51.45

COMMENTS: Yields based on single hand-harvested sample.

**GroAGri** Growers BRAND  
GroAGri Seed Company, Box 1656, Lubbock, Texas 79408, 747-6225

**BUY  
SELL  
AND  
TRADE  
WITH...**

# CLASSIFIED ADS

**DEADLINE FOR  
CLASSIFIED ADS IS  
TUESDAYS AND FRIDAYS  
11:00 A.M.**

**CLASSIFIED RATES**  
1st Insertion  
Per Word...\$.15  
Minimum Charge...\$2.30  
2nd Insertion  
Per Word...\$.13  
Minimum Charge...\$2.00  
**CARD OF THANKS**  
Per Word...\$.20  
**CLASSIFIED DISPLAY**  
\$1.70..per column inch  
**BLIND AD RATES**  
50% more  
**DEADLINES**  
11 a.m. Tues for Thurs.  
11 a.m. Fri. for Sun.  
**WE RESERVE THE RIGHT  
TO CLASSIFY REVISE OR  
REJECT ANY AD.  
NOT RESPONSIBLE FOR  
ANY ERROR AFTER AD  
HAS RUN ONCE.**

**1. PERSONALS**

Wanted 3 Bedroom house to be moved. Phone 272-4581 days, 272-5651 after 6 p.m. h1-8t-tfc

**CONCERNED**

about someone's drinking  
**HELP IS AVAILABLE**  
through Al-Anon  
Call 227-2350 or 965-2870 or come to visit Tuesday nights, 8:00 p.m. at 1116 W. American Boulevard, Muleshoe.

**2. LOST AND FOUND**

A Female Cocker spaniel found at Sonic Drive In. She's blonde with a beige collar. Notify Mike Stewart, (512) 837-9518. s2-16t-2tc

**3. HELP WANTED**

Need fast, accurate typist. Typing speed required on application. Come by Muleshoe Journal and fill in application. No Phone Calls!

Valley Grain Products, Inc. has a position open for a truck driver. Applications may be picked up 1/4 miles east of Muleshoe on Hwy 84. No Phone Calls. v3-16t-tfc

**PROCESS MAIL AT HOME**

\$75.00 per hundred! No experience. Part of full time. Start immediately. Detail - send self-addressed stamped envelope to C.R.I. 5288 P.O. Box 3149, Stuart, FL 33495. 3-15t-4tp

**1 PERSONALS**

Words cannot express our thanks to the many friends for all the prayers, calls, visits, food, flowers, memorial or other acts of kindness shown to us during the sudden death of our dear brother. May God Bless each and everyone of you.

Margaret Williams Family  
L.A. Harper & Family  
J.L. Harper & Family

We would like to express our appreciation to all those who helped to make our Youth Roundup possible last Saturday. Our sincere thanks to the Pro Shop, Pay 'N Save, Muleshoe Supermarket, Thriftway, Penny's, Gordon Wilson Appliance, John Fuller & M.S.D. We would like to say a special thank you to our youth director, Dani Heathington and Keith Madole, our Emcee, and to all the others who had a part in making this Youth Roundup a success.

Sincerely  
Richland Hills  
Baptist Youth

**8. REAL ESTATE FOR SALE**

**UNIQUE!!!** Beautiful 3 bedroom, 2 bath custom-built home. Fireplace, central air, basement, 2 enclosed courtyards, lots of storage, much more! By owner. 1807 W. Ave. I. 806 / 796-1133. a8-14s-8tc

**FOR SALE BY OWNER:** 3 bedroom, 1 bath house. Call 272-4583 before 5:00. After 5:00, 272-3985. c8-12s-tfc

**FOR SALE BY OWNER** Large Brick Home on 10 acres. Plus 32' x 50' insulated shop building, small barn, fruit orchard, excellent well with sprinkler system. Locate 2 1/2 miles from city limits. \$93,500. Call 272-4957. m8-4s-tfc

*Henry Realty*  
111 W. Ave. B  
Muleshoe  
272-4581

3 Bedroom - 1 Bath - 1 car garage in Lenau Addition.

800 Acres West of Muleshoe on HWY Excellent Improvements. Priced Right to Sell. Owner Financing.

38 Acres West of Muleshoe, 6 Inch Well, Side-roll, All Wheat.

One Acre Sites for Home Construction. 3 Miles of Muleshoe on HWY, 3 lots remain.  
h8-8t-tfc

**AMERICAN VALLEY INVESTMENTS REALTORS**

**NEAT CLEAN...** 2 Bedroom, 1 Bath, 1 Car Garage in Lenau Addition. Extra room built on behind garage. Storm windows and doors. Nearly new roof. In good condition.

**NEW LISTING...** 2 Bedroom, 1 Bath, 1 Car Garage in Lenau Addition. Extra room built on behind garage. Storm windows and doors. Nearly new roof. In good condition.

**SPACIOUS FAMILY HOME...** Nice 3 Bedroom, 1 3/4 bath, double car garage, brick home. Lots of storage. Well-kept, Mid 40's.

**AFFORDABLE LUXURY--IMMACULATE** 3 Bedroom, 2 Bath Home in Country Club Addition, Fireplace, Slanted Beamed Ceiling, Skylight, stained Glass. Lots of Storage, Gameroom, Matching Storage Building, Much, Much more... Assumable loan.

**PRICE REDUCED TO SELL...** Nice, Well-Built, 2 Bedroom, 1 Bath, Single-Car Garage. Storage Building.

**COUNTRY HOME...** Beautiful 3 Bedroom, 1 3/4 Bath, 2 car Garage. Located on 15 Acres West of City planted in Alfalfa. Barns, Corrals. Lots of Extras.

**NEW LISTING IN COUNTRY...** 3 Bedroom, 1 3/4 Bath, Double car garage located on one acre, Cellar, Fruit trees and grapevines.

**BUILDER SAYS SELL NOW** --- 3 Bedroom 1 3/4 bath, 2 car Garage, Fireplace, Cathedral Beamed Den.

**NEW LISTING...** 1 Bedroom home for only \$7,500.00. New carpet and wall heater.

**PRICE REDUCED--READY TO SELL!** Nice 2 Bedroom, 1 Bath, Single-car Garage. Well-Insulated. New Roof. Storm Doors & Windows.

**NEW ON THE MARKET...** 160 Acres in Lazbuddie Area. 2-8" Irrigation Wells. Good Land in Good Area.

280 Acres in Lazbuddie Area--Electric Valley Sprinkler -- 2 Siderolls 1-8" Well, 1-6" Well, 3/4 Mile Underground PVC, 1/4 Minerals, 25 hp. Lake Pump, 32 Acres of Improved Grasses. PRICED TO SELL!!

**LOVELY CORNER LOT...** Extra Nice 3 Bedroom, 1 3/4 Bath, Carport, Isolated Master Bedroom. Carport, new. Lots of Storage. Good Location.

3 BEDROOM-2 Bath, Fenced Yard, Storage Building, Fruit Trees, Garden Area. Assumable loan for Qualified Buyer.

**REDUCED AGAIN!!!!**---3 Bedroom, 1 Bath, Single Car Garage. Separate Dining Room.

**GOOD RENT PROPERTY...** 2 Bedroom and 1 Bedroom Homes. In Good Condition. \$22,500.00.

80 Acres in YL Community, 1-6" Well-- 30 Hp. Elec. Motor, 1/2 Mile Underground Pipe Domestic Well. Some Minerals.

3 Bedroom, 1 Bath, Carport.

160 Acres in Lazbuddie Area. Good Water. Priced to Sell.

**LARGE BUILDING** in Back for Workshop, Storage, or Hobbie. 3 Bedroom, 1 Bath Home in Lenau Addition.

4 BEDROOM- 2 Bath, Large Living Room, Dining Room, Fireplace.

**GOOD STARTER HOME** --- 1 Bedroom Home. Priced at only \$9,500.00.

**MOBILE HOME--** 2 Bedroom, 1 Bath. Partially Furnished. 12 x 64. \$9,500.00.

2 BEDROOM--Home at only \$15,000.00.  
272-4266

Joy Whitt---272-3058  
Roy Whitt---272-3058  
Thursie Reid---272-3142  
Derrell Matthews---965-2127  
Karen Harris---272-5183  
Lucille Harp---272-4693  
Rex Harris - Broker John Craig - Builder

8-14s-stfc

**FOR SALE** by owner 2700 sq. ft. 3-2-2 formal living and dining, den with fireplace, sunroom, recent carpet and roof, and refrigerated air and heat. Excellent location, storm cellar plus many extras. 272-4737. w8-16t-tfc

**J.B. SUDDERTH REALTY, INC**  
Drawer 887  
Farwell, Tx. 79325  
Ph. 806-481-3288

160 Acre on Hwy. N.W. of Muleshoe, 2 wells, Excellent Financing. Priced for Immediate Sale.

320 Acre, 3-8 inch wells. 1 Circle. Lays Excellent. Oklahoma Lane Area.

80 acres, 2 wells, 1 electric motor, wheat crop grows. West of Muleshoe on highway. Owner says sell

480 Acres-irrigated with Circle Sprinklers, lays good, on highway-West of Muleshoe. Owner says sell!

50 acres in edge of Muleshoe 6 inch electric well. Barn, Corral, side roll sprinkler, City Water. Owner says Sell.  
8-6s-tfc

**8. REAL ESTATE FOR SALE**

**FOR SALE**, 34 acres west of Muleshoe city limits, North side of Highway 84, approx. 560 feet of highway frontage; 5 acres has been subdivided for mobile home lots, entire tract must be sold together; \$1,875.00 per acre; contact David Langston, Trustee, 806-762-0214. g8-16t-4tc

Nice 2 bedroom, 1 bath & garage in Lenau Addition. Central Heat, Large Kitchen, Patio, Mid 20's. 272-3123.  
h8-7s-1tp-stfc

Krebbs Real Estate  
201 W. Ave. C.  
Telephone 272-3191  
Appraisals

See our lots on Hwy 84E. We specialize in farms.  
k8-15s-tfc

**TOWN and COUNTRY Real Estate**

John W. Smith  
Broker  
806-272-4307  
903 W. 7th  
Muleshoe, Tx. 79347  
t8-16s-tfc

**BINGHAM & NIEMAN REALTY**  
116 E. Ave. C  
272-5285---272-5286

**WE CAN HELP OUR BUYERS WITH 9 7/8% A.R.M. INTEREST RATES ON 30 YEAR LOANS!!!!!!**

3-1 3/4-2 carport Brick, Cent. A&H, built-ins, gas log fireplace, fenced yard. PRICED TO SELL. . . .  
3-1 3/4 Brick, Cent. heat, Evap. air, fireplace. Let's Look Today!!!!!!

3-2+2 carport, Brick, Cent. A&H, built-ins, fireplaces, nice den & lv. area, & freshly painted interior. . . .  
**COUNTRY CLUB**  
3-1 3/4-2 Brick, Cent. A&H, built-ins, fenced yard, much more, & a nice area!!!!  
2-1 home on corner lot, storm windows & doors, plus nice storage bldg. . . .

**LENAU ADDITION**  
3-1 1/2-1 home, Cent. heat, Evap. Air, built-ins, nice carpet, screened porch. Let's Look Today!!!!

2-1-1 home, wall furnace, window evap. air, fenced yard. PRICE REDUCED-3-1-1 carport home, corner lot, earth-tone carpets, fenced yard, large rooms, very nice!!!!  
3-1 3/4-1 carport home, Cent. heat, nice carpet, fenced yard, & more. 30's. . . .

2-1-1 home, Cent. heat, lots of storage, fenced yard, fruit trees, \$23,500!!!!  
3-1-1 home on corner lot, Cent. heat, Evap. Air, fenced yard. Let's Look Today. . . .  
3-1 3/4-1+1 carport, Brick, built-ins, new wallpaper, paint, & carpet less than 2 years old, utility, & large storage. Mid 40's. . . .  
JUST LISTED-EDGE OF TOWN-3-1 3/4-2 home on 1/2 acre, wall furnace heat, nice carpet, ceiling fans, & more. \$37,500!!!!!!

3-2 3/4 home on corner lot, Cent. A&H, built-ins, 2 fireplaces, approx. 3,000 sq. ft. of lv. area, new carpet, large gameroom, auto. sprinkler sys. Mid. 50's. . . .  
**ENJOY COUNTRY LIVING** in this 3-1 3/4-2 home on 1 acre, Cent. A&H, built-ins, nice large patio, fenced yard, storm shelter, & fruit trees. . . .  
3-1 3/4-1 carport Brick, Cent. A&H, built-ins, storage area, fenced yard on corner lot!!!!!!

2-1 home on 1 acre, built-ins, nice carpet, on pavement close to town. . . .  
2-1-1 home on corner lot, freshly painted interior, includes furniture & other items. One Block to School. . . .  
Nice 3-2 home on 1 acre, isolated master bdrm., Cent. A&H, built-ins, fireplace, wet bar, fenced yard, & insulated storage!!!!!!

2-1-1 home, new roof, freshly painted inside & out. Very nice. \$19,500  
3-1 3/4 - 2 home on corner lot, Cent. A&H, built-ins, covered patio, fenced yard, gas grill. Very nice & only \$39,500!!!!

3-2-1+1 carport home, built-ins, Cent. heat, fireplace, fenced yard. Mid 40's. . . .  
3-1 1/2-1 Brick near schools, fenced yard, nice large workshop. \$39,500. . . .  
Priced reduced 2-1+1 carport home, new paint, fenced yard, & storage bldg. 19,500.

**CLOVIS HWY** -3-1 home and 2-1 home (rented) on approx. 4.4 acres, fenced, & has sprinkler sys. \$42,500...  
2-1 3/4 Mobile home + 2 carport, built-ins, cable TV, large barn & corrals on approx. 2 acres on pavement close to town!!!!

**CHURCH BLDG.** on 2 lots, approx. 2350 sq. ft., paved parking. . . .  
**EARTH** - 3-1 3/4-2 Brick, isolated master, Cent. A&H, built-ins, fireplace, finished basement, fenced yard, storage bldg., & only 4 yrs. old. . . .  
**FARMS**  
2-1 home on 32 acres, 6" well, close to town on pavement, fully allotted. . . .  
1062 acres, 3 wells, 2 circles, large metal barn, 9% Owner financing. . . .  
80 acres, 6" well, undergrd. tile, close to town . . .  
40 acres, 8" well, undergrd. line, & sideroll sprinkler. . . .

**"WE APPRECIATE YOUR BUSINESS"**  
GEORGE NIEMAN\* BROKER  
DIANNE NIEMAN\* BROKER

8-17s-stfc

**JIMMIE CRAWFORD REAL ESTATE & INS.**  
1725 W Ave E  
Muleshoe, Texas  
Phone 272-3666

2-1-1 in Lenau Addition. Outside trim just painted.

2-1 with utility on 6th st. Will sell Lease-Pur.

3-1 1/2-2 with carport in Lenau Addition. Price reduced to sell.

3-2 with carport in Richland Hills. Very nice.

Lots of farm listings. Call for information.  
8-10s-stfc

**SMALLWOOD REAL ESTATE**  
232 Main  
272-4838

Nice 3 Bedroom, brick, 2 bath, 2 car garage, 2 storage bldg. Fireplace all electric, lots of insulation. Storm Windows.

For Rent -- 2 Bedroom, 2 Bath Apartment with Stove & Refrigerator.

3 Bedroom, 1 bath, carpet, fenced back yard, 213 E. Birch. \$1,000.00 down payment, monthly payment \$215.00 month.  
8-16s-tfc

**9. AUTOMOBILES FOR SALE**

Pick Up 4x4, 79 Luv, 44,000 miles, many extras, \$3,900. Camper and tool box go. Call 227-2123 or 227-2406. h9-16t-4tc

Automobile: The best of new used cars and the lowest of prices is us at Birdwells Auto, Auto Sales and Service 220 West Bedford, Dimmitt 647-4726. 9-15t-1mc

For Sale: 80 Manza Sun Roof, air power, \$2,250, 41,000. Call 272-4696. 509 E. Austin. 9-17s-3tsc

**10. FARM EQUIP FOR SALE**

**FOR SALE:** Avenger 3 Wheel Hoe Hands with spray tanks attached. Call First National Bank. 272-4515. 10-21t-tfc

**11. FOR SALE OR TRADE**

1978 Country Squire Motor home. 23 ft. long, loaded, 31,000 miles. 619 West 7th. 11-16-3tc

House for sale: 3 bedroom, 1 bath paneled, fully carpeted, aluminum siding, storm windows, storage building. Call 272-5415, after 5:00 call 272-5060. 11-15t-4tc

**FOR SALE**  
YAMAHA  
400 Dirt Bike  
Call 272-5600  
after 6:00  
g11-14t-tfc

Milk, Milk, Milk more milk than 1 can handle. Milk goats are for sale. Alpine, Saanan, Neubians. Texaco, 505-482-3860. b11-16t-2tc

For Sale - 2 bedroom, 2 bath Mobile home, Call 272-5260. 11-17s-tfc

Refrigerator - Sears 19.2 ft. White, no frost with icemaker. Excellent condition. \$200 call 272-4311 after 6 on weekdays. 11-17s-1tp

**FOR SALE:** Moving, need to sell beautiful town house, 2 bedroom, 2 bath, large den dining, large garden room, no yard to keep. 1507 Ave. C. 272-3921. 11-17s-tfc

**15. MISCELLANEOUS**

Now open for business, Jo Jo's Pet Grooming all breeds and Pet Store 905 E. 4th Littlefield. Call Sandy or JoAnn 385-3877. Also sell Amway and Golden Pride Products. 15-14s-18tc

**HOME REPAIRS.** F.M. Saldana Construction. Licensed and bonded plumber. Specialize in cement, carpenter work, remodeling, painting, acoustical ceilings. 272-4955. 15-16s-tfc

**ALEX'S TIRE SERVICE**  
For service 24 hours a day telephone 272-5012 or Mobile 965-2242. 224 East Fourth Street, Muleshoe, Tx. 79347. 15-5s-stfc

**DAVIS COMMERCIAL PUMPING SERVICE**  
Cess Pools Grease Pits Dipping Vats Mud Pits Septic Tanks  
"If it's part liquid & not over 20 ft. deep we'll try to drain it."  
806-272-4673  
806-272-3467  
Muleshoe, Texas  
15-38s-stfc

**IF YOU WANT IT SOLD**

**AMERICAN VALLEY INVESTMENTS**  
REAL ESTATE  
**272-4266**

**ROY WHITT HOME PHONE 806/272-3058** **WEST HWY 84 MULESHOE, TEXAS 79347**

**SEE ROY WHITT FOR YOUR REAL ESTATE NEEDS**


Royel M. Odell  
1444 Fairmont  
Clovis, NM 88101  
Telephone: (505) 763-6095


**ANTIQUES AND COLLECTABLES SHOW AND SALE**

**DEPRESSION AND CARNIVAL GLASS**  
May 5 10 AM - 8 PM  
MAY 6 12:00 - 5 PM

Knights of Columbus Hall- East 21st  
Street-Clovis, NM  
Information: Contact Mavis Bricker  
(505) 769-2760

# THE GREAT FOOD SALE

MORTON'S FAMILY PACK  

**DONUTS**  
 14 OZ. PKG. **\$1.19**

CONTADINA WHOLE PEELED  

**TOMATOES**  
 TV SPECIAL **\$1**  
 3 14 1/2 OZ. CANS

**QUALITY MEAT SPECIALS**  
 HORMEL SUPER SELECT LEAN TRIM QUARTER PORK LOIN OR FAMILY PACK 9-11 ASSTD. CHOPS  

**PORK CHOPS**  
**\$1.59** LB.  
 SUPER SELECT LEAN TRIM CENTER CUT WAFFER THIN BREAKFAST **PORK CHOPS** LB. **\$2.09**  
 SUPER SELECT LEAN TRIM CENTER CUT **PORK CHOPS** LB. **\$1.99**  
 GOOCH MEXICAN STYLE BULK PACK **HOT LINKS** LB. **\$1.39**  
 GARY'S **SUPER DOGS** 5 CT. PKG. **\$1.49**  
 PEDRO'S REAL SHUCK WRAPPED **HOT TAMALES** 12 CT. PKG. **\$2.89**  
 COUNTRY SKILLET FARM GROWN **CATFISH** FRESH CHANNEL LB. **\$2.29**  
 SELECTED SLICED YOUNG **BEEF LIVER** LB. **89¢**  
 ORE IDA REG./ONION/BACON **TATER TOTS** 2 LB. PKG. **\$1.29**  
 COUNTRY STYLE-LOTS OF MEAT  
**PORK RIBS** LB. **\$1.59**

BATH SIZE ZEST-COAST-WHITE OR GOLD SAFEGUARD  

**BATH SOAP**  
**49¢**  
 BARS

40% OFF LABEL LIQUID  

**PALMOLIVE**  
**\$2.29**  
 48 OZ. BTL.

MARGARINE QUARTERS  

**KRAFT PARKAY**  
**59¢**  
 1 LB. PKG.

**NATIONAL BABY WEEK**  
 60 CT. DAYTIME  
 48 CT. TODDLERS  


**PAMPERS DIAPERS**  
**\$8.59**  
 BOX

TV SPECIAL  
 CHEESE SPREAD  

**KRAFT VELVEETA**  
**\$2.89**  
 2 LB. BOX

WHITEHOUSE APPLE  
 TV SPECIAL **JUICE**  

**72¢**  
 32 OZ. BTL.


**DR. PEPPER**  
 2 Liter **99¢**

\$1.00 OFF LABEL  

**FRESH START**  
**\$5.89**  
 FAMILY SIZE

\$1.00 OFF LABEL  

**FAB**  
 WITH FABRIC SOFTENER  
**\$5.69**  
 FAMILY SIZE

TIDY CAT CAT **CAT LITTER** 10 LB. BAG **\$1.49**  
 WHITE CLOUD BATHROOM **TISSUE** 4 ROLL PKG. **\$1.19**  
 25¢ off **TIDE** 49 oz. **\$1.89**

GERBER STRAINED VEGETABLES & **FRUITS** 4 JARS **\$1**  
 GERBER JUNIOR VEGETABLES & **FRUITS** 3 JARS **99¢**  
 GERBER'S ASSORTED **JUICES** 4 JARS **\$1**  
**HEALTH & BEAUTY AIDS**

OREO DOUBLE STUFF **COOKIES**  

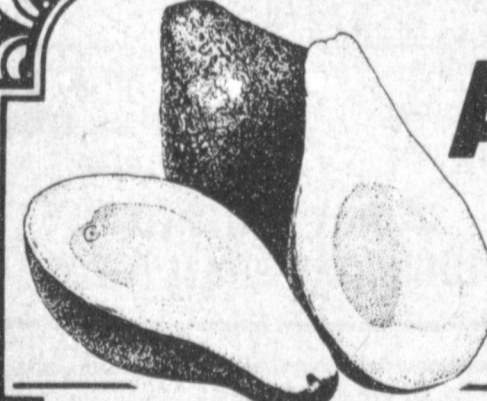
**\$1.69**  
 20 OZ. PKG.

ALL GRINDS COFFEE  

**HILLS BROS.**  
**\$2.19**  
 1 LB. CAN  
 SLICE & BAKE PILLSBURY ASSORTED **COOKIES** ROLL **\$1.49**

E.T. CHILDREN'S REG./WITH IRON **VITAMINS**  
 60 CT. BTL. **\$4.19**  
 MENNEN FRESH SPEED **STICK** 2.5 OZ. SIZE **\$1.89**

HILLS BROS. DECAFFENATED **COFFEE** 13 OZ. JAR **\$2.89**  
 SUNSHINE KRISPY **CRACKERS** 16 OZ. BOX **69¢**  
 SCHILLING BLACK **PEPPER** 4 OZ. CAN **69¢**  
 GLADIOLA **FLOUR** 5 LB. BAG **89¢**

FRESH FROM THE FARM PRODUCE  
 CALIFORNIA HASS  

**AVOCADOS**  
**6 \$1** FOR  
 WASHINGTON GOLDEN DELICIOUS **APPLES** LB. **49¢**  
 CALIFORNIA GREEN **ONIONS** 2 BUN. **29¢**  
 TEXAS GREEN **CABBAGE** 2 LBS. **49¢**

\$1.39 SIZE ALL TYPES FRITOS  

**CORN CHIPS**  
**99¢**  
 PKG.

BORDEN'S CHOCOLATE **MILK** QT. CTN. **59¢**  
 BORDEN'S COTTAGE **CHEESE** 12 OZ. CTN. **69¢**  
 BORDEN'S ASSORTED **NOVELTIES** 6 CT. PKG. **99¢**  
 BORDEN'S ASSORTED **ICE CREAM** 5 QT. BKT. **\$3.99**  
 SWANSON ASSORTED **DINNERS** 11 OZ. PKG. **\$1.09**  
 CITRUS HILL FROZEN ORANGE **JUICE** 6 OZ. CAN **59¢**  
 CITRUS HILL CHILLED ORANGE **JUICE** 32 OZ. BTL. **89¢**

**STORE HOURS:**

Mon - Sat 8:00 a.m. - 9:00 p.m.  
 Sun Only 9:00 a.m. - 7:00 p.m.



**STORE ADDRESS:**

515 Amer. Blvd.

PRICES EFFECTIVE APRIL 23 THRU APRIL 28, 1984  
 WE RESERVE THE RIGHT TO LIMIT