

08 — 8  
 ces  
 TX1800-F  
 room con-  
 295 miles  
 custom ex-  
 talled. Al-  
 al exhaust  
 lade quick-  
 windshield.  
 p backrest,  
 and grab  
 (806)898-  
 dson Elec-  
 sale. Low  
 Call 688-  
 97.  
 EOE  
 Photo  
 Bible  
 host  
 First  
 l be  
 send  
 es or  
 poetry  
 t # C-  
 01, or  
 het at  
 n.  
 bbers.  
 ound-  
 ising a  
 t tele-  
 ophre-  
 2446.

**Ashmore & Associates**  
 1224 North Hobart  
 NBC Plaza 2, Suite 11  
 Pampa, TX • 806-688-7081  
 www.ashmoreassociates.com  
 INSURANCE AGENCY, LLC

**DOUG BOYD MOTORS**  
 CORNER OF HWY 60 @ HWY 70 • 806-669-6062  
 BUY HERE • PAY HERE • NO CREDIT CHECK • AREAS LARGEST SELECTION  
 WWW.DOUGBOYDMOTORS.COM

**WHL**  
 POWER EQUIPMENT  
 SALES & RENTAL  
 103 S. HOBART  
 665-2366

Jim Bruton

# THE PAMPA NEWS

**We're Small But Good!**  
 Friendly Faces and Competitive Prices  
**36+ Years Experience**  
 Ceramics • Laminate  
 Hard Wood • Carpet

**The Floor Store**  
 2100 Perryton Parkway  
 665-4455

**Floor Care Essentials by Mohawk**  
 Professional Carpet & Upholstery Cleaning System  
 FREE ESTIMATES  
**10% off all in-stock flooring purchases**

**CHILDERS BROTHERS INC**  
**HOUSE LEVELING**  
 Uneven Floors  
 Floor Bracing  
 Cracks In Bricks  
 Sticking Doors & Windows  
 Interior Wall Cracking  
 FREE ESTIMATES  
**1-800-299-9563**  
 WWW.CHILDERSLEVELING.COM

**STOP**

**24HR WATER EXTRACTION**  
**RUG RATS**  
 Professional Carpet & Air Duct Cleaning  
 FREE ESTIMATES  
 Ronnie Harvill Owner  
 665-1976 or 662-9219

**Thomas Automotive Inc.**  
 Premier Auto Service and Repair  
**665-4851**  
**217 E. ATCHISON**  
 Monday - Friday • 8am - 6pm

**Double D OVERHEAD DOOR**  
 800-806-7112  
 Raynor Distributor  
 www.Raynor.com  
**RAYNOR**

**Sentry Self Storage**  
 24 hr Controlled Access  
 24 hr Video Surveillance  
 Personal & Commercial  
 665-1000

**M & H Leasing**  
**TOP OF TEXAS**  
**2ND Thessalonians 3:10**  
 1945 N. Hobart • 665-2061



Pampa News photo by Randy Pribble  
**Don Cain (far right), president of AT&T - Texas, talks with his mother Betty (far left) and his Uncle and Aunt Dick and Dorothy Stowers. Cain was in Pampa last week speaking before the Pampa Kiwanis Club.**

## Cain: Pampa can prosper from the changes that are coming

**By Randy Pribble**  
*The Pampa News*

Don Cain has a message for his hometown: Change is coming, so get ready and embrace it.

Cain knows about Pampa and about change. He grew up here (Pampa High School Class of '72) and in May he was named President of AT&T Texas, overseeing that company's regulatory, legislative, governmental and external affairs statewide.

He was here last week visiting his mother, Betty Cain, speaking before the Pampa Kiwanis and hosting a dinner for friends at the Pampa Country Club.

Cain was on familiar turf, addressing most people by their first names and promoting AT&T as a company that is prospering by riding the wave of change in the communications industry. Underlying his comments was a readily-apparent affection for his hometown, his state and the folks who helped him succeed.

"I was in Austin watching CNBC at 7 in the morning, and I heard Pampa mentioned," Cain told the Kiwanis at their luncheon

See CAIN, Page 3

## Old Mobeetie Music Festival starts Friday

**By Marilyn Powers**  
*The Pampa News*

The annual Old Mobeetie Music Festival will be Friday through Sunday on the grounds of the Old Mobeetie Jail Museum.

Seven bands will perform this year. New to the event will be the Link Family of Lebanon, Mo. and the Hunt Family from Perry, Okla. Other participants will be Star Canyon of San Antonio, the Batten Family of Lubbock, Triple L of Portales, N.M. and Saltgrass of Lake Jackson.

The Magic City Cowboys of Magic City will perform Western swing in their traditional time slot Saturday night. Gina Seitz will return for her third year as emcee, and Frank Cleveland will provide the sound.

Mobeetie Volunteer Fire Department will be on hand to provide ice cream and a concession stand.

Seating is not provided for the festival. Those attending the weekend's events may bring their own chairs.

The music begins at 6 p.m. Friday and continues to midnight. Saturday's schedule is 10 a.m. to midnight, and the weekend ends with Sunday's gospel music session from 9 a.m. to noon.

Visitors can listen to or take part in the nightly pick-up and jamming throughout the campgrounds. RV parking is available for 139 units and is on a first-come, first-served basis. There are sites with hookups as well as dry camp areas and handicap spaces.

RV hookup will be \$12 per day, including tax. Seven days is \$65, and 10 days is \$85. Dry camping is \$5 per day.

Admission to the music festival is \$10 on Friday, \$12 on Saturday and free of charge on Sunday. A week-end pass to all three days is \$18. Children age 12 and under will be admitted free.

## Watershed system helps flood control, water conservation

**By Marilyn Powers**  
*The Pampa News*

Anyone traveling along rural roads in Gray County near McClellan Creek may have noticed earthen dams scattered along the creek's length, each accompanied by a man-made tower.

These make up the watershed system which is the responsibility of local governments with technical assistance from the Natural Resources Conservation Service. The watershed system's purpose is to provide flood control and water conservation along the creek.

There are 13 watershed sites along the creek, 12 of which are in Gray County. One watershed, near the headwaters of McClellan Creek, is in Carson County. McClellan Creek stretches across Gray County from southwest to northeast, and eventually empties into the North Fork of the Red River.

The tower structure located beside each dam at the watershed sites is the principal spillway for rising creek waters, with ports at different levels to slowly release the water in times of flash flooding.

"It is a braking mechanism," said local NRCS District Conservationist Manuel DeLeon. "It slowly releases the water downstream. It won't prevent flooding, but will slow down the water in flash flood conditions."

The system acts to conserve water in order to obtain maximum benefit from the water. At the same time, the system helps minimize damage caused by flash flooding and helps minimize erosion.

A recent tour of some of the watersheds illustrated their necessity. A large section of a tree was caught on a portion of the tower of one of the watersheds, showing how high floodwaters had reached at some point.

Gray County and the Gray County Soil and Water Conservation District are sponsors of the county's watersheds, DeLeon said. The two signed an operation and maintenance agreement on June 8, 1976 to manage the watershed system in the county, and the local NRCS office also signed the agreement as a source of technical support for the system.

All of the watersheds in Gray County were completed in the 1980s, with one in 1980, six in 1982 and three each in 1984 and 1987. All have service and evaluation dates of 20-years after their completion.

Today's watershed system in Gray County and other sites can trace its roots to the mid-1930s, when Congress began looking into ways to complement the downstream flood control program of the Corps of Engineers. The Flood Control Act of 1936 was passed, which authorized provision of watershed protection and flood prevention.

Preliminary examinations were initiated on 212 watersheds nationwide, and detailed survey reports were prepared recommending the installation of watershed improvement programs in 25 watersheds from the original list.

The Flood Control Act of 1944 authorized the installation of works of improvement contained in 11 of the detailed survey reports that had been previously done. In 1953, the House and Senate Agriculture Appropriations Committees obtained an appropriation of \$5 million for a "pilot" watershed program. The Watershed Protection and Flood Prevention Act of 1954 authorized a permanent nationwide program to provide technical and financial assistance to local watershed groups who were willing to assume responsibility for initiating, carrying out and sharing in costs of upstream watershed conservation and flood control.

Approximately 2,000 dams in 139 watershed projects have been constructed in Texas. Dams are classified according to their potential to impact human lives and public infrastructure should a failure occur. Failure of a low hazard dam has the potential to cause damage to agricultural land, farm buildings and



Pampa News photos by Marilyn Powers  
**Twelve watersheds like the one above are situated along McClellan Creek in Gray County to minimize erosion, help control flood waters and conserve water. Each site consists of an earthen dam with a man-made tower beside it which routes the water and thus acts as a braking system.**

rural roads. All watershed dams in Gray County are classified as low hazard.

The typical dam has a drainage area of 600 to 3,000 acres, a height of 25 to 40 feet, and 500 to 1,500 acre-feet of detention storage. There are 283 constructed watershed dams in 15 watershed projects in the 13th Congressional District, which includes Gray County.




Annual watershed benefits for 2006, the most recent data available, include protection of eight bridges along the McClellan Creek system, creation or enhancement of 412 acres of wetlands, reduced sedimentation of 520,300 tons of soil and monetary benefits of \$598,000.

Monetary benefits include reduction in flood damages to agricultural lands and to rural and urban infrastructure including roads and bridges. Other benefits include soil erosion control, recreational areas, irrigation water, municipal and industrial water supply and wildlife habitat.

**SUMMER CLEARANCE!**  
 Hurry In For The BEST Selection!  
**West Texas Landscape**  
 120 S Hobart St • 669-0158

**For tickets call 806-655-2181**

**NEXT DAY FORECAST**

Sunday	Monday	Tuesday
		
Sunny	Sunny	Sunny

Sunday: Mostly sunny, with a high near 96. South-southwest wind between 10 and 15 mph, with gusts as high as 20 mph.

Sunday Night: Partly cloudy, with a low around 69. South wind between 10 and 15 mph, with gusts as high as 20 mph.

Monday: Mostly sunny, with a high near 95. South-southwest wind between 5 and 15 mph.

Monday Night: Partly cloudy, with a low around 70.

Tuesday: Mostly sunny, with a high near 96. South wind between 5 and 10 mph.

Tuesday Night: Partly cloudy, with a low around 71.

( ) This information brought to you by...

**PRESTIGE**  
**AUTOBODY & ACCESSORIES**  
 101 S. HOBART 806-665-3500  
**FULL COLLISION CENTER - FREE HAIL ESTIMATES**

Preneed Arrangements Available Including Caskets  
 Special Veterans Garden  
**Memory Gardens**  
 Cemetery & Mausoleum of Pampa  
 665-8921  
 23rd St and Price Rd  
 www.memory-gardens.tripod.com

# Obituaries

## Maxine A. Bennett, 86



Maxine A. Bennett, 86, of Pampa, Texas, died July 18, 2008, at Pampa.

Graveside services will be at 10 a.m. Monday, July 21, 2008, at the White Deer Cemetery in White Deer with Mr. Frankie Lemons, pastor of McCullough Street Church of Christ, officiating.

Arrangements are under the direction of Carmichael-Whitley Funeral Directors. Mrs. Bennett was born

Oct. 1, 1921, in Meeker, Colo. She married Bill Bennett on March 7, 1947, in Amarillo. He preceded her in death on Jan. 15, 2008.

Maxine had been a resident of Pampa for 57 years and was a member of Central Church of Christ. She loved

to cook and garden.

The family would like to express special thanks to the loving care given to Maxine by the Pampa Nursing Center staff.

Survivors include her daughter, Victoria Parsons and husband Russell

of Pampa; two sons, Keith Bennett and Kenneth Bennett and wife Debbie, all of San Antonio; five grandchildren, Shawn, Brian, Jessica, Kori and Amanda; and five great-grandchildren.

The family requests no flowers, but any memorials to be sent to a favorite charity.

—Sign the on-line register book at [www.carmichael-whitley.com](http://www.carmichael-whitley.com).

## William W. 'Bill' Hopkins, 81

SANGER, Texas — William W. "Bill" Hopkins, 81, of Sanger, Texas, died July 16, 2008, at Sanger.

Services will be at 10 a.m. Monday, July 21, 2008, at Carmichael-Whitley Colonial Chapel in Pampa,

Texas, with the Rev. Jeff Taylor, pastor of First United Methodist Church of Pampa, officiating.

Burial will be in Fairview Cemetery in Pampa, under the direction of Carmichael-Whitley Funeral Directors.

Mr. Hopkins was born May 2, 1927, in Denton County, Texas, to Will and Metha Winkelman Hopkins. He was a graduate of Gainesville High School, Gainesville Junior College and North Texas State Teachers College.

Bill married Margaret Purgason on Nov. 28, 1947, in Denton, Texas. She preceded him in death on Nov. 11, 2006.

He was a veteran of the U.S. Army, serving during World War II.

Bill was an engineer for Celanese before his retirement.

Survivors include three sisters, Mildred Cogdell and Betty Bishop, both of Sanger, and Martha Thorell of Whitesboro; and a sister-in-law, Bettye Gray of

Amarillo.

Bill was preceded in death by his parents; a son, Steven Ray Hopkins; a sister, Virginia Behake; and a brother, Sam Hopkins.

SPECIAL NOTICE: The family will receive friends from 5-7 p.m. on Sunday, July 20, 2008, at Carmichael-Whitley Funeral Home in Pampa.

—Sign the on-line register book at [www.carmichael-whitley.com](http://www.carmichael-whitley.com).

## Eva Lorene Evans, 82

Eva Lorene Evans, 82, of Pampa, Texas, died July 17, 2008, at Pampa. Services are pending under the direction of Carmichael-Whitley Funeral Directors.

Mrs. Evans was born Sept. 10, 1925, in War Eagle, Ark. She had been a resident of Pampa since 1942.

Eva married Audrey Evans in Pampa, and he preceded her in death in 1978.

She worked at a waitress at the Owen Johnson Café for several years and worked as a cook for the Pampa Senior Citizens Center.

Eva was a member of the First Baptist

Church for many years. She loved her animals as much as she did people.

Survivors include two stepsons, James Evans of Arizona and Earl Evans of Montana; one stepdaughter, Peggy Gallgan of Arizona; two grandnephews, her longtime caregiver, Roy Burton and wife Louann and Robby Burton, all of Pampa; and one grandniece, Rosland Moya of Houston.

MEMORIALS: American Diabetes Association, 8008 Slide Road, Suite 12-A, Lubbock, TX 79424.

—Sign the on-line register book at [www.carmichael-whitley.com](http://www.carmichael-whitley.com).

## CITY BRIEFS

The Pampa News is not responsible for the content of paid advertisement

40% OFF Summer Clothing-adults & children. Joy's Unlimited, 110 N. Cuyler.

ALL IN Stock Scrubs-Now On Sale 30% Off. Making room for new arrivals! Also Hiring a Delivery Tech. See in-store for job description. National Home Health Care, 1521 N. Hobart, 669-0000.

COMPUTER SICK? Mike, 665-2760. On-site repair.

GENEROUS REWARD for return of keychain w/ cross & 4 keys. Call cell# 898-2043.

FREE KITTENS too good home, 665-8554.

HERBS ETC. is celebrating 15 years! Additional 10% off already discounted prices through July 31. 109 W. Kingsmill, 665-4883.

I WILL clean your house. References, Doris, 665-1848.

JOE JOHNSON'S Fence Repair/Build New. 665-5839.

LIABILITY INSURANCE, \$60 down, \$37 mo. 665-2788.

PAMPA SHRINE Club We Cater!! 50-200 people. (approx 3000 sq ft) available for rent. Weddings, Banquets, Company Parties, or Family Reunions. Kitchen facilities available at no extra charge. Call Ben Watson 665-3359 to reserve!

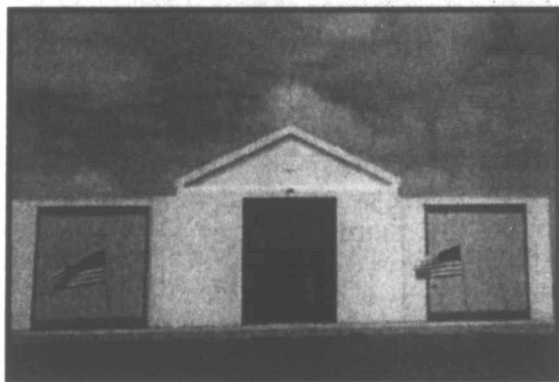
PHS CLASS of 1978 30th Class Reunion, Aug. 1-2, call 665-2105 for more info.

PUPPY PARLOR back from Maternity leave. Call Jenn for appt. 662-7352.

## CREMATION OPTIONS WITH DIGNITY

Do Something For Your Family You Will Always Be Remembered For...

**July & August Special**  
**SINGLE CREMATION NICHE**  
 As Low As \$31 A Month!  
**SIDE BY SIDE CREMATION NICHES**  
 As Low As \$54 A Month!  
**BRONZE NAME PLAQUE(S) INCLUDED**  
**Savings of \$1295 - \$2590**



Memory Gardens of Pampa Chapel of Peace Mausoleum

### PROGRAM INCLUDES:

- FREE CHAPEL MEMORIAL SERVICE
- FREE BRONZE NAME PLAQUE
- FREE FAMILY RECORD GUIDE
- FREE LEGAL WILL KIT

SEND FOR INFORMATION TODAY!!!

Every family needs closure when a death occurs. When a family chooses cremation and scatters the remains, or a final resting place is not designated, CLOSURE is gone forever. When a family Pre-Arranges a Cremation Niche, a final resting place is selected for memorialization. What a beautiful monument to remember your loved ones.

Your Life. Your Memories. Our Priorities.

Visit us on the Web at: <http://memory-gardens.tripod.com>

Cremation niche special valid thru Aug. 31, 2008. Not valid with any other discount or special offer. Valid on Pre-Need Arrangements Only. Exterior Niches Only.

YES, I WANT MORE INFORMATION ON PRE-PLANNING FOR MY FAMILY!

- Single Cremation Niche (Savings of \$1295)
- Side by Side Cremation Niches (Savings of \$2590)
- Monthly Payment Options

Name:.....

Address:..... City:.....

Zip:..... Phone:.....

Veteran: Yes..... No..... Date:.....

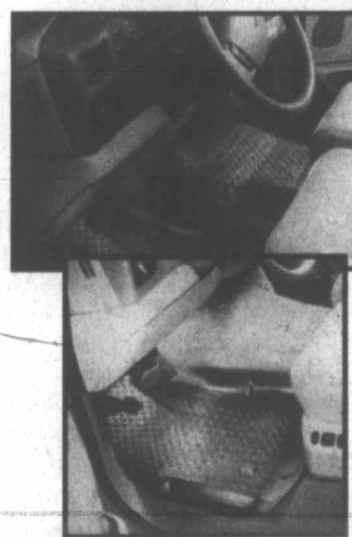


Mail To: Memory Gardens Cemetery and Mausoleum of Pampa  
 PO Box 1972 • Pampa, TX • 79066

"Come join the thousands of families who already own in Gray County's most beautiful Cemetery..."  
 Home Owned & Operated

# OVERSTOCK SALE

ON SELECT OVERSTOCKED MERCHANDISE



HUSKY FLOOR LINERS STARTING AT \$9<sup>95</sup>

MUD GUARDS STARTING AT \$9<sup>95</sup>

STOP BY TO SEE WHAT WE HAVE ON SALE!



WINDOW VENT VISORS

STARTING AT \$14<sup>95</sup>

**PRESTIGE AUTO CENTER**  
 101 S HOBART • 665-3560

# Cain

Continued from Front Page

meeting. "It is going to be the wind-capital of the world from what I hear.

"Pampa has always been involved in producing energy for this nation, whether it is oil or natural gas, and it looks like we are in a pretty good area for wind.

"Boone Pickens told me that he was going to change my hometown and add 2,000 jobs.

"I encourage you to build on that vision because a lot of the country doesn't have it."

He gave the group a brief history of AT&T as a company and in the community and it was a tale of acceleration.

"We are a wireless company, not a land-line company anymore," Cain noted. "We purchased all of Cingular, because there are many more voice minutes by far today over wireless networks that over wire line network. In 2000, wire line service accounted for about 56 percent of all subscribers. In 2007, wire line service slipped to 28 percent of the total market and wireless service is almost 60 percent of the total market."

Pampa, he said, started getting direct dial phones 50 years ago. There used to be a switchboard "right across from B&B Pharmacy."

Cell phones 20 years ago "used to be a brick."

"Around here if you had one, you probably worked in the oil industry and paid about \$1,500 for it," he said. "It cost you a couple of bucks a minute to use."

Today, he added, it costs you about 4-cents per minute.

"This year ATT is going to invest \$30 million in the Texas Panhandle," he said. "Forty-two percent of people use wireless phones as their primary phones. Two-thirds of the people 25 years and younger have only a wireless phone."

Cain threw out some other mind-boggling statistics to illustrate his point: "The US processes 48 billion text messages per month and it is growing by leaps and bounds. Over 1 billion devices are hooked to the AT&T network on a daily basis. This is how long it took for 25 percent of the population to adopt the following: telephone - 35 years; television - 26 years; personal computer - 15 years; cell phone - 13 years; the Internet - 6 years.

"It took 13 years to sell 100 million Sony Walkmans. It took two years to sell 1 million iPods. It took 74 days to sell 1 million iPhones. Steve Jobs of Apple says he is going to sell 10 million iPhones by the end of this year and I'm not going to bet against him. He's got a pretty good track record."

The future for AT&T, he told the group, is going to be the

"battle for the three screens" as television, the personal computer and the cell phone develop into a merged device.

Later in the evening, Cain in a more relaxed mode, dined with his mother, his uncle and aunt Dick and Dorothy Stowers, and long-time family friends such as Rep. Warren Chisum, Dr. Joe Donelson, Bob Curry, and Bill and Jarie Potts.

Cain's namesake, Judge Don Ezell Cain, Sr., died last year after a long career as an attorney, county judge, district judge and state judicial judge.

"It was great growing up in Pampa," Cain said after the dinner. "You were welcome to try out any activity you wanted, so it was a great experience. It was small enough and big enough at the same time. I was able to become involved in activities from sports to school government."

He earned a Bachelor of Science degree in History and Psychology from McMurry University in Abilene in 1976. He moved to Dallas.

In 1975, he married Kathy Allen, his "high school sweetheart." (They have two daughters, Corrie and Kayla, and two grandchildren.)

"I had been coaching some basketball and teaching some history and psychology, got married, starting having kids, and I decided I need to make a living."

His grandfather, the late Frank Culberson, owned Culberson's Chevrolet (later Culberson and Stowers).

"The President of Southwestern Bell - Texas at that time was a young man from Pampa," Cain said. "Pampa is probably the only city to have two state presidents (for telephone company). His name was Doyle Rogers."

"Doyle had worked in the body shop when he was in school for my grandfather. So my grandfather called Doyle and said he had a man here interested in the telephone business."

"I started in 1979 as a first line manager in Dallas managing a call center."

During his career, he also spent three years heading a legislative and regulatory team in South Africa helping that country bring modern communications to parts of the nation ignored during apartheid.

"A 1995 study showed that for every telephone line that was deployed in sub-Saharan Africa, it was worth \$4,500 in gross domestic product annually," Cain said. "We were very happy with what we did."

What they did was form a partnership with the largely government-owned phone company and guided it in setting up a regulatory framework

that allowed open market competition and a stock price that grew dramatically.

"They ended up making a lot of money on it over time and it had a lot of initial black ownership, so a lot of people went from being poverty-stricken to having some means.

"They built a lot of houses," he added. "With 40 percent unemployment, that meant a lot to a lot of people."

In January 2000, Cain became managing director of federal regulatory policy in the company's Washington, D.C., office. In October 2003, he was named president of AT&T Oklahoma.

Now he is back in Texas and is enjoying it.

"You want your state to stay ahead of the rest of the nation and to do that you've got to make yourself attractive. You want to show that your state and territory is open to investment. You want to make sure you stay on the edge of high-tech communication. I want Texas to continue to be at the forefront. Texas has a lot of momentum going for it right now, and we need to keep that momentum going."

"I think the state's best days are still ahead."

"We have more Fortune 500 company headquarters in Texas, than in any other state in the nation. We just passed New York. We've got to keep that sort of thing going. Texas supplied half of the nation's job growth during the past year. There are 1,000 people moving into Texas every day."

"That puts a lot of work on a lot of people in terms of having good infrastructure, good communications, good school systems. We have to really keep working."

He also has some definite ideas for his hometown.

"There have been a lot of changes in Pampa," Cain said. "We've worked to diversify our economy quite a bit, but I think Pampa is at a turning point right now. There has been a comeback in the oil and gas business, obviously, which has helped, but we've been through the ups and downs of that industry. We are in a different time now, though."

"In China, there are four automobiles per 1,000 people.



Pampa News photo by Randy Pribble  
Don Cain, (standing, center), president of AT&T-Texas, was in town recently to address the Pamp Kiwanis Club. Later that day, the Pampa native hosted a dinner for family and friends. Sitting, from left are Omega Chisum, Jane Potts, Betty Cain, Darlene Birkes, Dorothy Stowers and Joyce Swinford. Standing, from left are Cameron Monroe (AT&T), Bob Curry, Wallace Birkes, Rep. Warren Chisum, Dick Stowers, Dr. Joe Donelson, Cain, Holly Reed (AT&T), Rep. David Swinford, Warren Hasse and Bill Potts.

In the United States there are 745 automobiles per 1,000 people. China wants to be first in the world. India is right behind them. The energy requirement is going to be huge.

"Pampa has an opportunity with the renewable resource called wind."

"We need to take advantage of wind, take advantage of natural gas, I even think we should take advantage of solar, because the Lord knows we've got a lot of sun."

"We ought to be on the forefront of that. We ought to seize on to that and build our economy around that sort of thing. We need to give people the opportunity to invest here, and I think Pampa can see its best days ahead."

"We had leaders before (our age group) that have done a tremendous job. I think Pampa ought to look at some sort of mentoring program to encourage and educate future leaders. It has to be diverse. The population is changing."

"That's what I mean by it is a turning point."

## NATIONAL BANK OF COMMERCE

An Office Of First National Bank Waupaca, Wisconsin

### Leading your way to great rates!

**Five Month CD 3.28% APY\***

\*Annual Percentage Yield Effective June 15, 2008. \$1000 Minimum Balance to Obtain The A.P.Y. \$1000 Minimum Deposit. Rates are Subject to Change. Penalty For Early Withdrawal.

# Unlimited Texting to Your Circle<sup>SM</sup>

add a new My Circle<sup>®</sup> Message Pack to your My Circle calling plan

Get **UNLIMITED** text, pics & flicks to Your Circle plus **UNLIMITED** mobile-to-mobile messaging.

**Our lowest price ever!**  
**\$19.99**  
after \$50 mail-in rebate & 2-yr. service agreement

Available in turquoise blue, lavender, citrus orange and slate gray.

come and get your love

**alltel wireless**

alltel.com 1-800-alltel-1

**Ranked "Highest Call Quality Performance Among Wireless Cell Phone Users in Southwest Region in a Tie"**

Alltel Retail Stores			
<b>Berger</b> 1303 W. Wilson   (806) 273-2042	<b>Pampa</b> 1329 N. Hobart   (806) 669-3435	<b>Clarendon</b> Clarendon Outpost Co.   (806) 874-5202	<b>Perryton</b> Perryton Office Supply   (806) 435-4812
<b>Childress</b> 2004 Ave. G N.W.   (940) 937-8550	<b>Shop at a participating retailer:</b> Equipment & promotional offers at these locations may vary.	<b>Dalhart</b> Comm. Connection   (806) 249-8411	<b>Shamrock</b> Mehnen Drug   (806) 256-2782
<b>Dumas</b> 1526 Guyane Plaza   (806) 935-6307	<b>Berger</b> All About Wireless   (806) 274-7452 Comm. Connection   (806) 274-9444	<b>Dumas</b> Access Wireless   (806) 935-9197	<b>Speerman</b> Country Cellular   (806) 659-2541
<b>Hanford</b> 701 N. 25 Mile Ave.   (806) 384-1055	<b>Canadian</b> Canadian Parts & Supply   (806) 323-8556	<b>Hanford</b> Whiteface Cellular   (806) 363-2740	<b>Proud Sponsor of:</b> 
<b>Pampa</b> Comm. Connection   (806) 669-1551 RadioShack   (806) 669-2253			

**For Business & Government Accounts call 1-866-WLS-BIZZ or visit alltelbusiness.com**

Federal, state & local taxes & charges apply. In addition, Alltel may charge monthly connectivity, regulatory, administrative & 911 surcharges up to \$2.19 & federal & state Universal Service Fund fees (both may vary by customer usage). These additional fees may not be taxes or government-required charges & are subject to change. Additional information regarding your taxes, fees & surcharges is available from your Alltel customer service representative & on your monthly bill. My Circle: Available to new & existing customers on current select rate plans. Minimum rate plan of \$49.99 for 5 Circle Plan numbers; \$59.99 for 10 numbers; \$69.99 for 20 numbers. For Smart Choice Pack customers, minimum rate plan of \$99.99 for 5 Circle Plan numbers; \$109.99 for 10 numbers; \$129.99 for 20 numbers. My Circle numbers must be shared among all lines on the primary account. Customer may not designate own wireless or voice mail number, Directory Assistance or 900 numbers on any of the available numbers. Calls must begin & end in your plan's calling area. Designated numbers must be within the U.S. Feature may be discontinued at the discretion of Alltel. Restrictions apply to Business & Prepaid customers. See representative for details. My Circle Message Pack: Unlimited My Circle texting available to postpaid customers on My Circle-eligible calling plans who activate new My Circle-eligible messaging packs. My Circle & Mobile-to-Mobile (M2M) texting cannot be shared among other lines on the account. M2M applies to messaging between Alltel customers only. Instant Messages not included. Designated numbers must match primary account holder's selected 10-digit My Circle voice numbers, be within the U.S. & not be texting short codes. Features may be discontinued at the discretion of Alltel. Restrictions apply. See alltel.com for complete details. Phone Details: Phones & applicable rebates available for a limited time, while supplies last, with activation of a qualifying rate plan. Limit 1 rebate per qualifying purchase. Phone cannot be returned once mail-in rebate certificate has been submitted. Customer pays applicable taxes. See rebate certificate for details. Additional information: This offer may be limited due to time, supplies, coverage, or participating locations. \$25 non-refundable activation fee & possible \$200 early termination fee applies per line. Service is according to the Terms & Conditions for Communications Services & other information available at any Alltel store or alltel.com. All product & service marks referenced are the names, trade names, trademarks & logos of their respective owners. Screen images are simulated. ©2008 Alltel Communications, LLC. All rights reserved. J.D. Power and Associates Award: Alltel Wireless received the highest numerical score among wireless call phone providers in a tie in the Southwest region of the proprietary J.D. Power and Associates 2008 Wireless Call Quality Performance Study™ - Vol. 1. Study based on 23,472 wireless users measuring 5 providers in the Southwest region (AZ, CA, CO, TX) & measures opinions of consumers with the call quality of their wireless service. Proprietary study results are based on experiences & perceptions of consumers surveyed in October 2007 & January 2008. Your experiences may vary. Visit jdpower.com.

# Viewpoints

## The pound filled with lovable companions

I wasn't looking for a dog when I found Birdie, my three-year-old Australian Shepherd whom I adopted last year, nor did I choose her. When my mother told me she wanted to drop by the shelter to look for a companion for the poodle mix she had at home, I just didn't see how a person could walk past all those abandoned animals and decide to save just one. Granted, I still worry about what happened to the other dogs in the pound in "Lady and the Tramp." Did Boris find his own lady friend? Did Dachsie finish that hole he was working on to free the other dogs? Did Peg find work at another dog and pony show? The realist in me says probably not but regardless, I agreed to go anyway.

For any animal lover, the pound is a hard place to be. I don't think enough people understand what it means to abandon a dog. They may have descended from the wolf, but since domestication they simply aren't meant to be left in the wild (or the mean streets) to fend for themselves. They are meant to be companions and workers, and just like a child who is left without love or purpose, their own mental state can begin to break down. Some survive by hardening their personalities. They learn to bite or growl or fight for what they must but rare is the dog who is born that way. Others retreat into themselves, walk with their heads down and their tails tucked under and when someone is kind enough to help them, they shy

away. Others act out for lack of attention. They become hyper and unmanageable which is a problem all in its own because most people can't muster the time or patience to rehabilitate an animal they can't control in the first five minutes of meeting them. I've seen dogs who are so far gone they can do nothing but spin in circles.

There's a quote by an unknown author that points out that "the dog is the only animal that has seen his God." Can you imagine what it would be like to have the pinnacle of your existence dwell in another ordinary human? Any student of religion knows how flawed we can truly be and yet the ordinary dog ignores these flaws, loves us unconditionally and still gives us another chance when he rightfully shouldn't. They love us more than we love ourselves in most cases. Very few people who are truly honest can say they've remained that consistently devoted to their own God. But then, we have the power to ask, "Why?"

I suppose to the other people who walked through the pound that day, Birdie was just another abandoned dog. In truth, she would have been the same to me. You see, I was trying to be firm in my decision that I couldn't take one home. I already had two dogs and feeding time was expensive enough. I made

my way down the aisle, trailing behind my mother, and finally passed Birdie's cage. It wasn't her look that caught my attention, that "cute factor" people tend to look for when they adopt a dog. It was what she did. She didn't bounce or bark or whine for my attention ... she simply lifted a paw and put it on the fence. This might be a seemingly unremarkable feat, but what struck me was how "human" the gesture was. She was reaching out. She needed help and she knew it.

I would later learn that Birdie had been abandoned on the side of the Interstate and she was scheduled to be put down that day. Well, two dogs aside, that just wouldn't do, so I took her home. For weeks afterwards, she had a hard time letting me out of her sight. I think she thought I might leave her as she'd been left before. Even when I let her off her leash, she wouldn't wander more than a few feet away. It's taken her a year to realize she can walk around a corner, through a door or down a hill and still find me where she left me when she comes back. She is, without a doubt, the best dog I've ever had and we've become good friends.

Recently, I received a call from a woman in Lefors who told me that an increasing number of dogs were being left there and on the high-

way that runs through town. They are being killed by coyotes, run over and shot. She was concerned and wanted to get the word out and on Birdie's behalf I agreed. I don't believe that it was anyone's intention to put these dogs in a difficult situation. They more than likely thought that a dog had a better chance in the country than in a shelter where it might be put down. The fact is, it's practically a death sentence and there are better options for these dogs. The most important thing we can do is to make sure our animals are spayed and neutered so we reduce the numbers of pets without homes. The Pampa Animal Shelter has a 24 hour drop box where people may leave animals they don't want.

Amarillo has not only a shelter, but a humane society and an ASPCA (The American Society for the Prevention of Cruelty to Animals) facility as well. A simple ad in the paper advertising a free dog is sure to bring potential animal lovers. You could even sit at a grocery store with a cardboard sign and find a dog a home in a hurry.

I believe you can tell a great deal about a person's character by how they treat animals. They are innocent. We are not. If people truly are gods in an animal's eyes, then I say it's time to tend the flock. Maybe 99 have a home ... but there's always that one stray to look after.



**Julie Ann Thompson**  
Staff Writer

## Idle American: Happy campers at sea

Musical humorist Allan Sherman, gag writer for several of America's top comedians, died too young at age 48 and was beyond clever. For a couple of decades, his name was associated with many things funny.

He's been gone for 35 years, but many of his musical spoofs remain lodged in memories of folks who've lived long enough to remember 3-cent stamps, rotary phones and single-edge razor blades. One is "Hello Muddah, Hello Faddah."

It just may be that his spoof heightened interest in summer camps for children. Had he hung around longer, and had cruise ships offered planned activities for kids a few years earlier, Sherman might have turned out even more musical parodies. ...

Sherman's name came to mind last month as my wife and I sailed on Carnival Cruise Line's Miracle on an eight-day pilgrimage to three ports in the eastern Caribbean. Right after safety drills, we saw several sets of parents and grandparents parting company with youngsters who'd rather spend time with others their age at Camp Carnival.

Activities, projects and contests for the youngsters number into multiple dozens, and they're conducted by professional personnel.

Supervised programs for kids as young as 2 are offered. Some of the older children joke with their elders that they'll see them when the

**Don Newbury**  
Columnist



cruise is over, and they're semi-serious. Parents try to act sad, but smiles break out as they think of a week or so without being chained to children. ...

It's fun to see a growing number of children on summer cruises. Cruise ships, after all, are melting pots of nationalities, so why not ages, too?

I'm noting more family groups on cruises. This is most evident at mealtime, when some tables are reserved for 30-40 relatives. Sometimes they wear matching T-shirts with funny messages.

And several times I've heard grandparents bragging that they've got the whole family "trapped" without mentioning that they're also picking up the tab. ...

But wait. My initial intent a few paragraphs ago was to focus on funny things kids say and do.

It is rarely a mistake to watch and listen.

One day, a dozen or so cruisers, maybe 8 years of age, took a trivia contest seriously. ...

One question was viewed as a slam dunk by all of the youngsters — except the one to

whom it was directed.

Brow furrowed and voice shaking, he responded in classic fashion.

"I'm having a junior moment," he confessed. ...

\*\*\*\*\*

We are amused by others at times we least expect.

The same is true for moments of sheer inspiration. One day, we saw a large group of adults gathering on deck to participate in a Susan G. Komen Walk for the Cure. Actually, most Carnival vessels participate in the program that has raised almost a half-million dollars in the past year. Actually, they call it On Deck for the Cure, and come November it will also be featured on the 113,300-ton Splendor, Carnival's newest

ship. So far, more than 50,000 persons dedicated to raising funds for breast cancer research have signed up for the one-mile deck walks.

I learned that one of the older runners was a 77-year-old cancer survivor. And that the cruise was a present she bought for herself to mark an important milestone. Back in May, she crossed the stage to receive her college diploma. A lifelong dream has been to complete requirements for a baccalaureate degree — the pilgrimage she began as a freshman six decades ago. ...

\*\*\*\*\*

Amazement was underscored again as we noted the efficiency of 920 crew members. They hail from 51 countries.

Theirs is a strong work ethic, and their commitment to tasks, ready smiles and eagerness to please make it easy to deal with a multitude of accents rarely heard by this Texan's ears.

They know that their jobs on the cruise ship are their tickets out of poverty in their native lands, even though they are typically on assignment for six-month contracts. ...

\*\*\*\*\*

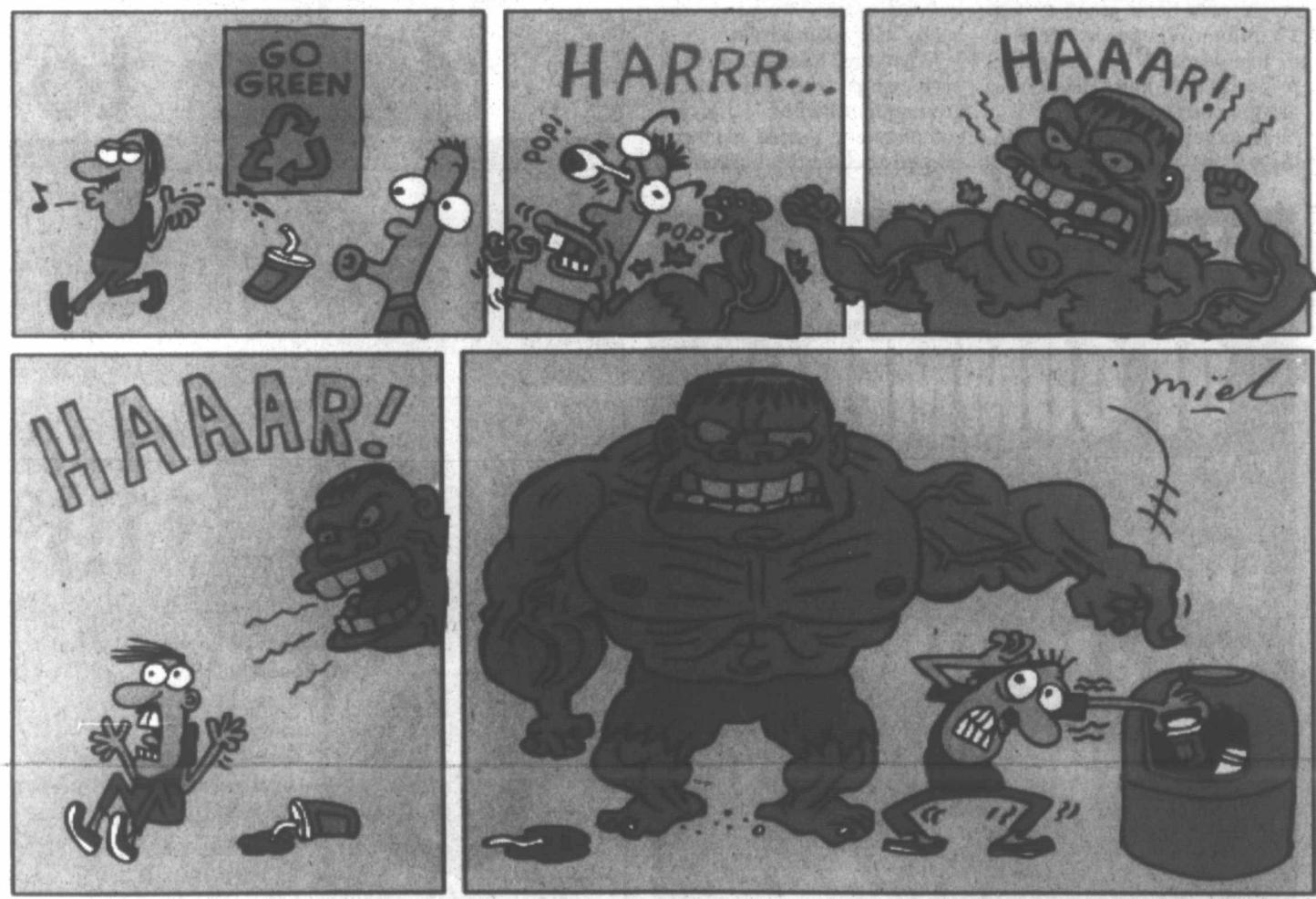
The ship, with a capacity of 2,600 guests on board, glided back toward NYC eight days after we boarded. We disembarked feeling totally pampered. Memories of grand food (the supper club was the best ever), wonderful entertainment and a cadre of new

friends remain.

We also remember children at play, families celebrating and a 77-year-old cancer survivor determined to finish college.

Finally, we had to chuckle upon hearing some esoteric quotations by graduate students engaged in spirited competition. "To do is to be," one scholar quoted Socrates. "To be is to do," a second attributed to Sartre. In the audience, a youngster piped up, "Do be do be do," crediting Sinatra. Yeah, I think it was the 8 year old kid who had a "junior" moment. I'm guessing Sherman could have penned several funny verses about this happy camper. ...

—Dr. Newbury is a speaker and author in the Metroplex.



### Our readers write

#### Confidence restored ...

Dear Editor,  
In my experience it seems that today's work force has no desire to do a job and do it well. Whether it be bagging groceries, mowing lawns or billing for doctors and hospitals, etc. People have no patience as well as they come across rude and inciviled. No one takes responsibility for anything.

Pampa people, you proved to me that it's not the case in Pampa. My kids and I were recently traveling back to Oklahoma from Amarillo, and as luck would have it my pickup broke down just west of Pampa, next to the LICK Feed Store. We went inside to ask about a mechanic, and the kind people got us the

phone number for Utility Tire.

Mind you, it was about 5 p.m. when I broke down. I called the number and the lady took the info about the break down and my phone number and told me they were sending a tow truck. In the meantime, a gentlemen stopped and asked if he could help. I explained that a tow truck was on the way and thanked him. The lady at Utility Tire called me back and told me the tow truck had to go to a wreck and that Steve was on his way.

In no time, Steve and his help were there, and they got us up and running to get to the shop and fix the problem. And the nice guy from O'Reilly's brings the parts to help us get going. There was another little problem; however, Steve got it taken care of very promptly, and we

were back on our way by 6:30 p.m.

I can't say when the last time that others helped me out in such a prompt and courteous way. And the icing on the cake was that Kelly from Utility Tire called the next day to see that we made it home OK.

Citizens of Pampa please take a minute out of your day to smile upon yourselves, pat each other on the back and say a job well done. We all do better when appreciation is shown to us. And I just want to say, we appreciate all the kindness and help from the Lick Feed Store, O'Reilly's and Utility Tire, and the Gentleman. Keep up the pride in Pampa.

Janene Kella and family  
Gage, Okla.

## THE PAMPA NEWS

403 W. Atchison • Pampa, TX 79065

806-669-2525 • 800-687-3348

Fax: 806-669-2520

email: editor1@thepampanews.com

**Randall Pribble**  
Editor and Publisher

**ReDonn Woods**  
Advertising Director

This newspaper (UPS 781-540) is published daily, except Sundays, Thanksgiving and Christmas Day, by The Pampa News. Periodicals postage, paid at Pampa, Texas. Postmaster: Send address changes to The Pampa News, P.O. Drawer 2198, Pampa, TX 79066-2198.

All carriers are independent contractors and The Pampa News is not responsible for advance payments of two or more months made to the carrier. Please pay directly to the Pampa News any payment that exceeds the current collection period. There are no mail subscriptions available within the city limits of Pampa. Mail subscriptions must be paid three months in advance.

© 2008 The Pampa News

# ACS award recognizes leadership

ST. LOUIS, Mo. — In recognition of exemplary achievement in the areas of saving lives, diminishing suffering or improving quality of life from cancer in underserved, at-risk communities, the American Cancer Society

is currently seeking applications from individuals, groups, organizations or companies that demonstrate the above characteristics. The Harold P. Freeman Service Award was developed by the society to recognize outstanding

efforts in cancer control activities and was named after Harold P. Freeman, MD, a past president of the society, who placed priority on issues relating to the underserved during his presidency. One award is presented annual-

ly in each state in the High Plains. The High Plains serves a multi-state area that includes Kansas, Hawaii, Missouri, Nebraska, Oklahoma and Texas. To obtain an application for the award, call Ann Marie Newman

at 512-919-1869. The deadline for application is Aug. 1, 2008. For more information on cancer, contact the American Cancer Society at 1-800-ACS-2345 or visit [www.cancer.org](http://www.cancer.org).

## Texas first lady stumps for mansion restoration funds

AUSTIN — First Lady Anita Perry today asked former governors and Texas first families to serve on an advisory committee to assist in mansion fund-raising and restoration efforts.

Mrs. Perry made the request at an informal breakfast meeting Thursday with representatives of former first families, where she relayed the status of mansion restoration efforts following the June 8th arson. Mrs. Perry noted that the former governors, first ladies and members of former first families all share a common bond from their days of living at the mansion.

"Although it is a tragedy that has brought us together, the images of the significant damage borne by this Texas treasure is a powerful call to action," said Mrs. Perry. "Today's gathering of first families is a shining example of how restoring our historic Governor's Mansion reaches beyond politics and partisanship, and into the shared sentiment of all Texans that we must rebuild this monument."

Former Govs. Dolph Briscoe and Mark White participated in the news conference, as did family members representing the late Govs. Price Daniel, Ann Richards and Allan Shivers. Former first family members' involvement and support of restoration efforts is not limited to those attending the event.

Mrs. Perry also shared a letter sent by First Lady Laura Bush, who was unable to attend the event but expressed her and the president's support of ongoing restoration efforts.

Mrs. Perry is chair of the Texas Governor's Mansion Restoration Fund, the non-profit organization created to raise money to help restore Texas' historic home. Pamela Willeford serves as vice-chair.

Those who wish to contribute to the mansion restoration may do so securely at [www.texasonline.com](http://www.texasonline.com), or send a check or money order made to: "Texas Governor's Mansion Restoration Fund," P.O. Box 12878, Austin, TX 78711-2878.

For questions regarding how to contribute to the Texas Governor's Mansion Restoration Fund, please call toll free 1-866-751-5829.

General Surgeon & Hand Specialty  
Tel: 806-273-7596  
600 W. Third St.  
Boger, Tx 79007

### Ed Quiros, M.D.

Board Certified- General Surgery  
Fellow of American College of Surgeons  
Fellow of Internatioanal College of Surgeons

- Laparoscopy
- Colonoscopy & EGD
- Carpal Tunnel
- Deformities due to arthritis
- Congenital hand deformities & trauma
- Other hand related problems or injuries

Please call our office with any questions

**Calvary Baptist Church Vacation Bible School**

**Hoist the mainstay and set sail on a high-seas Bible Adventure!**  
**Calvary Baptist Church**  
 900 E. 23rd St. • 665-0842  
 July 28 through August 1  
 6:30 - 9:00 p.m.  
 Entering Kindergarten through entering 6th grade  
 Registration nightly at 6:00 p.m.

## Texas Furniture July Clearance

Save up to \$400.00

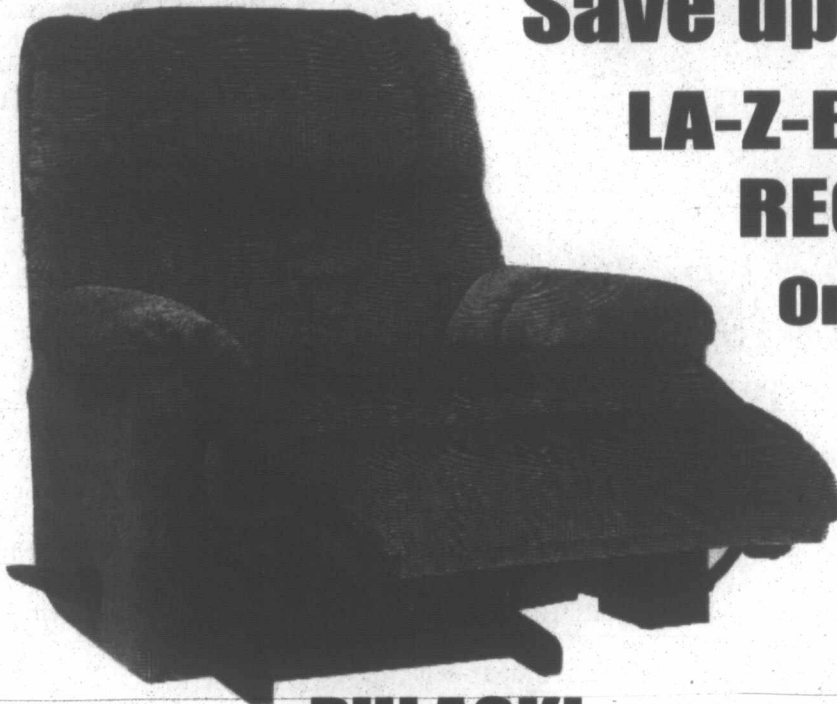
**LA-Z-BOY & LANE RECLINERS**

On sale now only

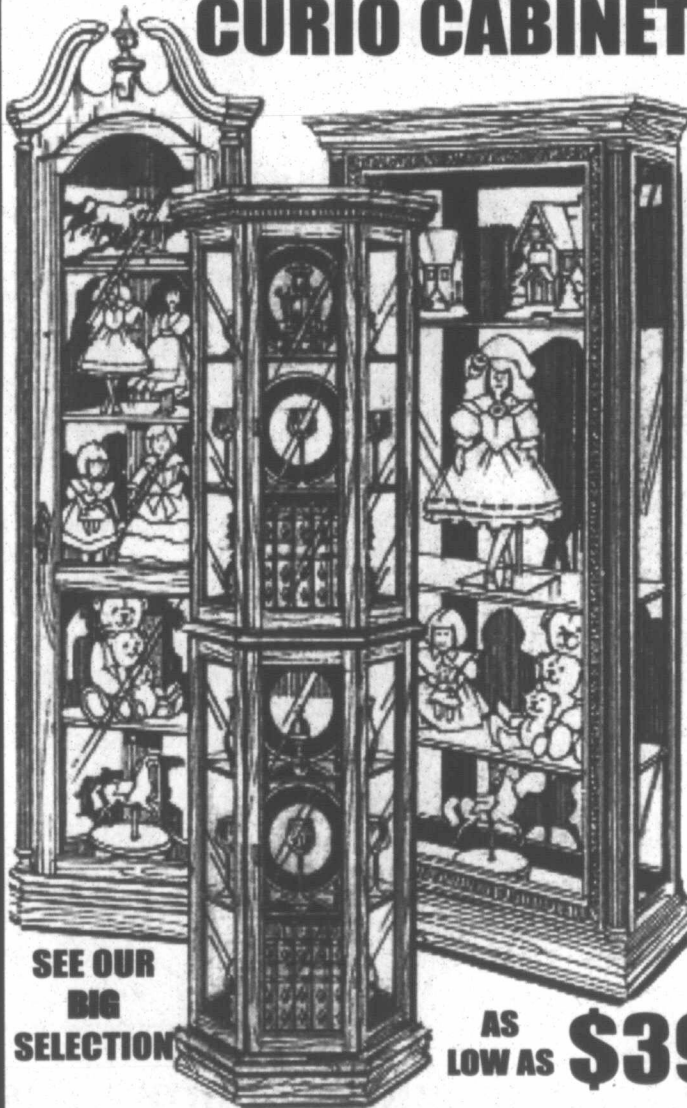
**\$299**

**\$399**

In stock now!



**PULASKI CURIO CABINETS**



SEE OUR BIG SELECTION

AS LOW AS **\$399 SEALY**



**ASHLEY SOFAS**

**\$599 • \$699 • \$799**



FACTORY DIRECT PRICE...IN STOCK FOR IMMEDIATE DELIVERY!

BETTER SLEEP ON A



**SEALY "SPIRIT WIND" PLUSH TWIN SET \$249**

TWIN SET **\$349** FULL SET **\$449** QUEEN SET **\$499**

FULL SET **\$349**

**SEALY "POSTUREPREMIER" YOUR CHOICE...PLUSH OR PILLOWTOP**

FULL SET **\$649** QUEEN SET **\$699** KING SET **\$999**

QUEEN SET **\$399**



**SEALY PILLOW-TOP**

FULL SET **\$549** QUEEN SET **\$599** KING SET **\$899**

**Texas**

MON - SAT 9:00 AM TO 5:30 PM  
**FURNITURE**

1415 N. HOBART • 665-1623  
 6 MONTHS NO INTEREST FINANCING WITH APPROVED CREDIT

# Lifestyle

## Karlsson, Smith Wedding

Britt-Lee Karlsson of Plano and Phillip Smith of Irving were wed May 3rd at Lake Palestine Methodist Church, a small country church at Chandler. Richard Prather, of Chandler and of the church, performed the ceremony.

The matron of honor was Amy Porter of Wylie. The maid of honor was Melaina Aune of Nacogdoches. The bridesmaids were Kristina Crowell of Irving, Lindsey Lipscomb of Arlington, Shibahn Landry of Dayton and Paula Wallace of Orlando, Fla. The flower girl was Maraya Adornetto of Crystal Lake, Ill.

Standing up as best man was Kevin Smith, twin brother of the groom of Fort Worth. The groomsmen were Sean Stowers of Midland, Ben Porter of Wylie, Brian Crowell of Irving, and Jerry Hames and Christopher Stackpole, both of Fort Worth. The ring bearer was Ethan Bride of McHenry, Ill.

Ushering guests to their seats were Adam Turner, Adam Thomas Murphy,



Britt-Lee Karlsson and Phillip Smith

Greg Myrick, all of Austin, and Philip J. Reed, Jr., of San Antonio.

A reception was held following the service at the Karlsson home on Lake Palestine in Chandler. The wedding was catered and

served by Traditions.

The couple met while paired together as bridesmaid and groomsman at the wedding of mutual friends, Brian and Kristina Crowell, on Jan. 22nd. Both claimed that they

couldn't shake the feeling that one day they would be doing this at their own wedding.

They talked throughout the wedding reception and on into the night and scheduled their first date the next night. He proposed exactly 10 months to the day later on Nov. 23rd during Thanksgiving holidays spent amongst their families.

The bride is the daughter of Ronnie and Diane Karlsson of Chandler. She graduated from Stephen F. Austin in Nacogdoches with a bachelor's degree in history and is currently managing the Plano Pin Co. in Plano.

The groom is the son of Billy and Debra Smith of Pampa. He graduated from Texas Tech University in Lubbock with a bachelor's degree in computer science and is currently employed by the Barbn Investments in Fort Worth.

The newlyweds honeymooned on the island of Maui in Hawaii and will settle into an apartment off North O'Connor in Irving.

## Menus

Week of July 21-25

### PISD Summer Nutrition Program MONDAY

Breakfast: Cheese omelets, toast.  
Lunch: Chicken & noodles or corn dogs, green beans, carrots, pineapple.

### TUESDAY

Breakfast: Pancake and sausage on a stick.  
Lunch: Macaroni cheese or burritos, potatoes, English peas, fruit.

### WEDNESDAY

Breakfast: Biscuits, gravy.  
Lunch: Chicken salad or pulled pork sandwiches, corn, spinach, fruit.

### THURSDAY

Breakfast: Breakfast pizza.  
Lunch: Meat/cheese nachos or string cheese, western beans, salad, pears, cornbread muffins, Spanish rice.

### FRIDAY

Breakfast: Cereal, toast.  
Lunch: Hamburgers or grilled cheese sandwiches, fries, burger salad, peaches.

### Kid's Cafe-Wilson MONDAY

Soft tacos, salad, dessert.

### Kid's Cafe-Lamar TUESDAY

Pizza, salad, dessert.

### Kid's Cafe-Briarwood FRIDAY

Fried chicken, mashed potatoes, green beans, dessert.

### Senior Citizens MONDAY

Chicken fried steak or ham tetrazinni, mashed potatoes, Italian green beans, beets, beans, German chocolate cake or cherry cream pie, slaw, tossed or jello salad, hot rolls or cornbread.

### TUESDAY

Baked cod fish/rice or Salisbury steak, sour cream potatoes, spinach, carrots, beans, hummingbird cake or vanilla pudding cups, slaw, tossed or jello salad.

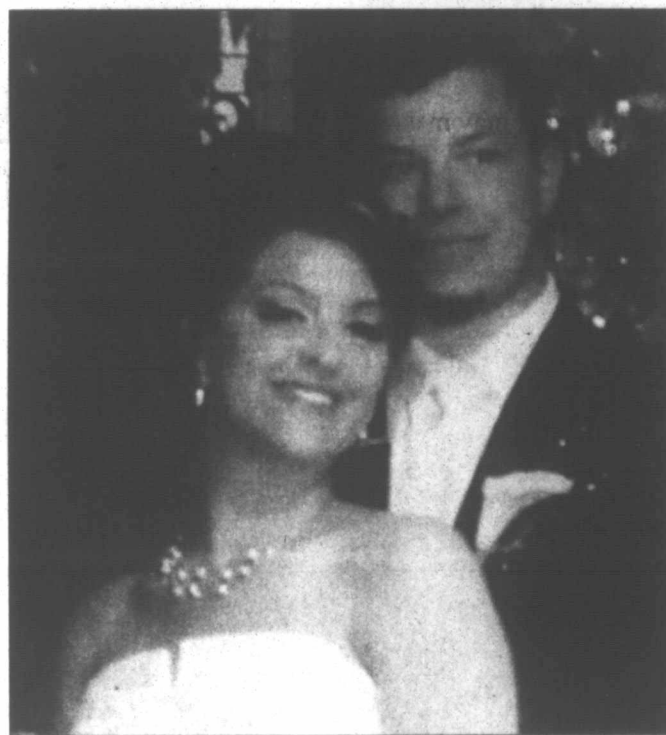
See MENUS, Page 7

## Avallone, Ferris Wedding

The nuptials for Elisabeth Nicole Avallone and Zachary Dale Ferris, both of Amarillo, were held June 7 at The Ranch House in Canyon. The officiating minister was Mel Brunson of Amarillo South, a nondenominational church in Amarillo.

The bride is the daughter of Anthony Avallone of Ruidoso, N.M., and Guadalupe Ford of Truth or Consequences, N.M. The groom is the son of Dale Ferris of Pampa and Tracie Clark of Eufaula, Okla.

Sister of the bride Marie Ellyson of Amarillo acted as the honor attendant. The bridesmaids were Bonnie Sanders of Artesia, N.M., and Nelva Alfaro of



Elisabeth N. Avallone and Zachary D. Ferris

Bakersfield, Calif.

The best man was Tim Ferris, brother of the groom of Amarillo. The groomsmen were Mark Garzia of Pampa and Joel Bottello of Amarillo.

James Silvia of Amarillo and Clay Trimble of Pampa acted as ushers.

The Ranch House doubled as the reception location.

The bride graduated from Carlsbad High School in Carlsbad, N.M. The groom graduated from Pampa High School (2003) and from Amarillo College in Amarillo (2006).

The newlyweds plan to make their home in Amarillo.

## Amarillo Komen chapter grants benefit outreach programs

AMARILLO — The Greater Amarillo Affiliate of Susan G. Komen for the Cure, one of more than 100 affiliates nationwide created to fight breast cancer, recently provided community grants, a press release reports, totaling \$190,000 to support area breast health education and breast cancer screening and treatment programs.

The Amarillo affiliate's fund-raising efforts, such as the Komen Greater Amarillo Race for the Cure®, have benefited such causes as the Breast Cancer Screening Program through the Don &

Sybil Harrington Cancer Center, which offers screening and diagnostic mammography for women 35-49 who are not covered by other funding.

Other programs receiving funding by the affiliate include the Amarillo Breast Prosthesis Program through the American Cancer Society; Girl Scout's of Texas Oklahoma Plains "Daisies in Bloom" Health Education Brunch; and the Amarillo Area Breast Health Coalitions Project Hope.

Up to 75 percent of funds raised by Komen affiliates

remains in the community to fund local breast health education and breast cancer screening and treatment outreaches. Remaining net income (a minimum of 25

percent) supports Susan G. Komen for the Cure Award and Research Grant Program.

The next Race for the Cure in Amarillo is scheduled Sept. 27.

## Lifestyles Policy

1. The Pampa News will not be responsible for photographs used in announcing births, weddings, engagements or anniversaries. We also reserve the right to refuse publication of photographs of poor quality. Photographs cannot be returned unless they are accompanied by a self-addressed, stamped envelope. They may be picked up in the office after appearing in the paper.

2. All information must be submitted by 5 p.m. Wednesday (12 noon Tuesday before a holiday such as Thanksgiving or Christmas), prior to Sunday insertion.

3. Engagement, wedding and anniversary news only will be printed on Sunday.

4. Engagement announcements will be published if the announcement is submitted at least one month before the wedding, but not more than three months before the wedding.

5. Bridal photos and information will not be accepted in The Pampa News office later than one month past the date of the wedding.

6. Anniversary announcements will be published for celebrations only of 25 years or more and will not be published more than four weeks after the anniversary date.

7. Birth announcements will only be published for 0- to 3-month-olds. (See form for more details.)

8. Forms are available from the office 8 a.m. to 5 p.m., Monday thru Friday, or by sending a SASE to The Pampa News, P.O. Box 2198, Pampa, TX 79066-2198.

9. Two anniversary pictures may be placed for a \$25 charge or four extra lines may be added to announcements for \$25 (\$50 for both).

**Bridal Selection**

Lauren Metcalf & Justin Waggoner  
Eva Isbell & Jeff Whittington  
Brittany Adams & Barret Lowenstein  
Lenna Wilson & Jody Richardson  
Melissa Lewis & Ryan Feil  
Kendall Stokes & Matt Murray  
Autumn Darden & Marc Garza  
Kimberly Cory & Brandon Soukup  
Michelle Etchison & Genesis Reddic  
Keana Daughtry & Ryan Bennett  
Alicia Anguiano & Royce McGrath  
Jill Lewis Stuart & Scott Stuart

**On Eagle's Wings**  
113 N. Cuyler 665-0614

**Prescriptions Filled  
With Personal Attention**

Merlin & Staff are here for all your pharmacy needs. Feel free to ask any questions! Plus, as a customer you'll always feel comfortable knowing we are here for you day and night.

**KEYES PHARMACY**  
928 NORTH HOBART • 806.669.1202

**FORD FAMILY CHIROPRACTIC**

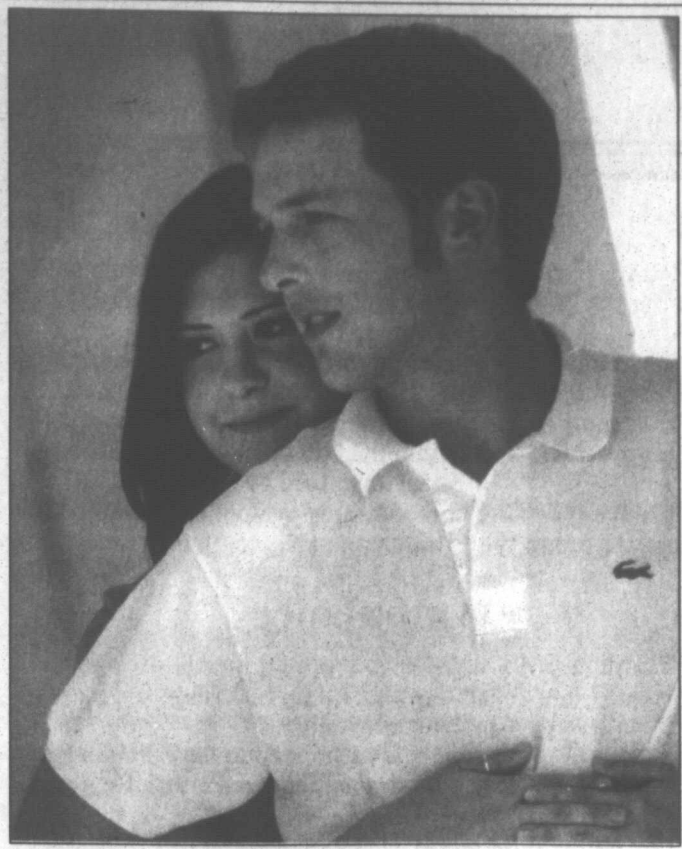
**WELLNESS CENTER**

New location to better serve our community's healthcare needs  
at 701 N. Price Rd  
Pampa, TX  
(806) 665-7261

Services Include:

- State of the Art Modern Chiropractic Care
- New digital X-ray services
- Surface EMG
- Computerized muscle strength & range of motion testing
- Personalized therapeutic rehabilitative exercise program
- Digital orthotics casting
- Soft tissue & myofascial release (medical massage) techniques
- Spinal distraction/decompression for disc problems
- Kinesiotaping for sports & other injuries
- Children's activity area

Dr. Mark W. Ford, Jr.  
Dr. Samantha A. Ford



### McKee/White

Megan Leigh McKee and Britton Thomas White plan to wed Oct. 11 at Destination Wedding at Alto Lakes Golf and Country Club in Ruidoso, N.M. The wedding reception is scheduled two weeks later on Oct. 25 at Amarillo Country Club in Amarillo. The bride-to-be is the daughter of Ms. Jackie Dalman, and Terry and Lisa McKee, all of Amarillo. She graduated salutatorian from Dumas High School in Dumas in 2004 and earned a Bachelor of Science degree in nursing from Texas Tech University Health Sciences Center in 2008. She is currently employed as a RN at Pampa Regional Medical Center. The future bridegroom is the son of Scott and Jamie White of Pampa. He graduated from Pampa High School in 2004 and earned a Bachelor of Business Administration degree in management from TTU in 2008. He is currently employed with Holman Well Services in Pampa.

### Cradle call



### Cooper Lee Trahan

Cooper Lee Trahan was born at 8:34 p.m. May 8 at United Regional Hospital in Wichita Falls, to Rustin and Jordan Trahan. At birth, the infant weighed 7-pounds, 13-ounces and was 20½-inches long. The newborn is the grandchild of Edmond and Alberta Trahan of Johnson Bayou, La., and Dr. Jack and Jana Albracht of Pampa; is the great-grandchild of Loreta Trahan and the late Ernest O. Trahan of Johnson Bayou, La., Malcolm Bell and the late Rosa Bell of Broussard, La., Ann Albracht and the late Dr. John Albracht of Amarillo, Eddie Spratt of Irving and Shirley Vansickle of Boswell, Okla.; and is the Godchild of Blaine Trahan of Johnson Bayou, La., and Brenna Albracht of Pampa.

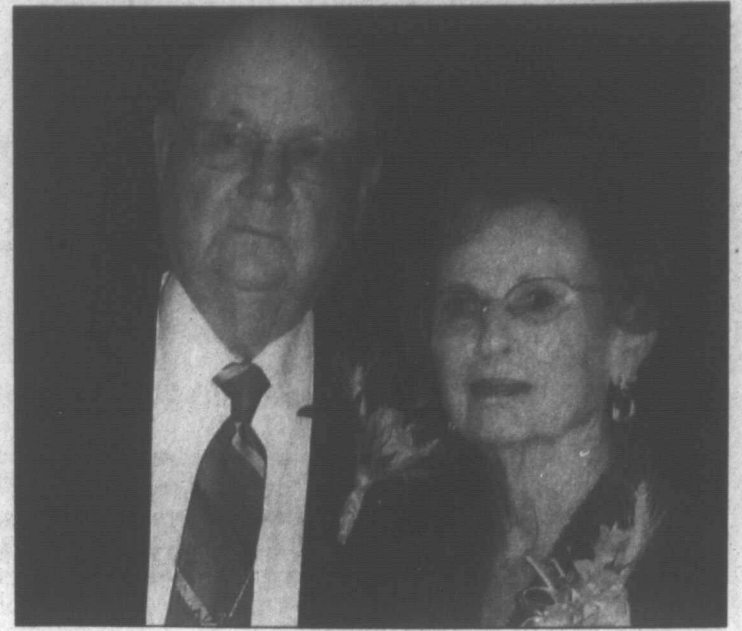
## BURGER ANNIVERSARY

Mr. and Mrs. Dean Burger of Pampa celebrated their 60th wedding anniversary June 7 at Pampa Country Club. Children of the couple hosted the reception.

Dean Burger and the former Donna Brunnier were married June 7, 1948, at Lockney. They belong to First United Methodist Church of Pampa.

Mr. Burger is a self-employed farmer and rancher. Mrs. Burger is a homemaker.

Children of the couple are Connie and Charles Fields of Groom, and Ken R. and Lynn Burger of Pampa. They have eight grandchildren and 16 great-grandchildren.



Mr. and Mrs. Dean Burger

## Aging doesn't necessarily come with 'normal' problems

By Kay Ledbetter  
Extension News

AMARILLO — Challenges the elderly face daily may be dismissed as "just growing older" or normal aging, a Texas AgriLife Extension Service specialist said. But in reality, the only thing "normal" about aging is that everyone grows older.

"As people age, a majority of them remain healthy and independent," said Andrew Crocker, AgriLife Extension gerontology specialist. "In spite of this, some individuals begin to experience changes that are perceived as signs of deterioration or decline.

"Our society tends to focus on that decline, influencing our perception of normal," he said. "We should forget stereotypes and look at all people, regardless of age, as unique individuals, each with a particular set of resources and challenges."

As the body ages, it may undergo gradual changes that may or may not be experienced by friends, family or acquaintances, Crocker said. How an individual ages may depend on heredity; however, studies show lifestyle choices also impact aging — to the tune of 50 percent of health-risk factors.

The physical aging process can be influenced in a variety of ways, Crocker said. The bulk of the changes that take place over the years may be strongly affected by physical activity and other lifestyle characteristics.

Apart from heredity, people who live in areas with especially long-life expectancy have the following characteristics: regular physical activity, well-balanced diet, social involvement, moderate or no alcohol and no smoking.

"By keeping respect for the immense differences between individuals, especially older adults, and not assuming or stereotyping based on health and function, we all can do a lot to further the 'normal is as normal does' philosophy of aging and health," Crocker said.

Body and function changes that may or may not occur as a person grows older include:

• Hearing and Vision. Changes in the ear may make some sounds harder to hear and fluctuations in tone and speech less clear. Also, over time, the lens of the eye may become

less flexible or develop cataracts. Night vision and visual sharpness may decline, and sensitivity to glare increase.

• Skin and Bones. Skin may become less elastic, more lined and wrinkled and/or bruise easily. Oil glands may produce less oil, making the skin drier than before. Over the course of a lifetime, it may be common to lose a couple of inches in height due to changes in posture and compression of joints, spinal bones and spinal discs. Bones may gradually lose some mineral content, making them weaker and less dense. In women, bone loss may increase after menopause.

• Brain and nervous system. Beginning in mid-life, the brain's weight, the size of its nerve network and its blood flow may begin to decrease. However, the brain adapts to these changes, growing new patterns of nerve endings. Memory changes are not necessarily common in aging. Recall of names and details may slow but keeping the brain active throughout life will help.

• Heart and Lungs. The heart may become less efficient as it ages and may have to work a little harder during activity. In inactive people, the lungs may become less efficient over time, supplying the body with less oxygen. For these rea-

See AGE, Page 9

*Bridal Registry...*

Brittany Adams & Barret Lowenstein  
Lauren Metcalf & Justin Waggoner

**New Arrivals from Market weekly!**

*Baby Registry...*

Tammy May

*Joys Unlimited*  
110 N. Cuyler 665-2515

## Menus

Continued from Page 6

hot rolls or cornbread.

### WEDNESDAY

Roast beef brisket/brown gravy or cook's choice, mashed potatoes, fried squash, English peas, beans, lemon cake or cherry cobbler, slaw, tossed or jello salad, hot rolls or cornbread.

### THURSDAY

Chicken strips or liver & onions, tater tots, succotash, turnip greens, beans, strawberry cake or chocolate pie, slaw, tossed or jello salad, hot rolls or cornbread.

### FRIDAY

Catfish/hushpuppies or beef enchiladas, potato wedges, Spanish rice, beans, brownies or tapioca cups, slaw, tossed or jello salad, garlic bread sticks, hot rolls or cornbread.

Meals On Wheels

### MONDAY

Steak fingers, gravy, broccoli casserole, carrots, pears.

### TUESDAY

Chicken/ham/cheese, rice pilaf, English peas, plums.

### WEDNESDAY

Burgers, fried potatoes, pinto beans, peaches.

### THURSDAY

Oven-fried chicken, corn, baked potatoes, pudding.

### FRIDAY

Baked fish, rice pilaf, garlic bread, green beans, apricots.

*Bridal Registry*

**bridal registry**

Brittany Adams ~ Barret Lowenstein  
Eva Isbell ~ Jeff Whittington

...  
need special gifts for the bridal party  
we're here to help with your special day

*Diamonds & Doorknobs*  
1508 N. Hobart 806.665.5090

**FREE** Screening for the  
**DEPARTMENT OF CRIMINAL  
JUSTICE ACADEMY**  
on July 23rd & 24th  
8am until noon at the  
**JORDAN UNIT**  
Academy begins July 28th  
\* Full Scholarships Still Available \*

## National Home Health Care

*Come Home*

1521 N Hobart  
806-669-0000  
800-753-3910

- Home Oxygen
- CPAPS
- Nebulizers
- Wheelchairs
- Walkers
- Orthotics
- Bathroom Safety
- Hospital Beds
- Diabetic Supplies
- Cushions

We Accept Most Insurances

## Emergency Services

### Pampa PD

Pampa Police Department reported the following incidents for the period from 12:01 a.m. Wednesday to 7 a.m. Friday.

#### Wednesday, July 16

Eleven traffic stops were made.

A vehicle accident was reported in the 2700 block of Perryton Parkway.

Calls and stops concerning animals occurred at the intersection of Harvester and Hobart streets, the 1400 block of Williston, the 2100 block of Perryton Parkway, the 1200 block of North Wells, the 1200 block of Duncan, the 700 block of Magnolia, the 500 block of North Starkweather, the 200 block of Miami, the 200 block of North Cuyler, the 1100 block of South Christy, the 200 block of North Sumner, the 700 block of Malone and the 100 block of South Gillespie.

Agency assistance was rendered in the 1300 block of South Hobart.

Warrant service was attempted on one occasion.

A civil matter was reported in the 300 block of East Brown.

Suspicious person calls were received from the intersection of Lincoln and Christy streets, the intersection of Maple and Barrett streets, and the intersection of Gray and Thut streets.

Suspicious vehicle calls were received from the 1000 block of Somerville, the intersection of Ford and Somerville streets, the 800 block of Denver, the 500 block of North Perry and the 1200 block of North Hobart.

Disorderly conduct was reported in the 1400 block of North Hobart, the 600 block of West Buckler, the 1200 block of North Hobart and the 1900 block of North Dwight.

Criminal mischief was reported in the 1200 block of South Dwight.

Telephone harassment was reported in the 600 block of North Sumner.

Threats were reported in the 1200 block of East Francis and the police department lobby.

A domestic disturbance was reported in the 1000 block of North Wells.

Assault was reported in the police department lobby. The incident occurred in the 1100 block of Bond. Minor injuries were reported.

Assault was reported in the police department lobby.

Sexual assault was reported in the 1200 block of North Wells.

One alarm was reported.

One open door was checked.

Theft was reported at Heard-Jones Health Mart, 114 N. Cuyler. Two notepads with total estimated value of \$2.60 were taken.

Theft was reported in the 2800 block of Charles. Unauthorized use of a motor vehicle was reported in the 100 block of South Starkweather.

#### Thursday, July 17

Suspicious person calls were received from the 500 block of East Atchison, and the intersection of 21st and Sumner streets.

Disorderly conduct was reported in the 400 block of Lefors.

Criminal mischief was reported at the intersection of Starkweather and Yeager streets.

A domestic disturbance was reported in the 500 block of Montagu.

One alarm was reported.

An arrest was made in connection with information received in the 700 block of West Brown.

### Sheriff

Gray County Sheriff's Office reported the following arrests before 8 a.m. Saturday.

#### Thursday, July 17

Tina Sue Hoskins, 38, of Pampa was arrested in the 1000 block of Huff Road by Pampa Police Department for possession of a controlled substance.

Stephan Orin Stokes, 45, of Pampa was arrested in the 700 block of North Roberta by Pampa PD for no Texas registration.

David Lee Ellison, 41, of Pampa was arrested in the 1000 block of Huff Road by Pampa PD for possession of a controlled substance.

#### Friday, July 18

Nicholas Scott Williams, 28, of Pampa was arrested by Pampa PD and charged with no seat belt-driver.

Jesus Maria Velasquez Jr., 38, of Pampa was arrested by Pampa PD and charged with burglary of a building.

#### Saturday, July 19

Jacon Ryan Crain, 24, of Pampa was arrested by Pampa PD and charged with possession of marijuana.

Simeon Xavier Dunn, 39, of Pampa was arrested by Pampa PD and charged with failure to appear and no valid driver's license.

Stephen Tyler Timmons, 24, of Pampa was arrested by GCSO and charged with defective headlamp and disregarding a stop sign.

Selena Susanne Rice, 28, of McLean was arrested by GCSO and charged with public intoxication.

### Fire

Pampa Fire Department reported the following calls during the 24-hour period ending at 7 a.m. Saturday.

#### Friday, July 18

10:05 a.m. — One unit and three personnel responded to the 11000 block of U.S. Highway 60 on a medical call.

2:07 p.m. — One unit and three personnel responded to a motor vehicle accident in the 700 block of North Hobart.

#### Saturday, July 19

12:38 a.m. — One unit and three personnel responded to a vehicle fire in the 1100 block of South Nelson.

### Ambulance

Guardian EMS ambulance reported the following calls between 7 a.m. Thursday and 7 a.m. Saturday.

#### Thursday, July 17

7:21 a.m. — A mobile ICU responded to the 800 block of West 25th and transported a patient to Pampa Regional Medical Center.

7:37 a.m. — A mobile ICU responded to Farm-to-Market roads 2300 and 293 and transported a patient to Northwest Texas Hospital in Amarillo.

8:47 a.m. — A mobile ICU responded to the 100 block of South Russell and transported a patient to PRMC.

10:51 a.m. — A mobile ICU responded to PRMC and transported a patient to the 100 block of Russell.

2:01 p.m. — A mobile ICU responded to Childress Regional Medical Center in Childress and transported a patient to PRMC.

10:56 p.m. — A mobile ICU responded to the 900 block of South Wells and transported a patient to PRMC.

#### Friday, July 18

1:48 a.m. — A mobile ICU responded to PRMC and transferred a patient to BSA Hospital in Amarillo.

7:16 a.m. — A mobile ICU responded to PRMC and transported a patient to NWTX.

10:05 a.m. — A mobile ICU responded to a location west three miles on Highway 60 and transported a patient to PRMC.

1:56 p.m. — A mobile ICU responded to Highway 60 and Kingsmill and transported a patient to NWTX.

5:42 p.m. — A mobile ICU responded to the 1200 block of Wells and transported a patient to PRMC.

9:37 p.m. — A mobile ICU responded to the 2100 block of Nelson and transported a patient to PRMC.

11:46 p.m. — A mobile ICU responded to the 1100 block of Hobart and transported a patient to PRMC.

## AgriLife Extension workshop to look at cotton prices in current markets

LUBBOCK — Texas AgriLife Extension Service will conduct a cotton profitability workshop from 10:30 a.m. to 4:30 p.m. July 23 at Texas AgriLife Research and Extension Center at Lubbock.

The center is located on U.S. Highway 1294, half a mile east of Interstate 27, just north of the Lubbock International Airport.

Jackie Smith, AgriLife Extension economist at

Lubbock, said the workshop will offer pricing strategies for today's volatile cotton market. Other topics will include the expected break-even price for this year's crop, the effect of market volatility on premiums and margin costs, and how margins are set and adjusted as price and volatility change.

"Hedging with cotton futures and options has become more challenging than ever," Smith said. "The

increase in volatility of the cotton market, as well as the other commodity markets, has made it expensive and difficult to use option contracts to lock in a profit.

"There seems to be very little reason to believe the volatility will go away any time soon. Because of huge expected carryover stocks, the cotton market is not experiencing the record prices of the grain markets. That's why cotton farmers

have a greater need to be prepared to take advantage of any favorable pricing opportunities when they occur."

Smith said the workshop's

speakers will explore pricing strategies and the management of these strategies under different market scenarios.

Individual registration,

which includes lunch, is \$20 at the door.

For more information, call Wendy at 806-746-6101.

### Events calendar

• **Harrington Cancer Center** Pampa Support Group will meet at 6:30 p.m. July 22 in the second floor classroom of Pampa Regional Medical Center. Beth Kean will present the program on "Information Resources." All cancer survivors and their supporters are welcome.

• **The deadline to enter a Golden Poets Guild** free poetry contest is July 26. A grand-prize will be awarded. To enter, send one poem of 21 lines or less to Free Poetry Contest, 601 16th St # C-115 Golden, CO 80401, or enter via the Internet at [www.freecontest.com](http://www.freecontest.com).

• **The deadline for local businesses to purchase a rodeo banner** in lieu of the upcoming Top O' Texas Rodeo is July 30. The 62nd annual rodeo is scheduled Aug. 14-16 at Top O' Texas Rodeo Arena in Pampa. For more information, contact the rodeo office at 669-0434.

• **The deadline to enter the Name the Mascot Contest** being sponsored

by Amarillo Botanical Gardens is Aug. 20. The name will be applied to a new statue erected at the gardens of a six-foot "frog musician." The winner will be announced at the season finale of "Music in the Gardens" on Aug. 25. If more than one entry supplies the winning name,

the first to submit the name will be considered the winner. To enter, choose a name for the mascot and submit the name to Amarillo Botanical Gardens, Name the Mascot Contest, 1400 Streit Dr., Amarillo, TX 79106.

**HOMESTYLE BBQ SPECIALS**

**Special Full Slab BBQ Ribs**

1 pt. cole slaw, ranch beans, homemade potato salad

**\$22.99**

Get 1 lb. BBQ Brisket or Polish Suasage **FREE!**

Valid Only when Presented with Order.  
NOT VALID WITH ANY OTHER OFFER.

**DYER'S**

Catering

Hwy 60 W  
Pampa, TX  
**806-665-4401**

**BAR-B-QUE**

**INVESTMENT STRATEGIES.  
ONE-ON-ONE ADVICE.**

**Duane Harp**  
Financial Advisor

1921 N Hobart  
Pampa, TX 79065  
806-665-6753  
[www.edwardjones.com](http://www.edwardjones.com) Member SIPC

Edward Jones

## Peace of mind.



Danielle wants her mother to have peace of mind as she ages ... but what about her own? As her mother's caregiver, Danielle worries about her mother's health and quality of life—and about whether she can be there to help mom with her daily living needs. Danielle's mother doesn't need full-time medical attention, so assisted living care at Craig Methodist Retirement Community can be a safer alternative.

They'll find our Assisted Living program is perfect for them both:

- We help seniors remain as independent as possible
- Around-the-clock licensed nursing assistance
- Advanced care available on campus should her health needs change
- Peace of mind that a loved one is secure
- A staff that considers caring for her a privilege

Call today and find out how The Craig can help you with a loved one's care, and give you both the freedom to enjoy life—and each other.

352-7244 • 5500 W. 9th Ave. • Amarillo, TX 79106 • [www.SMRS-TheCraig.org](http://www.SMRS-TheCraig.org)



A member of Sears Methodist Retirement System, Inc.



**114 N CUYLER • 669-7478**

**Head Jones**

**WE'RE MORE THAN  
A PHARMACY!  
COME VISIT AND SEE  
FOR YOURSELF!**

**SOFT N GENTLE  
BATH TISSUE**

**99¢**

4 ROLL PACK

**PALMOLIVE  
DISH DETERGENT**

**89¢**

16 OZ

**BOUNTY  
PAPER TOWELS**

**79¢**

**HEALTH MART**

**MARLBORO  
CIGARETTES**

**\$3.99**

PER PACK



**LARGE  
SELECTION  
OF CRAFT ITEMS  
50% OFF!**

**SERVING BREAKFAST! OPEN AT 8AM DAILY!**

**AS SEEN ON TV THE  
ORIGINAL  
DETOX FOOT  
PATCH**



**SATURDAY DINE IN  
FOUNTAIN SPECIAL**

**HAMBURGER & CHIPS...99¢**

**CHEESEBURGER & CHIPS...\$1.49**

CALL IN ORDERS WELCOME • CHIPS 35¢ PER BAG

PRICES GOOD THRU SATURDAY JULY 26TH!  
MONDAY-FRIDAY 8AM-6PM • SATURDAY 8AM-4PM • CLOSED SUNDAY

# Texas Education

## Teacher groups sue to block release of sensitive data

AUSTIN — Texas AFT and the Texas State Teachers Association have joined with Education Austin — Texas AFT's and TSTA's local affiliate representing employees in the Austin Independent School District — in a lawsuit to block public release of raw, unevaluated data from criminal-history background checks.

Release of the raw data could be compelled under a recent Texas attorney general's ruling that defined portions of the background-check information as "open records" under state law — even though the records are derived from sources that prohibit public dissemination.

Education Austin is the leading organization representing teachers and support employees in the Austin school district, with close to 4,000 members. The local union has been elected by all teachers and school employ-

ees in the district to represent them in negotiations over education policy and working conditions with district administrators.

The lawsuit, prepared by Texas AFT general counsel Martha Owen, would prevent Austin ISD from disclosing to the public at large any individually identifiable information contained in the background-check data compiled by the district pursuant to a new state law enacted last year.

The lawsuit would not hinder in any way use of the background-check information by the district and the State Board for Educator Certification to enforce local policies and state laws imposing sanctions on employees for many types of misconduct. Public disclosure of the number and types of offenses turned up by the background checks also would not be affected by the lawsuit.

Louis Malfaro, president of Education Austin, said: "The purpose of the lawsuit is not to attack Austin ISD but to block implementation of an ill-advised ruling by the attorney general. The reputations and careers of school district employees could easily be ruined, without justification, by disclosure that their names are on 'the list.'"

"These state-mandated background checks on school employees can yield sometimes incomplete and sometimes inaccurate raw data, touching on every encounter someone may have had with the criminal-justice system, including arrests on ancient misdemeanor charges later dropped," Malfaro said. "Also included may be records of other long-ago misconduct, unrelated to someone's fitness to discharge educational duties, for which these employees have long since

met their obligation to society."

Texas AFT President Linda Bridges added, "As educators, we take seriously our obligation to look out for the best interests of our students, and we support stringent measures to protect them from harm. To achieve that goal, it is not necessary to subject dedicated teachers and other school employees to public denigration just because a background check turns up some record of a minor brush with the law or one that has long since been resolved and that involves no threat of harm to students."

"Texas Attorney General

Greg Abbott's ruling that the Austin Independent School District has to release what should be confidential information about employees reminds me of an old-time sheriff who believed in hanging defendants before actually

holding trials to determine if they might be guilty," TSTA President Donna New Haschke added. "We can protect students in our public schools without lynching school employees who may not be guilty of anything or who may have committed minor infractions many years ago."

**Special Speaker,  
Jim & Chris Robinson**

**Assemblies of God World Missions--  
Global University will be at Calvary  
Assembly of God, 1030 Love 6:00 p.m.  
Sunday July 20th. All are invited  
Any questions call 669-7207**

## Age

Continued from Page 7

sons, among others, physical activity remains important throughout life.

• Kidneys. The kidneys may decline in size and function, which diminishes their ability to filter wastes and medications from the blood, and decreased tolerance for dehydration. This makes it increasingly important to minimize alcohol consumption and unnecessary medications and drink plenty of fluids.

The aging process may also bring social and emotional change, Crocker said.

"Inevitably, older relatives and friends

may grow frail and die, individuals may lose a spouse," he said. "Physical and social losses that may accompany aging may be very difficult emotionally.

"Grief and sadness are common reactions to such situations, and we cannot and should not try to lessen these reactions," Crocker said. "Just as the physical losses of later life may be compensated for, so can the social and emotional losses be overcome with time."

To test your "Normal Aging IQ" through the Mayo Clinic Web site, go to <http://www.mayoclinic.com/health/aging/QZ00073>.

**Amarillo Arborlogical will be sending  
an ISA Certified Arborist to service  
Pampa, Wheeler and Canadian on  
Tuesday, July 22nd.**

**To schedule an appointment,  
call Matt Johnson at 341-8257.**

**Amarillo Arborlogical  
is a full service Tree  
and Plant Health  
Care Company  
specializing in  
Fertilization, Insect  
Control, Pruning,  
Tree and Stump  
Removals.**



## meet jack.

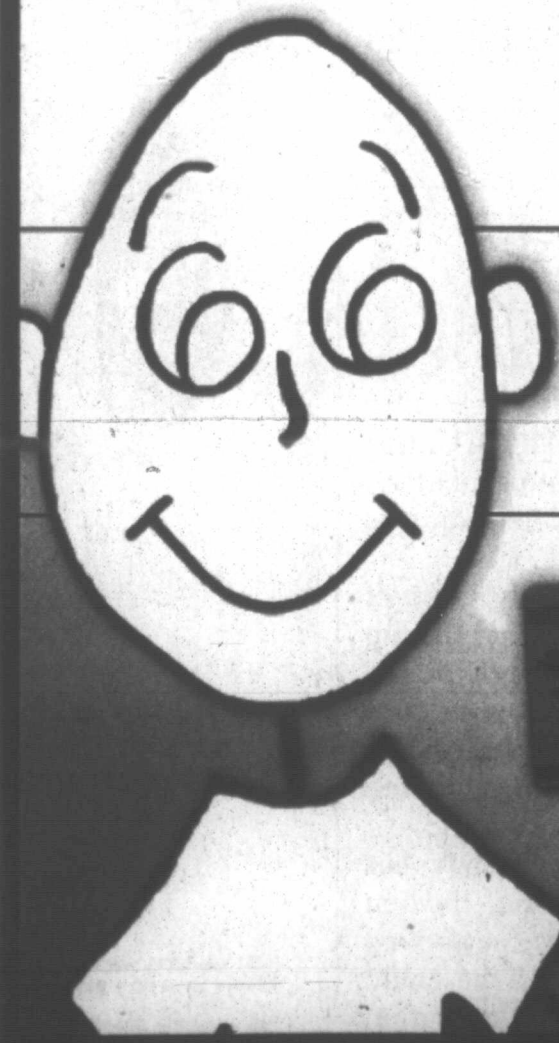
jack used to think money grew on trees.

jack's "money tree" soon withered and died...and so did his belief in money trees.

thankfully, jack opened a reality checking and savings account at firstbank southwest.

now jack has a cool reality check card and can save for the stuff he really wants.

jack's parents can also monitor his spending and teach him to manage his money.



if you don't know jack,  
log on to  
**jackknowsmoney.com**  
to learn more about  
reality checking and find useful  
money management tips.

# Report: Invest \$10 per person for better health

WASHINGTON (AP) — Investing just \$10 per person — roughly the price of a six-pack of beer and some chips — could greatly fuel community programs that get couch potatoes moving, prevent smoking and improve nutrition, researchers say.

How much health does \$10 a person buy? Invest that every year, and within five years the nation could cut health care costs by more than \$16 billion annually, concludes a new analysis by the nonprofit Trust for America's Health and a team of public-health research groups.

If the big dollars have your eyes glazing, the overall point is simple: Obesity — from poor nutrition and inactivity — and smoking are blamed for much of the heart disease, cancer, diabetes and lung diseases that are the nation's leading public health problems, fueling the \$2 trillion annually spent on health care.

Yet small improvements can add up. Research suggests, for example, that walking 30 minutes a day and dropping just 15 pounds can cut in half the risk that someone with pre-diabetes will get the full-blown disease. The question is how to educate and persuade people to take such steps.

"This is pennies when you look at the long-term cost of treating diabetes or high cholesterol," said Audry Tayse Haynes of the YMCA,

which runs programs in more than 64 communities that are the type the report aims to emulate — programs typically begun with one-time government grants of about \$40,000.

For example, the YMCA runs various after-school care programs. Rather than just supervise students playing and doing homework, some sites added a program that teaches healthy snacking and physical activity, with games to help kids exercise. Tracking 3,100 children in Texas, the YMCA found the program helped youngsters eat more fruit and less candy, exercise a little more each week and watch less TV.

The California Endowment has started a Healthy Eating, Active Communities program that partners with local government and private businesses to build parks, provide more fresh fruits and vegetables and other healthy foods for area markets, and increase physical activity in schools. Estimated cost: about \$7 per person, the report found.

In Somerville, Mass., federal health officials funded a "Shape Up Somerville" program that slowed weight gain among first- to third-graders and may have had some citywide impact: Steps that started with better school food and a push for safe walking and biking paths to school wound up also touting restaurants that

made their menus healthier. Estimated cost: \$3 to \$4 a person.

As for tobacco, when New Yorkers started paying the nation's highest cigarette taxes this month, officials estimated that 140,000 eventually would stop smoking.

U.S. spending on prevention programs has been stagnant for about four years.


Programs that help people slim down and stop smoking clearly make for a healthier population, but whether they save governments money is controversial. A Dutch study

published last winter, for instance, found that the obese and smokers die sooner, which makes them cheaper for health systems than thin nonsmokers who live longer.

But other research suggests the obese may actually live as long but with more diseases.

"You're prolonging the period of healthy life," said Jeff Levi, executive director of the Trust for America's Health. "Whether I need a

See REPORT, Page 2-B



If you're like most people, you want a pharmacist who takes the time to talk to you about your medication. Our pharmacy staff is committed to helping customers feel better by providing friendly, reliable prescription service and by making sure customers understand important information about their prescriptions.

The next time you need a prescription filled or refilled, call Dennis, our friendly pharmacist, and see what a difference caring service can make.

**D & B Pharmacy**  
 300 N. Ballard  
 Pampa, TX.  
 79065  
 806.665.5788  
 806.669.1871



**They've Arrived!**

NCAA caps! Arriving Soon!

**NCAA Licensed Tees**

Texas, Texas Tech, Notre Dame, OU

**T-Shirts & More**

111 W. Kingsmill Ave, Pampa, Tx.  
 665-3036

**Look What New...**

Mindy Weiss is one of the most sought after event planners 7 lifestyle experts in the United states. known for her creative & unusual ideas, her unexpected decor accents and her exquisite attention to every last detail.

These qualities, together with Mindy's respect for her clients' privacy, have made her the top choice for celebrities as well as high profile corporations.

Today, in addition to providing professional event planning services for weddings, parties, corporate functions, bar/bat mitzvahs and just about any other social occasion, Mindy has developed a line of lifestyle products - the first of which is for brides & grooms, newlywed couples, their wedding guests and the entire wedding planning, wedding day execution and most importantly - the details - Mindy has tapped into a market segment that offers few choices for style-minded consumers.

This line is now Exclusively at:

**WEST TEXAS LANDSCAPING**  
 120 S. Hobart • 669-0158  
 Information from www.twoscompany.com

Switch to the network with

## the best coverage.

More bars in more places.



**FREE**  
 after \$30 mail-in rebate debit card with feature package purchase and 2-year wireless service agreement.  
**LG CE110**  
 Ultra-thin Bluetooth camera phone

**\$49.99**  
 after \$75 mail-in rebate debit card with feature package purchase and 2-year wireless service agreement.  
**LG SHINE™**  
 2.0 megapixel camera with video  
 AT&T exclusive

**LIMITED TIME OFFER!**  
**\$99.99**  
 after \$100 mail-in rebate debit card with BlackBerry data plan, qualified voice plan and 2-year wireless service agreement.  
**BLACKBERRY Curve™ 8310**  
 Integrated GPS with AT&T Navigator  
 2.0 megapixel camera

Best Coverage claim based on global coverage.

More bars in more places

The new **at&t**  
 Your world. Delivered.

**FREE SHIPPING | 1.866.MOBILITY - ATT.COM/WIRELESS - VISIT A STORE**

AT&T STORES  
 Pampa 2131 Perryton Pkwy., 806-665-0500

\*AT&T also imposes monthly a Regulatory Cost Recovery Charge of up to \$1.25 to help defray costs incurred in complying with State and Federal telecom regulation; State and Federal Universal Service charges; and surcharges for customer-based and revenue-based state and local assessments on AT&T. These are not taxes or government-required charges.

Offer available on select phones. Limited-time offer. Other conditions and restrictions apply. See contract and rate plan brochure for details. Subscriber must live and have a mailing address within AT&T's owned wireless network coverage area. Up to \$36 activation fee applies. Equipment price and availability may vary by market and may not be available from independent retailers. Unlimited voice services: Unlimited voice services are provided solely for live dialog between two individuals. Offnet Usage: If your minutes of use (including unlimited services) on other carriers' networks ("offnet usage") during any two consecutive months exceed your offnet usage allowance, AT&T may at its option terminate your service, deny your continued use of other carriers' coverage, or change your plan to one imposing usage charges for offnet usage. Your offnet usage allowance is equal to the lesser of 750 minutes or 40% of the Anytime minutes included with your plan (data offnet usage allowance is the lesser of 6 megabytes or 20% of the kilobytes included with your plan). Early Termination Fee: None if cancelled in the first 30 days; up to \$175. Some agents impose additional fees. Rebate Debit Card: BlackBerry Curve™ 8310 price before mail-in rebate debit card, feature package purchase, and with 2-year wireless service agreement is \$199.99. BlackBerry data plan and minimum \$39.99 voice plan required. LG CE110 price before mail-in rebate debit card, feature package purchase, and with 2-year wireless service agreement is \$29.99. Minimum \$9.99 feature package purchase required. Allow 10-12 weeks for fulfillment. Card may be used only in the U.S. and is valid for 120 days after issuance date but is not redeemable for cash and cannot be used for cash withdrawal at ATMs or automated gasoline pumps. Card request must be postmarked by 08/28/2008; you must be a customer for 30 consecutive days to receive card. Sales tax calculated based on price of unactivated equipment. Service provided by AT&T Mobility. © 2008 AT&T Intellectual Property. All rights reserved. AT&T, AT&T logo and all other marks contained herein are trademarks of AT&T Intellectual Property and/or AT&T affiliated companies.

# Sports

## Cowboys' 'circus' headed back to California for camp

IRVING (AP) — Even Terrell Owens will find it difficult to draw top billing this time, with so many other sideshows to gawk at when the Dallas Cowboys open training camp.

As Owens has so eloquently put it before, "Getcha popcorn ready!" It's going to be a show.

There will be plenty to see with the Cowboys, whose bitter ending to a 13-win season in January made it 11 seasons without a playoff victory — though it has done little to dampen super expectations for 2008.

First, there is the player who wants to be formerly known as "Pacman" and doesn't know for sure if he will be allowed to play this season.

How about the Tank that Dallas got to roll out only half of last season after he returned from his NFL suspension.

Roy Williams went to his fifth straight Pro Bowl last season, even though the hard-hitting safety often went to the sideline on passing downs. And that could happen again, especially if "Pacman" — sorry, Adam — Jones is playing.

Jason Garrett, the supposed successor-in-waiting for coach Wade Phillips — who in his only season in charge so far led Dallas to its first NFC East title since 1998 — is more firmly in place.

Plus, who knows, maybe Jessica Simpson stops by to see her beau, Pro Bowl quarterback Tony Romo.

With all that and more when the Cowboys open camp Friday in Oxnard, Calif., not too far from Hollywood, they have the ingredients for a made-for-TV show.

Oh, Jerry Jones took care of that.

Never missing a chance to promote the Cowboys brand, Jones enthusiastically agreed when HBO executives wanted to again feature the team in the "Hard Knocks" series.

When last highlighted by the cable network six years ago, Dallas was coming off a 5-11 season and was on the way to another. That was pre-Bill Parcells, before T.O. and Romo.

Somehow last season, a franchise-record 13 victories, the NFC's top seed and an NFL-record 13 Pro Bowl players didn't equal a playoff victory. Dallas lost to the New York Giants, the eventual Super Bowl champion and NFC East foe the Cowboys beat twice in the regular season.

Their depth chart loaded with all those Pro Bowlers and returning players at nearly every other position, the Cowboys are considered a prime Super Bowl contender 12 seasons after their fifth championship.

But long before finding out if "America's Team" makes it to February, or falls short again, there are all the sideshows to watch.

**UN-"PAC"ING JONES:** Able to get a once-elite and still young cornerback-kick returner, filling two areas of need with one player, Jerry Jones was willing to take a chance on a player seeking to shed his nickname and troubled past.

The Cowboys won't really lose much if "I want to be Adam or Mr. Jones" doesn't work out, because they'd get a draft pick back from Tennessee. But Jerry — the Cowboys' only real Mr. Jones — hopes for another successful reclamation, like Owens and Tank Johnson previously, and several other players when Dallas was winning playoff games in the mid-1990s.

Adam Jones' situation is a bit different. He was suspended by the NFL all last season and couldn't even work out with the Titans. He has been arrested six times and involved in 12 incidents requiring police intervention since being drafted sixth overall in 2005.

While Jones was cleared in

June for practices and preseason games, commissioner Roger Goodell might not decide until the week of the Sept. 7 season opener if the player will be fully reinstated.

The commissioner has to be convinced there will be no more trouble.

"I'm going to do my part," Adam Jones said.

"He knows it's his last straw, so he's going to take extreme caution to everything he does," said Johnson, who has a locker near Jones at Valley Ranch.

Deion Sanders has become somewhat of a mentor for Jones in Dallas. Jones has since requested to be called by his real name, though he initially stuck with the nickname given him by his mother and that he's been known by his entire life.

"There's really just a lot of negativity behind it," Jones said. "It's just time for a change."

**TANK ROLLING FORWARD:** Tank Johnson was still serving his eight-game NFL suspension for violating probation on a gun charge and had to wait two months to play after signing last September.

Johnson, whose last game with the Chicago Bears was in the 2007 Super Bowl, initially kept a low profile while serving his penalty and getting acclimated to a new team. But the boisterous spirit is back, and the nose tackle is ready to have a real impact on the field.

"I am a beast right now," Johnson said. "You learn the plays one by one instead of 50 at a time. When you come in Week 11, they already have 50 plays in. ... Now I know where I am going."

Dallas took a chance on

Johnson after starting nose tackle Jason Ferguson tore his right biceps in last year's opener. Johnson started only one of the nine games he played, but showed enough that Ferguson was traded for draft picks this spring.

**SEEMINGLY CONTENT, MORE-TESTED T.O.:** When Dallas last trained in California two years ago, Owens spent more time on a stationary bicycle than the field.

To the ire of Bill Parcells, T.O. even donned a cycling uniform and helmet to poke fun at all the time he spent pedaling while nursing a sore hamstring during his first Cowboys camp after an unceremonious, midseason departure from Philadelphia.

Two touchdown-filled seasons and a new contract later (a \$27 million, three-year extension through 2011, when he will be 38), Owens seems content, healthy and settled in Dallas. Especially when catching passes from Romo.

"We're obviously getting better, obviously the chemistry," said Owens, whose team-record 15 TDs last season gave him an NFL-high 28 the past two years. "We just want to build on what we already have."

And, Owens is clean even though he's now part of the NFL's "reasonable cause" testing program. Owens missed a random drug test, which he blamed on a simple miscommunication about contact information, and can now be tested up to 24 times a year.

While unhappy about extra testing, Owens isn't worried about results. He said he has never had a positive test "for substance of any kind" during his 13-year NFL career.

"I know what I put in my body," Owens said.

**ROY BASH:** First, Roy Williams admitted during a radio interview that at times he hoped passes weren't thrown his way because he knew he couldn't cover the receiver.

Then there were some disparaging remarks made by a couple of teammates.

Phillips defended Williams, whose 115 tackles were second on the team, saying "the guy didn't give up a single deep pass all season. ... He did get in the Pro Bowl."

True, but Williams often didn't play on obvious passing downs. And that appears likely again, because cornerback Aaron Henry was dropping back into Williams' spot when Adam Jones was on the field during minicamp.

Williams quit doing interviews at Valley Ranch, but told the Fort Worth Star-Telegram after an autograph session he was excited and expects to have a good season.

"But I can't say it," he said. "I have to go out there and show it."

Hold the comments if No. 31 gets burned by a pass — that will be rookie cornerback Mike Jenkins, not Williams. The five-time Pro Bowler switched to No. 38.

**COACH IN WAITING?:** Before Phillips was hired as Parcells' replacement, Jerry Jones had already hired Garrett. Jones considered making the former backup to Hall of Fame quarterback Troy Aikman the head coach.

Instead, Garrett was hired as offensive coordinator, then became a hot commodity after his play-calling resulted

in many team passing records and the second-most points in the NFL.

Garrett interviewed with Baltimore and Atlanta about head coaching jobs, but removed his name from consideration. He got promoted to assistant head coach with a substantial pay raise because Jones didn't want to lose him — and the owner's feelings won't change in the future.

**GOT GLENN?:** Terry Glenn had as many operations on his right knee as he did catches last season: two. The receptions came in the playoff game after not playing until the regular-season finale.

The 34-year-old receiver, who got a \$5 million roster bonus last season, hasn't been back on the field because of an unresolved contract squabble. He refused to sign a \$500,000 injury waiver, which is what he'd get instead of his \$1.74 million base salary should he reinjure his knee and be unable to play again.

**BIG SPENDER:** Jerry Jones committed at least \$70 million, with \$59 million in signing bonuses, on multi-year contracts this offseason for Owens and four other Pro Bowlers: left tackle Flozell Adams; running back Marion Barber (now the starter after Julius Jones left in free agency); safety Ken Hamlin; and cornerback Terence Newman.

"Obviously, (Jones) has got high expectations and he should," said Pro Bowl tight end Jason Witten, who two years ago got his own big deal. "We've got to give him something back that he's put so much in this team."

## Golf briefs

**SOUTHPORT, England (AP) —** Royal Birkdale proved to be fertile ground for fairy tales.

K.J. Choi rolled in a 25-foot birdie on the final hole for a 3-under 67 in more gloom and wind along the Irish Sea, giving him his first lead in a major championship. It will be the second straight year he plays in the final group at the British Open going into the weekend.

But the biggest surprises were right behind him, starting with a pair of British Open champions who once were No. 1 in the world.

Greg Norman barely touched a club in the month leading up to his 26th appearance in golf's oldest championship. The 53-year-old married tennis great Chris Evert three weeks ago, and a trip to England counts as the tail end of his honeymoon.

Choi was at 1-under 139, one shot ahead of Norman.

**MILWAUKEE (AP) —** First-round leader Richard S. Johnson shot 3-under par 67 and Nick Flanagan had a 7-under 63 to share the second-round lead at 10-under at the U.S. Bank Championship over the 6,579-yard Brown Deer Park Golf Course.

Kent Jones and Gavin Coles were tied for third a shot back of the leaders. Jones shot 65 and Coles, of Australia, had the low round of the tournament at 62, one shy of the course record.

Another stroke back at 132 were Troy Matteson and Ken Duke, who both shot 65.

**BLAINE, Minn. (AP) —** Dana Quigley shot a tournament-record 10-under 62 and leads after the first round of the Champions Tour's 3M Championship.

Gene Jones shot a season-best 64, and is two shots back. Jeff Sluman birdied four of his last five holes to join R.W. Eaks at 7 under.

## Hidden Hills Results

Seniors Scramble  
Hidden Hills  
Golf Course  
July 16, 2008

**1st Place (58)**  
Roy Don Stephens  
John Hervey  
Nathan Lancaster  
Dale Bulter

**2nd Place (58)**  
Jerry Dorman  
D.D. Lofton  
Lucio Moreno  
Carl Johnson

**3rd Place (61)**  
Eldon Maxwell  
Larry Neighbors  
Wayne Haynes  
James Richardson

**4th Place (61)**  
Bill King  
Al Bolton  
Carroll Pettit  
Bob Henderson  
Bob Brandon

**5th Place (61)**  
Terry Holt  
Jimmy Cantrell  
Bob Lyle  
Marvin Allison

**6th Place (61)**  
Harley Knutson  
Travis Taylor  
John McGuire  
Oscar Sargent

**Closest to the Pin**  
Dale Bulter (#6)  
Jimmy Cantrell (#15)

## Pampa Open Results

### Girls Singles

1. Sammi Finney
2. Holly Gage
3. Alyssa Hoelting

### Boys Singles -16's

1. David Moore

### Boys Singles -18's

1. Jason Wait
2. Jack Ware
3. Myles Foreman

### Girls Doubles

1. Hilary Acker/Holly Gage
2. Sammi Finny/Alyssa Hoelting

### Men's Doubles

1. Michael Foreman/Myles Foreman
2. Phil Grooves/Gary Jameson

### Men's Singles

1. Gary Jameson
2. Phil Grooves
3. Cody Moore

**Ted Hutto's** 669-0433

Photos Courtesy of Shutterbug Photography

## People enjoy less of an appetite when chips are brown

By Kay Ledbetter  
Extension News

AMARILLO — Dr. Don Henne isn't wasting his degree when he's standing by the deep fryer waiting for potato slices to turn brown. He's conducting research that will help the potato industry and consumers.

Henne, an assistant research scientist in the Texas AgriLife Research plant pathology program in Amarillo, is one of many who are trying to find answers about zebra chip. Zebra chip is the latest disease to plague the potato industry, especially those in the chipping business.

Dr. Charlie Rush, AgriLife Research plant pathologist and leader of the program, began working on the project at the request of local producers in early 2007. His work later became a part of the Zebra Chip State Initiative through the Texas Department of Agriculture.

The initiative brought together researchers from throughout the state and country to try to find answers for zebra chip, Rush said.

"When we first began working on it, the pathogen and vector were unknown," he said. "Only recently have researchers began pinning those down."

Rush said Henne was brought into the program in May because of his experience and background. His primary responsibility is to help understand the factors that impact disease onset and spread.

Zebra chip is a disease that alters the sugar levels in the potato, Henne said. The sugar caramelizes and turns the chip brown when it is fried, giving it an off taste and burnt appearance. While it is not harmful, it is a cosmetic and taste concern for consumers.

Potato growers have had to abandon entire infected fields, costing as much as \$2 million a year in damage, he said.

Henne, who has a degree in entomology, is trying to chase the potato psyllid, the insect that likely carries the pathogens which cause the disease. He is trying to find out what makes it move through a field, as well as when it moves and how fast.

He has visited grower fields from Weslaco to Pearsall and Olton to Dalhart already this year, as well as made contact with other zebra chip researchers around the nation to familiarize himself with this new chipping potato disease.

Zebra chip first appeared

See CHIPS, Page 10-B

## Farm bill meeting slated for area producers

STRATFORD — Area producers will have the opportunity to learn the latest details of recently passed farm legislation during a meeting scheduled from 10 a.m. to 12 p.m. July 21 at the Sherman County Exhibit Building in Stratford, according to David Graf.

Graf is agriculture and natural resources agent for the AgriLife Extension Service in Sherman County.

The keynote speaker for the meeting, which will include a Dutch-treat catered meal, will be Dr. Joe Outlaw, professor and AgriLife Extension economist-management from College Station. Outlaw has worked shoulder-to-shoulder with legislators from Austin to Washington, D.C., due to his expertise in farm and risk management and ag policy issues relevant to Texas crop producers.

As a co-director of Texas

A&M University System's Agricultural and Food Policy Center, Outlaw is directly involved in developing analysis instruments for producers use in making farm bill decisions.

See FARM, Page 10-B



Courtesy Photo

### Breeder stock in sire report

M H P Angus, Pampa owns one bull listed in the 2008 Fall Sire Evaluation Report published by the American Angus Association® in Saint Joseph, Mo. Issued in both the spring and fall, the new report features the latest performance information available on 6,670 sires, and is currently accessible at [www.angus-siresearch.com](http://www.angus-siresearch.com).

"This report provides both Angus breeders and commercial cattle producers using Angus genetics with accurate, predictable selection tools for improving their herd," says Bill Bowman, American Angus Association chief operating officer (COO) and director of performance programs.

Expected Progeny Differences (EPDs) are generated from the performance database of the association, which includes information submitted by nearly 9,800 Angus breeders this past year through the association's Beef Improvement Records (BIR) program.

The fall 2008 evaluation includes new carcass EPDs which integrate the performance records from the carcass and ultrasound databases. Decision-making tools also include \$Values, the suite of bio-eco-

See ANGUS, Page 10-B

### Report

Cont. from Page 10

knee replacement is not a life-and-death question. ... If I'm not obese and more mobile and don't kill my knees and therefore don't need that knee replacement, I'm not living longer, but I'm a lot cheaper."

For the report, the New York Academy of Medicine reviewed research on community-based disease prevention programs to find what works, and how well. Then the Urban Institute developed a model to estimate the savings in health care costs that would accrue if the country achieved various levels of health improvements — such as a 5 percent drop in diabetes and high blood pressure rates.

### ▲▲ Musical frog

Amarillo Botanical Gardens is currently looking to name this six-foot statue recently erected at the facility. In lieu of the search, the gardens are sponsoring a Name the Mascot Contest now through Aug. 20. The winner will be announced during at "Music in the Gardens" season end on Aug. 25. If the same name is entered twice, the first entry will be the only entry considered. To enter, send a suggested name to Amarillo Botanical Gardens, Name the Mascot Contest, 1400 Streit Dr., Amarillo, TX 79106.

PSA SOCCER SIGN-UPS

STARTING MON. JULY 14TH RUNNING THRU JULY 26TH

SIGN UP AT T-SHIRTS & MORE 111 W. KINGSMILL OR

LOG ON TO [WWW.PAMPASOCCER.NET](http://WWW.PAMPASOCCER.NET)

TO DOWNLOAD A FORM & MAIL

TO PO BOX 997, PAMPA, TX 79066

### High speed wireless Internet Now Available!

Nightly, Weekly, and Monthly Reasonable Rates!

## RANCH HOUSE MOTEL

720 E. Frederic  
Pampa, Texas

Phone 669-1616 • Fax 669-1617 • Cell 664-4884

Welcome: Oil Fielders,  
Truckers, Travelers,  
OverNights

Cable TV, HBO, Phone Service,  
HouseKeeping-Daily, Pets  
welcome with deposit  
Visa & Mastercard Accepted



### Dreaming of a Summer Getaway?

**We Have Loans For Everything!**  
Vacations • Cars  
Education • Homes  
Remodeling  
and more....



Pampa Bank  
806-665-3669  
120 W Kingsmill



Miami Bank  
806-868-2771  
PO Box 8

**First State Bank of Miami**

# Drilling Intentions

## Intentions to Drill

GRAY (WILDCAT & EAST PANHANDLE) Cimarex Energy Co. of Colorado, #5 Johnson, 840' from North & 2335' from West line, Sec. 185,E,D&P, PD 3000'.

HEMPHILL (WILDCAT & BEGERT 10200) Laredo Petroleum, Inc., #2 Begert Trust '31', 2296' from North & 967' from West line, Sec. 31,41,H&TC, PD 13725'.

HEMPHILL (WILDCAT & BEGERT 10200) Laredo Petroleum, Inc., Elm Creek '34', Sec. 34,A-1,H&GN, PD 13700', for the following wells:

#1, 660' from North & 835' from West line of Sec.

#2, 1065' from North & 2216' from East line of Sec.

HEMPHILL (BUFFALO WALLOW Granite Wash) Cordillera Texas, L.P., PD 13400', for the following wells:

#1112 Ramp, 1065' from North & 660' from East line, Sec. 12,41,H&TC.

#1923 Ramp, et al, 1175' from South & 660' from West line, Sec. 23,41,H&TC.

#3 Walker Ranch '10', 703' from North & 1980' from West line, Sec. 10,41,H&TC.

HEMPHILL (WILDCAT & BUFFALO WALLOW Granite Wash) Samson Lone Star, L.L.C., Fillingim '44', Sec. 44,M-1,H&GN, PD 14000', for the following wells:

#11, 467' from South & 1200' from West line of Sec.

#12, 4677' from South & 2600' from East line of Sec.

#13, 1650' from South & 550' from West line of Sec.

#15, 1540' from South & 2100' from East line of Sec.

HEMPHILL (WILDCAT & S.E. CANADIAN Lower Morrow) Unit Petroleum Co., #4 Frank Shaller 'B', 3305' from North & 1650' from West line, J. Calk Survey, PD 12050'.

HEMPHILL (MATHERS Cleveland) Crusader Energy Group, L.L.C., #1H Bristol '135', 200' from North & 500' from East line, Sec. 135,41,H&TC, PD 10000' (BHL: 500' from South & East Sec. line) Horizontal

HEMPHILL (NORTH MENDOTA Upper Morrow) Unit Petroleum Co., #5 Webb 'T', 1700' from North & 467' from West line, Sec. 192,C,G&MMB&A, PD 11300'.

HEMPHILL (WILDCAT & SHREIKEY Granite Wash) Range Production Co., #10 Make Believe, 111' from South & 1525' from East line, Block 44, Christy Weckesser Survey, PD 11500'.

HUTCHINSON (PANHANDLE) Linn Operating, Inc., Spurlock, G. Martinez Survey, PD 3850', for the following wells:

#14, 3630' from South & 4232' from West line of Survey.

#16, 4290' from South & 6072' from West line of Survey.

ROBERTS (WILDCAT & N.W. MENDOTA Granite Wash) Mewbourne Oil Co., #82 Flowers Trust, 2000' from North & 660' from West line, Sec. 8,—,BS&F, PD

11350'.

WHEELER (WILDCAT & IVESTER Atoka) Apache Corp., PD 18000', for the following wells:

#4059 Brown, 1980' from North & 1600' from West line, Sec. 59,A-7,H&GN.

#2058 Keith, 1980' from North & West line, Sec. 58,A-7,H&GN.

WHEELER (WILDCAT & STILES RANCH Atoka) Apache Corp., Sidney, PD 18000', for the following wells:

#206, 467' from North & 717' from East line, Sec. 6,—,AB&M.

#305, 2000' from North & 250' from West line, Sec. 5,—,AB&M (BHL: 2173' from North & 467' from West Sec. line) Directional well

WHEELER (WILDCAT & STILES RANCH Atoka) Linn Operating, Inc., #5 Miller Spinney '39', 2310' from North & 990' from East line, Sec. 39,A-3,H&GN, PD 16351'.

## Oil Well Completions

WHEELER (MILLS RANCH Granite Wash K.C.) Sanguine Gas Exploration, L.L.C., #105 Sallie, Sec. 5,L, J.M. Lindsey, spud 4-2-08, drlg. compl 4-19-08, tested 5-3-08, flowed 467 bbl. of 44.4 grav. oil + 58 water thru 30/64" hour test, GOR 507, TD 16400', PBD 10491' — Plug-Back

## Gas Well Completions

HEMPHILL (BEGERT 10200) Laredo Petroleum, Inc., #1 Begert Trust '32', Sec. 31,41,H&TC, spud 1-26-08, drlg. compl 2-15-08, tested 4-23-08, potential 1005 MCF, TD 13398', PBD 13270' —

HEMPHILL (BEGERT 10200) Laredo Petroleum, Inc., #28 Clara Green, Sec. 28,41,H&TC, spud 3-14-08, drlg. compl 3-31-08, tested 5-8-08, potential 1475 MCF, TD 13200', PBD 13154'.

HEMPHILL (BEGERT 10200) Laredo Petroleum, Inc., #1 Elm Creek '7', Sec. 7,41,H&TC, spud 2-5-08, drlg. compl 2-29-08, tested 4-11-08, potential 2888 MCF, TD 13425', PBD 13336'.

HEMPHILL (BEGERT 10200) Laredo Petroleum, Inc., #1 Elm Creek '46', Sec. 46,A-1,H&GN, spud 2-14-08, drlg. compl 2-19-08, tested 4-11-08, potential 3424 MCF, TD 13500', PBD 13480' —

HEMPHILL (BEGERT 10200) Laredo Petroleum, Inc., #1 Tepe Estate '37', Sec. 37,41,H&TC, spud 11-12-07, drlg. compl 12-6-07, tested 2-14-08, potential 538 MCF, TD 13100', PBD 13010' —

HEMPHILL (BUFFALO WALLOW Granite Wash) Cordillera Texas, L.P., #3056 Chumbley, Sec. 56,41,H&TC, spud 1-25-08, drlg. compl 2-17-08, tested 6-12-08, potential 521 MCF, TD 12720', PBD 12659' —

HEMPHILL (BUFFALO WALLOW Granite Wash) Granite Operating Co., #1239 Hefley, Sec. 39,M-1,H&GN, spud 2-10-08, drlg. compl 3-5-08, tested 6-12-08, potential 554 MCF, TD 13618', PBD 13545' —

HEMPHILL (BUFFALO WALLOW Granite Wash) Granite Operating Co., #7001 Huff, Sec. 1,4,AB&M, spud 1-18-08, drlg. compl 2-5-08, tested 6-12-08, potential 509 MCF, TD 13400', PBD 13347' —

ROBERTS (N.W. MENDOTA S.W. Granite Wash) Devon Energy Production Co., L.P., #1307 Flowers 'D', Sec. 7,—,BS&F, spud 2-25-08, drlg. compl 3-14-08, tested 4-16-08, TD 10610', PBD 10604' —

WHEELER (EAST PANHANDLE) Questa Energy Corp., #1R Joiner, Sec. 30,24,H&GN, spud 9-4-07, drlg. compl 5-21-08, tested 6-16-08, TD 2450', PBD 2450' —

WHEELER (N.E. WHEELER Granite Wash) Forest Oil Corp., #1655 Austin, Sec. 55,A-4,H&GN, spud 4-17-08, drlg. compl 5-7-08, tested 6-6-08, potential 833 MCF, TD 13865', PBD 13775' —

## LONE STAR NEWS

### State housing agency launching mortgage credit programs

AUSTIN — The Texas Department of Housing and Community Affairs (TDHCA) has launched a \$15 million Mortgage Credit Certificate (MCC) Program to help low to moderate income households purchase their first home and thereby provide an array of economic and societal benefits to the state.

The program will provide an estimated 413 eligible homebuyers with a credit of up to \$2,000 against the federal taxes on the interest paid on their mortgage loan. Reducing the interest payments increases the borrower's disposable income, freeing up more money to qualify for the loan or make monthly mortgage payments.

"Promoting homeownership is a critical mission of the department," said Michael Gerber, TDHCA executive director. "These funds will not only help Texas families purchase their first home, they will generate new construction jobs, increase the community's tax base and create more cohesive, close-knit neighborhoods. I strongly urge anyone who has thought the dream of owning a home was beyond their reach to explore this program. The state of Texas is ready to help you realize your dreams."

Under the program, homebuyers earning up to 115 percent of the area median family income are eligible to deduct 30 percent of the annual interest paid on their mortgage loan up to the maximum amount of \$2,000 per year. Depending on the loan amount and interest rate, homeowners could have up to \$167 per month in additional income to apply to their mortgage.

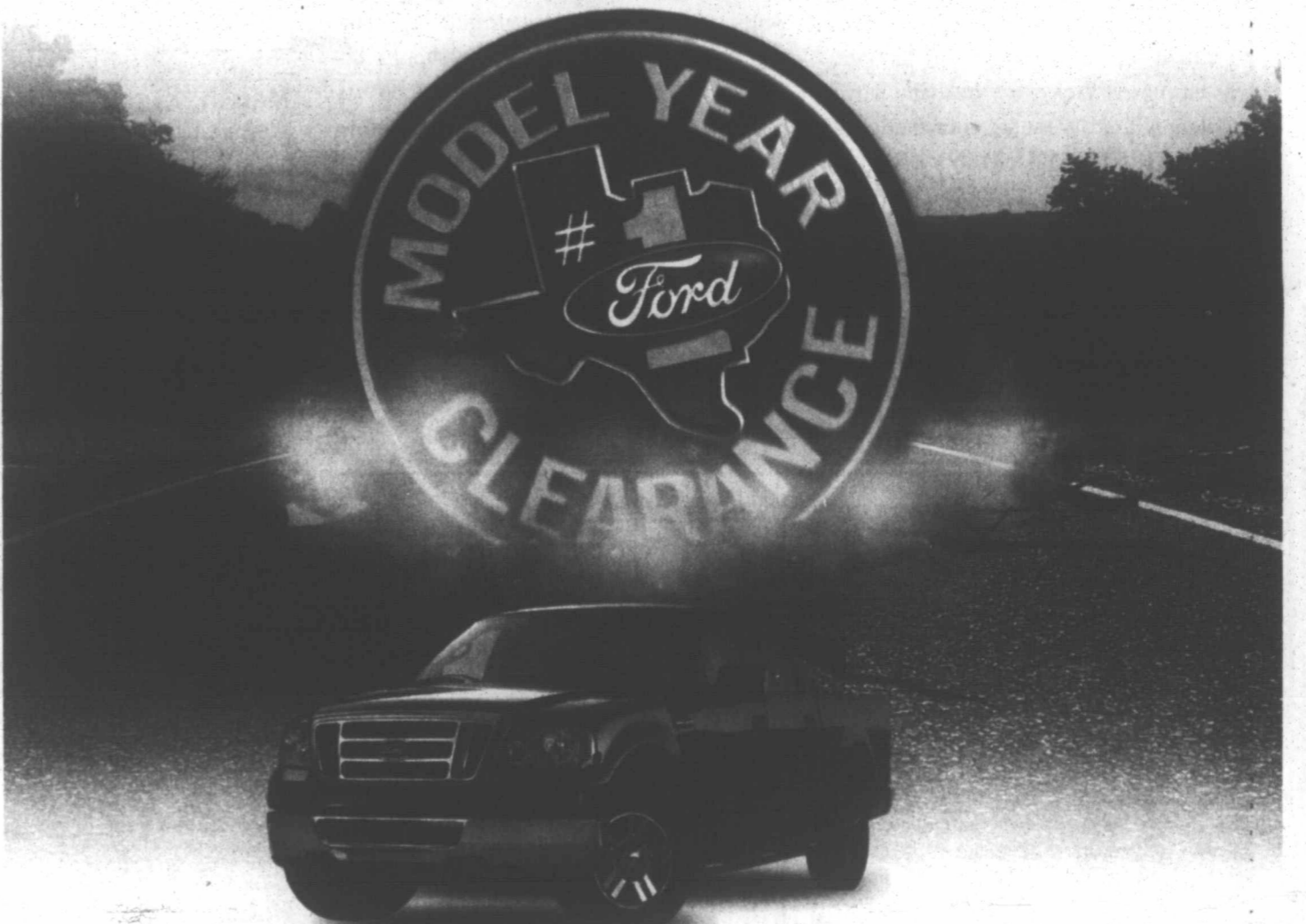
For residents living in certain "targeted" regions of the state, such as portions of southeast Texas designated as the Hurricane Rita Gulf Opportunity (GO) Zone, households may earn up to 140 percent of the median family income and still be eligible.

"The MCC Program is yet another helpful tool that TDHCA can offer to qualifying Texas families who are ready for homeownership," Gerber said. "It is a great program, and we are excited to bring it to our fellow Texans."

All conventional mortgage products are eligible, and loans are available through a network of participating lenders. The MCC Program may not be used to refinance an existing loan, and the homebuyer must meet income limits, meet the qualifying requirements of the mortgage loan, and not have owned a home in the previous three years. The credit cannot be larger than the annual federal income tax liability, after all other credits and deductions have been taken into account.

For more information on the MCC Program, how to qualify for a credit, or to locate the nearest participating lender, call TDHCA's Texas Homeownership Division toll free at 1-800-792-1119 or visit the program's Web site at [www.myfirsttexashome.com](http://www.myfirsttexashome.com).

## IT'S BIGGER

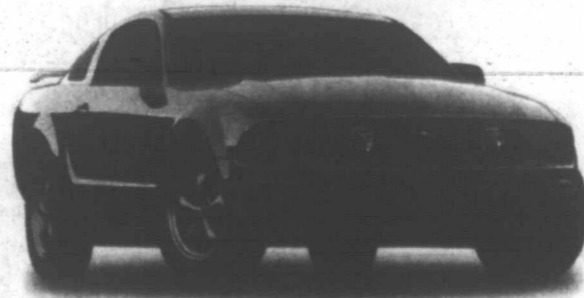


2008 Texas Edition F-150 Super Crew & Super Cab

Employee pricing

-plus-

Up To \$8100 In Factory Rebates



2008 Mustang

Up To \$4000 In Factory Rebates



2008 Expedition

Up To \$8000 In Factory Rebates

-OR-  
0% APR for 72 Months



BEST IN TEXAS  
[texasford.com](http://texasford.com)

Fenton Motors Of Pampa  
123 N. Hobart Street  
Pampa, TX 79065  
806-665-8404  
[www.fentonmotors.com](http://www.fentonmotors.com)

For all offers take new retail delivery from dealer stock by 7/31/08. See dealer for residency restrictions and complete details. F-150: Employee pricing available on 08 F-150 exclude Harley Davidson™ models and Chassis Cabs. \$8,100 in factory rebates based on \$2,500 customer cash + \$1,000 FMCC bonus cash; with approved FMCC credit, not all buyers will qualify + \$3,000 Owner Loyalty cash + \$1,600 Texas Edition Bonus Cash. EXPEDITION: \$8,000 in factory rebates based on \$4,000 customer cash + \$1,000 FMCC bonus cash; with approved FMCC credit, not all buyers will qualify + \$3,000 Owner Loyalty cash. 0% financing for 72 months is not available with any other public incentive offer. Not all buyers will qualify for Ford Credit APR financing. Estimated payments \$13.89 per month per \$1000 financed. MUSTANG: \$4,000 in factory rebates based on \$1,500 customer cash + \$500 FMCC bonus cash; with approved FMCC credit, not all buyers will qualify + \$2,000 Owner Loyalty Cash. OWNER LOYALTY CASH: Available only for customers that currently own or lease a 1998 or newer Ford vehicle and purchase or lease a new 2008-Model F-150 Super Cab or Super Crew, excluding Harley Davidson™ models, Expedition or Mustang. Not compatible with other RCL/RCO Renewal Programs and/or other Owner Loyalty programs.

# Dear Abby...

By Pauline & Jeanne Phillips

**DEAR ABBY:** Please help me -- I am in pieces. My sister is dying of cancer. She has shut me out of her life and has become very hostile toward me. This is breaking my heart, and I don't know how to deal with it. I have done nothing to offend her, and I don't understand why she is acting this way. I understand that my sister is in pain and afraid, but I need her in my life because I love her. What can I do? -- **CARING SISTER IN NORTH CAROLINA**

**DEAR CARING SISTER:** I'm sorry about the sad prognosis your sister received. Many years ago, a doctor named Elisabeth Kubler-Ross identified five distinct emotional stages that a dying person may go through after being diagnosed with a terminal illness. They are: denial, anger, bargaining, depression and acceptance. However, people do not necessarily pass through all of these stages. Sometimes they get "stuck" -- and it appears your sister hasn't made it past the second stage. Spiritual and/or psychological counseling might help her. But if she's unwilling to accept it, all you can do is let her know how much you love her, need her and will always miss her. P.S. A grief support group might be very helpful for you, so check with the American Cancer Society. It can be reached by calling (800) 227-2345 or visiting [www.cancer.org](http://www.cancer.org).

**DEAR ABBY:** My husband and I were invited to a dinner party. Then our hostess told us that guests must bring their own plates and silverware or we would not be permitted to join the dinner. I thought it was extremely tacky; my husband saw no problem with it. What are your thoughts? -- **DINNER GUEST IN DENVER**

**DEAR DINNER GUEST:** Let's put it this way -- your hostess's request was highly unusual. Perhaps the woman didn't have enough china and silverware to accommodate all the people she wanted to come. Of course, she could have provided paper plates and plastic flatware -- and that's what you should have brought so you wouldn't have had to carry home and wash your dirty dishes. P.S. If you chose to attend the woman's dinner party knowing the circumstances, it's not very nice to now be biting the hand that fed you.

**DEAR ABBY:** Now that it's summer I need your help with one of your to-the-point witty comebacks. My husband and I are both fair-skinned. Skin cancer runs in both sides of our families. We always wear sunscreen and lather up our 8-month-old child as well.

Yesterday, a few friends at the pool made jokes about needing sunglasses in our presence because of the sun reflecting off our pale bodies. I became upset and left the pool. Is there something I can say to make a point and let these people know how rude they are when commenting on our lack of a suntan? -- **TANLESS IN SUGAR HILL, GA.**

**DEAR TANLESS:** For many years the American Academy of Dermatology has urged everyone -- regardless of skin tone -- to avoid long-term exposure to the sun, and to always wear sunscreen, even on cloudy days. I see no reason to try and be witty. "Skin cancer runs in both sides of our family, and frankly, you should be careful, too," is a simple way to convey your message. (Let a smile be your umbrella if they give you any flak.)

## For Better Or Worse



## Zits



## Garfield



## Beetle Bailey



## Marvin



## Crossword Puzzle

### CROSSWORD

By THOMAS JOSEPH

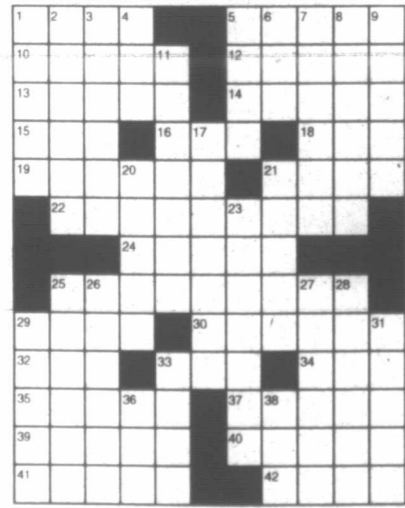
ACROSS

- 1 "In your related dreams!"
- 5 Donut-shaped
- 10 Orlando team
- 12 Sports venue
- 13 Like some tooth-paste
- 14 Municipal
- 15 Before now
- 16 Tennis divider
- 18 Sky sighting
- 19 Type of skiing
- 21 Related
- 22 It handles sight and hearing
- 24 Critic
- 25 Word
- 29 Cronies
- 30 Composer
- 32 Ornate planter
- 33 Workout site
- 34 Bulldog backer
- 35 Nonsense
- 37 Writer

### DOWN

- 1 Jordan's capital
- 2 Ho Chi Minh City
- 3 Disregard
- 4 Appropriate
- 5 Stretched
- 6 Bruins legend
- 7 Chastise
- 8 Facing trouble
- 9 Church code
- 11 Distrustful
- 17 Market concern
- 20 Karate schools
- 21 Top story
- 23 Government
- 25 Constricted
- 26 Climate affecting current
- 27 Put away
- 28 Scuffles
- 29 Green strokes
- 31 Singer Ronstadt
- 33 Neuter
- 36 Course goal
- 38 Hurried flight

NEW CROSSWORD BOOK! Send \$4.75 (check/m.o.) to Thomas Joseph Book 2, P.O. Box 536475, Orlando, FL 32853-6475



## Marmaduke



## The Family Circus

THE FAMILY CIRCUS By Bil Keane



## B.C.



## Hagar The Horrible



## Peanuts



## Flo & Friends



## Blondie





THURSDAY AFTERNOON / EVENING													JULY 24, 2008												
TVData	12pm	12:30	1pm	1:30	2pm	2:30	3pm	3:30	4pm	4:30	5pm	5:30	6pm	6:30	7pm	7:30	8pm	8:30	9pm	9:30	10pm				
KACV	WordWorld	SR-Be Fr	Painting	Painting	Reading	Lions	Arthur	WordGirl	Curious	Cliff Pup	Cyberchase	Fetch! With	News-Lehrer	The This Old House Hour	Carrier "Groundhog Day"	Globe Trekker	C. Rose								
KAMR	Days of our Lives	N	Paid Prog.	Paid Prog.	Martha Stewart	Rachael Ray	Rachael Ray	Ellen DeGeneres Show	News (N)	NBC News	News (N)	Entertain	World Vision	Dateline NBC	News (N)	Family Guy									
KCIT	Judge Mathis	△	The People's Court	Divorce Ct.	Young Judge	Judge	Malcolm	Simpsons	Lopez	Raymond	Friends	Two Men	You Smarter?	You Can Dance	News (N)	Family Guy									
KFDA	News (N)	Bold & B.	As the World Turns	Guiding Light	N	△	Dr. Phil	△	Inside	Jeopardy!	News (N)	CBS News	News (N)	Millionaire	Greatest American Dog	CSI: Crime Scn	Swingtown "Puzzlerama"	News (N)							
KVII	News	Paid Prog.	One Life to Live	N	△	△	General Hospital	N	Judge Judy	Judge Judy	Oprah Winfrey	News	ABC News	News	Fortune	Ugly Betty	△	News							
A&E	CSI: Miami "Wannabe"	Crossing Jordan	△	△	The Sopranos	△	△	American Justice	Cold Case Files	△	Cold Case Files	△	△	CSI: Miami "Wannabe"	The First 48	△	The First 48	△	Crime 360						
AMC	"Jaws the Revenge"	Movie *** "The Hunt for Red October" (1990) Sean Connery.			Wild Life	Chimp Eden	Growing Up... "Zebra"	Pet Star	△	△	It's Me or the Dog	△	△	Unexplained, Unexplored	Elephant Diaries	△	Elephant Diaries	△	Animal Precinct	△	Elephant				
ANPL	Animal Precinct	△	The Most Extreme	△	Wild Life	Chimp Eden	Growing Up... "Zebra"	Pet Star	△	△	It's Me or the Dog	△	△	Unexplained, Unexplored	Elephant Diaries	△	Elephant Diaries	△	Animal Precinct	△	Elephant				
BET	BET Now	△	Strokes	Strokes	Harvey	Harvey	Rap City	△	△	△	106 & Park: BET's Top 10	Live	△	How-Made	How-Made	Deadliest Catch	△	Deadliest Catch	△	How-Made					
DISC	A Haunting	△	A Haunting	△	The FBI Files	△	△	Deadliest Catch	△	△	It Takes a Thief	△	△	How-Made	How-Made	Deadliest Catch	△	Deadliest Catch	△	How-Made					
DISN	"Life Ruff"	Phineas	Phineas	Phineas	Emperor	Emperor	Suite Life	Suite Life	Cory	Cory	Wizards	Wizards	Montana	Suite Life	Wizards	Life Derek	Suite Life								
ESPN	SportsCenter	△	Best of 1st and 10	△	Lines	Football	NFL Live	Burning	SportsCenter Special	SportsCenter	(Live)	△	△	MLS Soccer: All-Star Game - MLS All-Stars vs. West Ham United	Baseball Tonight	(Live)	SportsCtr.								
ESPN2	(11:00) ESPN First Take	△	IndyCar Racing	△	New York Auto Show	△	△	△	△	△	△	△	△	△	△	△	△	△	△	△	△	△			
FAM	Sister, Sis.	Sister, Sis.	Sabrina	Sabrina	Full House	Full House	What I Like	What I Like	△	△	△	△	△	△	△	△	△	△	△	△	△	△			
FX	High School Football: 2007 Texas 4A Championship	△	△	△	Malcolm	King of Hill	King of Hill	70s Show	△	△	△	△	△	△	△	△	△	△	△	△	△	△			
FX	Spin City	King of Hill	King of Hill	Malcolm	King of Hill	King of Hill	70s Show	△	△	△	△	△	△	△	△	△	△	△	△	△	△	△			
HGTV	To Sell	Dime	Dime	Divine	Big Reveal	Color	Curb	Curb	△	△	△	△	△	△	△	△	△	△	△	△	△	△			
HIST	Modern Marvels	△	The Lost Book of Nostradamus	△	Mega Disasters	△	△	△	△	△	△	△	△	△	△	△	△	△	△	△	△	△			
LIFE	"She's Having a Baby"	Movie "Why I Wore Lipstick to My Mastectomy"			Golden	Golden	Still Stnd	Still Stnd	Reba	Reba	Still Stnd	Still Stnd	Reba	Reba	Still Stnd	Still Stnd	Movie *** "Duets" (2000) Gwyneth Paltrow.	Will-Grace							
NICK	Barnyard	Barnyard	Barnyard	Barnyard	iCarly	iCarly	iCarly	iCarly	5 at 5	△	△	△	△	△	△	△	△	△	△	△	△	△			
SCIFI	The X-Files	△	The X-Files "Bad Blood"	△	The X-Files "Milagro"	△	△	△	Stargate Atlantis "Allies"	△	△	△	△	△	△	△	△	△	△	△	△	△			
SPKIE	Most Amazing Videos	△	Most Amazing Videos	△	Most Amazing Videos	△	△	△	Star Trek: Voyager	△	△	△	△	△	△	△	△	△	△	△	△	△			
TBN	Behind	All Odds	Life Today	Marilyn H.	The 700 Club	△	△	△	John Hagee	Rod Parsley	Praise the Lord	△	△	△	△	△	△	△	△	△	△	△			
TCM	"711 Ocean Drive"	Movie *** "Kiss Me Deadly" (1955) Paul Stewart			Movie *** "The Naked City" (1948)				Movie *** "The Out-Towners" (1970) (E)					Movie *** "G-Men" (1935) (E)					Movie *** "Confessions of a Nazi Spy" (1939)						
TLC	Younger	Younger	Baby Story	Baby Story	Baby	Baby	Home Chef	Home Chef	Jon & Kate	Jon & Kate	What Not to Wear	△	△	△	△	△	△	△	△	△	△	△			
TNT	Golf: Senior British Open	Law & Order	(DVS)	Law & Order "Hindsight"	△	△	Charmed "Scry Hard"	△	Charmed	△	△	△	△	△	△	△	△	△	△	△	△	△			
TYLAND	Hillbillies	Hillbillies	Gunamoke	△	Bonanza	△	△	△	Hogan	Hogan	Hillbillies	Hillbillies	Griffith	Griffith	Griffith	Griffith	Griffith	Griffith	Griffith	Griffith	Griffith	Griffith			
UNI	Muchachitas Como Tu	Lola, Erase una Vez	Palabra de Mujer	△	El Gordo y la Flaca	Primer Impacto	△	△	Que Locura	Noticiero	Querida Enemiga	Diablo-Guapos	Fuego en la Sangre	La Rosa de Guadalupe	Impacto										
USA	Wings	△	Movie *** "How to Lose a Guy in 10 Days" (2003) (E)		Burn Notice	△	△	△	Burn Notice	△	△	△	△	△	△	△	△	△	△	△	△	△			
WGN	WGN News at Noon	N	Matlock "The Thief"	△	Funnest Home Videos	△	△	△	Cosby	Cosby	Sister, Sis.	Sister, Sis.	Funnest	Funnest	Funnest Home Videos	Movie *** "10 Things I Hate About You" (1999)	WGN News at Nine (N)	Scrubs	△						
WTBS	Home Imp.	Home Imp.	Just Shoot	Just Shoot	Yes, Dear	Yes, Dear	King	King	Seinfeld	Seinfeld	Friends	△	△	△	△	△	△	△	△	△	△	△			
HBO	(11:30) "Stuart Little"	Costas NOW	△	△	"Garfield: Tail"	△	△	△	(4:5) Movie *** "King Ralph" (1991) (E)	△	△	△	△	△	△	△	△	△	△	△	△	△			
MAX	Movie "Little Miss Sunshine" (2006)	(4:45) Movie *** "The Sentinel" (2006) (E)	△	△	(4:5) Movie *** "The Legend of Bagdad Vance" (2000) (E)	△	△	△	(15) Movie *** "Being John Malkovich" (1999) (E)	△	△	△	△	△	△	△	△	△	△	△	△	△			
SHOW	Movie *** "The Confessor" (E)	(4:5) Movie *** "G" (2002) Richard T. Jones. (E)	△	△	Movie *** "Godsend" (2004) (E)	△	△	△	(15) Movie *** "Being John Malkovich" (1999) (E)	△	△	△	△	△	△	△	△	△	△	△	△	△			
TMC	(1:15) Movie *** "A Very Serious Person" (2006)	Movie *** "Cannonball" (1976)	△	△	(4:0) Movie *** "Honky Tonk Freeway" (1981)	△	△	△	Movie *** "A Little Trip to Heaven" (2002) (E)	△	△	△	△	△	△	△	△	△	△	△	△	△			

FRIDAY AFTERNOON / EVENING													JULY 25, 2008												
TVData	12pm	12:30	1pm	1:30	2pm	2:30	3pm	3:30	4pm	4:30	5pm	5:30	6pm	6:30	7pm	7:30	8pm	8:30	9pm	9:30	10pm				
KACV	WordWorld	Cultivating	Garden	Painting	Reading	Lions	Arthur	WordGirl	Curious	Clifford-Red	Cyberchase	Fetch! With	News-Lehrer	Wash Wk	NOW	Bill Moyers Journal	N	Time Goes	Summer	C. Rose					
KAMR	Days of our Lives	N	Paid Prog.	Paid Prog.	Martha Stewart	Rachael Ray	Rachael Ray	Ellen DeGeneres Show	News (N)	NBC News	News (N)	Entertain	World Vision	Dateline NBC	△	News (N)	Family Guy								
KCIT	Judge Mathis	△	The People's Court	Divorce Ct.	Young Judge	Judge	Malcolm	Simpsons	Lopez	Raymond	Friends	Two Men	You Smarter?	You Can Dance	News (N)	Family Guy									
KFDA	News (N)	Bold & B.	As the World Turns	Guiding Light	N	△	Dr. Phil	△	Inside	Jeopardy!	News (N)	CBS News	News (N)	Millionaire	Ghost Whisperer	△	NUMB3RS "Burn Rate"	Flashpoint	(N) (E)	News (N)					
KVII	News	Paid Prog.	One Life to Live	N	△	△	General Hospital	N	Judge Judy	Judge Judy	Oprah Winfrey	News	ABC News	News	Fortune	Dance Machine	(N) (E)	Duel	(N) (E)	20/20	News				
A&E	CSI: Miami "Deadline"	Crossing Jordan	△	△	The Sopranos "Isabella"	American Justice	Cold Case Files	△	Cold Case Files	△	△	△	△	CSI: Miami "Deadline"	CSI: Miami	△	△	CSI: Miami	△	△	△	△			
AMC	Movie *** "Firestarter" (1984) David Keith.	Movie *** "The Usual Suspects" (1995) Stephen Baldwin.			Movie *** "My Cousin Vinny" (1992) Comedy Joe Pesci.				Movie *** "Road House" (1989) Patrick Swayze, Kelly Lynch.					Movie *** "Road House" (1989) Patrick Swayze, Kelly Lynch.	Movie *** "Christine" (1982) (E)										
ANPL	Animal Precinct	△	The Most Extreme	△	Wild Life	Chimp Eden	Growing Up... "Gorilla"	Pet Star	△	△	It's Me or the Dog	△	△	Unexplained, Unexplored	Elephant Diaries	△	Elephant Diaries	△	Animal Precinct	△	Animal				
BET	BET Now	△	Strokes	Strokes	Harvey	Harvey	Rap City	△	△	△	106 & Park: BET's Top 10	Live	△	How-Made	How-Made	Man vs. Wild	△	Man vs. Wild	△	Man vs. Wild	△				
DISC	A Haunting	△	A Haunting	△	The FBI Files	△	△	Deadliest Catch	△	△	It Takes a Thief	△	△	How-Made	How-Made	Man vs. Wild	△	Man vs. Wild	△	Man vs. Wild	△				
DISN	"Pocahn	Suite Life	Suite Life	Suite Life	Cory	Cory	Wizards	Wizards	Life Derek	Life Derek	Suite Life	Suite Life	Montana	Suite Life	Wizards	Life Derek	Suite Life								
ESPN	SportsCenter	△	Best of 1st and 10	△	Lines	Football	NFL Live	Burning	SportsCenter Special	SportsCenter	(Live)	△	△	Dale Jr. - Shifting Gears	Basketball United States vs. Team TBA. (Live)	Baseball Tonight	(Live)	SportsCtr.							
ESPN2	ATP Tennis: Rogers Cup - Quarterfinal	△	△	△	Shooting	NASCAR Race	△	△	Best of Burning	△	△	△	△	ATP Tennis: Rogers Cup - Quarterfinal	Boxing Friday Night Fights. (Live)	WTA Tennis									
FAM	Sister, Sis.	Sister, Sis.	Sabrina	Sabrina	Full House	Full House	What I Like	What I Like	△	△	△	△	△	△	△	△	△	△	△	△	△	△			
FX	Billiards: Pool	Rodeo	Acad Golf	△	Astros In	Big 12	Best Damn 50	△	Fight League	△	△	△	△	△	△	△	△	△	△	△	△	△			
FX	Malcolm	King of Hill	King of Hill	Malcolm	Malcolm	King of Hill	King of Hill	70s Show	Movie *** "Coach Carter" (2005, Drama) Samuel L. Jackson. (E)					Movie *** "Coach Carter" (2005, Drama) Samuel L. Jackson. (E)											
HGTV	To Sell	Dime	Dime	Divine	Big Reveal	Color	Save Planet	△	UFO Hunters	△	UFO Hunters	△	△	△	△	△	△	△	△	△	△	△			
HIST	Modern Marvels	△	UFO Hunters	△	UFO Hunters	△	△	△	UFO Hunters	△	△	△	△	△	△	△	△	△	△	△	△	△			
LIFE	"Before He Wakes"	Movie "An Unfinished Affair" (1996) Jennie Garth.			Golden	Golden	Still Stnd	Still Stnd	Reba	Reba	Still Stnd	Still Stnd	Reba	Reba	Still Stnd	Still Stnd	Movie *** "Devil in the Flesh" (1997) (E)	Will-Grace							
NICK	SpongeBob	SpongeBob	SpongeBob	SpongeBob	Drake	Drake	5 at 5	△	Barnyard	SpongeBob	Drake	Zoey 101	△	△	△	△	△	△	△	△	△	△			
SCIFI	Tru Calling	△	Tru Calling "Grace"	△	The X-Files "The Gift"	△	△	△	Stargate Atlantis	△	△	△	△	△	△	△	△	△	△	△	△	△			
SPKIE	Most Amazing Videos	△	Most Amazing Videos	△	Star Trek: Voyager	△	△	△	Star Trek: Voyager	△	△	△	△	△	△	△	△	△	△	△	△	△			
TBN	Behind	Paula White	Life Today	Marilyn H.	The 700 Club	△	△	△	John Hagee	Rod Parsley	Praise the Lord	△	△	△	△	△	△	△	△	△	△	△			
TCM	"To Have and Have Not"	(1:15) Movie *** "Nobody Lives Forever"			Movie *** "Best of the Badmen"				Movie *** "Glory" (1956) (E)					(1:15) MGM Parade	Movie *** "Bedknobs and Broomsticks" (1971)					Movie *** "Lassie Come Home"					
TLC	Younger	Younger	Baby Story	Baby Story	Baby	Baby	Home Chef	Home Chef	Jon & Kate Plus 8	△	△	△	△	△	△	△	△	△	△	△	△	△			
TNT	Golf: Senior British Open	Law & Order	(DVS)	Law & Order "DVS)	△	△	Charmed	△	Charmed	△	△	△	△	△	△	△	△	△	△	△	△	△			
TYLAND	Hillbillies	Hillbillies	Gunamoke	△	Bonanza	△	△	△	Foreman	Foreman	Hogan	Hogan	Griffith												



# THE PAMPA NEWS CLASSIFIED

IT'S EASY ... PLACE YOUR AD BY TELEPHONE

669-2525 OR 800-687-3348

VISA AND MASTERCARD ACCEPTED

**POLICIES...** We ask that you check your ad after its first insertion for mistakes. THE PAMPA NEWS is not responsible for more than ONE incorrect insertion or omission on any ad ordered for more than one insertion. Requests for corrections should be made within 24 hours of the first publication. The publisher reserves the right to edit, reject or properly classify any copy.

**NOTICE...** All Real Estate advertised herein is subject to the Federal Fair Housing Act, which makes it illegal to advertise "any preference, limitation, or discrimination because of race, color, religion, sex, handicap, familial status or national origin, or intention to make any such preference, limitation or discrimination." State law also forbids discrimination based on these factors. We will not knowingly accept any advertising for real estate which is in violation of the law. All persons are hereby informed that all dwellings advertised are available on an equal opportunity basis.



FOR RATES AND ADDITIONAL INFORMATION CALL 669-2525

## SUMMER SPECIAL

5 LINES FOR 7 DAYS  
**\$19.00**

7 LINES FOR 7 DAYS  
**\$21.00**

**DAYS MUST BE CONSECUTIVE  
GOOD FOR JUNE, JULY AND AUGUST**

PAID IN ADVANCE • VISA & MASTERCARD ACCEPTED

### THE PAMPA NEWS

806-669-2525 • 800-687-3348  
FAX 806-669-2520

**Realtors**

**First Landmark Realty**  
665-0717  
2545 Perryton Pkwy.  
in the Pampa Mall

**NEW LISTING**  
Incredible 4 bedroom, 2 1/2 baths. Huge open living-kitchen and dining. Beautiful tile through the open living area. Fireplace, office, Hobby room, 15 skylights throughout. Kitchen has butcher block and built in desk. Large utility room. Basement. Double car garage. Oversized back yard has a 26 x 26 wooden deck. Fresh paint throughout. A very unique home. Call Irvine for additional details.

**REDUCED-REDUCED**  
It's a bargain. 3 bedroom brick, 1 3/4 baths. Huge living room has new windows. Den, Basement. Large screened in patio for entertaining. All plumbing in house, water and gas lines plus water heater replaced. Beautiful front door and large tiled entry. Beautiful location, lots of curb appeal. Owner says sell. Call Irvine for an appointment. 7908

**LOOKING FOR 4 BEDROOMS?**  
Then, let us show you this updated brick, 2 full baths. Living room has WB fireplace, kitchen-breakfast combination. Formal dining room. Master bedroom is isolated and has his and hers bath. Price has been reduced. Call our office for an appointment. 7977

**BRAND NEW HOME**  
Wonderful 3 bedroom brick, 2 1/2 baths. Granite kitchen counter-top plus upscale appliances. Office could be a 4th bedroom. Open dining-room-family room. Covered patio. Sodded grass, fence and sprinkler system for the yards. Beautiful architectural designs throughout the home, 12' ceilings dining, foyer and family room. Class 4 composition roof allows for reduced insurance cost. Energy efficient duo-foam insulation. Call for additional information. OE

**NEW ON THE MARKET**  
Beautiful 3 bedroom, 1 3/4 baths. Cathedral ceilings in living room. Stone fireplace. Central heat and air. Ceiling fans. Located on an oversized lot. Storage building. Private fenced in back yard with trees. Chainlink dog run. Call Christa for an appointment. 7997

**N. HOBART**  
Former doctors office. Would be suitable for almost any kind of business. Excellent corner lot with great visibility. Call for additional details. OE

**CALL FIRST LANDMARK FIRST FOR ALL OF YOUR REAL ESTATE NEEDS. WE LOVE PUTTING PEOPLE AND PLACES TOGETHER YOUR BUSINESS.**

Christa Carpenter ... 806-669-0463  
Bill Carpenter ... 806-669-0464  
Michelle Hockett ... 806-669-0465  
Travis Hockett ... 806-669-0466  
Travis Hockett ... 806-669-0467  
Chris Moore ... 806-669-0468

**Realtors**

**OnePlus Realty**  
669-7000

**NEW LISTING**  
3/2 brick in great location. New paint, ceramic, carpet, + more. Ready to move in. Close to Travis school & shopping. Call Gail to see 1011

**Sierra today! Hurry - Won't last long!!!**

**BACK ON THE MARKET**  
1609 Hamilton, 3/2/1 with shop. Completely remodeled with central HVA, cedar closet, large rooms with extra room for office/studio. 08-8036

**Former Dollar General**  
Building on great high traffic corner downtown Pampa. Put your business in one of the most visible locations in town!

**COMMERCIAL CORNER**  
175' frontage on E. Frederic. Would make excellent location for storage units, strip-center, used car lot or shop. Use your imagination. \$35,000.00

**LEGAL NOTICE:**  
These Texas Lottery Commission Scratch-Off games will close on July 28, 2008. You have until January 24, 2009, to redeem any tickets for these games: #785 10 Times Lucky (\$10) overall odds are 1 in 3.43. #1002 5X Winnings (\$2) overall odds are 1 in 4.12. #1037 Majestic Jewels (\$3) overall odds are 1 in 3.79. #1061 Sum It Up!™ (\$1) overall odds are 1 in 4.97. The odds listed here are the overall odds of winning any prize in a game, including break-even prizes. Lottery retailers are authorized to redeem prizes of up to and including \$599. Prizes of \$600 or more must be claimed in person at a Lottery Claim Center or by mail with a completed Texas Lottery claim form; however, annuity prizes or prizes over \$999,999 must be claimed in person at the Commission Headquarters in Austin. Call Customer Service at 1-800-377-LOTTO or visit the Lottery Web at www.tslottery.org for more information and location of nearest Claim Center. The Texas Lottery is not responsible for lost or stolen tickets, or for tickets lost in the mail. Tickets, transactions, players, and winners are subject to, and players and winners agree to abide by, all applicable laws, Commission rules, regulations, policies, directives, instructions, conditions, procedures and final decisions of the Executive Director. A scratch-off game may continue to be sold even when all the top prizes have been claimed. Must be 18 years of age or older to purchase a Texas Lottery ticket. PLAY RESPONSIBLY. The Texas Lottery Supports Texas Education.  
B-8 July 20, 2008

**3 Personal**

**\*ADOPT\*** Young loving professional married couple (& puppy) excited to give your baby LOVE, laughter, opportunity. Expenses paid. Julie & Matt \*1-866-489-2796\*

**5 Special Notices**

**ADVERTISING Material to be placed in the Pampa News, MUST be placed through the Pampa News Office Only.**

**10 Lost/Found**

**REWARD** for information leading to the safe return of the dog that was taken from Garage Sale at 2531 Mary Ellen, Sat. June 28th, 2008. Call 806-688-0024

**13 Bus. Opp.**

**GREAT investment opp.** Pampa motel. Retired couple or individual. 665-1875, 806-383-1985.

**14d Carpentry**

**Carpentry, Roofing, Replacement Windows, steel siding & trim. Continuous gutters. Jerry Nicholas 669-9991, 662-8169**

**CUSTOM Building & Remodeling.** Replacement windows. Ref. avail. Shawn Deaver Const. 662-2977 or 665-0354.

**OVERHEAD DOOR REPAIR** Kidwell Construction. Call 669-6347.

**RICHARD'S General Carpentry, Roofs - Painting, Building & Remodeling. Fences & sheetrock. 886-0267, 275-9038**

**14e Carpet Serv.**

**NU-WAY Cleaning service, carpets, upholstery, walls, ceilings. Quality. doesn't cost...it pays! No steam used. Bob Marx owner-operator. 665-3541, or from out of town, 800-536-5341.**

**14h Gen. Serv.**

**HOUSE Cracking? In bricks or walls? Childers Brothers, Inc. 800-299-9563, 806-352-9563**

**COX Fence Company.** Repair old fence or build new. Free estimates. Call 669-7769.

**CERAMIC tile work.** Remodeling floor, shower, kitchen. Texture, painting, dry wall. Free est. Call 665-3453 leave message. Jesus Barraza.

**CAGLE BACKHOE SERVICE 898-2149**

**JH Concrete Work.** Stamps, driveways, addition, fences, patios. Free Est. 806-382-5408.

**DRIVEWAY Repair, Dirt Work, Light hauling. Call 806-679-7985**

**14s Plumbing/Heat**

**JACK'S Plumbing, 715 W. Foster, 665-7115.**

**Larry Baker Plumbing Heating/Air Conditioning Borger Hwy. 665-4392**

**21 Help Wanted**

**NOTICE: All ads that contain phone numbers or give reference to a number with an area code of 809 or a prefix of 011 are international toll numbers and you will be charged international long distance rates. For more information and assistance regarding the investigation of work at home opportunities and job lists, The Pampa News urges its readers to contact the Better Business Bureau of South Texas, 699 S. International Blvd., Westaco, TX. 78596, (210) 968-3678.**

**21 Help Wanted**

**NOTICE**  
Readers are urged to fully investigate advertisements which require payment in advance for information, services or goods.

**Petroleum Bulk Drivers**

**Eastex Crude Co.** is taking applications in Pampa, TX. Applicants must have a Class "A" CDL with Hazmat & Tanker Endorsements. Home Daily. Full Benefit Package.

(903)856-2401 x-137 (800)443-8580 Clint

**CDL Drivers Needed!**

**Night & Day shifts available in Miami, Tx. Must pass drug test. Competitive wages, paid weekly, 401K & Insurance, 2 weeks vacation after 1 year. Please call Turner Energy at (806) 898-0414**

**Drivers: Flatbed HCT Now Signing-on Lease/Owner Operator! No Truck? No Problem! Great Revenues + Fuel Surcharges! 800-635-7687 x11**

**TAKING applications for all positions.** Johnson Home Furnishings. 801 W. Francis.

**YARD/SALES Person.** Highly self-motivated. Full time. White House Lumber, 101 S. Ballard.

**DOMINO'S PIZZA Earn good money!! Part Time! Need Drivers Apply at 1332 Hobart, Pampa**

**WELLNESS Coaches** needed: 5550-2550. Work at Home or Office. Full training. 806.274.2665.

**TOP O' Texas Oilfield Service** needs Class A CDL Drivers. Benefits. Apply 408 S. Price Rd.

**ASME Code Welder.** Benefits avail., weld-test req. Apply in person, 1333 N. Price Rd., Pampa

**FRANK Phillips College Nursing Instructors** for Perryton / Guyton (full-time) and Dalhart (part-time). Minimum 3 yrs. as RN with varied exp. Send letter of interest, resume, Application for Employment form, and names and daytime phone numbers of 3 professional references to: Gloria Rummel, FPC, PO Box 5118, Borger, TX 79008-5118.

**McLean Care Center** has immediate opening for Certified Nurse Aides. Call 806-779-2469 or come by 605 W. 7th, McLean, to apply.

**Want a Career in the Oil and Gas Industry?** Must be willing to relocate. Have a good driving record & background. Must have a GED. Please contact 806-648-2633.

**21 Help Wanted**

**HIRING Rig Supervisor.** Minimum 10 years experience on pulling unit. 401K, Insurance, Vacation, Holidays. Send resume to Box 43, Pampa, TX.

**HELP Wanted: Part-Time Evening Dietary Helper.** Come in and apply in person or call for more information. St. Ann's Nursing Home, Panhandle. 537-3194

**PETCO Petroleum** is now hiring a pumper. Experience preferred but not required. Oilfield experience a plus. Insurance, Vacation, 401K, Holidays. Call Dennis @ 806-669-3947.

**NEEDED Drivers, Cook & Prep Person at Pizza Hut Delivery (1500 N. Banks). Ins. avail. & 401(k). Apply in person. No Phone Calls Please!**

**NEED Overhead Door Helper or Technician.** Rasco Construction, 1000 S. Price Rd. Please No Phone Calls.

**TRUCK Drivers** needed & hot shot drivers. Drug test and references required. Competitive pay! Call 665-0379.

**HAPPY BIRTHDAY** for Monday, July 21, 2008:

Learn not to react to immediate situations, as upsetting as they might be to your year. Others surround you; your popularity grows. You might feel as if anything is possible. Just the same, there could be bolts of reality that make you wonder. Sometimes reactions could be a bit strong. Make this your mantra: Detach and think. If you are single and you manage to stay footloose and fancy-free, on a deep level you want to. If you are unhappy with being single, look within and see what your inner messages are. If you are attached, the two of you might feel that relating is like being on a seesaw. Trust that ultimately you will become closer. PISCES encourages day-dreams.

**The Stars Show the Kind of Day You'll Have:** 5-Dynamic; 4-Positive; 3-Average; 2-So-so; 1-Difficult

**ARIES (March 21-April 19)**

Take a deep breath and think before you decide what to do. You might wonder whether you should push a key project ahead. Lie back and evaluate for a while. Tonight: Get some extra R and R. **TAURUS (April 20-May 20)**

Your goals and commitments are tested. If you're as stubborn as a Bull, you could receive a lot of flak. You wonder what to do and when. Think in terms of gains and growth. Be aware of your limits, and state them. Tonight: A friend needs to air a problem. **GEMINI (May 21-June 20)**

You might want to verify what is happening with a boss. Though his growing does seem directed at you, it

leaves you with a choice. You might not be sure which way to go. Center on doing what you need to do, possibly solo, perhaps just for now. Tonight: Rent a movie. This Week: Be part of a well-oiled team. You'll get amazing results. **LEO (July 23-Aug. 22)**

Others dominate, which is sometimes difficult for you. Right now, understand that your influence is moot. So why not go off and have a jolly good time by yourself or with one compliant person? Relax with the moment. Tonight: Make special time if requested. This Week: Ever playful, you see more options than many. Take that ability into different facets of your life. **VIRGO (Aug. 23-Sept. 22)**

Complete a project or indulge in a favored pastime during the day. Though you might think you have no plans, you might be surprised by what pops into your life. You will want to say yes and yes. Tonight: Go with the winds of fate. This Week: Work from home if possible, understanding your limits. **LIBRA (Sept. 23-Oct. 22)**

You might act like you don't have a care in the world, but those who know you understand that more is going on. Though you might have a late lunch, the time afterward needs to be just for you. Isn't there a project to complete or a letter to write? Tonight: Easy does it. This Week: Make calls, schedule meetings and let others know where you are coming from. **SCORPIO (Oct. 23-Nov. 21)**

Happiness surrounds family and home. You might need to decide on a different approach with a difficult or touchy friend. Remember what a loved one or child really means to you. Treat this person in that vein. Tonight: Let romance happen. This Week: Expenses could spiral upward. Express your feelings. **SAGITTARIUS (Nov. 22-Dec. 21)**

Speak your mind and ask for more of what you want. Others might not be responsive, but it is important to put your needs out there. You can no longer

**CANCER (June 21-July 22)**

Others prove not to be as flexible as you might like. This situation

**21 Help Wanted**

**NEEDED Drivers, Cook & Prep Person at Pizza Hut Delivery (1500 N. Banks). Ins. avail. & 401(k). Apply in person. No Phone Calls Please!**

**NEED Overhead Door Helper or Technician.** Rasco Construction, 1000 S. Price Rd. Please No Phone Calls.

**TRUCK Drivers** needed & hot shot drivers. Drug test and references required. Competitive pay! Call 665-0379.

**HAPPY BIRTHDAY** for Monday, July 21, 2008:

Learn not to react to immediate situations, as upsetting as they might be to your year. Others surround you; your popularity grows. You might feel as if anything is possible. Just the same, there could be bolts of reality that make you wonder. Sometimes reactions could be a bit strong. Make this your mantra: Detach and think. If you are single and you manage to stay footloose and fancy-free, on a deep level you want to. If you are unhappy with being single, look within and see what your inner messages are. If you are attached, the two of you might feel that relating is like being on a seesaw. Trust that ultimately you will become closer. PISCES encourages day-dreams.

**The Stars Show the Kind of Day You'll Have:** 5-Dynamic; 4-Positive; 3-Average; 2-So-so; 1-Difficult

**ARIES (March 21-April 19)**

Take a deep breath and think before you decide what to do. You might wonder whether you should push a key project ahead. Lie back and evaluate for a while. Tonight: Get some extra R and R. **TAURUS (April 20-May 20)**

Your goals and commitments are tested. If you're as stubborn as a Bull, you could receive a lot of flak. You wonder what to do and when. Think in terms of gains and growth. Be aware of your limits, and state them. Tonight: A friend needs to air a problem. **GEMINI (May 21-June 20)**

You might want to verify what is happening with a boss. Though his growing does seem directed at you, it

leaves you with a choice. You might not be sure which way to go. Center on doing what you need to do, possibly solo, perhaps just for now. Tonight: Rent a movie. This Week: Be part of a well-oiled team. You'll get amazing results. **LEO (July 23-Aug. 22)**

Others dominate, which is sometimes difficult for you. Right now, understand that your influence is moot. So why not go off and have a jolly good time by yourself or with one compliant person? Relax with the moment. Tonight: Make special time if requested. This Week: Ever playful, you see more options than many. Take that ability into different facets of your life. **VIRGO (Aug. 23-Sept. 22)**

Complete a project or indulge in a favored pastime during the day. Though you might think you have no plans, you might be surprised by what pops into your life. You will want to say yes and yes. Tonight: Go with the winds of fate. This Week: Work from home if possible, understanding your limits. **LIBRA (Sept. 23-Oct. 22)**

You might act like you don't have a care in the world, but those who know you understand that more is going on. Though you might have a late lunch, the time afterward needs to be just for you. Isn't there a project to complete or a letter to write? Tonight: Easy does it. This Week: Make calls, schedule meetings and let others know where you are coming from. **SCORPIO (Oct. 23-Nov. 21)**

Happiness surrounds family and home. You might need to decide on a different approach with a difficult or touchy friend. Remember what a loved one or child really means to you. Treat this person in that vein. Tonight: Let romance happen. This Week: Expenses could spiral upward. Express your feelings. **SAGITTARIUS (Nov. 22-Dec. 21)**

Speak your mind and ask for more of what you want. Others might not be responsive, but it is important to put your needs out there. You can no longer

**CANCER (June 21-July 22)**

Others prove not to be as flexible as you might like. This situation

**21 Help Wanted**

**NEED Overhead Door Helper or Technician.** Rasco Construction, 1000 S. Price Rd. Please No Phone Calls.

**TRUCK Drivers** needed & hot shot drivers. Drug test and references required. Competitive pay! Call 665-0379.

**HAPPY BIRTHDAY** for Monday, July 21, 2008:

Learn not to react to immediate situations, as upsetting as they might be to your year. Others surround you; your popularity grows. You might feel as if anything is possible. Just the same, there could be bolts of reality that make you wonder. Sometimes reactions could be a bit strong. Make this your mantra: Detach and think. If you are single and you manage to stay footloose and fancy-free, on a deep level you want to. If you are unhappy with being single, look within and see what your inner messages are. If you are attached, the two of you might feel that relating is like being on a seesaw. Trust that ultimately you will become closer. PISCES encourages day-dreams.

**The Stars Show the Kind of Day You'll Have:** 5-Dynamic; 4-Positive; 3-Average; 2-So-so; 1-Difficult

**ARIES (March 21-April 19)**

Take a deep breath and think before you decide what to do. You might wonder whether you should push a key project ahead. Lie back and evaluate for a while. Tonight: Get some extra R and R. **TAURUS (April 20-May 20)**

Your goals and commitments are tested. If you're as stubborn as a Bull, you could receive a lot of flak. You wonder what to do and when. Think in terms of gains and growth. Be aware of your limits, and state them. Tonight: A friend needs to air a problem. **GEMINI (May 21-June 20)**

You might want to verify what is happening with a boss. Though his growing does seem directed at you, it

leaves you with a choice. You might not be sure which way to go. Center on doing what you need to do, possibly solo, perhaps just for now. Tonight: Rent a movie. This Week: Be part of a well-oiled team. You'll get amazing results. **LEO (July 23-Aug. 22)**

Others dominate, which is sometimes difficult for you. Right now, understand that your influence is moot. So why not go off and have a jolly good time by yourself or with one compliant person? Relax with the moment. Tonight: Make special time if requested. This Week: Ever playful, you see more options than many. Take that ability into different facets of your life. **VIRGO (Aug. 23-Sept. 22)**

Complete a project or indulge in a favored pastime during the day. Though you might think you have no plans, you might be surprised by what pops into your life. You will want to say yes and yes. Tonight: Go with the winds of fate. This Week: Work from home if possible, understanding your limits. **LIBRA (Sept. 23-Oct. 22)**

You might act like you don't have a care in the world, but those who know you understand that more is going on. Though you might have a late lunch, the time afterward needs to be just for you. Isn't there a project to complete or a letter to write? Tonight: Easy does it. This Week: Make calls, schedule meetings and let others know where you are coming from. **SCORPIO (Oct. 23-Nov. 21)**

Happiness surrounds family and home. You might need to decide on a different approach with a difficult or touchy friend. Remember what a loved one or child really means to you. Treat this person in that vein. Tonight: Let romance happen. This Week: Expenses could spiral upward. Express your feelings. **SAGITTARIUS (Nov. 22-Dec. 21)**

Speak your mind and ask for more of what you want. Others might not be responsive, but it is important to put your needs out there. You can no longer

**CANCER (June 21-July 22)**

Others prove not to be as flexible as you might like. This situation

**21 Help Wanted**

**Job Opportunity:** National Bank of Commerce, Pampa, Texas is taking applications for a teller apply at 1224 N Hobart, Pampa, Texas. National Bank of Commerce is an Equal Opportunity Employer.

**DME Delivery Tech** Needed. Will Train. Heavy Lifting. On Call. Drug and Background Check. 401K & Benefits. National Home Health Care. 1521 N. Hobart.

**PEST Control Company** seeking motivated male or female, must be able to crawl houses, good driving record, 665-5294.

**SAGITTARIUS (Nov. 22-Dec. 21)**

Pressure builds inadvertently. You could feel uncomfortable dealing with a boss as well as a family member. Understanding will evolve if you detach. Chaos will evolve if you trigger. The cards are in your hand. Tonight: Happily heading home.

**CAPRICORN (Dec. 22-Jan. 19)**

You must detach if you don't want to get caught in an emotional whirlwind. Messages get lost; intentions get mixed up. Anger comes in out of the blue. Ask questions and don't take someone for granted. Tonight: Hang out with a friend.

**AQUARIUS (Jan. 20-Feb. 18)**

Use your ability to make someone feel good. If you want, revise your options, knowing that what you are seeking are problems or gaps in your thinking. Make no commitments in the present climate. Learn, question and observe. Tonight: Gather your bills.

**PISCES (Feb. 19-March 20)**

A lot of pressure bubbles up, especially when dealing with others. You might make more of someone's attitude than you need to. Listen to what is going on with a touch of cynicism. Don't make more out of someone's attitude or mood. Tonight: Let others do their thing.

**BORN TODAY**  
Astronomer Jean Picard (1620), violinist Isaac Stern (1920), novelist Ernest Hemingway (1899)

Jacqueline Bigar is on the Internet at <http://www.jacquelinebigar.com>.

© 2008 by King Features Syndicate Inc.

## Horoscopes

**HAPPY BIRTHDAY** for Sunday, July 20, 2008:

You will be able to realize many of your dreams because of a loving partnership. You learn to relate more deeply and intensely than in the past. Others give or share a lot. Together you become quite the team. Look to new ways of interacting. If you are single, someone quite significant enters your life. This person presents a different perspective on living. If you are attached, your significant other is full of great ideas. Help make them a reality. PISCES adds to your dreams.

**The Stars Show the Kind of Day You'll Have:** 5-Dynamic; 4-Positive; 3-Average; 2-So-so; 1-Difficult

**ARIES (March 21-April 19)**

Your imagination could spin out some very unusual plans. Why not give one a try? You might discover what a delightful time you'd have. Don't

**21 Help Wanted**

XTO Energy needs contractor oil field pumper. Experience preferred. Good pay & days off. Call 835-2400, Cell 662-8022.

PORT Elliott CISD is seeking a full-time maintenance worker. Please contact Roy Barker at 806-375-2454.

EAMH has opening for weekend RN at \$250 per 8 hr. shift. Positions for Nurse Aides, starting wages \$8/hr. training provided. Positions also open for LVNs and Dietary. Benefits incl. daily travel pay, paid holidays, vacation, health ins. Apply at 803 Birch St., Canadian, or call 323-6453. EOE.

EZ MONEY is in search of experienced retail / service industry Managers and CSRs for our new Pampa location opening soon! We are closed on Sundays and work better than retail hours. Apply on-line today at [www.ezmoneyjobs.com](http://www.ezmoneyjobs.com)

**Owner Operators**  
75% of Line Haul  
100% of FSC  
High Paying freight  
Huge Pump Discounts  
Extensive Load Board  
Your Trailer or Ours  
Flatbed, Step-deck or RGN  
Min. 1 Yr. OTR Flatbed Exp.  
Pacer Transport, Inc.  
(888)865-9509



**RECEPTIONIST**  
Front line person who will greet visitors while operating a multi-line telephone system, performing various office duties. Accounting experience helpful. Pre-employment physical exam and drug screen required. Competitive wage and benefit package. EOE.

Contact Titan at:  
806-665-3781  
11785 Hwy. 152  
Pampa, Tx. 79065  
[hr@titanspecialties.com](mailto:hr@titanspecialties.com)

**SECRETARY / Office Mgr.** needed for oilfield service business. Apply in person, 1010 S. Price Rd.

**WELDING** and Assembly positions available in manufacturing shop. Apply in person at SCARAB Manufacturing, 2 mi. West of White Deer and 1-1/2 mi. South off Hwy. 60 on County Rd. W.

**FIRST Baptist Church** needs a Director for Child Development/ Daycare. Send letter of interest & resume to First Baptist Church, P.O. Box 621, Pampa. Attn: Gail Cole

**Attention OTR Company Drivers**  
It's all about the MILES!  
\*Top Pay & Benefits  
\*Equip. to Count On!  
\*Rider Program  
\*Layover Pay  
1-888-588-6583 X1

**NURSES** Unlimited, Inc. is seeking enthusiastic and outgoing attendants to assist clients in the home with personal care, meal prep & light housekeeping. P-T. EOE. Call 1-888-859-0631.

**THERAPIST TECHNICIAN I**  
FIR / PAMPA  
\$8.14 per hour

Texas Panhandle MHMR is in need of applicants who have a high school diploma / GED. Must have a minimum of eighth grade reading-comprehension level as evidenced by score on the Adult Basic Learning Examination (ABLE) test and a valid Texas Drivers License and be insurable under the agency vehicle policy. Prefer experience working with individuals in therapeutic activities and would be interested in assisting persons with mental retardation in day program and residential settings. (4 positions available).

Shifts available:  
All 40 hrs / week  
8pm-8am Sat. & Sun.  
4pm.-12am.  
Thurs. & Fri.  
4pm.-12am Mon.-Fri.  
12am-8am Mon.-Fri.  
8am-8pm. Sat & Sun.  
12am-8am Mon. & Tues.

Apply at Texas Panhandle MHMR  
901 Wallace  
Amarillo, TX 79106  
806-358-1681

An Equal Opportunity Employer  
Drug Free & Smoke Free Workplace  
Pre-Employment Drug Screening Req.

**21 Help Wanted**

NOW hiring Code and Structural Welders. Must be able to pass weld test. Pay based on exp. Benefits avail. Apply in person at Conner Industries, 118 Bunton, in Borger.

**EYECARE TEAM**  
Reception, Optical Tech needed to be filled by energetic, career-minded persons. Must be able to multi-task. Interviews are being scheduled for both entry and advanced positions.

Drs. Simmons And Simmons  
VISION SOURCE  
1324 N. Banks  
FAX 665-3511

**21 Help Wanted**

**Excellent Driving Opportunity!**  
Owner Ops:  
\*Fuel Surcharge Paid, Loaded & Empty  
\*100% No Touch Freight  
\*Excellent Home Time

**ISD**  
Plus Much More!!!  
800-426-7110 ext. 129  
[www.isdinc.com](http://www.isdinc.com)

SUBSCRIBE TO THE PAMPA NEWS!  
CALL 669-2525

**21 Help Wanted**

**NEWSPAPER CARRIER NEEDED**  
APPLY IN PERSON  
**The Pampa News**  
403 W. Atchison,  
Pampa, Tx.

# Shop Smart SHOP THE CLASSIFIEDS!

**ConocoPhillips**  
WRB Refining LLC  
Borger Refinery

ConocoPhillips is an international, integrated energy company with operations in nearly 40 countries. As the third-largest integrated energy company in the United States and fifth-largest refiner in the world, ConocoPhillips' goal is to deliver energy in a safe, environmentally and socially responsible manner. Approximately 32,600 ConocoPhillips employees work worldwide to consistently deliver top performance and value to maintain the company's global market position. Employees' individual talents and strengths combine to create a diverse and energized workforce within ConocoPhillips.

The Borger Refinery is located in Borger, Texas, in the Texas Panhandle approximately 50 miles northeast of Amarillo, Texas. The refinery processes 146 mbpd of medium and heavy gravity sour crudes plus fractionates 50 mbpd of mixed natural gas liquids. The Borger Refinery produces LPGs and motor fuels products for the Rocky Mountains, West Texas and Central U.S. market areas. Additionally, the refinery produces pentane and heptane solvents for specialty products applications. The refinery also markets coke as a fuel for cement manufacturing and power generation facilities. We have opportunities at our Borger Refinery in Borger, Texas in the following position:

**Yardman (Entry Level General Maintenance Position)**  
The Borger Refinery is seeking to fill openings for Yardmen who perform a wide variety of manual labor tasks with varying day-to-day work assignments. A Yardman position is an entry level position at the Borger Refinery with excellent progression opportunities into Operations and Maintenance crafts. The entry level rate of pay for this position is \$16.40/hr with a pay increase after 9 months to \$19.00/hr and again in another 9 months to \$20.79/hr. From a Yardman position, an employee has the opportunity to progress into Operations or Maintenance. The entry level rate of pay for an Operator is \$22.96/hr with an increase every 12 months reaching top Operator pay of \$29.40/hr after 36 months. The entry level rate of pay for a Maintenance craftsman is \$22.96/hr with an increase every 12 months reaching top craftsman pay of \$30.69/hr after 48 months. The Borger Refinery provides extensive training to employees, both classroom and on-the-job.

The ideal Yardman candidate must have a High School diploma or GED with a minimum of 2 years of continuous recent full-time work experience. This position requires a valid driver's license and the ability to work in enclosed spaces such as tanks and silos and work on elevated platforms. Candidates must be able to work an 8 hour rotating shift and up to a 12 hour rotating shift that includes some weekends and holidays. The Borger Refinery is a 24-hour, 365 days per year operation.

For consideration and more information on the qualifications for this position, apply online at: [www.conocophillips.com/careers/](http://www.conocophillips.com/careers/) and click on "enter" in the ConocoPhillips Careers section, then on "search" in the Job Search area. Scroll down and look for the job titled: "Yardman - Entry Level Position -Borger Refinery, Job Requisition #00487."

All applications must be submitted electronically via the ConocoPhillips website by July 27, 2008. An electronic resume must be attached to your electronic application. To seek computer help with the on-line application visit your local area Workforce Commission office.  
Job ID # 3006522

AXYDLBAAXR  
is LONGFELLOW

One letter stands for another. In this sample, A is used for the three L's, X for the two O's, etc. Single letters, apostrophes, the length and formation of the words are all hints. Each day the code letters are different.

**7-19 CRYPTOQUOTE**

H XUKDV'S ZXUVNDC JT ISTOD  
HV SRDVST TDUGI... UVC  
SXUS ISTOD HI SY NDS JUC  
RXDV SXHVNI NY RGYVN.  
— UODMUVC DG XUHN  
Yesterday's Cryptoquote: IT HAS BEEN WELL SAID THAT A HUNGRY MAN IS MORE INTERESTED IN FOUR SANDWICHES THAN FOUR FREEDOMS. — HENRY CABOT LODGE JR.

**TWO ESTATE AUCTIONS**  
**TWO LOCATIONS, SAME DAY!**  
**SAT. JULY 26th 9:33 A.M. & 3:30 P.M.**

Loc.- Pampa, TX-1st AUCTION-2541 Christine. From Duncan St. & 26th Ave., one Blk. West, then South 1/4 Blk.  
2nd AUCTION-2207 Chestnut. From Duncan St. & 23rd East, 3 Blks., then South 3/4 Blk.

**LEONA SLOAN & H.J. "HUB" HOMER**  
Appliances, TV's, Furni., Patio Furni., Grandmother Clock, Collectible Glass, Collectibles, Kitchen, Household, Yard & Garden.  
Full Listing on Web Page  
[lyndon@loydsauktion.com](mailto:lyndon@loydsauktion.com)  
Lyndon Loyd Auctioneers  
Wheeler, Tx. (Lic. Tx. 7119)  
806-826-5850 or 334-0407

**Why follow the competition when you can lead the pack?**

At Grey Wolf Drilling our focus on achieving and exceeding the industry's most rigorous performance standards is what brought us to the front of the pack, but it's our people who keep us there. That's why we promote from within and invest heavily in safety and training programs that give every member of our team - from rig operations to finance and administration - the chance to advance and lead.

**Immediate Opportunities:**

- Drillers
- Derrickhands
- Motorhands
- Floorhands

Grey Wolf Drilling, L.P. offers competitive wages and an excellent benefits package including 401(k), medical/dental insurance and much more. To apply for these opportunities, please forward your resume to:

**Grey Wolf Drilling**  
6 Desta Drive, Ste. 5850, Midland, TX 79705  
Email: [jwilliams@gwdrilling.com](mailto:jwilliams@gwdrilling.com)  
Ph: (432) 687-8102

Equal Opportunity Employer M/F/D/V

**Moove on in!**

Braum's is looking for top quality Employees  
We're talking Cream of the Crop here!

**At Our Braum's located at**  
901 N Hobart Street

**HIRING FOR:**

**Assistant Managers \$27,000 + Bonus**  
(Bonuses Paid every 2 weeks)

**Shift Supervisors \$9.25 hour**

**Full-time Positions \$7.50-\$8.50 hour**  
**Part-time Positions \$6.70-\$8.25 hour**  
(Day and Night shifts available)  
(Advancement opportunities based on your performance)

Or send resume to  
email: [rpatton@braums.com](mailto:rpatton@braums.com)  
Fax: (405)475-2411  
Mail: 3000 N.E. 63rd, OKC, OK 73121

**B BRAUM'S**  
ICE CREAM AND DAIRY STORES

**HOUSEHUNTERS REALTOR**  
**New on Market**

**1029 N. Dwight- 2 story home that you must see to appreciate- Open floor plan-perfect family friendly dream home-Kitchen remodeled- Quantum windows-Complete List of all IMPROVEMENTS- Must See**

**Prime Location- MLS 08-7974- 1-40 • 70 South "Old KOA campground" 37.73 Acres**

**908 Somerville- MLS 08-8029- 2 Bedroom, 1 bath Basement - cute stucco home**

**225 Brown - MLS 08-8028 Great Retail location- Highway frontage - digital gas pumps- multiple possibilities**

**201 McCULLOUGH-MLS 07-7769-Outside City Limits with city utilities, water well - 700 + Storage**

**237 ANNE- ML-07-7819- Located on large corner lot 3 bedroom - 1 bath - 1 car garage- updates great starter Home - Make Offer**

**2325 BEECH-MLS 08-7954 2993 sq. ft. \$53.12 sq. ft. 3 bedroom - 3 bath- Just waiting for NEW OWNERS Srva Incentives - Priced to sell**

**2721 Randy Matson- MLS 087939- 1.6 acres- large deck , shop, swimming pool conveys- 3 bedroom 2 full baths - isolated master - owners have moved**

**700 Francis- MLS 08-7860 Lots of room- Lots of updates large 2 bedroom, 1 bath with another bedroom and 1/2 bath attached to oversize garage- Corner lot**

**CALL US. LET US SHOW. MAKE AN OFFER. 3 EASY STEPS TO OWNING YOUR OWN HOME OR BUSINESS.**  
**NOTHING IS SET IN STONE**

**LINDA LAYCOCK** BROKER  
**662-1312**  
Pampa MLS

**LARRY HADLEY** ASSOC.  
**662-2779**  
Amarillo MLS

**21 Help Wanted**

CDL Driver needed, pulling Belly Dumps. Drug test required. Call 662-5005 or 663-0528.

**YARD HAND NEEDED**  
Must Pass Pre-Employment Drug Test. Must be dependable and able to lift 50+ lbs. Will help load trucks, clean up shop & yard & help drivers with daily operations. If this is you, please apply at:  
**Bourland & Leverich Supply Co.**  
Borger Highway (11707 Hwy. 152 W.) between 8am-5pm. Mon. thru Fri.

**CASE MANAGER I-III PAMPA MH OUTPATIENT CLINIC**  
Provides case management and psychosocial rehabilitation to people getting Mental Health services in the Pampa area. Works closely with other TPMHMR providers and community stakeholders to provide quality services promoting independence and recovery. Responsible for Crisis Intervention services.  
**Qualifications:** Bachelor's degree in a Human Service field to qualify for a CM-I. CM-II needs a Bachelor's degree in Human Service field and one year direct MH experience. CM-III requires a Bachelor's degree in Human Service field with two year direct MH experience. **Preferred Qualifications:** Bilingual

**70 Musical**  
XYLOPHONE & Practice drum set for sale Has accessories Learning kit by Ludwig Call 663-0479

**69a Garage Sales**  
TOOLS, baby items, toys, office furniture, appliances & misc. Fri., Sat., Sun., 8-7 2533 Dogwood.

**NEW Crown XS 1200 in Calzone Case. 2 PV SP3 used twice, 1 Blen, call 664-1075.**

**80 Pets & Suppl.**  
DOG GROOMING 412 N. Nelson 665-3079  
Specialty Bows & Bandanas  
BASSET Hound Puppies For Sale Call Brittany 662-1293

**AMERICAN Bulldog/Pit puppies for sale. 5 male, 3 female. Solid white w/ patches of blue brindle or honey. \$100 OBO. 440-5631.**

**PITT Bull Puppies For Sale 806-868-4010 806-898-1680**

**FREE Puppies: 12 wks old. Terrier Mix Males. 2 left, come by 207 E. Browning, call 665-1120**

**Texas Panhandle MHMR 901 Wallace Blvd. 358-1681**

**An Equal Opportunity Employer DRUG FREE & SMOKE FREE WORKPLACE PRE-EMPLOYMENT DRUG SCREENING REQUIRED**

**GRANDVIEW Hopkins** is accepting appli. for 2008-2009. School Bus Driver. Call (806)669-3831 for application.

**GRANDVIEW Hopkins** is accepting appli. for Substitute Teachers. Please call (806)669-3831 for application.

**50 Building Suppl.**  
White House Lumber 101 S. Ballard 669-3291

**60 Household**  
MATTRESS \$100 TWIN SIZE set. In perfect condition. Never used. 806-341-6233.

**BED New Queen, pillow-top mattress set. In plastic. Warranty. Sacrifice \$150. 806-341-6233.**

**\$140 Brand new queen size mattress set. Still in factory plastic, has warranty. 806-341-6233.**

**NEW Visco Memory Foam Mattress & Box. Sealed in plastic w/ manufacturer warr. Must move. \$375. 806-341-6233.**

**MATTRESS- All New KING set Pillow-top. In plastic w/ warranty. \$250. 806-341-6233.**

**BRAND New full size mattress set in plastic with warranty. Sell \$125. 806-341-6233.**

**WASHERS, Dryers, Livingroom & Bedroom Furn., Hutch, many more items. 662-7557.**

**6 ft. Curio Cabinet \$100  
Sleeping Sofa \$100  
486-1017**

**Wal-Mart COME GROW WITH US!**  
Wal-Mart is looking for driven people. At Wal-Mart, you will explore new opportunities and learn in a supportive and challenging work environment. As a member of the Wal-Mart team, you'll receive competitive wages and a generous benefits package including: health, 401(k), stock purchase plan, profit sharing, merchandise discounts, and career advancement opportunities. Please apply at the hiring kiosks located at your Pampa Wal-Mart or online at [www.walmartstores.com](http://www.walmartstores.com)

**NOW HIRING ALL POSITIONS!**  
New Facility Start Rate \$7.40  
\$7.80 Cashiers  
\$8.60 Overnight Stockers  
Maintenance

Wal-Mart will not tolerate discrimination of employment on the basis of race, color, age, sex, sexual orientation, religion, disability, ethnicity, national origin, marital status, veteran status or any other legally protected status.

**69 Misc.**

**ADVERTISING Material** to be placed in the Pampa News MUST be placed through the Pampa News Office Only.

14X32 Office returned from rental-cleaned/ready for quick sale. Call 806-358-9597.

**SALE. VHS movies \$1.50 ea., household items, tools, furn., much more! Red Barn, Sat. 10 to 5. 1420 S. Barnes.**

2007 Morgan Hot Tub Never Used \$3000 obo Call 663-2848

**69a Garage Sales**  
TOOLS, baby items, toys, office furniture, appliances & misc. Fri., Sat., Sun., 8-7 2533 Dogwood.

**70 Musical**  
XYLOPHONE & Practice drum set for sale Has accessories Learning kit by Ludwig Call 663-0479

**NEW Crown XS 1200 in Calzone Case. 2 PV SP3 used twice, 1 Blen, call 664-1075.**

**80 Pets & Suppl.**  
DOG GROOMING 412 N. Nelson 665-3079  
Specialty Bows & Bandanas  
BASSET Hound Puppies For Sale Call Brittany 662-1293

**AMERICAN Bulldog/Pit puppies for sale. 5 male, 3 female. Solid white w/ patches of blue brindle or honey. \$100 OBO. 440-5631.**

**PITT Bull Puppies For Sale 806-868-4010 806-898-1680**

**FREE Puppies: 12 wks old. Terrier Mix Males. 2 left, come by 207 E. Browning, call 665-1120**

**Texas Panhandle MHMR 901 Wallace Blvd. 358-1681**

**An Equal Opportunity Employer DRUG FREE & SMOKE FREE WORKPLACE PRE-EMPLOYMENT DRUG SCREENING REQUIRED**

**GRANDVIEW Hopkins** is accepting appli. for 2008-2009. School Bus Driver. Call (806)669-3831 for application.

**GRANDVIEW Hopkins** is accepting appli. for Substitute Teachers. Please call (806)669-3831 for application.

**50 Building Suppl.**  
White House Lumber 101 S. Ballard 669-3291

**60 Household**  
MATTRESS \$100 TWIN SIZE set. In perfect condition. Never used. 806-341-6233.

**BED New Queen, pillow-top mattress set. In plastic. Warranty. Sacrifice \$150. 806-341-6233.**

**\$140 Brand new queen size mattress set. Still in factory plastic, has warranty. 806-341-6233.**

**NEW Visco Memory Foam Mattress & Box. Sealed in plastic w/ manufacturer warr. Must move. \$375. 806-341-6233.**

**MATTRESS- All New KING set Pillow-top. In plastic w/ warranty. \$250. 806-341-6233.**

**BRAND New full size mattress set in plastic with warranty. Sell \$125. 806-341-6233.**

**WASHERS, Dryers, Livingroom & Bedroom Furn., Hutch, many more items. 662-7557.**

**6 ft. Curio Cabinet \$100  
Sleeping Sofa \$100  
486-1017**

**Wal-Mart COME GROW WITH US!**  
Wal-Mart is looking for driven people. At Wal-Mart, you will explore new opportunities and learn in a supportive and challenging work environment. As a member of the Wal-Mart team, you'll receive competitive wages and a generous benefits package including: health, 401(k), stock purchase plan, profit sharing, merchandise discounts, and career advancement opportunities. Please apply at the hiring kiosks located at your Pampa Wal-Mart or online at [www.walmartstores.com](http://www.walmartstores.com)

**NOW HIRING ALL POSITIONS!**  
New Facility Start Rate \$7.40  
\$7.80 Cashiers  
\$8.60 Overnight Stockers  
Maintenance

Wal-Mart will not tolerate discrimination of employment on the basis of race, color, age, sex, sexual orientation, religion, disability, ethnicity, national origin, marital status, veteran status or any other legally protected status.

**96 Unfurn. Apts.**

**PAMA APTS**  
1200 N. WELLS  
669-2594

**LAKEVIEW Apt. 1 & 2 bdr. unfurn. apt. Call for availability. References & deposit req. 669-4386**

**NUMEROUS Houses, Apts., Dupl. & Comm. properties thru-out Pampa. 665-1875, 665-4274.**

**THE Schneider House, now leasing apts., 1 & 2 bdr., utilities incl. 120 S. Russell or call 665-0415.**

**98 Unfurn. Houses**  
SMALL 1 bedroom+ 513 Davis. \$200 mo. Refrigerator & stove. No bills pd. Call 665-4634.

**99 Stor. Bldgs.**  
TUMBLEWEED Acres, self storage units. Various sizes. 665-0079, 665-2450.

**101 Real Estate Wanted**  
BY Owner 3 bdr., 1 ba., att. carport. Newly painted outside. Austin Sch. 2717 Navajo. \$68,500. By appt. 662-2366.

**FOR all your Real Estate needs, call John Goddard, at Century 21! Where knowledge & expertise matter. 806-595-1234.**

**FOR Sale By Owner. 2 bdr., 1 bath, detached garage, sun room, 1495 sq ft. 1132 Mary Ellen. 806-886-0269**

**HIGHEST CASH PAID FOR HOUSES! CALL 665-1875**

**OFFICE SPACE FOR RENT NBC PLAZA 806-665-4100**

**103 Homes For Sale**  
Twila Fisher Century 21 Pampa Realty 665-3560, 440-2314 669-0007

**2 acres near city limits/ house appr. 3300 sq ft/ garage (900 sq ft) cellar & storage building. Lots of new thru-out/ hardwood floors. 8485 Loop 171. Call for app. 663-7385.**

**2 br 1 ba w/ large kitchen, garage, new plumbing, newly remodeled bath. 1348 Garland. 35 K. Appt only. 440-4443.**

**2207 N. Nelson. 4 bedroom, 1 3/4 baths, central heat & air. Travis' School Dist. 662-4651, 665-4150**

**103 Homes For Sale**  
Twila Fisher Century 21 Pampa Realty 665-3560, 440-2314 669-0007

**2 acres near city limits/ house appr. 3300 sq ft/ garage (900 sq ft) cellar & storage building. Lots of new thru-out/ hardwood floors. 8485 Loop 171. Call for app. 663-7385.**

**2 br 1 ba w/ large kitchen, garage, new plumbing, newly remodeled bath. 1348 Garland. 35 K. Appt only. 440-4443.**

**2207 N. Nelson. 4 bedroom, 1 3/4 baths, central heat & air. Travis' School Dist. 662-4651, 665-4150**

**103 Homes For Sale**  
Twila Fisher Century 21 Pampa Realty 665-3560, 440-2314 669-0007

**2 acres near city limits/ house appr. 3300 sq ft/ garage (900 sq ft) cellar & storage building. Lots of new thru-out/ hardwood floors. 8485 Loop 171. Call for app. 663-7385.**

**2 br 1 ba w/ large kitchen, garage, new plumbing, newly remodeled bath. 1348 Garland. 35 K. Appt only. 440-4443.**

**2207 N. Nelson. 4 bedroom, 1 3/4 baths, central heat & air. Travis' School Dist. 662-4651, 665-4150**

**103 Homes For Sale**  
Twila Fisher Century 21 Pampa Realty 665-3560, 440-2314 669-0007

**2 acres near city limits/ house appr. 3300 sq ft/ garage (900 sq ft) cellar & storage building. Lots of new thru-out/ hardwood floors. 8485 Loop 171. Call for app. 663-7385.**

**2 br 1 ba w/ large kitchen, garage, new plumbing, newly remodeled bath. 1348 Garland. 35 K. Appt only. 440-4443.**

**2207 N. Nelson. 4 bedroom, 1 3/4 baths, central heat & air. Travis' School Dist. 662-4651, 665-4150**

**103 Homes For Sale**  
Twila Fisher Century 21 Pampa Realty 665-3560, 440-2314 669-0007

**2 acres near city limits/ house appr. 3300 sq ft/ garage (900 sq ft) cellar & storage building. Lots of new thru-out/ hardwood floors. 8485 Loop 171. Call for app. 663-7385.**

**2 br 1 ba w/ large kitchen, garage, new plumbing, newly remodeled bath. 1348 Garland. 35 K. Appt only. 440-4443.**

**2207 N. Nelson. 4 bedroom, 1 3/4 baths, central heat & air. Travis' School Dist. 662-4651, 665-4150**

**103 Homes For Sale**

2406 Mary Ellen, 3/1 3/4/2, open kitchen, new bath., newly remodeled appl., large backyard, storage building, and new fence. 1500 sq. ft. \$110,000. 669-3164.

3/2/1 remodeled. Corner lot. Garage has living area and bath. \$45,900. 665-1122.

4 bdr house, 1 bdr house, & mobile home lot. Needs lots of TLC. Owner will finance. 486-1420.

4 br or 3 & office, 2 ba., 1 w/ whirlpool, updated kitchen w/ tile floors & countertops. Den w/ fp and bay window, 2 atriun doors. Stor. & workshop. Updated wiring & insulation. Split level deck w/ breathtaking view. \$129k. Shown by appt. 662-2977

400 Doucette-3-2-1 large backyard, corner lot, new paint, updated kitchen, lots of cabinets, \$48,000. Call 440-1685.

5 1/2 Acres, 4 bedroom home, north of Amarillo. Priced to Sell! 440-1819 or 440-3399.

BY Owner 3 bdr., 1 ba., att. carport. Newly painted outside. Austin Sch. 2717 Navajo. \$68,500. By appt. 662-2366.

FOR all your Real Estate needs, call John Goddard, at Century 21! Where knowledge & expertise matter. 806-595-1234.

FOR Sale By Owner. 2 bdr., 1 bath, detached garage, sun room, 1495 sq ft. 1132 Mary Ellen. 806-886-0269

HIGHEST CASH PAID FOR HOUSES! CALL 665-1875

OFFICE SPACE FOR RENT NBC PLAZA 806-665-4100

103 Homes For Sale Twila Fisher Century 21 Pampa Realty 665-3560, 440-2314 669-0007

2 acres near city limits/ house appr. 3300 sq ft/ garage (900 sq ft) cellar & storage building. Lots of new thru-out/ hardwood floors. 8485 Loop 171. Call for app. 663-7385.

2 br 1 ba w/ large kitchen, garage, new plumbing, newly remodeled bath. 1348 Garland. 35 K. Appt only. 440-4443.

2207 N. Nelson. 4 bedroom, 1 3/4 baths, central heat & air. Travis' School Dist. 662-4651, 665-4150

103 Homes For Sale Twila Fisher Century 21 Pampa Realty 665-3560, 440-2314 669-0007

2 acres near city limits/ house appr. 3300 sq ft/ garage (900 sq ft) cellar & storage building. Lots of new thru-out/ hardwood floors. 8485 Loop 171. Call for app. 663-7385.

2 br 1 ba w/ large kitchen, garage, new plumbing, newly remodeled bath. 1348 Garland. 35 K. Appt only. 440-4443.

2207 N. Nelson. 4 bedroom, 1 3/4 baths, central heat & air. Travis' School Dist. 662-4651, 665-4150

103 Homes For Sale Twila Fisher Century 21 Pampa Realty 665-3560, 440-2314 669-0007

2 acres near city limits/ house appr. 3300 sq ft/ garage (900 sq ft) cellar & storage building. Lots of new thru-out/ hardwood floors. 8485 Loop 171. Call for app. 663-7385.

2 br 1 ba w/ large kitchen, garage, new plumbing, newly remodeled bath. 1348 Garland. 35 K. Appt only. 440-4443.

2207 N. Nelson. 4 bedroom, 1 3/4 baths, central heat & air. Travis' School Dist. 662-4651, 665-4150

103 Homes For Sale Twila Fisher Century 21 Pampa Realty 665-3560, 440-2314 669-0007

2 acres near city limits/ house appr. 3300 sq ft/ garage (900 sq ft) cellar & storage building. Lots of new thru-out/ hardwood floors. 8485 Loop 171. Call for app. 663-7385.

2 br 1 ba w/ large kitchen, garage, new plumbing, newly remodeled bath. 1348 Garland. 35 K. Appt only. 440-4443.

2207 N. Nelson. 4 bedroom, 1 3/4 baths, central heat & air. Travis' School Dist. 662-4651, 665-4150

103 Homes For Sale Twila Fisher Century 21 Pampa Realty 665-3560, 440-2314 669-0007

2 acres near city limits/ house appr. 3300 sq ft/ garage (900 sq ft) cellar & storage building. Lots of new thru-out/ hardwood floors. 8485 Loop 171. Call for app. 663-7385.

2 br 1 ba w/ large kitchen, garage, new plumbing, newly remodeled bath. 1348 Garland. 35 K. Appt only. 440-4443.

2207 N. Nelson. 4 bedroom, 1 3/4 baths, central heat & air. Travis' School Dist. 662-4651, 665-4150

103 Homes For Sale Twila Fisher Century 21 Pampa Realty 665-3560, 440-2314 669-0007

**103 Homes For Sale**

NICE 3 Bdr. 1 Bath, 1 Car Garage. Lg. fenced yard. Siding. 302 Swift in White Deer. \$35,000 883-5941. Lv. Message.

**OWNER FINANCE**  
621 Lowry 1005 S. Wells 629 N. Dwight 620 Deane EZ Quality 806-665-4595 Call Gary @ Trustar Realty

**Price Reduced! Brick 3 Bdr., 1 Ba. Single Gar. New Carpet & Flooring X-Lrg. Corner Lot incl. C-21 Pampa Realty MLS #08-7874 662-7291**

**PRICED REDUCED!** 1313 Mary Ellen. 3/1-carport. Newly remodeled master. New paint, flooring & carpet. Austin Sch. District. Call 669-1123 or 440-4564

**114 Recre. Veh.**  
FOR Sale: 1994 34 ft. Southwind Motorhome Low Mileage Call 806-669-7952

FOR Sale: 5th Wheel Camper Starcraft 28'6" 13' Slide. 1995 5th wheel hitch goes with camper. \$9,000. Good shape. Call 665-7115 or 669-3288, leave message.

**115 Trailer Parks**  
TUMBLEWEED Acres, Storm Shelters, fenced, stor. bldg. avail. 665-0079, 665-2450.

**FOR Sale:** 1994 34 ft. Southwind Motorhome Low Mileage Call 806-669-7952

FOR Sale: 5th Wheel Camper Starcraft 28'6" 13' Slide. 1995 5th wheel hitch goes with camper. \$9,000. Good shape. Call 665-7115 or 669-3288, leave message.

**115 Trailer Parks**  
TUMBLEWEED Acres, Storm Shelters, fenced, stor. bldg. avail. 665-0079, 665-2450.

**FOR Sale:** 1994 34 ft. Southwind Motorhome Low Mileage Call 806-669-7952

FOR Sale: 5th Wheel Camper Starcraft 28'6" 13' Slide. 1995 5th wheel hitch goes with camper. \$9,000. Good shape. Call 665-7115 or 669-3288, leave message.

**115 Trailer Parks**  
TUMBLEWEED Acres, Storm Shelters, fenced, stor. bldg. avail. 665-0079, 665-2450.

**FOR Sale:** 1994 34 ft. Southwind Motorhome Low Mileage Call 806-669-7952

FOR Sale: 5th Wheel Camper Starcraft 28'6" 13' Slide. 1995 5th wheel hitch goes with camper. \$9,000. Good shape. Call 665-7115 or 669-3288, leave message.

**115 Trailer Parks**  
TUMBLEWEED Acres, Storm Shelters, fenced, stor. bldg. avail. 665-0079, 665-2450.

**FOR Sale:** 1994 34 ft. Southwind Motorhome Low Mileage Call 806-669-7952

FOR Sale: 5th Wheel Camper Starcraft 28'6" 13' Slide. 1995 5th wheel hitch goes with camper. \$9,000. Good shape. Call 665-7115 or 669-3288, leave message.

**115 Trailer Parks**  
TUMBLEWEED Acres, Storm Shelters, fenced, stor. bldg. avail. 665-0079, 665-2450.

**FOR Sale:** 1994 34 ft. Southwind Motorhome Low Mileage Call 806-669-7952

FOR Sale: 5th Wheel Camper Starcraft 28'6" 13' Slide. 1995 5th wheel hitch goes with camper. \$9,000. Good shape. Call 665-7115 or 669-3288, leave message.

**115 Trailer Parks**  
TUMBLEWEED Acres, Storm Shelters, fenced, stor. bldg. avail. 665-0079, 665-2450.

**FOR Sale:** 1994 34 ft. Southwind Motorhome Low Mileage Call 806-669-7952

FOR Sale: 5th Wheel Camper Starcraft 28'6" 13' Slide. 1995 5th wheel hitch goes with camper. \$9,000. Good shape. Call 665-7115 or 669-3288, leave message.

# New Arkansas effort connecting farmers, tourists

CABOT, Ark. (AP) — Arkansas wants to give tourists a taste of the farm experience, and is encouraging more of its farmers to start selling it.

The Arkansas Agritourism Initiative is designed to help consumers find local vendors as well as farms that offer tours or other attractions. Organizers launched a Web site recently that will help promote the industry through the state's tourism department and other avenues.

"In Arkansas, more and

more people are living in urban areas and we're losing sight of the rich agricultural heritage in the state," said Joe Foster, program coordinator with the Winthrop Rockefeller Institute at Petit Jean Mountain and one of the initiative organizers. "These businesses bridge the gap between rural and urban life here in Arkansas."

The notion of agritourism goes beyond U-pick farms and hay rides. Farmers markets, on-site farm sales, horse riding, ranching, fish farm tours and

even leasing east Arkansas farmland during duck season all fit the category. The initiative aims to bring them together on the Web site and help the industry grow by promoting it with all the state's other attractions.

Other agencies and groups backing the effort include the Arkansas Farm Bureau and the National Agricultural Law Center. The state Agriculture Department already was maintaining a Web site for producers who sell to the public but

said the new site will have greater reach.

A farmer taking on a venture with the public will have to be prepared to adopt a new perspective, said Larry Odom of Holland Bottom Farms outside of Cabot.

"We offer flavor and freshness," Odom said recently as he stood among crates of just-picked peaches, tomatoes and okra at his roadside produce business on Arkansas 321. "But you're also marketing the whole farm and you're marketing yourself. That is not to be overlooked."

Odom, 64, said he had not had a day off since April and does not expect to have one until the stand closes for the season in August.

Tom Ellison, marketing director for the Arkansas Agriculture Department, said farmers have to be sure adding a tourism component would improve the overall business, especially considering the need to make physical improvements and perhaps adding staff.

"You have to decide if you, have a story there to tell that people will want to come see," Ellison said.

Ellen Dalton and her husband run Pumpkin Hollow in Piggott, where aside from their produce they offer corn mazes

and tours of their barns, including an old concrete milking barn from the 1950s.

"They like to know things like that and how the farm evolved," Dalton said.

She added that visitors often want to know if she's really a farmer or being paid to act like one.

"They want to know that we grow our own things," Dalton said. "We are who the farm is."

Opening a farm to public visits can create a number of costs, including insurance, restrooms, shady sitting areas, facilities for refreshments and additional staff.

"People don't want to pull up to a closed gate where

there's a big dog that doesn't welcome you," said Donna Perrin of the Arkansas Parks and Tourism Department. "They won't want to get out of the car."

Perrin said her agency is offering hospitality programs geared specifically to farmers and advising farmers on how they can increase revenue. For instance, advertising on the Internet is essential, accepting credit cards accommodates customers who want to make big purchases, keeping events listings current helps draw patrons and being open during advertised hours is critical for sustaining business.



Pampa News photo by Marilyn Powers

## A cool bath

A cow cools off in a pond east of Pampa while a calf takes a nap on the bank. A silhouette of a hunter appears to be guarding the two.

## Chips

Cont. from Page 2-B

in Mexico and Guatemala in the early 2000s. It has been found in potato fields through South Texas and the Rio Grande Valley and now up into the South Plains and Panhandle regions.

The disease presents itself as curled leaves and stunted growth in the plant itself, and then the tubers exhibit a brown striped or mottled pattern when sliced, Henne said.

AgriLife Research and other scientists around the country have studied the vector or insect that transmits the pathogen, he said. Others are trying to identify the pathogen or bacteria that actually causes disease in the plant when the psyllid feeds on it.

Henne and other Amarillo-based researchers are working with commercial growers to monitor the movement of the insect and disease appearance. At the same time, they have established potato plots at the Texas AgriLife Research Station at Bushland and are doing some greenhouse work.

"We're focusing on the epidemiological aspects of the disease," Henne said. "We are trying to understand how the disease progresses in a potato field over time. We are looking at canopy structure, edge effect and how the insects are landing in fields and distributing the disease."

Henne and Dr. Fekede Workneh, an AgriLife Research quantitative plant disease epidemiologist, have planted six acres of potatoes at the Bushland station where they are looking at planting dates, canopy structure and insect dispersal.

Potatoes are planted in late March to early June in the Panhandle, so they are experimenting with planting dates — May 2, May 28 and June 16 — at Bushland to see if there is a relation between insect movement and disease severity.

"We are also working in the lab to graft diseased portions onto healthy plants to understand the movement of the disease through the plant," Henne said.

"We want to understand how the disease progresses so we can focus management practices on specific areas," he said. "Do the insects move up the plant, down or out from the stem? Some varieties have more canopy than others and is that acting as a natural bridge for insect movement?"

There is no adequate control for the insect or the disease at this time, he said.

Because there are other diseases that have similar symptoms as zebra chip, Henne said, one of the challenges they face is being able to correctly identify diseased plants in the field.

"When we find plants that appear to be infected, we bring the tubers back to the lab where they are sliced and fried to make the final determination," he said.

Henne said they hoped to have some management suggestions on how to help alleviate the problem for growers by the end of this year.

## Farm

Cont. from Page 2-B

Outlaw will discuss the Average Crop Revenue Election (ACRE) program and how it relates to this area of the state. He will explore significant differences between this and the previous farm bill, as well as offer potential effects of the bill as a total farm-income revenue program.

Farm Service Agency officials from area county offices will be on hand at the meeting to provide the latest information on county committee elections and requirements for supplemental disaster programs.

AgriLife's Sherman County Ag Committee and Sherman County's FSA office are primary hosts for the upcoming event.

For more information, call AgriLife Extension office in Gray County at 669-8033.

## Angus

Cont. from Page 2-B

conomic indexes designed to assist commercial producers in simplifying the genetic selection process. In addition, updated research reports are provided for heifer pregnancy and docility.

The semiannual analysis for the Sire Evaluation Report contains more than 16 million measures used to generate over 47 million EPDs for the Angus breed.

**Cranes**  
Auto Crane • Liftmore • RKI  
Bodies • Boxes  
RKI • Weatherguard • Montezuma

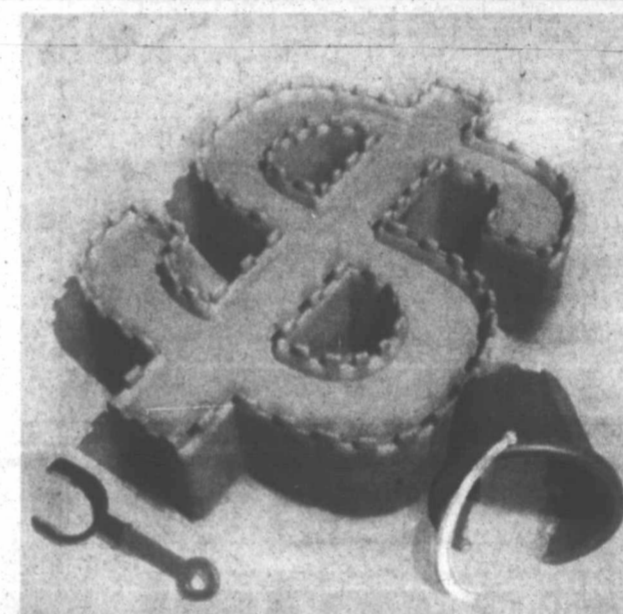
**AMERICAN**  
EQUIPMENT & TRAILER  
Since 1969  
www.aet.us

610 N. Grand Amarillo, TX 800-687-8831      3707 MLK Blvd. Lubbock, TX 800-590-4775

**Truck Trailers**  
Wilson • Clement • Lufkin • Eager Beaver • MuVall

Cattle • Grain • Dump • Flat • Machinery • Lowboy

## WE'LL HELP YOU BUILD YOUR CASTLE



**Five Month CD**  
**3.28% APY\***

\*Annual Percentage Yield Effective June 19, 2008.  
\$1000 Minimum Balance to Obtain The A.P.Y.\*  
\$1000 Minimum Deposit.  
Rates are Subject to Change.  
Penalty For Early Withdrawal.

## NATIONAL BANK OF COMMERCE

An Office Of First National Bank Waupaca, Wisconsin

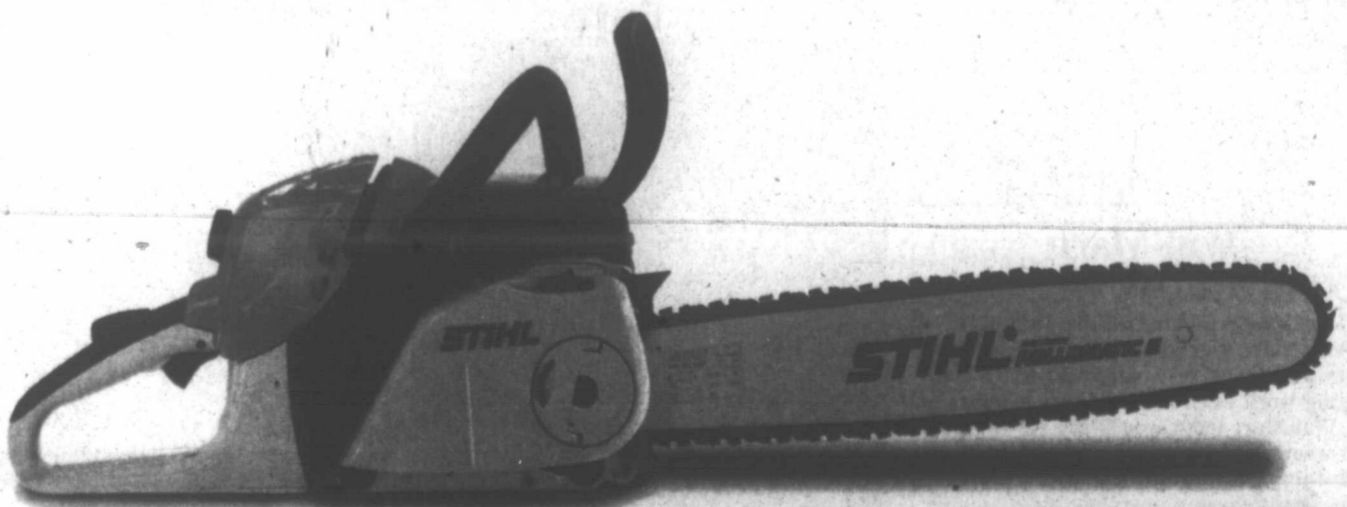
PAMPA • 1224 N. HOBART • 665-0022

SHAMROCK • 305 N. MAIN • 256-2181

CHILDRESS • 501 COMMERCE • 940-937-2514



**Why is the world's number one selling brand of chain saw not sold at Lowe's® or The Home Depot®?**



Our dealership is one of 8,000 reasons. We're proud to be one in a legion of independent STIHL dealers nationwide. You can count on us to give you a product demonstration, straight talk and genuine advice about

STIHL products. We offer fast and expert on-site service. And to stand behind every product we carry, always fully assembled. You see, we won't sell you a chain saw in a box, not even a big one.

**WHL**  
POWER EQUIPMENT  
SALES & RENTAL

1035 N. Hobart • 665-2366  
The Home Depot and Lowe's are registered trademarks of their respective companies.

Number 1 Worldwide **STIHL®**