

Sunday's Weather

HIGH  
100  
LOW  
65

See expanded weather on Page 2

The Only REAL No. 1 used car dealer in Pampa/Panhandle  
**DOUG BOYD MOTOR CO.**  
BUY HERE • PAY HERE • NO CREDIT CHECK  
Open 9 am - 8 pm Monday-Saturday • Buy 60 @ Buy 70 • Pampa, TX • 669-6662 • www.dougboymotors.com

**WTR**  
POWER EQUIPMENT  
SALES & RENTAL  
103 S. HOBART  
665-2366

# THE PAMPA NEWS

We're Small But Good!  
Friendly Faces and Competitive Prices

36+ Years Experience

Ceramics • Laminate  
Hard Wood • Carpet

**The Floor Store**  
2100 Perryton Parkway  
665-4455

Floor Care Essentials by Mohawk  
Professional Carpet & Upholstery Cleaning System  
FREE PROFESSIONAL ESTIMATES

CHILDERS BROTHERS INC.  
**HOUSE LEVELING**

Uneven Floors  
Floor Bracing  
Cracks In Bricks  
Sticking Doors & Windows  
Interior Wall Cracking  
FREE ESTIMATES  
1-800-299-9563  
WWW.CHILDERSLEVELING.COM

WE CARRY THE LARGEST SELECTION AND THE LATEST STYLES OF FLOORING IN STOCK WITH THE BEST PRICES!  
**One STOP Flooring**  
1533 N. HOBART  
MONDAY-FRIDAY 9-5  
SATURDAY 10-1

24HR WATER EXTRACTION  
**RUG RATS**  
Professional Carpet & Air Duct Cleaning  
FREE ESTIMATES  
Ronnie Harvill Owner  
665-1976 or 662-9219

**Ashmore & Associates**  
INSURANCE AGENCY, LLC  
1224 North Hobart  
NBC Plaza 2, Suite 11  
Pampa, TX • 806-688-7081  
www.ashmoreandassociates.com  
"For your Business & Personal Needs"  
**JIM BRUTON**

**Thomas**  
Automotive Inc.  
Premier Auto Service and Repair

665-4851  
217 E. ATCHISON  
Monday - Friday • 8am - 6pm

**Double D**  
OVERHEAD DOOR  
800-862-9712  
Raynor Distributors  
www.Raynor.com

Security Storage  
24 hr. Controlled Access  
24 hr. Video Surveillance  
Personal • Commercial  
909-1000

**M & H Leasing**  
**TOP OF TEXAS**  
**ACE**  
Back by Popular Demand  
Appliance Day  
June 7th 9am-11am  
1945 N. Hobart • 665-2061

## Volunteers to watch for parking violations

By DAVID BOWSER  
The Pampa News

Pampa City Manager Trevlyn Pitner said he gets complaints weekly concerning handicapped parking violations.

The answer may be V-PEP, or Volunteer Parking Enforcement Program. Such programs have been successful in other cities, Pitner said.

"We're going to start this program dealing with disabled parking or handicapped parking enforcement," said Pitner, formerly the Pampa Police Chief. "I've had several citizens from the community that have approached me over the last couple of years about handicapped parking and the lack of enforcement."

They presented him with some ideas that other cities, larger cities, are using such as using volunteers to enforce parking requirements, he said.

"I started looking into it," Pitner said.

He said he thinks using volunteers will work in Pampa.

"Basically, it's a voluntary

**'They are not police officers. They have no authority other than to enforce this law concerning disabled and handicapped parking.'**

—Trevlyn Pitner  
Pampa City Manager

program," Pitner said. "The law under the transportation code allows a city to appoint individuals to enforce this program."

The Chief of Police can swear in a voluntary force, but the volunteers have to go through at least four hours of training initially and periodic updates on the law along with a background check.

"They are not police officers," Pitner said. "They have no authority other than to enforce this law concerning disabled and handicapped parking."

The V-PEP is designed to ensure individuals whose needs require accessible parking spaces have those spaces, Pitner said.

The volunteers don't carry weapons, he said, but they act as eyes and ears for the police department. They will be similar to the Citizens on Patrol program that the

Pampa Police Department used to have.

"We're trying to use more voluntary programs for the city," Pitner said.

Voluntary programs, he said, get people involved in the community, and they help save taxpayers' money.

Pitner said he thinks that by putting a few volunteers out each week to watch for parking violations will help solve the problem.

"We try to enforce that anyway," he said.

The problem has been a lack of manpower.

"Officers can get backed up on their calls," Pitner said, "and don't have time to do their regular patrols sometimes." Other calls have often taken



Trevlyn Pitner  
Pampa City Manager

See VOLUNTEERS, Page 3

## Jail, rural dumping on Commission agenda

By MARILYN POWERS  
The Pampa News

Jail structural maintenance and county policy concerning junkyards and rural dumping are once again on Gray County commissioners' agenda. The meeting will begin at 9 a.m. Monday in the second-floor courtroom of Gray County Courthouse, 205 N. Russell.

The county currently has no policy in place which applies specifically to junkyards and rural dumping. The state has regulations in place concerning such locations, but the county must adopt those regulations in order for them to be enforceable in Gray County.

Precinct 2 Commissioner Gary Willoughby first brought the issue before county commissioners at their Feb. 15 meeting. He presented photos and descriptions of areas in his precinct in which items such as appliances, furniture, tires and household trash had been dumped, and of junkyards which did not meet proposed

state guidelines. Action on proposed county junkyard and dumping regulations has been postponed at least twice by commissioners while Willoughby and County Attorney Josh Seabourn worked on drafts of the policy.

State regulations concerning junkyards include guidelines on proper fencing around such areas, and those concerning dumping prohibit the activity in locations not designated for such use, such as landfills.

Structural maintenance of the county jail was brought to commissioners' attention by Gray County Sheriff Dan Copeland at commissioners' May 1 meeting. The building shows signs of settling unevenly, Copeland said, a condition which was confirmed at commissioners' May 15 meeting by Childers Brothers Inc. of Amarillo. A company representative had examined the structure and documented the building's uneven settling.

See AGENDA, Page 3

## Thornberry: This year's Farm Bill process 'tortuous'

AMARILLO -- Pampa's representative in the nation's capitol said this week that he hopes the 2008 Farm Bill will be passed into law in the next few weeks and won't become a 2009 Farm Bill.

The legislation, which started life as the 2007 Farm Bill, was passed by the House of Representatives last summer, but languished in the Senate until earlier this year. Once it passed the Senate, the President vetoed it, saying it spent too much money on farm subsidies and nutrition programs.

"The House voted to override the President's veto on the Farm Bill," Rep. Mac Thornberry said, "by a wide margin."

The problem is, he said, is that the Farm Bill that was sent to the President was not the same as Congress originally passed it because of a clerical error. Apparently, 34 pages of what Congress passed was left out when the legislation was sent to the President. Because of such an error, there are questions concerning the Constitutionality of the Farm Bill.

"The question is," Thornberry said, "will it be subject to Constitutional challenge?"

Thornberry said that the House of Representatives went ahead and voted on the Farm Bill again.

"Hopefully, the Senate will do that just to lay the contro-

versy to rest," he said.

While this Farm Bill contains compromise language on the controversial Country of Origin Labeling, which goes into affect the end of September and will include calves now on the ground, it also deals with the high price of corn and corn-based ethanol.

"One of the provisions of the Farm Bill is to scale down subsidy for corn-based ethanol six cents a gallon," Thornberry said, "and to phase in a subsidy for cellulosic ethanol, which can be based on a whole variety of plants."

Thornberry said he thinks that makes sense because corn is a grain used for many

things, including human food products and livestock feed.

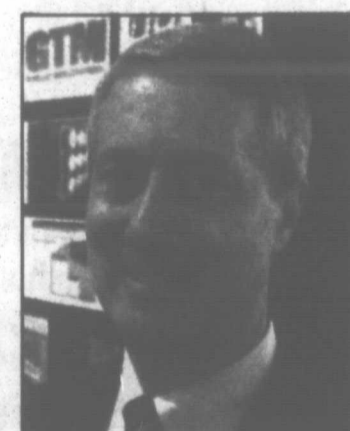
"If we can encourage this other source of ethanol production," he said, "it's good for agriculture, but it's also good for energy in diversifying our sources to produce ethanol. It makes a lot of sense."

Thornberry admitted that the Farm Bill is eight months late.

"It's time for folks and their bankers to know what the rules are," Thornberry said, "and to not have any uncertainty because this has been so tortuous."

He said he hopes that the issue will be resolved within the next few weeks.

Thornberry was in






Rep. Mac Thornberry

Amarillo to tour a new manufacturing plant that produces vessels to transport highly compressed gas.

New Summer Hours  
Open Sundays 10-5  
thru June  
**Walmart**  
120 S Hobart St • 669-0156

**NEXT DAY FORECAST**

Sunday	Monday	Tuesday
		
Sunny	Sunny	Sunny

Sunday: Mostly sunny, with a high near 90. North-northwest wind around 15 mph, with gusts as high as 20 mph.

Sunday Night: Partly cloudy, with a low around 67. East wind between 10 and 15 mph, with gusts as high as 25 mph.

Monday: Sunny, with a high near 96. East-southeast wind 5 to 15 mph becoming southwest. Winds could gust as high as 20 mph.

Monday Night: Partly cloudy, with a low around 69. Southwest wind around 15 mph, with gusts as high as 20 mph.

Tuesday: Mostly sunny, with a high near 90. West wind around 15 mph, with gusts as high as 20 mph.

Tuesday Night: Partly cloudy, with a low around 62. North wind around 10 mph.

† This information brought to you by...

**PRESTIGE**  
**AUTOBODY & ACCESSORIES**  
 101 S. HOBART 806-665-3500  
**We Have Harley Davidson Bed Covers**

**Calvary Assembly of God**  
 1030 Love St. • 669-7207  
 You are cordially invited to the  
**60th Anniversary**  
**Celebration**  
 of the founding of Calvary Assembly of God  
**Saturday, June 21, 2008**  
**starting at 2:00 pm.**

GOD BLESS; MRS. BILLIE PHEA; WHO CREATED HER 101 BIRTHDAY THIS MONTH. MRS. PHEA A LONG TIME RESIDENT OF THE TEXAS PANHANDLE WAS SURROUNDED BY MANY GUEST AND FRIENDS OF MANY YEARS, MRS. IRENE SANDERS, MRS. BERLENER RANDON, MRS. ADA MURRAY, AND A VERY DEAR AND SPECIAL FRIEND, MRS. MARY M. MACK OF MANY YEARS. THE DINNER PARTY WAS HOSTED BY MRS. MARY MACK OF COLORADO SPRINGS, COLO. JUNE THE 24TH, 2008 "MAY GOD BLESS AND KEEP YOU" "YE ARE BLESSED OF THE LORD WHICH MADE HEAVEN AND EARTH." PSALMS 115:15 KJV

**AMERICAN EQUIPMENT & TRAILER**  
 Since 1953 www.aet.us  
 610 N. Grand Amarillo, TX 800-687-8831  
 3707 MLK Blvd. Lubbock, TX 800-530-4775  
**Truck Trailers**  
 Wilson • Clement • Lufkin • Eager Beaver • MuVall  
 Cattle • Grain • Dump • Flat • Machinery • Lowboy

**HOMESTYLE BBQ SPECIALS**  
**Special Full Slab BBQ Ribs**  
 1 pt. cole slaw, ranch beans, homemade potato salad  
**\$22.99**  
 Get 1 lb. BBQ-Brisket or Polish Sausage FREE!  
 Valid Only when Presented with Order. NOT VALID WITH ANY OTHER OFFER.  
**DYER'S BAR-B-QUE**  
 Hwy 60 W Pampa, TX  
 806-665-4401

Preneed Arrangements Available including Caskets  
 Special Veterans Garden  
**Memory Gardens**  
 Cemetery & Mausoleum of Pampa  
 665-8921  
 23rd St and Price Rd  
 www.memory-gardens.tripod.com

# Obituaries

## Services tomorrow

### Services MONDAY

**HARDIN, Glenda Joyce** — 2 p.m., United Methodist Church, Miami.  
**MARTIN, Coela** — Graveside services, 10 a.m., Fairview Cemetery, Pampa.  
**MORELAND, Donna** — 10 a.m., First Baptist Church, Skellytown.

### Steven 'Cro' Burden, 52

LUBBOCK — Steven "Cro" Burden, 52, of Ruidoso, N.M., and Lubbock, died Saturday, May 24, 2008, at Ruidoso. Memorial services were conducted May 29 at Redbud Baptist Church in Lubbock. Mr. Burden was born Oct.

31, 1955, at Sherman and graduated from Coronado High School at Lubbock in 1974. He was employed by Southwestern Bell Telephone in Lubbock for 26 years. He moved to Ruidoso in 2006 and was risk manager for the Inn of the Mountain

Gods and for Ski Apache. He has been a member of the National Ski Patrol for over 25 years. Survivors include his wife, Christi of Lubbock; his sons, Stuart and Sean, both of Lubbock; his parents, Nona and Russ Burden of McAllen; and his brothers,

Keith Burden of Fort Collins, Colo., and the Rev. Kevin Burden of Greenville, Ky. The family suggests memorials be to Diabetes Association or Muscular Dystrophy Foundation.

### Edward H. Gamage, 84

FORT WORTH — Edward H. Gamage, 84, died Saturday, May 24, 2008, at Fort Worth. Mr. Gamage was born April 10, 1928, at Gilmore. He was retired from the U.S. Air Force. He was a lifetime

member of the VFW Post 2137 in Azle and was a master Mason at Sockyard 1244. Mr. Gamage was preceded in death by two sons,



Gamage

Jack and David Gamage. Survivors include his wife, La Vonda Gamage of Fort Worth; his sons, Elton Gamage of

Springtown and Eddie Gamage of Brenham; and several grandchildren. In lieu of flowers, the family requests memorials be to the VFW Ladies Auxiliary.

### Coela Martin, 72

Coela Martin, 72, of Pampa, Texas, died May 30, 2008, at Pampa. Graveside services will be at 10 a.m. Monday, June 2, 2008, at Fairview Cemetery with the Rev. Lynn Hancock, pastor of Briarwood Church, officiating. Arrangements are under the direction of Carmichael-Whately Funeral Directors. Mrs. Martin was born Aug. 22, 1935, in Foreman,

Ark. She married Orvis Martin on March 31, 1951, in Borger. He preceded her in death on Nov. 24, 1995. Coela was an LVN, starting with Highland General Hospital, and retiring in 2002, with over 32 years of service. She enjoyed visiting



Martin

Creek, Colo., and spending time with her great-grandchildren. Survivors include one son, Darrel Martin and wife Belinda of Pampa; one daughter, Debera and husband Jim of Pampa; five grandchildren; and

14 great-grandchildren. Coela was preceded in death by her parents; a sister, Sybil; and a grandson, Andrew Jackson in 1991. MEMORIALS: American Lung Association, P.O. Box 26566, Austin, TX 78755. —Sign the on-line register book at www.carmichael-whately.com.

SEE PAGE 5 FOR ADDITIONAL OBITUARIES

## CITY BRIEFS

The Pampa News is not responsible for the content of paid advertisement

40-75% OFF select clothing at Carousel Expressions, Downtown Pampa.

COMPUTER SICK? Mike, 665-2760. On-site repair.

DEBRA AND Dory formerly of Snips are now at A Perfect Ten Nail Salon, 109 Foster. They welcome new and old customers. 669-6004.

FOR SALE: 8 piece dining set-1rg. solid wood table w/ leaf, 6 chairs, buffet, \$200. We are moving & can't take it with us. 665-0172

I WILL clean your house. References, Doris, 665-1848.

JOE JOHNSON'S Fence Repair/Build New. 665-5839.

MEDICAL FUND has been set up for Jeff Kent of Lefors at Bank of America 100 N. Cuyler, Pampa Tx, 79065.

MONDAY NIGHT Dance. Tommy Henson, playing. Pampa Chamber Bldg. 7 pm. Public Invited!

PAMPA SHRINE Club We Cater!! 50-200 people. (approx 3000 sq ft) available for rent. Weddings, Banquets, company parties, or family reunions. Kitchen facilities available at no extra charge. call Ben Watson 665-3359 to reserve!

PHS CLASS of 1998, 10 yr reunion, July 18th & 19th. Email questions or info to pampaclassof98@yahoo.com

PUPPY PARLOR back from Maternity leave. Call Jenn for appt. 662-7352.

RIO TANNING Products now avail., \$27-\$30. Purses & Jewelry! Hot Headz, 665-2233

SALE @ Pollie's Greenhouse. Sunday & Monday.

SHOWER FOR Lindsey triplets, Monday, June 2nd at Calvary Baptist Church, 6 pm. Call 665-8217 for info.

UNIQUE SHOES- Cutest ever & comfortable. You create the look! Carousel Expressions.

WASHER AND Dryer for sale \$150, 662-3173

### Glenda Joyce Hardin, 76

MIAMI, Texas — Glenda Joyce Hardin, 76, of Miami, died May 30, 2008, at Amarillo, Texas.

Services will be at 2 p.m. Monday at the United Methodist Church of Miami with the Rev. Toni Bailey, associate pastor of St. Luke's United Methodist Church of Midland, officiating.

Burial will be in Miami Cemetery under the direction of Carmichael-Whately Funeral Directors of Pampa.

Mrs. Hardin was born Aug. 8, 1931, in Spearman. She married Earl Hardin on Sept. 2, 1950. He preceded her in death on May 8, 2003.

Glenda was a member of the United Methodist Church.

Survivors include one daughter, Rhonda Cochran and husband Danny of Darroulette; two sons, Dallas Hardin and wife Shawna of Houston, and Doug Hardin and wife Marjorie of Wichita Falls; eight grandchildren, Clay Gill, Caylee Wieck and husband Bruce, Clint Hardin and wife Lauren, Casey Hardin and wife Anila, Tiffany Brown and husband Wes, Chris Cochran and wife Jessica, Brittany Kimble and Kurtis Kimble; four great-grandchildren; three sisters, Beverly Loper of Colorado Springs, Colo., Vena Poore of Enid, Okla., and Mary Poore of Lucedale, Miss.; and one brother, Troy Poore of Roanoke, Ala.

Glenda was preceded in death by two brothers, Bobby Poore and Billy Poore; and her parents, Elva and Robert Poore.

In lieu of flowers, the family requests memorials to be made to Olivia's Angels Auxiliary, P.O. Box 950, Amarillo, TX 79105.

—Sign the on-line register book at www.carmichael-whately.com.

**Trinity Showcamp**  
 2225 N. Hobart  
 Kidmo Summer Slam VBS  
 This Monday through Thursday,  
**June 2nd-5th • 7-9 p.m.**  
 Register your child NOW Online  
 at www.tfampa.com  
 Select VBS on the left under  
 news. You must create an  
 account and then fill out a form  
 for each individual child.  
**Come Join the Fun!**

## Volunteers

Continued from Front Page

priority over parking issues, although Pitner said that Pampa police officers do respond to any calls they get, including parking complaints.

If volunteers find violations, Pitner said, they would be able to issue a citation or

ticket.

"It is a valid citation," he said. "It's just like coming from a police officer. It has all the same authority and will carry the same fines. It helps us do our job."

Pitner said the new program doesn't mean that if the department gets a call on a parking violation that an

officer won't respond, but if a volunteer is available he or she may be dispatched.

"They'll have an ID and some kind of safety vest identifying them," Pitner said. "We'll have some kind of signage on their cars, and we'll also provide them with a police radio so they can stay in touch with police dis-

patch and can call if they need an officer."

Anyone that's interested, Pitner said, can get an application for the program at the Pampa Police Department.

As soon as the application is returned, the city manager said, the police department will begin doing the necessary background checks.

"Volunteers will go through a regular background check," Pitner said. "We want good people in this program."

He said he's looking for people who can volunteer

and help the community.

"Hopefully," Pitner said, "we can eliminate these problems."

## Agenda

Continued from Front Page

Bids on tax-delinquent property will be considered at Monday's meeting. Bids received are from Lonell Moore, \$100 for 409 Harlem; Lonnie B. Moore Sr., \$100, 419 Harlem; Lonnie B. Moore Jr., \$125

for 1056 and 1060 Varmon Drive and \$100 for 537 Harlem; and Hollie Carter, \$100, 229 Henry.

County policy on taxable fringe benefits for county employees will be discussed. Certain benefits such as uniforms may now be taxable.

An executive session regarding medical payment for a county employee will be held during Monday's meeting.

Other items on the agenda include approval to replace a Precinct 2 employee, a budget amendment for

Precinct 3 to cover equipment repairs and payment of bills and salaries.

## Drivers should keep titles current

AUSTIN - Soaring gas prices are prompting many energy-conscious motorists to consider replacing what they're currently driving with more fuel-efficient models. With millions of cars and trucks expected to change hands in the upcoming months, the Texas Department of Transportation launched its Protect Your Title, Texas public awareness outreach campaign today to remind consumers not to overlook the paperwork side of buying or selling a vehicle.

State law requires buyers and sellers to provide specific information to TxDOT to keep vehicle ownership records correct and up to date. When a vehicle is sold, traded in or given away, the vehicle's title must be reassigned to its new owner.

According to state officials, this is where things often go wrong.

"A vehicle's title lists who officially owns it," said Rebecca Davio, director of TxDOT's Vehicle Titles and Registration Division. "If the seller doesn't let us know when a vehicle is sold or traded, he or she will continue to show up in our records as the owner, which means the individual can be held responsible if the new owner racks up parking tickets, toll violations or even more serious infractions."

Speaking at TxDOT's press event to announce the agency's new outreach effort, Tom Frost III, senior executive vice president of Frost Bank, warned motorists not to make the same mistake he

did when he traded in his car two years ago.

"I assumed the dealership was taking care of the paperwork," Frost said. "I didn't know it was my responsibility to file a simple one-page piece of paper that could have saved me two years of stress and aggravation because of things the new owner did in a vehicle that was still titled in my name."

That one-page piece of paper, the Vehicle Transfer Notification, is now as simple as a few computer clicks. You can file the transfer notification for free online at [www.txdot.gov](http://www.txdot.gov). When you submit the notification within 30 days of selling your vehicle, you are protecting yourself from actions the new owner may commit with the vehicle.

As an additional precaution, sellers also should take advantage of a new state law that allows them to transfer the license plates to another vehicle they own. When the plates and windshield registration sticker are removed, it forces the buyer of your car or truck to apply for a new title and register the vehicle in his or her name.

By law, buyers must retitle a vehicle within 20 days of purchase. Recurring penalties apply to procrastinators.

"The best advice I can give to buyers and sellers who aren't sure what to do and what forms to fill out is to go together to their local county tax office to complete the sale," said Davio. "If that isn't possible, everything they need to know and all the necessary forms are on our

Web site."

**UNSURE WHETHER YOU CAN RETIRE? LET'S TALK.**

Duane Harp  
Financial Advisor  
1921 N Hobart  
Pampa TX 79065  
806-665-6753

Member SIPC

**Edward Jones**  
MAKING SENSE OF INVESTING  
[www.edwardjones.com](http://www.edwardjones.com)

**The Gift Shop**  
at Pampa Regional Medical Center

**50% OFF EVERYTHING**

Sale Good Now Thru June 20th

Excludes Candy, Paperback Books & New Baby Door Decorations

Hours - Mon. - Thurs. 9:00 a.m. - 4:00 p.m.  
Friday Noon - 4:00 p.m.

One Medical Plaza - Pampa, Texas

All Proceeds Benefit The Hospital Auxiliary

**NEW!**

**PAMPA COMMUNICATIONS, INC.**

**HD Flat Panel TVs**  
High Resolution Ultra Thin Design

Latest in High Definition!  
Best picture quality, slim design HDTV's!

**42" Prices Starting At Just \$899 plus installation**

HD TV Widescreen LCD with Full 1080p Resolution, ATSC HD Off-air Tuner and 2 HDMI inputs.

All Popular Sizes Available!

**NEW THEATER SYSTEM**  
**GET THAT FLAT PANEL TV**  
**YOU'VE BEEN WANTING TODAY!**

Take the hassle out of HD Installation!  
Get a 32" - 47" Flat Panel HDTV Professionally Installed.

Includes:  
ASLOWAS  
High Definition Flat Panel TV  
Premium Quality Wall Mount  
High Quality HDMI Cabling  
1 Year of Free In-Home Service  
Professional Worry-free Installation

**\$799 includes installation**

**PROFESSIONAL INSTALLATION GUARANTEES YOU THE VERY BEST QUALITY PICTURE!**

**\$100 OFF TV WITH THE PURCHASE OF NEW DISH SERVICE**

**641 N. HOBART**  
**665-1663**

**WARNING!**

**NAILSTONES FALL AT 100 MPH.**

**YOUR CROPS CAN GO JUST AS FAST.**

**DO YOUR CROPS A FAVOR!**

**INVESTIGATE CROP INSURANCE.**

MAKE A NOTE TODAY. CALL YOUR LOCAL WINDMARK AGENT.

**Ashmore & Associates**  
1224 N Hobart • NBC Plaza II Suite 11  
Pampa TX 79065 • 806-688-7081

**Windmark**  
Insurance Agency, Inc.

# Viewpoints

## If you could do one thing to improve Pampa, what would it be?



"I'd put in better restaurants. We don't have very many."  
- Stephanie Boling



"I'd try to have more activities for children. I mean, look at the town of Sunray. They're small and they have an awesome water park. I just think Pampa needs to do more for our kids."  
- Cheryl Ely



"I'd make them give free gas!"  
- Kelt Taylor



"I just moved here but I guess the only thing I'd change is the water. I like Pampa so far but I hate the water here."  
- Nicole Dowdy



"I'm from Denver so a lot. Pampa needs more functional businesses, especially restaurants. It's impossible to go out with family for breakfast when all you have is fast food."  
- Kim Josselyn



"I'd say we need more food like Applebees and Chili's or different chains. I'm tired of Mexican and Chinese."  
- Lupe Martinez

## Today in History

By The Associated Press

Today is Sunday, June 1, the 153rd day of 2008. There are 213 days left in the year.

### Today's Highlight in History:

On June 1, 1813, the mortally wounded commander of the U.S. frigate Chesapeake, Capt. James Lawrence, said, "Don't give up the ship" during a losing battle with a British frigate.

### On this date:

In 1533, Anne Boleyn, the second wife of King Henry VIII, was crowned as Queen Consort of England.

In 1792, Kentucky became the 15th state of the Union.

In 1796, Tennessee became the 16th state.

In 1868, James Buchanan, the 15th president of the United States, died near Lancaster, Pa.

In 1926, actress Marilyn Monroe was born Norma Jeane Mortenson in Los Angeles.

In 1943, a civilian flight from Portugal to England was shot down by the Germans during World War II, killing all aboard, including actor Leslie Howard.

In 1958, Charles de Gaulle became premier of France, marking the beginning of the end of the Fourth Republic.

*'Conventionality is not morality. Self-righteousness is not religion. To attack the first is not to assail the last.'*

— Charlotte Bronte  
English novelist  
(1816-1855)

the Fourth Republic.

In 1968, author-lecturer Helen Keller, who earned a college degree despite being blind and deaf almost all of her life, died in Westport, Conn., at age 87.

In 1968, the British television series "The Prisoner," starring Patrick McGoohan, had its American premiere on CBS.

In 1980, Cable News Network made its debut. Ten years ago: President Clinton abruptly abandoned his claim of executive privilege in the Monica Lewinsky investigation. Thousands of refugees from Serbia's Kosovo province streamed into neighboring Albania to escape deadly fighting.

Five years ago: Leaders of the world's seven wealthiest nations and Russia pledged billions of dollars to fight AIDS and hunger on the opening day of their summit in Evian, France.

One year ago: The FDA warned consumers to avoid using toothpaste made in China because it might contain a poisonous chemical used in antifreeze. Kidnapped British journalist Alan Johnston appeared in a videotape posted on an Islamic Web, the first time he was seen since being abducted nearly three months earlier in Gaza. (Johnston was freed July 4.)



## Idle American: PR stunts gone bad ...

It was on television, for goodness' sake — strictly "play-like" any way you slice it. Not a single turkey lost its life; nay, not even a feather was disturbed in the WKRP in Cincinnati sitcom episode that aired almost 30 years ago.

You remember it — or hearing about it. They dropped live turkeys from a helicopter in a Thanksgiving promotion.

The stumbling/bumbling manager of the radio station, Arthur Carlson, was bombed by an enraged public. "As God is my witness, I thought turkeys could fly," he responded. ...

As it turned out, this was the #1-ranked episode of the popular TV show's five-year run. What isn't so funny is the real event on which it was loosely based.

Yep, back in the 1940's,

they started a "Turkey Trot Festival" in Yellville, Ark. It featured a turkey-calling contest, a turkey target shoot, a Miss Drumsticks Pageant, and — believe it or not — a live turkey release from the roof of the courthouse!

Then, for several years, they dropped gobblers from a low-flying airplane (hopefully a crop-duster). But in 1989, the community was put in a bad light when the National Enquirer splashed a photo of the "air drop" across the land. (Score a rare "A-plus" for the Enquirer.) Forthwith, the "turkey drop" was, uh, dropped. ...

Another goofy PR stunt went awry, for real, when

defunct Braniff International Airlines bragged: "We're going to be on time." They back-patted themselves for "having the guts to put clocks in the cabins."

Among their slick claims was "good for a fast buck," since they handed out silver tokens to passengers if they

deplaned late. (Tokens were redeemable for free future flights.)

The PR campaign was dismantled on May 3, 1968, when a Braniff Electra II, en route from Houston to Dallas, crashed over Dawson, near Corsicana, killing all 85 persons on board. Suddenly, being on time was no longer ballyhoed, and the clocks were

removed from the fleet's cabins. ...

Well, the Grand Prairie AirHogs, a new entry in the world of professional minor league baseball, aren't in the same league with Braniff when it comes to PR blunders, but they've dug mighty deep for a promotion that is over the top.

At their June 3 game, they're giving away a free funeral. That's right, some lucky stiff at the game on "All Hogs Go to Heaven" night will win a \$10,000 funeral with all the trimmings.

Idle thought: Some fan'll turn a profit while someone else turns the spade. Prediction: More heads are turning than turnstiles. ...

The winner gets to choose

See NEWBURY, Page 5

**Don Newbury**  
Columnist



## Texas Thoughts

By The Associated Press

A sample of editorial opinion around Texas:

■ May 26  
The Dallas Morning News on the end of cheap oil:

Memorial Day is the traditional start of the summer driving season. Hope you're flush this summer.

Gas prices are higher than Willie Nelson on the Fourth of July. American Airlines, pressed hard by high jet fuel prices, shocked flyers last week by announcing plans to start charging for transporting luggage. Every day brings more evidence that life is changing under the petroleum price assault.

"Does it trouble any of you when you see what you're doing to us?" blustered Sen. Dick Durbin, the Illinois Democrat, to oil executives last week. Demagoguery is not going to address this crisis, which is about insufficient supply to meet growing demand. The International Energy Agency reportedly will sharply downgrade its forecasts of future oil availability. IEA chief economist Fatih Birol told The Wall Street Journal, "The oil investments required may be much, much higher than what people assume. This is a dangerous situation."

Is this the start of the predicted peak oil catastrophe? It's hard to say, given that the role of speculators and the weak dollar in the current oil spike is unclear. But peak oil theory, once a fringe phenomenon, is now taken more seriously. Peak oil advocates hold that

the global supply of oil that's economically feasible to extract and refine has passed its "peak," and is in permanent decline.

Meanwhile, global thirst for oil is exploding especially from China, on track to double current U.S. consumption by 2030. Absent abundant new discoveries, scarcity is going to make the price of oil nightmarishly expensive.

Our economy and way of life especially in sprawling, car-crazy North Texas depends on a steady and affordable supply of oil. It can't last, because oil is not an infinite resource. We might not be at the end of the cheap oil era yet, but when that day comes, its dawn will look something like what we're

See OIL, Page 5

## THE PAMPA NEWS

403 W. Atchison • Pampa, TX 79065

806-669-2525 • 800-687-3348

Fax: 806-669-2520

email: editor1@thepampanews.com

**Randall Pribble**  
Editor and Publisher

**ReDonn Woods**  
Advertising Director

This newspaper (UPS 781-540) is published daily, except Sundays, Thanksgiving and Christmas Day, by The Pampa News. Periodicals postage, paid at Pampa, Texas. Postmaster: Send address changes to The Pampa News, P.O. Drawer 2198, Pampa, TX 79066-2198.

All carriers are independent contractors and The Pampa News is not responsible for advance payments of two or more months made to the carrier. Please pay directly to the Pampa News any payment that exceeds the current collection period. There are no mail subscriptions available within the city limits of Pampa. Mail subscriptions must be paid three months in advance.

© 2008 The Pampa News

## Emergency Services

Pampa Police Department reported the following incidents for the period from 12:01 a.m. Wednesday to 7 a.m. Thursday.

### Wednesday, May 28

Nine traffic stops were made.  
 Motorist assistance was rendered in the 2800 block of Charles.  
 Calls and stops concerning animals occurred at the intersection of Gwendolen and Davis streets, the 1100 block of Huff Road, the 1100 block of Prairie Drive, the 800 block of South Faulkner, the 500 block of North Cuyler, the 1000 block of South Wells, the 1100 block of South Christy, the 2200 block of North Russell, the 1800 block of Lea, the 200 block of North Russell, the 2300 block of Primrose, the 300 block of North Naida, the 1900 block of East Browning, the 600 block of Faulkner, the 1000 block of North Sumner, the intersection of Frederic and Tignor streets, the 500 block of South Ballard, the 1200 block of Darby, the 100 block of South Faulkner, the 400 block of North Faulkner and the 1400 block of North Christy.  
 Warrant service was attempted on three occasions and resulted in at least two arrests.  
 A welfare check was made in the 700 block of North Frost.  
 A runaway was reported in the 2800 block of Rosewood.  
 Suspicious person calls were received from the 1900 block of Hamilton, the 900 block of East Browning and the 800 block of Duncan.  
 Suspicious vehicle calls were received from the 2200 block of Lea and the 1800 block of Lea.  
 A prowler was reported in the 1100 block of Prairie Drive.  
 Silent/abusive 911 calls were received from the 900 block of South Dwight and the 200 block of North Nelson.  
 Criminal trespass was twice reported in the police department lobby.  
 Criminal mischief was reported in the police department lobby. The incident occurred in the 800 block of Bradley Drive. A light was knocked off a light post. Estimated cost of damage is \$200.  
 Disorderly conduct was reported in the 1100 block of Sierra, the 100 block of South Sumner and the 1100 block of South Dwight.  
 Telephone harassment was reported in the 1000 block of North Dwight.  
 A domestic disturbance was reported in the 1300 block of Barrett.  
 Assault causing bodily injury was reported in the 1900 block

of Duncan. A male student grabbed and twisted a female student's arm after school, causing injuries.

One alarm was reported.  
 Theft was reported in the 400 block of North Russell. A purse containing a driver's license, credit card, check for \$278 and \$500 in cash was taken.  
 Theft was reported in the 600 block of North Wells and the 1100 block of South Christy.

### Thursday, May 29

Three traffic stops were made. Stops in the 900 block of Rham, and the intersection of Hobart and Alcock streets resulted in arrests.  
 One attempt to serve papers in the 900 block of Rham resulted in at least one arrest.  
 Suspicious person calls were received from the 600 block of Lowry, the 1200 block of North Hobart, the 300 block of West Brown, the 400 block of North Christy and the 1000 block of Vamon Drive.  
 Criminal mischief and information were reported at Pampa High School, 111 E. Harvester. The incident occurred at the north parking lot. Cement curbs, sandbags and ramps were moved. No damage was reported.

Gray County Sheriff's Office reported the following arrests today.

### Thursday, May 29

Unique Katherine Obrown, 19, of Los Angeles, Calif., was arrested by Texas Department of Public Safety for possession of 2,000 pounds or less but more than 50 pounds of marijuana.  
 Victor Rodriguez, 30, of Foley, Ala., was arrested by GCSO for no seat belt-passenger, possession of drug paraphernalia, criminal mischief and a bond forfeiture for possession of a controlled substance with intent to deliver.  
 Brandy Michelle Peden, 32, of Pampa was arrested in the 1000 block of North Hobart by Pampa Police Department on capias pro fines for no driver's license, displaying expired registration and failure to maintain financial responsibility.  
 Van Johnson, 54, of Pampa was arrested in the 500 block of East Brown by PPD for driving while intoxicated, third or more offense.  
 Lacy Deionn Nevins, 37, of Fort Worth was arrested by GCSO on a probation violation for possession of a controlled substance.

Heather Elaine Willey, 20, of Pampa was arrested in the 2800 block of Charles by PPD for theft.

Christine Lynn Maier, 20, of Canyon was arrested in the 2800 block of Charles by PPD for theft.

### Friday, May 30

Joshua Lee Knoop, 19, of Pampa was arrested in the 1900 block of North Hobart by PPD for evading arrest, criminal trespass, no valid driver's license, failure to appear and failure to maintain financial responsibility.

Dwayne Edward Watson, 45, of McLean was arrested by GCSO for assault causing bodily injury.

Peagan Leann Cook, 24, of Pampa was arrested in the 100 block of North Hobart by PPD for secure/execute document by deception.

Amanda Hilton, no age given, of Pampa was arrested in the 100 block of North Hobart by PPD on a probation violation for burglary of a building.

Marcheri Renell Hughes, 22, of Pampa was arrested by GCSO on a probation violation for delivery of a controlled substance.

Stanley Branch, 33, of Pampa was arrested by PPD on a capias pro fine for public intoxication and for charges of possession of a controlled substance and evading arrest.

Luis Geraldo Acosta, 48, of Pampa was arrested by PPD on a capias pro fine for violation of a city ordinance for no running water.

Carlos Moreno, 23, of Pampa was arrested by PPD and charged with no driver's license and no insurance.

James Francis McDonald, 47, of Pampa was arrested by PPD as a fugitive from justice out of Oklahoma.

### Donna Moreland, 72

SKELLYTOWN, Texas — Donna Moreland, 72, of Skellytown, died May 29, 2008, at Amarillo, Texas. Services will be at 10 a.m. Monday, June 2, 2008, at the First Baptist Church in Skellytown with the Rev. Fines Marchman, pastor, officiating.  
 Burial will be in Memory Gardens Cemetery in Pampa under the direction of Carmichael-Whitley Funeral Directors of Pampa. Mrs. Moreland was born

March 24, 1936, in Pampa. She married Bill Moreland on April 11, 1954, in Clayton, N.M. Donna had been a resident of Skellytown since 1967. She was a beautician for 22 years and was a member of the First Baptist Church of Skellytown. Donna was a loving wife, mother and grandmother,



Moreland

and an inspiration to her family and friends. Survivors include her husband, Bill Moreland, of the home; three daughters, Cindy Francis of Pampa, Terri Boren of Borger, and Ronda Simpson and husband Tim of Thomas, Okla.; one sister, Sue Smith of Skellytown; seven grand-

children, Jesse Francis and wife Abbie, Kyle Francis, Erin Boren, Ethan Boren, Emma Boren, Myles Simpson and Quentin Simpson. MEMORIALS: First Baptist Church, P.O. Box 176, Skellytown, TX 79080, or BSA Hospice, P.O. Box 950, Amarillo, TX 79105. —Sign the on-line register book at [www.carmichael-whitley.com](http://www.carmichael-whitley.com).

### Janice Ann 'Mother' Rucker, 67

Janice Ann "Mother" Rucker, 67, of Pampa, died Friday, May 30, 2008, in Pampa. Memorial services will be announced at a later time. Cremation and arrangements are by Carmichael-Whitley Funeral Directors. Janice Ann Dillman was born on May 31, 1940, in Pampa, to George and Clara Dillman. She was a 1957 graduate of Pampa High School and attended West Texas State University in Canyon. She married Terrell Rucker on June 27, 1962, in Pampa. Janice was a lifelong member of St. Vincent de Paul Catholic Church. She

was a great wife, mom, Granny, and friend. She was a contestant in the very first Kid Pony Show and was a lifelong barrel racer and a true cowgirl. Her hobbies included her horses, making shirts for her cowboys, team penning, and being a mom to all her "other" kids. She will be greatly missed by all. She was preceded in death by her husband, Terrell; a daughter, Roy Lynn Cline; her parents, George and Clara Dillman; a sister, Norma Jean Homer; a broth-



Rucker

er, Donald Dillman; and by two grandsons, Matthew Rucker and Gregory Cline. Survivors include three sons, Rex Rucker and wife Carolyn of Pampa, and Roy Pat Rucker and Eddy Douglass, both of Amarillo; one daughter, Keziah Hoover and husband Brad of Pampa; and eight grandchildren, Darci Dunn and Chelsi Dunn, both of Rangely, Colo.; Jessica Cline of Abilene, Jason Cline of Altus, Okla.; Nicole Rucker, Evan Rucker, Ryne Richardson, and Marlee

Richardson, all of Pampa; and by her special lifelong friends, Temi Wardell, Becky Mayfield, Judy Morriss, Terri Sexton and Kelly Aldridge. MEMORIALS: BSA Hospice and Olivia's Angels, 800 N. Sumner, Pampa, TX 79065. —Sign the on-line register book at [www.carmichael-whitley.com](http://www.carmichael-whitley.com).

## Newbury

Continued from Page 4

the color of his (her) casket, and all related funeral expenses, including burial plot and headstone, will be paid. (The expiration date for claiming the prize is the same as the winner's expiration date.)  
 Though the game is still a few days away, fans are requested to wear black. (Nothing has been said yet if fans who opt to watch the game from the outfield swimming pool should wear black suits.)  
 When the PA guy screams, "Say 'bye-bye' to that one," fans won't know whether he's referring to the contest winner or the home run hitter. Fans also are advised that there will be funeral-related contests during the game, including pallbearer races and "MadLibs" eulogy deliveries. ...  
 \*\*\*\*\*  
 Excuse me, but is this not trivializing death? Somehow, one would think cooler

heads would have prevailed. Instead, bobble heads did; there is egg on many faces.  
 Oh, in some respects the promotion already is a smashing success. We know who the AirHogs are, and we have a snoutful of teases about their promotions. One of them is a "Jessica Simpson Night." ...  
 \*\*\*\*\*  
 In the early years of my career, the college president to whom I reported made it clear to me that my primary responsibility was to keep the school "in the news and off the front page." Parameters were established.  
 Most of the time, it worked. We never dropped turkeys or had hearses hot-rodding across parking lots. Anyone suggesting such in staff meetings would have been hooted out of the room.  
 Meanwhile, I'm really glad that minor league baseball is back, and I trust that the Grand Prairie AirHogs will give a hoot. Will they win the pennant? I dunno. Maybe when pigs fly. ...  
 —Dr. Newbury is a speaker and author in the Metroplex.

## Oil

Continued from Page 4

living through today.

We must start transitioning to a far less oil-intensive way of life. It can't be done overnight. Complacency is our enemy. Politicians, business leaders and every single one of us should read the signs of the times, and get on with it. URL: <http://www.dallasnews.com>

Come In Or Call For A Quote  
**AUTO • HOME • BUSINESS • LIFE**  
 Gray County Insurance Doing Business As  
**JOHNSTON INSURANCE AGENCY**



CJ Johnston, Agent

1712 N. HOBART  
 PAMPA, TEXAS  
 806.665.4133  
 866.665.2788



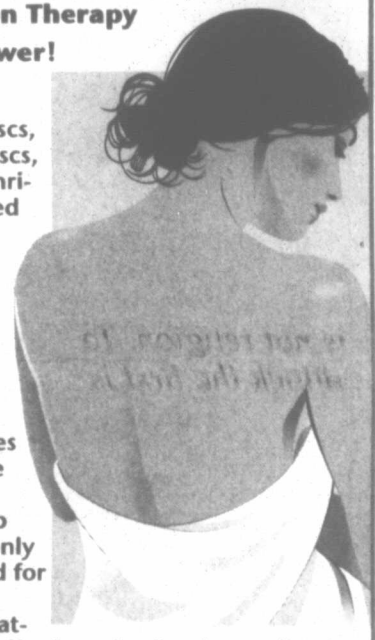
Betty Johnston, Agent

Not The Largest ... Not The Smallest .. But The Best Rates & Service!

## Tired of Neck and Back Pain?

Spine Decompression Therapy  
 May Be The Answer!

The back and leg pain associated with herniated discs, bulging and degenerative discs, spinal degeneration and arthritis may be virtually eliminated following this effective new treatment. The equipment for this treatment has FDA clearance and studies have shown that Spine Decompression can be effective in as many as 80% of the patients treated, even when surgery and other types of treatment have failed. The treatment is so comfortable that some patients fall asleep during the session. It takes only minutes and there is no need for hospitalization, medication, difficult exercises or post-treatment recovery time. If you suffer from back pain, neck pain, sciatica, or numbness and pain in your arms you owe it to yourself to try this exciting new treatment.



**ALBRACHT CHIROPRACTIC OF PAMPA**  
 2216 COFFEE STREET • 806.665.7161



**COMMUNITY CHRISTIAN SCHOOL** OF PAMPA  
 ACADEMICS • CHARACTER • CITIZENSHIP

## Charity Golf Scramble

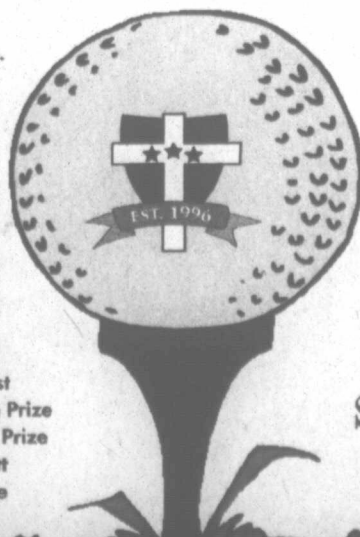
Teams are now forming for the 1st Annual Community Christian School Golf Scramble

Saturday, June 7, 2008

Pampa Country Club 8:00am Shotgun Start  
 \$400 per team (4 players)

Sponsored By:

Fenton Motors  
 Rep. Warren Chisum  
 W&W Fiberglass Tank Co.  
 Dr. Greg Kelly  
 Body of Christ  
 Hi-Plains Measurement  
 Chisum Ranch  
 The Floor Store  
 Certified Heroes  
 Walls Inc.  
 Ford Family Chiropractic  
 Pampa Office Supply



Sponsored By:

J&S Exploratory Management  
 Texas Furniture  
 Gray County Veterinary Clinic  
 Briarwood Church  
 B&G Electric  
 One Stop Flooring  
 Kevin Karr Construction  
 DE Chase Inc.  
 Farm Bureau Insurance  
 Plains Mud Services  
 Bourland & Leverich  
 Moncorp

**PRIZES!**  
 \$5,000 Putting Contest  
 Ford Mustang Hole In One Prize  
 Hogan Clubs Hole in One Prize  
 Long Drive / Long Putt  
 Titleist AP1 Irons Raffle  
 And More!

Sign Up Today!

To register your team call  
 DeLynn Gordzelik - (806) 440-1412  
 or sign up in the PCC Golf Shop.

# TDA promoting rural Texas with new state initiative

AUSTIN — Agriculture Commissioner Todd Staples today announced the launch of the GO TEXAN Rural Community Program to promote rural Texas communities through reimbursable funding programs, tourism, education and networking initiatives.

"Our rural Texas communities are a tremendous source of pride and are vital to the health of our state's economy," Commissioner Staples said. "These communities have much to offer, and it is the mission of the GO

TEXAN Rural Community Program to encourage Texas citizens, as well as visitors, to discover the bounty of our outlying cities and towns."

The GO TEXAN Rural Community Program replaces Texas Yes!, an initiative launched by TDA in 2003 to promote the growth and prosperity of rural Texas. Better designed to capitalize on the unique culture and distinctive flavor of rural Texas, the new GO TEXAN Rural Community Program will help rural communities leverage marketing

dollars to boost economic growth and prosperity.

Program participants are designated as certified or associate members. Certified membership is open to counties or cities with a population of less than 20,000, and whose city limits do not adjoin another city or group of cities' boundaries with an aggregate population of 50,000 or more.

Associate membership is available to chambers of commerce, economic development corporations, councils

of government, convention and visitors bureaus, sole proprietors, etc. whose principal place of business is in Texas, with a rural location.

Benefits of program certified membership include reimbursable funding through the Texas Department of Agriculture's Hometown STARS (Supporting Tourism and Rural Success) program and the Bootstrap Bucks program, which offer recipients up to \$10,000 and \$2,500, respectively.

Other program benefits available

to all members include promotion through GO TEXAN marketing campaigns, informative workshops and networking opportunities.

To learn more about the GO TEXAN Rural Community Program, visit <http://www.gotexan.org/> or contact Natalie Houghton, TDA's Marketing Coordinator for Rural Texas Communities, at [natalie.houghton@tda.state.tx.us](mailto:natalie.houghton@tda.state.tx.us) or (512) 463-6490.

**SPRING CLEARANCE SALE**  
**ENTIRE STOCK 30% TO 50% OFF**

**NOW IS THE TIME TO BUY!**

**UNDER AMOUR**  
**BASEBALL & SOFTBALL EQUIPMENT**  
**ALL SHOES & CLEATS**  
**SOCCER & COLLEGE SPORTSWEAR**  
**SHIRTS • SHORTS • SOCKS • CAPS**

**HOLMES**  
 Sports Center  
 est. 1962

304 S Cuyler 665-2631  
**SALE ENDS JUNE 5TH**

## COMMUNITY AFFAIRS

### Meals on Wheels celebrates 30 years

This year marks the 30th anniversary of Pampa Meals on Wheels.

On Oct. 9, 1978, the first meals were delivered to 45 shut-ins. The Leisure Lodge Nursing Center, now known as Coronado Nursing Center, agreed to share its kitchen and staff and to provide office space as well.



A Meals on Wheels board of directors was chosen, and each member played a major role in the planning and establishment of the program. The original board members were Reed Echols, president; Carol Mackey, vice president; Pauline Beard, secretary; and Bob Horton, treasurer. Members at large were Pat Turner, Joe Dickey, Father Francis Hynes and J.E. Thompson.

Two years after its establishment, Meals on Wheels had outgrown the Leisure Lodge Nursing Facility, and First United Methodist Church offered its kitchen and office space. In 1980, Meals on Wheels moved to the basement of FUMC and remained there for 24 years until purchasing the present building, located at 302 E. Foster.

Courtesy Photo  
**Pampa Meals on Wheels is currently observing its 30th anniversary. Above: Cindy Flaharty, from left, Donna Miller, Becky Watson, Jeane Autry, Kelle Cuthbert and Doris Stevens.**

The building was bought from Browning Heating and Air conditioning in the latter part of 2003. Walls in the building were torn out, and the building was completely remodeled by two board members and a volunteer.

Bill Bridges, a board member, drew the plans for the interior. Raymond Barrett and Tom Burns, board members, and Joe Autry, a volunteer, did the carpentry work. Mike Flynt, another volunteer, assisted as an apprentice carpenter.

Grants from several foundations paid for the kitchen equipment, tile and carpet and for black top for the parking lot. The move from FUMC to the present building officially took place June 19, 2004.

Today there are 12 board members, six full-time employees and a temporary employee. The board consists of Sherry McCavit, president; Jana Vinson, vice president; Linda Holt, secretary; and Barrett, treasurer.

Members at large are Lynn Allison, Donna Brauchi, Tom Burns, Sharon Haynes, John Palmitier, Donna Reynolds, Joan Gray-Soria and Judy Sutton.

Employees are Jeane

A minimum of three fund-raisers is scheduled each year. This year, on Feb. 29, Meals on Wheels had its first food drive, with a hamburger cookout and raffle of a quilt made and donated by Reynolds. Usual fund-raisers are March for Meals in May, a garage sale in August, Music and a Meal in November and Adopt A Friend, which lasts all year.

"Adopt A Friend is a wonderful way to give a donation and pay for the meals of a shut-in or homebound person," Autry said. "This payment can be for a day, week, month or year."

The annual Volunteer Appreciation Luncheon and/or Banquet will be in October. It will commemorate Meals on Wheel's 30 years of service to the Pampa community and show appreciation to past and present volunteers for the service they have provided and continue to provide for the elderly and homebound of the community.

**You're On Your Way!**  
**To a great rate**  
**Five Month CD**  
**3.28% APY\***

\*Annual Percentage Yield Effective June 1, 2008.  
 \$1000 Minimum Balance to Obtain The A.P.Y.\*  
 \$1000 Minimum Deposit. Rates are Subject to Change. Penalty For Early Withdrawal.

**NATIONAL BANK OF COMMERCE**

An Office Of First National Bank Waupaca, Wisconsin

**PAMPA • 1224 N. HOBART • 665-0022**  
**SHAMROCK • 305 N. MAIN • 256-2181**  
**CHILDRESS • 501 COMMERCE • 940-937-2514**

Member FDIC

### Landowners getting trampled in gas rights rush

CHARLESTON, W.Va. (AP) — Unsuspecting property owners around the country are getting trampled in an old-fashioned land rush by natural gas companies and speculators trying to lock up long-ignored drilling rights quickly and cheaply.

Stories of fast-talking industry representatives using scare tactics to strong-arm people into signing low-ball leases are popping up in rural areas and suburbs from New York to West Virginia

to parts of Indiana and Texas. All sit atop largely untapped natural gas deposits made suddenly viable — and valuable — by soaring prices and improved drilling techniques.

West Virginia farmer and convenience store owner Brad Castle is still smarting from his experience.

Castle and his father thought they were getting a windfall when they signed a \$5-an-acre lease and promise of 12.5 percent royalties

for the gas rights to 800 acres they own near Rowlesburg in northern West Virginia. The process started when a landman — an industry term for a person who secures mineral rights — knocked on their door.

"They're very nice people, the ones that come around. You thought you could trust them," said Castle, who adds that he was warned to sign or drillers would siphon the gas beneath his property without

paying him a dime.

His feelings of trust evaporated when rival companies started offering \$350 an acre and royalties as high as 15 percent.

"They knew what they were doing when they come in, but we didn't," said Castle, who's hired a lawyer to look into breaking the lease. "There's got to be a law broke somewhere."

Retired dairy farmer Dewey Decker heard similar pitches when landmen started showing up in New York's Broome and Delaware counties.

"They were offering like \$25, then \$50," Decker said. "Quite a few people signed for \$50."

But Decker held out and formed a pool with other landowners that has grown to more than 40,000 acres. The approach worked: Decker's group agreed to a five-year deal that pays \$2,411 an acre and a 15 percent royalty.

So, too, did entrepreneur and writer Tom Rodgers and much of his suburban Arlington, Texas, neighborhood, which sits atop a gas-rich formation called Barnett shale. Rodgers remembers the landmen's spiel as almost exactly like oilman Daniel Plainview's sweet-talking sales pitch in the movie "There Will Be Blood."

"That original speech that guy makes to the rural property owners, it hasn't changed much in 100 years," Rodgers said. And like Castle, Rodgers said landmen often warned that

**I am Pampa Regional**

"At PRMC, we are always trying to find better ways to take care of our patients. We're never satisfied with the status quo; we never stop growing and learning."

**Daniel Trejo, LVN**  
*Geriatric Psychiatry Unit, 7 years*

**PAMPA REGIONAL MEDICAL CENTER**  
 Well Equipped. Well Trained. Well Worth It.

# Texas Department of Agriculture

## Latest programs and promotions ...

### New Restaurant Program Off To A Sizzling Start

AUSTIN — Agriculture Commissioner Todd Staples has announced that, only months after its inauguration, the GO TEXAN Restaurant Program has reached 274 members. Staples made the announcement at the Driskill Grill in the historic the Driskill Hotel.

"These initial members recognize the importance of serving up their entrees with a side of Texas pride," Staples said. "When GO TEXAN Restaurant Program members connect with area producers to serve locally grown, seasonal products, the consumer enjoys the freshest ingredients possible and the state's economy is strengthened."

The new GO TEXAN Restaurant Program allows restaurants to join the GO TEXAN marketing program,

the Texas Department of Agriculture's comprehensive campaign promoting the products, culture and communities of Texas.

The program encourages restaurants to use locally produced items, which not only recognizes Lone Star State quality but also — in this time of rising fuel and food prices — helps control costs by keeping transportation distances to a minimum. The Driskill Hotel is one of the program's newest members.

"Having the oldest established restaurant in Austin, it's only natural for the Driskill to embrace the GO TEXAN Restaurant Program that connects our culinary staff with local growers and producers," Executive Chef Jonathan Gelman said. "At both the Driskill Grill and the 1886 Café & Bakery, we carefully select products and prepare menus that provide our guests with fresh, inno-

native cuisine that reflects the diverse food traditions of our city and state. With this program, the Texas Department of Agriculture has shortened the distance and reduced the amount of time that it takes to get the food from farm to table."

For a \$25 annual fee, members receive assistance in sourcing locally produced items; use of the GO TEXAN brand on menus and other printed materials; and inclusion in high-profile events, publications and other activities promoting member establishments to the public.

Make sure to mark your calendars for Oct. 1. On this day consumers will be invited to dine at GO TEXAN Restaurant Program establishments, with a portion of the proceeds benefiting food banks across Texas. Look for more information later this year about this exciting event.

For details about the GO TEXAN Restaurant Program or to inquire about membership, go to [www.gotexan.org](http://www.gotexan.org) or contact Sarah Riggins at (512) 475-1663 or [sarah.riggins@tda.state.tx.us](mailto:sarah.riggins@tda.state.tx.us).

### New Funds For Rural Cities, Counties To Improve Their Appearance

AUSTIN — Agriculture Commissioner Todd Staples has announced the Texas Department of Agriculture is now accepting applications for the GO TEXAN Rural Community Beautification Grant Program. The program has \$100,000 available for cities and counties that wish to improve the appearance of their downtown areas.

"The downtown appearance of any rural city is vital to the success of rural Texas," Commissioner Staples said. "These funds provide an opportunity for

See STATE, Page 8

## Rights

Continued from Page 6

Rodgers said. And like Castle, Rodgers said landmen often warned that homeowners risked getting nothing if they didn't sign. "These landmen do lie. They do exaggerate."

Gas companies such as Chesapeake Energy Corp. make no bones about their desire to lock up leasing rights. The Oklahoma City-based natural gas giant calls its aggressive lease acquisition program the "land grab" in its latest annual report to the Securities and Exchange Commission.

Chesapeake did not immediately return a call seeking comment.

While Rodgers said Chesapeake was aggressive in its efforts to secure rights in his neighborhood, he said

the company quickly clamped down when residents complained about dishonest tactics by independent landmen hired by the company.

West Virginia lawyer David McMahon said such aggressive tactics are showing up across West Virginia counties with substantial Marcellus shale, a 6,000-foot-deep rock formation believed to hold 50 trillion cubic feet of recoverable gas.

"Most everybody's getting a low-ball dollar offer and lots of people are getting rushed," McMahon said.

As for the kind of half-truths Castle was told — landowners can be reimbursed for gas sucked from beneath their property — McMahon said that's not universal — and not true. "Some landmen are being fair, but sharp bargainers."

McMahon recently started a campaign to educate landowners about mineral leasing through the West Virginia Surface Owners' Rights Organization. Among other things,

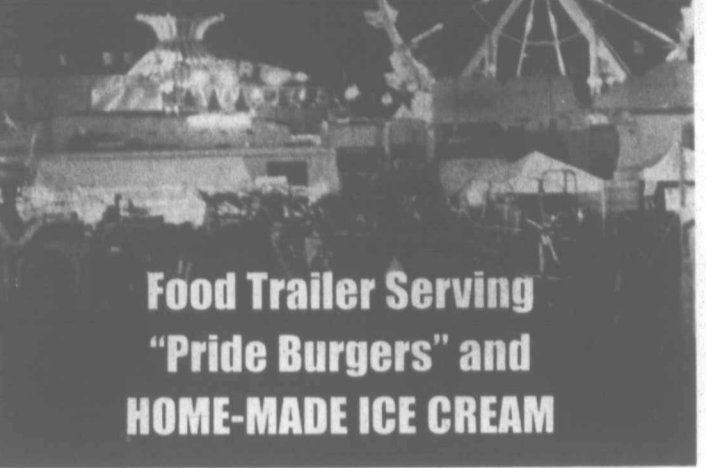
McMahon advises landowners to take their time and refuse to be rushed into signing leases. He also suggests rejecting standard leases in favor of documents containing protections against roads, potential pollutants such as saltwater injections, and use of depleted wells for gas storage.

Herschel McDivitt, director of Indiana's Division of Oil and Gas, offers similar advice. He hears from landowners often enough to suspect landmen are employing similar tactics as they try to secure rights to New Albany shale in the Illinois basin.

"There just aren't a lot of savvy landowners out there," McDivitt said of the calls he gets regularly. "Some of them are just, 'Hey, we just had some slick-talking guy who's just been pounding on us, but we don't understand.'"

## PRIDE OF PAMPA BAND CARNIVAL

June 3-7  
6 pm - 11 pm  
MK Brown /American Inn  
Parking Lot



Food Trailer Serving  
"Pride Burgers" and  
HOME-MADE ICE CREAM

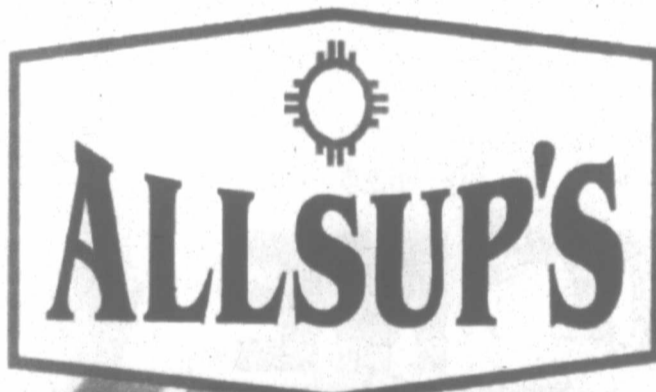
## THANK YOU

Wilson Elementary Power Hour Celebration was held on Wednesday May 21st at 2pm. We would like to say "Thank You" for giving up your time to help our kids have experiences outside the academic part of the classroom.

Jean Lucas Augustinhe from Brazil  
Bernice Blasigano from Palo Duro Canyon  
Salma Cortez  
Kay Crouch  
Culberson Stowers  
Carol Dunham  
Amy Germany from West Texas Landscape  
Celeste Gonzalez - PHS Student  
Dr. Brian Gordzolk  
Kathleen Guerrero  
Captain Haines  
Kay Harvey  
Grace Hudson  
Katy Hupp  
Officer Stormy McCuller  
Dobbie McDonald  
Brandon McGinty  
Garth Miller

Cara Morris  
Besa Olivas  
Wendy Pachas  
Pampa News  
Officer Carl Parks  
Kaitlin Passini  
Suzanne Pingol  
Tolma Ruiz  
Officer Michael Ryan  
Lidia Salazar - PHS Student  
Logan Shed  
Donna Solis  
Samantha Sutterfield  
Captain Yamashek and crew from Pampa Fire Department

A "special" thanks goes to Heidi Saggeman and Palma Born for their time in organizing Power Hour and to all of our facilitators for their time planning and helping. We appreciate all the help that you have given to our school this year.



Prices Good Thru 6/14/08

ASSORTED 16 OZ.  
**MONSTER ENERGY DRINK**

2 FOR \$3.00

ASSORTED  
**BROWNIE BAKER BROWNIES**  
\$1.29 EA.



309 N. Hobart  
140 S. Starkweather  
1025 W. Wilks  
1900 N. Hobart  
West Highway 152

ALLSUP'S ASSORTED  
**ICE CREAM**  
1/2 GALLON

\$3.79



BUY 12 GALLONS OF FRESH ALLSUP'S MILK...  
**"MOO"**  
GET ONE FREE!

ASSORTED REGULAR \$1.29  
**DORITOS TORTILLA CHIPS**  
\$1.09



HERSHEY'S, HERSHEY'S WITH ALMONDS,  
KIT KAT, REESE'S PB CUPS OR PAYDAY REGULAR SIZE  
**HERSHEY'S CANDY BAR**

KitKat 79¢  
Milk Chocolate

BAR-S 12 OZ. PKG.  
**MEAT FRANKS**  
& TENDER CRUST 8 COUNT  
**HOTDOG BUNS**  
\$1.59



### MORE SPECIALS

BLUE BUNNY THE CHAMPI CONE EACH	79¢
TOM'S FRIES ASSORTED FLAVORS REG. \$1.99	2 for \$3.00
CHEEZ-ITS PARTY MIX ASSORTED FLAVORS EACH	99¢
SOFT N' GENTLE BATH TISSUE 4 ROLL PKG.	\$1.19
ALLSUP'S SANDWICH BREAD 24 OZ. / 99¢ EACH OR	2 for \$1.99
ALLSUP'S WHEAT BREAD 24 OZ. / \$1.09 EACH OR	2 for \$1.99
CHINET PLASTIC CUPS 20 COUNT	\$1.99

### COMBO MEALS

COMBO NO. 1 BACON/EGG BISCUIT & 16 OZ. COFFEE	\$2.09	COMBO NO. 6 3 TAMALES, HOWLERS & 32 OZ. TALLSUP	\$2.69
COMBO NO. 2 SAUSAGE/EGG BISCUIT & 16 OZ. COFFEE	\$2.09	COMBO NO. 7 2 HOT LINKS WITH BREAD & 32 OZ. TALLSUP	\$2.59
COMBO NO. 3 BBQ SANDWICH & 32 OZ. TALLSUP	\$2.09	COMBO NO. 8 2 CORN DOGS & 32 OZ. TALLSUP	\$2.69
COMBO NO. 4 HONESTLY POPCORN CHICKEN & 32 OZ. TALLSUP	\$2.79	COMBO NO. 9 CHIRICHANGA & 32 OZ. TALLSUP	\$2.49
COMBO NO. 5 SPICY POPCORN CHICKEN & 32 OZ. TALLSUP	\$2.79	COMBO NO. 10 2 BEEF & BEAN BURRITOS & 32 OZ. TALLSUP	\$2.69

# State

Continued from Page 7

rural communities to spruce up their downtowns, increasing visual appeal and tourist activity.”

Vijay K. Mohan, M.D.

104 E. 30th • (806) 669-3303

Dear Patients,

After almost 30 years in Pampa, I have decided to limit my practice to office based procedures during certain days. I had to make this decision due to the fact that I will be joining the Amarillo V.A. Hospital as a General Surgeon starting July 2008.

I urge my patients who are desirous to obtain copies or request transfer of their records to contact the office as soon as possible at 669-3303.

I would like to use this opportunity to thank you for the trust and patronage over the years.

Sincerely,  
Vijay Mohan M.D.

The money can be used to purchase new welcome signage, decorative light posts, flags, benches, planters, or any outdoor furniture that can be used year-round.

The GO TEXAN Rural Community Beautification Grant Program, housed under the Rural Economic Development Division, has expanded beyond previous years to now include county participation. Counties may apply on behalf of unincorporated cities or for the county seat.

All funds must be used to purchase only the approved items and in an effort to improve the aesthetics of the downtown area. All applicants must be a GO TEXAN member prior to applying for the funds.

Applications will be accepted through June 27. For program details and eligibility requirements, rural communities are encouraged to visit [www.tda.state.tx.us](http://www.tda.state.tx.us).

### Farms, Ranches Seeking Recognition For More Than 100 Years Of Ag Production Encouraged To Apply Now

AUSTIN — Texas Department of Agriculture Commissioner Todd Staples is encouraging families who wish to apply for the state agency's Family Land Heritage Program to get started on their applications now.

The Family Land Heritage Program recognizes farms and ranches that have been in continuous agricultural production by the same family for at least 100 years or more.

“Since its inception in 1974, the Texas Department of Agriculture's Family Land Heritage Program has honored more than 4,300 Texas farms and ranches in 233 counties,” Commissioner Staples said. “This is proof Texas has a rich history of agriculture.”

Applications, which are due Sept. 15, will be accepted for farms or ranches established in 1908 or earlier that are still owned and operated by the descendants of the founder, either through blood, marriage or adoption. The land must also fit the old U.S. Census definition of a farm: 10 acres or more with agricultural sales of \$50 or more a year; or if less than 10 acres, sales of at least \$250 a year.

The owners must reside in Texas and actively manage the everyday operation of the farm or ranch. If all the land has ever been rented or leased to someone outside of the family, it will not qualify. If only a portion was leased, and as much as 10 acres were retained in the family for agricultural production with sales of at least \$50 annually, the property will still qualify. There is no cost to apply for the recognition.

For an application or more information, contact Michelle Sneed at 512-463-2631, P.O. Box 12847, Austin, Texas 78711. The application can also be downloaded at [www.tda.state.tx.us](http://www.tda.state.tx.us) under the Family Land Heritage link.

### Commissioner Staples Announces Partnership To Promote The Riches Of Rural Texas Communities

AUSTIN — Agriculture Commissioner Todd Staples has announced a partnership between the Texas Department of Agriculture and the Texas Travel Industry Association to present a series of one-day workshops advocating rural tourism.

“We are proud to recognize the richness and vitality of our rural communities through the Tourism Workshop Program,” Commissioner Staples said. “This collaborative initiative will salute the success stories of rural Texas while further invigorating rural economies through tourism.”

The first of six workshops will be presented Aug. 14 in Kingsville and will feature guest speaker Dan Quandt of the South Padre Island Convention and Visitors Bureau. Topics

of discussion during the workshops will include the development of tourism as a viable economic engine; rural business development; creative ways to leverage local and regional tourism partnerships; and managing and marketing aspects of rural tourism.

The Texas Travel Industry Association recognizes that economically vibrant rural communities are critical to the health of the overall tourism industry. That same vision is shared by TDA's GO TEXAN Rural Community Program, which is a comprehensive membership network designed to help rural communities leverage marketing dollars to promote economic growth and prosperity while sharing successful initiatives.

Other rural Texas communities participating in the Tourism Workshop Program include Plainview, Odessa and Tyler. Those workshops will be conducted prior to the end of the year.

To learn more about the Tourism Workshop Program and the GO TEXAN Rural Community Program, visit [gotexan.org](http://gotexan.org).

### AgriLife receives \$1 Million To Remove, Control Feral Hogs

AUSTIN — The Texas Department of Agriculture (TDA) recently awarded Texas AgriLife Extension Service \$1 million for the agency's new Texas Feral Hog Control Program: Moving Towards A Long-Term Abatement Strategy.

“The feral hog population has exploded in Texas over the past 20 years. This invasive species will destroy anything in its path from sorghum fields in the rolling plains to pastures in East Texas to plants in a suburban San Antonio landscape,” Commissioner Staples said. “Eliminating these animals also means safer driving conditions for Texans and for our many visitors. This grant will test the critical strategies we have developed to control this pest.”

Texas is home to more than 2 million feral hogs, the largest feral hog population in the U.S., and their numbers continue to increase due to high reproductive potential and the lack of natural predators.

Feral hogs wreak havoc on property, livestock, crops and pastures across the state and frustrate landowners because of their destructive nature. In fact the Extension Service estimates the statewide annual economic damage caused by feral hogs is close to \$52 million.

The 80th Legislature directed this \$1,000,000 in funding following a \$500,000 pilot project funded by the 79th Legislature. The pilot program was administered by Texas AgriLife Extension Service and Texas Tech University through a TDA grant in 2006-2007 and did provide technical assistance to landowners at three sites, and promote educational events for other landowners statewide. The pilot project succeeded in removing more than 3,000 feral hogs, saving landowners/agricultural producers nearly \$3 million in losses.

### New Grant To Expand Texas Wine Industry

AUSTIN — Texas Department of Agriculture has a new \$250,000 wine grant program for farmers who wish to expand existing vineyard operations or start new ones.

“The Texas wine industry ranks fifth in the nation and contributes more than \$1 billion annually to our state's economy, but it is critical to expand the industry and get even more grapevines in the ground,” Commissioner Todd Staples

See WINE, Page 9

**The Salvation Army Boys & Girls Summer Camp**  
June 9 - August 15  
Monday through Friday  
From 9 AM to 4 PM  
Ages 6-12 Welcome

- Snacks & Lunch Provided
- Daily Devotion
- Field Trips
- Outdoor Sports & Games
- Indoor Games & Activities

Registration Begins June 2  
Camp Size is limited so register early  
701 S. Cuyler  
806-665-7233

**Yard Care Made Easy. STIHL**

**FS 45 TRIMMER**

GREAT VALUE!

- Lightweight, reliable consumer trimmer
- Can use nylon line or STIHL PolyCut™ head
- Balanced design and upright fuel tank with retainer cap

**BG 55 HANDHELD BLOWER**

- Proven handheld blower at an affordable price
- Features round nozzle for increased air volume
- Optional vacuum and gutter kit attachments available

**MS 170 CHAIN SAW**

- Designed for occasional wood-cutting tasks around the home
- Includes many of the excellent design features of our professional models

STIHL HAS YOU COVERED WITH PROTECTIVE APPAREL AND ACCESSORIES.

**STIHL - 8000 SERVICING DEALERS NATIONWIDE**

**WHL POWER EQUIPMENT**  
120 S. Hobart • 669-0158

[stihlusa.com](http://stihlusa.com) © 2008 STIHL **Are you ready for a STIHL?**

From minor dents to major body repairs, we'll get your car back in shape.

**DAMAGE UNDONE**

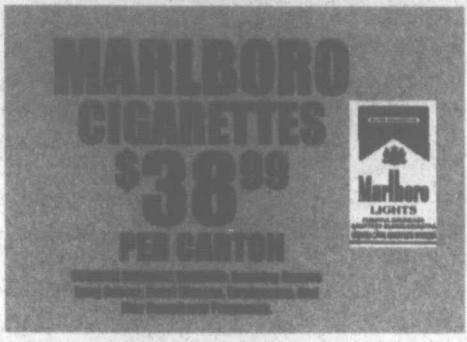
**Complete Paint & Bodywork**  
**Lifetime Guarantee**  
**All Insurances Accepted**  
**Detailed Estimates**  
**No Cutting Corners**

**Always remember - It is YOUR choice to decide where you get your vehicle repaired.**

**PRESTIGE AUTO CENTER**  
101 S HOBART • 665-3560



**Head-Jones**  
LOOK FOR OUR JUNE  
SUMMER COUPON SALE  
IN THIS WEEKS MAIL!



**SATURDAY DINE IN  
FOUNTAIN SPECIAL**  
HAMBURGER & CHIPS...99¢  
CHEESEBURGER & CHIPS...\$1.49  
CALL IN ORDERS WELCOME • CHIPS 30¢ PER BAG

**PAPER PLATES**  
9" • 100 CT  
**89¢**

**AJAX**  
DISH DETERGENT 16OZ  
**89¢**

**BOUNTY**  
PAPER TOWELS  
**79¢**

**PRICES GOOD THRU SATURDAY JUNE 7TH!**  
**MONDAY-FRIDAY 8AM-6PM • SATURDAY 8AM-4PM • CLOSED SUNDAY**

**A PHARMACY  
THAT CARES!**

- WE ACCEPT ALL THIRD PARTY PRESCRIPTION PLANS
- FREE CITYWIDE DELIVERY
- 24 HOUR EMERGENCY SERVICE FOR ESTABLISHED CUSTOMERS

**PROFFESIONAL SERVICE WITH  
A PERSONAL TOUCH!**

**SIGN UP FOR  
OUR EMAIL SPECIALS!**  
BE THE FIRST TO GET OUR  
MONTHLY SALES PLUS:  
VALUABLE COUPONS, GIVEAWAYS  
& A CHANCE TO WIN \$500  
**SIGN UP AT  
ANY CHECKOUT!**

**FASHION  
JEWELRY  
50% OFF  
RETAIL**

**HEALTH MART**  
**114 N CUYLER • 669-7478**

## WT's Department of Nursing singled out by board

CANYON — The Department of Nursing at West Texas A&M University has received an official commendation from the Texas Board of Nursing based on student performance on the 2007 National Council Licensure Examination (NCLEX).

Upon successful completion of the 126-hour curricu-

lum for a bachelor of science in nursing degree at West Texas A&M, students are eligible to take the NCLEX, which must be passed by anyone wishing to achieve licensure as a registered nurse.

Of those taking the test in 2007, 91.3 percent of WTAMU students passed on the first attempt, which

exceeds the state average.

Receipt of the commendation capped a banner year for the Department of Nursing, which also in 2007 was awarded \$273,059 by the Texas Higher Education Coordinating Board for achieving the third-highest increase in nursing graduates among public universities in the state.

The 80th Texas Legislature appropriated about \$7 million to the Coordinating Board in fiscal year 2007 for the Professional Nursing Shortage Reduction Program. The money was distributed in November in varying amounts to the state's public and private nursing programs that demonstrated an increase in the total number of nursing graduates from academic

year 2006 (September 2005 to August 2006) to academic year 2007 (September 2006-August 2007).

During that span, West Texas A&M increased its number of graduates by 35 (from 102 in 2006 to 137 in 2007) — the third-highest increase among state universities and only 4 graduates fewer than state university leader University of Texas-El Paso, which increased its number of nursing graduates

by 39.

Dr. Heidi Taylor, dean of the College of Nursing and Health Sciences, said: WTAMU's Department of Nursing "is committed to adding qualified nurses to the Texas work force and reducing the shortage of nurses locally and across the state. But we also have to remain diligent so that we continue to educate nurses of the highest competence and dedication."

## WILSON ELEMENTARY HONOR ROLL

Woodrow Wilson Elementary School recently released its honor roll for the sixth six-weeks grading period of the 2007-08 school year.

### A HONOR ROLL

Trey Hon, Chelsea White, Megan Dickinson, Francisco Silva, Raeden Mason, Seanna Herp, Tyler Beller, Nikki Dabbs, Vanessa Valenzuela, Madelyn Solis, J.T. Skinner, Alfredo Rodriguez, Caci Freeman, Trace Leftwich, Kristian Vizcaino, Autumn Dencklau, Gaby Perez, Kaylee Arnen, Destinee Ford, Tyler Hottman, Raelynn Miller, Joseph Paulson, Juan Perez, Erika Quezada, Ricardo Vazquez, Casey Wells, Makenzie Word.

### AB HONOR ROLL

Brooklyn Alvarez, Rubie Rodriguez, Dakota Winborne, Matthew Dencklau,

Destiny Portillo, Jose Resendiz, Damien Soto, Isaac Villigrana, Diana Casas, Brad Royer, Jonathan Valles, Dustin Winborne, Shelby Landers, Alex Ramirez, Joel Resendiz, Connie Leal, Frenanda Lozoya, Katanna Shay, Ashley Solis, Daniella Zelaya, Jace Jenkins, Dakota Roberson, Jason Solis, Gabby True, Conor Bressler, Raven Neal, Stacy Ramirez, Kenyon Kimbro, Matthew Salcido, Andrea Cotter, Erik Vizcaino, Elida Adame, Julian Arvizo, Kelton Kimbro, Indira Loa, Ricky Rivera, Lesly Salazar, Isaac Chavez, Lorenzo Venzor.

Perfect attendees for the year: Justin Beller, Tyler Beller, Bryan Calderon-Molina, Raul Mejia, Nikki Dabbs, Olivia Vasquez, Caci Freeman, Kristian Vizcaino, Colt Collins, Marcy Wilson, Autumn Dencklau.

## Scholarship recipient



Courtesy Photo

Lindsey Riley was recently awarded a scholarship from Beta Delta Chapter of Delta Kappa Gamma Society. The chapter consists of female educators from Gray, Roberts, Hemphill and Wheeler counties. Riley, shown here with her aunt Lora Hampton, is a 2008 Pampa High School graduate. She plans to attend Abilene Christian University and major in early childhood education.

## West Music Camp accepting applications

CROWELL — Guitarist, record producer and Grammy Award-winner Tommy Allsup will join with fiddle player Bob Boatright to produce the eighth annual Western Music Camp July 6-10 at Bowen Ranch near Crowell.

Other instructors will include Ronny Dale Shultz, guitar, with 26 years of experience; and Kalli Harbin, fiddler. J.W. Sollis is camp coordinator.

Boatright holds a bachelor's degree in mathematics and two master degrees in

mathematics and physics, respectively. He began his music career in the 1950s at the age of 14 with Bill Mack's band featured on radio and television. He began by playing dances and stage shows throughout Texas and Oklahoma. He has appeared on "Austin City Limits," "Texas Connections" as well as on stage with Bob Wills, Light Crust Doughboys, George Strait, Willie Nelson and others.

Allsup's career began in 1949. In 1958, he met Buddy

Holly and played lead guitar. He continued to play with Holly until the crash that took Holly's life. He also performed with the Big Bopper and Ritchie Valens. In addition, Allsup has produced many well-known artists.

The camp is open to beginner, intermediate and advanced musicians. For a camp application or more information, contact Sollis at P.O. Box 370, Crowell, TX 79227, at (940) 684-1894, or at [jwsollis@yahoo.com](mailto:jwsollis@yahoo.com). Participants must furnish their own instruments.

## Wine

Continued from Page 8

said. "These funds provide an incentive for producers to do just that."

The Wine Grape Investment Pilot Grant Program, housed under the Rural Economic Development Division, is the first of its kind at TDA. Applications will be accepted through June 6. For program details and eligibility requirements, producers are encouraged to visit [www.tda.state.tx.us](http://www.tda.state.tx.us).

• About Texas Wine Industry

Texas produces more than 2 million gallons of wine and has:

- More than 155 wineries
- More than 220 commercial vineyards
- More than 3,700 acres of grapes.

The Texas Legislature is dedicated to supporting and growing the Texas wine industry through:

- Viticulture education related to vineyard management, grape growing and wine making
- Research
- Extension expertise and resources
- Marketing, marketing research and promotion.

Teams now forming for the

## BSA Hospice Pampa Area 18th Annual Golf Scramble

benefiting Olivia's Angels  
BSA Hospice Support Auxiliary



Saturday, June 21 2008  
Pampa Country Club

7:30 a.m. Registration  
8:00 a.m. Tee Off

\$50.00 per person  
or \$200 per team

To Register your Team  
call David Teichmann  
Hidden Hills Golf Course  
(806) 669-5866

Thanks to BSA Hospice Community Partners

Britkare Home Medical - The Campbell Ranch

National Oilwell Varco - Darville & Myrna Orr

Ed & Pam Patman - Schiffman Machine Company

For more information call  
(806) 212-8787 or (806) 665-6677



## Muffins with Mom

► Pampa Junior High School recently had "Muffins with Mom." Among participants were J.J. and Joseph Slatten.

## Rio Grande Valley educators told to 'take it outside'

By ROD SANTA ANA  
Extension New

WESLACO — While their students are on summer break, some Rio Grande Valley school teachers will be going back to school. Only this time, they won't be teaching; they'll be learning how to create a wildlife habitat in their schoolyards and the classroom will be outdoors.

Sponsored by Texas AgriLife Extension Service and Texas Parks and Wildlife, the ninth annual Summer Teacher Training will be held July 7-11 at Estero Llano Grande State Park in Weslaco.

Teachers learn how to help their students create a wildlife garden on school property while earning continuing education credits, according to Barbara Storz, the AgriLife Extension horticulture agent in Hidalgo County.

"As the school year winds down, we know this is a very busy time for teachers, but they need to take a moment to sign up for this class before the May 29 deadline," Storz said.

The class is designed for third, fourth and fifth grade teachers, but Storz said teachers from kindergarten to high school have taken the class in the past.

"To better fit the capabilities of their students, kindergarten teachers tend to shorten the program they teach their kids, while high school teachers expand it," she said.

Both sponsors will bring their respective staffs and resources to the classroom to teach the teachers.

"We'll be teaching from the Junior Master Gardeners' curriculum called 'Wildlife Gardener,'" Storz said. "Texas Parks and Wildlife will be using an adult teacher and leader guide

called 'Creating a School Habitat.' Both meet state curriculum guidelines and are excellent publications that provide step-by-step educational tools on how to set up habitat gardens, large or small, that attract birds and butterflies."

Storz said the program has been very popular among teachers who this year will learn their new skills in a nature-filled setting.

"The Estero Llano Grande State Park in Weslaco will be our classroom this year," she said. "This is a beautiful park that is part of the World Birding Center. It offers a wide variety of woodland, marshes and wetlands that support a huge array of fascinating wildlife."

The actual classroom is no less enticing, she said.

"The classroom and visitor center are located over a shallow lake, providing cool breezes, fantastic views and a perfect setting in which to recover from a long year of teaching."

Storz said teachers will learn how to certify their students' gardens under the Best of Texas Program, a combined recognition from both Texas Parks and Wildlife and the National Wildlife Federation.

"Teachers will learn how to graduate their students as Certified Junior Master Gardeners while earning 35 hours of professional in-service training," she said.

The cost of the week-long training is \$130 and includes teaching materials, ebony tree seedlings, flower seeds, a bird nesting box and a butterfly feeder.

Class size is limited to 30. The deadline to register is May 29. For more information, contact Storz at 383-1026, or e-mail b-storz@tamu.edu.



Courtesy Photo

# give dad the network with the best coverage.

Only at the AT&T phone sale.



GET ONE FREE WHEN YOU BUY ONE FOR \$2999

after \$90 mail-in rebate debit card with feature package purchase and 2-year wireless service agreement per phone  
SONY ERICSSON W580i  
Walkman® media player with Shake Control  
2.0 megapixel camera



\$9999

after \$100 mail-in rebate debit card with BlackBerry data plan, qualified voice plan and 2-year wireless service agreement.

BLACKBERRY® Curve™ 8310  
Integrated GPS with AT&T Navigator  
2.0 megapixel camera



\$9999

after \$100 mail-in rebate debit card with PDA personal plan and eligible voice plan and 2-year wireless service agreement.

BLACKJACK™ II  
Integrated GPS with AT&T Navigator  
2.0 megapixel camera



FREE

after \$100 mail-in rebate debit card with data rate plan and 2-year wireless service agreement.

AT&T USB CONNECT 881

Best Coverage claim based on global coverage.

More bars in more places™

The new at&t Your world. Delivered.

FREE SHIPPING | 1.866.MOBILITY - ATT.COM/WIRELESS - VISIT A STORE

AT&T STORES

•Amarillo 6605 I-40 W & Coulter (806) 353-7447  
•K&B Plaza, 5752 W Amarillo Blvd. (located east of Wal-Mart at Amarillo Blvd. & Tescoma Rd.), (806) 355-6089  
•Pampa 2131 Perryton Pkwy. 806-665-0500

AUTHORIZED RETAILERS

Amarillo 10th & Georgia (806) 373-8668  
Bell Plaza, 45th & Bell, (806) 463-5509  
RadioShack, Wolfen Square (806) 355-6422  
RadioShack, 1804 E Amarillo Blvd. (806) 372-6072

Amarillo (cont.)  
RadioShack, 7305 W 34th St. (806) 358-8114  
RadioShack, (Westgate Mall) (806) 358-8614  
•Westgate Mall, (806) 457-1406  
Canyon 710 23rd St., (806) 656-0600

ALSO AVAILABLE AT SELECT:

RadioShack  
WAL-MART

•Open Sunday

\*AT&T also imposes monthly a Regulatory Cost Recovery Charge of up to \$1.25 to help defray costs incurred in complying with State and Federal telecom regulation, State and Federal Universal Service charges, and surcharges for customer-based and revenue-based state and local assessments on AT&T. These are not taxes or government-required charges.

Offer available on select phones. Limited-time offer. Other conditions and restrictions apply. See contract and rate plan brochure for details. Subscriber must live and have a mailing address within AT&T's owned wireless network coverage area. Up to \$36 activation fee applies. Equipment price and availability may vary by market and may not be available from independent retailers. Unlimited voice services: Unlimited voice services are provided solely for live dialog between two individuals. Offnet Usage: If your minutes of use (including unlimited services) on other carriers' networks ("offnet usage") during any two consecutive months exceed your offnet usage allowance, AT&T may at its option terminate your service, deny your continued use of other carriers' coverage, or change your plan to one imposing usage charges for offnet usage. Your offnet usage allowance is equal to the lesser of 750 minutes or 40% of the Anytime minutes included with your plan (data offnet usage allowance is the lesser of 6 megabytes or 20% of the kilobytes included with your plan). Early Termination Fee: None if cancelled in the first 30 days; up to \$175. Some agents impose additional fees. Rebate Debit Card: AT&T USB Connect 881 price before mail-in rebate debit card, data rate plan, and with 2-year wireless service agreement is \$99.99. Minimum \$60.00 data rate plan required. BlackBerry™ II price before mail-in rebate debit card, PDA personal plan, and with eligible voice plan and 2-year service agreement is \$199.99. Sony Ericsson W580i prices before mail-in rebate debit card, feature package purchase, and with 2-year wireless service agreement per phone are \$79.99 and \$49.99, respectively. Minimum \$89.99 feature package purchase required. BlackBerry® CURVE™ 8310 price before BlackBerry data plan, mail-in rebate debit card, and with 2-year wireless service agreement is \$199.99. BlackBerry data plan and minimum \$39.99 voice plan required. Allow 10-12 weeks for fulfillment. Card may be used only in the U.S. and is valid for 120 days after issuance date but is not redeemable for cash and cannot be used for cash withdrawal at ATMs or automated gasoline pumps. Card request must be postmarked by 07/25/2006; you must be a customer for 30 consecutive days to receive card. Sales tax calculated based on price of unactivated equipment. Service provided by AT&T Mobility. ©2006 AT&T Intellectual Property. All rights reserved. AT&T, AT&T logo and all other marks contained herein are trademarks of AT&T Intellectual Property and/or AT&T affiliated companies.

## Wheat market down but not groceries

AMARILLO — In recent weeks, the wheat market has seen a significant decline in price. However, consumers continue to look at their grocery bills with frustration.

The once erratic wheat market now sits at a comfortable single-digit price of approximately \$8. As producers prepare to harvest their crop, local wheat cash prices are approximately \$7 per bushel. With this scenario in place, it clearly shows farmers were not the driving force behind rising food costs.

While the declining wheat market may restore the integrity of our nation's farmers by correcting unjustified accusations, producers as well as consumers continue to face record-high input costs. This shift in the market has helped shed light on an issue of importance to organizations, like the Texas Wheat Producers Board & Association.

Parallel to consumers across the United States, farmers continue to struggle with skyrocketing fertilizer, energy, labor, and most importantly, fuel costs. In order to keep their products

on grocery store shelves, farmers must absorb production and post-production costs.

As the wheat market comes down, consumers are now able to understand that blame was unfairly placed at the farm gate, and there is much more in their grocery carts than what they were led to believe.

According to Dr. Mark Welch, a Texas A&M University economist, wheat currently contributes approximately \$0.12 to the cost of a loaf of bread. To put this in perspective, the same loaf of bread in 1980 contained \$0.05 of wheat. In the past 28 years, the cost of a loaf of bread has risen \$0.80, however, wheat accounts for only \$0.07 of this increase.

The uneven trend of rising markets and rising food costs leaves both farmers and consumers wondering if they can continue to fill their grocery carts. With the nation seeing farmers stretching their pocketbooks to keep food on the grocery store shelves, who will now be to blame for costly grocery bills?

# Sports



Courtesy Photo

Lamar Elementary fifth grade students recently participated in the Elementary All School Track meet. Pictured are (back row, L to R) Ty'Randa Archie-Johnson, Madison Brown, Arnole Wilkins and Corissa Malone, who took first place in the sprint relay and medley. Kristina Brown, Perla Barajas, Ashley Valles, and Crystal Ruiz took first in sprint. In the front row (L to R), Jonathon Silva, Jose Macias, Jacob Nelson, and Terry Bottello took second in sprint and first in medley.

## American League at a glance

	W	L	Pct	GB
Tampa Bay	32	22	.593	—
Boston	32	24	.571	1
Toronto	30	26	.536	3
Baltimore	26	26	.500	5
New York	26	27	.491	5 1/2
Central Division				
	W	L	Pct	GB
Chicago	30	23	.566	—
Minnesota	28	25	.528	2
Cleveland	24	29	.453	6
Detroit	22	31	.415	8
Kansas City	21	33	.389	9 1/2
West Division				

## North American Wind Research and Training Center Announces:

A new **Wind Energy Technician Program** being offered fall semester of 2008.

"Tallest Classroom in the World"

Full scale 1.5 MW Turbine

MESALANDS COMMUNITY COLLEGE  
111 South 10th Street  
Pampa, Texas 79791-1000

UP AND STARTING IN THIS EXCITING NEW INDUSTRY! STUDENTS ARE ENROLLING NOW FOR FALL 2008 CLASSES.

(800) 261-4877  
www.mesalands.edu/wind

## Sorenstam struggles at her LPGA tournament

MOUNT PLEASANT, S.C. (AP) — One LPGA Hall of Famer rose to the challenge at the Ginn Tribute. And, no, it wasn't the tournament's namesake host.

Karrie Webb had five birdies and an eagle for a 65 to share the first-round lead with In-Kyung Kim on Thursday.

Annika Sorenstam, whose first name is on everything from programs to tickets to caps at RiverTowne Country Club, was seven shots behind and tied for 60th.

"It was a little bit of a roller-coaster ride," Sorenstam said.

Sorenstam opened with a bogey. She did have a stretch of three birdies over four holes. The one she didn't birdie, though, was a disastrous triple-bogey seven on the fifth hole that knocked back any potential charge from the Swedish star.

She steadied herself with two birdies and few mistakes her last eight holes to end at even par. "I need some low scores the next few days," Sorenstam said. "But I saved what could have been a tough day."

There was little difficulty for Webb, Sorenstam's one-time rival for the top who has not won an LPGA Tour event since 2006.

"I've been swinging it quite nicely for the majority

of the year, and just not getting the most out of it," Webb said.

Webb blasted out of a greenside bunker and into the cup on the third hole for her eagle 3. She stayed sharp the rest of the way.

Webb rolled in an uphill, 35-foot birdie putt on the 10th hole to tie for the lead. She moved in front a hole later, chipping to 4 feet on the par-5 11th for another birdie.

Webb nearly made it three in row on the 12th, but her 15-footer rolled completely around the cup and out. Webb began pumping her fist in celebration, stopping immediately when the ball popped out. She turned and grinned back at her caddie as she walked back to her bag.

Webb followed with birdie putts of 15 feet or less on the next three holes but could not convert on any. She closed strongly, though, knocking a 5-iron to five feet for birdie on the difficult par-4 18th hole.

"Even though you could have left some out there, I'm not going to complain too much," Webb said, smiling.

Sorenstam, ranked second in the world, has looked forward to playing strongly at the tournament she's hosted the past two years.



## HANSFORD IMPLEMENT CO.

SPEARMAN, TEXAS  
1-800-753-1511

Hansford Implement Company in Spearman would like to announce that we are the newest Polaris Ranger and RZR dealer in the Texas and Oklahoma Panhandles.

The Polaris Ranger is the hardest working, smoothest riding off-road utility vehicle you can buy and the RZR is the fastest side by side on the market today. See how it can help everyone on your farm or ranch work harder and ride smoother. We invite you to call or come by and visit with us about one today.



Work Harder.  
Ride Smoother.

www.hansfordimplement.com

**CONGRATULATIONS**  
**TANNER COCHRAN**  
**AND BRODY RUSSELL**  
**GREAT JOB AND**  
**GOOD LUCK!**

1401 N HOBART  
PAMPA, TEXAS

Ted Hutto's  
*Quality Sales*

**669-0433**  
www.qualitysalespampa.com

*congratulates the*  
**CLASS of 2008!**

# Glo-Valve defeats Rotary Club 11-12

**CableONE BRINGS THE SYNDICATED ASTRO AND RANGER GAMES TO CHANNEL 59**

Sun. June 1	Ranger vs Athletics	2:05pm
Tues. June 3	Ranger vs Indians	7:05pm
Wens. June 4	Astros vs Pittsburgh Pirates	8:00pm
Thurs. June 5	Astros vs Pittsburgh Pirates	6:00pm
Fri. June 6	Astros vs St. Louis Cardinals	7:00pm
Sat. June 7	Rangers vs Rays	7:05pm
Sun. June 8	Astros vs St. Louis Cardinals	1:00pm
Tues. June 10	Astros vs Milwaukee Brewers	7:00pm
Wens. June 11	Astros vs Milwaukee Brewers	7:00pm
Thrus. June 12	Astros vs Milwaukee Brewers	1:00pm
Fri. June 13	Rangers vs Mets	8:10pm
Sat. June 14	Astros vs New York Yankees	6:00pm
Sun. June 15	Rangers vs Mets	12:10pm
Tues. June 17	Rangers vs Braves	7:05pm
Wens. June 18	Astros vs Baltimore Orioles	6:00pm
Fri. June 20	Astros vs Tampa Bay Rays	6:00pm
Sun. June 22	Astros vs Tampa Bay Rays	12:30pm
Fri. June 27	Rangers vs Phillies	7:05pm
Sat. June 28	Astros vs Boston Red Socks	6:00pm
Sun. June 29	Astros vs Boston Red Socks	1:00pm
Mon. June 30	Astros vs Los Angeles Dodgers	7:00pm

**FOR MORE INFORMATION CONTACT CABLEONE**  
**1423 N. HOBART • PAMPA • 665-2381**  
 Certain restrictions may apply. Offered in Cable One serviceable areas only. Some games, teams and/or times subject to change without notice.

Ryan Powell won his eighth game of the season and Aaron Allen and Chance Douglas had perfect nights at the plate as Glo-Valve bested Rotary Club 13-6 Thursday as the regular season for the Pampa Optimist 11-12 Cal Ripken League came to a close.

Replacing starter Krysten Miller in the second inning, Ryan Powell threw two shutout innings. He gave up a hit and a walk while striking out four. Miller gave up three runs on three hits. She walked two and struck out two. Aaron Allen finished up for Glo-Valve. He was touched for an unearned run and one hit in two innings. He walked one and struck out three. Tyler Powell also pitched for Glo-Valve giving up two unearned runs and two walks.

trapped off third and tagged out. Slatten alertly took third while Maul was being put out. He scored on a wild pitch.

Glo-Valve answered with four runs in the bottom of the first. Jordan Lemons doubled and stole third. Allen singled to left field to plate Lemons. He stole two bases and scored on a wild pitch. Tyler Powell walked, stole two bases and scored on a wild pitch. Casey Martindale and Ryan Powell kept the rally going with walks. Martindale was thrown out trying to score on a ball which had gotten past the catcher. Ryan Powell scored the fourth run of the inning on a wild pitch.

Powell, Martindale and Ryan Powell. Douglas raced home on a ground out by Trey Miller to give Glo-Valve an 11-3 lead.

from J. C. Allen in center, to shortstop Slatten to Maul at third nabbed a Glo-Valve batter trying to stretch a double into a triple.

Hunter Hall and Dylan Zawicki pitched for Rotary. Rotary jumped out to a three-run lead in the top of the first inning. Cory Chidester walked. Zawicki beat out an infield single. Braxton Maul doubled to score Chidester. A single by Joseph Slatten brought in Zawicki and moved Maul to third.

With one away in the second inning, Brody Gaines reached base on a Rotary error. He stole second, went to third on a ground out by J. T. Skinner and scored on a single by Michaela Wells. Glo-Valve led 5-3.

In the fourth inning walks to Hall and Jacob Brown for Rotary were followed by three Glo-Valve errors which permitted them to score. The inning ended on a double play from pitcher Allen to Trey Miller at third base.

Glo-Valve had an unusual out when Trey Miller picked up a ground ball near third, threw to Lemons at the plate who threw back to Douglas, the centerfielder, who was covering third because of an unusual shift, for the tag.

An attempted double steal resulted in. Maul being

Allen began a six-run rally with a double to lead off Glo-Valve's half of the third inning. He stole third and scored on a single by Krysten Miller. A walk to Tyler Powell was followed by consecutive singles by Martindale, Ryan Powell and Douglas which scored Tyler

Glo-Valve got the runs back in the bottom of the fourth. Wells was hit by a pitch. Lemons walked. Wells took third on a wild pitch and continued in to score on an overthrow. Lemons trotted home on Allen's third hit of the night.

The winners improved to 15-2 for the season, two games ahead of Celanese Corporation, 13-4, a 7-1 winner over Duncan, Fraser & Bridges Insurance Agency in the nightcap. Glo-Valve clinched the regular season championship earlier in the week.

## BSA announces Annual Pampa Area Golf Scramble

The BSA Hospice 18th Annual Pampa Area Golf Scramble offers a morning of fun, food, and lively competition ... all benefiting area hospice patients and their families.

BSA Hospice will host over a hundred area golfers to enjoy a morning of golf while benefiting their families and neighbors. Area golf teams enjoy lively competition, homemade refreshments and a hamburger lunch provided by Britkare Home Medical. Many teams and sponsors have participated in the golf scramble since it began in 1990.

5855 at Hidden hills to reserve a place in the scramble. Fees are \$50 per person or \$200 per team. There will be prizes for the first, second and third place in each flight based on the number of participants. There will be a prize for closest to the pin and longest drive donated by J.C. Beyer. A prize for the lowest score of an all women's team will also be presented.

ly due to lack of money. Sister Olivia would share those needs with members of the community who would in turn give money to her for those patients.

The BSA Hospice announces support for the 18th Annual Pampa Golf Scramble to be held Saturday, June 21, 2008 at Hidden Hills Public Golf Course in Pampa. Proceeds from sponsorship of the Scramble help benefit Olivia's Angels, support auxiliary for BSA Hospice within the eight county Pampa

Four man or mixed golf teams are now signing up to play in the scramble. Interested players should call David Teichmann (806) 669-

The Scramble is supported by Hospice's Community Partners on a \$250 level, Event Sponsors on a \$100 level, Tee Box Sponsors for \$50 and Golf Cart Sponsors at \$25. Many sponsors honor their loved ones who have passed or those who benefited from hospice care.

A group of compassionate community leaders met in 1990 to develop an organization dedicated to raising money to pay for the extras of Hospice patients and educating the community about hospice care. The organization has become known as Olivia's Angels and now celebrates its 18th year serving Panhandle Hospice families.

"We have already received great support this year, but are still looking for more businesses and individuals to get involved," Scramble Co-Chairperson June Beyers of Pampa said. "If I haven't already heard from you, be ready for a call."

Through the generous support of individuals and businesses, Olivia's Angels has stepped in to fulfill the needs, the dreams and wishes of so many Pampa area patients. Whether the need is relatively small such as denture repair, eyeglasses, a haircut at home or much larger, such as helping to purchase an airline ticket so that a loved one can spend time with a patient, many of the impossible dreams of Hospice patients and families come true.

BSA Hospice originally began as a home care program in 1980 under the leadership of Sister Olivia Prendergast. As Sister Olivia worked with the terminally ill, she recognized that needs often went unmet with patients and families primari-

For further information about Olivia's Angels, Golf Scramble Sponsorship or more information about team sign up, please contact Janet McCracken, BSA Hospice Pampa at (806) 665-6677 or toll free (800) 658-6985.

## TUXEDO RENTALS FOR ALL OCCASIONS



**T-Shirts & More of Pampa**  
 111 W. Kingsmill Ave, Pampa, Tx.  
 665-3036

## Choose the unlimited plan that fits your family best.

My Circle choose any 5, 10 or 20 numbers on any network

### BlackBerry Pearl

ONLY \$79<sup>99</sup>

after \$100 mail-in rebate with 2-yr. Smart Choice Pack service agreement.

- BlackBerry® Internet Services
- Voice Command and Dialing
- Bluetooth™
- Maps and TeleNav GPS

Available in red and amethyst.



### BlackBerry Curve

Stylish and powerful. This all-in-one device lets Dad do his best work wherever he goes.

Contact your local representative for pricing details.

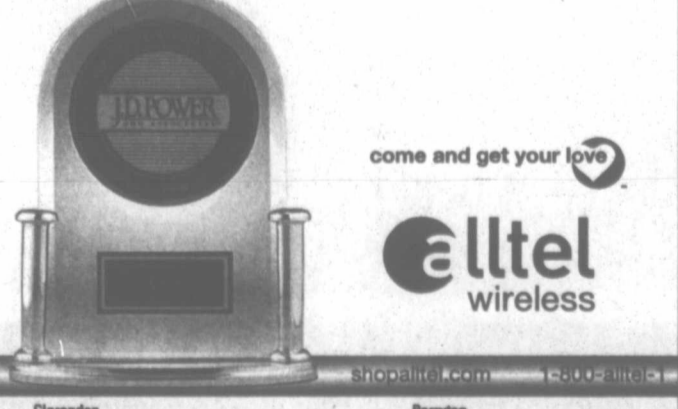


Access the Internet virtually anywhere. Get DSL speeds within the Alltel Nationwide EVDO data network.

**FREE** Huawei EC228 Wireless Internet Card after \$100 mail-in rebate with 2-yr. service agreement.



ultimate toys for ultimate dads



come and get your love

**alltel** wireless

Ranked "Highest Call Quality Performance Among Wireless Cell Phone Users in Southwest Region in a Tie"

- Alltel Retail Stores**
- Berger**  
1303 W. Wilson | (806) 273-2042
  - Childrens**  
2004 Ave. G.N.W. | (940) 937-8550
  - Dumas**  
1526 Goylaris Plaza | (806) 935-6307
  - Harford**  
701 N. 25 Mile Ave. | (806) 364-1055

- Pampa**  
1329 N. Hobart | (806) 669-3435
- Berger**  
All About Wireless | (806) 274-7452  
Comm. Connection | (806) 274-9444
- Canadian**  
Canadian Parts & Supply | (806) 323-0558

- Clarendon**  
Clarendon Outlet Co. | (806) 874-5202
- Dalhart**  
Comm. Connection | (806) 249-9411
- Dumas**  
Access Wireless | (806) 935-9197
- Herford**  
Whiteface Cellular | (806) 363-2740
- Pampa**  
Comm. Connection | (806) 669-1551  
RadioShack | (806) 669-2253

- Perryton**  
Perryton Office Supply | (806) 435-4812
- Shenrock**  
Mahnken Drug | (806) 256-2782
- Spearsman**  
Country Cellular | (806) 859-2541

Federal, state & local taxes apply. In addition, Alltel charges (a) a monthly connectivity, regulatory & administrative surcharge up to \$1.76; (b) federal & state Universal Service Fund fees (both may vary by customer usage); & (c) 911 fees. These additional fees may not be taxes or government-required charges & are subject to change. Additional information regarding your taxes, fees & surcharges is available from your Alltel customer service representative & on your monthly bill. My Circle Available to new & existing customers or current select rate plans. Minimum rate plan of \$89.99 for 1 Circle Plan numbers; \$89.99 for 10 numbers; \$139.99 for 20 numbers. My Circle numbers must be shared among all lines on the primary account. Customer may not designate own wireless or voice mail number; Directory Assistance or 800 numbers as any of the available numbers. Calls must begin & end in your plan's calling area. Designated numbers must be within the U.S. Program may be discontinued at the discretion of Alltel. Not available in all markets. Restrictions apply to Business & Prepaid customers. See representative for details. Please See: Phone, device & applicable rebates available for a limited time, while supplies last, with activation of a qualifying rate plan. Limit 1 rebate per qualifying purchase. Device cannot be returned once mail-in rebate certificate has been submitted. Customer pays applicable taxes. See rebate certificate for details. Smart Choice Pack Requirement: All new or existing customers activating or upgrading to a smart device are required to purchase a Smart Choice Pack to qualify for the in-contract phone price. Bluetooth: The Bluetooth feature of these handsets may not be compatible with all devices that are Bluetooth-enabled. Alltel cannot be responsible for compatibility with devices not sold by Alltel. EVDO Device & Coverage: Where available. Coverage & network details (speeds, usage, etc.) available at alltel.com. Additional Information: This offer may be limited due to taxes, supplies, coverage, or participating locations. 25 non-refundable activation fee & possible \$300 early termination fee applies per line. Service is according to the Terms & Conditions for Communications Services & other information available at any Alltel store or alltel.com. All product & service marks referenced are the names, trade names, trademarks & logos of their respective owners. The IBM & BlackBerry families of related marks, images & symbols are the exclusive properties & trademarks of Research In Motion Limited—used by permission. BlackBerry is registered with the U.S. Patent & Trademark Office & may be pending or registered in other countries. Screen images are simulated. ©2008 Alltel Communications, LLC. All rights reserved. "J.D. Power and Associates 2008 Wireless Call Quality Performance Study"—Vol. 1. Study based on 23,472 wireless users measuring 5 providers in the Southwest region (AR, KS, MO, OK, TX) & measure opinions of consumers with the call quality of their wireless service. Proprietary study results are based on experiences & perceptions of consumers surveyed in October 2007 & January 2008. Your experiences may vary. Visit www.jppower.com

**Calling All Coaches!**  
 Are you coaching a summer league with Optimist or elsewhere? Would you like your team to make the paper? Contact Julie Thompson at the Pampa News by calling 806-669-2525 or e-mail us at sports@thepampanews.com

### Fathers Day Gift Ideas

"The Front Pocket Solution to the Back Pocket Wallet"

**TPK Back Saver Wallet**

Each Wallet is Holding the SAME 19 Cards and 15 Bills

Standard Back Pocket Wallet vs. Front Pocket Back Saver Wallet

**only \$25**

- Folds flat when full
- Gold plated spring clip holds up to 30 bills
- Four pockets hold up to 24 cards
- Photo holder does not restrict use of pocket for your cards
- 3 year warranty

Made in the U.S.A.

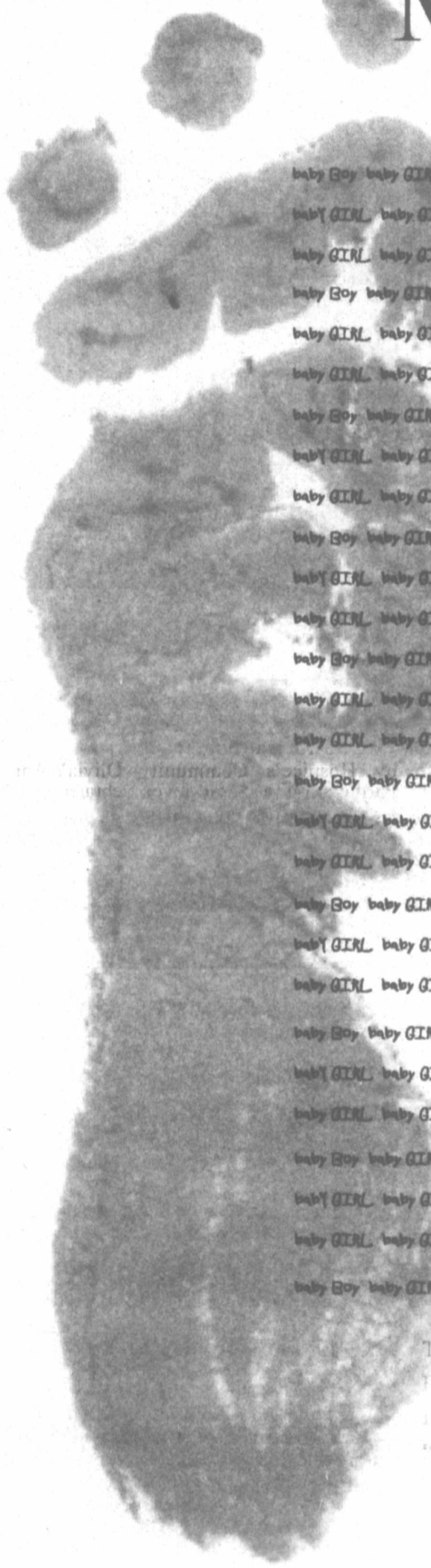
**Now Available At:**  
**Ford Family Chiropractic**  
 Rehabilitation And Wellness Center

"I want to be your Family Chiropractor"

**Dr. Mark W. Ford, Jr.**  
 665-7261  
 701 N. Price Rd. Pampa, Tx  
 www.fordfamilychiropractic.com

# 326

## Moms Know Best



baby BOY baby GIRL baby GIRL baby BOY baby BOY baby BOY baby BOY baby GIRL baby BOY baby GIRL baby GIRL baby GIRL  
baby GIRL baby GIRL baby BOY baby BOY baby GIRL baby GIRL baby GIRL baby BOY baby BOY baby GIRL baby BOY baby BOY  
baby GIRL baby GIRL baby GIRL baby BOY baby BOY baby BOY baby GIRL baby GIRL baby GIRL baby BOY baby GIRL baby GIRL  
baby BOY baby GIRL baby GIRL baby BOY baby BOY baby BOY baby BOY baby GIRL baby BOY baby GIRL baby GIRL baby GIRL  
baby GIRL baby GIRL baby BOY baby BOY baby GIRL baby GIRL baby GIRL baby BOY baby BOY baby GIRL baby BOY baby BOY  
baby GIRL baby GIRL baby GIRL baby BOY baby BOY baby BOY baby GIRL baby GIRL baby GIRL baby BOY baby GIRL baby GIRL  
baby BOY baby GIRL baby GIRL baby BOY baby BOY baby BOY baby BOY baby GIRL baby BOY baby GIRL baby GIRL baby GIRL  
baby GIRL baby GIRL baby GIRL baby BOY baby BOY baby BOY baby GIRL baby GIRL baby GIRL baby BOY baby BOY baby BOY  
baby BOY baby GIRL baby GIRL baby BOY baby BOY baby BOY baby BOY baby GIRL baby BOY baby GIRL baby GIRL baby GIRL  
baby GIRL baby GIRL baby GIRL baby BOY baby BOY baby BOY baby GIRL baby GIRL baby GIRL baby BOY baby BOY baby BOY  
baby GIRL baby GIRL baby GIRL baby BOY baby BOY baby BOY baby GIRL baby GIRL baby GIRL baby BOY baby BOY baby BOY  
baby GIRL baby GIRL baby GIRL baby BOY baby BOY baby BOY baby GIRL baby GIRL baby GIRL baby BOY baby BOY baby BOY  
baby BOY baby GIRL baby GIRL baby BOY baby BOY baby BOY baby BOY baby GIRL baby BOY baby GIRL baby GIRL baby GIRL  
baby GIRL baby GIRL baby BOY baby BOY baby GIRL baby GIRL baby GIRL baby BOY baby BOY baby GIRL baby BOY baby BOY  
baby GIRL baby GIRL baby GIRL baby BOY baby BOY baby BOY baby GIRL baby GIRL baby GIRL baby BOY baby BOY baby BOY  
baby BOY baby GIRL baby GIRL baby BOY baby BOY baby BOY baby BOY baby GIRL baby BOY baby GIRL baby GIRL baby GIRL  
baby GIRL baby GIRL baby BOY baby BOY baby GIRL baby GIRL baby GIRL baby BOY baby BOY baby GIRL baby BOY baby BOY  
baby GIRL baby GIRL baby GIRL baby BOY baby BOY baby BOY baby GIRL baby GIRL baby GIRL baby BOY baby BOY baby BOY  
baby BOY baby GIRL

That's right. Last year, 326 Moms chose to deliver their babies close to home at Pampa Regional Medical Center. What do they know that you should know? Highly trained physicians, anesthesiologists and nurses are skilled at helping "mothers to be" go to term and deliver safely.

When it's time to deliver, you can count on PRMC to help Moms and their newborns experience personalized, nurturing care in state-of-the-art labor and delivery rooms.

The miracle of birth is one of the greatest moments in your family's life. When you're expecting, expect the best for your little one. Pampa Regional Medical Center. Close to home. Safe and sound.

*Well equipped.  
Well trained.  
Well worth it.*

One Medical Plaza  
Pampa, Texas  
806.665.3721

**PAMPA REGIONAL  
MEDICAL CENTER**



# Lifestyle

## NEWSMAKERS

**ALVA, Okla.** — Robert Moore of Pampa was named to the President's Honorable Mention Honor Roll for graduate and post-graduate students at Northwestern Oklahoma State University for the 2008 spring semester.

**WEATHERFORD, Okla.** — Lindsey Dale Ammons, daughter of Dale and Lee Ann Ammons, was named to the President's Honorable Roll at Southwestern Oklahoma State University for the 2008 spring semester.

To qualify for the President's Honor Roll, a student must carry all A's while enrolled in 12 or more semester hours at the university.



Ammons

## BAIRD ANNIVERSARY

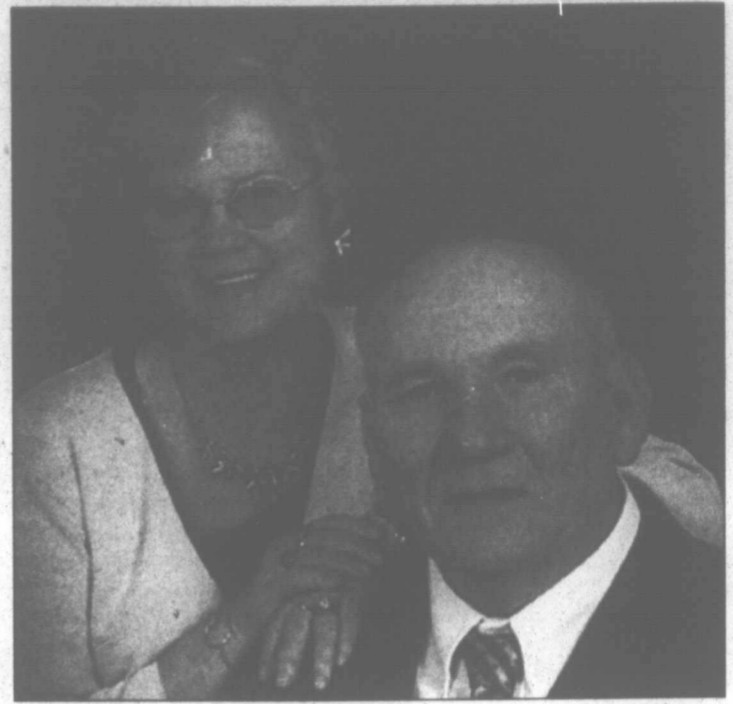
Ferrell and Barbara Baird of Pampa celebrated their 50th wedding anniversary recently with a Caribbean cruise hosted by their children.

Mr. Baird married the former Barbara Revioux on June 4, 1958, at Highland Baptist Church in Pampa. They have lived in Pampa for 49 years.

Mr. Baird retired from Southwestern Public Service after 43 years of service.

Mrs. Baird retired from Pampa Independent School District after 17 years of service.

The Baird's children are J.T. and Tandra Rogers, Jr., Ray and Theresa Conner, and Rick Baird. They have four grandchildren; and one great-grandchild.



Mr. and Mrs. Ferrell Baird

## Cradle call



### Troy Michael Roark

Troy Michael Roark was born at 2:03 p.m. April 14 at Northwest Texas Hospital in Amarillo, to Jason and Kelleen Roark of Amarillo. At birth, the infant weighed 9-pounds, 2½-ounces and was 21-inches long. Troy is the brother of Kaydence Roark, (sister) of the home; and is the grandson of Denny and Donna Roark, and Ron and Janis Ebel, all of Pampa.

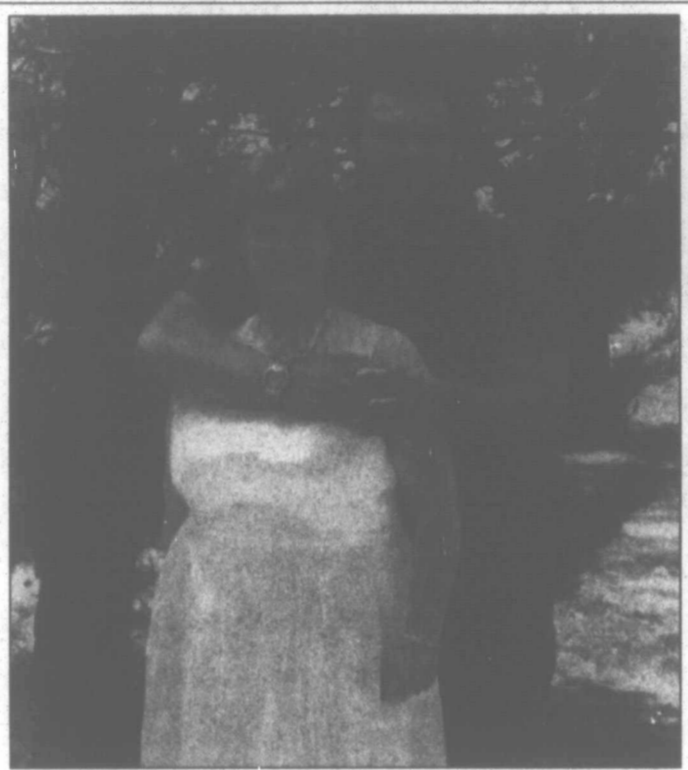
## YOUR CONCERNS RELIEVED

Customers come to us for prescriptions and peace of mind. That's because we take the time to answer your questions and make sure you understand all you need to know about the medications you're taking. That's the difference you can expect from a pharmacy that Pampa has trusted for 25 years.



**PHARMACY HOURS:**  
MONDAY-FRIDAY 8:30-6:00  
SATURDAY 8:30-1:00

**KEYES PHARMACY**  
928 NORTH HOBART  
LOCAL 806.669-1202  
OUTSIDE PAMPA 800.842.3866



### Francis/Colley

Eidonna Francis and James Ira Colley plan to wed June 7 at Friona. The bride-to-be is the daughter of Linda and Eldon McCormack of Bledsoe. The future bridegroom is the son of Hugh and Eida Campbell of Pampa.

## Bridal Selection

- Kim Josselyn & Reid Spearman
- Abby Cavalier & Jansen Hancock
- Cassie Gibson & Jacob Willis
- Tara Coffee & Luke Thornton
- Rebekah Jackson & Kevin Schaub
- Lauren Metcalf & Justin Waggoner
- Aprille Epperson & Vaughn Fudge
- Eva Isbell & Jeff Whittington
- Michelle Paul & Matt Harp
- Angela Mullen & Keith Franks
- Brittany Adams & Barret Lowenstein
- Nikki Guenther & Stephen Sugar
- Lenna Wilson & Jody Richardson
- Melissa Lewis & Ryan Feil
- Kendall Stokes & Matt Murray
- Autumn Darden & Marc Garza
- Kimberly Cory & Brandon Soukup

**On Eagle's Wings**  
113 N. Cuyler 665-0614

## bridal registry

Brittany Adams ~ Barret Lowenstein  
Lauren Metcalf ~ Justin Waggoner  
Eva Isbell ~ Jeff Whittington

need special gifts for the bridal party

**Diamonds & Doorknobs**  
1508 N. Hobart 806.665.5090

## Bridal Registry...

Now Arrivals from Market weekly!

## Baby Registry...

Valerie Hill  
Tammy May

Abby Cavalier & Jansen Hancock  
Victoria Rodriguez & Phillip Bridges  
Brittany Adams & Barret Lowenstein  
Jill Miller & Kurt West  
Amanda Castleberry & Wes Bryant  
Lauren Metcalf & Justin Waggoner  
Briana Russell & Ryan Barnes  
Michelle Paul & Matt Harp  
Rachel Wicker & Jason Adkins  
Eva Isbell & Jeff Whittington  
Autumn Darden & Marc Garza  
Kendall Stokes & Matt Murray  
Kebbi Hutto & Colton Wedeking  
Robin Kelley & Jared Winegeart

**Joys Unlimited**  
110 N. Cuyler 665-2515

## Menus

Week of June 2-6

### PISD Summer Nutrition Program MONDAY

Closed.

### TUESDAY

Breakfast: Mini pancakes.  
Lunch: Lasagna or breaded chicken patties on a bun, green beans, salad, pears, bread sticks.

### WEDNESDAY

Breakfast: Little smokies, biscuits.  
Lunch: Taco salad or mini twin cheeseburgers, pinto beans, corn, pineapple, cornbread muffins.

### THURSDAY

Breakfast: Scrambled eggs, toast.  
Lunch: Tuna sandwiches or bean/cheese burritos, cheesy potatoes, broccoli, fruit.

### FRIDAY

Breakfast: Cereal, toast.  
Lunch: Barbecue chicken/chips or hot dogs, fries, vegetarian beans, fruit.

### Kid's Cafe-Wilson MONDAY

Closed.

### Kid's Cafe-Lamar TUESDAY

Chicken fajitas, corn, salad, dessert.

### THURSDAY

Chicken strips, mashed potatoes, green beans, dessert.

### Kid's Cafe-Briarwood FRIDAY

Enchilada casserole, salad, beans, dessert.

### Senior Citizens MONDAY

Chicken fried steak or chili rellenos, mashed potatoes, beets, cheese hominy, pinto beans, German chocolate

cake or cherry cream pie, slaw, tossed or jello salad, hot rolls or cornbread.

### TUESDAY

Chicken breast/pasta or Salisbury steak au jus, potatoes/vegetables, macaroni tomatoes, turnip greens, beans, pineapple upsidedown cake or chocolate icebox pie, slaw, tossed or jello salad, hot rolls or cornbread.

### WEDNESDAY

Roast beef brisket/brown gravy or cook's choice, mashed potatoes, spring blend, spinach, beans, Boston cream pie or lemon cheesecake, slaw, tossed or jello salad, hot rolls or cornbread.

### THURSDAY

Chicken strips or mushroom steak, scalloped potatoes, Italian green beans, carrots, beans, lemon cake or rice pudding, slaw, tossed or jello salad, hot rolls or cornbread.

### FRIDAY

Catfish/hushpuppies or spaghetti & meatballs, potato wedges, broccoli casserole, beans, brownies or tapioca cups, garlic bread sticks, slaw, tossed or jello salad, garlic bread sticks, hot rolls or cornbread.

### Meals On Wheels MONDAY

Barbecue, potato salad, baked beans, pudding.

### TUESDAY

Hamloaf, hominy casserole, asparagus, pineapple.

### WEDNESDAY

Chicken nuggets, baked potatoes, peas/carrots, peach- es.

### THURSDAY

Shepherd's pie, pickled beets, corn, jello.

### FRIDAY

Baked chicken, sweet potatoes, peas, applesauce.

## Lifestyles Policy

1. The Pampa News will not be responsible for photographs used in announcing births, weddings, engagements or anniversaries. We also reserve the right to refuse publication of photographs of poor quality. Photographs cannot be returned unless they are accompanied by a self-addressed, stamped envelope. They may be picked up in the office after appear-

ing in the paper.

2. All information must be submitted by 5 p.m. Wednesday (12 noon Tuesday before a holiday such as Thanksgiving or Christmas), prior to Sunday insertion.

3. Engagement, wedding and anniversary news only will be printed on Sunday.

4. Engagement announcements will be published if the announcement is sub-

mitted at least one month before the wedding, but not more than three months before the wedding.

5. Bridal photos and information will not be accepted in The Pampa News office later than one month past the date of the wedding.

6. Anniversary announcements will be published for celebrations only of 25 years or more and will not be published more than four weeks after the anniversary date.

7. Birth announcements

will only be published for 0- to 3-month-olds. (See form for more details.)

8. Forms are available from the office 8 a.m. to 5 p.m., Monday thru Friday, or by sending a SASE to The Pampa News, P.O. Box 2198, Pampa, TX 79066-2198.

9. Two anniversary pictures may be placed for a \$25 charge or four extra lines may be added to announcements for \$25 (\$50 for both).

# Dear Abby...

By Pauline & Jeanne Phillips

**DEAR ABBY:** On a recent trip to Europe I learned firsthand the meaning of the term "ugly American," which stems partly from the loud, obnoxious voices we sometimes use in public. When Europeans are out in public they converse in low, modulated tones. They carry cell phones as we do, but rarely did I see Europeans use them, and never loudly. On trains, they walk out of the train car and answer their phones between the cars, so they won't disturb other passengers. And only once did I see someone answer a cell phone in a restaurant. For some reason, Americans seem to need to be constantly on their cell phones. It's almost as if they have a compulsion to prove to those around them they are important or have friends. Well, they would gain far more friends if they turned off their phones and smiled or spoke quietly to the human seated next to them. -- **TRAVELER IN SAN DIEGO**

**DEAR TRAVELER:** Here we go again on the subject of cell phone manners. People who plan to travel outside the country need to keep in mind that once we cross the border we become unofficial representatives of the U.S.A., and first impressions can have a lasting impact. That's why it's wise to ask a travel agent or read up on your destination before leaving to learn what the local customs are in the place you are visiting -- and this applies not only to the use of cell phones, but also to how you dress and whether or not it's appropriate to take photos.

**DEAR ABBY:** I am a student intern in a small laboratory. I like my job and get along with everyone who works here. However, there's one woman I can almost never understand. She has an accent, does not articulate her words well and speaks in a low tone of voice. When I say, "What?"

or "Excuse me?" she will repeat what she said, but I still cannot hear her. I have resorted to just laughing when she laughs and trying to avoid her. Luckily, I don't have to work directly with her very often, but I feel bad because I'm not as friendly to her as I am to everyone else. How should I handle this? -- **HUH? IN ORLANDO**

**DEAR HUH?** Tell her the truth, that you need her to speak more clearly because you have difficulty understanding her. But do it privately so you won't embarrass her.

**DEAR ABBY:** I have been dating an amazing girl, "Nina," for two months, and have fallen madly in love with her. Although contemplating marriage at this point might seem presumptuous, I'm convinced that this is where we're headed.

My concern is Nina's mother, "Joan." Although Joan is fully capable of working, she has chosen to "guilt" Nina into supporting her. She makes little or no financial contribution and works as little as possible. Nina is convinced that her mother is helpless, although Joan has never been diagnosed with a physical or psychological chronic illness. I'm afraid that if I marry Nina, she will insist that we take care of her mother for the rest of her life. This would take a heavy toll on both the marriage and our finances. How can I make Nina recognize that my concern is valid without having her think I'm heartless? -- **THREE'S A CROWD IN NEW YORK**

**DEAR THREE'S A CROWD:** A step in the right direction would be to have a long engagement, and insist that before you tie the knot you have premarital counseling to ensure the two of you are in agreement about what the marriage will involve.

## Crossword Puzzle

### CROSSWORD

By THOMAS JOSEPH

#### ACROSS

- 1 Writes parts hastily
- 5 Join, in a way
- 9 Indian coin
- 12 Lifeless
- 13 Peace goddess
- 14 Seedy bar
- 16 Fade out
- 17 All the rage
- 18 "Piece of cake!"
- 20 Game fishes
- 22 Woody's son
- 23 Traveler's stop
- 25 Small group
- 28 Hour follower
- 32 Kind of thinking
- 34 One of the Bobbseys
- 35 Altar promise
- 36 Disputed
- 38 Lama's land
- 40 Aspect
- 41 Catch

#### DOWN

- 1 Pop's name-sake
- 2 Interested in
- 3 Service period
- 4 Attack spot
- 5 Cries of grief
- 6 Slip
- 7 German songs
- 8 "Wasn't me," e.g.
- 9 Proper
- 11 Handle activity
- 15 Missed opportunity
- 19 Mural
- 21 "I'm in trouble!"
- 24 Astro-nomical event
- 25 Ninnies
- 26 Equestrian
- 27 Weather-map line
- 29 Reduced
- 30 Things to fight for
- 31 Place for padding
- 33 Destined
- 37 Exhibit event
- 39 Pitcher's stat

YESTERDAY'S ANSWER

9 Proper 26 Equestrian  
11 Handle activity  
15 Missed opportunity  
19 Mural 29 Reduced  
21 "I'm in trouble!"  
24 Astro-nomical event  
25 Ninnies 30 Things to fight for  
31 Place for padding  
33 Destined  
37 Exhibit event  
39 Pitcher's stat

NEW CROSSWORD BOOK! Send \$4.75 (check/m.o.) to Thomas Joseph Book 2, P.O. Box 536475, Orlando, FL 32853-6475

1	2	3	4	5	6	7	8
9				10			11
12				13			
14			15		16		
17		18		19			
20		21		22			
23		24					
25	26	27		28	29	30	31
32		33		34			
35		36		37			
38		39		40			
41				42			
43				44			

## Marmaduke



"Could I have more pancakes? Marmaduke licked all the syrup off these."

## The Family Circus

THE FAMILY CIRCUS By Bil Keane

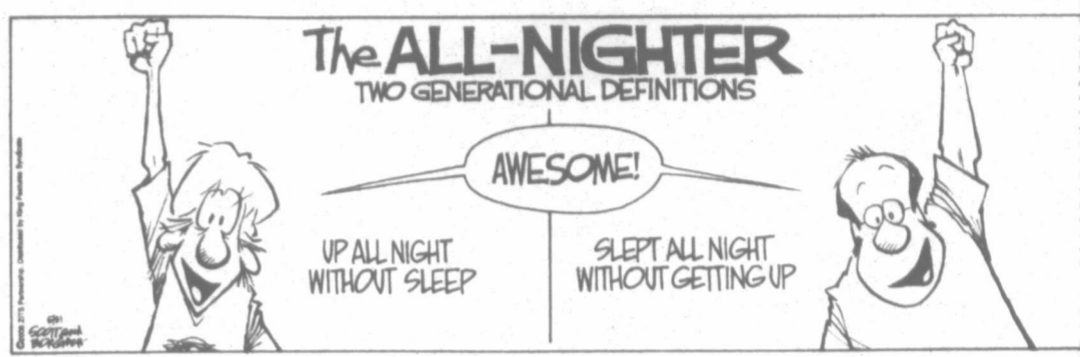


"Is it too early for me to start grumbling about having to go to bed?"

## For Better Or Worse



## Zits



## Garfield



## Beetle Bailey



## Marvin



## B.C.



## Haggar The Horrible



## Peanuts



## Blondie



## Flo & Friends



SUNDAY AFTERNOON / EVENING

JUNE 1, 2008

Table with columns for time slots (12pm to 10pm) and rows for various TV channels (KACV, KAMR, KCTV, etc.) listing programs and movies.

MONDAY AFTERNOON / EVENING

JUNE 2, 2008

Table with columns for time slots (12pm to 10pm) and rows for various TV channels (KACV, KAMR, KCTV, etc.) listing programs and movies.

TUESDAY AFTERNOON / EVENING

JUNE 3, 2008

Table with columns for time slots (12pm to 10pm) and rows for various TV channels (KACV, KAMR, KCTV, etc.) listing programs and movies.

WEDNESDAY AFTERNOON / EVENING

JUNE 4, 2008

Table with columns for time slots (12pm to 10pm) and rows for various TV channels (KACV, KAMR, KCTV, etc.) listing programs and movies.



THURSDAY AFTERNOON / EVENING
@TVData 12pm 12:30 1pm 1:30 2pm 2:30 3pm 3:30 4pm 4:30 5pm 5:30 6pm 6:30 7pm 7:30 8pm 8:30 9pm 9:30 10pm
KACV WordWorld Sit-Be Fit Fine Art Painting Reading Lions Arthur WordGirl Curious Cliff Pup Cyberchase Fetch! With News-Lehrer The This Old House Hour Adventure Lodges Globe Trekker C. Rose

FRIDAY AFTERNOON / EVENING
@TVData 12pm 12:30 1pm 1:30 2pm 2:30 3pm 3:30 4pm 4:30 5pm 5:30 6pm 6:30 7pm 7:30 8pm 8:30 9pm 9:30 10pm
KACV WordWorld Cultivating Garden Painting Reading Lions Arthur WordGirl Curious Clifford-Red Cyberchase Fetch! With News-Lehrer Wash Wk NOW Bill Moyers Journal Time Goes Summer C. Rose

SATURDAY AFTERNOON / EVENING
@TVData 12pm 12:30 1pm 1:30 2pm 2:30 3pm 3:30 4pm 4:30 5pm 5:30 6pm 6:30 7pm 7:30 8pm 8:30 9pm 9:30 10pm
KACV Gourmet Test Kitch Europe Hometown Woodwright MotorWeek Old House Workshop Antiques Roadshow Primal Grill WealthTrk Face-Face McLaughlin Lawrence Welk Show Classic Gospel Keeping Up Keeping Up Austin City

MEETINGS & PSAs

CLUBS, ASSOCIATIONS, ETC.
McLEAN DANCE CLUB. McLean Dance Club meets the second and fourth Saturdays of each month. For more information, call (806) 323-8515.
PAMPA GARDEN CLUB. Pampa Garden Club meets at 2 p.m. the second Monday of each month from September through May. Meeting location changes monthly.
PAMPA PILOTS ASSOCIATION. Pampa Pilots Association meets at 7 p.m. the third Tuesday of each month at the Airport Lounge.

experience. Projects and instructors are available. For more information, call 669-3008.
PPQG. Panhandle Piecemakers Quilt Guild meets at 6:30 p.m. the fourth Thursday of each month at Pampa Senior Citizens Center, 500 N. Francis. Visitors are welcome. For more information, call Jane Jacobs at 665-3878.
Shrine Club. Pampa Shrine Club holds a covered dish meeting at 7 p.m. every third Friday of each month at the Sportsman's Club on South Barnes.
TOP O' TEXAS RODEO ASSOCIATION. Top O' Texas Rodeo Association meets at 7:30 p.m. the first Monday of every month in the Nona S. Payne Room of Pampa Community Building.

Mondays at Bible Church of Pampa, 300 W. Browning. For more information, call 669-2923.
ALZHEIMER'S SUPPORT GROUP. The Alzheimer's Support Group meets the second Thursday of each month from 12-1 p.m. at Shepard's Nursing. A light lunch is provided. Programs provide information through video series and lectures. For more information, call 665-0356 or 665-8732.
AMERICAN HEART ASSOCIATION. American Heart Association meets at 12 noon the second Thursday of each month at Chaney's Restaurant in Pampa.
ANGELS HAVE WHEELS. Some Medicare recipients may qualify for electric wheelchairs at no charge to themselves. For more information, call 1-800-810-2877.

Agency on Aging of the Panhandle needs volunteers to serve as advocates for nursing home residents as part of its Ombudsman program. The Ombudsmen will visit residents of long-term care facilities and help resolve complaints involving residents rights, quality of life and quality of care. Once accepted into the program, volunteers complete a three month internship including intensive training and supervision in preparation. Ideal candidates will have strong sense of fair play, excellent problem-solving skills, good relationships with older people and the ability to devote two hours a week to the residents served by the Ombudsman program. For more information, contact Tanya Mock, regional local Ombudsman, at 1-800-642-6008; or write P.O. Box 9257, Amarillo, TX, 79105.
BEGINNINGS. "Beginnings," a Harrington Cancer Center program for newly diagnosed breast cancer patients, will meet weekly in Harrington Cancer Center Quiet Room, 1500 Wallace Blvd., Amarillo. For more information, call (806) 359-4673, ext. 173, or 1-800-274-4673, ext. 173.

MONEY FROM YOUR POCKET

# Credit card fraud cheats every consumer

(NAPSA) — Imagine going out to dinner at a local restaurant. Your server takes your credit card and returns to tell you that your card has been declined. Later, you discover the account has charges totaling more than \$800 that you did not make.

A recent case highlights the potential for credit card fraud when you don't witness a transaction. San Francisco police arrested a waitress for unauthorized use of a credit card after having received several similar reports of credit card fraud at a Bay Area restaurant.

All the victims remembered using their credit card at the same restaurant and identified the waitress as their server. The waitress told authorities she had sold the card numbers to a friend for \$40. A total of \$17,500 was charged on the cards to pay for electronics, clothing, cell phones and utility bills.

Credit card fraud is on the rise and costs issuers hundreds of millions of dollars each year. Credit card customers are often not held responsible for fraudulent charges, as long as they report the fraud in a timely manner.

The convenience of using a credit card to pay for a meal at a restaurant, for example, belies the risk for credit card fraud, said Kathy Li, director, Consumer Action in San Francisco. The restaurant industry is plagued with the highest incidence of credit card skimming, the unscrupulous practice of swiping a customer's credit card through a device, similar in size to a

beeper, to record the magnetic strip data for the creation of fraudulent credit cards. Consumers are urged to watch closely



Don't carry credit cards you don't use.

as store and restaurant employees handle their credit card to make sure they are not copying or "skimming" the credit card number. The information that is obtained can be used to order products and services online for several weeks until the unsuspecting victim is made aware via his or her monthly credit card statement, which can give the thieves plenty of time to run up bills.

Thieves may sell your information. Often, the criminals skimming your information into the device are not the same criminals that are using that information to commit identity theft or other crimes of fraud.

The card information can be encoded onto new white plastic counterfeit cards. The card can then be swiped at ATMs or at a merchant location.

If fraud strikes, you should act right away by calling the card issuer to report the card as being lost or stolen. Follow up the phone call with a letter to your issuer, which should include the card number, and the date you reported it lost or stolen, because once the loss of the card is reported, the consumer is not responsible for unauthorized charges.

"Even if a consumer is late in reporting the loss, or was not aware of the unauthorized use until their next statement arrives, their liability is limited to \$50 per card by federal law, although many issuers have \$0 liability policies," explained Li. "However, it must be reported in a timely manner to avoid losing protections under the law if there's negligent failure to report the loss of the card."

"Identity theft is a cruel crime that can continue beyond someone losing their money or personal property; it's a crime that can rob innocent men and women of their good credit, reputation and financial well-being without them ever knowing it has occurred," said Mike Laubsted, senior

vice president of Card Fraud Operations for WaMu (Washington Mutual) Bank.

According to both Consumer Action and WaMu, there are a number of things consumers can do to protect themselves against credit card fraud and identity theft, including:

- When making a purchase, after the credit card is returned, make sure it's your card.

- Always make sure you get your credit card receipt because it may include your credit card number.

- Never give your credit card number over the phone to someone you do not know.

- Never respond to an e-mail asking for your credit card number or personal banking information, no matter how official or legitimate it looks.

- Carefully review your monthly credit card statement and report any discrepancies right away.

- Notify the credit card company if you decide to make any unusually large purchase; otherwise, the account may be flagged for possible fraud.

"Even though there has been a lot of consumer education information published, in our experience, many consumers are still very concerned but are not completely knowledgeable about credit card fraud and identity theft," explained Laubsted. "Every consumer can take some very basic but effective actions to prevent identity theft from occurring in most instances."



For years, all-terrain vehicle (ATV) excursions have grown in popularity for families interested in group adventures.

## Summer fun on four wheels

(NAPSA) — Each year when warm weather replaces the cold and gloom of winter, people turn their attention to the great outdoors. For years, all-terrain vehicle (ATV) excursions have grown in popularity for families interested in group adventures.

Many reasons have led to this growth. Urban sprawl and video games, among other things, have limited the amount of time kids are spending in nature. Parents look around for activities that include fresh air and exercise. And new entry-level ATVs have opened up off-road activities to people who might have been reluctant in the past.

Most off-road enthusiasts can tell you their favorite vehicle as fast as their favorite reality TV show, but newcomers might have a hard time distinguishing between the latest options. Consider your age, size and experience, and pay attention to the terrain on which you plan to ride. Are you riding on wooded trails or desert sand dunes? Will you need four-wheel drive or can you consider a sportier machine?

Take the Raptor 250, for example, a new entry-level machine from Yamaha that can handle a variety of riding areas from basic ATV trails to more advanced motocross tracks. Built as a "sport" ATV, a two-wheel drive version with a more stylish design and sporty performance than its utility brethren, this quad can accommodate a newcomer (over 16 years old) while also allowing more

experienced riders to fully showcase their skills.

Vehicles such as the Raptor 250 offer families an activity that most any member can enjoy at his or her own pace, although parents should always follow age and safety recommendations.

"With a lot of new riders in the mix, it's a great time to consider an ATV Safety course," said Cathy Tharp, from the Specialty Vehicle Institute of America (SVIA). "Entry-level ATVs like the Raptor 250 can be great but deserve the proper respect and training to operate correctly."

Once you've settled on your vehicle, find the right riding area for your family. You'd be surprised to find that an ATV riding area, whether a national forest or private ATV park, is probably no more than a couple hours from where you live.

If you're not sure where to look, start by checking out the National Forest Web sites or visit your local ATV dealer. A quick online search can come up with new riding areas, and there are many ATV-specific sites and forums that offer a lot of information on where to ride in your area.

Just remember, before you get started, be sure to take a training class and learn about the basics of ATV riding techniques and proper riding gear. There are ATV safety courses taught across the country each month, and you can find out more at [www.atvsafety.org](http://www.atvsafety.org) or by calling (800) 887-2887.

**HAPPY BIRTHDAY** for Thursday, May 29, 2008:

Open up to your full potential this year. Often you might need to deal with a hardship or problem before you are willing to risk and take the next step. Emphasize your goals, keeping them in mind. You have a lot of flair and get-up-and-go. A risk could be much easier as a result. Success comes through groups of people as opposed to by yourself. Network as much as you want or can. If you are single, you could meet that special person anytime from winter on. Stay open. If you are attached, the two of you need to become more of a team in pursuit of one mutual goal. Count on ARIES; they are your natural cheerleader.

The Stars Show the Kind of Day You'll Have: 5-Dynamic; 4-Positive; 3-Average; 2-So-so; 1-Difficult

**ARIES** (March 21-April 19) **★★★★** Though you might be slow to get going, once you do, you feel renewed. Avoid a collision with a boss or someone you might need to answer to. Suddenly you feel better and are more than ready to challenge others. Tonight: What you want. Just ask.

**TAURUS** (April 20-May 20) **★★★** Use the early part of the day for any task or situation that demands high energy. Remember, you are not the Energizer Bunny; you need timeouts. You'll slow down in the afternoon. Plan accordingly. Tonight: Secrets could be swapped.

**GEMINI** (May 21-June 20) **★★★★★** Responsibilities continue to call. Don't evaluate how you could change this picture right now. Just do

**HAPPY BIRTHDAY** for Sunday, June 1, 2008:

If you are open to your inner voice, you'll head in a new direction. You might create waves by the way you change course. By now, you might be used to being a leader or a creator. This year, your role might be more subtle, as distinct changes occur within. Winter 2009, Lady Luck will ride on your shoulder if you remain innovative and open. Travel also could play a big role. If you are single, you become willing to reveal your authentic self. As a result, the real you will emerge. If you are attached, the two of you will benefit from some time away together. TAURUS understands you better than you think.

The Stars Show the Kind of Day You'll Have: 5-Dynamic; 4-Positive; 3-Average; 2-So-so; 1-Difficult

**ARIES** (March 21-April 19) **★★★** The need to possess could drive you wild. Why do this to yourself? The time has come to change your MO and revise your thinking. Emotional discomfort can be relieved in many different ways. Tonight: Decide on a treat.

This Week: Prepare to explain your ideas; others will listen.

**TAURUS** (April 20-May 20) **★★★★★** Your personality radiates and draws many to you. For all the wondering and thinking, wouldn't it be easier to simply ask? Your sense of humor helps others open up. Tonight: Whatever puts a grin on your face.

This Week: Monday and Thursday, the Force is with you.

**GEMINI** (May 21-June 20) **★★★** Much goes on behind the scenes. You could wonder which is the best way to proceed. Be open to ideas. A dear friend might share a very important confidence. Don't act on it just yet. Tonight: Vanishing could be fun.

This Week: Review decisions Monday, but act on Tuesday.

**CANCER** (June 21-July 22)

what you need to do. By midafternoon, you will see how much you have accomplished. A meeting could evolve into a fun get-together. Tonight: Just don't be alone.

**CANCER** (June 21-July 22) **★★★** Do your best to explore behind the scenes and get answers. You might not be comfortable with what you hear or the big picture. If you feel that you can change what is happening, take action later on. Take some time to evaluate first. Tonight: A must appearance.

**LEO** (July 23-Aug. 22) **★★★★** Work with others directly, and don't postpone a problem person or situation. Your ability to take in all the information and look at the big picture emerges. Seek out an expert or two if need be. You might be surprised at the input you get. Tonight: Togetherness works.

**VIRGO** (Aug. 23-Sept. 22) **★★★★** Others make a lot of effort. Why are you resisting the inevitable? Go for what you want with an eye to positive change and deeper interactions. This afternoon presents a glimpse at the possibilities. Tonight: Dinner with a special friend.

**LIBRA** (Sept. 23-Oct. 22) **★★★★** You might not always understand where people are coming from. Don't allow others to distract you from your present task. Defer meetings or calls until you are done. Let go and relax with those around you. Tonight: You decide who, what and where. Just don't be alone.

**SCORPIO** (Oct. 23-Nov. 21) **★★★★★** A brainstorming session is more important than you could possibly realize. Think positively about changes,

**BORN TODAY**  
King Charles II of England (1630), writer T.H. White (1906), President John F. Kennedy (1917)

Jacqueline Bigar is on the Internet at <http://www.jacquelinebigar.com>.  
© 2008 by King Features Syndicate Inc.

**★★★★** A friendship or an important gathering could easily star in your plans. Be open about your expectations. Verbalizing paves the way. Learn to manifest more of your desires. Tonight: Where you want to be.

This Week: Zero in on a goal. Be patient watching it culminate.

**LEO** (July 23-Aug. 22) **★★★** You could make more of a difference than you realize if you are willing to shoulder more responsibility. Weigh the pros and cons carefully. A parent could be demanding, knowing exactly what he or she wants. Tonight: Leader of the gang.

This Week: Move with precision. Complete all important details by Thursday.

**VIRGO** (Aug. 23-Sept. 22) **★★★★** Discuss a pending trip or a vacation. The more open you are, the better this vacation can be. Open up doors rather than close them. Reach out to someone at a distance. Let your imagination wander to great music. Tonight: The only limits your mind knows are the self-imposed ones.

This Week: Read between the lines. You don't want any nasty surprises.

**LIBRA** (Sept. 23-Oct. 22) **★★★★★** Defer and let others have their way. What you see is more of what makes someone the person he or she is. Ask more questions, and you will understand a special friend much more. Listen to what someone offers. Tonight: Keep togetherness a theme.

This Week: Others dominate until Thursday. Then you step out.

**SCORPIO** (Oct. 23-Nov. 21) **★★★★** Others do an excellent job of making suggestions. Your high energy emerges when dealing with a parent or someone in charge. Don't let someone push you too far. Understand what makes this person tick. Tonight: Sort through invitations.

This Week: Investigate a suggestion. You don't need to say yes.

**SAGITTARIUS** (Nov. 22-Dec. 21)

even if you might wonder what your role is here. Apply yourself to clearing out must-do errands. Tonight: Easy does it.

**SAGITTARIUS** (Nov. 22-Dec. 21) **★★★** Handle a personal matter in the a.m., when you feel fresh and invigorated. A relationship could take a higher priority right now. You might want to change your priorities just for a day. If you are single, check out someone new.

Tonight: Start your weekend early.

**CAPRICORN** (Dec. 22-Jan. 19) **★★★★** Make key calls before midafternoon. Your vision of what might be workable could be tested. Be willing to go back to the drawing board. Experiment with new ideas, keeping your priorities in mind. Tonight: Mosey on home.

**AQUARIUS** (Jan. 20-Feb. 18) **★★★★** Tackle funds head-on, knowing you can deal with whatever you need to. Return calls, schedule meetings and have an important discussion in the afternoon. Others will be more responsive as the day ages. Tonight: Talk up a storm.

**PISCES** (Feb. 19-March 20) **★★★★★** This morning, you might feel great but could decide those around you are out of sorts. Loosen up when dealing with a financial matter. You might not be open to listening to the many different financial options. Tonight: Indulge a tad.

**BORN TODAY**  
King Charles II of England (1630), writer T.H. White (1906), President John F. Kennedy (1917)

Jacqueline Bigar is on the Internet at <http://www.jacquelinebigar.com>.  
© 2008 by King Features Syndicate Inc.

**★★★★** Investigate a possible expenditure that would make the quality of your life better. A long-distance call or a potential day trip helps you see life from the other side. Think before leaping to conclusions. Tonight: Easy works.

This Week: Creativity helps meld two ideas ... yours and theirs!

**CAPRICORN** (Dec. 22-Jan. 19) **★★★★★** Creativity emerges, and for those of you who are flirts, that comes out. A partner could be difficult or angry. Could jealousy be rearing its ugly head? Be sensitive to a partner, but still enjoy what is happening in your backyard! Tonight: The party could go on and on.

This Week: Allow yourself to be a workaholic. It feels good sometimes.

**AQUARIUS** (Jan. 20-Feb. 18) **★★★★** Staying close to home fits your day. Invite others over for a fun get-together. Listen to feedback from a quarrelsome family member or partner. Investigate options more carefully, even if they have been tossed at you angrily. Tonight: Settle in for a few days.

This Week: Ever playful, you cannot seem to settle down. Oh, dear.

**PISCES** (Feb. 19-March 20) **★★★★★** Listen to chatter and participate in a discussion, should your interest be piqued. Bring others together for an easy game of cribbage, bowling or volleyball — whatever your group likes. Relax together. Tonight: Catch up on a friend's news.

This Week: Expect to explain a lot but also to relax more.

**BORN TODAY**  
Founder of the Mormon Church Brigham Young (1801), blond bombshell Marilyn Monroe (1926), musician Ronnie Wood (1947)

Jacqueline Bigar is on the Internet at <http://www.jacquelinebigar.com>.  
© 2008 by King Features Syndicate Inc.

# PAMPA NEWS CLASSIFIEDS

**Realtors**

**First Landmark Realty**

2545 Perryton Pkwy.  
in the Pampa Mall  
EQUAL HOUSING OPPORTUNITY

**665-0717**

**NEW LISTING**

Spacious 4 and possibly 5 bedroom home. Central heat and air. Large open living room w/dining. Tile in kitchen and utility. Beautiful laminate wood in living room, 2 BRs and hall, gas log fireplace in living room. Private fenced in backyard with a garage apartment in back. Call Christa to see. 7975

**NEW LISTING**

Lovely 3 bedroom brick, 2 full baths. New double pane windows. Tile in kitchen/utility/entryway and baths. Raised ceilings in lr and isolated master bedroom, double car garage. Corner lot. Large storage building has workshop in back. Won't last long at the listed price. Call Christa for an appointment. OE

**NEW LISTING**

Great 4 bedroom brick, 2 full baths. Living room has Wb fireplace. Kitchen-breakfast combination. Formal dining room. Many many updates. Isolated master bedroom opens into a large bath for hers and his. Call to see. 7977

**BEAUTIFUL LOCATION**

Don't miss seeing this 3 bedroom brick, 1 3/4 baths, huge formal living room. Den. Basement. Large screened in porch for easy entertaining. All plumbing in house, water and gas service lines plus water heater replaced in 06. New windows. Built in bookcases, beautiful front door and large tiled entry. Owner has reduced the price. Call our office for an appointment. 7808

**VERY COMFORTABLE HOME**

Large 2 bedroom permastone home. Large living and dining combination. Huge master bedroom. Large updated bathroom, lots and lots of storage. Lovely sunroom has 3 glass sliding doors. Storage room in back or garage. Central heat and air. Very good condition and priced to sell. 7926

**BRAND NEW CUSTOM BUILT HOME**

In a wonderful location. This home has everything including 2 1/2 baths. Granite kitchen countertop and all upscale appliances. 3 bedrooms and office or could be 4 bedrooms. Formal dining. Covered patio. Yard sprinkler and new fence. Call the office for details. OE

**CALL FIRST LANDMARK FIRST FOR ALL OF YOUR REAL ESTATE NEEDS. WE APPRECIATE YOUR BUSINESS.**

Irvine Riphahn GRI . 665-4534  
Chris Moore GRI . 665-8172  
Bobbie Nisbet BKR . 665-7037  
Christa Carpenter . 669-2192



PLACE AN AD TODAY!  
CALL 669-2525

**NOW HIRING:**

Greenhouse Sales, must be able to lift 50 pounds, hardworking, and dependable.  
General Laborers,  
Exp. Diesel Mechanic/Assistant

Must be at least 18 years of age and submit to a drug test.

Apply in person at:  
**West Texas Landscape**  
120 S. Hobart  
Please No Phone Calls!!!

**1 Public Notice**

**NOTICE TO PROPOSER**  
The Pampa Independent School District will receive sealed proposals in the Business Office at 321 W. Albert, Pampa, Texas 79065, until 2:00 p.m., Monday, June 30, 2008 for Job Order Contracts / Trade Bids including but not limited to:

General Carpentry, Plumbing, Electrical, Heating & Air. Floor Covering Install / Repair, Wall Covering Installation, Fence Installation / Repair, Carpet Cleaning, Asphalt Paving & Repair, Transmission Service / Repair. For a complete list and specifications or additional information please call Betty Meadows, Purchasing Director at (806)669-4700.

**3 Personal**

**\*ADOPT\*** Active young couple wishes to give your baby LOVE, laughter, stability, fine education. Laura & Jason 1-800-466-2459. Exp. pd.

**4 Not Respon.**

AS of this date May 30, 2008, I, Devlin C. Howe, will no longer be responsible for any debts other than those incurred by me. Signed, Devlin C. Howe.

**5 Special Notices**

**ADVERTISING MATERIAL** to be placed in the Pampa News, MUST be placed through the Pampa News Office Only.

**10 Lost/Found**

LOST White Female Chihuahua w/ brown spots. Cherished family pet. Reward. 664-2401.

**13 Bus. Opp.**

GREAT investment opp. Pampa motel. Retired couple or individual. 665-1875, 806-383-1985.

**14d Carpentry**

Carpentry, Roofing, Replacement Windows, steel siding & trim. Continuous gutters. Jerry Nicholas 669-9991, 662-8169

**CUSTOM Building & Remodeling.**

Replacement windows. Ref. avail. Shawn Deaver Const. 662-2977 or 665-0354.

**OVERHEAD DOOR REPAIR**

Kidwell Construction. Call 669-6347.

**RICHARD'S General Carpentry.**

Roofs & Painting. Building & Remodeling. 886-0267, 275-9038

**14e Carpet Serv.**

NU-WAY Cleaning service, carpets, upholstery, walls, ceilings. Quality doesn't cost...It pays! No steam used. Bob Marx owner-operator. 665-3541, or from out of town, 800-536-5341.

**14h Gen. Serv.**

HOUSE Cracking? In bricks or walls? Childers Brothers, Inc. 800-299-9563, 806-352-9563

**COX Fence Company.**

Repair old fence or build new. Free estimates. Call 669-7769.

**CERAMIC tile work.**

Remodeling floor, shower, kitchen. Texture, painting, dry wall. Free est. Call 665-3453 leave message, Jesus Barraza.

**14h Gen. Serv.**

4 K Fence Co. Wood, chainlink, iron gates & repairs. Call 806-883-2021.

**JH Concrete Work.**

Stamps, driveways, addition, fences, patios. Free Est. 806-382-5408.

**14r Plowing/Yard**

**HARDWORKING High sch. Teenager** looking to mow lawns. Please call Sean Malone, 806-282-2054, 806-688-0024.

**14s Plumbing/Heat**

JACK'S Plumbing, 715 W. Foster, 665-7115. Plumbing, repairs, new constr., & septic sys.

**Larry Baker Plumbing**

Heating/ Air Conditioning Borger Hwy. 665-4392

**19 Situations**

CHILD Care in my house Monday thru Friday. 665-0113.

**CHILDCARE in my home.**

Age 5 & up. Call 662-3672

**21 Help Wanted**

**NOTICE: All ads that contain phone numbers or give reference to a number with an area code of 809 or a prefix of 011 are international toll numbers and you will be charged international long distance rates. For more information and assistance regarding the investigation of work at home opportunities and job lists, The Pampa News urges its readers to contact the Better Business Bureau of South Texas, 609 S. International Blvd., Weslaco, Tx. 78596, (210) 968-3678.**

**4 K Fence Co.** Wood, chainlink, iron gates & repairs. Call 806-883-2021.

**JH Concrete Work.** Stamps, driveways, addition, fences, patios. Free Est. 806-382-5408.

**14r Plowing/Yard**

**HARDWORKING High sch. Teenager** looking to mow lawns. Please call Sean Malone, 806-282-2054, 806-688-0024.

**14s Plumbing/Heat**

JACK'S Plumbing, 715 W. Foster, 665-7115. Plumbing, repairs, new constr., & septic sys.

**Larry Baker Plumbing**

Heating/ Air Conditioning Borger Hwy. 665-4392

**19 Situations**

CHILD Care in my house Monday thru Friday. 665-0113.

**CHILDCARE in my home.**

Age 5 & up. Call 662-3672

**21 Help Wanted**

**NOTICE**

Readers are urged to fully investigate advertisements which require payment in advance for information, services or goods.

**GREAT opp. for single or retired couple,**

for 12 unit motel in Pampa. Lrg. apt. incl. 665-4274, 665-1875.

**COODER'S Dixie Cafe**

now hiring for Wait Staff, full-time, 18 yrs. or older. Apply in person, 2219 Perryton Pkwy. No phone calls.

**YARD/SALES Person.**

Highly self-motivated. Full time. White House Lumber, 101 S. Ballard.

**DRIVERS / CDL Career Training w/ Central Refrigerated.**

We Train. Employ w/ \$0 down financing. Avg. \$40,000 1st year! 800-567-3867.

**EXPERIENCED Cook**

needed at Granny's Home Cookin. 328 E. Frederic. No phone calls.

**EXPERIENCE Bookkeeper,**

over 18 with some computer skills. Call White House Lumber 665-8475 for appt.

**21 Help Wanted**

**MAINTENANCE** Man needed, remodeling exp. for various properties. Painting, drywall & plumbing a must!! Must have own tools & trans. 665-1875, 665-4274.

**POST OFFICE NOW HIRING.**

Avg. Pay \$20 / hr. or \$57K yr. incl. Federal benefits and OT. Placed by AdSource, not aff. w/ USPS who hires. 1-866-483-6490.

**POTTER TRUCKING INC.**

Pampa Equal Opportunity Employer Call 806-935-6385 or 806-886-6038

**\*\$15 hr. or more depending on exp.**

\*Good Vacations  
\*Retirement Plan  
\*Health Ins. w/ partial paid on spouse and children  
\*Dental  
\*Vision  
\*Disability Ins.  
\*Life Ins.  
\*Dot Medical  
\*CDL License Paid  
\*Uniforms

**HOME EVERY NIGHT SOME 5 DAY SCHEDULES**

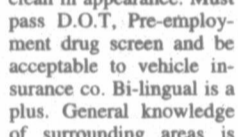
**YOU MUST HAVE:**

CDL with HAZMAT & TANKER  
GOOD DRIVING & PREVIOUS EMPLOYMENT RECORDS  
CLEAR DRUG & ALCOHOL RECORD  
DOT PHYSICAL

**GOLF Course Maintenance.**

Seeking seasonal Summer help. Apply in person Pampa Country Club, 1765 E. Harvester, ask for Trey.

**CLARENDON COLLEGE**



**Clarendon College Pampa Center is seeking qualified candidates for:**

**Vocational Nursing Instructor Pampa Center:** HS diploma and a registered nurse currently licensed in Tex. AS Degree in Nursing or a diploma RN required; Bachelor's degree in Nursing preferred with prior teaching program exp and three years of nursing exp.

Application forms can be found at www.clarendoncollege.edu Mail to: Ms. Darlene Spier, Assistant to the President, P.O. Box 968, Clarendon, TX 79226. Screening of applicants will begin immediately and continue until position is filled. Clarendon College is an equal opportunity employer.

An Equal Opportunity Employer

**HOUSEHUNTERS 662-1312 REALTOR**

**FEATURE HOME OF THE WEEK**

**2325 BEECH-MLS 07-7867**

LOOKING for a nice home- Lots of room- Large spacious floor plan-3 bedroom, 3 baths- fireplace, 2 living areas, Large Gameroom\ Sunroom- possible 4th bedroom.Sirva Incentives available -Only \$60.14 sq.ft

**237 ANNE- ML-07-7819**

Downsizing? first Time Home Buyer? Look at this charming & cozy 3 bedroom, 1 bath, attached garage, updated windows. Corner lot, separate carport & storage. New central heat and air. Reduced

**700 FRANCIS- MLS-08-7860**

Adorable, extremely nice, UPDATED, Charming, Unique, Large 2 bedroom, corner lot. Oversize 2 car garage w/ attached bedroom & 1/2 bath. Nice neighborhood. Won't believe till YOU SEE IT. OWNER SAYS SELL!

**2721 RANDY MATSON- MLS 08-7939**

3 bedroom, 2 bath, mobile home, situated on 1.6 acres. Beautiful landscaped yard, front deck, 2 shop buildings: 1-20'x24' & 1-12'x20'. Pricd to sell.

**201 McCULLOUGH-MLS 07-7769**

LOOKING for acreage outside City Limits with city utilities?YOU FOUND IT- Including a water well not ocean front property-sorry guys- 700 sq. ft. stricture plus 2 car garage- Use for storage-shop- IMAGINE horse facilities, storage- numerous possibilities- right under 2 acres.

CALL US. LET US SHOW. MAKE AN OFFER. 3 EASY STEPS TO OWNING YOUR OWN HOME OR BUSINESS. NOTHING IS SET IN STONE

**LINDA LAYCOCK** BROKER  
662-1312  
Pampa MLS

**LARRY HADLEY** ASSOC.  
662-2779  
Amarillo MLS

**21 Help Wanted**

**FLORAL Designer** needed Part-Time or Full-Time. Come by Pampa Flowers, 410 E. Foster.

**Petroleum Bulk Drivers**

Eastex Crude Co. is taking applications in Pampa, TX. Applicants must have a Class "A" CDL with Hazmat & Tanker Endorsements •Home Daily •Full Benefit Package (903)856-2401 x-137 (800)443-8580 Clint

**DRIVERS** Needed at Pizza Hut Delivery (1500 N. Banks). Ins. avail. & 401(k). Apply in person. No Phone Calls Please!

**MEASUREMENT TECH**

ENOGEX is engaged in natural gas gathering, processing, transportation, storage and marketing. We offer competitive reward driven pay, team based annual incentives, 401K matching and a variety of career advancement opportunities.

We are seeking an individual to be responsible for the day-to-day operation, maintenance, troubleshooting, testing, and calibration of natural gas measurement, quality testing and communications equipment and systems. This position is located in Wheeler, Texas.

Additional information on this position can be viewed on the OGE Energy Corp. website. Applicants must apply online at www.oge.com.

An Equal Opportunity Employer

**OG/E**

Enogex

**MEASUREMENT TECH**

ENOGEX is engaged in natural gas gathering, processing, transportation, storage and marketing. We offer competitive reward driven pay, team based annual incentives, 401K matching and a variety of career advancement opportunities.

We are seeking an individual to be responsible for the day-to-day operation, maintenance, troubleshooting, testing, and calibration of natural gas measurement, quality testing and communications equipment and systems. This position is located in Wheeler, Texas.

Additional information on this position can be viewed on the OGE Energy Corp. website. Applicants must apply online at www.oge.com.

An Equal Opportunity Employer

**OG/E**

Enogex

**MEASUREMENT TECH**

ENOGEX is engaged in natural gas gathering, processing, transportation, storage and marketing. We offer competitive reward driven pay, team based annual incentives, 401K matching and a variety of career advancement opportunities.

We are seeking an individual to be responsible for the day-to-day operation, maintenance, troubleshooting, testing, and calibration of natural gas measurement, quality testing and communications equipment and systems. This position is located in Wheeler, Texas.

Additional information on this position can be viewed on the OGE Energy Corp. website. Applicants must apply online at www.oge.com.

An Equal Opportunity Employer

**OG/E**

Enogex

**MEASUREMENT TECH**

ENOGEX is engaged in natural gas gathering, processing, transportation, storage and marketing. We offer competitive reward driven pay, team based annual incentives, 401K matching and a variety of career advancement opportunities.

We are seeking an individual to be responsible for the day-to-day operation, maintenance, troubleshooting, testing, and calibration of natural gas measurement, quality testing and communications equipment and systems. This position is located in Wheeler, Texas.

Additional information on this position can be viewed on the OGE Energy Corp. website. Applicants must apply online at www.oge.com.

An Equal Opportunity Employer

**OG/E**

Enogex

**MEASUREMENT TECH**

ENOGEX is engaged in natural gas gathering, processing, transportation, storage and marketing. We offer competitive reward driven pay, team based annual incentives, 401K matching and a variety of career advancement opportunities.

We are seeking an individual to be responsible for the day-to-day operation, maintenance, troubleshooting, testing, and calibration of natural gas measurement, quality testing and communications equipment and systems. This position is located in Wheeler, Texas.

Additional information on this position can be viewed on the OGE Energy Corp. website. Applicants must apply online at www.oge.com.

An Equal Opportunity Employer

**OG/E**

Enogex

**MEASUREMENT TECH**

ENOGEX is engaged in natural gas gathering, processing, transportation, storage and marketing. We offer competitive reward driven pay, team based annual incentives, 401K matching and a variety of career advancement opportunities.

We are seeking an individual to be responsible for the day-to-day operation, maintenance, troubleshooting, testing, and calibration of natural gas measurement, quality testing and communications equipment and systems. This position is located in Wheeler, Texas.

Additional information on this position can be viewed on the OGE Energy Corp. website. Applicants must apply online at www.oge.com.

An Equal Opportunity Employer

**OG/E**

Enogex

**MEASUREMENT TECH**

ENOGEX is engaged in natural gas gathering, processing, transportation, storage and marketing. We offer competitive reward driven pay, team based annual incentives, 401K matching and a variety of career advancement opportunities.

We are seeking an individual to be responsible for the day-to-day operation, maintenance, troubleshooting, testing, and calibration of natural gas measurement, quality testing and communications equipment and systems. This position is located in Wheeler, Texas.

Additional information on this position can be viewed on the OGE Energy Corp. website. Applicants must apply online at www.oge.com.

An Equal Opportunity Employer

**OG/E**

Enogex

**MEASUREMENT TECH**

ENOGEX is engaged in natural gas gathering, processing, transportation, storage and marketing. We offer competitive reward driven pay, team based annual incentives, 401K matching and a variety of career advancement opportunities.

We are seeking an individual to be responsible for the day-to-day operation, maintenance, troubleshooting, testing, and calibration of natural gas measurement, quality testing and communications equipment and systems. This position is located in Wheeler, Texas.

Additional information on this position can be viewed on the OGE Energy Corp. website. Applicants must apply online at www.oge.com.

An Equal Opportunity Employer

**OG/E**

Enogex

21 Help Wanted

THE PLAZA III is now accepting applications for Day Time Servers. Must be 18 & over.

IMMEDIATE OPENING FOR TUBULAR INVENTORY CONTROL. Previous experience a plus.

FULL Time RN needed at Parkway Home Health in Wheeler.

Drivers: Flatbed HCT Now Signaling on Lease/Owner Operators!

TRUCK Drivers needed. Drug test and references required.

POSTAL JOBS \$17.89-\$28.27/hr. now hiring. For application & free government job info.

PART TIME INSERTER Needed immediately! About 20 hrs. per week. Must work every Sat. & be 18 yrs. old.

OUTREACH Health Services needs Providers in Pampa. Please call 1-806-354-6815.

NEED Assistant Manager for Pampa locations. Will Train. Must have people skills.

NEED Immediately: Exp Auto Tech with min 5 years, must have hand tools, ability to flag 40+ hrs/wk.

ASME Code Welder. Benefits avail., weld test req. Apply in person, 1333 N. Price Rd., Pampa

PETCO Pet. is hiring a Pulling Unit Operator. Paid holidays, vacation, 401k, ins. Call 669-3947.

PART-time help needed cleaning carpet. Must have valid dr. lic. and pass backgr. check.

CUSTODIAN WANTED White Deer ISD has immediate opening for full-time Custodian.

TEACHER looking for someone to watch toddler & infant in my home during 08-09 school year.

SECRETARY needed. Good computer skills a must. Bookkeeping exp. a plus.

TAKING applications for Glass Installer. Will train. Pampa Glass, 1432 N. Banks, Pampa.

PAMPA Teachers Federal Credit Union is now accepting resumes for the position of "Loan Officer".

50 Building Suppl. White House Lumber 101 S. Ballard 669-3291

21 Help Wanted

MAKE UP TO \$900 A WEEK Work for a local Well Service Company

Attention OTR Company Drivers It's all about the MILES!

CONSTRUCTION Superintendent Needed. Must have high production residential and multi-family experience.

THERAPIST TECHNICIAN I FIR / PAMPA \$8.14 per hour

TEXAS Panhandle MHRM is in need of applicants who have a high school diploma / GED.

Apply at Texas Panhandle MHRM 901 Wallace Amarillo, TX 79106 806-358-1681

TRUCK DRIVER WANTED Must have current Class A CDL, pass drug test & DOT physical.

Looking for Shop & Production Labor Immediate Openings w/ 48+ hours / week

CRALL 50 hr. week, 100% employee paid insurance, 401k, paid holidays.

Apply in person 2930 Hwy. 152 West Pampa, TX 806-665-8446

White House Lumber 101 S. Ballard 669-3291

60 Household

MATTRESS \$100 TWIN SIZE set. In perfect condition. Never used. 806-341-6233.

BED New Queen, pillow-top mattress set. In plastic. Warrantly. Sacrifice \$150. 806-341-6233.

MATTRESS- All New KING set Pillow-top. In plastic w/ warrantly. \$250. 806-341-6233.

69 Misc. ADVERTISING Material to be placed in the Pampa News MUST be placed through the Pampa News Office Only.

WANTED TO BUY JUNK CARS & USED BATTERIES!!! 236-9759

52" Vanity, 49" & 64" New Corian Vanity tops. 440-6998.

RED Barn Open Sat, 10-5. Bunk beds, chests, kitchen ware, lots more.

FOR Sale. 21" Lawn Mower. Used one season. 665-6431.

69a Garage Sales MOVING Sale. 110 S. Sumner. Everything must go! 8-7

80 Pets & Suppl. WKC Reg. 2 yr. old Doberman. Shots current.

95 Furn. Apts. 1341 N. Duncan, 2 bdr., 1ba., lrg. fenced back yard, near schools.

All real estate advertised herein is subject to the Federal Fair Housing Act, which makes it illegal to advertise "any preference, limitation, or discrimination because of race, color, religion, sex, handicap, familial status or national origin, or intention to make any such preference, limitation, or discrimination."

Tejas Real Estate NEW LISTINGS Feels like you're in the country! Sitting on nearly 1 ac. this home is just barely in the city limits.

95 Furn. Apts.

EFFICIENCY Apt., suitable for 1. Deposit req. 662-6089 for appointment.

96 Unfurn. Apts. CAPROCK APTS. Enjoy balconies/patio, on site laundry, beautiful grounds.

BENT CREEK APARTMENTS \* Lovely 2 & 3 Bdr. Apts. \* All Single Story Units \* Electric Range \* Frost-Free Refrigerator

PAMAPTS 1200 N. WELLS 669-2594

LAKEVIEW Apt. 1 & 2 bdr. unfurn. apt. Call for availability. References & deposit req. 669-4386

NUMEROUS Houses, Apts., Dupl. & Comm. properties thru-out Pampa. 665-1875, 665-4274.

STUDIO Apt. for rent. \$600.00. All bills paid except Water. Deposit required. 1912 Charles, Pampa, TX. Call 665-0908.

THE Schneider House, now leasing apts., 1 & 2 bdr., utilities incl. 120 S. Russell or call 665-0415.

98 Unfurn. Houses NICE 3 bedroom, washer / dryer hookups. Big yard. Call 663-6121.

LARGE 3 Bedroom Mobile Home for Rent. 665-8317.

3 bdr., 1 ba. Must see inside to appreciate. References required. Call 806-374-4360.

102 Bus. Rent. Prop. OFFICE Space for rent, ask about 3 months free rent. 669-6841.

OFFICE SPACE FOR RENT NBC PLAZA 806-665-4100

103 Homes For Sale

Twila Fisher Century 21 Pampa Realty 665-3560, 440-2314 669-0007

1313 Mary Ellen, 3/1-carport. Newly remodeled master. New paint, flooring & carpet.

16X80, 3/2, 1988 Manufactured home. Good shape. To be moved. See at S. Price Rd. Gray J, 3rd house on right. \$9500.

3 bdr., 2 ba. Foreclosure. Only \$18,600! Must sell. For info. 800-903-7141.

4 br or 3 & office, 2 ba., 1 w/ whirlpool, updated kitchen w/ tile floors & countertops.

Summer Savings PRICES GOOD THRU JUNE 1ST! 2006 BUICK LUCERNE CXL 17,995 2007 TRAILBLAZER LS 4X4 17,495 2004 CHEVROLET Z-71 EXT CAB 4X4 16,995

Quentin Williams REALTORS Keagy-Edwards, Inc. Selling Pampa Since 1952 669-2522 • 2208 Coffee & Perryton Pkwy.

N. NELSON- Large living room with two bedrooms, one bath, new carpet in a bedroom and some tile. Double garage. MLS 08-7969

N. SOMERVILLE- Lovely older home full of charm. Extra high ceilings, crown molding, and taller baseboards.

CHARLES- Beautiful three bedroom home. Owner states all rooms and ceilings have been painted and textured and crown mold.

N. CREST - Great investment property. Large building with plenty of parking. Building has central heat and air.

N. SOMERVILLE- Would make a great rental. Three bedroom home close to downtown area. Ext a living area. Fenced backyard.

PRICE REDUCED- N. FROST- Beautiful small church in residential area. Sanctuary has 10 leaded glass windows and a beautifully leaded glass window of Jesus behind the pulpit.

PRICE REDUCED- DUNCAN - Large open living and formal dining room. Kitchen has lots of storage, Den area off kitchen.

ASPERTS- Nice older home located on corner lot. It has a beautiful landscaped front and back yard with 20'x40' inground diving pool.

BEECHI- Nice neighborhood in Austin School district. Central heat and air less than 2 years old.

Visit our new site at www.quentin-williams.com

103 Homes For Sale

4 br, 2 3/4 b, 2 Living areas w/brp, open dining /kitchen, 2475 sq ft w/ 18X36 inground pool on 1/4 block lot. 700 Cedar, McLean, 806-779-8811.

FOR Sale. 3/2/3. Has Storage Building & Fenced Yard. New Carpet, Paint & AC/Heating.

MOVE-IN READY! 2728 Cherokee. 3/2/2. New Hardwood floors, new Ceramic tile. Completely remodeled inside.

VERY nice older home. 2 bdr., 1 ba. New ba., shop w/ carport, insulation.

115 Trailer Parks TUMBLEWEED Acres, Storm Shelters, fenced, stor. bldg. avail. 665-0079, 665-2450.

128 Aircraft CESSNA 172. 25% ownership. Call 440-1347 for details.

128 Aircraft

OPEN HOUSES SUNDAY, JUNE 1 - 2-4PM 2526 FIR \$149,900 1022 Mary Ellen \$ 80,000 1301 CHARLES \$149,900 2133 DWIGHT \$94,500 1228 CHARLES \$49,000 1029 N DWIGHT \$189,000 PAMPA REALTY INC. 312 N. GRAY • 806.669.0007

PHONE IN - MOVE IN 1-888-883-2086 call today for your Free Pre-approval!

¡Llámenos y Múdense Pronto! 1-888-891-8764 El camino a casa más rápido, más simple, y más conveniente.

Table with school district names (AUSTIN SCHOOL DISTRICT, LAMAR SCHOOL DISTRICT, TRAVIS SCHOOL DISTRICT, WILSON SCHOOL DISTRICT) and list of properties with addresses and prices.

Table with OTHER AREAS and list of properties outside Pampa City Limits.

Pampa Realty Inc. 669-0007 Pampa MLS & Amarillo MLS Jim Davidson (BRK/OWNR) 662-9021 Robert Anderwald 665-3367

NO CREDIT CHECK

BUY HERE • PAY HERE

THE ONLY REAL NO. 1  
USED CAR DEALER IN PAMPA ~~PANHANDLE!~~ PANHANDLE!

# DOUG BOYD

669-6062 • HWY 60 HWY 70  
9AM - 6PM MON-SAT  
www.dougboydmotors.com

2004 Honda Accord

**\$9,850**



WHITE • 4 DOOR

167 MILES

2004 Hummer

**\$27,995**



BLACK • SPORT UTILITY

1080 MILES

2004 Saturn VUE

**\$10,995**



WHITE • WAGON

92075 MILES

2004 Suzuki Axiom

**\$8,995**



WHITE • 4 DOOR WAGON

15336 MILES

2000 Oldsmobile Bravada

**\$7,995**

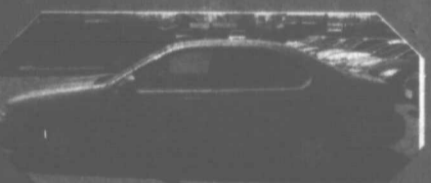


RED • 4 DOOR WAGON

139563 MILES

2001 Nissan Altima

**\$8,995**



GOLD • 4 DOOR SEDAN

77890 MILES

2004 Mitsubishi Outlander

**\$10,995**

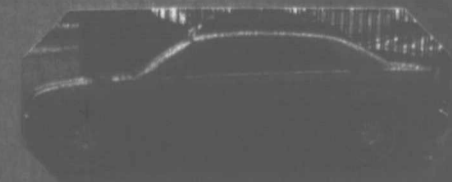


WHITE • 4 DOOR

15236 MILES

2007 Chrysler 300

**\$22,995**

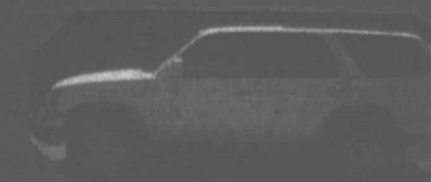


WHITE • 4 DOOR SEDAN

15236 MILES

2001 Toyota 4Runner

**\$11,995**



WHITE • SPORT UTILITY

15236 MILES

ES  
NC.  
7  
N  
36  
64  
irth East  
SF/GCAD  
SF/GCAD  
SF/GCAD  
- 3137 SF  
SF/GCAD  
SF/GCAD  
SF/GCAD  
SF/GCAD  
SF/GCAD  
SF/GCAD  
SF/GCAD  
SF/GCAD  
irth West  
SF/GCAD  
SF/GCAD  
SF/GCAD  
irth West  
SF/GCAD  
9 SF/Appri  
8 SF/Appri  
SF/GCAD  
SF/GCAD  
SF/GCAD  
SF/GCAD  
SF/GCAD  
SF/GCAD  
SF/GCAD  
SF/GCAD  
SF/GCAD  
SF/GCAD  
irth East  
SF/GCAD  
SF/GCAD  
SF/GCAD  
SF/GCAD  
SF/GCAD  
ty Limits  
... Ranch  
Of Lefort  
SF/GCAD  
h 10 acres  
SF/5 Acres  
SF/GCAD  
Dasis Rest,  
of Walmart  
umber Co,  
N of Sears  
use Motel  
SF/GCAD  
60 SF Bldg  
pp 1080 SF  
SF/GCAD  
007  
662-9021  
665-3367  
898-8510  
898-0779  
440-2312  
895-1234  
662-9611  
662-2190  
664-0312  
662-7291  
TURY 21  
Community LLC

## Outstanding fifth-graders



Courtesy Photo  
Madelyn Solis and Kristian Vizcaino were named best all-around fifth grade boy and girl at Woodrow Wilson Elementary School.

# Amish outhouses at issue in dispute

EBENSBURG, Pa. (AP) — Amish farmer Andy Swartzentruber is determined to live the simple life of his forefathers, plowing his field with a horse-drawn tractor, getting around in a horse-drawn buggy and offering eggs for sale to help support his family.

But now he and a school elder in his Amish settlement are being compelled to defend their religious beliefs over an unlikely issue: sewage.

The two say that they will not comply with state code that governs how they handle waste from two outhouses at their community's schoolhouse. The men are members of the Swartzentruber Amish, one of the Christian group's most conservative wings. Their only Pennsylvania settlement is the one here, about 70 miles east of Pittsburgh.

Their refusal to budge has left officials in a quandary: They are not eager to throw the offenders in jail, but also believe they need to apply the law uniformly and prevent contamination of water supplies.

Waste from the outhouses has been collected in plastic buckets, then dumped onto fields. The county is demanding the Amish install a holding tank and contract with a certified sewage hauler for disposal.

"I'd rather go to jail, and abide by our religion," Swartzentruber, his face and clothes dusty, told The Associated Press recently, while taking a break from tilling a field.

A district judge in April found Swartzentruber, on whose land the outhouses sit, and school elder Sam Yoder, in violation of state sewage disposal law.

A deadline to appeal the ruling, or face more than \$500 each in fines, passed without any action on their part.

Another hearing is likely in the next two weeks, according to the office of District Judge Michael Zungali, who issued the original ruling.

Local officials say putting the men in jail won't solve anything.

"That's a huge sacrifice. I believe in their sincerity," said William Barbin, attorney for the Cambria County Sewage Enforcement Agency. "But I still have to find a way to solve the problem."

Zungali has said he hasn't decided what to do if the farmers don't comply — but might impose community service instead of jail time.

"It's the judge's call," Barbin said. "Whatever the judge says is fine with us."

Swartzentruber and Yoder represented themselves in court, where Yoder also said he would not pay the fine or appeal, county officials said. Because the Amish do not have phones in their homes, Yoder could not be reached for comment.

The Swartzentrubers relocated from Ohio about a decade ago, a relatively recent community compared with the much larger and more well-known Amish population in south-central Pennsylvania. Their settlement is home to just 30 families.

Permit disputes with the Amish are most common in areas where they are relative newcomers, but usually get resolved, said Herman Bontrager, an insurance company

executive from Lancaster County who is a member of the National Committee for Amish Religious Freedom.

"The position of not wanting to abide by code and cooperate with legal authority, that's a pretty rare position," he said. "Most Amish find ways to do that."

The Swartzentrubers number only about 8,000, or fewer than 5 percent of the roughly 220,000 Amish in the U.S., according to Donald Kraybill, an Amish expert at Elizabethtown College. More than half of their settlements are in Ohio.

While all Amish shun the modern world, the Swartzentrubers are known for their tighter restrictions on technology, more severe limits to interaction with the outside world and more rigid notions of the separation of church and state, Kraybill said.

Yoder and five other Amish men laid out their beliefs in a handwritten letter to the sewage enforcement agency in January.

"We feel this sewage plan enforcement along with its standards is against our religious (beliefs),"

they wrote. "Our forefathers and the church are conscientiously opposed to install the sewage method accordingly to the world's standards."

Other than the sewage issue, local officials say relations with the Swartzentrubers have generally gone well; occasionally, members have received citations for not having warning markers, like orange triangles, on their horse-drawn buggies.

Among the Amish, church guidelines can be interpreted differently from congregation to congregation. How they respond in disputes can also vary dramatically, from accommodation to outright resistance that leads to prison time, Kraybill said.

Kraybill said he was unaware of any similar dispute over sewage disposal in Ohio. In Morristown, N.Y., the Swartzentrubers are involved in a court fight over state building codes.

Andy Swartzentruber's troubles began in October 2006 when residents complained anonymously that the schoolhouse and outhouses were erected on his property without permits. Swartzentruber told sewage officials the waste was being dumped onto his fields, according to sewage agency documents.

County officials said they want to reach a compromise. If they choose, the Amish can propose building their own holding tank, as long as it can be shown to meet construction standards.

"People respect their religious beliefs," township supervisor Giles Dumm said. "Nobody's coming down on them about that."

But, he said, "it's not fair to the rest of the community if some people have to abide by the sewage laws and some don't."

Agency, state and township officials have met with Swartzentruber and other local Amish at least seven times since October to discuss permit requirements.

If the stalemate continues, Barbin said, other options include refiling criminal charges or seeking an injunction to prohibit use of the school or the outhouses.

*Their refusal to budge has left officials in a quandary ...*

MON - SAT 9:00 AM TO 5:30 PM  
**Texas FURNITURE**  
1415 N. HOBART • 665-1623  
6 MONTHS NO INTEREST FINANCING WITH APPROVED CREDIT



**ASHLEY SOFAS**  
IN STOCK - READY FOR IMMEDIATE DELIVERY AS LOW AS  
**\$499**  
**\$599**

**ASHLEY**  
FURNITURE INDUSTRIES, INC.  
FACTORY DIRECT PRICES  
IN STOCK FOR IMMEDIATE DELIVERY

**5 PIECE DINETTES**  
TABLE, 4 CHAIRS  
**\$399 • \$499**

**TWO FOR ONE SAVINGS**  
**LA-Z-BOY & LANE RECLINERS**

RIGHT NOW YOU CAN GET TWICE AS MUCH FOR YOUR MONEY!  
CHOOSE FROM OUR BEST SELECTION EVER F LA-Z-BOY & LANE RECLINERS



**TWO FOR ONLY \$599**    **TWO FOR ONLY \$699**    **TWO FOR ONLY \$799**

**DUAL RECLINING SOFAS \$699 • \$799**

**LEATHER RECLINERS**    **ENTERTAINMENT CONSOLE**  
RETAIL \$999.00    **48" AND 60"**  
**\$499**    **FOR FLAT-SCREEN TV**  
RETAIL \$1199.00    **AS LOW AS**  
**\$599**    **\$399**

**SLEEP BETTER TONIGHT**

**SEALY "POSTUREPREMIER"**

TWIN SET <b>\$249</b>	FULL SET <b>\$349</b>
QUEEN SET <b>\$499</b>	QUEEN SET <b>\$399</b>

**SEALY PLUSH**    **SEALY PILLOW-TOP**

TWIN SET <b>\$349</b>	QUEEN SET <b>\$499</b>	TWIN SET <b>\$499</b>	QUEEN SET <b>\$599</b>
FULL SET <b>\$449</b>	KING SET <b>\$699</b>	FULL SET <b>\$549</b>	KING SET <b>\$799</b>

**TEMPUR-PEDIC**  
PRESSURE RELIEVING SWEDISH MATTRESSES AND PILLOWS

**CHANGING THE WAY THE WORLD SLEEPS**