

Tomorrow's Weather

HIGH
74
LOW
42

See expanded weather on Page 2

The Only REAL No. 1 used car dealer in Pampa

DOUG BOYD MOTOR CO.

BUY HERE • PAY HERE • NO CREDIT CHECK

Open 9 am - 6 pm Monday-Saturday • Buy 66 @ Buy 70 • Pampa, TX • 669-6662 • www.dougboydmotors.com

WHL

POWER EQUIPMENT

SALES & RENTAL

103 S. HOBART
665-2366

THE PAMPA NEWS

Volume 104 • No. 342

We're Small But Good!
Friendly Faces and Competitive Prices

36+ Years Experience
Ceramics • Laminate
Hard Wood • Carpet

The Floor Store
2100 Perryton Parkway
665-4455

Floor Care Essentials by Mohawk
Professional Carpet & Upholstery Cleaning System

FREE PROFESSIONAL ESTIMATES

CHILDERS BROTHERS INC.
HOUSE LEVELING

Uneven Floors
Floor Bracing
Cracks In Bricks
Sticking Doors & Windows
Interior Wall Cracking

FREE ESTIMATES

1-800-299-9563
WWW.CHILDERSLEVELING.COM

WE CARRY THE LARGEST SELECTION AND THE LATEST STYLES OF FLOORING IN STOCK WITH THE BEST PRICES!

One STOP Flooring

1533 N. HOBART
MONDAY-FRIDAY 9-5
SATURDAY 10-1

24HR WATER EXTRACTION
RUG RATS
Professional Carpet & Air Duct Cleaning

FREE ESTIMATES

Ronnie Harvill Owner
665-1976 or 662-9219

Ashmore & Associates
INSURANCE AGENCY, LLC

1224 North Hobart
NBC Plaza 2, Suite 11
Pampa, TX • 806-688-7081
www.ashmoreassociates.com

For All Your Business & Personal Needs

JIM BRUTON

Thomas
LUBRICANTS INC.

Protein Auto Service and Repair

665-4851
217 E. ATCHISON
Monday - Friday • 8am - 6pm

M & H Leasing
TOP OF TEXAS
ICE
"Pray Without Ceasing"

1945 N. Hobart
665-2061

OVERHEAD DOOR

www.roynor.com

TEXAS FURNITURE

PREMIER SERVING PAMPA SINCE 1972

1415 N. HOBART • 806-662-3121
MONDAY-SATURDAY 9:00-5:30

Election

City, school elections this Saturday ...

By **MARILYN POWERS**
The Pampa News

Election Day is Saturday for various city and school board officials in Gray County. Also on the ballot are special elections concerning a maintenance tax to benefit Clarendon College-Pampa Center and a property tax rate freeze for some Pampa residents.

The polls will open at 7 a.m. and close at 7 p.m. at the various precinct polling places. Polling places are as follows:

- Precinct 1:** Lefors Community Center, 103 N. Court, Lefors
- Precinct 2:** Lovett Memorial Library, 11 N. Houston, Pampa
- Precinct 3:** Grandview-Hopkins School
- Precinct 4:** Lovett Library, 302 N. Main, McLean
- Precinct 5:** First Christian Church Family Life Center, 1633 N. Nelson, Pampa
- Precinct 6:** Zion Lutheran Church, 1200 Duncan, Pampa

Precinct 7: M.K. Brown Civic Auditorium, 1000 N. Sumner, Pampa.

Early voting began April 28 and ended Tuesday. There were 795 early ballots cast in Pampa and 81 in McLean. Twelve of 15 mail-in ballots had been received as of Thursday, according to Elections Administrator Linda Lewis.

"It was a pretty good turnout," Lewis said of the early vote totals.

All Gray County voters have the opportunity to vote on whether to

approve a maintenance tax for CCPC. State law requires that the tax would never exceed 5-cents per \$100 valuation of all taxable property in Gray County, and all tax revenue would go to the Pampa Center.

Maintenance tax funds could be used for tuition reduction, maintenance costs, special projects, building construction and expansion of course offerings.

Residents of the City of Pampa

See **ELECTION**, Page 3

Mud Bog



Pampa News photo by Marilyn Powers

Stephen McCarley piloted a buggy through the trench in an exhibition run during the ATV-class competition at the 2007 Pampa Mud Bog. This year's event begins at 9 a.m. Saturday at Recreation Park, 1600 E. Highway 60. Admission is free. A new feature this year is twin trenches, in which entrants will race side-by-side to travel the farthest distance possible in their respective "bogs" in the fastest time possible. High Plains Off Road is sponsor of the Mud Bog.

Korea open to U.S. cattle shipments

By **DAVID BOWSER**
The Pampa News

PERRYTON — Ross Wilson expects U.S. beef to begin flowing to South Korea by mid-May.

Before Korea closed its market to U.S. beef following the discovery of a cow with bovine spongiform encephalopathy, or mad cow disease, just before Christmas 2003, it had been one of the top export markets for the U.S. beef industry.

Speaking to cattlemen here Monday evening, Wilson said that over the past couple of years, Korea has opened and then closed its market to U.S. beef as shipments were discovered to have been mislabeled or contained bone chips.

Under the new agreement with Korea, Wilson, chief executive officer of the Amarillo-based Texas Cattle Feeders Association, said Korea could no longer close its market based on such circumstances. Korean officials have agreed to keep the market open unless there is a change in the world animal health status of U.S. beef.

The opening of the Korean market, Wilson said, is one of the few bright spots in the cattle feeding industry today when cattle feeders are losing as much as \$250 a head.

He explained that there are two major inputs in feeding cattle, the feeder cattle that are bought from ranchers and the corn that is used to feed the animals.

With corn pushing \$7 dollars a bushel at Panhandle feedyards, more than double what it was a couple of years ago, the cost of feeding cattle has soared.

Normally, he said, cattle feeders would make up for that by paying ranchers less for cattle coming into the feedyard, but there is a shortage of cattle, which is keeping feeder cattle prices up.

But with cattle feeders losing so much money, Wilson said something is going to have to give.

He said there is a record number of feedyards across the nation that are up for sale. Some may close down, he said, if the price of corn does not come down, or the prices being paid for cattle coming into the feedyard will have to drop.

The alternative would be an increase in the price of beef in restaurants and at the supermarket. While that scenario would be good for cattlemen, it would put a strain on consumers at a time when the economy is already in decline.

The demand for corn is up for several rea-

See **CATTLE**, Page 3



Courtesy Photo

The Lady Harvester varsity softball team stands ready to be escorted out of town by the Pampa Police and Fire departments on their way to Odessa. The team will compete in the Regional Quarterfinals against El Paso, Chapin at Ratcliff Stadium in Odessa. Their first game is tonight at 6 p.m.

Swim In For Savings

Plants • Trees
Pond Supplies & More

West Texas Landscape




120 S Hobart St • 669-0158

Chamber of Commerce's Annual Pampa Partnership Golf Tournament

May 10th & 11th
T-Box Signs On Sale • \$50
with meal \$125

For information call 669-3241

NEXT DAY FORECAST

Saturday	Sunday	Monday
		
Sunny	Sunny	Sunny

Saturday: Mostly sunny, with a high near 74.
Saturday Night: Partly cloudy, with a low around 42.

Sunday: Sunny, with a high near 75. West wind between 5 and 10 mph.
Sunday Night: Mostly clear, with a low around 50,

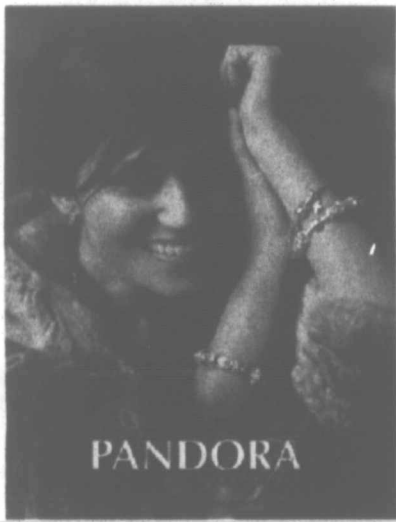
Monday: Mostly sunny, with a high near 83.
Monday Night: Partly cloudy, with a low around 58. South wind between 15 and 20 mph, with gusts as high as 25 mph.

© This information brought to you by...

PRESTIGE
AUTOBODY & ACCESSORIES
101 S. HOBART 806-665-3500
We Have Harley Davidson Bed Covers

Diamonds & Doorknobs
1508 N. Hobart 665.5090
"HAPPY MOTHERS DAY"
• Pandora Jewelry • Costume Jewelry
• Home Decor • Oil Lamp
• Candles & More

We have that something special for your someone special



WAYNES WESTERN WEAR
1504 N. HOBART • 665-2925

DON'T FORGET MOM ON MOTHER'S DAY (GUYS WE HAVE GIFT CARDS, TOO!)

BRIGHTON & MONTANA SILVERSMITH JEWELRY AMERICAN WEST HANDBAGS BRIGHTON PERFUME

WE NOW HAVE LADIES LUCKY BRAND JEANS
Store Hours M - S • 9am - 8pm

Preneed Arrangements Available Including Caskets
Special Veterans Garden
Memory Gardens
Cemetery & Mausoleum of Pampa
665-8921
23rd St and Price Rd
www.memory-gardens.tripod.com

Obituaries

Services tomorrow

BETCHAN, Ethel Idelle (Seitz) — 11 a.m., Memory Gardens Mausoleum, Pampa.

Ethel Idelle (Seitz) Betchan

Ethel Idelle (Seitz) Betchan, beloved mother and friend, was born June 9, 1921, in White Deer, Texas. She passed peacefully from this earth May 8, 2008, in Fort Worth, Texas. Ethel formerly from Pampa had been a resident of Comanche, Texas, for the past 10 years. She was a long-time member of the Ladies Auxiliary of VFW of

Pampa. She had a great sense of humor and could always bring a smile to everyone she meet. She devoted her life to her children and will most certainly be missed. Survivors: Two sons, Fred



Betchan

Betchan Jr. of Pampa, and Marvin Kelly Robinson and wife Loretta of Wimberley; three daughters, Neva Sledge and husband Scott of Comanche, Becky Campbell and husband Richard of Fort Worth, and

Mary Jo Long and husband Ken of Chandler, Ariz.; nine grandchildren; and seven great-grandchildren. Ethel was preceded in death by one granddaughter, Cyndie (Long) Johnson of Arizona. Services will be in Pampa at Memory Gardens Mausoleum Saturday, May 10, 2008 at 11 a.m.

BORGER — Mildred Camp, 89, of Borger, died Thursday, May 8, 2008. Services are scheduled at 10 a.m. Saturday at Brown Funeral Directors Chapel of the Fountains with Mike Woelfle officiating. Burial will be in Highland Park Cemetery. Mrs. Camp was born Aug. 5, 1918, at Lonewolf, Okla., to Thomas and Mary (Campbell)

Liles. She married George Douglas Camp in 1939, at Pampa; he died July 29, 2007. The couple belonged to Red Dale Campers in Pampa. Mrs. Camp served as social director of the square dances while George was a



Camp

caller. She was preceded in death by a daughter MaryAnn Camp in January 1989; a grandson Scott Hurt; and a twin sister, Thelma Casey in 1966. Survivors include three daughters, Linda Sue Hurt of Plano,

Fran Fletcher of Claude and Beth Hale of Pampa; 12 grandchildren; and 16 great-grandchildren. Mrs. Camp will lie in state today until service time. The family suggests memorials be to Hospice Care of the Southwest, 1301 S Coulter, Ste 404, Amarillo, TX 79106. Online condolences may be submitted at www.brownfuneralldirectors.net.

CITY BRIEFS

The Pampa News is not responsible for the content of paid advertisement

ANNUAL RABIES drive May 9th & 10th (no appt necessary), Mon. by appt only, at Easley Animal Hospital & Gray County Veterinary Clinic -Rates Reduced at both locations.

BEAUTIFY MOM'S Garden with plants, hanging baskets or a gift certificate from the Potting Shed! 410 E. Foster. Open Sat. 10-4, Sun. 1-4.

BEGIN A Career As A Firefighter! If you are interested in becoming a Firefighter, the Pampa Fire Department will be hosting an informational meeting Tuesday, May 13, 2008 at 7:00 p.m. at Pampa Fire Dept. Station 1, 203 W. Foster. Employment as a firefighter is a challenging and rewarding career that offers men and women the opportunity to serve their community helping others while working as a member of a highly professional team. Application packets will be available at this time. Entry-Level exam will be May 24th, at 8:00 a.m. in the Meeting Room at Lovett Memorial Library. Closing date for applications will be Friday, May 16th at 5:00 p.m.

BRANDON'S FLOWERS open late Sat. Pre arranged flowers available for pick up. 123 N. Cuyler, 665-5546.

BASIC LAWN Care. Call 665-0310 leave message.

COME & Go 90th Birthday Party for Jerry Tucker @ The Hamburger Station. May 10th, 3-6 pm.

FIRST I want to Thank All My Clients of The Golden Touch. I will have to close my business because Social Security will penalize me as self-employed. I have been working on farms from 7 yrs old, spent 35 yrs with Celanese, 38 in the Military & 9 yrs as a Massage Therapist. The Gov. has given money (city, county, state) to people who doesn't even have to work, but they penalize me now. I will have a Business Sale, Fri., Sat.- office furni., massage equip., weights, picture, special leather bound books of Old West, Civil War & Louis L'Amour. Special Evils plates. Open 10:30am, 317 Ballard. 806-665-6850, 806-665-9711.

GOSPEL SINGING, postponed until Sun. May 18th, due to Mother's Day. Pentecostal Holiness Church, 1700 Alcock, Pampa.

LOOKING FOR Sandblaster / Painter. Apply in person, 1333 N. Price Rd., Pampa.

MOTHER'S DAY Sale Artificial Floral Arrangements, Fri. & Sat. noon-6pm., 913 Varnon Dr. 806-663-2324

MOTHER'S DAY Special, Sun. 11am.-? Granny's Home Cookin'. Turkey & dressing, baked ham & the trimmings. 328 E. Frederic, 669-6237.

NEED COLOR Before Prom? Derma-Dark continues to process tan up to 8 days. Taylor Tans, 665-4101, Above The Clouds, 665-1101. Purchase any Rio product & receive full size moisturizer free.

PHS GOLF Banquet \$12 Steak Dinner, May 13th at 6:00 PM at the Calvary Baptist Fellowship Hall. The public is welcome. Call Josh Blackmon at Carver Center if you would like to attend.

THE COTTAGE Collection is having it's Annual Mother's Day Celebration, Sat. May 10th, 10-5pm. Please come by for refreshments & drawings for gifts.

UNDER NEW Management Putt-A-Round or Two & Hawaiian Shaved Ice Opens Sat., May 10, 1-11pm. Book your Summer parties, call Michael 662-4340 or 665-7570

Emergency Services

Sheriff

Gray County Sheriff's Office reported the following arrests today.

Wednesday, May 7
William Donald Stanley, 39, of Pampa was arrested by the Texas Rangers on a probation violation for driving while intoxicated.

Steven Ray Crawford, 29, of Dallas was arrested by GCSO for failure to appear, disregarding a red light, capias pro fines for no driver's license and failure to appear/bail jumping, and a probation violation for driving while intoxicated.

Joshua John Romero, 21, of Pampa was arrested by GCSO on a motion to revoke probation for driving while intoxicated.

David Walter Vinson, 46, of Seabrook was arrested in the 200 block of South Starkweather by Pampa Police Department for public intoxication.

Thursday, May 8
Jamie Douglas Boston, 18, of Borger was arrested in the 1100 block of East Frederic by PPD for no seat belt, failure to appear/bail jumping, possession of drug paraphernalia, no valid driver's license and no proof of insurance.

Ambulance

Guardian EMS ambulance reported the following calls during the 24-hour period ending at 7 a.m. today.

Thursday, May 8
1:23 p.m. — A mobile ICU responded to the 1200 block of North Wells and transported a patient(s) to Pampa Regional Medical Center.

1:54 p.m. — A mobile ICU responded to PRMC and transported a patient(s) to BSA Hospital in Amarillo.

5:15 p.m. — A mobile ICU responded to the 400 block of Roberta and transported a patient(s) to PRMC.

11:12 p.m. — A mobile ICU responded to the 500 block of Frost and transported a patient to PRMC.

Friday, May 9
5:32 a.m. — A mobile ICU responded to the 800 block of Deane. No transport.

Dennis Jernigan



Come join us at the **First Baptist Church Sanctuary**

203 N. West Pampa, Texas for

A Night of Praise

Saturday, May 10, 2008 • 7:00pm

Community Appreciation Cookout

720 W. Francis • 665-9700

May 9th • 11-1:30

Complimentary Hamburgers & Hotdogs-Door Prizes

Cook- Jim Bruton of Ashmore & Associates



Election

Continued from Page 1

may vote on a proposed limitation on the amount of ad valorem taxes imposed on the homestead residence of a person who is disabled or is 65 years of age or older and receives a residential homestead exemption.

The proposition on the ballots states that if the limitation is approved, it would be established "even if the tax freeze raises the tax rate for other taxpayers or reduces services in the City of Pampa."

No election is being held for Pampa Independent School District's board of trustees, although three seats are up for election. Each incumbent filed for re-election and was unopposed, and in such instances, the school district declines to hold an election.

Incumbents who will each serve another three-year term on the PISD school board are Derrell DeLoach, Place 1; Lance DeFever, Place 2; and Dana Terry, Place 3.

Candidates in the running for seats on the McLean ISD's board of

trustees are Joe Riley, Toni Bohlar and Linda Harvey. Voters are instructed on the ballot to vote for none, one or two of the candidates.

Lefors ISD's election for school board trustees drew five candidates. They are Bruce Withers, Sandra Pairsh, Pam Franks, Anna Johnson and Michael Ray. Voters are instructed on the ballot to vote for none, one or two of the candidates.

There are three candidates in the City of Pampa's general election for two city commissioners. Ward 4 Commissioner Neil Fulton is running

unopposed for re-election. In Ward 2, incumbent Bill Allison faces Shawn Clifton.

Registered voters in the City of Lefors may vote on a mayor, city council members and cemetery committee members. The choices for mayor are Mike Young or a write-in candidate.

On the ballot for Lefors City Council are Dana Davis, Johnny Harper, Karen Noble, Ray Carter, C.E. (Bud) Hess, Ronny Ferguson and David Boyd. Voters are instructed on the ballot to vote for none, one or two of the candidates.

Candidates for Lefors cemetery committee member are Linda Stanton, Wayne O'Brien and Clayton Lock. Voters are instructed on the ballot to vote for none, one, two or three of the candidates.

Running for two-year terms on the City of McLean's city council are Patti Brass, Donnie Basham, Robert McDonald, Lynn Reeves, Roby Lynn, Debbie McDonald and Mindy Reeves. Voters are instructed on the ballot to vote for none, one, two or three candidates.

Cattle

Continued from Page 1

sons, Wilson said, and that is fueling the rise in corn prices.

He said that while the weak dollar has increased the export of corn, the major culprit in the rising price of the grain is a booming ethanol industry.

Wilson said livestock groups are opposed to the government subsidy for ethanol, noting that Texas Gov. Rick Perry last week called for the government of modify its mandated increase in ethanol production because of the economic losses in the livestock industry.

CORRECTION



Garnett Schafer

The information included in the honor graduates article appearing in the Thursday edition of The News held incorrect information about Garnett Schafer. Below is how the listing should have appeared.

Garnett Schafer, son of Glenn and Leslie Schafer, ranks 16th in the class with a 3.692 GPA. His honors, activities and accomplishments include NHS; Outstanding Male Junior Band Member; U.S. History AP Award; three consecutive division 1 ratings in solo/ensemble; PHS Band; D-FY-IT; Latin Club; and Band Council. His future plans are to attend Lubbock Christian University and major in electrical engineering.

Obama picks up 4 superdelegates

WASHINGTON (AP) — The movement of Democratic superdelegates to presidential hopeful Barack Obama gained steam Friday with four new endorsements, including a union president and a congressman who switched his backing from rival Hillary Rodham Clinton.

Obama has now climbed within a handful of superdelegates of catching Clinton in endorsements from the party and elected officials who will ultimately decide the nomination. With the new endorsements, the superdelegate count is Clinton, 271.5 and Obama, 267.

Obama's endorsements from superdelegates have picked up sharply since Tuesday, when he soundly defeated Clinton in North Carolina's primary and held her to a narrow victory in Indiana. The momentum in his direction reflects a growing sense among Democratic leaders that it is inevitable Obama will lock up the nomination.

"Just looking at the facts, he's the presumptive nominee," Rep. Rahm Emanuel, D-Ill., said at a The New Yorker magazine conference Friday.

Emanuel, who worked in the Clinton White House and has home state ties to Obama, has remained neutral in the race.

Obama also picked up the endorsement of the influential American Federation of Government Employees union on Friday.

"Our people, I think, recognize the enthusiasm and vitality behind Senator Obama's campaign," AFGE President John Gage said.

Gage, a previously uncommitted superdelegate to the Democratic National Convention, said he is also personally endorsing Obama.

In New Jersey, Donald Payne — a black congressman who had been

backing Clinton for the nomination — is switching his support to Obama, Dan Pfeiffer, a spokesman for the Obama campaign, confirmed.

Rep. Peter DeFazio of Oregon also plans to formally endorse Obama and campaign with him at events Friday in Eugene and Albany, Ore.

"Senator Obama has proven he is able to energize young Americans, independents, and even moderate Republicans to support his candidacy," DeFazio said in a statement released by his office. "I believe he represents our best hope of winning in November, and puts the needs and priorities of hard working

Americans ahead of the powerful special interests that have been extraordinarily favored by the Bush-Cheney administration."

Oregon holds its primary on May 20. While polling in the state has been sparse, Obama is believed to hold a significant advantage over Clinton. With DeFazio, he will have the endorsement of three of the state's four Democratic House members. Reps. Earl Blumenauer and David Wu earlier endorsed Obama, while Gov. Ted Kulongoski and Rep. Darlene Hooley have endorsed Clinton.

Clinton won the New Jersey primary on Feb. 5 and has strong backing from the state's congressional delegation.

"After careful consideration, I have reached the conclusion that Barack Obama can best bring about the change that our country so desperately wants and needs," Payne told The Star-Ledger in Newark, N.J. It was "one of the most difficult decisions I have made," Payne said. "I've really been mulling it over for quite a while."

'Just looking at the facts, he's the presumptive nominee.'

— Rep. Rahm Emanuel D-III.

Look for
Extra deals that ultimately lead to
Extra fun

Introducing RedPlum

Your ultimate source of value delivered straight to your mailbox, doorstep — even your computer.

Online in your mailbox on your doorstep with your paper in your store

Always get good deals so you can splurge on a family day, a date night, or something fun.

redplum.com

Congratulations 2008 Senior!

PAMPA NEWS ADVERTISING TAB WILL BE IN THE WEEK OF MAY 31ST!
DEADLINE: MAY 14, 5 PM.

\$50.00
Single Ad



\$100.00
Double Ad



\$150.00
Triple Size Ad

Banner Ad

SAMPLE SIZES



advance

887-3348

Viewpoints

Banking on food to afford the price of gas ...

"I was upset about the rising cost of food, too. But then I got smart."

"Smart?"

"Look, when food costs began soaring, I complained as much as the next guy. I complained about fuel costs driving up shipping expenses, which drove up the cost of produce and meat. I complained about the emerging middle class in India and China."

"What's wrong with an emerging middle class?"

"Nothing, except that middle class folks have the means to eat well. They're driving up the demand for decent grub, which is also driving up costs. I spent a lot of time complaining about Congress."

"What does Congress have to do with rising food costs?"

"Our esteemed politicians are pumping big subsidies into ethanol production. Ethanol is made from things such as corn. Today, nearly a quarter of our corn production is being used to make fuel. That has increased the demand for corn, which has driven up its cost. It's driven up the cost of beef, too — cows eat corn."

"That's no good."

"But the thing that really got my goat is the speculators. According to The Washington Post, they've pulled their money out of the housing market and pumped it into grain futures. On top of all the other food woes we've been having, there is a drought in Australia, which means there is a wheat shortage, too."

"Let me get this straight:

The same investors who helped create a housing bubble are now driving up the cost of grain futures?"

"That's right. And if Americans think they have it bad, imagine how hard it is for the world's poor to afford dinner nowadays. Riots are breaking out all over the world as frustrated folks struggle to feed themselves."

"That is terrible. Could you explain what you mean when you say you got smart?"

"Oh, that's easy. You see, I'm just an average Joe trying to feed my family. I concluded there is no way I can beat the conditions that are driving up food costs, so I may as well join them."

Tom Purcell
Columnist



more than 5 percent, I sold it for a nice little profit."

"You are buying and selling meat?"

"For starters, I took my profit and invested in cereal. With grain costs skyrocketing, I got an 8 percent return on a few thousand boxes of Lucky Charms. And then I poured those profits into milk, cheese, bananas and peanut butter. Those investments are growing 10 percent a year."

"You're a regular General Mills."

"I was rolling now and used my profits to invest in flour and rice. Both are shooting up more than 13 percent a year, and I found myself sitting on a pile of cash. It was about then that I struck the mother lode."

"The mother lode?"

"Eggs. The wife and I built a barn out back and stocked it with hundreds of chickens. The cash began really rolling in then. The cost of eggs has shot up more than 30 percent this year."

"Didn't your neighbors complain about all those chickens in your backyard?"

"My neighbors are my biggest investors. The point is the sky is the limit. Arends says the trend is for food costs to get even worse. That will be good for business."

"I have to praise you for your ingenuity. What do you plan to do with your profits?"

"Invest in gasoline. The wife and I are clearing just enough to fill our tank once a week."

—Tom Purcell is a humor columnist nationally syndicated exclusively by Cagle Cartoons.

Politicians offer little leadership for U.S.

I suppose the one saving grace of the human race is that virtually all of our problems are self-inflicted. Theoretically at least, if we are the cause of the problems, we should be able to provide the cure or correction.

Hopefully, the Democratic Party will learn from this experience that it is not a good idea to award delegates on a proportional basis. If the primaries had been winner-take-all, the party would have had its nominee long ago and could be chopping on the Republican tree.

Instead, it is stuck with an exceedingly close race that apparently can only be settled by the so-called superdelegates, who are appointed and not elected (another bad idea). This means that inevitably they will be seen as stealing the nomination from one of the two candidates. This will undoubtedly cause a rift in the party.

I used to make money betting that no matter how unlikely the Republican candidate was, the Democrats would scour the country to find somebody who could lose the race. It worked with Jimmy Carter, Walter Mondale, Michael Dukakis and Al Gore. In the interim, of course, the Republicans picked up the Democrat habit and nominated Bush the First for a second term and then dragged out the old relic, Bob Dole, so both could be mowed down by Bill Clinton.

Now the Republicans have found another old relic, John McCain, to go up against Barack Obama or

Charley Reese
Columnist



Hillary Clinton. What a great choice in the minds of many: an African-American, a woman or a geezer. Though they won't tell it to the pollsters or say it on television, there are still blocs of Americans who will not vote for an African-American or a woman. Racist and sexist? Of course. Who told you the American people had become civilized, urbane and educated?

This was supposed to be a shoo-in year for the Democrats. The Republican president has disapproval ratings of historic proportions, has screwed up the economy and has gotten us stuck in two wars. It should have been no contest, but the Democratic Party has managed, with its nutty rules, to make it a level playing field.

This means the geezer has a chance, provided he doesn't topple over during the campaign. He doesn't seem to be very much in touch with reality, but that will merely carry on the tradition of George W. Bush, who, as the Buddhists say, seems destined to have been born drunk and to die dreaming. They will just have to hire somebody to stay close and whisper in McCain's ear who the good guys are and who the bad guys are. He seems confused.

Well, the world can't blame us. We are only 300 million souls, which is a

small field to choose from. Nor can we help it that reasonably honest people with reasonably good skills can make more money in the private sector than in public service, so that we are stuck largely with crooks, lazy people and incompetents.

Another self-inflicted problem is that our whole society, like some wooden

house in a swamp, is riddled with lawyers who most resemble termites. There is a truthful old saying that if a town has one lawyer, he will be poor, but if there are two, they will both prosper. That's because lawyers are hired arguers, and it takes two to have a dispute. Lawyers have almost replaced car salesmen in

local television advertising.

There is a lot of talk about the rising costs of health care, but I think that lags far behind the rising cost of legal services. Legal fees seem to run into the millions of dollars in the blink of an eye these days, and not because there has been a burst of legal talent. They have their own monopoly

and usually charge what the traffic will bear and then some.

But, as I said, most of our problems are self-inflicted. Let's just hope we can avoid self-destruction.

—Write to Charley Reese at P.O. Box 2446, Orlando, FL 32802.



Texas Thoughts

By The Associated Press

A sample of editorial opinion from the nation:

■ April 30

The News and Observer, Raleigh, N.C., on the presidential candidates and their plans to deal with high gas prices:

All of a sudden there's some daylight between Hillary Clinton and Barack Obama on an everyday pocketbook issue. She's for a summer-long fuel tax holiday; he says suspending the federal per-gallon tax would be shortsighted.

The Democratic presidential candidates are in a high-octane chase for North Carolina's 115 pledged delegates in Tuesday's primary election. But on the tax holiday idea they're both eating

John McCain's dust. Earlier this month the Republican nominee-in-waiting urged a halt in federal fuel taxes (18.4 cents per gallon on gasoline and 24.4 cents on diesel) from Memorial Day to Labor Day. ...

McCain's proposal, however, was widely panned — with good reason. Lowering pump prices this way would simply accelerate demand and the need to import oil. Plus, fuel tax receipts help fund road and bridge repairs. ... Countless Americans, rightly suspicious of oil companies, fear that any tax cut would be followed, in the blink of an electronic sign, by an offsetting price hike. ...

Three candidates, three different stances. All fueled by frustration at high prices (which are mainly a func-

tion of the record price of oil on world markets), political calculation and — let's hope — an underlying realization that energy policy, at least once election season is over, is more complicated than this.

In the longer run, conservation and energy independence, which all three candidates tout, depend on consistent price signals to consumers, producers and innovators. Tax policy should encourage diversified energy supplies and efficiency. The fuel tax holiday plan does neither. It is short-term and sends the wrong signal. ...

On the Net:

<http://www.newsobserver.com/opinion/editorials/story/1054991.html>

TODAY IN HISTORY

By The Associated Press

Today is Friday, May 9, the 130th day of 2008. There are 236 days left in the year.

Today's Highlight in History:

On May 9, 1754, a cartoon in Benjamin Franklin's Pennsylvania Gazette showed a snake cut into sections, each part representing an American

colony; the caption read, "JOIN, or DIE."

On this date:

In 1883, Spanish philosopher Jose Ortega y Gasset was born in Madrid.

In 1936, Italy annexed Ethiopia.

In 1945, U.S. officials announced that a midnight entertainment curfew was being lifted immediately.

In 1958, "Vertigo," Alfred Hitchcock's eerie thriller starring James Stewart and Kim Novak, premiered in San Francisco, the movie's setting.

In 1961, FCC chairman Newton N. Minow decried the majority of television programming as a "vast wasteland" in a speech to the National Association of Broadcasters.

In 1974, the House Judiciary Committee opened public hearings on whether to recommend the impeachment of President Nixon.

In 1978, the bullet-riddled body of former Italian prime minister Aldo Moro, who'd been abducted by the Red Brigades, was found in an automobile in the center of Rome.

THE PAMPA NEWS

403 W. Atchison • Pampa, TX 79065

806-669-2525 • 800-687-3348

Fax: 806-669-2520

email: editor1@thepampanews.com

Randall Pribble
Editor and Publisher

ReDonn Woods
Advertising Director

This newspaper (UPS 781-540) is published daily, except Sundays, Thanksgiving and Christmas Day, by The Pampa News. Periodicals postage paid at Pampa, Texas. Postmaster: Send address changes to The Pampa News, P.O. Drawer 2198, Pampa, TX 79066-2198.

All carriers are independent contractors and The Pampa News is not responsible for advance payments of two or more months made to the carrier. Please pay directly to the Pampa News any payment that exceeds the current collection period. There are no mail subscriptions available within the city limits of Pampa. Mail subscriptions must be paid three months in advance.

© 2008 The Pampa News

Sports

Ten Star Basketball Camp

Final applications are now being evaluated for the Ten Star All Star Summer Basketball Camp. The camp is by invitation only. Boys and girls ages 10-19 are eligible to apply.

Camp locations include: Commerce, Texas, Prescott, Arizona, Thousand Oaks, California, Babson Park, Florida, and Blacksburg, Virginia.

There is also a summer camp available for boys and girls ages 6-18 of all skill levels. For a free brochure on these summer camps, please call 704-373-0873 anytime or go to www.tenstarcamp.com.

NEW EXHIBIT OPENING!

The White Deer Land Museum

112 S. Cuyler will open a new exhibit Sunday, May 11, from 1:00 - 4:00 P.M. This exhibit will

explore the history of Gray County, both Court Houses, a long time Sheriff and a 24 yr. Texas Ranger - all with excellent photographs.

IF YOU NEED IT WE HAVE IT!



ENGINE PARTS & SUPPLY

Automotive Parts Distribution

A Local Company Established In 1938

416 W. FOSTER

806.669.3305

E.P.S.



SERVING LOCAL NEEDS FOR 60 PLUS YEARS

with the **LARGEST INVENTORY IN THE AREA**

including **AC-DELCO • WIX MONROE • WAGNER**

Does Something in Your Life Need Rebuilding?

Do You Seem To Be Falling Apart?

Dallas Stringer will be preaching this Sunday on: "Nehemiah, Rebuilding The Walls."

A FRIENDLY CHURCH FULL OF PEOPLE JUST LIKE YOU!

REBUILD FOR THE FUTURE



www.calvarypampa.com
900 E. 23rd Street • 806-665-0842

NEW! Phone Service

CABLE ONE
Watch us make you smile.

- UNLIMITED calling in the Continental USA
- Call Waiting
- Caller ID Blocking
- Anonymous Call Rejection
- Call Forwarding
- Call Return
- 3-Way Calling
- Keep Your Same Phone Number



Garyn McFall poses in his rodeo gear. Courtesy Photo

McFall goes to nationals for second time in a row

Garyn McFall is only a sophomore at Brownwood High School, but he is no stranger to competing with and excelling against the best.

McFall, who is going to the National Range Contest for the second consecutive year with the Brownwood High FFA Range Team, is also looking ahead to the state finals of the High School Rodeo Association June 15-21 in Abilene.

He qualified by ranking in the top 10 in regional competition in steer wrestling (eighth), bareback riding (third) and bull riding (10th). The top 10 at the state competition qualify for nationals to be held in New Mexico. The sophomore also was fifth high individual out of 180 in state at the Texas range competition April 24 at Tarleton State University in Stephenville, where the Brownwood team of which he is a part advanced to nationals. Other members of the BHS range team are Chris Smith, Taylor Moore and Tyler Kemp. Their ag teacher is Denzil Flood.

"We went to nationals last year too," McFall said. "I think that should help us this time, although there's a lot more to learn this time. We're going to have to pull some all-nighters."

The team left Sunday for Oklahoma City and the competition continues through Thursday. The teams participating are given new information they have to learn when they arrive, and the studying begins immediately on materials they will use in the judging process. It's not something for which they show up and compete.

"I'd like to give special thanks to Ben Ellebracht," McFall said, the team's ag teacher last year, who retired from the school district. "The team is lucky to have had two really good teachers with him and Mr. Flood."

McFall still has two years before he graduates from high school, but he already knows what he wants to do, and where he wants to go, when it comes to college. He wants to participate in rodeo at Tarleton State University.

"I've no clue exactly what my major will be," McFall said, "but I will be in college rodeo."

He is the son of Marty and Stacy McFall of Brownwood, grandson of Gary and Kathy Middaugh of Fritch, Lester and Paula Robinson of Brownwood, Charlie and Sue Miller of Olney and Gary and Cheryl McFall of Pampa.

Article courtesy of the Brownwood Bulletin.

Red Wings roll past Stars 4-1 in West finals opener

DETROIT (AP) — win, Lidstrom said the Red Nicklas Lidstrom has seen the Detroit Red Wings at their best, helping them win three Stanley Cups in a six-year stretch.

After Detroit drilled the Dallas Stars 4-1 in the Western Conference finals opener for its seventh straight

rolling, not rusty, playing for the first time since sweeping the Colorado Avalanche.

"It's been a week and we were really anxious to get back into playing," Lidstrom said. "Keeping a lot of focus on that and talking a lot about it I think really helped the team to set the tone early on."

Power plays helped, too. Johan Franzen, Brian Rafalski and Tomas Holmstrom took advantage of Dallas' penalty-filled start, helping the Red Wings lead by four goals in the second period.

The Stars couldn't recover. They simply looked tired. Dallas advanced past the San Jose Sharks in one of the longest games in NHL history — ending Monday morning in a fourth overtime — after playing three other OT games in the series.

"It looked like we lacked a little emotion or jump we had in the other series," Marty Turco said.

Turco took the brunt of that as Detroit scored on two

of its first seven shots.

"Whether it's fatigue or whatever, we just weren't at the level we needed to be," coach Dave Tippett said.

After Valtteri Filppula put the top-seeded Red Wings ahead 4-0, Brenden Morrow scored with a minute left in the second period to prevent the fifth-seeded Stars from getting shut out.

"We had a good two or three shifts to start the game," Morrow said. "But then the ice got tilted the other way."

Game 2 is Saturday night at Joe Louis Arena, where Stars goalie Marty Turco is 0-8-2 in his NHL career.

Turco, who made 27 saves, was serenaded with jeers of "Turrrr-co! Turrrr-co!" by fans early and often.

But Tippett tried to deflect blame for the blowout.

"A lot had to do with the team in front of him," he said.

Detroit's Chris Osgood turned away 20 shots, improving to 7-0 as a starter since replacing Dominik Hasek in Game 4 against Nashville.

"It's a myth that you get rusty when you get time off," Osgood insisted. Dallas upset the defending Stanley Cup champion Anaheim Ducks in the first round and then topped the second-seeded Sharks after starting both series with two road wins.

The way the Franzen-led Red Wings are playing, they're going to be tough to beat in any rink.

AXYDLBAAXR is LONGFELLOW

One letter stands for another. In this sample, A is used for the three L's, X for the two O's, etc. Single letters, apostrophes, the length and formation of the words are all hints. Each day the code letters are different.

5-9 CRYPTOQUOTE

KOLV YP DIYLRQYQU O UEVOPS
FXIV KXE BVQ AXIIOEP OQA
ECYQYQU BEXCPVEP GXEBT
KYKBVVQ AXIIOEP. — NXPT
RYIIYQUP

Yesterday's Cryptoquote: THE TROUBLE WITH OUR YOUNGER WRITERS IS THAT THEY ARE ALL IN THEIR SIXTIES. — W. SOMERSET MAUGHAM

HAPPY BIRTHDAY for Friday, May 9, 2008:

New beginnings and good news come from detaching, intellectualizing and remaining open. The more willing you are to identify with others, the better your year could be. Travel, education, writing and maybe the law could play significant roles this year. You might see some change and disruption on the home front. A move or remodeling an old home could be possible. A parent or family member could become extremely difficult as well. If you are single, you might want to date but not formalize a tie until next year. With so much change in your immediate life, a live-in commitment could be hard. If you are attached, talk about long-overdue changes. CANCER enjoys bouncing ideas off you.

The Stars Show the Kind of Day You'll Have: 5-Dynamic; 4-Positive; 3-Average; 2-So-so; 1-Difficult

ARIES (March 21-April 19) ★★★★★ You certainly add steam and fun to most situations. You could also be unusually assertive when dealing with a child or loved one. A reversal could only be temporary, but not as short as you would like. Use your imagination with a child. Tonight: You will need all the rest you can get.

TAURUS (April 20-May 20) ★★★★★ You see many other people differently than the majority do. Don't push a family member or roommate, unless you want a bigger problem. Understanding comes forward when talking with an expert. Tonight: Adapt plans.

GEMINI (May 21-June 20)

hills. Listen to feedback and be graceful about accepting criticism. Verbal sparring becomes more likely. Tonight: Treat yourself well.

CANCER (June 21-July 22)

★★★★ You might want to rethink a decision. Consider options that come forward when investigating different ways of handling a problem. Use care with spending. Understand your limits. Tonight: Get into the Friday-night celebrations.

LEO (July 23-Aug. 22)

★★★ You suddenly decide enough is enough and opt for a different path. How you deal with someone could change dramatically. Anger and frustration start surfacing. Look for the most appropriate way of dealing with this issue. Tonight: Take some downtime.

VIRGO (Aug. 23-Sept. 22)

★★★★ Stop and check in with yourself. Anger easily could be the end result if you aren't careful. Prioritize, and you will feel much better. Learn to say no as well. A must appearance demands your attention. Tonight: Pick up where others let off.

SCORPIO (Oct. 23-Nov. 21)

★★★★ Someone might push you beyond your limits. He or she could be very sorry, but ultimately so might you. Detach as soon as you feel uncomfortable and gain deeper insight. Your sense

★★★★ Work with someone directly. Do necessary digging. Look for the story behind the story. You'll find answers quickly and effectively. Togetherness emerges as the best way to deal with a problem. Tonight: Dinner with a favorite person.

CAPRICORN (Dec. 22-Jan. 19)

★★★★ You might want to defer to others. Some people might be difficult to deal with, especially one particular person who might have a heavy influence on you. You might get a second run at an offer that you thought was impossible. Tonight: Sort through your options.

AQUARIUS (Jan. 20-Feb. 18)

★★★ Someone comes in hard, fast and possibly angry. You might wonder what you did to deserve this attitude or behavior. Lie back and do your thing, knowing that you cannot control someone else. Tonight: Off to the gym or get some exercise.

PISCES (Feb. 19-March 20)

★★★★ Let your creativity speak, and you'll come up with many ideas. Mobilize now to take action. What others think might not be that important. Review facts. A friend might need some space for now. Tonight: As if there is no tomorrow.

HISTORICAL FIGURES BORN TODAY
Dramatist, novelist (author of "Peter Pan") James Matthew Barrie (1860), Spanish philosopher Jose Ortega y Gasset (1883), abolitionist John Brown (1800)

Jacqueline Bigar is on the Internet at <http://www.jacquelinebigar.com>.

TO
The Pa
School
ceive se
the Bu
321 W
Texas
p.m., T
2008 fo
Lan a
Ethernet
tions f
School.
questio
Jameso
rector
For spe
ditional
please c
ows, Pu
at (806)
A-76

TO
The Pa
School
ceive se
the Bu
321 W
Texas
p.m., T
2008 fo
and Equ
ificatio
formati
ty Mea
Directo
4700.
A-77

On 2/4
Ministri
applicat
consent
structio
translat
munity
rillo. T
casts K
Amarill
Pampa,
with 75
the com
McCull
Pampa,
A-79

On 2/4
Ministri
applicat
consent
structio
translat
munity
rillo. T
casts K
Amarill
Pampa,
with 75
the com
McCull
Pampa,
A-80

The An
PHS Fo
able for
at the
Warner
urer, 30
pa, Tex
office 1
5:00p
Friday.
A-75

3 Pers
*ADOF
time M
cessful
ues, ch
family
Expens
Lori, I-
5 Spec

ADVE
al to f
Pampa
placed
pa New
10 Los
FOUN
Call 59
LOST
male b
red coll

13 Bus
GREAT
Pampa
couple
1875, 8

PAMPA NEWS CLASSIFIEDS

1 Public Notice

NOTICE TO PROPOSERS
The Pampa Independent School District will receive sealed proposals in the Business Office at 321 W. Albert, Pampa, Texas 79065 until 2:30 p.m., Thursday, May 22, 2008 for 802.11 Wireless Lan and Power-Over-Ethernet Internal Connections for Pampa High School. For technical questions contact Suzie Jameson, Technology Director at (806)669-4707. For specifications or additional information please call Betty Meadows, Purchasing Director at (806)669-4700. A-76 May 9, 11, 2008

NOTICE TO PROPOSERS
The Pampa Independent School District will receive sealed proposals in the Business Office at 321 W. Albert, Pampa, Texas 79065, until 2:00 p.m., Thursday, May 22, 2008 for Athletic Supplies and Equipment. For specifications or additional information please call Betty Meadows, Purchasing Director at (806)669-4700. A-77 May 9, 11, 2008

On 2/4/08, Radio Assist Ministries, Inc. submitted application to the FCC for consent to assign construction permit for a FM translator to Grace Community Church of Amarillo. Translator rebroadcasts KXLV Channel 206 Amarillo, TX and serves Pampa, TX on Ch. 255 with 75 Watts from near the corner of Hobart and McCullough Streets, Pampa, TX. A-79 May 9, 2008

On 2/4/08, Radio Assist Ministries, Inc. submitted application to the FCC for consent to assign construction permit for a FM translator to Grace Community Church of Amarillo. Translator rebroadcasts KXLV Channel 206 Amarillo, TX and serves Pampa, TX on Ch. 296 with 75 Watts from near the corner of Hobart and McCullough Streets, Pampa, TX. A-80 May 9, 2008

The Annual Return of the PHS Foundation is available for public reviewing at the office of John W. Warner, Secretary-Treasurer, 309 W. Foster, Pampa, Texas, during regular office hours, 8:30a.m. to 5:00p.m. Monday through Friday. A-75 May 9, 2008

3 Personal

"ADOPT" Adoring full-time Mom, loving, successful Dad, strong values, closeknit extended family awaits your baby. Expenses paid. Mike & Lori, 1-800-990-7667.

5 Special Notices

ADVERTISING Material to be placed in the Pampa News, MUST be placed through the Pampa News Office Only.

10 Lost/Found

FOUND Mini Doberman. Call 595-0886.

LOST May 3rd, small female black Poodle, with red collar. Call 662-7237.

13 Bus. Opp.

GREAT investment opp. Pampa motel. Retired couple or individual. 665-1875, 806-383-1985.

14d Carpentry

Carpentry, Roofing, Replacement Windows, steel siding & trim. Continuous gutters. Jerry Nicholas 669-9991, 662-8169

CUSTOM Building & Remodeling. Replacement windows. Ref. avail. Shawn Deaver Const. 662-2977 or 665-0354.

CUSTOM Building & Remodeling. Replacement windows. Ref. avail. Shawn Deaver Const. 662-2977 or 665-0354.

OVERHEAD DOOR REPAIR Kidwell Construction. Call 669-6347.

RICHARD'S General Carpentry, Roofs & Painting. Building & Remodeling. 886-0267, 275-9038

14e Carpet Serv.

NU-WAY Cleaning service, carpets, upholstery, walls, ceilings. Quality doesn't cost. It pays! No steam used. Bob Marx owner-operator. 665-3541, or from out of town, 800-536-5341.

14h Gen. Serv.

HOUSE Cracking? In bricks or walls? Childers Brothers, Inc. 800-299-9563, 806-352-9563

COX Fence Company. Repair old fence or build new. Free estimates. Call-669-7769.

CERAMIC tile work. Remodeling floor, shower, kitchen. Texture, painting, dry wall. Free est. Call 665-3453 leave message, Jesus Barraza.

4 K Fence Co. Wood, chainlink, iron gates & repairs. Call 806-883-2021.

JH Concrete Work. Stamps, driveways, addition, fences, patios. Free Est. 806-382-5408.

14r Paving/Yard

*****FAITH*** TREE & LAWN SERVICE 662-1000**

14s Plumbing/Heat

JACK'S Plumbing, 715 W. Foster, 665-7115. Plumbing, repairs, new constr., & septic sys.

19 Situations

CHILD CARE/IRONING AVAILABLE. Mon-Sat. Night time care also. Can provide Ref. 663-2214.

EXP. housekeepers will clean homes & businesses. Call 664-4635 or 662-2731.

21 Help Wanted

NOTICE
Readers are urged to fully investigate advertisements which require payment in advance for information, services or goods.

GREAT opp. for single or retired couple, for 12 unit motel in Pampa. Lrg. apt. incl. 665-4274, 665-1875.

21 Help Wanted

MAINTENANCE Man needed, remodeling exp. for various properties. Painting, drywall & plumbing a must!! Must have own tools & trans. 665-1875, 665-4274.

CDL Drivers Needed!! Night & Day shifts available in Miami, Tx. Must pass drug test. Competitive wages, paid weekly, 401K & insurance, 2 weeks vacation after 1 year. Please call Turner Energy at (806) 898-0414

COODER'S Dixie Cafe now hiring for Wait Staff, full-time, 18 yrs. or older. Apply in person, 2219 Perryton Pkwy. No phone calls.

YARD/SALES Person. Highly self-motivated. Full time. White House Lumber, 101 S. Ballard.

LAW firm seeking experienced Executive Secretary. Fax resumes to 806-669-0440.

SERVICE Truck Driver Needed must have experience in repairing all types of tires must be available for call outs. Pay based on experience. Interested parties please call 806-669-2750 for interview. Serious applicants only!

POST OFFICE NOW HIRING. Avg. Pay \$20/hr. or \$57K yr. incl. Federal benefits and OT. Placed by AdSource, not aff. w/USPS who hires. 1-866-483-6490.

IMMEDIATE Openings! Local Roustabout Company now hiring for Experienced Roustabouts for the Miami TX area. Please call 580-772-5157 for more info.

PANTHER ENERGY COMPANY, LLC
Degreed Field Geologist
to work in the OK-TX panhandle for rapidly growing Independent Exploration and Production Co., drilling horizontal wells. Excellent opportunity for advancement and experience with current technologies. Some field exp. required. Competitive salary and generous comprehensive benefit package, commensurate with experience & qualifications. Send cover letter and resume to:
Human Resources
P.O. Box 3105
Tulsa, OK 74101
hr@pantherenergy.us
Fax 866-585-2752

DOMINO'S Pizza. Earn good money. Part Time! Need Drivers and inside help. Apply at 1332 Hobart.

MAKE UP TO \$900 A WEEK
Work for a local Well Service Company
*Must have a good driving record
*Must have a good background
*Must have at least a GED
*Must be at least 21 yrs. of age
Please contact SOS STAFFING SERVICES 806-648-2633

Chiropractic Office is expanding our team! Clerical / computer skills position. On the job training. FAX Resume To: (806)665-0537

CITY of Skellytown is accepting applications for Trash Truck Driver. Must have current CDL & good driving record. Send resume to P.O. Box 129, Skellytown, 79080, come by 204 4th St., or call 806-848-2477. email: skelly@amaonline.com

21 Help Wanted

SIVALLS Inc. is looking for an Industrial Maintenance Technician. Electrical & Mechanical background a must. Drug test required. Benefits & Health Ins., Profit Sharing, 401K, 8 paid holidays & 10 Vacation days per yr. Call 806-665-7111. Pampa.

Cable One is introducing new product to the Borger, Dumas & Pampa area. We are looking for an enthusiastic individual to sell Cable One services Door to Door. Earn a national average of \$28,000 to \$34,000 per year including a base salary, commissions and sales incentives. Must be able to work flexible hours & have a valid drivers license. All offers are dependent upon pre-hire physical, drug screening, background check and DMV screen. Apply at any Cable One office or fax resume to 806-665-5174 Attn: Donna Litterell. EOE.

PRODUCTION CONTROL SERVICES (PCS)
is currently looking for a Sales & Service Technician for our Woodward, Ok. location. This is a "hands on" position in which the individual will be responsible for identifying, developing and maintaining customer base. Install and maintain artificial lift equipment in the field (outdoors in climatic weather).
Requirements: Excellent communication skills, must have oil & gas industry (production and/or wireline), highly self motivated with can-do attitude and must enjoy working outdoors and will work long hours. Must have clean driving record. Excellent benefits. Interested candidates should email their resume to: careers@pcslungertiff.com EOE

FOOD Service Person. Must be clean, dependable & have good Ref. Apply aft. 3pm. Heard-Jones

FULL Time help needed 35 hrs, off on Sun. Hoagies Deli, Coronado Shopping Center.

NEED Exp. Cook to manage a Small Grill Opening Soon. Must be able to work independently. Send resumes to Box 69 on Pampa News, P.O. Box 2498, Pampa, 79066.

NEED Overhead Door Helper or Technician. Rasco Construction, 1000 S. Price Rd. Please No Phone Calls.

SALES / CASHIER Must be Honest & Dependable and able to lift 50 lbs. Pick up application at Heard-Jones, Pampa

AMERICAN SELF STORAGE, L.P.
2600 N. HOBART PAMPA, TX.

STORAGE UNIT SALE
Wed. May 14, 1pm.

Sell By Complete Unit: #B001 McCullar #A012 Wells

FIREWOOD For Sale 662-1000

CHESTS, beds, dressers, bookcase, lamps, Red Barn, 1420 S. Barnes, Sat. 10 to 5. 665-2767.

WILL haul off any old or unwanted vehicles. Towing is free. 806-665-3546 or 806-662-2706.

MOVING Must Sell!!! Side by side refrigerator \$65, 40 in elec. stove \$75, washer \$50, table & chairs \$50, bunk bed \$200. 486-1017.

Garage Sale 1121 Terry Rd. Sat. 8-?

SAT. 8am-? 1801 Lynn, Furn., clothes, misc. No Checks & No Early Birds. 2000 Williston. Fresh eggs, women, baby girl & children's clothes, nicnacs, misc. Sat. 8-3

1816 Lynn str. Fri. & Sat. 8am-??

YARD Sale 510 N. Ward Fri. & Sat. 8a-3p Baby Stuff, Lots of Clothes all sizes, some furniture

SATURDAY 8-? 2535 Charles. Queen Bed, sofa table, enter. cent, t.v., table & 4 Chairs, bookcase, boys clothes 3T-4T, girls clothes 8 & 10.

BIG Garage Sale, 2101 Chestnut, Sat. 8-1. Bar stools, tools, clothes, 7 misc.

EVERYTHING Must Go! 1024 Crane, Fri. 4pm-8pm, Sat. 8am-2pm. Kid's clothes \$1 bag.

SATURDAY 9-? Lots of baby items, childrens clothing & nicknacs. 420 W. Browning.

21 Help Wanted

LOCAL Delivery Drivers for Pampa, TX. Class A CDL req. with Hazmat & Tanker endorsement. Salary based on experience. Health & Dental ins., 401K and uniforms provided. Call 806-595-0495 Mon.-Fri., 7:30-4:30pm.

CUSTODIAN WANTED
White Deer ISD has immediate opening for full-time Custodian. Benefits incl. High School diploma or GED preferred. Call Mr. Danny Ferrell, Supt., 806-883-2311 x103. Application avail. at Adm. Bldg., 601 Omohundro St., White Deer, TX 79097. EOE.

TRUCK Drivers needed. Drug test and references required. Competitive pay! Call 665-0379.

DRIVERS needed. Day & Night shifts. CDL & drug test required. Paid ins., paid vacation. Call 806-662-5155 or 662-2197.

MAJOR greeting card co. needs p.t. merchandiser to service card dept. in Pampa. Weekday and weekend shifts. 1-800-373-3636 ext. 99223.

EXPERIENCE Bookkeeper, over 18 with some computer skills. Call White House Lumber 665-8475 for appt.

DEMO SPA DEMO SPA DEMO SPA CALL 806-358-9597

HUGE! SLIGHTLY DAMAGED BARN "MAKE OFFER" CALL 806-358-9597

50 Building Suppl.
White House Lumber 101 S. Ballard 669-3291

68 Antiques
SPACE Available. The Village Antique Mall, Amarillo's newest and largest antique mall between Dallas & Denver, 2711 Stanley St., Amarillo, Tx. Mon-Sat. 10am-5:30 pm., 806-372-4472.

69 Misc.
FIREWOOD For Sale 662-1000

CHESTS, beds, dressers, bookcase, lamps, Red Barn, 1420 S. Barnes, Sat. 10 to 5. 665-2767.

WILL haul off any old or unwanted vehicles. Towing is free. 806-665-3546 or 806-662-2706.

MOVING Must Sell!!! Side by side refrigerator \$65, 40 in elec. stove \$75, washer \$50, table & chairs \$50, bunk bed \$200. 486-1017.

Garage Sale 1121 Terry Rd. Sat. 8-?

SAT. 8am-? 1801 Lynn, Furn., clothes, misc. No Checks & No Early Birds. 2000 Williston. Fresh eggs, women, baby girl & children's clothes, nicnacs, misc. Sat. 8-3

1816 Lynn str. Fri. & Sat. 8am-??

YARD Sale 510 N. Ward Fri. & Sat. 8a-3p Baby Stuff, Lots of Clothes all sizes, some furniture

SATURDAY 8-? 2535 Charles. Queen Bed, sofa table, enter. cent, t.v., table & 4 Chairs, bookcase, boys clothes 3T-4T, girls clothes 8 & 10.

BIG Garage Sale, 2101 Chestnut, Sat. 8-1. Bar stools, tools, clothes, 7 misc.

EVERYTHING Must Go! 1024 Crane, Fri. 4pm-8pm, Sat. 8am-2pm. Kid's clothes \$1 bag.

SATURDAY 9-? Lots of baby items, childrens clothing & nicknacs. 420 W. Browning.

21 Help Wanted

SEMCRUDE has openings for a Full-Time Bobtail and Transport drivers in the Pampa and surrounding areas. Must have Class A CDL with the X endorsement and meet DOT qual. Exc. benefit pkg. incl. medical, dental, vision, life ins.; along with a 401K package and paid vacation, sick and holidays. Please call 806-934-7505, for application.

PART-time help needed cleaning carpet. Must have valid dr. lic. and pass backgr. check. 665-1976

TRUCK Drivers needed. Drug test and references required. Competitive pay! Call 665-0379.

DRIVERS needed. Day & Night shifts. CDL & drug test required. Paid ins., paid vacation. Call 806-662-5155 or 662-2197.

MAJOR greeting card co. needs p.t. merchandiser to service card dept. in Pampa. Weekday and weekend shifts. 1-800-373-3636 ext. 99223.

EXPERIENCE Bookkeeper, over 18 with some computer skills. Call White House Lumber 665-8475 for appt.

DEMO SPA DEMO SPA DEMO SPA CALL 806-358-9597

HUGE! SLIGHTLY DAMAGED BARN "MAKE OFFER" CALL 806-358-9597

50 Building Suppl.
White House Lumber 101 S. Ballard 669-3291

68 Antiques
SPACE Available. The Village Antique Mall, Amarillo's newest and largest antique mall between Dallas & Denver, 2711 Stanley St., Amarillo, Tx. Mon-Sat. 10am-5:30 pm., 806-372-4472.

69 Misc.
FIREWOOD For Sale 662-1000

CHESTS, beds, dressers, bookcase, lamps, Red Barn, 1420 S. Barnes, Sat. 10 to 5. 665-2767.

WILL haul off any old or unwanted vehicles. Towing is free. 806-665-3546 or 806-662-2706.

MOVING Must Sell!!! Side by side refrigerator \$65, 40 in elec. stove \$75, washer \$50, table & chairs \$50, bunk bed \$200. 486-1017.

Garage Sale 1121 Terry Rd. Sat. 8-?

SAT. 8am-? 1801 Lynn, Furn., clothes, misc. No Checks & No Early Birds. 2000 Williston. Fresh eggs, women, baby girl & children's clothes, nicnacs, misc. Sat. 8-3

1816 Lynn str. Fri. & Sat. 8am-??

YARD Sale 510 N. Ward Fri. & Sat. 8a-3p Baby Stuff, Lots of Clothes all sizes, some furniture

SATURDAY 8-? 2535 Charles. Queen Bed, sofa table, enter. cent, t.v., table & 4 Chairs, bookcase, boys clothes 3T-4T, girls clothes 8 & 10.

BIG Garage Sale, 2101 Chestnut, Sat. 8-1. Bar stools, tools, clothes, 7 misc.

EVERYTHING Must Go! 1024 Crane, Fri. 4pm-8pm, Sat. 8am-2pm. Kid's clothes \$1 bag.

SATURDAY 9-? Lots of baby items, childrens clothing & nicknacs. 420 W. Browning.

69 Misc.

ADVERTISING Material to be placed in the Pampa News MUST be placed through the Pampa News Office Only.

BASIC Lawn Care. Call 665-0310 Leave message.

WANT to Sell. Bowflex Xtreme. All accessories included. Please call after 5 p.m. 806-664-1226. Ask for Matt.

RCA 52 in. projection HD TV, 2 yrs. old. \$300. 806-898-2484.

BEAUTIFUL 2.02 ct. 14 K White Gold Ring. Appraisal & Purchase papers available. Only Serious Calls Please. Call Kala, 440-1804.

CITY-WIDE GARAGE SALE! SAT. MAY 10 CLAUDE, TX.
40+ registered sales! Maps avail. at Johnny's Hometown Foods, 202 Goodnight or online at: www.claudenews.com
Claude is approx. 25 miles east of Amarillo on Hwy. 287.
For more info, call 806-226-4500

Garage Sale: Furniture, appliances, etc. 1115 E. Harvester, Sat. 8-4pm.

MULTI FAMILY SALE 2317 DUNCAN FRL 7am-? SAT. 7am-?

127 E. 26th, May 9 & 10-8-4 - Overbed Toolbox, Queen Bedframe/Headboard, Microwave, Lots of goodies!!

SAT., 1133 Sandlewood Dr., 8am-? Cleaning clothes, mini-blinds, much more.

HUGE Garage Sale: Too much to mention! Saturday Only! 9am-? 1908 N. Faulkner.

Garage Sale 1121 Terry Rd. Sat. 8-?

SAT. 8am-? 1801 Lynn, Furn., clothes, misc. No Checks & No Early Birds. 2000 Williston. Fresh eggs, women, baby girl & children's clothes, nicnacs, misc. Sat. 8-3

1816 Lynn str. Fri. & Sat. 8am-??

YARD Sale 510 N. Ward Fri. & Sat. 8a-3p Baby Stuff, Lots of Clothes all sizes, some furniture

SATURDAY 8-? 2535 Charles. Queen Bed, sofa table, enter. cent, t.v., table & 4 Chairs, bookcase, boys clothes 3T-4T, girls clothes 8 & 10.

BIG Garage Sale, 2101 Chestnut, Sat. 8-1. Bar stools, tools, clothes, 7 misc.

EVERYTHING Must Go! 1024 Crane, Fri. 4pm-8pm, Sat. 8am-2pm. Kid's clothes \$1 bag.

SATURDAY 9-? Lots of baby items, childrens clothing & nicknacs. 420 W. Browning.

77 Livest./Equip.

SERVICEABLE black Angus bulls for sale. Volume discounts. Contact Thomas Angus. 580-655-4318 .580-497-7217.

18 head Angus Bulls for Sale. 28-16 months old. \$1500 each. 806-664-3417.

95 Furn. Apts.
All real estate advertised herein is subject to the Federal Fair Housing Act, which makes it illegal to advertise "any preference, limitation, or discrimination because of race, color, religion, sex, handicap, familial status or national origin, or intention to make any such preference, limitation, or discrimination." State law also forbids discrimination based on these factors. We will not knowingly accept any advertising for real estate which is in violation of the law. All persons are hereby informed that all dwellings advertised are available on an equal opportunity basis.

96 Unfurn. Apts.
CAPROCK APTS.
Enjoy balconies/patios, on site laundry, beautiful grounds. One bdrm starting at \$390. Call for availability. 665-7149.

LAKEVIEW Apt. 1 & 2 bdr. unfurn. apt. Call for availability. References & deposit req. 669-4386

NICE 2 bdr., 1 ba., w/d hookups, updates. Quiet loc., Austin Elem. \$575 mo., \$575 dep. 663-0432

NUMEROUS Houses, Apts., Dupl. & Comm. properties thru-out Pampa. 665-1875, 665-4274.

THE Schneider House, now leasing apts., 1 & 2 bdr., utilities incl. 120 S. Russell or call 665-0415.

Praise & Worship

RELIGION PAGE



Pampa News photos by ReDonn Woods

St. Matt's

▲ Jackson Thomas, from left, Ruth Andrews, Kyler Cook, Ky Parnell, Britt Summers and Gracie Hapeman "play ball" at St. Matthew's Episcopal Day School recently. ▼ Jack Hendricks, from left, Lizzy Devoll, Macie Voss, Madison parks and JoJo Ragsdale.



RHEAMS
DIAMOND SHOP
"May God Be With You During The Week"
Ken & Stephanie Rheams

Pampa
Nursing Center
Medicare
Medicaid
Special Alzheimer's Care
1321 W. Kentucky 669-2551

ENGINE PARTS & SUPPLY
416 W. Foster 669-3305
Local Company Serving Local Needs

FORD FAMILY CHIROPRACTIC
Dr. Mark W. Ford, Jr.
103 E. 28th Ave. Pampa, 806-665-7261

WAYNE'S
WESTERN WEAR
1504 N. Hobart 665-2925

NATIONAL BANK OF COMMERCE
an office of First National Bank, Waupaca, WI
Member FDIC
1224 N. Hobart Pampa, Tx 806-665-0022
501 Commerce St. Childress, Tx 940-937-2514
305 N. Main Shamrock, Tx. 806-256-2181

KEYES PHARMACY
"Your Key To Better Health"
928 N. Hobart - Pampa, Texas
669-1202 - Emergency 669-3559
Merlin Rose R. Ph. - Owner - Pharmacist

United
Supermarkets

Texas PRINTING
COMPANY
PHONE (800) 885-7951
310 N. BALLARD PAMPA, TEXAS

STATE FARM
Sheila Webb
State Farm Insurance
N Side of Coronado Center
669-3861
"Like a good neighbor, State Farm is there."

Pampa Concrete Co., Inc.
220 W. Tyng Ave. • 669-3111

2201 Perryton Pkwy. Jay Gist
Chitek 669-CHIC (2442)
Pampa, Texas Royce Jordan

CURT B. BECK, P.E.
CONSULTING ENGINEER - POLLUTION AND ENERGY
"When You Need To Know The Facts"
HUGHES BLDG. SUITE 173A PAMPA, TEXAS 669-5281

PARSLEY'S 214 E. Tyng 669-6461
Pampa, Texas

ARLSON, INC. 669-7171
Berger Hwy.- Pampa
Jerry E. Carlson, Pres.

JOHN T. KING & SONS
918 S. Barnes 669-3711

CLIFTON
SUPPLY COMPANY
700 South Price Road • 665-0089
"Visit our new location!"

THE PAMPA NEWS
403 W. ATCHISON • 669-2525

Culligan
314 STARKWEATHER 665-5729

Century 21 PAMPA REALTY INC.
312 N. Gray • 669-0007

Titan 11785 Hwy. 152
Pampa, Texas 665-3781

LARRY BAKER
PLUMBING HEATING & AIR
11780 HWY 152 TACLA003191 665-4392

ADVERTISE YOUR BUSINESS HERE

Culberson - Stowers, Inc.
SINCE 1927
www.culbersonautos.com

BUICK GMC PONTIAC
805 N. Hobart • Pampa, TX
(806) 665-1665

MINISTER'S MUSINGS

Like mother, like child ...

It is impossible to evaluate the influential power that a mother has on her children. Many tributes have been given to this truth. It is reported that Abraham Lincoln said, "All that I am I owe to my darling mother."

While we do not want to take the responsibility from fathers, the very nature of our society demonstrates the enormous impact of mothers on our lives. There is no substitute for motherhood.

While others may help to care for and raise a child, a mother relates best to that child during his or her most tender and teachable years. A mother is a child's best caregiver. We will read the scripture as we look at three great illustrations of motherhood.

Jochebed, the mother of Moses, exhibited great faith in God. (Exodus 2:1-3) There is not reason that she would have risked her life to save her son. She fully trusted Moses to the protection of God. She instilled pride in Moses that he was one of God's people. God arranged for her to be Moses' mother during his most teachable years.

Note Moses' response in Hebrews 11:24-25. His heathen environment did not influence his life choices. Since Moses' mother was not afraid, neither was he (verse 27). Fear of water was no problem to him (Exodus 1). From his earliest days, this child was infected with faith in God by his mother. We cannot help but conclude that Moses became God's vessel to lead the Israelites to freedom because of his mother's influence.

Mary, the mother of John Mark, created an atmosphere that had a great influence on her son. (Acts 12:12) Her home was a meeting place for the early followers of Jesus. It



Dr. Jimmy Flynn
Evangelist

was normal for people of faith to be in her home. John Mark was surrounded by believers and came to great personal faith in Jesus. Mary infected her son with such a faith in Jesus and love for His followers that earthly situations could not overcome that faith. Many believe he wrote the Gospel of Mark. He accompanied Paul and Barnabas on the first missionary journey. (Acts 13:5) It is still the option of mothers to infect their children with a spirit of faith. Do your children see Jesus in your daily life?

Eunice had a wonderful influence on her son, Timothy. (2 Timothy 1:5) The godly impact on Timothy actually goes back another generation to his grandmother, Lois. The faith of Lois infected Eunice, who passed it on to Timothy. His father was probably not a Christian, but his mother's faithfulness caused him to believe in Jesus. We know more about Timothy than about Eunice. His name literally means "honoring God."

Timothy was Paul's closest companion for 17 years. In 1 Timothy 1:2, Paul called him "my true son in the faith." How did Timothy become such a powerful man of faith? It was his mother's influence.

Mothers are still shaping the lives of their children. The raw materials to change the world are in the hands of mothers.