

Tomorrow's Weather

HIGH
85
LOW
51

See expanded weather on Page 2

BUY HERE • PAY HERE • NO CREDIT CHECK
Open 9 am - 6 pm Monday - Saturday • Hwy 60 • Hwy 70 • Pampa TX • 669 6062 • www.DougBoydMotors.com
DOUG BOYD MOTOR CO.

WFL
POWER EQUIPMENT
SALES & RENTAL
103 S. HOBART
665-2366

THE PAMPA NEWS

Friday, April 15, 2005

Volume 104 • No. 324

50¢ Daily • Sunday \$1.50

We're Small But Good!
Friendly Faces and Competitive Prices

36+ Years Experience

Ceramics • Laminate
Hard Wood • Carpet

The Floor Store
2100 Perryton Parkway
665-4455

Floor Care Essentials by Mohawk
Professional Carpet & Upholstery Cleaning System

FREE PROFESSIONAL ESTIMATES

CHILDERS BROTHERS INC.
HOUSE LEVELING

Uneven Floors
Floor Bracing
Cracks In Bricks
Sticking Doors & Windows
Interior Wall Cracking

FREE ESTIMATES

1-800-299-9563
WWW.CHILDERSLEVELING.COM

WE CARRY THE LARGEST SELECTION AND THE LATEST STYLES OF FLOORING IN STOCK WITH THE BEST PRICES!

One STOP Flooring
1533 N. HOBART
MONDAY-FRIDAY 9-5
SATURDAY 10-1

24HR WATER EXTRACTION
RUG RATS

Professional Carpet & Air Duct Cleaning

FREE ESTIMATES

Ronnie Harvill Owner
665-1976 or 662-9219

Texas FURNITURE

PROUDLY SERVING PAMPA SINCE 1932

1415 N. HOBART • 806-665-1623
MONDAY-SATURDAY 9:00-5:30

Asmore & Associates
INSURANCE AGENCY, LLC

1224 North Hobart
NBC Plaza 2, Suite 11
Pampa, TX • 806-688-7081
www.asmoreassociates.com

"For your Business & Personal Needs"

JIM BRUTON

Rebecca McCall
Sales - Associate

PAMPA REALTY INC.

312 N. Quip
Pampa, TX 79065
669-0007

Cell 669-0005
Cell 665-2790

Thomas
Pumper, Auto Service and Repair

665-4851
217 E. ATCHISON

Monday - Friday • 8am - 6pm

TOP OF TEXAS
WEE

Were Going Green!
1st Sat. of Month
9:00 A.M. - 11:00 A.M.
665-2061

Bring your old refrigerators & freezers for proper disposal!



Pampa News photos by Marilyn Powers

Above - Pampa Police Sgt. Colby Brown examines the scene of a one-vehicle accident which occurred Thursday evening and sent two Pampa teens to the hospital. Orange lettering marks the point of impact, where the teens' car collided with the culvert running under Scott Avenue near its intersection with Tignor Street. Right - The right front wheel of the car, a 2001 Chevrolet Impala, was detached from the car as a result of the accident, and the engine and other parts were also torn loose.

Two teens injured Culvert, speed factors in accident

By MARILYN POWERS
The Pampa News

The 13-year-old was flown to Northwest Medical Center in Amarillo by Lifestar, and the 16-year-old was taken to Pampa Regional Medical Center by Guardian EMS Ambulance Service for treatment after the wreck.

Two Pampa teens were hospitalized Thursday evening after the car they were riding in collided with a street culvert and became airborne.

A 16-year-old male was driving the 2001 Chevrolet Impala involved in the accident, and the passenger was his 13-year-old brother, according to Pampa Police Department Assistant Chief Logan Stout.

The accident occurred at approximately 8:30 p.m. Thursday on Tignor Street near its intersection with Scott Avenue. The vehicle was traveling northbound on Tignor when tire tracks at

See ACCIDENT, Page 3



Grandmother's 'lost art' becomes Alecia's 'flakey' passion

By DAVID BOWSER
The Pampa News

Alecia Weaver has a lot of crust...and they're all nice and flakey.

The key to a good pie, she said, is a flakey crust.

"I feel like it's a lost art," Weaver said. "A lot of people my age don't take the interest or time to learn. It's like sewing. I don't know how to sew. I'd love to, but it too is kind of a lost art."

Weaver was born and reared in Pampa. After graduating from Pampa High School in 1997, she went to West Texas A&M University where she earned a teaching degree in interdisciplinary studies.

But cooking came late in life for her.

"My grandmother was Aulsie Scott," Weaver said. "She used to own a restaurant downtown across from the Coney Island called The Lone Star in the late 1940s and early 1950s. She was a great cook."

"I used to watch my grandmother make pies," Weaver said. "She'd let us help. She'd have little pie pans for us to make our own. We'd use the left over dough."

Back then, Weaver said she didn't take the time to really learn from her grandmother.

Weaver's interest in baking started when she became a stay-at-home mom after her son, Hudson, was born two years ago.

Her grandmother died last year.



PIE LADY -- At home in her kitchen, Alecia Weaver is surrounded by pie crusts while the coconut cream filling simmers on the stove.

Pampa News photo by David Bowser

"About the time I graduated from college," Weaver said, "she started getting dementia. When I got engaged, she was really having trouble remembering things. She knew me, but couldn't remember my husband, Thorban."

By the time Weaver took an interest in cooking, her grandmother was already in a nursing home.

"I couldn't learn from her," Weaver said, "so I got the recipes from my mom and my aunt. My aunt especially knows how to make pies

really well."

Weaver said she kept trying and trying until she became pretty good herself.

"My husband is really good at

See PIE LADY, Page 3

Still Time To Plant Trees!
Come by for a great selection!



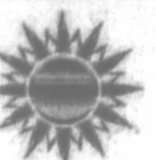
West Texas Landscape
120 S Hobart St • 669-0158 • Mon-Sat • 9am - 6pm

Chamber of Commerce's Annual Pampa Partnership Golf Tournament

May 10th & 11th
T-Box Signs On Sale - \$50
with meal \$125

For information call 669-3241

NEXT DAY FORECAST

| Saturday | Sunday | Monday |
|---|---|---|
|  |  |  |
| Sunny | Sunny | Sunny |

Saturday: Mostly sunny, with a high near 85. South wind between 5 and 15 mph, with gusts as high as 20 mph.

Saturday Night: Partly cloudy, with a low around 51. South-southwest wind between 15 and 20 mph, with gusts as high as 25 mph.

Sunday: Mostly sunny, with a high near 84. Southwest wind around 15 mph, with gusts as high as 25 mph.

Sunday Night: Mostly clear, with a low around 54. Southwest wind between 10 and 20 mph, with gusts as high as 25 mph.

Monday: Sunny, with a high near 83. West wind around 15 mph, with gusts as high as 25 mph.

Monday Night: Mostly clear, with a low around 51. West wind between 5 and 15 mph, with gusts as high as 20 mph.

Ⓢ This information brought to you by...

PRESTIGE
AUTOBODY & ACCESSORIES
 101 S. HOBART 806-665-3500
We Have Harley Davidson Bed Covers

Preneed Arrangements Available
 Including Caskets
 Special Veterans Garden
Memory Gardens
 Cemetery & Mausoleum of Pampa
 665-8921
 23rd St and Price Rd
 www.memory-gardens.tripod.com

Obituaries

Leblentha (Blint) Landers, 48

Leblentha (Blint) Landers, 48, of Pampa, died April 15, 2008, at Pampa. Services will be at 10 a.m. Saturday in Southside Church of Christ with Frankie Lemons, minister, officiating.

Burial will be in Fairview Cemetery under the direction of Carmichael-Whatley Funeral Directors.

Miss Landers was born Feb. 7, 1960, in Fort Worth. She had been a Pampa resident since 1970, attending

Pampa High School.

She graduated from Texas State Technical Institute in 1984 and belonged to Southside Church of Christ.

Miss Landers worked as kitchen supervisor at Meredith House for eight years. She was preceded in death by her father, Earl Landers; and a sister,



Landers

Ruby Landers.

Survivors include two daughters, Latcha Landers and LaRanda Landers, both of Pampa; one son, Shelby Landers of Pampa; her mother, Ester Landers of Pampa; five brothers, Earl Landers, Jr.,

Michael Landers and Harold Landers, all of Fort Worth, Jewel Landers of Arlington,

and Cornelius Landers of Pampa; three sisters, Mary Brown of Tyler, Shirley Young of Pampa, and Mia Nash of Arlington; and 10 grandchildren.

MEMORIALS: Lupus Foundation of America, Inc., 2000 L Street, N.W., Suite 710, Washington, DC 20036.

—Sign the on-line register book at www.carmichael-whatley.com.

Elijah William (E.W.) Osby, Jr., 58

Elijah William (E.W.) Osby, Jr., 58, of Pampa, Texas, died April 12, 2008, at Pampa. Services will be at 2 p.m. Saturday, April 19, 2008, at Carmichael-Whatley Colonial Chapel with Frankie Lemons, minister of Southside Church of Christ, officiating.

Burial will be in Fairview Cemetery under the direction of Carmichael-Whatley Funeral Directors.

Mr. Osby was born June 13, 1949, in Wheeler to

Elijah and Marie Osby. He attended schools in Shamrock, graduating from Shamrock High School. He was employed by the Pampa Independent School District and Hammons Janitorial Service for 25 years.

Survivors include his wife, Connie Osby, of the



Osby

home; two sons, Terry Osby and wife Pinki of Pampa, and Jerry Osby and wife Christie of Norman, Okla.; two daughters, Jacqueline Matthews of Dallas, and Tonya Brown and husband Gary of Carrollton; mother, Marie Osby of Shamrock; one sister, Eva Osby of Shamrock;

15 grandchildren; one great-grandchild; and a host of family and friends.

He was preceded in death by his father, E.W. Osby, Sr., in 2007.

MEMORIALS: Odyssey Hospice, 6900 I-40 West, Suite 150, Amarillo, TX 79106.

—Sign the on-line register book at www.carmichael-whatley.com.

Emergency Services

Pampa PD

Pampa Police Department reported the following incidents for the 24 hour period ending at 7 a.m. today. Ten traffic stops were made.

Traffic complaints were received from the 100 block of East Harvester, the intersection of 23rd and Duncan streets, the 2800 block of Charles and the 100 block of East 28th.

Vehicle accidents were reported in the 100 block of East Harvester, the 100 block of West 30th, the 600 block of North Ward, and the intersection of Tignor and Scott streets.

Animal control officers made stops concerning animals in the 300 block of North Banks, the 2200 block of Charles, the 300 block of North Warren, the 700 block of North Roberta, the 900 block of East Browning, the 1400 block of East Browning, the 900 block of Brunow, the 500 block of Lefors

and the 1800 block of North Sumner.

A welfare check was made in the 1200 block of North Wells.

Civil matters were reported in the police department lobby and twice in the 1000 block of South Christy.

Warrant service was attempted on one occasion and resulted in at least one arrest.

Suspicious person calls were received from the 1000 block of Alcock, the 1200 block of North Hobart, the intersection of Foster and Lefors streets, the intersection of Foster and Gillespie streets, and the 1400 block of Alcock. At least one arrest was made in connection with the incident in the 1200 block of North Hobart.

Suspicious vehicle calls were received from the 900 block of Brunow and the 1200 block of Darby.

Violation of a city ordinance was reported in the 2200 block of North Wells.

A silent/abusive 911 call was received from the 2200 block of North Christy.

Disorderly conduct was reported at Recreation Park, 1600 E. Highway 60.

Harassment was reported in the 600 block of North Sumner.

Violation of a protective order was reported in the 500 block of North Frost. At least one arrest was made in connection with the incident.

Domestic disturbances were reported in the 1900 block of North Dwight and the 400 block of South Gray. At least one arrest was made in connection with the incident in the 1900 block of North Dwight.

A domestic disturbance and aggravated assault with a deadly weapon were reported in the 1100 block of Seneca. An arrest was made in connection with the incident.

Assault was reported in the police department lobby.

Identity theft was reported in the 1700 block of Williston.

Theft was reported in the 200 block of Miami. Silver jewelry valued at an estimated \$120 was taken from a residence.

Theft was reported in the 1100 block of East Foster and the 900 block of East Albert.

Unauthorized use of a motor vehicle was reported in the 400 block of North West. A 1998 Mercury Sable was taken from a residence.

Sheriff

Gray County Sheriff's Office reported the following arrests today.

Thursday, April 17

Dante Allen Wilbon, 17, of Pampa was arrested in the 1300 block of North Hobart by Pampa Police Department on a probation violation for possession of marijuana.

David Price Farrar, 46, of Pampa was arrested by PPD for violation of a protection order and bias/prejudice.

Keith Allen Finch, 24, of Plainview was arrested by GCSO on a bond forfeiture for possession of a controlled substance.

Friday, April 18

Kevin Ray Kirkham Jr., 18, of Pampa was arrested in the 300 block of North Christy by PPD on capias pro fines for minor in possession/second or more offense and disorderly conduct/obscene language.

Ambulance

Guardian EMS ambulance reported the following calls during the 24-hour period ending at 7 a.m. today.

Thursday, April 17

12:19 p.m. — A mobile ICU responded to Pampa Regional Medical Center and transferred a patient to Northwest Texas Hospital in Amarillo.

3:52 p.m. — A mobile ICU was dispatched to the 400 block of South Gray. The call was canceled en route.

3:58 p.m. — A mobile ICU responded to the 2000 block of North Hobart and transported a patient to PRMC.

4:01 p.m. — A mobile ICU responded to the 600 block of North Ward. No transport.

8:24 p.m. — A mobile ICU responded to Tignor and Scott, and transported a patient to NWTH. Another patient was airlifted by LifeStar helicopter.

11:56 p.m. — A mobile ICU responded to the 800 block of Malone and transported a patient to PRMC.

Texas unemployment rises 4.3 percent in March

DALLAS (AP) — The Texas unemployment rate rose to 4.3 percent in March as an uptick in hiring was offset by an increase in people looking for work.

The ranks of the unemployed grew by an estimated 15,400 in March, to 494,400, the Texas Workforce Commission said Friday.

And initial claims for unemployment benefits rose 8.5 percent, to 56,901 in March.

However, the March jobless rate was only slightly higher than February's 4.1

percent, which was a record low, and the March figure remained below the national average of 5.1 percent. The number of jobs in Texas has grown 2.1 percent since March 2007, compared to a national increase of 0.4 percent in the same period.

The Workforce Commission said Texas employers added 13,500 jobs in March.

The biggest gain was in the trade, transportation and utilities sector, which added 7,800 jobs. Leisure and hospitality added 4,300 jobs, according

to the commission.

Smaller gains were reported in the education and health services sector and in natural resource and mining, which includes the oil and gas industry, the commission said.

"Our Texas economy continues to show significant underlying strength with gains of nearly 40,000 jobs during the last three months," Workforce Commission Chairman Tom Pauken said.

Midland had the lowest March unemployment rate in the state, 2.6 percent, followed by Odessa and Amarillo.

The highest jobless rate in the state was in the McAllen-Edinburg-Mission area, at 6.4 percent.

The statewide numbers were adjusted for seasonal trends in hiring and firing, which most economists believe gives a better picture of the job market. Local figures are not seasonally adjusted.

Following are the preliminary March jobless rates for local areas in Texas, with

revised February numbers in parentheses. The figures are not seasonally adjusted. The statewide unadjusted jobless rate was 4.2 percent in March, down from 4.3 percent in February.

CITY BRIEFS

The Pampa News is not responsible for the content of paid advertisement

JULIE'S HALLMARK, 125 W. Kingsmill, Pampa. Full or Part time. Apply in person.

LEFORS, 403 E. 6th, Fund Raiser Yard Sale, Sat. 8-2pm.

STAMPED CONCRETE that looks like natural stone. Variety of colors and patterns. Free Estimates 669-1287.

IF YOU NEED IT WE HAVE IT!

ENGINE PARTS & SUPPLY

Automotive Parts Distribution
 A Local Company Established In 1938

416 W. FOSTER 806.669.3305
 E.P.S.

SERVING LOCAL NEEDS FOR 60 PLUS YEARS
 with the **LARGEST INVENTORY IN THE AREA**
 including **AC-DELCO • WIX MONROE • WAGNER**

CALVARY BIBLE CONFERENCE
APRIL 27TH - APRIL 30TH



Sunday speaker
Dr. Emir Caner
 (former Muslim)
 10:45am and 6:00pm

Monday speaker • James Greer • 6:30pm

Tuesday speaker • Bruce Edwards • 6:30pm

Wednesday speaker • Moses Caesar • 6:30pm
 (Youth meeting at M.K. Brown)
 Shelby Deatherage • 6:30pm
 (Children's meeting at the church)

Calvary Baptist Church
 900 E. 23rd Street
 806-665-0842
 www.calvarybaptist.com

In Memory of Gene F. Enterline
 Born September 21, 1927 - April 17, 2007

Gene went to school in Pampa and worked for Parker Blossom Shop for several years. He moved to California in the 1950's and settled in Long Beach, California where he owned Spring Florist's for 46 years. He retired September 1, 2005. He was survived by his wife of 62 years, Billie Sackett Enterline and their four children Bill, Larry, Marjorie and Jim. He was preceded in death by his father and mother, Sherman and Isabella, and brother Leland Enterline. His memorial service was held May 5, 2007 at the Lakewood Elks 1570.

Appeal rejected for man nearly executed in 2003

HOUSTON (AP) — A man who came within two hours of execution five years ago has lost an appeal in federal court, likely making him eligible for a new death date.

Kenneth Wayne Morris' lethal injection was blocked in 2003 after his lawyers argued he was mentally retarded and ineligible for the death penalty under U.S. Supreme Court guidelines. In a brief ruling with no explanation late Thursday, a three-judge panel of the New Orleans-based 5th U.S. Circuit Court of Appeals upheld a lower court's decision that Morris was eligible for execution.

Morris, 37, was identified as the gunman in a three-man gang who in 1991 broke into the Houston home of 63-year-old James Moody Adams because they thought he had a gun collection. Adams, who actually had no weapons, was shot four times after he surrendered the money in his wallet.

Executions had been on hold in Texas — the nation's leading death penalty state — and the rest of the country before the U.S. Supreme Court ruled this week that lethal injection is not unconstitutionally cruel.

Morris' execution could be scheduled as soon as 30 days from the day prosecutors go to court to request a death date.

The ruling was one of three Texas death row cases considered by the court Thursday.

David Lee Powell, a former University of Texas honors student sent to death row three times for the fatal shooting of an Austin police officer, won permission to appeal his case again. And Jose Villegas, condemned for the slayings of a 24-year-old Corpus Christi woman, her young son and her mother, lost his appeal.

Powell, 57, most recently was convicted and condemned in 1999 for the 1978 slaying of Ralph Albanedo, who had pulled over Powell's girlfriend for a traffic stop. Powell was a passenger in the car.

Powell claimed his rights to due process were violated because prosecutors didn't timely disclose documents that showed his girlfriend may have fired the shots and tossed a hand grenade at other officers. He also claimed his constitutional rights were violated when an emergency room doctor didn't provide Miranda warnings when he examined Powell following his arrest. The doctor testified for the prosecution at Powell's trial.

Villegas, 33, had argued his defense lawyers were ineffective at his trial where he was convicted of capital murder for the slayings of Erida Perez Salazar, his ex-girlfriend; her son, Jacob, 3; and her mother Alma Perez, 51.

All were fatally stabbed. Salazar was stabbed 32 times, her son 19 times and mother 35 times. A television and car also were taken from the home.

Pie lady

Continued from Front Page

tasting," she said.

But she also learned from The Food Network.

"Alton Brown on The Food Network encourages you to let you dough rest before you roll it out," Weaver said. "It takes a while to make it."

But baking pies makes her feel close to her late grandmother.

"She used to make dozens of pies at every day," Weaver said. "She made them all from scratch."

With a smile Weaver said she kind of deviates from her grandmother's recipes, but just a little.

"I can't do it as good as she could," Weaver laughed, "so I kind of learned some tricks from the Food Network."

But the basic recipes are her grandmother's, Weaver said.

While she makes a variety

of pies for special occasions and for family and friends, Weaver admitted that her favorite kind of pie is coconut cream. It's also one of the more difficult pies to make.

"It's definitely an art to making them," she said. "They're finicky."

Weaver said that even the weather can affect how they turn out.

A lot of recipes call for butter or lard when making the crust.

"I do both," she said. "It makes it more flakey."

While the crusts remain the same, the fillings differ.

"I did a lot pecan and pumpkin over the holidays," she said.

She made about 30 pies for family and friends for Thanksgiving and about 19 for Christmas.

"It was quite an experience," Weaver said.

She made up 25 crusts in a

day. "I had a system going," she said. "You can freeze pie crusts for up to two months, and they'll stay fresh. You pull them out, put the filling in and they're ready to go, and they taste just as good. I was surprised when I learned that."

Takes two to three hours to make a pie, she said.

"A pecan pie will take an hour to cook," Weaver said.

A cream pie with meringue only needs to bake about 30 minutes, but then it has to cool and then it needs to be chilled.

"The meringue pies are a little more labor intensive," she admitted.

And it's not just the meringue.

The coconut filling has to be boiled to reach a certain consistency. Learning that consistency is more experience than anything else,

Weaver said.

The meringue is another challenge.

"You have to use a glass bowl," she said. "You use eggs whites to make the meringue, and you have to get them room temperature. If you deviate a little bit or add too much sugar, it can go flat."

Weaver said you can't be distracted if you're making meringue, or it will be ruined.

"One of my best friends," she said, "loves cherry pies."

When she had her baby or anytime her friend has a birthday, Weaver will make a cherry pie for her.

"That's with a double crust," Weaver said, "and that's really hard. Trying to get it on there and cut and even is hard."

Fortunately, most of her friends like cream pies, she laughs.

Accident

Continued from Front Page

scene showed it moved to the left of the roadway and then impacted a covered concrete drainage culvert at the intersection of Tignor and Scott.

The vehicle became airborne and then landed in the roadway on Tignor Street.

"Speed was a factor," said Stout concerning the cause of the accident. No indication of any type of substance abuse was found at the scene, he said.

"Both had their seat belts on and were not ejected from the car," Stout said.

Pampa Fire Department, PPD and Guardian all responded to the scene of the accident Thursday evening. There was at least one witness to the incident, Stout said.

The accident remains under investigation by PPD. No further information on the condition of the victims was available as of press time.

Odessa wildfire contained

ODESSA, Texas (AP) — State forestry officials said Friday that they have completely contained an Odessa wildfire that injured one person, destroyed six homes and forced 150 people from their homes.

Officials estimated the size of the fire to be between 25 acres and 50 acres.

Two outbuildings also were destroyed by the fire, which also burned into a junkyard, destroying "a good many shack-type buildings" not included in the official count, said Lewis Kearney, a spokesman for the Texas Forest Service.

Officials suspect an electrical problem caused the blaze, the Odessa American reported. Sustained winds the National Weather Service estimated at nearly 40 mph fueled the fire.

Several area fire departments responded to the blaze, said Andrea Goodson, a spokeswoman for the city of Odessa. The Texas Forest Service provided an aircraft, two helicopters for air drops and three bulldozers to fight the blaze.

Emergency personnel treated one person on site for breathing problems, but no one had been transported to

hospitals, Goodson said.

The initial call reporting the fire came in around 1 p.m. Thursday.

Storms roll through Dallas-Fort Worth for 2nd time in a week

DALLAS (AP) — Severe weather hit the storm-skitish Dallas-Fort Worth area for the second time in a week Thursday night, bringing golf ball-sized hail, strong winds and at least one report of a tornado.

Television footage showed a blanket of hail in a parking lot in Mansfield, southwest of Fort Worth, and cars with broken windows and deep dents from hail damage.

The worst of the storm was west of Dallas-Fort Worth, where hail damaged police cars in Mineral Wells, officials said.

A tornado was reported just west of Fort Worth in Parker County and was on the ground six to seven minutes, said National Weather Service meteorologist Dan Huckaby. There were no initial reports of damage or injuries, said Parker County Judge Mark Riley.

"I think we probably dodged a bullet," Riley said. The Federal Aviation Administration said depart-

ing flights were being delayed more than an hour at Dallas-Fort Worth International Airport.

The storm packed winds of around 60 mph but lost steam as it moved through the Dallas-Fort Worth area, Huckaby said. It paled in comparison to last week's system, which produced several tornadoes and fierce straight-line winds that caused widespread damage.

"We don't see events like that to that extreme and certainly as widespread as that event was," Huckaby said. "But this is certainly typical springtime severe weather tonight."

FOCUS ON PAMPA
With A COMMUNITY CAMERA From THE PAMPA NEWS
We want to share with our readers events throughout the community...so come by to borrow a camera for Church Socials, Family Reunions, School Activities or Any Other Mess You Have!
THE PAMPA NEWS
400 W. HOBART • 806-2925

SPRING FASHIONS
Roper Sandals
Gypsy Slip Flops
American West Handbags
WAYNE'S WESTERN WEAR, INC.
1505 N. HOBART • 806-665-2925

Community Appreciation Cookout
720 W. Francis • 665-9700
May 9th • 11-1:30
Complimentary Hamburgers & Hotdogs • Door Prizes
Cook - Jim Bruton of Ashmore & Associates

Accolade
HOMECARE

St. Ann's Catholic Church, Pampa, Texas
Ministries present 3rd Annual
St. Ann's Daughters
Social/Suena Luncheon
Featuring Pampa Natives,
Mother/Daughter
Lana Epperly & Cyndi Hassell



Viewpoints

Self-injury: Cutter's pain more than skin-deep

Recently, our 12-year-old daughter came home from junior high with a strange story. At least, it was strange to us until we began extensive research on this most bizarre topic. Her story was about a girl at school who had a problem. This girl was cutting herself, inflicting herself with repeated bloody cuts on her arms and legs. Our daughter then said something that shocked us. She said, "Lots of kids do it."

We share the results of our research in the hope that if you know someone with this problem you will help them seek help. This is a budding epidemic that we can stop with concerted effort. Why would anyone intentionally hurt himself or herself?

When she was only 12-years-old, Lisa Bayen began cutting her own stomach and arms with razor blades. In a television interview, Princess Diana confessed to cutting her legs and arms with penknives and razor blades. Not only did actor Johnny Depp admit to injuring himself, but also 2 to 3 million less well-known Americans inflict cuts into their skin. They call themselves "cutters" and the trend is growing.

"[F]or people who do injure themselves by cutting or other means, self-injury offers a momentary sense of calm and a release of tension. Unfortunately, that's usually quickly followed by guilt and shame and the return of other painful emotions," accord-

ing to the Mayo Clinic.

"I felt so much anger inside and I was so upset that I wanted to have my feelings expressed," says Bayen, who is now in her twenties and no longer cuts herself. "I couldn't discuss them with somebody, so I felt like I had to put a mark on my body. I felt so relieved afterwards that I continued the behavior every time I was sad or angry, upset or depressed."

People who deliberately harm their own bodies are trying to find a way to deal with overwhelming emotions but do not know a healthy way to cope with them. Like Bayen, they usually begin between the ages of 10 to 16. These highly charged years of volatile emotions and "drama" are a time when young people are beginning to deal with peer pressure and conflict with parents, besides feelings of loneliness.

Nearly 50 percent of cutters come from backgrounds of physical, sexual or emotional abuse and most are female. Social isolation, eating disorders, problems with intimacy, a history of loss or self-injury in the family, marital violence and divorce are often common factors. A family where the discussion of feelings is frowned upon puts one at risk. One thing cutters have in common is a lack of

good problem solving skills.

The Mayo Clinic reports that for these troubled young people, "Physical injury distracts them from painful emotions or helps them feel a sense of control over an otherwise uncontrollable situation. For those who have feelings of emptiness or little emotion, self-injury is a way to feel something, anything, even if it's physical pain." Some say when cutting themselves they finally "feel something" because they have shut down their strong emotions of anger, depression and suffering low self-worth.

Not only do psychological reasons come into play, but also physical factors are involved with the self-injury disorder. "One theory holds that during self-mutilation, the body releases chemicals called beta-endorphins, which have a powerful analgesic property and provide an instant feeling of calm," says Lynn Ponton, M.D. The behavior can become addicting. "When someone hurts emotionally but can't express it, a physical injury will redirect that pain to the physical realm," explained Ponton.

"It's a physical expression of anger," says Wendy Lader.

Lader and Karen Conterio are early pioneers in dealing with people with self-injury

problems. The psychologists are directors of SAFE (Self-Abuse Finally Ends) Alternatives Program in Chicago. Together they wrote the book, "Bodily Harm: The Breakthrough Healing Program for Self-Injurers."

Cutters are people with deep psychological pain. "The self-injury isn't the problem," says Lader. "It's the feelings that lead to it, the anger and the abandonment."

However, help is available: People seeking information can call SAFE at 1-800-DONT-CUT.

Prevention and treatment are similar. Two important factors help stop self-injury according to research. Developing an ability to identify and express feelings verbally is one factor. The other contributing factor which ceases self-injury is for cutters is to learn and use positive alternatives to self-mutilation. In therapy, writing their feelings in journals and talking with friends are encouraged as healthy outlets for emotions in addition to learning good coping skills.

"Therapy teaches them to think about their self-injurious behavior by making them ask, 'What feelings am I trying to avoid by thinking about cutting?'" says Conterio. She believes that once people understand the emotions that motivate their harmful behavior, it is easier for them to stop.

—The Browns are bestselling authors and speakers.



Floyd & Mary Beth Brown
Columnists

Americans must use reason in face of hysteria

Years ago, a friend who worked for Florida's state environmental department told me something that's handy to remember, given the habit some journalists have of adding melodrama to stories about science and the environment. My friend said that testing capability had far outrun knowledge.

What he meant was that equipment used to analyze water, for example, could now detect substances in really minute amounts like parts per billion, while nobody knew if substances in such infinitely small amounts had any effect whatsoever on human health. Nobody even knew for sure if the substances had always been in water, though previously undetectable.

I got aggravated once some years ago by a reporter who always referred to a pesticide as "cancer-causing." Sunshine and many common substances can cause cancer. The thing to remember is that when we talk of toxicity of chemicals or carcinogens, amount is the key. We can't live without salt, for example, but too much salt will kill us. Aspirin is a great pain reliever; too much will kill us. You can probably think of many examples yourself.

Anyway, I was so aggravated with that reporter's sloppy reporting that I tracked down the man in the Environmental Protection Agency bureaucracy in charge of setting standards

for pesticide. He explained the process. First, a chemical is tested on mice. A caution: Results in mice do not necessarily translate to humans. But if a certain dosage produces tumors in mice, a computerized formula is applied to determine a safe level for humans.

He cited an example. When the EPA says the acceptable level of something for human consumption is so many parts per million, what it is really saying is that according to the formula in the computer, if a human being consumes so many parts per million every day of his life for 72 years, then the risk of developing cancer is increased by some fraction of a percentage point. Then, with a somewhat sardonic laugh, he pointed out that the natural background cancer rate is 20 percent.

In the case that had irked me so, which involved grapefruit and a pesticide to treat a root disease, it is highly unlikely that any human being would consume enough grapefruit every day of his life for 72 years and thus increase his risk of cancer by some negligible fraction of a percent. What the reporter had been doing was writing alarmist stories about negligible,

near-nonexistent risk. She was, as so many journalists do, following the Disney formula for cartoons — simplifying and exaggerating.

Redd Foxx used to tell a joke about smoking: "Some folks don't smoke cigarettes 'cause they're scared of

dying of lung cancer; some folks don't eat cheese or eggs 'cause they're scared of heart attacks; some folks don't eat pie or cake 'cause they're scared of diabetes. They gonna feel like damned fools one day lying in the hospital dying from nothing."

The old rascal was making the point that human mortality is 100 percent. We're all going to die of something, so there is no need to get para-

noid about some trace amount of chemicals. I've seen stories recently about some tranquilizers showing up in treated sewage. So what? I seriously doubt they are in sufficient dosage to cause happy fish.

What usually kills us, and historically always has been the main killer of people, are bacteria, viruses and parasites. None of these, to the best of my knowledge, is manufactured by Monsanto

or DuPont. I personally don't read news stories about health or science. There are so many scare stories about the risk of this or that, you can easily become a paranoid hypochondriac by reading all of that junk. Reasonable precautions and moderation in all things are quite sufficient for reasonable health.

—Write to Charley Reese at P.O. Box 2446, Orlando, FL 32802.

Charley Reese
Columnist



Texas Thoughts

By The Associated Press

A sample of editorial opinion around Texas:

■ April 3
El Paso Times on airline safety:
Cross-wired brakes. Cracks in fuselages. Missed inspections. Fuel leaks caused by a faulty bolt. Questions about fire-suppression systems.
Questions about commercial aircraft safety have been making headlines for the past several weeks, but the biggest question has to be, how were these problems allowed to get this far?
Airline passengers and crew members are entitled to a reasonable expect-

tation of safety when they fly.
The first line of defense, of course, is the airlines themselves. Maintenance of aircraft should be meticulous, airline standards of safety and maintenance must be high and problems with aircraft shouldn't be ignored.
There's a lot of pressure on airlines these days. Fuel costs are spiking, on-board service and amenities are decreasing, competition for passengers is fierce, and on-time and baggage problems don't seem to get better.
What must not happen is that safety concerns are sacrificed in pursuit of the almighty dollar. It is apparent that airlines must pay closer attention to safe-

ty matters.
This sudden spate of safety concerns with airlines makes one wonder whether the Federal Aviation Administration is paying enough attention to airline safety. The agency's mission statement is "Our mission is to provide the safest, most efficient aerospace system in the world."
It seems likely that the airlines need to spend more time on inspection and maintenance of their equipment.
And the FAA should provide closer oversight of the airlines' safety procedures.
Passengers deserve that. URL: <http://www.elpasotimes.com>

THE PAMPA NEWS
403 W. Atchison • Pampa, TX 79065
806-669-2525 • 800-687-3348
Fax: 806-669-2520
email: editor1@thepampanews.com
Randall Pribble
Editor and Publisher
ReDonn Woods
Advertising Director

This newspaper (UPS 781-540) is published daily, except Sundays, Thanksgiving and Christmas Day, by The Pampa News. Periodicals postage, paid at Pampa, Texas. Postmaster: Send address changes to The Pampa News, P.O. Drawer 2198, Pampa, TX 79066-2198.

All carriers are independent contractors and The Pampa News is not responsible for advance payments of two or more months made to the carrier. Please pay directly to the Pampa News any payment that exceeds the current collection period. There are no mail subscriptions available within the city limits of Pampa. Mail subscriptions must be paid three months in advance.

© 2008 The Pampa News

Praise & Worship

Church Page

RHEAMS DIAMOND SHOP
 "May God Be With You During The Week"
 Ken & Stephanie Rheams

PAMPA NURSING CENTER
 Medicare Medicare Special Alzheimers Care
 1321 W. Kentucky 669-2551

ENGINE PARTS & SUPPLY
 416 W. Foster 669-3305
 Local Company Serving Local Needs

FORD FAMILY CHIROPRACTIC
 Dr. Mark W. Ford, Jr.
 103 E. 28th Ave. Pampa, 806-665-7261

WAYNE'S WESTERN WEAR
 1504 N. Hobart 665-2925

NATIONAL BANK OF COMMERCE
 an office of First National Bank, Waupaca, WI
 Member FDIC
 1224 N. Hobart Pampa, Tx 806-665-0022
 501 Commerce St Childress, Tx 940-937-2514
 305 N. Main Shamrock, Tx 806-256-2181

KEYES PHARMACY
 "Your Key To Better Health"
 928 N. Hobart - Pampa, Texas
 669-1202 - Emergency 669-3559
 Merlin Rose R. Ph. - Owner - Pharmacist

United Supermarkets

Texas PRINTING COMPANY
 PHONE (806) 669-7941
 318 N. BALLARD PAMPA, TEXAS

STATE FARM SHEILA WEBB
 State Farm Insurance
 N Side of Coronado Center
 669-3861
 "Like a good neighbor, State Farm is there."

Pampa Concrete Co., Inc.
 220 W. Tyng Ave. • 669-3111

2201 Perryton Pkwy. Jay Gist Pampa, Texas Royce Jordan
Chutekon 669-CHIC (2442)

CURT B. BECK, P.E.
 CONSULTING ENGINEER - POLLUTION AND ENERGY
 "When You Need To Know The Facts"
 HUGHES BLDG. SUITE 173A PAMPA, TEXAS 669-6281

New youth pastor



Courtesy Photo
 Eric Lockwood in the balcony of the Calvary Baptist Church youth room, overlooking the stage.

Calvary adds to staff

Calvary Baptist Church recently announced an addition to its staff. The church has hired Eric Lockwood as youth minister. Lockwood comes to Calvary from Fort Myers, Fla. Both he and wife Meghan are graduates of Liberty University in Virginia.

Many activities are being planned for the church's youth group(s) including a weekly youth worship service on Wednesday

nights and Bible Study classes on Sunday morning.

Lockwood says he is excited to be at Calvary and looking forward to seeing how God is going to work in the lives of high school and junior high teenagers in Pampa and the surrounding area.

For information on youth activities at Calvary, call the office at 665-0842 or visit the church at 900 E. 23rd Street.

Kirkin' o' the Tartan in offing

First Presbyterian Church, 525 N. Gray, will hold its annual "Kirkin' o' the Tartan" service at 10:45 a.m. Sunday, April 27. The yearly event is held in honor of the denomination's Scottish roots.

The service will feature members carrying Scottish tartan (plaid) banners and the music of bagpipes by piper John Brewer of Amarillo. Scottish hymns and folk tunes will be played. A potluck luncheon will follow the service.

Ted Wardlaw, president of the Presbyterian Theological Seminary in Austin, will be special guest preacher. Wardlaw has served as seminary president since 2002 and holds a BA from Presbyterian college in Clinton, S.C.; a master of divinity from Union Theological Seminary in Richmond, Va.; a masters of sacred theology from Yale University Divinity School; and an honorary doctorate from Presbyterian College, his alma mater.

Wardlaw has held several pastorates during his career including Atlanta, Ga., Germantown, Tenn., and Long Island. He and wife, Dr. Kay Bryant, a clinical psychologist, have two daughters.

The custom of "Kirkin'" is an American one not practiced in Scotland. Historically, it is based on the carrying of a hidden scrap of tartan by Scots in defiance of English law.



Courtesy Photo
 Piper John Brewer, left, of Amarillo will serve as piper another year during the annual Kirkin' o' the Tartan at First Presbyterian. Pictured with Brewer is the Rev. Mrs. Robin Gantz of Pampa.

GOOD SAM
 Good Samaritan board to meet
 The board of directors for Good Samaritan Christian Services in Pampa will meet at 5 p.m. Thursday, May 22 at Good Sams, 309 N. Ward.
 At a previous board meeting, Floyd Sackett, a longtime volunteer from First Presbyterian Church, and Claude Taylor, of Highland Baptist, resigned. The board discussed new brochures with services listed and the revival of a sign-up sheet for prayers. Members considered reviving the prayer list and sending it to member churches.
 In March, 381 families and 1,277 individuals were served, according to a newsletter from Good Sam. Needs for April are men's tennis shoes, men's jeans (size 30-34), kids shoes (size 4-6), diapers (4 and 5), toothpaste, shampoo, pots/pans, and brown paper bags.
 For more information, contact Good Sam at 665-0073.

PARSLEY'S 214 E. Tyng 669-6461 Pampa, Texas

669-7171
Borger Hwy.- Pampa
 Jerry E. Carlson, Pres.

JOHN T. KING & SONS
 918 S. Barnes 669-3711

CLIFTON SUPPLY COMPANY
 700 South Price Road • 665-0089
 "Visit our new location!"

THE PAMPA NEWS
 403 W. ATCHISON • 669-2525

Culligan
 314 STARKWEATHER 665-5729

Century 21 PAMPA REALTY INC.
 312 N. Gray • 669-0007

Titan SPECIALTIES, LTD. 11785 Hwy. 152 Pampa, Texas 665-3781

LARRY BAKER PLUMBING HEATING & AIR
 11780 HWY 152 TACLA003191 665-4392

Southwest Collision
 2525 W. Hwy. 152 • Pampa 669-9997

Culberson - Stowers, Inc.
 SINCE 1927
 www.culbersonautos.com

 BUICK GMC PONTIAC
 805 N. Hobart • Pampa, TX
 (806) 665-1665

This weekly series brought to you by these area businesses.

Dear Abby...

By Pauline & Jeanne Phillips

DEAR ABBY: My sister, "Ellie," and her husband, "Bill," have three lovely little girls. Both have good jobs and live in a pleasant neighborhood. However, neither one ever learned any life skills. Both worked and lived rent-free with their parents until they met and married in their late 20s. Consequently, they are up to their necks in credit card debt because of their need for instant gratification. For the past year Ellie has called me almost daily, crying, asking for money "for the sake of the children." I have given them what we can spare, but I have three sons in college, and my husband may be facing a medical retirement, which would leave me the sole wage-earner. I have told Ellie repeatedly that she and Bill must learn to budget and pay their bills, and advised them to seek professional debt and marriage counseling, neither of which they have done. Several months ago, Ellie called to ask if the family could move in with us until they got on their feet. My husband refused, telling her that without counseling their habits were not going to change, and we could not afford to support them short of a true emergency. Ellie was furious. She joined a "swingers" club and began a series of love affairs. Ellie says her affairs are "the only comfort" she has now that I have failed to "rescue" her in her "hour of need." I'm upset that I have made the girls' situation worse by refusing to provide for their parents. However, my husband is adamant that two working people should learn to manage their own lives. Am I injuring my nieces by refusing to rescue their parents? - **NON-ENABLER, OAK RIDGE, TENN.**

DEAR NON-ENABLER: Your sister has made it your responsibility because she joined a swingers club, and you're accept

ing it? Wake up! You haven't made their situation worse, SHE has. Ellie is not only irresponsible, but also immature. Do not be bamboozled. You are carrying a heavy enough load as it is. If you step in and try to rescue Ellie, you'll wind up carrying her until the stress makes you sick. The only person who can get her out of the mess she has created is herself.

DEAR ABBY: Early in our marriage -- the second for both of us -- my husband suggested having my portrait painted in the nude. We found an artist we were comfortable with, and the painting turned out so beautiful, we decided to have my husband pose nude, too. We keep these paintings in our bedroom and have never allowed anyone else to see them. We plan to cherish them for many years, but now realize we will need to make arrangements for their safekeeping after we're gone. They are tastefully positioned, beautifully framed and quite large. We do not want our children left with the task of finding a home for our "art.ork." How do we go about finding a gallery that will display them? - **PICTURE-PERFECT IN PENNSYLVANIA**

DEAR PICTURE-PERFECT: Start calling the museums and art galleries in your area. Your success may depend upon the level of recognition the artist who painted your portraits has achieved. If that doesn't work, then contact the clothing-optional resorts in your area and ask if they would like to hang them in their clubhouse.

For Better Or Worse



Zits



Garfield



Beetle Bailey



Marvin



B.C.



Hagar The Horrible



Peanuts



Blondie



Crossword Puzzle

CROSSWORD

THOMAS JOSEPH

45 Good

Player judgment

46 Comic

leader Bruce

India's

first prime

minister

1 Linking

word

2 Curved

letter

3 Schwar-

zenegger

10 Call for

27 Small

composer

16 Mauna —

pianos

4 Pick from

18 Letter

30 Workout

17 Great

the menu

start

5 Trick

19 Aspirin

33 Scoundrel

6 Goad

34 Impu-

lations

35 Not busy

7 Enter-

tainment

37 Uttered

for GIs

23 Un-

assuming

39 Birth

8 Robertson

24 Notorious

name

41 Jewelry

Davies

25 Mecca

item

9 Corn Belt

state

42 Artful

| | |
|---------|----------|
| LIFT | MALAGA |
| ERIE | ANIMAL |
| NORA | TGNITE |
| ONESTED | |
| EEK | REFIT |
| SLATE | SNIDE |
| HAT | REX |
| VERT | PLEAT |
| PARER | ROW |
| | BIFOCALS |
| MOJAVE | UTAH |
| ORATED | SEMI |
| BEGETS | TRAP |

Yesterday's answer

| | |
|-------------|------------|
| 10 Call for | 27 Small |
| 16 Mauna — | pianos |
| 18 Letter | 30 Workout |
| 34 Impu- | unit |
| 34 Impu- | lations |
| 35 Not busy | 37 Uttered |
| 39 Birth | name |
| 41 Jewelry | item |
| 42 Artful | |

NEW CROSSWORD BOOK! Send \$4.75 (check/m.o.) to Thomas Joseph Book 1, P.O. Box 538475, Orlando, FL 32853-8475

| | | | | | | | | | |
|----|----|---|---|---|----|----|---|---|----|
| 1 | 2 | 3 | 4 | 5 | 6 | 7 | 8 | 9 | 10 |
| 11 | | | | | | | | | 12 |
| 13 | | | | | | | | | 14 |
| 15 | | | | | | | | | 17 |
| 18 | 19 | | | | 20 | 21 | | | |
| 22 | | | | | | | | | 24 |
| 25 | | | | | | | | | 28 |
| 29 | | | | | | | | | 31 |
| 32 | | | | | | | | | 33 |
| 34 | 35 | | | | | | | | 37 |
| 38 | | | | | | | | | 40 |
| 41 | | | | | | | | | 42 |
| 43 | | | | | | | | | 44 |
| 45 | | | | | | | | | 46 |

Marmaduke



The Family Circus

THE FAMILY CIRCUS By Bil Keane



Flo & Friends



AP-YAHOO POLL

Obama overtaking Clinton despite bruises

WASHINGTON (AP) — Sens. Barack Obama and Hillary Rodham Clinton are both sustaining dents and dings from their lengthy presidential fight. The former first lady is clearly suffering more as Democratic voters no longer see her as the party's strongest contender for the White House.

Voters of all types have gotten a better sense of Obama, who was an obscure Illinois legislator just four years ago. As more people moved from the "I don't know him" category in an AP-Yahoo News poll, more rated Obama as inexperienced, unethical and dishonest. And 15 percent erroneously think he's a Muslim, thanks in part to disinformation widely spread on the Internet.

But Obama's positive ratings have climbed as well, while Clinton — widely known since the early 1990s — has been less able to change people's views of her. And when those views have shifted, it has hurt her more than helped.

The New York senator's ratings for being honest, likable, ethical and refreshing have fallen since January, and Obama scores higher than she does in all those categories.

In a dramatic reversal, the AP-Yahoo News poll found that a clear majority of Democratic voters now say Obama has the better chance of defeating Republican Sen. John McCain in November.

In late January, before Obama scored 11 straight primary and caucus victories, 56 percent of Democrats saw Clinton as the stronger nominee, compared with 33 percent for Obama. Now, Obama leads on that question, 56 percent to 43 percent.

Still, the poll, conducted by Knowledge Networks, contains some worrisome signs for the first-term senator. Those rating him as "not at all honest," for example, jumped from 18 percent last fall to 27 percent in April. It came as he was put on the defen-

"But the more I hear her talk, and the more I hear him talk, the more put off I am," said Barton, 69. "I think she's brash, I think she's rude. I get the feeling that she feels she deserves to be president" and doesn't need "to earn it."

sive over incendiary comments by his former pastor. But many holding such views are Republicans or conservative independents who would be unlikely to vote in a Democratic primary or support a Democrat in the fall anyway.

The most encouraging sign for Obama is that many Democrats who previously saw Clinton as their party's best hope now give him that role. About one-third of them still prefer Clinton, but they have lost confidence in her electability.

"I would love to vote for Hillary," said Nancy Costello of Bellevue, Ky., one of the more than 1,800 randomly selected adults whose opinions are rechecked every few months in the AP-Yahoo News poll. "I'm 67, and I'll probably never get another chance to vote for a woman."

But Obama now appears to be the stronger candidate, she said, and electing a Democrat in November is paramount. If McCain wins and continues many of President Bush's economic and foreign policies, Costello said, "I think I would just sit down and cry."

By tracking the same group throughout the campaign, the AP-Yahoo News poll can gauge how individual views change. It suggests that Clinton has paid a price for hammering Obama since early February on several issues as she tries to overcome his lead

in delegates and the popular vote. Among those Democrats who no longer consider her the more electable of the two, most now see her as less likable, decisive, strong, honest, experienced and ethical than they did in January.

Meanwhile, those same voters are more likely to see Obama as strong, honest and refreshing than before.

Beulah Barton of Leesburg, Fla., said she initially backed Clinton, partly because she liked Bill Clinton's record as president.

"But the more I hear her talk, and the more I hear him talk, the more put off I am," said Barton, 69. "I think she's brash, I think she's rude. I get the feeling that she feels she deserves to be president" and doesn't need "to earn it."

Barton said she likes Obama, and ignores e-mails suggesting that he refuses to salute the flag or is somehow threatening "because of his name."

"People try to make him look like a traitor," she said. "I think he has risen above most of that stuff."

Some misinformation sticks, however. The great majority of the poll's participants said this month they did not know the religious affiliation of Clinton (a Methodist) or Obama (United Church of Christ). But 15 percent ventured that Obama, whose father was Kenyan, is a Muslim.

That group includes more Democrats than Republicans, and it doesn't necessarily worry them.

Randi Estes, a Democrat from Ada, Okla., said she prefers Clinton but feels Obama is likely to win the nomination. "He's gotten very strong media coverage, and Bill Clinton's not helping her a bit," said Estes, 36, who has four children under the age of 6.

Speaking of Obama, she said, "I have a sense he's a Muslim."

If Obama wins the nomination, the poll indicates he will need to mend his image a bit as he battles McCain for independents and soft Republicans. His favorability rating among all voters has declined, with those ranking him as "very unfavorable" growing from 17 percent in January to 25 percent in April. Most of them are Republicans and independents.

In January, 30 percent of Republicans rated Obama very unfavorably. That grew to 43 percent in April. Among the coveted independents, 12 percent had a very unfavorable view of Obama in January. That has nearly doubled to 23 percent.

Obama would be the first black president, and the survey detected some evidence of racial discomfort in voters' minds. It found that about 8 percent of whites would be uncomfortable voting for a black president. It produced an estimate of about 13 percent of Republicans who would feel that way, but suggested very few if any Democrats would now be uncomfortable. In November, about 5 percent of Democrats indicated discomfort at voting for a black person for president.

For Allen Lovell, a moderate Democrat in Everett, Wash., race is unimportant, but replacing Bush with a Democrat is vital. And lately he has concluded that Obama

See POLL, Page 8

Philadelphia suburbs may hold key to Pennsylvania primary

MEDIA, Pa. (AP) — To bisect the heart of the Democratic presidential contest, take the Chester exit of I-95 and wend your way to the Pennsylvania Turnpike. If Barack Obama has any chance of cultivating an upset on April 22, this 20-mile stretch is fertile land.

These are Philadelphia's western suburbs — a patchwork of charming small towns, elite colleges and working class neighborhoods that constitute one of the most competitive political battlegrounds in the state.

"It is, without question, right at the center of the fight for Pennsylvania," said Rep Joe Sestak, D-Pa., the retired admiral who represents this district and who has endorsed Obama's rival, Sen. Hillary Rodham Clinton. "How my district goes is how the state may go."

Clinton holds a lead in statewide polls. But Obama is strongly favored in Philadelphia and polls show him holding a slight lead in the arc of four increasingly

Democratic counties around the city. Delaware County, the one which makes up most of Sestak's 7th con-

'The economy stinks. We need something new. When Bill Clinton was in the White House, we didn't have these problems and maybe she had something to do with it behind the scenes.'

— Stacey Martinez
Graphic designer

gressional district, is his toughest with demographics that also suit Clinton and her blue collar appeal.

"She has experience and we need something," said Stacey Martinez, a 30-year-old graphic designer, as she stood outside her row house in the inner suburbs near the city line. "The economy

stinks. We need something new. When Bill Clinton was in the White House, we didn't have these problems and maybe she had something to do with it behind the scenes."

To the west is Media, the county seat. With its Internet-wired coffee shops, quaint storefronts and local progressive politics, the borough's Democrats are more typical of Obama supporters.

"It's nice to be inspired by a politician," said Andrew Arata, the 34-year old owner of Earth & State, an arts and crafts shop in the center of town. Arata, who switched

his registration from Independent to Democrat so he could vote for Obama, said he also feared the emergence of White House family dynasties.

"Since I started voting, it's been a Clinton or a Bush," he said.

Martinez and Arata were among two dozen Delaware

County voters interviewed randomly by The Associated Press this week.

For Obama, who leads in the number of delegates needed to secure the nomination, a victory here would pierce Clinton's claim that he can't win primaries in large states. A Clinton victory would buttress her argument to stay in the race to the end. But even if the Southeast Pennsylvania counties don't propel Obama to victory, their concentration of delegates has driven the candidates and their surrogates to lavish attention on this corner of the state.

In Delaware County alone, Clinton made a surprise visit to Martinez' working class Drexel Hill neighborhood on Sunday, was in Haverford College with her daughter, Chelsea, on Thursday and planned to campaign with Sestak in Radnor on Friday.

Obama has consistently stayed ahead of Clinton in advertising in the state, spending about \$7 million statewide to her \$2.7 mil-

lion, according to Evan Tracey, of TNS Media Intelligence/Campaign Media Analysis Group, a political ad tracking firm. But in the expensive Philadelphia media market,

Tracey said, Clinton has caught up to Obama in broadcast ads and both are at parity.

Obama backers see hope

See PA., Page 8

Perry's plans trigger political repercussions

AUSTIN (AP) — Gov. Rick Perry now says he wants a record 14 years in the state's highest office, but he might have to fight some of the biggest names in his Republican Party to keep his job that long.

His announcement Thursday could trigger a GOP bloodbath. Both Sen. Kay Bailey Hutchison and Lt. Gov. David Dewhurst are thought to have gubernatorial aspirations.

"Both Hutchison and Perry are giants in the Texas Republican Party and have strong constituencies within the party, and it would be a monumental clash," said Republican consultant Ray Sullivan, who has worked for Hutchison and Perry.

Hutchison, who has said she's thinking about a run for governor, considered taking on Perry in 2002 and again in 2006, but decided against what would have been divisive primary battles.

This time, she's made it clear that Perry won't stop her, saying earlier this month that "there's not anyone who could really make a case to me that this would be divisive for the Republican Party in a way that would make me step back." She announced in October — not even a year into her third six-year

term as senator — that she would not seek re-election.

Dewhurst said Thursday he is focusing on his legislative priorities.

"The state is slowly becoming more competitive for Democrats, and a nasty intramural fight for a major post like governor could seriously hamper the ultimate nominee's chances in the general election," Sullivan said.

Beyond the gubernatorial aspirants, Perry's decision could have repercussions for a slate of statewide officeholders looking to move up the political chain.

Despite his surprise announcement, Perry's office wouldn't discuss the potential political fallout.

"It's premature to talk about a primary battle at this point," said Perry spokesman Robert Black. "There's only one person that we know is running for re-election at this point."

Others questioned the sincerity of Perry's announced plans.

"He could be saying that — and not be absolutely as certain as it sounds — to not be viewed as a lame duck," said Republican consultant Bill Miller. "If people view him as a lame duck, he doesn't have the same leverage as he would" if lawmakers expect to have to

answer to him for another four years."

Perry will become the longest-serving governor in Texas history later this year. He took over for George W. Bush after Bush was elected president in 2000 and has won two four-year terms since.

Even Hutchison said Thursday she doubts the certainty of another Perry for governor campaign.

"I think that it's not the time for us to be focusing on 2010," she said. "Maybe he didn't say something definitive ... I'm not saying he was announcing, I doubt that he was, but I do think talk of 2010 is not good in April of 2008."

Black seemed to leave the door open. "I think it would be safe to assume that Rick Perry is a candidate for governor in 2010 unless he says otherwise," he said.

Black said much would be determined by the next legislative session in January, with Perry planning to roll out a series of legislative priorities leading up to the session. Topics will include tax rebates and spending transparency.

Working in Perry's favor is that his most significant possible opponent, Hutchison, "has a history of waffling,"

See PERRY, Page 8

TOWN HALL MEETING

April 22 • 7:00 PM

Clarendon College - Pampa Center

LET YOUR VOICE BE HEARD!!!

You are encouraged to vote for the Levy of a Junior College District Branch campus maintenance tax in an amount not to exceed five cents on each \$100 valuation of all taxable property in Gray County.

NEW! Phone Service

CABLE ONE
Which is made you smile.
Great service, great rates. Get your Cable One phone service now!

- UNLIMITED calling in the Continental USA
- Call Waiting
- Caller ID Blocking
- Anonymous Call Rejection
- Call Forwarding
- Call Return
- 3-Way Calling
- Keep Your Same Phone Number

The Titanic

Book by metallurgists blames rivets for ship's epic tragedy ...

NEW YORK (AP) — The tragic sinking of the Titanic nearly a century ago can be blamed on low grade rivets that the ship's builders used on some parts of the ill-fated liner, two experts on metals conclude in a new book.

The company, Harland and Wolff of Belfast, Northern Ireland, needed to build the ship quickly and at reasonable cost, which may have compromised quality, said co-author Timothy Foecke. That the shipyard was building two other vessels at the same time added to the difficulty of getting the millions of rivets needed, he added.

"Under the pressure to get these ships up, they ramped up the riveters, found materials from additional suppliers, and some was not of quality," said Foecke, a metallurgist at the U.S. government's National Institute of Standards and Technology who has been studying the Titanic for a decade.

More than 1,500 people died when the Titanic, advertised as an "unsinkable" luxury liner, struck an iceberg on its maiden voyage in 1912 and went down in the North Atlantic less than three hours later.

"The company knowingly purchased weaker rivets, but I think they did it not knowing they would be purchasing something substandard enough that when they hit an iceberg their ship would sink," said co-author Jennifer Hooper McCarty, who started researching the Titanic's rivets while working on her Ph.D. at Johns Hopkins University in 1999.

The company disputes the idea that inferior rivets were at fault. The theory has been around for years, but McCarty and Foecke's book, "What Really Sank the Titanic," published last month, outlines their extensive research into the Harland and Wolff archives and surviving rivets from the Titanic.

McCarty spent two years in Britain studying the company's archives and works on the training and working conditions of shipyard workers. She and Foecke also studied engineering textbooks from the 1890s and early 1900s to learn more about shipbuilding practices and materials.

"I had the opportunity to study the metallurgy of several rivets," McCarty said. "It was a process of taking thousands of images of the inside of these rivets, finding out what the structure was like, doing chemical testing and computer modeling."

"Seeing the kind of levels we saw in different areas, in different parts of the ship led us to believe they would have ordered from different people," she said, adding this may have led to the weaker rivets.

The two metallurgists tested 48 rivets from the ship and found that slag concentrations were at 9 percent, when they should have been 2 to 3 percent. The slag is a byproduct of the smelting process.

"You need the slag but you need just a little to take up the load that's applied so the iron doesn't stretch," Foecke said. "The iron becomes weak the more slag there is because

the brittleness of the slag takes over and it breaks easily."

Foecke said the main question was not whether the Titanic would sink after hitting the iceberg, but how fast the ship went down.

He believes the answer is provided by the weak rivets. His analysis showed the builders used stronger steel rivets where they expected the greatest stress and weaker iron rivets for the stern and the bow, where they thought there would be less pressure, he said. But it was the ship's bow that struck the iceberg.

"Typically you want a four bar for rivets," Foecke said, using the measurement for the strongest rivets. "Some of the orders were for three bar."

Harland and Wolff spokesman Joris Minne disputed the findings. "We always say there was nothing wrong with the Titanic when it left here," he said.

When the iceberg hit the Titanic, it scraped alongside the ship. Foecke said this affected a number of seams in the bow and the weak rivets let go, putting more pressure on the strong rivets.

"Six compartments flooded. If the rivets were on average better quality, five compartments may have flooded and the ship would have stayed afloat longer and more people would have been saved," Foecke said. "If four compartments flooded, the ship may have limped to Halifax."

The company does not have an archivist, but it refers scientific questions on the Titanic to retired Harland and Wolff naval engineer David Livingstone, who also has researched the ship's sinking.

He said he largely agrees with the authors' findings on the metallic composition of the rivets, but added

their conclusions that the rivets were to blame for the sinking are "misleading and incorrect" because they do not consider the ship's

Contrary to Foecke's theory, Livingstone said, the Titanic did not go down fast compared to other ships that have sunk.

'Six compartments flooded. If the rivets were on average better quality, five compartments may have flooded and the ship would have stayed afloat longer and more people would have been saved. If four compartments flooded, the ship may have limped to Halifax.'

—Timothy Foecke
Co-author

overall design and the historical context.

"You can't just look at the material and say it was substandard," Livingstone said. "Of course material from 100 years ago would be inferior to material today."

He said he has found no document to support the argument that Harland and Wolff knowingly used substandard material. He pointed out that the Olympic, a ship the company built at the same time using the same materials, had a long life with no troubles. The third vessel turned out in the early 1900s was attacked and sunk in World War I.

Livingstone said he is not sure why iron rivets were used in the bow and the stern but believes it may have been because a crane-mounted hydraulic rivet machine could not reach those points. He said the iron rivets were wider to compensate for the difference in strength.

He said the Titanic did not capsize — as do most sinking ships — but maintained an even keel until the last moment, going down after about 2 1/2 hours when the weight of the water it took on became too much.

William Garzke, chairman of the forensics panel of the Society of Naval Architects and Marine Engineers based in New Jersey, said wrought iron was commonly used at that time, but steel was the newer, stronger choice.

Garzke, who also has studied the Titanic sinking, said the two scientists made a good point about the variability of the rivets, but "the problem is not the metallurgy of the rivets, it was the design of the riveted joints."

He said that the company used only two rivets at the site of impact, when three would have provided more strength and durability.

Poll

Continued from Page 7

probably has the better chance of beating McCain. "I am leaning towards him, not because he's black because I'm white — but because we definitely need a change," said Lovell, 50. He said the Democratic

campaign has lasted too long, but there is one topic he'd like to hear more about. Lovell, who guessed that Obama is "either Christian or Muslim," said: "I don't think we're getting enough information on religion" from the candidates.

The survey of 1,844 adults was conducted April 2-14 and had an overall margin of sampling error of plus or minus 2.3 percentage points.

Included were interviews with 863 Democrats, for whom the margin of sampling error was plus or minus 3.3 points, and 668 Republicans, with a margin of sampling error of plus or

minus 3.8 points. The poll was conducted over the Internet by Knowledge Networks. It initially contacted people using traditional telephone polling methods, and followed with

online interviews. People chosen for the study who had no Internet access were given it for free.

AP News Survey Specialist Dennis Junius

contributed to this report.

On the Net:
<http://news.yahoo.com/polls>

Pa.

Continued from Page 7

in Democratic Gov. Ed Rendell's gubernatorial primary victory in 2002. Then, Rendell, a Philadelphia, carried the eight counties in the Philadelphia media market by a 4-1 margin. He only won two of the remaining 59 counties in the state, but it was enough to beat Democrat Robert Casey, now a U.S. senator.

"Sen. Obama can do the same thing, but needs to do better than the polls show him doing in the suburban counties," said Anthony Campisi, the first vice chair of the Delaware County Democratic Party and an Obama supporter. "The polls show him in the low 50s. To

build a big enough margin to carry the state his percentage needs to increase close to 55-60 percent."

Short of a win, Obama-backing strategists are looking to secure enough delegates to blunt Clinton's likely success statewide. Seven of the state's 19 congressional districts yield 50 of the state's 103 elected delegates. All but one of those districts are concentrated in and around Philadelphia.

The 2nd Congressional District in Philadelphia has nine delegates at stake. To win six of them, Obama would have to win the district with 62 percent of the vote. Sestak's 7th Congressional District has seven delegates; to win five of them Obama would need more than 64 percent of the vote.

Quinnipiac University Polling Institute, showed that Obama barely led Clinton by two percentage points in the suburbs after having enjoyed an 11 point lead the week before.

And Delaware County, something of a lynchpin in the calculation, has mixed allegiances. There are 11 colleges or universities in Sestak's congressional district. The students and the upscale educated Democratic voters who live in the outer developments and old stone houses are part of Obama's core support. But the district has one of the highest percentages of residents with Irish ancestry — a Catholic concentration that together with blue collar workers and the elderly form a solid base for Clinton.

Clinton benefits from a fondness for her husband among many voters.

"I know that when Bill Clinton was in office, the economy was good, we weren't at war and I think he'll be helping her in some fashion with the Cabinet. So this week, a poll by the

30-year-old general manager of a convenience store.

Joe Kernen, waiting for his commuter train into Philadelphia at a station in Swarthmore, Pa., said he is supporting Clinton for "her experience as a senator, her intelligence and precision on the issues."

Still, polls show as much as 12 percent of voters in the Pennsylvania primary remain undecided. Asim Maqbool, a physician who teaches pediatrics at Children's Hospital in Philadelphia, spoke for many when he described his ambivalence.

"What impresses me most about Hillary is she has a number of facts and figures at her disposal. She's obviously been immersed in this sort of work on a different level than Sen. Obama," he said. But he spoke admiringly of Obama as a candidate who exudes optimism and vision.

"When you look at people like Barack Obama, he's more of a transformational candidate," he said. "Is this going to be his year? I don't know."

Perry

Continued from Page 7

said Jim Henson, director of the Texas Politics Project of the University of Texas at Austin, an online textbook for Texas Politics.

"She's been living on the fence as far as the governor's race goes," Henson said. "If Perry's still in it, one has to wonder is it still worth it to her."

On the other hand, skepticism among voters on whether anyone wants a single person holding the governor's office for three terms could work against Perry.

Perry's decision to run again "may be stark terror at the idea of having to get a real job," said Cal Jillson, a Southern Methodist University political science profes-

sor.

"There was some speculation early in the process he might be considered for vice president, but that I think was not really likely, so I think he's looking at what the next five years are going to look like and deciding to keep himself alive in Texas politics, so he needs to say he's going to run again," Jillson said.

"It's certainly not a lock he could win a third four-year term. It's clear this time Kay Bailey Hutchison is going to leave the Senate and come home to Texas and run for governor, and she is a more popular politician statewide than Perry is."

Associated Press Writer Suzanne Gamboa contributed to this report from Washington, D.C.

AXYDLBAAXR
is LONGFELLOW

One letter stands for another. In this sample, A is used for the three L's, X for the two O's, etc. Single letters, apostrophes, the length and formation of the words are all hints. Each day the code letters are different.

4-18 CRYPTOQUOTE

WJXYNHGSKNSKMM GM OEML
YSXLQKJ UYB XI MYBGSV Y
IKCCXU GM LXX CYRB LX
IXJH YS XAGSGXS. — UGCC

JXVKJM
Yesterday's Cryptoquote: THE WONDERFUL THING ABOUT A THEORY IS THAT ANY FOOL CAN PROPOSE ONE. — GARY B. WRIGHT

HAPPY BIRTHDAY for Saturday, April 19, 2008:
The dynamics of many of your relationships, friendships and business ties could transform this year. Attempt to walk in others' shoes more often, and you will gain enormous understanding. These insights will carry you much further than just relating to the person in question. Demands and pressure mount. Learn effective ways to eliminate stress. If you are single, many people could vie for the role of No. 1 in your life. Discriminate. If you are attached, work on nurturing each other more. LIBRA cares but demonstrates his or her feelings in a very different style.

The Stars Show the Kind of Day You'll Have:
5-Dynamic; 4-Positive; 3-Average; 2-So-so; 1-Difficult

ARIES (March 21-April 19)
★★★★ Let others understand the extremes in your life. Though not all bad, it does take some sense of balance. Other people play a strong role, whether at work or personally. A money matter comes to the forefront, if not today, then in the near future. Tonight: Let someone voice his or her opinion.

TAURUS (April 20-May 20)
★★★ Seize the moment to finish errands or a project that perhaps has been on hold for too long. Think "summer" and think "fun." Perhaps a diet or new exercise program is in order. Some of you might decide just to walk around the block. Tonight: Easy does it.

GEMINI (May 21-June 20)
★★★★ You are so playful, it is hard to imagine that you even have a serious side. Investigate rather than risk. You are

likely to be lucky, but you could have the reverse effect. Think positively. Take a walk. Use private time well. Tonight: Pretend to be your favorite romantic hero or heroine.

CANCER (June 21-July 22)
★★★★ Your sense of well-being comes from home and family. Is it surprising that is where you want to be? However, a recent bout of frustration could be causing crankiness. Tonight: Order in.

LEO (July 23-Aug. 22)
★★★★ Verbalize more. Though you can be vocal, you often don't express your deeper feelings. If you are not in touch with your inner emotional currents, you could say something you regret much later. Tonight: Bring friends together for dinner.

VIRGO (Aug. 23-Sept. 22)
★★★★ Use your conservative streak with funds. Someone might push you hard to spend. After you blow a wad of money, you could feel out of sorts. Having a strong sense of your priorities can prevent a problem. Tonight: Fun really doesn't need to cost.

LIBRA (Sept. 23-Oct. 22)
★★★★ You are the ringleader that everyone answers to. Your personality draws others like a magnet. You cannot be resisted by those who count. Listen to your inner voice when dealing with a boss or older person. Tonight: Nowhere else but in the limelight.

SCORPIO (Oct. 23-Nov. 21)
★★★★ Reach out for a dear friend or loved one at distance. He or she might surprise you with his or her response. Have you thought of going on a mini-trip and meeting up with this person? Others surround you. Tonight: Note the change

in a key partner.
SAGITTARIUS (Nov. 22-Dec. 21)
★★★★ As long as you are surrounded by people, a big smile can be found on your face. Don't allow someone's caustic remarks to get to you. For the sake of peace, let the comment go. Tonight: If you aren't going to a party, throw a spontaneous one!

CAPRICORN (Dec. 22-Jan. 19)
★★★★ Defer to someone you care deeply about. Sometimes you have difficulty rooting out a problem. If you are hitting a wall of anger, let it defuse before you have a much-needed talk. Schedule special time with an older relative or friend. Tonight: A must show.

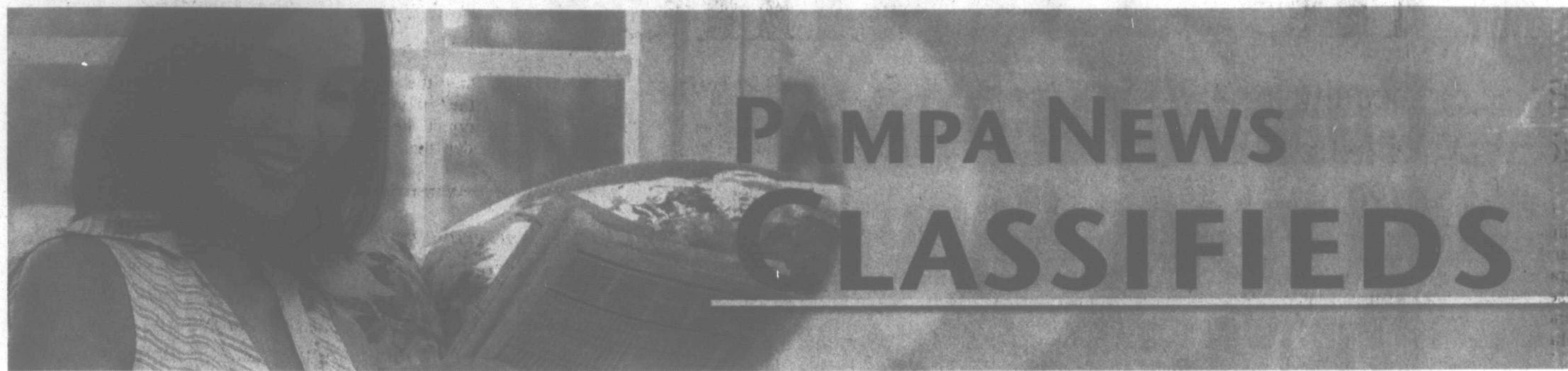
AQUARIUS (Jan. 20-Feb. 18)
★★★★ Plug your high energy into a hike or maybe explore a new section of town. Some might meet friends at an art gallery or go off on a similar adventure. Blend mind and body, and you will feel great. Tonight: Go to a new spot that might sound a touch exotic!
PISCES (Feb. 19-March 20)
★★★★ Work as a team with your loved one. Together you'll gain greater insight into a child and his or her behavior. Knowing when you have had enough might be more important than you realize. Tonight: Try togetherness.

HISTORICAL FIGURES BORN TODAY
Prohibition agent Eliot Ness (1903), political leader Roger Sherman (1721), chemist Glenn Seaborg (1912)

© 2008 by King Features Syndicate Inc.

5 Special
ADVERT
al to be
Pampa N
placed th
pa News
10 Lost/L
FOUND
Street,
2 dogs, 1
1 that loc
FOUND:
hua, black
ner Price
663-6725,
13 Bus. C
GREAT I
Pampa r
couple or
1875, 806-
14d Carp
Carpentry
placement
siding & t
gutters. I
669-9991,
CUSTOM
Remodeli
windows.
Shawn N
662-2977
OVERHE
REPAIR
struction.
14e Carp
NU-WAY
ice, carpe
walls, ce
doesn't co
steam use
owner-ope
3541, or
town, 800-
14h Gen
HOUSE
bricks or
Brothers,
9563, 806-
COX Fe
Repair ol
new. Free
669-7769.
CERAMIC
modeling
kitchen. T
dry wall.
665-3453
Jesus Barr
SQUARE
Remod. S
ing. 664-05
JH Cot
Stamps, d
tion, fence
Est. 806-3
14r Plow

TREN
SH
66
14s Plum
JACK'S
W. Fost
Plumbing,
constr., &
Lar
Heating/A
Borger F
19 Situ
CHILDCA
BLE. M
time care
vide Ref.
SITTING
ly. Light
665-5114
21 Help
N
Readers a
investigat
which req
advance t
services o
GREAT o
retired co
motel in I
incl. 665-
REAL E
maintenan
tools. App
fee, Mon.
665-4274.
MAINTEN
needed, r
for vari
Painting,
plumbing
have own
665-1875.
TAKING
all posi
Home F
W. Franci



PAMPA NEWS CLASSIFIEDS

5 Special Notices

ADVERTISING Material to be placed in the Pampa News, **MUST** be placed through the Pampa News Office Only.

10 Lost/Found

FOUND on Hobart Street, 2 dogs, 1 Dachshund and 1 that looks like Dixie.

FOUND: Female Chihuahua, black w/ brown. Corner Price Rd. & Alcock. 663-6725, 886-8626.

13 Bus. Opp.

GREAT investment opp. Pampa motel. Retired couple or individual. 665-1875, 806-383-1985.

14d Carpentry

Carpentry, Roofing, Replacement Windows, steel siding & trim. Continuous gutters. Jerry Nicholas 669-9991, 662-8169

CUSTOM Building & Remodeling. Replacement windows. Ref. avail. Shawn Deaver Const. 662-2977 or 665-0354.

OVERHEAD DOOR REPAIR Kidwell Construction. Call 669-6347.

14e Carpet Serv.

NU-WAY Cleaning service, carpets, upholstery, walls, ceilings. Quality doesn't cost...It pays! No steam used. Bob Marx owner-operator. 665-3541, or from out of town, 800-536-5341.

14h Gen. Serv.

HOUSE Cracking? In bricks or walls? Childers Brothers, Inc. 800-299-9563, 806-352-9563

COX Fence Company. Repair old fence or build new. Free estimates. Call 669-7769.

CERAMIC tile work. Remodeling floor, shower, kitchen. Texture, painting, dry wall. Free esti. Call 665-3453 leave message, Jesus Barraza.

SQUARE I Roofing & Remod. Sheet Rock Mud and Tape. Texture. Painting. 664-0968, 664-4259

JH Concrete Work. Stamps, driveways, addition, fences, patios. Free Est. 806-382-5408.

14r Plowing/Yard

*****FAITH*****
TREE & LAWN
SERVICE
662-1000

14s Plumbing/Heat

JACK'S Plumbing, 715 W. Foster, 665-7115. Plumbing, repairs, new constr., & septic sys.

Larry Baker Plumbing
Heating/Air Conditioning
Borger Hwy. 665-4392

19 Situations

CHILDCARE AVAILABLE. Mon-Sat. Night time care also. Can Provide Ref. 663-2214

SITTING with the Elderly. Light housekeeping. 665-5114 or 440-2971.

21 Help Wanted

NOTICE
Readers are urged to fully investigate advertisements which require payment in advance for information, services or goods.

GREAT opp. for single or retired couple; for 12 unit motel in Pampa. Lrg. apt. incl. 665-4274, 665-4274.

REAL Estate Co. needs maintenance man w/ own tools. Apply at 1347 Coffee, Mon.-Fri., 8am-6pm, 665-4274, 665-1875.

MAINTENANCE Man needed, remodeling exp. for various properties. Painting, drywall & plumbing a must!! Must have own tools & trans. 665-1875, 665-4274.

TAKING applications for all positions. Johnson Home Furnishings, 801 W. Francis.

21 Help Wanted

TEXAS Rose Steakhouse is now hiring Servers. Apply in person! No Phone Calls.

POST OFFICE NOW HIRING. Avg. Pay \$20 / hr. or \$57K yr. incl. Federal benefits and OT. Placed by AdSource, not aff. w/ USPS who hires. 1-866-483-6490.

EXP. Rouabout Hands and Backhoe Operator needed. Competitive wages & insurance. 669-7996.

C.N.A.'s needed. Full-time. Excellent Benefits Package. Or if you would like to become a Certified Nurse Aide, we can assist you with classes. St. Ann's Nursing Home, Panhandle, 537-3194.

L.V.N.'S needed. Full-time with Exc. Benefits. PRN Position also avail. St. Ann's Nursing Home, Panhandle, 537-3194.

WEEKEND RN, Fri. & Sat., 10:30pm-7am. St. Ann's Nursing Home, Panhandle, 537-3194. Would consider 2 RN's alternating weekends.

DRIVER Wanted. Local Transit Company has a driver position open. Applicant must have good driving record, stable work history, neat and clean in appearance. Must pass D.O.T. pre-employment drug screen and be acceptable to vehicle insurance company. Bi-lingual is a plus. General knowledge of surrounding areas is helpful. Apply in person at Panhandle Community Services, 411 N. Cuyler, Pampa TX. M-F 8:00-5:00. Equal Opportunity Employer.

Sonic Drive-In is now accepting applications for dependable, mature, enthusiastic, friendly crewmembers for all shifts, all positions. Apply in person at 1404 N. Hobart. EOE

CRALL
SHOP WELDERS
WANTED
Weld test required with stick & wire. 45-50 hrs. per week, most weeks off. Apply in person at:
2930 Hwy. 152 West
Pampa, TX
806-665-8446

DRIVER Wanted. Local Transit Company has a driver position open. Applicant must have good driving record, stable work history, neat and clean in appearance. Must pass D.O.T. pre-employment drug screen and be acceptable to vehicle insurance company. Bi-lingual is a plus. General knowledge of surrounding areas is helpful. Apply in person at Panhandle Community Services, 411 N. Cuyler, Pampa TX. M-F 8:00-5:00. Equal Opportunity Employer.

HOUSE Cracking? In bricks or walls? Childers Brothers, Inc. 800-299-9563, 806-352-9563

COX Fence Company. Repair old fence or build new. Free estimates. Call 669-7769.

CERAMIC tile work. Remodeling floor, shower, kitchen. Texture, painting, dry wall. Free esti. Call 665-3453 leave message, Jesus Barraza.

SQUARE I Roofing & Remod. Sheet Rock Mud and Tape. Texture. Painting. 664-0968, 664-4259

JH Concrete Work. Stamps, driveways, addition, fences, patios. Free Est. 806-382-5408.

14r Plowing/Yard
*****FAITH*****
TREE & LAWN
SERVICE
662-1000

14s Plumbing/Heat
JACK'S Plumbing, 715 W. Foster, 665-7115. Plumbing, repairs, new constr., & septic sys.

Larry Baker Plumbing
Heating/Air Conditioning
Borger Hwy. 665-4392

19 Situations
CHILDCARE AVAILABLE. Mon-Sat. Night time care also. Can Provide Ref. 663-2214

SITTING with the Elderly. Light housekeeping. 665-5114 or 440-2971.

21 Help Wanted
NOTICE
Readers are urged to fully investigate advertisements which require payment in advance for information, services or goods.

GREAT opp. for single or retired couple; for 12 unit motel in Pampa. Lrg. apt. incl. 665-4274, 665-4274.

REAL Estate Co. needs maintenance man w/ own tools. Apply at 1347 Coffee, Mon.-Fri., 8am-6pm, 665-4274, 665-1875.

MAINTENANCE Man needed, remodeling exp. for various properties. Painting, drywall & plumbing a must!! Must have own tools & trans. 665-1875, 665-4274.

TAKING applications for all positions. Johnson Home Furnishings, 801 W. Francis.

CRALL
SHEET METAL
WORKER
needed to roll flat sheet into cylinders. Exp. preferred, will train right person, minor welding required.
Apply at
Crall Products
2930 Hwy. 152 West
Pampa, TX
806-665-8446

CANADIAN Family Physicians is now taking applications for the position of LVN. Benefits package offered. Apply in person 1025 S. 3rd St., Canadian

Cable One is introducing new product to the Borger, Dumas & Pampa area. We are looking for an enthusiastic individual to sell Cable One services Door to Door. Earn a national average of \$28,000 to \$34,000 per year including a base salary, commissions and sales incentives. Must be able to work flexible hours & have a valid drivers license. All offers are dependent upon pre-hire physical, drug screening, background check and DMV screen. Apply at any Cable One office or fax resume to 806-665-5174 Attn: Donna Litterell. EOE.

21 Help Wanted

TOP Pay for general oil-field work, light rouabout work and relief pumping. Must have good driving record & be able to pass drug test. Call LeJan, Inc. at 806-665-0627 for application.

CALDWELL Production needs Pulling Unit Operator. 6 paid holidays. 1 week paid vacation per yr. Contact 595-0724.

COODER'S Dixie Cafe now hiring for Wait Staff, full-time, 18 yrs. or older. Apply in person, 2219 Perryton Pkwy. No phone calls.

CUSTOMODIAN WANTED White Deer ISD has immediate opening for full-time Custodian. Benefits incl. High School diploma or GED preferred. Call Mr. Danny Ferrell, Supt., 806-883-2311 x 103. Application avail. at Adm. Bldg., 601 Omohundro St., White Deer, TX 79097. EOE.

HOSPICE Care of the Southwest: RN & CNA, p-t & f-t positions avail. 866-654-2941.

Unarmed Security Officers needed for local post. Must pass: FBI background check, Texas DPS fingerprint check & drug test. Apply in person at
National Oilwell
Guard Shack
Hwy. 60, Pampa

MAKE UP TO \$900 A WEEK
Work for a local Well Service Company
*Must have a good driving record
*Must have a good background
*Must have at least a GED
*Must be at least 21 yrs. of age
Please contact
SOS STAFFING SERVICES
806-648-2633

YARD/SALES Person. Highly self-motivated. Full time. White House Lumber, 101 S. Ballard.

MOVING Sale, Sat. 8-Noon, 1301 Mary Ellen, complete 1940's Duncan Phyffe dining room set, bed, furn., misc.

3 Family Sale, Fri. 1-7 Sat. 9-7 213 N. Sumner. Lots of misc.

GARAGE Sale: Dale Earnhardt stuff & lots of misc; Sat. 9-3pm. 1326 N. Russell.

SAT. All day. 1138 S. Dwight. Stereo & end table & Misc items.

SAT. 7am-7 1230 Mary Ellen. Plus sz. women's clothes, lots of kitchen stuff, baby girls toys, etc.

ESTATE Sale. Some Antiques, Beauty products. Sat April 19th. 8-7 1133 Siroteo.

GARAGE Sale. A little bit of everything. Proceeds to go towards medical expenses for upcoming surgery. Saturday only. 8-5. 500 Duncan St.

BIG Yard Sale. 504 S. Finley. Furniture, a lot of everything. Friday & Saturday. 8-6

SALE
1100 E. Browning
Sat. & Sun. 8am-7
Baby items, furn., etc.

MOVING SALE
SAT. & SUN. 9-5pm
1824 LEA

BABY Items. Lots of Girls Clothes & more. 629 N. Cuyler. Saturday 8-3.

1305 Mary Ellen, 8am. Sat. thru Sun. Early birds welcome. Furniture, appliances, big stuff, lots & lots household.

CLOTHES for Women, Shoes, size 6 & 7. Baby clothes & boys & girls. 700 Naida. Sat. 10-7

77 Livest./Equip.
SERVICEABLE black Angus bulls for sale. Volume discounts. Contact Thomas Angus. 580-655-4318, 580-497-7217.

60 Household
Complete Bedroom Sets \$599-\$999
806-677-0400

BASSETT Couch & Loveseat for sale (in Pampa), \$150. Call 817-422-3841 (cell #).

69 Misc.
ADVERTISING Material to be placed in the Pampa News MUST be placed through the Pampa News Office Only.

ONLY One Left!
14x32 Office
Reduced to Sell!
Call 806-358-9659

RODS & reels, Coleman stoves, cast iron skillets, garden tools, big vise & drill, tools, etc. Red Barn, 1420 S. Barnes, Sat. 10-5. 665-2767.

WHIRLPOOL gas dryer-\$110. 4 Good Year P235 tires 75R16-\$60. Craftsman lawnmower, 6.0 engine-\$75. Boy's bike-\$20. Yard Machine mower, 3.5 engine-\$30. 665-5473.

FIREWOOD
For Sale
662-1000

69a Garage Sales
ESTATE Sale, 502 S. Bond, Clarendon, Fri. & Sat., 8am. Estate incl. 2 bdr., 1 ba. home, hand & power tools, fishing gear, guns, reloading equip., furn., leather & craft supplies, too much to list.
GARAGE Sale: Lots of Misc. Sat. 8am-4pm. 1818 Christmas

McLean Care Center has opening for Certified Nurse Aides. Call 806-779-2469 or come by 605 W. 7th, McLean.

21 Help Wanted

FIRST STATE BANK of MIAMI is now accepting applications for Teller/Book keeping Must have 10 key and GED or equivalent Previous Exp preferred Apply in person at 120 W. Kingsmill

OUTREACH Health Services needs Providers in Pampa. Please call 1-806-354-6815. EOE.

COODER'S Dixie Cafe now hiring for Wait Staff, full-time, 18 yrs. or older. Apply in person, 2219 Perryton Pkwy. No phone calls.

CUSTOMODIAN WANTED White Deer ISD has immediate opening for full-time Custodian. Benefits incl. High School diploma or GED preferred. Call Mr. Danny Ferrell, Supt., 806-883-2311 x 103. Application avail. at Adm. Bldg., 601 Omohundro St., White Deer, TX 79097. EOE.

HOSPICE Care of the Southwest: RN & CNA, p-t & f-t positions avail. 866-654-2941.

Unarmed Security Officers needed for local post. Must pass: FBI background check, Texas DPS fingerprint check & drug test. Apply in person at
National Oilwell
Guard Shack
Hwy. 60, Pampa

MAKE UP TO \$900 A WEEK
Work for a local Well Service Company
*Must have a good driving record
*Must have a good background
*Must have at least a GED
*Must be at least 21 yrs. of age
Please contact
SOS STAFFING SERVICES
806-648-2633

YARD/SALES Person. Highly self-motivated. Full time. White House Lumber, 101 S. Ballard.

MOVING Sale, Sat. 8-Noon, 1301 Mary Ellen, complete 1940's Duncan Phyffe dining room set, bed, furn., misc.

3 Family Sale, Fri. 1-7 Sat. 9-7 213 N. Sumner. Lots of misc.

GARAGE Sale: Dale Earnhardt stuff & lots of misc; Sat. 9-3pm. 1326 N. Russell.

SAT. All day. 1138 S. Dwight. Stereo & end table & Misc items.

SAT. 7am-7 1230 Mary Ellen. Plus sz. women's clothes, lots of kitchen stuff, baby girls toys, etc.

ESTATE Sale. Some Antiques, Beauty products. Sat April 19th. 8-7 1133 Siroteo.

GARAGE Sale. A little bit of everything. Proceeds to go towards medical expenses for upcoming surgery. Saturday only. 8-5. 500 Duncan St.

BIG Yard Sale. 504 S. Finley. Furniture, a lot of everything. Friday & Saturday. 8-6

SALE
1100 E. Browning
Sat. & Sun. 8am-7
Baby items, furn., etc.

MOVING SALE
SAT. & SUN. 9-5pm
1824 LEA

BABY Items. Lots of Girls Clothes & more. 629 N. Cuyler. Saturday 8-3.

1305 Mary Ellen, 8am. Sat. thru Sun. Early birds welcome. Furniture, appliances, big stuff, lots & lots household.

CLOTHES for Women, Shoes, size 6 & 7. Baby clothes & boys & girls. 700 Naida. Sat. 10-7

77 Livest./Equip.
SERVICEABLE black Angus bulls for sale. Volume discounts. Contact Thomas Angus. 580-655-4318, 580-497-7217.

60 Household
Complete Bedroom Sets \$599-\$999
806-677-0400

BASSETT Couch & Loveseat for sale (in Pampa), \$150. Call 817-422-3841 (cell #).

69 Misc.
ADVERTISING Material to be placed in the Pampa News MUST be placed through the Pampa News Office Only.

ONLY One Left!
14x32 Office
Reduced to Sell!
Call 806-358-9659

RODS & reels, Coleman stoves, cast iron skillets, garden tools, big vise & drill, tools, etc. Red Barn, 1420 S. Barnes, Sat. 10-5. 665-2767.

WHIRLPOOL gas dryer-\$110. 4 Good Year P235 tires 75R16-\$60. Craftsman lawnmower, 6.0 engine-\$75. Boy's bike-\$20. Yard Machine mower, 3.5 engine-\$30. 665-5473.

FIREWOOD
For Sale
662-1000

69a Garage Sales
ESTATE Sale, 502 S. Bond, Clarendon, Fri. & Sat., 8am. Estate incl. 2 bdr., 1 ba. home, hand & power tools, fishing gear, guns, reloading equip., furn., leather & craft supplies, too much to list.
GARAGE Sale: Lots of Misc. Sat. 8am-4pm. 1818 Christmas

McLean Care Center has opening for Certified Nurse Aides. Call 806-779-2469 or come by 605 W. 7th, McLean.

60 Household

Complete Bedroom Sets \$599-\$999
806-677-0400

BASSETT Couch & Loveseat for sale (in Pampa), \$150. Call 817-422-3841 (cell #).

69 Misc.

ADVERTISING Material to be placed in the Pampa News MUST be placed through the Pampa News Office Only.

ONLY One Left!
14x32 Office
Reduced to Sell!
Call 806-358-9659

RODS & reels, Coleman stoves, cast iron skillets, garden tools, big vise & drill, tools, etc. Red Barn, 1420 S. Barnes, Sat. 10-5. 665-2767.

WHIRLPOOL gas dryer-\$110. 4 Good Year P235 tires 75R16-\$60. Craftsman lawnmower, 6.0 engine-\$75. Boy's bike-\$20. Yard Machine mower, 3.5 engine-\$30. 665-5473.

FIREWOOD

For Sale
662-1000

69a Garage Sales

ESTATE Sale, 502 S. Bond, Clarendon, Fri. & Sat., 8am. Estate incl. 2 bdr., 1 ba. home, hand & power tools, fishing gear, guns, reloading equip., furn., leather & craft supplies, too much to list.

GARAGE Sale: Lots of Misc. Sat. 8am-4pm. 1818 Christmas

MCLEAN-Jasper Family Estate Sale: 405 W. 2nd, mobile home in rear. Follow signs. Sat. Only 8am.

HUGE Moving Sale. Everything Must Go! Boys & newborn-2T clothes, fax machine, furn., lots of misc. Sat. 8-7 2225 N. Dwight

1513 N. Zimmers. Saturday 9-2. Recliner, 2 desk, twin bed just like new, quilts, radio telephone, three tv cabinet, Revo scooter and batteries charging. New jumpstart hugo, one walker, boots, steel grip tubercul, old tires & toolbox, new items never been used.

MOVING Sale, Sat. 8-Noon, 1301 Mary Ellen, complete 1940's Duncan Phyffe dining room set, bed, furn., misc.

3 Family Sale, Fri. 1-7 Sat. 9-7 213 N. Sumner. Lots of misc.

GARAGE Sale: Dale Earnhardt stuff & lots of misc; Sat. 9-3pm. 1326 N. Russell.

SAT. All day. 1138 S. Dwight. Stereo & end table & Misc items.

SAT. 7am-7 1230 Mary Ellen. Plus sz. women's clothes, lots of kitchen stuff, baby girls toys, etc.

ESTATE Sale. Some Antiques, Beauty products. Sat April 19th. 8-7 1133 Siroteo.

GARAGE Sale. A little bit of everything. Proceeds to go towards medical expenses for upcoming surgery. Saturday only. 8-5. 500 Duncan St.

BIG Yard Sale. 504 S. Finley. Furniture, a lot of everything. Friday & Saturday. 8-6

SALE
1100 E. Browning
Sat. & Sun. 8am-7
Baby items, furn., etc.

MOVING SALE
SAT. & SUN. 9-5pm
1824 LEA

BABY Items. Lots of Girls Clothes & more. 629 N. Cuyler. Saturday 8-3.

COME CELEBRATE WITH US 81 YEARS SERVING PAMPA

**April 19, 2008
10am to 2pm
Pokey the Clown
Food • Drinks • Fun**



NEW 2007 PONTIAC SOLSTICE

MSRP \$28,030
C/S DISC. \$1,200
REBATE \$1,000
*GM OWNER LOYALTY \$1,000
Sell Price \$22,839**
stk# P07001



NEW 2007 BUICK LUCERNE

MSRP \$34,010
C/S DISC. \$1,000
REBATE \$2,500
*GM OWNER LOYALTY \$1,500
Sell Price \$28,210**
stk# B00016



**SALE ENDS
APRIL 30, 2008**

NEW 2008 CHEVROLET EQUINOX AWD LT

MSRP \$27,745
C/S DISC. \$1,300
REBATE \$1,000
*GM OWNER LOYALTY \$1,000
Sell Price \$24,445**
stk# C08059



NEW 2008 CHEVROLET EQUINOX AWD

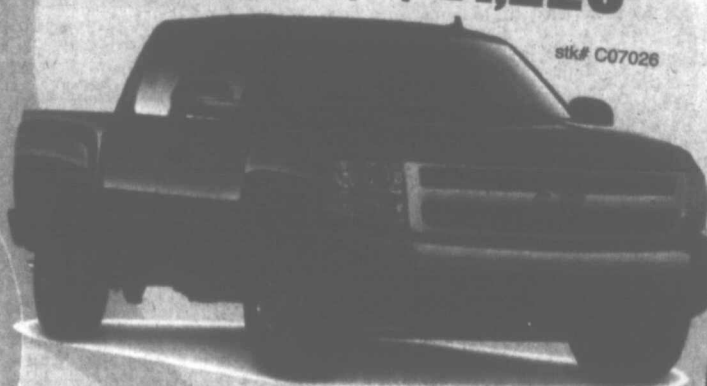
MSRP \$27,745
C/S DISC. \$1,000
REBATE \$1,000
*GM OWNER LOYALTY \$1,000
Sell Price \$24,745**
stk# C08059



**CULBERSON-STOWERS
ADDITIONAL LOYALTY
CASH BACK \$500
LIMITATIONS MAY APPLY**

NEW 2007 CHEVROLET CREW CAB 2WD

MSRP \$28,120
C/S DISC. \$1,000
REBATE \$3,000
*GM OWNER LOYALTY \$2,000
Sell Price \$21,220**
stk# C07028



NEW 2007 GMC CREW CAB SLE1 2WD

MSRP \$30,240
C/S DISC. \$1,900
REBATE \$3,000
*GM OWNER LOYALTY \$2,000
Sell Price \$23,340**
stk# C07025



NEW 2008 CHEVROLET HHR LT

MSRP \$23,100
C/S DISC. \$1,000
REBATE \$300
*GM OWNER LOYALTY \$1,000
Sell Price \$20,660**
stk# C07193



**NEW 2008 GMC ACADIA FWD SLE
CAR & CHASSIS • 6.1L GVM • 12,000LBS**

MSRP \$31,330
C/S DISC. \$750
REBATE \$500
*GM OWNER LOYALTY \$1,000
Sell Price \$29,080**
stk# G08044



NEW 2008 CHEVROLET TAHOE 4WD LS

MSRP \$40,235
C/S DISC. \$2,700
REBATE \$2,000
*GM OWNER LOYALTY \$1,000
Sell Price \$34,535**
stk# C08025



NEW 2008 GMC YUKON 2WD

MSRP \$37,125
C/S DISC. \$2,500
REBATE \$2,000
*GM OWNER LOYALTY \$2,000
Sell Price \$32,625**
stk# Q07114



* GM OWNER LOYALTY. MUST OWN GM PRODUCT 99 OR NEWER. DOES NOT NEED TO BE TRADED IN.
** WAC PLUS TT&L

CULBERSON-STOWERS, INC.

805 N Hobart • 665-1665 • www.culbersonautos.com

