

Sunday's Weather

HIGH
71
LOW
46

See expanded weather on Page 2

DOUG BOYD MOTOR CO.

Open 9 am - 6 pm Monday - Saturday • Hwy 60 • Hwy 70 • Pampa 1A • 669-6067 • www.DougBoydMotor.com

BUY HERE • PAY HERE • NO CREDIT CHECK

WTR

POWER EQUIPMENT

SALES & RENTAL

103 S. HOBART
665-2366

THE PAMPA NEWS

Sunday, February 24, 2008 Volume 103 • No. 277 50¢ Daily • Sunday \$1.50

We're Small But Good!
Friendly Faces and Competitive Prices

36+ Years Experience

Ceramics • Laminate
Hard Wood • Carpet

The Floor Store
2100 Perryton Parkway
665-4455

Floor Care Essentials by Mohawk
Professional Carpet & Upholstery Cleaning System

FREE PROFESSIONAL ESTIMATES

CHILDERS BROTHERS INC.
HOUSE LEVELING

Uneven Floors
Floor Bracing
Cracks In Bricks
Sinking Doors & Windows
Interior Wall Cracking

FREE ESTIMATES

1-800-299-9563
WWW.CHILDERSLEVELING.COM

WE CARRY THE LARGEST SELECTION AND THE LATEST STYLES OF FLOORING IN STOCK WITH THE BEST PRICES!

One STOP Flooring

1533 N. HOBART
MONDAY-FRIDAY 9-5
SATURDAY 10-1

24HR WATER EXTRACTION
RUG RATS

Professional Carpet & Air Duct Cleaning

FREE ESTIMATES
Ronnie Harvill Owner
665-1976 or 662-9219

Texas FURNITURE

PROUDLY SERVING PAMPA SINCE 1932

1415 N. HOBART • 806-665-1623
MONDAY-SATURDAY 9:00-5:30

Ashmore & Associates

INSURANCE AGENCY, LLC

1224 North Hobart
NBC Plaza 2, Suite 11
Pampa, TX • 806-688-7081
www.ashmoreassociates.com

"For your Business & Personal Needs"

JIM BRUTON

Rebecca McCall
Sales - Associate

PAMPA REALTY INC.

312 N. Gray
Pampa, TX 79065
665-6007
Fax: 665-0005
cell: 665-8190

Thomas Automotive Inc.

Premium Auto Service and Repairs

665-4851
217 E. ATCHISON
Monday - Friday • 8am - 6pm

Still Time To Plant Trees!
Come by for a great selection!

West Texas Landscape

120 S Hobart St • 669-0158 • Mon-Sat • 9am - 6pm

Second aggravated robbery trail set to begin

By **MARILYN POWERS**
Staff Writer

The trial of the second of three men to be charged in an incident involving aggravated robbery and aggravated assault at a Pampa home in 2006 is scheduled to begin with jury selection at 9 a.m. Monday in the district courtroom on the third floor of Gray County Courthouse, 205 N. Russell.

Carlos Jose Cordova of Pampa will be tried on

charges of two counts of aggravated robbery, a first-degree felony, and two counts of aggravated assault, a second-degree felony.

He was indicted on the charges by a Gray County grand jury on Oct. 3, 2006 in 223rd District Court in Pampa. Bond was set at \$300,000.

At about 9 a.m. May 21, 2006, two armed men broke into the home of Layne and Mae Conner in the 1100 block of East Francis and

took a blue Citibank bag with \$100 and \$50 bills totaling \$4,000. A third man was believed to be the driver for the group.

One of the two armed men fired a shot at Layne Conner in the course of the robbery. Conner was not injured as a result of the shot. Also present in the home at the time of the robbery were Mae Conner and an 8-year-old grandson of the Conners, neither of whom were injured during the incident.

Also indicted in connection with the robbery were Davey Enriquez and Adam Refugio Aguilar, both of Amarillo. Both were charged with two counts of aggravated robbery and two counts of aggravated assault. Enriquez' charges were enhanced because on Oct. 18, 1991, in 222nd District Court of Deaf Smith County, he was convicted of the felony offense of aggravated assault with a deadly weapon. He was also con-

victed Jan. 9, 2002 in 251st District Court in Potter County of the felony offense of burglary of a habitation.

Cordova is the second of the three to go to trial concerning the Pampa robbery. Enriquez was convicted in January and sentenced to four 99-year prison terms at the end of his second trial. The first trial ended in a hung jury July 25, 2007 with the jury deadlocked at 10 to two.

Abandoned



Dumpy hopes to have a new home soon.

Puppy rescued from dumpster

By **KERRI SMITH**
Managing Editor

A worker at Coronado Shopping Center found something unexpected in a trash dumpster and Pampa Police and Animal Control officers are asking for help in solving this mystery. What the worker found Friday morning was a puppy that had been placed in a box and then inside the dumpster. Luckily, the puppy was still alive.

A representative from animal control said the worker called the police department to report what he had found and they in turn notified animal control.

When the worker found the puppy inside of the box, he also found an unopened bag of dog food, which did the puppy no good since he could not get to it.

"If this puppy had been in the dumpster very long, he would have either starved to death or died from dehydration since there wasn't any water nearby," the police department representative said. "We just couldn't believe how someone could do this to such a sweet innocent puppy. The least they could have done was to take the puppy to animal control so they could

have found a home for him or at least put him down humanely if no one adopted him."

The light brown puppy, which is a male, is believed to be approximately 7 weeks old. Animal control officers believe he is some type of terrier or terrier mix. The puppy was going to a local vet Friday to be checked out and make sure he was in good health.

The representative from the police department said she is planning on taking the puppy home with her, so he is

See **PUPPY**, Page 3

GIFT OF LIFE

Coffee bloodmobile to accept donations

By **KERRI SMITH**
Managing Editor

Coffee Memorial Blood Center will be hosting another blood drive in Pampa. This time they will be accepting blood donations at their "Bloodmobile" from 3 - 7 p.m. Monday at the Wal-Mart parking lot.

Every eligible donor who presents to donate blood will receive a free T-shirt. You can stop by any time during these hours or you can also make an

appointment ahead of time by calling their office at 1-877-574-8800.

Suzanne Talley, marketing and community relations for Coffee Memorial, said the need for blood donations is always present.

"The need for donors is real," Talley said. "There is no substitute for blood. It can only come from volunteers, so we would appreciate the support for the patients of the high plains region. Please come by and give the gift of life."

Special delivery



Courtesy Photo

Junior CASA Volunteers do many fundraisers to raise money for CASA, which helps children who are victims of abuse. For one of those fundraisers, CASA members delivered flowers on Valentine's Day for Brandon's Flowers.

Stephen Marszal delivers a dozen lavender roses to Kayla Mendoza at her home.

The Pampa News welcomes new publisher from Indiana

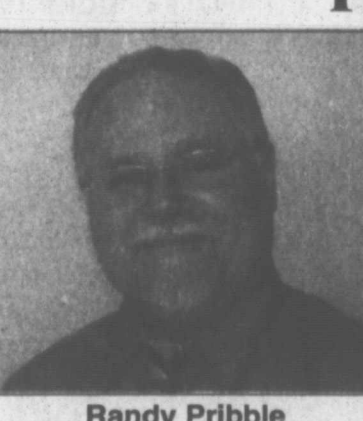
By **KERRI SMITH**
Managing Editor

Randall Pribble has been named the new publisher of The Pampa News. Pribble, 53, is the former publisher of The Crawfordsville Journal Review in Indiana, and former editor and publisher of the Perryville Republic Monitor in Missouri.

"It is great to be back in Texas," Pribble said. "My

wife and I lived in South Texas for three years in the 1970's during my tour of duty in the U.S. Navy and we loved the state and the friendly people. I'm looking forward to working with the wonderful staff at The Pampa News."

The publisher is a 1980 graduate of Southeast University in Cape Girardeau, Mo. He and his



Randy Pribble

wife, Sue, have been married 34 years. They have two daughters, Rachel, 19 and Sarah, 25. They also have a granddaughter, Xochi, 4.

"Right now, I'm simply trying to meet local people and learn about the community from my talented associates on the newspaper staff," Pribble said. "Buying a home and get-

ting my family settled is also on the immediate agenda. Sue is still in Indiana, working with a realtor to sell our home there. She will be joining me here soon.

"We both look forward to becoming involved in the community," he added. Pribble replaced Sean Smith as publisher. Smith moved to Crawfordsville to take the publisher's position there.

Still Time To Plant Trees!
Come by for a great selection!

West Texas Landscape

120 S Hobart St • 669-0158 • Mon-Sat • 9am - 6pm

TOP OF TEXAS

YOUR COMPLETE ICE COMPANY

(806) 665-2061




1945 N. Hobart
Pampa, TX 79065

Sales • Service • Lease Ice Equipment
Merchandisers • Package Ice • We Deliver

The Chamber wants to say Thank You to all of the Banquet table sponsors.

Innovative Staffing Solutions • The Pampa News • FirstBank Southwest • Great Plains Abstract & Title • Clarendon College • Edward Jones Investments • National Bank of Commerce • Century 21 • Girls Scouts Texas Oklahoma Plains • Millex Corporation • City of Pampa • Halliburton Services • Shepard's Crook Nursing • Duncan, Fraser & Bridges • Accolade Home Care • Roberta's Flowers • BSA Hospice • National Oilwell Varco • Pampa Economic Development Corporation • Quentin Williams Realtors • Atmos Energy

NEXT DAY FORECAST

Sunday	Monday	Tuesday
		
Sunny	Partly cloudy	Partly cloudy

Sunday: Mostly sunny, with a high near 73. Wind chill values between 32 and 41 early.
 Sunday Night: Partly cloudy, with a low around 48. South-southwest wind between 15 and 20 mph, with gusts as high as 25 mph.
 Monday: Partly sunny, with a high near 63. Northwest wind between 15 and 20 mph, with gusts as high as 30 mph.
 Monday Night: Mostly cloudy, with a low around 29. North wind between 5 and 10 mph.
 Tuesday: Partly sunny, with a high near 46. Northeast wind between 10 and 20 mph, with gusts as high as 25 mph.
 Tuesday Night: Partly cloudy, with a low around 29. North-northwest wind between 5 and 15 mph, with gusts as high as 20 mph.

Ⓢ This information brought to you by...

Preneed Arrangements Available Including Caskets
 Special Veterans Garden
Memory Gardens
 Cemetery & Mausoleum of Pampa
 665-8921
 23rd St and Price Rd
 www.memory-gardens.tripod.com

Obituaries

Venice M. Wright, 91
 McLEAN — Venice M. Wright, 91, died Friday, Feb. 22, 2008, at Amarillo. Services are pending with Bailey-Ware Funeral Home in McLean.

Services tomorrow

HAPEMAN, Mahota Maxine — 10 a.m., Calvary Baptist Church, Pampa. Graveside services, 3 p.m., Fairlawn Cemetery, Elk City, Okla.

Roy W. Feazel, 75

Roy W. Feazel, 75, of Pampa, died Friday, Feb. 22, 2008, in Pampa. Services are pending with Carmichael-Whitley Funeral Directors.
 Mr. Feazel was born on Jan. 24, 1933, in Wetumka, Okla. He came to Pampa in 1951 from St. Jo, Texas. He married Dixie De Foor on June 6, 1953, in Borger. She preceded him in death on Jan. 16, 2004.
 He worked for Cabot Carbon Black for 25 years as an ATU operator. After retiring from Cabot, he owned and operated the Minit Mart and GT Mart for eight years.
 He was a member of Mary Ellen and Harvester Church of Christ and was a veteran of the U.S. Army during the Korean Conflict.

Survivors include one daughter, Janet Williams and husband Randall of Pampa; one sister, Virginia Wallace of San Antonio; two grandsons, Joey Slagle and wife Michele and Jeremy Teakell, all of Pampa; one granddaughter, Jennifer Slagle and husband Tim of Pampa; and by five great-grandchildren, Jaslynn and Jarren Slagle, and Jaylee, Timmy and James Remington.
 He was preceded in death by a daughter, Susan Teakell; and by a grandson, Jason Teakell.
MEMORIALS: BSA Hospice, 800 N. Sumner, Pampa, TX 79065.
 —Sign the on-line register book at www.carmichael-whitley.com.

Mahota Maxine Hapeman, 88

Mahota Maxine Hapeman, 88, of Pampa, Texas, died Feb. 22, 2008, at Pampa.
 Services will be at 10 a.m. Monday, Feb. 25, 2008, at the Calvary Baptist Church with the Rev. Dave Adkins, retired Baptist minister, the Rev. Richard Bartel, pastor of Calvary Baptist Church, and the Rev. Walt Perry, a Baptist minister, officiating.
 Graveside services will be at 3 p.m. Monday at Fairlawn Cemetery in Elk City, Okla., under the direction of Carmichael-Whitley Funeral Directors.
 Mrs. Hapeman was born Nov. 23, 1919, in Roger Mills County, Okla. She married George Wilbur Hapeman on Feb. 24, 1943, in Corpus Christi. He pre-



ceded her in death on June 25, 1977.
 She was a homemaker and a member of Calvary Baptist Church. She was known as the "Card Lady."
 Survivors include two sons, Wilbur Hapeman of Pampa and Gene Hapeman of Jacksboro; one daughter, Mahota Stamper of Cheyenne, Okla.; seven grandchildren; and 14 great-grandchildren.
 She was preceded in death by her parents, Leonard and Clara Black, by two brothers and one sister.
MEMORIALS: Calvary Baptist Church, 900 E. 23rd St., Pampa, TX 79065.
 —Sign the on-line register book at www.carmichael-whitley.com.

Emergency Services

Gray County Sheriff's Office recorded the following arrests before 8 a.m. Saturday.

Friday, Feb. 22
 Candace May Velasquez, 19, of Pampa was arrested by Pampa Police Department on a capias pro fine for minor in possession of alcohol.
 Ivan Joseph Eblin, 22, of Pampa was arrested by Pampa PD and charged with no driver's license, no insurance, expired inspection and expired motor vehicle registration.
 Lauren Heath Holtman, 28, of Pampa was arrested by Pampa PD and charged with possession of drug paraphernalia.
 Desmond Parnell Jackson, 44, of Pampa was arrested by Pampa PD on two motions to enforce for child support.
 Randy Harris, 50, of Pampa was arrested by GCSO on a capias pro fine for no valid driver's license.
Saturday, Feb. 23
 Fred Henry Pitt, 49, of McLean was arrested by GCSO and charged with no driver's license, expired registration and expired driver's license.
 Pampa Fire Department reported the following calls during the 24-hour period ending at 7 a.m. Saturday.

Friday, Feb. 22
 7:49 a.m. — One unit and three personnel responded to the 1900 block of North Banks on a call for lifting assistance.
 4:39 p.m. — One unit and three personnel responded to Perryton Parkway and 25th on a motor vehicle accident.
 7:35 p.m. — Two units and seven personnel responded to the 2300 block of Beech on an electrical fire.

Hoover Volunteer Fire Department reported the following calls for the month of January.

Friday, Jan. 4
 12:36 p.m. — Seven units and 13 personnel responded to a grass fire at County Road D and County Road 3.

Saturday, Jan. 5
 12 p.m. — Three units and six personnel responded to a grass fire in McLean for mutual aid.
 1:40 p.m. — Six units and 12 personnel responded to a grass fire on Highway 70 adjacent to County Road H.
 4:05 p.m. — One unit and two personnel responded to a rekindle on Highway 70 adjacent to County Road H.
 4:25 p.m. — Three units and six personnel responded to a good intent call at Highways 70 and 749.

5:15 p.m. — Three units and six personnel responded to a grass fire at Fritch for mutual aid.

Tuesday, Jan. 8
 3:36 a.m. — Six units and 14 personnel responded to a train fire at the Hoover Crossing, 8800 Highway 2391.

Friday, Jan. 11
 9:45 a.m. — Three units and five personnel responded to a motor vehicle accident at Highway 152 and County Road 21.

Saturday, Jan. 12
 1:20 p.m. — Two units and four personnel responded to a motor vehicle accident at Highway 749 and County Road 9.

Monday, Jan. 14
 3:10 p.m. — Three units and five personnel responded to a grass fire at Quarter Horse Road and Harold Road.
 5 p.m. — Three units and five personnel responded to a good intent call concerning a gas leak at 7600 Highway 70.

Tuesday, Jan. 15
 10:28 a.m. — Two units and four personnel responded to a hay fire at Highway 749 and County Road I.

Sunday, Jan. 20
 4:45 p.m. — Three units and six personnel responded to a grass fire at Quarter Horse Road and Lister Road.

Thursday, Jan. 24
 11:48 a.m. — Three units and six personnel responded to a tractor fire at Highways 152 and 60.
 2:15 p.m. — Six units and 11 personnel responded to a grass fire on Berry Road at Keller Estates.

Saturday, Jan. 26
 1:20 p.m. — Three units and five personnel responded to a motor vehicle accident at Highways 273 and 749.
 3:40 p.m. — Three units and five personnel responded to a grass fire at County Road H 1/2 and County Road 5 1/2.

Sunday, Jan. 27
 5:30 p.m. — Two units and four personnel responded to a grass fire at Slapout, Okla., for mutual aid.

Monday, Jan. 28
 11 a.m. — Four units and seven personnel responded to a grass fire at County Roads 11 and K.
 2:30 p.m. — Nine units and 17 personnel responded to a grass fire at 7600 Highway 70.

Tuesday, Jan. 29
 12:30 a.m. — Three units and five personnel responded to a good intent call at Highways 749 and 2375.
 5:40 a.m. — Four units and eight personnel responded to a grass fire at 7600 Highway 70.
 7:45 a.m. — Two units and four personnel responded to a grass fire at County Roads 11 and K.
 2:28 p.m. — Five units and nine personnel responded to a grass fire at County Roads 1 and E.
 8:32 p.m. — Four units and seven personnel responded to a grass fire at County Road 1 and the Carson County line.

Wednesday, Jan. 30
 5:40 a.m. — Six units and 10 personnel responded to a grass fire at County Road 1 and the Carson County line.
 7 a.m. — One unit and two personnel responded to a good intent call at County Roads 11 and K.
 1:20 p.m. — Two units and four personnel responded to a motor vehicle accident at Highway 152 and County Road 2.

Thursday, Jan. 31
 9:29 a.m. — Six units and 13 personnel responded to a structure fire at 7989 Highway 749.

PRESTIGE
AUTOBODY & ACCESSORIES
 101 S. HOBART 806-665-3500
B & W HITCH PRODUCTS • WE INSTALL!

Come Experience Canadian!

Liquid Lifts, Botox, Juvederm, Photofacials for Age Spots, Laser Hair Removal, Rosacea Photofacials, Spider Vein Treatment, Laser Peels, Advanced Acne Treatment, Bio-Identical Hormones, Medical Grade Skin Care Products.

John Murphy, MD
 215 Main Street
 Canadian, Texas
www.dermcan.com
 877.281.DERM 806.323.8365

Available March 1-8 in Canadian by appointment 9 am - 8 pm

dermOnivo
 laser & medical skin care

Fairview Cemetery
The Only Pampa Cemetery that

- Has paved Roads
- Offers upright Monuments
- Is a non-profit organization
- Is regulated by a Board of directors for perpetuity

"Your Best Cemetery Choice"

Fairview Cemetery Association
 1500 Duncan • 665-2412
www.fairviewcemetery.org

THANK YOU SO MUCH FOR ALL YOUR PRAYERS.....Jameson Thomas Finley is home from his second open-heart surgery and doing GREAT and with the Grace of GOD and so many prayers, his family was lifted up during this whole experience and we appreciate everyone who kept him on their prayer list.

Many thanks & to God Be the Glory..... Jameson's Family

THANKS

CITY BRIEFS

The Pampa News is not responsible for the content of paid advertisement

COMPUTER SICK? Call Mike, 665-2760. On-site repair. Custom built computer with Win XP or Vista.

BASKETBALL FLIP-FLOPS—really cute, at Carousel Expressions!

I WILL clean your house. References. 665-1848.

PAMPA TEACHERS Federal Credit Union 71st Annual meeting, Mon. Feb 25th 7pm, at MK Brown in the Heritage Room. All members in good standing are welcome. Fun & Prizes including: digital camcorder, GPS system, PSP Playstation, IPOD Nano, Gift cards & cash.

SHIH-TZU FOR sale to good home. Great with children and loves cats. Owners must move and can't take family pet. 440-2218

TRI-COLOR FE. Shih-Tzu puppy, for sale, 662-4731.

IN PAMPA News Bible Verse Contest— the word "delight" should be Number 18, and the word "soul" should be Number 17. Sorry for any inconvenience.

COTTONWOOD SPRINGS is now booking receptions, reunions, rehearsal dinners and parties! 665-8217

DIAMONDS & Door-knobs Gifts, Decor, and much more!! Jewelry repairs done in house. 1508 N. Hobart, 665-5090.

MARY ELLEN & Harvester Clothing Room now in Church Building. Middle dble. doors on front of the church, watch for signs. Open Tues., Feb. 26th, 9-1pm.

DRASTIC MARK Downs on Winter clothing. Check out new Spring & Summer wear. Also Maternity Wear. Tralee Re-sale Shop.

NOW BOOKING 120 N. Cuyler Str. for weddings, reunions, parties or meetings. 665-3943 or 662-9007.

ENVIRONMENTAL

Alaska fights attempt to protect polar bears, might effect pipeline

ANCHORAGE, Alaska (AP) — The polar bear can be found in just one place in America — Alaska — and is perhaps as much a symbol of the state as, say, alligators are of Florida. So you might think Alaska's politicians would be pounding on doors in Washington to protect it.

You'd be wrong. As the federal government decides whether to list polar bears as threatened under the Endangered Species Act, Gov. Sarah Palin and the state's Republican congressional delegation are solidly opposed to the idea.

Listing the polar bear would trigger a plan to protect the shrinking Arctic sea ice. And that, Alaskans fear, could dim chances for a proposed project that could bring the state's next big boom: a natural gas pipeline that would tap the North Slope's vast reserves.

"This is yet another example of how a law with the best of intentions has been subverted by the lawyers for the extreme environmental organizations and the liberal Democratic leadership," Rep. Don Young said.

Alaska's elected officials reject climate models that predict a complete summer meltdown of the polar ice cap by 2030 or sooner. They also dispute a U.S. Geological Survey study that predicts polar bears in Alaska could be wiped out by 2050.

Listing polar bears as threatened "would establish a dangerous precedent based on mathematical models instead of biological observations," Sen. Ted Stevens said Tuesday.

Similarly, Alaska political leaders have ardently supported the opening of the Arctic National Wildlife Refuge to oil drilling, despite strong opposition from environmentalists and politicians in the Lower 48. The issue is still before Congress.

Andrew Wetzler of Natural Resources Defense Council, one of the groups that sued to protect polar bears, said the state's position, scientifically speaking, is "mostly gibberish" and "motivated by economic concerns and political concerns."

He said that there is considerable evi-

dence of a decline in polar bears in Canada and Alaska — with some of the animals starving, turning to cannibalism and drowning — and that most scientists believe the drop-off is directly related to the loss of sea ice.

Listing a species as "threatened" means it is likely to become endangered. "Endangered" is even more dire and means a species is in danger of extinction throughout all or much of its range.

The U.S. Fish and Wildlife Service missed its Jan. 9 deadline for a decision on the polar bear. Director Dale Hall said that the agency had never declared a species threatened or endangered because of climate change and that it needed more time to "do it right and have it explained properly to the public."

Alaska was built on booms — fur, gold, military expansion, oil — and the state is in need of another one.

Nearly 90 percent of Alaska's unrestricted revenue for next year is projected to come from the oil industry, and state leaders fear the not-so-distant future when oil earnings fall dramatically with a drop in production.

The mighty trans-Alaska pipeline has been running at less than half its capacity since 2000, and only high oil prices have prevented a dive in state income.

The proposed \$26 billion natural gas pipeline would be the largest private-sector project ever undertaken in North America. It would tap 35 trillion cubic feet of proven natural gas reserves on Alaska's North Slope.

Summer sea ice in Alaska dropped last year to its lowest level in 38 years of satellite record-keeping, falling to 1.65 million square miles, or about 1.15 million square miles less than the average from 1970 to 2000. The loss is bigger than the combined area of Alaska, Texas, California and Georgia.

A 2006 USGS study put the number of polar bears in the Beaufort Sea at 1,526, compared with 1,800 in 1986. But USGS researchers said the studies used different counting methods and the numbers cannot be directly compared.

Winners announced for 'Sweetheart Sweepstakes'

The Pampa News and many of their local advertisers held a "Sweetheart Sweepstakes" for Valentine's Day in which residents could go to the different businesses and register for prizes. The winners were drawn and following is a list of those winners and the gifts they received. Congratulations and enjoy your prizes.

- Holmes Sporting Goods - Suzie Terry, won a \$50 gift certificate
- Wayne's Western Wear - Jana Vinson, won a \$50 gift certificate
- Carousel Expressions - Susie Johnson, won a purse
- Joy's Unlimited - Pam Story, won a \$50 gift basket
- Roberta's Flowers - Cheryl Feazel, won one dozen roses
- Rheams Diamond Shop - Elanore Haynes, won a heart necklace
- Prestige Autobody - Stacie Winegeart, won window tint
- West Texas Landscape - Pam Been, won a \$50 gift basket
- Pampa Communications & Trends - winners names were unavailable

Pa+MPA

Pampa ISD Events for the week of FEBRUARY 25-29

February 25-Holiday-No School

Pampa High School

- February 26 • 11th Grade Pre-Enrollment
- February 26 • 9th -11th Grade Parent Meeting • 7:00pm
- February 27 • 10th Grade Pre-Enrollment
- February 27 • Lady Harvester Basketball Banquet
- February 28 • 9th Grade Pre-Enrollment
- February 28 • Evening on Broadway • 7:30pm • MK Brown
- February 28 • Speech TFA State

Pampa Jr. High

- February 26 • Student Council • 1:55 pm
- February 28 • Academic Pep Rally • 2:35 • Auditorium

Austin Elementary

- February 26-29 • Book Fair

Lamar Elementary

- February 26& 28 • Kid's Cafe • 5:30-6:30 pm
- February 27 • Head Start Field Trip • 8:30am • Discovery Center in Amarillo

Wilson

- February 26 • ESL • 1:30-2:30pm
- February 27 • Kid's Cafe • 5:30-6:30 pm
- February 27 • Power Hour • 2:00pm

Rare red panda at zoo

NEW YORK (AP) — All the other animals must be green with envy.

The one getting the most attention at Brooklyn's Prospect Park Zoo these days is Mao Mi, a rare red panda that just arrived from his former home at Michigan's Binder Park Zoo.

Red pandas are endangered, and Mao Mi is part of

a Wildlife Conservation Society breeding program that's trying to ensure the survival of threatened or endangered species.

Mao Mi has black legs, a furry reddish-brown face and body and white ears.

Prospect Park zookeepers said Thursday that their cuddly cutie is very playful and loves to climb trees and explore his new home.

Puppy

Continued from Page 1

expected to be adopted as soon as possible, as long as her other dog accepts the new family member.

He already has a name, which she felt was appropriate, "Dumpy."

Even though he probably has a home, the police and animal control officers would like for anyone that

has information on who placed the animal in the trash to call them and let them know.

The puppy was placed inside a dumpster on the back side of Coronado Shopping Center, next to Sumner Street. It is not known how long he was in the trash, but probably not too long.

Anyone with information about this incident should call animal control at 669-5775 or Pampa Police Department at 669-5700.

Hrycyk Financial LLC

An Independent Financial Planning Firm

Stephanie A. Hrycyk, Ph.D.
over 20 years experience

3000 W. 27th Avenue
Amarillo, Texas 79109

An investment in knowledge pays the best interest
Benjamin Franklin

401K, IRA AND PENSION ROLLOVERS • INHERITANCE • SELLING A BUSINESS

Trust, but verify.

401K, IRA AND PENSION ROLLOVERS

INHERITANCE

SELLING A BUSINESS

Hrycyk Financial believes the most critical step is to earn our client's trust. We encourage our clients to examine, investigate and question our approach.

We are committed to providing you the highest quality service and communication with a no nonsense, no-pressure approach to meet your individual financial objectives.

INVEST IN YOUR RETIREMENT

For a free consultation call

1-800-677-0895 • 1-800-733-5584

Securities offered by Gramercy Securities, Inc. Member FINRA/SIPC

HOMESTYLE BBQ SPECIALS

Special Full Slab BBQ Ribs
1 pt. cole slaw, ranch beans, homemade potato salad
\$22.99

Get 1 lb. BBQ Brisket or Polish Suasage FREE!

Valid Only when Presented with Order.
NOT VALID WITH ANY OTHER OFFER.



**Hwy 60 W
Pampa, TX
806-665-4401**

Viewpoints

Don't be afraid of change, it may make your life more complete

The publisher here at The Pampa News, Sean Smith, recently moved to Indiana to accept another position as publisher of a newspaper up there. He, and his wife Chrissy, will definitely be missed by all of us here at the paper, but we are also excited to work with our new publisher, Randy Pribble, who came here from Indiana.

This change made me think back on the many life-changing decisions, such as moving or changing jobs, that I've made over the years. It's amazing how easy some of these decisions were, but yet it's also amazing to realize just how hard others were.

Many people do not like change. I don't mind change and some times even thrive and enjoy it. I think it's good for everyone to get out of their comfort zone at least

occasionally and take some risks in life. Some of these risks will change your life for the better, while others you will wish you'd never even thought about, but most of the time you do not suffer irreversible damage though.

Moving around the country while my husband was in the Navy was both scary and exhilarating. On one hand, you were moving to another place, and in our case usually to another side of the United States, where you did not know your way around and didn't know anyone who lived there. How scary, in case you needed something and didn't know where to find it or you needed help with a task and didn't know who to ask for assistance.

But, on the other hand it was also very freeing. It gave you the chance to make a clean and fresh start. If you'd struggled at your job

or with relationships, you got the chance to forget about those and begin again. If you wanted to try a new job but were afraid to quit your other steady job, well now you didn't have a choice because you had to move and get a new job at the new destination.

It gives you the chance to try new food and learn about new cultures, but it also makes you miss your favorite foods and friends back home.

Thinking about some of the other life-changing decisions brought marriage to mind. I remember standing in the church looking at myself in the mirror in my wedding dress thinking "What am I about to do? Is

this the right decision? Is he the right choice for a spouse? Will this marriage last?" These were answers I didn't have at that moment, but I just had to jump off into the deep end and take the chance. And now we've been married for 20 years and most of those have been happily.



Kerri Smith
Managing Editor

You can't be afraid to get married because you don't want to get hurt or fear getting a divorce. You might miss out on the most amazing relationship with your soul-mate that you will grow old together with. All you can do is to know that you've done everything in your power to try and make the best choice.

And yet another decision I looked back on is to have a

child or not. Roger and I didn't want kids for a while after getting married because he was gone so much in the Navy and I didn't want to raise a child as a "Navy widow." Then, the longer we went without having kids, I learned to like my freedom, laid back life and how I could do what I wanted without worrying about taking care of a child. I also worried that I would not be a "good mother" and I might not be able to handle the responsibility of taking care of another human being.

We'd been married 15 years when we finally decided to have a child and we were lucky enough to have our beautiful Kooper. Well, even though he can be a terror at times (especially during the 2's and 3's...whew), most of the time he's amazing, funny, loving and so interesting and I can't imag-

ine our lives without him. If I'd listened to my earlier fears and worries about having a child, I would have missed out on the most amazing gift a person can receive, which is a child of their own.

Many decisions like marriage, college, jobs, and children are very difficult to make and many people struggle and worry about them until they are sick. You never know what you are going to miss out on if you don't take the chance to try something new or meet someone new.

I feel the best thing to do when facing a life-changing decision is to follow your heart, instead of listening to your mind, and to pray and put it in God's hands.

Today in History

By The Associated Press

Today is Sunday, Feb. 24, the 55th day of 2008. There are 311 days left in the year.

Today's Highlight in History:

On Feb. 24, 1868, the House of Representatives impeached President Andrew Johnson following his attempted dismissal of Secretary of War Edwin M. Stanton; Johnson was later acquitted by the Senate.

On this date:

In 1582, Pope Gregory XIII issued a papal bull, or edict, outlining his calendar reforms. (The Gregorian Calendar is the calendar in general use today).

In 1607, the opera "Orfeo," by Claudio Monteverdi, had its public premiere at the Court Theater in Mantua, Italy.

In 1803, in its Marbury v. Madison decision, the Supreme Court established judicial review of the constitutionality of statutes.

In 1821, Mexican rebels proclaimed the "Plan de Iguala," their declaration of independence from Spain.

In 1863, Arizona was organized as a territory.

In 1920, a fledgling German political party held its first meeting of importance in Munich; it became known as the Nazi Party, and its chief spokesman was Adolf Hitler.

In 1942, the Voice of America went on the air for the first time.

In 1946, Argentinians went to the polls to elect Juan D. Peron their president.

In 1983, a congressional commission released a report condemning the internment of Japanese-Americans during World War II as a "grave injustice."

In 1988, in a ruling that expanded legal protections for parody and satire, the Supreme Court overturned a \$200,000 award that the Rev. Jerry Falwell had won against Hustler magazine and publisher Larry Flynt.

Ten years ago: Henny Youngman, a tireless comic who quipped "Take my wife — please" and countless other one-liners during a career that spanned seven decades, died in New York City at age 91.

Five years ago: Seeking U.N. approval for war against Iraq, the United States, Britain and Spain submitted a resolution to the Security Council declaring that Saddam Hussein had missed "the final opportunity" to disarm peacefully and indicating that he had to face the consequences. A powerful earthquake in China's western region of Xinjiang killed at least 268 people and injured more than 1,000.

'I once wanted to become an atheist but I gave up ... they have no holidays.'

— Henny Youngman
American comedian (1906-1998)



Idle American: Nose passes smell test ...

Each week it is mine to pick a topic for this space. If I picked a body part, it wouldn't be the nose, but in recent weeks, the nose — proboscis for readers who join me in being facetious — has chosen me!

Often, nose topics are comedic. It is the organ that horses win races by, it is the one we poke into other people's business. Daily, people rely on their noses to see what passes — or fails — smell tests. ...

As kids, we gave up fairly early on contemplating our noses. When we did, our eyes crossed.

It was what we did NOT wipe on our sleeves; yet, we were admonished to keep it clean.

We were told NOT to get our nose out of joint when things didn't go the way we planned. Noses of New

England Patriots' fans remain disjointed. ...

Really, though, my personal "nose news" started about the time I reached my 70th birthday last fall — when so many well-wishers reminded that 70 is "just a number."

So are calendar dates for doctors and dentists, and last year, I had enough appointment cards for a full deck.

My dentist decided I needed half-a-dozen crowns, and I saw him so often that he memorized my eating habits.

"No tuna sandwich for lunch today?" he once quizzed, adding a weak joke about "crowns in my stars if

not stars in my crown." (Really, though, he's a good sport, decked out in orange and usually humming "The Eyes of Texas." Better at drilling than trilling, he's usually off-key, particularly on Monday mornings.)



Don Newbury
Columnist

the doctor found a spot that he didn't like.

"Probably a basal cell," he said. "But before too long, you'll likely want to have it fixed, unless you want a third hole in your nose." (At once, I had an answer for the woman who corrected me when I mentioned having a nose for news. She retorted, "You don't even have a NOSTRIL for news!")

Yikes! I figured I needed a third nostril like, uh, a hole in the head. Oh, I know that Jimmy Durante, W.C. Fields, Barbara Streisand and a few others didn't let big proboscises get in the way of their stardom.

But I figured that a third nostril could only diminish a speaking career that now is pressing toward 50 years. I dismissed the thought of joining the circus as a three-nostriled wonder and scheduled the surgery. ...

With my nose still bandaged, I phoned Southwest Airlines to schedule a flight.

Their agents were "busy with other customers." I was mollified by soothing music and occasional babbling interruptions of little-known facts.

One factoid related is

See NEWBURY, Page 5

Texas Thoughts

By The Associated Press

A sample of editorial opinion around Texas:

■ Feb. 18

The Dallas Morning News on the Texas House speaker's race:

It's an easy bet that the Texas House speaker's race next session will be a knock-down-drag-out political drama with folks champing to have their say.

But not so quick. Put down that pen, because you might face one year in jail and a \$4,000 fine for speaking your mind.

Yes, you read that correctly. Since 1973, it's been a misdemeanor for people other than the speaker candidates to spend more than \$100 on written communication to voice an opinion in the

House speaker's race. That includes the media. Under the law although never enforced an editorial in this newspaper commenting on the speaker's race might be deemed a misdemeanor. Also in violation might be an avid letter writer, a group distributing printed leaflets, perhaps even e-mailed correspondence.

This is one issue in which conservative and liberal groups are in lockstep. The Texas Eagle Forum PAC, the American Civil Liberties Union and the Free Market Foundation have sued to have the measure declared an unconstitutional violation of free speech.

Agreed. This newspaper favors limiting the influence of money in politics. And one can see why lawmakers in 1973, with the memory of then-speaker

Gus Mutscher and Houston's infamous Sharpstown scandal still fresh, thought this might control outside influence on the speaker's race.

But this law actually stands to stifle debate and begs to be abused. And it doesn't control big donors, who will still exert influence through campaign contributions. Yet others who want to speak on behalf of a candidate, say, through letters of support to House members, risk running afoul of the law.

Repeal of this law will make it easier for organized political groups such as the plaintiffs in this case to weigh in on the speaker's race. But that's OK. Though sometimes messy, free speech is necessary.

See HOUSE, Page 5

THE PAMPA NEWS

403 W. Atchison • Pampa, TX 79065

806-669-2525 • 800-687-3348

Fax: 806-669-2520

email: editor1@thepampanews.com

Publisher: Randy Pribble

Managing Editor: Kerri Smith

Advertising Director: ReDonn Woods

This newspaper (UPS 781-540) is published daily, except Saturdays, Thanksgiving and Christmas Day, by The Pampa News. Periodicals postage, paid at Pampa, Texas. Postmaster: Send address changes to The Pampa News, P.O. Drawer 2198, Pampa, TX 79066-2198.

All carriers are independent contractors and The Pampa News is not responsible for advance payments of two or more months made to the carrier. Please pay directly to the Pampa News any payment that exceeds the current collection period. There are no mail subscriptions available within the city limits of Pampa. Mail subscriptions must be paid three months in advance.

© 2005 The Pampa News

Events calendar

• **The Amarillo Art Institute** is offering a variety of classes for children and adults this spring. Classes include Clay for Kids, Basics of Drawing and Painting, Silvery Jewelry Design and Fabrication, and more. For further details or to register, call (806) 354-8802.

• **Harrington Cancer**

Center-Pampa Support Group will meet at 6:30 p.m. Feb. 26 in the second floor classroom of Pampa Regional Medical Center. Roy Bowen of Amarillo will present the program "Believing in Your Strengths in a Time of Weakness."

• **Participants have until Feb. 29** to enter the Miss Irish Rose

Scholarship Pageant to be staged during the March 14-16 Saint Patrick's Celebration in Shamrock. The pageant is open to girls between the ages of 14 and 18. Eighteen-year-olds must still be in high school. The 2008 Miss Irish Rose, along with her three runner-ups and Miss Congeniality, will receive

a scholarship to the college of their choice. For more information, call Betty at (806) 334-0929, Dana at (806) 662-5405 or Shamrock Chamber of Commerce at (806) 256-2501.

• **The Red Hat Dollies Society of Pampa** will meet for coffee at 9:30 a.m. March 4 at Harvester Donuts. For more infor-

mation, call Rita at 669-9916, Vivian at 669-9297 or Emilie at 669-3580.

• **Pampa Book Club** will review the following books in the coming months: "Night" by Elie Wiesell, March 12; "A Tree Grows in Brooklyn" by Betty Smith, April 9; and "Walking Drum" by Louis L'amour, May 14. The club meets at 10 a.m. the second Wednesday of each month in the Texas Room at Lovett Memorial Library in Pampa.

• **Memory Gardens Cemetery in Pampa** will host a family Easter egg hunt starting at 11 a.m. March 15. Activities include egg hunt, bouncer for kids 10 and under, prizes and more. In case of inclement weather, the hunt will be postponed until 2 p.m. March 16. For more information, call Connie at (806) 683-9079 or Bill at (806) 231-0771.

• **Tickets are currently available now through March 14** for the Area Friends of the NRA banquet set to kick-off at 5:30 p.m. March 15 in the Heritage Room of the Amarillo Civic Center in Amarillo. Prime rib with all the trimmings will be served at 7 p.m. Dinner tickets are \$30 for adults, \$15 for participants 18 and under or \$50 per couple if purchased in advance. The deadline for advance ticket sales is the day prior to the banquet. A limited number of tickets will be available at the door. Tickets are available in Amarillo at Pro Shooters, Panhandle Gunslings and A&K Shooters Supply. For more information, contact Connie at (806) 683-9079 or Bill at (806) 231-0771.



COURTESY PHOTO

Art club

Pampa Art Club met recently at the home of Linda Shackelford. Betty Fletcher, a member of the club, demonstrated how to make beads from sculpey clay. A sample of Fletcher's work is pictured above. More of her work will be on display at the club's annual Tea and Art Exhibit to be staged from 10 a.m. to 6 p.m. May 6 at Lovett Memorial Library. The event will also commemorate the club's 60th anniversary.

Newbury

Continued from Page 4

unsubstantiated: "Did you know that every three or four hours, you breathe out of your OTHER nostril?..."

Later that day, a daughter forwarded an e-mail that claimed that our noses (and ears) keep growing until we draw our last breath.

It made me think of a life-long friend who may have been born with a 40-year-old nose. I mean NASCAR could hold races in his nasal passages.

He was an outstanding

basketball coach, and one night a leather-lunged fan provided what my friend says was the best line he'd ever heard about his exaggerated proboscis. The heckler screamed, "Coach, if I had your nose full of nickels, I'd retire!" ...

My minor surgery was just that. While in the waiting room for the doctor to sign off on it, the fellow next to me wanted to "show me some pictures." I cringed, fearing "quadruple exposure" — or more — to pictures of grandchildren.

I was wrong. They were pictures of his grand vacation to the Black Hills of

South Dakota. He had stacks of pictures of Mount Rushmore and even more of the Chief Crazy Horse Memorial just 17 miles away. Under construction since 1948, it is easily the world's largest mountain sculpture. A few years ago, the famous chief's face was finished. It is more than 87-feet tall. Completion of the project may take another 20 years.

Crazy Horse's nose, chiseled and detonated from hundreds of tons of granite, is some four stories tall. Before getting your nose out of joint about costs, know that the entire project — nose and all — is funded by dona-

tions. And a nose this big is nothing to sneeze at. ...

—Dr. Newbury is a speaker and author in the Metroplex.

House

Cont. from Page 4

The speaker's post is one of the most powerful jobs in Texas government and deserves an opinion free-for-all. Let the debate begin. URL: <http://www.dallasnews.com>

STIMSTORE'S

301 S. STARKWEATHER
STORAGE SPACE AVAILABLE

FULLY ENCLOSED-14' WIDE X 14' TALL X 49' LENGTH
COVERED-13' WIDE X 15' TALL X 40' LENGTH
CALL TODAY FOR PRICES

806-688-7867

Heard-Jones PHARMACY PRESENTS
114 N CUYLER • 669-7478

SENIOR GROUP SOLUTIONS
A WORKSHOP ON NEW MEDICARE PLANS
FEBRUARY 26TH AT 10 AM
PAMPA SENIOR CITIZENS CENTER

Come hear about the new Medicare plans available this year, including the changes for Part D plans. Holly Handy & Pam Pitt, Senior Market Specialists, will be with us for the program. If you have Medicare Parts A & B and are paying for your supplement, you'll want to hear more. There will be special information for people with diabetes, COPD, and/or heart problems. Let us help you with your Part D donut hole.

Call Carol • 669-7478 for details!
SPACE LIMITED!

West Texas A&M University

BUFF PROMISE

Beginning Fall 2008

West Texas A&M University will commit 100% of its available resources to cover fall and spring in-state tuition and fees for entering undergraduate Texas residents who have an annual family income of \$40,000 or less.

BUFF Promise eligibility date is April 15, 2008 - don't wait!

Students who do not meet BUFF Promise eligibility requirements may still qualify for a portion of the \$36 million in assistance offered by WTAMU.

wtamu.edu/buffpromise

APPLY TODAY
Apply by APRIL 15
AFFORDABLE EDUCATION

Discover the BUFF in You.

(806) 651-2055 • (800) 99-WTAMU
admissions@wtamu.edu

Dear Abby...

By Pauline & Jeanne Phillips

DEAR ABBY: Our granddaughter and her twin brother are turning 13. My husband and I wanted to celebrate this milestone birthday with a candlelight spaghetti dinner at our house that includes their boyfriend/girlfriend. We planned to get out the china and silver and eat in the formal dining room. Our daughter was on board, and the kids were excited. Our daughter's former in-laws, however, threw a fit about the children being "too young to date." Obviously, we'll honor our ex-son-in-law's wishes, but we're terribly disappointed, as are the kids. Since when is dinner at home with your grandparents and your boyfriend and girlfriend considered a date? Or are we out of touch with reality? — **CANCELED IN RED OAK, TEXAS**

DEAR CANCELED: The deal-killer may have been the "candlelight" aspect of the dinner, because in some people's minds candlelight connotes "romance." I can't blame your ex-son-in-law and his parents for wanting to keep the twins cocooned in their concept of childhood for as long as they can, but it's a losing battle. If memory serves me, seventh grade (12 or 13) is when boys and girls begin noticing each other -- if not before -- and while they are too young to "date," I hardly consider dinner at the grandparents as dating. Although it may not have been the custom in your son-in-law's family, age 13 or 14 is when many young people begin going to supervised parties/dances, although they do it in groups.

DEAR ABBY: I have been dating a lovely woman, "Bethany," for the past seven months. I'm 30 and Bethany is 29. She's a teacher, and I work in health care. We met online, then talked on the phone and even

tually decided to meet. Abby, I was attracted to her from the moment I saw her. Over these past months I have bonded with Bethany's family and have fallen in love with her. I would like nothing more than to make her my wife. I haven't asked her yet, although we have joked about it. Two nights ago we went to dinner, and the whole time something felt "off" to me. When we returned to Bethany's place, she informed me out of the blue that she would like to take a break from "us." She said she feels rushed into a new relationship without having closure from her previous one, which lasted six years and was difficult. Before I became too upset, I got up off the couch and left. We haven't talked since, as I want to give her the "space" she has requested. I love Bethany, and I'm afraid I am going to lose her. How long should I go without making contact with her? — **TROUBLED IN JACKSONVILLE, N.C.**

DEAR TROUBLED: Frankly, the person to reach out should be Bethany, but give her six weeks. If you haven't heard from her by then, when you do call, don't be surprised to hear that she and her former boyfriend have reconciled. When a woman says there was "no closure," it usually means she still has feelings for the person. It is also possible that she finds "difficult" relationships more exciting than ones without drama. And if that's the case, then unless you, too, are looking for pain, you'll move on. You have my sympathy.

For Better Or For Worse



Zits



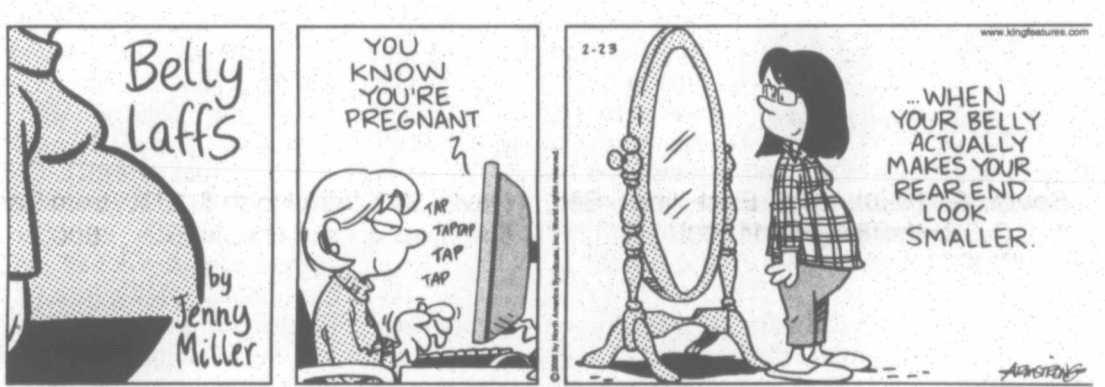
Garfield



Beetle Bailey



Marvin



Crossword Puzzle

CROSSWORD

By THOMAS JOSEPH

ACROSS 41 Fight

6 — fatale abodes

11 Greek letter

12 "Barry Lyndon" star

13 Austerity

14 So out, it's in

15 Stunned

17 Stylish

18 Bus. card abbr.

19 Common sugar

22 Sports drink

23 Poet Pablo

24 Enticed

25 Vacillate

27 Course goal

30 Caribbean island

31 Pindar poem

32 Tale

33 Salad base

35 Underway

38 Lets up

39 Disney dog

40 Sleep sound

DOWN

1 Layers

2 Sounded the hour

3 Entertain

4 Whole range

5 Complicated rites?

6 In favor of

7 Compass pt.

8 Way

9 Tomei of

10 Lookout's spot

21 Campaign

24 Floral hits

25 Suppress for one

26 Supple-

29 Della and

30 Some

34 Hamlet,

36 Giant Mel

37 Overly

38 Hamlet,

39 Overly

40 Overly

41 Overly

42 Overly

43 Overly

44 Overly

45 Overly

46 Overly

47 Overly

48 Overly

49 Overly

50 Overly

51 Overly

52 Overly

53 Overly

54 Overly

55 Overly

56 Overly

57 Overly

58 Overly

59 Overly

60 Overly

61 Overly

62 Overly

63 Overly

64 Overly

65 Overly

66 Overly

67 Overly

68 Overly

69 Overly

70 Overly

71 Overly

72 Overly

73 Overly

74 Overly

75 Overly

76 Overly

77 Overly

78 Overly

79 Overly

80 Overly

81 Overly

82 Overly

83 Overly

84 Overly

85 Overly

86 Overly

87 Overly

88 Overly

89 Overly

90 Overly

91 Overly

92 Overly

93 Overly

94 Overly

95 Overly

96 Overly

97 Overly

98 Overly

99 Overly

100 Overly

101 Overly

102 Overly

103 Overly

104 Overly

105 Overly

106 Overly

107 Overly

108 Overly

109 Overly

110 Overly

111 Overly

112 Overly

113 Overly

114 Overly

115 Overly

116 Overly

117 Overly

118 Overly

119 Overly

120 Overly

121 Overly

122 Overly

123 Overly

124 Overly

125 Overly

126 Overly

127 Overly

128 Overly

129 Overly

130 Overly

131 Overly

132 Overly

133 Overly

134 Overly

135 Overly

136 Overly

137 Overly

138 Overly

139 Overly

140 Overly

141 Overly

142 Overly

143 Overly

144 Overly

145 Overly

146 Overly

147 Overly

148 Overly

149 Overly

150 Overly

151 Overly

152 Overly

153 Overly

154 Overly

155 Overly

156 Overly

157 Overly

158 Overly

159 Overly

160 Overly

161 Overly

162 Overly

163 Overly

164 Overly

165 Overly

166 Overly

167 Overly

168 Overly

169 Overly

170 Overly

171 Overly

172 Overly

173 Overly

174 Overly

175 Overly

176 Overly

177 Overly

178 Overly

179 Overly

180 Overly

181 Overly

182 Overly

183 Overly

184 Overly

185 Overly

186 Overly

187 Overly

188 Overly

189 Overly

190 Overly

191 Overly

192 Overly

193 Overly

194 Overly

195 Overly

196 Overly

197 Overly

198 Overly

199 Overly

200 Overly

201 Overly

202 Overly

203 Overly

204 Overly

205 Overly

206 Overly

207 Overly

208 Overly

209 Overly

210 Overly

211 Overly

212 Overly

213 Overly

214 Overly

215 Overly

216 Overly

217 Overly

218 Overly

219 Overly

220 Overly

221 Overly

222 Overly

223 Overly

224 Overly

225 Overly

226 Overly

227 Overly

228 Overly

229 Overly

230 Overly

231 Overly

232 Overly

233 Overly

234 Overly

Heard-Jones

HEALTHMART

114 N CUYLER
669-7478



BILL HITE
PHARMACIST

PRICES GOOD THRU SATURDAY MARCH 1ST!
MONDAY-FRIDAY 8AM-6PM • SATURDAY 8AM-4PM • CLOSED SUNDAY

SATURDAY DINE IN FOUNTAIN SPECIAL

HAMBURGER & CHIPS...99¢
CHEESEBURGER & CHIPS...\$1.49
CALL IN ORDERS WELCOME • CHIPS 30¢ PER BAG

BRAWNY
PAPER TOWELS
79¢

DAWN
DISH DETERGENT
89¢

ALL VALENTINE
MERCHANDISE
& CANDY
75% OFF
RETAIL

YOUR HOMETOWN PHARMACY FOR OVER 45 YEARS

- WE ACCEPT ALL THIRD PARTY PRESCRIPTION PLANS
- FREE CITYWIDE DELIVERY
- 24 HOUR EMERGENCY SERVICE FOR ESTABLISHED CUSTOMERS
- ENJOY BREAKFAST OR LUNCH WHILE WE FILL YOUR PRESCRIPTIONS



OVER 1700 HEALTHMART LOCATIONS NATIONWIDE

ATTENTION SENIORS

INFORMATIVE MEETING ON NEW MEDICARE BENEFITS
TUESDAY, FEBRUARY 26TH AT 10 AM
PAMPA SENIOR CITIZENS CENTER • 500 W FRANCIS

CHARMIN BASIC
BATH TISSUE 4 ROLL DBL PKG
\$1.99

COME IN AND SEE WHAT'S NEW!

Drilling Intentions

Intentions to Drill

HEMPHILL (WILDCAT & BUFFALO WALLOW Granite Wash) Cordillera Energy III, L.L.C., Alexander, for the following wells:

#6 '33', 939' from North & 1980' from East line, Sec. 33,A-1,H&GN, PD 13400'.

#30 '48', 2033' from North & 1980' from West line, Sec. 48,A-1,H&GN, PD 13300'.

HEMPHILL (WILDCAT & N.W. CANADIAN Lower Morrow) Crest Resources, Inc., #2125 Webb, 2200' from South & 1320' from East line, Sec. 125,42,H&TC, PD 12300'.

HEMPHILL (WILDCAT & FELDMAN Tonkawa) Apache Corp., #4 Fee '37', 900' from South & 1350' from East line, Sec. 37,42,H&TC, PD 7900'.
Recompletion

HEMPHILL (WILDCAT & HEMPILL Douglas) Laredo Petroleum, Inc., PD 13700', for the following wells:

#1 Begert Trust '6', 990' from North & East line, Sec. 6,41,H&TC.

#1 Elm Creek Ranch '47', 660' from North & 990' from East line, Sec. 47,A-1,H&GN.

HEMPHILL (WILDCAT & HEMPILL Granite Wash) Mewbourne Oil Co., #2236 J.T. Brown, et al 'D', 3650' from South & 1090' from East line, Sec. 223,C,G&MMB&A, PD 11000'.

HEMPHILL (WILDCAT & N.W. MENDOTA Granite Wash) Cimarex Energy Co. of Colorado, #5 R.A. Flowers, 1100' from North & East line, Sec. 84,B-1,H&GN, PD 11000'.
Recompletion

HEMPHILL (N.W. MENDOTA Granite Wash) Chesapeake Operating, Inc., #2 Mendota '40' NW, 660' from North & 2350' from West line, Sec. 40,1,I&GN, PD 14000'.

ROBERTS (WILDCAT & LIPS Lower Morrow) Cimarex Energy Co., #2 Killebrew '215', 1750' from North & 1550' from West line, Sec. 215,42,H&TC, PD 12000'.

ROBERTS (N.W. MENDOTA Granite Wash) Samson Lone Star, L.L.C., #3119 Chamber Ranch, 1622' from North & 1047' from East line, Sec. 119,C,G&M, PD 11000'.

ROBERTS (WILDCAT & R.F.C. Upper Morrow) Range Production Co., #15H D.D. Payne Ranch, 11398' from North & 3784' from West line, Clay County School Land, PD 11000' (BHL: 13160' from North & 2214' from West Survey line) Horizontal

ROBERTS (WILDCAT & ST. CLAIR Granite Wash) Mewbourne Oil Co., McMordie, PD 10000', for the following wells:

#863 '86', 810' from North & 2090' from East line, 86,C,G&M.

#1292, 467' from North & 2600' from East line, Sec. 129,C,G&M.

WHEELER (BUFFALO WALLOW Granite Wash) Samson Lone Star, L.L.C., #1550 Sophia, 2645' from North & 574' from West line, Sec. 50,M-1,H&GN, PD 14000' (BHL: 2100' from South & 467' from West Sec. line) Directional well

WHEELER (WILDCAT & BUFFALO WALLOW Granite Wash) Forest Oil Corp., #1059A L.A. Johnson, 1130' from North & 467' from East line, Sec. 59,M-1,H&GN, PD 14000'.

WHEELER (WILDCAT & DYCO Granite Wash) Linn Operating, Inc., #6 Treadwell '35', 1787' from North & 467' from West line, Sec. 35,M-1,H&GN, PD 14770'.

WHEELER (WILDCAT & FRYE RANCH Consolidated) Forest Oil Corp., for the following wells:

#9010 Frye Ranch, 2310' from South & 567' from East line, Sec. 10,A-3,H&GN, PD 15200'.

#3011 Pride, 990' from South & 2310' from East line, Sec. 11,A-3,H&GN, PD 15500'.

WHEELER (WILDCAT & MILLS RANCH Atoka) Forest Oil Corp., #2043 Davis, 947' from North & 1770' from East line, Sec. 43,A-7,H&GN, PD 16600'.

WHEELER (WILDCAT & STILES RANCH Granite Wash) Forest Oil Corp., for the following wells:

#405 Britt, 467' from North & 1650' from West line, Sec. 5,1,B&B, PD 16100'.

#507 Britt Ranch, 1650' from South & East line, Sec. 7,2,B&B, PD 16100'.

#807 Britt, 467' from South & 990' from West line, Sec. 7,2,B&B, PD 15900'.

WHEELER (WEST-PARK Granite Wash) Samson Lone Star, L.L.C., #Holt SWD, 616' from North & 485' from East line, Sec. 19,RE,R&E, PD 6550'.
Injection well

Oil Well Completions

HUTCHINSON (PANHANDLE) Linn Operating, Inc., #25 Crosby & Hatcher 'A', Sec. 5,M-24,TCRR, spud 11-25-07, drlg. compl 12-14-07, tested 1-22-08, pumped 21 bbl. of oil + 173 bbls. water on 24 hour test, GOR 2000, TD 3650', PBTD 3583' — Form 1 filed in Stallion Energy

HUTCHINSON (PANHANDLE) Linn Operating, Inc., #17 Hazel, Sec. 4,X-02,H&OB, spud 5-14-07, drlg. compl 6-22-07, tested 1-8-08, pumped 3 bbl. of

oil + 150 bbls. water on 24 hour test, GOR 3667, TD 3650', PBTD 3607' — Form 1 in Stallion Energy

HUTCHINSON (PANHANDLE) Linn Operating, Inc., #34 Read, J. McDonald Survey, spud 10-31-07, drlg. compl 11-29-07, tested 1-22-08, pumped 1 bbl. of oil + 34 bbls. water on 24 hour test, GOR 12000, TD 3350', PBTD 3294' —

HUTCHINSON (PANHANDLE) Linn Operating, Inc., #5 Spurlock, G. Martinez Survey, spud 11-16-07, drlg. compl 12-7-07, tested 1-15-08, pumped 18 bbl. of oil + 85 bbls. water on 24 hour test, GOR 889, TD 3810', PBTD 3759' —

WHEELER (MILLS RANCH Granite Wash K.C.) Sanguine Gas Exploration, L.L.C., #305 Neeley, Sec. 5,L,J,M. Lindsey, spud 10-19-07, drlg. compl 11-4-07, tested 12-18-07, flowed 484 bbls. of 43 grav. oil + 982 bbls. water thru 32/64" choke on 24 hour test, GOR 1148, TD 12570', PBTD 10560' —

Gas Well Completions

HEMPHILL (BUFFALO WALLOW Granite Wash) Forest Oil Corp., #1753A Barker, Sec. 53,M-1,H&GN, spud 11-1-07, drlg. compl 11-17-07, tested 12-27-07, potential 4411 MCF, TD 13545', PBTD 13428' —

HEMPHILL (BUFFALO WALLOW Granite Wash) Noble Energy, Inc., #5532A Carr-Muse '55', Sec. 55,M-1,H&GN, spud 11-19-07, drlg. compl 12-1-07, tested 1-24-08, TD 11887', PBTD 11795'.

HEMPHILL (N.W. MENDOTA Granite Wash) Chesapeake Operating, Inc., #8 Mendota '15' NW, Sec. 15,1,I&GN, spud 9-27-07, drlg. compl 10-12-07, tested 12-18-07, potential 4585 MCF, TD 11400', PBTD 11312' —

ROBERTS (CLARK MARTIN Granite Wash) Cordillera Texas, L.P., #4H Hale, Clay CSL Survey, spud 7-23-07, drlg. compl 9-17-07, tested 12-21-07, potential 215 MCF, TVD 9298', MD 10722' — Horizontal

ROBERTS (LARD RANCH Granite Wash 'C') Cimarex Energy Co., #4H D.D. Payne 'B', Clay School Lands, spud 10-17-07, drlg. compl 11-16-07, tested 1-4-08, potential 9165 MCF, TVD 8765', MD 10255' — Horizontal

ROBERTS (N.W. MENDOTA Granite Wash) Cimarex Energy Co., #5H Earp '58', Sec. 58,B-1,H&GN, spud 10-20-07, drlg. compl 11-24-07, tested 1-22-08, potential 9199 MCF, TVD 10682', MD

See INTENTS, Page 9

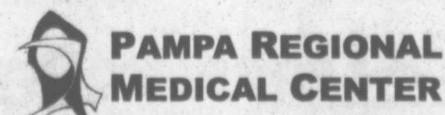
1/2 PRICE SALE WOMENS & MENS

3 DAYS ONLY!

55 Alive Mature Driving Class

Wednesday and Thursday
March 5 & March 6

1:00 PM - 5:00 PM



Pampa Senior Citizen Center
500 W. Francis • Pampa Texas

\$10.00 Per Person ... Includes Both Days
Class Is Limited To 25 People
To Enroll Please Call 663-5577

February
28th
29th
1st

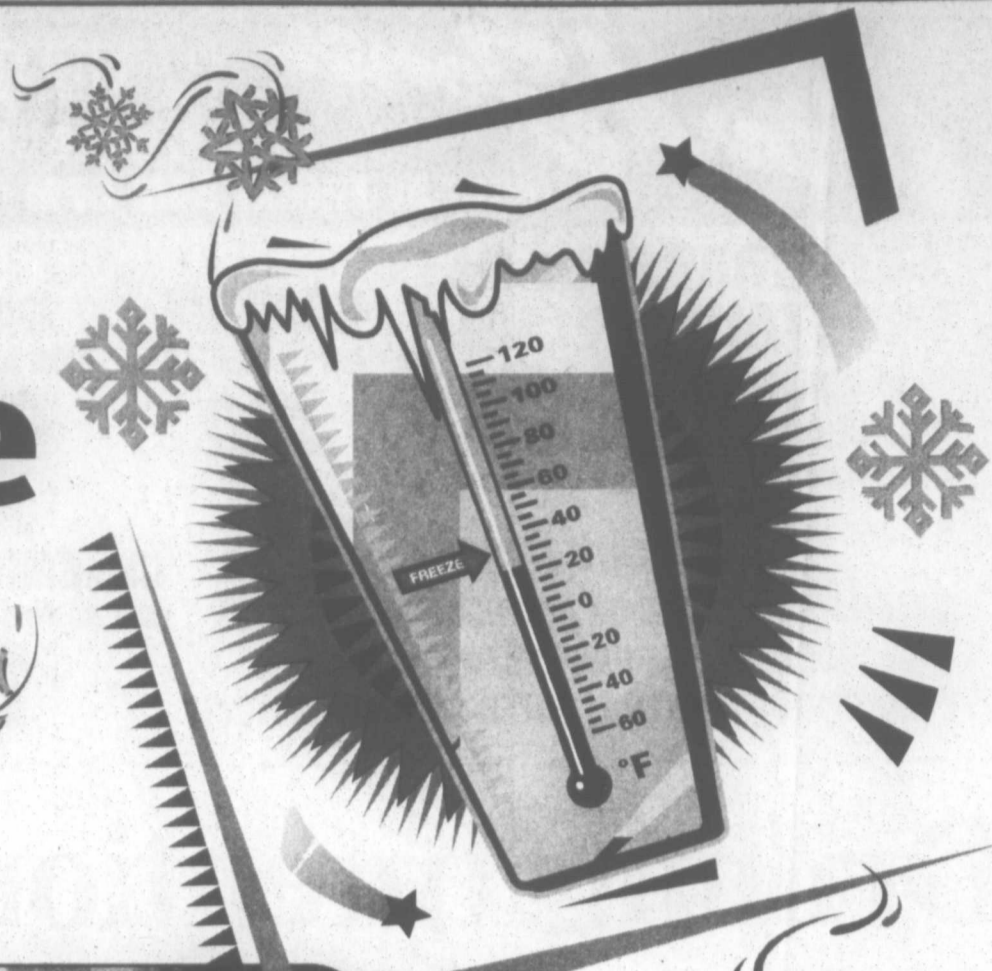
Brown's SHOE FIT CO.

1500 N. Hobart • Pampa • 806-665-5691
Open Monday - Saturday 9 - 6

Thursday
Friday
Saturday
ONLY

Winterize Your Home

With Vinyl & Steel Siding



Professional Service & Installation

High - Performance Siding by Alside:

Alside products are designed to improve the enjoyment of your home, as well as its value. Whether you are remodeling, restoring a historic home or building a new one, you can create distinction and appeal with the colors, styles and features only Alside can offer.

Thermal Support System for Siding by Fullback

Fullback Thermal Support is a patented contoured foam system precisely configured to fit the profile of any siding panel. It completely eliminates the problems associated with the void behind conventional hollow sidings.

Some advantages are:

- Thermal comfort and energy savings
- *Superior impact resistance
- Up to 5 times the system "R" value
- Reduced noise transmission
- Improved appearance
- Manufacturer lifetime warranty.

A Multitude Of Colors To Choose From.

15% off
Complete Siding or Complete Eaves & Overhang Project.

Never Paint Your Home Again!

A Lifetime Of Carefree Beauty And Protection For Your Home!

Come Visit Our New Home Design Center!

Serving The Texas And Oklahoma Panhandles

2800 Hobbs Road
806.358.7419 or 888.711.6303



BEST 2007
AMERICAN QUALITY NEWS

Quality Home Remodeling

With Over 20 Years Experience!

www.bigstateremodeling.com



COURTESY PHOTO

Rock Star Day

Courtney Ward recently jammed out at Pampa Junior High School while participating in "Rock Star Day" at the school. Ward is an eighth grader at PJHS.

First full Amarillo season for Kimbo

AMARILLO — Kimbo Ishii-Eto's first season with the Amarillo Symphony has been a record-setting smash. Now, Ishii-Eto is looking ahead to his first full season in residence in Amarillo with a season packed with incredible music.

The season, which launches in September, is full of the orchestral canon's most memorable works, masterpieces ripe for rediscovery and brilliant compositions never before heard in Amarillo.

Season packages are on sale now through the

'In just a few months, this orchestra has come so far. You should hear what's to come when we have more time together, especially with the amazing music that we'll perform.'

— Kimbo Ishii-Eto
Conductor

Symphony office. Deadline for renewals is May 30, after which the seating process will begin for new subscribers and those wishing to change seats. By subscribing now, patrons can attend all seven concerts for the price of five, which amounts to savings of almost 30 percent. Subscribers can also take advantage of new lower prices for Amarillo Symphony Uncorked, the annual New Year's Eve concert and party.

Ishii-Eto said he wants the Symphony's 84th season to be a revelation to audiences. "In just a few months, this orchestra has come so far," Ishii-Eto said. "You should

hear what's to come when we have more time together, especially with the amazing music that we'll perform."

Ishii-Eto will be on the podium for all seven concerts in the Symphony's 2008-09 season, and he and his family will have moved to Amarillo full-time by the time the season begins.

The season opens Sept. 19-20 with concerts featuring the works of three of the repertoire's most famous composers: Ravel's Menuet Antique, Tchaikovsky's Violin Concerto and Shostakovich's Symphony

No. 1. Featured soloist is Kyoko Takezawa, one of the world's best violinists and a personal friend of Ishii-Eto.


Halloween weekend (Oct. 31-Nov. 1) finds the Symphony in full spooky mode with concerts featuring the most chilling, thrilling works in the repertoire: Bach's Toccata and Fugue, Wieniawski's Fantaisie Brillante on a Theme of Gounod's Faust, Ravel's Tzigane and Mussorgsky's Night on Bald Mountain. In a special treat for families, the Symphony also will perform works by John Williams from Harry Potter and the Sorcerer's Stone. Violinist Mayuko Kamio is the featured soloist on the Wieniawski and Ravel compositions.

Audiences will be in for an emotional experience at the Nov. 21-22 concerts, when two of Mahler's most powerful works will be performed. First, mezzo-soprano Susan Platts, in a return performance, joins the Symphony for Mahler's Kindertotenlieder, a cycle of songs dealing with ultimate grief. The evening concludes with Mahler's stirring Symphony No. 1, which depicts nature awakening from a long winter's nap.


Tchaikovsky's immortal Pathétique Symphony and the mysterious erhu dominate the Jan. 23-24 concert weekend. Ishii-Eto has a close connection with the erhu (pronounced ER-hu), an ancient Chinese instrument similar to the viola: His maternal grandfather was an accomplished player of the instrument. Erhu master

Karen Han, who is featured on the soundtracks to The Joy Luck Club and The Passion of the Christ, will perform Wu Houyuan's Capriccio for the Red Plum Blossom and Monti's Czardas. Also on the concert program is the world premiere of a new composition

See KIMBO, Page 10



National Home Health Care
Come Home
SALES & RENTALS
1521 N. HOBART • 669-0000
Making Life A Little Easier!



- Wheelchairs • Walkers • Canes
- Home Oxygen
- Nebulizers
- Orthopedics
- Diabetic Supplies
- Bathroom Safety Equipment
- Hospital Beds
- Special Orders
- Hospital Gowns
- Diabetic Supplies
- Much More

Intents

Continued from Page 7

12760' — Horizontal ROBERTS (N.W. MENDOTA Granite Wash) Cimarex Energy Co., #8 W.H. Moore '64', Sec. 64,B-

1,H&GN, spud 10-15-07, drlg. compl 10-31-07, tested 1-4-08, potential 1375 MCF, TD 11500', PBD 10848' —

ROBERTS (N.W. MENDOTA, S.W. Granite Wash) Unit Petroleum Co., #3 Waterfield 'A', Sec. 102,C,G&M, spud 8-28-07, drlg. compl 9-20-07, tested 1-3-08, TD 11300', PBD 11020' —

ROBERTS (RED DEER CREEK Granite Wash) Cimarex Co. of Colorado, #22 Byrum '27', Sec. 22,RE,R&E, spud 10-10-07, drlg. compl 11-5-07, tested 1-4-08, potential 283 MCF, TD 10660', PBD 10568' —

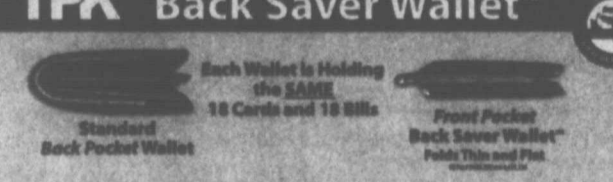
WHEELER (ALLISON-BRITT 12350') Chesapeake Operating, Inc., #3 Grayson '22', Sec. 22,RE,R&E, spud 8-6-07, drlg. compl 8-28-07, tested 12-12-07, potential 3341 MCF, TD 14250', PBD 14220' —

WHEELER (STILES RANCH Atoka) Chesapeake Operating, Inc., #5066 Ledbetter, Sec. 66,A-7,H&GN, spud 7-20-07, drlg. compl 9-2-07, tested 12-12-07, potential 5362 MCF, TD 16400', PBD 16353' —

WHEELER (STILES RANCH Granite Wash) Forest Oil Corp., #701 Britt, Sec. 1,5,B&B, spud 10-23-07, drlg. compl 11-17-07, tested 12-26-07, potential 3979 MCF, TD 15810', PBD 15733' —

"The Front Pocket Solution to the Back Pocket Wallet"

TPK Back Saver Wallet™



Each Wallet is Holding the SAME 18 Cards and 18 Bills

Standard Back Pocket Wallet vs. Front Pocket Back Saver Wallet™

Stop sitting on the problem

- Folds flat when full
- Quiet padded spring clip holds up to 30 bills
- Power pockets hold up to 24 cards
- Photo holder does not restrict use of pocket for your cards
- 3 year warranty

Made in the U.S.A.

Now Available At:

Ford Family Chiropractic

Rehabilitation And Wellness Center



"I want to be your Family Chiropractor"

Dr. Mark W. Ford, Jr.
665-7261

103 E. 28th Ave. Pampa, Tx
www.fordfamilychiropractic.com

NOW my circle means more choice

Get unlimited free calling to any 5, 10 or 20 numbers on any network.



Optional faceplates available in many fun colors



BUY ONE GET ONE FREE

Alltel HUE™

ONLY \$29.99

The Alltel Hue by Samsung includes blue & red faceplates. After \$50 mail-in rebate with 2-yr. service agreement on both lines. See below for details.

Choose the circle that's right for you.

5 my circle numbers

10 my circle numbers

20 my circle numbers

Alltel Retail Stores

Burger
1303 W. Wilson | (806) 273-2042

Children
2004 Ave. G N.W. | (940) 937-8550

Dumas
1526 Guyton Plaza | (806) 935-4307

Hereford
701 N. 25th Hwy. | (806) 364-1055

Pampa
1329 N. Hobart | (806) 869-3435

Canadian
Canadian Parts & Supply | (806) 323-6556

Clarendon
Clarendon Outpost Co. | (806) 874-5202

Dalhart
Comm. Connection | (806) 249-8411

Dumas
Access Wireless | (806) 935-9197

Hereford
Whiteface Cellular | (806) 383-2740

Pampa
Comm. Connection | (806) 869-1551
RadioShack | (806) 869-2253

Perryton
Perryton Office Supply | (806) 435-48

Shamrock
Mahken Drug | (806) 256-2782

Spearsman
Country Cellular | (806) 859-2541

Proud Sponsor of:



shopalltel.com
1-800-alltel-1

Federal, state & local taxes apply. In addition, Alltel charges a monthly connectivity, regulatory & administrative surcharge up to \$1.76 federal & state Universal Service Fund fee (both vary by customer usage); & a fee of up to \$1.94 (where 911 service is available). These additional fees may not be taxes or government-regulated charges & are subject to change. My Circle: Available to new & existing customers on current select rate plans. Minimum rate plan of \$49.99 for 5 Circle Plan numbers; \$69.99 for 10 numbers; \$89.99 for 20 numbers. For Smart Choice Pack customers, minimum rate plan of \$69.99 for 5 Circle Plan numbers; \$89.99 for 10 numbers; \$129.99 for 20 numbers. My Circle numbers must be shared among all lines on the primary account. Not available on prepaid plans. Customer may not designate own wireless or voice mail number; Directory Assistance 900 numbers as any of the available numbers. Calls must begin & end in your plan's calling area. Designated numbers must be within the U.S. Program may be discontinued at the discretion of Alltel. Allow 24 hours for changes to Your Circle number to become effective. **Phone Details:** Phone includes blue and red faceplates. Optional faceplates available. Phones & applicable rebates available for a limited time, while supplies last, with activation of a qualifying rate plan. Limit 1 rebate per qualifying purchase. Phone cannot be returned once mail-in rebate certificate has been submitted. Customer pays applicable taxes. See rebate certificate for details. Additional information: Limited-time offer at participating locations. While supplies last. Qualifying Alltel rate plan, credit approval & approved handset required. \$25 non-refundable activation fee applies per line. ©2008 Samsung Electronics Co., Ltd. Alltel is a trademark of Alltel Telecom & Communications. Samsung is a trademark of Samsung Electronics Co., Ltd. Alltel is a trademark of Alltel Telecom & Communications.

WT news and notes ...

WTAMU, Community Choruses to Stage 'Carmina Burana'

CANYON — More than 200 singers, dancers and instrumentalists will fill the stage when the Department of Music at West Texas A&M University presents Carl Orff's "Carmina Burana" at 7:30 p.m. March 6-7 in the Branding Iron Theatre at the Sybil B. Harrington Fine Arts

Complex on campus. The Amarillo Boy Choir, the Canyon High School Chorale and a trio of soloists will join the WTAMU choirs, dance ensemble and symphony orchestra for what is considered one of the most recognizable classical works.

"This is a massive undertaking that allows us to collaborate across the disciplines and reach out to the

community," Dr. Mark Bartley, assistant professor of music and director of the production, said. "While this work is often performed in the concert hall, our production with choreography and special lighting effects will fulfill Orff's intention that this piece be staged."

With music that is powerful, dramatic and rhythmic, Orff set secular texts from a medieval collection of poetry on such universal topics as fortune and fate, love and desire, and the anticipation and celebration of the return of springtime. Portions of Carmina Burana have been used in countless movies, video games and television commercials.

Leslie Williams, assistant professor of dance, serves as the production's choreographer. Vocal soloists are Lyndi Fisher, soprano, Matt Oglesby, tenor, and Dr. Robert Hansen, baritone.

Other vocals will be provided by the WTAMU Chorale and Collegiate Choir, under the direction of Dr. Daniel J. Hall, assistant professor of music, and joined by the Amarillo Boy Choir, directed by Jerry Perales, and the Canyon High School Chorale, directed by Brandon Farren. The WTAMU Symphony Orchestra, under the direction of Bartley, will supply the instrumental music.

Lynn Hart, who served as creative director for Amarillo's new Nutcracker, is assisting with the production through WTAMU's Guest Artist Series. He will help with special lighting effects and projection.

Tickets for Carmina Burana are priced at \$10 for reserved and \$7 for students and seniors. To reserve tickets, call the BIT Box Office

'While this work is often performed in the concert hall, our production with choreography and special lighting effects will fulfill Orff's intention that this piece be staged.'

— Dr. Mark Bartley
Director and assistant professor of music

at 806-651-2804. Box office hours are 1-5 p.m. Monday through Friday.

Tables Set for WTAMU Women's Council Event March 7-8

CANYON — Lavish table tops will be the focus of the fourth annual Tantalizing Tables March 7-8 in the Regency Room of the Amarillo Civic Center.

The two-day event, presented by the Women's Council for West Texas A&M University, will follow the theme "Epicurean Jewels." Different table top themes designed by some of the area's leading decorators will be featured in a gourmet presentation of china, pottery, stemware and cutlery. Fifteen tables will be featured, and each designer will furnish his or her own table and chairs as well as the dishes and decorative items needed to create an interesting table top theme.

Walk-through viewings of the tables will be from 10 a.m.-6 p.m. Friday, March 7 and from noon-3:30 p.m. Saturday, March 8. Music and professional demonstrations on special touches will be added benefits to the viewings. Demonstrations on Friday include jewelry making at 11 a.m.; "Painting a Canvas Rug: Revival of an Old Art" by Buffle Schaeffer

at 1 p.m.; "It's a Wrap Part I: Gift Wrap Designs from Panache" by Kendra Quackenbush at 2:15 p.m. and "Not a Wrap Part II: Thinking Outside the Traditional from Panache" by Nikki Chisum at 3:15 p.m.

Saturday's demonstrations are "Various Lighting Effects on Color" by Tim Ellison, owner/consultant of Old School Design; and "Scrapbooking and Beyond: New Materials and Techniques" by Suzann Soliz of The Paper Garden at 1:45 p.m. Tickets for the walk-through viewings are priced at \$10 each and will be available at the door.

Saturday will be a full day, starting at 10 a.m. with a brunch in the Regency Room. Rani Khamesra, merchandise analyst for Harry Winston in New York City, will be the keynote speaker.

The Texas native has 10 years experience in the jewelry industry with expertise in wholesale marketing and designing. She holds two undergraduate degrees from the University of Texas at Austin and an M.B.A. from Texas A&M-Dallas. She also has completed work in diamond grading from the Gemological Institute of America in New York City. She has traveled to Hong Kong, China and India as a

jewelry buyer, designer and sales manager for House of India in Dallas and served as a sales manager for International Jewelers in Dallas.

Tickets for the brunch are priced at \$50 each or \$350 for a table of eight. Tickets are limited, and reservations are required.

Cocktails and dinner at the designer tables will close out this year's Tantalizing Tables beginning at 6 p.m. Saturday, March 8. Reservations for the gala dinner are priced at \$1,000 for a table of eight. A silent auction will give diners an opportunity to bid on an array of gift baskets, decorative items, jewelry and more.

All proceeds from "Epicurean Jewels" will benefit WTAMU programs. For more information, contact the WTAMU Office of Development at 806-651-2990.

Anonymous Donor Contributes \$438,000 for Clock Tower on Campus

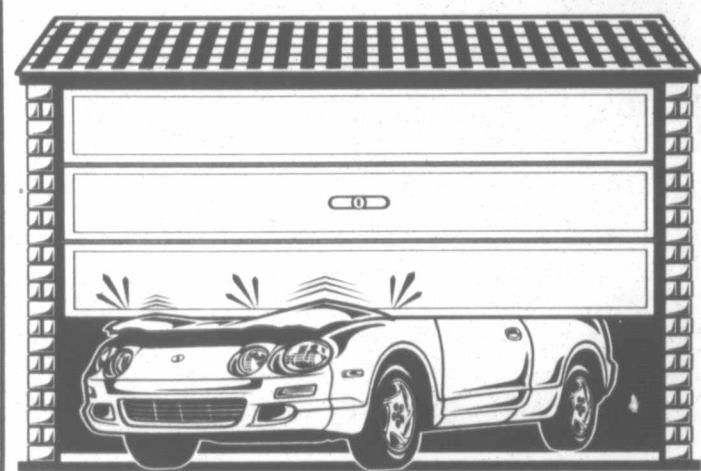
CANYON — A skyscraping clock tower with chimes that toll hourly and play the West Texas A&M University Fight Song each day at noon will soon be erected on campus.

The 77-foot-tall clock tower — to be known as the Spirit Tower — is both the brainchild and gift of an anonymous donor whose contribution of \$438,000 will cover the cost of the project.

A ground-breaking ceremony for the towering timepiece has been scheduled for 1:30 p.m. Tuesday, Feb. 26 on the spot where it ultimately will stand — in front of the Computer Center on the

See WT, Page 11

ACCIDENTS HAPPEN.



**Complete Paint & Bodywork
Lifetime Guarantee
Most Insurances Accepted
Detailed Estimates
No Cutting Corners**

PRESTIGE AUTO CENTER

101 S HOBART • 665-3560

WINTERIZE SPECIAL

LET US FINE TUNE YOUR LAWN TOOLS!

LAWNMOWERS
18.95 +TAX
Sharpen Blades, Change Oil, Change Spark Plugs, Add Fuel Stabilizer, Clean Air Filter (New Air Filter & Oil Filter Extra)

TRIMMERS
14.95 +TAX
Clean Air Filter, Change Spark Plugs, Add Fuel Stabilizer

SALE EXTENDED
Hurry.... offer ends soon!



POWER EQUIPMENT

SALES & RENTAL

806-665-2366 • 103 S. HOBART

MONDAY-SATURDAY 7:00AM-6:00PM

CLOSED SUNDAY

Kimbo

Continued from Page 9

by Korean-born composer Kyeong-Sook Bang, who has collaborated with Ishii-Eto at the Komische Oper Berlin.

Mussorgsky's epic Pictures at an Exhibition will be the centerpiece of the Feb. 27-28 concert weekend. The bravura piece, which vividly

brings to life a stroll through a Russian art gallery, bursts with creativity and spectacle. Gabriel Faure's lush Pavane opens the explosive concert, which also features pianist Jeffrey Biegel, a protégé of Leonard Bernstein, on Prokofiev's bombastic Piano Concerto No. 3.

Pianist Davide Cabassi, who teamed with Ishii-Eto during the conductor's audition in September 2006,

returns to Amarillo for the March 27-28 concert weekend. "Davide is the guy who brought me luck," Ishii-Eto said. "I had to bring him back." They'll reteam for Beethoven's majestic Emperor piano concerto — one of two Beethoven compositions on the concert, following the composer's fiery Coriolan Overture. The Amarillo Youth Symphony will join the Symphony for Bizet's l'Arlesienne Suites.

The season closes on April 24-25 with a choral army from the combined Amarillo Civic Chorus and West Texas A&M University choirs helping to bring to life two little-known but powerful works: William Walton's Belshazzar's Feast and Ralph Vaughan-Williams' Toward the Unknown Region. Also spotlighted during the concerts will be concertmaster Tomas Cotik and the string section on Schubert's Rondo for Violin and Strings.

The 2008-09 season also includes Amarillo Symphony Uncorked, the annual New Year's Eve party and concert, this year featuring Steve Lippia and his show "Simply Sinatra," during which Lippia and the Symphony will recreate the feel of a Frank Sinatra concert. Plus, a new, lower price level will be available that still allows patrons to enjoy the concert and the following party.

Since 1924, the Amarillo Symphony has been filling audiences with an unbridled enthusiasm for the performance and discovery of great orchestral music. As the only professional orchestra in the Panhandle area, the Symphony employs 85 skilled musicians to perform for more than 2,300 subscribers each year.

For more information, please contact Nathan Newbrough, executive director, at 376-8782 or via e-mail at nathan@amarillosymphony.org.

PAMPA'S NUMBER 1 USED CAR DEALER

2004 JEEP GRAND CHEROKEE.....	\$13,587
2005 FORD F150 SUPER CAB.....	\$16,297
2007 CHRYSLER TOWN & COUNTRY.....	\$16,988
2007 DODGE CARAVAN.....	\$13,646
2007 CHEVROLET IMPALA.....	\$15,390
2006 PONTIAC MONTANA.....	\$13,971
2006 PONTIAC GRAND PRIX.....	\$12,287
2007 PONTIAC G-6 2DR.....	\$13,639
2007 CHEVROLET COBALT 4DR.....	\$12,257
2005 JEEP LIBERTY.....	\$15,210
2007 BUICK LACROSSE.....	\$19,951
2007 FORD EDGE.....	\$21,762
2007 FORD TAURUS.....	\$12,297
2007 CHEVROLET EQUINOX.....	\$18,587
2005 NISSAN PATHFINDER.....	\$19,393
2007 DODGE CALIBER.....	\$12,987
2005 CHRYSLER 300C.....	\$21,957
2006 DODGE 2500 QUAD CAB.....	\$29,567
2006 FORD F150 SUPERCREW.....	\$25,353
2007 DODGE DAKOTA QUAD CAB.....	\$17,514



123 N HOBART • PAMPA, TX
806.688.6888 • 800.299.6699

FARM SCENE

Top ethanol producer, university team on ethanol starch research

SIoux FALLS, S.D. (AP) — The nation's top ethanol producer is teaming with an Iowa State University researcher in hopes of squeezing more ethanol out of a kernel of corn.

Sioux Falls-based Poet LLC already uses a process called BPX, which converts starch to sugar and then ferments it to ethanol without the use of heat or cooking. Poet uses the method in 20 of its 22 ethanol plants and estimates it can get 3 gallons of ethanol from each bushel of corn compared with an industry standard of 2.7 gallons per bushel.

Poet is working with Jay-lin Jane, a carbohydrate chemist and professor in Iowa State's food science and human nutrition department, to look at differences between starches in various varieties of corn.

The goal is to identify which lines of corn starches are more easily broken down into glucose by the enzyme used for conversion. The glucose is then fermented into ethanol and carbon dioxide.

"When starch is in the corn plant, it's sometimes difficult to break down," said Mark Stowers, Poet's

vice president of research and development. "So what we're trying to understand is how the starch is structured in vari-

'... what we're trying to understand is how the starch is structured in various corn plants so that we can do a better job and more efficiently break the starch down into the sugars for the ethanol process.'

— Mark Stowers
Poet's VP

ous corn plants so that we can do a better job and more efficiently break the starch down into the sugars for the ethanol process."

Jane said some starches are loosely packed in the granule and can be easily broken into glucose. Others, especially those with different crystalline

structures, prove much more difficult.

"Certain corn lines are more easily susceptible to enzyme conversion," she said.

Jane said she's about four months into the two-year project, which is co-funded by Poet and a state economic development fund. Poet said it's contributing \$284,000 to the project over two years and the Grow Iowa Values Fund is contributing \$149,233.

"We are generating more exciting results every day," Jane said Wednesday.

Stowers said the BPX process helps the company reduce energy costs, increase ethanol yields, decrease plant emissions and improve the nutrient quality of its distillers grains, an ethanol byproduct used as cattle feed.

Poet officials hope the research collaboration will improve its per-bushel ethanol yield.

"I think that it's a good university-industry partnership to solve an important question, and that is how much more ethanol can we get out of an acre of corn," Stowers said. "And that has tremendous positive land implications."

Report includes local Angus breeder

Goode Angus in Pampa has been recognized nationally by the American Angus Association® for having two registered Angus cows included in the Association's 2008 Pathfinder® Report.

Only 2,306 of the more than 36,000 American Angus Association members are represented in this year's report, according to John Crouch, chief executive officer of the association with headquarters in Saint Joseph, Mo.

The Pathfinder Program identifies superior Angus cows based upon recorded performance traits that are economically important to efficient beef production. These traits include early and regular calving and heavy weaning weights, reports Bill Bowman, Association director of performance programs.

More than 1.6 million eligible dams and more than 5.4 million weaning records were examined to determine Pathfinder status. All registered Angus cows that meet the strict Pathfinder standards are listed, along with their owners, in the Pathfinder Report that is published annually by the Association.

The 2008 Pathfinder Report lists 9,917 individual cows and 273 Pathfinder sires. It is published in the April issue of the Angus Journal, and copies are available from the Association. The reports appear on the Web site at www.angus.org.

The largest number of Pathfinder cows from a single herd this year is 94. Started in 1978, the Pathfinder Program continues to recognize outstanding breeders participating in the Angus Herd Improvement Records (AHIR®) Program.

WT

Continued from Page 10

University's new Pedestrian Mall.

"A friend of the University who wishes to remain anonymous came forward with the concept for a clock tower like some other universities have on their campuses," Gary Barnes, vice president for business and finance, said. "This person agreed to cover the cost of the project with the only stipulation being that it plays the WT Fight Song every day at

noon and chime the other hours of the day.

"Everyone is so enthused with the idea of a clock tower," he said. "This will be an opportunity for new tradition and feelings of great pride for our students and for the entire University community."

The clock tower, at 77 feet, will stand even taller than the nearby four-story Classroom Center. The four-sided tower will contain four clock faces, each about 7 feet in diameter, and it will stand about 15' x 15' at the base.

Construction of the Spirit Tower is expected to be complete by July 4.

Time to Prepare your Yard for SPRING with

• **Fertilome Avert Lawn Fertilizer:** 18-0-12 control of broadleaf and grassy weeds

• **Natural Guard Soil Activator:** Humates consumer friendly, safe way to help lawn clippings compost and return valuable nutrients to your soil.

• **Weed Free Zone Lawn Fertilizer:** 18-0-6 provides superior weed control in cooler temperatures. Best used on young and actively growing broadleaf weeds

WEST TEXAS LANDSCAPE
120 S HOBART • 669-0158

MON - SAT • 9AM - 6PM

TRAVEL

TEXAS FURNITURE



ASHLEY
FURNITURE INDUSTRIES, INC.

IN STOCK NOW READY FOR IMMEDIATE DELIVERY, NO WAITING!

SOFAS \$499 • \$599 • \$699

5 PIECE DINING GROUP TABLE WITH FOUR CHAIRS \$399 • \$499



BEDROOM SAVINGS
CHOICE OF OAK OR CHERRY FINISH ONLY

• QUEEN SIZE BED
• DRESSER
• MIRROR
\$999

ASHLEY
FURNITURE INDUSTRIES, INC.

FACTORY DIRECT PRICES
IN STOCK FOR IMMEDIATE DELIVERY

BUY ONE ... GET ONE FREE LA-Z-BOY & LANE RECLINERS

RIGHT NOW YOU CAN GET TWICE AS MUCH FOR YOUR MONEY!
CHOOSE FROM OUR BEST SELECTION EVER OF LA-Z-BOY & LANE RECLINERS



TWO FOR ONLY \$599

TWO FOR ONLY \$699

TWO FOR ONLY \$799

MATTRESS SALE

PRICES AS LOW AS SEALY "POSTURE PREMIER" FIRM

TWIN SET **\$249** FULL SET **\$349**
QUEEN SET **\$399**



SEALY PLUSH
TWIN SET **\$349** QUEEN SET **\$499**
FULL SET **\$449** KING SET **\$699**

SEALY PILLOW TOP
TWIN SET **\$449** QUEEN SET **\$599**
FULL SET **\$549** KING SET **\$899**

SEALY POSTUREPEDIC DESIGNED TO PROVIDE YOUR BODY WITH THE PROPER SUPPORT FOR A GOOD NIGHT'S REST.

SEALY POSTUREPEDIC "WESTBEND" PLUSH
TWIN SET **\$499** FULL SET **\$599** QUEEN SET **\$649** KING SET **\$949**

MONDAY - SATURDAY 9:00 AM TO 5:30 PM
Texas FURNITURE
1415 N. HOBART • 665-1623

12 MONTHS NO INTEREST FINANCING WITH APPROVED CREDIT

Sports



Pampa News photo by KATHERINE FLANARY
Cecilia Garcia goes to defend the Lady Harvesters last Tuesday. The Lady Harvesters and Harvesters played Friday night against Palo Duro. A story will be run Monday.

Deal clears way for single open-wheel series

The long, bitter open-wheel split is over.

After 12 years of rivalry which confused fans, promoted apathy and nearly buried the sport, the Champ Car World Series has accepted an agreement to cease operations, giving the surviving Indy Racing League the opportunity to rebuild open-wheel's lost prestige.

The unification deal, which has been in the works for about two weeks, was announced Friday in Indianapolis, where both series have their headquarters.

A statement was released, saying, "Owners of Champ Car and the Indy Racing League completed an agreement in principle Friday that will unify the sport for 2008."

"Gerald Forsythe, co-owner of Champ Car, signed an agreement in principle in Chicago, joining his partner Kevin Kalkhoven and Indy Racing League founder and CEO Tony George who had signed late Thursday in Indianapolis."

Griffin said details will be forthcoming in a news conference next week. Earlier in the day, it appeared the talks might be stalled when Kalkhoven left without comment.

Numerous tries over the years to merge the series have failed, mostly over the issue of who would retain control. This time, though, all the hurdles were cleared as George worked together with principal Champ car owners Kalkhoven and Forsythe to reach an agreement.

The latest talks began after

George offered any Champ Car team that moved to the IRL in 2008 free Honda engine lease programs, free Dallara chassis and the same \$1.2 million incentive program offered to its own teams.

At least six Champ Car teams, with up to 10 cars, were believed ready to make the move in time to race in the IRL's season-opener March 29 at Homestead, Fla. That could give the IRL's IndyCar Series a field of up to 26 cars, a considerable improvement over the numbers of entries in both series in recent years.

The agreement is also expected to add up to three Champ Car events to the IRL's original 16-race schedule for 2008. That could include the races at Long Beach, Calif., Surfers Paradise in Australia and Edmonton, Canada.

The rest of the Champ Car schedule, which was to have begun April 20 in Long Beach, was canceled, omitting races in Houston, Monterey, Calif., Cleveland, Mont Tremblant, Quebec, Toronto, Portland, Ore., Road America, Mexico City, Zolder, Belgium, and Jerez, Spain.

But IRL officials said earlier this week that several of those tracks, as well as several new venues, could be given consideration for addition to the 2009 IndyCar schedule.

In the early 1990s, Championship Auto Racing Teams (CART), which later became Champ Car, had become a destination for drivers from Europe and

South America and was a strong, thriving series constantly adding more road and street races to its schedule at the expense of the traditional oval tracks.

George announced in the fall of 1994 his intention to start the IRL as a series that would give young American drivers a chance to get to the Indianapolis 500 and to move open-wheel racing back toward its grassroots oval tracks.

The IRL began competition in 1996, with CART going its own way until it declared bankruptcy in January 2004. George made the high bid for CART's assets, but the judge awarded them to Kalkhoven, Forsythe and Gentilozzi because George intended to close down the rival series, leaving many people without jobs.

Since then, the two series have gone head to head for drivers, teams, fans, sponsors and TV ratings, generally losing out on all counts, particularly in light of the growing popularity of NASCAR.

Champ Car teams expected to move to the IRL include series powerhouse Newman/Haas/Lanigan Racing, which has won four straight series championships, Kalkhoven, Pettit and former CART champion Jimmy Vasser's PKV team, Forsythe Championship Racing, Conquest Racing, Derrick Walker Racing and Dale Coyne Racing. Others could also take the deal, but have remained mum on their intentions.

Sons of former Astros greats trying to make final roster

KISSIMMEE, Fla. (AP) — Their jerseys read "Cruz" and "Niekro" on the back, conjuring images of two of the Houston Astros' all-time greats.

But these are the sons of Jose Cruz and Joe Niekro — Jose Jr. and Lance — and they've arrived at spring training as non-roster invitees, concerned as much with finding work as they are with honoring their father's legacies.

The 33-year-old Cruz Jr. is among a half-dozen players vying for one backup outfielding spot while Niekro, 29, is trying to nab a reserve role at first or third base.

They played together in San Francisco in 2003 and reminisced about their shared childhood, when the Astrodome doubled as their playground and the place where their fathers earned a living.

"That was pretty much

my first memory of being in a big-league stadium," Niekro said. "It was the greatest thing in the world being in there."

Cruz Jr. remembers countless pickup games in the tunnels and the batting cages, where his father used to lob pitches to the kids.

"There was always a whole group of us," Cruz Jr. said. "Looking back, it was a special time for us. We didn't think of it that way, of course."

The elder Cruz played for Houston from 1975-87 and ranks among the franchise's top 10 in every significant hitting category. He's the first-base coach now and still wears his old No. 25, even though its one of eight the franchise has retired.

But manager Cecil Cooper has already told the father and son that Jose Jr. won't get any special treatment when it comes time to trim the roster, even though

Cooper and Cruz are close friends.

"He has to separate and so do I," Cooper said. "It has to be based on performance. He's got to come in and he's got to show us that he can still play and help us."

Cruz Sr. has kept some distance from his son, though he can't help but do a double-take when he sees him batting or shagging fly balls.

"It's a little strange for me, seeing another Cruz," he said. "I know a lot of people in Houston are really excited to see him working out with the team. I just hope he does good so he can make the ballclub."

Cruz Jr. has been trying for years to join his father with the Astros, but his contracts and the team's priorities never dovetailed. He's played on eight teams in 12 seasons and San Diego released him in July 2007 after he hit only .234.

Cruise 2 for the price of 1....

... When you make your wedding tuxedo rentals with

T-Shirts & More
111 W. Kingsmill Ave.
665-3036

CELEBRATE YOUR SPECIAL DAY BOUND FOR PARADISE

Imagine the two of you dancing under a canopy of stars. What could be more romantic? On your NCL cruise, you can enjoy intimate restaurants, secluded lounges and spacious Oceanview Staterooms. Our discreet staff is available for you morning, noon and night. Ask about Bon Voyage & Special Occasions gifts, Champagne and flowers, Professional portraits, Wine and cheese, Passion, Memories. There's no better combination than an NCL cruise and the one you love.

See store associate for details

Ted Hutto's 1401 N HOBART PAMPA, TEXAS

Quality Sales



669-0433

ATHLETES OF THE WEEK

David Soto

Soccer



David Soto played in the defensive midfield position against Canyon and did a great job breaking up through balls and slowing down any counter-attack possibilities. David does a very good job of playing physical and shielding our back four from balls played through the air with his aggressive play in the air.

Valerie Resendiz

Soccer



Valerie Resendiz (11) is a freshman gaining a lot of quality experience this year on Varsity. She has played at least 4 positions on the field and has played well in every position. Valerie will be a force to be reckoned with in the future of Lady Harvester Soccer.

Ken Kesey's family fires up magic bus

PLEASANT HILL, Ore. (AP) — Before Ken Kesey wrote "One Flew Over the Cuckoo's Nest," or stocked a psychedelic school bus with LSD and the Merry Pranksters to look for America, he was a wrestler.

He might never have written "Cuckoo's Nest," the 1962 novel that launched him to stardom, if he hadn't dislocated his shoulder wrestling for the University of Oregon.

The injury kept him out of the draft, allowing him to go to Wallace Stegner's writing seminar at Stanford University, where his job at the local veterans hospital gave him the setting for "Cuckoo's Nest" and the prototype for mean Nurse Ratched.

So when his alma mater decided to eliminate wrestling at the end of this season, it went down hard on the Kesey family farm. That's where Kesey is buried alongside his son Jed, the victim of a 1984 van crash

during a University of Oregon wrestling team road trip. It's also where Further, the bus made famous by Kesey's 1964 odyssey and Tom Wolfe's book "The Electric Kool-Aid Acid Test," awaits restoration.

"I know what Dad would do," said 46-year-old Zane Kesey, who also wrestled for Oregon. "It's just the kind of thing he would step up and attack when he sees something that's wrong, when it's something he's already shed so much soul for."

So last weekend, wearing his dad's American flag shirt, Zane Kesey fired up a newer version of Further, called on Oregon wrestlers and alums to "Get on the bus," and with original Merry Prankster George Walker at the wheel roared through the Eugene campus.

Loudspeakers blared "Save Oregon wrestling," drums beat, a brass bell clanged, and wrestlers handed out fliers as they circled McArthur Court, the aging

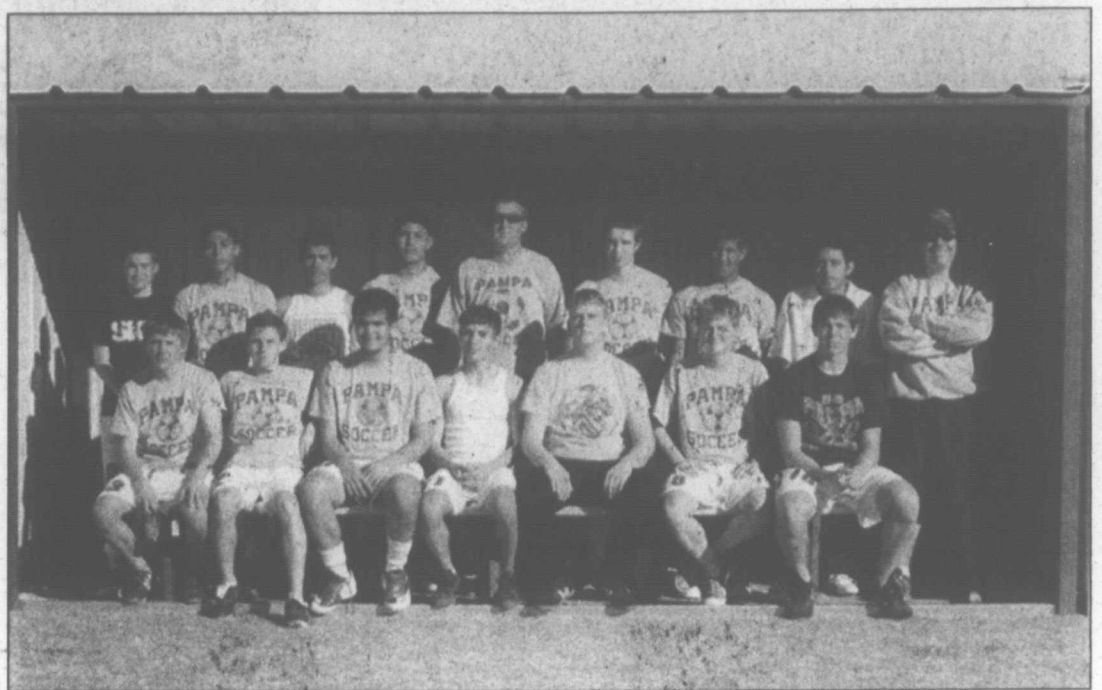
arena where Ken Kesey wrestled from 1955 to 1957, posting a winning percentage of .806 that stands seventh all-time at Oregon.

The '60s-style act of taking it to the streets did not immediately get the university to change its mind about wrestling. But the Kesey family is not giving up.

"One thing about wrestlers is if they get on their back, it's not over — it just got interesting," said Zane Kesey, whose father died in 2001. "You get fierce."

Head wrestling coach Chuck Kearney suggested that if Oregon had not had a wrestling team back in the 1950s, Ken Kesey might not have attended the university. And the course of literary history might have been different.

Soccer Shelters



Courtesy Photo

Back row, left to right: Colton Adams, Cezar marrufo, Adam Estrada, Enrique Marquez, Coach John True, Rusty Snider, Jesus Quesada, Juan Rivera, Coach Byron May. Front Row, left to right: Tanner Dyson, Nick Day, David Soto, Victor Quezada, Brendon Carpenter, Mitch Kelley, Colby Colton.

Two soccer shelters donated by booster club

By KATHERINE FLANARY Sports Editor

The Pampa High School Soccer Booster club purchased and donated two shelters for the Harvester and Lady Harvester soccer teams recently.

The shelters were built to allow the teams to stay out of the colder weather.

The Harvesters and Lady Harvesters have waited for these shelters for a

long time, and will be used by teams now and in the future.

Rasco Construction donated the shelters and had them ready for the first district games.

The shelters were made to be portable so that during the off-season, the shelters will be removed for regular field maintenance.

"[We would like to] thank Randy

Dyson for his work to make the arrangements, design the shelters and get them set and secured at the soccer fields," Soccer Booster Club president Ed Copeland said in an email.

"The booster club would like to invite all of Pampa to come out and watch these excellent soccer players, as they have started their district play," Copeland said.

Pampa Soccer Assoc. Soccer Sign-Ups

March 3rd thru 8th at T-Shirts & More
111 W. Kingsmill or

March 8th 10-4 p.m. at the parking lot of
Dr. Greg Kelly DDS
1835 N. Hobart, Pampa

Online registration begins Feb. 11th

Fees:
T-Ball 6 & under \$40.00
Coach Pitch 8 & under \$60.00
10-18 & under \$70.00

For more information call 683-5150 or visit www.highplainsfastpitch.com

Nike extends soccer reach in \$506 million deal

PARIS (AP) — The French national soccer team will end its long sponsorship deal with Adidas in 2011 in favor of a \$506 million contract with Nike.

The French soccer federation said Friday the American sports equipment firm outbid Adidas and French company Airness, promising to pay 42.66 million euros (\$63.4 million) per year until the end of the 2017-2018 season. The federation will get about half

that amount in the final year.

Adidas has sponsored the national team, called Les Bleus, since 1972.

Nike has made a major push into the world's most popular sport, vowing to become soccer's top brand by the next world cup.

Nike recently bought out England's Umbro PLC for \$566 million in a deal expected to be approved next month. Umbro's soccer apparel, footwear and equipment is sold in more than 90

countries and supplies uniforms to the national teams of England, Ireland, Sweden and Norway, six English Premier League teams and more than 100 other professional teams globally.

The French soccer federation said it switched suppliers on the bid alone.

"For French soccer and those who will come after us, the federal council owed itself to go with the highest bidder," said Jacques Lambert, director general of

the French soccer federation.

A higher bid has not always been enough for Nike.

German soccer authorities rejected a \$680 million offer from Nike and extended its contract with Adidas at roughly half the value last year. Adidas is a German company.

Les Bleus will wear Adidas gear at this year's European Championship and at the 2010 World Cup if it qualifies.

Texas on roll in Big 12 with OU rolling in

AUSTIN (AP) — His team is on a roll now, but when Texas coach Rick Barnes looks back at a mid-season slump, he partly blames himself.

"I coached them mad," Barnes said. "When you coach mad, nothing good happens."

Nothing but good things have been happening lately

for the No. 7 Longhorns. Texas (22-4, 9-2) has won six in a row and is tied for first in the Big 12 heading into Saturday's game against rival Oklahoma (18-8, 6-5).

The Longhorns were one of the surprise teams in the country through the first six weeks of the season. Even without Kevin Durant, last season's all-everything

freshman who left for the NBA, the Longhorns started with 11 straight wins, including a pair of impressive victories over No. 2 Tennessee and No. 6 UCLA.

Texas dropped consecutive losses to Michigan State and Wisconsin, then hit bottom at the start of the Big 12 with a blowout loss at Missouri.

The Longhorns won three in a row before another blowout loss at Texas A&M, and Barnes was publicly ripping his team and some players individually. He admits he had a hard time letting go of the loss at Missouri, where he felt the Longhorns stood around watching the Tigers pile up 97 points.

"Nothing's ever good enough," Barnes said. "It was not as much them as it was me, I'm the one that needed to let go and they handled it, which I appreciate."

The coach had to find a way to back off, yet still whip his team into shape defensively. Sophomore guard Justin Mason, who was among Barnes' early targets for criticism, said the players talked among themselves about what had to be done.

"Probably after our A&M loss, we had a little get-together," Mason said. "Maybe if we had been playing like this in the first place he would have never got mad and frustrated at us. ... When we beat Tennessee and UCLA, he's always said that he's seen it all before. He's been coaching forever, so he's seen teams go on 10-game winning streaks and go on 10-game losing streaks."

It's the current winning streak that has Texas in the hunt for the Big 12 championship and has Longhorn fans calculating whether they can get a No. 1 seed in the NCAA tournament.

There's never been a better time to SWITCH.

Cable ONE Phone

- Unlimited Local & Long Distance Calling in the Continental U.S. anytime, day or night
- Easy to switch
- Phone Service for your home
- Save up to \$130 over your current provider
- Free Install - Save \$75!
- Certified Cable ONE Technicians handle it all

High Speed Internet

- Super Fast 3.0 MB Speed - or Crank It Up to 8.0 MB!
- 50x faster than Dial-Up & 2x faster than DSL
- Always on
- Reliability you can count on
- 24/7 Customer Support
- Easy to set up

ADD PHONE \$29.95/mo.
GET BOTH \$61.95/mo.

1-888-216-5524
www.cableone.net/upgrade

CABLE ONE

Pampa Harvester Sports Schedule

SOCCER
MONDAY • FEBRUARY 25
Harvesters vs Caprock • 7:00pm at Dick Blivins
FRIDAY • FEBRUARY 29
Lady Harvesters vs Borger • 4:00pm at Pampa
SATURDAY • MARCH 1
Harvesters vs Borger • 2:00pm at Pampa
Harvester JV vs Borger • 12:00 noon at Pampa
Lady Harvesters vs Tascosa • 2:00pm at Pampa

TRACK
SATURDAY • MARCH 1
Harvesters & Lady Harvesters (Varsity & JV) at Borger Relays in Borger, Texas

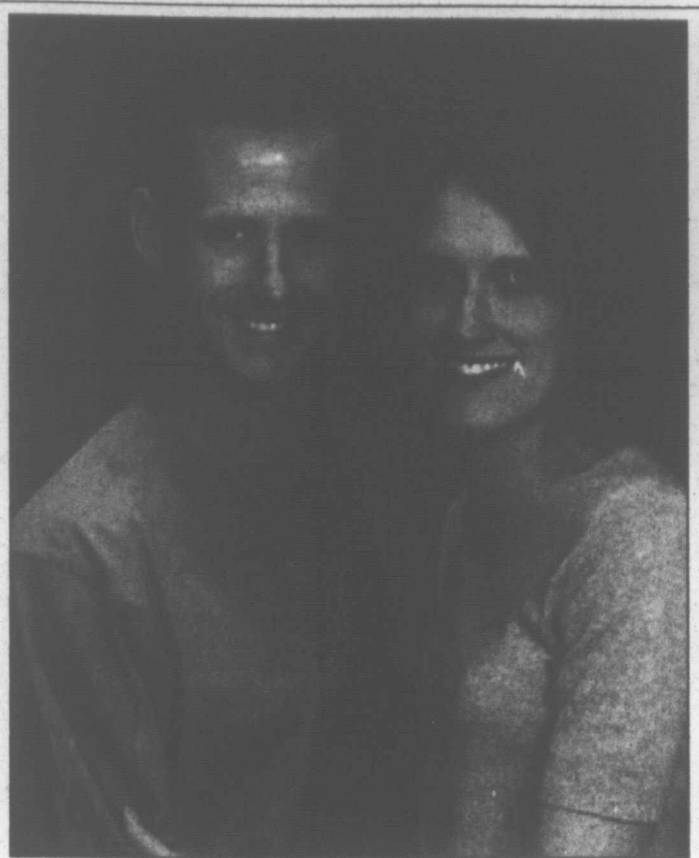
VOLLEYBALL KNEEPADS • SPANKY'S & MANY NEW STYLES OF SOCKS

SOCCER CLEATS • BALLS SHINGUARDS • SOCKS

TRACK SPIKES RUNNING TIGHTS THROWING SHOES

HOLMES Sports Center

304 S. CUYLER est. 1962 665-2631
Home Of The Original RIOT Shirt



Neff/Fredriksson

Maj. Stacie Delaine Neff, United States Air Force Active Reserve, and Col. Brian Eric Fredriksson, USAF, both of Chelmsford, Mass., plan to wed Saturday, June 21, at St. Bernard's Church in Concord, Mass. The bride-elect is the daughter of Raymond Dee and Elaine Neff of Pampa. She graduated from Pampa High School in 1989 and earned a bachelor of arts degree in political science, magna cum laude, from Angelo State University in 1992. She belonged to Alpha Chi. In 1998, she received a master's of art degree from the University of Nevada at Las Vegas. She is currently employed with Reach Out To Read in Boston, Mass. The future groom is the son of Carl and Muriel Fredriksson of Merrimack, N.H. He graduated from Merrimack High School in 1984 and earned a bachelor of science with high honors in mechanical engineering from LeHigh University in Pennsylvania. In 1990, he received a master of science degree in mechanical engineering from LeHigh. He is currently stationed at Hanscom Air Force Base with Missile Defense and Warning Division.



Robbins/May

Amy Nicole Robbins and Ian McKenzie May, both of Kingwood, Texas, plan to wed Saturday, April 5, 2008, at Trinity Fellowship in Pampa, Texas. The bride-elect is the daughter of Lonny and Gloria Robbins of Pampa; and is the granddaughter of June Robbins of Pampa and the late Deryl Robbins, George and Arlene Kirchoff of Pampa and the late Lyle Gibson. She graduated from Pampa High School in 2002 and received her Bachelor of Arts degree in Communications/Public Relations from Oral Roberts University in Tulsa, Okla., in 2005. She currently teaches eighth grade English/Reading in New Caney, Texas, is involved with Buddy Hicks Ministries and helps manage Fuel Cyber Café in Humble, Texas. The future groom is the son of Tom and Pat May of St. Combs, Scotland. He graduated from Fraserburgh Academy of Scotland in 1995, where he received additional diplomas in Construction and Surveying. He received a Bachelor of Arts degree in Religion in 1999 from Rocky Mountain College in Calgary, Canada. He currently serves as Associate Pastor of Pipeline Church in Humble and oversees Humble State Park. Ian also leads worship and writes music. Ian proposed to Amy at Eilean Donan Castle in Scotland, where he also performed a song he wrote especially for her.

Menus

Week of February 25-29

<p>Pampa Schools MONDAY No school.</p> <p>TUESDAY Breakfast: Mini-pancakes. Lunch: Taco salad or steak fingers, western beans, carrot sticks, pineapple, cornbread muffins.</p> <p>WEDNESDAY Breakfast: Breakfast pizza. Lunch: Pigs in a blanket or pizza dippers, mashed potatoes, English peas, fruit.</p> <p>THURSDAY Breakfast: Cinnamon rolls. Lunch: Mini twin cheeseburgers, beef/cheese nachos, pinto beans, corn, fruit.</p> <p>FRIDAY Breakfast: Cereal, toast. Lunch: Grilled cheese sandwiches or burgers, fries, burger salad, peaches, gelatin.</p> <p>Kid's Cafe-Wilson MONDAY Closed.</p> <p>WEDNESDAY Pizza, fries, green beans, dessert.</p> <p>Kid's Cafe-Lamar TUESDAY Fried chicken, mashed potatoes, English peas, dessert.</p> <p>THURSDAY Cheese ravioli, green beans, salad, dessert.</p> <p>Kid's Cafe-Briarwood FRIDAY Soft tacos, beans, salad, dessert.</p> <p>Senior Citizens MONDAY Chicken fried steak or broccoli/chicken/noodles, mashed potatoes, Italian green beans, beets, beans, caramel cake or blueberry cream pie, slaw, tossed or jello salad, hot rolls or cornbread.</p> <p>TUESDAY Ham/fruit sauce or barbecued beef/onion rings, potato salad, macaroni cheese,</p>	<p>spinach, beans, pineapple upsidedown cake or chocolate sundae cups, slaw, tossed or jello salad, hot rolls or cornbread.</p> <p>WEDNESDAY Roast beef brisket/brown gravy or cook's choice, mashed potatoes, fried squash, winter blend, beans, Boston cream pie or bread pudding, slaw, tossed or jello salad, hot rolls or cornbread.</p> <p>THURSDAY Chicken strips or pepper steak/rice, Potatoes O'Brien, cabbage, carrots, beans, devilsfood cake or butterscotch pie, slaw, tossed or jello salad, hot rolls or cornbread.</p> <p>FRIDAY Catfish/hushpuppies or stew, potato wedges, English peas, beans, brownies or tapioca cups, slaw, tossed or jello salad, garlic bread sticks, hot rolls or cornbread.</p> <p>Meals On Wheels MONDAY Sloppy joes, tater tots, pork beans, pineapple.</p> <p>TUESDAY Biscuits, eggs, bacon, gravy, hashbrowns, pears.</p> <p>WEDNESDAY Chicken pot pie, pickled beets, corn, pudding.</p> <p>THURSDAY Catfish, pinto beans, cole slaw, apricots.</p> <p>FRIDAY Swiss steak, mashed potatoes, green beans, jello/fruit.</p>
--	--

STEPHEN RINGEL MD
F.A.A.S.
ORTHOPAEDIC SURGEON

OPEN SCHEDULING
USUALLY WITHIN 24 HRS

107 W. 30TH AVE
806.665.1400

Cradle call



Asher Reid Downs

Asher Reid Downs was born at 1:55 a.m. at BSA Hospital in Amarillo, to Jason and Brienna Downs. At birth, Asher weighed 7-pounds, 1-ounce and was 20.75-inches long. He is the brother of a sister, Kendall Grace Downs; and is the grandson of Brenda Caudle of Fritch, Keith and Beverly Taylor of Howardwick, and Johnny and Brenda Downs of Pampa.

Lifestyles Policy

1. The Pampa News will not be responsible for photographs used in announcing births, weddings, engagements or anniversaries. We also reserve the right to refuse publication of photographs of poor quality. Photographs cannot be returned unless they are accompanied by a self-addressed, stamped envelope. They may be picked up in the office after appearing in the paper.
2. All information must be submitted by 5 p.m. Wednesday (12 noon Tuesday before a holiday such as Thanksgiving or Christmas), prior to Sunday insertion.
3. Engagement, wedding and anniversary news only will be printed on Sunday.
4. Engagement announcements will be published if the announcement is submitted at least one month before the wedding, but not more than three months before the wedding.
5. Bridal photos and information will not be accepted in The Pampa News office later than one month past the date of the wedding.
6. Anniversary announcements will be published for celebrations only of 25 years or more and will not be published more than four weeks after the anniversary date.
7. Birth announcements will only be published for 0- to 3-month-olds. (See form for more details.)
8. Forms are available from the office 8 a.m. to 5 p.m., Monday thru Friday, or by sending a SASE to The Pampa News, P.O. Box 2198, Pampa, TX 79066-2198.
9. Two anniversary pictures may be placed for a \$25 charge or four extra lines may be added to announcements for \$25 (\$50 for both).

Bridal Selection
Tara Coffee & Luke Thornton
Katie Foust & Matt Foust
Angela Huckins & Jim Chaney
Kristen Bell & Isaiah Nolte
Amy Robbins & Ian May
Cassie Gibson & Jacob Willis

On Eagle's Wings
113 N. Cuyler 665-0614

Whatever you WANT or NEED! We have the

LOAN

for YOU!

Come talk to our experienced loan officers! We can help! Whether it's a new home, new car, vacation or money for school, we have a loan to fit everyone!

NATIONAL BANK OF COMMERCE
An Office Of First National Bank Wampar, Wampar

PAMPA • 1224 N. HOBART • 665-9822
SHAMROCK • 305 N. MAIN • 256-2181
CHILDRESS • 501 COMMERCE • 940-837-2814

YOUR QUESTIONS ANSWERED

We do more than just fill all your prescriptions. We take the time to answer your questions and make sure you understand all you need to know about the medications you're taking. That's the difference you can expect from a pharmacy that Pampa has trusted for 25 years.

KEYES PHARMACY
928 NORTH HOBART
LOCAL 806.669-1202
OUTSIDE PAMPA 800.842.3866

Altrusa Club
SPRING CRAFT SHOW
Free Admission

Clothing, dolls, florals, furniture, jewelry, purses, candles, great gift items, hand-made crafts

Date: March 1st & 2nd
Saturday, 9 a.m. to 6 p.m.
Sunday, 10 a.m. to 5 p.m.
Berger's Aluminum Dome

Texas cotton outlook may be looking up

By **BLAIR FANNIN**
Extension News

COLLEGE STATION — With an uncertain national economy and volatile equity and commodity markets, the price of cotton is being influenced by many outside forces, according to a Texas AgriLife Extension Service economist.

However, even in uncertain economic times, the outlook appears to be positive for Texas cotton producers, said Dr. John Robinson, AgriLife Extension cotton marketing economist.

"If you're growing cotton, you are going to see better prices than you've seen in the past eight to 10 years," said Robinson, who spoke recently at the Texas Farm Bureau Leadership Conference in College Station.

Background considerations include:

- Across-the-board reductions in cotton plantings in 2007. All U.S. cotton acres were down some 29 percent with ethanol production weighing heavily in the shift of planted acres.

- Though West Texas had record yields and generally good quality cotton, lower yields and poor quality prevailed elsewhere in the Cotton Belt.

- Rainy conditions in China hampered crops in 2007, lowering yields and quality.

These factors, along with "jittery markets" where money is flowing in and out of agricultural commodities, tie everything together in the cotton price scenario, Robinson said.

"The March/May futures trading had prices at 65 to 66 cents, and the mills bought 500,000 bales of cotton one day," Robinson said. "The next day the market went up. Then the mills typically quit buying and waited for prices to take a dip. A lot of this is being influenced by the stock market and investment funds, too. When something causes a pullback, the commodities markets will react."

Cotton is competing with other acreage, Robinson said, and cotton is fundamentally tied to the stock market.

"New towels, drapes, clothes; these are more luxury type goods," he said. "If the U.S. economy goes into recession, this can have ripple effects back through the retail, textile and cotton supply chain worldwide."

Another segment to consider is index funds, which buy commodity futures attempting to mimic the Dow Jones AIG Commodity Index, Robinson said.

"All they do is buy futures contracts," he said. "They buy and hold cotton futures as well as other commodities. Commodity funds can give as good a return as the stock market, but it's also very, very risky. This is also why you see cotton prices moving up or down with

See **COTTON**, Page 12-B

TEXAS BEEF COUNCIL

Checkoff program redesigns Web site

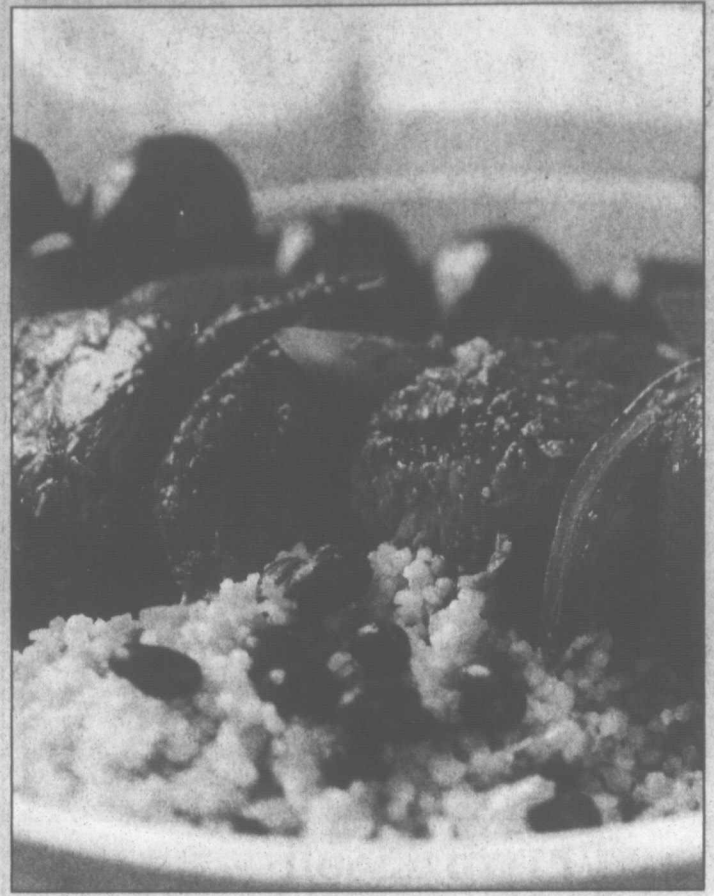
AUSTIN — The Texas Beef Council recently unveiled an updated version of their consumer-focused Web site, www.txbeef.org. Complete with beef recipes, cooking tips and beef nutrition information, the new Web site features include instructional beef cooking videos, a recipe rating system and a 'My Profile' section where visitors can create a recipe book to save their favorite beef dishes.

Offering consumers a more interactive method of learning important beef information, the new website encourages visitors to stay longer and come back more often. Txbeef.org provides users an opportunity to visit several sections such as the 'Healthy Living' section where they can learn about the power in protein, enjoy tips on sharing family mealtime and discover the importance of including nutrient-rich beef in a healthy diet.

"TBC is taking full

advantage of current technology in order to maximize the user experience," said Linda Joy Stovall, TBC Board member and chair of the communications committee. "An efficient and cost-effective tool to reach consumers with beef information and recipes, txbeef.org enables TBC to reach visitors on their terms, providing beef information and recipes to consumers instantaneously."

In efforts to provide a more attractive and user-friendly site, TBC worked with a production company to develop web videos for the new site. In 2007, a production crew filmed the videos at the TBC office, generating 10 new videos and personalizing seven videos created by the national checkoff. The 17 videos, featuring recipe demonstrations, instructional beef information and more, will be rolled out on the Web site over the next year and a half.



COURTESY PHOTO

Beef recipes, such as the Mojo Beef Kabobs shown here, continue to be the number one attraction on the Texas Beef Council Web site.

Since its inception in 2000, the txbeef.org Web site continues to be a success with over 1 million unique visitors last year alone, averaging nearly 100,000 visitors per month and over 3,000 visitors per day. TBC drives consumers

to the Web site through numerous events and promotions, with all TBC program areas working to incorporate the Web site on promotional literature, banners and materials.

Arthritis spawns stiffness, swelling

By **KAY LEDBETTER**
Extension News

AMARILLO — Arthritis is one of the most common diseases in this country, affecting millions of adults and half of all people age 65 and older, said a Texas AgriLife Extension Service specialist.

Arthritis literally means "joint inflammation," said Andrew Crocker, AgriLife Extension program gerontology specialist. However, there are many kinds of arthritis, each with different symptoms and treatments.

Arthritis can attack almost any part of the body, Crocker said. Some forms of arthritis cause changes you can see and feel — swelling, warmth and redness. Other types have fewer symptoms but still slowly cause damage.

The three most common types of arthritis in older adults are osteoarthritis, rheumatoid arthritis and gout, he said.

Of the three, osteoarthritis is the most common, Crocker said, and it starts when cartilage, the tissue that cushions bones, begins to wear away. At its worst, all of the cartilage in a joint wears away, leaving bones that rub against each other. "Symptoms may range from stiffness and mild pain that comes and goes to severe pain that persists when you are at rest," he said. "Sometimes osteoarthritis causes you to

feel stiff when you have not moved in a while, but the stiffness goes away when you move."

Rheumatoid arthritis is an autoimmune disease, meaning the body attacks the lining of a joint just as it would if it were trying to

ing your ankle, elbow, knee, wrist, hand or other toes," he said. "Swelling may cause the skin to pull tightly around the joint and make the area red or purple and very tender."

"If any arthritis symptoms last longer than two

Along with taking the right medicine and properly resting joints, exercise is a good way to stay fit, keep muscles strong and control arthritis symptoms, he said. Daily exercise helps keep joints moving, lessens pain and makes muscles around the joints stronger.

Three types of exercise work best on arthritis:

- Range-of-motion exercises, like dancing, relieve stiffness, improve flexibility and help keep joints moving.

- Strengthening exercises, such as weight training, strengthen muscles to support and protect joints. Be sure to move in a slow, steady manner — do not bounce. A gentle stretch at the end of each motion is all right, but there should be no pain.

- Aerobic or endurance exercises, like bicycle riding, improve overall health and well-being, and may lessen swelling in some joints.

"You might find comfort by applying heat or cold, soaking in a warm bath or swimming in a heated pool," Crocker said. "Your health provider may suggest surgery when damage to your joints becomes disabling or when other treatments do not help with pain. Surgeons can repair or replace these joints with artificial ones."

He suggested that pain and arthritis shouldn't be accepted as part of growing older.

"You and your health provider can work together to safely lessen pain and stiffness and prevent more serious damage to your joints," Crocker said.

For more information, go to the National Institute of Arthritis and Musculoskeletal and Skin Diseases Web site at <http://www.niams.nih.gov/>.

"Symptoms may range from stiffness and mild pain that comes and goes to severe pain that persists when you are at rest. Sometimes osteoarthritis causes you to feel stiff when you have not moved in a while, but the stiffness goes away when you move."

— Andrew Crocker
AgriLife Extension program gerontology specialist

protect itself from an infection, Crocker said. The disease generally leads to inflammation, pain, swelling and stiffness, and can occur in many different joints at the same time. "If you have rheumatoid arthritis in a joint on one side of the body, the same joint on the other side of the body will probably have it," he said. "People with rheumatoid arthritis often do not feel well, often being tired or running a fever."

Gout is one of the most painful forms of arthritis, Crocker said. It begins when crystals of uric acid form in the joints, leading to swelling, redness, heat, pain and stiffness in the joint. Eating foods like shellfish, liver, dried beans, peas, anchovies or gravy can bring on gout attacks. "Gout is most often a problem in the big toe, but it can affect other joints, includ-

weeks, see your health provider," Crocker advised. "If you have a fever, feel physically ill, suddenly have a swollen joint or have problems using your joint, see him or her sooner."

Medications may help with the pain and swelling — acetaminophen and some non-steroidal anti-inflammatory drugs are sold without a prescription, he said. These are medications like Tylenol, ibuprofen or naproxen. Read the warnings that come with the drug, and talk to a health provider about how to best use them for arthritis pain.

There are some treatments specific for each common type of arthritis, including prescription drugs or steroid injections, Crocker said. A health provider may recommend a treatment after determining which type of arthritis is present.

Club news

Club news is published strictly on a first come, first serve basis due to space limitations. The deadline each week for Sunday's paper is Wednesday at 5 p.m., (Tuesday at 12 noon on holidays such as Thanksgiving and Christmas.) The deadline does not guarantee publication that week. Thank you.

Genealogy society
Gray County Genealogical Society will convene its next meeting at 7 p.m. Monday,

Feb. 25 at Lovett Memorial Library in Pampa. Guest speaker for the meeting will be Misty Guy.

Guy is the new head librarian at the local library. She is a native of Amarillo, graduating from Caprock High in 1992, and has many relatives in the Pampa and Amarillo areas.

Guy will discuss changes at the library and the genealogical site Ancestry.com.

UNSURE WHETHER YOU CAN RETIRE? LET'S TALK.

Duane Harp
Financial Advisor
1921 N. Hobart
Pampa, TX 79065
806-665-6753

Member SIPC

Edward Jones
MAKING SENSE OF INVESTING
www.edwardjones.com

WE ARE PROVIDERS FOR

BCBS • IMS
FIRSTCARE • AETNA
MEDICARE • ICON
VSP • EYEMED
MEDICAID
UNITED HEALTH
CIGNA

DRS. SIMMONS & SIMMONS
1324 N. BANKS
800-944-6172
665-0771

Vision Source!

Cranes
Auto Crane • Liftmore • RKI
Bodies • Boxes
RKI • Weatherguard • Montezuma

AMERICAN
EQUIPMENT & TRAILER
Since 1953
www.aet.us

610 N. Grand
Amarillo, TX
800-687-8831

3707 MLK Blvd.
Lubbock, TX
800-530-4775

Truck Trailers
Wilson • Clement • Lufkin • Eager Beaver • MuVall

Cattle • Grain • Dump • Flat • Machinery • Lowboy

REMODELER?

Remodeler Late Fees Start March 1, 2008!

STATE LAW REQUIRES ANY BUILDER/REMODELER THAT DOES INTERIOR RENOVATIONS, MATERIAL IMPROVEMENTS, OR NEW CONSTRUCTION OF \$10,000 OR MORE TO REGISTER IN ORDER TO WORK LEGALLY IN TEXAS.

IF YOU'VE NEVER WORKED ON INTERIOR REMODELING PROJECTS OF \$20,000 OR MORE, REGISTER BEFORE MARCH 1 TO AVOID PAYING A LATE FEE.

CALL TOLL-FREE 877-651-TRCC (8722) FOR MORE INFORMATION OR VISIT US ON THE WEB AT WWW.TEXASRCC.ORG

SU
©TV
KACV
KAMR
KCTI
KFDA
KVII
A&E
AMC
ANPL
BET
DISC
DISN
ESPN
ESPN2
FAM
FSSW
FX
HGT
HIST
LIFE
NICK
SCIFI
SPIKE
TBN
TCM
TLC
TNT
TVLA
UNI
USA
WGN
WTBS
HBO
MAX
SHOW
TMC

MC
©TV
KACV
KAMR
KCTI
KFDA
KVII
A&E
AMC
ANPL
BET
DISC
DISN
ESPN
ESPN2
FAM
FSSW
FX
HGT
HIST
LIFE
NICK
SCIFI
SPIKE
TBN
TCM
TLC
TNT
TVLA
UNI
USA
WGN
WTBS
HBO
MAX
SHOW
TMC

TU
©TV
KACV
KAMR
KCTI
KFDA
KVII
A&E
AMC
ANPL
BET
DISC
DISN
ESPN
ESPN2
FAM
FSSW
FX
HGT
HIST
LIFE
NICK
SCIFI
SPIKE
TBN
TCM
TLC
TNT
TVLA
UNI
USA
WGN
WTBS
HBO
MAX
SHOW
TMC

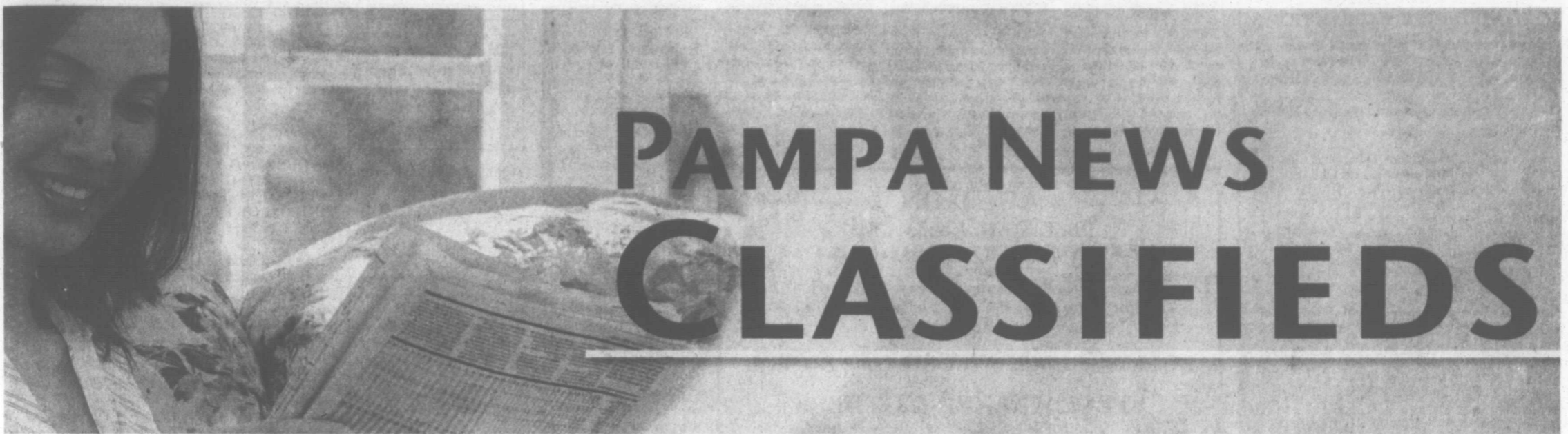
W
©TV
KACV
KAMR
KCTI
KFDA
KVII
A&E
AMC
ANPL
BET
DISC
DISN
ESPN
ESPN2
FAM
FSSW
FX
HGT
HIST
LIFE
NICK
SCIFI
SPIKE
TBN
TCM
TLC
TNT
TVLA
UNI
USA
WGN
WTBS
HBO
MAX
SHOW
TMC

SUNDAY AFTERNOON / EVENING													FEBRUARY 24, 2008									
TVData	12pm	12:30	1pm	1:30	2pm	2:30	3pm	3:30	4pm	4:30	5pm	5:30	6pm	6:30	7pm	7:30	8pm	8:30	9pm	9:30	10pm	
KACV	Business	WealthTrk	Unforgivable Blackness: Jack Johnson	Unforgivable Blackness: Jack Johnson	Time Goes	My Hero	Monarch of the Glen	Nature "Raptor Force"	Masterpiece "Pride and Prejudice" (N) (DVS)	Red Tail Re												
KAMR	Laureus Award	PGA Tour Golf WGC Accenture Match Play Championship - Final (Live) (L) (E)	PGA Tour Golf WGC Accenture Match Play Championship - Final (Live) (L) (E)	PGA Tour Golf WGC Accenture Match Play Championship - Final (Live) (L) (E)	PGA Tour Golf WGC Accenture Match Play Championship - Final (Live) (L) (E)	PGA Tour Golf WGC Accenture Match Play Championship - Final (Live) (L) (E)	PGA Tour Golf WGC Accenture Match Play Championship - Final (Live) (L) (E)	PGA Tour Golf WGC Accenture Match Play Championship - Final (Live) (L) (E)	PGA Tour Golf WGC Accenture Match Play Championship - Final (Live) (L) (E)	PGA Tour Golf WGC Accenture Match Play Championship - Final (Live) (L) (E)	PGA Tour Golf WGC Accenture Match Play Championship - Final (Live) (L) (E)	PGA Tour Golf WGC Accenture Match Play Championship - Final (Live) (L) (E)	PGA Tour Golf WGC Accenture Match Play Championship - Final (Live) (L) (E)	PGA Tour Golf WGC Accenture Match Play Championship - Final (Live) (L) (E)	PGA Tour Golf WGC Accenture Match Play Championship - Final (Live) (L) (E)	PGA Tour Golf WGC Accenture Match Play Championship - Final (Live) (L) (E)	PGA Tour Golf WGC Accenture Match Play Championship - Final (Live) (L) (E)	PGA Tour Golf WGC Accenture Match Play Championship - Final (Live) (L) (E)	PGA Tour Golf WGC Accenture Match Play Championship - Final (Live) (L) (E)	PGA Tour Golf WGC Accenture Match Play Championship - Final (Live) (L) (E)	PGA Tour Golf WGC Accenture Match Play Championship - Final (Live) (L) (E)	

MONDAY AFTERNOON / EVENING													FEBRUARY 25, 2008									
TVData	12pm	12:30	1pm	1:30	2pm	2:30	3pm	3:30	4pm	4:30	5pm	5:30	6pm	6:30	7pm	7:30	8pm	8:30	9pm	9:30	10pm	
KACV	Word World	Needle Art	Real Simple	Painting	Reading	Lions	Arthur	Maya	Curious	Clifford-Red	Cyberchase	Fetch! With	News-Lehrer	Antiques Roadshow (N)	American Experience (N)	American Experience (N)	C. Rose					
KAMR	Days of Our Lives (N) (L)	Law Order: CI	Martha Stewart	Rachael Ray (E)	Ellen DeGeneres Show	News (N)	NBC News	News (N)	Entertain	My Dad-Better	American Idol Rewind (N)	Funnies Home Videos	WGN News	Replay	Scrubs (E)							

TUESDAY AFTERNOON / EVENING													FEBRUARY 26, 2008									
TVData	12pm	12:30	1pm	1:30	2pm	2:30	3pm	3:30	4pm	4:30	5pm	5:30	6pm	6:30	7pm	7:30	8pm	8:30	9pm	9:30	10pm	
KACV	Word World	Knit	Painting	Painting	Reading	Lions	Arthur	Maya	Curious	Clifford-Red	Cyberchase	Fetch! With	News-Lehrer	Nova (N) (L) (DVS)	Secrets of the Dead (L)	Frontline/World (L)	C. Rose					
KAMR	Days of Our Lives (N) (L)	Law Order: CI	Martha Stewart	Rachael Ray (E)	Ellen DeGeneres Show	News (N)	NBC News	News (N)	Entertain	The Biggest Loser: Couples (N) (L) (E)	quarterlife (N) (E)	News (N)										

WEDNESDAY AFTERNOON / EVENING													FEBRUARY 27, 2008									
TVData	12pm	12:30	1pm	1:30	2pm	2:30	3pm	3:30	4pm	4:30	5pm	5:30	6pm	6:30	7pm	7:30	8pm	8:30	9pm	9:30	10pm	
KACV	Word World	Donnas	Your Home	Painting	Reading	Lions	Arthur	Maya	Curious	Clifford-Red	Cyberchase	Fetch! With	News-Lehrer	Ballroom	Chall	American Masters (N) (L) (E)	Previews	C. Rose				
KAMR	Days of Our Lives (N) (L)	Law Order: CI	Martha Stewart	Rachael Ray (E)	Ellen DeGeneres Show	News (N)	NBC News	News (N)	Entertain	Deal or No Deal (N) (E)	Law Order: CI	Law & Order "Tango" (N)	News (N)									



Realtors

First Landmark Realty

665-0717
2545 Perryton Pkwy. in the Pampa Mall

NEW LISTING

Adorable 3 bedroom brick, 2 baths. Large living-dining combination. WB fireplace. Galley kitchen. Central heat and air. New and updated colors. Double car garage. Central heat and air. Nearly new fence in back yard. Must see. Priced to sell. 7882

NEW LISTING

Lots of updates in this 3 bedroom brick, 1 3/4 bath. Huge den has beautiful fireplace. Open kitchen-breakfast area. Great school location for Travis Elementary. Call for an appointment to see. 7878

LYNN STREET

Wonderful 3 bedroom, 2 baths. Huge open and airy den-kitchen. WB fireplace. Formal living room. Hobby room. Spiral staircase to upper loft. Basement. Many updates. Great condition. Perfect for a growing family. Too many amenities to mention. Must see to appreciate. OE.

DWIGHT ST.

2 bedroom, 1 bath home. Hardwood flooring in living room. Fresh interior paint. Huge garage. Priced to sell! Perfect for first time buyers. OE.

GRAPE ST.

Great curb appeal in this 3 bedroom brick, 1 3/4 baths. Oversized formal living room. Den has built ins. New windows. Great utility room. Large screened in patio. Basement room, double car garage. Perfect location. Call Irvine to see. 7808

DOGWOOD

Unique 3 bedroom brick, 1 3/4 baths. Open living area. Large room in back has tiled flooring would make a wonderful hobby room or rec. room. Storage building in back along with a nice garden area. Corner lot has room for RV parking. Call to see. OE.
CALL FIRST LANDMARK REAL ESTATE NEEDS. WE APPRECIATE YOUR BUSINESS.
Irvine Rhubahn GR. 665-4534
Chris Moore GR. 665-8172
Bobbie Nisbet BKR. 665-7037

1 Public Notice

and winners agree to abide by, all applicable laws, Commission rules, regulations, policies, directives, instructions, conditions, procedures and final decisions of the Executive Director. A scratch-off game may continue to be sold even when all the top prizes have been claimed. Must be 18 years of age or older to purchase a Texas Lottery ticket. **PLAY RESPONSIBLY.** The Texas Lottery Supports Texas Education.
A-29 Feb. 24, 2008

14s Plumbing/Heat

Larry Baker Plumbing
Heating/ Air Conditioning
Borger Hwy. 665-4392

19 Situations

DOMESTIC- Lifetime of exp. Feeling overwhelmed? Can't get ahead? I can help. Detailing a specialty and yes I do windows. Exc. ref. locally & surrounding area. Call Carey 806-733-2492

21 Help Wanted

POST OFFICE NOW HIRING. Avg. Pay \$20 / hr. or \$57K yr. incl. Federal benefits and OT. Offered by Exam Services, not aff. w/ USPS who hires. 1-866-483-6490.

21 Help Wanted

REGISTERED NURSES \$2000 SIGN-ON BONUS

PAMPA NURSING CENTER is currently hiring an RN to work the **Baylor Plan on week-ends.** Duties will consist of being the Charge Nurse on the 6 to 12 and 2 to 10 shift, passing meds and supervising the care of our residents.

21 Help Wanted

Fresenius Medical Care \$5000 Sign On Bonus RN Clinic Manager

Pampa Dialysis Center Located at 2545 Perryton Pkwy. Pampa, Texas

Please Apply in Person Only
Amarillo High Plains Dialysis Center 5920
Amarillo Blvd. West Amarillo, Texas
Or Call
Mike Moss, Area Mgr. 806-353-9182

Interested Applicants Please Contact Mandi Martin at 1321 W. Kentucky or call 806-669-2551

Collectors

Openings for Collectors in our Pampa office. Ideal candidate has strong communication skills and basic computer knowledge. No exp. necessary. Base pay \$8.25 per hr, comm., benefits. Bilingual a plus. FT M-F 11am-8pm, PT M-F 6pm-10pm, Sat 9am-1pm. Apply in person at 200 N. Cuyler St.

POSTAL JOBS

\$17.89-\$28.27/hr. now hiring. For application & free government job info, call American Assoc. of Labor, 1-913-599-8226 24 hrs. emp.serv.

REAL Estate Co. needs maintenance man w/ own tools. Apply at 1347 Coffee, Mon.-Fri., 8am-6pm, 665-4274, 665-1875.

EDWARD Abraham Memorial Home has openings for the following positions:

Nutrition Tech
Hospitality Tech
Nurse Tech

Training will be provided for these positions. A Nurse Tech Certification Class will begin 3/10/08. Benefits include:

- Travel Pay
- Holidays
- Vacation
- Health Insurance

Apply at 803 Birch Street, Canadian or call Lee Anne or Lori at 323-6453 EOE

CERTIFIED NURSING ASSISTANTS \$1500 SIGN-ON BONUS

PAMPA NURSING CENTER is currently hiring **CNAs for all shifts.** Applicants can apply at:

1321 W. Kentucky or call Mandi Martin at 806-669-2551

FLOOR TECH / HOUSEKEEPER

PAMPA NURSING CENTER is currently hiring an individual to do housekeeping and floor care. Experience in floor care is a plus! Please apply at:

1321 W. Kentucky or call Daniel Alley at 806-669-2551

EXP. Pumper need for local co. 401-K, health ins., dental / vision, paid vacation, holidays & uniforms. Must have clean driving record and pass drug test. Send resume and salary requirements to Box 1061, Pampa, Tx.

WE need an Exp. Pulling Unit Operator. 401K, vacation, lots of hours. Call 669-3947 & leave msg.

ASST. MANAGERS needed for fast paced apt. complexes. Call 665-4274, 665-1875.

THE CITY OF McLEAN

is accepting applications with resumes for a **Public Works Director.** Applicants must have Class C Groundwater & Wastewater licenses and a CDL license. The Director of Public Works supervises & participates in the duties of crews performing maintenance of utilities and ensures compliance with applicable laws and regulations. Must be able to read, interpret and understand industry manuals and Federal, State and local law specifications, and prepare necessary paperwork associated with the position. **Salary is negotiable. Deadlines for applications is Thurs., mar. 6th at 5:00 p.m.**

Applications may be picked up at City Hall, 220 N. Main, McLean, TX.

Please include resume with application. The City of McLean is an Equal Opportunity employer. For more info, contact City Hall at 806-779-2481.

14r Plowing/Yard

LAWN Scalping, Fertilizing and General Lawn Cleanups. Call 662-6622

14s Plumbing/Heat

JACK'S Plumbing, 715 W. Foster, 665-7115. Plumbing, repairs, new constr., & sept. sys.

1 Public Notice

and winners agree to abide by, all applicable laws, Commission rules, regulations, policies, directives, instructions, conditions, procedures and final decisions of the Executive Director. A scratch-off game may continue to be sold even when all the top prizes have been claimed. Must be 18 years of age or older to purchase a Texas Lottery ticket. **PLAY RESPONSIBLY.** The Texas Lottery Supports Texas Education.
A-29 Feb. 24, 2008

"Notice is given that a 320' cellular phone tower is planned to be installed on a plot of vacant land along County Road 3. Lat: 36 04 10.2/Long 101 02 16.38. For more information contact Scott at (918)824-1430."

A-31 Feb. 24, 25, 26, 2008

NOTICE TO BIDDERS

Gray County has for sale and will receive sealed bids on one 1992 Chevrolet Blazer, automatic transmission with four wheel drive located in Precinct 4. Bids should be submitted to the Gray County Judge's Office, 205 N. Russell, Pampa, Texas 79065, no later than 10:00 a.m. March 17, 2008. Bids should be submitted in a marked, sealed envelope. Bid specifications can be picked up in the Gray County Judge's Office. Gray County reserves the right to reject any or all bids.
A-26 Feb. 24, Mar. 2, 2008

5 Special Notices

ADVERTISING Material to be placed in the Pampa News, MUST be placed through the Pampa News Office Only.

10 Lost/Found

LOST male bl. & white Rat Terrier "Sammy", 1400 bl. Charles. Has seizures, needs meds daily. 669-2383.

13 Bus. Opp.

GREAT investment opp. Pampa motel. Retired couple or individual. 665-1875, 806-383-1985.

A CASH COW!!

30 Vending Machines/ You approve ea. location Entire Business- \$10,970 Hurry! 1-800-836-3464

14d Carpentry

Carpentry, Roofing, Replacement Windows, steel siding & trim. Continuous gutters. Jerry Nicholas 669-9991, 662-8169

OVERHEAD DOOR REPAIR Kidwell Construction. Call 669-6347.

RICHARD'S General Carpentry, Roofs & Painting, Building & Remodeling. 886-0267, 275-9038

14e Carpet Serv.

NU-WAY Cleaning service, carpets, upholstery, walls, ceilings. Quality doesn't cost...it pays! No steam used. Bob Marx owner-operator. 665-3541, or from out of town, 800-536-5341.

14h Gen. Serv.

HOUSE Cracking? In bricks or walls? Childers Brothers, Inc. 800-299-9563, 806-352-9563

COX Fence Company. Repair old fence or build new. Free estimates. Call 669-7769.

CERAMIC tile work. Remodeling floor, shower, kitchen. Texture, painting, dry wall. Free esti. Call 665-3453 leave message, Jesus Barraza.

JH Concrete Work. Stamps, driveways, addition, fences, remodeling. Free Est. 806-382-5408.

14r Plowing/Yard

LAWN Scalping, Fertilizing and General Lawn Cleanups. Call 662-6622

14s Plumbing/Heat

JACK'S Plumbing, 715 W. Foster, 665-7115. Plumbing, repairs, new constr., & sept. sys.

14s Plumbing/Heat

Larry Baker Plumbing
Heating/ Air Conditioning
Borger Hwy. 665-4392

19 Situations

DOMESTIC- Lifetime of exp. Feeling overwhelmed? Can't get ahead? I can help. Detailing a specialty and yes I do windows. Exc. ref. locally & surrounding area. Call Carey 806-733-2492

21 Help Wanted

NOTICE: All ads that contain phone numbers or give reference to a number with an area code of 809 or a prefix of 011 are international toll numbers and you will be charged international long distance rates. For more information and assistance regarding the investigation of work at home opportunities and job lists, *The Pampa News* urges its readers to contact the **Better Business Bureau of South Texas, 609 S. International Blvd., Weslaco, Tx. 78596, (210) 968-3678.**

NOTICE

Readers are urged to fully investigate advertisements which require payment in advance for information, services or goods.

GREAT opp. for single or retired couple, for 12 unit motel in Pampa. Lrg. apt. incl. 665-4274, 665-4274.

DRIVERS; Owner Operators wanted for pneumatic tanks!

Your truck, our tanks! 73% of gross revenue! 6 western states. *800-635-7687* ext. 11

TRUCK Drivers needed.

Drug test and references required. Competitive pay! Call 665-0379.

ACCOUNTS Payable position with established company. Computer knowledge req. Full time Mon-Fri 8-5pm. Great benefits. Email resume to tmppa@tm-ems.com or mail to ATTN: Accounting, Po Box 2358, Pampa, TX. 79066-2358.

PARKVIEW Hospital now accepting appl. for **Full-Time RN & LVN,** for the 7pm-7am shift. Competitive salary. Exc. benefits. Mileage pd. Call Sue Stiles, DON, or apply in person, 901 Sweetwater St., Wheeler, Tx., 806-826-5581.

What are you waiting for? Come take advantage of the most attractive sales opportunity in the panhandle area. Send resume to Aflac Regional Office 2600 Paramount Suite H3 Amarillo, TX 79109 or email to wildwest@megapathdsi.net

THE CITY OF McLEAN

is accepting applications with resumes for a **Public Works Director.** Applicants must have Class C Groundwater & Wastewater licenses and a CDL license. The Director of Public Works supervises & participates in the duties of crews performing maintenance of utilities and ensures compliance with applicable laws and regulations. Must be able to read, interpret and understand industry manuals and Federal, State and local law specifications, and prepare necessary paperwork associated with the position. **Salary is negotiable. Deadlines for applications is Thurs., mar. 6th at 5:00 p.m.**

Applications may be picked up at City Hall, 220 N. Main, McLean, TX.

Please include resume with application. The City of McLean is an Equal Opportunity employer. For more info, contact City Hall at 806-779-2481.

21 Help Wanted

REGISTERED NURSES \$2000 SIGN-ON BONUS

PAMPA NURSING CENTER is currently hiring an RN to work the **Baylor Plan on week-ends.** Duties will consist of being the Charge Nurse on the 6 to 12 and 2 to 10 shift, passing meds and supervising the care of our residents.

Interested Applicants Please Contact Mandi Martin at 1321 W. Kentucky or call 806-669-2551

Collectors

Openings for Collectors in our Pampa office. Ideal candidate has strong communication skills and basic computer knowledge. No exp. necessary. Base pay \$8.25 per hr, comm., benefits. Bilingual a plus. FT M-F 11am-8pm, PT M-F 6pm-10pm, Sat 9am-1pm. Apply in person at 200 N. Cuyler St.

POSTAL JOBS

\$17.89-\$28.27/hr. now hiring. For application & free government job info, call American Assoc. of Labor, 1-913-599-8226 24 hrs. emp.serv.

REAL Estate Co. needs maintenance man w/ own tools. Apply at 1347 Coffee, Mon.-Fri., 8am-6pm, 665-4274, 665-1875.

EDWARD Abraham Memorial Home has openings for the following positions:

Nutrition Tech
Hospitality Tech
Nurse Tech

Training will be provided for these positions. A Nurse Tech Certification Class will begin 3/10/08. Benefits include:

- Travel Pay
- Holidays
- Vacation
- Health Insurance

Apply at 803 Birch Street, Canadian or call Lee Anne or Lori at 323-6453 EOE

CERTIFIED NURSING ASSISTANTS \$1500 SIGN-ON BONUS

PAMPA NURSING CENTER is currently hiring **CNAs for all shifts.** Applicants can apply at:

1321 W. Kentucky or call Mandi Martin at 806-669-2551

FLOOR TECH / HOUSEKEEPER

PAMPA NURSING CENTER is currently hiring an individual to do housekeeping and floor care. Experience in floor care is a plus! Please apply at:

1321 W. Kentucky or call Daniel Alley at 806-669-2551

EXP. Pumper need for local co. 401-K, health ins., dental / vision, paid vacation, holidays & uniforms. Must have clean driving record and pass drug test. Send resume and salary requirements to Box 1061, Pampa, Tx.

WE need an Exp. Pulling Unit Operator. 401K, vacation, lots of hours. Call 669-3947 & leave msg.

ASST. MANAGERS needed for fast paced apt. complexes. Call 665-4274, 665-1875.

THE CITY OF McLEAN

is accepting applications with resumes for a **Public Works Director.** Applicants must have Class C Groundwater & Wastewater licenses and a CDL license. The Director of Public Works supervises & participates in the duties of crews performing maintenance of utilities and ensures compliance with applicable laws and regulations. Must be able to read, interpret and understand industry manuals and Federal, State and local law specifications, and prepare necessary paperwork associated with the position. **Salary is negotiable. Deadlines for applications is Thurs., mar. 6th at 5:00 p.m.**

Applications may be picked up at City Hall, 220 N. Main, McLean, TX.

Please include resume with application. The City of McLean is an Equal Opportunity employer. For more info, contact City Hall at 806-779-2481.

21 Help Wanted

REGISTERED NURSES \$2000 SIGN-ON BONUS

PAMPA NURSING CENTER is currently hiring an RN to work the **Baylor Plan on week-ends.** Duties will consist of being the Charge Nurse on the 6 to 12 and 2 to 10 shift, passing meds and supervising the care of our residents.

Interested Applicants Please Contact Mandi Martin at 1321 W. Kentucky or call 806-669-2551

Collectors

Openings for Collectors in our Pampa office. Ideal candidate has strong communication skills and basic computer knowledge. No exp. necessary. Base pay \$8.25 per hr, comm., benefits. Bilingual a plus. FT M-F 11am-8pm, PT M-F 6pm-10pm, Sat 9am-1pm. Apply in person at 200 N. Cuyler St.

POSTAL JOBS

\$17.89-\$28.27/hr. now hiring. For application & free government job info, call American Assoc. of Labor, 1-913-599-8226 24 hrs. emp.serv.

REAL Estate Co. needs maintenance man w/ own tools. Apply at 1347 Coffee, Mon.-Fri., 8am-6pm, 665-4274, 665-1875.

EDWARD Abraham Memorial Home has openings for the following positions:

Nutrition Tech
Hospitality Tech
Nurse Tech

Training will be provided for these positions. A Nurse Tech Certification Class will begin 3/10/08. Benefits include:

- Travel Pay
- Holidays
- Vacation
- Health Insurance

Apply at 803 Birch Street, Canadian or call Lee Anne or Lori at 323-6453 EOE

CERTIFIED NURSING ASSISTANTS \$1500 SIGN-ON BONUS

PAMPA NURSING CENTER is currently hiring **CNAs for all shifts.** Applicants can apply at:

1321 W. Kentucky or call Mandi Martin at 806-669-2551

FLOOR TECH / HOUSEKEEPER

PAMPA NURSING CENTER is currently hiring an individual to do housekeeping and floor care. Experience in floor care is a plus! Please apply at:

1321 W. Kentucky or call Daniel Alley at 806-669-2551

EXP. Pumper need for local co. 401-K, health ins., dental / vision, paid vacation, holidays & uniforms. Must have clean driving record and pass drug test. Send resume and salary requirements to Box 1061, Pampa, Tx.

WE need an Exp. Pulling Unit Operator. 401K, vacation, lots of hours. Call 669-3947 & leave msg.

ASST. MANAGERS needed for fast paced apt. complexes. Call 665-4274, 665-1875.

THE CITY OF McLEAN

is accepting applications with resumes for a **Public Works Director.** Applicants must have Class C Groundwater & Wastewater licenses and a CDL license. The Director of Public Works supervises & participates in the duties of crews performing maintenance of utilities and ensures compliance with applicable laws and regulations. Must be able to read, interpret and understand industry manuals and Federal, State and local law specifications, and prepare necessary paperwork associated with the position. **Salary is negotiable. Deadlines for applications is Thurs., mar. 6th at 5:00 p.m.**

Applications may be picked up at City Hall, 220 N. Main, McLean, TX.

Please include resume with application. The City of McLean is an Equal Opportunity employer. For more info, contact City Hall at 806-779-2481.

21 Help Wanted

REGISTERED NURSES \$2000 SIGN-ON BONUS

PAMPA NURSING CENTER is currently hiring an RN to work the **Baylor Plan on week-ends.** Duties will consist of being the Charge Nurse on the 6 to 12 and 2 to 10 shift, passing meds and supervising the care of our residents.

Interested Applicants Please Contact Mandi Martin at 1321 W. Kentucky or call 806-669-2551

Collectors

Openings for Collectors in our Pampa office. Ideal candidate has strong communication skills and basic computer knowledge. No exp. necessary. Base pay \$8.25 per hr, comm., benefits. Bilingual a plus. FT M-F 11am-8pm, PT M-F 6pm-10pm, Sat 9am-1pm. Apply in person at 200 N. Cuyler St.

POSTAL JOBS

\$17.89-\$28.27/hr. now hiring. For application & free government job info, call American Assoc. of Labor, 1-913-599-8226 24 hrs. emp.serv.

POTTER TRUCKING, INC.
DUMAS, BORGER, PAMPA, TEXAS
AREAS
 Equal Opportunity Employer
 Call 806-935-6385 for Application

****\$14 / hr Plus for Experienced Qualified Drivers**
****Retirement**
****Vacations**
****Health Ins., Dental, Vision, Disability, Life, Partial Insurance Paid on Wife and Children**
****DOT Medical, Uniforms**
****Home Every Night**
****CDL W/ Hazmat and Tanker**
****Good Driving Record**
****Previous Employment Record**
****Clear Drug & Alcohol Record**
****DOT Physical**

ATTENTION:
Kill Truck Drivers
Transport Drivers
Winch Truck
Drivers Needed

- Competitive Pay
- Health Insurance
- 401(k)
- Dental-Vision
- Incentive Bonus
- Paid Vacation

Apply Inside

TOTAL
 Oilfield Services

Hwy. 152 & 30
 Sweetwater, Okla.
 1-580-534-2210
 Ask for Judy

Quentin Williams REALTORS
 Keagy-Edwards, Inc.
 Selling Pampa Since 1952
 669-2522 • 2208 Coffee & Perryton Pkwy.

NEW LISTING - ASPEN - Four bedroom home located on corner lot. New tile in kitchen, utility, den, hall, and entry. Covered patio, 2 storage buildings, sprinkler system front and back. Steel siding on soffits for low maintenance. Double Garage. MLS 08-7886

NEW LISTING - N. NELSON - Very nice well maintained three bedroom home with wonderful kitchen. Home has been updated. Small storage unit in back yard. Central heat and air, single garage. MLS 08-7891

NEW LISTING - N. SUMMER - Nice 2 bedroom brick home with steel siding on eaves. New central heat and air in 2000. Storm windows and single garage. MLS 08-7886

NEW LISTING - LYNN - Three bedroom home with wood burning fireplace. 1-3/4 baths, central heat and air, pier/beam construction, 2 living areas. Storm cellar, storm windows, storage building, double garage. MLS 08-7894

NEW LISTING - N. SOMERVILLE - Three bedroom home close to downtown area. Extra living area. Fenced backyard. One bath, wall heat, has new vinyl in kitchen, dining and utility areas. Some hardwood floors under carpet. Mock fireplace. Single detached garage with storage area. MLS 08-7887

NEW LISTING - N. CREST - Great investment property. Large building with plenty of parking. Building has central heat and air. The property is currently zoned medical. It is leased to Amarillo Heat Group and a home health care company. MLS 08-7880

N. BANKS - Very nice 16' X 76' Northcrest mobile home with three bedrooms. Central heat and air. Large living and kitchen areas. Master bedroom has a wonderful bath area. Double drive. MLS 07-7742

BEECH - Nice neighborhood in Austin school district. Central heat and air less than 2 years old. New Woodbridge triple pane windows. Shop and storm cellar, storage building, utility and craft room, 3 bedrooms, above ground pool, 2 ponds, and a greenhouse. MLS 07-7842

BEECH - Very nice three bedroom home located on corner lot. Has 1 3/4 baths, large screened in porch. Garage plus three storage buildings. Kitchen has nice cabinets. Some updating has been done. MLS 07-7847

CHEROKEE - Very nice three bedroom, 1 3/4 bath home. New paint and textures on the interior. Appliances and air conditioner have been replaced. New garage door and opener. New counter tops, has wood burning fireplace, utility room, storage building and double garage. MLS 07-7857

N. CUYLER - Commercial lot close to downtown. MLS 06-7242

DUNCAN - Large open living and formal dining room. Kitchen has lots of storage. Den area off kitchen. 1 3/4 baths. Lots of storage. Corner lot. Double garage in back. MLS 07-7642

DUNCAN - Well kept home with three bedrooms. Kitchen has large snack bar. Dining room separate from kitchen. Nice pantry, large utility with lots of storage. Circle drive and RV storage in back. Single garage. MLS 07-7784

DUNCAN - Lovely 4 bedroom home sitting at end of street. Brick floors in entry, hall, kitchen, breakfast area, formal living room and dining room. Upstairs has 4 bedrooms, deck and lots of closets. Den has fireplace. Double detached garage has a bonus room that could be used for a hobby room or more. MLS 08-7870

N. FAULKNER - Three bedroom, 2 bath home with central heat and air, 1 car garage plus carport, chain link fence. Large living room and utility, and a storage building. MLS 07-7740

RUSSELL - Two or three bedroom home with vinyl siding. Good street appeal. Double paneled windows, formal dining room, three window air units, single garage. MLS 07-7832

E. FRANCIS - Very unique home in older part of home. Lots of closets, built in bookcases, three bedrooms, 2 apartments in back, corner lot, kitchen has some remodeling. MLS 08-7866

LOWRY - Two bedroom home. New carpet in last 2 years, central heat and air, ceiling fans, has had some updating in last 2 years. double garage. MLS 08-7872

WELLS - Very nice three bedroom home with new paint and updating. Nice size kitchen with eating area. Back yard is big and pretty. Great starter home. Central heat and air, and single garage. MLS 07-7787

21 Help Wanted
DRIVEWAY Attendant Needed. Able to fix flats & change oil. CDL a plus! 40+ hrs. a week. NO PHONE CALLS. Apply in person, Utility Oil, 501 W. Brown, Pampa.

21 Help Wanted
COODER'S Dixie Cafe now hiring for Hostesses, part-time, 16 yrs. or older. Wait Staff, full-time, 18 yrs. or older. Apply in person, 2219 Perryton Pkwy. No phone calls.

21 Help Wanted
NATURAL Gas Measurement Co. hiring Field Technicians. Good benefits, email resume to jobs@nm-ems.com or mail to Attn: Resume, P.O. Box 2358, Pampa, Tx. 79066-2358.

21 Help Wanted
DRIVERS / CDL Career Training w/ Central Refrigerated. We Train, Employ w/ \$0 down financing. Avg. \$40,000 1st year! 800-567-3867.

21 Help Wanted
JANITOR Full & Part-Time job. No experience needed, will train! To apply call 665-2667

21 Help Wanted
 RELIABLE help wanted. Starting pay \$6.50. Must be able to work nights & weekends. Must be 21 & have ref. 806-676-0995.

21 Help Wanted
FOOD Service III positions avail. in the Pampa area. Salary starting at \$2516.85 monthly. For more information and a complete job description contact Laundry, Food & Supply HR at (936)437-4858 or visit our Website at: <http://www.tdcj.state.tx.us>

AUCTION
SAT. MAR. 1, 9:33 A.M.
BAD WEATHER DATE SAT. MAR. 8

Loc.: Wheeler, Tx. - From Inter. of Hwy. 83 & Hwy. 152 (stop light), take Hwy. 152 west 2 mi. to Co. Rd. 13, north side of Hwy.

ROLLING STOCK WILL SELL AT 1:00 P.M.

STEVE WALKER & OTHERS

Backhoe-98 JD 310SE, CRAWLER TRACTOR-Cat D5, Tractors-96 JD 5500 MFWD w/ JD 540 loader, Ford 801 w/ front end loader, PEANUT COMBINE-98 KMT 6 row or 8 row, ARTIC CAT 07 Prowler 650 4x4, MULE-Kawasaki 2510 4x4, FOUR WHEELERS-Kawasaki 01 Prairie 650 4x4, Polaris 90, DIRT BIKE, Sport Craft G7C, RIDING MOWER-SUV-TRUCK-PICKUP-CARS-BUGGY-BBQ PIT-TRAILERS-IRRIGATION ENGINES-FARM EQUIP.-WOODWORKING & SHOP TOOLS-CATERING EQUIP.-WOODBURNING STOVE-TANKS-HOG EQUIP-TRACTOR TOOL MAKEUP-SUCKER ROD-SALVAGE IRRIGATION PIPE

Full Listing on Web Site
LYNDON LOYD AUCTIONEERS
 806-826-5850 or 334-0407
 WHEELER, TX. (Lic. 7119)

Mewbourne Oil Company
PETROLEUM ENGINEER

MEWBOURNE OIL COMPANY, an established and growing independent oil and gas exploration and production company, is seeking to hire a **Petroleum Engineer** for each of our operations offices located in Hobbs, NM, Perryton, TX and Woodward OK.

Candidates with a petroleum engineering degree are preferred. Will consider individuals with related engineering degree or experience. Recent graduates are encouraged to apply. Experience in the oil and gas industry is a plus but not a requirement. This is a great opportunity to gain experience in drilling, completion and production engineering.

Salary based upon qualifications and level of experience. Comprehensive benefit package includes enhanced 401 (K) retirement plan; Health (includes eligible dependents), Life and LTD Insurance with insurance premiums paid by company. Relocation assistance provided. Interested candidates should send detailed resume to:

Shawn Ray
 Mewbourne Oil Company
 P.O. Box 8360
 Tyler, Texas 75711-8360
mocjobs@mewbourne.com
 Fax: 903/561-1045

An Equal Opportunity Employer

PHONE IN - MOVE IN

It's not just getting a mortgage it's building your future.

1-888-883-2086
 call today for your Free Pre-approval!

¡Llámenos y Mútese Pronto!
1-888-891-8764
 El camino a casa más rápido, más simple, y más conveniente.

AUSTIN SCHOOL DISTRICT		North and North East	
2700 Duncan	\$365,000	4/2.5/2	3830 SF/GCAD
210 W. Harvester	\$275,000	5/3.75/2	3262 SF/GCAD
12004 White Acres	\$209,900	3/2/2	2300 SF/GCAD
12002 White Acres	\$199,900	3/2/2	2080 SF/GCAD
12018 White Acres	\$199,900	4/3/4	2912 SF/GCAD
1228 Charles	\$145,000	3/1.75/2	2014 SF/GCAD
1810 Beech Ln	\$135,000	3/1.75/2	1320 SF/GCAD
1009 Kiowa	\$89,900	3/1.75/2	1912 SF/GCAD
2200 Duncan	\$82,000	4/1.5/2	1912 SF/GCAD
621 Reed Deer	\$75,000	3/1/1	1041 SF/GCAD
2425 Navajo	\$60,000	3/1/0	1347 SF/GCAD
2231 Mary Ellen	\$59,900	3/1/1cpl	1386 SF/GCAD
526 Powell	\$50,000	2/1/1	927 SF/GCAD
LAMAR SCHOOL DISTRICT		South West	
701 N. Nelson	\$58,900	4/1/1	1845 SF/GCAD
853 N. Craven	\$58,000	3/1/1	1056 SF/GCAD
1141S. Christy	\$35,000	3/1/1	1520 SF/GCAD
615 N. Faulkner	\$19,900	2/1/0	728 SF/GCAD
TRAVIS SCHOOL DISTRICT		West and North West	
915 Sierra	\$169,000	3/2/2	1659 SF/Bldr
2113 Lynn	\$129,900	4/1.75/2	2007 SF/GCAD
1524 Christy	\$124,900	3/1.75/2	1562 SF/GCAD
1532 N. Christy	\$117,500	3/1.75/1	1450 SF/GCAD
1605 N. Sumner	\$89,000	3/1.75/2	1277 SF/GCAD
1916 Zimmers	\$79,900	3/1.5/1	1244 SF/GCAD
1825 Dwight	\$79,000	3/1.5/1	1902 SF/GCAD
2225 N. Dwight	\$69,900	3/1/1	1209 SF/GCAD
1117 Willow	\$69,900	3/1.5/1	1112 SF/GCAD
1527 N. Sumner	\$65,000	3/1.75/2	1028 SF/GCAD
2133 N. Wells	\$57,500	3/1/0	1284 SF/GCAD
WILSON SCHOOL DISTRICT		South East	
533 Powell St	\$62,500	3/1/2	1372 SF/GCAD
725 N. Bradley	\$52,000	2/1/2	900 SF/GCAD
621 Lefors	\$47,500	3/1/1	1027 SF/GCAD
1212 Darby	\$32,000	3/1/1	877 SF/GCAD
107 Warren	\$27,000	2/1/1	852 SF/GCAD
1329 Terrace	\$25,000	2/1/1	954 SF/GCAD
1412 E. Browning	\$24,900	2/1/1	912 SF/GCAD
OTHER AREAS		Outside Pampa City Limits	
640 Acres Magic City	\$740,000		Ranch
530 Acres Near Lefors	\$530,000		Ranch West Of Lefors
1706 Cnty Rd V, White Deer	\$124,900	4/3/2	1725SF Approx
210 N. Dickerson, Mob	\$49,900	4/1/3	1725SF/Ownr
117 N. Miami, Mob	\$55,000	3/2/0 Tr	1216 SF/Ownr
Hwy 152, Mobeette	\$12,000	3 Acres 1 Mile E. of Oasis Rest.	
COMMERCIAL PROPERTY			
30th & Charles	\$3 sf & \$1 sf	50.9 Acres N of Walmart	
420 W. Charles	\$165-400,000	Houston Lumber Co.	
Hwy 60 Ranch House Motel	\$150,000	Ranch House Motel	
732 E. Frederic	\$140,000	Restaurant	
319 W. Foster	\$95,000	Milano Pizza	
1122 Alcock	\$80,000	3,360 SF Bldg	

Pampa MLS & Amarillo MLS
Pampa Realty Inc. - 669-0007

Jim Davidson (BKR/OWNR) . 662-9021
 Robert Anderwald . 665-3357
 Katrina Bigham . 898-8510
 Christa Carpenter . 664-0463
 Donna Courter . 595-0779
 Twila Fisher (BKR) . 440-2314
 Linda Lapacka . 662-9611
 Rebecca McCall . 662-2190
 Zeb Sallors . 664-0312
 Sandra Schuneman (BKR) . 662-7291

Visit CENTURY 21 COMMUNITIES™ on AOL® keyword: CENTURY 21
 Average 4 Home A Minute reports on average based upon homes bought or sold through CENTURY 21 franchise during 1995.
 ©1997 Century 21 Real Estate Corporation and its trademark and service marks of Century 21 Real Estate Corporation (Equal Housing Opportunity). LACI OFFICE IS INDIVIDUALLY OWNED AND OPERATED.

NOW HIRING:
 CDL Driver Needed,
 General Laborers,
 Diesel Mechanic/Assistant.

Must be at least 18 years of age and submit to a drug test.

Apply in person at:
West Texas Landscape
 120 S. Hobart
 Please No Phone Calls!!!

Tejas Real Estate

TIMING IS EVERYTHING
 If you've been thinking about buying a new house NOW IS THE TIME

Feb. 2007, the average 30 yr. fixed interest rate was 6.28% with 0.3 pts. For the week ending Feb. 15, 2008, the avg. 30 yr. fixed rate was 5.75% with 0.4 pts.

We have what you want!
 Check out these "hard to find" homes.

2706 Duncan: Looking for a basement? This home offers 3 bdms., 2 1/2 baths, 2 living areas, o's garage with heated workshop and a wonderful basement! Excellent condition and ready to move into with updated flooring, texture and paint. Mls 08-7888 \$187,000.00

1900 Grape: Need 4 bedrooms? Here it is! Over 3200 sq/ft, 4 bdms, 2 3/4 baths, 2 lg. living areas, 2 dining areas, big roomy kitchen, sunroom...all completely renovated. Large master suite with fabulous bathroom. All new flooring, fixtures, texture, paint, appliances and so much more! Mls 08-7884 \$245,000.00

8484 Rabbit Ln.: Brand new construction, this is truly an impressive home. 10'x12' tray & vaulted ceilings, crown molding, architectural columns, granite counter tops, custom cabinets, stone fireplace, designer lighting and fixtures, 3 covered porches. You simply must see this house to appreciate it. 3/2/2 on 1 ac. Mls 08-7889

Sue Baker, Agent ... 669-SOLD (7653)
 Gaye Sadler, Broker
www.tejasrealestate-pampa.com

PAMPA NURSING CENTER has an opening for a **Cook**. Please apply in person to: Sharon Brown at 1321 W. Kentucky 806-669-2551

L.V.N. \$1500.00 Sign-On Bonus
PAMPA NURSING CENTER is now hiring for **Charge Nurses** on the 10p to 6a shift and for weekends.
 Contact Mandi Martin 1321 W. Kentucky or 806-669-2551

PART-TIME help needed, 11am-2pm., Mon. thru Sat. Apply in person Hoagies Deli, Coronado Shopping Center.

THERAPIST TECHNICIAN I FIR / PAMPA
 \$8.14 per hour
 Texas Panhandle MHMR is in need of applicants who have a high school diploma / GED. Must have a minimum of eighth grade reading-comprehension, level as evidenced by score on the Adult Basic Learning Examination (ABLE) test and a valid Texas Drivers License and be insurable under the agency vehicle policy. Prefer experience working with individuals in therapeutic activities and would be interested in assisting persons with mental retardation in day program and residential settings. (3 positions available).
 Apply at Texas Panhandle MHMR 901 Wallace Amarillo, TX 79106 806-358-1681
 An Equal Opportunity Employer
 Drug Free & Smoke Free Workplace
 Pre-Employment Drug Screening Req.

STREETS & PARKS MAINTENANCE WORKER - To qualify for this position you must have a high school diploma or equivalent, a valid Texas driver's license and six months experience in maintenance related to streets and park repairs. Work Schedule: 7:00 a.m. to 4:00 p.m., Monday through Friday, with availability for taking emergency call out.
PART TIME JANITOR - To qualify for this position you must be capable of performing light maintenance as well as janitorial duties.
GRASS ROUTE DRIVER - To qualify for this position you must have a high school diploma or equivalent, and be able to lift 50-70 lbs. and work in the heat, wind and rain if necessary. Class A CDL a plus. Work schedule: 6:00 a.m. to 4:00 p.m., Monday thru Friday.

50 Building Suppl.
 White House Lumber
 101 S. Ballard
 669-3291

60 Household
MATTRESS SETS
 New in Plastic Pillow or Plush 15 yr. factory warr. Q-\$289 K-\$389 All sizes avail. 806-677-0400

MUST SELL
 Beautiful, 6 person Spa / Hot Tub Factory Warranty 53 jets, waterfall, lounger, cover, chemicals & steps 2007 model, need space New, never used Only \$4600 806-677-0400

A brand new twin mattress and box. Sealed in plastic w / warranty-\$100-806-341-6233

NASA VISCO memory foam mattress set, never used, must move \$350, 806-341-6233

NEW QUEEN Pillow Top mattress set. Unopened, w / warranty. Sacrifice \$150. 806-341-6233

FULL size mattress set. Brand new, still in package. Sell for \$125. 806-341-6233

MATTRESS Set-Orthopedic \$140 Must sell, Still in Plastic. 806-341-6233

BED-\$250-Brand name King PT Mattress Set, NEW in plastic, warranty, 806-341-6233

LIKE new. Couch, Lay Z Boy rocker recliner, glider rocker, coffee table & end table. \$350 for all. 669-1679 or 662-7421.

69 Misc.
ADVERTISING Material to be placed in the Pampa News MUST be placed through the Pampa News Office Only.
 RED Barn, Sat. 10-5. Dje nette sets, desks, chest books, much more. 1420 S. Barnes.
LIMO SERVICE 662-0097

DEBBIE'S Used Furniture, 903 S. Main, Borger, Tx. Lrg. Inventory! Specials. 273-2905, 886-0268

MEMORY Gardens of Pampa. Dbl. depth crypt, granite marker. Discounted price. 10% down-carry papers. 806-351-2128

Will Buy Surplus Equipment *Controls *Valves *Fittings *Instrumentation Prime Liquidators 832-883-6563 (cell)

End of Month Savings

HURRY IN... PRICES GOOD THRU MARCH 1ST!

2007 CADILLAC DEVILLE Drive In Luxury • Save Half Off New! • STK# 3740A	\$24,998
2007 NISSAN XTERRA 4WD • Go Anywhere! • STK#3753A	\$19,993
2005 CADILLAC CTS 36K Miles • STK# 3766A	\$19,985
2007 GMC SIERRA New Body Style • 3000 Miles • STK#3757A	\$17,995
2005 TOYOTA PRIUS 49K • One Owner • Carfax • 50 MPG! • STK# T07304A	\$17,955
2007 TOYOTA CAMRY Beat battle of the pump! • STK# 3755A	\$17,590
2000 LANDCRUISER Travel In Luxury! • STK# CA0727C	\$16,474
1995 TOYOTA AVALON 85K Miles • STK# T07288A	\$15,999
2004 TOYOTA TUNDRA SR5 30K Miles • Dynamic Blue! • STK# T07092D	\$15,995
2007 BUICK LACROSSE SAVE \$\$\$! • STK# 3764A	\$14,999
2002 TOYOTA TUNDRA White • Access Cab • 4x4 • STK# T08007A	\$13,795
2002 CHEVROLET CREW CAB 4X4 Economical with power! • STK# G08007A	\$10,295
2004 FORD ESCAPE Roomy! • Gas Saver! • STK# G07074A	\$9,987
1998 CHEVROLET PICKUP 4WD Ext Cab • STK# G07113A	\$8,754
1998 BUICK REGAL LS Great school car! • STK# B07005A	\$3,147

CULBERSON-STOWERS, INC.
805 N. HOBART • 806.665.1665 • 800.879.1665

69 Misc.

1 Jazzy electric wheel chair unused, 1 Jazzy 1113 electric wheel chair used, 1 Rascal electric scooter, 1 fold up wheel chair like new, 1 fold up walker, 1 bedside potty, 669-4150.

77 Livest./Equip.

SERVICEABLE black Angus bulls for sale. Volume discounts. Contact Thomas Angus. 580-655-4318, 580-497-7217.

80 Pets & Suppl.

FREE male puppy, 7 wks. old. 1/2 Yellow Lab-1/2 Great Pyreneese. Shots started. 835-2916 lv. msg. 2 Cats free to good home. Must stay together. One solid black, one Siamese. Both female. 669-5909.

FREE indoor Cat to good home. 3 yr. old Siamese, female, spayed. Call 440-1995

FREE dog. Part German Shepard. Medium sized female. 4 yrs old. House broke. Needs fenced yard. 440-5784.

Shih-tzu for sale to good home. Great with children and loves cats. Owners must move and cant take family pet. 440-2218

89 Pets & Suppl.

NEED small male Shih-Tzu for Stud Service. Call 669-6467.

89 Wanted To Buy

LOOKING to buy good used living room set. Call Vikki @ 662-0663.

95 Furn. Apts.

HUD ACCEPTED
1400 W. SOMERVILLE
PAMPA
806-665-3292

Equal Housing Opportunity
All real estate advertised herein is subject to the Federal Fair Housing Act, which makes it illegal to advertise "any preference, limitation, or discrimination because of race, color, religion, sex, handicap, familial status or national origin, or intention to make any such preference, limitation, or discrimination." State law also forbids discrimination based on these factors. We will not knowingly accept any advertising for real estate which is in violation of the law. All persons are hereby informed that all dwellings advertised are available on an equal opportunity basis.

96 Unfurn. Apts.

BENT CREEK APARTMENTS
• Lovely 2 & 3 Bdr. Apts.
• All Single Story Units
• Electric Range
• Frost-Free Refrigerator
• Blinds & Carpet
• Washer/Dryer Connec.
• Central Heat/Air
• Walk In Closets
• Exterior Storage
• Front Porches
HUD ACCEPTED
1400 W. SOMERVILLE
PAMPA
806-665-3292

NUMEROUS Houses, Apts., Dupl. & Comm. properties thru-out Pampa. 665-1875, 665-4274.

THE Schneider House, now leasing apts. Seniors or disabled, utilities included. Stop by 120 S. Russell or call 665-0415.

99 Stor. Bldgs.

TUMBLEWEED Acres, self storage units. Various sizes. 665-0079, 665-2450.

102 Bus. Rent. Prop.

OFFICE Space for rent, ask about 3 months free rent. 669-6841.

DOWNTOWN office space for rent. Utilities & cleaning service provided. Ample parking. 669-6823.

103 Homes For Sale

Brick
3 Bdr., 1 Ba.,
Single Gar.
New
Carpet & Flooring
X-Lrg. Corner Lot Incl.
C-21 Pampa Realty
MLS #08-7874
662-7291

103 Homes For Sale

Twila Fisher
Century 21 Pampa Realty
665-3560, 440-2314
669-0007

COUNTRY LIVING!
Alanreed Tx.
3 bd, 2 bath
modular home
1600 sf. on approx.
10 acres, 40x60 shop
cattle pins, cellar- \$60K
Call 662-6591

HIGHEST CASH PAID
FOR HOUSES!
CALL 662-1875

HOUSE for sale in McLean. 42. 1904 sq. ft. New updates throughout the house. 334-1136.

MOVE In Ready! 3 bdr., 1.75 ba., 1682 sq. ft. Fire-place, all appliances, lots of storage, double garage. New roof. Nice neighborhood. 1818 Evergreen. Call 662-2029 for more information.

MOVE In Ready! 3/2.5 / 2+. Den, living, sun., hob- by rms. Extra storage. Deck, sprinkler sys. New ceramic & paint. 1930 Dogwood. 663-3964.

Owner Finance
Low Down &
Low Payment:
1108 S. Faulkner
332 Sunset
931 E. Francis
313 Miami
Habla Espanol
Call Joe
806-336-1740
Or Milton
806-790-0827

112 Farms/Ranches
WILL buy your farmland for cash & lease it back to you for a reas. rate. 806-595-0724, 806-273-2328

115 Trailer Parks
TUMBLEWEED Acres, Storm Shelters, fenced, stor. bldg. avail. 665-0079, 665-2450.

120 Autos
1999 Jeep Grand Cherokee Limited 4*4, leather. 96 K miles, fully loaded \$8500. 806-236-0656.

121 Trucks
1995 GMC
4x4, New Tires
\$4200 OBO.
665-5473

06 Dodge Mega cab 1 ton diesel. 4x4, still under warr. 05 Idle Time camper, 28 ft. 5th wh. Loaded, still under warr. 806-232-9986 aft. 6pm.

103 Homes For Sale

OWNER FINANCE
Price Reduced!
313 Miami
1018 Duncan
2 bdr., 1 ba.
Low Down Low Mo.
Easy To Qualify
665-4595

UPDATED 3/2/2, Quiet street, 1510 N. Wells. 665-2130, 806-206-7666.

WHITE Deer Tx. 518 Warren, 2000 sq. ft. 3 bd, 2 bath, new flooring throughout, new ac/heating unit and water heater \$85,000. 806-886-0164.

112 Farms/Ranches
WILL buy your farmland for cash & lease it back to you for a reas. rate. 806-595-0724, 806-273-2328

115 Trailer Parks
TUMBLEWEED Acres, Storm Shelters, fenced, stor. bldg. avail. 665-0079, 665-2450.

120 Autos
1999 Jeep Grand Cherokee Limited 4*4, leather. 96 K miles, fully loaded \$8500. 806-236-0656.

121 Trucks
1995 GMC
4x4, New Tires
\$4200 OBO.
665-5473

06 Dodge Mega cab 1 ton diesel. 4x4, still under warr. 05 Idle Time camper, 28 ft. 5th wh. Loaded, still under warr. 806-232-9986 aft. 6pm.

Owner Finance
Low Down &
Low Payment:
1108 S. Faulkner
332 Sunset
931 E. Francis
313 Miami
Habla Espanol
Call Joe
806-336-1740
Or Milton
806-790-0827

112 Farms/Ranches
WILL buy your farmland for cash & lease it back to you for a reas. rate. 806-595-0724, 806-273-2328

115 Trailer Parks
TUMBLEWEED Acres, Storm Shelters, fenced, stor. bldg. avail. 665-0079, 665-2450.

120 Autos
1999 Jeep Grand Cherokee Limited 4*4, leather. 96 K miles, fully loaded \$8500. 806-236-0656.

121 Trucks
1995 GMC
4x4, New Tires
\$4200 OBO.
665-5473

06 Dodge Mega cab 1 ton diesel. 4x4, still under warr. 05 Idle Time camper, 28 ft. 5th wh. Loaded, still under warr. 806-232-9986 aft. 6pm.

Owner Finance
Low Down &
Low Payment:
1108 S. Faulkner
332 Sunset
931 E. Francis
313 Miami
Habla Espanol
Call Joe
806-336-1740
Or Milton
806-790-0827

112 Farms/Ranches
WILL buy your farmland for cash & lease it back to you for a reas. rate. 806-595-0724, 806-273-2328

115 Trailer Parks
TUMBLEWEED Acres, Storm Shelters, fenced, stor. bldg. avail. 665-0079, 665-2450.

120 Autos
1999 Jeep Grand Cherokee Limited 4*4, leather. 96 K miles, fully loaded \$8500. 806-236-0656.

121 Trucks
1995 GMC
4x4, New Tires
\$4200 OBO.
665-5473

06 Dodge Mega cab 1 ton diesel. 4x4, still under warr. 05 Idle Time camper, 28 ft. 5th wh. Loaded, still under warr. 806-232-9986 aft. 6pm.

Owner Finance
Low Down &
Low Payment:
1108 S. Faulkner
332 Sunset
931 E. Francis
313 Miami
Habla Espanol
Call Joe
806-336-1740
Or Milton
806-790-0827

112 Farms/Ranches
WILL buy your farmland for cash & lease it back to you for a reas. rate. 806-595-0724, 806-273-2328

115 Trailer Parks
TUMBLEWEED Acres, Storm Shelters, fenced, stor. bldg. avail. 665-0079, 665-2450.

120 Autos
1999 Jeep Grand Cherokee Limited 4*4, leather. 96 K miles, fully loaded \$8500. 806-236-0656.

121 Trucks
1995 GMC
4x4, New Tires
\$4200 OBO.
665-5473

06 Dodge Mega cab 1 ton diesel. 4x4, still under warr. 05 Idle Time camper, 28 ft. 5th wh. Loaded, still under warr. 806-232-9986 aft. 6pm.

Owner Finance
Low Down &
Low Payment:
1108 S. Faulkner
332 Sunset
931 E. Francis
313 Miami
Habla Espanol
Call Joe
806-336-1740
Or Milton
806-790-0827

112 Farms/Ranches
WILL buy your farmland for cash & lease it back to you for a reas. rate. 806-595-0724, 806-273-2328

115 Trailer Parks
TUMBLEWEED Acres, Storm Shelters, fenced, stor. bldg. avail. 665-0079, 665-2450.

120 Autos
1999 Jeep Grand Cherokee Limited 4*4, leather. 96 K miles, fully loaded \$8500. 806-236-0656.

121 Trucks
1995 GMC
4x4, New Tires
\$4200 OBO.
665-5473

06 Dodge Mega cab 1 ton diesel. 4x4, still under warr. 05 Idle Time camper, 28 ft. 5th wh. Loaded, still under warr. 806-232-9986 aft. 6pm.

Owner Finance
Low Down &
Low Payment:
1108 S. Faulkner
332 Sunset
931 E. Francis
313 Miami
Habla Espanol
Call Joe
806-336-1740
Or Milton
806-790-0827

112 Farms/Ranches
WILL buy your farmland for cash & lease it back to you for a reas. rate. 806-595-0724, 806-273-2328

115 Trailer Parks
TUMBLEWEED Acres, Storm Shelters, fenced, stor. bldg. avail. 665-0079, 665-2450.

120 Autos
1999 Jeep Grand Cherokee Limited 4*4, leather. 96 K miles, fully loaded \$8500. 806-236-0656.

121 Trucks
1995 GMC
4x4, New Tires
\$4200 OBO.
665-5473

06 Dodge Mega cab 1 ton diesel. 4x4, still under warr. 05 Idle Time camper, 28 ft. 5th wh. Loaded, still under warr. 806-232-9986 aft. 6pm.

Owner Finance
Low Down &
Low Payment:
1108 S. Faulkner
332 Sunset
931 E. Francis
313 Miami
Habla Espanol
Call Joe
806-336-1740
Or Milton
806-790-0827

112 Farms/Ranches
WILL buy your farmland for cash & lease it back to you for a reas. rate. 806-595-0724, 806-273-2328

115 Trailer Parks
TUMBLEWEED Acres, Storm Shelters, fenced, stor. bldg. avail. 665-0079, 665-2450.

120 Autos
1999 Jeep Grand Cherokee Limited 4*4, leather. 96 K miles, fully loaded \$8500. 806-236-0656.

121 Trucks
1995 GMC
4x4, New Tires
\$4200 OBO.
665-5473

06 Dodge Mega cab 1 ton diesel. 4x4, still under warr. 05 Idle Time camper, 28 ft. 5th wh. Loaded, still under warr. 806-232-9986 aft. 6pm.

SWEET CAREER!

Store Managers
\$30,000 base + Bonus
(Average potential pay w/bonuses \$48K-Plus)
(Bonuses paid every 2 weeks)

Assistant Manager
\$27,000 + Bonuses
We pay our Managers bonuses every 2 weeks

Shift Supervisors
\$9.25/hour

Full & Part-time Positions
\$6.00-\$8.25/hour
Advancement opportunities based on your performance
Day & Evening Shifts Available we will work with your schedule

Now hiring mail resumé to:
3000 Ne 63rd,
Okc, Ok 73121
Fax To Recruiter:
405-475-2411
Email:
Rpatton@braums.com

Or Apply At Your
Neighborhood
Braum's Store
EOE

B BRAUM'S
ICE CREAM AND DAIRY STORES

Founded in 1919, Halliburton is one of the world's largest providers of products and services to the petroleum and energy industries. With more than 50,000 employees in over 70 countries worldwide, Halliburton is able to offer a variety of career opportunities. Explore the following opportunity in Pampa:

Cementing Service Supervisors

We currently have many opportunities for Cementing Service Supervisors experienced in oil & gas well cementing on land as well as offshore. We offer a competitive salary and benefits package and will provide training and competency development programs that will guide individual career development paths.

Applicants must be able to pass a pre-employment drug screen and physical exam. Interested candidates please apply online:

www.HALLIBURTON.Jobs

HALLIBURTON

Create your future with Halliburton.

Wal-Mart
COME GROW WITH US!

Wal-Mart is looking for driven people. At Wal-Mart, you will explore new opportunities and learn in a supportive and challenging work environment. As a member of the Wal-Mart team, you'll receive competitive wages and a generous benefits package including: health, 401(k), stock purchase plan, profit sharing, merchandise discounts, and career advancement opportunities. Please apply at the hiring kiosk located at your Pampa Wal-Mart or online at WWW.walmartstores.com

NOW HIRING ALL POSITIONS!

Wal-Mart will not tolerate discrimination of employment on the basis of race, color, age, sex, sexual orientation, religion, disability, ethnicity, national origin, marital status, veteran status or any other legally protected status.

WINTER SAVINGS
BUY HERE • PAY HERE • NO CREDIT CHECK

98 LINCOLN NAVIGATOR GOLD • LEATHER • SUNROOF \$10,995	02 FORD F250 CREW CAB CHARCOAL/BLACK • 5.2L • DIESEL \$21,995	06 F150 SUPER CREW KING CAB COPPER/PENDANT • FACTORY WARRANTY \$29,995	05 HYUNDAI ELANTRA RED • 4-DR • 30 MPG \$9,850
05 PONTIAC GRAND AM BLUE • 1.8L • 24 • 100 \$8,995	01 CHEVROLET CAMARO RED • AUTOMATIC • SUNROOF \$7,995	00 FORD FOCUS RED • AUTOMATIC • 100 \$5,995	02 DAEWOO LAGANZA BLUE • 5-DR • AUTOMATIC \$7,995
99 JEEP GRAND CHEROKEE GOLD • LEATHER • SUNROOF \$12,995	03 BUICK REGAL LS SILVER • 2.7L • 100 \$7,995	99 CHEVROLET TRUCK WHITE • 4-DR • 2.7L \$8,995	99 CHEVROLET TRUCK WHITE • 4-DR • 2.7L \$8,995

Hwy 60@Hwy 70 • 669-6062 • Open 9 am - 6pm Monday- Saturday

DOUG BOYD MOTOR CO.

WOW! NO CREDIT CHECK. DOUG BOYD MOTOR CO. OVER 150 VEHICLES TO CHOOSE FROM. IF YOU HAVE A JOB AND A DOWN PAYMENT WE SAY *YES!*



2000 Chevy Tahoe Z-71
Red, Leather, 4x4
\$14,995



2000 Cadillac Seville
Pewter, 74K, Leather
\$10,995



2001 Chevy Suburban
Black, Leather, Nice
\$11,995



2001 Mercury Cougar
White, Loaded, Sporty
\$6,995



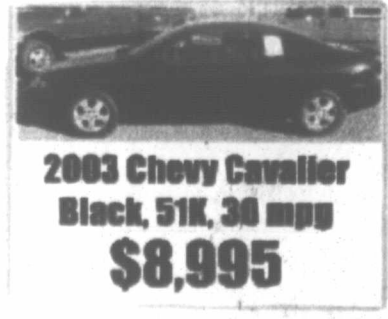
2002 Dodge Ram 1500 SLE
Blk, Quad Cab, Well Equipped
\$13,995



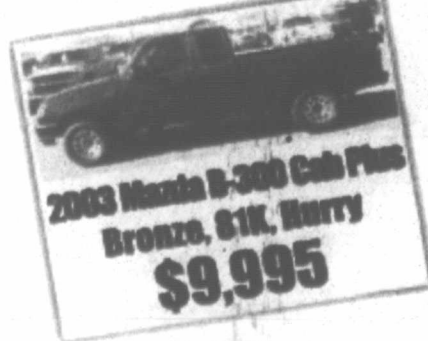
2003 Cadillac Deville
Red, 30K, Loaded
\$16,995



2006 Hummer H3
Green, 50K, Luxury
\$29,995



2003 Chevy Cavalier
Black, 51K, 38 mpg
\$8,995



2003 Mazda B-300 Cab Plus
Bronze, 61K, Huffy
\$9,995



2007 Chevy Monte Carlo
Red, 29K, Factory Warranty
\$15,995

2002 BUICK LE SABRE	WHITE • STK # 5031	\$8,995
2002 BUICK RENDEZVOUS	MAROON • STK # P1062A	\$12,995
2003 BUICK CENTURY	SILVER • STK # P1516	\$7,995
2000 BUICK CENTURY	WHITE • STK # P1497	\$4,995
2003 BUICK PARK AVENUE	WHITE • STK # P1490	\$10,995
1998 CADILLAC DEVILLE	WHITE • STK # P1274	\$9,850
2003 CADILLAC DEVILLE	RED • STK # P1431	\$16,995
1994 CADILLAC SEVILLE	WHITE • STK # P1450A	\$4,995
2000 CADILLAC SEVILLE	PEWTER • STK # P1498	\$10,995
1994 CADILLAC DEVILLE	WHITE/BLUE • STK # P1498	\$5,995
1994 CHEVROLET SUBURBAN	MAROON • STK # 4659B	\$4,995
1999 CHEVROLET TAHOE	GREY • STK # P1032	\$10,995
1996 CHEVROLET TAHOE	GREEN • STK # P1068A	\$5,995
2000 CHEVROLET VENTURE	BLUE • STK # P1082A	\$5,995
2007 CHEVROLET MONTE CARLO	RED • STK # P1465	\$15,995
1999 CHEVROLET EXPRESS	GREEN • STK # R1203	\$6,995
2003 CHEVROLET AVALANCHE	WHITE • STK # R1320	\$21,995
2002 CHEVROLET SILVERADO	WHITE • STK # R1376	\$13,995
2003 CHEVROLET SUBURBAN	SILVER • STK # R1422	\$17,995
2002 CHEVROLET SILVERADO	WHITE • STK # R1474	\$14,995
1997 CHEVROLET C3500	WHITE • STK # P1166B	\$7,995
2003 CHEVROLET SUBURBAN	GREEN • STK # R1474	\$17,995
2005 CHEVROLET EQUINOX	SILVER • STK # P1214	\$15,995
2000 CHEVROLET C2500	WHITE • STK # P1228	\$10,995
1993 CHEVROLET SUBURBAN	SILVER • STK # P1113	\$4,995
1995 CHEVROLET SUBURBAN	BROWN • STK # P1139	\$4,995
1995 CHEVROLET SUBURBAN	BROWN • STK # P1139	\$4,995
2004 CHEVROLET SILVERADO	WHITE • STK # P1290	\$13,995
2000 CHEVROLET TAHOE	RED • STK # P1321	\$14,995
2001 CHEVROLET SILVERADO	RED • STK # P1322	\$10,995
2001 CHEVROLET TAHOE	PEWTER • STK # P1326	\$15,995
2002 CHEVROLET SUBURBAN	BLUE • STK # P1331	\$13,995
2005 CHEVROLET SILVERADO	WHITE • STK # P1341	\$17,995
2004 CHEVROLET SILVERADO	WHITE • STK # P1383	\$18,995
2003 CHEVROLET CAVALIER	BLACK • STK # P1401	\$8,995
2003 CHEVROLET MALIBU	TAN • STK # P1402	\$8,995
1997 CHEVROLET C2500	WHITE • STK # P1404	\$5,995
2002 CHEVROLET CAVALIER	WHITE • STK # P1414	\$4,995

2001 CHEVROLET SILVERADO	RED • STK # P1400	\$14,995
2004 CHEVROLET AVALANCHE	BLUE • STK # P1406	\$19,995
2004 CHEVROLET TAHOE	MAROON • STK # P1421	\$19,995
2003 CHEVROLET IMPALA	WHITE • STK # P1447	\$9,850
2002 CHEVROLET AVALANCHE	PEWTER • STK # P1438	\$18,995
2004 CHEVROLET SILVERADO	GREEN • STK # P1458	\$15,995
2003 CHEVROLET HHR	PURPLE • STK # P1459	\$15,995
2004 CHEVROLET IMPALA	RED • STK # P1495	\$10,900
1988 CHEVROLET C1500	WHITE • STK # P1520A	\$5,995
1999 CHEVROLET S10	BLUE • STK # P1517A	\$6,995
2003 CHEVROLET AVALANCHE	CHARCOAL • STK # P1486	\$18,995
1999 CHEVROLET BLAZER	RED • STK # P1506	\$5,995
1998 CHEVROLET K1500	RED • STK # P1500A	\$7,995
2001 CHEVROLET SUBURBAN	BLACK • STK # P1503	\$11,995
1995 CHEVROLET S10	WHITE • STK # P1504	\$5,995
2007 CHEVROLET SILVERADO	BLUE GRAPHITE • STK # P1462	\$19,995
1999 CHEVROLET SUBURBAN	PEWTER • STK # P1176	\$7,995
2004 CHEVROLET IMPALA	GRAY • STK # P1281	\$6,995
2007 CHRYSLER TOWN & COUNTRY	BLUE • STK # P1035	\$18,995
2005 CHRYSLER TOWN & COUNTRY	GOLD • STK # P1036	\$12,995
2007 CHRYSLER SEBRING	SILVER • STK # P1464	\$15,995
2001 CHRYSLER PT CRUISER	SILVER • STK # P1446	\$7,995
1999 CHRYSLER SEBRING	WHITE • STK # P1494	\$5,995
1999 CHRYSLER CONCORDE	CHAR COAL • STK # P1413	\$6,995
2000 DAEWOO LEGANZA	GOLD • STK # P1148A	\$4,995
2002 DAEWOO LEGANZA	BLUE • STK # R1303	\$4,995
2000 DODGE CARAVAN	SILVER • STK # P1015	\$7,995
2002 DODGE RAM PICKUP	SILVER/BLUE • STK # R1476	\$13,995
1999 DODGE RAM PICKUP	WHITE • STK # P1409	\$8,995
2005 DODGE RAM PICKUP	BURGUNDY • STK # P1136A	\$19,995
2001 DODGE RAM PICKUP	WHITE • STK # P1195	\$12,995
2003 DODGE RAM PICKUP	SILVER • STK # P1197	\$15,995
2003 DODGE RAM PICKUP	WHITE • STK # P1215	\$15,995
2005 DODGE RAM PICKUP	BLACK • STK # P1225A	\$19,995
2006 DODGE RAM PICKUP	TAN • STK # P1245	\$21,995
2003 DODGE RAM PICKUP	BLUE • STK # P1267	\$17,995
2006 DODGE NEON	GREY • STK # P1156A	\$5,995
2002 DODGE RAM VAN	HUNTER GREEN • STK # P1380	\$7,995

2004 DODGE STRATUS	WHITE • STK # P1275	\$8,995
2003 DODGE CARAVAN	MAROON • STK # P1345	\$7,995
2002 DODGE RAM PICKUP	RED • STK # P1415	\$13,995
2002 DODGE RAM PICKUP	RED • STK # P1507A	\$13,995
2003 DODGE CARAVAN	WHITE • STK # P1466B	\$6,995
2004 DODGE INTREPID	WHITE • STK # P1511	\$5,995
1999 DODGE RAM PICKUP	PURPLE • STK # R1423	\$10,995
1997 DODGE RAM PICKUP	• STK # 4965A	\$5,000
2002 FORD F150	GREY • STK # 4640	\$14,995
2003 FORD FOCUS	BLACK • STK # 5010	\$6,995
2000 FORD F250	GOLD • STK # 4993	\$14,995
2005 FORD EXPLORER SPORT TRAC	CHARCOAL • STK # P1049	\$17,995
1995 FORD WINDSTAR	MINT • STK # P1080A	\$4,995
2001 FORD F150	GOLD • STK # P1463	\$14,995
2001 FORD F150	WHITE • STK # R1377A	\$10,995
2001 FORD EXPEDITION	BLACK • STK # R1387	\$12,995
2000 FORD F150	RED • STK # R1408	\$6,995
2002 FORD FOCUS	SILVER • STK # P1085A	\$6,995
2002 FORD F250	WHITE • STK # P1095A	\$14,995
2004 FORD EXPLORER SPORT TRAC	TAN • STK # P1105	\$16,995
2004 FORD F150	MAROON • STK # P1123	\$18,995
2005 FORD EXPEDITION	GREY • STK # P1130	\$17,995
2002 FORD F150	MAROON • STK # P1221	\$15,995
2003 FORD F150	GREY • STK # P1230	\$15,995
2003 FORD F150	MAROON • STK # P1231	\$12,995
2000 FORD WINDSTAR	MAROON • STK # P1249	\$9,850
1999 FORD EXPEDITION	WHITE • STK # P1256	\$10,995
1998 FORD F150	TAN • STK # P1257	\$7,995
2001 FORD F150	WHITE • STK # P1288	\$10,995
2000 FORD FOCUS	RED • STK # P1308	\$5,995
2006 FORD F150/KING RANCH	COPPER/PEWTER • STK # P1398	\$29,995
1998 FORD F150	BLUE • STK # P1181	\$7,995
2005 FORD TAURUS	MAROON • STK # P1237	\$10,995
2003 FORD TAURUS	SLATE • STK # P1250	\$6,995
1999 FORD F250	WHITE • STK # P1342	\$13,995
2001 FORD ESCAPE	RED • STK # P1453	\$9,995
1998 FORD EXPLORER	BLACK • STK # P1499A	\$5,995
2001 FORD F150	GOLD • STK # P1519	\$10,995

DOUG BOYD MOTOR CO.

Open 9:00 am - 6:00 pm • Monday- Saturday
Hwy 60 @ Hwy 70 • Pampa • 669-6062
WWW.DOUGBOYDMOTORS.COM




2004 Toyota Corolla
Sunset, Sunroof, What's Hot
\$11,995

PRESIDENTS' DAY SALES DRIVE

NEW 2007 BUICK LUCERNE CXL

MSRP \$34,910
C/S DISC. \$2,000
REBATE \$2,500
PRES DAY REBATE \$1,000

Sell Price \$28,510

stk# P09016



NEW 2008 MALIBU LS

MSRP \$20,225
C/S DISC. \$411

Sell Price \$19,814

stk# C08011



NEW 2008 CHEVROLET AVALANCHE LT - 2WD

MSRP \$34,565
C/S DISC. \$2,000
REBATE \$2,000
PRES DAY REBATE \$1,000

Sell Price \$29,565

stk# C07264



NEW 2008 CHEVROLET SILVERADO 2WD - REG CAB - SWB - V8

MSRP \$20,915
C/S DISC. \$924
REBATE \$1,500
PRES DAY REBATE \$1,000

Sell Price \$17,491

stk# C06020




GEORGE BULLARD



JAY HOLMES

NEW 2008 CHEVROLET SILVERADO 1500 2WD - EXT CAB

MSRP \$30,230
C/S DISC. \$2,000
REBATE \$2,000
PRES DAY REBATE \$1,000

Sell Price \$25,230

stk# C07264



NEW 2008 CHEVROLET SILVERADO 1500 4WD - EXT CAB

MSRP \$31,910
C/S DISC. \$2,000
REBATE \$2,000
PRES DAY REBATE \$1,000

Sell Price \$26,910

stk# C07261




PAT WALSH



TOM BIBLE

NEW 2008 GMC SIERRA 2WD - CREW CAB

MSRP \$29,915
C/S DISC. \$1,960
REBATE \$2,000
PRES DAY REBATE \$1,000

Sell Price \$24,995

stk# C07011




STEVE BUSSE

NEW 2008 GMC SIERRA 1500 4WD - CREW CAB

MSRP \$35,535
C/S DISC. \$2,000
REBATE \$2,000
PRES DAY REBATE \$1,000

Sell Price \$30,535

stk# G07092



NEW 2008 GMC YUKON 2WD

MSRP \$37,125
C/S DISC. \$2,200
REBATE \$2,000
PRES DAY REBATE \$1,000

Sell Price \$31,925

stk# G07114



NEW 2008 GMC ACADIA FWD SLE

MSRP \$30,995
C/S DISC. \$300
REBATE \$500

Sell Price \$30,105

stk# G08011

SOLD



**SALE ENDS
FEBRUARY 29TH, 2008**



CULBERSON-STOWERS, INC.



805 N Hobart • 665-1665 • www.culbersonautos.com



Nation sees more cancer deaths

ATLANTA (AP) — U.S. cancer deaths rose by more than 5,000 in 2005, a somewhat disappointing reversal of a two-year downward trend, the American Cancer Society said in a report issued recently.

The group counted 559,312 people who died from cancer.

The cancer death rate among the overall population continued to fall, but only slightly, after a couple of years of more dramatic decline.

In 2005, there were just under 184 cancer deaths per 100,000 people, down from nearly 186 the previous year. Experts said it wasn't surprising that the rate would stabilize.

The cancer death rate has been dropping since the early 1990s, and early in this decade was declining by about 1 percent a year. The actual number of cancer deaths kept rising, however, because of the growing population.

So it was big news when the rate dropped by 2 percent in both 2003 and 2004, enough to cause the total number of cancer deaths to fall for the first time since 1930.

President Bush and others hailed that as a sign that federally funded research was making strides against the disease.

But now the death rate decline is back to 1 percent. And the 2005 numbers show annual cancer deaths are no longer falling, but are up more than 5,400 since 2004.

"The declining rate was no longer great enough to overcome the increase in population," said Elizabeth Ward, a co-author of the

cancer society report. Officials with the organization say they don't know why the decline in the death rate eased.

It may be that cancer screenings are not having as big an effect as they were a few years ago, said Dr. Peter Ravdin, a research professor in biostatistics at the University of Texas M.D. Anderson Cancer Center in Houston.

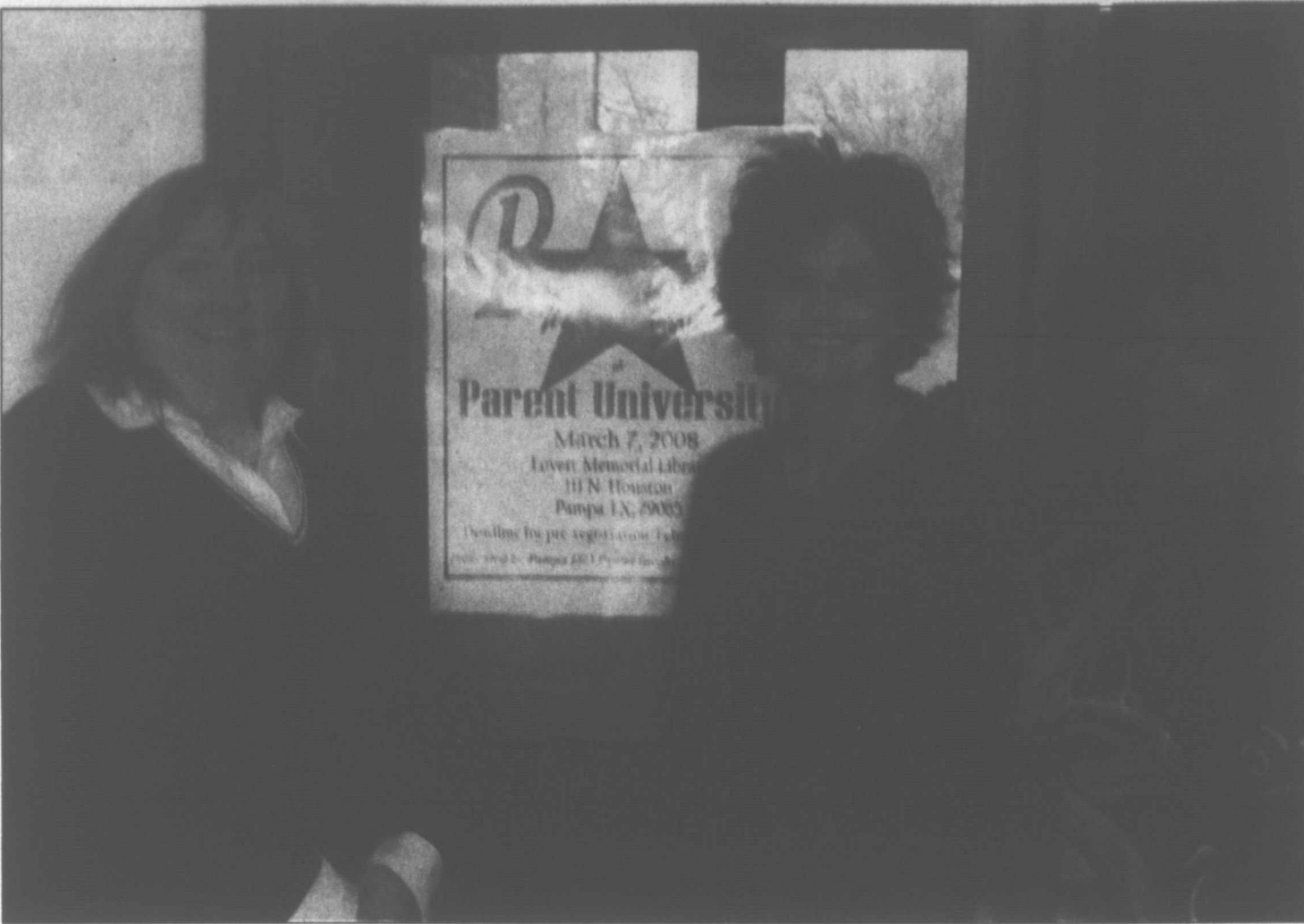
One possible example: In 2004, the largest drop in deaths among the major cancers was in colorectal cancer. Experts gave much of the credit to colonoscopy screenings that detect polyps and allow doctors to remove them before they turn cancerous. They also mentioned "the Katie Couric effect" — a jump in colonoscopy rates after the "Today" show host had the exam on national television in 2000.

In the new report, the colorectal cancer death rate decreased by about 3 percent from 2004 to 2005, after plunging 6 percent from 2003 to 2004.

Colorectal cancer screening rates through 2003 did not show a decline. But it's possible they have fallen since then, Ravdin said.

Cancer society officials have also voiced concern that cancer deaths may increase as Americans lose health insurance coverage and get fewer screenings.

The good news is the cancer death rate is still declining, and that since the early 1990s is down more than 18 percent for men and more than 10 percent for women. Those reductions translate to more than half a million cancer deaths avoided, according to the cancer society.



Parent University

COURTESY PHOTO

Sherese Oles, from left, Lynda Knight and Sara Wheeley talk about the upcoming "Parenting with a Purpose Parent University" to be presented by Pampa ISD Parent Involvement coordinators from 9 a.m.-2:30 p.m. March 7 at Lovett Memorial Library. Oles will be talking about communication within the family. Knight will be discussing anorexia and eating disorders and her own personal journey with her daughter. Sara Wheeley will talk about bonding, attachment and the importance of the human connection. She will also discuss pregnancy and related issues. Registration will be from 8:30-9 a.m. the day of the event at the library. To find out more, call Sabrina at 669-4700 and Debbie (for both English and Spanish) at 669-4990, ext. 29.

Cotton

Continued from Page 4-B

grains, metals, oil, etc. These funds are stepping in and buying shares causing a reaction."

Traditional hedge funds, on the other hand, will buy or sell futures according to market trends, he said. Combining both index and hedge

fund transactions result in a "swing with the wind where you see 3 cents, 4 cents, 5 cents and 6 cents in change when they are both buying contracts," Robinson said.

Nearby cotton futures prices are predicted to hold in the mid-60 cent range, though they could continue to rise considering carryover stocks were at 3.47 percent going into the 2007-2008 year, Robinson said.

"You could see trading of new crop cotton futures reach the low to mid-

80 cent range," he said.

However, Robinson cautioned producers not to overextend themselves in purchasing new equipment, land or making other capital investments if cotton prices continue to rise.

"Remember, this type of market situation isn't going to last," he said. "Though you may be in a situation where you see that prices are high, the cost of production and equipment are rising, too."

Spring Break


Ashmore Inn
& Suites

2301 I-40

East, Exit 72-A • 877-374-3344

(Behind Cracker Barrel

Restaurant)

• 2 Nights in a Traditional guestroom with In Room Microwave, Refrigerator, and Coffee Maker
• 4 Games of Lights off Golf
• 4 UA Cinema Movie passes
• Mr. Gattis Pizza family Buffet to include drinks and game tokens
• Enjoy our Indoor Heated Pool
• Deluxe Continental breakfast Each morning
A \$289.00+ Value
ONLY \$159.00

Family Get-Away Package amenities for for 2 Adults and 2 Children under 16 years of age

Offer good February 17, 2008 thru march 31, 2008 Based on Availability Must be 21 years of age Reservations must be made in advance and guaranteed with a valid major Credit Card 48 hour cancellation required

Memory Gardens Cemetery and Mausoleum of Pampa



WORLD WAR II MEMORIAL WASHINGTON D.C.

Be Remembered...

It is human nature to want to be remembered in life. Throughout history our society has remembered many of our heroes thru elaborate memorialization. At many of our greatest National Memorials, Many have been Memorialized, yet, **No one person is buried there.**

VIETNAM WAR MEMORIAL WASHINGTON D.C.

DO SOMETHING TODAY YOU WILL ALWAYS BE REMEMBERED FOR...

CREMATION OPTIONS EXPLAINED

It is our desire to help your family prepare for this inevitable obligation with our famous "Family Protection Program".

Please note the tremendous benefits included in our **CREMATION OPTIONS PROGRAM:**

- **FREE CERTIFICATE** (values at \$500 as a credit to apply towards cremation arrangements at Memory Gardens Cemetery and Mausoleum of Pampa)
- **FREE Family Record Guide** - Valuable social security and veteran's benefits along with "must know" information.
- **FREE legal Will Kit.**
- **FREE Child/Grand Child protection** - should you elect to enroll in one of our programs, we offer free child protection for dependent children and grandchildren up to the age of 21.

Visit us on the Web at: <http://memory-gardens.tripod.com>
Locally owned and operated

YES, I want more Information on Cremation Options!

- Free Certificate (valued at \$500 as a credit to apply towards cremation arrangements)
- Above Ground Mausoleum Entombment (I understand it can be less expensive than ground burial)
- Register for the **FREE VETERAN'S SPACE and INFORMATION ON A SECOND SPACE FOR SPOUSE**
- Casket Information (Receive a \$100 discount when casket is selected thru Memory Gardens Cemetery)

Name _____